

**Assessment Report
Ground Penetrating Radar**

**Work Performed by Boris Logutov PhD Geo
On # P 516621, P 516622, P 516623, P 518532, P 518533, P 518651
August 31, 2017**

**Bear Creek
Map # 116B03b
Claim Owner Sylvain Montreuil**



Table Of Contents

**Introduction and Purpose, Method
2**

**Location
3**

**Data Analysis
4 – 6**

**Bear Creek August 2017
Line Location Co-ordinates
7**

**Expenses
7**

**Recommendations & Conclusion
Statement of Qualification
8**

Section 1: Introduction

The purpose of this document is to provide a comprehensive overview of the project's objectives and scope. It is intended for all stakeholders involved in the project.

- 1.1 Project Objectives
- 1.2 Project Scope
- 1.3 Project Organization

Section 2: Project Organization

The project is organized into several key areas, each with specific responsibilities and roles.

- 2.1 Project Manager
- 2.2 Project Sponsor
- 2.3 Project Steering Committee

For more information, please refer to the project charter and organizational chart.

Section 3: Conclusion

This document serves as a foundational reference for the project's structure and goals.

**Assessment Report
Ground Penetrating Radar**

**Work Performed by Boris Logutov PhD Geo
Field Assistant Sylvain Montreuil
On # P 516621, P 516622, P 516623, P 518532, P 518533, P 518651**

August 31, 2017

**Bear Creek
Map # 116B03b**

Table Of Contents

**Introduction and Purpose, Method
2**

**Location
3**

**Data Analysis
4 – 6**

**Bear Creek August 2017
Line Location Co-ordinates
7**

**Expenses
7**

**Recommendations & Conclusion
Statement of Qualification
8**

1. The first part of the document is a list of names and titles.

2. The second part of the document is a list of names and titles.

3. The third part of the document is a list of names and titles.

4. The fourth part of the document is a list of names and titles.

5.

6. The sixth part of the document is a list of names and titles.

7. The seventh part of the document is a list of names and titles.

8. The eighth part of the document is a list of names and titles.

9. The ninth part of the document is a list of names and titles.

10. The tenth part of the document is a list of names and titles.

11. The eleventh part of the document is a list of names and titles.

12. The twelfth part of the document is a list of names and titles.

Introduction and Purpose

To test placer for bedrock depth and mineralization areas, to determine locations for drill or shaft testing in future.

Method

Field work carried out August utilized ground penetrating radar machine "EasyRad Pro" and computer system RedMax software used for data analysis. To analyze strips of ground under lease and compile a general overview map of mineral potential.

A total of 8 lines of GPR (Ground Penetrating Radar) were conducted during the field works, for a total length of **1,600 m**; the distances between lines are approximately of **50 – 200 m**. The actual location of the surveyed lines is visible on map named "picture #1" (see next pages). The coordinates of the surveyed lines are listed in Table 1.

The effective depth of this survey is estimated to be up to 16.0 m. The results of these conducted surveys confirmed the strong ability of recognition of the main lithological units at the radar's-images such as:

«Overburden»- thickness 1.5-2.9 m;
«Alluvial»- thickness 1.5-13.0 m;
«Bedrock surface» – at the depth up to 13.0 m.

The results of the final interpretation and analysis of the received data of GPR surveys are presented in pictures #2.

THE UNIVERSITY OF CHICAGO
DEPARTMENT OF CHEMISTRY
5800 S. DICKINSON DRIVE
CHICAGO, ILLINOIS 60637

TO: [Name]
FROM: [Name]
SUBJECT: [Subject]

[Text block containing details of the communication]

[Text block containing details of the communication]

[Text block containing details of the communication]

[Text block containing details of the communication]

[Text block containing details of the communication]

[Text block containing details of the communication]

Location – Bear Creek

Picture #1 – Analysis Lines of Ground Penetrating Radar Tests in Red

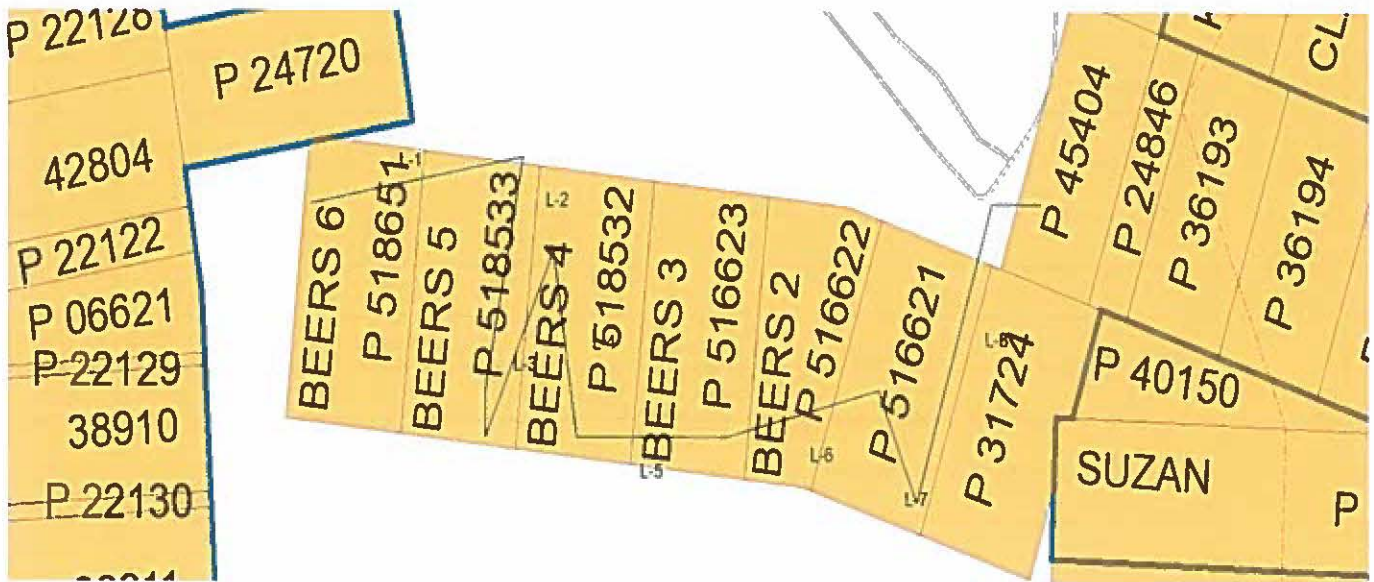
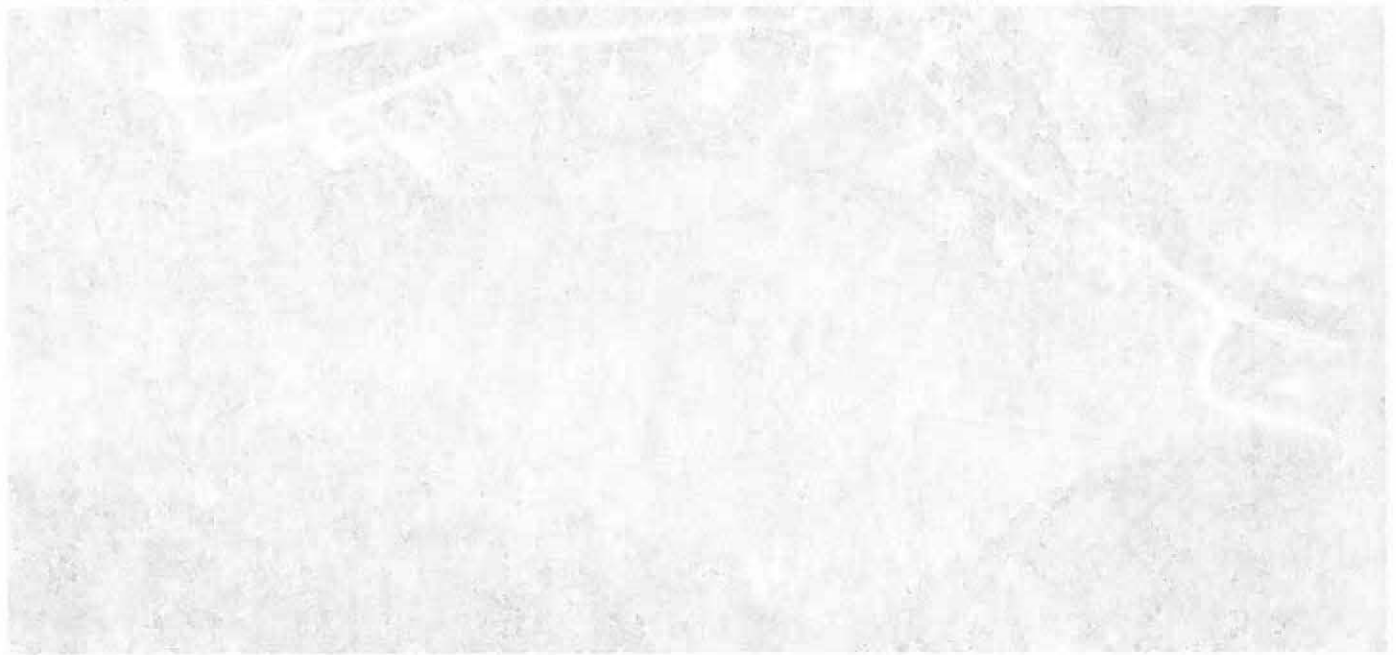


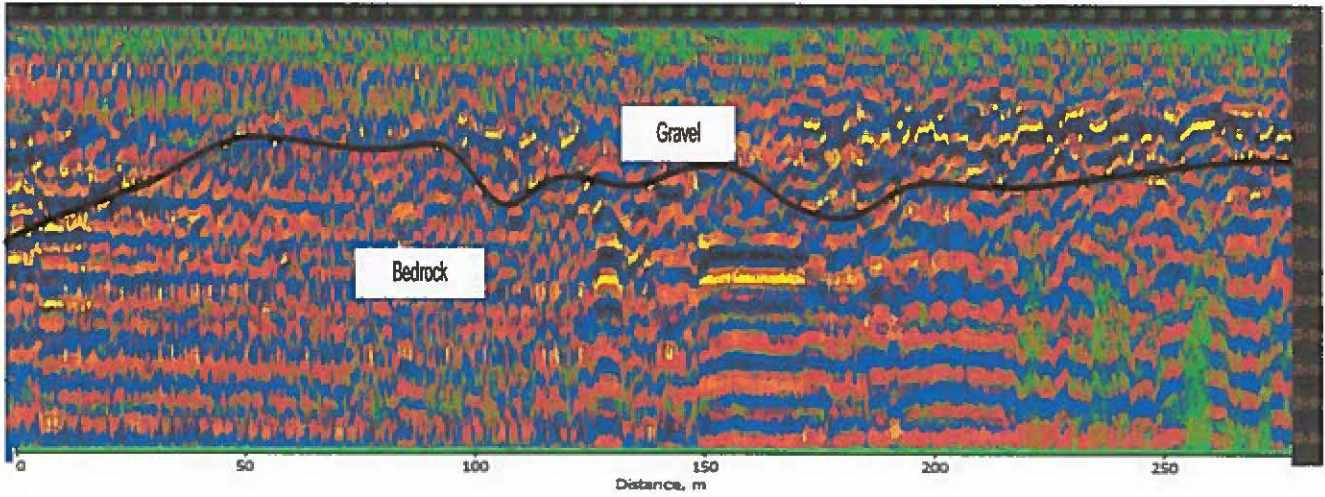
Figure 1 - Present Value of Cash Flows



Data Analysis - Picture #2

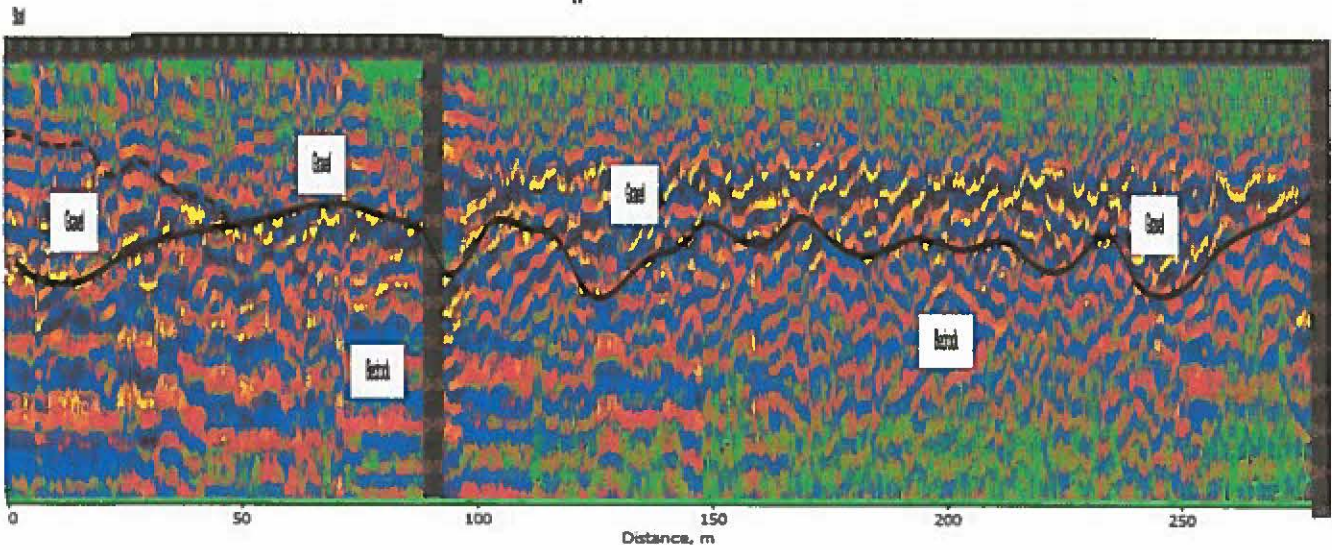
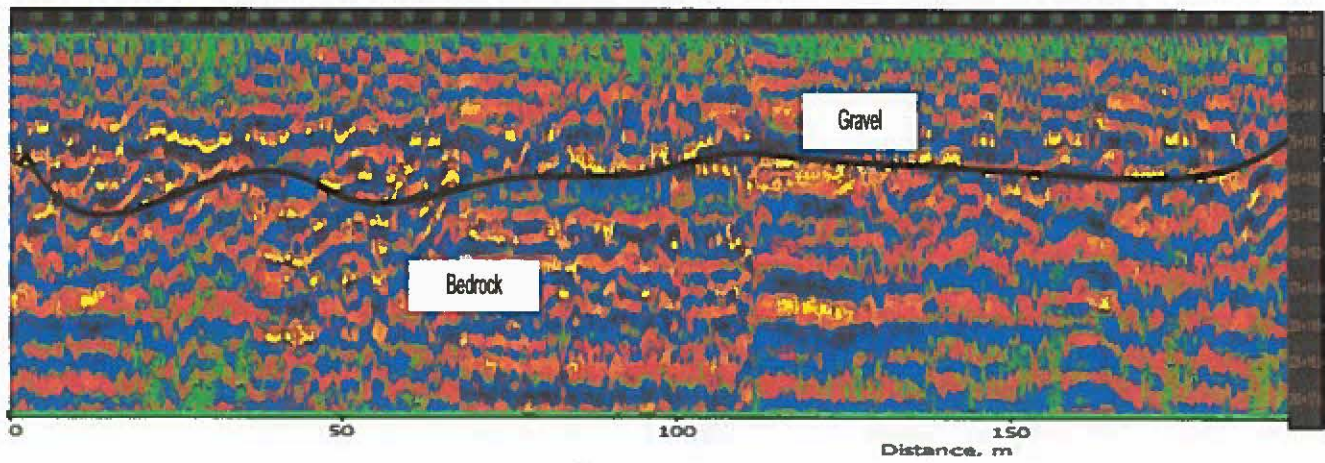
Start

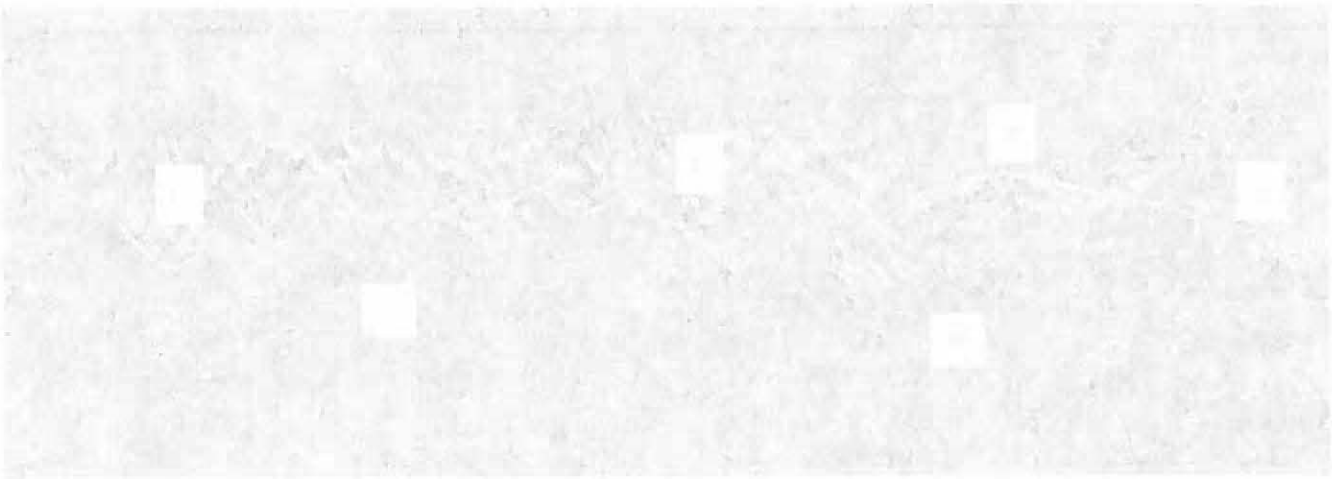
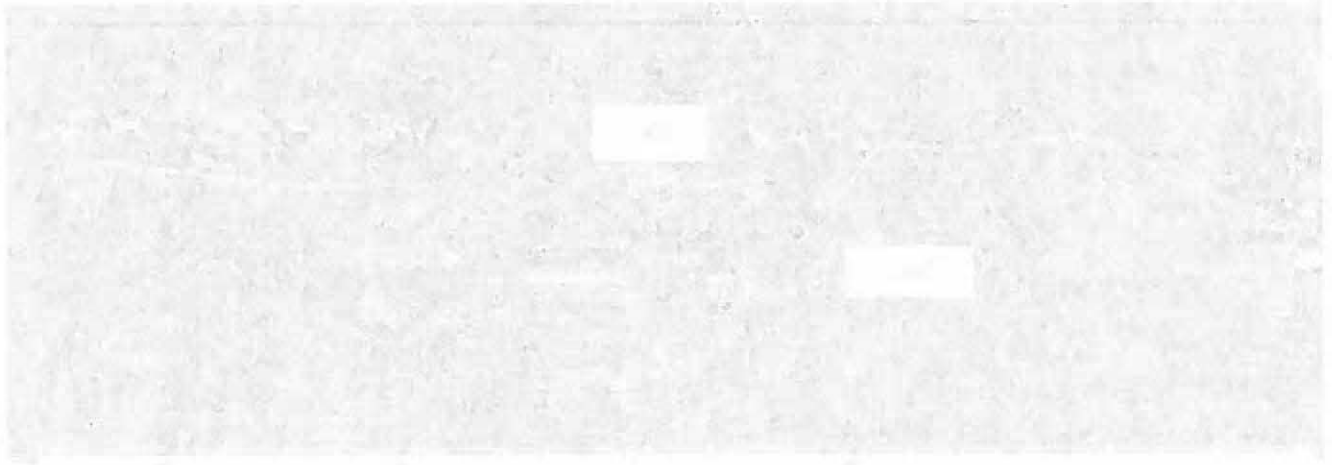
L-1



Start

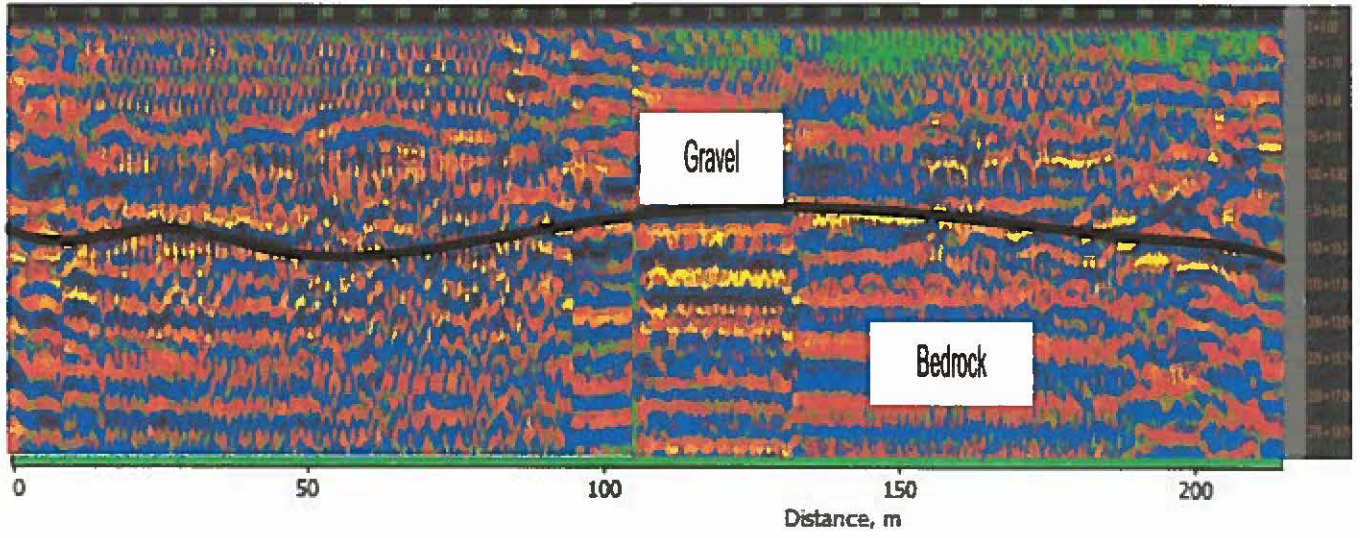
L-2





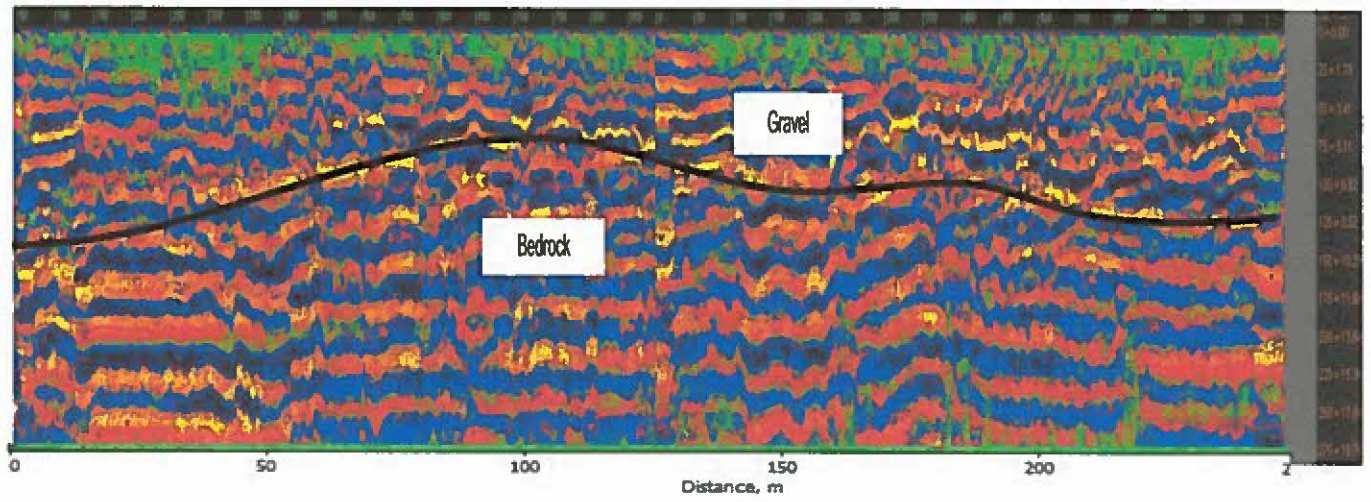
L-4

Start



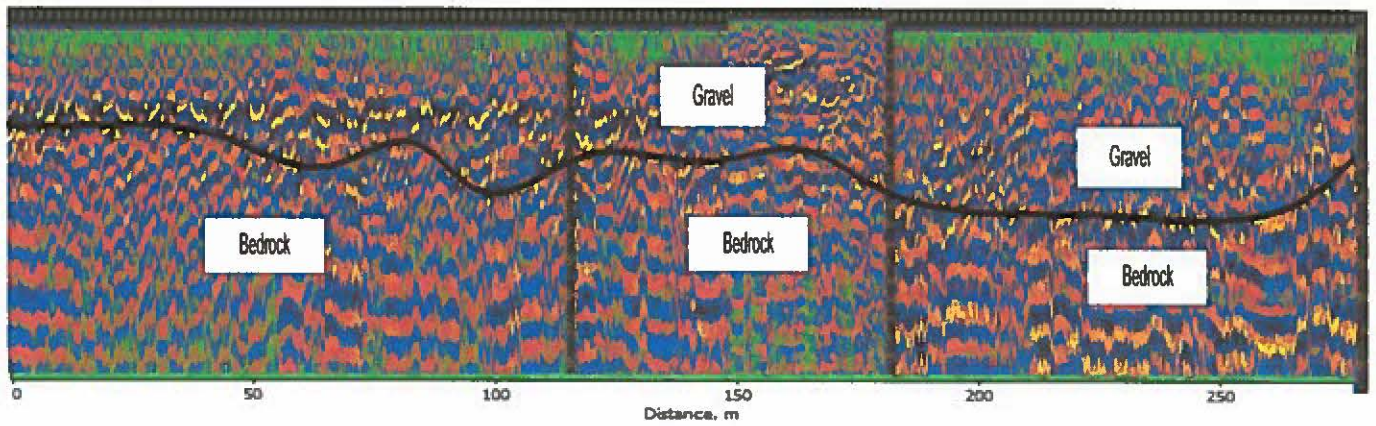
Start

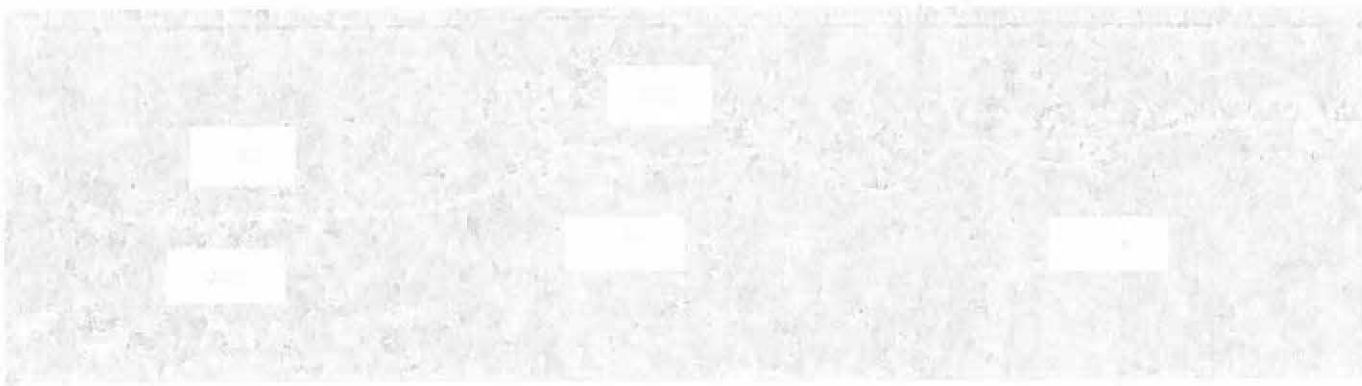
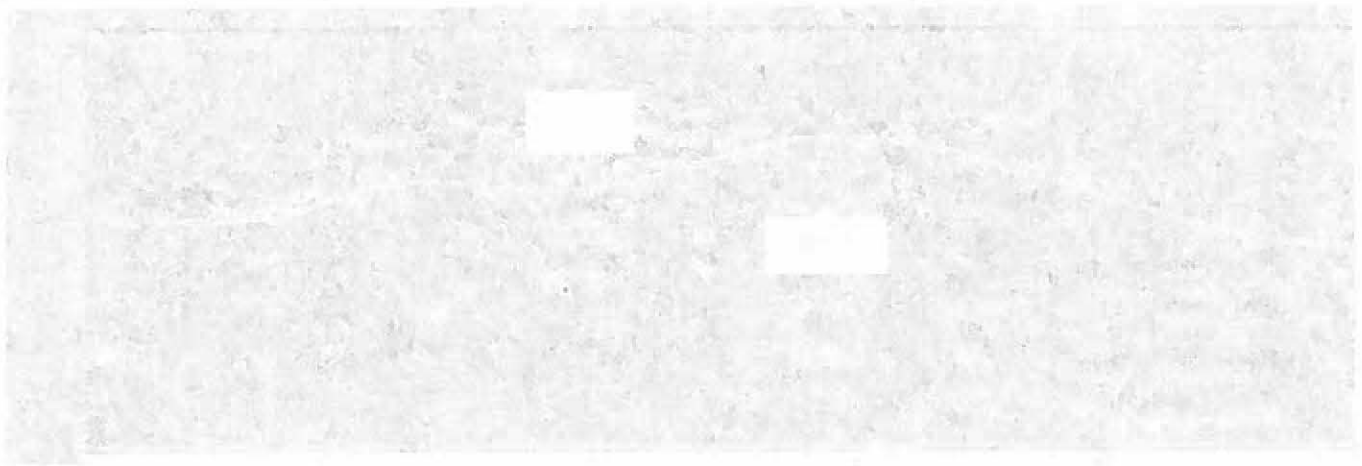
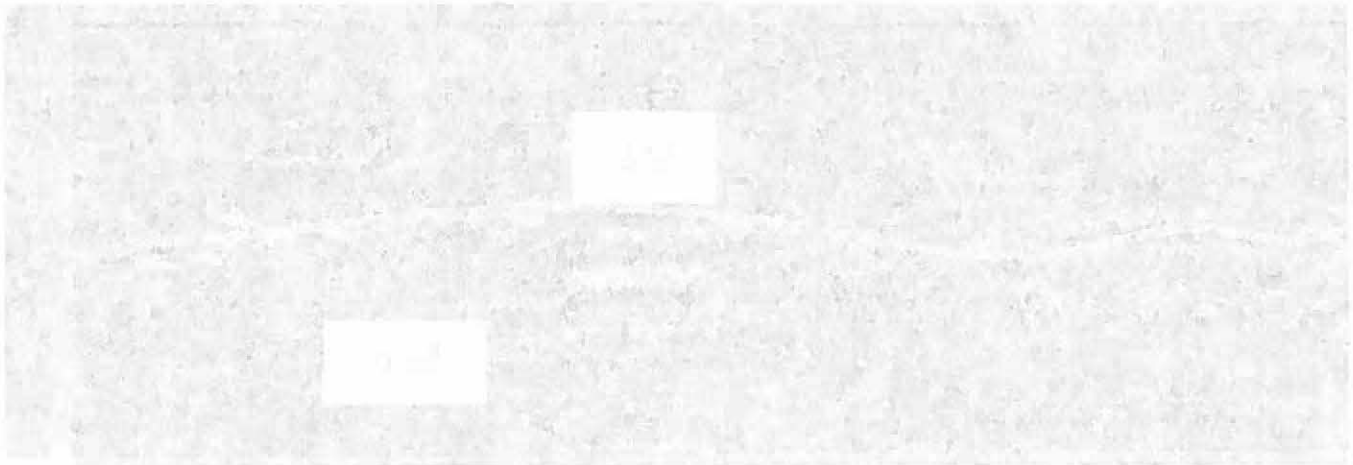
L-5



Start

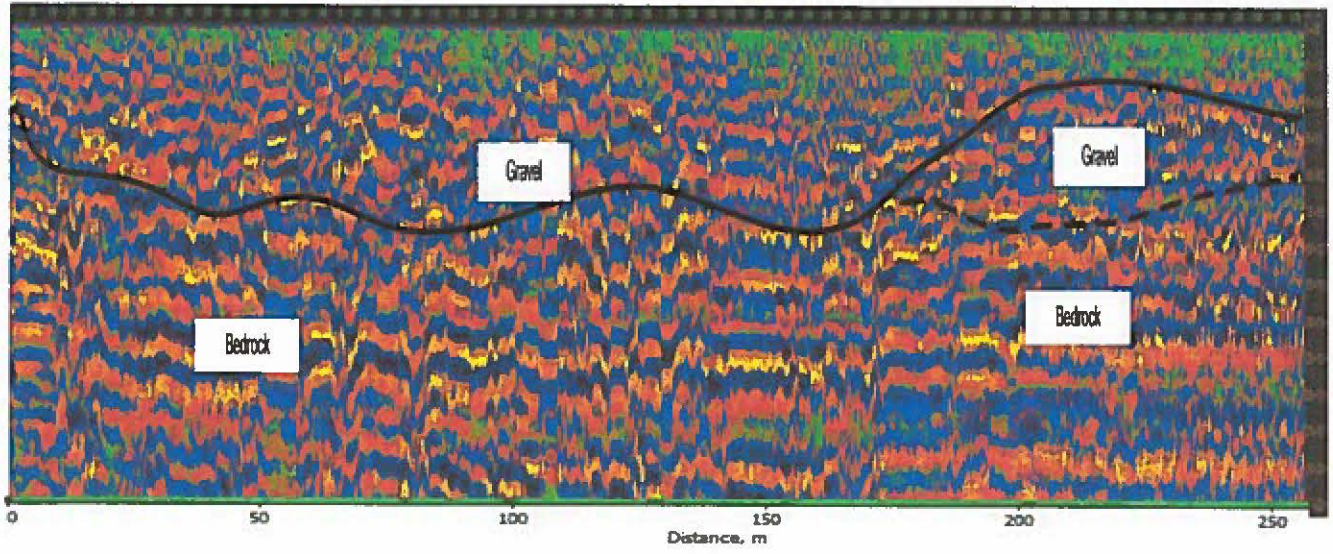
L-6





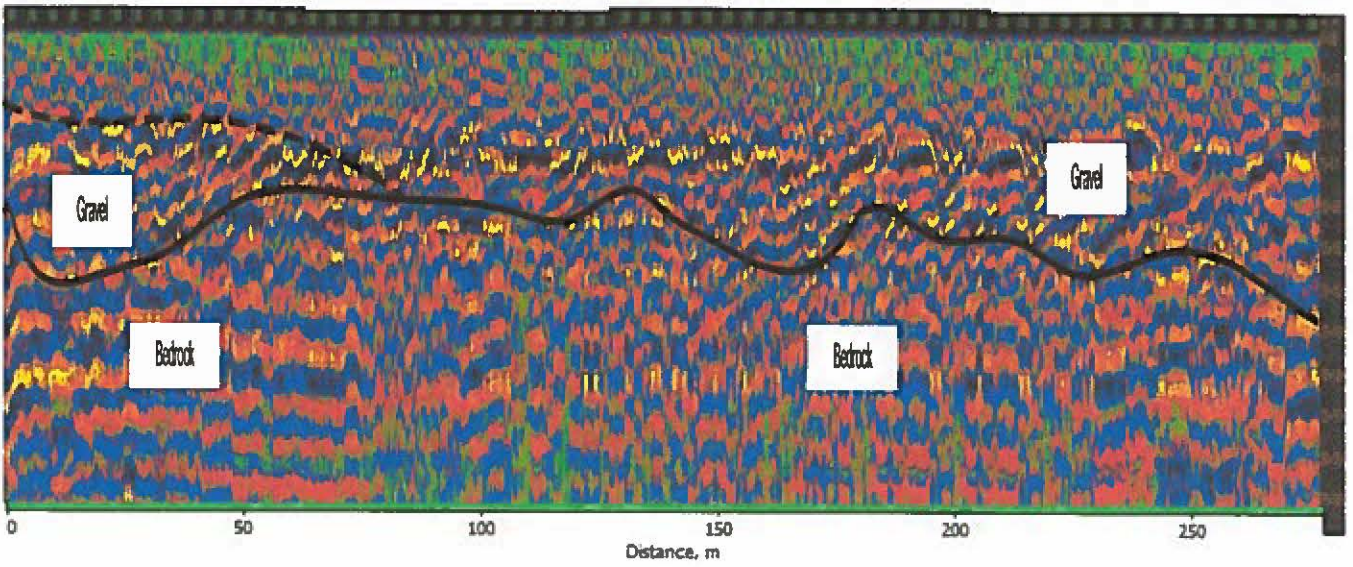
Site

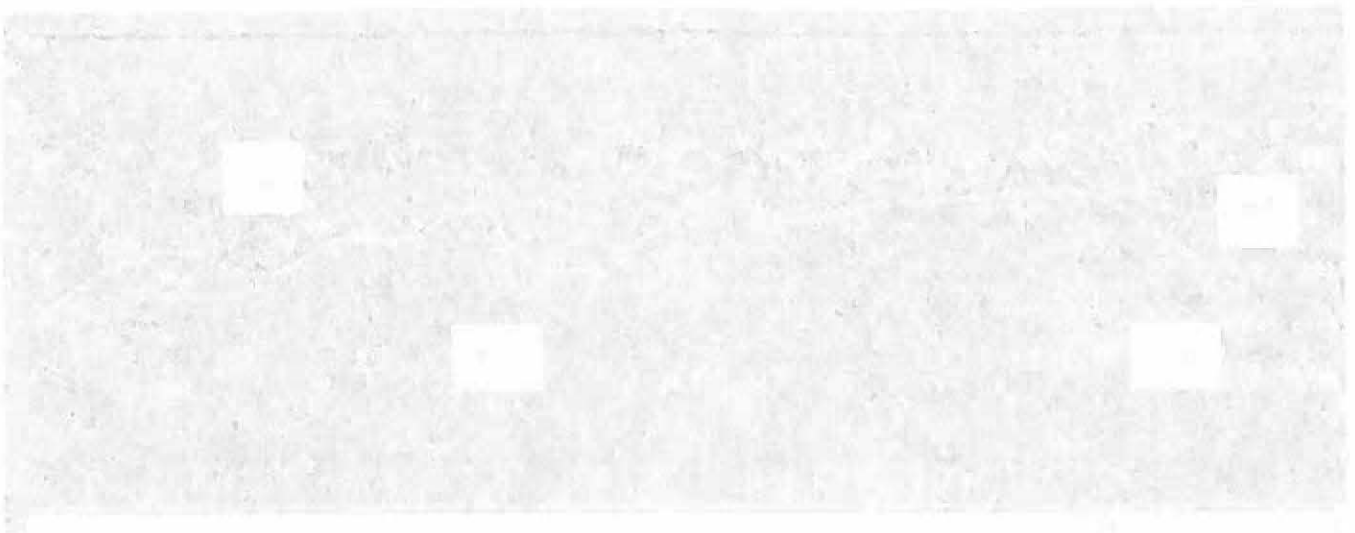
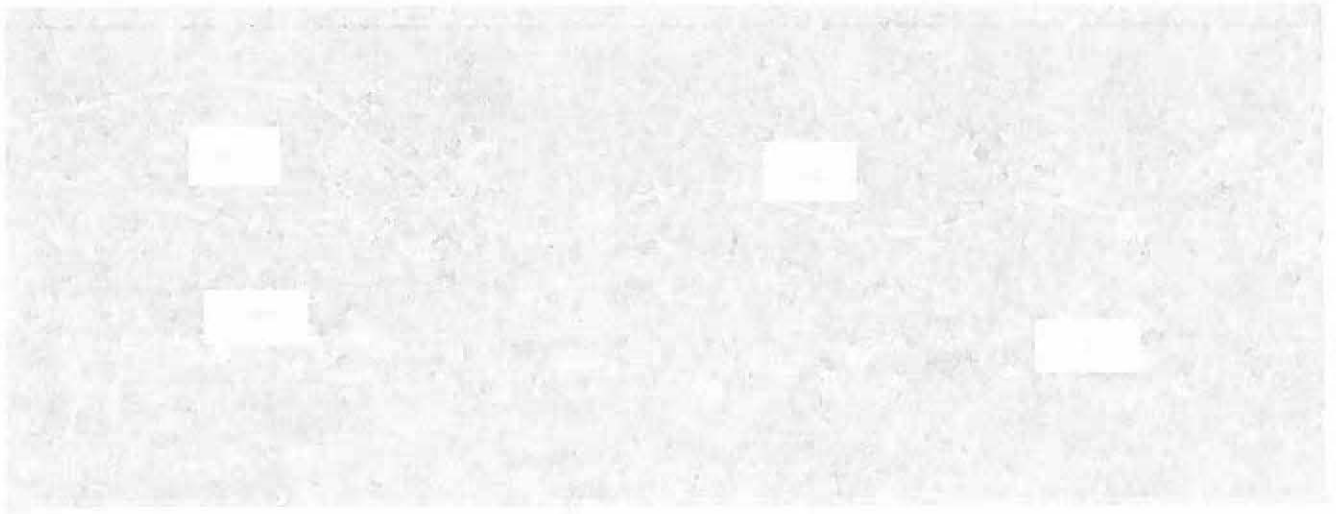
L-7



L-8

Site





**Table 1:
Bear Creek August 2017
Line Location Co-ordinates
WGS 84**

No GPR Lines	Geographical Coordinates Zone7, Latitude-Longitude			
	Start		End	
1	64°01'31.9"	139°14'09.9"	64°01'31.1"	139°14'00.3"
2	64°01'31.1"	139°14'00.3"	64°01'27.1"	139°14'02.9"
3	64°01'27.1"	139°14'02.9"	64°01'31.1"	139°13'52.4"
4	64°01'31.1"	139°13'52.4"	64°01'27.2"	139°13'52.5"
5	64°01'27.2"	139°13'52.5"	64°01'26.0"	139°13'37.3"
6	64°01'26.0"	139°13'37.3"	64°01'25.7"	139°13'19.8"
7	64°01'25.7"	139°13'19.8"	64°01'23.7"	139°13'18.3"
8	64°01'23.7"	139°13'18.3"	64°01'29.8"	139°13'05.4"

Receipt of Payment for Services

Date August 31, 2017

Dawson, Yukon

47129 Yukon Inc
2-1908 Centennial Street
Whitehorse, YT, Y1A 3Z5
E-mail: perm193xp@gmail.com
GST : 83744 2375 RT0001

Sold to: Sylvain Montreuil
Box 1112, Dawson City Yukon Y0B 1G0

Work Completed August 31, 2017

<u>Name of goods / services</u>	<u>Quantity of the Units/ Services</u>	<u>Price at unit</u>	<u>Amount</u>
1. Geophysical penetration radar survey Bear Creek at Klondike Placer Claims	1,600 metres	1,400.00	1,400
Subtotal			1,400
GST 5%			70
Total:			\$1,470

Director 47129 Yukon Inc
Boris Logutov

TABLE I
 [Title of the Table, which is extremely faint and difficult to read]

Column 1	Column 2	Column 3	Column 4	Column 5	Column 6
1	2	3	4	5	6
7	8	9	10	11	12
13	14	15	16	17	18
19	20	21	22	23	24
25	26	27	28	29	30
31	32	33	34	35	36
37	38	39	40	41	42
43	44	45	46	47	48
49	50	51	52	53	54
55	56	57	58	59	60
61	62	63	64	65	66
67	68	69	70	71	72
73	74	75	76	77	78
79	80	81	82	83	84
85	86	87	88	89	90
91	92	93	94	95	96
97	98	99	100	101	102

[Faint text or caption below the table]

[Faint text]

[Faint text]

[Faint text]

[Faint text]

[Faint text]

[Faint text]

[Faint text]

[Faint text]

[Faint text]

[Faint text]

[Faint text]

Expenses

Cost of Equipment, Geologist and Field Assistant \$1400 per Mile.
Analysis of data and report included in this amount.
1.6km ~ 1 Mile covered in one field day August 31st

Recommendations and Conclusion

Drilling can be recommended on Lines 1, 3, 5, 6, 7, 8 where gravel indicating placer is shown at maximum depth to bedrock locations. See gravel locations on maps picture 2.

Statement of Qualification

Boris Logutov

- Studied at the Perm State University, Geological Faculty, Department of Geophysical Exploration Methods of Fields from 1984 to 1990. Specialty is engineer geologist-geophysicist.
- Leading specialist in exploration work, the head of the committee on the development of innovative technologies, Institute of Natural Sciences, Perm State University (Russia);
- Deputy General Director for Geology, "Mining Company Polyus" (Russia)
- President of the company 47129 Yukon Inc. (Canada)

THE UNIVERSITY OF CHICAGO
DEPARTMENT OF CHEMISTRY
5301 S. DICKINSON DRIVE
CHICAGO, ILLINOIS 60637

RECEIVED
JAN 15 1964

TO THE DIRECTOR
OF THE UNIVERSITY OF CHICAGO
FROM THE DEPARTMENT OF CHEMISTRY
RE: [Illegible]