

**Assessment Report
Ground Penetrating Radar**

**Work Performed by Boris Logutov PhD Geo
Field Assistant Sylvain Montreuil
On 5 Mile Placer Lease # ID01518**

August 18-19, 2017

**60 Mile River and Tyrell Mountain Area
Map # 115N 09
Lease Owner Cari Tangedal**

Table Of Contents

Introduction, Purpose Method

2

Location

3

Data Analysis

4

Recommendations and Expenses

6

Statement of

Qualifications

60 Mile Tyrell August 2017

Line Location Co-ordinates

7

Introduction and Purpose

To test placer for bedrock depth and mineralization areas, to determine locations for drill or shaft testing in future.

Method

Field work carried out August utilized ground penetrating radar machine “EasyRad Pro” and computer system RedMax software used for data analysis. To analyze strips of ground under lease and compile a general overview map of mineral potential.

A total of 7 lines of GPR (Ground Penetrating Radar) were conducted during the field works, for a total length of **4,700 m**; the distances between lines are approximately of 250 – 500 m. The actual location of the surveyed lines is visible on map named “picture #1” (see next pages). The coordinates of the surveyed lines are visible here below on Table 1.

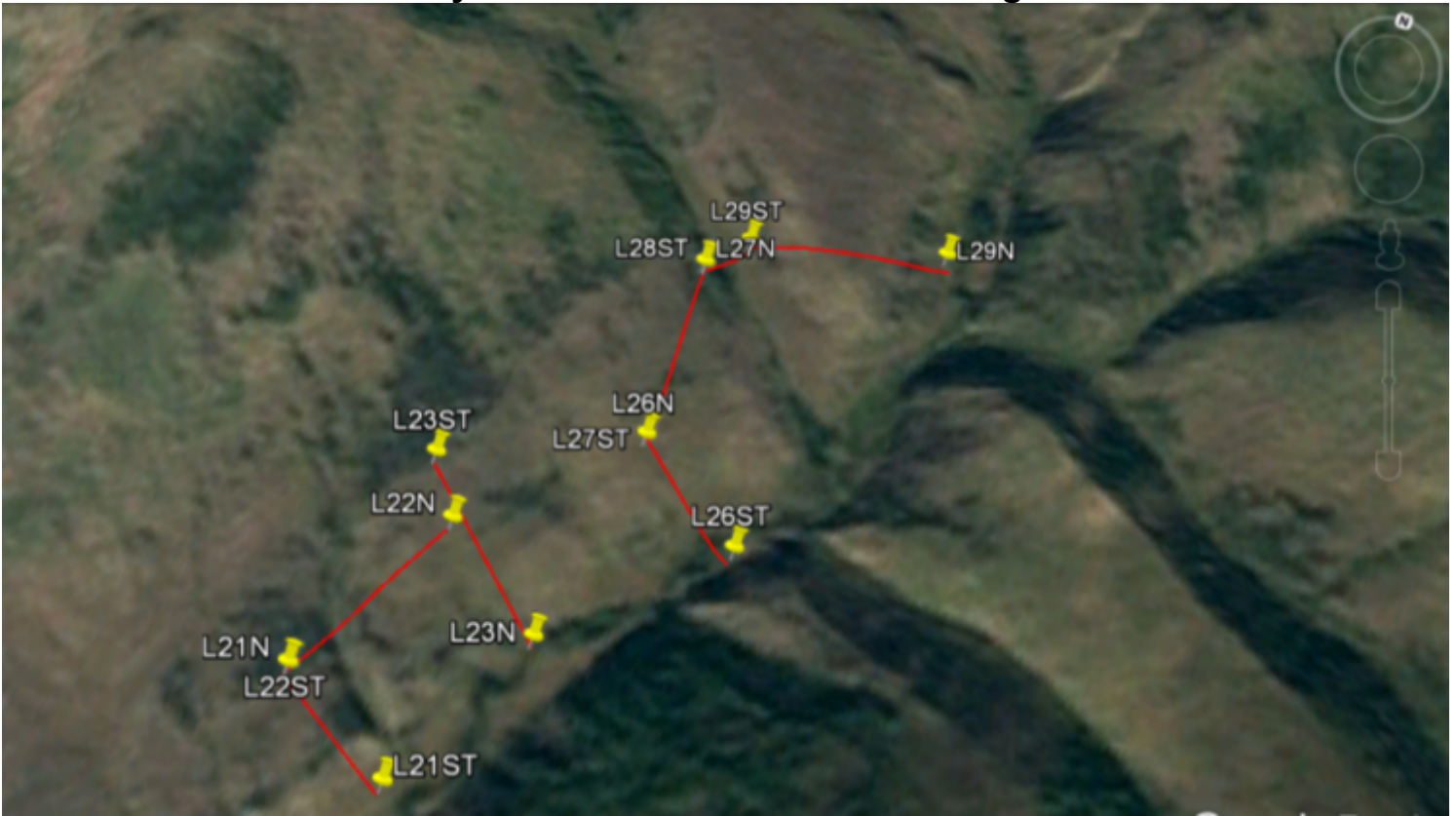
The effective depth of this survey is estimated to be up to 18.0 m. The results of these conducted surveys confirmed the strong ability of recognition of the main lithological units at the radar’s-images such as:

- «Permafrost»- thickness – 1.0 – 2.1 m;
- «Overburden»- thickness 0.6-2.1 m;
- «Alluvial»- thickness 1.0-16.0 m;
- «Bedrock surface» – at the depth up to 16.0 m.

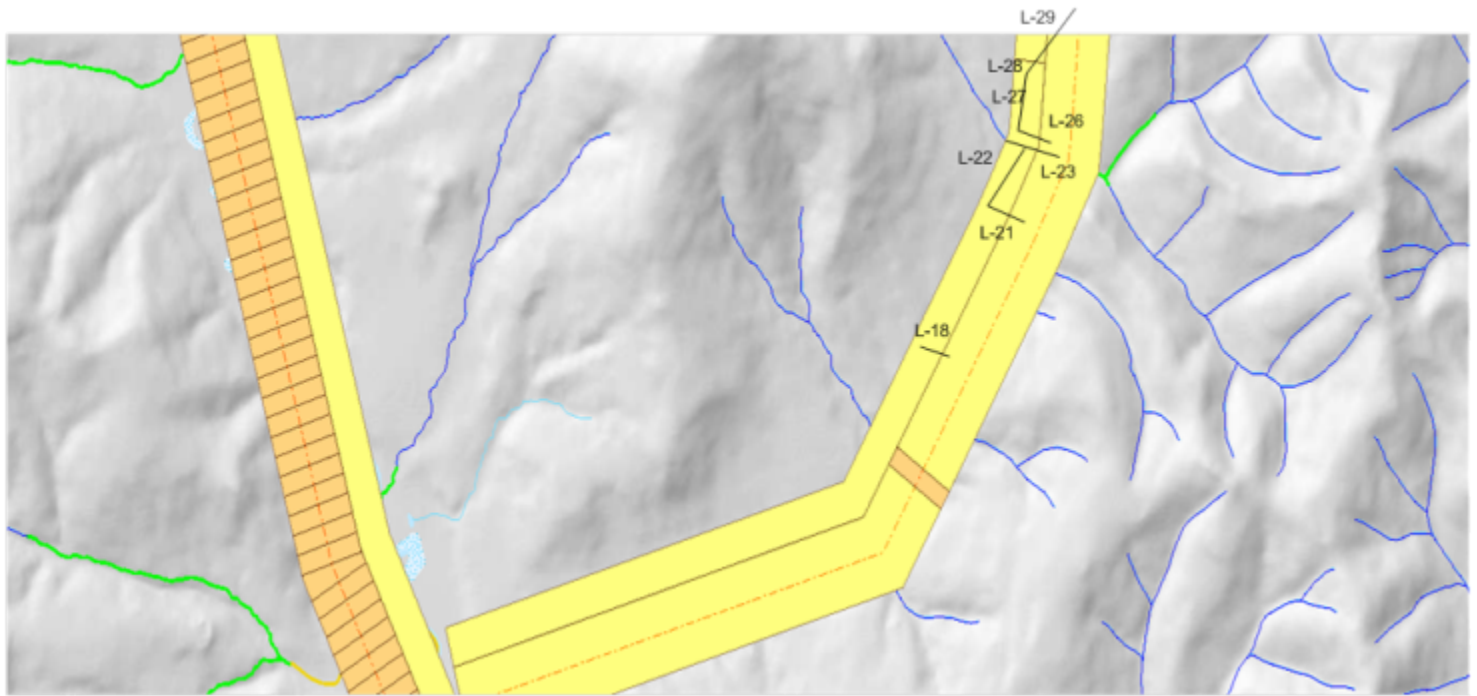
The results of the final interpretation and analysis of the received data of GPR surveys are presented in pictures #2.

Location – Tyrell Mountain Area, 60 Mile River Tributary

Picture #1 – Analysis Lines of Ground Penetrating Radar Tests in Red



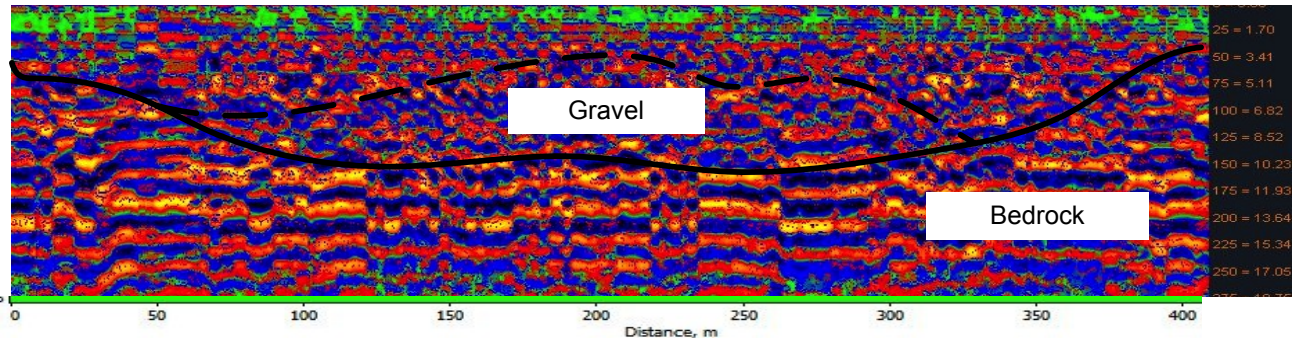
Lease # ID01518 “Cari”



Data Analysis - Picture #2

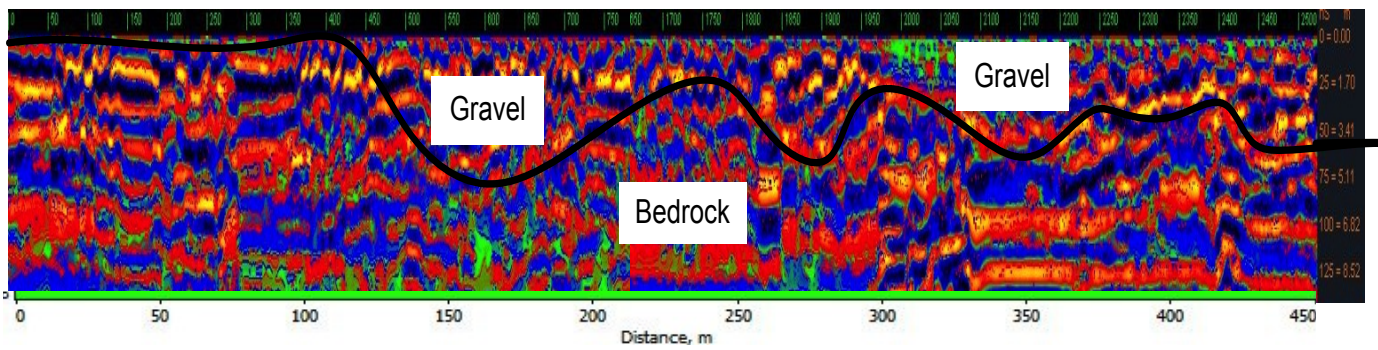
Start

L-18



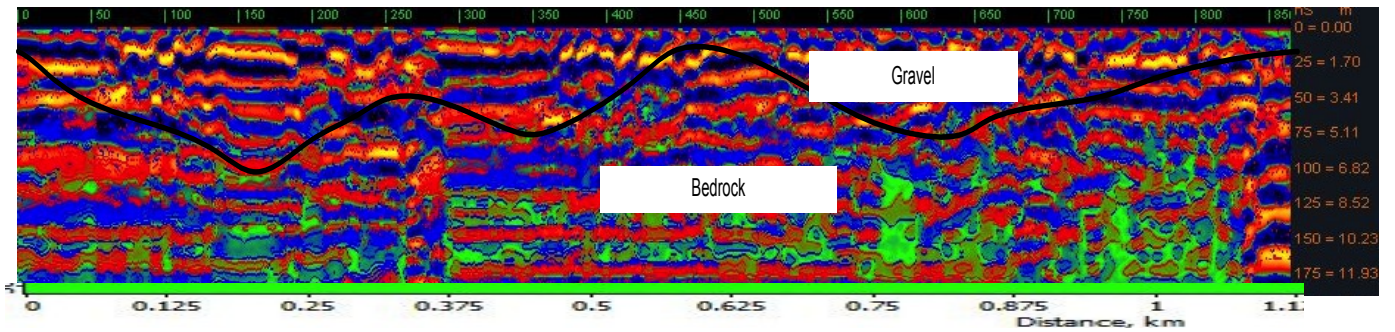
Start

L-21



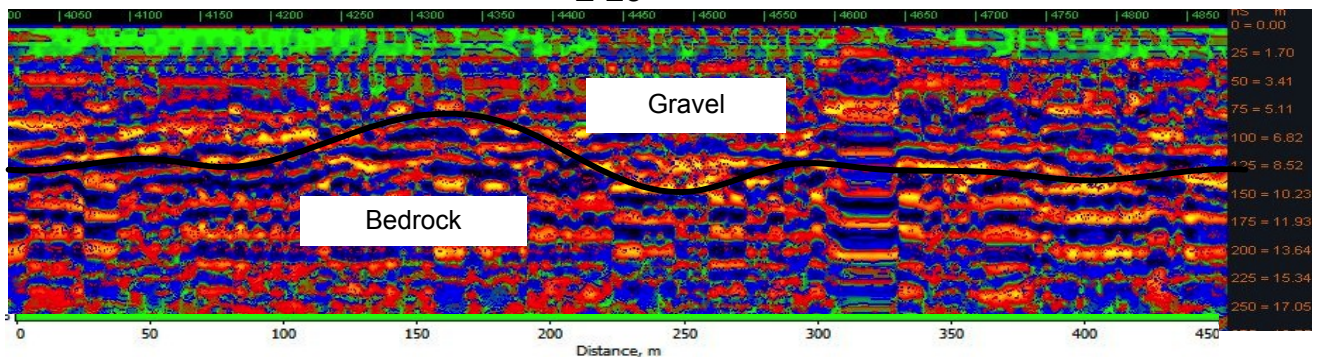
Start

L-22



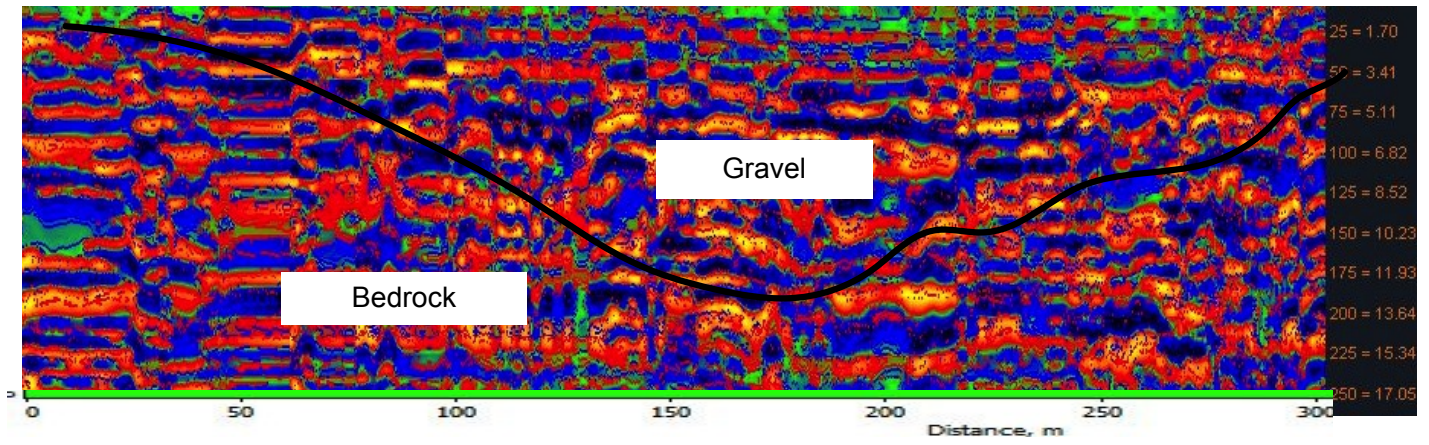
Start

L-23



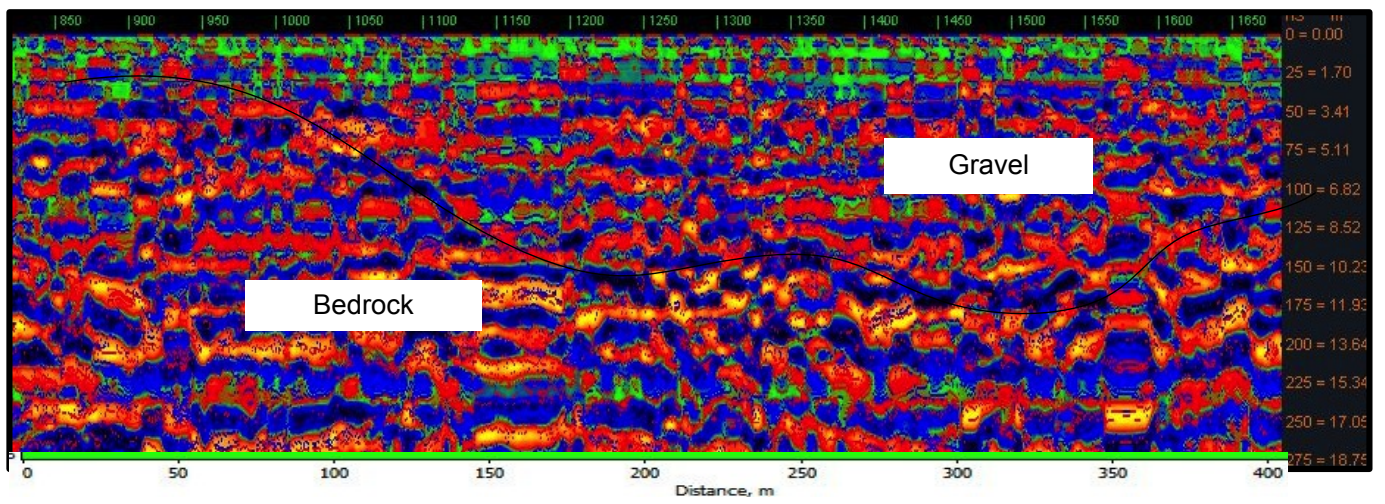
Start

L-26



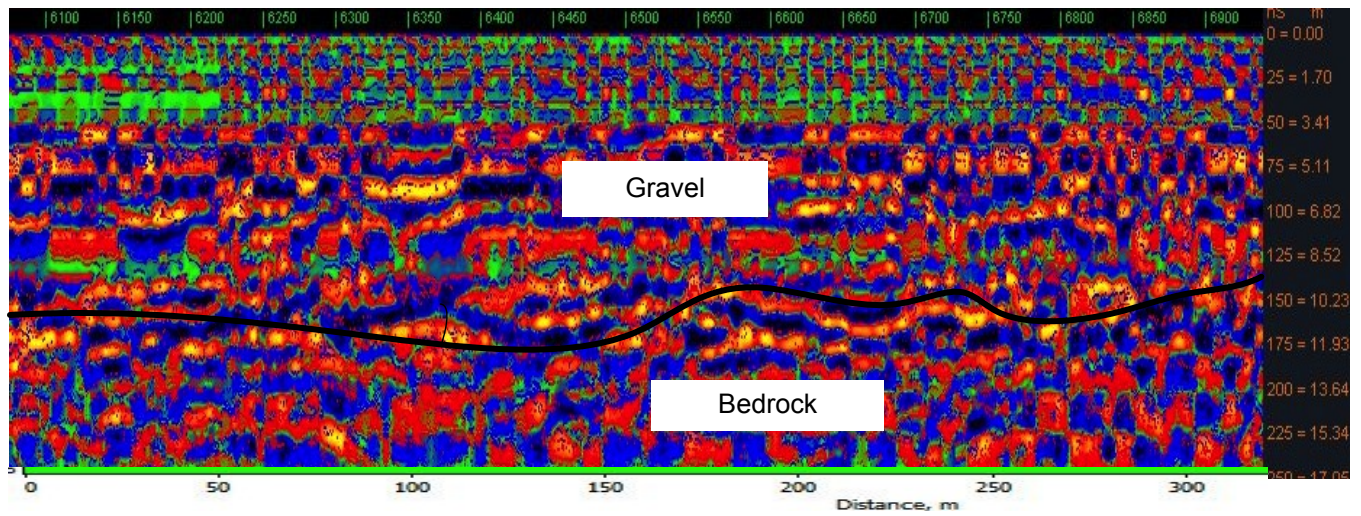
Start

L-27



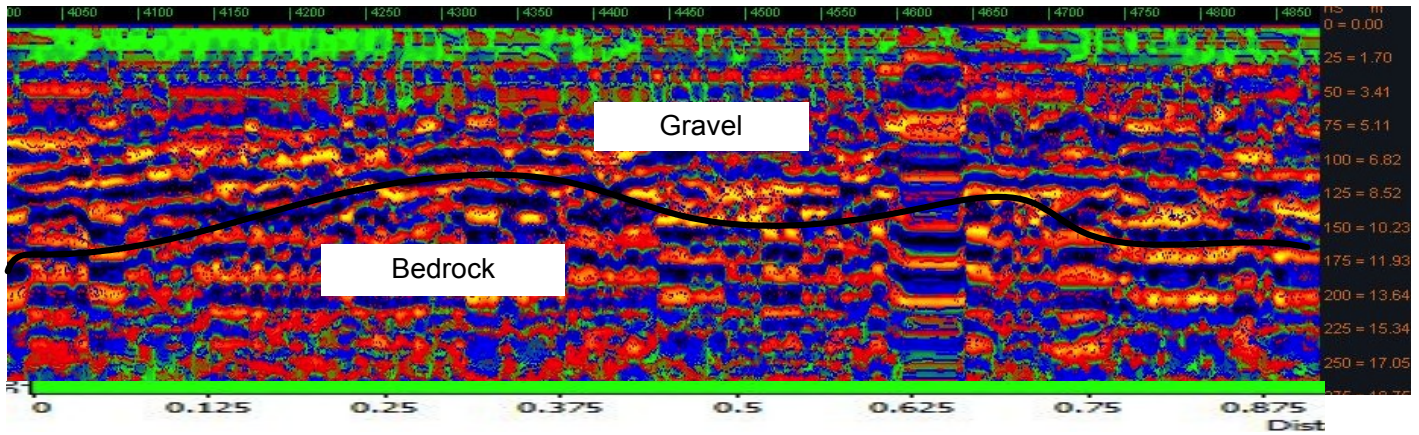
Start

L-28



Start

L-29



Recommendations and Conclusion

Drilling can be recommended on Lines 21, 22, 26, 27 where gravel indicating placer is shown at maximum depth to bedrock locations. See gravel locations on maps picture 2.

Expenses

Accepted Cost of Equipment, Geologist and Field Assistant is \$2400 per Mile.
Analysis of data and report included in this amount.
5 Miles covered in two field days August 18 – 19.

Invoice # 4

To: Hudson Bay Resources Canada Inc.
Box 1062, Dawson City, YT
Y0B 1G0

From: 47129 Yukon Inc.
2-1908 Centennial Street
Whitehorse, YT, Y1A 3Z5

E-mail: perm193xp@gmail.com

Invoice Date August 25, 2017

For Work Performed August 18-19, 2017 Dawson, Yukon

Lease# ID01518

Units/ Services

1. Geophysical penetration radar survey 5 miles of Placer Lease – “Tyrell -60 Mile” Creek with assessment report by Boris Logutov PhD Geo.
2. Field assistance and trail cutting work performed by Sylvain Montreuil, local prospector.

Calculation of 4.7 km surveyed kilometers ~ at rate of \$2,400 per mile
(equipment, expenses, assistance and report included). 2.92 miles x \$2400 =

Subtotal: \$7,008

Statement of Qualifications

Boris Logutov

- Studied at the Perm State University, Geological Faculty, Department of Geophysical Exploration Methods of Fields from 1984 to 1990. Specialty is engineer geologist-geophysicist.
- Leading specialist in exploration work, the head of the committee on the development of innovative technologies, Institute of Natural Sciences, Perm State University (Russia);
- Deputy General Director for Geology, "Mining Company Polyus" (Russia)
- President of the company 47129 Yukon Inc. (Canada)

Table 1:
60 Mile Tyrell August 2017
Line Location Co-ordinates
Format: UTM Datum[121]: WGS 84

Name	Zone	Easting	Northing	Altitude(m)
L18N	07 V	0548142	7060094	496.4
L18ST	07 V	0547941	7060282	510.3
L21N	07 V	0548367	7061572	592.8
L21ST	07 V	0548671	7061397	515.4
L22N	07 V	0548600	7062025	613.4
L22ST	07 V	0548369	7061573	590.9
L23N	07 V	0548880	7061826	535.3
L23ST	07 V	0548503	7062166	637.0
L26N	07 V	0548974	7062392	603.1
L26ST	07 V	0549272	7062183	551.7
L27N	07 V	0548965	7062908	641.3
L27ST	07 V	0548974	7062396	604.3
L28N	07 V	0549052	7063028	633.9
L28ST	07 V	0548961	7062907	644.2
L29N	07 V	0549566	7063172	583.6
L29ST	07 V	0549052	7063024	625.5

