

**Assessment Report  
Ground Penetrating Radar**

**60 Mile River and Tyrell Mountain Area  
Map # 115N 09**

**Work Performed by Boris Logutov PhD Geo  
Field Assistant Sylvain Montreuil  
On August 23, 2017**

**On 3 Mile Lease # ID01519  
Matthew McHugh**

**Table Of Contents**

**Introduction and Purpose**

**2**

**Method**

**2**

**Location**

**3**

**Data Analysis**

**4**

**Recommendations and Expenses**

**5**

**Statement of Qualifications**

**6**

**60 Mile Tyrell August 2017**

**Line Location Co-ordinates**

**6**

## **Introduction and Purpose**

To test placer for bedrock depth and mineralization areas, to determine locations for drill or shaft testing in future.

## **Method**

Field work carried out August utilized ground penetrating radar machine “EasyRad Pro” and computer system RedMax software used for data analysis. To analyze strips of ground under lease and compile a general overview map of mineral potential.

**A total of 3 lines** of GPR (Ground Penetrating Radar) were conducted during the field works, for a total length of **2,050 m**; the distances between lines are approximately of **350 – 900 m**. The actual location of the surveyed lines is visible on map named “picture #1” (see next pages). The coordinates of the surveyed lines are visible here below on Table 1.

The effective depth of this survey is estimated to be up to 17.0 m. The results of these conducted surveys confirmed the strong ability of recognition of the main lithological units at the radar’s-images such as:

- «Permafrost»- thickness none observed;
- «Overburden»- thickness 0.0-1.7m;
- «Gravel»- thickness 1.0-14.0 m;
- «Bedrock surface» – at the depth up to 16.0 m.

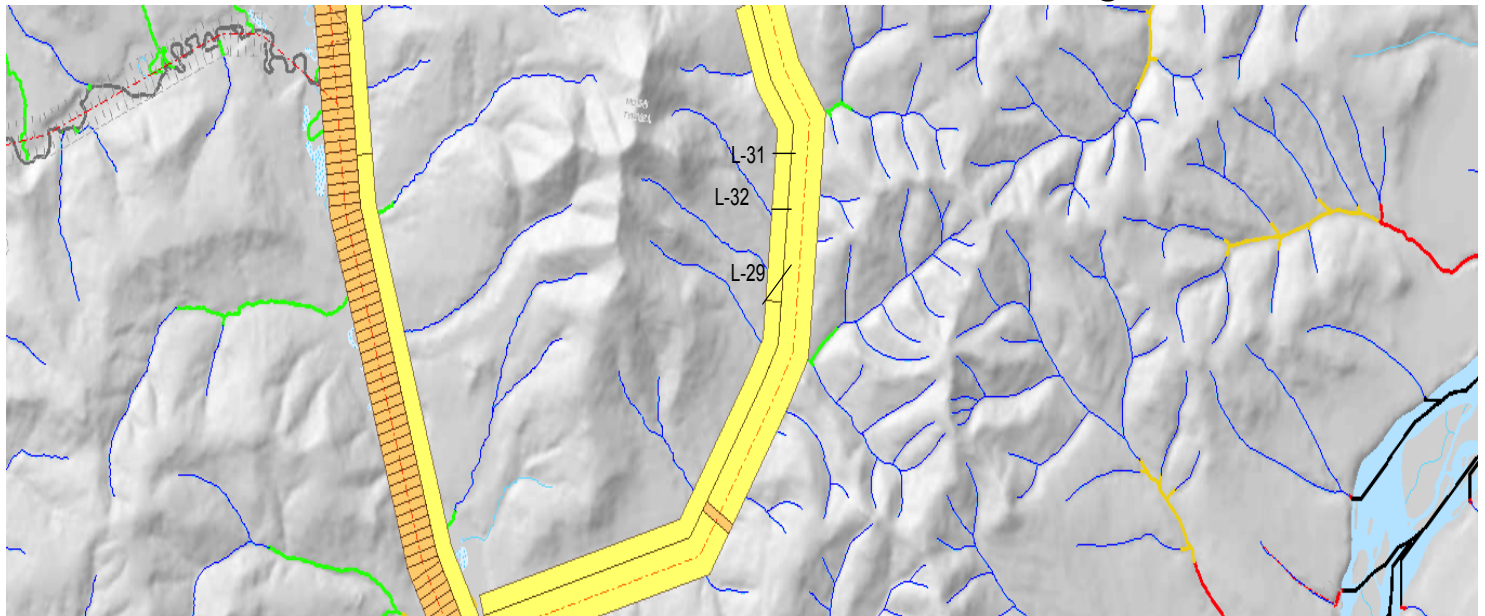
The results of the final interpretation and analysis of the received data of GPR surveys are presented in pictures #2.

**Location – Tyrell Mountain Area, 60 Mile River Tributary**

**Picture #1 – Analysis Lines of Ground Penetrating Radar Tests in Red**



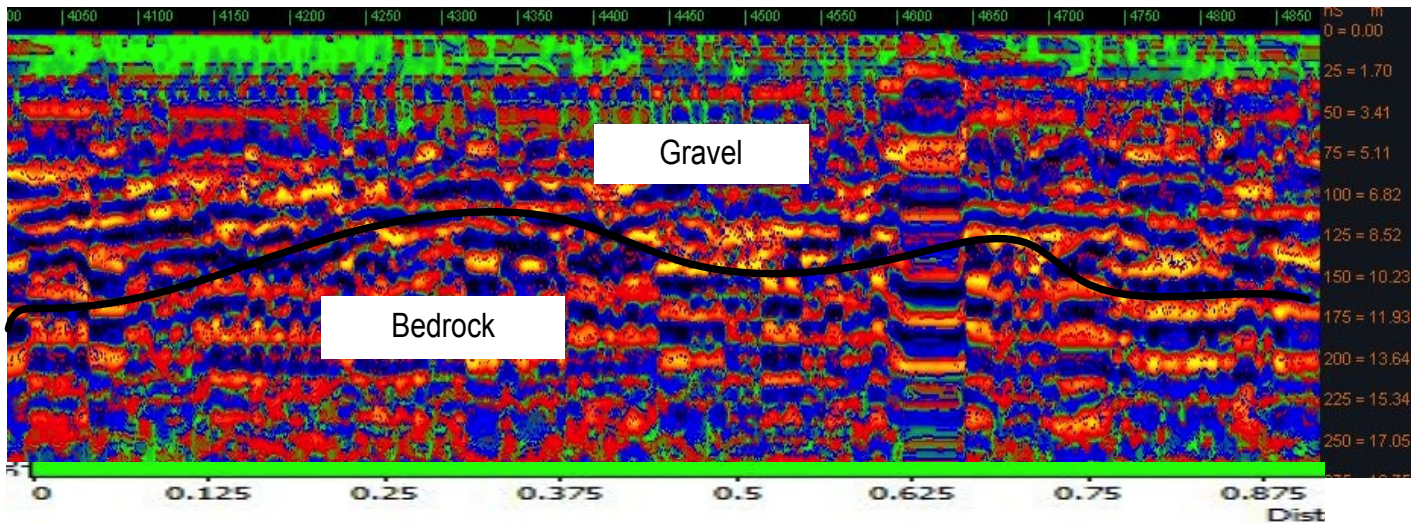
**3 Mile Lease #ID01519 ~ Matthew McHugh**



# Data Analysis - Picture #2

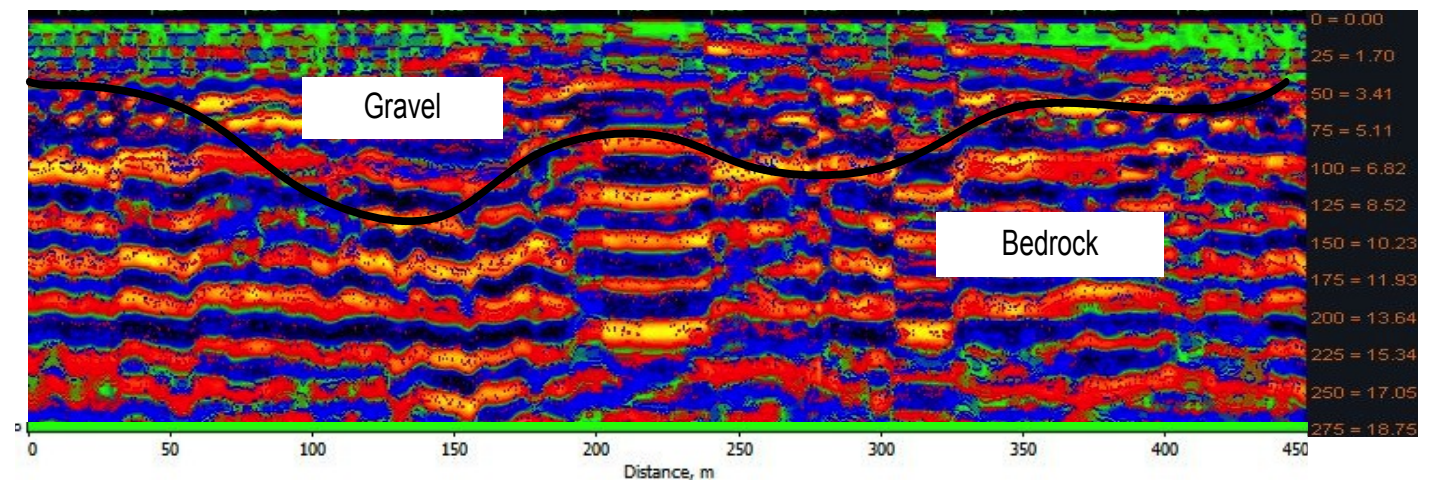
Start

## L-29



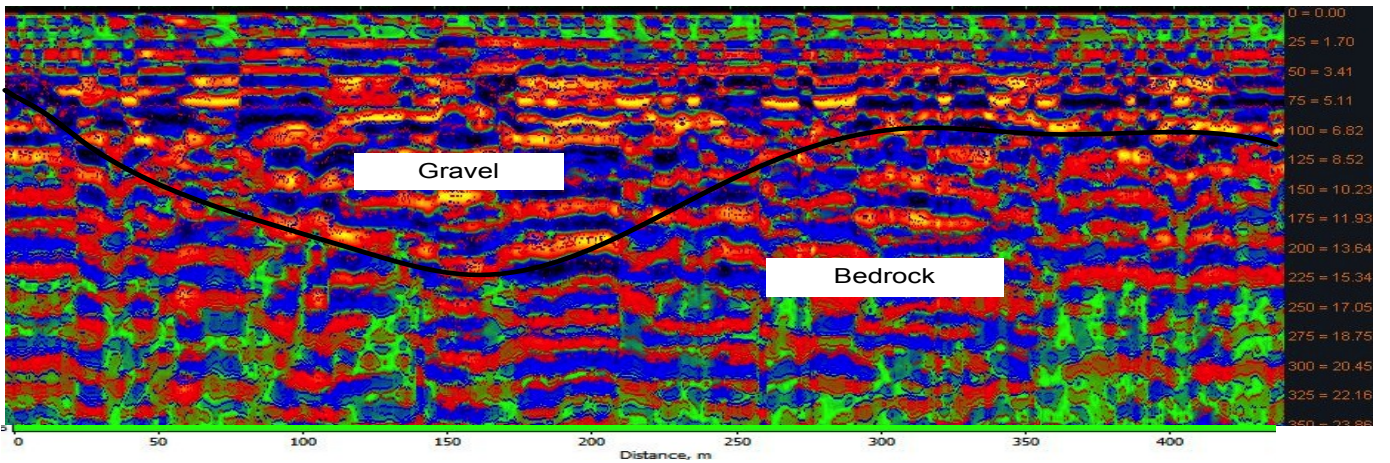
Start

## L-32



Start

## L-31



### **Recommendations and Conclusion**

Drilling can be recommended on Lines 29, 32, 31 where gravel indicating placer is shown at maximum depth to bedrock locations. See gravel locations on maps picture 2. No bedrock anomalies detected below indicated gravel horizon.

### **Expenses**

Accepted Cost of Equipment, Geologist and Field Assistant is \$2400 per Mile. Analysis of data and report included in this amount. 3 Miles covered in one field day August 21th.

### **Invoice # 2**

**To:** Hudson Bay Resources Canada Inc.  
Box 1062, Dawson City, YT  
Y0B 1G0

**From:** 47129 Yukon Inc.  
2-1908 Centennial Street  
Whitehorse, YT, Y1A 3Z5  
E-mail: perm193xp@gmail.com

**Invoice Date August 25, 2017**

**For Work Performed August 23, 2017 Dawson, Yukon  
Lease# ID01519**

### **Units/ Services**

- 1. Geophysical penetration radar survey 3 miles of Placer Lease – “Tyrell -60 Mile” Creek with assessment report by Boris Logutov PhD Geo.**
- 2. Field assistance and trail cutting work performed by Sylvain Montreuil, local prospector.**

**Calculation of 2.05km surveyed kilometers ~ at rate of \$2,400 per mile (equipment, expenses, assistance and report included).**

**Subtotal: \$3,048**

## Statement of Qualifications

### Boris Logutov

- Studied at the Perm State University, Geological Faculty, Department of Geophysical Exploration Methods of Fields from 1984 to 1990. Specialty is engineer geologist-geophysicist PhD.
- Leading specialist in exploration work, the head of the committee on the development of innovative technologies, Institute of Natural Sciences, Perm State University (Russia);
- Deputy General Director for Geology, Mining Company "Polyus" (Russia)
- President of the company 47129 Yukon Inc. (Canada)

**Table 1:**  
**60 Mile Tyrell August 2017**  
**Line Location Co-ordinates**  
Format: UTM Datum[121]: WGS 84

Name	Zone		Easting	Northing	Altitude(m)
L29N	07	V	0549566	7063172	583.6
L29ST	07	V	0549052	7063024	625.5
L31N	07	V	0549448	7065066	597.8
L31ST	07	V	0549369	7065098	629.3
L32N	07	V	0549555	7064588	616.3
L32ST	07	V	0549497	7064570	621.9



