

**Assessment Report
Ground Penetrating Radar**

**Work Performed by Boris Logutov PhD Geo
Field Assistant Sylvain Montreuil
On lease # ID01461**

August 17, 2017

**60 Mile River and Tyrell Mountain Area
Map # 115N 09**

Table Of Contents

Introduction and Purpose

2

Method

2

Location

3

Data Analysis

4

Recommendations and Expenses

5

Statement of Qualifications

6

60 Mile Tyrell August 2017

Line Location Co-ordinates

7

Introduction and Purpose

To test placer for bedrock depth and mineralization areas, to determine locations for drill or shaft testing in future.

Method

Field work carried out August utilized ground penetrating radar machine “EasyRad Pro” and computer system RedMax software used for data analysis. To analyze strips of ground under lease and compile a general overview map of mineral potential.

A total of 5 lines of GPR (Ground Penetrating Radar) were conducted during the field works, for a total length of **3,100 m**; the distances between lines are approximately of **300 – 500 m**. The actual location of the surveyed lines is visible on map named “picture #1” (see next pages). The coordinates of the surveyed lines are listed in Table 1.

The effective depth of this survey is estimated to be up to 16.0 m. The results of these conducted surveys confirmed the strong ability of recognition of the main lithological units at the radar’s-images such as:

- «Permafrost»- thickness – 1.5 – 2.5 m;
- «Overburden»- thickness 0.8-2.1 m;
- «Alluvial»- thickness 1.5-12.0 m;
- «Bedrock surface» – at the depth up to 12.0 m.

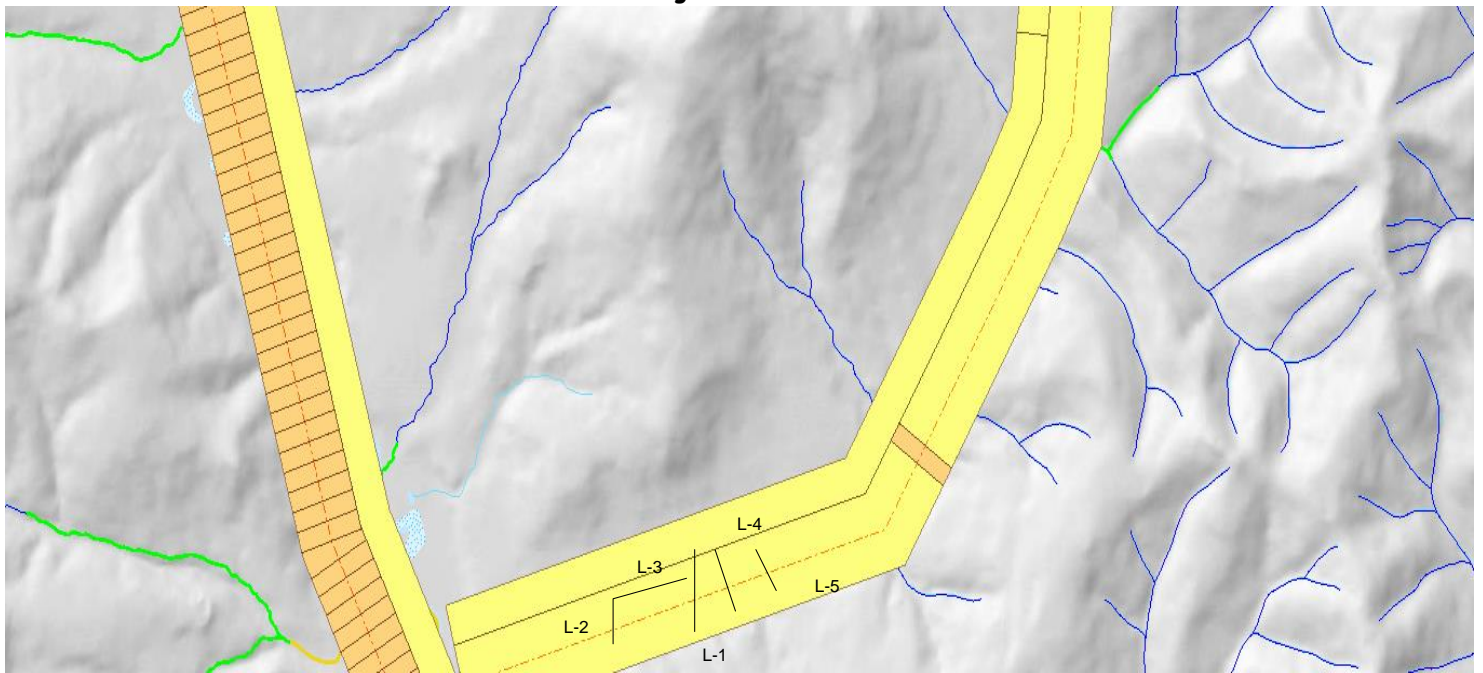
The results of the final interpretation and analysis of the received data of GPR surveys are presented in pictures #2.

Location – Tyrell Mountain Area, 60 Mile River Tributary

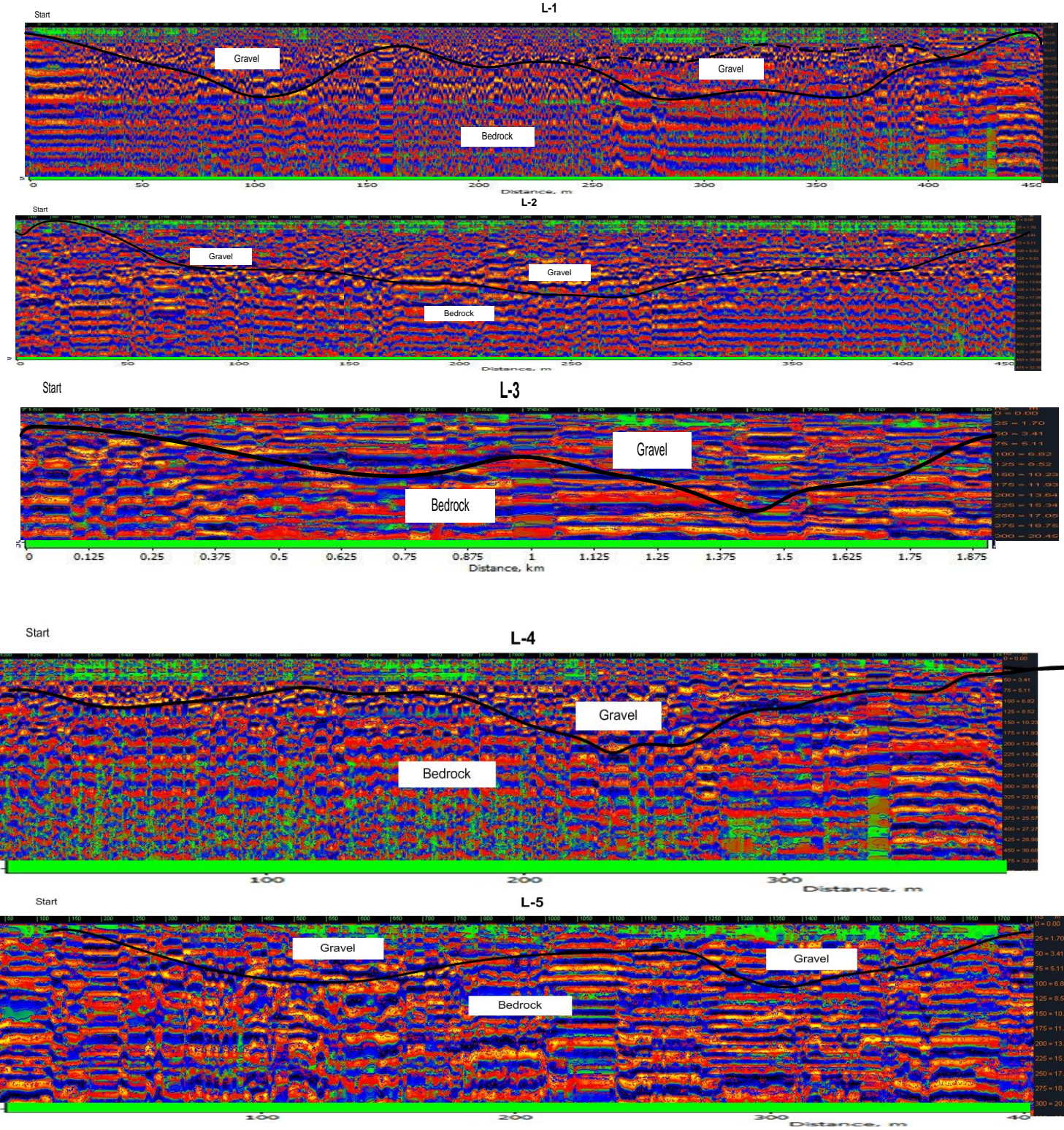
Picture #1 – Analysis Lines of Ground Penetrating Radar Tests in Red



**Lease Number ID01461 owner Tov Westby
“Tyrell Creek”**



Data Analysis - Picture #2



Recommendations and Conclusion

Drilling can be recommended on Lines 3 and 4 where gravel indicating placer is shown at maximum depth to bedrock locations. See locations on maps picture 2.

Expenses

Accepted Cost of Equipment, Geologist and Field Assistant is \$2400 per Mile.
Analysis of data and report included in this amount.
3 Miles covered in one field day August 17th

Invoice # 1

To: Hudson Bay Resources Canada Inc.
Box 1062, Dawson City, YT
Y0B 1G0

From: 47129 Yukon Inc.
2-1908 Centennial Street
Whitehorse, YT, Y1A 3Z5
E-mail: perm193xp@gmail.com

Invoice Date August 25, 2017

**For Work Performed August 17 – 25, 2017 Dawson, Yukon
Lease# ID0461**

Units/ Services

- 1. Geophysical penetration radar survey 16 miles of Placer Lease – “Tyrell -60 Mile” Creek with assessment report by Boris Logutov PhD Geo.**
- 2. Field assistance and trail cutting work performed by Sylvain Montreuil, local prospector.**

Calculation by 3.1 surveyed kilometers ~ at rate of \$2,400 per mile equipment, expenses, assistance and report included.

Subtotal: \$4,800



Statement of Qualifications

Boris Logutov

- Studied at the Perm State University, Geological Faculty, Department of Geophysical Exploration Methods of Fields from 1984 to 1990. Specialty is engineer geologist-geophysicist.
- Leading specialist in exploration work, the head of the committee on the development of innovative technologies, Institute of Natural Sciences, Perm State University (Russia);
- Deputy General Director for Geology, "Mining Company Polyus" (Russia)
- President of the company 47129 Yukon Inc. (Canada)

Table 1:
60 Mile Tyrell August 2017
Line Location Co-ordinates
 Format: UTM Datum[121]: WGS 84

Name	Zone		Easting	Northing	Altitude(m)
L1	07	V	0546533	7059365	467.6
L1N	07	V	0546519	7059043	464.2
L1ST	07	V	0546563	7059489	484.4
L2	07	V	0546051	7059199	455.8
L2N	07	V	0546053	7058984	466.8
L2ST	07	V	0546050	7059202	454.1
L3N	07	V	0546471	7059337	466.6
L3ST	07	V	0546031	7059211	451.2
L4	07	V	0546853	7059282	469.2
L4K	08	V	0426354	6564384	499.5
L4ST	07	V	0546715	7059520	491.4
L5N	07	V	0547151	7059361	491.1
L5ST	07	V	0547086	7059561	485.1