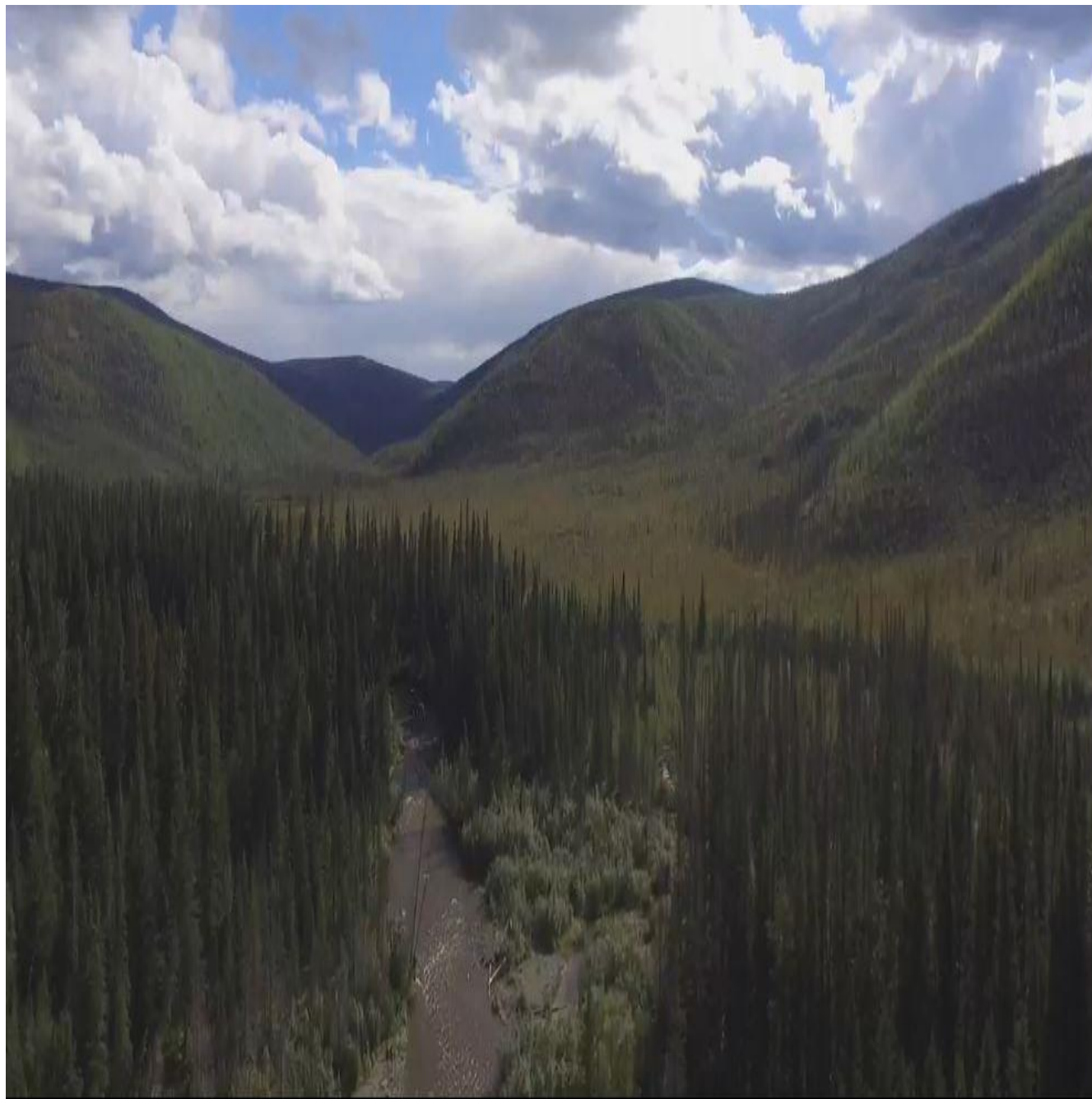


Assessment Work Filing for Placer Prospecting Lease # Id01321  
October 1 2016



Bruin Creek Valley upstream from Post Nr. 1 , Forty Mile River Area, Map # 116C07P

# Vencan Resources Ltd

Po.Box. 31091 Whitehorse Yt. Y1A 5P7 /Po.Box. 1725 Dawson City YT. Y0B 1G

## *2017 Assessment Work Filing for Bruin Creek Placer Prospecting Lease*

*# ID01321*

*Dawson District, Forty Mile River Area ,*

*Map # 116C07P*

*Bruin Creek has a long history of placer mining and prospecting and has seen extensive mining over the last 100 years.*

*In addition to placer gold being reported in the creek channel it is also found in the upper bench gravels of Bruin Creek. Areas investigated during ground penetrating radar ( GPR ) survey carried out on behalf of Vencan showed that the benches immediately upstream from Post # 1 hosted extensive gravel deposits. That program also indicated the potential of paleo channels being covered by the bench gravels. A drilling program conducted by Vencan during August 2016 confirmed the accuracy of the GPR results. Vencan opted to follow up with a new GPR survey to extend the potential exploration area further upstream from the end of the area previously investigated. The goal of this new surveying campaign is to continue to search for potential mineable ground on the prospecting lease ID 01321. The company also wanted to obtain more data on the upstream area examined during the previous survey. The GPR lines over that stretch of the bench are somewhat far apart and Vencan wanted to confirm if the channel sections identified are contiguous.*

*For this second geophysical campaign, Vencan Resources engaged 47129 Yukon Inc. of Whitehorse, an exploration company led by Dr. Boris Logutov, PhD.*

*Dr. Logutov conducted the GPR campaign between Sept 20 and Sept 28 of 2016. Geologist Sandro Frizzi collaborated with Dr Logutov on the compilation of the survey data. Vencan Resources Ltd assisted the survey with mobilization, logistic and field assistance.*

*Considering the so far positive outcome of the exploration the company intends to convert the lease in to claims and follow up with more drilling and trenching early next season. . Vencan will also move to procure a water license and land use permit to be able to start mining on the claims in 2017*

Tel: 867 6893163 / e.mail: [vencanresourcesltd@gmail.com/](mailto:vencanresourcesltd@gmail.com/)

# 47129 Yukon Ltd

-Geophysical Survey on

**Prospecting Bruin Creek for new placer deposits with GPR  
(ground penetrating radar)**

**Map 116C07**

**Prospecting Lease ID 01321**



*Location of prospected area*

*By PhD Geophysicist Boris Logutov with collaboration of Geologist Sandro Frizzi*

## **Introduction**

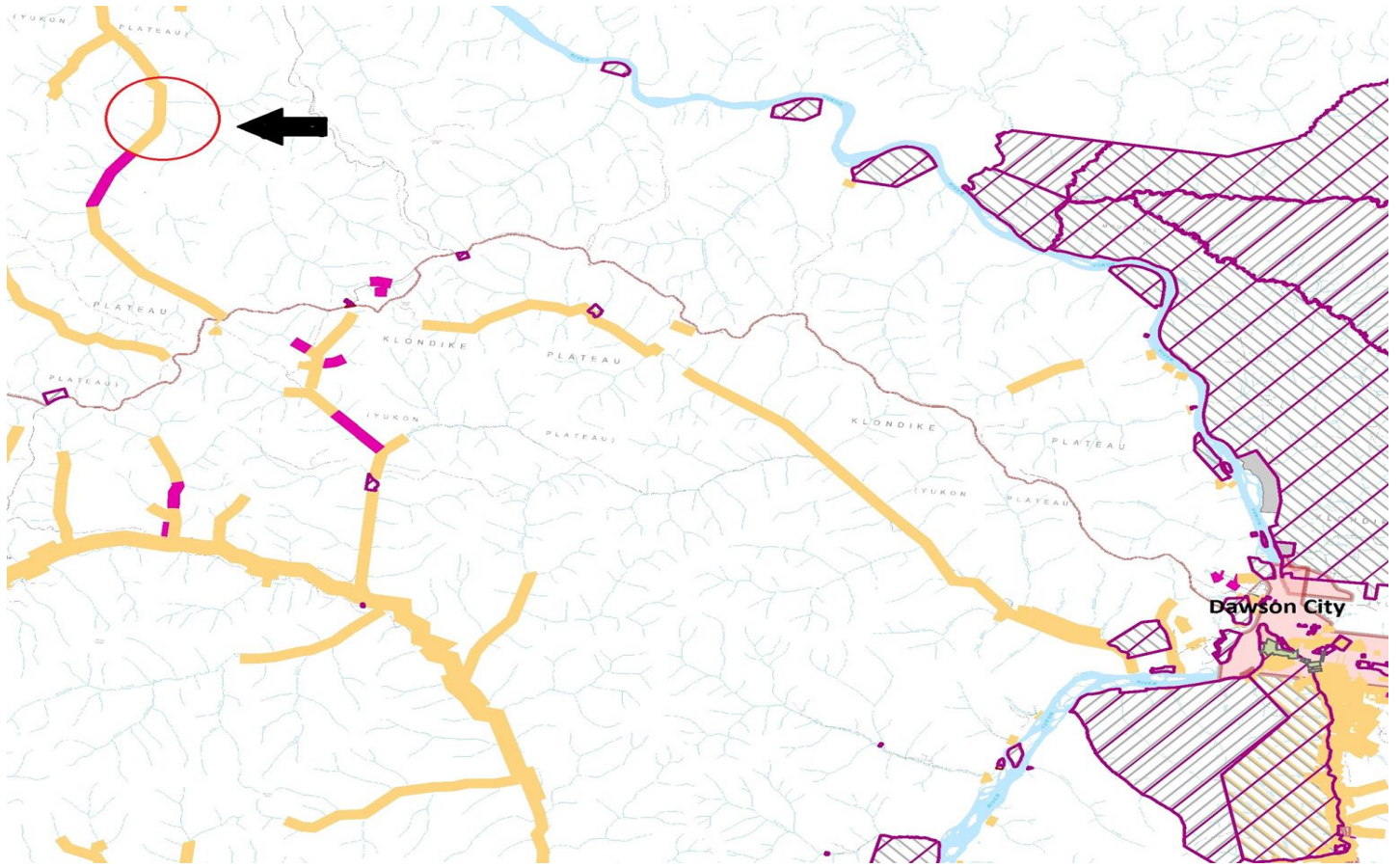
Between the 20th and the 28th of September 2016, geophysicist Dr. Boris Logutov carried out a geophysical survey on benches located within the 5 mile long prospecting lease ID 01321. He performed a GPR survey along 13 lines (line number 13 showed technical problem and has not yet been interpreted) of different lengths (the shortest is line 2 of 190 meters and the longest is line 12 of 560 meters), for a total of 4,475 meters.

For this geophysical survey Dr. Logutov used a ground penetrating radar EasyRad-Pro of German-Ucrainan fabrication with two antennas of 100 MHz for a depth penetration capacity of > 20m. The results obtained by the electronic receiver have been processed by using two software especially programmed for geological purposes: Prizm 2.0 and RadMax. This survey is to follow up of the GPR survey carried out in August 2016 also by Dr. Logutov. The previous August GPR survey covered the lower 3500 meter section of the of the lease starting immediately upstream from post Nr 1 . The September GPR survey examined along benches upstream from the area surveyed in August . New GPR lines where positioned to infill areas between line 1 line 2 and line 3 surveyed during the August GPR program. The location and distance between those lines and the subsequent interpretation of the data suggested that obtaining additional information on that particular bench group would be desirable and the results of the September survey confirmed that assumption. This geophysical survey produced positive results and served to locate several paleo-channels on the Bruin Creek benches that where examined.

The regional location of the prospecting lease and the outlines of the lease as well as the survey lines and the graphic representation of the surface of bedrock and the gravel coverage of it is shown in the following pages.

## **Conclusions**

The Bruin Creek GPR Program of September 2016 confirmed the existence of gravels on the eastern benches along the first 5 km upstream from Post #1 along Bruin Creek . It also revealed the presence of well defined paleo channels that are of considerable interest to the placer miner. Despite that the terrain made data acquisition challenging ,the survey provided very crisp data for interpretation and the results described in this report can be viewed with confidence as to accuracy. The Benches examined host, in addition to the bench gravels , paleo channel gravels over a length of approximately 2500 and up to 400 meters wide. The original Paleo Channel appears to be only interrupted by the drainages flowing in from the east. The Writers of this report recommend a follow-up with a drilling or trenching program to verify the existence of commercial quantities of placer gold within the gravel's contained in the paleo channels and the potential volume of minable material.



**Location of Lease ID 01321 on map**

(red circle), Scale 1:320 road to lease ID01321 (in red)



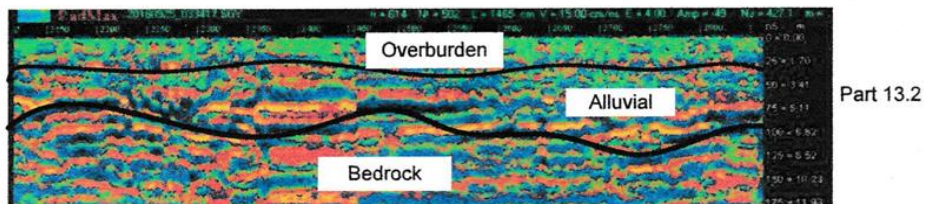
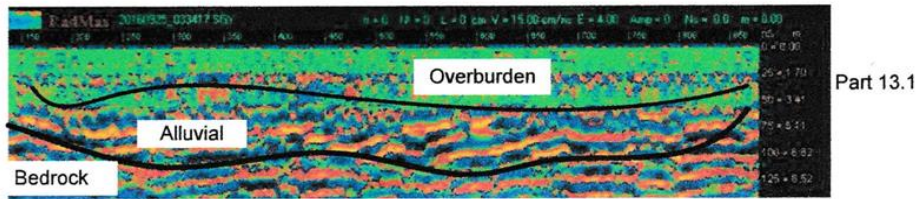
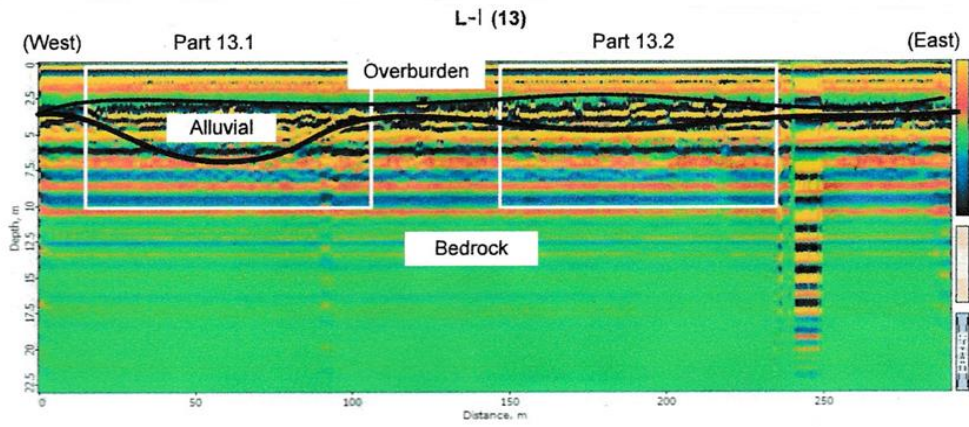
**Outline of lease ID01321**



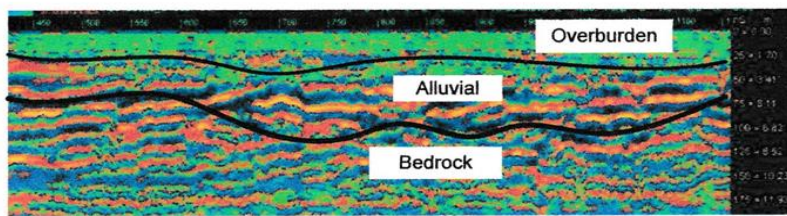
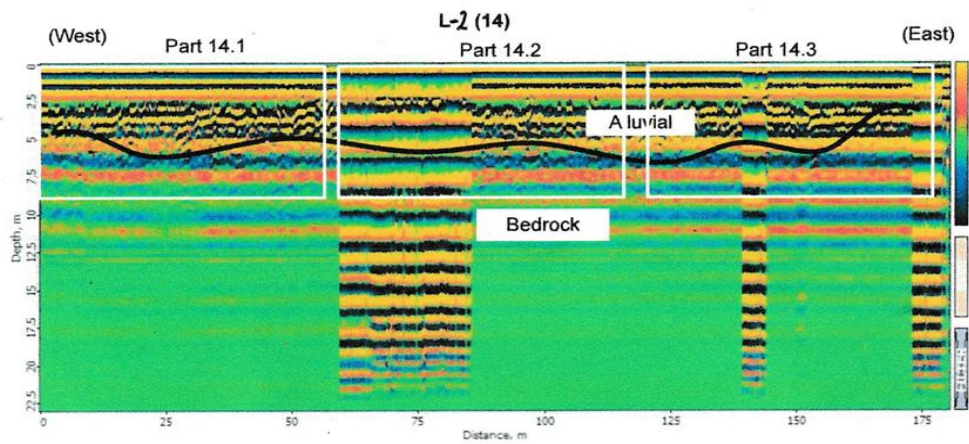
**Location of the September GPR lines along the lease ID 01321**

Lines ##	Points of survey	Coordinates of the “start” and “end” points		Elevation of the points (m) .
1(13)	Start	64 17 42	140 38 37	478
	End	64 17 50	140 38 20	427
2(14)	Start	64 17 55	140 38 53	407
	End	64 17 56	140 38 31	432
3(15)	Start	64 18 02	140 38 58	413
	End	64 18 02	140 38 39	453
4(16)	Start	64 18 08	140 39 04	441
	End	64 18 10	140 38 51	415
5(17)	Start	64 18 16	140 39 32	438
	End	64 18 25	140 39 14	400
6(18)	Start	64 18 24	140 39 42	391
	End	64 18 27	140 39 26	415
7(19)	Start	64 18 26	140 39 44	391
	End	64 18 34	140 39 56	405
8(20)	Start	64 18 32	140 40 00	441
	End	64 18 37	140 39 43	395
9(21)	Start	64 18 50	140 40 39	433
	End	64 18 57	140 40 20	384
10(21)	Start	64 18 54	140 40 56	403
	End	64 19 03	140 40 34	377
11(22)	Start	64 18 52	140 40 33	397
	End	64 18 57	140 40 47	377
12(23)	Start	64 18 57	140 40 47	377
	End	64 19 04	140 40 05	369
13(24)	Start	64 18 54	140 40 56	403
	End	64 19 03	140 40 34	377

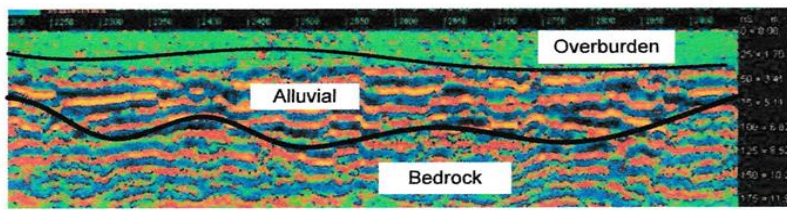
GPR lines (graphic results):



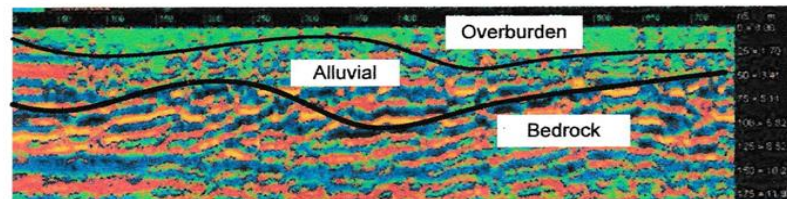
Pic. 2



Part 14.1

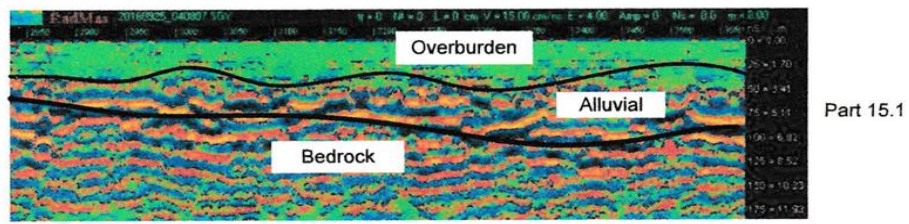
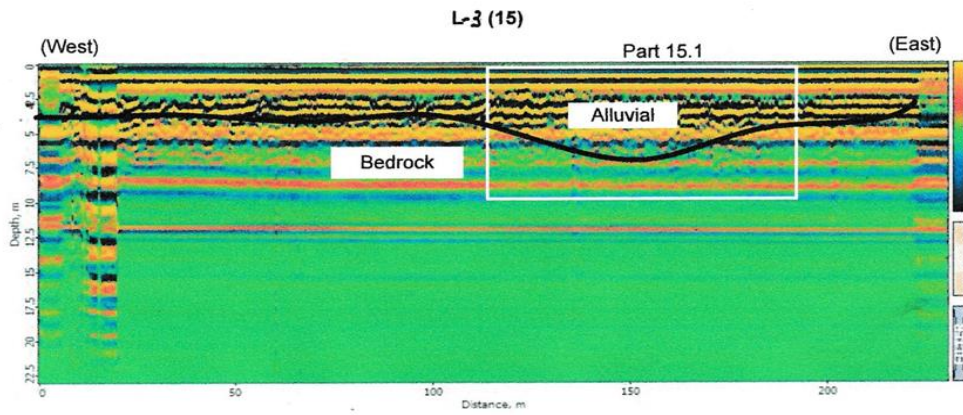


Part 14.2

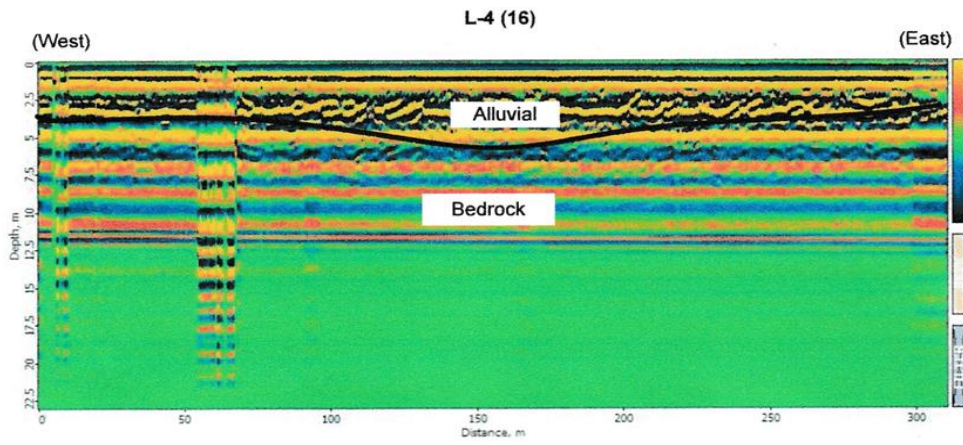


Part 14.3

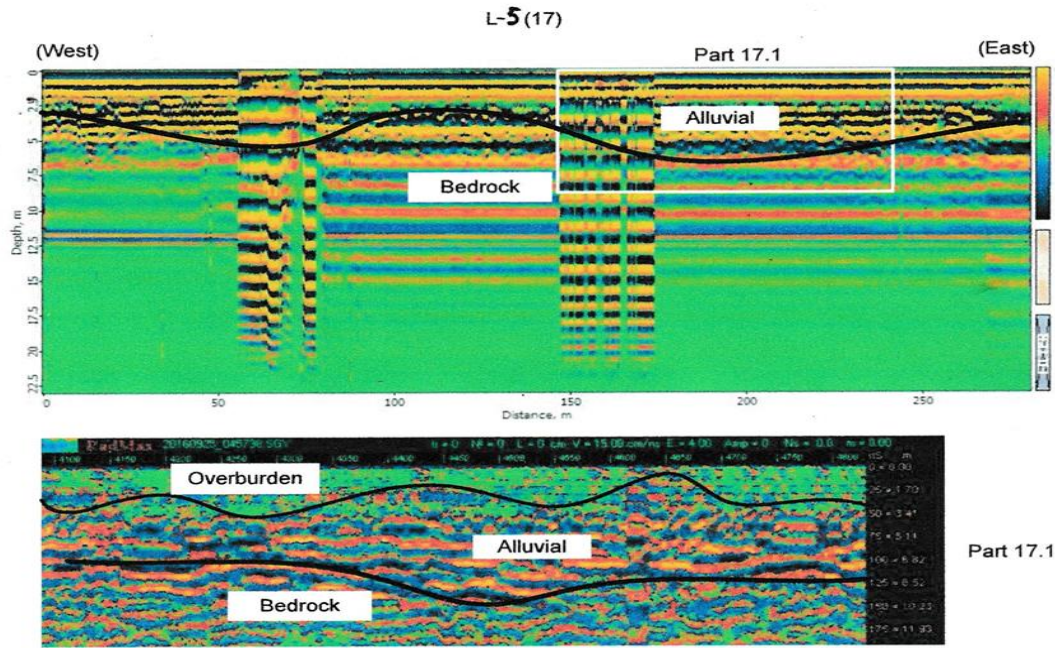
Pic. 3



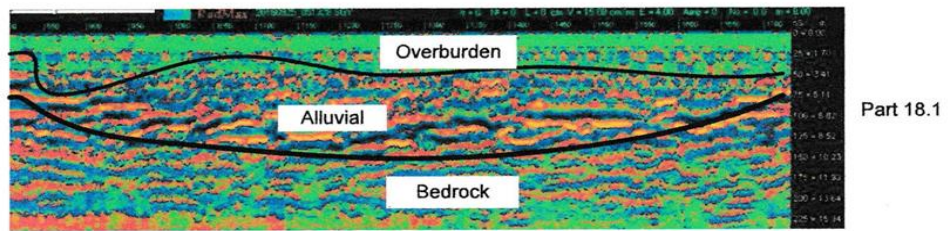
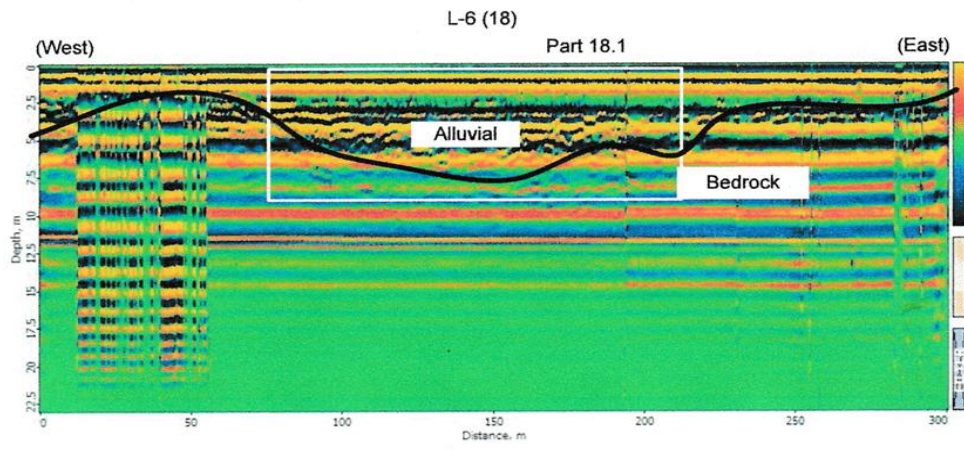
Pic. 4



Pic. 5

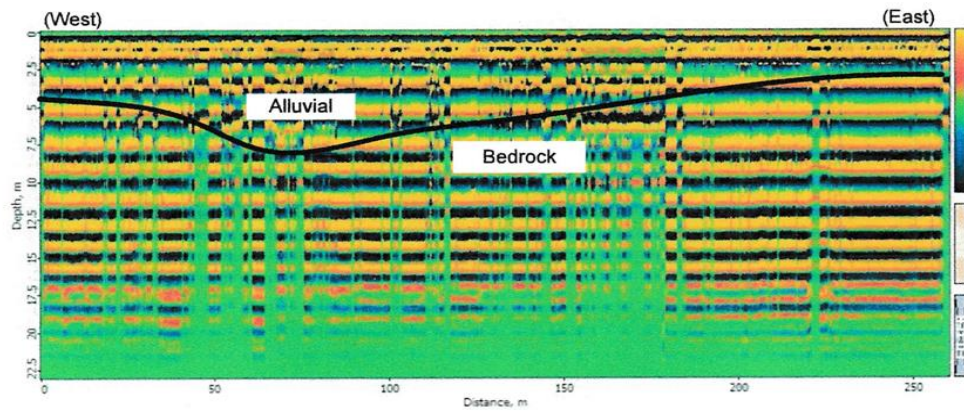


Pic. 6

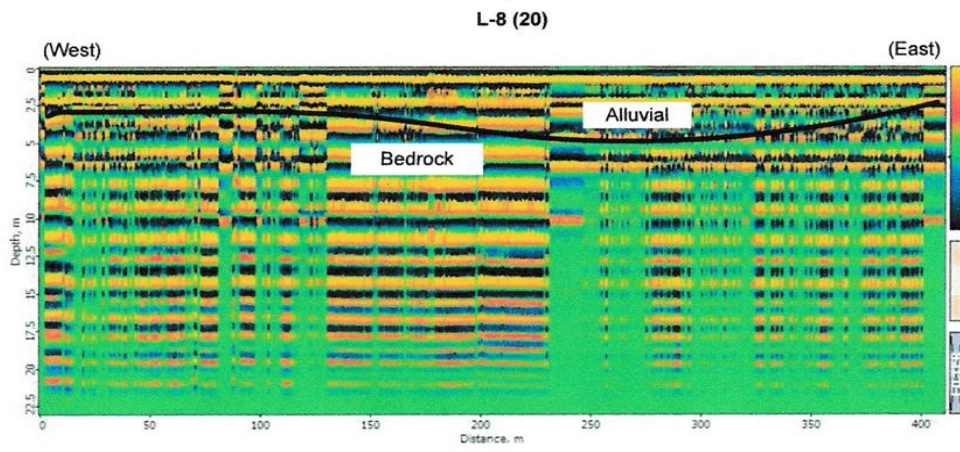


Pic. 7

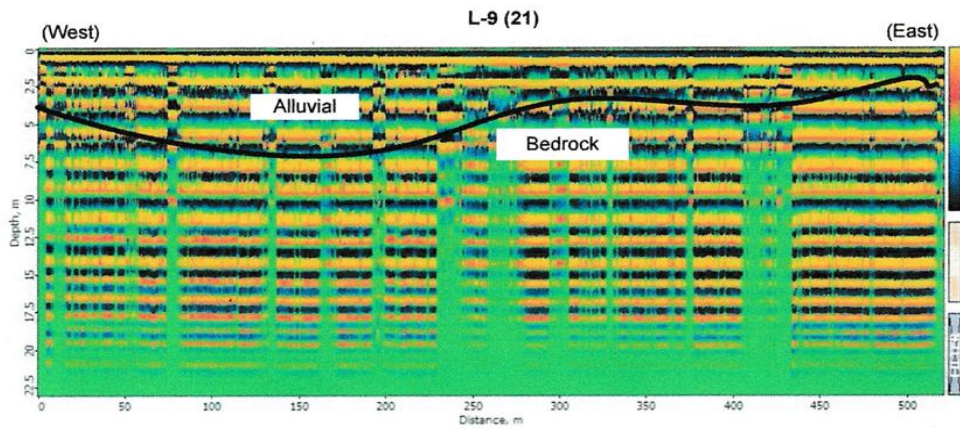
L-7 (19)



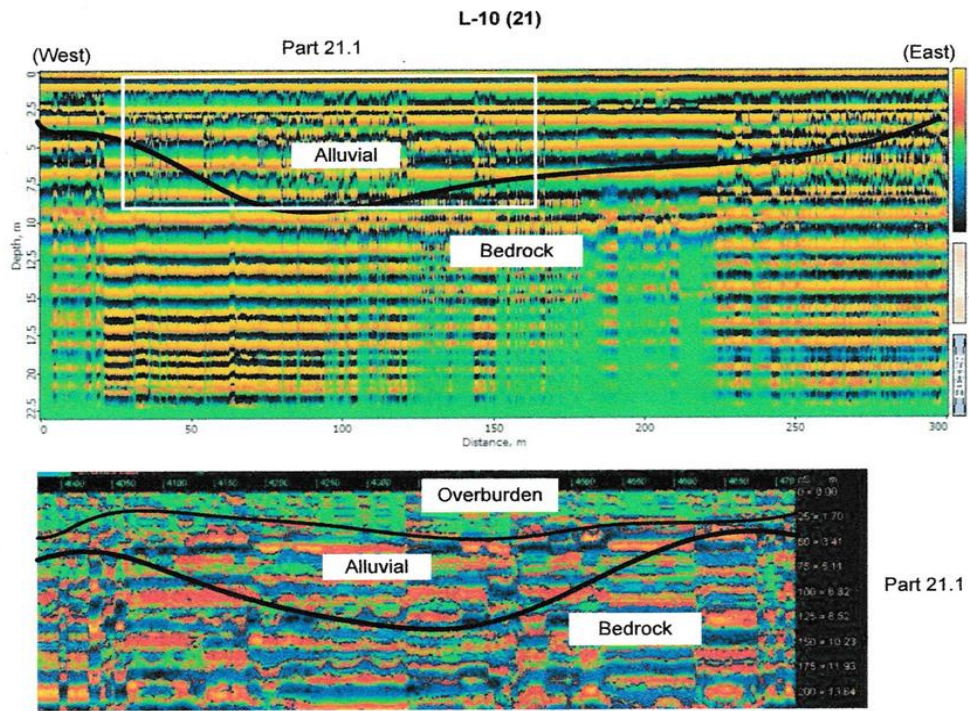
Pic. 8



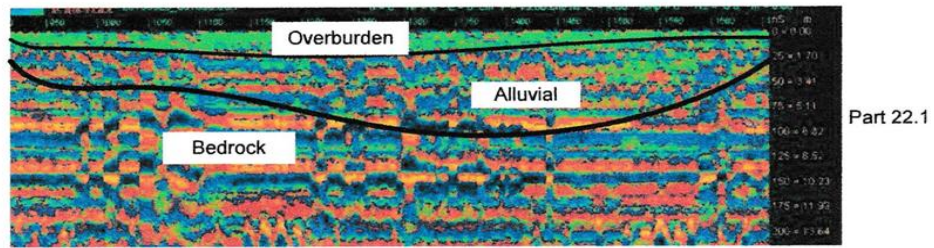
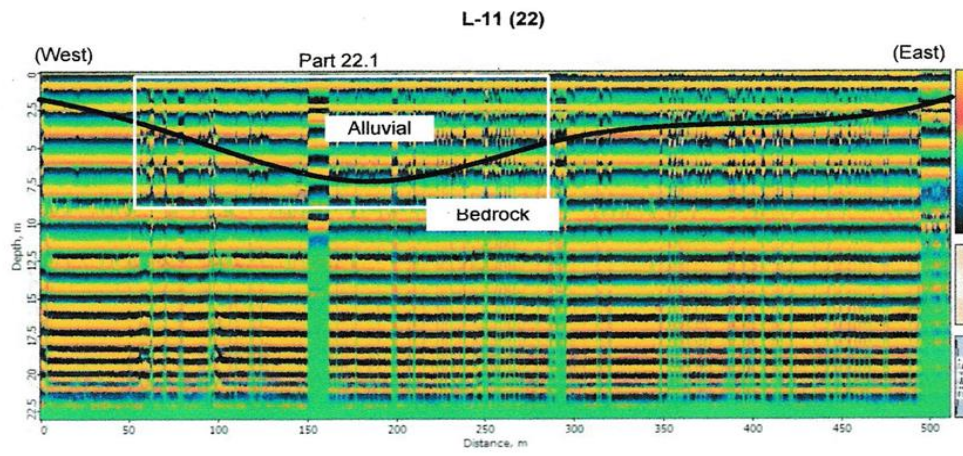
Pic. 9



Pic. 10

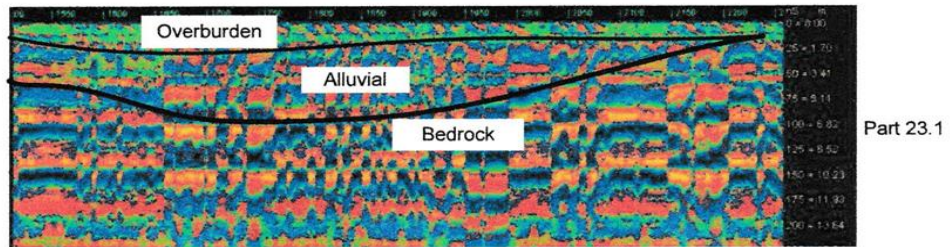
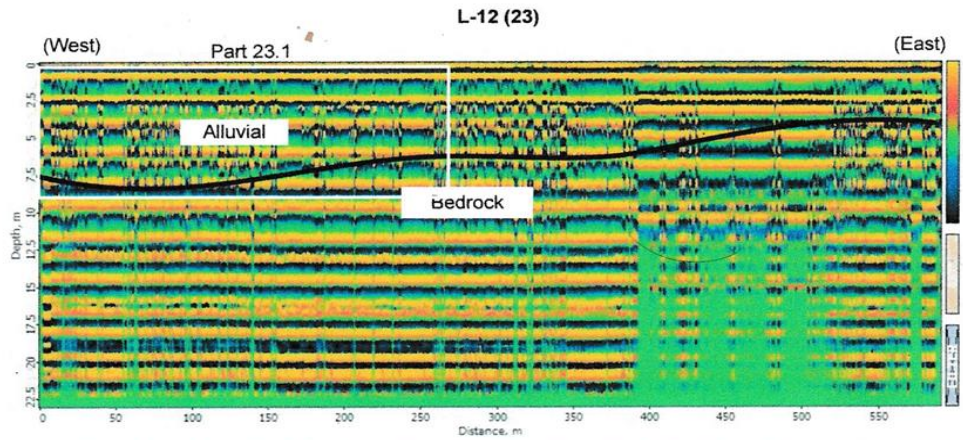


Pic. 14



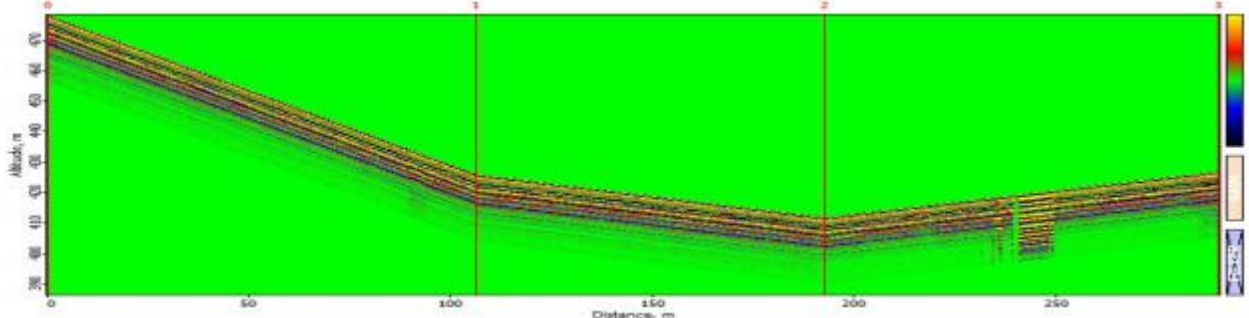
Pic. 11

Pic. 12

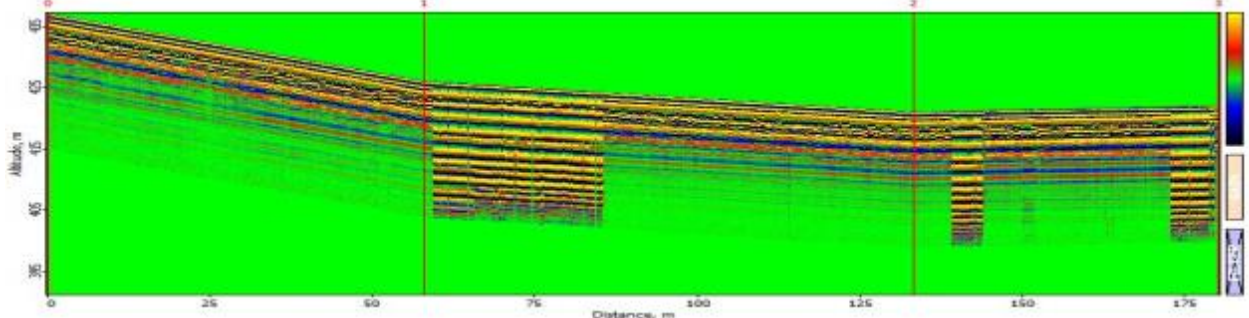


# Geodesic lines with elevations

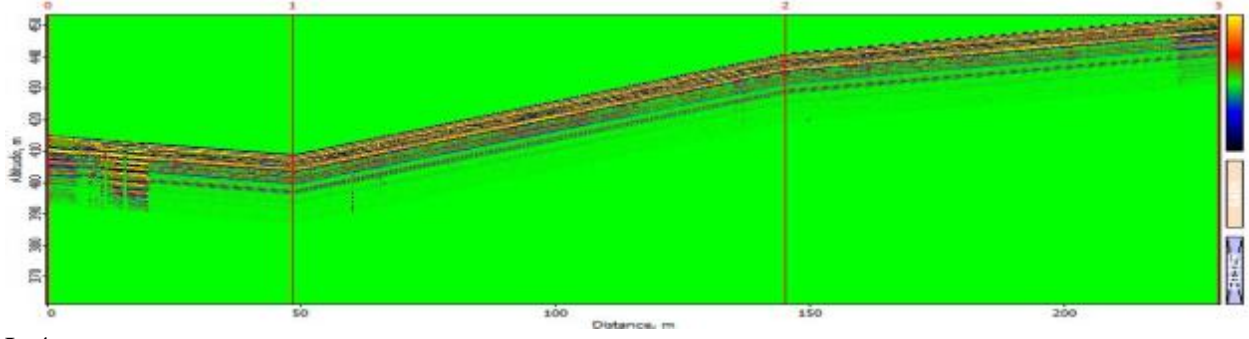
L-1



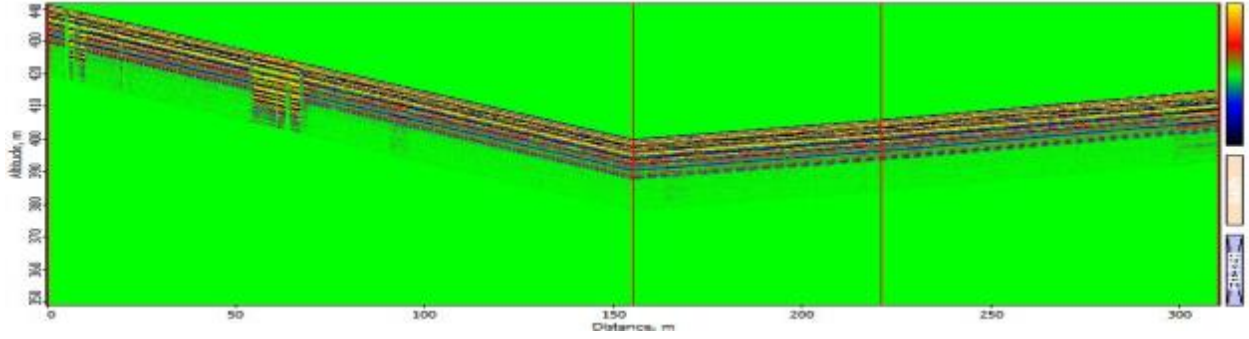
L-2



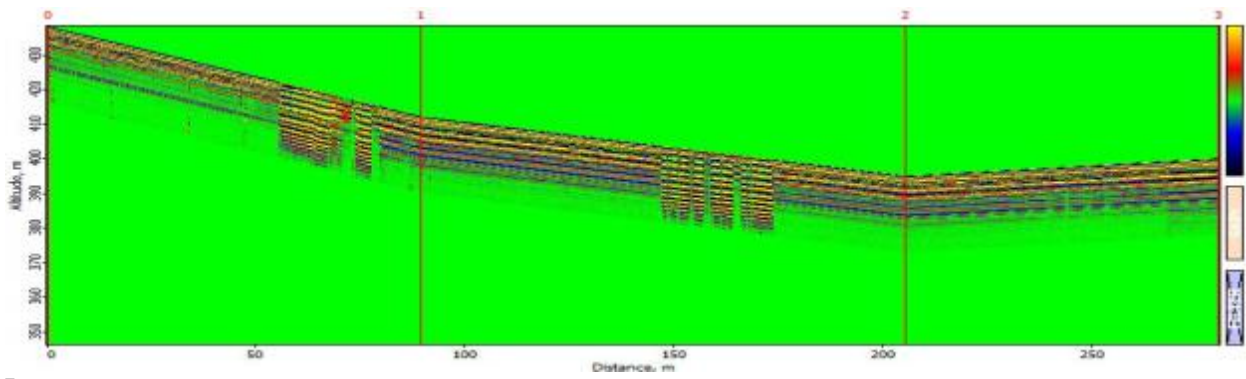
L-3



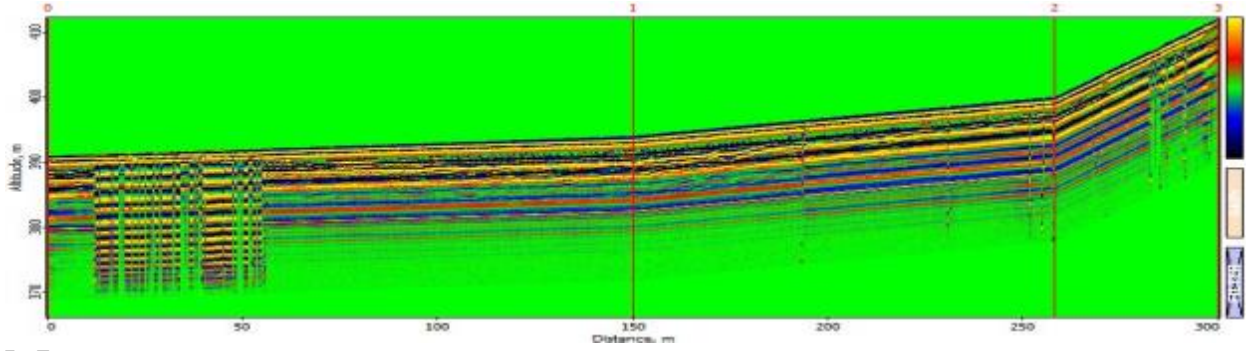
L-4



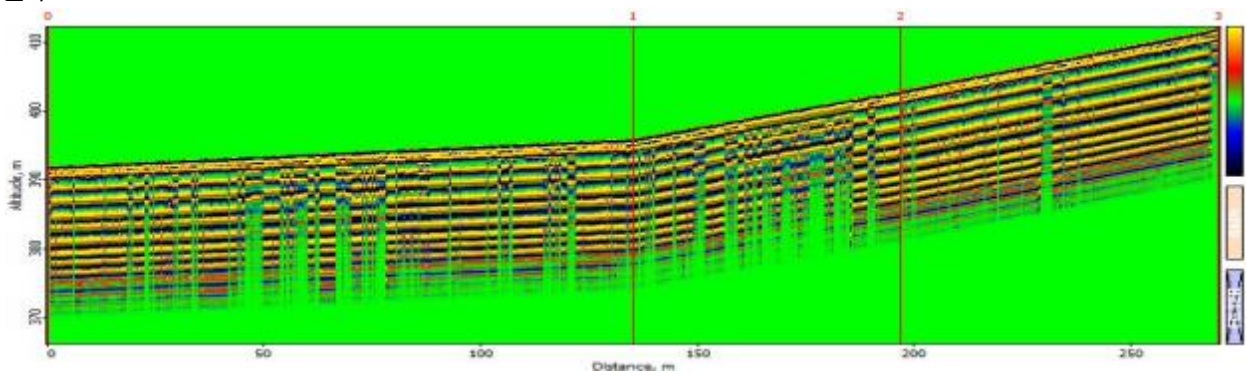
L-5



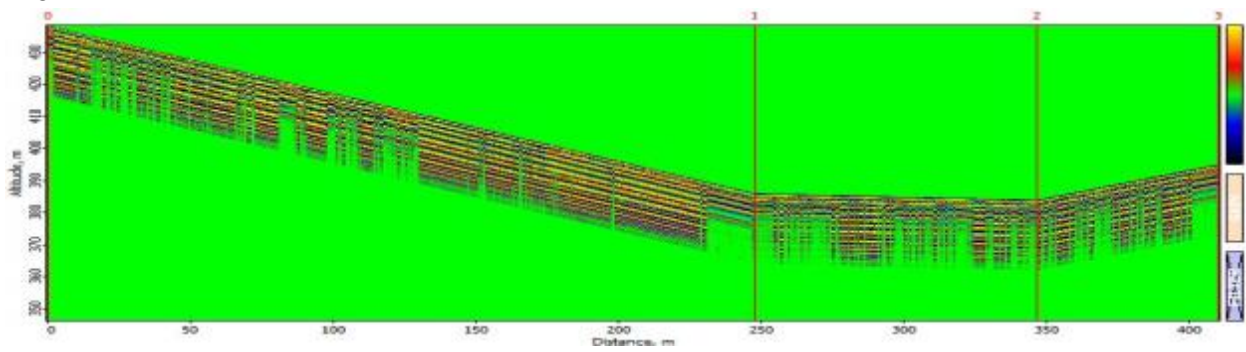
L-6



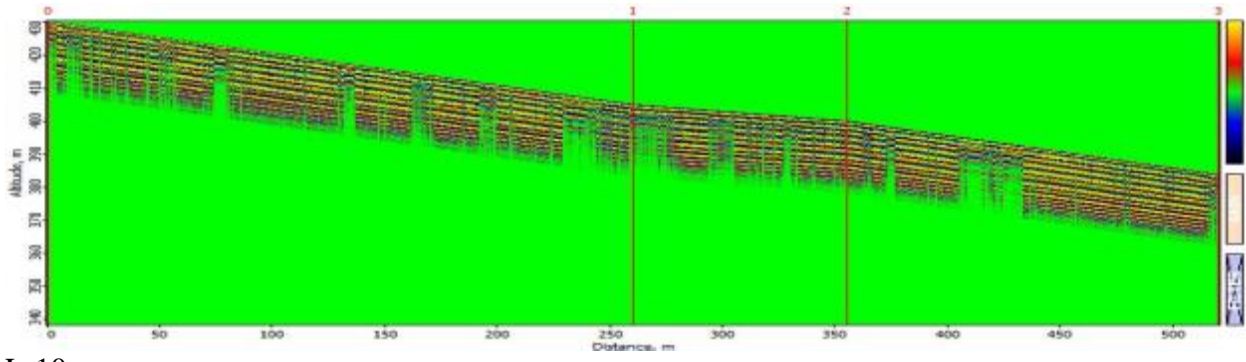
L-7



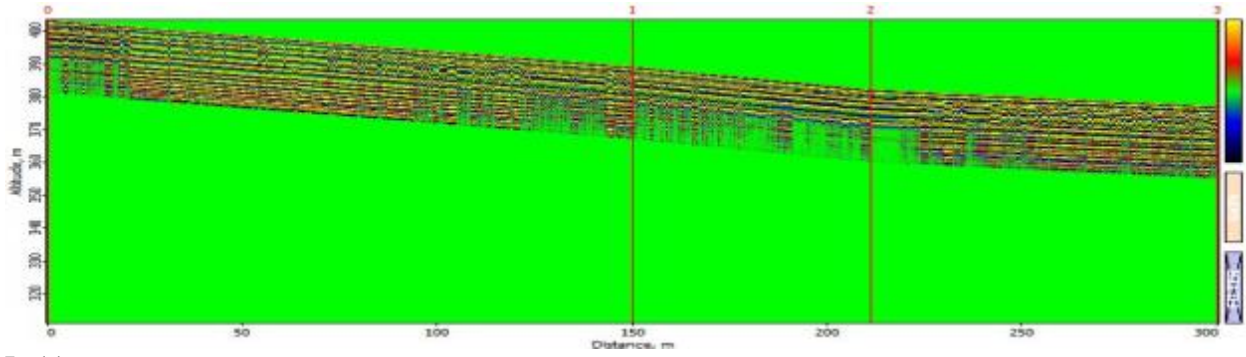
L-8



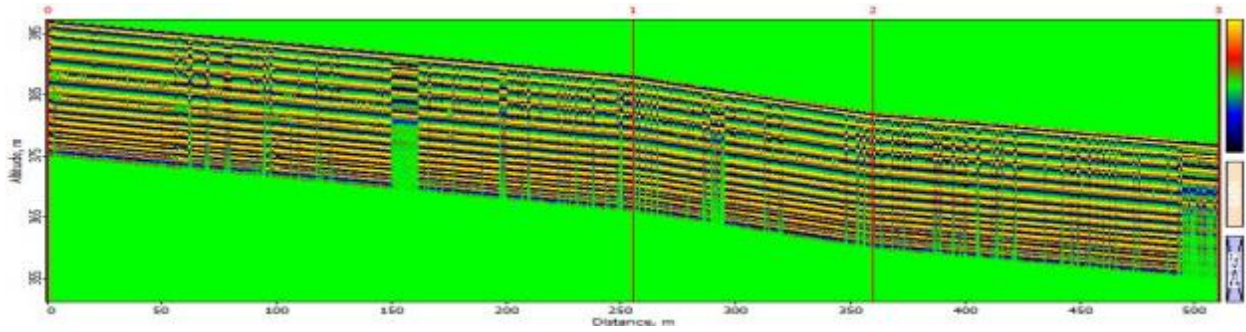
L-9



L-10



L-11



L-12

