

REPORT

Geophysical Ground Penetrating Radar Survey

Placer Prospecting Lease № ID01321

Bruin Creek

August 20 2016 to August 26, 2016

Dawson Mining District

Forty Mile River Area

Map Nr 116C07P

Report compiled by:

Geologist Boris Logutov

Technician

Tasha Logutova

Introduction

Geophysical survey was conducted by using of Ground Penetrating Radar (GPR) at the Placer prospecting lease nr ID01321 during period of August 20 2016 to August 26, 2016.

METHODOLOGY AND SUMMARY OF THE CONDUCTED STUDIES.

Four **12 lines** of GPR survey's were surveyed during the field works. The total length of the **12 lines** is **4 240 m**; the distances between lines approx is **100 – 1 200 m**. The actual location of the surveyed lines is present on the map at the picture #1. (see attachment). The original data of electro-magnetic survey are presented on CD (see attachment 2).

The coordinates of the surveyed lines are presented at the Table 1.

Table 1 1

Lines ##	Points of survey	Coordinates of the “start” and “end” points		Elevation of the points (m) .
1	Start	64 17 25	140 38 30	449
	End	64 17 25	140 38 12	426
2	Start	64 17 44	140 38 35	429
	End	64 17 50	140 38 18	431
3	Start	64 18 17	140 39 32	424
	End	64 18 22	140 39 12	401
4	Start	64 18 21	140 39 37	403
	End	64 18 25	140 39 15	400
5	Start	64 18 29	140 39 46	391
	End	64 18 30	140 39 33	413
6	Start	64 18 33	140 39 52	405
	End	64 18 37	140 39 37	409
7	Start	64 18 39	140 40 18	388
	End	64 18 41	140 40 02	420
8	Start	64 18 45	140 40 22	401
	End	64 18 48	140 40 03	461
9	Start	64 18 49	140 40 38	433
	End	64 18 57	140 40 16	406
10	Start	64 18 49	140 40 44	440
	End	64 19 02	140 40 26	382
11	Start	64 18 55	140 41 10	402
	End	64 19 04	140 40 35	388
12	Start	64 18 57	140 41 14	386
	End	64 19 09	140 40 50	371

The electro-magnetic survey was conducted by using the GPR “EasyRad PRO+” equipped with antenna by working frequency 100 MHz with resolution 0.2m; the results of the survey which was analyzed by using software «Prizm 2.5». The actual depth of the effective survey is estimated up to 11 m.

The results of the conducted surveys are present the strong ability of recognition of the main lithological units at the radar's-images such as:

«**Permafrost**»- thickness – 1.3 – 3.5 m;

«**Colluvium**»- thickness – 1.3 – 1.9 m

«**Overburden**»- thickness 0.8-3.1 m;

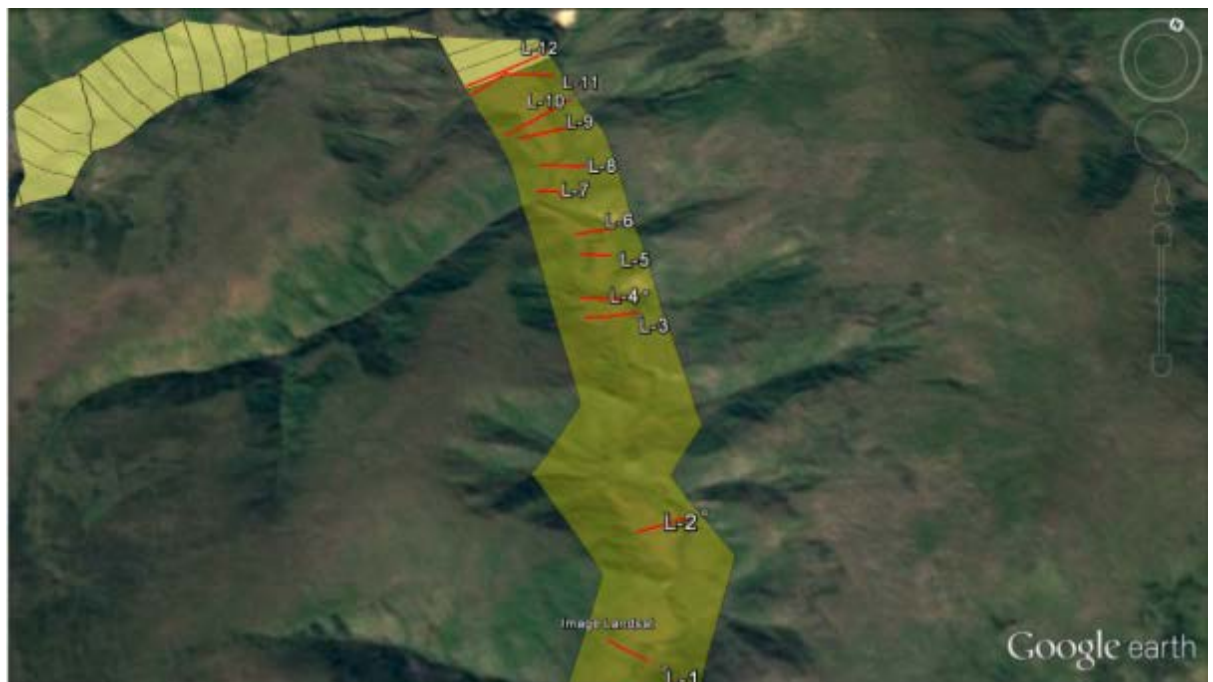
«**Alluvial**»- thickness 1.1-5.0 m;

«**Weathered bedrock**» – thickness 0.5-0.9 m;

«**Bedrock surface**» – at the depth up to 6.6 m.

The results of the final interpretation and analysis of the received data of GPR surveys are presented at the pictures 2; 3; 4; 5; 6; 7; 8; 9; 10; 11; 12; 13.

Pictures working with radar and geomorphology in the pictures 14-17.



Pic. 1

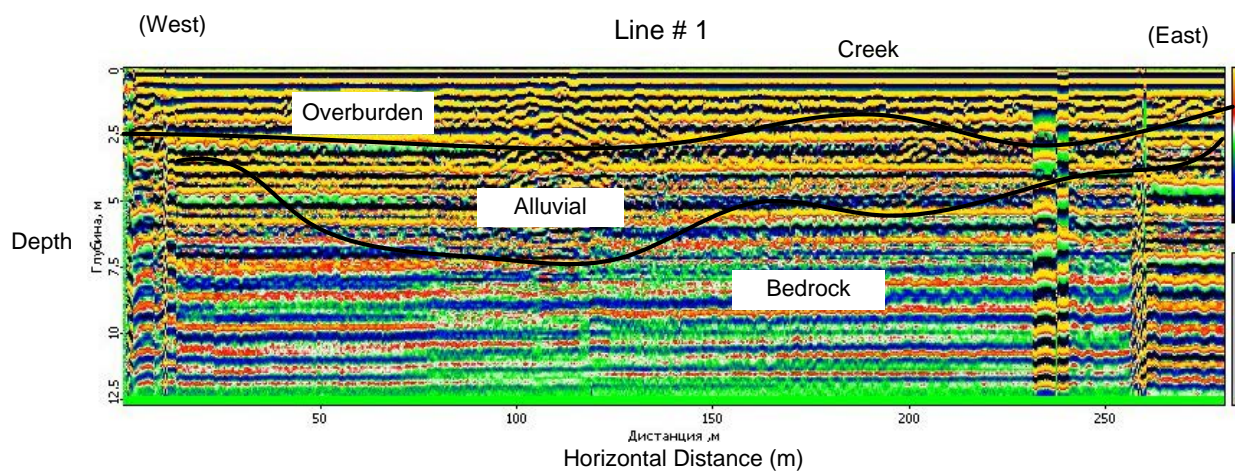
The map of the lines of survey location.

CONCLUSION

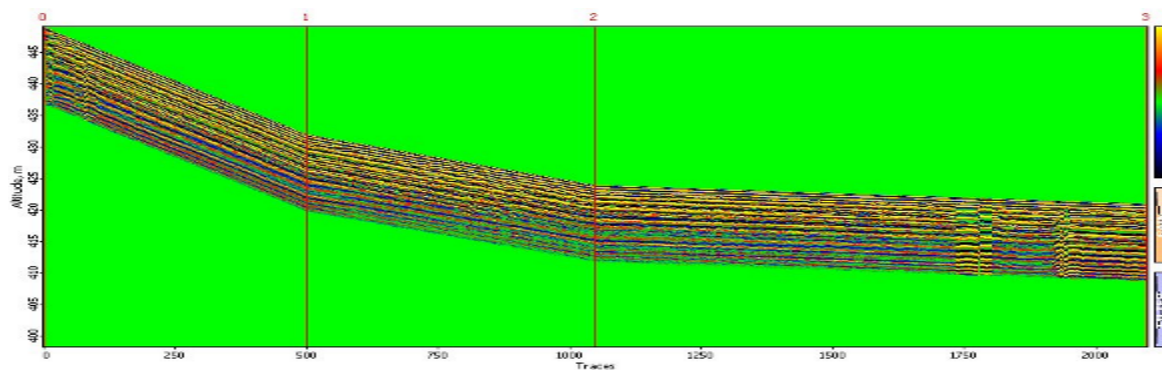
The geophysical studies were conducted in the limits at the Placer prospecting lease nr ID01321 during period of August 20 2016 to August 26, 2016.

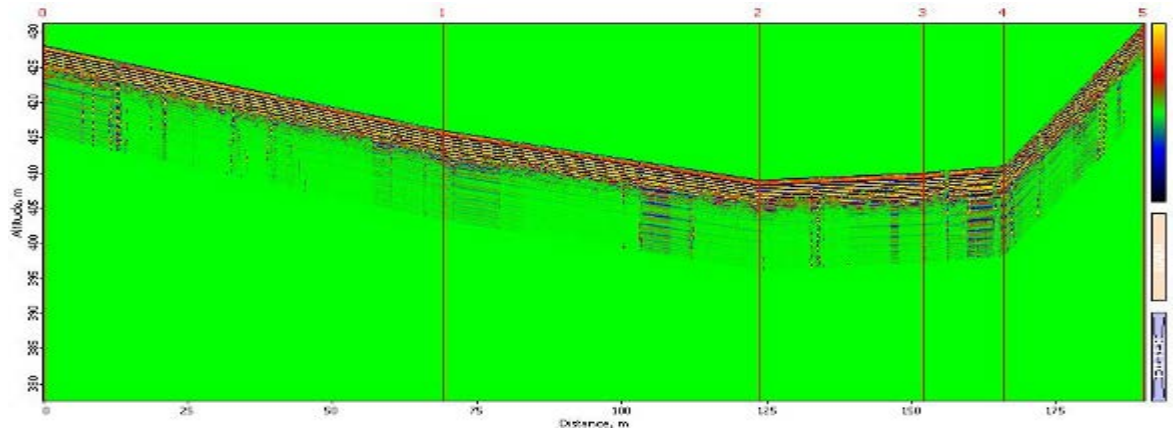
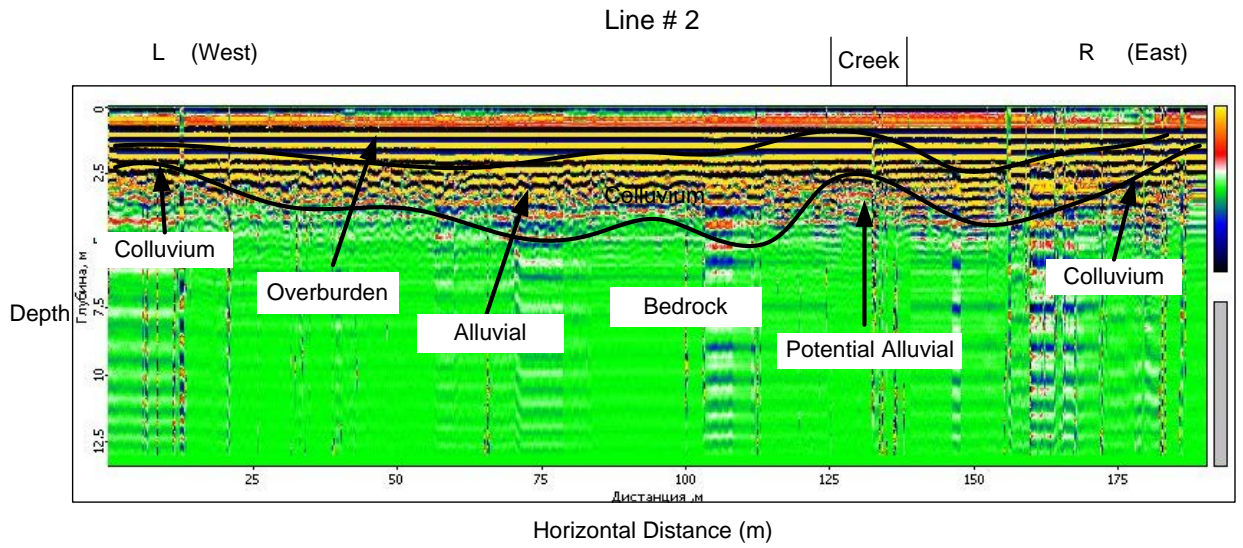
The results of the conducted studies are:

- Actual data of GPR survey;
- Analysis and interpretation of the GPR data;
- The lithological distribution of the deposits along the cross-section were analyzed;
- The summary of the results was compiled.

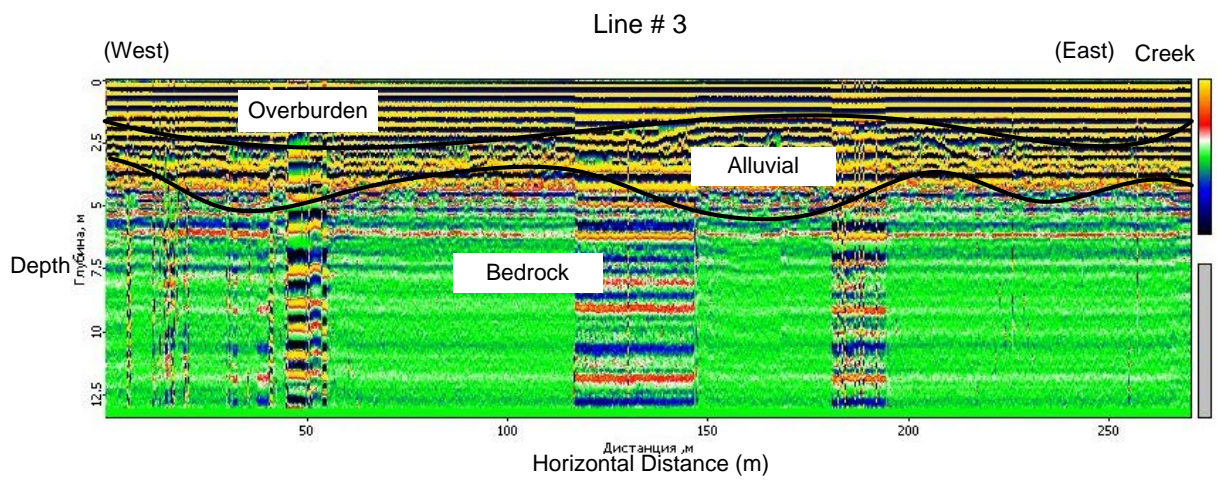


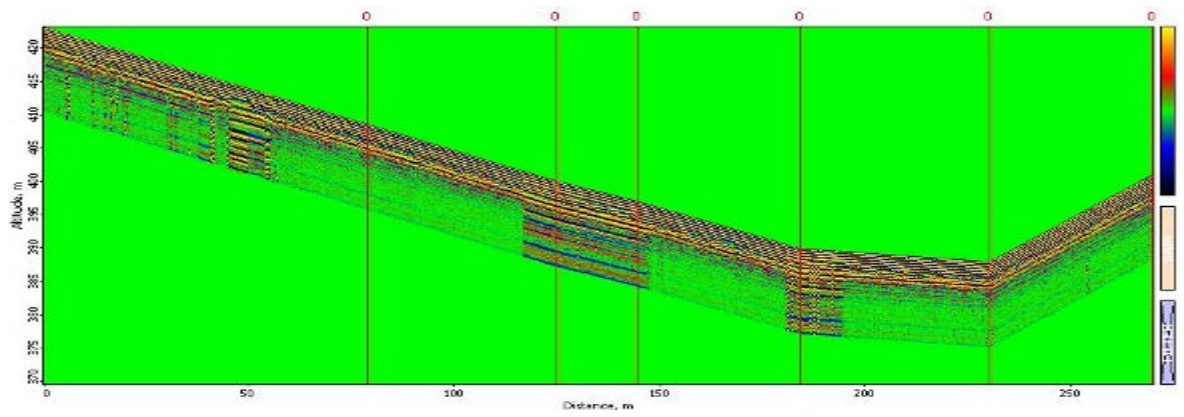
Pic. 2



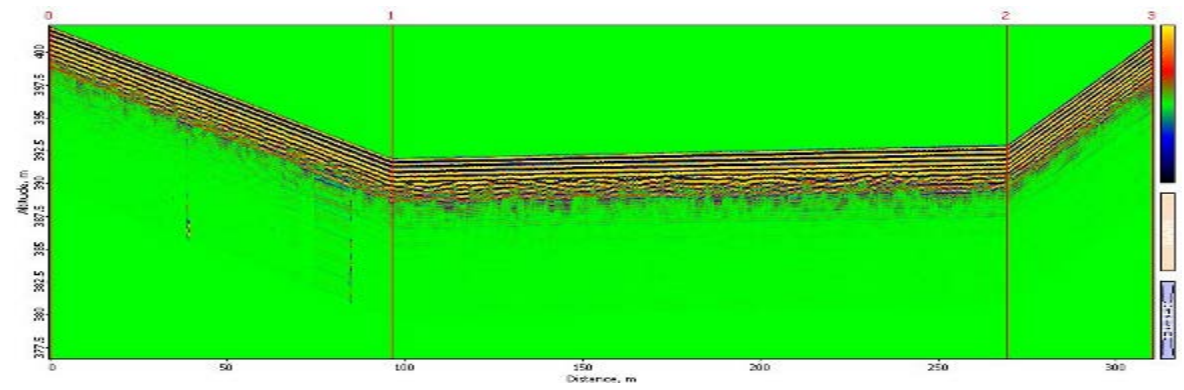
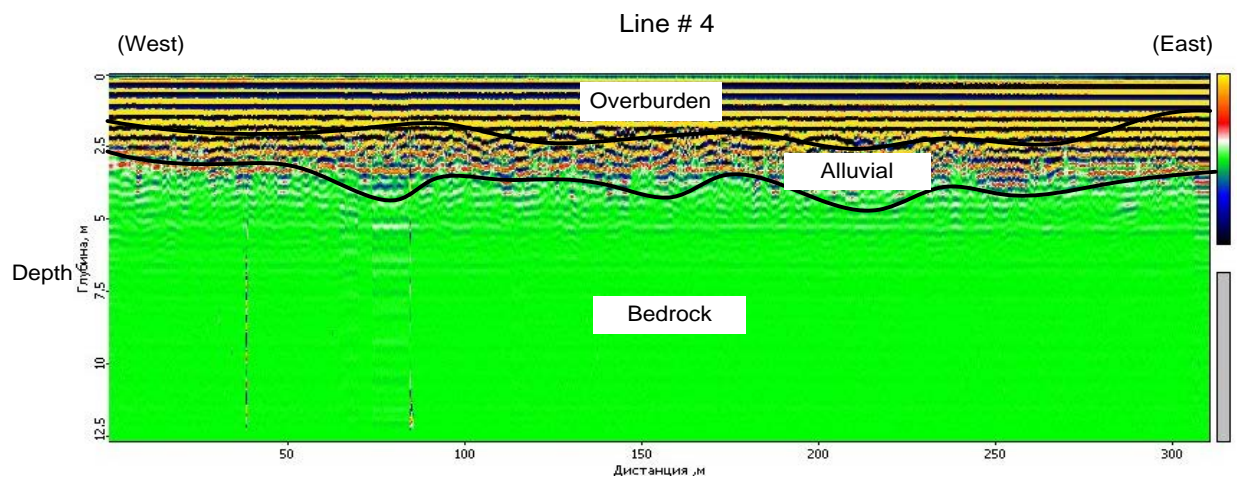


Pic. 3

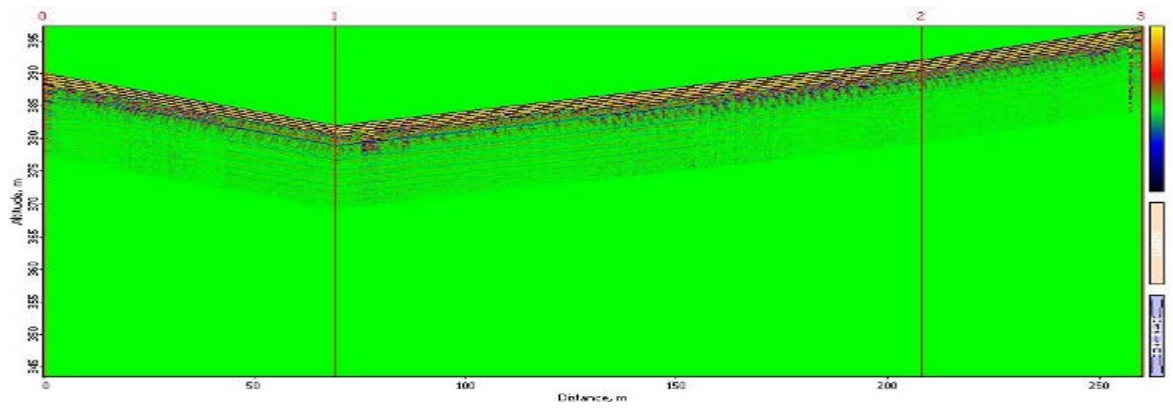




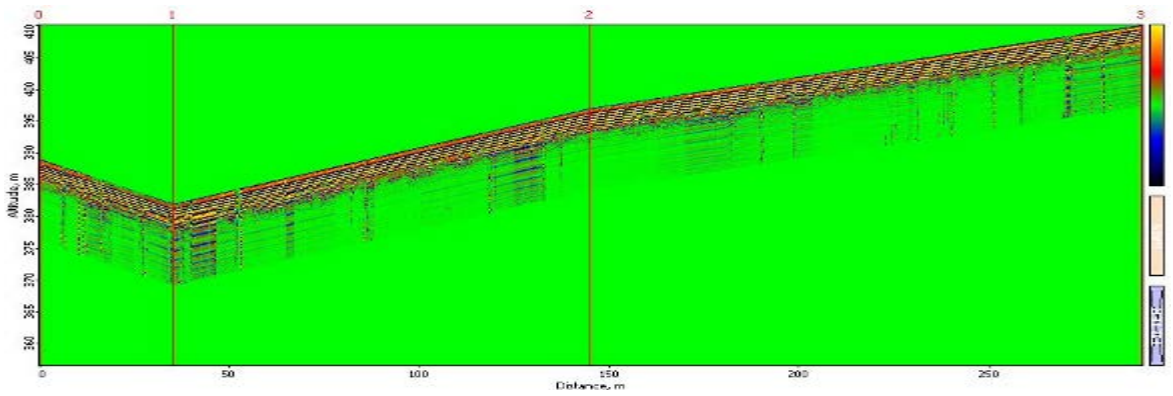
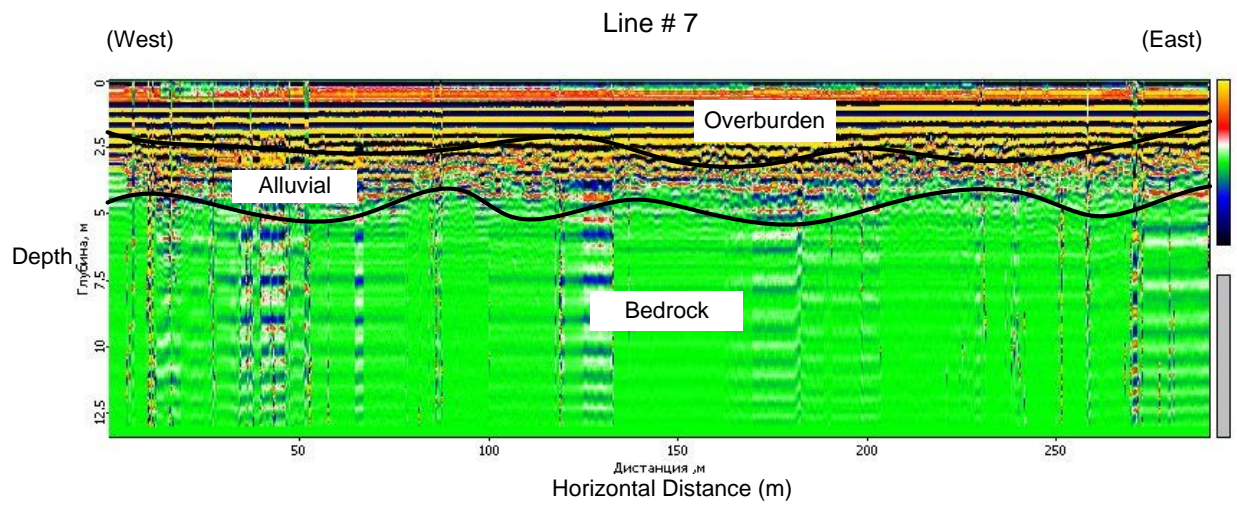
Pic. 4



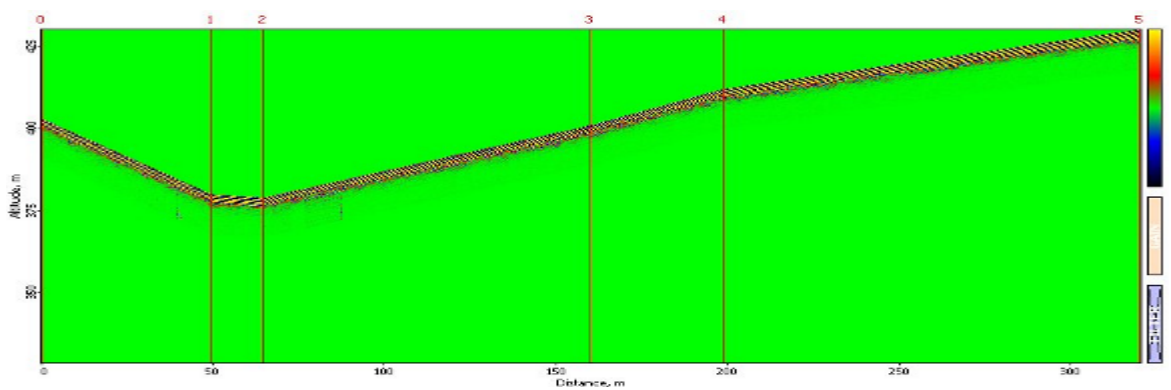
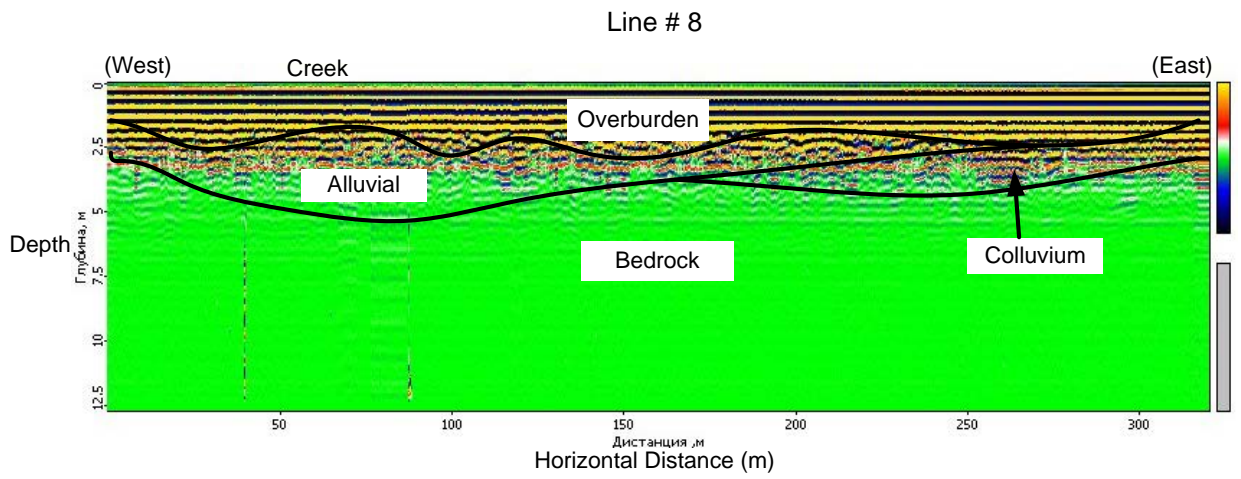
Pic. 5



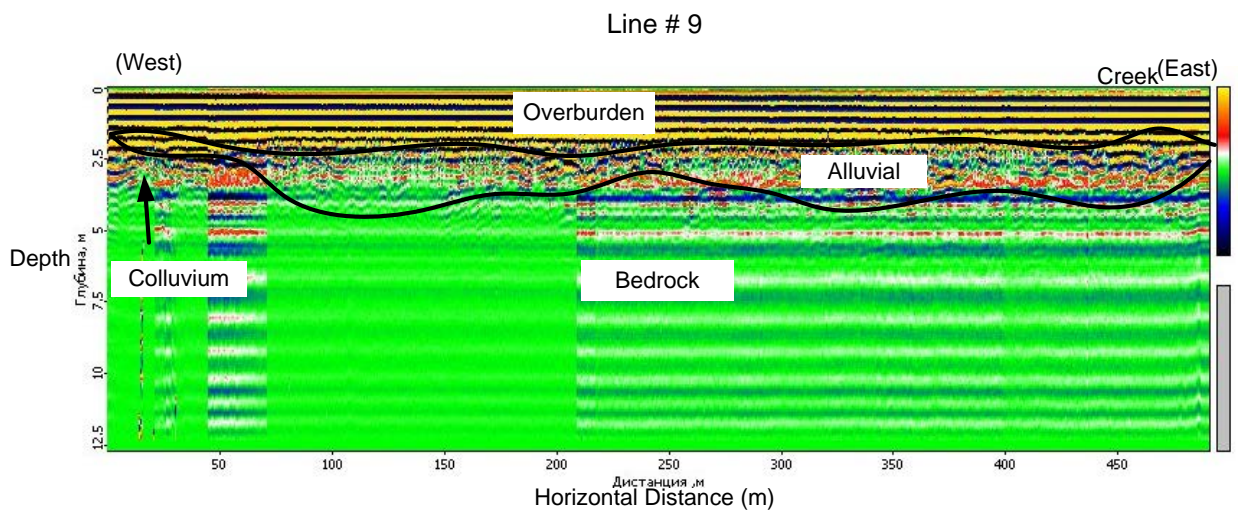
Pic. 7

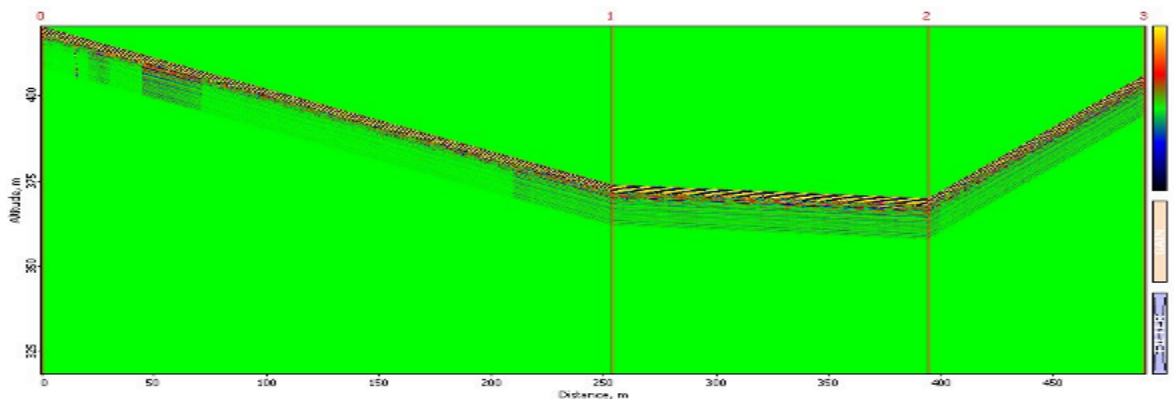


Pic. 8



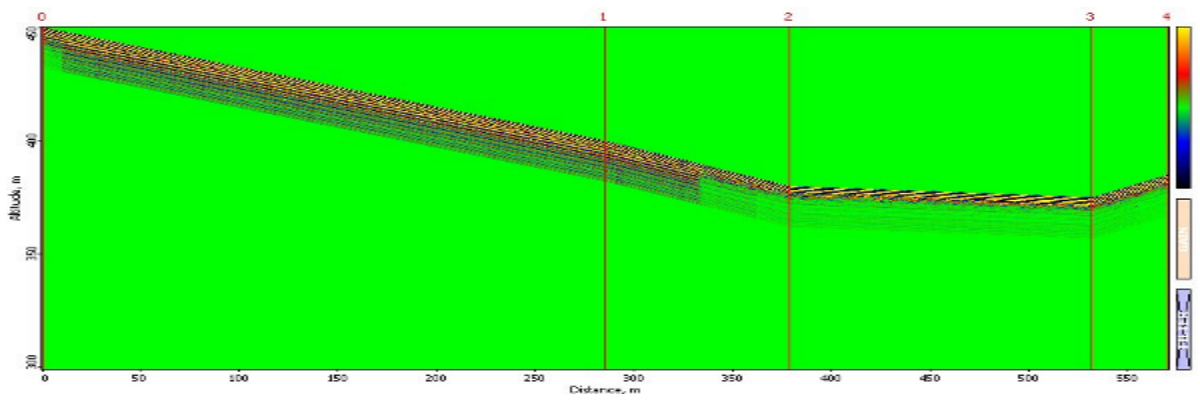
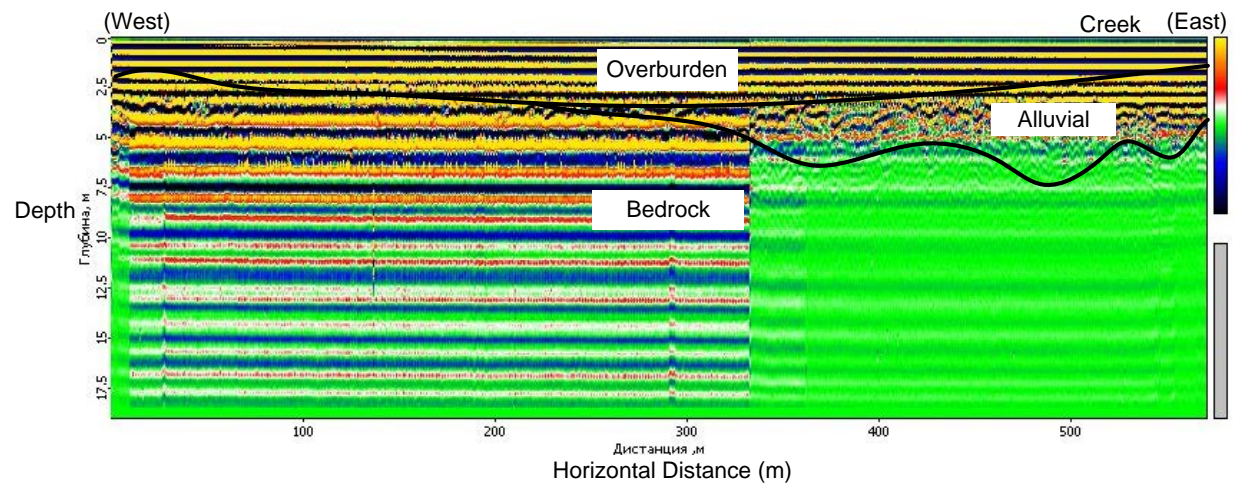
Pic. 9



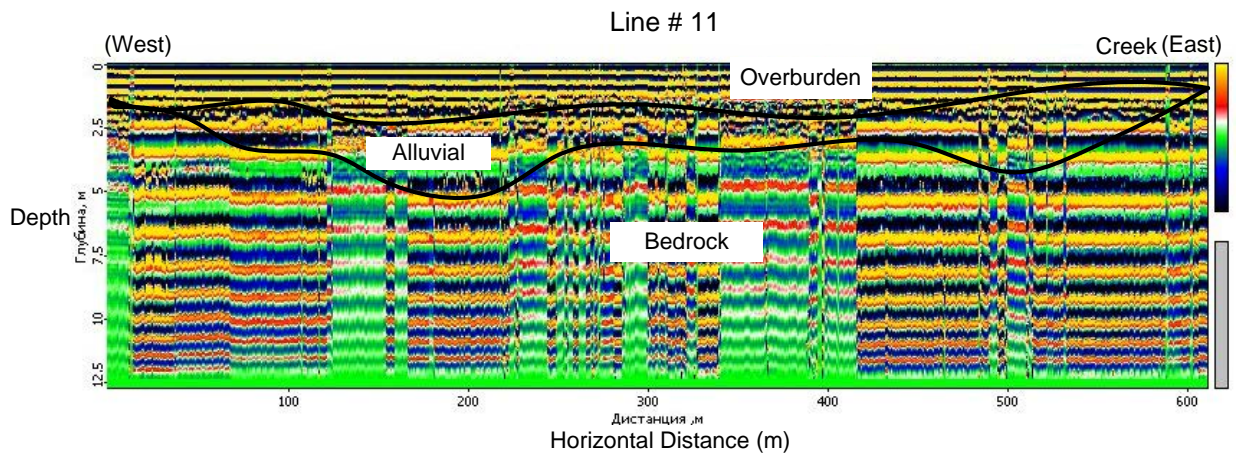


Pic. 10

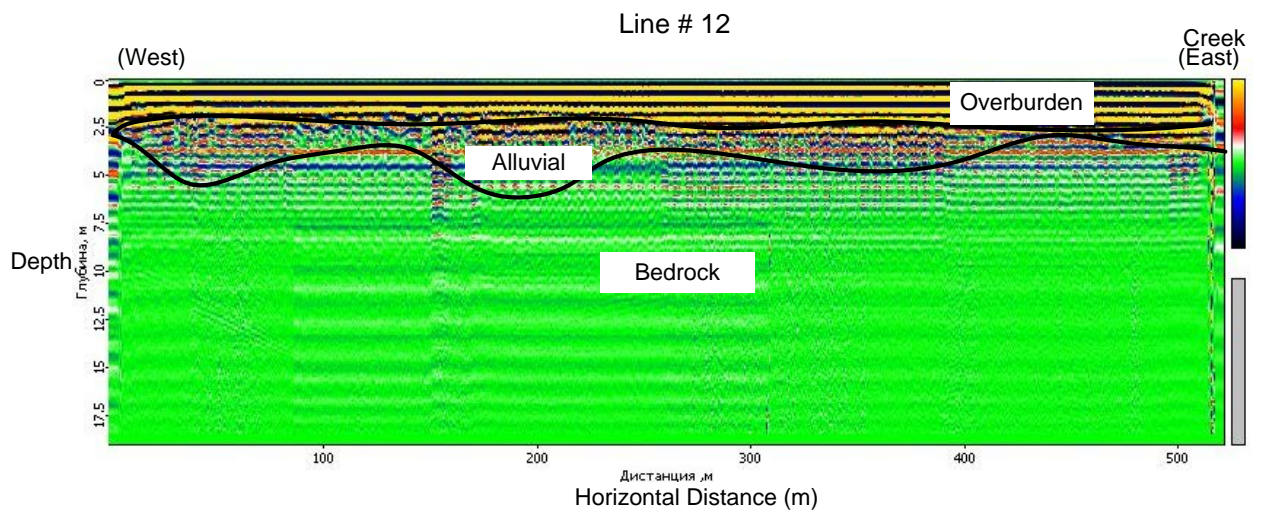
Line # 10



Pic. 11



Pic. 12



Pic. 13



Pic. 14



Pic. 15



Pic. 16



Pic. 17

Boris Logutov

President, 47129 Yukon Inc.

_____ 26 August, 2016