

# Arctic Geophysics Inc.



Geophysical Surveys • Prospecting • Consulting

## Geophysical Survey with 2D Resistivity/IP Scroggie Creek, Yukon

N63 06 35.1 W138 36 33.4

FOR

Allen & Shannon Radford  
Box 1040, Dawson City YT  
Y0B1G0, Canada

FROM

Arctic Geophysics Inc.  
Box 747, Dawson City YT  
Y0B1G0, Canada  
[www.arctic-geophysics.com](http://www.arctic-geophysics.com)

AUTHORS

Stefan Ostermaier  
Philipp Moll

WORK PERFORMED

Aug 27<sup>th</sup> - Sept 8<sup>th</sup> 2011

DATE OF REPORT

Feb 2<sup>nd</sup> 2012

## Table of Contents

1. Introduction .....	3
2. Crew .....	3
3. Claims .....	3
4. Scroggie Creek.....	4
5. Survey Area .....	4
6. Access.....	5
7. Work History .....	5
8. Bedrock Geology .....	6
9. Surficial Geology .....	8
10. Stratigraphy.....	8
11. Gold.....	9
12. Geophysical Methods .....	9
13. Use of Geophysical Methods .....	10
6.1. Instrumentation .....	10
6.2. Data Acquisition .....	10
6.3. Processing .....	11
6.4. Interpretation .....	11
14. Profile image .....	11
15. Line Arrangement .....	11
16. Survey Map .....	12
17. Profiles: Interpretation, Recommendation.....	13
18. Gallery.....	31
19. Qualifications .....	33
20. Appendix .....	35
Literature .....	35
Geophysical Data Table.....	36
Costs.....	37
GPS-Data .....	39

## 1. Introduction

This geophysical investigation was done for Shannon and Allen Radford.

The survey, using 2D Resistivity /IP, was conducted to prospect the ground for placer mining interests. The geophysical prospecting program was focussed on measuring and interpreting the following placer-related subsurface characteristics:

1. Depth and topography of bedrock  
Paleochannels, terraces
2. Sedimentary stratification
3. Groundwater, permafrost
4. Mining/prospecting history

The ground was tested with nine measuring lines with a length of 148m to 198m and a depth of 20m to 30m. The fieldwork was done from August 27<sup>th</sup> 2011 to September 8<sup>th</sup> 2011.

## 2. Crew

Survey Leader:	Philipp Moll
Geophysical Prospector	Stefan Ostermaier
Documentation:	Stefan Ostermaier, Philipp Moll

## 3. Claims

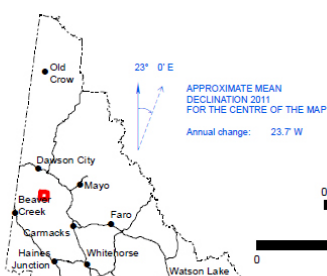
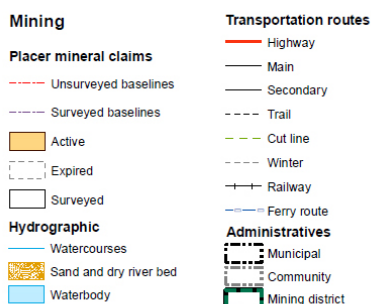
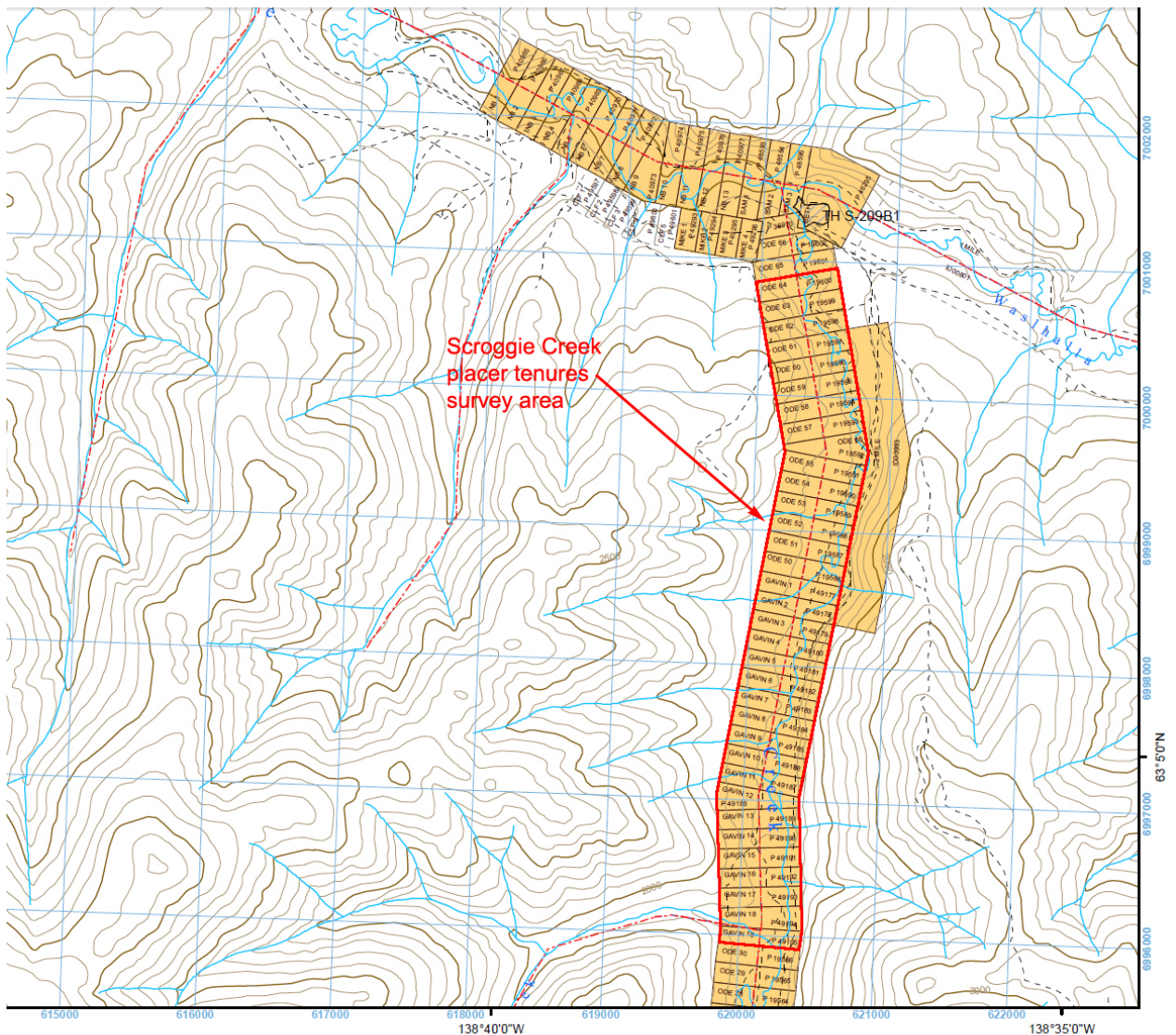
Grant Number	Claim Name	#	Owner
P 19599	ODE	63	Shannon Radford
P 19598	ODE	62	Shannon Radford
P 19597	ODE	61	Shannon Radford
P 19596	ODE	60	Shannon Radford
P 19595	ODE	59	Shannon Radford
P 19594	ODE	58	Shannon Radford
P 19593	ODE	57	Shannon Radford

## 4. Scroggie Creek

Scroggie Creek flows in a northwesterly direction and joins Stewart River about 25 miles above its confluence with the Yukon River. The main valley is about 40 miles in length.

## 5. Survey Area

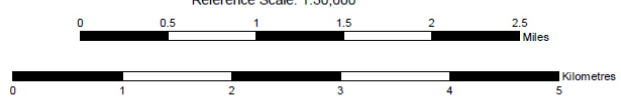
The survey area is located on Scroggie Creek just above the confluence with Walhalla Creek app.115Km south of Dawson City.



# 115002P

## MINING CLAIMS

Coordinate System: NAD 1983 UTM Zone 7N  
 Projection: Transverse Mercator  
 Datum: North American 1983  
 District: Dawson  
 Date: 09 Jan 2012  
 Reference Scale: 1:30,000



## 6. Access

The survey area was accessed by way of an airplane from Dawson City airport to the Alanac air strip; from there the actual claims were accessed on foot.

## 7. Work History

“Gold was discovered on Scroggie Creek in 1898, by Ernest B. and W.T. Scroggie, whom the creek was named after. Its tributary, Mariposa Creek, was first staked during the stampede to Scroggie Creek in the fall of 1898. Most of these early claims soon lapsed. The Discovery Claim was restaked in 1902 and lapsed the following year. In 1911, George Stevenson staked a Discovery Claim 330 metres from the Scroggie Creek baseline. This staking was the beginning of a period of increased mining and exploration which lasted until at least 1916. During the late 1940's, Rolf Sembsmoen was active on the creek.

During 1944, Scroggie Creek ground was optioned by Numalake Mining Company, Limited. They continued prospecting through 1945, but abandoned their efforts afterward.

From 1952 to 1955, Scroggie Creek was mined by George Fant and Ivor Norbeck. They had a fairly successful operation, however in 1955, they said the ground was no longer worth working.

During 1975 and 1976, Yugold Mines Ltd. did stripping and small amounts of testing on the lower portion of the creek. During 1981, Territorial Gold Placers Ltd. mined at the mouth of the creek.

In 1984 exploration programs by Auramet International Limited consisted of surficial geological mapping, air photo interpretation, limited seismic surveys and bulk sampling of nearby placer leases. Two pits on the property were excavated and sampled by hand. Surficial mapping and air photo interpretation delineated approximately 8.5 million cubic yards of bench gravels on the Golden Saddle leases. No bulk sampling was conducted on the leases but nearby leases contained gold grades ranging from 0.15 to 0.95 grams per cubic metre.

During 1984, Resore Industries began mining at the mouth. They mined on a large scale nearly every year, both on Mariposa and the adjacent portion of Scroggie, until the end of the 1992 season.

Zdenek Bidrman and his family were mining on the creek from 1989 to 2006.”<sup>1</sup>

---

<sup>1</sup> Yukon Placer Database

## 8. Bedrock Geology

“Bedrock is mapped as Nasina Group quartzite and schist and Early Jurassic felsic granite and syenite.”<sup>2</sup>

In the field several bedrock outcrops were observed:

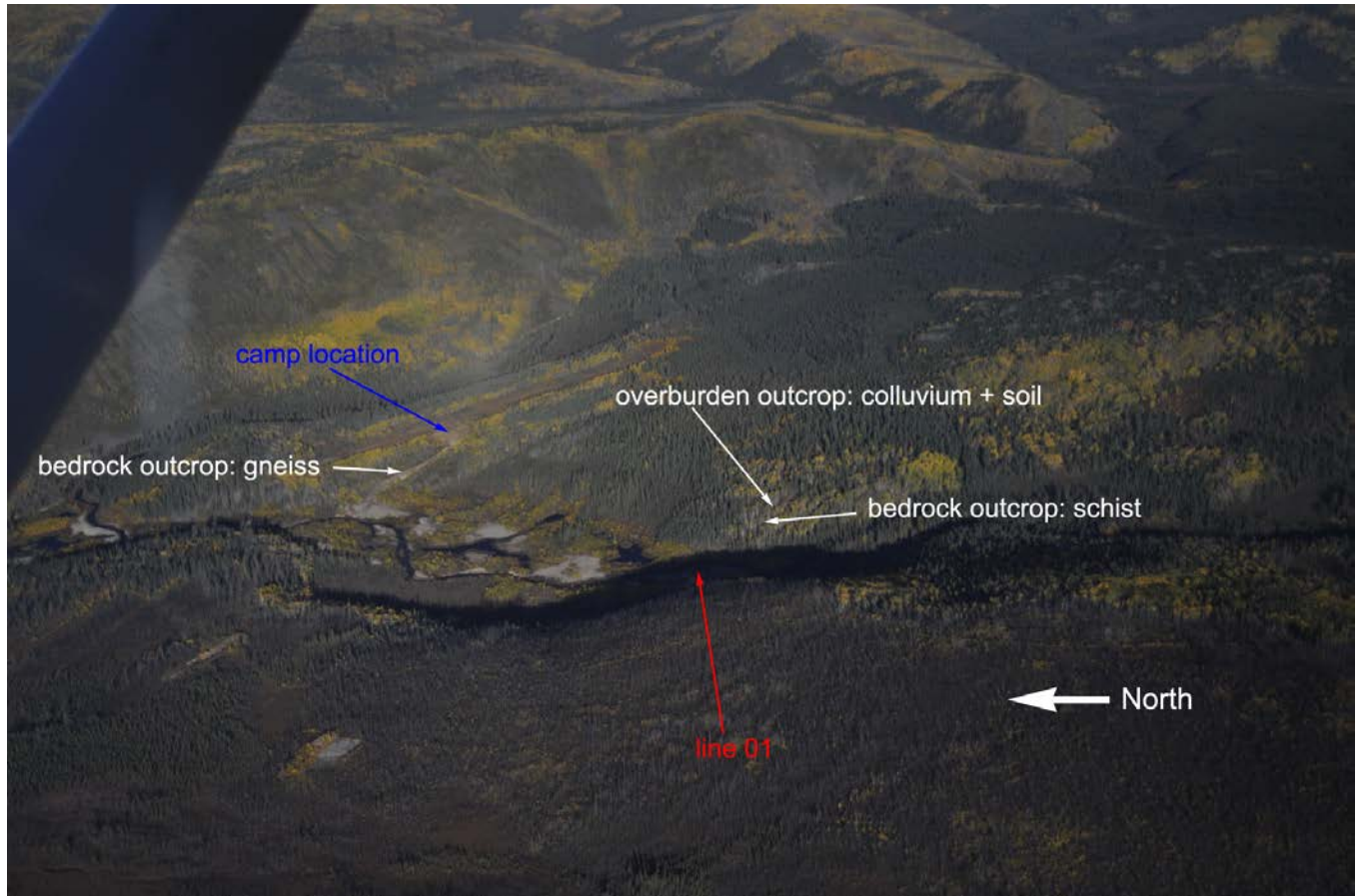


Figure 01: Overview survey area (Ostermaier)

---

<sup>2</sup> Yukon Placer Database



Figure 02: Bedrock outcrop: fine foliated Schist (Ostermaier)



Figure 03: Bedrock outcrop: coarsely banded Gneiss, likely Paragneiss (Ostermaier)

## 9. Surficial Geology

“The valley is 65 to 160 meters wide with a flat bottom and shallow gradient. An extensive bench runs along the left limit of Scroggie Creek from the confluence of Mariposa Creek to its confluence with the Stewart River.”<sup>3</sup>

## 10. Stratigraphy

“Deposits are frozen. Along the lower reaches they vary from 3 to 6 meters deep and consist of 1.2 to 2.6 meters of muck which overlies 1.8 to 3.4 meters of brown gravel with the occasional boulder. Further upstream the depth to bedrock increase to approximately 9 meters.”<sup>4</sup>



Figure 04: Overburden outcrop: Colluvium mixed with soil (Ostermaier)

---

<sup>3</sup> Yukon Placer Database

<sup>4</sup> Ditto

## 11. Gold

“Gold varies from smooth and rounded to rough and flat and is 40% +10 mesh. Purity is between 890 and 900 fine. Platinum is reported to have been found in the concentrate although modern operators have not encountered it. The largest nugget found up to 1915 weighed 5 ounces and was mined on Claim #5 Above Discovery. Old-time prospectors considered garnets to be pathfinders for gold on Mariposa Creek.”<sup>5</sup>

## 12. Geophysical Methods

**Resistivity** is not a time domain geophysical method such as Ground Penetrating Radar or Seismic. Resistivity measures a material property. In the Resistivity model the different underground zones are material-dependently differentiated according to their electrical conductivity. Thus, Resistivity promises good chances in respect of measuring the kind and character of the subsurface materials as well as the groundwater distribution, which would be of interest for placer mining. The equipment used (see below) allows for measuring of layer interfaces in depths from 0.5m to 100m by varying the electrode spacing. – Therefore, this prospecting concept is based on the use of 2D Resistivity.



Figure 5: 2D Resistivity/IP measurement, Stefan Ostermaier, Arctic Geophysics Inc., Yukon 2009 (Moll)

---

<sup>5</sup> Yukon Placer Database

**Induced Polarization (IP):** IP data are simultaneously taken when measuring Resistivity, with the same equipment and line staking. So these data are automatically at hand when using Resistivity. The IP model serves as the basis for the interpretation of the mineral and petrologic conditions in hardrock. Thus, IP is an industry proven standard method for the detection of primary mineral deposits. However, the IP model can also support the interpretation of the Resistivity profiles done for placer prospecting.

## 13. Use of Geophysical Methods

### 6.1. Instrumentation

For this survey a lightweight, custom-built 2D RESISTIVITY and INDUCED POLARIZATION (IP) imaging system with rapid data acquisition was used. The system includes:

- “4 POINT LIGHT” EARTH RESISTIVITY METER<sup>6</sup>
- 100 ELECTRODE CONTROL MODULES<sup>7</sup>
- 100 STAINLESS STEEL ELECTRODES<sup>8</sup>
- 500m MULTICORE CABLE: CONNECTOR SPACING: 5m<sup>9</sup>

This system weighs approximately 120 kg which is about one third of regular standard equipment. It can be run with a 12V lead battery. The equipment facilitates high mobility and rapid data acquisition with a small crew.

### 6.2. Data Acquisition

#### Resistivity/IP

The data acquisition is carried out by the automatic activation of 4-point-electrodes. Thus several thousand measurements are taken, one every 1-2 seconds. The AC transmitter current of 0.26 to 30 Hz is amplified by the electrode control modules, up to a maximum of 100mA and 400V peak to peak. The voltage measured at the receiver electrodes (M, N) is also amplified.

In this geoelectrical survey the **Schlumberger-array** was used. This array is appropriate to image horizontally running layers as is needed for placer prospecting.

The 2D Resistivity imaging system, used for this survey, allows measurements with a depth of up to 100m. With a depth to bedrock of more than 6m, an electrode spacing of 5m can be used for placer surveys. This allows the measuring of large profile lengths in short time with a horizontal measuring resolution of 2.5m. This quantification has proven itself to be reliable in the determination of the bedrock topography and sedimentary arrangement for placer investigation at the most environmental conditions.

---

<sup>6</sup> Constructed and produced by LGM (Germany)

<sup>7</sup> Ditto

<sup>8</sup> Constructed and produced by GEOANALYSIS.DE (Germany)

<sup>9</sup> Ditto

The **IP** data is getting noisy below approx. 50m depth because the sender current is limited to a 100 m Amp. The noise of the IP data in greater depth can significantly be decreased by using an IP-specific data acquisition mode that is much more time consuming.<sup>10</sup> Since this survey is focused on the detection of placer-geological aspects, the data acquisition was not optimized for IP.

The Schlumberger array, used in this geoelectrical survey, is appropriate to measure subsurface conditions predominantly showing a horizontal zoning of the ground materials.

### 6.3. Processing

#### Resistivity/IP

The measured Resistivity/IP data were processed with the **RES2DINV** inversion program<sup>11</sup>.

### 6.4. Interpretation

The resistivity profile is the basic source for the interpretation of placer-related subsurface aspects of overburden and bedrock. The IP model supports the interpretation of the resistivity profile.

The interpretation of the data should be verified by physical prospecting methods such as drilling, trenching, or digging test holes since this information about the subsurface cannot be guaranteed.

## 14. Profile image

In the **Resistivity profile** the interpreted layer interfaces are marked with a black line. The profiles show ground-layers approximately 15% thicker than they are in reality. The thickening of the model layers is caused by the inversion software. The **correction factor** of 0.85 for the determination of the true layer thickness has been established by the Arctic Geophysics Inc. team on the basis of numerous geoelectrical profiles verified by drilling, trenching, and mining done by our customers.<sup>12</sup>

The **graphical markings** showing the interpreted layer interfaces in the profiles (using a black line) are done according to the data structure in the profile itself. This means: the layers there will also show up approximately 15% thicker than they are expected in reality. In the interpretation text, the layer thicknesses and depths have been recalculated to the expected real values.

## 15. Line Arrangement

The **line locations** were discussed and decided upon by Philipp Moll from Arctic Geophysics Inc. and Randy Clarkson. The goal of the survey was to establish the extent of the mining that took place and to see if there was any chance of channels and maybe virgin ground that had not previously been mined.

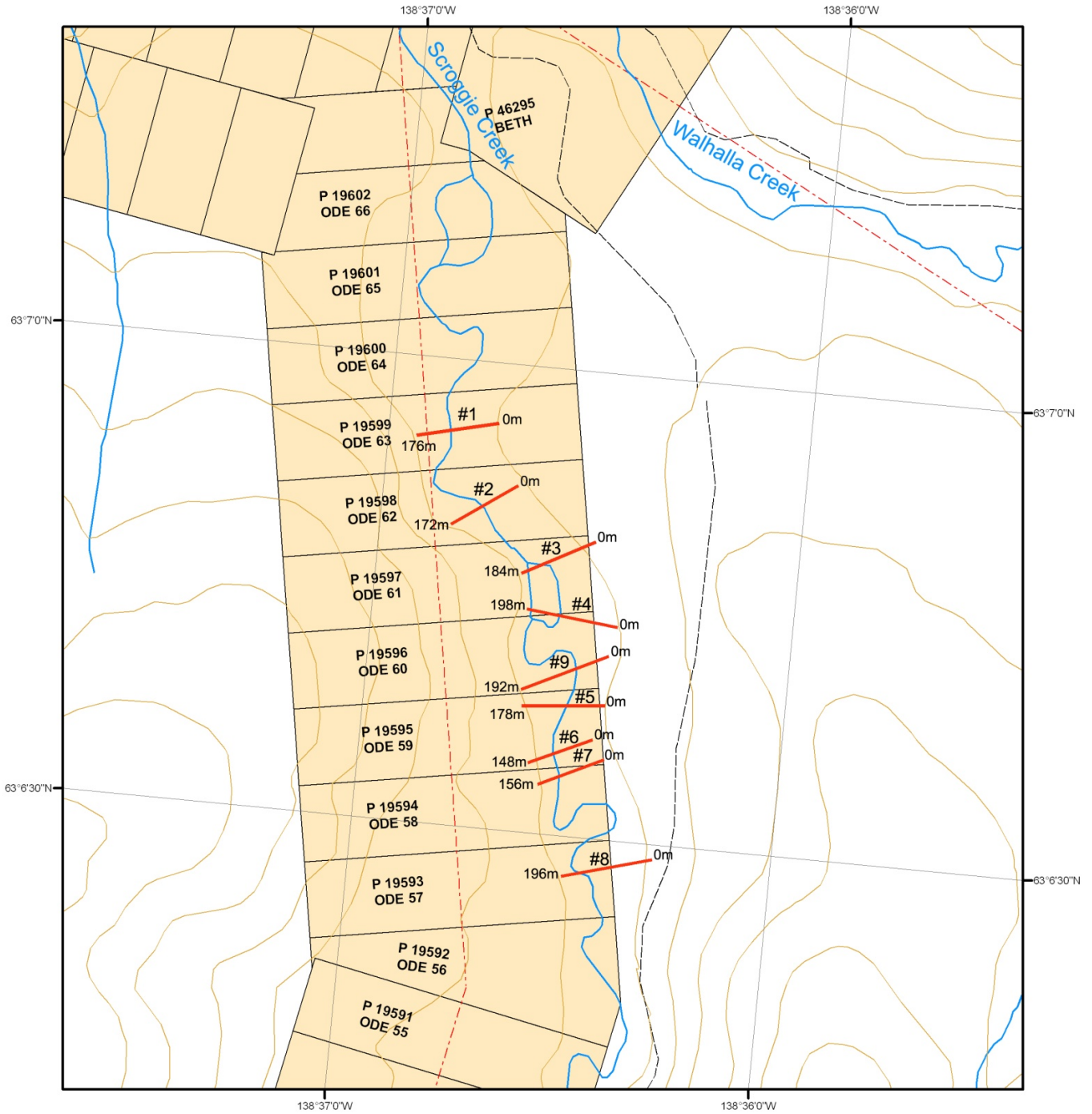
---

<sup>10</sup> 1) Transition Resistivity between electrodes and ground lower than 1 Kilo Ohm; 2) More single 4point measurements to calculate the average of each data point etc.

<sup>11</sup> Produced by GEOTOMO SOFTWARE (Malaysia)

<sup>12</sup> Program settings in RES2DINV for modifying the layer thickness do frequently not work well for our use and could falsify the profile. That's why this mode was not used.

# 16. Survey Map



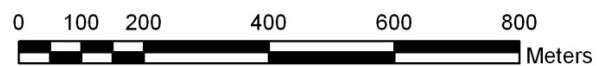
## Legend

- measuring line
  - contour line
  - - - trail
  - water course
  - water body
  - - - placer baseline
- PLACER CLAIMS STATUS**
- Active
  - Expired

## Survey Map

115002 (Scroggie Creek)

1:10,000



# 17. Profiles: Interpretation, Recommendation

## Scroggie Creek\_01

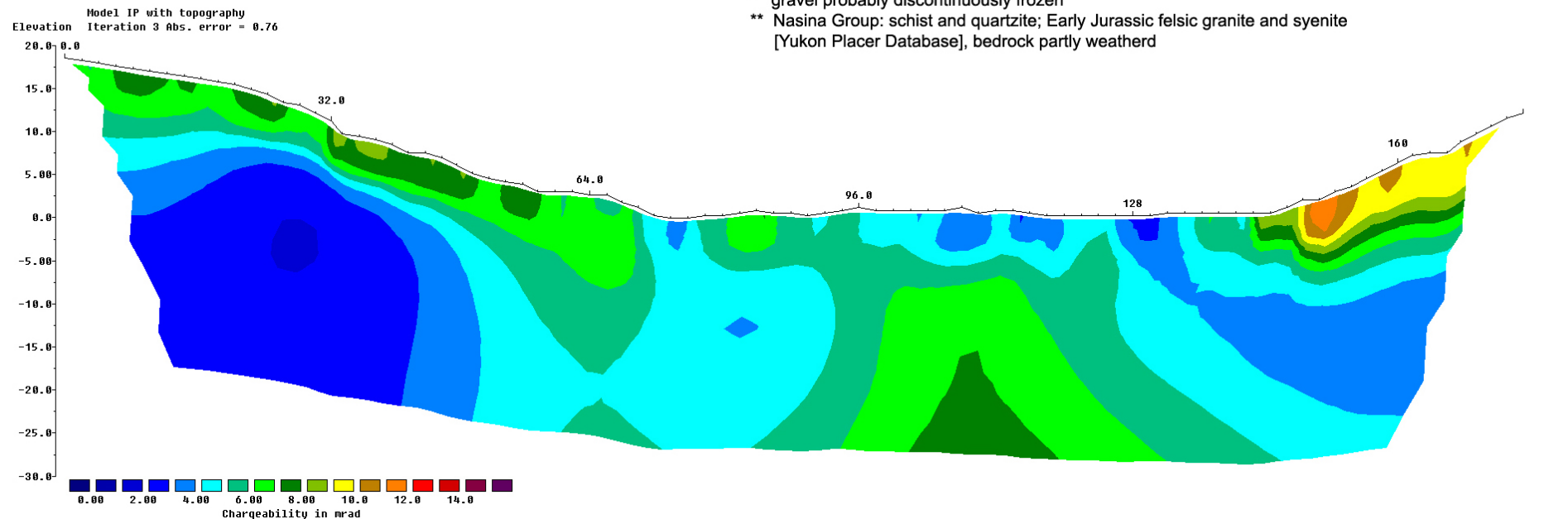
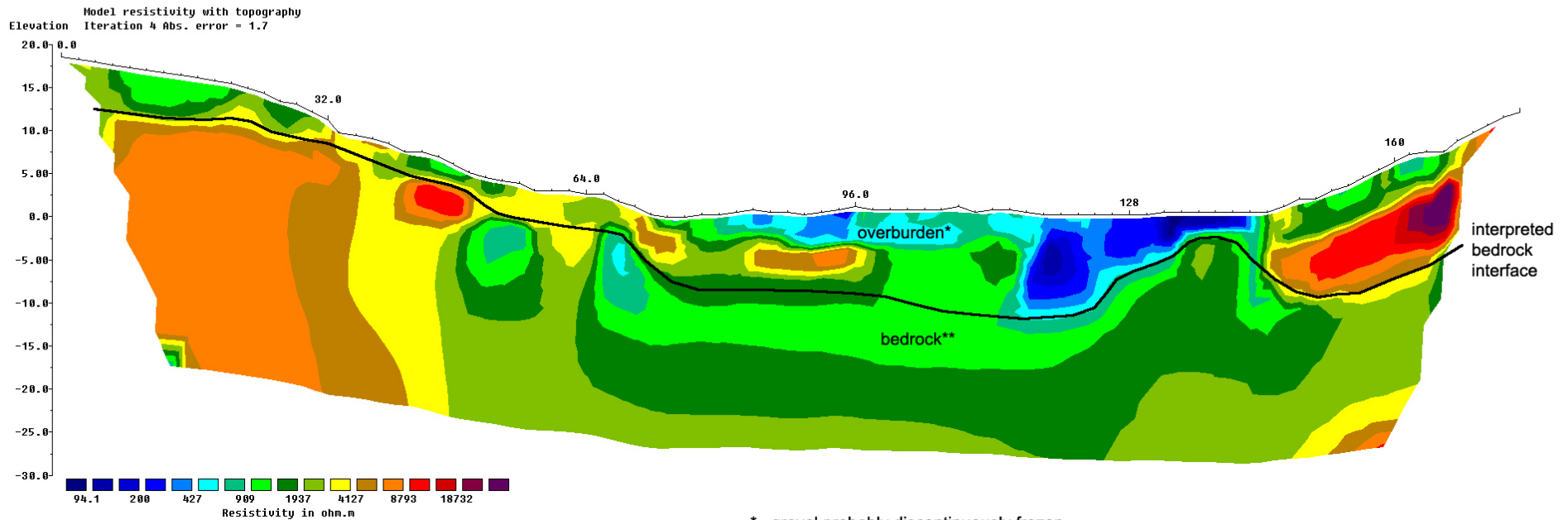
2D Resistivity/IP, Schlumberger array  
 89 Electrodes: spacing 2m, Horizontal resolution 1m  
 Horizontal and vertical measure in [meter], Iteration error in [%]  
 Vertical exaggeration in model section display = 1

Data acquisition: Stefan Ostermaier, 29th Aug 2011  
 Processing: Philipp Moll, 10th Sept 2011  
 Profile shows the ground-layers approx. 15% thicker than in reality.  
 Comments to this/these profile/s are interpretation.

Arctic Geophysics Inc.



Geophysical Surveys • Prospecting • Consulting



\* gravel probably discontinuously frozen  
 \*\* Nasina Group: schist and quartzite; Early Jurassic felsic granite and syenite [Yukon Placer Database], bedrock partly weathered

## Interpretation, Recommendation

Resistivity profile\_01 shows a wide alluvial paleo-channel below the valley bottom overlain by approx. 10m of overburden. The bedrock seems to be discontinuously weathered.

From 0-70m the overburden is apparently 1-5m thick and has relatively high resistivity values, probably due to dry conditions of colluvium (sliderock) mixed with soil (see Figure 04 above). The IP model shows that the overburden in this part of the profile has moderately high chargeability values which might be produced by mineral changes in the overburden. In this section the bedrock has markedly lower IP data and relatively low conductivity which could indicate gneiss (see Figure 03 above) or Nasina Group quartzite<sup>13</sup>

From 70-135m the main channel appears to be located with a max. depth of 10m at 116m in the profile. The overburden in this channel appears to be quite heterogeneous: From 80m to 118m there is an approx. 3m thick, moderately well conducting layer on the surface. This seems to be water saturated gravel.

Underneath this layer, from 70-100m, there is some poorly conducting material until 118m that looks like it could be a continuation of the overburden on the slope likely being colluvium (clasts), or less likely frozen gravel; after 118m the material starts getting a matrix, or starts to become fully thawed. The rest of the overburden in the channel, from 118-142m, appears to be relatively homogeneous and is probably thawed, water saturated gravel.

From 70m to the end of the profile the bedrock shows moderate resistivity values and higher IP data which could indicate some kind of frozen schist bedrock (see Figure 02 above). The resistivity of this interpreted schist bedrock increases slowly to the depth: This is most likely caused by the decrease of weathering to the depth. The bedrock outcrops nearby are showing fractured, weathers schist bedrock (see Figure 02). In this section the IP model does not show a layered structure.<sup>14</sup>

From 140m to the end of the profile there appears to be a second channel. At 150m it would be 10m deep. The overburden in this possible channel seems to be in two distinct layers: The upper layer seems to be 4m thick and has moderate to high resistivity; this is probably due to some drying out of the topmost material on the slope. This layer shows high conductivity and high resistivity both suggesting a deposit dominated by colluvium (sliderock) from somewhere further up the slope.

Underneath there is an approx. 5m thick layer which has very high resistivity (red/violet); this could be frozen river gravel or dry talus; the talus is however unlikely since the groundwater from the creek should seep in and saturate the possible channel resulting in high resistivity values.

The surface on the valley bottom was all bare gravel – same as all the way downstream to the camp location (see Figure 01 above). This whole section of the valley seems to have been stripped or even mined. However, at the location of profile\_01 the subsurface looks virgin because frozen overburden was indicated at a high chance. The ground at profile\_01 has most likely just been stripped and later reworked by the modern stream. – It is recommended that the interpreted main channel and the possible side channel are confirmed by drilling, digging a test hole, or shafting.

---

<sup>13</sup> Yukon Placer Database

---

<sup>14</sup> Usually the IP profile shows the subsurface conditions much rougher than the resistivity profile – especially when scanning sediment layers on top of bedrock.

# Scroggie Creek\_02

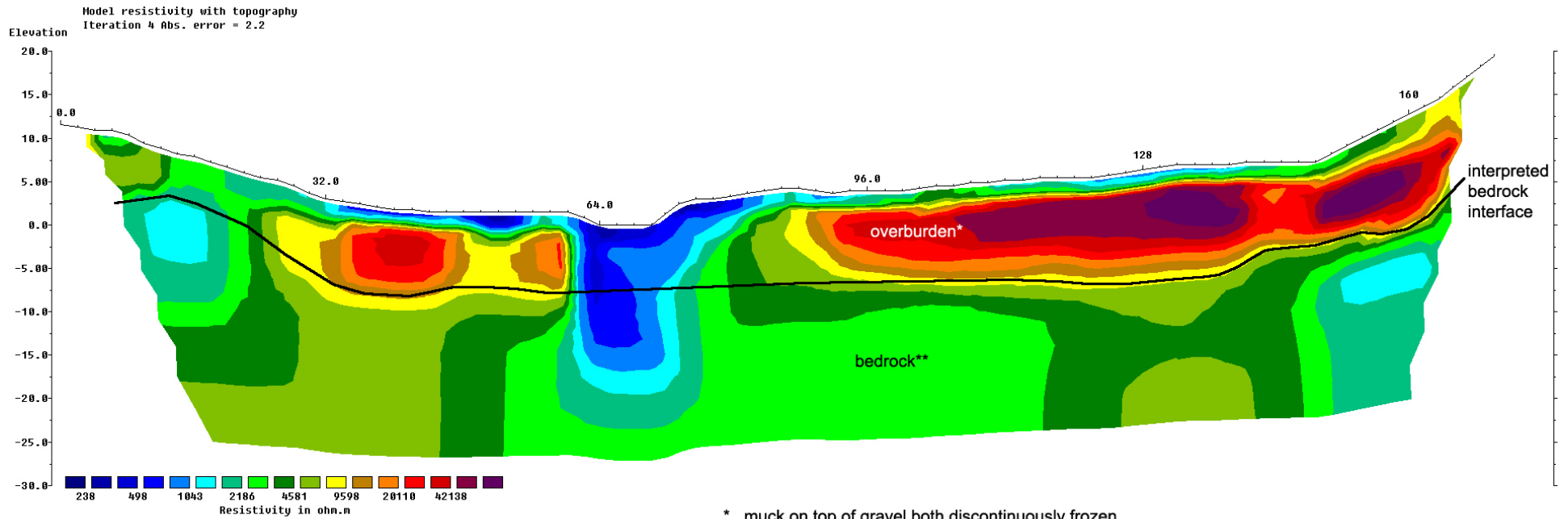
2D Resistivity/IP, Schlumberger array  
 87 Electrodes: spacing 2m, Horizontal resolution 1m  
 Horizontal and vertical measure in [meter], Iteration error in [%]  
 Vertical exaggeration in model section display = 1

Data acquisition: Stefan Ostermaier, 30th Aug 2011  
 Processing: Philipp Moll, 10th Sept 2011  
 Profile shows the ground-layers approx. 15% thicker than in reality.  
 Comments to this/these profile/s are interpretation.

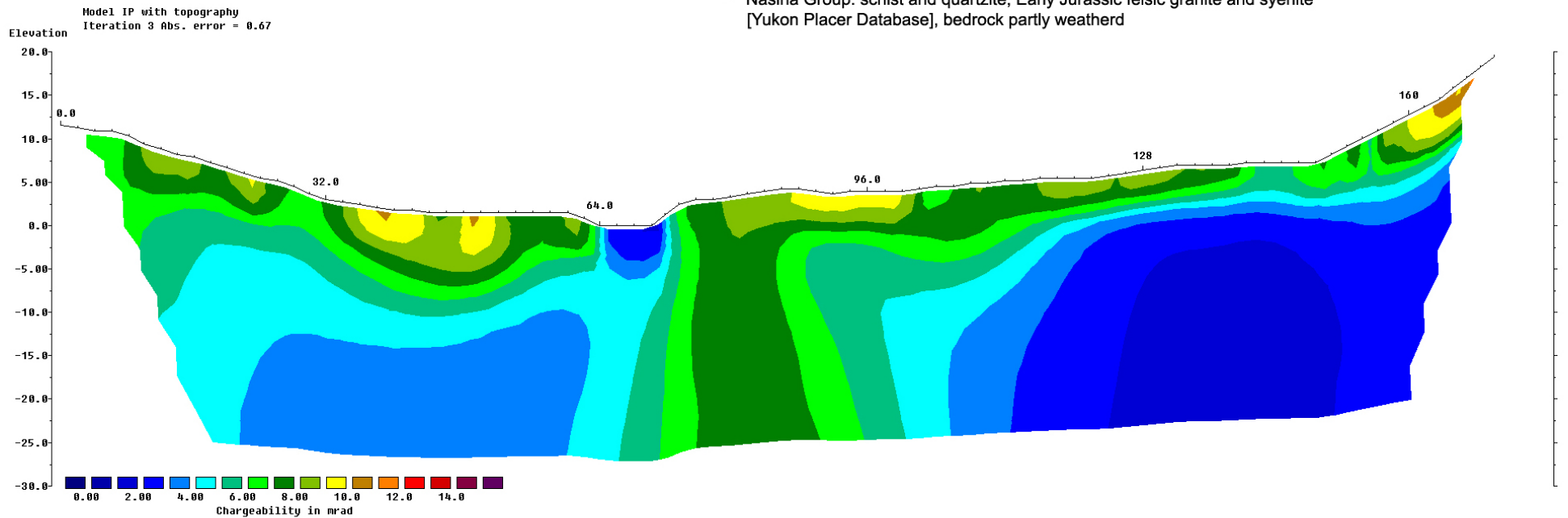
**Arctic Geophysics Inc.**



Geophysical Surveys • Prospecting • Consulting



\* muck on top of gravel both discontinuously frozen  
 \*\* Nasina Group: schist and quartzite; Early Jurassic felsic granite and syenite [Yukon Placer Database], bedrock partly weathered



## Interpretation, Recommendation

Profile\_02 shows predominantly frozen overburden, 4-11m thick. The bedrock seems to form a wide flat creek bed.

From 0-26m the 4-7m thick overburden appears to be mostly thawed, it is probably colluvium + soil being dry due to its exposed nature on the slope.

From 32m to the end of the profile, with the exception of the creek around 66m, the overburden shows a two layered structure: A thin, 1-2m thick, well conducting layer (blue-green) of thawed overburden, probably muck. Also a 7-9m thick layer of frozen overburden with high resistivity values (red) that could be gravel with a significant amount of muck or soil mixed in (matrix).

At 60-80m the contemporary stream apparently has thawed the permafrost producing water saturated overburden (blue). Again the IP model shows the overburden as a band of material with higher chargeability (yellow-green) compared to the bedrock (blue).

The bedrock has a relatively homogeneous, high resistivity which would suggest a non-schist bedrock possibly gneiss or quartzite. Those bedrock types are more erosion resistant, which makes it plausible that no distinctive channel seems to have cut into the bedrock. At 40m and 130m there are two slight depressions in the bedrock, with a depth of 9m and 11m.

Beyond 140m some slight benches in the bedrock could have been produced by fluvial erosion in the past.

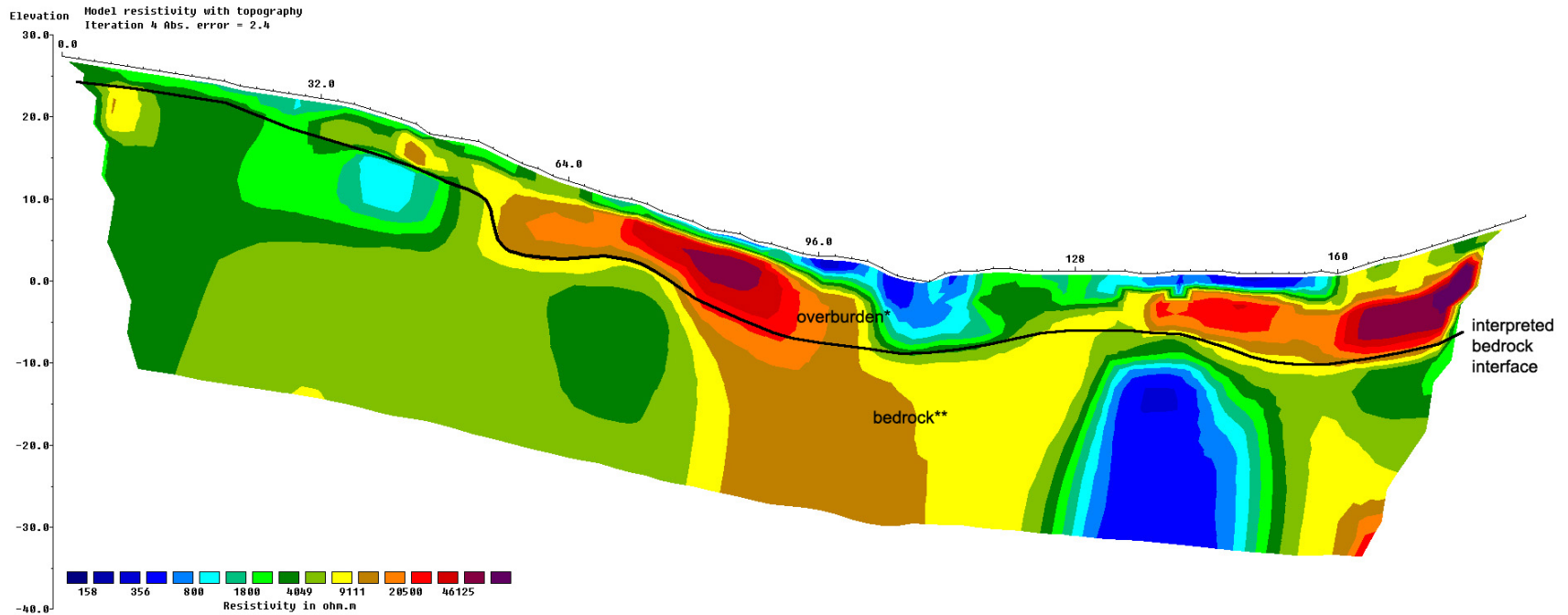
The IP anomaly right in the middle of the profile (green) is most likely a false anomaly.

The vegetation and geomorphologic structure that was seen at the line location plus the high likelihood of permafrost in the overburden suggest that this part of the valley is still virgin ground. – It is recommended that the depressions in the bedrock at 40m and 130m be drilled to verify its depth and viability as a placer mining target.

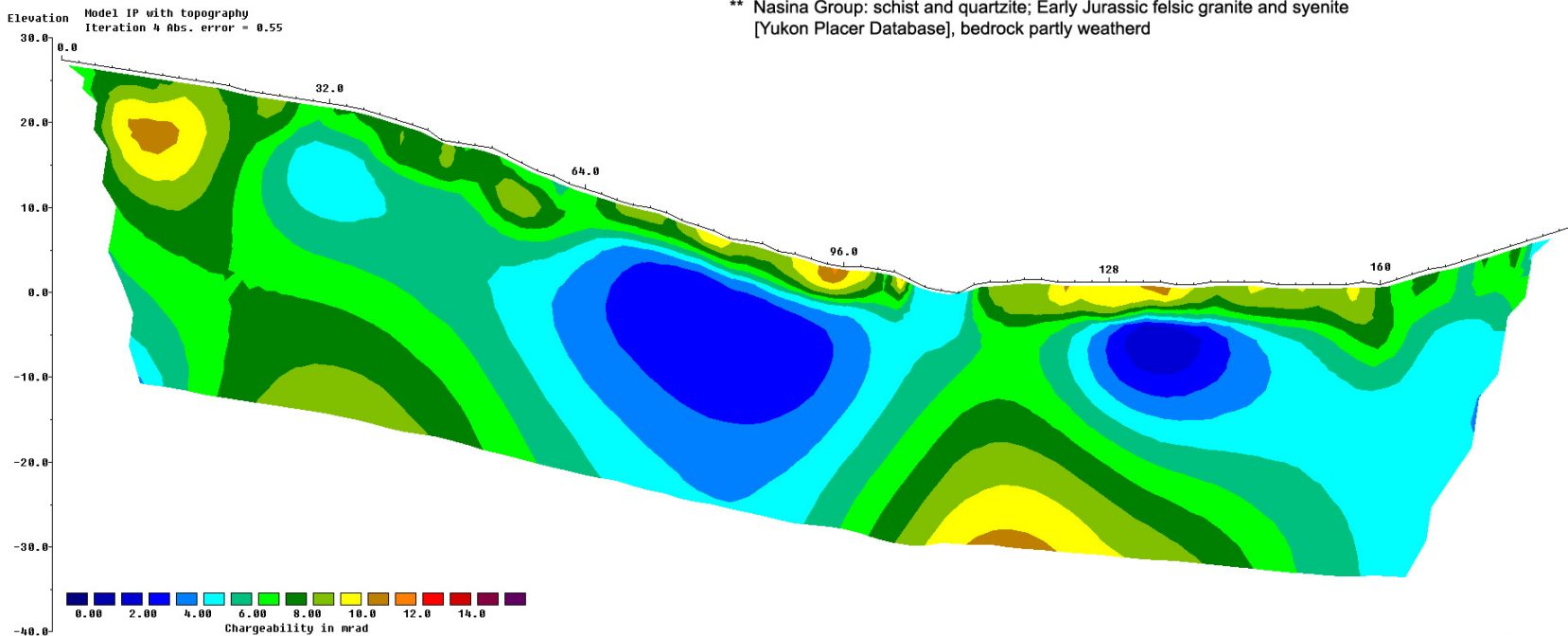
Scroggie Creek\_03

2D Resistivity/IP, Schlumberger array  
 93 Electrodes: spacing 2m, Horizontal resolution 1m  
 Horizontal and vertical measure in [meter], Iteration error in [%]  
 Vertical exaggeration in model section display = 1

Data acquisition: Stefan Ostermaier, 31st Aug 2011  
 Processing: Philipp Moll, 10th Sept 2011  
 Profile shows the ground-layers approx. 15% thicker than in reality.  
 Comments to this/these profile/s are interpretation.



\* muck on top of gravel both discontinuously frozen  
 \*\* Nasina Group: schist and quartzite; Early Jurassic felsic granite and syenite [Yukon Placer Database], bedrock partly weathered



## Interpretation, Recommendation

The overburden and bedrock are again heterogeneous. The overburden appears to be 2-9m thick. The bedrock seems to form two channels.

From 0-54m the 2-4m thick overburden shows moderately high resistivity (green), this is most likely again due to dry colluvium + soil on the slope. The IP model again shows the overburden as a band of material with higher chargeability.

From 54m to the end of the profile we see the same double-layered overburden structure as in profile 02: The thin, 1-2m thick surface layer seems to be again thawed muck, here possibly mixed with sand and little gravel. The second layer (red) consists most likely of frozen gravel with a significant amount of muck or soil mixed in (matrix).

At 64m there could be a bedrock terrace or high channel, 8m deep, covered with predominantly frozen overburden: muck on top of gravel with a fine matrix.

At 108m, directly underneath the current stream bed, an 8m deep channel appears to be located. The overburden under the creek again seems to be thawed due to the melting influence of the water stream. The overburden seems to be muck on top of gravel.

At 156m there seems to be a second, 9m deep channel with mostly frozen overburden: muck on top of gravel.

The bedrock appears to be mostly the same high resistivity material as in the previous profiles, namely gneiss or quartzite. However, at 140m there is a large section of well conducting bedrock (blue) that could represent a

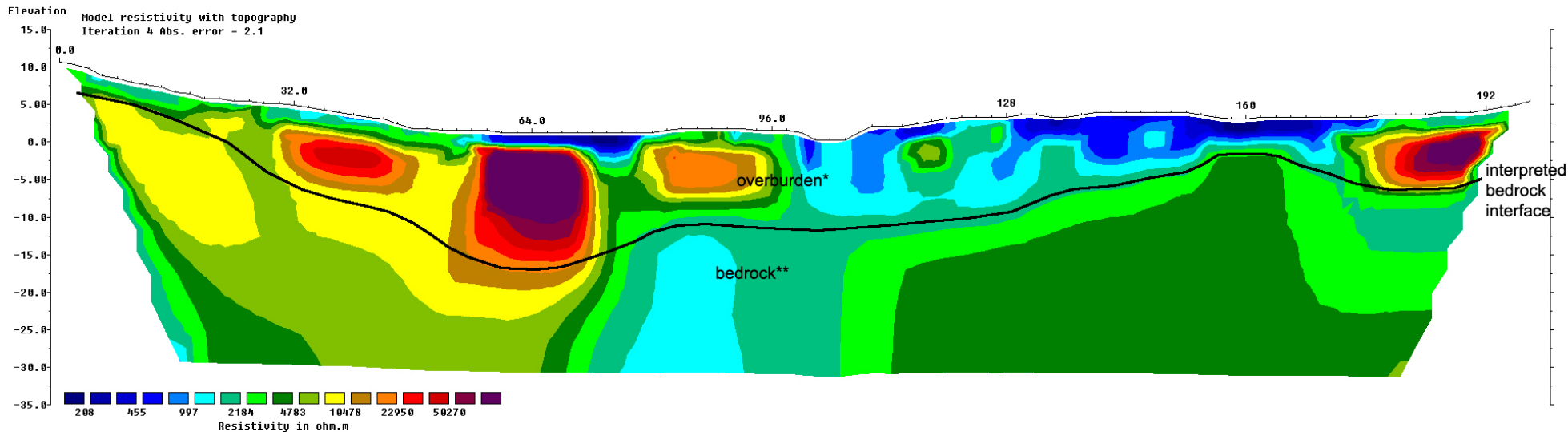
bedrock change: possibly some kind of schist starts here. The IP model is not very conclusive. The anomaly at 120m could or could not coincide with the resistivity bedrock change.

The vegetation and geomorphologic structure that was seen at the line location plus the high likeliness of permafrost in the overburden suggest that this part of the valley is still virgin ground. – It is recommended that the two interpreted channels and the possible bedrock terrace are confirmed by drilling, digging a test hole, or shafting.

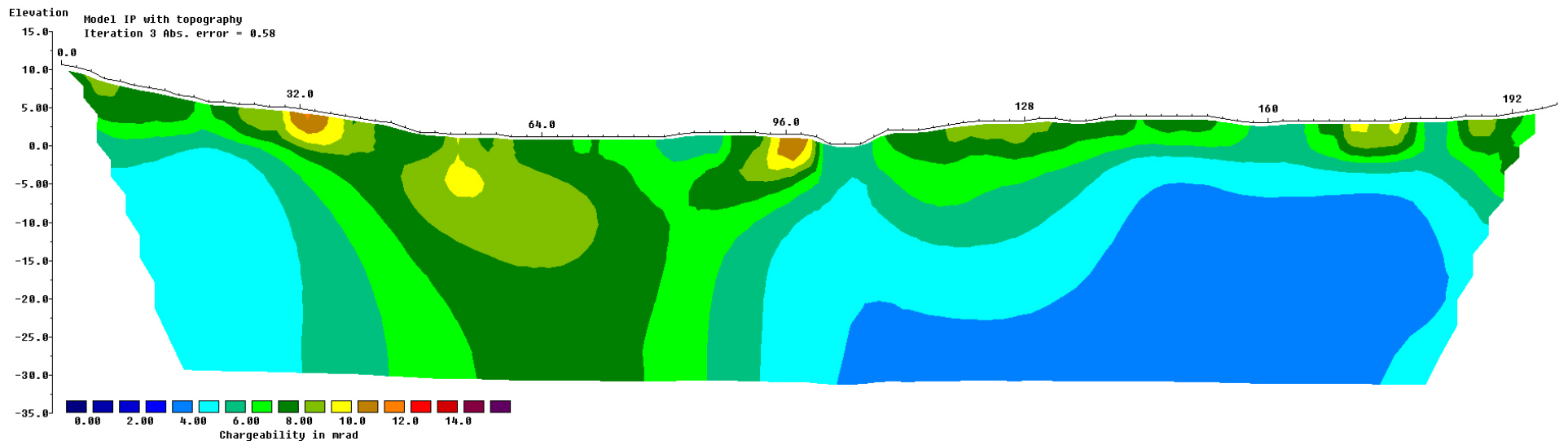
# Scroggie Creek\_04

2D Resistivity/IP, Schlumberger array  
 100 Electrodes: spacing 2m, Horizontal resolution 1m  
 Horizontal and vertical measure in [meter], Iteration error in [%]  
 Vertical exaggeration in model section display = 1

Data acquisition: Stefan Ostermaier, 1st Sept 2011  
 Processing: Philipp Moll, 10th Sept 2011  
 Profile shows the ground-layers approx. 15% thicker than in reality.  
 Comments to this/these profile/s are [interpretation](#).



\* muck on top of gravel both discontinuously frozen  
 \*\* Nasina Group: schist and quartzite; Early Jurassic felsic granite and syenite [Yukon Placer Database], bedrock weathered



## Interpretation, Recommendation

The heterogeneous overburden appears to be 2-15m thick. The bedrock seems to form two channels and appears to show the same two kinds of bedrock as in the previous profile.

Between 0m and 30m in the profile we see again a 2-5m thick layer of possibly thawed, dry colluvium + soil on top of bedrock.

From 30m to 98m the overburden shows the same layering that was seen in the last two profiles: A thin 1-2m thick layer of well conducting, thawed material (likely muck) on the surface, and a 6-13m thick layer of frozen gravel that should contain a high percentage of muck or mud. And again the overburden in this profile shows higher chargeability than the bedrock.

Around 64m there seems to be the main channel; it appears to have a maximum depth of 15m and could be the continuation of the channel at in profile\_03 at 108m.

From 98m to 172m the overburden seems to be mostly thawed and consequently shows better conductivity in this part of the profile.

From 160m to the end of the profile the bedrock interface seems to form a second channel, 8m deep. The overburden in this channel appears to be mostly frozen muck on top of gravel.

The bedrock appears to have the same general structure that was interpreted in profile 03: mostly the bedrock seems to consist of some material that has high resistivity and low chargeability: possibly gneiss or quartzite. The exception is a small possible intrusion in the center of the

profile (88m) consisting of material that shows low resistivity (turquoise) and an increased chargeability in the IP model.

The vegetation and geomorphologic structure that was seen at the line location plus the high likeliness of permafrost in the overburden suggest that this part of the valley is still virgin ground. – Again it is recommended that the two interpreted channels are confirmed by drilling, digging a test hole, or shafting.

# Scroggie Creek\_09

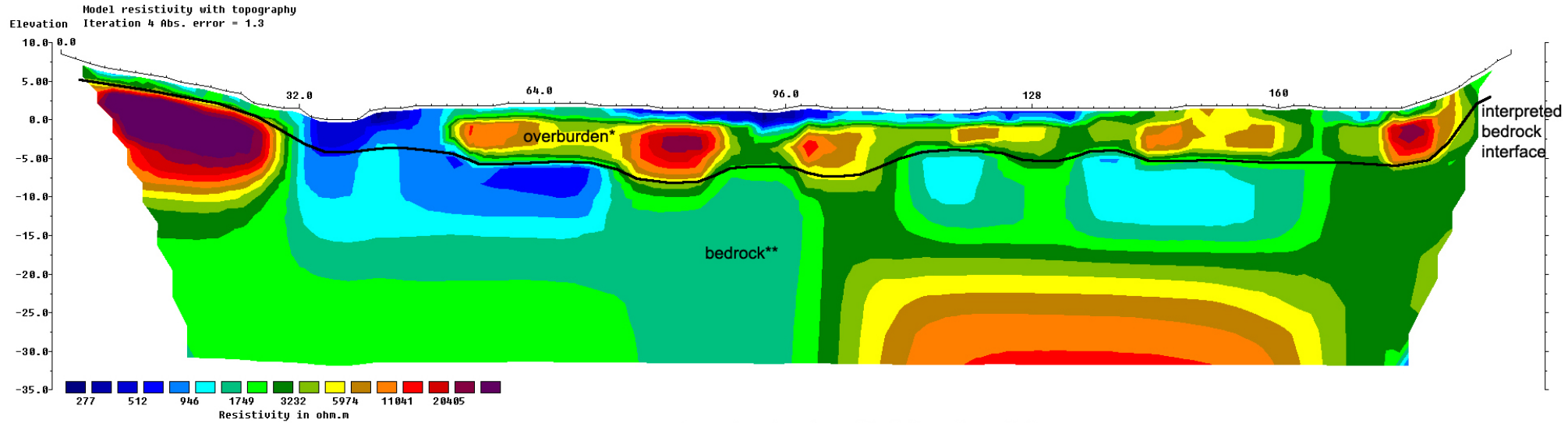
2D Resistivity/IP, Schlumberger array  
97 Electrodes: spacing 2m, Horizontal resolution 1m  
Horizontal and vertical measure in [meter], Iteration error in [%]  
Vertical exaggeration in model section display = 1

Data acquisition: Stefan Ostermaier, 7th Sept 2011  
Processing: Philipp Moll, 11th Sept 2011  
Profile shows the ground-layers approx. 15% thicker than in reality.  
Comments to this/these profile/s are interpretation.

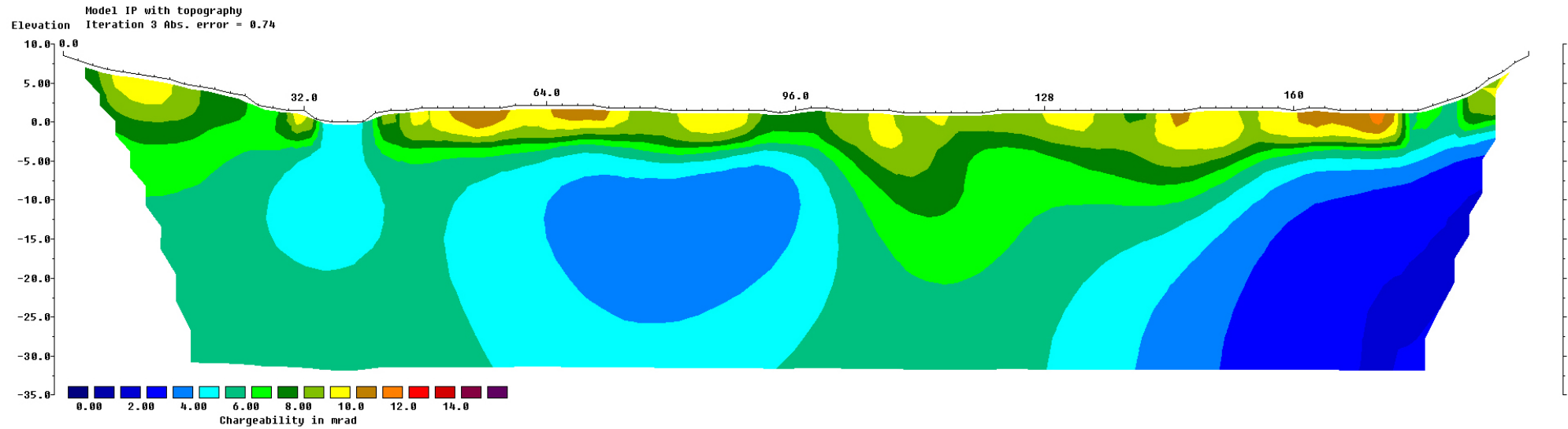
Arctic Geophysics Inc.



Geophysical Surveys • Prospecting • Consulting



- \* muck on top of gravel both discontinuously frozen
- \*\* Nasina Group: schist and quartzite; Early Jurassic felsic granite and syenite [Yukon Placer Database], bedrock weathered



## Interpretation, Recommendation

Profile\_09 is located about 100m upstream from profile\_04.

The profile shows the same basic structure as the previous ones: partly frozen overburden that is 2-8m thick. The bedrock shows some possible channel-like depressions.

From 0-30m the overburden seems to be 1-2m thick and thawed with moderately poor resistivity values that suggest dry conditions of colluvium + soil on the slope.

From 30-50m the creek seems to have thawed, 3-5m thick overburden (muck and gravel) which in this section of the profile exhibits good conductivity because of water saturation.

From 50-136m the overburden again shows a thin 1-2m thick layer of thawed material that has most likely high muck content. The rest of the overburden appears to be mostly frozen gravel associated with muck or soil.

At 80m the main channel seems to be located, it measures 8m to bedrock. Among the main channel several small side channels seem to exist altogether forming a small paleo-drainage system: Possible secondary channels are located: at 58m 6.5m deep, at 104m 7.5m deep, at 130m 6m deep; and at 160m 6m deep. The overburden seems again a combination of muck and gravel both greatly influenced by frost.

Again the overburden shows up as a band of high chargeability in the IP model. This leads to the unlikely theory that the material with high resistivity values in the first 30m of the profile (violet) might represent a 13m deep, frozen channel that is filled with a majority of black muck on top

of a thin gravel layer. This theory is solely based on the relatively large IP signal in the first 30m of the profile, however, the IP model does not produce very sharply defined borders – so this theory is only assigned a probability of maybe 20%.

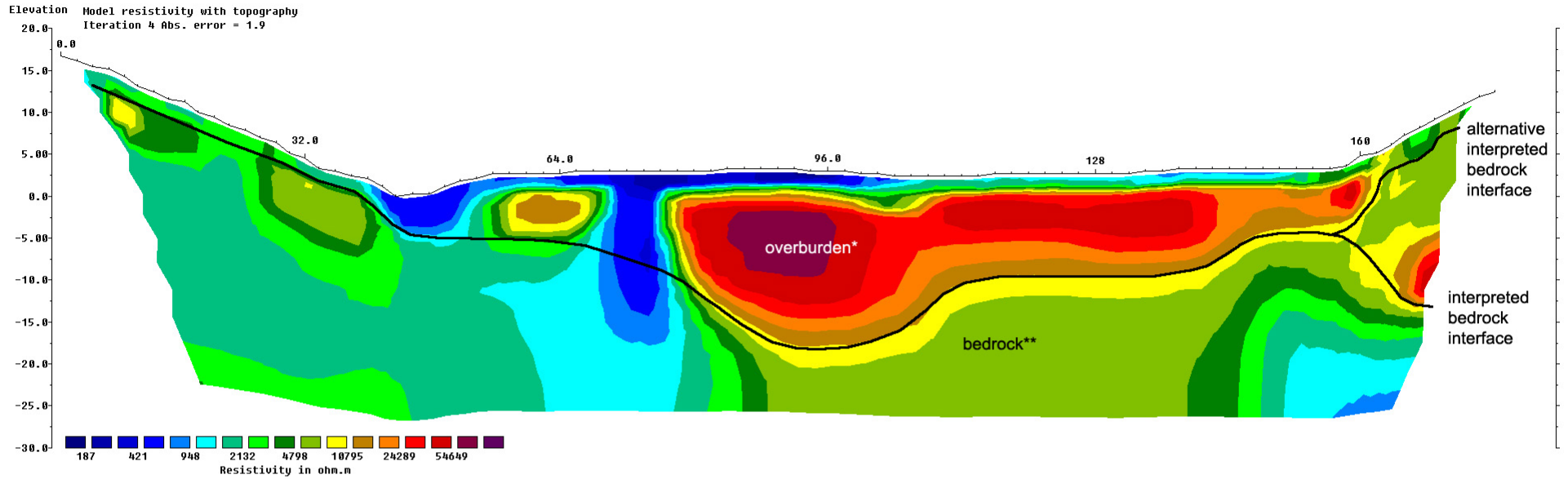
The high resistivity bedrock zone at 0-30m and 100-160m could represent quartzite.

The vegetation and geomorphologic structure that was seen at the line location plus the high likeliness of permafrost in the overburden suggest that this part of the valley is still virgin ground. – Again it is recommended to drill or dig the possible channels in the bedrock.

# Scroggie Creek\_05

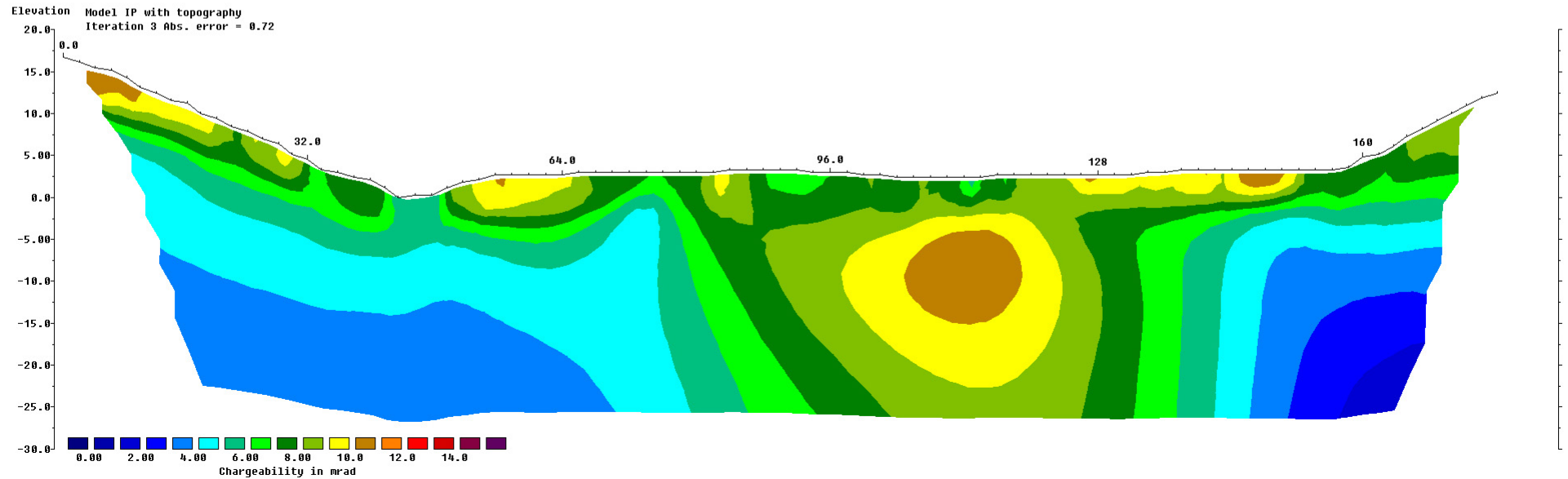
2D Resistivity/IP, Schlumberger array  
 90 Electrodes: spacing 2m, Horizontal resolution 1m  
 Horizontal and vertical measure in [meter], Iteration error in [%]  
 Vertical exaggeration in model section display = 1

Data acquisition: Stefan Ostermaier, 3rd Sept 2011  
 Processing: Philipp Moll, 11th Sept 2011  
 Profile shows the ground-layers approx. 15% thicker than in reality.  
 Comments to this/these profile/s are interpretation.



\* muck on top of gravel both discontinuously frozen

\*\* Nasina Group: schist and quartzite; Early Jurassic felsic granite and syenite [Yukon Placer Database], bedrock weathered



## Interpretation, Recommendation

Profile\_05 shows the same basic structure as the other profiles in this series. The overburden seems to be 2-18m thick and mostly frozen, with a thin layer of thawed material on the surface. The bedrock shows one distinct main channel in the former creek bed.

At 0-40m the overburden might again be just 1-2m thick, and probably dry due to exposed colluvium + soil on the slope. The IP model would suggest thicker overburden, however, as previously stated the IP model does not show the material boundaries as sharp as the resistivity model; therefore there might be only a 10% chance that the overburden at this location is up to 5m thick.

From 40m to 56m the creek has thawed the 5m thick overburden which again is most likely consisting of muck on top of gravel, being rich in fine sediments (matrix). This kind of overburden material seems to stay all along the valley bottom.

Between 56m and 70m there might be an area with permafrost (brown) in the 6m deep overburden.

From 70m to 76m the overburden and the upper bedrock are thawed. This makes an unclear border between overburden and bedrock on the left flank of the main channel.

From 76m to 160m the overburden is mostly frozen with only a 1-2m thin layer of thawed material on the surface. The bedrock interface forms a prominent former creek bed with an 18m deep channel at 96m. The IP model confirms the channel and illustrates the 'blurred' nature of the IP signal at this location.

After 160m the bedrock interface can be interpreted in two equally likely ways: First the bedrock interface could sink down to a depth of 20m (measured at 170m), this interpretation is supported by the area of high resistivity material (red) which could indicate the location-typical frozen overburden consisting of gravel mixed with muck or mud. - Second the bedrock interface could run close to the surface in a depth of only 3-5m which would be supported by the IP model that shows only a thin band of IP active material at this location (the overburden in this area all shows increased IP activity).

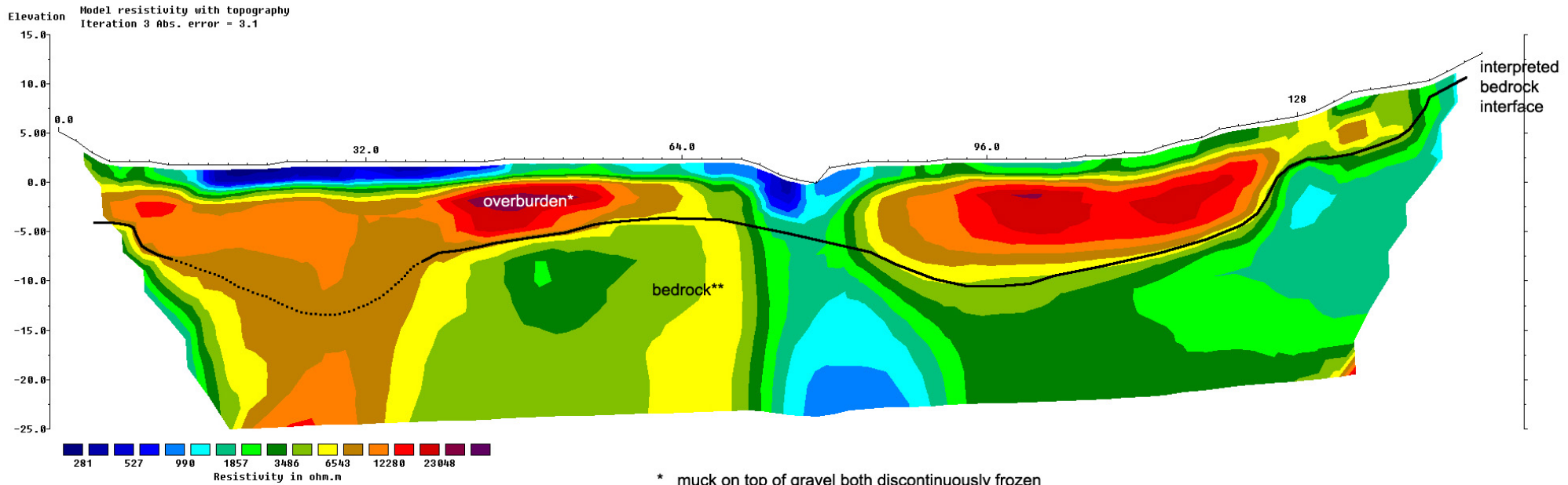
The bedrock in this profile shows again moderate resistivity values which could indicate gneiss or quartzite.

The vegetation and geomorphologic structure that was seen at the line location plus the high likeliness of permafrost in the overburden suggest that this part of the valley is still virgin ground. – It is recommended that the two interpreted channels are confirmed by drilling, digging a test hole, or shafting.

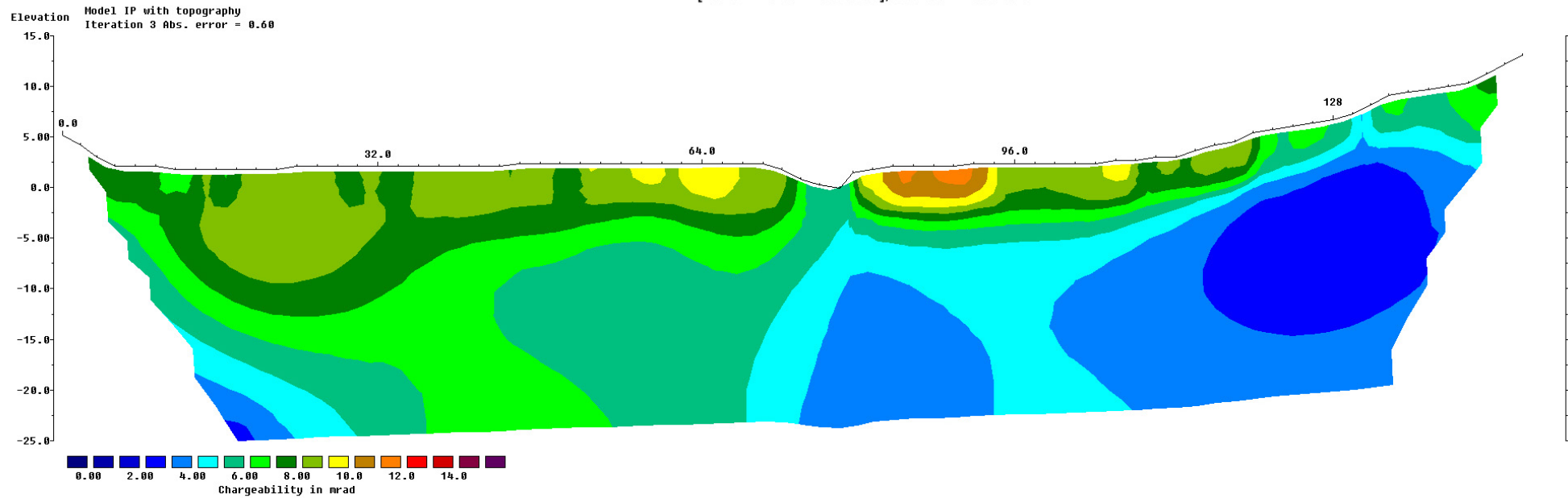
# Scroggie Creek\_06

2D Resistivity/IP, Schlumberger array  
 75 Electrodes: spacing 2m, Horizontal resolution 1m  
 Horizontal and vertical measure in [meter], Iteration error in [%]  
 Vertical exaggeration in model section display = 1

Data acquisition: Stefan Ostermaier, 4th Sept 2011  
 Processing: Philipp Moll, 11th Sept 2011  
 Profile shows the ground-layers approx. 15% thicker than in reality.  
 Comments to this/these profile/s are interpretation.



\* muck on top of gravel both discontinuously frozen  
 \*\* Nasina Group: schist and quartzite; Early Jurassic felsic granite and syenite [Yukon Placer Database], bedrock weathred



## Interpretation, Recommendation

Profile\_06 shows 4-13m of discontinuously frozen overburden. The bedrock is again heterogeneous and appears to form two channels.

Throughout the profile the overburden again shows a thin layer of thawed overburden, 1-2m thick, likely muck. Underneath this layer the overburden appears to be frozen (with the exception of the current creek zone) and might consist of gravel having a fine matrix.

From 6-46m the main channel seems to be located, possibly 13 deep at 28m in the profile. The interpretation of the bedrock interface is based on a low data contrast in the resistivity profile; thus the interpreted depth to bedrock might be rough. The existence of a possible main channel at this location is supported by the IP model and neighbouring profile\_07 being located 50m upstream. In this section the overburden could contain a greater amount of gravel with less fine components since the resistivity is lower.

From 46-66m the overburden is about 5m thick.

From 66m to 84m the creek has thawed the overburden. This causes the unclear bedrock interface in the resistivity profile.

After 84m the overburden is frozen, with only a thin layer of thawed material on top. The bedrock interface appears to form a channel, 11m deep at 96m in the profile.

The very low conducting bedrock on the left side (orange/brown) shows higher chargeability; this could be gneiss or quartzite. The lower conducting bedrock on the right side (green/blue) shows lower chargeability; this could

be gneiss. Below the current creek at 78m the bedrock might be thawed, fractured and weathered; it could alternatively be schist.

The vegetation and geomorphologic structure that was seen at the line location plus the high likeliness of permafrost in the overburden suggest that this part of the valley is still virgin ground. – It is recommended that the two interpreted channels are confirmed by drilling, digging a test hole, or shafting.

# Scroggie Creek\_07

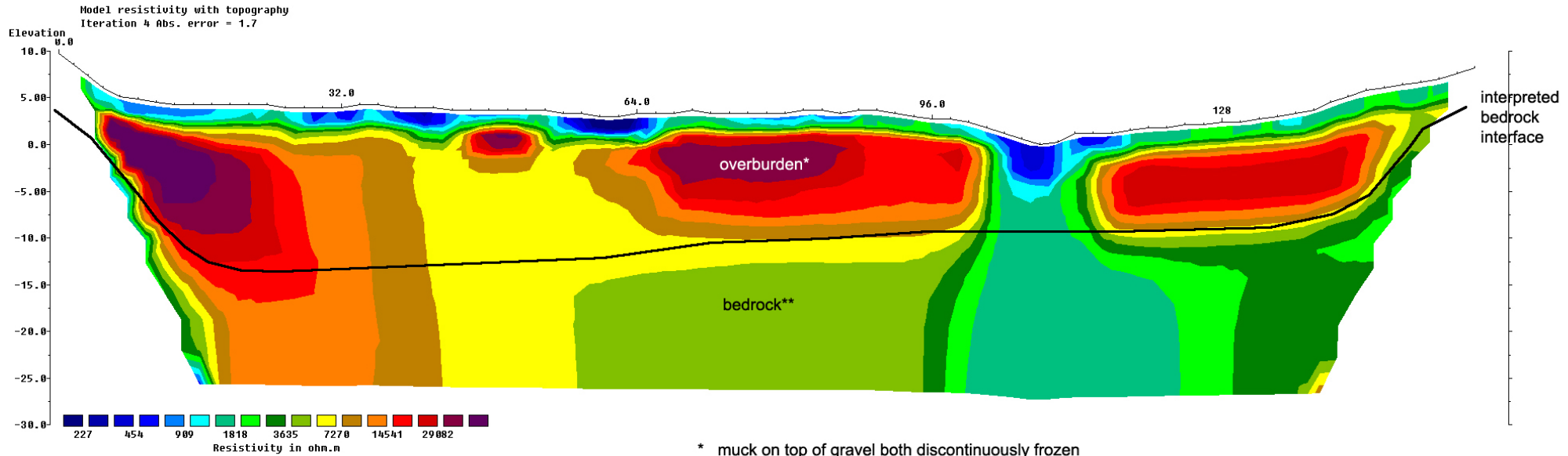
2D Resistivity/IP, Schlumberger array  
79 Electrodes: spacing 2m, Horizontal resolution 1m  
Horizontal and vertical measure in [meter], Iteration error in [%]  
Vertical exaggeration in model section display = 1

Data acquisition: Stefan Ostermaier, 5th Sept 2011  
Processing: Philipp Moll, 11th Sept 2011  
Profile shows the ground-layers approx. 15% thicker than in reality.  
Comments to this/these profile/s are interpretation.

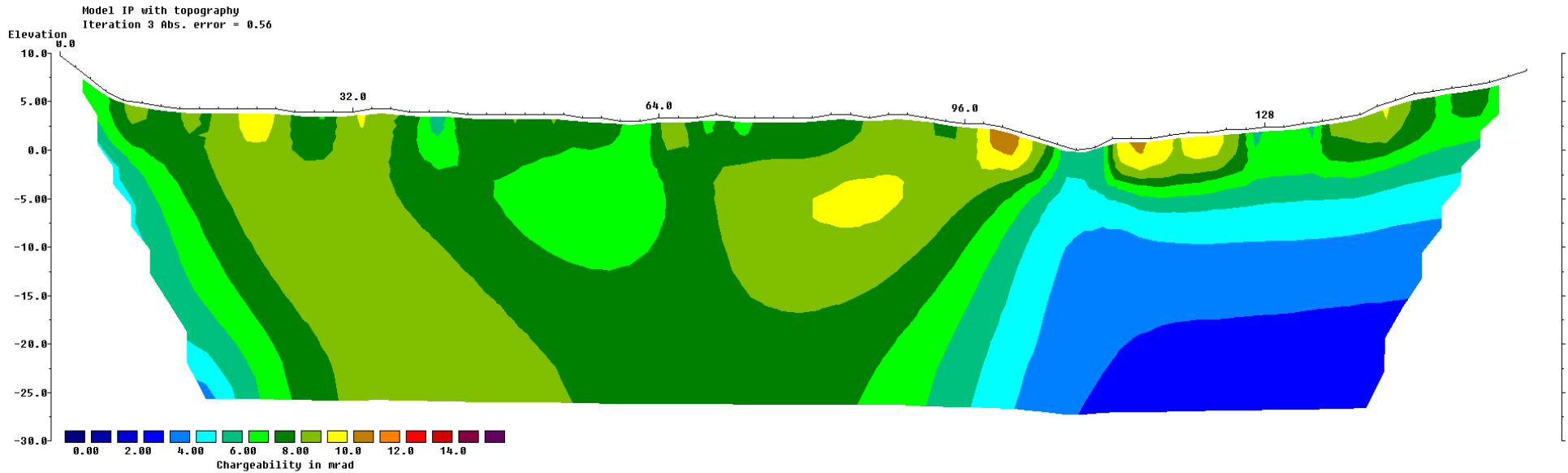
Arctic Geophysics Inc.



Geophysical Surveys • Prospecting • Consulting



\* muck on top of gravel both discontinuously frozen  
\*\* Nasina Group: schist and quartzite; Early Jurassic felsic granite and syenite [Yukon Placer Database], bedrock weathered



## Interpretation, Recommendation

Profile\_07 shows again the same basic structure that was seen in the previous profiles: a thin layer of thawed material on top of a frozen layer of 8-15m thick overburden. The bedrock seems to form a prominent former creek bed showing its deepest point on the left side of the profile; here might be a channel of 15m depth.

The profile shows a two layered overburden: a 1-2m thick layer of thawed, well conducting, possibly muck-rich material on the surface, and an 8-12m thick layer of frozen gravel, that is also probably rich in muck or soil, underneath. The IP model again shows the overburden as a zone of higher chargeability.

The bedrock interface shows a channel inside of the former creek bed; this interpreted channel is located between 14m and 64m with the deepest part at 22m in the profile, having a depth of 15m. The hypothetical main channel is located on the same side of the valley as in neighbour profiles\_06 and \_08. This strengthens the interpretation of the main channel.

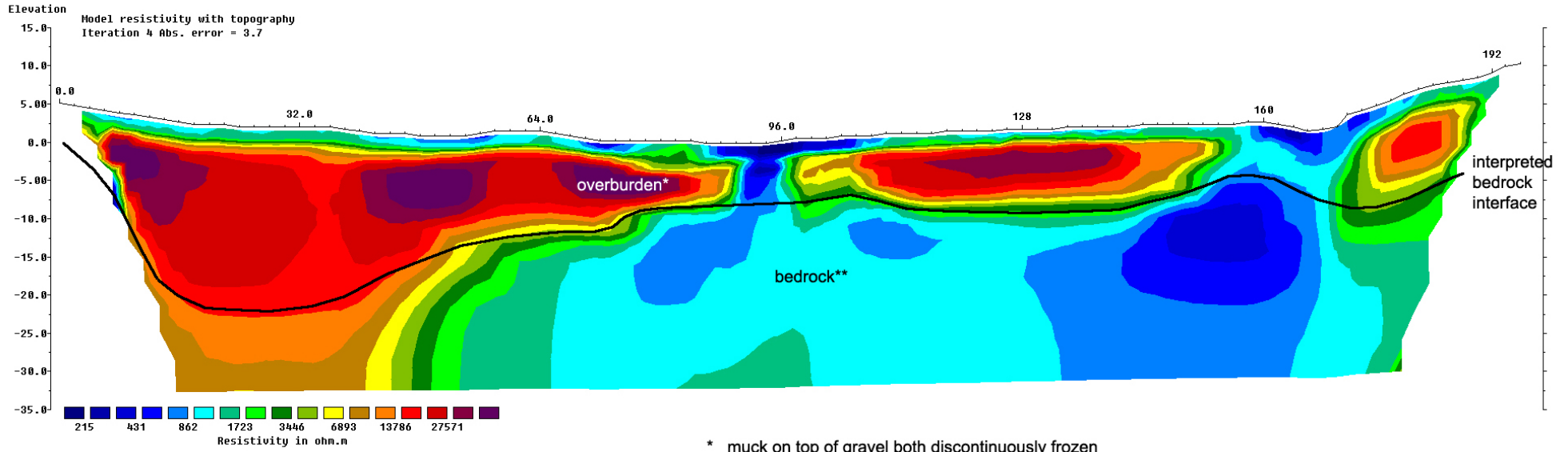
The bedrock appears to be mostly homogeneous with moderately high resistivity which would suggest the same gneiss or quartzite that were suggested in the previous profiles.

The vegetation and geomorphologic structure that was seen at the line location plus the high likeliness of permafrost in the overburden suggest that this part of the valley is still virgin ground. – It is recommended that the interpreted channel is confirmed by drilling, digging a test hole, or shafting.

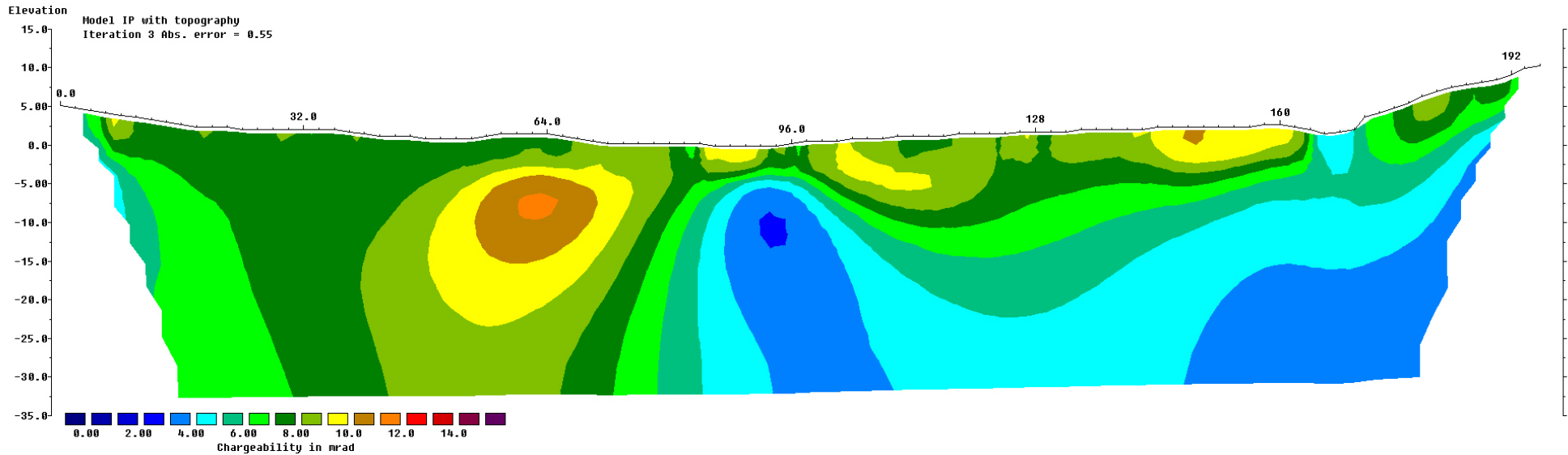
# Scroggie Creek\_08

2D Resistivity/IP, Schlumberger array  
 99 Electrodes: spacing 2m, Horizontal resolution 1m  
 Horizontal and vertical measure in [meter], Iteration error in [%]  
 Vertical exaggeration in model section display = 1

Data acquisition: Stefan Ostermaier, 6th Sept 2011  
 Processing: Philipp Moll, 11th Sept 2011  
 Profile shows the ground-layers approx. 15% thicker than in reality.  
 Comments to this/these profile/s are [interpretation](#).



\* muck on top of gravel both discontinuously frozen  
 \*\* Nasina Group: schist and quartzite; Early Jurassic felsic granite and syenite [Yukon Placer Database], bedrock weatherd



## Interpretation, Recommendation

Profile\_08 again shows a two layered, 5-20m thick overburden with the topmost layer thawed and the one underneath frozen. The bedrock interface shows one massive main channel and several promising depressions.

The overburden has the same structure that was seen in the previous profiles: a thin, 1-2m thick, thawed, probably muck-rich layer of overburden on top of a 5-19m thick, frozen layer of likely gravel containing a fine sediment matrix. The IP model again shows the overburden as an area of higher chargeability.

At 30m the main channel might be 20m deep. It might be filled with the location-typical overburden.

Around 128m and 174m two bedrock depressions, 9m and 11m deep, seem to be located.

At 96m and 166m the overburden is apparently thawed; this is most likely due to modern streams running at these locations.

The bedrock appears to be rather homogeneous and displays moderately well conductivity values which would conform with some kind of schist. The IP model shows low chargeability values for the bedrock.

The vegetation and geomorphologic structure that was seen at the line location plus the high likeliness of permafrost in the overburden suggest that this part of the valley is still virgin ground. – It is recommended that the main channel and the secondary channels are verified by drilling, digging a test hole, or shafting to calculate its economical viability for placer mining.

## 18. Gallery



Figure 06: Photo made 50m downstream from Line\_01 looking downstream (Ostermaier)



Figure 07: Scroggie Creek Landing Strip (Ostermaier)

## 19. Qualifications



### Philipp Moll

Box 747, Dawson City, Yukon, Y0B 1G0

Phone: 001-867-993 3671 (Canada)

01149 (0)781 970 5893 (Germany)

Email: [philipp.moll@arctic-geophysics.com](mailto:philipp.moll@arctic-geophysics.com)

- Study of geology, University of Freiburg, Germany
- Visit of geophysical field courses, University of Karlsruhe and University of Stuttgart, Germany
- Working for Arctic Geophysics Inc. since June 2007 (foundation)  
Geophysical field surveys using 2D Resistivity, Induced Polarization, Magnetics: Data acquisition, processing, interpretation, documentation
- Geophysical surveying for Mining Exploration in the Yukon since 2005
- Geological Prospecting for precious metals and minerals in the Yukon, NWTs, and Alaska since 1989
- Publications:
  - A) Numerous Assessment Reports about geophysical surveys done for Yukon mining companies, filed at Yukon Mining Recorder
  - B) Geophysical survey (45 field days) for Yukon Government: Yukon Geological Survey, Publication:  
<http://www.geology.gov.yk.ca/recent.html> Open Files: Moll, P., & Ostermaier, S., 2010. 2D Resistivity/IP Data Release for Placer Mining and shallow Quartz Mining - Yukon 2010. Yukon Geological Survey Miscellaneous Report MR-4. [PDF Report](#) [10.3 MB Data Profiles [45.4 MB 



---

Philipp Moll

**Stefan Ostermaier**

Box 747, Dawson City, Yukon, Y0B 1G0

Phone: 001-867-993 3671 (Canada)

01149 (0)7021 -59866 (Germany)

Email: [stefan.ostermaier@arctic-geophysics.com](mailto:stefan.ostermaier@arctic-geophysics.com)

- Study of geology, University of Tübingen, Germany
- Visit of geophysical field courses, University of Karlsruhe and University of Stuttgart, Germany
- Working for Arctic Geophysics Inc. since June 2007 (foundation)  
Geophysical field surveys using 2D Resistivity, Induced Polarization, Magnetics: Data acquisition, processing, interpretation, documentation
- Geophysical surveying for Mining Exploration in the Yukon since 2005
- Geological Prospecting for precious metals and minerals in the Yukon, NWTs, and Alaska since 2001
- Publications:
  - A) Numerous Assessment Reports about geophysical surveys done for Yukon mining companies, filed at Yukon Mining Recorder
  - B) Geophysical survey (45 field days) for Yukon Government: Yukon Geological Survey, Publication:  
<http://www.geology.gov.yk.ca/recent.html> Open Files: Moll, P., & Ostermaier, S., 2010. 2D Resistivity/IP Data Release for Placer Mining and shallow Quartz Mining - Yukon 2010. Yukon Geological Survey Miscellaneous Report MR-4. [PDF Report](#) [10.3 MB Data Profiles [45.4 MB 



---

Stefan Ostermaier

## 20. Appendix

### Literature

#### Location-specific

LeBarge William, Yukon Placer Database

#### Literature – Background

Chesterman W. Ch. and Lowe K.E. Field Guide to Rocks and Minerals - North America, Chanticleer Press Inc. New York 2007

Evans A.M. Erzlagerstättenkunde, Ferdinand Enke Verlag Stuttgart (1992)

Griffiths, D.H.,Turnbull, J. and Olayinka,A.I. Two dimensional resistivity mapping with a computer-controlled array, First Break 8: 121-129 (1990)

Griffiths, D.H. and Barker, R.D. Two-dimensional resistivity imaging and modeling in areas of complex geology. Journal of Applied Geophysics 29 : 211 - 226. (1993)

Keller, G.V.and Frischknecht, F.C. Electrical methods in geophysical prospecting. Oxford: Pergamon Press Inc. (1966)

Loke M.H. and Barker R.D. Rapid least-squares inversion of apparent resistivity pseudosections by a quasi-Newton method. Geophysical Prospecting 44: 131-152 (1996)

Ostensoe Eric A. "Report on the Gladstone Creek, Placer Gold Property, Kluane Area" (Feb 1984), for: CATEAR RESOURCES LTD.

Press F., Siever R., Grotzinger J., Thomas H.J. Understanding Earth, W.H. Freeman and Company, New York (2004)

Robb L. Introducing to Ore-Forming Processes, Backwell Science Ltd., 2005

#### Maps

Energy, Mines and Resources: CSW\_MINING.PLACER\_LANDUSE\_PERMIT\_POLY\_50K

Government of Canada, Natural Resources Canada, Centre for Topographic Information: 115002; 2005

## Geophysical Data Table

Rock type	Resistivity range ( $\Omega\text{m}$ )
Granite porphyry	$4.5 \times 10^3$ (wet) – $1.3 \times 10^6$ (dry)
Feldspar porphyry	$4 \times 10^3$ (wet)
Syenite	$10^2$ – $10^6$
Diorite porphyry	$1.9 \times 10^3$ (wet) – $2.8 \times 10^4$ (dry)
Porphyrite	$10$ – $5 \times 10^4$ (wet) – $3.3 \times 10^3$ (dry)
Carbonatized porphyry	$2.5 \times 10^3$ (wet) – $6 \times 10^4$ (dry)
Quartz diorite	$2 \times 10^4$ – $2 \times 10^6$ (wet) – $1.8 \times 10^5$ (dry)
Porphyry (various)	$60$ – $10^4$
Dacite	$2 \times 10^4$ (wet)
Andesite	$4.5 \times 10^4$ (wet) – $1.7 \times 10^2$ (dry)
Diabase (various)	$20$ – $5 \times 10^7$
Lavas	$10^2$ – $5 \times 10^4$
Gabbro	$10^3$ – $10^6$
Basalt	$10$ – $1.3 \times 10^7$ (dry)
Olivine norite	$10^3$ – $6 \times 10^4$ (wet)
Peridotite	$3 \times 10^3$ (wet) – $6.5 \times 10^3$ (dry)
Hornfels	$8 \times 10^3$ (wet) – $6 \times 10^7$ (dry)
Schists	
(calcareous and mica)	$20$ – $10^4$
Tuffs	$2 \times 10^3$ (wet) – $10^5$ (dry)
Graphite schist	$10$ – $10^2$
Slates (various)	$6 \times 10^2$ – $4 \times 10^7$
Gneiss (various)	$6.8 \times 10^4$ (wet) – $3 \times 10^6$ (dry)
Marble	$10^2$ – $2.5 \times 10^8$ (dry)
Skarn	$2.5 \times 10^2$ (wet) – $2.5 \times 10^8$ (dry)
Quartzites	
(various)	$10$ – $2 \times 10^8$
Consolidated shales	$20$ – $2 \times 10^3$
Argillites	$10$ – $8 \times 10^2$
Conglomerates	$2 \times 10^3$ – $10^4$
Sandstones	$1$ – $6.4 \times 10^8$
Limestones	$50$ – $10^7$
Dolomite	$3.5 \times 10^2$ – $5 \times 10^3$
Unconsolidated wet clay	20
Marls	3–70
Clays	1–100
Oil sands	4–800

## Costs

# Arctic Geophysics Inc.



Geophysical Surveys • Prospecting • Consulting

Randy Clarkson  
Consulting for:  
Shannon Radford  
Box 1040, Dawson City YT  
Y0B1G0, Canada

Arctic Geophysics Inc.  
Box 747  
Dawson City, Yukon  
Y0B-1G0, Canada  
Phone: 867-993-3671 (Cell)  
info@arctic-geophysics.com  
[www.arctic-geophysics.com](http://www.arctic-geophysics.com)

Survey Location: Scroggie Creek, 115002P, Dawson Mining District  
Placer Claim Group: Ode 50-64, Gavin 1-19

**Invoice #** 20110911

Date: 11<sup>th</sup> Sept, 2011

Services provided: 2D Resistivity Survey

Quantity	Description	Amount \$CAN
<b>Organisation</b>		
1 day	Survey leader, Vehicle, Gas (360.--/day)	360.--
<b>Geophysical Survey</b>		
2 day	Mob/Demob, building camp, transportation of equipment 300.--/day	600.--
9 days	RES/IP imaging system: Earth resistivity meter, 500m cable line, 100 electrodes + control modules, computer, software, GPS, electric power supply + Survey leader, 900.--/day;	8 100.--
11 days	Camp + outdoor equipment 80.-- /day	880.--
	Gas, propane	65.--
11 days	Satellite phone 25.--/day	275.--
	135 min, 1.99/min	268.65
11 days	Food 20.--/day	220.--

**Documentation**

1 ½ day	Data processing, interpretation, first docu, 300.--/ day	450.--
2 ½ days	Writing report \$ 300.-- / day	750.--
	Printing / Binding /Shipping	60.--

---

**NET Amount** \$ 12 028.65

**GST Number** 846363216RT0001

**G.S.T. (5%)** \$ 601.43

---

**Total Due** \$ **12 630.08**

**Payment** \$ **12 500.--**

---

## GPS-Data

### Scroggie Creek 01

Electrode No.	Location in Profile [m]	GPS-Coordinates Latitude/Longitude hddd° mm' ss.s"	GPS-Accuracy [m]	Post [ * ]
1	0.0	N63 06 56.1 W138 36 44.4	3	*
2	2.0	N63 06 56.1 W138 36 44.6	3	
3	4.0	N63 06 56.1 W138 36 44.7	3	
4	6.0	N63 06 56.1 W138 36 44.8	3	
5	8.0	N63 06 56.1 W138 36 44.9	3	
6	10.0	N63 06 56.1 W138 36 45.1	3	
7	12.0	N63 06 56.0 W138 36 45.3	3	
8	14.0	N63 06 56.0 W138 36 45.3	3	
9	16.0	N63 06 56.0 W138 36 45.4	3	
10	18.0	N63 06 56.0 W138 36 45.6	3	
11	20.0	N63 06 56.0 W138 36 45.7	3	
12	22.0	N63 06 56.0 W138 36 46.0	3	
13	24.0	N63 06 56.0 W138 36 46.0	3	
14	26.0	N63 06 56.0 W138 36 46.1	3	
15	28.0	N63 06 56.0 W138 36 46.3	3	
16	30.0	N63 06 56.0 W138 36 46.4	3	
17	32.0	N63 06 56.0 W138 36 46.4	3	
18	34.0	N63 06 56.0 W138 36 46.5	3	
19	36.0	N63 06 55.9 W138 36 46.6	3	
20	38.0	N63 06 56.0 W138 36 46.7	3	
21	40.0	N63 06 55.9 W138 36 46.8	3	

Electrode No.	Location in Profile [m]	GPS-Coordinates Latitude/Longitude hddd° mm' ss.s"	GPS-Accuracy [m]	Post [ * ]
22	42.0	N63 06 55.9 W138 36 46.9	3	
23	44.0	N63 06 55.9 W138 36 47.3	3	
24	46.0	N63 06 55.9 W138 36 47.4	3	
25	48.0	N63 06 55.8 W138 36 47.6	3	
26	50.0	N63 06 55.8 W138 36 47.8	3	
27	52.0	N63 06 55.8 W138 36 48.1	3	
28	54.0	N63 06 55.8 W138 36 48.1	3	
29	56.0	N63 06 55.7 W138 36 48.2	3	
30	58.0	N63 06 55.7 W138 36 48.4	3	
31	60.0	N63 06 55.7 W138 36 48.5	3	
32	62.0	N63 06 55.7 W138 36 48.6	3	
33	64.0	N63 06 55.7 W138 36 48.6	3	
34	66.0	N63 06 55.7 W138 36 48.8	3	
35	68.0	N63 06 55.7 W138 36 48.9	3	
36	70.0	N63 06 55.6 W138 36 49.1	3	
37	72.0	N63 06 55.6 W138 36 49.2	3	
38	74.0	N63 06 55.6 W138 36 49.2	3	
39	76.0	N63 06 55.6 W138 36 49.4	3	
40	78.0	N63 06 55.5 W138 36 49.5	3	
41	80.0	N63 06 55.5 W138 36 49.6	3	
42	82.0	N63 06 55.5 W138 36 49.8	3	

Electrode No.	Location in Profile [m]	GPS-Coordinates Latitude/Longitude hddd° mm' ss.s"	GPS-Accuracy [m]	Post [ * ]
43	84.0	N63 06 55.5 W138 36 50.0	3	
44	86.0	N63 06 55.5 W138 36 50.2	3	
45	88.0	N63 06 55.5 W138 36 50.3	3	
46	90.0	N63 06 55.5 W138 36 50.6	3	
47	92.0	N63 06 55.5 W138 36 50.6	3	
48	94.0	N63 06 55.5 W138 36 50.6	3	
49	96.0	N63 06 55.5 W138 36 50.8	3	
50	98.0	N63 06 55.5 W138 36 50.9	3	*
51	100.0	N63 06 55.4 W138 36 51.1	3	
52	102.0	N63 06 55.4 W138 36 51.2	3	
53	104.0	N63 06 55.4 W138 36 51.2	3	
54	106.0	N63 06 55.4 W138 36 51.4	3	
55	108.0	N63 06 55.4 W138 36 51.5	3	
56	110.0	N63 06 55.4 W138 36 51.6	3	
57	112.0	N63 06 55.4 W138 36 51.7	3	
58	114.0	N63 06 55.4 W138 36 51.8	3	
59	116.0	N63 06 55.4 W138 36 51.9	3	
60	118.0	N63 06 55.4 W138 36 52.0	3	
61	120.0	N63 06 55.3 W138 36 52.1	3	
62	122.0	N63 06 55.3 W138 36 52.2	3	
63	124.0	N63 06 55.3 W138 36 52.3	3	
64	126.0	N63 06 55.2 W138 36 52.6	3	

Electrode No.	Location in Profile [m]	GPS-Coordinates Latitude/Longitude hddd° mm' ss.s"	GPS-Accuracy [m]	Post [ * ]
65	128.0	N63 06 55.2 W138 36 52.6	3	
66	130.0	N63 06 55.3 W138 36 52.6	3	
67	132.0	N63 06 55.2 W138 36 53.1	3	
68	134.0	N63 06 55.2 W138 36 53.2	3	
69	136.0	N63 06 55.2 W138 36 53.4	3	
70	138.0	N63 06 55.1 W138 36 53.6	3	
71	140.0	N63 06 55.1 W138 36 53.7	3	
72	142.0	N63 06 55.1 W138 36 53.9	3	
73	144.0	N63 06 55.1 W138 36 54.1	3	
74	146.0	N63 06 55.1 W138 36 54.2	3	
75	148.0	N63 06 55.1 W138 36 54.2	3	
76	150.0	N63 06 55.1 W138 36 54.2	3	
77	152.0	N63 06 55.1 W138 36 54.4	3	
78	154.0	N63 06 55.1 W138 36 54.5	3	
79	156.0	N63 06 55.0 W138 36 54.6	3	
80	158.0	N63 06 55.0 W138 36 54.7	3	
81	160.0	N63 06 55.0 W138 36 54.9	3	
82	162.0	N63 06 54.9 W138 36 55.0	3	
83	164.0	N63 06 54.9 W138 36 55.2	3	
84	166.0	N63 06 54.9 W138 36 55.2	3	
85	168.0	N63 06 54.9 W138 36 55.3	3	
86	170.0	N63 06 54.9 W138 36 55.4	3	

Electrode No.	Location in Profile [m]	GPS-Coordinates Latitude/ Longitude hddd° mm' ss.s"	GPS-Accuracy [m]	Post [ * ]
87	172.0	N63 06 54.9 W138 36 55.6	3	
88	174.0	N63 06 54.8 W138 36 55.7	3	

Electrode No.	Location in Profile [m]	GPS-Coordinates Latitude/ Longitude hddd° mm' ss.s"	GPS-Accuracy [m]	Post [ * ]
89	176.0	N63 06 54.8 W138 36 56.0	3	*

### Scroggie Creek 02

Electrode No.	Location in Profile [m]	GPS-Coordinates Latitude/ Longitude hddd° mm' ss.s"	GPS-Accuracy [m]	Post [ * ]
1	0.0	N63 06 52.2 W138 36 40.8	3	*
2	2.0	N63 06 52.2 W138 36 40.8	3	
3	4.0	N63 06 52.1 W138 36 41.1	3	
4	6.0	N63 06 52.0 W138 36 41.2	3	
5	8.0	N63 06 52.0 W138 36 41.2	3	
6	10.0	N63 06 52.0 W138 36 41.3	3	
7	12.0	N63 06 52.0 W138 36 41.5	3	
8	14.0	N63 06 51.9 W138 36 41.8	3	
9	16.0	N63 06 51.8 W138 36 41.9	3	
10	18.0	N63 06 51.8 W138 36 42.0	3	
11	20.0	N63 06 51.7 W138 36 42.1	3	
12	22.0	N63 06 51.7 W138 36 42.1	3	
13	24.0	N63 06 51.7 W138 36 42.2	3	
14	26.0	N63 06 51.7 W138 36 42.3	3	
15	28.0	N63 06 51.7 W138 36 42.3	3	

Electrode No.	Location in Profile [m]	GPS-Coordinates Latitude/ Longitude hddd° mm' ss.s"	GPS-Accuracy [m]	Post [ * ]
16	30.0	N63 06 51.6 W138 36 42.5	3	
17	32.0	N63 06 51.6 W138 36 42.5	3	
18	34.0	N63 06 51.6 W138 36 42.6	3	
19	36.0	N63 06 51.6 W138 36 42.7	3	
20	38.0	N63 06 51.5 W138 36 42.8	3	
21	40.0	N63 06 51.5 W138 36 42.9	3	
22	42.0	N63 06 51.4 W138 36 43.0	3	
23	44.0	N63 06 51.4 W138 36 43.1	3	
24	46.0	N63 06 51.4 W138 36 43.3	3	
25	48.0	N63 06 51.3 W138 36 43.4	3	
26	50.0	N63 06 51.3 W138 36 43.6	3	
27	52.0	N63 06 51.3 W138 36 43.8	3	
28	54.0	N63 06 51.2 W138 36 43.9	3	
29	56.0	N63 06 51.2 W138 36 44.0	3	
30	58.0	N63 06 51.2 W138 36 44.0	3	

Electrode No.	Location in Profile [m]	GPS-Coordinates Latitude/ Longitude hddd° mm' ss.s"	GPS-Accuracy [m]	Post [ * ]
31	60.0	N63 06 51.2 W138 36 44.0	3	
32	62.0	N63 06 51.2 W138 36 44.1	3	
33	64.0	N63 06 51.2 W138 36 44.3	3	
34	66.0	N63 06 51.2 W138 36 44.4	3	
35	68.0	N63 06 51.2 W138 36 44.5	3	
36	70.0	N63 06 51.2 W138 36 44.4	3	
37	72.0	N63 06 51.1 W138 36 44.8	3	
38	74.0	N63 06 50.8 W138 36 44.8	3	
39	76.0	N63 06 50.8 W138 36 45.0	3	
40	78.0	N63 06 50.7 W138 36 45.1	3	
41	80.0	N63 06 50.7 W138 36 45.2	3	
42	82.0	N63 06 50.7 W138 36 45.4	3	
43	84.0	N63 06 50.6 W138 36 45.6	3	
44	86.0	N63 06 50.6 W138 36 45.7	3	
45	88.0	N63 06 50.6 W138 36 45.8	3	
46	90.0	N63 06 50.6 W138 36 45.9	3	
47	92.0	N63 06 50.5 W138 36 46.0	3	
48	94.0	N63 06 50.5 W138 36 46.1	3	
49	96.0	N63 06 50.5 W138 36 46.2	3	
50	98.0	N63 06 50.5 W138 36 46.3	3	*
51	100.0	N63 06 50.5 W138 36 46.4	3	
52	102.0	N63 06 50.5 W138 36 46.4	3	

Electrode No.	Location in Profile [m]	GPS-Coordinates Latitude/ Longitude hddd° mm' ss.s"	GPS-Accuracy [m]	Post [ * ]
53	104.0	N63 06 50.5 W138 36 46.6	3	
54	106.0	N63 06 50.5 W138 36 46.7	3	
55	108.0	N63 06 50.5 W138 36 46.8	3	
56	110.0	N63 06 50.4 W138 36 46.9	3	
57	112.0	N63 06 50.3 W138 36 47.0	3	
58	114.0	N63 06 50.2 W138 36 47.1	3	
59	116.0	N63 06 50.2 W138 36 47.3	3	
60	118.0	N63 06 50.1 W138 36 47.6	3	
61	120.0	N63 06 50.0 W138 36 47.8	3	
62	122.0	N63 06 50.0 W138 36 47.8	3	
63	124.0	N63 06 50.0 W138 36 47.9	3	
64	126.0	N63 06 50.0 W138 36 47.9	3	
65	128.0	N63 06 49.9 W138 36 48.0	3	
66	130.0	N63 06 49.9 W138 36 48.2	3	
67	132.0	N63 06 49.9 W138 36 48.2	3	
68	134.0	N63 06 49.9 W138 36 48.2	3	
69	136.0	N63 06 49.8 W138 36 48.3	3	
70	138.0	N63 06 49.8 W138 36 48.4	3	
71	140.0	N63 06 49.8 W138 36 48.6	3	
72	142.0	N63 06 49.8 W138 36 48.8	3	
73	144.0	N63 06 49.7 W138 36 48.9	3	
74	146.0	N63 06 49.6 W138 36 49.0	3	

Electrode No.	Location in Profile [m]	GPS-Coordinates Latitude/Longitude hddd° mm' ss.s"	GPS-Accuracy [m]	Post [ * ]
75	148.0	N63 06 49.6 W138 36 49.0	3	
76	150.0	N63 06 49.6 W138 36 49.1	3	
77	152.0	N63 06 49.6 W138 36 49.1	3	
78	154.0	N63 06 49.6 W138 36 49.2	3	
79	156.0	N63 06 49.6 W138 36 49.2	3	
80	158.0	N63 06 49.5 W138 36 49.3	3	
81	160.0	N63 06 49.5 W138 36 49.4	3	
82	162.0	N63 06 49.4 W138 36 49.5	3	

Electrode No.	Location in Profile [m]	GPS-Coordinates Latitude/Longitude hddd° mm' ss.s"	GPS-Accuracy [m]	Post [ * ]
83	164.0	N63 06 49.4 W138 36 49.7	3	
84	166.0	N63 06 49.4 W138 36 49.7	3	
85	168.0	N63 06 49.3 W138 36 49.6	3	
86	170.0	N63 06 49.3 W138 36 49.7	3	
87	172.0	N63 06 49.3 W138 36 49.9	3	*

### Scroggie Creek 03

Electrode No.	Location in Profile [m]	GPS-Coordinates Latitude/Longitude hddd° mm' ss.s"	GPS-Accuracy [m]	Post [ * ]
1	0.0	N63 06 49.1 W138 36 29.1	3	*
2	2.0	N63 06 49.1 W138 36 29.1	3	
3	4.0	N63 06 49.1 W138 36 29.1	3	
4	6.0	N63 06 49.1 W138 36 29.2	3	
5	8.0	N63 06 49.0 W138 36 29.4	3	
6	10.0	N63 06 49.0 W138 36 29.4	3	
7	12.0	N63 06 48.9 W138 36 29.5	3	
8	14.0	N63 06 48.9 W138 36 29.8	3	
9	16.0	N63 06 48.9 W138 36 29.9	3	

Electrode No.	Location in Profile [m]	GPS-Coordinates Latitude/Longitude hddd° mm' ss.s"	GPS-Accuracy [m]	Post [ * ]
10	18.0	N63 06 48.9 W138 36 30.2	3	
11	20.0	N63 06 48.9 W138 36 30.2	3	
12	22.0	N63 06 48.9 W138 36 30.2	3	
13	24.0	N63 06 48.9 W138 36 30.5	3	
14	26.0	N63 06 48.9 W138 36 30.6	3	
15	28.0	N63 06 48.8 W138 36 30.6	3	
16	30.0	N63 06 48.8 W138 36 30.9	3	
17	32.0	N63 06 48.7 W138 36 31.1	3	
18	34.0	N63 06 48.7 W138 36 31.1	3	

Electrode No.	Location in Profile [m]	GPS-Coordinates Latitude/Longitude hddd° mm' ss.s"	GPS-Accuracy [m]	Post [ * ]
19	36.0	N63 06 48.7 W138 36 31.2	3	
20	38.0	N63 06 48.7 W138 36 31.2	3	
21	40.0	N63 06 48.7 W138 36 31.2	3	
22	42.0	N63 06 48.7 W138 36 31.3	3	
23	44.0	N63 06 48.6 W138 36 31.6	3	
24	46.0	N63 06 48.6 W138 36 31.8	3	
25	48.0	N63 06 48.6 W138 36 31.9	3	
26	50.0	N63 06 48.6 W138 36 32.1	3	
27	52.0	N63 06 48.6 W138 36 32.2	3	
28	54.0	N63 06 48.5 W138 36 32.3	3	
29	56.0	N63 06 48.5 W138 36 32.3	3	
30	58.0	N63 06 48.5 W138 36 32.3	3	
31	60.0	N63 06 48.5 W138 36 32.3	3	
32	62.0	N63 06 48.5 W138 36 32.4	3	
33	64.0	N63 06 48.5 W138 36 32.6	3	
34	66.0	N63 06 48.5 W138 36 32.6	3	
35	68.0	N63 06 48.4 W138 36 32.6	3	
36	70.0	N63 06 48.4 W138 36 32.8	3	
37	72.0	N63 06 48.3 W138 36 33.1	3	
38	74.0	N63 06 48.3 W138 36 33.2	3	
39	76.0	N63 06 48.3 W138 36 33.4	3	
40	78.0	N63 06 48.1 W138 36 33.7	3	

Electrode No.	Location in Profile [m]	GPS-Coordinates Latitude/Longitude hddd° mm' ss.s"	GPS-Accuracy [m]	Post [ * ]
41	80.0	N63 06 48.1 W138 36 33.8	3	
42	82.0	N63 06 48.1 W138 36 33.8	3	
43	84.0	N63 06 48.1 W138 36 33.8	3	
44	86.0	N63 06 48.0 W138 36 34.2	3	
45	88.0	N63 06 48.0 W138 36 34.2	3	
46	90.0	N63 06 48.0 W138 36 34.2	3	
47	92.0	N63 06 48.0 W138 36 34.3	3	
48	94.0	N63 06 48.0 W138 36 34.3	3	
49	96.0	N63 06 48.0 W138 36 34.3	3	
50	98.0	N63 06 48.0 W138 36 34.3	3	
51	100.0	N63 06 47.8 W138 36 35.0	3	*
52	102.0	N63 06 47.7 W138 36 35.2	3	
53	104.0	N63 06 47.7 W138 36 35.2	3	
54	106.0	N63 06 47.7 W138 36 35.2	3	
55	108.0	N63 06 47.7 W138 36 35.3	3	
56	110.0	N63 06 47.5 W138 36 35.8	3	
57	112.0	N63 06 47.1 W138 36 36.6	3	
58	114.0	N63 06 47.1 W138 36 36.9	3	
59	116.0	N63 06 47.1 W138 36 36.9	3	
60	118.0	N63 06 47.1 W138 36 36.9	3	
61	120.0	N63 06 47.1 W138 36 36.9	3	
62	122.0	N63 06 47.1 W138 36 36.9	3	

Electrode No.	Location in Profile [m]	GPS-Coordinates Latitude/Longitude hddd° mm' ss.s"	GPS-Accuracy [m]	Post [ * ]
63	124.0	N63 06 47.1 W138 36 37.0	3	
64	126.0	N63 06 47.1 W138 36 37.0	3	
65	128.0	N63 06 47.1 W138 36 37.0	3	
66	130.0	N63 06 47.1 W138 36 37.1	3	
67	132.0	N63 06 47.1 W138 36 37.1	3	
68	134.0	N63 06 47.1 W138 36 37.1	3	
69	136.0	N63 06 47.1 W138 36 37.1	3	
70	138.0	N63 06 47.1 W138 36 37.2	3	
71	140.0	N63 06 47.0 W138 36 37.9	3	
72	142.0	N63 06 46.9 W138 36 38.2	3	
73	144.0	N63 06 46.9 W138 36 38.4	3	
74	146.0	N63 06 46.9 W138 36 38.4	3	
75	148.0	N63 06 46.9 W138 36 38.4	3	
76	150.0	N63 06 46.9 W138 36 38.4	3	
77	152.0	N63 06 46.8 W138 36 38.5	3	
78	154.0	N63 06 46.8 W138 36 38.5	3	

Electrode No.	Location in Profile [m]	GPS-Coordinates Latitude/Longitude hddd° mm' ss.s"	GPS-Accuracy [m]	Post [ * ]
79	156.0	N63 06 46.7 W138 36 38.6	3	
80	158.0	N63 06 46.7 W138 36 38.6	3	
81	160.0	N63 06 46.7 W138 36 38.6	3	
82	162.0	N63 06 46.7 W138 36 38.7	3	
83	164.0	N63 06 46.7 W138 36 38.7	3	
84	166.0	N63 06 46.7 W138 36 38.7	3	
85	168.0	N63 06 46.7 W138 36 38.7	3	
86	170.0	N63 06 46.6 W138 36 38.9	3	
87	172.0	N63 06 46.5 W138 36 39.1	3	
88	174.0	N63 06 46.5 W138 36 39.1	3	
89	176.0	N63 06 46.5 W138 36 39.1	3	
90	178.0	N63 06 46.5 W138 36 39.2	3	
91	180.0	N63 06 46.5 W138 36 39.2	3	
92	182.0	N63 06 46.6 W138 36 39.2	3	
93	184.0	N63 06 46.6 W138 36 39.2	3	*

### Scroggie Creek 04

Electrode No.	Location in Profile [m]	GPS-Coordinates Latitude/Longitude hddd° mm' ss.s"	GPS-Accuracy [m]	Post [ * ]
1	0.0	N63 06 43.7 W138 36 24.8	3	*

Electrode No.	Location in Profile [m]	GPS-Coordinates Latitude/Longitude hddd° mm' ss.s"	GPS-Accuracy [m]	Post [ * ]
2	2.0	N63 06 43.7 W138 36 25.0	3	

Electrode No.	Location in Profile [m]	GPS-Coordinates Latitude/ Longitude hddd° mm' ss.S"	GPS-Accuracy [m]	Post [ * ]
3	4.0	N63 06 43.7 W138 36 25.2	3	
4	6.0	N63 06 43.8 W138 36 25.4	3	
5	8.0	N63 06 43.8 W138 36 25.5	3	
6	10.0	N63 06 43.8 W138 36 25.5	3	
7	12.0	N63 06 43.8 W138 36 25.6	3	
8	14.0	N63 06 43.7 W138 36 25.8	3	
9	16.0	N63 06 43.8 W138 36 25.9	3	
10	18.0	N63 06 43.8 W138 36 26.0	3	
11	20.0	N63 06 43.8 W138 36 26.2	3	
12	22.0	N63 06 43.7 W138 36 26.4	3	
13	24.0	N63 06 43.8 W138 36 26.5	3	
14	26.0	N63 06 43.8 W138 36 26.7	3	
15	28.0	N63 06 43.8 W138 36 26.7	3	
16	30.0	N63 06 43.8 W138 36 26.8	3	
17	32.0	N63 06 43.7 W138 36 27.1	3	
18	34.0	N63 06 43.7 W138 36 27.4	3	
19	36.0	N63 06 43.7 W138 36 27.5	3	
20	38.0	N63 06 43.7 W138 36 27.6	3	
21	40.0	N63 06 43.7 W138 36 27.7	3	
22	42.0	N63 06 43.7 W138 36 27.7	3	
23	44.0	N63 06 43.7 W138 36 27.9	3	
24	46.0	N63 06 43.7 W138 36 28.1	3	

Electrode No.	Location in Profile [m]	GPS-Coordinates Latitude/ Longitude hddd° mm' ss.S"	GPS-Accuracy [m]	Post [ * ]
25	48.0	N63 06 43.7 W138 36 28.3	3	
26	50.0	N63 06 43.8 W138 36 28.5	3	
27	52.0	N63 06 43.8 W138 36 29.1	3	
28	54.0	N63 06 43.8 W138 36 29.3	3	
29	56.0	N63 06 43.8 W138 36 29.3	3	
30	58.0	N63 06 43.8 W138 36 29.4	3	
31	60.0	N63 06 43.7 W138 36 29.5	3	
32	62.0	N63 06 43.7 W138 36 29.5	3	
33	64.0	N63 06 43.7 W138 36 29.7	3	
34	66.0	N63 06 43.7 W138 36 29.8	3	
35	68.0	N63 06 43.7 W138 36 29.8	3	
36	70.0	N63 06 43.7 W138 36 29.9	3	
37	72.0	N63 06 43.7 W138 36 29.9	3	
38	74.0	N63 06 43.8 W138 36 30.0	3	
39	76.0	N63 06 43.7 W138 36 30.1	3	
40	78.0	N63 06 43.7 W138 36 30.3	3	
41	80.0	N63 06 43.7 W138 36 30.4	3	
42	82.0	N63 06 43.7 W138 36 30.5	3	
43	84.0	N63 06 43.7 W138 36 30.6	3	
44	86.0	N63 06 43.7 W138 36 30.9	3	
45	88.0	N63 06 43.7 W138 36 31.0	3	
46	90.0	N63 06 43.6 W138 36 31.1	3	

Electrode No.	Location in Profile [m]	GPS-Coordinates Latitude/Longitude hddd° mm' ss.S"	GPS-Accuracy [m]	Post [ * ]
47	92.0	N63 06 43.6 W138 36 31.2	3	
48	94.0	N63 06 43.6 W138 36 31.4	3	
49	96.0	N63 06 43.7 W138 36 31.6	3	
50	98.0	N63 06 43.7 W138 36 31.6	3	*
51	100.0	N63 06 43.7 W138 36 31.8	3	
52	102.0	N63 06 43.7 W138 36 31.9	3	
53	104.0	N63 06 43.6 W138 36 32.1	3	
54	106.0	N63 06 43.6 W138 36 32.2	3	
55	108.0	N63 06 43.7 W138 36 32.6	3	
56	110.0	N63 06 43.7 W138 36 32.7	3	
57	112.0	N63 06 43.7 W138 36 32.8	3	
58	114.0	N63 06 43.7 W138 36 32.8	3	
59	116.0	N63 06 43.7 W138 36 32.8	3	
60	118.0	N63 06 43.6 W138 36 33.0	3	
61	120.0	N63 06 43.7 W138 36 33.1	3	
62	122.0	N63 06 43.7 W138 36 33.3	3	
63	124.0	N63 06 43.8 W138 36 33.4	3	
64	126.0	N63 06 43.7 W138 36 33.6	3	
65	128.0	N63 06 43.7 W138 36 33.8	3	
66	130.0	N63 06 43.7 W138 36 33.9	3	
67	132.0	N63 06 43.8 W138 36 34.0	3	
68	134.0	N63 06 43.8 W138 36 34.1	3	

Electrode No.	Location in Profile [m]	GPS-Coordinates Latitude/Longitude hddd° mm' ss.S"	GPS-Accuracy [m]	Post [ * ]
69	136.0	N63 06 43.8 W138 36 34.3	3	
70	138.0	N63 06 43.8 W138 36 34.3	3	
71	140.0	N63 06 43.8 W138 36 34.4	3	
72	142.0	N63 06 43.8 W138 36 34.5	3	
73	144.0	N63 06 43.8 W138 36 34.6	3	
74	146.0	N63 06 43.8 W138 36 34.9	3	
75	148.0	N63 06 43.9 W138 36 35.0	3	
76	150.0	N63 06 43.9 W138 36 35.3	3	
77	152.0	N63 06 44.0 W138 36 35.4	3	
78	154.0	N63 06 44.0 W138 36 35.4	3	
79	156.0	N63 06 44.0 W138 36 35.5	3	
80	158.0	N63 06 44.1 W138 36 35.6	3	
81	160.0	N63 06 44.1 W138 36 35.7	3	
82	162.0	N63 06 44.1 W138 36 35.9	3	
83	164.0	N63 06 44.2 W138 36 36.1	3	
84	166.0	N63 06 44.2 W138 36 36.3	3	
85	168.0	N63 06 44.2 W138 36 36.3	3	
86	170.0	N63 06 44.2 W138 36 36.4	3	
87	172.0	N63 06 44.2 W138 36 36.6	3	
88	174.0	N63 06 44.2 W138 36 36.6	3	
89	176.0	N63 06 44.3 W138 36 36.7	3	
90	178.0	N63 06 44.3 W138 36 36.9	3	

Electrode No.	Location in Profile [m]	GPS-Coordinates Latitude/Longitude hddd° mm' ss.S"	GPS-Accuracy [m]	Post [ * ]
91	180.0	N63 06 44.3 W138 36 37.0	3	
92	182.0	N63 06 44.3 W138 36 37.2	3	
93	184.0	N63 06 44.3 W138 36 37.2	3	
94	186.0	N63 06 44.3 W138 36 37.4	3	
95	188.0	N63 06 44.3 W138 36 37.4	3	

Electrode No.	Location in Profile [m]	GPS-Coordinates Latitude/Longitude hddd° mm' ss.S"	GPS-Accuracy [m]	Post [ * ]
96	190.0	N63 06 44.4 W138 36 37.5	3	
97	192.0	N63 06 44.4 W138 36 37.6	3	
98	194.0	N63 06 44.4 W138 36 37.8	3	
99	196.0	N63 06 44.4 W138 36 37.9	3	
100	198.0	N63 06 44.4 W138 36 38.0	3	*

### Scroggie Creek 05

Electrode No.	Location in Profile [m]	GPS-Coordinates Latitude/Longitude hddd° mm' ss.S"	GPS-Accuracy [m]	Post [ * ]
1	0.0	N63 06 38.6 W138 36 25.5	3	*
2	2.0	N63 06 38.6 W138 36 25.6	3	
3	4.0	N63 06 38.6 W138 36 25.6	3	
4	6.0	N63 06 38.6 W138 36 25.9	3	
5	8.0	N63 06 38.6 W138 36 26.1	3	
6	10.0	N63 06 38.7 W138 36 26.2	3	
7	12.0	N63 06 38.7 W138 36 26.3	3	
8	14.0	N63 06 38.6 W138 36 26.5	3	
9	16.0	N63 06 38.6 W138 36 26.5	3	
10	18.0	N63 06 38.6 W138 36 26.7	3	
11	20.0	N63 06 38.6 W138 36 27.0	3	
12	22.0	N63 06 38.6 W138 36 27.1	3	

Electrode No.	Location in Profile [m]	GPS-Coordinates Latitude/Longitude hddd° mm' ss.S"	GPS-Accuracy [m]	Post [ * ]
13	24.0	N63 06 38.7 W138 36 27.2	3	
14	26.0	N63 06 38.7 W138 36 27.3	3	
15	28.0	N63 06 38.7 W138 36 27.3	3	
16	30.0	N63 06 38.7 W138 36 27.5	3	
17	32.0	N63 06 38.7 W138 36 27.5	3	
18	34.0	N63 06 38.7 W138 36 27.8	3	
19	36.0	N63 06 38.7 W138 36 27.8	3	
20	38.0	N63 06 38.6 W138 36 28.0	3	
21	40.0	N63 06 38.6 W138 36 28.0	3	
22	42.0	N63 06 38.6 W138 36 28.1	3	
23	44.0	N63 06 38.6 W138 36 28.3	3	
24	46.0	N63 06 38.6 W138 36 28.3	3	

Electrode No.	Location in Profile [m]	GPS-Coordinates Latitude/Longitude hddd° mm' ss.S"	GPS-Accuracy [m]	Post [ * ]
25	48.0	N63 06 38.6 W138 36 28.2	3	
26	50.0	N63 06 38.7 W138 36 28.8	3	
27	52.0	N63 06 38.7 W138 36 29.2	3	
28	54.0	N63 06 38.7 W138 36 29.3	3	
29	56.0	N63 06 38.7 W138 36 29.3	3	
30	58.0	N63 06 38.7 W138 36 29.3	3	
31	60.0	N63 06 38.7 W138 36 29.4	3	
32	62.0	N63 06 38.7 W138 36 29.5	3	
33	64.0	N63 06 38.7 W138 36 29.6	3	
34	66.0	N63 06 38.6 W138 36 29.8	3	
35	68.0	N63 06 38.6 W138 36 29.9	3	
36	70.0	N63 06 38.6 W138 36 30.0	3	
37	72.0	N63 06 38.6 W138 36 30.1	3	
38	74.0	N63 06 38.6 W138 36 30.3	3	
39	76.0	N63 06 38.6 W138 36 30.3	3	
40	78.0	N63 06 38.6 W138 36 30.6	3	
41	80.0	N63 06 38.6 W138 36 30.7	3	
42	82.0	N63 06 38.6 W138 36 30.9	3	
43	84.0	N63 06 38.6 W138 36 31.0	3	
44	86.0	N63 06 38.6 W138 36 31.1	3	
45	88.0	N63 06 38.6 W138 36 31.2	3	
46	90.0	N63 06 38.6 W138 36 31.4	3	

Electrode No.	Location in Profile [m]	GPS-Coordinates Latitude/Longitude hddd° mm' ss.S"	GPS-Accuracy [m]	Post [ * ]
47	92.0	N63 06 38.6 W138 36 31.5	3	
48	94.0	N63 06 38.6 W138 36 31.6	3	
49	96.0	N63 06 38.5 W138 36 31.7	3	
50	98.0	N63 06 38.5 W138 36 31.9	3	*
51	100.0	N63 06 38.5 W138 36 32.1	3	
52	102.0	N63 06 38.5 W138 36 32.2	3	
53	104.0	N63 06 38.5 W138 36 32.3	3	
54	106.0	N63 06 38.5 W138 36 32.5	3	
55	108.0	N63 06 38.5 W138 36 32.5	3	
56	110.0	N63 06 38.4 W138 36 32.6	3	
57	112.0	N63 06 38.4 W138 36 32.9	3	
58	114.0	N63 06 38.4 W138 36 33.0	3	
59	116.0	N63 06 38.4 W138 36 33.1	3	
60	118.0	N63 06 38.4 W138 36 33.3	3	
61	120.0	N63 06 38.4 W138 36 33.5	3	
62	122.0	N63 06 38.4 W138 36 33.6	3	
63	124.0	N63 06 38.4 W138 36 33.6	3	
64	126.0	N63 06 38.4 W138 36 33.7	3	
65	128.0	N63 06 38.4 W138 36 33.9	3	
66	130.0	N63 06 38.4 W138 36 34.0	3	
67	132.0	N63 06 38.4 W138 36 34.2	3	
68	134.0	N63 06 38.4 W138 36 34.2	3	

Electrode No.	Location in Profile [m]	GPS-Coordinates Latitude/ Longitude hddd° mm' ss.s"	GPS-Accuracy [m]	Post [ * ]
69	136.0	N63 06 38.4 W138 36 34.5	3	
70	138.0	N63 06 38.4 W138 36 34.6	3	
71	140.0	N63 06 38.3 W138 36 34.8	3	
72	142.0	N63 06 38.3 W138 36 35.0	3	
73	144.0	N63 06 38.3 W138 36 35.1	3	
74	146.0	N63 06 38.3 W138 36 35.4	3	
75	148.0	N63 06 38.3 W138 36 35.6	3	
76	150.0	N63 06 38.3 W138 36 35.6	3	
77	152.0	N63 06 38.3 W138 36 35.7	3	
78	154.0	N63 06 38.3 W138 36 35.8	3	
79	156.0	N63 06 38.3 W138 36 36.0	3	
80	158.0	N63 06 38.3 W138 36 36.0	3	

Electrode No.	Location in Profile [m]	GPS-Coordinates Latitude/ Longitude hddd° mm' ss.s"	GPS-Accuracy [m]	Post [ * ]
81	160.0	N63 06 38.3 W138 36 36.1	3	
82	162.0	N63 06 38.2 W138 36 36.3	3	
83	164.0	N63 06 38.2 W138 36 36.4	3	
84	166.0	N63 06 38.2 W138 36 36.5	3	
85	168.0	N63 06 38.2 W138 36 36.6	3	
86	170.0	N63 06 38.2 W138 36 36.7	3	
87	172.0	N63 06 38.2 W138 36 36.8	3	
88	174.0	N63 06 38.2 W138 36 37.0	3	
89	176.0	N63 06 38.2 W138 36 37.2	3	
90	178.0	N63 06 38.1 W138 36 37.3	3	*

### Scroggie Creek 06

Electrode No.	Location in Profile [m]	GPS-Coordinates Latitude/ Longitude hddd° mm' ss.s"	GPS-Accuracy [m]	Post [ * ]
1	0.0	N63 06 36.4 W138 36 26.8	3	*
2	2.0	N63 06 36.3 W138 36 27.2	3	
3	4.0	N63 06 36.3 W138 36 27.3	3	
4	6.0	N63 06 36.2 W138 36 27.4	3	
5	8.0	N63 06 36.2 W138 36 27.7	3	

Electrode No.	Location in Profile [m]	GPS-Coordinates Latitude/ Longitude hddd° mm' ss.s"	GPS-Accuracy [m]	Post [ * ]
6	10.0	N63 06 36.2 W138 36 27.7	3	
7	12.0	N63 06 36.2 W138 36 28.0	3	
8	14.0	N63 06 36.1 W138 36 28.3	3	
9	16.0	N63 06 36.2 W138 36 28.4	3	
10	18.0	N63 06 36.1 W138 36 28.5	3	

Electrode No.	Location in Profile [m]	GPS-Coordinates Latitude/Longitude hddd° mm' ss.S"	GPS-Accuracy [m]	Post [ * ]
11	20.0	N63 06 36.1 W138 36 28.5	3	
12	22.0	N63 06 36.1 W138 36 28.6	3	
13	24.0	N63 06 36.1 W138 36 28.9	3	
14	26.0	N63 06 36.1 W138 36 29.0	3	
15	28.0	N63 06 36.1 W138 36 29.2	3	
16	30.0	N63 06 36.1 W138 36 29.2	3	
17	32.0	N63 06 36.1 W138 36 29.4	3	
18	34.0	N63 06 36.0 W138 36 29.5	3	
19	36.0	N63 06 36.0 W138 36 29.7	3	
20	38.0	N63 06 36.0 W138 36 29.7	3	
21	40.0	N63 06 36.0 W138 36 29.9	3	
22	42.0	N63 06 35.9 W138 36 29.9	3	
23	44.0	N63 06 35.9 W138 36 30.3	3	
24	46.0	N63 06 35.8 W138 36 30.5	3	
25	48.0	N63 06 35.8 W138 36 30.5	3	
26	50.0	N63 06 35.8 W138 36 30.6	3	
27	52.0	N63 06 35.8 W138 36 30.6	3	
28	54.0	N63 06 35.7 W138 36 30.9	3	
29	56.0	N63 06 35.7 W138 36 30.9	3	
30	58.0	N63 06 35.7 W138 36 30.9	3	
31	60.0	N63 06 35.7 W138 36 31.1	3	
32	62.0	N63 06 35.7 W138 36 31.0	3	

Electrode No.	Location in Profile [m]	GPS-Coordinates Latitude/Longitude hddd° mm' ss.S"	GPS-Accuracy [m]	Post [ * ]
33	64.0	N63 06 35.7 W138 36 31.0	3	
34	66.0	N63 06 35.7 W138 36 31.4	3	
35	68.0	N63 06 35.7 W138 36 31.4	3	
36	70.0	N63 06 35.7 W138 36 31.4	3	
37	72.0	N63 06 35.7 W138 36 31.5	3	
38	74.0	N63 06 35.6 W138 36 31.8	3	
39	76.0	N63 06 35.6 W138 36 31.8	3	
40	78.0	N63 06 35.5 W138 36 31.9	3	
41	80.0	N63 06 35.4 W138 36 32.2	3	
42	82.0	N63 06 35.4 W138 36 32.2	3	
43	84.0	N63 06 35.4 W138 36 32.5	3	
44	86.0	N63 06 35.3 W138 36 32.8	3	
45	88.0	N63 06 35.2 W138 36 32.9	3	
46	90.0	N63 06 35.2 W138 36 32.9	3	
47	92.0	N63 06 35.2 W138 36 32.9	3	
48	94.0	N63 06 35.2 W138 36 33.0	3	
49	96.0	N63 06 35.2 W138 36 33.2	3	
50	98.0	N63 06 35.1 W138 36 33.4	3	*
51	100.0	N63 06 35.1 W138 36 33.6	3	
52	102.0	N63 06 35.1 W138 36 33.6	3	
53	104.0	N63 06 35.1 W138 36 33.7	3	
54	106.0	N63 06 35.0 W138 36 33.8	3	

Electrode No.	Location in Profile [m]	GPS-Coordinates Latitude/Longitude hddd° mm' ss.s"	GPS-Accuracy [m]	Post [ * ]
55	108.0	N63 06 35.0 W138 36 33.9	3	
56	110.0	N63 06 35.0 W138 36 34.1	3	
57	112.0	N63 06 34.9 W138 36 34.2	3	
58	114.0	N63 06 34.9 W138 36 34.4	3	
59	116.0	N63 06 34.9 W138 36 34.5	3	
60	118.0	N63 06 34.9 W138 36 34.6	3	
61	120.0	N63 06 34.9 W138 36 34.6	3	
62	122.0	N63 06 34.9 W138 36 34.6	3	
63	124.0	N63 06 34.8 W138 36 34.9	3	
64	126.0	N63 06 34.7 W138 36 35.1	3	
65	128.0	N63 06 34.7 W138 36 35.1	3	
66	130.0	N63 06 34.6 W138 36 35.1	3	

Electrode No.	Location in Profile [m]	GPS-Coordinates Latitude/Longitude hddd° mm' ss.s"	GPS-Accuracy [m]	Post [ * ]
67	132.0	N63 06 34.6 W138 36 35.2	3	
68	134.0	N63 06 34.6 W138 36 35.2	3	
69	136.0	N63 06 34.6 W138 36 35.3	3	
70	138.0	N63 06 34.6 W138 36 35.4	3	
71	140.0	N63 06 34.5 W138 36 35.5	3	
72	142.0	N63 06 34.5 W138 36 35.7	3	
73	144.0	N63 06 34.5 W138 36 35.7	3	
74	146.0	N63 06 34.5 W138 36 35.7	3	
75	148.0	N63 06 34.5 W138 36 35.7	3	*

### Scroggie Creek 07

Electrode No.	Location in Profile [m]	GPS-Coordinates Latitude/Longitude hddd° mm' ss.s"	GPS-Accuracy [m]	Post [ * ]
1	0.0	N63 06 35.2 W138 36 24.9	3	*
2	2.0	N63 06 35.2 W138 36 24.9	3	
3	4.0	N63 06 35.1 W138 36 25.2	3	
4	6.0	N63 06 35.1 W138 36 25.3	3	
5	8.0	N63 06 35.1 W138 36 25.3	3	

Electrode No.	Location in Profile [m]	GPS-Coordinates Latitude/Longitude hddd° mm' ss.s"	GPS-Accuracy [m]	Post [ * ]
6	10.0	N63 06 35.0 W138 36 25.5	3	
7	12.0	N63 06 35.0 W138 36 25.5	3	
8	14.0	N63 06 34.9 W138 36 25.6	3	
9	16.0	N63 06 34.9 W138 36 25.7	3	
10	18.0	N63 06 34.9 W138 36 25.7	3	

Electrode No.	Location in Profile [m]	GPS-Coordinates Latitude/Longitude hddd° mm' ss.S"	GPS-Accuracy [m]	Post [ * ]
11	20.0	N63 06 34.9 W138 36 25.7	3	
12	22.0	N63 06 34.9 W138 36 25.9	3	
13	24.0	N63 06 34.8 W138 36 26.1	3	
14	26.0	N63 06 34.8 W138 36 26.1	3	
15	28.0	N63 06 34.8 W138 36 26.4	3	
16	30.0	N63 06 34.8 W138 36 26.4	3	
17	32.0	N63 06 34.8 W138 36 26.4	3	
18	34.0	N63 06 34.8 W138 36 26.6	3	
19	36.0	N63 06 34.6 W138 36 27.0	3	
20	38.0	N63 06 34.6 W138 36 27.2	3	
21	40.0	N63 06 34.6 W138 36 27.3	3	
22	42.0	N63 06 34.6 W138 36 27.6	3	
23	44.0	N63 06 34.6 W138 36 27.6	3	
24	46.0	N63 06 34.5 W138 36 28.0	3	
25	48.0	N63 06 34.5 W138 36 28.1	3	
26	50.0	N63 06 34.5 W138 36 28.1	3	
27	52.0	N63 06 34.5 W138 36 28.1	3	
28	54.0	N63 06 34.5 W138 36 28.1	3	
29	56.0	N63 06 34.5 W138 36 28.1	3	
30	58.0	N63 06 34.5 W138 36 28.2	3	
31	60.0	N63 06 34.4 W138 36 28.4	3	
32	62.0	N63 06 34.4 W138 36 28.4	3	

Electrode No.	Location in Profile [m]	GPS-Coordinates Latitude/Longitude hddd° mm' ss.S"	GPS-Accuracy [m]	Post [ * ]
33	64.0	N63 06 34.3 W138 36 28.5	3	
34	66.0	N63 06 34.2 W138 36 28.7	3	
35	68.0	N63 06 34.2 W138 36 28.9	3	
36	70.0	N63 06 34.2 W138 36 28.9	3	
37	72.0	N63 06 34.2 W138 36 29.1	3	
38	74.0	N63 06 34.2 W138 36 29.1	3	
39	76.0	N63 06 34.1 W138 36 29.4	3	
40	78.0	N63 06 34.1 W138 36 29.4	3	
41	80.0	N63 06 34.1 W138 36 29.4	3	
42	82.0	N63 06 34.0 W138 36 29.6	3	
43	84.0	N63 06 34.0 W138 36 29.8	3	
44	86.0	N63 06 34.0 W138 36 30.0	3	
45	88.0	N63 06 33.9 W138 36 30.1	3	
46	90.0	N63 06 33.9 W138 36 30.2	3	
47	92.0	N63 06 33.9 W138 36 30.3	3	
48	94.0	N63 06 33.8 W138 36 30.4	3	
49	96.0	N63 06 33.8 W138 36 30.6	3	
50	98.0	N63 06 33.8 W138 36 30.8	3	*
51	100.0	N63 06 33.8 W138 36 31.1	3	
52	102.0	N63 06 33.8 W138 36 31.2	3	
53	104.0	N63 06 33.8 W138 36 31.2	3	
54	106.0	N63 06 33.7 W138 36 31.2	3	

Electrode No.	Location in Profile [m]	GPS-Coordinates Latitude/Longitude hddd° mm' ss.s"	GPS-Accuracy [m]	Post [ * ]
55	108.0	N63 06 33.7 W138 36 31.4	3	
56	110.0	N63 06 33.7 W138 36 31.6	3	
57	112.0	N63 06 33.7 W138 36 31.8	3	
58	114.0	N63 06 33.6 W138 36 32.0	3	
59	116.0	N63 06 33.6 W138 36 32.1	3	
60	118.0	N63 06 33.6 W138 36 32.1	3	
61	120.0	N63 06 33.6 W138 36 32.3	3	
62	122.0	N63 06 33.6 W138 36 32.4	3	
63	124.0	N63 06 33.4 W138 36 32.8	3	
64	126.0	N63 06 33.4 W138 36 32.8	3	
65	128.0	N63 06 33.4 W138 36 32.8	3	
66	130.0	N63 06 33.3 W138 36 33.1	3	
67	132.0	N63 06 33.3 W138 36 33.2	3	

Electrode No.	Location in Profile [m]	GPS-Coordinates Latitude/Longitude hddd° mm' ss.s"	GPS-Accuracy [m]	Post [ * ]
68	134.0	N63 06 33.3 W138 36 33.3	3	
69	136.0	N63 06 33.3 W138 36 33.3	3	
70	138.0	N63 06 33.3 W138 36 33.3	3	
71	140.0	N63 06 33.3 W138 36 33.3	3	
72	142.0	N63 06 33.3 W138 36 33.4	3	
73	144.0	N63 06 33.2 W138 36 33.5	3	
74	146.0	N63 06 33.2 W138 36 33.5	3	
75	148.0	N63 06 33.2 W138 36 33.7	3	
76	150.0	N63 06 33.2 W138 36 33.8	3	
77	152.0	N63 06 33.2 W138 36 34.0	3	
78	154.0	N63 06 33.2 W138 36 34.1	3	
79	156.0	N63 06 33.2 W138 36 34.1	3	*

### Scroggie Creek 08

Electrode No.	Location in Profile [m]	GPS-Coordinates Latitude/Longitude hddd° mm' ss.s"	GPS-Accuracy [m]	Post [ * ]
1	0.0	N63 06 29.1 W138 36 16.7	3	*
2	2.0	N63 06 29.1 W138 36 16.7	3	
3	4.0	N63 06 29.1 W138 36 16.7	3	
4	6.0	N63 06 29.1 W138 36 16.9	3	

Electrode No.	Location in Profile [m]	GPS-Coordinates Latitude/Longitude hddd° mm' ss.s"	GPS-Accuracy [m]	Post [ * ]
5	8.0	N63 06 29.0 W138 36 17.0	3	
6	10.0	N63 06 29.0 W138 36 17.3	3	
7	12.0	N63 06 29.0 W138 36 17.5	3	
8	14.0	N63 06 29.0 W138 36 17.7	3	

Electrode No.	Location in Profile [m]	GPS-Coordinates Latitude/ Longitude hddd° mm' ss.S"	GPS-Accuracy [m]	Post [ * ]
9	16.0	N63 06 29.0 W138 36 17.8	3	
10	18.0	N63 06 29.0 W138 36 18.0	3	
11	20.0	N63 06 29.0 W138 36 18.3	3	
12	22.0	N63 06 29.0 W138 36 18.3	3	
13	24.0	N63 06 28.9 W138 36 18.4	3	
14	26.0	N63 06 28.9 W138 36 18.6	3	
15	28.0	N63 06 28.9 W138 36 18.6	3	
16	30.0	N63 06 28.9 W138 36 18.8	3	
17	32.0	N63 06 28.9 W138 36 18.9	3	
18	34.0	N63 06 28.9 W138 36 19.1	3	
19	36.0	N63 06 28.9 W138 36 19.3	3	
20	38.0	N63 06 28.9 W138 36 19.3	3	
21	40.0	N63 06 28.9 W138 36 19.3	3	
22	42.0	N63 06 28.9 W138 36 19.3	3	
23	44.0	N63 06 28.8 W138 36 19.3	3	
24	46.0	N63 06 28.8 W138 36 19.5	3	
25	48.0	N63 06 28.8 W138 36 19.6	3	
26	50.0	N63 06 28.8 W138 36 19.7	3	
27	52.0	N63 06 28.7 W138 36 20.3	3	
28	54.0	N63 06 28.6 W138 36 20.5	3	
29	56.0	N63 06 28.6 W138 36 20.5	3	
30	58.0	N63 06 28.6 W138 36 20.7	3	

Electrode No.	Location in Profile [m]	GPS-Coordinates Latitude/ Longitude hddd° mm' ss.S"	GPS-Accuracy [m]	Post [ * ]
31	60.0	N63 06 28.6 W138 36 20.9	3	
32	62.0	N63 06 28.6 W138 36 20.9	3	
33	64.0	N63 06 28.5 W138 36 21.2	3	
34	66.0	N63 06 28.5 W138 36 21.2	3	
35	68.0	N63 06 28.5 W138 36 21.3	3	
36	70.0	N63 06 28.5 W138 36 21.6	3	
37	72.0	N63 06 28.5 W138 36 21.7	3	
38	74.0	N63 06 28.4 W138 36 21.9	3	
39	76.0	N63 06 28.4 W138 36 22.2	3	
40	78.0	N63 06 28.4 W138 36 22.2	3	
41	80.0	N63 06 28.4 W138 36 22.2	3	
42	82.0	N63 06 28.4 W138 36 22.3	3	
43	84.0	N63 06 28.3 W138 36 22.6	3	
44	86.0	N63 06 28.3 W138 36 22.8	3	
45	88.0	N63 06 28.3 W138 36 23.0	3	
46	90.0	N63 06 28.2 W138 36 23.3	3	
47	92.0	N63 06 28.2 W138 36 23.3	3	
48	94.0	N63 06 28.2 W138 36 23.3	3	
49	96.0	N63 06 28.2 W138 36 23.6	3	
50	98.0	N63 06 28.1 W138 36 23.7	3	*
51	100.0	N63 06 28.1 W138 36 23.7	3	
52	102.0	N63 06 28.1 W138 36 23.9	3	

Electrode No.	Location in Profile [m]	GPS-Coordinates Latitude/Longitude hddd° mm' ss.S"	GPS-Accuracy [m]	Post [ * ]
53	104.0	N63 06 28.1 W138 36 24.3	3	
54	106.0	N63 06 28.0 W138 36 24.6	3	
55	108.0	N63 06 28.0 W138 36 24.6	3	
56	110.0	N63 06 28.0 W138 36 24.6	3	
57	112.0	N63 06 28.0 W138 36 24.7	3	
58	114.0	N63 06 28.0 W138 36 24.7	3	
59	116.0	N63 06 28.0 W138 36 24.7	3	
60	118.0	N63 06 28.0 W138 36 24.8	3	
61	120.0	N63 06 27.9 W138 36 25.2	3	
62	122.0	N63 06 27.9 W138 36 25.4	3	
63	124.0	N63 06 27.9 W138 36 25.4	3	
64	126.0	N63 06 27.9 W138 36 25.5	3	
65	128.0	N63 06 27.9 W138 36 25.8	3	
66	130.0	N63 06 27.8 W138 36 26.0	3	
67	132.0	N63 06 27.8 W138 36 26.0	3	
68	134.0	N63 06 27.8 W138 36 26.0	3	
69	136.0	N63 06 27.8 W138 36 26.2	3	
70	138.0	N63 06 27.8 W138 36 26.3	3	
71	140.0	N63 06 27.8 W138 36 26.4	3	
72	142.0	N63 06 27.8 W138 36 26.6	3	
73	144.0	N63 06 27.8 W138 36 26.8	3	
74	146.0	N63 06 27.8 W138 36 26.8	3	

Electrode No.	Location in Profile [m]	GPS-Coordinates Latitude/Longitude hddd° mm' ss.S"	GPS-Accuracy [m]	Post [ * ]
75	148.0	N63 06 27.8 W138 36 26.8	3	
76	150.0	N63 06 27.8 W138 36 27.0	3	
77	152.0	N63 06 27.7 W138 36 27.3	3	
78	154.0	N63 06 27.7 W138 36 27.6	3	
79	156.0	N63 06 27.7 W138 36 27.6	3	
80	158.0	N63 06 27.7 W138 36 27.6	3	
81	160.0	N63 06 27.7 W138 36 27.6	3	
82	162.0	N63 06 27.7 W138 36 27.8	3	
83	164.0	N63 06 27.7 W138 36 28.0	3	
84	166.0	N63 06 27.7 W138 36 28.1	3	
85	168.0	N63 06 27.7 W138 36 28.2	3	
86	170.0	N63 06 27.7 W138 36 28.2	3	
87	172.0	N63 06 27.6 W138 36 28.7	3	
88	174.0	N63 06 27.6 W138 36 28.7	3	
89	176.0	N63 06 27.6 W138 36 28.8	3	
90	178.0	N63 06 27.6 W138 36 28.8	3	
91	180.0	N63 06 27.6 W138 36 28.9	3	
92	182.0	N63 06 27.6 W138 36 29.1	3	
93	184.0	N63 06 27.6 W138 36 29.1	3	
94	186.0	N63 06 27.6 W138 36 29.1	3	
95	188.0	N63 06 27.6 W138 36 29.1	3	
96	190.0	N63 06 27.5 W138 36 29.2	3	

Electrode No.	Location in Profile [m]	GPS-Coordinates Latitude/ Longitude hddd° mm' ss.s"	GPS-Accuracy [m]	Post [ * ]
97	192.0	N63 06 27.5 W138 36 29.2	3	
98	194.0	N63 06 27.4 W138 36 29.5	3	

Electrode No.	Location in Profile [m]	GPS-Coordinates Latitude/ Longitude hddd° mm' ss.s"	GPS-Accuracy [m]	Post [ * ]
99	196.0	N63 06 27.4 W138 36 29.4	3	*

### Scroggie Creek 09

Electrode No.	Location in Profile [m]	GPS-Coordinates Latitude/ Longitude hddd° mm' ss.s"	GPS-Accuracy [m]	Post [ * ]
1	0.0	N63 06 41.8 W138 36 25.7	3	*
2	2.0	N63 06 41.8 W138 36 25.9	3	
3	4.0	N63 06 41.8 W138 36 25.9	3	
4	6.0	N63 06 41.8 W138 36 26.1	3	
5	8.0	N63 06 41.8 W138 36 26.3	3	
6	10.0	N63 06 41.8 W138 36 26.5	3	
7	12.0	N63 06 41.7 W138 36 26.7	3	
8	14.0	N63 06 41.7 W138 36 26.9	3	
9	16.0	N63 06 41.7 W138 36 27.0	3	
10	18.0	N63 06 41.7 W138 36 27.0	3	
11	20.0	N63 06 41.7 W138 36 27.0	3	
12	22.0	N63 06 41.7 W138 36 27.2	3	
13	24.0	N63 06 41.7 W138 36 27.2	3	
14	26.0	N63 06 41.7 W138 36 27.3	3	
15	28.0	N63 06 41.6 W138 36 27.5	3	

Electrode No.	Location in Profile [m]	GPS-Coordinates Latitude/ Longitude hddd° mm' ss.s"	GPS-Accuracy [m]	Post [ * ]
16	30.0	N63 06 41.6 W138 36 27.6	3	
17	32.0	N63 06 41.5 W138 36 27.8	3	
18	34.0	N63 06 41.5 W138 36 27.9	3	
19	36.0	N63 06 41.4 W138 36 28.1	3	
20	38.0	N63 06 41.4 W138 36 28.2	3	
21	40.0	N63 06 41.4 W138 36 28.3	3	
22	42.0	N63 06 41.2 W138 36 28.9	3	
23	44.0	N63 06 41.1 W138 36 29.2	3	
24	46.0	N63 06 41.1 W138 36 29.2	3	
25	48.0	N63 06 41.1 W138 36 29.2	3	
26	50.0	N63 06 41.1 W138 36 29.2	3	
27	52.0	N63 06 41.0 W138 36 29.3	3	
28	54.0	N63 06 41.0 W138 36 29.4	3	
29	56.0	N63 06 41.0 W138 36 29.6	3	
30	58.0	N63 06 40.9 W138 36 29.6	3	

Electrode No.	Location in Profile [m]	GPS-Coordinates Latitude/Longitude hddd° mm' ss.S"	GPS-Accuracy [m]	Post [ * ]
31	60.0	N63 06 40.9 W138 36 29.9	3	
32	62.0	N63 06 40.9 W138 36 29.9	3	
33	64.0	N63 06 40.8 W138 36 30.0	3	
34	66.0	N63 06 40.8 W138 36 30.3	3	
35	68.0	N63 06 40.8 W138 36 30.4	3	
36	70.0	N63 06 40.8 W138 36 30.6	3	
37	72.0	N63 06 40.8 W138 36 30.7	3	
38	74.0	N63 06 40.7 W138 36 30.8	3	
39	76.0	N63 06 40.7 W138 36 30.8	3	
40	78.0	N63 06 40.7 W138 36 30.8	3	
41	80.0	N63 06 40.7 W138 36 30.8	3	
42	82.0	N63 06 40.7 W138 36 30.8	3	
43	84.0	N63 06 40.7 W138 36 30.9	3	
44	86.0	N63 06 40.7 W138 36 30.9	3	
45	88.0	N63 06 40.6 W138 36 31.2	3	
46	90.0	N63 06 40.6 W138 36 31.2	3	
47	92.0	N63 06 40.6 W138 36 31.2	3	
48	94.0	N63 06 40.6 W138 36 31.3	3	
49	96.0	N63 06 40.3 W138 36 32.0	3	
50	98.0	N63 06 40.3 W138 36 32.2	3	*
51	100.0	N63 06 40.2 W138 36 32.2	3	
52	102.0	N63 06 40.2 W138 36 32.5	3	

Electrode No.	Location in Profile [m]	GPS-Coordinates Latitude/Longitude hddd° mm' ss.S"	GPS-Accuracy [m]	Post [ * ]
53	104.0	N63 06 40.2 W138 36 32.7	3	
54	106.0	N63 06 40.2 W138 36 32.8	3	
55	108.0	N63 06 40.2 W138 36 32.7	3	
56	110.0	N63 06 40.1 W138 36 33.2	3	
57	112.0	N63 06 40.1 W138 36 33.4	3	
58	114.0	N63 06 40.0 W138 36 33.5	3	
59	116.0	N63 06 40.0 W138 36 33.5	3	
60	118.0	N63 06 40.0 W138 36 33.9	3	
61	120.0	N63 06 40.0 W138 36 33.9	3	
62	122.0	N63 06 40.0 W138 36 33.9	3	
63	124.0	N63 06 40.0 W138 36 33.9	3	
64	126.0	N63 06 39.9 W138 36 34.1	3	
65	128.0	N63 06 39.9 W138 36 34.2	3	
66	130.0	N63 06 39.9 W138 36 34.3	3	
67	132.0	N63 06 39.8 W138 36 34.7	3	
68	134.0	N63 06 39.8 W138 36 34.7	3	
69	136.0	N63 06 39.8 W138 36 34.7	3	
70	138.0	N63 06 39.8 W138 36 34.8	3	
71	140.0	N63 06 39.8 W138 36 35.0	3	
72	142.0	N63 06 39.7 W138 36 35.3	3	
73	144.0	N63 06 39.7 W138 36 35.4	3	
74	146.0	N63 06 39.6 W138 36 35.6	3	

Electrode No.	Location in Profile [m]	GPS-Coordinates Latitude/ Longitude hddd° mm' ss.S"	GPS-Accuracy [m]	Post [ * ]
75	148.0	N63 06 39.6 W138 36 35.6	3	
76	150.0	N63 06 39.6 W138 36 35.7	3	
77	152.0	N63 06 39.6 W138 36 35.7	3	
78	154.0	N63 06 39.6 W138 36 35.8	3	
79	156.0	N63 06 39.6 W138 36 36.0	3	
80	158.0	N63 06 39.5 W138 36 36.2	3	
81	160.0	N63 06 39.5 W138 36 36.2	3	
82	162.0	N63 06 39.5 W138 36 36.3	3	
83	164.0	N63 06 39.5 W138 36 36.3	3	
84	166.0	N63 06 39.5 W138 36 36.3	3	
85	168.0	N63 06 39.5 W138 36 36.4	3	
86	170.0	N63 06 39.5 W138 36 36.5	3	

Electrode No.	Location in Profile [m]	GPS-Coordinates Latitude/ Longitude hddd° mm' ss.S"	GPS-Accuracy [m]	Post [ * ]
87	172.0	N63 06 39.5 W138 36 36.6	3	
88	174.0	N63 06 39.4 W138 36 36.6	3	
89	176.0	N63 06 39.4 W138 36 36.7	3	
90	178.0	N63 06 39.4 W138 36 36.7	3	
91	180.0	N63 06 39.4 W138 36 36.8	3	
92	182.0	N63 06 39.5 W138 36 37.0	3	
93	184.0	N63 06 39.4 W138 36 37.1	3	
94	186.0	N63 06 39.3 W138 36 37.5	3	
95	188.0	N63 06 39.2 W138 36 37.6	3	
96	190.0	N63 06 39.2 W138 36 37.6	3	
97	192.0	N63 06 39.2 W138 36 37.7	3	*