

Arctic Geophysics Inc.



Geophysical Surveys • Prospecting • Consulting

www.arctic-geophysics.com

Box 747, Dawson City Y.T., Y0B-1G0, Canada

Phone: 867-993-3671 (Cell), info@arctic-geophysics.com

Geophysical Survey with 2D Resistivity for Placer Investigation, Scroggie Creek 2013

LOCATION

Placer Claims P 49188, P 49189, P 49190, P 49191, P 49192,
P 49193, and P 49194

N63° 04' 33" W138° 37' 04"

FOR

Shannon Radford

Box 1040

Dawson City, YT

Y0B 1G0

AUTHOR

Philipp Moll

WORK PERFORMED

Sept 21-28th 2013

DATE OF REPORT

Dec 1st 2013

Table of Contents

1	Introduction	3
2	Placer Tenures	3
3	Location	3
4	Access	3
5	Goal	3
6	Geophysical Methods.....	4
7	Use of Geophysical Methods	5
7.1	Instrumentation	5
7.2	Data Acquisition	5
7.3	Processing	5
7.4	Interpretation.....	6
8	Profile image	6
9	Resistivity Survey.....	6
9.1	Survey Map	7
9.2	Profiles: Interpretation, Recommendation.....	8
10	Conclusion	22
11	References.....	24
11.1	Literature.....	24
11.2	Maps.....	24
12	Qualification	25
13	Confirmation	25
14	Addendum.....	26
14.1	Cost.....	26
14.2	GPS-Data	28

1 Introduction

This geophysical investigation was done for Shannon Radford. The survey, using 2D Resistivity, was conducted to prospect the tenures listed below for the localisation of possible targets for placer gold. The ground was tested with seven 2D measuring lines with a length of 235-315m each; the depth of investigation is 50-60m.

2 Placer Tenures

Grant Number	Name	Owner
P 49188	Gavin 12	Shannon Radford
P 49189	Gavin 13	Shannon Radford
P 49190	Gavin 14	Shannon Radford
P 49191	Gavin 15	Shannon Radford
P 49192	Gavin 16	Shannon Radford
P 49193	Gavin 17	Shannon Radford
P 4914	Gavin 18	Shannon Radford

3 Location

The placer claim property is located app. 120km southeast of Dawson City, map number 115O02.

4 Access

The exploration site was accessed by helicopter from Dawson City, and on an old CAT trail on site.

5 Goal

The survey was focussed on measuring and interpreting the following subsurface characteristics:

1. Depth and topography of bedrock
 - Paleochannels
 - Bedrock benches
2. Sedimentary stratification
3. Permafrost conditions
4. Groundwater table
5. Mining/prospecting history

6 Geophysical Methods

Resistivity is not a time domain geophysical method such as Ground Penetrating Radar or Seismic. Resistivity measures a material property. In the Resistivity model the different underground zones are material-dependently differentiated according to their electrical conductivity. Thus, Resistivity promises good chances in respect of measuring the kind and character of the subsurface materials as well as the groundwater distribution, which would be of interest for placer mining. The equipment used (see below) allows for measuring of layer interfaces in depths from 0.5m to 100m by varying the electrode spacing. – Therefore, this prospecting concept is based on the use of 2D Resistivity.



Figure 1: 2D Resistivity measurement, Stefan Ostermaier, Arctic Geophysics Inc., Yukon 2009

7 Use of Geophysical Methods

7.1 Instrumentation

For this survey a lightweight, custom-built 2D RESISTIVITY and INDUCED POLARIZATION (IP) imaging system with rapid data acquisition was used. The system includes:

- “4 POINT LIGHT” EARTH RESISTIVITY METER¹
- 64 ELECTRODE CONTROL MODULES²
- 64 STAINLESS STEEL ELECTRODES³
- 320m MULTICORE CABLE: CONNECTOR SPACING: 5m⁴

This system weighs approximately 150 kg which is about one third of regular standard equipment. It can be run with a 12V lead battery. The equipment facilitates high mobility and rapid data acquisition with a small crew.

7.2 Data Acquisition

Resistivity

The data acquisition is carried out by the automatic activation of 4-point-electrodes. Thus several thousand measurements are taken, one every 1-2 seconds. The AC transmitter current of 0.26 to 30 Hz is amplified by the electrode control modules, up to a maximum of 100mA and 400V peak to peak. The voltage measured at the receiver electrodes (M, N) is also amplified.

In this geoelectrical survey the Schlumberger-array was used. This array is appropriate to image horizontal layers as is needed for placer prospecting.

The 2D Resistivity imaging system, used for this survey, allows measurements with a depth of up to 100m. With a depth to bedrock of more than 6m, an electrode spacing of 5m can be used for placer surveys. This allows the measuring of large profile lengths in short time with a horizontal measuring resolution of 2.5m. This system has proven itself to be reliable in the determination of the bedrock topography and sedimentary arrangement for placer investigation at the most environmental conditions.

7.3 Processing

Resistivity

The measured Resistivity/IP data were processed with the RES2DINV inversion program⁵.

¹ Constructed and produced by LGM (Germany)

² Ditto

³ Constructed and produced by GEOANALYSIS.DE (Germany)

⁴ Ditto

⁵ Produced by GEOTOMO SOFTWARE SDN. BHD (Malaysia)

7.4 Interpretation

The interpretation of the profiles should be verified by physical prospecting methods such as digging test holes/trenches, drilling, or shafting.

8 Profile image

The 2D Resistivity profile is providing a model of the electrical resistivity of the different ground materials/zones.

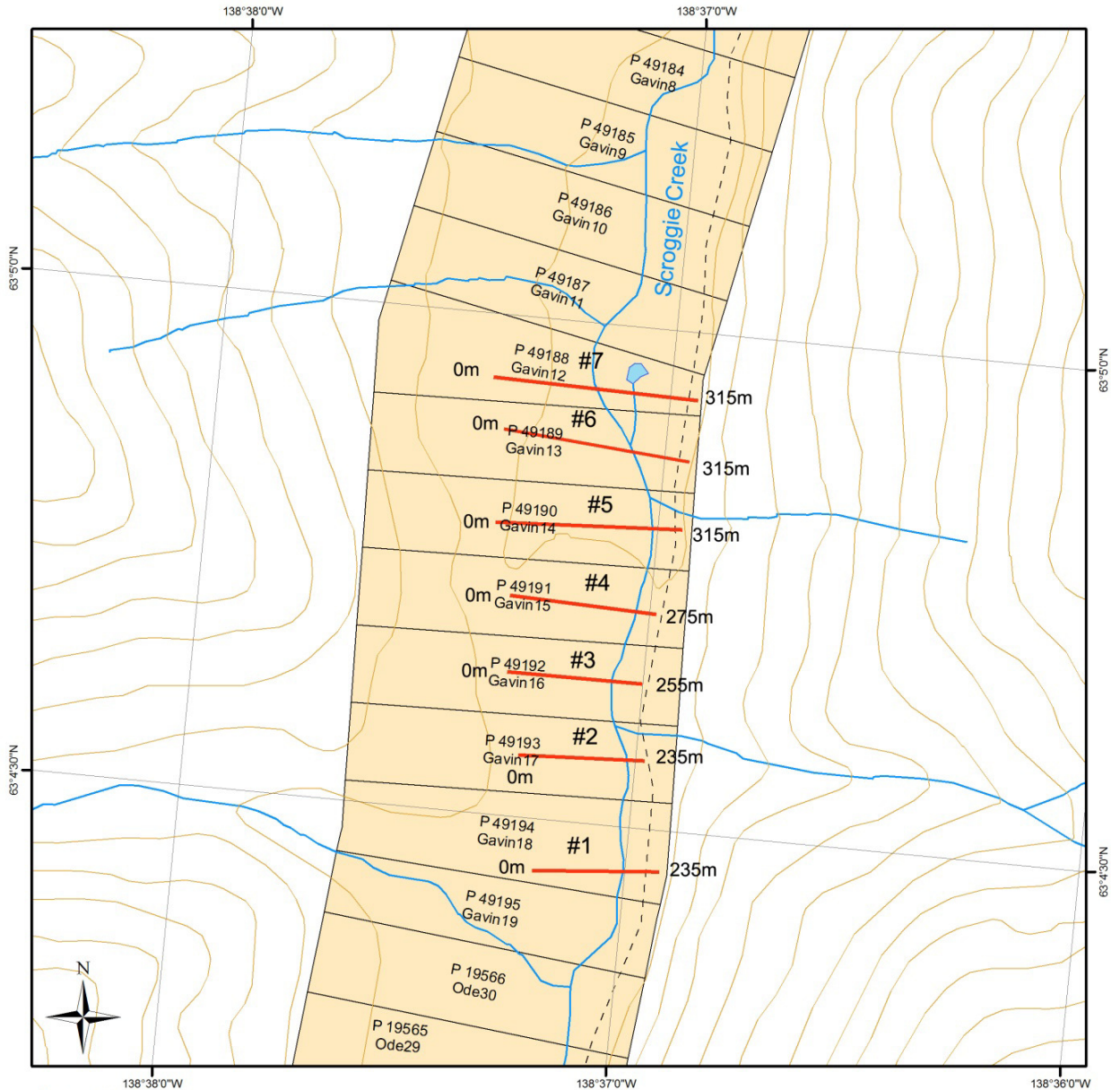
In the Resistivity profiles the interpreted bedrock interfaces are marked with a black line. The dotted black line seen in some profiles represents an alternative secondary interpretation of the bedrock interface estimated to be less likely; in those profiles the black line shows the primary interpretation of the bedrock.

9 Resistivity Survey









Preliminary Note!

The subsurface information of this study is an interpretation and cannot be guaranteed.

9.1 Survey Map⁶



Legend

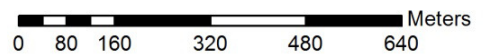
- | | |
|--|---|
|  measuring line | Placer claims |
|  contour line |  Active |
|  watercourse |  Expired |
|  road | |
|  trail | |
|  waterbody | |

Survey Map

115002 (Scroggie Creek)

Universal Transverse Mercator Zone7
North America Datum 1983

Scale 1:10,000



⁶ Government of Canada, Natural Resources Canada, Centre for Topographic Information
<ftp://ftp.geomaticsyukon.ca/Mining>

9.2 Profiles: Interpretation, Recommendation

Line 01

2D Resistivity, Schlumberger array
48 Electrodes: spacing 5m, Horizontal resolution 2.5m
Horizontal and vertical measure in [meter], Iteration error in [%]
Vertical exaggeration in model section display: RES 1.0
Data acquisition: Stefan Ostermaier, 21th Sep 2013
Processing: Stefan Ostermaier, 2nd Nov 2013

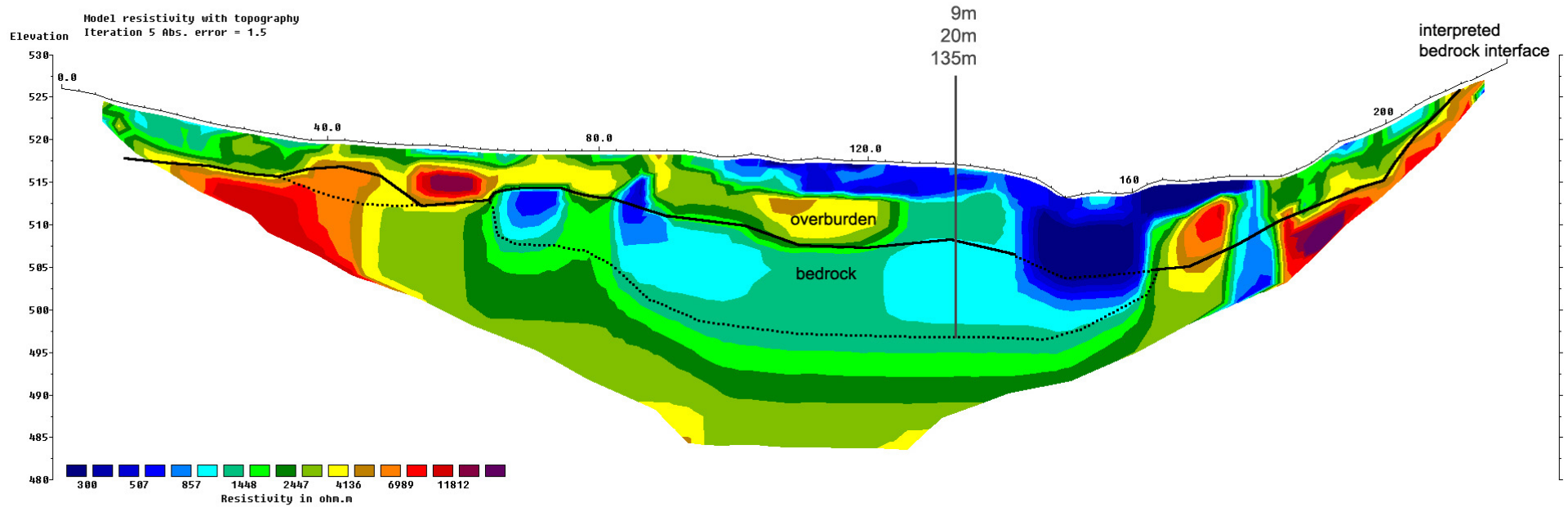
Arctic Geophysics Inc.



Geophysical Surveys • Prospecting • Consulting

www.arctic-geophysics.com
Box 747, Dawson City, Yukon Territory, Y0B 1G0, Canada
Phone: 867-993-3671 (Cell), info@arctic-geophysics.com

Interpretation



This 2D Resistivity measuring result is an interpretation of geophysical data.
We recommend the verification of the profile by drilling or trenching.

Interpretation

Resistivity profile_01 suggests 0-9m of overburden on top of bedrock.

The uppermost resistivity layer up to 9m thick shows a heterogeneous data pattern (blue/green/yellow/brown /orange /red). This layer, interpreted to be **overburden**, seems to be dominated by recent fluvial sedimentation. From 100-180m the blue zone in the interpreted overburden seems to be thawed, which should be due to the creek and the fact, that there was a forest fire which burned most of the insulating plant cover. The interpreted overburden consists most likely of black muck on the surface with a thickness of max 5m at 120m and seems to shrink in thickness towards the left limit of the profile with a interpreted depth of only 2m at 60m. On the right hand side of the profile the overburden consists most likely of colluvium. The overburden with the exception of the blue data zones is expected to be frozen. Also the blue data zone is expected to contain a certain amount of groundwater.

An alternative interpretation would put a massive paleo-channel with a max. depth of 20m in the middle of the valley from 80-160m. This interpretation seems less likely especially considering that a general depth to bedrock has been observed in the mined area app. 1km upstream, however the following profiles seem to support this interpretation, also the tributary to the west of this line seems to have brought quite a lot of sediment into the main valley.

Bedrock outcrops were observed in the field just beyond the end of the measuring line. From 145-165m in the profile there appears to be a

indistinct channel of about 8m depth in the interpreted **bedrock** interface. Due to the thawing influence of the creek the exact depth can only be approximated in the profile.

The interpreted bedrock in the profile shows very heterogeneous resistivity values, which should be due to the inconsistent permafrost conditions and variation in the amount of weathering.

Recommendation

We recommend drilling the possible channel at 110m in the profile where bedrock is expected at 9m depth, or alternatively at 20m.

Line 02

2D Resistivity, Schlumberger array

48 Electrodes: spacing 5m, Horizontal resolution 2.5m

Horizontal and vertical measure in [meter], Iteration error in [%]

Vertical exaggeration in model section display: RES 1.0

Data acquisition: Stefan Ostermaier, 22th Sep 2013

Processing: Stefan Ostermaier, 2nd Nov 2013

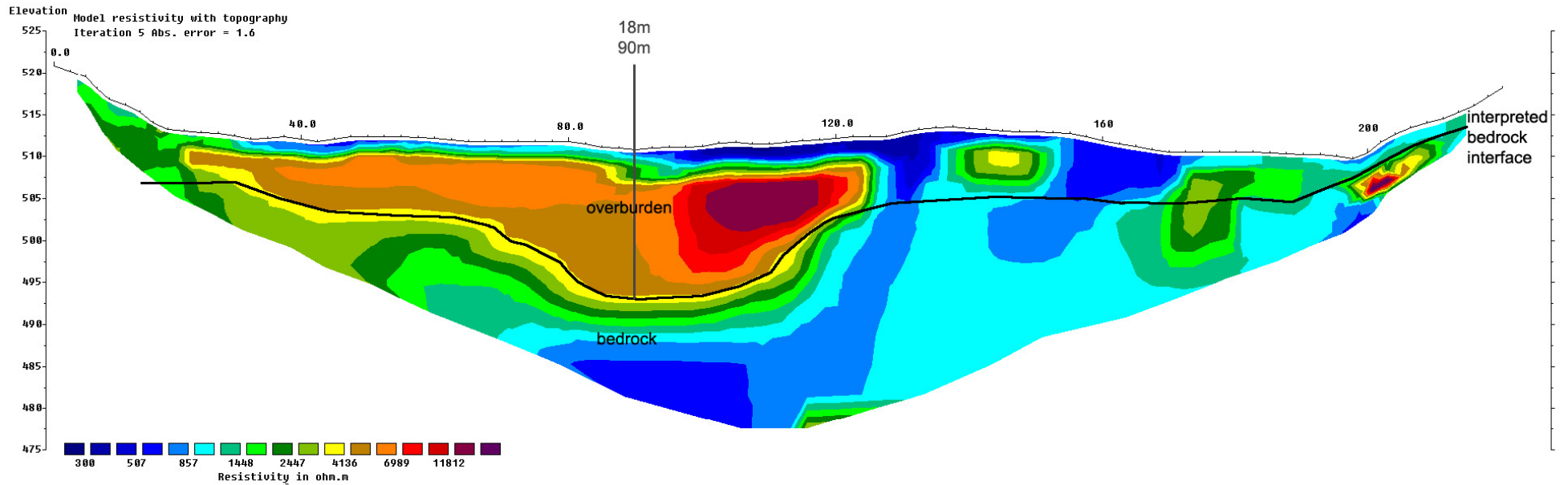
Arctic Geophysics Inc.



Geophysical Surveys • Prospecting • Consulting

www.arctic-geophysics.com
Box 747, Dawson City, Yukon Territory, Y0B 1G0, Canada
Phone: 867-993-3671 (Cell), info@arctic-geophysics.com

Interpretation



This 2D Resistivity measuring result is an interpretation of geophysical data.
We recommend the verification of the profile by drilling or trenching.

Interpretation

Resistivity profile_02 indicates an overburden thickness of 2-18m on top of bedrock.

The topmost resistivity layer, 2-18m thick, is interpreted as **overburden**, and shows a heterogeneous data pattern (blue/green/yellow/brown /orange /red). The interpreted overburden seems to be dominated by recent fluvial sedimentation, most likely consisting of black muck and gravel. The interpreted overburden shows an area with low resistivity values, blue data zone, 1-7m thick, that is interpreted as thawed ground with higher groundwater saturation. The brown-red zone in the interpreted overburden shows higher resistivity values and is most likely permafrost. The thawing of the overburden is most likely caused by the creek and the forest fire in this area.

At 80-110m there is a channel-like structure in the interpreted **bedrock** interface with a depth of up to 18m. This indicates the possibility of a paleochannel.

The interpreted bedrock has relatively homogeneous resistivity data; this indicates that the permafrost conditions in this area should be more consistent and homogeneous.

Recommendation

We recommend drilling at 90m in the profile where bedrock is expected in a depth of 18m.

Line 03

2D Resistivity, Schlumberger array
52 Electrodes: spacing 5m, Horizontal resolution 2.5m
Horizontal and vertical measure in [meter], Iteration error in [%]
Vertical exaggeration in model section display: RES 1.0
Data acquisition: Stefan Ostermaier, 23th Sep 2013
Processing: Stefan Ostermaier, 2nd Nov 2013

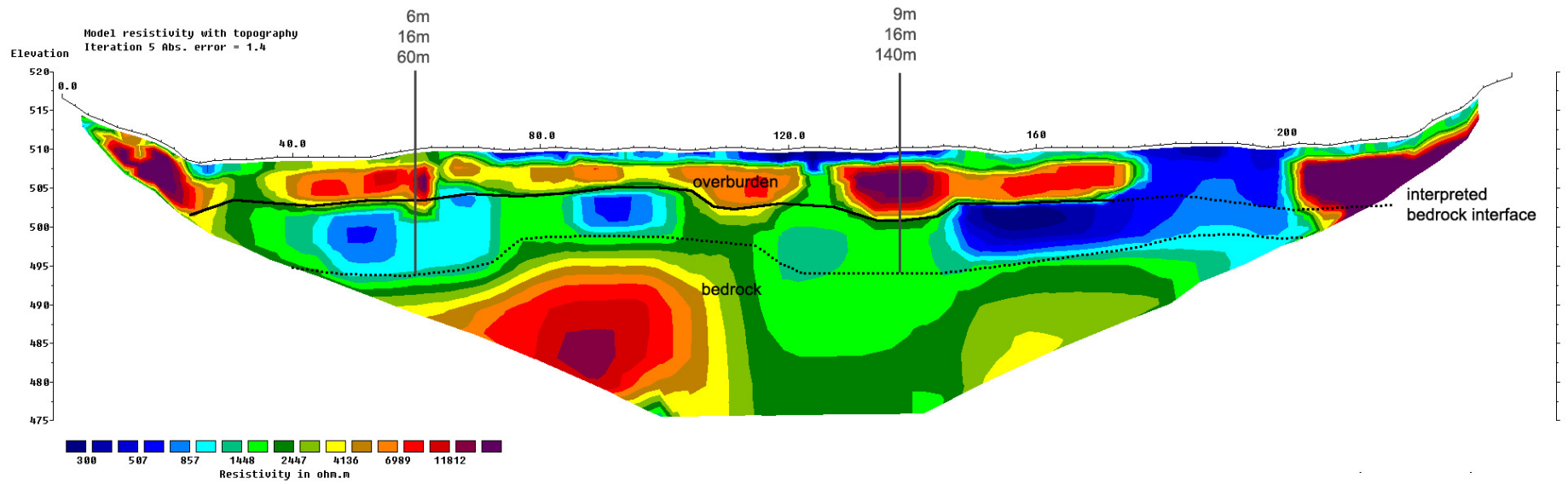
Arctic Geophysics Inc.



Geophysical Surveys • Prospecting • Consulting

www.arctic-geophysics.com
Box 747, Dawson City, Yukon Territory, Y0B 1G0, Canada
Phone: 867-993-3671 (Cell), info@arctic-geophysics.com

Interpretation



This 2D Resistivity measuring result is an interpretation of geophysical data.
We recommend the verification of the profile by drilling or trenching.

Interpretation

Resistivity profile_03 shows an overburden of 5-9m thickness on top of bedrock

The uppermost resistivity layer, 5-9m thick, interpreted as **overburden** shows a seemingly heterogeneous data pattern (blue/green/yellow/brown/orange/red). The blue data layer on the surface indicates thawed ground. The overburden consists most likely of fluvial sediments with black muck on top. It is unlikely that the thawed material on the surface should represent the thickness of black muck, thus it is not possible to differentiate between the black muck and the gravel that is expected underneath. Groundwater saturation is again seen in the area where the creek has thawed the subsurface material.

The blue/green data layer underneath could be overburden or bedrock. If this layer is overburden two paleochannels could be in the bedrock: one at 40-80m and the other one at 120-140m. This would mean that this overburden layer, sitting directly on top of bedrock, would be thawed containing mobile groundwater.

If the blue/green layer is bedrock, the interpreted **bedrock** interface shows two possible paleochannels: one at 105-120m, 9m deep; and a second at 130-145m, also 9m deep. If the blue/green layer is overburden, the two channels described above might be true.

The interpreted bedrock shows heterogeneous resistivity values that are to be expected with the inconsistent permafrost situation.

Recommendation

We recommend drilling at 60m and 140m where bedrock is expected in a depth of 6 (or 16)m and 9 (or 16)m. It is recommended to give the drill hole at 140m higher priority, since there is also a potential paleochannel in the primary interpretation.

Line 04

2D Resistivity, Schlumberger array

56 Electrodes: spacing 5m, Horizontal resolution 2.5m

Horizontal and vertical measure in [meter], Iteration error in [%]

Vertical exaggeration in model section display: RES 1.0

Data acquisition: Stefan Ostermaier, 24th Sep 2013

Processing: Stefan Ostermaier, 2nd Nov 2013

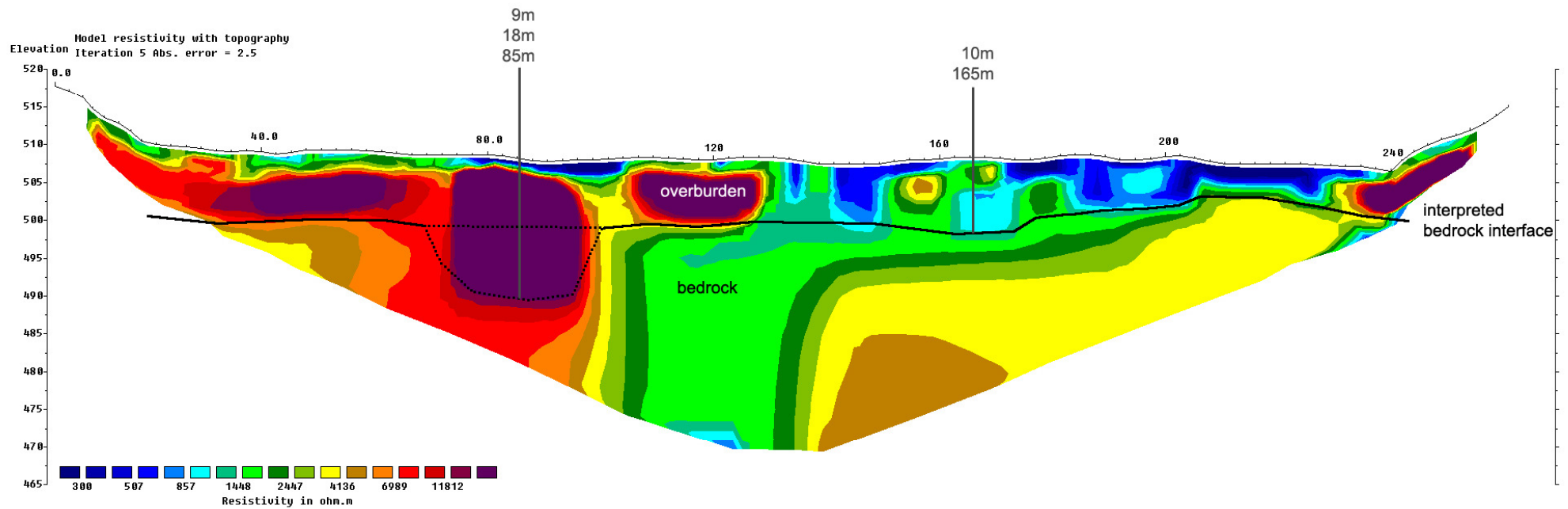
Arctic Geophysics Inc.



Geophysical Surveys • Prospecting • Consulting

www.arctic-geophysics.com
Box 747, Dawson City, Yukon Territory, Y0B 1G0, Canada
Phone: 867-983-3671 (Cell), info@arctic-geophysics.com

Interpretation



This 2D Resistivity measuring result is an interpretation of geophysical data.
We recommend the verification of the profile by drilling or trenching.

Interpretation

Resistivity profile_04 suggests 5-10m of overburden on top of bedrock.

The uppermost resistivity layer, 5-10m thick, again shows a very heterogeneous data pattern and is interpreted as **overburden**. The blue zones of low resistivity material are again in a forest fire zone and additionally there are some areas (80-100m) where the surface is very swampy; also the thawing influence of the creek can be seen in this data. A higher groundwater saturation is to be expected in these areas. The red data zones of high resistivity are interpreted as frozen overburden, again there is no clear distinction between gravel and black muck.

From 75-95m there is a very high resistivity area (violet) where the interpretation of the overburden depth is ambivalent. The bedrock could start at approx. 9m or 18m. If the bedrock is 18m deep there would be a paleochannel.

From 150-175m in the profile there is a slight depression in the interpreted **bedrock** interface with a depth of app. 10m. This might represent a paleochannel.

Bedrock seems to change laterally, however all the actual resistivity values are pretty high, so it is most likely that we only see the influence of the high resistivity data in the overburden that is 'smeared' downwards and seems to indicate a false bedrock change.

Recommendation

We recommend drilling at 165m to check the possible existence of a interpreted paleochannel, 10m deep. For completeness sake a drill hole at 85m in the unlikely channel should also be considered, just to make sure nothing is missed; if there should be a second channel, the depth to bedrock would be 18m.

Line 05

2D Resistivity, Schlumberger array
64 Electrodes: spacing 5m, Horizontal resolution 2.5m
Horizontal and vertical measure in [meter], Iteration error in [%]
Vertical exaggeration in model section display: RES 1.0
Data acquisition: Stefan Ostermaier, 25th Sep 2013
Processing: Stefan Ostermaier, 2nd Nov 2013

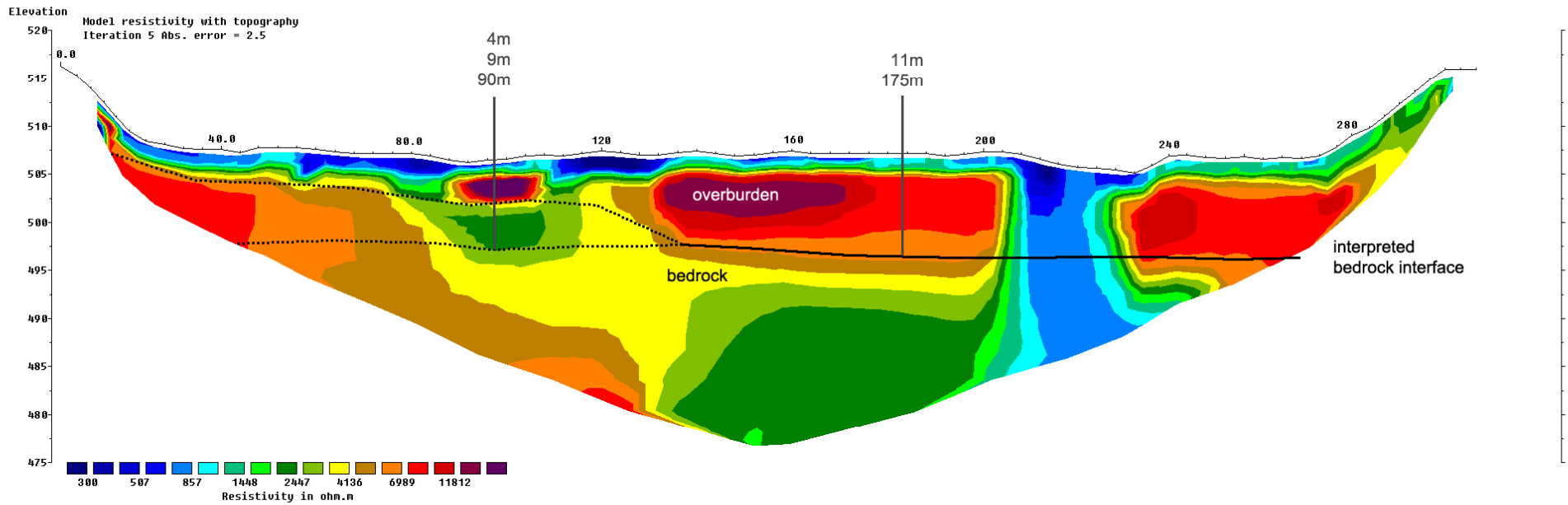
Arctic Geophysics Inc.



Geophysical Surveys • Prospecting • Consulting

www.arctic-geophysics.com
Box 747, Dawson City, Yukon Territory, Y0B 1G0, Canada
Phone: 867-993-3671 (Cell), info@arctic-geophysics.com

Interpretation



This 2D Resistivity measuring result is an interpretation of geophysical data.
We recommend the verification of the profile by drilling or trenching.

Interpretation

Resistivity profile_05 suggests 5-11m of overburden on top of bedrock.

The uppermost resistivity layer, 3-11m thick, with changing resistivity values (blue to red), is interpreted as **overburden**. Most of this deposit is probably thawed material and is right on the surface where there is swampy in this profile; the rest is mainly in the area of the creek where the flowing water seems to have thawed out the permafrost. The rest of the interpreted overburden is of higher resistivity (yellow to red) and is most likely frozen gravel with a layer of black muck on top that cannot be differentiated.

From the beginning of the profile to 130m the bedrock could be 4 or 9m deep. In case it would be 4 m deep, there would be a bedrock bench.

The interpreted **bedrock** interface does not suggest any channel, however, there could be the aforementioned bench that ends at 130m in the profile.

The bedrock itself shows heterogeneous resistivity data likely indicating various permafrost and mineral condition.

Recommendation

We recommend drilling somewhere between 130m and 200m to test the bedrock depth in the valley.

An additional drill hole somewhere on the possible bench between 40m and 130m should be considered to ascertain which alternative bedrock interface is the correct one.

Line 06

2D Resistivity, Schlumberger array

64 Electrodes: spacing 5m, Horizontal resolution 2.5m

Horizontal and vertical measure in [meter], Iteration error in [%]

Vertical exaggeration in model section display: RES 1.0

Data acquisition: Stefan Ostermaier, 27th Sep 2013

Processing: Stefan Ostermaier, 2nd Nov 2013

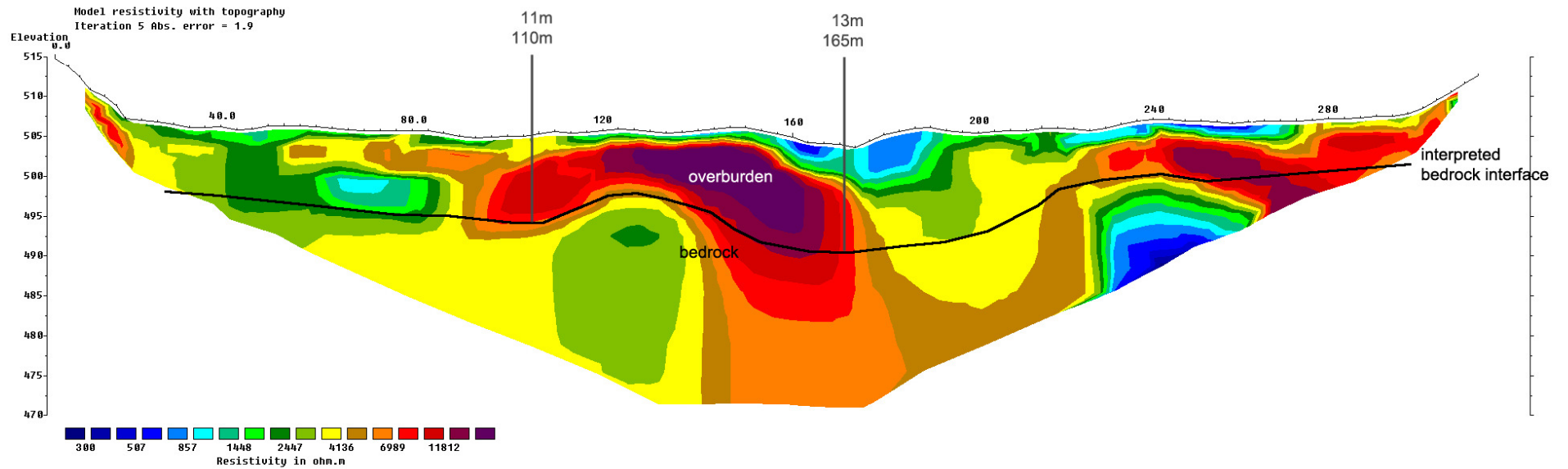
Arctic Geophysics Inc.



Geophysical Surveys • Prospecting • Consulting

www.arctic-geophysics.com
Box 747, Dawson City, Yukon Territory, Y0B 1G0, Canada
Phone: 867-993-3671 (Cell), info@arctic-geophysics.com

Interpretation



This 2D Resistivity measuring result is an interpretation of geophysical data.
We recommend the verification of the profile by drilling or trenching.

Interpretation

Resistivity profile_06 indicates an overburden thickness of 5-13m over bedrock.

The uppermost resistivity layer, 5-13m, shows a heterogeneous data pattern (blue/green/yellow/brown /orange /red). The overburden is most likely dominated by fluvial sediments covered in a 2-3m thick layer of black muck. In this profile it is again difficult to differentiate between these layers, however, they were observed throughout the survey during the field work. Again the blue zones in the profile are interpreted as thawed material close to the surface and in the vicinity of the creek. The only anomaly in the 'usual' data pattern is the blue lens at 70m in the profile, in a depth of up to 10m. This could represent a channel in the sedimentary filling of the valley bottom that is thawed and now carries groundwater.

The interpreted **bedrock** interface shows two possible depressions that are divided by a hump in the bedrock. The possible main channel is located at 150-220m, with a depth of up to 13m. The secondary channel from 40-110m seems to be 11m deep.

Recommendation

We recommend drilling at 165m in the profile where bedrock is expected at 13m depth.

A second drill hole at 110m is also indicated to see if the valley bottom to the left of the bedrock hump is gold bearing.

Line 07

2D Resistivity, Schlumberger array

64 Electrodes: spacing 5m, Horizontal resolution 2.5m

Horizontal and vertical measure in [meter], Iteration error in [%]

Vertical exaggeration in model section display: RES 1.0

Data acquisition: Stefan Ostermaier, 28th Sep 2013

Processing: Stefan Ostermaier, 2nd Nov 2013

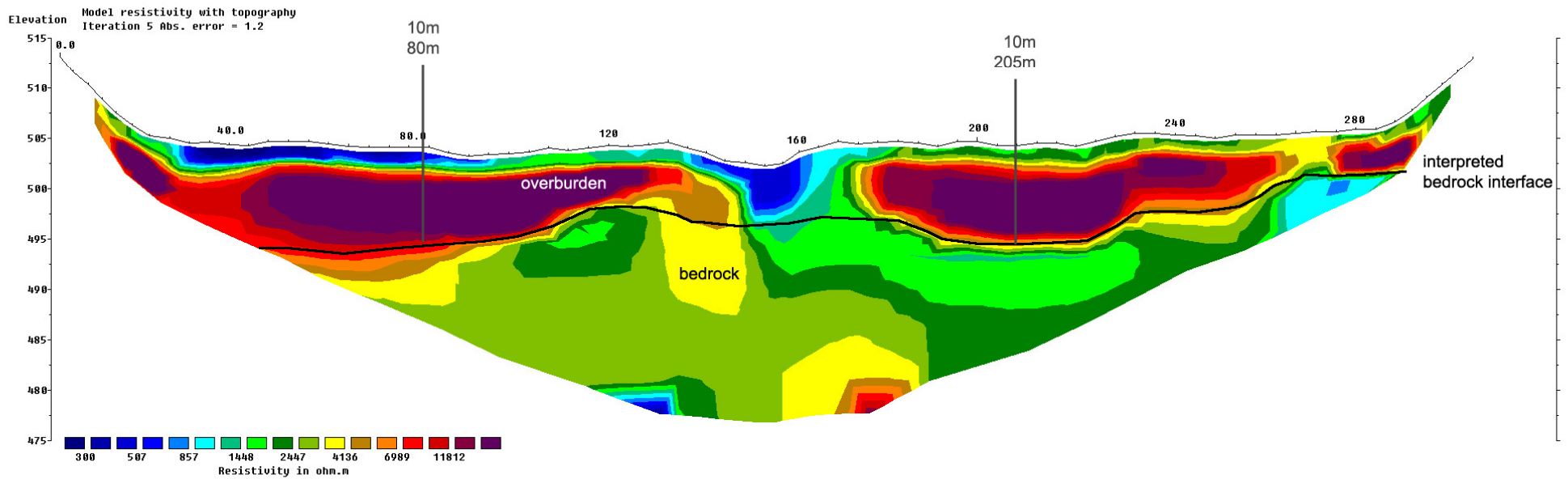
Arctic Geophysics Inc.



Geophysical Surveys • Prospecting • Consulting

www.arctic-geophysics.com
Box 747, Dawson City, Yukon Territory, Y0B 1G0, Canada
Phone: 867-993-3671 (Cell), info@arctic-geophysics.com

Interpretation



This 2D Resistivity measuring result is an interpretation of geophysical data.
We recommend the verification of the profile by drilling or trenching.

Interpretation

Resistivity profile_07 suggests 4-10m of overburden on top of bedrock.

The interpreted **overburden** apparently consists of two distinct and well defined layers. The topmost layer (blue/green) with a thickness of 1-2m should consist of thawed overburden material, probably black muck that is water saturated.

The second layer with high resistivity values (red/violet) should consist of frozen black muck and frozen gravel. The only exception in this layering is the area around the creek where the whole overburden package seems to have been thawed by the creeks warmth.

The interpreted **bedrock** interface shows two possible paleochannels, one at 40-110m and a second at 190-230m both with a depth of up to 10m, and divided by a bedrock hump that should be the continuation of the one seen in profile_06.

The bedrock itself seems to be fairly homogeneous with medium high resistivity values.

Recommendation

We recommend drilling at 205m in the profile where bedrock is expected at 10m depth.

A second drill hole at 80m with the same expected bedrock depth is also recommended.

10 Conclusion

The following table shows an **estimation** of the value of the interpreted placer targets (paleochannels). This estimation includes two parameters: First, the **Likeliness of the Interpretation**, this means an estimation of the likeliness if the profile interpretation formulated above is true or not. Second, the **Placer Potential**, this describes an estimation of the possible placer gold value of the interpreted placer targets prospected in this survey. Both parameters are developed by the Arctic Geophysics team based on the following aspects: data structure in the resistivity profile, geological background, and historical/current mining.

The Placer Potential is classified in: low, moderate, fair, good, high, very high.

Resistivity Line	Channel Depth / Location	Likeliness of Interpretation	Placer Potential
01	9m (20) / 110m	moderate (moderate)	Fair (good)

Resistivity Line	Channel Depth / Location	Likeliness of Interpretation	Placer Potential
02*	18m / 90m	high	high

Resistivity Line	Channel Depth / Location	Likeliness of Interpretation	Placer Potential
03	6m (16m) / 60m 9m (16m) / 140m	moderate (moderate) moderate (moderate)	fair (good) good (fair)

Resistivity Line	Channel Depth / Location	Likeliness of Interpretation	Placer Potential
04*	9m (18) / 85m 10m / 140m	moderate (low) moderate	low (high) good

Resistivity Line	Channel Depth / Location	Likeliness of Interpretation	Placer Potential
05	4m (9m) / 90m 11m / 175m	moderate (moderate) high	Moderate moderate-low

Resistivity Line	Channel Depth / Location	Likeliness of Interpretation	Placer Potential
06	11m / 110m 13m / 165m	high high	high very high

Resistivity Line	Channel Depth / Location	Likeliness of Interpretation	Placer Potential
07	10m / 80m 10m / 205m	high high	high high

11 References

11.1 Literature

Chesterman W. Ch. and Lowe K.E. Field Guide to Rocks and Minerals - North America, Chanticleer Press Inc. New York 2007

Evans A.M. Erzlagerstättenkunde, Ferdinand Enke Verlag Stuttgart (1992)

Griffiths, D.H.,Turnbull, J. and Olayinka,A.I. Two dimensional resistivity mapping with a computer-controlled array, First Break 8: 121-129 (1990)

Griffiths, D.H. and Barker, R.D. Two-dimensional resistivity imaging and modeling in areas of complex geology. Journal of Applied Geophysics 29 : 211 - 226. (1993)

Keller, G.V. and Frischknecht, F.C. Electrical methods in geophysical prospecting. Oxford: Pergamon Press Inc. (1966)

Loke M.H. and Barker R.D. Rapid least-squares inversion of apparent resistivity pseudosections by a quasi-Newton method. Geophysical Prospecting 44: 131-152 (1996)

Press F., Siever R., Grotzinger J., Thomas H.J. Understanding Earth, W.H. Freeman and Company, New York (2004)

Robb L. Introducing to Ore-Forming Processes, Backwell Science Ltd., 2005

11.2 Maps

Government of Canada, Natural Resources Canada, Centre for Topographic Information

<ftp://ftp.geomaticsyukon.ca/Mining>

12 Qualification

Philipp Moll

Box 747, Dawson City, Yukon, Y0B 1G0

Phone: 001-867-993 3671 (Canada)

01149 (0)781 -9705893 (Germany)

E-mail: philipp.moll@arctic-geophysics.com

- Study of geology, University of Freiburg, Germany
- Visit of geophysical field courses, University of Karlsruhe, Germany
- Working for Arctic Geophysics Inc. since June 2007 (foundation)
Geophysical field surveys using 2D Resistivity, Induced Polarization, Magnetics: Data acquisition, processing, interpretation, documentation
- Geophysical surveying for Mining Exploration in the Yukon since 2005, and geological prospecting for precious metals and minerals in the Yukon, NWTs, and Alaska since 1989
- Publications:
 - a. Numerous Assessment Reports about geophysical surveys done for Yukon mining companies, filed at Yukon Mining Recorder
 - b. Geophysical survey (45 field days) for Yukon Government: Yukon Geological Survey,
 - c. <http://virtua.gov.yk.ca:8080/lib/item?id=chamo:164867&theme=emr> "2D resistivity / IP data release for placer mining and shallow quartz mining - Yukon 2010 : Los Angeles Creek, Wolf Creek, Ladue River, and Rice Creek ; Philipp Moll and Stefan Ostermaier"

13 Confirmation

I have prepared this report entitled "Geophysical Survey with 2D Resistivity for Placer Investigation, Dawson Range 2013" for assessment credit, and have collected and reviewed the data. The survey was carried out by Arctic Geophysics Inc.

Schutterwald, Germany, 1st Dec 2013

"Signed" Philipp Moll



Philipp Moll

14 Addendum

14.1 Cost

Arctic Geophysics Inc.



Geophysical Surveys • Prospecting • Consulting

Shannon and Alan Radford

Box 1040

Dawson

YT

Y0B1G0

Arctic Geophysics Inc.

Box 747

Dawson City, Yukon

Y0B-1G0, Canada

Phone: 867-993-3671 (Cell)

info@arctic-geophysics.com

www.arctic-geophysics.com

Survey Location: Scroggie Creek, 115002P, Dawson Mining District

Placer Claim Group: Ode 50-64, Gavin 1-19

Invoice # 20131028

Date: 28th

Oct, 2013

Services provided: 2D Resistivity Survey

Quantity	Description	Amount \$CAN
Organisation		
1 day	Survey leader, Vehicle, Gas (360.--/day)	360.--
Geophysical Survey		
3 days	Mob/Demob, building camp, transportation of equipment , cutting lines, 400.--/day	1200.--
8 days	RES/IP imaging system: Earth resistivity meter, 500m cable line, 100 electrodes + control modules, computer, software, GPS, electric power supply + Survey leader, 900.--/day;	7 200.--
11 days	Camp + outdoor equipment, 80.-- /day	880.--

	Gas, propane	65.--
11 days	Satellite phone 25.--/day	275.--
	145 min, 1.99/min	288.55
11 days	Food 20.--/day	220.--
Documentation		
1 ½ day	Data processing, interpretation, first docu, 300.--/ day	450.--
2 ½ days	Writing report \$ 300.-- / day	750.--
	Printing / Binding /Shipping	60.--
		NET Amount \$ 11 748.55
GST Number 846363216RT0001		G.S.T. (5%) \$ 587.42
Total Due		\$ 12 335.97

14.2 GPS-Data

Line01

Electrode No.	Location in Profile [m]	GPS-Coordinates UTM NAD83 Zone 7	GPS-Accuracy [m]	Post [*]
1	0	7V 620221 6996076	3	*
2	5	7V 620227 6996078	3	
3	10	7V 620231 6996077	3	
4	15	7V 620237 6996078	3	
5	20	7V 620240 6996078	3	
6	25	7V 620245 6996078	3	
7	30	7V 620252 6996080	3	
8	35	7V 620255 6996080	3	
9	40	7V 620262 6996080	3	
10	45	7V 620265 6996082	3	
11	50	7V 620271 6996082	3	
12	55	7V 620277 6996084	3	
13	60	7V 620281 6996083	3	
14	65	7V 620285 6996083	3	
15	70	7V 620292 6996085	3	
16	75	7V 620297 6996084	3	
17	80	7V 620300 6996087	3	
18	85	7V 620306 6996087	3	
19	90	7V 620311 6996086	3	
20	95	7V 620315 6996087	3	
21	100	7V 620320 6996089	3	
22	105	7V 620327 6996090	3	
23	110	7V 620331 6996091	3	
24	115	7V 620335 6996091	3	
25	120	7V 620340 6996092	3	
26	125	7V 620347 6996092	3	
27	130	7V 620352 6996093	3	
28	135	7V 620357 6996093	3	
29	140	7V 620362 6996093	3	
30	145	7V 620366 6996094	3	
31	150	7V 620370 6996094	3	
32	155	7V 620376 6996096	3	
33	160	7V 620382 6996097	3	
34	165	7V 620386 6996097	3	
35	170	7V 620392 6996096	3	
36	175	7V 620396 6996098	3	
37	180	7V 620400 6996099	3	
38	185	7V 620406 6996100	3	
39	190	7V 620411 6996100	3	
40	195	7V 620416 6996100	3	
41	200	7V 620421 6996102	3	
42	205	7V 620427 6996102	3	

Electrode No.	Location in Profile [m]	GPS-Coordinates UTM NAD83 Zone 7	GPS-Accuracy [m]	Post [*]
43	210	7V 620430 6996103	3	
44	215	7V 620437 6996104	3	
45	220	7V 620440 6996105	3	
46	225	7V 620447 6996105	3	
47	230	7V 620452 6996106	3	
48	235	7V 620457 6996104	3	*

Line02

Electrode No.	Location in Profile [m]	GPS-Coordinates UTM NAD83 Zone 7	GPS-Accuracy [m]	Post [*]
1	0	7V 620167 6996286	3	*
2	5	7V 620173 6996285	3	
3	10	7V 620177 6996286	3	
4	15	7V 620181 6996288	3	
5	20	7V 620187 6996287	3	
6	25	7V 620191 6996287	3	
7	30	7V 620198 6996289	3	
8	35	7V 620202 6996290	3	
9	40	7V 620207 6996288	3	
10	45	7V 620212 6996291	3	
11	50	7V 620217 6996291	3	
12	55	7V 620221 6996290	3	
13	60	7V 620228 6996292	3	
14	65	7V 620232 6996292	3	
15	70	7V 620237 6996291	3	
16	75	7V 620243 6996292	3	
17	80	7V 620246 6996292	3	
18	85	7V 620252 6996293	3	
19	90	7V 620257 6996294	3	
20	95	7V 620262 6996294	3	
21	100	7V 620267 6996293	3	
22	105	7V 620271 6996295	3	
23	110	7V 620278 6996294	3	
24	115	7V 620282 6996297	3	
25	120	7V 620286 6996295	3	
26	125	7V 620293 6996297	3	
27	130	7V 620297 6996298	3	
28	135	7V 620302 6996298	3	
29	140	7V 620307 6996297	3	
30	145	7V 620312 6996298	3	
31	150	7V 620318 6996299	3	
32	155	7V 620321 6996299	3	
33	160	7V 620327 6996300	3	
34	165	7V 620333 6996300	3	
35	170	7V 620337 6996300	3	
36	175	7V 620342 6996300	3	
37	180	7V 620346 6996302	3	
38	185	7V 620353 6996301	3	
39	190	7V 620358 6996303	3	
40	195	7V 620361 6996301	3	
41	200	7V 620366 6996304	3	
42	205	7V 620373 6996302	3	
43	210	7V 620377 6996305	3	
44	215	7V 620381 6996303	3	
45	220	7V 620388 6996303	3	

Electrode No.	Location in Profile [m]	GPS-Coordinates UTM NAD83 Zone 7	GPS-Accuracy [m]	Post [*]
46	225	7V 620391 6996305	3	
47	230	7V 620396 6996304	3	
48	235	7V 620402 6996306	3	*

Line03

Electrode No.	Location in Profile [m]	GPS-Coordinates UTM NAD83 Zone 7	GPS-Accuracy [m]	Post [*]
1	0	7V 620126 6996436	3	*
2	5	7V 620131 6996435	3	
3	10	7V 620137 6996437	3	
4	15	7V 620141 6996438	3	
5	20	7V 620145 6996437	3	
6	25	7V 620150 6996436	3	
7	30	7V 620156 6996438	3	
8	35	7V 620160 6996436	3	
9	40	7V 620165 6996438	3	
10	45	7V 620172 6996438	3	
11	50	7V 620175 6996439	3	
12	55	7V 620182 6996438	3	
13	60	7V 620187 6996440	3	
14	65	7V 620190 6996438	3	
15	70	7V 620196 6996438	3	
16	75	7V 620202 6996440	3	
17	80	7V 620205 6996440	3	
18	85	7V 620210 6996440	3	
19	90	7V 620216 6996441	3	
20	95	7V 620222 6996441	3	
21	100	7V 620227 6996439	3	
22	105	7V 620231 6996441	3	
23	110	7V 620237 6996440	3	
24	115	7V 620240 6996440	3	
25	120	7V 620245 6996440	3	
26	125	7V 620250 6996442	3	
27	130	7V 620256 6996442	3	
28	135	7V 620260 6996441	3	
29	140	7V 620267 6996442	3	
30	145	7V 620272 6996443	3	
31	150	7V 620276 6996441	3	
32	155	7V 620282 6996442	3	
33	160	7V 620286 6996443	3	
34	165	7V 620290 6996442	3	
35	170	7V 620297 6996443	3	
36	175	7V 620300 6996443	3	
37	180	7V 620306 6996443	3	
38	185	7V 620312 6996444	3	
39	190	7V 620316 6996445	3	
40	195	7V 620322 6996445	3	
41	200	7V 620326 6996445	3	
42	205	7V 620332 6996446	3	
43	210	7V 620335 6996444	3	
44	215	7V 620341 6996444	3	
45	220	7V 620345 6996445	3	

Electrode No.	Location in Profile [m]	GPS-Coordinates UTM NAD83 Zone 7	GPS-Accuracy [m]	Post [*]
46	225	7V 620350 6996446	3	
47	230	7V 620357 6996446	3	
48	235	7V 620360 6996447	3	
49	240	7V 620366 6996445	3	
50	245	7V 620371 6996446	3	
51	250	7V 620377 6996447	3	
52	255	7V 620381 6996447	3	*

Line04

Electrode No.	Location in Profile [m]	GPS-Coordinates UTM NAD83 Zone 7	GPS-Accuracy [m]	Post [*]
1	0	7V 620112 6996578	3	*
2	5	7V 620116 6996579	3	
3	10	7V 620123 6996578	3	
4	15	7V 620127 6996579	3	
5	20	7V 620131 6996577	3	
6	25	7V 620136 6996578	3	
7	30	7V 620141 6996578	3	
8	35	7V 620146 6996578	3	
9	40	7V 620153 6996579	3	
10	45	7V 620156 6996579	3	
11	50	7V 620161 6996578	3	
12	55	7V 620167 6996577	3	
13	60	7V 620173 6996577	3	
14	65	7V 620176 6996579	3	
15	70	7V 620181 6996579	3	
16	75	7V 620186 6996577	3	
17	80	7V 620192 6996577	3	
18	85	7V 620198 6996577	3	
19	90	7V 620203 6996578	3	
20	95	7V 620207 6996577	3	
21	100	7V 620213 6996577	3	
22	105	7V 620217 6996578	3	
23	110	7V 620221 6996578	3	
24	115	7V 620228 6996579	3	
25	120	7V 620231 6996579	3	
26	125	7V 620236 6996577	3	
27	130	7V 620241 6996577	3	
28	135	7V 620247 6996579	3	
29	140	7V 620252 6996578	3	
30	145	7V 620256 6996580	3	
31	150	7V 620261 6996578	3	
32	155	7V 620268 6996579	3	
33	160	7V 620272 6996580	3	
34	165	7V 620277 6996578	3	
35	170	7V 620281 6996578	3	
36	175	7V 620288 6996578	3	
37	180	7V 620293 6996579	3	
38	185	7V 620298 6996580	3	
39	190	7V 620303 6996578	3	
40	195	7V 620306 6996580	3	
41	200	7V 620312 6996579	3	
42	205	7V 620318 6996580	3	
43	210	7V 620322 6996580	3	
44	215	7V 620327 6996580	3	
45	220	7V 620331 6996578	3	

Electrode No.	Location in Profile [m]	GPS-Coordinates UTM NAD83 Zone 7	GPS-Accuracy [m]	Post [*]
46	225	7V 620338 6996580	3	
47	230	7V 620342 6996579	3	
48	235	7V 620348 6996579	3	
49	240	7V 620351 6996578	3	
50	245	7V 620358 6996579	3	
51	250	7V 620363 6996579	3	
52	255	7V 620368 6996578	3	
53	260	7V 620372 6996580	3	
54	265	7V 620376 6996580	3	
55	270	7V 620383 6996578	3	
56	275	7V 620387 6996579	3	*

Line05

Electrode No.	Location in Profile [m]	GPS-Coordinates UTM NAD83 Zone 7	GPS-Accuracy [m]	Post [*]
1	0	7V 620097 6996712	3	*
2	5	7V 620103 6996713	3	
3	10	7V 620106 6996712	3	
4	15	7V 620113 6996712	3	
5	20	7V 620118 6996713	3	
6	25	7V 620122 6996715	3	
7	30	7V 620128 6996713	3	
8	35	7V 620133 6996715	3	
9	40	7V 620137 6996714	3	
10	45	7V 620141 6996716	3	
11	50	7V 620147 6996717	3	
12	55	7V 620153 6996717	3	
13	60	7V 620158 6996716	3	
14	65	7V 620162 6996718	3	
15	70	7V 620167 6996717	3	
16	75	7V 620172 6996720	3	
17	80	7V 620178 6996719	3	
18	85	7V 620183 6996719	3	
19	90	7V 620186 6996721	3	
20	95	7V 620191 6996720	3	
21	100	7V 620198 6996722	3	
22	105	7V 620202 6996721	3	
23	110	7V 620207 6996721	3	
24	115	7V 620211 6996722	3	
25	120	7V 620217 6996722	3	
26	125	7V 620223 6996723	3	
27	130	7V 620226 6996723	3	
28	135	7V 620233 6996724	3	
29	140	7V 620238 6996726	3	
30	145	7V 620242 6996726	3	
31	150	7V 620246 6996724	3	
32	155	7V 620252 6996726	3	
33	160	7V 620258 6996727	3	
34	165	7V 620261 6996726	3	
35	170	7V 620267 6996727	3	
36	175	7V 620271 6996727	3	
37	180	7V 620276 6996728	3	
38	185	7V 620282 6996730	3	
39	190	7V 620287 6996728	3	
40	195	7V 620292 6996731	3	
41	200	7V 620296 6996731	3	
42	205	7V 620301 6996729	3	
43	210	7V 620308 6996732	3	
44	215	7V 620312 6996732	3	
45	220	7V 620317 6996731	3	

Electrode No.	Location in Profile [m]	GPS-Coordinates UTM NAD83 Zone 7	GPS-Accuracy [m]	Post [*]
46	225	7V 620321 6996731	3	
47	230	7V 620328 6996732	3	
48	235	7V 620332 6996732	3	
49	240	7V 620338 6996734	3	
50	245	7V 620343 6996733	3	
51	250	7V 620347 6996736	3	
52	255	7V 620351 6996736	3	
53	260	7V 620357 6996735	3	
54	265	7V 620361 6996737	3	
55	270	7V 620366 6996737	3	
56	275	7V 620371 6996737	3	
57	280	7V 620376 6996736	3	
58	285	7V 620383 6996739	3	
59	290	7V 620388 6996737	3	
60	295	7V 620393 6996740	3	
61	300	7V 620396 6996738	3	
62	305	7V 620402 6996740	3	
63	310	7V 620407 6996740	3	
64	315	7V 620412 6996741	3	*

Line06

Electrode No.	Location in Profile [m]	GPS-Coordinates UTM NAD83 Zone 7	GPS-Accuracy [m]	Post [*]
1	0	7V 620095 6996884	3	*
2	5	7V 620100 6996885	3	
3	10	7V 620104 6996884	3	
4	15	7V 620110 6996885	3	
5	20	7V 620114 6996884	3	
6	25	7V 620121 6996885	3	
7	30	7V 620124 6996885	3	
8	35	7V 620129 6996886	3	
9	40	7V 620135 6996885	3	
10	45	7V 620140 6996887	3	
11	50	7V 620144 6996886	3	
12	55	7V 620149 6996887	3	
13	60	7V 620155 6996886	3	
14	65	7V 620159 6996888	3	
15	70	7V 620165 6996886	3	
16	75	7V 620169 6996888	3	
17	80	7V 620175 6996889	3	
18	85	7V 620180 6996887	3	
19	90	7V 620186 6996887	3	
20	95	7V 620191 6996889	3	
21	100	7V 620194 6996890	3	
22	105	7V 620199 6996888	3	
23	110	7V 620205 6996889	3	
24	115	7V 620211 6996890	3	
25	120	7V 620216 6996891	3	
26	125	7V 620221 6996889	3	
27	130	7V 620224 6996891	3	
28	135	7V 620229 6996889	3	
29	140	7V 620234 6996889	3	
30	145	7V 620241 6996890	3	
31	150	7V 620246 6996892	3	
32	155	7V 620250 6996892	3	
33	160	7V 620255 6996891	3	
34	165	7V 620261 6996890	3	
35	170	7V 620264 6996892	3	
36	175	7V 620269 6996891	3	
37	180	7V 620276 6996891	3	
38	185	7V 620279 6996892	3	
39	190	7V 620285 6996893	3	
40	195	7V 620291 6996894	3	
41	200	7V 620296 6996893	3	
42	205	7V 620299 6996893	3	
43	210	7V 620306 6996893	3	
44	215	7V 620310 6996893	3	
45	220	7V 620314 6996895	3	

Electrode No.	Location in Profile [m]	GPS-Coordinates UTM NAD83 Zone 7	GPS-Accuracy [m]	Post [*]
46	225	7V 620319 6996893	3	
47	230	7V 620324 6996895	3	
48	235	7V 620331 6996894	3	
49	240	7V 620334 6996895	3	
50	245	7V 620340 6996894	3	
51	250	7V 620344 6996894	3	
52	255	7V 620349 6996894	3	
53	260	7V 620356 6996894	3	
54	265	7V 620359 6996895	3	
55	270	7V 620364 6996896	3	
56	275	7V 620370 6996897	3	
57	280	7V 620374 6996897	3	
58	285	7V 620380 6996898	3	
59	290	7V 620384 6996898	3	
60	295	7V 620389 6996897	3	
61	300	7V 620396 6996897	3	
62	305	7V 620401 6996897	3	
63	310	7V 620406 6996899	3	
64	315	7V 620410 6996898	3	*

Line07

Electrode No.	Location in Profile [m]	GPS-Coordinates UTM NAD83 Zone 7	GPS-Accuracy [m]	Post [*]
1	0	7V 620098 6996977	3	*
2	5	7V 620102 6996977	3	
3	10	7V 620107 6996978	3	
4	15	7V 620114 6996977	3	
5	20	7V 620119 6996978	3	
6	25	7V 620124 6996979	3	
7	30	7V 620127 6996977	3	
8	35	7V 620134 6996977	3	
9	40	7V 620137 6996977	3	
10	45	7V 620142 6996978	3	
11	50	7V 620147 6996978	3	
12	55	7V 620154 6996977	3	
13	60	7V 620158 6996978	3	
14	65	7V 620162 6996979	3	
15	70	7V 620169 6996980	3	
16	75	7V 620174 6996980	3	
17	80	7V 620178 6996980	3	
18	85	7V 620184 6996980	3	
19	90	7V 620187 6996979	3	
20	95	7V 620193 6996979	3	
21	100	7V 620197 6996978	3	
22	105	7V 620203 6996978	3	
23	110	7V 620209 6996978	3	
24	115	7V 620214 6996979	3	
25	120	7V 620219 6996980	3	
26	125	7V 620223 6996979	3	
27	130	7V 620227 6996980	3	
28	135	7V 620232 6996980	3	
29	140	7V 620237 6996981	3	
30	145	7V 620242 6996979	3	
31	150	7V 620247 6996979	3	
32	155	7V 620252 6996979	3	
33	160	7V 620258 6996980	3	
34	165	7V 620264 6996981	3	
35	170	7V 620267 6996980	3	
36	175	7V 620272 6996981	3	
37	180	7V 620277 6996982	3	
38	185	7V 620283 6996982	3	
39	190	7V 620289 6996981	3	
40	195	7V 620294 6996980	3	
41	200	7V 620297 6996982	3	
42	205	7V 620304 6996982	3	
43	210	7V 620309 6996980	3	
44	215	7V 620312 6996980	3	
45	220	7V 620318 6996981	3	

Electrode No.	Location in Profile [m]	GPS-Coordinates UTM NAD83 Zone 7	GPS-Accuracy [m]	Post [*]
46	225	7V 620324 6996980	3	
47	230	7V 620327 6996982	3	
48	235	7V 620334 6996981	3	
49	240	7V 620337 6996982	3	
50	245	7V 620343 6996982	3	
51	250	7V 620347 6996983	3	
52	255	7V 620352 6996981	3	
53	260	7V 620357 6996983	3	
54	265	7V 620363 6996983	3	
55	270	7V 620368 6996981	3	
56	275	7V 620373 6996981	3	
57	280	7V 620377 6996982	3	
58	285	7V 620382 6996982	3	
59	290	7V 620388 6996981	3	
60	295	7V 620394 6996983	3	
61	300	7V 620399 6996982	3	
62	305	7V 620402 6996983	3	
63	310	7V 620407 6996982	3	
64	315	7V 620413 6996983	3	*