

B.Y.G. Natural Resources Inc.

Mt. Nansen Project

**WORK COMPLETED ON PLACER CLAIMS**

1995

- (1) Table showing work completed on various claims
- (2) Drawing of work in relation to claims
- (3) Drill logs for all drilling on claims

120163

DAM

B.Y.G. NATURAL RESOURCES INC.  
SUMMARY OF PLACER WORK AND COST - 1995

PLACER GRANT #	PLACER CLAIM NAME	HOLE	METRES DRILLED	FEET DRILLED	COST / FT. DRILLED	COST /HOLE	COST / CLAIM	RENEWAL PERIOD YEARS
P23648	Dome 1	95-19	9.41	31	\$50.00	\$1,543		
P23648	Dome 1	95-18	12.45	41	\$50.00	<u>\$2,042</u>		
							\$3,585	5
P23649	Dome 2	95-20	4.60	15	\$50.00	\$754		
P23649	Dome 2	95-22	4.57	15	\$50.00	\$749		
P23649	Dome 2	95-23	9.14	30	\$50.00	<u>\$1,499</u>		
							\$3,003	5
P23650	Dome 3	95-21	6.10	20	\$50.00	<u>\$1,000</u>		
							\$1,000	5
P26269	Fox 14	95-27	9.14	30	\$50.00	<u>\$1,499</u>		
							\$1,499	4
P26270	Fox 15	95-10	10.36	34	\$50.00	\$1,699		
P26270	Fox 15	95-08	5.43	18	\$50.00	\$891		
P26270	Fox 15	95-16	7.98	26	\$50.00	\$1,309		
P26270	Fox 15	95-28	8.69	29	\$50.00	\$1,425		
P26270	Fox 15	95-08B	9.60	31	\$50.00	\$1,574		
P26270	Fox 15	95-26	8.65	28	\$50.00	\$1,419		
P26270	Fox 15	95-08A	4.57	15	\$50.00	\$749		
P26270	Fox 15	95-29	6.10	20	\$50.00	<u>\$1,000</u>		
							\$10,066	4
P26271	Fox 16	95-15	2.24	7	\$50.00	\$367		
P26271	Fox 16	95-11	18.29	60	\$50.00	\$3,000		
P26271	Fox 16	95-24	8.81	29	\$50.00	\$1,445		
P26271	Fox 16	95-04	22.55	74	\$50.00	\$3,698		
P26271	Fox 16	95-25	2.12	7	\$50.00	\$348		
P26271	Fox 16	95-14	2.90	10	\$50.00	\$476		
P26271	Fox 16	95-09	9.60	31	\$50.00	\$1,574		
P26271	Fox 16	95-12	12.34	40	\$50.00	\$2,024		
P26271	Fox 16	95-07	11.77	39	\$50.00	\$1,930		
P26271	Fox 16	95-14A	2.74	9	\$50.00	\$449		
P26271	Fox 16	95-17	1.36	4	\$50.00	\$223		
P26271	Fox 16	95-13	10.97	36	\$50.00	\$1,799		
P26271	Fox 16	95-06	17.68	58	\$50.00	\$2,900		
P26271	Fox 16	95-05	15.60	51	\$50.00	\$2,558		
							\$22,791	4

TOTAL ELIGIBLE WORK

255.76

839

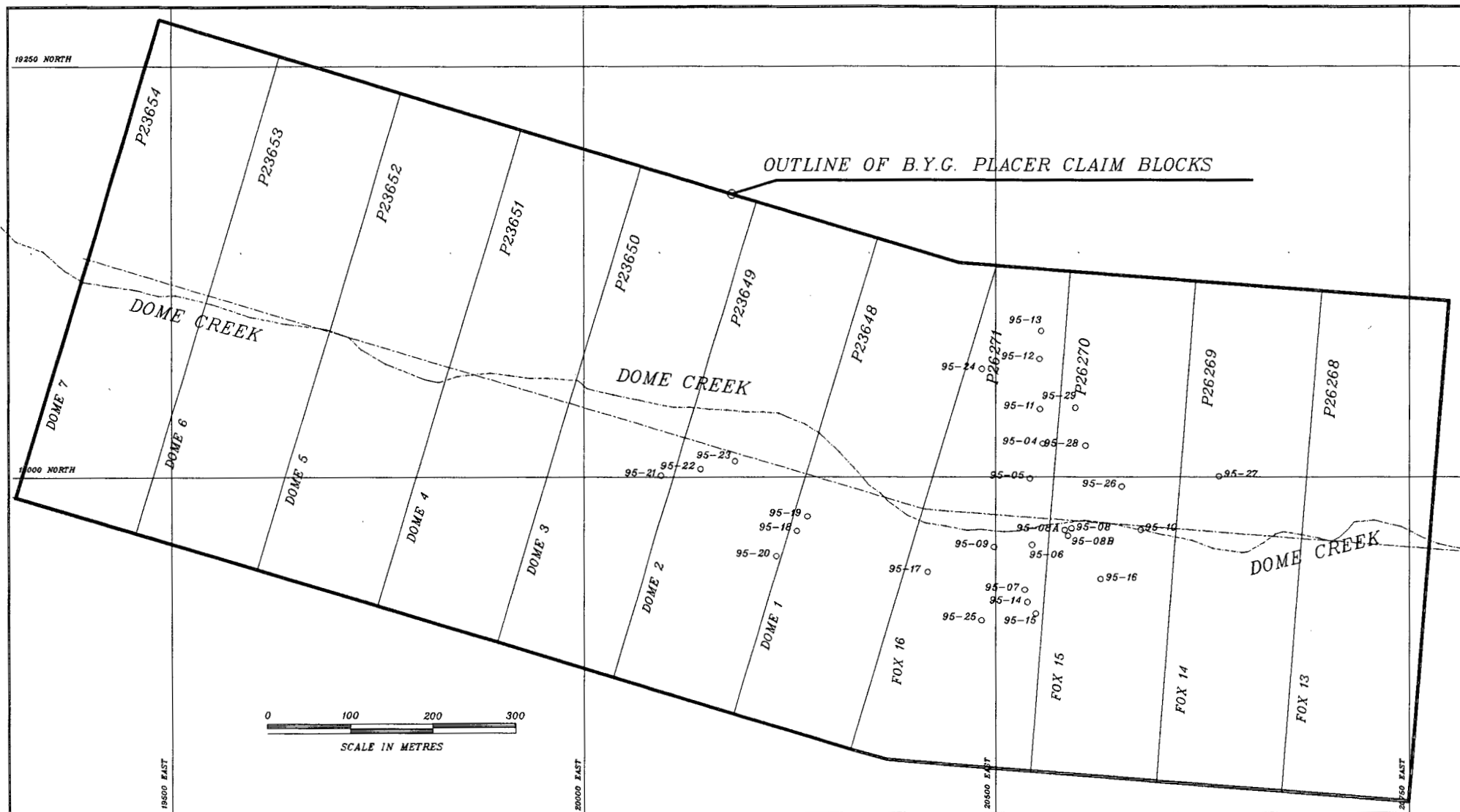
\$0.00

\$41,945

Note: All holes drilled were over 4", and ranged from 6" to 8.5"

Drilling completed by Midnight Sun Drilling Co., Drill logs attached. (Actual Invoice \$54,516)

YUKON ENERGY, MINES  
& RESOURCES LIBRARY  
P.O. BOX 2703  
WHITEHORSE, YUKON Y1A 2G6



B.Y.G. NATURAL RESOURCES INC.  
 PLACER CLAIM HOLDINGS - DOME CREEK  
 WORK COMPLETED 1995

# TEST HOLE LOG

kg/cu.m

1000    1500    2000    2500

DENSITY  
 ◆ DRY    ■ FROZEN BULK

PLASTIC LIMIT %    WATER CONTENT %    LIQUID LIMIT %  
 10 X 30    50    70 X 90

VERTICAL SCALE: 1cm = 0.25m

DATE DRILLED: 26 JUN 95 - 26 JUN 95

## SAMPLE DATA

DRILL TYPE: Track-mounted CME-75

HAMMER WEIGHT    kg

ELEV. GROUND (m): 1149.23

DROP HEIGHT    m

CO-ORDINATES (m): N 19,040 E 20,555

Depth (m)    Method    Rec %    Run No.

## DESCRIPTION OF MATERIALS

THERMISTOR DETAILS

SYMBOL

Depth (m)	Method	Rec %	Run No.	SYMBOL	DESCRIPTION OF MATERIALS	THERMISTOR	DETAILS	DENSITY	PLASTIC LIMIT %	WATER CONTENT %	LIQUID LIMIT %
1.0	CRREL	31	CT1		SAND (SP-SM) - fine to medium - some silt to silty - trace to some rounded gravel - trace organics - trace mica - occasional grey sandy SILT lenses < 10mm thick - dry to moist - light brown to reddish brown - frozen below 3.73 m - SAMPLE SP1 taken @ 0.61m - SAMPLE SP2 taken @ 1.14m						
2.0	CRREL	39	CT2		- SAMPLE SP3 taken @ 1.98m						
3.0	CRREL	37	CT3		- SAMPLE SP4 taken @ 2.67m						
4.0	CRREL	36	CT4		- SAMPLE SP5 taken @ 3.73m						
	CRREL	46	CT5		- becoming frozen, Nbn to Nbe, excess ice content < 5%  - becoming fine to coarse sand with trace to some silt						
	CRREL	67	CT6		- SAMPLE SP6 taken @ 4.57m						

1646    1981

1731    2015

Continued

JOB NO:	PM 5314 0502
PROJECT:	Mt. Nansen Gold Project
LOCATION:	Carmacks, Yukon Territory
LOGGED BY:	JM
CHECKED BY:	
PLATE:	1 of 5
HOLE NO:	DH95-04



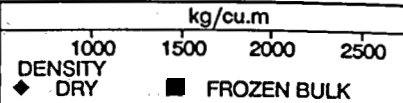
KLOHN-CRIPPEN

11/07/95

# TEST HOLE LOG

VERTICAL SCALE: 1cm = 0.25m

DATE DRILLED: 26 JUN 95 - 26 JUN 95



## SAMPLE DATA

HAMMER WEIGHT kg

DROP HEIGHT m

Depth (m)	Method	Rec %	Run No.
	CRREL	39	CT7
6.0	CRREL	61	CT8
7.0	CRREL	8	CT9
	CRREL	100	CT10
8.0	CRREL	0	CT11
9.0	CRREL	75	CT12
	CRREL		CT13

SYMBOL

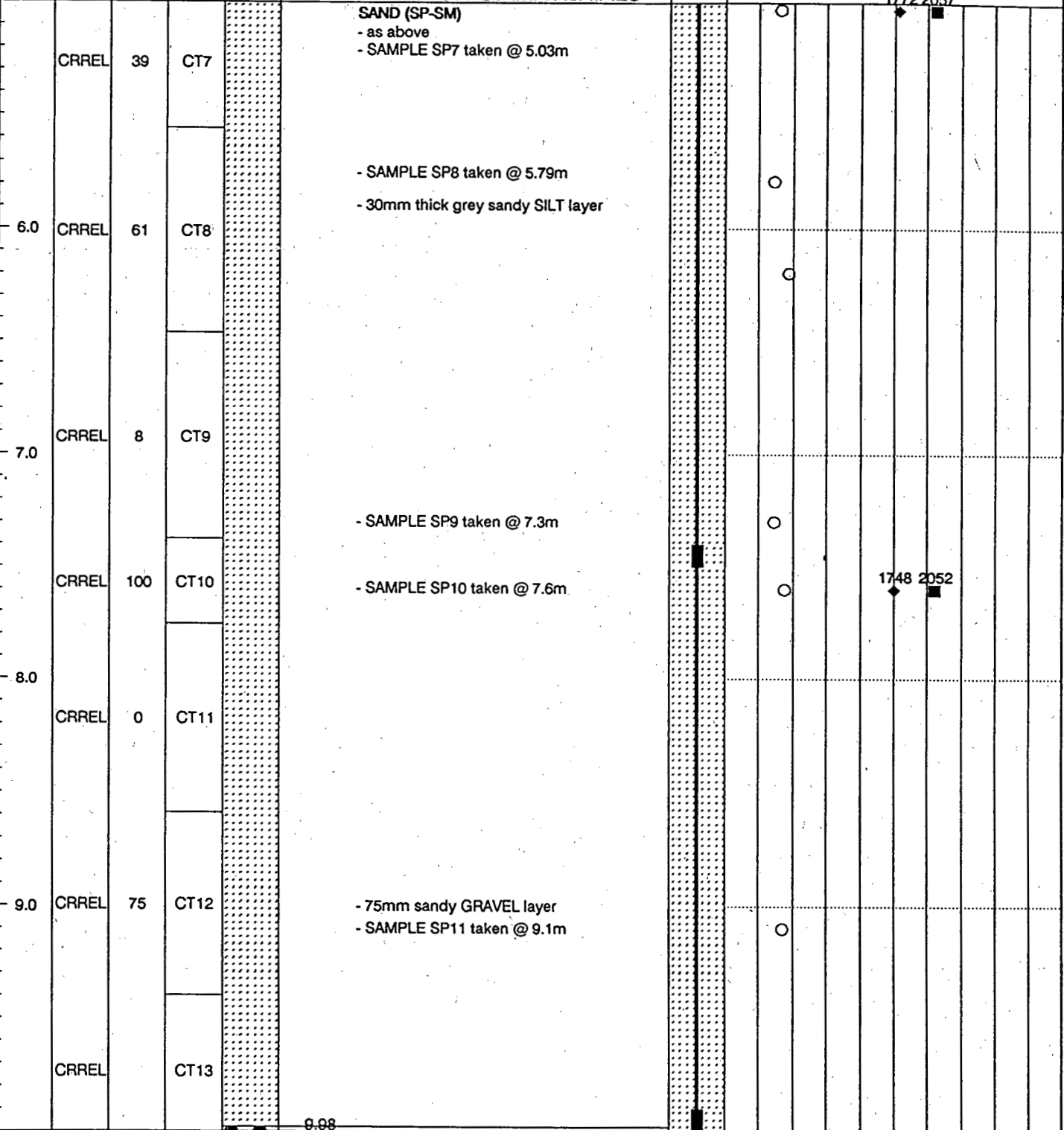
DRILL TYPE: Track-mounted CME-75

ELEV. GROUND (m): 1149.23

CO-ORDINATES (m): N 19,040 E 20,555

THERMISTOR  
DETAILS

## DESCRIPTION OF MATERIALS



9.08

Continued

JOB NO: PM 5314 0502

PROJECT: Mt. Nansen Gold Project

LOCATION: Carmacks, Yukon Territory

LOGGED BY: JM CHECKED BY:

PLATE: 2 of 5

HOLE NO: DH95-04



**KLOHN-CRIPPEN**

11/07/95









# TEST HOLE LOG

kg/cu.m

VERTICAL SCALE: 1cm = 0.25m

DATE DRILLED: 26 JUN 95 - 27 JUN 95

1000    1500    2000    2500

DENSITY  
♦ DRY    ■ FROZEN BULK

## SAMPLE DATA

DRILL TYPE: Track-mounted CME-75

HAMMER WEIGHT    kg

ELEV. GROUND (m): 1143.44

DROP HEIGHT    m

CO-ORDINATES (m): N 18,998 E 20,540

PLASTIC    WATER    LIQUID  
LIMIT %    CONTENT %    LIMIT %

10 X    30    50    70    90 X

Depth (m)    Method    Rec %    Run No.

## DESCRIPTION OF MATERIALS

THERMISTOR  
DETAILS

Depth (m)	Method	Rec %	Run No.	SYMBOL	DESCRIPTION OF MATERIALS	THERMISTOR	DETAILS	DENSITY	WATER CONTENT %	LIQUID LIMIT %
6.0	CRREL	72	CT7		<p>SAND (SP-SM)</p> <ul style="list-style-type: none"> <li>- as above</li> <li>- SAMPLE SP6 taken @ 5.56m</li> <li>- 75mm thick gravel zone @ 5.8m</li> </ul>	○			1758	2027
7.0	CRREL	58	CT8		<ul style="list-style-type: none"> <li>- SAMPLE SP7 taken @ 6.4m</li> <li>- gravelly layer @ 6.53m; Nbn ice class, little Vc ice around gravel particles</li> <li>- SAMPLE SP8 taken @ 6.86m</li> </ul>	○			1792	2094
7.0	CRREL	100	CT9		<ul style="list-style-type: none"> <li>- SAMPLE SP9 taken @ 7.32m</li> <li>- CT10 has thin gravelly layer at 7.49m</li> </ul>	○			1822	2076
7.52	CRREL		CT10	●●●●	<p>GRAVEL (GP)</p> <ul style="list-style-type: none"> <li>- fine to coarse, sandy</li> <li>- subangular to angular</li> </ul>	○				
7.92	CRREL				<p>SAND (SP-SM)</p> <ul style="list-style-type: none"> <li>- fine to medium</li> <li>- silty</li> <li>- trace fine gravel</li> <li>- greenish grey</li> <li>- occasional thin gravel layers indicated by return from solid stem auger</li> </ul>	○				
8.0	AUGER				<ul style="list-style-type: none"> <li>- no recovery from CRREL tubes below 9.32m</li> </ul>					
9.0	CRREL	0	CT11							

Continued

JOB NO: PM 5314 0502



**KLOHN-CRIPPEN**

PROJECT: Mt. Nansen Gold Project

LOCATION: Carmacks, Yukon Territory

LOGGED BY: JM

CHECKED BY:

11/07/95

PLATE: 2 of 4

HOLE NO: DH95-05

# TEST HOLE LOG

kg/cu.m

VERTICAL SCALE: 1cm = 0.25m

DATE DRILLED: 26 JUN 95 - 27 JUN 95

1000    1500    2000    2500  
DENSITY  
◆ DRY            ■ FROZEN BULK

**SAMPLE DATA**

DRILL TYPE: Track-mounted CME-75

THERMISTOR  
DETAILS

HAMMER WEIGHT            kg

ELEV. GROUND (m): 1143.44

PLASTIC            WATER            LIQUID  
LIMIT %          CONTENT %      LIMIT %

DROP HEIGHT            m

CO-ORDINATES (m): N 18,998 E 20,540

10 X          30          50          70          90

Depth (m)	Method	Rec %	Run No.	SYMBOL	DESCRIPTION OF MATERIALS	THERMISTOR	DETAILS
	CRREL	0	CT12		SAND (SP-SM) - as above		
					10.44		
	CRREL	0	CT13		SILT (ML-SM) - trace fine sand - trace fine gravel - trace organics - dark greyish brown - SAMPLE G11 taken @ 10.8m from auger		
11.0							
	AUGER		G12		- SAMPLE G12 taken @ 12.5m		
12.0							
	AUGER		G13		- SAMPLE G13 taken @ 13.7m		
13.0							
14.0							

Depth (m) Method Rec % Run No. SYMBOL DESCRIPTION OF MATERIALS THERMISTOR DETAILS

CRREL 0 CT12 SAND (SP-SM) - as above

10.44

CRREL 0 CT13 SILT (ML-SM)

- trace fine sand

- trace fine gravel

- trace organics

- dark greyish brown

- SAMPLE G11 taken @ 10.8m from auger

11.0

AUGER G12

- SAMPLE G12 taken @ 12.5m

13.0

AUGER G13

- SAMPLE G13 taken @ 13.7m

Continued

JOB NO: PM 5314 0502

PROJECT: Mt. Nansen Gold Project

LOCATION: Carmacks, Yukon Territory

LOGGED BY: JM CHECKED BY:

PLATE: 3 of 4 HOLE NO: DH95-05



**KLOHN-CRIPPEN**

19/07/95

# TEST HOLE LOG

kg/cu.m

1000    1500    2000    2500

DENSITY  
 ◆ DRY            ■ FROZEN BULK

PLASTIC            WATER            LIQUID  
 LIMIT %          CONTENT %        LIMIT %  
 10 X              30              50              70              90

VERTICAL SCALE: 1cm = 0.25m

DATE DRILLED: 26 JUN 95 - 27 JUN 95

## SAMPLE DATA

DRILL TYPE: Track-mounted CME-75

HAMMER WEIGHT            kg

ELEV. GROUND (m): 1143.44

DROP HEIGHT                    m

CO-ORDINATES (m): N 18,998 E 20,540

Depth (m)	Method	Rec %	Run No.

SYMBOL

## DESCRIPTION OF MATERIALS

THERMISTOR  
DETAILS

SILT (ML-SM)  
- as above

15.40

SAND (SP-SM)  
- fine, silty, trace fine gravel, dark grey/black, moist  
- SAMPLE G14 taken @ 15.5m

End of hole @ 15.6m  
- auger refusal

**NOTES:**

1. A 30 m long prepared thermistor string was installed folded into the borehole. The 10 individual thermistors are located at the following depths from surface:
  - #10 @ 0.5m
  - #1 @ 1.0m
  - #2 @ 2.0m
  - #3 @ 3.0m
  - #4 @ 5.0m
  - #9 @ 5.5m
  - #5 @ 7.5m
  - #6 @ 10.0m
  - #8 @ 10.5m
  - #7 @ 15.0m



**KLOHN-CRIPPEN**

JOB NO: PM 5314 0502

PROJECT: Mt. Nansen Gold Project

LOCATION: Carmacks, Yukon Territory

LOGGED BY: JM            CHECKED BY:

PLATE: 4 of 4

HOLE NO: DH95-05

11/07/95

# TEST HOLE LOG

kg/cu.m

VERTICAL SCALE: 1cm = 0.25m

DATE DRILLED: 19 JUN 95 - 21 JUN 95

1000    1500    2000    2500  
DENSITY  
● DRY    ■ FROZEN BULK

## SAMPLE DATA

DRILL TYPE: Track-mounted CME-75

THERMISTOR  
DETAILS

HAMMER WEIGHT    kg  
DROP HEIGHT        m

ELEV. GROUND (m): 1133.87

PLASTIC    WATER    LIQUID  
LIMIT %    CONTENT %    LIMIT %  
10 X    30    50    70    90

Depth (m)    Method    Rec %    Run No.

CO-ORDINATES (m): N 18,917 E 20,542

## DESCRIPTION OF MATERIALS

Depth (m)	Method	Rec %	Run No.	SYMBOL	DESCRIPTION OF MATERIALS	THERMISTOR	DETAILS	DENSITY	WATER CONTENT %	LIQUID LIMIT %
	AUGER				Moss cover - 100mm					
					PEAT (Pt) - trace fine sand, dark brown - fine fibrous to amorphous - ice class Vs to Vr, ice lenses typically 1mm thick, 2-5mm apart, also random ice formations within fibrous peat structure					
0.70	CRREL	100	CT1		- frozen below 0.3m, ice content 30%					
					SAND (SP-SM) - fine, some silt to silty, trace sand, light grey - ice class Nbn, Vc in coarser pockets - approx. 5% excess ice - SAMPLE SP1 taken @ .76m					
1.22										
1.31	CRREL	100	CT2		PEAT (Pt) - as above					
1.50					SAND (SP-SM) - as above - SAMPLE SP2 taken @ 1.37m					
1.74					PEAT (Pt) - as above - ice class Vr, ice formations around larger roots					
2.04	CRREL	100	CT3		SAND (SP-SM) - as above - SAMPLE SP3 taken @ 1.83m					
2.44					PEAT (Pt) - as above					
2.60					SAND (SP-SM) - as above					
2.71					PEAT (Pt) - as above					
3.0	CRREL	93	CT4		SAND (SM) - fine, silty, grey - interbedded with 5mm-50mm thick silt lenses at 10mm-20mm spacing - occasional roots and fibrous organic zones - ice class Nbn except for occasional organic zones with Vr ice around roots - ice formations noncontinuous, random, and <5mm thick - SAMPLE SP4 taken @ 2.90m - SAMPLE SP5 taken @ 3.66m					
4.0	CRREL	58	CT5							
	CRREL	100	CT6		- SAMPLE SP6 taken @ 4.47m					

Continued

JOB NO:	PM 5314 0502
PROJECT:	Mt. Nansen Gold Project
LOCATION:	Carmacks, Yukon Territory
LOGGED BY:	JM
CHECKED BY:	
PLATE:	1 of 4
HOLE NO:	DH95-06



KLOHN-CRIPPEN

14/07/95

# TEST HOLE LOG

kg/cu.m

VERTICAL SCALE: 1cm = 0.25m

DATE DRILLED: 19 JUN 95 - 21 JUN 95

1000    1500    2000    2500

◆ DENSITY DRY    ■ FROZEN BULK

## SAMPLE DATA

DRILL TYPE: Track-mounted CME-75

THERMISTOR  
DETAILS

HAMMER WEIGHT    kg

ELEV. GROUND (m): 1133.87

PLASTIC LIMIT %    WATER CONTENT %    LIQUID LIMIT %

DROP HEIGHT    m

CO-ORDINATES (m): N 18,917 E 20,542

10    30    50    70    90

Depth (m)	Method	Rec %	Run No.	SYMBOL
5.20	CRREL	100	CT7	
6.13	CRREL	100	CT8	
6.86	CRREL	100	CT9	
7.62	CRREL	100	CT10	
8.00	CRREL	100	CT11	
8.00	CRREL	100	CT12	
8.84	CRREL	33	CT13	
8.84	CRREL	63	CT14	
9.30	CRREL	100	CT15	
	CORE		CR#1	

## DESCRIPTION OF MATERIALS

SAND (SM) - as above

5.20

### SAND (SP-SM)

- fine to medium
- some silt to silty
- trace rounded gravel
- light greyish brown
- occasional grey silt layers < 10mm thick
- occasional gravelly zones < 75mm thick
- SAMPLE SP7 taken @ 5.52m

- SAMPLE SP8 taken @ 6.13m

- SAMPLE SP9 taken @ 6.86m

- SAMPLE SP10 taken @ 7.62m

- SAMPLE SP11 taken @ 8.00m

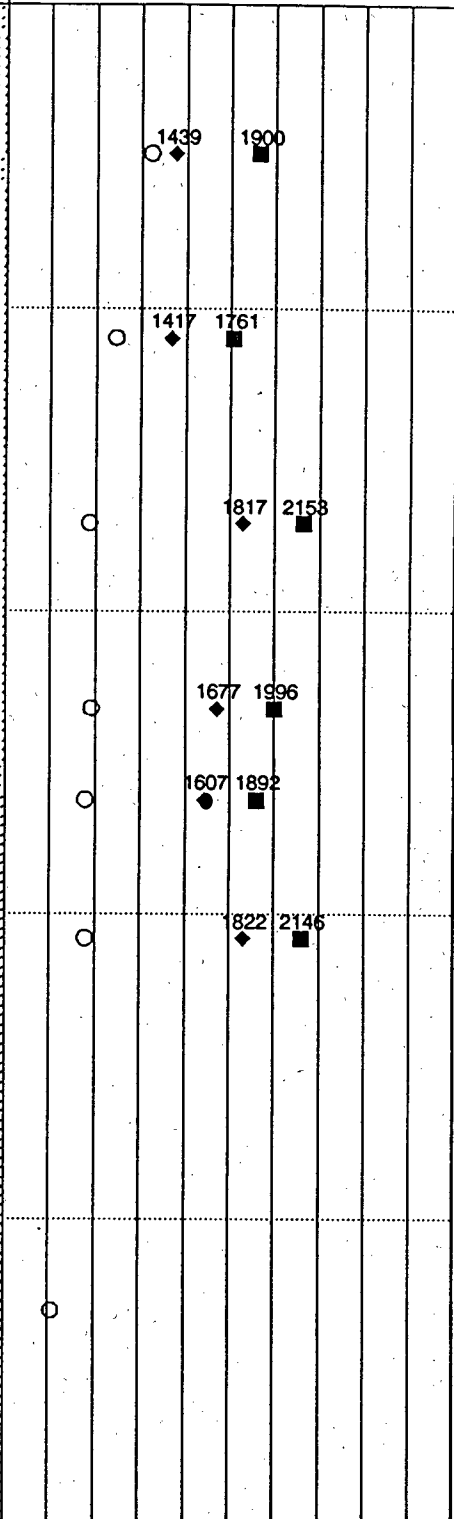
- SAMPLE SP12 taken @ 8.84m

9.30

### SAND & GRAVEL (SM-GM)

- angular particles up to 30mm size
- SAMPLE SP13 taken @ 9.30m

- CR#1 recovery of 10 pieces of angular to subangular gravel of varying rock types, particles to 30mm



Continued

JOB NO: PM 5314 0502



KLOHN-CRIPPEN

PROJECT: Mt. Nansen Gold Project

LOCATION: Carmacks, Yukon Territory

LOGGED BY: JM    CHECKED BY:

11/07/95

PLATE: 2 of 4

HOLE NO: DH95-06

# TEST HOLE LOG

kg/cu.m

VERTICAL SCALE: 1cm = 0.25m

DATE DRILLED: 19 JUN 95 - 21 JUN 95

1000    1500    2000    2500

◆ DENSITY DRY    ■ FROZEN BULK

## SAMPLE DATA

DRILL TYPE: Track-mounted CME-75

THERMISTOR  
DETAILS

HAMMER WEIGHT    kg

ELEV. GROUND (m): 1133.87

DROP HEIGHT    m

CO-ORDINATES (m): N 18,917 E 20,542

PLASTIC LIMIT %    WATER CONTENT %    LIQUID LIMIT %

10 X    30    50 O    70    90 X

Depth (m)	Method	Rec %	Run No.	SYMBOL	DESCRIPTION OF MATERIALS	THERMISTOR	DETAILS
11.0	CORE		CR#2	●	<p><b>SAND &amp; GRAVEL (SM-GM)</b> - as above</p> <p>- CR#2 recovery of 4 pieces of cobbles likely up to 100mm; fine to medium, light brown sand</p>		
	CORE		CR#3	●	<p>- CR#3 recovery of 3 pieces of rock including two 50mm cores from cobbles; fine to medium, light brown sand</p>		
	CORE		CR#4	●	<p>- CR#4 recovery of 36 pieces of gravel predominantly of 13mm to 20mm size; fine to medium, brown sand</p>		
12.0	CORE		CR#5	●	<p>- CR#5 recovery of 20 gravel particles from 5mm-35mm; subangular; several pieces cored from cobbles/boulders; large rock at 11.9m depth</p>		
13.0				●	<p>13.10</p> <p><b>SAND (SP-SM)</b> - medium</p> <p>CR#6 recovery of medium sand, grey; 7 pieces of subangular to angular rock from 25mm to 40mm</p>		
14.0	CORE		CR#6	●			
				●	<p>14.33</p> <p><b>GRAVEL (GP)</b> - some cobbles - trace silt</p> <p>- CR#7 recovery of 24 pieces of subangular gravel from 5mm - 40mm; trace silt</p>		
	CORE		CR#7	●			

## DESCRIPTION OF MATERIALS

**SAND & GRAVEL (SM-GM)**

- as above

- CR#2 recovery of 4 pieces of cobbles likely up to 100mm; fine to medium, light brown sand

- CR#3 recovery of 3 pieces of rock including two 50mm cores from cobbles; fine to medium, light brown sand

- CR#4 recovery of 36 pieces of gravel predominantly of 13mm to 20mm size; fine to medium, brown sand

- CR#5 recovery of 20 gravel particles from 5mm-35mm; subangular; several pieces cored from cobbles/boulders; large rock at 11.9m depth

**SAND (SP-SM)**

- medium

CR#6 recovery of medium sand, grey; 7 pieces of subangular to angular rock from 25mm to 40mm

**GRAVEL (GP)**

- some cobbles

- trace silt

- CR#7 recovery of 24 pieces of subangular gravel from 5mm - 40mm; trace silt

Continued

JOB NO: PM 5314 0502

PROJECT: Mt. Nansen Gold Project

LOCATION: Carmacks, Yukon Territory

LOGGED BY: JM

CHECKED BY:

PLATE: 3 of 4

HOLE NO: DH95-06



KLOHN-CRIPPEN

11/07/95

# TEST HOLE LOG

kg/cu.m

VERTICAL SCALE: 1cm = 0.25m

DATE DRILLED: 19 JUN 95 - 21 JUN 95

1000 1500 2000 2500  
 DENSITY  
 ◆ DRY      ■ FROZEN BULK

## SAMPLE DATA

DRILL TYPE: Track-mounted CME-75

HAMMER WEIGHT kg

ELEV. GROUND (m): 1133.87

DROP HEIGHT m

CO-ORDINATES (m): N 18,917 E 20,542

PLASTIC      WATER      LIQUID  
 LIMIT %      CONTENT %      LIMIT %  
 10 X      30      50      70      X 90

Depth (m)	Method	Rec %	Run No.	SYMBOL
16.0	CORE		CR8	●●●●
	CORE	33	CR#9	++++
	CORE		CR#10	++++
	CORE	100	CR#11	++++
17.0	CORE		CR#12	++++
	CORE	83	CR#12	++++
	CORE		CR#13	++++

## DESCRIPTION OF MATERIALS

THERMISTOR DETAILS

**GRAVEL (GP)**  
 - as above  
 - CR#8 recovery of 36 pieces of subangular gravel from 12mm-25mm

15.85

**ANDESITE, fine grained (anphanitic), moderately altered**  
 - CR#9 recovery of 1 piece of highly weathered rock; some clay along side and in depressions  
 - CR#10 recovery of 10 pieces of subangular to angular rock, brown, weathered; clay in discontinuities

- CR#11: fractured, highly weathered rock in silty clay matrix; one 5mm piece of core with weathered subvertical joint @ 80 degrees; no visible ice, but excess water on thaw (Nbe)  
 - CR#12: fractured (RQD=44%), slightly weathered bedrock with 55 degree joints at 60mm spacing

- CR#13: fractured (RQD=33%), slightly weathered bedrock

17.68

End of Hole @ 17.68m

**NOTES:**  
 1. A 15 m long prepared thermistor string was installed folded into the borehole. The 7 individual thermistors are located at the following depths from surface:  
 #7 @ 0.5m  
 #1 @ 1.0m  
 #2 @ 2.0m  
 #3 @ 3.0m  
 #4 @ 5.0m  
 #6 @ 5.5m  
 #5 @ 7.5m



**KLOHN-CRIPPEN**

JOB NO: PM 5314 0502

PROJECT: Mt. Nansen Gold Project

LOCATION: Carmacks, Yukon Territory

LOGGED BY: JM      CHECKED BY:

PLATE: 4 of 4      HOLE NO: DH95-06

13/07/95

# TEST HOLE LOG

VERTICAL SCALE: 1cm = 0.25m

DATE DRILLED: 21 JUN 95 - 23 JUN 95

kg/cu.m			
1000	1500	2000	2500
● DENSITY DRY	■ FROZEN BULK		
PLASTIC LIMIT %	WATER CONTENT %	LIQUID LIMIT %	
10 X	30	50 O	70 X 90

## SAMPLE DATA

HAMMER WEIGHT **kg**  
DROPP HEIGHT **m**

DRILL TYPE: **Track-mounted CME-75**

ELEV. GROUND (m): **1144.18**

CO-ORDINATES (m): **N 18,862 E 20,535**

THEMISTOR DETAILS

SYMBOL

## DESCRIPTION OF MATERIALS

Depth (m)	Method	Rec %	Run No.	SYMBOL
	AUGER			
	CRREL	80	CT1	
1.0	CRREL	80	CT2	
2.0	CRREL	92	CT3	
3.0	CRREL	97	CT4	
	CRREL	100	CT5	
4.0	CRREL	43	CT6	
	CRREL	52	CT7	

Moss cover - 150mm

**PEAT (Pt)**  
 - fine fibrous, occasional roots to 25mm, dark brown  
 - frozen below 0.3m  
 - Vr: 0.5mm-1.0mm ice lenses at 2mm-3mm spacing  
 - frozen white ash layer @ 0.3m, 125mm thick  
 - 3mm thick ice lense @ 0.36m  
 - SAMPLE SP1 taken @ 0.66m

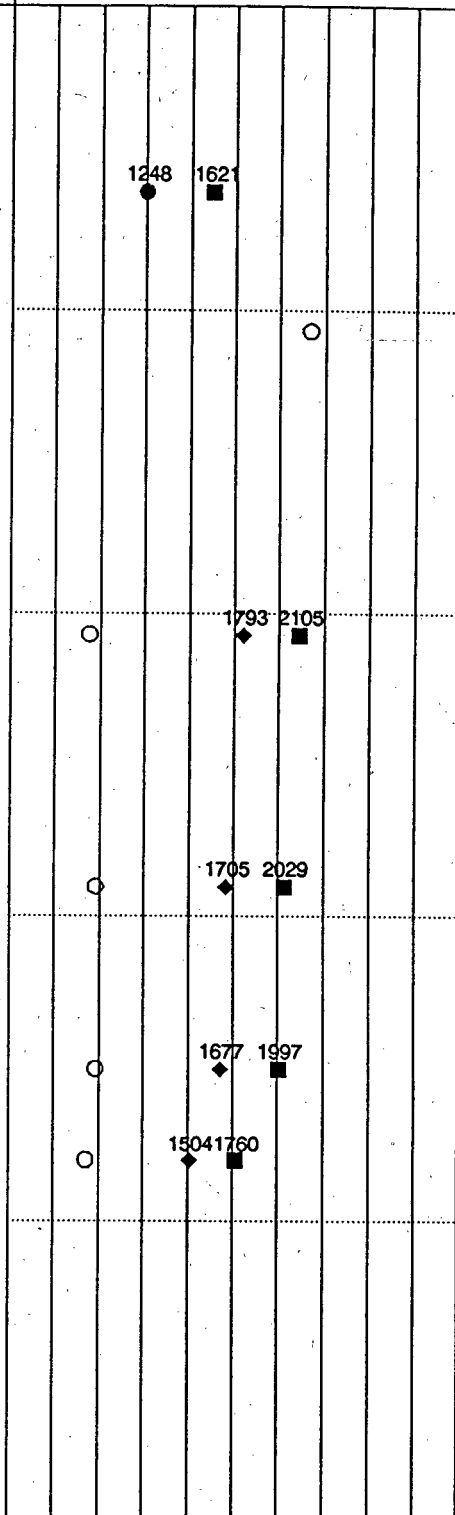
**SAND (SM)**  
 - fine to medium, silty, trace of gravel, light grey  
 - interbedded with brown silt lenses < 12mm thick  
 - Vx to Vr, ice content 10% to 15%

**PEAT (Pt)**  
 - as above  
 - occasional gravelly sand pockets  
 - Vx to Vr, ice content 20% to 25%  
 - SAMPLE SP2 taken @ 1.07m

**SILT (ML)**  
 - trace to some sand and gravel  
 - trace to some organics  
 - brown  
 - Vx to Vr, ice content 15%

**SAND (SP-SM)**  
 - fine to medium  
 - some silt to silty  
 - trace of rounded gravel  
 - occasional gravelly pockets  
 - occasional grey silt lenses < 10mm thick  
 - light brown  
 - Nbn, occasional Nbe zones (ice content < 5%)  
 - some Vc around particles in coarse zones (ice content < 10%)  
 - SAMPLE SP3 taken @ 2.08m  
 - SAMPLE SP4 taken @ 2.90m  
 - ice layer @ 3.4m, 14mm thick  
 - ice layer @ 3.5m, 7mm thick  
 - SAMPLE SP5 taken @ 3.50m

- ice layer @ 3.8m, 12mm thick (diagonal and non-continuous)  
 - SAMPLE SP6 taken @ 3.81m



Continued

JOB NO: **PM 5314 0502**

PROJECT: **Mt. Nansen Gold Project**

LOCATION: **Carmacks, Yukon Territory**

LOGGED BY: **JM**

CHECKED BY:

PLATE: **1 of 3**

HOLE NO: **DH95-07**



**KLOHN-CRIPPEN**

11/07/95

# TEST HOLE LOG

VERTICAL SCALE: 1cm = 0.25m				DATE DRILLED: 21 JUN 95 - 23 JUN 95		kg/cu.m	
SAMPLE DATA				DRILL TYPE: Track-mounted CME-75		1000    1500    2000    2500 DENSITY ◆ DRY    ■ FROZEN BULK	
HAMMER WEIGHT    kg				ELEV. GROUND (m): 1144.18		PLASTIC    WATER    LIQUID LIMIT %    CONTENT %    LIMIT %	
DROP HEIGHT    m				CO-ORDINATES (m): N 18,862 E 20,535		10 X    30    50    70    90	
Depth (m)	Method	Rec %	Run No.	SYMBOL		THERMISTOR DETAILS	
6.0	CRREL	70	CT8		5.03 SILT and SAND (ML-SM) - fine sand, interbedded - trace to some organics - dark grey - no excess ice - SAMPLE SP7 taken @ 5.33m	1360	1789
	CRREL	79	CT9		6.00 SAND (SM) 6.17 - fine to medium, silty, grey, Nbn		
	CRREL	100	CT10	+++++	ANDESITE PORPHORY - strong argillic weathering - light brown - Vr, some joints filled with ice to 5mm thick - SAMPLE SP8 taken @ 6.86m	○	
	CORE	40	CR1	+++++	- CR1: RQD=0% - 45 degree joints at 30mm-40mm spacing		
	CORE	74	CR2	+++++	- CR2: RQD=0% - some 50 degree joints - becoming moderately weathered		
9.0	CORE	50	CR3	+++++	- CR3: RQD=0%		
	CORE	95	CR4	+++++	- CR4: RQD=42%		

Continued



**KLOHN-CRIPPEN**

JOB NO: **PM 5314 0502**  
 PROJECT: **Mt. Nansen Gold Project**  
 LOCATION: **Carmacks, Yukon Territory**  
 LOGGED BY: **JM**    CHECKED BY:  
 PLATE: **2 of 3**    HOLE NO: **DH95-07**



# TEST HOLE LOG

kg/cu.m

VERTICAL SCALE: 1cm = 0.25m

DATE DRILLED: 22 JUN 95 - 23 JUN 95

1000    1500    2000    2500  
 DENSITY  
 ● DRY    ■ FROZEN BULK

## SAMPLE DATA

DRILL TYPE: Track-mounted CME-75

THERMISTOR  
DETAILS

HAMMER WEIGHT    kg

ELEV. GROUND (m): 1130.81

PLASTIC    WATER    LIQUID  
LIMIT %    CONTENT %    LIMIT %

DROP HEIGHT    m

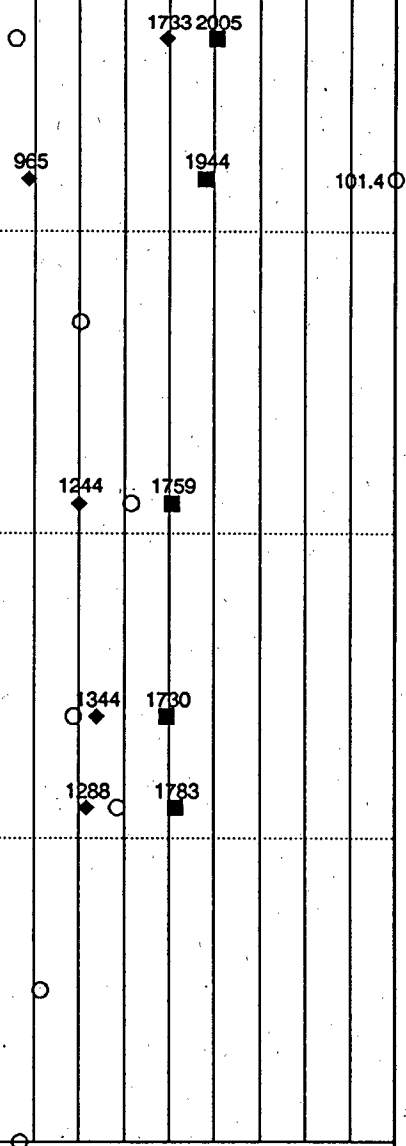
CO-ORDINATES (m): N 18,936 E 20,591

10    30    50    70    90

Depth (m)    Method    Rec %    Run No.

## DESCRIPTION OF MATERIALS

Depth (m)	Method	Rec %	Run No.	SYMBOL	DESCRIPTION OF MATERIALS	THERMISTOR	DETAILS
	CRREL		CT1		Thin grass cover - 30mm SILT (ML-SM) - some fine sand to sandy - some organics and rootlets - dark grey		
0.38							
	CRREL		CT2	/ / / / /	PEAT (Pt) - fine fibrous to amorphous - occasional roots to 15mm - reddish brown to dark brown - Vr ice around roots, also Vx - excess ice content 20%-30% - 125mm thick SAND layer @ 0.7m, Nbn		
1.07							
	CRREL		CT3	. . . . .	SAND (SP-SM) - fine to coarse - some silt to silty - trace rounded gravel - occasional rootlets - Nbn - grey - 100mm thick gravelly layer @ 1.1m; Vr, excess ice < 10% - SAMPLE SP1 taken @ 1.37m - 150mm thick sandy peat layer @ 1.7m; Vr, excess ice 15% - SAMPLE SP2 taken @ 1.83m - 75mm thick silt layers @ 2.03m and 2.1m; 0.5mm-1mm ice lenses at 1mm-3mm spacing, excess ice 20% - Vx and Vr in fine sand from 2.0m to 2.3m, excess ice 20% - SAMPLE SP3 taken @ 2.3m - 125mm thick silt layer @ 2.4m; 0.5mm-2mm ice lenses at 4mm spacing - 50mm thick sandy ash layer @2.55m with Nbe ice (15%-20%) - 125mm thick fine fibrous peat layer @ 2.6m; 0.5mm-2mm ice lenses at 4mm spacing - 25mm thick organic layer @ 2.8m; three 1mm thick ice lenses - SAMPLE SP4 taken @ 2.9m - 150mm thick gravelly layer @ 3.0m; Vc around fine gravel particles - 150mm dia log @ 3.3m - SAMPLE SP5 taken @ 3.6m 3.6-3.9m: interbedded dark brown silt and roots to 20mm - SAMPLE SP6 taken @ 3.9m-4.5m 3.9-4.5m: occasional dark brown to grey organic silt pockets; Nbn except for occasional Vc around gravel particles, excess ice < 5% - SAMPLE SP7 taken @ 4.5m		
1.0							
	CRREL		CT4	. . . . .			
2.0							
	CRREL		CT5	. . . . .			
3.0							
	CRREL		CT6	. . . . .			
4.0							
	CRREL		CT7	. . . . .			
4.0							
	CRREL			. . . . .			
4.0							



Continued

JOB NO:	PM 5314 0502
PROJECT:	Mt. Nansen Gold Project
LOCATION:	Carmacks, Yukon Territory
LOGGED BY:	JM
CHECKED BY:	
PLATE:	1 of 2
HOLE NO:	DH95-08



KLOHN-CRIPPEN

11/07/95

# TEST HOLE LOG

kg/cu.m

1000    1500    2000    2500

DENSITY  
 ● DRY    ■ FROZEN BULK

PLASTIC LIMIT %    WATER CONTENT %    LIQUID LIMIT %  
 10 X    30    50    70    90 X

VERTICAL SCALE: 1cm = 0.25m

DATE DRILLED: 22 JUN 95 - 23 JUN 95

THERMISTOR  
DETAILS

## SAMPLE DATA

DRILL TYPE: Track-mounted CME-75

HAMMER WEIGHT    kg  
 DROP HEIGHT    m

ELEV. GROUND (m): 1130.81

Depth (m)    Method    Rec %    Run No.

CO-ORDINATES (m): N 18,936 E 20,591

CRREL    CT8

## DESCRIPTION OF MATERIALS

- SAMPLE SP8 taken @ 5.0m

5.28

GRAVEL (GP) - some sand to sandy, some silt, angular

5.43

End of Hole @ 5.43m

- refusal in gravel using CRREL and solid stem auger
- moved rig over and redrilled as DH95-08A



**KLOHN-CRIPPEN**

JOB NO: PM 5314 0502

PROJECT: Mt. Nansen Gold Project

LOCATION: Carmacks, Yukon Territory

LOGGED BY: JM    CHECKED BY:

PLATE: 2 of 2    HOLE NO: DH95-08

11/07/95

# TEST HOLE LOG

kg/cu.m

1000    1500    2000    2500

DENSITY  
 ◆ DRY            ■ FROZEN BULK

PLASTIC            WATER            LIQUID  
 LIMIT %          CONTENT %        LIMIT %  
 10 X              30              50              70              90 X

VERTICAL SCALE: 1cm = 0.25m

DATE DRILLED: 24 JUN 95 - 24 JUN 95

THERMISTOR  
DETAILS

## SAMPLE DATA

DRILL TYPE: Track-mounted CME-75

HAMMER WEIGHT            kg

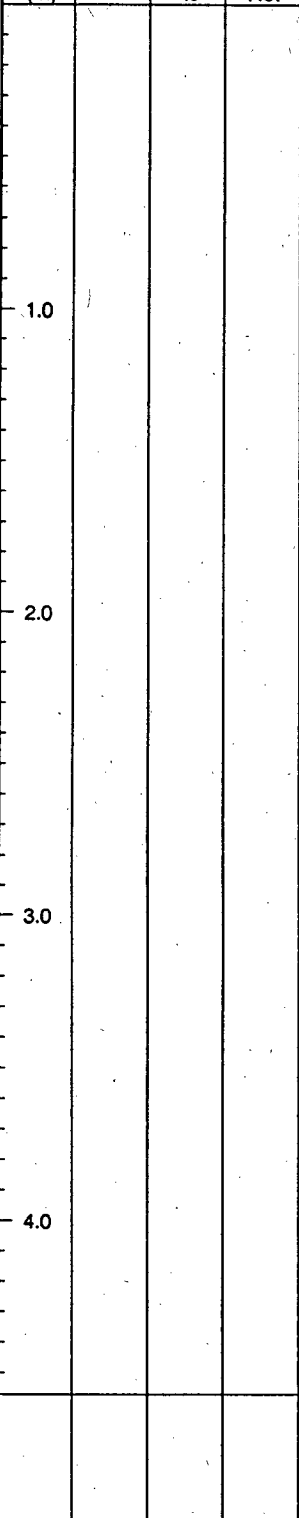
ELEV. GROUND (m): 1131.20

DROP HEIGHT                m

CO-ORDINATES (m): N 18,936 E 20,583

Depth (m)	Method	Rec %	Run No.

## DESCRIPTION OF MATERIALS



Thin grass cover - 30mm

**SILT (ML)**

- trace to some sand
- some organics
- dark brown
- frozen below 0.38m
- ice fragments in cuttings

0.91

**SAND (SP-SM)**

- fine to medium
- silty
- trace of rounded gravel
- trace mica
- occasional thin gravelly layers
- light brown to grey

4.42

**GRAVEL (GP)**

4.57

End of Hole @ 4.57m

- auger refusal in gravel
- moved rig over and redrilled as DH95-08B




**KLOHN-CRIPPEN**

JOB NO:	<b>PM 5314 0502</b>
PROJECT:	<b>Mt. Nansen Gold Project</b>
LOCATION:	<b>Carmacks, Yukon Territory</b>
LOGGED BY:	<b>JM</b>
CHECKED BY:	
PLATE:	<b>1 of 1</b>
HOLE NO:	<b>DH95-08A</b>

11/07/95



# TEST HOLE LOG

kg/cu.m

VERTICAL SCALE: 1cm = 0.25m

DATE DRILLED: 24 JUN 95 - 25 JUN 95

1000    1500    2000    2500

DENSITY

● DRY

■ FROZEN BULK

## SAMPLE DATA

HAMMER WEIGHT      kg

DROP HEIGHT            m

Depth (m)	Method	Rec %	Run No.

SYMBOL

DRILL TYPE: Track-mounted CME-75

ELEV. GROUND (m): 1131.59

CO-ORDINATES (m): N 18,927 E 20,586

THERMISTOR  
DETAILS

PLASTIC  
LIMIT %

WATER  
CONTENT %

LIQUID  
LIMIT %

10    30    50    70    90

## DESCRIPTION OF MATERIALS

NOTES:

1. A prepared thermistor string was installed folded into the borehole. The 7 individual thermistors are located at the following depths from surface:
  - #7 @ 0.3m
  - #1 @ 0.8m
  - #2 @ 1.8m
  - #3 @ 2.8m
  - #4 @ 4.8m
  - #6 @ 5.3m
  - #5 @ 7.3m



**KLOHN-CRIPPEN**

JOB NO: PM 5314 0502

PROJECT: Mt. Nansen Gold Project

LOCATION: Carmacks, Yukon Territory

LOGGED BY: JM

CHECKED BY:

PLATE: 3 of 3

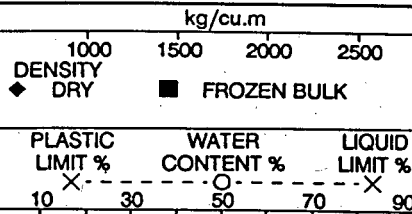
HOLE NO: DH95-08B

27/07/95

# TEST HOLE LOG

VERTICAL SCALE: 1cm = 0.25m

DATE DRILLED: 25 JUN 95 - 25 JUN 95



## SAMPLE DATA

HAMMER WEIGHT **kg**

DROP HEIGHT **m**

Depth (m) Method Rec % Run No.

DRILL TYPE: **Track-mounted CME-75**

ELEV. GROUND (m): **1135.05**

CO-ORDINATES (m): **N 18,914 E 20,497**

## DESCRIPTION OF MATERIALS

THERMISTOR DETAILS

Depth (m)	Method	Rec %	Run No.	SYMBOL	DESCRIPTION OF MATERIALS	THERMISTOR DETAILS	1000	1500	2000	2500
	AUGER				Thin grass cover - 30mm.					
	CRREL	100	CT1		<b>PEAT (Pt)</b> - fine fibrous, black to dark brown - interbedded with discontinuous fine to medium sand layers - frozen below 0.48m - Vr, ice content 30% - SAMPLE SP1 taken @ 0.53m - ice layer @ 0.76m, 3mm thick					
1.0					1.01					
	CRREL	71	CT2		<b>SAND (SP-SM)</b> - fine to medium - some silt to silty - trace rounded gravel - occasional roots to 10mm - trace mica - occasional grey silt lenses < 15mm thick - grey - Nbn - SAMPLE SP2 taken @ 1.40m - becoming Nbe below 1.75m, ice content 5%-10%					
2.0										
	CRREL	94	CT3		- PEAT layer @ 1.75m, 125mm thick - Vr with two 2mm thick ice lenses (ice content 25%) - 1mm to 2mm thick ice lenses at 2mm spacing over 20mm @ 2.0m - 0.5mm to 1.0mm thick ice lenses at 2mm spacing over 50mm @ 2.2m - some Vc in coarse sand pockets - SAMPLE SP3 taken @ 2.44m - sandy gravel layer @ 2.74m, 150mm thick					
3.0										
	CRREL	71	CT4		2.90-3.51m: gravelly - SAMPLE SP4 taken @ 2.90m					
	CRREL	67	CT5		3.51 <b>SILT (ML-SM)</b> - some organics, occasional sandy zones, dark brown - Vr, 0.5mm ice lenses throughout @ 1mm to 2mm spacing (ice content 40%)					
4.0										
	CRREL	86	CT6		<b>SAND (SP-SM)</b> - fine to medium - some silt to silty - trace to some rounded gravel - occasional roots - trace mica - dark brownish grey - SAMPLE SP7 taken @ 4.11m - SAMPLE SP8 taken @ 4.62m					
					<b>SILT (ML)</b> - trace to some sand, occasional sand interbeds					
					4.62					
					4.68					

Continued

JOB NO: **PM 5314 0502**

PROJECT: **Mt. Nansen Gold Project**

LOCATION: **Carmacks, Yukon Territory**

LOGGED BY: **JM**

CHECKED BY:

PLATE: **1 of 3**

HOLE NO: **DH95-09**



**KLOHN-CRIPPEN**

11/07/95

# TEST HOLE LOG

kg/cu.m

1000    1500    2000    2500

DENSITY  
 ◆ DRY    ■ FROZEN BULK

PLASTIC    WATER    LIQUID  
 LIMIT %    CONTENT %    LIMIT %  
 10 X 30 50 70 X 90

VERTICAL SCALE: 1cm = 0.25m

DATE DRILLED: 25 JUN 95 - 25 JUN 95

## SAMPLE DATA

DRILL TYPE: Track-mounted CME-75

HAMMER WEIGHT    kg

ELEV. GROUND (m): 1135.05

DROP HEIGHT    m

CO-ORDINATES (m): N 18,914 E 20,497

Depth (m)    Method    Rec %    Run No.

## DESCRIPTION OF MATERIALS

THERMISTOR  
DETAILS

6.0	CRREL	66	CT7	SYMBOL
7.0	CRREL	61	CT8	
8.0	CRREL	96	CT9	
9.0	CRREL	33	CT10	
9.0	CRREL	0	CT11	

- dark grey to brown
- ice lense @ 4.72m, 3mm thick
- 0.5mm to 1.0mm ice lenses @ 3mm spacing over 70mm
- gravelly sand layer @ 4.98m, 50mm thick

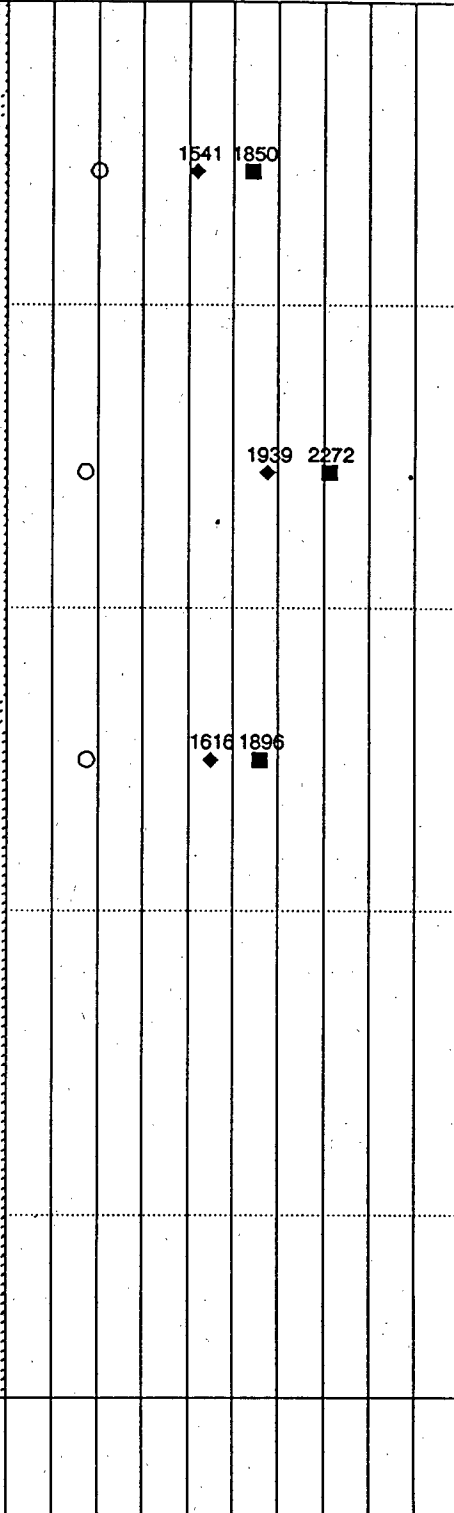
- SAND (SP-SM)**
- fine to coarse
  - some silt to silty
  - trace to some rounded gravel
  - occasional organic interbeds < 10mm thick
  - trace mica
  - occasional light grey silt lenses < 10mm thick
  - greyish brown
  - SAMPLE SP9 taken @ 5.53m

- SAMPLE SP10 taken @ 6.50m
- brown organic silt layer @ 6.55m, 50mm thick
- sandy gravel layer @ 6.61m, 125mm thick
- Vr in voids
- grey silt layer @ 6.81m, 150mm thick
- Vr, 1mm to 2mm ice lenses spaced at 12mm over 100mm
- ice lense @ 7.06m, 3mm thick
- SAMPLE SP11 taken @ 7.32m

- gravelly layer @ 7.92m, 75mm thick

9.45  
 GRAVEL (GP)

9.60  
 End of Hole @ 9.60m  
 - auger refusal in gravel



Continued

JOB NO: PM 5314 0502

PROJECT: Mt. Nansen Gold Project

LOCATION: Carmacks, Yukon Territory

LOGGED BY: JM    CHECKED BY:

PLATE: 2 of 3    HOLE NO: DH95-09



**KLOHN-CRIPPEN**

11/07/95

# TEST HOLE LOG

kg/cu.m

1000    1500    2000    2500

DENSITY

● DRY    ■ FROZEN BULK

PLASTIC  
LIMIT %

WATER  
CONTENT %

LIQUID  
LIMIT %

10

30

50

70

90

VERTICAL SCALE: 1cm = 0.25m

DATE DRILLED: 25 JUN 95 - 25 JUN 95

**SAMPLE DATA**

DRILL TYPE: Track-mounted CME-75

HAMMER WEIGHT    kg

ELEV. GROUND (m): 1135.05

DROP HEIGHT    m

CO-ORDINATES (m): N 18,914 E 20,497

Depth (m)	Method	Rec %	Run No.

**DESCRIPTION OF MATERIALS**

THERMISTOR  
DETAILS

NOTES:

1. A prepared thermistor string was installed folded into the borehole. The 7 individual thermistors are located at the following depths from surface:

- #7 @ 0.4m
- #1 @ 0.9m
- #2 @ 1.9m
- #3 @ 2.9m
- #4 @ 4.9m
- #6 @ 5.4m
- #5 @ 7.4m



**KLOHN-CRIPPEN**

JOB NO: PM 5314 0502

PROJECT: Mt. Nansen Gold Project

LOCATION: Carmacks, Yukon Territory

LOGGED BY: JM

CHECKED BY:

11/07/95

PLATE: 3 of 3

HOLE NO: DH95-09

# TEST HOLE LOG

VERTICAL SCALE: 1cm = 0.25m

DATE DRILLED: 27 JUN 95 - 28 JUN 95

kg/cu.m			
1000	1500	2000	2500
DENSITY ◆ DRY	■ FROZEN BULK		
PLASTIC LIMIT %	WATER CONTENT %	LIQUID LIMIT %	
10 X	30	50 O	70 X 90

**SAMPLE DATA**

HAMMER WEIGHT kg

DROP HEIGHT m

DRILL TYPE: **Track-mounted CME-75**

ELEV. GROUND (m): **1128.43**

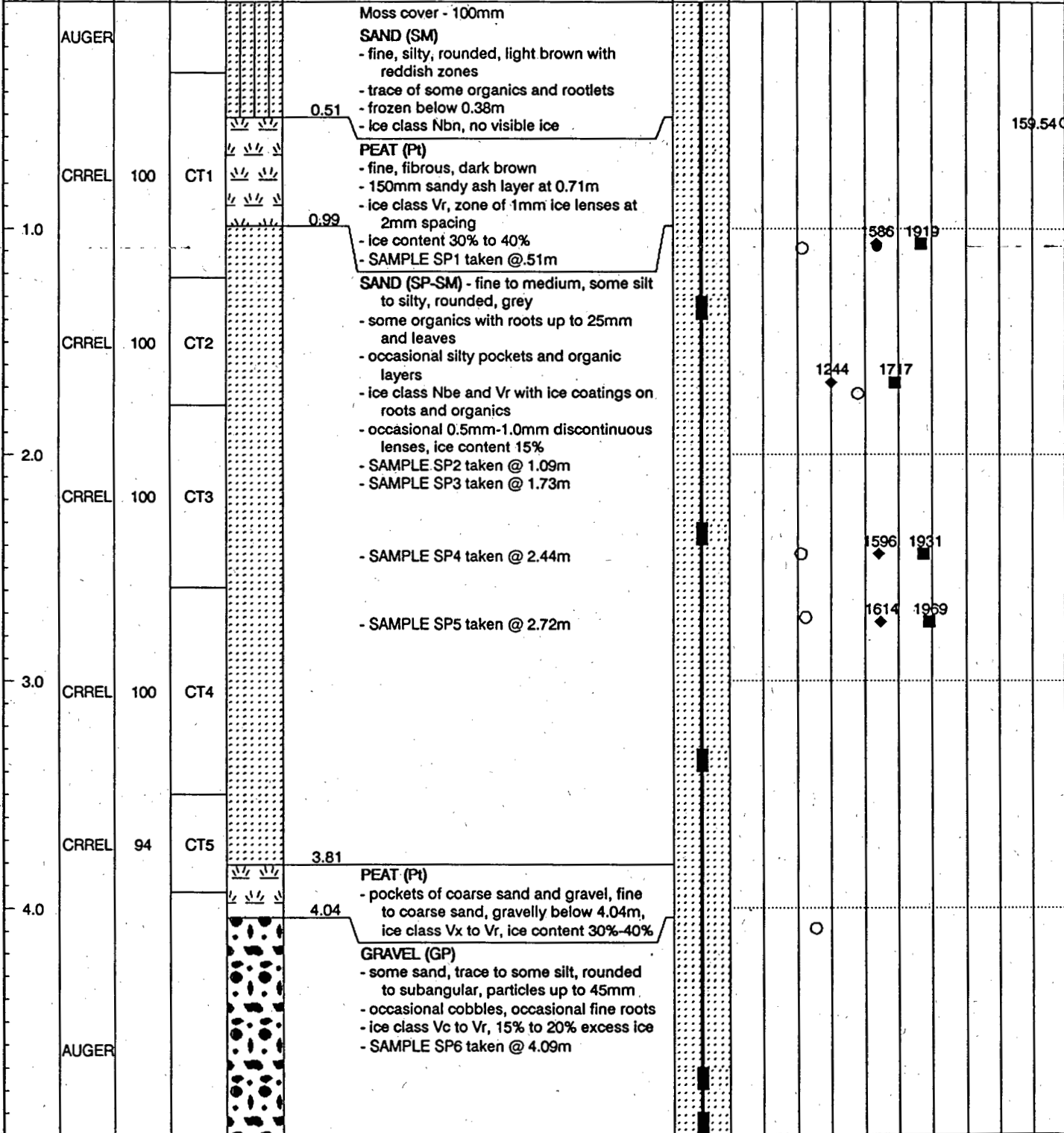
CO-ORDINATES (m): **N 18,936 E 20,676**

THERMISTOR  
DETAILS

Depth (m)	Method	Rec %	Run No.
-----------	--------	-------	---------

SYMBOL

**DESCRIPTION OF MATERIALS**



Continued

JOB NO: **PM 5314 0502**

PROJECT: **Mt. Nansen Gold Project**

LOCATION: **Carmacks, Yukon Territory**

LOGGED BY: **JM** CHECKED BY:

PLATE: **1 of 3** HOLE NO: **DH95-10**



**KLOHN-CRIPPEN**

11/07/95

# TEST HOLE LOG

kg/cu.m

1000    1500    2000    2500

◆ DENSITY DRY    ■ FROZEN BULK

PLASTIC LIMIT %	WATER CONTENT %	LIQUID LIMIT %
10    30    50    70    90	10    30    50    70    90	10    30    50    70    90

VERTICAL SCALE: 1cm = 0.25m

DATE DRILLED: 27 JUN 95 - 28 JUN 95

## SAMPLE DATA

DRILL TYPE: Track-mounted CME-75

HAMMER WEIGHT    kg

ELEV. GROUND (m): 1128.43

DROP HEIGHT    m

CO-ORDINATES (m): N 18,936 E 20,676

Depth (m)	Method	Rec %	Run No.	SYMBOL	DESCRIPTION OF MATERIALS	THERMISTOR	DETAILS
-----------	--------	-------	---------	--------	--------------------------	------------	---------

## DESCRIPTION OF MATERIALS

Depth (m)	Method	Rec %	Run No.	SYMBOL	DESCRIPTION OF MATERIALS	THERMISTOR	DETAILS
				●	GRAVEL (GP) - as above  - SAMPLE SP7 taken @ 5.31m	○	
6.0	CRREL	68	CT6	●	5.54  SAND (SP-SM) - fine to coarse, some silt to silty, trace to some gravel, rounded, grey, occasional lenses of grey sandy silt <10mm thick - SAMPLE SP8 taken @ 5.69m - ice class Nbn to Nbe, excess ice <5% - SAMPLE SP9 taken @ 5.69m	○	
	CRREL	22	CT7	●	6.55  GRAVEL (GP-GM) - some sand to sandy, some silt, subangular to rounded, occasional pockets of dark grey sandy silt, occasional cobbles, 80mm cored rock sample - some Vr ice between particles of rock, excess ice <10% - SAMPLE SP10 taken @ 6.86m	○	
7.0	CRREL	33	CT8	●	6.99  SAND (SP-SM) - fine to coarse, some silt to silty, trace to some gravel, rounded, occasional lenses of grey sandy silt up to 35mm thick - ice class Nbn to Nbe, excess ice content <5% - SAMPLE SP11 taken @ 7.67m	○	1787
	CRREL	22	CT9	●		○	2126
8.0	CRREL	0	CT10	●		○	
9.0	AUGER			●	9.02  GRAVEL (GP) - no return of cuttings to surface with solid stem auger, drilling response suggests gravel with some cobbles	○	

Continued



KLOHN-CRIPPEN

JOB NO: PM 5314 0502

PROJECT: Mt. Nansen Gold Project

LOCATION: Carmacks, Yukon Territory

LOGGED BY: JM

CHECKED BY:

11/07/95

PLATE: 2 of 3

HOLE NO: DH95-10

# TEST HOLE LOG

VERTICAL SCALE: 1cm = 0.25m

DATE DRILLED: 27 JUN 95 - 28 JUN 95

kg/cu.m

1000    1500    2000    2500

DENSITY  
 ● DRY    ■ FROZEN BULK

## SAMPLE DATA

HAMMER WEIGHT      kg

DROP HEIGHT            m

Depth (m)    Method    Rec %    Run No.

SYMBOL

DRILL TYPE:      Track-mounted CME-75

ELEV. GROUND (m): 1128.43

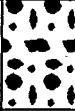
CO-ORDINATES (m): N 18,936 E 20,676

## DESCRIPTION OF MATERIALS

THERMISTOR  
DETAILS

PLASTIC LIMIT %      WATER CONTENT %      LIQUID LIMIT %

10    X    30      50      70      X    90



GRAVEL (GP)  
- as above

10.36

End of Hole @ 10.36m  
- refusal in gravel

NOTES:

1. A 30m long prepared thermistor string was installed folded into the borehole. The 10 individual thermistors are located at the following depths from surface:

- #8 @ -0.1m (above ground)
- #1 @ 1.2m
- #2 @ 2.2m
- #3 @ 3.2m
- #7 @ 4.7m
- #9 @ 4.9m
- #4 @ 5.2m
- #5 @ 7.7m
- #10 @ 9.6m
- #9 @ 9.9m



**KLOHN-CRIPPEN**

JOB NO:      PM 5314 0502

PROJECT:     Mt. Nansen Gold Project

LOCATION:     Carmacks, Yukon Territory

LOGGED BY:    JM              CHECKED BY:

PLATE:      3 of 3              HOLE NO:    DH95-10

11/07/95



# TEST HOLE LOG

kg/cu.m

VERTICAL SCALE: 1cm = 0.25m

DATE DRILLED: 17 JUN 95 - 17 JUN 95

1000    1500    2000    2500  
 DENSITY  
 ● DRY    ■ FROZEN BULK

## SAMPLE DATA

DRILL TYPE: Track-mounted CME-75

THERMISTOR  
DETAILS

HAMMER WEIGHT      kg

ELEV. GROUND (m): 1150.12

PLASTIC      WATER      LIQUID  
LIMIT %      CONTENT %      LIMIT %

DROP HEIGHT      m

CO-ORDINATES (m): N 19,083 E 20,553

10 X      30      50      70      90

Depth (m)	Method	Rec %	Run No.
-----------	--------	-------	---------

## DESCRIPTION OF MATERIALS

SYMBOL

SAND (SP-SM)  
- as above

6.0

7.0

8.0

9.0

- 150mm thick gravelly layer

Continued



**KLOHN-CRIPPEN**

JOB NO: PM 5314 0502

PROJECT: Mt. Nansen Gold Project

LOCATION: Carmacks, Yukon Territory

LOGGED BY: JM      CHECKED BY:

11/07/95

PLATE: 2 of 4

HOLE NO: DH95-11

# TEST HOLE LOG

VERTICAL SCALE: 1cm = 0.25m					DATE DRILLED: 17 JUN 95 - 17 JUN 95		kg/cu.m	
<b>SAMPLE DATA</b>					DRILL TYPE: Track-mounted CME-75		1000    1500    2000    2500 DENSITY ◆ DRY    ■ FROZEN BULK	
HAMMER WEIGHT    kg				SYMBOL	ELEV. GROUND (m): 1150.12		PLASTIC    WATER    LIQUID	
DROP HEIGHT    m					CO-ORDINATES (m): N 19,083 E 20,553		LIMIT %    CONTENT %    LIMIT %	
Depth (m)	Method	Rec %	Run No.		<b>DESCRIPTION OF MATERIALS</b>		10    30    50    70    90 X    -    O    -    X	
11.0				SAND (SP-SM) - as above				
12.0								
13.0								
14.0								
				14.94				

Continued



**KLOHN-CRIPPEN**

JOB NO:	PM 5314 0502
PROJECT:	Mt. Nansen Gold Project
LOCATION:	Carmacks, Yukon Territory
LOGGED BY:	JM
CHECKED BY:	
PLATE:	3 of 4
HOLE NO:	DH95-11

11/07/95

# TEST HOLE LOG

kg/cu.m

VERTICAL SCALE: 1cm = 0.25m

DATE DRILLED: 17 JUN 95 - 17 JUN 95

1000    1500    2000    2500

◆ DENSITY DRY    ■ FROZEN BULK

## SAMPLE DATA

DRILL TYPE: Track-mounted CME-75

HAMMER WEIGHT    kg

ELEV. GROUND (m): 1150.12

DROP HEIGHT    m

CO-ORDINATES (m): N 19,083 E 20,553

Depth (m)    Method    Rec %    Run No.

## DESCRIPTION OF MATERIALS

THERMISTOR  
DETAILS

PLASTIC LIMIT %	WATER CONTENT %	LIQUID LIMIT %
10    X    30	50    O    70	X    90

16.0

17.0

18.0

18.29

SILT (ML)  
- trace fine sand  
- grey

- becoming coarser

End of Hole @ 18.29m  
- limit of available auger sections  
NOTES:  
Probe hole augered to determine depth to bedrock



**KLOHN-CRIPPEN**

YUKON ENERGY, MINES  
& RESOURCES LIBRARY

P.O. BOX 2703  
WHITEHORSE, YUKON Y1A 2C6

11/07/95

JOB NO: PM 5314 0502

PROJECT: Mt. Nansen Gold Project

LOCATION: Carmacks, Yukon Territory

LOGGED BY: JM    CHECKED BY:

PLATE: 4 of 4

HOLE NO: DH95-11

# TEST HOLE LOG

kg/cu.m

1000    1500    2000    2500

DENSITY  
● DRY    ■ FROZEN BULK

VERTICAL SCALE: 1cm = 0.25m

DATE DRILLED: 18 JUN 95 - 18 JUN 95

## SAMPLE DATA

HAMMER WEIGHT    kg

DRILL TYPE: Track-mounted CME-75

DROP HEIGHT    m

ELEV. GROUND (m): 1156.88

Depth (m)    Method    Rec %    Run No.

CO-ORDINATES (m): N 19,144 E 20,552

## DESCRIPTION OF MATERIALS

THERMISTOR  
DETAILS

PLASTIC LIMIT %	WATER CONTENT %	LIQUID LIMIT %
10    X    30	O    50	X    70    90

Thin moss cover - 60mm

- SAND (SP-SM)**
- fine to medium
  - silty with trace of fine rounded gravel
  - trace mica
  - moist
  - light brown

1.0

2.0

3.0

4.0

Continued

JOB NO: PM 5314 0502

PROJECT: Mt. Nansen Gold Project

LOCATION: Carmacks, Yukon Territory

LOGGED BY: JM

CHECKED BY:

11/07/95

PLATE: 1 of 3

HOLE NO: DH95-12



**KLOHN-CRIPPEN**







# TEST HOLE LOG

kg/cu.m

VERTICAL SCALE: 1cm = 0.25m

DATE DRILLED: 18 JUN 95 - 18 JUN 95

1000    1500    2000    2500

● DENSITY

■ FROZEN BULK

## SAMPLE DATA

DRILL TYPE: Track-mounted CME-75

THERMISTOR  
DETAILS

HAMMER WEIGHT    kg

ELEV. GROUND (m): 1161.50

DROP HEIGHT    m

CO-ORDINATES (m): N 19,179 E 20,554

Depth (m)	Method	Rec %	Run No.

PLASTIC LIMIT %	WATER CONTENT %	LIQUID LIMIT %
X	O	X
10    30	50    70	90

## DESCRIPTION OF MATERIALS

SAND (SP-SM)  
- as above

- 300mm thick approx. gravelly layer

6.0

7.0

8.0

9.0



KLOHN-CRIPPEN

Continued

JOB NO: PM 5314 0502

PROJECT: Mt. Nansen Gold Project

LOCATION: Carmacks, Yukon Territory

LOGGED BY: JM                      CHECKED BY:

PLATE: 2 of 3

HOLE NO: DH95-13

11/07/95

# TEST HOLE LOG

VERTICAL SCALE: 1cm = 0.25m				DATE DRILLED: 18 JUN 95 - 18 JUN 95		THERMISTOR DETAILS	kg/cu.m																
SAMPLE DATA				DRILL TYPE: Track-mounted CME-75			1000    1500    2000    2500 ◆ DENSITY DRY    ■ FROZEN BULK																
HAMMER WEIGHT		DROP HEIGHT		SYMBOL	ELEV. GROUND (m): 1161.50		PLASTIC LIMIT %		WATER CONTENT %		LIQUID LIMIT %												
Depth (m)	Method	Rec %	Run No.		CO-ORDINATES (m): N 19,179 E 20,554		10    30    50    70    90 X    X    O    X    X																
DESCRIPTION OF MATERIALS																							
				•	SAND (SP-SM) - as above																		
				•	10.97 End of Hole @ 10.97m - auger refusal																		
					NOTES: Probe hole augered to determine depth to bedrock.																		



**KLOHN-CRIPPEN**

JOB NO:	PM 5314 0502
PROJECT:	Mt. Nansen Gold Project
LOCATION:	Carmacks, Yukon Territory
LOGGED BY:	JM
CHECKED BY:	
PLATE:	3 of 3
HOLE NO:	DH95-13

11/07/95

# TEST HOLE LOG

kg/cu.m

VERTICAL SCALE: 1cm = 0.25m

DATE DRILLED: 18 JUN 95 - 18 JUN 95

1000    1500    2000    2500  
 DENSITY    ■ FROZEN BULK  
 ◆ DRY

**SAMPLE DATA**

DRILL TYPE: Track-mounted CME-75

THERMISTOR  
DETAILS

HAMMER WEIGHT    kg

ELEV. GROUND (m): 1147.03

DROP HEIGHT    m

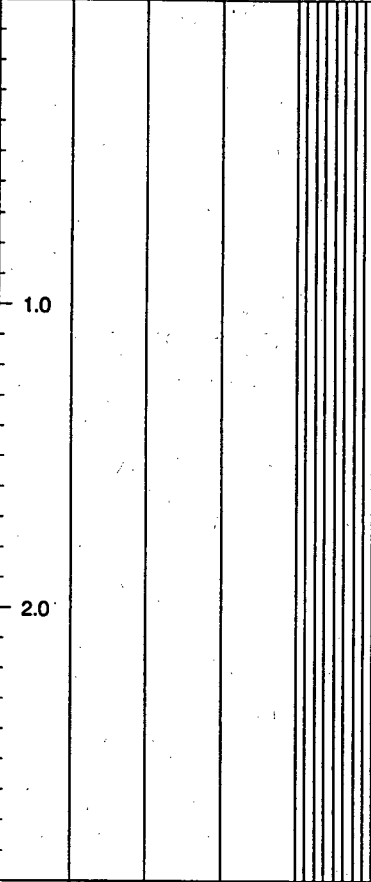
CO-ORDINATES (m): N 18,847 E 20,538

PLASTIC    WATER    LIQUID  
LIMIT %    CONTENT %    LIMIT %  
 10    X    30    50    70    X    90

Depth (m)	Method	Rec %	Run No.
-----------	--------	-------	---------

SYMBOL

**DESCRIPTION OF MATERIALS**



Moss cover - 150mm

**SILT (ML)**

- trace to some fine sand
- trace to some organics
- dark brown
- frozen from surface
- ice lumps in cuttings

- becoming light brown below 2.4m

- becoming sandy below 2.6m

- becoming gravelly below 2.7m

2.90

End of Hole @ 2.90m  
 - auger refusal in bedrock

**NOTES:**

Probe hole augered to determine depth to bedrock.



**KLOHN-CRIPPEN**

JOB NO: PM 5314 0502

PROJECT: Mt. Nansen Gold Project

LOCATION: Carmacks, Yukon Territory

LOGGED BY: JM      CHECKED BY:

PLATE: 1 of 1      HOLE NO: DH95-14

11/07/95



# TEST HOLE LOG

kg/cu.m

VERTICAL SCALE: 1cm = 0.25m

DATE DRILLED: 23 JUN 95 - 23 JUN 95

1000    1500    2000    2500

DENSITY  
● DRY    ■ FROZEN BULK

## SAMPLE DATA

DRILL TYPE: Track-mounted CME-75

HAMMER WEIGHT      kg

ELEV. GROUND (m): 1150.44

DROP HEIGHT      m

CO-ORDINATES (m): N 18,833 E 20,548

Depth (m)    Method    Rec %    Run No.

SYMBOL

## DESCRIPTION OF MATERIALS

THERMISTOR  
DETAILS

PLASTIC LIMIT %    WATER CONTENT %    LIQUID LIMIT %  
10 X    30    50    70    X 90

Depth (m)	Method	Rec %	Run No.	SYMBOL	DESCRIPTION OF MATERIALS	THERMISTOR	DETAILS
1.0	AUGER				Moss cover - 150mm		
	CRREL	100	CT1		<b>SILT (ML)</b> - trace to some fine sand, trace to some gravel, dark brown - some organics including roots - 75mm silty gravel layer at 0.41m - 125mm sandy ash layer at 0.53m - 25mm organic layer at 0.69m - thawed to 0.46m depth - ice class Vx to Vr with ice content of 30%-50%		126.4
	CRREL	61	CT2		0.74 <b>SAND (SM)</b> - fine, silty, trace to some rounded gravel, dark grey, occasional cobbles - trace to some organics in 20mm interbeds between 0.74m-1.04m - ice class Vs for two 3mm lenses at 0.79m and 1.01m - ice class Vr for several 1-2mm lenses from 1.04m to 1.24m - excess ice estimated at 50%		
2.0	CRREL	85	CT3		1.42 <b>GRAVEL (GM-GP)</b> - sandy, rounded, grey, occasional cobbles, occasional roots up to 15mm - ice class Vr in voids between large gravel particles, Vc around some fine gravel, Nbe in sand portion - excess ice 15%		
					2.24 Bottom of hole @ 2.24m - auger refusal in gravel NOTES: Probe hole augered to determine depth to bedrock.		



**KLOHN-CRIPPEN**

JOB NO: PM 5314 0502

PROJECT: Mt. Nansen Gold Project

LOCATION: Carmacks, Yukon Territory

LOGGED BY: JM

CHECKED BY:

PLATE: 1 of 1

HOLE NO: DH95-15

11/07/95

# TEST HOLE LOG

kg/cu.m

VERTICAL SCALE: 1cm = 0.25m

DATE DRILLED: 28 JUN 95 - 28 JUN 95

1000    1500    2000    2500  
 DENSITY  
 ◆ DRY    ■ FROZEN BULK

## SAMPLE DATA

DRILL TYPE: Track-mounted CME-75

THERMISTOR  
DETAILS

HAMMER WEIGHT    kg

ELEV. GROUND (m): 1138.36

DROP HEIGHT    m

CO-ORDINATES (m): N 18,877 E 20,628

PLASTIC    WATER    LIQUID  
 LIMIT %    CONTENT %    LIMIT %  
 10 X    30    50    70    90

Depth (m)    Method    Rec %    Run No.

## DESCRIPTION OF MATERIALS

1.0	AUGER			SYMBOL
	CRREL	53	CT1	
	CRREL	36	CT2	
	CRREL	70	CT3	
	CRREL	61	CT4	
3.0				
	CRREL	0	CT5	
4.0	AUGER			

Moss cover - 150mm

**SAND (SP-SM)**

- fine to coarse
- some silt to silty
- trace rounded gravel
- trace organics inc. fine roots
- trace mica
- occasional grey sandy silt layers < 10mm thick
- reddish brown to light brown
- moist when thawed, thawed above 0.51m
- Nbn with some Nbe zones
- occasional Vc in coarse sand pockets
- ice content < 5%

- 75mm thick gravel layer @ 3.45m

3.96

**GRAVEL (GP)**

- to 30mm size
- sandy
- brown

--	--	--	--	--	--	--	--	--	--	--	--	--	--	--	--	--	--	--	--

Continued

JOB NO: PM 5314 0502
PROJECT: Mt. Nansen Gold Project
LOCATION: Carmacks, Yukon Territory
LOGGED BY: JM      CHECKED BY:
PLATE: 1 of 2      HOLE NO: DH95-16



KLOHN-CRIPPEN

11/07/95

# TEST HOLE LOG

TEST HOLE LOG					kg/cu.m														
VERTICAL SCALE: 1cm = 0.25m					DATE DRILLED: 28 JUN 95 - 28 JUN 95														
<b>SAMPLE DATA</b> HAMMER WEIGHT      kg DROP HEIGHT      m Depth (m)   Method   Rec %   Run No.   SYMBOL					DRILL TYPE: Track-mounted CME-75														
					ELEV. GROUND (m): 1138.36														
					CO-ORDINATES (m): N 18,877 E 20,628														
					DESCRIPTION OF MATERIALS														
					THERMISTOR DETAILS														
					DENSITY ◆ DRY      ■ FROZEN BULK														
					PLASTIC LIMIT %      WATER CONTENT %      LIQUID LIMIT % 10 X      30      50 O      70      90 X														
6.0	CRREL	0	CT6	GRAVEL (GP) - as above															
				5.64															
	AUGER			SILT (ML) - some fine sand - trace of fine gravel - occasional gravelly layers - brown															
7.0																			
	CRREL	0	CT7	GRAVEL (GP)															
				7.47															
	AUGER			GRAVEL (GP)															
				7.98															
				End of hole @ 7.98m - auger refusal in gravel															



**KLOHN-CRIPPEN**

JOB NO:	PM 5314 0502
PROJECT:	Mt. Nansen Gold Project
LOCATION:	Carmacks, Yukon Territory
LOGGED BY:	JM      CHECKED BY:
PLATE:	2 of 2      HOLE NO: DH95-16



# TEST HOLE LOG

kg/cu.m

VERTICAL SCALE: 1cm = 0.25m

DATE DRILLED: 29 JUN 95 - 29 JUN 95

1000    1500    2000    2500

◆ DENSITY DRY    ■ FROZEN BULK

## SAMPLE DATA

HAMMER WEIGHT    kg

DROP HEIGHT    m

Depth (m)	Method	Rec %	Run No.
6.0	CRREL	22	CT6
7.0	CRREL	47	CT7
8.0	CRREL	36	CT8
9.0	CRREL	0	CT9
	CRREL	64	CT10

SYMBOL

DRILL TYPE: Track-mounted CME-75

ELEV. GROUND (m): 1149.10

CO-ORDINATES (m): N 18,883 E 20,417

THERMISTOR  
DETAILS

PLASTIC LIMIT %	WATER CONTENT %	LIQUID LIMIT %
10 X	50	70 X

## DESCRIPTION OF MATERIALS

**SAND (SP-SM)**  
- as above

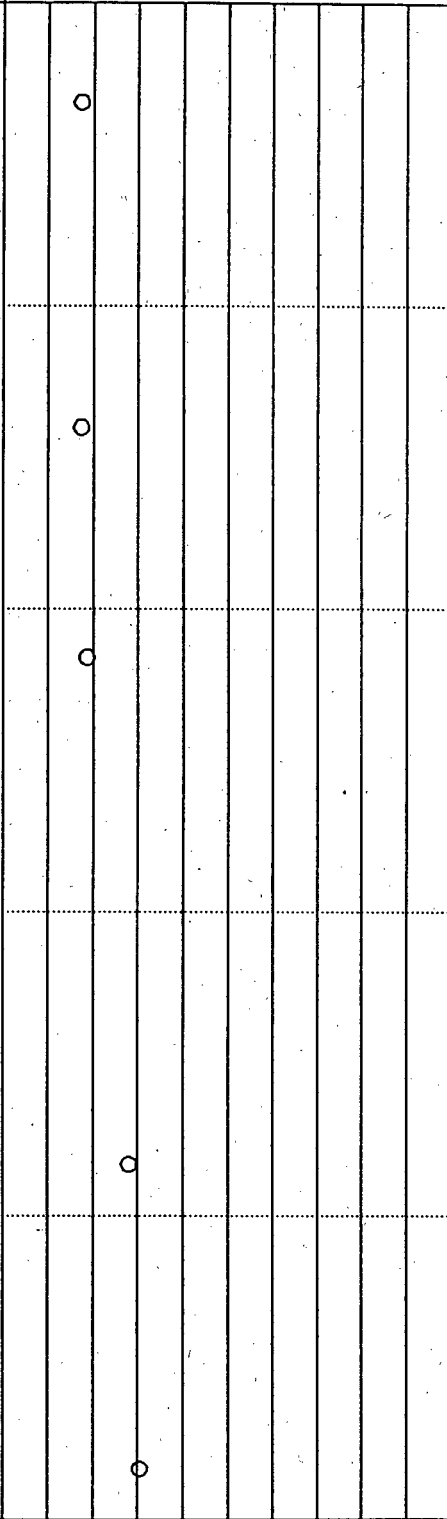
- SAMPLE SP6 taken @ 5.33m  
- some Vr to Vc around gravel particles @ 5.4m  
- excess ice 10%

6.25

**SILT (ML-SM)**  
- some fine sand to sandy  
- trace mica  
- Nbn  
- organic odour  
- dark grey  
- interbedded with fine to medium SAND @ 6.25m-7.62m, layers <40mm thick  
- some Nbe and Vc in sand interbeds (excess ice 5%-10%)  
- SAMPLE SP7 taken @ 6.25m-6.55m  
- SAMPLE SP8 taken @ 7.16m

- SAMPLE SP9 taken @ 8.83m  
- occasional thin brown organic layers <4mm thick

- SAMPLE SP10 taken @ 9.83m



Continued

JOB NO: PM 5314 0502

PROJECT: Mt. Nansen Gold Project

LOCATION: Carmacks, Yukon Territory

LOGGED BY: JM      CHECKED BY:

PLATE: 2 of 3

HOLE NO: DH95-17



**KLOHN-CRIPPEN**

11/07/95

# TEST HOLE LOG

kg/cu.m

VERTICAL SCALE: 1cm = 0.25m

DATE DRILLED: 29 JUN 95 - 29 JUN 95

1000    1500    2000    2500

DENSITY

◆ DRY

■ FROZEN BULK

## SAMPLE DATA

DRILL TYPE: Track-mounted CME-75

THERMISTOR  
DETAILS

HAMMER WEIGHT      kg

ELEV. GROUND (m): 1149.10

DROP HEIGHT      m

CO-ORDINATES (m): N 18,883 E 20,417

PLASTIC  
LIMIT %

WATER  
CONTENT %

LIQUID  
LIMIT %

Depth (m)    Method    Rec %    Run No.

10    X

30

50    O

70

90    X

## DESCRIPTION OF MATERIALS

SILT (ML-SM)  
- as above

10.36

End of Hole @ 10.36m



**KLOHN-CRIPPEN**

JOB NO: PM 5314 0502

PROJECT: Mt. Nansen Gold Project

LOCATION: Carmacks, Yukon Territory

LOGGED BY: JM

CHECKED BY:

11/07/95

PLATE: 3 of 3

HOLE NO: DH95-17

# TEST HOLE LOG

kg/cu.m

VERTICAL SCALE: 1cm = 0.25m

DATE DRILLED: 29 JUN 95 - 29 JUN 95

1000    1500    2000    2500

DENSITY ● DRY    ■ FROZEN BULK

## SAMPLE DATA

DRILL TYPE: Track-mounted CME-75

HAMMER WEIGHT    kg

ELEV. GROUND (m): 1156.82

DROP HEIGHT    m

CO-ORDINATES (m): N 18,933 E 20,257

Depth (m)    Method    Rec %    Run No.

## DESCRIPTION OF MATERIALS

THERMISTOR DETAILS

PLASTIC LIMIT %    WATER CONTENT %    LIQUID LIMIT %

10 X 30 50 70 X 90

Depth (m)	Method	Rec %	Run No.	SYMBOL	DESCRIPTION OF MATERIALS	THERMISTOR	DETAILS	PLASTIC LIMIT %	WATER CONTENT %	LIQUID LIMIT %
	AUGER			●	Thin moss cover - 20mm  - SAMPLE SP1 taken @ 0.00m-0.61m	○				
1.0	CRREL	44	CT1	●	<b>SAND (SP-SM)</b> - fine to medium - trace to some organics at surface - occasional coarse sand layers - occasional grey silt lenses <20mm thick - reddish brown to brown - frozen below 1.8m - Nbn, occasional Nbe zones - SAMPLE SP2 taken @ 0.61m-1.52m - SAMPLE SP3 taken @ 1.68m	○				
2.0	CRREL	31	CT2	●		○				
3.0	CRREL	37	CT3	●	- SAMPLE SP4 taken @ 2.59m	○				
	CRREL	39	CT4	●	- SAMPLE SP5 taken @ 3.2m	○				
4.0	CRREL	19	CT5	●	- SAMPLE SP6 taken @ 4.11m	○				

Continued



**KLOHN-CRIPPEN**

JOB NO: PM 5314 0502

PROJECT: Mt. Nansen Gold Project

LOCATION: Carmacks, Yukon Territory

LOGGED BY: JM    CHECKED BY:

PLATE: 1 of 3    HOLE NO: DH95-18

11/07/95



# TEST HOLE LOG

kg/cu.m

VERTICAL SCALE: 1cm = 0.25m

DATE DRILLED: 29 JUN 95 - 29 JUN 95

1000    1500    2000    2500  
 DENSITY  
 ● DRY    ■ FROZEN BULK

## SAMPLE DATA

DRILL TYPE: Track-mounted CME-75

THERMISTOR  
DETAILS

HAMMER WEIGHT      kg

ELEV. GROUND (m): 1156.82

DROP HEIGHT      m

CO-ORDINATES (m): N 18,933 E 20,257

PLASTIC      WATER      LIQUID  
 LIMIT %      CONTENT %      LIMIT %  
 X      O      X  
 10      30      50      70      90

Depth (m)    Method    Rec %    Run No.

## DESCRIPTION OF MATERIALS

11.0	CRREL	50	CT11	
12.0	CRREL	26	CT12	
12.0	CRREL	0	CT13	

- SILT (ML)**
- trace of fine sand
  - trace mica
  - occasional brown organic interbeds <5mm thick
  - organic odour
  - occasional grey sand interbeds 5mm-15mm thick
  - Nbn
  - grey
  - SAMPLE SP13 taken @ 10.52m

12.45  
 End of Hole @ 12.45m



KLOHN-CRIPPEN

JOB NO: PM 5314 0502	
PROJECT: Mt. Nansen Gold Project	
LOCATION: Carmacks, Yukon Territory	
LOGGED BY: JM	CHECKED BY:
PLATE: 3 of 3	HOLE NO: DH95-18

11/07/95

# TEST HOLE LOG

kg/cu.m

VERTICAL SCALE: **1cm = 0.25m**

DATE DRILLED: **30 JUN 95 - 30 JUN 95**

1000    1500    2000    2500  
 DENSITY  
 ● DRY            ■ FROZEN BULK

## SAMPLE DATA

DRILL TYPE: **Track-mounted CME-75**

HAMMER WEIGHT            kg

ELEV. GROUND (m): **1156.46**

DROP HEIGHT                m

CO-ORDINATES (m): **N 18,952 E 20,270**

Depth (m)    Method    Rec %    Run No.

## DESCRIPTION OF MATERIALS

THERMISTOR DETAILS

PLASTIC            WATER            LIQUID  
 LIMIT %            CONTENT %            LIMIT %  
 X                    O                    X  
 10            30            50            70            90

1.0	CRREL	38	CT1	SYMBOL
2.0	CRREL	56	CT2	
3.0	CRREL	17	CT3	
4.0	CRREL	0	CT4	
	CRREL	50	CT5	

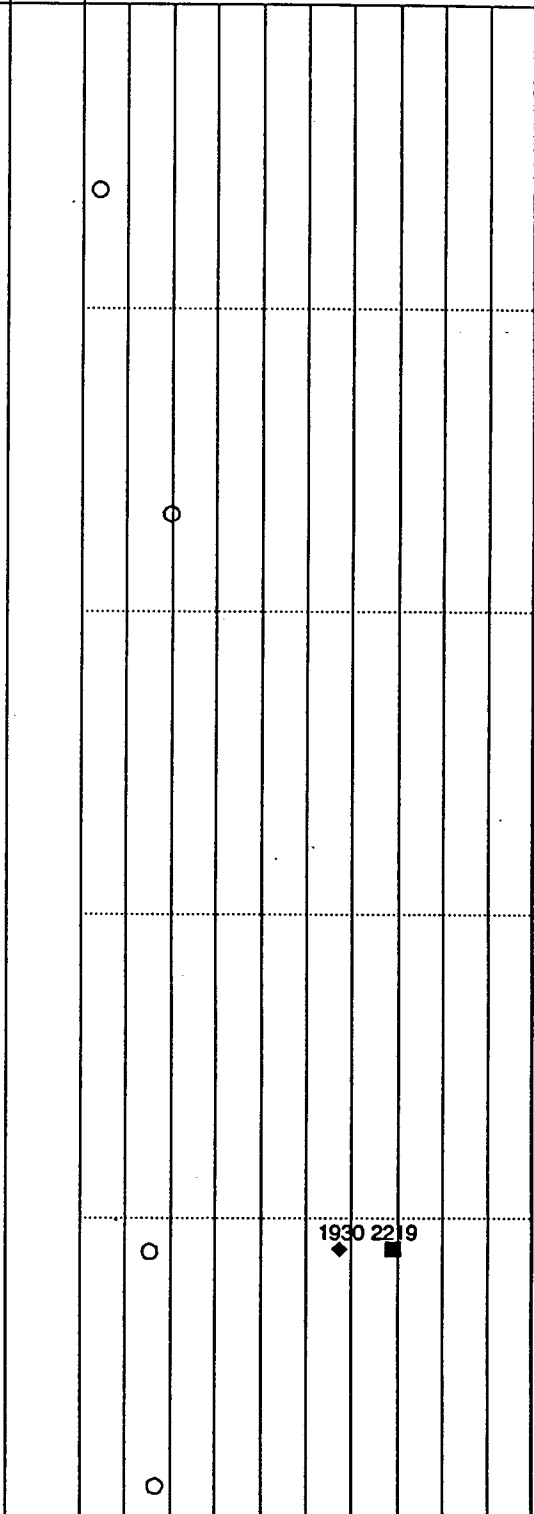
Thin moss cover - 20mm

- SAMPLE SP1 taken @ 0.15m-1.07m

**SAND (SP-SM)**  
 - fine to medium  
 - some silt to silty  
 - trace to some rounded gravel  
 - trace to some organics  
 - occasional grey silt layers < 10mm thick  
 - reddish brown to brown  
 - frozen below 1.6m  
 - Nbn, occasional Nbe zones  
 - excess ice < 5%  
 - SAMPLE SP2 taken @ 1.68m

- SAMPLE SP3 taken @ 4.11m

- SAMPLE SP4 taken @ 4.88m



Continued



**KLOHN-CRIPPEN**

JOB NO: **PM 5314 0502**

PROJECT: **Mt. Nansen Gold Project**

LOCATION: **Carmacks, Yukon Territory**

LOGGED BY: **JM**

CHECKED BY:

PLATE: **1 of 2**

HOLE NO: **DH95-19**

11/07/95

# TEST HOLE LOG

kg/cu.m

VERTICAL SCALE: **1cm = 0.25m**

DATE DRILLED: **30 JUN 95 - 30 JUN 95**

1000 1500 2000 2500  
 DENSITY  
 ● DRY      ■ FROZEN BULK

**SAMPLE DATA**

DRILL TYPE: **Track-mounted CME-75**

THERMISTOR  
DETAILS

HAMMER WEIGHT      kg

ELEV. GROUND (m): **1156.46**

DROP HEIGHT      m

CO-ORDINATES (m): **N 18,952 E 20,270**

Depth (m)	Method	Rec %	Run No.	SYMBOL	DESCRIPTION OF MATERIALS	PLASTIC LIMIT %	WATER CONTENT %	LIQUID LIMIT %
						X	O	X
						10	30	50
						70	90	

**DESCRIPTION OF MATERIALS**

	CRREL	28	CT6					
6.0	CRREL	0	CT7					
7.0	CRREL	0	CT8					
8.0	CRREL	0	CT9					
9.0	CRREL	33	CT10					

**SAND (SP-SM)**  
- as above

**SILT (ML)**  
 - trace to some fine sand  
 - interbedded with fine to medium sand lenses <5mm thick  
 - occasional thin brown organic layers  
 - grey  
 - SAMPLE SP5 taken @ 8.53m

7.62

9.41

End of Hole @ 9.41m



**KLOHN-CRIPPEN**

JOB NO:	<b>PM 5314 0502</b>
PROJECT:	<b>Mt. Nansen Gold Project</b>
LOCATION:	<b>Carmacks, Yukon Territory</b>
LOGGED BY:	<b>JM</b>
CHECKED BY:	
PLATE:	<b>2 of 2</b>
HOLE NO:	<b>DH95-19</b>

11/07/95

# TEST HOLE LOG

SAMPLE DATA					SYMBOL	DATE DRILLED: 30 JUN 95 - 30 JUN 95		THERMISTOR DETAILS	kg/cu.m				
						VERTICAL SCALE: 1cm = 0.25m			DRILL TYPE: Track-mounted CME-75	1000	1500	2000	2500
HAMMER WEIGHT		kg			ELEV. GROUND (m): 1158.59				◆ DENSITY DRY	■ FROZEN BULK			
DROP HEIGHT		m			CO-ORDINATES (m): N 18,903 E 20,234				PLASTIC LIMIT %	WATER CONTENT %	LIQUID LIMIT %		
Depth (m)	Method	Rec %	Run No.		DESCRIPTION OF MATERIALS				10	30	50	70	90
1.0					Thin moss cover - 20mm								
2.0					SAND (SP-SM) - fine to medium - some silt to silty - trace of rounded gravel - trace to some organics near surface - reddish brown to brown - frozen below 0.9m								
3.0					SILT (ML) - some fine sand - trace mica - Nbe - grey								
4.0					4.60 End of Hole @ 4.6m								



**KLOHN-CRIPPEN**

JOB NO:	PM 5314 0502
PROJECT:	Mt. Nansen Gold Project
LOCATION:	Carmacks, Yukon Territory
LOGGED BY:	JM
CHECKED BY:	
PLATE:	1 of 1
HOLE NO:	DH95-20



# TEST HOLE LOG

VERTICAL SCALE: <b>1cm = 0.25m</b>				DATE DRILLED: <b>30 JUN 95 - 30 JUN 95</b>		kg/cu.m 1000    1500    2000    2500															
<b>SAMPLE DATA</b>				SYMBOL		DRILL TYPE: <b>Track-mounted CME-75</b>		DENSITY ◆ DRY    ■ FROZEN BULK													
HAMMER WEIGHT <b>kg</b>						ELEV. GROUND (m): <b>1164.92</b>		PLASTIC LIMIT %		WATER CONTENT %		LIQUID LIMIT %									
DROP HEIGHT <b>m</b>						CO-ORDINATES (m): <b>N 19,000 E 20,094</b>		10    X    30    50    70    X    90		10    X    30    50    70    X    90		10    X    30    50    70    X    90									
Depth (m)	Method	Rec %	Run No.	<b>DESCRIPTION OF MATERIALS</b>						THERMISTOR DETAILS											
6.0				SILT (ML) - as above																	
				6.10 End of Hole @ 6.1m																	



**KLOHN-CRIPPEN**

JOB NO:	<b>PM 5314 0502</b>
PROJECT:	<b>Mt. Nansen Gold Project</b>
LOCATION:	<b>Carmacks, Yukon Territory</b>
LOGGED BY:	<b>JM</b>
CHECKED BY:	
PLATE:	<b>2 of 2</b>
HOLE NO:	<b>DH95-21</b>

# TEST HOLE LOG

VERTICAL SCALE: 1cm = 0.25m				DATE DRILLED: 30 JUN 95 - 30 JUN 95		kg/cu.m				
SAMPLE DATA				SYMBOL	DRILL TYPE: Track-mounted CME-75		DENSITY			
HAMMER WEIGHT kg					ELEV. GROUND (m): 1161.55		1000 1500 2000 2500			
DROP HEIGHT m					CO-ORDINATES (m): N 19,009 E 20,141		◆ DRY ■ FROZEN BULK			
Depth (m)	Method	Rec %	Run No.		DESCRIPTION OF MATERIALS		X	O	X	
						10	30	50	70	90
1.0				0.30	Thin moss cover - 20mm SAND (SM) - fine, silty, trace to some gravel, trace organics, brown					
				0.76	SILT (ML) - trace sand and gravel, organic odour, frozen with excess water on thaw, brown					
				1.22	SAND (SP-SM) - fine to medium - some silt to silty - trace of rounded gravel - brown - thawed from 0.76m-1.07m					
2.0					SILT (ML) - trace to some sand - trace gravel - trace organics - excess water on thaw - grey					
3.0										
4.0										
				4.57	- ice content increasing					
					End of Hole @ 4.57m					

THERMISTOR DETAILS



**KLOHN-CRIPPEN**

JOB NO:	PM 5314 0502
PROJECT:	Mt. Nansen Gold Project
LOCATION:	Carmacks, Yukon Territory
LOGGED BY:	JM
CHECKED BY:	
PLATE:	1 of 1
HOLE NO:	DH95-22



# TEST HOLE LOG

kg/cu.m

VERTICAL SCALE: 1cm = 0.25m

DATE DRILLED: 30 JUN 95 - 30 JUN 95

1000    1500    2000    2500

DENSITY

◆ DRY

■ FROZEN BULK

## SAMPLE DATA

DRILL TYPE: Track-mounted CME-75

THERMISTOR  
DETAILS

HAMMER WEIGHT      kg

ELEV. GROUND (m): 1159.89

DROP HEIGHT            m

CO-ORDINATES (m): N 19,018 E 20,183

PLASTIC  
LIMIT %

WATER  
CONTENT %

LIQUID  
LIMIT %

Depth (m)	Method	Rec %	Run No.

10    30    50    70    90

## DESCRIPTION OF MATERIALS

**SILT (ML)**  
 - as above  
 - sand content reduced to trace  
 - becoming dark bluish grey  
 - increasing ice content  
 - interbedded with brown silt lenses @  
 6.1m-7.6m

6.0

7.0

8.0

9.0

9.14

End of Hole @ 9.14m



KLOHN-CRIPPEN

11/07/95

JOB NO: PM 5314 0502

PROJECT: Mt. Nansen Gold Project

LOCATION: Carmacks, Yukon Territory

LOGGED BY: JM      CHECKED BY:

PLATE: 2 of 2

HOLE NO: DH95-23

# TEST HOLE LOG

kg/cu.m

VERTICAL SCALE: 1cm = 0.25m

DATE DRILLED: 30 JUN 95 - 30 JUN 95

1000    1500    2000    2500

DENSITY

● DRY

■ FROZEN BULK

## SAMPLE DATA

DRILL TYPE: Track-mounted CME-75

THERMISTOR  
DETAILS

HAMMER WEIGHT      kg

ELEV. GROUND (m): 1157.52

DROP HEIGHT              m

CO-ORDINATES (m): N 19,133 E 20,482

Depth (m)	Method	Rec %	Run No.	SYMBOL	DESCRIPTION OF MATERIALS
-----------	--------	-------	---------	--------	--------------------------

PLASTIC      WATER      LIQUID  
LIMIT %      CONTENT %      LIMIT %

10    30    50    70    90

## DESCRIPTION OF MATERIALS

Depth (m)	Method	Rec %	Run No.	SYMBOL	DESCRIPTION OF MATERIALS	THERMISTOR	DETAILS
	AUGER				Thin moss cover - 30mm - 50mm thick greyish white ash layer underneath moss cover <b>SILT (ML-SM)</b> - trace to some sand - trace to some gravel - some organics and rootlets - frozen below 0.6m - Nbn 0.81 - SAMPLE SP1 taken @ 0.81m		
1.0	CRREL	50	CT1	.....	<b>SAND (SP-SM)</b> - fine to medium - silty to some silt - trace rounded gravel - trace mica - Nbn - brownish grey - occasional grey silt lenses < 15mm thick - occasional gravelly zones < 30mm thick - SAMPLE SP2 taken @ 1.37m		
2.0	CRREL	36	CT2	.....	- SAMPLE SP3 taken @ 2.29m		
3.0	CRREL	39	CT3	.....	- SAMPLE SP4 taken @ 3.5m		
4.0	CRREL	67	CT4	.....	- SAMPLE SP5 taken @ 4.11m		
	CRREL	42	CT5	.....			

Continued



KLOHN-CRIPPEN

JOB NO: PM 5314 0502	
PROJECT: Mt. Nansen Gold Project	
LOCATION: Carmacks, Yukon Territory	
LOGGED BY: JM	CHECKED BY:
PLATE: 1 of 2	HOLE NO: DH95-24

11/07/95



# TEST HOLE LOG

VERTICAL SCALE: 1cm = 0.25m				DATE DRILLED: 1 JUL 95 - 1 JUL 95		kg/cu.m		
SAMPLE DATA				SYMBOL	DRILL TYPE: Track-mounted CME-75		1000    1500    2000    2500 DENSITY ◆ DRY    ■ FROZEN BULK	
HAMMER WEIGHT		kg			ELEV. GROUND (m): 1155.35		PLASTIC    WATER    LIQUID LIMIT %    CONTENT %    LIMIT %	
DROP HEIGHT		m			CO-ORDINATES (m): N 18,825 E 20,482		10 X    30    50    70    90	
Depth (m)	Method	Rec %	Run No.		DESCRIPTION OF MATERIALS			
1.0	AUGER				Moss cover - 150mm			
	CRREL	83	CT1		SILT (ML) - trace to some sand - trace to some gravel - some organics - brown to orangish brown - occasional gravelly zones below 0.6m - frozen below moss cover - Vr to Vs, 1mm-3mm ice lenses spaced at 4mm apart - excess ice 40%-60%			
	CRREL	100	CT2	▽ ▽ ▽ ▽ ▽ ▽ ▽ ▽ ▽ ▽ ▽ ▽	1.22 PEAT (Pt) - fine fibrous - occasional roots - dark brown			
2.0	CRREL	100	CT3	+ + + + + + + + + + + +	1.60 - fine to coarse sand layer @ 1.47m, 70mm thick 1.75 SAND (SP-SM), fine to medium, silty, greyish brown			
	CRREL	100	CT3	+ + + + + + + +	2.12 ANDESITE - angular bedrock fragments in silty sand matrix - SAMPLE SP1 taken @ 2.0m End of Hole @ 2.12m - auger refusal			



**KLOHN-CRIPPEN**

JOB NO:	PM 5314 0502
PROJECT:	Mt. Nansen Gold Project
LOCATION:	Carmacks, Yukon Territory
LOGGED BY:	JM
CHECKED BY:	
PLATE:	1 of 1
HOLE NO:	DH95-25



# TEST HOLE LOG

kg/cu.m

1000    1500    2000    2500

DENSITY

● DRY    ■ FROZEN BULK

PLASTIC  
LIMIT %

WATER  
CONTENT %

LIQUID  
LIMIT %

10    30    50    70    90

VERTICAL SCALE: 1cm = 0.25m

DATE DRILLED: 2 JUL 95 - 2 JUL 95

## SAMPLE DATA

DRILL TYPE: Track-mounted CME-75

HAMMER WEIGHT      kg

ELEV. GROUND (m): 1144.45

DROP HEIGHT      m

CO-ORDINATES (m): N 18,989 E 20,653

Depth (m)	Method	Rec %	Run No.
6.0	CRREL	8	CT6
7.0	CRREL	0	CT7
8.0	CRREL	0	CT8
8.65	CRREL	27	CT9

SYMBOL

THERMISTOR  
DETAILS

## DESCRIPTION OF MATERIALS

SAND (SP-SM)  
- as above

- gravelly layer @ 8.08m, 75mm thick

8.65

End of Hole @ 8.65m  
- refusal in gravel



**KLOHN-CRIPPEN**

JOB NO: PM 5314 0502

PROJECT: Mt. Nansen Gold Project

LOCATION: Carmacks, Yukon Territory

LOGGED BY: JM      CHECKED BY:

PLATE: 2 of 2      HOLE NO: DH95-26

11/07/95

# TEST HOLE LOG

kg/cu.m

VERTICAL SCALE: **1cm = 0.25m**

DATE DRILLED: **2 JUL 95 - 2 JUL 95**

1000    1500    2000    2500  
 DENSITY  
 ◆ DRY    ■ FROZEN BULK

**SAMPLE DATA**

DRILL TYPE: **Track-mounted CME-75**

THERMISTOR  
DETAILS

HAMMER WEIGHT    kg

ELEV. GROUND (m): **1137.41**

DROP HEIGHT    m

CO-ORDINATES (m): **N 19,002 E 20,770**

Depth (m)	Method	Rec %	Run No.
-----------	--------	-------	---------

**DESCRIPTION OF MATERIALS**

PLASTIC LIMIT %	WATER CONTENT %	LIQUID LIMIT %
X	O	X
10    30	50    70	90

1.0				0.91	Moss cover - 150mm  <b>SILT (ML)</b> - organic - ice rich - dark brown to black - thin white ash layer @ 0.6m																	
2.0					<b>SAND (SP-SM)</b> - fine - silty - some rounded gravel to gravelly - trace to some organics in upper zone - light grey																	
3.0																						
4.0					- becoming fine to medium - some silt to silty - some rounded gravel to gravelly, to 30mm size - light brown - Nbn to Nbe - some Vc around coarser sand particles and fine gravel - excess ice < 10%																	

<p style="font-size: 24px; font-weight: bold; margin-top: 10px;">KLOHN-CRIPPEN</p>	Continued	JOB NO: <b>PM 5314 0502</b>
		PROJECT: <b>Mt. Nansen Gold Project</b>
		LOCATION: <b>Carmacks, Yukon Territory</b>
		LOGGED BY: <b>JM</b> CHECKED BY:
	11/07/95	PLATE: <b>1 of 2</b> HOLE NO: <b>DH95-27</b>

# TEST HOLE LOG

kg/cu.m

VERTICAL SCALE: 1cm = 0.25m

DATE DRILLED: 2 JUL 95 - 2 JUL 95

1000    1500    2000    2500

DENSITY

◆ DRY

■ FROZEN BULK

## SAMPLE DATA

HAMMER WEIGHT      kg

DROP HEIGHT            m

Depth (m)	Method	Rec %	Run No.

SYMBOL

DRILL TYPE: Track-mounted CME-75

ELEV. GROUND (m): 1137.41

CO-ORDINATES (m): N 19,002 E 20,770

THERMISTOR  
DETAILS

PLASTIC  
LIMIT %

WATER  
CONTENT %

LIQUID  
LIMIT %

10	30	50	70	90
----	----	----	----	----

## DESCRIPTION OF MATERIALS

SAND (SP-SM)  
- as above

6.0

7.0

8.0

9.0

9.14

End of Hole @ 9.14m



KLOHN-CRIPPEN

JOB NO: PM 5314 0502

PROJECT: Mt. Nansen Gold Project

LOCATION: Carmacks, Yukon Territory

LOGGED BY: JM

CHECKED BY:

PLATE: 2 of 2

HOLE NO: DH95-27

11/07/95







# TEST HOLE LOG

TEST HOLE LOG					kg/cu.m											
VERTICAL SCALE: 1cm = 0.25m					DATE DRILLED: 2 JUL 95 - 2 JUL 95					THERMISTOR DETAILS						
SAMPLE DATA					DRILL TYPE: Track-mounted CME-75					DENSITY						
HAMMER WEIGHT kg					ELEV. GROUND (m): 1149.47					● DRY		■ FROZEN BULK				
DROP HEIGHT m					CO-ORDINATES (m): N 19,085 E 20,596					PLASTIC LIMIT %		WATER CONTENT %			LIQUID LIMIT %	
Depth (m)	Method	Rec %	Run No.	SYMBOL	DESCRIPTION OF MATERIALS					10	30	50	70	90		
6.0				[Pattern]	SAND (SP-SM) - as above											
					6.10 End of Hole @ 6.1m											



**KLOHN-CRIPPEN**

JOB NO:	PM 5314 0502
PROJECT:	Mt. Nansen Gold Project
LOCATION:	Carmacks, Yukon Territory
LOGGED BY:	JM
CHECKED BY:	
PLATE:	2 of 2
HOLE NO:	DH95-29

11/07/95