

MAP NO.: PLACER ASSESSMENT REPORT X
116 C 1 PROSPECTUS
CONFIDENTIAL X
OPEN FILE

DOCUMENT NO:120069
MINING DISTRICT: DAWSON
TYPE OF WORK: GEOCHEM, DRILLING

REPORT FILED UNDER: WILSHIRE MORTGAGE

DATE PERFORMED: JULY & SEPTEMBER, 1985

DATE FILED: JULY 19, 1985

LOCATION: LAT.: 64° 07' N
LONG.: 140° 20' W

AREA: CLAIFORNIA CREEK
VALUE \$: 16,266.85

CLAIM NAME & NO.: P 6853-6854
LAVINA'S 25TH P4677
LARRY'S FOLLY P4678
NCG 54-94 P7689-7729

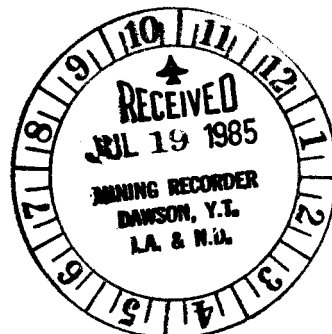
NCG 1-53 P7730-7782
NCG 100-152 P9734-9786

WORK DONE BY: BACON, DONALDSON & ASSOC. LTD. AND MIDNIGHT SUN DRILLING CO. LTD.

WORK DONE FOR: WILSHIRE MORTGAGE

DATE TO GOOD STANDING:	

REMARKS:



GRAVITY PROCESSING
OF
DRILL HOLE SAMPLES
FOR THE RECOVERY OF RAW GOLD

prepared for:

Mr. Wayne Hall

PACIFIC INTERNATIONAL PRODUCTION CO.

120069

File No.: 5336

14 January 1985

W.G. Bacon

Dr. W. G. Bacon, P.Eng.

14 January 1985

File No.: 5336

Mr. Wayne Hall
P.O. Box 113
Georgetown, Colorado
U.S.A. 80444

Dear Wayne

Re: Gravity Processing of Drill Hole Samples
For the Recovery of Raw Gold

1.0 INTRODUCTION

A letter of instruction was received from yourself in September 1984 and following various telephone conversations it was decided to process these placer samples as shown in Figures 1 and 2.

The samples immediately above, at, and immediately below the bedrock were selected by Mr. Wayne Hall and treated as shown in Figure 1. All other samples treated were processed using the flowsheet shown in Figure 2.

2.0 PROCESSING OF SAMPLES

The early samples were wet screened at 12 mesh and very early in the program coarse gold was discovered visually in the +12 mesh material. At this time Mr. Wayne Hall was advised by telephone and he then came to our Laboratory. At this time the two process flowsheets (Figures 1 and 2) were selected by BACON DONALDSON, and Wayne Hall.

3.0 RESULTS

The results are summarized in the appended tables in Appendix I. It should be noted that 6 samples (LF1A, LF2, LF3, BL3, BL4 and BL9) contained large nuggets of gold in the +12 mesh fraction. These nuggets were photographed and the photographs sent to Wayne Hall. The gold was also sent to Wayne Hall.

In the results tables the weight of the large gold nuggets was not included in the Raw Au, oz/ton, calculation.

4.0 COMMENTS

It is felt a few comments should be made with respect to the gold nuggets recovered from the six samples.

The gold is very coarse and contains some quartz. It does not appear to have been transported long distances.

It is not common to have such a distribution of gold sizes. The samples with a lot of coarse gold do not have large amounts of finer gold. In fifteen years of consulting we have not observed this type of size distribution.

5.0 SUMMER PROGRAM FOR 1985

Mr. Wayne Hall requested a costing for undertaking a similar program to the program reported herein for the summer of 1985. This program would take place in the field instead of the laboratory.

The program does not require sophisticated equipment. It simply requires:

- 1) a Wifley or Diester table
- 2) a good vibratory wet screen
- 3) a number of large sample containers
- 4) a water supply (pump)
- 5) an electric generator

This presupposes the table concentrate will be processed by amalgamation in a laboratory.

The above equipment can be purchased or rented more cheaply than we can lease the same equipment. Also it would greatly inconvenience us to be without this equipment for a portion of the summer.

We would provide an experienced Laboratory Technician for \$27.50/hour based upon a 5-day, 8-hour day/week. More hours than 40/week would be charged at \$32.50/hour.

We would be available to advise what equipment to buy and where to buy it for the field program.

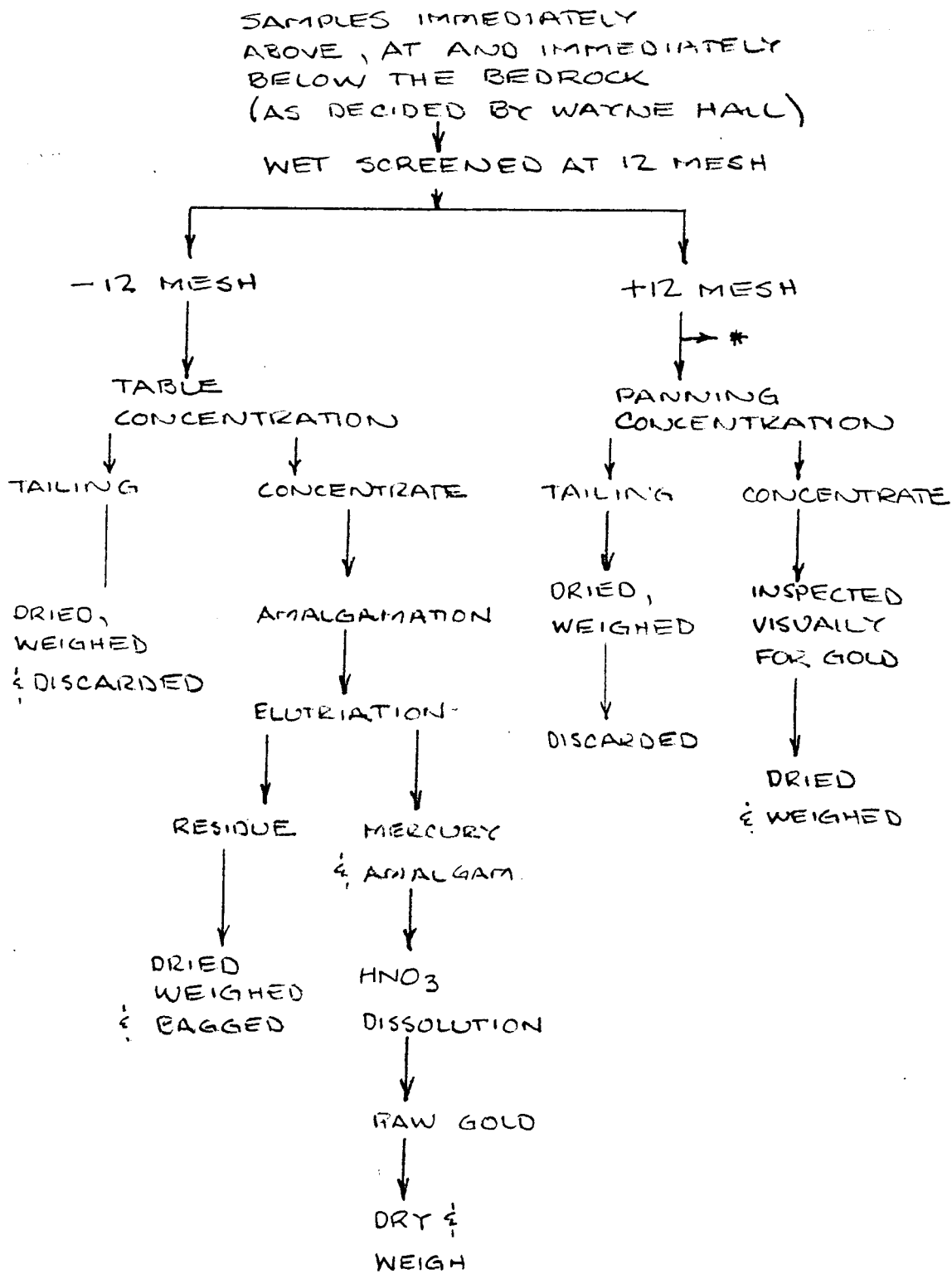
Yours truly

BACON, DONALDSON & ASSOCIATES LTD.



Dr. W. G. Bacon, P.Eng.

WGB/lis



* COARSE GOLD
MANUALLY REMOVED,
CLEANED, DRIED,
WEIGHED & PHOTOGRAPH.

FIGURE 1

SAMPLES AWAY FROM
PLACER / BEDROCK
INTERFACE.

WET SCREENED AT 12 MESH

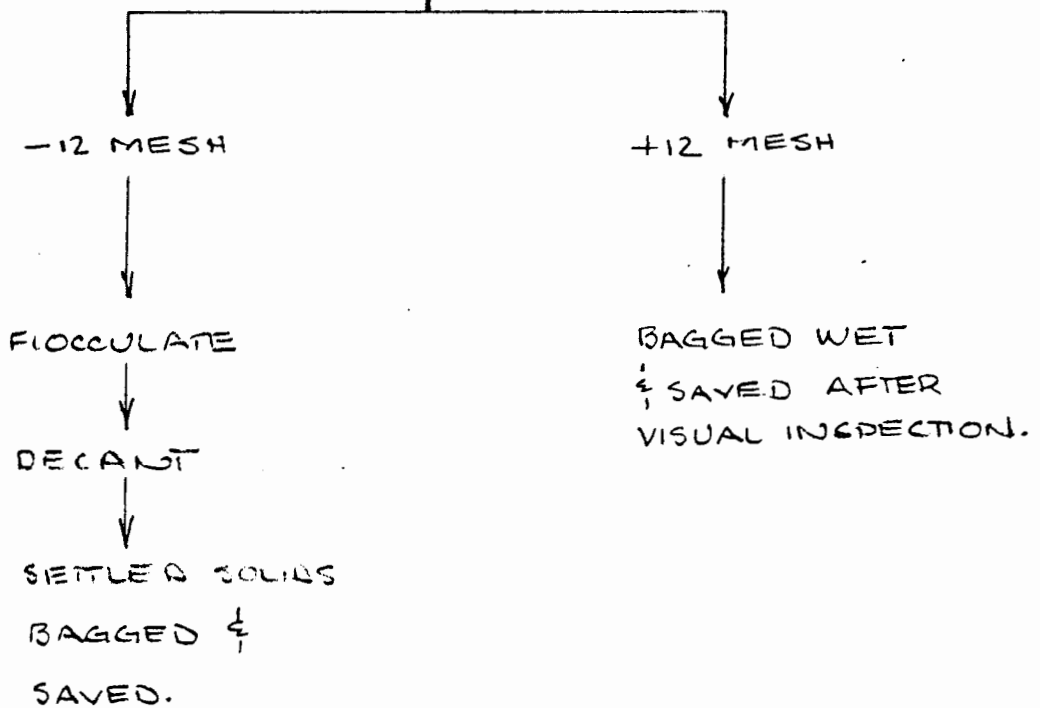


FIGURE 2

HOLE #	FOOTAGE	O/S Au gm	O/S gm	TABLE TAIL gm	AMALG TAIL gm	TOTAL WT. SAMPLE	AMALG CON. Au mgm	RAW Au oz/ton
LF3A	8'-10'		8,548.7	18,356	181.0	27,085.7	0.830	0.0009
	10'-12'		4,583	11,598	95.0	16,276	4.792	0.0086
	12'-14'		8,026	24,120	74.0	32,220	2.324	0.0021
	14'-16'	-	screened, bagged wet and saved					
LF4	6'- 8'	-	screened, bagged wet and saved					
	8'-10'		8,613.3	16,596	784.8	25,994.1	3.208	0.0036
	10'-12'		3,957	8,970	40.1	12,967.1	0.776	0.0017
	12'-14'		6,532	5,840	440.6	12,812.6	0.386	0.0009
	14'-16'	-	screened, bagged wet and saved					
LF5	4'- 6'	-	screened, bagged wet and saved					
	6'- 8'	-	"	"	"	"	"	"
	8'-10'		13,059	37,308	201.2	50,568.2	0.582	0.0003
	10'-12'		7,186	10,467	171.5	17,824.5	0.405	0.0007
	12'-14'		3,073	6,363	259.8	9,695.8	0.350	0.0011
LF6	4'- 6'	-	screened, bagged wet and saved					
	6'- 8'	-	"	"	"	"	"	"
	8'-10'		9,420	16,072	469.8	25,961.8	0.797	0.0009
	10'-12'		13,740	11,393	170.8	25,302.8	0.413	0.0005
	12'-14'		8,198.5	10,428	450.2	19,076.7	0.820	0.0013

HOLE #	FOOTAGE	O/S Au gm	O/S gm	TABLE TAIL gm	AMALG TAIL gm	TOTAL WT. SAMPLE	AMALG CON. Au mgm	RAW Au oz/ton
LF1	8'-10'		8,542	12,431	2,193.0	23,166.0	0.551	0.0007
	10'-12'		8,897	10,319	1,069.5	20,285.5	1.039	0.0015
	12'-14'		10,482	14,731	740.3	25,953.3	2.116	0.0024
	14'-16'		4,639	7,942	316.7	12,897.7	0.501	0.0011
	16'-18'		1,545	3,094	224	4,863.0	0.121	0.0007
LF1A	8'-10'		8,618	9,498	333.5	18,449.5	0.100	0.0002
	10'-12'		7,604	4,983	361.9	12,948.9	0.330	0.0007
	12'-14'	24.65	10,112	13,213.5	453.1	23,778.6	1.948	0.0024
	14'-16'		7,676	13,693	550.9	21,919.9	0.633	0.0008
	16'-18'		6,950	17,440	304.7	24,694.7	0.427	0.0005
						<u>10174.6</u>		
LF2	12'-14'		8,153	14,454	85.4	22,692.4	10.673	0.0137
	14'-16'		4,431	10,748	383.0	15,562.0	3.755	0.0070
	16'-18'		15,213	33,985	399.5	49,597.5	6.227	0.0037
	18'-20'		19,783	18,857	659.2	39,299.2	7.500	0.0057
	20'-22'	20.94	5,837	15,272	364.5	21,473.4	1.742	0.0024
	22'-24'		3,693	10,455	169.9	14,317.9	1.098	0.0022
						<u>72242.4</u>		
LF3	10'-12'		9,106	18,464	276.3	27,846.3	1.937	0.0020
	12'-14'		5,022	8,389	393.0	13,804.0	1.495	0.0032
	14'-16'		5,434	10,951	843.9	17,228.9	2.266	0.0038
	16'-18'	43.26	6,223	18,846	223.2	25,292.2	1.334	0.0015
	18'-20'		6,602	17,831	821.0	24,714.0	0.938	0.0011

HOLE #	FOOTAGE	O/S Au gm	O/S gm	TABLE TAIL gm	AMALG TAIL gm	TOTAL WT. SAMPLE	AMALG CON. Au mgm	RAW Au oz/ton	
LF7	6'-8'	-	screened, bagged wet and saved						
	8'-10'	-	" " " " "						
	10'-12'		9,564	16,230	198.2	25,992.2	3.098	0.0035	
	12'-14'		2,965	34,831	1255.2	39,051.2	.974	0.0007	
	14'-16'		2,278	9,945	366	12,589.0	1.750	0.0035	
LF7A	12'-14'	-	screened, bagged wet and saved						
	14'-16'	-	" " " " "						
	16'-18'		7,142	16,065	661.0	23,868	.484	0.0006	
	18'-20'		4,956	18,787	843.0	24,586	.500	0.0006	
	20'-22'		1,202	14,043	457	15,702	1.200	0.0022	
LF8	12'-14'	-	screened, bagged wet and saved						
	14'-16'		10,278	11,147	36.8	21,461.8	.760	0.0010	
	16'-18'		5,844	2,777	132.3	8,753.3	2.050	0.0068	
	18'-20'		7,804	6,423	350.7	14,577.7	0.387	0.0008	
LF9	8'-10'	-	screened, bagged wet and saved						
	10'-12'	-	" " " " "						
	12'-14'		6,878	9,872	260.5	17,010.5	.400	0.0007	
	14'-16'		6,043	20,502	930	27,475	1.300	0.0014	
	16'-18'		5,453	16,634	729.5	22,816.5	.230	0.0003	

HOLE #	FOOTAGE	O/S Au gm	O/S gm	TABLE TAIL gm	AMALG TAIL gm	TOTAL WT. SAMPLE	AMALG CON. Au mgm	RAW Au oz/ton	
LF10	6'- 8'	-	screened , bagged wet and saved						
	8'-10'		7,848	15,028	381.9	23,257.9	0.425	0.0005	
	10'-12'		8,243	13,557	101.8	21,901.8	0.258	0.0003	
	12'-14'		7,013	11,152	393.9	18,558.9	0.100	0.0002	
LF11	4'- 6'	-	screened, bagged wet and saved						
	6'- 8'	-	"	"	"	"	"	"	
	8'-10'		6,661.4	12,949	1,330.2	20,940.6	1.310	0.0018	
	10'-12'		4,783.5	11,583	518.0	16,884.5	0.301	0.0005	
	12'-14'		9,839	17,317	809.0	27,965.0	0.357	0.0004	
LF12	6'- 8'	-	screened, bagged wet and saved						
	8'- 10'	-	"	"	"	"	"	"	
	10'-12'		13,993	10,908	534.5	25,435.5	0.245	0.0003	
	12'-14'		11,654	15,640	127.3	27,421.3	0.387	0.0004	
	14'-16'		9,659	6,761	41.5	16,461.5	12.903	0.0229	
LF13	10'-12'		11,887	6,879	90.0	18,856	1.780	0.0028	
	12'-14'		11,786.8	6,571	129.0	18,486.8	0.789	0.0012	
	14'-16'		10,614	8,444	61.8	19,119.8	0.173	0.0003	
	16'-18'	-	screened, bagged wet and saved						
	18'-20'	-	missing						

HOLE #	FOOTAGE	O/S Au gm	O/S gm	TABLE TAIL gm	AMALG TAIL gm	TOTAL WT. SAMPLE	AMALG CON. Au mgm	RAW Au oz/ton
RF 1	10 - 12			screened, bagged wet and saved				
	12 - 14			screened, bagged wet and saved				
	14 - 16		7,372	14,625	318.2	22,315.2	.412	0.0005
	16 - 18		7,184	10,447	1,093.0	18,724.0	1.100	0.0017
	18 - 20							
RF - 2	14 - 16			screened, bagged wet and saved				
	16 - 18		9,491	14,438	525.0	24,454.0	.975	0.0012
	18 - 20		8,550	14,351	212.9	23,113.9	.741	0.0009
	20 - 22		6,649	6,514	82.0	13,245.0	.292	0.0006
RF 3	12 - 14			screened, bagged wet and saved				
	14 - 16			screened, bagged wet and saved				
	16 - 18		3,951	16,174	886.0	21,011.0	1.041	0.0015
	18 - 20		6,722	16,988	545.0	24,255.0	0.600	0.0007
	20 - 22		5,627	10,642	185.0	16,454.0	0.305	0.0005
RF 4	10 - 12			screened, bagged wet and saved				
	12 - 14			screened, bagged wet and saved				
	14 - 16		22,146	20,425	283.0	42,854	2.793	0.0019
	16 - 18		6,448	11,395	577.2	18,420.2	.750	0.0012
	18 - 20		7,187	11,619.1	163.5	18,969.6	.783	0.0012
RF 5	18 - 20			screened, bagged wet and saved				
	20 - 22			screened, bagged wet and saved				
	22 - 24		1,741	12,263	448.8	14,452.8	.783	0.0016
	24 - 26		7,401	6,821	177.8	14,399.8	.357	0.0007
	26 - 28		10,409.5	9,045	201	19,655.5	.277	0.0004

HOLE #	FOOTAGE	O/S Au gm	O/S gm	TABLE TAIL gm	AMALG TAIL gm	TOTAL WT. SAMPLE	AMALG CON. Au mgm	RAW Au oz/ton
RF 6	12 - 14		screened, bagged wet and saved					
	14 - 16		screened, bagged wet and saved					
	16 - 18		13,640	10.,584	491.1	24,715.1	0.262	0.0003
	18 - 20		9,416	7,697	153.5	17,266.5	0.432	0.0007
	20 - 22		10,699	9,614	541.0	20,854	0.384	0.0005
RF 7	12 - 14		screened, bagged wet and saved					
	14 - 16		screened, bagged wet and saved					
	16 - 18		11,472	7,869	97	19,438	0.468	0.0007
	18 - 20		9,796	9,495	196	19,487	0.902	0.0014
	20 - 22		8,120.3	14,181.7	170	22,472	0.592	0.0008
RF 8	10 - 12		screened, bagged wet and saved					
	12 - 14		screened, bagged wet and saved					
	14 - 16		8,285.2	6,762	144	15,191.2	0.300	0.0006
	16 - 18		7,045.2	5,027	145	12,217.2	0.420	0.0010
	18 - 20		10,259.5	9,141.5	183	19,584.0	0.350	0.0005
RF 9	4 - 6		screened, bagged wet and saved					
	6 - 8		9,098	15,093	556.9	24,747.9	0.843	0.0010
	8 - 10		13,633	14,762	725.2	29,120.2	0.371	0.0004
	10 - 12		8,672	11,408	560.0	20,640	0.207	0.0003
	12 - 14		16,508	3,545	527	20,580	ND	-
RF 10	5 - 7		screened, bagged wet and saved					
	7 - 9		screened, bagged wet and saved					
	9 - 11		9,218	14,762	629.5	24,609.5	1.036	0.0012
	11 - 13		8,748	10,882.5	103.4	19,733.9	0.200	0.0003
	13 - 15		8,777.9	10,827	284.8	19,889.7	0.400	0.0006

HOLE #	FOOTAGE	O/S Au gm	O/S gm	TABLE TAIL gm	AMALG TAIL gm	TOTAL WT. SAMPLE	AMALG CON. Au mgm	RAW Au oz/ton
RF 11	10 - 12		screened, bagged wet and saved					
	12 - 14		4,179	25,909	327	30,415	4.467	0.0043
	14 - 16		6,766.5	28,901	1,021.7	36,689.2	1.143	0.0009
	16 - 18		5,386	4,615	152.9	10,153.9	0.246	0.0007
	18 - 20		screened, bagged wet and saved					
RF 12	18 - 20		screened, bagged wet and saved					
	20 - 22		9,958	4,835	394.8	15,187.8	0.653	0.0013
	22 - 24		10,616	13,932	183.5	24,731.5	0.084	0.0001
	24 - 26		9,929	11,198	186.2	21,313.2	0.327	0.0004
RF 13	20 - 22		hold					
	22 - 24		hold					
	24 - 26		screened, bagged wet and saved					
	26 - 28		screened, bagged wet and saved					
	28 - 30		14,076	9,001	219.7	23,296.7	0.195	0.0002
	30 - 32		9,793	13,059	183	23,035	0.242	0.0003
	32 - 34		8,114.5	18,003	911.1	27,028.6	0.377	0.0004
RF 14	34 - 36		screened, bagged wet and saved					
	36 - 38		screened, bagged wet and saved					
	38 - 40		13,875	15,195	243	29,313	2.478	0.0025
	40 - 42		6,238	10,994	200	17,432	0.100	0.0001
	42 - 44		5,479	5,340	222.5	11,041.5	0.231	0.0006
RF 15	29 - 31		hold					
	31 - 33		screened, bagged wet and saved					
	33 - 35		screened, bagged wet and saved					
	35 - 37		7,303	23,914	990	32,207	0.521	0.0005
	37 - 39		6,700	11,507	289	18,496	0.050	0.0001
	39 - 41		6,222	9,773	701.1	16,696.1	0.159	0.0003

^ HOLE #	FOOTAGE	O/S Au gm	O/S gm	TABLE TAIL gm	AMALG TAIL gm	TOTAL WT. SAMPLE	AMALG CON. Au mgm	RAW Au oz/ton
RF 16	28 - 30		hold					
	30 - 32		hold					
	32 - 34		screened, bagged wet and saved					
	34 - 36		screened, bagged wet and saved					
	36 - 38		11,780	18,366	597	30,743	0.089	0.0001
	38 - 40		7,903	12,022	257	20,182	ND	-
	40 - 42		5,707	8,195	170	14,072	0.186	0.0004
RF 17	22 - 24		hold					
	24 - 26		screened, bagged wet and saved					
	26 - 28		screened, bagged wet and saved					
	28 - 30		7,563.8	7,794	544	15,901.8	0.259	0.0005
	30 - 32		7,721	7,950	611.5	16,282.5	0.650	0.0012
	32 - 34		7,352	6,622	602.1	14,576.1	0.268	0.0005
RF 18	10 - 12		hold					
	12 - 14		screened, bagged wet and saved					
	14 - 16		screened, bagged wet and saved					
	16 - 18		4,653	6,681	136	11,470	0.135	0.0003
	18 - 20		12,869	9,902	182	22,953	0.239	0.0003
	20 - 22		11,688	10,002	548.9	22,238.9	0.210	0.0003
RF 19	20 - 22		screened, bagged wet and saved					
	22 - 24		screened, bagged wet and saved					
	24 - 26		9,013	8,840	320.8	18,173.8	.281	.0005
	26 - 28		2,917	9,956	73	12,946	ND	-
	28 - 30		8,733	7,685	695.2	17,113.2	.083	.0001

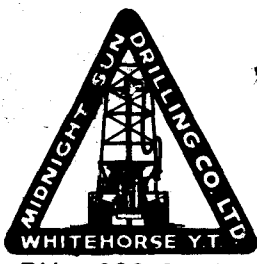
HOLE #	FOOTAGE	O/S Au gm	O/S gm	TABLE TAIL gm	AMALG TAIL gm	TOTAL WT. SAMPLE	AMALG CON. Au mgm	RAW Au oz/ton
RF 20	14 - 16		7,230.2	10,954	504.6	18,688.8	0.555	0.0009
	16 - 18		6,062	4,459.3	110.3	10,631.6	0.075	0.0002
	18 - 20		11,850	5,166.4	255.0	17,271.4	0.090	0.0002
	20 - 22		screened, bagged wet and saved					
RF 21	12 - 14		6,666.1	13,503	853.4	21,022.5	0.356	0.0005
	14 - 16		12,531	15,280	275	28,086	0.200	0.0002
	16 - 18		11,781	14,476	152.0	26,409	0.177	0.0002
	18 - 20		screened, bagged wet and saved					
RF 22	10 - 12		screened, bagged wet and saved					
	12 - 14		6,270	23,926	195	30,391	0.315	0.0003
	14 - 16		6,195	9,550	302.4	16,047.4	0.079	0.0001
	16 - 18		8,708	7,899	251.2	16,858.2	0.536	0.0009
RF 23	18 - 20		screened, bagged wet and saved					
	6 - 8		screened, bagged wet and saved					
	8 - 10		15,602	16,752	556.2	32,910.2	0.547	0.0005
	10 - 12		10,567	8,216	58	18,841	0.139	0.0002
RF 24	12 - 14		15,659	10,864	121.2	26,644.2	0.201	0.0002
	5 - 7		screened, bagged wet and saved					
	7 - 9		screened, bagged wet and saved					
	9 - 11		8,305	17,784	495.4	26,584.4	0.214	0.0002
	11 - 13		8,886	28,712	497.2	38,095.2	0.427	0.0003
	13 - 15		6,600	3,478	491.2	10,569.2	0.309	0.0009

HOLE #	FOOTAGE	O/S Au gm	O/S gm	TABLE TAIL gm	AMALG TAIL gm	TOTAL WT. SAMPLE	AMALG CON. Au mgm	RAW Au oz/ton
BL 1	14 - 16			screened, bagged wet and saved				
	16 - 18			screened, bagged wet and saved				
	18 - 20		13,100	15,009	1,149.4	29,258.4	0.306	0.0003
	20 - 22		8,218	18,634	698.2	27,550.2	ND	-
	22 - 24		6,343	19,057	288.7	25,688.7	0.183	0.0002
BL 2	28 - 30			hold				
	30 - 32			hold				
	32 - 34			screened, bagged wet and saved				
	34 - 36			screened, bagged wet and saved				
	36 - 38		5,779	24,288	981	31,048	0.460	0.0004
	38 - 40		2,497	7,988	1,330.2	11,815.2	0.213	0.0005
BL 3	40 - 42		3,367	16,974	495.5	20,836.5	0.216	0.0003
	28 - 30			hold				
	30 - 32			screened, bagged wet and saved				
	32 - 34			screened, bagged wet and saved				
	34 - 36		3,569	10,167	160.8	13,896.8	0.624	0.0013
BL 4	36 - 38	31.5	4,094	12,908	537.8	17,539.8	0.567	0.0009
	38 - 40		2,762	18,429	713.0	21,904	0.079	0.0001
	30 - 32			screened, bagged wet and saved				
BL 4	32 - 34			screened, bagged wet and saved				
	34 - 36	11.3	7,944	1,726	240.0	9,910.0	1.354	0.0040
	36 - 38		3,918	8,651	430.8	12,999.8	ND	-
	38 - 40		4,078	10,400	83.0	14,561	ND	-

HOLE #	FOOTAGE	O/S Au gm	O/S gm	TABLE TAIL gm	AMALG TAIL gm	TOTAL WT. SAMPLE	AMALG CON. Au mgm	RAW Au oz/ton
BL 5	36 - 38		hold					
	38 - 40		screened, bagged wet and saved					
	40 - 42		screened, bagged wet and saved					
	42 - 44		2,196	5,598	182.0	7,976	.059	0.0002
	44 - 46		2,715	5,569	607.9	8,891.9	.468	0.0015
BL 6	46 - 48		2,771	11,461	1,041	15,281	.131	0.0003
	24 - 26		hold					
	26 - 28		hold					
	28 - 30		screened, bagged wet and saved					
	30 - 32		screened, bagged wet and saved					
	32 - 34		6,209	4,800	50.0	11,059	.242	0.0006
	34 - 36		9,790	10,409	705.0	20,904	.203	0.0003
BL 7	36 - 38		1,489	3,139	121.7	4,749.7	.567	0.0035
	44 - 54		hold					
	54 - 56		screened, bagged wet and saved					
	56 - 58		9,536	9,020	733.1	19,289.1	.180	0.0003
	58 - 60		10,987	15,087	546.0	26,670.0	.236	0.0003
	60 - 62		3,312	8,171	421.3	11,904.3	ND	-
BL 8	62 - 64		screened, bagged wet and saved					
	64 - 74		hold					
	74 - 76		screened, bagged wet and saved					
	76 - 78		11,675	19,129	1,904	32,708	1.095	0.0010
	78 - 80		8,343	6,432	3,242	18,017	.200	0.0003
	80 - 82		4,213	7,101	946.3	12,260.3	.226	0.0005
	82 - 84		screened, bagged wet and saved					

HOLE #	FOOTAGE	O/S Au gm	O/S gm	TABLE TAIL gm	AMALG TAIL gm	TOTAL WT. SAMPLE	AMALG CON. Au mgm	RAW Au oz/ton
BL 9	16 - 90		hold					
	90 - 92		screened, bagged wet and saved					
	92 - 94	31.7 g	6,112	20,647	228.8	29,047	0.482	0.0005
	94 - 96		2,142	4,796	255.8	7,193.8	0.279	0.0011
	96 - 98		1,111	3,064	96.7	4,271.7	0.300	0.0020
	98 -100		screened, bagged wet and saved					
BL 10	8 - 10		1,941	15,522	334.8	17,797.8	0.253	0.0004
	10 - 12		1,715	13,919	342.2	15,976.2	0.383	0.0007
	12 - 14		1,410	11,323	718.8	13,511.8	0.347	0.0007
BL 11	50 - 54		hold					
	54 - 56		screened, bagged wet and saved					
	56 - 58		screened, bagged wet and saved					
	58 - 60		4,020	22,271	907.4	27,198.4	0.268	0.0003
	60 - 62		4,564	13,347	915.2	18,826.2	0.279	0.0004
	62 - 64		1,344	13,711	440.2	15,495.2	0.357	0.0007
BL 12	58 - 68		hold					
	68 - 70		screened, bagged wet and saved					
	70 - 72		screened, bagged wet and saved					
	72 - 74		4,013	7,254	255.6	11,522.6	0.255	0.0006
	74 - 76		619	5,656	348.1	6,623.1	ND	-
	76 - 78		587	11,083	553.2	12,223.2	0.554	0.0013
BL 13	24 - 26		screened, bagged wet and saved					
	26 - 28		screened, bagged wet and saved					
	28 - 30		4,620	11,757	602.2	16,979.2	0.439	0.0008
	30 - 32		2,781	10,181	407.6	13,369.6	0.200	0.0004
	32 - 34		2,774	13,405	504.8	16,683.8	0.236	0.0004

HOLE #	FOOTAGE	O/S Au gm	O/S gm	TABLE TAIL gm	AMALG TAIL gm	TOTAL WT. SAMPLE	AMALG CON. Au mgm	RAW Au oz/ton
FC 1	8 - 10			screened, bagged wet and saved				
	10 - 12		3,112	8,480	442	12,034	0.344	0.0008
	12 - 14		3,133	20,875	103.8	24,111.8	0.155	0.0002
	14 - 16		3,576	11,958	92.5	15,626.5	0.225	0.0004
	16 - 18			screened, bagged wet and saved				
FC 2	8 - 10			screened, bagged wet and saved				
	10 - 12			screened, bagged wet and saved				
	12 - 14		1,567	7,086	234.8	8,887.8	0.370	0.0012
	14 - 16		8,199	13,594	422	22,215	0.140	0.0002
	16 - 18		5,855	10,408	610	16,324.0	0.193	0.0003
FC 3	2 - 4							
	4 - 6			screened, bagged wet and saved				
	6 - 8		1,781	19,779	790	22,350	0.343	0.0005
	8 - 10		115.7	11,681	464	12,260.7	0.291	0.0007
	10 - 12		77	8,801	508.5	9,386.5	0.222	0.0007
FC 4	8 - 10			screened, bagged wet and saved				
	10 - 12			screened, bagged wet and saved				
	12 - 14		5,453	15,786	855	22,094	0.246	0.0003
	14 - 16		1,424	19,012	1,137	21,573	1.400	0.0019
	16 - 18		459	7,592	39.0	8,090	0.227	0.0008
FC 5	8 - 10			screened, bagged wet and saved				
	10 - 12			screened, bagged wet and saved				
	12 - 14		1,420	8,505	43.5	9,968.5	3.004	0.0088
	14 - 16		845.1	10,242	711	11,798.1	0.198	0.0005
	16 - 18		1,173	10,028	146	11,347	0.100	0.0003



PH. 633-3070
P.O. BOX 4361
WHITEHORSE, YUKON

Field Report

120069

CONFIDENTIAL

Started. July...3..... 1985.

Completed. July...9..... 1985.

NAME AND ADDRESS OF CLIENT	DESCRIPTION OF WORK	LOCATION OF WORK
Job # 85-4AH-1 Homesite	Placer Drilling	California Creek

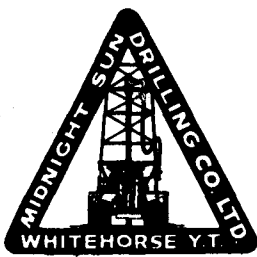
FORMATION LOG			DESCRIPTION OF WORK	TIME			
FROM	TO	FORMATION		DATE	FROM	TO	HOURS
0H	85	22 RF	MOVE # 20-22	July 4	10:00	10:05	
0	8	Flazr Silt					
	8	Bedrock	No Sample		10:05	10:15	
			Move Back to Road		10:15	10:30	
			July 5				
			Move -		10:20 ^{Am}	10:40	

Rcrd. of Casing & Pipe				Remarks:		
Size	Type	Size	Type			
Feet	Inch	Feet	Inch			
				CONFIDENTIAL		
				Static Level	Total Rig Time	hrs.
				Ground Level	Total Standby	hrs.
				Top Of Casing	Drilling Mud	sacks

SIGNATURES

MIDNIGHT SUN.....
TITLE.....

CLIENT.....
TITLE.....



PH. 633-3070
P.O. BOX 4391
WHITEHORSE, YUKON

Field Report

Started July 2.....1985.

Completed July 8.....1985.

NAME AND ADDRESS OF CLIENT	DESCRIPTION OF WORK	LOCATION OF WORK
Job # <u>85-4A-1</u> <u>Homestead</u>	<u>Placet Drilling</u>	<u>California Creek</u>

FORMATION LOG			DESCRIPTION OF WORK	TIME			
FROM	TO	FORMATION		DATE	FROM	TO	HOURS
85	23	LF	MOVE to site	July 6			
0	4	UNFROZEN Gravel	Move to site		10:30	12	
	4	Budrock	Drill		12:00	12:40	
85	24	LF					
0	14	UNFROZEN Gravel	Move - 23 - 24		12:10	12:20	
	14	B.R.	Drill		12:20	12:50	
85	25	LF	Move - 24 - 25		12:50	12:55	
0	3	FROZEN Silt	- Gravel too coarse to penetrate	Drill	12:55	1:05	
85	25	LF					
0	8	FROZEN Silt	Move - 25 - 25A		1:05	1:10	
3	6	Gravel					
	6	B.R.	Drill		1:10	1:20	
85	29	LF					
0	23	FROZEN silt	Move 25A - 29		1:20	1:30	
	23	B.R.	Drill		1:30	2:00	

Crd. of Casing & Pipe			
Size	Type	Size	Type

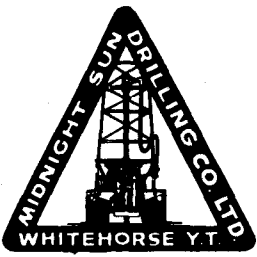
Remarks:			
Feet	Inch	Feet	Inch

Static Level	Total Rig Time	hrs.
Ground Level	Total Standby	hrs.
Top Of Casing	Drilling Mud	sacks

SIGNATURES

MIDNIGHT SUN.....
TITLE.....

CLIENT.....
TITLE.....



PH. 633-3070
P.O. BOX 4391
WHITEHORSE, YUKON

Field Report

Started... July 7 ... 1985.

Completed... July 8 ... 1985.

NAME AND ADDRESS OF CLIENT	DESCRIPTION OF WORK	LOCATION OF WORK
Job # <u>85-4A-1</u> <u>Homestead</u>	<u>Placer Drilling</u>	<u>California Creek</u>

FORMATION LOG			DESCRIPTION OF WORK	TIME			
FROM	TO	FORMATION		DATE	FROM	TO	HOURS
<u>0485</u>	<u>52</u>	<u>LF</u>	<u>MOVE</u>	<u>July 7</u>			
<u>0</u>	<u>4</u>	<u>Frozen silt</u>	<u>move-51-52</u>		<u>1:30</u>	<u>1:40</u>	
<u>4</u>	<u>5</u>	<u>Frozen fill</u>					
	<u>5</u>	<u>B.R.</u>	<u>Drill</u>		<u>1:40</u>	<u>1:50</u>	
<u>DH</u>	<u>54</u>	<u>LF</u>	<u>Move-52-54</u>		<u>1:50</u>	<u>2:00</u>	
<u>0</u>	<u>8</u>	<u>Frozen silt</u>					
<u>8</u>	<u>10</u>	<u>Frozen fill</u>					
	<u>10</u>	<u>B.R.</u>	<u>Drill</u>		<u>2:00</u>	<u>2:20</u>	
<u>DH85</u>	<u>55</u>	<u>LF</u>					
<u>0</u>	<u>9</u>	<u>Frozen silt</u>	<u>Move-54-55</u>		<u>2:20</u>	<u>2:30</u>	
<u>9</u>	<u>11</u>	<u>Frozen fill</u>					
	<u>11</u>	<u>B.R.</u>	<u>Drill</u>		<u>2:30</u>	<u>2:40</u>	
<u>DH</u>	<u>57</u>	<u>LF</u>					
<u>0</u>	<u>12</u>	<u>Frozen silt</u>	<u>Move-55-57</u>		<u>2:40</u>	<u>3:00</u>	
<u>12</u>	<u>14</u>	<u>Frozen fill</u>					
	<u>14</u>	<u>B.R.</u>	<u>Drill</u>		<u>3:00</u>	<u>3:15</u>	

Rcrd. of Casing & Pipe				Remarks:		
Size	Type	Size	Type			
Feet	Inch	Feet	Inch			
				Static Level	Total Rig Time	hrs.
				Ground Level	Total Standby	hrs.
				Top Of Casing	Drilling Mud	sacks

SIGNATURES

MIDNIGHT SUN.....
TITLE.....

CLIENT.....
TITLE.....



PH. 633-3070
P.O. BOX 4391
WHITEHORSE, YUKON

Field Report

Started... July 2 1995.

Completed... July 8 1995.

NAME AND ADDRESS OF CLIENT	DESCRIPTION OF WORK	LOCATION OF WORK
<u>Job 85-4A-1</u> <u>Homesite</u>	<u>Platform Drilling</u>	<u>California Creek</u>

FORMATION LOG			DESCRIPTION OF WORK	TIME			
FROM	TO	FORMATION		DATE	FROM	TO	HOURS
<u>85</u>	<u>16</u>	<u>LF</u>	<u>MOVE</u>	<u>July 3</u>			
<u>0</u>	<u>11</u>	<u>Frozen Gravel</u>	<u>Move 12-16</u>		<u>5:35</u>	<u>5:45</u>	
	<u>11</u>	<u>Bedrock</u>	<u>Drill</u>		<u>5:45</u>	<u>6:10</u>	
<u>85</u>	<u>15</u>	<u>LF</u>					
<u>0</u>	<u>9</u>	<u>Frozen Sand-silt</u>	<u>Move 16-15</u>		<u>6:10</u>	<u>6:20</u>	
<u>9</u>	<u>11</u>	<u>Bedrock</u>	<u>Drill</u>		<u>6:20</u>	<u>6:45</u>	
<u>85</u>	<u>14</u>	<u>LF</u>					
<u>0</u>	<u>3</u>	<u>Frozen Sand</u>	<u>Move 15-14</u>		<u>6:45</u>	<u>6:55</u>	
<u>3</u>	<u>5</u>	<u>Frozen Gravel</u>					
<u>5</u>	<u>7</u>	<u>Bedrock</u>	<u>Drill</u>		<u>6:55</u>	<u>7:15</u>	
<u>85</u>	<u>3</u>	<u>LF</u>					
<u>0</u>	<u>6</u>	<u>Frozen Silt</u>	<u>Move 14-3</u>		<u>7:15</u>	<u>7:25</u>	
<u>6</u>	<u>15</u>	<u>Gravel Frozen</u>					
	<u>15</u>	<u>Bedrock</u>	<u>Drill</u>		<u>7:25</u>	<u>7:45</u>	

Rcrod. of Casing & Pipe
Size Type Size Type

Remarks:

Feet Inch Feet Inch

1 - 7" Fish tail Bit

Static Level
Ground Level
Top Of Casing

Total Rig Time hrs.
Total Standby hrs.
Drilling Mud sacks

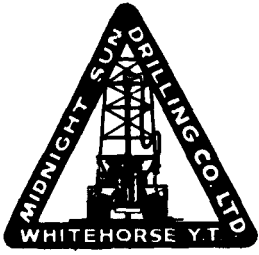
SIGNATURES

MIDNIGHT SUN.....

CLIENT.....

TITLE.....

TITLE.....



PH. 633-3070
P.O. BOX 4391
WHITEHORSE, YUKON

Field Report

Started July 2 1985

Completed July 8 1985

NAME AND ADDRESS OF CLIENT	DESCRIPTION OF WORK	LOCATION OF WORK
Tab # BS-4AH-1 Homeswap	Placer Drilling	California Creek

FORMATION LOG				DESCRIPTION OF WORK	TIME			
FROM	TO	FORMATION	DATE		FROM	TO	HOURS	
				MOVE	July 4			
				Move from Camp #1 - Highway		9:40	11:20	
				Loading - Moving - Rig to Camp #2		11:20	1:30	
				Service Rig		1:30	3:30	
				Pull k.w.		3:30	5:30	
				Move to hole # DH-85-17-RF		5:30	6:00	
DH-85-17-RF								
0	5	Frozen Silt		No Sample				
	5'	Bedrock		Drill		6:00	6:10	
DH 85		17A-RF		Move - 17 - 17A		6:10	6:15	
0	6	Frozen Silt		No Sample				
	6'	Bedrock		Drill		6:15	6:25	
DH 85		18-RF						
0	4	Frozen Silt		Move 17A - 18		6:25	6:35	
4	6	Peat						
6	13	Frozen Silt						
13	18	Frozen Ground		Unable to Reach Bedrock	Drill	6:35	7:30	
Rcd. of Casing & Pipe				Remarks:				
Size	Type	Size	Type					
Feet	Inch	Feet	Inch					
				Static Level	Total Rig Time		hrs.	
				Ground Level	Total Standby		hrs.	
				Top Of Casing	Drilling Mud		sacks	

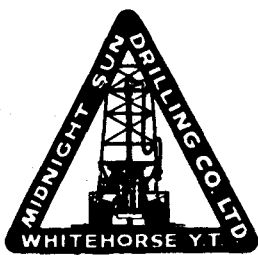
SIGNATURES

MIDNIGHT SUN.....

CLIENT.....

TITLE.....

TITLE.....



PH. 633-3070
P.O. BOX 4391
WHITEHORSE, YUKON

Field Report

Started. July 2.....1985.

Completed. July 8.....1985.

NAME AND ADDRESS OF CLIENT	DESCRIPTION OF WORK	LOCATION OF WORK
TOP 85-4AH-1 HOMESTEAD	Placer Drilling	California Creek

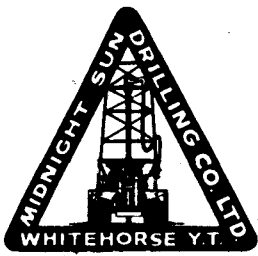
FORMATION LOG			DESCRIPTION OF WORK	TIME			
FROM	TO	FORMATION		DATE	FROM	TO	HOURS
DH 85	19	RF	MOVE 130-18-19 ¹⁸⁻¹⁹	July 4	7:30	7:40	
0	8	Frozen Silt					
8	10	Peat moss					
10	20	Frozen Silt					
20	23	Frozen Gravel					
	23	Bedrock	Drill		7:40	8:50	
DH 85	21	RF	MOVE - 19 - 21		8:50	9:00	
0	11	Frozen Silt					
11	13	Frozen Gravel					
	13	Bedrock	Drill		9:00	9:20	
DH 85	20	RF	MOVE - 21 - 20		9:20	9:25	
0	26	Frozen Silt					
26	27	Frozen Gravel					
	27	Bedrock	Drill		9:25	10:00	
			1 7" Fishtail Bit				

Rcrod. of Casing & Pipe				Remarks:	
Size	Type	Size	Type		
Feet	Inch	Feet	Inch		
Static Level				Total Rig Time	hrs.
Ground Level				Total Standby	hrs.
Top Of Casing				Drilling Mud	sacks

SIGNATURES

MIDNIGHT SUN.....
TITLE.....

CLIENT.....
TITLE.....



PH. 633-3070
P.O. BOX 4391
WHITEHORSE, YUKON

Field Report

Started July 7.....1985.

Completed July 9.....1985.

NAME AND ADDRESS OF CLIENT	DESCRIPTION OF WORK	LOCATION OF WORK
Job # <u>85-4A-1</u> <u>Homes 5700</u>	<u>Placer Drilling</u>	<u>Calif Patricia Creek</u>

FORMATION LOG			DESCRIPTION OF WORK	TIME			
FROM	TO	FORMATION		DATE	FROM	TO	HOURS
<u>64.85</u>	<u>66</u>	<u>LF</u>	<u>MOVE</u>	<u>July 7</u>			
<u>67.0</u>	<u>7</u>	<u>UNFROZEN SILT</u>	<u>Move 63-66</u>		<u>6:30</u>	<u>7:00</u>	
<u>7</u>	<u>11</u>	<u>UNFROZEN Gravel</u>	<u>Drill</u>		<u>7:00</u>	<u>7:10</u>	
	<u>11</u>	<u>B.R.</u>					
<u>DH 85</u>	<u>65</u>	<u>LF</u>	<u>Move 66-65</u>		<u>7:10</u>	<u>7:20</u>	
<u>0</u>	<u>7</u>	<u>UNFROZEN SILT</u>	<u>Drill</u>		<u>7:20</u>	<u>7:35</u>	
<u>7</u>	<u>11</u>	<u>Frozen Gravel</u>					
	<u>11</u>	<u>B.R.</u>					
<u>DH 85</u>	<u>68</u>	<u>LF</u>	<u>Move - 65-68</u>		<u>7:35</u>	<u>7:45</u>	
<u>0</u>	<u>7</u>	<u>UNFROZEN SILT</u>	<u>Drill</u>		<u>7:45</u>	<u>8:00</u>	
<u>7</u>	<u>9</u>	<u>Frozen Gravel</u>					
	<u>9</u>	<u>B.R.</u>					
<u>DH 85</u>	<u>68</u>						
<u>0</u>	<u>7</u>	<u>SILT</u>	<u>Move - 68-69</u>		<u>8:00</u>	<u>8:10</u>	
<u>7</u>	<u>14</u>	<u>Frozen Gravel</u>	<u>Drill</u>		<u>8:10</u>	<u>8:20</u>	
	<u>14</u>	<u>B.R.</u>					

Rcrod. of Casing & Pipe				Remarks:
Size	Type	Size	Type	
Feet	Inch	Feet	Inch	
Static Level			Total Rig Time	hrs.
Ground Level			Total Standby	hrs.
Top Of Casing			Drilling Mud	sacks

SIGNATURES

MIDNIGHT SUN.....

CLIENT.....

TITLE.....

TITLE.....



PH. 633-3070
P.O. BOX 4391
WHITEHORSE, YUKON

Field Report

Started July 7 1985

Completed July 8 1985

NAME AND ADDRESS OF CLIENT	DESCRIPTION OF WORK	LOCATION OF WORK
Job # 85-44H-1 HOMESTEAD	Glacier Drilling	California Creek

FORMATION LOG			DESCRIPTION OF WORK	TIME			
FROM	TO	FORMATION		DATE	FROM	TO	HOURS
DH 85	70	DF	MOVE	July 7			
0	10	unfrozen silt	Move to 9-70		8:20	8:30	
10	13	frozen gravel	Drill		8:30	8:40	
7	13	B.R.					
DH 85	72						
0	11	frozen sand	Move 70-72		8:40	9:00	
11	14	frozen gravel	Drill		9:00	9:25	
	14	B.R.					
DH 85	71	LF					
0	7	frozen silt	Move 72-71		9:25	9:35	
7	9	frozen gravel	Drill		9:35	9:50	
	9	B.R.					
DH 85	64	LF					
0	6	unfrozen silt	Move - 71-64		9:50	10:05	
6	10	unfrozen gravel	Drill		10:05	10:20	
	10	B.R.					

Rcord. of Casing & Pipe			
Size	Type	Size	Type

Remarks:

Feet	Inch	Feet	Inch

Static Level	Total Rig Time	hrs.
Ground Level	Total Standby	hrs.
Top Of Casing	Drilling Mud	sacks

SIGNATURES

MIDNIGHT SUN.....
TITLE.....

CLIENT.....
TITLE.....



PH. 633-3070
P.O. BOX 4391
WHITEHORSE, YUKON

Field Report

Started... July 2 ... 1985.

Completed... July 8 ... 1985.

NAME AND ADDRESS OF CLIENT	DESCRIPTION OF WORK	LOCATION OF WORK
Job # <u>85-4AH-1</u> <u>Home Stamp</u>	<u>Placer Drilling</u>	<u>California Creek</u>

FORMATION LOG			DESCRIPTION OF WORK	TIME			
FROM	TO	FORMATION		DATE	FROM	TO	HOURS
<u>DH 85</u>	<u>74</u>	<u>BC</u>	<u>MOVE</u>	<u>July 8</u>			
<u>0</u>	<u>26</u>	<u>Frozen till</u>	<u>Make camp - #74</u>		<u>11</u>	<u>2:10</u>	
<u>26</u>	<u>30</u>	<u>Frozen gravel</u>					
<u>30</u>	<u>34</u>	<u>Very soft Bedrock-30</u>	<u>Drill</u>		<u>2:10</u>	<u>3:30</u>	
<u>DH 85</u>	<u>75</u>	<u>BC</u>					
<u>0</u>	<u>13</u>	<u>Frozen Gravel</u>	<u>Move - 74 - 75</u>		<u>3:30</u>	<u>3:45</u>	
	<u>13'</u>	<u>B.R.</u>	<u>Drill</u>		<u>3:45</u>	<u>4:00</u>	
<u>DH 85</u>	<u>76</u>	<u>BC</u>					
<u>0</u>	<u>24</u>	<u>Frozen till</u>	<u>Move - 75 - 76</u>		<u>4:00</u>	<u>4:15</u>	
<u>24</u>	<u>30</u>	<u>Frozen Gravel</u>					
	<u>30</u>	<u>B.R.</u>	<u>Drill</u>		<u>4:15</u>	<u>4:40</u>	
<u>DH 85</u>	<u>77</u>	<u>BC</u>					
<u>0</u>	<u>17</u>	<u>Frozen till</u>	<u>Move - 76 - 77</u>		<u>4:40</u>	<u>4:50</u>	
<u>17</u>	<u>25</u>	<u>Frozen clay</u>					
	<u>25'</u>	<u>Boulder</u>			<u>4:50</u>	<u>5:25</u>	

Rcd. of Casing & Pipe				Remarks:		
Size	Type	Size	Type			
Feet	Inch	Feet	Inch			
				Static Level	Total Rig Time	hrs.
				Ground Level	Total Standby	hrs.
				Top Of Casing	Drilling Mud	sacks

SIGNATURES

MIDNIGHT SUN.....

CLIENT.....

TITLE.....

TITLE.....

