

ASSESSMENT REPORT ON THE 2020 GEOCHEMICAL SURVEY OF THE AU CLAIMS

Dawson Mining District – NTS 1150/ 13 and 14

Latitude 63° 52' 30" N, Longitude 139° 25 ' W

UTM NAD 83 Zone 7: 578500E, 7085000N

Claim name	Certificate no.
AU 136–186	YF41306 –YF41356
AU 187–284	YF59877 – YF59974

Fieldwork conducted from October 3 to 8, 2020

Report by Danièle Héon, P. Geo.

For Coureur des Bois Ltée Ltd.

Whitehorse, June 02, 2021

TABLE OF CONTENTS

ASSESSMENT REPORT ON THE 2020 GEOCHEMICAL SURVEY OF THE AU CLAIMS	1
LIST OF FIGURES	II
LIST OF TABLES	II
LIST OF APPENDICES	II
SUMMARY.....	1
LOCATION AND ACCESS	1
CLAIM DATA	2
REGIONAL DATA	4
Geology	4
Regional Geochemistry	6
Regional Geophysics	6
MINERALIZATION	7
PREVIOUS WORK	8
2020 SOIL SURVEY	9
Description of work	9
Methodology	10
2020 Results	10
SOIL COMPILATION 2012 TO 2020	14
DISCUSSION AND CONCLUSIONS	20
RECOMMENDATIONS	20
STATEMENT OF QUALIFICATIONS	22
REFERENCES	23

LIST OF FIGURES

Figure 1: General Location Map– AU Claims	2
Figure 2: Placer Claims and Leases	3
Figure 3 A: Regional Geology and Minfile.....	5
Figure 4: RGS Data for Au (ppb).....	6
Figure 5: Regional Mag – First Derivative	7
Figure 6: 2020 Soil Sample Location	9
Figure 7: Au ppb (ICP-21) in 2020 soils	11
Figure 8: As (ppm) in 2020 soils	12
Figure 9: Pb (ppm) in 2020 soils.....	13
Figure 10: Inventory of Soil Sampling Programs	14
Figure 11: Gold Analyses by Au-ICP21	15
Figure 12: Compilation Gold Assays in Soils	18
Figure 13: Compilation Lead Assays in Soils	19

LIST OF TABLES

Table 1: Summary claim data.....	2
Table 2: Basic Statistics for 2020 soils.....	10
Table 3: Inventory of gold detection methods by year.....	15
Table 4: Description of analytical methods for gold	15
Table 5: Basic Statistics for All Surveys (2012 to 2020).....	17

LIST OF APPENDICES

Appendix A- Claim Map	1
Appendix B- Claim Data	2
Appendix C - Soil Sample Location Data	9
Appendix D – Statement of Expenditures.....	1
Appendix E- Assay Certificates.....	3

SUMMARY

The AU property consists of 222 quartz claims located on NTS map sheet 1150/13 and 14 and registered in the Dawson Mining District.

The property is located in the heart of the Klondike district. It is drained to the east by Bonanza and Eldorado creeks, which have produced placer gold from the early days of the Klondike to the present. Regional mapping shows the property to overlie the Permian Sulphur Creek Orthogneiss and its northeastern contact with the Permian Klondike Schist. Gold mineralization, some of it as visible gold in quartz veins, occurs in the district in these same rocks, less than 5 km away.

A soil geochemical survey was conducted on October 3 to 8, 2020, for a total of 39 person-days. A total of 324 soil samples were collected in the northern portion of the claims and were analyzed for gold by fire assay (Au-ICP21) and for multi-element geochemistry by aqua regia and ICP analyses (ME-MS41L).

The 2020 samples were collected on 75 × 75 m grid established at the eastern boundary of the northern portion of the property. A small proportion of the survey overlapped slightly with samples from pre-existing surveys. Two samples located at the northern end of the 2020 grid were highly anomalous in gold and lead at 161 ppb Au (116 ppm Pb) and 22 ppb Au (50 ppm Pb). These samples define new targets. Fourteen additional samples assayed between 11 and 20 ppb Au; two of those samples confirm the outline of a coincident gold and lead soil anomaly that was defined by previous surveys.

The 2020 sampling yielded two samples strongly anomalous in gold and lead in the northern sector of the survey (161 ppb Au/123 ppm Pb, and 22 ppb Au/50 ppm Pb). Other metal response was low. A few samples were taken in 2020 near the north-central gold anomaly (25 to 508 ppb Au) but did not replicate these results.

Compilation of all data (2012 to 2020) shows that the property hosts significant if spotty gold and lead anomalies. Two areas of coincident gold-lead anomalies occur in the northern and north-central portions of the grid, and two gold (-only) anomalies occur in the south-central portion of the grid. Two other strong lead anomalies (no anomalous gold) are located in the south-central and southern-most portions of the grid. All these anomalies are considered worthy of follow-up.

Where different soil surveys overlap, the poor reproducibility of gold assays suggests that gold may be coarse and inconsistently captured in the -80 mesh fraction selected for analysis. The gold-lead association and the low mobility of lead in soils indicate that lead is a valid pathfinder for gold.

The 2020 gold, arsenic, and lead assay results are displayed in geochemical maps found in Figure 7 to Figure 9. Compiled results of all surveys to date are shown in Figure 12 (gold) and Figure 13 (lead).

The author was not involved in the fieldwork. This report documents and interprets the results of the 2020 sampling, based on information supplied by Coureur des Bois Ltée Ltd; it also integrates the results of this survey with those of earlier surveys.

Further work is recommended to confirm, infill, and extend the known anomalies.

LOCATION AND ACCESS

The AU property is located in the heart of the Klondike district, approximately 20 km south of Dawson City, on NTS map sheet 1150/13 and 14 (Figure 1). Most creeks on the property drain into Bonanza and Eldorado creeks, two creeks with historical and current production of placer gold.

The property was accessed by road from Dawson City from the Bonanza Creek Road, a well-travelled gravel road that leads into the Klondike goldfields, south of the Klondike Highway. A secondary dirt road provides access to the north-central part of the property.

The centre of the property lies approximately at Latitude 63° 52' 30" N, Longitude 139° 25' W, or UTM NAD 83 Zone 7N coordinates 575000E, 7085500N.

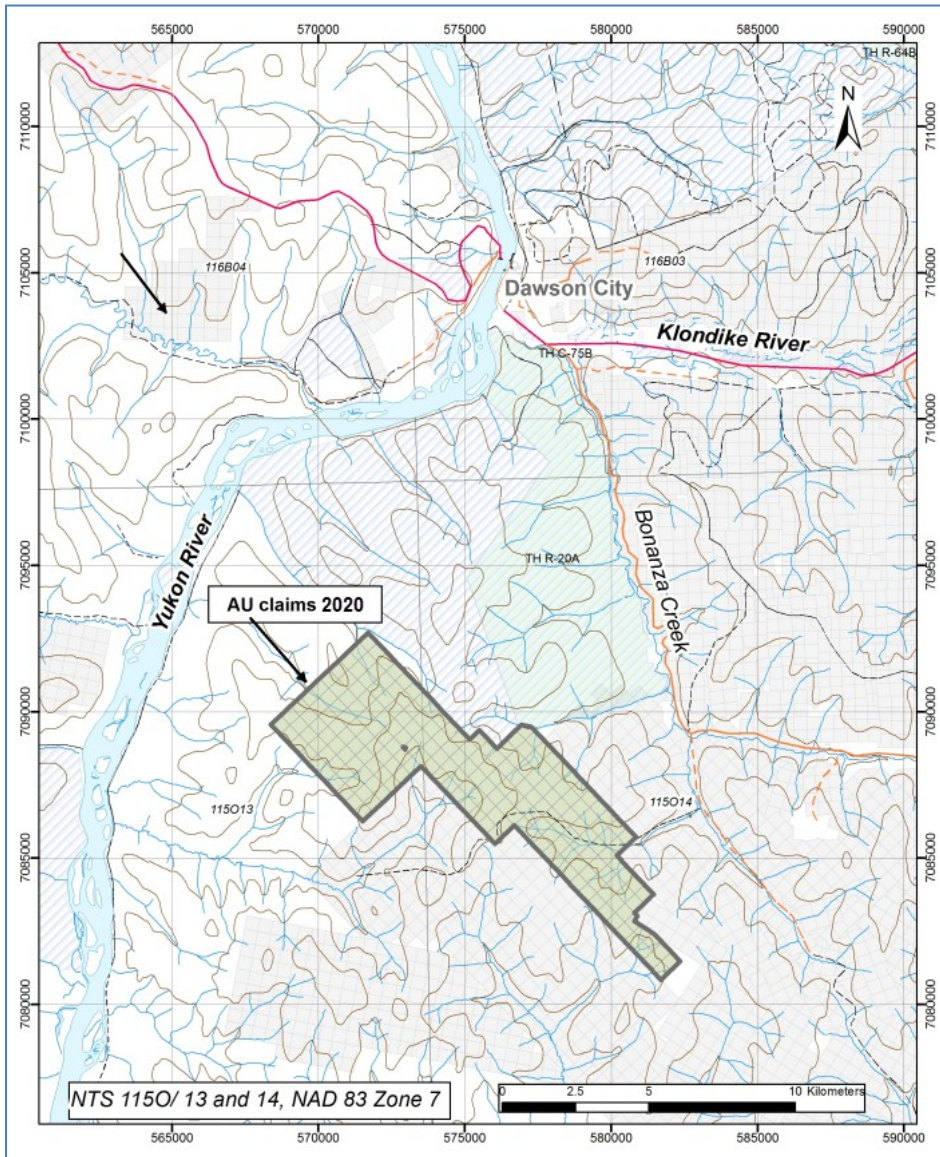


FIGURE 1: GENERAL LOCATION MAP– AU CLAIMS

CLAIM DATA

The AU property consists of 222 contiguous quartz claims registered in the Dawson Mining District. The claims are held by Coureur des Bois Ltée Ltd. and are grouped under grouping number HD03646. The summary claim data is as follows:

TABLE 1: SUMMARY CLAIM DATA

AU 63–186	YF41233 –YF41356
AU 187–284	YF59877 – YF59974

Most of the claims have a renewal date of December 20, 2023, pending acceptance of this filing, with 8 claims being renewed until December 20, 2022. The claims are shown on Figure 1, a detailed claim map is located in Appendix A, and the detailed claim data is located in Appendix B.

Placer claims and leases bisect the AU property along French Gulch, an east-southeast-flowing tributary of Eldorado Creek (Figure 2).

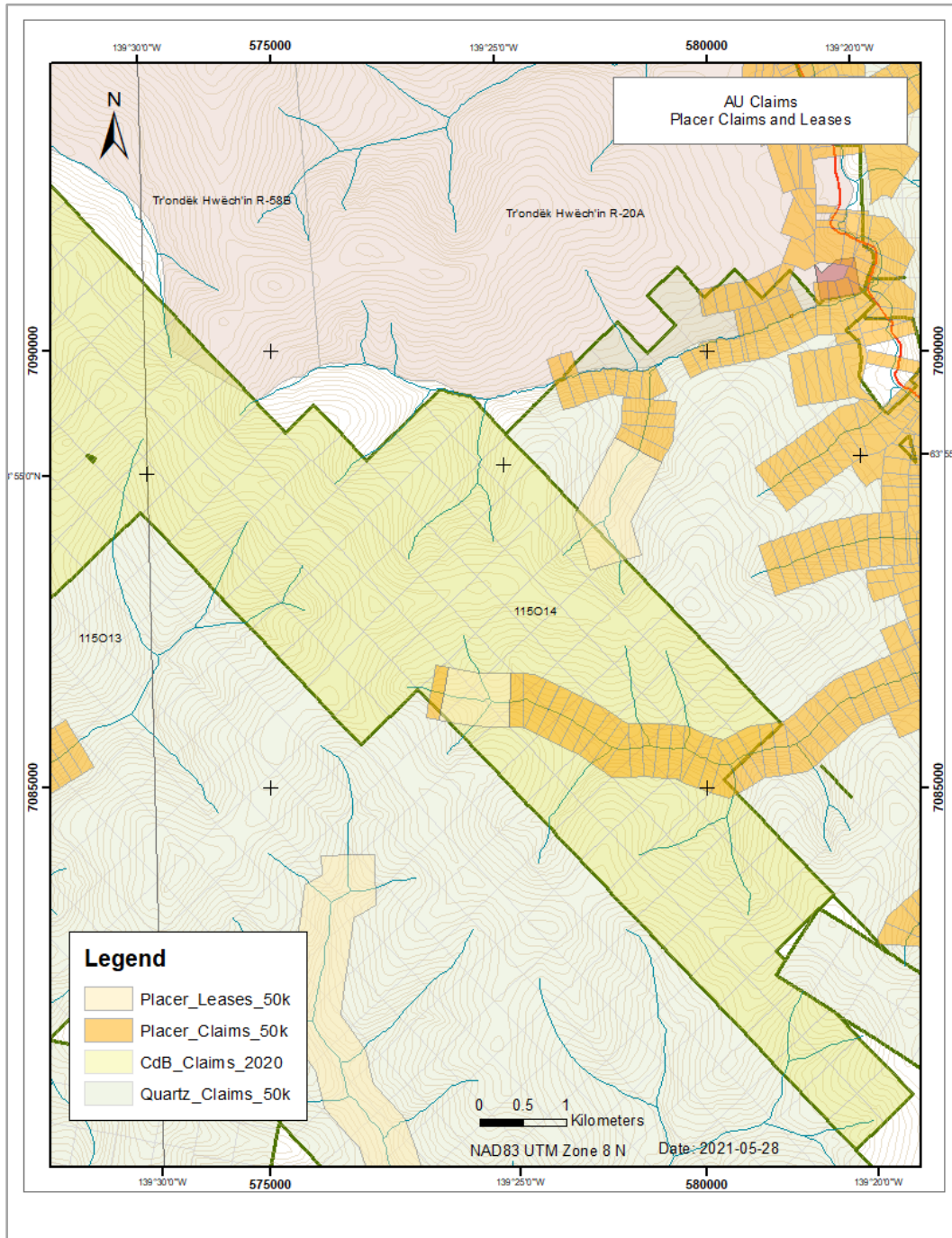


FIGURE 2: PLACER CLAIMS AND LEASES

REGIONAL DATA

The regional data is taken from previous reports on the property.

GEOLOGY

Since this area of central Yukon has not been glaciated, the weathering profile and oxidation level are deeper than in glaciated areas. Metal response in soils may be muted due to prolonged weathering and resulting dilution. Interpretation of soil geochemical results must take this into consideration. Any rocks located at upper elevations would be locally derived.

The bedrock geology in the property area is part of the Yukon-Tanana terrane (YTT), a belt of metamorphosed sedimentary, volcanic and plutonic rocks which document a complex magmatic and structural history. Rocks of YTT are interpreted to have started off as a Paleozoic (Devono-Mississippian) magmatic arc built on the margin of the Laurentian craton as a response to subduction of the oceanic lithosphere under the craton. Subsequent rifting created the Slide Mountain Ocean between YTT and Laurentia and lasted until mid-Permian time. In late Permian time, the polarity of the subduction reversed, and the Slide Mountain Ocean began to subduct under YTT, creating a new (Permian) continental arc package. The metavolcanic and metasedimentary rocks of the Klondike Schist and the late Permian Sulphur Creek plutonic suite are part of this Permian arc. In latest Permian time, arc polarity reversed and YTT collided with and overrode the Laurentian margin. Continued convergence led to several other episodes of subduction and their complex magmatic response. The Klondike Schist records five deformational events (D₁ to D₅).

The digital regional geology map published by the Yukon Geological Survey (Figure 3a) shows the claims to be underlain by the Late Permian Sulphur Creek Orthogneiss (unit PqS), described as gneiss/ granite/ granodiorite/ quartz monzonite, and Permian rocks of the Klondike Schist (unit CPK1), described as quartzite/ quartz-muscovite schist/gneiss/amphibolite. The contact between the two units may be transitional. No ground-truthing was done to test the regional geological interpretation.

This mapping, originally published in 1996, was updated by regional mapping and metallogenic studies conducted by UBC's Mineral Deposit Research Unit (MDRU) and summarized in their Yukon Gold Project report (2012) (Figure 3b). There is no change in the distribution or ages of these two units, but the Jim Creek pluton, located west of the claims and formerly thought to be part of the Jurassic Long Lake Suite, is now known to be Permian and is now correlated with the Sulphur Creek Plutonic suite. This intrusion hosts the IND occurrence (Minfile 1150 095, Gleeson).

No new geological information was collected during Coureur des Bois' programs; these regional geology maps are still the most detailed sources of information available for this area.

REGIONAL GEOCHEMISTRY

About ten RGS sample sites are located on creeks that drain the AU claims, while only two are located on the claim block itself (Figure 4). The metal response in these samples is flat for all the elements analyzed. The plot below shows that gold response in silt is muted for most of the Klondike district, with only the King Solomon dome area showing a strongly anomalous gold response.

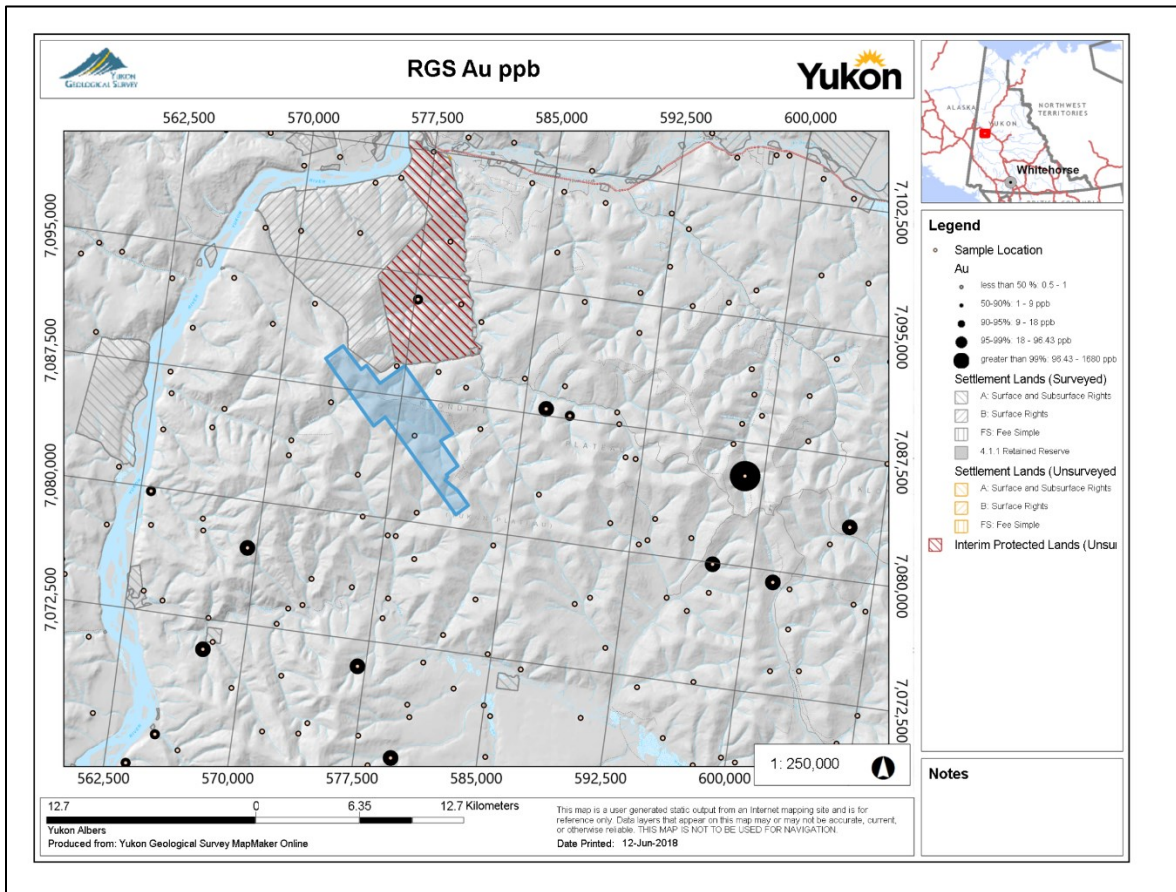


FIGURE 4: RGS DATA FOR AU (PPB)

REGIONAL GEOPHYSICS

Regional magnetic data is available from the YGS website. Figure 5 below shows the first derivative magnetic survey, with the outline of the AU claim block shown in red.

The overall magnetic signature for the claim area is subdued, apart from an isolated weak mag high in the middle of the claim block. The cluster of Minfile occurrences east of the property also appear to correspond to a low mag signature.

The southwestern boundary of the claim block lines up with a linear discontinuity in magnetic signature, which, according to the regional geology maps, corresponds to a fault contact between the Sulphur Creek orthogneiss and the Devonian-Mississippian Nasina assemblage.

The neighbouring Jim Creek pluton, which hosts the IND occurrence, also appears to have a subdued magnetic response.

The isolated higher mag at the centre of the claim block has yet to be explained.

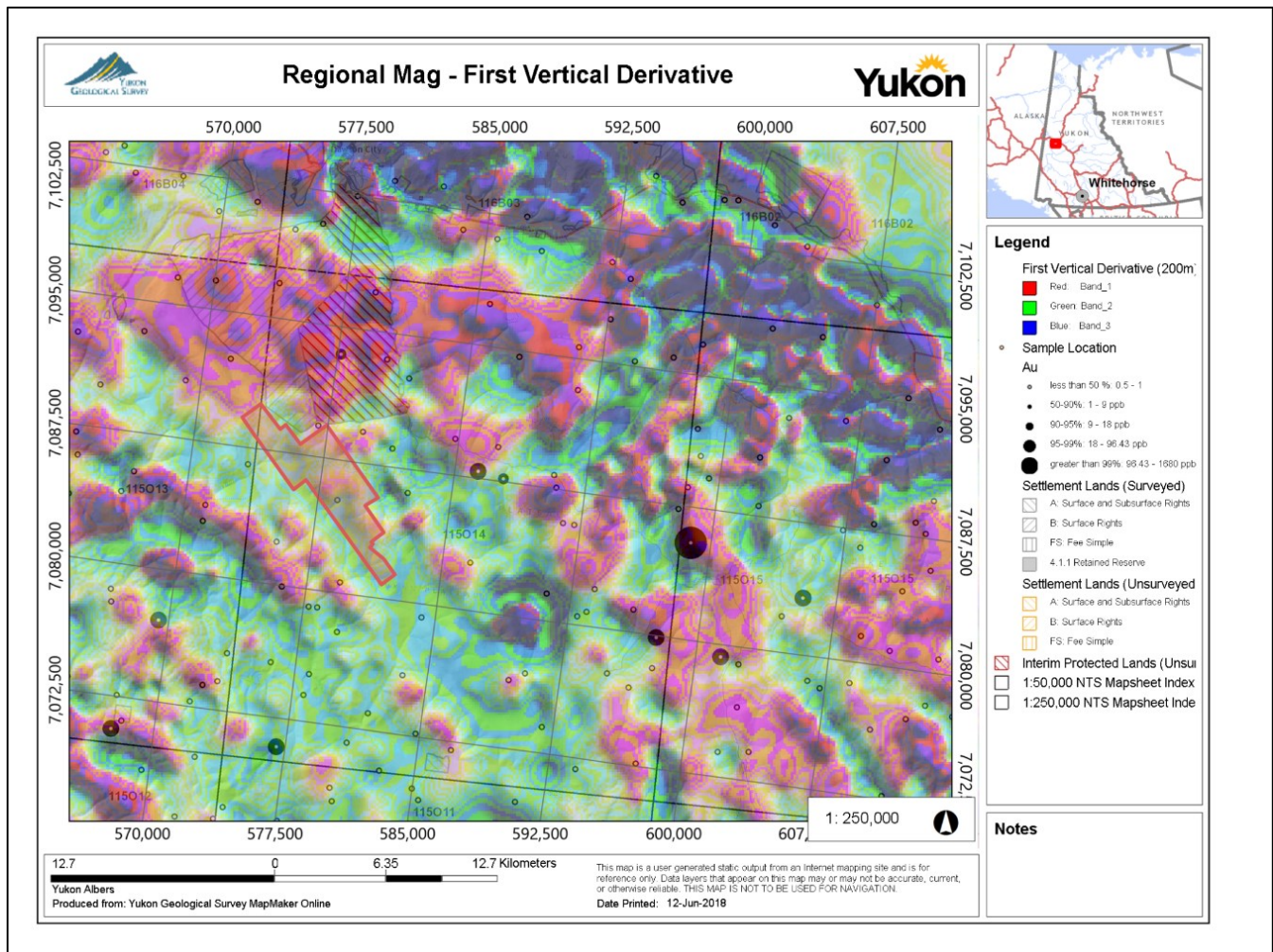


FIGURE 5: REGIONAL MAG – FIRST DERIVATIVE

MINERALIZATION

According to the regional geology map, the claim block is underlain by the Permian Sulphur Creek Plutonic Suite and its contact with the Permian Klondike Schist, postulated to be located at the northern and southern portions of the claim block.

Mineralization in the region is mostly associated with rocks of the Klondike Schist, as is evident from the distribution of Minfile occurrences as seen on Figure 3. Exploration targets include VMS mineralization as well as structurally hosted gold. Several occurrences of vein-hosted gold mineralization, sometimes as visible gold, occur immediately east of the AU claims in rocks of the Klondike Schist, on Klondike Gold Corp.'s Eldorado property. Recent and current drilling at Klondike Gold's Lone Star (past producer, Minfile 1050 072) and Nugget zones, located approximately 4 to 6 km east of the AU claims, continue to test the hardrock gold potential of the area (klondikegoldcorp.com).

The Minfile occurrences that are displayed to be hosted by the Sulphur Creek Orthogneiss are in fact hosted in pendants of Klondike Schist within the orthogneiss.

The neighbouring IND occurrence (Minfile 1150 095, Gleeson) is located 7 km west of the claims block. It is hosted in the Jim Creek pluton, formerly thought to be part of the Jurassic Long Lake Suite. However, more recent age dating showed the host intrusion to be Permian and that body is now correlated with the Sulphur Creek Plutonic suite (Figure 3), the same

suite that is mapped on the AU claims. Formerly interpreted as a tungsten skarn, work by Aldrin Resources outlined a sheeted sill complex cut by bluish quartz veins. Trench samples yielded up to 12 g/t gold (Allan et al., 2012).

PREVIOUS WORK

Claims AU 1 to 130 were staked in September 2012, and a first phase of widely spaced soil sampling (281 samples) proceeded shortly afterwards. The samples were assayed using ALS Laboratories' ME-MS41L analytical package using a 0.5 g sample. Subsequently, 48 samples with the highest gold values were reanalyzed for gold by Au-TL43, using the same aqua regia digestion than used by ME-MS41L but on 25 g samples. A comparison of the results showed no clear correlation; 9 reanalyses were significantly lower than the original assays, 18 were higher, and 21 did not change significantly.

A second block of adjoining claims (AU 131 to 186) was staked to the north in October 2012, and 231 samples were collected from widely spaced soil lines in September 2013 (Héon 2013). Samples were analyzed for gold by Au-ICP21, a fire assay with ICP-AES finish, and by ME-MS41L for multi-element geochemistry.

In 2015, a total of 179 soil samples were collected on five small detailed grids that were established over anomalous sample sites outlined during the 2012-2013 programs (Héon 2016). These samples were analyzed for gold by the Au-ST43 package, a super trace analytical method using aqua regia digestion on a 25 g sample and an ICP-MS finish, and for multi-element geochemistry by ME-MS41L. Gold assay results, although of low values, showed that one sample confirmed a Au-Pb-Zn anomaly outlined by the 2012 work.

In 2017, soil sampling focused on expanding and infilling the eastern portion of the grid, as well as infilling an area surrounding the zone of anomalous soils outlined by previous work. A total of 289 samples were analyzed for gold by Au-ICP21 and for multi-element geochemistry by ME-MS41L. This combination was used from then on in subsequent programs. Sampling of an area that had previously returned values of 25 ppb Au and anomalous Ba, Co, La, Mn, and Pb yielded two strongly anomalous values of 508 and 120 ppb Au (Héon 2018).

In 2018, 98 claims were added at the northern end of the claims block. The 2018 soil sampling program was conducted to provide more detailed coverage in the area of anomalous located at the northern end of the 2017 claim block. A total of 227 soil samples were collected and analyzed. A grid was established to provide infill coverage of previous sampling and to span two distinct anomalies:

- One area where two consecutive samples from the 2017 survey, spaced 50 m apart, returned values of 508 and 120 ppb Au, adjacent to a 2013 sample that assayed 25 ppb Au. The 2018 survey did not replicate the previous anomalous results. However, the survey did yield a 64 ppb Au and 116 ppm Pb sample east of the 2017 anomaly.
- Another area, 1.5 km to the south, where a 2013 sample assayed 78 ppb Au (Héon, 2019). This sample remains an isolated anomaly.

Figure 10 shows the distribution of the various grids throughout the sampling history of the property.

2020 SOIL SURVEY

DESCRIPTION OF WORK

A class 1 permit was issued under permit number Q2020_0316 - C1Q00293; it is valid until September 24, 2021. A soil sampling program was conducted on the eastern boundary of the northern portion of the claim block (Figure 6). A total of 324 samples were collected at a sample spacing of approximately 75 m x 75 m and were analyzed for gold (Au-ICP21) and multi-element chemistry (ME-MS41L).

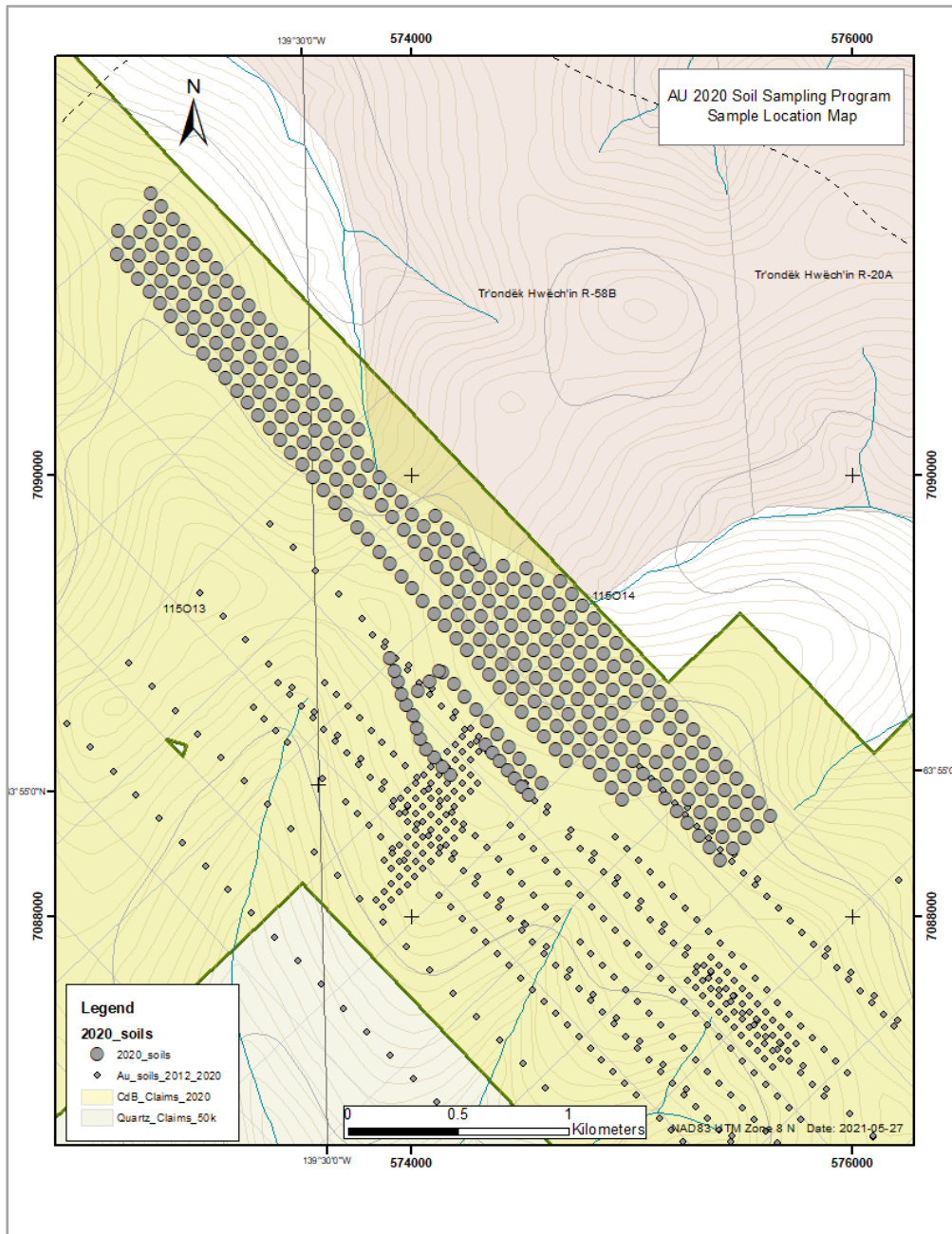


FIGURE 6: 2020 SOIL SAMPLE LOCATION

The 2020 assay results for gold, arsenic, and lead are displayed in Figure 7, Figure 8, and Figure 9. The assay certificate is located in Appendix E.

METHODOLOGY

Sample sites were predetermined and stored in the sampler's GPS unit. The samplers navigated to the planned waypoints using their GPS, and sampled the B or C horizon at the sample site using a mattock or soil auger. The soil sample was put in a Kraft bag which was labelled with the waypoint number.

Samples were bagged, brought to Whitehorse and shipped directly by Coureur des Bois to ALS Minerals' sample preparation facility in Whitehorse.

Samples were prepped according to prep code 41, where the samples were dried at <60°C/140F, sieved to -180 micron (80 mesh) and both fractions retained. The samples were then assayed at ALS's analytical facility in Vancouver using the following analytical packages:

- For gold: Au-ICP21 package: consisting of a 30 g fire assay with AES finish
- For other elements: the ME-MS41L super-trace ICP-MS multi-element analysis using aqua regia digestion on a 0.5 g sample. The sample size is considered too small to produce reliable results for gold.

2020 RESULTS

Soil geochemical maps for Au, As, and Pb are shown in Figure 7 to Figure 9. Gold values below detection limit (0.001ppm or 1 ppb) were converted in the digital database to half of that detection limit (0.0005 ppm (0.5 ppb)).

The geochemical maps display the range of values for selected elements and thresholds were chosen in order to best represent the distribution of values specific to this 2020 survey. Metal values are generally low. Muted metal response is expected in non-glaciated terrain as the prolonged weathering and oxidation of sample material may cause leaching and therefore dilution of metals. Significant anomaly thresholds may therefore be at lower grade than in glaciated areas.

The 2020 results are first shown in isolation of the rest of the grid for clarity; the results are incorporated in the property database in the next section.

The 2020 soil survey overlapped slightly with a gold and lead anomaly discovered in 2013, 2018 and 2015. It did not duplicate the anomalous gold but it confirmed, filled in, and expanded the lead anomaly. As lead is not very mobile in soils, this trend, especially considering its partial overlap with a gold anomaly (25 to 508 ppb Au), provides an interesting target. This target area defines a trend that has spotty sample coverage. The lead anomaly is outlined in blue in Figure 12 and Figure 13; it surrounds a gold anomaly that is outlined in red. Table 2 lists the basic statistics for the elements showing the greatest variation in the 2020 survey.

The following observations are drawn from this 2020 soil survey:

- Sample 20_AU 205 returned the highest gold value at 161 ppb Au and coincident 123.5 ppm Pb.
- Sample 20_AU 165 returned the second-highest gold value of the survey at 22 ppb Au and coincident 50 ppm Pb.
- Nine other samples assayed between 12 and 19 ppb Au.
- The median gold value for this survey was 3.5 ppb, 3.5 x the detection limit.
- The highest lead assay was 304 ppm Pb. Fourteen other samples assayed between 90 and 296 ppm Pb.
- Arsenic values are low.

TABLE 2: BASIC STATISTICS FOR 2020 SOILS

N=324	Au ppb	Ag	As	Co	Cr	Cs	Cu	Fe	Mo	Ni	Pb	Te	Tl	U	W	Zn
max	161	0.732	18.15	17.4	62.7	4.14	67.3	3.29	2.79	23.3	304	0.039	0.516	14.2	0.481	331
min	0.5	0.014	1.48	1.155	4.25	0.233	5.58	0.68	0.43	3.26	11.55	0.004	0.05	0.495	0.029	13.9
median	3.5	0.157	5.405	6.155	17.8	0.576	15.58	1.95	1.165	11.6	29.85	0.016	0.127	1.5	0.143	64.65

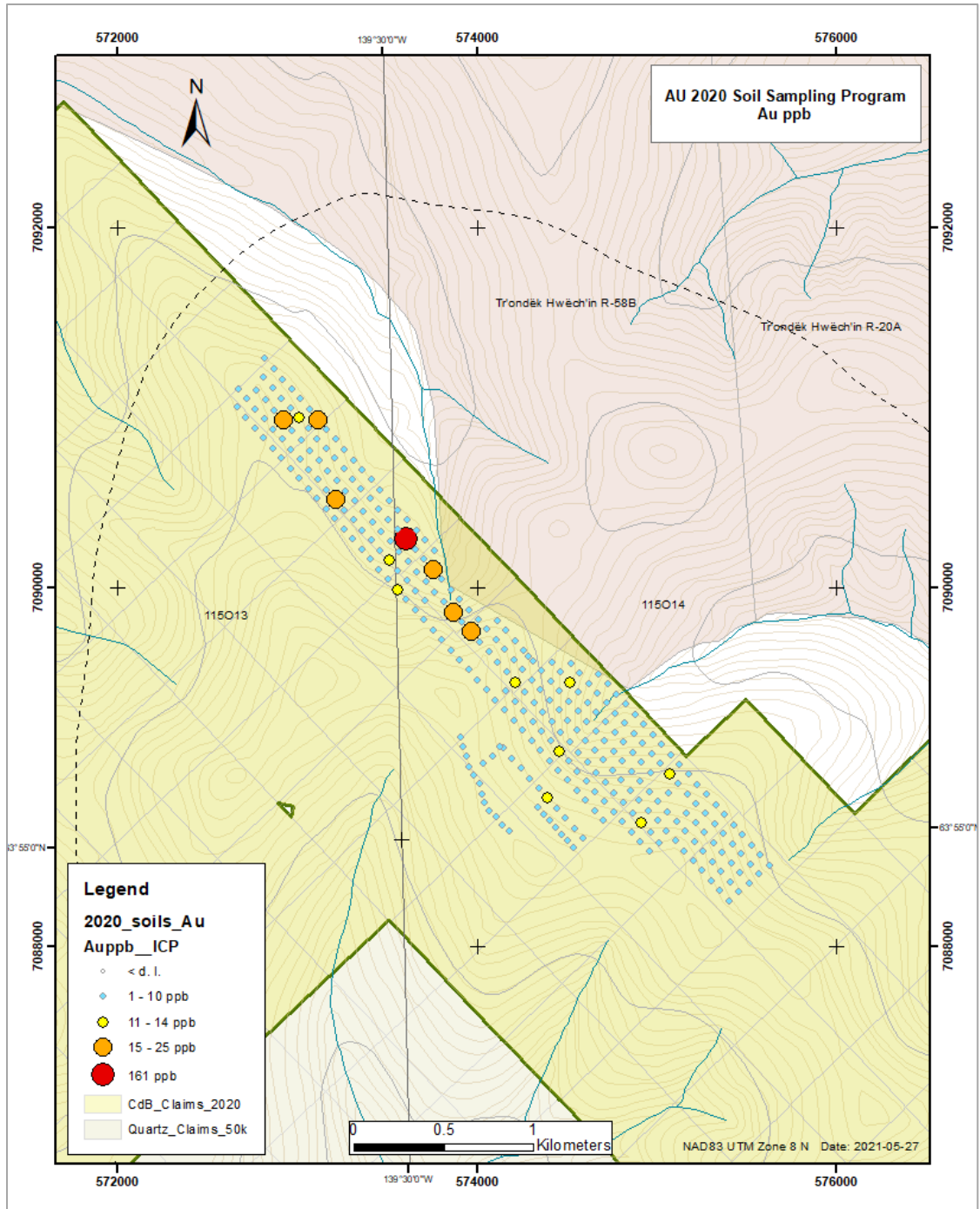


FIGURE 7: AU PPB (ICP-21) IN 2020 SOILS

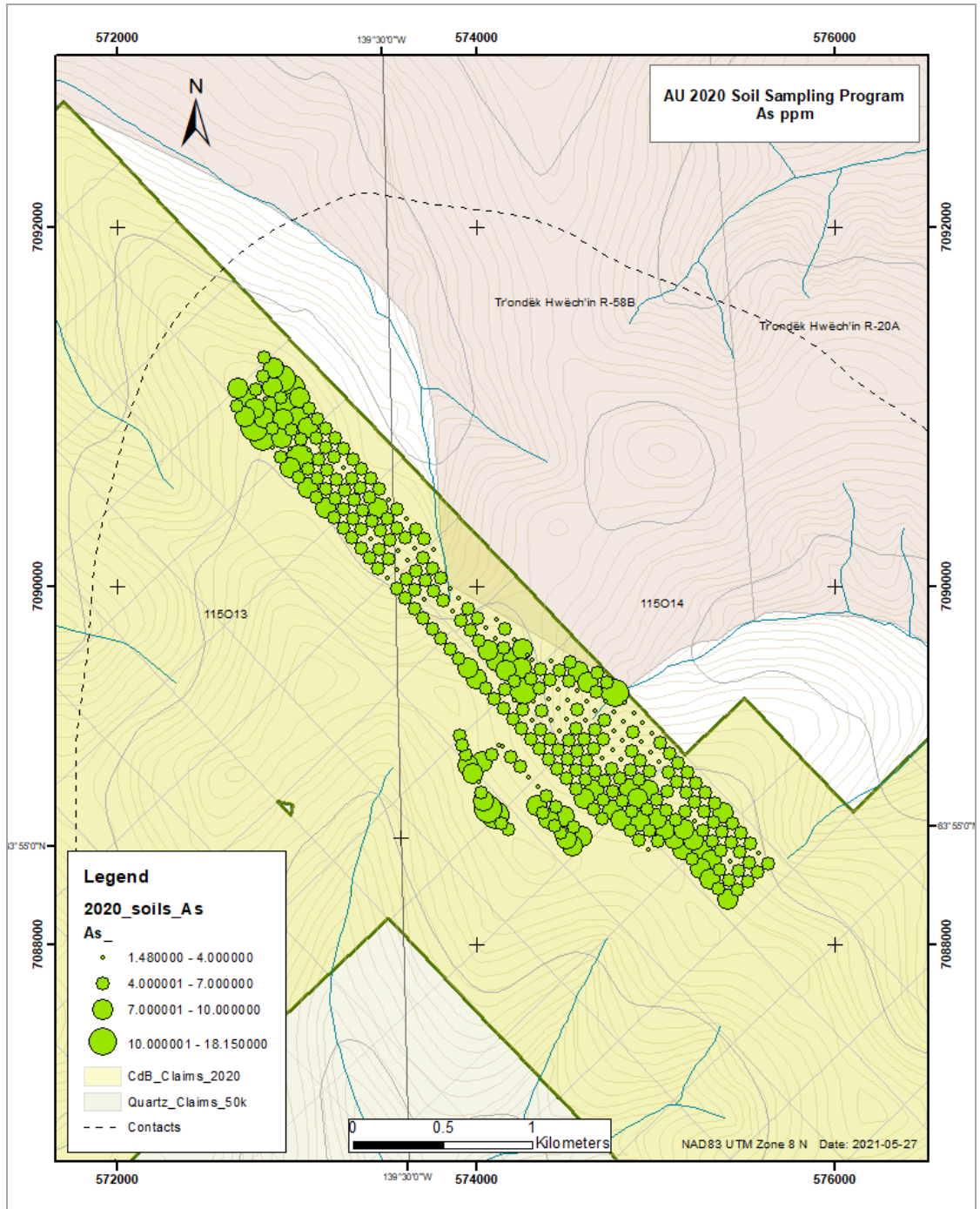


FIGURE 8: AS (PPM) IN 2020 SOILS

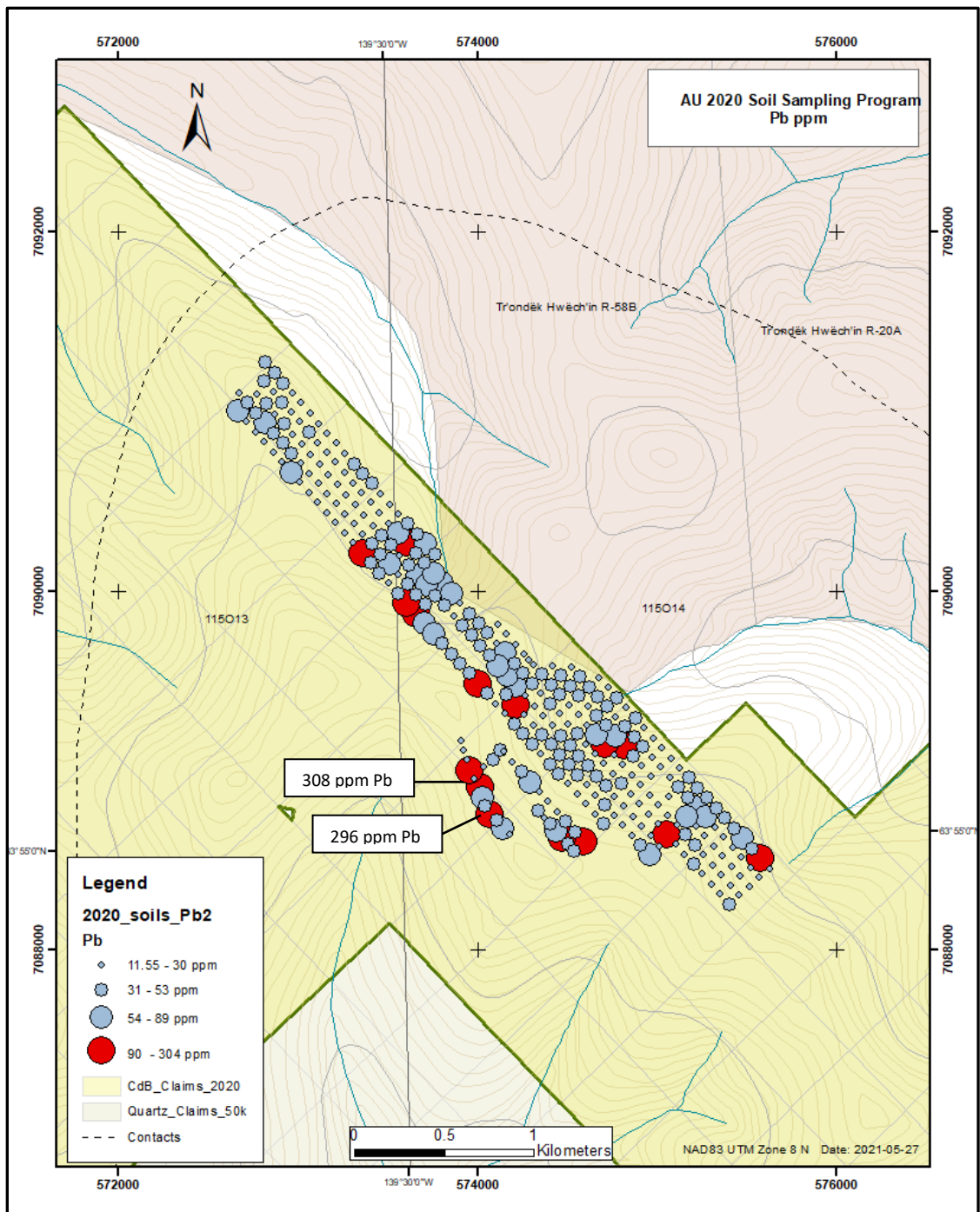


FIGURE 9: PB (PPM) IN 2020 SOILS

SOIL COMPILATION 2012 TO 2020

Density of soil sampling varies throughout the property; some areas are covered by widely spaced samples (450 m), others by tightly spaced ones (50 to 75 m). Some portions of the property have not yet been sampled, and others have been sampled but the choice of analytical methods used in 2012 and 2015 limits data interpretation, as it is difficult to compare results from fire assays with results of assays that used aqua regia digestion. Figure 10 shows the distribution by year of each soil sampling program. Figure 11 shows which surveys were analyzed by Au-ICP21, the fire assay technique that was finally adopted, as the fire assay ensures the sample is completely processed for analysis. The 2012 (in blue) and 2015 (in bright green) surveys were not analyzed by Au-ICP21.

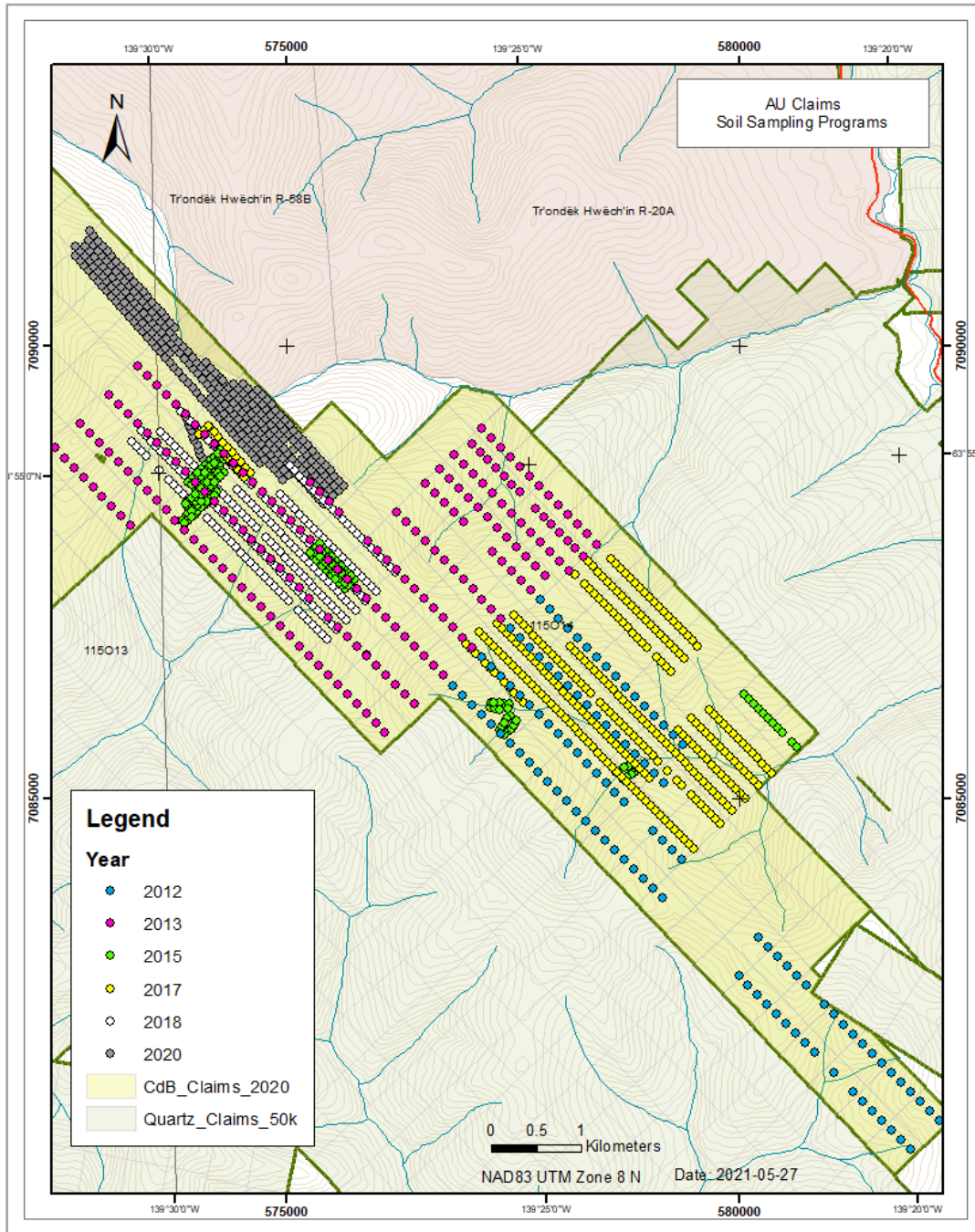


FIGURE 10: INVENTORY OF SOIL SAMPLING PROGRAMS

TABLE 3: INVENTORY OF GOLD DETECTION METHODS BY YEAR

Year	2012		2013	2015	2017	2018	2020
Method for Au	Au ME-MS41L	Au-TL43	Au-ICP21	Au-ST43	Au-ICP21	Au-ICP21	Au-ICP21
Sample weight	0.5 g	25 g	30 g	25 g	30 g	30 g	30 g
No. of samples	281	48	231	179	289	227	324

TABLE 4: DESCRIPTION OF ANALYTICAL METHODS FOR GOLD

	Au-ICP21	Au ME-MS41L	Au-ST43	Au-TL43
Extraction	fire assay	aqua regia	aqua regia	aqua regia
Finish	ICP-AES	ICP-MS	ICP-MS	ICP-MS
sample weight	30 g	0.5 g	25 g	25 g
Lower Detection Limit (Au)	0.01 ppm 0.02 (1 ppb)	0.0002 ppm (0.2 ppb)	0.0001 ppm (0.1 ppb)	0.001 ppm (1 ppb)
Year	2013, 2017, 2018, 2020	2012	2015	2012 (reanalysis of highest gold from ME-MS41L)

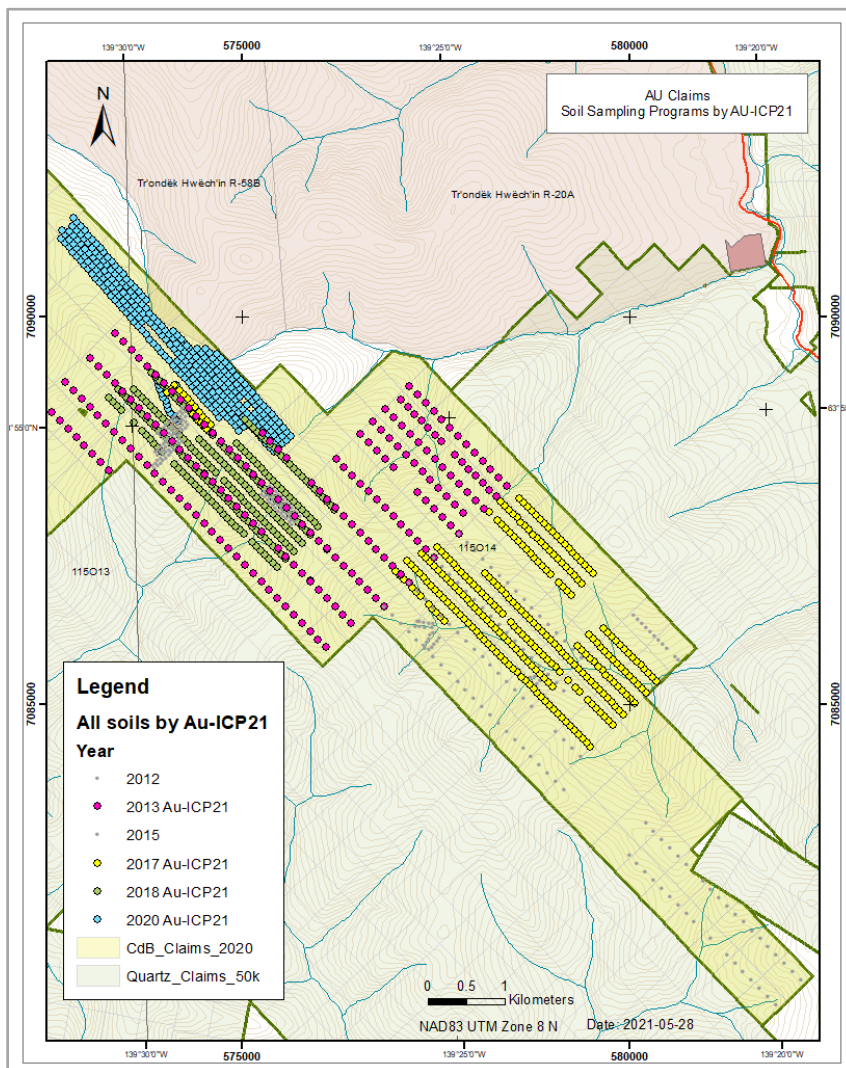


FIGURE 11: GOLD ANALYSES BY AU-ICP21

The sampling to date outlines four general areas with irregular but significant gold-in-soil anomalies, some coincident with anomalous lead which is considered significant as lead is not very mobile in soils:

- Two samples at the northern end of the 2020 grid assayed 161 ppb Au (123.5 ppm Pb), and 22 ppb Au (50 ppm Pb). Between these two samples, three other samples assayed between 13 and 18 ppb Au.
- The results from several surveys outline an area in the north-central part of the property (inset map in Figure 12 and Figure 13) that forms a 2 km long (approximately) elongate band of elevated lead values and that encloses a smaller area (700 m long) of anomalous gold. Sample density is irregular; some areas remained unsampled and some anomalous samples are at the edge of the sampled area. Some non-anomalous samples occur between the anomalous ones. The anomalies are characterized as follows:
 - A narrow elongate lead anomaly is defined by 13 samples that assayed between 90 and 408 ppm Pb (16 samples between 50 and 90 ppm Pb). The outline of this broad trend, outlined in blue in Figure 12 and Figure 13, remains unsampled in places and is especially open to the northwest. This lead anomaly encloses the gold anomaly described next at its eastern end.
 - Three consecutive samples (one from the 2013 survey and two from the 2017 survey) define a cluster of strongly anomalous gold (25, 508, and 120 ppb Au). Two samples from the 2020 survey were taken in this area and did not reproduce the original gold assays. A sample located approximately 700 m further east assayed 64 ppb Au and 116 ppm Pb (2018 survey); this sample is grouped with the former three to form the anomaly displayed in red on Figure 12 and Figure 13; the sampling density between this sample and the cluster of three anomalous samples is low.
- A single soil anomaly of 78 ppb Au from the 2013 survey is located in the central part of the property. A small grid established in 2015 to overlap this sample did not replicate this result; the assay method used in 2015 (Au-ST43) was not the same as the one used in 2013 (Au-ICP21), which makes comparison difficult. In 2018, a soil line was run 30 m to the southwest of the line containing the 78 ppb Au sample, but the neighbouring 2018 samples assayed less than the detection limit (< 1 ppb). The ridgetop uphill from the anomalous sample remains unsampled.
- A sample assayed 41 ppb in the south-central part of the property. Three samples located on the line 200m to the northeast assayed between 15 and 23 ppb Au; all these samples are from the 2017 survey.

High lead values, 158.5 and 137 ppm Pb, were also obtained from two consecutive samples in 2013 at the southeast portion of the grid; neighbouring grid lines were 225 m away. At the southern limit of the 2017 grid, two samples assayed 100.5 and 155.5 Pb. All these samples had low gold values.

The location of highest gold value obtained by Au-TL43 in 2012, 15 ppb, is plotted on Figure 12. The highest gold value obtained by Au-ST43 is 7.8 ppb Au; these samples were coded for gold according to the same symbology as the one used for samples assayed by Au-ICP21.

TABLE 5: BASIC STATISTICS FOR ALL SURVEYS (2012 TO 2020)

	Au ppb ICP21	Au ppb ST43	Au ppb TL43	Ag	As	Ba	Bi	Ce	Co	Cr	Cu	Fe
n	1070	179	48	1531	1531	1531	1531	1531	1531	1531	1531	1531
< detection limit	0.5	0.05	0.5									
Min	0.5	0.6	1	0.003	0.8	49	0.051	6	0.783	2.13	4.25	0.38
Max	508	7.8	15	1.41	96.5	1710	2.3	225	50.7	261	109	5.88
Median	2	1.9	3	0.116	6.69	323	0.215	43.7	5.85	20	15.55	2.03
max/median	254	4.11	5.00	12.16	14.42	5.29	10.70	5.15	8.67	13.05	7.01	2.90
90 th percentile	7	3.6	5.3									
95 th percentile	9	4.4	8									
99 th percentile	19.6	7.7	12.2									

	Mn	Mo	Ni	Pb	S	Sb	Se	Sn	Te	Tl	U	Zn
n	1531	1531	1531	1531	1350	1531	1527	1531	1495	1531	1531	1531
< detection limit												
Min	34.2	0.26	1.34	1.415	0.01	0.1	0.084	0.11	0.004	0.042	0.275	3.6
Max	29700	15.55	64.7	408	0.54	2.39	5.8	1.6	0.37	1.24	30.9	393
Median	254	0.97	12.5	21.7	0.02	0.418	0.4	0.41	0.02	0.104	1.135	56.4
max/median	116.93	16.03	5.18	18.80	27.00	5.72	14.50	3.90	18.50	11.92	27.22	6.97

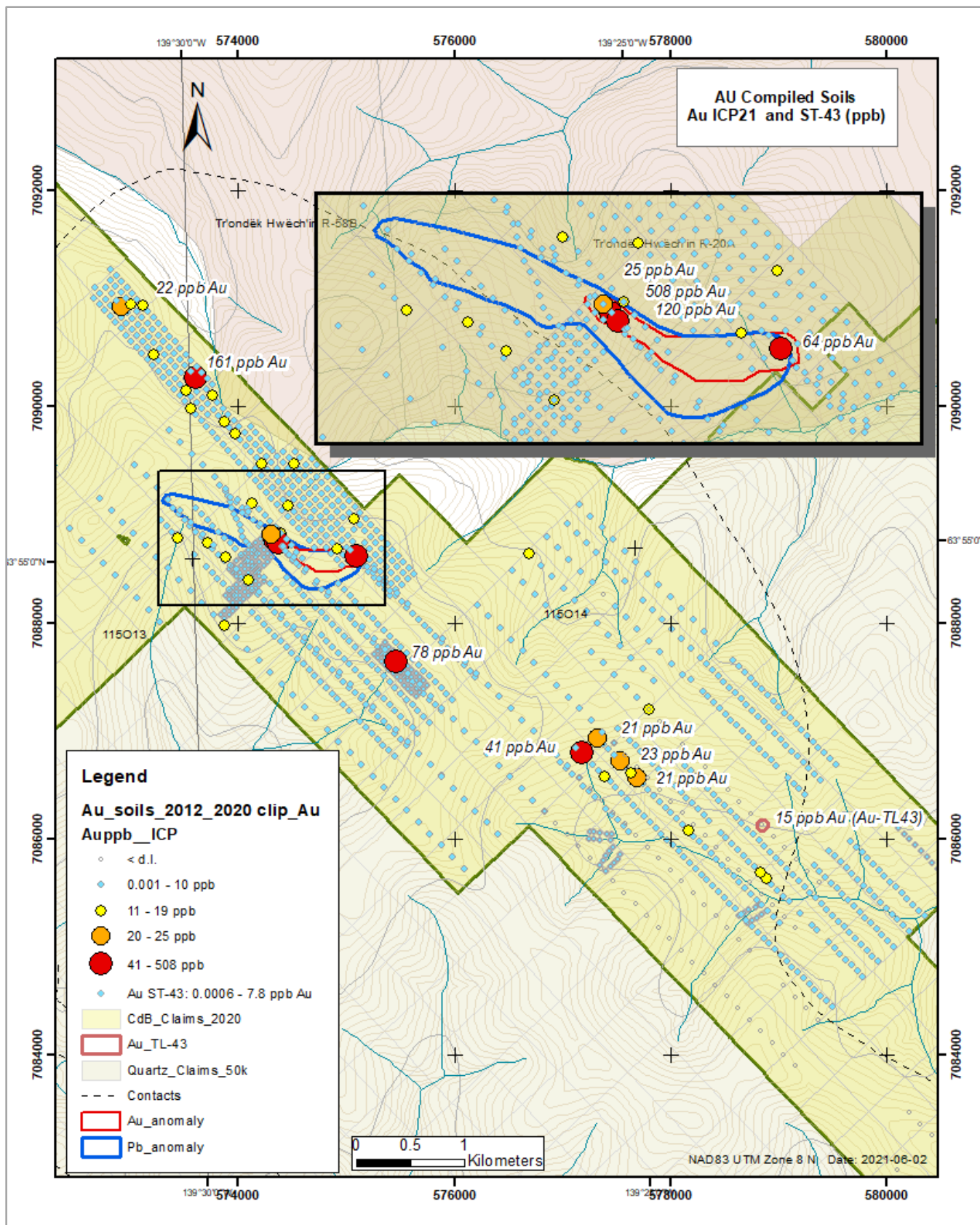


FIGURE 12: COMPILATION GOLD ASSAYS IN SOILS

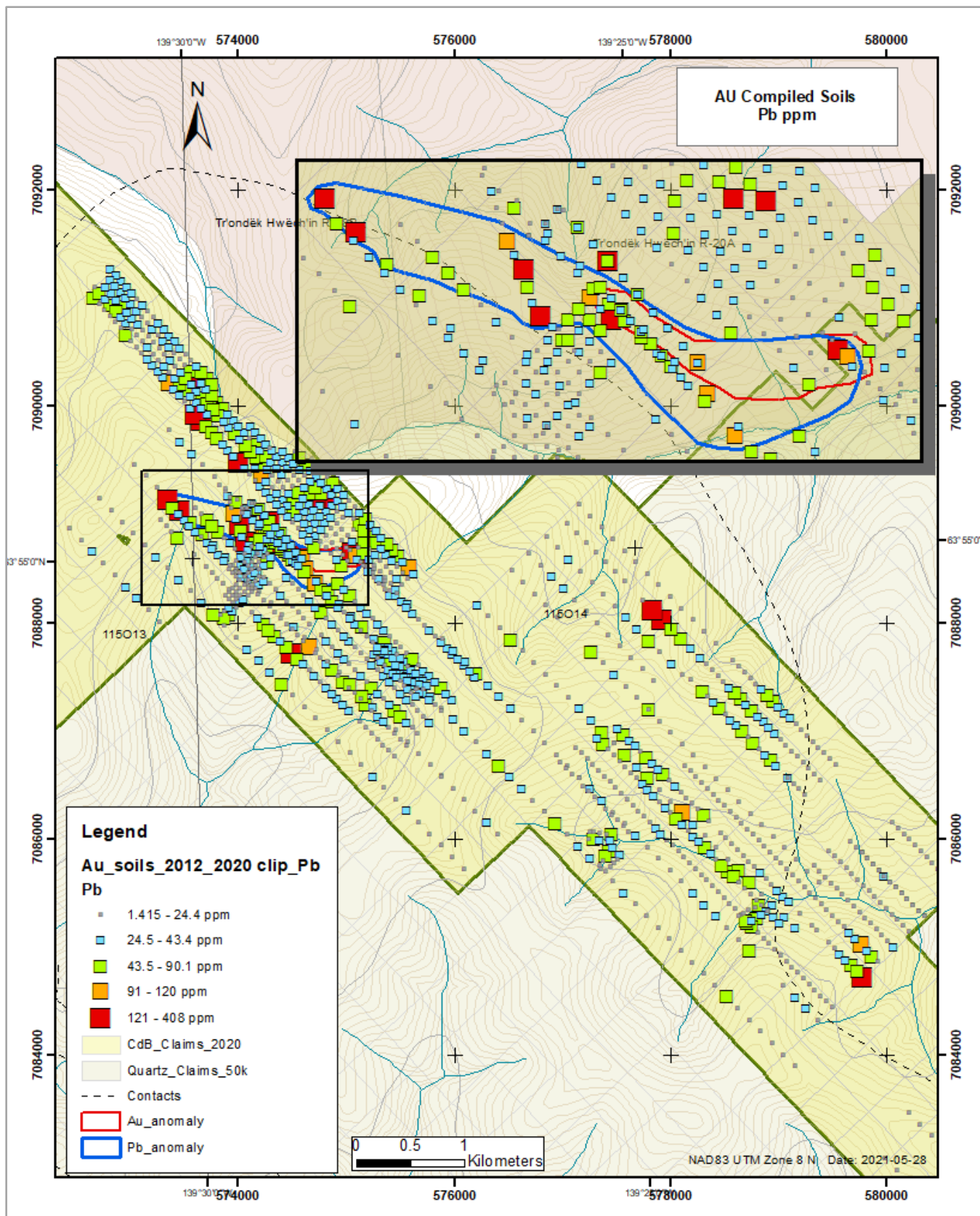


FIGURE 13: COMPILATION LEAD ASSAYS IN SOILS

DISCUSSION AND CONCLUSIONS

The initial 2012-2013 soil surveys were conducted on widely spaced lines (450 m spacing). The 2015 work consisted of small focused grids infilling near the 2012-2013 anomalies. The 2017 work infilled an area to the north following up on anomalous results and yielded significant gold anomalies. The 2017 work also expanded and infilled the eastern portion of the grid. The 2018 work infilled a section of the northern portion of the grid at a good sampling density. The 2020 survey tied in with the northeast end of the 2018 survey and extended the grid towards the northwest.

To put the assay results in a statistical context, the median value (50th percentile) for gold (Au-ICP21) is 2 ppb Au; the highest assay is 508 ppb Au, or 254 times the median value. The spread from the median is used as an indicator of the intensity of an anomaly. The 90th, 95th, and 99th percentile values for gold are 7, 9, and 19.6 ppb Au, respectively. Similarly, the median value for lead is 21.7 ppm, and the highest value, 408 ppm, represents almost 19 times the median value. The 90th, 95th, and 99th percentile values for lead are 49.4, 61.65, and 137.75 ppm Pb, respectively.

The 2020 sampling yielded two samples strongly anomalous in gold and lead in the northern sector of the survey (161 ppb Au/123 ppm Pb, and 22 ppb Au/50 ppm Pb). Other metal response was low. A few samples were taken in 2020 near the central gold anomaly (25 to 508 ppb Au) but did not reproduce these results.

Compilation of all data (2012 to 2020) shows that the property hosts significant if spotty gold and lead anomalies. Two areas of coincident gold-lead anomalies occur in the northern and north-central portions of the grid, and two gold (-only) anomalies occur in the south-central portion of the grid. Two other strong lead anomalies (no anomalous gold) are located in the south-central and southern-most portions of the grid.

Several factors may contribute to the poor reproducibility of gold results in those areas sampled by more than one survey:

- Soil sampling methodology, such as depth of samples and material sampled, needs to be evaluated to make sure the sampling method is adequate and consistent throughout all surveys. If the White River ash is present on the property, the samples need to be taken below this layer. Using a soil auger instead of a mattock may allow for deeper sampling.
- Two of the soil surveys were analyzed using an aqua regia digestion instead of a fire assay. The aqua regia digestion is considered adequate in such an oxidized non-glaciated environment, but variations in methodology may hinder interpretation.
- Results from laboratory duplicates show three pairs of samples with significant discrepancy in results for gold by fire assay (78 ppb vs. 3 ppb, 1 ppb vs. 23 ppb, and 4 ppb vs. 19 ppb Au). Such discrepancy can be due to the presence of coarse gold that is not distributed homogeneously throughout the sample (the nugget effect). Some of the gold may be sieved out in the coarse fraction during sample processing. The presence of coarse visible gold in quartz veins at nearby occurrences support this possibility.

Several ridges have not yet been sampled. No prospecting no ground-truthing of the regional geology has been done yet.

RECOMMENDATIONS

In light of these results, the property merits further work. The following steps are proposed:

- If available, process and reanalyze the coarse rejects of selected samples from the existing surveys to identify if gold partitions in the coarse fraction.

- Ensure the sampling protocol is optimized. Include a sample description if possible. If the White River ash horizon is present in the area, ensure that sampling depth is below it. Use a soil auger for deeper sampling.
- Infill to 100 m spacing and continue coverage of unsampled areas, especially in the area of the central gold-lead anomaly and on ridge tops. Extend the grid to the north and south of its current extent.
- Prioritize the sampling of ridges as the material there will not be transported and any anomalies would be in place.
- Insert certified reference materials in the sample stream to test the laboratory protocols.
- In future sampling, keep the coarse rejects and analyze them in areas of interest.
- Include a protocol of field duplicates to test for reproducibility of gold assays.

Ground-truthing of the regional geology by prospecting and examining rock chips in the soil pits where there is no outcrop is needed to provide context for the geochemical interpretation. The following steps are proposed:

- Air photo interpretation, looking for evidence for structures as controls to orogenic gold mineralization.
- Geological mapping and prospecting of the property, with focus on determining the underlying rock types and their contacts, prospecting for quartz veins and/or sulphide mineralization giving priority to the known anomalous areas and to ridgetops where outcrop or subcrop may be more likely to occur.
- Where anomalies occur without any exposed rocks, or following up on ground-truthing of anomalies, trenching and/or RAB drilling is recommended.

Additional work would be dependent on the results of this proposed phase of work.

Signed, in Whitehorse, June 02, 2021

Danièle Héon, P. Geo.

STATEMENT OF QUALIFICATIONS

I, Danièle Héon, of:

12 Marigold Place
Whitehorse, Yukon
Y1A 6A2

do hereby declare that;

- I am an independent contracting geologist.
- I graduated with a Bachelor of Science degree from McGill University in Montréal in 1984.
- I have worked as a geologist since graduation from University and in the Yukon since 1990.
- I am a member in good standing of the Association of Engineers and Geoscientists BC (formerly APEGBC), no. 38518.
- I have not visited the property.
- I am the author of this report in which I compile and present the work and the results of the soil survey conducted by Coureur des Bois Exploration Ltée Ltd., based on the data provided by Coureur des Bois Exploration Ltée Ltd.
- I have not been involved in the fieldwork described herein, so therefore my responsibility is limited to the interpretation and presentation of the data provided.
- This report is intended to satisfy assessment requirements only.

Danièle Héon, P. Geo.

REFERENCES

Allan, M.M., Hart. C.J.R., and Mortensen, J.K. (eds), 2012, Yukon Gold Project Final Technical Report, Mineral Deposit Research Unit, University of British Columbia.

Allan, M.M., Hart. C.J.R., and Mortensen, J.K. (eds), 2012, Geological Map of the Dawson Range- White Gold Area, Yukon and East-Central Alaska, 1: 400,000, Mineral Deposit Research Unit, University of British Columbia.

Héon, D., 2013, Assessment Report on the 2012 and 2013 Geochemical Surveys of the AU Claims.

Héon, D., 2016, Assessment Report on the 2015 Geochemical Survey of the AU Claims.

Héon, D., 2018, Assessment Report on the 2017 Geochemical Survey of the AU Claims.

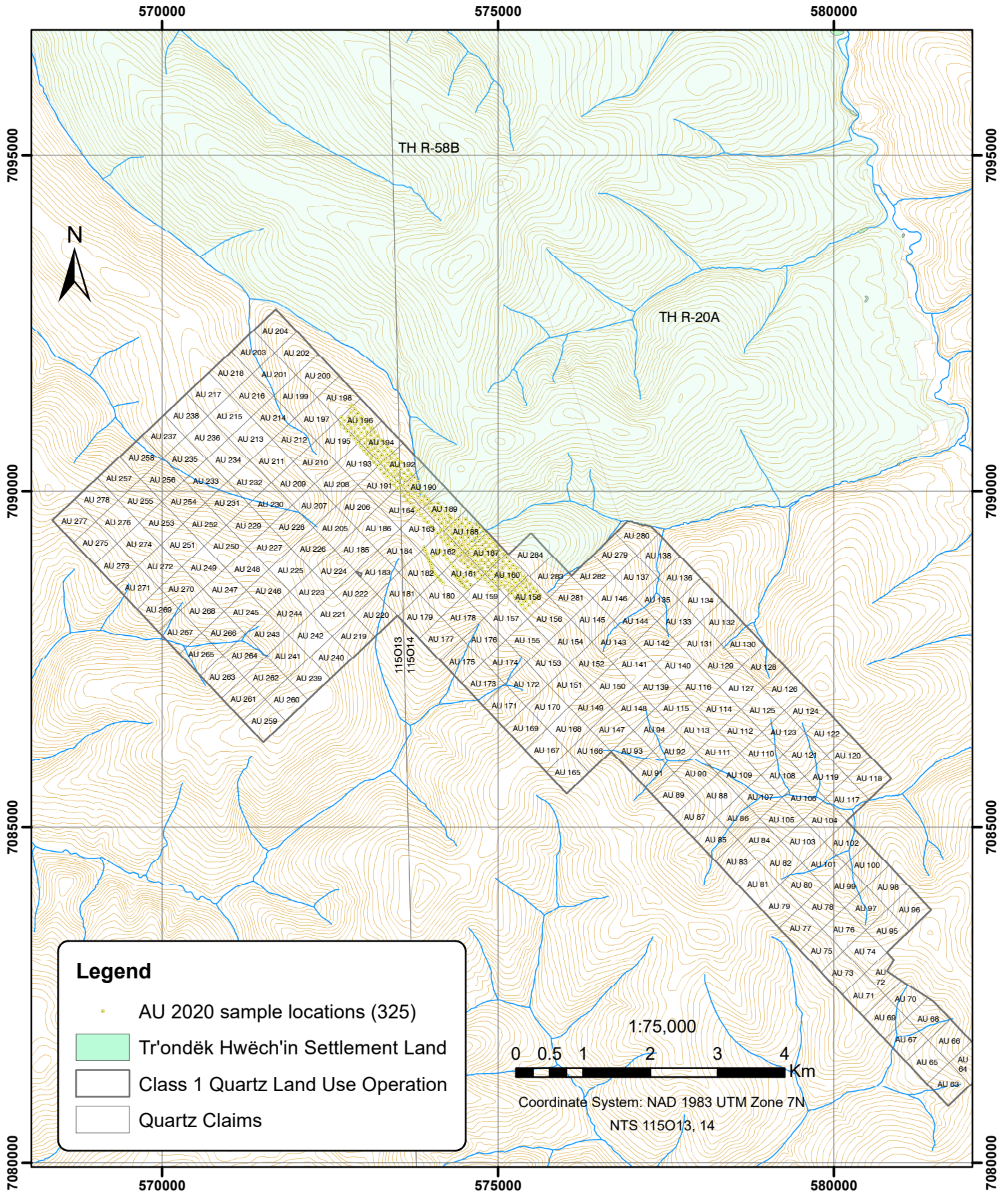
Héon, D., 2019, Assessment Report on the 2018 Geochemical Survey of the AU Claims.

Yukon Government's digital map browser accessed at <https://mapservices.gov.yk.ca/GeoYukon/>

Digital data as provided by the Yukon Geological Survey and government agencies at <https://map-data.service.yukon.ca/GeoYukon/>

APPENDIX A- CLAIM MAP

AU Claims 2020 Work



APPENDIX B- CLAIM DATA

NTS	Grant Number	Claim Label	Claim Owner	Claim Expiry Date	Renewal Period (years)	Requested Expiry Date
115014	YF41233	AU 63	Coureur des Bois Ltee Ltd.	2021-12-20	2.0	2023-12-20
115014	YF41234	AU 64	Coureur des Bois Ltee Ltd.	2021-12-20	2.0	2023-12-20
115014	YF41235	AU 65	Coureur des Bois Ltee Ltd.	2021-12-20	2.0	2023-12-20
115014	YF41236	AU 66	Coureur des Bois Ltee Ltd.	2021-12-20	2.0	2023-12-20
115014	YF41237	AU 67	Coureur des Bois Ltee Ltd.	2021-12-20	2.0	2023-12-20
115014	YF41238	AU 68	Coureur des Bois Ltee Ltd.	2021-12-20	2.0	2023-12-20
115014	YF41239	AU 69	Coureur des Bois Ltee Ltd.	2021-12-20	2.0	2023-12-20
115014	YF41240	AU 70	Coureur des Bois Ltee Ltd.	2021-12-20	2.0	2023-12-20
115014	YF41241	AU 71	Coureur des Bois Ltee Ltd.	2021-12-20	2.0	2023-12-20
115014	YF41242	AU 72	Coureur des Bois Ltee Ltd.	2021-12-20	2.0	2023-12-20
115014	YF41243	AU 73	Coureur des Bois Ltee Ltd.	2021-12-20	2.0	2023-12-20
115014	YF41244	AU 74	Coureur des Bois Ltee Ltd.	2021-12-20	2.0	2023-12-20
115014	YF41245	AU 75	Coureur des Bois Ltee Ltd.	2021-12-20	2.0	2023-12-20
115014	YF41246	AU 76	Coureur des Bois Ltee Ltd.	2021-12-20	2.0	2023-12-20
115014	YF41247	AU 77	Coureur des Bois Ltee Ltd.	2021-12-20	2.0	2023-12-20
115014	YF41248	AU 78	Coureur des Bois Ltee Ltd.	2021-12-20	2.0	2023-12-20
115014	YF41249	AU 79	Coureur des Bois Ltee Ltd.	2021-12-20	2.0	2023-12-20
115014	YF41250	AU 80	Coureur des Bois Ltee Ltd.	2021-12-20	2.0	2023-12-20
115014	YF41251	AU 81	Coureur des Bois Ltee Ltd.	2021-12-20	2.0	2023-12-20
115014	YF41252	AU 82	Coureur des Bois Ltee Ltd.	2021-12-20	2.0	2023-12-20
115014	YF41253	AU 83	Coureur des Bois Ltee Ltd.	2021-12-20	2.0	2023-12-20
115014	YF41254	AU 84	Coureur des Bois Ltee Ltd.	2021-12-20	2.0	2023-12-20
115014	YF41255	AU 85	Coureur des Bois Ltee Ltd.	2021-12-20	2.0	2023-12-20
115014	YF41256	AU 86	Coureur des Bois Ltee Ltd.	2021-12-20	2.0	2023-12-20
115014	YF41257	AU 87	Coureur des Bois Ltee Ltd.	2021-12-20	2.0	2023-12-20
115014	YF41258	AU 88	Coureur des Bois Ltee Ltd.	2021-12-20	2.0	2023-12-20
115014	YF41259	AU 89	Coureur des Bois Ltee Ltd.	2021-12-20	2.0	2023-12-20
115014	YF41260	AU 90	Coureur des Bois Ltee Ltd.	2021-12-20	2.0	2023-12-20
115014	YF41261	AU 91	Coureur des Bois Ltee Ltd.	2021-12-20	2.0	2023-12-20
115014	YF41262	AU 92	Coureur des Bois Ltee Ltd.	2021-12-20	2.0	2023-12-20
115014	YF41263	AU 93	Coureur des Bois Ltee Ltd.	2021-12-20	2.0	2023-12-20
115014	YF41264	AU 94	Coureur des Bois Ltee Ltd.	2021-12-20	2.0	2023-12-20
115014	YF41265	AU 95	Coureur des Bois Ltee Ltd.	2021-12-20	2.0	2023-12-20
115014	YF41266	AU 96	Coureur des Bois Ltee Ltd.	2021-12-20	2.0	2023-12-20
115014	YF41267	AU 97	Coureur des Bois Ltee Ltd.	2021-12-20	2.0	2023-12-20
115014	YF41268	AU 98	Coureur des Bois Ltee Ltd.	2021-12-20	2.0	2023-12-20
115014	YF41269	AU 99	Coureur des Bois Ltee Ltd.	2021-12-20	2.0	2023-12-20
115014	YF41270	AU 100	Coureur des Bois Ltee Ltd.	2021-12-20	2.0	2023-12-20
115014	YF41271	AU 101	Coureur des Bois Ltee Ltd.	2021-12-20	2.0	2023-12-20
115014	YF41272	AU 102	Coureur des Bois Ltee Ltd.	2021-12-20	2.0	2023-12-20

NTS	Grant Number	Claim Label	Claim Owner	Claim Expiry Date	Renewal Period (years)	Requested Expiry Date
115014	YF41273	AU 103	Coureur des Bois Ltee Ltd.	2021-12-20	2.0	2023-12-20
115014	YF41274	AU 104	Coureur des Bois Ltee Ltd.	2021-12-20	2.0	2023-12-20
115014	YF41275	AU 105	Coureur des Bois Ltee Ltd.	2021-12-20	2.0	2023-12-20
115014	YF41276	AU 106	Coureur des Bois Ltee Ltd.	2021-12-20	2.0	2023-12-20
115014	YF41277	AU 107	Coureur des Bois Ltee Ltd.	2021-12-20	2.0	2023-12-20
115014	YF41278	AU 108	Coureur des Bois Ltee Ltd.	2021-12-20	2.0	2023-12-20
115014	YF41279	AU 109	Coureur des Bois Ltee Ltd.	2021-12-20	2.0	2023-12-20
115014	YF41280	AU 110	Coureur des Bois Ltee Ltd.	2021-12-20	2.0	2023-12-20
115014	YF41281	AU 111	Coureur des Bois Ltee Ltd.	2021-12-20	2.0	2023-12-20
115014	YF41282	AU 112	Coureur des Bois Ltee Ltd.	2021-12-20	2.0	2023-12-20
115014	YF41283	AU 113	Coureur des Bois Ltee Ltd.	2021-12-20	2.0	2023-12-20
115014	YF41284	AU 114	Coureur des Bois Ltee Ltd.	2021-12-20	2.0	2023-12-20
115014	YF41285	AU 115	Coureur des Bois Ltee Ltd.	2021-12-20	2.0	2023-12-20
115014	YF41286	AU 116	Coureur des Bois Ltee Ltd.	2021-12-20	2.0	2023-12-20
115014	YF41287	AU 117	Coureur des Bois Ltee Ltd.	2021-12-20	2.0	2023-12-20
115014	YF41288	AU 118	Coureur des Bois Ltee Ltd.	2021-12-20	2.0	2023-12-20
115014	YF41289	AU 119	Coureur des Bois Ltee Ltd.	2021-12-20	2.0	2023-12-20
115014	YF41290	AU 120	Coureur des Bois Ltee Ltd.	2021-12-20	2.0	2023-12-20
115014	YF41291	AU 121	Coureur des Bois Ltee Ltd.	2021-12-20	2.0	2023-12-20
115014	YF41292	AU 122	Coureur des Bois Ltee Ltd.	2021-12-20	2.0	2023-12-20
115014	YF41293	AU 123	Coureur des Bois Ltee Ltd.	2021-12-20	2.0	2023-12-20
115014	YF41294	AU 124	Coureur des Bois Ltee Ltd.	2021-12-20	2.0	2023-12-20
115014	YF41295	AU 125	Coureur des Bois Ltee Ltd.	2021-12-20	2.0	2023-12-20
115014	YF41296	AU 126	Coureur des Bois Ltee Ltd.	2021-12-20	2.0	2023-12-20
115014	YF41297	AU 127	Coureur des Bois Ltee Ltd.	2021-12-20	2.0	2023-12-20
115014	YF41298	AU 128	Coureur des Bois Ltee Ltd.	2021-12-20	2.0	2023-12-20
115014	YF41299	AU 129	Coureur des Bois Ltee Ltd.	2021-12-20	2.0	2023-12-20
115014	YF41300	AU 130	Coureur des Bois Ltee Ltd.	2021-12-20	2.0	2023-12-20
115014	YF41301	AU 131	Coureur des Bois Ltee Ltd.	2021-12-20	2.0	2023-12-20
115014	YF41302	AU 132	Coureur des Bois Ltee Ltd.	2021-12-20	2.0	2023-12-20
115014	YF41303	AU 133	Coureur des Bois Ltee Ltd.	2021-12-20	2.0	2023-12-20
115014	YF41304	AU 134	Coureur des Bois Ltee Ltd.	2021-12-20	2.0	2023-12-20
115014	YF41305	AU 135	Coureur des Bois Ltee Ltd.	2021-12-20	2.0	2023-12-20
115014	YF41306	AU 136	Coureur des Bois Ltee Ltd.	2021-12-20	2.0	2023-12-20
115014	YF41307	AU 137	Coureur des Bois Ltee Ltd.	2021-12-20	2.0	2023-12-20
115014	YF41308	AU 138	Coureur des Bois Ltee Ltd.	2021-12-20	2.0	2023-12-20
115014	YF41309	AU 139	Coureur des Bois Ltee Ltd.	2021-12-20	2.0	2023-12-20
115014	YF41310	AU 140	Coureur des Bois Ltee Ltd.	2021-12-20	2.0	2023-12-20
115014	YF41311	AU 141	Coureur des Bois Ltee Ltd.	2021-12-20	2.0	2023-12-20
115014	YF41312	AU 142	Coureur des Bois Ltee Ltd.	2021-12-20	2.0	2023-12-20

NTS	Grant Number	Claim Label	Claim Owner	Claim Expiry Date	Renewal Period (years)	Requested Expiry Date
115014	YF41313	AU 143	Coureur des Bois Ltee Ltd.	2021-12-20	2.0	2023-12-20
115014	YF41314	AU 144	Coureur des Bois Ltee Ltd.	2021-12-20	2.0	2023-12-20
115014	YF41315	AU 145	Coureur des Bois Ltee Ltd.	2021-12-20	2.0	2023-12-20
115014	YF41316	AU 146	Coureur des Bois Ltee Ltd.	2021-12-20	2.0	2023-12-20
115014	YF41317	AU 147	Coureur des Bois Ltee Ltd.	2021-12-20	2.0	2023-12-20
115014	YF41318	AU 148	Coureur des Bois Ltee Ltd.	2021-12-20	2.0	2023-12-20
115014	YF41319	AU 149	Coureur des Bois Ltee Ltd.	2021-12-20	2.0	2023-12-20
115014	YF41320	AU 150	Coureur des Bois Ltee Ltd.	2021-12-20	2.0	2023-12-20
115014	YF41321	AU 151	Coureur des Bois Ltee Ltd.	2021-12-20	2.0	2023-12-20
115014	YF41322	AU 152	Coureur des Bois Ltee Ltd.	2021-12-20	2.0	2023-12-20
115014	YF41323	AU 153	Coureur des Bois Ltee Ltd.	2021-12-20	2.0	2023-12-20
115014	YF41324	AU 154	Coureur des Bois Ltee Ltd.	2021-12-20	2.0	2023-12-20
115014	YF41325	AU 155	Coureur des Bois Ltee Ltd.	2021-12-20	2.0	2023-12-20
115014	YF41326	AU 156	Coureur des Bois Ltee Ltd.	2021-12-20	2.0	2023-12-20
115014	YF41327	AU 157	Coureur des Bois Ltee Ltd.	2021-12-20	2.0	2023-12-20
115014	YF41328	AU 158	Coureur des Bois Ltee Ltd.	2021-12-20	2.0	2023-12-20
115014	YF41329	AU 159	Coureur des Bois Ltee Ltd.	2021-12-20	2.0	2023-12-20
115014	YF41330	AU 160	Coureur des Bois Ltee Ltd.	2021-12-20	2.0	2023-12-20
115014	YF41331	AU 161	Coureur des Bois Ltee Ltd.	2021-12-20	2.0	2023-12-20
115014	YF41332	AU 162	Coureur des Bois Ltee Ltd.	2021-12-20	2.0	2023-12-20
115014	YF41333	AU 163	Coureur des Bois Ltee Ltd.	2021-12-20	2.0	2023-12-20
115014	YF41334	AU 164	Coureur des Bois Ltee Ltd.	2021-12-20	2.0	2023-12-20
115014	YF41335	AU 165	Coureur des Bois Ltee Ltd.	2021-12-20	2.0	2023-12-20
115014	YF41336	AU 166	Coureur des Bois Ltee Ltd.	2021-12-20	2.0	2023-12-20
115014	YF41337	AU 167	Coureur des Bois Ltee Ltd.	2021-12-20	2.0	2023-12-20
115014	YF41338	AU 168	Coureur des Bois Ltee Ltd.	2021-12-20	2.0	2023-12-20
115014	YF41339	AU 169	Coureur des Bois Ltee Ltd.	2021-12-20	2.0	2023-12-20
115014	YF41340	AU 170	Coureur des Bois Ltee Ltd.	2021-12-20	2.0	2023-12-20
115014	YF41341	AU 171	Coureur des Bois Ltee Ltd.	2021-12-20	2.0	2023-12-20
115014	YF41342	AU 172	Coureur des Bois Ltee Ltd.	2021-12-20	2.0	2023-12-20
115014	YF41343	AU 173	Coureur des Bois Ltee Ltd.	2021-12-20	2.0	2023-12-20
115014	YF41344	AU 174	Coureur des Bois Ltee Ltd.	2021-12-20	2.0	2023-12-20
115014	YF41345	AU 175	Coureur des Bois Ltee Ltd.	2021-12-20	2.0	2023-12-20
115014	YF41346	AU 176	Coureur des Bois Ltee Ltd.	2021-12-20	2.0	2023-12-20
115014	YF41347	AU 177	Coureur des Bois Ltee Ltd.	2021-12-20	2.0	2023-12-20
115014	YF41348	AU 178	Coureur des Bois Ltee Ltd.	2021-12-20	2.0	2023-12-20
115014	YF41349	AU 179	Coureur des Bois Ltee Ltd.	2021-12-20	2.0	2023-12-20
115014	YF41350	AU 180	Coureur des Bois Ltee Ltd.	2021-12-20	2.0	2023-12-20
115014	YF41351	AU 181	Coureur des Bois Ltee Ltd.	2021-12-20	2.0	2023-12-20
115014	YF41352	AU 182	Coureur des Bois Ltee Ltd.	2021-12-20	2.0	2023-12-20

NTS	Grant Number	Claim Label	Claim Owner	Claim Expiry Date	Renewal Period (years)	Requested Expiry Date
115014	YF41353	AU 183	Coureur des Bois Ltee Ltd.	2021-12-20	2.0	2023-12-20
115014	YF41354	AU 184	Coureur des Bois Ltee Ltd.	2021-12-20	2.0	2023-12-20
115014	YF41355	AU 185	Coureur des Bois Ltee Ltd.	2021-12-20	2.0	2023-12-20
115014	YF41356	AU 186	Coureur des Bois Ltee Ltd.	2021-12-20	2.0	2023-12-20
115014	YF59877	AU 187	Coureur des Bois Ltee Ltd.	2021-12-20	2.0	2023-12-20
115014	YF59878	AU 188	Coureur des Bois Ltee Ltd.	2021-12-20	2.0	2023-12-20
115014	YF59879	AU 189	Coureur des Bois Ltee Ltd.	2021-12-20	2.0	2023-12-20
115014	YF59880	AU 190	Coureur des Bois Ltee Ltd.	2021-12-20	2.0	2023-12-20
115014	YF59881	AU 191	Coureur des Bois Ltee Ltd.	2021-12-20	2.0	2023-12-20
115014	YF59882	AU 192	Coureur des Bois Ltee Ltd.	2021-12-20	2.0	2023-12-20
115014	YF59883	AU 193	Coureur des Bois Ltee Ltd.	2021-12-20	2.0	2023-12-20
115014	YF59884	AU 194	Coureur des Bois Ltee Ltd.	2021-12-20	2.0	2023-12-20
115014	YF59885	AU 195	Coureur des Bois Ltee Ltd.	2021-12-20	2.0	2023-12-20
115014	YF59886	AU 196	Coureur des Bois Ltee Ltd.	2021-12-20	2.0	2023-12-20
115014	YF59887	AU 197	Coureur des Bois Ltee Ltd.	2021-12-20	2.0	2023-12-20
115014	YF59888	AU 198	Coureur des Bois Ltee Ltd.	2021-12-20	2.0	2023-12-20
115014	YF59889	AU 199	Coureur des Bois Ltee Ltd.	2021-12-20	2.0	2023-12-20
115014	YF59890	AU 200	Coureur des Bois Ltee Ltd.	2021-12-20	2.0	2023-12-20
115014	YF59891	AU 201	Coureur des Bois Ltee Ltd.	2021-12-20	2.0	2023-12-20
115014	YF59892	AU 202	Coureur des Bois Ltee Ltd.	2021-12-20	2.0	2023-12-20
115014	YF59893	AU 203	Coureur des Bois Ltee Ltd.	2021-12-20	2.0	2023-12-20
115014	YF59894	AU 204	Coureur des Bois Ltee Ltd.	2021-12-20	2.0	2023-12-20
115013	YF59895	AU 205	Coureur des Bois Ltee Ltd.	2021-12-20	2.0	2023-12-20
115013	YF59896	AU 206	Coureur des Bois Ltee Ltd.	2021-12-20	2.0	2023-12-20
115013	YF59897	AU 207	Coureur des Bois Ltee Ltd.	2021-12-20	2.0	2023-12-20
115013	YF59898	AU 208	Coureur des Bois Ltee Ltd.	2021-12-20	2.0	2023-12-20
115013	YF59899	AU 209	Coureur des Bois Ltee Ltd.	2021-12-20	2.0	2023-12-20
115013	YF59900	AU 210	Coureur des Bois Ltee Ltd.	2021-12-20	2.0	2023-12-20
115013	YF59901	AU 211	Coureur des Bois Ltee Ltd.	2021-12-20	2.0	2023-12-20
115013	YF59902	AU 212	Coureur des Bois Ltee Ltd.	2021-12-20	2.0	2023-12-20
115013	YF59903	AU 213	Coureur des Bois Ltee Ltd.	2021-12-20	2.0	2023-12-20
115013	YF59904	AU 214	Coureur des Bois Ltee Ltd.	2021-12-20	2.0	2023-12-20
115013	YF59905	AU 215	Coureur des Bois Ltee Ltd.	2021-12-20	2.0	2023-12-20
115013	YF59906	AU 216	Coureur des Bois Ltee Ltd.	2021-12-20	2.0	2023-12-20
115013	YF59907	AU 217	Coureur des Bois Ltee Ltd.	2021-12-20	2.0	2023-12-20
115013	YF59908	AU 218	Coureur des Bois Ltee Ltd.	2021-12-20	2.0	2023-12-20
115013	YF59909	AU 219	Coureur des Bois Ltee Ltd.	2021-12-20	2.0	2023-12-20
115013	YF59910	AU 220	Coureur des Bois Ltee Ltd.	2021-12-20	2.0	2023-12-20
115013	YF59911	AU 221	Coureur des Bois Ltee Ltd.	2021-12-20	2.0	2023-12-20
115013	YF59912	AU 222	Coureur des Bois Ltee Ltd.	2021-12-20	2.0	2023-12-20

NTS	Grant Number	Claim Label	Claim Owner	Claim Expiry Date	Renewal Period (years)	Requested Expiry Date
115013	YF59913	AU 223	Coureur des Bois Ltee Ltd.	2021-12-20	2.0	2023-12-20
115013	YF59914	AU 224	Coureur des Bois Ltee Ltd.	2021-12-20	2.0	2023-12-20
115013	YF59915	AU 225	Coureur des Bois Ltee Ltd.	2021-12-20	2.0	2023-12-20
115013	YF59916	AU 226	Coureur des Bois Ltee Ltd.	2021-12-20	2.0	2023-12-20
115013	YF59917	AU 227	Coureur des Bois Ltee Ltd.	2021-12-20	2.0	2023-12-20
115013	YF59918	AU 228	Coureur des Bois Ltee Ltd.	2021-12-20	2.0	2023-12-20
115013	YF59919	AU 229	Coureur des Bois Ltee Ltd.	2021-12-20	2.0	2023-12-20
115013	YF59920	AU 230	Coureur des Bois Ltee Ltd.	2021-12-20	2.0	2023-12-20
115013	YF59921	AU 231	Coureur des Bois Ltee Ltd.	2021-12-20	2.0	2023-12-20
115013	YF59922	AU 232	Coureur des Bois Ltee Ltd.	2021-12-20	2.0	2023-12-20
115013	YF59923	AU 233	Coureur des Bois Ltee Ltd.	2021-12-20	2.0	2023-12-20
115013	YF59924	AU 234	Coureur des Bois Ltee Ltd.	2021-12-20	2.0	2023-12-20
115013	YF59925	AU 235	Coureur des Bois Ltee Ltd.	2021-12-20	2.0	2023-12-20
115013	YF59926	AU 236	Coureur des Bois Ltee Ltd.	2021-12-20	2.0	2023-12-20
115013	YF59927	AU 237	Coureur des Bois Ltee Ltd.	2021-12-20	2.0	2023-12-20
115013	YF59928	AU 238	Coureur des Bois Ltee Ltd.	2021-12-20	2.0	2023-12-20
115013	YF59929	AU 239	Coureur des Bois Ltee Ltd.	2021-12-20	2.0	2023-12-20
115013	YF59930	AU 240	Coureur des Bois Ltee Ltd.	2021-12-20	2.0	2023-12-20
115013	YF59931	AU 241	Coureur des Bois Ltee Ltd.	2021-12-20	2.0	2023-12-20
115013	YF59932	AU 242	Coureur des Bois Ltee Ltd.	2021-12-20	2.0	2023-12-20
115013	YF59933	AU 243	Coureur des Bois Ltee Ltd.	2021-12-20	2.0	2023-12-20
115013	YF59934	AU 244	Coureur des Bois Ltee Ltd.	2021-12-20	2.0	2023-12-20
115013	YF59935	AU 245	Coureur des Bois Ltee Ltd.	2021-12-20	2.0	2023-12-20
115013	YF59936	AU 246	Coureur des Bois Ltee Ltd.	2021-12-20	2.0	2023-12-20
115013	YF59937	AU 247	Coureur des Bois Ltee Ltd.	2021-12-20	2.0	2023-12-20
115013	YF59938	AU 248	Coureur des Bois Ltee Ltd.	2021-12-20	2.0	2023-12-20
115013	YF59939	AU 249	Coureur des Bois Ltee Ltd.	2021-12-20	2.0	2023-12-20
115013	YF59940	AU 250	Coureur des Bois Ltee Ltd.	2021-12-20	2.0	2023-12-20
115013	YF59941	AU 251	Coureur des Bois Ltee Ltd.	2021-12-20	2.0	2023-12-20
115013	YF59942	AU 252	Coureur des Bois Ltee Ltd.	2021-12-20	2.0	2023-12-20
115013	YF59943	AU 253	Coureur des Bois Ltee Ltd.	2021-12-20	2.0	2023-12-20
115013	YF59944	AU 254	Coureur des Bois Ltee Ltd.	2021-12-20	2.0	2023-12-20
115013	YF59945	AU 255	Coureur des Bois Ltee Ltd.	2021-12-20	2.0	2023-12-20
115013	YF59946	AU 256	Coureur des Bois Ltee Ltd.	2021-12-20	2.0	2023-12-20
115013	YF59947	AU 257	Coureur des Bois Ltee Ltd.	2021-12-20	2.0	2023-12-20
115013	YF59948	AU 258	Coureur des Bois Ltee Ltd.	2021-12-20	2.0	2023-12-20
115013	YF59949	AU 259	Coureur des Bois Ltee Ltd.	2021-12-20	2.0	2023-12-20
115013	YF59950	AU 260	Coureur des Bois Ltee Ltd.	2021-12-20	2.0	2023-12-20
115013	YF59951	AU 261	Coureur des Bois Ltee Ltd.	2021-12-20	2.0	2023-12-20
115013	YF59952	AU 262	Coureur des Bois Ltee Ltd.	2021-12-20	2.0	2023-12-20

NTS	Grant Number	Claim Label	Claim Owner	Claim Expiry Date	Renewal Period (years)	Requested Expiry Date
115013	YF59953	AU 263	Coureur des Bois Ltee Ltd.	2021-12-20	1.0	2022-12-20
115013	YF59954	AU 264	Coureur des Bois Ltee Ltd.	2021-12-20	2.0	2023-12-20
115013	YF59955	AU 265	Coureur des Bois Ltee Ltd.	2021-12-20	1.0	2022-12-20
115013	YF59956	AU 266	Coureur des Bois Ltee Ltd.	2021-12-20	2.0	2023-12-20
115013	YF59957	AU 267	Coureur des Bois Ltee Ltd.	2021-12-20	1.0	2022-12-20
115013	YF59958	AU 268	Coureur des Bois Ltee Ltd.	2021-12-20	2.0	2023-12-20
115013	YF59959	AU 269	Coureur des Bois Ltee Ltd.	2021-12-20	1.0	2022-12-20
115013	YF59960	AU 270	Coureur des Bois Ltee Ltd.	2021-12-20	2.0	2023-12-20
115013	YF59961	AU 271	Coureur des Bois Ltee Ltd.	2021-12-20	1.0	2022-12-20
115013	YF59962	AU 272	Coureur des Bois Ltee Ltd.	2021-12-20	2.0	2023-12-20
115013	YF59963	AU 273	Coureur des Bois Ltee Ltd.	2021-12-20	1.0	2022-12-20
115013	YF59964	AU 274	Coureur des Bois Ltee Ltd.	2021-12-20	2.0	2023-12-20
115013	YF59965	AU 275	Coureur des Bois Ltee Ltd.	2021-12-20	1.0	2022-12-20
115013	YF59966	AU 276	Coureur des Bois Ltee Ltd.	2021-12-20	2.0	2023-12-20
115013	YF59967	AU 277	Coureur des Bois Ltee Ltd.	2021-12-20	1.0	2022-12-20
115013	YF59968	AU 278	Coureur des Bois Ltee Ltd.	2021-12-20	2.0	2022-12-20
115013	YF59969	AU 279	Coureur des Bois Ltee Ltd.	2021-12-20	2.0	2022-12-20
115013	YF59970	AU 280	Coureur des Bois Ltee Ltd.	2021-12-20	2.0	2022-12-20
115013	YF59971	AU 281	Coureur des Bois Ltee Ltd.	2021-12-20	2.0	2022-12-20
115013	YF59972	AU 282	Coureur des Bois Ltee Ltd.	2021-12-20	2.0	2022-12-20
115013	YF59973	AU 283	Coureur des Bois Ltee Ltd.	2021-12-20	2.0	2022-12-20
115013	YF59974	AU 284	Coureur des Bois Ltee Ltd.	2021-12-20	2.0	2022-12-20

APPENDIX C - SOIL SAMPLE LOCATION DATA

Prefix	wpt_no	UTM_E	UTM_N
AU2020	1	574336	7088774
AU2020	2	574369	7088737
AU2020	3	574402	7088700
AU2020	4	574436	7088661
AU2020	5	574469	7088624
AU2020	6	574502	7088587
AU2020	7	574535	7088549
AU2020	8	574591	7088599
AU2020	9	574541	7088655
AU2020	10	574491	7088712
AU2020	11	574442	7088767
AU2020	12	574392	7088824
AU2020	13	574342	7088880
AU2020	14	574293	7088935
AU2020	15	574243	7088992
AU2020	16	574193	7089048
AU2020	17	574144	7089105
AU2020	18	574126	7089109
AU2020	19	574084	7089061
AU2020	20	574031	7089021
AU2020	34	574703	7088699
AU2020	35	574653	7088756
AU2020	36	574603	7088811
AU2020	37	574554	7088867
AU2020	38	574503	7088923
AU2020	39	574453	7088979
AU2020	40	574403	7089035
AU2020	41	574353	7089091
AU2020	42	574304	7089146
AU2020	43	574254	7089203
AU2020	44	574204	7089259
AU2020	45	574154	7089315
AU2020	46	574103	7089370
AU2020	47	574054	7089426
AU2020	48	574004	7089483
AU2020	49	573954	7089538
AU2020	50	573904	7089594
AU2020	51	573854	7089650
AU2020	52	573804	7089706
AU2020	53	573754	7089762

Prefix	wpt_no	UTM_E	UTM_N
AU2020	54	573704	7089818
AU2020	55	573654	7089873
AU2020	56	573604	7089930
AU2020	57	573555	7089986
AU2020	58	573505	7090043
AU2020	59	573455	7090098
AU2020	60	573406	7090155
AU2020	61	573357	7090212
AU2020	62	573307	7090268
AU2020	63	573257	7090325
AU2020	64	573208	7090380
AU2020	65	573158	7090437
AU2020	66	573109	7090493
AU2020	67	573059	7090550
AU2020	68	573009	7090606
AU2020	69	572960	7090662
AU2020	70	572911	7090719
AU2020	71	572861	7090775
AU2020	72	572811	7090831
AU2020	73	572762	7090887
AU2020	74	572713	7090944
AU2020	75	572663	7091001
AU2020	76	574959	7088526
AU2020	77	574909	7088581
AU2020	78	574859	7088637
AU2020	79	574809	7088694
AU2020	80	574759	7088749
AU2020	81	574709	7088805
AU2020	82	574659	7088861
AU2020	83	574609	7088917
AU2020	84	574559	7088973
AU2020	85	574509	7089029
AU2020	86	574460	7089084
AU2020	87	574410	7089141
AU2020	88	574359	7089197
AU2020	89	574309	7089252
AU2020	90	574259	7089308
AU2020	91	574210	7089365
AU2020	92	574160	7089421
AU2020	101	573710	7089924

Prefix	wpt_no	UTM_E	UTM_N
AU2020	102	573660	7089979
AU2020	103	573610	7090036
AU2020	104	573560	7090092
AU2020	105	573510	7090148
AU2020	106	573460	7090203
AU2020	107	573410	7090260
AU2020	108	573361	7090316
AU2020	109	573312	7090373
AU2020	110	573262	7090429
AU2020	111	573212	7090485
AU2020	112	573163	7090542
AU2020	113	573114	7090598
AU2020	114	573064	7090654
AU2020	115	573014	7090710
AU2020	116	572965	7090767
AU2020	117	572915	7090824
AU2020	118	572866	7090879
AU2020	119	572816	7090936
AU2020	120	572766	7090992
AU2020	121	572717	7091049
AU2020	122	572668	7091104
AU2020	123	575015	7088575
AU2020	124	574965	7088632
AU2020	125	574915	7088687
AU2020	126	574865	7088743
AU2020	127	574815	7088800
AU2020	128	574765	7088855
AU2020	129	574715	7088911
AU2020	130	574665	7088967
AU2020	131	574615	7089023
AU2020	132	574565	7089079
AU2020	133	574515	7089135
AU2020	134	574465	7089190
AU2020	135	574415	7089247
AU2020	136	574366	7089303
AU2020	137	574316	7089359
AU2020	138	574265	7089414
AU2020	139	574215	7089471
AU2020	140	574165	7089527
AU2020	141	574116	7089582
AU2020	142	574066	7089638
AU2020	143	574016	7089695

Prefix	wpt_no	UTM_E	UTM_N
AU2020	144	573966	7089750
AU2020	145	573916	7089806
AU2020	146	573866	7089862
AU2020	147	573816	7089917
AU2020	148	573766	7089974
AU2020	149	573716	7090030
AU2020	150	573666	7090086
AU2020	151	573616	7090141
AU2020	152	573566	7090198
AU2020	153	573516	7090254
AU2020	154	573466	7090309
AU2020	155	573416	7090365
AU2020	156	573366	7090422
AU2020	157	573317	7090479
AU2020	158	573268	7090534
AU2020	159	573218	7090591
AU2020	160	573168	7090647
AU2020	161	573119	7090704
AU2020	162	573070	7090759
AU2020	163	573020	7090816
AU2020	164	572970	7090873
AU2020	165	572921	7090929
AU2020	166	572871	7090985
AU2020	167	572822	7091041
AU2020	168	572772	7091098
AU2020	169	575404	7088252
AU2020	170	575354	7088309
AU2020	171	575304	7088364
AU2020	172	575254	7088420
AU2020	173	575204	7088476
AU2020	174	575154	7088532
AU2020	175	575104	7088588
AU2020	176	575054	7088644
AU2020	177	575004	7088699
AU2020	178	574954	7088756
AU2020	179	574904	7088812
AU2020	180	574854	7088868
AU2020	181	574804	7088923
AU2020	182	574754	7088980
AU2020	183	574705	7089036
AU2020	184	574655	7089091
AU2020	185	574605	7089147

Prefix	wpt_no	UTM_E	UTM_N
AU2020	186	574554	7089204
AU2020	187	574504	7089259
AU2020	188	574455	7089315
AU2020	189	574405	7089371
AU2020	190	574355	7089427
AU2020	191	574305	7089483
AU2020	192	574255	7089539
AU2020	193	574205	7089594
AU2020	194	574155	7089651
AU2020	195	574105	7089707
AU2020	196	574055	7089763
AU2020	197	574005	7089818
AU2020	198	573955	7089875
AU2020	199	573905	7089931
AU2020	200	573855	7089986
AU2020	201	573805	7090042
AU2020	202	573755	7090099
AU2020	203	573705	7090154
AU2020	204	573655	7090210
AU2020	205	573605	7090266
AU2020	206	573555	7090323
AU2020	207	573505	7090378
AU2020	208	573455	7090434
AU2020	209	573406	7090491
AU2020	210	573356	7090546
AU2020	211	573307	7090603
AU2020	212	573257	7090659
AU2020	213	573208	7090716
AU2020	214	573158	7090773
AU2020	215	573109	7090828
AU2020	216	573059	7090885
AU2020	217	573009	7090941
AU2020	218	572960	7090998
AU2020	219	572911	7091053
AU2020	220	572861	7091110
AU2020	221	572811	7091167
AU2020	222	575460	7088302
AU2020	223	575410	7088358
AU2020	224	575360	7088415
AU2020	225	575310	7088470
AU2020	226	575260	7088526
AU2020	227	575210	7088582

Prefix	wpt_no	UTM_E	UTM_N
AU2020	228	575160	7088639
AU2020	229	575110	7088694
AU2020	230	575060	7088750
AU2020	231	575010	7088805
AU2020	232	574960	7088862
AU2020	233	574911	7088918
AU2020	234	574860	7088974
AU2020	235	574810	7089029
AU2020	236	574760	7089086
AU2020	237	574710	7089142
AU2020	238	574660	7089197
AU2020	239	574611	7089253
AU2020	240	574561	7089310
AU2020	241	574511	7089365
AU2020	242	574461	7089421
AU2020	243	574410	7089477
AU2020	244	574361	7089533
AU2020	245	574311	7089589
AU2020	246	574261	7089645
AU2020	247	574211	7089700
AU2020	248	574161	7089757
AU2020	249	574111	7089813
AU2020	256	573761	7090205
AU2020	257	573711	7090260
AU2020	258	573661	7090316
AU2020	259	573611	7090372
AU2020	260	573561	7090429
AU2020	261	573511	7090484
AU2020	262	573461	7090540
AU2020	263	573412	7090597
AU2020	264	573362	7090652
AU2020	265	573313	7090709
AU2020	266	573263	7090765
AU2020	267	573214	7090822
AU2020	268	573164	7090877
AU2020	269	573115	7090934
AU2020	270	573065	7090991
AU2020	271	573016	7091047
AU2020	272	572966	7091104
AU2020	273	572917	7091159
AU2020	274	572867	7091216
AU2020	275	572817	7091272

Prefix	wpt_no	UTM_E	UTM_N
AU2020	276	575515	7088353
AU2020	277	575466	7088408
AU2020	278	575416	7088464
AU2020	279	575366	7088520
AU2020	280	575316	7088576
AU2020	281	575266	7088632
AU2020	282	575216	7088688
AU2020	283	575166	7088743
AU2020	285	575066	7088856
AU2020	287	574966	7088968
AU2020	288	574916	7089024
AU2020	289	574866	7089080
AU2020	290	574816	7089135
AU2020	291	574766	7089191
AU2020	292	574716	7089248
AU2020	293	574666	7089303
AU2020	294	574616	7089359
AU2020	295	574566	7089416
AU2020	296	574517	7089471
AU2020	297	574467	7089527
AU2020	298	574416	7089583
AU2020	299	575572	7088402
AU2020	300	575522	7088459
AU2020	301	575472	7088514
AU2020	302	575422	7088570
AU2020	303	575372	7088626
AU2020	304	575322	7088681
AU2020	305	575272	7088738
AU2020	306	575222	7088794
AU2020	307	575172	7088849
AU2020	308	575122	7088906
AU2020	309	575072	7088962
AU2020	310	575022	7089018
AU2020	311	574972	7089073
AU2020	312	574922	7089130
AU2020	313	574872	7089186
AU2020	314	574822	7089241
AU2020	315	574772	7089297
AU2020	316	574722	7089354
AU2020	317	574672	7089409
AU2020	318	574622	7089465
AU2020	319	574572	7089521

Prefix	wpt_no	UTM_E	UTM_N
AU2020	320	574522	7089577
AU2020	321	575627	7088452
AU2020	322	575577	7088508
AU2020	323	575528	7088564
AU2020	324	575478	7088621
AU2020	325	575428	7088676
AU2020	326	575378	7088732
AU2020	327	575328	7088787
AU2020	328	575278	7088844
AU2020	329	575228	7088900
AU2020	330	575178	7088956
AU2020	331	575128	7089012
AU2020	332	575078	7089068
AU2020	333	575028	7089124
AU2020	334	574978	7089179
AU2020	335	574928	7089235
AU2020	336	574878	7089292
AU2020	337	574828	7089347
AU2020	338	574778	7089403
AU2020	339	574728	7089460
AU2020	340	574678	7089515
AU2020	341	574181	7088640
AU2020	342	574140	7088674
AU2020	343	574107	7088719
AU2020	344	574069	7088754
AU2020	345	574040	7088799
AU2020	346	574025	7088849
AU2020	347	574012	7088907
AU2020	348	573980	7088955
AU2020	349	573957	7089001
AU2020	350	573941	7089061
AU2020	351	573923	7089111
AU2020	352	573906	7089167
AU2020	353	574287	7089615

APPENDIX D – STATEMENT OF EXPENDITURES

Coureur des Bois

AU claims – 2020 Sampling

AU claims - Statement of Expenditures October 2020
Dawson Mining District, 1150/ 13 and 14

Project preparation: October 2, 2020

Fieldwork: October 3, 4, 5, 7 and 8, 2020, incl. mob and demob

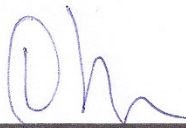
Sample management and shipping: October 13, 2018

Total: 39 pers-days

Wages: 39 pers-days	\$11,700.00
Room and board (\$4,369.48) and extra food (\$693.87)	\$5,063.35
Truck (2 trucksx 5 days x \$100/day):	\$1,000.00
Fuel	\$836.79
Assays (324 samples)	\$22,069.00
Supplies	\$1,000.00
Data management, geology, report:	\$1,995.00
	TOTAL: \$43,664.14

Based on information supplied by Coureur des Bois

See attached for detailed breakdown of field expenses and receipts



signed: Danièle Héon, P. Geo

Whitehorse, December 08, 2020

APPENDIX E- ASSAY CERTIFICATES

See Data Folder for Assay Certificates