

# **Report on Diamond Drilling, Prospecting and Sampling on the Klondike Property, Dawson Mining District, Yukon Territory, Canada**

*On the following claims groups:*

*AC, BAD, Bar, BR, Cal, Chi, CIM, Cul, DE, DN, Gap, Giga, IF, Joe, KG, KG F, KH, Klondike, LB, LLIB, ND,  
Nug, Nugget, On, Oyro, Rado, Red, Reef, Rex, RJ, Ron, Stam, Syndicate, UELD, VI, Win*

*See detailed list in Appendix II*

**NTS MAP-SHEETS 1150/14**

**62°52'N 139°15'W**

**588500mE / 7084500mN NAD83, Zone 7N**

**DAWSON MINING DISTRICT**

**Work completed: April – October, 2019**

**Submitted by: Peter Tallman, P. Geo.**

**On behalf of  
Klondike Gold Corp.**



**2833 – 595 Burrard Street,**

**Vancouver, BC Canada V7X 1J1**

**Tel • 604.559.4440 Fax • 604.559.4443**

**Webpage • [www.klondikegoldcorp.com](http://www.klondikegoldcorp.com)**

**Table of Contents**

1.0	Introduction .....	4
2.0	Property Description and Location .....	4
3.0	Accessibility, Climate, Local Resources, Infrastructure and Physiography .....	6
4.0	History .....	8
5.0	Geological Setting and Mineralization .....	15
5.1	Yukon-Tanana Terrane .....	15
5.2	Regional Geology and Structure .....	15
5.4	Quartz Veining and Mineralization .....	16
5.5	Quaternary Geology .....	16
5.6	Property Geology .....	16
6.0	2019 Exploration Program .....	22
6.1	Light Detection and Ranging (LIDAR) Survey .....	23
6.2	Soil Sampling .....	24
6.3	Prospecting .....	25
6.4	GT-Probe Sampling .....	26
6.5	Diamond Drilling .....	27
7.0	Sample Preparation, Quality Assurance and Quality Control, Analysis, and Security .....	42
8.0	Interpretation and Conclusions .....	44
9.0	Recommendations .....	44
10.0	Statement of Qualifications .....	46
11.0	References .....	47

## **Appendices**

Appendix I: Statement of Costs

Appendix II: Claims List

Appendix III: Soil Sample Descriptions

Appendix IV: Soil Sample Assay Certificates

Appendix V: Rock Sample Descriptions

Appendix VI: Rock Sample Assay Certificates

Appendix VII: Geoprobe Sample Descriptions

Appendix VIII: Geoprobe Sample Assay Certificates

Appendix IX: LiDAR data (Digital)

Appendix X: Diamond Drill Sample Information

Appendix XI: Diamond Drill Geological Logs

Appendix XII: Diamond Drill Assay Certificates

## **List of Figures**

Figure 1: Klondike Property Location Map

Figure 2: Klondike Property Claims Map

Figure 3: Klondike Property Regional Geology

Figure 4: 2019 LIDAR Survey

Figure 5: 2019 Soil Sampling Results

Figure 6: 2019 Prospecting Results

Figure 7: 2019 Geoprobe Sampling Results

Figure 8: 2019 Klondike Property drill areas

Figure 9: Lone Star Zone plan map

Figure 10: Nugget Zone plan map

Figure 11: Nugget East Zone plan map

Figure 12: Glacier Gulch plan map

Figure 13: Gay Gulch plan map

## 1.0 Introduction

Exploration on the Klondike property, which includes the Lone Star and Bonanza claim groupings, in 2019 consisted of a total of 44 HTW and 51 NTW diamond drill holes totaling 8628.37m, completed by Kluane Drilling Ltd., 936 square kilometers of Light Detection and Ranging (LIDAR) completed by McElhane of Vancouver, BC, and 66 rock samples performed by GroundTruth Exploration using a GT-Probe Survey. Additional work not claimed for credit includes additional soils, prospecting, trenching, channel sampling and significant remediation of past disturbances. Exploration drilling focused on three main zones, the Nugget, Nugget East and Lone Star Zones, with several holes also drilled Glacier Gulch and Gay Gulch.

## 2.0 Property Description and Location

The Klondike property is centered on 63°52'N, 139°15'W, covers the western portion of the Klondike goldfields, located some 500 km NNW of the territorial capital of Whitehorse, YT. It is comprised of 3078 contiguous quartz claims as well as 14 Crown Grants. The Klondike property quartz claims are divided for purposes of administration into the Lone Star grouping and the Bonanza grouping. The Lone Star property extends northward along Adams Gulch and the entirety of Bonanza Creek, north to the Klondike River at Bear Creek, east across Chance Creek and Independence Creek, south to Blanche Creek and covering the entirety of Eldorado Creek.

The claims lie on NTS map sheet 1150/14 within the Dawson mining district. Property and claim locations are shown in Figure 1 and Figure 2, and a detailed claim list is located in Appendix II. As of the date of this report all quartz claims are listed and owned 100% by Klondike Gold Corp. without encumbrance or underlying royalty. Klondike Gold also owns 14 crown grants within the Lone Star property.



Figure 1: Klondike Property Location Map

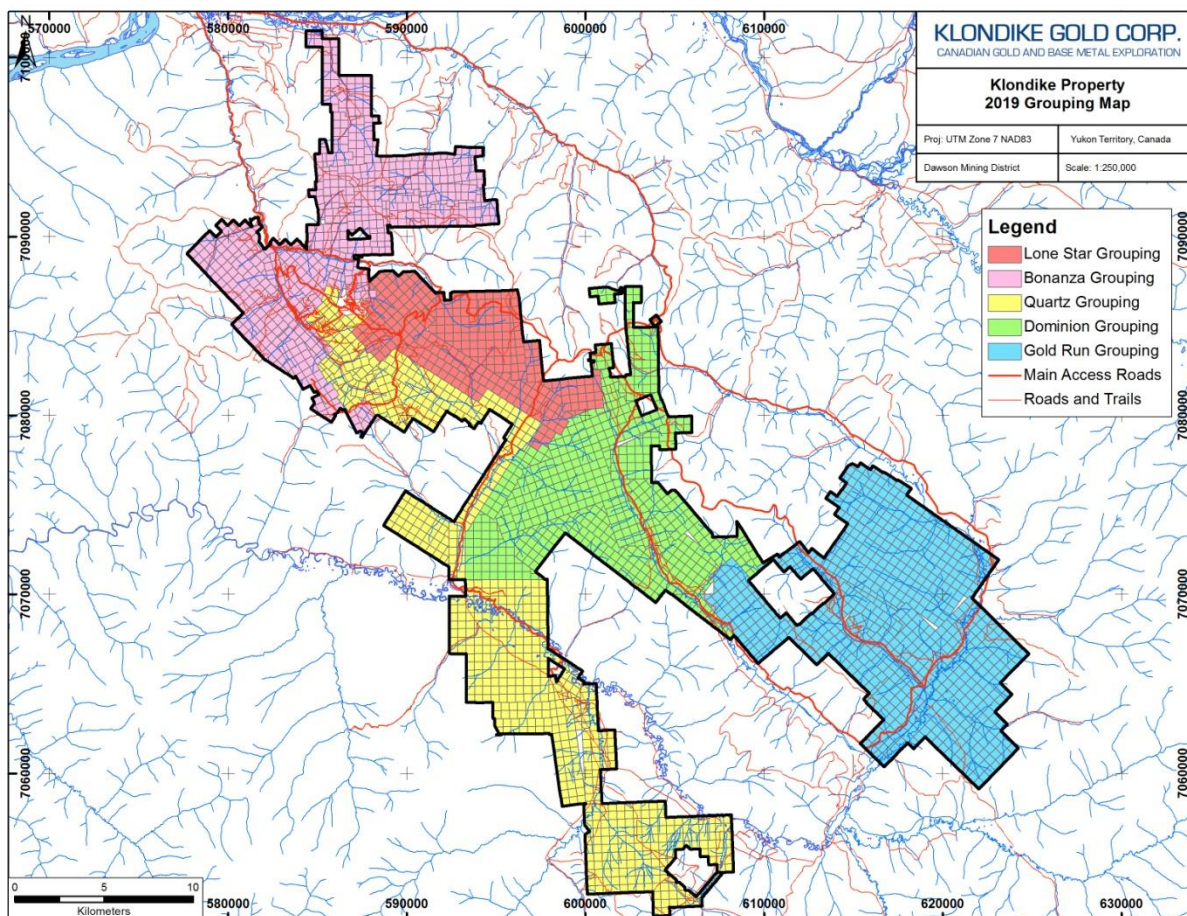


Figure 2: Klondike Property Claims Map

### 3.0 Accessibility, Climate, Local Resources, Infrastructure and Physiography

The Klondike Property covers the discovery creeks of the Klondike placer goldfields located near Dawson City (“Dawson”), Yukon Territory. Gold was originally discovered and mined from gravels in lower Quartz Creek near Indian River in 1894. Another nearby discovery of abundant gold on Rabbit Creek (now Bonanza Creek) and two weeks later in Eldorado Creek initiated the “Klondike Gold Rush” in 1896. Gold in the gravels and bedrock within the Klondike district has been the target of prospectors and placer gold miners since that time.

Dawson is connected to the territorial capital of Whitehorse via a 540 km sealed, government maintained two-lane highway (the “Klondike Highway”). Electricity in Dawson is supplied by the Yukon Energy Corporation’s territorial power grid (connected in 2004) with back-up diesel power. A 5000’ x 100’ gravel surface lighted Yukon Government airfield at 1214’ (370 m) elevation is located on the outskirts of Dawson. This strip was paved in the summer of 2019. Scheduled daily air service to Dawson is maintained by Air North using twin-engine turboprop aircraft from Whitehorse, and seasonally by Boeing 737 jet from Fairbanks, Alaska for cruise ship tourists. A smaller unmaintained 800’ grass/gravel airstrip at 2100’ (640 m) elevation suitable for light aircraft is located on the Klondike property alongside

Eldorado Creek. Charter fixed wing light aircraft of various capabilities are available locally or in Whitehorse. In addition, there are two year-round helicopter bases (Trans North Helicopters and Fireweed Helicopters) in Dawson. Other helicopter companies establish seasonal bases as needed. Regular truck freight, parcel and mail, and fuel services supply Dawson via the highway. Dawson offers normal town facilities such as hotels, restaurants, grocery, clothing, building supplies and hardware stores, engineering supplies, four bulk fuel and one bulk propane depot, as well as vehicle and heavy equipment repair capability. Dawson also serves as a construction hub for materials, equipment, and personnel extending the Dempster Highway north from Inuvik to Tuktoyaktuk on the Arctic Ocean slated for completion in fall 2018.

The Klondike Property lies within the traditional territory of the Tr'ondëk Hwëch'in First Nation. The Tr'ondëk Hwëch'in are based in Dawson with roughly 1,100 members who are descended from the Han-speaking people. Tr'ondëk Hwëch'in began negotiating their individual land claim in 1991. The Tr'ondëk Hwëch'in Final Agreement was signed on July 16, 1998 and came into effect on September 15, 1998.

The Klondike property has a number of access points. The Bonanza Creek road begins in Dawson, connects south and west to the Hunker Creek road, and is a major government maintained loop which provides access for miners from two points along the Klondike Highway to the centre of the Klondike. This east-west road cuts across the northern part of the Klondike property. The Eldorado Creek road, a north-south branch off the Bonanza Creek road, runs along Eldorado Creek to its headwater and transects the Klondike property. The Lone Star Ridge road, one main branch off the Eldorado Creek road, provides access to high ground above both Eldorado and Bonanza Creeks, is a long-used road (in existence at least from 1896) that wears well in summer and is an alternative to the Bonanza Creek road. The Violet road, a second branch off the Eldorado Creek road, loops west on high ground and then runs along the west ridge above Eldorado Creek. The Bonanza and Eldorado Creek roads are 2-wheel drive dirt and gravel roads and have significant mining and tourist traffic through the summer. The Bonanza Creek road is ploughed during winter, the other main roads are cleared and graded from April until October. The Lone Star Ridge and Violet roads are maintained privately by Klondike Gold and others as needed. Roads to individual placer claims, old cut roads, and dirt trails, some requiring 4-wheel drive or ATV, branch from these roads. Taken together, there is an extensive road network which allows excellent access by vehicles and heavy equipment throughout the property.

The Klondike property is within Central Yukon Basin climatic zone, characterized by a sub-arctic climate, with normally low annual precipitation (approximately 400 mm total precipitation). The exploration season typically extends from May through October, by which time nightly temperatures are below freezing and there may be a few centimeters of snow on the ground. Winter temperatures may drop to at least -40 °C for up to six weeks in January and February.

The Klondike region consists of rugged topography of rounded hills and V-section valleys, as this region was not affected by late Cenozoic glaciation (specifically the Nansen, Klaza, Reid, and McConnell advances (Bostock, 1966)). In-situ weathering of the region has had a lengthy, multimillion year history resulting in few natural fresh rock exposures.

Dawson City is on the Yukon River at 1050' (320 m) elevation and the highest point near to the Klondike property, King Solomon Dome, is at 4032' (1229 m). The region surrounding the claims has been historically denuded of large timber by cutting to supply mines and fuel boilers or by forest fires, and is now covered by regrowth of spruce, poplar, birch and alder. Only the very highest ridges are covered by dwarf willow and birch ("buckbrush").

## 4.0 History

The Klondike area has been prospected since the discovery of placer gold on Bonanza Creek and Eldorado Creek in 1896, which sparked the Klondike Gold Rush. Many small bedrock gold showings were investigated by hand-dug pits, trenches, shallow shafts, or short adits driven on notable prospects. Prospecting circa 1900 was the most successful in locating bedrock gold-bearing quartz veins on/near the ridge crests where colluvium/overburden is generally thinnest. Prospectors dug holes, collected the quartz boulders, crushed them, and panned the crushed material. If gold was visually identified, additional pits, shafts, or adits would be excavated. Notable prospects discovered around 1900 include Lone Star, Pioneer, and Parnell showings situated on the east ridge above Eldorado and Bonanza Creeks (Minfile #'s 072, 150, and 147), Violet on the west ridge above Eldorado Creek (Minfile #146), and the Mitchell and Sheba veins off the property to the east near King Solomon Dome (Minfile #068).

The Lone Star prospect was first staked in 1897 and the adjacent Parnell and Pioneer prospects in 1900. The Violet prospect was first staked in 1901. Lone Star and Violet were both explored by various episodes of underground mining from short multi-level drifts between 1910 and 1948.

A summary of exploration work from 1896 to present is listed below.

- 1896: Discovery of placer gold, start of placer exploration and mining, along with quartz exploration. Eldorado and Bonanza Creek drainages which underlie the Lone Star property have been the creeks with the most placer gold production, with mining continuing to the present.
- 1897: Lone Star prospect staked by Messrs. *Chute, Corthay and Stewart*. They prospected the discordant quartz body known as the Corthay vein by shaft sinking and drifting.
- 1909-1914: Lone Star Company developed the 'Boulder Lode' at the Lone Star "mine". The company excavated an open-cut and connected it below to a 225 m adit by means of two ore passes. An amalgamation plate 4-head stamp mill with Wilfley table was built 1.5 km downslope on Victoria Gulch and a gravity cable tramway connected this to the mine. By 1914 some 7650 tons of rock had been mined and milled (calculated, with approximately a head grade of 0.202 oz/ton Au: Cathro, 1979).
- 1914: GSC investigated and sampled surface and underground at the Lone Star mine (MacLean, 1914).
- 1929-1936: Consolidated Lone Star Ltd conducted limited work at the Lone Star mine.
- 1935: GSC investigated and sampled surface and underground at the Lone Star mine.
- 1946-1947: Yukon Consolidated Gold Corp ("YGCG") conducted cable-driven percussion "churn" drilling and underground examination of the Lone Star mine site, under option.

- 1960-1962: Klondike Lode Gold Mines prospected, bulldozed five contour trenches, and sluiced the ~85 liter size samples collected. Gold concentrations were expressed qualitatively as number of colours. Colluvial gold was found in the 7 Pup-O'Neil area, also Gay Gulch and Oro Grande Gulch. Trenching by engineer Gordon Hilchey was conducted on the Bonanza side of the ridge alongside the Lone Star, and also east of Eldorado Creek at French Gulch (one trench of 2100 ft) and between Gay Gulch and Oro Grande (five smaller trenches). Four churn holes at 7 Pup indicated gold there, including holes VC-10 and VC-11 with 'considerable gold'. Nine churn holes tested Oro Grande; C-1 to C-6 contained 'colours' including C-6 with '40 coarse colours'. Also 160 meters of diamond drilling in 5 holes near French Gulch with no gold result, plus other drilling at Gay Gulch and 7 Pup.
- 1979-1985: Dawson Eldorado Gold Explorations Ltd hired Archer Cathro and Associates Ltd who re-evaluated the Lone Star prospect. Soils, resistivity surveying, and geological mapping were completed. Mapping observed the Lone Star prospect contained gold in vertical quartz 'stringers' that are discordant to the attitude of the dominant foliation of the host schist, hosted within an "F3" antiform fold. The Lone Star mine adit portal was re-opened. Six reverse circulation holes totaling 416 meters were drilled in 1985 between the Lone Star mine and the Hilchey showing. A sixth hole near Oro Grande was 21 meters. All had anomalous results.
- 1983-1986: A claims syndicate, the "Dawson Syndicate" was created by contribution of properties from Arbor Resources (now Klondike Gold), Ebony Gold Corp, Perron Gold Mines, Eastern Mines, Cream Silver Resources, Tiberon Petroleum, Texoro Resources, H-L Corp, Standard Gold Mines, Silver Sceptre, and Dawson Syndicate (as an entity). The collective carried out systematic prospecting that covered much of the Klondike from upper Adams Gulch to Hunker Creek, and from Grand Forks to the Klondike River. Five grids were laid out for soil sampling and geophysics; four on the south side of the Klondike River within 3 km of its valley and the fourth (Penibe claims) south of Hunker on the ridge to the west of Last Chance Creek. Induced polarization surveys detected no response in the Oro Grande to Gay Gulch grids, and a prominent response from the 27 Pup area likely due to outcropping graphitic schist. At the French Gulch / Eldorado junction a split anomaly was defined and at Big Skookum a resistivity anomaly noted. Detailed surveying of the Lone Star grid produced some very distinct responses. Twenty seven diamond drill holes were used to test anomalies over the whole region, with unknown or little result.
- 1984: Bedrock geology map, 1:50,000 published (Debicki, Open File 1984-3).
- 1986-present: Arbor Resources (later changes name to Klondike Gold Corp in 1996) optioned the Klondike property in 1986 and continued exploration of both the large claim block and the Lone Star Crown Grants (Grunenberg and Gonzales, 1987). At French Gulch, near the junction with Eldorado Creek, ten diamond drill holes were used to investigate I.P. and VLF/EM anomalies close to zones of quartz veins exposed in placer workings. The shear zones intersected did not yield any anomalous geochemistry and pyritic chlorite schists were barren of gold. The geophysical anomalies correlated with graphitic layers and linear magnetic anomalies with diabase dykes that are reverse polarized and hence give very sharp negative anomalies. Five zones of from 1.5 to 8 ft. (0.46-2.4 m) thickness were intersected giving gold grades of 0.01-

0.20 oz/t Au, each in quartz veins. Seven holes were drilled along Eldorado Creek between Golden Gulch and Little Eldorado Gulch to test shear zones indicated by geophysics and five of the holes were abandoned due to 'broken ground'. At Lone Star, twelve diamond drill holes were completed; holes 86LS01 to 86LS02 beneath the Lone Star mine workings and the rest to test soil geochemistry or I.P. chargeability/resistivity anomalies. 86LS03 and 86LS11 proved the most promising, with narrow intervals (2.5 ft.) up to 0.345 oz/t Au. Also, twenty three rotary drill holes were completed during the 1986-87 winter, mostly between Oro Grande and Gay Gulch. Several 5 to 10 ft. zones of 0.013-0.23 oz/t Au were intersected.

- 1992: Kennecott optioned the Lone Star Property and continued the rotary percussion and reverse circulation drilling started by Arbor Resources. The Lone Star mine mineralization was extended out to 250 metres west-northwest of the open cut, including 92LS14. Doyle (1993) considers this to be part of an alteration zone that trends northwest from the Pioneer prospect (with right hand fault offset) and which continues towards O'Neil Gulch.
- 1993: Kennecott (Finlayson, 1994) prepared heavy mineral concentrates from cuttings of hole 92LS14. Assays of concentrates were lower than the original 1992 drill cutting assays and free gold was not found. Kennecott concluded that coarse free gold was not present and, on the basis of gold content in pyrite, that two generations of sulphides exist in the Lone Star rocks: i.e., that gold mineralization was impressed upon existing pyritic schists. The 1993 drilling tested the gold soil anomaly downslope of the Lone Star workings defined by Arbor Resources. Mineralization encountered in their drilling consisted of intersections of less than 10 metres of >1g/t Au (>0.029 oz/t Au) in Boulder Lode drill holes 92LS01, 92LS03, 92LS04, 92LS07, 92LS08 and 92LS09. In the Buckland Zone holes 92LS20 to 92LS22 encountered 3 to 15 metre intersections of >1g/t Au.
- 1994: Kennecott (Cranswick et al., 1995a) targeted the Buckland Zone. Power driven soil augers sampled lines spaced at 1 km intervals down the spurs from the ridge road to Eldorado Creek and over the Lone Star mine. Anomalies up to 500 ppm Au were obtained from spurs between 27 Pup and Oro Grande, the northwest side of Gay Gulch, and directly above O'Neil Gulch. The anomaly at the Nugget Zone was trenched (94TR02). Assays of 2.35g/t Au / 12.0 m and 26.5g/t Au / 2.0 m were obtained. In addition, low in Gay Gulch, trench 90GGTR06 was re-cut and sampled, yielding individual assays of 3.71 g/t Au / 2 m; 3.01 g/t Au / 2 m; 1.25g/t Au / 2 m; and 1.17g/t Au / 2 m in discordant pyritic quartz veins. Reprocessed helicopter-borne magnetic survey (from 1986?) was used to infer the presence of a magnetite-type granitic intrusion at Sourdough Gulch, based upon magnetite-bearing porphyry dykes at 77 Pup and Discovery Pup (off Bonanza Creek). Auger sampling found no significant gold at the other localities. Kennecott terminated the property option in January 1995.
- 1996: Arbor Resources changed name to Klondike Gold Corp ("KG") in January 1996. Newmont Exploration evaluated the property, under option, by studying the mineralogy and amenability to milling of bulk samples. Coarse gold >100 mesh was found in lab tests, as well as in assays, indicating considerably higher numbers compared with rotary drill cutting results. J.E. Tilsley and Associates (Hayden and Tilsley, 1997) carried out surface sampling at the Lone Star mine to

investigate techniques to obtain representative assays. Coarse gold was encountered in large size ( $\approx 30$ kg) samples.

- 1996: Work consisted of trenching at Lone Star, Pioneer, Parnell, Buckland, French Hill, Glacier and Oro Grande showings, together with a reinterpretation of the geology (Van Angeren, 1996), which recommended concentration of work on the Boulder Lode, Buckland Shear and 27 Pup Zones aimed at finding primarily disseminated mineralization rather than crosscutting quartz veins. Also in 1996, Barramundi Gold Ltd staked and optioned much of the Klondike area, over 3000 claims, adjacent to KG's Lone Star property. YGS also produced new bedrock geology maps, 1:50,000 published, including 1150/15.
- 1999: Barramundi commissioned a fixed wing airborne magnetics and VLF-EM survey over a 16 by 24 km area adjacent to Lone Star property. Later, Barramundi optioned all of their Klondike region claims to KSL Exploration (Yukon) Ltd, a private Australian company who conducted airphoto and Landsat interpretation with minor rock and soil sampling (assessment report #094119). Claims that were held by Barramundi under option from JAE Resources and United Keno Hill Mines were excluded from the deal, hence KSL only explored peripheral to the project.
- 2002: Airborne magnetics and radiometrics geophysical survey, 1:50,000 scale published (Shives et. al., GSC Open File 3992).
- 2002-2015: Klondike Gold ("KG") optioned a  $\sim 50\%$  interest in the property to Klondike Star Mineral Corporation ("KSMC"), which became a 50/50 joint venture in 2005. KSMC worked the Lone Star property until 2008. KG resumed work in 2011. KG purchased KSMC in 2015, thereby restoring a 100% interest.
- 2004: KSMC conducted exploration at the Lone Star mine, Oro Grande and 27 Pup areas. A gravity circuit mill was constructed on Eldorado Creek to process bulk samples of bedrock mineralization. The mill was fed by hand, so bulk samples were limited to  $\sim 1,000$  kg in size. The 'process plan' circuit consisted of one small jaw crusher, two small ball mills, and a shaker gold finishing table. Tailings were disposed in local placer cuts with placer tailings. Twelve bulk samples ranging in size from 8 kg to 959 kg were processed. Free gold was recovered from all samples and estimated to constitute between 18 and 81% of the total gold in the samples. Heavy mineral concentrates, dominated by pyrite and iron oxide pseudomorphs of pyrite, contained significant amounts of gold. Tailings from the laboratory table used for cleaning the rough concentrates were also 'high' in gold. The mill tailings were gold-bearing, containing between 42% and 76% of the calculated gold head grade. Fieldwork consisted of surveying, detailed geological mapping and trail construction, and trenching. Seventeen trenches were excavated by backhoe and selectively chip sampled over five metre intervals.
- 2005: By 2005, KSMC had acquired a  $\sim 55\%$  interest in the property. Thirty two diamond drill holes totaling 4830 metres were drilled; 27 at the Lone Star mine, 3 at the Veronika showing, and 2 at the Dysle showing, with no significant results. The bulk sampling gravity mill was upgraded in 2005 and processed 18 mini-bulk samples, ranging between 1394 and 4111 kg in weight, collected from Lone Star, 7 Pup, Nugget, Veronika and Dysle showings. These tests indicated a nugget effect with 50% of the gold present as coarse free gold and about one third of the gold in the mill tailings with the remainder as fine gold. Fourteen trenches were dug by

backhoe at nine locations in 2005. Good results were obtained from the '310 Zone', located on the ridge between Nugget Gulch and French Gulch where some older trenches were re-excavated and sampled, and also from the Nugget Zone from the re-excavation of the upper part of 94TR02. The trench below the Chateau at Lone Star, 05TR12, returned a broad mineralized interval corresponding to hole 05LS22, which is angled under the trench.

- 2006: Work included 23 diamond drill holes (17 at Lone Star mine, 3 at O'Neill Gulch, 3 at Nugget Zone), 8 trenches, IP geophysics at Buckland, 139 soil samples on the WIN claims, and 18 bulk samples.
- 2007: Work included remapping trenches and geology data compilation. 6 drill holes totalling 858.4 m targeted the Buckland and Pioneer showings, all with anomalous gold results associated with discordant quartz veins. Seven bulk samples from 3085 kg to 7471 kg and one hand excavated 350 kg bulk sample were processed. Twenty-three batches of chips from two rotary drill holes totaling 3892 kg were also processed through the gravity mill. Nugget effects were evident in results; in addition 07-LS-B1 had 96% of its gold reporting to tailings "suggesting the gold may be either of an extremely fine grain size or perhaps bound in silicate minerals to avoid being recovered in the heavies". Or the circuit didn't capture the gold. An induced polarization ("IP") geophysical survey at the "JF showing" consisted of eleven lines totaling 9.9 line km oriented northwest to southeast located above Gay Gulch targeted trench 06TR06 area. The IP grid was also soil sampled with 381 samples collected.
- 2008: KSMC conducted geological mapping, trench and rock sampling, and soil sampling on the WIN and LB-LLIB claims.
- 2011: Klondike Gold Corporation work consisted of excavating two trenches near the Lone Star mine and excavating a 6 m vertical section in the Lone Star mine to the depth of the first underground level. At Nugget Zone, trenches were enlarged and deepened. A soil sampling program using an excavator to obtain 1 m deep soil samples was conducted along the ridge road from near Grand Forks to the Calder Summit ridge. No significant new results were obtained.
- 2012: Klondike Gold Corporation drilled 4 holes to the southeast of the Lone Star mine. Initial results found that the low grade gold mineralization present at Lone Star does not extend eastward to the Pioneer Zone, which was invalidated by the results of the 2017 drill program below. Gold was present in all four holes, but is weak and sporadic. The faces of the Lone Star mine excavation were channel-sampled at close spacing. Quartz veins yielded interesting assay values (~10-60 g/t Au). The intervening schist yielded sporadic low grades (typically  $\leq 1.0$  g/t Au). Surficial terrain mapping was completed by AECOM Consulting based on 1996 1:25000 aerial photographs and 2009 0.5 m resolution satellite image interpretation. This analysis led to a soil sampling program near the upper headwaters of Little Blanche Creek (defining the "Boy" soil anomaly) and a recommendation to similarly sample the southeast of the property in the vicinity of Canyon Creek.
- 2015: Klondike Gold Corporation drilled 19 NWT holes on the Nugget Zone, Buckland Zone and Gay Gulch, as well as spent 85 man days on regional prospecting, sampling and reclamation work. GroundTruth Exploration was also contracted to complete 690 line kilometers of ground magnetic surveying. Results of the ground magnetic survey imaged the WNW-trending fault

system in greater detail than previous surveys. Diamond drilling successfully intersected gold-bearing quartz veins in a variety of lithologies and structural environments. Discovery holes at Gay Gulch Zone (EC15-10: 75.6 g/t Au over 2.8 meters) and Nugget Zone (EC15-03: 5.3 g/t Au over 7.6 meters) indicate potential for economically interesting grades and widths can be generated by quartz vein arrays. Additional work not claimed for credit includes additional prospecting, mapping, trenching, airphoto surveying and orthophoto mosaic creation, and significant remediation of past disturbances.

- 2016: Klondike Gold Corporation drilled 71 NWT holes on the 6 main zones: the Nugget Zone, Gay Gulch, Violet, Christie, Dominion and the Lone Star Zone. The Company also completed 155 man days of soil sampling, prospecting, sampling and reclamation work, as well as contracted GroundTruth Exploration to conduct a 240 line kilometer ground magnetic survey. High grade holes at the Lone Star Zone (EC16-58: 2.73 g/t Au over 37.0 metres) and Nugget Zone (EC16-32: 5.06 g/t Au over 14.34 metres and EC16-54: 336.59 g/t Au over 0.22 metres) indicate potential for economically interesting grades and widths can be generated by quartz vein arrays. In late 2016, the Lone Star target was identified by drilling to contain disseminated gold mineralization with characteristics of wide widths, lower grades, starting at surface. Additional work not claimed for credit includes additional soils, prospecting, mapping, trenching, airphoto surveying and orthophoto mosaic creation, and significant remediation of past disturbances.
- 2017: Klondike Gold Corporation drilled 70 NWT holes on the Nugget and Lone Star Zones, as well as completed 120 man days of soil sampling, prospecting, sampling, trenching and reclamation work. High grade holes at the Lone Star Zone (LS17-82: 2.41 g/t Au over 41.20 metres) and Nugget Zone (EC17-140: 0.73 g/t Au over 24.94 metres) indicate potential for economically interesting grades and widths that can be generated by quartz vein arrays and large zones of disseminated gold hosted in pyritic laminated schists associated with large, second-order "D4" high angle faults. Additional work not claimed for credit includes additional soils, prospecting, mapping, trenching, 4.37 square kilometers of IP geophysical survey data completed by Dias Geophysical, 223.7 line kilometers of ground magnetics surveying completed by Aurora Geosciences Ltd., and significant remediation of past disturbances.
- 2018: Klondike Gold Corporation drilled 87 NTW holes on the Nugget and Lone Star Zones, as well as completed 701.44 square kilometers of high resolution helicopter magnetic and gamma-ray spectrometric geophysical survey data by New-Sense Geophysics of Markham, ON and 128 man days of soil sampling, prospecting, sampling, trenching and reclamation work. Additional work not claimed for credit included additional soils, prospecting, detailed structural mapping completed by SRK Consulting (Canada) Inc. of Toronto, ON, trenching, and significant remediation of past disturbances.

Some of the more significant results are noted below;

Little Blanche Creek area was tested with 607 soil samples, following up on anomalous soil results obtained by Klondike Star between 2004 and 2008. Results show a strong north-south trending gold anomaly with a width of approximately 400 m and a length of 900 m. Analysis of soil results indicated a high correlation between Au and Ag and no correlation between Au and As in this area.

In 2012, exploration on the Violet to 310 quartz vein trend consisted of soil sampling, prospecting, and rock sampling. Two selected grab samples from the Violet mine ore pile ran 41.25 g/t Au with 524 g/t Ag and 47.4 g/t Au with 894 g/t Ag in agreement with historical reported samples of up to 131.6 g/t Au in surface sampling (Source: Yukon MINFILE 1150 073). Prospecting along the Violet to 310-trend revealed a number of historical unmarked pits from the early 1900s. Rock samples from pits show stockwork quartz veining with common pyrite and limonite and with local galena, chalcopyrite, and barite. Results from these samples show anomalous gold. Of the 130 rock samples assayed, 11 returned greater than 1 g/t Au and silver had 14 samples greater than 10 g/t Ag.

The JF target is located on the Lone Star Property near the upper headwaters of Gay Gulch and Eldorado Creek and is an area of anomalous gold associated with quartz veining and quartz rich fault gouge. The JF target was first excavated with a 1.2 km long trench cut 150 meters wide (could be seen prominently from space; remediated in 2015) and first sampled in 2006. Anomalous gold values at the western end of this trench prompted an extension of the trench in 2007, resulting in a slight increase of the mineralized zone. An IP grid over the trench area was also completed in 2007. In 2012, a portion of the JF trench was deepened significantly to provide better exposure and 67 samples were collected over 101 metres. The new results redefined the anomalous zone to 1.75 g/t Au over 10.2 metres.

In 2015 and 2016, the Company discovered economically interesting grades of gold mineralization over significant widths at Gay Gulch (75.6 g/t Au over 2.8 meters) and Nugget (5.1 g/t Au over 14.3 meters). At Lone Star, drill results from 17 holes showed gold mineralization over a 700 meter strike length starting from surface, including one of up to 2.4 g/t gold over 37.0 meters. In late 2016, the Lone Star target was identified by this drilling to contain disseminated gold mineralization with characteristics of wide widths and lower grades, starting at surface. The follow-up 2017 Lone Star Zone drill program systematically tested a new interpretation of gold mineralization that preferentially targeted disseminated gold mineralization. The positive results from 2017 drilling, which showed extensive areas of disseminated gold in addition to gold-bearing veins, has upgraded the potential for economically interesting gold mineralization both at the Lone Star Zone and Nugget Zone. The gold at Lone Star, both as disseminations in host rock and contained within quartz veins, is located in a pyritic laminated schist unit above (in the hanging wall) and adjacent to the Bonanza Fault, a major, second-order "D3" fault in the area.

The 2018 exploration season identified orogenic gold mineralization on the Klondike property as the result of a newly defined set of major "D3" faults acting as fluid conduits across the region. Airborne magnetics helped identify a previously unobserved orogenic event and large, first order basement structure that extends through the Klondike District from Eldorado Creek to Gold Run Creek. This major "D3/D4" fault structure, named the "Bonanza Fault", is a prominent NW-SE structure and is thought to be associated with bedrock gold mineralization at the Gold Run target as well as Lone Star. Regional structural mapping in conjunction with the airborne magnetic survey above identified five major deformation events, "D1" to "D5", that occurred in the Klondike District. Gold mineralization is thought to be associated with the D4 event, which also reactivated the main NW-SE trending D3 structures associated with the accretion of the schist onto the North American continent.

## 5.0 Geological Setting and Mineralization

### 5.1 Yukon-Tanana Terrane

The Klondike region is underlain by Permian age Klondike Schist, correlative with units of the Yukon-Tanana terrane (“YTT”), which extends from Alaska through the Yukon to British Columbia. The YTT is a diverse lithotectonic terrane of continental affinity consisting primarily of quartzitic, pelitic and calcic metasedimentary rocks, as well as local mafic and felsic meta-igneous rocks. These protoliths are intruded by Mesozoic and Cenozoic granitic rocks. The YTT is bound to the north by the Tintina-Kaltag fault system, to the south by the Tanana-Denali-Farewell fault system, and is cut in the middle by the Teslin fault system. These fault systems form zones of major right lateral strike-slip movement. Units of YTT are polydeformed and, over a regional scale, show a range of metamorphic grade from lower green schist to amphibolite facies. Structural styles are consistent with deformation during east to northeast directed accretion and crustal shortening. In part, the Yukon-Tanana terrane forms the basement for Quesnellia, and the existence of mid-Jurassic plutons that intrude both terranes indicates they were sutured by that time (Nelson and Friedman, 2004). Current Klondike Gold exploration thinking links a northwesterly extension/termination of the Teslin fault system during the mid-Jurassic to orogenesis and emplacement of gold-bearing quartz veins in the Klondike area.

Igneous rocks are widespread throughout the YTT, but are most abundant in the eastern portion of the province. Age dates of plutonic rocks in the YTT generally cluster into three distinctive groups: 1) 215-188 Ma (Late Triassic to Early Jurassic), 2) 110-85 Ma (Mid to Late Cretaceous), and 3) 70-50 Ma (Latest Cretaceous to Eocene).

### 5.2 Regional Geology and Structure

Late Permian back-arc volcanism related to subduction beneath the Slide Mountain ocean produced the rocks of the Klondike schist within the Klondike property. The Klondike Schist represents a Permian transition from plutonism, represented by the Sulphur Creek orthogneiss on the Violet ridge along the western portion of the property, to arc volcanism and related volcanoclastic rocks extending through the Klondike property eastward 50 km to Dominion Creek.

Obduction of the Klondike Schist arc terrane onto cratonic North America created pervasive S1+S2 foliation(s) from deformation and metamorphism of these units. Continued ductile deformation produced a spaced crenulation cleavage across the region. Medium to large scale folds verge to the NE and this phase of folding produced an asymmetric anticline along the Lone Star ridge associated with regional thrusting and imbrication within the Klondike schist.

In the mid-Jurassic, Slide Mountain terrane mafic and ultramafic rocks were underthrust beneath the Klondike Schist, which produced angular kink folds, reverse faults, and subsequent quartz veining. Devolatilization of the Slide Mountain underthrust slab produced volumes of carbonate and gold-bearing fluids which ascended into the Klondike Schist. Uplift and brittle deformation produced conduits for gold-bearing fluids which channeled and formed the distinctive discordant gold-bearing quartz veins.

Northward trending faults within the YTT are a result of transpression and initiation of the Tintina fault in the Tertiary. Late Cretaceous felsic and mafic intrusions and volcanics (Carmacks Group) and Eocene bimodal dykes are emplaced in and along these N-S structures. Lamprophyre dykes, another phase of intrusion, are known from drill core at the Nugget Zone to also intrude along N-S structures.

Within the western end of the Klondike Schist, in the vicinity of Eldorado Creek (Lone Star grouping), quartz eye 'augen' schist representing a deformed subvolcanic dacitic intrusion outcrops along the west side of Eldorado Creek. Graphitic schist outcrops beneath and immediately adjacent to Eldorado Creek. Felsic tuffaceous volcanics and sediments that are locally cherty outcrop on the hills east of Eldorado Creek and into the high ground south of Bonanza Creek. Further east, the ridge is largely chlorite schist derived from mafic tuffaceous volcanic and intrusive rocks.

#### **5.4 Quartz Veining and Mineralization**

Two types of quartz veins are common in the Klondike and are distinguishable by not being an exploration target (no gold) or being an exploration target (with gold), respectively:

- a) foliaform veins that are typically concordant with transposed bedding and may be metres thick, but are usually lenticular and have subtle to prominent foliation(s). These are always barren of gold and,
- b) discordant veins that carry sulphide mineralization (pyrite, with rare galena, chalcopyrite and tetrahedrite) and visible gold, which is both commonly contained in selvages of pyrite (or after weathering, pseudomorphs of goethite/limonite) and as free gold grains in the white quartz. Discordant veins are rarely up to 2-3 metres thick and can persist for hundreds of metres strike length (eg. Violet to 310 trend). Some spectacular gold grades are reported from this vein type (Rushton et al., 1993; Klondike Gold NR 14-Jan-2015 results from Lone Star mine of 1,766 g/t Au grab sample(s); Klondike Gold NR 26-Oct-2015 results from Gay Gulch of 75.6 g/t Au over 2.8m drill hole).

#### **5.5 Quaternary Geology**

The Lone Star property lies in unglaciated terrain near the western margin of the Cordilleran ice sheet limits. It is in the zone of widespread discontinuous permafrost, with permafrost generally present on north and east facing slopes.

The upland soils in the area, dominated by colluvium have been described by Bond and Sanborn (2006): "... a thin veneer (<25 cm) of loess is preserved on moderate upland slopes. On slopes with a south-facing aspect the loess forms a distinct unit at the top of the B horizon. A minor component of coarser, locally derived colluvium appears to have been incorporated in the loess by slope processes in many places. On north-facing slopes, permafrost is commonly present (or has been present), which enhances the colluviation of the surficial deposits. On these slopes, the loess has been incorporated in the underlying colluvium by cryoturbation." The dominant soil types on ridge crests and south facing slopes are dystric brunisols. The dominant soils on north facing slopes are turbic cryosols.

#### **5.6 Property Geology**

The geology of the Klondike district, which is underlain by Permian age Klondike Schist, is not well known due to a paucity of outcrop and relatively deep weathering caused by the lack of glacial scouring.

However, systematic mapping of (rare) outcrops and slide rock along road-sides, trails and creek bed exposures over a period of 5 years, combined with the magnetic/radiometric surveys flown in 2018, have significantly improved the general understanding of the geology on a property scale.

At its simplest, the geology can be divided into 7 mappable units. Outcropping along the southwestern edge of the property along its entire 50km length is the Sulphur Creek Orthogneiss, which is generally pinkish in colour, and often is more granitic in appearance than gneissic. It is bounded to the SW by the NW-SE trending Indian River Fault with south side down movement, and to the NE by its thrust contact with the QAS unit. Horizontal distance between the Indian River Fault and the QAS is up to 10km. The unit dips variably to the SW.

Proceeding NE (in the younging direction), the granitic unit is overlain by a quartz augen schist (QAS). This unit is quite variable and is likely composed of both sub-volcanic intrusive porphyry bodies, as well as extrusive tuffs and tuffaceous sediments. Typically, the unit is buff in colour, and has relatively sparse 1-2mm blue quartz eyes, normally quite round and quite blue, but occasionally white and lensoidal. The unit is blocky weathering, and well jointed, and is well exposed along the Eldorado Creek road between Glacier Gulch and Upper Eldorado Gulch, and also on the hills between the Klondike River and Upper Bonanza Creek, along the Bear Creek Road. It is traceable along the entire length of the property, along its contact with the Sulphur Creek Granite, and at its NW end, wraps around to the north, - implying a gentle plunge of the whole Klondike Schist sequence to the SE. In the NW end of the project area the QAS underlays a 1.6 to 2km horizontal width between the Sulphur Creek Orthogneiss and the Eldorado Fault, while further to the SE the unit covers up to a 10km horizontal width between the Sulphur Creek unit and the overlying (fault contact) mafic metavolcanic (MVM) unit.

As noted above, units overlying the QAS can be divided into 2 categories, based on whether they are SE or NW of the Eldorado Creek/ Little Blanche-Quartz Creek (Klondike River/Indian River) watershed boundary. In the NW, the overlying sequence is a cream and dark green coloured mafic to intermediate schist (SCH-i, m), frequently weathered or altered to a bronzy colour, which outcrops along the south facing slope between the Lone Star ridge crest and Eldorado Creek. The relationship is uncertain, as the Eldorado Creek valley is thought to be fault related, - being one branch of the Bonanza Fault system which begins to horsetail NW of the watershed boundary noted above. Whereas the Orthogneiss and the QAS unit have been thrust northeastwards, this unit forms part of a sequence of schists that have been folded into a NW striking, NE verging anticline (the Lone Star Anticline).

Overlying the mafic to intermediate schist above, is a very distinctive felsic schist (SCH-f). This unit has been variously described as a quartzite or banded sediment, but geochemistry places it with some certainty as a rhyolite. The unit is variable, but generally is less than 100m thick. Based on our mapping to date, it is thought that there may be only one Sch-f unit, but that it is folded on both a large and small scale, so may be cut in the same drill hole numerous times. It is a distinct apple green in colour, very siliceous, may occasionally be banded, and may occasionally host small white porphyroblasts of feldspar. It outcrops along the Lone Star ridge-crest, as well as on the NE facing slope down towards Upper Bonanza Creek, and is seen frequently in outcrop traversing up Victoria Gulch. Notably, this unit is hard and siliceous and is sandwiched between much more micaceous units, presenting a strong rheological

contrast, and this may play a role in the localizing of mineralization, as it is noted at the Nugget Zone and also forms the footwall marker unit at the Lone Star Zone.

Overlying the SCH-f unit is an assemblage of intermediate schists (SCH-i) that have a wide variety of textures, thought to be the result of differing degrees of strain and recrystallization. The widest variety is noted proximal to the Lone Star mineralized zone, which crops out along the northside of the Lone Star Anticline, primarily between O'Neil Gulch and the upper reaches of Victoria Gulch. In this vicinity the anticline rolls over as a folded fold, resulting in textures that range from laminated, to ptlygmatically folded, to completely tectonized zones where light and dark schistose banding becomes chaotic, and almost fragmental in appearance. The primary difference between the SCH-i, m beneath the felsic unit and this SCH-i unit above the felsic schist, is the predominance of sericite over chlorite. This unit hosts the bulk of the gold mineralization at Lone Star,- particularly in strongly quartz veined zones within the schist.

Currently, we consider the next unit moving upwards through the stratigraphy to be a mixed unit of mafic meta-volcanic rocks, consisting of relatively undeformed (and much less schistose) basalts, with intercalated very fine grained laminated buff coloured sediments, and nearly pristine gabbro bodies. This unit is noted along the Bonanza road, in the vicinity of the Bonanza Dam, above the confluence of Rice Gulch with Upper Bonanza Creek. The volcanics are olive green, often strongly magnetic with magnetite crystals up to 5mm in length, and appear relatively fresh and undeformed. It is possible that this unit is actually one of the non-Klondike Schist sequences in (thrust) fault contact with the Schist package, perhaps Slide Mountain Terrane. It does not appear to be related to one of the younger Cretaceous or Eocene intrusive events, as rocks associated with these are almost without exception porphyritic and darker brown (or light in the case of rhyolitic composition) in colour. This mafic sequence (or perhaps more than 1 mafic sequence?) can be traced in an arc from Bonanza Creek, between Rice Gulch and Carmacks Fork southeasterly to between Upper Little Blanche Creek and Little Blanche Creek, where it contacts the QAS unit, and then lies along the northeast contact of the QAS for 35km down to Dominion Creek. The contact zone, presumably a thrust fault has along its length a series of gold in soil anomalies and especially in the Gold Run Creek area a host of gold showings, including the Kentucky Lode and West Kentucky Lode, Doran East and West and Aime.

A final unit within the Klondike Schist package is a graphitic sediment. This unit is best seen along Eldorado Creek near its confluence with 27 Pup, and is likely stratigraphically situated somewhere near the top of the QAS. It was exposed in placer workings in Eldorado Creek in 2019 where it appears as a strongly sheared and fissile incompetent siliceous/graphitic schist. It has clearly been the locus of shearing, and whether it started out as a carbonaceous shale or whether the graphite has squeezed up along the fault from lower thrust plates is uncertain. The unit hosts numerous quartz veins, but none have returned significant gold values. One other well exposed occurrence is located on Eldorado Dome,- located east of the Lone Star deposit on Lone Star Ridge,- where a graphitic, highly sheared unit cored by an unusually siliceous dyke (maybe a sucrosic textured vein?) is exposed in a trench. This occurrence may actually be part of the Lone Star Thrust, which is postulated by earlier mappers in this area to be a gently SW dipping thrust, underlying the Lone Star deposit.

All of the units and structures discussed above are associated with the Permian aged island arc volcanic suite and its accretion onto the North American craton in the Jurassic. Subsequent to that event there have been 2 additional magmatic events one in the Cretaceous and the second in the Eocene, both represented by voluminous dykes, and less frequently volcanism. Distinguishing between the two is made much simpler by the fact that the Cretaceous aged rocks have normal magnetic polarity, whilst the Eocene rocks were intruded during a period of pole reversal. Both ages of dykes are aligned in a N-S direction, and are thought to occupy a fracture system formed in response to movement along the Tintina Fault system. On the Klondike property, the highest density of these lie in the central area, between the Lone Star deposit to the west and the upper reaches of Sulphur Creek to the east, though there are certainly additional dykes throughout the property. The Cretaceous aged andesitic dykes, which are mostly not exposed on the property probably acted as feeder dykes to the Haystack Mountain area volcanoes, as well as other small extrusive centers on the southern property boundary known as either the Jen showing or Hawke showing, and another geophysically inferred body just SE of the confluence of Victoria Gulch and Upper Bonanza Creek. The Eocene aged dykes are bimodal basaltic/rhyolitic in composition, and frequently occur as narrow basaltic dykes cored by wider rhyolitic ones, indicating that the extensional regime extended for some considerable time. Movement along these fracture systems is normally not large, but as evidenced within the Lone Star mineralized zone it can be 100m or more.

In general, within the Klondike Schist package on the property, metamorphic grade appears to increase from greenschist facies in the northwest to amphibolite facies in the southeast.

## Property Structure

The main fabric on the property is a NW-SE trending foliation, considered to be S2 and S3, both of which are associated with accretion of the island arc onto north America at the closure of the Slide Mountain Ocean in the Jurassic. This accretion was accompanied by thrust faulting and folding, and a gentle tilting of the entire sequence to the SE, resulting in the older units being better exposed in the NW end of the property.

The magnetic survey flown in 2018, clearly shows a major magnetic break extending the entire length of the property, from Dominion Creek to Grand Forks, with higher magnetic intensity to the northeast, and weaker to the southwest. This higher magnetic area is believed to be related to underplating of the Slide Mountain mafic and ultramafic ophiolitic sequences, which were over-ridden by the Klondike Schist package. On surface, in the SE part of the property, it correlates roughly with the top of the QAS between Quartz Creek and Dominion Creek. In the NW part of the project area, this main structure, which we have named the Bonanza Fault, appears to horsetail or splay into series of 5 faults including;

1. Un-named fault crossing Upper Bonanza between Rice Gulch and Carmacks Fork, that puts the youngest mafic meta volcanic unit in contact with the intermediate schist unit.
2. The Lone Star fault which diverges from the main Bonanza Fault at Eldorado Dome, and runs NW through the old placer workings on 7 Pup of Victoria Creek,

3. The main Bonanza Fault running through the Lone Star deposit, which manifests as numerous shear zones accompanied by silicification and emerald green micas, - mariposite, or fuchsite.
4. The Stander shear zone, which runs through the Nugget and Nugget East mineralized zones, is connected through a series of cross faults cutting into the SE end of the Lone Star Anticline,
5. The Eldorado Creek fault,

All of these are thought to dip generally southwest.

It is generally accepted that 5 deformation events are recorded in the area, with D1-D3 associated with the accretion event in the Jurassic, followed by a D4 in which the main compressive direction has rotated from NE-SW to E-W, and a D5 associated with movement along the Tintina. It is also generally accepted that the mineralizing event that deposited gold in the Klondike region was associated with the D4 event, or possibly a relaxation of that event shortly after maximum compression.

## **Mineralization and Alteration:**

While previous authors are in general agreement with the D4 linkage to gold mineralization, for practical purposes, looking for evidence of D4 to home in on gold mineralization has not been particularly effective, as it was a subtle event, associated with warping of the lithologies on a km scale and which produced volumetrically small amounts of quartz, albeit with high concentrations of gold. Fortunately, while the timing of the mineralization was post the main D2 and D3 accretionary episodes, the D4 event reactivated the main D3 through-going structures discussed above, such that all of the significant gold showings discovered to date are located on or immediately adjacent to these NW trending features, probably as a result of being “ground prepped” with higher permeability. From an exploration perspective, these structures present geophysically traceable targets along which to focus.

Typically, the mineralized zones discovered to date consist of quartz vein zones which can be hosted by any of the Klondike Schist lithologies. The veins themselves range from mm scale up to 1.0m in thickness, are normally rusty brown and fractured, and are generally very low in sulphides, though they may host weathered limonitic euhedral Py cubes along fractures and near vein margins. Gold is normally in its native form, and is found along pyrite crystal edges, cracks within the pyrite, and along the margins of the quartz veins. Polished and thin section study (M. Grimshaw PhD thesis) indicates that the gold is normally associated with hyalophane, a Barium feldspar, however the concentration of it is insufficient to generate a Ba halo around the mineralization. Other trace elements that may be elevated within or proximal to the mineralized zones include As, Sb, W, Hg, and Te, although these are best described as sometimes but not always, being elevated within samples returning anomalous gold.

There has been considerable discussion around disseminated gold within the schist itself, and whether this may be an indication of a volcanogenic source for the gold. Recent drilling, particularly in the Lone Star mineralized zone over the past 5 years, and totaling nearly 20,000m, indicates that the vast majority of gold is tied up with the quartz veins, and while there are certainly schist intervals (without quartz veining) that carry gold, it is thought now that these likely contain micro-fractures, connecting them to the quartz vein systems, which are normally quite close by.

At Lone Star the mineralized set of veins range from 310 (almost parallel to the regional strike) to nearly N-S with gentle NE dips. In general they are discontinuous both along strike and down dip, but occur in clusters representing zones of dilation formed in response to D4 stresses.

Nugget Zone mineralization, on the south side of the Lone Star Anticline is somewhat different. This zone sits along the NE side of a prominent NW trending magnetic feature, thought to represent the Stander Fault system. Currently, we interpret this to be a 200-300m wide zone along which (mostly) thrust and normal faulting has occurred within distinct SW dipping planes. The mineralization here consists of quartz veins within a series of stacked horizontal wedges which are thickest at the structure, and thin rapidly to the SW. Within these wedges is a complex system of quartz veining, made more so by the rubbly nature of the quartz veins themselves. The pattern of gold mineralization is very similar to Lone Star, being largely in its native form, and being deposited along the edges and within fractures of euhedral pyrite cubes, and also along vein margins. The “wedge” geometry of the zones is thought to be related to subtle changes in the dip of the structure, relating to rheological differences between the central small zone of felsic schist and the softer mafic-intermediate schist.

One hole at Nugget, EC19-267, intersected a very different style of gold mineralization, returning 1008g/t Au and 998g/t Ag over 1.0m. This interval included a narrow 4mm thick vein of Electrum, which crossed the core at a low angle to the core axis. On its fractured edge, the typical wiry electrum texture is especially prominent. Electrum occurrences are rare in the Yukon, with the best known being the Mt. Skookum vein system, associated with Eocene volcanism. While Eocene volcanism is rare in the Klondike area, there is unquestionably large volumes of Eocene aged intrusive rocks including no fewer than 5 dykes within the 200m strike length of the zone. Likely not coincidentally, the high grade intersection sits exactly where the D3, NW trending structure is postulated to cut the drill hole.

With respect to alteration, there are 2 main types at Lone Star, and a 3<sup>rd</sup> type at Nugget Zone. At Lone Star, within the heart of the mineralized zone there is often a fuchsite/silica zone at or near the intermediate schist contact with the felsic schist footwall rocks. Typically, this appears as a grey-green silica rich zone with light coloured, wispy sericite “feathers”, cut by occasional to frequent smears and seams of bright green fuchsite. Occasionally, this occurs right at the contact with a fuchsite rich seam marking the contact, but more frequently it is more cloud like, and can be either entirely within the footwall or entirely within the hangingwall sequences, or straddling both. Above this zone there is frequently a laminated schist unit, with variable magnetite content, and often containing distinctive 2mm scale spotted chlorite. It is uncertain currently whether the magnetite forms as a replacement of pyrite, and/or replacement of the chlorite spots, as there appear to be both round magnetite blobs (possibly replacing the chlorite rosettes), and angular magnetite grains (likely after pyrite). The best gold values within the Lone Star zone seem to correspond with well veined sections within this magnetite bearing intermediate (laminated) schist.

Along the Stander Fault at both Nugget and Nugget East occurrences, the only consistent alteration appears to be a dark, bronzy coloration to the more typically dark greenish mafic to intermediate schist. Very rarely there also appears to be a greyish wash, over the normal coloration, caused by abundant very fine grained biotite (potassic) alteration of unknown origin.

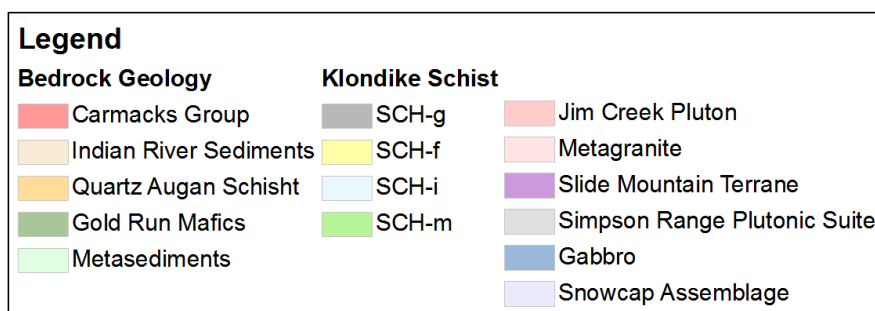
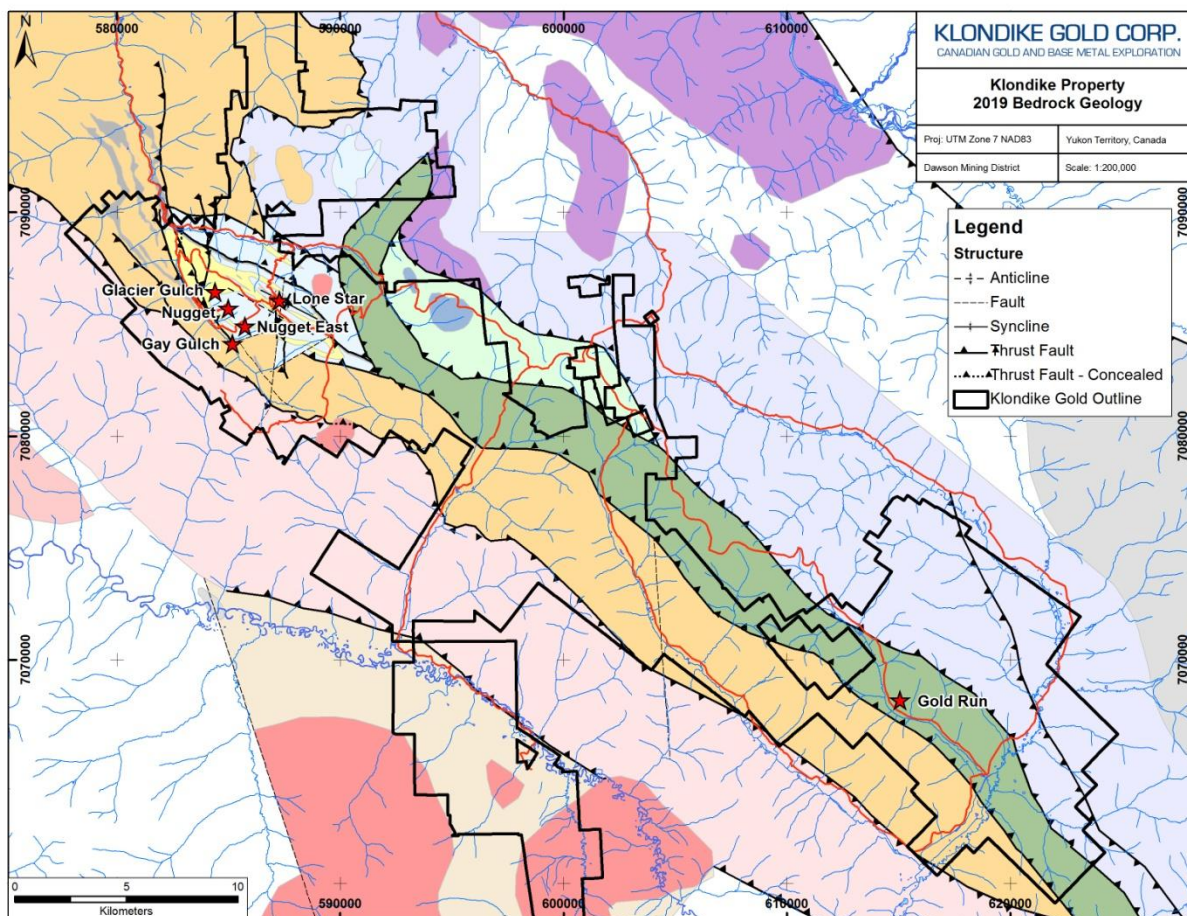


Figure 3: Klondike Property Regional Geology

### 6.0 2019 Exploration Program

Exploration in 2019 consisted of 44 HTW and 51 NTW diamond drill holes completed by Kluane Drilling Ltd., 936 square kilometers of Light Detection and Ranging (LIDAR) survey data completed by McElhane of Vancouver, BC, 66 rock samples using a GT-Probe Survey performed by GroundTruth Exploration and over 200 man days of soil sampling, prospecting, mapping, sampling, trenching and reclamation work carried out by Klondike Gold Corp employees. The only work claimed for assessment credit in 2019

consisted of Lidar and about half of the drilling expenditures, however all of the data collected with respect to soil sampling, mapping, etc is assembled in this report providing a complete record of data collected and results of analyses.

A minimum total of \$2,088,746.53 was spent on exploration work including: prospecting and mapping, assays, GT-Probe survey, and soil sampling from May 19 to November 5, 2019. Approximately \$1,294,200.00 was spent on diamond drilling performed between May 19 and August 15, 2019 and approximately \$131,766 was spent on a LIDAR survey flown on June 4th and 5th.

Exploration of the Klondike property was based from accommodations in Dawson with daily access to the property via 2WD and 4WD trucks. The exploration program consisted of prospecting, trenching and mapping work performed by Klondike Gold employees, soil sampling conducted by GroundTruth Exploration of Dawson using 4WD trucks, rock sampling performed by GroundTruth Exploration of Dawson using a GT-Probe Survey, diamond drilling and dozer for drilling by Kluane Drilling of Whitehorse, LIDAR survey data completed by McElhaney of Vancouver, BC, and remediation of trenches and old camp sites using Klondike Gold excavators and personnel.

### **6.1 Light Detection and Ranging (LIDAR) Survey**

A 936 square kilometer LiDAR and orthophoto survey was flown over the Klondike Gold Corp property on June 4<sup>th</sup> and 5<sup>th</sup> 2019. The objective of the survey was to update the property-wide airphoto coverage, and also to provide a means of locating historic trenches, shafts, drill pads and roads/trails many of which have become lost due to canopy over growth over the past 120 years of exploration, and also to evaluate the various linear features in the context of possible underlying structures. The LiDAR data collected Full Feature elevation points (measuring a combination of canopy and ground) at a density of 15.21 pts/m, and filtered Bare Earth elevation points at an average density of 5.15 pts/m. The BE dataset provides excellent clarity and has turned up a wide array of hitherto un-noticed features.

Total cost of the survey was \$131,766. The Survey outline is shown in Figure 4 and digital data is included in Appendix 5.

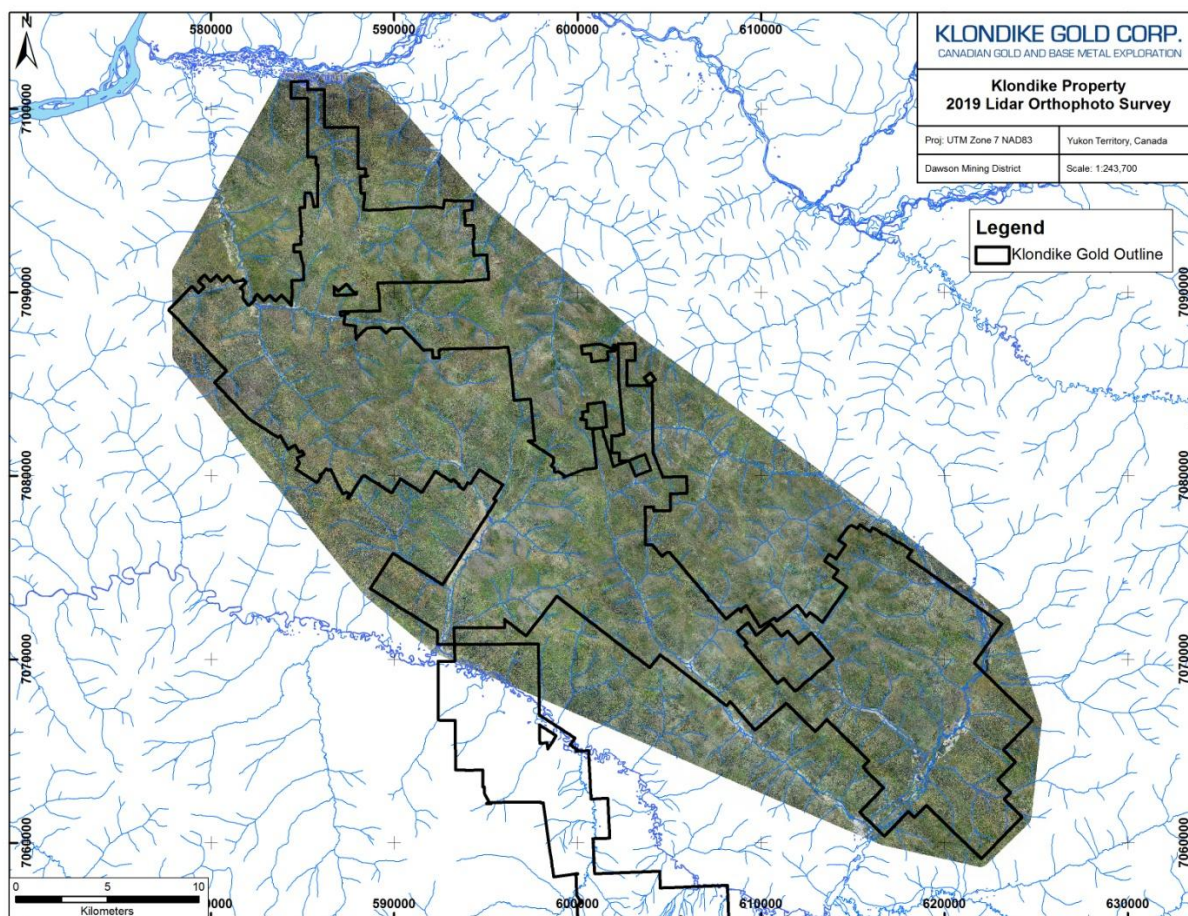


Figure 4: 2019 Lidar Orthophoto Survey

## 6.2 Soil Sampling

A total of 2479 soil samples were collected by GroundTruth Exploration of Dawson, YT, over two areas; the first covering the south facing slope of Lone Star Ridge between the ridge road and Eldorado Creek as far east as Chief Gulch and the second extending and filling in an earlier soil grid extending eastwards from the Lone Star deposit to Eldorado Dome. The Lone Star east extension grid was sampled on 100m line spacing, with 25m sample intervals between samples, and was sampled in 2019, but analysed in the spring of 2020. At least 2 anomalies stand out in this grid,- one which extends for over 2km as a 2-3 sample anomaly on each line, and thought to represent a mineralized splay off of one of the major NW trending thrust faults, and the second likely associated with the eastern extension of the Lone Star Zone itself,- where it crosses over the ridge east of the Pioneer showing. The Eldorado slope grid hosts gold in soil anomalies down slope from both Nugget and Nugget East showings, as well as quite a number of smaller anomalous zones that warrant follow-up.

Upon collection, soil samples were aggregated into rice bags, sealed, and submitted by Company personnel to the Bureau Veritas (“BV”) Labs preparation facility in Whitehorse, YT with chemical analysis of sample pulps completed in Vancouver, BC. Samples were analyzed for multi-element chemistry by ICP-MS analysis (AQ201 code).

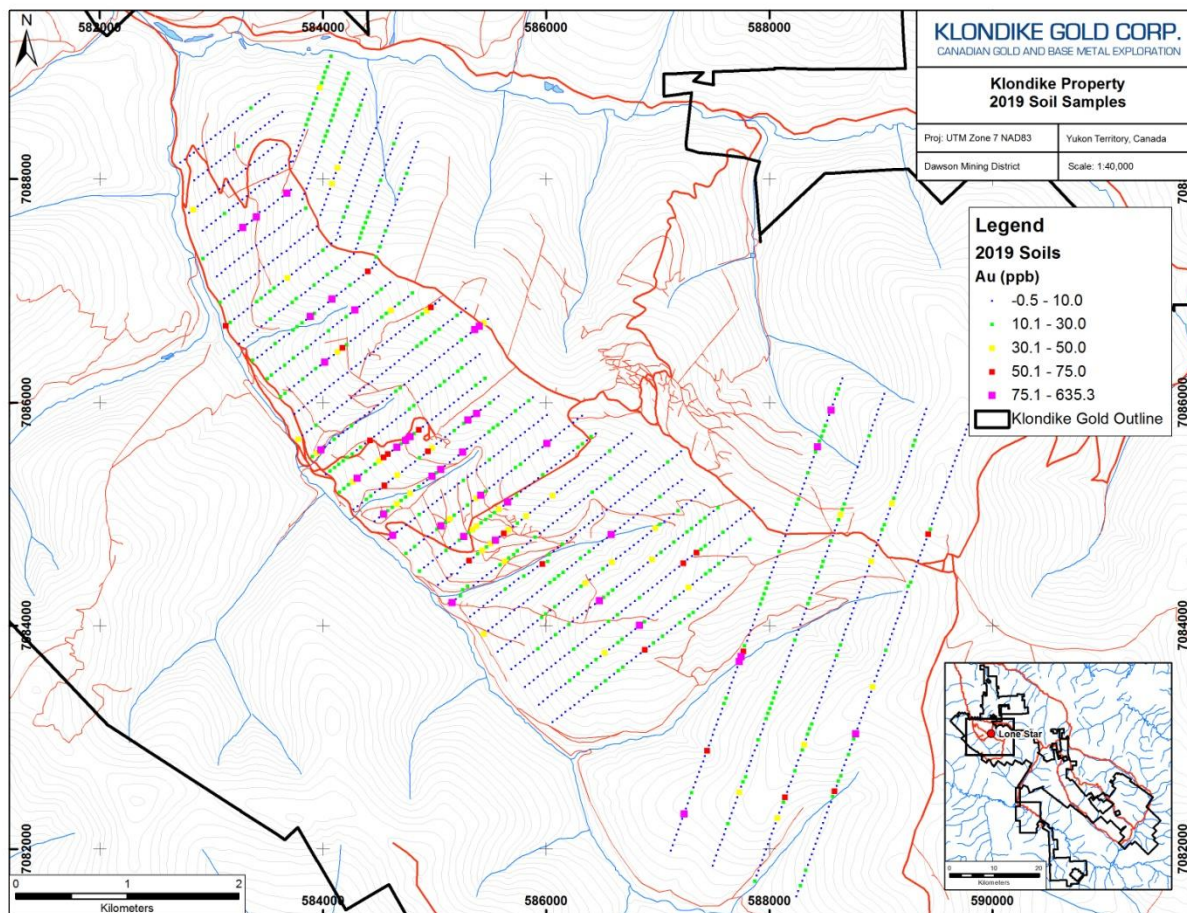


Figure 5: 2019 Soil Sampling Results

### 6.3 Prospecting

Prospecting on the Klondike Property was completed between May 6 and September 27, 2019, with daily access to the property via company truck and based from accommodations in Dawson. No company exploration camp is located on the property.

The 2019 prospecting program was guided by interpreted magnetic and soil anomalies, as well as prospecting and drilling work done between 2015 and 2018, to investigate areas of faulting with the objective of documenting gold-enriched quartz veins and distinguishing them from unmineralized quartz and carbonate veins. The 2019 program also focused on finding historical adits and shafts, documenting visible gold in outcrop, and sampling float in prospective gold areas.

A total of 212 prospecting samples were submitted to Bureau Veritas Labs in Whitehorse for analysis.

Of the samples collected, 92 returned assays of greater than 1.0g/t Au, and forty-three samples assayed greater than 5.0 g/t Au. The highest value was returned from a sample from a cross cutting quartz vein, with cubic py and visible gold, which returned 296.34g/t Au. (see Appendix III and IV for rock sample data and assay data).

Extensional quartz veins of economic interest sampled at the Klondike property are ascribed to late or post-D4 veining; all have similar observed textural features, structural characteristics, and geochemistry, and are interpreted to be generated by an extensional fault system documented by Company and GSC airborne magnetics.

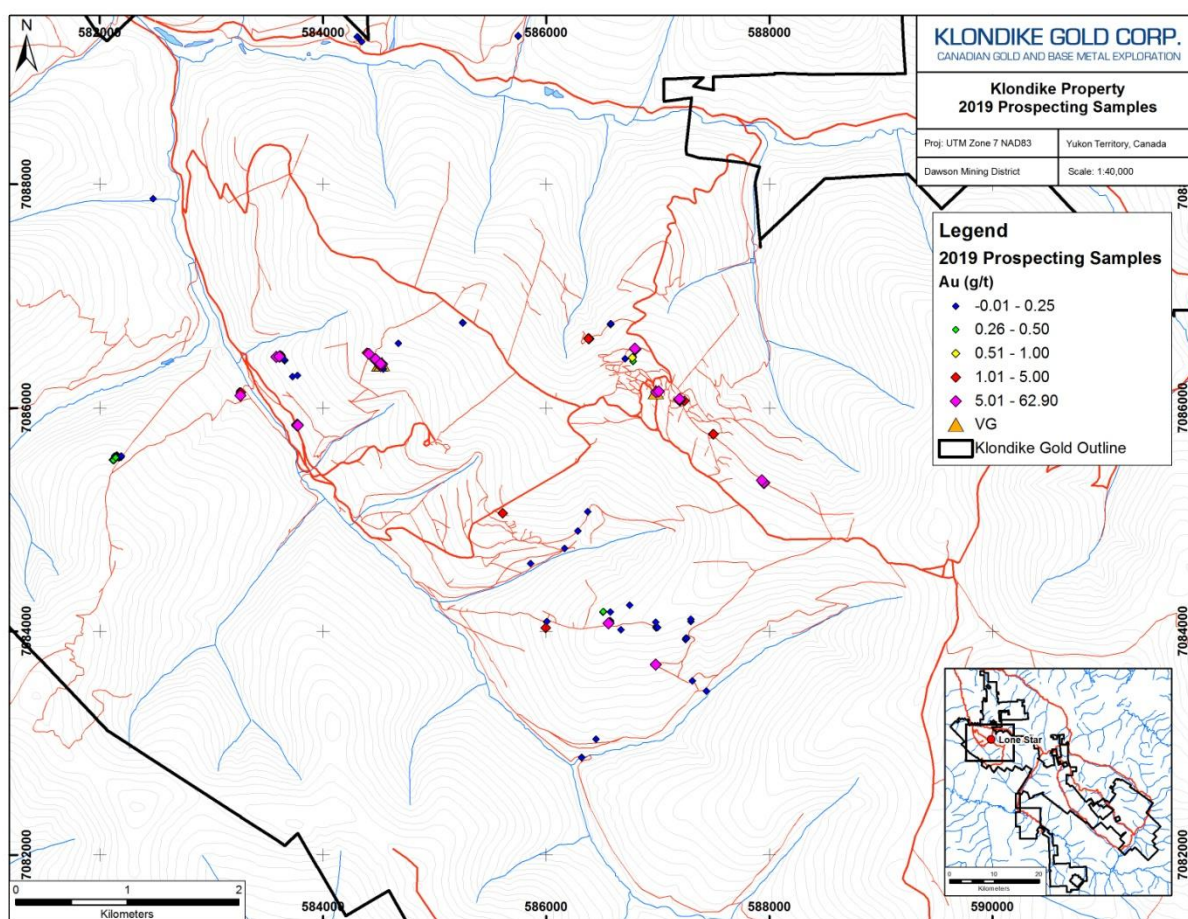


Figure 6: 2019 Gold Prospecting Results

### 6.4 GT-Probe Sampling

A total of 66 samples were collected by Ground Truth using their GeoProbe track based overburden sampling equipment, manned by a 3 person crew. Samples were collected right at bedrock, and often

include bedrock chips. The survey was done as a 22 sample test within the Lone Star zone on the north facing (and permanently frozen) side of the Lone Star Anticline, and worked well in these conditions. Later in the season, the same crew did 2 additional lines off the ends of the known part of the Nugget zone, where N-S faulting appears to have cut off the quartz veining. This survey was successful to a degree,- locating a number of spot highs and one 4 station anomalous zone that looked likely to be an eastward continuation of the Nugget zone. Subsequent drilling of the anomaly did encounter quartz veining which returned gold values,- however more work needs to be done to prove this for certain.

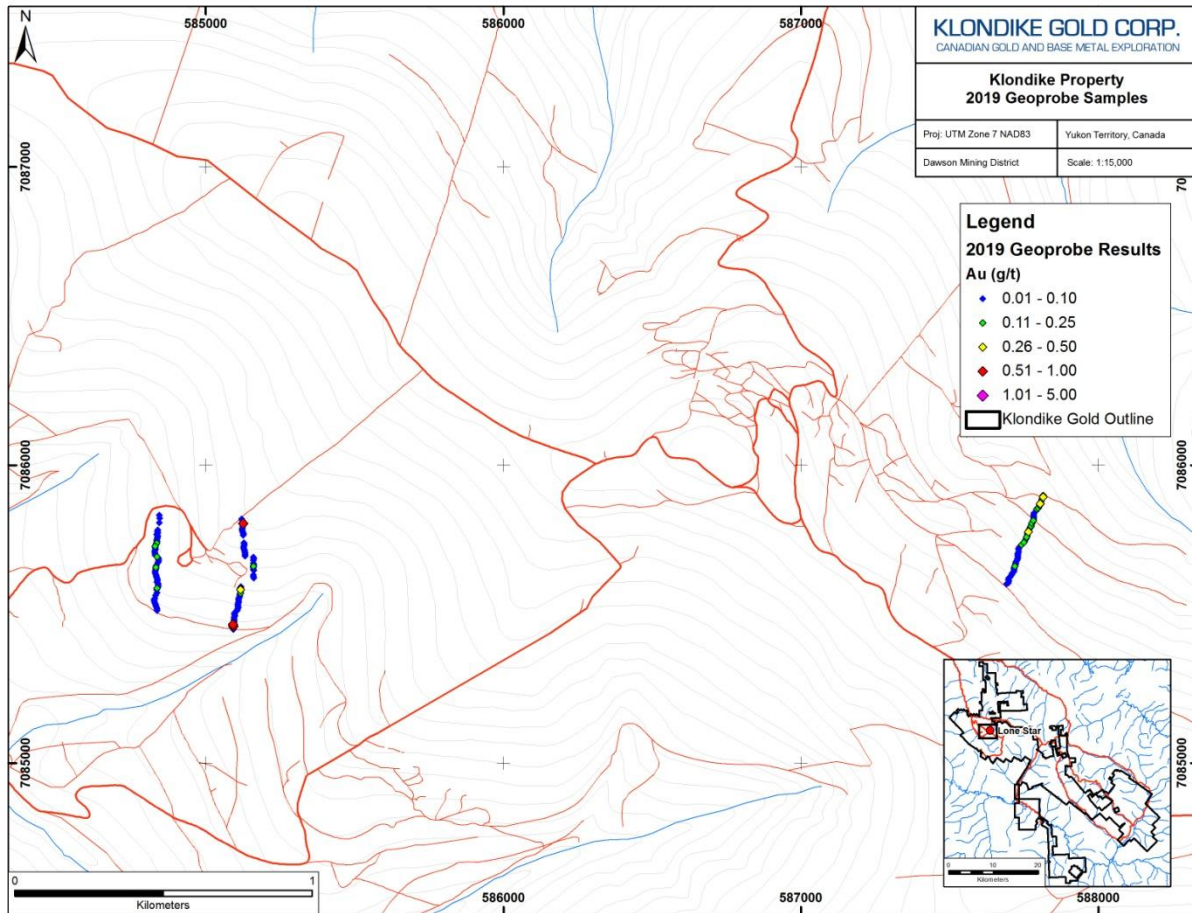


Figure 7: 2019 Geoprobe Sampling Results

### 6.5 Diamond Drilling

A total of 8628.37 metres of oriented core diamond drilling was completed on the Klondike Property in 2019. Kluane Drilling of Whitehorse, YT was contracted to supply the diamond drill and TruCore Core Orientation system for oriented core marking. Kluane also provided a D6 dozer which was used to move the drill, prepare drill pads, and in many places for reclamation work backfilling old trenches.

Diamond drill testing was completed in 5 general areas, the Nugget Zone with 23 holes, Nugget East with 19 holes, Upper Glacier with 4 holes, Gay Gulch with 7 holes and Lone Star Zone with 42 holes.

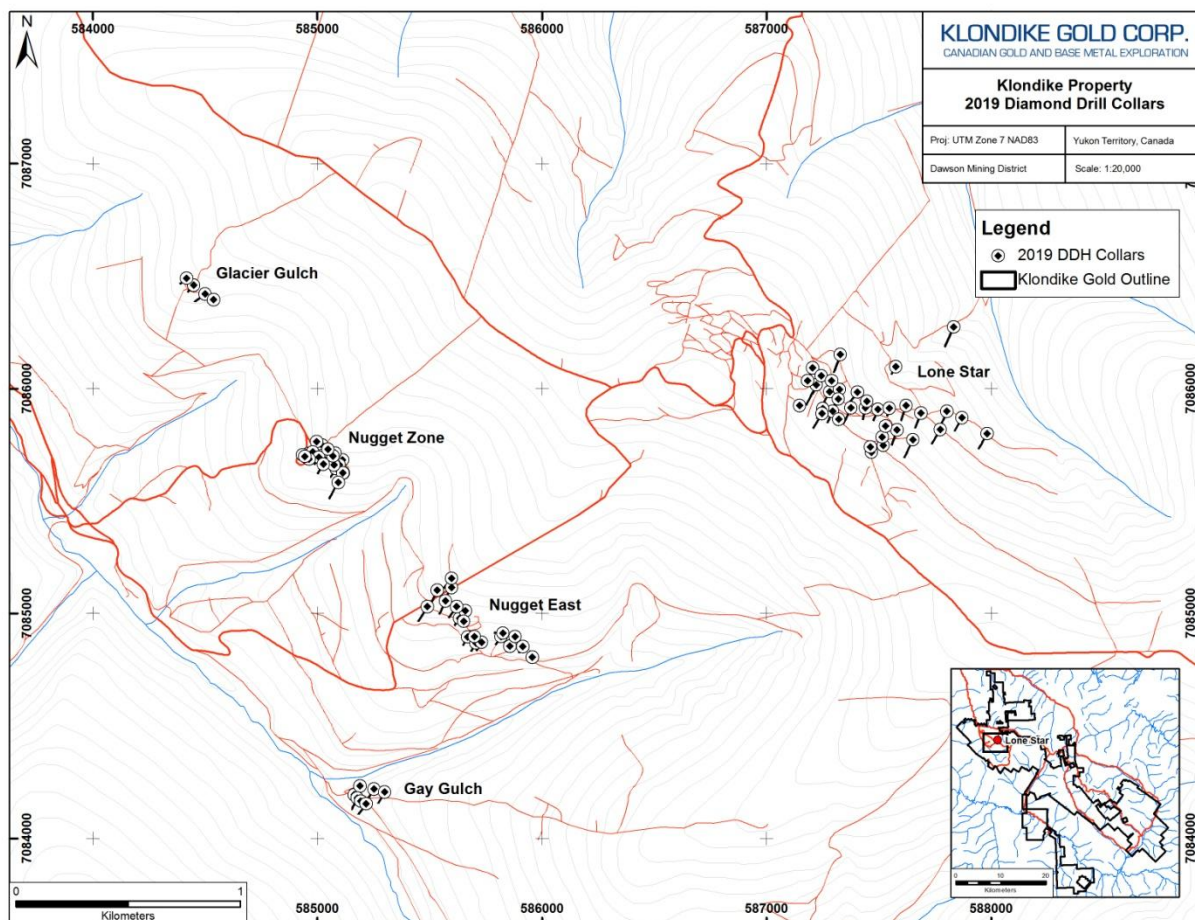


Figure 8: 2019 Drilling Areas

All core was logged using MX Deposit, a Sequent product, with the following defined fields; Box End Meterage, RQD, Mag Susc, Lithology Log, Faults, Veins, Alteration, Samples, and Photographs.

A list of drill hole locations is included in Table 2, and a brief discussion of results follows.

Table 2: 2019 Diamond Drill Locations

Hole ID	UTM East	UTM North	Elevation (m)	Dip	Azimuth	Depth (m)	Date Started	Date Completed
EC19-242	585164.4	7084194.7	610.6	55	90	38.40	19-May-19	20-May-19
EC19-243	585188.7	7084234.4	604.4	80	210	70.10	20-May-19	21-May-19
EC19-244	585176.6	7084179.9	614.4	55	210	96.01	21-May-19	23-May-19
EC19-245	585191.9	7084166.0	616.4	55	90	74.68	23-May-19	24-May-19
EC19-246	585216.5	7084153.6	619.8	55	210	100.58	24-May-19	26-May-19
EC19-247	585251.7	7084220.1	620.5	55	210	114.30	26-May-19	28-May-19
EC19-248	585299.9	7084206.4	631.3	55	210	100.58	28-May-19	29-May-19
EC19-249	585668.9	7084896.3	741.3	55	210	79.25	30-May-19	02-Jun-19
EC19-250	585706.5	7084869.4	733.4	55	210	77.72	02-Jun-19	04-Jun-19

EC19-251	585731.2	7084872.7	733.9	55	210	80.77	05-Jun-19	08-Jun-19
EC19-252	585632.1	7084979.2	763.6	55	210	70.10	08-Jun-19	09-Jun-19
EC19-253	585657.6	7085012.9	775.7	55	210	100.58	09-Jun-19	11-Jun-19
EC19-254	585651.3	7084965.5	760.3	55	210	36.60	11-Jun-19	12-Jun-19
EC19-255	585110.5	7085683.0	805.0	55	210	76.20	11-Jun-19	12-Jun-19
EC19-256	585061.9	7085687.0	806.1	55	210	54.86	12-Jun-19	13-Jun-19
EC19-257	585097.0	7085661.6	800.2	50	270	51.82	13-Jun-19	13-Jun-19
EC19-258	585048.9	7085674.3	802.5	55	270	65.53	13-Jun-19	14-Jun-19
EC19-259	585078.7	7085713.3	813.4	55	210	80.77	14-Jun-19	14-Jun-19
EC19-260	585914.3	7084854.0	735.4	65	210	80.77	28-May-19	30-May-19
EC19-261	585956.0	7084806.5	721.5	50	210	46.63	31-May-19	01-Jun-19
EC19-262	585856.5	7084854.8	732.9	75	210	50.29	01-Jun-19	02-Jun-19
EC19-263	585880.1	7084897.9	744.0	75	210	64.01	02-Jun-19	05-Jun-19
EC19-264	585818.0	7084896.7	744.0	50	210	70.10	05-Jun-19	06-Jun-19
EC19-265	585825.8	7084912.1	748.1	55	270	70.10	06-Jun-19	07-Jun-19
EC19-266	585038.3	7085686.6	802.8	80	210	71.63	08-Jun-19	08-Jun-19
EC19-267	585020.1	7085748.9	808.3	55	210	111.25	08-Jun-19	09-Jun-19
EC19-268	584996.7	7085765.2	802.5	55	210	112.78	09-Jun-19	10-Jun-19
EC19-269	585019.0	7085701.2	802.5	55	210	76.20	10-Jun-19	11-Jun-19
EC19-270	584965.8	7085701.2	792.3	50	270	73.15	15-Jun-19	15-Jun-19
EC19-271	584961.2	7085712.2	793.8	55	210	88.39	15-Jun-19	16-Jun-19
EC19-272	584933.5	7085704.8	785.2	55	210	50.29	16-Jun-19	17-Jun-19
EC19-273	585597.0	7085115.9	799.3	55	210	100.58	17-Jun-19	19-Jun-19
EC19-274	585596.9	7085156.4	805.6	55	210	155.45	19-Jun-19	20-Jun-19
EC19-275	585533.5	7085104.1	790.0	55	210	120.40	21-Jun-19	22-Jun-19
EC19-276	585571.0	7085056.1	784.6	55	210	120.40	21-Jun-19	22-Jun-19
EC19-277	585489.1	7085031.5	769.9	55	210	135.64	23-Jun-19	24-Jun-19
EC19-278	585619.6	7085030.6	781.7	55	210	106.68	24-Jun-19	25-Jun-19
EC19-279	585699.0	7084897.5	740.5	75	210	60.95	25-Jun-19	26-Jun-19
EC19-280	584448.9	7086460.5	832.4	55	225	74.68	26-Jun-19	27-Jun-19
EC19-281	584416.5	7086490.3	831.2	55	225	70.10	28-Jun-19	29-Jun-19
EC19-282	584499.5	7086422.0	828.1	55	225	100.58	29-Jun-19	01-Jul-19
EC19-283	584537.5	7086395.3	820.7	75	225	100.58	01-Jul-19	02-Jul-19
LS19-284	587293.7	7085899.6	950.2	55	200	100.58	04-Jul-19	05-Jul-19
LS19-285	587146.7	7085925.5	981.4	55	210	24.45	05-Jul-19	06-Jul-19
LS19-286	587280.6	7085986.0	939.3	50	200	140.21	06-Jul-19	08-Jul-19
LS19-287	587403.5	7085984.3	902.0	55	200	123.44	08-Jul-19	10-Jul-19
LS19-288	587496.3	7085908.8	900.3	55	200	100.58	10-Jul-19	11-Jul-19
LS19-289	587621.1	7085924.8	887.4	55	200	122.83	11-Jul-19	13-Jul-19
LS19-290	587650.4	7085773.6	918.0	55	200	155.45	14-Jul-19	15-Jul-19
LS19-291	587580.9	7085817.4	921.9	55	200	131.06	15-Jul-19	17-Jul-19
LS19-292	587687.5	7085891.8	880.4	55	200	124.97	17-Jul-19	18-Jul-19
LS19-293	587545.8	7085913.2	896.3	55	200	66.14	18-Jul-19	20-Jul-19
LS19-294	587519.8	7085747.7	948.4	50	320	40.84	20-Jul-19	21-Jul-19
LS19-295	587467.1	7085717.0	964.4	50	320	40.23	21-Jul-19	22-Jul-19
LS19-296	587513.4	7085785.3	939.9	55	200	50.29	22-Jul-19	23-Jul-19
LS19-297	587462.1	7085741.6	958.4	55	200	47.24	23-Jul-19	23-Jul-19
LS19-298	587250.5	7085911.8	959.3	55	200	89.92	24-Jul-19	25-Jul-19
LS19-299	587245.8	7085890.6	963.6	55	200	129.54	24-Jul-19	26-Jul-19
LS19-300	587375.3	7085914.6	923.3	55	200	140.21	26-Jul-19	29-Jul-19
LS19-301	587220.4	7086016.4	951.0	55	200	176.78	28-Jul-19	29-Jul-19

LS19-302	587529.7	7085833.7	925.3	55	200	100.58	30-Jul-19	31-Jul-19
LS19-303	587323.7	7085997.3	922.7	55	200	140.21	31-Jul-19	02-Aug-19
LS19-304	587318.9	7085954.7	932.7	55	200	129.54	02-Aug-19	03-Aug-19
LS19-305	587328.4	7086151.7	908.4	55	200	150.88	03-Aug-19	05-Aug-19
LS19-306	587574.4	7086098.1	832.3	55	200	68.72	05-Aug-19	06-Aug-19
LS19-307	587832.0	7086274.0	855.3	55	200	165.81	07-Aug-19	08-Aug-19
LS19-308	587802.1	7085899.3	851.8	55	200	170.69	09-Aug-19	10-Aug-19
LS19-309	587981.0	7085800.0	820.1	55	200	140.21	10-Aug-19	12-Aug-19
LS19-310	587772.6	7085819.0	874.6	55	200	135.03	12-Aug-19	14-Aug-19
LS19-311	587870.1	7085870.7	840.2	55	200	121.28	14-Aug-19	15-Aug-19
LS19-312	587204.1	7086093.6	949.6	50	200	60.05	5-Sep-19	5-Sep-19
LS19-313	587204.0	7086093.6	949.6	75	200	70.10	5-Sep-19	6-Sep-19
LS19-314	587242.4	7086058.0	940.9	55	200	160.02	6-Sep-19	9-Sep-19
LS19-315	587289.5	7086035.1	927.7	55	200	129.54	9-Sep-19	11-Sep-19
LS19-316	587439.5	7085915.9	906.9	55	200	100.58	11-Sep-19	15-Sep-19
LS19-317	587446.5	7085943.7	899.6	55	200	100.58	14-Sep-19	16-Sep-19
LS19-318	587183.0	7086034.7	962.1	55	20	74.68	16-Sep-19	17-Sep-19
LS19-319	587321.7	7085864.3	951.2	55	200	50.29	17-Sep-19	18-Sep-19
EC19-320	584979.6	7085718.2	796.7	85	210	70.10	15-Sep-19	15-Sep-19
EC19-321	585082.6	7085646.1	797.0	55	210	79.25	15-Sep-19	16-Sep-19
EC19-322	585114.1	7085625.8	790.5	55	210	80.77	7-Sep-19	8-Sep-19
EC19-323	585113.7	7085625.2	790.4	85	210	50.29	8-Sep-19	8-Sep-19
EC19-324	585092.2	7085583.5	778.5	55	210	151.49	8-Sep-19	10-Sep-19
EC19-325	585026.4	7085690.5	802.7	55	210	70.10	10-Sep-19	11-Sep-19
EC19-326	585026.4	7085690.5	802.7	85	210	70.10	11-Sep-19	11-Sep-19
EC19-327	585006.7	7085695.6	800.3	85	210	70.10	11-Sep-19	12-Sep-19
EC19-328	585006.7	7085695.6	800.3	55	210	70.10	11-Sep-19	12-Sep-19
EC19-329	584962.4	7085687.4	790.9	85	210	80.77	13-Sep-19	14-Sep-19
EC19-330	584943.8	7085698.4	788.4	55	90	123.44	14-Sep-19	15-Sep-19
EC19-331	585075.0	7085662.2	800.7	55	30	47.24	16-Sep-19	17-Sep-19
EC19-332	585074.7	7085662.0	800.7	44	30	9.14	16-Sep-19	16-Sep-19
EC19-333	585069.0	7085700.0	826.4	55	210	80.47	17-Sep-19	18-Sep-19
EC19-334	585047.7	7085730.5	813.2	55	210	131.06	18-Sep-19	21-Sep-19
EC19-335	585026.1	7085664.8	797.7	55	210	89.92	21-Sep-19	23-Sep-19

### **Lone Star Drill Results**

The Lone Star mineralized zone is the largest mineralized zone discovered to date on the Klondike property. It lies on the NE facing slope of Lone Star Ridge, just below the crest, and has been traced from O'Neil Gulch east as far as the headwaters of Victoria Gulch. Successive drill programs between 2015 and 2019 have been substantially focused along this zone, and data from these will form the basis of a resource estimate in the next few years. Mineralization, alteration and geology are discussed in previous sections. Table 3 summarizes Au intersections in the Lone Star drill holes associated with the 2019 program, and these intersections are thought to be close to true width of each zone.

**Table 3: Summary of Lone Star Drilling Assay Results**

Hole ID	Zone	From (m)	To (m)	Au (g/t)	Length (m)
---------	------	----------	--------	----------	------------

LS19-284	Lone Star	4.00	87.00	0.60	83.00
including	Lone Star	35.00	51.50	1.91	16.50
LS19-285	Lone Star		NSA		
LS19-286	Lone Star	5.60	34.60	0.51	29.00
LS19-287	Lone Star	26.90	57.50	0.56	30.60
LS19-288	Lone Star	56.00	81.50	0.28	25.50
LS19-289	Lone Star	21.10	33.00	0.33	11.90
LS19-290	Lone Star	5.30	23.80	0.84	18.50
LS19-291	Lone Star		NSA		
LS19-292	Lone Star		NSA		
LS19-293	Lone Star	5.90	35.50	0.32	29.60
LS19-294	Lone Star		NSA		
LS19-295	Lone Star		NSA		
LS19-296	Lone Star		NSA		
LS19-297	Lone Star	8.95	34.00	0.22	25.05
LS19-298	Lone Star	3.00	64.30	0.39	61.30
LS19-299	Lone Star	15.80	73.00	0.27	57.20
LS19-300	Lone Star	28.20	59.60	0.69	31.40
including	Lone Star	28.20	46.00	1.09	17.80
LS19-301	Lone Star	63.00	126.00	0.20	63.00
including	Lone Star	124.00	126.00	2.58	2.00
LS19-302	Lone Star	46.30	80.30	0.35	34.00
LS19-303	Lone Star	33.75	35.00	1.59	1.25
LS19-304	Lone Star	3.35	28.00	0.24	24.65
and also	Lone Star	115.70	129.54	0.52	13.84
LS19-305	Lone Star	20.00	92.50	0.48	72.50
including	Lone Star	51.50	72.00	1.25	20.50
LS19-306	Lone Star	36.80	45.50	0.73	8.70
LS19-307	Lone Star		NSA		
LS19-308	Lone Star		NSA		
LS19-309	Lone Star		NSA		
LS19-310	Lone Star		NSA		
LS19-311	Lone Star		NSA		
LS19-312	Lone Star		NSA		
LS19-313	Lone Star	43.30	44.30	0.52	1.00
LS19-314	Lone Star	28.00	56.80	0.41	28.80
LS19-315	Lone Star	4.35	46.00	0.35	41.65
LS19-316	Lone Star	14.00	14.60	1.21	0.60
and	Lone Star	50.00	53.30	0.95	3.00
LS19-317	Lone Star	41.00	50.00	0.42	9.00
and	Lone Star	57.40	58.40	3.14	1.00
LS19-318	Lone Star	51.00	52.00	0.73	1.00
LS19-319	Lone Star	20.80	41.00	1.45	20.20

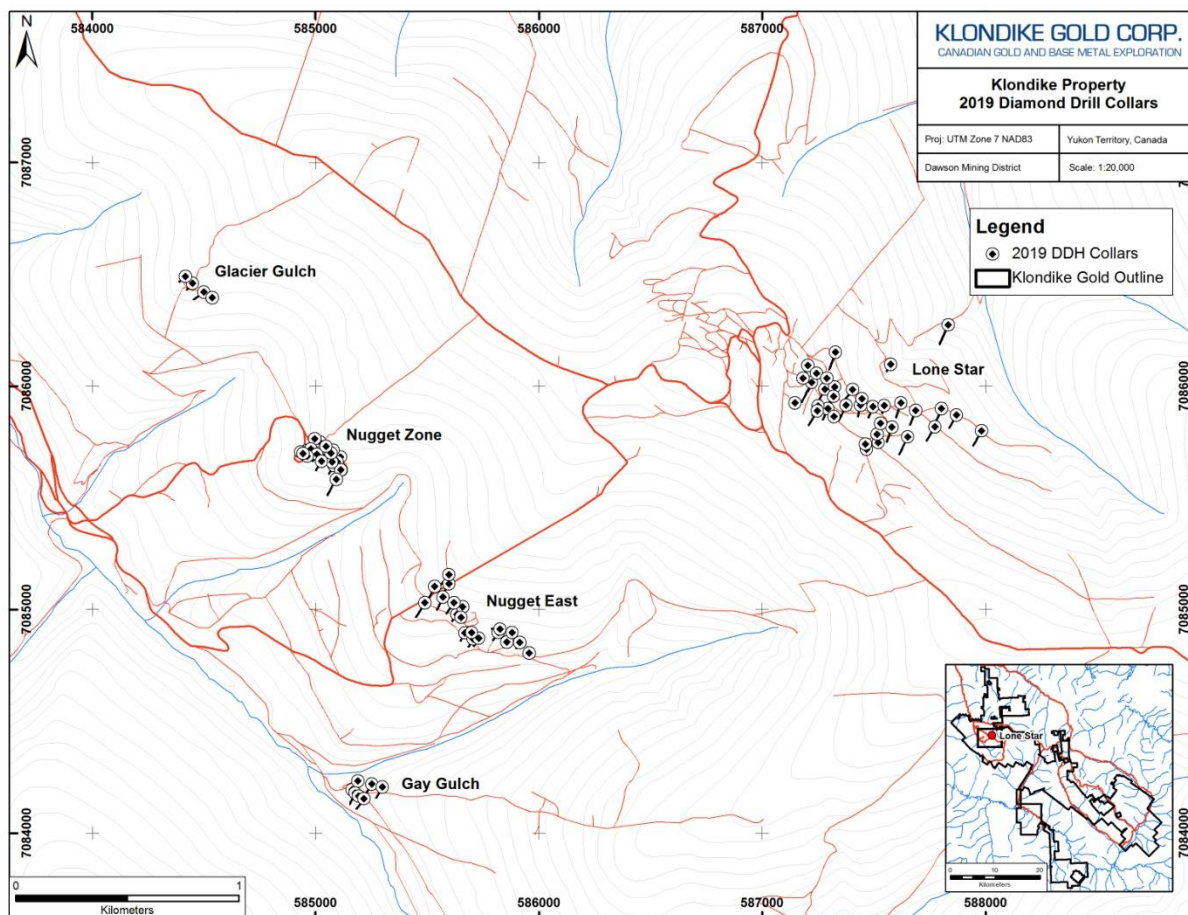


Figure 9: Lone Star Zone plan map

The results from the 2019 drilling on the Lone Star Zone continues to show broad intervals of gold mineralization, associated with quartz veining localized proximal to the felsic schist/mafic schist contact, which has been modified by faulting associated with the Bonanza Fault system. Results indicate down-dip continuity of mineralization at shallow depths due to mineralization dipping sub-parallel to topography.

### **Nugget Zone Drill Results**

Twenty-three ddh's were drilled in 2019 on the Nugget Zone to test possible gold mineralization targets within the Eldorado Creek drainage, proximal to a magnetic break interpreted from the 2018 aeromagnetic survey. Two NW trending structural breaks stand out; one half way down the slope from the crest of Lone Star Ridge to Eldorado Creek called the Stander Fault (this hosts the Nugget, Nugget East and Lower Glacier zones of gold mineralization) and a second, less obvious feature corresponding with Eldorado Creek itself called the Eldorado Fault (which hosts the Gay Gulch and 27Pup gold

showings). These faults can be traced for over 8 kilometers and run parallel to the Bonanza Fault, and are considered to be related to and perhaps connected to the Bonanza Fault at depth. For clarity these are thrust faults, associated with D3, and reactivated during or just post-D4.

Previous drilling programs from 2015 and 2018 intersected near-surface gold-bearing quartz vein arrays over a strike length of 225 metres, dominantly in individual off white, locally iron oxide stained, fractured quartz veins and stringers with euhedral pyrite, very similar in appearance to the Lone Star mineralized vein systems. Vein mineralization in the Nugget Zone is hosted by moderately ductile mafic to intermediate schists proximal to a narrow band of more brittle felsic schist,- at its intersection with the Stander Fault.

A full description of the Nugget zone mineralization is included in the Mineralization and Alteration section of this report.

2019 ddh are listed in Table 2 and significant gold assays are listed in Table 5. True thickness of the mineralized zones is approximately the interval width within each hole.

**Table 4: Summary of 2019 Nugget Zone, Nugget East, Gay Gulch and Upper Glacier Drilling Assay Results**

Hole ID	Zone	From (m)	To (m)	Au (g/t)	Length (m)
EC19-242	Gay Gulch	8.75	25.50	0.24	16.75
EC19-243	Gay Gulch			NSA	
EC19-244	Gay Gulch	5.70	35.50	0.40	29.80
including	Gay Gulch	5.70	6.20	9.33	0.50
EC19-245	Gay Gulch	4.90	14.70	1.09	9.80
including	Gay Gulch	13.10	13.70	8.30	0.60
EC19-246	Gay Gulch	3.05	4.60	2.29	1.55
EC19-247	Gay Gulch			NSA	
EC19-248	Gay Gulch	70.00	70.50	6.07	0.50
including	Gay Gulch	92.00	92.50	9.66	0.50
EC19-249	Nugget East	52.00	53.40	2.20	1.40
EC19-250	Nugget East	21.35	37.00	0.44	15.65
EC19-251	Nugget East	18.30	29.00	0.26	10.70
EC19-252	Nugget East	7.00	28.00	0.19	21.00
and	Nugget East	49.00	68.25	0.17	19.25
EC19-253	Nugget East	8.00	56.90	0.13	48.90
EC19-254	Nugget East	11.90	35.00	0.58	23.10
EC19-255	Nugget	58.00	60.00	0.50	2.00
EC19-256	Nugget	5.90	27.40	4.30	21.50
including	Nugget	17.40	27.40	8.90	10.00
including	Nugget	19.90	20.40	19.70	0.50
including	Nugget	22.90	23.40	20.20	0.50

including	Nugget	25.80	26.30	113.60	0.50
EC19-257	Nugget	4.00	51.20	0.60	47.20
including	Nugget	13.40	21.80	2.50	8.40
including	Nugget	17.80	18.30	26.10	0.50
EC19-258	Nugget	21.70	52.20	0.40	30.50
including	Nugget	21.70	24.70	1.80	3.00
EC19-259	Nugget	67.40	80.80	1.40	13.40
including	Nugget	74.40	74.80	1.70	0.40
EC19-260	Nugget East			NSA	
EC19-261	Nugget East	35.05	36.60	1.96	1.55
EC19-262	Nugget East			NSA	
EC19-263	Nugget East			NSA	
EC19-264	Nugget East	30.50	33.50	0.82	3.00
EC19-265	Nugget East	18.29	18.79	8.32	0.50
EC19-266	Nugget	4.60	54.20	1.80	49.60
including	Nugget	4.60	19.70	3.90	15.10
including	Nugget	9.50	10.10	78.80	0.60
and	Nugget	36.70	54.20	1.60	17.60
including	Nugget	37.40	38.40	22.20	1.00
EC19-267	Nugget	70.90	79.60	0.40	8.70
including	Nugget	70.90	71.80	1.10	0.90
and	Nugget	94.20	95.20	1.20	1.00
and	Nugget	104.00	106.50	404.20	2.50
including	Nugget	104.00	105.00	1009.50	1.00
EC19-268	Nugget	40.00	40.50	1.10	0.50
EC19-269	Nugget	10.00	28.20	0.70	18.20
EC19-270	Nugget	19.40	39.90	0.46	20.50
including	Nugget	35.75	39.90	1.67	4.15
including	Nugget	39.40	39.90	9.38	0.50
EC19-271	Nugget	5.60	6.60	0.95	1.00
and	Nugget	46.40	52.90	0.24	6.50
EC19-272	Nugget	35.00	35.50	3.38	0.50
EC19-273	Nugget East	54.50	67.40	0.44	12.90
and	Nugget East	93.70	100.58	0.25	6.88
EC19-274	Nugget East			NSA	
EC19-275	Nugget East	40.45	55.50	0.37	15.05
including	Nugget East	52.25	55.50	1.47	3.25
EC19-276	Nugget East	49.00	78.50	0.27	29.50
including	Nugget East	78.00	78.50	6.74	0.50
EC19-277	Nugget East	25.85	28.00	3.62	2.15
and	Nugget East	115.00	115.50	2.02	0.50
EC19-278	Nugget East	25.85	66.40	0.31	40.55
including	Nugget East	26.35	26.85	10.53	0.50

EC19-279	Nugget East	35.60	36.40	3.11	0.80
and	Nugget East	57.90	59.40	1.48	1.50
EC19-280	Glacier Gulch		NSA		
EC19-281	Glacier Gulch	57.35	60.35	3.00	3.44
EC19-282	Glacier Gulch	80.80	81.40	1.59	0.60
EC19-283	Glacier Gulch		NSA		
LS19-284	Lone Star	4.00	87.00	0.60	83.00
including	Lone Star	35.00	51.50	1.91	16.50
LS19-285	Lone Star		NSA		
LS19-286	Lone Star	5.60	34.60	0.51	29.00
LS19-287	Lone Star	26.90	57.50	0.56	30.60
LS19-288	Lone Star	56.00	81.50	0.28	25.50
LS19-289	Lone Star	21.10	33.00	0.33	11.90
LS19-290	Lone Star	5.30	23.80	0.84	18.50
LS19-291	Lone Star		NSA		
LS19-292	Lone Star		NSA		
LS19-293	Lone Star	5.90	35.50	0.32	29.60
LS19-294	Lone Star		NSA		
LS19-295	Lone Star		NSA		
LS19-296	Lone Star		NSA		
LS19-297	Lone Star	8.95	34.00	0.22	25.05
LS19-298	Lone Star	3.00	64.30	0.39	61.30
LS19-299	Lone Star	15.80	73.00	0.27	57.20
LS19-300	Lone Star	28.20	59.60	0.69	31.40
including	Lone Star	28.20	46.00	1.09	17.80
LS19-301	Lone Star	63.00	126.00	0.20	63.00
including	Lone Star	124.00	126.00	2.58	2.00
LS19-302	Lone Star	46.30	80.30	0.35	34.00
LS19-303	Lone Star	33.75	35.00	1.59	1.25
LS19-304	Lone Star	3.35	28.00	0.24	24.65
and also	Lone Star	115.70	129.54	0.52	13.84
LS19-305	Lone Star	20.00	92.50	0.48	72.50
including	Lone Star	51.50	72.00	1.25	20.50
LS19-306	Lone Star	36.80	45.50	0.73	8.70
LS19-307	Lone Star		NSA		
LS19-308	Lone Star		NSA		
LS19-309	Lone Star		NSA		
LS19-310	Lone Star		NSA		
LS19-311	Lone Star		NSA		
LS19-312	Lone Star		NSA		
LS19-313	Lone Star	43.30	44.30	0.52	1.00
LS19-314	Lone Star	28.00	56.80	0.41	28.80
LS19-315	Lone Star	4.35	46.00	0.35	41.65

LS19-316	Lone Star	14.00	14.60	1.21	0.60
and	Lone Star	50.00	53.30	0.95	3.00
LS19-317	Lone Star	41.00	50.00	0.42	9.00
and	Lone Star	57.40	58.40	3.14	1.00
LS19-318	Lone Star	51.00	52.00	0.73	1.00
LS19-319	Lone Star	20.80	41.00	1.45	20.20
EC19-320	Nugget	1.20	6.05	1.03	4.85
and	Nugget	48.00	50.00	0.87	2.00
and	Nugget	63.00	65.50	1.95	2.50
EC19-321	Nugget	21.00	22.00	0.75	1.00
EC19-322	Nugget	46.90	48.65	2.01	1.75
EC19-323	Nugget		NSA		
EC19-324	Nugget	32.70	34.30	1.80	1.60
EC19-325	Nugget	4.40	40.00	1.19	35.60
including	Nugget	4.40	23.20	2.17	18.80
EC19-326	Nugget	5.80	50.45	0.83	44.65
including	Nugget	6.80	16.10	2.24	9.30
including	Nugget	10.70	11.20	31.20	0.50
including	Nugget	39.00	46.10	2.00	7.10
EC19-327	Nugget	1.15	46.75	1.21	45.60
including	Nugget	1.15	24.00	2.12	22.85
including	Nugget	8.80	9.35	27.64	0.55
including	Nugget	37.60	46.75	0.69	9.15
EC19-328	Nugget	10.50	17.00	1.34	6.50
EC19-329	Nugget		NSA		
EC19-330	Nugget	69.60	71.40	1.95	1.80
EC19-331	Nugget	1.75	18.30	1.28	16.55
EC19-332	Nugget	3.00	4.50	5.61	1.50
EC19-333	Nugget	22.70	28.00	3.71	5.30
including	Nugget	22.70	67.00	0.60	44.30
EC19-334	Nugget	62.50	77.70	0.27	15.20
EC19-335	Nugget	6.50	20.00	0.41	13.50
and	Nugget	67.00	83.00	0.22	16.00
including	Nugget	67.00	69.90	0.96	2.90

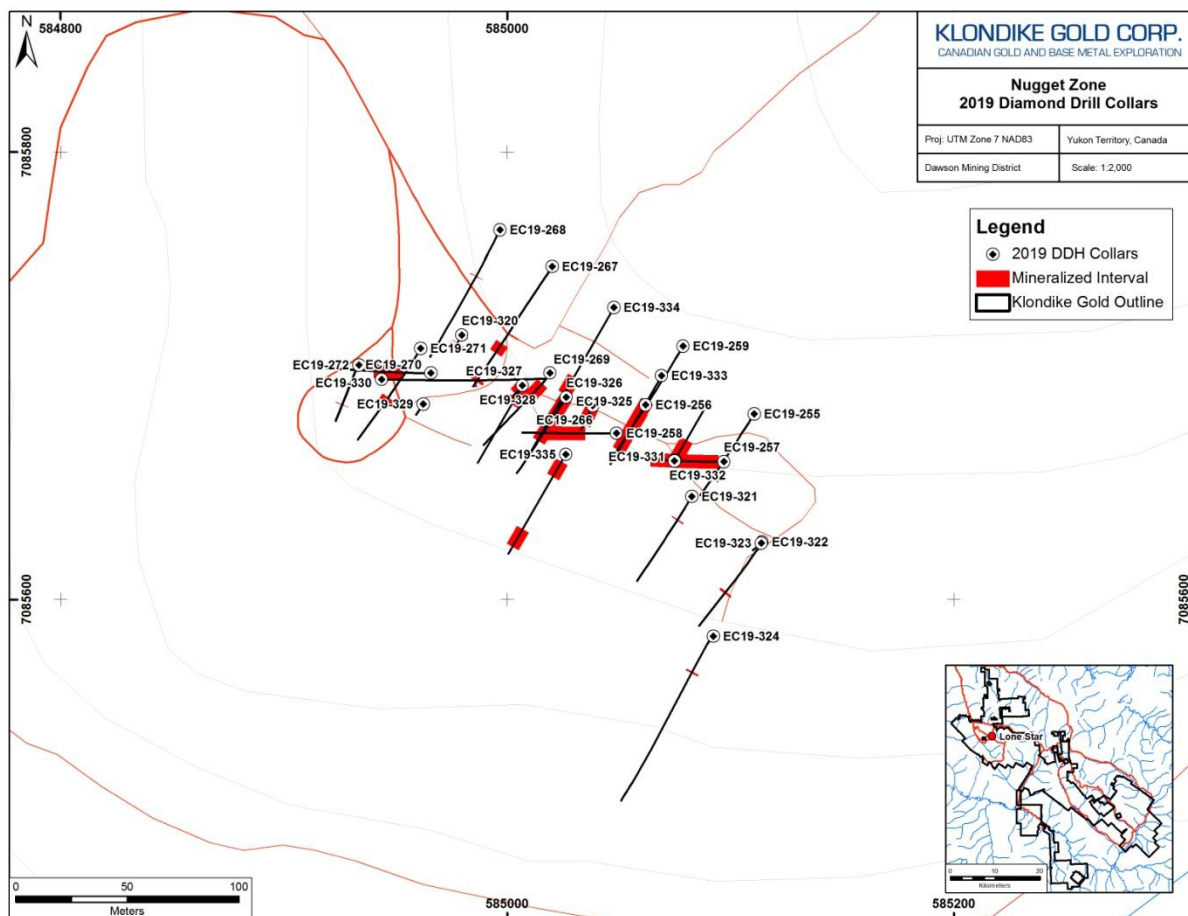


Figure 10: Nugget Zone plan map

### Nugget East Drill Results

The Nugget East (formerly the Buckland showing) showing area is located approximately 600m SE of the Nugget Zone along the Stander Fault. Whilst the gold bearing quartz veins look similar in appearance to those at Lone Star and Nugget, the geometry is much less well understood due to very broken ground conditions, and a resulting lack of oriented quartz veins. A total of 19 holes were drilled in 2019 to better understand the system, which occurs just NE of an intersection point between the Stander Fault, and a N-S trending magnetic high, thought to represent the signature from a buried Cretaceous aged mafic dyke.

Drill hole locations are shown in Table 2, results in Table 5, and a map showing hole locations is included as Figure 11. In general, results were inconclusive but generally disappointing, with very poor core recovery despite using the bigger HTW core size. Individual vein zones, returning up to 14.8g/3.05m returned from the 2018 program, were not repeated, though veins with specks of VG were encountered. Oddly, a number of holes were found to contain zones of very fine biotite alteration, which remains enigmatic.

**Table 5: Summary of Nugget East Drilling Assay Results**

Hole ID	Zone	From (m)	To (m)	Au (g/t)	Length (m)
EC19-249	Nugget East	52.00	53.40	2.20	1.40
EC19-250	Nugget East	21.35	37.00	0.44	15.65
EC19-251	Nugget East	18.30	29.00	0.26	10.70
EC19-252	Nugget East	7.00	28.00	0.19	21.00
and	Nugget East	49.00	68.25	0.17	19.25
EC19-253	Nugget East	8.00	56.90	0.13	48.90
EC19-254	Nugget East	11.90	35.00	0.58	23.10
EC19-260	Nugget East			NSA	
EC19-261	Nugget East	35.05	36.60	1.96	1.55
EC19-262	Nugget East			NSA	
EC19-263	Nugget East			NSA	
EC19-264	Nugget East	30.50	33.50	0.82	3.00
EC19-265	Nugget East	18.29	18.79	8.32	0.50
EC19-273	Nugget East	54.50	67.40	0.44	12.90
and	Nugget East	93.70	100.58	0.25	6.88
EC19-274	Nugget East			NSA	
EC19-275	Nugget East	40.45	55.50	0.37	15.05
including	Nugget East	52.25	55.50	1.47	3.25
EC19-276	Nugget East	49.00	78.50	0.27	29.50
including	Nugget East	78.00	78.50	6.74	0.50
EC19-277	Nugget East	25.85	28.00	3.62	2.15
and	Nugget East	115.00	115.50	2.02	0.50
EC19-278	Nugget East	25.85	66.40	0.31	40.55
including	Nugget East	26.35	26.85	10.53	0.50
EC19-279	Nugget East	35.60	36.40	3.11	0.80
and	Nugget East	57.90	59.40	1.48	1.50

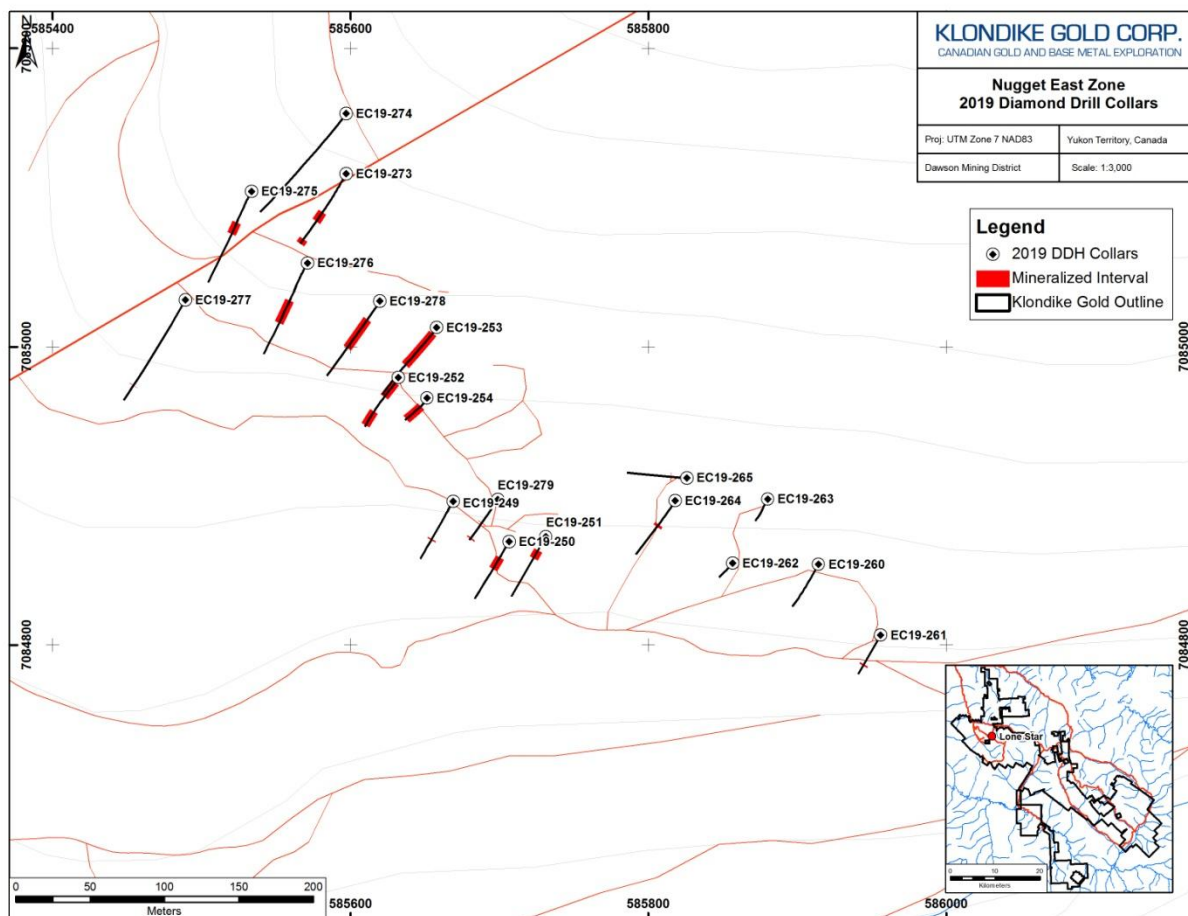


Figure 11: Nugget East Zone plan map

### **Glacier Gulch and Gay Gulch Drill Results**

A total of 4 holes were drilled at Glacier Gulch and a further 7 holes were drilled at Gay Gulch, to follow up interesting results from earlier drilling.

Two holes (EC18-235 and EC18-236) were drilled in 2018 at the Glacier Gulch target located 800 metres northwest of the Nugget Zone. The purpose of the drill holes was to test for mineralization in the vicinity of boulders and grab samples that contained visible gold collected during prospecting, to test targets based on visible gold in quartz vein arrays noted in 2019 trenching and to follow-up the significant gold assay results in hole EC18-235. Hole EC19-281, drilled under an old shaft at the NW end of the prospect returned 3.44g/t Au/3.0m from a small vein array cut at a depth between 57.35m and 60.35m. The work confirmed the spotty nature of gold within what are some very dense and nice looking quartz vein arrays, which at times look almost like sheeted veins.

At Gay Gulch, drilling in 2015 intersected coarse clots of visible gold in quartz veining and the 2019 program was designed to gain a better understanding of the grade and continuity of these. A total of 7 holes were drilled here in 2019, with generally disappointing results.

Significant gold intercepts based on assay results are summarized in Table 6. True thickness of the mineralized zones is approximately the interval width within each hole.

Drill hole locations are noted in Table 2, with a summary of results for both Gay and Upper Glacier Gulches included in Table 6. Location maps showing a plan view of the drill holes at Glacier and Gay Gulches are included as Figure 12 and Figure 13 respectively.

**Table 6: Summary of 2019 Glacier Gulch and Gay Gulch Assay Results**

Hole ID	Zone	From (m)	To (m)	Au (g/t)	Length (m)
EC19-242	Gay Gulch	8.75	25.50	0.24	16.75
EC19-243	Gay Gulch			NSA	
EC19-244	Gay Gulch	5.70	35.50	0.40	29.80
including	Gay Gulch	5.70	6.20	9.33	0.50
EC19-245	Gay Gulch	4.90	14.70	1.09	9.80
including	Gay Gulch	13.10	13.70	8.30	0.60
EC19-246	Gay Gulch	3.05	4.60	2.29	1.55
EC19-247	Gay Gulch			NSA	
EC19-248	Gay Gulch	70.00	70.50	6.07	0.50
including	Gay Gulch	92.00	92.50	9.66	0.50
EC19-280	Glacier Gulch			NSA	
EC19-281	Glacier Gulch	57.35	60.35	3.00	3.44
EC19-282	Glacier Gulch	80.80	81.40	1.59	0.60
EC19-283	Glacier Gulch			NSA	

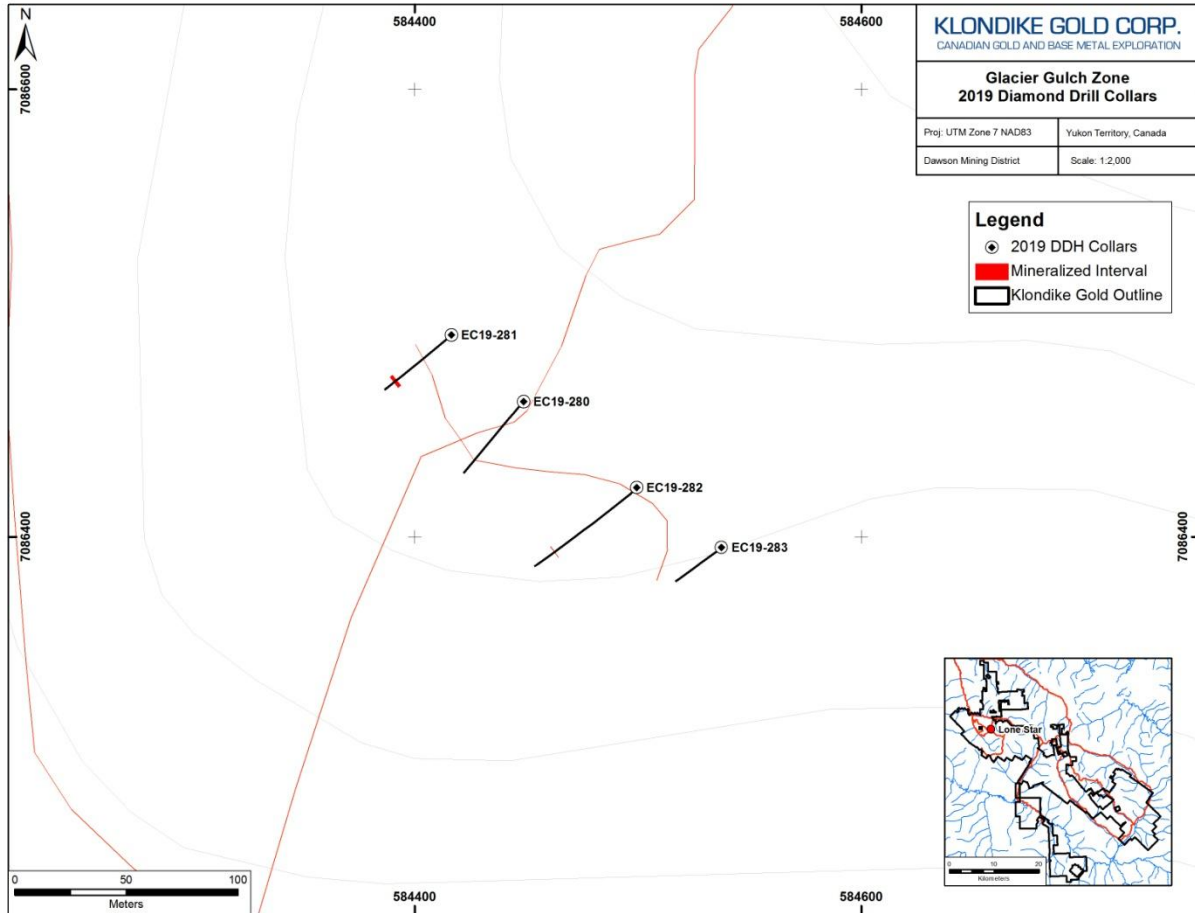


Figure 12: Glacier Gulch plan map

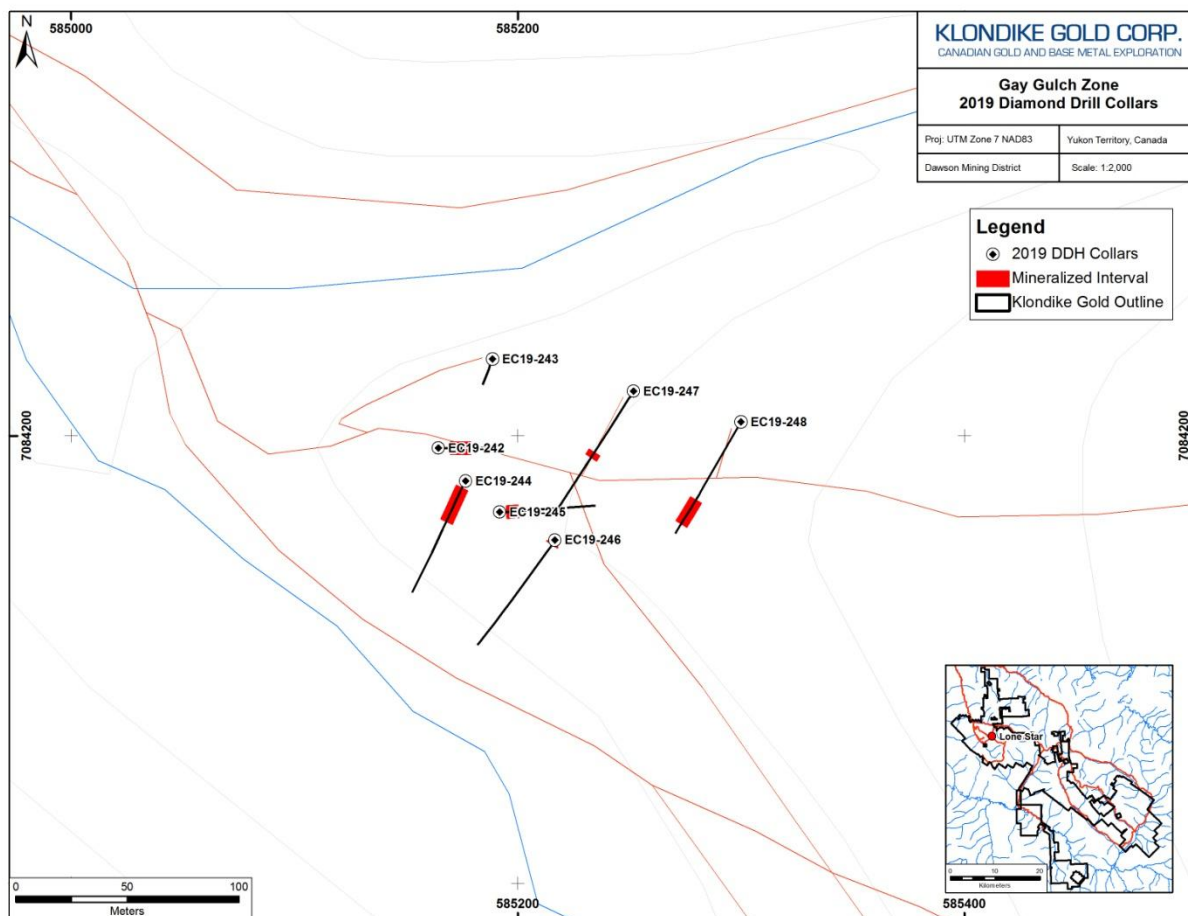


Figure 13: Gay Gulch plan map

## 7.0 Sample Preparation, Quality Assurance and Quality Control, Analysis, and Security

### Rock/Prospecting Grab Sample Assay Protocols

Prospecting samples are selective in nature, non-representative rock grab samples of bedrock or boulders are collected to test for the presence or absence of gold and other economic minerals. Systematic additional test results may vary significantly. Samples are usually 0.5 kg to 2.0 kg in weight. The Company’s samples are spatially located to within 5 meters using a hand-held Global Positioning System (“GPS”) in NAD83 datum, assigned a unique assay tag, described, photographed using a GPS-enabled camera, then placed in a plastic bag and sealed. Groups of sealed sample bags are aggregated in large fiber bags and security sealed for shipment. For samples collected in 2018, the fiber bags were retained in locked storage in the Company’s Dawson office until after the end of the field season before being delivered by Company personnel directly to the lab. Samples were submitted to Bureau Veritas Mineral Laboratories (“BV Labs”) (formerly Acme Labs) preparation facility in Whitehorse, YT with

chemical analysis of sample pulps completed in Vancouver, British Columbia. Bureau Veritas Labs is an accredited ISO 9001:2008 full-service commercial laboratory.

At BV Labs each 1 kg rock sample is crushed to 80% passing 2 mm size. A 250 g subsample is pulverized to >85% passing -75 microns size (Code PRP70-250). A 30 g (1 assay ton) subsample is assayed for gold by fire assay (“FA”) fusion with an atomic absorption (“AA”) finish (Code FA430). All over-limit results in excess of 10 ppm (10 g/t) for both silver and gold are re-assayed. The re-assay uses a 30 g subsample and is assayed by FA with a gravimetric finish (Code FA530-Au/Ag). Samples were also analyzed for multi-element chemistry by ultratrace ICP-MS analysis (AQ251+U code).

No Company standards, blanks, or duplicates or blank samples were inserted into the prospecting sample stream in 2019, as it was not considered necessary for a small program of early stage work. BV Labs inserted and completed analyses on internal duplicates, blanks, Au-only standards, and ICP-MS standards as part of QA/QC process on Klondike Gold’s 2019 submitted samples. All results were within expected bounds and within error limits of detection.

### **Drill Core and Assay Protocols**

All drill holes are photographed wet. Data collected during logging includes Basic Header Information, Box Ends, RQD/Recovery, Magnetic Susceptibility, Foliation/Crenulation Angles, Lithology, Alteration, Faults, Veins and, core orientation measurements. Core orientation was performed by Kluane Drilling using a Boart Longyear TruCore Core Orientation system to mark “bottom” orientation of hole. Oriented core tools were used to collect accurate structurally oriented dip angles.

During logging, visible gold is identified in drill core, measured, and photographed. Assay samples from drill core are cut using a diamond saw. Half the core sample interval is bagged, tagged, and sealed; the other half is returned to the core box with a corresponding tag and retained for reference. Sample bags are aggregated into rice bags, sealed, and submitted by Klondike Gold personnel to Bureau Veritas Mineral Laboratories (“BV Labs”) (formerly Acme Labs) preparation facility in Whitehorse, YT with chemical analysis of sample pulps completed in Vancouver, British Columbia. Bureau Veritas Labs is an accredited ISO 9001:2008 full-service commercial laboratory.

At BV Labs each rock sample is crushed to 80% passing 2 mm size. A 500 g subsample is pulverized to >85% passing -75 microns size (Code PRP70-500). The 500 g subsample is then sieved to 106 microns (140 mesh) for “metallic screen” assaying. The plus 140 mesh fraction is then weighed and assayed for gold by fire assay (“FA”) fusion with a gravimetric finish (Code FS631). A 30 g subsample of the minus 140 mesh fraction is assayed for gold by fire assay (“FA”) fusion with an atomic absorption (“AA”) finish (Code FA430). All over-limit results in excess of 10 ppm (10 g/t) for both silver and gold are re-assayed using a 30 g subsample and assayed by FA with a gravimetric finish (Code FA530-Au/Ag). Total gold grade is then calculated using a weighted average of the plus and minus fraction assay results. Samples were also analyzed for multi-element chemistry by ultratrace ICP-MS analysis (AQ251+U code). Samples over-limit in lead are rerun by a high-detection limit ICP-ES procedure (Code MA370). QA/QC includes the insertion and continual monitoring of numerous standards, blanks, and duplicates within each batch.

Blanks and standards are obtained commercially from Canadian Resource Laboratories of Langley, British Columbia. In 2019, the Company inserted one pulverized and one coarse silica blank, as well as one high grade and one low grade gold standard as well as one coarse reject duplicate per 100 samples. Blanks and standards were sourced from well known commercial suppliers of such materials.

## 8.0 Interpretation and Conclusions

The Klondike Property covers a 527 square kilometer area in the vicinity of Eldorado Creek and Bonanza Creek underlying the western half of the Klondike placer goldfields. The area is prospective for orogenic gold deposits that have an implied possible mid-Cretaceous age, based on new findings, and are analogues of similar mineralization in the White Gold and Coffee Creek districts. The 2019 exploration season has continued to identify new zones of orogenic gold mineralization on the Klondike property as well as expanding the mineralization at known showings.

KGC's 2018 airborne magnetic and radiometric surveys, have vastly improved the resolution of the major NW-SE trending structures, including the main Bonanza Fault, which appears to horsetail, or splay in the vicinity of the Quartz Creek into the 3 main faults that are associated with the most important showings. This work has finally provided geophysically defined corridors along which to systematically explore for additional zones of gold mineralization.

Geological mapping over the past 5 has similarly improved upon the geological model and knowledge of the distribution of felsic, mafic, intermediate and graphitic schistose units on the Property, as well as the wide variety and hitherto much underestimated volumes of Cretaceous and Eocene intrusive (minor extrusive) activity.

Diamond drilling in the 2019 drill program was again successful in intersecting gold-bearing quartz vein arrays and disseminated gold mineralization in a variety of lithologic and structural environs.

## 9.0 Recommendations

### Regional:

Regional prospecting, mapping and soil sampling should again be completed as a systematic, district-scale survey in the 2020 exploration program to identify anomalous zones across the Klondike properties for further follow-up drilling with a focus on district-scale structures, faults and lithologies. In particular, lithological mapping should be conducted in the Gold Run, Sulphur Creek and Bear Creek areas of the property, where there is already defined structural targets with associated soil anomalies.

### Lone Star Zone:

Diamond drilling is recommended to follow-up on drilling results from the 2019 exploration program to further delineate the potential quantity and extent of the Lone Star Zone. Further work would potentially define a mineral resource and further investigate the extent of gold mineralization associated with the Bonanza Fault.

**Nugget Zone:**

Further diamond drilling is recommended on the Nugget Zone to test for continuity and extensions of high-grade gold mineralization in quartz veining associated with the Nugget Fault, similar to drilling executed in previous years, as well as target broader widths of disseminated gold mineralization noted in the 2018 drill results.

## 10.0 Statement of Qualifications

I, Peter Tallman, of Vancouver, British Columbia hereby certify that:

- I am a graduate of the University of Western Ontario with a Bachelor of Science (Geology) degree (1984).
- I am a practicing Professional Geoscientist (#02366) with the Professional Engineers and Geoscientists of Newfoundland and Labrador (PEGNL) since May 1991.
- I have practiced my profession as a geologist in Canada, throughout the America's as well as Australia and Africa continuously since graduation.
- I have held the position of executive officer and/or director of various publically listed Canadian corporations since 1995.
- I currently hold the position of President and Chief Executive Officer with Klondike Gold Corp., a company listed publically on the TSXV Exchange.
- I own shares and have been granted options to purchase shares in Klondike Gold Corp.
- I directed work on the Klondike Property and am the designated Qualified Person as defined by National Instrument 43-101 policy.

Dawson, Yukon Territory

A handwritten signature in black ink, appearing to read 'Peter Tallman', with a period at the end.

Peter Tallman, P.Geol.

## 11.0 References

Allen, M.M., Mortenson, J.K., Hart, C.J., and Bailey, L.A. 2012. Timing, nature, and distribution of Jurassic orogenic gold systems in west-central Yukon. *In* Yukon Gold Project Final Technical Report, May 2012, M. Allen, C. Hart, J. Mortensen (eds), MRDU private report, p. 55-78.

Bond, J.D. and Sanborn, P.T., 2006. Morphology and geochemistry of soils formed on colluviated weathered bedrock: Case studies from unglaciated upland slopes in west-central Yukon. Yukon Geological Survey, Open File 2006-19.

Bostock, H.S., 1966. Notes on Glaciation in Central Yukon Territory," Geological Survey of Canada, Paper 65-36.

Bucknam, C.H. 1995. Lone Star property bulk sample results by Newmont Exploration Ltd. for Klondike Gold Ltd. Unpublished report, pp. 16 + appendix.

Cathro, R.J. 1979. Summary report on the Lone Star gold property. Unpublished report for Dawson Eldorado Gold Explorations Ltd., pp. 21.

Chapman, R.J., Mortensen, J.K., Crawford, E.C. and LeBarge, W.P. 2010. Microchemical studies of placer and lode gold in the Klondike District, Canada: 2. Constraints on the nature and location of regional lode sources. *Economic Geology* **105**: 1393-1410.

Cranswick, R., Martin, L. and de Wit, S. 1995. 1994 Annual report on the Lone Star project, Dawson Mining District, Yukon Territory. Unpublished report for Kennecott Canada Inc., pp. 23 + appendices.

Cranswick, R., de Wit, S. and Vary, A. 1995. 1994 Annual report on the Klondike gold project. Unpublished report for Kennecott Canada Inc., pp. 22 + appendices.

Cranswick, R., Martin, L. and de Wit, S. 1995. 1994 Annual report on the Klondike gold project. Unpublished report for Kennecott Canada Inc., pp. 24 + appendices.

Doyle, A. 1993. 1992 rotary drilling report on the Lone Star property, Yukon. Unpublished report for Kennecott Canada Inc., pp. 23 + appendices.

Finlayson, E.J. 1994. 1993 Exploration report for the Lone Star property, Dawson Mining District, Yukon Territory. Unpublished report for Kennecott Canada Inc., pp. 26 + appendices.

Gonzales, R.A. 1987. Geological, geochemical and diamond drill report for work performed by Mark Management Ltd. on the Dawson property. Unpublished Assessment report for Dawson syndicate (1983) Expl. Partnership.

Gordey, S.P. and Makepeace, A.J., 2001. Bedrock geology, Yukon Territory. Geological Survey of Canada, Open File 3754, scale 1:1 000 000, also Yukon Geological Survey, Open File 2001-1.

Gorton, R., 1996. Lone Star Property Bulk Sampling Results. Internal Report, Newmont Exploration Ltd; 7pp.

Grunenberg, P. and Gonzalez, R.A. 1987a. Geological, geochemical and diamond drill report for work performed by Mark Management Ltd. on the Dawson property. Unpublished report for Dawson Syndicate (1983) Expl. Ltd. partnership, pp. 50 + appendices.

Grunenberg, P. 1988. Geological, geochemical, geophysical diamond and rotary drilling report on the Dawson property, Dawson Mining District, Yukon. Assessment report for Arbor Resources Inc., pp. 56 + appendices. EMR library file number 092132.

Grunenberg, P. 1989. Geological, geochemical, geophysical and trenching report on the Dawson property, Dawson Mining District, Yukon. Assessment report for Arbor Resources Inc., pp. 57 + appendices. EMR library file number 092690.

Grunenberg, P. and Gonzalez, R.A. 1987b. Geological, geochemical, and diamond and rotary drilling report on the Lone Star property, Dawson Mining District, Yukon. Assessment report for Arbor Resources Inc., pp. 48 + appendices. EMR library file number 091756

Hayden, A.S. and Tilsley, J.E. 1997. Sampling study Lone Star area. Unpublished report for Klondike Gold Corporation, pp. 10 + appendices.

Hilchey, G.R. 1961. Report of exploration - 1960. Unpublished report for Klondike Lode Mines Ltd. (N.P.L.), pp. 21.

Hildes, D. 2007. Induced polarization / resistivity surveys at the Eldorado property, Yukon Territory for Klondike Star Mineral Corp. EMR Assessment report.

Knight, J.B., Morison, S.R. and Mortensen, J.K. 1999. The relationship between placer gold particle shape, rimming, and distance of fluvial transport as exemplified by gold from the Klondike district, Yukon Territory, Canada. *Economic Geology*, **94**: 635-648.

Knight, J.B., Morison, S.R. and Mortensen, J.K. 1999. Lode and placer gold composition in the Klondike district, Yukon Territory, Canada: Implications for the nature and genesis of Klondike placer and lode gold deposits. *Economic Geology*, **94**: 649-664.

Liverton, 2004. Geological mapping, rock and soil geochemistry, trenching and bulk sampling on the Lone Star (Klondike) property. Yukon Mining Incentives report YEIP 2004-053. EMR library, Whitehorse.

Liverton, T. and Mann, W. 2005. Geological mapping, rock and soil geochemistry, trenching and bulk sampling on the Lone Star (Klondike) property. EMR Assessment report 094689.

Liverton, T. and Mann, W. 2005. Diamond drilling, geological mapping, rock and soil geochemistry, trenching and bulk sampling on the Lone Star (Klondike) property. EMR Assessment report 094579.

Liverton, T., Mann, W. and O'Shea, C. 2007. Diamond drilling, geological mapping, rock and soil geochemistry, IP geophysics, trenching and bulk sampling on the Lone Star (Klondike) property. EMR Assessment report.

MacKenzie, D.J., Craw, D., Mortensen, J.K. and Liverton, T., 2007. Structure of schist in the vicinity of the Klondike goldfield. *In: Yukon Exploration and Geology 2006*, D.S. Edmond, L.L. Lewis and L.H. Weston (eds.), Yukon Geological Survey, p. 197-212.

MacKenzie, D.J., Craw, D. and Mortensen, J. 2008a. Structural controls on orogenic gold mineralization in the Klondike goldfield, Canada. *Mineralium Deposita*, **43**: 435-448.

MacKenzie, D., Craw, D. and Mortensen, J.M. 2008b. Thrust slices and associated deformation in the Klondike goldfields, Yukon. *In: Yukon Exploration and Geology 2007*, D.S. Emond, L.R. Blackburn, R.P. Hill and L.H. Weston (eds.), Yukon Geological Survey, p. 199-213.

MacKenzie, D., Craw, D., Mortensen, J.M. and Liverton, T. 2008c. Disseminated gold mineralization associated with orogenic veins in the Klondike Schist, Yukon. *In: Yukon Exploration and Geology 2007*, D.S. Emond, L.R. Blackburn, R.P. Hill and L.H. Weston (eds.), Yukon Geological Survey, p. 215-234.

Maclean, T.A. 1914. Lode mining in the Yukon. Mines Branch Publication 222, p. 20-40.

Mortensen, J.K. 1984. Summary report 1983 mapping and interpretation Lone Star gold property, for Dawson Eldorado Gold Explorations Ltd., pp. 13. EMR Assessment report 091756.

Mortensen, J.K., Chapman, R., LeBarge, W. and Crawford, E. 2006. Compositional studies of placer and lode gold from western Yukon: Implications for lode sources. *In: Yukon Exploration and Geology 2005*, D.S. Emond, G.D. Bradshaw, L.L. Lewis and L.H. Weston (eds.), Yukon Geological Survey, p. 247-255.

Mortensen, J.K., Nesbitt, B.E. and Rushton, R. 1992. Observations on the geology and geochemistry of quartz veins in the Klondike district, west-central Yukon. *In: Bremner, T.J. (ed.): Yukon Geology, Vol. 3. Exploration and Geological Services Division, Indian and Northern Affairs Canada*, p. 260-270.

O'Shea, C., Liverton, T., Allen, E., Iles, S. and Mann, W. 2008. Diamond drilling, rotary drilling, geological mapping, rock and soil geochemistry, IP geophysics, trenching and bulk sampling on the Lone Star (Klondike) property. EMR Assessment report.

Rushton, R.W., Nesbitt, B.E. and Mortensen, J.K. 1993. A fluid inclusion and stable isotope study of Au quartz veins in the Klondike district, Yukon Territory, Canada: A section through a mesothermal vein system. *Economic Geology*, **88**: 647-678.

Tomlinson, S. 1991. Geological and geochemical report on the Lone Star property, Dawson Mining District, Y.T. Unpublished report for Arbor Resources Inc., pp. 38 + appendices.

Walcott, P.E. and Associates, 1987. A report on magnetic and induced polarization surveying. Assessment report for Arbor Resources Inc. and Kangeld resources Ltd., pp. 14 + appendices. EMR Assessment report 091752.