

**Assessment Report on 2019 Surface Work
on the Rosebute Property, White Gold
District, YT**

| Claim Name No. | Tag No. |
|-----------------------|--------------------|
| Bute 1 to 62 | YC87401 to YC96396 |
| Rose 1 to 281 | YC87106 to YD43561 |
| Rose 282 to 412 | YD43562 to YD43692 |
| RS 1 to 48 | YD15751 to YD15798 |
| RS 51 to 220 | YD92271 to YE74832 |

**Dawson Mining District, Yukon
NTS Sheet 115O05, O06, O11 &
O12 139°30'W., 63°28'N.**

Work Completed:

September 12 to 19th, 2019

Operated by and Recorded to



**By
Jeffrey A. Cary,
P. Geo.
June 30, 2020**

Table of Contents

Table of Contents..... ii
List of Figures ii
List of Tables ii
Certificate of Qualifications iii

Introduction and Terms of Reference 1
Location, Property Information and Access 1
Previous Work 4
Geological Context and Deposit Model 5
2019 Exploration 6
Data Verification 10
Interpretation and Conclusions 10
Recommendations 10
References 11

- Appendix A - Sample Locations and Descriptions
- Appendix B - Assay Certificates
- Appendix C - Certificate of Work Application

List of Figures

Figure 1 - General Location 2
Figure 2 - Claim Map 3
Figure 3 - Yukon Terrane Map 10
Figure 4 - Geology Map 11
Figure 5 - Trenching Locations 12

List of Tables

Table 1 - List of Claims 1
Table 2 - Previous Assessment Work Files 4
Table 3 - MINFILE Showings 4

Certificate of Qualifications

I, Jeffrey A. Cary, having my place of residence at 2416 Needham Ct, Durango, Colorado, USA do hereby certify that:

1. I obtained a Bachelor of Science Degree in Geology from Fort Lewis College, Durango, Colorado USA in 1983 and a Master of Science Degree in Geology from Western Washington University, Bellingham, Washington, USA in 1990. I have been engaged as a Geologist continuously since 1982 and I am a Member in good standing of the American Association of Professional Geologists (AAPG # CPG 11673), and I am a “qualified person” as defined in Section 1.2 in and for the purposes of National Instrument 43-101;
2. I have not field inspected the Rosebute property;
3. I am the senior author and qualified person responsible for the contents of this assessment report entitled “Memorandum report, 2019 surface work, Rosebute Property, Dawson Mining District, Yukon, NTS Sheets 115O05, O06, O11 & O12, 139°30’W., 63°28’N.,” based on my professional experience, a review of relevant reports and maps made available to me from government and corporate sources and my participation in the work programs described in the report;
4. I am not aware of any material fact or material change with respect to the subject matter of the report that is not disclosed in the report which, by its omission, makes the report misleading;
5. I am not an Officer and Director, and I do not own shares in Taku Gold Corp.;
6. I hold no direct interest in the Rosebute property as a result of my prior involvement with the property;
and
7. This report has not been prepared for the purposes, nor in full compliance with, National Instrument 43-101 and according to Form 43-101F1.

Respectfully submitted this 30th day of December 2017,

(s) “Jeffrey A. Cary”

Jeffrey A. Cary, P.Geol.

Introduction and Terms of Reference

The author was engaged by Taku Gold. Corp. (“Taku”) to report on a trenching program completed on the Rosebute property (“Rosebute” or the “Property”) in 2019 by GroundTruth Exploration Inc. (“GroundTruth”) and consulting geologist Jean Paulter, P.Geol. The primary objective of the work program was to better define the orientation of mineralized structures within the Hudbay zone, a soil anomaly initially identified in 2011, through a trenching program that consisted of two trenches totaling 283 metres. A third trench site was prepared (cut and flagged); however, due to time constraints the trench was not excavated. Five grab samples were also collected. This memorandum report was prepared to complete statutory assessment work filings required under the Yukon Quartz Mining Act. It is not intended to and does not fully comply with National Instrument 43-101.

Location, Property Information and Access

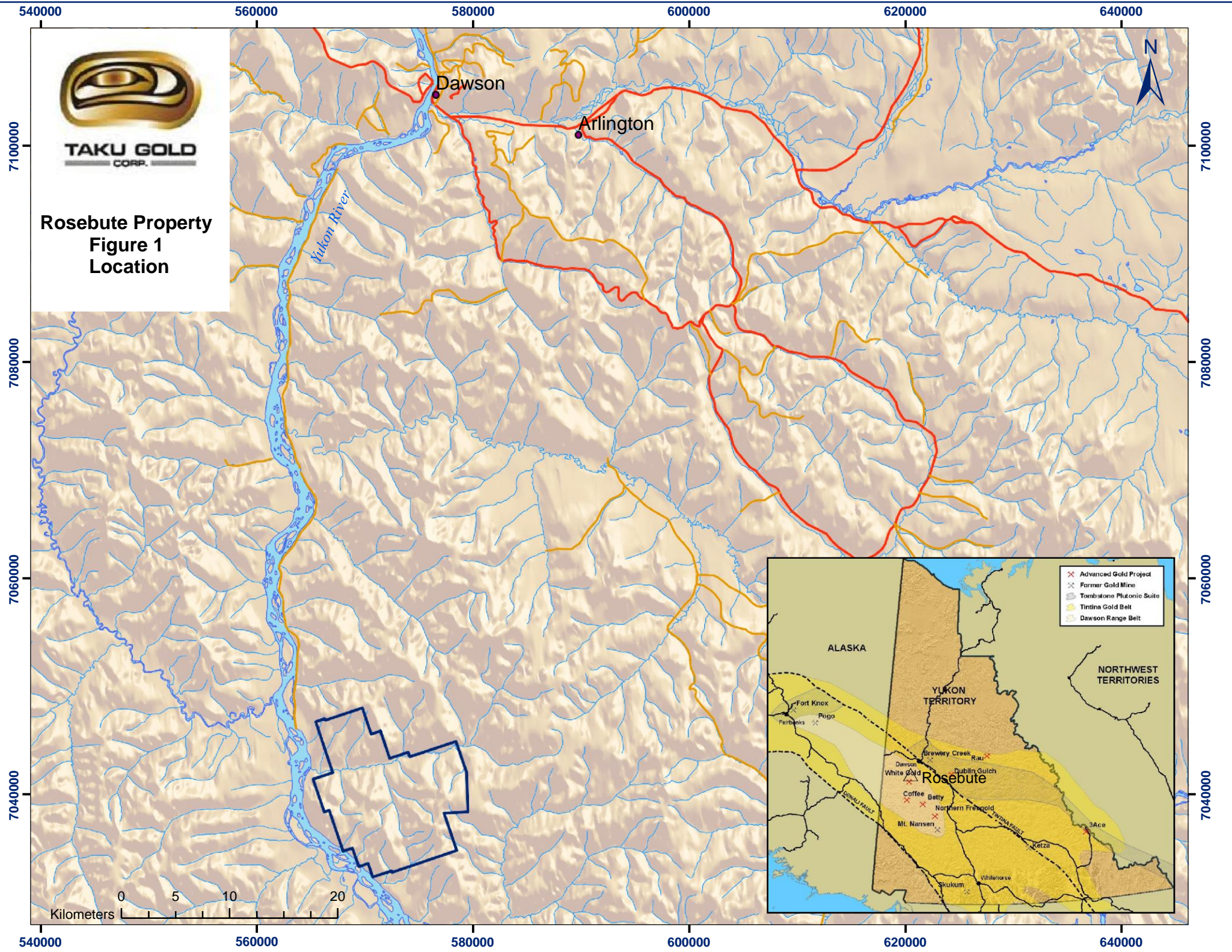
Rosebute is located approximately 65 kilometres due south of Dawson City in the Klondike gold camp of the Yukon at the headwaters of Rosebute Creek, a tributary of the Yukon River (Figure 1). The approximate centre of the Property is described by 63°28' North Latitude and 139°30' West Longitude on N.T.S. Sheets 115O05, 115O06, 115O11 and 115O12. The Property covers an approximate area of 14,085 hectares within the Dawson Mining Division and includes 694 un-surveyed mineral titles (Figure 2) more fully described in Table 1 below.

Table 1 - List of Claims

| Claim Name No. | Tag No. | Expiry Date | # |
|-----------------------|--------------------|--------------------|----------|
| Bute 1 to 62 | YC87401 to YC96396 | 9-Mar-27 | 62 |
| Rose 1 to 281 | YC87106 to YD43561 | 9-Mar-28 | 281 |
| Rose 282 to 412 | YD43562 to YD43692 | 9-Mar-27 | 131 |
| RS 1 to 48 | YD15751 to YD15798 | 9-Mar-27 | 48 |
| RS 51 to 220 | YD92271 to YE74832 | 9-Mar-27 | 172 |
| | | | 694 |

Taku holds the Property 100% subject to a two per cent (2%) Net Smelter Return (“NSR”) royalty payable to Shawn Ryan. Taku has the right to buy back the first one per cent (1%) of the NSR royalty for two million dollars (\$2,000,000). Advance royalty payments of \$25,000 are due annually up to a maximum of \$250,000 (\$125,000 paid).

The Property is located in an isolated part of Yukon with relatively few local resources or infrastructure. There is no road access to Rosebute. Access to the claims is by helicopter, which can be chartered year-round from Dawson City. The property is located approximately five kilometres east of the Yukon River, allowing for equipment and supplies to be barged in reasonably close to the Property before being slung in by helicopter. The Property can be worked by from Dawson City or from an exploration camp set up on or near the Property. A camp can be supported from Dawson City, where services are limited, or from Whitehorse where a full range of services are locally available including line-cutting, geophysics, drilling, assaying, aircraft charters, etc.



TAKU GOLD
CORP.

**Rosebute Property
Figure 1
Location**

- ✕ Advanced Gold Project
- ✕ Former Gold Mine
- ▨ Tombstone Plutonic Suite
- Tintina Gold Belt
- Dawson Range Belt



562000 565000 568000 571000 574000 577000 580000

N

7047000

7047000

7044000

7044000

7041000

7041000

7038000


7038000

7035000

7035000



Coordinate System: WGS 1984 UTM Zone 7N
 Projection: Transverse Mercator
 Datum: WGS 1984 Date: 2017-12-05



TAKU GOLD
CORP.

Rosebuté
Figure 2
Claims Rosebuté

562000 565000 568000 571000 574000 577000 580000

Previous Work

The following exploration history of the Property has been compiled from the Yukon Energy and Mines and Resources Library and Yukon Geological Survey MINFILE database. Prior to Taku, there has been limited exploration work on Rosebute. Table 2 below lists all known assessment reports that describe work done adjacent to and within the boundaries of the present Property in whole or in part.

Table 2 - Previous Assessment Work Files

| Company | Year | AFR No. | Author | Work | Link |
|-----------------------------------|------|----------------|----------------|---|--|
| Kennecott Canada Exploration Inc. | 2003 | 094441, 094388 | Roger Hulstein | Soil Geochem | 094441 , 094388 |
| Copper Ridge Explorations Inc. | 2005 | 094511 | J. Greg Dawson | Soil Geochem | 094511 |
| Taku Gold Corp. | 2010 | 095965 | Mark Fekete | Airborne Geophysics, Soil Geochem | 095965 |
| Taku Gold Corp. | 2011 | 096005 | Mark Fekete | Soil Geochem | 096005 |
| Taku Gold Corp. | 2012 | 096409 | Mark Fekete | Drilling, Surface work | 096409 |
| Taku Gold Corp. | 2013 | 096703 | Mark Fekete | Geophysics, geoprobe | 096703 |
| Independence Gold Corp. | 2016 | 097067 | B. Kienlen | RAB Drilling, Geophysics | Confidential |
| Taku Gold Corp. | 2017 | 097064 | Mark Feteke | Soil Geochem | Confidential |

There is one mineral showing documented within the area of the Property listed in Table 3 below:

Table 3 - MINFILE Showings

| MINFILE No. | MINEFILE Name | Link |
|-------------|---------------|--------------------------|
| 115O 167 | LJS | 115O 167 |

In 2010, Taku carried out an airborne geophysical survey over the entire Property existing at that time and collected 5,087 soil samples over three grids (Fekete and Huber, 2011). The “Norwest” zone was identified by this sampling.

In 2011, Taku Gold collected 2,356 reconnaissance ridge and spur soil samples over most of the Property existing at that time; and an additional 457 soil samples were taken between the 2010 grid lines on the Norwest zone (Fekete and Huber, 2012).

In 2012, extensive exploration was undertaken on the property including detailed soil geochemical sampling, prospecting, drilling, trenching and an IP/Res geophysical survey (Fekete and Huber, 2013). A very strong gold-in-soil zone trending northwest over a length of at least 1000m was identified by an initial 1,358 soil samples collected in June 2012 by Breakaway at 50m stations on lines spaced 50m apart (the “Hudbay” zone). The detailed grid sampling also identified a second anomalous gold-in-soil zone approximately 750m southeast of the Hudbay zone. Although the “Furtrade” zone showed much narrower dimensions and lower gold values than Hudbay, it was nonetheless interesting.

In October 2012 GroundTruth collected 829 soil samples on lines spaced 100m apart with 25m sample intervals over the Hudbay and Southeast zones. The overall results from the GroundTruth survey were essentially identical to and showed no improvement over the results from the first round of soil sampling performed by Breakaway and effectively validated Breakaway’s sampling methods (Fekete and Huber, 2013).

Based on all of the soil geochemical results, the Hudbay zone varies from 150m to 350m wide and shows a maximum gold-in-soil value of 916 ppb Au or 0.9 g/t Au. The southern end of the zone appears especially prospective with almost every sample showing strongly anomalous gold values greater than 60 ppb Au over an area 500m long by 350m wide. The Southeast zone was found to trend northwest over a length of 650m, vary from 50m to 250m in width and returned maximum gold values up to 96 ppb Au. Gold-in-soil values in the Hudbay and Southeast zones show excellent correlation with tungsten as well as other pathfinder elements such as silver and tellurium.

Prospecting was also undertaken in July 2012. Ninety samples of weathered bedrock returned up to 492 ppb Au from the Hudbay zone and up to 207 ppb Au from the Norwest Zone (Fekete and Huber, 2013). However, prospecting was determined to be relatively unproductive due to the lack of outcrop and very weathered nature of the bedrock.

In July 2012, 963m of drilling was completed in four core holes to test the subsurface extent of the four gold-in-soil anomalies that collectively make up the Norwest zone (Fekete and Huber, 2013). A total of 913 core samples were collected and analyzed. The first hole intersected 0.95 g/t Au over 23.4m from a depth of 22.6m. The second hole intersected 1.58 g/t Au over 1.0m from a depth of 19.0m in an area where a strong arsenic-in-soil anomaly was identified in 2011. The fourth hole intersected 0.88 g/t Au over 3.0m from a depth of 66.0m. The third hole was drilled to test a 900m long gold-in-soil trend with values up to 0.2 g/t Au, but it did not intersect any notable gold-bearing intervals.

In August 2012, a total of 1,341m of trenching was completed in nine trenches (Fekete and Huber, 2013). Seven trenches were completed to test the southern end of the Hudbay zone, and two trenches were completed to test the surface extent of the gold-bearing zone intersected in drill hole RO12-01. No major mineralized zones, structures or trends are visible in the trenches. However, a total of 332 rock samples identified a number of parallel, north-trending gold zones in the Hudbay area. Highlights of the sampling include 6.17 g/t Au over 5.0m from 35.0m in ROTH12-02 and 1.50 g/t Au over 20.0m from 130.0m in ROTH12-04 (Fekete, 2013).

In September 2012, an IP/Res survey was completed over the Hudbay area by GroundTruth. Three profiles were done for a total survey length of 647m. This survey was very experimental in nature and it returned ambiguous results (Fekete and Huber, 2013).

In September 2013, GroundTruth collected 141 rock samples on seven Geoprobe® lines covering an aggregate total of 680m. Highly anomalous results were obtained on all seven lines with maximum values up to 4.3 g/t Au (Fekete and Huber, 2014)

In 2016, Independence Gold Corp. optioned the Property and completed prospecting and ground magnetic surveys followed by a 12-hole (923.5m) Rotary Air Blast (“RAB”) drilling campaign over the Hudbay Zone (Kienlen et.al., 2017). Intercepts from the 2016 drilling included 0.50 g/t Au over 36.6m in hole RO16-15, 0.31 g/t Au over 38.1m in hole RO16-16 and 0.15 g/t Au over 91.4m in hole RO19-09.

In 2017, a total of 1,650 deep-auger-type soil samples were collected at 50m sample intervals lines spaced 100m apart as well as on reconnaissance ridge and spur lines on the western third of the Property. The grid sampling on the property was designed to identify the extents of the Hudbay and Furtrade zones. Overall, the work was successful in closing off the anomalies with favorable results adjacent to the Hudbay zone. The Hudbay zone was extended approximately 450m west with several anomalous soil values (i.e. > 10 ppb Au). Sampling from the reconnaissance ridge and spur work did not generate any new targets.

Geological Context and Deposit Model

The Property lies within the Yukon-Tanana Terrane (Figure 3) which, due to large areas with little or no bedrock exposure and limited modern regional or detailed mapping, remains very poorly understood. Generally, it consists of several successions of layered sedimentary and volcanic rocks ranging from Late Proterozoic to Late Permian age that overlay the older Nisling Terrane. These complexly deformed layered rocks have been episodically intruded by various intrusive rocks in the Permian, Jurassic, Cretaceous and Tertiary periods. The intrusive events have been accompanied by volcanic activity especially in the Upper Jurassic to Lower Cretaceous. The Yukon-Tanana has been subjected to numerous, prolonged deformational events, including subduction and accretion, that has led to significant structural thickening. Imbricated allochthonous terranes such as Slide Mountain Terrane are evidenced by altered ultramafic fragments.

The most recent regional mapping and compilation work in the Stewart River area (Ryan and Gordey, 2004) indicates that the Property is dominated by Devonian to Mississippian meta-siliciclastic rocks (DMps), which interfinger with, and are stratigraphically overlain by, intermediate to mafic amphibolite

(DMA; Figure 4). The meta-siliciclastic rocks include metamorphosed fine clastic rocks, quartzite and conglomerate. The above lithologies include marble horizons (DMc) and are metamorphosed to amphibolite grade. Devonian to Mississippian meta-sedimentary rocks (quartzite and metapelite) of the Nasina Assemblage (DMq) is structurally above and/or may partly be equivalent to the above meta-clastic unit.

Abundant orthogneiss bodies of Devonian to Mississippian (DMog – undivided, DMogg, DMoga, DMogt, DMogta) and Permian ages (Pog – undivided, Pogg, Poga), with compositions ranging from granite (g) to K-spar augen bearing (a), to tonalite and diorite (t), occur within Yukon-Tanana Terrane. DMogta represents undivided DMogt and DMA. Narrow bodies of Paleozoic ultramafic rocks (mPum), commonly serpentinized (mPums), also occur within the area.

The above units are interpreted to represent two arcs, an older Devonian to Mississippian arc consisting of amphibolite (DMA) and associated subvolcanic intrusions (DMogg, DMoga, DMogt) built on siliciclastic basement (DMps, DMq, DMcg, DMNq) and a Permian arc of granitic orthogneiss (Pogg, Poga) and coeval metavolcanic rocks (PKs) built on the Devonian-Mississippian arc.

The above lithologies are intruded by small plugs and stocks of Jurassic (eJgd) and Cretaceous (Kg) age syenite, quartz monzonite and granodiorite, are unconformably overlain by massive andesite flows and breccias of the Late Cretaceous Carmacks Group (uKv) and locally with Early Cretaceous coarse clastic sedimentary rocks at the base of the sequence (IKs). Eocene feldspar ± quartz porphyry dykes intrude the above (Er).

The Property lies within an underexplored part of the White Gold district within the loosely defined Tintina Gold Belt. This metallogenic province has 29.9 million ounces of past gold production and 39.3 million ounces of known gold resources for total gold endowment of 69.2 million ounces. Notable gold deposits are Donlin Creek, Ft. Knox, Pogo and Brewery Creek. The White Gold district is host to several advanced projects including the White Gold Corp.'s White Gold project, 20km south of the Property, and Comstock Metals Ltd.'s QV project, 10km southwest of the Property. The White Gold project hosts the Golden Saddle zone which has NI43-101 resources of 9.7 Mt of 3.2 g/t Au indicated and an additional 4.1 Mt at 2.3g/t Au inferred, and the Arc zone with resources of 4.4 Mt at 1.2 g/t Au inferred (Weiershauser et. al., 2010). The QV project hosts the VG zone which has NI43-101 resources of 4.4 Mt at 1.7 g/t Au (Comstock news release, July 8, 2014).

The Klondike-White Gold district lies within the larger Dawson Range area where a number of known gold and porphyry copper deposits show a wide range of styles, geological settings and geochemical associations. Taku's exploration effort at Rosebute is not adhering to any firm deposit model but is instead based on practical survey methods that generate drill targets and have led to discoveries by other groups working in the area.

2019 Exploration

A 283m trenching program survey, as well as minor rock sampling, was completed on Rosebute in 2019 from September 12th to 19th. The three-person crew was supported by helicopter from White Gold Corp.'s Vertigo Camp located to the southwest. Professional Geologist Jean Pautler managed the trenching program and wrote the below section titled '2019 Exploration Overview'.

2019 Exploration Overview

A total of 283m of trenching was carried out in 2 trenches between September 12th and 19th. Trench specifications are summarized in Table 1. The entire trenches were sampled and select grab samples collected, resulting in 126 samples, which were sent in to ALS Minerals for geochemical analysis for gold by fire assay with an atomic absorption finish on a 30g aliquot (Au-AA-23) and multi-element analysis by inductively coupled plasma techniques (ME-ICP-41 and ME-ICP-42 for Te).

The trenches were excavated perpendicular to the easterly trending 2012 trenches, which were excavated across a 1.3 km long, northerly trending gold-silver-tungsten-molybdenum soil anomaly (HudBay anomaly). Results from the 2012 program, at the southern end of the anomaly, returned 1.5 g/t Au over 20m in TR12-

04, including 4.2 g/tAu over 5m, 0.35 g/t Au over 81m in TR12-05 and 6.1 g/t Au over 5m in TR12-02. Geoprobe lines in 2013 within the TR12-04 to TR12-05 area also returned significant gold results with 6 of the 47 samples returning values between 0.527 to 0.818 g/t Au. An examination of the trenches in 2014 indicated a 3m vein trending 245°/85°N at the highergrade intercept in TR12-04 and visible gold was present at the highestgrade interval within TR12-05. Other structures trending 245° were encountered within the trenches, including fault zones. Other vein orientations observed were 230°/80°N, and one at 035° in TR12-05. RAB drilling in 2016 intersected some anomalous zones but all holes were directed north at a -70° dip, which would not favorably intersect the northerly dipping structures.

The 2019 program was successful in confirming the presence of additional west-southwest to southwesterly trending structures. A 70 cm vein trending 245°/85°N was intersected near the southern end of TR19-10 within a broad 30m wide quartz, ± oxidized cubic pyrite, stockwork and sericite and potassic-hematite alteration zone. A fault zone at 18.5m trends 245-250°/steep(?) and a large fault zone from 40 to 52m trends 250°/steep with stockwork veins on its northern margin. Jointing occurs at 355°/80-85°E and 235-240°/78°N. Alteration diminishes to the north of the fault to the end of the trench.

TR19-11, which lies about 70m north of TR19-10, begins in sericite and potassic-hematite alteration and minor quartz veinlets. A fault occurs at 7m and quartz stockwork at 9 to 13.5m, including vein rubble to 7 cm. Another quartz stockwork occurs at 22m, with minor stockwork veins at 17m, between 39.4 and 44.5m, at 51m, and at 60m. A 50 cm vein at 79.3m appears to trend 073°/88°S and occurs within a 7.5m wide stockwork zone. Fault zones were intersected from 97 to 110m and 123.4 to 132m, with strands (at 067°/80°S) continuing to another fault at 151.5m which shows orientations of 107° and 136°, both steeply dipping. The latter fault is followed by stockwork veins to 153.7m in the trench. Other faults are evident at 172.6 to 175 and at 200m (250°/N). Joints at 205m trend 210°/60°NW and 295°/88°N.

Hosts rocks are biotite-quartz-feldspar orthogneiss, paragneiss and schist. Marble was encountered at the north end of TR19-11. Foliation was generally found to trend 040°/50°SE and 048°/10°SE, but locally near TR12-03 (109.2m in TR19-11) is 340°/20°E.

The north end of the HudBay anomaly was also tested by geoprobe sampling in 2013 along three, 070° trending lines, 100m apart. Results show a northerly trend with values of 1.2, 1.1, and 4.3 g/t Au from south to north and open along trend. A trench was prepared (flagged and cut) at the southern end of the anomaly to test for the source and actual trend of the zone and a nearby existing helipad was brushed out at 568579mE 7041348mN. Due to time constraints the trench was not excavated.

Data Verification

It is the Authors' opinion that the sampling procedures, security measures, sample preparations and analytical methods applied to the soil, rock and core samples were diligently followed and are adequate to meet industry standards commonly accepted or this level of exploration. The authors have relied upon the adequacy and accuracy of the analytical results provided by ALS Minerals. Independent verification of those results has not been undertaken.

Interpretation and Conclusions

Highlights of the 2019 program include trench T19-11 that intersected two separate parallel gold zones highlighted by 17.5m of 1.9 g/t gold, including a higher grade interval of 2.4m of 5.2 g/t gold from westerly trending veins and stockwork zones. Importantly, T19-11 confirmed that significant gold mineralization at the Hudbay zone is predominately hosted by west-southwest rather than north-south structures as previously interpreted. This new understanding has contributed to several follow-up targets to expand the 17.5m wide gold zone identified in T19-11 along strike in both directions and to test the larger Hudbay zone, one of the most significant soil anomalies within the emerging White Gold District.

Recommendations

It is recommended that additional trenching and a VLF survey be completed to further delineate the extent of west-southwest controlling structures at the HudBay zone followed by a RAB drilling program depending upon results. Total estimated costs for the work program is approximately \$520,000 with a

trenching program based on an all-inclusive estimate of \$150/m totaling \$300,000 and approximately RAB drilling costs of \$220,000 based on all-inclusive costs of \$220/m.

References

- Comstock Metals Ltd. (2014). <http://www.comstock-metals.com/news-2014>, consulted November 23, 2017
- Gordey, S.P. and Ryan, J.J. (2005): Geology, Stewart River Area (115 N, 115-O and part of 115 J), Yukon Territory; Geological Survey of Canada, Open File 4970, scale 1:250 000.
- Mortensen, J.K. (1996): Geological compilation maps of the northern Stewart River map area, Klondike and Sixtymile Districts (115N/15, 16; 115O/13, 14; and parts of 115O/15, 16). Exploration and Geological Services Division, Yukon region, Indian and Northern Affairs Canada, Open File 1996-1 (G).
- Fekete, M. and Huber, M. (2011): 2010 surface work on the Rosebute property, Dawson Mining District, Yukon, NTS Sheets 115O05, O06, O11 & O12, 63°28'N. Lat., 139°30'W. Long. (unpub.)
- Fekete, M. and Huber, M. (2012): 2011 soil geochemical survey on the Rosebute property, Dawson Mining District, Yukon, NTS Sheets 115O05, O06, O11 & O12, 63°28'N. Lat., 139°30'W. Long. (unpub.)
- Fekete, M. and Huber, M (2013): Memorandum Report 2012 drilling and surface work on the Rosebute property, Dawson Mining District, Yukon, NTS Sheets 115O05, O06, O11 & O12, 63°28'N. Lat., 139°30'W. Long. (unpub.)
- Fekete, M. and Huber, M (2014): Memorandum Report surface work on the Rosebute property, Dawson Mining District, Yukon, NTS Sheets 115O05, O06, O11 & O12, 63°28'N. Lat., 139°30'W. Long. (unpub.)
- Fekete, M. and Huber, M (2017): Memorandum Report surface work on the Rosebute property, Dawson Mining District, Yukon, NTS Sheets 115O05, O06, O11 & O12, 63°28'N. Lat., 139°30'W. Long. (unpub.)
- Kienlan, B., Gale, D., and Johnston, K. (2017): Assessment report on the 2016 Exploration Program on the Rosebute Project, Yukon (unpub.)
- Weiershauser, L., Nowak, M., Barnett, W. (2010): White Gold Property, Dawson Range, Yukon, Canada. Prepared for Underworld Resources Ltd. by SRK Consulting (Canada) Inc. and reviewed by Gilles Arseneau.
- White Gold Corp. website (2017): <http://whitegoldcorp.ca>, consulted November 23, 2017

Legend

Outboard

CG Chugach

YA Yakutat

Insular

4 WR Wrangellia

AX Alexander

KS Kluane schist

Arctic

AA Arctic Alaska

Intermontane

CC Cache Creek

ST Stikinia

QN Quesnellia

YT Yukon-Tanana

SM Slide Mountain

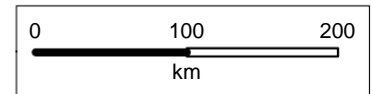
Ancestral North America

CA Cassiar

NAb basinal facies

NAp shelf facies

NAc graton & cover



Copyright © 2011
Yukon Geological Survey

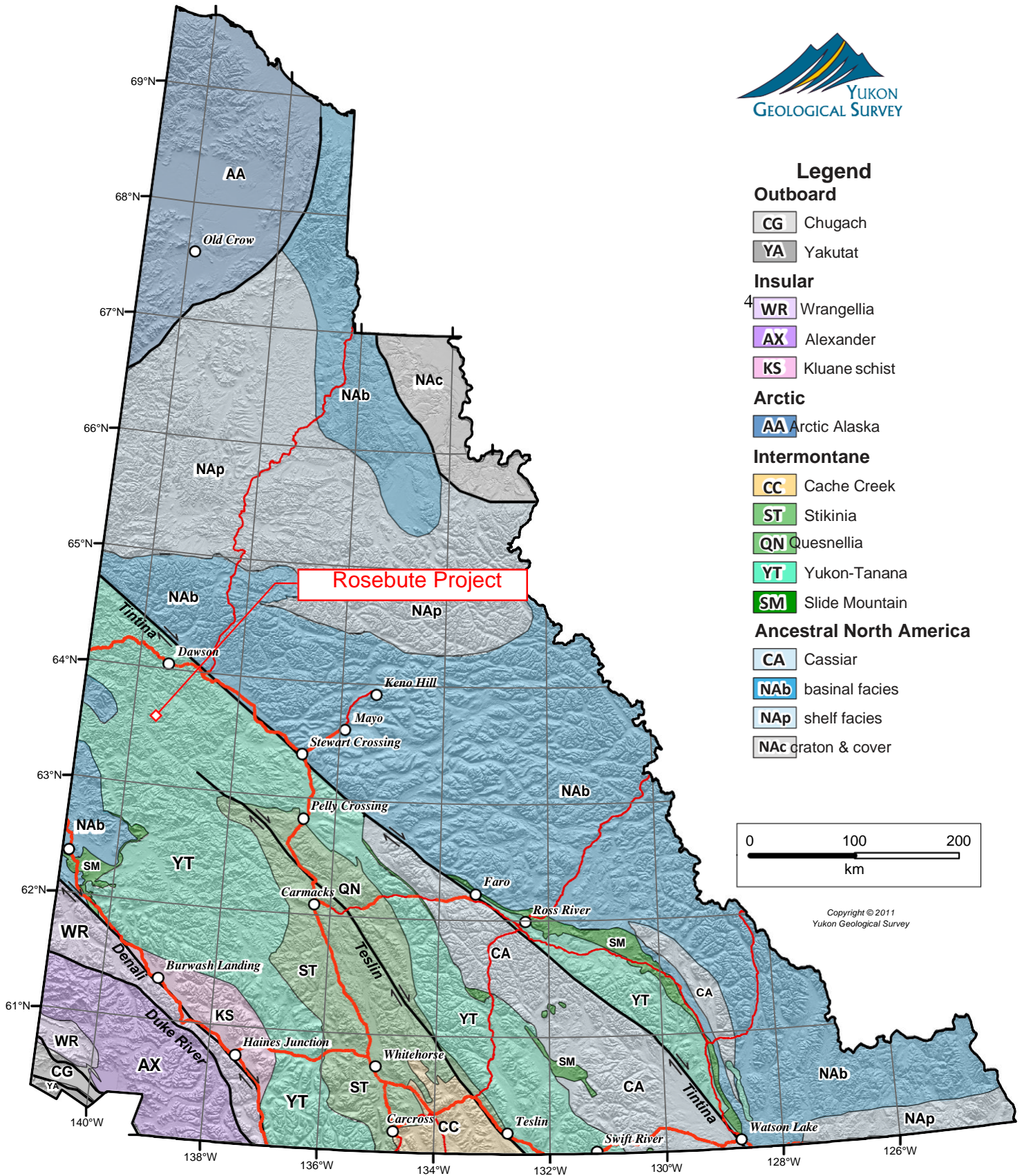
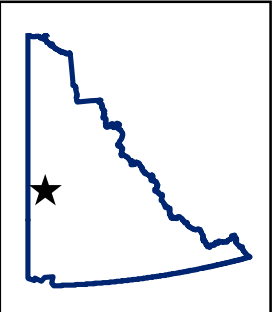
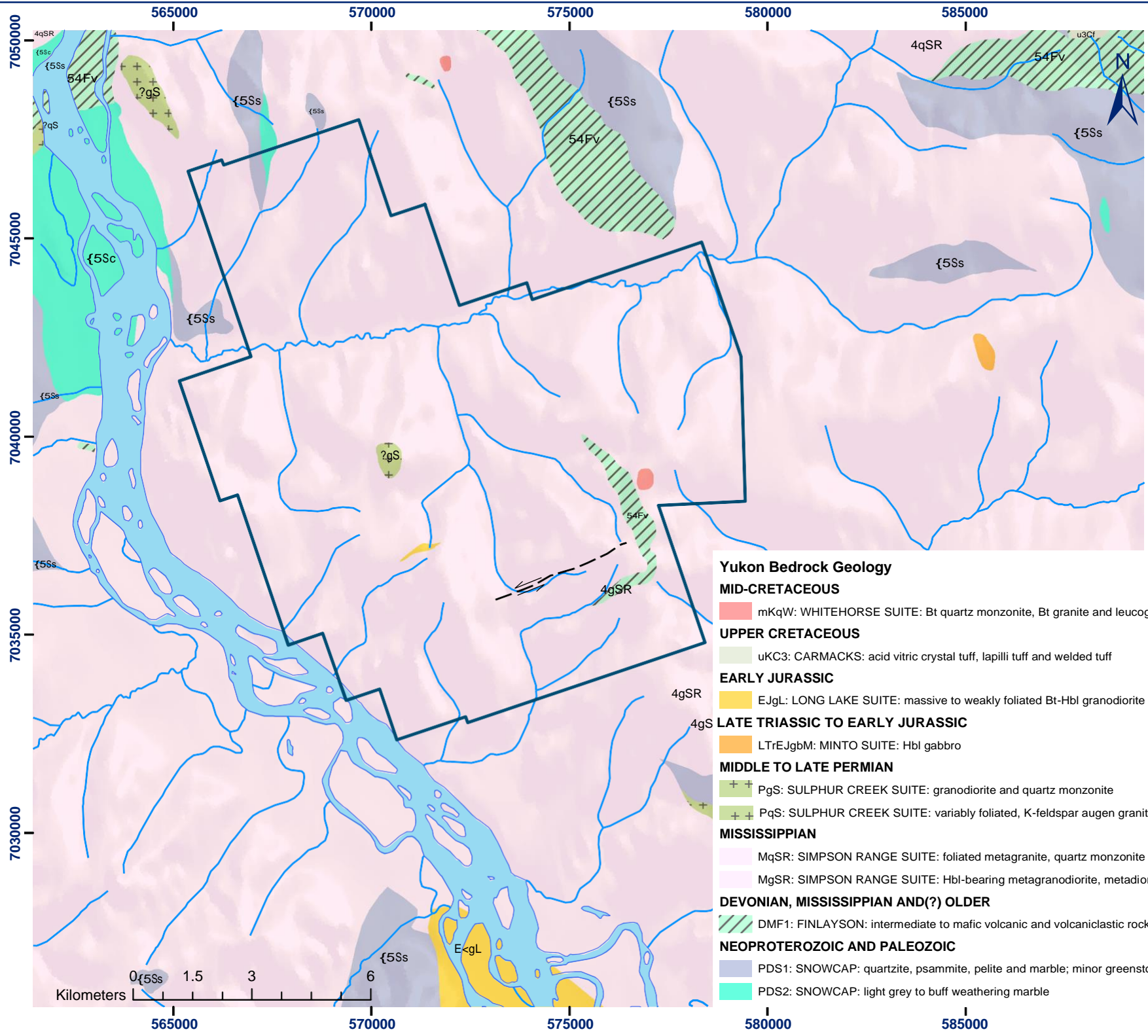
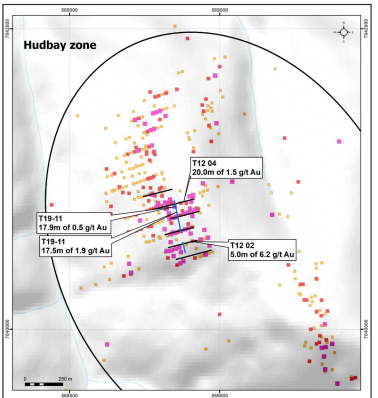


Figure 3 - Yukon Tectonic Map



**Rosebute Property
Figure 4
Geology**

- Yukon Bedrock Geology**
- MID-CRETACEOUS**
 - mKqW: WHITEHORSE SUITE: Bt quartz monzonite, Bt granite and leucogranite
 - UPPER CRETACEOUS**
 - uKc3: CARMACKS: acid vitric crystal tuff, lapilli tuff and welded tuff
 - EARLY JURASSIC**
 - EJgL: LONG LAKE SUITE: massive to weakly foliated Bt-Hbl granodiorite
 - LATE TRIASSIC TO EARLY JURASSIC**
 - LTrEJgbM: MINTO SUITE: Hbl gabbro
 - MIDDLE TO LATE PERMIAN**
 - PgS: SULPHUR CREEK SUITE: granodiorite and quartz monzonite
 - PqS: SULPHUR CREEK SUITE: variably foliated, K-feldspar augen granite, metaporphry
 - MISSISSIPPIAN**
 - MqSR: SIMPSON RANGE SUITE: foliated metagranite, quartz monzonite and granodiorite; augen granite
 - MgSR: SIMPSON RANGE SUITE: Hbl-bearing metagranodiorite, metadiorite and metatonalite
 - DEVONIAN, MISSISSIPPIAN AND(?) OLDER**
 - DMF1: FINLAYSON: intermediate to mafic volcanic and volcanoclastic rocks
 - NEOPROTEROZOIC AND PALEOZOIC**
 - PDS1: SNOWCAP: quartzite, psammite, pelite and marble; minor greenstone and amphibolite
 - PDS2: SNOWCAP: light grey to buff weathering marble



Legend



TAKU GOLD
CORPORATION

Rosebute Property Trenching and Soils

| | |
|-------------|--------------------------------|
| DATE: | 24/02/2020 |
| MAPID: | TD_003_Rosebute_TrenchandSoils |
| Projection: | NAD83 UTM Zone 18N |

Appendix A: Sample Location and Descriptions

2019 Trench Sample Descriptions with Select Results

| SAMPLE NUMBER | LOCATION (m) FROM | TO | NAD 83 Zone 7 EASTING | interval NORTHING(m) | Lithology | ROSEBUTE PROJECT DESCRIPTION | Au ppm | Ag ppm | Ba ppm | W ppm | Te ppm | Mo ppm | |
|---------------|--------------------------------------|-----------------------|-----------------------|-------------------------|--------------------------------|--|--------|--------|--------|-------|--------|--------|----|
| 1817346 | prior to trenching | TR19-11 | 568735 | 7040694 grab | quartz | 2-3 cm wide white quartz vein with sheeted fractures parallel to vein margin with limonite, goethite, Mn, locally crystalline quartz vugs, chlorite infilling, as float along trench trail, prior to trenching grab of host orthogneiss from 1817346 quartz vein, with weak epidote on fractures, fine clots of disseminated pyrite, generally along fractures, minor drusy quartz-limonite-Mn veinlets to 4 mm, 3-4% pyrite, as float along trench trail | 0.051 | <0.2 | | 10 | <10 | 0.09 | <1 |
| 1817347 | prior to trenching | TR19-11 | 568736 | 7040694 grab | orthogneiss | | 0.007 | <0.2 | | 80 | <10 | 0.03 | <1 |
| 1817348 | prior to trenching | TR19-11 | 568729 | 7040712 grab | quartz | 4 cm wide white quartz vein with crystalline quartz vugs, 3% oxidized cubic pyrite, silica haloes (few mm) along Mn fracture fillings, minor limonite, as float along trench trail, prior to trenching | 0.016 | <0.2 | | 40 | 540 | 0.13 | 5 |
| 1817349 | prior to trenching | TR19-11 | 568713 | 7040787 grab | quartz | well fractured 12 cm wide, rusty weathering quartz vein float blocks with Mn, limonite, fracture fillings, 3% oxidized cubic pyrite, some drusy quartz, pinkified (Kspar-hematite) wallrock (orthogneiss) clasts | 0.008 | <0.2 | | 30 | <10 | 0.02 | 1 |
| 1817350 | prior to trenching TR19-10 Az 347 | TR19-10 length 70m | 568760 568770 | 7040516 grab 7040510 | quartz | quartz veins to 3 cm, some calcite generally as fracture fillings and clots, cutting variably clay altered orthogneiss, some foliation parallel veins, 5% oxidized cubic pyrite, limonite, ankerite, Mn, black sooty mineral, along fractures, local green sericite N.B. GPS is for start of interval weak to moderate sericite altered orthogneiss with moderate limonite and weak Mn fracture fillings, 2-3% goethite knots, patchy pinkification (pervasive Kspar & hematite alteration), few quartz veinlets to 1 cm silicified orthogneiss with moderate limonite and weak Mn fracture fillings, weak sericite alteration, with 35% quartz in interval as stockwork veins to 3 cm, most 0.5 - 1 cm, some sooty black mineral and minor pyrite in veins | 1.175 | 4.3 | 2150 | 10 | 2.19 | <1 | |
| 1817351 | | 1.9 | 2.9 | | 1 orthogneiss | | 0.54 | 2.8 | 70 | <10 | 1.52 | <1 | |
| 1817352 | | 2.9 | 3.9 | | 1 orthogneiss | | 0.276 | 2.6 | 1240 | <10 | 0.86 | <1 | |
| 1817353 | | 3.9 | 4.6 | | 0.7 quartz | white quartz vein trending 245/85N with moderate to strong limonite and Mn, open crystalline vugs, sooty black mineral in fractures, weak sericite and clay on margins; 0.6m true width | 0.182 | 1.5 | 2820 | <10 | 0.48 | <1 | |
| 1817354 | | 4.6 | 5.6 | | 1 orthogneiss | weak sericite altered orthogneiss with weak limonite and Mn fracture fillings, weak clay-limonite fracture fillings, few 0.3 to 1 cm quartz veins, some vuggy with Mn infilling | 0.054 | 1.5 | 740 | <10 | 0.21 | <1 | |
| 1817355 | | 5.6 | 7.5 | | 1.9 orthogneiss | weak sericite altered orthogneiss with moderate limonite and weak Mn fracture fillings, and weak clay-limonite fracture fillings, with 35% quartz in interval as stockwork veins to 1-2 cm, vuggy, minor weathered out calcite | 0.084 | 0.7 | 1400 | <10 | 0.2 | <1 | |
| 1817356 | | 7.5 | 10 | | 2.5 orthogneiss | weak sericite altered orthogneiss with moderate limonite and weak Mn fracture fillings, with 1-2% pyrite and 10% quartz-weak calcite in interval as stockwork veins to 1 cm, vuggy, minor quartz-barite or albite? veins | 0.083 | 0.3 | 2860 | <10 | 0.21 | <1 | |
| 1817357 | bridge | 10 12 | 12 16 | | 2 orthogneiss 4 orthogneiss | weak sericite altered and pinkified orthogneiss with moderate limonite and weak Mn blebs and fracture fillings, and weak clay-limonite fracture fillings, with 20% quartz in interval as stockwork veins to 1 cm, vuggy, minor clay-gouge | 0.056 | 0.3 | 340 | <10 | 0.16 | <1 | |
| 1817358 | | 16 | 17.9 | 568762 7040527 | 1.9 orthogneiss | striped, moderate silicified, strongly pinkified orthogneiss with strong limonite and moderate Mn fracture fillings, moderate silicification, minor spec hematite, 1-2% oxidized cubic pyrite, 10% quartz, weak calcite in interval as stockwork veins to 1 cm clay fault gouge trending 245-250/steep with 70% greyish-white vuggy quartz with weathered out calcite and limonite-Mn as fracture fillings and in vugs | 0.071 | 0.2 | 100 | 10 | 0.17 | 3 | |
| 1817359 | | 17.9 | 18.9 | | 1 fault | | 0.837 | 2.1 | 120 | 10 | 1.91 | 19 | |
| 1817360 | | 18.9 | 20.2 | | 1.3 orthogneiss | striped quartz/potassic altered layers, moderate silicified, strongly pinkified orthogneiss with strong limonite and moderate Mn fracture fillings, 3-5% oxidized cubic pyrite and boxwork, minor quartz in interval as stockwork veins, some drusy and vuggy, to 2 cm; very minor quartz-biotite-feldspar schist | 1.515 | 3.3 | 130 | 280 | 2.77 | 25 | |

| | | | | | | | | | | | |
|-----------------|---------------|------|----------------|-----------------------------|--|------------|------|---------|-----|---------|----|
| 1817361 | | | | standard | CDN-GS-2K | 1.9 | 0.3 | 110 | 20 | 0.09 | 3 |
| 1817362 | | | | blank | CDN-BL-8 | <0.005 | <0.2 | 70 | 10 | 0.03 | 3 |
| 1817363 | 20.2 | 24.2 | | 4 QBF schist | quartz-biotite-feldspar schist with 1% oxidized cubic pyrite, lots Mn fracture fillings, some limonite, local hematite, 5% quartz as stockwork veins to 1 cm | 0.044 | 0.2 | 1010 | 20 | 0.1 | 1 |
| 1817364 | 24.2 | 27.1 | | 2.9 orthogneiss | striped sericite altered/pinkified orthogneiss with foliation parallel silicification and few mm quartz veins, also crosscutting quartz veinlets and 30% quartz as irregular stockwork veins, 2% oxidized cubic pyrite, moderate clay-limonite and weak calcite fracture fillings, minor talc & chlorite | 0.083 | 0.5 | 120 | 10 | 0.19 | 1 |
| 1817365 | 27.1 | 29.6 | | 2.5 orthogneiss | striped sericite altered/weakly pinkified orthogneiss with foliation parallel silicification and few mm quartz veins, also crosscutting quartz veinlets and 5% quartz as irregular stockwork veins, 2% oxidized cubic pyrite, moderate limonite-ankerite fracture fillings, minor chlorite | 0.789 | 1.5 | 200 <10 | | 0.86 | 1 |
| 1817366 | 26 | | | grab quartz stockwork | 70% quartz as stockwork veins to 2 cm wide, 1% oxidized cubic pyrite, moderate limonite-ankerite, very weak Mn and chlorite fracture fillings, in pervasively pinkified orthogneiss, weakly magnetic | 0.057 | 0.2 | 50 | 10 | 0.17 <1 | |
| 1817367 | 30 | | | grab quartz | 7 cm quartz vein block with 6% oxidized cubic pyrite, some fresh pyrite cubes, well fractured with limonite, minor talc, fracture fillings, occasional vuggy quartz, weak clay altered feldspar | 4.43 | 12 | 860 | 90 | 9.04 | 97 |
| 1817368 | 30 | | | grab CRD | coarse reject duplicate of 1817367 | 4.76 | 13.8 | 850 | 100 | 9.64 | 99 |
| 1817369 | 29.6 | 32.3 | | 2.7 orthogneiss | striped weakly pinkified & sericite altered orthogneiss with minor crosscutting quartz veinlets to a few mm, some vuggy, weak limonite, Mn fracture fillings, minor chlorite | 0.094 | 0.6 | 310 | 40 | 0.27 | 7 |
| 1817370 | 32.3 | 35.1 | | 2.8 QBF schist | quartz-biotite-feldspar schist with minor limonite-clay fracture fillings | 0.038 | 0.3 | 330 | 20 | 0.1 <1 | |
| 1817371 | 35.1 | 37.5 | | 2.4 orthogneiss | striped very weakly pinkified orthogneiss with weak limonite-ankerite-clay, Mn fracture fillings | 0.034 | 0.2 | 140 | 10 | 0.12 <1 | |
| 1817372 | 26.5 | | | grab quartz stockwork | vuggy quartz-ankerite stockwork veins to 4 cm with Mn infilling vugs, in sericite-ankerite? altered orthogneiss | 0.048 <0.2 | | 160 | 10 | 0.11 <1 | |
| 1817373 | 37.5 | 38 | | 0.5 orthogneiss | striped weakly pinkified & sericite altered orthogneiss weak limonite-ankerite-clay fracture fillings, minor jarosite | <0.005 | <0.2 | 90 | 10 | 0.02 <1 | |
| bridge | 38 | 40 | 568761 7040546 | 2 orthogneiss | | | | | | | |
| 1817374 | 40 | 42.2 | | 2.2 fault | fault zone with weak limonite, weak-moderate clay gouge, some weak sericite altered, pinkified orthogneiss, and weak hematite & Mn fracture fillings. | 0.083 | 0.2 | 140 <10 | | 0.2 | 1 |
| 1817375 | 42.2 | 43 | | 0.8 QBF schist | weakly hornfelsed quartz-biotite-feldspar schist with weak Mn, trace limonite fracture fillings | 0.025 | 0.3 | 250 <10 | | 0.03 <1 | |
| 1817376 | 43 | 48.5 | | 5.5 QBF schist | quartz-biotite-feldspar schist with weak Mn, trace limonite fracture fillings | 0.031 | 0.4 | 550 <10 | | 0.1 <1 | |
| 1817377 | 48.5 | 52 | | 3.5 fault | quartz-biotite-feldspar schist with weak Mn, moderate limonite fracture fillings in limonitic clay fault zone trending 250/steep | 0.091 | 0.9 | 640 | 10 | 0.31 | 2 |
| 1817378 | 52 | 56.5 | 568755 7040565 | 4.5 QBF schist | quartz-biotite-feldspar schist with trace hematite-calcite fracture fillings | 0.552 | 2.4 | 650 <10 | | 1.35 | 2 |
| 1817379 | 56.5 | 59.2 | | 2.7 QBF schist | quartz-biotite-feldspar schist with minor calcite fracture fillings and patchy (7%) sericite alteration | 0.334 | 0.8 | 360 <10 | | 0.73 | 1 |
| 1817380 | 59.2 | 62.6 | | 3.4 QBF schist, orthogneiss | mixed zone of weakly pinkified orthogneiss, with weak calcite fracture fillings, and very weak stockwork veins, and quartz-biotite-feldspar schist | 0.005 <0.2 | | 230 <10 | | 0.02 <1 | |
| 1817381 | 62.6 | 65 | | 2.4 QBF schist | quartz-biotite-feldspar schist with minor hematite and Mn, very weak calcite fracture fillings | 0.009 | 0.3 | 280 <10 | | 0.07 | 1 |
| 1817382 | 65 | 70 | | 5 QBF schist, orthogneiss | mixed zone of pervasive moderately pinkified orthogneiss, with mm size chlorite veinlets with narrow Kspar haloes, and quartz-biotite-feldspar schist | <0.005 | <0.2 | 210 <10 | | 0.02 <1 | |
| 1817383 58 & 60 | | | | grab orthogneiss | few mm to 1 cm wide stockwork veins, some vuggy, some with Kspar haloes, in weak sericite altered orthogneiss with some pinkification and specular hematite on fractures | 0.601 | 1 | 190 <10 | | 1 <1 | |
| end of trench | 70 | | 568750 7040579 | | | | | | | | |
| TR19-11 Az 347 | length 213.1m | | 568748 7040636 | | | | | | | | |
| 1817384 | | | | standard | CDN-GS-2K | 1.95 | 0.5 | 120 | 20 | 0.07 | 3 |
| 1817385 | | | | blank | CDN-BL-8 | <0.005 | <0.2 | 80 | 10 | 0.02 | 4 |

| | | | | | | | | | | | |
|---------------------|------|------|------|----------------------------|---|------------|-----|---------|-----|---------|---|
| 1817386 | 1.5 | 2.5 | | 1 orthogneiss | weak pinkified orthogneiss with minor quartz veinlets to a few mm, Mn and minor calcite fracture fillings | 0.028 | 0.3 | 160 | 40 | 0.12 | 1 |
| 1817387 | 2.5 | 3.6 | | 1.1 fault | weak pinkified orthogneiss with minor quartz veinlets to a few mm, weak fine vuggy fractures with Mn and minor calcite, in dry fault zone with minor clay gouge | 0.019 | 0.5 | 180 <10 | | 0.09 | 1 |
| 1817388 | 3.6 | 6.1 | | 2.5 orthogneiss | weak to moderate pinkified orthogneiss with minor quartz veinlets to a few mm, weak fine vuggy fractures with Mn | 0.22 | 0.8 | 180 <10 | | 0.74 | 4 |
| 1817389 | 6.1 | 7.9 | | 1.8 orthogneiss fault | weak pinkified orthogneiss with Mn fracture fillings, weak clay fault gouge | 0.027 <0.2 | | 150 | 10 | 0.05 <1 | |
| 1817390 | 7.9 | 9 | | 1.1 orthogneiss | weak pinkified orthogneiss with Mn & minor clay-limonite fracture fillings | 0.018 <0.2 | | 160 <10 | | 0.03 <1 | |
| 1817391 | 9 | 9.5 | | 0.5 orthogneiss | weak pinkified orthogneiss with Mn & minor clay-limonite fracture fillings, 25% quartz as stockwork veins, some vuggy, to 2 cm; near contact with schist | 0.012 | 0.2 | 180 <10 | | 0.03 | 1 |
| 1817392 | 9.15 | 9.35 | | 0.2 quartz | 6 cm quartz vein with parallel drusy Mn filled fractures hosted in pinkified orthogneiss | 0.005 <0.2 | | 160 <10 | | 0.02 | 1 |
| 1817393 | 9.5 | 10.5 | | 1 orthogneiss | weak pinkified orthogneiss with Mn & minor clay-limonite fracture fillings; near contact with schist | 0.019 <0.2 | | 190 <10 | | 0.03 | 1 |
| 1817394 | 8.5 | | grab | quartz stockwork | pinkified, variably silicified orthogneiss with Mn & minor clay-limonite fracture fillings, 15% quartz as stockwork veins, some vuggy, to 2.5 cm, most 0.7-1 cm wide, black Mn specks, moderate limonite | 0.017 <0.2 | | 70 | 10 | 0.06 | 1 |
| 1817395 12.2 & 13.5 | | | grab | quartz stockwork | weak pinkified & silicified, moderately limonitic gneiss with 7% quartz as stockwork veins, some vuggy, to 1 cm, Mn infilling vugs and black sooty mineral, moderate limonite fracture fillings with 1% fine oxidized cubic pyrite | 0.034 <0.2 | | 70 | 10 | 0.2 | 6 |
| 1817396 | 10.5 | 12.8 | | 2.3 BQF gneiss | weak pinkified gneiss with Mn & minor & patchy weak sericite altered limonite fracture fillings, minor greenish mineral? (clay?) on fractures; at contact between orthogneiss and paragneiss | 0.02 <0.2 | | 180 <10 | | 0.05 | 1 |
| 1817397 | 12.8 | 16.1 | | 3.3 BQF gneiss | hornfelsed weak pinkified metasedimentary biotite-quartz-feldspar gneiss, Mn staining and minor fracture fillings, weak patchy (8%) sericite alteration | 0.026 <0.2 | | 130 <10 | | 0.06 | 1 |
| 1817398 | 16.1 | 17.6 | | 1.5 BQF gneiss | hornfelsed weak pinkified metasedimentary biotite-quartz-feldspar gneiss, Mn staining and minor fracture fillings, weak patchy (8%) sericite alteration, minor quartz stockwork, to 2 cm, most 1 cm wide, with some Mn infilling vugs, minor Kspar-quartz veins to 1 cm | 0.017 <0.2 | | 120 <10 | | 0.04 | 1 |
| 1817399 | 17.6 | 20.8 | | 3.2 BQF gneiss | hornfelsed weak pinkified metasedimentary biotite-quartz-feldspar gneiss, Mn staining and minor fracture fillings, red earthy hematite on fractures, minor quartz veins to 1 cm | 0.02 <0.2 | | 170 <10 | | 0.08 | 1 |
| 1817400 | 20.8 | 22.5 | | 1.7 BQF gneiss | hornfelsed weak pinkified metasedimentary biotite-quartz-feldspar gneiss, Mn staining and minor fracture fillings, weak patchy sericite alteration, minor quartz and Kspar-quartz veins to 1 cm | 0.03 | 0.2 | 170 <10 | | 0.17 | 1 |
| 1817401 | 21.9 | | grab | quartz stockwork | 50% quartz as stockwork with veins to 1.5 cm, some vuggy quartz with Mn infilling, 4% oxidized cubic pyrite to 0.5 cm | 0.012 <0.2 | | 140 <10 | | 0.04 <1 | |
| 1817402 | 22.5 | 25 | | 2.5 BQF gneiss | dark weathering, metasedimentary biotite-quartz-feldspar gneiss, Mn staining and minor fracture fillings | 0.022 <0.2 | | 150 <10 | | 0.05 <1 | |
| 1817403 | 25 | 27.5 | | 2.5 BQF gneiss quartz vein | dark weathering, metasedimentary biotite-quartz-feldspar gneiss, Mn staining and minor fracture fillings, quartz veinlets to 0.7 cm, some vuggy with Mn infilling, weak epidote on fractures | 0.056 | 0.5 | 130 | 70 | 0.17 | 1 |
| 1817404 | 27.5 | 30 | | 2.5 BQF gneiss quartz vein | dark weathering, metasedimentary biotite-quartz-feldspar gneiss, Mn staining and minor fracture fillings, crosscutting quartz veinlets to 2 cm, some vuggy with Mn infilling, weak epidote on fractures | 0.041 | 0.4 | 120 | 950 | 0.22 | 3 |
| 1817405 | 27.5 | 30 | | 2.5 CRD | coarse reject duplicate of 1817404 | 0.036 | 0.6 | 120 | 940 | 0.25 | 3 |
| 1817406 | 30 | 37.2 | | 7.2 BQF gneiss | metasedimentary biotite-quartz-feldspar gneiss, red earthy hematite staining | 0.274 | 1.2 | 170 | 10 | 1.16 | 1 |
| 1817407 | 37.2 | 39.4 | | 2.2 BQF gneiss | metasedimentary biotite-quartz-feldspar gneiss, weak epidote on fractures | 0.463 | 3.5 | 170 <10 | | 1.53 <1 | |
| 1817408 | 39.4 | 41.1 | | 1.7 BQF gneiss | metasedimentary biotite-quartz-feldspar gneiss, very weak limonite on fractures, 5% quartz veinlets to 1 cm, some vuggy with Mn infilling | 0.162 | 1.2 | 170 | 10 | 0.43 | 1 |

| | | | | | | | | | | |
|---------|------|-------|----------------------|---|-------|------|-----|-----|------|----|
| 1817409 | 41.1 | 42.8 | 1.7 BQF gneiss | metasedimentary biotite-quartz-feldspar gneiss, hematite and Mn fracture fillings, 6% quartz veinlets to 1 cm, some vuggy with Mn infilling | 0.208 | 1.5 | 170 | 100 | 0.7 | 1 |
| 1817410 | 42.8 | 44.5 | 1.7 BQF gneiss | metasedimentary biotite-quartz-feldspar gneiss, Mn and weak hematite fracture fillings, 5% quartz veinlets to 0.5 cm, some vuggy with Mn infilling | 0.471 | 5.1 | 140 | 30 | 2.54 | <1 |
| 1817411 | 44.5 | 47 | 2.5 BQF gneiss | metasedimentary biotite-quartz-feldspar gneiss, Mn and weak limonite fracture fillings, 2% quartz veinlets to 0.5 cm, some vuggy with Mn infilling | 0.172 | 3 | 140 | 10 | 0.93 | <1 |
| 1817412 | 47 | 48.8 | 1.8 BQF gneiss | weak hornfelsed metasedimentary biotite-quartz-feldspar gneiss, rare quartz veinlet | 0.043 | 0.2 | 110 | <10 | 0.08 | <1 |
| 1817413 | 48.8 | 50 | 1.2 orthogneiss | hematite & weak Mn stained orthogneiss with weak Mn fracture fillings, minor quartz veinlets to 1 cm, some vuggy | 0.019 | <0.2 | 100 | <10 | 0.1 | <1 |
| 1817414 | 50 | 51.4 | 1.4 orthogneiss | weak hematite stained orthogneiss with 15% quartz as veinlets to 1 cm, some vuggy | 0.015 | <0.2 | 100 | <10 | 0.09 | <1 |
| 1817415 | 51.4 | 55.9 | 4.5 orthogneiss | weak, patchy sericite altered orthogneiss with occasional quartz veinlets to 0.5 cm, weak clay-limonite fracture fillings | 0.02 | <0.2 | 100 | <10 | 0.04 | <1 |
| 1817416 | 55.9 | 57 | 1.1 orthogneiss | orthogneiss with weak hematite-Mn-clay fracture fillings, metasedimentary gneiss draped over top of orthogneiss | 0.041 | <0.2 | 90 | <10 | 0.13 | <1 |
| 1817417 | 57 | 59 | 2 orthogneiss | orthogneiss with 10% quartz as veinlets to 1.5 cm, weak sericite haloes, some vuggy quartz with Mn infilling, Mn blebs | 0.113 | 0.7 | 140 | <10 | 0.78 | 1 |
| 1817418 | 59 | 60.5 | 1.5 orthogneiss | orthogneiss with occasional sericite and some Mn fracture fillings | 1.75 | 4.9 | 270 | 10 | 4.12 | 1 |
| 1817419 | 60.5 | 63 | 2.5 orthogneiss | orthogneiss with occasional sericite and some Mn fracture fillings, minor quartz veinlets to 1 cm, some vuggy with Mn infilling | 0.043 | 0.3 | 120 | 10 | 0.2 | <1 |
| 1817420 | 63 | 65 | 2 orthogneiss | metasedimentary biotite-quartz-feldspar schist, 3% quartz as foliation parallel and crosscutting veinlets to 1 cm, some vuggy with Mn | 0.022 | <0.2 | 80 | 10 | 0.14 | 1 |
| 1817421 | 65 | 66.5 | 1.5 BQF schist | weak hematite stained orthogneiss? with few quartz veinlets to 1 cm | 0.485 | 1.6 | 180 | 140 | 2.03 | 10 |
| 1817422 | 66.5 | 68.1 | 1.6 orthogneiss | weak hematite stained orthogneiss and minor schist with foliation parallel quartz veinlets to 1 cm | 0.029 | 0.2 | 100 | 10 | 0.07 | 1 |
| 1817423 | 68.1 | 71.7 | 3.6 orthogneiss | metasedimentary biotite-quartz-feldspar schist with folioform quartz veinlets, Mn and weak limonite fracture fillings | 0.114 | 0.6 | 170 | 10 | 0.71 | 3 |
| 1817424 | 71.7 | 73 | 1.3 BQF schist | metasedimentary biotite-quartz-feldspar gneiss with folioform quartz veinlets to 0.5 cm, weak Mn and weak to moderate sericite fracture fillings | 0.794 | 2.1 | 150 | 10 | 2.44 | 4 |
| 1817425 | 73 | 75 | 2 BQF gneiss | 80% white quartz as veins, some vuggy with Mn, in sericite-clay altered orthogneiss; minor metasedimentary BQF gneiss | 0.382 | 1.8 | 160 | 10 | 1.52 | 4 |
| 1817426 | 75 | 77.1 | 2.1 quartz | weak sericite-clay altered orthogneiss with 5% folioform quartz veins, Mn flecks and weak Mn | 0.04 | 0.3 | 110 | 20 | 0.2 | 1 |
| 1817427 | 77.1 | 79.3 | 2.2 orthogneiss | 60% quartz as stockwork veining to 2 cm in weak sericite altered orthogneiss, weak limonite, minor oxidized cubic pyrite | 0.091 | 0.2 | 130 | 10 | 0.26 | 1 |
| 1817428 | 79.3 | 79.8 | 0.5 quartz | coarse reject duplicate of 1817428 | 0.042 | <0.2 | 50 | 390 | 0.19 | 4 |
| 1817429 | 79.3 | 79.8 | 0.5 CRD | patchy, weak sericite altered orthogneiss with 15% quartz as stockwork veins, weak limonite fracture fillings | 0.044 | <0.2 | 50 | 470 | 0.21 | 4 |
| 1817430 | 79.8 | 82.5 | 2.7 orthogneiss | metasedimentary biotite-quartz-feldspar gneiss and minor orthogneiss, weak hematite & Mn fracture fillings | 0.039 | <0.2 | 100 | 80 | 0.13 | 1 |
| 1817431 | 82.5 | 87.5 | 5 BQF gneiss | patchy, weak sericite altered orthogneiss with minor folioform quartz veinlets to 1 cm, weak Mn blebs & fracture fillings | 0.048 | <0.2 | 110 | 20 | 0.1 | 1 |
| 1817432 | 87.5 | 90.8 | 3.3 orthogneiss | patchy, weak sericite altered orthogneiss with occasional folioform & lesser crosscutting quartz veinlets to 1 cm, weak Mn-clay and limonite fracture fillings | 0.051 | <0.2 | 100 | 10 | 0.16 | 5 |
| 1817433 | 90.8 | 97 | 6.2 orthogneiss | buff weathering, weak pinkified orthogneiss with weak clay-sericite and weak Mn fracture fillings, minor hematite, bit rubby fault zone, minor metasedimentary gneiss | 0.042 | <0.2 | 90 | 10 | 0.12 | 2 |
| 1817434 | 97 | 102 | 5 orthogneiss | fault in orthogneiss with moderate clay gouge, weak clay-sericite fracture fillings | 0.228 | 0.6 | 120 | 10 | 0.65 | 9 |
| 1817435 | 102 | 105 | 3 fault | metasedimentary gneiss in fault with weak clay gouge especially from 105-107.5m | 0.069 | 0.3 | 110 | 10 | 0.09 | 1 |
| 1817436 | 105 | 109.8 | 4.8 BQF gneiss fault | | 0.121 | 0.5 | 140 | 10 | 0.25 | 3 |

| | | | | | | | | | | | |
|---------|-------|-------|----------------|------------------------------|---|------------|------|---------|-----|---------|----|
| 1817437 | 109.8 | 112.8 | | 3 orthogneiss | well fractured, weak pinkified orthogneiss with bit more clay, weak Mn fracture fillings, minor folioform? quartz | 0.178 | 0.5 | 130 | 10 | 0.33 | 2 |
| 1817438 | 112.8 | 115 | | 2.2 BQF gneiss | well fractured, weak pinkified metasedimentary gneiss with moderate Mn fracture fillings | 0.226 | 0.8 | 160 | 980 | 0.58 | 5 |
| 1817439 | 115 | 116.6 | | 1.6 BQF gneiss | well fractured, weak pinkified metasedimentary gneiss with 20% quartz as folioform and lesser crosscutting veins | 1.305 | 2.5 | 130 | 650 | 2.98 | 12 |
| 1817440 | 116.6 | 118.2 | | 1.6 orthogneiss | well fractured, weak pinkified orthogneiss with 5% quartz as folioform veins, weak quartz stockwork, moderate Mn fracture fillings | 2.93 | 6.8 | 130 | 760 | 5.97 | 16 |
| 1817441 | 118.2 | 118.8 | | 0.6 BQF gneiss | dark weathering metasedimentary BQF gneiss with minor Mn staining & fracture fillings | 0.194 | 0.9 | 160 | 20 | 0.37 | 3 |
| 1817442 | 118.8 | 123.4 | | 4.6 BQF gneiss | rusty weathering BQF metasedimentary gneiss with moderate limonite & weak Mn staining fracture fillings; well fractured with weak clay gouge to 120.2m | 0.88 | 3.7 | 130 | 20 | 2.3 | 12 |
| 1817443 | 123.4 | 124.4 | | 1 orthogneiss | rusty weathering weak pinkified orthogneiss with moderate limonite fracture fillings; well fractured with weak clay gouge, minor quartz to 1 cm | 0.339 | 1.1 | 110 | 30 | 0.74 | 3 |
| 1817444 | 124.4 | 127.1 | | 2.7 orthogneiss fault | orange weathering weak pinkified and sericite altered orthogneiss with moderate limonite fracture fillings; in fault zone with weak clay gouge, 10% quartz veinlets to 1 cm | 1.62 | 5.7 | 230 | 90 | 3.49 | 9 |
| 1817445 | 127.1 | 129.5 | | 2.4 orthogneiss fault | orange weathering weak patchy pinkified and sericite altered orthogneiss with weak limonite fracture fillings; in fault zone with weak clay gouge, minor quartz veinlets to 1 cm | 1.82 | 4.7 | 160 | 80 | 4.5 | 6 |
| 1817446 | 129.5 | 131.9 | | 2.4 orthogneiss fault | orange weathering moderate pinkified and sericite altered orthogneiss with weak limonite fracture fillings; in fault zone with weak clay gouge, 15% quartz veinlets to 0.5 cm | 5.4 | 10.6 | 220 | 40 | 16.2 | 3 |
| 1817447 | 131.9 | 132.5 | | 0.6 orthogneiss fault | orange weathering weak pinkified and sericite altered orthogneiss with moderate limonite fracture fillings; in fault zone with weak clay gouge, quartz stockwork with veins to 1.5 cm | 0.867 | 4.9 | 3460 | 240 | 3.1 | 26 |
| 1817448 | 132.5 | 133.7 | | 1.2 orthogneiss fault | orange weathering orthogneiss in fault zone with moderate clay gouge | 0.325 | 1 | 280 | 110 | 0.67 | 1 |
| 1817449 | 133.7 | 135 | | 1.3 orthogneiss fault | orange weathering orthogneiss in fault zone with moderate clay gouge, 20% quartz as stockwork with veins to 1 cm | 0.472 | 1.7 | 190 | 80 | 1.16 | 1 |
| 1817450 | 135 | 141.6 | | 6.6 QBF gneiss | well fractured weak pinkified quartz-biotite-feldspar metasedimentary gneiss and minor orthogneiss with quartz stockwork to 0.6 cm, very weak clay gouge | 0.336 | 1 | 130 | 30 | 0.88 | 2 |
| 1817451 | 141.6 | 147.2 | | 5.6 orthogneiss fault | orange weathering very weak pinkified orthogneiss in fault zone with weak clay gouge, 5% quartz as stockwork with veins to 0.5 cm, minor vugs, very weak Mn fracture fillings | 0.023 <0.2 | | 110 | 10 | 0.01 <1 | |
| 1817452 | 147.2 | 149.4 | 568714 7040780 | 2.2 BQF gneiss | well fractured to weakly faulted with weak clay gouge, weak limonitic biotite-quartz-feldspar metasedimentary gneiss with 15% quartz as folioform veins to 1.5 cm, Mn blebs & fracture fillings | 0.018 <0.2 | | 160 | 10 | 0.01 | 1 |
| 1817453 | 149.4 | 150.4 | | 1 orthogneiss | weak to moderate clay and weak sericite altered orthogneiss with quartz stockwork veins to 1 cm, weak Mn & limonite fracture fillings | 0.027 | 0.2 | 200 | 10 | 0.03 | 2 |
| 1817454 | 150.4 | 151.6 | | 1.2 orthogneiss quartz fault | weak sericite altered orthogneiss with 70% quartz as stockwork veins to 1.5 cm, moderate limonite & Mn fracture fillings, in fault with moderate clay gouge | 0.078 <0.2 | | 230 | 280 | 0.16 | 12 |
| 1817455 | 151.6 | 153.7 | | 2.1 BQF gneiss | limonitic, well fractured biotite-quartz-feldspar metasedimentary gneiss with weak stockwork veins to a few mm, weak limonite, hematite & Mn fracture fillings, minor clay fault gouge | 0.426 | 1.1 | 170 | 20 | 1.09 | 3 |
| 1817456 | 153.7 | 155.9 | | 2.2 BQF gneiss | weak sericite altered biotite-quartz-feldspar metasedimentary gneiss with 15% quartz as folioform and lesser stockwork veins to 1 cm, moderate limonite, weak hematite & Mn fracture fillings, minor clay fault gouge | 0.205 | 0.6 | 80 | 20 | 0.56 | 1 |
| 1817457 | 155.9 | 158.5 | | 2.6 BQF gneiss | biotite-quartz-feldspar metasedimentary gneiss with weak stockwork veins to 0.5 cm, weak hematite & Mn fracture fillings, rare orthogneiss | 0.081 | 0.4 | 200 | 110 | 0.12 | 1 |
| 1817458 | 158.5 | 161.5 | | 3 BQF gneiss | faulted to well fractured with weak clay gouge, biotite-quartz-feldspar metasedimentary gneiss with hematite fracture fillings | 0.053 | 0.3 | 280 <10 | | 0.04 <1 | |
| 1817459 | 161.5 | 166 | | 4.5 BQF gneiss | well fractured with weak clay gouge, biotite-quartz-feldspar metasedimentary gneiss with rare folioform quartz to 0.5 cm | 0.103 | 0.3 | 460 <10 | | 0.22 <1 | |

| | | | | | | | | | | | |
|---------------|-------------------------|-------|--------|-----------------|--|---|-----|---------|----|---------|-------------|
| 1817460 | 166 | 170.5 | | 4.5 orthogneiss | weak pinkified orthogneiss with rare irregular quartz veinlets to 0.3 cm, minor Mn fracture fillings | 0.048 | 0.2 | 260 <10 | | 0.19 <1 | |
| 1817461 | 170.5 | 172.6 | | 2.1 orthogneiss | weak pinkified orthogneiss with minor quartz veinlets to 0.4 cm, minor Mn fracture fillings | 0.175 | 0.2 | 260 | 10 | 0.66 <1 | |
| 1817462 | 172.6 | 175 | | 2.4 orthogneiss | weak pinkified orthogneiss with minor quartz veinlets, minor Mn fracture fillings, minor metasedimentary gneiss | 0.044 <0.2 | | 330 <10 | | 0.06 <1 | |
| 1817463 | 175 | 179.1 | | 4.1 orthogneiss | weak pinkified and weak sericite altered orthogneiss with minor quartz veinlets, minor Mn fracture fillings | 0.018 <0.2 | | 130 <10 | | 0.03 <1 | |
| 1817464 | 179.1 | 185 | | 5.9 BQF gneiss | weak pinkified biotite-quartz-feldspar metasedimentary gneiss with limonite-clay fracture fillings | 0.031 <0.2 | | 120 <10 | | 0.11 <1 | |
| 1817465 | 185 | 190.9 | | 5.9 BQF gneiss | weak pinkified biotite-quartz-feldspar metasedimentary gneiss with weak hematite, minor oxidized cubic pyrite | 0.041 | 0.2 | 120 | 10 | 0.33 | 1 |
| 1817466 | 190.9 | 193.9 | | 3 BQF gneiss | weak pinkified biotite-quartz-feldspar metasedimentary gneiss with limonite-clay fracture fillings, weak hematite, Mn blebs, minor oxidized cubic pyrite | 0.061 | 0.2 | 170 | 10 | 0.12 | 1 |
| 1817467 | 193.9 | 197.1 | | 3.2 BQF gneiss | dark weathering biotite-quartz-feldspar metasedimentary gneiss with weak limonite-clay fracture fillings and minor gouge, weak Mn | 0.151 | 1.3 | 290 | 10 | 0.46 | 2 |
| 1817468 | 197.1 | 199.6 | | 2.5 BQF gneiss | dark weathering biotite-quartz-feldspar metasedimentary gneiss with weak limonite-clay fracture fillings and minor gouge, minor talc, quartz veinlets to 1.5 cm with vuggy Mn, weak hematite | 2.15 | 4.1 | 230 <10 | | 2.92 | 2 |
| 1817469 | 199.6 | 205 | | 5.4 BQF gneiss | dark weathering biotite-quartz-feldspar metasedimentary gneiss with weak limonite-clay fracture fillings and minor gouge, minor talc, quartz veinlets to 1.5 cm with vuggy Mn, weak hematite | 0.33 | 0.9 | 240 <10 | | 0.68 <1 | |
| 1817470 | 205 | 211.8 | | 6.8 BQF gneiss | grey weathering biotite-quartz-feldspar metasedimentary gneiss with weak hematite fracture fillings | 0.146 | 0.7 | 240 | 40 | 0.32 <1 | |
| 1817471 | 211.8 | 213.1 | | 1.3 marble | cream to pink (hematite) to pale green (chlorite) marble with folioform quartz | <0.005 | 0.4 | 90 <10 | | 0.02 <1 | |
| end of trench | | 213.1 | 568696 | 7040839 | | | | | | | |
| wpt 026 | 45m N of end of Tr19-11 | | 568698 | 7040884 | orthogneiss | pinkified orthogneiss with minor oxidized cubic pyrite, Mn & minor limonite fracture fillings, few fine crosscutting quartz veinlets with oxidized cubic pyrite | | | | | not sampled |

Appendix B: Assay Certificates



ALS Canada Ltd.
 2103 Dollarton Hwy
 North Vancouver BC V7H 0A7
 Phone: +1 (604) 984 0221 Fax: +1 (604) 984 0218
 www.alsglobal.com/geochemistry

To: GROUNDTRUTH EXPLORATION
 PO BOX 70
 DAWSON CITY YT Y0B 1C0

Page: 1
 Total # Pages: 5 (A - C)
 Plus Appendix Pages
 Finalized Date: 4-NOV-2019
 Account: TRUPTD

CERTIFICATE WH19244825

Project: ROSEBUTE (ROS)

This report is for 126 Rock samples submitted to our lab in Whitehorse, YT, Canada on 30-SEP-2019.

The following have access to data associated with this certificate:

| | | |
|---------------|-------------|--------------|
| JORDAN BUTLER | GREG DAWSON | JEAN PAUTLER |
|---------------|-------------|--------------|

| SAMPLE PREPARATION | |
|--------------------|------------------------------------|
| ALS CODE | DESCRIPTION |
| WEI-21 | Received Sample Weight |
| LOG-21 | Sample logging - ClientBarCode |
| CRU-QC | Crushing QC Test |
| PUL-QC | Pulverizing QC Test |
| CRU-31 | Fine crushing - 70% <2mm |
| SPL-21 | Split sample - riffle splitter |
| PUL-31 | Pulverize up to 250g 85% <75 um |
| LOG-23 | Pulp Login - Rcvd with Barcode |
| LOG-21d | Sample logging - ClientBarCode Dup |
| SPL-21d | Split sample - duplicate |
| PUL-31d | Pulverize Split - duplicate |

| ANALYTICAL PROCEDURES | | |
|-----------------------|-------------------------------|------------|
| ALS CODE | DESCRIPTION | INSTRUMENT |
| Au-AA23 | Au 30g FA-AA finish | AAS |
| ME-ICP41 | 35 Element Aqua Regia ICP-AES | ICP-AES |
| ME-MS42 | Up to 34 elements by ICP-MS | ICP-MS |

This is the Final Report and supersedes any preliminary report with this certificate number. Results apply to samples as submitted. All pages of this report have been checked and approved for release.

***** See Appendix Page for comments regarding this certificate *****

Signature:
 Saa Traxler, General Manager, North Vancouver



ALS Canada Ltd.
 2103 Dollarton Hwy
 North Vancouver BC V7H 0A7
 Phone: +1 (604) 984 0221 Fax: +1 (604) 984 0218
 www.alsglobal.com/geochemistry

To: GROUNDTRUTH EXPLORATION
 PO BOX 70
 DAWSON CITY YT Y0B 1C0

Page: 2 - A
 Total # Pages: 5 (A - C)
 Plus Appendix Pages
 Finalized Date: 4-NOV-2019
 Account: TRUPTD

Project: ROSEBUTE (ROS)

CERTIFICATE OF ANALYSIS WH19244825

| Sample Description | Method Analyte Units LOD | WEI-21 | Au-AA23 | ME-ICP41 | ME-ICP41 | ME-ICP41 | ME-ICP41 | ME-ICP41 | ME-ICP41 | ME-ICP41 | ME-ICP41 | ME-ICP41 | ME-ICP41 | ME-ICP41 | ME-ICP41 | ME-ICP41 |
|--------------------|--------------------------|--------------|---------|----------|----------|----------|----------|----------|----------|----------|----------|----------|----------|----------|----------|----------|
| | | Recvd Wt. kg | Au ppm | Ag ppm | Al % | As ppm | B ppm | Ba ppm | Be ppm | Bi ppm | Ca % | Cd ppm | Co ppm | Cr ppm | Cu ppm | Fe % |
| 1817346 | | 0.45 | 0.051 | <0.2 | 0.06 | <2 | <10 | 10 | <0.5 | <2 | 0.01 | <0.5 | <1 | 14 | 1 | 0.31 |
| 1817347 | | 0.81 | 0.007 | <0.2 | 0.47 | <2 | <10 | 80 | <0.5 | <2 | 0.21 | <0.5 | 2 | 17 | 3 | 0.59 |
| 1817348 | | 2.04 | 0.016 | <0.2 | 0.17 | <2 | <10 | 40 | <0.5 | <2 | 0.11 | <0.5 | 2 | 10 | 4 | 0.34 |
| 1817349 | | 2.86 | 0.008 | <0.2 | 0.10 | <2 | <10 | 30 | <0.5 | <2 | 0.01 | <0.5 | 1 | 15 | 4 | 0.29 |
| 1817350 | | 1.84 | 1.175 | 4.3 | 0.16 | <2 | <10 | 2150 | <0.5 | <2 | 0.50 | <0.5 | 1 | 15 | 13 | 0.41 |
| 1817351 | | 2.20 | 0.540 | 2.8 | 0.37 | 2 | <10 | 70 | <0.5 | <2 | 0.06 | <0.5 | 2 | 6 | 15 | 0.99 |
| 1817352 | | 2.27 | 0.276 | 2.6 | 0.31 | <2 | <10 | 1240 | <0.5 | <2 | 0.32 | <0.5 | 2 | 7 | 23 | 0.66 |
| 1817353 | | 1.85 | 0.182 | 1.5 | 0.21 | <2 | <10 | 2820 | <0.5 | <2 | 0.19 | <0.5 | 1 | 11 | 17 | 0.37 |
| 1817354 | | 2.06 | 0.054 | 1.5 | 0.36 | <2 | <10 | 740 | <0.5 | <2 | 0.17 | <0.5 | 2 | 6 | 17 | 0.72 |
| 1817355 | | 3.28 | 0.084 | 0.7 | 0.24 | <2 | <10 | 1400 | <0.5 | <2 | 0.26 | <0.5 | 1 | 8 | 15 | 0.46 |
| 1817356 | | 2.54 | 0.083 | 0.3 | 0.33 | <2 | <10 | 2860 | <0.5 | <2 | 0.30 | <0.5 | 1 | 6 | 14 | 0.66 |
| 1817357 | | 2.18 | 0.056 | 0.3 | 0.47 | 2 | <10 | 340 | <0.5 | <2 | 0.45 | <0.5 | 3 | 6 | 13 | 1.07 |
| 1817358 | | 1.65 | 0.071 | 0.2 | 0.36 | <2 | <10 | 100 | <0.5 | <2 | 0.36 | <0.5 | 2 | 7 | 7 | 1.01 |
| 1817359 | | 2.27 | 0.837 | 2.1 | 0.32 | 4 | <10 | 120 | <0.5 | <2 | 0.07 | <0.5 | 3 | 10 | 12 | 1.12 |
| 1817360 | | 1.75 | 1.515 | 3.3 | 0.42 | 2 | <10 | 130 | <0.5 | <2 | 0.28 | <0.5 | 4 | 6 | 7 | 1.55 |
| 1817361 | | 0.11 | 1.900 | 0.3 | 1.74 | 8 | <10 | 110 | <0.5 | <2 | 0.94 | <0.5 | 11 | 31 | 34 | 2.96 |
| 1817362 | | 0.04 | <0.005 | <0.2 | 0.95 | 2 | 10 | 70 | <0.5 | <2 | 0.60 | <0.5 | 7 | 28 | 20 | 1.82 |
| 1817363 | | 3.01 | 0.044 | 0.2 | 1.88 | <2 | <10 | 1010 | <0.5 | <2 | 0.95 | <0.5 | 12 | 10 | 21 | 3.24 |
| 1817364 | | 2.68 | 0.083 | 0.5 | 0.36 | <2 | <10 | 120 | <0.5 | <2 | 0.11 | <0.5 | 2 | 8 | 11 | 0.80 |
| 1817365 | | 2.19 | 0.789 | 1.5 | 0.36 | <2 | <10 | 200 | <0.5 | <2 | 0.09 | <0.5 | 2 | 9 | 10 | 0.84 |
| 1817366 | | 3.55 | 0.057 | 0.2 | 0.21 | <2 | <10 | 50 | <0.5 | <2 | 0.06 | <0.5 | 2 | 14 | 9 | 0.61 |
| 1817367 | | 2.55 | 4.43 | 12.0 | 0.06 | 5 | <10 | 860 | <0.5 | 2 | 0.62 | <0.5 | 2 | 21 | 2 | 1.04 |
| 1817368 | | <0.02 | 4.76 | 13.8 | 0.07 | 5 | <10 | 850 | <0.5 | 2 | 0.59 | <0.5 | 2 | 21 | 2 | 1.14 |
| 1817369 | | 2.06 | 0.094 | 0.6 | 0.32 | <2 | <10 | 310 | <0.5 | <2 | 0.06 | <0.5 | 3 | 8 | 11 | 1.00 |
| 1817370 | | 2.64 | 0.038 | 0.3 | 1.70 | <2 | <10 | 330 | 0.6 | <2 | 2.22 | <0.5 | 11 | 10 | 22 | 3.10 |
| 1817371 | | 2.10 | 0.034 | 0.2 | 0.53 | <2 | <10 | 140 | <0.5 | <2 | 0.21 | <0.5 | 4 | 4 | 7 | 1.13 |
| 1817372 | | 1.20 | 0.048 | <0.2 | 0.24 | <2 | <10 | 160 | <0.5 | <2 | 0.07 | <0.5 | 1 | 9 | 20 | 0.47 |
| 1817373 | | 1.25 | <0.005 | <0.2 | 0.52 | 2 | <10 | 90 | <0.5 | <2 | 0.09 | <0.5 | 3 | 7 | 9 | 0.94 |
| 1817374 | | 2.60 | 0.083 | 0.2 | 0.65 | <2 | <10 | 140 | 0.5 | <2 | 2.51 | <0.5 | 2 | 4 | 8 | 1.11 |
| 1817375 | | 1.95 | 0.025 | 0.3 | 0.51 | <2 | <10 | 250 | <0.5 | <2 | 1.54 | <0.5 | 2 | 4 | 7 | 0.84 |
| 1817376 | | 2.59 | 0.031 | 0.4 | 0.83 | <2 | <10 | 550 | <0.5 | <2 | 0.22 | <0.5 | 3 | 5 | 10 | 1.27 |
| 1817377 | | 3.18 | 0.091 | 0.9 | 0.68 | <2 | <10 | 640 | 0.5 | <2 | 0.39 | <0.5 | 4 | 5 | 17 | 1.06 |
| 1817378 | | 3.35 | 0.552 | 2.4 | 0.99 | <2 | <10 | 650 | <0.5 | <2 | 0.77 | <0.5 | 4 | 5 | 30 | 1.50 |
| 1817379 | | 2.29 | 0.334 | 0.8 | 1.17 | <2 | <10 | 360 | <0.5 | <2 | 0.72 | <0.5 | 4 | 7 | 20 | 1.73 |
| 1817380 | | 2.10 | 0.005 | <0.2 | 0.68 | <2 | <10 | 230 | <0.5 | <2 | 0.70 | <0.5 | 3 | 7 | 7 | 1.01 |
| 1817381 | | 2.37 | 0.009 | 0.3 | 1.20 | <2 | <10 | 280 | <0.5 | <2 | 0.78 | <0.5 | 5 | 5 | 27 | 1.88 |
| 1817382 | | 2.53 | <0.005 | <0.2 | 0.69 | <2 | <10 | 210 | <0.5 | <2 | 0.35 | <0.5 | 3 | 6 | 5 | 0.84 |
| 1817383 | | 1.19 | 0.601 | 1.0 | 0.29 | <2 | <10 | 190 | <0.5 | <2 | 1.02 | <0.5 | 1 | 7 | 4 | 0.33 |
| 1817384 | | 0.11 | 1.950 | 0.5 | 1.85 | 8 | 10 | 120 | <0.5 | <2 | 1.01 | <0.5 | 12 | 33 | 36 | 3.12 |
| 1817385 | | 0.04 | <0.005 | <0.2 | 1.01 | 3 | 10 | 80 | <0.5 | <2 | 0.64 | <0.5 | 7 | 30 | 21 | 1.92 |



ALS Canada Ltd.
 2103 Dollarton Hwy
 North Vancouver BC V7H 0A7
 Phone: +1 (604) 984 0221 Fax: +1 (604) 984 0218
 www.alsglobal.com/geochemistry

To: GROUNDTRUTH EXPLORATION
 PO BOX 70
 DAWSON CITY YT Y0B 1C0

Page: 2 - B
 Total # Pages: 5 (A - C)
 Plus Appendix Pages
 Finalized Date: 4-NOV-2019
 Account: TRUPTD

Project: ROSEBUTE (ROS)

CERTIFICATE OF ANALYSIS WH19244825

| Sample Description | Method Analyte Units LOD | ME-ICP41 | ME-ICP41 | ME-ICP41 | ME-ICP41 | ME-ICP41 | ME-ICP41 | ME-ICP41 | ME-ICP41 | ME-ICP41 | ME-ICP41 | ME-ICP41 | ME-ICP41 | ME-ICP41 | ME-ICP41 | |
|--------------------|--------------------------|-----------|----------|----------|-----------|-----------|----------|----------|-----------|----------|----------|----------|----------|----------|----------|----------|
| | | Ga ppm 10 | Hg ppm 1 | K % 0.01 | La ppm 10 | Mg % 0.01 | Mn ppm 5 | Mo ppm 1 | Na % 0.01 | Ni ppm 1 | P ppm 10 | Pb ppm 2 | S % 0.01 | Sb ppm 2 | Sc ppm 1 | Sr ppm 1 |
| 1817346 | | <10 | 1 | 0.01 | <10 | 0.03 | 41 | <1 | 0.01 | 1 | 10 | <2 | <0.01 | <2 | <1 | 2 |
| 1817347 | | <10 | <1 | 0.08 | <10 | 0.17 | 169 | <1 | 0.08 | 3 | 230 | 4 | <0.01 | <2 | 1 | 42 |
| 1817348 | | <10 | 1 | 0.08 | <10 | 0.03 | 74 | 5 | 0.04 | 1 | 110 | 2 | <0.01 | <2 | <1 | 8 |
| 1817349 | | <10 | <1 | 0.05 | 10 | 0.01 | 106 | 1 | 0.03 | 1 | 20 | <2 | <0.01 | <2 | <1 | 3 |
| 1817350 | | <10 | 1 | 0.08 | 10 | 0.02 | 193 | <1 | 0.03 | 2 | 100 | <2 | 0.06 | <2 | <1 | 46 |
| 1817351 | | <10 | <1 | 0.16 | 30 | 0.04 | 142 | <1 | 0.03 | 2 | 110 | 6 | <0.01 | <2 | 1 | 6 |
| 1817352 | | <10 | <1 | 0.14 | 10 | 0.03 | 247 | <1 | 0.05 | 1 | 210 | 4 | 0.03 | <2 | <1 | 29 |
| 1817353 | | <10 | <1 | 0.11 | 10 | 0.02 | 204 | <1 | 0.04 | 1 | 200 | 2 | 0.07 | <2 | <1 | 70 |
| 1817354 | | <10 | <1 | 0.11 | 10 | 0.03 | 244 | <1 | 0.06 | 1 | 330 | 3 | 0.02 | <2 | 1 | 20 |
| 1817355 | | <10 | <1 | 0.07 | 10 | 0.02 | 261 | <1 | 0.06 | 1 | 230 | 3 | 0.04 | <2 | <1 | 33 |
| 1817356 | | <10 | <1 | 0.07 | 10 | 0.03 | 265 | <1 | 0.06 | 1 | 240 | 3 | 0.08 | <2 | 1 | 125 |
| 1817357 | | <10 | <1 | 0.10 | 10 | 0.05 | 303 | <1 | 0.05 | 3 | 370 | 7 | 0.01 | <2 | 2 | 15 |
| 1817358 | | <10 | <1 | 0.13 | 30 | 0.04 | 309 | 3 | 0.02 | 4 | 90 | 8 | <0.01 | <2 | 1 | 7 |
| 1817359 | | <10 | <1 | 0.10 | 20 | 0.03 | 368 | 19 | 0.02 | 3 | 120 | 11 | <0.01 | <2 | 1 | 5 |
| 1817360 | | <10 | 1 | 0.20 | 20 | 0.07 | 206 | 25 | 0.03 | 2 | 300 | 13 | 0.01 | <2 | 1 | 17 |
| 1817361 | | 10 | <1 | 0.15 | <10 | 0.83 | 442 | 3 | 0.10 | 26 | 610 | 6 | 0.04 | <2 | 5 | 46 |
| 1817362 | | <10 | <1 | 0.06 | <10 | 0.45 | 289 | 3 | 0.05 | 21 | 460 | 3 | 0.04 | <2 | 3 | 26 |
| 1817363 | | 10 | <1 | 0.31 | 20 | 1.17 | 678 | 1 | 0.03 | 6 | 1250 | 4 | 0.02 | <2 | 4 | 60 |
| 1817364 | | <10 | 1 | 0.15 | 30 | 0.09 | 196 | 1 | 0.05 | 3 | 130 | 6 | <0.01 | <2 | 1 | 9 |
| 1817365 | | <10 | <1 | 0.13 | 30 | 0.09 | 250 | 1 | 0.04 | 3 | 170 | 5 | <0.01 | <2 | 1 | 9 |
| 1817366 | | <10 | <1 | 0.10 | 20 | 0.03 | 112 | <1 | 0.05 | 2 | 50 | 5 | <0.01 | <2 | <1 | 4 |
| 1817367 | | <10 | 1 | 0.05 | <10 | 0.01 | 82 | 97 | 0.01 | 2 | 10 | 23 | 0.13 | <2 | <1 | 45 |
| 1817368 | | <10 | 1 | 0.05 | <10 | 0.01 | 87 | 99 | 0.01 | 2 | 10 | 25 | 0.15 | <2 | <1 | 44 |
| 1817369 | | <10 | <1 | 0.14 | 30 | 0.06 | 232 | 7 | 0.04 | 3 | 120 | 6 | 0.01 | <2 | 1 | 11 |
| 1817370 | | 10 | <1 | 0.38 | 20 | 0.96 | 730 | <1 | 0.03 | 6 | 1160 | 6 | <0.01 | <2 | 5 | 56 |
| 1817371 | | <10 | <1 | 0.13 | 40 | 0.05 | 316 | <1 | 0.02 | 5 | 170 | 6 | <0.01 | <2 | 1 | 6 |
| 1817372 | | <10 | <1 | 0.08 | <10 | 0.02 | 162 | <1 | 0.07 | 2 | 230 | 2 | <0.01 | <2 | 1 | 9 |
| 1817373 | | <10 | <1 | 0.12 | 40 | 0.03 | 178 | <1 | 0.01 | 3 | 160 | 5 | <0.01 | <2 | 1 | 4 |
| 1817374 | | <10 | <1 | 0.17 | 20 | 0.07 | 459 | 1 | 0.02 | 2 | 230 | 15 | <0.01 | <2 | 2 | 14 |
| 1817375 | | <10 | <1 | 0.20 | 10 | 0.09 | 293 | <1 | 0.04 | 2 | 240 | 13 | <0.01 | <2 | 1 | 22 |
| 1817376 | | <10 | <1 | 0.31 | 10 | 0.30 | 557 | <1 | 0.05 | 2 | 320 | 13 | 0.01 | <2 | 1 | 14 |
| 1817377 | | <10 | <1 | 0.26 | 10 | 0.17 | 364 | 2 | 0.03 | 3 | 260 | 17 | 0.01 | <2 | 1 | 15 |
| 1817378 | | <10 | <1 | 0.38 | 20 | 0.44 | 437 | 2 | 0.04 | 3 | 350 | 27 | 0.01 | <2 | 2 | 18 |
| 1817379 | | <10 | <1 | 0.44 | 10 | 0.64 | 473 | 1 | 0.04 | 2 | 430 | 17 | <0.01 | <2 | 3 | 14 |
| 1817380 | | <10 | <1 | 0.16 | 10 | 0.29 | 285 | <1 | 0.06 | 2 | 310 | 7 | <0.01 | <2 | 2 | 21 |
| 1817381 | | <10 | <1 | 0.25 | 10 | 0.64 | 497 | 1 | 0.04 | 2 | 420 | 17 | <0.01 | <2 | 2 | 20 |
| 1817382 | | <10 | <1 | 0.20 | 10 | 0.29 | 261 | <1 | 0.06 | 1 | 260 | 7 | <0.01 | <2 | 1 | 17 |
| 1817383 | | <10 | <1 | 0.11 | <10 | 0.08 | 188 | <1 | 0.07 | 1 | 100 | 13 | <0.01 | <2 | <1 | 32 |
| 1817384 | | 10 | <1 | 0.16 | 10 | 0.87 | 472 | 3 | 0.11 | 28 | 630 | 5 | 0.04 | 3 | 6 | 49 |
| 1817385 | | <10 | <1 | 0.06 | <10 | 0.48 | 304 | 4 | 0.05 | 22 | 480 | 2 | 0.04 | <2 | 4 | 28 |



ALS Canada Ltd.
 2103 Dollarton Hwy
 North Vancouver BC V7H 0A7
 Phone: +1 (604) 984 0221 Fax: +1 (604) 984 0218
 www.alsglobal.com/geochemistry

To: GROUNDTRUTH EXPLORATION
 PO BOX 70
 DAWSON CITY YT Y0B 1C0

Page: 2 - C
 Total # Pages: 5 (A - C)
 Plus Appendix Pages
 Finalized Date: 4-NOV-2019
 Account: TRUPTD

Project: ROSEBUTE (ROS)

CERTIFICATE OF ANALYSIS WH19244825

| Sample Description | Method Analyte Units LOD | ME-ICP41 | ME-ICP41 | ME-ICP41 | ME-ICP41 | ME-ICP41 | ME-ICP41 | ME-ICP41 | ME-MS42 |
|--------------------|--------------------------|----------|----------|----------|----------|----------|----------|----------|---------|
| | | Th ppm | Ti % | Tl ppm | U ppm | V ppm | W ppm | Zn ppm | Te ppm |
| 1817346 | | <20 | <0.01 | <10 | <10 | 2 | <10 | 4 | 0.09 |
| 1817347 | | <20 | 0.04 | <10 | <10 | 10 | <10 | 28 | 0.03 |
| 1817348 | | <20 | <0.01 | <10 | <10 | 3 | 540 | 5 | 0.13 |
| 1817349 | | <20 | <0.01 | <10 | <10 | 3 | <10 | 2 | 0.02 |
| 1817350 | | <20 | <0.01 | <10 | <10 | 3 | 10 | 13 | 2.19 |
| 1817351 | | 40 | <0.01 | <10 | <10 | 6 | <10 | 14 | 1.52 |
| 1817352 | | <20 | <0.01 | <10 | <10 | 5 | <10 | 24 | 0.86 |
| 1817353 | | <20 | <0.01 | <10 | <10 | 4 | <10 | 10 | 0.48 |
| 1817354 | | <20 | <0.01 | <10 | <10 | 10 | <10 | 20 | 0.21 |
| 1817355 | | <20 | <0.01 | <10 | <10 | 5 | <10 | 14 | 0.20 |
| 1817356 | | <20 | <0.01 | <10 | <10 | 11 | <10 | 19 | 0.21 |
| 1817357 | | <20 | <0.01 | <10 | <10 | 15 | <10 | 27 | 0.16 |
| 1817358 | | 40 | <0.01 | <10 | <10 | 6 | 10 | 30 | 0.17 |
| 1817359 | | 20 | <0.01 | <10 | <10 | 7 | 10 | 24 | 1.91 |
| 1817360 | | 20 | <0.01 | <10 | <10 | 6 | 280 | 14 | 2.77 |
| 1817361 | | <20 | 0.15 | <10 | <10 | 70 | 20 | 52 | 0.09 |
| 1817362 | | <20 | 0.10 | <10 | <10 | 43 | 10 | 33 | 0.03 |
| 1817363 | | <20 | 0.05 | <10 | <10 | 46 | 20 | 83 | 0.10 |
| 1817364 | | 30 | <0.01 | <10 | <10 | 6 | 10 | 18 | 0.19 |
| 1817365 | | 30 | <0.01 | <10 | <10 | 7 | <10 | 23 | 0.86 |
| 1817366 | | 40 | <0.01 | <10 | <10 | 5 | 10 | 12 | 0.17 |
| 1817367 | | <20 | <0.01 | <10 | <10 | 2 | 90 | 5 | 9.04 |
| 1817368 | | <20 | <0.01 | <10 | <10 | 2 | 100 | 5 | 9.64 |
| 1817369 | | 40 | <0.01 | <10 | <10 | 6 | 40 | 19 | 0.27 |
| 1817370 | | <20 | 0.02 | <10 | <10 | 42 | 20 | 81 | 0.10 |
| 1817371 | | 30 | <0.01 | <10 | <10 | 9 | 10 | 35 | 0.12 |
| 1817372 | | <20 | <0.01 | <10 | <10 | 7 | 10 | 11 | 0.11 |
| 1817373 | | 30 | <0.01 | <10 | <10 | 10 | 10 | 21 | 0.02 |
| 1817374 | | <20 | <0.01 | <10 | <10 | 13 | <10 | 47 | 0.20 |
| 1817375 | | <20 | 0.01 | <10 | <10 | 12 | <10 | 32 | 0.03 |
| 1817376 | | <20 | 0.01 | <10 | <10 | 8 | <10 | 54 | 0.10 |
| 1817377 | | <20 | <0.01 | <10 | <10 | 6 | 10 | 45 | 0.31 |
| 1817378 | | <20 | 0.03 | <10 | <10 | 10 | <10 | 73 | 1.35 |
| 1817379 | | <20 | 0.05 | <10 | <10 | 14 | <10 | 68 | 0.73 |
| 1817380 | | <20 | 0.01 | <10 | <10 | 14 | <10 | 40 | 0.02 |
| 1817381 | | <20 | 0.01 | <10 | <10 | 16 | <10 | 76 | 0.07 |
| 1817382 | | <20 | <0.01 | <10 | <10 | 10 | <10 | 35 | 0.02 |
| 1817383 | | <20 | <0.01 | <10 | <10 | 3 | <10 | 12 | 1.00 |
| 1817384 | | <20 | 0.17 | <10 | <10 | 74 | 20 | 55 | 0.07 |
| 1817385 | | <20 | 0.10 | <10 | <10 | 45 | 10 | 34 | 0.02 |



ALS Canada Ltd.
 2103 Dollarton Hwy
 North Vancouver BC V7H 0A7
 Phone: +1 (604) 984 0221 Fax: +1 (604) 984 0218
 www.alsglobal.com/geochemistry

To: GROUNDTRUTH EXPLORATION
 PO BOX 70
 DAWSON CITY YT Y0B 1C0

Page: 3 - A
 Total # Pages: 5 (A - C)
 Plus Appendix Pages
 Finalized Date: 4-NOV-2019
 Account: TRUPTD

Project: ROSEBUTE (ROS)

CERTIFICATE OF ANALYSIS WH19244825

| Sample Description | Method Analyte Units LOD | WEI-21 | Au-AA23 | ME-ICP41 | ME-ICP41 | ME-ICP41 | ME-ICP41 | ME-ICP41 | ME-ICP41 | ME-ICP41 | ME-ICP41 | ME-ICP41 | ME-ICP41 | ME-ICP41 | ME-ICP41 | ME-ICP41 |
|--------------------|--------------------------|--------------|---------|----------|----------|----------|----------|----------|----------|----------|----------|----------|----------|----------|----------|----------|
| | | Recvd Wt. kg | Au ppm | Ag ppm | Al % | As ppm | B ppm | Ba ppm | Be ppm | Bi ppm | Ca % | Cd ppm | Co ppm | Cr ppm | Cu ppm | Fe % |
| 1817386 | | 1.83 | 0.028 | 0.3 | 0.78 | <2 | <10 | 160 | <0.5 | <2 | 0.15 | <0.5 | 3 | 10 | 4 | 0.95 |
| 1817387 | | 2.25 | 0.019 | 0.5 | 0.95 | <2 | <10 | 180 | <0.5 | <2 | 0.20 | <0.5 | 3 | 6 | 7 | 1.05 |
| 1817388 | | 2.48 | 0.220 | 0.8 | 0.99 | <2 | <10 | 180 | <0.5 | 2 | 0.24 | <0.5 | 4 | 6 | 8 | 1.45 |
| 1817389 | | 2.86 | 0.027 | <0.2 | 0.77 | <2 | <10 | 150 | <0.5 | <2 | 0.21 | <0.5 | 2 | 7 | 5 | 0.82 |
| 1817390 | | 2.21 | 0.018 | <0.2 | 1.04 | <2 | <10 | 160 | <0.5 | <2 | 0.29 | <0.5 | 4 | 5 | 33 | 1.65 |
| 1817391 | | 2.03 | 0.012 | 0.2 | 1.45 | <2 | <10 | 180 | <0.5 | <2 | 0.24 | <0.5 | 7 | 11 | 20 | 2.39 |
| 1817392 | | 0.93 | 0.005 | <0.2 | 0.40 | <2 | <10 | 160 | <0.5 | <2 | 0.06 | <0.5 | 2 | 13 | 5 | 0.71 |
| 1817393 | | 2.21 | 0.019 | <0.2 | 1.57 | 2 | <10 | 190 | 0.5 | <2 | 0.38 | <0.5 | 8 | 14 | 46 | 2.52 |
| 1817394 | | 1.00 | 0.017 | <0.2 | 0.33 | <2 | <10 | 70 | <0.5 | <2 | 0.07 | <0.5 | 1 | 8 | 5 | 0.74 |
| 1817395 | | 1.83 | 0.034 | <0.2 | 0.33 | <2 | <10 | 70 | <0.5 | <2 | 0.07 | <0.5 | 1 | 7 | 12 | 0.80 |
| 1817396 | | 2.69 | 0.020 | <0.2 | 1.48 | 2 | <10 | 180 | 0.5 | <2 | 0.54 | <0.5 | 9 | 13 | 41 | 2.40 |
| 1817397 | | 2.40 | 0.026 | <0.2 | 1.13 | 2 | <10 | 130 | <0.5 | <2 | 0.44 | <0.5 | 5 | 14 | 47 | 1.74 |
| 1817398 | | 1.78 | 0.017 | <0.2 | 0.77 | 3 | <10 | 120 | <0.5 | <2 | 0.29 | <0.5 | 3 | 10 | 14 | 1.17 |
| 1817399 | | 2.92 | 0.020 | <0.2 | 1.05 | 2 | <10 | 170 | <0.5 | <2 | 0.44 | <0.5 | 4 | 9 | 35 | 1.72 |
| 1817400 | | 1.94 | 0.030 | 0.2 | 1.19 | <2 | <10 | 170 | <0.5 | 2 | 0.43 | <0.5 | 6 | 14 | 30 | 1.92 |
| 1817401 | | 2.12 | 0.012 | <0.2 | 0.25 | <2 | <10 | 140 | <0.5 | <2 | 0.14 | <0.5 | 1 | 13 | 4 | 0.40 |
| 1817402 | | 2.19 | 0.022 | <0.2 | 0.98 | 2 | <10 | 150 | <0.5 | <2 | 0.45 | <0.5 | 4 | 11 | 42 | 1.43 |
| 1817403 | | 2.49 | 0.056 | 0.5 | 0.87 | 2 | <10 | 130 | <0.5 | <2 | 0.38 | <0.5 | 3 | 8 | 40 | 1.31 |
| 1817404 | | 2.38 | 0.041 | 0.4 | 0.70 | <2 | <10 | 120 | <0.5 | <2 | 0.24 | <0.5 | 3 | 7 | 15 | 1.07 |
| 1817405 | | <0.02 | 0.036 | 0.6 | 0.69 | 2 | <10 | 120 | <0.5 | 2 | 0.24 | <0.5 | 3 | 8 | 15 | 1.07 |
| 1817406 | | 4.47 | 0.274 | 1.2 | 1.19 | 3 | <10 | 170 | <0.5 | <2 | 0.43 | <0.5 | 7 | 11 | 46 | 1.99 |
| 1817407 | | 2.12 | 0.463 | 3.5 | 1.38 | <2 | <10 | 170 | <0.5 | 4 | 0.27 | <0.5 | 10 | 14 | 70 | 2.55 |
| 1817408 | | 2.01 | 0.162 | 1.2 | 0.93 | <2 | <10 | 170 | <0.5 | 2 | 0.24 | <0.5 | 5 | 7 | 25 | 1.65 |
| 1817409 | | 1.93 | 0.208 | 1.5 | 0.86 | <2 | <10 | 170 | <0.5 | <2 | 0.25 | <0.5 | 5 | 11 | 19 | 1.45 |
| 1817410 | | 2.60 | 0.471 | 5.1 | 0.72 | 2 | <10 | 140 | <0.5 | 2 | 0.19 | <0.5 | 3 | 9 | 15 | 1.17 |
| 1817411 | | 2.53 | 0.172 | 3.0 | 0.69 | <2 | <10 | 140 | <0.5 | 4 | 0.18 | <0.5 | 3 | 6 | 10 | 0.98 |
| 1817412 | | 2.30 | 0.043 | 0.2 | 0.62 | <2 | <10 | 110 | <0.5 | <2 | 0.27 | <0.5 | 1 | 8 | 5 | 0.76 |
| 1817413 | | 1.56 | 0.019 | <0.2 | 0.69 | <2 | <10 | 100 | <0.5 | <2 | 0.27 | <0.5 | 2 | 8 | 4 | 0.87 |
| 1817414 | | 1.85 | 0.015 | <0.2 | 0.71 | <2 | <10 | 100 | <0.5 | <2 | 0.25 | <0.5 | 2 | 9 | 10 | 0.89 |
| 1817415 | | 3.10 | 0.020 | <0.2 | 0.73 | <2 | <10 | 100 | <0.5 | <2 | 0.31 | <0.5 | 2 | 9 | 6 | 0.78 |
| 1817416 | | 1.64 | 0.041 | <0.2 | 0.63 | <2 | <10 | 90 | <0.5 | <2 | 0.33 | <0.5 | 1 | 6 | 4 | 0.50 |
| 1817417 | | 2.26 | 0.113 | 0.7 | 0.78 | 2 | <10 | 140 | <0.5 | 2 | 0.23 | <0.5 | 3 | 5 | 100 | 1.22 |
| 1817418 | | 2.45 | 1.750 | 4.9 | 0.59 | 2 | <10 | 270 | <0.5 | 2 | 0.12 | <0.5 | 3 | 6 | 35 | 1.01 |
| 1817419 | | 2.73 | 0.043 | 0.3 | 0.63 | 2 | <10 | 120 | <0.5 | <2 | 0.19 | <0.5 | 1 | 5 | 24 | 0.75 |
| 1817420 | | 1.78 | 0.022 | <0.2 | 0.61 | 2 | <10 | 80 | <0.5 | <2 | 0.27 | <0.5 | 2 | 6 | 5 | 0.58 |
| 1817421 | | 2.19 | 0.485 | 1.6 | 0.58 | 2 | <10 | 180 | <0.5 | 2 | 0.16 | <0.5 | 4 | 7 | 65 | 1.20 |
| 1817422 | | 1.83 | 0.029 | 0.2 | 0.64 | <2 | <10 | 100 | <0.5 | <2 | 0.19 | <0.5 | 2 | 6 | 9 | 0.65 |
| 1817423 | | 2.31 | 0.114 | 0.6 | 0.76 | <2 | <10 | 170 | <0.5 | 3 | 0.15 | <0.5 | 3 | 5 | 68 | 1.40 |
| 1817424 | | 1.91 | 0.794 | 2.1 | 0.68 | 2 | <10 | 150 | <0.5 | 3 | 0.11 | <0.5 | 5 | 6 | 86 | 1.76 |
| 1817425 | | 1.87 | 0.382 | 1.8 | 0.84 | 3 | <10 | 160 | <0.5 | 2 | 0.19 | <0.5 | 5 | 4 | 99 | 1.86 |



ALS Canada Ltd.
 2103 Dollarton Hwy
 North Vancouver BC V7H 0A7
 Phone: +1 (604) 984 0221 Fax: +1 (604) 984 0218
 www.alsglobal.com/geochemistry

To: GROUNDTRUTH EXPLORATION
 PO BOX 70
 DAWSON CITY YT Y0B 1C0

Page: 3 - B
 Total # Pages: 5 (A - C)
 Plus Appendix Pages
 Finalized Date: 4-NOV-2019
 Account: TRUPTD

Project: ROSEBUTE (ROS)

CERTIFICATE OF ANALYSIS WH19244825

| Sample Description | Method Analyte Units LOD | ME-ICP41 | ME-ICP41 | ME-ICP41 | ME-ICP41 | ME-ICP41 | ME-ICP41 | ME-ICP41 | ME-ICP41 | ME-ICP41 | ME-ICP41 | ME-ICP41 | ME-ICP41 | ME-ICP41 | ME-ICP41 | |
|--------------------|--------------------------|-----------|----------|----------|-----------|-----------|----------|----------|-----------|----------|----------|----------|----------|----------|----------|----------|
| | | Ca ppm 10 | Hg ppm 1 | K % 0.01 | La ppm 10 | Mg % 0.01 | Mn ppm 5 | Mo ppm 1 | Na % 0.01 | Ni ppm 1 | P ppm 10 | Pb ppm 2 | S % 0.01 | Sb ppm 2 | Sc ppm 1 | Sr ppm 1 |
| 1817386 | | <10 | <1 | 0.20 | 10 | 0.33 | 328 | 1 | 0.05 | 5 | 240 | 9 | <0.01 | <2 | 1 | 10 |
| 1817387 | | <10 | <1 | 0.24 | 10 | 0.33 | 360 | 1 | 0.05 | 3 | 280 | 10 | <0.01 | <2 | 1 | 12 |
| 1817388 | | <10 | <1 | 0.20 | 10 | 0.47 | 425 | 4 | 0.05 | 5 | 450 | 13 | <0.01 | <2 | 2 | 19 |
| 1817389 | | <10 | <1 | 0.19 | 10 | 0.23 | 305 | <1 | 0.06 | 5 | 400 | 5 | <0.01 | <2 | 1 | 13 |
| 1817390 | | <10 | <1 | 0.12 | 10 | 0.54 | 616 | <1 | 0.07 | 3 | 540 | 8 | <0.01 | <2 | 4 | 15 |
| 1817391 | | 10 | <1 | 0.11 | 10 | 0.88 | 747 | 1 | 0.06 | 6 | 580 | 6 | <0.01 | <2 | 4 | 9 |
| 1817392 | | <10 | <1 | 0.04 | 10 | 0.19 | 581 | 1 | 0.02 | 3 | 100 | 3 | <0.01 | <2 | 1 | 3 |
| 1817393 | | 10 | <1 | 0.17 | 20 | 0.91 | 634 | 1 | 0.05 | 8 | 810 | 9 | <0.01 | <2 | 6 | 16 |
| 1817394 | | <10 | <1 | 0.08 | 10 | 0.12 | 183 | 1 | 0.04 | 2 | 100 | 6 | <0.01 | <2 | 1 | 7 |
| 1817395 | | <10 | <1 | 0.12 | 10 | 0.05 | 108 | 6 | 0.04 | 2 | 130 | 8 | <0.01 | <2 | 1 | 7 |
| 1817396 | | 10 | <1 | 0.12 | 20 | 0.88 | 596 | 1 | 0.06 | 7 | 740 | 13 | <0.01 | <2 | 7 | 40 |
| 1817397 | | 10 | <1 | 0.10 | 10 | 0.67 | 445 | 1 | 0.07 | 5 | 520 | 9 | <0.01 | <2 | 5 | 39 |
| 1817398 | | <10 | <1 | 0.06 | 10 | 0.39 | 354 | 1 | 0.06 | 4 | 270 | 8 | <0.01 | <2 | 3 | 30 |
| 1817399 | | 10 | <1 | 0.16 | 10 | 0.60 | 435 | 1 | 0.07 | 4 | 560 | 8 | <0.01 | 2 | 5 | 32 |
| 1817400 | | 10 | <1 | 0.14 | 10 | 0.69 | 528 | 1 | 0.05 | 7 | 560 | 18 | <0.01 | <2 | 5 | 40 |
| 1817401 | | <10 | <1 | 0.05 | 10 | 0.04 | 230 | <1 | 0.05 | 2 | 40 | 8 | <0.01 | <2 | 1 | 11 |
| 1817402 | | <10 | <1 | 0.14 | 10 | 0.53 | 399 | <1 | 0.06 | 4 | 640 | 8 | <0.01 | <2 | 4 | 35 |
| 1817403 | | <10 | <1 | 0.14 | 10 | 0.44 | 312 | 1 | 0.06 | 2 | 400 | 7 | <0.01 | <2 | 3 | 41 |
| 1817404 | | <10 | <1 | 0.16 | 10 | 0.30 | 305 | 3 | 0.06 | 3 | 370 | 7 | <0.01 | <2 | 2 | 22 |
| 1817405 | | <10 | <1 | 0.17 | 10 | 0.30 | 303 | 3 | 0.06 | 3 | 360 | 5 | <0.01 | <2 | 2 | 22 |
| 1817406 | | 10 | <1 | 0.20 | 10 | 0.66 | 440 | 1 | 0.05 | 7 | 720 | 14 | <0.01 | <2 | 4 | 40 |
| 1817407 | | 10 | <1 | 0.17 | 10 | 0.83 | 548 | <1 | 0.05 | 11 | 510 | 44 | <0.01 | <2 | 6 | 17 |
| 1817408 | | <10 | <1 | 0.18 | 10 | 0.42 | 439 | 1 | 0.05 | 5 | 580 | 11 | <0.01 | <2 | 3 | 12 |
| 1817409 | | <10 | <1 | 0.15 | 10 | 0.43 | 491 | 1 | 0.05 | 5 | 520 | 19 | <0.01 | <2 | 3 | 17 |
| 1817410 | | <10 | <1 | 0.19 | 10 | 0.28 | 382 | <1 | 0.05 | 3 | 490 | 64 | <0.01 | <2 | 1 | 11 |
| 1817411 | | <10 | <1 | 0.19 | 10 | 0.20 | 300 | <1 | 0.07 | 3 | 340 | 58 | <0.01 | 2 | 2 | 17 |
| 1817412 | | <10 | <1 | 0.11 | 10 | 0.22 | 202 | <1 | 0.07 | 3 | 360 | 8 | <0.01 | <2 | 2 | 44 |
| 1817413 | | <10 | <1 | 0.11 | 10 | 0.27 | 226 | <1 | 0.08 | 2 | 400 | 4 | <0.01 | <2 | 2 | 45 |
| 1817414 | | <10 | <1 | 0.13 | 10 | 0.28 | 241 | <1 | 0.07 | 3 | 350 | 5 | <0.01 | <2 | 1 | 39 |
| 1817415 | | <10 | <1 | 0.13 | 10 | 0.28 | 201 | <1 | 0.07 | 3 | 370 | 5 | <0.01 | <2 | 1 | 53 |
| 1817416 | | <10 | <1 | 0.15 | 10 | 0.17 | 136 | <1 | 0.07 | 1 | 350 | 4 | <0.01 | <2 | 1 | 69 |
| 1817417 | | <10 | <1 | 0.21 | 10 | 0.27 | 242 | 1 | 0.05 | 2 | 240 | 14 | <0.01 | <2 | 1 | 39 |
| 1817418 | | <10 | 1 | 0.23 | 10 | 0.14 | 199 | 1 | 0.04 | 3 | 220 | 11 | <0.01 | <2 | 1 | 16 |
| 1817419 | | <10 | <1 | 0.22 | 10 | 0.17 | 182 | <1 | 0.05 | 2 | 310 | 8 | <0.01 | <2 | 1 | 25 |
| 1817420 | | <10 | <1 | 0.15 | 10 | 0.17 | 151 | 1 | 0.07 | 2 | 340 | 5 | <0.01 | <2 | 1 | 47 |
| 1817421 | | <10 | <1 | 0.17 | 10 | 0.16 | 200 | 10 | 0.04 | 2 | 210 | 24 | 0.01 | <2 | 1 | 24 |
| 1817422 | | <10 | <1 | 0.22 | 10 | 0.13 | 172 | 1 | 0.06 | 3 | 320 | 11 | <0.01 | <2 | 1 | 26 |
| 1817423 | | <10 | <1 | 0.22 | 20 | 0.27 | 348 | 3 | 0.03 | 3 | 230 | 21 | <0.01 | <2 | 1 | 12 |
| 1817424 | | <10 | <1 | 0.27 | 10 | 0.20 | 210 | 4 | 0.03 | 3 | 220 | 26 | <0.01 | <2 | 1 | 8 |
| 1817425 | | <10 | <1 | 0.27 | 20 | 0.30 | 235 | 4 | 0.03 | 1 | 430 | 24 | 0.01 | <2 | 1 | 11 |



ALS Canada Ltd.
 2103 Dollarton Hwy
 North Vancouver BC V7H 0A7
 Phone: +1 (604) 984 0221 Fax: +1 (604) 984 0218
 www.alsglobal.com/geochemistry

To: GROUNDTRUTH EXPLORATION
 PO BOX 70
 DAWSON CITY YT Y0B 1C0

Page: 3 - C
 Total # Pages: 5 (A - C)
 Plus Appendix Pages
 Finalized Date: 4-NOV-2019
 Account: TRUPTD

Project: ROSEBUTE (ROS)

CERTIFICATE OF ANALYSIS WH19244825

| Sample Description | Method Analyte Units LOD | ME-ICP41 | ME-ICP41 | ME-ICP41 | ME-ICP41 | ME-ICP41 | ME-ICP41 | ME-ICP41 | ME-MS42 |
|--------------------|--------------------------|-----------|-----------|-----------|----------|----------|----------|----------|-------------|
| | | Th ppm 20 | Ti % 0.01 | Tl ppm 10 | U ppm 10 | V ppm 1 | W ppm 10 | Zn ppm 2 | Te ppm 0.01 |
| 1817386 | | <20 | 0.01 | <10 | <10 | 11 | 40 | 47 | 0.12 |
| 1817387 | | <20 | 0.01 | <10 | <10 | 11 | <10 | 49 | 0.09 |
| 1817388 | | <20 | 0.01 | <10 | <10 | 16 | <10 | 63 | 0.74 |
| 1817389 | | <20 | <0.01 | <10 | <10 | 11 | 10 | 34 | 0.05 |
| 1817390 | | <20 | 0.02 | <10 | <10 | 31 | <10 | 72 | 0.03 |
| 1817391 | | <20 | 0.01 | <10 | <10 | 33 | <10 | 125 | 0.03 |
| 1817392 | | <20 | <0.01 | <10 | <10 | 8 | <10 | 32 | 0.02 |
| 1817393 | | <20 | 0.02 | <10 | <10 | 54 | <10 | 98 | 0.03 |
| 1817394 | | 20 | 0.01 | <10 | <10 | 10 | 10 | 16 | 0.06 |
| 1817395 | | 20 | 0.01 | <10 | <10 | 9 | 10 | 17 | 0.20 |
| 1817396 | | <20 | 0.11 | <10 | <10 | 59 | <10 | 96 | 0.05 |
| 1817397 | | <20 | 0.10 | <10 | <10 | 39 | <10 | 69 | 0.06 |
| 1817398 | | <20 | 0.07 | <10 | <10 | 22 | <10 | 45 | 0.04 |
| 1817399 | | <20 | 0.12 | <10 | <10 | 38 | <10 | 67 | 0.08 |
| 1817400 | | <20 | 0.11 | <10 | <10 | 35 | <10 | 83 | 0.17 |
| 1817401 | | <20 | 0.01 | <10 | <10 | 5 | <10 | 11 | 0.04 |
| 1817402 | | <20 | 0.10 | <10 | <10 | 30 | <10 | 52 | 0.05 |
| 1817403 | | <20 | 0.08 | <10 | <10 | 25 | 70 | 49 | 0.17 |
| 1817404 | | <20 | 0.03 | <10 | <10 | 17 | 950 | 39 | 0.22 |
| 1817405 | | <20 | 0.03 | <10 | <10 | 17 | 940 | 38 | 0.25 |
| 1817406 | | <20 | 0.07 | <10 | <10 | 37 | 10 | 80 | 1.16 |
| 1817407 | | <20 | 0.02 | <10 | <10 | 42 | <10 | 92 | 1.53 |
| 1817408 | | <20 | 0.01 | <10 | <10 | 23 | 10 | 59 | 0.43 |
| 1817409 | | <20 | 0.01 | <10 | <10 | 22 | 100 | 53 | 0.70 |
| 1817410 | | <20 | 0.01 | <10 | <10 | 14 | 30 | 45 | 2.54 |
| 1817411 | | <20 | 0.01 | <10 | <10 | 13 | 10 | 39 | 0.93 |
| 1817412 | | <20 | 0.02 | <10 | <10 | 15 | <10 | 36 | 0.08 |
| 1817413 | | <20 | 0.02 | <10 | <10 | 17 | <10 | 39 | 0.10 |
| 1817414 | | <20 | 0.02 | <10 | <10 | 14 | <10 | 42 | 0.09 |
| 1817415 | | <20 | 0.04 | <10 | <10 | 13 | <10 | 38 | 0.04 |
| 1817416 | | <20 | 0.03 | <10 | <10 | 10 | <10 | 26 | 0.13 |
| 1817417 | | <20 | 0.02 | <10 | <10 | 9 | <10 | 75 | 0.78 |
| 1817418 | | <20 | 0.01 | <10 | <10 | 6 | 10 | 30 | 4.12 |
| 1817419 | | <20 | 0.01 | <10 | <10 | 8 | 10 | 33 | 0.20 |
| 1817420 | | <20 | 0.04 | <10 | <10 | 10 | 10 | 24 | 0.14 |
| 1817421 | | <20 | 0.02 | <10 | <10 | 8 | 140 | 68 | 2.03 |
| 1817422 | | <20 | 0.01 | <10 | <10 | 8 | 10 | 34 | 0.07 |
| 1817423 | | <20 | 0.01 | <10 | <10 | 9 | 10 | 69 | 0.71 |
| 1817424 | | <20 | <0.01 | <10 | <10 | 8 | 10 | 46 | 2.44 |
| 1817425 | | <20 | <0.01 | <10 | <10 | 11 | 10 | 63 | 1.52 |



ALS Canada Ltd.
 2103 Dollarton Hwy
 North Vancouver BC V7H 0A7
 Phone: +1 (604) 984 0221 Fax: +1 (604) 984 0218
 www.alsglobal.com/geochemistry

To: GROUNDTRUTH EXPLORATION
 PO BOX 70
 DAWSON CITY YT Y0B 1C0

Page: 4 - A
 Total # Pages: 5 (A - C)
 Plus Appendix Pages
 Finalized Date: 4-NOV-2019
 Account: TRUPTD

Project: ROSEBUTE (ROS)

CERTIFICATE OF ANALYSIS WH19244825

| Sample Description | Method Analyte Units LOD | WEI-21 | Au-AA23 | ME-ICP41 | ME-ICP41 | ME-ICP41 | ME-ICP41 | ME-ICP41 | ME-ICP41 | ME-ICP41 | ME-ICP41 | ME-ICP41 | ME-ICP41 | ME-ICP41 | ME-ICP41 | ME-ICP41 |
|--------------------|--------------------------|--------------|---------|----------|----------|----------|----------|----------|----------|----------|----------|----------|----------|----------|----------|----------|
| | | Recvd Wt. kg | Au ppm | Ag ppm | Al % | As ppm | B ppm | Ba ppm | Be ppm | Bi ppm | Ca % | Cd ppm | Co ppm | Cr ppm | Cu ppm | Fe % |
| 1817426 | | 1.86 | 0.040 | 0.3 | 0.46 | <2 | <10 | 110 | <0.5 | 2 | 0.12 | <0.5 | 2 | 6 | 15 | 0.71 |
| 1817427 | | 2.81 | 0.091 | 0.2 | 0.56 | <2 | <10 | 130 | <0.5 | <2 | 0.15 | <0.5 | 2 | 7 | 9 | 0.94 |
| 1817428 | | 3.54 | 0.042 | <0.2 | 0.25 | <2 | <10 | 50 | <0.5 | 2 | 0.10 | <0.5 | 2 | 14 | 5 | 0.54 |
| 1817429 | | <0.02 | 0.044 | <0.2 | 0.21 | <2 | <10 | 50 | <0.5 | <2 | 0.11 | <0.5 | 2 | 13 | 5 | 0.48 |
| 1817430 | | 2.40 | 0.039 | <0.2 | 0.48 | <2 | <10 | 100 | <0.5 | <2 | 0.15 | <0.5 | 2 | 7 | 5 | 0.63 |
| 1817431 | | 3.40 | 0.048 | <0.2 | 0.57 | <2 | <10 | 110 | <0.5 | 2 | 0.15 | <0.5 | 3 | 6 | 8 | 0.85 |
| 1817432 | | 2.56 | 0.051 | <0.2 | 0.49 | <2 | <10 | 100 | <0.5 | <2 | 0.08 | <0.5 | 3 | 6 | 13 | 0.94 |
| 1817433 | | 3.26 | 0.042 | <0.2 | 0.45 | <2 | <10 | 90 | <0.5 | 2 | 0.08 | <0.5 | 2 | 7 | 8 | 0.96 |
| 1817434 | | 2.67 | 0.228 | 0.6 | 0.54 | <2 | <10 | 120 | <0.5 | <2 | 0.10 | <0.5 | 3 | 5 | 8 | 1.26 |
| 1817435 | | 2.25 | 0.069 | 0.3 | 0.50 | <2 | <10 | 110 | <0.5 | 2 | 0.11 | <0.5 | 2 | 3 | 10 | 0.89 |
| 1817436 | | 3.23 | 0.121 | 0.5 | 0.75 | <2 | <10 | 140 | <0.5 | <2 | 0.12 | <0.5 | 4 | 21 | 12 | 1.31 |
| 1817437 | | 3.18 | 0.178 | 0.5 | 0.67 | <2 | <10 | 130 | 0.5 | <2 | 0.12 | <0.5 | 3 | 12 | 13 | 1.13 |
| 1817438 | | 2.74 | 0.226 | 0.8 | 0.80 | <2 | <10 | 160 | 0.5 | <2 | 0.19 | <0.5 | 4 | 6 | 13 | 1.35 |
| 1817439 | | 2.55 | 1.305 | 2.5 | 0.56 | 2 | <10 | 130 | <0.5 | <2 | 0.16 | <0.5 | 4 | 7 | 9 | 1.10 |
| 1817440 | | 2.88 | 2.93 | 6.8 | 0.57 | <2 | <10 | 130 | <0.5 | 2 | 0.19 | <0.5 | 3 | 5 | 13 | 1.20 |
| 1817441 | | 2.09 | 0.194 | 0.9 | 0.88 | <2 | <10 | 160 | 0.5 | 2 | 0.20 | <0.5 | 4 | 4 | 12 | 1.63 |
| 1817442 | | 2.72 | 0.880 | 3.7 | 0.65 | <2 | <10 | 130 | <0.5 | <2 | 0.12 | <0.5 | 4 | 4 | 9 | 1.50 |
| 1817443 | | 1.51 | 0.339 | 1.1 | 0.45 | <2 | <10 | 110 | <0.5 | <2 | 0.11 | <0.5 | 2 | 4 | 10 | 0.87 |
| 1817444 | | 2.40 | 1.820 | 5.7 | 0.76 | <2 | <10 | 230 | 0.5 | <2 | 0.17 | <0.5 | 5 | 7 | 37 | 1.64 |
| 1817445 | | 2.53 | 1.820 | 4.7 | 0.57 | <2 | <10 | 160 | <0.5 | <2 | 0.15 | <0.5 | 3 | 5 | 18 | 1.02 |
| 1817446 | | 2.41 | 5.40 | 10.6 | 0.80 | <2 | <10 | 220 | 0.6 | 2 | 0.21 | <0.5 | 5 | 9 | 70 | 1.70 |
| 1817447 | | 1.14 | 0.867 | 4.9 | 0.60 | 3 | <10 | 3460 | <0.5 | <2 | 0.94 | <0.5 | 3 | 4 | 13 | 1.18 |
| 1817448 | | 1.06 | 0.325 | 1.0 | 0.99 | <2 | <10 | 260 | 0.5 | <2 | 0.28 | <0.5 | 4 | 6 | 20 | 1.55 |
| 1817449 | | 1.16 | 0.472 | 1.7 | 0.65 | <2 | <10 | 190 | 0.5 | <2 | 0.16 | <0.5 | 3 | 4 | 13 | 1.12 |
| 1817450 | | 3.88 | 0.336 | 1.0 | 0.54 | <2 | <10 | 130 | <0.5 | <2 | 0.11 | <0.5 | 3 | 7 | 11 | 1.08 |
| 1817451 | | 2.28 | 0.023 | <0.2 | 0.51 | <2 | <10 | 110 | <0.5 | <2 | 0.11 | <0.5 | 1 | 4 | 7 | 0.59 |
| 1817452 | | 2.84 | 0.018 | <0.2 | 0.66 | <2 | <10 | 160 | <0.5 | 2 | 0.15 | <0.5 | 2 | 5 | 8 | 1.25 |
| 1817453 | | 0.87 | 0.027 | 0.2 | 0.56 | <2 | <10 | 200 | <0.5 | 2 | 0.14 | <0.5 | 2 | 3 | 12 | 0.93 |
| 1817454 | | 0.98 | 0.078 | <0.2 | 0.51 | 2 | <10 | 230 | <0.5 | <2 | 0.30 | <0.5 | 2 | 10 | 8 | 0.75 |
| 1817455 | | 2.35 | 0.426 | 1.1 | 0.43 | 2 | <10 | 170 | <0.5 | <2 | 0.06 | <0.5 | 2 | 8 | 18 | 1.31 |
| 1817456 | | 2.58 | 0.205 | 0.6 | 0.43 | <2 | <10 | 80 | <0.5 | <2 | 0.08 | <0.5 | 3 | 6 | 24 | 0.86 |
| 1817457 | | 2.54 | 0.081 | 0.4 | 1.20 | <2 | <10 | 200 | 0.5 | <2 | 0.42 | <0.5 | 6 | 4 | 11 | 1.84 |
| 1817458 | | 2.99 | 0.053 | 0.3 | 1.41 | <2 | <10 | 280 | 0.5 | 2 | 0.64 | <0.5 | 7 | 5 | 12 | 2.12 |
| 1817459 | | 3.60 | 0.103 | 0.3 | 2.55 | <2 | <10 | 460 | 0.6 | 3 | 1.08 | <0.5 | 19 | 16 | 29 | 4.59 |
| 1817460 | | 3.82 | 0.048 | 0.2 | 0.76 | <2 | <10 | 260 | <0.5 | <2 | 0.20 | <0.5 | 4 | 5 | 7 | 1.36 |
| 1817461 | | 1.82 | 0.175 | 0.2 | 0.61 | <2 | <10 | 260 | 0.5 | <2 | 0.12 | <0.5 | 3 | 4 | 6 | 1.18 |
| 1817462 | | 2.44 | 0.044 | <0.2 | 0.82 | 2 | 10 | 330 | 0.8 | <2 | 0.16 | <0.5 | 3 | 4 | 4 | 1.19 |
| 1817463 | | 3.55 | 0.018 | <0.2 | 0.47 | <2 | <10 | 130 | <0.5 | <2 | 0.08 | <0.5 | 1 | 4 | 10 | 0.84 |
| 1817464 | | 3.54 | 0.031 | <0.2 | 0.50 | <2 | <10 | 120 | <0.5 | <2 | 0.08 | <0.5 | 2 | 6 | 13 | 1.03 |
| 1817465 | | 3.28 | 0.041 | 0.2 | 0.45 | <2 | <10 | 120 | <0.5 | <2 | 0.07 | <0.5 | 2 | 5 | 15 | 1.19 |



ALS Canada Ltd.
 2103 Dollarton Hwy
 North Vancouver BC V7H 0A7
 Phone: +1 (604) 984 0221 Fax: +1 (604) 984 0218
 www.alsglobal.com/geochemistry

To: GROUNDTRUTH EXPLORATION
 PO BOX 70
 DAWSON CITY YT Y0B 1C0

Page: 4 - B
 Total # Pages: 5 (A - C)
 Plus Appendix Pages
 Finalized Date: 4-NOV-2019
 Account: TRUPTD

Project: ROSEBUTE (ROS)

CERTIFICATE OF ANALYSIS WH19244825

| Sample Description | Method Analyte Units LOD | ME-ICP41 | ME-ICP41 | ME-ICP41 | ME-ICP41 | ME-ICP41 | ME-ICP41 | ME-ICP41 | ME-ICP41 | ME-ICP41 | ME-ICP41 | ME-ICP41 | ME-ICP41 | ME-ICP41 | ME-ICP41 | |
|--------------------|--------------------------|-----------|----------|-----------|-----------|-----------|----------|----------|-----------|----------|-----------|----------|-----------|----------|----------|----------|
| | | Ga | Hg | K | La | Mg | Mn | Mo | Na | Ni | P | Pb | S | Sb | Sc | Sr |
| | | ppm 10 | ppm 1 | % 0.01 | ppm 10 | % 0.01 | ppm 5 | ppm 1 | % 0.01 | ppm 1 | ppm 10 | ppm 2 | % 0.01 | ppm 2 | ppm 1 | ppm 1 |
| 1817426 | <10 | <1 | 0.18 | 10 | 0.10 | 191 | 1 | 0.06 | 1 | 320 | 8 | <0.01 | <2 | 1 | 10 | |
| 1817427 | <10 | <1 | 0.14 | 10 | 0.22 | 226 | 1 | 0.08 | 3 | 330 | 7 | <0.01 | <2 | 1 | 15 | |
| 1817428 | <10 | <1 | 0.07 | <10 | 0.07 | 94 | 4 | 0.06 | <1 | 130 | 3 | <0.01 | <2 | 1 | 9 | |
| 1817429 | <10 | <1 | 0.06 | <10 | 0.06 | 84 | 4 | 0.05 | <1 | 110 | 4 | <0.01 | <2 | <1 | 8 | |
| 1817430 | <10 | <1 | 0.15 | 10 | 0.14 | 181 | 1 | 0.08 | <1 | 280 | 4 | <0.01 | <2 | 1 | 21 | |
| 1817431 | <10 | <1 | 0.19 | 10 | 0.18 | 213 | 1 | 0.07 | 1 | 290 | 7 | <0.01 | <2 | 1 | 16 | |
| 1817432 | <10 | <1 | 0.19 | 20 | 0.15 | 250 | 5 | 0.05 | <1 | 190 | 7 | <0.01 | <2 | 1 | 7 | |
| 1817433 | <10 | <1 | 0.13 | 20 | 0.14 | 191 | 2 | 0.07 | 1 | 200 | 9 | <0.01 | <2 | 1 | 8 | |
| 1817434 | <10 | <1 | 0.16 | 30 | 0.15 | 236 | 9 | 0.06 | 2 | 200 | 10 | <0.01 | <2 | 1 | 8 | |
| 1817435 | <10 | <1 | 0.12 | 30 | 0.11 | 169 | 1 | 0.05 | 1 | 240 | 7 | <0.01 | <2 | 1 | 9 | |
| 1817436 | <10 | <1 | 0.19 | 30 | 0.30 | 257 | 3 | 0.05 | 5 | 190 | 9 | <0.01 | <2 | 2 | 9 | |
| 1817437 | <10 | <1 | 0.20 | 30 | 0.23 | 215 | 2 | 0.05 | 2 | 220 | 12 | 0.01 | <2 | 1 | 9 | |
| 1817438 | <10 | <1 | 0.27 | 30 | 0.29 | 314 | 5 | 0.05 | 4 | 340 | 8 | <0.01 | <2 | 2 | 13 | |
| 1817439 | <10 | 1 | 0.19 | 20 | 0.18 | 274 | 12 | 0.04 | 2 | 190 | 8 | <0.01 | <2 | 1 | 10 | |
| 1817440 | <10 | 1 | 0.20 | 20 | 0.16 | 263 | 16 | 0.04 | 1 | 190 | 14 | <0.01 | <2 | 1 | 12 | |
| 1817441 | <10 | <1 | 0.26 | 30 | 0.32 | 314 | 3 | 0.03 | 2 | 340 | 8 | <0.01 | <2 | 2 | 11 | |
| 1817442 | <10 | <1 | 0.21 | 20 | 0.19 | 245 | 12 | 0.04 | 2 | 190 | 10 | <0.01 | <2 | 1 | 10 | |
| 1817443 | <10 | <1 | 0.17 | 20 | 0.09 | 142 | 3 | 0.04 | <1 | 190 | 6 | <0.01 | 2 | 1 | 10 | |
| 1817444 | <10 | 1 | 0.30 | 40 | 0.27 | 211 | 9 | 0.04 | 3 | 310 | 10 | 0.01 | <2 | 2 | 10 | |
| 1817445 | <10 | 1 | 0.21 | 20 | 0.11 | 190 | 6 | 0.04 | 1 | 260 | 8 | <0.01 | <2 | 1 | 10 | |
| 1817446 | <10 | 1 | 0.21 | 30 | 0.26 | 316 | 3 | 0.04 | 4 | 330 | 11 | 0.01 | <2 | 2 | 13 | |
| 1817447 | <10 | <1 | 0.18 | 20 | 0.14 | 210 | 26 | 0.04 | 2 | 320 | 6 | 0.09 | <2 | 1 | 144 | |
| 1817448 | <10 | <1 | 0.26 | 30 | 0.36 | 396 | 1 | 0.05 | 1 | 660 | 6 | <0.01 | <2 | 2 | 15 | |
| 1817449 | <10 | <1 | 0.20 | 30 | 0.20 | 270 | 1 | 0.03 | 1 | 290 | 6 | <0.01 | <2 | 1 | 10 | |
| 1817450 | <10 | <1 | 0.19 | 30 | 0.16 | 277 | 2 | 0.05 | 2 | 210 | 8 | <0.01 | <2 | 1 | 10 | |
| 1817451 | <10 | <1 | 0.14 | 20 | 0.14 | 190 | <1 | 0.07 | <1 | 180 | 4 | <0.01 | <2 | 1 | 13 | |
| 1817452 | <10 | <1 | 0.20 | 30 | 0.21 | 271 | 1 | 0.05 | <1 | 250 | 6 | <0.01 | <2 | 1 | 11 | |
| 1817453 | <10 | <1 | 0.20 | 30 | 0.11 | 257 | 2 | 0.04 | 1 | 210 | 4 | <0.01 | <2 | 1 | 10 | |
| 1817454 | <10 | <1 | 0.20 | 20 | 0.09 | 280 | 12 | 0.02 | 2 | 170 | 5 | 0.01 | <2 | 1 | 17 | |
| 1817455 | <10 | <1 | 0.19 | 40 | 0.07 | 146 | 3 | 0.04 | 1 | 130 | 8 | 0.01 | <2 | 1 | 7 | |
| 1817456 | <10 | <1 | 0.22 | 30 | 0.07 | 156 | 1 | 0.04 | 1 | 220 | 6 | <0.01 | <2 | 1 | 7 | |
| 1817457 | <10 | <1 | 0.43 | 20 | 0.47 | 467 | 1 | 0.04 | <1 | 980 | 5 | 0.01 | <2 | 1 | 31 | |
| 1817458 | 10 | <1 | 0.47 | 20 | 0.64 | 473 | <1 | 0.06 | 2 | 1060 | 4 | <0.01 | <2 | 2 | 56 | |
| 1817459 | 10 | <1 | 0.68 | 10 | 1.76 | 843 | <1 | 0.05 | 7 | 1710 | 6 | <0.01 | <2 | 8 | 57 | |
| 1817460 | <10 | <1 | 0.16 | 30 | 0.32 | 322 | <1 | 0.06 | 2 | 390 | 5 | <0.01 | <2 | 1 | 17 | |
| 1817461 | <10 | <1 | 0.17 | 30 | 0.18 | 299 | <1 | 0.04 | 1 | 190 | 9 | <0.01 | <2 | 1 | 12 | |
| 1817462 | <10 | <1 | 0.23 | 20 | 0.25 | 331 | <1 | 0.04 | 2 | 360 | 6 | <0.01 | <2 | 1 | 14 | |
| 1817463 | <10 | <1 | 0.14 | 20 | 0.12 | 136 | <1 | 0.06 | <1 | 150 | 4 | <0.01 | <2 | 1 | 7 | |
| 1817464 | <10 | <1 | 0.13 | 20 | 0.16 | 176 | <1 | 0.06 | 1 | 150 | 6 | <0.01 | <2 | 1 | 9 | |
| 1817465 | <10 | <1 | 0.13 | 30 | 0.16 | 247 | 1 | 0.05 | <1 | 140 | 7 | <0.01 | <2 | 1 | 7 | |



ALS Canada Ltd.
 2103 Dollarton Hwy
 North Vancouver BC V7H 0A7
 Phone: +1 (604) 984 0221 Fax: +1 (604) 984 0218
 www.alsglobal.com/geochemistry

To: GROUNDTRUTH EXPLORATION
 PO BOX 70
 DAWSON CITY YT Y0B 1C0

Page: 4 - C
 Total # Pages: 5 (A - C)
 Plus Appendix Pages
 Finalized Date: 4-NOV-2019
 Account: TRUPTD

Project: ROSEBUTE (ROS)

CERTIFICATE OF ANALYSIS WH19244825

| Sample Description | Method Analyte Units LOD | ME-ICP41 | ME-ICP41 | ME-ICP41 | ME-ICP41 | ME-ICP41 | ME-ICP41 | ME-ICP41 | ME-MS42 |
|--------------------|-----------------------------------|-----------|-----------|-----------|-----------|----------|-----------|----------|-------------|
| | | Th | Tl | Tl | U | V | W | Zn | Te |
| | | ppm 20 | % 0.01 | ppm 10 | ppm 10 | ppm 1 | ppm 10 | ppm 2 | ppm 0.01 |
| 1817426 | | <20 | <0.01 | <10 | <10 | 7 | 20 | 24 | 0.20 |
| 1817427 | | <20 | 0.01 | <10 | <10 | 13 | 10 | 34 | 0.26 |
| 1817428 | | <20 | <0.01 | <10 | <10 | 7 | 390 | 10 | 0.19 |
| 1817429 | | <20 | <0.01 | <10 | <10 | 6 | 470 | 8 | 0.21 |
| 1817430 | | <20 | 0.01 | <10 | <10 | 10 | 80 | 24 | 0.13 |
| 1817431 | | <20 | 0.01 | <10 | <10 | 11 | 20 | 29 | 0.10 |
| 1817432 | | 20 | 0.01 | <10 | <10 | 8 | 10 | 23 | 0.16 |
| 1817433 | | 20 | 0.01 | <10 | <10 | 10 | 10 | 23 | 0.12 |
| 1817434 | | 20 | 0.01 | <10 | <10 | 11 | 10 | 32 | 0.65 |
| 1817435 | | <20 | 0.01 | <10 | <10 | 9 | 10 | 25 | 0.09 |
| 1817436 | | 20 | 0.01 | <10 | <10 | 13 | 10 | 39 | 0.25 |
| 1817437 | | 30 | 0.01 | <10 | <10 | 12 | 10 | 33 | 0.33 |
| 1817438 | | 20 | 0.01 | <10 | <10 | 16 | 980 | 38 | 0.58 |
| 1817439 | | 20 | 0.01 | <10 | <10 | 9 | 650 | 26 | 2.98 |
| 1817440 | | 30 | <0.01 | <10 | <10 | 8 | 760 | 25 | 5.97 |
| 1817441 | | 30 | 0.02 | <10 | <10 | 18 | 20 | 41 | 0.37 |
| 1817442 | | 30 | 0.01 | <10 | <10 | 11 | 20 | 29 | 2.30 |
| 1817443 | | 20 | <0.01 | <10 | <10 | 5 | 30 | 17 | 0.74 |
| 1817444 | | 20 | 0.01 | <10 | <10 | 14 | 90 | 41 | 3.49 |
| 1817445 | | <20 | <0.01 | <10 | <10 | 6 | 80 | 24 | 4.50 |
| 1817446 | | 20 | <0.01 | <10 | <10 | 14 | 40 | 44 | 16.20 |
| 1817447 | | <20 | <0.01 | <10 | <10 | 8 | 240 | 32 | 3.10 |
| 1817448 | | <20 | <0.01 | <10 | <10 | 19 | 110 | 66 | 0.67 |
| 1817449 | | <20 | <0.01 | <10 | <10 | 8 | 80 | 33 | 1.16 |
| 1817450 | | 20 | 0.01 | <10 | <10 | 9 | 30 | 27 | 0.88 |
| 1817451 | | <20 | <0.01 | <10 | <10 | 5 | 10 | 23 | 0.01 |
| 1817452 | | 20 | 0.01 | <10 | <10 | 8 | 10 | 36 | 0.01 |
| 1817453 | | 20 | <0.01 | <10 | <10 | 4 | 10 | 27 | 0.03 |
| 1817454 | | <20 | <0.01 | <10 | <10 | 6 | 280 | 20 | 0.16 |
| 1817455 | | 40 | <0.01 | <10 | <10 | 5 | 20 | 16 | 1.09 |
| 1817456 | | 30 | <0.01 | <10 | <10 | 6 | 20 | 15 | 0.56 |
| 1817457 | | <20 | 0.03 | <10 | <10 | 16 | 110 | 57 | 0.12 |
| 1817458 | | <20 | 0.12 | <10 | <10 | 27 | <10 | 67 | 0.04 |
| 1817459 | | <20 | 0.20 | <10 | <10 | 98 | <10 | 125 | 0.22 |
| 1817460 | | 20 | <0.01 | <10 | <10 | 18 | <10 | 43 | 0.19 |
| 1817461 | | 40 | <0.01 | <10 | <10 | 11 | 10 | 31 | 0.66 |
| 1817462 | | 20 | <0.01 | <10 | <10 | 9 | <10 | 41 | 0.06 |
| 1817463 | | 40 | <0.01 | <10 | <10 | 6 | <10 | 21 | 0.03 |
| 1817464 | | 40 | <0.01 | <10 | <10 | 10 | <10 | 30 | 0.11 |
| 1817465 | | 30 | 0.01 | <10 | <10 | 11 | 10 | 29 | 0.33 |



ALS Canada Ltd.
 2103 Dollarton Hwy
 North Vancouver BC V7H 0A7
 Phone: +1 (604) 984 0221 Fax: +1 (604) 984 0218
 www.alsglobal.com/geochemistry

To: GROUNDTRUTH EXPLORATION
 PO BOX 70
 DAWSON CITY YT Y0B 1C0

Page: 5 - A
 Total # Pages: 5 (A - C)
 Plus Appendix Pages
 Finalized Date: 4-NOV-2019
 Account: TRUPTD

Project: ROSEBUTE (ROS)

CERTIFICATE OF ANALYSIS WH19244825

| Sample Description | Method Analyte Units LOD | WEI-21 Recvd Wt. kg | Au-AA23 Au ppm | ME-ICP41 Ag ppm | ME-ICP41 Al % | ME-ICP41 As ppm | ME-ICP41 B ppm | ME-ICP41 Ba ppm | ME-ICP41 Be ppm | ME-ICP41 Bi ppm | ME-ICP41 Ca % | ME-ICP41 Cd ppm | ME-ICP41 Co ppm | ME-ICP41 Cr ppm | ME-ICP41 Cu ppm | ME-ICP41 Fe % |
|--------------------|--------------------------|---------------------|----------------|-----------------|---------------|-----------------|----------------|-----------------|-----------------|-----------------|---------------|-----------------|-----------------|-----------------|-----------------|---------------|
| | | 0.02 | 0.005 | 0.2 | 0.01 | 2 | 10 | 10 | 0.5 | 2 | 0.01 | 0.5 | 1 | 1 | 1 | 0.01 |
| 1817466 | | 2.05 | 0.061 | 0.2 | 0.59 | <2 | <10 | 170 | <0.5 | 2 | 0.13 | <0.5 | 3 | 5 | 12 | 1.21 |
| 1817467 | | 2.42 | 0.151 | 1.3 | 1.11 | <2 | <10 | 290 | 0.6 | <2 | 0.24 | <0.5 | 7 | 8 | 36 | 2.09 |
| 1817468 | | 2.71 | 2.15 | 4.1 | 0.78 | <2 | <10 | 230 | <0.5 | <2 | 1.18 | <0.5 | 6 | 6 | 34 | 1.69 |
| 1817469 | | 3.93 | 0.330 | 0.9 | 1.06 | <2 | <10 | 240 | <0.5 | <2 | 0.97 | <0.5 | 7 | 6 | 54 | 2.14 |
| 1817470 | | 3.96 | 0.146 | 0.7 | 1.25 | <2 | <10 | 240 | 0.5 | <2 | 1.97 | <0.5 | 7 | 14 | 28 | 1.95 |
| 1817471 | | 1.07 | <0.005 | 0.4 | 0.22 | <2 | <10 | 90 | <0.5 | <2 | 19.8 | <0.5 | <1 | 7 | 5 | 0.46 |



ALS Canada Ltd.
 2103 Dollarton Hwy
 North Vancouver BC V7H 0A7
 Phone: +1 (604) 984 0221 Fax: +1 (604) 984 0218
 www.alsglobal.com/geochemistry

To: GROUNDTRUTH EXPLORATION
 PO BOX 70
 DAWSON CITY YT Y0B 1C0

Page: 5 - B
 Total # Pages: 5 (A - C)
 Plus Appendix Pages
 Finalized Date: 4-NOV-2019
 Account: TRUPTD

Project: ROSEBUTE (ROS)

CERTIFICATE OF ANALYSIS WH19244825

| Sample Description | Method Analyte Units LOD | ME-ICP41 | ME-ICP41 | ME-ICP41 | ME-ICP41 | ME-ICP41 | ME-ICP41 | ME-ICP41 | ME-ICP41 | ME-ICP41 | ME-ICP41 | ME-ICP41 | ME-ICP41 | ME-ICP41 | ME-ICP41 | |
|--------------------|-----------------------------------|----------|----------|----------|----------|----------|----------|----------|----------|----------|----------|----------|----------|----------|----------|-----|
| | | Ga | Hg | K | La | Mg | Mn | Mo | Na | Ni | P | Pb | S | Sb | Sc | Sr |
| | | ppm | ppm | % | ppm | % | ppm | ppm | % | ppm | ppm | ppm | % | ppm | ppm | ppm |
| | | 10 | 1 | 0.01 | 10 | 0.01 | 5 | 1 | 0.01 | 1 | 10 | 2 | 0.01 | 2 | 1 | 1 |
| 1817466 | | <10 | <1 | 0.14 | 40 | 0.21 | 348 | 1 | 0.05 | 1 | 190 | 7 | <0.01 | <2 | 1 | 9 |
| 1817467 | | <10 | <1 | 0.40 | 30 | 0.45 | 583 | 2 | 0.04 | 7 | 340 | 16 | <0.01 | <2 | 3 | 10 |
| 1817468 | | <10 | <1 | 0.37 | 20 | 0.29 | 762 | 2 | 0.03 | 4 | 340 | 9 | <0.01 | <2 | 2 | 29 |
| 1817469 | | <10 | <1 | 0.31 | 20 | 0.54 | 722 | <1 | 0.05 | 5 | 390 | 11 | <0.01 | <2 | 3 | 19 |
| 1817470 | | 10 | <1 | 0.32 | 20 | 0.76 | 675 | <1 | 0.04 | 6 | 340 | 11 | <0.01 | <2 | 3 | 39 |
| 1817471 | | <10 | <1 | 0.02 | 10 | 0.25 | 985 | <1 | 0.01 | 5 | 230 | 30 | <0.01 | <2 | 1 | 313 |



ALS Canada Ltd.
 2103 Dollarton Hwy
 North Vancouver BC V7H 0A7
 Phone: +1 (604) 984 0221 Fax: +1 (604) 984 0218
 www.alsglobal.com/geochemistry

To: GROUNDTRUTH EXPLORATION
 PO BOX 70
 DAWSON CITY YT Y0B 1C0

Page: 5 - C
 Total # Pages: 5 (A - C)
 Plus Appendix Pages
 Finalized Date: 4-NOV-2019
 Account: TRUPTD

Project: ROSEBUTE (ROS)

CERTIFICATE OF ANALYSIS WH19244825

| Sample Description | Method Analyte Units LOD | ME-ICP41 | ME-ICP41 | ME-ICP41 | ME-ICP41 | ME-ICP41 | ME-ICP41 | ME-ICP41 | ME-MS42 |
|--------------------|--------------------------|----------|----------|----------|----------|----------|----------|----------|---------|
| | | Th | Tl | Tl | U | V | W | Zn | Te |
| | | ppm | % | ppm | ppm | ppm | ppm | ppm | ppm |
| | | 20 | 0.01 | 10 | 10 | 1 | 10 | 2 | 0.01 |
| 1817466 | | 30 | 0.01 | <10 | <10 | 12 | 10 | 39 | 0.12 |
| 1817467 | | <20 | 0.03 | <10 | <10 | 20 | 10 | 77 | 0.46 |
| 1817468 | | <20 | 0.02 | <10 | <10 | 15 | <10 | 47 | 2.92 |
| 1817469 | | <20 | 0.02 | <10 | <10 | 25 | <10 | 78 | 0.68 |
| 1817470 | | <20 | 0.05 | <10 | <10 | 28 | 40 | 76 | 0.32 |
| 1817471 | | <20 | 0.01 | <10 | <10 | 7 | <10 | 35 | 0.02 |



ALS Canada Ltd.
2103 Dollarton Hwy
North Vancouver BC V7H 0A7
Phone: +1 (604) 984 0221 Fax: +1 (604) 984 0218
www.alsglobal.com/geochemistry

To: GROUNDTRUTH EXPLORATION
PO BOX 70
DAWSON CITY YT Y0B 1C0

Page: Appendix 1
Total # Appendix Pages: 1
Finalized Date: 4-NOV-2019
Account: TRUPTD

Project: ROSEBUTE (ROS)

CERTIFICATE OF ANALYSIS WH19244825

CERTIFICATE COMMENTS

LABORATORY ADDRESSES

| | | | | |
|--------------------|--|----------|---------|---------|
| Applies to Method: | Processed at ALS Whitehorse located at 78 Mt. Sima Rd, Whitehorse, YT, Canada. | | | |
| | CRU-31 | CRU-QC | LOG-21 | LOG-21d |
| | LOG-23 | PUL-31 | PUL-31d | PUL-QC |
| | SPL-21 | SPL-21d | WEI-21 | |
| Applies to Method: | Processed at ALS Vancouver located at 2103 Dollarton Hwy, North Vancouver, BC, Canada. | | | |
| | Au-AA23 | ME-ICP41 | ME-MS42 | |

APPLICATION FOR A CERTIFICATE OF WORK

I, Jordan Butler (Taku Gold Corp.)

of 2725 Fairbanks St., Nanaimo, BC, V9S 3S8

Phone 604-802-4759

Client I.D. Number: _____

make oath and say that:



1. I am the owner, or agent of the owner, of the mineral claim(s) to which reference is made herein.
2. I have done, or caused to be done, work, on the following mineral claim(s): (Here list claims on which work was actually done by number and name)

Rose113, Rose 115, Rose 118

situated at RoseBute Ck, Klondike Gold District Claim sheet No. NTS115005, O06, O011, and O012

in the Dawson Mining District, to the value of at least 37,000 dollars,

since the 01 day of April 2019,

to represent the following mineral claims under the authority of Grouping Certificate No. _____
(Here list claims to be renewed in numerical order, by grant number and claim name, showing renewal period requested).

Please see Schedule B

3. The following is a detailed statement of such work: (Set out full particulars of the work done indicating when work commenced and ended in the twelve months in which such work is required to be done as shown by Section 56).

A total of 213.1m of trenching was carried out in 2 trenches between September 12 and 19.

The entire trenches were sampled and select grab samples collected, resulting in 126 samples, These were

Despatched to ALS for geochemical analysis.

Sworn before me at Nanaimo, BC this 30th day of March 2020.

Notary Public

Owner or Authorized Agent

Access to Information and Protection of Privacy Act

The personal information requested on this form is collected under the authority of and used for the purpose of administering the Quartz Mining Act. Questions about the collection and use of this information can be directed to the Mining Recorders Office, Mineral Resources, Department of Energy, Mines and Resources, Yukon Government, Box 2703, Whitehorse, Yukon Territory, Y1A 2C6 (867) 667-3190

Wen Bing Zhang
Notary Public
#6 - 2150 Bowen Road
Nanaimo, BC V9S 1H7
Tel: 250-758-3347
Fax: 250-758-1415
HERMANENT COMMUNICATION



Statement of Expenditures

| Vendor | Item | Cost \$ | Invoice No |
|----------------------|----------------------------|-----------|------------|
| GroundTruth | Trenching | 15,254.00 | 10281 |
| GroundTruth | Helicopter | 7,351.85 | 10281 |
| GroundTruth | Helicopter | 4,697.00 | 10312 |
| GroundTruth | Fixed Wing Sample Shipment | 268.30 | 363.23 |
| GroundTruth | Sample Shipment | 94.93 | 10281 |
| Bureau Veritas | Assays on 1 xx Rocks | 4,052.45 | 10281 |
| JP Exploration | Field Work | 8,880.00 | 561TGC |
| Snr Geologist 2 Days | Reporting | 1,200.00 | |
| | Total | 41,798.53 | |