

**ASSESSMENT REPORT ON THE CRIP CLAIMS BLOCK,
ROCK GEOCHEMISTRY SURVEY, YUKON TERRITORY**

Claim Names: Crip 1-17, Crip 26-46, Crip 56-57, Crip 60-63, Crip F 51-55, Crip F 58-59, Crip F 62-63, CRIP 47-50, Crip Friday 13, Pure 1-52, Vera Lyne 1

Grant Numbers: YD07758 -07763, YD11909-11916, YD11936-11938, YD11930-11935, YD11939-11941, YD92424-92432, YD102311-102313, YE78846-78847, YE78850, YE79948, YE72658-72661, YE78845, YE78848-78849, YE79949-79950, YE71343-71346, YE78201-78230, YE78161-78180, YE78505-78506, YE78912

NTS Map Sheet 115 O 14

Latitude N64° 00' 9.5", Longitude W139° 18' 46.8"

UTM Coordinates 582500E, 7098400N, Zone 7V, NAD83

Dawson Mining District

Registered owner: RST Klondike Discoveries Ltd.

Work performed: 2015, 2018 and 2019

for

RST Klondike Discoveries Ltd.

by

Bohumil (Boris) Molak, PhD., P.Geo (BC)

Date: July 06, 2020

Table of Contents

	page
1. Introduction	3
1.1. Location, Access and Topography	3
1.2. The Claims	6
1.3. Terms of Reference	6
2. Previous Exploration	6
3. Regional Geology	13
4. Local Geology	13
5. Rock Geochemistry Survey	14
6. Sample Preparation and Analysis	18
7. Quality Assurance	18
8. Conclusions and Recommendations	21
9. 2015, 2018, 2019 Exploration Expenses	21
10. References	22
11. Statement of Qualifications	25

List of Figures

Fig. 1: Location of Crip Claim Block	4
Fig. 2: Geological Map with CCB Location	5
Fig. 3: Crip Claim Block with Minfile Occurrences in the Surrounding Area	7
Fig. 4: Bonanza and Eldorado Placers with Approximate Location of Crip Claim Block	15
Fig. 5: Rock Sample Locations with Gold and Silver Assays	16
Fig. 6: Classification Diagram with Diabase Dyke Sample from Crip 3 Claim	17
Fig. 7: Au, Ag, Cu, Pb and Zn in Field Original Compared to Field Duplicate	19
Fig. 8: Au, Ag, Cu, Pb and Zn in Standards DS 11 (a) and Oreas262 (b)	20

List of Tables

Table 1: Correlation Matrix	17
-----------------------------	----

List of Appendices

Appendix I: Crip Claim List	26
Appendix II: Rock Sample Descriptions	30
Appendix III: Assay Certificates	31

1. INTRODUCTION

The Crip Claim Block (“CCB”) is a group of 109 contiguous, non-surveyed Quartz claims situated approximately 5 kilometers southeast of Dawson City in the Yukon Territory. The claims are named/numbered Crip 1 - 17, Crip 26 - 46, Crip 56 – 57, Crip 60 – 61, Crip Friday 13, Crip F 51 – 56, Crip F 58 – 59, Crip F 62 - 63, CRIP 47 - 50, Pure 1 - 52 and Vera Lyne 1. CCB and they cover an area of approximately 2,277 hectares (22.77 sq kms). The claims are registered and permitted in 2019 under Q2019_0089 Class 1 Permit and valid to July 18, 2020. The owners of CCB are RST Klondike Discoveries Ltd. (50 %), S. Montreuil (25 %) and E. Petroutsas (25 %), and the Class 1 Permits have been required in the Traditional Territory of the Tr’ondek H’wech’in First Nations since April of 2018.

Prior to 2014, the CCB was registered to S. Montreuil and E. Petroutsas who worked the claims by mechanical trenching and bulk sampling. In 2014, the holders optioned 50% of the CCB to RST Klondike Discoveries Ltd. (“RST”), which continues to investigate the claims by logging and sampling of historical pits/trenches and outcrops with a rationale to obtain additional information on the bedrock geology, structure and mineralization and to make an assessment of the potential of the CCB area to host significant gold mineralization.

Most of the CCB is floored by the Klondike Schist and Finlayson Assemblages, while Slide Mountain Assemblage and mafic volcanic rocks are rarely represented. Northwestern part of the claim block is covered by White Channel Gravel and placer mining takes place. The work in 2015, 2018 and 2019 targeted the areas cleared of gravel down to the bedrock, the historical pits and outcrops, from which the rock samples were collected. The samples were submitted to an accredited laboratory for analysis. The assays returned one anomalous gold and several anomalous silver values. Also of note are four anomalous molybdenum values. The information obtained from this program and from historical reports on the nearby lode gold occurrences and showings provide an incentive for further work. Further outcrop mapping and sampling in the western portion and soil geochemistry in the eastern portion of the CCB are recommended.

1.1. Location, Access and Topography

The CCB is situated about 4 air kilometers southeast of Dawson City in the Yukon Territory. Access to claims from Dawson City is by paved and maintained, all-weather dirt roads running south along Bonanza Creek and by several mining roads and/or ATV trails. Topography on the Crip claims is medium mountainous with altitudes ranging from about 370 meters above sea level at Bonanza Creek to about 1040 meters above sea level on the mountain top in the southeastern corner of the CCB. The area has a sub-arctic climate with discontinuous permafrost.

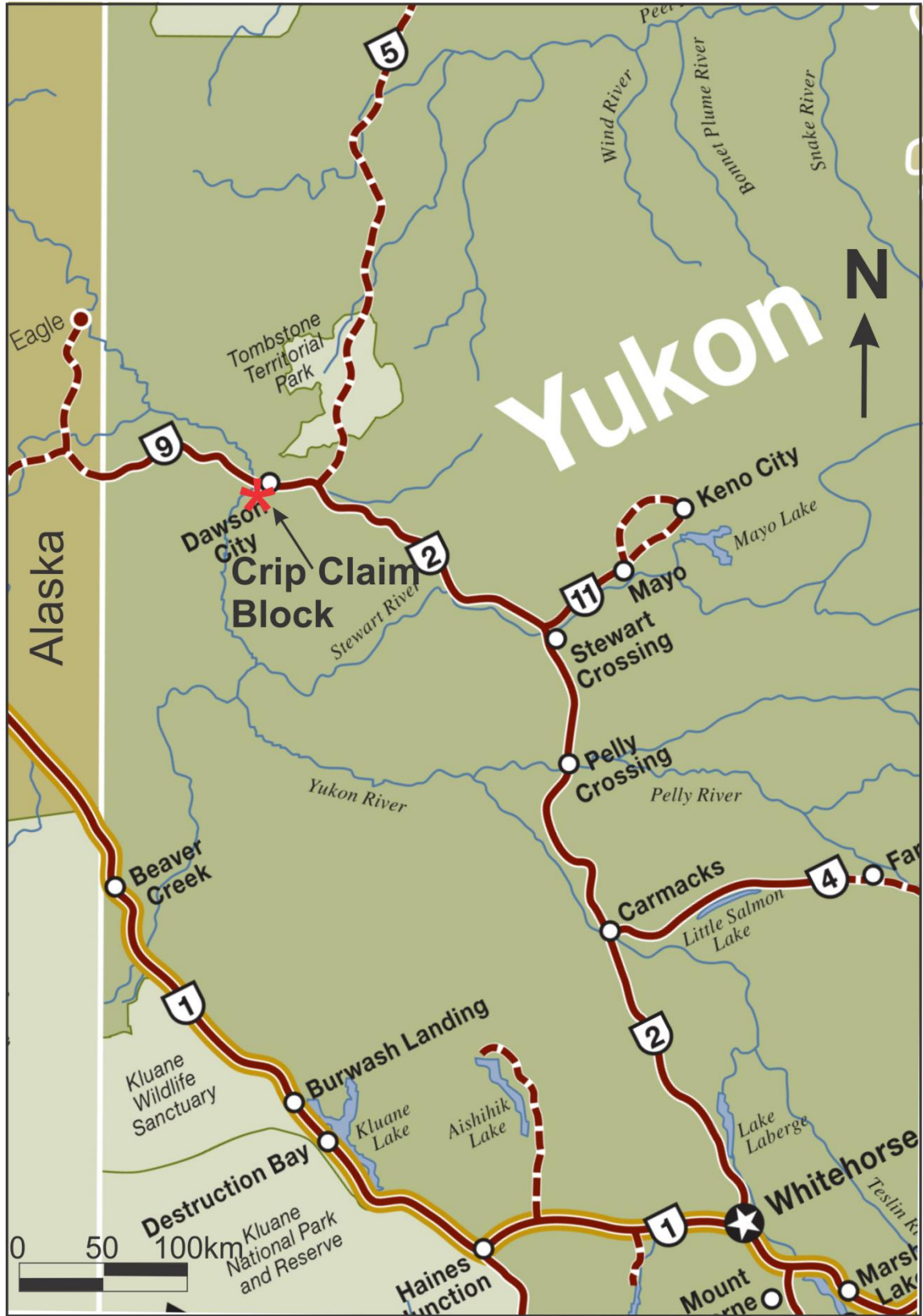


Fig. 1: Location of Crip Claim Block.

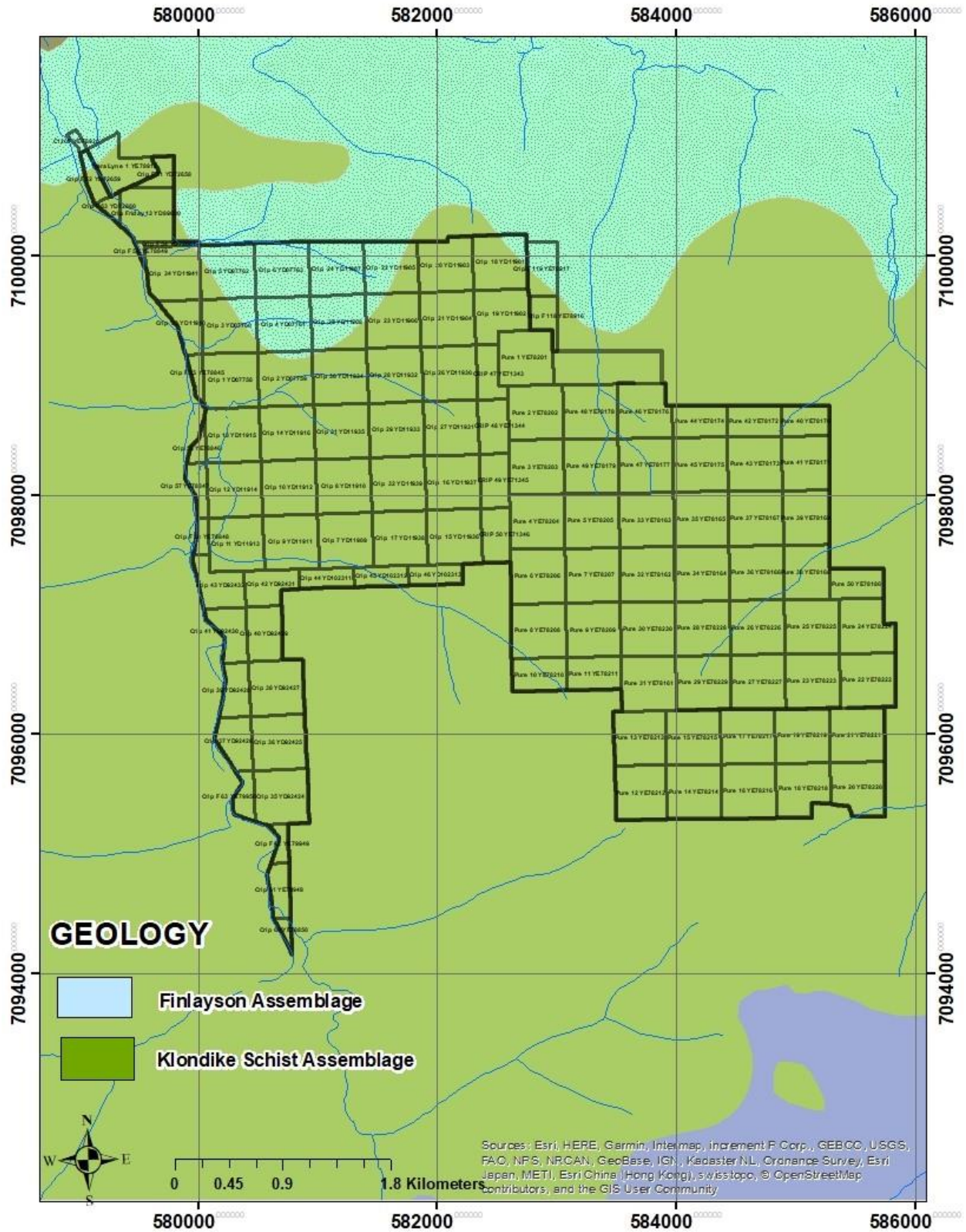


Fig. 2: Geological map with CCB location.

1.2. The Claims

The CCB consists of 109 contiguous, non-surveyed, Quartz mining claims covering an area of approximately 2,277 hectares (22.77 sq kms). The CCB location is shown in Figs. 1 and 2 and the claim information is attached as Appendix I at the back of this report.

1.3. Terms of Reference

This report summarizes the results of RST's rock sampling program that was conducted on selected CCB claims intermittently during the years 2015, 2018 and 2019 with an objective to locate precious and/or base metal anomalies in the Klondike Schist and/or the Finlayson Assemblages. For parts of this report the writer has relied on the assessment and open file reports of the Yukon Exploration and Geological Services Division, on several geo-scientific publications and on the Yukon Department of Energy, Mines and Resources Internet applications. The information reported by other experts who are not qualified persons for this report are quoted in the References chapter and are to the best of the writer's knowledge and experience correct and suitable for inclusion in this report. The Claim descriptions provided herein have been excerpted from the Yukon Department of Energy, Mines and Resources website and relate to the status as of June 15, 2020. The 2015, 2018 and 2019 Exploration Expenses chapter was prepared in co-operation with Xyquest Mining Corp. The assays for this report were made available to the writer in 2018 and/or 2019.

2. PREVIOUS EXPLORATION

Historical mineral occurrences closest to the CCB and referred to in the Minfile are named West Dawson, Fibre, Tyndall, Quigley, Maclean, Stutter, Virgin, Fork, Halifax, Hilker, Bronson, Bald Eagle, Oro Fino and Gonzales (Fig. 3). Some of them are included in Debicki's (1984) and in Mortensen's (1996) reports.

Maclean (116 B 008) prospect contains stringers and small lenses of quartz cutting across carbonaceous quartz-monzonite schist and quartzite. An 8.2 m adit was driven in early 1900s. MacLean claimed that a 1.8 tonne mill test had returned almost 17.1 g/t gold. In 1987 geological survey outlined anomalies while soil sampling returned some high gold values. Drilling and trenching was carried out in late 1980s and the hole 87-GAL-1 intersected alternating layers of quartz-muscovite and quartz-graphite schist and several zones of shearing and quartz-carbonate veining but no significant assays were obtained from either the drill hole or from trenches. In early 1990s trenching intersected siliceous, pyritic sericite schist, which contained up to 10.2 ppm Ag, 1 440 ppm Pb and 8 ppm Hg. Trench 92TR13 cut graphitic schists containing up to 175 ppb Au, 46 ppm Ag and 347 ppm Cu. Soil sampling in 1993 outlined a weak gold+arsenic+zinc anomaly on the Sharon claims.

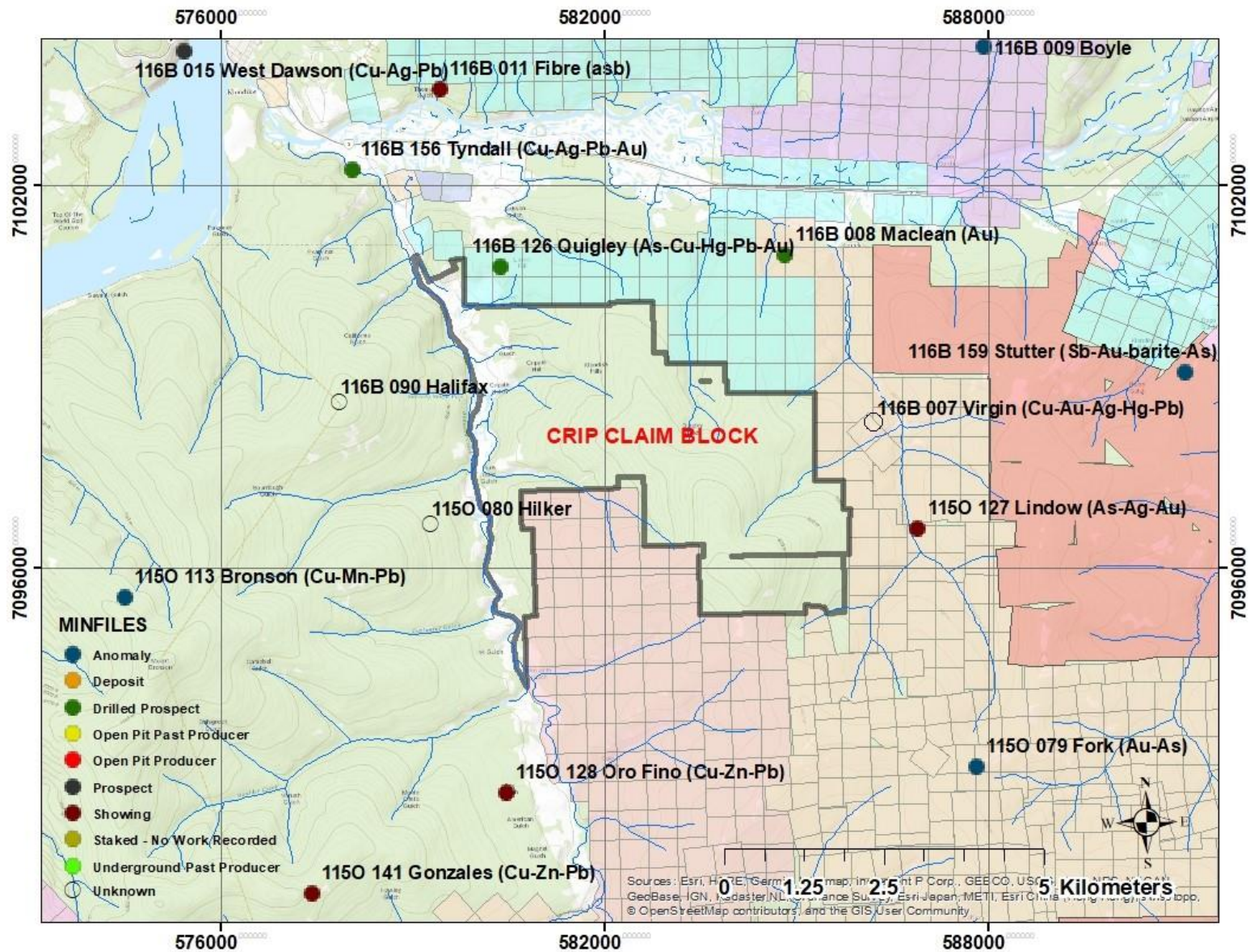


Fig. 3: Crip Claim Block with Minfile occurrences in the surrounding area.

Virgin (116 B 007) occurrence is underlain by blocky quartz-muscovite-(chlorite) schist with small quartz augen and abundant but barren, narrow foliaform quartz and quartz-feldspar sweets. Old workings on the property are either completely caved or have been covered by placer tailings. The workings were visited briefly by MacLean (1914) and Bostock (1935). MacLean panned gold from the vein quartz and stringers and reported two samples from the adit that assayed 27.4 g/t and 30.9 g/t Au, respectively.

Bostock (1935) examined quartz veins, which strike between 118 and 130 and dip northeast at angles of 50 to 70. The veins crop out on surface and were followed by two shafts. A very few crystals of pyrite are present in the quartz in places and some iron stain occurs along fractures. It was reported that specks of free gold can be found in fractures in the veins. Bostock (l.c.) further examined excavation, shafts and adits, which targeted quartz veins with pyrite hosted by green schists and described the wallrock in the No. 2 adit and the foliaform quartz, which was unlikely to contain gold.

Klondike Gold Quartz Mines presented the gold assay results in a company prospectus that was prepared in late 1934 or early 1935. It included assays from 24 grab samples from shaft No 1, which averaged 30.5 g/t gold, 10 grab sample assays from shaft No. 2 that averaged 26.4 g/t gold, 5 grab sample assays from adit No. 1 averaged 32.6 g/t gold, 15 channel samples from adit No. 2 taken at roughly 3 m intervals over 43 m averaged 36.7 g/t gold and 15 channel samples at 1.5 m intervals over 21.3 m interval along a crosscut averaged 40.8 g/t gold.

These impressive assay results however cannot be verified because the old workings are sloughed or destroyed by placer mining. In view of Bostock's description of the workings, the veracity of these assays was somewhat questionable.

Several companies investigated the area in 1970s, 1980s and 1990s by soil sampling, drilling and trenching. One drill hole was collared in 1987 to test a gold, copper, iron, zinc and barium anomaly but no significant mineralization was encountered. Hastings Management Corp trenched geochemical anomalies on the Moon claims in 1992. One of the trenches cut graphitic schist containing up to 175 ppb gold, 46 ppm silver and 347 ppm copper. Kennecott outlined two base metal soil anomalies on the eastern boundary of the claim group and a resistivity low in the southwest corner of the claim block but neither anomaly was ever followed up.

Barramundi silt sampled the streams surrounding the occurrence in late 1990s but no anomalies were found. KSL collected a line of soil samples on the Klondike claims approximately 2 km to the northeast, which they analyzed using Mobile Metal Ion geochemistry. None of the samples were anomalous and the claims surrounding the occurrence were allowed to lapse in Dec/2002.

Fibre (116 B 011): veinlets of chrysotile slip-fibre up to 30 mm long are exposed in old hand pits at the end of a wagon road. The mineralization occurs in a poorly exposed, irregular serpentinite

body that extends 2 km uphill from the river bank. Most of the activity in this vicinity between 1901 and 1908 was apparently directed toward lode and placer gold potential, with disappointing results. The serpentinite body is enclosed within Klondike Schist (Permian).

West Dawson (116 B 015) is mentioned in the mining records from the 1900's. Three small adits were driven into the northwest bank of the Yukon River approximately 150 m south of the Cassiar Asbestos tramline tower. These adits were collared about 7.6 m above the river in an outcrop of strongly contorted chlorite-muscovite gneiss of the Klondike Schist Assemblage. Chalcopyrite, galena and pyrite occur in an epidote-calcite skarn horizon 13 cm thick, and in a steeply dipping shear zone up to 0.6 m wide. A narrow feldspar porphyry dike outcrops 90 m to the south. A selected sample from an adit dump assayed 0.6% Cu, 0.9% Pb and 6.9 g/t Ag. J. Kowalchuk briefly mapped the property in 1989 and described a sequence of andesitic greenstone interbedded with sericite-altered mafic tuff and occasional layers of black shale. The rocks are schistose with a foliation which strikes 50° and dips steeply north. Mortensen (1990) interpreted these rocks as imbricate fault-bounded slices of Slide Mountain Terrane. Volcanic rocks exposed in the cliffs above the river are malachite stained, but returned low values of copper (0.035 to 0.35%) and traces of gold and silver.

Halifax (116 B 090) claims were staked over Klondike Schist, which is cut by numerous quartz veins and lenses.

Quigley (116 B 128) prospect is centered on Trail Hill and is underlain by graphitic Nasina Series quartz-muscovite schist and quartzite with fault slivers of serpentinite. These rocks are intruded by Cretaceous quartz-feldspar porphyry and diabase dykes. Schist adjacent to the dykes is hydrothermally altered to clay and propylitic assemblages, and pyrite is common in both dykes and wallrocks. A thick section of unconsolidated White Channel gravel covers most of the property, but in places, placer mining has created good bedrock exposure. Soil sampling on the Crazy claims outlined an area of weakly anomalous gold, silver, arsenic, mercury, lead and copper values. The most anomalous value was 17.4 ppm silver. Mapping in 1990 identified an extensive zone of hydrothermal alteration where a thrust fault is cut by a diabase dyke.

Rotary drilling tested the alteration zone, and did not penetrate beneath it. All of the holes were barren of gold, but ICP analyses of the cuttings returned anomalous values for arsenic (up to 1 358 ppm), tungsten (up to 27 ppm), and thallium (average 15 ppm). A 30 cm quartz vein tested by one of the 1992 drill holes contained minor galena, but assays were disappointing. Trenching was conducted in 1980 in conjunction with the nearby placer mining. mapping, sampling and airborne EM, magnetic and VLF-EM surveys were flown in 1984 to 1987. Soil sampling was done in 1986 and bulldozer trenching in 1988. Arbor Resources Inc. conducted 381 m of rotary drilling (5 holes) in 1990, further trenching and diamond drilling of 8 holes (623.3 m) and performed 10.9 km of resistivity surveys. Kennecott Canada Inc. optioned the Snake claims in May/93.

Tyndall (116 B 156) showing was explored with mapping, sampling and an airborne EM survey in 1984 and mag, VLF-EM and geochem surveys and drilling in 1986. The immediate area is underlain by locally sheared, weakly foliated to massive greenstone of the allochthonous Anvil Assemblage. A vein of steel galena was exposed in a roadcut during construction of the Klondike Mines Railroad. An assay of an 18 kg rock chip of vein material is reported to have assayed about 17.3% Pb, 2% Cu, 582.8 g/t Ag and trace Au. No dimensions are available for the vein.

Stutter's (116 B 159) claims were staked over unconsolidated White Channel Gravels of Miocene or Pliocene age and around Dago Hill, where work by Tempelman-Kluit for DIAND in 1982 identified low pH alteration zones associated with placer gold. Tempelman-Kluit advanced the theory that the gold was deposited in the White Channel Gravels in areas overlying bedrock faults through the action of circulating low temperature hydrothermal fluids. Further study by Dufresne (1985) and Dufresne et al (1987) established the presence of typical hydrothermal alteration assemblages (secondary Fe minerals, kaolinite, adularia plus or minus smectite clays and sericite) in the sediments although the relationship to the gold content of the gravels is still unclear.

The altered gravels contain up to 25% Fe, 0.5% S, 6 750 ppm Ba, 4 230 ppm Mn and 250 ppm As, and are also anomalous in Sb and Au. Narrow quartz-chalcedony veins are observed cutting both metamorphic rocks and diabase dykes of probable Eocene age beneath these altered zones. The veins are generally less than 2-3 cm thick and range from vuggy, banded and crustiform quartz with minor siderite, to thinly banded quartz-chalcedony veins. Both the veins and the associated alteration zones are considered to be the products of an epithermal system of Quaternary age.

The 1986 airborne survey outlined several anomalies while the soil sampling returned some anomalous gold values. Drill holes intersected 30 m of altered limonitic clay surrounding unaltered wallrock fragments but no assays were released. Arbor reported the recovery of angular gold from deeply altered bedrock in Frank Short's placer pit, which coincides with an IP anomaly.

In 1993 - 1994 Kennecott sampled placer bedrock channel drains in the vicinity of Dago Hill. Bedrock encountered in trenches consisted of graphitic schist and quartz-muscovite schist, with lesser quartzite, ultramafic, and volcanic rocks. A specimen of clay-altered volcanic breccia returned a value of 2460 ppb gold. On the southeast side of Dago Hill, Kennecott found float boulders displaying epithermal vein textures in an area underlain by Cretaceous sedimentary and volcanic rocks. Detailed mapping and chip sampling was carried out in a nearby placer drain and a calcite-veined volcanic breccia returned 95 ppb Au. Check assaying could not reproduce the assay.

Kennecott's geophysical surveys mapped the location of possible intrusions and alteration located beneath the deep cover of the White Channel Gravels in 80 Pup. Drilling results were poor, with only one narrow gold-bearing interval reported from the 5 holes (0.86 g/t Au over 0.4 m). The results demonstrated beyond a reasonable doubt that no mineralized intrusions occur on the 80 Pup property and that the bulk tonnage potential of the claims is low.

Fork occurrence (115 O 079) contains strongly deformed schists of the Klondike Schist Assemblage and carbonaceous quartz-muscovite schist of the Nasina Assemblage form the bedrock of this occurrence. Numerous dykes and sills of Eocene aged quartz feldspar porphyry, some carrying up to 2% arsenopyrite, and basalt intrude the schists and quartzite on a local scale.

In 1990, Dawson Syndicate tested a magnetic low outlined by airborne surveying by soil sampling, which returned consistently anomalous arsenic with minor coincidental gold values. Follow up trenching revealed mostly quartz-muscovite, locally clay altered schists, and many samples returned high arsenic values (>1,000 ppm), but in most cases gold was below detection limit. A trench dug in 1993 in the vicinity of the occurrence returned slightly anomalous silver, arsenic, copper, iron, molybdenum and zinc values.

The various trenching programs also located several narrow (<20 cm thick) discordant quartz veins cutting the schists. These veins trend 125° and display near-vertical dips. The veins are mainly barren, but occasionally contain trace amounts of pyrite, arsenopyrite, galena and rutile. One grab sample from such a vein containing arsenopyrite returned 0.2 g/t Au and >10,000 ppm As. Elevated gold values (0.1 g/t Au) were also returned from four chip samples collected across 12 m of variably clay altered carbonaceous schist uncovered in the middle section of trench 88TR-21.

The 1990 geophysical surveys identified several IP chargeability and resistivity features coincident with areas of anomalous arsenic geochemical response. These areas also roughly coincide with the magnetic low feature identified in the course of the 1986/1987 airborne survey.

KSL Exploration conducted soil sampling ('A' soil horizon) and analyses on site using a Mobile Metal Ion (MMI) geochemistry. The survey outlined the previously known arsenic anomaly which appeared to extend to the southeast. A compilation and evaluation study identified a series of drill targets which were labeled A through D and designated as a drill target of moderate importance.

The Hilker showing (115 O 080) is hosted by the Klondike Schist, which is cut by pyritic porphyry dykes and narrow quartz veins. The felsic porphyry contains bands of carbonaceous and felsic schist which was interpreted to be deformed pendants and screens within the intrusive body.

The Bronson showing (115 O 113) includes several soil geochemical anomalies in area underlain by Klondike Schist and vein quartz – galena float. Stringers with disseminations of pyrite, chalcopyrite and galena were found in the Klondike Schist boulders and their Pb isotopic model age was determined to be Permian. Mortensen interpreted this mineralization as a VMS style, syngenetic mineralization. On Debicki's (1984) map, this showing is numbered as 35 (Bronson) and it describes galena-bearing vein quartz-carbonate float. The vein from which the float was derived must be at least 50 cm wide. Abundant fine-grained pyrite is locally disseminated in schist and one sample taken in 1983 yielded 0.6 g/t gold and 2.0 g/t silver.

The Lindow occurrence (115 O 127) includes gold-bearing vein quartz, which returned up to 26.4 g/t Au and 6.9 g/t Ag in a rock where no gold was visible. Cairnes reported quartz veins with pyrite and visible gold, some of which was crystalline. Crystalline gold is relatively common in placer deposits in Bear Creek and may be derived in part from this occurrence.

The work by Yukon Geological Survey includes mapping and investigation of the broader area since the first half of the past century. Bostock (1942) completed a geological map at 1:250,000 scale; Debicki and co-workers (1984, 1985) mapped the area south and east of Dawson City at 1:50,000 scale and Mortensen (1996) completed the geological maps of the Northern Stewart River, Klondike and Sixtymile Districts at 1:50,000 scale covering the NTS maps 115 O/13, 14 and parts of 115 O/15 and 16.

The Oro Fine showing (115 O 128) is underlain by Klondike Schist with carbonaceous phyllite bands. An adit was driven in 1916 into a stringer of quartz vein associated with shears and graphite bands and traces of pyrite. Locally up to 15 % sulphides (galena, arsenopyrite, pyrite) were found to form “knots”. Coincident IP/EM anomalies were tested by trenching in 1987, but the precious metal contents were found to be low.

The Gonzales occurrence (115 O 141) is underlain by Klondike Schist, the bands of carbonaceous – quartz – muscovite schist and the monzonite intrusives. A discordant quartz vein 1.5 to 2 meters wide trending 130° reportedly contained traces of pyrite, ferrous carbonate, albite, rutile and flakes of gold in limonitic boxwork. A coincident IP and resistivity anomalies were detected in 1990. In 1984 the drillings intersected the schist with carbonaceous bands associated with pyrite and traces of sphalerite, galena and chalcopyrite. Pb-dating made on a galena sample yielded Permian age.

More recent geoscientific work in the area includes compilations of geological maps at 1:250,000 scale by Gordey and Makepeace (1999, 2001, 2003) and Gordey and Ryan (2005), Stewart River map sheet 115N&O (2018), Airborne multisensor geophysical survey, Stewart River area (Shives et al, 2002). There is an ongoing research by the UBC's Mineral Deposits Research Unit (MDRU) into the origin and formation of lode gold mineralization in the Klondike

Goldfields and the research results are published in geoscientific papers and periodicals such as *Mineralium Deposita*, *Yukon Exploration and Geology* (MacKenzie et al., 2007, 2008 a, 2008 b), *Economic Geology* (Chapman et al., 2010, etc.). Geoscientific research into formation of precious and base metal mineralization in the Klondike Goldfields include Rushton et al (1993), Hoyman and Friedrich (1992), and others.

3. REGIONAL GEOLOGY

The area is situated on the southwest side of the Tintina Trench within the Yukon – Tanana Terrane. The Klondike Goldfield is made up of meta-sedimentary and meta-igneous units belonging to Klondike Schist Assemblage (Middle – Late Permian) and Finlayson Assemblage (Devonian – Mississippian) and lesser amount of low-grade metamorphosed, variously serpentinized ultramafic rocks of the Slide Mountain Terrane (Carboniferous to Permian) comprised of serpentinite, harzburgite and their altered, carbonatized and steatitized derivatives (MacKenzie et al, 2008; Yukon Geological Survey, *Bedrock Geology, Dawson* (116 B & 116 C maps 1: 250,000, 2018). Regional scale thrust faulting in the Early Jurassic stacked these rocks into a series of thrust slices that are locally separated by lenses of sheared ultramafic rocks. They were then uplifted through the brittle-ductile transition in the Jurassic and unconformably overlain by locally derived sedimentary and volcanogenic rocks in the Late Cretaceous (Mortensen, 1996). The Klondike Goldfield was then offset approximately 450 km along the Tintina fault (Gabrielse et al., 2006). Erosion and minor uplift continued in the Late Tertiary and resulted in the deposition of the Pliocene White Channel Gravels and their placer gold deposits (Lowey, 1998, 2004, 2005).

4. LOCAL GEOLOGY

Based on Mortensen (1996) and Gordey & Makepeace (2003), CCB is underlain by the Nasina and the Klondike Schist Assemblage rocks. The Nasina Assemblage is made up of dark grey to black, fine grained graphitic and non-graphitic quartzite, grey micaceous quartzite and quartz muscovite (\pm chlorite, \pm feldspar augen) schist, locally garnetiferous; minor graphitic stretched metaconglomerate and metagrit. Rare diabase dykes cut across the above assemblages and carbonatized and silicified rocks (listwanites) as part of the Slide Mountain Assemblage are also present locally.

Eastern portion of the CCB is overlain by high-level terrace, White Channel Gravel deposits (Fig. 4). Lowey (2004) studied their geological setting and the map shown in Fig. 4 is based on his work. McConnell (1905, 1907) presented a comprehensive study of the placer deposits of the Klondike Goldfields as they existed soon after they were discovered one hundred twenty three years ago.

The White Channel Gravel, presently the most important gold-bearing unit, is up to 46 m thick and characterized by a predominance of quartz clasts, which are generally more abundant in the White Gravel than in the Yellow Gravel. It is considered Early Pliocene to earliest Late Pliocene in age (~5 to 3 Ma).

Genetic models for the lode gold mineralization in the Klondike Goldfields include orogenic, mesothermal quartz veins with sulphidic/gold mineralization (MacKenzie et al. 2007, 2008 and others), the California Mother Lode style gold-quartz veins associated with altered ophiolitic rocks (Ash (2005, 2006, 2010; Doherty and Ash, 2005; MacFaul, 2005), the intrusion-related porphyry style gold mineralization (Ryan, 2005, Pautler, 2009), the epithermal gold model associated with a late Cretaceous Aalki Creek stock, and/or with Tertiary felsic volcanic rocks.

5. ROCK GEOCHEMISTRY SURVEY

Prior to 2014, the claim holders S. Montreuil and E. Petroutsas conducted mechanical trenching and bulk sampling on the Crip claims and reported their work and filed for the Certificate of Work. In 2014 the holders sold 50 % of the title to RST, which continues to work the claims by outcrop mapping, logging and sampling of selected pits. The RST's rock geochemistry program took place intermittently in 2015 (September 4), 2018 (August 18) and 2019 (August 15) and included collection of 14 rock samples. Sample locations are shown in Fig. 5 and sample descriptions with gold, silver, copper, lead and zinc values are attached as Appendix II at the back of this report.

Most rock samples except three were collected from areas underlain by the Klondike Schist and/or the Finlayson Assemblages. One sample with a field duplicate was taken from a mafic dyke outcrop and one sample comes from a sub-crop made of silicified and carbonatized rock (listwanite) that can be ascribed to Slide Mountain Assemblage.

One fault gauge sample assayed 28.5 ppb gold, which is considered slightly anomalous. All other samples assayed low gold values ranging from <0.2 to 2.7 ppb. Silver values ranged from 15 to 822 ppb and four black schist samples assayed elevated molybdenum ranging from 19.4, to 86.6 ppm. One black schist sample with the highest silver also assayed the highest mercury of 54 ppb. Our previously collected black shale samples with quartz and pyrite cubes < 5mm, arsenopyrite and ubiquitous Fe-oxides however assayed up to 156.7 ppb gold and 3167 ppm arsenic. These samples were chipped off from boulders, which are believed to be part of the local bedrock. Any loose material was removed from the samples to reduce the risk of contamination by gold from gravel that once covered the bedrock.

Correlation matrix for 14 assays (11 elements) is in Table 1. As shown, gold strongly correlates with lead (95% co-variance) and there are fairly strong correlations between copper and arsenic and among Cr-Ni-Mg. These correlations however may not appear robust enough due to small number of assays.

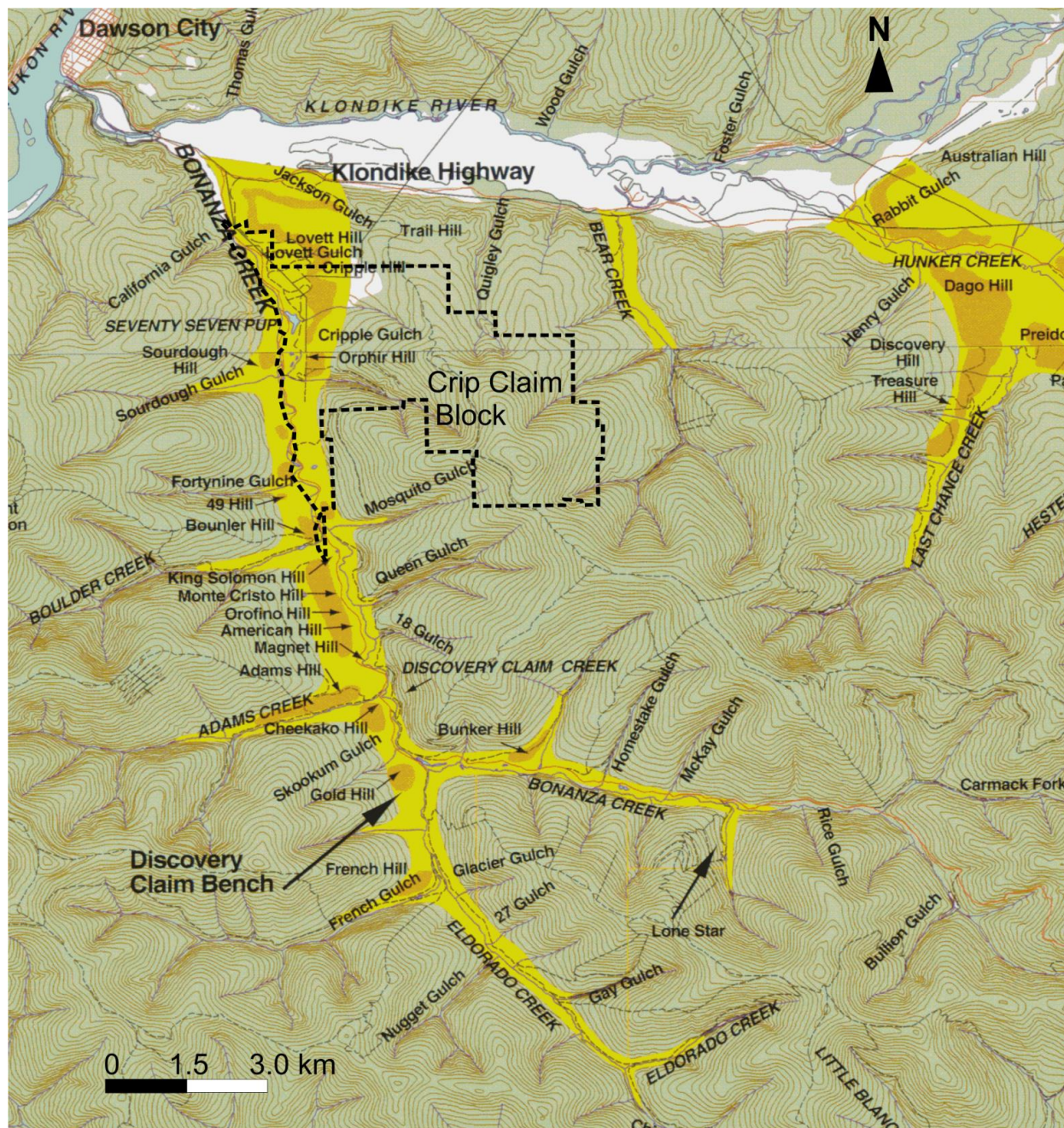


Fig. 4: Bonanza and Eldorado placers (yellow and brown) with approximate location of Crip Claim Block (map based on Lowey, 1998).

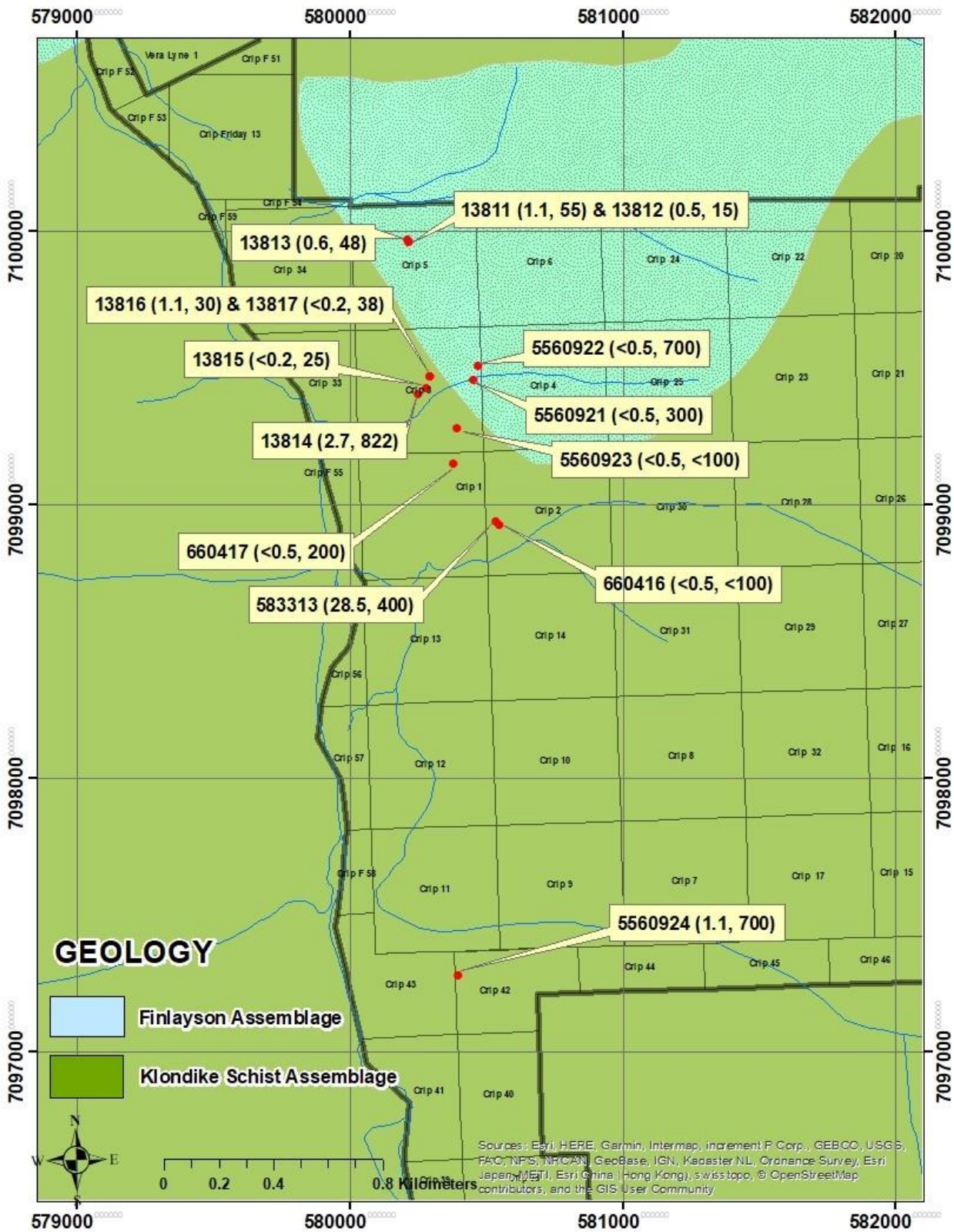


Fig. 5: Rock sample locations with gold and silver assays.

Table 1: Correlation matrix

	<i>Au</i>	<i>Ag</i>	<i>Cu</i>	<i>Pb</i>	<i>Zn</i>	<i>As</i>	<i>Sb</i>	<i>Hg</i>	<i>Cr</i>	<i>Ni</i>	<i>Mg</i>
<i>Au</i>	1.000										
<i>Ag</i>	0.444	1.000									
<i>Cu</i>	-0.010	-0.014	1.000								
<i>Pb</i>	0.974	0.535	0.030	1.000							
<i>Zn</i>	0.297	0.006	0.060	0.254	1.000						
<i>As</i>	-0.175	-0.143	0.732	-0.144	-0.264	1.000					
<i>Sb</i>	-0.038	-0.105	-0.036	-0.030	-0.316	0.566	1.000				
<i>Hg</i>	0.252	0.438	0.062	0.307	-0.187	0.055	0.077	1.000			
<i>Cr</i>	0.338	0.169	-0.048	0.297	-0.043	-0.051	-0.159	-0.019	1.000		
<i>Ni</i>	-0.030	-0.097	-0.214	-0.099	0.381	-0.291	-0.362	-0.306	0.720	1.000	
<i>Mg</i>	-0.111	0.198	-0.093	-0.111	0.030	-0.114	-0.237	0.030	0.801	0.779	1.000
	0.5-0.707; 25-49.9%					0.708-0.868; 50-75%		>0.868; >75%			

We plotted the whole rock values for mafic dyke 13815 onto LeBas et al (1986) diagram shown in Fig. 6 together with 6 other volcanic/sub-volcanic samples from Klondike Goldfields, including Germaine Creek (559658, 559676), Six Below Pup (559651), Hester Creek (559669), Hunker Creek (559671) and Tinhorn Creek (559683). The mafic dyke falls within the basalt field and can be classified as diabase. Other volcanics fall within acid, intermediate and/or mafic fields. The rhyolites are presumably Eocene in age. The granodiorite (sub-volcanic?) sample 559651 is from an outcrop, which was dated at 69.1 Ma (Maastrichtian) by Mortensen (1996).

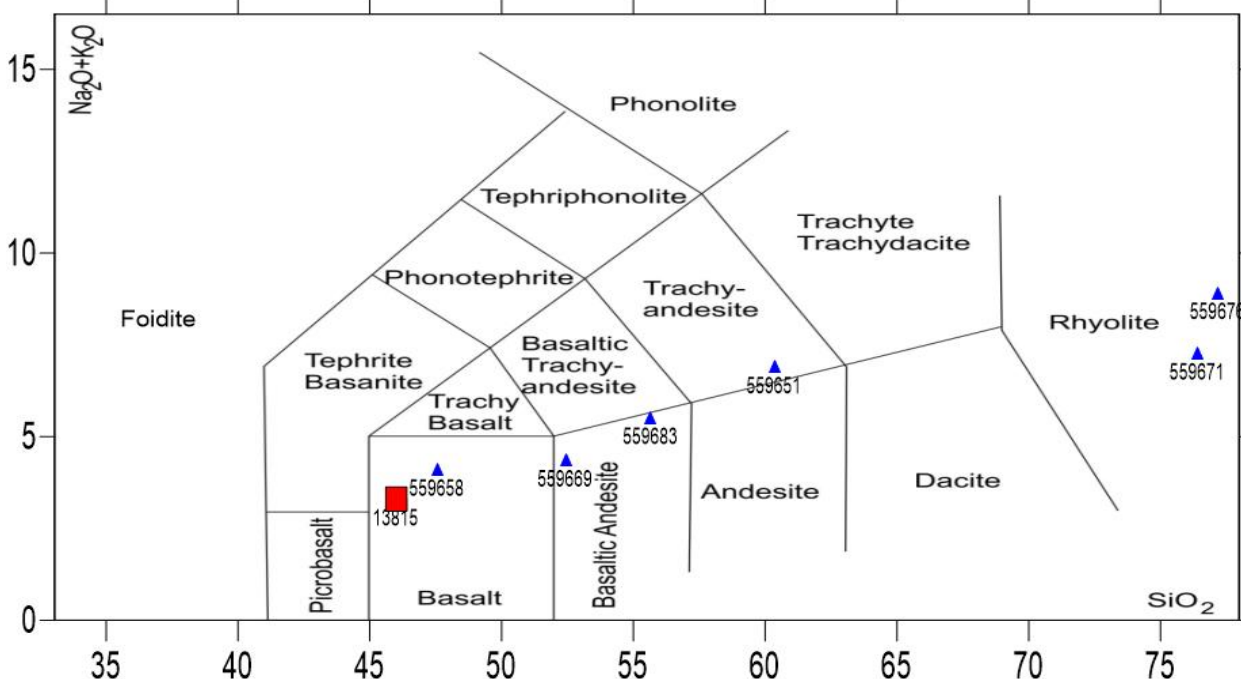


Fig. 6: Classification diagram (after LeBas et al, 1986) with diabase dyke sample 13815 (red square) from Crip 3 claim (six other volcanic and/or sub-volcanic rocks from Klondike Goldfields for comparison).

6. SAMPLE PREPARATION AND ANALYSIS

Rock samples were placed in polypropylene bags, provided with tags with sample numbers and closed with flagging tape. Sample locations were recorded using GPS in NAD 83 (zone 7V) projection. The samples were not modified after collection and the writer personally dispatched samples to Bureau Veritas Laboratories (“BVL”) in Whitehorse for preparation and analysis.

BVL are registered or are pending registration to ISO 9001. Additionally a number of analytical hubs have received ISO/IEC 17025 accreditation for specific laboratory procedures. Details of BVL accreditation can be viewed at www.scc.ca.

During the sample preparation, BVL continuously monitors the efficiency of crushing and pulverizing to ensure that a representative portion of each sample submitted is prepared. Sample duplicates are created and analyzed for all rocks submitted.

In addition to routine calibration solutions the laboratory inserts reference materials, replicates and blanks into randomly assigned positions within each analytical rack generated by BVL proprietary LIMS. These QC materials provide a final verification of the entire analytical process. Data review and evaluation is the final layer that is made up of sophisticated proprietary software and professional personnel reviewing the data.

A modified aqua regia digestion and ICP-ES/MS for 36 elements (code AQ202) or for 37 elements (code AQ252) are used to determine low to ultra-low contents in rocks. Larger splits (15 or 30 g) give a more representative analysis of elements subject to nugget effect (e.g. Au). Gold solubility can be limited in refractory and graphitic samples.

Lead collection fire assay fusion (code FA 430) is a classic method for total sample decomposition. Total Au content is determined by digesting an Ag dore bead and then analysing by AAS, ICP-ES, or ICP-MS.

The BVL’s assay certificates are attached at the back of this report (Appendix III).

7. QUALITY ASSURANCE

BVL has implemented a comprehensive quality management system meeting the requirements of ISO/IEC 17025 and ISO 9001 to ensure the necessary processes and oversight are in place to achieve this goal. Through the process of external auditing by recognized organizations, BVL facilities maintain ISO registrations and accreditations. These registrations and accreditations provide independent verification that the management systems have been implemented and meet the requirements of the ISO standards.

The BVL Quality Assurance (QA) program for the CCB samples included repeat, standard and blank analyses and corrections, calibrations were made as needed. RST’s rock sample set

included one field duplicate (Fig. 7) to independently check the laboratory performance. Most elements in the field duplicate 13816 are compatible with their originals except gold, which assayed 1.1 ppb while the original is below detection limit (“DL”) and zinc, which in the field duplicate assayed only 45 % of its original.

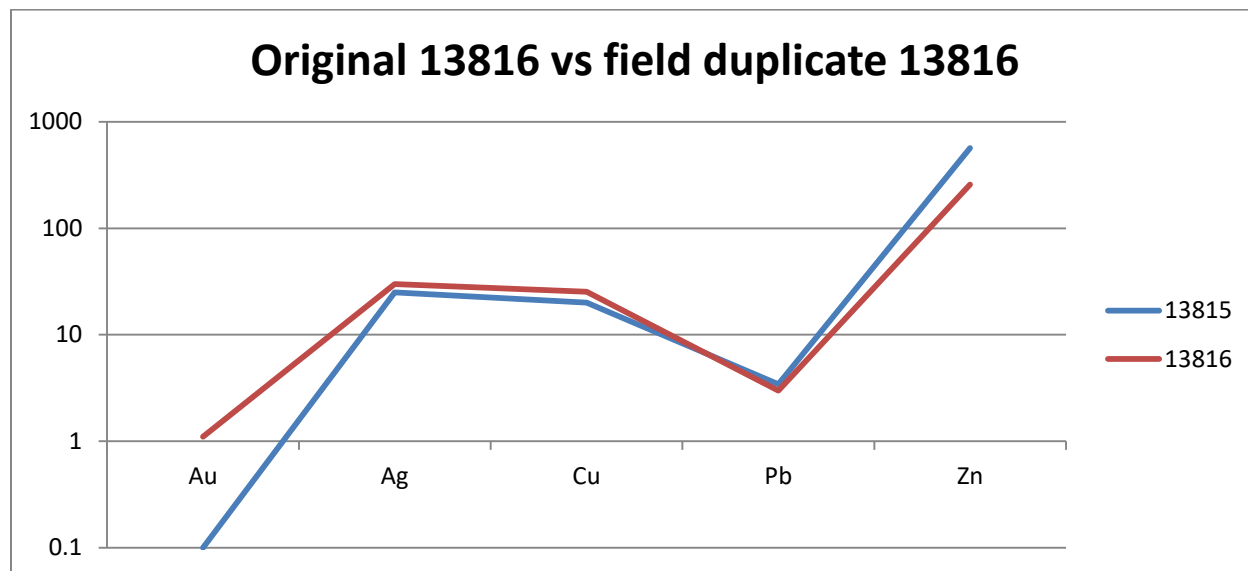


Fig. 7: Au, Ag, Cu, Pb and Zn in field original compared to field duplicate.

Preparation blank for WHI19000520 has some discrepancies in gold and in copper.

Standards OXC129, DS11, OREAS262, BVGEO01, OXN134, OXC145 and ASPROOF were measured with the rock sample set. We checked the performance and prepared diagrams for gold, silver, copper, lead and zinc for DS11 and Oreas262 standards (Fig. 8 a, b). As shown most values fare well within a few per cent plus or minus, there are however significant variations in gold in DS11 standard and zinc values in Oreas262 standard also vary, but should fall within acceptable limits.

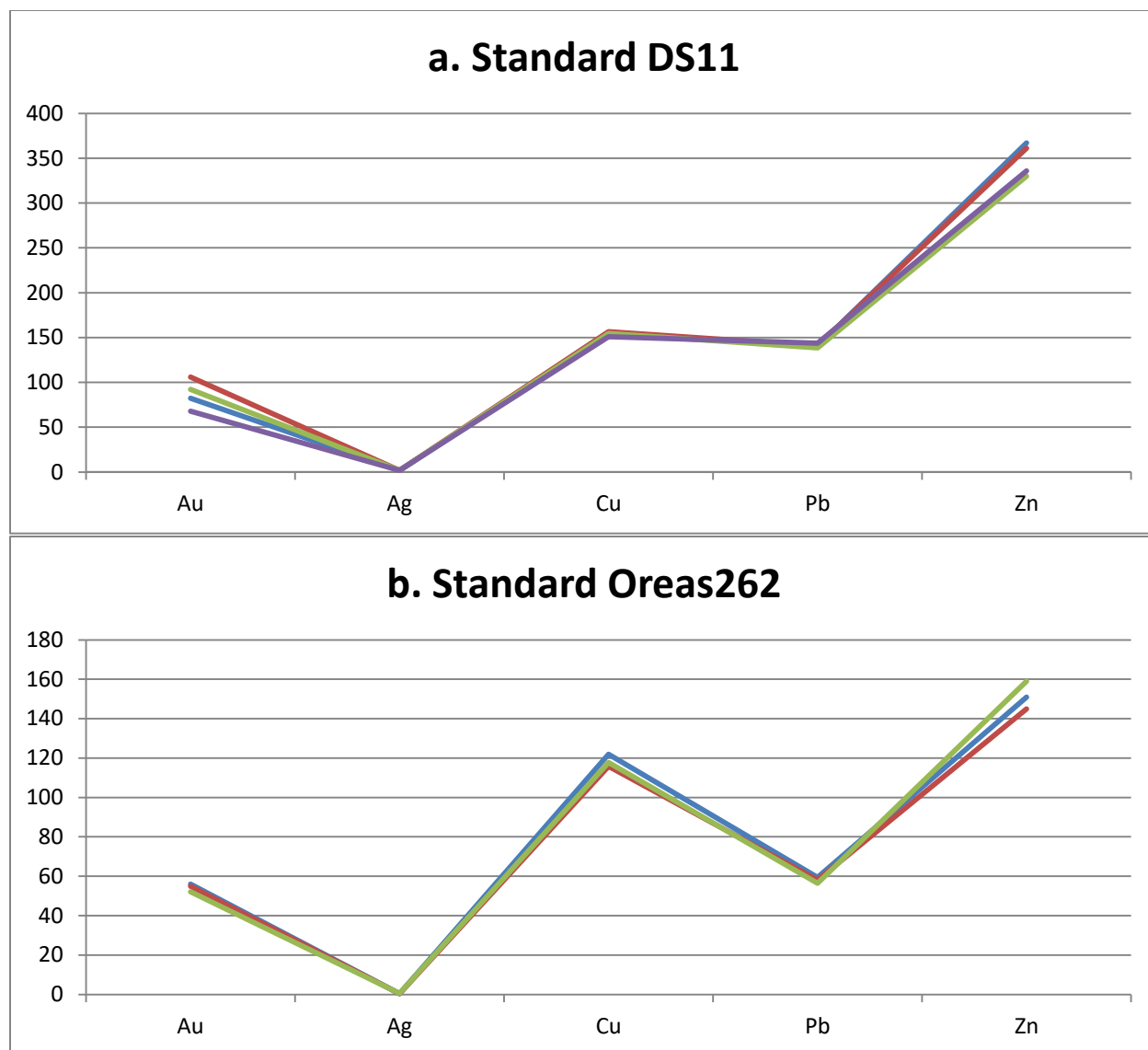


Fig. 8: Au, Ag, Cu, Pb and Zn in standard DS 11 (a) and Oreas 262 (b).

Blanks were measured 11 times and all gold, silver, copper and lead values are below DL. Zinc in one blank assayed 0.6 ppm.

In conclusion we can state that the assays made by BVL for this project meet the industry standards and are acceptable for this stage of the project.

8. CONCLUSIONS AND RECOMMENDATIONS

Objectives of RST's 2015, 2018 and 2019 rock geochemistry program on the CCB were to locate precious and/or base metals anomalies in the Klondike Schist Assemblage Finlayson Assemblage and/or Slide Mountain Assemblage bedrock and to use them as guides for further exploration. The program resulted in one slightly anomalous gold assay and several samples assayed slightly anomalous silver. One of our previously collected black schist samples with pyrite cubes and abundant iron oxide infiltrations from local mine dump returned anomalous gold of 156.7 ppb.

Airborne magnetic map of Stewart River area 115O/14 at 1:50,000 scale (Shives et al, 2001), shows the Crip claim area is characterized by weak magnetic field ranging generally from 0.030+ to 0.020- nT/m. There is a weak mag anomaly in the southern portion of the CCB, which is floored by quartz mica schist and one rock sample (5560924) was taken from a historical pit. The rock is fractured and stained by iron oxides, the assay however returned 1.1 ppb gold only.

Historical records on the lode gold occurrences within a few kilometer radius of the CCB indicate that the area has a potential to host significant gold mineralization. Historical Virgin and Lindow mines are situated less than one kilometer east of the CCB. Active placer mining takes place in the western portion of the claim block and new bedrock is being opened continuously. This provides additional incentive for further work on the CCB. We recommend outcrop mapping and sampling of those areas and soil sampling at higher elevations in the eastern portion of the claim block, which lie above the gravel deposit levels.

9. 2015, 2018 and 2019 EXPLORATION EXPENSES

Geologist B. B. Molak, PGeo (3 days @ \$ 600/day)	1800.00
Geologist A. R. Doherty PGeo (1 day @ \$ 600/day)	600.00
Assistant S. Montreuil (3 days @ \$ 350/day)	1050.00
Assistant E. Petroutsas (3 days @ \$ 350/day)	1050.00
Assistant B. Ettlinger (2 days @ \$ 350/day)	700.00
Assistant A. Molak (1 day @ \$ 350/day)	350.00
Truck (Mileage, gas, oil, 3 days @ \$ 50/day)	150.00
ATV Mileage, gas, oil, 2 days @ \$ 40/day)	80.00
Back hoe (1 day @ \$ 750/day)	750.00
Accommodation, food (13 days @ \$150)	1950.00
Mob/demob	1000.00
Assays (13 samples @ \$ 40/sample)	520.00
Digitization, report	1000.00
Total:	11000.00

10. REFERENCES

Ash, C. H., 2005a: Geological setting of the Klondike Goldfields; “2005 Yukon Geoscience Forum”, Whitehorse Yukon, November 2005, PowerPoint presentation.

Ash, C. H., 2006, Setting of the gold-quartz vein lode source for placers within the Klondike goldfields, west-central Yukon, Canada; Society of Economic Geologists, 2006 Keystone Conference May 14-16, Wealth Creation in the Minerals Industry, Poster and extended abstract, p. 109-114.

Bostock H. S., 1942: Geology Map # 711, Ogilvie, Yukon Territory, Dept. of Mines and Res., Scale 1:253,440.

Chapman R. J., Mortensen J. K., Crawford E. C. and Lebarge W. 2010: Microchemical studies of placer and lode gold in the Klondike District, Yukon, Canada: 1. Evidence for a small, gold-rich, orogenic hydrothermal system in the Bonanza and Eldorado Creek Area. *Econ. Geol.*, vol. 105; No. 8; p. 1369-1392.

Debicki, R.L., 1984: Bedrock geology and mineralization of the Klondike area (west), 115 O 14, 15 and 116 B 2, 3; Exploration and Geological Services Division, DIAND, Open File, 1:50,000 scale map with marginal notes.

Doherty, R. A. and Ash, H. C. 2005: Report on the White Property, Dawson Mining District; Madalina Ventures Inc., Tech. Report, 116 p.

Dufresne, M.B., 1986: Origin of gold in the White Channel sediments of the Klondike region, Yukon Territory. Unpublished M.Sc. thesis, University of Alberta.

Dufresne, M.B., Nesbitt, B.E., Longstaffe, F.J., and Morison, S.R., 1987: Plio-Pleistocene epithermal Au mineralization in the White Channel sediments of the Klondike District, Yukon. Geological Association of Canada, Program with Abstracts, Vol. 12, p. 38.

Gabrielse H., Murphy D.C. and Mortensen J.K., 2006: Cretaceous and Cenozoic dextral orogeny-parallel displacements, magmatism and paleogeography, north-central Canadian Cordillera. In: Paleogeography of the North American Cordillera: Evidence for and against large-scale displacements; J.W. Haggart, R.J. Enkin and J.W.H. Monger (eds.), Geological Association of Canada, Spec. Paper 46, 255 – 276.

Gordey, S. P. and Makepeace, A. J. 2003: Yukon Digital Geology, version 2.0, S.P. Gordey and A.J. Makepeace (comp); Geological Survey of Canada, Open File 1749 and Yukon Geological Survey, Open File 2003-9 (D).

Gordey, S. P. and Ryan, J. J. 2005: Geology, Stewart River Area (115N, 115 O and part of 115J), Yukon Territory; Geological Survey of Canada, Open File 4970, scale 1:250 000.

Hoymann, K.-H. and Friedrich, G., 1992: Gold and sulphide mineralization in the Hunker Creek area, Yukon Territory, Canada. In: Indian & Northern Affairs Canada/Department of Indian & Northern Development: Exploration & Geological Services Division, p. 312-326.

Lowey G.W., 2004: Placer geology of the Stewart River (115N&O) and part of the Dawson (116B & C) map areas, west-central Yukon, Canada; Bulletin 14, Yukon Geological Survey, 275 p.

Lowey, G.W., 2005: The origin and the evolution of the Klondike Goldfields, Yukon, Canada. *Ore Geology Reviews*, Vol. 28, 431 – 450.

Lowey, G.W., 1998: White Channel Gravel, Klondike Goldfields, Yukon, Canada; Exploration and Geological Services Division, Indian and Northern Affairs, Canada, Open File 1998-2, 1:100,000 scale map and notes.

MacKenzie, D.J., Craw, D., Mortensen, J.K. and Liverton, T., 2007: Structure of schist in the vicinity of the Klondike goldfield, Yukon . In: *Yukon Exploration and Geology 2006*, D.S. Emond, L.L. Lewis and L.H. Weston (eds.), Yukon Geological Survey, p. 197-212.

MacKenzie, D.J., Craw, D., Mortensen, J.K. and Liverton, T., 2008: Disseminated gold mineralization associated with orogenic veins in the Klondike Schist, Yukon. In: *Yukon Exploration and Geology 2007*, D.S. Emond, L.R. Blackburn, R.P. Hill and L.H. Weston (eds.), Yukon Geological Survey, p. 215 - 224.

MacKenzie, D.J., Craw, D.C. and Mortensen, J.K., 2008: Structural controls on orogenic gold mineralisation in the Klondike goldfield, Canada. *Mineralium Deposita* 43, No. 4, 435 – 448.

MacLean T. A., 1914: Lode Mining in Yukon; Dept. of Mines, Mines Branch Pub. No. 222, 205.

McConnell, R.G., 1905: Report on the Klondike gold fields. Geological Survey of Canada, Annual Report (New Series), Vol. XIV, 1901, Part B, p. 1B–71B.

McConnell, R.G., 1907: Report on gold values in the Klondike high level gravels. Geological Survey of Canada, Report No. 979, 34 p.

Minfile 116 B 007, 116 B 008, 116 B 011, 116 B 015, 115 O 079, 115 O 080, 115 O 090, 115 O 113, 115 O 127, 115 O 128, 116 B 128, 116 B 156, 116 B 159.

Mortensen, J.K. 1992. Pre-mid-Mesozoic tectonic evolution of the Yukon-Tanana terrane, Yukon and Alaska. *Tectonics*, 11: 836 – 853.

Mortensen J.K., 1996: Geological compilation maps of the Northern Stewart River map area Klondike and Sixtymile Districts (115N/15,16; 115O/13,14 and parts of 115O/15,16), 1:50,000 scale. Exploration and Geological Services, Indian and Northern Affairs: Yukon Region, Open file 1996-1 (G).

Pautler, J. 2009: Technical Report on the Indian River Project, Dawson, Yukon Territory.

Rushton R.W., Nesbitt B.E., Muellenbachs K and Mortensen J.K 1993: A fluid inclusion and stable isotope study of au quartz veins in the Klondike District, Yukon-Territory, Canada - A section through a mesothermal vein system", Econ. Geol. Vol. 88, pp. 647-678.

Ryan, S., 2008: Geophysical-geochemical report, IND claims. Yukon Mines, Energy and Resources Report YMIP 2007-047

Shives, R.B.K., Carson, J.M., Ford, K.L., Holman, P.B., Gordey, S.P., and Abbott, G., 2002: Airborne multisensor geophysical survey, Stewart River area, Yukon Territory, Phase 1 and 2 (Parts of 115 N, O and 116 B): 120 digital images of 1:50,000 (110) and 1:250,000 (10) scale colour interval maps, on CD-ROM, in Portable Document Format (PDF): Geological Survey of Canada, Open File 4311 (also Yukon Exploration and Geological Services Division Open File 2002-17D).

Tyrrell J. B. 1907: Concentration of gold in the Klondike; Econ Geol., vol. 2, No. 4, p343-349.

Yukon Geological Survey, 2016: Yukon Bedrock Geology Map; based on digital compilation by Gordie S.P. and Makepeace A. J. 1999, 2001.

Yukon Geological Survey, 2018: Bedrock Geology, Dawson (116 B & 116 C), 1: 250,000 map, <http://data.geology.gov.yk.ca/Compilation/3>; map updated in May 2018.

11. STATEMENT OF QUALIFICATIONS

I, Bohumil (Boris) Molak, Ph.D., P.Geo., do hereby certify that:

1. I am a self-employed Geoscientist residing at 312, 9298 University Crescent, Burnaby, BC., V5A 4X8, Canada.
2. I am a member of the Association of Professional Engineers and Geoscientists of British Columbia (License No. 28600) in good standing.
3. I graduated from the Comenius University of Czechoslovakia with a Bachelor of Science (Mgr.) in Economic Geology in 1970. From the same university I obtained in 1980 the degree Master of Science in Economic Geology (RNDr.) and in 1990 the degree Doctor of Philosophy (CSc.). I have practiced my profession continuously since 1970.
4. My geological practice includes research, prospecting, and exploration for precious, base, ferrous and other metals in Slovakia, Zambia, Cuba, Guinea, Canada, Chile and Argentina.
5. Since 2003 until present I work as a self-employed geo-scientist.
6. I visited the Crip Claim Block in 2015, 2018 and 2019.
7. I am responsible for all items but item Exploration Expenses in this report. The sources of all information not based on personal examination are quoted in the References Chapter.
8. As of the date of this Statement I am not aware of any material fact or material change with respect to the subject matter of this report that is not reflected in this report, the omission of which would make the report misleading.
9. I am independent of RST Klondike Discoveries Ltd.

Dated at Vancouver, BC, Canada, this 06th day of July, 2020.

APPENDIX I

Crip Claims List

Grant #	Cl. Name	Cl. #	Claim Owner	Cl.ExpiryDate	Status	NTS Map #
YE71343	CRIP	47	Sylvain Montreuil - 25%, Erini Petroustas - 25%, RST Klondike Discoveries Ltd. - 50%	10/21/2023	Active	116B03
YE71344	CRIP	48	Sylvain Montreuil - 25%, Erini Petroustas - 25%, RST Klondike Discoveries Ltd. - 50%	10/21/2023	Active	116B03
YE71345	CRIP	49	Sylvain Montreuil - 25%, Erini Petroustas - 25%, RST Klondike Discoveries Ltd. - 50%	10/21/2023	Active	116B03
YE71346	CRIP	50	Sylvain Montreuil - 25%, Erini Petroustas - 25%, RST Klondike Discoveries Ltd. - 50%	10/21/2023	Active	116B03
YD72658	Crip F	51	Sylvain Montreuil - 25%, Erini Petroustas - 25%, RST Klondike Discoveries Ltd. - 50%	12/4/2023	Active	116B03
YD72659	Crip F	52	Sylvain Montreuil - 25%, Erini Petroustas - 25%, RST Klondike Discoveries Ltd. - 50%	12/4/2023	Active	116B03
YD72660	Crip F	53	Sylvain Montreuil - 25%, Erini Petroustas - 25%, RST Klondike Discoveries Ltd. - 50%	12/4/2023	Active	116B03
YD72661	Crip F	54	Sylvain Montreuil - 25%, Erini Petroustas - 25%, RST Klondike Discoveries Ltd. - 50%	12/4/2023	Active	116B03
YE78845	Crip F	55	Sylvain Montreuil - 25%, Erini Petroustas - 25%, RST Klondike Discoveries Ltd. - 50%	10/16/2024	Active	116B03
YE78846	Crip	56	Sylvain Montreuil - 25%, Erini Petroustas - 25%, RST Klondike Discoveries Ltd. - 50%	10/16/2023	Active	116B03
YE78847	Crip	57	Sylvain Montreuil - 25%, Erini Petroustas - 25%, RST Klondike Discoveries Ltd. - 50%	10/16/2023	Active	116B03
YE78848	Crip F	58	Sylvain Montreuil - 25%, Erini Petroustas - 25%, RST Klondike Discoveries Ltd. - 50%	10/16/2024	Active	116B03
YE78849	Crip F	59	Sylvain Montreuil - 25%, Erini Petroustas - 25%, RST Klondike Discoveries Ltd. - 50%	10/16/2024	Active	116B03
YE78850	Crip	60	Sylvain Montreuil - 25%, Erini Petroustas - 25%, RST Klondike Discoveries Ltd. - 50%	10/16/2024	Active	115O14
YE79948	Crip	61	Sylvain Montreuil - 25%, Erini Petroustas - 25%, RST Klondike Discoveries Ltd. - 50%	10/16/2024	Active	115O14
YE79949	Crip F	62	Sylvain Montreuil - 25%, Erini Petroustas - 25%, RST Klondike Discoveries Ltd. - 50%	10/16/2024	Active	115O14
YE79950	Crip F	63	Sylvain Montreuil - 25%, Erini Petroustas - 25%, RST Klondike Discoveries Ltd. - 50%	10/16/2024	Active	115O14
YE78201	Pure	1	Sylvain Montreuil - 25%, Erini Petroustas - 25%, RST Klondike Discoveries Ltd. - 50%	12/4/2023	Active	115O14
YE78202	Pure	2	Sylvain Montreuil - 25%, Erini Petroustas - 25%, RST Klondike Discoveries Ltd. - 50%	12/4/2023	Active	115O14
YE78203	Pure	3	Sylvain Montreuil - 25%, Erini Petroustas - 25%, RST Klondike Discoveries Ltd. - 50%	12/4/2023	Active	115O14
YE78204	Pure	4	Sylvain Montreuil - 25%, Erini Petroustas - 25%, RST Klondike Discoveries Ltd. - 50%	12/4/2023	Active	115O14
YE78205	Pure	5	Sylvain Montreuil - 25%, Erini Petroustas - 25%, RST Klondike Discoveries Ltd. - 50%	12/4/2023	Active	115O14
YE78206	Pure	6	Sylvain Montreuil - 25%, Erini Petroustas - 25%, RST Klondike Discoveries Ltd. - 50%	12/4/2023	Active	115O14
YE78207	Pure	7	Sylvain Montreuil - 25%, Erini Petroustas - 25%, RST Klondike Discoveries Ltd. - 50%	12/4/2023	Active	115O14
YE78208	Pure	8	Sylvain Montreuil - 25%, Erini Petroustas - 25%, RST Klondike Discoveries Ltd. - 50%	12/4/2023	Active	115O14
YE78209	Pure	9	Sylvain Montreuil - 25%, Erini Petroustas - 25%, RST Klondike Discoveries Ltd. - 50%	12/4/2023	Active	115O14

Assessment Report on the Crip Claim Block, Rock Geochemistry Survey, Yukon Territory

YE78171	Pure	41	Sylvain Montreuil - 25%, Erini Petroustas - 25%, RST Klondike Discoveries Ltd. - 50%	12/4/2023	Active	115O14
YE78172	Pure	42	Sylvain Montreuil - 25%, Erini Petroustas - 25%, RST Klondike Discoveries Ltd. - 50%	12/4/2023	Active	115O14
YE78173	Pure	43	Sylvain Montreuil - 25%, Erini Petroustas - 25%, RST Klondike Discoveries Ltd. - 50%	12/4/2023	Active	115O14
YE78174	Pure	44	Sylvain Montreuil - 25%, Erini Petroustas - 25%, RST Klondike Discoveries Ltd. - 50%	12/4/2023	Active	115O14
YE78175	Pure	45	Sylvain Montreuil - 25%, Erini Petroustas - 25%, RST Klondike Discoveries Ltd. - 50%	12/4/2023	Active	115O14
YE78176	Pure	46	Sylvain Montreuil - 25%, Erini Petroustas - 25%, RST Klondike Discoveries Ltd. - 50%	12/4/2023	Active	115O14
YE78177	Pure	47	Sylvain Montreuil - 25%, Erini Petroustas - 25%, RST Klondike Discoveries Ltd. - 50%	12/4/2023	Active	115O14
YE78178	Pure	48	Sylvain Montreuil - 25%, Erini Petroustas - 25%, RST Klondike Discoveries Ltd. - 50%	12/4/2023	Active	115O14
YE78179	Pure	49	Sylvain Montreuil - 25%, Erini Petroustas - 25%, RST Klondike Discoveries Ltd. - 50%	12/4/2023	Active	115O14
YE78180	Pure	50	Sylvain Montreuil - 25%, Erini Petroustas - 25%, RST Klondike Discoveries Ltd. - 50%	12/4/2023	Active	115O14
YE78505	Pure	51	Sylvain Montreuil - 25%, Erini Petroustas - 25%, RST Klondike Discoveries Ltd. - 50%	12/4/2024	Active	115O14
YE78506	Pure	52	Sylvain Montreuil - 25%, Erini Petroustas - 25%, RST Klondike Discoveries Ltd. - 50%	12/4/2024	Active	115O14
YD07758	Crip	1	Sylvain Montreuil - 25%, Erini Petroustas - 25%, RST Klondike Discoveries Ltd. - 50%	10/21/2023	Active	116B03
YD07759	Crip	2	Sylvain Montreuil - 25%, Erini Petroustas - 25%, RST Klondike Discoveries Ltd. - 50%	10/21/2023	Active	116B03
YD07760	Crip	3	Sylvain Montreuil - 25%, Erini Petroustas - 25%, RST Klondike Discoveries Ltd. - 50%	10/21/2023	Active	116B03
YD07761	Crip	4	Sylvain Montreuil - 25%, Erini Petroustas - 25%, RST Klondike Discoveries Ltd. - 50%	10/21/2023	Active	116B03
YD07762	Crip	5	Sylvain Montreuil - 25%, Erini Petroustas - 25%, RST Klondike Discoveries Ltd. - 50%	10/21/2023	Active	116B03
YD07763	Crip	6	Sylvain Montreuil - 25%, Erini Petroustas - 25%, RST Klondike Discoveries Ltd. - 50%	10/21/2023	Active	116B03
YD11916	Crip	14	Sylvain Montreuil - 25%, Erini Petroustas - 25%, RST Klondike Discoveries Ltd. - 50%	10/21/2023	Active	116B03
YD11909	Crip	7	Sylvain Montreuil - 25%, Erini Petroustas - 25%, RST Klondike Discoveries Ltd. - 50%	10/21/2023	Active	116B03
YD11910	Crip	8	Sylvain Montreuil - 25%, Erini Petroustas - 25%, RST Klondike Discoveries Ltd. - 50%	10/21/2023	Active	116B03
YD11911	Crip	9	Sylvain Montreuil - 25%, Erini Petroustas - 25%, RST Klondike Discoveries Ltd. - 50%	10/21/2023	Active	116B03
YD11912	Crip	10	Sylvain Montreuil - 25%, Erini Petroustas - 25%, RST Klondike Discoveries Ltd. - 50%	10/21/2023	Active	116B03
YD11913	Crip	11	Sylvain Montreuil - 25%, Erini Petroustas - 25%, RST Klondike Discoveries Ltd. - 50%	10/21/2023	Active	116B03
YD11914	Crip	12	Sylvain Montreuil - 25%, Erini Petroustas - 25%, RST Klondike Discoveries Ltd. - 50%	10/21/2023	Active	116B03
YD11915	Crip	13	Sylvain Montreuil - 25%, Erini Petroustas - 25%, RST Klondike Discoveries Ltd. - 50%	10/21/2023	Active	116B03
YD11936	Crip	15	Sylvain Montreuil - 25%, Erini Petroustas - 25%, RST Klondike Discoveries Ltd. - 50%	10/21/2023	Active	116B03
YD11937	Crip	16	Sylvain Montreuil - 25%, Erini Petroustas - 25%, RST Klondike Discoveries Ltd. - 50%	10/21/2023	Active	116B03
YD11938	Crip	17	Sylvain Montreuil - 25%, Erini Petroustas - 25%, RST Klondike Discoveries Ltd. - 50%	10/21/2023	Active	116B03
YD11930	Crip	26	Sylvain Montreuil - 25%, Erini Petroustas - 25%, RST Klondike Discoveries Ltd. - 50%	10/21/2023	Active	116B03
YD11931	Crip	27	Sylvain Montreuil - 25%, Erini Petroustas - 25%, RST Klondike Discoveries Ltd. - 50%	10/21/2023	Active	116B03

Assessment Report on the Crip Claim Block, Rock Geochemistry Survey, Yukon Territory

YD11932	Crip	28	Sylvain Montreuil - 25%, Erini Petroustas - 25%, RST Klondike Discoveries Ltd. - 50%	10/21/2023	Active	116B03
YD11933	Crip	29	Sylvain Montreuil - 25%, Erini Petroustas - 25%, RST Klondike Discoveries Ltd. - 50%	10/21/2023	Active	116B03
YD11934	Crip	30	Sylvain Montreuil - 25%, Erini Petroustas - 25%, RST Klondike Discoveries Ltd. - 50%	10/21/2023	Active	116B03
YD11935	Crip	31	Sylvain Montreuil - 25%, Erini Petroustas - 25%, RST Klondike Discoveries Ltd. - 50%	10/21/2023	Active	116B03
YD11939	Crip	32	Sylvain Montreuil - 25%, Erini Petroustas - 25%, RST Klondike Discoveries Ltd. - 50%	10/21/2024	Active	116B03
YD11940	Crip	33	Sylvain Montreuil - 25%, Erini Petroustas - 25%, RST Klondike Discoveries Ltd. - 50%	10/21/2024	Active	116B03
YD11941	Crip	34	Sylvain Montreuil - 25%, Erini Petroustas - 25%, RST Klondike Discoveries Ltd. - 50%	10/21/2024	Active	116B03
YD89600	Crip Friday	13	Sylvain Montreuil - 25%, Erini Petroustas - 25%, RST Klondike Discoveries Ltd. - 50%	10/18/2027	Active	116B03
YD92424	Crip	35	Sylvain Montreuil - 25%, Erini Petroustas - 25%, RST Klondike Discoveries Ltd. - 50%	10/21/2023	Active	115O14
YD92425	Crip	36	Sylvain Montreuil - 25%, Erini Petroustas - 25%, RST Klondike Discoveries Ltd. - 50%	10/21/2023	Active	115O14
YD92426	Crip	37	Sylvain Montreuil - 25%, Erini Petroustas - 25%, RST Klondike Discoveries Ltd. - 50%	10/21/2023	Active	115O14
YD92427	Crip	38	Sylvain Montreuil - 25%, Erini Petroustas - 25%, RST Klondike Discoveries Ltd. - 50%	10/21/2023	Active	115O14
YD92428	Crip	39	Sylvain Montreuil - 25%, Erini Petroustas - 25%, RST Klondike Discoveries Ltd. - 50%	10/21/2023	Active	115O14
YD92429	Crip	40	Sylvain Montreuil - 25%, Erini Petroustas - 25%, RST Klondike Discoveries Ltd. - 50%	10/21/2023	Active	115O14
YD92430	Crip	41	Sylvain Montreuil - 25%, Erini Petroustas - 25%, RST Klondike Discoveries Ltd. - 50%	10/21/2023	Active	115O14
YD92431	Crip	42	Sylvain Montreuil - 25%, Erini Petroustas - 25%, RST Klondike Discoveries Ltd. - 50%	10/21/2023	Active	115O14
YD92432	Crip	43	Sylvain Montreuil - 25%, Erini Petroustas - 25%, RST Klondike Discoveries Ltd. - 50%	10/21/2023	Active	115O14
YD102311	Crip	44	Sylvain Montreuil - 25%, Erini Petroustas - 25%, RST Klondike Discoveries Ltd. - 50%	10/20/2024	Active	115O14
YD102312	Crip	45	Sylvain Montreuil - 25%, Erini Petroustas - 25%, RST Klondike Discoveries Ltd. - 50%	10/20/2024	Active	115O14
YD102313	Crip	46	Sylvain Montreuil - 25%, Erini Petroustas - 25%, RST Klondike Discoveries Ltd. - 50%	10/20/2024	Active	115O14
YE78912	Vera Lyne	1	Sylvain Montreuil - 25%, Erini Petroustas - 25%, RST Klondike Discoveries Ltd. - 50%	11/15/2024	Pending	116B03

APPENDIX II

Rock Sample Descriptions

Easting	Northing	#	Date	Description	Claim #	Au	Ag	Cu	Pb	Zn
580452	7099459	5560921	15.8.19	Bedrock, BS altered by HT fluids?Fe-ox infiltrations	Crip 3	<0.5	300	305.3	23.5	167
580498	7099480	5560922	15.8.19	Bedrock, crenul black schist, sugary qtz, mica, oxidic squares	Crip 4	<0.5	700	12.5	15.9	47
580472	7099508	5560923	15.8.19	Bedrock, black schist, qtz lense, Fe-ox infilt on fractures	Crip 3	<0.5	<100	14.7	6.3	27
580396	7097281	5560924	15.8.19	Pit, qtz-mica schist, fracture, qtz Fe-oxides	Crip 2	1.1	700	50.2	27.7	103
580550	7098929	660416	04.8.15	Augen scht Fe-ox infiltr after prt? Trench TCR3	Crip 2	<0.5	<100	3.9	7.8	11
580381	7099151	660417	04.8.15	Contact graphit scht-pale alter scht talc, 47/40SE	Crip 1	<0.5	200	10.1	15.1	8
580537	7098940	583313	04.8.15	Grey fault gouge, No strong coulour alteration.	Crip 2	28.5	400	39.2	285.4	318
580218	7099962	13811	18.8.18	Docomposed schist, clay band, Fe-ox precipitate above it	Crip 5	1.1	55	8.94	8.41	82.6
580218	7099962	13812	18.8.18	Docomposed schist, clay band, Fe-ox precipitate above it	Crip 5	0.5	15	2.21	57.4	184.7
580211	7099970	13813	18.8.18	Green decomp chl. Schist, clay, Fe-precipitate above it	Crip 5	0.6	48	7.07	13.64	249.6
580251	7099405	13814	18.8.18	Boulder, BS rich in Fe-oxides, small oxidized cubes after prt?	Crip 3	2.7	822	42.78	70.63	62
580294	7099473	13815	18.8.18	Diabase dyke up to 2 m wide (fresh center of dyke) WR	Crip 3	<0.2	25	20.06	3.42	566.8
580294	7099473	13816*	18.8.18	Diabase dyke up to 2 m wide (fresh center of dyke) WR	Crip 3	1.1	30	25.41	2.99	256.3
580279	7099430	13817	18.8.18	Sub-crop, listwanite rich on Cr-mica, some actinolite	Crip 3	<0.2	38	11.38	6	48.2

Abbreviations: BS – black schist; qtz – quartz; prt – pyrite; WR – whole rock analysis; * field duplicate of 13815; Au and Ag in ppb, Cu, Pb, Zn in ppm.

Whole Rock Analysis

Easting	Northing	#	SiO2	Al2O3	Fe2O3	MgO	CaO	Na2O	K2O	TiO2	P2O5	MnO	Cr2O3	Ba	Sr	SO3	LOI	Sum
580294	7099473	13815	46	15.2	14.2	3.12	8.78	2.56	0.74	3.14	1.04	0.45	<0.01	0.06	0.04	0.337	4.4	100.07

APPENDIX III

Assay Certificates



BUREAU VERITAS MINERAL LABORATORIES
Canada

www.bureauveritas.com/um

Bureau Veritas Commodities Canada Ltd.
9050 Shaughnessy St Vancouver BC V6P 6E5 CANADA
PHONE (604) 253-3158

Client: **RST Klondike Discoveries Ltd.**
#702 - 889 West Pender St.
Vancouver BC V6C 3B2 CANADA

Submitted By: Jim Boyce
Receiving Lab: Canada-Whitehorse
Received: February 12, 2016
Report Date: March 13, 2016
Page: 1 of 4

CERTIFICATE OF ANALYSIS

WHI16000030.1

CLIENT JOB INFORMATION

Project: RST 02
Shipment ID: RST16-02
P.O. Number
Number of Samples: 80

SAMPLE DISPOSAL

STOR-PLP Store After 90 days Invoice for Storage
PICKUP-RJT Client to Pickup Rejects

Bureau Veritas does not accept responsibility for samples left at the laboratory after 90 days without prior written instructions for sample storage or return.

Invoice To: RST Klondike Discoveries Ltd.
#702 - 889 West Pender St.
Vancouver BC V6C 3B2
CANADA

CC: Al Doherty
Boris Molak

SAMPLE PREPARATION AND ANALYTICAL PROCEDURES

Procedure Code	Number of Samples	Code Description	Test Wgt (g)	Report Status	Lab
PRP70-250	78	Crush, split and pulverize 250 g rock to 200 mesh			WHI
AQ202	78	1:1:1 Aqua Regia digestion ICP-MS analysis	30	Completed	VAN
SHP01	80	Per sample shipping charges for branch shipments			VAN

ADDITIONAL COMMENTS



This report supersedes all previous preliminary and final reports with this file number dated prior to the date on this certificate. Signature indicates final approval; preliminary reports are unsigned and should be used for reference only. All results are considered the confidential property of the client. Bureau Veritas assumes the liabilities for actual cost of analysis only. Results apply to samples as submitted.
*** asterisk indicates that an analytical result could not be provided due to unusually high levels of interference from other elements.



**BUREAU
VERITAS**

MINERAL LABORATORIES
Canada

www.bureauveritas.com/um

Bureau Veritas Commodities Canada Ltd.

9050 Shaughnessy St Vancouver BC V6P 6E5 CANADA

PHONE (604) 253-3158

Client: RST Klondike Discoveries Ltd.
#702 - 889 West Pender St.
Vancouver BC V6C 3B2 CANADA

Project: RST 02
Report Date: March 13, 2016

Page: 3 of 4

Part: 1 of 2

CERTIFICATE OF ANALYSIS

WHI16000030.1

Method	WGHT	AQ202	AQ202	AQ202	AQ202	AQ202	AQ202	AQ202	AQ202	AQ202	AQ202	AQ202	AQ202	AQ202	AQ202	AQ202	AQ202	AQ202	AQ202	AQ202	AQ202
Analyte	Wgt	Mo	Cu	Pb	Zn	Ag	Ni	Co	Mn	Fe	As	Au	Th	Sr	Cd	Sb	Bi	V	Ca	P	
Unit	kg	ppm	ppm	ppm	ppm	ppm	ppm	ppm	ppm	%	ppm	ppb	ppm	ppm	ppm	ppm	ppm	ppm	%	%	
MDL	0.01	0.1	0.1	0.1	1	0.1	0.1	0.1	1	0.01	0.5	0.5	0.1	1	0.1	0.1	0.1	2	0.01	0.001	
583313	Rock	2.21	0.3	39.2	285.4	318	0.4	34.0	12.6	71	1.27	3.6	28.5	2.9	30	1.8	0.9	<0.1	92	0.82	0.208



**BUREAU
VERITAS**

MINERAL LABORATORIES
Canada

www.bureauveritas.com/um

Bureau Veritas Commodities Canada Ltd.

9050 Shaughnessy St Vancouver BC V6P 6E5 CANADA

PHONE (604) 253-3158

Client: RST Klondike Discoveries Ltd.
#702 - 889 West Pender St.
Vancouver BC V6C 3B2 CANADA

Project: RST 02
Report Date: March 13, 2016

Page: 3 of 4

Part: 2 of 2

CERTIFICATE OF ANALYSIS

WHI16000030.1

Method	AQ202	AQ202	AQ202	AQ202	AQ202	AQ202	AQ202	AQ202	AQ202	AQ202	AQ202	AQ202	AQ202	AQ202	AQ202	AQ202	AQ202	
Analyte	La	Cr	Mg	Ba	Ti	B	Al	Na	K	W	Hg	Sc	Tl	S	Ga	Se	Te	
Unit	ppm	ppm	%	ppm	%	ppm	%	%	%	ppm	ppm	ppm	ppm	%	ppm	ppm	ppm	
MDL	1	1	0.01	1	0.001	1	0.01	0.001	0.01	0.1	0.01	0.1	0.1	0.05	1	0.5	0.2	
583313	Rock	36	121	0.28	242	0.067	<1	4.89	0.005	0.03	<0.1	0.04	21.7	<0.1	<0.05	12	<0.5	<0.2



Bureau Veritas Commodities Canada Ltd.
9050 Shaughnessy St Vancouver BC V6P 6E5 CANADA
PHONE (604) 253-3158

Client: RST Klondike Discoveries Ltd.
#702 - 889 West Pender St.
Vancouver BC V6C 3B2 CANADA

Project: RST 02
Report Date: March 13, 2016

Page: 1 of 2 Part: 1 of 2

QUALITY CONTROL REPORT

WHI16000030.1

Method	WGHT	AQ202	AQ202	AQ202	AQ202	AQ202	AQ202	AQ202	AQ202	AQ202	AQ202	AQ202	AQ202	AQ202	AQ202	AQ202	AQ202	AQ202	AQ202	AQ202	AQ202
Analyte	Wgt	Mo	Cu	Pb	Zn	Ag	Ni	Co	Mn	Fe	As	Au	Th	Sr	Cd	Sb	Bi	V	Ca	P	
Unit	kg	ppm	ppm	ppm	ppm	ppm	ppm	ppm	ppm	%	ppm	ppb	ppm	ppm	ppm	ppm	ppm	ppm	%	%	
MDL	0.01	0.1	0.1	0.1	1	0.1	0.1	0.1	1	0.01	0.5	0.5	0.1	1	0.1	0.1	0.1	2	0.01	0.001	
Pulp Duplicates																					
17214	Rock	1.21	1.4	53.5	2.8	23	0.5	38.8	4.1	97	1.71	10.3	1.8	10.8	10	<0.1	1.0	<0.1	10	0.07	0.031
REP 17214	QC		1.3	55.1	2.7	22	0.5	40.1	4.3	96	1.71	9.2	1.2	10.6	10	0.1	0.9	<0.1	10	0.07	0.030
17250	Rock	3.41	0.7	16.0	4.3	39	1.1	45.8	7.8	397	3.61	588.2	10.6	1.6	27	0.2	0.2	<0.1	3	1.13	0.013
REP 17250	QC		0.7	16.8	4.3	41	1.1	48.6	7.8	394	3.66	584.1	11.2	1.5	27	0.2	0.2	<0.1	3	1.14	0.012
662426	Rock	1.24	0.3	5.9	12.8	43	0.2	602.4	33.6	2129	2.50	206.7	0.6	0.3	344	0.5	0.7	0.3	18	6.63	0.004
REP 662426	QC		0.3	6.0	13.0	44	0.2	596.8	34.7	2147	2.47	195.1	1.2	0.3	344	0.6	0.7	0.3	18	6.49	0.004
662439	Rock	0.68	0.5	16.1	43.9	37	0.4	54.5	100.7	180	26.60	541.2	<0.5	6.6	19	0.2	3.1	6.3	13	1.14	0.014
REP 662439	QC		0.5	17.0	49.2	36	0.5	56.2	101.9	200	27.25	556.1	<0.5	7.5	21	0.1	3.7	7.0	14	1.23	0.015
Core Reject Duplicates																					
17249	Rock	1.93	3.4	78.1	7.7	231	0.3	57.6	20.3	1382	2.77	18.6	1.6	5.0	49	1.2	0.3	<0.1	12	2.23	0.060
DUP 17249	QC		3.3	79.7	8.1	233	0.4	55.5	21.4	1433	2.88	17.5	0.9	4.9	52	1.6	0.2	<0.1	12	2.19	0.054
662427	Rock	1.47	27.0	8.4	2.4	378	0.1	3215.9	191.7	>10000	>40	20.8	0.5	0.2	20	12.9	0.5	<0.1	21	0.19	0.015
DUP 662427	QC		29.3	9.5	2.5	397	0.1	3370.6	200.5	>10000	>40	24.5	4.5	0.3	21	13.4	0.5	<0.1	23	0.19	0.016
Reference Materials																					
STD DS10	Standard		13.6	153.8	151.9	377	2.0	72.3	12.7	872	2.74	46.0	83.6	7.3	70	2.4	9.5	12.6	44	1.06	0.074
STD DS10	Standard		14.8	145.3	135.5	361	1.9	72.2	13.0	889	2.77	43.3	73.0	6.7	63	2.6	8.7	11.1	43	1.11	0.077
STD DS10	Standard		15.0	143.9	154.2	358	2.0	73.0	13.2	893	2.72	45.6	81.3	7.7	67	2.6	9.0	12.0	43	1.09	0.076
STD DS10	Standard		14.0	151.9	150.9	368	1.9	75.3	13.4	876	2.76	45.2	71.3	8.1	72	2.3	9.0	12.2	43	1.10	0.075
STD OXC129	Standard		0.9	25.6	5.9	37	<0.1	75.3	18.8	407	2.95	0.7	172.4	1.8	181	<0.1	<0.1	<0.1	52	0.62	0.096
STD OXC129	Standard		1.3	27.6	6.2	42	<0.1	81.3	22.4	425	3.06	0.7	180.8	1.6	187	<0.1	<0.1	<0.1	50	0.66	0.101
STD OXC129	Standard		1.2	28.1	6.4	42	<0.1	79.0	22.1	417	3.04	0.6	186.9	1.9	193	<0.1	<0.1	<0.1	50	0.66	0.103
STD OXC129	Standard		1.3	27.0	6.4	41	<0.1	80.2	20.1	411	2.97	0.8	175.4	1.9	200	<0.1	<0.1	<0.1	51	0.67	0.098
STD DS10 Expected			15.1	154.61	150.55	370	2.02	74.6	12.9	875	2.7188	46.2	91.9	7.5	67.1	2.62	9	11.65	43	1.0625	0.0765
STD OXC129 Expected			1.3	28	6.3	42.9		79.5	20.3	421	3.065	0.6	195	1.9					51	0.665	0.102
BLK	Blank		<0.1	<0.1	<0.1	<1	<0.1	0.1	<0.1	<1	<0.01	<0.5	<0.5	<0.1	<1	<0.1	<0.1	<0.1	<2	<0.01	<0.001
BLK	Blank		<0.1	<0.1	<0.1	<1	<0.1	<0.1	<0.1	<1	<0.01	<0.5	<0.5	<0.1	<1	<0.1	<0.1	<0.1	<2	<0.01	<0.001
BLK	Blank		<0.1	<0.1	<0.1	<1	<0.1	<0.1	<0.1	<1	<0.01	<0.5	<0.5	<0.1	<1	<0.1	<0.1	<0.1	<2	<0.01	<0.001
BLK	Blank		<0.1	<0.1	<0.1	<1	<0.1	<0.1	<0.1	<1	<0.01	<0.5	<0.5	<0.1	<1	<0.1	<0.1	<0.1	<2	<0.01	<0.001



QUALITY CONTROL REPORT

WHI16000030.1

Method	AQ202	AQ202	AQ202	AQ202	AQ202	AQ202	AQ202	AQ202	AQ202	AQ202	AQ202	AQ202	AQ202	AQ202	AQ202	AQ202	AQ202	AQ202
Analyte	La	Cr	Mg	Ba	Ti	B	Al	Na	K	W	Hg	Sc	Tl	S	Ga	Se	Te	
Unit	ppm	ppm	%	ppm	%	ppm	%	%	%	ppm	ppm	ppm	ppm	%	ppm	ppm	ppm	
MDL	1	1	0.01	1	0.001	1	0.01	0.001	0.01	0.1	0.01	0.1	0.1	0.05	1	0.5	0.2	
Pulp Duplicates																		
17214	Rock	22	18	0.29	65	0.001	1	0.48	0.075	0.06	<0.1	<0.01	1.7	<0.1	<0.05	2	0.7	<0.2
REP 17214	QC	23	20	0.30	69	0.001	<1	0.47	0.075	0.06	<0.1	<0.01	1.7	<0.1	<0.05	1	0.9	<0.2
17250	Rock	2	10	0.48	42	<0.001	<1	0.13	0.020	0.04	<0.1	<0.01	1.2	<0.1	2.73	<1	14.4	0.8
REP 17250	QC	2	10	0.48	49	<0.001	<1	0.13	0.020	0.03	<0.1	<0.01	1.2	<0.1	2.75	<1	14.8	0.9
662426	Rock	<1	718	5.23	614	0.001	1	0.34	0.003	<0.01	<0.1	0.02	3.7	<0.1	<0.05	1	<0.5	<0.2
REP 662426	QC	<1	721	5.34	578	0.001	1	0.33	0.003	<0.01	<0.1	0.02	3.8	<0.1	<0.05	1	<0.5	<0.2
662439	Rock	11	7	0.51	4	0.002	<1	0.12	0.010	0.03	<0.1	0.09	1.0	<0.1	>10	<1	43.3	3.1
REP 662439	QC	13	8	0.57	4	<0.001	<1	0.13	0.014	0.04	<0.1	0.08	1.0	<0.1	>10	<1	45.4	4.0
Core Reject Duplicates																		
17249	Rock	10	14	0.51	132	<0.001	2	0.44	0.025	0.19	0.1	0.01	3.2	0.2	0.63	1	3.0	<0.2
DUP 17249	QC	10	9	0.60	129	<0.001	1	0.43	0.026	0.19	0.1	<0.01	3.3	0.2	0.71	1	3.2	<0.2
662427	Rock	5	55	0.65	293	<0.001	<1	0.17	0.010	0.03	<0.1	0.05	10.3	0.3	0.07	<1	2.0	<0.2
DUP 662427	QC	5	63	0.66	292	<0.001	<1	0.18	0.010	0.03	<0.1	0.05	11.6	0.4	0.08	<1	3.0	<0.2
Reference Materials																		
STD DS10	Standard	16	54	0.79	338	0.072	5	1.02	0.068	0.33	3.2	0.26	2.8	5.3	0.29	4	2.3	4.5
STD DS10	Standard	18	57	0.78	355	0.077	6	1.07	0.072	0.34	2.9	0.29	3.0	5.1	0.28	4	2.2	4.6
STD DS10	Standard	19	55	0.78	363	0.080	8	1.09	0.072	0.34	3.3	0.32	3.0	5.4	0.27	5	2.2	4.8
STD DS10	Standard	18	57	0.78	336	0.081	6	1.06	0.073	0.34	3.2	0.28	2.9	5.2	0.29	4	1.9	5.0
STD OXC129	Standard	12	46	1.52	46	0.366	<1	1.51	0.591	0.37	<0.1	<0.01	0.6	<0.1	<0.05	5	<0.5	<0.2
STD OXC129	Standard	12	54	1.55	48	0.393	1	1.62	0.612	0.39	<0.1	<0.01	1.3	<0.1	<0.05	5	<0.5	<0.2
STD OXC129	Standard	13	55	1.55	50	0.407	<1	1.61	0.600	0.37	<0.1	<0.01	1.1	<0.1	<0.05	6	<0.5	<0.2
STD OXC129	Standard	13	54	1.57	51	0.399	2	1.60	0.605	0.37	<0.1	<0.01	1.0	<0.1	<0.05	5	<0.5	<0.2
STD DS10 Expected		17.5	54.6	0.775	359	0.0817		1.0755	0.067	0.338	3.32	0.3	3	5.1	0.29	4.5	2.3	5.01
STD OXC129 Expected		13	52	1.545	50	0.4	1	1.58	0.6	0.37			1.1			5.6		
BLK	Blank	<1	<1	<0.01	<1	<0.001	<1	<0.01	<0.001	<0.01	<0.1	<0.01	<0.1	<0.1	<0.05	<1	<0.5	<0.2
BLK	Blank	<1	<1	<0.01	<1	<0.001	<1	<0.01	<0.001	<0.01	<0.1	<0.01	<0.1	<0.1	<0.05	<1	<0.5	<0.2
BLK	Blank	<1	<1	<0.01	<1	<0.001	<1	<0.01	<0.001	<0.01	<0.1	<0.01	<0.1	<0.1	<0.05	<1	<0.5	<0.2
BLK	Blank	<1	<1	<0.01	<1	<0.001	<1	<0.01	<0.001	<0.01	<0.1	<0.01	<0.1	<0.1	<0.05	<1	<0.5	<0.2



BUREAU VERITAS MINERAL LABORATORIES
Canada

www.bureauveritas.com/um

Bureau Veritas Commodities Canada Ltd.
9050 Shaughnessy St Vancouver BC V6P 6E5 CANADA
PHONE (604) 253-3158

Client: RST Klondike Discoveries Ltd.
#702 - 889 West Pender St.
Vancouver BC V6C 3B2 CANADA

Project: RST 02
Report Date: March 13, 2016

Page: 2 of 2

Part: 1 of 2

QUALITY CONTROL REPORT

WHI16000030.1

		WGHT	AQ202	AQ202	AQ202	AQ202	AQ202	AQ202	AQ202	AQ202	AQ202	AQ202	AQ202	AQ202	AQ202	AQ202	AQ202	AQ202	AQ202	AQ202	AQ202
		Wgt	Mo	Cu	Pb	Zn	Ag	Ni	Co	Mn	Fe	As	Au	Th	Sr	Cd	Sb	Bi	V	Ca	P
		kg	ppm	ppm	ppm	ppm	ppm	ppm	ppm	ppm	%	ppm	ppb	ppm	ppm	ppm	ppm	ppm	ppm	%	%
		0.01	0.1	0.1	0.1	1	0.1	0.1	0.1	1	0.01	0.5	0.5	0.1	1	0.1	0.1	0.1	2	0.01	0.001
Prep Wash																					
ROCK-WHI	Prep Blank		0.5	4.4	1.8	31	<0.1	0.7	3.7	397	1.68	<0.5	<0.5	2.6	31	<0.1	<0.1	<0.1	22	0.61	0.039
ROCK-WHI	Prep Blank		0.4	3.1	1.4	27	<0.1	0.9	3.0	349	1.44	1.1	<0.5	2.2	30	<0.1	<0.1	<0.1	21	0.59	0.039



BUREAU VERITAS MINERAL LABORATORIES
Canada

www.bureauveritas.com/um

Bureau Veritas Commodities Canada Ltd.
9050 Shaughnessy St Vancouver BC V6P 6E5 CANADA
PHONE (604) 253-3158

Client: RST Klondike Discoveries Ltd.
#702 - 889 West Pender St.
Vancouver BC V6C 3B2 CANADA

Project: RST 02
Report Date: March 13, 2016

Page: 2 of 2

Part: 2 of 2

QUALITY CONTROL REPORT

WHI16000030.1

		AQ202	AQ202	AQ202	AQ202	AQ202	AQ202	AQ202	AQ202	AQ202	AQ202	AQ202	AQ202	AQ202	AQ202	AQ202	AQ202	AQ202
		La	Cr	Mg	Ba	Ti	B	Al	Na	K	W	Hg	Sc	Tl	S	Ga	Se	Te
		ppm	ppm	%	ppm	%	ppm	%	%	%	ppm	ppm	ppm	ppm	%	ppm	ppm	ppm
Prep Wash		1	1	0.01	1	0.001	1	0.01	0.001	0.01	0.1	0.01	0.1	0.1	0.05	1	0.5	0.2
ROCK-WHI	Prep Blank	5	2	0.40	70	0.082	1	0.97	0.097	0.09	0.1	<0.01	2.9	<0.1	<0.05	4	<0.5	<0.2
ROCK-WHI	Prep Blank	5	2	0.39	63	0.070	<1	0.93	0.087	0.09	0.1	<0.01	2.7	<0.1	<0.05	4	<0.5	<0.2



BUREAU VERITAS MINERAL LABORATORIES
Canada

www.bureauveritas.com/um

Bureau Veritas Commodities Canada Ltd.
9050 Shaughnessy St Vancouver British Columbia V6P 6E5 Canada
PHONE (604) 253-3158

Client: **XyQuest Mining Corp.**
702-889 Pender Street W
Vancouver British Columbia V6C 3B2 Canada

Submitted By: Boris Molak
Receiving Lab: Canada-Whitehorse
Received: October 04, 2017
Report Date: April 20, 2018
Page: 1 of 2

CERTIFICATE OF ANALYSIS

WHI17001014.1

CLIENT JOB INFORMATION

Project: LEOTA, RST
Shipment ID:
P.O. Number
Number of Samples: 29

SAMPLE DISPOSAL

DISP-PLP Dispose of Pulp After 90 days
DISP-RJT Dispose of Reject After 60 days

Bureau Veritas does not accept responsibility for samples left at the laboratory after 90 days without prior written instructions for sample storage or return.

Invoice To: XyQuest Mining Corp.
702-889 Pender Street W
Vancouver British Columbia V6C 3B2
Canada

CC:

SAMPLE PREPARATION AND ANALYTICAL PROCEDURES

Procedure Code	Number of Samples	Code Description	Test Wgt (g)	Report Status	Lab
PRP70-250	29	Crush, split and pulverize 250 g rock to 200 mesh			WHI
FA430	29	Lead Collection Fire - Assay Fusion - AAS Finish	30	Completed	VAN
EN002	29	Environmental disposal charge-Fire assay lead waste			VAN
AQ202	29	1:1:1 Aqua Regia digestion ICP-MS analysis	30	Completed	VAN
SHP01	29	Per sample shipping charges for branch shipments			VAN
FA530	1	Lead collection fire assay 30G fusion - Grav finish	30	Completed	VAN

ADDITIONAL COMMENTS



This report supersedes all previous preliminary and final reports with this file number dated prior to the date on this certificate. Signature indicates final approval; preliminary reports are unsigned and should be used for reference only. All results are considered the confidential property of the client. Bureau Veritas assumes the liabilities for actual cost of analysis only. Results apply to samples as submitted.
*** asterisk indicates that an analytical result could not be provided due to unusually high levels of interference from other elements.



BUREAU
VERITAS

MINERAL LABORATORIES
Canada

www.bureauveritas.com/um

Bureau Veritas Commodities Canada Ltd.

9050 Shaughnessy St Vancouver British Columbia V6P 6E5 Canada

PHONE (604) 253-3158

Client: **XyQuest Mining Corp.**
702-889 Pender Street W
Vancouver British Columbia V6C 3B2 Canada

Project: LEOTA, RST
Report Date: April 20, 2018

Page: 2 of 2

Part: 1 of 2

CERTIFICATE OF ANALYSIS

WHI17001014.1

Method	WGHT	FA430	AQ202	AQ202	AQ202	AQ202	AQ202	AQ202	AQ202	AQ202	AQ202	AQ202	AQ202	AQ202	AQ202	AQ202	AQ202	AQ202	AQ202	AQ202
Analyte	Wgt	Au	Mo	Cu	Pb	Zn	Ag	Ni	Co	Mn	Fe	As	Au	Th	Sr	Cd	Sb	Bi	V	Ca
Unit	kg	ppm	ppm	ppm	ppm	ppm	ppm	ppm	ppm	ppm	%	ppm	ppb	ppm	ppm	ppm	ppm	ppm	ppm	%
MDL	0.01	0.005	0.1	0.1	0.1	1	0.1	0.1	0.1	1	0.01	0.5	0.5	0.1	1	0.1	0.1	0.1	2	0.01

660416	Rock	1.47	<0.005	0.1	3.9	7.8	11	<0.1	2.7	0.6	47	0.59	2.1	<0.5	3.3	5	<0.1	0.1	0.2	<2	0.05
660417	Rock	1.84	<0.005	86.6	10.1	15.1	8	0.2	3.0	0.3	42	2.14	116.4	<0.5	8.3	46	<0.1	8.8	0.2	11	0.02



BUREAU
VERITAS

MINERAL LABORATORIES
Canada

www.bureauveritas.com/um

Bureau Veritas Commodities Canada Ltd.

9050 Shaughnessy St Vancouver British Columbia V6P 6E5 Canada

PHONE (604) 253-3158

Client: **XyQuest Mining Corp.**
702-889 Pender Street W
Vancouver British Columbia V6C 3B2 Canada

Project: LEOTA, RST
Report Date: April 20, 2018

Page: 2 of 2

Part: 2 of 2

CERTIFICATE OF ANALYSIS

WHI17001014.1

Method	AQ202	AQ202	AQ202	AQ202	AQ202	AQ202	AQ202	AQ202	AQ202	AQ202	AQ202	AQ202	AQ202	AQ202	AQ202	AQ202	AQ202	AQ202	FA530
Analyte	P	La	Cr	Mg	Ba	Ti	B	Al	Na	K	W	Hg	Sc	Tl	S	Ga	Se	Te	Au
Unit	%	ppm	ppm	%	ppm	%	ppm	%	%	%	ppm	ppm	ppm	ppm	%	ppm	ppm	ppm	gm/t
MDL	0.001	1	1	0.01	1	0.001	1	0.01	0.001	0.01	0.1	0.01	0.1	0.1	0.05	1	0.5	0.2	0.9

660416	Rock	0.013	11	3	0.02	106	0.007	<1	0.19	0.042	0.12	<0.1	<0.01	1.3	<0.1	<0.05	<1	<0.5	<0.2
660417	Rock	0.337	9	7	0.04	541	0.003	2	0.32	0.025	0.27	1.0	0.02	1.2	0.2	0.18	<1	19.8	<0.2



Bureau Veritas Commodities Canada Ltd.

9050 Shaughnessy St Vancouver British Columbia V6P 6E5 Canada

PHONE (604) 253-3158

Client: XyQuest Mining Corp.
702-889 Pender Street W
Vancouver British Columbia V6C 3B2 Canada

Project: LEOTA, RST
Report Date: April 20, 2018

Page: 1 of 2

Part: 1 of 2

QUALITY CONTROL REPORT

WHI17001014.1

Method	WGHT	FA430	AQ202	AQ202	AQ202	AQ202	AQ202	AQ202	AQ202	AQ202	AQ202	AQ202	AQ202	AQ202	AQ202	AQ202	AQ202	AQ202	AQ202	AQ202	AQ202
Analyte	Wgt	Au	Mo	Cu	Pb	Zn	Ag	Ni	Co	Mn	Fe	As	Au	Th	Sr	Cd	Sb	Bi	V	Ca	
Unit	kg	ppm	ppm	ppm	ppm	ppm	ppm	ppm	ppm	ppm	%	ppm	ppb	ppm	ppm	ppm	ppm	ppm	ppm	%	
MDL	0.01	0.005	0.1	0.1	0.1	1	0.1	0.1	0.1	1	0.01	0.5	0.5	0.1	1	0.1	0.1	0.1	2	0.01	
Pulp Duplicates																					
17334	Rock	1.97	<0.005	0.4	3.2	2.2	14	<0.1	2.3	2.2	120	0.63	2.6	<0.5	13.6	3	<0.1	0.3	<0.1	<2	<0.01
REP 17334	QC	<0.005																			
17204	Rock	2.59	0.005	0.1	5.0	18.4	10	<0.1	1.0	1.3	196	0.75	1.9	1.3	12.3	12	<0.1	0.1	0.1	<2	0.11
REP 17204	QC	0.1 5.1 19.2 10 <0.1 0.9 1.2 200 0.75 1.9 1.7 13.0 12 <0.1 0.2 0.1 <2 0.11																			
17205	Rock	1.88	<0.005	0.2	11.5	17.8	34	<0.1	1.3	2.8	277	1.91	1.8	<0.5	13.4	4	<0.1	0.3	0.2	5	0.04
REP 17205	QC	<0.005																			
Reference Materials																					
STD AGPROOF	Standard																				
STD DS11	Standard	14.5 153.8 140.5 367 1.8 79.8 14.0 1045 3.20 44.7 82.2 8.1 70 2.5 7.4 12.6 51 1.08																			
STD DS11	Standard	13.9 156.4 140.8 361 1.7 80.2 13.8 1030 3.24 46.0 106.1 7.8 68 2.5 7.8 12.3 51 1.08																			
STD OXC129	Standard	1.3 27.9 6.5 43 <0.1 80.8 20.9 429 3.12 <0.5 203.6 2.0 194 <0.1 <0.1 <0.1 54 0.66																			
STD OXC129	Standard	1.2 28.9 6.3 44 <0.1 80.5 21.4 418 3.15 <0.5 190.6 1.8 199 <0.1 <0.1 <0.1 53 0.71																			
STD OXC145	Standard	0.213																			
STD OXH139	Standard	1.362																			
STD OXN134	Standard	7.880																			
STD SP49	Standard																				
STD SQ70	Standard																				
STD OXN134 Expected		7.667																			
STD OXC145 Expected		0.212																			
STD OXH139 Expected		1.312																			
STD AGPROOF Expected																					
STD SP49 Expected																					
STD SQ70 Expected																					
STD OXC129 Expected		1.3 28 6.2 42.9 79.5 20.3 421 3.065 0.6 195 1.9 51 0.684																			
STD DS11 Expected		14.6 149 138 345 1.71 77.7 14.2 1055 3.1 42.8 79 7.65 67.3 2.37 8.74 12.2 50 1.063																			
BLK	Blank	<0.005																			
BLK	Blank	<0.005																			
BLK	Blank																				



QUALITY CONTROL REPORT

WHI17001014.1

Method		AQ202	AQ202	AQ202	AQ202	AQ202	AQ202	AQ202	AQ202	AQ202	AQ202	AQ202	AQ202	AQ202	AQ202	AQ202	AQ202	AQ202	AQ202	FA530
Analyte		P	La	Cr	Mg	Ba	Ti	B	Al	Na	K	W	Hg	Sc	Tl	S	Ga	Se	Te	Au
Unit		%	ppm	ppm	%	ppm	%	ppm	%	%	%	ppm	ppm	ppm	ppm	%	ppm	ppm	ppm	gm/t
MDL		0.001	1	1	0.01	1	0.001	1	0.01	0.001	0.01	0.1	0.01	0.1	0.1	0.05	1	0.5	0.2	0.9
Pulp Duplicates																				
17334	Rock	0.003	11	2	0.10	137	0.003	2	0.42	0.031	0.26	<0.1	0.04	1.3	<0.1	<0.05	2	<0.5	<0.2	
REP 17334	QC																			
17204	Rock	0.018	14	2	0.15	183	0.006	1	0.56	0.031	0.28	<0.1	<0.01	2.0	<0.1	<0.05	2	<0.5	<0.2	
REP 17204	QC	0.019	15	2	0.16	197	0.007	<1	0.56	0.030	0.28	<0.1	<0.01	1.9	<0.1	<0.05	2	<0.5	<0.2	
17205	Rock	0.010	70	3	0.46	313	0.041	1	1.18	0.029	0.40	0.2	<0.01	4.1	0.2	<0.05	5	<0.5	<0.2	
REP 17205	QC																			
Reference Materials																				
STD AGPROOF	Standard																			<0.9
STD DS11	Standard	0.074	18	61	0.87	391	0.097	7	1.16	0.073	0.40	3.0	0.26	3.3	5.0	0.27	5	2.7	5.1	
STD DS11	Standard	0.071	19	59	0.85	361	0.096	8	1.16	0.072	0.40	3.0	0.27	3.2	4.8	0.28	5	2.4	4.7	
STD OXC129	Standard	0.105	13	54	1.60	54	0.405	<1	1.59	0.589	0.37	<0.1	<0.01	1.5	<0.1	<0.05	6	<0.5	<0.2	
STD OXC129	Standard	0.105	13	51	1.57	53	0.399	2	1.59	0.578	0.36	<0.1	<0.01	1.1	<0.1	<0.05	6	<0.5	<0.2	
STD OXC145	Standard																			
STD OXH139	Standard																			
STD OXN134	Standard																			
STD SP49	Standard																			18.3
STD SQ70	Standard																			39.2
STD OXN134 Expected																				
STD OXC145 Expected																				
STD OXH139 Expected																				
STD AGPROOF Expected																				0
STD SP49 Expected																				18.34
STD SQ70 Expected																				39.62
STD OXC129 Expected		0.102	12.5	52	1.545	50	0.4	1	1.58	0.59	0.3655			1.1			5.5			
STD DS11 Expected		0.0701	18.6	61.5	0.85	385	0.0976		1.1795	0.0762	0.4	2.9	0.26	3.4	4.9	0.2835	5.1	2.2	4.56	
BLK	Blank																			
BLK	Blank																			
BLK	Blank																			<0.9



Bureau Veritas Commodities Canada Ltd.

9050 Shaughnessy St Vancouver British Columbia V6P 6E5 Canada

PHONE (604) 253-3158

Client: **XyQuest Mining Corp.**
702-889 Pender Street W
Vancouver British Columbia V6C 3B2 Canada

Project: LEOTA, RST
Report Date: April 20, 2018

Page: 2 of 2

Part: 1 of 2

QUALITY CONTROL REPORT

WHI17001014.1

		WGHT	FA430	AQ202	AQ202	AQ202	AQ202	AQ202	AQ202	AQ202	AQ202	AQ202	AQ202	AQ202	AQ202	AQ202	AQ202	AQ202	AQ202	AQ202	AQ202
		Wgt	Au	Mo	Cu	Pb	Zn	Ag	Ni	Co	Mn	Fe	As	Au	Th	Sr	Cd	Sb	Bi	V	Ca
		kg	ppm	ppm	ppm	ppm	ppm	ppm	ppm	ppm	ppm	%	ppm	ppb	ppm	ppm	ppm	ppm	ppm	ppm	%
		0.01	0.005	0.1	0.1	0.1	1	0.1	0.1	0.1	1	0.01	0.5	0.5	0.1	1	0.1	0.1	0.1	2	0.01
BLK	Blank			<0.1	<0.1	<0.1	<1	<0.1	<0.1	<0.1	<1	<0.01	<0.5	<0.5	<0.1	<1	<0.1	<0.1	<0.1	<2	<0.01
BLK	Blank			<0.1	<0.1	<0.1	<1	<0.1	<0.1	<0.1	<1	<0.01	<0.5	<0.5	<0.1	<1	<0.1	<0.1	<0.1	<2	<0.01
	Prep Wash																				
ROCK-WHI	Prep Blank		<0.005	1.1	4.4	1.6	39	<0.1	1.4	4.1	641	1.90	10.9	1.7	1.9	39	<0.1	0.3	0.1	21	0.95
ROCK-WHI	Prep Blank		<0.005	1.2	11.1	1.6	45	<0.1	1.5	4.2	624	1.94	8.9	2.0	1.8	56	<0.1	0.3	0.1	22	0.99



Bureau Veritas Commodities Canada Ltd.

9050 Shaughnessy St Vancouver British Columbia V6P 6E5 Canada

PHONE (604) 253-3158

Client: **XyQuest Mining Corp.**
702-889 Pender Street W
Vancouver British Columbia V6C 3B2 Canada

Project: LEOTA, RST
Report Date: April 20, 2018

Page: 2 of 2

Part: 2 of 2

QUALITY CONTROL REPORT

WHI17001014.1

		AQ202	AQ202	AQ202	AQ202	AQ202	AQ202	AQ202	AQ202	AQ202	AQ202	AQ202	AQ202	AQ202	AQ202	AQ202	AQ202	AQ202	AQ202	FA530
		P	La	Cr	Mg	Ba	Ti	B	Al	Na	K	W	Hg	Sc	Tl	S	Ga	Se	Te	Au
		%	ppm	ppm	%	ppm	%	ppm	%	%	%	ppm	ppm	ppm	ppm	%	ppm	ppm	ppm	gm/t
		0.001	1	1	0.01	1	0.001	1	0.01	0.001	0.01	0.1	0.01	0.1	0.1	0.05	1	0.5	0.2	0.9
BLK	Blank	<0.001	<1	<1	<0.01	<1	<0.001	<1	<0.01	<0.001	<0.01	<0.1	<0.01	<0.1	<0.1	<0.05	<1	<0.5	<0.2	
BLK	Blank	<0.001	<1	<1	<0.01	<1	<0.001	<1	<0.01	<0.001	<0.01	<0.1	<0.01	0.1	<0.1	<0.05	<1	<0.5	<0.2	
Prep Wash																				
ROCK-WHI	Prep Blank	0.040	6	3	0.54	64	0.073	4	1.26	0.072	0.10	0.1	<0.01	3.2	<0.1	0.10	5	<0.5	<0.2	
ROCK-WHI	Prep Blank	0.040	6	3	0.55	84	0.075	3	1.36	0.086	0.11	<0.1	<0.01	3.2	<0.1	0.12	5	<0.5	<0.2	



BUREAU VERITAS MINERAL LABORATORIES
Canada

www.bureauveritas.com/um

Bureau Veritas Commodities Canada Ltd.
9050 Shaughnessy St Vancouver British Columbia V6P 6E5 Canada
PHONE (604) 253-3158

Client: **XyQuest Mining Corp.**
702-889 Pender Street W
Vancouver British Columbia V6C 3B2 Canada

Submitted By: Boris Molak
Receiving Lab: Canada-Whitehorse
Received: August 21, 2018
Report Date: October 25, 2018
Page: 1 of 4

CERTIFICATE OF ANALYSIS

WHI18000710.1

CLIENT JOB INFORMATION

Project: KLONDIKE
Shipment ID: 18-01
P.O. Number
Number of Samples: 71

SAMPLE DISPOSAL

DISP-PLP Dispose of Pulp After 90 days
DISP-RJT Dispose of Reject After 60 days

Bureau Veritas does not accept responsibility for samples left at the laboratory after 90 days without prior written instructions for sample storage or return.

Invoice To: XyQuest Mining Corp.
702-889 Pender Street W
Vancouver British Columbia V6C 3B2
Canada

CC: Al Doherty

SAMPLE PREPARATION AND ANALYTICAL PROCEDURES

Procedure Code	Number of Samples	Code Description	Test Wgt (g)	Report Status	Lab
PRP70-250	71	Crush, split and pulverize 250 g rock to 200 mesh			WHI
AQ252	71	1:1:1 Aqua Regia digestion Ultratrace ICP-MS analysis	30	Completed	VAN
FA430	5	Lead Collection Fire - Assay Fusion - AAS Finish	30	Completed	VAN
EN002	5	Environmental disposal charge-Fire assay lead waste			VAN
XF700	2	Li2B4O7/LiBO2 fusion, analysis of Whole Rock by XRF	0.66	Completed	VAN
SHP01	71	Per sample shipping charges for branch shipments			VAN

ADDITIONAL COMMENTS



This report supersedes all previous preliminary and final reports with this file number dated prior to the date on this certificate. Signature indicates final approval; preliminary reports are unsigned and should be used for reference only. All results are considered the confidential property of the client. Bureau Veritas assumes the liabilities for actual cost of analysis only. Results apply to samples as submitted.
*** asterisk indicates that an analytical result could not be provided due to unusually high levels of interference from other elements.



**BUREAU
VERITAS**

MINERAL LABORATORIES
Canada

www.bureauveritas.com/um

Bureau Veritas Commodities Canada Ltd.

9050 Shaughnessy St Vancouver British Columbia V6P 6E5 Canada

PHONE (604) 253-3158

Client: **XyQuest Mining Corp.**
702-889 Pender Street W
Vancouver British Columbia V6C 3B2 Canada

Project: KLONDIKE
Report Date: October 25, 2018

Page: 3 of 4

Part: 2 of 3

CERTIFICATE OF ANALYSIS

WHI18000710.1

Method	AQ252	AQ252	AQ252	AQ252	AQ252	AQ252	AQ252	AQ252	AQ252	AQ252	AQ252	AQ252	AQ252	AQ252	AQ252	AQ252	AQ252	AQ252	FA430	XF700
Analyte	P	La	Cr	Mg	Ba	Ti	B	Al	Na	K	W	Sc	Tl	S	Hg	Se	Te	Ga	Au	LOI
Unit	%	ppm	ppm	%	ppm	%	ppm	%	%	%	ppm	ppm	ppm	%	ppb	ppm	ppm	ppm	ppm	%
MDL	0.001	0.5	0.5	0.01	0.5	0.001	1	0.01	0.001	0.01	0.1	0.1	0.02	0.02	5	0.1	0.02	0.1	0.005	-5.1

013811	Rock	0.038	21.7	28.1	0.16	797.0	0.014	<1	0.73	0.005	0.04	<0.1	13.6	0.09	0.15	<5	1.1	<0.02	1.9	
013812	Rock	0.036	18.2	6.7	0.25	930.7	0.002	<1	0.71	0.007	0.11	0.1	6.1	0.06	<0.02	<5	0.6	<0.02	1.8	
013813	Rock	0.087	8.6	14.1	0.23	2014.0	0.007	<1	0.62	0.005	0.01	<0.1	5.8	<0.02	0.02	<5	0.9	<0.02	1.8	



BUREAU
VERITAS

MINERAL LABORATORIES
Canada

www.bureauveritas.com/um

Bureau Veritas Commodities Canada Ltd.

9050 Shaughnessy St Vancouver British Columbia V6P 6E5 Canada

PHONE (604) 253-3158

Client: **XyQuest Mining Corp.**
702-889 Pender Street W
Vancouver British Columbia V6C 3B2 Canada

Project: KLONDIKE
Report Date: October 25, 2018

Page: 4 of 4

Part: 1 of 3

CERTIFICATE OF ANALYSIS

WHI18000710.1

Method	WGHT	AQ252	AQ252	AQ252	AQ252	AQ252	AQ252	AQ252	AQ252	AQ252	AQ252	AQ252	AQ252	AQ252	AQ252	AQ252	AQ252	AQ252	AQ252	AQ252	
Analyte	Wgt	Mo	Cu	Pb	Zn	Ag	Ni	Co	Mn	Fe	As	U	Au	Th	Sr	Cd	Sb	Bi	V	Ca	
Unit	kg	ppm	ppm	ppm	ppm	ppb	ppm	ppm	ppm	%	ppm	ppm	ppb	ppm	ppm	ppm	ppm	ppm	ppm	%	
MDL	0.01	0.01	0.01	0.01	0.1	2	0.1	0.1	1	0.01	0.1	0.1	0.2	0.1	0.5	0.01	0.02	0.02	1	0.01	
013814	Rock	1.73	20.56	42.78	70.63	62.0	822	15.7	1.5	192	2.59	20.5	2.1	2.7	8.5	26.9	0.23	0.58	0.27	34	0.13
013815	Rock	1.45	1.40	20.06	3.42	566.8	25	78.3	86.9	2502	6.11	0.8	0.2	<0.2	1.4	82.2	1.32	0.02	<0.02	33	1.89
013816	Rock	1.49	1.39	25.41	2.99	256.3	30	77.1	47.5	910	4.53	2.2	0.7	1.1	2.6	86.6	0.46	0.07	0.02	81	1.39
013817	Rock	1.52	0.08	11.38	6.00	48.2	38	138.6	9.3	235	1.87	27.4	<0.1	<0.2	<0.1	4.4	0.11	0.18	0.05	25	0.11



BUREAU
VERITAS

MINERAL LABORATORIES
Canada

www.bureauveritas.com/um

Bureau Veritas Commodities Canada Ltd.

9050 Shaughnessy St Vancouver British Columbia V6P 6E5 Canada

PHONE (604) 253-3158

Client: **XyQuest Mining Corp.**
702-889 Pender Street W
Vancouver British Columbia V6C 3B2 Canada

Project: KLONDIKE
Report Date: October 25, 2018

Page: 4 of 4

Part: 2 of 3

CERTIFICATE OF ANALYSIS

WHI18000710.1

Method	AQ252	AQ252	AQ252	AQ252	AQ252	AQ252	AQ252	AQ252	AQ252	AQ252	AQ252	AQ252	AQ252	AQ252	AQ252	AQ252	AQ252	AQ252	FA430	XF700
Analyte	P	La	Cr	Mg	Ba	Ti	B	Al	Na	K	W	Sc	Tl	S	Hg	Se	Te	Ga	Au	LOI
Unit	%	ppm	ppm	%	ppm	%	ppm	%	%	%	ppm	ppm	ppm	%	ppb	ppm	ppm	ppm	ppm	%
MDL	0.001	0.5	0.5	0.01	0.5	0.001	1	0.01	0.001	0.01	0.1	0.1	0.02	0.02	5	0.1	0.02	0.1	0.005	-5.1
013814	Rock	0.132	26.0	35.9	1.24	338.9	0.002	2	1.26	0.008	0.20	0.4	1.3	0.10	0.06	54	3.2	0.13	4.0	
013815	Rock	0.379	33.6	10.7	1.13	78.6	0.107	<1	1.86	0.204	0.06	<0.1	6.3	0.04	0.14	5	0.6	<0.02	6.3	4.4
013816	Rock	0.339	36.6	25.1	0.46	1137.0	0.078	1	1.47	0.129	0.07	<0.1	12.5	0.09	0.07	7	0.9	<0.02	6.4	
013817	Rock	0.011	0.7	249.0	2.96	318.4	0.047	1	2.36	0.015	0.14	<0.1	4.5	0.09	<0.02	<5	<0.1	<0.02	3.2	



BUREAU VERITAS MINERAL LABORATORIES
Canada

www.bureauveritas.com/um

Bureau Veritas Commodities Canada Ltd.

9050 Shaughnessy St Vancouver British Columbia V6P 6E5 Canada

PHONE (604) 253-3158

Client: **XyQuest Mining Corp.**
702-889 Pender Street W
Vancouver British Columbia V6C 3B2 Canada

Project: KLONDIKE
Report Date: October 25, 2018

Page: 4 of 4

Part: 3 of 3

CERTIFICATE OF ANALYSIS

WHI18000710.1

Method	XF700	XF700	XF700	XF700	XF700	XF700	XF700	XF700	XF700	XF700	XF700	XF700	XF700	XF700	
Analyte	Al ₂ O ₃	Ba	CaO	Cr ₂ O ₃	Fe ₂ O ₃	K ₂ O	MgO	MnO	Na ₂ O	P ₂ O ₅	SO ₃	SiO ₂	Sr	TiO ₂	
Unit	%	%	%	%	%	%	%	%	%	%	%	%	%	%	
MDL	0.01	0.01	0.01	0.01	0.01	0.01	0.01	0.01	0.01	0.01	0.002	0.01	0.002	0.01	
013814	Rock														
013815	Rock	15.20	0.06	8.78	<0.01	14.20	0.74	3.12	0.45	2.56	1.04	0.337	46.00	0.042	3.14
013816	Rock														
013817	Rock														
013818	Rock														
013819	Rock														
1909301	Rock														
1909302	Rock														
1909303	Rock														
1909304	Rock														
1909305	Rock														



Bureau Veritas Commodities Canada Ltd.
9050 Shaughnessy St Vancouver British Columbia V6P 6E5 Canada
PHONE (604) 253-3158

Client: XyQuest Mining Corp.
702-889 Pender Street W
Vancouver British Columbia V6C 3B2 Canada

Project: KLONDIKE
Report Date: October 25, 2018

Page: 1 of 2

Part: 1 of 3

QUALITY CONTROL REPORT

WHI18000710.1

Method	WGHT	AQ252	AQ252	AQ252	AQ252	AQ252	AQ252	AQ252	AQ252	AQ252	AQ252	AQ252	AQ252	AQ252	AQ252	AQ252	AQ252	AQ252	AQ252	AQ252	AQ252
Analyte	Wgt	Mo	Cu	Pb	Zn	Ag	Ni	Co	Mn	Fe	As	U	Au	Th	Sr	Cd	Sb	Bi	V	Ca	
Unit	kg	ppm	ppm	ppm	ppm	ppb	ppm	ppm	ppm	%	ppm	ppm	ppb	ppm	ppm	ppm	ppm	ppm	ppm	%	
MDL	0.01	0.01	0.01	0.01	0.1	2	0.1	0.1	1	0.01	0.1	0.1	0.2	0.1	0.5	0.01	0.02	0.02	1	0.01	
Pulp Duplicates																					
013755	Rock	1.32	111.59	164.17	50.70	148.6	225	44.5	7.3	331	12.39	118.1	9.3	0.9	8.7	18.5	2.18	1.14	0.11	36	0.11
REP 013755	QC		111.10	164.11	50.61	146.1	231	43.3	7.3	328	12.35	117.5	9.0	0.5	8.7	18.4	2.18	1.12	0.10	36	0.11
013788	Rock	1.86	0.05	35.70	10.29	46.4	70	914.9	63.4	1362	2.77	26.0	<0.1	5.7	<0.1	78.2	0.73	0.14	0.03	39	5.51
REP 013788	QC		0.04	35.24	10.42	45.7	73	937.1	62.5	1385	2.85	27.9	<0.1	1.9	<0.1	76.3	0.68	0.15	0.03	41	5.64
013815	Rock	1.45	1.40	20.06	3.42	566.8	25	78.3	86.9	2502	6.11	0.8	0.2	<0.2	1.4	82.2	1.32	0.02	<0.02	33	1.89
REP 013815	QC		1.44	20.38	3.52	606.8	21	81.4	94.3	2546	6.19	1.3	0.2	<0.2	1.4	87.5	1.31	0.03	<0.02	34	1.96
Core Reject Duplicates																					
013769	Rock	1.60	1.80	4.64	33.76	42.5	273	3.7	5.5	377	1.61	2.4	2.5	0.5	7.2	86.3	0.44	0.08	0.38	3	0.68
DUP 013769	QC		1.32	5.10	32.99	40.8	263	3.4	5.2	323	1.49	2.3	2.2	0.7	7.2	73.6	0.39	0.09	0.30	3	0.59
013803	Rock	1.84	0.50	16.38	2.06	27.2	43	33.0	12.5	605	2.15	4.0	<0.1	1.8	<0.1	2.1	0.10	0.06	<0.02	61	0.08
DUP 013803	QC		0.63	18.23	2.35	28.0	51	34.5	13.3	667	2.26	3.6	<0.1	5.8	<0.1	2.2	0.14	0.04	<0.02	63	0.09
Reference Materials																					
STD DS11	Standard		13.86	156.79	139.84	361.7	1711	78.4	13.5	1023	3.18	41.3	2.6	93.0	7.6	67.5	2.56	8.33	12.09	51	1.06
STD DS11	Standard		13.30	153.76	136.86	344.6	1739	77.5	13.5	1068	3.17	45.9	2.5	79.0	7.5	64.8	2.40	7.91	11.77	49	1.05
STD DS11	Standard		13.20	148.21	137.21	335.8	1649	77.3	13.7	1032	3.10	42.4	2.5	74.5	7.2	63.6	2.18	7.44	11.49	49	1.04
STD OREAS184	Standard																				
STD OXC129	Standard		1.27	29.66	6.39	43.4	14	82.6	22.3	443	3.09	0.4	0.7	194.7	1.8	190.6	0.02	0.04	<0.02	53	0.62
STD OXC129	Standard		1.27	26.48	6.15	41.7	10	81.3	21.2	421	3.13	0.5	0.7	190.6	1.8	189.3	<0.01	0.03	<0.02	52	0.65
STD OXC129	Standard		1.34	27.39	6.05	40.5	5	82.4	20.7	425	3.04	0.7	0.7	195.6	1.8	179.5	<0.01	0.02	<0.02	51	0.61
STD OXC145	Standard																				
STD OXH139	Standard																				
STD OXN134	Standard																				
STD SY-4(D)	Standard																				
STD OREAS184 Expected																					
STD SY-4(D) Expected																					
STD OXN134 Expected																					
STD OXC145 Expected																					
STD OXH139 Expected																					



QUALITY CONTROL REPORT

WHI18000710.1

Method	AQ252	AQ252	AQ252	AQ252	AQ252	AQ252	AQ252	AQ252	AQ252	AQ252	AQ252	AQ252	AQ252	AQ252	AQ252	AQ252	AQ252	AQ252	FA430	XF700
Analyte	P	La	Cr	Mg	Ba	Ti	B	Al	Na	K	W	Sc	Tl	S	Hg	Se	Te	Ga	Au	LOI
Unit	%	ppm	ppm	%	ppm	%	ppm	%	%	%	ppm	ppm	ppm	%	ppb	ppm	ppm	ppm	ppm	%
MDL	0.001	0.5	0.5	0.01	0.5	0.001	1	0.01	0.001	0.01	0.1	0.1	0.02	0.02	5	0.1	0.02	0.1	0.005	-5.1
Pulp Duplicates																				
013755	Rock	0.303	5.1	13.7	0.04	181.1	0.002	<1	0.65	0.003	0.06	0.2	2.0	0.08	<0.02	36	6.3	0.09	0.8	
REP 013755	QC	0.305	5.2	13.5	0.04	181.1	0.002	<1	0.63	0.003	0.06	0.2	1.9	0.09	<0.02	33	6.2	0.11	0.8	
013788	Rock	<0.001	<0.5	908.6	7.56	29.6	0.003	<1	1.04	0.001	0.06	<0.1	5.8	0.05	0.07	5	0.9	0.22	1.5	21.8
REP 013788	QC	<0.001	<0.5	942.7	7.62	31.0	0.003	<1	1.04	0.002	0.06	<0.1	6.4	0.05	0.07	<5	0.6	0.25	1.5	21.8
013815	Rock	0.379	33.6	10.7	1.13	78.6	0.107	<1	1.86	0.204	0.06	<0.1	6.3	0.04	0.14	5	0.6	<0.02	6.3	4.4
REP 013815	QC	0.406	33.7	10.6	1.15	81.7	0.121	<1	1.93	0.218	0.06	<0.1	6.2	0.04	0.14	<5	0.6	<0.02	5.8	
Core Reject Duplicates																				
013769	Rock	0.205	16.6	2.7	0.10	1551.8	0.006	1	0.51	0.043	0.31	<0.1	1.7	0.08	0.04	29	<0.1	0.03	1.4	
DUP 013769	QC	0.199	19.2	3.4	0.09	1633.5	0.006	<1	0.56	0.062	0.35	<0.1	1.6	0.09	0.03	18	<0.1	0.02	1.4	
013803	Rock	0.027	<0.5	60.7	1.26	79.9	0.010	<1	1.25	0.033	0.02	<0.1	7.8	<0.02	<0.02	<5	0.1	<0.02	3.2	
DUP 013803	QC	0.033	<0.5	61.8	1.33	94.2	0.010	<1	1.30	0.032	0.02	<0.1	7.7	<0.02	<0.02	<5	0.1	<0.02	3.3	
Reference Materials																				
STD DS11	Standard	0.069	19.5	57.6	0.84	375.6	0.093	8	1.14	0.074	0.40	3.0	3.0	4.90	0.27	277	2.3	4.60	4.8	
STD DS11	Standard	0.073	17.4	58.2	0.85	346.2	0.090	7	1.12	0.073	0.41	2.8	3.0	4.68	0.28	249	2.5	4.47	4.9	
STD DS11	Standard	0.071	16.9	58.7	0.83	339.0	0.087	7	1.11	0.073	0.40	2.9	3.0	4.71	0.28	274	1.8	4.60	4.7	
STD OREAS184	Standard																			6.2
STD OXC129	Standard	0.102	12.8	56.5	1.55	50.8	0.421	3	1.54	0.589	0.37	<0.1	0.7	0.03	<0.02	<5	0.3	<0.02	5.7	
STD OXC129	Standard	0.105	12.8	52.8	1.56	52.9	0.418	<1	1.54	0.594	0.37	<0.1	0.7	0.05	<0.02	<5	0.2	0.02	5.6	
STD OXC129	Standard	0.099	12.3	52.6	1.52	48.8	0.399	<1	1.53	0.581	0.37	<0.1	0.7	0.03	<0.02	<5	<0.1	<0.02	5.1	
STD OXC145	Standard																			0.203
STD OXH139	Standard																			1.291
STD OXN134	Standard																			7.850
STD SY-4(D)	Standard																			4.6
STD OREAS184 Expected																				6.24
STD SY-4(D) Expected																				4.56
STD OXN134 Expected																				7.667
STD OXC145 Expected																				0.212
STD OXH139 Expected																				1.312



Bureau Veritas Commodities Canada Ltd.
9050 Shaughnessy St Vancouver British Columbia V6P 6E5 Canada
PHONE (604) 253-3158

Client: XyQuest Mining Corp.
702-889 Pender Street W
Vancouver British Columbia V6C 3B2 Canada

Project: KLONDIKE
Report Date: October 25, 2018

Page: 1 of 2

Part: 3 of 3

QUALITY CONTROL REPORT

WHI18000710.1

Method	XF700	XF700	XF700	XF700	XF700	XF700	XF700	XF700	XF700	XF700	XF700	XF700	XF700	XF700	
Analyte	Al2O3	Ba	CaO	Cr2O3	Fe2O3	K2O	MgO	MnO	Na2O	P2O5	SO3	SiO2	Sr	TiO2	
Unit	%	%	%	%	%	%	%	%	%	%	%	%	%	%	
MDL	0.01	0.01	0.01	0.01	0.01	0.01	0.01	0.01	0.01	0.01	0.002	0.01	0.002	0.01	
Pulp Duplicates															
013755	Rock														
REP 013755	QC														
013788	Rock	3.17	<0.01	8.43	0.24	5.49	0.01	18.10	0.18	<0.01	<0.01	0.216	41.60	0.009	0.02
REP 013788	QC	3.16	<0.01	8.46	0.24	5.50	0.01	18.20	0.18	<0.01	<0.01	0.223	41.60	0.007	0.02
013815	Rock	15.20	0.06	8.78	<0.01	14.20	0.74	3.12	0.45	2.56	1.04	0.337	46.00	0.042	3.14
REP 013815	QC														
Core Reject Duplicates															
013769	Rock														
DUP 013769	QC														
013803	Rock														
DUP 013803	QC														
Reference Materials															
STD DS11	Standard														
STD DS11	Standard														
STD DS11	Standard														
STD OREAS184	Standard	4.60	0.02	0.22	1.71	39.30	<0.01	3.05	0.67	<0.01	0.02	0.003	42.20	0.005	0.06
STD OXC129	Standard														
STD OXC129	Standard														
STD OXC129	Standard														
STD OXC145	Standard														
STD OXH139	Standard														
STD OXN134	Standard														
STD SY-4(D)	Standard	20.70	0.03	7.94	<0.01	6.15	1.66	0.53	0.11	7.17	0.13	0.048	49.80	0.117	0.30
STD OREAS184 Expected		4.62		0.216	1.75	39.3		3.05	0.676		0.017		42.25		0.06
STD SY-4(D) Expected		20.69	0.034			6.18	1.66	0.54	0.108	7.1	0.131		49.8	0.1203	0.287
STD OXN134 Expected															
STD OXC145 Expected															
STD OXH139 Expected															



Bureau Veritas Commodities Canada Ltd.

9050 Shaughnessy St Vancouver British Columbia V6P 6E5 Canada

PHONE (604) 253-3158

Client: XyQuest Mining Corp.
702-889 Pender Street W
Vancouver British Columbia V6C 3B2 Canada

Project: KLONDIKE
Report Date: October 25, 2018

Page: 2 of 2

Part: 1 of 3

QUALITY CONTROL REPORT

WHI18000710.1

	WGHT	AQ252	AQ252	AQ252	AQ252	AQ252	AQ252	AQ252	AQ252	AQ252	AQ252	AQ252	AQ252	AQ252	AQ252	AQ252	AQ252	AQ252	AQ252	AQ252	AQ252
	Wgt	Mo	Cu	Pb	Zn	Ag	Ni	Co	Mn	Fe	As	U	Au	Th	Sr	Cd	Sb	Bi	V	Ca	
	kg	ppm	ppm	ppm	ppm	ppb	ppm	ppm	ppm	%	ppm	ppm	ppb	ppm	ppm	ppm	ppm	ppm	ppm	%	
	0.01	0.01	0.01	0.01	0.1	2	0.1	0.1	1	0.01	0.1	0.1	0.2	0.1	0.5	0.01	0.02	0.02	1	0.01	
STD OXC129 Expected		1.3	28	6.2	42.9	13	79.5	20.3	421	3.065	0.6	0.69	195	1.9		0.03	0.04		51	0.684	
STD DS11 Expected		14.6	149	138	345	1710	77.7	14.2	1055	3.1	42.8	2.59	79	7.65	67.3	2.37	8.74	12.2	50	1.063	
SI BLK	Blank																				
BLK	Blank																				
BLK	Blank																				
BLK	Blank	<0.01	<0.01	<0.01	<0.1	<2	0.1	<0.1	<1	<0.01	<0.1	<0.1	<0.2	<0.1	<0.5	<0.01	<0.02	<0.02	<1	<0.01	
BLK	Blank	<0.01	0.05	<0.01	0.1	<2	<0.1	<0.1	<1	<0.01	<0.1	<0.1	<0.2	<0.1	<0.5	<0.01	<0.02	<0.02	<1	<0.01	
BLK	Blank	<0.01	<0.01	<0.01	<0.1	<2	<0.1	<0.1	<1	<0.01	<0.1	<0.1	<0.2	<0.1	<0.5	<0.01	<0.02	<0.02	<1	<0.01	
Prep Wash																					
ROCK-WHI	Prep Blank	1.18	3.10	1.31	33.2	7	0.6	3.3	477	1.68	1.0	0.3	0.5	2.0	27.0	0.01	0.03	0.03	21	0.55	
ROCK-WHI	Prep Blank	1.17	3.16	1.45	40.9	9	0.9	4.1	567	1.84	1.4	0.4	<0.2	2.4	25.5	0.02	0.02	0.03	22	0.56	



Bureau Veritas Commodities Canada Ltd.

9050 Shaughnessy St Vancouver British Columbia V6P 6E5 Canada

PHONE (604) 253-3158

Client: XyQuest Mining Corp.
702-889 Pender Street W
Vancouver British Columbia V6C 3B2 Canada

Project: KLONDIKE
Report Date: October 25, 2018

Page: 2 of 2

Part: 2 of 3

QUALITY CONTROL REPORT

WHI18000710.1

		AQ252	AQ252	AQ252	AQ252	AQ252	AQ252	AQ252	AQ252	AQ252	AQ252	AQ252	AQ252	AQ252	AQ252	AQ252	AQ252	AQ252	FA430	XF700	
		P	La	Cr	Mg	Ba	Ti	B	Al	Na	K	W	Sc	Tl	S	Hg	Se	Te	Ga	Au	LOI
		%	ppm	ppm	%	ppm	%	ppm	%	%	%	ppm	ppm	ppm	%	ppb	ppm	ppm	ppm	ppm	%
		0.001	0.5	0.5	0.01	0.5	0.001	1	0.01	0.001	0.01	0.1	0.1	0.02	0.02	5	0.1	0.02	0.1	0.005	-5.1
STD OXC129 Expected		0.102	12.5	52	1.545	50	0.4	1	1.58	0.59	0.3655	0.08	1.1	0.03					5.5		
STD DS11 Expected		0.0701	18.6	61.5	0.85	385	0.0976		1.1795	0.0762	0.4	2.9	3.4	4.9	0.2835	260	2.2	4.56	5.1		
SI BLK	Blank																				0.0
BLK	Blank																				<0.005
BLK	Blank																				<0.005
BLK	Blank	<0.001	<0.5	<0.5	<0.01	<0.5	<0.001	<1	<0.01	<0.001	<0.01	<0.1	<0.1	<0.02	<0.02	<5	<0.1	<0.02	<0.1		
BLK	Blank	<0.001	<0.5	<0.5	<0.01	<0.5	<0.001	<1	<0.01	<0.001	<0.01	<0.1	<0.1	<0.02	<0.02	<5	<0.1	<0.02	<0.1		
BLK	Blank	<0.001	<0.5	<0.5	<0.01	<0.5	<0.001	<1	<0.01	<0.001	<0.01	<0.1	<0.1	<0.02	<0.02	<5	<0.1	<0.02	<0.1		
Prep Wash																					
ROCK-WHI	Prep Blank	0.039	4.9	1.8	0.42	63.5	0.051	3	0.87	0.110	0.10	<0.1	2.2	<0.02	0.04	8	<0.1	<0.02	3.2		
ROCK-WHI	Prep Blank	0.044	5.6	2.4	0.46	73.1	0.064	4	1.05	0.168	0.15	<0.1	3.2	<0.02	0.07	<5	<0.1	<0.02	3.9		



Bureau Veritas Commodities Canada Ltd.
9050 Shaughnessy St Vancouver British Columbia V6P 6E5 Canada
PHONE (604) 253-3158

Client: **XyQuest Mining Corp.**
702-889 Pender Street W
Vancouver British Columbia V6C 3B2 Canada

Project: KLONDIKE
Report Date: October 25, 2018

Page: 2 of 2

Part: 3 of 3

QUALITY CONTROL REPORT

WHI18000710.1

		XF700	XF700	XF700	XF700	XF700	XF700	XF700	XF700	XF700	XF700	XF700	XF700	XF700	
		Al2O3	Ba	CaO	Cr2O3	Fe2O3	K2O	MgO	MnO	Na2O	P2O5	SO3	SiO2	Sr	TiO2
		%	%	%	%	%	%	%	%	%	%	%	%	%	%
		0.01	0.01	0.01	0.01	0.01	0.01	0.01	0.01	0.01	0.01	0.002	0.01	0.002	0.01
STD OXC129 Expected															
STD DS11 Expected															
SI BLK	Blank	0.33	<0.01	0.01	<0.01	0.02	<0.01	0.03	<0.01	<0.01	<0.01	<0.002	99.20	0.003	0.03
BLK	Blank														
BLK	Blank														
BLK	Blank														
BLK	Blank														
BLK	Blank														
Prep Wash															
ROCK-WHI	Prep Blank														
ROCK-WHI	Prep Blank														



BUREAU VERITAS MINERAL LABORATORIES
Canada

www.bureauveritas.com/um

Bureau Veritas Commodities Canada Ltd.
9050 Shaughnessy St Vancouver British Columbia V6P 6E5 Canada
PHONE (604) 253-3158

Client: **XyQuest Mining Corp.**
702-889 Pender Street W
Vancouver British Columbia V6C 3B2 Canada

Submitted By: Boris Molak
Receiving Lab: Canada-Whitehorse
Received: September 05, 2019
Analysis Start: September 13, 2019
Report Date: February 20, 2020
Page: 1 of 4

CERTIFICATE OF ANALYSIS

WHI19000520.1

CLIENT JOB INFORMATION

Project: Klondike 2019
Shipment ID: 19-01
P.O. Number
Number of Samples: 67

SAMPLE DISPOSAL

RTRN-PLP Return After 90 days
RTRN-RJT Return After 60 days

Bureau Veritas does not accept responsibility for samples left at the laboratory after 90 days without prior written instructions for sample storage or return.

Invoice To: XyQuest Mining Corp.
702-889 Pender Street W
Vancouver British Columbia V6C 3B2
Canada

CC:

SAMPLE PREPARATION AND ANALYTICAL PROCEDURES

Procedure Code	Number of Samples	Code Description	Test Wgt (g)	Report Status	Lab
PRP70-250	67	Crush, split and pulverize 250 g rock to 200 mesh			WHI
AQ202	67	1:1:1 Aqua Regia digestion ICP-MS analysis	30	Completed	VAN
SHP01	67	Per sample shipping charges for branch shipments			VAN
SLBHP	0	Sort, label and box pulps			WHI

ADDITIONAL COMMENTS


GEORGE ARCALA
Instrumentation Shift Supervisor

This report supersedes all previous preliminary and final reports with this file number dated prior to the date on this certificate. Signature indicates final approval; preliminary reports are unsigned and should be used for reference only. All results are considered the confidential property of the client. Bureau Veritas assumes the liabilities for actual cost of analysis only. Results apply to samples as submitted.
*** asterisk indicates that an analytical result could not be provided due to unusually high levels of interference from other elements.



BUREAU
VERITAS

MINERAL LABORATORIES
Canada

www.bureauveritas.com/um

Bureau Veritas Commodities Canada Ltd.

9050 Shaughnessy St Vancouver British Columbia V6P 6E5 Canada

PHONE (604) 253-3158

Client: **XyQuest Mining Corp.**
702-889 Pender Street W
Vancouver British Columbia V6C 3B2 Canada

Project: Klondike 2019
Report Date: February 20, 2020

Page: 2 of 4

Part: 1 of 2

CERTIFICATE OF ANALYSIS

WHI19000520.1

Method	WGHT	AQ202	AQ202	AQ202	AQ202	AQ202	AQ202	AQ202	AQ202	AQ202	AQ202	AQ202	AQ202	AQ202	AQ202	AQ202	AQ202	AQ202	AQ202	AQ202
Analyte	Wgt	Mo	Cu	Pb	Zn	Ag	Ni	Co	Mn	Fe	As	Au	Th	Sr	Cd	Sb	Bi	V	Ca	P
Unit	kg	ppm	ppm	ppm	ppm	ppm	ppm	ppm	ppm	%	ppm	ppb	ppm	ppm	ppm	ppm	ppm	ppm	%	%
MDL	0.01	0.1	0.1	0.1	1	0.1	0.1	0.1	1	0.01	0.5	0.5	0.1	1	0.1	0.1	0.1	1	0.01	0.001



5560921	Rock	1.78	35.5	305.3	23.5	167	0.3	11.0	2.5	182	13.79	152.1	<0.5	13.9	30	0.5	0.8	0.1	105	0.17	0.177
5560922	Rock	1.81	19.4	12.5	15.9	47	0.7	17.3	1.1	78	1.14	12.6	<0.5	7.4	43	<0.1	0.8	0.2	35	0.17	0.076
5560923	Rock	1.95	2.7	14.7	6.3	27	<0.1	7.3	0.7	139	0.89	35.5	<0.5	5.1	10	<0.1	0.7	<0.1	12	0.04	0.024
5560924	Rock	0.89	1.6	50.2	27.7	103	0.7	2.2	2.3	155	1.53	9.0	1.1	4.1	8	0.4	2.2	0.2	5	0.08	0.031



BUREAU VERITAS MINERAL LABORATORIES
Canada

www.bureauveritas.com/um

Bureau Veritas Commodities Canada Ltd.

9050 Shaughnessy St Vancouver British Columbia V6P 6E5 Canada

PHONE (604) 253-3158

Client: **XyQuest Mining Corp.**
702-889 Pender Street W
Vancouver British Columbia V6C 3B2 Canada

Project: Klondike 2019
Report Date: February 20, 2020

Page: 2 of 4

Part: 2 of 2

CERTIFICATE OF ANALYSIS

WHI19000520.1

Method	AQ202	AQ202	AQ202	AQ202	AQ202	AQ202	AQ202	AQ202	AQ202	AQ202	AQ202	AQ202	AQ202	AQ202	AQ202	AQ202	AQ202	
Analyte	La	Cr	Mg	Ba	Ti	B	Al	Na	K	W	Hg	Sc	Tl	S	Ga	Se	Te	
Unit	ppm	ppm	%	ppm	%	ppm	%	%	%	ppm	ppm	ppm	ppm	%	ppm	ppm	ppm	
MDL	1	1	0.01	1	0.001	1	0.01	0.001	0.01	0.1	0.01	0.1	0.1	0.05	1	0.5	0.2	
5560921	Rock	11	25	0.29	143	0.001	<1	1.14	0.010	0.09	0.5	0.02	14.5	<0.1	0.09	2	8.4	<0.2
5560922	Rock	17	18	0.66	601	0.003	2	1.01	0.007	0.25	0.3	0.09	1.7	0.2	<0.05	3	2.2	<0.2
5560923	Rock	4	3	0.18	96	<0.001	1	0.37	0.012	0.02	<0.1	0.01	0.7	<0.1	<0.05	1	0.9	<0.2
5560924	Rock	7	3	0.38	99	0.003	1	0.80	0.015	0.32	0.1	<0.01	1.8	0.1	<0.05	3	<0.5	<0.2



QUALITY CONTROL REPORT

WHI19000520.1

Method	WGHT	AQ202	AQ202	AQ202	AQ202	AQ202	AQ202	AQ202	AQ202	AQ202	AQ202	AQ202	AQ202	AQ202	AQ202	AQ202	AQ202	AQ202	AQ202	AQ202	AQ202
Analyte	Wgt	Mo	Cu	Pb	Zn	Ag	Ni	Co	Mn	Fe	As	Au	Th	Sr	Cd	Sb	Bi	V	Ca	P	
Unit	kg	ppm	ppm	ppm	ppm	ppm	ppm	ppm	ppm	%	ppm	ppb	ppm	ppm	ppm	ppm	ppm	ppm	%	%	
MDL	0.01	0.1	0.1	0.1	1	0.1	0.1	0.1	1	0.01	0.5	0.5	0.1	1	0.1	0.1	0.1	1	0.01	0.001	
Pulp Duplicates																					
5560922	Rock	1.81	19.4	12.5	15.9	47	0.7	17.3	1.1	78	1.14	12.6	<0.5	7.4	43	<0.1	0.8	0.2	35	0.17	0.076
REP 5560922	QC		19.0	12.6	15.3	45	0.7	16.9	1.0	82	1.16	12.4	<0.5	7.3	42	<0.1	0.7	0.2	35	0.17	0.076
REP 619027	QC		0.2	1.8	19.3	43	<0.1	13.0	3.0	206	1.28	<0.5	<0.5	1.1	24	<0.1	<0.1	0.3	6	0.23	0.034
Core Reject Duplicates																					
21146	Rock	1.38	0.6	4.2	7.0	46	<0.1	3.3	6.5	402	1.48	1.9	3.1	9.6	19	0.8	<0.1	<0.1	2	0.27	0.039
DUP 21146	QC		0.7	4.4	7.1	49	<0.1	3.2	6.8	404	1.47	1.9	2.2	9.4	19	0.9	<0.1	<0.1	2	0.27	0.041
619027	Rock	1.23	0.2	2.1	20.3	47	<0.1	13.5	3.1	217	1.31	<0.5	<0.5	1.0	25	<0.1	0.1	0.3	7	0.25	0.035
DUP 619027	QC		0.2	1.9	20.0	44	<0.1	13.1	3.5	208	1.30	<0.5	<0.5	1.4	24	<0.1	0.1	0.3	7	0.24	0.033
Reference Materials																					
STD BVGEO01	Standard		10.5	4355.9	189.5	1760	2.5	160.0	24.8	758	3.63	117.5	210.1	15.4	61	6.5	3.0	25.2	72	1.34	0.082
STD DS11	Standard		15.7	154.4	138.4	330	1.8	80.4	13.7	1005	3.20	45.7	92.0	9.1	69	2.5	7.8	11.7	54	1.09	0.073
STD DS11	Standard		16.7	150.8	143.7	336	1.7	82.1	14.9	1021	3.08	42.7	68.0	9.1	66	2.5	8.2	11.3	48	1.08	0.072
STD OREAS262	Standard		0.8	117.7	56.5	159	0.5	66.1	25.9	536	3.31	36.9	52.1	9.3	37	0.6	4.1	0.9	23	2.84	0.041
STD OREAS262	Standard		0.6	115.8	58.1	145	0.4	62.8	27.2	533	3.20	35.1	54.9	9.2	36	0.7	4.1	1.0	21	2.91	0.042
STD OREAS262	Standard		0.6	122.0	59.5	151	0.4	65.4	28.8	543	3.21	34.7	56.0	11.1	34	0.6	3.6	1.0	22	2.96	0.040
STD BVGEO01 Expected			11.2	4415	187	1741	2.53	163	25	733	3.7	121	219	14.4	55	6.5	3.39	25.6	73	1.3219	0.0727
STD DS11 Expected			14.6	149	138	345	1.71	77.7	14.2	1055	3.1	42.8	79	7.65	67.3	2.37	8.74	12.2	50	1.063	0.0701
STD OREAS262 Expected			0.68	118	56	154	0.45	62	26.9	530	3.284	35.8	65	9.33	36	0.61	5.06	1.03	22.5	2.98	0.04
BLK	Blank		<0.1	<0.1	<0.1	<1	<0.1	<0.1	<0.1	<1	<0.01	<0.5	<0.5	0.2	<1	<0.1	<0.1	<0.1	<1	<0.01	<0.001
BLK	Blank		<0.1	<0.1	<0.1	<1	<0.1	<0.1	<0.1	<1	<0.01	<0.5	<0.5	<0.1	<1	<0.1	<0.1	<0.1	<1	<0.01	<0.001
BLK	Blank		<0.1	<0.1	0.6	<1	<0.1	<0.1	<0.1	<1	<0.01	<0.5	<0.5	<0.1	<1	<0.1	0.1	<0.1	<1	<0.01	<0.001
Prep Wash																					
ROCK-WHI	Prep Blank		0.9	5.8	0.9	31	<0.1	2.1	4.6	552	1.90	0.6	0.6	2.2	25	<0.1	<0.1	<0.1	28	0.68	0.043
ROCK-WHI	Prep Blank		0.7	3.1	0.9	29	<0.1	1.0	3.5	486	1.74	0.8	1.4	2.2	23	<0.1	<0.1	<0.1	24	0.62	0.038



Bureau Veritas Commodities Canada Ltd.

9050 Shaughnessy St Vancouver British Columbia V6P 6E5 Canada

PHONE (604) 253-3158

Client: XyQuest Mining Corp.
702-889 Pender Street W
Vancouver British Columbia V6C 3B2 Canada

Project: Klondike 2019
Report Date: February 20, 2020

Page: 1 of 1

Part: 2 of 2

QUALITY CONTROL REPORT

WHI19000520.1

Method	Analyte	AQ202	AQ202	AQ202	AQ202	AQ202	AQ202	AQ202	AQ202	AQ202	AQ202	AQ202	AQ202	AQ202	AQ202	AQ202	AQ202	AQ202
		La	Cr	Mg	Ba	Ti	B	Al	Na	K	W	Hg	Sc	Tl	S	Ga	Se	Te
Unit		ppm	ppm	%	ppm	%	ppm	%	%	ppm	ppm	ppm	ppm	%	ppm	ppm	ppm	
MDL		1	1	0.01	1	0.001	1	0.01	0.001	0.01	0.1	0.01	0.1	0.05	1	0.5	0.2	
Pulp Duplicates																		
5560922	Rock	17	18	0.66	601	0.003	2	1.01	0.007	0.25	0.3	0.09	1.7	0.2	<0.05	3	2.2	<0.2
REP 5560922	QC	17	17	0.65	608	0.003	1	1.00	0.006	0.25	0.3	0.09	1.6	0.2	<0.05	3	2.1	<0.2
REP 619027	QC	3	25	1.14	60	0.050	<1	1.11	0.003	0.06	<0.1	<0.01	1.1	<0.1	<0.05	3	<0.5	<0.2
Core Reject Duplicates																		
21146	Rock	15	2	0.22	294	0.003	1	0.36	0.008	0.29	<0.1	<0.01	1.6	<0.1	0.43	<1	<0.5	<0.2
DUP 21146	QC	14	2	0.22	295	0.003	<1	0.37	0.008	0.30	<0.1	<0.01	1.7	<0.1	0.41	<1	<0.5	<0.2
619027	Rock	3	26	1.15	62	0.054	<1	1.14	0.003	0.06	<0.1	<0.01	1.0	<0.1	<0.05	3	<0.5	<0.2
DUP 619027	QC	3	26	1.16	62	0.056	<1	1.16	0.004	0.06	<0.1	<0.01	1.2	<0.1	<0.05	3	<0.5	<0.2
Reference Materials																		
STD BVGEO01	Standard	27	193	1.31	241	0.234	5	2.38	0.192	0.86	4.5	0.08	6.5	0.6	0.67	7	5.0	1.1
STD DS11	Standard	20	60	0.86	373	0.097	7	1.21	0.075	0.43	3.0	0.26	3.4	5.0	0.29	5	2.5	4.4
STD DS11	Standard	20	63	0.84	365	0.097	6	1.18	0.074	0.40	2.9	0.26	3.5	5.0	0.27	5	2.5	4.8
STD OREAS262	Standard	18	44	1.15	235	0.003	3	1.38	0.068	0.33	0.2	0.16	3.4	0.5	0.26	4	<0.5	0.2
STD OREAS262	Standard	17	44	1.16	250	0.003	3	1.36	0.067	0.31	0.2	0.15	3.5	0.4	0.25	4	0.5	0.2
STD OREAS262	Standard	19	45	1.17	252	0.003	4	1.50	0.068	0.33	0.2	0.16	3.5	0.5	0.25	4	<0.5	0.2
STD BVGEO01 Expected		25.9	187	1.2963	260	0.233		2.347	0.1924	0.89	5.3	0.1	5.97	0.62	0.6655	7.37	4.84	1.02
STD DS11 Expected		18.6	61.5	0.85	385	0.0976		1.1795	0.0762	0.4	2.9	0.26	3.4	4.9	0.2835	5.1	2.2	4.56
STD OREAS262 Expected		15.9	41.7	1.17	248	0.0027	4	1.3	0.071	0.312	0.2	0.17	3.24	0.47	0.253	3.73	0.4	0.23
BLK	Blank	<1	<1	<0.01	<1	<0.001	<1	<0.01	<0.001	<0.01	<0.1	<0.01	<0.1	<0.1	<0.05	<1	<0.5	<0.2
BLK	Blank	<1	<1	<0.01	<1	<0.001	<1	<0.01	<0.001	<0.01	<0.1	<0.01	<0.1	<0.1	<0.05	<1	<0.5	<0.2
BLK	Blank	<1	<1	<0.01	<1	<0.001	<1	<0.01	<0.001	<0.01	<0.1	<0.01	<0.1	<0.1	<0.05	<1	<0.5	<0.2
Prep Wash																		
ROCK-WHI	Prep Blank	6	4	0.57	55	0.080	2	0.98	0.093	0.09	<0.1	<0.01	3.0	<0.1	<0.05	4	<0.5	<0.2
ROCK-WHI	Prep Blank	6	3	0.47	49	0.075	2	0.86	0.094	0.10	<0.1	<0.01	2.8	<0.1	<0.05	4	<0.5	<0.2

580000

582000

584000

586000

7100000
7100000

7100000
7100000

7098000
7098000

7098000
7098000

7096000
7096000

7096000
7096000

7094000
7094000

7094000
7094000

580000

582000

584000

586000

