

Surficial Geochemical and Ground Geophysical Report

Soil Sampling, VLF+Mag, UAV Drone

on the
Goddess Property
Dawson, Yukon

GRANT_NUM	CLAIM_NUM
YC23562	4
YC23564	6
YC23566	8
YC23568	10
YC23573	15
YC23575	17
YC23577	19
YC23583-588	25-30
YC23594	36
YC23596	38
YC23598	40
YF74087-098	41-52

NTS: 1:50,000 Map sheet 116C/08

UTM: 531239 E 7133950 N

NAD83 Zone 7N

Dawson Mining District

Work Performed:

Soil Sampling: 6/9/2019

VLF+Mag: 6/9/2019

UAV Drone: 6/9/2019

Prepared for Shawn A. Ryan

By GroundTruth Exploration

Written By: Kaitlyn Crawford and Amir Radjaee

Compilation Date: March 31, 2019

Summary

Shawn Ryan commissioned GroundTruth Exploration Inc. of Dawson City, Yukon to perform a soil sampling survey, walking VLF+Mag survey and a UAV drone survey on the Goddess property, all work was performed on August 6, 2019. A 3-man crew was set out to perform a small-scale soil sampling survey, 79 samples were collected and sent for assay. On the same day, 1 drone pilot performed a survey covering 15 km², the data was processed on a later date. One VLF+Mag technician was set out and covered 2 line-km with magnetic ground geophysics.

The Pluto drilled prospect occurs near the center of the Goddess property. The veins consist of molybdenite (average grade 0.02-0.05%), wolframite and pyrite, it occurs in a feldspar porphyry unit. There are two other occurrences in the vicinity, the Jolly Occurrence and the Mickey Drilled Prospect. Besides the drilling done on the Pluto occurrence, airborne geophysics and stream sediment sampling has been done on NTS map sheet 116C.

The property resides on the Yukon-Tanana Terrane which is faulted to the northeast by the Tintina Thrust Fault. Three major rock packages are present in the area, including the Klondike Schists, the Nisan Assemblage and the Slide Mountain Terranes highly metamorphosed ophiolite sequence. The property consists mostly of the Nisan Assemblage with carbon rich quartzites and mica schists.

Contents

Introduction	1
Location and Access	1
Claims	3
History and Previous Work	4
Geology	6
Regional Geology	6
Property Geology	6
Mineralization	7
2019 Exploration Program and Results	8
Soil Sampling	8
Methods and Procedures	8
Analysis	8
Results	8
VLF Magnetism Surveys	11
Methods and Procedures	11
Analysis	12
Results	12
Drone	14
Interpretation and Conclusions	15
Recommendations	16
References	17
Statement of Expenditures	17
Statement of Qualifications	17

List of Figures

Figure 1: Location of the Goddess Property

Figure 2: Goddess property with Grant Numbers

Figure 3: Geological Survey of Canada RTP_VD (Aurora Geosciences Ltd., 2017) historic geophysics, Stream Sediment locations (Jackaman, 2012) and location of occurrences in the area (Yukon Mine Files, 2019)

Figure 4: Goddess property geology, units based on Mortensen, 1996.

Figure 5: Location of 2019 soil samples on the goddess property

Figure 6: 2019 Soils sample depth and ground coverage in sampling location

Figure 7: Location of the 2019 VLF lines on the Goddess property with underlying bedrock geology (Mortensen, 1996)

Figure 8: Walking VLF taken during the 2019 field season. A 252 Fraser filter was used to process the data

Figure 9: Walking VLF taken during the 2019 field season. A 214 Fraser filter was used to process the data

Figure 10: Walking VLF taken during the 2019 field season. TMI Magnetics

Figure 11: Drone imagery taken on Goddess property summer 2019

Figure 12: Copper and Molybdenum highs in soil over bedrock geology (Mortensen, 1996)

Figure 13: Copper and Molybdenum soil highs over in-phase VLF data taken during the summer of 2019

List of Tables

Table 1: Summary of the Goddess property Claims

Table 2: Statistical analysis of the 2019 soil assay results on the Goddess property

Table 3: Correlation matrix for the 2019 soil assay results on Goddess

List of Appendices

Appendix I: Soil Sample Analytical Certificates and Sample Descriptions

Appendix II: Drone Imagery

Appendix III: VLF+Mag Imagery and Report

Introduction

Shawn Ryan commissioned GroundTruth Exploration Inc. of Dawson City, Yukon to perform a soil sampling survey, a walking VLF+Mag survey and a drone survey on the Goddess property. The property is located on NTS Map Sheet 116C/08 in the Dawson mining District (Figure 1). The Goddess property lies 54 km northwest of Dawson city and the Forty Mile gravel road is located approximately 6 km southwest from the bottom of the property.

A 3-man crew was set out on September 6, 2019 to perform a small-scale soil sampling survey, 79 samples were collected and sent for assay. On the same day a two-person drone crew performed a drone imagery and topographic survey covering 15 km², the imagery was processed at a later date. One VLF+Mag technician was set out and covered 2 line-km.

Location and Access

The Goddess property is located approximately 54 km northwest of Dawson City in the Dawson mining district. The property is located on NTS Map Sheet 116C/08 and the UTM coordinates for the center of the property are 531239 E 7133950 N (Figure 1). Access is gained via helicopter, but the Forty Mile gravel road does run along the bottom of the property and would be a good location for a larger staging area.

The Yukon River runs along the northeast side of the Goddess Property. Elevation on the property varies from 600 m to 1200 m at its highest point with the terrain being rocky and steep. The vegetation consists mostly of birch forests with minor alders and conifers in small pockets. The ground cover varies from sphagnum moss and grass to bare or rocky surfaces.

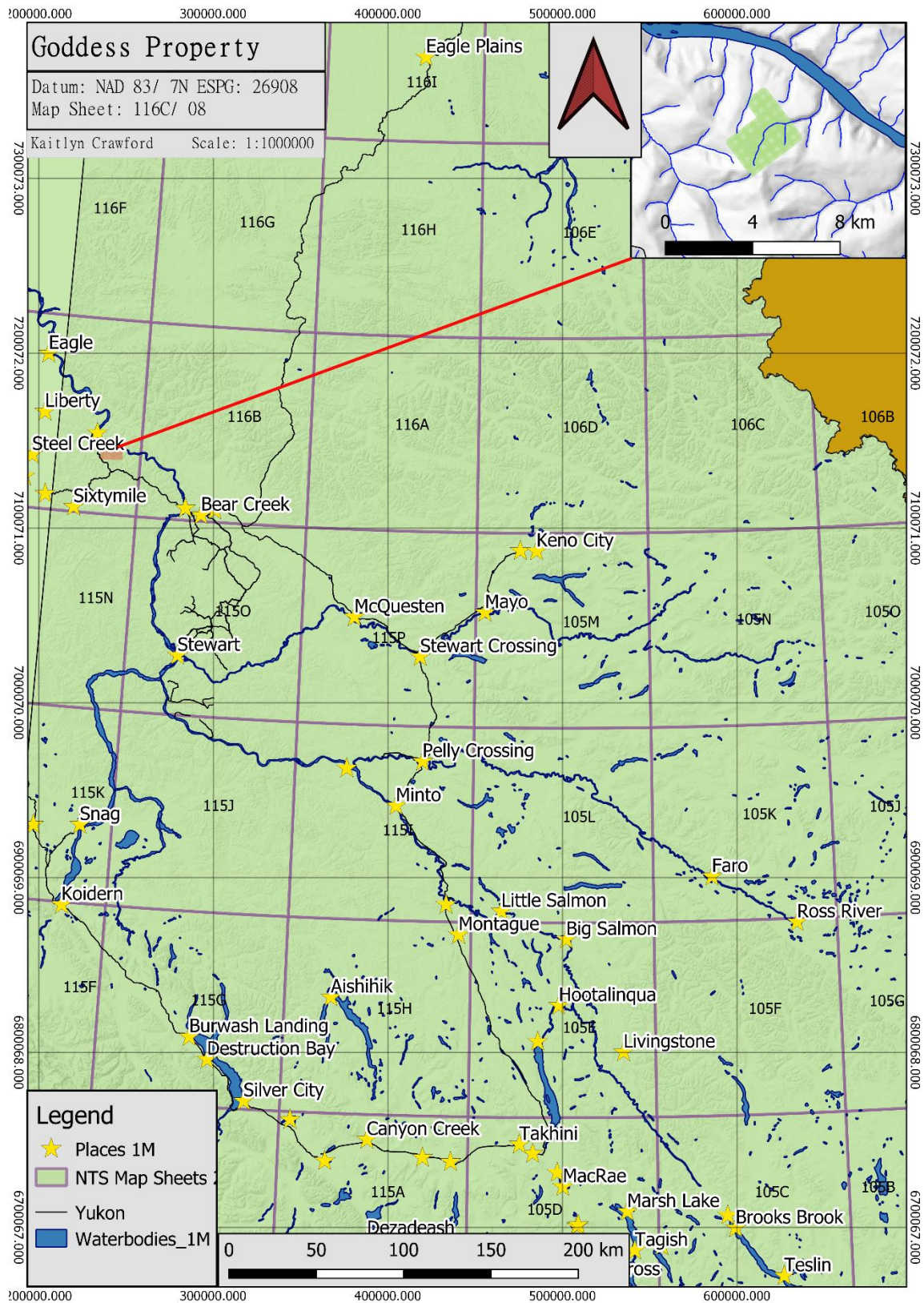


Figure 1: Location of the Goddess Property

Claims

The Goddess property is composed of 28 claims, all 100% owned by Shawn Ryan. A summary of the claims is below (Table 1) and can be seen in Figure 2.

GRANT_NUM	STATUS	CLAIM_NAME	CLAIM_NUM	OWNER	STAKE_DATE	EXPIRY_DAT	DISTRICT
YC23562	Active	Goddess	4	Shawn	2/4/2003	2/5/2020	Dawson
YC23564	Active	Goddess	6	Shawn	2/4/2003	2/5/2020	Dawson
YC23566	Active	Goddess	8	Shawn	2/4/2003	2/5/2020	Dawson
YC23568	Active	Goddess	10	Shawn	2/4/2003	2/5/2020	Dawson
YC23573	Active	Goddess	15	Shawn	2/2/2003	2/5/2020	Dawson
YC23575	Active	Goddess	17	Shawn	2/2/2003	2/5/2020	Dawson
YC23577	Active	Goddess	19	Shawn	2/2/2003	2/5/2020	Dawson
YC23583-588	Active	Goddess	25-30	Shawn	2/2/2003	2/5/2020	Dawson
YC23594	Active	Goddess	36	Shawn	2/4/2003	2/5/2020	Dawson
YC23596	Active	Goddess	38	Shawn	2/4/2003	2/5/2020	Dawson
YC23598	Active	Goddess	40	Shawn	2/4/2003	2/5/2020	Dawson
YF74087-098	Pending	Goddess	41-52	Shawn	9/6/2019	9/9/2020	Dawson

Table 1: Summary of the Goddess property claims

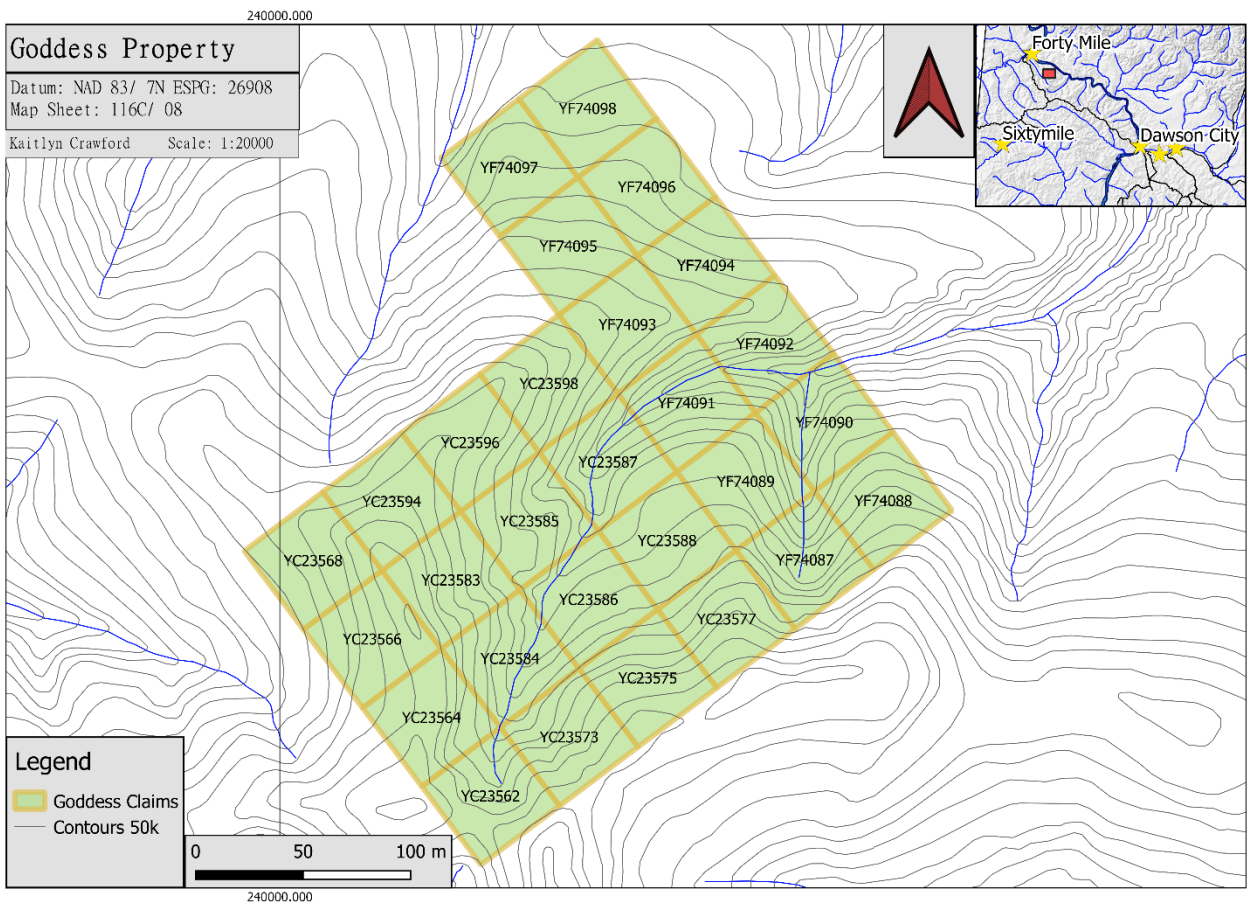


Figure 2: Goddess property with grant numbers

History and Previous Work

The claim block, that is now titled Goddess, was part of a larger set of claims, Pluto. Originally staked in 1979 by Cominco Exploration. In 1979 mapping, geochemical sampling and a mag survey was completed. During 1980, follow up geochemical sampling and mapping took place as well as bulldozer trenching (Yukon Mapinfo, 2019). Soon after Cominco entered into a joint venture with Getty Can Mls L. In 1981, 11 diamond drill holes were completed and the following year 2 more holes were drilled.

In 1976 and 1977, 1783 geochemical stream and sediment samples were taken over NTS map sheets 116B, C, F and G. The work was undertaken by the Geological Survey of Canada under the Federal Uranium Reconnaissance Program (Jackaman, 2012). In 1990, reanalysis by instrumental neutron activation analysis (INAA) was completed under the Canada-Yukon Economic Programming Agreement (1989-1990). In 2011, 1091 of the original samples were submitted to Acme Analytical Laboratories for ultra-trace aqua-regia digestion. This was part of the Yukon Database Upgrade Program.

In April of 1995, the Pluto claims were re-staked under the Dome property name by Cathro and Associates (1981).

In the spring of 2014, Goldak Airborne Surveys (Goldak), on behalf of the Geological Survey of Canada (GSC), carried out a high sensitivity aeromagnetic survey. From November 2016 to March 2017 the data magnetic data was compiled, different resolutions were merged, and a series of images individually levelled for each map sheet were produced (Figure 3). This task was completed on behalf of the Geological Survey of Canada and the Yukon Geological survey.

Shawn Ryan staked part of the Goddess claims in 2003 and the other portion in the spring of 2019.

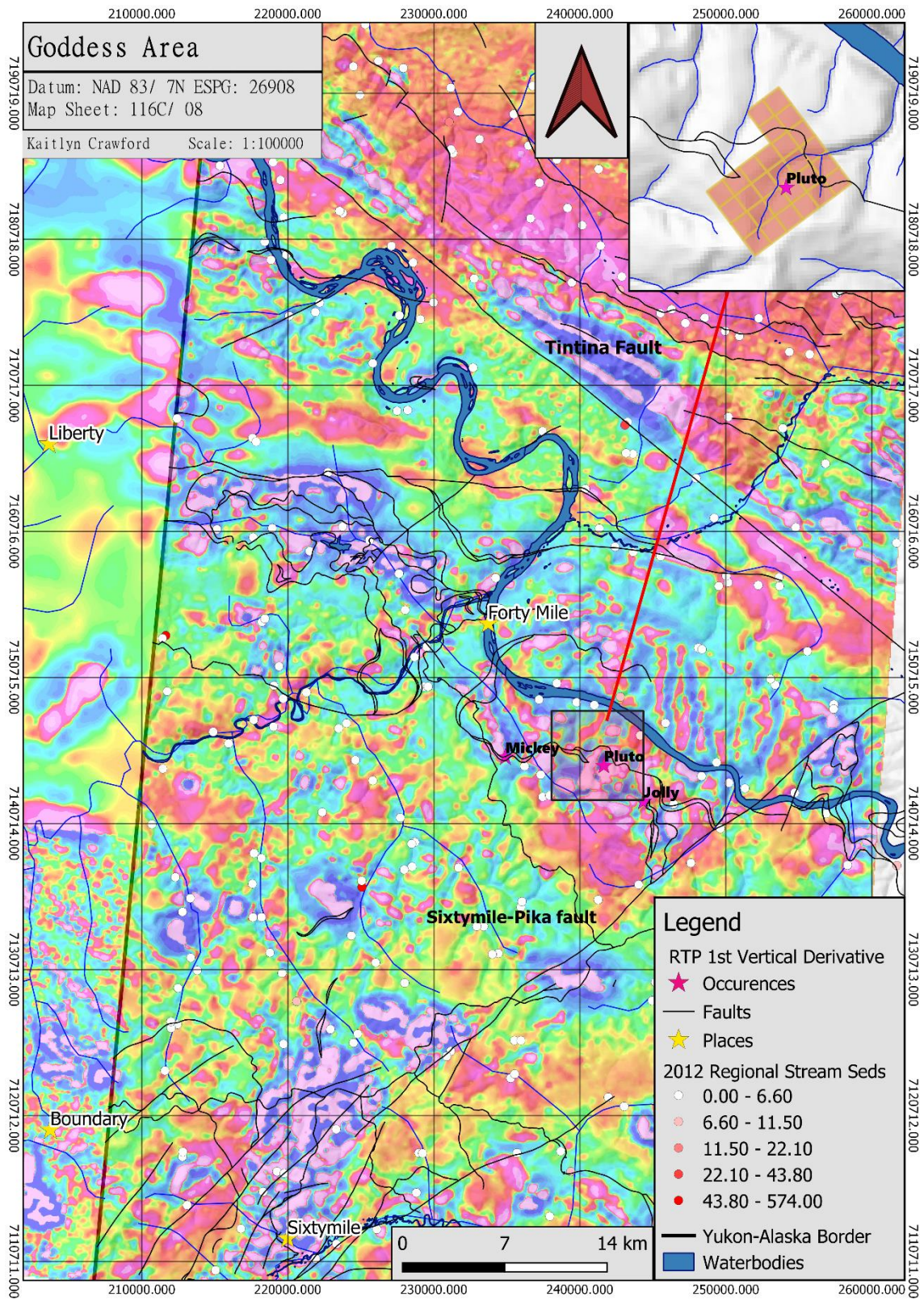


Figure 3: Geological Survey of Canada RTP_VD (Aurora Geosciences Ltd., 2017) historic geophysics, Stream Sediment locations (Jackaman, 2012) and location of occurrences in the area (Yukon Mine Files, 2019)

Geology

Regional Geology

The rocks of the Klondike Plateau are bounded sharply to the northeast by the Cretaceous Tintina Thrust Fault. The sinistral Sixtymile-Pika Fault also occurs within the Klondike Plateau region. The Yukon-Tanana terrane consists of two major supracrustal rock assemblages and three metaplutonic rock units (Mortensen, 1996). The assemblages are the Nisan Suite and the Klondike Schists. The Nisan Suite represents the continental shelf, while the Klondike Schists represent seafloor material that was accreted onto the North American Plate during the Jurassic (Murray J. S., 1982).

The Nisan Suite makes up the majority of the rocks covered by the Goddess property (Figure 4). This rock suite occurred during the Ordovician to Upper Devonian. The suite is composed of metamorphosed carbonaceous and quartz rich sedimentary rocks. Quartz-mica-chlorite, graphitic and variations of these schists are seen throughout the area. As well, impure graphitic quartzites and minor amounts of biotite gneiss are seen in the region.

The mid-Permian Klondike schists are cataclastic and quartz rich. Quartz- muscovite schists and gneiss are common in this group (Tempelman-Kluit, 1976). The igneous bodies in the area are 48-68 Ma in age. Biotite granodiorite, quartz monzonite and feldspar porphyries are among the rock types that formed during this time. A feldspar porphyry intrusion hosts the Pluto Drilled prospect (Figure 3) (Murray J. S., 1982).

The Slide Mountain Terrane ophiolite sequence consists of ultramafics, gabbro, basalt, chert and limestone make the sequence and are highly metamorphosed in most cases to serpentine with hornblende diorite, amphibolite with chlorite schist. These rocks are highly sheared and occur within the larger Nisan Suite and often have carbon and graphite associations. Rocks in this sequence are Carboniferous in age (Mortensen, 1996).

The Klondike Schists and Nisan Assemblage have undergone ductile deformation and metamorphism. Rocks are altered to middle greenschist facies and lower amphibolite facies (Mortensen, 1996). These rocks can be found with tight open and closed folds as well as stretching lineations. The rocks of the Slide Mountain Terrane do not generally show closed folds. The Slide Mountain Terrane and the Yukon-Tanana Terrane have been juxtaposed along shallow to moderately dipping surfaces (Mortensen, 1996).

Property Geology

On the Goddess property there are two rock units of interest. The majority of rocks covered by the property are grey to black quartz phyllite, black quartzite, limestone and chlorite schist. The second major rock unit is smaller and is located in the central portion of the claim. This unit is a quartz-feldspar porphyry, with occasional biotite and rarely wolframite and ilmenite. The quartz feldspar porphyry can also be seen brecciated in areas (Patterson, 1980). The porphyry-Mo Pluto occurrence is also found within this unit on the property (Figure 4).

There are three less prominent units on the property. To the west is the tip of an ultramafic intrusion from the Slide Mountain Suite, these rocks are mainly dunite, peridotite or diabase (Mortensen, 1996).

In the southern portion of the property there is a small granodiorite plug with minor amounts of biotite. On the north eastern section of the property the quartz-feldspar porphyry changes slightly with the inclusion of biotite-chlorite schist.

An inferred thrust fault runs through the northern portion of the property (Mortensen, 1988). The rocks on the Goddess claim block have undergone two phases of metamorphism. The first phase was a regional metamorphism event associated with the main schistosity, bedding and tight isoclinal folds found on the property. The second phase of metamorphism was through contact with the intrusive bodies (Patterson, 1980).

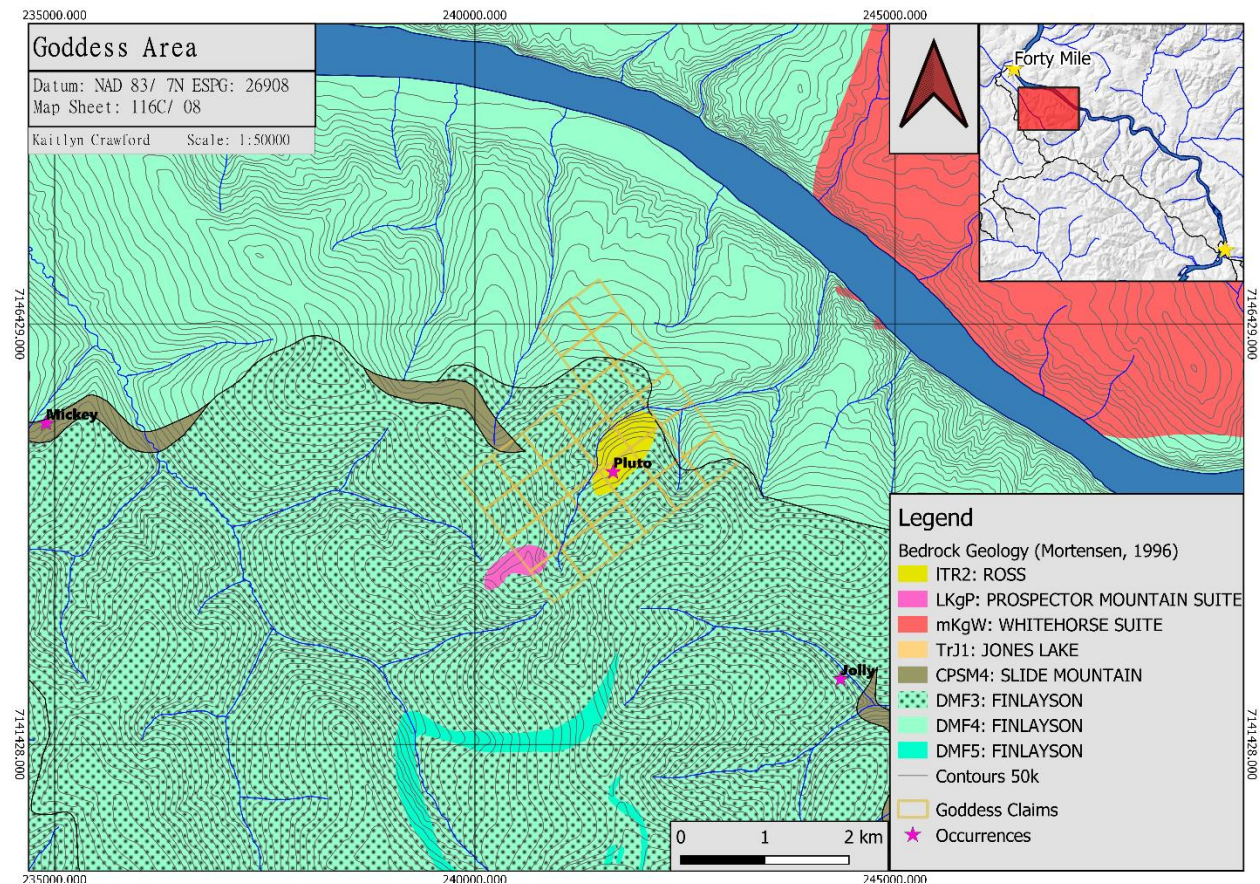


Figure 4: Goddess property geology, units based on Mortensen, 1996.

Mineralization

The Pluto drilled prospect is located on the Goddess claim block (Yukon Minefiles, 2019). A stockwork system cuts the southwest portion of the quartz-feldspar porphyry pluton. The veins consist of molybdenite (average grade 0.02-0.05%), wolframite and pyrrite. Mineralization is also associated with strong sericite alteration. The stock is 1.5 km long and .5 m wide and intrudes into the quartz-mica schist. While logging the drill core from the Pluto Occurrence, pegmatites containing blue beryl and quartz-tourmaline veins intruding the surrounding ultramafic rocks were noted.

Within a 5 km radius of the property, there are two other drilled prospects. The Mickey Occurrence is a Zn-Pb SEDEX deposit that is underlain by the Nisan Quartzite and graphitic phyllite. Zones of sphalerite,

galena and bedded barite in limy phyllite had grades of less than 2% combined Zn and Pb. The other occurrence is the silver-lead Jolly showing. This showing is underlain by the Nisana schists (Figure 4).

2019 Exploration Program and Results

Soil Sampling

On September 6, 2019, a 3-man crew conducted a small-scale soil survey on the Goddess property. A total of 78 samples were collected and sent for assay.

Methods and Procedures

Field technicians navigated to sample sites using handheld GPS units. A C-Horizon sample is collected using an Eijklcamp brand hand auger at a depth of between 20 cm and 110 cm. Where necessary, in rocky or frozen ground, a mattock is used to obtain the sample. Photos are taken of the sample site 5 m from sample hole with auger inserted. Typically, 400 to 500 g of soil is placed in a pre-labeled bag. An aluminum metal tag inscribed with the sample ID number is attached to a rock or branch in a visible area at the sample site along with a length of pink flagging tape. A field duplicate sample is taken once for every 25 samples. The GPS location of the sample site is recorded with a Garmin 60cx or 76cx GPS device in UTM NAD 83 format, and the waypoint is labeled with the project name and the sample ID number. A weather-proof handheld device equipped with a barcode scanner is used in the field to record the descriptive attributes of the sample collected, including sample ID number, soil color, soil horizon, slope, sample depth, ground and tree vegetation and sample quality and any other relevant information.

Analysis

Once received in the lab, soil samples are prepared using the SS80 method. Samples are dried at 60 degrees Celsius and sieved such that up to 100 grams of material passes 180 microns (80 mesh). The samples are then analyzed by the AQ201+U method which involves dissolving 15 grams of material in a hot Aqua Regia solution and determining the concentration of 37 elements of the resulting analyte by the ICP-MS technique.

Results

During the 2019 field season, a small-scale soil sampling survey was conducted on the Goddess property, 78 soil samples were taken and sent for assay. Sample descriptions and assay certificates can be found in Appendix I. Gold returned a maximum of 40 ppb, while elements like molybdenum and lead had a much higher maximum at 594.5 ppm and 450.1 ppm, respectively. This was expected as the Pluto Occurrence was previously explored for porphyry molybdenum.

Element	Count_n	Maximum	Minimum	Mean	Median	Range	Variance	Standard deviation	percentile50	percentile75	percentile 90	percentile95	Percentile98
au_ppb	78	40	0.25	2.08141	1.35	39.75	19.97674	4.4695344	1.35	2.3	2.83	4.115	5.106
ag_ppm	78	1.9	0.1	0.53205	0.4	1.8	0.161921	0.402394624	0.4	0.675	1.1	1.215	1.792
as_ppm	78	29	0.6	8.9141	7.9	28.4	30.05198	5.48196868	7.9	9.375	15.89	21.01	26.322
bi_ppm	78	92.1	1	17.1167	9.8	91.1	393.4019	19.83436164	9.8	17.625	45.66	65.65	81.584
cu_ppm	78	286	4	57.541	46.1	282	2275.827	47.70562628	46.1	67.15	103.65	125.97	204.22
hg_ppm	78	0.14	0.005	0.03115	0.02	0.135	0.000902	0.030031213	0.02	0.0375	0.073	0.11	0.13
mo_ppm	78	594.5	3.9	89.4769	52.3	590.6	12206.87	110.4847094	52.3	88.675	247.86	318.635	407.104
pb_ppm	78	450.1	5.8	64.7167	49.3	444.3	4513.836	67.18508957	49.3	70.65	105.51	175.32	283.36
se_ppm	78	1.3	0.25	0.38269	0.25	1.05	0.046271	0.215106849	0.25	0.575	0.7	0.8	0.846
sb_ppm	78	3.9	0.1	0.72179	0.5	3.8	0.408115	0.638838577	0.5	0.7	1.36	2.4	2.5
te_ppm	78	0.4	0.1	0.11538	0.1	0.3	0.002327	0.048243302	0.1	0.1	0.2	0.2	0.246
tl_ppm	78	3.1	0.1	1.11282	0.7	3	0.6624	0.813879436	0.7	1.7	2.43	2.615	2.846
zn_ppm	78	717	9	171.923	157	708	10981.61	104.7931747	157	216.75	251.3	305.8	449.14
w_ppm	78	32.8	0.5	9.31154	7.9	32.3	37.14051	6.094301263	7.9	12.075	16.29	20.275	27.576

Table 2: Statistical analysis of the 2019 soil assay results on the Goddess property

There is a slight correlation between gold, arsenic and tellurium. However, arsenic correlates particularly well with copper, molybdenum, silver, bismuth, lead, tellurium and antimony.

	au_ppb	ag_ppm	as_ppm	bi_ppm	cu_ppm	hg_ppm	mo_ppm	pb_ppm	se_ppm	sb_ppm	te_ppm	tl_ppm	zn_ppm	w_ppm
au_ppb	1	0.115704	0.342245	0.274398	-0.01223	0.077145	0.192771	0.232528	-0.12802	0.188635	0.42169	-0.14924	-0.14122	0.219353
ag_ppm	0.115704	1	0.568894	0.56904	0.43301	0.234584	0.507471	0.642393	0.096018	0.599744	0.483118	-0.06271	0.260402	0.220781
as_ppm	0.342245	0.568894	1	0.617207	0.600006	0.149732	0.767684	0.79293	0.190795	0.686535	0.55666	0.111508	0.248075	0.492669
bi_ppm	0.274398	0.56904	0.617207	1	0.634674	0.128442	0.717981	0.610341	0.115562	0.921633	0.808856	0.197789	0.295055	0.511236
cu_ppm	-0.01223	0.43301	0.600006	0.634674	1	0.042312	0.862294	0.404884	0.585655	0.626193	0.680058	0.647351	0.499025	0.300105
hg_ppm	0.077145	0.234584	0.149732	0.128442	0.042312	1	0.099943	0.197904	0.117703	0.219213	0.120483	-0.33683	-0.17539	-0.07464
mo_ppm	0.192771	0.507471	0.767684	0.717981	0.862294	0.099943	1	0.657106	0.424474	0.665374	0.670684	0.425795	0.292224	0.428867
pb_ppm	0.232528	0.642393	0.79293	0.610341	0.404884	0.197904	0.657106	1	-0.03032	0.635685	0.460097	-0.06917	0.022156	0.592534
se_ppm	-0.12802	0.096018	0.190795	0.115562	0.585655	0.117703	0.424474	-0.03032	1	0.084845	0.167732	0.514612	0.296002	0.046851
sb_ppm	0.188635	0.599744	0.686535	0.921633	0.626193	0.219213	0.665374	0.635685	0.084845	1	0.80029	0.093902	0.395407	0.413107
te_ppm	0.42169	0.483118	0.55666	0.808856	0.680058	0.120483	0.670684	0.460097	0.167732	0.80029	1	0.190888	0.191442	0.278473
tl_ppm	-0.14924	-0.06271	0.111508	0.197789	0.647351	-0.33683	0.425795	-0.06917	0.514612	0.093902	0.190888	1	0.549411	0.111529
zn_ppm	-0.14122	0.260402	0.248075	0.295055	0.499025	-0.17539	0.292224	0.022156	0.296002	0.395407	0.191442	0.549411	1	0.01029
w_ppm	0.219353	0.220781	0.492669	0.511236	0.300105	-0.07464	0.428867	0.592534	0.046851	0.413107	0.278473	0.111529	0.01029	1

Table 3: Correlation matrix for the 2019 soil assay results on Goddess

The higher Au values lie within the feldspar porphyry unit (Figure 5). Terrain was rocky with sparse vegetation and a subtle to pronounced slope on the porphyry portion of the property (Figure 6). Most of the samples were taken at 30-40 cm in depth.

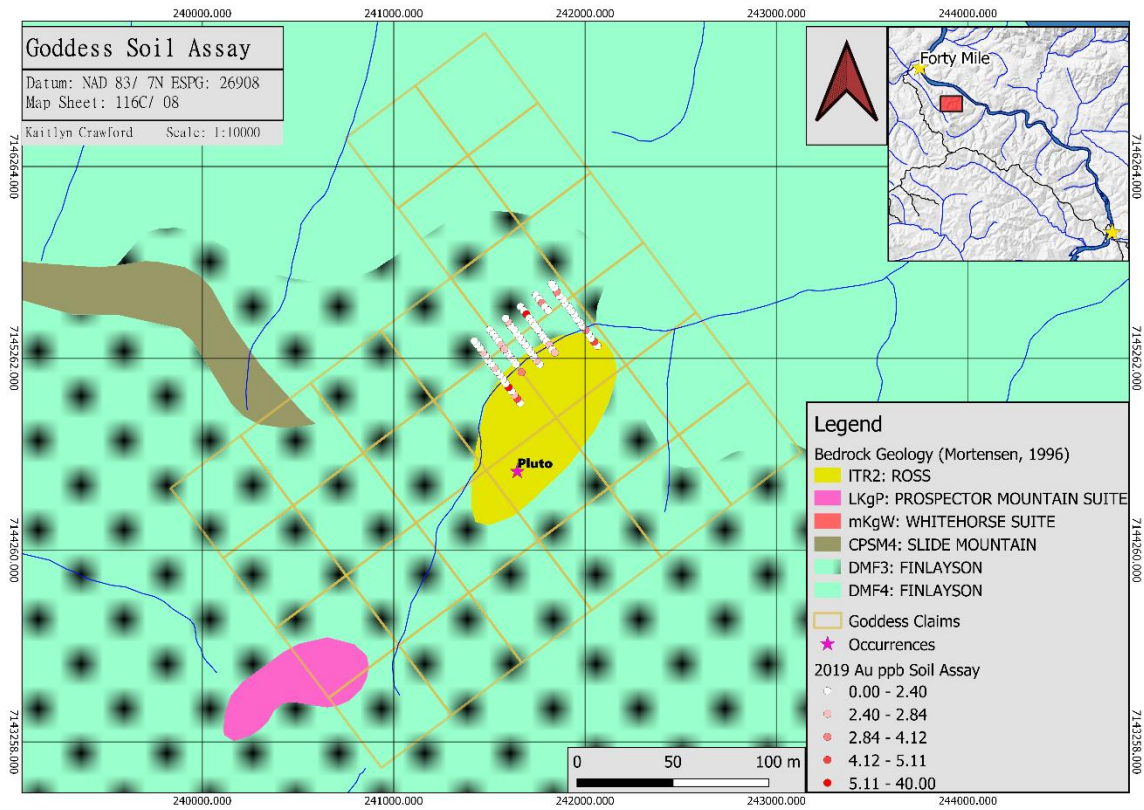


Figure 5: Location of 2019 soil samples on the goddess property

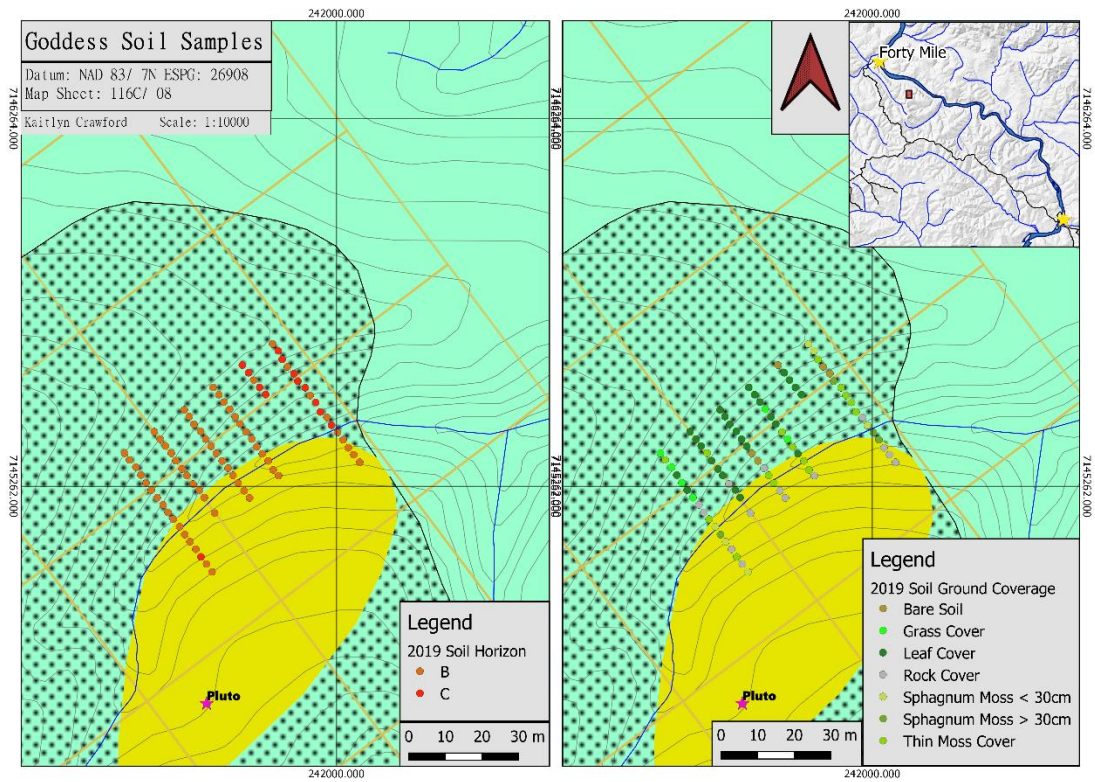


Figure 6: 2019 Soils sample depth and ground coverage in sampling location

VLF Magnetics Surveys

The VLF+Mag survey covered 4 lines equaling 2 line-km over the edge of the porphyry rhyolite intrusion on the Goddess property (Figure 7).

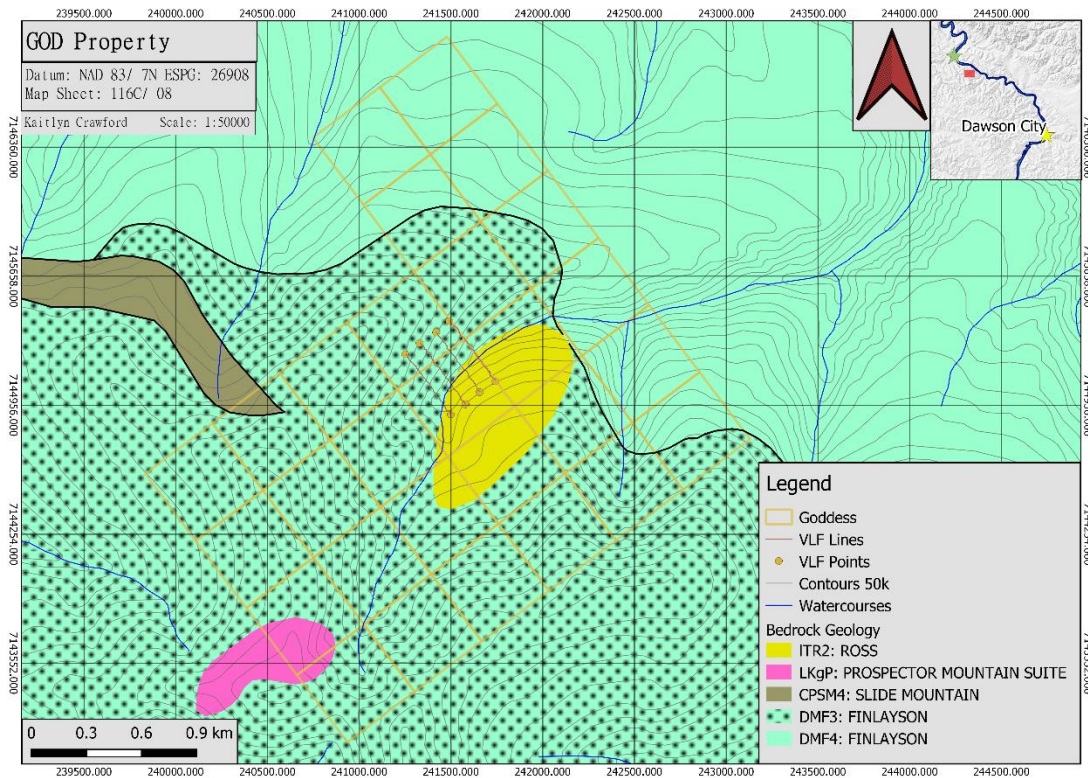


Figure 7: Location of the 2019 VLF lines on the Goddess property with underlying bedrock geology

Methods and Procedures

Data was acquired using GEM-19 portable VLF systems supplemented by a high-sensitivity proton magnetometer. The magnetometer has an absolute accuracy of +/- 0.2nT. Along with basic GPS tracking, GEM provides a navigation feature with the real-time coordinate transformation to UTM and the local grid. Operators can define a complete survey on a PC and download points to the magnetometer via RS-232 serial port.

During the survey, a GEM-19 magnetometer was set up as the base station to collect data for correction and removal of unwanted noise arising from solar and atmospheric activity. Total coverage of the survey block amounted to 2 line-km along 4 survey lines taking 267 readings at about 10 m station spacing. The survey lines are in an azimuthal direction of SE-NW (NE 318°) with line spacing of 100 m. The in-phase and out-of-phase (quadrature) signals were measured as the percentage of total field for three frequencies.

The methods and procedure for VLF+Mag surveys are discussed fully in the report “Goddess GEOPHYSICAL REPORT GROUND VLF AND MAGNETIC SURVEY” by Geophysicist Amir H. Radjaee, *Ph.D., P.Geo* in Appendix III.

Analysis

Once each survey was completed in the field, the data measurements were downloaded and reviewed to ensure the quality of the data collected. This allowed field errors to be addressed before moving the equipment. The VLF+Mag datasets were processed daily by the operator using EarthImager2D software

provided by Advanced Geosciences Inc. Data collected in the field was then processed by the Ground Truth Exploration Inc. geophysicist, Amir Radjaee.

The data is processed for magnetic diurnal correction and the Fraser filter is applied on in-phase and quadrature components of VLF+ MAG data. The data can be processed in advanced levels using inversion modelling techniques recently developed for the 2D inversion of VLF data. The EMTOMO-VLF2Dmf which is a software program for the 2D inversion of VLF-EM data based on the finite element (FE) method. This will ensure that geological models respect a consistent structural, stratigraphic, and topological framework in addition to ensuring consistency between different geophysical models.

Results

2 line-km was covered by walking geophysics during the summer of 2019. VLF+Mag was conducted over the edge of a porphyry rhyolite intrusion. This data was later processed by the GroundTruth geophysicist. A report for the VLF that occurred on the property can be found in Appendix I. Two different Fraser Lenses were used to process the data, Fraser lens 252 (Figure 8) and Fraser Lens 214 (Figure 9). As well, the TMI magnetics were processed (Figure 10). For the full report see “Goddess GEOPHYSICAL REPORT GROUND VLF AND MAGNETIC SURVEY” by Geophysicist Amir H. Radjaee, *Ph.D., P.Geo* in Appendix III.

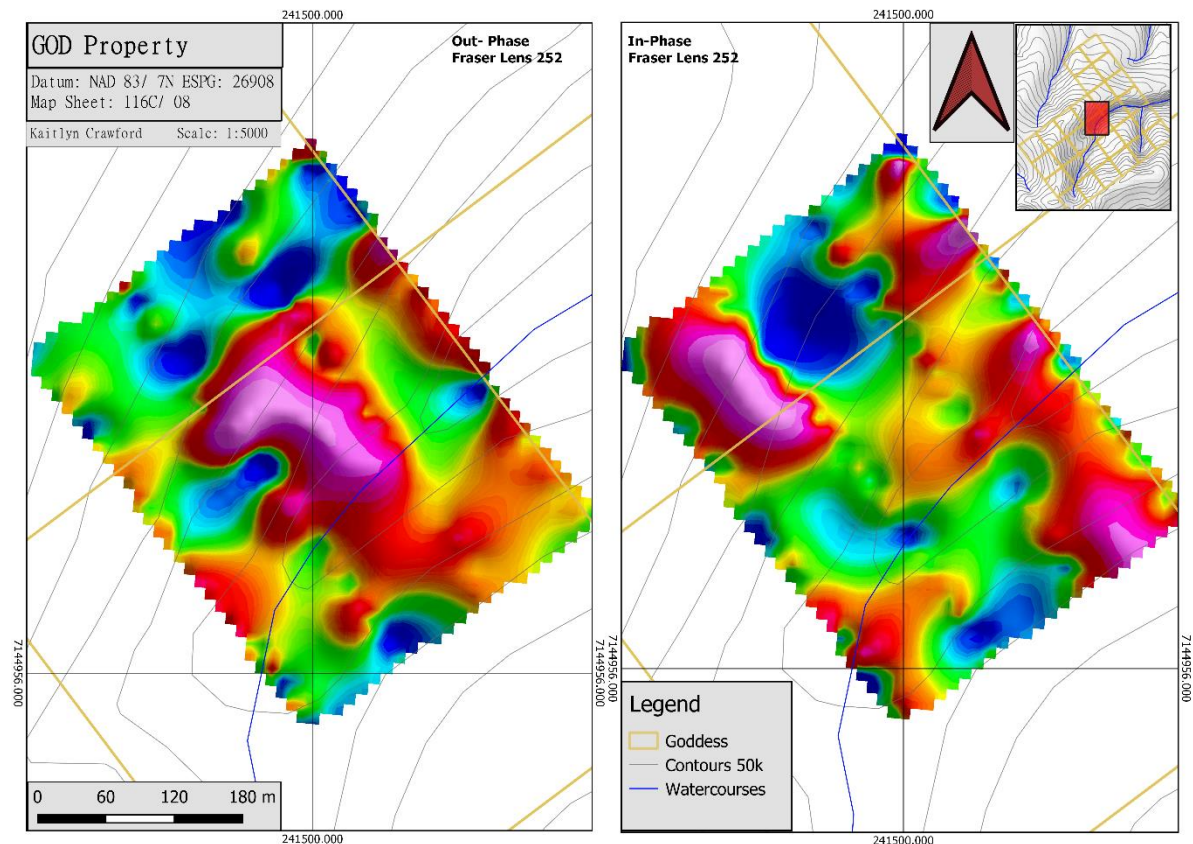


Figure 8: Walking VLF taken during the 2019 field season. A 252 Fraser filter was used to process the data

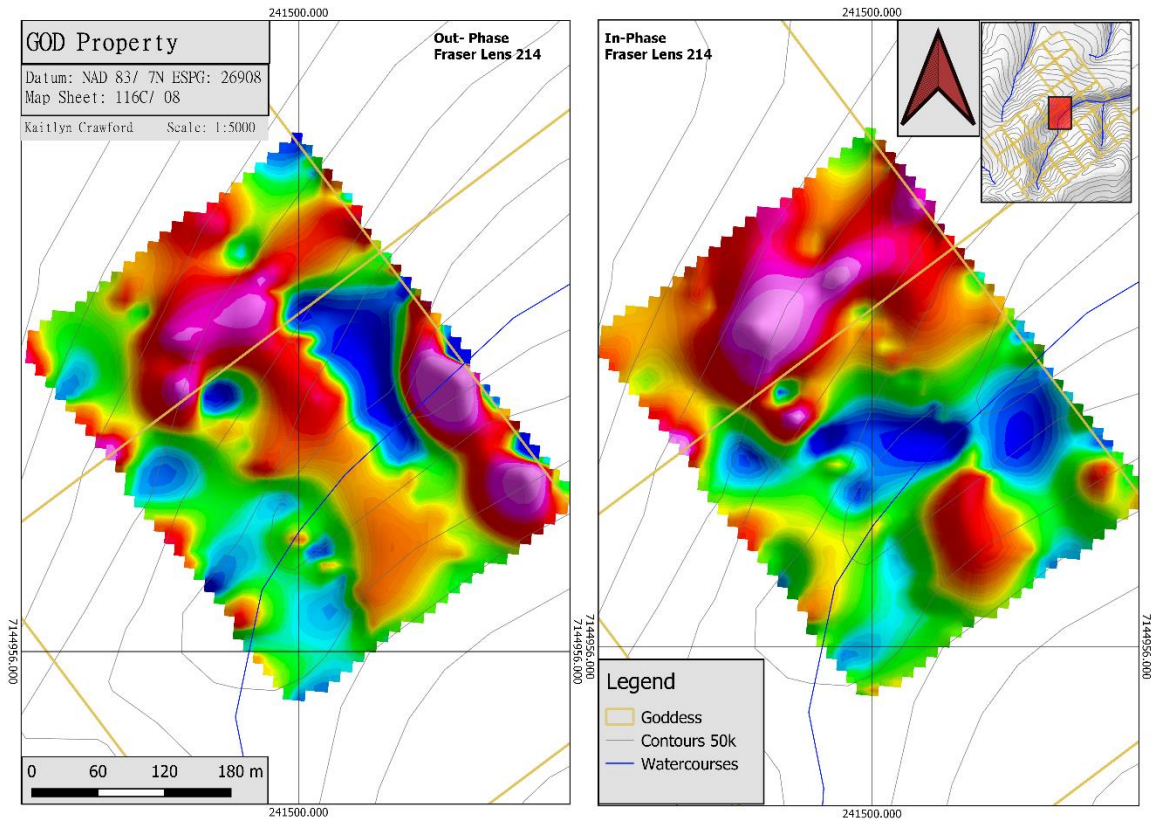


Figure 9: Walking VLF taken during the 2019 field season. A 214 Fraser filter was used to process the data

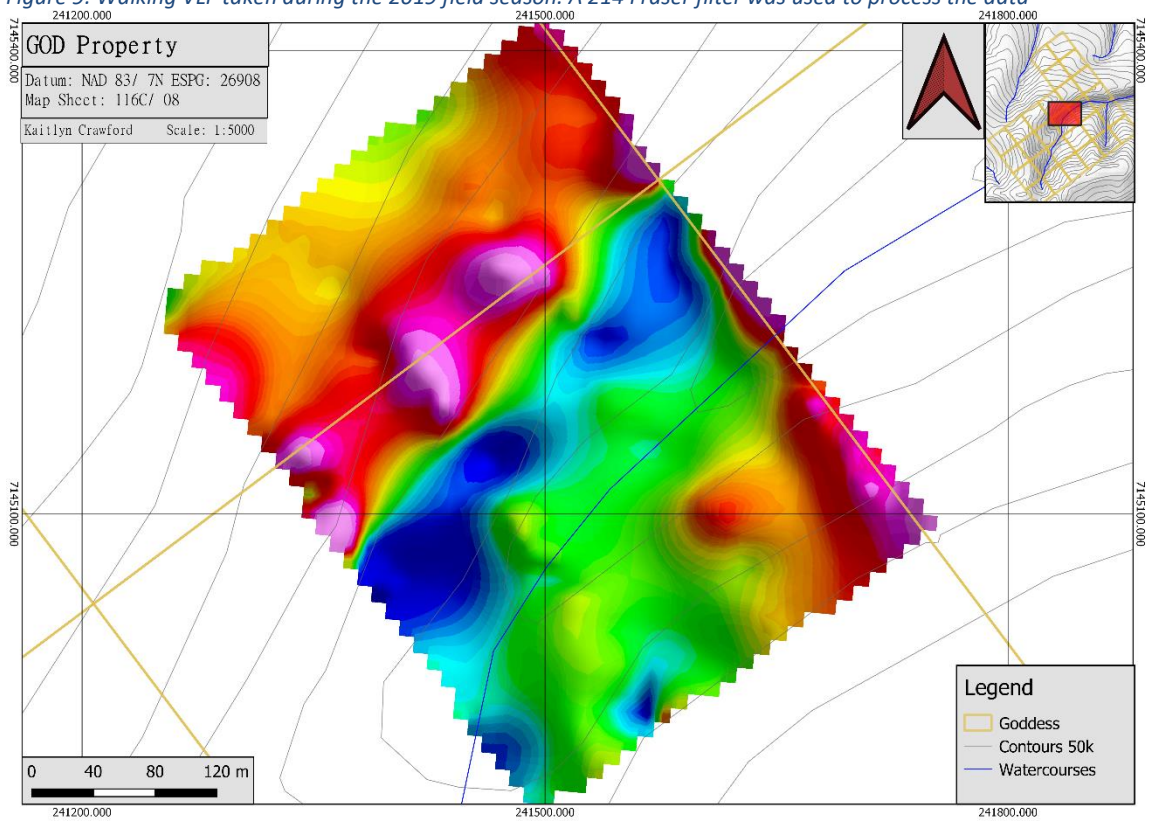


Figure 10: Walking VLF taken during the 2019 field season. TMI Magnetics

Drone

A two-person drone crew performed a drone imagery and topographic survey covering 15 km². The imagery covers the entire Goddess property (Figure 11). The data was taken on September 6, 2019 and processed on a later date. See imagery in Appendix II for full sized images.

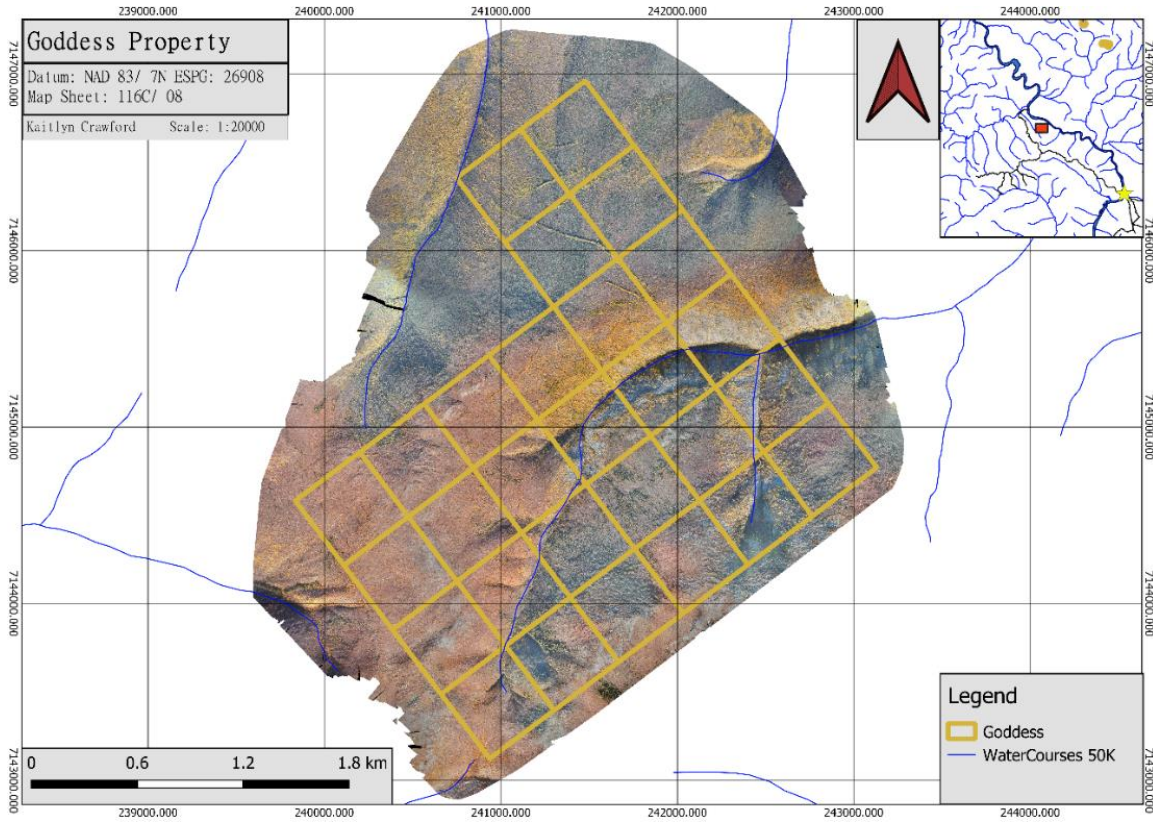


Figure 11: Drone imagery taken on Goddess property summer 2019

Interpretation and Conclusions

The high molybdenum content is promising for further exploration. Its strong correlation with porphyry deposit minerals such as copper and arsenic are also encouraging results. Molybdenum and copper content in soils is highest approaching and on the quartz-feldspar porphyry that has been mapped by Mortensen, 1996 (Figure 12). Further bedrock mapping, soil sampling and VLF should be done to see the full potential of this intrusion.

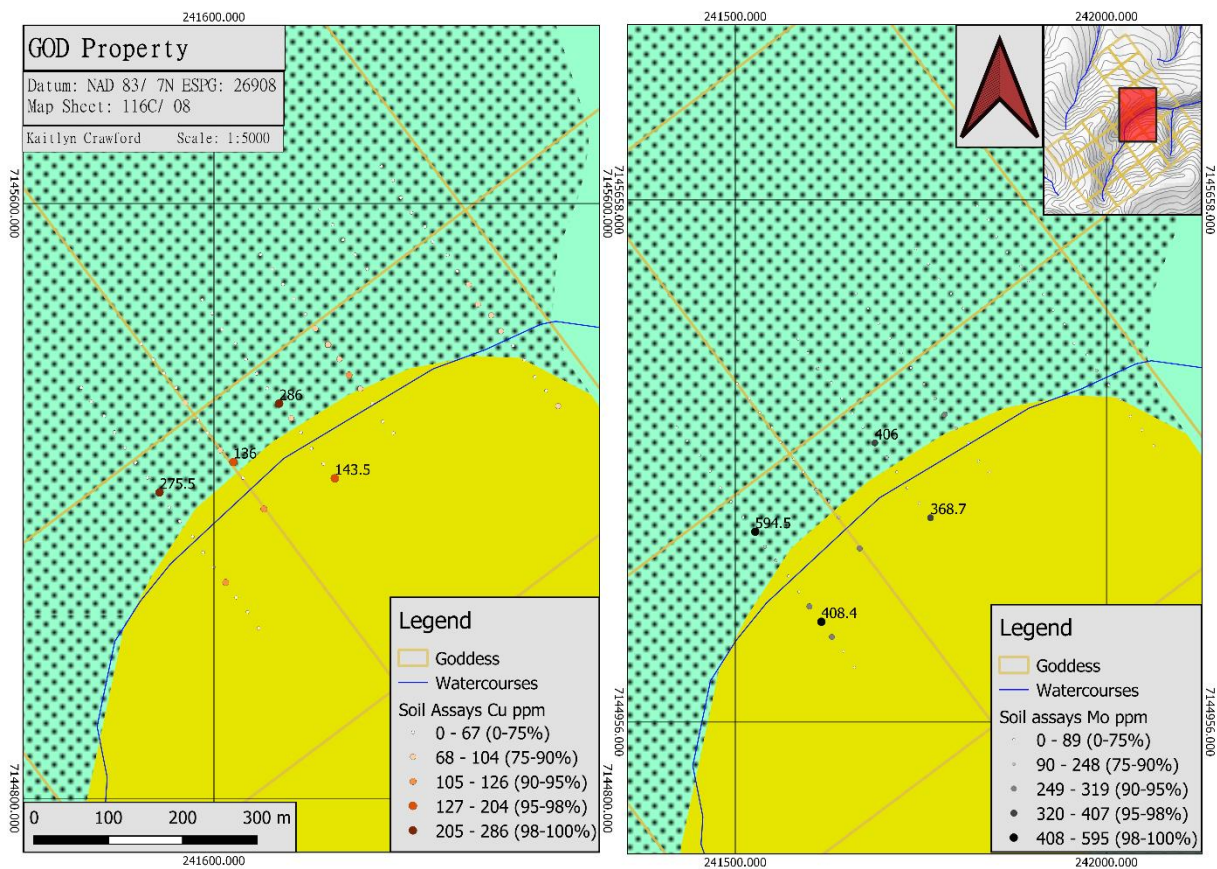


Figure 12: Copper and Molybdenum highs in soil over bedrock geology (Mortensen, 1996)

Potential for underlying structures can be seen in the VLF+Mag data. This could include branches of the quartz-feldspar porphyry intrusion and veins below the surface. High copper and molybdenum appear on either side of an in-phase Fraser lens 214 low as well as the TMI imagery (Figure 13). This could be an underlying structure such as the edge of the quartz-feldspar porphyry intrusion.

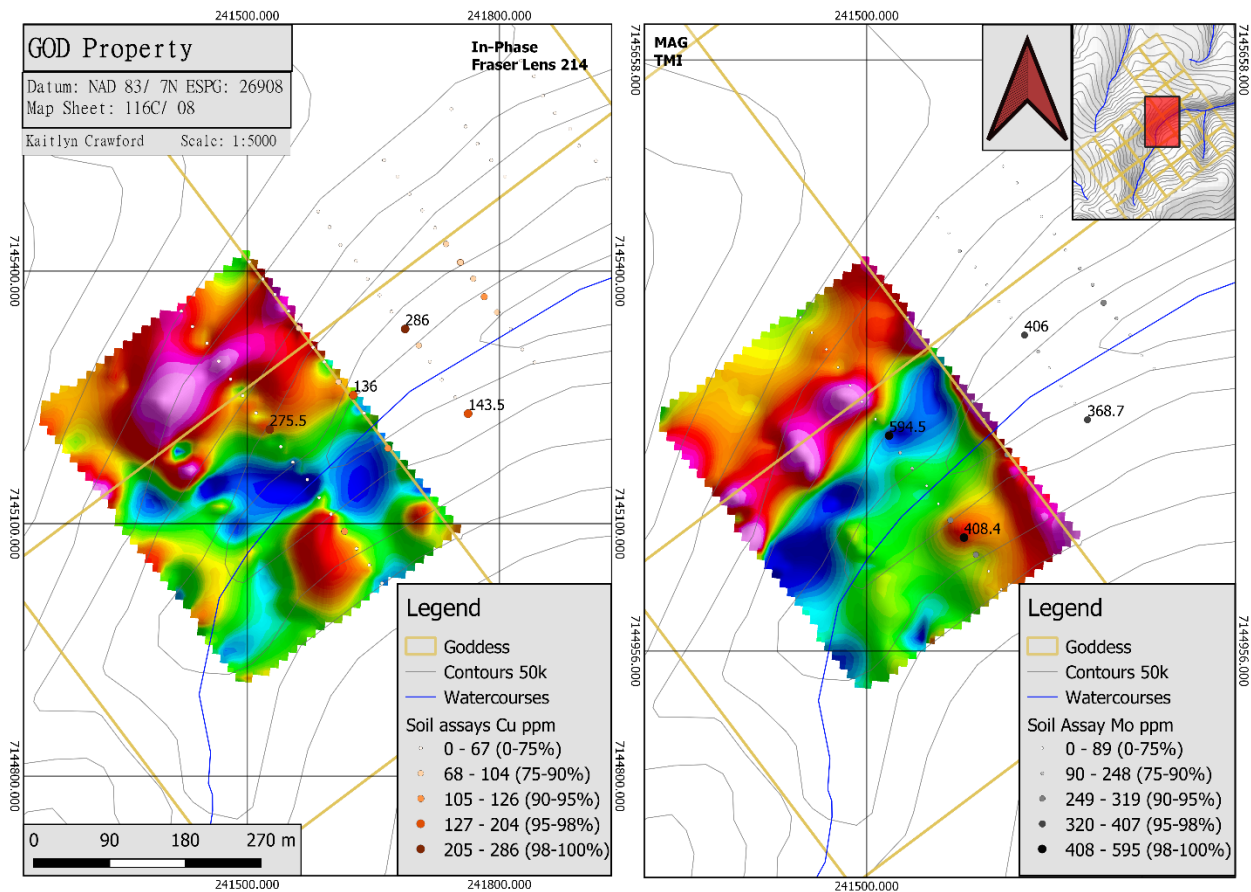


Figure 13: Copper and Molybdenum soil highs over in-phase VLF data taken during the summer of 2019

Recommendations

Further exploration should be done on the Goddess property. Learning the extent of the quartz-feldspar porphyry pluton is a must in further exploration efforts. This can be done through bedrock mapping, prospecting and geophysics such as IP resistivity. In areas that are not on exposed ridges, bedrock interface probing should be done. As well, further soil sampling should be done over the rest of the intrusion to obtain specific areas of interest.

References

- Jackaman, W ., (2012). Regional Stream Sediment Geochemical Data, Dawson area, west central Yukon (NTS 116B and 116C). *Yukon Geological Survey*, Open File 2012-6.
- Mortensen, J. K., (1988). Geology, Southwestern Map Area, Yukon (116B, C). *Yukon Geological Survey*, Scale 1:250000.
- Mortensen, J. K., (1996). Geological Compilation Maps of the Northern Stewart River Map Area, Klondike and Sixtymile. *Yukon Geological Survey*, Open File 1996-1.
- Murray, J.S., (1982). Excavator Pitting Program, *Dawson Mining District*.
- Paterson I. A., (1980). Geological, Geochemical, and Geophysical Report on the Pluto Claim Group. *Cominco LTD*.
- Tempelman-Kluit, D. J., (1976). The Yukon crystalline terrane: Enigma in the Canadian Cordillera; *Geological Society of America Bulletin*, v. 87, pp. 1343-1357.
- Yukon MINFILE, 2019. Yukon MINFILE – A database of mineral occurrences. Yukon Geological Survey, <http://www.geology.gov.yk.ca/databases_gis.html>.

Statement of Expenditures

VLF+MAG 2.0 line km, 1 man day - Sept. 6/19 Operator \$330, Mag/VLF \$200, Base Mag \$50	\$580.00
Drone Survey (15km ²) - Sept 6/19 Operator \$330 + Assistant \$250, Ebee Drone \$250, Processing \$250	\$1,080.00
Project Support- Crew Meals/Campsite in Dawson - Sept 6/19. 4md * \$60 for food/campsite	\$240.00
Trans North Helicopters - Sept 6/19 Astar SD2 - 2.5 hrs - 67875	\$4,362.50
Total Expenditures	\$6,262.50

Statement of Qualifications

I, Kaitlyn Crawford, do hereby declare that:

1. I am currently assisting with end of season report writing for GroundTruth Exploration Inc. of Dawson City, Yukon.
2. I graduated from Brandon University in 2018 with a B.Sc. degree in Geology.
3. I have worked as a geologist or geological assistant on and off since 2015.
4. I am not aware of any material, fact or material change with respect to the subject matter of this report, the omission to disclose which makes this report misleading.

Dated: March 31, 2020

Appendices

Appendix I: Soil Sample Analytical Certificates and Sample Descriptions



BUREAU VERITAS MINERAL LABORATORIES
Canada

www.bureauveritas.com/um

Bureau Veritas Commodities Canada Ltd.
9050 Shaughnessy St Vancouver British Columbia V6P 6E5 Canada
PHONE (604) 253-3158

Client: **Shawn Ryan Prospecting**
Box 213
Dawson City Yukon Y0B 1G0 Canada

Submitted By: Shawn Ryan
Receiving Lab: Canada-Whitehorse
Received: September 17, 2019
Report Date: September 24, 2019
Page: 1 of 4

CERTIFICATE OF ANALYSIS

WHI19000553.1

CLIENT JOB INFORMATION

Project: GOD
Shipment ID: GOD190906-01-SOIL
P.O. Number: 3120
Number of Samples: 78

SAMPLE DISPOSAL

DISP-PLP Dispose of Pulp After 90 days
DISP-RJT-SOIL Immediate Disposal of Soil Reject

Bureau Veritas does not accept responsibility for samples left at the laboratory after 90 days without prior written instructions for sample storage or return.

Invoice To: Shawn Ryan Prospecting
Box 213
Dawson City Yukon Y0B 1G0
Canada

CC: Isaac Fage
Data Management

SAMPLE PREPARATION AND ANALYTICAL PROCEDURES

Procedure Code	Number of Samples	Code Description	Test Wgt (g)	Report Status	Lab
DY060	78	Dry at 60C			WHI
SS80	78	Dry at 60C sieve 100g to -80 mesh			WHI
AQ201-U	78	1:1:1 Aqua Regia digestion ICP-MS analysis	15	Completed	VAN
DISPL	78	Disposal of pulps			VAN
SHP01	78	Per sample shipping charges for branch shipments			VAN

ADDITIONAL COMMENTS


GEORGE ARCALA
Instrumentation Shift Supervisor

This report supersedes all previous preliminary and final reports with this file number dated prior to the date on this certificate. Signature indicates final approval; preliminary reports are unsigned and should be used for reference only. All results are considered the confidential property of the client. Bureau Veritas assumes the liabilities for actual cost of analysis only. Results apply to samples as submitted.
*** asterisk indicates that an analytical result could not be provided due to unusually high levels of interference from other elements.



Bureau Veritas Commodities Canada Ltd.

9050 Shaughnessy St Vancouver British Columbia V6P 6E5 Canada

PHONE (604) 253-3158

Client: **Shawn Ryan Prospecting**

Box 213

Dawson City Yukon Y0B 1G0 Canada

Project: GOD

Report Date: September 24, 2019

Page: 2 of 4

Part: 1 of 2

CERTIFICATE OF ANALYSIS

WHI19000553.1

Method Analyte Unit MDL	AQ201	AQ201	AQ201	AQ201	AQ201	AQ201	AQ201	AQ201	AQ201	AQ201	AQ201	AQ201	AQ201	AQ201	AQ201	AQ201	AQ201	AQ201	AQ201	AQ201	AQ201	
	Mo	Cu	Pb	Zn	Ag	Ni	Co	Mn	Fe	As	U	Au	Th	Sr	Cd	Sb	Bi	V	Ca	P		
	ppm	ppm	ppm	ppm	ppm	ppm	ppm	ppm	%	ppm	ppm	ppb	ppm	ppm	ppm	ppm	ppm	ppm	%	%		
	0.1	0.1	0.1	1	0.1	0.1	0.1	0.1	1	0.01	0.5	0.1	0.5	0.1	1	0.1	0.1	1	0.1	0.01	0.001	
1815394	Soil	18.0	37.1	28.0	140	0.3	51.3	12.6	894	3.65	7.7	1.0	1.6	4.3	29	0.4	0.5	5.5	104	0.39	0.058	
1815389	Soil	20.0	32.4	30.5	188	0.3	36.3	14.9	1060	3.56	7.6	1.1	2.3	4.7	38	0.9	0.6	15.3	100	0.61	0.084	
1815392	Soil	4.8	15.2	21.3	76	0.3	15.1	5.6	346	2.07	5.8	0.7	1.1	1.8	19	0.5	0.3	2.0	51	0.20	0.089	
1815396	Soil	24.9	39.2	28.2	155	0.4	39.2	15.7	1144	3.86	10.0	1.6	1.8	4.7	28	0.6	0.6	6.3	105	0.38	0.063	
1815397	Soil	31.2	42.5	22.7	281	0.6	48.5	22.1	2840	3.92	6.5	1.4	<0.5	3.6	59	2.6	0.5	7.3	105	1.11	0.100	
1815391	Soil	7.7	16.6	18.8	120	0.2	19.9	8.6	895	2.63	7.2	0.8	1.3	4.0	23	0.9	0.4	3.3	70	0.31	0.100	
1815395	Soil	15.0	31.1	29.9	175	0.5	36.0	15.2	1477	3.67	8.8	1.2	4.1	3.5	35	1.2	0.5	5.2	91	0.49	0.092	
1815377	Soil	69.5	55.5	63.5	84	0.5	35.1	8.3	432	2.72	10.8	6.9	4.2	11.6	14	0.5	0.8	27.0	53	0.16	0.055	
1815390	Soil	25.1	33.3	26.2	132	0.2	34.6	11.1	758	3.66	8.4	1.3	2.9	7.5	21	0.3	0.6	7.8	90	0.31	0.050	
1815387	Soil	45.4	55.0	30.1	179	0.2	73.5	22.0	828	4.80	5.7	1.2	<0.5	4.0	38	0.9	0.4	8.2	159	0.62	0.073	
1815376	Soil	67.0	70.7	69.0	137	0.3	56.7	13.7	1050	3.68	8.5	5.0	<0.5	12.8	13	0.4	0.7	27.1	93	0.20	0.069	
1815383	Soil	58.5	90.1	18.0	240	0.1	143.4	37.8	1564	6.93	4.8	2.0	<0.5	4.1	40	0.6	0.3	12.7	206	0.77	0.134	
1815388	Soil	20.9	34.3	27.4	212	0.3	36.8	17.3	1435	3.56	8.6	1.7	<0.5	6.1	60	1.0	0.6	14.5	96	1.11	0.086	
1815393	Soil	16.2	19.6	32.0	94	0.3	23.1	8.2	514	2.93	9.2	0.8	1.3	3.2	20	0.5	0.5	5.8	78	0.25	0.060	
1815385	Soil	45.0	65.8	40.7	188	0.3	80.5	27.7	952	5.41	5.6	1.8	<0.5	4.0	26	1.0	0.4	10.1	167	0.40	0.062	
1815386	Soil	34.9	48.3	24.5	163	0.1	64.9	16.5	814	4.62	5.9	1.3	<0.5	4.8	32	1.1	0.4	11.4	149	0.42	0.065	
1815380	Soil	8.3	19.6	25.3	41	0.3	17.3	3.1	145	1.25	2.2	2.1	3.8	1.6	15	0.2	0.2	7.8	24	0.19	0.073	
1815382	Soil	65.8	101.0	34.9	188	0.3	134.4	34.5	1064	6.21	6.0	2.7	1.0	4.8	47	0.5	0.3	9.4	186	0.78	0.120	
1815384	Soil	55.0	80.6	24.7	195	0.2	121.4	30.5	1116	5.97	4.4	1.7	<0.5	4.5	43	0.6	0.3	9.6	195	0.69	0.089	
1815381	Soil	88.9	67.4	29.2	178	0.3	61.2	40.6	1744	4.35	6.1	6.7	0.7	9.4	24	0.5	0.5	18.9	107	0.39	0.103	
1815379	Soil	3.9	10.7	7.3	24	0.1	5.7	1.0	96	0.64	0.6	0.9	0.7	0.3	11	0.2	0.1	1.0	7	0.12	0.078	
1815378	Soil	14.1	18.4	28.5	50	0.3	10.5	5.4	853	1.73	4.2	1.4	<0.5	2.2	9	0.3	0.4	4.3	38	0.08	0.052	
1815327	Soil	59.1	62.5	57.7	143	0.5	35.8	20.8	1946	2.75	8.1	7.3	2.7	4.9	22	1.5	0.7	9.6	62	0.32	0.081	
1815328	Soil	63.7	36.1	75.3	40	1.0	15.3	5.1	257	1.55	5.7	3.0	0.8	1.4	16	0.3	0.8	16.8	33	0.18	0.086	
1815334	Soil	73.6	66.4	105.3	298	1.9	40.5	15.6	1388	3.69	7.6	3.4	1.3	6.1	35	3.7	0.6	12.2	97	0.52	0.079	
1815329	Soil	43.0	29.4	14.6	106	0.8	12.3	7.0	1799	1.40	1.8	0.8	<0.5	1.0	19	1.1	0.4	6.3	40	0.25	0.032	
1815326	Soil	368.7	143.5	203.2	106	1.7	28.6	8.6	501	3.34	19.8	12.8	1.5	31.2	20	0.9	2.5	73.3	63	0.26	0.056	
1815331	Soil	406.0	286.0	110.5	481	1.2	134.5	40.5	2990	6.47	18.2	6.7	0.6	7.7	53	2.9	3.9	92.1	167	1.23	0.131	
1815330	Soil	167.2	102.0	106.0	717	1.1	73.5	39.0	6549	3.93	20.3	2.4	1.2	3.7	66	7.7	2.5	40.5	96	1.48	0.102	
1815332	Soil	57.0	47.2	61.1	422	1.1	79.2	44.4	1660	4.04	5.2	0.8	0.6	3.3	63	3.0	0.7	26.1	122	1.32	0.062	



Bureau Veritas Commodities Canada Ltd.

9050 Shaughnessy St Vancouver British Columbia V6P 6E5 Canada

PHONE (604) 253-3158

Client: **Shawn Ryan Prospecting**
Box 213
Dawson City Yukon Y0B 1G0 Canada

Project: GOD
Report Date: September 24, 2019

Page: 2 of 4

Part: 2 of 2

CERTIFICATE OF ANALYSIS

WHI19000553.1

Method	Analyte	AQ201	AQ201	AQ201	AQ201	AQ201	AQ201	AQ201	AQ201	AQ201	AQ201	AQ201	AQ201	AQ201	AQ201	AQ201	AQ201	AQ201
		La	Cr	Mg	Ba	Ti	B	Al	Na	K	W	Hg	Sc	TI	S	Ga	Se	Te
Unit		ppm	ppm	%	ppm	%	ppm	%	%	ppm	ppm	ppm	ppm	%	ppm	ppm	ppm	
MDL		1	1	0.01	1	0.001	1	0.01	0.001	0.01	0.01	0.1	0.01	0.1	0.05	1	0.5	0.2
1815394	Soil	13	83	1.10	543	0.156	2	2.76	0.015	0.31	12.7	0.01	7.2	1.0	<0.05	10	<0.5	<0.2
1815389	Soil	14	62	0.95	393	0.137	2	2.64	0.014	0.35	16.5	0.01	6.9	0.9	<0.05	11	<0.5	<0.2
1815392	Soil	10	26	0.29	208	0.059	1	1.66	0.017	0.07	4.2	0.03	2.8	0.4	<0.05	8	<0.5	<0.2
1815396	Soil	17	64	0.90	423	0.134	2	2.78	0.014	0.29	9.0	0.02	7.4	0.6	<0.05	10	<0.5	<0.2
1815397	Soil	13	72	1.00	780	0.144	3	2.74	0.021	0.53	9.6	0.02	7.4	1.1	<0.05	10	0.7	<0.2
1815391	Soil	15	36	0.49	258	0.082	1	1.86	0.014	0.13	5.5	0.01	4.4	0.4	<0.05	8	<0.5	<0.2
1815395	Soil	13	60	0.77	463	0.114	2	2.63	0.025	0.21	7.9	0.02	6.2	0.6	<0.05	10	<0.5	<0.2
1815377	Soil	19	54	0.41	190	0.056	1	1.54	0.013	0.08	27.9	0.04	3.2	0.5	<0.05	6	<0.5	<0.2
1815390	Soil	15	53	0.87	237	0.133	1	2.44	0.010	0.26	14.0	0.02	7.4	0.9	<0.05	10	<0.5	<0.2
1815387	Soil	11	139	1.76	696	0.260	2	3.94	0.026	1.14	9.8	0.01	11.7	2.3	0.05	13	<0.5	<0.2
1815376	Soil	14	116	0.90	254	0.133	2	2.37	0.017	0.22	24.1	0.03	6.4	0.7	<0.05	9	0.5	<0.2
1815383	Soil	13	249	2.79	879	0.324	2	4.86	0.032	1.58	13.6	0.01	16.4	2.8	<0.05	16	0.8	<0.2
1815388	Soil	16	60	0.85	558	0.137	4	2.46	0.019	0.54	14.2	0.01	6.7	1.1	0.06	9	<0.5	<0.2
1815393	Soil	14	41	0.55	246	0.087	1	2.09	0.012	0.11	6.5	0.02	4.1	0.5	<0.05	8	<0.5	<0.2
1815385	Soil	16	139	1.67	519	0.281	2	4.08	0.030	0.98	10.9	0.02	12.1	2.2	<0.05	14	0.6	<0.2
1815386	Soil	14	128	1.57	734	0.255	1	3.40	0.020	0.86	12.3	0.01	12.0	1.8	<0.05	13	0.6	<0.2
1815380	Soil	13	37	0.28	136	0.058	1	1.06	0.012	0.12	5.0	0.05	2.8	0.4	0.09	6	0.6	<0.2
1815382	Soil	16	217	2.36	897	0.317	2	4.44	0.039	1.27	13.2	<0.01	15.9	2.7	<0.05	15	0.7	<0.2
1815384	Soil	13	209	2.30	818	0.327	2	4.63	0.029	1.34	9.9	0.02	15.5	3.1	<0.05	16	0.8	<0.2
1815381	Soil	21	90	1.25	640	0.159	1	2.39	0.023	0.57	13.5	0.03	9.0	1.3	<0.05	9	0.7	<0.2
1815379	Soil	6	13	0.04	97	0.017	<1	0.53	0.015	0.02	0.9	0.05	0.8	0.1	0.09	2	0.6	<0.2
1815378	Soil	16	17	0.15	67	0.049	<1	1.17	0.023	0.04	5.4	0.08	1.4	0.2	<0.05	6	0.5	<0.2
1815327	Soil	26	35	0.44	235	0.065	1	1.88	0.029	0.12	5.2	0.11	3.3	0.4	0.10	6	0.7	<0.2
1815328	Soil	7	19	0.16	133	0.032	1	0.69	0.024	0.07	14.6	0.14	1.4	0.3	0.12	4	0.6	<0.2
1815334	Soil	25	58	0.79	516	0.145	2	2.61	0.018	0.32	9.3	0.03	8.2	1.1	0.06	10	0.6	<0.2
1815329	Soil	6	20	0.12	193	0.068	<1	0.68	0.035	0.08	1.1	0.05	2.0	0.3	<0.05	5	<0.5	<0.2
1815326	Soil	17	48	0.57	157	0.074	2	1.72	0.028	0.14	19.0	0.07	5.1	0.7	0.12	7	0.5	0.2
1815331	Soil	22	133	1.80	1152	0.270	6	4.30	0.037	1.35	10.9	0.04	16.1	2.6	0.09	14	0.8	0.4
1815330	Soil	17	73	0.86	781	0.138	7	2.39	0.041	0.38	5.4	0.08	7.5	1.1	0.10	9	0.6	<0.2
1815332	Soil	12	101	1.08	451	0.208	4	3.05	0.034	0.57	3.9	0.02	7.8	1.2	0.08	10	<0.5	<0.2



Bureau Veritas Commodities Canada Ltd.

9050 Shaughnessy St Vancouver British Columbia V6P 6E5 Canada

PHONE (604) 253-3158

Client: **Shawn Ryan Prospecting**
Box 213
Dawson City Yukon Y0B 1G0 Canada

Project: GOD
Report Date: September 24, 2019

Page: 3 of 4

Part: 1 of 2

CERTIFICATE OF ANALYSIS

WHI19000553.1

Method Analyte	Unit	AQ201	AQ201	AQ201	AQ201	AQ201	AQ201	AQ201	AQ201	AQ201	AQ201	AQ201	AQ201	AQ201	AQ201	AQ201	AQ201	AQ201	AQ201	AQ201	AQ201
		Mo	Cu	Pb	Zn	Ag	Ni	Co	Mn	Fe	As	U	Au	Th	Sr	Cd	Sb	Bi	V	Ca	P
MDL		ppm	ppm	ppm	ppm	ppm	ppm	ppm	ppm	%	ppm	ppm	ppm	ppm	ppm	ppm	ppm	ppm	ppm	%	%
		0.1	0.1	0.1	1	0.1	0.1	0.1	1	0.01	0.5	0.1	0.5	0.1	1	0.1	0.1	2	0.01	0.001	
1815333	Soil	77.6	50.4	44.0	350	0.2	87.4	23.8	1539	4.09	7.5	1.1	<0.5	3.6	29	3.0	0.5	6.6	111	0.52	0.055
1815342	Soil	44.6	34.5	43.4	165	0.5	32.8	12.0	844	3.54	8.6	1.6	1.5	5.9	29	1.0	0.6	8.9	96	0.43	0.053
1815337	Soil	32.6	34.7	53.0	134	0.3	29.7	10.5	561	2.92	9.1	1.7	2.8	7.1	22	0.7	0.6	12.8	73	0.28	0.030
1815338	Soil	37.6	24.9	57.2	135	0.5	23.2	7.8	404	2.81	8.3	1.3	0.7	5.6	19	0.5	0.6	8.0	78	0.22	0.025
1815343	Soil	74.4	62.9	33.6	219	0.5	52.3	14.6	1110	4.23	6.6	3.1	0.6	6.1	34	1.4	0.5	12.1	129	0.57	0.069
1815341	Soil	35.9	25.2	39.2	141	0.3	23.9	9.4	916	2.91	7.8	1.3	5.7	5.3	23	0.9	0.5	8.6	75	0.31	0.044
1815339	Soil	22.2	21.3	35.6	110	0.4	21.4	8.5	634	2.51	7.8	1.3	2.0	3.2	26	0.8	0.5	5.3	69	0.34	0.052
1815336	Soil	91.7	45.0	68.7	281	0.5	35.4	12.2	1209	3.43	7.2	2.5	1.5	7.3	26	1.5	0.7	21.6	88	0.45	0.067
1815340	Soil	30.2	14.7	26.4	117	0.3	16.3	6.0	456	2.62	8.0	0.7	1.1	2.3	20	1.6	0.5	3.8	70	0.22	0.042
1815335	Soil	49.6	48.4	54.5	186	0.6	28.7	9.5	686	2.49	6.0	3.7	2.4	5.9	24	2.2	0.5	11.8	65	0.37	0.055
1815346	Soil	257.1	107.5	54.7	224	0.4	104.0	28.9	1013	5.87	20.8	3.9	1.6	6.1	28	0.8	0.8	27.7	163	0.58	0.062
1815344	Soil	82.3	81.9	39.7	188	0.3	69.4	15.2	917	4.07	6.3	3.7	2.0	6.2	33	1.2	0.5	10.0	120	0.51	0.060
1815351	Soil	14.0	24.3	29.8	86	0.2	17.0	8.4	1326	2.26	7.2	1.5	1.7	1.5	16	0.6	0.4	2.4	55	0.20	0.079
1815345	Soil	189.4	83.8	34.9	213	0.4	86.4	35.8	1265	5.18	10.1	1.8	1.3	4.7	35	1.4	0.5	10.7	149	0.69	0.096
1815350	Soil	198.6	93.8	68.0	234	0.3	113.0	33.8	945	5.54	6.0	1.2	1.0	3.3	28	1.3	0.4	16.3	151	0.57	0.102
1815352	Soil	9.4	22.4	16.3	51	0.1	13.4	5.1	529	1.16	2.3	1.0	2.5	0.6	13	0.5	0.3	1.3	33	0.14	0.065
1815347	Soil	179.4	81.4	55.3	215	0.3	88.6	24.0	981	4.95	10.2	2.4	1.0	4.8	30	0.8	0.7	20.9	145	0.61	0.091
1815349	Soil	243.9	114.7	71.1	230	0.4	127.2	36.8	882	5.92	5.2	1.3	1.2	3.3	31	0.9	0.4	17.9	163	0.62	0.107
1815348	Soil	55.6	37.1	45.8	71	0.2	22.2	12.5	1031	2.42	6.3	2.4	2.8	3.4	16	0.3	0.6	6.2	69	0.16	0.068
1817272	Soil	32.5	32.6	102.4	123	0.8	27.1	11.6	513	3.03	9.1	1.6	1.4	5.7	15	1.1	0.5	6.5	82	0.18	0.038
1817265	Soil	16.1	23.0	76.7	137	0.2	24.6	13.6	722	2.66	9.5	1.2	2.5	5.6	20	0.9	0.5	5.7	65	0.23	0.042
1817269	Soil	15.2	28.0	61.4	111	0.3	25.6	8.8	458	2.63	7.6	1.6	2.1	6.0	19	0.5	0.5	4.0	66	0.28	0.046
1817271	Soil	23.4	27.5	76.1	124	0.5	27.4	10.1	492	2.99	9.3	1.4	1.1	5.2	18	0.6	0.5	5.8	82	0.22	0.044
1817267	Soil	10.8	29.9	99.6	118	0.8	23.3	7.4	349	2.76	9.9	1.4	1.7	5.5	21	0.6	0.5	5.9	68	0.22	0.034
1817270	Soil	21.4	25.9	62.0	149	0.6	26.1	11.6	821	2.69	8.4	1.3	2.3	4.8	32	1.3	0.5	4.2	81	0.44	0.049
1817268	Soil	11.7	38.6	95.9	108	1.1	25.0	7.8	416	2.56	8.1	2.0	1.8	4.0	27	0.8	0.5	5.3	62	0.32	0.050
1817263	Soil	13.3	25.6	42.5	126	0.9	20.0	5.8	468	2.03	3.8	1.0	0.9	3.1	28	1.4	0.3	4.0	57	0.28	0.039
1817273	Soil	62.3	70.4	68.6	248	0.4	59.2	16.8	1099	4.03	9.2	2.7	2.8	6.3	32	1.0	0.5	14.8	126	0.57	0.079
1817266	Soil	16.5	24.8	77.2	125	1.1	24.9	7.8	413	2.86	10.3	1.1	1.2	5.4	22	0.5	0.5	5.4	75	0.26	0.054
1817254	Soil	408.4	120.2	450.1	94	1.2	30.3	10.6	338	2.98	29.0	9.8	2.2	64.1	11	0.4	2.3	52.7	48	0.15	0.028



BUREAU VERITAS MINERAL LABORATORIES
Canada

www.bureauveritas.com/um

Bureau Veritas Commodities Canada Ltd.

9050 Shaughnessy St Vancouver British Columbia V6P 6E5 Canada

PHONE (604) 253-3158

Client: **Shawn Ryan Prospecting**
Box 213
Dawson City Yukon Y0B 1G0 Canada

Project: GOD
Report Date: September 24, 2019

Page: 3 of 4

Part: 2 of 2

CERTIFICATE OF ANALYSIS

WHI19000553.1

Method	Analyte	AQ201	AQ201	AQ201	AQ201	AQ201	AQ201	AQ201	AQ201	AQ201	AQ201	AQ201	AQ201	AQ201	AQ201	AQ201	AQ201	AQ201
		La	Cr	Mg	Ba	Ti	B	Al	Na	K	W	Hg	Sc	TI	S	Ga	Se	Te
Unit		ppm	ppm	%	ppm	%	ppm	%	%	ppm	ppm	ppm	ppm	%	ppm	ppm	ppm	
MDL		1	1	0.01	1	0.001	1	0.01	0.001	0.01	0.01	0.01	0.1	0.05	1	0.5	0.2	
1815333	Soil	12	142	1.32	430	0.188	2	3.01	0.021	0.41	6.2	0.02	7.9	1.8	<0.05	10	<0.5	<0.2
1815342	Soil	18	54	0.81	387	0.127	1	2.44	0.015	0.21	7.9	0.02	6.7	0.6	<0.05	9	<0.5	<0.2
1815337	Soil	18	45	0.60	268	0.091	1	1.82	0.011	0.13	6.1	0.02	5.3	0.4	<0.05	7	<0.5	<0.2
1815338	Soil	15	37	0.53	232	0.096	1	1.79	0.011	0.13	6.4	0.01	4.5	0.5	<0.05	8	<0.5	<0.2
1815343	Soil	23	92	1.25	492	0.202	2	3.03	0.018	0.51	13.0	0.02	10.9	1.5	0.06	12	0.6	<0.2
1815341	Soil	15	42	0.60	326	0.091	2	1.90	0.012	0.14	7.6	0.02	5.0	0.5	<0.05	7	<0.5	<0.2
1815339	Soil	14	33	0.46	270	0.067	2	1.56	0.012	0.11	5.6	0.03	3.5	0.3	<0.05	6	<0.5	<0.2
1815336	Soil	16	61	0.94	505	0.133	2	2.23	0.013	0.35	16.2	0.02	7.9	1.2	<0.05	7	<0.5	<0.2
1815340	Soil	13	28	0.33	246	0.069	1	1.38	0.014	0.11	4.5	0.01	2.8	0.4	<0.05	7	<0.5	<0.2
1815335	Soil	21	43	0.60	313	0.090	2	1.63	0.011	0.19	9.9	0.02	6.4	0.7	<0.05	6	<0.5	<0.2
1815346	Soil	19	183	2.07	649	0.298	3	4.45	0.026	0.90	5.9	0.03	13.5	2.5	<0.05	13	0.9	<0.2
1815344	Soil	21	116	1.34	522	0.201	2	3.25	0.022	0.54	8.0	0.01	11.1	1.9	<0.05	10	<0.5	<0.2
1815351	Soil	11	25	0.25	156	0.044	<1	1.35	0.018	0.07	2.0	0.13	1.6	0.2	<0.05	6	<0.5	<0.2
1815345	Soil	12	163	1.67	630	0.263	3	3.72	0.029	0.97	7.1	0.02	11.3	2.1	<0.05	12	0.5	<0.2
1815350	Soil	12	227	1.94	464	0.265	2	3.91	0.026	1.04	8.4	0.01	9.6	2.2	<0.05	11	0.6	<0.2
1815352	Soil	14	15	0.13	124	0.028	1	0.74	0.022	0.04	0.8	0.11	0.9	0.2	<0.05	4	<0.5	<0.2
1815347	Soil	15	171	1.77	556	0.246	2	3.48	0.026	0.84	10.6	0.01	11.0	2.1	<0.05	11	0.7	<0.2
1815349	Soil	12	251	2.23	520	0.287	2	4.39	0.032	1.16	9.1	0.01	9.8	2.4	<0.05	12	<0.5	<0.2
1815348	Soil	12	43	0.42	182	0.090	2	1.49	0.031	0.15	3.4	0.13	4.0	0.7	<0.05	7	<0.5	<0.2
1817272	Soil	17	44	0.60	229	0.106	1	2.02	0.015	0.14	6.7	0.01	5.2	0.7	<0.05	8	<0.5	<0.2
1817265	Soil	16	40	0.58	238	0.088	1	1.74	0.011	0.13	7.5	0.02	4.1	0.5	<0.05	7	<0.5	<0.2
1817269	Soil	16	40	0.61	235	0.097	<1	1.66	0.011	0.11	6.4	0.02	4.8	0.5	<0.05	6	<0.5	<0.2
1817271	Soil	15	44	0.66	221	0.103	2	2.09	0.013	0.14	6.3	0.02	5.0	0.6	<0.05	8	<0.5	<0.2
1817267	Soil	15	35	0.48	256	0.077	1	1.86	0.017	0.12	3.9	0.02	4.4	0.5	<0.05	7	<0.5	<0.2
1817270	Soil	15	42	0.65	338	0.105	2	1.88	0.013	0.13	6.5	0.01	4.5	0.6	<0.05	8	<0.5	<0.2
1817268	Soil	19	32	0.44	289	0.067	2	1.77	0.012	0.09	4.7	0.04	4.2	0.5	<0.05	7	<0.5	<0.2
1817263	Soil	12	30	0.32	299	0.088	2	1.38	0.050	0.14	2.7	<0.01	3.6	0.5	<0.05	7	<0.5	<0.2
1817273	Soil	17	110	1.27	517	0.188	2	3.28	0.020	0.61	14.9	0.01	10.5	1.7	<0.05	10	<0.5	<0.2
1817266	Soil	16	38	0.54	244	0.088	2	1.86	0.012	0.12	5.5	0.03	4.2	0.5	<0.05	8	<0.5	<0.2
1817254	Soil	12	37	0.38	75	0.049	<1	1.49	0.009	0.06	32.8	0.04	3.3	0.7	<0.05	5	<0.5	0.2



BUREAU VERITAS MINERAL LABORATORIES
Canada

www.bureauveritas.com/um

Bureau Veritas Commodities Canada Ltd.

9050 Shaughnessy St Vancouver British Columbia V6P 6E5 Canada

PHONE (604) 253-3158

Client: Shawn Ryan Prospecting

Box 213

Dawson City Yukon Y0B 1G0 Canada

Project: GOD

Report Date: September 24, 2019

Page: 4 of 4

Part: 1 of 2

CERTIFICATE OF ANALYSIS

WHI19000553.1

Method	Analyte	AQ201	AQ201	AQ201	AQ201	AQ201	AQ201	AQ201	AQ201	AQ201	AQ201	AQ201	AQ201	AQ201	AQ201	AQ201	AQ201	AQ201	AQ201	AQ201	AQ201
		Mo	Cu	Pb	Zn	Ag	Ni	Co	Mn	Fe	As	U	Au	Th	Sr	Cd	Sb	Bi	V	Ca	P
		ppm	ppm	ppm	ppm	ppm	ppm	ppm	ppm	%	ppm	ppm	ppb	ppm	ppm	ppm	ppm	ppm	ppm	%	%
		MDL	MDL	MDL	MDL	MDL	MDL	MDL	MDL	MDL	MDL	MDL	MDL	MDL	MDL	MDL	MDL	MDL	MDL	MDL	MDL
1817262	Soil	80.5	63.6	76.0	252	0.4	64.7	24.0	1221	4.24	8.8	1.5	0.7	6.8	37	3.8	1.1	21.3	120	0.55	0.048
1817275	Soil	75.7	64.3	55.9	216	0.3	63.3	17.5	934	4.36	9.1	2.0	2.6	5.8	24	1.0	0.6	15.0	140	0.35	0.048
1817253	Soil	309.8	51.7	232.3	66	0.5	17.1	5.3	295	2.23	14.9	2.5	2.8	20.8	19	0.2	1.5	54.0	25	0.26	0.025
1817251	Soil	6.1	4.0	7.2	19	0.2	2.3	2.4	779	0.69	1.6	0.2	<0.5	1.6	8	0.1	0.2	3.0	23	0.06	0.013
1817258	Soil	88.0	52.3	69.3	198	0.8	59.0	17.6	713	3.74	9.9	2.9	2.0	6.5	32	0.7	0.4	11.4	119	0.54	0.063
1814478	Soil	55.8	41.6	52.8	204	0.6	44.6	18.9	1484	3.61	6.8	1.3	<0.5	4.3	25	1.8	0.4	8.3	112	0.36	0.055
1814479	Soil	194.3	97.4	60.1	229	1.1	40.6	15.1	919	4.43	9.3	2.3	1.6	5.2	25	1.6	2.4	89.9	116	0.35	0.042
1817257	Soil	8.6	4.7	5.8	9	0.1	2.1	0.7	28	0.32	0.8	0.4	0.6	0.5	6	<0.1	0.1	1.3	14	0.04	0.014
1817260	Soil	100.2	59.8	75.5	251	0.6	84.3	31.3	991	4.31	8.5	1.2	2.3	3.9	21	1.1	0.8	16.0	112	0.29	0.050
1817274	Soil	87.5	63.9	54.4	214	0.2	68.1	21.2	959	4.50	9.4	2.1	1.0	5.8	25	1.0	0.5	14.0	149	0.41	0.051
1814480	Soil	177.0	136.0	38.8	231	0.2	75.7	23.7	1351	5.30	7.7	3.9	1.4	7.3	31	0.5	1.3	43.8	155	0.64	0.075
1817259	Soil	153.1	60.8	37.2	217	0.3	105.5	23.6	1053	5.10	7.2	1.6	2.2	3.7	31	0.9	0.5	10.0	146	0.50	0.063
1814482	Soil	290.3	124.2	343.3	130	1.9	34.3	10.5	648	3.14	26.7	22.7	3.9	56.4	24	0.8	2.4	74.5	57	0.35	0.054
1817261	Soil	594.5	275.5	127.5	248	1.3	293.9	88.1	1429	8.08	26.0	7.1	2.8	5.4	47	1.2	0.6	20.0	160	0.88	0.116
1817264	Soil	43.9	41.6	75.3	246	0.7	41.6	12.4	908	3.67	12.8	1.5	1.0	5.9	23	1.2	0.6	7.4	107	0.34	0.066
1817252	Soil	26.6	31.1	43.5	66	0.2	34.1	12.2	328	2.97	12.5	3.6	4.6	11.5	15	0.2	0.7	6.3	65	0.14	0.022
1817256	Soil	259.7	53.7	170.4	89	0.9	32.3	11.8	701	3.15	22.2	5.9	40.0	22.5	18	0.5	1.7	64.3	64	0.22	0.056
1814481	Soil	91.5	49.1	44.5	159	0.9	36.4	7.2	557	2.76	4.3	1.1	0.7	3.4	19	0.9	1.3	50.0	92	0.24	0.043



BUREAU VERITAS MINERAL LABORATORIES
Canada

www.bureauveritas.com/um

Bureau Veritas Commodities Canada Ltd.

9050 Shaughnessy St Vancouver British Columbia V6P 6E5 Canada

PHONE (604) 253-3158

Client: **Shawn Ryan Prospecting**
Box 213
Dawson City Yukon Y0B 1G0 Canada

Project: GOD
Report Date: September 24, 2019

Page: 4 of 4

Part: 2 of 2

CERTIFICATE OF ANALYSIS

WHI19000553.1

Method	Analyte	AQ201	AQ201	AQ201	AQ201	AQ201	AQ201	AQ201	AQ201	AQ201	AQ201	AQ201	AQ201	AQ201	AQ201	AQ201	AQ201	AQ201
		La	Cr	Mg	Ba	Ti	B	Al	Na	K	W	Hg	Sc	Tl	S	Ga	Se	Te
Unit		ppm	ppm	%	ppm	%	ppm	%	%	ppm	ppm	ppm	ppm	%	ppm	ppm	ppm	
MDL		1	1	0.01	1	0.001	1	0.01	0.001	0.01	0.01	0.01	0.1	0.05	1	0.5	0.2	
1817262	Soil	12	107	1.18	470	0.193	2	3.10	0.021	0.41	5.5	0.01	9.5	1.5	<0.05	10	0.5	<0.2
1817275	Soil	15	124	1.45	518	0.230	2	3.34	0.021	0.55	9.1	0.01	11.2	2.0	<0.05	12	<0.5	<0.2
1817253	Soil	11	18	0.27	91	0.012	<1	1.28	0.006	0.06	27.3	0.02	2.0	0.3	<0.05	5	<0.5	<0.2
1817251	Soil	3	7	0.06	62	0.041	<1	0.35	0.023	0.03	0.5	0.02	0.6	0.1	<0.05	3	<0.5	<0.2
1817258	Soil	19	107	1.19	473	0.175	2	3.02	0.019	0.48	8.6	0.03	9.3	1.7	<0.05	10	<0.5	<0.2
1814478	Soil	13	87	0.98	405	0.175	1	2.89	0.024	0.39	5.8	0.04	7.7	1.3	<0.05	10	<0.5	<0.2
1814479	Soil	11	67	0.83	428	0.175	2	2.60	0.024	0.42	11.4	0.02	8.2	1.6	<0.05	10	<0.5	0.2
1817257	Soil	5	8	0.04	23	0.016	<1	0.29	0.018	0.02	2.5	0.01	0.6	0.2	<0.05	2	<0.5	<0.2
1817260	Soil	11	115	1.02	304	0.173	2	2.98	0.022	0.34	5.9	0.01	7.8	1.4	<0.05	10	<0.5	<0.2
1817274	Soil	15	137	1.50	552	0.238	1	3.48	0.018	0.55	9.6	0.02	12.2	2.1	<0.05	13	0.6	<0.2
1814480	Soil	17	120	1.72	679	0.260	2	3.78	0.028	1.07	8.4	0.02	14.9	2.6	<0.05	13	<0.5	0.2
1817259	Soil	10	218	1.83	490	0.260	2	3.68	0.025	0.69	6.3	0.02	11.3	2.6	<0.05	12	<0.5	<0.2
1814482	Soil	16	36	0.44	212	0.067	2	1.58	0.027	0.11	16.6	0.10	3.8	0.7	0.10	5	<0.5	0.2
1817261	Soil	15	298	2.65	534	0.291	3	5.72	0.043	1.51	8.0	0.04	11.9	2.9	0.05	13	1.3	0.2
1817264	Soil	14	70	0.99	418	0.153	1	2.61	0.014	0.26	15.2	0.02	7.7	1.0	<0.05	9	<0.5	<0.2
1817252	Soil	19	46	0.50	174	0.073	1	1.98	0.009	0.06	5.9	0.04	5.8	0.3	<0.05	5	<0.5	<0.2
1817256	Soil	13	43	0.43	169	0.067	1	1.51	0.016	0.09	19.6	0.04	3.2	0.5	<0.05	6	<0.5	0.3
1814481	Soil	10	63	0.55	320	0.146	1	1.75	0.028	0.31	7.5	0.02	5.1	1.2	<0.05	9	<0.5	0.2



QUALITY CONTROL REPORT

WHI19000553.1

Method	Analyte	AQ201	AQ201	AQ201	AQ201	AQ201	AQ201	AQ201	AQ201	AQ201	AQ201	AQ201	AQ201	AQ201	AQ201	AQ201	AQ201	AQ201	AQ201	AQ201	AQ201
		Mo	Cu	Pb	Zn	Ag	Ni	Co	Mn	Fe	As	U	Au	Th	Sr	Cd	Sb	Bi	V	Ca	P
Unit		ppm	ppm	ppm	ppm	ppm	ppm	ppm	ppm	%	ppm	ppm	ppb	ppm	ppm	ppm	ppm	ppm	%	%	%
MDL		0.1	0.1	0.1	1	0.1	0.1	0.1	1	0.01	0.5	0.1	0.5	0.1	1	0.1	0.1	0.1	2	0.01	0.001
Pulp Duplicates																					
1815376	Soil	67.0	70.7	69.0	137	0.3	56.7	13.7	1050	3.68	8.5	5.0	<0.5	12.8	13	0.4	0.7	27.1	93	0.20	0.069
REP 1815376	QC	66.0	68.9	68.9	137	0.3	57.3	13.0	996	3.45	8.8	5.0	1.1	12.6	13	0.4	0.7	26.1	95	0.20	0.065
1815347	Soil	179.4	81.4	55.3	215	0.3	88.6	24.0	981	4.95	10.2	2.4	1.0	4.8	30	0.8	0.7	20.9	145	0.61	0.091
REP 1815347	QC	176.4	79.4	54.9	215	0.3	90.3	24.3	956	4.72	10.4	2.3	0.8	4.6	29	0.7	0.6	21.1	137	0.61	0.084
1817261	Soil	594.5	275.5	127.5	248	1.3	293.9	88.1	1429	8.08	26.0	7.1	2.8	5.4	47	1.2	0.6	20.0	160	0.88	0.116
REP 1817261	QC	594.9	277.6	126.5	260	1.2	288.2	89.5	1423	8.13	25.4	7.3	2.5	4.8	47	1.2	0.7	20.8	165	0.91	0.115
Reference Materials																					
STD BVGEO01	Standard	11.5	4608.6	199.7	1704	2.3	166.6	26.0	708	4.01	119.2	4.2	211.6	18.0	55	6.7	3.8	24.6	78	1.30	0.078
STD DS11	Standard	15.5	155.2	145.9	351	1.7	83.6	14.3	1130	3.42	44.8	2.7	79.9	8.3	70	2.3	9.1	11.9	47	1.07	0.080
STD DS11	Standard	15.3	153.2	144.0	343	1.6	78.2	14.0	994	3.07	42.6	2.8	75.7	9.6	67	2.3	8.6	11.8	49	0.99	0.070
STD OREAS262	Standard	0.8	127.4	62.6	159	0.5	68.8	29.4	567	3.56	38.6	1.3	72.0	10.2	36	0.7	5.8	1.1	18	3.08	0.045
STD OREAS262	Standard	0.6	125.4	59.0	152	0.4	64.2	28.4	509	3.33	35.5	1.3	70.0	10.7	35	0.7	5.8	1.0	19	2.93	0.042
STD OREAS262	Standard	0.4	115.9	58.9	150	0.4	62.6	28.1	516	3.24	35.3	1.3	70.9	10.3	36	0.7	5.7	1.1	19	2.85	0.041
STD BVGEO01 Expected		11.2	4415	187	1741	2.53	163	25	733	3.7	121	3.77	219	14.4	55	6.5	3.39	25.6	73	1.3219	0.0727
STD DS11 Expected		14.6	149	138	345	1.71	77.7	14.2	1055	3.1	42.8	2.59	79	7.65	67.3	2.37	8.74	12.2	50	1.063	0.0701
STD OREAS262 Expected		0.68	118	56	154	0.45	62	26.9	530	3.284	35.8	1.22	65	9.33	36	0.61	5.06	1.03	22.5	2.98	0.04
BLK	Blank	<0.1	<0.1	<0.1	<1	<0.1	<0.1	<0.1	<1	<0.01	<0.5	<0.1	<0.5	<0.1	<1	<0.1	<0.1	<0.1	3	<0.01	<0.001
BLK	Blank	<0.1	<0.1	<0.1	<1	<0.1	<0.1	<0.1	<1	<0.01	<0.5	<0.1	<0.5	<0.1	<1	<0.1	<0.1	<0.1	<2	<0.01	<0.001
BLK	Blank	<0.1	<0.1	<0.1	<1	<0.1	<0.1	<0.1	<1	<0.01	<0.5	<0.1	<0.5	<0.1	<1	<0.1	<0.1	<0.1	<2	<0.01	<0.001



Bureau Veritas Commodities Canada Ltd.
9050 Shaughnessy St Vancouver British Columbia V6P 6E5 Canada
PHONE (604) 253-3158

Client: **Shawn Ryan Prospecting**
Box 213
Dawson City Yukon Y0B 1G0 Canada

Project: GOD
Report Date: September 24, 2019

Page: 1 of 1

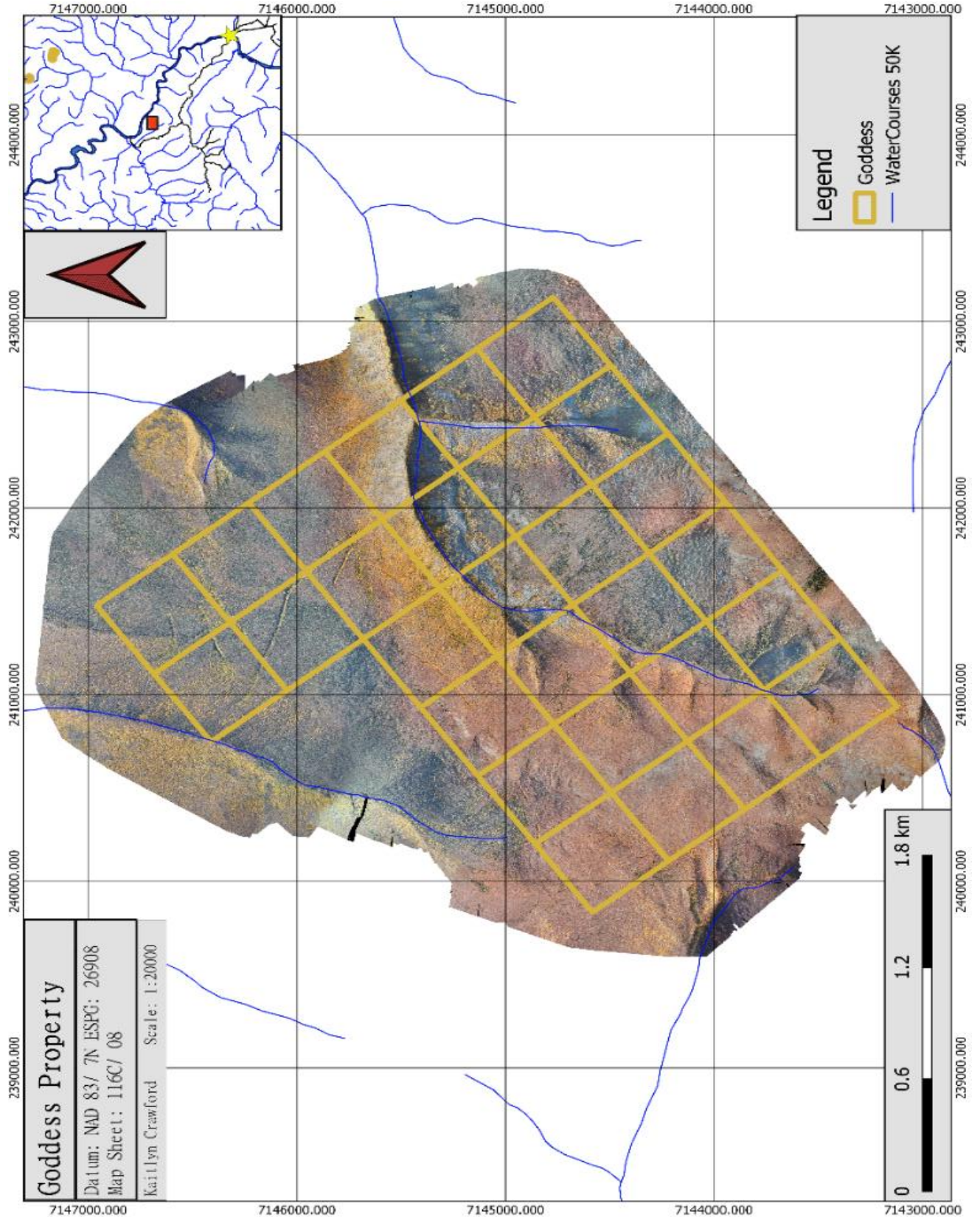
Part: 2 of 2

QUALITY CONTROL REPORT

WHI19000553.1

Method	Analyte	AQ201	AQ201	AQ201	AQ201	AQ201	AQ201	AQ201	AQ201	AQ201	AQ201	AQ201	AQ201	AQ201	AQ201	AQ201	AQ201	AQ201
		La	Cr	Mg	Ba	Ti	B	Al	Na	K	W	Hg	Sc	Tl	S	Ga	Se	Te
Unit		ppm	ppm	%	ppm	%	ppm	%	%	%	ppm	ppm	ppm	ppm	%	ppm	ppm	ppm
MDL		1	1	0.01	1	0.001	1	0.01	0.001	0.01	0.1	0.01	0.1	0.05	1	0.5	0.2	
Pulp Duplicates																		
1815376	Soil	14	116	0.90	254	0.133	2	2.37	0.017	0.22	24.1	0.03	6.4	0.7	<0.05	9	0.5	<0.2
REP 1815376	QC	14	112	0.89	255	0.132	1	2.38	0.017	0.21	23.1	0.03	6.5	0.7	<0.05	8	0.6	<0.2
1815347	Soil	15	171	1.77	556	0.246	2	3.48	0.026	0.84	10.6	0.01	11.0	2.1	<0.05	11	0.7	<0.2
REP 1815347	QC	14	171	1.68	555	0.240	2	3.20	0.026	0.80	9.6	<0.01	10.8	2.1	<0.05	11	<0.5	<0.2
1817261	Soil	15	298	2.65	534	0.291	3	5.72	0.043	1.51	8.0	0.04	11.9	2.9	0.05	13	1.3	0.2
REP 1817261	QC	16	285	2.55	526	0.297	3	5.48	0.043	1.53	8.5	0.03	11.7	2.9	0.06	13	1.9	0.3
Reference Materials																		
STD BVGEO01	Standard	28	198	1.38	293	0.241	4	2.37	0.200	0.92	5.8	0.10	6.6	0.6	0.73	7	4.8	1.1
STD DS11	Standard	20	61	0.86	381	0.094	6	1.16	0.076	0.41	3.3	0.26	3.5	5.3	0.32	6	2.6	5.0
STD DS11	Standard	20	60	0.75	370	0.093	6	1.05	0.065	0.39	3.0	0.24	3.2	5.0	0.26	5	2.2	4.5
STD OREAS262	Standard	18	46	1.20	275	0.003	3	1.34	0.067	0.30	0.2	0.16	3.6	0.5	0.30	5	0.5	0.3
STD OREAS262	Standard	17	44	1.11	252	0.003	4	1.25	0.064	0.30	0.3	0.15	3.6	0.5	0.29	4	<0.5	0.2
STD OREAS262	Standard	16	43	1.07	246	0.003	3	1.18	0.061	0.30	0.2	0.15	3.3	0.5	0.27	4	<0.5	0.3
STD BVGEO01 Expected		25.9	187	1.2963	260	0.233	3.8	2.347	0.1924	0.89	5.3	0.1	5.97	0.62	0.6655	7.37	4.84	1.02
STD DS11 Expected		18.6	61.5	0.85	385	0.0976		1.1795	0.0762	0.4	2.9	0.26	3.4	4.9	0.2835	5.1	2.2	4.56
STD OREAS262 Expected		15.9	41.7	1.17	248	0.0027	4	1.3	0.071	0.312	0.2	0.17	3.24	0.47	0.253	3.73	0.4	0.23
BLK	Blank	<1	1	<0.01	<1	<0.001	<1	<0.01	<0.001	<0.01	<0.1	<0.01	<0.1	<0.1	<0.05	<1	<0.5	<0.2
BLK	Blank	<1	1	<0.01	<1	<0.001	<1	<0.01	<0.001	<0.01	<0.1	<0.01	<0.1	<0.1	<0.05	<1	<0.5	<0.2
BLK	Blank	<1	1	<0.01	<1	<0.001	<1	<0.01	<0.001	<0.01	<0.1	<0.01	<0.1	<0.1	<0.05	<1	<0.5	<0.2

Appendix II: Drone Imagery



Appendix III: VLF+Mag Imagery and Report

GEOPHYSICAL REPORT
GROUND VLF AND MAGNETIC SURVEY

Goodess (GOD) Project

YT, Canada

Work Performed On: September 06, 2019

FOR:

Shawn Ryan
Dawson City, YT

Report# SRP-GVLF19-GOD / Rev. 01

Prepared By:
GroundTruth Exploration Inc.
BOX 70, Dawson City, YT

Author: Amir H. Radjaee, *Ph.D., P.Geo*

March 2020

Table of Contents

1.0	Introduction	2
2.0	Purpose and Scope	2
3.0	Survey Description	2
4.0	Survey Theory	4
5.0	Results and recommendations	6
6.0	Deliverables	7

List of Figures

Figure 1:	Location map of ground VLF/Mag 2019 on Goodess property, YT.	3
Figure 2:	EM field distribution for the VLF method in E-polarization.....	5
Figure 3:	Earth's magnetic field, declination (D) and inclination angles	6

List of Tables

Table 1:	The parameters of VLF Tx stations.....	3
-----------------	--	---

1.0 Introduction

This report describes data acquisition and preliminary data processing results of the 2019 ground VLF and magnetic survey. The GroundTruth Exploration was commissioned by Shawn Ryan, Dawson City, YT to run the survey and process the data.

On September 6, 2019, ground VLF (GVLF) and ground magnetic (GMAG) surveys were completed over the Goodess claims (GOD) located in the Yukon Territory. This survey is a part of a comprehensive survey completed in order to target future exploration on the property. All data, grids and maps are delivered in NAD83 UTM Zone 7N.

2.0 Purpose and Scope

The primary purpose of completing ground VLF and magnetic geophysical surveys is to determine the spatial distribution of subsurface electrical and magnetic properties of rocks. This, in turn, will allow the characterization of geophysical signatures for zones of mineralization and support geological models and structural mapping.

3.0 Survey Description

Data were acquired using GEM-19 portable VLF systems supplemented by a high-sensitivity proton magnetometer. The magnetometer has an absolute accuracy of $\pm 0.2\text{nT}$. Along with basic GPS tracking, GEM provides a navigation feature with the real-time coordinate transformation to UTM and the local grid. Operators can define a complete survey on PC and download points to the magnetometer via RS-232 serial port.

During the survey, a GEM-19 magnetometer was set up as the base station to collect data for correction and removing of unwanted noise arising from solar and atmospheric activity.

Total coverage of the survey block amounted to 2 line-km along 4 survey lines tacking 267 readings at about 10m station spacing. The survey lines are in an azimuthal direction of SE-NW (NE 318°) with line spacing of 100m. The in-phase and out-of-phase (quadrature) signals were measured as percentage of total field for three frequencies. The VLF transmitter frequencies used for this survey are

presented in Table 1. The outline of survey areas and layout of flight lines are shown in Figure-1.

Table 1: The parameters of VLF Tx stations.

VLF Tx Station	Frequency (kHz)	Latitude	Longitude
NML, ND	25.2	46.365987°N	98.335667°W
NSS, MD	21.4	38.977778°N	76.453333°W

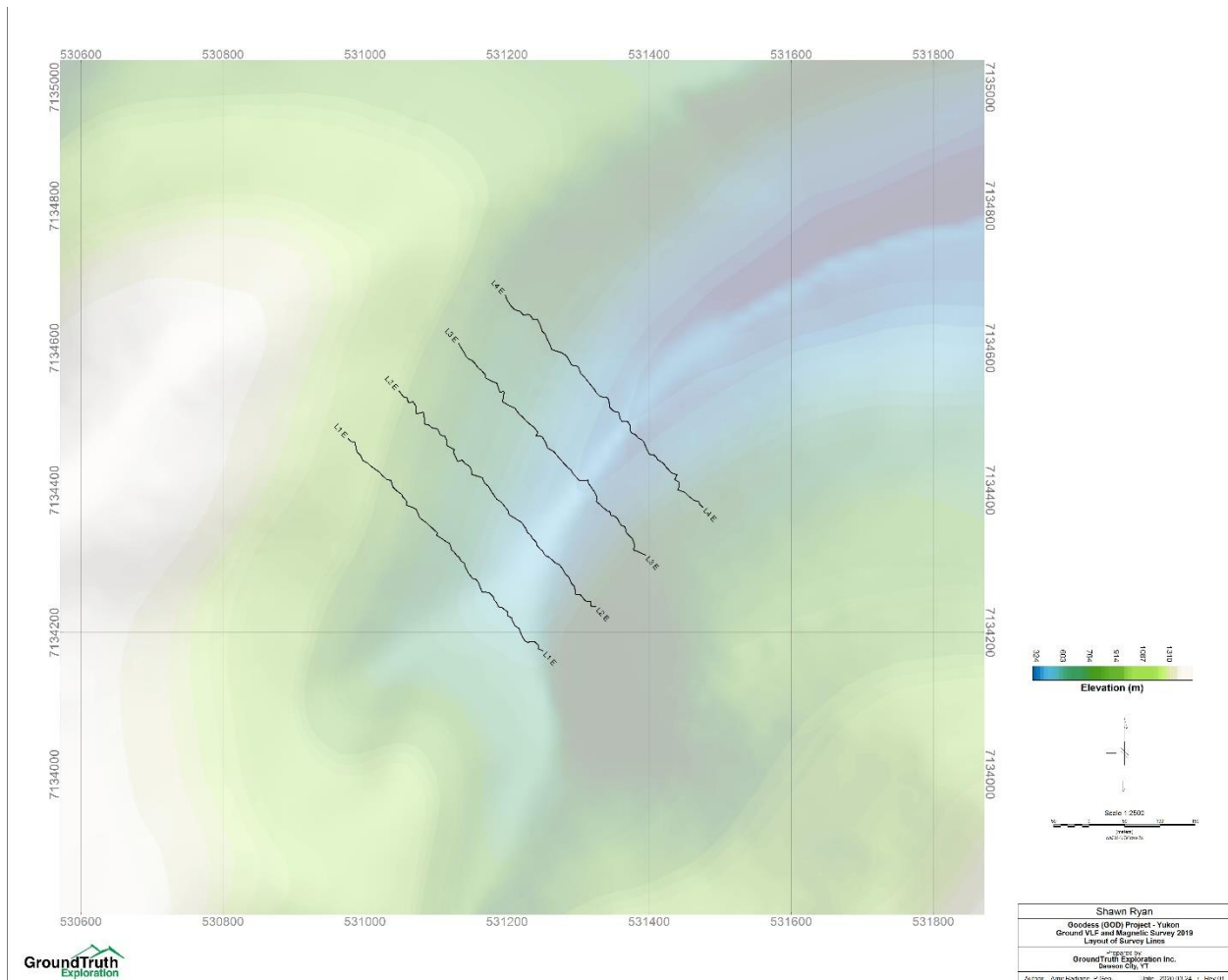


Figure 1: Location map of ground VLF/Mag survey 2019 on Goodness (GOD) property, YT.

4.0 Survey Theory

4.1 Very Low Frequency (VLF) survey

Very Low Frequency Electromagnetics (VLF) is a geophysical ground probing technology that uses powerful remote radio transmitters set up in different parts of the world for the military submarine communication. In radio communications terminology, VLF means very low frequency, about 15 to 25 kHz, while relative to frequencies generally used in geophysical exploration, these are very high frequencies. The radiated field from a remote VLF transmitter, propagating over a uniform or horizontally layered earth and measured on the earth's surface, consists of a vertical electric field component and a horizontal magnetic field component each perpendicular to the direction of propagation.

These radio transmitters are very powerful and induce electric currents in conductive bodies thousands of kilometres away. Under normal conditions, the fields produced are relatively uniform in the far-field at a significant distance (hundreds of kilometres) from the transmitters. The induced currents produce secondary magnetic fields that can be detected at the surface through the deviation of the normal radiated field (Figure 2).

VLF is used in many applications, including mineral exploration, water exploration and more. In mineral exploration, VLF data are used to map geologic structure, including the apparent dip of the fault and shear zones. The data can be interpreted to identify the dip of these structures for reliable drilling. Data are also used to identify conductive ground which might correspond to sulphide or clay rich concentrations. A third application is to map overburden in preparation for drilling and further sampling. All of these features have electrical contrasts with surrounding rocks, tending to be more electrically conductive or resistive and are reasonable targets.

The depth of investigation is controlled by the electrical "Skin-Depth" of the local geology. It varies from shallow to in some cases >100m depending upon the overall background resistivity of the subsurface. Typically, 20-75 meters can be expected. Conductive overburden suppresses signals, and depth penetration may be severely limited at times. VLF works best where rocks are resistive and overburden is minimal or is highly resistive.

The data include in-phase and out-of-phase signals as a percentage of the total field, horizontal component (x), horizontal component (y), and field strength in pT. The electrical conductivity of rocks can be modelled by the inversion of VLF data.

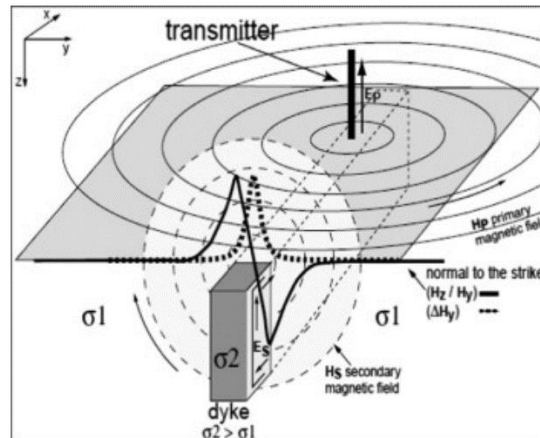


Figure 2: EM field distribution for the VLF method in E-polarization with theoretical signals over a vertical conductive dike (after Bosch and Müller, 2001).

4.2 Magnetic surveys

Magnetic is the most commonly used geophysical method for gold, diamond, platinum group metals and base metal exploration. Measurements of the magnetic field contain information about subsurface variations in magnetic susceptibility. Data can be acquired in the air (planes, satellites), on the ground (stationary, moving platforms, marine) and underground (boreholes, tunnels). The measurements record the sum of Earth's field and fields induced in magnetic materials. More magnetic (i.e. susceptible) materials have stronger induced fields. Removing Earth's field from the observations yields anomalous fields that can be interpreted in terms of where magnetic material lies and also its susceptibility and shape. Processed data are presented as maps or profiles, and advanced processing, involving inversion, yields parametric structures or 3D models of the subsurface susceptibility distribution.

Magnetic surveying is extremely versatile and can be applied in many areas in the geosciences including geologic mapping and mineral exploration. In gold exploration, magnetics helps in direct detection of associated mineralization and for mapping large- and local-scale structure (faults, dikes, and shear zones).

To a first approximation, Earth's magnetic field resembles a large dipolar source with a negative pole in the northern hemisphere and a positive pole in the southern hemisphere. The dipole is offset from the center of the earth and also tilted. The north magnetic pole at the surface of the earth is approximately at Melville Island. The field at any location on the Earth is generally described in terms described of magnitude $|B|$, declination D and inclination I as illustrated in Figure 3.

When the magnetic source field is applied to earth materials it causes the material to become magnetized. Magnetization is dipole moment per unit volume. This is a vector quantity because a dipole has a strength and a direction. Because Earth's field is different at different locations on the earth, then the same object gets magnetized differently depending on where it is situated. As a consequence, magnetic data from a steel drum buried at the north pole will be very different from that from a drum buried at the equator.

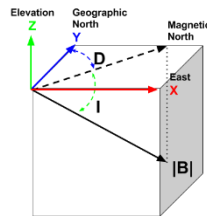


Figure 3: Earth's magnetic field, declination (D) and inclination angles (2018, GeoSci Developers).

5.0 Results and recommendations

The data are processed for magnetic diurnal correction and the Fraser filter are applied on in-phase and quadrature components of VLF data. The data can be processed in advanced levels using inversion modelling techniques recently developed for the 2D inversion of VLF data. The EMTOMO-VLF2Dmf which is a software program for the 2D inversion of VLF-EM data based on the finite element (FE) method. This will ensure that geological models respect a consistent structural, stratigraphic, and topological framework in addition to ensuring consistency between different geophysical models.

The combination of geophysical models and geological and drilling information allows some general correlations to be made. The interpretations of VLF results can better identify lithological and structures features, as well as, the fracture zones.

6.0 Deliverables

Summary report in .pdf format

Database in Geosoft .dbf and .xyz formats

Fraser filter Grids in Geosoft and Tiff format

Magnetic Grids in Geosoft and Tiff format

Location Maps in .pdf and .jpg formats

Survey lines in Arcview shapefile format