

2019 Exploration Report on the Tomas claims, Watson Lake Mining District, Yukon
Geochemical, magnetometer and glacial geology

Brian Atkinson P.Geol.

June 11, 2020

Claims:

Name	Grant Number
Tomas 1	YE85887
Tomas 2	YE85888
Tomas 3	YF50161
Tomas 4	YF50162

Map: NTS 105/B01 1:50 000, Watson Lake Mining District

Registered claim holder: Brian Atkinson P.Geol.

Date of Work: June 19 to June 29, 2019

Table of Content

Introduction	3
Previous Work.....	3
Geology of the Tomas claim group	4
Quaternary Geology.....	4
Phanerozoic Geology	4
Data Collection.....	5
Geochemical Sampling Results	5
Magnetic Survey Results.....	6
Glacial Deposition Study	6
Sediment sieve analysis	6
Statement of Expenditures	7
Statement of Qualifications	7
References	8
Figures.....	9
Figure 1: Location, access and camp location for the Tomas claim group.....	10
Figure 2. Topographic profiles across the Tomas claims showing lateral moraines.	11
Figure 3. Soil sample grid with gold assay results.....	12
Figure 4. Detailed soil sample location grid with 2019 geochemical results over the 2018 anomalous gold sample location on Line 0+00, 2+75N.....	13
Figure 5. Magnetic survey data.....	14
Figure 6. Semi-log size frequency distribution plot of the mean of 19 soil samples indicating the percent sample retention verses sieve size.....	15
Figure 7. Reconstruction of the glacial history in the vicinity of the Tomas claims.....	16
Tables	17
Table 1. Sample location, magnetic reading and gold assays.....	17
Table 2. Sieve size analysis of select sediments from the Tomas claim group.....	19
Appendix	20

Introduction

The Tomas claims (Figure 1) are located approximately 120 km west of the town of Watson Lake in the Watson Lake Mining Division. Access is via the Silvertip Mine road off the Alaska Highway. At a point 9 km along the Silvertip Mine road, an old exploration trail leads west to alpine heights and bisects the Tomas claim group. The 4 quartz mining claims of the Tomas claim group were originally staked in June 2016 and this report documents exploration work completed in the summer of 2019 with the objective of mineral discovery for gold and base metals. The present work was the continuation of exploration efforts that commenced the previous 2018 field season. Exploration work included line cutting, soil sampling, sediment sieve size analysis and topographic profiling related to glacial history and magnetic surveys.

Previous Work

Work completed on the claims in 2018 by the author included prospecting, geological reconnaissance, line cutting, soil sampling and magnetic surveying.

Although no evidence of previous exploration work was identified on the Tomas claims, several notable mineral occurrences in the area have been the focus of ongoing exploration efforts. That has culminated in the recent opening and production of Pb-Zn-Ag at Silvertip Mine, BC, located 16 km south of the Tomas claims.

Reports of mineral discoveries by the Geological Survey of Canada during geological reconnaissance in 1944 drew attention to the area (Lord 1944). As a result, Western Ranger Prospecting Syndicate constructed road access from the newly prepared Alaska Highway southward to argentiferous galena occurrences where they did bedrock trenching. Subsequent exploration by prospectors continued until 1982 when Butler Mountain Minerals Corp. consolidated several separate claim holdings and completed geological surveys, diamond drilling, trenching and additional road access construction. A description of mineral occurrences in the vicinity of the Tomas claims is reported in an engineering report in the Yukon assessment file database (Cukor 1983).

The Dale prospect is situated 5 km west of Tomas claims. In 1958, Mountain Highgrade Mines Ltd. carried out underground exploration by way of a 168 m long adit on high grade lead, zinc and silver bearing quartz + carbonate veins with anomalous gold values. The mineralization occurs in a shear zone where quartz diorite of the Cassiar Batholith is altered to propylitic and argillic mineral assemblages. A small bulk sample of mineralization was extracted for smelting and refining by the American Smelting and Refining Company. Additional exploration work in 1995 led to the discovery of more high-grade mineralization in the Dale Fault to the east of the original showing (Power 1996, Lee and Power 1997).

Lying immediately north of the Tomas claims, the Wildcat property, as it is now known, has been the focus of exploration activities including magnetic and VLF-EM surveys, bedrock trenching, soil sampling (Casselman 2007) and diamond drilling. Several styles of Pb Zn Ag mineralization have been encountered in argillaceous sediments and rhyolite. Besides argentiferous galena and sphalerite, arsenopyrite and low values of W, Sn and Co are reported in drill logs. Fluorite was noted in drill core from several holes associated with rhyolite (White 1983). Besides Pb Zn Ag mineralization, copper and low gold mineralization were encountered in the 2009 diamond drilling program (Mastalerz 2010).

Geology of the Tomas claim group

Quaternary Geology

Reconnaissance scale surficial mapping has covered the area of the Tomas claims (Klassen 1982). The last (McConnell) glacial episode began about 24 Ka ago (Jackson and MacKay 1990) and ended in the area at 17 Ka ago (Yukon Geological Survey 2017). Although the regional ice flow direction was from west to east, high mountain relief dictated highly variable local flow directions.

An unnamed east flowing mountain stream occupies a moderately steep sided valley on the south part of the Tomas claims. The creek has incised through several parallel glacial lateral moraines that formed during resurgent advances of ice down the valley. Collectively, the moraines exhibit a stepped or terraced nature to the valley slopes (Figure 2). Although no outcrop has been identified on the Tomas claims from which glacial striations might indicate ice flow, the convergence of lateral moraines at the confluence of 2 branches of the stream indicate ice directions merged eastward downstream from the southwest and the northwest mountain summits. That the northeast flow direction, (from the southwest) was the last and probably dominant in the local area is evidenced by the truncation of a 10 m high interlobate morainal ridge on the north side of the stream valley. Subangular glacial erratics of granodiorite on surrounding mountain crests indicate the mountains were inundated by glacial ice in the past.

The glacial till consists of clast supported boulder conglomerate with well-rounded boulders up to 1 metre in diameter with a matrix of coarse to fine sand and little silt or clay. Clast compositions include, in order of abundance: medium to coarse grained felsic intrusive boulders, limestone, argillite, fine grained calcareous sediments, marble, rhyolite, calc-silicate skarn, and rare porphyritic diabase. The stream bed is armoured by large blocky felsic intrusive boulders but in several places of gentle slope gradient, >1 m thick deposits of humus have accumulated on the banks.

Bedrock of the nearby mountains to the southwest consist of Cassiar Batholith felsic intrusive rocks where mountains to the northwest expose sedimentary rocks of limestone, sandstone, calcareous argillite, rhyolite, shale and skarn. The predominance of glacial deposits sourced by the northeast ice flow accounts for the composition of the till that infills the stream valley and constitute the lateral moraines.

Phanerozoic Geology

The Tomas claim group lies within the Cassiar Terrane (Colpron and Nelson 2011) at the inferred contact between the Atan Group (Rosella Formation) of Cambrian age on the west and the Carboniferous Earn Group to the east. The Rosella Formation is composed of thick bedded to massive limestone and siliceous limestone while the Earn Group includes black siliceous slate, chert, greywacke, grit and conglomerate. Clastic sediments and chert of Mississippian age comprise the Slide Mountain Group that lies 2.5 km to the southeast (Gordey and Makepeace 2001). The contact between the Atan and Earn groups is delineated by a north trending fault. (Lowey and Lowey, 1986). An intervening sliver of dolomitic siltstone and sandstone of the Askin Group lies between the Atan Group and felsic intrusive rocks of the 112 ±4 Ma Cassiar Batholith plutonic suite (Mortensen et al 2006) located 2.5 km to the

west. The Askin Group coincides with GSC mapping in the area depicted as limestone, marble, skarn and hornfels (Green, Poole and Roddick 1960).

Data Collection

For survey control, cut lines were established on the 4 East and 4 West positions of the sampling grid that was located the previous year. These lines were cut using a machette to a width of 1m extending both north and south from the baseline to the claim boundaries. Station pickets were erected at 25 m intervals as measured by hip chain then each station was pinpointed using GPS referencing. UTM coordinates for each station are listed in Table 1. The picket stations were used as control points both for soil sample collection and magnetic survey locations (Figure 3).

A 500 gram sample of soil was collected at each station along the entire distance of the cut lines. This amounted to 92 samples in total. Each sample was obtained from the poorly developed B-horizon using a grub hoe to excavate a small hole to extract the sample and the hole subsequently back filled. Soil samples were collected into individual bags and labelled with a unique identification number. Sample depth seldom exceed 25 cm. Samples remained in my custody until delivery to Actlabs in Timmins, Ontario for analytical treatment. All samples were analyzed for gold and multi-element using the lab's atomic absorption-fire assay method and induced coupled plasma. This yielded gold results down to a detection limit of 5 ppb Au and other elements detection limits as reported in the appended assay certificates. Results are provided in Table 1 and assay certificates, invoice and documentation are appended to this report.

In the vicinity of an anomalous gold assay on Line 0+00, 2+75N obtained in the 2018 sampling program, where one soil sample yielded a value of 715 ppb Au, a detailed soil sampling grid was located and sampled on a 5m spacing. Analytical results are depicted in Table 1 and Figure 4.

Geochemical Sampling Results

All soil samples were analyzed for gold using fire assay with atomic absorption finish, with a detection limit of <5 ppb Au. Twenty samples gave weakly anomalous results up to 20 ppb gold. The detailed soil sampling over the 2018 anomalous area at Line 0+00, 2+75N did not return any notable values. A follow up sample of the 2018 sample that yielded 715 ppb returned a value of <5 ppb Au and an adjacent sample assayed 9 ppb Au.

Each sample was also assayed for multiple elements using Induced Coupled Plasma method. Laboratory results are presented in the appended table. Specific attention was directed to Pb, Zn and Ag as the area is considered prospective for this type of mineralization. However, only 5 samples were barely above detection limit of 0.5 ppm Ag. Sample number 1914 assayed 5 ppm silver but lacked correlation with Pb and/or Zn. The best values for Pb/Zn were for sample 1967 that assayed 1 ppm Ag, 405 ppm Pb and 1108 Zn.

Overall, the soil sample results probably reflect the significant component of transported glacial material contributed from the nearby Cassiar batholith felsic intrusive rocks and do not adequately sample the underlying bedrock of the Tomas claims.

Magnetic Survey Results

Using a GFM Systems GSM -19TW proton magnetometer, serial # 2121241, magnetic readings were recorded at each picket station on 25 m spacing. Readings were recorded internally to the instrument and were also recorded in a notebook at the time of field data collection. A total of 85 stations were surveyed.

Because no base station magnetometer was available to record diurnal magnetic flux, the 0+00N picket station was used as a control point and repeatedly surveyed over the course of field data collection. As a further magnetic control, the cut lines were magnetically surveyed in both directions departing from the 0+00N control point and returning to it. Duplicate recordings were then averaged and corrected for diurnal variation. Results are listed in Table 1 and contoured data are presented in Figure 5. Of note is the approximate 100 nT reduction of results in comparison to data from the 2018 survey. This reduction in the magnetic flux is attributed to the declining strength of the Earth's magnetic field or the eastward migration of the north magnetic pole.

Glacial Deposition Study

Due to the lack of bedrock outcrop on the Tomas claim group, exploration attention was directed toward the glacial history of the unconsolidated drift cover. To that end, a sediment size analysis of select soil samples and topographic profiling of the area was conducted.

Sediment sieve analysis

As part of a glacial history analysis of the claim group, a split fraction of 19 select soil samples derived from the soil sampling survey were subject to sieve size analysis. This involved initial weighing of each sample fraction then depositing the sample into the top of a series of Fieldmaster stainless steel nested sieves. The sample was then vibrated on a shaker for a period of 10 minutes as per ASTM 136 protocol (Standard test method for the sieve analysis of fine and coarse aggregate). The retained sample portion on each sieve was weighed using an Ohaus Gold Series scale with a capacity of 600 g and accuracy of 0.01 g. Sieve mesh sizes included 4000, 2000, 500, 250, 125 and 63 microns. Mesh sizes are numbered 5, 10, 35, 60, 120 and 230, respectively. Any material smaller than 63 mesh was retained on the bottom pan. Sieve results with sample weights for each fraction and cumulative weights for the individual samples are presented in Table 2. Statistical analysis yields the following:

Sieve size (microns)	Mean
4000	10.54
2000	13.64
500	48.98
250	11.32

125	10.00
63	2.14
Pan	1.18

The sediment size analysis indicates a normal distribution pattern to the ≤ 4000 micron sediment as depicted in Figure 6. Almost 50% of the cumulative sample results are retained on the 35 mesh (500 μ) sieve. The paucity of very fine sediment may be the result of glacial meltwater winnowing out the clay fraction of the glacial till during and after deposition. The predominance of very coarse boulder fraction in the terraced slopes is consistent with derivation of that material from talus slopes of the enclosing mountain uplands.

An interpretation sketch depicting the glacial history of the Tomas claims based on the landscape, topographic profiles and surface features is illustrated in Figure 7.

Statement of Expenditures

Travel: Bright Ontario to Rancheria YK area and return 10800 Km @ \$0.60/km = \$6480

Geological day rate* \$750 x 11 days	8250
Geochemical analyses	3152.70
Groceries 11 days @ \$50/day	550
Magnetometer 1 day @ \$100	100
Total	\$ 18532.70

*Line cutting, soil sampling, magnetic surveying and prospecting included in geological day rate.

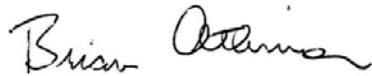
Statement of Qualifications

I, Brian Atkinson, P.Geo., with postal address at Bright, Ontario, do hereby certify that:

1. I am a consulting/contract geologist.
2. I graduated with an Hon.Bachelor (Geology/Phys. Geography), from McMaster University.
3. I am a Professional Geoscientist registered with the Association of Professional Geoscientists of Ontario.
4. I have worked as a geologist for 40+ years.

5. I personally completed 11 days of line cutting, geological mapping, prospecting, soil sampling and magnetic surveys on the Tomas claim group, Watson Lake Mining Division YK from June 19 to June 29, 2019.

Dated this June 11, 2020.



Brian Atkinson PGeo.

References

- Casselman, S. 2007. Report on the 2007 Soil sampling program of the Wildcat Property. Yukon Min File 094852.
- Colpron, M. and Nelson, J.L. 2011. A Digital Atlas of Terranes for the Northern Cordillera.
- Colpron, M., Israel, S., Murphy, D., Pigage, L. and Moynihan, D. 2016. Yukon Bedrock Geology Map. Yukon Geological Survey, Open File 2016-1. Scale 1:1 000 000
- Cukor, V.C., 1983. Butler Mountain Minerals Corp. Lola - Idaho - YP Claims, NTS 105B-1, Watson Lake Mining District, Yukon. Engineering Report, June 17, 1983. Prospectus. Yukon Min File 062158.
- Gabrielse, H. 1969. Geology of the Jennings River Map Area. Geological Survey of Canada, Paper 68-55.
- Gordey, S.P. and Makepeace, A.J. (compilers) 2001. Bedrock Geology, Yukon Territory; Geological Survey of Canada, Open File 3754 and Exploration and Geological Services Division, Yukon Indian and Northern Affairs Canada, Open File 2001-1, Scale 1:1 000 000.
- Green, L.H., Poole, W.H. and Roddick, J.A. 1960. Wolf Lake, Yukon Territory. Geological Survey of Canada, Preliminary Map 10-1960.
- Jackson, L.E. Jr. and MacKay, T. D. 1990. Cordilleran Glaciation. Geological Survey of Canada, Open File Map 2329. Scale 1: 1 000 000.
- Klassen, R.W., 1982. Surficial Geology Wolf Lake Yukon Territory. Geological Survey of Canada, Map 14-82. Scale 1:250 000.
- Lee, G. and Power, M.A., 1997. Summary report on the Dale property, Rancheria area. Yukon Min File 093738.
- Lord, C.S., 1944. Geological Reconnaissance along the Alaska Highway between Watson Lake and Teslin River, Yukon and British Columbia. Geological Survey of Canada, Paper 1944-25.

Lowey, G.W. and Lowey, J.F. 1986. Geology of Spencer Creek (105B/1) and Daughney Lake (105B/2) Map Areas, Rancheria District, Southeast Yukon. Indian and Northern Affairs Canada; INAC Open File 1986-1.

Mastalerz, K. 2009. Geological report 2009 diamond drill program on the Wildcat Property. Yukon Min File 095149.

Mortensen, J.K., Sluggett, C., Liverton, T., and Roots, C.F., 2006. Uranium-lead ID-TI MS and LA-ICP-MS ages for the Cassiar and Seagull batholiths, Wolf Lake map area, southern Yukon. In: Yukon Exploration and Geology 2005, Emond, D.S., Bradshaw, G.D., Lewis, L.L., and Weston, L.H. (eds.). Yukon Geological Survey, p. 257-266.

Poole, H. 1957. Wolf Lake sheet. Geological Survey of Canada, Map 22-1957. Scale 1:253 440

Power, M.A. 1996. Mountain Highgrade Mines Ltd. Geophysical Surveys and Trenching Program on the Dale Property, Rancheria Area, Southern Yukon Territory. Yukon Min File 093394.

Power, M.A. and Lee, G. 1999. Total magnetic field and VLF-EM surveys at the Wildcat property Rancheria Area, Yukon. Yukon Min File 093939 and Yukon Min File 094104.

Roman-Sierra, J., Munoz-Perez, J. and Navarro-Pons, M. 2013. Influence of sieving time on the efficiency and accuracy of grain-size analysis of beach and dune sands. <http://doi.org/10.1111/sed.12040>. Accessed May 31, 2020. Sedimentology Volume 60, Issue 6.

White, G.E., 1983. Drilling Report on the YP Property, (for Butler Mountain Minerals Corp.), December 9, 1983. Yukon Min File 091501.

Yukon Geological Survey, 2017. Glacial Limits Map of Yukon.

Figures

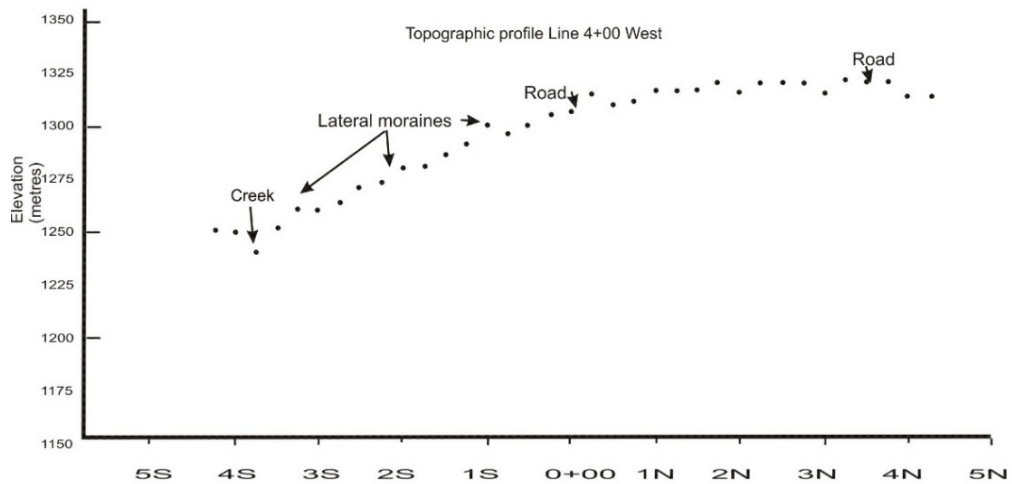
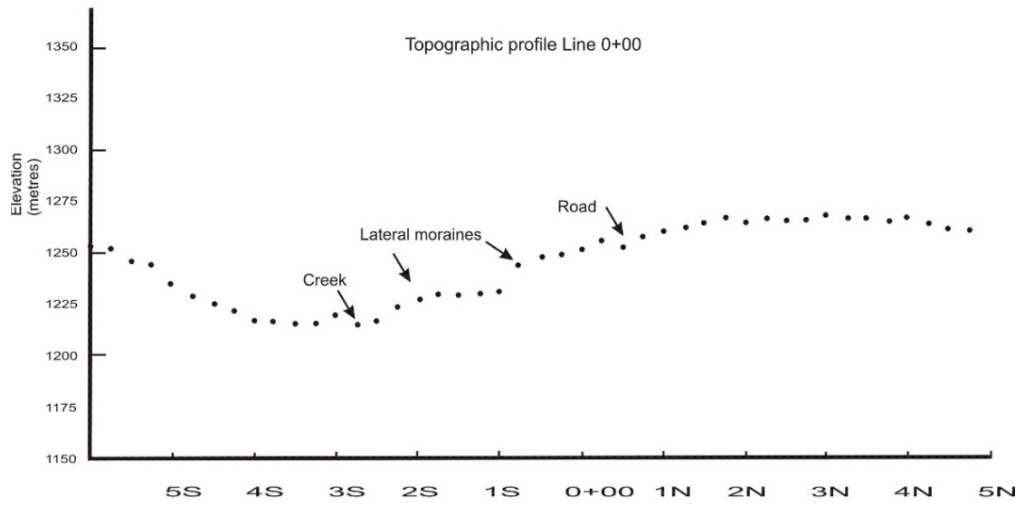
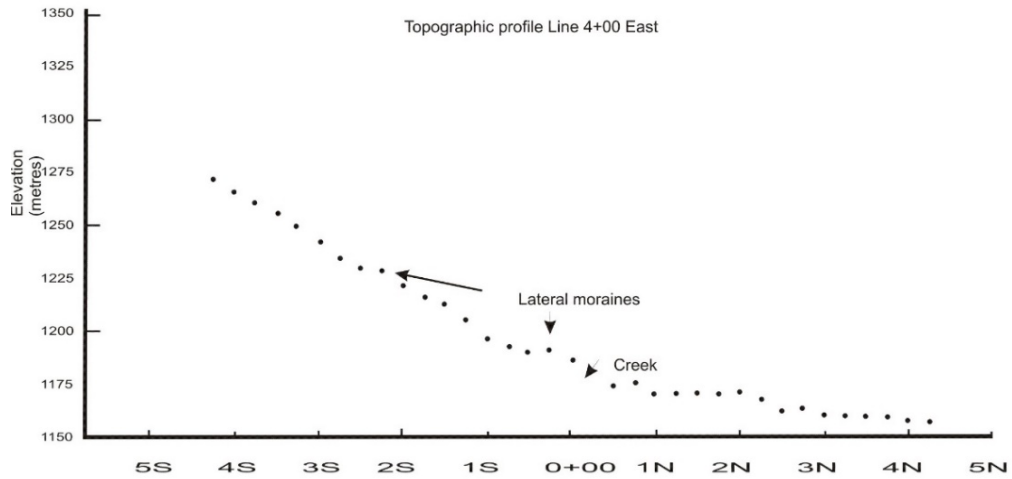


Figure 2. Topographic profiles across the Tomas claims showing lateral moraines.

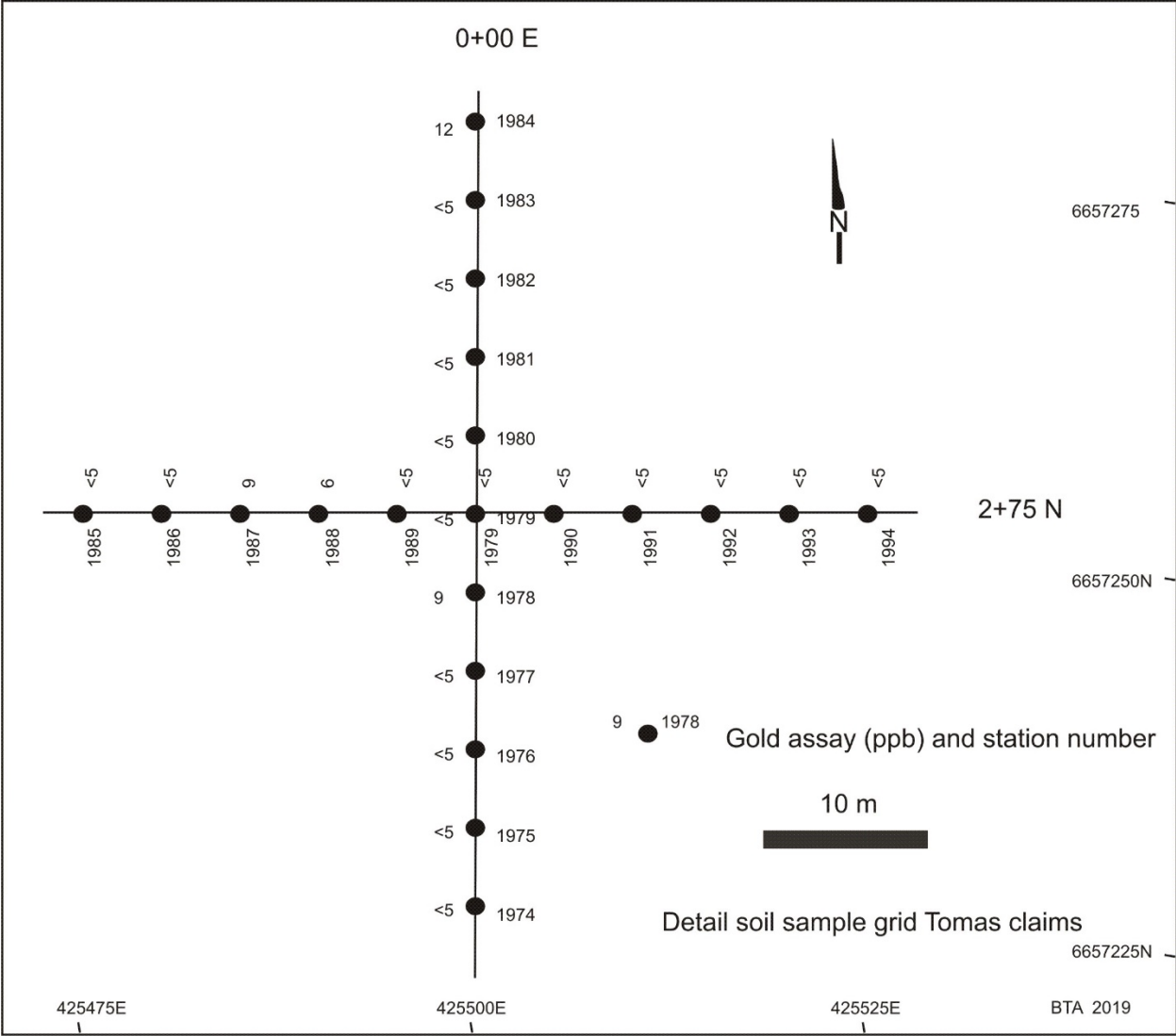


Figure 4. Detailed soil sample location grid with 2019 geochemical results over the 2018 anomalous gold sample location on Line 0+00, 2+75N.

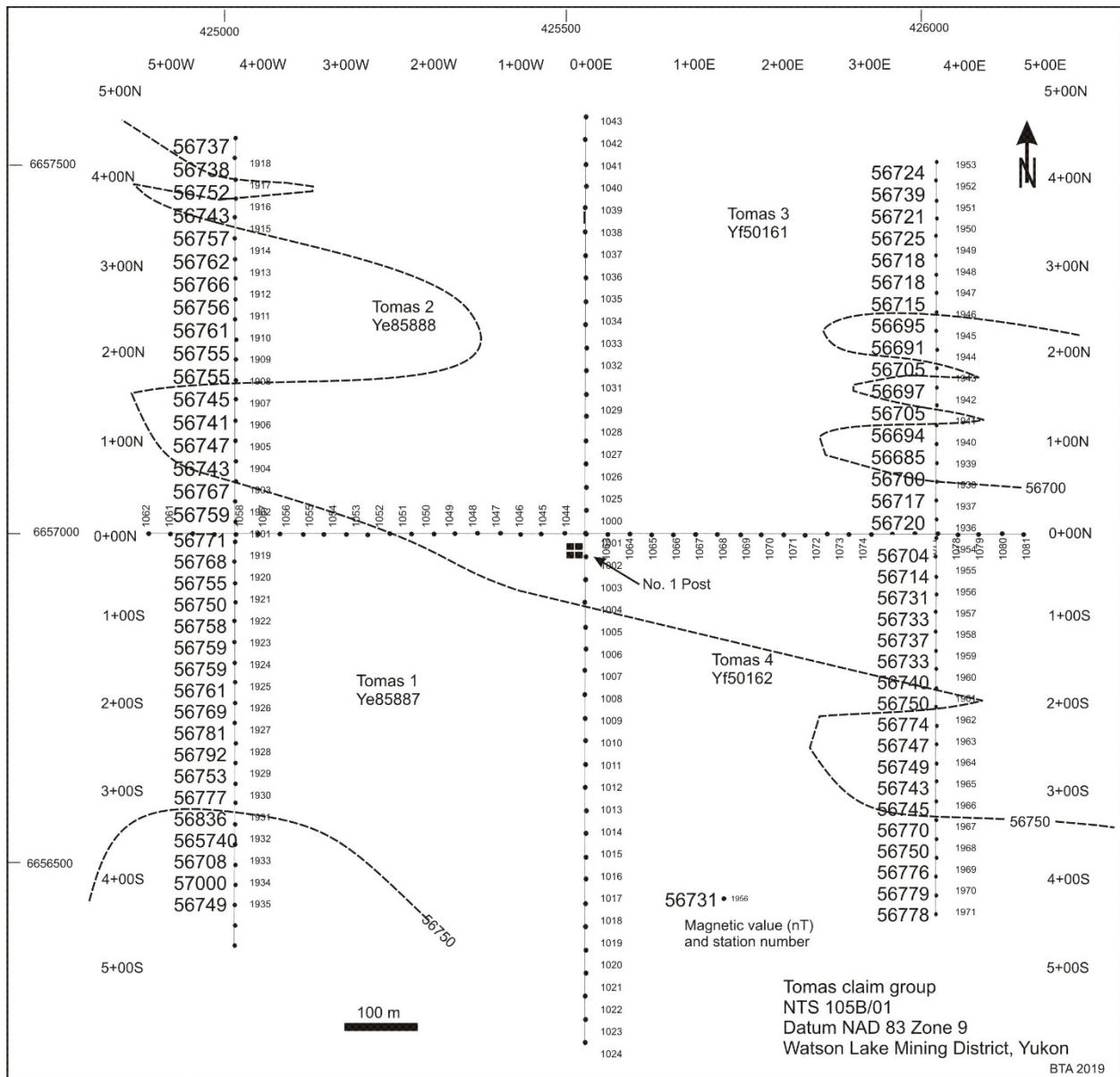


Figure 5. Magnetic survey data

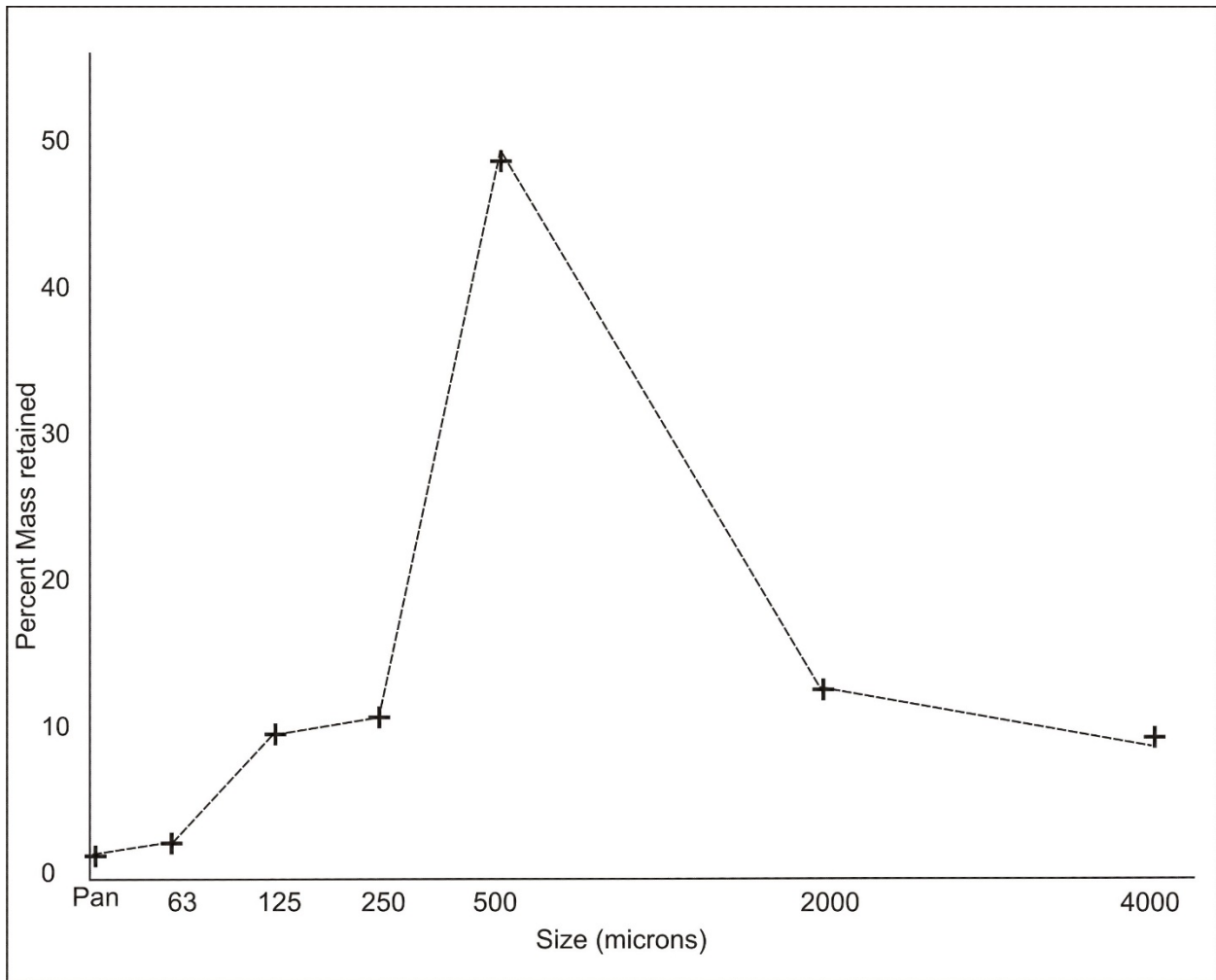


Figure 6. Semi-log size frequency distribution plot of the mean of 19 soil samples indicating the percent sample retention versus sieve size.

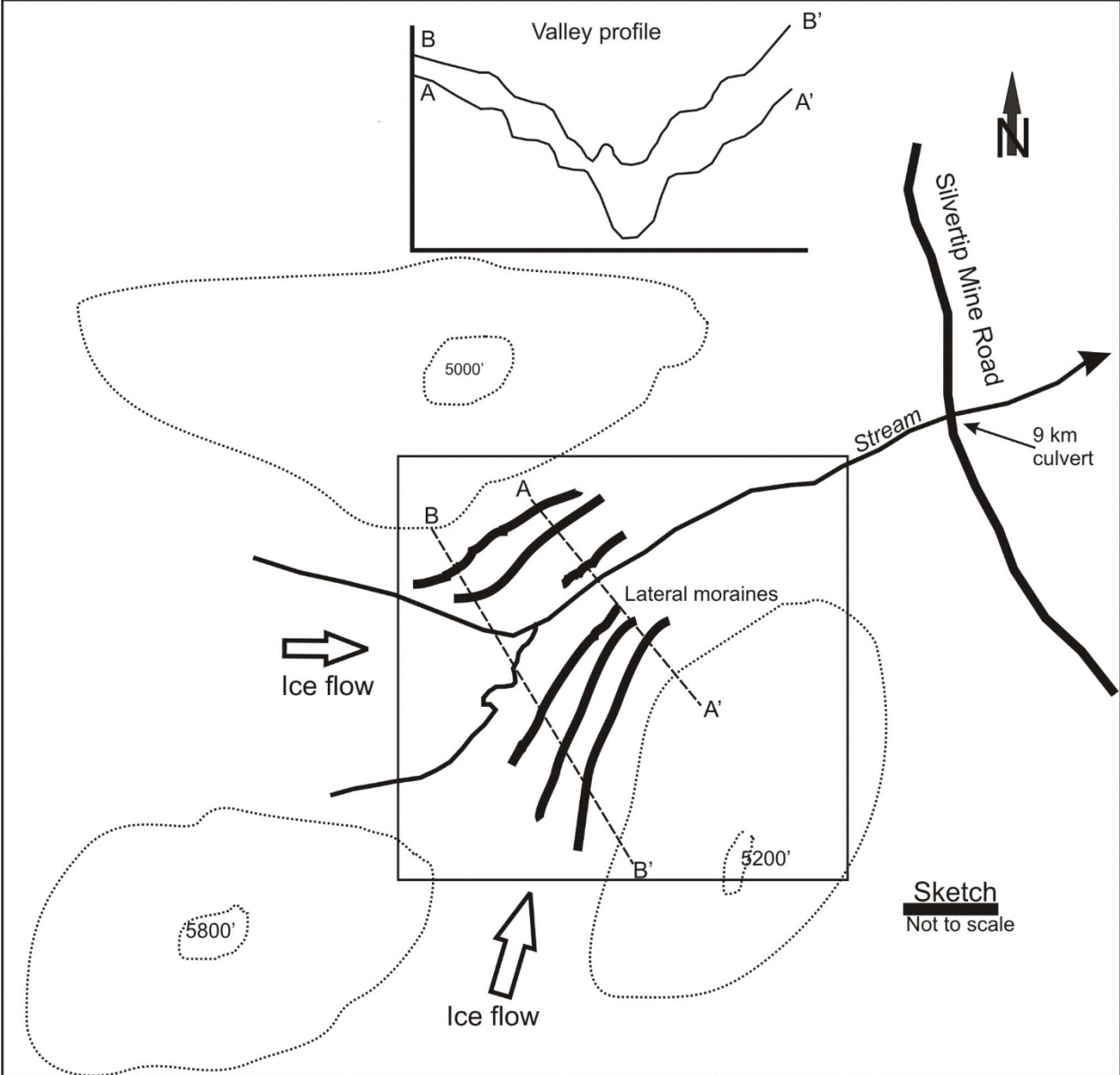


Figure 7. Reconstruction of the glacial history in the vicinity of the Tomas claims.

Tables

Table 1. Sample location, magnetic reading and gold assays.

		Easting	Northing	Elev (m)	nT	nT	Dirurnal	Au (ppb)
4+00 East Line South								
0+00S	1936	425880	6656883	1187	56704.86	56714.83	5	<5
0+25S	1954	425870	6656847	1191	56714.21	56728.85	7	<5
0+50S	1955	425851	6656822	1190	56731.61	56746.57	7	<5
0+75S	1956	425841	6656808	1193	56732.9	56745.55	6	<5
1+00S	1957	425808	6656767	1196	56737.87	56750.38	6	5
1+25S	1958	425796	6656743	1206	56733.59	56746.21	6	6
1+50S	1959	425786	6656720	1214	56740.22	56751.18	5	<5
1+75S	1960	425777	6656697	1217	56750.6	56763.65	6	5
2+00S	1961	425765	6656676	1221	56774.05	56784.5	5	<5
2+25S	1962	425754	6656654	1229	56747.32	56752.7	2	<5
2+50S	1963	425748	6656639	1230	56749.12	56758.75	5	<5
2+75S	1964	425734	6656620	1236	56743.21	56752.83	4	<5
3+00S	1965	425723	6656600	1243	56745.74	56752.7	4	<5
3+25S	1966	425711	6656576	1250	56770.03	56774.63	2	<5
3+50S	1967	425701	6656552	1255	56750.98	56753.82	1	<5
3+75S	1968	425690	6656532	1261	56776.06	56783.38	3	<5
4+00S	1969	425677	6656513	1267	56778.97	56780.88	1	<5
4+25S	1970	425658	6656482	1272	56778.77	56779.01	1	<5
4+30S	1971	425648	6656482	1272				<5
4+00 East Line North								
0+00N	1936	425885	6656870	1187	56697.56	56704.76	3	<5
0+25N	1937	425895	6656897		56720.17	56727.75	3	<5
0+50N	1938	425899	6656905	1175	56717.88	56721.46	2	15
0+75N	1939	425911	6656947	1177	56700.05	56708.16	4	<5
1+00N	1940	425922	6656963	1170	56685.8	56693.47	4	<5
1+25N	1941	425932	6656996	1171	56694.24	56698	2	<5
1+50N	1942	425944	6657013	1171	56705.89	56708.03	1	6
1+75N	1943	425955	6657035	1170	56697.83	56702.46	2	<5
2+00N	1944	425971	6657055	1171	56705.72	56711.84	3	<5
2+25N	1945	425986	6657082	1168	56691.32	56697.16	3	7
2+50N	1946	426002	6657101	1162	56695.67	56704.93	4	<5
2+75N	1947	426017	6657124	1164	56715.46	56712.16	-1	<5
3+00N	1948	426032	6657145	1160	56718.86	56724.52	3	7
3+25N	1949	426049	6657166	1160	56718.13	56719.51	0	<5
3+50N	1950	426063	6657183	1160	56725.58	56727.92	1	7
3+75N	1951	426074	6657198	1160	56721.22	56722.89	1	7

		Easting	Northing	Elev (m)	nT	nT	Dirurnal	Au (ppb)
4+00N	1952	426089	6657218	1158	56739.43	56738.78	0	<5
4+25N	1953	426105	6657236	1158	56724.06	56723.65	0	<5
4+00 West Line South								
0+00S	1901	425020	6657060	1309	56771.87	56773.39	1	5
0+25S	1919	425010	6657037	1307	56768.17	56768.97	0	<5
0+50S	1920	425001	6657014	1301	56755.11	56757.67	1	<5
0+75S	1921	424992	6656993	1297	56750.33	56741.07	-4	<5
1+00S	1922	424980	6656970	1301	56758.29	56757.92	0	<5
1+25S	1923	424972	6656944	1294	56759.55	56760.15	0	7
1+50S	1924	424961	6656919	1288	56759.35	56761.58	1	<5
1+75S	1925	424950	6656896	1282	56761.26	56763.27	1	<5
2+00S	1926	424943	6656875	1281	56769.38	56775.9	3	<5
2+25S	1927	424929	6656851	1274	56781.49	56777.09	-2	<5
2+50S	1928	424921	6656827	1271	56792.35	56793.02	0	<5
2+75S	1929	424910	6656802	1266	56753.27	56752.58	0	<5
3+00S	1930	424901	6656779	1262	56777.11	56784.05	3	<5
3+25S	1931	424893	6656757	1262	56836.29	56847.43	5	<5
3+50S	1932	424884	6656738	1253	56740.12	56738.73	-1	6
3+75S	1933	424871	6656706	1241	56708.78	56708.59	0	5
4+00S	1934	424863	6656683	1250	56699.99		0	5
4+25S	1935	424858	6656661	1252	56749.14	56748.84	0	
4+00 West Line North								
0+00N	1901	425022	6657062	1319	56784.09	56771.87	-6	5
0+25N	1902	425031	6657084	1316	56759.12	56757.97	-1	<5
0+50N	1903	425038	6657099	1311	56767.1	56765.31	-1	<5
0+75N	1904	425049	6657129	1313	56743.78	56743.32	0	9
1+00N	1905	425057	6657154	1318	56747.62	56746.72	0	16
1+25N	1906	425066	6657178	1318	56741.35	56739.63	-1	<5
1+50N	1907	425074	6657199	1319	56745.65	56743.48	-1	<5
1+75N	1908	425082	6657218	1321	56755.6	56756.95	0	<5
2+00N	1909	425093	6657244	1318	56755.22	56752.89	-1	<5
2+25N	1910	425102	6657269	1321	56761.19	56758.88	-1	<5
2+50N	1911	425114	6657296	1321	56756.79	56755.5	0	<5
2+75N	1912	425120	6657319	1321	56766.68	56765.11	0	<5
3+00N	1913	425130	6657336	1318	56762.13	56758.32	-2	<5
3+25N	1914	425146	6657368	1322	56756.99	56754.11	-1	<5
3+50N	1915	425155	6657390	1321	56743.71	56743.04	0	20
3+75N	1916	425167	6657414	1321	56752.99	56749.72	-1	5
4+00N	1917	425178	6657439	1315	56738.9	56736.44	-1	<5

		Easting	Northing	Elev (m)	nT	nT	Dirurnal	Au (ppb)
4+25N	1918	425190	6657456	1316	56737.41	56736.86	0	<5

Detail soil sample grid on Line 0+00W

2+50N	1974	425498	6657232					<5
2+55N	1975	425499	6657237					<5
2+60N	1976	425500	6657242					<5
2+65N	1977	425501	6657247					<5
2+70N	1978	425503	6657252					9
2+75N	1979	425505	6657257					<5
2+80N	1980	425507	6657262					<5
2+85N	1981	425510	6657267					<5
2+90N	1982	425512	6657272					<5
2+95N	1983	425513	6657278					<5
3+00N	1984	425514	6657283					12
0+00W	1979	425505	6657257					<5
0+05W	1989	425500	6657257					<5
0+10W	1988	425495	6657257					6
0+15W	1987	425490	6657257					9
0+20W	1986	425485	6657257					<5
0+25W	1985	425480	6657257					<5
0+00E	1979	425505	6657257					<5
0+05E	1990	425510	6657257					<5
0+10E	1991	425515	6657257					<5
0+15E	1992	425520	6657257					<5
0+20E	1993	425525	6657257					<5
0+25E	1994	425530	6657257					<5
0+10S	1972	425880	6656866			Stream silt		<5

Table 2. Sieve size analysis of select sediments from the Tomas claim group.

Sample No	Sieve No	Sieve size (microns)	5	10	35	60	125	230	Pan
		Initial Weight grams	Per cent sample retention on sieve						
1905		73.01	24.61	21.03	36.56	9.39	5.94	0.92	0.03
1915		140.98	21.68	14.45	57.13	2.87	3.08	0.13	0
1920		210.77	6.9	16.65	59.43	10.09	6.85	0.88	0.09

Sample No	Sieve No	5	10	35	60	125	230	Pan
1925	122.82	4.99	14.27	67.1	14.98	6.41	1.02	0.2
1930	151.5	28.24	23.29	35.83	23.15	3.95	1.21	0.78
1935	84.03	4.87	11.59	76.57	10.81	2.76	0.61	0.17
1940	75.08	0	0	16.28	8.38	38.64	4.28	1.81
1942		0	7.63	48.21	15.62	14.03	3.06	1.57
1946	159.21	1.65	7.01	61	11.37	11.4	2.62	1.11
1949	53.05	0.53	11.28	68.68	8.4	6.49	1.51	0.58
1955	111.14	1.56	20.95	55.32	2.79	2.54	0.54	0.13
1960	98.66	17.23	12.1	50.07	8.88	7.72	1.88	0.73
1965	89.89	16.72	12.15	43.46	5.68	13.74	2.49	1.61
1970	99.85	11.29	6.96	42.17	5.41	21.23	3.73	0.97
1975	62.93	1.29	18.81	46.83	3.12	8.39	2.58	0.85
1979	74.36	11.2	18.54	42.86	38.69	7.61	2.22	1.5
1984	88.03	18.24	18.54	42.86	8.38	7.61	2.22	1.5
1985	96.39	6.37	9.2	42.09	15.62	14.46	6.12	5.54
1990	96.85	22.94	14.7	38.17	11.37	7.14	2.7	3.18
Total		200.31	259.15	930.62	215	189.99	40.72	22.35
Mean		10.54	13.64	48.98	11.32	10	2.14	1.18

Appendix

See attached

Class 1 Notification C1Q00129

Actlabs Certificate of Analysis

Actlabs Invoice

Sample coordinates Excel file

--	--	--