

Assessment Report
2019 Exploration Program
Geological/Geochemical
Tell Property
MAYO MINING DISTRICT

**(Frog Claims, YC10564, YC 10573-10574, YC10584, YC10587-10588,
YD 105803-105891, YD 156092-156099, YE 60192-60197, YE 60214, YE60216, YE60218, YE
60220, YE60237-60309, YE60311, YE 60318-60323)**

Map Sheets 106C/03 and 105N/14

Jade Leader Corp.,
(formerly: Manson Creek Resources Ltd.)
By: Jean-Pierre Jutras, B.Sc. Hons, P.Geol

For work performed during the Period of July 16-24, 2019

TABLE OF CONTENTS

	Page
INTRODUCTION	4
PROPERTY LOCATION	6
LIST OF CLAIMS	6
GEOLOGICAL SETTING AND MINERALIZATION (REFERENCES TO AVAILABLE GEOLOGY)	7
SUMMARY OF PREVIOUS INVESTIGATIONS	9
2019 FIELD PROGRAM	21
INTERPRETATION AND CONCLUSIONS	25
REFERENCES	26
LIST OF TABLES AND FIGURES	
Table 1: Listing of Frog claims comprising the Property	6
Table 2: Drill Hole Summary	12
Table 3: Summary Strip Logs	13
Table 4: 2014 Mineralized Drill Intercepts Summary	14
Table 5: Area 13 Stream Sampling Geochemistry	14
Table 6: Area 13, 2015 Sampling	16
Table 7: Tell Main Zone, 2019 soils geochemical summary	23
Table 8: Area 13, 2019 soils geochemical summary	24
Figures:	
Figure 1: Tell and Crystal Springs gossans	5
Figure 2: Property Location Map	6
Figure 3: Frog Claim Map	7
Figure 4: Regional Geology – Historical/updated	9
Figure 5: Drill Hole Map	12
Figure 6: 2015 exploration work location map	15
Figure 7: Stream Sediment Geochemical Anomaly Point Source, Photos	16
Figure 8: Section A-A' and B-B', Geology/Structure	17/18
Figure 9: Ground Geophysical Report	20
Figure 10: Summary sketch map of 2019 field activities	22

APPENDICES

Appendix A	Statement of Qualifications
Appendix B	Samples collected, descriptions, locations and Assay Certificates
Appendix C	Signed statement of expenditures

INTRODUCTION

The Tell property comprised of the frog claims was initially staked by Manson Creek Resources in 2002, following some 6 years of regional work in the area, including northwards across the Nadaleen Range. The focus of that work was always based on evidence of SEDEX/VMS style mineralization, a target style in the area that had not previously been investigated. The area's general focus, while it was historically known for various small scale silver-lead-zinc occurrences, shifted to gold exploration through the Nadaleen range based on work by Atac resources and the discovery of the Osiris and Tiger deposits, amongst others.

It was only in 2018 and 2019 that a significant sedex style massive sulphide drill discovery was made in the region by Cantex Mine Development Corp. at their North Rackla project, located some 55 Km NNW of the Tell property. Found by drilling below strongly altered surface gossans, Cantex has now established a multi-km size mineralized massive sulphide target with a strong silver, zinc, lead and manganese signature.

This report summarizes both historical results as well as recent results of a short field program of reconnaissance mapping, soils sampling and prospecting which were performed during the period July 16th to July 24th, 2019 on Jade Leader Corp.'s (formerly Manson Creek Resources Ltd., "Manson") Frog Claims in the Mayo Mining District.

The main Tell gossan consists of a large 75m by 250+ meters zone of rusty iron oxides (Minfile Occurrence 105N 015/106C 091) and an associated downgradient "kill zone" characterized by stunted vegetation. The gossan is a highly fractured surficial deposit of cemented iron oxides and oxyhydroxides that precipitated from spring waters emerging from the face of a steep slope. Along with iron, the Tell gossan contains appreciable quantities of base and heavy metals such as zinc, nickel, cobalt, manganese, arsenic, and antimony. The gossan itself is not economically exploitable, however, its geochemistry suggests a subsurface sulphide source, possibly Volcanogenic Massive Sulphide (VMS) or Sedimentary Exhalative (SEDEX) in origin.

Up to 650 m east and 450 m south of the Tell gossan are active cold water springs that precipitate very fine-grained, soft iron oxyhydroxides that also contain other metals of economic interest. At surface, the gossans and active springs coincide with zones of conductive and chargeable geophysical anomalies, and with outcropping bedded barite that is interpreted to be exhalative in origin. A short, initial exploration diamond drilling program in 2014 outlined numerous areas of broad, bedded barite underlain by low grade anomalous mineralization (Zn, Ag) and evidence of synsedimentary sulphide formation associated with submarine exhalative systems.

The property currently consists of 193 claims covering an area of approximately 4,033 hectares. The claims are currently 100% owned by Jade Leader Corp. (formerly Manson Creek Resources Ltd.).

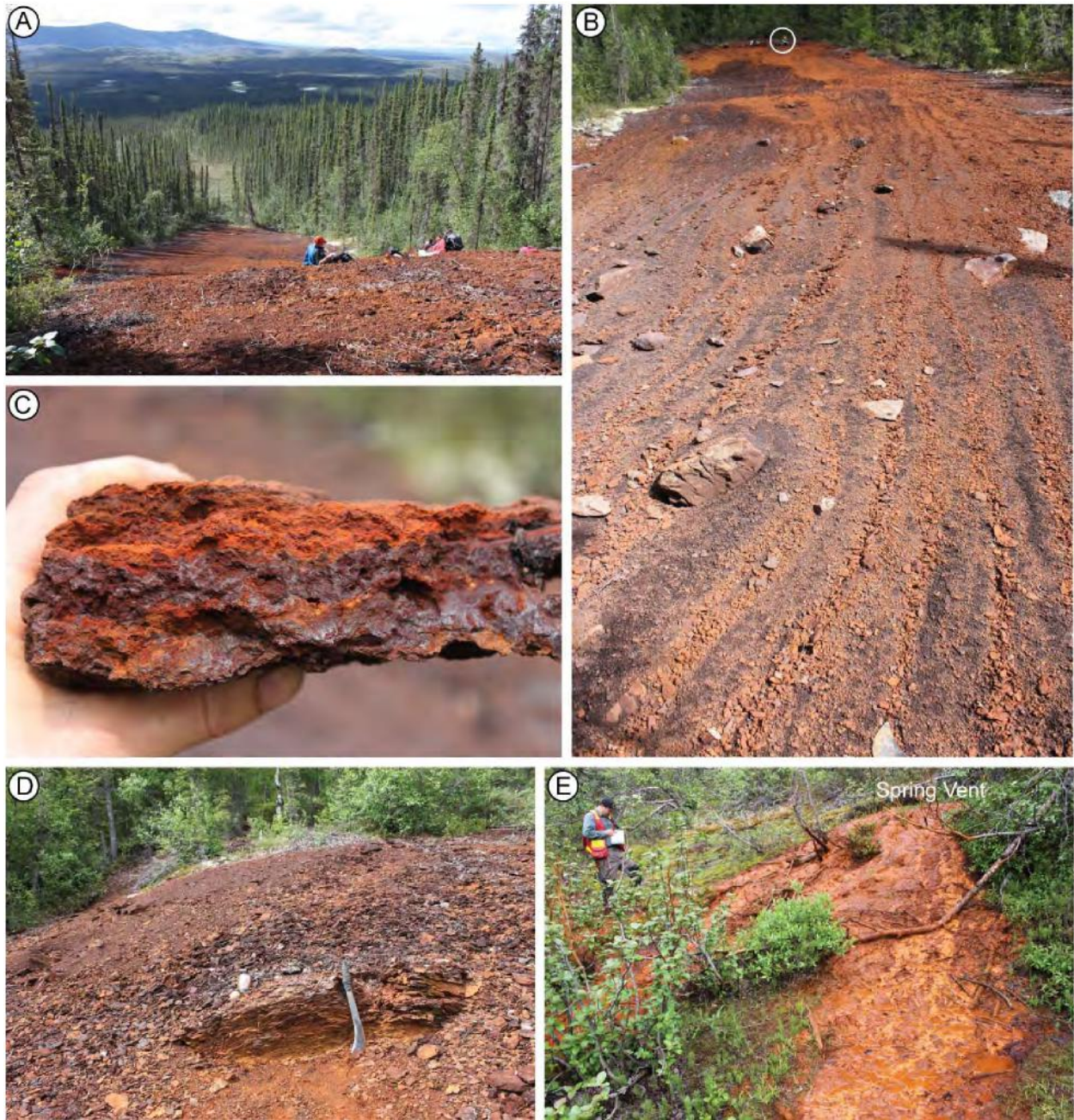


Figure 1: Tell gossan (A-D). Crystal Springs (E). A) Looking south towards Stewart River from top of Tell gossan. B) View looking up the Tell gossan. White circle indicates person sitting. C) Tell gossan hand sample likely composed of hematite and goethite. D) Rare bedded gossan outcrop amongst fractured rubble. Machete in foreground. E) Crystal Springs and associated gossan.

PROPERTY LOCATION

The Property is located in the Mayo Mining District in east-central Yukon (Fig. 2), and consists of 235 claims covering an approximate surface area of 4,900 hectares (Table 1). Most of the claims are present within NTS map sheet 106C/03, and some within 105N/14 (Fig. 3). The claim block is oriented in a northwest-southeast direction, with the northernmost point located at 64°3'40"N and 133°15'3"W, whereas the southernmost point is located at 63°59'11.5"N and 133°7'38.4"W.

Figure 2: Property Location map

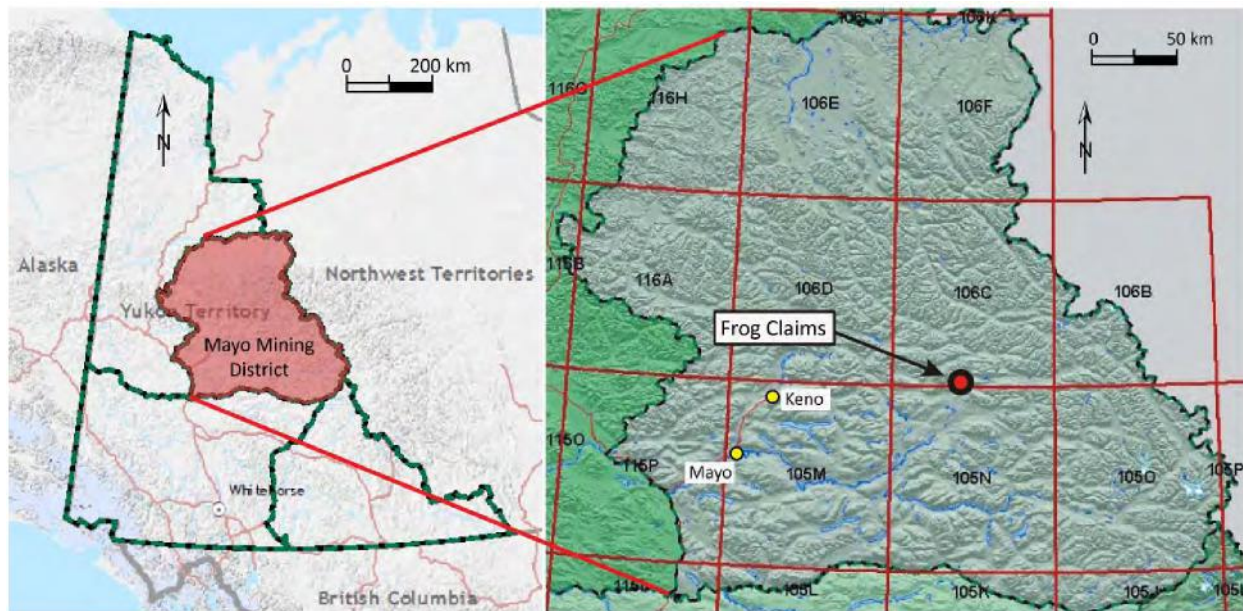
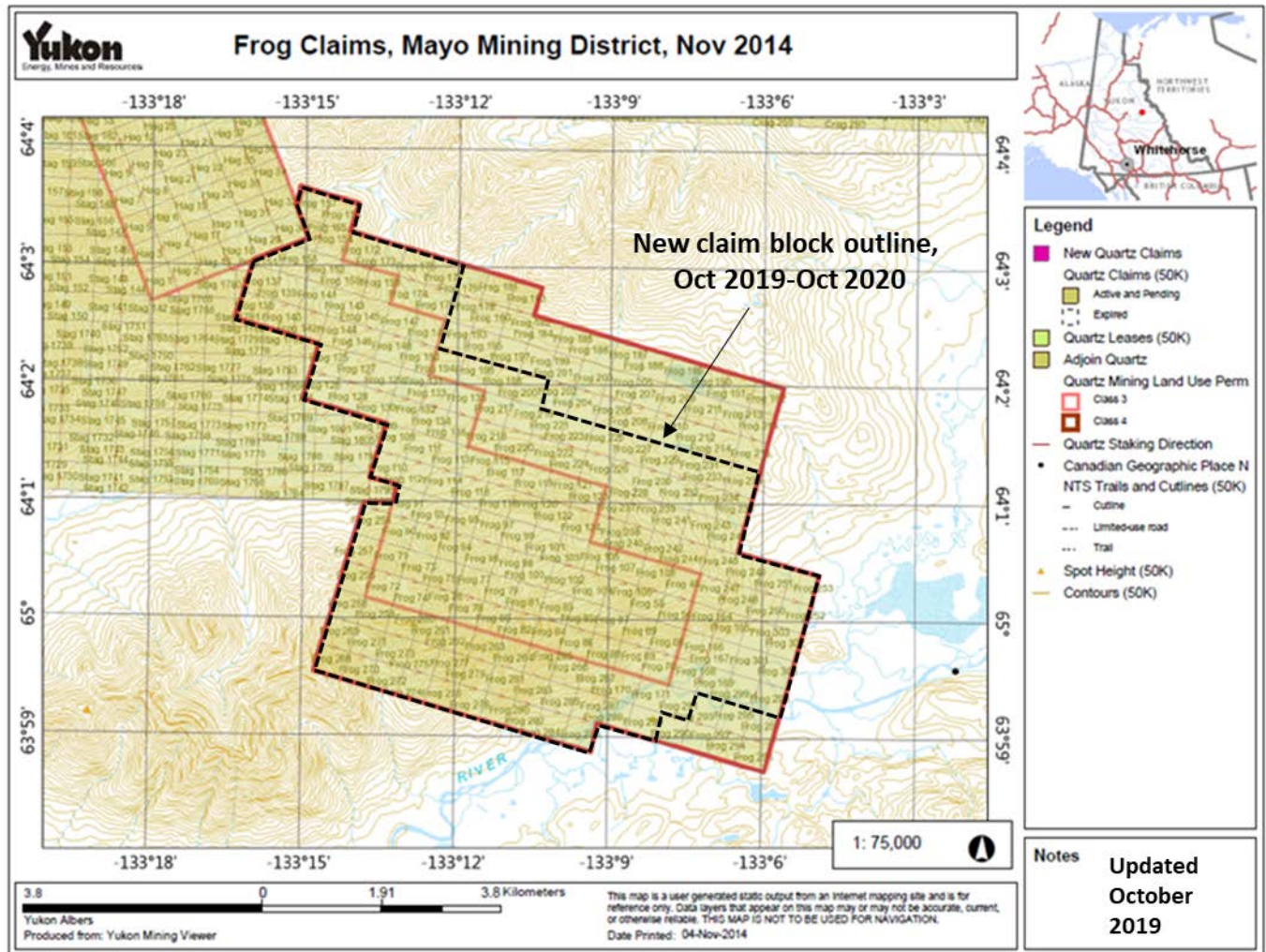


Table 1: Listing of Frog claims comprising the Property

Claim Name #	Grant Numbers	Expiry Date	Location
Frog 46	YC10564	2020/10/22	Nadaleen River
Frog 55 – 56	YC10573 -YC10574	2020/10/22	Nadaleen River
Frog 66	YC10584	2020/10/22	Nadaleen River
Frog 69 – 70	YC10587 - YC10588	2020/10/22	Nadaleen River
Frog 71 – 159	YD105803 - YD105891	2020/10/22	Northwest of Stewart River
Frog 164 – 171	YD156092 - YD156099	2020/10/22	North of Stewart River
Frog 172-177	YE60192-YE60197	2020/10/22	Northwest of Stewart River
Frog 194	YE60214	2020/10/22	Northwest of Stewart River
Frog 196	YE60216	2020/10/22	Northwest of Stewart River
Frog 198	YE60218	2020/10/22	Northwest of Stewart River

Frog 200	YE60220	2020/10/22	Northwest of Stewart River
Frog 217-289	YE60237 – YE60309	2020/10/22	North of Stewart River
Frog 291	YE60311	2020/10/22	South of Stewart River
Frog 298-303	YE60318 – YE60323	2020/10/22	North of Stewart River

Figure 3:



Geological Setting and Mineralization

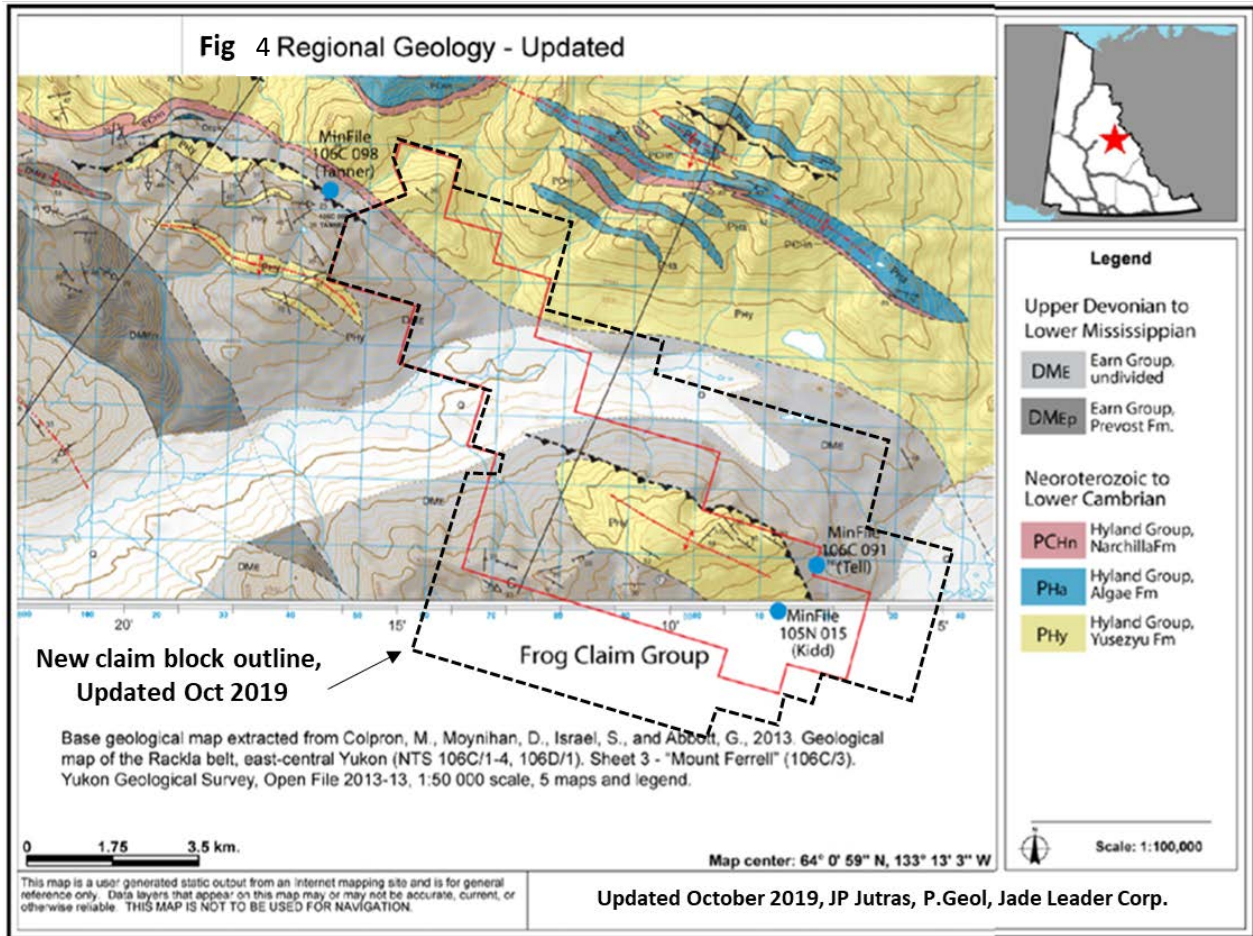
Regional Geological Setting

In terms of published geological information, the Property lies in the northern part of the Selwyn Basin fold and thrust belt. The Selwyn Basin is a late Proterozoic to middle Paleozoic depositional basin underlying much of eastern Yukon, and is highly prospective for

sedimentary exhalative (SEDEX) and volcanogenic massive sulphide (VMS) deposits (Goodfellow, 2007). From the Property, the Selwyn basin extends over a hundred kilometers to the east, south, and west. Less than 10 km north of the Property, basinal clastic deposition transitions to slope and shelf depositional settings. The slope and shelf deposits are related to the Paleozoic Mackenzie Carbonate Platform. Approximately 7 km north of the Property, Selwyn Basin clastic rocks are separated from Mackenzie Platform carbonate rocks by the Dawson Thrust. Thus, the Dawson Thrust, which is a major (up to 3 km wide), west-northwest striking regional structure, delineates the northern edge of the Selwyn Basin. In a broad geological sense, the Selwyn Basin rocks underlying the Property are of part of the hanging wall that was thrust over the Mackenzie Platform footwall. Initial regional mapping in the vicinity of the Tell property was conducted by S.L. Blusson in 1974, and incorporated into a digital compilation by Gordey and Makepeace (2003). Overlaying the Property claim boundaries on the 2003 compilation suggested that most of the Property is underlain by a northwest-southeast trending block of black shales and cherts belonging to the Ordovician to Silurian-aged Road River Group, with a small portion of the claim block to the northeast residing on Upper Proterozoic to Lower Cambrian Hyland Group clastic sedimentary rocks. Southwest of the Property, extensive Devonian to Mississippian Earn Group clastic sedimentary and felsic volcanic rocks are depicted. In 2011, as part of the South Wernecke mapping project, the Yukon Geological Survey (YGS) mapped the NTS 106C/03 (Mount Ferrell) 1:50K map sheet in greater detail (Colpron, 2012; Colpron et al. 2013). The revised mapping reinterprets the geology underlying the Property as being only Hyland Group and Earn Group rocks (Fig. 4). Rocks of the Road River Group no longer appear on the map.

Rocks of the Hyland Group are described by YGS as “brownish-grey sandstone and grit (pebbly sandstone), calcareous near top of unit; brown, grey, olive green and locally maroon shale and siltstone; locally quartz pebble conglomerate”, whereas Earn Group rocks are described as “brown-weathering, dark grey to black shale, chert, minor sandstone, siltstone; minor limestone; chert-pebble conglomerate and sandstone; locally bedded barite” (Colpron et al. 2013). Field work conducted by Manson geologists since 2011 generally corroborates the updated YGS observations and mapping. Manson observed that the eastern side of the Property is underlain by a grit unit with some interbedded shale. The grit unit varies from medium- to coarse-grained quartz-rich sandstone to quartz-pebble conglomerate. The western side of the Property is underlain by locally variable amounts of chert and variably-coloured shale to slate. The YGS mapping project did not extend south of map sheet 106C/3 to map sheet 105N/14, where most of the gossans and active iron-precipitating springs are located.

Figure 4:



SUMMARY OF PREVIOUS INVESTIGATIONS

Two MinFile occurrences, 105N 015 and 106C 091 (Deklerk and Traynor, 2005), are present on the southern portion of the Property (Figs. 3 and 4). In 1975, McIntyre Mines Ltd. staked the area around MinFile 105N 015 (63°59'53"N; 133°7'59"W) and named it the Kidd property (claim Y97808). In 1975 and 1976, the company conducted mapping and geochemical sampling to target zinc mineralization. In 1975, the company reportedly drilled an 11.3 m Winkie hole that failed to reach its target. In 1991, Kennecott Canada Inc. staked 10 claims (Tell 1-10, claim YB18115) around MinFile 106C 091 (64°0'15"N; 133°7'18"W). Kennecott conducted a mapping and geochemical sampling program in 1991 that targeted zinc mineralization. The company collected 30 stream

sediment samples, 58 soil samples and 5 rock samples. Some samples returned anomalous Zn (up to 20,600 ppm), Mn (24,180 ppm), Cd (276 ppm), Ni (1,670 ppm) and Co (432 ppm).

Both Minfile listings were visited, and left the impression that the recorded location of 106C 091 may be incorrect. At the 106C 091 coordinates, there are no gossans or active springs, the region is heavily vegetated, and any visible rocks are un-mineralized, gritty sandstones. The description provided in Minfile 106C 091 however, matches the general description of the Tell gossan. Thus, it is probable that Minfile 106C 091 was not a separate MinFile occurrence, but simply later work conducted at the location described in Minfile 105N 015. Regardless, all claims in the vicinity of these MinFile listings were allowed to lapse prior to being re-visited by Manson. Manson had the Frog Claims staked in 2002, allowed them to lapse in 2008, and subsequently re-staked them in the Fall of 2010, and has adjusted the claim holdings according to continuing exploration results since then.

To date, Jade Leader (formerly Manson) has mobilized personnel to the Property a total of 8 times for the purpose of conducting exploration activities not related to claim staking. In 2004, Aurora Geosciences Ltd. was hired by Manson Creek to conduct a soil-sampling program in the vicinity of the Tell gossan. A total of 40 samples were collected along two sample lines, with samples collected at 100 m intervals. The southern line samples returned anomalous Ag (1.14 ppm), Ba (3,850 ppm), Cu (294 ppm), Ni (214 ppm), Pb (99.1 ppm), Zn (69 ppm) and Co (5.1 ppm). The northern line samples were less anomalous with elevated levels of Zn (268 ppm) and Ba (930 ppm) in a couple of samples.

In 2005, two Manson geologists conducted a reconnaissance program that involved a detailed soil sampling grid over the Tell gossan, regional prospecting, and regional stream sediment sampling. A soil sample grid was established over the Tell gossan using handheld GPS to establish a grid center at 591,000 mE, 7,097,600 mN (NAD 27, Zone 8). The grid consisted of four, 400 m long east-west lines spaced 100 m apart. Where practicable, soil samples were collected every 25 m, for a total of 53 samples. Five rock samples were collected from the Tell gossan, and regional traverses resulted in the collection of two rock samples and 5 stream sediment samples. Results of the 2005 field program outlined a 400 m by 400 m zone over the Tell gossan with Zn > 100 ppm and Ni > 20 ppm. A higher grade, 240 m by 75 m core had samples with 10,000 – 49,600 ppm Zn and 250 to 2600 ppm Ni. Anomalous Zn and Ni values were also encountered in samples east of the Tell gossan, indicating additional zones of potential for a follow-up field program.

In 2011, Manson personnel conducted a work program between June 22 and July 8, 2011, and conducted a follow-up day visit on August 7. For the main field program, a fly camp was established in an alpine saddle to explore the north half of the property, then a camp was established on the north bank of the Stewart River to explore the south half of the claim block and focus on the area around the Tell gossan. The 2011 exploration program consisted of soil geochemical sampling at newly discovered gossans and springs, regional stream sediment sampling of all major drainages on the property,

spring water sampling of newly discovered springs, and prospecting. Stream sediment sampling was the prime focus of the program. Stream sediment sampling stations were located ~ 250 m apart. UTM (NAD27, zone 8) coordinates for stream sampling stations were loaded into handheld GPS units, and samples were collected as close as reasonably possible to each station. The actual UTM for each station was recorded.

During the 2011 program, prospecting activities in the area of the Tell gossan and vegetation kill zone led to the discovery of six new well developed active and previously active natural spring gossans; Crystal Springs, Ash Springs, Area 51, Roswell, Majestic and Corona. Soil and rock samples collected from the Tell Zone, Crystal Springs, Ash Springs, Roswell, Area 51, Majestic and Corona zones returned highly anomalous zinc, nickel, lead, arsenic, cobalt, and manganese. Property-wide stream sediment sampling also outlined two additional, regional geochemical gossanous anomalies at Area 13 and Area 15.

Subsequent to the gossan discoveries made in 2011, Manson hired a 4-person crew from Aurora Geosciences to conduct an induced polarization (IP) geophysical survey on the southern part of the Property from June 13 to June 21, 2012. A crew cut 4.5 km of lines and placed stations at 50 m intervals along a line azimuth of 70 degrees for lines L300 N and L600 N, and 160 degrees for lines L250 E, L500E and L750E (Fig. 5). All five lines were surveyed with an expanding pole dipole IP array and all but L600 N were also surveyed with a modified gradient IP array. Aurora used the IP data in Oasis Montaj to produce pseudosections of apparent chargeability, apparent chargeability error, and apparent resistivity draped over topography.

DMT Geosciences was contracted by Manson in 2014 to process and conduct a 2D inversion of the IP/resistivity data collected in 2012. The data processing identified a coincident anomalous high IP chargeability/low resistivity zone approximately 400 m by 800 m that is located just upslope of the active spring and gossan corridor east of the Tell gossan. Using a 20 mV/V contour, this zone was also found to be open to the east and to the northwest of the survey area.

To prepare for diamond drilling in late summer 2014, Manson conducted another week-long field program at the Tell Property from June 8 to June 15, 2014. Geographically, the field program focused on the southernmost quarter of the claim block where the gossans are located. Field work included soil sampling at 25 m intervals along the five geophysical lines cut in 2012, mapping and prospecting where high IP (conductivity and chargeability geophysical anomalies) extend to surface, establishing a soil sampling grid over the secondary target in the area of the Corona and Majestic gossans, and finalizing the diamond drill program. A total of 186 soil samples were collected and analyzed on site using a Niton X-Ray fluorescence (XRF) portable analyzer.

In July and August of 2014, a short initial drilling program was conducted on the Property to test unexposed areas of highly anomalous coincident chargeability/conductivity along trend of the known series of northern gossans (Tell, Ash and Crystal Springs, Roswell and Area 51).

Drill holes were logged for geology from top to bottom. The bottom 2 meters of drill hole #1 was send to the laboratory for analysis, and drill holes 2, 3 and 4 were sampled in their entirety from top to bottom, as recovery allowed, in 2 meter intervals. Holes were sawn with diamond saws, and a quarter of the core was shipped for analysis, with the remaining three quarters labelled and archived in stacked, wooden core boxes (Core stacked near Heli Pad on Drill Location Map, figure 5).

Summary strip logs are included in Table 3 below:

Table 3: Summary Strip Logs

Drill Hole #	From:	To:	Main lithological unit
1	4	47	Highly altered, clay rich agglomerate (?) - poor recovery
	47	49 (EOH)	Pyritic shales
2	1.8	7.95	Massive bedded barite
	7.95	118	Pyritic shales
	118	120	Lapilli tuffs
	120	243.3 (EOH)	Pyritic shales
3	0	92	Massive bedded barite
	92	161 (EOH)	Pyritic shales, local clasts massive sulphides.
4	0	62	Massive bedded barite
	62	104	Coarse to Fine sulphide bearing muds and synsedimentary breccias
	104	114	Quartz-mica(sericite)-sulphide unit, minor feldspars, possibly coarse grit or submarine hyaloclastic felsic volcanics
	114	126	Coarse to Fine sulphide bearing muds and synsedimentary breccias
	126	130	Quartz-mica(sericite)-sulphide unit, minor feldspars, possibly coarse grit or submarine hyaloclastic felsic volcanics
	130	154	Coarse to Fine sulphide bearing muds and synsedimentary breccias
	154	201 (EOH)	Quartz-mica(sericite)-sulphide unit, minor feldspars, possibly coarse grit or submarine hyaloclastic felsic volcanics

All drill core was logged, photographed, and cut in half with a diamond saw on site. One quarter of the core was bagged and sent to AGAT Laboratories for analysis (an ISO 9001 and ISO/IEC 17025 certified lab), while the remaining core was archived and stored on site for verification and reference purposes. Gold was assayed by standard fire assay methods with 45 additional elements analyzed by Induced Coupled Plasma (ICP) utilizing a 4-acid digestion. Quality assurance and quality control was ensured through the use of certified standards as well as checks and assay of duplicate samples.

Assay samples from drill core outlined widespread anomalous zinc and silver haloes associated mostly with the (syngenetic) sulphide bearing pyritic shales, coarse to fine sulphide bearing muds and synsedimentary breccias. Results from the 2014 drilling program are summarized in table 4 below.

Table 4: 2014 Mineralized Drill Intercepts Summary

Drill hole	From (m)	To (m)	Interval (m)*	Silver (ppm)	Zinc (ppm)	Zinc (%)
1	47	49 (eoh)**	2	3	1530	0.15
2	6	226 (eoh)**	220	3.16	1193	0.12
including	56	68	12	5.95	2237	0.22
and	130	160	30	1.97	2361	0.24
3	92	160	68	3.54	2354	0.24
including	92	114	22	3.42	3035	0.30
and	136	138	2	1.60	7000	0.7
4	140	148	8	2.6	1306	0.13
including	146	148	2	4.2	3320	0.33

In 2015, a one week program was conducted on the Property to prospect around the source of an extensive stream geochemical anomaly generated during previous regional sampling, as well as conduct a tight spaced ground magnetometer grid over the previously conducted Induced Polarization grid and 2014 drilling.

Program objectives, as conducted by two geologists, one geophysicist and one field assistant, were to advance knowledge of the underlying geology on the property as well as discover the source of historical anomalous stream samples.

Previously obtained anomalous stream sample values are summarized in table 5 below.

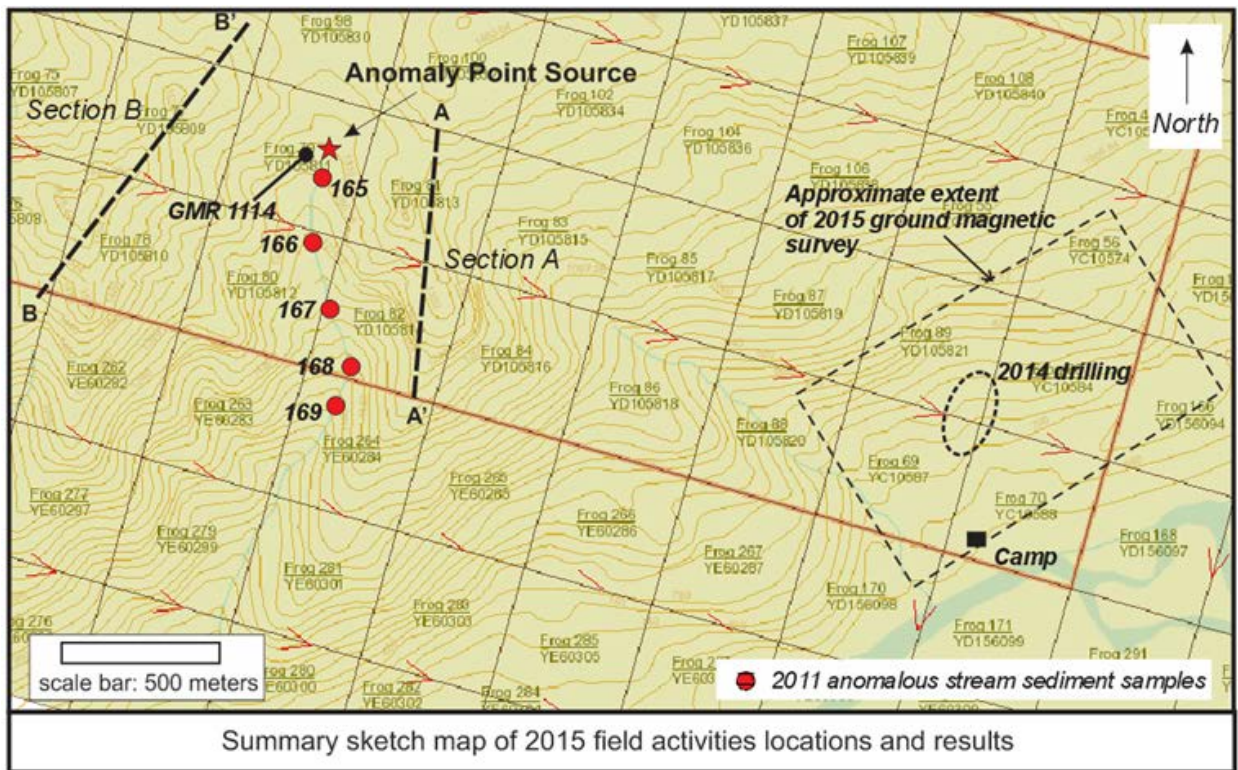
Table 5: Area 13 Stream Sampling Geochemistry

Sample #	UTM E	UTM N	Zn (%)	Ni (ppm)	Cu (ppm)	Co (ppm)	Ba (ppm)	Mn (ppm)
165	588920	7098442	1.43	>1000	163	689	771	>10000
166	588913	7098236	0.40	441	55	132	386	6041

167	588970	7098042	3.00	>1000	126	656	733	>10000
168	589101	7097839	1.42	>1000	79.5	384	557	>10000
169	589071	7097725	0.52	210.2	22	58	150	2788

Two ridges framing the anomalous creek were mapped, showing sequences of cherts and shales, which form a series of climbing folds to the North. Observations from the ridge tops indicate that the major fold structure controlling the distribution of units is anticlinal in nature, and closes along an axis of 090-110 degrees at the top of the ridge. Mapped ridges are shown with overlays outlining geology and structure along sections A-A' to B-B', with section locations outlined on the 2015 regional work map below (Figure 6).

Figure 6: 2015 exploration work location map.



A point source for the geochemical stream sediment anomaly was identified as an active spring vent which enters the natural creek just above historical sample 165. Thick crusts (3-5 centimeters) of reddish to white oxide/oxyhydroxide secondary deposits cover the stream bed downstream from this distinct point source, although the primary sulphide mineralization from which this remobilization occurs were not identified at surface. 2 samples, one of the crusts proximal to the point source, and one of a boulder float of iron

oxide rich polymictic black shale dominated breccia proved to be highly anomalous in some of the program's target metals.

Figure 7:

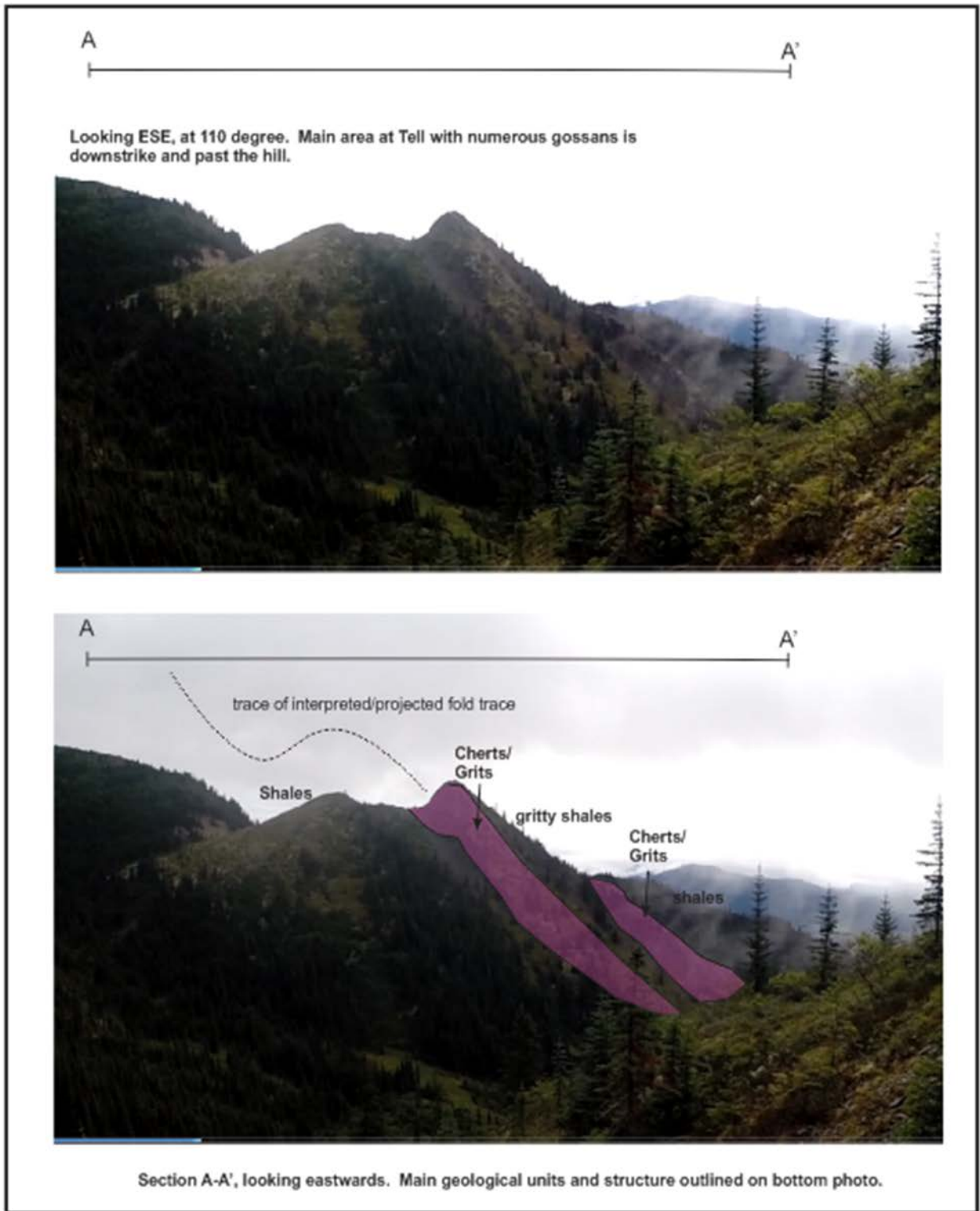


Samples of the remobilized material (GMR 1115) as well as of a rusty black shale dominated breccia float (GMR 1114) , similar to some of the units found near the main Tell gossan in drilling in 2014 both returned elevated values of metals of interest and SEDEX/VMS style pathfinder elements (table 6).

Table 6: Area 13, 2015 sampling

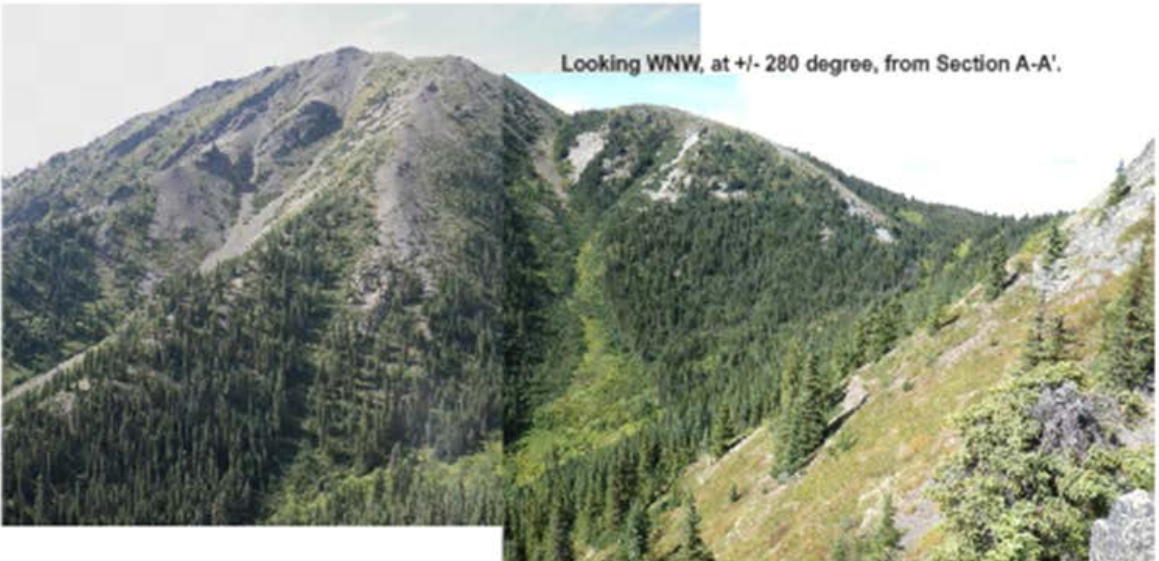
Sample #	UTM E	UTM N	Zn (%)	Ni (ppm)	Cu (ppm)	Co (ppm)	Ba (ppm)	Mn (ppm)
GMR 1114	588902	7098488	0.29	470	260	190	1610	15200
GMR 1115	588927	7098472	3.83	5970	280	2780	4170	>10000

Figure 8, sections A-A', B-B' (map location on figure 6):



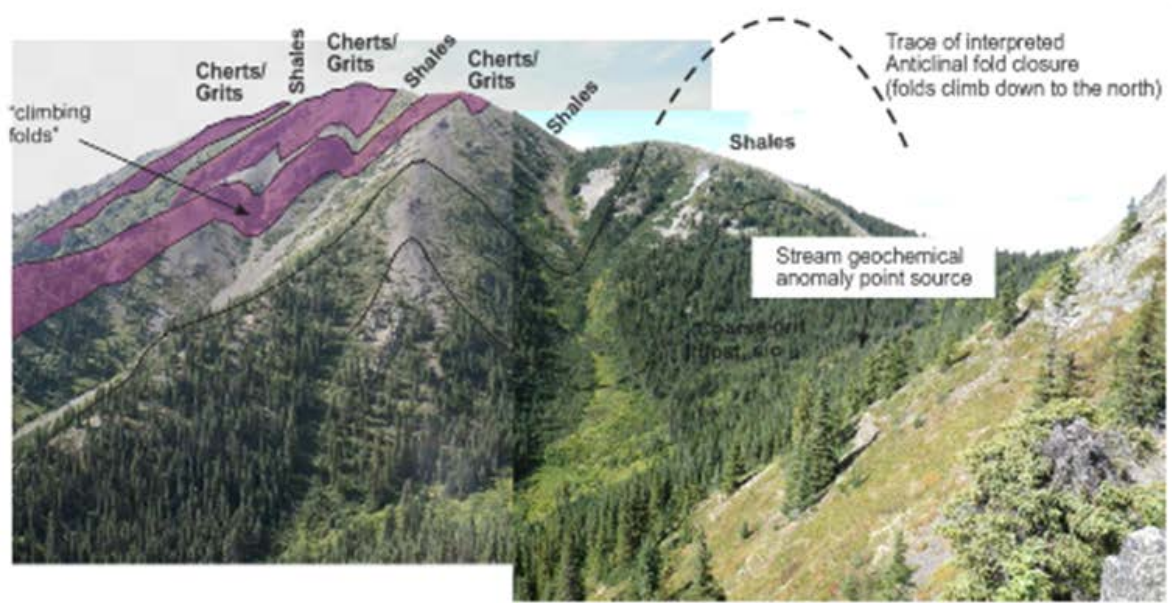
B

B'



B

B'



Section B-B', looking westwards. Main geological units and structure outlined on bottom photo.

Structural measurements taken on traverses support the geological sections, with a majority of bedding planes in the limbs of climbing folds ranging from sub vertical to dipping steeply to the south, and local variations where climbing fold closures rotate those bedding planes over short distances to shallow north dipping (typically 25-35 degrees). The main foliation (f1) is likely a regional axial planar shearing fabric, and ranges in general direction from 90 degrees (east-west) to 120 degrees.

The shale and chert package exposed along sections A-A' and B-B' are interpreted to extend eastwards under cover towards the southern portion of the geophysical grids, and connect with the previously documented Corona and Majestic gossans.

Float around the stream sediment point source anomaly indicated the presence of subcropping, metal rich black shales and gritty units, such as has been observed in drilling under the northern belt of gossans of the Main zone in 2014. It can be noted that nowhere else have such units been observed in mapping/prospecting, and it would be supported by both field observations and understanding of both stratigraphic and structural settings that both area 13 and the main zone are likely related to an extensive (3 km +) metal rich horizon within the stratigraphic sequence which is only partially exposed due to a combination of current topography and underlying structural folding.

Stratigraphically, the black shale units and associated exhalative units (syngenetic sulphides and barite units) appear to overly a coarse mixed grit unit with local evidence of subvolcanic origins.

In total, some 16 samples were collected during the 2015 program, including 8 which were duplicates of core stored from the 2014 program for QA/QC purposes.

2015 Ground Magnetic Survey

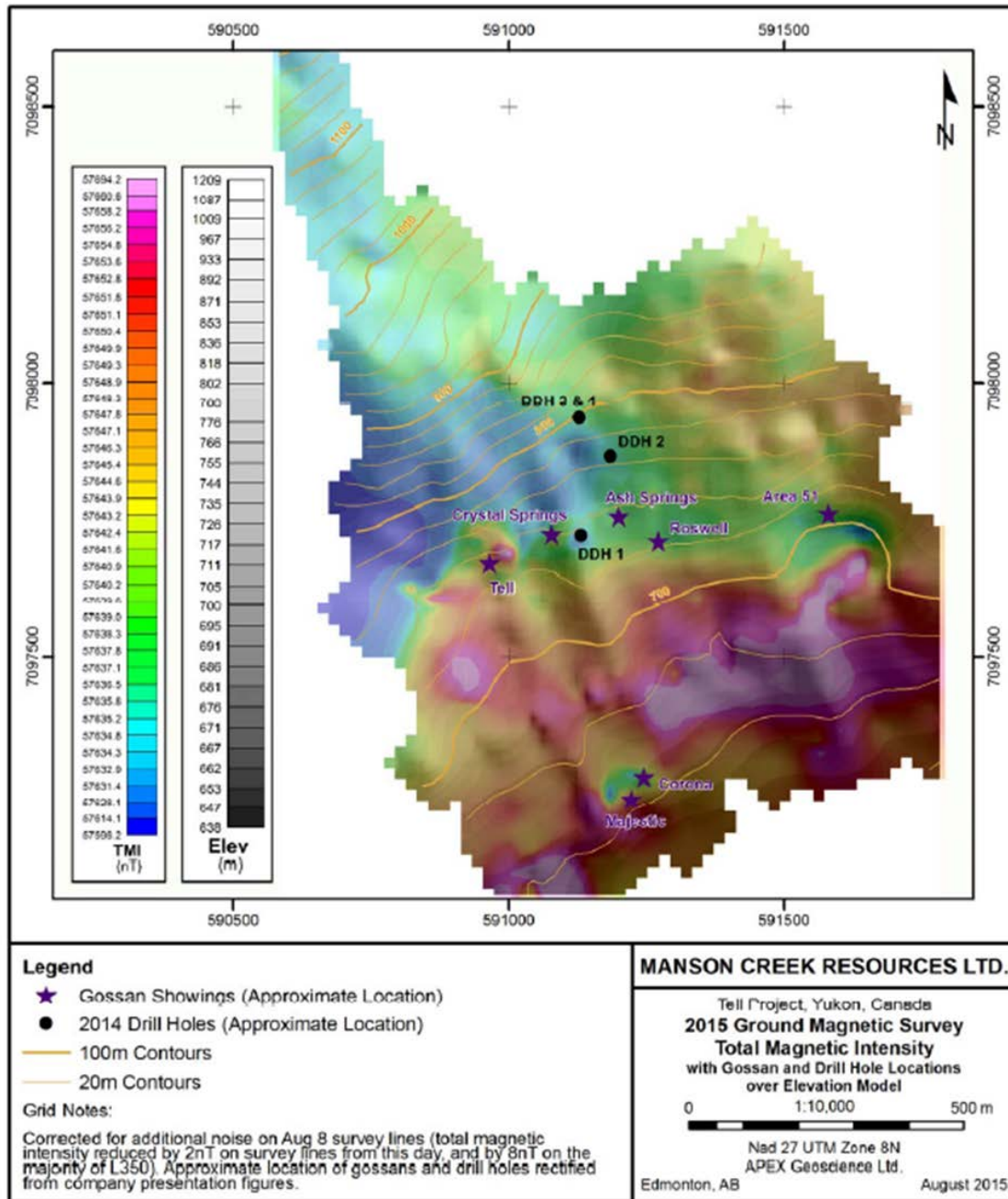
Concurrently with the more regional mapping and prospecting work, a tightly spaced ground magnetics survey was conducted over the area where the first pass drilling had been conducted in 2014. Existing cut lines from the 2011 Induced polarization were used as the base lines, with additional infill lines as time allowed.

Over 15 line km of ground survey were completed. The data supports the geological interpretation for the area developed during the 2014 and 2015 programs, and outlines a relationship between relative magnetic lows and the presence of gossans.

Subsequent to the data being processed, the contractor, Apex Geosciences Ltd. of Edmonton, Alberta, suggested that "Interestingly, the metal rich cold springs producing large orange gossans at surface are all located within lower magnetic regions proximal to the higher magnetic region (Figure 9). This relationship may be significant, representing the possibility of a continuous metal-rich layer contained within a specific section of the

magnetic low region. A very small window of the same magnetically weak unit appears to be closely related to the gossan showings in the southern section of the grid as well.”

Figure 9: 2015 Ground magnetic survey.



The 2015 program allowed for the first well documented look at the lithological and structural framework underlying the property through surface mapping of well exposed

sections proximally and to the west of the Main Tell gossan in a context sufficient to guide further exploration.

In addition to outlining large scale folding property wide, the program also identified certain key elements which continue to support the search for massive sulphides related to a sedex/vms style of environment.

All active streams redepositioning metal bearing oxide mineralization to date were found in close association to a specific lithological unit, a mineralized (Zn-Ag-Mn) black shale sequence with syngenic breccias, syngenic sulphides and evidence of exhalative components (bedded barite).

Conversely, all other units exposed and mapped to date can be ruled out as potential sources of sulphide mineralization that could have led to gossan formation.

Mineralized black shales at area13 may be related to an exhalative time horizon and be the northwestern extension of the black shales intercepted in drilling in 2014, extending this potential target horizon to some 3 kilometers of known strike length to date, consistent with the current litho-structural model for the property.

Due to the incipient folding, as well as the fact that the sulphide bearing shales tend to be erosionally recessive as opposed to the more siliceous shales, grits and chert units, and in consideration of the evidence of near surface alteration of sulphides, fresh target sulphides are unlikely to be exposed at surface. Continued geophysical investigations, namely by electro magnetic methods (EM), or gravity may be the best way forward in identifying potential massive sulphide bodies within this stratigraphic unit.

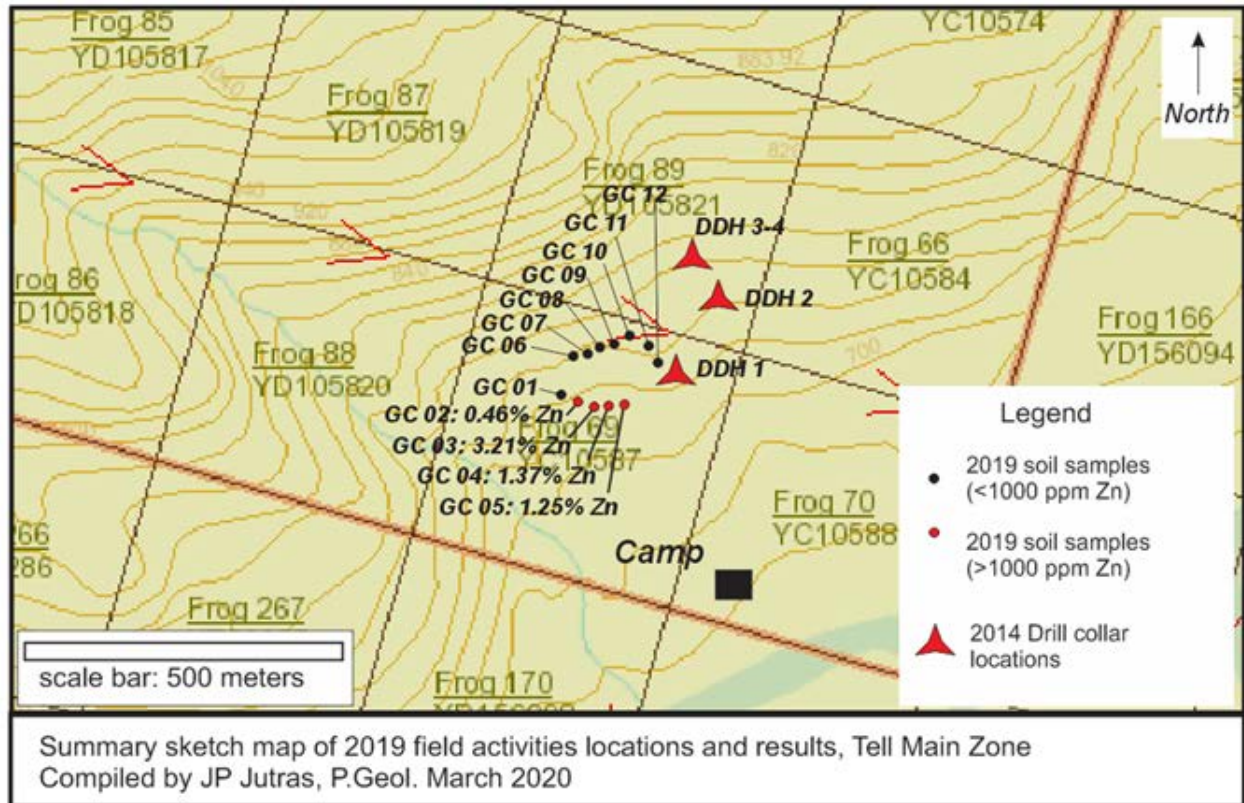
2019 Field Program

The important new regional discovery of high grade massive sulphide sedex style Zn-Pb-Ag-MN mineralization by Cantex Mine Development in 2018-2019 in the district provided Jade Leader with the incentive to conduct a short fly-in 2019 exploration program at the Tell property, which was conducted by one geologist and one field assistant during the period of July 16th to the 21st (in field).

A total of 25 new soil samples were collected over two target areas, as described below. Soil samples were screened on site from hand dug pits targeting soils below the organic layer when present, bagged and sent to ALS Laboratories in Vancouver for analysis (an ISO/IEC 17025:2017 accredited lab). Samples were dried, sieved to 180 microns, and analyzed by ICP (Induced Coupled Plasma) after an Aqua Regia digestion for a suite of 53 elements. Overlimit samples (zinc) were re-analyzed with ore grade methods for final concentrations. Quality assurance and quality control was ensured through the use of certified standards, blanks as well as checks and assay of duplicate samples.

Crew flew in to the main Tell zone for 2.5 days to conduct additional prospecting and soil sampling to increase the existing dataset at the northwestern limits of the existing grid and gossan occurrences between the Crystal Spring and Tell gossans. 12 new soils were collected during this time (GC-ST-01 to 12). Basic Camp clean up and restoration were also conducted to maintain the winterized camp on site in good condition. Locations of the soil sampling, to the west of the 2014 drilling area, is illustrated in Figure 10.

Figure 10:



4 of the 12 samples collected during this phase of work showed strongly anomalous and well correlated Zn-Mn anomalies, in association with gossanous zones west of the drilling area (and around the main Tell gossan) (Table 7, full assay results included in appendix B).

Table 7: Tell main zone 2019 soils geochemical summary.

	Zn	Ag	Pb	Mn	Ni	Fe
sample number	ppm	ppm	ppm	ppm	ppm	%
Tell Main Zone						
GC-ST-01	354	0.04	2.1	183	23	0.2
GC-ST-02	4670	0.04	22.3	937	271	6.0
GC-ST-03	32100	0.02	1.1	29400	3110	44.0
GC-ST-04	13700	0.09	17.7	1560	913	18.0
GC-ST-05	12450	0.08	12.0	5020	824	22.6
GC-ST-06	151	0.04	20.4	457	20	3.0
GC-ST-07	116	0.10	41.5	697	35	3.9
GC-ST-08	82	0.09	46.3	773	26	3.6
GC-ST-09	109	0.13	32.4	494	37	4.2
GC-ST-10	134	0.22	34.0	573	47	3.6
GC-ST-11	209	0.29	30.1	1440	53	4.1
GC-ST-12	579	0.13	26.3	1520	64	4.2

Crew then moved to a fly camp site near the area 13 target prospected in 2015 to conduct initial soil sampling lines and mapping, with the objective of determining whether carbonate units were present and exposed in the stratigraphy near the ridges. 13 soil samples were collected bracketing the anomalous stream gossan point source (GC-ST-12 to 25). Two of the samples (GC-ST-13 and GC-ST-21) showed elevated zinc and manganese anomalies, which correlated well with the gossan point source, high stream sample values (165) and previous rock float sample GMR 1114 over roughly 75 meters of strike length in a SE direction. Sample locations are shown on Figure 11 and summary assay results are shown in table 8 (full assay results included in appendix B).

Field traverses also identified previously undocumented carbonate units proximal to the mineralization anomalies and NW of the area 13 gossan (labelled Lst in Figure 11).

Figure 11.

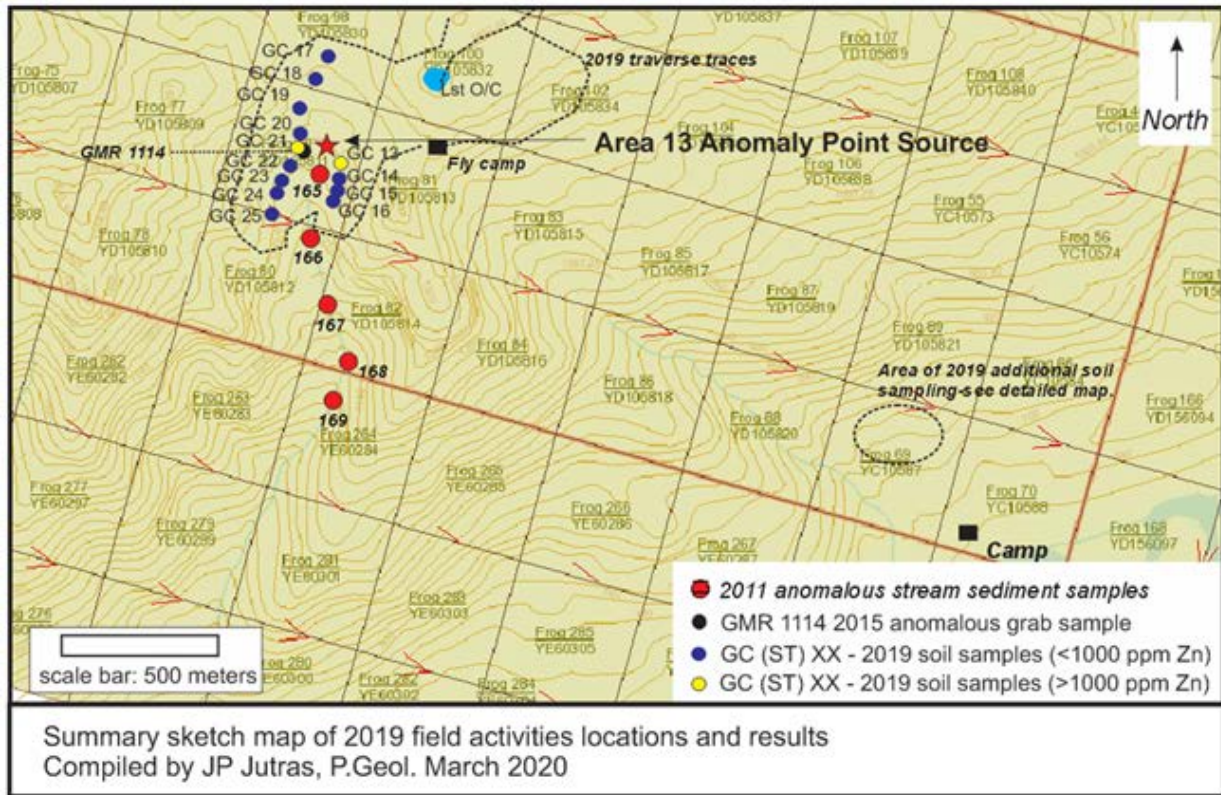


Table 8: Area 13, 2019 soils geochemical summary.

sample number	Zn ppm	Ag ppm	Pb ppm	Mn ppm	Ni ppm	Fe %
Tell-Area 13						
GC-ST-13	1075	0.26	19.2	1360	149	3.9
GC-ST-14	92	0.38	14.5	393	29	3.8
GC-ST-15	117	0.17	21.0	417	30	4.1
GC-ST-16	94	0.19	18.4	572	29	3.7
GC-ST-17	80	0.05	17.9	487	28	3.8
GC-ST-18	75	0.04	20.4	486	27	3.9
GC-ST-19	184	0.43	24.2	556	48	4.9
GC-ST-20	30	11.75	25.0	24.2	4	1.5
GC-ST-21	2390	0.15	43.4	1160	195	16.9
GC-ST-22	157	0.08	30.7	1670	35	5.0
GC-ST-23	354	0.29	23.8	1320	64	4.2
GC-ST-24	175	0.85	27.7	657	43	4.6
GC-ST-25	175	0.14	17.8	1300	37	4.2

Interpretations and Conclusions.

Ongoing work continues to document a geological setting with large highly anomalous, and unexplained Zn-Mn (Ag/Pb) anomalies, often in the shape of impressive surface gossans, which support a target rich environment significant potential to host SEDEX/VMS type massive sulphide mineralization.

As carbonate units have been historically found in association with numerous regional Zn-Ag-Pb anomalies (Rusty Mountain Val and Vera occurrences, Craig occurrence, Ocelot discovery (Atac Resources) and more recently the North Rackla massive sulphide discoveries by Cantex Mine Development Corp.), the documentation of carbonate units at Tell this is a new encouraging element that requires follow up.

Further geophysical work may be required to vector into the more promising portions of the system for such deposits as the current dataset remains fairly basic, and could be greatly improved with such techniques as gravity, electromagnetics and magnetic surveys. As the property has never been flown with a detailed airborne geophysical survey (including geological survey coverage), and geological work to date supports an extensive syngenetic sulphides bearing, mineralized package of fine grained sediments over a multiple km scale span, a property wide airborne electromagnetic survey may be a cost effective tool to generate responses pointing to more focused sulphide accumulations within the stratigraphic package.

REFERENCES

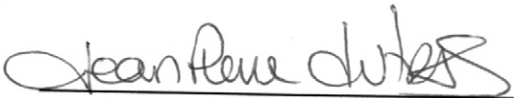
- Blusson, S.L., 1974. Open File 205. Geological Survey of Canada.
- Chernish, R., 2012. Assessment Report on the 2012 Induced Polarization Geophysical Survey on the Frog Claims Nadaleen River and NW of Stewart River, Yukon.
- Chernish, R. and Rainey, D., 2011. Assessment Report on the 2011 Geological and Geochemical Sampling Survey on the Frog Claims Nadaleen River and NW of Stewart River, Yukon.
- Colpron, M., Moynihan, D., Israel, S., and Abbott, G., 2013. Geological map of the Rackla belt, east-central Yukon (NTS 106C/1-4, 106D/1). Yukon Geological Survey, Open File 2013-13.
- Deklerk, R. and Traynor, S. (compilers), 2005. Yukon MINFILE - A database of mineral occurrences, Yukon Geological Survey.
- Goodfellow, W.D. 2007. Base metal metallogeny of the Selwyn Basin, Canada, *in* Goodfellow, W.D., ed., Mineral Deposits of Canada: A Synthesis of Major Deposit-Types, District Metallogeny, the Evolution of Geological Provinces, and Exploration Methods: Geological Association of Canada, Mineral Deposits Division, Special Publication No. 5, p. 553-579.
- Gordey, S.P., and Makepeace, A.J., 2003. Yukon Digital Geology, version 2.0, S.P. Gordey and A.J. Makepeace (compilers): Geological Survey of Canada, Open File 1749 and Yukon Geological Survey, Open File 2003-9 (D).
- Gunson, Cory, 2015, 2015 Tell Property Ground Magnetometer Survey-Post Field Memorandum, Apex Geosciences Ltd.
- Jutras, J.P., 2014. Assessment report, 2014 core drilling program, Guaman Project/Tell property, Mayo Mining District, Yukon.
- Jutras, J.P., 2015. Technical report 2015 exploration program Tell Property, Mayo Mining District, Yukon. YMEP Grant 15-097, Target evaluation, Hard Rock.
- Rainey, D., 2014. National Instrument 43-101 Technical Report. Geological and Geophysical Reconnaissance of the Tell Property (Frog Claims) in the Mayo Mining District, Yukon.
- Yukon Geological Survey. Unknown date. Selwyn Basin Metallogeny. 55 pages.
<http://www.geology.gov.yk.ca/pdf/SelwynBasin.pdf>

APPENDIX "A"

CERTIFICATE OF QUALIFICATIONS

I, Jean Pierre Jutras of 1048 Edgemont Rd NW, Calgary, AB, T3A 2J3, hereby certify that:

1. I am a Professional Geologist with a residence and office at the above address.
2. I graduated from the University of Alberta with a Bachelor of Science Degree honors in Geology (1991).
3. I am a Registered Professional Geologist with APEGA, member #65297.
4. I have worked as a geologist since my graduation from University.
5. The 2019 work described in this report was carried out under my supervision.
6. I am the President and a Director of Jade Leader Corp. (Formerly Manson Creek Resources Ltd.) whose address is Suite 800, 808 – 4th Avenue SW, Calgary, Alberta, T2P 3E8.



Jean Pierre Jutras, P. Geol.
President and Director



APPENDIX "B"

Samples collected, locations/descriptions, and assay certificates.

TELL PROPERTY-2019 Soil samples, location, description

sample number	type	UTM E	UTM N	description
GC-ST-01	soil	590841	7097803	lower tell - main camp grid: dark black to brown , minor pebbles, mixed with fg brw soils
GC-ST-02	soil	590865	7097795	lower tell - main camp grid: gr-brw soils, mix of bl organics with 80% brw soils, 75cm depth
GC-ST-03	soil	590893	7097789	lower tell - main camp grid: dark red skree, fe oxidized soils, at surface in the spring
GC-ST-04	soil	590919	7097791	lower tell - main camp grid: bl organics with minor brw soils, ground is frozen, dug to 60cm depth
GC-ST-05	soil	590944	7097795	lower tell - main camp grid: bl organics with br soils, frozen, coarse pebble sized pieces
GC-ST-06	soil	590856	7097875	lower tell - main camp grid: above tell spring, br to bl soils, minor pebbles, shale outcrop proximal, 50cm
GC-ST-07	soil	590879	7097879	lower tell - main camp grid: br gr soils, minor coarse material
GC-ST-08	soil	590898	7097894	lower tell - main camp grid: br gr soils, minor coarse material
GC-ST-09	soil	590925	7097899	lower tell - main camp grid: br soils minor coarse material with organics, bl sh oc
GC-ST-10	soil	590951	7097914	lower tell - main camp grid: bl organics with fg brw to gr soils, boggy, 75cm
GC-ST-11	soil	590985	7097896	lower tell - main camp grid: bl organics with fg brw to gr soils, boggy, 75cm
GC-ST-12	soil	591001	7097870	lower tell - main camp grid: bl organics with fg br soils, frozen ground
GC-ST-13	soil	588945	7098517	upper tell - ridge camp - white fang spring; white ppt from spring, soild boggy bl organics with br to gr soils; 40cm
GC-ST-14	soil	588946	7098493	upper tell - ridge camp ; boggy - br soils with organics, 40-60cm
GC-ST-15	soil	588943	7098463	upper tell - ridge camp ; boggy - br soils with organics, 40-60cm
GC-ST-16	soil	588941	7098437	upper tell - ridge camp ; boggy - br soils with organics, 40-60cm
GC-ST-17	soil	588960	7098868	upper tell - ridge camp br to golden br soils, minor course pebbles
GC-ST-18	soil	588910	7098803	upper tell - ridge camp br to golden br soils, minor course pebbles, calcareous
GC-ST-19	soil	588880	7098712	upper tell - ridge camp - br to bl soils, with mg shale fragments, shale oc nearby
GC-ST-20	soil	588891	7098622	upper tell - ridge camp br to golden br soils, minor course pebbles
GC-ST-21	soil	588885	7098560	upper tell - ridge camp - br to bl soils, with mg shale fragments, shale oc nearby
GC-ST-22	soil	588880	7098513	upper tell - ridge camp - br to bl soils, with mg shale fragments, shale oc nearby
GC-ST-23	soil	588858	7098483	upper tell - ridge camp - br to bl soils, with mg shale fragments, shale oc nearby
GC-ST-24	soil	588834	7098429	upper tell - ridge camp - br to bl soils, with mg shale fragments, shale oc nearby
GC-ST-25	soil	588831	7098330	upper tell - ridge camp - br to bl soils, with mg shale fragments, shale oc nearby

UTM-NAD 83 Zone 8N



ALS Canada Ltd.
2103 Dollarton Hwy
North Vancouver BC V7H 0A7
Phone: +1 (604) 984 0221 Fax: +1 (604) 984 0218
www.alsglobal.com/geochemistry

To: **JADE LEADER CORP.**
SUITE 815, 808-4TH AVENUE S.W
CALGARY AB T2P 3E8

Page: 1
Total # Pages: 2 (A - D)
Plus Appendix Pages
Finalized Date: 21-AUG-2019
Account: JALECO

CERTIFICATE VA19193689

Project: Tell

This report is for 25 Soil samples submitted to our lab in Vancouver, BC, Canada on 6-AUG-2019.

The following have access to data associated with this certificate:

JEAN-PIERRE JUTRAS

BARBARA ONEILL

SAMPLE PREPARATION

ALS CODE	DESCRIPTION
WEI-21	Received Sample Weight
LOG-22	Sample login - Rcd w/o BarCode
SCR-41	Screen to -180um and save both

ANALYTICAL PROCEDURES

ALS CODE	DESCRIPTION	INSTRUMENT
ME-OG46	Ore Grade Elements - AquaRegia	ICP-AES
Zn-OG46	Ore Grade Zn - Aqua Regia	
ME-MS41L	Super Trace Lowest DL AR by ICP-MS	

This is the Final Report and supersedes any preliminary report with this certificate number. Results apply to samples as submitted. All pages of this report have been checked and approved for release.

***** See Appendix Page for comments regarding this certificate *****

Signature: 

Colin Ramshaw, Vancouver Laboratory Manager



ALS Canada Ltd.
 2103 Dollarton Hwy
 North Vancouver BC V7H 0A7
 Phone: +1 (604) 984 0221 Fax: +1 (604) 984 0218
 www.alsglobal.com/geochemistry

To: JADE LEADER CORP.
 SUITE 815, 808-4TH AVENUE S.W
 CALGARY AB T2P 3E8

Page: 2 - A
 Total # Pages: 2 (A - D)
 Plus Appendix Pages
 Finalized Date: 21-AUG-2019
 Account: JALECO

Project: Tell

CERTIFICATE OF ANALYSIS VA19193689

Sample Description	Method Analyte Units LOD	WEI-21	ME-MS41L	ME-MS41L	ME-MS41L	ME-MS41L	ME-MS41L	ME-MS41L	ME-MS41L	ME-MS41L	ME-MS41L	ME-MS41L	ME-MS41L	ME-MS41L	ME-MS41L	ME-MS41L
		Recvd Wt. kg	Au ppm	Ag ppm	Al %	As ppm	B ppm	Ba ppm	Be ppm	Bi ppm	Ca %	Cd ppm	Ce ppm	Co ppm	Cr ppm	Cs ppm
GC ST 01		0.02	0.0002	0.001	0.01	0.01	10	0.5	0.01	0.0005	0.01	0.001	0.003	0.001	0.01	0.005
GC ST 02		0.22	0.0015	0.041	0.15	1.05	30	120.0	0.07	0.0256	5.55	0.842	1.555	1.655	3.22	0.119
GC ST 03		0.60	0.0008	0.044	1.58	15.15	<10	284	1.05	0.277	1.03	16.70	33.9	48.8	18.55	0.826
GC ST 04		1.22	<0.0002	0.016	0.53	30.2	<10	279	2.03	0.0159	0.05	80.2	5.15	1705	1.45	0.281
GC ST 05		0.36	0.0004	0.092	1.20	27.4	<10	137.5	1.13	0.223	1.22	58.2	22.6	113.0	11.65	0.714
GC ST 06		0.22	0.0009	0.081	0.54	56.7	<10	386	0.95	0.0980	1.16	17.90	10.95	262	7.97	0.807
GC ST 07		0.42	0.0002	0.036	1.18	7.05	<10	123.0	0.38	0.256	0.42	0.426	34.9	12.80	15.85	0.593
GC ST 08		0.64	0.0008	0.096	1.16	12.50	<10	106.5	0.95	0.360	0.33	0.107	42.4	21.0	14.70	0.697
GC ST 09		1.00	0.0004	0.087	1.06	8.66	<10	222	0.82	0.405	0.17	0.166	50.7	20.9	14.85	0.635
GC ST 10		0.46	0.0004	0.125	1.28	18.80	<10	125.5	0.75	0.350	0.34	0.174	44.5	23.7	17.05	0.658
GC ST 11		0.52	0.0010	0.220	0.76	13.85	<10	98.9	0.76	0.352	7.59	0.150	33.0	22.9	10.60	0.666
GC ST 12		0.56	0.0010	0.291	1.05	17.15	<10	350	0.97	0.312	1.86	0.513	46.8	25.8	13.75	0.505
GC ST 13		0.54	0.0006	0.133	0.98	19.20	<10	274	0.64	0.311	0.68	0.810	45.6	30.2	13.60	0.474
GC ST 14		0.78	0.0019	0.258	1.82	12.15	<10	538	1.55	0.368	0.40	16.30	21.9	34.0	27.0	4.07
GC ST 15		0.88	0.0012	0.375	1.40	8.70	<10	713	0.92	0.380	0.09	0.385	17.85	12.30	29.0	4.05
GC ST 16		0.88	0.0008	0.174	1.40	17.05	<10	949	0.77	0.336	0.35	0.458	22.2	11.70	28.3	2.49
GC ST 17		1.04	0.0015	0.189	1.45	13.85	<10	1100	1.70	0.439	0.17	0.298	21.5	11.95	28.4	5.72
GC ST 18		0.26	0.0008	0.052	1.52	14.05	<10	148.5	0.86	0.316	0.03	0.171	29.1	13.80	23.7	1.190
GC ST 19		0.20	0.0006	0.041	1.39	14.20	<10	95.2	0.63	0.283	0.02	0.152	27.8	12.40	20.6	1.115
GC ST 20		0.24	0.0010	0.426	1.92	21.5	<10	130.0	0.62	0.326	0.09	0.762	18.55	19.80	34.8	2.64
GC ST 21		0.20	0.0031	11.75	0.63	19.15	<10	895	0.38	0.263	0.08	1.710	21.3	0.761	22.9	1.210
GC ST 22		0.06	0.0010	0.150	2.37	75.8	<10	295	2.93	0.502	0.10	14.45	27.4	39.8	36.2	8.21
GC ST 23		0.28	0.0006	0.083	1.64	14.80	<10	112.0	0.68	0.411	0.03	1.055	21.8	23.4	27.0	3.28
GC ST 24		0.16	0.0015	0.292	1.46	23.3	<10	269	0.96	0.439	0.35	1.125	18.00	14.75	28.4	6.66
GC ST 25		0.12	0.0030	0.853	1.34	31.8	<10	176.0	0.79	0.343	0.15	0.524	35.8	16.05	27.7	1.535
GC ST 25		0.08	0.0013	0.143	1.28	20.0	<10	267	0.52	0.317	0.08	0.508	29.3	16.00	25.9	1.330



ALS Canada Ltd.
 2103 Dollarton Hwy
 North Vancouver BC V7H 0A7
 Phone: +1 (604) 984 0221 Fax: +1 (604) 984 0218
 www.alsglobal.com/geochemistry

To: JADE LEADER CORP.
 SUITE 815, 808-4TH AVENUE S.W
 CALGARY AB T2P 3E8

Page: 2 - B
 Total # Pages: 2 (A - D)
 Plus Appendix Pages
 Finalized Date: 21-AUG-2019
 Account: JALECO

Project: Tell

CERTIFICATE OF ANALYSIS VA19193689

Sample Description	Method Analyte Units LOD	ME-MS41L	ME-MS41L	ME-MS41L	ME-MS41L	ME-MS41L	ME-MS41L	ME-MS41L	ME-MS41L	ME-MS41L	ME-MS41L	ME-MS41L	ME-MS41L	ME-MS41L	ME-MS41L	
		Cu ppm	Fe %	Ga ppm	Ge ppm	Hf ppm	Hg ppm	In ppm	K %	La ppm	Li ppm	Mg %	Mn ppm	Mo ppm	Na %	Nb ppm
GC ST 01		7.43	0.231	0.344	0.020	0.035	0.076	<0.005	0.02	0.753	0.7	0.46	183.0	0.38	0.009	0.075
GC ST 02		18.30	6.04	4.01	0.068	0.078	0.066	0.030	0.08	16.25	23.8	0.33	937	2.09	0.007	0.219
GC ST 03		2.84	44.0	0.785	0.207	0.031	0.012	<0.005	0.04	2.92	0.5	0.02	29400	45.8	0.007	0.040
GC ST 04		19.30	18.00	2.66	0.117	0.098	0.059	0.015	0.07	10.10	12.7	0.21	1560	11.35	0.009	0.217
GC ST 05		14.95	22.6	1.355	0.119	0.065	0.081	0.011	0.06	5.23	5.0	0.16	5020	12.20	0.007	0.107
GC ST 06		20.6	3.00	4.23	0.046	0.033	0.014	0.018	0.08	17.90	18.6	0.24	457	0.91	0.005	0.317
GC ST 07		30.4	3.89	3.04	0.066	0.083	0.043	0.023	0.11	20.3	19.2	0.29	697	0.72	0.009	0.131
GC ST 08		23.4	3.55	4.06	0.066	0.053	0.007	0.017	0.15	26.1	18.9	0.17	773	0.95	0.008	0.145
GC ST 09		31.8	4.24	3.46	0.059	0.048	0.020	0.026	0.14	21.7	26.1	0.25	494	0.92	0.007	0.168
GC ST 10		38.8	3.60	1.750	0.060	0.097	0.100	0.020	0.09	16.40	17.0	0.61	573	0.76	0.008	0.050
GC ST 11		29.2	4.08	2.05	0.083	0.137	0.091	0.030	0.07	22.3	17.7	0.32	1440	0.77	0.007	0.081
GC ST 12		24.8	4.16	2.50	0.072	0.083	0.053	0.021	0.09	22.6	20.3	0.33	1520	1.06	0.006	0.085
GC ST 13		79.8	3.91	4.22	0.063	0.103	0.069	0.033	0.09	9.65	38.8	0.46	1360	2.95	0.008	0.255
GC ST 14		35.5	3.81	4.63	0.042	0.014	0.033	0.022	0.07	8.16	26.1	0.48	393	3.13	0.008	0.276
GC ST 15		62.0	4.05	5.21	0.041	0.010	0.030	0.038	0.09	8.59	30.3	0.42	417	3.70	0.007	0.517
GC ST 16		61.1	3.71	4.69	0.055	0.044	0.037	0.026	0.07	9.76	29.4	0.45	572	3.95	0.008	0.263
GC ST 17		30.6	3.77	4.11	0.055	0.053	0.048	0.027	0.06	12.75	26.9	0.40	487	1.17	0.005	0.376
GC ST 18		30.7	3.87	3.55	0.049	0.025	0.034	0.021	0.06	12.85	25.0	0.35	486	0.89	0.005	0.233
GC ST 19		42.7	4.92	5.17	0.060	0.045	0.030	0.043	0.07	8.16	46.5	0.65	556	4.89	0.009	0.326
GC ST 20		43.2	1.470	2.91	0.086	0.012	0.573	0.043	0.12	13.15	2.7	0.05	24.2	41.6	0.006	0.079
GC ST 21		183.0	16.90	5.19	0.138	0.103	0.035	0.037	0.07	10.00	44.9	0.45	1160	62.2	0.009	0.138
GC ST 22		42.4	5.04	5.37	0.048	0.061	0.031	0.029	0.06	9.59	34.9	0.48	1670	1.82	0.006	0.194
GC ST 23		49.4	4.24	4.48	0.052	0.197	0.070	0.027	0.07	8.54	33.3	0.40	1320	3.20	0.008	0.235
GC ST 24		44.5	4.63	3.68	0.075	0.034	0.063	0.026	0.07	17.95	33.0	0.39	657	12.15	0.012	0.148
GC ST 25		59.7	4.21	5.19	0.053	0.003	0.034	0.034	0.13	12.55	15.2	0.32	1300	4.48	0.007	0.345



ALS Canada Ltd.
 2103 Dollarton Hwy
 North Vancouver BC V7H 0A7
 Phone: +1 (604) 984 0221 Fax: +1 (604) 984 0218
 www.alsglobal.com/geochemistry

To: JADE LEADER CORP.
 SUITE 815, 808-4TH AVENUE S.W
 CALGARY AB T2P 3E8

Page: 2 - C
 Total # Pages: 2 (A - D)
 Plus Appendix Pages
 Finalized Date: 21-AUG-2019
 Account: JALECO

Project: Tell

CERTIFICATE OF ANALYSIS VA19193689

Sample Description	Method Analyte Units LOD	ME-MS41L	ME-MS41L	ME-MS41L	ME-MS41L	ME-MS41L	ME-MS41L	ME-MS41L	ME-MS41L	ME-MS41L	ME-MS41L	ME-MS41L	ME-MS41L	ME-MS41L	ME-MS41L	
		Ni ppm	P %	Pb ppm	Pd ppm	Pt ppm	Rb ppm	Re ppm	S %	Sb ppm	Sc ppm	Se ppm	Sn ppm	Sr ppm	Ta ppm	Te ppm
		0.04	0.001	0.005	0.001	0.002	0.005	0.0002	0.01	0.005	0.005	0.003	0.01	0.01	0.005	0.003
GC ST 01		22.9	0.056	2.06	<0.001	0.005	1.055	0.0022	0.30	0.080	0.268	1.545	0.07	256	<0.005	0.009
GC ST 02		271	0.030	22.3	<0.001	0.002	10.10	<0.0002	0.02	0.669	4.55	0.757	0.36	41.3	<0.005	0.041
GC ST 03		3110	0.030	1.130	<0.001	0.002	1.770	<0.0002	0.02	2.01	0.874	0.221	0.03	33.9	<0.005	0.008
GC ST 04		913	0.041	17.65	<0.001	0.002	9.83	0.0003	0.03	1.495	2.93	1.180	0.21	61.9	<0.005	0.038
GC ST 05		824	0.086	12.00	<0.001	<0.002	6.23	<0.0002	0.06	1.005	3.29	1.265	0.09	115.0	<0.005	0.024
GC ST 06		19.95	0.023	20.4	0.002	<0.002	9.92	<0.0002	<0.01	0.323	1.870	0.138	0.32	17.40	<0.005	0.034
GC ST 07		34.6	0.028	41.5	<0.001	0.004	9.58	<0.0002	0.05	0.381	2.99	0.204	0.22	21.5	<0.005	0.043
GC ST 08		26.2	0.036	46.3	<0.001	0.003	13.55	<0.0002	0.05	0.351	1.535	0.115	0.32	16.60	<0.005	0.041
GC ST 09		37.4	0.038	32.4	<0.001	0.003	11.90	<0.0002	0.02	0.463	1.870	0.232	0.28	16.75	<0.005	0.055
GC ST 10		47.3	0.061	34.0	0.002	0.004	5.48	<0.0002	0.06	0.437	2.88	0.485	0.15	186.0	<0.005	0.054
GC ST 11		52.7	0.068	30.1	<0.001	0.003	7.01	<0.0002	0.05	0.421	4.78	1.385	0.13	75.4	<0.005	0.071
GC ST 12		63.6	0.035	26.3	<0.001	0.003	7.69	<0.0002	0.02	0.423	3.20	0.613	0.23	37.8	<0.005	0.065
GC ST 13		149.0	0.074	19.15	0.003	0.002	11.30	0.0049	0.04	1.035	4.58	1.005	0.29	27.9	<0.005	0.064
GC ST 14		28.5	0.081	14.50	<0.001	0.002	8.04	<0.0002	0.05	1.070	1.345	0.547	0.41	15.05	<0.005	0.060
GC ST 15		30.1	0.069	21.0	<0.001	0.002	9.92	0.0002	0.05	1.510	1.585	0.821	0.40	38.7	<0.005	0.072
GC ST 16		28.5	0.073	18.40	0.003	0.002	9.19	0.0002	0.05	1.475	2.68	0.997	0.41	28.4	<0.005	0.081
GC ST 17		28.4	0.037	17.85	0.003	<0.002	8.71	<0.0002	0.01	0.610	2.88	0.382	0.34	7.51	<0.005	0.042
GC ST 18		27.0	0.032	20.4	<0.001	0.003	7.74	<0.0002	<0.01	0.486	2.29	0.415	0.28	5.98	<0.005	0.038
GC ST 19		47.7	0.158	24.2	0.002	0.003	7.04	0.0004	0.09	2.94	2.13	2.13	0.30	42.3	<0.005	0.083
GC ST 20		4.38	0.339	25.0	0.006	0.005	9.33	0.0079	0.19	26.9	1.355	15.50	1.23	73.3	<0.005	0.154
GC ST 21		195.0	0.114	43.4	<0.001	0.002	6.26	0.0004	0.11	3.41	5.78	3.03	0.27	23.1	<0.005	0.083
GC ST 22		34.8	0.059	30.7	<0.001	0.002	9.36	<0.0002	0.02	0.784	2.38	0.472	0.38	9.09	<0.005	0.054
GC ST 23		64.0	0.101	23.8	<0.001	0.002	13.20	0.0008	0.05	1.165	3.33	1.390	0.33	36.7	<0.005	0.056
GC ST 24		43.3	0.086	27.7	<0.001	0.002	5.58	0.0002	0.07	5.52	2.29	2.14	0.27	43.1	<0.005	0.126
GC ST 25		36.8	0.082	17.80	0.001	0.002	14.05	<0.0002	0.05	1.685	1.760	0.678	0.41	22.7	<0.005	0.125



ALS Canada Ltd.
 2103 Dollarton Hwy
 North Vancouver BC V7H 0A7
 Phone: +1 (604) 984 0221 Fax: +1 (604) 984 0218
 www.alsglobal.com/geochemistry

To: JADE LEADER CORP.
 SUITE 815, 808-4TH AVENUE S.W
 CALGARY AB T2P 3E8

Page: 2 - D
 Total # Pages: 2 (A - D)
 Plus Appendix Pages
 Finalized Date: 21-AUG-2019
 Account: JALECO

Project: Tell

CERTIFICATE OF ANALYSIS VA19193689

Sample Description	Method Analyte Units LOD	ME-MS41L	ME-MS41L	ME-MS41L	ME-MS41L	ME-MS41L	ME-MS41L	ME-MS41L	ME-MS41L	ME-MS41L	Zn-OG46
		Th ppm	Ti %	Ti ppm	U ppm	V ppm	W ppm	Y ppm	Zn ppm	Zr ppm	Zn %
		0.002	0.001	0.001	0.005	0.1	0.001	0.003	0.1	0.01	0.001
GC ST 01		0.144	0.003	0.022	4.78	2.0	0.012	1.325	354	1.15	
GC ST 02		3.89	0.003	0.173	2.25	24.7	0.058	19.65	4670	3.51	
GC ST 03		0.230	0.004	6.00	34.8	3.0	0.027	139.0	>10000	1.35	3.21
GC ST 04		2.97	0.004	0.376	6.64	13.4	0.049	72.6	>10000	3.98	1.370
GC ST 05		1.285	0.003	0.684	3.74	8.5	0.029	40.7	>10000	2.32	1.245
GC ST 06		4.03	0.005	0.088	0.469	25.0	0.053	3.64	151.0	2.06	
GC ST 07		6.92	0.003	0.116	0.681	14.2	0.037	10.40	116.0	5.30	
GC ST 08		7.52	0.003	0.103	0.491	16.6	0.036	4.52	82.4	3.72	
GC ST 09		5.71	0.003	0.105	0.495	19.4	0.038	5.37	109.0	3.37	
GC ST 10		4.72	0.001	0.095	1.005	7.7	0.015	16.25	133.5	6.00	
GC ST 11		3.70	0.002	0.072	2.75	9.6	0.015	25.6	209	5.76	
GC ST 12		4.66	0.002	0.089	1.020	11.5	0.019	12.65	579	3.48	
GC ST 13		2.82	0.007	0.202	4.03	27.9	0.078	17.45	1075	3.64	
GC ST 14		0.606	0.008	0.183	1.480	39.4	0.087	4.50	91.8	0.52	
GC ST 15		0.556	0.013	0.230	1.550	41.6	0.138	4.98	117.0	0.36	
GC ST 16		1.245	0.007	0.226	2.35	39.3	0.112	9.26	94.2	1.25	
GC ST 17		2.84	0.009	0.108	0.941	30.4	0.109	6.65	80.3	1.75	
GC ST 18		2.93	0.005	0.091	0.676	23.4	0.061	4.21	75.3	1.04	
GC ST 19		1.685	0.012	0.198	1.985	59.2	0.124	4.36	184.0	1.38	
GC ST 20		0.511	0.005	1.330	14.00	300	0.817	12.60	29.5	0.63	
GC ST 21		5.08	0.003	0.097	15.80	51.3	0.044	24.9	2390	4.44	
GC ST 22		2.82	0.004	0.075	0.760	31.8	0.054	4.06	157.0	2.07	
GC ST 23		2.53	0.005	0.104	2.60	28.6	0.052	10.55	354	6.51	
GC ST 24		3.52	0.006	0.431	1.695	31.7	0.078	8.78	174.5	1.35	
GC ST 25		0.544	0.022	0.137	0.850	47.4	0.164	4.47	175.0	0.31	



ALS Canada Ltd.
2103 Dollarton Hwy
North Vancouver BC V7H 0A7
Phone: +1 (604) 984 0221 Fax: +1 (604) 984 0218
www.alsglobal.com/geochemistry

To: **JADE LEADER CORP.**
SUITE 815, 808-4TH AVENUE S.W
CALGARY AB T2P 3E8

Page: Appendix 1
Total # Appendix Pages: 1
Finalized Date: 21-AUG-2019
Account: JALECO

Project: Tell

CERTIFICATE OF ANALYSIS VA19193689

CERTIFICATE COMMENTS

ANALYTICAL COMMENTS

Applies to Method:

Gold determinations by this method are semi-quantitative due to the small sample weight used (0.5g).
ME-MS41L

LABORATORY ADDRESSES

Applies to Method:

Processed at ALS Vancouver located at 2103 Dollarton Hwy, North Vancouver, BC, Canada.
LOG-22
WEI-21

ME-MS41L
Zn-OG46

ME-OG46

SCR-41

Appendix "C"

Statement of Expenditures

Description	Costs
Geological Consulting	6,300.00
Project personnel, Field assistant	1,500.00
Geochemical Analysis/Assays	1,162.88
Helicopter Costs	8,795.37
Travel/Food/Accommodation/equipment rentals /field costs	3,392.78
Supervisory/Report writing	1,000.00
Total	\$22,151.03

Date submitted: April 22, 2020

Signed:

