

**2019 Assessment Report on the Quartz Property**

QZ 1 to 100 (YD28801 to YD28900)  
QZ 101 to 146 (YD 28121 to YD 28166)

Work Done 20-21 September, 2019 and 16 October, 2019

Dawson Mining District, Yukon

NTS Sheet 115O14 (Grand Forks)

63°48'N. Lat., 139°07'W. Long.

Operated by and Recorded to

**TAKU GOLD**  
CORP.

Janelle Smith BSc. Hons. (Geol) MAIG

March 6, 2020

## Certificate of Qualifications

I, Janelle Smith, having my place of residence at 1704 – 1020 Harwood St Vancouver, British Columbia, V6E 4R1 do hereby certify that:

1. I obtained a Bachelor of Science Degree (Geology) from the University of New England, New South Wales, Australia and an Honors Degree in Geology from the James Cook University of North Queensland. I am a member in good standing of the Australian Institute of Geoscientists (4640). I am a “Qualified person” as defined in Section 1.2 in and for the purposes of National Instrument 43-101.
2. I have not visited the Quartz property.
3. I am the person, responsible for the contents of this technical report entitled “Assessment Report of 2019 Surface Work on the Quartz Property in the Dawson Mining District, Yukon NTS Sheet 115O14 (Grand Forks) 63°48’N. Lat., 139°07’W. Long,” based on my professional experience, a review of relevant reports and maps made available to me from government and corporate sources and my oversight of work programs described in the report.
4. I hold no shares in Taku Gold Corp.
5. This report has not been prepared for the purposes, nor in full compliance with, National Instrument 43-101 and according to Form 43-101F1.

*Respectfully submitted March 6, 2019.*

(s) “Janelle Smith”

---

Janelle Smith (MAIG)

## 2. TABLE OF CONTENTS

1. Introduction.....	1
2. Location and Property Description .....	1
3. Accessibility, Local Resources, Infrastructure, Physiography, and Climate.....	3
4. Exploration History.....	5
5. Regional Geology .....	6
6. Project Area .....	8
7. Deposit Types .....	12
8. 2019 Exploration Work.....	12
7. Results.....	16
8. Interpretation of Results and Conclusions.....	28
9. Bibliography .....	28

Appendix A - Statement of Work Expenditures  
Appendix B - Sample Locations and Descriptions  
Appendix C - Analytical Certifications

## TABLE OF FIGURES

Figure 1 Quartz Property General Location .....	2
Figure 2 Quartz Property Claim Map with Claims Worked.....	2
Figure 3 Quartz Property Location and Access.....	4
Figure 4 Location of the Klondike District in the Yukon Tanana Terrane.....	8
Figure 5 Quartz Property Area Geology. YGS 2018.....	10
Figure 6 Total Magnetic Intensity Quartz Property.....	11
Figure 7 2019 Quartz Soil Sample Locations.....	13
Figure 8 2019 Quartz Soil Sample Locations.....	14
Figure 9 2019 Quartz Rock Sample Locations.....	15
Figure 10 2019 Quartz Soil Sample Results Au ppb QZ111 – QZ112.....	17
Figure 11 2019 Quartz Soil Sample Results Au ppb QZ104 – QZ106.....	18
Figure 12 2019 Quartz Soil Sample Results Pb ppm QZ104 – QZ106.....	19
Figure 13 2019 Quartz Soil Sample Results Cu ppm QZ104 – QZ106.....	20
Figure 14 2019 Quartz Soil Sample Results Pb ppm QZ112 .....	21
Figure 15 2019 Quartz Soil Sample Results Cu ppm QZ112.....	22
Figure 16 2019 Quartz Rock Sample Results Au ppb .....	23
Figure 17 2019 Quartz Rock Sample Results Pb ppm.....	24
Figure 18 2010 - 2019 Quartz Soil Sample Results.....	25
Figure 19 2010 - 2019 Quartz Soil Sample Results Pb ppm .....	26
Figure 20 2017 - 2019 Quartz Rock Sample Results Au ppb.....	27

## TABLE OF TABLES

Table 1 Previous Assessment Work Files .....	5
Table 2 MINFILE Showings.....	5
Table 3 Tectonic assemblages of the Slide Mountain and Yukon-Tanana terranes .....	7
Table 4 Summary of deformation and metamorphic events in the Klondike gold district .....	9

## 1. INTRODUCTION AND TERMS OF REFERENCE

This technical report (the Report) describes the 2019 exploration work on the Quartz property which consisted of soil geochemical sampling and prospecting. The goal of the geochemical survey was to verify and expand previously defined (Taku, 2011 and 2017) areas of anomalous gold-in-soil anomalies. The main purpose of the Report is to complete statutory assessment work filings required under the Yukon Quartz Mining Act. It is not intended to and does not fully comply with National Instrument 43-101.

The Author may have relied on technical data and interpretations found in various sources cited throughout the Report. The Author may not have verified this information and take no responsibility for its accuracy or completeness. Reference to the compliance or non-compliance with NI 43-101 standards of historical information and data referred to in this Report are made where appropriate. The Author does not offer any opinion concerning legal, title, environmental, political or other non-technical issues that may be relevant to the Report.

## 2. LOCATION AND PROPERTY DESCRIPTION

The Property covers an approximate area of 3,022 hectares within the Dawson Mining Division of Yukon. It is located at the headwaters of Calder Creek, a tributary of Quartz Creek, some 30km southeast of Dawson City (Figure 1). The approximate center of the Property is described by 63°48'00" North Latitude and 139°07'00" West Longitude on N.T.S. Sheets 115014 (Grand Forks). The Property includes 146 contiguous, un-surveyed mineral titles (Figure 2) more fully described in Table 1 below.

Table 1 Quartz List of Claims

Claim No.	Label	Grant No.	Expiry Date	No.
QZ 1 to 100		YD28801 to YD28900	30-Jul-18	100
QZ 101 to 146		YD28121 to YD28166	30-Jul-18	46

2019 Quartz Property Assessment Report

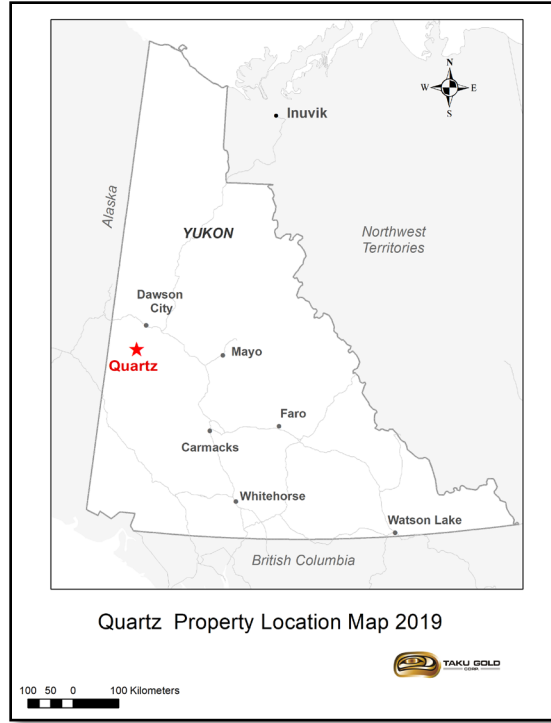


Figure 1 Quartz Property General Location

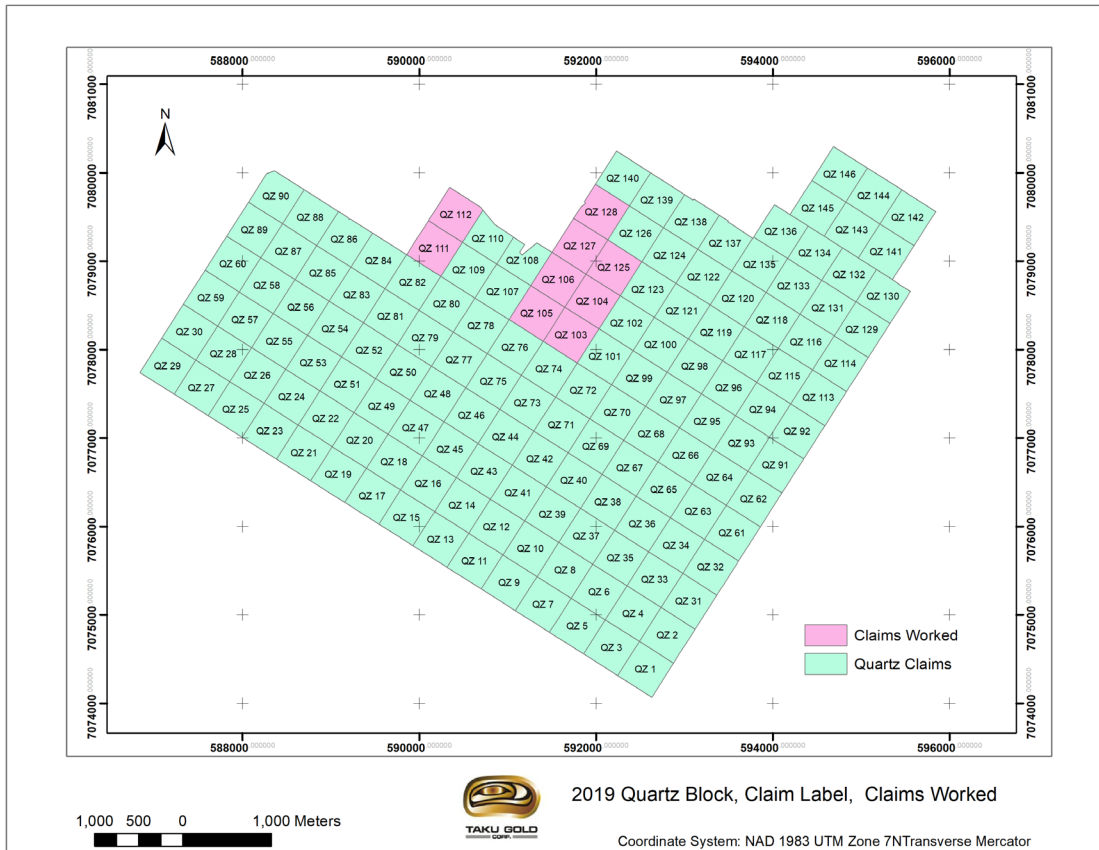


Figure 2 Quartz Property Claim Map with Claims Worked

### 3. ACCESSIBILITY, LOCAL RESOURCES, INFRASTRUCTURE, PHYSIOGRAPHY AND CLIMATE

Access to the Property is via a network of summer roads (Figure 3). Access to the Property from Dawson City is via the Hunker Creek Road and then left onto Quartz Creek Road until Redford followed by a right onto the Calder Creek Road.

The Quartz property is in an isolated part of Yukon with relatively few local resources or infrastructure. The Property can be worked from Dawson City by truck or from an exploration camp set up on or near the Property. A camp can be supported from Dawson City, where services are limited, or from Whitehorse where a full range of services are available including line-cutting, geophysics, drilling, assaying, aircraft charters etc.

The Property covers the headwaters of Calder Creek in the Dawson Range of Yukon. Unlike most parts of Yukon, the Dawson Range was not affected by Pleistocene glaciation and is characterized by low rolling hills incised with steep sided, V-shaped valleys. Bedrock is typically deeply weathered and there is very little (perhaps less than 5%) exposure; usually on ridges above tree-line or in rare canyons in the creek valleys. Elevations on the Property range from 500m to 940m above sea level. Most of the Property lies below tree-line and is covered by a typical boreal mixture of pine, spruce, balsam fir, aspen and birch trees, and willow and alder brush. North and west slopes are often covered with thick moss blanketing permafrost.

The Dawson City area is characterized by a semi-arid, sub-arctic continental climate with mild to hot summers and cold winters. Precipitation is generally light in the summer and overall clear skies and warm temperatures prevail. Forest fires are common and thick smoke at times may impede exploration work. The best season for exploration is during the summer months from mid-May to mid-October. Although it is possible to work during the winter months, costs rise exponentially due to cold temperatures, inclement weather and short daylight hours.

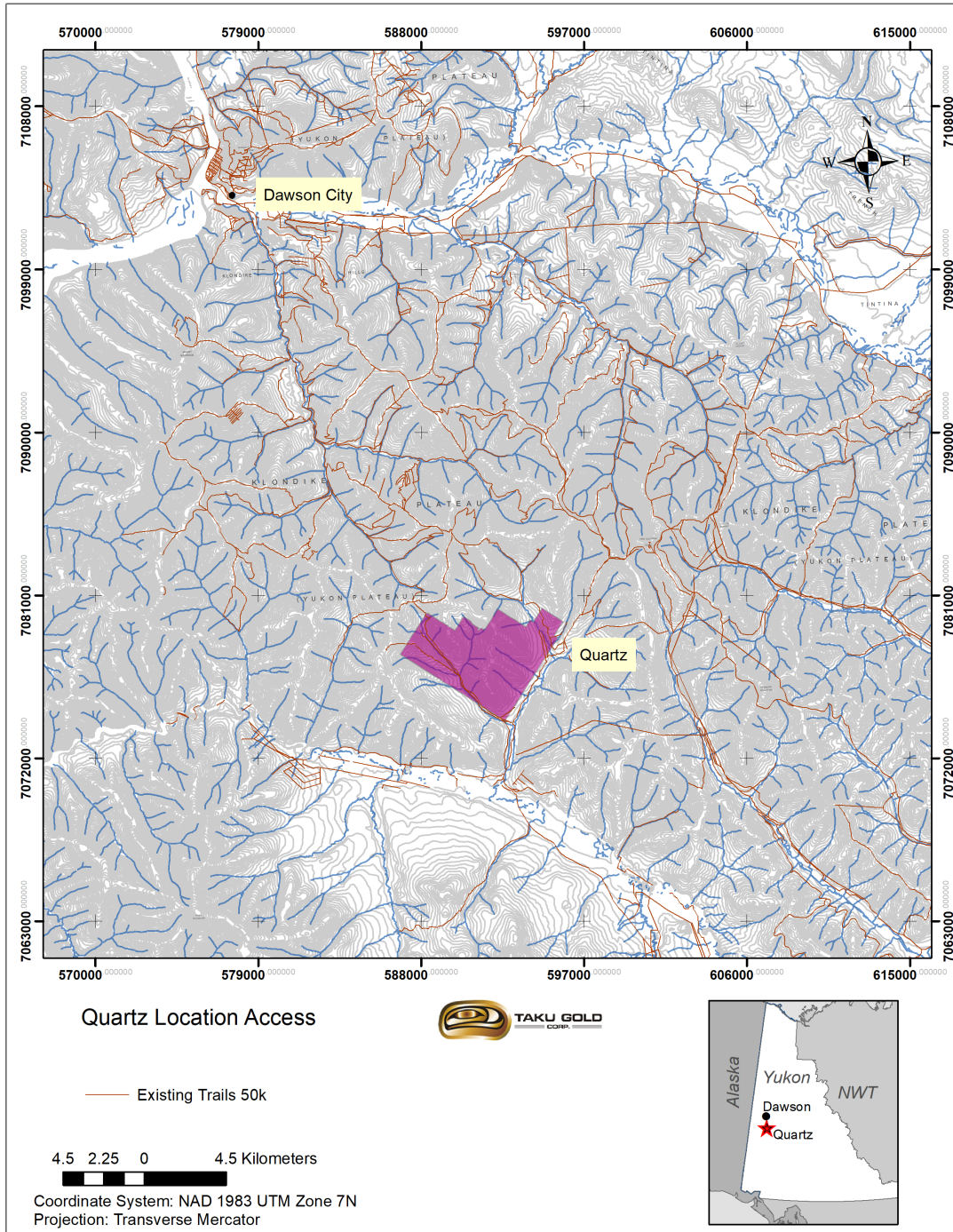


Figure 3 Quartz Property Location and Access

#### 4. EXPLORATION HISTORY

The following exploration history of the Property has been compiled from the Yukon Energy and Mines and Resources Library and Yukon Geological Survey MINFILE database. There has been limited exploration work on the Property. Table 2 below lists all known assessment reports that describe work done adjacent to and within the boundaries of the present Property in whole or in part.

**Table 1 Previous Assessment Work Files**

Company	Year	AFR No.	Author	Work
Placer Dome Inc.	1990	092853	J.M. Kowalchuk	Soil geochem
Barramundi Gold Ltd.	1997	093711	R. Stevens	Soil Geochem/Trenching
Barramundi Gold Ltd.	1999	094021	W.A. (Sandy) Sears	Geophysics
Taku Gold	2010	095965	M. Fekete	Geophysics/Soil Geochem
Taku Gold	2011	096220	M. Fekete	Soil Geochem
Taku Gold	2017	097058	M. Fekete	Soil Geochem/Trenching

There are several mineral showings documented within and adjacent to the area of the Property listed in Table 3 below:

**Table 2 MINFILE Showings**

<u>MINFILE No.</u>	<u>MINEFILE Name</u>	<u>Link</u>
1150 078	Jen	<a href="#">1150 078</a>
1150 117	Blanche	<a href="#">1150 117</a>
1150 129	Schramm	<a href="#">1150 129</a>
1150 161	Readford	<a href="#">1150 161</a>

Quartz or hard rock prospecting and placer mining in the Quartz Creek area dates back to the Klondike Gold Rush and has continued sporadically since then. The work completed in the early 1900s is today seen as signs of old workings consisting of tunnels being dug into the clay to test the channels along the lower parts of the creek (AFR No. 092853).

In 1972, Conwest carried out mapping and geochemical sampling surveys, along with some bulldozer trenching in 1973 (AFR No. 092853).

In 1989 Placer Dome Inc. took 90 soil samples, at 20 meter intervals along three contour lines on the east bank of the south flowing creek (AFR No. 092853).

JAE Resources Inc. completed mapping, geochemical sampling and trenching in 1996. The goal of the work was to identify the location and nature of the gold-bearing rock types and acquire an understanding to the geology (AFR No. 093711).

Taku Gold Corp. completed a surface exploration program on the Quartz property in 2010. This program consisted of a 339.6 line kilometer high resolution magnetic and radiometric airborne

## 2019 Quartz Property Assessment Report

survey over the entire Property. This survey showed a strong magnetic high in the northwest corner of the Property. Also a 902-sample deep auger-type soil geochemical survey was completed. The soil samples were collected with hand augers at 50m sample intervals and 450m line spacings. A cluster of seven anomalous gold-in-soil values, with the highest being 25.6ppb Au, were identified in the northwest corner of the Property within the magnetic high (Fekete and Dokic, 2011).

In 2011 Taku Gold Corp. completed a surface exploration program where 593 deep auger-type soil samples were collected over predetermined grids. A small cluster of anomalous gold samples were identified with values reaching a maximum of 144 ppb Au (Fekete and Dokic, 2011). 2017 Exploration Work

Exploration work in 2017 included a soil geochemical survey, prospecting, and trenching.

In 2017 Taku Gold Corp. completed a surface exploration program of soil sampling prospecting and trenching as follows:

- A. Taku collected 85 auger soil samples at 50m sample intervals. No significant results were returned from this soil sampling.
- B. A total of 28 rock samples were collected no notable results were returned from the prospecting survey.
- C. 194.4 m of trenching was completed in two trenches. No major mineralized zones, structures or trends were visible in the trenches.

## 5. REGIONAL GEOLOGY

The property is located within northern part of the Yukon-Tanana terrane (YTT) . The YTT extends from Alaska to the southern Yukon and B.C. It formed, from early Paleozoic to Mesozoic, as a result of accretion and subduction related processes on the Western Margin of North America.

The YTT is composed of the Snowcap, Finlayson, Klinkit, and Klondike assemblages as well as post tectonic igneous rocks and sedimentary units Colpron (2006).

Table 3 Tectonic assemblages of the Slide Mountain and Yukon-Tanana terranes (modified from Colpron et al., 2006b).

<b>Tectonic Assemblage</b>	<b>Age</b>	<b>Characteristics</b>	<b>Tectonic Setting</b>
<b>Klondike</b>	Middle–Late Permian	Felsic metavolcanic rocks, calc-alkaline; minor mafic metavolcanic rocks; coeval intrusions of the Sulphur Creek suite	Continental arc; Yukon-Tanana terrane
<b>Klinkit</b>	Middle Mississippian–Early Permian	Mafic to intermediate calc-alkaline volcanoclastic and volcanic rocks; minor alkali basalt; limestone/marble; basal conglomerate	Island Arc. Yukon-Tanana terrane
<b>Slide Mountain</b>	Early Mississippian–Middle Permian	Basalt (N-MORB; rare E-MORB to OIB); chert, argillite; gabbro; serpentinite	Marginal ocean basin (back-arc); Slide Mountain terrane
<b>Finlayson</b>	Late Devonian–Mississippian	Mafic to felsic metavolcanic rocks Middle of arc and back-arc affinities; carbonaceous pelite, chert, minor quartzite; volcanoclastic rocks; marble; coeval with the Grass Lakes and Simpson Range plutonic suites	Continental arc system (including arc and back-arc) Yukon-Tanana terrane
<b>Snowcap</b>	Pre-Late Devonian	Polydeformed and metamorphosed quartzite, psammite, pelite, and marble; N-MORB to OIB amphibolite; intruded by Devonian–Mississippian plutons of the Grass Lakes and Simpson Range suites	Continental margin; Basement to Yukon-Tanana terrane

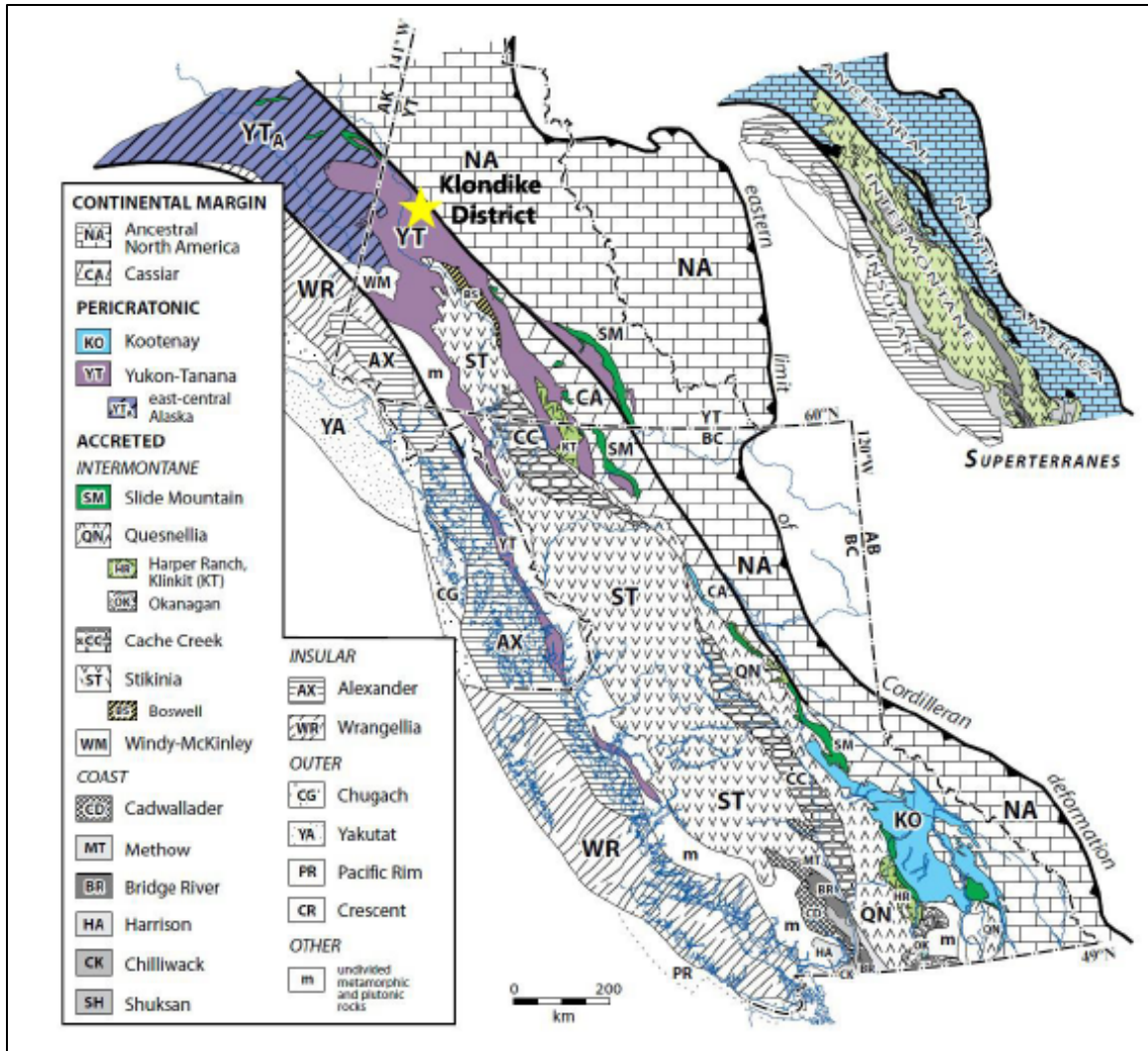


Figure 4 Location of the Klondike District in the Yukon Tanana Terrane after Colpron 2006, Parry 2018.

## 6. PROJECT AREA

Mapping by Mortensen 1996, show that the Quartz Claims are underlain by Permian rocks of the Klondike Schist, (AKA Klondike Assemblage, the youngest and stratigraphically highest tectonostratigraphic unit of the YTT (Colpron 2006)), the Permian Sulphur Creek orthogneiss, and volcanic rocks of the Cretaceous Carmacks group. A geological map (Yukon Geological Survey 2018), of the project area is provided in Figure 5.

Five episodes of deformation are recognized in the Klondike Goldfields (Stroh, 2019). These deformation events and relative episodes of mineralization are described and presented in Table 4.

Table 4 Summary of deformation and metamorphic events in the Klondike gold district (Stroh 2019, modified from MacKenzie et al., 2008c).

<b>Event</b>	<b>Deformation Stage</b>	<b>Deformation Feature</b>	<b>Deformation Orientation</b>	<b>Metamorphic Facies</b>	<b>Associated Metals</b>	<b>Age (Ma)</b>
<b>D<sub>5</sub></b>	Normal faulting	Normal faults, gouge zones	Steeply dipping, west to northeast trending	-	Pyrite	100–66
<b>D<sub>4</sub></b>	Fault-fold	Kink folds (F <sub>4</sub> ), fold axial planar fractures (S <sub>4</sub> ), high-angle reverse faults, shears, gouge zones	Steeply dipping two orthogonal sets trending west to northeast	-	Au, pyrite	179–155
<b>D<sub>3</sub>/M<sub>3</sub></b>	Thrust stacking	Crenulation cleavage (S <sub>3</sub> ) and recumbent folds (F <sub>3</sub> )	Shallowly southwest dipping	Lower greenschist	-	195–187
<b>D<sub>2</sub>/M<sub>2</sub></b>	Penetrative foliation	Foliation (S <sub>2</sub> ), isoclinal folds (F <sub>2</sub> )	Variable	Upper greenschist	-	260–252.5
<b>D<sub>1</sub>/M<sub>1</sub></b>	First foliation	Foliation (S <sub>1</sub> ), segregations	Variable	Unconstrained	-	269–260
<b>Early Meta</b>	Discrete deformation	-	-	Variable, low P	-	365–350

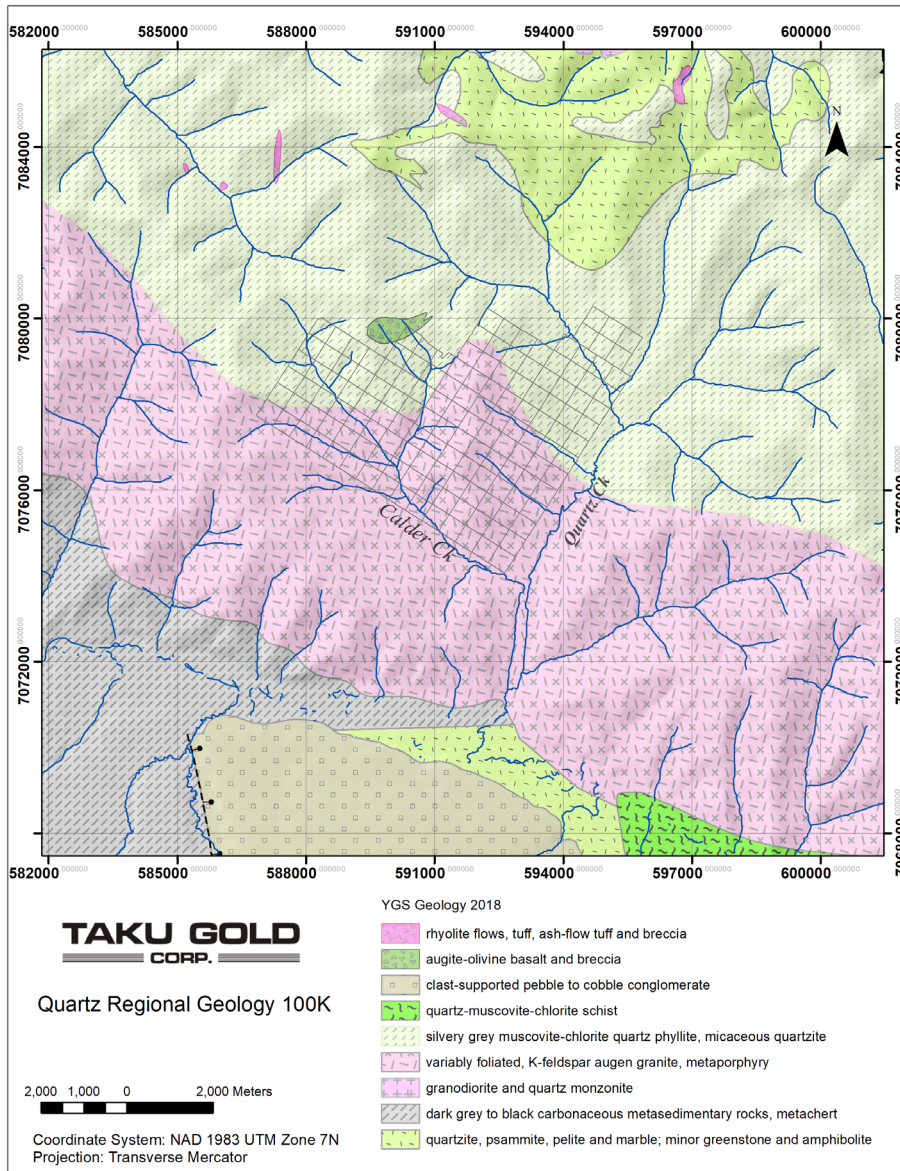


Figure 5 Quartz Property Area Geology. YGS 2018

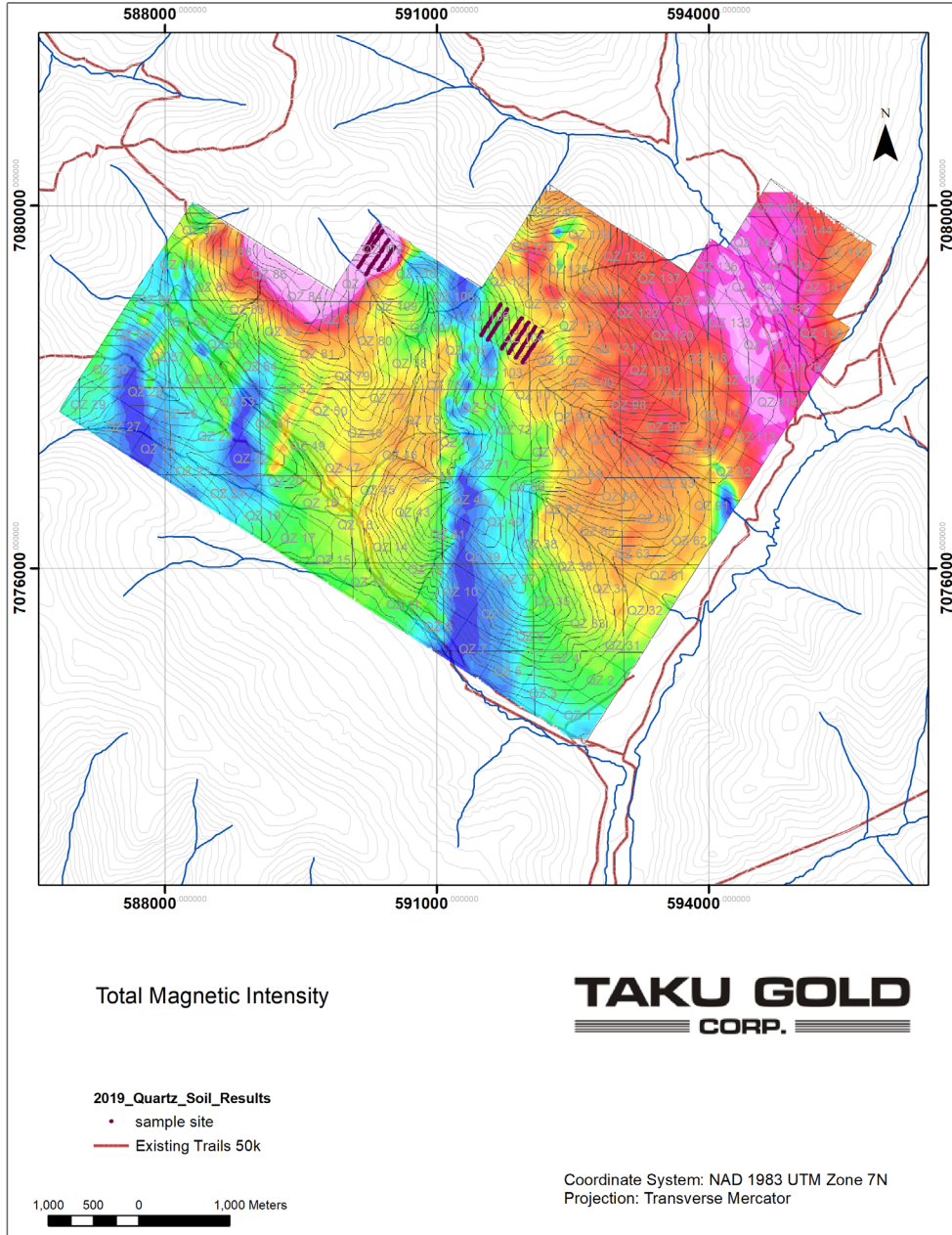


Figure 6 Total Magnetic Intensity Quartz Property

## 7. DEPOSIT TYPES

Taku is actively exploring for orogenic and intrusion related gold deposits.

## 9. 2019 EXPLORATION WORK

Exploration work in 2019 included a soil and rock chip geochemical survey to follow up on previous gold and base metal anomalous results. Field work was conducted by Ground-Truth Exploration and Jean Pautler P GEO. A five-person crew collected 170 soil samples on 16 October 2019 and Jean Pautler P collected rock samples and inspected soil sample anomalies on 20-21 September 2019.

### Soil Geochemical Survey

A total of 172 soil samples were collected over five person-days with hand augers at 25 m sample intervals on grids established using handheld GPS units for a total of 3944-line kilometers.

Soil samples were collected according to the following procedure: All sampling traverses were planned, with specified sampling intervals. Field technicians navigated to sample sites using handheld GPS units. The soil sampler arrived at each sample site, identified the most appropriate location to collect the sample and laid out a sheet of plastic (12"x20" ore bag). The soil sample was taken using an Eijkelkamp brand hand auger at a depth of between 20cm and 110cm. Samplers tried to consistently collect C-Horizon sample material. Where necessary (rocky or frozen ground) a prospector's pick ('mattock') was used to obtain the sample. The soil was laid out on the sheet of plastic in the order it was recovered from the sample hole. Two Standardized photos are taken at each sample site- 1) Sample Location photo: across slope, 5m from sample hole with auger inserted and 2) Sample Profile photo: Close up of sample laid out on ore bag with barcode tag and Munsell color chart in photo. The sampler placed the necessary amount of soil (400-500 grams) from the bottom of the hole into a kraft sample bag. The bag was labeled with the 3-letter project and tagged with a plastic barcode ID tag containing a unique seven-digit sample identification number was inserted. A plastic barcode ID tag with the sample identification number was attached to a rock or branch in a visible area at the sample site along with a length of pink flagging tape. The sample was recorded, and a note was made indicating the duplicate and its corresponding sample identification number. The GPS location of the sample site was recorded with a Garmin GPS Map 60cx device in UTM NAD 83 format, and the waypoint was labeled with the project name and the sample identification number. A weather-proof handheld device equipped with a barcode scanner was used in the field to record the descriptive attributes of the sample collected. This included: sample identification number (scanned into device at sample site), soil colour, soil horizon, slope, sample depth, ground and tree vegetation and sample quality and any other relevant information. As well, the GPS coordinates were entered into the handheld device as a secondary backup in case of GPS failure. The soils were dispatched to Bureau Veritas and analyzed for gold and 36 elements with an aqua regia digest and on a 15g aliquot and ICP-mass spectrometry finish (AQ201) BV WH19000715

### Prospecting

Jean Pautler collected 13 rock and 2 soil samples from the property during a two-day evaluation of the anomalies. The site visit by Ms Pautler indicated that the gold anomaly is valid, and the higher values were not influenced by creek or base of slope seepages. The gold target adjoins Klondike Gold Corp.'s Lonestar Project to the south and is drained by the placer producing creeks, Little Blanche and Quartz.

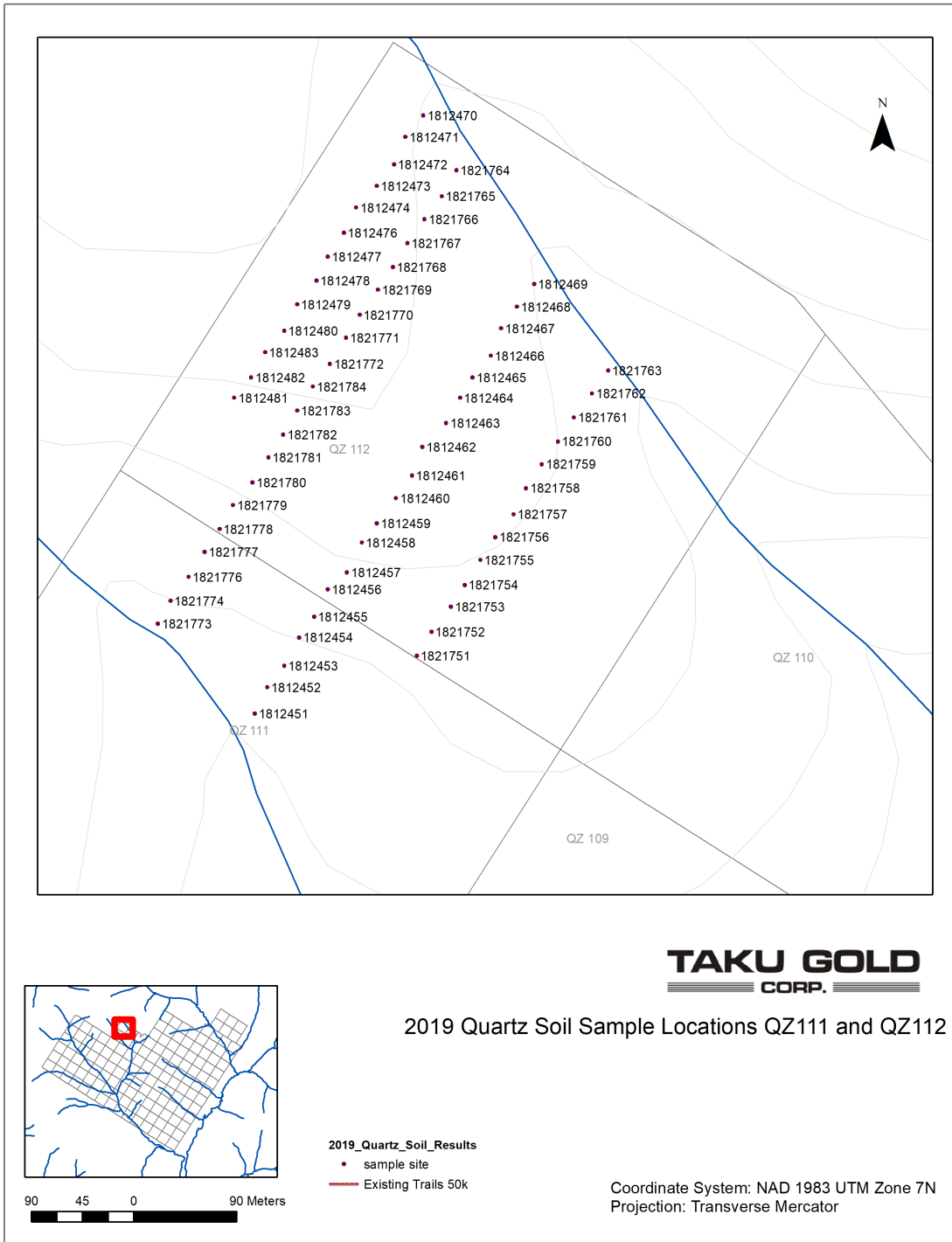


Figure 7 2019 Quartz Soil Sample Locations

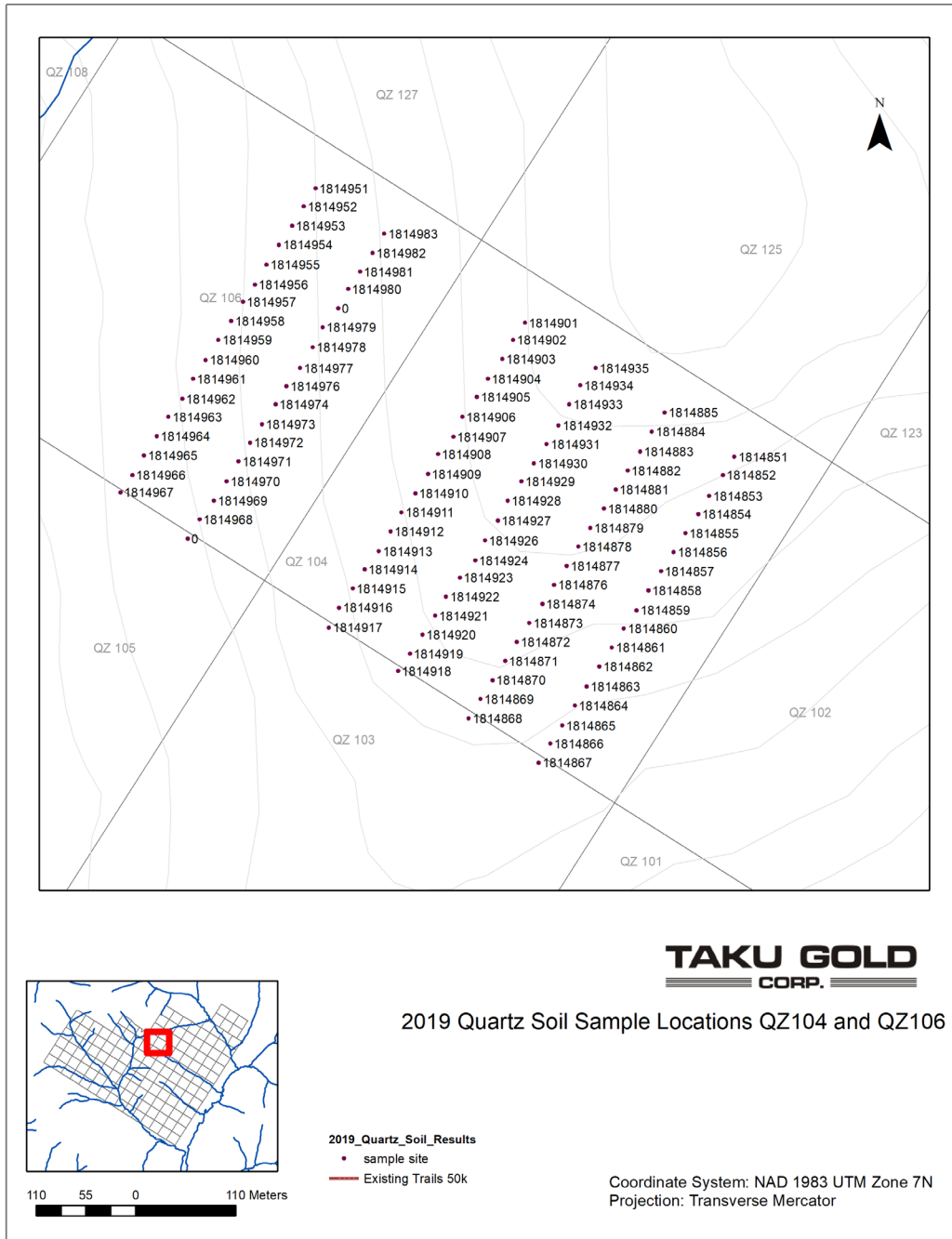


Figure 8 2019 Quartz Soil Sample Locations

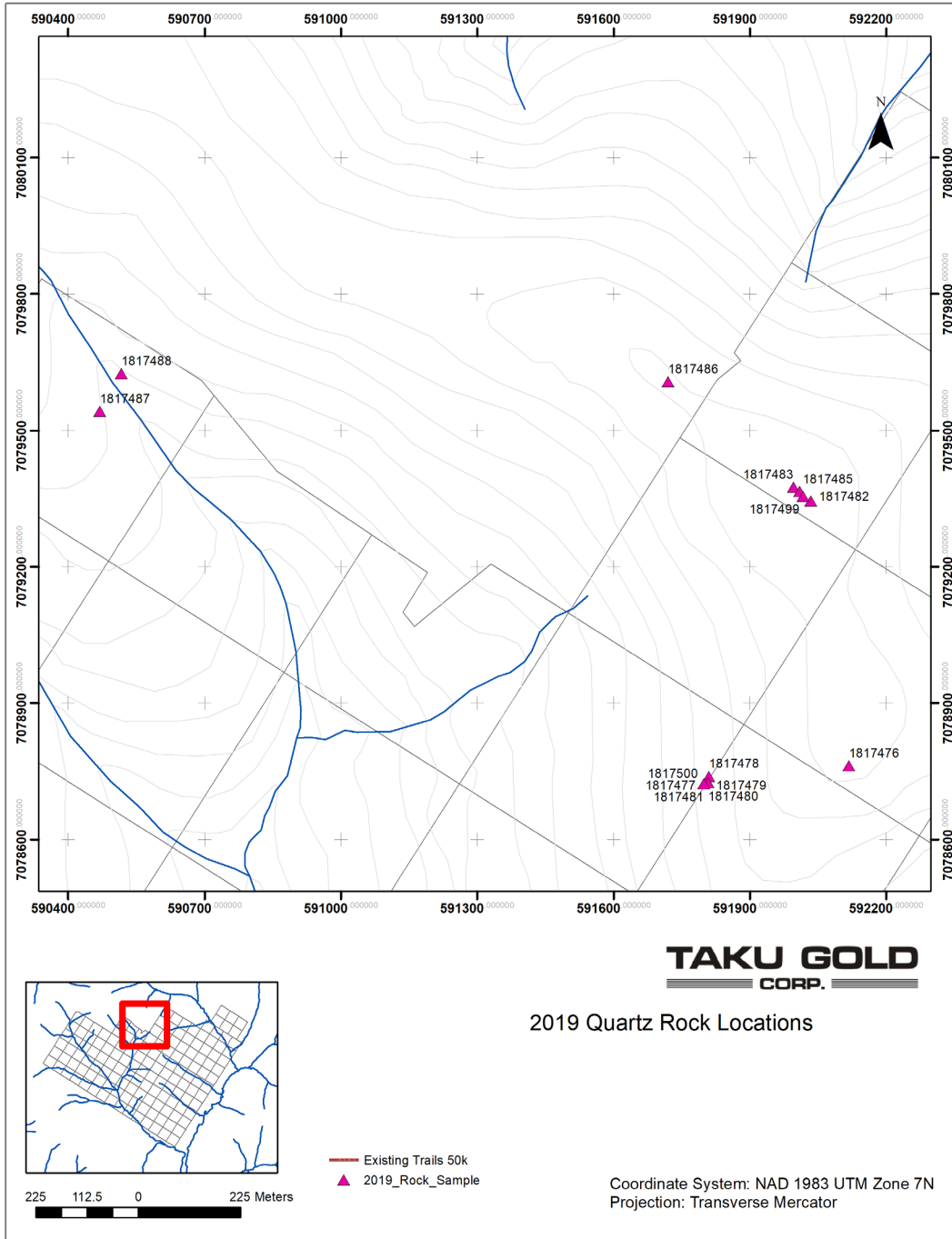


Figure 9 2019 Quartz Rock Sample Locations

## 10. RESULTS

The results of 2019 geochemical soil and rock chip sampling are displayed on Figures 9 – 16. Rock and soil sample descriptions are provided in Appendix1. Laboratory certificates for rock and soil sample geochemical samples are provided in Appendix2.

Compilation maps of available current and historic geochemical results are presented as Figures 17 – 19.

### 2019 Soil Sample Descriptive Statistics on Au ppb Values

Mean	7
Median	2.3
Standard Deviation	9
Range	40
Minimum	0.05
Maximum	40
Count	172

### 2019 Soil Sample Descriptive Statistics on Cu ppm Values

Mean	44
Median	32.2
Standard Deviation	33
Range	169
Minimum	9.5
Maximum	178.5
Count	172

### 2019 Soil Sample Descriptive Statistics on Pb ppm Values

Mean	42
Standard Error	3
Median	30.5
Standard Deviation	41.
Range	330.5
Minimum	4
Maximum	334.5
Count	172

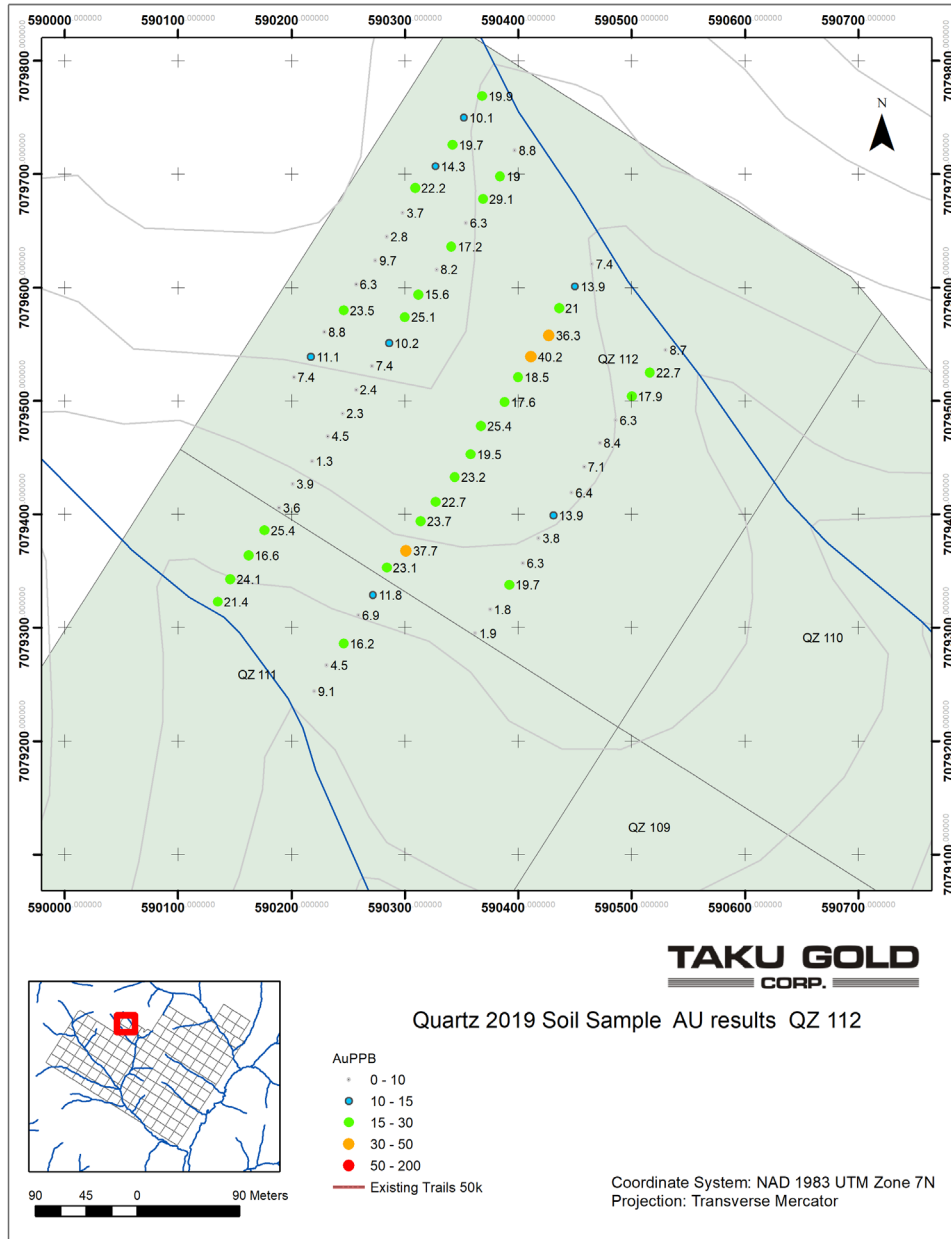


Figure 10 2019 Quartz Soil Sample Results Au ppb QZ111 – QZ112

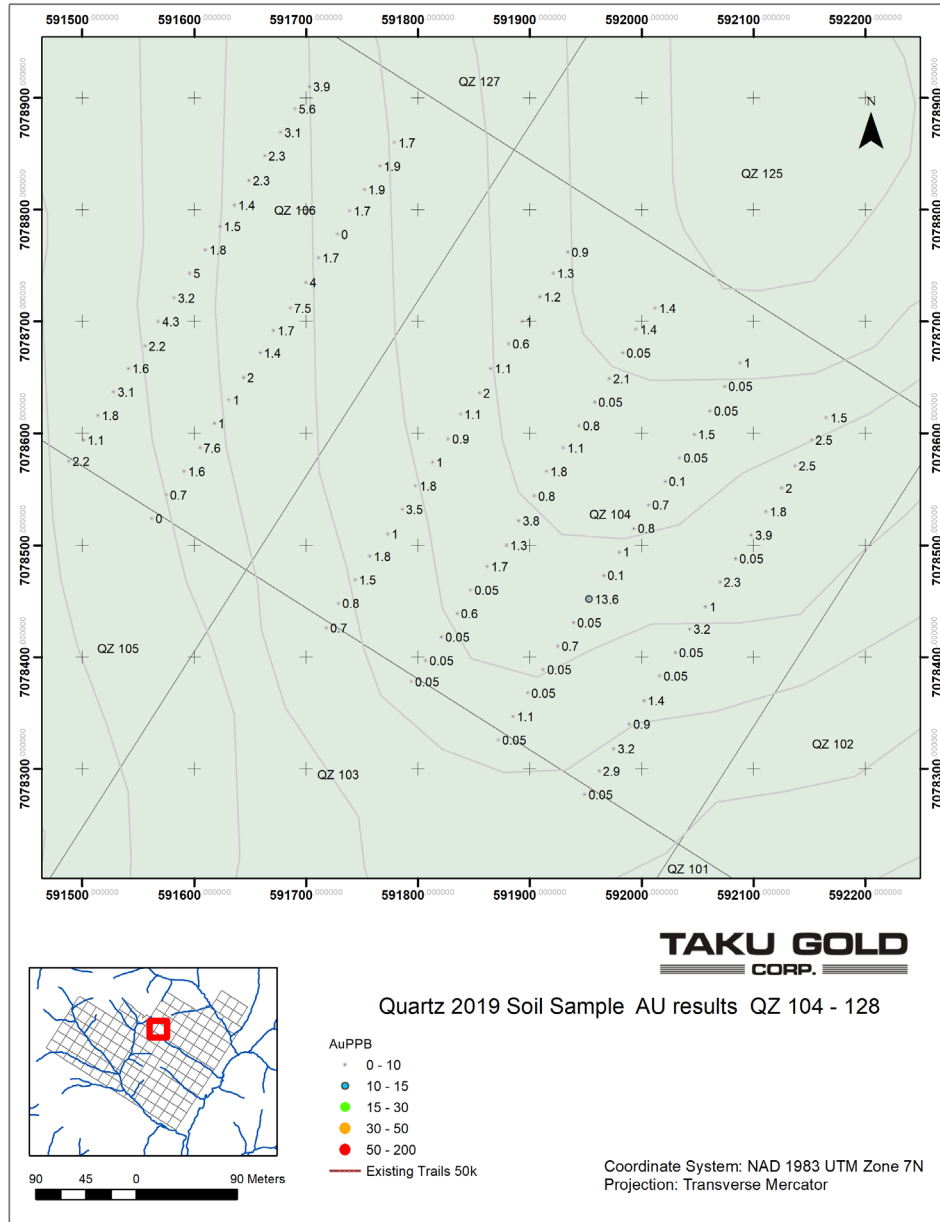


Figure 11 2019 Quartz Soil Sample Results Au ppb QZ104 – QZ106

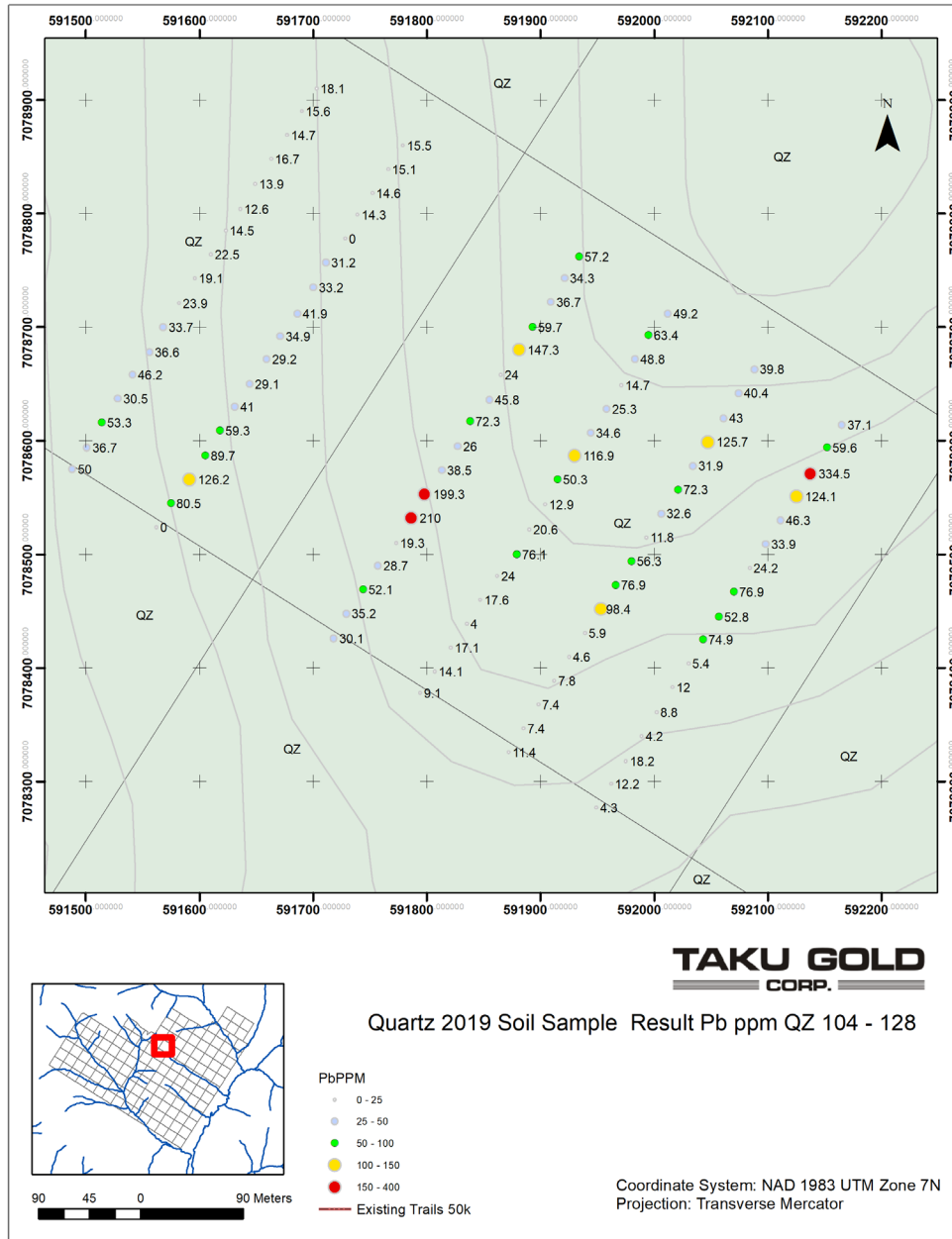


Figure 12 2019 Quartz Soil Sample Results Pb ppm QZ104 – QZ106



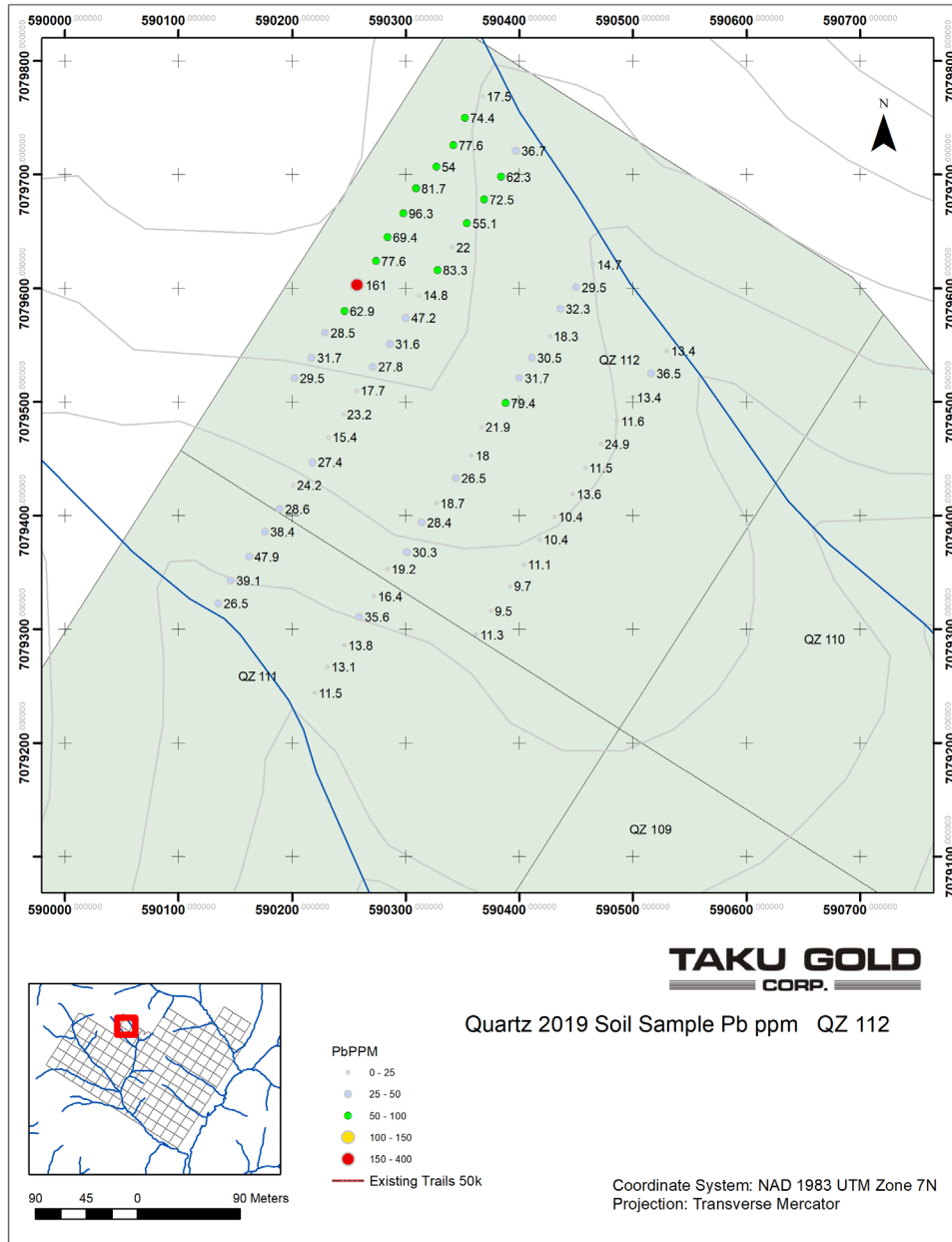


Figure 14 2019 Quartz Soil Sample Results Pb ppm QZ112

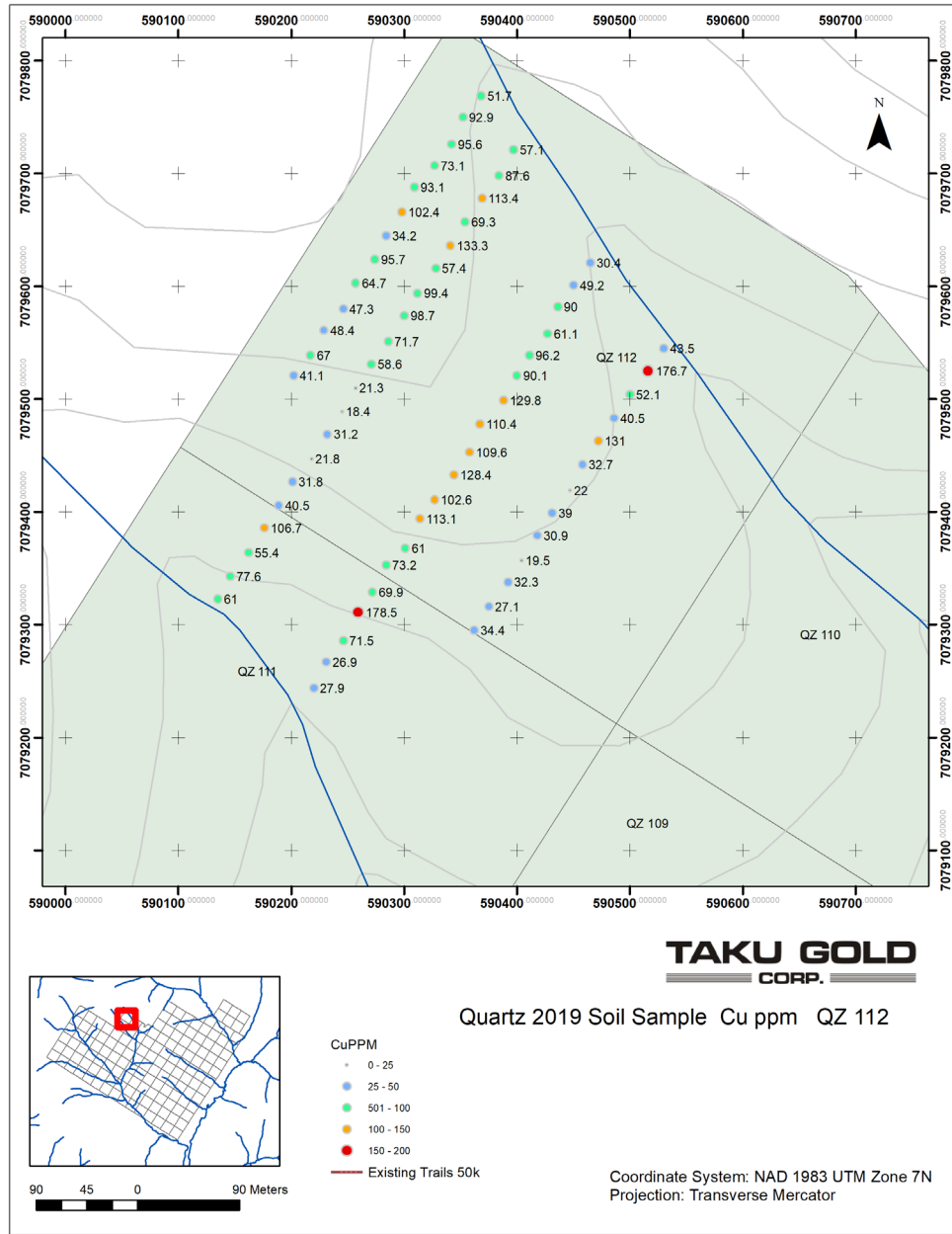


Figure 15 2019 Quartz Soil Sample Results Cu ppm QZ112



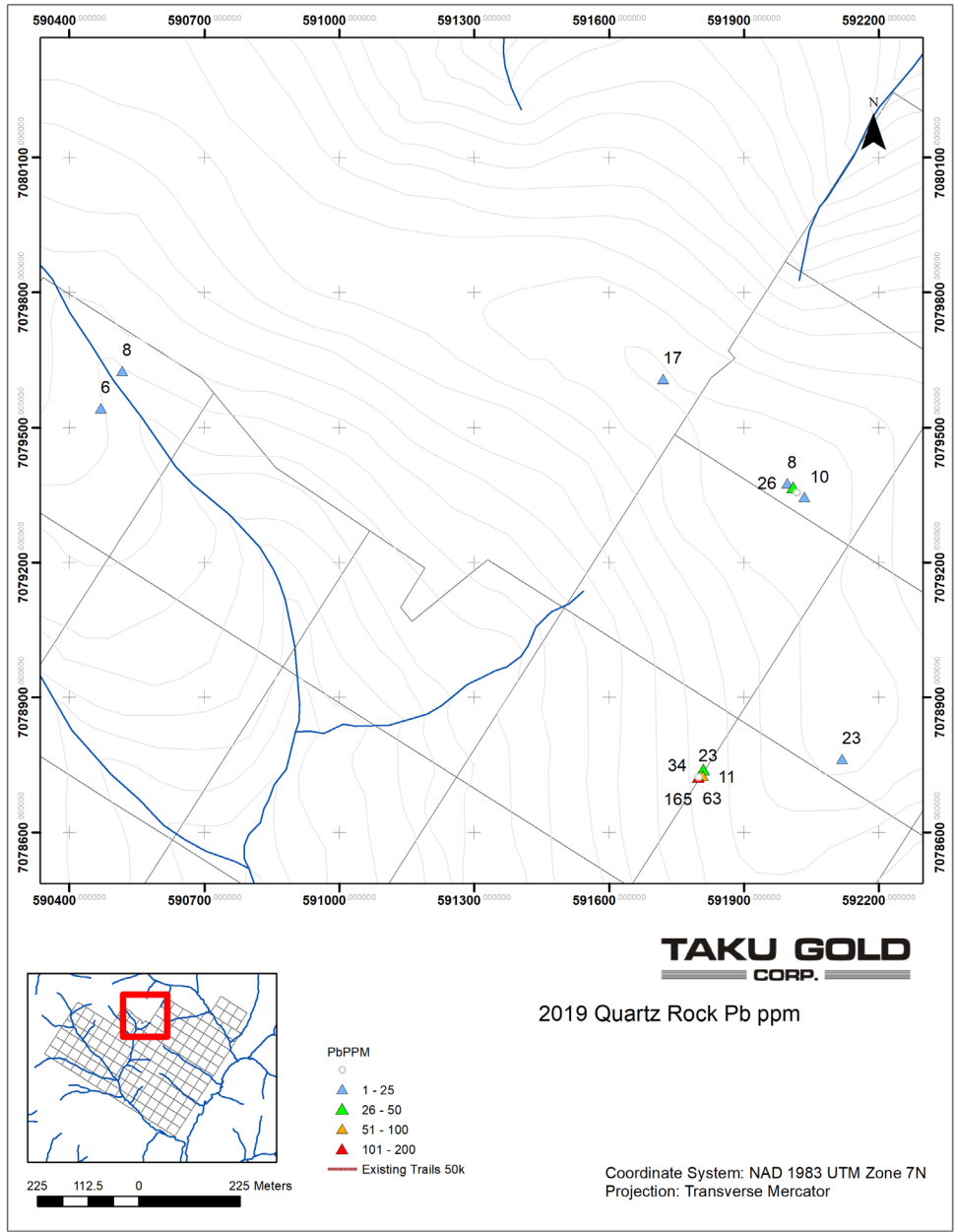


Figure 17 2019 Quartz Rock Sample Results Pb ppm

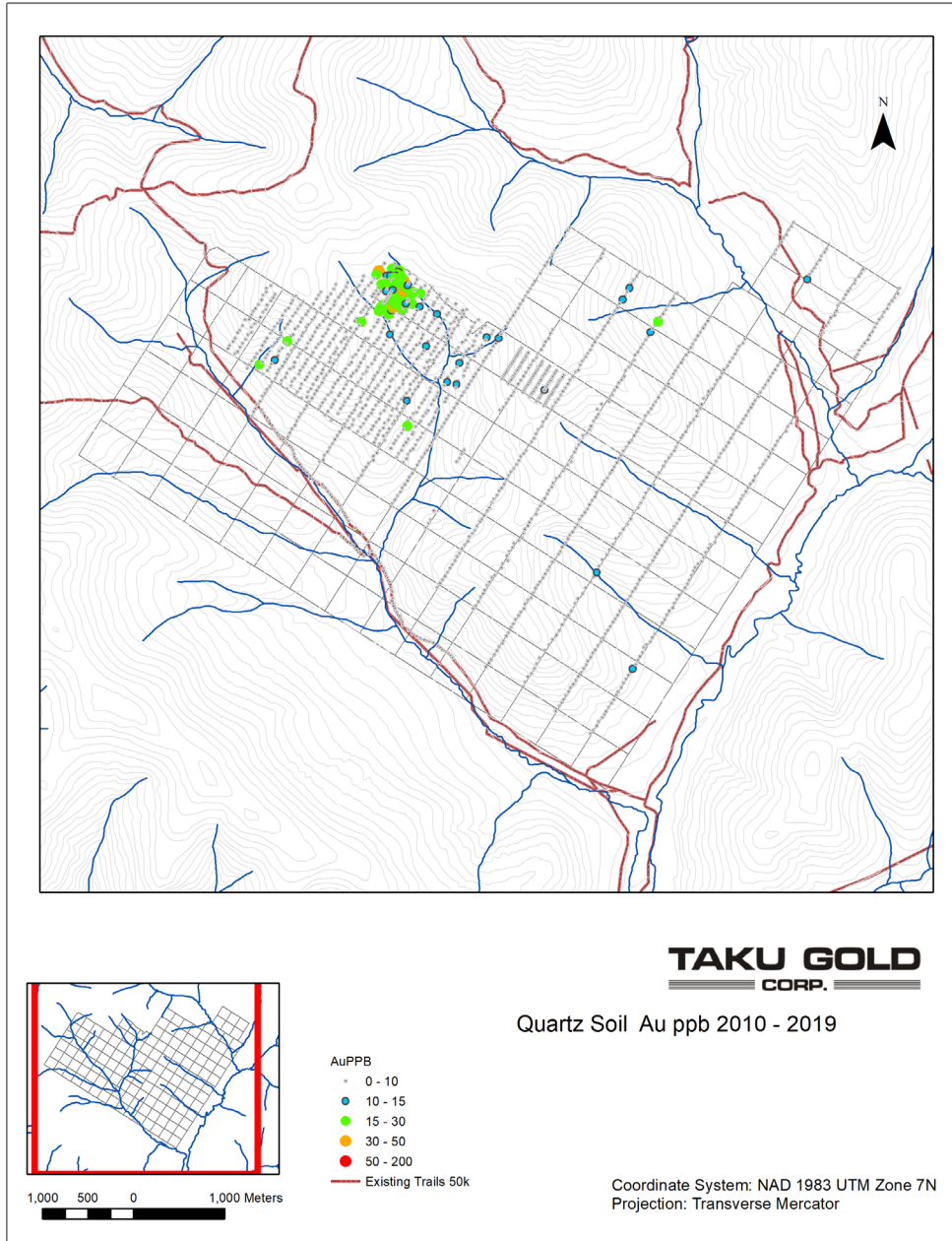


Figure 18 2010 - 2019 Quartz Soil Sample Results

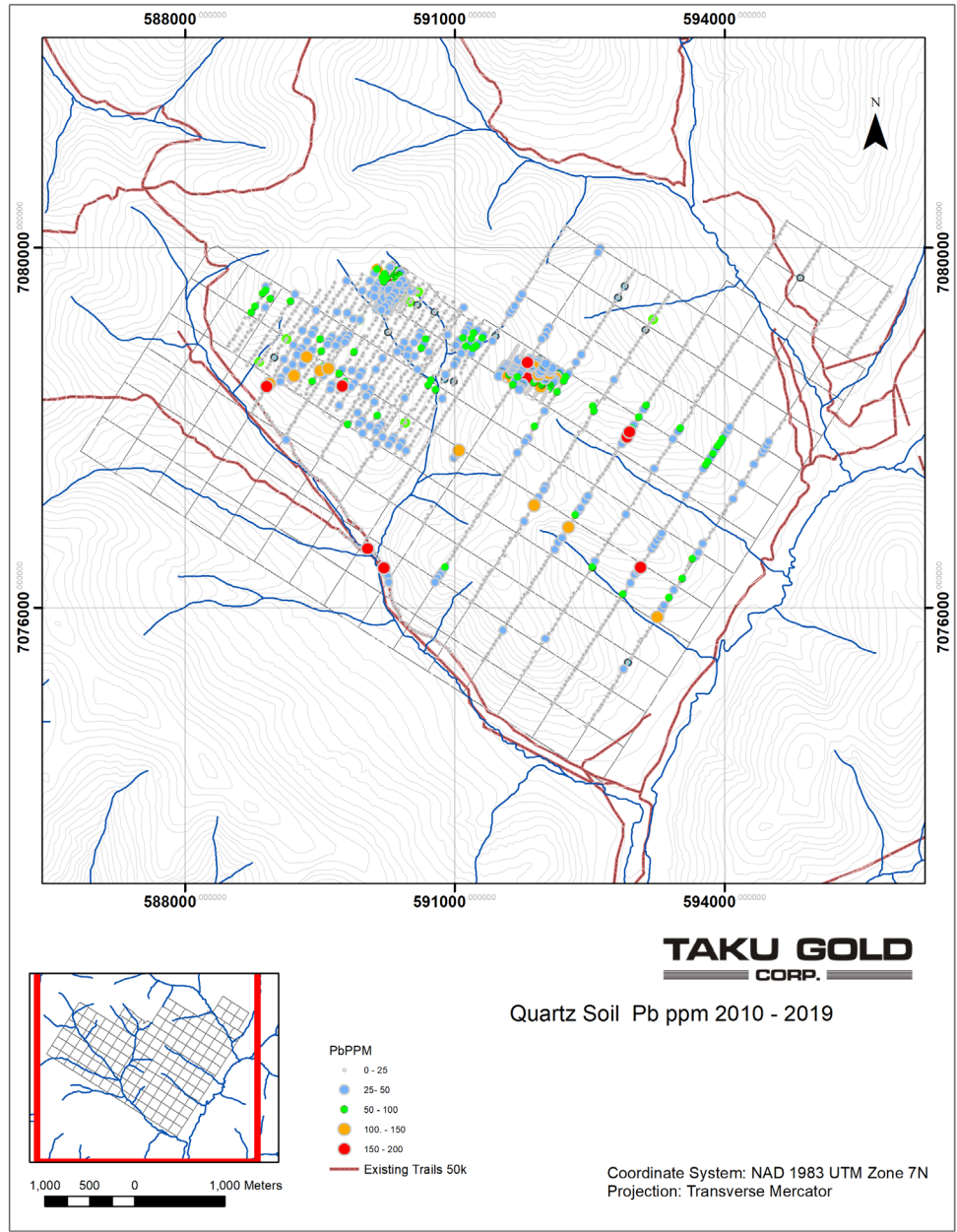


Figure 19 2010 - 2019 Quartz Soil Sample Results Pb ppm

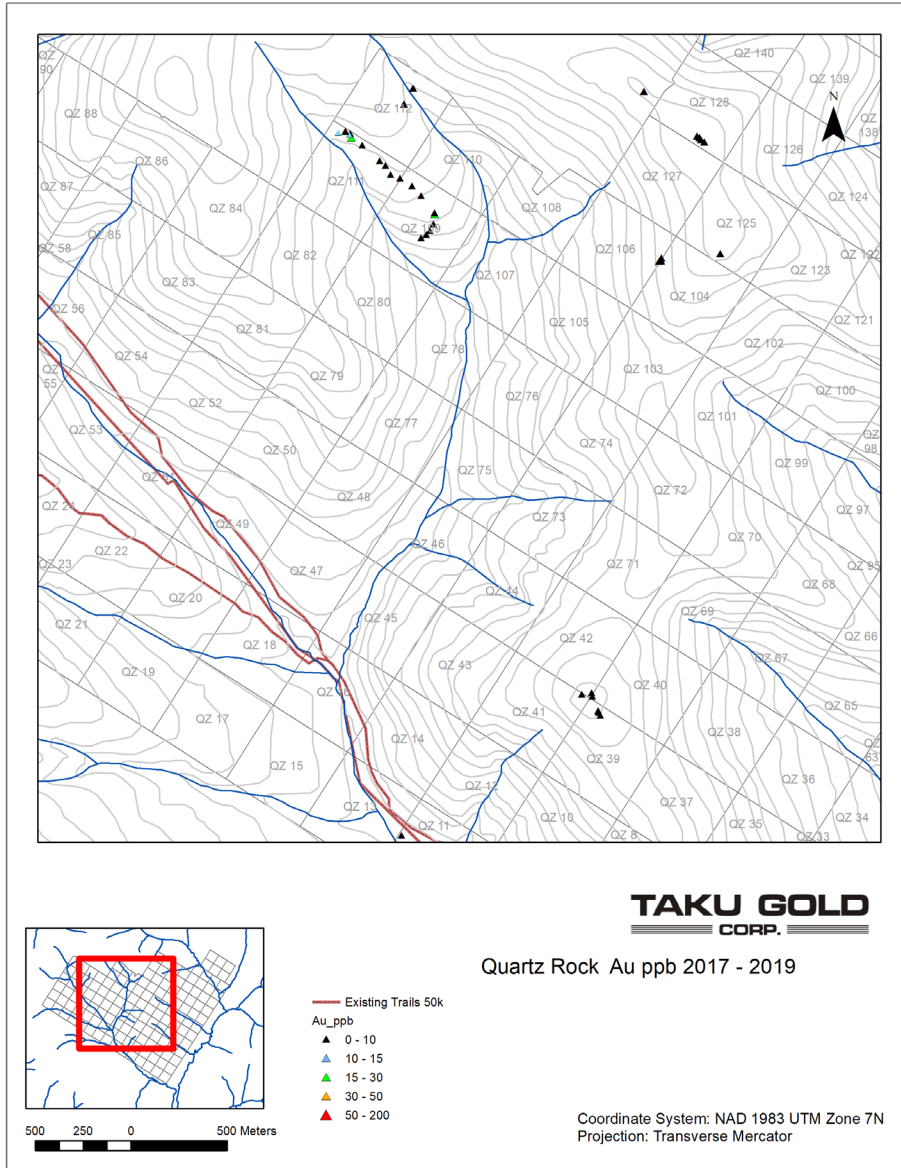


Figure 20 2017 - 2019 Quartz Rock Sample Results Au ppb

## 11. INTERPRETATION OF RESULTS AND CONCLUSIONS

A site visit by the Ms Putler and infill grid soil sampling in 2019 indicates that the soil sample gold anomaly located in the north east corner of the property is valid and the higher values are not influenced by creek or base of slope seepages. The gold in soil anomaly adjoins Klondike Gold Corp.'s Lonestar Project to the north and is drained by the placer producing creeks, Little Blanche and Quartz. It does appear that the anomalous gold in soil values may be related to a circular magnetic high. The magnetic high may be indicative of an intrusive body at depth. In 2019 a rock chip sample (No. 1817488) of ferruginous chloritic schist collected in the north east corner of the property returned the season maximum value of 7ppb Au.

In 2019 the existing soil grid was also infilled on claims QZ104 and QZ106 on a weak base metal anomaly that was interpreted to have VMS affinities. The 2019 soil samples in this area confirmed above background Pb values with the highest value of 334.5 ppm Pb. With a total of three soil samples on this grid with a value over 150 ppm Pb. Rock chip samples in this area returned a maximum Pb value (1817481) of 165 ppm Pb from ferruginous quartz with box-works after pyrite.

There are no clear indicators of economic mineralization on the Quartz property. Further work on the gold in soil anomaly at the north east corner of the property is of low priority.

## 12. BIBLIOGRAPHY

- Allan, M. M., Mortensen, J. K., and Cook, N. (2014). Preliminary stable isotope and geochemical investigation of carbonate in the Klondike district. *Yukon Exploration and Geology 2013*, K. E. MacFarlane, M. G. Nordling, and P.J. Sack (eds.), Yukon Geological Survey, pages 1–20. → page 6
- Allan, M. M., Mortensen, J. K., Hart, C. J. R., Bailey, L. A., Sanchez, M. G., Ciolkiewicz, W., McKenzie, G. G., and Creaser, R. A. (2013). Magmatic and Metallogenic Framework of West-Central Yukon and Eastern Alaska. *Tectonics, Metallogeny, and Discovery: The North American Cordillera and Similar Accretionary Settings: Society of Economic Geologists Special Publication*, 17:111–168. pages 3, 4, 5, 7, 9, 10, 12, 13, 16, 17, 20, 21, 23, 27, 32, 33, 34, 36, 58, 68, 78, 79
- Allan, M. M., Rhys, D. A., and Hart, C. J. R. (2017). Orogenic gold mineralization of the eastern Cordilleran gold belt, British Columbia: Structural ore controls in the Cariboo (093A/H), Cassiar (104P) and Sheep Creek (082F) mining districts. *Geoscience BC Report 2017-15*, page 108. → page 69
- Bailey, L. A. (2013). Late Jurassic Fault-Hosted Gold Mineralization of the Golden Saddle Deposit, White Gold District, Yukon Territory. *M.Sc. thesis, University of British Columbia, Vancouver, Canada*. pages 3, 12, 19, 21, 23, 25, 27, 78, 79
- Beranek, L. P. and Mortensen, J. K. (2011). The timing and provenance record of the Late Permian Klondike orogeny in northwestern Canada and arc-continent collision along western North America. *Tectonics*, 30(5):1–23. → pages 5, 12, 19, 20, 32, 34, 36

## 2019 Quartz Property Assessment Report

Bond, D. P. G. and Chapman, R. J. (2007). Evaluation of the origins of gold hosted by the conglomerates of the Indian River formation, Yukon, using a combined sedimentological and mineralogical approach. *Yukon Exploration and Geology 2006*, D. S. Emond, L. L. Lewis and L. H. Weston (eds.), Yukon Geological Survey, pages 93–103. → page 20

Bons, P. D., Elburg, M. A., and Gomez-Rivas, E. (2012). A review of the formation of tectonic veins and their microstructures. *Journal of Structural Geology*, 43:33–62. Chapman, R. J., Mortensen, J. K., Crawford, E. C., and LeBarge, W. P. (2010b). Microchemical Studies of Placer and Lode Gold in the Klondike District, Yukon, Canada: 2. Constraints on the Nature and Location of Regional Lode Sources. *Economic Geology*, 105(8):1393–1410. → pages 3, 5, 27, 34

Chapman, R. J., Mortensen, J. K., and LeBarge, W. P. (2011). Styles of lode gold mineralization contributing to the placers of the Indian River and Black Hills Creek, Yukon Territory, Canada as deduced from microchemical characterization of placer gold grains. *Mineralium Deposita*, 46(8):881–903. → pages 3, 5, 27

Gehrels, G., and Villeneuve, M. (2006a). Basement complex, Carboniferous magmatism and Paleozoic deformation in Yukon-Tanana terrane of central Yukon: Field, geochemical and geochronological constraints from Glenlyon map area.

Colpron, M. and Nelson, J. L. eds., *Paleozoic Evolution and Metallogeny of Pericratonic Terranes at the Ancient Pacific Margin of North America, Canadian and Alaskan Cordillera, Geological Association of Canada, Special Paper*, 45:131–151. pages 4, 19

Colpron, M. and Nelson, J. L. (2011). A Digital Atlas of Terranes for the Northern Cordillera. *BC GeoFile 2011-11*. → page 10

Colpron, M., Nelson, J. L., and Murphy, D. C. (2006b). A tectonostratigraphic framework for the pericratonic terranes of the northern Canadian Cordillera. Colpron, M. and Nelson, J. L. eds., *Paleozoic Evolution and Metallogeny of Pericratonic Terranes at the Ancient Pacific Margin of North America, Canadian and Alaskan Cordillera, Geological Association of Canada, Special Paper*, 45:1–23. pages 4, 9, 11, 12, 19, 32, 33, 58

Colpron, M., Nelson, J. L., and Murphy, D. C. (2007). Northern Cordilleran terranes and their interactions through time. *GSA Today*, 17(4/5):4–10. → pages 4, 12

Cox, S. F. (2005). Coupling between Deformation, Fluid Pressures, and Fluid Flow in Ore-Producing Hydrothermal Systems at Depth in the Crust. *Economic Geology 100th Anniversary Volume*, pages 39–75. → page 1

Creaser, R. A., Hart, C. J. R., Romback, C. S., Thompson, J. F. H., Smith, M. T., Bakke, A. A., and Goldfarb, R. J. (2002). Absolute timing of sulfide and gold mineralization: A comparison of Re-Os molybdenite and Ar-Ar mica methods from the Tintina Gold Belt, Alaska. *Geology*, 30(9):791–794. pages 2, 26

Debicki, R. (1984). Bedrock geology and mineralization of the Klondike area (west), 1150/14, 15, and 116B/2, 3. *Indian and Northern Affairs Canada, Whitehorse, Y.T. Open file map with marginal notes*. page 5

Debicki, R. (1985). Bedrock geology and mineralization of the Klondike area (east), 1150/9, 10, 11, 14, 15, 16, and 116B/2. *Indian and Northern Affairs Canada, Whitehorse, Y.T. Open file map with marginal notes*. → page 5

## 2019 Quartz Property Assessment Report

Dusel-Bacon, C., Lanphere, M. A., Sharp, W. D., Layer, P. W., and Hansen, V. L. (2002). Mesozoic thermal history and timing of structural events for the Yukon-Tanana Upland, east-central Alaska:  $^{40}\text{Ar}/^{39}\text{Ar}$  data from metamorphic and plutonic rocks. *Canadian Journal of Earth Sciences*, 39(6):1013–1051.

Etheridge, M. A. (1983). Differential stress magnitudes during regional deformation and metamorphism: Upper bound imposed by tensile fracturing. *Geology*, 11:231–234. → pages 28, 99

Fekete, M. and Dokic, N., 2010. Report on the surface work performed from August 1, 2010 to December 10, 2010 on the Quartz property, operated by and recorded to Taku Gold Corp. Open File report Yukon EMR. 095964

Fekete, M. and Dokic, N., 2011. Surface Work on the Quartz Property. Open File report Yukon EMR. 096220

Fekete, M. and Huber 2017. Surface Work on the Quartz Property, operated by and recorded to Taku Gold Corp. Open File report Yukon EMR. 097058

Gabrielse, H., Murphy, D. C., and Mortensen, J. (2006). Cretaceous and Cenozoic dextral orogen-parallel displacements, magmatism, and paleogeography, north-central Canadian Cordillera. *Geological Association of Canada Special Paper*, 46:255–276. → page 13

Goldfarb, R. J., Baker, T., Dube, B., Groves, D. I., Hart, C. J. R., and Gosselin, P. (2005). Distribution, character, and genesis of gold deposits in metamorphic terranes. *Economic Geology 100th Anniversary Volume*, pages 407–450. → pages 1, 26

Goldfarb, R. J. and Groves, D. I. (2015). Orogenic gold: Common or evolving fluid and metal sources through time. *Lithos*, 233:2–26. → pages 1, 26, 48

Gordey, S. P. and Ryan, J. (2005). Geology, Stewart River Area (115N, 115-O and part of 115-J), Yukon Territory. *Geological Survey of Canada, Open File 4970, scale 1:250000*. → pages 17, 18, 20, 35

Grimshaw, M. R. (2018). *Gold Mineralisation in the Lone Star area of the Klondike Gold District, Yukon, Canada*. Ph.D. thesis, University of Leeds, Leeds, England. → pages 6, 58, 64, 69

Hansen, V. L. and Dusel-Bacon, C. (1998). Structural and kinematic evolution of the Yukon-Tanana upland tectonites, east-central Alaska: A record of late Paleozoic to Mesozoic crustal assembly. *GSA Bulletin* 1998, 110(2):211–230. → page 12

Hoymann, K. H. and Friedrich, G. (1990). Gold and sulphide mineralization in the Hunker Creek area, Yukon Territory, Canada. *Yukon Geology*, 3:312–326. → pages 6, 23, 33

Knight, E., Schneider, D., and Ryan, J. (2013). Thermochronology of the Yukon-Tanana terrane, west-central Yukon: Evidence for Jurassic extension and exhumation in the northern Canadian Cordillera. *The Journal of Geology*, 121(4):371–400. → pages 12, 13, 23, 36

Knight, J. B., Morison, S. R., and Mortensen, J. (1999a). The relationship between placer gold particle shape, rimming and distance of fluvial transport; as exemplified by gold from the Klondike District, Yukon Territory, Canada. *Economic Geology*, 94:635–648. → pages 3, 5, 27

Knight, J. B., Mortensen, J., and Morison, S. R. (1994). Shape and composition of lode and placer gold from the Klondike District, Yukon, Canada. *Exploration and Geological Services Division, Yukon Region, Indian and Northern Affairs Canada, Bulletin 3*, page 155. → page 5

Knight, J. B., Mortensen, J. K., and Morison, S. R. (1999b). Lode and Placer Gold Composition in the Klondike District, Yukon Territory, Canada: Implications for the Nature and Genesis of Klondike Placer and Lode Gold Deposits. *Economic Geology*, 94:649–664. → pages 3, 5, 27

Kovacs, N. (2018). Genesis and post-ore modification of the migmatized Carmacks Copper Cu-Au-Ag porphyry deposit, Yukon, Canada. *M.Sc. thesis, University of British Columbia, Vancouver, British Columbia, Canada*. → page 16

Liverton, T. and Mann, W. (2011). Quartz vein gold mineralization in the Klondike Schist: The Mitchell-Sheba system, central Klondike district, Yukon. *Yukon Exploration and Geology*, pages 149–160. → pages 6, 24

MacKenzie, D. and Craw, D. (2010). Structural controls on hydrothermal gold mineralization in the White River area, Yukon. *Yukon Exploration and Geology 2009, K. E. MacFarlane, L. H. Weston and L. R. Blackburn (eds.), Yukon Geological Survey*, pages 253–263. → pages 12, 20, 32

MacKenzie, D. and Craw, D. (2012). Contrasting structural settings of mafic and ultramafic rocks in the Yukon-Tanana terrane. *Yukon Exploration and Geology 2011, K. E. MacFarlane and P. J. Sack (eds.), Yukon Geological Survey*, pages 115–127. → page 32

MacKenzie, D., Craw, D., and Mortensen, J. (2008a). Thrust slices and associated deformation in the Klondike goldfields, Yukon. *Yukon Exploration and Geology 2007, D. S. Emond, L. R. Blackburn, R. P. Hill, and L. H. Weston (eds.) Yukon Geological Survey*, pages 199–213. → pages 5, 32

MacKenzie, D., Craw, D., Mortensen, J., and Liverton, T. (2007). Structure of schist in the vicinity of the Klondike goldfield, Yukon. *Yukon Exploration and Geology 2006, D. S. Emond, L. L. Lewis and L. H. Weston (eds.), Yukon Geological Survey*, pages 197–212. → page 5

MacKenzie, D., Craw, D., Mortensen, J. K., and Liverton, T. (2008b). Disseminated gold mineralization associated with orogenic veins in the Klondike Schist, Yukon. *Yukon Exploration and Geology 2007, D.S. Emond, L. R. Blackburn, R. P. Hill, and L. H. Weston (eds.) Yukon Geological Survey*, pages 215–224. → pages 6, 64, 76, 77

MacKenzie, D. J., Craw, D., and Mortensen, J. K. (2008c). Structural controls on orogenic gold mineralisation in the Klondike goldfield, Canada. *Mineralium Deposita*, 43(4):435–448.  
pages 4, 6, 12, 20, 21, 22, 23, 32, 33, 36, 56

Metcalf, P. (1981). *Petrogenesis of the Klondike Formation*. M.Sc. thesis, University of Manitoba, Winnipeg, Manitoba. → page 5

Mihalynuk, M. G., Nelson, J. A., and Diakow, L. J. (1994). Cache Creek terrane entrapment: Oroclinal paradox within the Canadian Cordillera. *Tectonics*, 13(3):575–595. → page 13

Mortensen, J. K. (1990). Geology and U–Pb geochronology of the Klondike District, west-central Yukon Territory. *Canadian Journal of Earth Sciences*, 27(7):903–914. → pages 4, 5, 17, 19, 21, 33

## 2019 Quartz Property Assessment Report

Mortensen, J. K. (1992). Pre-mid-Mesozoic tectonic evolution of the Yukon-Tanana terrane, Yukon and Alaska. *Tectonics*, 11(4):836–853. → pages 11, 19

Mortensen, J. K. (1996). Geological compilation maps of the northern Stewart River map area, Klondike and Sixtymile Districts (115N/15, 16; 115O/13, 14; and parts of 115O/15, 16). *Exploration and Geological Services Division, Yukon Region, Indian and Northern Affairs Canada, Open File 1996-1 (G)*, page 43. → pages 4, 5, 17, 18, 20, 21, 34, 35, 46, 47

Mortensen, J. K. (in review). Locally-Sourced Gold-Bearing Orogenic Quartz Vein Systems in the Klondike Gold District, Yukon, Canada: Constraints from U-Pb Rutile Dating and Pb Isotopic Studies. *Economic Geology*. → pages 3, 6, 7, 21, 23, 24, 27, 33, 58, 64

Mortensen, J. K., Chapman, R., LeBarge, W., and Jackson, L. (2004). Application of placer and lode gold geochemistry to gold exploration in western Yukon. *Yukon Exploration and Geology 2004*, D. S. Emond, L. L. Lewis, and G. D. Bradshaw (eds.), Yukon Geological Survey, pages 205–212. → pages 3, 5, 27

Mortensen, J. K., Chapman, R. J., LeBarge, W., and Crawford, E. C. (2006a). Compositional studies of placer and lode gold from western Yukon: Implications for lode sources. *Yukon Exploration and Geology 2005*, D. S. Emond, G. D. Bradshaw, L. L. Lewis and L. H. Weston (eds.), Yukon Geological Survey, pages 247–255. → pages 3, 5, 27

Mortensen, J. K., Craw, D., MacKenzie, D. J., Gabites, J. E., and Ullrich, T. (2010). Age and origin of orogenic gold mineralization in the Otago Schist Belt, South Island, New Zealand: constraints from lead isotope and  $^{40}\text{Ar}/^{39}\text{Ar}$  dating studies. *Economic Geology*, 105(4):777–793. → pages 2, 26

Mortensen, J. K. and Dusel-Bacon, C. (2014). Nature and U-Pb zircon ages of Mid-Cretaceous calderas and tuffs in Eastern Alaska and Western Yukon: Implications for landscape evolution in the Northern Cordillera. *GSA Annual Meeting Abstract*. → pages 13, 20

Mortensen, J. K., Dusel-Bacon, C., Hunt, J. A., and Gabites, J. (2006b). Lead isotopic constraints on the metallogeny of middle and late Paleozoic syngenetic base-metal occurrences in the Yukon-Tanana and Slide Mountain/Seventymile terranes and adjacent portions of the North American miogeocline.

Mortensen, J. K., Liverton, T., and Dodd, K. (2019). Chemostratigraphic Constraints on the Nature and Origin of Felsic Schist Units Hosting Stratabound and Orogenic Vein Gold on Lone Star Ridge, Klondike Gold District, Yukon. *Journal of Geochemical Exploration*, 204:112–130. Pages 5, 6, 18, 19, 33, 34, 35, 41, 46, 47, 63, 64

Mortensen, J. K., Nesbitt, B. E., and Rushton, R. W. (1992). Preliminary observations on the geology and geochemistry of quartz veins in the Klondike District, West-Central Yukon. *Yukon Geology*, 3:260–270. → pages 4, 6, 23, 33, 34

Mortensen, J. K., Rhys, D. A., and Ross, K. V. (2011). Investigations of orogenic gold deposits in the Cariboo Gold District, east-central British Columbia: final report. *Summary of Activities 2010, Geoscience BC, Report 2011-1*, pages 65–76. → page 69

Nelson, J. L., Colpron, M., and Israel, S. (2013). The Cordillera of British Columbia, Yukon, and Alaska: Tectonics and metallogeny. *Tectonics, Metallogeny, and Discovery: The North American Cordillera and Similar Accretionary Settings: Society of Economic Geologists Special Publication*, 17:53–109. pages 4, 9, 11, 12, 13, 23, 32, 36

Nelson, J. L., Colpron, M., Piercey, S. J., Dusel-Bacon, C., Murphy, D. C., and Roots, C. F. (2006). Paleozoic tectonic and metallogenic evolution of the pericratonic terranes in Yukon, northern British Columbia and eastern Alaska. *Colpron, M. and Nelson, J. L. eds., Paleozoic Evolution and Metallogeny of Pericratonic Terranes at the Ancient Pacific Margin of North America, Canadian and Alaskan Cordillera, Geological Association of Canada, Special Paper*, 45:323–360. → pages 12, 13, 19

Parry, R. (2018). Mechanism of Post-Hydrothermal Deformation in Orogenic Gold Deposits: A Case Study of the Klondike Gold District, Yukon. *B.Sc. thesis, University of British Columbia, Vancouver, British Columbia, Canada.* → page 6

Phillips, G. N. and Powell, R. (2010). Formation of gold deposits: a metamorphic devolatilization model. *Journal of Metamorphic Geology*, 28(6):689–718. → page 1

Piercey, S. J. and Colpron, M. (2009). Composition and provenance of the Snowcap assemblage, basement to the Yukon-Tanana terrane, northern Cordillera: Implications for Cordilleran crustal growth. *Geosphere*, 5(5):439–464. → page 11

Piercey, S. J., Nelson, J. L., Colpron, M., Dusel-Bacon, C., Simard, R.-L., and Roots, C. F. (2006). Paleozoic magmatism and crustal recycling along the ancient Pacific margin of North America, northern Cordillera. *Colpron, M. and Nelson, J. L. eds., Paleozoic Evolution and Metallogeny of Pericratonic Terranes at the Ancient Pacific Margin of North America, Canadian and Alaskan Cordillera, Geological Association of Canada, Special Paper*, 45:281–322. → page 11

Powell, R., Will, T., and Phillips, G. (1991). Metamorphism in Archaean greenstone belts: calculated fluid compositions and implications for gold mineralization. *Journal of Metamorphic Geology*, 9(2):141–150. → page 1

Rhys, D. A., Mortensen, J., and Ross, K. V. (2009). Investigations of Orogenic Gold Deposits in the Cariboo Gold District, East-Central British Columbia (Parts of NTS 093A, H): Progress Report. *Geoscience BC Summary of Activities 2008, Geoscience BC, Report 2009-1*, pages 49–74. → page 69

Ruks, T. W., Piercey, S. J., Ryan, J. J., Villeneuve, M. E., and Creaser, R. A. (2006). Mid- to late Paleozoic K-feldspar augen granitoids of the Yukon-Tanana terrane, Yukon, Canada: Implications for crustal growth and tectonic evolution of the northern Cordillera. *Geological Society of America Bulletin*, 118(9-10):1212–1231. → page 19

Rushton, R. W., Nesbitt, B. E., Muehlenbachs, K., and Mortensen, J. K. (1993). A Fluid Inclusion and Stable Isotope Study of Au Quartz Veins in the Klondike District, Yukon Territory, Canada: A Section through a Mesothermal Vein System. *Economic Geology*, 88(3):647–678. → pages 4, 6, 23, 33, 34, 68

Sanchez, M. G., Allan, M. M., Hart, C. J. R., and Mortensen, J. (2013). Orogen-perpendicular magnetic segmentation of the Western Yukon and Eastern Alaska Cordilleran hinterland: Implications for structural control of mineralization. *Yukon Exploration and Geology 2012*, K. E. MacFarlane, M. G. Nordling, and P. J. Sack (eds.), Yukon Geological Survey, pages 133–146. → pages 13, 21, 33

Sangster, A. and Smith, P. (2007). Metallogenic summary of the Meguma gold deposits, Nova Scotia. Goodfellow, W.D., eds., *Mineral Deposits of Canada: A Synthesis of Major Deposit-Types, District Metallogeny, the Evolution of the Geological Provinces, and Exploration Methods: Geological Association of Canada, Mineral Deposits Division, Special Publication, 5:723–732*. → page 68

Sears, W.A., 1999, Detailed Airborne Magnetics and VLF-EM over the Klondike District, Dawson City *Yukon EMR Open File Report. 094021*

Stevens, R., 1996. JAE Mapping Report. A geological and Geochemical Report of the Hunker Dome Project. *Yukon EMR Open File Report. 093711*

Staples, R. D., Gibson, H. D., Berman, R. G., Ryan, J. J., and Colpron, M. (2013). A window into the Early to mid-Cretaceous infrastructure of the Yukon-Tanana terrane recorded in multi-stage garnet of west-central Yukon, Canada. *Journal of Metamorphic Geology*, 31(7):729–753. pages 13, 17, 21, 33, 36, 68, 74, 77

Staples, R. D., Gibson, H. D., Colpron, M., and Ryan, J. J. (2016). An orogenic wedge model for diachronous deformation, metamorphism, and exhumation in the hinterland of the northern Canadian Cordillera. *Lithosphere*, 8(2):165–184. → pages 68, 71

Tafti, R. (2005). Nature and Origin of the Early Jurassic Copper (-Gold) Deposits at Minto and Williams Creek, Carmacks Copper Belt, Western Yukon: Examples of Deformed Porphyry Deposits. M.Sc. thesis, University of British Columbia, Vancouver, Canada. → page 12

Topham, M. J., Allan, M. M., Hart, C. J. R., Colpron, M., and Sack, P. J. (2016). Crustal depth of emplacement of the Early Jurassic Aishihik and Tatchun batholiths, west-central Yukon. *Yukon Exploration and Geology 2015*, K. E. MacFarlane and M. G. Nordling (eds.), Yukon Geological Survey, pages 233–251. → page 12

Wolff, W. R. G. (2012). Microstructures and Trace Element Signatures of Orogenic Quartz Veins in the Klondike District, Yukon Territory, Canada. *B.Sc. thesis, University of British Columbia, Vancouver, Canada*. → pages 6, 56

Yukon-MINFILE (2019). Yukon MINFILE - A Database of Mineral Occurrences. *Yukon Geological Survey*, <http://data.geology.gov.yk.ca>. → pages 4, 34

13. APPENDIX A - STATEMENT OF WORK EXPENDITURES

Quartz Caim Group 2019 Statement of Expenses				
Expense		Rate \$	# of days/units	Total \$
Wages Geologist	Jean Pautler - Contract Geo	600	2	1,200.00
Truck Hire	Jean Pautler - Contract Geo	100	2	200.00
Board	Jean Pautler - Contract Geo	75	2	150.00
Soil Sampling	Ground Truth	34	170	5,780.00
Helicopter	Ground Truth	n/a	n/a	1,947.00
Assay	ALS Bureau Veritas	n/a	n/a	3,910.00
Sample Shipment	Mantoulin	n/a	n/a	148.52
Reporting	Senior Geologist	600	2.5	1,500.00
			<b>TOTAL</b>	<b>14,835.52</b>

## 14. APPENDIX B - SAMPLE LOCATIONS AND DESCRIPTIONS

## Rock Sample Locations and Descriptions

2019 09 20-21					QUARTZ PROJECT: Rock Sample Descriptions					
SAMPLE	NAD 83 Zone 7		ELEV.							
NUMBER	EASTING	NORTHING	(ft)	TYPE	DESCRIPTION		WgtKG	AuPPM		
1817476	592118	7078762	3141	grab	well fractured white quartz vein float to 20 cm blocks with Mn and limonite fracture fillings and clots of spongy limonite to 0.7 cm, goethite knots after pyrite, oxidized cubic pyrite, some crystalline vuggy quartz	1817476	2.35	0.0025		
1817477	591799	7078723	2921	grab	rusty felsic quartz-sericite schist	1817477	1.87	0.0025		
1817478	591810	7078739	2923	grab	strongly rusty quartz-sericite schist with limonite knots and flecks of mariposite	1817478	1.19	0.0025		
1817479	591808	7078725	2920	grab	quartz float to 2 cm from pit dug at 308.5 ppm Pb soil anomaly, some limonite, lesser Mn fracture fillings and rusty blebs	1817479	0.63	0.0025		
1817480	591808	7078725	2920	grab	rusty quartz sericite schist with goethite knots from pit dug at 308.5 ppm Pb soil anomaly	1817480	1.61	0.0025		
1817481	591799	7078723	2921	grab	quartz with strong limonite-goethite infilling and rusty silicified quartz-sericite schist with goethite knots and oxidized cubic pyrite	1817481	0.89	0.0025		
1817482	592034	7079345	3158	grab	quartz- weak carbonate vein float with weak limonite and Mn fracture fillings	1817482	0.81	0.0025		
1817483	591996	7079375	3169	grab	rusty weathering, quartz stockworked, weak potassically altered orthogneiss with limonite infilling open crystalline vugs in quartz veinlets, which are generally 4-5mm wide, some few mm	1817483	1.59	0.0025		
1817484	591996 591972	7079375 7079392	3169	grab	orange weathering, silicified, ankerite altered felsic gneiss (orthogneiss or meta felsic volcanic, lots limonite-ankerite fracture fillings, some black quartz veinlets to 0.5 cm	1817484	2.73	0.0025		
1817485	592010	7079366	3122	grab	composite of quartz float in area with limonite and Mn fracture fillings, some vuggy ankerite and limonite, minor Mn infilling vugs, blocks to 20 cm, from just SE of 1817484 to soil 1817499	1817485	3.1	0.0025		
1817486	591720	7079607	3116	grab	white sugary quartz vein float near property boundary with lots Mn infilling vugs, minor fresh cubic pyrite, 20 cm block	1817486	2.3	0.0025		
1817487	590470	7079542	2620	grab	quartz veins to 3 cm, with moderate limonite and Mn fracture fillings and infilling vugs, 2% oxidized cubic pyrite, in silicified, limonitic chlorite-quartz-feldspar schist, some wallrock in sample, from 144 ppb Au soil anomaly just under lichen/moss with homogenous beige-brown soil beneath, flat-gentle slope above change in slope and creek influence	1817487	1.31	0.005		
1817488	590517	7079625	2642	grab	rusty chlorite-sericite schist from trench area just east of creek	1817488	1.17	0.007		
1817499	592017	7079355	3167	soil	rusty brown C horizon soil, 15 cm depth, flat, that appears to be fault related					
1817500	591799	7078723	2921	soil	orange-brown C horizon soil, clayey sand texture, moderate-gentle slope, from 40 cm pit near 308.5 ppm Pb soil anomaly					

## Soil Sample Locations and Descriptions Supplied Electronically

### SOIL SAMPLE LOCATIONS AND ASSAYS

point_type	sample_id	utm_easting	utm_northing	Sample	AuPPB	HgPPM	CuPPM	PbPPM	ZnPPM	AgPPM	NiPPM	CoPPM
Soil Sample	1812451	590220	7079244	1812451	9.1	0.04	27.9	11.5	54	0.2	17.5	10.8
Soil Sample	1812452	590231	7079267	1812452	4.5	0.02	26.9	13.1	49	0.2	14.8	7.2
Soil Sample	1812453	590246	7079286	1812453	16.2	0.04	71.5	13.8	67	0.2	26.5	11.2
Soil Sample	1812454	590259	7079311	1812454	6.9	0.04	178.5	35.6	365	0.7	28	11.3
Soil Sample	1812455	590272	7079329	1812455	11.8	0.03	69.9	16.4	71	0.2	24.2	9.3
Soil Sample	1812456	590284	7079353	1812456	23.1	0.02	73.2	19.2	57	0.1	18.9	8.4
Soil Sample	1812457	590301	7079368	1812457	37.7	0.02	61	30.3	93	0.1	27.3	12.5
Soil Sample	1812458	590314	7079394	1812458	23.7	0.03	113.1	28.4	61	0.1	15.5	8.9
Soil Sample	1812459	590327	7079411	1812459	22.7	0.04	102.6	18.7	57	0.1	25.5	9.5
Soil Sample	1812460	590344	7079433	1812460	23.2	0.03	128.4	26.5	74	0.05	15	8.6
Soil Sample	1812461	590358	7079453	1812461	19.5	0.02	109.6	18	94	0.05	14.2	6.1
Soil Sample	1812462	590367	7079478	1812462	25.4	0.03	110.4	21.9	101	0.1	21.2	7.7
Soil Sample	1812463	590388	7079499	1812463	17.6	0.01	129.8	79.4	196	0.1	39.5	17.2
Soil Sample	1812464	590400	7079521	1812464	18.5	0.005	90.1	31.7	64	0.05	11.3	8.2
Soil Sample	1812465	590411	7079539	1812465	40.2	0.02	96.2	30.5	78	0.05	17.7	9.6
Soil Sample	1812466	590427	7079558	1812466	36.3	0.005	61.1	18.3	40	0.05	11.5	5.1
Soil Sample	1812467	590436	7079582	1812467	21	0.01	90	32.3	80	0.1	39.8	14.5
Soil Sample	1812468	590450	7079601	1812468	13.9	0.01	49.2	29.5	66	0.2	30.1	12
Soil Sample	1812469	590465	7079621	1812469	7.4	0.005	30.4	14.7	67	0.1	20.6	9
Soil Sample	1812470	590368	7079769	1812470	19.9	0.03	51.7	17.5	84	0.2	20.9	9.6
Soil Sample	1812471	590352	7079750	1812471	10.1	0.01	92.9	74.4	147	0.1	111.6	28.5
Soil Sample	1812472	590342	7079726	1812472	19.7	0.02	95.6	77.6	120	0.1	57.6	19.9
Soil Sample	1812473	590327	7079707	1812473	14.3	0.01	73.1	54	89	0.2	44.4	17.9

2019 Quartz Property Assessment Report

point_type	sample_id	utm_easting	utm_northing	Sample	AuPPB	HgPPM	CuPPM	PbPPM	ZnPPM	AgPPM	NiPPM	CoPPM
Soil Sample	1812474	590309	7079688	1812474	22.2	0.02	93.1	81.7	116	0.1	57.4	23.8
Field Duplicate	1812475	590309	7079688	1812475	21.7	0.01	97	73.2	112	0.1	57.1	23.4
Soil Sample	1812476	590298	7079666	1812476	3.7	0.005	102.4	96.3	109	0.05	74.9	37.9
Soil Sample	1812477	590284	7079645	1812477	2.8	0.03	34.2	69.4	158	0.2	49.2	36
Soil Sample	1812478	590274	7079624	1812478	9.7	0.005	95.7	77.6	145	0.1	78.9	37.6
Soil Sample	1812479	590257	7079603	1812479	6.3	0.01	64.7	161	305	0.2	90.8	30.4
Soil Sample	1812480	590246	7079580	1812480	23.5	1.19	47.3	62.9	237	0.6	80.6	17.7
Soil Sample	1812481	590202	7079521	1812481	7.4	0.18	41.1	29.5	80	0.2	26.3	8.7
Soil Sample	1812482	590217	7079539	1812482	11.1	0.1	67	31.7	64	0.1	19.1	9.3
Soil Sample	1812483	590229	7079561	1812483	8.8	0.18	48.4	28.5	97	0.3	37	13.4
Soil Sample	1814851	592165	7078614	1814851	1.5	0.02	20.5	37.1	115	0.1	9.5	3.5
Soil Sample	1814852	592152	7078594	1814852	2.5	0.03	21.8	59.6	124	0.2	11.9	4.8
Soil Sample	1814853	592137	7078571	1814853	2.5	0.24	59.9	334.5	247	1	11.8	3.6
Soil Sample	1814854	592125	7078551	1814854	2	0.03	28.3	124.1	211	0.2	7.5	1.5
Soil Sample	1814855	592111	7078530	1814855	1.8	0.02	25.5	46.3	98	0.2	13.1	4.9
Soil Sample	1814856	592098	7078509	1814856	3.9	0.05	48.3	33.9	125	0.3	14.1	7
Soil Sample	1814857	592084	7078488	1814857	0.05	0.01	14.7	24.2	139	0.4	8.4	10.5
Soil Sample	1814858	592070	7078467	1814858	2.3	0.05	33.7	76.9	166	0.2	9.5	4.4
Soil Sample	1814859	592057	7078445	1814859	1	0.02	48.4	52.8	186	0.5	16.1	9.9
Soil Sample	1814860	592043	7078425	1814860	3.2	0.07	73.6	74.9	219	0.6	19.9	14.6
Soil Sample	1814861	592030	7078404	1814861	0.05	0.005	41.7	5.4	82	0.05	22.2	22.8
Soil Sample	1814862	592016	7078383	1814862	0.05	0.005	32.8	12	105	0.1	30.2	16.7
Soil Sample	1814863	592002	7078361	1814863	1.4	0.005	26	8.8	74	0.05	18.4	9.2
Soil Sample	1814864	591989	7078340	1814864	0.9	0.005	37.6	4.2	95	0.05	35.7	15.8
Soil Sample	1814865	591975	7078318	1814865	3.2	0.01	9.5	18.2	43	0.1	10.8	5.6
Soil Sample	1814866	591962	7078298	1814866	2.9	0.01	23.6	12.2	63	0.1	18.3	8.1
Soil Sample	1814867	591949	7078277	1814867	0.05	0.005	21.6	4.3	97	0.05	22.2	12.8

2019 Quartz Property Assessment Report

point_type	sample_id	utm_easting	utm_northing	Sample	AuPPB	HgPPM	CuPPM	PbPPM	ZnPPM	AgPPM	NiPPM	CoPPM
Soil Sample	1814868	591872	7078326	1814868	0.05	0.005	32.1	11.4	116	0.1	31.3	14.1
Soil Sample	1814869	591885	7078347	1814869	1.1	0.005	16.7	7.4	80	0.05	21.6	11.1
Soil Sample	1814870	591898	7078368	1814870	0.05	0.02	35.3	7.4	78	0.2	22.4	10.4
Soil Sample	1814871	591912	7078389	1814871	0.05	0.005	40.8	7.8	91	0.4	23.5	17
Soil Sample	1814872	591925	7078410	1814872	0.7	0.005	43.4	4.6	68	0.05	26.7	21
Soil Sample	1814873	591939	7078431	1814873	0.05	0.005	57.1	5.9	94	0.05	28.6	31.5
Soil Sample	1814874	591953	7078452	1814874	13.6	0.07	56.3	98.4	161	0.7	22.3	13
Field Duplicate	1814875	591953	7078452	1814875	3.5	0.05	36.6	117.5	166	0.6	17.4	8.1
Soil Sample	1814876	591966	7078473	1814876	0.1	0.02	16.6	76.9	599	0.8	14.2	9.9
Soil Sample	1814877	591980	7078494	1814877	1	0.02	22.2	56.3	92	0.2	9.2	5
Soil Sample	1814878	591993	7078515	1814878	0.8	0.01	35.4	11.8	136	0.2	12.8	14.9
Soil Sample	1814879	592006	7078536	1814879	0.7	0.01	20.7	32.6	95	0.4	9.7	4.2
Soil Sample	1814880	592021	7078557	1814880	0.1	0.005	11.8	72.3	63	0.3	6.6	2.4
Soil Sample	1814881	592034	7078578	1814881	0.05	0.005	50.7	31.9	390	0.3	12.2	10.1
Soil Sample	1814882	592047	7078599	1814882	1.5	0.04	87.8	125.7	215	0.6	13.9	5.1
Soil Sample	1814883	592061	7078620	1814883	0.05	0.02	15	43	70	0.3	9.1	3.2
Soil Sample	1814884	592074	7078642	1814884	0.05	0.03	19.9	40.4	75	0.4	12.1	4.2
Soil Sample	1814885	592088	7078663	1814885	1	0.03	14.9	39.8	59	0.4	13.1	5
Soil Sample	1814901	591934	7078762	1814901	0.9	0.03	12.7	57.2	148	0.4	7.7	3.5
Soil Sample	1814902	591921	7078743	1814902	1.3	0.04	17.3	34.3	85	0.5	19.8	6.4
Soil Sample	1814903	591909	7078722	1814903	1.2	0.03	11.4	36.7	80	0.2	9.2	7.7
Soil Sample	1814904	591893	7078700	1814904	1	0.05	21.9	59.7	108	0.3	18.2	12.7
Soil Sample	1814905	591881	7078680	1814905	0.6	0.06	29.1	147.3	147	0.7	14.9	11.3
Soil Sample	1814906	591865	7078658	1814906	1.1	0.03	34.5	24	137	0.3	23.3	9.6
Soil Sample	1814907	591855	7078636	1814907	2	0.04	27.6	45.8	108	0.4	15.9	4.8
Soil Sample	1814908	591838	7078617	1814908	1.1	0.02	21	72.3	133	0.1	13.3	5.4
Soil Sample	1814909	591827	7078595	1814909	0.9	0.03	16.4	26	112	0.4	12.4	4.9

2019 Quartz Property Assessment Report

point_type	sample_id	utm_easting	utm_northing	Sample	AuPPB	HgPPM	CuPPM	PbPPM	ZnPPM	AgPPM	NiPPM	CoPPM
Soil Sample	1814910	591813	7078574	1814910	1	0.03	21	38.5	90	0.6	14.5	5.4
Soil Sample	1814911	591798	7078553	1814911	1.8	0.05	36.9	199.3	150	0.5	8.5	2.1
Soil Sample	1814912	591786	7078532	1814912	3.5	0.08	40.7	210	263	0.7	8.9	2.9
Soil Sample	1814913	591773	7078510	1814913	1	0.02	28.7	19.3	118	0.3	9.7	7.3
Soil Sample	1814914	591757	7078490	1814914	1.8	0.03	22.8	28.7	94	0.2	9.9	5.5
Soil Sample	1814915	591744	7078469	1814915	1.5	0.02	19.5	52.1	80	0.2	12.2	5.5
Soil Sample	1814916	591729	7078448	1814916	0.8	0.03	41	35.2	165	0.2	18.5	12.6
Soil Sample	1814917	591718	7078426	1814917	0.7	0.02	40.3	30.1	100	0.1	14.9	13.3
Soil Sample	1814918	591794	7078378	1814918	0.05	0.02	33.3	9.1	78	0.2	24.3	8.5
Soil Sample	1814919	591807	7078397	1814919	0.05	0.03	41.5	14.1	80	0.3	20.9	20.4
Soil Sample	1814920	591821	7078418	1814920	0.05	0.01	22	17.1	65	0.2	13.6	12.3
Soil Sample	1814921	591835	7078439	1814921	0.6	0.005	51.6	4	91	0.2	26.3	24.8
Soil Sample	1814922	591847	7078460	1814922	0.05	0.01	44.2	17.6	134	0.4	22.1	15.9
Soil Sample	1814923	591862	7078481	1814923	1.7	0.03	24.7	24	125	0.6	13.5	6.6
Soil Sample	1814924	591879	7078500	1814924	1.3	0.06	21.1	76.1	85	0.6	13.3	6.1
Soil Sample	1814925	591879	7078500	1814925	1.2	0.03	29	94.3	91	0.6	16.1	8.1
Soil Sample	1814926	591890	7078522	1814926	3.8	0.02	15.2	20.6	134	0.7	11.7	9.3
Soil Sample	1814927	591904	7078544	1814927	0.8	0.02	12.1	12.9	114	0.5	12.1	7.8
Soil Sample	1814928	591915	7078566	1814928	1.8	0.02	13.8	50.3	126	0.5	10.1	4.4
Soil Sample	1814929	591930	7078587	1814929	1.1	0.02	37.6	116.9	321	0.6	14.7	4.4
Soil Sample	1814930	591944	7078607	1814930	0.8	0.02	29.3	34.6	282	0.8	8.1	2.8
Soil Sample	1814931	591958	7078628	1814931	0.05	0.02	34.8	25.3	130	0.3	18	5.5
Soil Sample	1814932	591971	7078649	1814932	2.1	0.02	13.8	14.7	209	0.4	16.1	7.5
Soil Sample	1814933	591983	7078672	1814933	0.05	0.02	59.3	48.8	302	0.4	19.4	6.3
Soil Sample	1814934	591995	7078693	1814934	1.4	0.02	15.2	63.4	110	0.5	13.9	5.1
Soil Sample	1814935	592012	7078712	1814935	1.4	0.02	15.3	49.2	76	0.4	13.5	4.4
Soil Sample	1814951	591703	7078910	1814951	3.9	0.04	12.9	18.1	57	0.3	12	5.6

2019 Quartz Property Assessment Report

point_type	sample_id	utm_easting	utm_northing	Sample	AuPPB	HgPPM	CuPPM	PbPPM	ZnPPM	AgPPM	NiPPM	CoPPM
Soil Sample	1814952	591690	7078890	1814952	5.6	0.04	14.9	15.6	70	0.2	13.4	7.4
Soil Sample	1814953	591677	7078869	1814953	3.1	0.03	16.7	14.7	59	0.2	13.6	6.4
Soil Sample	1814954	591663	7078848	1814954	2.3	0.03	20	16.7	66	0.2	15.6	7.3
Soil Sample	1814955	591649	7078826	1814955	2.3	0.03	19.5	13.9	73	0.1	14.6	6.5
Soil Sample	1814956	591636	7078804	1814956	1.4	0.03	20.8	12.6	67	0.1	16.4	6.9
Soil Sample	1814957	591623	7078785	1814957	1.5	0.02	13.3	14.5	70	0.2	14.5	7.6
Soil Sample	1814958	591610	7078764	1814958	1.8	0.03	16.5	22.5	86	0.2	14.1	8.3
Soil Sample	1814959	591596	7078743	1814959	5	0.04	21.8	19.1	79	0.1	16.2	7.2
Soil Sample	1814960	591582	7078721	1814960	3.2	0.02	14.1	23.9	80	0.1	13.5	9.2
Soil Sample	1814961	591568	7078700	1814961	4.3	0.03	21.5	33.7	72	0.1	14.4	6.8
Soil Sample	1814962	591556	7078678	1814962	2.2	0.02	15.3	36.6	66	0.2	9.9	3.7
Soil Sample	1814963	591541	7078658	1814963	1.6	0.04	17.9	46.2	79	0.3	10.2	3.3
Soil Sample	1814964	591528	7078637	1814964	3.1	0.02	14.9	30.5	74	0.2	11.8	4.5
Soil Sample	1814965	591514	7078616	1814965	1.8	0.05	43.3	53.3	146	0.7	19.3	7.8
Soil Sample	1814966	591501	7078594	1814966	1.1	0.03	24.3	36.7	103	0.2	13.6	4.9
Soil Sample	1814967	591488	7078575	1814967	2.2	0.04	32	50	112	0.3	15.2	5.6
Soil Sample	1814968	591575	7078545	1814968	0.7	0.03	29.3	80.5	89	0.6	8.5	2.9
Soil Sample	1814969	591591	7078566	1814969	1.6	0.02	25.6	126.2	120	0.3	11.4	4.5
Soil Sample	1814970	591605	7078587	1814970	7.6	0.02	71.8	89.7	330	0.5	17	5.1
Soil Sample	1814971	591618	7078609	1814971	1	0.02	19	59.3	99	0.3	7.7	2.8
Soil Sample	1814972	591631	7078630	1814972	1	0.02	18.8	41	141	0.2	12.4	5.2
Soil Sample	1814973	591644	7078650	1814973	2	0.02	16.2	29.1	79	0.1	11.6	4.7
Soil Sample	1814974	591659	7078672	1814974	1.4	0.02	13.5	29.2	63	0.1	11.2	4.1
Field Duplicate	1814975	591659	7078672	1814975	2.2	0.02	16.1	31.8	72	0.2	12.4	4.7
Soil Sample	1814976	591671	7078692	1814976	1.7	0.02	13.6	34.9	65	0.2	9.6	3.5
Soil Sample	1814977	591686	7078712	1814977	7.5	0.03	19	41.9	84	0.3	12.3	6.9
Soil Sample	1814978	591700	7078735	1814978	4	0.03	16.8	33.2	80	0.4	13	6.4

2019 Quartz Property Assessment Report

point_type	sample_id	utm_easting	utm_northing	Sample	AuPPB	HgPPM	CuPPM	PbPPM	ZnPPM	AgPPM	NiPPM	CoPPM
Soil Sample	1814979	591711	7078757	1814979	1.7	0.06	25.6	31.2	111	0.1	18.4	7.5
Soil Sample	1814980	591739	7078799	1814980	1.7	0.04	24.4	14.3	87	0.2	19	7.3
Soil Sample	1814981	591752	7078818	1814981	1.9	0.03	18	14.6	72	0.05	13.7	5.2
Soil Sample	1814982	591766	7078839	1814982	1.9	0.04	16.7	15.1	80	0.1	13.3	4.9
Soil Sample	1814983	591779	7078860	1814983	1.7	0.04	18	15.5	73	0.1	14.5	6.1
Soil Sample	1821751	590362	7079295	1821751	1.9	0.01	34.4	11.3	67	0.05	22.2	10.1
Soil Sample	1821752	590375	7079316	1821752	1.8	0.005	27.1	9.5	61	0.05	20.3	10.3
Soil Sample	1821753	590392	7079338	1821753	19.7	0.04	32.3	9.7	52	0.05	23.7	8.4
Soil Sample	1821754	590404	7079357	1821754	6.3	0.005	19.5	11.1	38	0.05	14.5	6.3
Soil Sample	1821755	590418	7079379	1821755	3.8	0.03	30.9	10.4	49	0.05	18.9	7
Soil Sample	1821756	590431	7079399	1821756	13.9	0.04	39	10.4	53	0.05	24.6	10
Soil Sample	1821757	590447	7079419	1821757	6.4	0.02	22	13.6	34	0.05	11.2	4.2
Soil Sample	1821758	590458	7079442	1821758	7.1	0.02	32.7	11.5	49	0.05	18.8	6.6
Soil Sample	1821759	590472	7079463	1821759	8.4	0.02	131	24.9	88	0.1	21.1	8.6
Soil Sample	1821760	590486	7079483	1821760	6.3	0.03	40.5	11.6	53	0.05	20.3	7.5
Soil Sample	1821761	590500	7079504	1821761	17.9	0.03	52.1	13.4	58	0.2	23.3	8.3
Soil Sample	1821762	590516	7079525	1821762	22.7	0.02	176.7	36.5	268	0.2	30.4	12.7
Soil Sample	1821763	590530	7079545	1821763	8.7	0.04	43.5	13.4	56	0.3	23.1	11.7
Soil Sample	1821764	590397	7079721	1821764	8.8	0.04	57.1	36.7	82	0.3	38.7	13.1
Soil Sample	1821765	590384	7079698	1821765	19	0.05	87.6	62.3	108	0.5	54.5	20.6
Soil Sample	1821766	590369	7079678	1821766	29.1	0.04	113.4	72.5	133	0.4	61	20.3
Soil Sample	1821767	590354	7079657	1821767	6.3	0.005	69.3	55.1	104	0.05	118.8	32.4
Soil Sample	1821768	590341	7079636	1821768	17.2	0.02	133.3	22	70	0.05	79.7	18.8
Soil Sample	1821769	590328	7079616	1821769	8.2	0.05	57.4	83.3	71	0.2	43.1	10.6
Soil Sample	1821770	590312	7079594	1821770	15.6	0.04	99.4	14.8	73	0.05	41.1	12.1
Soil Sample	1821771	590300	7079574	1821771	25.1	0.04	98.7	47.2	118	0.2	44.9	11.1
Soil Sample	1821772	590286	7079551	1821772	10.2	0.03	71.7	31.6	93	0.1	35.3	10.7

2019 Quartz Property Assessment Report

point_type	sample_id	utm_easting	utm_northing	Sample	AuPPB	HgPPM	CuPPM	PbPPM	ZnPPM	AgPPM	NiPPM	CoPPM
Soil Sample	1821773	590135	7079323	1821773	21.4	0.04	61	26.5	77	0.2	22.3	12.1
Soil Sample	1821774	590146	7079343	1821774	24.1	0.02	77.6	39.1	94	0.3	23.9	20.3
Field Duplicate	1821775	590146	7079343	1821775	23.4	0.04	73.9	32.2	83	0.3	26.4	17.9
Soil Sample	1821776	590162	7079364	1821776	16.6	0.02	55.4	47.9	88	0.4	17.2	9.9
Soil Sample	1821777	590176	7079386	1821777	25.4	0.03	106.7	38.4	81	0.2	27.5	16.3
Soil Sample	1821778	590189	7079406	1821778	3.6	0.08	40.5	28.6	60	0.2	27.1	9.7
Soil Sample	1821779	590201	7079427	1821779	3.9	0.04	31.8	24.2	62	0.2	22.9	9.1
Soil Sample	1821780	590218	7079447	1821780	1.3	0.01	21.8	27.4	54	0.05	14.9	6.1
Soil Sample	1821781	590232	7079469	1821781	4.5	0.03	31.2	15.4	55	0.1	23.2	8.4
Soil Sample	1821782	590245	7079489	1821782	2.3	0.02	18.4	23.2	53	0.2	19.1	10.1
Soil Sample	1821783	590257	7079510	1821783	2.4	0.02	21.3	17.7	45	0.2	17.3	8.9
Soil Sample	1821784	590271	7079531	1821784	7.4	0.02	58.6	27.8	80	0.3	26	9

15. APPENDIX C - ANALYTICAL CERTIFICATIONS –

Supplied electronically as PDF

See Data Folder for Secured Assay Certificates