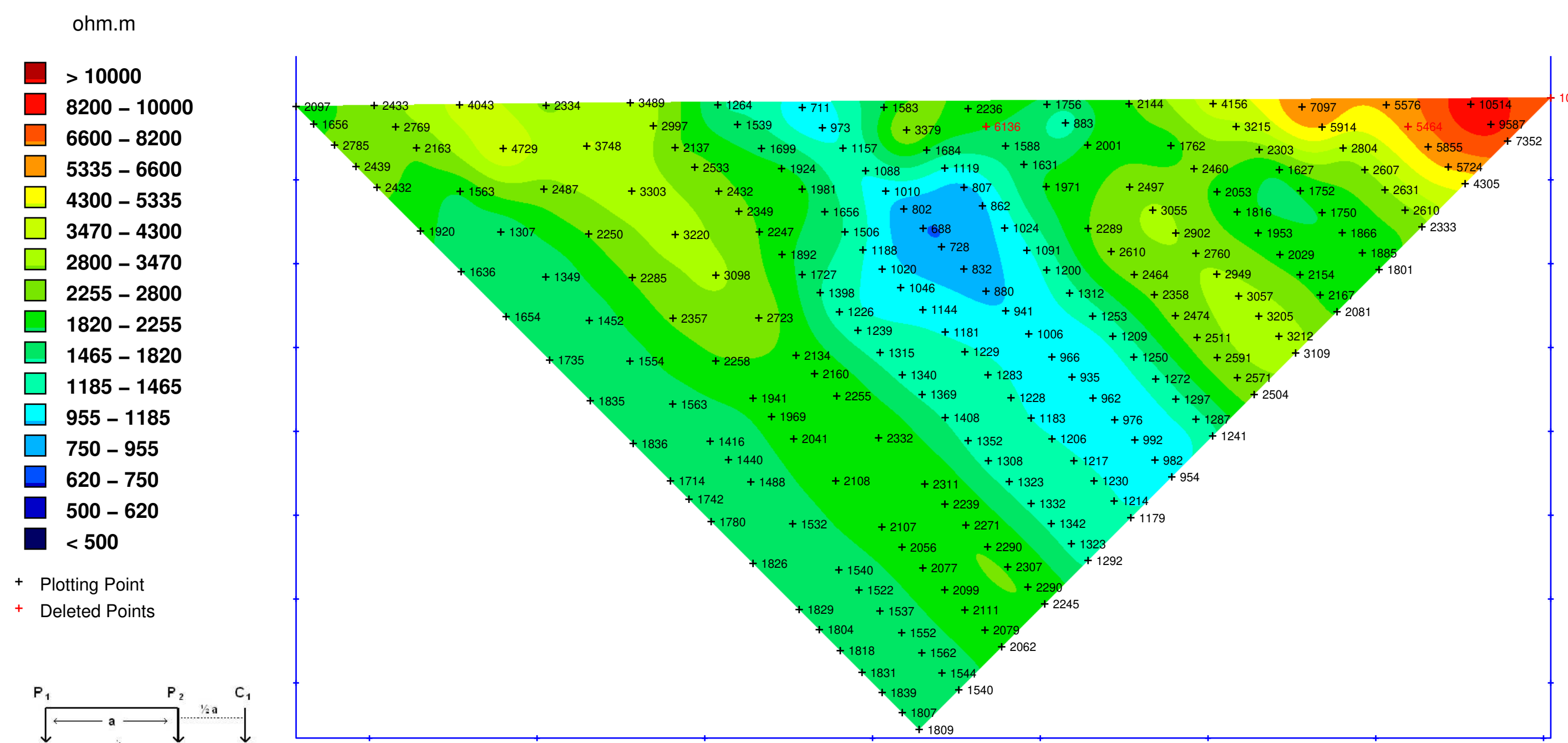
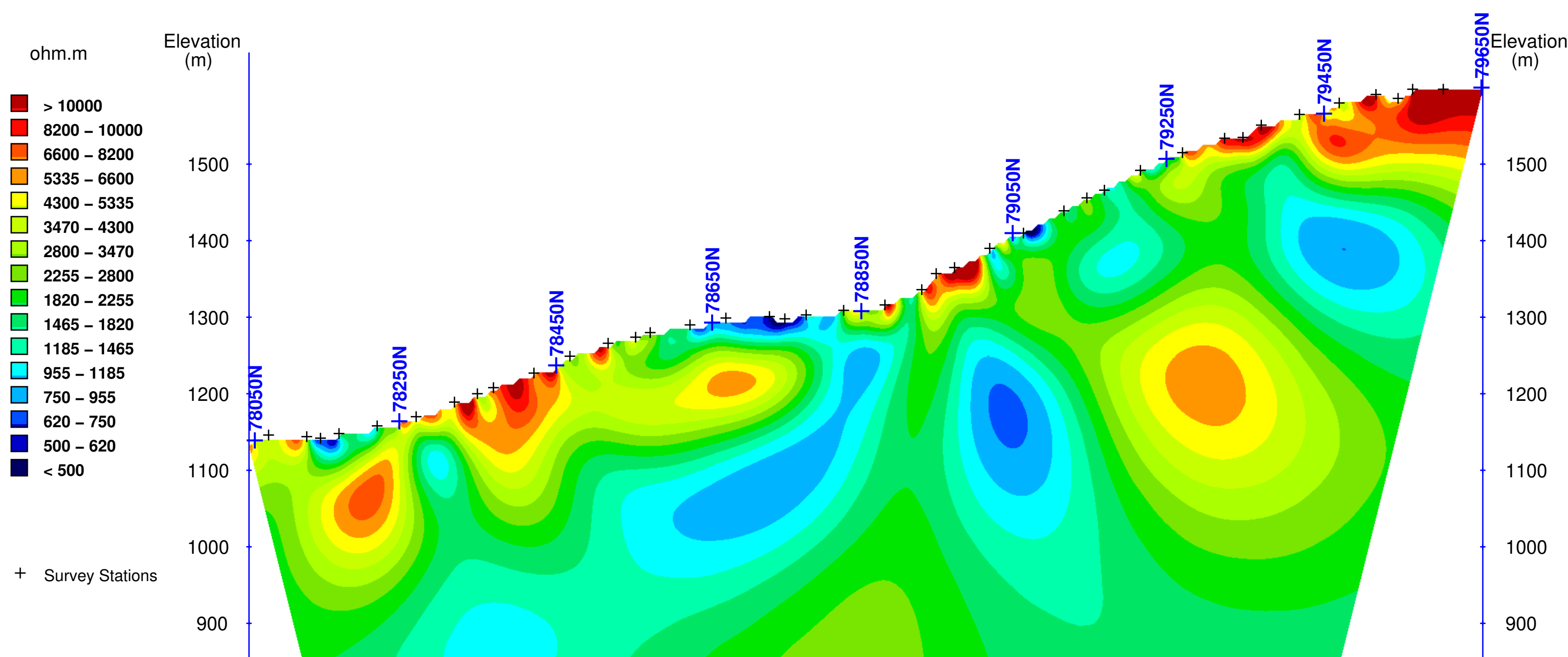


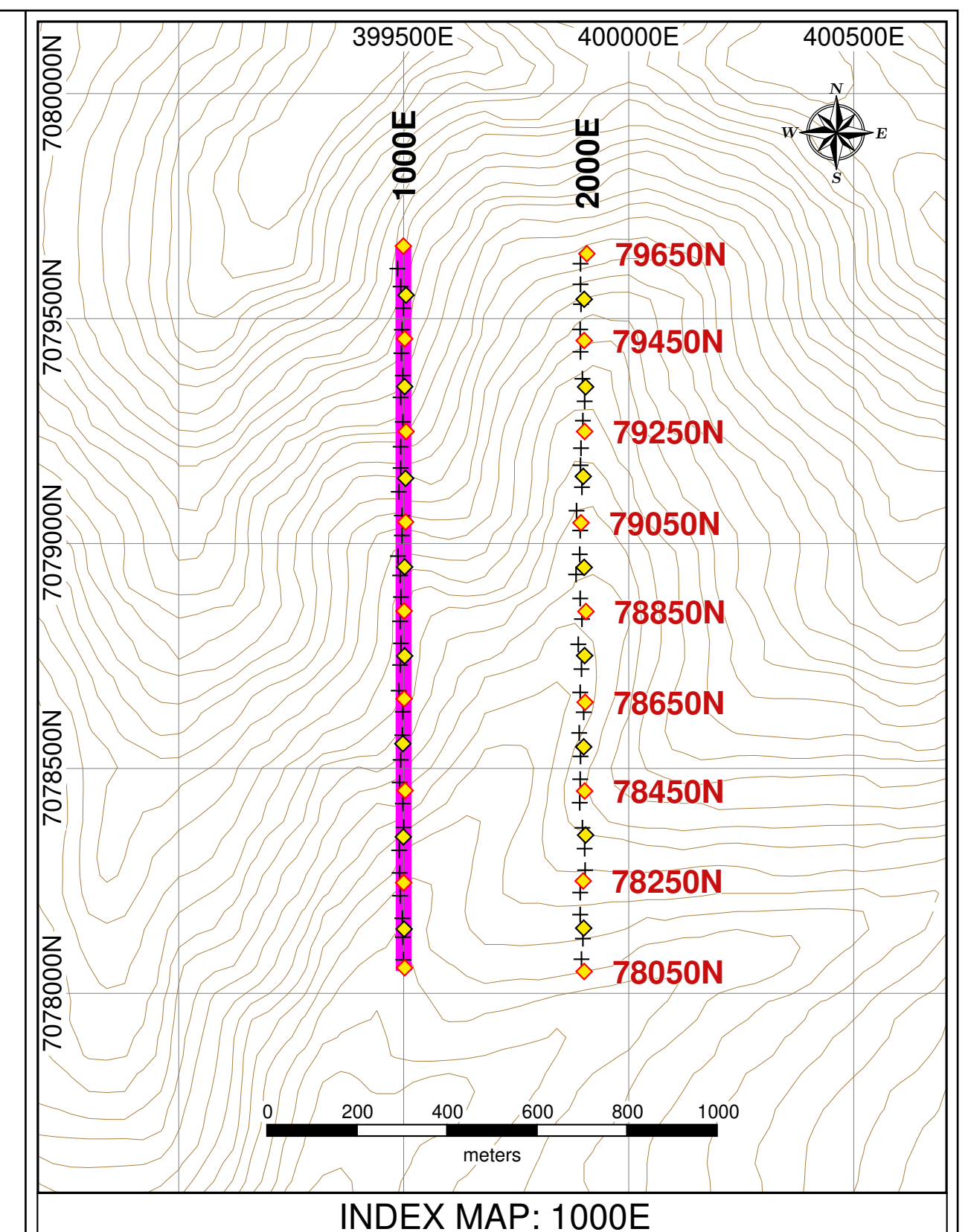
Pseudosection : Apparent Resistivity (ohm-m)
Potential Dipole > Current Station



Pseudosection : Apparent Resistivity (ohm-m)
Potential Dipole < Current Station



Resistivity (ohm.m)
(All Data : P>C & P<C)



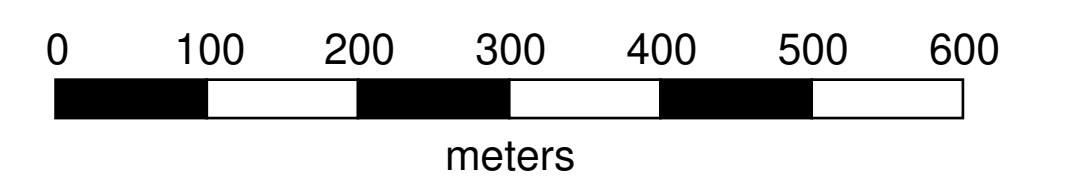
INDEX MAP: 1000E

Project Information:
Survey by: SJ Geophysics Ltd.
Survey Type: Volterra-2DIP
Survey Date: Aug. 7 – Aug. 10, 2019
Inversion by: SJ Geophysics Ltd.
Inversion Software: UBC-GIF DCIP2D

Instrumentation:
Receiver: Volterra Acquisition Unit
Transmitter: GDD TxII 3600 W

Mapping Information:
Index Map Datum: NAD83
Index Map Projection: UTM Zone 8N
Section Map Projection: Local Coordinate System
Resistivity Inversion Model: dcinv2d.026
Mapping Date: 05-Sep-2019

Colour Classification:
Resistivity: Modified Logarithmic



Sitka Gold Corp.
RC Gold Project
Clear Creek, Yukon, Canada
Volterra-2DIP
Resistivity
Cross Section: 1000E
2D Pseudosections
&
2D Inversion Model