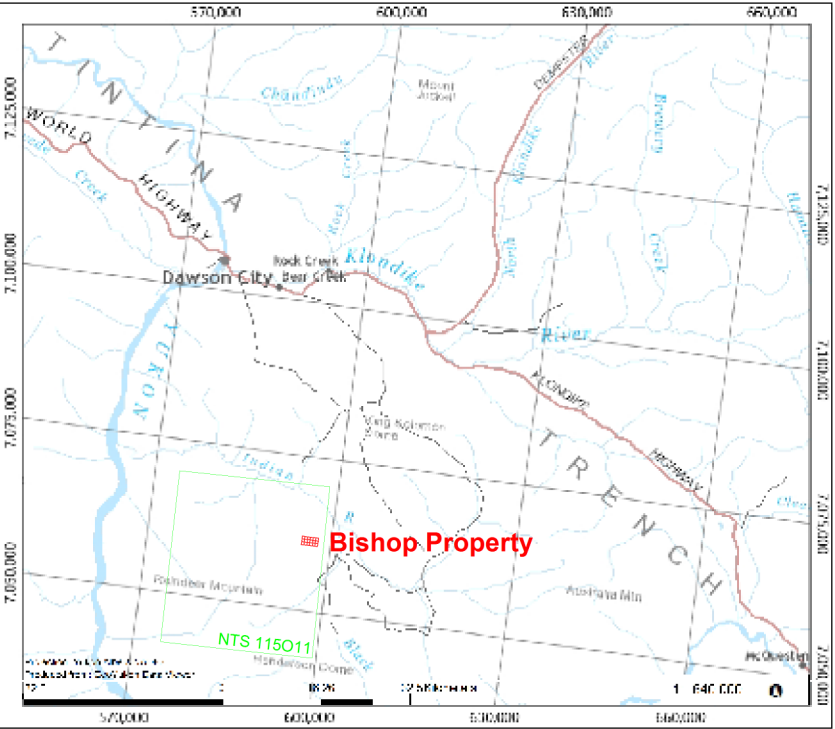
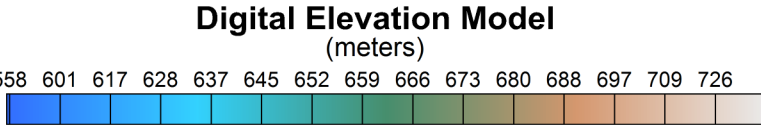


Technical Specifications

Line azimuth : N090
Line spacing : 100 m
Station spacing : 25 m
Instrument : EM-16, Geonics
Operators : M. Huber & J. Judson
VLF Antenna # 1 : NPM Lualualei, Hawaii
Frequency : 21.4 kHz
Distance : 4900 km
Azimuth : N206
VLF Antenna # 2 : NLK Seattle, Washington
Frequency : 24.8 kHz
Distance : 2040 km
Azimuth : N142



TAKU GOLD CORPORATION
Bishop Project, Yukon

**DIGITAL ELEVATION MODEL WITH
SURVEY LINES AND PROPERTY CLAIMS**

VLF-EM SURVEY

Surveyed by : Breakaway Exploration Management Inc.
August 2016

Compiled by : Joël Dubé, P. Eng.
May 2017

Dynamic
Discovery
Geoscience