

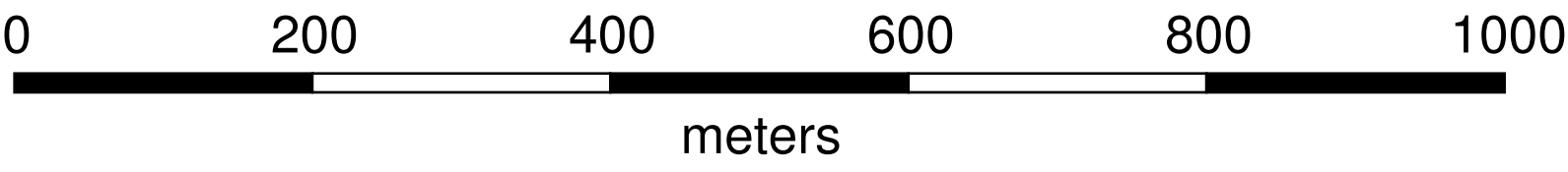
Project Information:
Survey by: SJ Geophysics Ltd.
Processing by: SJ Geophysics Ltd.
Survey Date: Aug.–Sept., 2017

Instrumentation:
Magnetometer: GEM–Systems GSM–19 Overhauser Magnetometer

Mapping Information:
Datum: NAD83
Projection: UTM Zone 8N
Mapping Date: 13–Oct–2017

Ground Magnetic Survey

Grid Map



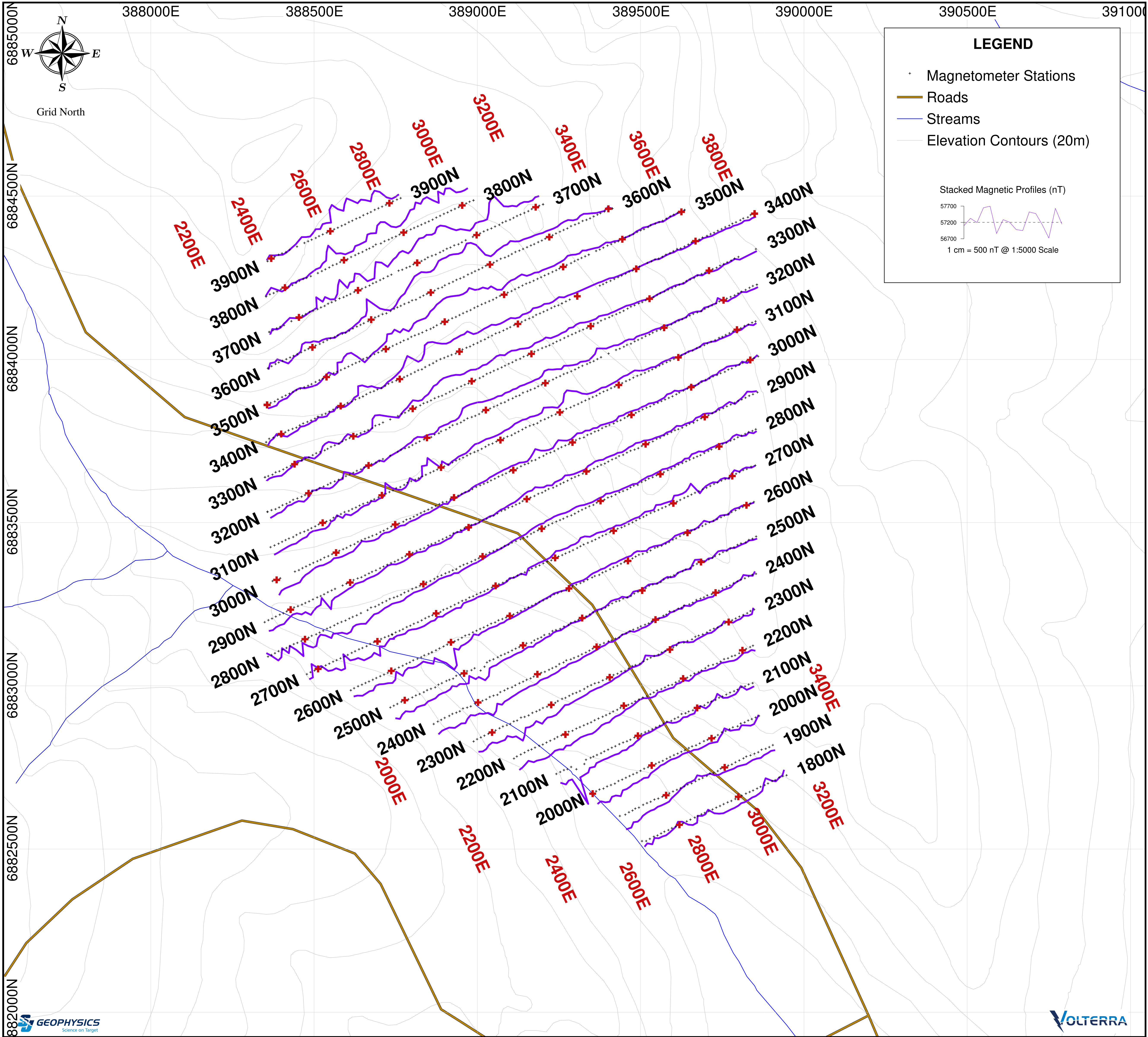
Rockhaven Resources Ltd.

Klaza Property

Val Grid

Yukon Territory, Canada

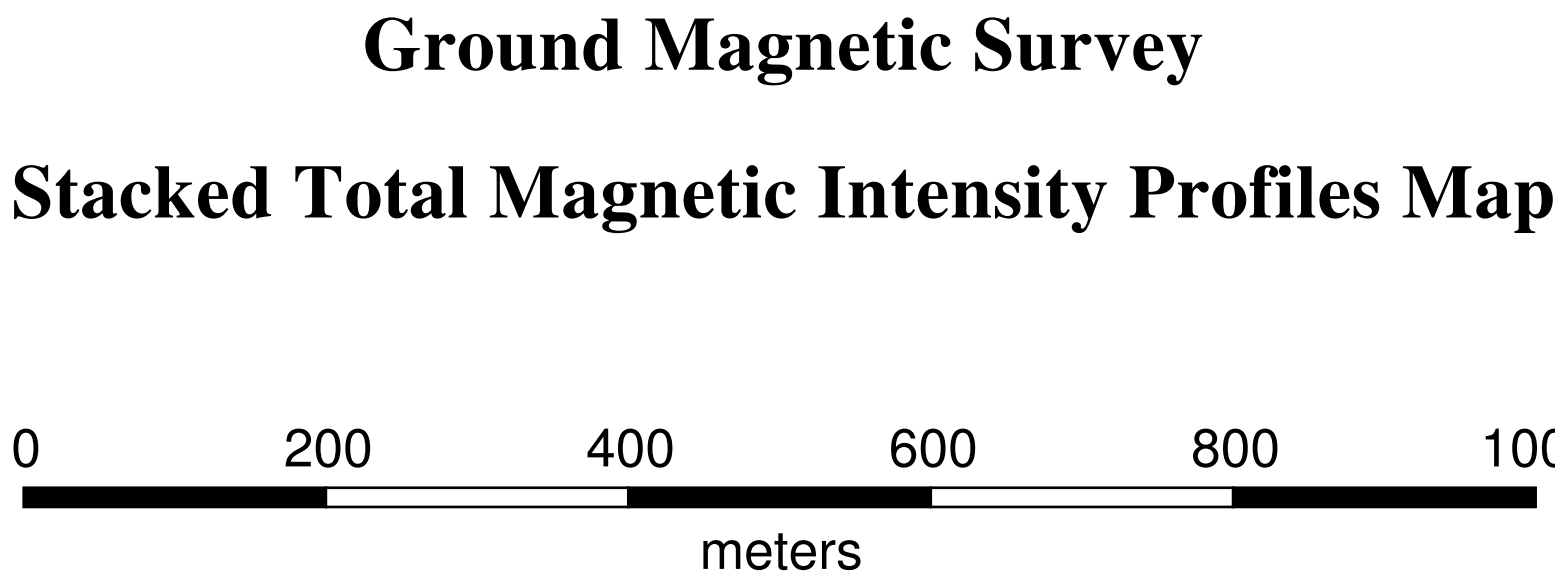




Project Information:
Survey by: SJ Geophysics Ltd.
Processing by: SJ Geophysics Ltd.
Survey Date: Aug.–Sept., 2017

Instrumentation:
Magnetometer: GEM–Systems GSM–19 Overhauser Magnetometer

Mapping Information:
Datum: NAD83
Projection: UTM Zone 8N
Mapping Date: 13–Oct–2017

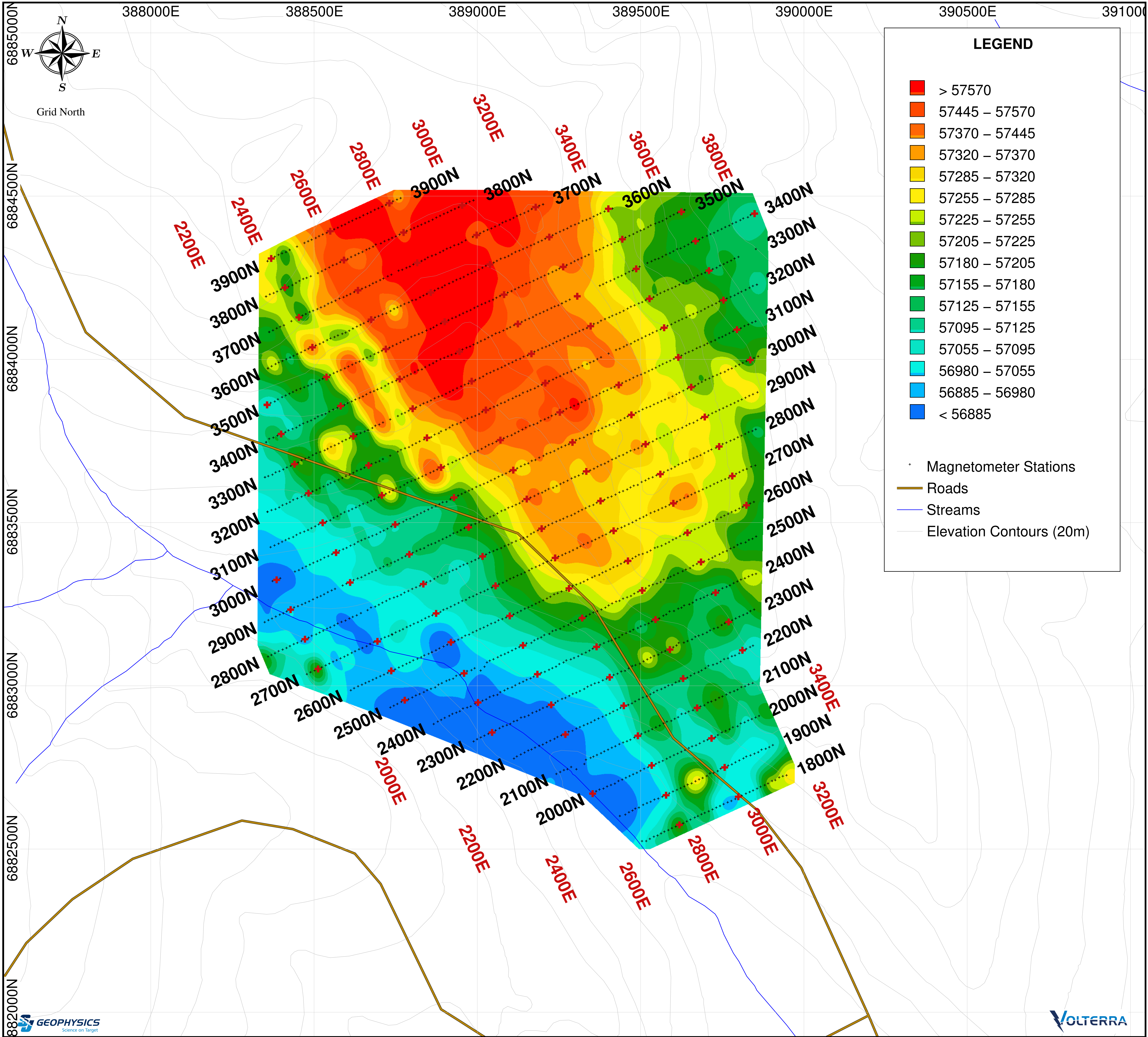


Rockhaven Resources Ltd.

Klaza Property

Val Grid

Yukon Territory, Canada



LEGEND

> 57570

57445 – 57570

57370 – 57445

57320 – 57370

57285 – 57320

57255 – 57285

57225 – 57255

57205 – 57225

57180 – 57205

57155 – 57180

57125 – 57155

57095 – 57125

57055 – 57095

56980 – 57055

56885 – 56980

< 56885

• Magnetometer Stations

— Roads

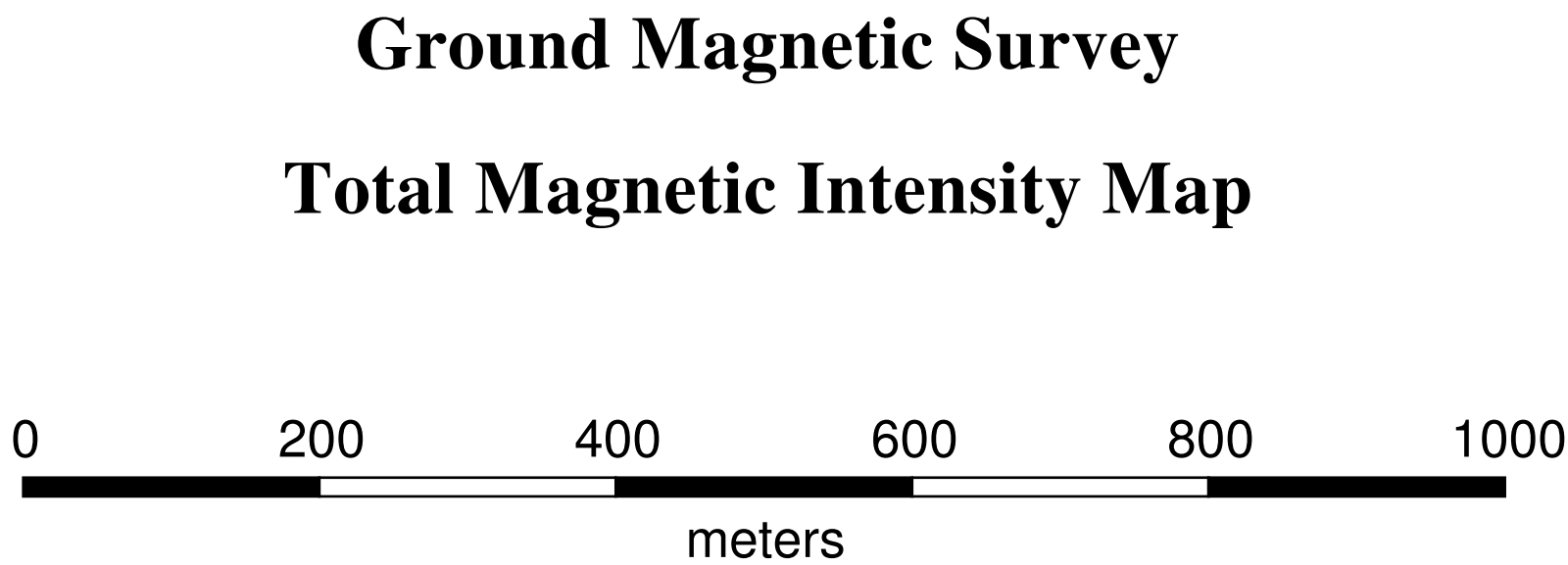
— Streams

— Elevation Contours (20m)

Project Information:
Survey by: SJ Geophysics Ltd.
Processing by: SJ Geophysics Ltd.
Survey Date: Aug.–Sept., 2017

Instrumentation:
Magnetometer: GEM–Systems GSM–19 Overhauser Magnetometer

Mapping Information:
Datum: NAD83
Projection: UTM Zone 8N
Colour Classification: Modified Equal Area
Mapping Date: 13–Oct–2017

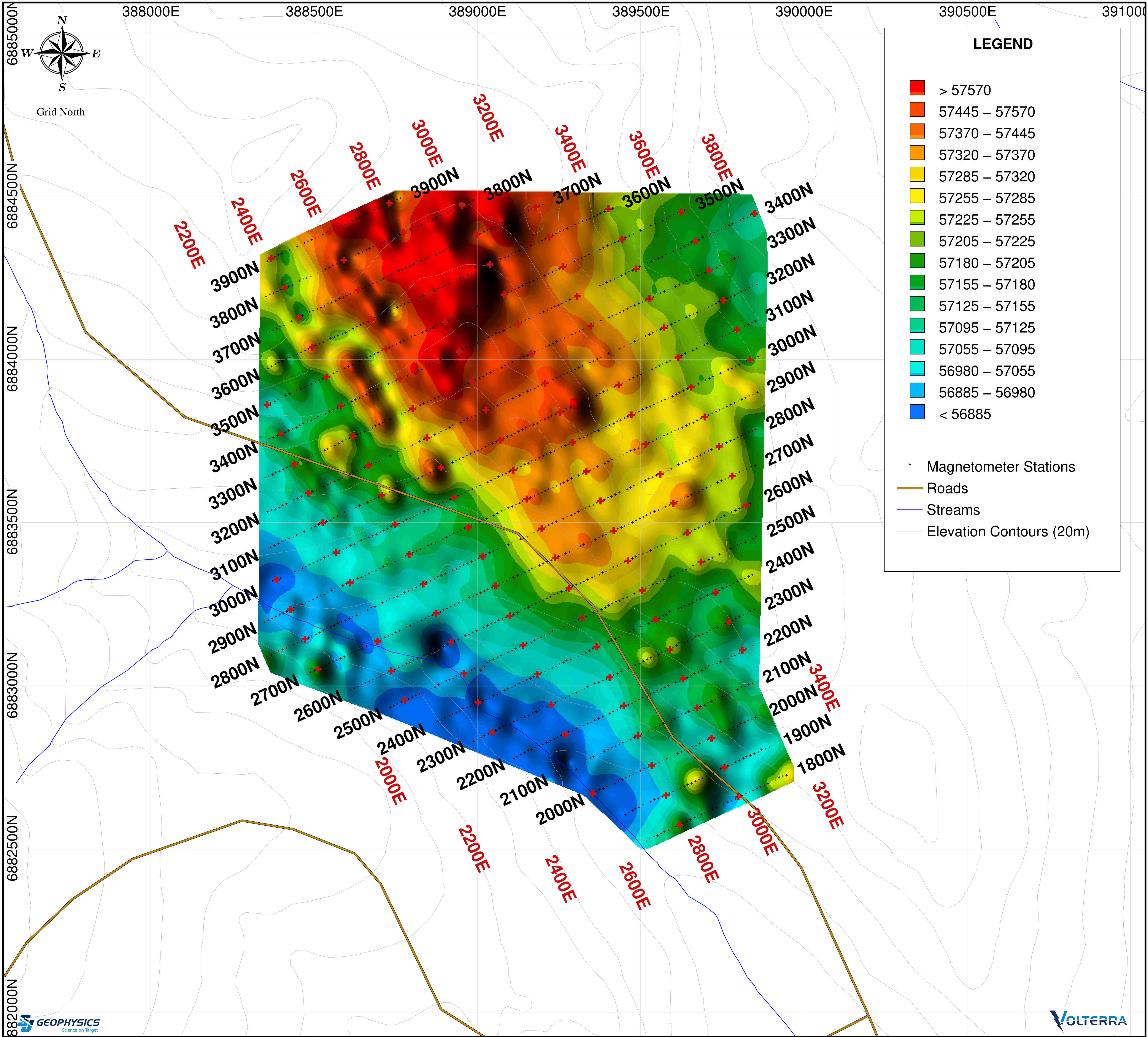


Rockhaven Resources Ltd.

Klaza Property

Val Grid

Yukon Territory, Canada

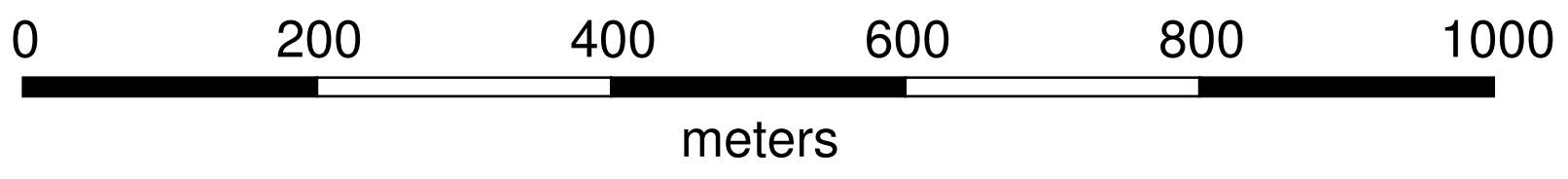


Project Information:
Survey by: SJ Geophysics Ltd.
Processing by: SJ Geophysics Ltd.
Survey Date: Aug.–Sept., 2017

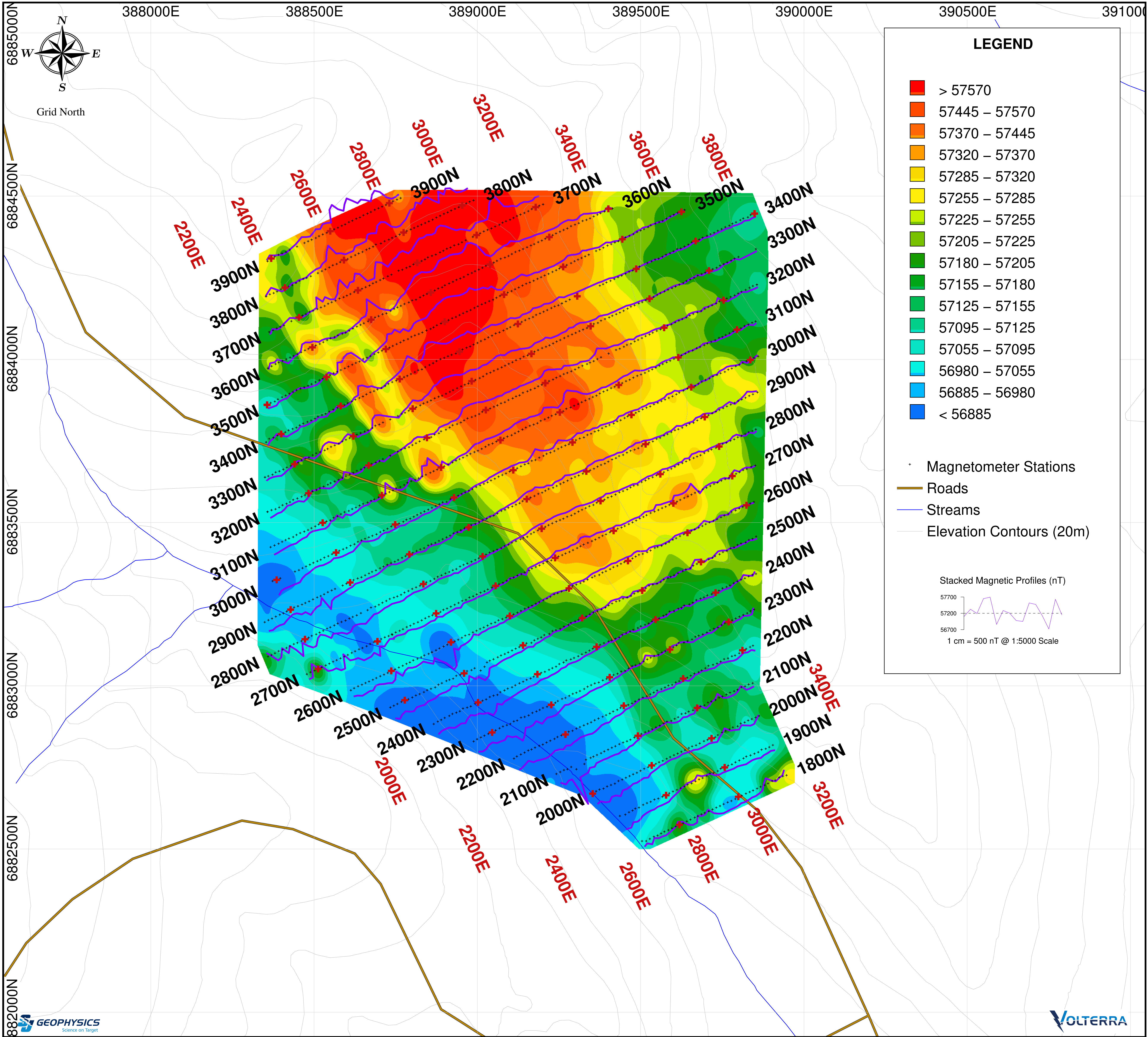
Instrumentation:
Magnetometer: GEM–Systems GSM–19 Overhauser Magnetometer

Mapping Information:
Datum: NAD83
Projection: UTM Zone 8N
Colour Classification: Modified Equal Area
Mapping Date: 13–Oct–2017

Ground Magnetic Survey
Total Magnetic Intensity Map: Shadow Enhanced



Rockhaven Resources Ltd.
Klaza Property
Val Grid
Yukon Territory, Canada



Project Information:
Survey by: SJ Geophysics Ltd.
Processing by: SJ Geophysics Ltd.
Survey Date: Aug.–Sept., 2017

Instrumentation:
Magnetometer: GEM–Systems GSM–19 Overhauser Magnetometer

Mapping Information:
Datum: NAD83
Projection: UTM Zone 8N
Colour Classification: Modified Equal Area
Mapping Date: 13–Oct–2017

Ground Magnetic Survey

Total Magnetic Intensity Map with Stacked Profiles

Rockhaven Resources Ltd.

Klaza Property

Val Grid

Yukon Territory, Canada