

DRILLING ASSESSMENT REPORT
on the
COWLEY PARK PROPERTY

Whitehorse area; NTS 105D 10

Centered at: Latitude 60° 30' 29.087" N, and Longitude 134° 53' 29.088" W

Mining District: Whitehorse

Yukon Territory

Quartz Claims

JIM 9 – 10	85337 - 85338
JIM 27 – 30	85355 - 85358
JIM 38	Y37220
SUE 1 – 4	75653 - 75656
ACE 30	85476

For work done
from June 2016 to June 2017

Prepared for
Lobo Del Norte Ltd. (Owner)

By
Nicolai Goepfel

Summary

The property covers the Cowley Deposit which remains the largest open-pit mineable reserve in the Whitehorse Copper Belt. In 2016 and 2017 a total of 1559.41 meters of drilling was conducted on the Cowley Park property with a total assessment valuation of \$ 203,716.27. Work was carried out on JIM 9 – 10, JIM 27 – 30, JIM 38, SUE 1 – 4, and ACE 30 claims that lie approximately 20km south of Whitehorse and are road accessible of the Klondike Highway. A covered skid mounted drill rig was used and maneuvered into position using a D6 bulldozer. The existing network of trails from previous exploration was utilized to keep ground disturbance to a minimum. Water was sourced from Cowley creek that intersects the property.

2016 and 2017 drilling was designed to test fringes of the deposit for potential extensions to known mineralization. In 2016 Lobo Del Norte Ltd. conducted 858.01 m of diamond drilling in 5 holes. Only two holes were logged and assayed, LDN-16-04 and LDN-16-05; hole LDN-16-05 intersected an extensive strongly mineralized zone and yielded 1.59% Cu and 9.24 g/t Ag over 10.36 meters, alternately LDN-16-04 intersected 0.56% Cu and 2.75 g/t Ag over 6.63 meters. In 2017, Lobo Del Norte Ltd. conducted another 701.4 meters of diamond drilling in 4 holes on the Cowley Park Property, all holes remain to be logged and assayed.

Further work is recommended on the Cowley Park property and would require logging and assaying of all previous unprocessed core from 2016, 2017 programs and 16 holes outstanding from 2008 Yankee Hat Ltd. drilling program. Further, a complete data compilation and digitization from historic and current work is recommended prior to any future drilling or exploration work.

Contents

Summary	2
Introduction	4
Location and Access	5
Previous Work History	5
Recent Work	6
Regional Geology	6
Property Geology and Mineralization.....	6
2016 Drilling Program	7
2017 Drilling Program	8
Expenditures	9
Conclusion and Recommendations	10
Statement of Qualifications	11
Reference	11
Appendix I	12
Appendix 2	16
Appendix 3	18

Introduction

The Cowley Deposit is largest open-pit mineable reserve in the Whitehorse Copper Belt, located at the southern boundary of Whitehorse city limits in the Yukon Territory (MacKay et al., 1993). The property is road accessible situated 2km from the Klondike Highway. The Whitehorse Copper Belt has historically been the most significant copper production in the Territory with >10Mt grading approximately 1.5% Cu with significant gold and silver credits in several deposits (Watson, 1984). The skarn mineralization in the Whitehorse Copper Belt was first noted in 1897 with surface and underground hand mining occurring into the early 1900s; primarily on the War Eagle and Copper King sites. From 1967 to 1971 Whitehorse Copper Mines surface mined several deposits including the Arctic Chief, Little Chief and Keewenaw deposits through open pit methods. From 1972 until its closure in 1982 Whitehorse Copper Mines Ltd. operated year-round through underground mining. The Whitehorse Copper Mines provide steady work to locals for decades and close proximity to Whitehorse allowed for local businesses to benefit, stabilizing the Yukon's economy. Over 30 known deposits are comprised within the 35 km by 5 km northwesterly trending arc of predominantly skarn-related mineralization and includes the Cowley Deposit (Heon 2004, Tenney 1981).

The Cowley Deposit was first discovered in the early 1900s and explored with minor underground work. Drilling during the 60s had loosely defined the Main Zone, in the 1970s more-thorough drilling was conducted, culminating to 125 holes and 11,500 meters of core (Hureau, 1981). The Cowley Deposit was at the feasibility stage prior to shutdown of Whitehorse Copper Mines in 1982, due to a declining economy and copper prices. Approximately 884,000 tonnes of unmined ore at the Main Zone was calculated grading 1.04% Cu, 3.77 g/t Ag, 0.21 g/t Au, and 0.066% MoS₂; with 668,000 tonnes of ore calculated in the South Zone at 0.9% Cu (Tenney, 1981; Watson, 1984).

More recently in 2008 Yankee Hat Minerals conducted a 21-hole drill program totalling 2134.1 meters. However, due to monetary constraints only 4 out of the 21 holes were logged. From the holes processed assays returned high grades up to 47% Cu and 324 g/t Ag.

In 2016 Lobo Del Norte Ltd. conducted 858.01 m of diamond drilling in 5 holes. Only two holes were logged and assayed, LDN-16-04 and LDN-16-05; hole LDN-16-05 intersected an extensive strongly mineralized zone and yielded 1.59% Cu and 9.24 g/t Ag over 10.36 meters, furthermore LDN-16-04 intersected 0.56% Cu and 2.75 g/t Ag over 6.63 meters. In 2017, Lobo Del Norte Ltd. conducted another 701.4 meters of diamond drilling in 4 holes on the Cowley Park Property, all holes remain to be logged and assayed. The purpose of this report is to summarize the assessment work carried out in 2016 and 2017 on the Cowley Park property. The total assessment valuation is \$ 203,716.27 and resulted in 1559.41 meters of drilling.

Location and Access

The Cowley Park property is located in southern Yukon, in the Whitehorse Mining District and NTS map sheet 105D 10 (Figure 1&2, Appendix I). The Cowley Park property is centered on Latitude of 60° 30' 29.087" N, and Longitude 134° 53' 29.088" W. The project lies on the southern boundary of Whitehorse city limits, under 20 km from the city centre. The property is road accessible located approximately 2 km off of the Klondike Highway and power (Figure 1, Appendix I). Nearby infrastructure makes for cost-effective exploration on the property and good feasibility. White Pass Railway is within 2km of the project with a line extending to the deep-water port located approximately 155 km south in Skagway, Alaska. Claims are in good standing held 100% by Lobo Del Norte Ltd., status is shown below.

GrantNumber	Claim Name	Claim Number	Claim Owner	Staking Date	Claim Expiry Date	Status
75653	SUE	1	Lobo del Norte Ltd. - 100%	1961-04-23	2018-01-01	Active
75654	SUE	2	Lobo del Norte Ltd. - 100%	1961-04-23	2018-01-01	Active
75655	SUE	3	Lobo del Norte Ltd. - 100%	1961-04-23	2018-01-01	Active
75656	SUE	4	Lobo del Norte Ltd. - 100%	1961-04-23	2018-01-01	Active
85337	JIM	9	Lobo del Norte Ltd. - 100%	1963-08-10	2018-01-01	Active
85338	JIM	10	Lobo del Norte Ltd. - 100%	1963-08-10	2018-01-01	Active
85355	JIM	27	Lobo del Norte Ltd. - 100%	1963-08-22	2018-01-01	Active
85356	JIM	28	Lobo del Norte Ltd. - 100%	1963-08-22	2018-01-01	Active
85357	JIM	29	Lobo del Norte Ltd. - 100%	1963-08-22	2018-01-01	Active
85476	ACE	30	Lobo del Norte Ltd. - 100%	1963-09-19	2018-01-01	Active
85358	JIM	30	Lobo del Norte Ltd. - 100%	1963-08-22	2018-01-01	Active
Y 37220	JIM	38	Lobo del Norte Ltd. - 100%	1969-09-02	2018-01-01	Active

Previous Work History

The Cowley Park property was first explored in the early 1900s with minor underground work. The property received little work until the mid sixties with the advent of the Whitehorse Copper Mines and open pit mining through the Whitehorse Copper Belt. Ground based magnetic and induced polarization (IP) was conducted through the area defining multiple exploration targets, some showed association with historic showings. Later diamond drilling during the 1960's loosely defined the Main Zone mineralization. More thorough drilling was conducted during the 1970's, culminating to a total of 125 holes and 11,500 meters of core (Hureau, 1981). Approximately 884,000 tonnes of unmined ore at the Main Zone was calculated at 1.04% Cu, 3.77 g/t Ag, 0.21 g/t Au, and 0.066% MoS₂; with 668,000 tonnes of ore calculated in the South Zone at 0.9% Cu (Tenney, 1981; Watson, 1984). The Cowley Deposit remains the largest open-pit mineable reserve in the Whitehorse Copper Belt (MacKay et al., 1993).

In 1965 New Imperial Metals contracted Wright Engineers Ltd., J.A.C. Ross and Associates and Dr. A.C. Skerl, PEng to conduct feasibility studies on the 6 main deposits in the belt including the Cowley Deposit (Wengzynowski, 2012). It was latter revised following 1970 drilling which further delineated mineralized zones. Feasibility studies record the evaluated geology, ore reserves;

proposed pit designs and mining methods; mining schedule and results from metallurgical tests (Wengzynowski, 2014). The Cowley Deposit was at the feasibility stage prior to shutdown of Whitehorse Copper Mines in 1982, due to a declining economy and copper prices.

Recent Work

In 2008 work carried out by Yankee Hat Mineral after optioning the property from Lobo Del Norte consisted of 2134 m of diamond drilling at 21 locations. Due to monetary constraints and economic conditions only 5 of the 21 holes were logged and assayed and the property reverted to Lobo Del Norte Ltd. From the holes processed assays returned high grades up to 47% Cu and 324 g/t Ag and an interval of 1.76% Cu over 38.57 m (Davis, 2008). Core is currently at a storage facility in Whitehorse.

Regional Geology

Due to the economic significance of the Whitehorse Copper Belt and the proximity to a major city in Yukon Territory, the rocks in the area have been well documented and researched. A number of regional geological and compilation studies have been carried out on the Whitehorse Copper Belt and associated Whitehorse Trough and include: Hart and Pelletier 1989; Heon, 2004; Kindle 1964; Morrison 1981; Tenney 1981; Watson 1984; and Wheeler 1961. The regional geology is illustrated in Figure 3, Appendix I.

The intrusive units in the region are predominantly granodiorite or diorite and Cretaceous in age (109 - 199 Ma). They are thought to form the upper reaches of a large batholith belonging to the Whitehorse Plutonic Suite of the Coast Plutonic Complex and intrude primarily into Triassic to Jurassic Lewes River (also known as the Aksala Group) Group clastic (Casca and Mandanna Members) and carbonate (Hancock Member) metasediments. These marine rocks belong to the Whitehorse Trough, part of the Stikinia Terrane within the Intermontane Superterrane; an island arc complex of Paleozoic to Jurassic age (Davis, 2008). The copper bearing skarns occur over a length of about 32 km along the western side of the Cretaceous diorite batholith. The Miles Canyon basalt, tertiary volcanic sequence and Quaternary glaciofluvial deposits overlay the older units. A series of folds run the length of the Whitehorse Copper Belt with fold hinges trending roughly NNW (Davis, 2008).

Property Geology and Mineralization

At the Cowley deposit skarning occurs variably along the contacts and through an extensive limestone lens encompassed by Cretaceous intrusive rocks of predominantly granodioritic to dioritic composition of the Whitehorse Plutonic Suite. The unit intrudes Triassic to Jurassic Lewes River Group clastic and carbonate meta-sedimentary units of the Whitehorse trough (Figure 3 & 4, Appendix I). The sequence has been regionally folded and cross cut by younger Tertiary volcanism. Quaternary glaciofluvial till forms veneer obscuring bedrock geology. Widespread skarning in the limestone lens is characterized assemblages of garnet, diopside, actinolite, tremolite/wollastonite, and epidote. Mineralized zones in skarnified horizons contain

disseminated to 'spectacular' massive sections of pyrite, chalcopyrite, bornite, magnetite and lesser molybdenite. Figure 5 and 6 (Appendix I) illustrate the tabular nature and complexity of the mineralized zone which form two main mineralized lobes with higher grade cores and lower grade shells.

From observations, visual inspection of the core and logging of holes LDN-16-04 and LDN-16-05; it is evident that there is a structural and morphological control to skarn mineralization. Increased flow of intrusive related fluids is correlated to increased metasomatism of the carbonate and evident along contacts, structures, and other sites more prone to dilation. The limestone lens is a sedimentary sequence with observable bedding with skarnification and mineralization focused along bedding planes and in more permeable horizons. Mineralization is characteristically defined in zones dominated by either magnetite, chalcopyrite, pyrite, or molybdenum with other constituents in lesser amounts as semi massive to fine interstitial disseminations. Mineralization is also observed in association with zones where skarn mineral abundances vary from dominated by garnet, diopside, tremolite or wollastonite and likely signify changes in overall fluid chemistry as the fluid reacts more with surrounding rock. The distribution of surface mineralization and complimented by the extensive historic drilling indicate two primary mineralized lobes. The distribution of most evident zone is along the northeast contact of the large limestone lens and would offer a site prone to dilation and potential faulting.

2016 Drilling Program

2016 drilling was designed to test fringes of the central part of the deposit for potential extensions to known mineralization. Several days were spent by the author prior to drilling to digitize historic drill locations and field check sites for accuracy and data confirmation. In 2016 Lobo Del Norte Ltd conducted 858.01 m of diamond drilling in 5 holes. Due to timing constraints, only two holes were logged and assayed, LDN-16-04 and LDN-16-05. LDN-16-05 was a directional drill hole drilled at an inclination of -60 till 185 meters where it was changed to -45 till the end of hole. LDN-16-05 intersected an extensive strongly mineralized zone and yielded 1.59% Cu and 9.24 g/t Ag over 10.36 meters; in addition, LDN-16-04 intersected 0.56% Cu and 2.75 g/t Ag over 6.63 meters. Visual inspection of the other holes indicated the calc-silicate skarn was intersected with variable amounts of sulphide mineralization and thereby extending known mineralization.

Drilling was carried out by Kluane Drilling Ltd using a covered skid mounted diamond drill that was maneuvered into position using a D6 bulldozer. The existing network of trails from previous exploration was utilized to keep ground disturbance to a minimum. Water was sourced from Cowley creek that intersects the property. Drilling was primarily with HTW sized bore and for the directional hole (LDN-16-05) NTW was also applied. Produced core was boxed and loaded on skids and brought to the Kluane Drilling Ltd compound for storage. LDN-16-01A was a failed hole, the drill was reset besides the hole and a new hole was drilled (LDN-16-01).

Holes LDN-1604 and LDN-16-05 where taken to the Bostock Core Library where it was logged and prepped for assay by Higher Ground Exploration Services. Core submitted for assay was brought

to the ALS prep facility in Whitehorse. Analytical tests were conducted by ALS Global in Vancouver, BC, which is ISO accredited. Samples are crushed to 70% less than 2 millimetres, and a 250-gram sample is split with a riffle splitter. The split is pulverized to 85 per cent less than 75 microns, and 30 gram charges go through a multi-element assay with ICP-AES finish. Samples with gold, silver, copper, lead, or zinc exceeding the upper detection level are reanalyzed with ore grade determinations that are deemed most appropriate by the lab. Rigorous procedures are in place regarding sample collection, chain of custody and data entry. Certified assay standards, duplicate samples and blanks are routinely inserted into the sample stream to ensure integrity of the assay process.

The table below summarizes azimuth, inclination and depth of each hole drilled in 2016. Detailed drill logs and assays are located in Appendix II & III of this report.

2016 Drill Hole Data

Hole #	Year	Datum	Zone	Easting	Northing	Depth	Dip	Azimuth
LDN-16-01A	2016	NAD 83	8	505738	6715416	12.19m	- 90	010
LDN-16-01	2016	NAD 83	8	505738	6715416	236.22m	- 90	010
LDN-16-02	2016	NAD 83	8	505738	6715416	201.17m	- 45	010
LDN-16-04	2016	NAD 83	8	505791	6715401	201.17m	- 90	010
LDN-16-03	2016	NAD 83	8	505882	6715384	207.26m	- 90	010
LDN-16-05	2016	NAD 83	8	506082	6715373	283.77m	- 60, - 45 (from 185m till EOH)	010

2017 Drilling Program

The 2017 drilling program was intended to further infill around the central part of the deposit and test for extension to known mineralization drilled with HTW. Drilling was carried out by Kluane Drilling Ltd. using a covered skid mounted diamond drill that was maneuvered into position using a D6 bulldozer. In 2017 a total of 701.4 meters of diamond drilling in 4 holes was conducted on the Cowley Park Property, all holes remain to be logged and assayed.

The existing network of trails from previous exploration was utilized to keep ground disturbance to a minimum. Water was sourced from Cowley creek that intersects the property. Drilling was completed with HTW bore. Produced core was boxed and loaded on skids and brought to the Kluane Drilling Ltd. compound for storage.

At the time of this report no core was assayed or logged from the 2017 program. Visual inspection of the core indicated the calc-silicate skarn was intersected with variable amounts of sulphide mineralization. The table below summarizes azimuth, inclination and depth of each hole drilled in 2017.

2017 Drill Hole Data

Hole #	Year	Datum	Zone	Easting	Northing	Depth	Dip	Azimuth
2017A	2017	NAD 83	8	506131	6715356	172.21m	75	011
2017A2	2017	NAD 83	8	506131	6715356	193.55m	75	191
2017B	2017	NAD 83	8	506047	6715308	193.55m	45	191
2017C	2017	NAD 83	8	505976	6715392	141.73m	90	191

Expenditures

2016 Expenditures

Drilling and Transportation	\$114,419.10
Drill hole targeting	\$1,968.75
Subtotal	\$116,387.85

2017 Expenditures

Drilling and Transportation	\$72,998.84
Core Logging	\$5,444.78
Assays	\$8,254.80
Drill hole targeting	\$630.00
Subtotal	\$87,328.42

Total	\$203,716.27
--------------	---------------------

The total expenditures for the 2016 and 2017 drilling programs are \$203,716.27. Invoices and analytical certificates are located in Appendix II of this report.

Conclusion and Recommendations

The Cowley Park property covers the Cowley Deposit which is largest open-pit mineable reserve in the Whitehorse Copper Belt. Approximately 884,000 tonnes of unmined ore at the Main Zone was calculated grading 1.04% Cu, 3.77 g/t Ag, 0.21 g/t Au, and 0.066% MoS₂; with 668,000 tonnes of ore calculated in the South Zone at 0.9% Cu (Tenney, 1981; Watson, 1984). The property located at the southern boundary of Whitehorse city limits in the Yukon Territory and road accessible situated 2km from the Klondike Highway. The Cowley Park property is easily accessible that allows for cost-effective exploration and good feasibility.

Further work is recommended on the Cowley Park property the excellent infrastructure and known resource make the project very feasible with a good potential for advanced development. Follow up work will require a complete compilation and digitization of historic data and completion of assaying and logging of all outstanding core from the 2016 and 2017 Lobo Del Norte Ltd programs and previous 2008 Yankee Hat Ltd drilling.

The 2008 Yankee Hat drill program intended to test historic drilling, continuity of mineralization and along the fringes of mineralized zones. There are still 16 out of the 21 holes drilled in 2008 that remain to be logged and assayed; from the five that have been processed low grade mineralization is indicated in between main mineralized zones and connecting the two lobes. From the holes processed assays returned high grades up to 47% Cu and 324 g/t Ag and an interval of 1.76% Cu over 38.57 m (Davis, 2008). The 2008 core is located at a storage facility in Whitehorse Yukon.

In 2016 Lobo Del Norte Ltd conducted 858.01 m of diamond drilling in 5 holes. Only two holes were logged and assayed, LDN-16-04 and LDN-16-05; hole LDN-16-05 intersected an extensive strongly mineralized zone and yielded 1.59% Cu and 9.24 g/t Ag over 10.36 meters, alternately LDN-16-04 intersected 0.56% Cu and 2.75 g/t Ag over 6.63 meters. In 2017, Lobo Del Norte Ltd. conducted another 701.4 meters of diamond drilling in 4 holes on the Cowley Park Property, all holes remain to be logged and assayed.

Logging and assaying of all remaining core will greatly advance the property and further delineate the boundaries of mineralization. Ground magnetic, VLF geophysical survey would aid in locating potential mineralized zones in the immediate area that may be obscured by glacial till. The abundant magnetite would respond well with the magnetic survey; whereas, the VLF survey may identify potential structures and primary fluid conduits. Further drilling is recommended following compilation of historic and current data to further test for potential mineralized extensions around the main zones and towards the northwest that remains relatively untested with locations of mineralization observed in bedrock and indications of historic workings from the early 1900s.

Statement of Qualifications

I Nicolai Goepfel am a local Yukon prospector/geologist and owner to Higher Ground Exploration Services. I'm born and raised in the Yukon with placer roots in the Freegold Mountain area near Carmacks. Earliest involvement in geology includes two field seasons with the Yukon Geological Survey and three years as senior project manager at All-In Explorations. More recently includes managing multiple placer and hard rock projects for Midnight Mining Services and alternate exploration companies. In the last eight field seasons I've encountered and worked in skarn, porphyry, epithermal and intrusive related vein systems, vms, magmatic Cu-Ni mineralization, and Carlin as well other types of mineralization for various commodities. Recent work includes on STU, and various occurrences in the Freegold area, and managing a regional exploration prospecting program through the BC coastal mountains; in addition, visited various porphyry and related deposits in Chile and Bolivia, including Chuquicamata, Cerro Rico, and Candelaria. This includes work in Newfoundland, where I recently completed a BSc in Earth Sciences at Memorial University in January 2015.

Reference

Davis, C. "Drilling and Geophysical Assessment Report on the Whitehorse Copper Belt Project." Yankee Hat Mineral Ltd. Open File 095193, 2008.

Hart, Craig JR, and J. K. Radloff. *Geology of Whitehorse, Alligator Lake, Fenwick Creek, Carcross and part of Robinson map areas (105D/11, 6, 3, 2, & 7)*. Indian and Northern Affairs Canada, Northern Affairs, Yukon Region, 1990.

Mackay, Gordon, Rick Diment, and J. Falkiner. "Whitehorse copper belt: A simplified technical history." (1993).

Morrison, Gregg William. *Setting and origin of skarn deposits in the Whitehorse Copper Belt, Yukon*. Vol. 70. No. 09. 1981.

Tenney, D. *The Whitehorse Copper Belt: mining, exploration, and geology (1967-1980)*. Vol. 1. Indian and Northern Affairs Canada, 1981.

Watson, P. H. "The Whitehorse Copper Belt-A Compilation." Exploration and Geological Services Division-Yukon, Indian and Northern Affairs Canada, Open File 1.25,000, 1984.

Wengzynowski, W.A. "Summary report documenting the Cowley, Keewenaw and Gem copper deposits on the Lobo property." Skivik Holdings Co. Ltd., 2014

Wengzynowski, W.A. "Summary Report Documenting the Gem, Keewenaw Copper Deposits." Skivik Holdings Co Ltd., 2012.

Appendix I

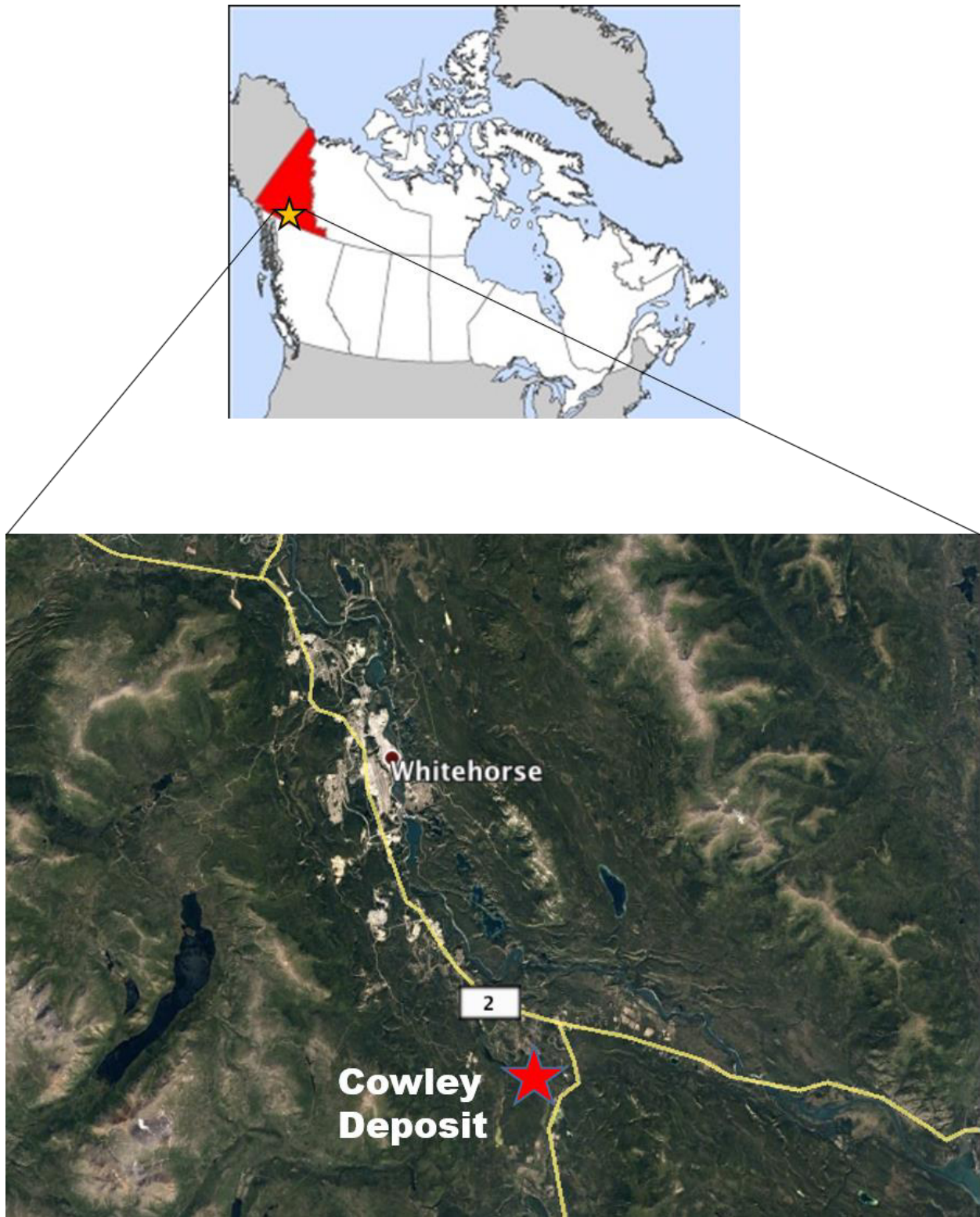


Figure 1. Location

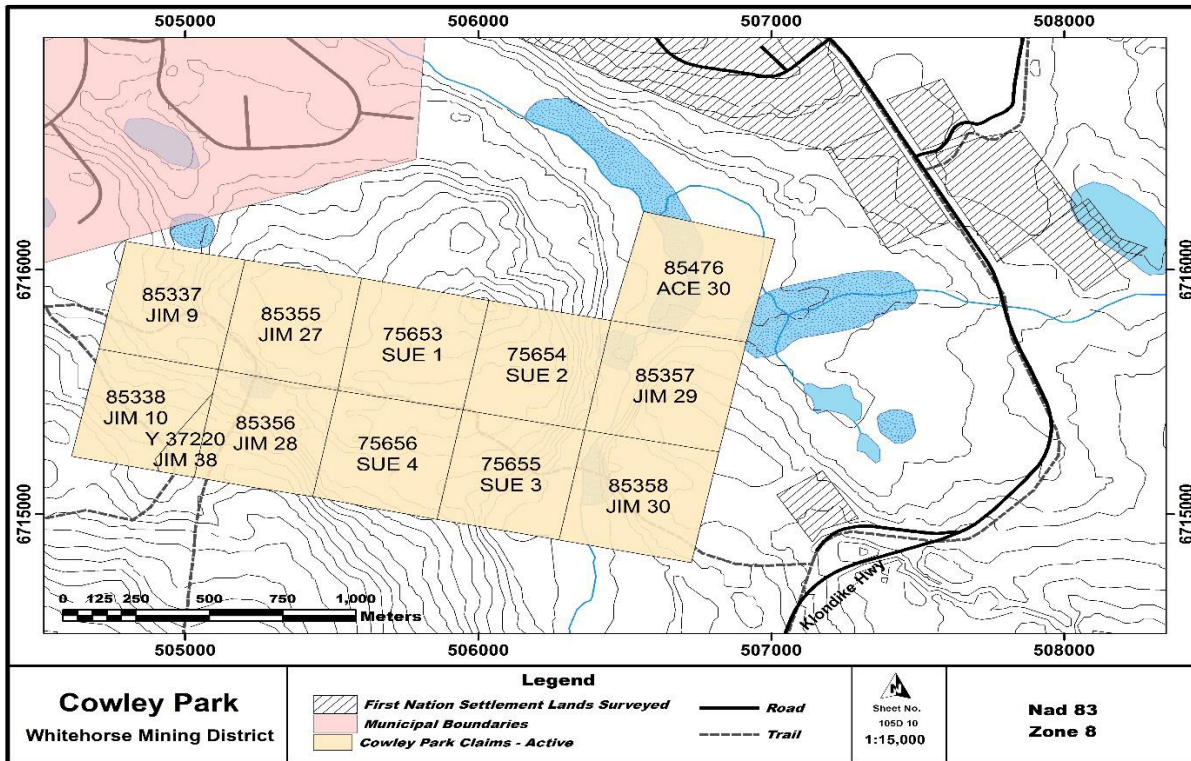


Figure 2. Claim map

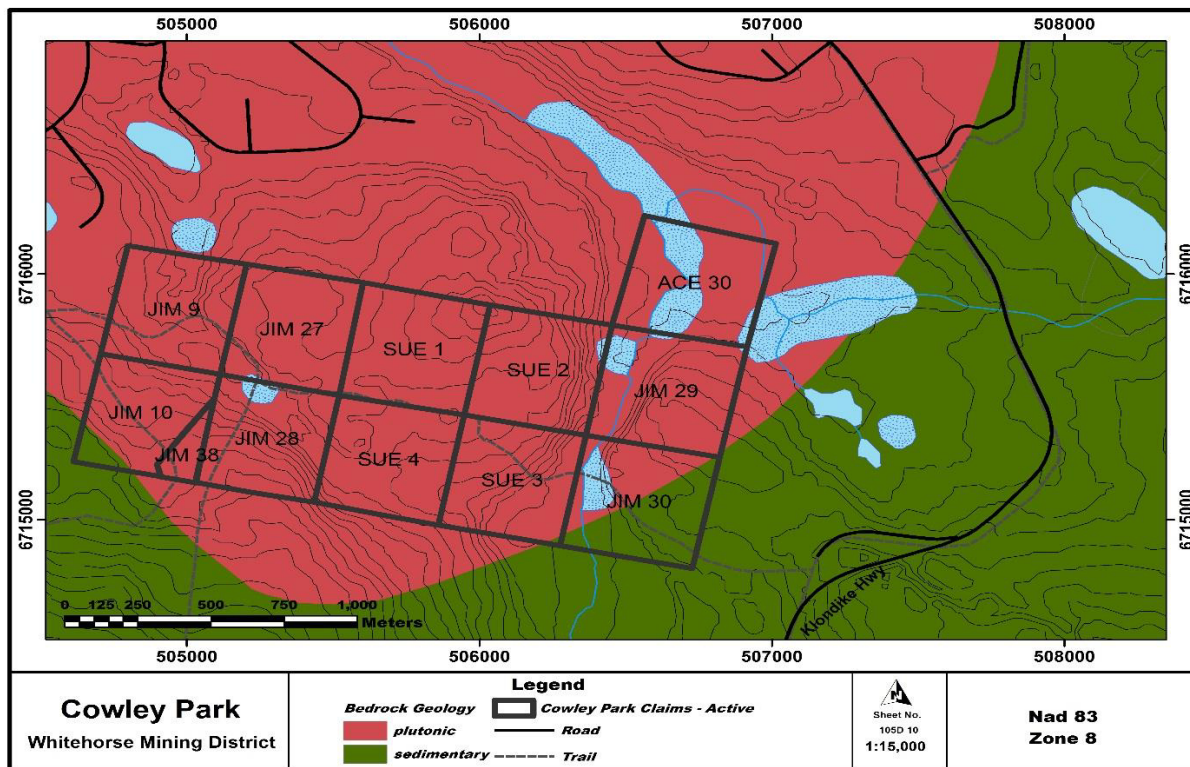


Figure 3. Regional Geology

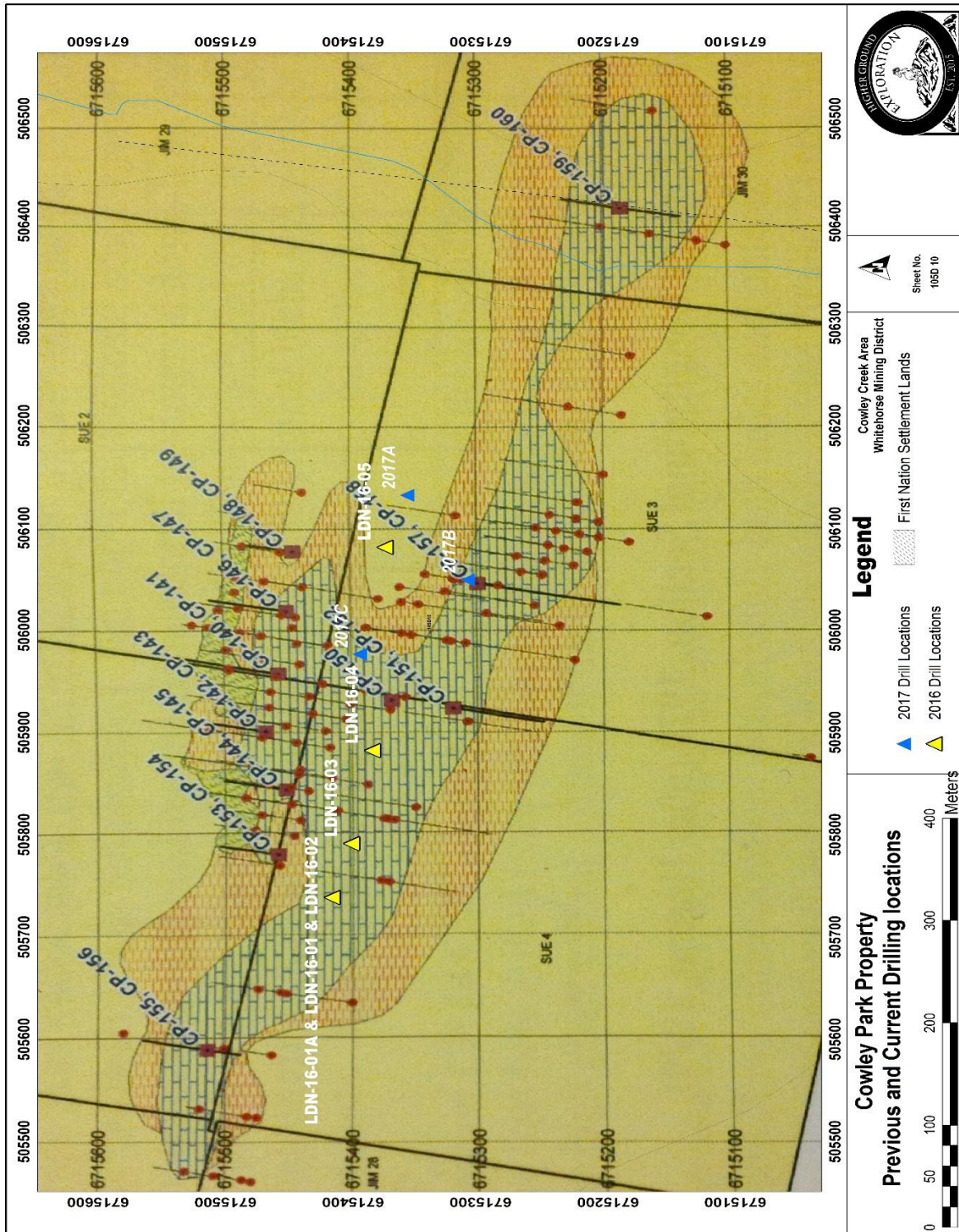


Figure 4. 2016 and 2017 drill hole locations with historic drill holes. Historic holes (red dot with line), 2008 Yankee Hat holes (labeled red dot with bold line), 2016 drilling (yellow triangles) and 2017 drilling (blue triangles).

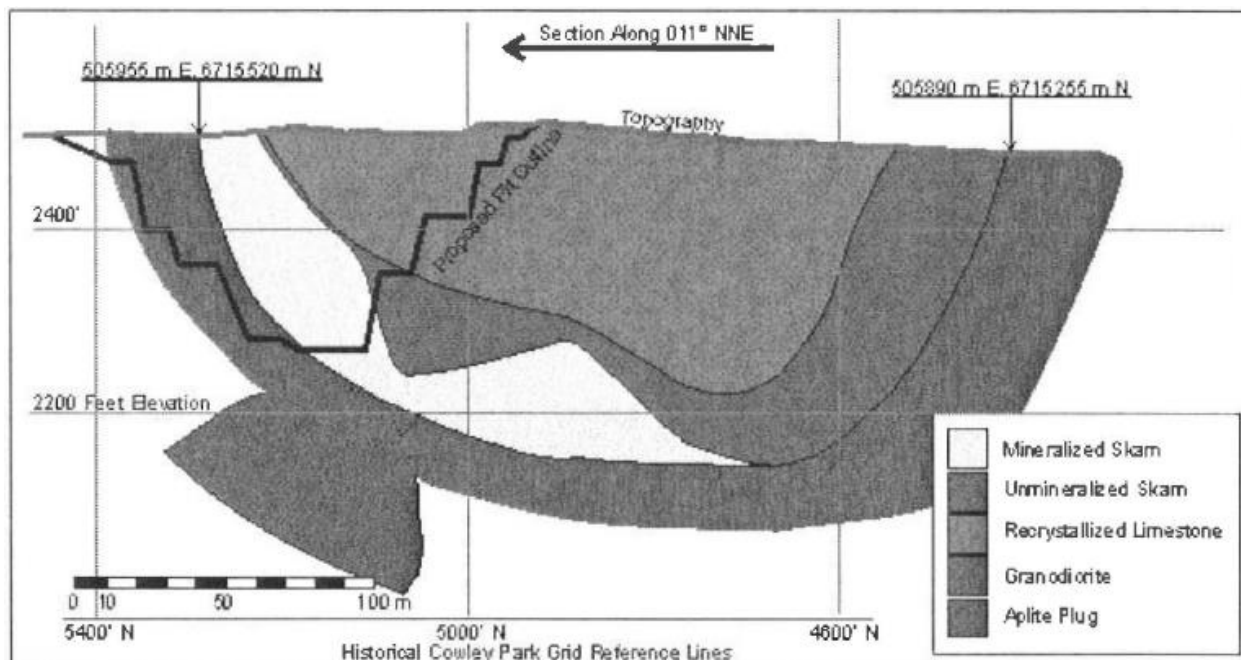


Figure 5. Cross-section through deposit with proposed pit outline (Modified after Tenney, 1981).

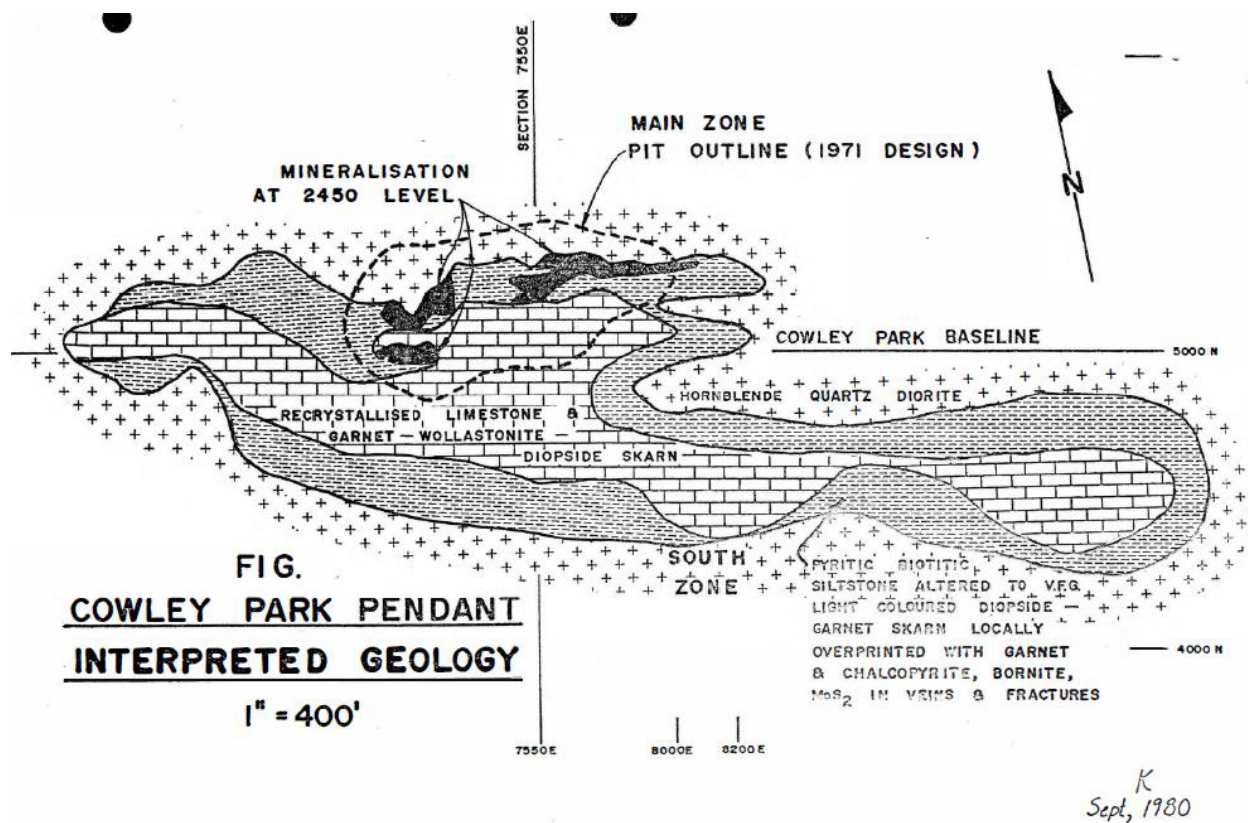


Figure 6. Geology and mineralization (Tenney, 1981).

Appendix 2

STATEMENT OF EXPENDITURES
on the
COWLEY PARK PROPERTY

2016 Expenditures

Drilling and Transportation	\$114,419.10
Drill hole targeting	\$1,968.75
Subtotal	\$116,387.85

2017 Expenditures

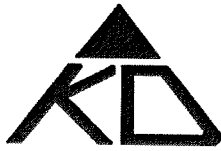
Drilling and Transportation	\$72,998.84
Core Logging	\$5,444.78
Assays	\$8,254.80
Drill hole targeting	\$630.00
Subtotal	\$87,328.42

Total	\$203,716.27
--------------	---------------------

Approved by:

Jim Coyne

Date



Kluane Drilling Ltd.
 14 MacDonald Rd., Whitehorse, Yukon Y1A 4L2
 Tel: (867) 633-4800 Fax: (867) 633-3641
 kluanedrilling@northwestel.net

CLIENT: 2403 TEST

CONTRACT NO.:
 PROJECT NAME: Drill
 RIGS: Cowley
 1

INVOICE NUMBER:
 INVOICE DATE:
 INVOICE PERIOD
 FROM: 17-Jun-2016
 TO: 3-Jul-2016

METERS DRILLED: 858.01
 AVG. METERS PER SHIFT:
TOTAL INVOICE: \$81,926.74

SUMMARY OF CHARGEABLES:	KD1	TOTAL
HW	15.24	15.24
HTW	842.77	842.77
NTW	0.00	0.00
BTW	0.00	0.00
DRILLING AND CASING CHARGEABLES	58,268.62	58,268.62
HOURLY CHARGEABLES	7,800.00	7,800.00
CONSUMABLES, EQUIPMENT AND SUPPLIES	2,774.95	2,774.95
OTHER CHARGEABLES	0.00	0.00
TOTAL CHARGEABLES	68,843.56	68,843.56

PUMP MAN, NON DRILLING FOREMAN, EQUIPMENT

HOURLY CHARGABLES	0.00
EQUIPMENT CHARGES	0.00
TRANSPORT, FREIGHT & SUPPLIES CHARGES	8,463.21
TOTAL PUMP MAN, NON DRILLING FOREMAN, EQUIPMENT	8,463.21

ADDITIONAL CHARGES:

DESCRIPTION	UNITS	PRICE
EXCESSIVE BITWEAR CHARGE		718.70
TOTAL ADDITIONAL CHARGES		718.70

SUBTOTAL 78,025.47

GST BN 10286 1168 RT 001 3,901.27
TOTAL INVOICE 81,926.74
 LESS CREDIT FOR ADVANCE -

PAYMENT DUE 81,926.74

PLEASE MAKE PAYMENT TO:

KLUANE DRILLING LTD.
 BANK: CANADIAN IMPERIAL BANK OF COMMERCE
 ADDRESS: 110 MAIN STREET, WHITEHORSE, YT, Y1A 2A8
 TRANSIT NO.: 80
 ACCOUNT NO.: 5107717

THANK YOU FOR YOUR BUSINESS!



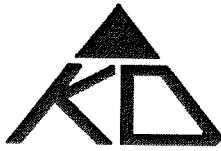
Kluane Drilling Ltd.

14 MacDonald Rd., Whitehorse, Yukon Y1A 4L2

Tel: (867) 633-4800 Fax: (867) 633-3641

kluanedrilling@northwestel.net

HOLE	LDN16-01A	LDN16-01	LDN16-02	LDN16-03	LDN16-04	TOTAL
METERS DRILLED	12.19	236.22	201.17	207.26	201.17	858.01
HOURLY CHARGEABLES						
MOVING	0.00	0.00	400.00	0.00	700.00	400.00
REAMING	0.00	0.00	0.00	0.00	0.00	0.00
STABILIZATION	350.00	0.00	0.00	0.00	0.00	350.00
PULLING RODS	0.00	0.00	0.00	0.00	0.00	0.00
CEMENTING	0.00	0.00	0.00	0.00	0.00	0.00
WATER SUPPLY	0.00	100.00	0.00	0.00	0.00	100.00
REDUCTION	0.00	0.00	0.00	0.00	0.00	0.00
TESTING	0.00	0.00	0.00	0.00	0.00	0.00
STAND-BY	0.00	0.00	0.00	0.00	0.00	0.00
TRAVEL	0.00	0.00	0.00	0.00	0.00	0.00
HOLE CONDITIONING	175.00	1,137.50	962.50	1,312.50	962.50	2,275.00
MISCELLANEOUS	0.00	0.00	0.00	0.00	0.00	0.00
MOBILIZATION / DEMOBILIZATION	1,300.00	0.00	0.00	0.00	0.00	1,300.00
DIFF. IN HRS DRILLER HOURLY RATE \$55.00	0.00	0.00	0.00	0.00	400.00	0.00
DIFF. IN HRS HELPER HOURLY RATE \$45.00	0.00	0.00	0.00	0.00	0.00	0.00
TOTAL HOURLY CHARGEABLES	1,825.00	1,237.50	1,362.50	1,312.50	2,062.50	7,800.00
DRILLING CHARGABLES	813.82	16,047.72	13,664.18	14,078.71	13,664.18	58,268.62
CONSUMABLES, EQUIPMENT	181.50	544.50	689.13	833.76	526.06	2,774.95
OTHER CHARGEABLES	0.00	0.00	0.00	0.00	0.00	0.00
TOTAL	2,820.32	17,829.72	15,715.81	16,224.97	16,252.75	68,843.56
SUMMARY TOTAL	68,843.56					
INVOICE TOTAL	68,843.56					
DIFFERENCE TO CORRECT	0.00					



Kluane Drilling Ltd.
 14 MacDonald Rd., Whitehorse, Yukon Y1A 4L2
 Tel: (867) 633-4800 Fax: (867) 633-3641
 kluanedrilling@northwestel.net

CLIENT: DEVICO TEST
 CONTRACT NO.:
 PROJECT NAME: Lobo del Norte
 RIGS: Cowley Park
 INVOICE NUMBER: 1
 INVOICE DATE:
 INVOICE PERIOD:
 FROM: 13-Aug-2016
 TO: 25-Aug-2016
 METERS DRILLED: 283.77
 AVG. METERS PER SHIFT:
TOTAL INVOICE: \$32,492.36

SUMMARY OF CHARGEABLES:	KD1	TOTAL
HW	4.57	4.57
HTW	123.75	123.75
NTW	76.81	76.81
Devico	78.64	78.64
DRILLING AND CASING CHARGEABLES	17,394.94	17,394.94
HOURLY CHARGEABLES	7,100.00	7,100.00
CONSUMABLES, EQUIPMENT AND SUPLIES	3,246.10	3,246.10
OTHER CHARGEABLES	0.00	0.00
TOTAL CHARGEABLES	27,741.04	27,741.04

PUMP MAN, NON DRILLING FOREMAN, EQUIPMENT

HOURLY CHARGABLES	0.00
EQUIPMENT CHARGES	0.00
TRANSPORT, FREIGHT & SUPPLIES CHARGES	3,204.06
TOTAL PUMP MAN, NON DRILLING FOREMAN, EQUIPMENT	3,204.06

ADDITIONAL CHARGES:

DESCRIPTION	UNITS	PRICE
EXCESSIVE BITWEAR CHARGE		0.00
TOTAL ADDITIONAL CHARGES		0.00

SUBTOTAL 30,945.10

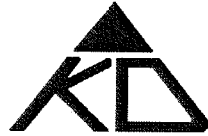
GST BN 10286 1168 RT 001 1,547.26
TOTAL INVOICE 32,492.36
 LESS CREDIT FOR ADVANCE -

PAYMENT DUE 32,492.36

PLEASE MAKE PAYMENT TO:

KLUANE DRILLING LTD.
 BANK: CANADIAN IMPERIAL BANK OF COMMERCE
 ADDRESS: 110 MAIN STREET, WHITEHORSE, YT, Y1A 2A8
 TRANSIT NO.: 80
 ACCOUNT NO.: 5107717

THANK YOU FOR YOUR BUSINESS!



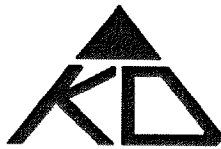
Kluane Drilling Ltd.

14 MacDonald Rd., Whitehorse, Yukon Y1A 4L2

Tel: (867) 633-4800 Fax: (867) 633-3641

kluanedrilling@northwestel.net

HOLE	LDN16-05	LDN16-05A	LDN16-05B	TOTAL
METERS DRILLED	27.74	198.12	57.91	283.77
HOURLY CHARGEABLES				
MOVING	0.00	200.00	0.00	200.00
REAMING	0.00	0.00	875.00	875.00
STABILIZATION	0.00	0.00	0.00	0.00
PULLING RODS	0.00	0.00	0.00	0.00
CEMENTING	0.00	0.00	0.00	0.00
WATER SUPPLY	0.00	0.00	0.00	0.00
REDUCTION	0.00	350.00	0.00	350.00
TESTING	0.00	1,400.00	350.00	1,750.00
STAND-BY	0.00	0.00	0.00	0.00
TRAVEL	0.00	0.00	0.00	0.00
HOLE CONDITIONING	0.00	1,837.50	787.50	2,625.00
MISCELLANEOUS	0.00	0.00	0.00	0.00
MOBILIZATION / DEMOBILIZATION	800.00	0.00	500.00	1,300.00
DIFF. IN HRS DRILLER HOURLY RATE \$55.00	0.00	0.00	0.00	0.00
DIFF. IN HRS HELPER HOURLY RATE \$45.00	0.00	0.00	0.00	0.00
TOTAL HOURLY CHARGEABLES	800.00	3,787.50	2,512.50	7,100.00
DRILLING CHARGABLES	0.00	13,456.92	3,938.02	17,394.94
CONSUMABLES, EQUIPMENT	344.56	2,030.91	870.63	3,246.10
OTHER CHARGEABLES	0.00	0.00	0.00	0.00
TOTAL	1,144.56	19,275.33	7,321.14	27,741.04
SUMMARY TOTAL	27,741.04			
INVOICE TOTAL	27,741.04			
DIFFERENCE TO CORRECT				0.00



Kluane Drilling Ltd.

14 MacDonald Rd., Whitehorse, Yukon Y1A 4L2
Tel: (867) 633-4800 Fax: (867) 633-3641
kluanedrilling@northwestel.net

CLIENT: 2403 TEST

CONTRACT NO.:
PROJECT NAME: Drill
RIGS: Cowley
1

INVOICE NUMBER:
INVOICE DATE:
INVOICE PERIOD
FROM: 24-May-2017
TO: 5-Jun-2017

METERS DRILLED: 701.04
AVG. METERS PER SHIFT:

TOTAL INVOICE: \$72,998.84

SUMMARY OF CHARGEABLES:

	KD1	TOTAL
HW	18.29	18.29
HTW	701.04	701.04
NTW	0.00	0.00
BTW	0.00	0.00

DRILLING AND CASING CHARGEABLES	53,766.72	53,766.72
HOURLY CHARGEABLES	6,025.00	6,025.00
CONSUMABLES, EQUIPMENT AND SUPPLIES	1,730.98	1,730.98
OTHER CHARGEABLES	0.00	0.00
TOTAL CHARGEABLES	61,522.70	61,522.70

PUMP MAN, NON DRILLING FOREMAN, EQUIPMENT

HOURLY CHARGABLES	0.00
EQUIPMENT CHARGES	0.00
TRANSPORT, FREIGHT & SUPPLIES CHARGES	8,000.00
TOTAL PUMP MAN, NON DRILLING FOREMAN, EQUIPMENT	8,000.00

ADDITIONAL CHARGES:

DESCRIPTION	UNITS	PRICE
EXCESSIVE BITWEAR CHARGE		0.00
TOTAL ADDITIONAL CHARGES		0.00

SUBTOTAL 69,522.70

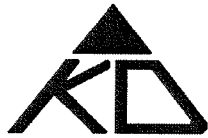
GST BN 10286 1168 RT 001 3,476.14
TOTAL INVOICE 72,998.84
LESS CREDIT FOR ADVANCE -

PAYMENT DUE 72,998.84

PLEASE MAKE PAYMENT TO:

KLUANE DRILLING LTD.
BANK: CANADIAN IMPERIAL BANK OF COMMERCE
ADDRESS: 110 MAIN STREET, WHITEHORSE, YT, Y1A 2A8
TRANSIT NO.: 80
ACCOUNT NO.: 5107717

THANK YOU FOR YOUR BUSINESS!



Kluane Drilling Ltd.

14 MacDonald Rd., Whitehorse, Yukon Y1A 4L2

Tel: (867) 633-4800 Fax: (867) 633-3641

kluanedrilling@northwestel.net

HOLE	LDN-2017A	LDN-2017A2	LDN-2017B	LDN-2017C	TOTAL
METERS DRILLED	172.21	193.55	193.55	141.73	701.04
HOURLY CHARGEABLES					
MOVING	500.00	0.00	300.00	1,300.00	800.00
REAMING	0.00	0.00	0.00	0.00	0.00
STABILIZATION	0.00	175.00	0.00	0.00	175.00
PULLING RODS	0.00	0.00	0.00	0.00	0.00
CEMENTING	0.00	0.00	0.00	0.00	0.00
WATER SUPPLY	100.00	0.00	200.00	100.00	300.00
REDUCTION	0.00	0.00	0.00	0.00	0.00
TESTING	0.00	0.00	525.00	0.00	525.00
STAND-BY	500.00	0.00	0.00	0.00	500.00
TRAVEL	0.00	0.00	0.00	0.00	0.00
HOLE CONDITIONING	0.00	350.00	962.50	612.50	1,312.50
MISCELLANEOUS	0.00	0.00	0.00	0.00	0.00
MOBILIZATION / DEMOBILIZATION	0.00	400.00	0.00	0.00	400.00
DIFF. IN HRS DRILLER HOURLY RATE \$55.00	0.00	0.00	0.00	0.00	0.00
DIFF. IN HRS HELPER HOURLY RATE \$45.00	0.00	0.00	0.00	0.00	0.00
TOTAL HOURLY CHARGEABLES	1,100.00	925.00	1,987.50	2,012.50	6,025.00
DRILLING CHARGABLES	13,312.14	14,813.28	14,714.22	10,927.08	53,766.72
CONSUMABLES, EQUIPMENT	1,126.66	278.19	326.13	0.00	1,730.98
OTHER CHARGEABLES	0.00	0.00	0.00	0.00	0.00
TOTAL	15,538.80	16,016.47	17,027.85	12,939.58	61,522.70
SUMMARY TOTAL	61,522.70				
INVOICE TOTAL	61,522.70				
DIFFERENCE TO CORRECT	0.00				



ALS Canada Ltd.
 2103 Dollarton Hwy
 North Vancouver BC V7H 0A7
 Phone: +1 (604) 984 0221 Fax: +1 (604) 984 0218 www.alsglobal.com

To: **KLUANE DRILLING LTD**
14 MACDONALD ROAD
WHITEHORSE YT Y1A 4L2

INVOICE NUMBER 3822439

BILLING INFORMATION	
Certificate:	WH17045124
Sample Type:	Drill Core
Account:	KLUDRIL
Date:	27- MAR- 2017
Project:	
P.O. No.:	
Quote:	
Terms:	Due on Receipt C1
Comments:	

QUANTITY	CODE	ANALYSED FOR DESCRIPTION	UNIT PRICE	TOTAL
1	BAT- 01	Administration Fee	33.10	33.10
84	PREP- 31	Crush, Split, Pulverize	7.70	646.80
86.14	PREP- 31	Weight Charge (kg) - Crush, Split, Pulverize	0.75	64.61
84	Au- ICP21	Au 30g FA ICP- AES Finish	17.20	1,444.80
84	ME- ICP41	35 Element Aqua Regia ICP- AES	11.50	966.00
12	ME- OG46	Ore Grade Elements - AquaRegia	8.95	107.40
12	Cu- OG46	Ore Grade Cu - Aqua Regia	2.55	30.60

SUBTOTAL (CAD) \$ 3,293.31

R100938885 GST \$ 164.67

TOTAL PAYABLE (CAD) \$ 3,457.98

To: **KLUANE DRILLING LTD**
 ATTN: JM COYNE
 14 MACDONALD ROAD
 WHITEHORSE YT Y1A 4L2

Payment may be made by: Cheque or Bank Transfer

Beneficiary Name: ALS Canada Ltd.
 Bank: Royal Bank of Canada
 SWIFT: ROYCCAT2
 Address: Vancouver, BC, CAN
 Account: 003-00010-1001098
 Please send payment info to accounting.canusa@alsglobal.com

Please Remit Payments To :
ALS Canada Ltd.
 2103 Dollarton Hwy
 North Vancouver BC V7H 0A7



ALS Canada Ltd.
 2103 Dollarton Hwy
 North Vancouver BC V7H 0A7
 Phone: +1 (604) 984 0221 Fax: +1 (604) 984 0218 www.alsglobal.com

To: **KLUANE DRILLING LTD**
14 MACDONALD ROAD
WHITEHORSE YT Y1A 4L2

INVOICE NUMBER 3897432

BILLING INFORMATION	
Certificate:	WH17098567
Sample Type:	Drill Core
Account:	KLUDRIL
Date:	13- JUN- 2017
Project:	COWLEY
P.O. No.:	
Quote:	
Terms:	Due on Receipt C1
Comments:	

ANALYSED FOR			UNIT	TOTAL
QUANTITY	CODE	- DESCRIPTION	PRICE	
1	BAT- 01	Administration Fee	34.10	34.10
118	PREP- 31	Crush, Split, Pulverize	7.70	908.60
303.47	PREP- 31	Weight Charge (kg) - Crush, Split, Pulverize	0.75	227.60
118	Au- ICP21	Au 30g FA ICP- AES Finish	17.20	2,029.60
118	ME- ICP41	35 Element Aqua Regia ICP- AES	11.50	1,357.00
1	ME- OG46	Ore Grade Elements - AquaRegia	8.95	8.95
1	Cu- OG46	Ore Grade Cu - Aqua Regia	2.55	2.55

SUBTOTAL (CAD) \$ 4,568.40

R100938885 GST \$ 228.42

TOTAL PAYABLE (CAD) \$ 4,796.82

To: **KLUANE DRILLING LTD**
 ATTN: JM COYNE
 14 MACDONALD ROAD
 WHITEHORSE YT Y1A 4L2

Payment may be made by: Cheque or Bank Transfer

Beneficiary Name: ALS Canada Ltd.
 Bank: Royal Bank of Canada
 SWIFT: ROYCCAT2
 Address: Vancouver, BC, CAN
 Account: 003-00010-1001098
 Please send payment info to accounting.canusa@alsglobal.com

Please Remit Payments To :
ALS Canada Ltd.
 2103 Dollarton Hwy
 North Vancouver BC V7H 0A7

Appendix 3

Drilling Report LDN-16-05



Drilling Report

Client: Kluane
 Project: NTW/DCD test for Kluane
 Hole: Carcross Road Testhole (ind.: 1)

Notes: S08-CAN-KLU-BHTEST-20160821-612ft-PW-EB
 Date: 21.08.2016

Registered data, calculated trajectories coordinates:

St Depth [ft]	Direction[Az]	Inclination	Northing	Easting [ft]	Elevation	Turn Rate	Build Rate	Dogleg
0,00	30,70	-60,00	0,00	0,00	0,00	0,00	0,00	-
16,40	30,70	-59,89	7,06	4,19	-14,19	0,01	0,66	0,66
65,62	31,70	-59,99	28,15	16,97	-56,80	2,00	0,20	1,02
114,83	32,45	-59,66	49,11	30,10	-99,34	1,50	0,66	1,00
164,04	33,20	-59,32	70,10	43,65	-141,73	1,50	0,68	1,02
213,25	33,95	-59,09	91,09	57,58	-184,01	1,50	0,46	0,90
262,47	34,70	-59,00	112,00	71,86	-226,22	1,50	0,18	0,79
311,68	35,45	-58,75	132,81	86,47	-268,34	1,50	0,50	0,92
321,52	35,90	-58,71	136,96	89,45	-276,75	2,00	0,48	1,14
331,36	36,30	-58,49	141,11	92,47	-285,15	4,25	1,30	2,57
341,21	36,61	-58,54	145,24	95,53	-293,55	3,10	0,50	1,70
344,49	36,41	-58,55	146,62	96,55	-296,35	0,82	0,45	0,62
347,00	38,03	-58,62	147,66	97,34	-298,49	10,89	0,82	5,74
352,00	37,60	-58,44	149,72	98,94	-302,76	9,03	0,91	4,81
357,00	37,61	-58,14	151,80	100,54	-307,01	4,13	4,72	5,20
362,00	37,96	-57,90	153,90	102,17	-311,25	3,54	5,31	5,64
367,00	38,20	-57,81	155,99	103,81	-315,48	5,81	3,25	4,48
372,00	38,38	-57,86	158,08	105,46	-319,72	4,13	0,39	2,23
377,00	39,26	-57,80	160,15	107,13	-323,95	10,43	0,10	5,56
382,00	38,75	-57,81	162,22	108,80	-328,18	3,64	0,49	2,00
387,00	39,62	-57,81	164,29	110,49	-332,41	3,54	0,10	1,89
392,00	39,06	-57,81	166,35	112,17	-336,64	3,05	0,00	1,63
397,00	38,57	-57,82	168,42	113,84	-340,87	10,33	0,10	5,51
402,00	38,40	-57,84	170,51	115,50	-345,11	6,50	0,30	3,47
407,00	38,00	-57,84	172,60	117,15	-349,34	5,61	0,20	3,00
412,00	38,22	-57,84	174,69	118,79	-353,57	1,77	0,00	0,95
417,00	38,10	-57,84	176,79	120,43	-357,80	0,98	0,00	0,53
422,00	37,70	-57,85	178,89	122,07	-362,04	5,12	0,10	2,73
427,00	37,53	-57,84	180,99	123,69	-366,27	5,61	0,00	2,99
432,00	37,05	-57,83	183,11	125,31	-370,50	6,40	0,20	3,41
437,00	36,85	-57,69	185,24	126,91	-374,73	6,69	1,48	3,87
442,00	36,49	-57,44	187,39	128,51	-378,95	5,51	3,84	4,84
447,00	36,38	-57,03	189,57	130,12	-383,16	4,63	6,50	6,96
452,00	35,95	-56,66	191,78	131,73	-387,34	5,31	7,68	8,21
457,00	36,91	-56,22	194,00	133,37	-391,51	5,22	7,97	8,48
462,00	37,80	-55,95	196,22	135,07	-395,66	18,21	6,99	12,28
467,00	39,62	-55,59	198,41	136,82	-399,79	26,67	6,20	16,19
472,00	36,79	-55,50	200,64	138,57	-403,92	9,94	4,43	7,14
477,00	38,21	-55,12	202,89	140,31	-408,03	13,88	4,63	9,15
482,00	36,34	-54,69	205,18	142,05	-412,12	4,43	7,97	8,37
487,00	34,73	-54,29	207,54	143,73	-416,19	34,25	8,17	21,41
492,00	34,68	-54,35	209,94	145,40	-420,25	16,34	3,35	10,06
497,00	34,22	-53,84	212,36	147,05	-424,30	5,02	4,43	5,32
502,00	34,53	-53,57	214,80	148,73	-428,33	1,48	7,68	7,73
507,00	35,08	-53,25	217,25	150,43	-432,34	8,46	5,81	7,68
512,00	35,45	-53,03	219,70	152,16	-436,35	9,06	5,31	7,59
517,00	34,79	-52,83	222,16	153,89	-440,33	2,85	4,13	4,48
522,00	32,76	-52,74	224,68	155,57	-444,32	26,48	2,85	16,23
527,00	34,36	-52,64	227,20	157,25	-448,29	4,23	1,87	3,17
532,00	34,35	-52,47	229,71	158,96	-452,26	15,65	2,66	9,87
537,00	34,19	-52,38	232,23	160,68	-456,23	1,67	2,56	2,76
542,00	33,88	-51,89	234,77	162,40	-460,17	4,63	5,71	6,38
547,00	34,28	-51,47	237,34	164,14	-464,10	0,89	8,96	8,98
552,00	34,71	-51,01	239,92	165,91	-468,00	8,17	8,66	10,05
557,00	33,69	-50,49	242,54	167,69	-471,87	5,81	9,65	10,32
562,00	34,96	-50,04	245,18	169,49	-475,71	2,46	9,55	9,68
567,00	36,44	-49,56	247,80	171,37	-479,53	27,02	9,18	19,64
572,00	36,37	-49,10	250,42	173,31	-483,32	13,85	9,21	12,87

Drilling Report

577,00	38,55	-48,59	253,03	175,31	-487,09	20,79	9,55	16,64
582,00	36,98	-48,03	255,66	177,34	-490,82	5,99	10,56	11,28
587,00	36,85	-47,44	258,35	179,36	-494,52	16,71	11,29	15,89
592,00	36,50	-46,85	261,08	181,40	-498,19	4,71	11,66	12,09
597,00	35,50	-46,24	263,86	183,42	-501,82	13,29	11,79	14,88
602,00	36,22	-45,69	266,68	185,45	-505,41	2,79	11,41	11,58
607,00	36,34	-45,08	269,51	187,53	-508,97	8,26	11,42	12,80
612,00	36,66	-44,59	272,36	189,64	-512,50	4,40	10,79	11,23

Direction in Degrees, length unit Feet, inclination in Degrees, zero is horizontal



ALS Canada Ltd.
 2103 Dollarton Hwy
 North Vancouver BC V7H 0A7
 Phone: +1 (604) 984 0221 Fax: +1 (604) 984 0218
 www.alsglobal.com

To: **KLUANE DRILLING LTD**
14 MACDONALD ROAD
WHITEHORSE YT Y1A 4L2

Page: 1
 Total # Pages: 4 (A - C)
 Plus Appendix Pages
 Finalized Date: 13- JUN- 2017
 Account: KLUDRIL

CERTIFICATE WH17098567

Project: COWLEY

This report is for 118 Drill Core samples submitted to our lab in Whitehorse, YT, Canada on 19- MAY- 2017.

The following have access to data associated with this certificate:

JM COYNE	NICOLAI GOEPEL	
----------	----------------	--

SAMPLE PREPARATION	
ALS CODE	DESCRIPTION
WEI- 21	Received Sample Weight
LOG- 22	Sample login - Rcd w/o BarCode
CRU- QC	Crushing QC Test
PUL- QC	Pulverizing QC Test
CRU- 31	Fine crushing - 70%<2mm
SPL- 21	Split sample - riffle splitter
PUL- 31	Pulverize split to 85%< 75 um

ANALYTICAL PROCEDURES		
ALS CODE	DESCRIPTION	INSTRUMENT
ME- ICP41	35 Element Aqua Regia ICP- AES	ICP- AES
ME- OG46	Ore Grade Elements - AquaRegia	ICP- AES
Cu- OG46	Ore Grade Cu - Aqua Regia	ICP- AES
Au- ICP21	Au 30g FA ICP- AES Finish	ICP- AES

To: **KLUANE DRILLING LTD**
ATTN: JM COYNE
14 MACDONALD ROAD
WHITEHORSE YT Y1A 4L2

This is the Final Report and supersedes any preliminary report with this certificate number. Results apply to samples as submitted. All pages of this report have been checked and approved for release.

***** See Appendix Page for comments regarding this certificate *****

Signature: 
 Colin Ramshaw, Vancouver Laboratory Manager



ALS Canada Ltd.
 2103 Dollarton Hwy
 North Vancouver BC V7H 0A7
 Phone: +1 (604) 984 0221 Fax: +1 (604) 984 0218
 www.alsglobal.com

To: **KLUANE DRILLING LTD**
14 MACDONALD ROAD
WHITEHORSE YT Y1A 4L2

Page: 2 - A
 Total # Pages: 4 (A - C)
 Plus Appendix Pages
 Finalized Date: 13- JUN- 2017
 Account: KLUDRIL

Project: COWLEY

CERTIFICATE OF ANALYSIS WH17098567

Sample Description	Method	WEI- 21	Au- ICP21	ME- ICP41	ME- ICP41	ME- ICP41	ME- ICP41	ME- ICP41	ME- ICP41	ME- ICP41	ME- ICP41	ME- ICP41	ME- ICP41	ME- ICP41	ME- ICP41	ME- ICP41
	Analyte	Recvd Wt.	Au	Ag	Al	As	B	Ba	Be	Bi	Ca	Cd	Co	Cr	Cu	Fe
Units		kg	ppm	ppm	%	ppm	ppm	ppm	ppm	ppm	%	ppm	ppm	ppm	ppm	%
LOR		0.02	0.001	0.2	0.01	2	10	10	0.5	2	0.01	0.5	1	1	1	0.01
S057053		2.15	0.006	0.3	0.45	5	<10	50	<0.5	<2	18.5	1.7	7	12	169	2.47
S057054		2.94	<0.001	0.7	0.55	18	<10	10	<0.5	<2	9.8	0.9	8	10	1170	0.50
S057055		2.49	<0.001	0.2	0.51	9	<10	10	<0.5	<2	10.1	1.1	5	5	55	0.37
S057056		1.90	<0.001	0.2	0.23	5	<10	10	<0.5	<2	18.4	1.0	4	2	126	0.30
S057057		2.42	0.001	0.2	0.50	4	<10	<10	<0.5	<2	22.2	<0.5	4	1	14	0.76
S057058		1.38	0.001	<0.2	0.93	4	<10	10	<0.5	<2	19.7	0.5	4	2	44	0.94
S057059		3.58	0.001	0.2	0.26	2	<10	10	<0.5	<2	>25.0	<0.5	1	1	9	0.46
S057060		0.96	0.001	0.2	0.23	2	<10	60	<0.5	<2	>25.0	<0.5	2	1	67	0.47
S057061		3.22	0.011	<0.2	0.07	<2	<10	10	<0.5	<2	>25.0	<0.5	1	<1	3	0.14
S057062		3.69	<0.001	<0.2	0.28	<2	<10	<10	<0.5	<2	>25.0	<0.5	1	1	5	0.27
S057063		3.03	<0.001	<0.2	1.02	3	<10	30	<0.5	<2	3.38	<0.5	7	40	192	1.52
S057064		3.44	0.002	0.2	0.83	3	<10	20	<0.5	<2	4.04	<0.5	4	19	447	1.09
S057065		1.68	<0.001	0.2	1.07	3	<10	20	<0.5	<2	3.92	<0.5	3	21	404	1.15
S057066		3.20	<0.001	0.5	0.70	3	<10	30	<0.5	<2	2.96	<0.5	8	29	1410	1.17
S057067		2.99	<0.001	<0.2	0.29	2	<10	30	<0.5	<2	0.92	<0.5	7	9	351	0.80
S057068		2.96	<0.001	0.5	0.42	2	<10	50	<0.5	<2	0.91	<0.5	8	30	1370	0.91
S057069		3.49	<0.001	0.2	1.83	5	<10	40	<0.5	<2	4.29	<0.5	4	26	426	1.05
S057070		3.32	<0.001	<0.2	1.33	6	<10	<10	<0.5	<2	5.78	<0.5	6	36	374	1.26
S057071		3.68	<0.001	0.4	1.04	16	<10	<10	<0.5	<2	10.1	<0.5	2	22	296	0.82
S057072		3.46	0.001	0.2	1.04	10	<10	<10	<0.5	<2	10.3	<0.5	1	18	69	0.68
S057073		2.91	<0.001	<0.2	0.95	4	<10	40	<0.5	<2	1.12	<0.5	8	29	239	1.15
S057074		2.77	<0.001	0.2	1.09	5	<10	40	<0.5	<2	1.26	<0.5	11	42	393	1.68
S057075		2.47	<0.001	0.2	0.79	6	<10	50	<0.5	<2	1.17	<0.5	11	53	435	1.40
S057076		2.67	<0.001	<0.2	1.18	9	<10	10	0.5	<2	5.08	<0.5	4	24	153	0.68
S057077		1.81	<0.001	0.2	0.63	8	<10	<10	<0.5	<2	9.3	<0.5	1	16	110	0.37
S057078		2.15	<0.001	1.1	0.88	8	<10	50	<0.5	2	11.7	0.6	3	5	1010	0.67
S057079		1.57	<0.001	0.3	2.24	5	<10	60	<0.5	<2	4.97	0.8	4	5	287	0.78
S057080		1.94	0.001	0.3	2.24	5	<10	40	<0.5	<2	7.0	<0.5	2	6	272	0.49
S057081		2.88	<0.001	0.2	0.50	7	<10	10	<0.5	<2	14.3	<0.5	4	3	149	0.39
S057082		1.82	0.001	0.7	0.72	47	<10	40	<0.5	<2	17.0	2.9	6	4	107	0.95
S057083		2.52	<0.001	0.2	0.72	14	<10	30	<0.5	<2	4.38	<0.5	10	10	97	1.27
S057084		2.83	0.012	<0.2	1.93	17	<10	60	<0.5	3	4.22	<0.5	10	17	69	1.76
S057085		2.27	0.001	0.3	1.61	12	<10	70	<0.5	4	2.41	<0.5	11	22	372	2.00
S057086		3.44	<0.001	0.9	1.10	8	<10	40	<0.5	<2	2.53	0.8	7	8	1055	1.08
S057087		2.78	0.001	0.3	0.43	15	20	20	<0.5	3	19.1	7.4	6	3	228	0.85
S057088		3.01	0.001	1.8	0.49	10	10	30	<0.5	16	17.1	13.9	9	7	1580	0.59
S057089		0.95	<0.001	<0.2	0.93	4	<10	<10	<0.5	<2	7.14	<0.5	1	5	20	0.71
S057090		3.28	<0.001	<0.2	1.30	<2	<10	10	<0.5	2	5.60	<0.5	<1	1	9	1.05
S057091		2.71	<0.001	<0.2	0.97	<2	<10	10	<0.5	<2	7.5	<0.5	<1	1	17	1.05
S057092		1.25	<0.001	<0.2	0.82	<2	<10	<10	<0.5	2	8.4	<0.5	1	1	41	0.94



ALS Canada Ltd.
 2103 Dollarton Hwy
 North Vancouver BC V7H 0A7
 Phone: +1 (604) 984 0221 Fax: +1 (604) 984 0218
 www.alsglobal.com

To: **KLUANE DRILLING LTD**
14 MACDONALD ROAD
WHITEHORSE YT Y1A 4L2

Page: 2 - B
 Total # Pages: 4 (A - C)
 Plus Appendix Pages
 Finalized Date: 13- JUN- 2017
 Account: KLUDRIL

Project: COWLEY

CERTIFICATE OF ANALYSIS WH17098567

Sample Description	Method Analyte Units LOR	ME- ICP41	ME- ICP41	ME- ICP41	ME- ICP41	ME- ICP41	ME- ICP41	ME- ICP41	ME- ICP41	ME- ICP41	ME- ICP41	ME- ICP41	ME- ICP41	ME- ICP41	ME- ICP41	
		Ga	Hg	K	La	Mg	Mn	Mo	Na	Ni	P	Pb	S	Sb	Sc	Sr
		ppm	ppm	%	ppm	%	ppm	ppm	%	ppm	ppm	ppm	%	ppm	ppm	ppm
		10	1	0.01	10	0.01	5	1	0.01	1	10	2	0.01	2	1	1
S057053		<10	<1	0.05	10	0.04	75	29	0.16	68	780	13	1.79	<2	1	3780
S057054		<10	<1	0.01	<10	0.06	259	2	0.01	21	1320	4	0.22	<2	1	362
S057055		<10	<1	<0.01	<10	0.12	129	115	0.01	14	1350	50	0.21	<2	<1	557
S057056		<10	<1	<0.01	<10	0.07	160	11	0.01	9	1110	7	0.26	<2	<1	1100
S057057		<10	<1	0.01	<10	0.04	119	4	0.03	12	930	2	0.51	<2	<1	751
S057058		<10	<1	0.02	<10	0.03	96	5	0.05	15	1100	5	0.61	<2	<1	804
S057059		<10	<1	0.01	<10	0.03	65	2	0.05	5	490	<2	0.30	<2	<1	1095
S057060		<10	<1	0.06	<10	0.13	87	1	0.07	2	270	2	0.32	<2	<1	918
S057061		<10	<1	0.01	<10	0.08	83	1	0.03	1	260	<2	0.09	<2	<1	670
S057062		<10	<1	0.03	<10	0.04	87	<1	0.10	3	680	<2	0.17	<2	<1	548
S057063		<10	<1	0.09	<10	0.64	486	11	0.05	12	810	3	0.53	<2	1	79
S057064		<10	<1	0.05	<10	0.23	506	41	0.06	5	790	<2	0.35	<2	1	90
S057065		<10	<1	0.06	10	0.25	589	36	0.06	6	950	<2	0.14	<2	2	105
S057066		<10	<1	0.05	10	0.34	359	15	0.06	12	1140	<2	0.59	<2	1	140
S057067		<10	<1	0.04	10	0.11	75	47	0.10	18	760	<2	0.56	<2	<1	51
S057068		<10	<1	0.08	10	0.30	95	13	0.08	21	880	<2	0.58	2	1	62
S057069		<10	<1	0.09	<10	0.19	509	70	0.06	9	920	<2	0.19	<2	1	246
S057070		<10	<1	<0.01	<10	0.15	620	28	<0.01	4	1060	<2	0.10	<2	3	232
S057071		<10	<1	0.01	10	0.06	620	9	0.01	2	1260	<2	0.03	<2	2	41
S057072		<10	<1	<0.01	10	0.06	630	20	0.01	2	880	<2	0.01	<2	2	58
S057073		<10	<1	0.17	<10	0.63	131	30	0.09	15	780	<2	0.70	<2	1	113
S057074		<10	<1	0.16	10	0.72	136	28	0.13	21	930	2	1.13	2	1	125
S057075		<10	<1	0.16	10	0.65	149	25	0.08	19	960	<2	0.92	2	1	76
S057076		<10	<1	0.01	10	0.10	378	12	0.01	5	1080	<2	0.09	2	2	48
S057077		<10	<1	<0.01	10	0.05	393	4	0.01	2	890	<2	0.02	<2	1	57
S057078		<10	<1	0.02	<10	0.21	202	2	0.03	4	520	11	0.45	<2	1	391
S057079		10	<1	0.08	<10	0.08	90	24	0.04	4	430	10	0.61	<2	<1	115
S057080		10	<1	0.01	<10	0.04	285	7	0.04	1	460	9	0.11	<2	1	151
S057081		<10	<1	0.01	10	0.05	367	2	0.02	4	390	4	0.21	<2	<1	267
S057082		<10	<1	0.04	<10	0.06	124	12	0.06	13	730	73	0.63	<2	<1	848
S057083		<10	1	0.04	10	0.07	82	5	0.05	12	1380	6	0.87	<2	1	110
S057084		<10	<1	0.19	10	0.49	69	4	0.06	12	1030	8	1.27	<2	1	144
S057085		10	<1	0.52	10	1.17	157	40	0.06	10	1060	3	1.55	2	1	184
S057086		<10	<1	0.09	10	0.15	131	29	0.07	7	720	8	0.92	<2	1	125
S057087		<10	<1	0.01	<10	0.05	179	5	0.01	<1	580	17	0.70	<2	1	945
S057088		<10	<1	0.04	10	0.20	294	2	0.01	3	670	18	0.45	2	1	599
S057089		<10	<1	0.01	<10	0.08	771	<1	0.01	<1	400	<2	0.01	<2	1	70
S057090		<10	<1	0.02	<10	0.02	1000	<1	0.01	<1	<10	2	<0.01	<2	<1	28
S057091		<10	<1	0.01	<10	0.02	1230	<1	<0.01	<1	<10	2	0.02	<2	<1	60
S057092		<10	<1	0.01	<10	0.05	1245	<1	<0.01	<1	<10	3	0.02	2	1	60



ALS Canada Ltd.
 2103 Dollarton Hwy
 North Vancouver BC V7H 0A7
 Phone: +1 (604) 984 0221 Fax: +1 (604) 984 0218
 www.alsglobal.com

To: **KLUANE DRILLING LTD**
14 MACDONALD ROAD
WHITEHORSE YT Y1A 4L2

Page: 2 - C
 Total # Pages: 4 (A - C)
 Plus Appendix Pages
 Finalized Date: 13- JUN- 2017
 Account: KLUDRIL

Project: COWLEY

CERTIFICATE OF ANALYSIS WH17098567

Sample Description	Method Analyte Units LOR	ME- ICP41	ME- ICP41	ME- ICP41	ME- ICP41	ME- ICP41	ME- ICP41	ME- ICP41	Cu- OG46
		Th	Ti	Tl	U	V	W	Zn	Cu
		ppm	%	ppm	ppm	ppm	ppm	ppm	%
		20	0.01	10	10	1	10	2	0.001
S057053		<20	0.03	<10	<10	14	<10	54	
S057054		<20	0.04	<10	<10	9	<10	131	
S057055		<20	0.03	<10	<10	6	<10	191	
S057056		<20	0.01	<10	<10	3	<10	165	
S057057		<20	0.01	<10	<10	1	<10	15	
S057058		<20	0.02	<10	<10	2	<10	20	
S057059		<20	0.01	<10	<10	1	<10	7	
S057060		<20	0.01	<10	<10	1	<10	11	
S057061		<20	<0.01	<10	<10	<1	<10	4	
S057062		<20	0.01	<10	<10	1	<10	9	
S057063		<20	0.08	<10	<10	24	<10	26	
S057064		<20	0.07	<10	<10	18	<10	12	
S057065		<20	0.10	<10	<10	25	<10	14	
S057066		<20	0.11	<10	<10	21	<10	15	
S057067		<20	0.10	<10	<10	11	<10	6	
S057068		<20	0.11	<10	<10	15	<10	15	
S057069		<20	0.07	<10	<10	21	<10	17	
S057070		<20	0.10	<10	<10	20	<10	8	
S057071		<20	0.05	<10	<10	16	<10	9	
S057072		<20	0.04	<10	<10	14	<10	9	
S057073		<20	0.08	<10	<10	22	<10	31	
S057074		<20	0.10	<10	<10	27	<10	42	
S057075		<20	0.10	<10	<10	30	<10	42	
S057076		<20	0.05	<10	<10	16	<10	18	
S057077		<20	0.04	<10	<10	10	<10	9	
S057078		<20	0.04	<10	<10	6	<10	78	
S057079		<20	0.04	<10	<10	8	<10	107	
S057080		<20	0.04	<10	<10	10	<10	50	
S057081		<20	0.02	<10	<10	4	<10	29	
S057082		<20	0.04	<10	<10	5	<10	302	
S057083		<20	0.08	<10	<10	13	<10	54	
S057084		<20	0.11	<10	<10	25	<10	43	
S057085		<20	0.14	<10	<10	31	<10	52	
S057086		<20	0.07	<10	<10	12	<10	133	
S057087		<20	0.02	<10	<10	4	<10	1500	
S057088		<20	0.03	<10	<10	6	<10	2830	
S057089		<20	0.02	<10	<10	5	<10	14	
S057090		<20	0.02	<10	10	3	<10	12	
S057091		<20	0.02	<10	10	3	<10	2	
S057092		190	0.03	<10	30	2	<10	3	



ALS Canada Ltd.
 2103 Dollarton Hwy
 North Vancouver BC V7H 0A7
 Phone: +1 (604) 984 0221 Fax: +1 (604) 984 0218
 www.alsglobal.com

To: **KLUANE DRILLING LTD**
14 MACDONALD ROAD
WHITEHORSE YT Y1A 4L2

Page: 3 - A
 Total # Pages: 4 (A - C)
 Plus Appendix Pages
 Finalized Date: 13- JUN- 2017
 Account: KLUDRIL

Project: COWLEY

CERTIFICATE OF ANALYSIS WH17098567

Sample Description	Method	WEI- 21	Au- ICP21	ME- ICP41	ME- ICP41	ME- ICP41	ME- ICP41	ME- ICP41	ME- ICP41	ME- ICP41	ME- ICP41	ME- ICP41	ME- ICP41	ME- ICP41	ME- ICP41	ME- ICP41
	Analyte	Recvd Wt.	Au	Ag	Al	As	B	Ba	Be	Bi	Ca	Cd	Co	Cr	Cu	Fe
Units		kg	ppm	ppm	%	ppm	ppm	ppm	ppm	ppm	%	ppm	ppm	ppm	ppm	%
LOR		0.02	0.001	0.2	0.01	2	10	10	0.5	2	0.01	0.5	1	1	1	0.01
S057093		2.40	0.003	0.2	2.20	4	<10	10	<0.5	<2	6.62	<0.5	2	12	631	0.41
S057094		1.70	<0.001	<0.2	0.85	3	<10	10	<0.5	3	4.99	<0.5	3	15	620	0.62
S057095		3.24	0.001	<0.2	2.36	6	<10	20	<0.5	2	6.12	<0.5	1	10	179	0.35
S057096		2.18	<0.001	<0.2	1.40	2	<10	10	<0.5	<2	4.13	<0.5	3	9	721	0.45
S057097		2.24	0.001	0.4	2.58	5	<10	20	<0.5	<2	4.01	<0.5	6	14	1165	0.76
S057098		2.89	<0.001	<0.2	0.98	12	<10	50	<0.5	<2	1.51	<0.5	9	36	312	1.45
S057099		2.38	0.003	0.5	1.12	2	<10	40	<0.5	2	3.26	0.5	6	17	1095	0.77
S057100		2.06	0.004	0.5	1.51	3	<10	20	<0.5	<2	5.00	0.6	6	21	1160	0.82
S057101		1.78	0.008	0.8	1.44	4	<10	40	<0.5	<2	3.19	0.5	5	10	1560	0.61
S057102		2.21	0.016	1.6	0.97	8	<10	30	<0.5	5	1.98	1.2	12	23	2690	1.01
S057103		2.26	0.005	0.2	2.90	5	<10	10	0.6	2	8.1	<0.5	3	15	594	0.57
S057104		2.92	<0.001	<0.2	2.51	6	<10	20	<0.5	<2	5.77	<0.5	2	17	54	0.53
S057105		3.84	<0.001	<0.2	1.40	5	<10	10	<0.5	<2	5.44	<0.5	1	16	34	0.75
S057106		3.43	0.001	<0.2	0.81	9	<10	<10	<0.5	<2	9.9	<0.5	1	14	58	0.45
S057107		1.50	0.001	<0.2	1.63	15	<10	50	<0.5	2	11.2	<0.5	9	8	167	0.67
S057108		1.43	0.004	0.2	0.37	39	<10	<10	<0.5	10	16.6	<0.5	2	6	2320	12.55
S057109		2.81	0.001	<0.2	1.72	19	<10	20	0.5	4	10.4	<0.5	3	14	1285	6.52
S057110		3.73	0.010	0.4	1.29	70	<10	<10	<0.5	5	14.0	<0.5	2	6	663	7.69
S057111		2.26	0.026	2.3	1.49	12	<10	<10	<0.5	14	6.12	<0.5	2	18	1840	1.62
S057112		2.68	0.007	0.4	1.65	13	<10	10	<0.5	5	6.36	<0.5	2	17	469	2.06
S057113		3.31	<0.001	<0.2	1.63	16	<10	<10	<0.5	<2	6.37	<0.5	3	15	109	1.84
S057114		2.43	0.003	<0.2	2.34	<2	<10	60	<0.5	<2	1.89	<0.5	13	66	431	5.57
S057115		2.70	0.014	2.7	2.22	3	<10	30	<0.5	<2	2.56	0.6	30	45	8410	5.17
S057116		2.43	0.035	2.6	1.87	6	<10	20	<0.5	6	3.57	<0.5	13	35	4920	3.89
S057117		2.87	0.004	<0.2	1.73	5	<10	20	<0.5	3	8.2	<0.5	4	19	1085	2.82
S057118		3.16	0.004	0.3	1.79	3	<10	<10	<0.5	2	10.9	<0.5	5	9	1465	4.62
S057119		1.97	0.010	1.0	1.33	<2	<10	<10	<0.5	3	13.8	<0.5	11	15	4580	4.34
S057120		2.27	<0.001	0.4	1.23	3	<10	50	<0.5	<2	1.61	<0.5	6	31	488	2.10
S057121		1.05	0.009	0.6	1.11	8	<10	10	<0.5	<2	3.33	<0.5	2	13	932	1.49
S057122		3.13	0.001	<0.2	2.30	3	<10	50	<0.5	<2	2.28	<0.5	17	138	85	2.59
S057123		3.90	0.002	<0.2	2.13	7	<10	40	<0.5	<2	5.65	<0.5	11	79	103	3.69
S057124		2.61	0.004	0.7	1.50	7	<10	10	<0.5	4	8.6	<0.5	3	14	1260	4.85
S057125		2.63	0.008	0.7	1.00	2	<10	30	<0.5	<2	0.79	<0.5	9	16	2060	2.21
S057126		1.67	0.015	2.4	2.09	2	<10	20	<0.5	<2	1.96	<0.5	30	42	8000	7.03
S057127		4.09	<0.001	0.3	1.40	4	<10	<10	<0.5	<2	6.46	<0.5	1	7	295	2.81
S057128		3.20	0.175	7.2	1.20	33	<10	10	<0.5	41	9.2	<0.5	2	13	7210	6.26
S057129		3.35	0.140	6.3	1.05	87	<10	<10	<0.5	46	14.0	<0.5	2	12	7460	10.95
S057130		3.54	0.007	0.5	0.72	71	<10	<10	<0.5	2	15.6	<0.5	1	8	2330	11.75
S057131		3.41	0.084	4.4	0.79	100	<10	<10	<0.5	60	15.8	<0.5	1	7	6580	13.15
S057132		3.81	0.033	1.9	1.27	13	<10	<10	<0.5	10	11.0	<0.5	2	6	2100	7.99



ALS Canada Ltd.
 2103 Dollarton Hwy
 North Vancouver BC V7H 0A7
 Phone: +1 (604) 984 0221 Fax: +1 (604) 984 0218
 www.alsglobal.com

To: **KLUANE DRILLING LTD**
14 MACDONALD ROAD
WHITEHORSE YT Y1A 4L2

Page: 3 - B
 Total # Pages: 4 (A - C)
 Plus Appendix Pages
 Finalized Date: 13- JUN- 2017
 Account: KLUDRIL

Project: COWLEY

CERTIFICATE OF ANALYSIS WH17098567

Sample Description	Method Analyte Units LOR	ME-ICP41	ME-ICP41	ME-ICP41	ME-ICP41	ME-ICP41	ME-ICP41	ME-ICP41	ME-ICP41	ME-ICP41	ME-ICP41	ME-ICP41	ME-ICP41	ME-ICP41	ME-ICP41	
		Ga	Hg	K	La	Mg	Mn	Mo	Na	Ni	P	Pb	S	Sb	Sc	Sr
		ppm	ppm	%	ppm	%	ppm	ppm	%	ppm	ppm	ppm	%	ppm	ppm	ppm
		10	1	0.01	10	0.01	5	1	0.01	1	10	2	0.01	2	1	1
S057093		<10	<1	0.02	10	0.16	287	356	0.05	1	650	2	0.14	<2	1	166
S057094		<10	<1	0.03	<10	0.26	466	38	0.04	2	620	2	0.10	<2	1	114
S057095		<10	<1	0.02	10	0.07	290	102	0.09	<1	680	4	0.04	<2	1	222
S057096		<10	<1	0.03	<10	0.11	169	5440	0.11	3	670	3	0.60	2	1	157
S057097		<10	<1	0.05	<10	0.16	152	7310	0.17	8	660	4	1.02	<2	1	225
S057098		<10	<1	0.23	<10	0.79	87	52	0.11	11	650	3	1.10	<2	2	82
S057099		<10	<1	0.08	10	0.35	170	99	0.09	7	730	4	0.38	<2	1	110
S057100		<10	<1	0.11	10	0.40	328	48	0.06	5	720	3	0.25	<2	2	124
S057101		<10	<1	0.06	<10	0.10	125	46	0.12	5	740	6	0.35	<2	1	120
S057102		<10	<1	0.10	10	0.34	126	21	0.09	11	730	2	0.67	<2	1	79
S057103		10	<1	0.03	10	0.17	249	33	0.05	1	590	2	0.18	<2	1	124
S057104		<10	<1	0.04	<10	0.09	365	267	0.02	1	860	7	0.03	<2	2	128
S057105		<10	<1	0.01	<10	0.07	488	237	0.02	<1	320	3	0.03	<2	2	43
S057106		<10	<1	0.01	10	0.05	509	7	<0.01	<1	710	2	0.01	<2	1	33
S057107		<10	<1	0.09	10	0.75	102	3	0.21	26	700	4	0.33	<2	1	329
S057108		<10	1	<0.01	<10	0.08	1065	82	<0.01	<1	160	5	0.22	<2	<1	37
S057109		10	<1	0.06	<10	0.10	1120	270	0.07	<1	390	2	0.14	<2	1	72
S057110		10	1	<0.01	10	0.11	1120	1220	<0.01	<1	330	3	0.12	<2	1	32
S057111		<10	<1	<0.01	10	0.21	823	69	<0.01	1	1240	3	0.08	<2	2	22
S057112		<10	<1	0.03	10	0.22	1015	141	0.01	3	1330	3	0.03	<2	2	40
S057113		<10	<1	<0.01	10	0.18	963	95	0.01	2	1630	<2	0.02	<2	2	31
S057114		10	<1	0.10	10	2.32	479	6	0.06	8	1170	<2	0.68	<2	7	116
S057115		10	<1	0.07	10	1.70	497	17	0.15	23	1200	<2	2.41	<2	5	135
S057116		10	<1	0.04	10	1.03	559	47	0.06	8	1210	3	0.79	<2	4	78
S057117		<10	1	0.11	<10	0.34	1165	74	0.02	3	520	3	0.16	<2	2	103
S057118		10	<1	0.01	<10	0.29	1430	15	0.01	1	160	2	0.17	<2	1	123
S057119		<10	<1	0.01	<10	0.73	1665	23	<0.01	8	370	2	0.48	<2	1	162
S057120		<10	<1	0.08	<10	1.22	229	18	0.09	6	610	2	0.27	<2	4	93
S057121		<10	<1	0.03	10	0.13	414	65	0.13	2	1610	<2	0.14	<2	2	96
S057122		<10	1	0.08	<10	2.20	519	12	0.13	36	380	3	0.13	<2	3	105
S057123		10	<1	0.05	<10	1.21	1035	58	0.06	20	390	<2	0.17	<2	2	138
S057124		10	<1	0.02	10	0.30	1190	195	0.03	2	630	4	0.21	<2	1	48
S057125		<10	<1	0.09	<10	0.95	173	99	0.07	4	640	<2	0.79	<2	2	59
S057126		10	<1	0.05	<10	1.82	526	203	0.05	14	1020	3	2.69	<2	4	71
S057127		<10	<1	0.02	<10	0.11	985	253	0.03	<1	150	<2	0.05	<2	1	19
S057128		<10	1	0.04	10	0.14	1000	530	0.02	<1	460	7	0.35	<2	<1	16
S057129		10	<1	<0.01	10	0.07	1320	114	0.01	<1	260	8	0.38	2	<1	8
S057130		10	<1	<0.01	10	0.04	1440	1135	0.01	<1	140	4	0.29	2	<1	14
S057131		10	1	<0.01	10	0.05	1500	753	0.01	<1	280	7	0.43	<2	<1	9
S057132		10	<1	0.01	10	0.14	1320	364	0.02	<1	410	5	0.12	<2	<1	9



ALS Canada Ltd.
 2103 Dollarton Hwy
 North Vancouver BC V7H 0A7
 Phone: +1 (604) 984 0221 Fax: +1 (604) 984 0218
 www.alsglobal.com

To: **KLUANE DRILLING LTD**
14 MACDONALD ROAD
WHITEHORSE YT Y1A 4L2

Page: 3 - C
 Total # Pages: 4 (A - C)
 Plus Appendix Pages
 Finalized Date: 13- JUN- 2017
 Account: KLUDRIL

Project: COWLEY

CERTIFICATE OF ANALYSIS WH17098567

Sample Description	Method Analyte Units LOR	ME- ICP41	ME- ICP41	ME- ICP41	ME- ICP41	ME- ICP41	ME- ICP41	ME- ICP41	Cu- OG46
		Th	Ti	Tl	U	V	W	Zn	Cu
		ppm	%	ppm	ppm	ppm	ppm	ppm	%
		20	0.01	10	10	1	10	2	0.001
S057093		<20	0.05	<10	<10	11	<10	18	
S057094		<20	0.06	<10	<10	9	<10	16	
S057095		<20	0.05	<10	<10	10	<10	13	
S057096		<20	0.05	<10	<10	12	<10	23	
S057097		<20	0.06	<10	<10	14	<10	24	
S057098		<20	0.08	<10	<10	24	<10	21	
S057099		<20	0.07	<10	<10	14	<10	75	
S057100		<20	0.04	<10	<10	16	<10	88	
S057101		<20	0.07	<10	<10	11	<10	65	
S057102		<20	0.08	<10	<10	15	<10	106	
S057103		<20	0.05	<10	<10	12	<10	24	
S057104		<20	0.05	<10	<10	11	<10	15	
S057105		<20	0.06	<10	<10	15	<10	9	
S057106		<20	0.04	<10	<10	9	<10	5	
S057107		<20	0.07	<10	<10	8	<10	36	
S057108		<20	0.01	<10	10	4	110	3	
S057109		<20	0.06	<10	10	23	90	6	
S057110		<20	0.03	<10	10	15	30	3	
S057111		<20	0.05	<10	<10	19	<10	10	
S057112		<20	0.07	<10	<10	19	<10	12	
S057113		<20	0.07	<10	<10	17	<10	10	
S057114		<20	0.27	<10	<10	215	<10	67	
S057115		<20	0.22	<10	<10	125	<10	77	
S057116		<20	0.25	<10	<10	135	<10	66	
S057117		<20	0.06	<10	<10	27	<10	17	
S057118		<20	0.05	<10	<10	32	<10	19	
S057119		<20	0.05	<10	<10	22	<10	39	
S057120		<20	0.06	<10	<10	56	<10	32	
S057121		<20	0.10	<10	<10	40	<10	9	
S057122		<20	0.10	<10	<10	62	<10	67	
S057123		<20	0.07	<10	<10	43	<10	26	
S057124		<20	0.06	<10	<10	26	<10	12	
S057125		<20	0.13	<10	<10	60	<10	31	
S057126		<20	0.26	<10	<10	208	<10	67	
S057127		<20	0.06	<10	<10	26	10	5	
S057128		<20	0.04	<10	10	21	30	6	
S057129		<20	0.02	<10	10	18	<10	5	
S057130		<20	0.01	<10	10	15	<10	2	
S057131		<20	0.02	<10	20	62	30	3	
S057132		<20	0.03	<10	10	54	460	6	



ALS Canada Ltd.
 2103 Dollarton Hwy
 North Vancouver BC V7H 0A7
 Phone: +1 (604) 984 0221 Fax: +1 (604) 984 0218
 www.alsglobal.com

To: **KLUANE DRILLING LTD**
14 MACDONALD ROAD
WHITEHORSE YT Y1A 4L2

Page: 4 - A
 Total # Pages: 4 (A - C)
 Plus Appendix Pages
 Finalized Date: 13- JUN- 2017
 Account: KLUDRIL

Project: COWLEY

CERTIFICATE OF ANALYSIS WH17098567

Sample Description	Method	WEI- 21	Au- ICP21	ME- ICP41	ME- ICP41	ME- ICP41	ME- ICP41	ME- ICP41	ME- ICP41	ME- ICP41	ME- ICP41	ME- ICP41	ME- ICP41	ME- ICP41	ME- ICP41	ME- ICP41
	Analyte	Recvd Wt.	Au	Ag	Al	As	B	Ba	Be	Bi	Ca	Cd	Co	Cr	Cu	Fe
Units		kg	ppm	ppm	%	ppm	ppm	ppm	ppm	ppm	%	ppm	ppm	ppm	ppm	%
LOR		0.02	0.001	0.2	0.01	2	10	10	0.5	2	0.01	0.5	1	1	1	0.01
S057133		2.98	0.016	1.1	1.57	8	<10	10	<0.5	6	10.4	<0.5	2	13	1290	7.04
S057134		2.35	0.025	1.0	0.46	<2	<10	30	<0.5	4	0.86	<0.5	3	10	2480	0.89
S057135		2.40	0.011	0.6	0.47	<2	<10	30	<0.5	<2	0.78	<0.5	3	9	1590	0.89
S057136		2.63	<0.001	0.2	1.69	5	<10	10	<0.5	<2	5.88	<0.5	5	23	270	2.29
S057137		2.86	<0.001	<0.2	1.27	4	<10	<10	<0.5	<2	5.26	<0.5	3	14	192	1.82
S057138		3.73	<0.001	<0.2	2.22	3	<10	10	<0.5	<2	4.95	<0.5	2	7	86	1.38
S057139		2.08	0.001	0.2	1.51	7	<10	20	<0.5	<2	1.86	<0.5	8	10	292	1.79
S057140		1.97	<0.001	0.2	1.76	3	<10	20	<0.5	<2	3.00	<0.5	7	10	328	1.65
S057141		3.60	<0.001	<0.2	1.22	<2	<10	50	<0.5	<2	4.94	<0.5	7	49	129	1.67
S057142		1.81	0.003	0.3	0.73	<2	<10	90	<0.5	<2	2.61	<0.5	4	13	978	0.93
S057143		2.42	0.018	1.8	0.97	<2	<10	110	<0.5	5	1.27	<0.5	6	7	4730	1.37
S057144		2.28	0.004	0.5	0.76	<2	<10	20	<0.5	<2	1.96	<0.5	8	63	2720	1.19
S057145		2.38	0.008	1.6	0.95	<2	<10	30	<0.5	<2	1.85	<0.5	11	33	9180	2.06
S057146		2.60	0.007	1.6	1.21	2	<10	30	<0.5	<2	2.00	<0.5	8	19	5950	1.96
S057147		2.69	0.007	1.5	0.82	<2	<10	30	<0.5	2	1.70	<0.5	10	17	6300	2.38
S057148		2.67	0.006	0.8	0.74	<2	<10	50	<0.5	2	1.30	<0.5	9	18	3360	1.32
S057149		2.69	0.003	0.3	0.70	<2	<10	30	<0.5	<2	0.93	<0.5	6	33	581	1.53
S057150		2.33	<0.001	<0.2	0.74	<2	<10	50	<0.5	<2	0.93	<0.5	5	24	350	1.43
S057151		2.43	0.003	0.6	1.14	<2	<10	60	<0.5	<2	1.74	<0.5	10	26	1500	1.62
S057152		2.91	0.011	2.4	1.00	2	<10	80	<0.5	<2	2.03	0.5	12	16	8170	1.71
S057153		1.50	0.003	1.0	1.56	3	<10	40	<0.5	<2	5.77	<0.5	17	38	2470	2.61
S057154		1.23	0.002	0.2	1.52	2	<10	30	<0.5	<2	4.44	<0.5	8	15	330	1.70
S057155		2.02	0.021	1.7	2.15	<2	<10	50	0.5	3	3.45	<0.5	13	17	4680	5.71
S057156		2.07	0.032	2.5	1.30	<2	<10	50	<0.5	3	3.34	<0.5	14	18	6050	6.09
S057157		1.69	0.003	0.6	0.67	<2	<10	30	<0.5	<2	1.74	<0.5	5	14	1570	1.01
S057158		2.78	<0.001	<0.2	1.17	<2	<10	40	<0.5	<2	1.25	<0.5	8	33	62	2.03
S057159		2.67	0.003	0.2	2.39	<2	<10	30	<0.5	2	2.95	<0.5	8	32	509	1.94
S057160		3.05	0.015	0.8	1.61	<2	<10	30	<0.5	7	2.70	<0.5	9	38	1670	2.10
S057161		2.16	0.020	0.5	1.39	<2	<10	30	<0.5	4	2.01	<0.5	9	44	1060	2.20
S057162		2.73	0.073	2.8	1.43	<2	<10	60	<0.5	17	1.85	<0.5	11	35	5040	2.03
S057163		3.21	0.001	0.3	1.70	<2	<10	40	<0.5	<2	1.85	<0.5	10	38	511	2.08
S057164		2.14	<0.001	0.2	1.23	<2	<10	40	<0.5	<2	1.61	<0.5	10	32	323	2.00
S057165		1.48	0.031	4.2	1.81	5	<10	30	<0.5	<2	1.84	<0.5	29	56	>10000	6.97
S057166		1.45	0.011	1.3	1.29	2	<10	90	<0.5	<2	1.18	<0.5	15	10	4250	3.06
S057167		2.39	0.016	2.4	1.44	2	<10	10	<0.5	5	1.89	<0.5	16	17	7780	3.02
S057168		3.46	0.012	1.4	1.46	<2	<10	20	<0.5	4	1.59	<0.5	11	20	4510	2.97
S057169		1.97	0.042	1.9	0.70	<2	<10	80	<0.5	8	1.11	<0.5	6	33	4370	1.32
S057170		2.18	0.008	0.6	0.89	<2	<10	50	<0.5	2	1.21	<0.5	6	23	1670	1.61



ALS Canada Ltd.
 2103 Dollarton Hwy
 North Vancouver BC V7H 0A7
 Phone: +1 (604) 984 0221 Fax: +1 (604) 984 0218
 www.alsglobal.com

To: **KLUANE DRILLING LTD**
14 MACDONALD ROAD
WHITEHORSE YT Y1A 4L2

Page: 4 - B
 Total # Pages: 4 (A - C)
 Plus Appendix Pages
 Finalized Date: 13- JUN- 2017
 Account: KLUDRIL

Project: COWLEY

CERTIFICATE OF ANALYSIS WH17098567

Sample Description	Method Analyte Units LOR	ME- ICP41	ME- ICP41	ME- ICP41	ME- ICP41	ME- ICP41	ME- ICP41	ME- ICP41	ME- ICP41	ME- ICP41	ME- ICP41	ME- ICP41	ME- ICP41	ME- ICP41	ME- ICP41	
		Ga	Hg	K	La	Mg	Mn	Mo	Na	Ni	P	Pb	S	Sb	Sc	Sr
		ppm	ppm	%	ppm	%	ppm	ppm	%	ppm	ppm	ppm	%	ppm	ppm	ppm
		10	1	0.01	10	0.01	5	1	0.01	1	10	2	0.01	2	1	1
S057133		10	1	0.02	<10	0.10	1330	186	0.03	<1	430	3	0.08	<2	1	57
S057134		<10	<1	0.05	10	0.23	103	113	0.11	5	620	2	0.28	<2	<1	65
S057135		<10	<1	0.06	<10	0.27	98	74	0.11	3	630	3	0.27	<2	<1	57
S057136		<10	<1	0.02	10	0.45	887	221	0.06	6	1260	<2	0.12	<2	2	97
S057137		<10	<1	0.01	10	0.35	767	134	0.03	3	930	<2	0.08	<2	2	62
S057138		<10	<1	0.03	<10	0.22	583	44	0.07	2	590	<2	0.07	<2	1	135
S057139		10	<1	0.03	<10	1.13	247	34	0.09	4	610	5	0.70	<2	3	146
S057140		10	<1	0.04	<10	0.70	458	15	0.17	3	810	3	0.43	<2	2	232
S057141		<10	<1	0.14	10	1.05	616	9	0.04	26	580	4	0.06	<2	2	164
S057142		<10	<1	0.10	10	0.43	270	27	0.06	5	490	5	0.15	<2	2	129
S057143		<10	<1	0.07	10	0.36	178	104	0.10	7	350	5	0.78	<2	1	230
S057144		<10	<1	0.03	10	0.63	265	25	0.07	30	1100	<2	0.43	<2	2	148
S057145		<10	<1	0.05	20	0.44	205	42	0.10	21	900	4	1.40	<2	1	302
S057146		<10	<1	0.04	10	0.57	289	90	0.12	10	940	2	1.11	<2	2	212
S057147		<10	<1	0.04	10	0.35	186	48	0.10	17	1050	<2	0.95	<2	1	169
S057148		<10	1	0.05	10	0.33	126	32	0.10	23	1020	2	0.81	<2	1	200
S057149		<10	<1	0.05	10	0.51	209	2	0.10	16	1110	<2	0.14	<2	1	61
S057150		<10	<1	0.07	10	0.49	203	2	0.08	12	720	4	0.11	<2	1	94
S057151		<10	<1	0.05	10	0.60	228	88	0.11	19	1120	2	0.38	<2	1	141
S057152		<10	<1	0.04	20	0.50	209	220	0.10	28	1090	2	1.20	<2	1	332
S057153		<10	<1	0.10	10	1.66	522	29	0.06	38	1530	9	1.86	<2	5	236
S057154		<10	<1	0.15	10	0.94	346	6	0.07	10	680	3	0.94	<2	3	144
S057155		10	<1	0.11	20	1.15	367	240	0.10	16	490	6	0.91	<2	2	252
S057156		10	<1	0.11	20	0.55	237	260	0.09	17	420	6	1.48	<2	2	233
S057157		<10	<1	0.09	10	0.48	192	68	0.07	8	350	3	0.34	<2	1	43
S057158		<10	<1	0.05	10	0.83	270	2	0.09	16	1030	<2	0.05	<2	2	83
S057159		10	<1	0.07	10	1.18	340	14	0.07	20	1010	3	0.11	<2	3	100
S057160		10	<1	0.08	10	1.59	413	111	0.07	25	1020	6	0.20	<2	5	84
S057161		10	<1	0.05	10	1.41	377	627	0.07	24	1100	4	0.17	<2	5	70
S057162		<10	<1	0.05	10	1.19	294	424	0.09	27	1050	8	0.58	<2	3	213
S057163		10	<1	0.05	10	1.43	346	9	0.08	26	1030	<2	0.30	<2	3	152
S057164		10	<1	0.04	10	1.01	270	13	0.09	23	990	2	0.41	<2	2	147
S057165		10	1	0.06	<10	1.53	494	97	0.07	15	1210	2	2.81	<2	4	109
S057166		<10	<1	0.04	<10	0.55	264	170	0.10	7	640	2	1.90	<2	1	648
S057167		<10	<1	0.03	<10	1.02	396	860	0.06	7	740	2	1.28	<2	2	146
S057168		10	1	0.05	10	0.91	354	731	0.07	6	820	<2	0.65	<2	1	113
S057169		<10	<1	0.14	10	0.62	143	325	0.09	14	1280	2	0.48	<2	1	77
S057170		<10	<1	0.12	10	0.80	193	222	0.09	5	820	3	0.43	<2	1	79



ALS Canada Ltd.
 2103 Dollarton Hwy
 North Vancouver BC V7H 0A7
 Phone: +1 (604) 984 0221 Fax: +1 (604) 984 0218
 www.alsglobal.com

To: **KLUANE DRILLING LTD**
14 MACDONALD ROAD
WHITEHORSE YT Y1A 4L2

Page: 4 - C
 Total # Pages: 4 (A - C)
 Plus Appendix Pages
 Finalized Date: 13- JUN- 2017
 Account: KLUDRIL

Project: COWLEY

CERTIFICATE OF ANALYSIS WH17098567

Sample Description	Method Analyte Units LOR	ME- ICP41	ME- ICP41	ME- ICP41	ME- ICP41	ME- ICP41	ME- ICP41	ME- ICP41	Cu- OG46
		Th	Ti	Tl	U	V	W	Zn	Cu
		ppm	%	ppm	ppm	ppm	ppm	ppm	%
		20	0.01	10	10	1	10	2	0.001
S057133		<20	0.05	<10	10	68	140	5	
S057134		<20	0.10	<10	<10	22	70	9	
S057135		<20	0.12	<10	<10	29	10	14	
S057136		<20	0.11	<10	<10	43	10	23	
S057137		<20	0.07	<10	<10	28	10	19	
S057138		<20	0.04	<10	<10	14	20	13	
S057139		<20	0.08	<10	<10	41	<10	32	
S057140		<20	0.09	<10	<10	38	<10	35	
S057141		20	0.01	<10	10	22	<10	35	
S057142		20	0.02	<10	10	16	<10	14	
S057143		30	0.04	<10	10	14	<10	19	
S057144		<20	0.07	<10	<10	22	<10	17	
S057145		20	0.08	<10	10	22	<10	24	
S057146		20	0.06	<10	10	18	<10	29	
S057147		<20	0.09	<10	10	24	<10	26	
S057148		<20	0.10	<10	<10	20	<10	14	
S057149		<20	0.13	<10	<10	48	<10	19	
S057150		30	0.11	<10	10	40	<10	18	
S057151		<20	0.13	<10	<10	43	<10	21	
S057152		<20	0.10	<10	10	31	<10	32	
S057153		<20	0.09	<10	<10	54	<10	33	
S057154		<20	0.07	<10	10	29	<10	20	
S057155		30	0.07	<10	10	106	<10	36	
S057156		40	0.07	<10	20	120	<10	29	
S057157		20	0.03	<10	10	20	<10	15	
S057158		<20	0.15	<10	<10	58	<10	24	
S057159		<20	0.13	<10	<10	52	<10	24	
S057160		<20	0.13	<10	<10	56	<10	26	
S057161		<20	0.14	<10	<10	64	<10	26	
S057162		<20	0.15	<10	<10	53	<10	22	
S057163		<20	0.16	<10	<10	51	<10	26	
S057164		<20	0.15	<10	<10	52	<10	22	
S057165		<20	0.32	<10	<10	307	30	116	1.505
S057166		<20	0.08	<10	<10	30	<10	50	
S057167		<20	0.12	<10	<10	52	<10	70	
S057168		<20	0.17	<10	<10	84	<10	47	
S057169		<20	0.14	<10	<10	40	110	20	
S057170		<20	0.17	<10	<10	55	90	29	



ALS Canada Ltd.
 2103 Dollarton Hwy
 North Vancouver BC V7H 0A7
 Phone: +1 (604) 984 0221 Fax: +1 (604) 984 0218
 www.alsglobal.com

To: **KLUANE DRILLING LTD**
14 MACDONALD ROAD
WHITEHORSE YT Y1A 4L2

Page: Appendix 1
 Total # Appendix Pages: 1
 Finalized Date: 13- JUN- 2017
 Account: KLUDRIL

Project: COWLEY

CERTIFICATE OF ANALYSIS WH17098567

	CERTIFICATE COMMENTS								
	LABORATORY ADDRESSES								
Applies to Method:	<p>Processed at ALS Whitehorse located at 78 Mt. Sima Rd, Whitehorse, YT, Canada.</p> <table style="width: 100%; border: none;"> <tr> <td style="width: 33%;">CRU- 31</td> <td style="width: 33%;">CRU- QC</td> <td style="width: 33%;">LOG- 22</td> <td style="width: 33%;">PUL- 31</td> </tr> <tr> <td>PUL- QC</td> <td>SPL- 21</td> <td>WEI- 21</td> <td></td> </tr> </table>	CRU- 31	CRU- QC	LOG- 22	PUL- 31	PUL- QC	SPL- 21	WEI- 21	
CRU- 31	CRU- QC	LOG- 22	PUL- 31						
PUL- QC	SPL- 21	WEI- 21							
Applies to Method:	<p>Processed at ALS Vancouver located at 2103 Dollarton Hwy, North Vancouver, BC, Canada.</p> <table style="width: 100%; border: none;"> <tr> <td style="width: 33%;">Au- ICP21</td> <td style="width: 33%;">Cu- OG46</td> <td style="width: 33%;">ME- ICP41</td> <td style="width: 33%;">ME- OG46</td> </tr> </table>	Au- ICP21	Cu- OG46	ME- ICP41	ME- OG46				
Au- ICP21	Cu- OG46	ME- ICP41	ME- OG46						



ALS Canada Ltd.
 2103 Dollarton Hwy
 North Vancouver BC V7H 0A7
 Phone: +1 (604) 984 0221 Fax: +1 (604) 984 0218
 www.alsglobal.com

To: **KLUANE DRILLING LTD**
14 MACDONALD ROAD
WHITEHORSE YT Y1A 4L2

Page: 1
 Total # Pages: 4 (A - C)
 Plus Appendix Pages
 Finalized Date: 27- MAR- 2017
 Account: KLUDRIL

CERTIFICATE WH17045124

This report is for 84 Drill Core samples submitted to our lab in Whitehorse, YT, Canada on 10- MAR- 2017.
 The following have access to data associated with this certificate:

JM COYNE	NICOLAI GOEPEL	
----------	----------------	--

SAMPLE PREPARATION	
ALS CODE	DESCRIPTION
WEI- 21	Received Sample Weight
LOG- 22	Sample login - Rcd w/o BarCode
CRU- QC	Crushing QC Test
PUL- QC	Pulverizing QC Test
CRU- 31	Fine crushing - 70%<2mm
SPL- 21	Split sample - riffle splitter
PUL- 31	Pulverize split to 85%< 75 um

ANALYTICAL PROCEDURES		
ALS CODE	DESCRIPTION	INSTRUMENT
ME- ICP41	35 Element Aqua Regia ICP- AES	ICP- AES
ME- OG46	Ore Grade Elements - AquaRegia	ICP- AES
Cu- OG46	Ore Grade Cu - Aqua Regia	ICP- AES
Au- ICP21	Au 30g FA ICP- AES Finish	ICP- AES

To: **KLUANE DRILLING LTD**
ATTN: JM COYNE
14 MACDONALD ROAD
WHITEHORSE YT Y1A 4L2

This is the Final Report and supersedes any preliminary report with this certificate number. Results apply to samples as submitted. All pages of this report have been checked and approved for release.

***** See Appendix Page for comments regarding this certificate *****

Signature: 
 Colin Ramshaw, Vancouver Laboratory Manager



ALS Canada Ltd.
 2103 Dollarton Hwy
 North Vancouver BC V7H 0A7
 Phone: +1 (604) 984 0221 Fax: +1 (604) 984 0218
 www.alsglobal.com

To: KLUANE DRILLING LTD
 14 MACDONALD ROAD
 WHITEHORSE YT Y1A 4L2

Page: 2 - A
 Total # Pages: 4 (A - C)
 Plus Appendix Pages
 Finalized Date: 27- MAR-2017
 Account: KLUDRIL

CERTIFICATE OF ANALYSIS WH17045124

Sample Description	Method	WEI- 21	Au- ICP21	ME- ICP41	ME- ICP41	ME- ICP41	ME- ICP41	ME- ICP41	ME- ICP41	ME- ICP41	ME- ICP41	ME- ICP41	ME- ICP41	ME- ICP41	ME- ICP41	ME- ICP41
	Analyte	Recvd Wt.	Au	Ag	Al	As	B	Ba	Be	Bi	Ca	Cd	Co	Cr	Cu	Fe
Units		kg	ppm	ppm	%	ppm	ppm	ppm	ppm	ppm	%	ppm	ppm	ppm	ppm	%
LOR		0.02	0.001	0.2	0.01	2	10	10	0.5	2	0.01	0.5	1	1	1	0.01
S059169		1.53	0.006	0.8	1.00	6	<10	<10	<0.5	<2	6.40	0.5	10	17	3430	4.38
S059170		2.07	0.012	1.5	1.44	5	<10	10	<0.5	2	9.5	0.7	11	18	8040	7.13
S059171		2.05	0.016	0.8	1.54	6	<10	<10	<0.5	6	9.5	<0.5	2	18	3920	6.01
S059172		2.29	0.034	2.7	1.18	6	<10	<10	<0.5	4	9.6	0.7	8	12	>10000	7.21
S059173		2.02	0.200	1.1	1.52	2	<10	20	<0.5	4	8.5	0.5	5	7	5650	5.89
S059174		1.98	0.014	2.5	0.91	4	<10	<10	<0.5	2	5.48	0.9	9	10	9590	4.25
S059175		1.13	0.014	2.7	1.18	5	<10	<10	<0.5	3	6.7	0.8	18	15	>10000	4.98
S059176		0.58	0.005	0.7	2.06	5	<10	10	<0.5	<2	9.2	0.5	16	14	2560	5.82
S059177		0.63	0.006	0.6	1.88	5	<10	80	<0.5	<2	8.4	<0.5	7	8	2450	5.49
S059178		0.50	0.009	0.8	1.99	8	<10	30	<0.5	<2	10.6	<0.5	9	11	2740	7.32
S059179		0.73	0.008	0.9	1.36	5	<10	<10	<0.5	<2	6.71	<0.5	10	8	2580	3.45
S059180		0.58	0.006	0.9	1.72	5	<10	<10	<0.5	<2	8.3	0.6	11	9	3180	4.74
S059181		0.61	0.002	0.5	1.57	2	<10	<10	<0.5	<2	7.8	0.5	5	7	1955	3.85
S059182		0.62	0.007	1.4	1.46	4	<10	<10	<0.5	4	8.9	0.8	6	10	5930	5.42
S059183		1.76	0.092	5.8	1.19	<2	<10	<10	<0.5	10	13.5	0.5	3	7	>10000	3.90
S059184		2.01	0.106	9.5	1.45	2	<10	<10	<0.5	33	12.2	0.7	4	8	>10000	5.45
S059185		2.07	0.029	3.2	1.70	3	<10	<10	<0.5	6	8.9	<0.5	1	11	3520	4.38
S059186		2.36	0.034	2.7	1.81	3	<10	<10	<0.5	9	9.9	<0.5	1	10	4610	4.73
S059187		1.73	0.075	5.2	1.29	3	<10	<10	<0.5	27	11.1	0.5	2	10	7440	6.23
S059188		1.56	0.016	1.5	1.31	2	<10	<10	<0.5	5	12.3	<0.5	1	10	2380	7.32
S059189		1.41	0.062	3.6	1.71	4	<10	20	<0.5	19	12.3	<0.5	2	11	4790	7.99
S059190		2.03	0.024	2.3	2.01	2	<10	20	<0.5	8	12.0	0.5	7	132	4880	5.21
S059191		1.45	0.151	11.9	2.47	3	<10	20	<0.5	10	9.0	1.5	12	258	>10000	4.76
S059192		1.64	0.020	4.7	2.58	2	<10	10	<0.5	10	9.6	1.0	8	98	9110	7.54
S059193		1.17	0.026	3.8	1.82	<2	<10	10	<0.5	6	10.5	1.4	10	6	>10000	8.06
S059194		1.13	0.009	0.5	1.81	<2	<10	30	<0.5	3	12.9	0.5	12	8	709	5.15
S059195		1.15	0.013	2.1	0.43	9	<10	<10	<0.5	2	6.59	<0.5	4	6	2130	2.29
S059196		0.79	0.003	0.9	0.81	5	<10	<10	<0.5	<2	6.10	<0.5	10	18	1095	1.60
S059197		1.70	0.003	2.7	1.13	5	<10	20	<0.5	4	9.2	<0.5	8	22	4110	2.69
S059198		1.07	0.007	1.7	2.17	2	<10	20	<0.5	5	11.9	<0.5	16	46	5250	3.12
S059199		0.95	0.086	22.0	1.94	<2	<10	50	<0.5	12	2.58	0.5	17	44	>10000	8.77
S059200		1.76	0.001	0.6	1.56	<2	<10	10	<0.5	<2	6.35	<0.5	14	16	1490	2.60
S057001		1.52	<0.001	0.5	3.14	<2	<10	10	<0.5	<2	7.5	<0.5	28	11	1700	4.82
S057002		1.53	<0.001	<0.2	0.69	<2	<10	<10	<0.5	<2	7.0	<0.5	6	14	431	1.68
S057003		0.47	0.003	0.9	1.16	5	<10	30	<0.5	<2	10.5	<0.5	5	29	1805	3.82
S057004		0.67	0.007	0.8	1.14	<2	<10	10	<0.5	3	8.9	<0.5	5	5	1180	3.95
S057005		0.73	0.017	1.1	0.70	<2	<10	<10	<0.5	3	8.8	<0.5	4	4	1245	3.92
S057006		0.59	0.021	0.9	0.99	<2	<10	70	<0.5	2	6.26	<0.5	7	11	1300	3.19
S057007		0.49	0.020	4.0	1.17	<2	<10	10	<0.5	10	8.4	<0.5	7	3	6600	4.59
S057008		0.37	0.013	2.9	1.07	3	<10	10	<0.5	2	9.1	<0.5	6	4	3160	5.40



ALS Canada Ltd.
 2103 Dollarton Hwy
 North Vancouver BC V7H 0A7
 Phone: +1 (604) 984 0221 Fax: +1 (604) 984 0218
 www.alsglobal.com

To: **KLUANE DRILLING LTD**
14 MACDONALD ROAD
WHITEHORSE YT Y1A 4L2

Page: 2 - B
 Total # Pages: 4 (A - C)
 Plus Appendix Pages
 Finalized Date: 27- MAR-2017
 Account: KLUDRIL

CERTIFICATE OF ANALYSIS WH17045124

Sample Description	Method Analyte Units LOR	ME-ICP41	ME-ICP41	ME-ICP41	ME-ICP41	ME-ICP41	ME-ICP41	ME-ICP41	ME-ICP41	ME-ICP41	ME-ICP41	ME-ICP41	ME-ICP41	ME-ICP41	ME-ICP41	
		Ga	Hg	K	La	Mg	Mn	Mo	Na	Ni	P	Pb	S	Sb	Sc	Sr
		ppm	ppm	%	ppm	%	ppm	ppm	%	ppm	ppm	ppm	%	ppm	ppm	ppm
		10	1	0.01	10	0.01	5	1	0.01	1	10	2	0.01	2	1	1
S059169		<10	1	0.01	<10	1.25	1570	548	0.01	11	750	12	0.53	2	1	27
S059170		10	<1	0.03	<10	0.80	1925	1475	0.03	6	560	8	0.94	2	1	52
S059171		10	1	0.03	<10	0.31	1940	299	0.02	3	490	10	0.42	2	1	13
S059172		10	<1	0.02	<10	0.65	2120	2230	0.01	3	780	19	1.54	<2	<1	19
S059173		<10	<1	0.05	<10	0.57	1805	902	0.02	1	340	4	0.64	<2	<1	62
S059174		<10	<1	0.01	<10	1.00	1310	825	<0.01	4	560	8	1.10	<2	<1	30
S059175		<10	<1	0.01	<10	0.70	1590	673	<0.01	4	550	6	1.46	3	1	20
S059176		10	1	0.03	<10	0.53	2200	110	0.02	4	560	5	0.64	3	1	17
S059177		10	1	0.04	<10	0.47	1830	1295	0.03	1	500	2	0.49	<2	<1	144
S059178		10	2	0.04	<10	0.77	2400	1620	0.02	2	720	2	0.82	<2	<1	82
S059179		<10	<1	<0.01	<10	0.51	1820	136	<0.01	3	810	3	0.56	<2	<1	10
S059180		<10	<1	0.01	<10	0.90	2240	218	0.01	2	770	3	0.44	2	<1	14
S059181		<10	1	<0.01	<10	0.63	2010	25	<0.01	1	540	5	0.22	<2	<1	10
S059182		10	<1	0.01	<10	0.71	2170	218	0.01	2	980	5	0.63	2	<1	13
S059183		<10	2	0.01	<10	0.37	2890	83	<0.01	3	340	7	0.60	4	<1	26
S059184		10	<1	0.01	<10	0.38	2680	477	0.01	2	490	12	0.69	2	<1	26
S059185		10	1	<0.01	<10	0.28	2130	14	<0.01	1	490	4	0.25	3	<1	7
S059186		10	<1	<0.01	<10	0.64	2630	180	<0.01	3	330	6	0.31	3	<1	16
S059187		10	1	<0.01	<10	0.24	2460	191	<0.01	2	420	6	0.45	<2	<1	13
S059188		10	<1	0.01	<10	0.30	2560	2270	<0.01	2	380	5	0.32	2	<1	29
S059189		10	2	0.04	<10	0.40	2450	1860	0.01	2	130	8	0.48	4	<1	100
S059190		10	1	0.11	10	1.32	2300	33	<0.01	20	780	17	0.47	<2	5	189
S059191		10	1	0.18	10	2.60	1870	210	<0.01	43	1360	8	1.80	2	8	187
S059192		10	<1	0.08	<10	1.97	2640	223	<0.01	15	790	7	0.99	3	4	123
S059193		10	<1	0.05	<10	1.22	2090	205	<0.01	6	140	10	2.17	2	1	245
S059194		10	1	0.23	10	1.28	2270	298	<0.01	12	480	10	2.08	3	2	370
S059195		<10	<1	<0.01	10	0.41	1005	122	<0.01	5	2910	3	0.12	3	1	57
S059196		<10	<1	0.01	20	1.00	970	16	0.01	19	3030	5	0.10	<2	2	59
S059197		<10	<1	0.03	<10	0.85	1500	436	<0.01	12	920	5	0.42	5	2	84
S059198		10	<1	0.05	10	1.82	1880	71	0.02	26	1010	10	0.53	<2	3	138
S059199		10	<1	0.02	<10	1.71	805	15	0.01	33	290	8	5.10	<2	2	246
S059200		10	<1	0.07	<10	1.46	1230	5	<0.01	22	250	3	0.16	3	1	59
S057001		10	<1	0.08	10	3.13	2030	15	<0.01	41	330	6	0.17	3	2	84
S057002		<10	<1	<0.01	<10	0.47	1070	52	<0.01	12	310	4	0.04	3	2	61
S057003		10	1	0.06	<10	0.49	2060	301	0.01	8	680	12	0.16	3	2	178
S057004		<10	1	0.01	<10	0.83	2340	121	<0.01	5	70	7	0.07	2	<1	68
S057005		10	<1	<0.01	<10	0.38	1990	149	<0.01	4	110	7	0.06	4	<1	56
S057006		<10	1	0.01	<10	0.78	1785	13	0.01	11	130	5	0.05	4	<1	85
S057007		<10	<1	<0.01	<10	0.70	2230	239	<0.01	6	30	6	0.28	2	<1	74
S057008		<10	1	<0.01	<10	0.41	2330	56	<0.01	4	60	4	0.14	<2	<1	54



ALS Canada Ltd.
 2103 Dollarton Hwy
 North Vancouver BC V7H 0A7
 Phone: +1 (604) 984 0221 Fax: +1 (604) 984 0218
 www.alsglobal.com

To: **KLUANE DRILLING LTD**
14 MACDONALD ROAD
WHITEHORSE YT Y1A 4L2

Page: 2 - C
 Total # Pages: 4 (A - C)
 Plus Appendix Pages
 Finalized Date: 27- MAR- 2017
 Account: KLUDRIL

CERTIFICATE OF ANALYSIS WH17045124

Sample Description	Method Analyte Units LOR	ME- ICP41	ME- ICP41	ME- ICP41	ME- ICP41	ME- ICP41	ME- ICP41	ME- ICP41	Cu- OG46
		Th	Ti	Tl	U	V	W	Zn	Cu
		ppm	%	ppm	ppm	ppm	ppm	ppm	%
		20	0.01	10	10	1	10	2	0.001
S059169		<20	0.04	<10	<10	19	<10	35	
S059170		<20	0.05	<10	<10	28	<10	30	
S059171		<20	0.05	<10	<10	30	<10	14	
S059172		<20	0.03	<10	<10	24	<10	36	1.325
S059173		<20	0.05	<10	<10	23	<10	17	
S059174		<20	0.05	<10	<10	17	<10	52	
S059175		<20	0.06	<10	<10	25	<10	42	1.060
S059176		<20	0.04	<10	<10	20	<10	29	
S059177		<20	0.02	<10	<10	20	<10	31	
S059178		<20	0.04	<10	<10	24	<10	35	
S059179		<20	0.02	<10	<10	12	<10	21	
S059180		<20	0.02	<10	<10	16	<10	37	
S059181		<20	0.02	<10	<10	12	<10	38	
S059182		<20	0.03	<10	<10	16	<10	49	
S059183		<20	0.02	<10	<10	14	<10	21	1.065
S059184		<20	0.05	<10	<10	28	<10	18	1.310
S059185		<20	0.05	<10	<10	15	<10	10	
S059186		<20	0.05	<10	<10	19	<10	18	
S059187		<20	0.05	<10	<10	25	<10	13	
S059188		<20	0.06	<10	<10	37	<10	13	
S059189		<20	0.05	<10	<10	40	<10	17	
S059190		<20	0.05	<10	<10	52	<10	57	
S059191		<20	0.10	<10	<10	53	<10	70	2.00
S059192		<20	0.07	<10	<10	53	20	59	
S059193		<20	0.04	<10	<10	43	<10	56	1.115
S059194		<20	0.01	<10	<10	35	40	56	
S059195		<20	0.08	<10	<10	40	10	10	
S059196		<20	0.06	<10	<10	35	<10	47	
S059197		<20	0.04	<10	<10	59	10	43	
S059198		<20	0.04	<10	<10	57	<10	85	
S059199		<20	0.01	<10	<10	56	<10	109	7.45
S059200		<20	0.01	<10	<10	55	<10	88	
S057001		<20	0.01	<10	<10	98	10	196	
S057002		<20	0.04	<10	<10	67	<10	25	
S057003		<20	0.05	<10	<10	127	50	46	
S057004		<20	0.03	<10	<10	25	<10	52	
S057005		<20	0.03	<10	<10	35	10	26	
S057006		<20	0.03	<10	<10	29	10	49	
S057007		<20	0.02	<10	<10	32	10	31	
S057008		<20	0.02	<10	<10	45	10	19	



ALS Canada Ltd.
 2103 Dollarton Hwy
 North Vancouver BC V7H 0A7
 Phone: +1 (604) 984 0221 Fax: +1 (604) 984 0218
 www.alsglobal.com

To: **KLUANE DRILLING LTD**
14 MACDONALD ROAD
WHITEHORSE YT Y1A 4L2

Page: 3 - A
 Total # Pages: 4 (A - C)
 Plus Appendix Pages
 Finalized Date: 27- MAR- 2017
 Account: KLUDRIL

CERTIFICATE OF ANALYSIS WH17045124

Sample Description	Method	WEI- 21	Au- ICP21	ME- ICP41	ME- ICP41	ME- ICP41	ME- ICP41	ME- ICP41	ME- ICP41	ME- ICP41	ME- ICP41	ME- ICP41	ME- ICP41	ME- ICP41	ME- ICP41	
	Analyte	Recvd Wt.	Au	Ag	Al	As	B	Ba	Be	Bi	Ca	Cd	Co	Cr	Cu	Fe
Units		kg	ppm	ppm	%	ppm	ppm	ppm	ppm	ppm	%	ppm	ppm	ppm	ppm	%
LOR		0.02	0.001	0.2	0.01	2	10	10	0.5	2	0.01	0.5	1	1	1	0.01
S057009		0.61	0.174	8.8	1.30	3	<10	<10	<0.5	39	8.9	0.6	5	7	>10000	6.02
S057010		0.47	0.028	2.0	2.33	<2	<10	30	<0.5	9	8.1	0.5	19	10	5610	6.29
S057011		0.43	0.001	0.2	1.41	<2	<10	10	<0.5	<2	9.1	<0.5	3	6	579	4.43
S057012		0.40	0.005	1.0	1.58	<2	<10	20	<0.5	<2	8.8	0.5	6	7	3700	4.86
S057013		0.37	0.072	12.5	1.78	6	<10	50	<0.5	7	6.49	5.3	44	5	>10000	7.99
S057014		0.58	0.011	3.0	1.26	<2	<10	120	<0.5	<2	7.9	0.9	8	6	>10000	4.82
S057015		0.60	0.021	4.1	1.01	<2	<10	40	<0.5	8	7.2	0.6	4	6	>10000	3.81
S057016		0.74	0.101	6.2	1.53	<2	<10	20	<0.5	48	8.0	<0.5	2	7	6240	4.90
S057017		0.63	0.001	<0.2	1.18	<2	<10	20	<0.5	<2	7.2	<0.5	2	6	565	4.74
S057018		0.45	0.004	1.0	1.83	<2	<10	10	<0.5	10	9.2	<0.5	1	8	2610	5.80
S057019		0.71	0.005	0.4	1.64	4	<10	20	<0.5	<2	2.39	<0.5	13	9	1240	1.42
S057020		0.79	0.003	1.6	1.70	2	<10	<10	<0.5	<2	8.9	<0.5	6	10	4640	5.00
S057021		0.60	0.019	1.9	1.20	7	<10	10	<0.5	<2	2.87	1.1	31	16	7430	12.15
S057022		0.54	<0.001	<0.2	1.57	3	<10	40	<0.5	<2	2.26	<0.5	14	22	192	3.00
S057023		0.58	<0.001	<0.2	1.06	2	<10	30	<0.5	<2	1.78	<0.5	12	27	103	2.31
S057024		0.46	<0.001	<0.2	0.97	2	<10	30	<0.5	<2	1.54	<0.5	12	8	244	2.92
S057025		0.37	<0.001	<0.2	0.97	2	<10	30	<0.5	<2	2.73	<0.5	11	7	109	3.56
S057026		0.50	<0.001	<0.2	0.58	4	<10	20	<0.5	<2	0.88	<0.5	9	13	168	2.20
S057027		0.39	<0.001	<0.2	0.84	4	<10	10	<0.5	<2	1.51	<0.5	12	6	79	3.29
S057028		0.46	<0.001	<0.2	0.81	3	<10	20	<0.5	<2	1.39	<0.5	13	9	100	2.94
S057029		0.40	<0.001	<0.2	0.62	3	<10	20	<0.5	<2	1.18	<0.5	7	6	47	1.57
S057030		0.58	<0.001	<0.2	0.44	2	<10	20	<0.5	<2	1.03	<0.5	8	10	93	1.11
S057031		0.42	<0.001	<0.2	0.63	2	<10	30	<0.5	<2	1.24	<0.5	11	17	140	1.61
S057032		0.46	0.005	1.2	0.90	3	<10	20	<0.5	<2	2.49	<0.5	24	14	3940	3.22
S057033		0.31	<0.001	<0.2	0.74	5	<10	20	<0.5	<2	2.25	<0.5	14	18	354	2.31
S057034		0.24	<0.001	<0.2	0.63	6	<10	20	<0.5	<2	1.51	<0.5	8	40	71	1.59
S057035		0.51	<0.001	<0.2	1.27	3	<10	40	<0.5	<2	2.25	<0.5	13	9	175	4.88
S057036		0.67	0.001	0.2	1.89	2	<10	50	0.6	<2	3.55	<0.5	17	6	492	5.79
S057037		0.38	0.011	0.7	0.85	2	<10	30	<0.5	<2	1.77	<0.5	13	21	1435	3.19
S057038		0.51	0.004	0.3	1.02	<2	<10	50	<0.5	<2	1.24	<0.5	9	31	603	1.88
S057039		0.45	0.011	1.2	1.04	<2	<10	70	<0.5	12	1.25	<0.5	8	28	2600	1.53
S057040		0.57	0.010	1.3	1.16	2	<10	150	<0.5	2	1.10	<0.5	8	29	5140	1.91
S057041		0.47	0.001	0.2	0.85	<2	<10	70	<0.5	<2	1.23	<0.5	8	41	260	1.92
S057042		1.46	0.007	2.4	2.29	2	<10	20	<0.5	6	13.3	0.8	9	72	4550	6.27
S057043		0.18	0.010	0.3	0.73	<2	<10	40	<0.5	4	0.65	<0.5	5	7	772	1.40
S057044		1.67	<0.001	<0.2	0.65	6	<10	20	<0.5	<2	1.39	0.6	7	10	88	1.70
S057045		2.34	<0.001	<0.2	0.63	3	<10	20	<0.5	<2	1.78	<0.5	10	15	197	1.76
S057046		1.90	<0.001	<0.2	0.62	3	<10	50	<0.5	<2	0.73	<0.5	10	15	165	1.58
S057047		1.80	<0.001	<0.2	0.59	4	<10	30	<0.5	<2	0.67	<0.5	9	23	40	1.37
S057048		1.78	<0.001	<0.2	0.66	2	<10	60	<0.5	2	0.67	<0.5	9	27	32	1.56



ALS Canada Ltd.
 2103 Dollarton Hwy
 North Vancouver BC V7H 0A7
 Phone: +1 (604) 984 0221 Fax: +1 (604) 984 0218
 www.alsglobal.com

To: **KLUANE DRILLING LTD**
14 MACDONALD ROAD
WHITEHORSE YT Y1A 4L2

Page: 3 - B
 Total # Pages: 4 (A - C)
 Plus Appendix Pages
 Finalized Date: 27- MAR-2017
 Account: KLUDRIL

CERTIFICATE OF ANALYSIS WH17045124

Sample Description	Method Analyte Units LOR	ME- ICP41	ME- ICP41	ME- ICP41	ME- ICP41	ME- ICP41	ME- ICP41	ME- ICP41	ME- ICP41	ME- ICP41	ME- ICP41	ME- ICP41	ME- ICP41	ME- ICP41	ME- ICP41	
		Ga	Hg	K	La	Mg	Mn	Mo	Na	Ni	P	Pb	S	Sb	Sc	Sr
		ppm	ppm	%	ppm	%	ppm	ppm	%	ppm	ppm	ppm	%	ppm	ppm	ppm
		10	1	0.01	10	0.01	5	1	0.01	1	10	2	0.01	2	1	1
S057009		<10	1	<0.01	<10	0.66	2520	254	0.01	5	250	6	0.46	2	<1	36
S057010		10	<1	0.09	<10	2.18	1985	102	0.01	10	560	9	0.58	3	4	107
S057011		<10	<1	0.02	<10	0.54	2140	12	<0.01	3	180	3	0.15	<2	1	56
S057012		<10	<1	<0.01	<10	0.51	2300	223	<0.01	4	260	8	0.45	<2	<1	29
S057013		<10	<1	0.03	<10	0.49	1385	5	0.06	14	70	6	6.31	<2	1	353
S057014		<10	1	0.02	<10	0.28	1595	112	0.02	5	120	4	1.21	4	<1	171
S057015		<10	<1	0.01	<10	0.62	1675	261	0.01	4	270	7	1.14	3	<1	97
S057016		<10	<1	0.01	<10	0.39	1775	776	0.02	2	140	6	0.42	<2	<1	40
S057017		10	<1	0.01	<10	0.37	1650	923	0.01	2	180	6	0.13	2	<1	24
S057018		10	<1	0.01	<10	0.23	1980	22	0.01	6	80	11	0.28	2	<1	12
S057019		<10	<1	0.03	10	0.24	301	524	0.16	18	1120	2	1.18	<2	1	166
S057020		10	<1	<0.01	<10	0.17	1710	898	<0.01	6	170	3	0.81	<2	1	9
S057021		<10	<1	0.01	<10	0.54	775	121	0.03	72	370	5	>10.0	<2	<1	44
S057022		<10	<1	0.04	10	0.29	222	50	0.11	42	970	2	3.07	<2	1	435
S057023		<10	<1	0.02	10	0.44	204	28	0.07	46	1090	3	2.42	<2	1	94
S057024		<10	<1	0.02	10	0.23	178	8	0.09	17	1020	3	3.03	<2	<1	164
S057025		<10	<1	0.02	10	0.15	330	11	0.06	16	860	5	3.76	2	<1	149
S057026		<10	<1	0.02	10	0.30	174	12	0.08	27	1110	2	1.94	<2	<1	49
S057027		<10	<1	0.02	10	0.11	137	14	0.07	25	1170	5	3.52	<2	<1	258
S057028		<10	<1	0.02	10	0.16	149	29	0.09	27	980	2	3.00	<2	<1	195
S057029		<10	<1	0.02	10	0.13	71	7	0.08	20	1020	4	1.74	2	<1	75
S057030		<10	<1	0.02	10	0.21	107	9	0.08	23	1100	<2	0.94	<2	1	41
S057031		<10	<1	0.02	10	0.40	150	8	0.06	32	950	3	1.29	2	1	47
S057032		<10	<1	0.03	10	0.56	230	310	0.05	35	1400	4	3.09	<2	2	56
S057033		<10	<1	0.02	10	0.64	250	9	0.06	32	1170	2	2.26	<2	1	58
S057034		<10	<1	0.02	10	0.50	171	8	0.08	50	1050	4	1.37	2	1	51
S057035		<10	<1	0.04	10	0.32	305	7	0.09	15	960	3	5.31	<2	1	244
S057036		<10	<1	0.04	10	0.44	415	2	0.12	21	1060	4	6.60	2	1	205
S057037		<10	<1	0.03	10	0.61	284	66	0.05	23	970	3	1.01	2	1	48
S057038		<10	<1	0.05	10	0.79	267	79	0.06	26	1020	3	0.43	<2	1	106
S057039		<10	<1	0.07	10	0.78	224	114	0.06	20	1020	5	0.37	3	2	112
S057040		<10	<1	0.08	10	0.69	206	383	0.08	24	1090	2	0.59	2	1	216
S057041		<10	<1	0.12	10	0.77	257	3	0.06	19	1200	2	0.04	<2	1	63
S057042		10	<1	0.13	<10	1.64	2780	493	<0.01	27	420	10	0.72	3	3	312
S057043		<10	<1	0.08	20	0.56	201	11	0.05	7	500	4	0.08	2	1	40
S057044		<10	<1	0.05	10	0.17	85	8	0.10	24	900	4	1.87	<2	1	124
S057045		<10	<1	0.05	10	0.38	155	2	0.08	28	1100	3	1.76	<2	1	75
S057046		<10	<1	0.06	10	0.34	111	2	0.09	27	1040	3	0.98	<2	1	46
S057047		<10	1	0.06	10	0.43	145	1	0.07	17	1040	3	0.30	2	1	28
S057048		<10	<1	0.09	10	0.46	162	1	0.09	17	1160	2	0.32	2	1	38



ALS Canada Ltd.
 2103 Dollarton Hwy
 North Vancouver BC V7H 0A7
 Phone: +1 (604) 984 0221 Fax: +1 (604) 984 0218
 www.alsglobal.com

To: **KLUANE DRILLING LTD**
14 MACDONALD ROAD
WHITEHORSE YT Y1A 4L2

Page: 3 - C
 Total # Pages: 4 (A - C)
 Plus Appendix Pages
 Finalized Date: 27- MAR- 2017
 Account: KLUDRIL

CERTIFICATE OF ANALYSIS WH17045124

Sample Description	Method Analyte Units LOR	ME- ICP41	ME- ICP41	ME- ICP41	ME- ICP41	ME- ICP41	ME- ICP41	ME- ICP41	Cu- OG46
		Th ppm	Ti %	Ti ppm	U ppm	V ppm	W ppm	Zn ppm	Cu %
		20	0.01	10	10	1	10	2	0.001
S057009		<20	0.03	<10	<10	35	350	21	1.210
S057010		<20	0.07	<10	<10	76	140	61	
S057011		<20	0.03	<10	<10	29	<10	25	
S057012		<20	0.04	<10	<10	30	<10	34	
S057013		<20	0.03	<10	<10	14	<10	342	5.21
S057014		<20	0.04	<10	<10	18	<10	60	1.095
S057015		<20	0.03	<10	<10	17	<10	42	1.235
S057016		<20	0.03	<10	<10	26	<10	14	
S057017		<20	0.03	<10	<10	29	<10	14	
S057018		<20	0.03	<10	<10	30	<10	8	
S057019		<20	0.07	<10	<10	10	<10	28	
S057020		<20	0.05	<10	<10	39	<10	21	
S057021		<20	0.04	<10	10	16	<10	74	
S057022		<20	0.05	<10	<10	10	<10	12	
S057023		<20	0.07	<10	<10	13	<10	14	
S057024		<20	0.07	<10	<10	10	<10	14	
S057025		<20	0.05	<10	10	20	<10	8	
S057026		<20	0.11	<10	<10	17	<10	29	
S057027		<20	0.07	<10	<10	10	<10	16	
S057028		<20	0.08	<10	<10	11	<10	9	
S057029		<20	0.08	<10	<10	10	<10	14	
S057030		<20	0.11	<10	<10	17	<10	9	
S057031		<20	0.09	<10	<10	24	10	11	
S057032		<20	0.12	<10	<10	28	<10	15	
S057033		<20	0.08	<10	<10	26	<10	13	
S057034		<20	0.11	<10	<10	24	<10	11	
S057035		<20	0.03	<10	10	10	<10	12	
S057036		<20	0.02	<10	10	14	<10	13	
S057037		<20	0.09	<10	<10	62	<10	32	
S057038		<20	0.13	<10	<10	44	30	23	
S057039		<20	0.11	<10	<10	40	<10	23	
S057040		<20	0.12	<10	<10	46	<10	24	
S057041		<20	0.14	<10	<10	56	<10	26	
S057042		<20	0.05	<10	<10	44	10	66	
S057043		40	0.12	<10	<10	32	<10	22	
S057044		20	0.09	<10	<10	17	<10	213	
S057045		<20	0.09	<10	<10	22	<10	81	
S057046		<20	0.12	<10	<10	25	<10	18	
S057047		<20	0.12	<10	<10	37	<10	21	
S057048		<20	0.15	<10	<10	45	<10	23	



ALS Canada Ltd.
 2103 Dollarton Hwy
 North Vancouver BC V7H 0A7
 Phone: +1 (604) 984 0221 Fax: +1 (604) 984 0218
 www.alsglobal.com

To: **KLUANE DRILLING LTD**
14 MACDONALD ROAD
WHITEHORSE YT Y1A 4L2

Page: 4 - A
 Total # Pages: 4 (A - C)
 Plus Appendix Pages
 Finalized Date: 27- MAR- 2017
 Account: KLUDRIL

CERTIFICATE OF ANALYSIS WH17045124

Sample Description	Method Analyte Units LOR	WEI- 21	Au- ICP21	ME- ICP41	ME- ICP41	ME- ICP41	ME- ICP41	ME- ICP41	ME- ICP41	ME- ICP41	ME- ICP41	ME- ICP41	ME- ICP41	ME- ICP41	ME- ICP41	
		Recvd Wt.	Au	Ag	Al	As	B	Ba	Be	Bi	Ca	Cd	Co	Cr	Cu	Fe
		kg	ppm	ppm	%	ppm	ppm	ppm	ppm	%	ppm	ppm	ppm	ppm	%	
		0.02	0.001	0.2	0.01	2	10	10	0.5	2	0.01	0.5	1	1	1	0.01
S057049		1.68	<0.001	<0.2	0.46	3	<10	20	<0.5	<2	0.95	<0.5	9	10	173	1.50
S057050		1.96	0.046	3.2	0.65	<2	<10	30	<0.5	34	1.25	<0.5	5	16	8030	1.85
S057051		1.70	0.048	4.0	0.70	2	<10	30	<0.5	38	1.62	<0.5	6	19	7490	1.30
S057052		1.59	0.047	5.8	1.29	<2	<10	200	<0.5	21	0.77	<0.5	9	47	>10000	1.88

***** See Appendix Page for comments regarding this certificate *****



ALS Canada Ltd.
 2103 Dollarton Hwy
 North Vancouver BC V7H 0A7
 Phone: +1 (604) 984 0221 Fax: +1 (604) 984 0218
 www.alsglobal.com

To: **KLUANE DRILLING LTD**
14 MACDONALD ROAD
WHITEHORSE YT Y1A 4L2

Page: 4 - B
 Total # Pages: 4 (A - C)
 Plus Appendix Pages
 Finalized Date: 27- MAR- 2017
 Account: KLUDRIL

CERTIFICATE OF ANALYSIS WH17045124

Sample Description	Method Analyte Units LOR	ME- ICP41	ME- ICP41	ME- ICP41	ME- ICP41	ME- ICP41	ME- ICP41	ME- ICP41	ME- ICP41	ME- ICP41	ME- ICP41	ME- ICP41	ME- ICP41	ME- ICP41	ME- ICP41	
		Ga ppm	Hg ppm	K %	La ppm	Mg %	Mn ppm	Mo ppm	Na %	Ni ppm	P ppm	Pb ppm	S %	Sb ppm	Sc ppm	Sr ppm
		10	1	0.01	10	0.01	5	1	0.01	1	10	2	0.01	2	1	1
S057049		<10	<1	0.03	10	0.09	48	1	0.11	24	1260	4	1.64	<2	<1	65
S057050		<10	<1	0.05	10	0.21	72	1095	0.09	26	1160	5	0.89	<2	<1	168
S057051		<10	<1	0.06	10	0.42	142	143	0.06	30	1210	11	0.92	2	1	119
S057052		10	<1	0.55	10	1.06	235	67	0.08	31	1220	6	0.58	2	2	131

***** See Appendix Page for comments regarding this certificate *****



ALS Canada Ltd.
 2103 Dollarton Hwy
 North Vancouver BC V7H 0A7
 Phone: +1 (604) 984 0221 Fax: +1 (604) 984 0218
 www.alsglobal.com

To: **KLUANE DRILLING LTD**
14 MACDONALD ROAD
WHITEHORSE YT Y1A 4L2

Page: 4 - C
 Total # Pages: 4 (A - C)
 Plus Appendix Pages
 Finalized Date: 27- MAR- 2017
 Account: KLUDRIL

CERTIFICATE OF ANALYSIS WH17045124

Sample Description	Method Analyte Units LOR	ME- ICP41	ME- ICP41	ME- ICP41	ME- ICP41	ME- ICP41	ME- ICP41	ME- ICP41	Cu- OG46
		Th ppm	Ti %	Tl ppm	U ppm	V ppm	W ppm	Zn ppm	Cu %
		20	0.01	10	10	1	10	2	0.001
S057049		<20	0.12	<10	<10	17	<10	135	
S057050		20	0.09	<10	<10	48	<10	21	
S057051		<20	0.09	<10	<10	20	<10	25	
S057052		<20	0.22	<10	<10	70	<10	30	1.160

***** See Appendix Page for comments regarding this certificate *****



ALS Canada Ltd.
 2103 Dollarton Hwy
 North Vancouver BC V7H 0A7
 Phone: +1 (604) 984 0221 Fax: +1 (604) 984 0218
 www.alsglobal.com

To: **KLUANE DRILLING LTD**
14 MACDONALD ROAD
WHITEHORSE YT Y1A 4L2

Page: Appendix 1
 Total # Appendix Pages: 1
 Finalized Date: 27- MAR- 2017
 Account: KLUDRIL

CERTIFICATE OF ANALYSIS WH17045124

	CERTIFICATE COMMENTS								
	LABORATORY ADDRESSES								
Applies to Method:	<p>Processed at ALS Whitehorse located at 78 Mt. Sima Rd, Whitehorse, YT, Canada.</p> <table style="width: 100%; border: none;"> <tr> <td style="width: 33%;">CRU- 31</td> <td style="width: 33%;">CRU- QC</td> <td style="width: 33%;">LOG- 22</td> <td style="width: 33%;">PUL- 31</td> </tr> <tr> <td>PUL- QC</td> <td>SPL- 21</td> <td>WEI- 21</td> <td></td> </tr> </table>	CRU- 31	CRU- QC	LOG- 22	PUL- 31	PUL- QC	SPL- 21	WEI- 21	
CRU- 31	CRU- QC	LOG- 22	PUL- 31						
PUL- QC	SPL- 21	WEI- 21							
Applies to Method:	<p>Processed at ALS Vancouver located at 2103 Dollarton Hwy, North Vancouver, BC, Canada.</p> <table style="width: 100%; border: none;"> <tr> <td style="width: 33%;">Au- ICP21</td> <td style="width: 33%;">Cu- OG46</td> <td style="width: 33%;">ME- ICP41</td> <td style="width: 33%;">ME- OG46</td> </tr> </table>	Au- ICP21	Cu- OG46	ME- ICP41	ME- OG46				
Au- ICP21	Cu- OG46	ME- ICP41	ME- OG46						

DRILL LOGS

See attached data file