

**ASSESSMENT REPORT DESCRIBING
SAMPLING PROGRAM ON THE KIRKMAN CLAIMS**

Claim Group:

YC23730-YC23743; YC30529-YC30554; YC86825-86873;
YC87949-YC87976

NTS 115O/03, 115J/14

LAT: 63.02° N

LONG: 139.29° W

DAWSON MINING DISTRICT

Work Performed May 28, 2016

Report prepared on Aug 22, 2017

by

Eric Buitenhuis, GIT
Goldcorp
Suite 3400-666 Burrard St.
Vancouver, B.C.

Table of Contents

1.0	INTRODUCTION	3
2.0	LOCATION AND ACCESS	3
3.0	CLIMATE AND PHYSIOGRAPHY	3
4.0	LAND TENURE	3
5.0	PREVIOUS WORK	3
6.0	GEOLOGICAL SETTING.....	7
6.1	Regional Geology	7
6.2	Property Geology	7
7.0	EXPLORATION	9
7.1	Geology and Grab Sampling	9
8.0	DISCUSSION AND RECOMMENDATIONS.....	12
9.0	STATEMENT OF EXPENDITURES.....	13
10.0	REFERENCES CITED	14
11.0	STATEMENT OF QUALIFICATIONS	15
12.0	APPENDIX 1 – KIRKMAN Claims	16

List of Figures

Figure 1	Location of the Kirkman claims, 115 km south of Dawson City, west-central Yukon.	4
Figure 2	Kirkman claims.	5
Figure 3	Summary map of historic soil sampling on the KIRKMAN property.	6
Figure 4	Summary previous Airborne Magnetic survey over KIRKMAN property.	7
Figure 4	Regional geological setting of the Kirkman claims (after Gordey and Makepeace, 1999).	8
Figure 5	Local geological map for the Kirkman area (MDRU 2015).	9
Figure 6	Cu grab samples with local geological map for the Kirkman area (after Gordey and Makepeace, 1999)...	10
Figure 7	Pb grab samples with local geological map for the Kirkman area (after Gordey and Makepeace, 1999). ..	11
Figure 8	Zn grab samples with local geological map for the Kirkman area (after Gordey and Makepeace, 1999)...	12

List of Tables

Table 1	Cost summary for the 2016 sampling program at Kirkman.....	13
----------------	--	----

1.0 INTRODUCTION

In 2009, Kaminak Gold Corp. acquired the Kirkman claims located 115 km south of Dawson City, Yukon. The project area is proximal to both the Golden Saddle and Coffee gold project, and is hosted in similar rocks. Historic work at Kirkman has highlighted a number of gold anomalies. Based on regional analogs, nature of the geochemical signature and trenching results, these anomalies potentially represent structurally hosted hydrothermal gold mineralization or VMS style mineralization. A mapping and prospecting program was conducted in order to follow up on previously identified geochemical anomalies within the claim area and investigate potential bedrock explanations for specific geophysical features identified during the 2014 geophysical program.

2.0 LOCATION AND ACCESS

The Kirkman claims are located 115 kilometers south of Dawson City in west-central Yukon and approximately 15 km north of the Supremo Zone on Kaminak's Coffee property and 20 km south-southeast of the Golden Saddle deposit (Kinross Gold; Figure 1). The property is centered at latitude 63.02N and longitude 139.29W (NTS mapsheets 115O/03 and 115J/14). Direct access to the property is by helicopter from Dawson or Carmacks. An air strip located at Thistle Creek approximately 5 km away from Kirkman provides the best access to site, alternatively access from Coffee Camp is approximately 15km southwest of the property. River access to this region is provided by barge landings on the Yukon River near the thistle creek airstrip and Coffee Camp offer additional logistical support. River transport along the Yukon River from Dawson City to the barge landings is available for five months during the summer period when the river is free of ice.

3.0 CLIMATE AND PHYSIOGRAPHY

The Kirkman area consists of rolling to locally steep hills incised by streams and the majority of the Kirkman area is covered by trees (spruce and poplar). The elevation range on the property is approximately 500m to 1200m. Western Yukon has a sub-arctic continental climate with a summer mean of 10° Celsius and a winter mean of minus 23° Celsius. Summer and winter temperatures can reach plus 35° and minus 55° Celsius, respectively. Dawson City, the nearest town, has a daily average above freezing for 180 days per year.

4.0 LAND TENURE

The Kirkman block consists of a total of 116 claims (Figure 2; Appendix 1). The claims are staked under the Yukon Quartz Mining Act and are registered with the mining recorder in the name of Kaminak Gold Corp.

5.0 PREVIOUS WORK

Shawn Ryan's group completed an initial reconnaissance soil sampling program on the central part of the Kirkman claims (14 samples) in 2003 (Ryan, 2004A), in addition to approximately 150 samples within the current property boundary as part of a Stewart area regional survey (Ryan 2004B). An initial soil grid (559 samples) with a ground magnetometer survey was completed in 2004 (Ryan, 2005).

In 2009, Kaminak optioned the property and 2 north-south trenches were completed that year in the area of the 2004 soil grid. Quartz veining, brecciation, carbonate/ankerite/silica alteration, barite mineralization and limonite/hematite were observed in the trench samples. Minor disseminated pyrite and arsenopyrite were also noted; however, geochemical results from these samples contained low gold. In 2009, Kaminak also completed a second soil sampling grid in the north-central part of the property with 640 samples collected, spaced 50 m apart along 100m-spaced lines.

In 2011, four hundred and ninety-six (496) ridgetop and contour soil samples were collected with sampling stations spaced at 50 metres. The crew was based out of the Groundtruth Thistle camp and they completed the work during July 28-29, 2011 (Figure 3).

The historic work indicates that various areas on the Kirkman claims have gold-in-soil values that are considered elevated for the region (see below). In addition to these Au anomalies there are Cu, Ag, Zn in-soil anomalies. To further delineate and constrain the target areas within the soil anomalies, a horizontal-gradient magnetic intensity airborne survey was conducted over the entire property. The survey consisted of 100m spaced survey line direction oriented at 140°/320° with 1000m spaced tie-lines for data leveling oriented at 50°/230°. The survey consisted of 237.9 km of survey lines and 25.8 km of tie lines, for a total of 263.6 line km surveyed (Figure 4). The survey was conducted on March 22nd and May 28th, 2014 with the survey crew staging out of Dawson City.

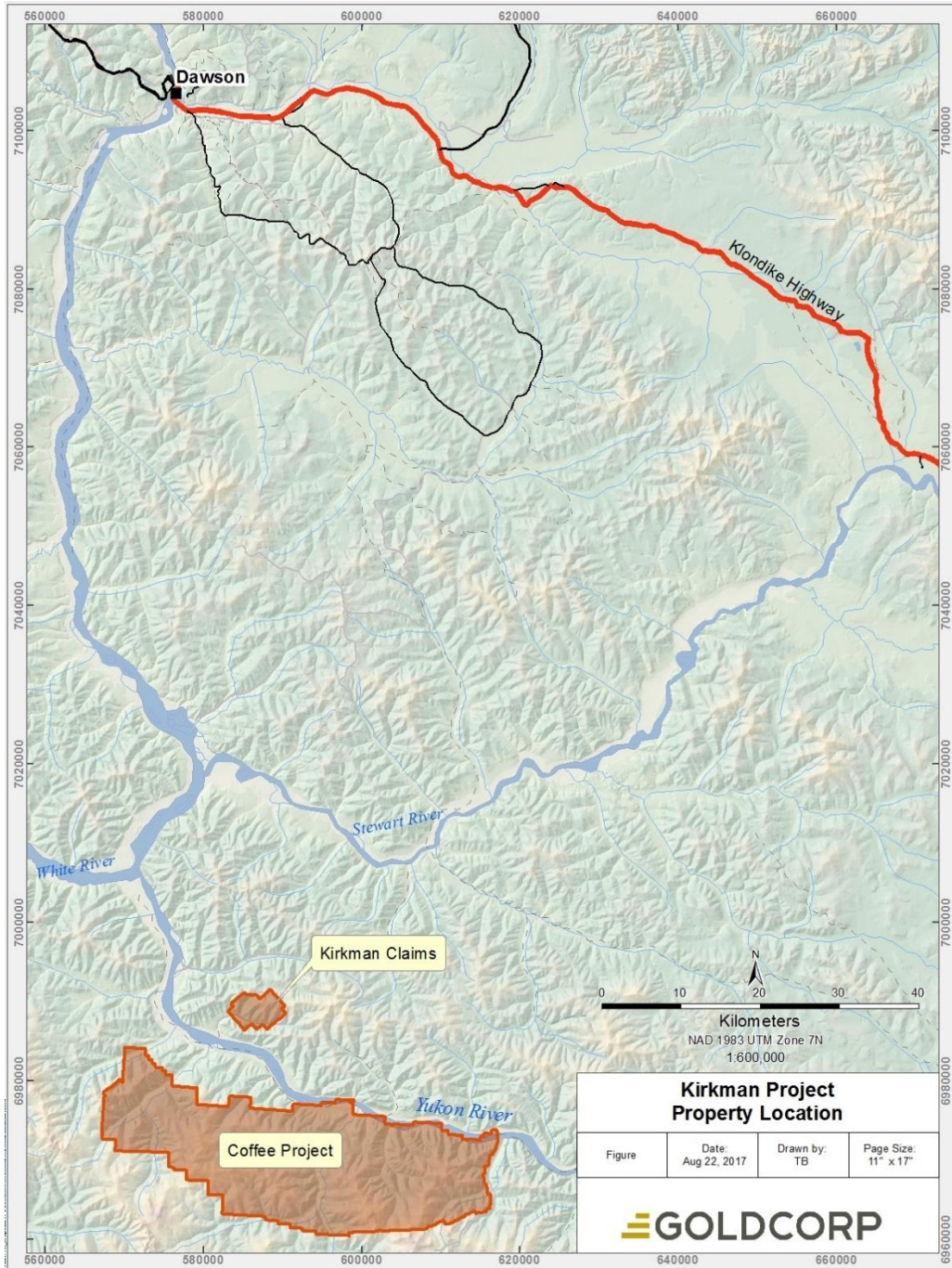


Figure 1 Location of the Kirkman claims, 115 km south of Dawson City, west-central Yukon. Coordinate system is UTM NAD83, zone 7.

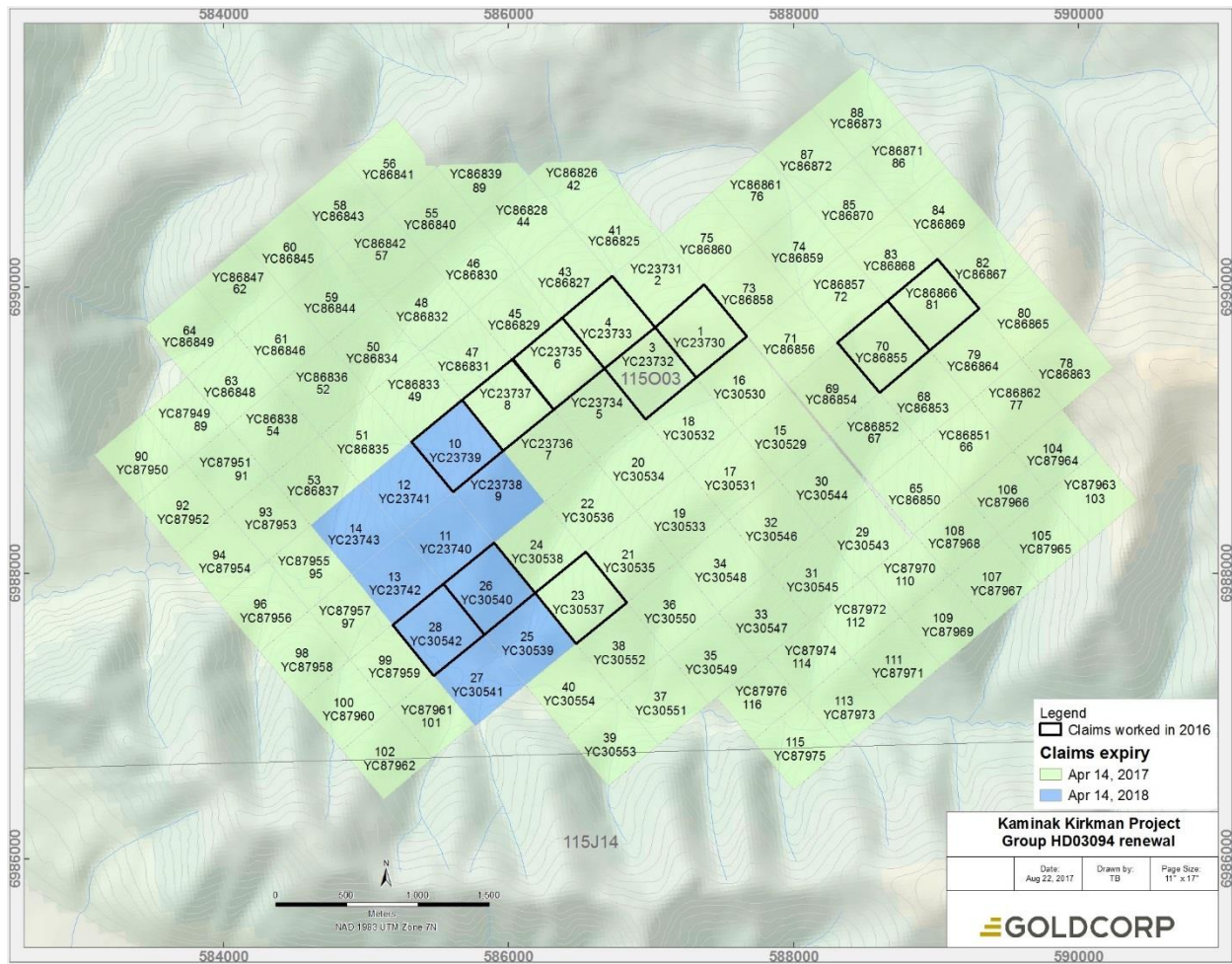


Figure 2 Kirkman claims. Coordinate system is UTM NAD83, zone 7.

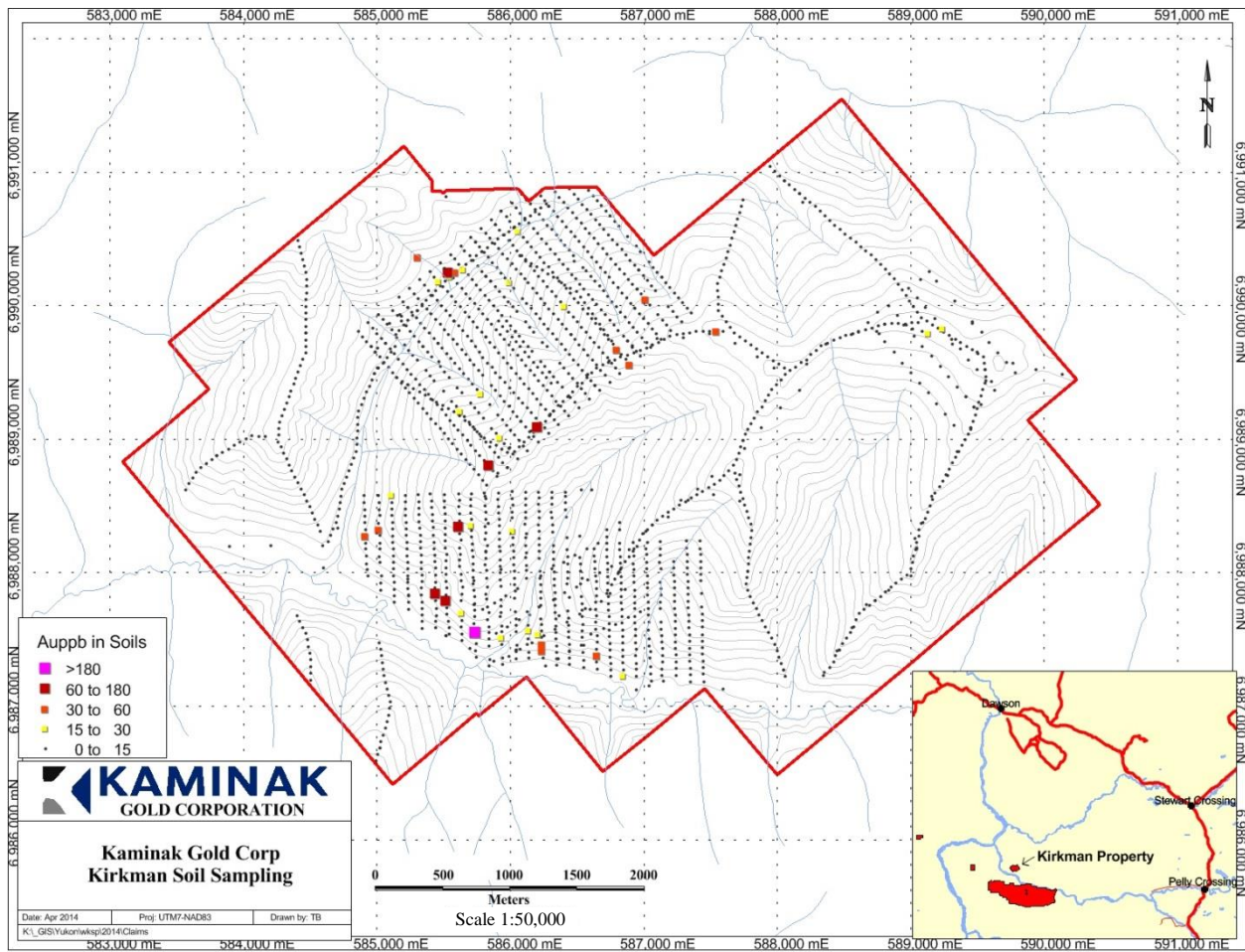


Figure 3 Summary map of historic soil sampling on the KIRKMAN property. Coordinate system is UTM NAD83, zone 7.

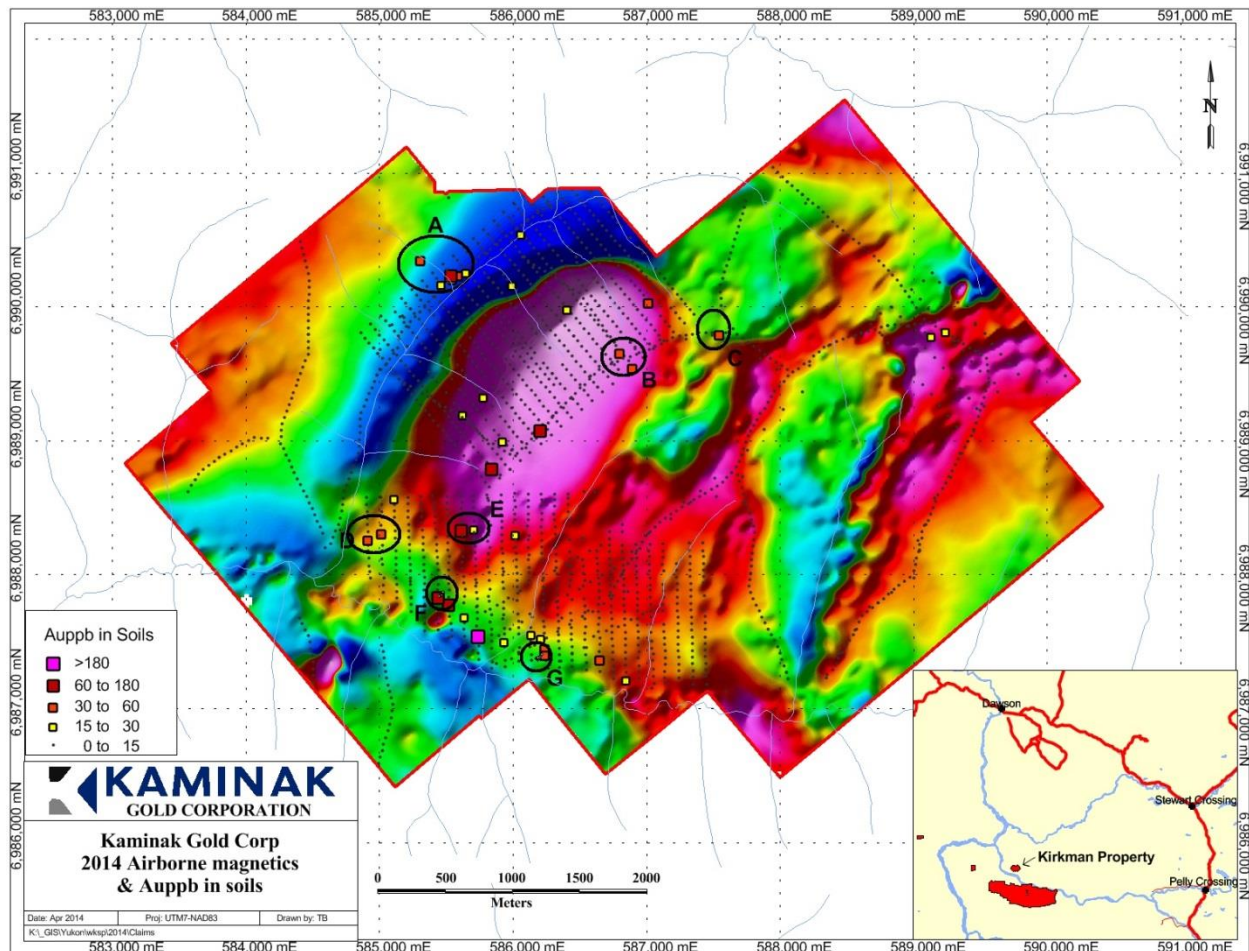


Figure 4 Summary previous Airborne Magnetic survey over KIRKMAN property. Coordinate system is UTM NAD83, zone 7.

6.0 GEOLOGICAL SETTING

6.1 Regional Geology

The KIRKMAN claims region is underlain by the Yukon-Tanana terrane, which is the basement for Mesozoic to Cenozoic plutons and batholiths including those from the Dawson Range and Cassiar intrusive suites (Figure 5). Cretaceous intrusive rocks are spatially associated with the White Gold and Coffee projects, in addition to a number of other gold-bearing mineral deposits in the region such as Sonora Gulch, Freegold Mountain and Casino.

6.2 Property Geology

Rocks from the Kirkman area are assigned to the Yukon-Tanana terrane on regional geological maps and the claims cover two different rock units. The northeast part of the claim block is underlain by quartz-mica schist, and the southern part of the claim block is underlain by augen gneiss (Figure 6).

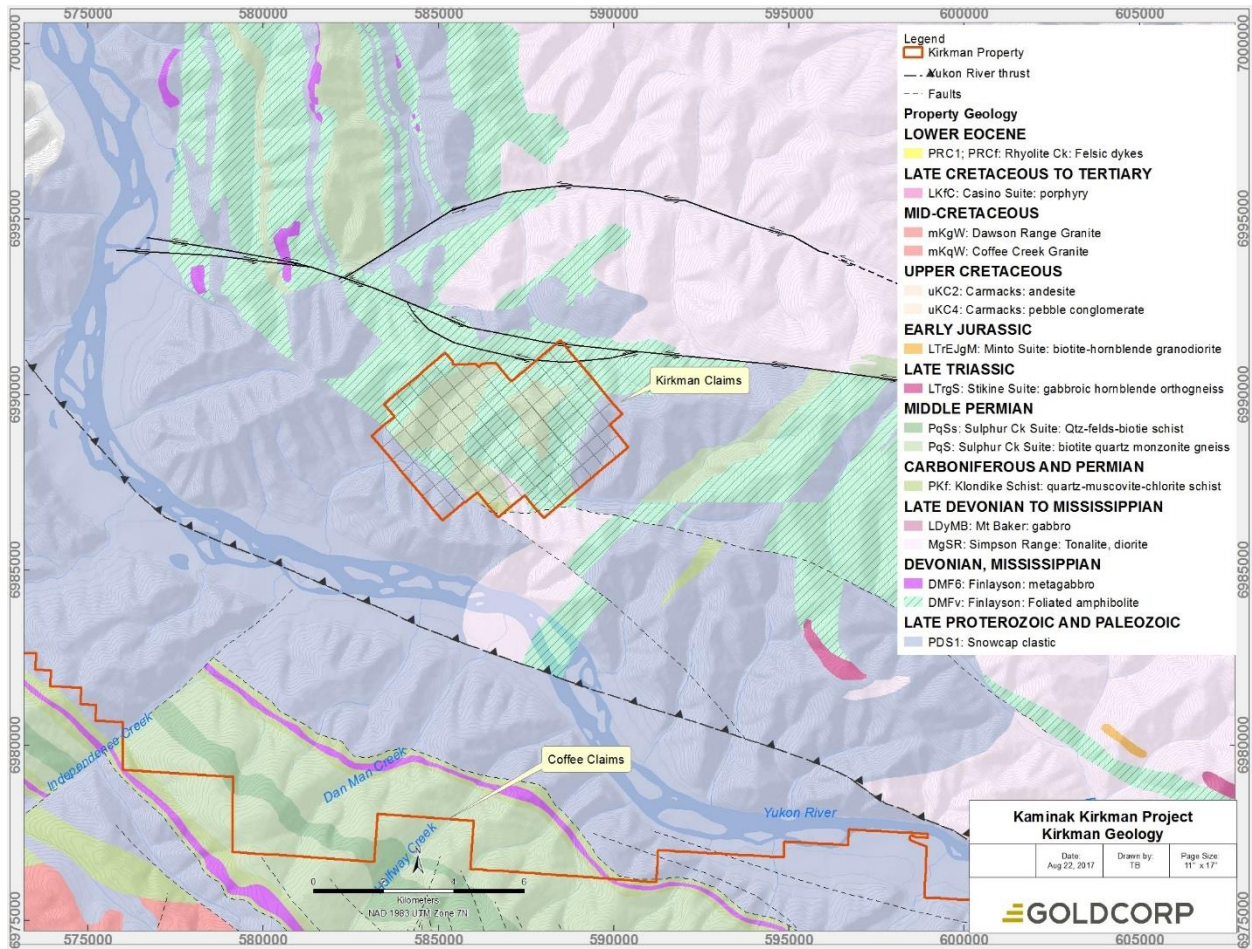


Figure 5 Regional geological setting of the Kirkman claims (after Gordey and Makepeace, 1999). Coordinate system is UTM NAD83, zone 7.

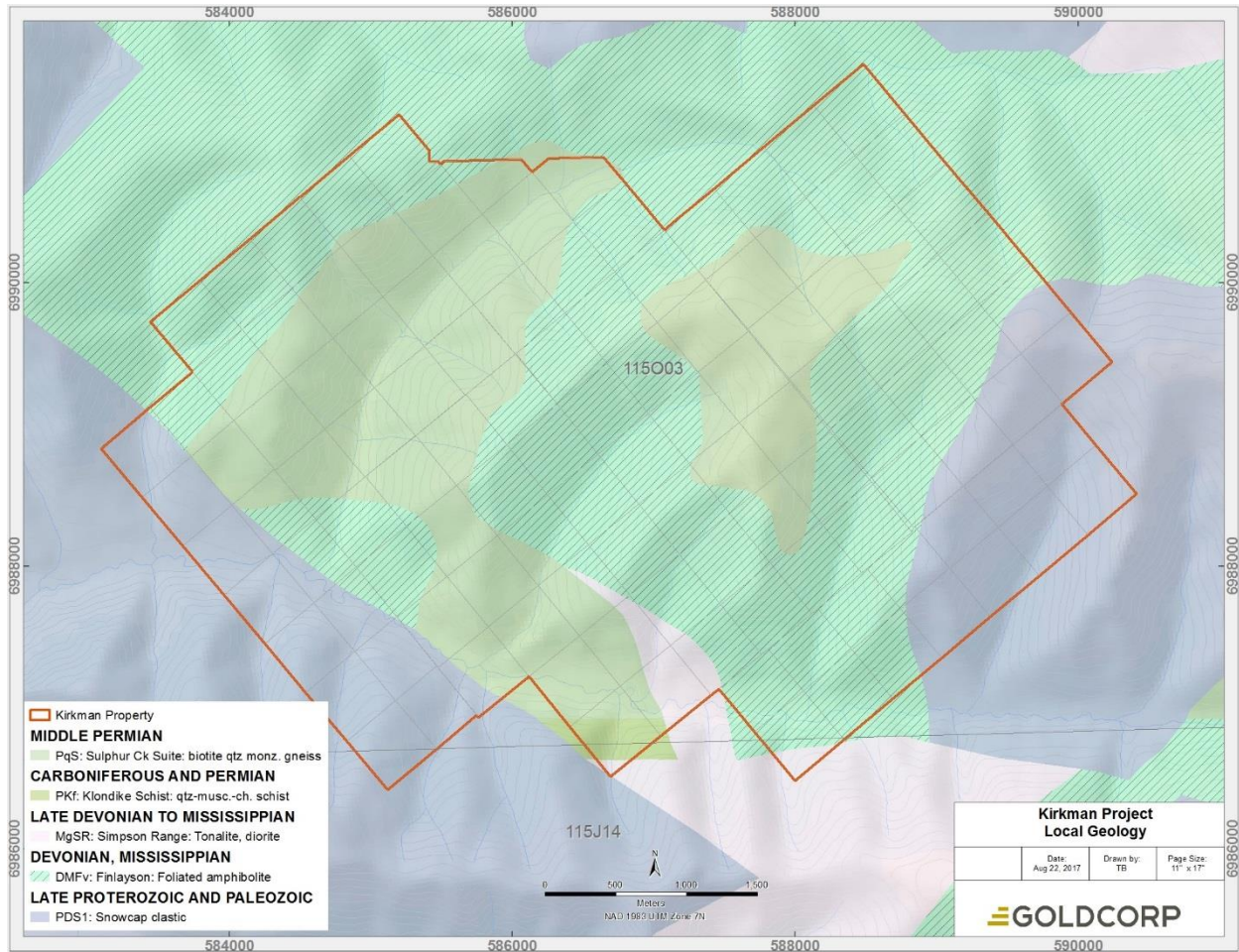


Figure 6 Local geological map for the Kirkman area (MDRU 2015). Coordinate system is UTM NAD83, zone 7.

7.0 EXPLORATION

7.1 Geology and Grab Sampling

On May 28, 2016, 18 grab samples were taken over select claims within the Kirkman property. None of the samples yielded gold or silver results beyond the detection limit of the assay lab. The results for copper, zinc and lead are indicated in figures below (Figures 7-9).

All samples were taken while traversing the central ridge of the property from the northeast into the Kirkman drainage in the southwest. Samples were collected as grabs from sporadic outcrop, but more commonly as test pits taken along the ridge itself. Soil samples which were anomalous for Au, Cu, Zn, and Pb during the 2011 program were followed-up on by collecting additional material as a check from the same coordinates.

The excavator trenches completed in 2009 by Kaminak were also visited. Though reclaimed through mechanical methods, abundant float is found throughout the area fitting the same description as previously noted: gneiss with quartz veining, brecciation, carbonate/ankerite/silica alteration, barite mineralization and limonite/hematite staining. Confirmation samples were collected during the 2016 visit – no Au mineralization was found.

The best Au results for all soil samples collected at Kirkman are concentrated slightly uphill of the creek bottom itself, on moderately steep southwest facing slopes. This is approximately where the 2009 trenching was conducted. While

all 2009 and 2016 breccia samples collected were absent of Au, there is potential for significant down-slope creep of Au-bearing soil. Prospecting along the southwestern slopes of Kirkman Creek yielded only minor outcrop of schist and gneiss consistent with Klondike/Sulphur Creek assemblage rocks.

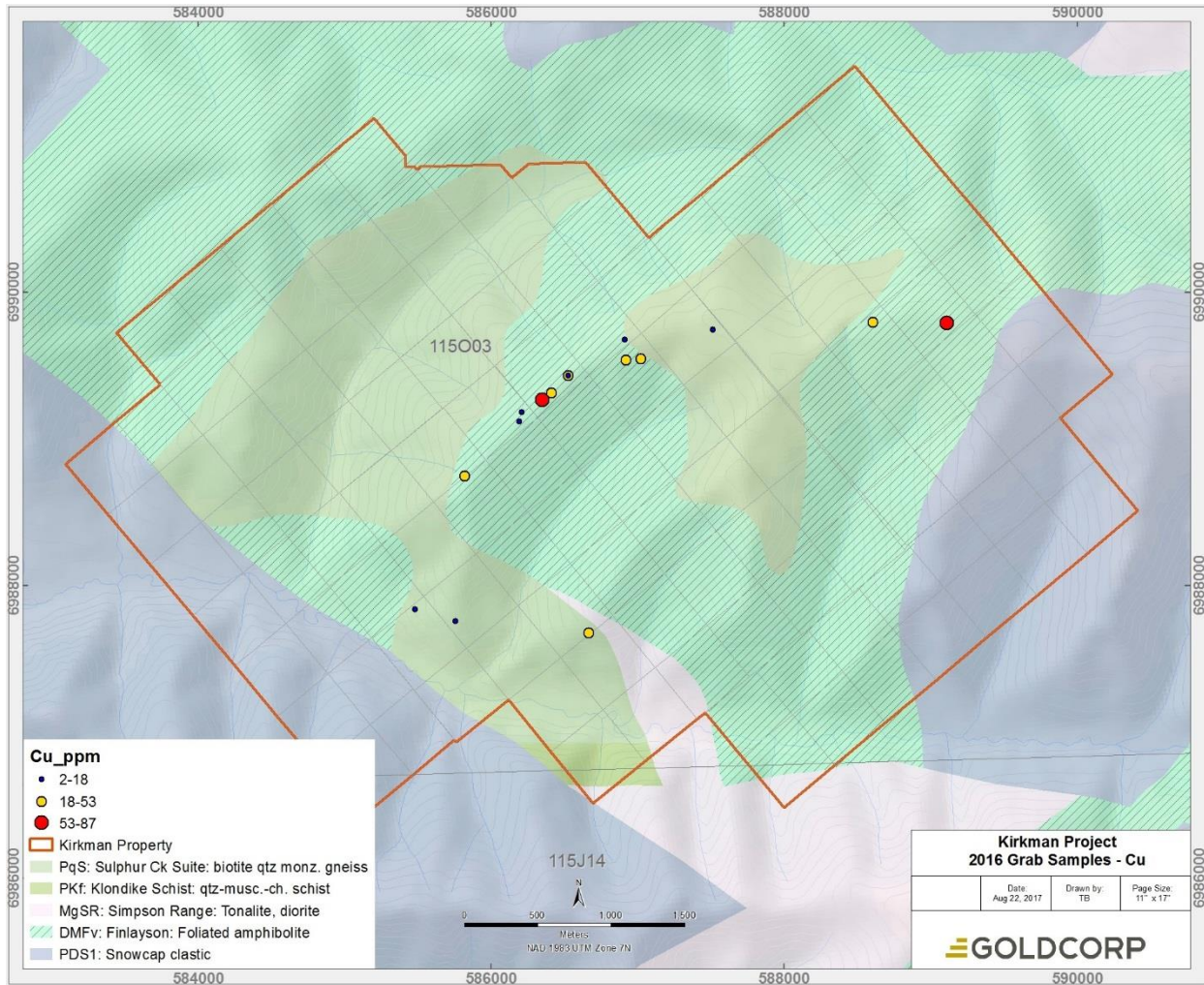


Figure 7 Cu grab samples with local geological map for the Kirkman area (after Gordey and Makepeace, 1999). Coordinate system is UTM NAD83, zone 7.

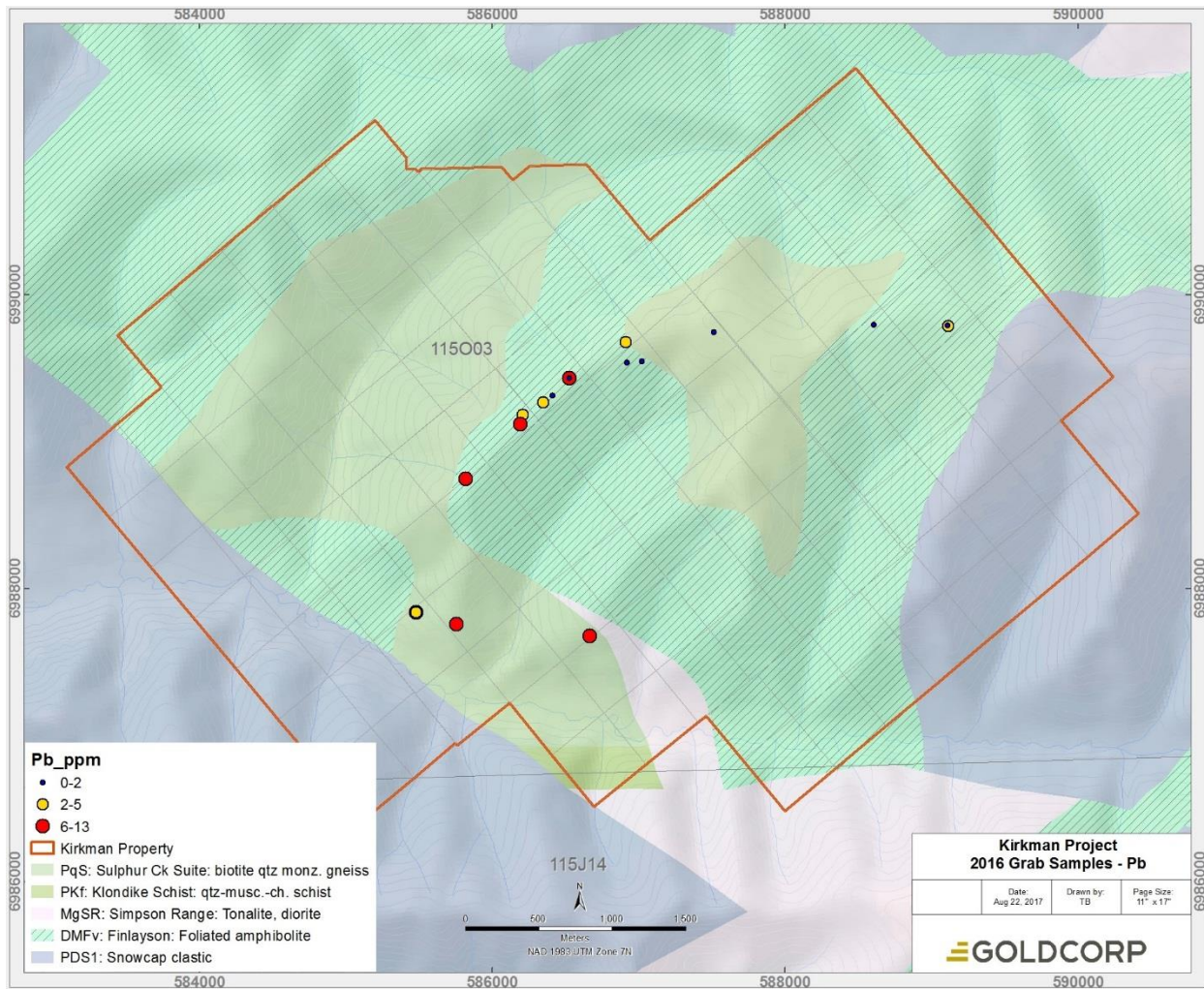


Figure 8 Pb grab samples with local geological map for the Kirkman area (after Gordey and Makepeace, 1999). Coordinate system is UTM NAD83, zone 7.

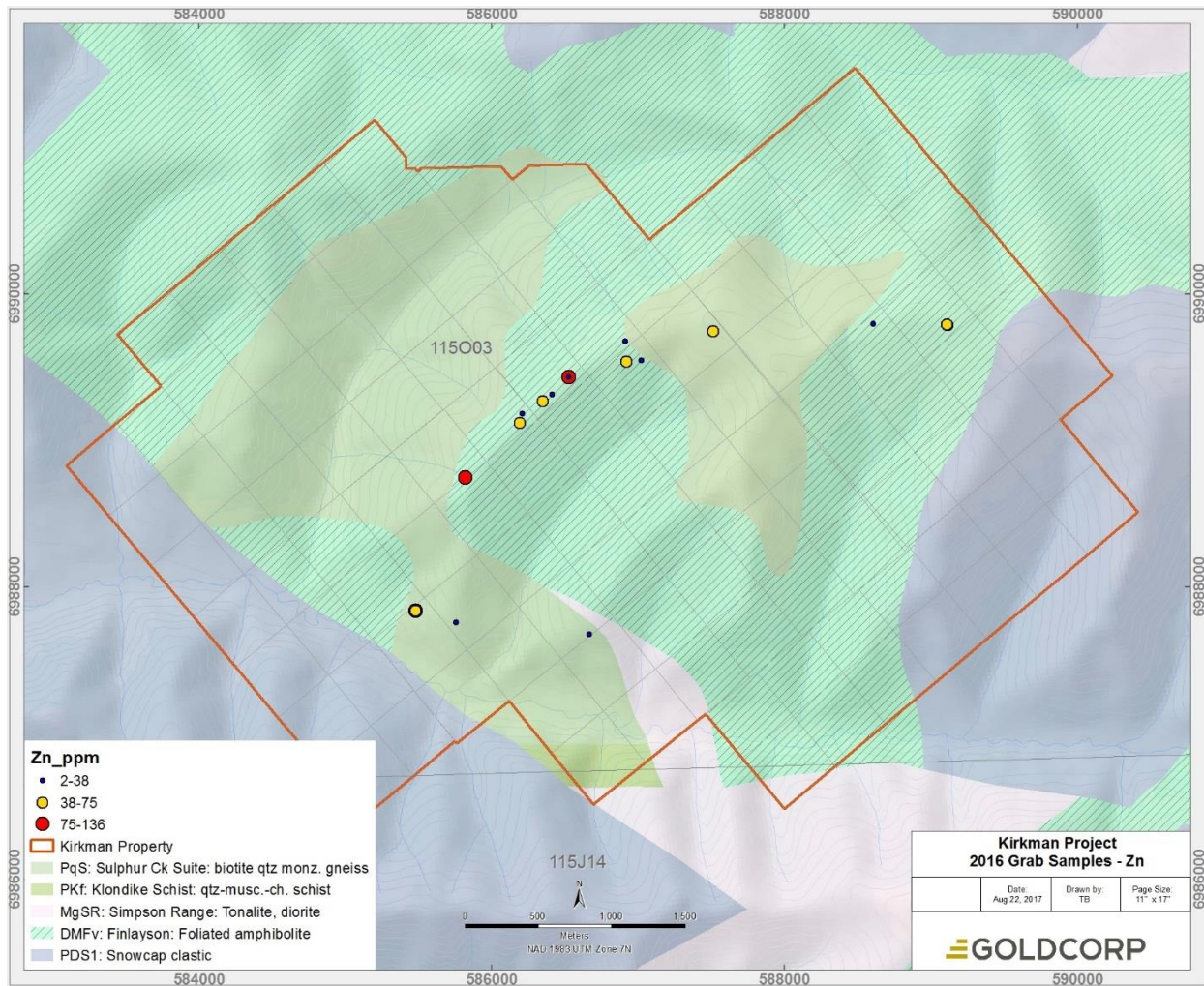


Figure 9 Zn grab samples with local geological map for the Kirkman area (after Gordey and Makepeace, 1999). Coordinate system is UTM NAD83, zone 7.

8.0 DISCUSSION AND RECOMMENDATIONS

Sampling along the main Kirkman ridge yielded no anomalous Au values. All Cu, Zn, and Pb anomalies in 2016 grab sampling are attributed to background-level values within Finlayson assemblage mafic rocks – confirmed during the 2016 traverses.

There is potential for Au anomalism within soils on the southwestern slopes of the Kirkman ridge area to be sourced from up-slope of the sample locations. Breccias found during the 2009 trenching program may represent a peripheral component of a gold-bearing mineralized system, however soil Au values are inconsistent and potentially emanate from an undercover source which may only be exposed on the steep slopes of the hill. This source was not visible during the 2016 program. No further work is recommended.

9.0 STATEMENT OF EXPENDITURES

The total expenditure for the 2016 sampling at Kirkman was \$7,596, as summarized in Table 1.

Table 1 Cost summary for the 2016 sampling program at Kirkman.

Item	cost	GST/HST	total
Geologist – sampling + prospecting (\$835/day x 2)	\$1,670.00		\$1,670.00
Analytical (21 samples)	\$493.88	\$24.69	\$518.57
Helicopter time + fuel (\$1425+tax/hr. x 2hr)	\$2,850	\$342	\$3,192
Data analysis and report writing (1 day @ \$835/day)	\$835.00		\$835.00
(3 days @ \$460/day)	\$1,380.00		\$1,380.00
Total			\$7,595.57

10.0 REFERENCES CITED

- Finnigan, Craig S., 2011 Assessment report describing geochemical work on the Kirkman claims 096219
- Gordey, S.P. and Makepeace, A.J., 1999, Yukon bedrock geology in Yukon digital geology, S.P. Gordey and A.J. Makepeace (comp.), Geological Survey of Canada Open File D3826 and Exploration and Geological Services Division, Yukon, Indian and Northern Affairs Canada, Open File 1999-1(D).
- Ryan, S., 2004A, Geochemical report Kirkman 1-14 claims, Yukon Mining Incentive Program report 094490, 14 pages.
- Ryan, S., 2004B, Stewart regional soil survey 2003, YMIP # 03-082, 56 pages.
- Ryan, S., 2005, Geochemical/geophysical report Kirkman 1-40 claims, Yukon Mining Incentive Program report 094698, 59 pages.

11.0 STATEMENT OF QUALIFICATIONS

GEOLOGIST'S CERTIFICATE
Eric N. Buitenhuis
315-2151 Front St.
North Vancouver, BC, V7H 0B7

I, Eric Buitenhuis, am a Project Geologist at Goldcorp Inc., with offices at Suite 3400–666 Burrard Street in the City of Vancouver, B.C., in the Province of British Columbia.

I am a Geoscientist in Training with the Association of Professional Geoscientists of Ontario and have been a member since April of 2011.

I am a graduate of Western University (2011) with a Bachelor of Science degree in Geology and a Master of Science degree in Geology (2013). I have practiced my profession continuously since 2013.

Since 2013 I have been involved in mineral exploration for gold deposits in the Yukon.

I am presently a full time employed Geologist and have been so since November 2013.

Dated at Vancouver, British Columbia, this 6th day of September, 2017.

Eric Buitenhuis, M.Sc Geology, GIT

12.0 APPENDIX 1 – KIRKMAN Claims

Grant#	Claim#	Expiry Date	Claim Owner	Recorded Date	Staking Date	District
YC23730	1	2016 04 14	Kaminak 100%	2003 04 14	2003 04 10	Dawson
YC23731	2	2016 04 14	Kaminak 100%	2003 04 14	2003 04 10	Dawson
YC23732	3	2016 04 14	Kaminak 100%	2003 04 14	2003 04 10	Dawson
YC23733	4	2016 04 14	Kaminak 100%	2003 04 14	2003 04 10	Dawson
YC23734	5	2016 04 14	Kaminak 100%	2003 04 14	2003 04 10	Dawson
YC23735	6	2016 04 14	Kaminak 100%	2003 04 14	2003 04 10	Dawson
YC23736	7	2016 04 14	Kaminak 100%	2003 04 14	2003 04 10	Dawson
YC23737	8	2016 04 14	Kaminak 100%	2003 04 14	2003 04 10	Dawson
YC23738	9	2016 04 14	Kaminak 100%	2003 04 14	2003 04 10	Dawson
YC23739	10	2016 04 14	Kaminak 100%	2003 04 14	2003 04 10	Dawson
YC23740	11	2016 04 14	Kaminak 100%	2003 04 14	2003 04 10	Dawson
YC23741	12	2016 04 14	Kaminak 100%	2003 04 14	2003 04 10	Dawson
YC23742	13	2016 04 14	Kaminak 100%	2003 04 14	2003 04 10	Dawson
YC23743	14	2016 04 14	Kaminak 100%	2003 04 14	2003 04 10	Dawson
YC30529	15	2016 04 14	Kaminak 100%	2004 04 21	2004 04 16	Dawson
YC30530	16	2016 04 14	Kaminak 100%	2004 04 21	2004 04 16	Dawson
YC30531	17	2016 04 14	Kaminak 100%	2004 04 21	2004 04 16	Dawson
YC30532	18	2016 04 14	Kaminak 100%	2004 04 21	2004 04 16	Dawson
YC30533	19	2016 04 14	Kaminak 100%	2004 04 21	2004 04 16	Dawson
YC30534	20	2016 04 14	Kaminak 100%	2004 04 21	2004 04 16	Dawson
YC30535	21	2016 04 14	Kaminak 100%	2004 04 21	2004 04 16	Dawson
YC30536	22	2016 04 14	Kaminak 100%	2004 04 21	2004 04 16	Dawson
YC30537	23	2016 04 14	Kaminak 100%	2004 04 21	2004 04 16	Dawson
YC30538	24	2016 04 14	Kaminak 100%	2004 04 21	2004 04 16	Dawson
YC30539	25	2016 04 14	Kaminak 100%	2004 04 21	2004 04 16	Dawson
YC30540	26	2016 04 14	Kaminak 100%	2004 04 21	2004 04 16	Dawson
YC30541	27	2016 04 14	Kaminak 100%	2004 04 21	2004 04 16	Dawson
YC30542	28	2016 04 14	Kaminak 100%	2004 04 21	2004 04 16	Dawson
YC30543	29	2016 04 14	Kaminak 100%	2004 04 21	2004 04 16	Dawson
YC30544	30	2016 04 14	Kaminak 100%	2004 04 21	2004 04 16	Dawson
YC30545	31	2016 04 14	Kaminak 100%	2004 04 21	2004 04 16	Dawson
YC30546	32	2016 04 14	Kaminak 100%	2004 04 21	2004 04 16	Dawson
YC30547	33	2016 04 14	Kaminak 100%	2004 04 21	2004 04 16	Dawson
YC30548	34	2016 04 14	Kaminak 100%	2004 04 21	2004 04 16	Dawson
YC30549	35	2016 04 14	Kaminak 100%	2004 04 21	2004 04 16	Dawson
YC30550	36	2016 04 14	Kaminak 100%	2004 04 21	2004 04 16	Dawson
YC30551	37	2016 04 14	Kaminak 100%	2004 04 21	2004 04 16	Dawson
YC30552	38	2016 04 14	Kaminak 100%	2004 04 21	2004 04 16	Dawson
YC30553	39	2016 04 14	Kaminak 100%	2004 04 21	2004 04 16	Dawson
YC30554	40	2016 04 14	Kaminak 100%	2004 04 21	2004 04 16	Dawson
YC86825	41	2016 04 14	Kaminak 100%	2009 05 19	2009 05 08	Dawson
YC86826	42	2016 04 14	Kaminak 100%	2009 05 19	2009 05 08	Dawson
YC86827	43	2016 04 14	Kaminak 100%	2009 05 19	2009 05 08	Dawson
YC86828	44	2016 04 14	Kaminak 100%	2009 05 19	2009 05 08	Dawson
YC86829	45	2016 04 14	Kaminak 100%	2009 05 19	2009 05 08	Dawson
YC86830	46	2016 04 14	Kaminak 100%	2009 05 19	2009 05 08	Dawson
YC86831	47	2016 04 14	Kaminak 100%	2009 05 19	2009 05 08	Dawson

Grant#	Claim#	Expiry Date	Claim Owner	Recorded Date	Staking Date	District
YC87957	97	2015 04 14	Kaminak 100%	2009 06 18	2009 06 12	Dawson
YC87958	98	2015 04 14	Kaminak 100%	2009 06 18	2009 06 12	Dawson
YC87959	99	2015 04 14	Kaminak 100%	2009 06 18	2009 06 12	Dawson
YC87960	100	2015 04 14	Kaminak 100%	2009 06 18	2009 06 12	Dawson
YC87961	101	2015 04 14	Kaminak 100%	2009 06 18	2009 06 12	Dawson
YC87962	102	2015 04 14	Kaminak 100%	2009 06 18	2009 06 12	Dawson
YC87963	103	2015 04 14	Kaminak 100%	2009 06 18	2009 06 12	Dawson
YC87964	104	2015 04 14	Kaminak 100%	2009 06 18	2009 06 12	Dawson
YC87965	105	2015 04 14	Kaminak 100%	2009 06 18	2009 06 12	Dawson
YC87966	106	2015 04 14	Kaminak 100%	2009 06 18	2009 06 12	Dawson
YC87967	107	2015 04 14	Kaminak 100%	2009 06 18	2009 06 12	Dawson
YC87968	108	2015 04 14	Kaminak 100%	2009 06 18	2009 06 12	Dawson
YC87969	109	2015 04 14	Kaminak 100%	2009 06 18	2009 06 12	Dawson
YC87970	110	2015 04 14	Kaminak 100%	2009 06 18	2009 06 12	Dawson
YC87971	111	2015 04 14	Kaminak 100%	2009 06 18	2009 06 12	Dawson
YC87972	112	2015 04 14	Kaminak 100%	2009 06 18	2009 06 12	Dawson
YC87973	113	2015 04 14	Kaminak 100%	2009 06 18	2009 06 12	Dawson
YC87974	114	2015 04 14	Kaminak 100%	2009 06 18	2009 06 12	Dawson
YC87975	115	2015 04 14	Kaminak 100%	2009 06 18	2009 06 12	Dawson
YC87976	116	2015 04 14	Kaminak 100%	2009 06 18	2009 06 12	Dawson