

GEOLOGICAL AND GEOCHEMICAL REPORT

ON THE

NOOC 1-24 CLAIMS

WHITEHORSE MINING DISTRICT

NTS 105E/01

UTM NAD 83 ZONE 8: 528500E, 6773500N

LATITUDE 61° 05' 58" LONGITUDE 134° 28 '15"

**Work conducted: Sept. 23 & 24, 2016
(Geological mapping, Prospecting & Geochemical Sampling)**



BY: ROGER HULSTEIN, P. GEO.

MARCH 31, 2017

SUMMARY

A strong gossan exposed in a landslide on the west side of the Open Creek valley was spotted during a reconnaissance flight in 2014. The Teslin Mountain Project grew out of this following research of the available literature and a successful YMEP application in 2015 (YMEP # 15-069). Positive results from the 2015 fieldwork led to the staking of the NOOC 1-24 Yukon quartz claims on February 26, 2016. The project is located in the Whitehorse trough about 60 km northeast of Whitehorse Yukon. In 2016 additional work, also partly funded by the YMEP program (YMEP # 16-019), consisting of geological mapping, prospecting and geochemical sampling (rock and soil) was carried out on the NOOC Claims

In 2015, an eight day exploration program consisting of prospecting, geochemical sampling and geological mapping was carried out by Danièle Héon and Roger Hulstein on three separate targets. One of these was the area subsequently staked as the NOOC claims, where a number of soil and rock samples returned anomalous gold values, up to 823 ppb and 77.8 ppb respectively, and anomalous values for several pathfinder elements (As, Sb, Pb, Zn).

Rock and soil sampling based out of a camp on the NOOC claims focused on the Pond Zone. The area currently has an approximate minimum extent of 200 m by 300 m based on scattered outcrops of quartz and/or carbonate-veined shale, siltstone – sandstone – conglomerate, limestone and carbonate-altered intrusive of indeterminate type (likely intermediate to mafic in composition). All units are likely part of the Jurassic Laberge Group. There are also local areas of silicification, brecciation and weak zones of carbonate – quartz stockwork cutting the same rock units.

A total of five rock and 23 soil samples confirmed the anomalous results obtained in 2015, but did not extend the anomalous area or locate higher grade mineralization. A rock sample best described as a rough chip over approximately 4 m of quartz veined and sheared sandstone - siltstone returned 373 ppb gold. A soil sample collected within 5 m of the 2015 highest gold in grab rock sample (823 ppb) returned 830 ppb gold and 2500 ppm arsenic. The quartz veining and fracturing – shearing appear to be late stage and possibly high level, likely related to faulting and perhaps the nearby Open Creek volcanic formation.

Low values from the few samples collected outside the Pond Zone anomaly coupled with landslide and glacial cover precluded extending the anomaly and obtaining better soil sample coverage. Although the Pond Zone and area has been prospected and sampled for about a total of four person days in 2015 and 2016 the exact nature of the mineralization and its limits are still unknown. Additional work is required to determine its significance.

At the Pond Zone, where the glacial cover severely hinders exploration, additional surface work such as trenching the gold in rock samples located to date should be carried out to determine the character and extent of known mineralization. A low level close spaced aeromagnetic survey, or alternatively a ground based survey, is recommended over this area to help determine trends obscured by the glacial cover. Any trends suspected of being related to the anomalous rock and soil samples would likely need to be further evaluated by geophysics, such as IP and or EM, followed by trenching and or drilling of any prospective anomalies.

TABLE OF CONTENTS

Summary.....	ii
Table of Contents.....	iii
Introduction.....	1
Location, Access and Land Status.....	3
Topography, Vegetation and Climate.....	3
History.....	3
Property.....	4
Regional Geology.....	4
Regional Geophysical data.....	6
Property Geology and Mineralization.....	7
Geochemistry.....	11
Conclusions and Recommendations.....	12
References.....	13
Statement of Qualifications.....	14

LIST OF PHOTOS

Photo 1. False gossan NOOC claims, looking southwest, composed of orange weathering lapilli tuffs exposed in landslide.....	6
Photo 2. Pond Zone, Rock sample Q009322 (373 ppb Au) from the stripped outcrop and soil sample I030102 (42.1 ppb Au) at pink ribbon, hammer is approximately 75 cm long.....	9
Photo 3. Pond Zone, looking westerly at soil sample site I030121 (830 ppb Au) and false gossan over Open Creek Volcanics in the background.....	10
Photo 4. The Debicki Occurrence, looking northerly at limonitic weathering sheared and faulted granodiorite.....	11

LIST OF FIGURES

Figure 1. Location, Teslin Mountain Project.....	2
Figure 2. Regional Geology, Mineral Occurrences, Stream Sediment Geochemistry and Quartz Claims.....	in pocket
Figure 3. Camp 2016 – 2, 2016 Tracks and Waypoints.....	in pocket
Figure 4. Claim Map, NOOC Claims.....	5
Figure 5. Camp 16-2 NOOC Claims, 2015 – 2016 Field Stations & Soil and Rock Sample Locations.....	in pocket
Figure 6. Pond Zone, Geology and Gold Geochemistry.....	in pocket
Figure 7. Pond Zone, Gold Geochemistry.....	in pocket
Figure 8. Pond Zone, Arsenic Geochemistry.....	in pocket
Figure 9. Geological Legend for Figures 5 & 6.....	in pocket

LIST OF APPENDICES

- Appendix A: Analytical Certificates
- Appendix B: Rock Sample Descriptions and Analytical Results
- Appendix C: Soil Sample Descriptions and Analytical Results
- Appendix D: Field Stations
- Appendix E: Digital Data

Cover photo: Camp 16-2, Pond Zone in Open Creek Valley, looking NE, drainage from left side of pond flows NW. Low knolls are outcrops of sedimentary and altered intrusive rocks.

INTRODUCTION

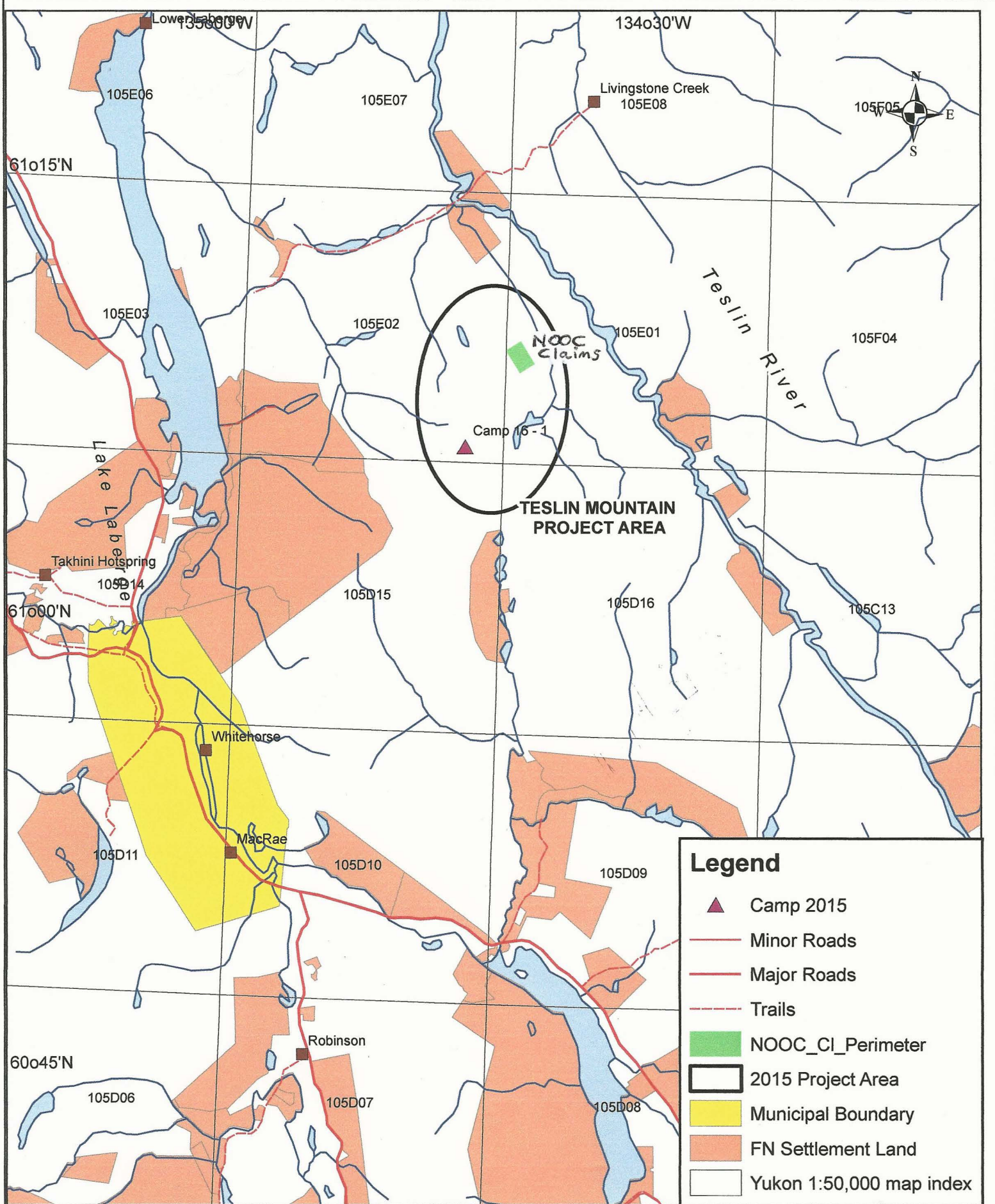
The purpose of this report is to describe the 2016 work program on the NOOC claims to fulfill requirements as stipulated in Yukon Quartz Mining Act. The program was carried out with the financial assistance provided by the Yukon Mineral Exploration Program (YMEP) contract #16-019. An exploration program of prospecting, geochemical sampling and geological mapping was conducted by Roger Hulstein, of Whitehorse, Yukon. It was carried out from September 23, 24, 2016 from a camp on the NOOC claims (Figure 1). In addition reconnaissance fixed wing flights were flown on April 2 and August 5, 2016. This report draws heavily from reports by Hulstein and Héon (2016) and Hulstein (2017).

Exploration in the Teslin Mountain Project area was initiated in 2015 after a 'gossan' (near Camp 2 on the NOOC claims), exposed in a fault scarp at the head of landslide, was spotted from the air during a reconnaissance flight in late 2014 (Hulstein, 2016). Research of the available literature in 2014 indicated that the 'gossan' was underlain by Cretaceous Open Creek volcanics (unit uKW, Figure 2) in the vicinity of a favorable structural regime.










The NOOC 1-24 claims were staked on Feb. 26, 2016 following receipt of anomalous rock and soil samples results (up to 823 ppb and 77.8 ppb gold respectively), from rock samples with quartz +/- carbonate veining cutting sandstone – siltstone, feldspathic epiclastics and carbonate-altered intermediate volcanic - intrusive rocks rock. These samples, located east of the otherwise barren 'gossan' examined in 2015, identified previously unknown mineralization and together with samples collected in 2016 define an area of approximately 200 m by 300 m and is now called the Pond Zone. Exploration targets in 2016 were accessed on foot from the camp on the NOOC claims. Work focused on following up on the anomalous soil and rock samples collected in 2015 at the Pond Zone and surrounding area.

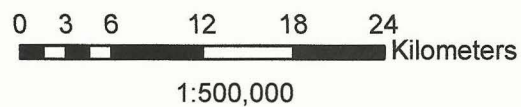
Traverse waypoints and track points (obtained by GPS) collected in 2016 on the NOOC claims are shown on Figure 3.

This report also describes the location, access, history, geological setting, known mineral occurrences and outlines a proposed exploration program to further explore the project area for gold deposits.



Legend

-  Camp 2015
-  Minor Roads
-  Major Roads
-  Trails
-  NOOC_CI_Perimeter
-  2015 Project Area
-  Municipal Boundary
-  FN Settlement Land
-  Yukon 1:50,000 map index



Teslin Mountain Project Location Map *Fig. 1*

LOCATION, ACCESS AND LAND STATUS

The NOOC claims are approximately 52 km northeast of Whitehorse (Figure 1) and accessible by helicopter. Several helicopter companies offer air charter service from Whitehorse. In 2016 Capital Helicopters provided great service utilizing Bell 206's and Robinson R44 models. The claims lie in the Open Creek valley and the north draining Open Creek is a tributary to the Teslin River. The west side of the claims cover the east facing valley slopes but the majority of the claims cover an area of low relief that has been heavily glaciated and includes a lot of wet swampy ground.

The project area covers a portion of the of the west side of 1:50,000 scale NTS map sheet 105E/01. The approximate center of the claim block is latitude 61° 05' 58", longitude 134° 28' 15" and Universal Traverse Mercator coordinates are North American Datum 83 Zone 8, 528500E east and 6773500 west.

The NOOC 1-24 claims were staked over the Pond Zone and surrounding area on Feb 26, 2016 and are recorded with the Whitehorse Mining Recorder (Figure 4). The registered owner is Roger Hulstein who holds them in a 49%/51% partnership with Danièle Héon (51%). The claims were staked to cover a zone of auriferous quartz +/- carbonate veining in the Open Creek valley bottom (the Pond Zone).

There are no large areas of First Nations owned lands and no areas withdrawn from staking or development in the NOOC 1-24 claim area.

TOPOGRAPHY, VEGETATION AND CLIMATE

Topography in the region is typical of an incised peneplain (Yukon Plateau) with steep hillsides and rounded crests. Elevations range from approximately 800 m in the Open Creek valley to about 1800 m at Teslin Mountain. Areas of high elevation locally consist of rugged alpine terrain with rare patches of stagnant ice and abundant evidence of recently departed alpine glaciers. Areas of lower elevation and the valleys, approximately below 1350 m elevation, are moderately to densely vegetated. Larger valleys such as the Open Creek valley are broad and filled with glacial debris.

The climate in the project area is variable with warm summers and long cold winters. Precipitation is light, with moderate snowfalls during the winter months. Depending on the elevation the typical field season extends from late May to middle - late September. Permafrost can be expected anywhere within the project area, particularly on northerly facing slopes.

HISTORY

Little mineral exploration history has been documented within the project area. Three Yukon Minfile occurrences are found in the area (Figure 2), one, the Karin #105E 055, is listed as an unknown and another, the Sline #105E 038, is listed as an anomaly (Yukon Minfile, 2015). The Sline was staked over a geochemical anomaly by DuPont in 1981 and little else is known. The third occurrence, the Debicki #105E 050, was staked in 1982 by Inco over epithermal type veins and alteration covering a limonitic 100 m x 50 m zone of weakly sheared and fractured hornblende granodiorite adjacent to grey weathering Open Creek volcanic rocks. No further work was recorded. A bulldozer trail up the creek bottom on the east side of Teslin Mountain indicates that exploration, not recorded in the literature, also took place there. A large claim block was staked in 2011 by Golden Predator Corp. over an anomalous (gold) RGS sample on the west side of Teslin Mountain. The claim block was subsequently reduced in size and now consists of 20 claims with an expiry date in 2019. Rumor has it that the exploration results to date are encouraging for gold mineralization.

Outside the project area, a Minfile occurrence, the Hig (#105E 024), is covered by 15 Quartz claims. This is a weak porphyry occurrence discovered in 1975 by United Keno Exploration and is currently held by a numbered company (Yukon Minfile, 2015).

PROPERTY

The NOOC property consist of 24 two-post unsurveyed mineral claims (Figure 4) staked under the Yukon Quartz Mining Act totalling approximately 501 hectares (1238 acres) in the Whitehorse Mining District. The claims are shown on Yukon Quartz Sheet 105E-01 and claim data are as follows:

<u>Claim Name</u>	<u>Grant No.s</u>	<u>Staking Date</u>	<u>Recording Date</u>	<u>Expiry Date*</u>
NOOC 1 – NOOC 24	YD74431 – YD74454	Feb., 26, 2016	March 1, 2016	March 1, 2021

*Subject to the acceptance of this report.

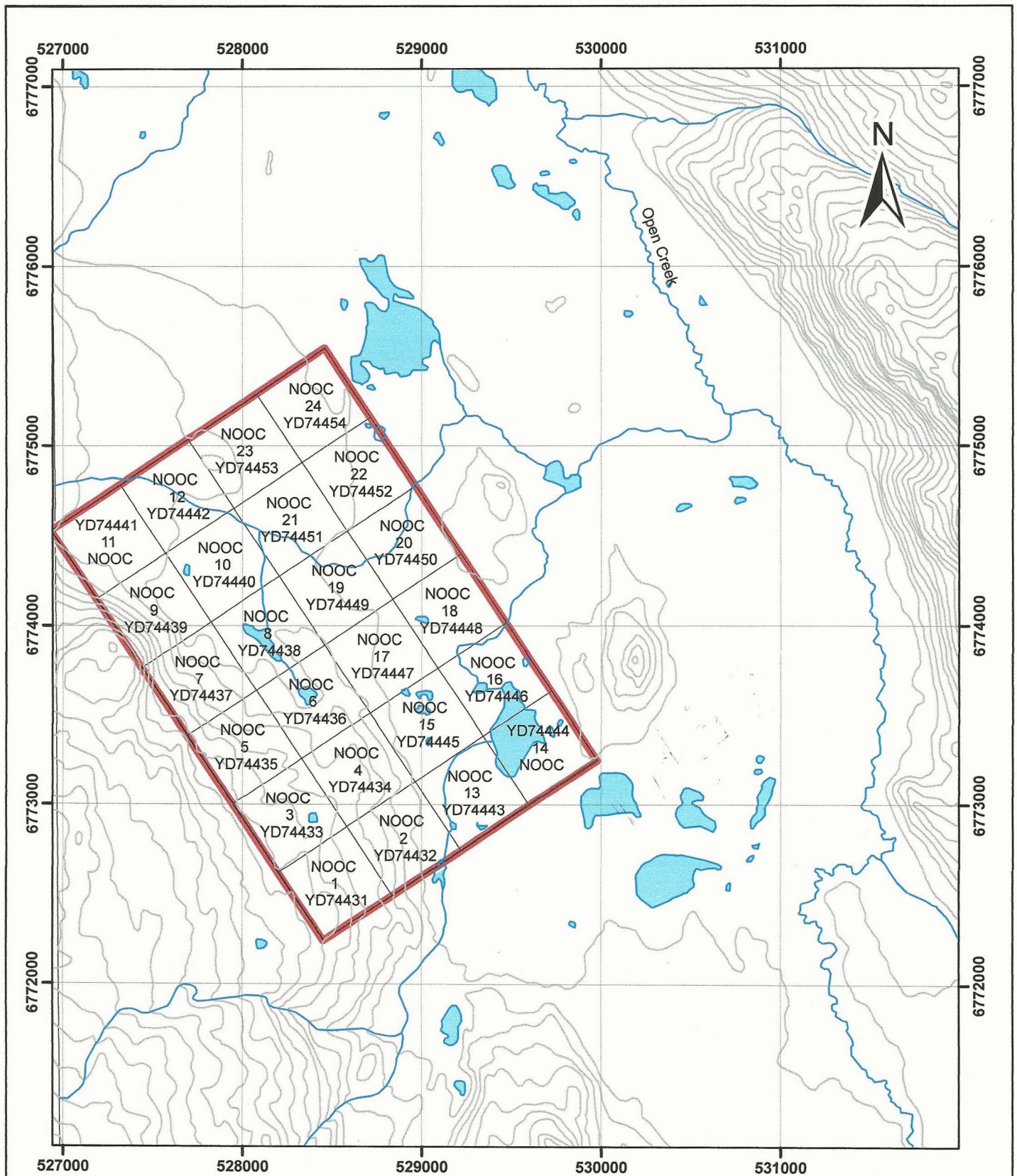
The claims are registered with the Whitehorse Mining Recorder and the owner is Roger Hulstein who holds them in a 49%/51% partnership with Danièle Héon.

REGIONAL GEOLOGY

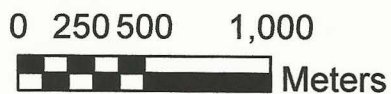
The Project Area was mapped by Tempelman-Kluit in the 1980's and most of the area has not been revisited since (Tempelman-Kluit, 2009). The YGS carried out a mapping program in the area this in 2015 and 2016 and the results are presently awaited. The area is underlain by rocks of the Whitehorse Trough, a frontier intermontane basin in south-central Yukon, south of the Tintina fault (Colpron, 2011). As described by the Yukon Geological Survey (Anonymous, 2015);

The trough is an overlap assemblage, with strata unconformably overlying both the Stikine terrane (Lewes River arc), and also the Quesnel terrane locally. The trough originated as a forearc basin (based on structural geology and detrital clast content, but progressively evolved to become a synorogenic piggy-back basin sometime after the end of the Pliensbachian (Colpron 2014). The basin straddles the Yukon – British Columbia border, with its northernmost margin in the Carmacks area, and covers an area of approximately 2.44 million hectares. Its geology is characterized by an approximately 3000m thick deformed Jurassic sedimentary succession (the Laberge Group), underlain by a depositional basement of Triassic sediments (the Lewes River Group), and capped by Cretaceous and Neogene volcanic rocks.

Initially an apparent gossan now known to consist of Open Creek formation volcanics (map unit uKW, Photo 1) prompted the 2015 exploration program. These volcanics are orange weathering lapilli tuffs, of dacitic composition. They are exposed as landslide rubble and can be readily seen from the air. This landslide is found along the trace of a major fault interpreted to be a splay of the Teslin Fault. This structure may have potential to be a mineralizing structure, due to its depth and its long range of activity (Colpron, pers. com.). The fault on the east side of the volcanics as mapped by Tempelman-Kluit (2009), may have contributed to the landslide event that created the large area of orange weathering land slide rubble.



TESLIN MOUNTAIN, YUKON CLAIM MAP NOOC CLAIMS



Note; Claim information from: www.yukonminingrecorder.ca
Date: Dec. 30, 2016 Drawn by: RWH

Grid: UTM NAD83 Zone 8, NTS 105E-01
1:30,000

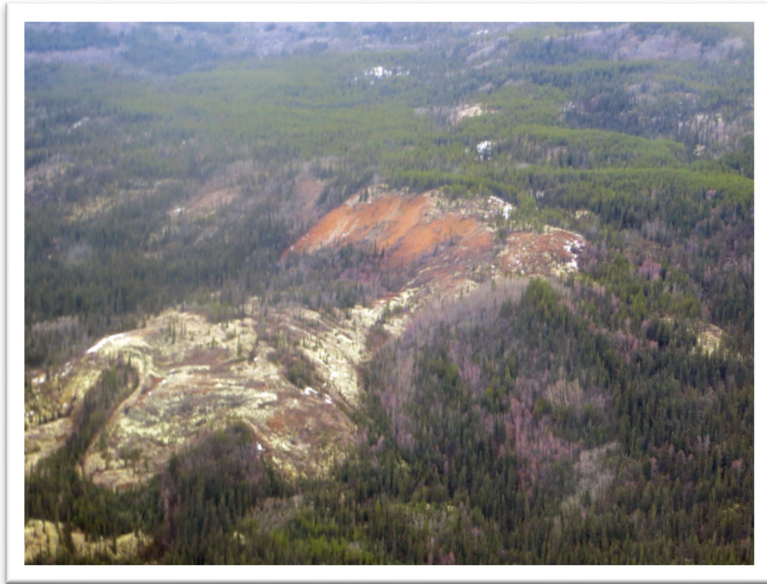


PHOTO 1. FALSE GOSSAN ON NOOC CLAIMS, LOOKING SOUTHWEST, COMPOSED OF ORANGE WEATHERING LAPILLI TUFFS EXPOSED IN LANDSLIDE.

These volcanic rocks, dated as late Cretaceous, overlie the Jurassic-Triassic stratigraphy and are thought to be the extrusive equivalent of the intrusive rocks hosting the Red Mountain molybdenum deposit, located to the southeast.

Two sedimentary units are found within the project area, the Triassic Lewes River and Jurassic Laberge Groups (map units uTrAK and JL respectively, Figure 2). The formations that are of interest in project area, Aksala of the Lewes River and Richthofen of the Laberge Group, have similar lithologic description. Both are comprised of shale, conglomerate, limestone, siltstone and porphyry flows. One or both of these units may underlie the Pond Zone.

Two Cretaceous granitoid intrusions are found within the project area (map units mKW and EKgT, Figure 2) north and south of Teslin Mountain and intrude the sedimentary and volcanic units.

The Debicki Minfile occurrence (#105E 050), is described as chalcedony and jasperoid veins, silicified breccia, calcite and clay minerals associated with a 50 m x 100 m stockwork and alteration zone in a Tertiary porphyry dyke (Yukon Minfile, 2015). The occurrence location is on the margin of a granitoid intrusion (map unit mKW, Figure 2). The occurrence is visible from the air as a limonitic weathering zone and is cut by northerly trending shear zones, joint sets and andesitic dykes of the Open Creek volcanics. Only minor quartz veining, calcite veining and silicification were found when the occurrence was examined in 2016.

REGIONAL GEOPHYSICAL DATA

The following is from Hulstein (2016):

The area mapped as being underlain by the Open Creek volcanics has a variable magnetic signature, typical of volcanic rocks. A strong NE trending magnetic low linear cuts the Open Creek volcanic package and separates the area into separate north and south highs. The northern magnetic high appears stronger of the two and

may represent a vent zone or volcanic neck as well being a local topographic high. The false 'gossan' at camp 2 is located near the NE trending magnetic low.

The regional NW trending fault zones that underlie the Open Creek valley and the Teslin River valley show up in part as strong NW trending magnetic lows and highs. The Pond Zone, an area of weak auriferous quartz +/- carbonate veining cutting sedimentary rocks and carbonate altered intrusive, is underlain by a magnetic low near subtle magnetic highs.

PROPERTY GEOLOGY AND MINERALIZATION

NOOC Claims

The geology of the NOOC claims can be subdivided into two major components; the upper Cretaceous Open Creek Formation (map unit uKW, Figure 5) and Jurassic Laberge Group (map unit JL, Richthofen Formation). The Lewes River Group (map unit uTrAK, Aksala Formation) is mapped by Colpron (2014) as being in fault contact with the Laberge Group and as the description of the two formations is similar the actual rock unit(s) found to the east of the Open Creek formation, underlying the Pond Zone and most of the NOOC claims, is uncertain.

The Pond Zone (Figure 6), located on either side of the two small ponds in the valley at the foot of the landslide on the east side of the Open Creek formation, returned a number of rock and soil samples with anomalous gold and pathfinder element values in 2015. Silt sample 122568 collected in 2015 from a meandering creek draining the area (choked with glacially derived sediment), contained 56.1 ppb Au. Whale back type outcrops have been scoured by glaciers from a southeasterly direction, the same trend as the creek and ponds. Outcrops consist of siltstone – sandstone (map unit SS), limestone (map unit LST), shale (map unit SHL), conglomerate (map unit CON) and a carbonate altered intrusive (map unit INT) of undetermined type (intermediate to mafic in composition). The siliciclastics are commonly calcareous (calcite altered?) and the siltstone-sandstone units could be intermediate epiclastics in part and are commonly feldspathic.

All rock types are locally cut by thin quartz and/or carbonate veins and veinlets. There are also local areas of silicification, brecciation and weak zones of carbonate – quartz stockwork. Taken together the scattered outcrops and anomalous rock and soil samples define an anomalous area of about 300 m in an E-W direction and 200 m in an N-S direction.

In 2015 eight rock samples collected from the Pond Zone returned anomalous gold values with one sample (122615) containing 823 ppb Au and seven between 53 – 194 ppb Au (Hulstein, 2015). Silver values are less than 0.9 ppm, antimony is between 3 – 26 ppm and arsenic values for the eight samples range between 12 – 470 ppm (Figures 7 and 8). Other elements of interest returned low to background values. Due to Pleistocene glaciation, the media for effective soil sampling is far from ideal, nevertheless, utilizing a hand soil auger or collecting near surface samples below the low outcrops, anomalous gold values (42.8 and 77.8 ppb) were returned for two samples in 2015. Arsenic for four samples ranged between 31.1 – 153 ppm and antimony values for the same samples are less than 5.49 ppm.

In 2016 prospecting, geochemical rock and soil sampling in the Pond Zone area and areas to the north and south, returned low gold and pathfinder element values similar to those received in 2015. Of five rock samples (Q009320 to Q009324) collected, one rock sample (Q009322), over approximately 4 meters of fractured and quartz veined sandstone – siltstone, returned 373 ppb gold (Photo 2). This sample was over a rock grab sample site that returned 194 ppb in 2015 (sample

122916) and a 2016 soil sample (I030102) that contained 42.1 ppb.



PHOTO 2. POND ZONE, ROCK SAMPLE Q009322 (373 PPB AU) FROM STRIPPED OUTCROP AND SOIL SAMPLE I030102 (42.1 PPB AU) AT PINK RIBBON, HAMMER IS APPROXIMATELY 75 CM LONG.

Soil sampling in 2016 over the Pond Zone area returned a number of samples with gold and pathfinder elements consistent with those obtained in 2015. Of 23 samples collected in 2016, six returned between 11.9 ppb and 42 ppb gold. One soil sample (I030121) collected approximately 5 m from a 2015 rock sample (122615) that contained 823 ppb Au contained 830 ppb Au and 2500 ppm As (Photo 3). The 2016 soil sampling both confirmed and helped to fill in and define the Pond Zone gold anomaly. However low values from the few samples collected outside the Pond Zone anomaly coupled with landslide and glacial cover precluded extending the anomaly and obtaining better soil sample coverage.



PHOTO 3. POND ZONE, LOOKING WESTERLY AT SOIL SAMPLE SITE I030121 (830 PPB AU) AND FALSE GOSSAN OVER OPEN CREEK VOLCANICS IN THE BACKGROUND.

The reader is referred to Appendices B and C for sample descriptions and analytical results for rock and soil samples respectively, collected in 2015 and 2016.

Typically the Open Creek formation consists of a fine grained grey quartz feldspar hornblende crystal lithic lapilli tuff and is magnetite bearing. The lapilli tuffs may be interlayered with andesitic flows. In 2015, to the northwest of Camp 16-2 the lapilli tuffs are cut by a NNE near vertical andesite - basalt dyke up to 20 m wide and is flanked by a 2 m wide rhyolite dyke on the west side (Hulstein, 2016). Rock and soil sampling in 2015 over areas underlain by Open Creek volcanics returned low values for gold and pathfinder elements.

The lapilli tuff exposed in the prominent land slide and fault scarp weathers orange, giving rise to a false 'gossan' (Photo 1). This orange weathering sets this landslide area apart from other exposures of tuff that were examined in the area. The resulting landslide debris has flow patterns and spreads out on the valley floor. To the west of the cliff like fault scarp and the bluff that forms an abrupt valley wall are large fissures and slump features indicating the area affected by the landslide is in excess of 1km². The age of the land slide is likely greater than 1200 years before present as apparently undisturbed layers of White River ash were noted on the debris. In spite of the low geochemical values received in 2015 the volcanic stratigraphy, intersection of regional faults and the variable aeromagnetic signature points may still indicate a favorable environment for epithermal mineralization.

Debicki Minfile Occurrence

The Debicki Minfile occurrence (number 105E 050), found on the margin of granitoid map unit mKW (Figure2), is about 7.5 kilometers to the southwest of the NOOC claims. It is included here as it shares some similarities with the mineralization and geology observed at the Pond Zone.

The Debicki occurrence is centered over a limonitic colored ('gossan'), carbonate altered, medium grained granite cut by northeast trending, steeply dipping, joint sets, faults, intermediate dykes and possibly more felsic dykes (versus intermediate dykes) (Photo 4). The granite in the gossan area is non-magnetic and contains no visible hornblende. Limonite - calcite veinlets commonly fill joints and fractures, a few chalcedonic veinlets and rarer grey quartz veins with trace sulfides (galena, pyrite and ??) were noted (sample Q009315). The better quartz-sulfide veining is scarce while the limonite – calcite veinlets appear to be late, possibly related to faulting – shearing, formed from cooler hydrothermal fluids, and not directly related to mineralization. The dykes are similar in appearance to the dykes and intrusive rocks observed at the Pond Zone on the NOOC claims. The grey solid outcrop on the west and east side of the limonitic margin is medium grained hornblende magnetite granite, cut by sparse joint sets with minor calcite-limonite veinlets. The area of orange non-magnetic granite extends up the ridge for several hundred meters and there is a poor exposure of it a couple hundred meters to the south (area of sample Q009425).



PHOTO 4. THE DEBICKI OCCURRENCE, LOOKING NORTHERLY AT LIMONITIC WEATHERING SHEARED AND FAULTED GRANODIORITE.

While no significant mineralization was found, the soil and rock geochemistry returned weakly anomalous values for Au, Ag, As, Pb, Sb and Zn. Rock float sample Q009315 of quartz veining and trace sulfides contained 160 ppb Au, 5.2 ppm Ag, 753 ppm Pb, 31 ppm Sb and 2130 Zn. Soil samples (Q009418 to Q009425) taken over the gossanous granite and talus fine samples from the base of limonitic weathered granite outcrop contained a similar suite of weakly anomalous elements (<41.7 ppb gold). The area, while not highly anomalous, extends over hundreds of meters and is open in all directions. The limonitic - gossanous sheared and faulted granite indicates that the margin of the granite body is a prospective target area although glacial till cover and colluvium hinders geochemical exploration, prospecting and mapping.

GEOCHEMISTRY

All sample and field stations locations were collected by GPS, Garmin model 60CSx, with an accuracy commonly of +/- 3 m, using a UTM grid, NAD83 Datum in Zone 8v. Analytical results for rock and soil samples are presented in Appendix A. Sample locations, descriptions and analytical results, merged using Microsoft Excel, for rock and soil samples are presented in Appendix B and C respectively.

A total of 5 rock samples and 23 soil or 'C' horizon samples were collected on the NOOC claims in 2016. All samples were collected by Roger Hulstein and submitted by him to ALS Canada Ltd.'s preparation laboratory in Whitehorse, Yukon. Samples were dried, weighed, crushed or screened as the case may be in Whitehorse and then forwarded to ALS in North Vancouver BC for analysis.

For rock samples, analytical procedures included analysis for 35 elements by ICP-AES using a 1 gram pulverized sample split (ALS method ME-ICP41). Gold was also analyzed separately using a 30 gram pulverized sample split and subjected to aqua regia extraction, fire assay and an ICP-AES finish (ALS method Au-ICP21).

Soil samples were screened to -180 um and a 1 gram split was analyzed for 53 elements by ICP-MS (ALS method ME-MS41L). To ensure accuracy gold was also analyzed using a 25 gram sample split by aqua regia extraction and ICP-MS finish (method Au-ST43). One sample (I030121) was over the 100 ppb Au limit for method Au-ST43 and was analyzed separately by ICP-MS to capture the 0.830 ppm Au value (ALS Code Au-AROR43).

Anomalous thresholds for gold and other elements of interest - pathfinders (Ag, Bi, As, Sb, Hg, Cu, Pb, Zn, Mo) were determined by eye and using natural breaks (Jenks) with ESRI ArcGis 10. Significant analytical results are described above under "Project Area Geology and Mineralization".

CONCLUSIONS AND RECOMMENDATIONS

The Pond Zone, subsequently staked and covered in early 2016 by the NOOC claims, is defined by a number of soil and rock samples that contain anomalous gold values, up to 823 ppb and 77.8 ppb respectively, and anomalous values for several pathfinder elements (As, Sb, Pb, Zn). Prospecting, rock and soil sampling on the NOOC claims in 2016 focused on the Pond Zone. The area has an approximate current minimum extent of 200 m by 300 m based on scattered outcrops of quartz and/or carbonate-veined shale, siltstone – sandstone – conglomerate, limestone and carbonate-altered intrusive of indeterminate type (likely intermediate to mafic in composition). All units are likely part of the Jurassic Laberge Group. There are also local areas of silicification, brecciation and weak zones of carbonate – quartz stockwork. Mineralization at the Pond Zone may be related to the Open Creek formation igneous event and the Pond Zone shares mineralization and alteration characteristics with the Debicki occurrence approximately 7.5 km to the southwest.

A total of five rock and 23 soil samples confirmed the anomalous results obtained in 2015, but did not extend the anomalous area or locate higher grade mineralization. A rock sample best described as a 'rough' chip sample over approximately 4 m of quartz veined and sheared sandstone - siltstone returned 373 ppb gold. A soil sample collected within 5 m of the 2015 highest gold in rock sample (823 ppb) returned 830 ppb gold and 2500 ppm arsenic. The quartz veining and fracturing – shearing appear to be late stage and possibly high level, likely related to faulting and perhaps the nearby Open Creek volcanic formation, although the volcanics themselves are not mineralized or appreciably altered.

Low gold and pathfinder element values from the few samples collected outside the Pond Zone anomaly coupled with landslide and glacial cover precluded extending the anomaly and obtaining better soil sample coverage. Although the Pond Zone and surrounding area have been prospected and sampled for about a total of four person days in 2015 and 2016, the exact nature of the mineralization and its limits are still unknown and additional work in this area is required to determine its significance.

Based on the work and anomalous results obtained in 2016 on the NOOC claims additional work is warranted and recommended. Although the glacial cover hinders exploration additional prospecting, rock sampling and selective soil sampling is required. Additional surface work such as trenching the gold in rock samples located to date should be carried out to determine the character and extent of known mineralization. A low level close-spaced aeromagnetic survey, or alternatively a ground based survey, is recommended over this area to help determine trends obscured by the glacial cover. Any trends suspected of being related to the anomalous rock and soil samples would likely need to be further evaluated by geophysics, such as IP and or EM, followed by trenching and or drilling of any identified anomalies.

REFERENCES

Anonymous, 2015. Digital products from Yukon Geological Survey, available on-line from the YGS: http://www.geology.gov.yk.ca/whitehorse_trough.html

Yukon Minfile, 2015. Digital products from Yukon Geological Survey, available on-line from the YGS: <http://www.geology.gov.yk.ca/>

Colpron, M. (comp.), 2011. Geological compilation of Whitehorse trough - Whitehorse (105D), Lake Laberge (105E), and part of Carmacks (115I), Glenlyon (105L), Aishihik Lake (115H), Quiet Lake (105F) and Teslin (105C) (1:250 000-scale). Yukon Geological Survey, Geoscience Map 2011-1, 3 maps, legend and appendices.

Hulstein, R. and Héon, D., 2016. YMEP Report#15-069 – 2015 Teslin Mountain Project. Yukon Geological Survey.

Hulstein, R., 2017. YMEP Report #16-019 – 2016 Teslin Mountain Project. Yukon Geological Survey.

Tempelman-Kluit, D.J., 2009. Geology of Carmacks and Laberge map areas, central Yukon: Incomplete draft manuscript on stratigraphy, structure and its early interpretation (ca. 1986), GSC OF 5982

STATEMENT OF QUALIFICATIONS

I, Roger W. Hulstein, of:

106 Wilson Drive
Whitehorse, Yukon Territory
Y1A 0C9,

do hereby certify that:

1. I am an independent, self-employed, mineral exploration geologist with over 30 years of experience working in the Yukon.
2. I am a graduate of Saint Mary's University, Halifax, with a degree in geology (B.Sc., 1981) and have been involved in geology and mineral exploration continuously since 1978.
3. I am a fellow of the Geological Association of Canada (F3572).
4. I am registered as a professional geoscientist (No. 19127) with the Association of Professional Engineers and Geoscientists of the Province of British Columbia.
5. I am the author of this report on the Teslin Mountain Project in the Whitehorse Mining District, Yukon.
6. The report is based on personal examination of the ground from September 23, 24, 2016 and on referenced sources.



Roger Hulstein, P.Geol.

March 31, 2017

ERRATUM

2016 NOOC claim expenditures

To accompany: Geological and Geochemical Report on the NOOC Claims, by R. Hulstein; dated March 31, 2017

2016 Teslin Mtn Expenses			
Costs Incurred			Total Expense claim
Capital Heli - 12613	\$1,480.00		
		\$1,480.00	
ALS rx WH16163702	\$191.22		
ALS Soils WH16163700	\$1,460.14		
		\$1,651.36	
			\$3,131.36
In Kind Contribution			
wages 2 @ \$500/d RH	\$1,000.00		
mob - demob (1/2 day RH)	\$250.00		
Reprographics			
Report, 2 days @ \$500/day	\$1,000.00		
		\$2,250.00	
			\$2,250.00
Total			\$5,381.36

Cost Allocation per Claim			
	Number	Calculation	Cost
Total cost per rock sample	\$171.45	(\$38.24 sample + \$133.21 collection and report cost)	
Total cost per soil sample	\$196.48	(\$63.48 sample + \$133.21 collection and report cost)	
NOOC 8 claim YD74438	3 rock samples	(3 x \$171.45)	\$514.35
	12 soil samples	(12 x 196.48)	\$2,357.76
		Total	\$2,872.11
NOOC 6 claim YD74436	2 rock samples	(2 x \$171.45)	\$342.90
	11 soil samples	(11 x 196.48)	\$2,161.28
		Total	\$2,504.18

Appendix A
Analytical Certificates



ALS Canada Ltd.
 2103 Dollarton Hwy
 North Vancouver BC V7H 0A7
 Phone: +1 (604) 984 0221 Fax: +1 (604) 984 0218
 www.alsglobal.com

To: HULSTEIN, ROGER
 106 WILSON DR.
 WHITEHORSE YT Y1A 5R2

Page: 1
 Total # Pages: 2 (A - C)
 Plus Appendix Pages
 Finalized Date: 17- OCT- 2016
 This copy reported on
 2- NOV- 2016
 Account: HULROG

CERTIFICATE WH16163702

Project: Nooc Claims

This report is for 5 Rock samples submitted to our lab in Whitehorse, YT, Canada on 27- SEP- 2016.

The following have access to data associated with this certificate:

DANIELE HEON
 ROGER HULSTEIN

ROGER HULSTEIN
 R. HULSTEIN

R. HULSTEIN

SAMPLE PREPARATION

ALS CODE	DESCRIPTION
WEI- 21	Received Sample Weight
LOG- 22	Sample login - Rcd w/o BarCode
CRU- QC	Crushing QC Test
PUL- QC	Pulverizing QC Test
CRU- 31	Fine crushing - 70% < 2mm
SPL- 21	Split sample - riffle splitter
PUL- 31	Pulverize split to 85% < 75 um

ANALYTICAL PROCEDURES

ALS CODE	DESCRIPTION	INSTRUMENT
Au- ICP21	Au 30g FA ICP- AES Finish	ICP- AES
ME- ICP41	35 Element Aqua Regia ICP- AES	ICP- AES

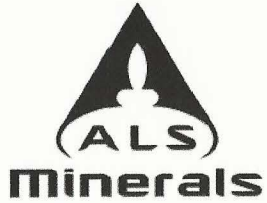
To: HULSTEIN, ROGER
 ATTN: R. HULSTEIN
 106 WILSON DR.
 WHITEHORSE YT Y1A 5R2

This is the Final Report and supersedes any preliminary report with this certificate number. Results apply to samples as submitted. All pages of this report have been checked and approved for release.

***** See Appendix Page for comments regarding this certificate *****

Signature:

Colin Ramshaw, Vancouver Laboratory Manager



ALS Canada Ltd.
 2103 Dollarton Hwy
 North Vancouver BC V7H 0A7
 Phone: +1 (604) 984 0221 Fax: +1 (604) 984 0218
 www.alsglobal.com

To: HULSTEIN, ROGER
 106 WILSON DR.
 WHITEHORSE YT Y1A 5R2

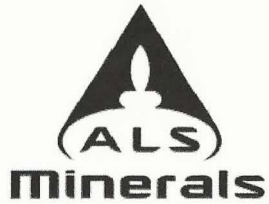
Page: 2 - A
 Total # Pages: 2 (A - C)
 Plus Appendix Pages
 Finalized Date: 17- OCT- 2016
 Account: HULROG

Project: Nooc Claims

CERTIFICATE OF ANALYSIS WH16163702

Sample Description	Method Analyte Units LOR	WEI- 21 Recvd Wt. kg	ME- ICP41 Ag ppm	ME- ICP41 Al %	ME- ICP41 As ppm	ME- ICP41 B ppm	ME- ICP41 Ba ppm	ME- ICP41 Be ppm	ME- ICP41 Bi ppm	ME- ICP41 Ca %	ME- ICP41 Cd ppm	ME- ICP41 Co ppm	ME- ICP41 Cr ppm	ME- ICP41 Cu ppm	ME- ICP41 Fe %	ME- ICP41 Ga ppm
		0.02	0.2	0.01	2	10	10	0.5	2	0.01	0.5	1	1	1	0.01	10
Q009320		1.02	<0.2	1.02	4	<10	220	<0.5	<2	1.00	0.5	6	10	10	2.47	<10
Q009321		1.67	<0.2	0.53	41	<10	60	0.5	<2	4.70	0.5	9	13	32	2.55	<10
Q009322		2.47	0.7	0.45	18	<10	40	<0.5	<2	0.15	<0.5	10	14	64	2.78	<10
Q009323		1.20	<0.2	0.39	19	<10	790	<0.5	<2	1.59	<0.5	3	12	14	1.30	<10
Q009324		1.66	<0.2	0.03	4	<10	10	<0.5	<2	>25.0	<0.5	<1	8	2	0.13	<10

***** See Appendix Page for comments regarding this certificate *****



ALS Canada Ltd.
 2103 Dollarton Hwy
 North Vancouver BC V7H 0A7
 Phone: +1 (604) 984 0221 Fax: +1 (604) 984 0218
 www.alsglobal.com

To: HULSTEIN, ROGER
 106 WILSON DR.
 WHITEHORSE YT Y1A 5R2

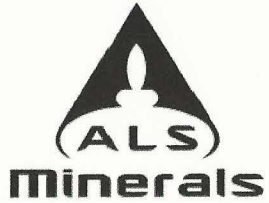
Page: 2 - B
 Total # Pages: 2 (A - C)
 Plus Appendix Pages
 Finalized Date: 17- OCT- 2016
 Account: HULROG

Project: Nooc Claims

CERTIFICATE OF ANALYSIS WH16163702

Sample Description	Method Analyte Units LOR	ME- ICP41	ME- ICP41	ME- ICP41	ME- ICP41	ME- ICP41	ME- ICP41	ME- ICP41	ME- ICP41	ME- ICP41	ME- ICP41	ME- ICP41	ME- ICP41	ME- ICP41	ME- ICP41	
		Hg ppm	K %	La ppm	Mg %	Mn ppm	Mo ppm	Na %	Ni ppm	P ppm	Pb ppm	S %	Sb ppm	Sc ppm	Sr ppm	Th ppm
		1	0.01	10	0.01	5	1	0.01	1	10	2	0.01	2	1	1	20
Q009320		<1	0.16	20	0.35	652	1	0.05	7	820	75	0.05	<2	6	49	<20
Q009321		<1	0.11	<10	1.67	626	<1	0.01	14	200	46	0.03	<2	5	385	<20
Q009322		1	0.09	<10	0.08	540	1	<0.01	13	530	23	0.01	5	10	14	<20
Q009323		<1	0.04	10	0.50	303	1	0.01	10	360	20	0.05	<2	2	94	<20
Q009324		<1	0.02	<10	0.10	119	<1	<0.01	1	170	9	<0.01	<2	1	311	<20

***** See Appendix Page for comments regarding this certificate *****



ALS Canada Ltd.
 2103 Dollarton Hwy
 North Vancouver BC V7H 0A7
 Phone: +1 (604) 984 0221 Fax: +1 (604) 984 0218
 www.alsglobal.com

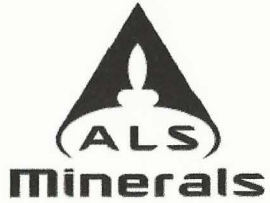
To: HULSTEIN, ROGER
 106 WILSON DR.
 WHITEHORSE YT Y1A 5R2

Page: 2 - C
 Total # Pages: 2 (A - C)
 Plus Appendix Pages
 Finalized Date: 17- OCT- 2016
 Account: HULROG

Project: Nooc Claims

CERTIFICATE OF ANALYSIS WH16163702

Sample Description	Method Analyte Units LOR	ME- ICP41	ME- ICP41	ME- ICP41	ME- ICP41	ME- ICP41	ME- ICP41	Au- ICP21
		Ti %	Ti ppm	U ppm	V ppm	W ppm	Zn ppm	Au ppm
		0.01	10	10	1	10	2	0.001
Q009320		0.03	<10	<10	45	<10	167	<0.001
Q009321		<0.01	<10	<10	36	<10	88	0.006
Q009322		<0.01	<10	<10	45	<10	67	0.373
Q009323		<0.01	<10	<10	13	<10	30	0.014
Q009324		<0.01	<10	<10	5	<10	15	0.001



ALS Canada Ltd.
 2103 Dollarton Hwy
 North Vancouver BC V7H 0A7
 Phone: +1 (604) 984 0221 Fax: +1 (604) 984 0218
 www.alsglobal.com

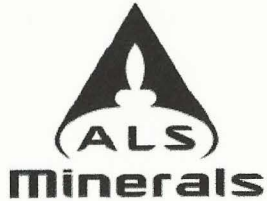
To: HULSTEIN, ROGER
 106 WILSON DR.
 WHITEHORSE YT Y1A 5R2

Page: Appendix 1
 Total # Appendix Pages: 1
 Finalized Date: 17- OCT- 2016
 Account: HULROG

Project: Nooc Claims

CERTIFICATE OF ANALYSIS WH16163702

CERTIFICATE COMMENTS									
	LABORATORY ADDRESSES								
Applies to Method:	<p>Processed at ALS Kamloops located at 2953 Shuswap Drive, Kamloops, BC, Canada.</p> <table border="0"> <tr> <td>CRU- 31</td> <td>CRU- QC</td> <td>LOG- 22</td> <td>PUL- 31</td> </tr> <tr> <td>PUL- QC</td> <td>SPL- 21</td> <td>WEI- 21</td> <td></td> </tr> </table>	CRU- 31	CRU- QC	LOG- 22	PUL- 31	PUL- QC	SPL- 21	WEI- 21	
CRU- 31	CRU- QC	LOG- 22	PUL- 31						
PUL- QC	SPL- 21	WEI- 21							
Applies to Method:	<p>Processed at ALS Vancouver located at 2103 Dollarton Hwy, North Vancouver, BC, Canada.</p> <table border="0"> <tr> <td>Au- ICP21</td> <td>ME- ICP41</td> </tr> </table>	Au- ICP21	ME- ICP41						
Au- ICP21	ME- ICP41								



ALS Canada Ltd.
 2103 Dollarton Hwy
 North Vancouver BC V7H 0A7
 Phone: +1 (604) 984 0221 Fax: +1 (604) 984 0218
 www.alsglobal.com

To: HULSTEIN, ROGER
 106 WILSON DR.
 WHITEHORSE YT Y1A 5R2

Page: 1
 Total # Pages: 2 (A - D)
 Plus Appendix Pages
 Finalized Date: 17- OCT- 2016
 This copy reported on
 2- NOV- 2016
 Account: HULROG

CERTIFICATE WH16163700

Project: Nooc Claims

This report is for 23 Soil samples submitted to our lab in Whitehorse, YT, Canada on 27- SEP- 2016.

The following have access to data associated with this certificate:

DANIELE HEON
 ROGER HULSTEIN

ROGER HULSTEIN
 R. HULSTEIN

R. HULSTEIN

SAMPLE PREPARATION

ALS CODE	DESCRIPTION
WEI- 21	Received Sample Weight
LOG- 22	Sample login - Rcd w/o BarCode
SCR- 41	Screen to - 180um and save both

ANALYTICAL PROCEDURES

ALS CODE	DESCRIPTION	INSTRUMENT
Au- ST43	Super Trace Au - 25g AR	ICP- MS
Au- AROR43	Au AR Overage - 25g	ICP- MS
ME- MS41L	Super Trace Lowest DL AR by ICP- MS	

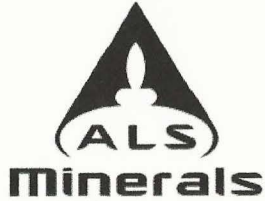
To: HULSTEIN, ROGER
 ATTN: R. HULSTEIN
 106 WILSON DR.
 WHITEHORSE YT Y1A 5R2

This is the Final Report and supersedes any preliminary report with this certificate number. Results apply to samples as submitted. All pages of this report have been checked and approved for release.

***** See Appendix Page for comments regarding this certificate *****

Signature:


 Colin Ramshaw, Vancouver Laboratory Manager



ALS Canada Ltd.
 2103 Dollarton Hwy
 North Vancouver BC V7H 0A7
 Phone: +1 (604) 984 0221 Fax: +1 (604) 984 0218
 www.alsglobal.com

To: HULSTEIN, ROGER
 106 WILSON DR.
 WHITEHORSE YT Y1A 5R2

Page: 2 - A
 Total # Pages: 2 (A - D)
 Plus Appendix Pages
 Finalized Date: 17- OCT- 2016
 Account: HULROG

Project: Nooc Claims

CERTIFICATE OF ANALYSIS WH16163700

Sample Description	Method Analyte Units LOR	WEI- 21	ME- MS41L	ME- MS41L	ME- MS41L	ME- MS41L	ME- MS41L	ME- MS41L	ME- MS41L	ME- MS41L	ME- MS41L	ME- MS41L	ME- MS41L	ME- MS41L	ME- MS41L	ME- MS41L
		Recvd Wt. kg	Au ppm	Ag ppm	Al %	As ppm	B ppm	Ba ppm	Be ppm	Bi ppm	Ca %	Cd ppm	Ce ppm	Co ppm	Cr ppm	Cs ppm
I030101		0.36	0.0032	0.141	2.11	5.40	<10	166.5	0.37	0.095	0.79	0.154	25.1	13.80	40.6	0.927
I030102		0.45	0.0235	0.280	1.08	17.05	<10	130.5	0.36	0.086	0.48	0.040	17.80	8.64	41.3	0.523
I030103		0.32	0.0037	0.102	1.51	12.50	<10	161.5	0.46	0.080	0.64	0.067	21.9	18.50	47.1	0.800
I030104		0.48	0.0062	0.224	1.98	7.04	<10	159.0	0.35	0.051	6.52	0.268	17.30	19.55	38.7	0.941
I030105		0.52	0.0019	0.190	2.08	6.23	<10	105.0	0.31	0.075	0.94	0.099	20.3	15.45	42.1	0.933
I030106		0.45	0.0064	0.289	1.85	6.71	<10	103.5	0.55	0.060	4.64	0.251	18.90	18.05	45.3	0.858
I030107		0.49	0.0020	0.128	2.61	5.50	<10	79.4	0.53	0.059	0.53	0.097	16.60	21.0	50.3	0.996
I030108		0.40	0.0021	0.088	2.60	7.18	<10	118.5	0.47	0.091	0.85	0.190	24.6	17.00	36.2	0.596
I030109		0.34	0.0003	0.061	1.22	2.89	<10	106.0	0.25	0.075	0.36	0.118	9.07	6.75	23.1	0.412
I030110		0.39	0.0046	0.100	1.29	23.0	<10	149.5	0.43	0.076	0.62	0.218	20.3	11.60	26.4	0.483
I030111		0.45	0.0017	0.029	0.99	1.56	<10	80.3	0.43	0.063	0.17	0.028	31.3	5.06	13.15	0.253
I030112		0.39	0.0028	0.047	1.07	28.9	10	151.5	0.36	0.035	2.14	0.121	12.35	16.65	21.5	0.673
I030113		0.40	0.0098	0.076	0.36	9.78	<10	41.5	0.11	0.074	5.12	0.154	16.10	3.84	8.97	0.421
I030114		0.44	0.0291	0.061	1.00	4.50	<10	58.2	0.55	0.075	0.35	0.043	60.4	8.72	18.50	0.183
I030115		0.45	0.0032	0.509	1.11	24.5	<10	293	0.63	0.201	0.48	0.811	19.60	12.50	23.5	0.399
I030116		0.52	0.0190	0.033	1.36	1.42	<10	59.3	0.68	0.066	0.29	0.032	71.5	7.21	22.0	0.258
I030117		0.34	0.0012	0.120	0.77	13.50	<10	692	0.41	0.054	2.34	0.144	12.55	19.05	23.4	0.758
I030118		0.40	0.0015	0.066	1.65	9.42	<10	162.0	0.78	0.239	0.42	0.283	14.15	9.69	22.0	0.658
I030119		0.31	0.0006	0.214	1.13	8.09	<10	558	0.70	0.041	2.66	0.444	16.05	17.85	22.8	1.390
I030120		0.49	0.0009	0.069	0.89	13.15	<10	157.5	0.34	0.076	0.63	0.154	18.45	8.79	17.75	0.901
I030121		0.42	0.873	0.192	0.32	2500	<10	62.8	0.47	0.076	3.13	0.158	12.50	21.4	9.27	0.434
I030122		0.44	0.0122	0.034	1.54	66.3	<10	138.5	0.44	0.085	0.37	0.046	17.75	11.00	33.3	0.569
I030123		0.33	0.0032	0.080	1.31	26.8	<10	438	0.45	0.130	1.41	0.223	19.40	15.05	35.7	0.414



ALS Canada Ltd.
 2103 Dollarton Hwy
 North Vancouver BC V7H 0A7
 Phone: +1 (604) 984 0221 Fax: +1 (604) 984 0218
 www.alsglobal.com

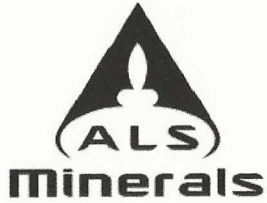
To: HULSTEIN, ROGER
 106 WILSON DR.
 WHITEHORSE YT Y1A 5R2

Page: 2 - B
 Total # Pages: 2 (A - D)
 Plus Appendix Pages
 Finalized Date: 17- OCT- 2016
 Account: HULROG

Project: Nooc Claims

CERTIFICATE OF ANALYSIS WH16163700

Sample Description	Method Analyte Units LOR	ME- MS41L	ME- MS41L	ME- MS41L	ME- MS41L	ME- MS41L	ME- MS41L	ME- MS41L	ME- MS41L	ME- MS41L	ME- MS41L	ME- MS41L	ME- MS41L	ME- MS41L	ME- MS41L	ME- MS41L
		Cu ppm	Fe %	Ga ppm	Ge ppm	Hf ppm	Hg ppm	In ppm	K %	La ppm	Li ppm	Mg %	Mn ppm	Mo ppm	Na %	Nb ppm
I030101		55.6	3.24	6.37	0.071	0.123	0.127	0.036	0.06	14.35	18.6	1.03	628	0.75	0.053	0.331
I030102		18.50	2.43	3.60	0.039	0.059	0.058	0.019	0.09	8.42	6.5	0.38	186.5	0.50	0.013	0.767
I030103		54.9	3.96	6.26	0.076	0.092	0.043	0.036	0.08	14.20	12.0	0.73	597	1.12	0.018	0.421
I030104		83.1	4.13	7.97	0.065	0.125	0.064	0.036	0.06	8.83	22.5	1.49	607	0.51	0.023	0.174
I030105		50.5	3.74	8.97	0.058	0.068	0.081	0.046	0.12	9.62	16.8	0.73	379	1.05	0.014	0.305
I030106		95.8	4.18	9.00	0.069	0.096	0.110	0.041	0.08	9.97	15.9	1.07	620	0.53	0.016	0.225
I030107		92.1	5.36	13.20	0.090	0.258	0.018	0.045	0.04	11.40	24.2	1.63	418	0.28	0.017	0.124
I030108		50.3	3.81	7.16	0.065	0.134	0.028	0.035	0.09	11.20	18.7	1.12	443	1.06	0.083	0.487
I030109		12.45	1.960	4.25	0.025	0.068	0.016	0.012	0.03	4.41	7.7	0.40	200	0.74	0.018	0.680
I030110		32.1	3.15	4.43	0.061	0.034	0.035	0.025	0.07	13.05	9.3	0.50	500	2.09	0.022	0.346
I030111		6.91	1.840	4.92	0.041	0.038	0.007	0.013	0.09	16.55	10.3	0.31	199.5	0.32	0.008	0.197
I030112		50.4	3.29	3.36	0.044	0.071	0.094	0.024	0.17	5.53	6.5	0.39	469	0.26	0.022	0.279
I030113		12.90	8.38	4.74	0.069	0.065	0.028	0.027	0.18	8.61	6.6	0.19	120.5	3.03	0.254	0.127
I030114		17.25	2.00	4.65	0.088	0.060	0.021	0.028	0.05	34.4	8.9	0.38	363	1.09	0.010	0.126
I030115		104.5	4.80	3.01	0.096	0.072	0.077	0.071	0.15	14.90	7.8	0.26	212	16.60	0.056	0.050
I030116		11.90	2.62	6.39	0.060	0.041	0.007	0.022	0.06	28.5	16.5	0.40	419	0.52	0.007	0.118
I030117		82.7	5.59	2.26	0.057	0.083	0.024	0.032	0.16	6.32	3.2	0.35	746	0.76	0.009	0.066
I030118		72.8	3.96	4.42	0.056	0.073	0.025	0.051	0.09	8.11	12.8	0.49	172.0	5.89	0.009	0.168
I030119		81.6	4.23	4.47	0.056	0.050	0.042	0.039	0.18	8.08	6.3	0.39	764	0.61	0.014	0.125
I030120		24.8	2.15	2.97	0.045	0.033	0.028	0.017	0.06	9.54	5.2	0.25	320	1.05	0.016	0.364
I030121		116.5	3.58	1.540	0.056	0.039	2.20	0.032	0.10	5.31	1.1	0.59	659	0.32	0.007	0.032
I030122		24.4	3.09	5.08	0.048	0.061	0.030	0.025	0.05	9.43	10.1	0.75	357	1.32	0.015	0.434
I030123		55.1	3.54	4.25	0.059	0.068	0.054	0.030	0.11	11.20	9.4	0.57	429	1.77	0.015	0.879



ALS Canada Ltd.
 2103 Dollarton Hwy
 North Vancouver BC V7H 0A7
 Phone: +1 (604) 984 0221 Fax: +1 (604) 984 0218
 www.alsglobal.com

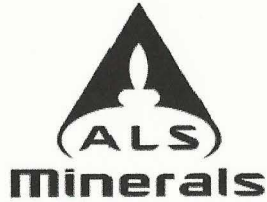
To: HULSTEIN, ROGER
 106 WILSON DR.
 WHITEHORSE YT Y1A 5R2

Page: 2 - C
 Total # Pages: 2 (A - D)
 Plus Appendix Pages
 Finalized Date: 17- OCT- 2016
 Account: HULROG

Project: Nooc Claims

CERTIFICATE OF ANALYSIS WH16163700

Sample Description	Method Analyte Units LOR	ME- MS41L	ME- MS41L	ME- MS41L	ME- MS41L	ME- MS41L	ME- MS41L	ME- MS41L	ME- MS41L	ME- MS41L	ME- MS41L	ME- MS41L	ME- MS41L	ME- MS41L	ME- MS41L	
		Ni	P	Pb	Pd	Pt	Rb	Re	S	Sb	Sc	Se	Sn	Sr	Ta	Te
		ppm	%	ppm	ppm	ppm	ppm	ppm	%	ppm	ppm	ppm	ppm	ppm	ppm	ppm
I030101		30.3	0.039	6.25	0.002	0.002	5.89	<0.001	0.01	0.304	13.75	0.5	0.38	45.6	<0.005	0.04
I030102		23.2	0.026	3.93	0.001	0.002	7.29	<0.001	0.01	1.135	5.79	0.3	0.24	29.3	<0.005	0.01
I030103		35.0	0.028	5.59	<0.001	0.002	7.61	<0.001	0.01	0.568	16.95	0.7	0.34	37.9	<0.005	0.01
I030104		28.9	0.079	3.71	0.006	0.003	5.04	0.001	0.02	0.509	15.30	0.7	0.31	143.5	<0.005	0.02
I030105		17.90	0.033	4.84	0.001	0.002	8.88	<0.001	0.02	0.442	21.0	0.5	0.36	34.4	<0.005	<0.01
I030106		25.8	0.069	4.31	0.003	0.003	5.81	0.001	0.03	0.376	18.40	0.5	0.36	88.4	<0.005	0.03
I030107		29.6	0.024	4.55	0.002	0.004	3.73	<0.001	0.01	0.252	23.8	0.2	0.53	23.5	<0.005	0.02
I030108		33.9	0.031	6.15	0.002	0.002	8.06	<0.001	0.01	0.466	12.80	0.8	0.39	55.8	<0.005	0.01
I030109		13.60	0.014	3.94	<0.001	<0.002	3.92	<0.001	0.01	0.207	3.20	0.1	0.29	18.70	<0.005	0.01
I030110		22.6	0.030	5.12	0.003	0.002	5.78	0.001	0.01	0.781	10.40	1.0	0.29	29.3	<0.005	0.01
I030111		6.52	0.028	6.11	<0.001	<0.002	6.78	<0.001	0.01	0.177	2.19	0.1	0.26	10.10	<0.005	<0.01
I030112		16.25	0.032	2.45	0.007	0.003	6.87	<0.001	0.03	1.470	16.55	0.2	0.23	97.6	<0.005	0.02
I030113		4.70	0.036	8.62	0.001	<0.002	7.17	0.001	4.30	0.282	1.745	0.7	0.30	184.5	<0.005	0.02
I030114		13.90	0.039	8.74	0.002	0.002	3.16	0.001	0.02	0.177	6.78	0.2	0.28	14.45	<0.005	0.02
I030115		63.3	0.076	11.65	0.002	0.003	5.25	0.014	0.36	3.49	13.90	7.9	0.40	193.5	<0.005	0.11
I030116		10.05	0.062	7.58	0.002	0.002	4.48	<0.001	0.01	0.135	5.28	0.1	0.47	7.54	<0.005	<0.01
I030117		22.1	0.058	2.98	0.004	0.003	8.06	<0.001	0.03	0.338	17.35	0.5	0.20	86.4	<0.005	0.02
I030118		29.3	0.053	10.15	0.002	<0.002	5.40	0.017	0.05	1.820	7.72	4.4	0.52	45.6	<0.005	0.07
I030119		20.9	0.054	4.45	<0.001	0.003	10.30	0.001	0.03	0.256	25.4	0.6	0.24	94.7	<0.005	<0.01
I030120		21.6	0.065	6.55	0.001	0.002	5.52	<0.001	0.02	0.374	6.33	0.3	0.22	34.6	<0.005	0.01
I030121		26.7	0.104	4.66	0.003	0.003	4.30	<0.001	0.24	51.0	14.75	2.7	0.25	141.0	<0.005	0.04
I030122		25.0	0.025	5.66	<0.001	<0.002	4.73	<0.001	0.01	1.015	9.61	0.8	0.32	28.8	<0.005	0.02
I030123		35.1	0.028	4.99	<0.001	<0.002	5.98	0.001	0.02	0.793	13.00	0.7	0.39	47.7	<0.005	0.03



ALS Canada Ltd.
 2103 Dollarton Hwy
 North Vancouver BC V7H 0A7
 Phone: +1 (604) 984 0221 Fax: +1 (604) 984 0218
 www.alsglobal.com

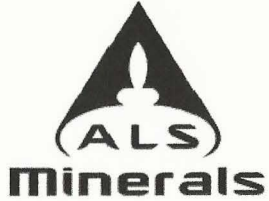
To: HULSTEIN, ROGER
 106 WILSON DR.
 WHITEHORSE YT Y1A 5R2

Page: 2 - D
 Total # Pages: 2 (A - D)
 Plus Appendix Pages
 Finalized Date: 17- OCT- 2016
 Account: HULROG

Project: Nooc Claims

CERTIFICATE OF ANALYSIS WH16163700

Sample Description	Method Analyte Units LOR	ME- MS41L	ME- MS41L	ME- MS41L	ME- MS41L	ME- MS41L	ME- MS41L	ME- MS41L	ME- MS41L	ME- MS41L	Au- ST43	Au- AROR43
		Th ppm	Ti %	Ti ppm	U ppm	V ppm	W ppm	Y ppm	Zn ppm	Zr ppm	Au ppm	Au ppm
		0.002	0.001	0.002	0.005	0.1	0.001	0.003	0.1	0.01	0.0001	0.01
I030101		2.42	0.027	0.105	0.572	87.3	0.123	16.10	53.1	3.43	0.0028	
I030102		3.34	0.038	0.059	0.557	60.2	0.379	3.72	26.0	2.02	0.0421	
I030103		2.49	0.032	0.100	0.365	114.0	0.130	17.55	64.7	3.17	0.0036	
I030104		1.110	0.015	0.080	0.368	118.5	0.095	14.75	78.0	2.81	0.0062	
I030105		1.395	0.010	0.063	0.398	124.0	0.149	14.60	45.8	1.73	0.0011	
I030106		1.110	0.015	0.081	0.340	144.0	0.109	16.20	69.3	2.12	0.0055	
I030107		1.685	0.020	0.036	0.309	162.5	0.033	18.80	72.6	6.52	0.0020	
I030108		2.36	0.032	0.133	0.564	95.7	0.117	11.20	61.5	4.23	0.0020	
I030109		1.080	0.043	0.068	0.210	53.8	0.643	2.20	35.1	2.17	<0.0001	
I030110		1.680	0.021	0.110	0.452	76.2	0.103	14.65	60.8	1.10	0.0049	
I030111		3.75	0.007	0.038	0.623	33.3	0.036	4.89	32.5	1.01	0.0016	
I030112		0.943	0.007	0.084	0.146	101.0	0.142	9.69	28.2	2.08	0.0044	
I030113		2.16	0.005	0.501	0.757	168.5	0.055	1.885	59.9	2.08	0.0119	
I030114		8.48	0.004	0.044	2.04	28.3	0.027	14.25	61.0	1.78	0.0276	
I030115		2.03	0.001	0.536	1.950	69.4	0.069	21.3	224	2.69	0.0042	
I030116		7.78	0.005	0.045	0.874	42.7	0.032	9.09	44.3	1.18	0.0198	
I030117		0.852	0.002	0.060	0.311	94.3	0.067	13.65	63.7	1.57	0.0016	
I030118		2.52	0.004	0.193	0.732	55.0	0.035	5.25	165.5	2.20	0.0016	
I030119		0.892	0.003	0.079	0.284	97.1	0.132	20.7	68.9	1.32	0.0005	
I030120		1.415	0.013	0.061	0.659	39.5	0.090	6.66	47.0	1.43	0.0009	
I030121		1.340	0.001	1.155	0.629	87.1	0.256	12.35	55.2	0.63	>0.1000	0.83
I030122		2.29	0.038	0.063	0.604	81.5	0.103	5.91	45.0	2.71	0.0135	
I030123		2.52	0.035	0.151	0.516	88.2	0.174	15.00	56.2	2.70	0.0045	



ALS Canada Ltd.
2103 Dollarton Hwy
North Vancouver BC V7H 0A7
Phone: +1 (604) 984 0221 Fax: +1 (604) 984 0218
www.alsglobal.com

To: HULSTEIN, ROGER
106 WILSON DR.
WHITEHORSE YT Y1A 5R2

Page: Appendix 1
Total # Appendix Pages: 1
Finalized Date: 17- OCT- 2016
Account: HULROG

Project: Nooc Claims

CERTIFICATE OF ANALYSIS WH16163700

CERTIFICATE COMMENTS

ANALYTICAL COMMENTS

Applies to Method:

Gold determinations by this method are semi- quantitative due to the small sample weight used (0.5g).
ME- MS41L

LABORATORY ADDRESSES

Applies to Method:

Processed at ALS Kamloops located at 2953 Shuswap Drive, Kamloops, BC, Canada.
LOG- 22 SCR- 41 WEI- 21

Applies to Method:

Processed at ALS Vancouver located at 2103 Dollarton Hwy, North Vancouver, BC, Canada.
Au- AROR43 Au- ST43 ME- MS41L

Appendix B

**Rock Sample Descriptions
and
Analytical Results**

Teslin Mountain Project

2015 and 2016 Rock Samples

Sample No.	type	Date	Grid	Datum	Zone	UTM E	UTM N	CAMP	Description	sample notes	Samp No.	Au-ICP21-ppm
122611	rock	23-Jun-15	UTM	NAD83	8v	523838	6775574	Camp 2	grab of qtz veinlets, spaced 2-3 cm, x-cutting intermediate volcanic +/- brx, autobrx; contains diss magnetite.	outcrop	122611	0.001
122612	rock	23-Jun-15	UTM	NAD83	8v	523979	6775809	Camp 2	rock grab of calcite veined andesite near andesite - rhy dyke contact.	outcrop	122612	0.001
122613	rock	24-Jun-15	UTM	NAD83	8v	528423	6773639	Camp 2	Grab of <= 1 cm qtz vein, clear light grey qtz, X/c'ing dirty calcareous sandstone.	outcrop	122613	0.01
122614	rock	24-Jun-15	UTM	NAD83	8v	528392	6773668	Camp 2	Tan weathering carb alt feld phyric volcanic - intrusive X/C by qtz - calcite veinlets. Grab of qtz with rare fine grained acicular silver sulfides(?) < 1-2 mm size	outcrop	122614	0.053
122615	rock	24-Jun-15	UTM	NAD83	8v	528379	6773682	Camp 2	grab of qtz veining cross cutting carb altered feld phyric intrusive volcanic. Trace Sx.	outcrop	122615	0.823
122616	rock	26-Jun-15	UTM	NAD83	8v	528164	6773631	Camp 2	dirty calcareous sandstone/ arkose cut by 1 cm orange calcite vein, qtz in core and limonitic selvages	outcrop	122616	0.003
122617	rock	26-Jun-15	UTM	NAD83	8v	528081	6773640	Camp 2	White fine grained bull qtz vein approx 6 cm wide cross cutting variably brecciated and siliceous grey fine grained shale. "Siliceous brx zone with qtz vein in middle" (DH). Minor limonite.	outcrop	122617	0.187
122618	rock	26-Jun-15	UTM	NAD83	8v	528428	6773609	Camp 2	White - light tan weathering very small 1x 0.5 m outcrop. Carb alt dyke? Weathered out limonite -ankerite(?) feldspar phenos in light grey aphanitic matrix.	outcrop	122618	0.009
122619	rock	26-Jun-15	UTM	NAD83	8v	528392	6773665	Camp 2	Rough chip vertically over 1 m. Across O/C fractures. Flat lying <1cm qtz veinlets and oblique veinlets <2cm wide plus minor <=1-3mm random veinlets. Overall approx 5% qtz in sample and wall rock of brown weathering carb alt intrusive/volcanic. Sample approx 2 m west of 122614.	outcrop	122619	0.079
122620	rock	26-Jun-15	UTM	NAD83	8v	528392	6773665	Camp 2	approx 8m rough chip - panel across o/c of 122614 and 122619. same veining and wallrock as 614 and 619). <= 5% qtz in sample, lim and tr py.	outcrop	122620	0.099
122621	rock	26-Jun-15	UTM	NAD83	8v	528351	6773784	Camp 2	small 0.3 X 0.3 m O/C of dark grey limonitic coarse grained carbonate alt mafic rock, ie. Gabbro? X/C by <= 1 cm banded qtz - carb vein. Non magnetic.	outcrop	122621	0.003
122622	rock	26-Jun-15	UTM	NAD83	8v	528279	6773814	Camp 2	Weak qtz veining and shearing X/c altered intrusion, over approx 0.3m med grained, limonitic feldspars. Located near W end of whaleback o/c and approx 25 m from dirty sandst contact with small intermediate dyke at contact.	outcrop	122622	0.002
122623	rock	26-Jun-15	UTM	NAD83	8v	528132	6773813	Camp 2	Grab from small o/c face, qtz stkwk x/c by what looks to be alt brx intrusive as at 122614.	outcrop	122623	0.098
122624	rock	24-Jun-15	UTM	NAD83	8v	528382	6773680	Camp 2	grab of qtz veining over 6", white to light grey qtz, trace dis fine grained pyrite. X/c'ing carb alt feld phyric volc - intrusive.	outcrop	122624	0.64
122907	rock		UTM	NAD83	8v	523846	6775568	Camp 2	dk brown weathering f.g. brownish volc rx we 1 cm black mt veins rimmed by qtz-cc	float	122907	0.001
122908	rock		UTM	NAD83	8v	523850	6775570	Camp 2	maroon/brown strongly vesicular andesite/ basalt/ w vugs filled w calcite and amorphous green mineral (zeolite?)	float	122908	0.001

Teslin Mountain Project

2015 and 2016 Rock Samples

Sample No.	Au-ICP21-ppb	Ag_ppm	Al_per	As_ppm	B_ppm	Ba_ppm	Be_ppm	Bi_ppm	Ca_per	Cd_ppm	Co_ppm	Cr_ppm	Cu_ppm	Fe_per	Ga_ppm	Hg_ppm_icp41	K_per	La_ppm	Mg_per	Mn_ppm
122611	1	0.2	0.51	29	10	60	0.5	2	4.36	0.5	13	44	14	3.6	10	1	0.08	10	3.07	1470
122612	1	0.2	1.1	51	10	90	0.5	2	10.2	0.5	12	24	13	3.23	10	1	0.11	10	2.42	1590
122613	10	0.2	0.64	24	10	410	0.5	2	5.76	0.5	16	26	50	3.91	10	1	0.13	10	0.9	851
122614	53	0.2	0.86	86	10	50	0.5	2	3.07	0.5	4	9	5	1.38	10	1	0.1	10	1	367
122615	823	0.9	0.74	462	10	70	0.5	2	4.93	0.5	15	15	57	3.4	10	1	0.1	10	1.42	961
122616	3	0.2	1.76	3	10	40	0.7	2	5.23	0.5	9	18	39	3.73	10	1	0.08	10	0.74	743
122617	187	0.2	0.57	90	10	50	0.5	2	0.38	0.5	4	12	41	1	10	1	0.05	10	0.06	91
122618	9	0.2	0.82	21	10	150	0.5	2	1.92	0.5	4	4	4	1.52	10	1	0.21	20	0.42	394
122619	79	0.2	0.68	112	10	40	0.5	2	1.64	0.5	4	7	7	1.04	10	1	0.08	10	0.39	259
122620	99	0.2	0.72	106	10	60	0.5	2	3.13	0.5	4	6	5	1.56	10	1	0.1	10	0.99	413
122621	3	0.2	0.73	22	10	60	0.5	2	5.24	0.5	5	7	3	1.72	10	1	0.08	10	1.25	458
122622	2	0.2	0.75	4	10	50	0.5	2	3.29	0.5	4	8	4	1.27	10	1	0.09	10	0.11	209
122623	98	0.2	0.45	12	10	40	0.5	2	0.35	0.5	8	11	27	2.47	10	1	0.11	10	0.1	422
122624	640	0.6	0.5	470	10	40	0.5	2	1.45	0.5	6	7	20	1.88	10	1	0.1	10	0.25	290
122907	1	0.2	0.64	17	10	120	0.5	2	2.22	0.5	9	34	15	3.26	10	1	0.07	10	1.47	928
122908	1	0.2	0.96	2	10	70	0.5	2	2.01	0.5	14	68	25	3.35	10	1	0.14	20	0.7	840

Teslin Mountain Project

2015 and 2016 Rock Samples

Sample No.	Mo_ppm	Na_per	Ni_ppm	P_per	Pb_ppm	S_per	Sb_ppm	Sc_ppm	Sr_ppm	Th_pm	Ti_per	Tl_ppm	U_ppm	V_ppm	W_ppm	Zn_ppm	certificate
122611	3	0.14	34	1100	4	0.04	2	9	80	20	0.02	10	10	74	10	64	WH15096954
122612	4	0.2	27	600	4	0.03	2	9	234	20	0.03	10	10	49	10	34	WH15096954
122613	1	0.02	14	530	4	0.02	3	16	239	20	0.01	10	10	109	10	57	WH15096954
122614	1	0.01	8	430	8	0.06	3	3	186	20	0.01	10	10	15	10	19	WH15096954
122615	1	0.01	18	440	7	0.33	25	12	184	20	0.01	10	10	83	10	59	WH15096954
122616	1	0.03	8	470	6	0.01	2	10	119	20	0.01	10	10	94	10	69	WH15096954
122617	1	0.01	5	420	3	0.04	9	3	13	20	0.01	10	10	38	10	23	WH15096954
122618	1	0.02	3	320	18	0.02	2	4	174	20	0.01	10	10	22	10	33	WH15096954
122619	1	0.01	11	270	8	0.06	4	3	92	20	0.01	10	10	10	10	21	WH15096954
122620	1	0.01	12	400	9	0.05	5	3	240	20	0.01	10	10	11	10	27	WH15096954
122621	1	0.01	10	160	7	0.01	2	3	339	20	0.01	10	10	14	10	26	WH15096954
122622	1	0.02	11	550	7	0.01	2	3	125	20	0.01	10	10	17	10	28	WH15096954
122623	1	0.01	11	320	4	0.01	7	6	24	20	0.01	10	10	24	10	42	WH15096954
122624	2	0.01	10	230	6	0.35	26	4	85	20	0.01	10	10	14	10	23	WH15096954
122907	2	0.18	31	1090	5	0.29	2	5	68	20	0.07	10	10	69	10	38	WH15096954
122908	1	0.18	44	1490	2	0.01	2	11	92	20	0.1	10	10	81	10	56	WH15096954

Teslin Mountain Project

2015 and 2016 Rock Samples

Sample No.	type	Date	Grid	Datum	Zone	UTM E	UTM N	CAMP	Description	sample notes	Samp No.	Au-ICP21-ppm
122909	rock		UTM	NAD83	8v	523855	6775575	Camp 2	carbonate breccia w small fragments lined w radiating calcite xtals, numerous vugs w bladed calcite (open space xtallization)	float	122909	0.001
122910	rock		UTM	NAD83	8v	523860	6775580	Camp 2	in altered volc? Vug lined by bladed radial qtz-carb xtals w chalcedonic purplish qtz in core	float	122910	0.001
122911	rock		UTM	NAD83	8v	527176	6773976	Camp 2	bleached xtal tuff w strong oxidation on fractures, pervasive fracturing 1/ 1 cm, still magnetic, no sulph	talus off o/c	122911	0.001
122912	rock		UTM	NAD83	8v	527225	6774014	Camp 2	rusty -weathering xtal tuff w groundmass altered to light yellow-green colour (sericite?). Float in talus	float	122912	0.001
122913	rock		UTM	NAD83	8v	527364	6773899	Camp 2	rusty-weathering, white, bleached stal tuff w sl clay-altered groundmass and mafics	float	122913	0.001
122914	rock		UTM	NAD83	8v	527542	6773781	Camp 2	pervasively bleached tuff w limonitic fract. No flag in field.	float	122914	0.001
122915	rock		UTM	NAD83	8v	528292	6773810	Camp 2	altered intrusive rx, limonitic, some thin hairline veinlets w narrow bleached haloes	o/c	122915	0.001
122916	rock		UTM	NAD83	8v	528134	6773810	Camp 2	zone of intense qtz stockwork and brecciation in altered intrusive rx, like stn across swamp.	o/c	122916	0.194
122917	rock		UTM	NAD83	8v	527911	6773314	Camp 2	float of orange lapilli lithic tuff at camp, some fx altered green.	float	122917	0.001
Q009320	rock	23-Sep-16	UTM	NAD83	8v	528093	6774128	Nooc CI	White weathering, well foliated almost sheared felsic epiclastic (Open Creek volcanic), rhyolite, dacite, shale clasts, possibly very fine grained diss sulfides	grab	Q009320	0.001
Q009321	rock	23-Sep-16	UTM	NAD83	8v	528218	6773844	Nooc CI	Grab from small outcrop of brown calcareous sandstone-siltstone, weakly brecciated and qtz-calcite veined, trace pyrite.	grab	Q009321	0.006
Q009322	rock	24-Sep-16	UTM	NAD83	8v	528131	6773817	Nooc CI	Rough chip 4 m horizontally across outcrop of brecciated sandstone cut by qtz - calcite veining in brittle fractures. Looks late, high level and tectonic related.	grab	Q009322	0.373
Q009323	rock	24-Sep-16	UTM	NAD83	8v	528306	6773735	Nooc CI	Subcrop of feldspar phyric andesite cross cut by fine grained light grained light grey white qtz veinlets.	float	Q009323	0.014
Q009324	rock	24-Sep-16	UTM	NAD83	8v	528481	6773690	Nooc CI	SE end of low hump - hill of grey limestone, weakly altered, fine grained minor calcite veinlets.	grab	Q009324	0.001

Teslin Mountain Project

2015 and 2016 Rock Samples

Sample No.	Au-ICP21-ppb	Ag_ppm	Al_per	As_ppm	B_ppm	Ba_ppm	Be_ppm	Bi_ppm	Ca_per	Cd_ppm	Co_ppm	Cr_ppm	Cu_ppm	Fe_per	Ga_ppm	Hg_ppm_icp41	K_per	La_ppm	Mg_per	Mn_ppm
122909	1	0.2	0.39	57	10	50	0.6	2	13.4	0.5	9	31	7	4.03	10	1	0.07	10	7.41	3900
122910	1	0.2	0.38	2	10	2120	0.5	2	7.4	0.5	10	29	8	2.11	10	1	0.03	10	4.45	3620
122911	1	0.2	0.81	2	10	230	0.5	2	0.47	0.5	1	15	6	2.55	10	1	0.19	10	0.51	290
122912	1	0.2	1.1	2	10	350	0.5	2	0.25	0.5	1	11	11	2.9	10	1	0.31	20	0.75	225
122913	1	0.2	0.88	2	10	170	0.5	2	0.22	0.5	1	16	3	2.81	10	1	0.21	20	0.43	188
122914	1	0.2	1.02	16	10	140	0.5	2	0.19	0.5	1	11	9	2.14	10	1	0.2	10	0.56	130
122915	1	0.2	0.49	4	10	40	0.5	2	1.17	0.5	2	8	13	1.32	10	1	0.09	10	0.05	144
122916	194	0.5	0.27	19	10	180	0.5	2	0.07	0.5	3	14	36	0.95	10	1	0.05	10	0.03	177
122917	1	0.2	0.75	2	10	470	0.5	2	0.28	0.5	1	3	1	0.36	10	1	0.24	30	0.12	170
Q009320	1	0.2	1.02	4	10	220	0.5	2	1	0.5	6	10	10	2.47	10	1	0.16	20	0.35	652
Q009321	6	0.2	0.53	41	10	60	0.5	2	4.7	0.5	9	13	32	2.55	10	1	0.11	10	1.67	626
Q009322	373	0.7	0.45	18	10	40	0.5	2	0.15	0.5	10	14	64	2.78	10	1	0.09	10	0.08	540
Q009323	14	0.2	0.39	19	10	790	0.5	2	1.59	0.5	3	12	14	1.3	10	1	0.04	10	0.5	303
Q009324	1	0.2	0.03	4	10	10	0.5	2	25	0.5	1	8	2	0.13	10	1	0.02	10	0.1	119

Teslin Mountain Project

2015 and 2016 Rock Samples

Sample No.	Mo_ppm	Na_per	Ni_ppm	P_per	Pb_ppm	S_per	Sb_ppm	Sc_ppm	Sr_ppm	Th_pm	Ti_per	Tl_ppm	U_ppm	V_ppm	W_ppm	Zn_ppm	certificate
122909	6	0.09	31	570	2	0.01	2	16	164	20	0.02	10	10	70	10	48	WH15096954
122910	1	0.09	40	340	2	0.05	2	4	134	20	0.05	10	10	31	10	38	WH15096954
122911	2	0.15	3	920	8	0.03	2	4	40	20	0.12	10	10	69	10	25	WH15096954
122912	3	0.18	1	740	11	0.45	2	5	135	20	0.03	10	10	59	10	29	WH15096954
122913	2	0.14	1	870	8	0.4	2	5	56	20	0.06	10	10	75	10	22	WH15096954
122914	2	0.1	1	340	5	0.27	2	4	58	20	0.02	10	10	50	10	14	WH15096954
122915	1	0.04	5	590	4	0.02	2	2	54	20	0.01	10	10	19	10	21	WH15096954
122916	1	0.01	3	90	2	0.02	12	3	10	20	0.01	10	10	18	10	16	WH15096954
122917	1	0.81	1	120	10	0.02	2	1	23	20	0.01	10	10	3	10	19	WH15096954
Q009320	1	0.05	7	820	75	0.05	2	6	49	20	0.03	10	10	45	10	167	WH16163702
Q009321	1	0.01	14	200	46	0.03	2	5	385	20	0.01	10	10	36	10	88	WH16163702
Q009322	1	0.01	13	530	23	0.01	5	10	14	20	0.01	10	10	45	10	67	WH16163702
Q009323	1	0.01	10	360	20	0.05	2	2	94	20	0.01	10	10	13	10	30	WH16163702
Q009324	1	0.01	1	170	9	0.01	2	1	311	20	0.01	10	10	5	10	15	WH16163702

Appendix C

**Soil Sample Descriptions
And
Analytical Results**

2015 and 2016 Soil Samples

Samp_No	Type	Date	Grid	Datum	Zone	UTM_East	UTM_North	Camp	Description	medium	person	Samp_No	Au_ST43_ppm	Au_ST43_PPB	Au_MS411_ppm	Au_MS411_PPB	Ag_ppm	Al_per	As_ppm	B_ppm
122558	soil	23-Jun-15	UTM	NAD83	8v	523840	6775574	Camp 2	At base of cliff; magnetite diss in intermediate volcanic +/- brx, autobrx, minor X-cutting qtz - mag veinlets and chalcadonic qtz.	talus fines	RH	122558	0.003	3	0.0029	2.9	0.042	1.43	13.7	10
122559	soil	23-Jun-15	UTM	NAD83	8v	523976	6775809	Camp 2	soil from talus below rhyolite - basalt dyke contacts with qtz veining and shearing along contact.	talus fines	RH	122559	0.006	6	0.0061	6.1	0.076	1.8	177	10
122560	soil	23-Jun-15	UTM	NAD83	8v	523952	6775616	Camp 2	soil of light green sandy clay at base of cliff - top of landslide material.	talus fines	RH	122560	0.0007	0.7	0.0002	0.2	0.052	2.02	7.31	10
122561	soil	23-Jun-15	UTM	NAD83	8v	523971	6775565	Camp 2	Light green lapilli tuff, Mn on fracture, sericite altered. white clay - muck! Maybe due to intense alteration?	C horiz	RH	122561	0.0004	0.4	0.0002	0.2	0.077	3.48	1.19	10
122562	soil	24-Jun-15	UTM	NAD83	8v	528425	6773644	Camp 2	from base of small outcropping brown weathering brown lithic sandstone to conglomerate (congl only found in float), calcareous matrix, Mn on fracture - clast surfaces.	talus fines	RH	122562	0.0428	42.8	0.0442	44.2	0.165	0.95	153	10
122563	soil	24-Jun-15	UTM	NAD83	8v	528357	6773721	Camp 2	grey soil below small grey limestone o/c, x/c by irregular calcite veinlets, float block with slicks and crackle brx - X/c by calcite veinlets.	talus fines	RH	122563	0.0021	2.1	0.0016	1.6	0.527	0.54	32.5	10
122564	soil	25-Jun-15	UTM	NAD83	8v	527361	6773476	Camp 2	at base of o/c of vesicular grey tuff (15DH71 station)	talus fines	DH/RH	122564	0.0004	0.4	0.0009	0.9	0.096	1.53	1.03	10
122565	soil	25-Jun-15	UTM	NAD83	8v	526775	6773761	Camp 2	soil from dry hump in bowl - likely glacial origin, rounded boulders 25cm deep, ok sample	soil	RH	122565	0.0007	0.7	0.0006	0.6	0.079	1.62	7.71	10
122567	soil	25-Jun-15	UTM	NAD83	8v	526459	6773649	Camp 2	light brown soil with ash - volcanic float as at station RH15133, dry hump.	soil	RH	122567	0.0005	0.5	0.0003	0.3	0.087	1.43	7.13	10
122854	soil	June 2015	UTM	NAD83	8v	523984	6775560	Camp 2	in rusty volc near clayey poorly consolidated greenish lapilli tuff	talus fines	DH	122854	0.0034	3.4	0.0026	2.6	0.096	1.28	43.2	10
122855	soil	June 2015	UTM	NAD83	8v	527178	6773974	Camp 2	2m east of chute of rusty rx and rx sample 122911. Talus fines yellowish talus fines in narrow zone of strongly limonitic fractures in xtal tuff, (where groundmass is altered white and sl clayey but mafics still fresh. (hope to have big enough sample)	talus fines	DH	122855	0.0019	1.9	0.0002	0.2	0.398	1.59	3.47	10
122856	soil	June 2015	UTM	NAD83	8v	527259	6773988	Camp 2	talus fines in steep talus chute. Below unaltered xtal tuff and one zone of rusty 'rings' on weathered surface	talus fines	DH	122856	0.0034	3.4	0.0033	3.3	0.357	1.66	42	10
122857	soil	June 2015	UTM	NAD83	8v	527301	6773970	Camp 2	of rusty 'rings' on weathered surface	talus fines	DH	122857	0.0015	1.5	0.0009	0.9	0.105	1.73	20.8	10
122858	soil	June 2015	UTM	NAD83	8v	527363	6773900	Camp 2	area of float of rx 122913	talus fines	DH	122858	0.0029	2.9	0.0021	2.1	0.148	1.64	6.79	10
122859	soil	June 2015	UTM	NAD83	8v	527432	6773801	Camp 2	talus fines in talus of maroon lapilli tuff, some with hematized or kspar altered fspar	coarse talus fines	DH	122859	0.0018	1.8	0.0016	1.6	0.195	1.74	1.72	10
122860	soil	June 2015	UTM	NAD83	8v	527541	6773783	Camp 2	talus fines in area of bleached rusty rx. Area of rx 122914.	talus fines	DH	122860	0.0023	2.3	0.0014	1.4	0.13	1.43	4.46	10
122861	soil	June 2015	UTM	NAD83	8v	527464	6773735	Camp 2	talus fines, looks like silt? Below fg brownish massive unit (andesite?)	talus fines	DH	122861	0.0015	1.5	0.0005	0.5	0.119	1.42	1.44	10
122862	soil	June 2015	UTM	NAD83	8v	527458	6773681	Camp 2	talus fines, silty sandy, back in tuff unit	talus fines	DH	122862	0.0008	0.8	0.0006	0.6	0.074	1.49	0.96	10
122863	soil	26-Jun-15	UTM	NAD83	8v	528204	6773572	Camp 2	talus fines, on knoll, limy siltstone - sandstone	talus fines	RH	122863	0.0013	1.3	0.0009	0.9	0.134	2.22	6.57	10
122864	soil	26-Jun-15	UTM	NAD83	8v	528081	6773640	Camp 2	talus fines, bedrock of quartz veined grey shale	talus fines	RH	122864	0.0778	77.8	0.0811	81.1	0.162	2.02	34.5	10
122865	soil	26-Jun-15	UTM	NAD83	8v	528275	6773611	Camp 2	reddish soil on top of small knoll	soil	DH	122865	0.0021	2.1	0.0018	1.8	0.053	1.78	8.32	10
122866	soil	26-Jun-15	UTM	NAD83	8v	528410	6773693	Camp 2	1m deep auger soil sample, beige - olive sandy soil	soil	RH	122866	0.0055	5.5	0.005	5	0.218	1.09	31.1	10
122867	soil	26-Jun-15	UTM	NAD83	8v	528377	6773748	Camp 2	0.15m deep soil, located at W end of outcrop hump of dark brown weathered mafic intrusive, burley poplers	soil	RH	122867	0.002	2	0.0033	3.3	0.069	1.04	1.41	10
I030101	soil	23-Sep-16	UTM	NAD83	8v	528094	6773796	NOOC	30 cm deep, till - outwash but angular pieces of dark grey non calcareous siltstone	soil	RH	I030101	0.0028	2.8	0.0032	3.2	0.141	2.11	5.4	10
I030102	soil	23-Sep-16	UTM	NAD83	8v	528132	6773813	NOOC	At rock sample 122916, C horizon 20-40 cm deep of brecciated sandstone - argillite crosscut by qtz veins and later dry fractures.	soil	RH	I030102	0.0421	42.1	0.0235	23.5	0.28	1.08	17.05	10
I030103	soil	23-Sep-16	UTM	NAD83	8v	528147	6773656	NOOC	0.5m deep, very fine silt - loess, few pebbles, red brown	soil	RH	I030103	0.0036	3.6	0.0037	3.7	0.102	1.51	12.5	10
I030104	soil	23-Sep-16	UTM	NAD83	8v	528079	6773666	NOOC	0.5m deep, till, grey pebbles (Sandstone)	soil	RH	I030104	0.0062	6.2	0.0062	6.2	0.224	1.98	7.04	10
I030105	soil	23-Sep-16	UTM	NAD83	8v	528112	6773655	NOOC	0.2m deep, C horizon, sandstone	soil	RH	I030105	0.0011	1.1	0.0019	1.9	0.19	2.08	6.23	10
I030106	soil	23-Sep-16	UTM	NAD83	8v	528107	6773618	NOOC	Red brown - limonite soil, 0.25m deep, till?	soil	RH	I030106	0.0055	5.5	0.0064	6.4	0.289	1.85	6.71	10
I030107	soil	23-Sep-16	UTM	NAD83	8v	528166	6773605	NOOC	0.25m deep, c horizon and till? Brown sandstone - siltstone feld rich greywacke float and sub outcrop.	soil	RH	I030107	0.002	2	0.002	2	0.128	2.61	5.5	10
I030108	soil	23-Sep-16	UTM	NAD83	8v	528078	6773854	NOOC	0.25 m deep, sandstone - siltstone C pebbles, minor rounded till pebbles.	soil	RH	I030108	0.002	2	0.0021	2.1	0.088	2.6	7.18	10
I030109	soil	23-Sep-16	UTM	NAD83	8v	528050	6774170	NOOC	0.25m deep, brown clayey loess till	soil	RH	I030109	0.0001	0.1	0.0003	0.3	0.061	1.22	2.89	10
I030110	soil	23-Sep-16	UTM	NAD83	8v	528145	6774085	NOOC	brown clayey soil, siltstone pebbles, specks limonite. Looks ok.	soil	RH	I030110	0.0049	4.9	0.0046	4.6	0.1	1.29	23	10

2015 and 2016 Soil Samples

Samp_No	Ba_ppm	Be_ppm	Bi_ppm	Ca_per	Cd_ppm	Ce_ppm	Co_ppm	Cr_ppm	Cs_ppm	Cu_ppm	Fe_per	Ga_ppm	Ge_ppm	Hf_ppm	Hg_ppm _MS42	In_ppm	K_per	La_ppm	Li_ppm	Mg_per	Mn_ppm	Mo_ppm	Na_per	Nb_ppm	Ni_ppm	P_per	Pb_ppm
122558	238	0.46	0.122	2.44	0.234	30.4	61.5	56.5	0.419	54.5	6.39	4.52	0.193	0.162	0.026	0.026	0.06	15.3	18.3	2.12	3490	4.08	0.121	0.09	122.5	0.102	3.97
122559	123	0.61	0.104	1.71	0.326	39.1	59.7	63.9	0.613	53.6	7.36	4.89	0.123	0.324	0.033	0.034	0.16	20.3	15.8	1.77	2420	23	0.139	0.107	125	0.09	8.46
122560	682	1.53	0.425	0.49	0.104	75.1	1.965	2.66	0.579	2.3	0.4	3.54	0.086	0.717	0.004	0.015	0.66	38.5	4.5	0.62	142.5	1.01	0.59	0.172	6.14	0.005	28.1
122561	1360	1.24	0.354	0.4	0.242	63.4	0.859	1.1	0.685	0.86	0.178	4.94	0.077	0.682	0.004	0.017	1.7	32.2	2.4	0.26	371	0.6	1.415	0.047	1.7	0.004	35.4
122562	374	0.4	0.124	2.03	0.184	14.3	25.8	23.4	1.12	70.2	3.7	3.67	0.052	0.081	0.192	0.029	0.17	6.46	6.7	0.49	1065	0.51	0.01	0.177	24.5	0.094	5.47
122563	124.5	0.36	0.036	19.6	4.48	8.03	5.5	13.55	0.177	28	1.84	1.405	0.034	0.088	0.207	0.025	0.08	7.45	2.4	0.17	236	16.3	0.014	0.07	44.4	0.189	2.81
122564	300	0.34	0.068	0.54	0.064	33.6	7.68	25.3	0.496	11.6	2.89	4.92	0.054	0.156	0.013	0.025	0.34	16.35	5.4	0.75	291	0.69	0.041	0.624	10.35	0.039	4.92
122565	292	0.3	0.104	0.32	0.116	17.15	10.2	34.8	0.67	15.3	3.14	4.64	0.028	0.101	0.007	0.02	0.09	8.4	10	0.55	239	1.82	0.026	0.501	20.6	0.046	6.65
122567	161	0.25	0.087	0.26	0.077	10.15	6.93	28.9	0.395	15.7	2.41	4.5	0.021	0.13	0.008	0.016	0.07	5.52	8.8	0.43	176	0.89	0.015	0.567	16.95	0.02	5.14
122854	206	0.6	0.347	1	0.209	35.1	44.7	44.1	0.854	35.6	4.83	4.12	0.097	0.164	0.035	0.036	0.08	18.25	15.5	1.18	2620	5.82	0.065	0.165	98.1	0.1	6.98
122855	220	0.62	0.101	0.22	0.266	31.3	13.1	19.4	0.936	34.8	2.08	6.35	0.057	0.008	0.093	0.016	0.09	16.6	6.2	0.33	1280	1.83	0.018	1.12	9.75	0.277	5.26
122856	76.4	0.23	0.061	0.2	0.033	114	10.7	49	1.405	54.5	13.75	9.67	0.266	0.017	0.03	0.097	0.41	55	8.9	0.91	426	54.8	0.668	0.781	21.9	0.31	24.1
122857	188	0.62	0.081	1.66	0.177	42.9	19.2	32.2	1.05	27.3	4.02	9.5	0.115	0.098	0.022	0.026	0.09	22.6	17.9	1.24	831	24.8	0.042	1.835	20.8	0.118	6.01
122858	174	0.28	0.329	0.12	0.041	33.5	7.76	25.7	0.555	47.6	7.01	7.04	0.1	0.029	0.04	0.027	0.14	18.4	10.7	0.73	318	5.66	0.098	0.904	16.45	0.116	9.43
122859	850	0.45	0.186	0.8	0.177	39.4	14.3	23.9	0.379	32.7	4.06	8.95	0.091	0.116	0.032	0.032	0.26	21.6	12.5	1.34	677	3.28	0.056	1.075	11.8	0.135	7.76
122860	354	0.41	0.239	1.05	0.189	36.5	14.25	20.7	0.475	31.1	3.82	7.7	0.09	0.06	0.067	0.017	0.24	18.85	11.6	1.2	765	3.58	0.123	0.894	15.55	0.123	6.47
122861	204	0.4	0.09	1.14	0.18	40.1	15.45	57.1	0.466	31.7	3.51	7.44	0.105	0.057	0.028	0.029	0.2	21.4	11.1	1.72	718	1.77	0.039	0.99	35.7	0.124	4.01
122862	210	0.41	0.074	1.02	0.282	38.3	13.45	24.4	0.366	26	3.41	8.66	0.096	0.052	0.021	0.033	0.23	19.85	8.8	1.53	844	1.08	0.027	1.17	12	0.147	5.08
122863	121	0.49	0.098	0.64	0.114	26.1	17.25	42.4	1.145	54.8	3.97	9.96	0.051	0.098	0.027	0.04	0.07	11.95	15	0.64	562	0.71	0.016	0.484	19.75	0.033	7.01
122864	260	0.46	0.065	0.87	0.206	20.6	21.5	41.3	0.565	62.6	3.77	9.14	0.063	0.131	0.126	0.038	0.15	9.07	18.9	1.07	570	0.61	0.021	0.339	26.9	0.055	5.2
122865	48.6	1.35	0.045	3.36	0.081	23.3	17.05	47.2	1.885	41.3	4.78	17.2	0.087	0.108	0.026	0.054	0.04	14.4	14.2	1	638	0.27	0.005	0.206	14.3	0.077	6.45
122866	161.5	0.46	0.07	7.73	1.075	18.8	13.75	33.3	0.55	58.8	3.18	4.36	0.05	0.049	0.14	0.029	0.06	13.35	10.1	0.66	506	4.21	0.014	0.304	47.6	0.111	5.82
122867	1000	0.31	0.028	1.75	0.135	10.1	11.65	57.2	0.563	43.5	4.15	3.14	0.038	0.05	0.057	0.026	0.12	5.58	4.2	0.21	574	0.3	0.01	0.149	10.9	0.029	3.93
1030101	166.5	0.37	0.095	0.79	0.154	25.1	13.8	40.6	0.927	55.6	3.24	6.37	0.071	0.123	0.127	0.036	0.06	14.35	18.6	1.03	628	0.75	0.053	0.331	30.3	0.039	6.25
1030102	130.5	0.36	0.086	0.48	0.04	17.8	8.64	41.3	0.523	18.5	2.43	3.6	0.039	0.059	0.058	0.019	0.09	8.42	6.5	0.38	186.5	0.5	0.013	0.767	23.2	0.026	3.93
1030103	161.5	0.46	0.08	0.64	0.067	21.9	18.5	47.1	0.8	54.9	3.96	6.26	0.076	0.092	0.043	0.036	0.08	14.2	12	0.73	597	1.12	0.018	0.421	35	0.028	5.59
1030104	159	0.35	0.051	6.52	0.268	17.3	19.55	38.7	0.941	83.1	4.13	7.97	0.065	0.125	0.064	0.036	0.06	8.83	22.5	1.49	607	0.51	0.023	0.174	28.9	0.079	3.71
1030105	105	0.31	0.075	0.94	0.099	20.3	15.45	42.1	0.933	50.5	3.74	8.97	0.058	0.068	0.081	0.046	0.12	9.62	16.8	0.73	379	1.05	0.014	0.305	17.9	0.033	4.84
1030106	103.5	0.55	0.06	4.64	0.251	18.9	18.05	45.3	0.858	95.8	4.18	9	0.069	0.096	0.11	0.041	0.08	9.97	15.9	1.07	620	0.53	0.016	0.225	25.8	0.069	4.31
1030107	79.4	0.53	0.059	0.53	0.097	16.6	21	50.3	0.996	92.1	5.36	13.2	0.09	0.258	0.018	0.045	0.04	11.4	24.2	1.63	418	0.28	0.017	0.124	29.6	0.024	4.55
1030108	118.5	0.47	0.091	0.85	0.19	24.6	17	36.2	0.596	50.3	3.81	7.16	0.065	0.134	0.028	0.035	0.09	11.2	18.7	1.12	443	1.06	0.083	0.487	33.9	0.031	6.15
1030109	106	0.25	0.075	0.36	0.118	9.07	6.75	23.1	0.412	12.45	1.96	4.25	0.025	0.068	0.016	0.012	0.03	4.41	7.7	0.4	200	0.74	0.018	0.68	13.6	0.014	3.94
1030110	149.5	0.43	0.076	0.62	0.218	20.3	11.6	26.4	0.483	32.1	3.15	4.43	0.061	0.034	0.035	0.025	0.07	13.05	9.3	0.5	500	2.09	0.022	0.346	22.6	0.03	5.12

2015 and 2016 Soil Samples

Samp_No	Pd_ppm	Pt_ppm	Rb_ppm	Re_ppm	S_per	Sb_ppm	Sc_ppm	Se_ppm	Sn_ppm	Sr_ppm	Ta_ppm	Te_ppm	Th_ppm	Ti_per	Tl_ppm	U_ppm	V_ppm	W_ppm	Y_ppm	Zn_ppm	Zr_ppm	Au_AROR43_ppm	Certificate
122558			5.49	0.001	0.01	0.104	18.4	0.6	0.44	91.6	0.005	0.08	2.34	0.081	0.568	0.84	116.5	0.097	14.85	119	9.45		WH15096973
122559			11.5	0.001	0.11	0.347	17.1	1	0.55	100.5	0.005	0.02	4.96	0.064	1.975	6.08	93.4	0.161	19.7	121	19.7		WH15096973
122560			30	0.001	0.01	0.123	2.18	0.7	0.45	69.7	0.005	0.02	19.95	0.005	0.257	3.7	3.7	0.032	14.9	13.4	31.5		WH15096973
122561			61.3	0.001	0.01	0.077	1.855	0.5	0.47	178.5	0.005	0.01	14.45	0.003	0.387	2.85	2.1	0.025	11.3	10.2	21.2		WH15096973
122562			7.66	0.001	0.09	5.49	14.1	1.1	0.19	115	0.005	0.03	0.465	0.005	0.143	0.227	84.8	0.148	11.7	69.4	1.92		WH15096973
122563			2.28	0.008	0.07	5.24	3.35	4.2	0.25	374	0.005	0.06	0.279	0.001	0.378	2.33	76.3	0.115	13.15	114.5	2.55		WH15096973
122564			51.6	0.001	0.01	0.125	7.65	0.3	0.45	53.3	0.005	0.01	3.97	0.108	0.094	1.15	77.1	0.085	6.19	49.6	4.82		WH15096973
122565			11.9	0.001	0.01	0.411	4.59	0.3	0.38	34.2	0.005	0.01	2.39	0.063	0.135	0.532	78.4	0.088	3.14	46.3	3.49		WH15096973
122567			11.15	0.001	0.01	0.392	3.43	0.2	0.33	23.4	0.005	0.02	2.02	0.07	0.078	0.422	62.3	0.101	2.01	35.3	4.09		WH15096973
122854			8.51	0.001	0.01	0.216	14.75	0.7	0.44	48	0.005	0.14	3.38	0.048	1.185	3.02	86	0.059	16.4	82.7	9.74		WH15096973
122855			11.3	0.001	0.06	0.188	2.12	0.5	0.31	19.65	0.005	0.02	0.282	0.062	0.075	1.23	52.3	0.207	4.87	43.4	0.39		WH15096973
122856			13.15	0.01	2.72	0.726	11.55	1.4	0.3	945	0.005	0.57	2.14	0.078	0.675	2.3	126	0.178	3.58	55	0.9		WH15096973
122857			9.18	0.001	0.1	0.383	9.92	0.5	0.69	361	0.006	0.01	3.44	0.144	0.265	1.835	97.2	0.142	10.45	69.2	3.68		WH15096973
122858			7.06	0.001	0.62	0.481	7.11	1.6	0.31	109	0.005	0.49	2.53	0.066	0.191	1.41	80.6	0.089	5	50	1.46		WH15096973
122859			15.3	0.001	0.27	0.268	8.58	0.5	0.41	68.5	0.005	0.46	3.21	0.063	0.102	1.835	97.1	0.139	10.55	66.6	3.9		WH15096973
122860			14.2	0.001	0.44	0.218	7.69	0.7	0.35	132.5	0.005	0.38	1.765	0.06	0.122	1.055	79.8	0.113	8.18	60.3	2.18		WH15096973
122861			14	0.001	0.04	0.09	8.91	0.5	0.5	47.4	0.005	0.02	2.53	0.078	0.103	0.95	97.8	0.112	10.7	77.6	2.05		WH15096973
122862			16.3	0.001	0.04	0.078	9.02	0.5	0.48	39	0.005	0.01	1.735	0.082	0.096	1.045	97.8	0.142	12.1	80.6	1.69		WH15096973
122863			7.4	0.001	0.02	0.35	18.3	0.7	0.43	28.5	0.005	0.04	2.05	0.023	0.129	0.504	119	0.153	11.1	58.1	2.68		WH15096973
122864			7.86	0.001	0.05	2.26	12.85	1.5	0.39	42.3	0.005	0.02	1.09	0.021	0.231	0.302	105	0.121	11.5	74.2	2.57		WH15096973
122865			4.26	0.001	0.01	0.111	20.7	0.5	0.95	64.6	0.005	0.01	1.02	0.013	0.025	0.246	157	0.029	14.75	90.4	1.5		WH15096973
122866			3.54	0.005	0.02	1.41	10.45	2.1	0.33	174	0.005	0.05	1.875	0.02	0.262	1.8	90.1	0.13	18.35	94.5	1.93		WH15096973
122867			7.53	0.001	0.03	0.26	27.5	0.6	0.22	46.8	0.005	0.01	0.497	0.012	0.046	0.226	111	0.073	13.7	25.7	1.38		WH15096973
I030101	0.002	0.002	5.89	0.001	0.01	0.304	13.75	0.5	0.38	45.6	0.005	0.04	2.42	0.027	0.105	0.572	87.3	0.123	16.1	53.1	3.43		WH16163700
I030102	0.001	0.002	7.29	0.001	0.01	1.135	5.79	0.3	0.24	29.3	0.005	0.01	3.34	0.038	0.059	0.557	60.2	0.379	3.72	26	2.02		WH16163700
I030103	0.001	0.002	7.61	0.001	0.01	0.568	16.95	0.7	0.34	37.9	0.005	0.01	2.49	0.032	0.1	0.365	114	0.13	17.55	64.7	3.17		WH16163700
I030104	0.006	0.003	5.04	0.001	0.02	0.509	15.3	0.7	0.31	143.5	0.005	0.02	1.11	0.015	0.08	0.368	118.5	0.095	14.75	78	2.81		WH16163700
I030105	0.001	0.002	8.88	0.001	0.02	0.442	21	0.5	0.36	34.4	0.005	0.01	1.395	0.01	0.063	0.398	124	0.149	14.6	45.8	1.73		WH16163700
I030106	0.003	0.003	5.81	0.001	0.03	0.376	18.4	0.5	0.36	88.4	0.005	0.03	1.11	0.015	0.081	0.34	144	0.109	16.2	69.3	2.12		WH16163700
I030107	0.002	0.004	3.73	0.001	0.01	0.252	23.8	0.2	0.53	23.5	0.005	0.02	1.685	0.02	0.036	0.309	162.5	0.033	18.8	72.6	6.52		WH16163700
I030108	0.002	0.002	8.06	0.001	0.01	0.466	12.8	0.8	0.39	55.8	0.005	0.01	2.36	0.032	0.133	0.564	95.7	0.117	11.2	61.5	4.23		WH16163700
I030109	0.001	0.002	3.92	0.001	0.01	0.207	3.2	0.1	0.29	18.7	0.005	0.01	1.08	0.043	0.068	0.21	53.8	0.643	2.2	35.1	2.17		WH16163700
I030110	0.003	0.002	5.78	0.001	0.01	0.781	10.4	1	0.29	29.3	0.005	0.01	1.68	0.021	0.11	0.452	76.2	0.103	14.65	60.8	1.1		WH16163700

2015 and 2016 Soil Samples

Samp_No	Type	Date	Grid	Datum	Zone	UTM_East	UTM_North	Camp	Description	medium	person	Samp_No	Au_ST43_ppm	Au_ST43_PPB	Au_MS411_ppm	Au_MS411_PPB	Ag_ppm	Al_per	As_ppm	B_ppm
I030111	soil	23-Sep-16	UTM	NAD83	8v	528175	6773945	NOOC	sandy soil sample next to outcrop of dirty feldspathic sandstone - siltstone	soil	RH	I030111	0.0016	1.6	0.0017	1.7	0.029	0.99	1.56	10
I030112	soil	23-Sep-16	UTM	NAD83	8v	528237	6773827	NOOC	sample site below brecciated fractured rusty weathering sandstone, trace iron oxide,	soil	RH	I030112	0.0044	4.4	0.0028	2.8	0.047	1.07	28.9	10
I030113	soil	24-Sep-16	UTM	NAD83	8v	528189	6773900	NOOC	Odd soil, sandy - powdery limonitic soil, 0.5m deep. No rounded pebbles, float of decomposed feldspathic sandstone.	soil	RH	I030113	0.0119	11.9	0.0098	9.8	0.076	0.36	9.78	10
I030114	soil	24-Sep-16	UTM	NAD83	8v	528222	6773897	NOOC	0.5m deep, weakly limonitic soil and pebbles of feldspathic sandstone, similar to I030113.	soil	RH	I030114	0.0276	27.6	0.0291	29.1	0.061	1	4.5	10
I030115	soil	24-Sep-16	UTM	NAD83	8v	528286	6773863	NOOC	0.4m deep, grey decomposed feldspathic sandstone, limonite specks	soil	RH	I030115	0.0042	4.2	0.0032	3.2	0.509	1.11	24.5	10
I030116	soil	24-Sep-16	UTM	NAD83	8v	528353	6773842	NOOC	Limonite - brown decomposed feldspathic sandstone, decomposed due to weathering out of calcite matrix?	soil	RH	I030116	0.0198	19.8	0.019	19	0.033	1.36	1.42	10
I030117	soil	24-Sep-16	UTM	NAD83	8v	528314	6773794	NOOC	soil of limonite - brown decomposed feldspathic sandstone, 20cm deep	soil	RH	I030117	0.0016	1.6	0.0012	1.2	0.12	0.77	13.5	10
I030118	soil	24-Sep-16	UTM	NAD83	8v	528434	6773780	NOOC	soil of limonite - brown decomposed feldspathic sandstone, 30cm deep	soil	RH	I030118	0.0016	1.6	0.0015	1.5	0.066	1.65	9.42	10
I030119	soil	24-Sep-16	UTM	NAD83	8v	528512	6773682	NOOC	Brown soil, limonite specks, sandstone - siltstone pebbles	soil	RH	I030119	0.0005	0.5	0.0006	0.6	0.214	1.13	8.09	10
I030120	soil	24-Sep-16	UTM	NAD83	8v	528606	6773549	NOOC	Limonite - brown sandy - pebble soil - silt sample in gully between limestone and intrusive units.	soil	RH	I030120	0.0009	0.9	0.0009	0.9	0.069	0.89	13.15	10
I030121	soil	24-Sep-16	UTM	NAD83	8v	528388	6773683	NOOC	near location of best 2015 rock samples, 0.4 m deep, limonite - hematite brown soil, loamy - clayey , looks good.	soil	RH	I030121	0.1	830	0.873	873	0.192	0.32	2500	10
I030122	soil	24-Sep-16	UTM	NAD83	8v	528428	6773652	NOOC	Med brown soil, 0.3m deep, float of feldspar porphyry, brecciated siliceous - calcite altered.	soil	RH	I030122	0.0135	13.5	0.0122	12.2	0.034	1.54	66.3	10
I030123	soil	24-Sep-16	UTM	NAD83	8v	528359	6773752	NOOC	poor soil quality	soil	RH	I030123	0.0045	4.5	0.0032	3.2	0.08	1.31	26.8	10

2015 and 2016 Soil Samples

Samp_No	Ba_ppm	Be_ppm	Bi_ppm	Ca_per	Cd_ppm	Ce_ppm	Co_ppm	Cr_ppm	Cs_ppm	Cu_ppm	Fe_per	Ga_ppm	Ge_ppm	Hf_ppm	Hg_ppm	In_ppm	K_per	La_ppm	Li_ppm	Mg_per	Mn_ppm	Mo_ppm	Na_per	Nb_ppm	Ni_ppm	P_per	Pb_ppm
															_MS42												
I030111	80.3	0.43	0.063	0.17	0.028	31.3	5.06	13.15	0.253	6.91	1.84	4.92	0.041	0.038	0.007	0.013	0.09	16.55	10.3	0.31	199.5	0.32	0.008	0.197	6.52	0.028	6.11
I030112	151.5	0.36	0.035	2.14	0.121	12.35	16.65	21.5	0.673	50.4	3.29	3.36	0.044	0.071	0.094	0.024	0.17	5.53	6.5	0.39	469	0.26	0.022	0.279	16.25	0.032	2.45
I030113	41.5	0.11	0.074	5.12	0.154	16.1	3.84	8.97	0.421	12.9	8.38	4.74	0.069	0.065	0.028	0.027	0.18	8.61	6.6	0.19	120.5	3.03	0.254	0.127	4.7	0.036	8.62
I030114	58.2	0.55	0.075	0.35	0.043	60.4	8.72	18.5	0.183	17.25	2	4.65	0.088	0.06	0.021	0.028	0.05	34.4	8.9	0.38	363	1.09	0.01	0.126	13.9	0.039	8.74
I030115	293	0.63	0.201	0.48	0.811	19.6	12.5	23.5	0.399	104.5	4.8	3.01	0.096	0.072	0.077	0.071	0.15	14.9	7.8	0.26	212	16.6	0.056	0.05	63.3	0.076	11.65
I030116	59.3	0.68	0.066	0.29	0.032	71.5	7.21	22	0.258	11.9	2.62	6.39	0.06	0.041	0.007	0.022	0.06	28.5	16.5	0.4	419	0.52	0.007	0.118	10.05	0.062	7.58
I030117	692	0.41	0.054	2.34	0.144	12.55	19.05	23.4	0.758	82.7	5.59	2.26	0.057	0.083	0.024	0.032	0.16	6.32	3.2	0.35	746	0.76	0.009	0.066	22.1	0.058	2.98
I030118	162	0.78	0.239	0.42	0.283	14.15	9.69	22	0.658	72.8	3.96	4.42	0.056	0.073	0.025	0.051	0.09	8.11	12.8	0.49	172	5.89	0.009	0.168	29.3	0.053	10.15
I030119	558	0.7	0.041	2.66	0.444	16.05	17.85	22.8	1.39	81.6	4.23	4.47	0.056	0.05	0.042	0.039	0.18	8.08	6.3	0.39	764	0.61	0.014	0.125	20.9	0.054	4.45
I030120	157.5	0.34	0.076	0.63	0.154	18.45	8.79	17.75	0.901	24.8	2.15	2.97	0.045	0.033	0.028	0.017	0.06	9.54	5.2	0.25	320	1.05	0.016	0.364	21.6	0.065	6.55
I030121	62.8	0.47	0.076	3.13	0.158	12.5	21.4	9.27	0.434	116.5	3.58	1.54	0.056	0.039	2.2	0.032	0.1	5.31	1.1	0.59	659	0.32	0.007	0.032	26.7	0.104	4.66
I030122	138.5	0.44	0.085	0.37	0.046	17.75	11	33.3	0.569	24.4	3.09	5.08	0.048	0.061	0.03	0.025	0.05	9.43	10.1	0.75	357	1.32	0.015	0.434	25	0.025	5.66
I030123	438	0.45	0.13	1.41	0.223	19.4	15.05	35.7	0.414	55.1	3.54	4.25	0.059	0.068	0.054	0.03	0.11	11.2	9.4	0.57	429	1.77	0.015	0.879	35.1	0.028	4.99

2015 and 2016 Soil Samples

Samp_No	Pd_ppm	Pt_ppm	Rb_ppm	Re_ppm	S_per	Sb_ppm	Sc_ppm	Se_ppm	Sn_ppm	Sr_ppm	Ta_ppm	Te_ppm	Th_ppm	Ti_per	Tl_ppm	U_ppm	V_ppm	W_ppm	Y_ppm	Zn_ppm	Zr_ppm	Au_AROR43_ppm	Certificate
I030111	0.001	0.002	6.78	0.001	0.01	0.177	2.19	0.1	0.26	10.1	0.005	0.01	3.75	0.007	0.038	0.623	33.3	0.036	4.89	32.5	1.01		WH16163700
I030112	0.007	0.003	6.87	0.001	0.03	1.47	16.55	0.2	0.23	97.6	0.005	0.02	0.943	0.007	0.084	0.146	101	0.142	9.69	28.2	2.08		WH16163700
I030113	0.001	0.002	7.17	0.001	4.3	0.282	1.745	0.7	0.3	184.5	0.005	0.02	2.16	0.005	0.501	0.757	168.5	0.055	1.885	59.9	2.08		WH16163700
I030114	0.002	0.002	3.16	0.001	0.02	0.177	6.78	0.2	0.28	14.45	0.005	0.02	8.48	0.004	0.044	2.04	28.3	0.027	14.25	61	1.78		WH16163700
I030115	0.002	0.003	5.25	0.014	0.36	3.49	13.9	7.9	0.4	193.5	0.005	0.11	2.03	0.001	0.536	1.95	69.4	0.069	21.3	224	2.69		WH16163700
I030116	0.002	0.002	4.48	0.001	0.01	0.135	5.28	0.1	0.47	7.54	0.005	0.01	7.78	0.005	0.045	0.874	42.7	0.032	9.09	44.3	1.18		WH16163700
I030117	0.004	0.003	8.06	0.001	0.03	0.338	17.35	0.5	0.2	86.4	0.005	0.02	0.852	0.002	0.06	0.311	94.3	0.067	13.65	63.7	1.57		WH16163700
I030118	0.002	0.002	5.4	0.017	0.05	1.82	7.72	4.4	0.52	45.6	0.005	0.07	2.52	0.004	0.193	0.732	55	0.035	5.25	165.5	2.2		WH16163700
I030119	0.001	0.003	10.3	0.001	0.03	0.256	25.4	0.6	0.24	94.7	0.005	0.01	0.892	0.003	0.079	0.284	97.1	0.132	20.7	68.9	1.32		WH16163700
I030120	0.001	0.002	5.52	0.001	0.02	0.374	6.33	0.3	0.22	34.6	0.005	0.01	1.415	0.013	0.061	0.659	39.5	0.09	6.66	47	1.43		WH16163700
I030121	0.003	0.003	4.3	0.001	0.24	51	14.75	2.7	0.25	141	0.005	0.04	1.34	0.001	1.155	0.629	87.1	0.256	12.35	55.2	0.63	0.83	WH16163700
I030122	0.001	0.002	4.73	0.001	0.01	1.015	9.61	0.8	0.32	28.8	0.005	0.02	2.29	0.038	0.063	0.604	81.5	0.103	5.91	45	2.71		WH16163700
I030123	0.001	0.002	5.98	0.001	0.02	0.793	13	0.7	0.39	47.7	0.005	0.03	2.52	0.035	0.151	0.516	88.2	0.174	15	56.2	2.7		WH16163700

Appendix D
Field Stations

Station	Project	Date	Time	Grid	Datum	Zone	Easting	Northing	Elev	Ft.	Description	structure
Camp2	Teslin_Mtn	20-Jun-15	3:10:40PM	UTM	NAD83	8v	527911	6773314	5256	ft	2015 Camp 2	
RH15127	Teslin_Mtn	24-Jun-15	3:13:24PM	UTM	NAD83	8v	528186	6773346	2606	ft	White river ash deposited on top of landslide debris with lichen and more mature tree cover. Multiple events including present time.	
RH15128	Teslin_Mtn	24-Jun-15	5:20:26PM	UTM	NAD83	8v	528423	6773716	2471	ft	Whales back outcrop of grey limestone, O/C trends 138 - glacial scour - shapping	glacial dir'n 138deg
RH15129	Teslin_Mtn	24-Jun-15	5:30:12PM	UTM	NAD83	8v	528527	6773647	2486	ft	Dark grey limestone X/C by white calcite veinlets.	
RH15130	Teslin_Mtn	24-Jun-15	5:40:21PM	UTM	NAD83	8v	528516	6773629	2500	ft	Brecciated, partly decalcified limestone. Limonite replacing coarse 1-3mm py?	
RH15131	Teslin_Mtn	24-Jun-15	5:49:51PM	UTM	NAD83	8v	528454	6773630	2468	ft	White qtz veins 1-2 up to 4 cm X-cutting feld phyric intermediate carb alt intrusive -volcanic.	qtz veining 070/90
RH15132	Teslin_Mtn	24-Jun-15	6:11:18PM	UTM	NAD83	8v	528364	6773681	2427	ft	NW end of whalesback outcrop with exposure of carb alt feld phyric intrusive/volcanic	
Rh15133	Teslin_Mtn	25-Jun-15	3:07:11PM	UTM	NAD83	8v	526579	6773698	3008	ft	Grey weathering, grey feld-qtz-biot phyric andesite. Fine grained crystalline groundmass. Non mag, minor FeOx on joint faces.	
RH15134	Teslin_Mtn	25-Jun-15	3:38:56PM	UTM	NAD83	8v	526241	6773579	3150	ft	grey weathering grey qtz-feld-biot phyric andesite, fresh. Magnetic, rubble pile - not O/C. Overall, seems to be flattish lying volc packages forming mini plateaus and cliffs. Local structures in cliffs are often steep.	
RH15135	Teslin_Mtn	25-Jun-15	3:57:15PM	UTM	NAD83	8v	526163	6773584	3185	ft	Top of cliff. Andesite agglomerate - lapilli tuff, fresh, magnetic	
RH15136	Teslin_Mtn	26-Jun-15	10:21:48AM	UTM	NAD83	8v	528204	6773572	2488	ft	on Scoured hump, knoll next to pond. Very weak rusty brown weathering green-grey limy siltstone-sandstone-conglomerate. Congl has limy clasts , disruted lamin. Very dirty sandstone.	
RH15137	Teslin_Mtn	26-Jun-15	11:32:05AM	UTM	NAD83	8v	528087	6773685	2511	ft	NW end of whalesback outcrop, dark grey green very weakly calcareous shale, minor reddish sandy lamination - beds, Bedding not visible.	strong fracture- joint 122/90
RH15138	Teslin_Mtn	26-Jun-15	1:07:50PM	UTM	NAD83	8v	528391	6773633	2417	ft	10m long x 2m high brown weathering outcrop of grey dirty sandstone x-cut by fractures and minor calcite veinlets. Calcareous matrix. Brx-carb-ankerite zone approx 25cm wide	frac with cal vnlets 250/35N frac spaced 10cm 015/50S 25cm brx fracture zone 040/76S
RH15139	Teslin_Mtn	26-Jun-15	4:32:45PM	UTM	NAD83	8v	528220	6773841	2434	ft	brown weathering pebble conglomerate; brn matrix supporting brn rounded clasts composed of sub mm granular 'sand'. Possible fault breccia?	
RH15140	Teslin_Mtn	26-Jun-15	5:13:04PM	UTM	NAD83	8v	528080	6774096	2427	ft	Outcrop of grey weathering grey lithic lapilli tuff. Similar to young volc rocks to west.	
RH15141	Teslin_Mtn	26-Jun-15	5:51:45PM	UTM	NAD83	8v	528186	6773765	2419	ft	Sub outcrop of red weathering immature sandstone with pebbles of angular SS clasts.	
RH16052A	Teslin_Mtn	23-Sep-16	11:14:36AM	UTM	NAD83	8v	528141	6773774	744		small <0.5 x 0.5m outcrop of brown calcareous sandstone - siltstone.	
RH16053A	Teslin_Mtn	23-Sep-16	11:29:59AM	UTM	NAD83	8v	528151	6773743	758		outcrop and subcrop, mostly moss vegetation covered brown - green brown calcareous greywacke - siltstone - sandstone with abundant feldspar grains (epiclastic ?). No soil.	

Station	Project	Date	Time	Grid	Datum	Zone	Easting	Northing	Elev	Ft.	Description	structure
RH16054A	Teslin_Mtn	23-Sep-16	11:42:15AM	UTM	NAD83	8v	528164	6773740	757		Brown - green weathering, green with white specks of feldspar, epiclastic, </= cm size clasts of dark siltstone. Abundant outcrop and subcrop on hillside. No soil.	
Rh16055A	Teslin_Mtn	23-Sep-16	11:51:08AM	UTM	NAD83	8v	528161	6773700	770		Top of hill, facing east, on 'plateau' composed of sandstone - siltstone - ?? Epiclastic as stn 052 - 054.	
RH16056A	Teslin_Mtn	23-Sep-16	12:15:00PM	UTM	NAD83	8v	528134	6773648	765		Siltstone subcrop of feldspathic epiclastic	
RH16057A	Teslin_Mtn	23-Sep-16	2:39:02PM	UTM	NAD83	8v	528040	6773876	740		Float and pebbles of dark grey siltstone.	
RH16058A	Teslin_Mtn	23-Sep-16	2:58:18PM	UTM	NAD83	8v	528012	6774011	737		White weathering, well foliated - almost sheared felsic epiclastic with rhyolite, dacite and shale clasts.	
RH16059A	Teslin_Mtn	23-Sep-16	5:11:12PM	UTM	NAD83	8v	528271	6773824	740		Next to 2015 sample 122622. Weird intrusive - breccia. Qtz - tourmaline minor calcite matrix with matrix supported clasts of white qtz-feldspar. Needs a thin section.	
NOOC_Camp	Teslin_Mtn	23-Sep-16	9:20:40AM	UTM	NAD83	8v	528179	6773871	735		2016 camp site	
RH16060	Teslin_Mtn	24-Sep-16	9:52:06AM	UTM	NAD83	8v	528219	6773915	748		2x2m outcrop of brown feldspathic sandstone	
RH16061	Teslin_Mtn	24-Sep-16	9:57:48AM	UTM	NAD83	8v	528269	6773904	749		SE end of hump of brown feldspathic sandstone, as stn 060.	
RH16062	Teslin_Mtn	24-Sep-16	10:25:33AM	UTM	NAD83	8v	528243	6773907	737		small 1x0.5m outcrop of brown feldspathic sandstone	
RH16063	Teslin_Mtn	24-Sep-16	11:29:59AM	UTM	NAD83	8v	528269	6773827	747		Feldspar porphyry with qtz vein float in area of intrusive. Hump for approx 50 m south is all variations of feld porphyry.	
RH16064	Teslin_Mtn	24-Sep-16	12:00:22PM	UTM	NAD83	8v	528337	6773750	752		Attempted soil sample site. 0.5m deep, hematite - red-grey at depth of fine powder silt size soil. Similar to other soils found between 'humps'.	
RH16065	Teslin_Mtn	24-Sep-16	12:18:07PM	UTM	NAD83	8v	528411	6773812	754		Hump outcrop of brown feldspathic sandstone with occasional siltstone pebbles.	
RH16066	Teslin_Mtn	24-Sep-16	12:30:33PM	UTM	NAD83	8v	528461	6773836	745		Hump outcrop of brown conglomerate, mixed liths of sandstone, feldspar porphyry, qtz, with sandy calcareous matrix.	
RH16067	Teslin_Mtn	24-Sep-16	12:34:37PM	UTM	NAD83	8v	528533	6773781	748		Brown sandstone, conglomerate 20 m to east.	
RH16068	Teslin_Mtn	24-Sep-16	1:22:32PM	UTM	NAD83	8v	528507	6773643	764		Limestone sub crop. Fine grained grey limestone.	
RH16069	Teslin_Mtn	24-Sep-16	1:33:33PM	UTM	NAD83	8v	528644	6773564	752		Outcrop of grey limestone, as previous, minor 'normal' calcite veins. Photo looking east, down game trail to lake.	
RH16070	Teslin_Mtn	24-Sep-16	2:08:11PM	UTM	NAD83	8v	528561	6773490	763		Intermediate volcanoclastic (photo) andesite - dacite, no obvious rhyolite, veining or alteration.	
RH16071	Teslin_Mtn	24-Sep-16	2:19:04PM	UTM	NAD83	8v	528577	6773410	782		Medium grained andesitic volcanoclastic - sandstone. Finer grained brown sandstone approx 75 m to SE.	
RH16072	Teslin_Mtn	24-Sep-16	2:32:25PM	UTM	NAD83	8v	528567	6773302	781		N (or NW) edge of Open Creek volcanics, toe of landslide. No outcrop.	
RH16073	Teslin_Mtn	24-Sep-16	2:57:05PM	UTM	NAD83	8v	528663	6773135	793		Outcrop - subcrop? Of Open Creek volcanics. Doesn't look like landslide.	
RH16074	Teslin_Mtn	24-Sep-16	3:30:05PM	UTM	NAD83	8v	528302	6773625	736		Small outcrop - subcrop on W side of pond; brown feldspathic sandstone, no alteration, veining or mineralization.	
RH16075	Teslin_Mtn	24-Sep-16	3:50:56PM	UTM	NAD83	8v	528299	6773760	731		Conglomerate, rounded clasts </= 2cm grey limestone.	

Appendix E
Digital Data

**MAP
POCKET**

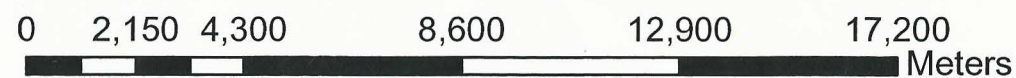


Legend

- ▲ 2015 Camp Site
- ✚ MINFILE_Occur & Number
- RGS_2003_105D-N_105E**
- Au 2003 RGS (ppb)**
- ▲ 0.0 - 14.0
- ▲ 14.1 - 64.0
- ▲ 64.1 - 279.0
- ▲ 279.1 - 950.0
- ▲ 950.1 - 1810.0
- Teslin 2015 soil**
- Au_ST43 (ppb)**
- 0.4 - 2.9
- 2.9 - 7.4
- 7.4 - 21.0
- 21.0 - 42.8
- 42.8 - 100.0
- Yukon_50Kmap_INDEX
- Bedrock_Geology Contacts
- Faults
- Quartz_Claims_1M
- FN_Settlement_Lands
- Project Area

TESLIN MOUNTAIN PROJECT, YUKON

Date: Jan. 5, 2016 Drawn by: RWH

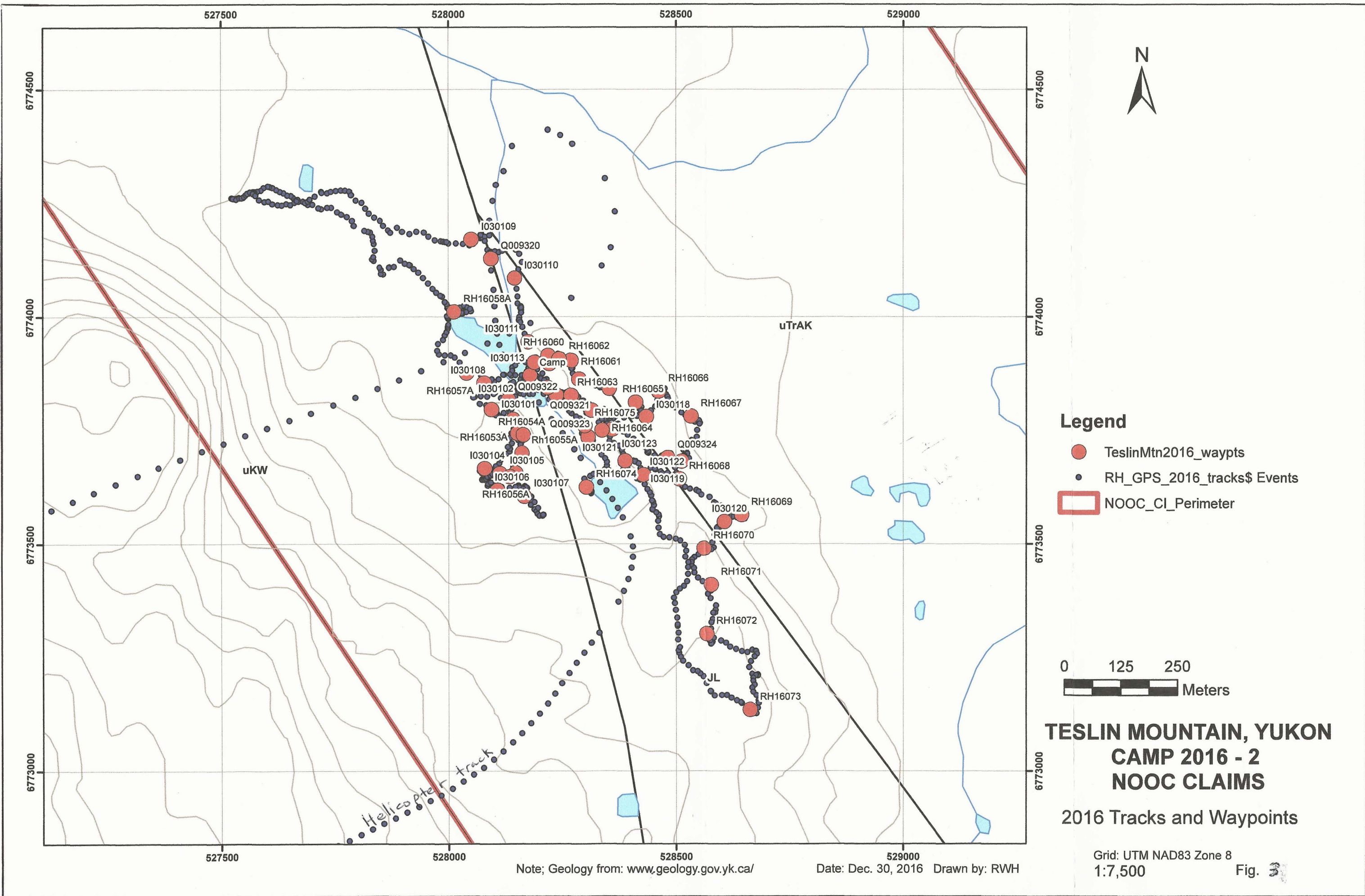


1:150,000

Note: geology, MINFILE, RGS, Claims and Settlement Lands data from: www.geology.gov.yk.ca/

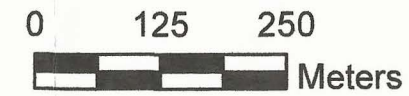
Regional Geology, Mineral Occurrences, Stream Sediment Geochemistry and Quartz Claims

Fig. 2.



Legend

- TeslinMtn2016_waypts
- RH_GPS_2016_tracks\$ Events
- NOOC_CI_Perimeter



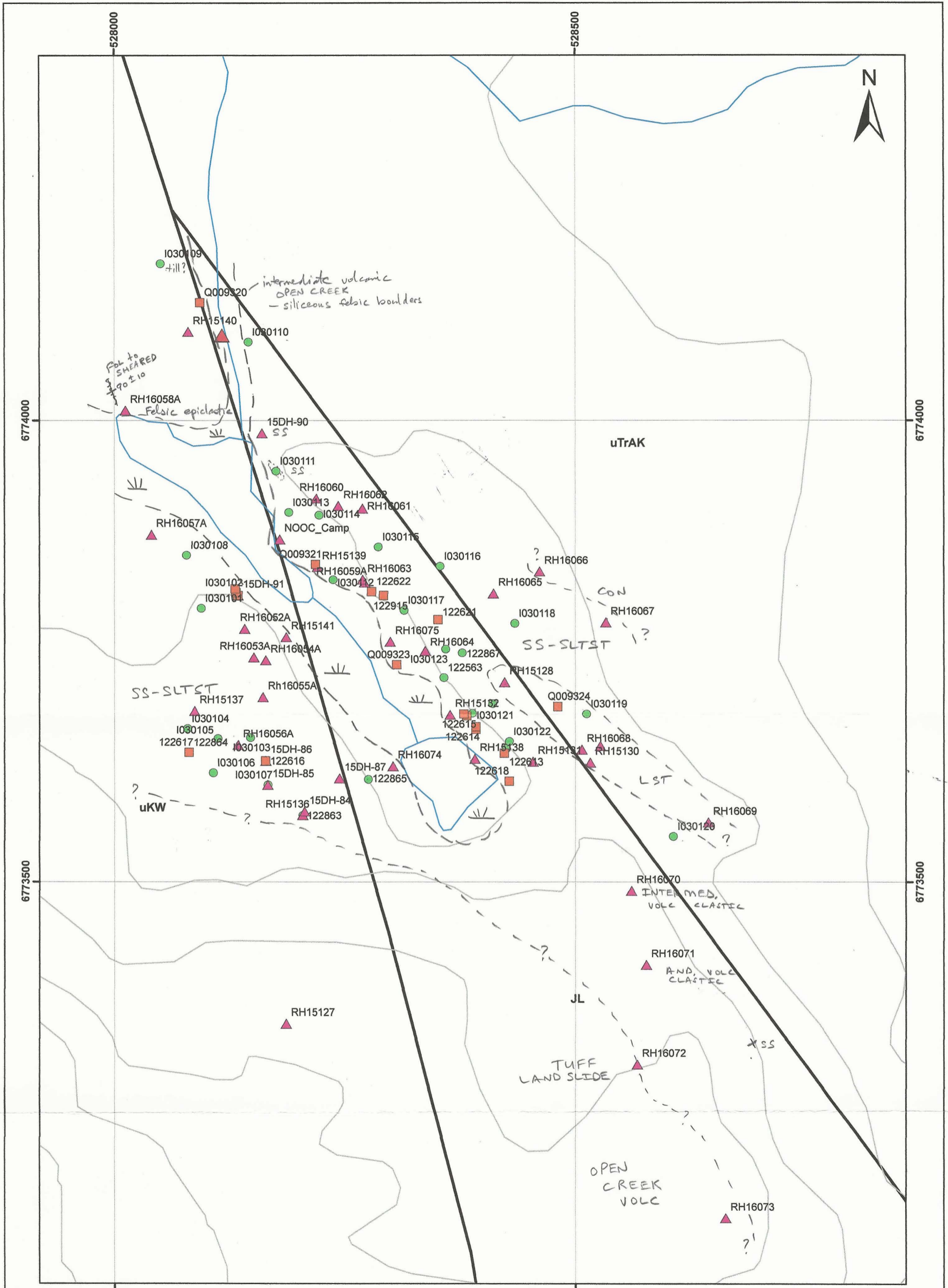
**TESLIN MOUNTAIN, YUKON
CAMP 2016 - 2
NOOC CLAIMS**

2016 Tracks and Waypoints

Grid: UTM NAD83 Zone 8
1:7,500

Note; Geology from: www.geology.gov.yk.ca/

Date: Dec. 30, 2016 Drawn by: RWH



Legend

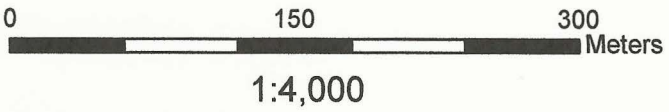
- 'NOOC_2015-16_Rocks\$' Events
- ▲ All 2015-16 Fieldstations
- Teslin2015-2016_Soil
- Bedrock Geology Contacts; YUKON GEOLOGICAL SURVEY

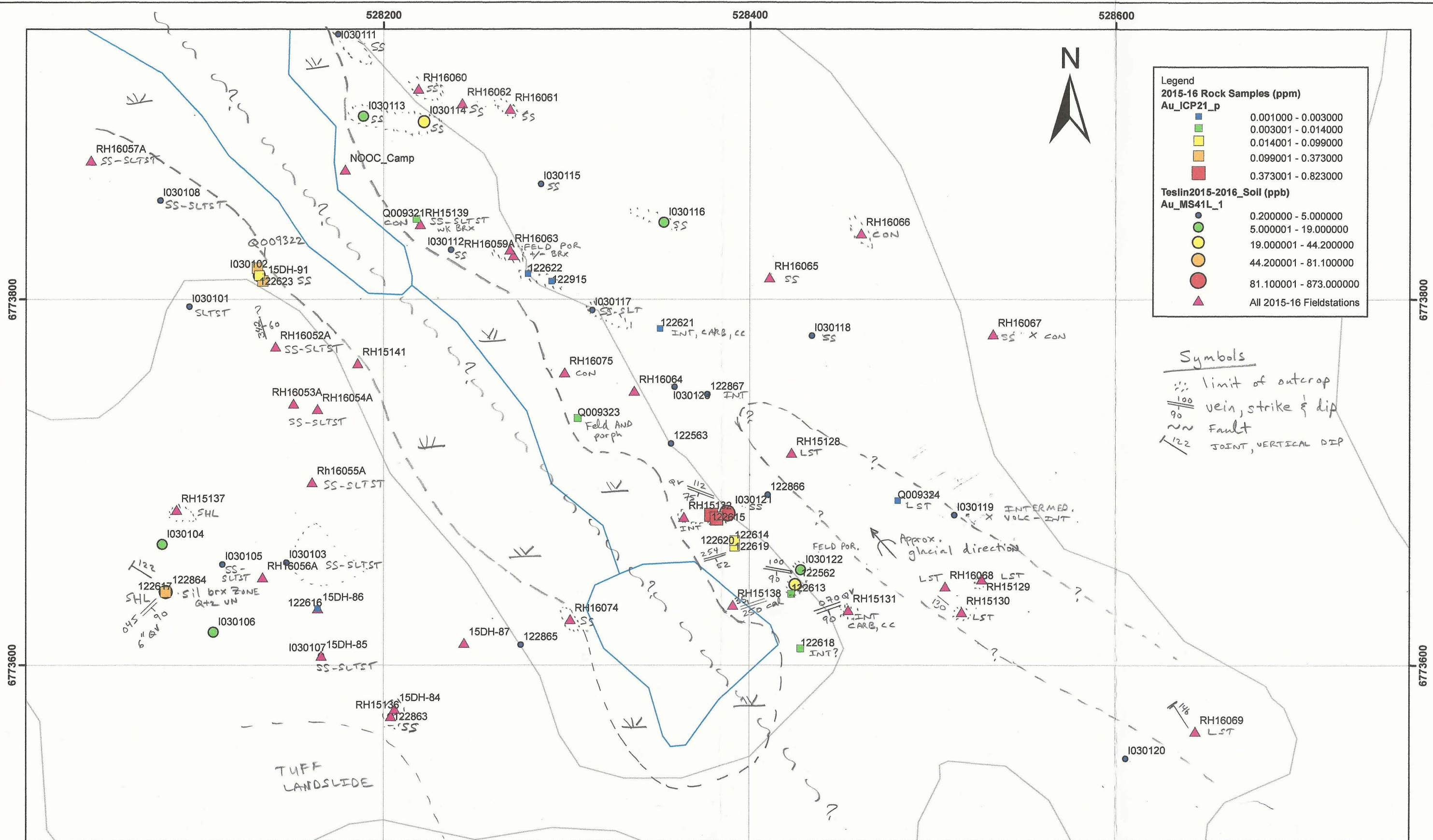
Date: Jan. 2, 2017 Drawn by: RWH
 NTS 105E-01, UTM NAD83 Zone 6

NOOC Property 2015-2016 Fieldstations & Soil and Rock Sample Locations

Note: See Fig. 9 for geology legend

Figure 5





Legend

2015-16 Rock Samples (ppm)
Au_ICP21_p

Blue square	0.001000 - 0.003000
Green square	0.003001 - 0.014000
Yellow square	0.014001 - 0.099000
Orange square	0.099001 - 0.373000
Red square	0.373001 - 0.823000

Teslin 2015-2016 Soil (ppb)
Au_MS41L_1

Small blue circle	0.200000 - 5.000000
Small green circle	5.000001 - 19.000000
Small yellow circle	19.000001 - 44.200000
Small orange circle	44.200001 - 81.100000
Small red circle	81.100001 - 873.000000
Triangle	All 2015-16 Fieldstations

Symbols

--- limit of outcrop
 100/90 vein, strike & dip
 ~~~ Fault  
 /122 JOINT, VERTICAL DIP

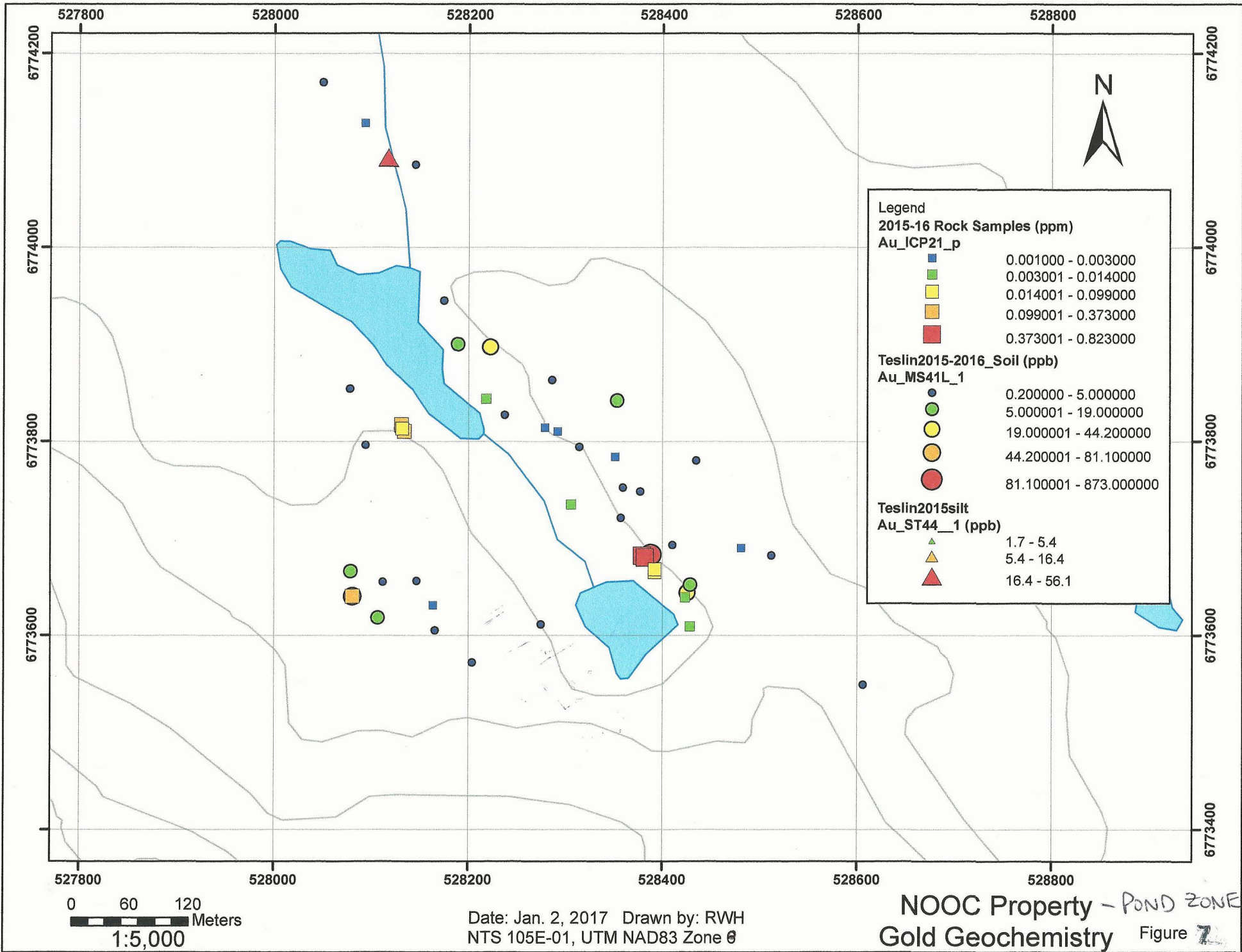
Note: See Fig. 9 for geology legend

**NOOC Property - POND ZONE  
 Geology and Gold Geochemistry**

Figure 6

Date: Jan. 2, 2017 Drawn by: RWH  
 NTS 105E-01, UTM NAD83 Zone 6

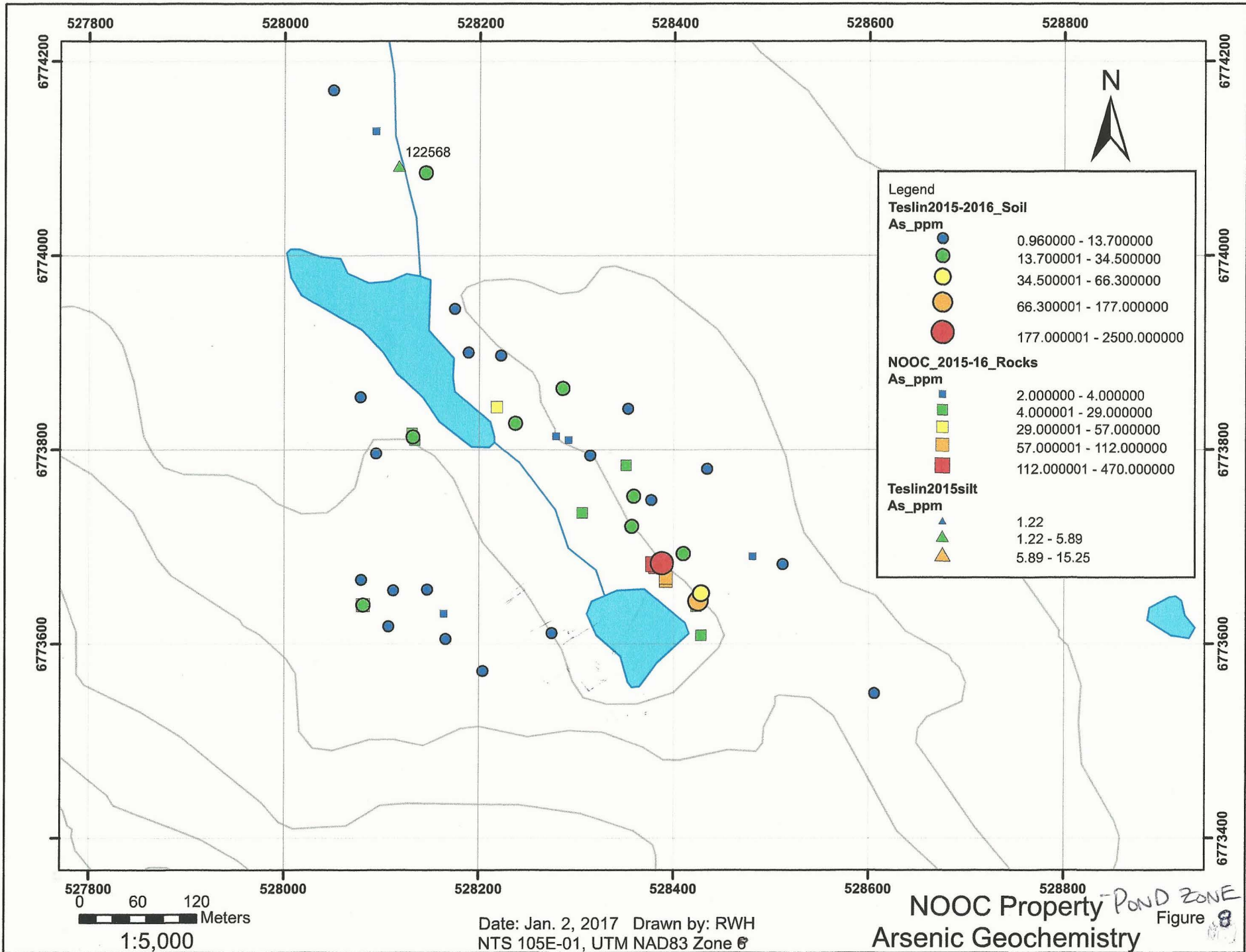
0 50 100 Meters  
 1:2,000



NOOC Property - POND ZONE  
 Gold Geochemistry Figure 7

Date: Jan. 2, 2017 Drawn by: RWH  
 NTS 105E-01, UTM NAD83 Zone 8

0 60 120 Meters  
 1:5,000



**Legend**

**Teslin2015-2016\_Soil**  
As\_ppm

- 0.960000 - 13.700000
- 13.700001 - 34.500000
- 34.500001 - 66.300000
- 66.300001 - 177.000000
- 177.000001 - 2500.000000

**NOOC\_2015-16\_Rocks**  
As\_ppm

- 2.000000 - 4.000000
- 4.000001 - 29.000000
- 29.000001 - 57.000000
- 57.000001 - 112.000000
- 112.000001 - 470.000000

**Teslin2015silt**  
As\_ppm

- ▲ 1.22
- ▲ 1.22 - 5.89
- ▲ 5.89 - 15.25

Date: Jan. 2, 2017 Drawn by: RWH  
NTS 105E-01, UTM NAD83 Zone 6

NOOC Property Pond Zone  
Arsenic Geochemistry  
Figure 8

## Geological Legend

### Late Cretaceous

**uKw** Open Creek Formation; dacite flows, tuffs, basalt dykes, sandstone

### Early Cretaceous

**mKw** granodiorite, quartz diorite

**EKT** granite, granodiorite, quartz monzonite, quartz monzodiorite

### Jurassic

**JL** Laberge Suite; Richthofen Formation; shale, conglomerate, limestone, siltstone, porphyry flows

### Upper Triassic

**uTrAK** Lewes River; Aksala Formation; shale, conglomerate, limestone, siltstone

### Middle Triassic

**mTrJ** Joe Mountain Formation; basalt, andesite, microdiorite flows, diamictite, gabbro, diorite

## Lithologies

### Igneous Rocks

**AND** Andesite; green, fine grained volcanic flow and related rocks

**FEL** Felsic dyke rock, light colored, fine grained; +/- quartz, +/- feldspar phyrical

**GRN** Granitoid; medium grained

**INT** Altered igneous rocks of unknown type (Camp 2 - Pond Zone); medium grained, light colored, intermediate - mafic, possibly gabbroic.

**QP, QFP, QHP** Porphyritic felsic intrusives, dyke; QP: Quartz porphyry; QFP: Quartz-feldspar porphyry; QHP: quartz -hornblende porphyry

**RHY** Rhyolite, fine grained, may be flow banded

**TUF** Tuffaceous rocks, Lapilli, dacitic - andesitic

### Sedimentary Rocks

**CON** Conglomerate

**LST** Tan weathering limestone

**SS** Tan weathering sandstone

## Abbreviations

carb carbonate alteration, calcite, dolomite

cc calcite veining

qtz qtz veining

QV quartz veining

Sil siliceous

brx brecciated

Figure 9 Geological Legend, Teslin Mountain Project.