

MOD LEAD-ZINC-SILVER PROSPECT

Patience 1-4 claims (YE85697-YE85700)

Patience 5-8 (YD10896-YD10899)

105B-3

REPORT OF FIELDWORK 2016:

Sampling, surveying, assay and mineragraphy

Fieldwork from 18th. September 2016,

Mineragraphy February-March 2017

T. Liverton Ph.D, C.Geol, F.G.S.

March 2017

CONTENTS

LOCATION, TOPOGRAPHY AND CLIMATE	p. 5
CLAIMS	p. 5
INTRODUCTION	p. 7
REGIONAL GEOLOGY	p. 9
2016 WORK	p. 11
PETROGRAPHY	p. 11
ASSAY	p. 27
DISCUSSION	p. 27
CONCLUSIONS AND RECOMMENDATIONS	p. 28
REFERENCES	p. 29
STATEMENT OF QUALIFICATIONS	p. 30
COST STATEMENT	p. 31
INVOICES	follow
APPENDIX: Assay certificates	follow

FIGURES

Fig. 1	Location	p. 4
Fig. 2	Claims	p. 6
Fig. 3	Regional geology	p. 8
Fig. 4	Upper showing: updated map	p. 10
Fig. 5	Image of sawn and ground slabs: M3	p. 12
Fig. 6	Image of slab M1	p. 13
Fig. 7	Sketches of thin sections	p. 15
Fig. 8	Mosaic of photomicrographs of specimen M3A	p. 17
Fig. 9	Sketch of the above	p. 18
Fig. 10	Photomicrographs of M1 and M3A	p. 20
Fig. 11	Photomicrographs of M3A	p. 21
Fig. 12	Photomicrographs of M3B	p. 22
Fig. 13	Photomicrographs of M3B	p. 24
Fig. 14	Photomicrographs of M3B	p. 25
Fig. 15	Photomicrograph of M3B	p. 26

Legend

Outboard

- CG Chugach
- YA Yakutat

Insular

- WR Wrangellia
- AX Alexander
- KS Kluane schist

Arctic

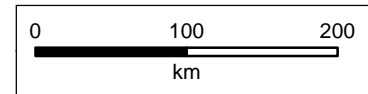
- AA Arctic Alaska

Intermontane

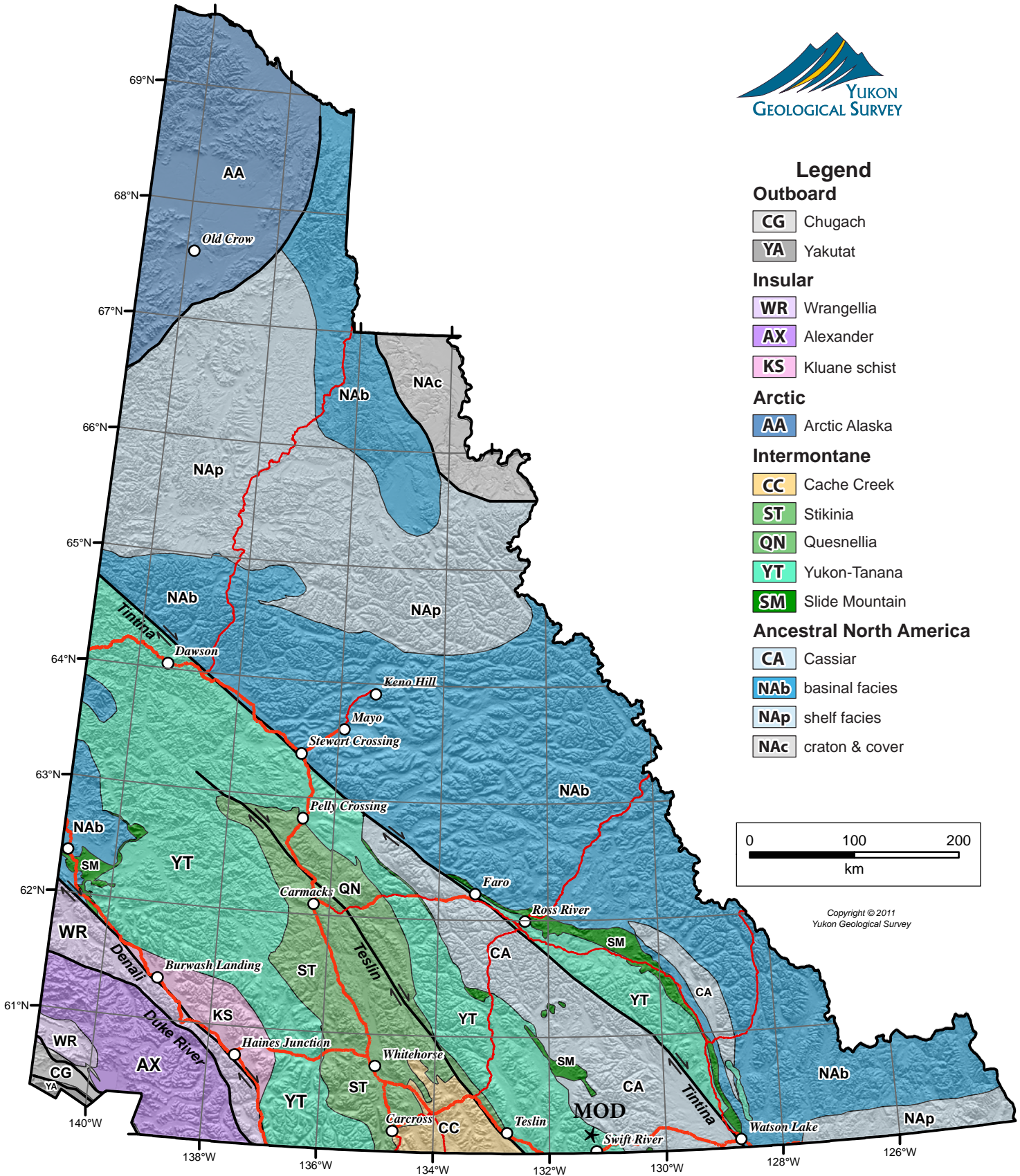
- CC Cache Creek
- ST Stikinia
- QN Quesnellia
- YT Yukon-Tanana
- SM Slide Mountain

Ancestral North America

- CA Cassiar
- NAb basinal facies
- NAP shelf facies
- NAc craton & cover



Copyright © 2011
Yukon Geological Survey



LOCATION AND BEDROCK TERRANES - MOD PROJECT
Hibbing, Liverton & Mann

LOCATION, TOPOGRAPHY AND CLIMATE

The Mod (Bom) property is located at the southwestern headwaters of the Swift River. Claim map sheet 105B-3 shows the Patience 1-4 claims that cover the original Mod 1-4 claims and peripheral claims Patience 5-8 . The centre of the block is at 60°08'N, 131°13'W. Access is possible using a four wheel drive trail from the Alaska Highway via the Pine Lake airstrip.

The original Mod mineralization is at the bottom of glaciated, U-shaped valley with >300 metres relief. Approximate elevation of the upper showing is 4200ft (1280m). Only small remnants of lateral moraines are found at the lower elevations and rock exposure is often within 2 metres of surface.

The climate is sub-arctic, with the possibility of temperatures dropping below -40° C for some weeks of winter, although for the past six years the winters have been warmer. There are often accumulations of avalanched snow in the valley bottom by Spring, so vehicular access is often only possible after late June. Snow can fall again in mid September.

CLAIMS

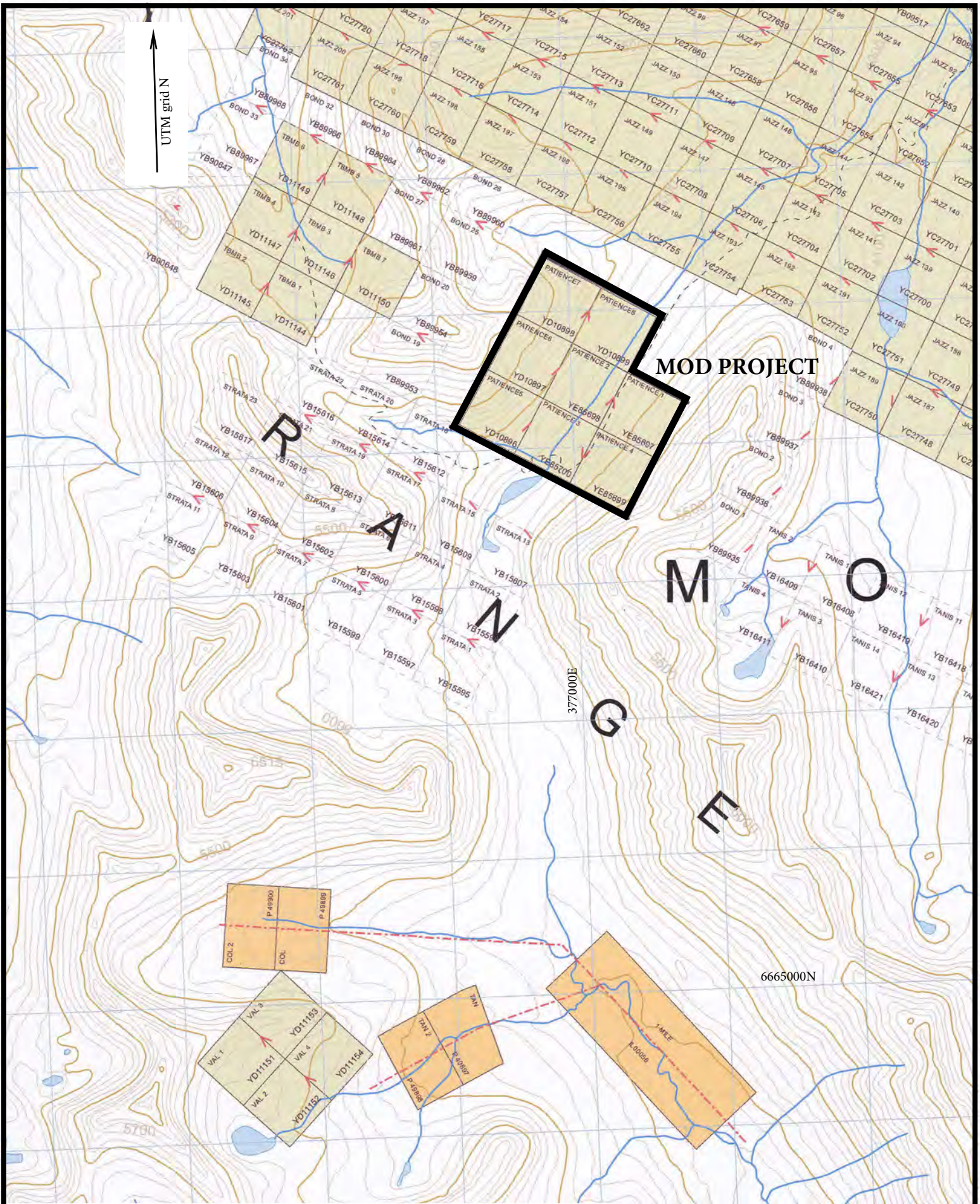
Eight quartz claims cover the prospect as follows:

Patience 1, YE85697, held by Hardy Hibbing; Patience 2, YE85698, held by Hardy Hibbing;

Patience 3, YE85700, held by Hardy Hibbing; Patience 4, YE85699, held by Hardy Hibbing;

Patience 5, YD10896, held by Hardy Hibbing; Patience 6, YD10897, held by Timothy Liverton;

Patience 7, YE10898, held by Hardy Hibbing; Patience 8, YD10899, held by Hardy Hibbing.



Patience 1-8 claims: H. Hibbing & T. Liverton

Sheet 105B-3

INTRODUCTION

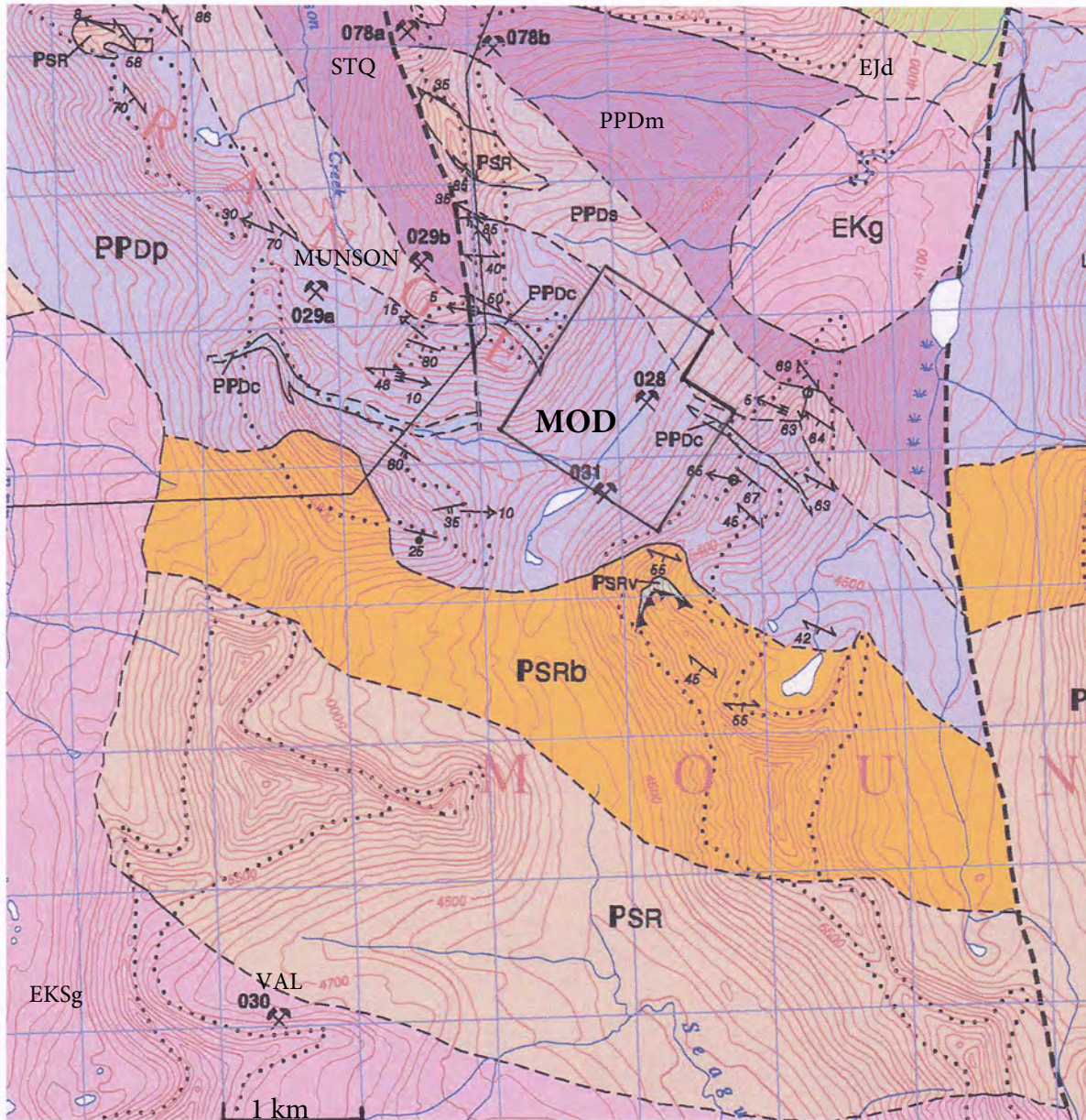
The Mod property (Minfile 105B-028), originally called the Bom prospect, was discovered in 1946 by prospectors working for Hudson Bay Mining and Smelting Co. Ltd. They drilled 18 diamond drill holes in the region in 1947, as well as trenching three localities. A map and some cross sections remain (Assessment report A092107), but no detailed logs are available. Drill core is no longer preserved. Boswell River Mines also drilled on the property in the 1960s, but documentation of this work is sketchy and no identifiable core remains. Only one of the drill sites is now recognizable: that collared in rock exposure adjacent to the upper showing. In more recent times the obvious showings were covered by four ('Mod') claims held by Henry Regehr until 2013. The prospect is now covered by the Patience claims held by Hardy Hibbing.

During the time that Henry Regehr held the property the only work done was bulldozer stripping. This obliterated the original Hudson Bay trenching and actually obscured much of the mineralization since the cuts were never cleaned down to the irregularly shaped rock surface. Less than one metre of sulphide was visible at either the upper or lower localities in 2014.

Outcropping sulphide mineralization in existing bulldozer trenches at the Mod property was uncovered in 2015 and sampling of the lower Mod showing achieved in 2015.

EKSg - early Cretaceous Seagull Batholith
 EKg - early Cretaceous granite
 EJd - early Jurassic diorite

GEOLOGY after Roots, Nelson & Stevens, 2004



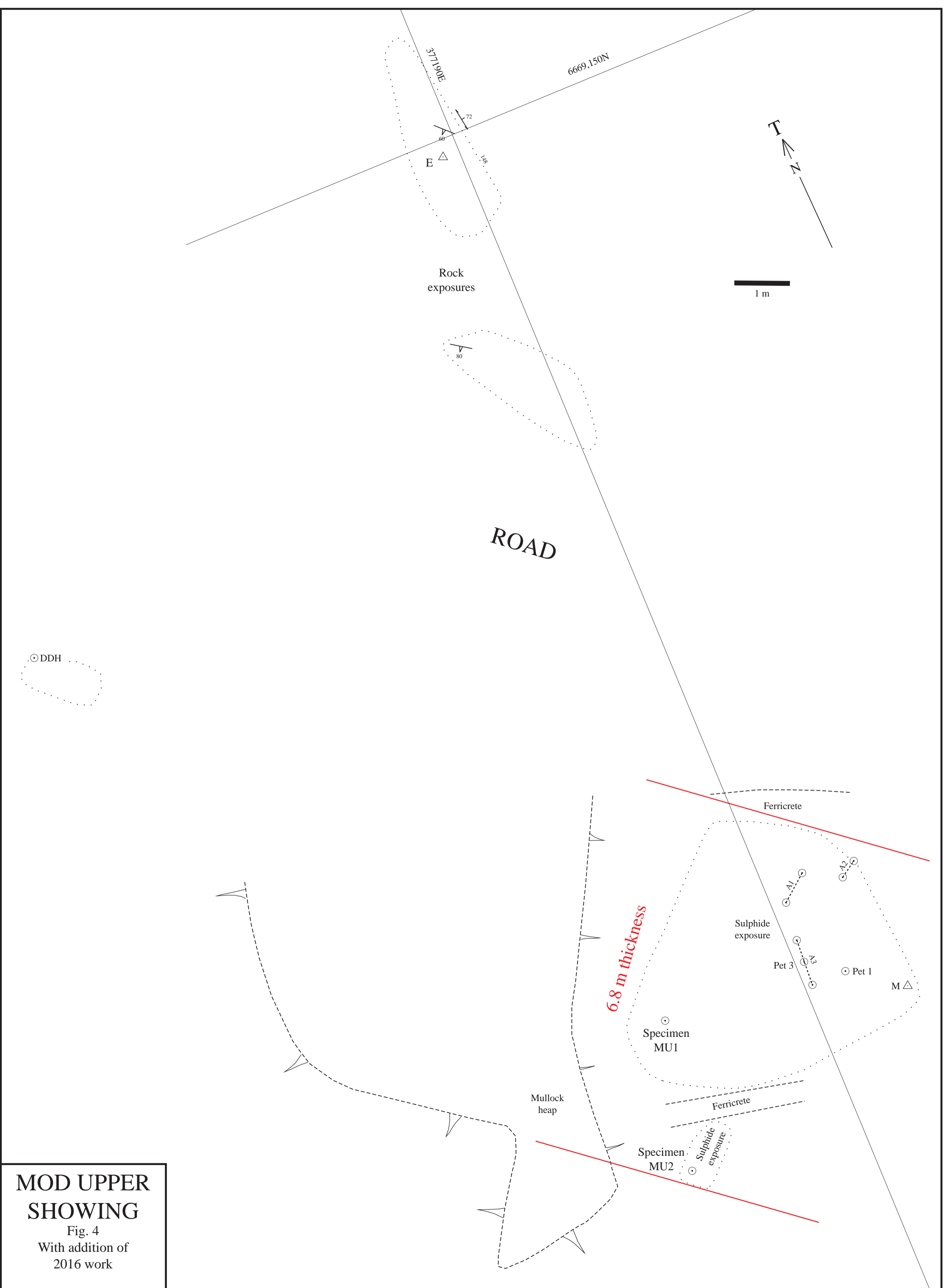
1:50,000 MOD PROJECT - PATIENCE CLAIMS 105B/3

YUKON TANANA TERRANE

- PSR - Swift River Group grit, argillite
- PSRb - chert & phyllite
- Dorsey Complex - PPDp - Upper Dorsey phyllite
- PPDc - marble & limestone
- PPDs - biotite schist

REGIONAL GEOLOGY

The prospect occurs within the Yukon Tanana terrane in a sequence of siliciclastic sediments, volcanics and marble that are assigned to the Dorsey assemblage of Devonian age. The Mod mineralization is peripheral to a marble horizon that crops out intermittently along the local ESE strike of the metasediments. The metasediments have been polydeformed and metamorphosed to greenschist facies during the deformation. The style of folding is indicated in Silva et al. (2000) and it would result in major folds with perhaps 200m wavelength. To the north and northeast of the prospect a granite stock that is an apophysis of the Cretaceous Seagull batholith is exposed in the deep canyon below the prospect and on the ridge to the northeast. The proximity of the stock has resulted in contact metamorphism of the greenschist grade metasediment forming abundant pyroxene around the prospect. Whether the original mineralization was of stratiform (VMS), high-temperature replacement of carbonate, or skarn origin is currently debated. If the mineralized horizon is of regional extent, then repetition by folding is likely. Mineralogy at the Mod consists predominantly of pyrrhotite-sphalerite-magnetite-galena-tetrahedrite in a pyroxene, epidote and carbonate gangue found alongside a discontinuous marble bed. A kilometre to the east the on-strike mineralization consists of sphalerite with magnetite.



**MOD UPPER
SHOWING**

Fig. 4
With addition of
2016 work

2016 WORK

The work during 2016 consisted of obtaining large hand samples (up to 30kg) from the exposure at the upper showing. Two types of mineralization were submitted to ALS for assay: the coarse galena-rich mineralization and the fine-grained pyrrhotite-sphalerite-magnetite material. Polished thin sections were prepared (in 2017) by Vancouver Petrographics from specimens of typical mineralogy (as noted on the detailed map). Those specimens were located using theodolite/EDM surveying. Specimens broken out over a width (A1 to A3 as shown on the accompanying map: Fig. 4) have not yet been sent for assay. These will be crushed and split next Spring prior to submission for analysis.

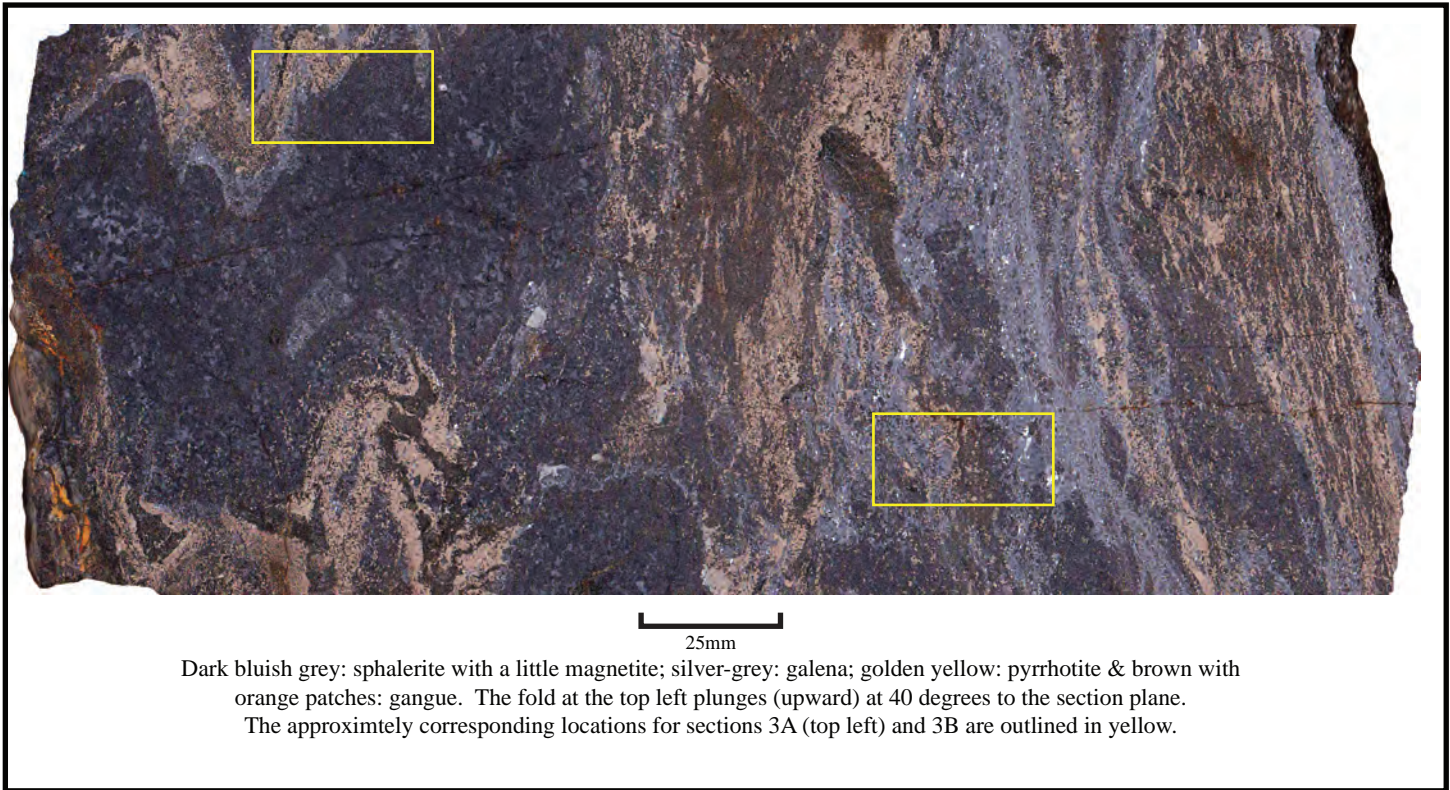
The location of petrographic specimens 1 and 3 is also shown on the sketch (Fig. 4). These were located by measurement using theodolite and EDM equipment from the 2005 survey station 'E'.

Slabs of the sulphides were sawn, ground flat and images produced by scanning the slabs under oil immersion (Figs. 5 & 6). One polished thin section was prepared from specimen 1 and two from specimen 3. Specimen 2 was somewhat weathered, so no sections were cut from it.

PETROGRAPHY

Three sawn and ground slabs were prepared from specimens taken at localities 1 and 3 as marked on the detailed map. These show ample evidence that the sulphide mineralization has been intensely folded, likely in at least two generations of deformation. The two sphalerite-galena slabs from locality 3 clearly show folding with doubly-plunging structures (? incipient sheath folds) in the case of the larger specimen. The finer grained pyrrhotite rich specimen (1) also shows hints of fold closures, but with a generally discordant style showing disjointed fold closures. This is interpreted as being result of 'durchbewegung' texture (Craig and Vaughan, 1981, p. 135) being developed in the more brittle sulphide.

The majority of the 'gangue' in all three specimens is diopsidic pyroxene, with minor epidote, mica and carbonate.

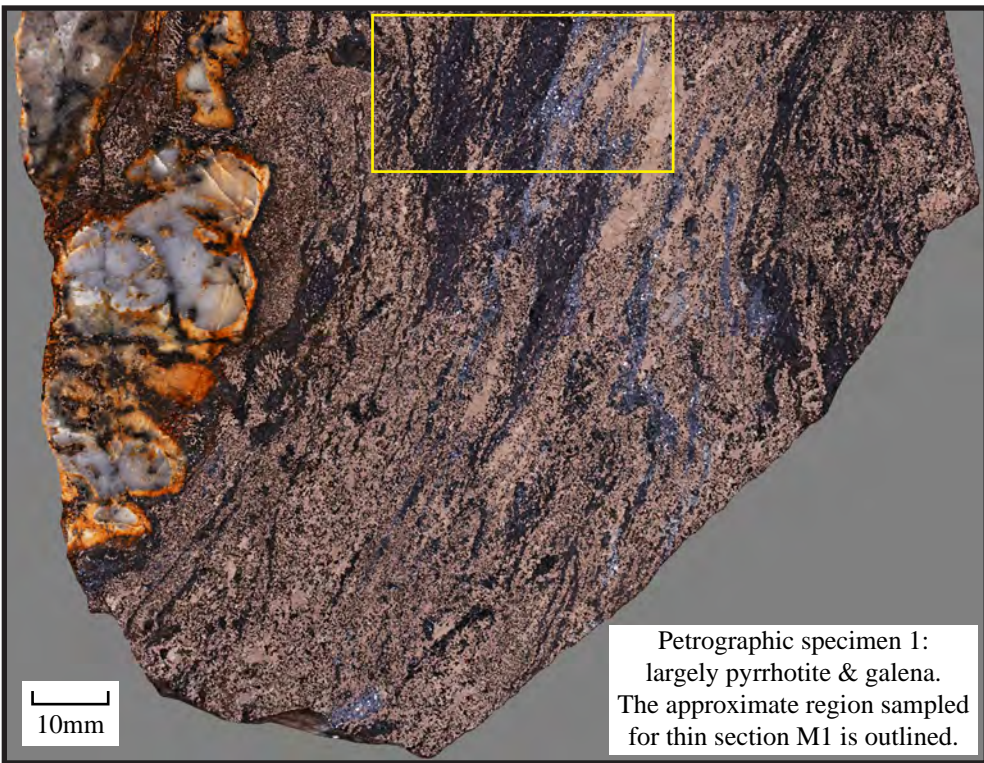


LARGE SLAB FROM SPECIMEN 3



SMALL SLAB FROM SPECIMEN 3

Figure 5



SLAB OF SPECIMEN 1.

Figure 6

The 2015-16 petrography identified the mineralogy of the 'ore' as pyrrhotite-sphalerite-galena-arsenopyrite-tetrahedrite and magnetite. The specimens used were slightly weathered, so the polish was not especially good. The present specimens have received a much better polish and it is possible to see that much of the material identified as tetrahedrite is in fact magnetite. An erratum was written and later included with the 2016 assessment report. There is, however, a small amount of sulphosalt obvious in these newer specimens.

Sketches of thin sections 1 and 3B are shown in Fig. 7. The mineralogy observed is as follows:

M1

This specimen is from the fine grained pyrrhotite-rich mineralization. The various mineral layers labelled in the sketch are as follows:

'A' = pyrrhotite with sphalerite and magnetite, mostly $\leq 0.4\text{mm}$ grainsize. The magnetite is subhedral, sphalerite interstitial to the recrystallized pyrrhotite in angular grains.

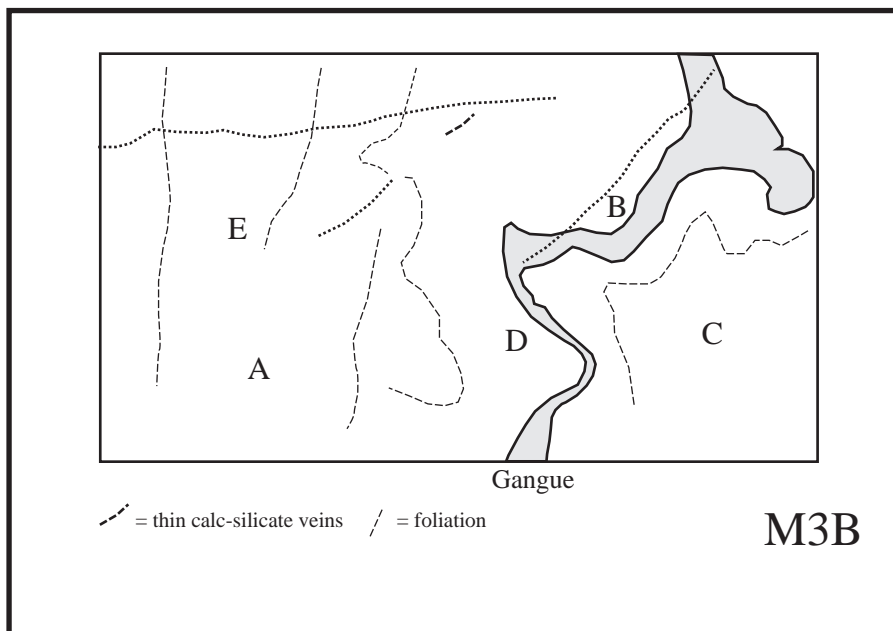
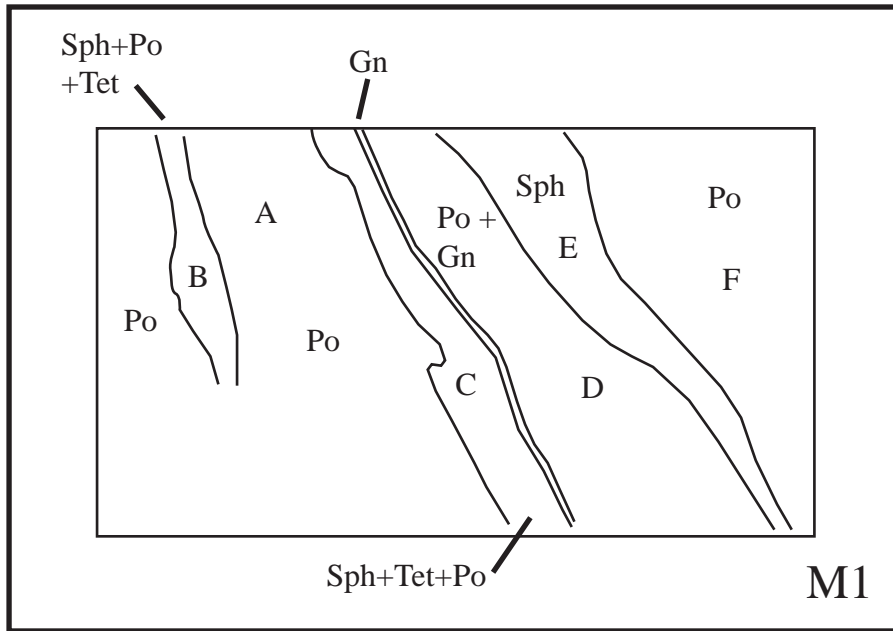
'B' = sphalerite with 10% magnetite in 0.3mm subhedral grains and some interstitial sulphosalt (presumably tetrahedrite) 5%.

'C' = 2mm wide band of magnetite (0.12mm subhedral to euhedral crystals) 60% of bulk, with sphalerite and pyrrhotite the remainder.

'D' = pyrrhotite, 4.5mm wide, containing magnetite, sphalerite and a little sulphosalt.

'E' = sphalerite with sulphosalt (10%) interstitial, pyrrhotite in $0.4\text{-}0.8\text{mm}$ grains.

'F' = galena layer 0.8mm wide followed by massive pyrrhotite. Contains 30% gangue and some minor irregular galena layers $0.5\text{-}2\text{mm}$ thick.



Sketches of polished thin sections M1 & M3B showing foliation & mineralogy. The sections were cut such that these images will be the mirror image of the scanned slabs.

Figure 7

M3B

In the sketch the letters represent the particular spot described.

‘A’ = vein of possibly fluoborite in red/brown sphalerite: see photomicrograph M3B-5,0pp.

‘B’ = folded layer of pyroxene (photomicrograph M3B-2,5xp in transmitted light with crossed polarizers, M3B-2,5ppin in incident p.p. light).

‘C’ = field of galena and pyrrhotite.

‘D’ = sphalerite with a little sulphosalt, galena and pyrrhotite.

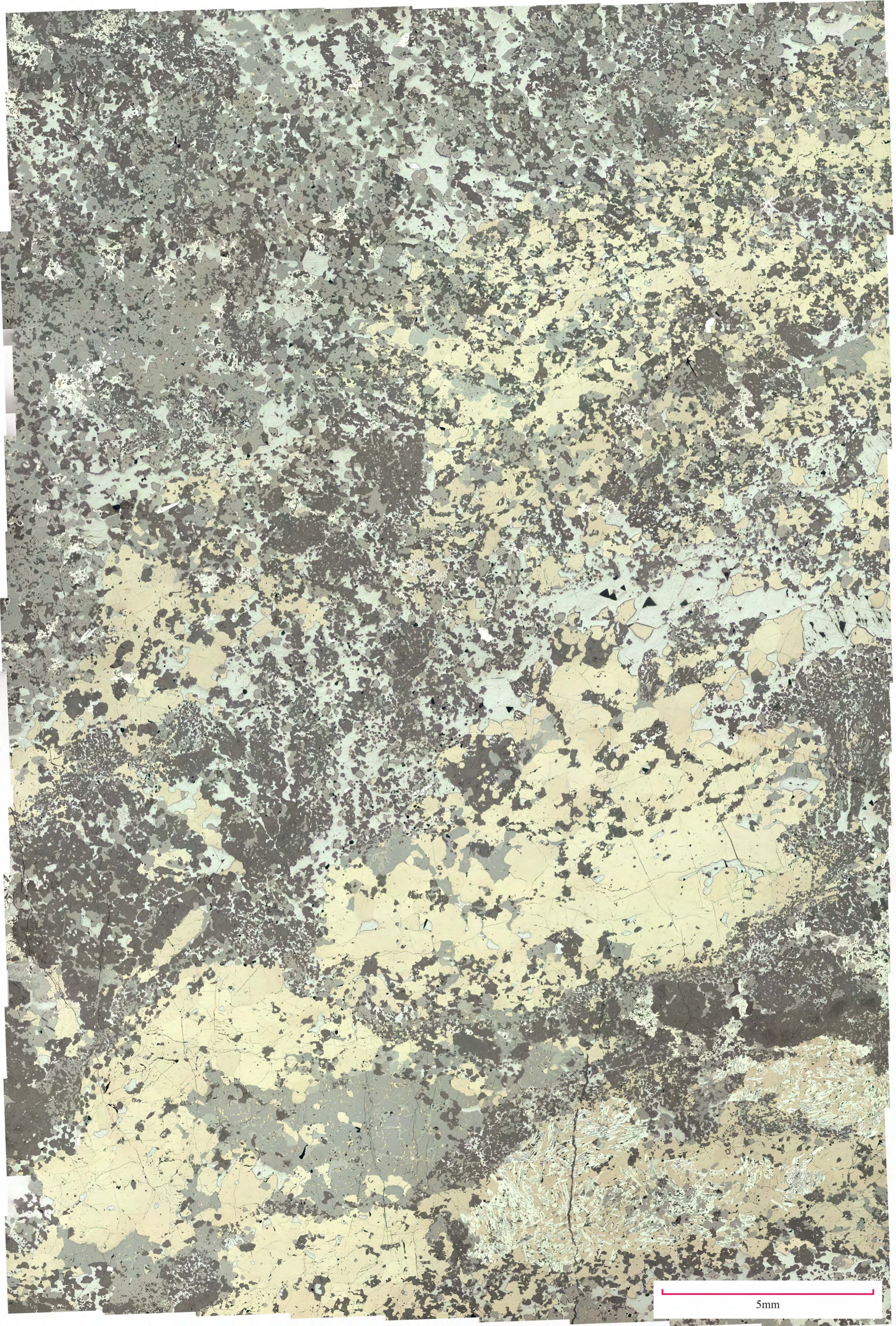
‘E’ = band of sphalerite with sulphosalt (4mm wide) galena and pyrrhotite to end of section. Photomicrograph M3B-10ppin2 shows detail of the sphalerite with sulphosalt.

Photomicrograph M3B-5,0 ppin2 shows the region 2mm to the right of ‘A’ with galena, sphalerite and sulphosalt, pyrrhotite and a few distinctly brownish-grey magnetite crystals.

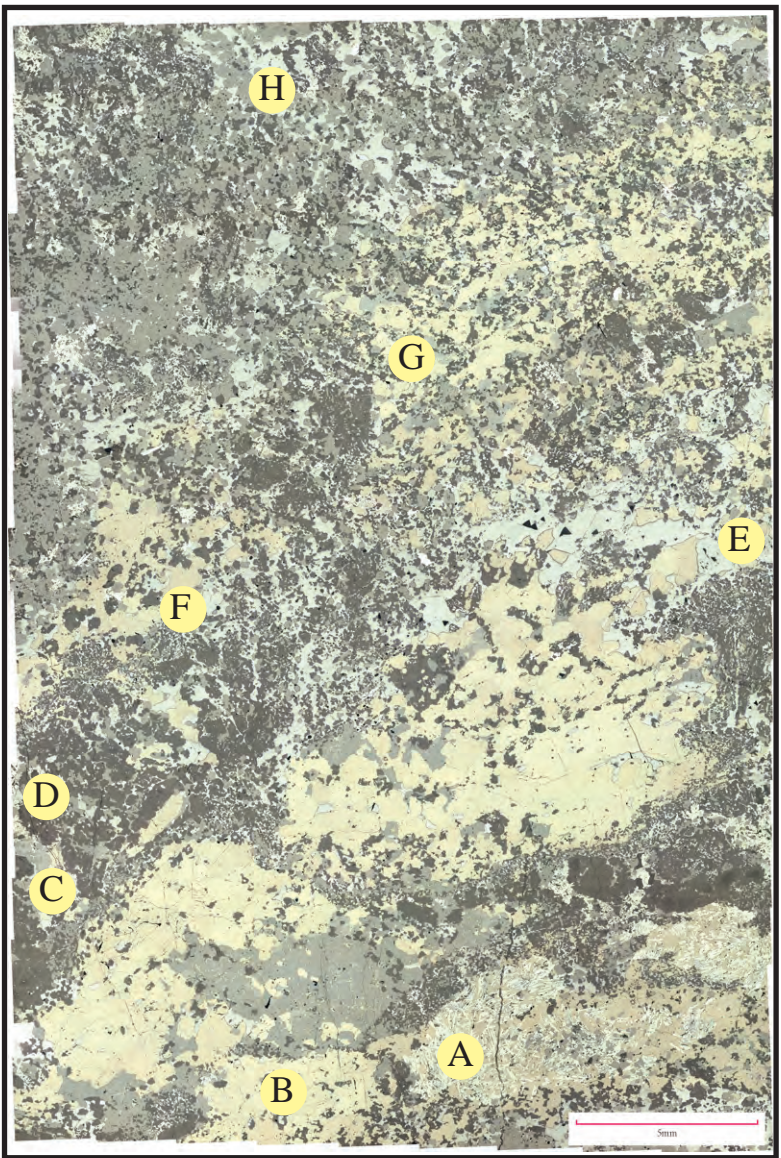
Between points ‘A’ and ‘E’ is a 3mm thick galena layer that contains very ragged sphalerite grains to 0.4mm long (that contain tiny pyrrhotite inclusions) with subhedral magnetite to 0.25mm. This has the texture of a cataclastic zone. Photomicrographs M3B-5,0ppin3 and M3B-2,5ppin2 show this zone.

M3A

A high resolution ‘stitched’ mosaic of 171 photomicrographs taken with the 5.0x objective in incident (reflected) light is shown as Fig. 8. The full resolution image (2.1Gb) is presented in the digital copy appended to this report. That resolution allows the image to be ‘zoomed’ to show detail of individual mineral grains. The image covers the majority of the area



5mm



Thin section M3A: location for mineralogical notes

of the thin section. The massive pyrrhotite layer shown in this image describes a fold closure and perhaps, following the contact of gangue at the centre right edge of the photograph, smaller folds may be described. Figure 9 shows specific locations on this section for the following mineralogical notes:

‘A’ = euhedral arsenopyrite in pyrrhotite.

‘B’ = pyrrhotite with a little sphalerite and pyroxene gangue.

‘C’ = arsenopyrite, sphalerite and pyrrhotite.

‘D’ = mostly gangue, some galena, arsenopyrite and sphalerite.

‘E’ = pyrrhotite, galena, fine-grained magnetite, gangue.

‘F’ = massive magnetite, magnetite in sphalerite and galena.

‘G’ = magnetite, sphalerite and galena.

‘H’ = sphalerite with a little interstitial sulphosalt: galena below.

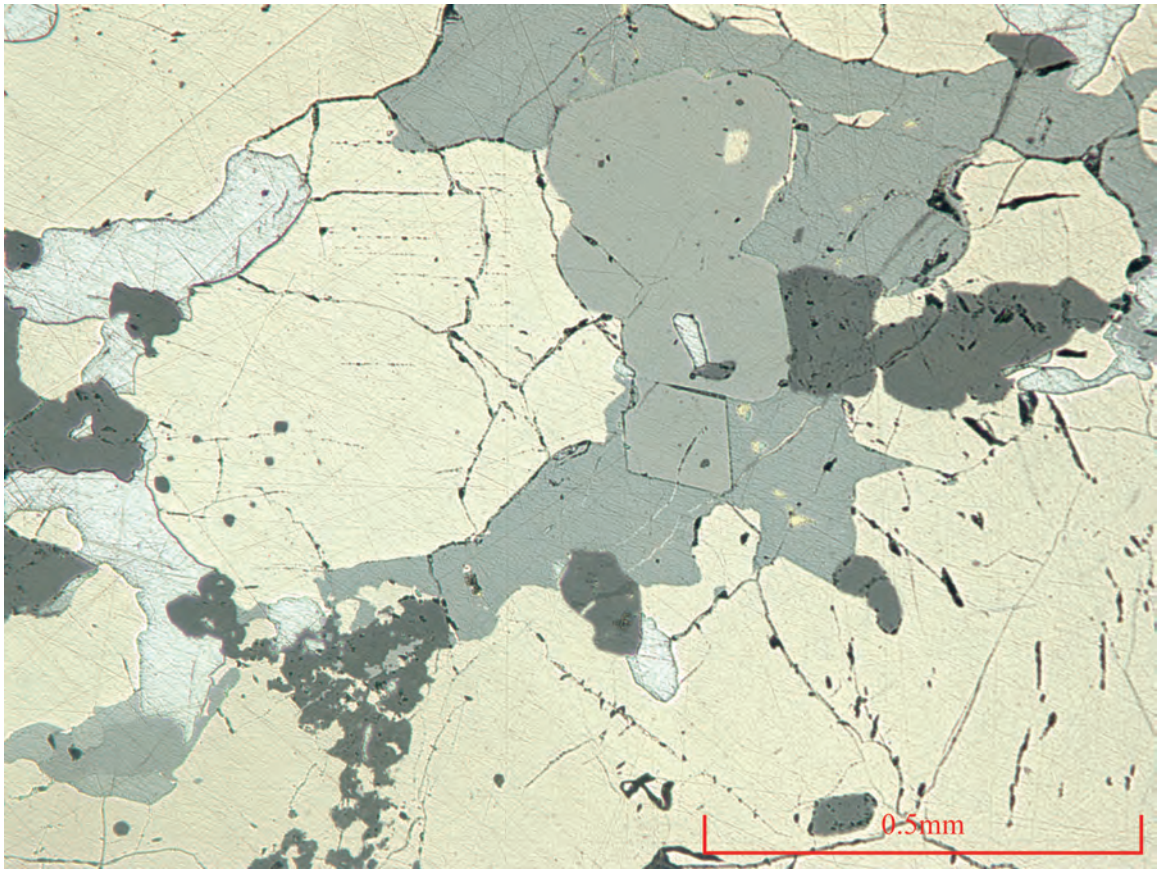
In this specimen magnetite varies from individual subhedral to euhedral 0.12mm crystals to 2-3mm aggregates of subhedral grains. The magnetite may also be included in galena, sphalerite and pyrrhotite. Arsenopyrite in 1mm acicular crystals is restricted to pyrrhotite layers, except for very occasional single crystals 0.5mm long in galena. Galena forms masses (often cusped) interstitial to the pyrrhotite crystals, some to 3mm across and in one layer it that traverses the whole width of the thin section.

Individual photomicrographs (scale bars represent 1mm unless marked otherwise) are as follows:

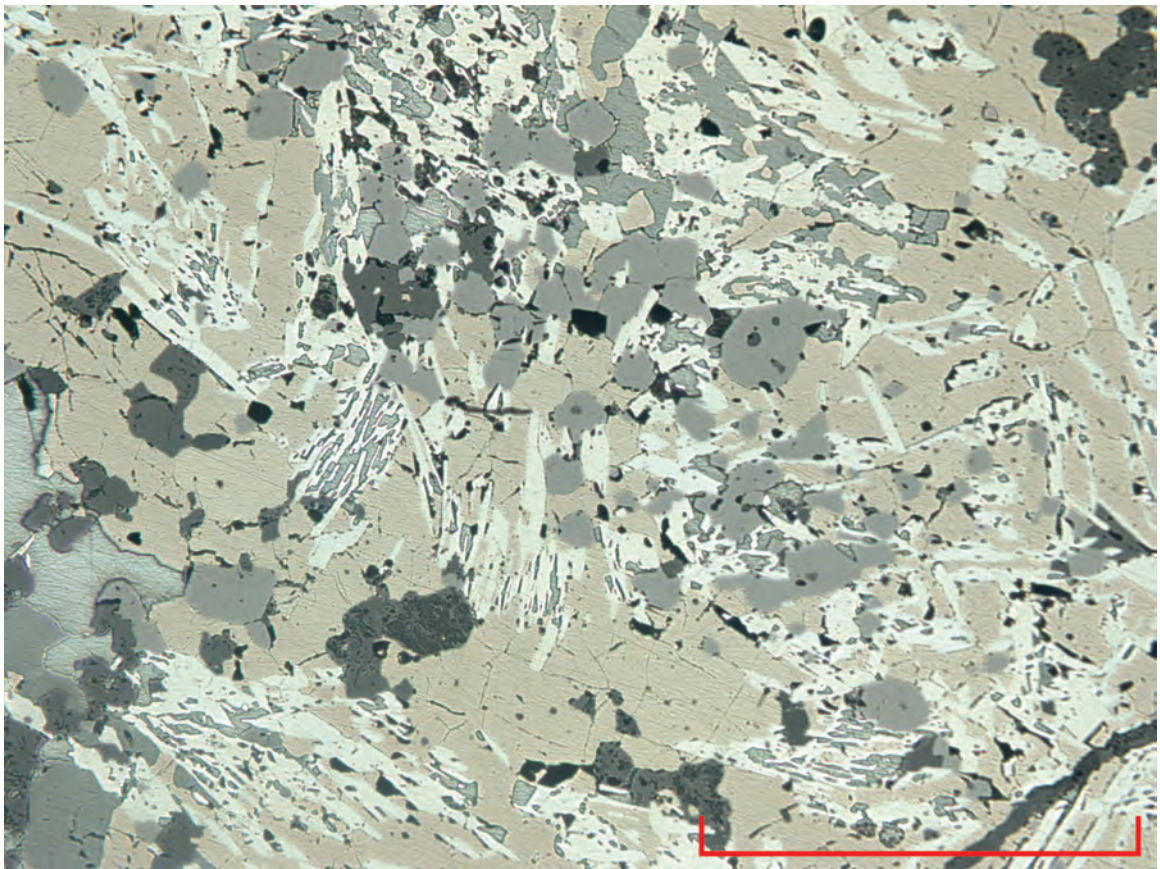
Figure 10a shows euhedral magnetite (brownish grey) in sphalerite (dark grey) with pyrrhotite, galena and, in the lower LH corner, tetrahedrite-tennantite.

Figure 10b shows arsenopyrite in pyrrhotite with euhedral magnetite crystals.

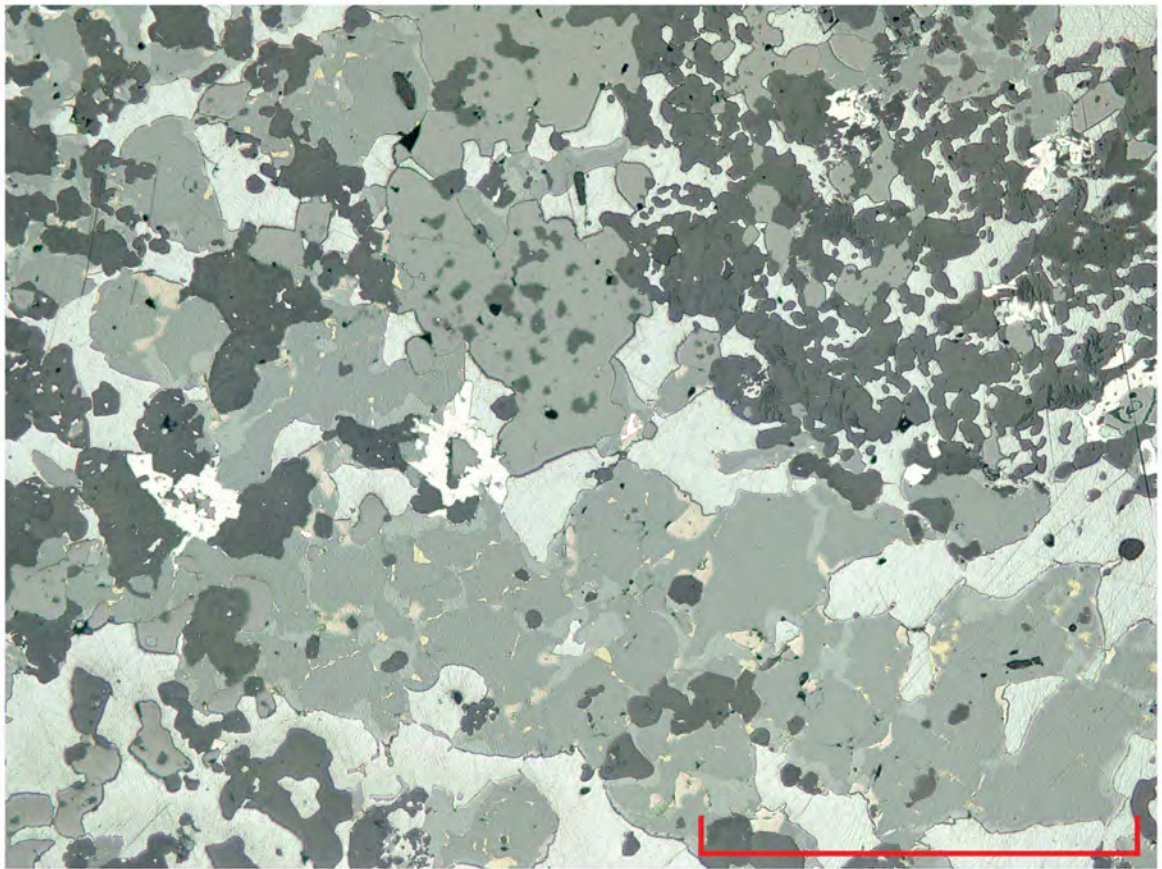
Figure 11a shows euhedral magnetite, galena, sphalerite with some tetrahedrite-tennantite.



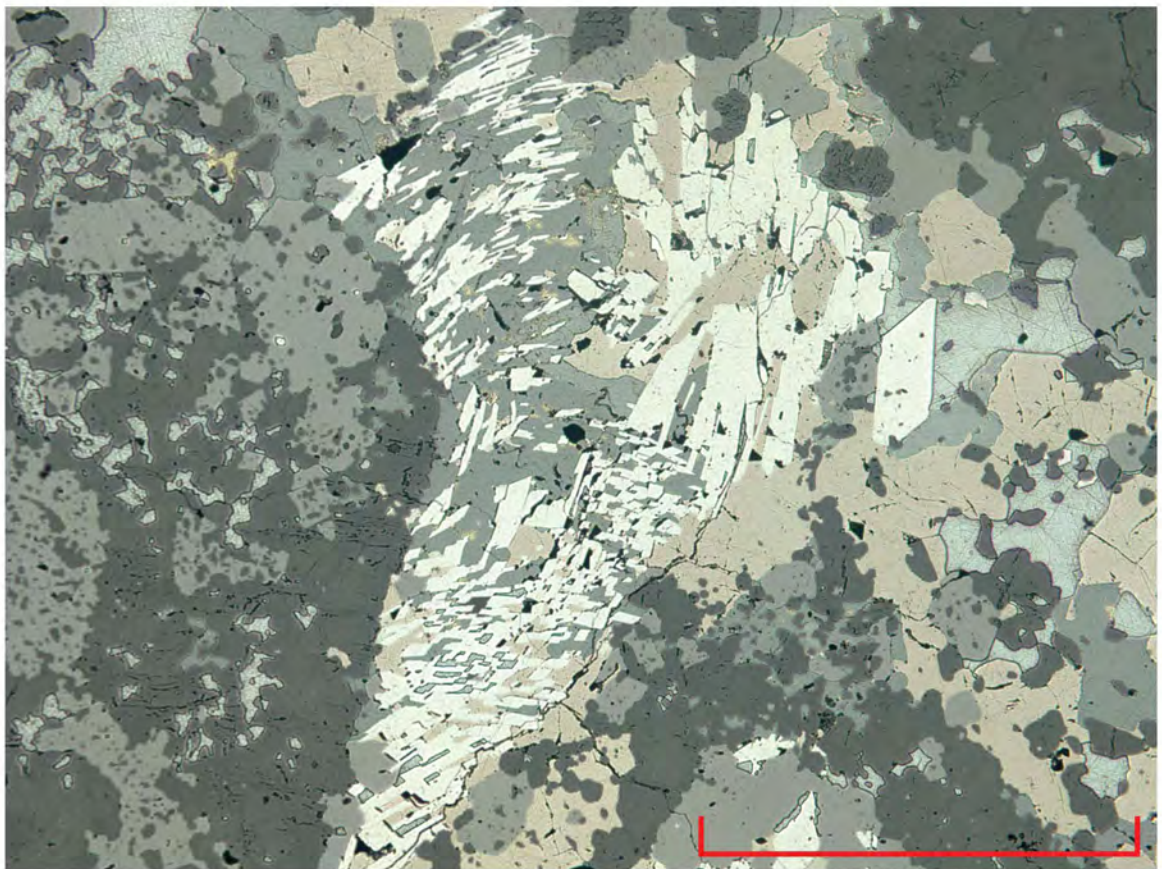
M1-10ppin Plane polarized incident light. Figure 10a



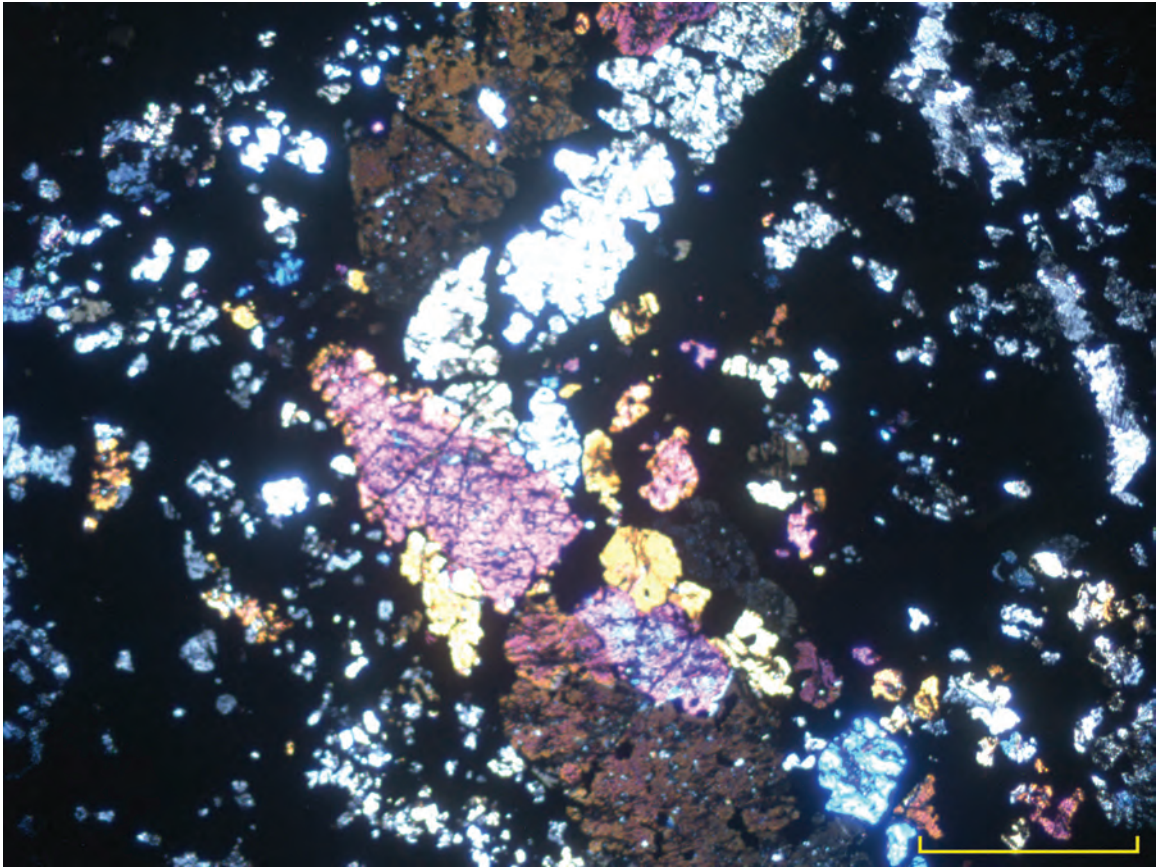
M3A-5,0ppin Plane polarized incident light. Figure 10b



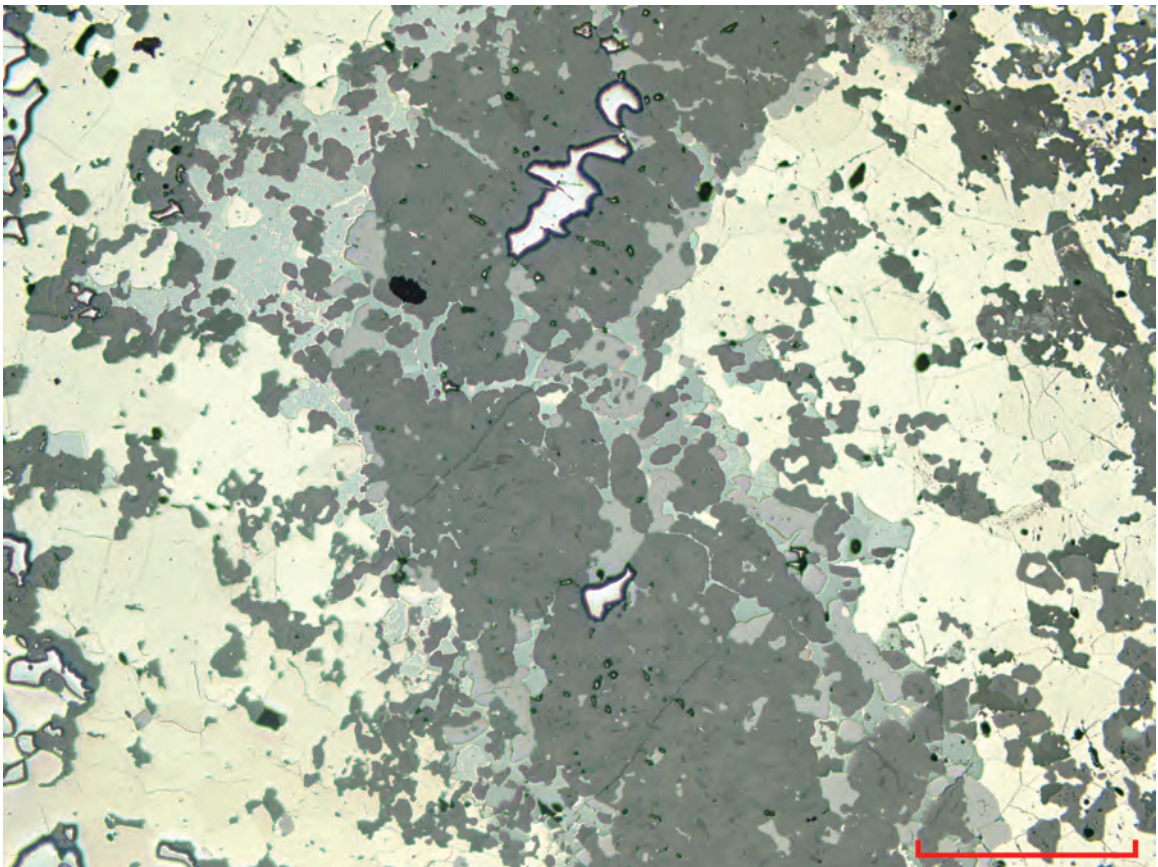
M3A-5,0ppin3 Plane polarized incident light. Figure 11a



M3A-5,0ppin2 Plane polarized incident light. Figure 11b



M3B- 2,5xp Transmitted light, crossed polarizers. Figure 12a



M3B-2,5ppin Plane polarized incident light, same field. Figure 12b

Figure 11b shows euhedral arsenopyrite with pyrrhotite and sphalerite. Dark gangue.

Figure 12a shows a folded layer of pyroxene gangue.

Figure 12b shows the centre of the same field. A rim of magnetite in sphalerite is evident.

Pyrrhotite shows its bireflectance.

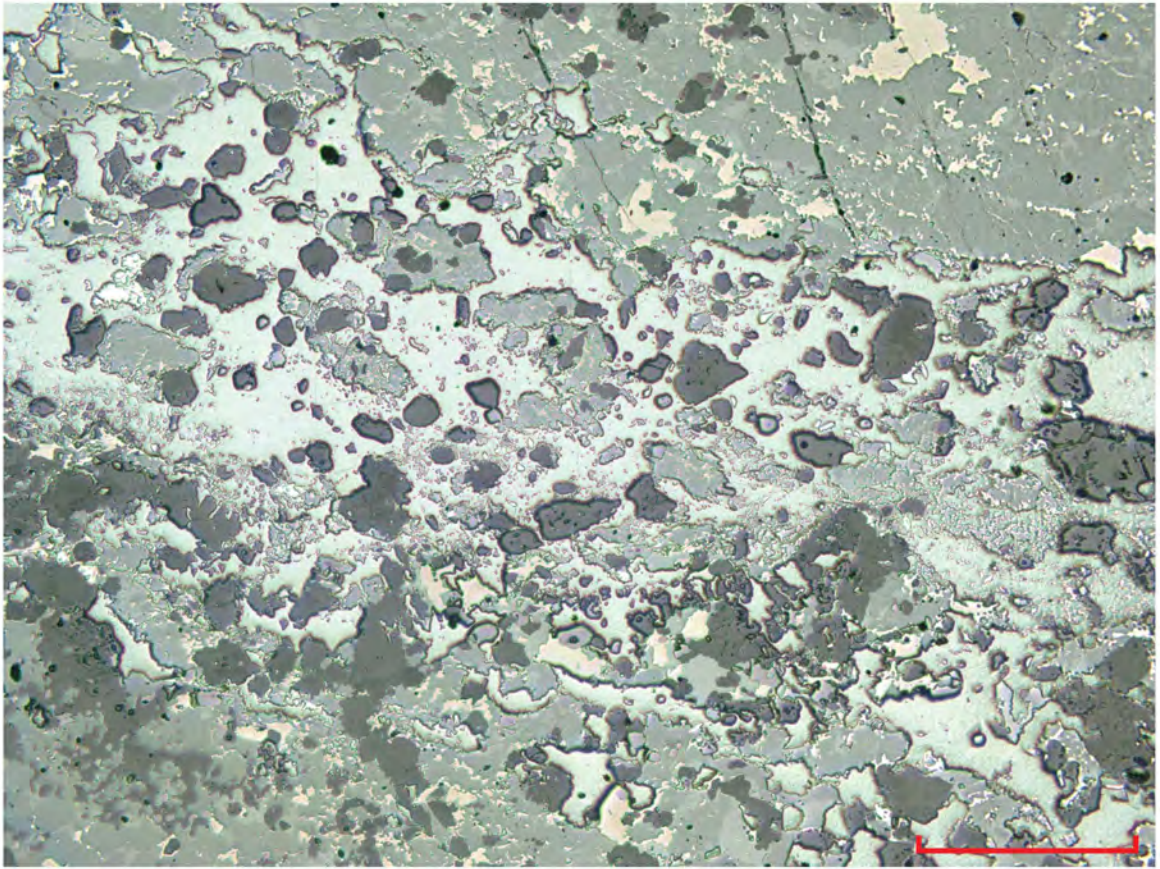
Figure 13a shows a cataclastic zone of sphalerite (with some pyrrhotite inclusions) in galena.

Figure 13b shows detail of the above. The small brownish grains are magnetite.

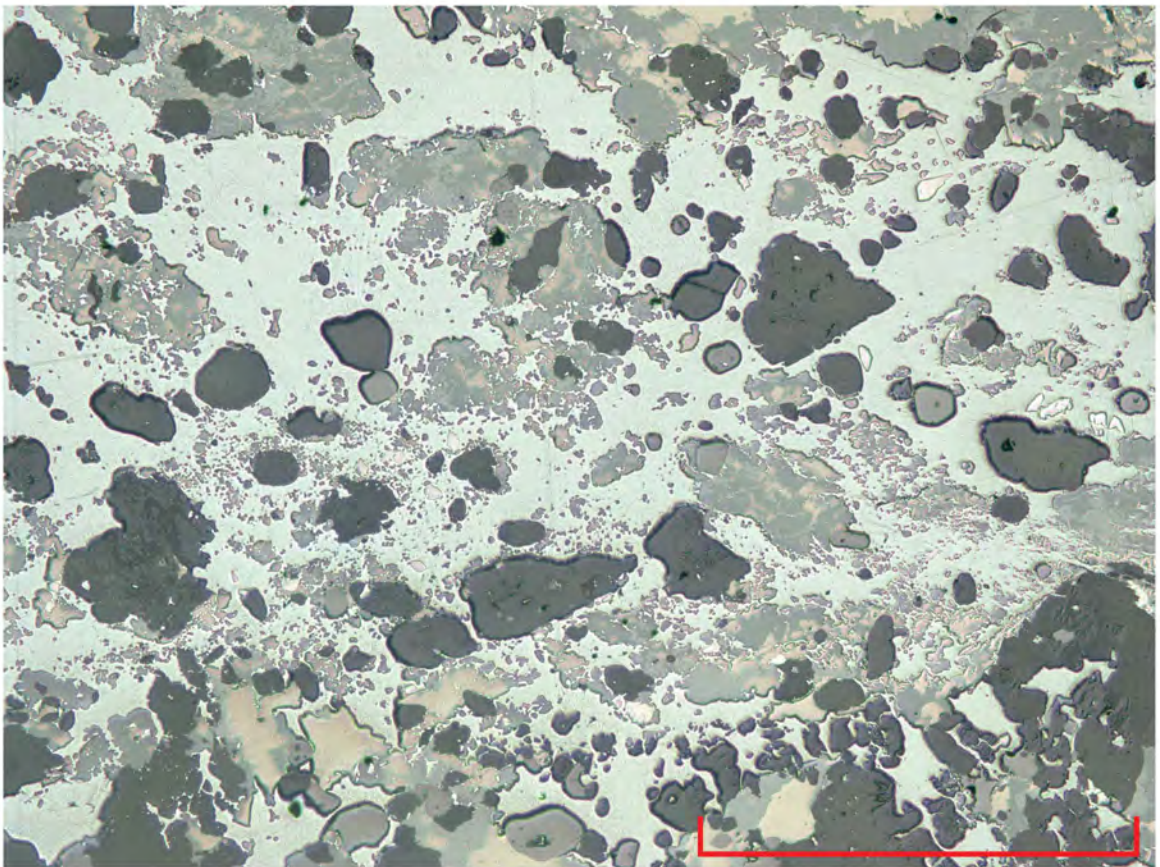
Figure 14a shows sphalerite containing tetrahedrite-tennantite along grain boundaries with inclusions of pyrrhotite.

Figure 14b shows galena, sphalerite and tetrahedrite with pyrrhotite.

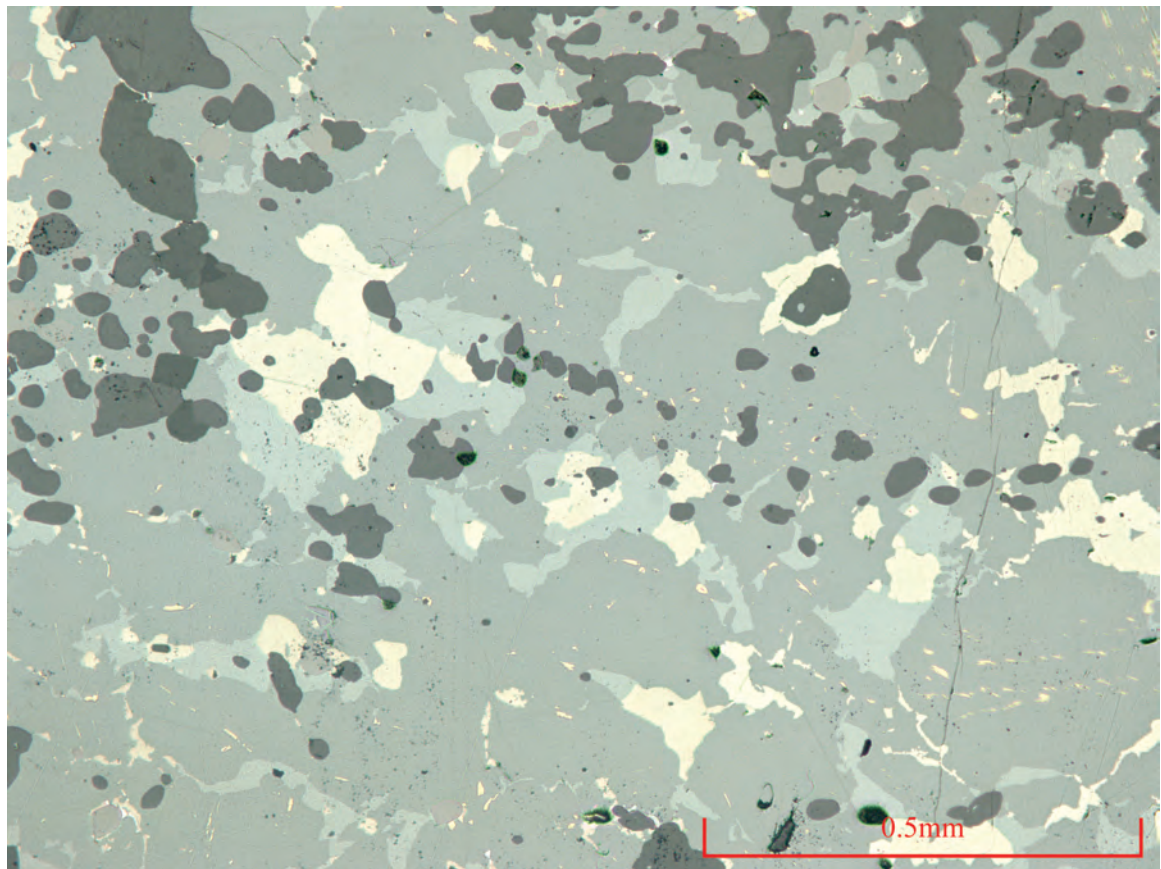
Figure 15 shows a vein of (?) fluoborite in red-brown sphalerite.



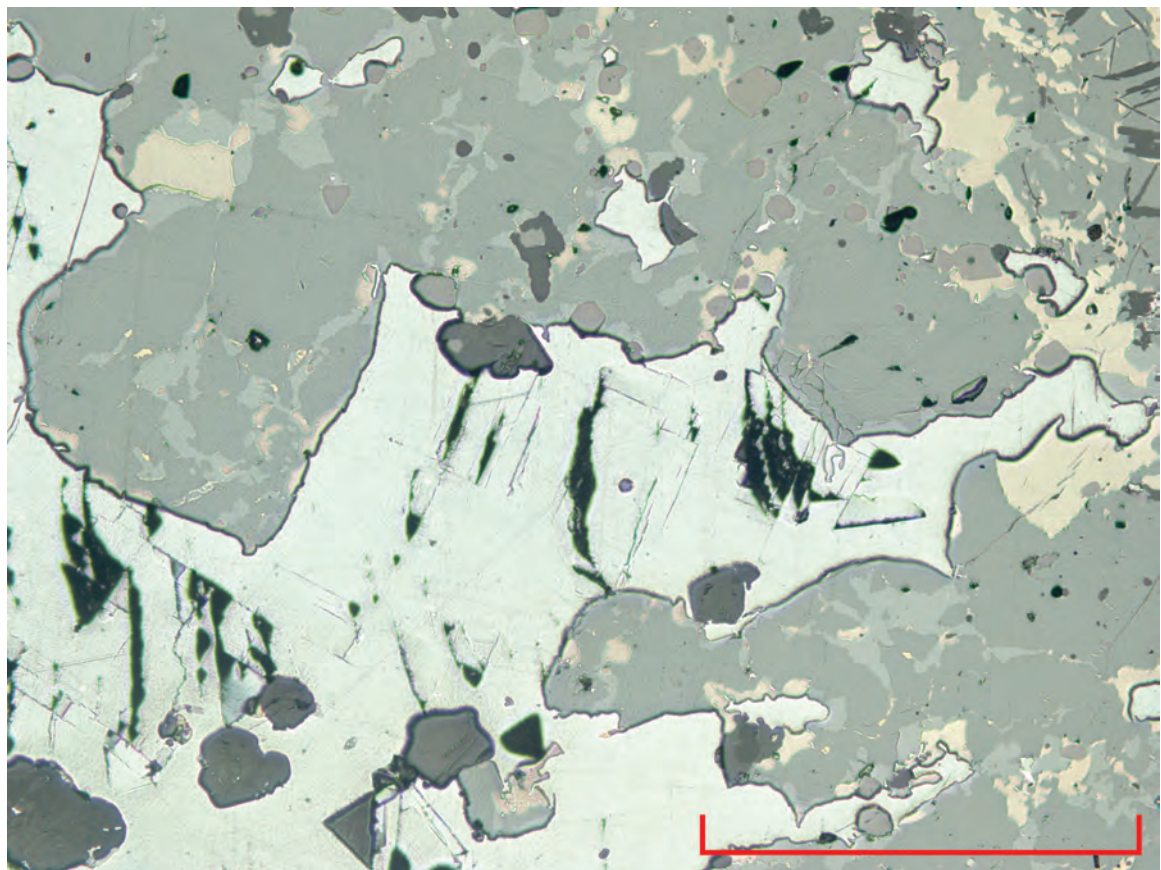
M3B-2,5ppin. Plane polarized incident light. Figure 13a



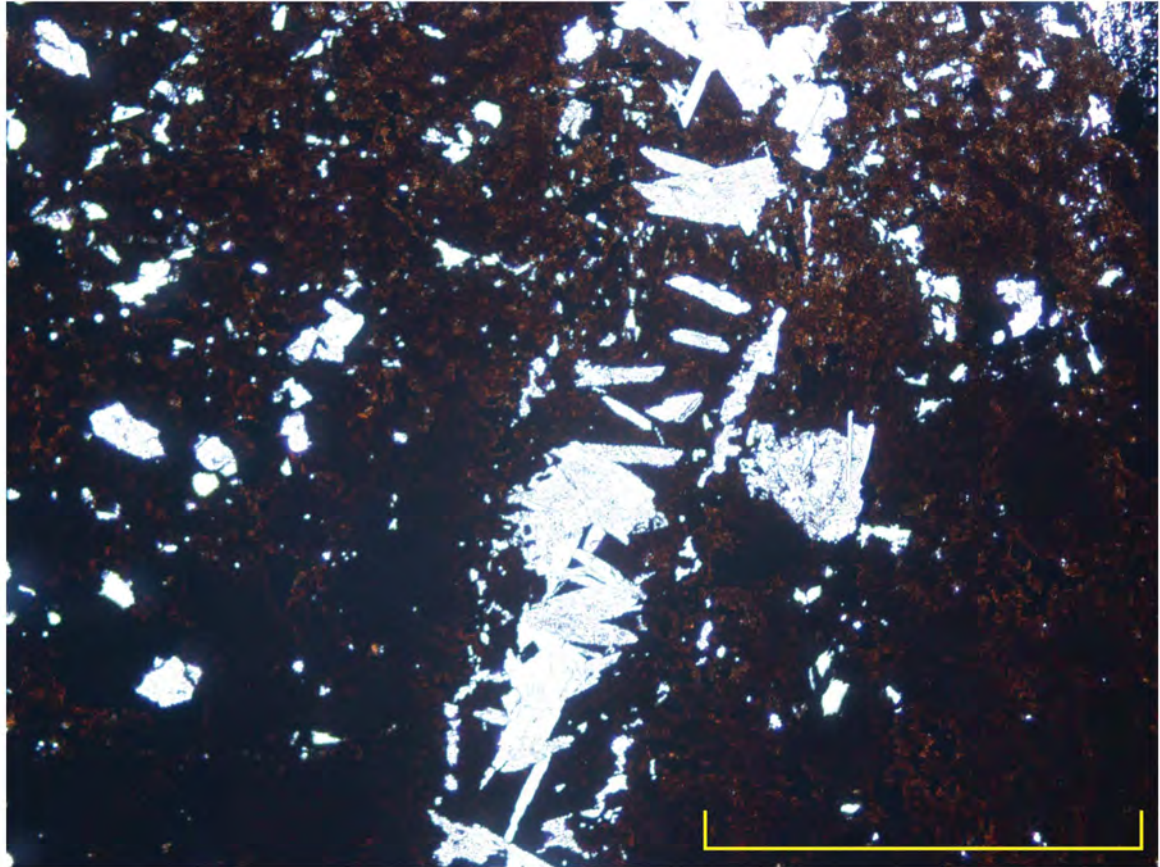
M3B-2,5ppin. Detail: plane polarized incident light. Figure 13b



M3B-10ppin Plane polarized incident light. Figure 14a



M3B-5,0ppin2 Plane polarized incident light. Figure 14b



M3B-5,0pp Plane polarized transmitted light. Figure 15

ASSAY

Two grab samples were submitted to ALS for assay. These were a fine-grained pyrrhotite-bearing specimen similar to slab 1 ('FG mod' on the assay sheets) and the coarser more galena-rich material (CG Mod), similar to that of specimen 3. The three specimens marked on the map (A1-A3) will be crushed, rolled and split in the spring once weather permits and then submitted for assay.

Methods used were trace element four acid digestion followed by ICPMS method ME-MS41 and aqua regia digestion for the fine-grained specimen with Pb and Zn at ore grade determined by titration with Ag-GRA21 gravimetric determination for silver for the coarse grained specimen.

For the fine-grained material the trace element analysis indicated that As = 3610ppm, Au = < 0.2ppm, Cu = 635ppm, Mn > 5%, Sb = 239ppm, Sn = 220ppm, and W = 3.55ppm. Ag, Pb and Zn at ore-grade determination were 257ppm (8.26 oz/ton), 3.19% and 5.61% respectively. The coarse grained material reported 2150ppm Ag (i.e., 69.13 oz/ton) and 41.06% Pb.

For the fine-grained pyrrhotite-bearing material it may be noted that the As content is consistent with observed arsenopyrite content, although some is expected in the sulphosalt (tetrahedrite-tennantite) as well as the Sb values. The low tin and copper content indicates that at least at this topographic level the sulphosalt stannite is not significant. The silver content of the galena-rich coarser-grained specimen is significant.

DISCUSSION

The present work has demonstrated significant grades in Ag, Pb and Zn in the mineralization at the Mod prospect. The grades from the grab samples are not representative of the width of the mineralization (6.8 metres) at the upper showing. They do, however, demonstrate that both the pyrrhotite-rich mineralization and galena-rich material have significant base metal-silver content and that the coarser grained sulphide has an impressive silver content.

Examination of the texture of the sulphides indicates that this material has been poly-deformed, with pyrrhotite exhibiting chaotic 'durchbewegung' texture. This is consistent with the folding of the Yukon-Tanana assemblage as described for the on-strike TBMB prospect (Del Rey Silva et al., 2001). The sulphide mineralization in this region has previously been described

as skarn. Emplacement of the mineralization by metasomatism caused by the adjacent Seagull batholith is inconsistent with this observation: the granite is mid Cretaceous. The country-rock in this locality has obviously been contact metamorphosed as indicated by diopsidic pyroxene being the most common gangue silicate and by its frequent occurrence in the adjacent country-rock. This contact metamorphic overprint is bound to confuse the issue! That some form of exhalative mineralization is present in this part of the Yukon-Tanana terrane has to be considered.

CONCLUSIONS AND RECOMMENDATIONS

The 2016 sampling work and microscopic examination of mineralization at the Mod upper showing has revealed significant grades of Ag, Pb and Zn. Observed structures in the sulphides indicate that this mineralization is likely not of skarn origin. The property warrants further work.

The historic bulldozer cuts could be further cleaned up at the head of the cut above the upper showing, at the lower cut just below the camp location and at the head of the lowest cut (above the 2015 channel sampling). This effort would test surface continuity of mineralization. The surveying indicates that the elevation difference between the lower and upper showings is 24 metres. If continuity can be shown at surface, that alone indicates significant tonnage.

Eventually it would be desirable to obtain a bulk sample from the outcrop. The further cleaning-up of the cuts will determine the optimum site for this.

REFERENCES

Craig, J.R. and Vaughan, D.J. 1981. Ore microscopy and ore petrography. John Wiley and Sons pp. 406.

Hudsons Bay Mining and Smelting Co. Ltd. Maps and sections from 1947 drill programme. Assessment report 092107.

D'el-Rey Silva, L.J.H., Liverton, T., Roots, C. and Paradis, S. 2001. A structural analysis of the upper Swift River area (105B/3), Yukon, Part II: the TBMB claims and implications for the regional geology. *In: Yukon Exploration and Geology 2000*, D.S. Emond and L.H. Weston (eds.), Exploration and Geological Services Division, Yukon, Indian and Northern Affairs Canada, p. 301-310.

J.W. McLeod and P.H. Sevensma: Boswell River Mines Ltd., Dan Group. Watson lake M.D. 105B-3. 60°10' North, 131° 6' West. Summary of 1968 Work Program. July 7th. 1969

QUALIFICATIONS

Timothy Liverton: Geologist

Qualifications: BSc in Geology & Geophysics, University of Sydney, conferred 1965
BSc (Hons) in Economic Geology, University of Adelaide, conferred 1968
PhD in petrology, structural geology & metallogeny, Royal Holloway, University of London 1992.

Chartered Geologist, Fellow of the Geological Society, Fellow of the Geological Association of Canada, Member of the Geological Society of America, Member of the Society of Economic Geologists

Experience: 49 years' experience in engineering geology, mine geology and mineral exploration for tin, tungsten, uranium, manganese, base metals, silver, gold and industrial minerals in Australia, Canada, U.S.A., Brasil, Guyana, Norway, Portugal and Egypt. Two years as Visiting Professor in Economic Geology at the University of Brasília.

Watson Lake, Yukon

March 2017



COST STATEMENT

Incurring September 2016, fieldwork:

T. Liverton 2days fieldwork @ \$500-00	\$ 1000.00
H. Hibbing 2 days fieldwork @ \$300.00	\$ 600.00
Camp costs @ \$100- / man-day	\$ 400.00
Vehicle, 320km @ \$0.62	\$ 198.40
Jackhammer @ \$20- per day	\$ 40.00
<u>TOTAL</u>	<u>\$ 2238.40</u>

Incurring after October 2016:

ALS Minerals: assay	\$ 295.27
Vancouver Petrographics: section preparation	\$ 183.75
Diamond sawing, slab grinding (T. Liverton, ½ day)	\$ 250.00
Petrography and report preparation (T.L. 3 days)	\$ 1500.00
Integraphics (printing)	\$ 60.00
<u>TOTAL</u>	<u>\$ 2289.02</u>



ALS Canada Ltd.
 2103 Dollarton Hwy
 North Vancouver BC V7H 0A7
 Phone: +1 (604) 984 0221 Fax: +1 (604) 984 0218
 www.alsglobal.com

To: **HARDY HIBBING**
P.O. BOX 547
WATSON LAKE YT Y0A 1C0

Page: 1
 Total # Pages: 2 (A)
 Plus Appendix Pages
 Finalized Date: 11-OCT-2016
 Account: HIBHAR

CERTIFICATE WH16169384

This report is for 1 Rock sample submitted to our lab in Whitehorse, YT, Canada on 5-OCT-2016.

The following have access to data associated with this certificate:

HARDY HIBBING

SAMPLE PREPARATION

ALS CODE	DESCRIPTION
FND-02	Find Sample for Addn Analysis

ANALYTICAL PROCEDURES


ALS CODE	DESCRIPTION	INSTRUMENT
Ag-GRA21	Ag 30g FA-GRAV finish	WST-SIM
Pb-VOL70	Pb by Titration	

To: **HARDY HIBBING**
ATTN: HARDY HIBBING
P.O. BOX 547
WATSON LAKE YT Y0A 1C0

This is the Final Report and supersedes any preliminary report with this certificate number. Results apply to samples as submitted. All pages of this report have been checked and approved for release.

***** See Appendix Page for comments regarding this certificate *****

Signature:


 Colin Ramshaw, Vancouver Laboratory Manager



ALS Canada Ltd.
 2103 Dollarton Hwy
 North Vancouver BC V7H 0A7
 Phone: +1 (604) 984 0221 Fax: +1 (604) 984 0218
 www.alsglobal.com

To: **HARDY HIBBING**
 P.O. BOX 547
 WATSON LAKE YT Y0A 1C0

Page: Appendix 1
 Total # Appendix Pages: 1
 Finalized Date: 4-OCT-2016
 Account: HIBHAR

Project: Mod

CERTIFICATE OF ANALYSIS WH16164479

CERTIFICATE COMMENTS

ANALYTICAL COMMENTS

Applies to Method: Gold determinations by this method are semi-quantitative due to the small sample weight used (0.5g).
 ME-MS41

LABORATORY ADDRESSES

Applies to Method: Processed at ALS Whitehorse located at 78 Mt. Sima Rd, Whitehorse, YT, Canada.

CRU-31	CRU-QC	LOG-22	
PUL-QC	SPL-21	WEI-21	PUL-31

Applies to Method: Processed at ALS Vancouver located at 2103 Dollarton Hwy, North Vancouver, BC, Canada.

Ag-OG46	ME-MS41	ME-OG46	
Zn-OG46			Pb-OG46



ALS Canada Ltd.
 2103 Dollarton Hwy
 North Vancouver BC V7H 0A7
 Phone: +1 (604) 984 0221 Fax: +1 (604) 984 0218
 www.alsglobal.com

To: **HARDY HIBBING**
P.O. BOX 547
WATSON LAKE YT Y0A 1C0

Page: 2 - A
 Total # Pages: 2 (A - D)
 Plus Appendix Pages
 Finalized Date: 4-OCT-2016
 Account: HIBHAR

Project: Mod

CERTIFICATE OF ANALYSIS WH16164479

Method Analyte Units LOR	WEI-21 Recvd Wt. kg	ME-MS41 Ag ppm	ME-MS41 Al %	ME-MS41 As ppm	ME-MS41 Au ppm	ME-MS41 B ppm	ME-MS41 Ba ppm	ME-MS41 Be ppm	ME-MS41 Bi ppm	ME-MS41 Ca %	ME-MS41 Cd ppm	ME-MS41 Ce ppm	ME-MS41 Co ppm	ME-MS41 Cr ppm	ME-MS41 Cs ppm
Sample Description	0.02	0.01	0.01	0.1	0.2	10	10	0.05	0.01	0.01	0.01	0.02	0.1	1	0.05
FG Mod	2.05	>100	0.08	3810	<0.2	20	10	0.80	6.80	1.43	180.5	2.70	12.8	<1	0.05



ALS Canada Ltd.
 2103 Dollarton Hwy
 North Vancouver BC V7H 0A7
 Phone: +1 (604) 984 0221 Fax: +1 (604) 984 0218
 www.alsglobal.com

To: **HARDY HIBBING**
P.O. BOX 547
WATSON LAKE YT Y0A 1C0

Page: 2 - B
 Total # Pages: 2 (A - D)
 Plus Appendix Pages
 Finalized Date: 4-OCT-2016
 Account: HIBHAR

Project: Mod

CERTIFICATE OF ANALYSIS WH16164479

Sample Description	Method Analyte Units LOR	ME-MS41 Cu ppm 0.2	ME-MS41 Fe % 0.01	ME-MS41 Ca ppm 0.05	ME-MS41 Ce ppm 0.05	ME-MS41 Hf ppm 0.02	ME-MS41 Hg ppm 0.01	ME-MS41 In ppm 0.005	ME-MS41 K % 0.01	ME-MS41 La ppm 0.2	ME-MS41 Li ppm 0.1	ME-MS41 Mg % 0.01	ME-MS41 Mn ppm 5	ME-MS41 Mo ppm 0.05	ME-MS41 Na % 0.01	ME-MS41 Nb ppm 0.05
FG Mod		635	28.5	2.54	0.14	0.03	0.02	0.807	<0.01	1.1	1.4	2.25	>50000	0.27	0.01	0.12



ALS Canada Ltd.
 2103 Dollarton Hwy
 North Vancouver BC V7H 0A7
 Phone: +1 (604) 984 0221 Fax: +1 (604) 984 0218
 www.alsglobal.com

To: **HARDY HIBBING**
P.O. BOX 547
WATSON LAKE YT Y0A 1C0

Page: 2 - C
 Total # Pages: 2 (A - D)
 Plus Appendix Pages
 Finalized Date: 4-OCT-2016
 Account: HIBHAR

Project: Mod

CERTIFICATE OF ANALYSIS WH16164479

Sample Description	Method Analyte Units LOR	ME-MS41 Ni ppm	ME-MS41 P ppm	ME-MS41 Pb ppm	ME-MS41 Rb ppm	ME-MS41 Re ppm	ME-MS41 S %	ME-MS41 Sb ppm	ME-MS41 Sc ppm	ME-MS41 Se ppm	ME-MS41 Sn ppm	ME-MS41 Sr ppm	ME-MS41 Ta ppm	ME-MS41 Te ppm	ME-MS41 Th ppm	ME-MS41 Ti %
FG Mod		4.8	420	>10000	0.5	<0.001	8.01	239	0.4	1.6	220	4.9	<0.01	0.15	0.2	<0.005



ALS Canada Ltd.
 2103 Dollarton Hwy
 North Vancouver BC V7H 0A7
 Phone: +1 (604) 984 0221 Fax: +1 (604) 984 0218
 www.alsglobal.com

To: **HARDY HIBBING**
P.O. BOX 547
WATSON LAKE YT Y0A 1C0

Page: 2 - D
 Total # Pages: 2 (A - D)
 Plus Appendix Pages
 Finalized Date: 4-OCT-2016
 Account: HIBHAR

Project: Mod

CERTIFICATE OF ANALYSIS WH16164479

Sample Description	Method Analyte Units LOR	ME-MS41 Ti ppm 0.02	ME-MS41 U ppm 0.05	ME-MS41 V ppm 1	ME-MS41 W ppm 0.05	ME-MS41 Y ppm 0.05	ME-MS41 Zn ppm 2	ME-MS41 Zr ppm 0.5	Ag-OC46 Ag ppm 1	Pb-OC46 Pb % 0.001	Zn-OC46 Zn % 0.001
FG Mod		0.10	0.61	3	3.55	3.40	>10000	0.7	267	3.19	5.61

***** See Appendix Page for comments regarding this certificate *****



ALS Canada Ltd.
2103 Dollarton Hwy
North Vancouver BC V7H 0A7
Phone: +1 (604) 984 0221 Fax: +1 (604) 984 0218
www.alsglobal.com

To: **HARDY HIBBING**
P.O. BOX 547
WATSON LAKE YT Y0A 1C0

Page: 2 - A
Total # Pages: 2 (A)
Plus Appendix Pages
Finalized Date: 11-OCT-2016
Account: HIBHAR

CERTIFICATE OF ANALYSIS WH16169384

Sample Description	Method Analyte Units LOR	Ag-GRAZ1	Pb-VOL70
		Ag ppm	Pb %
CG Mod		2150	41.06



ALS Canada Ltd.

2103 Dollarton Hwy
North Vancouver BC V7H 0A7

Phone: +1 (604) 984 0221 Fax: +1 (604) 984 0218 www.alsglobal.com

To: **HARDY HIBBING**
P.O. BOX 547
WATSON LAKE YT Y0A 1C0

INVOICE NUMBER 3688763

BILLING INFORMATION

Certificate: **WH16164478**
Sample Type: **Rock**
Account: **HIBHAR**
Date: **4-OCT-2016**
Project: **Mod**
P.O. No.:
Quote:
Terms: **Due on Receipt** **C1**
Comments:

QUANTITY	CODE	ANALYSED FOR		UNIT PRICE	TOTAL
		-	DESCRIPTION		
1	PREP-31	-	Crush, Split, Pulverize Rush Charges X 2.0	14.90	14.90
2.53	PREP-31	-	Weight Charge (kg) - Crush, Split, Pulverize Rush Chg	1.40	3.54
1	ME-0G62	-	Ore Grade Elements - Four Acid Rush Charges X 2.0	37.20	37.20

SUBTOTAL (CAD) \$ 55.64

R100938885 GST \$ 2.78

TOTAL PAYABLE (CAD) \$ 58.42

To: **HARDY HIBBING**
ATTN: HARDY HIBBING
P.O. BOX 547
WATSON LAKE YT Y0A 1C0

Payment may be made by: Cheque or Bank Transfer

Beneficiary Name: ALS Canada Ltd.
Bank: Royal Bank of Canada
SWIFT: ROYCCAT2
Address: Vancouver, BC, CAN
Account: 003-00010-1001098
Please send payment info to accounting.canusa@alsglobal.com

Please Remit Payments To :
ALS Canada Ltd.
2103 Dollarton Hwy
North Vancouver BC V7H 0A7



ALS Canada Ltd.
 2103 Dollarton Hwy
 North Vancouver BC V7H 0A7
 Phone: +1 (604) 984 0221 Fax: +1 (604) 984 0218 www.alsglobal.com

To: **HARDY HIBBING**
P.O. BOX 547
WATSON LAKE YT Y0A 1C0

INVOICE NUMBER 3688755

BILLING INFORMATION	
Certificate:	WH16164479
Sample Type:	Rock
Account:	HIBHAR
Date:	4-OCT-2016
Project:	Mod
P.O. No.:	
Quote:	
Terms:	Due on Receipt C1
Comments:	

		ANALYSED FOR		UNIT	TOTAL
QUANTITY	CODE	DESCRIPTION	PRICE		
1	BAT-01	Administration Fee	33.10		33.10
1	PREP-31	Crush, Split, Pulverize Rush Charges X 2.0	14.90		14.90
2.05	PREP-31	Weight Charge (kg) - Crush, Split, Pulverize Rush Chg	1.40		2.87
1	ME-MS41	Ultra Trace Aqua Regia ICP-MS Rush Charges X 2.0	46.40		46.40
1	Ag-OG46	Ore Grade Ag - Aqua Regia Rush Charges X 2.0	4.90		4.90
1	ME-OG46	Ore Grade Elements - AquaRegia Rush Charges X 2.0	17.40		17.40
1	Pb-OG46	Ore Grade Pb - Aqua Regia Rush Charges X 2.0	4.90		4.90
1	Zn-OG46	Ore Grade Zn - Aqua Regia Rush Charges X 2.0	4.90		4.90

To: **HARDY HIBBING**
ATTN: HARDY HIBBING
P.O. BOX 547
WATSON LAKE YT Y0A 1C0

SUBTOTAL (CAD) \$ 129.37
 R100938885 GST \$ 6.47
TOTAL PAYABLE (CAD) \$ 135.84

Payment may be made by: Cheque or Bank Transfer

Beneficiary Name: ALS Canada Ltd.
 Bank: Royal Bank of Canada
 SWIFT: ROYCCAT2
 Address: Vancouver, BC, CAN
 Account: 003-00010-1001098
 Please send payment info to accounting.canusa@alsglobal.com

Please Remit Payments To :
ALS Canada Ltd.
 2103 Dollarton Hwy
 North Vancouver BC V7H 0A7



ALS Canada Ltd.
2103 Dollarton Hwy
North Vancouver BC V7H 0A7
Phone: +1 (604) 984 0221 Fax: +1 (604) 984 0218 www.alsglobal.com

To: **HARDY HIBBING**
P.O. BOX 547
WATSON LAKE YT Y0A 1C0

INVOICE NUMBER 3693743

BILLING INFORMATION

Certificate: **WH16169384**
Sample Type: **Rock**
Account: **HIBHAR**
Date: **11-OCT-2016**
Project:
P.O. No.:
Quote:
Terms: **Due on Receipt** C1
Comments:

		ANALYSED FOR	UNIT PRICE	TOTAL
QUANTITY	CODE	DESCRIPTION		
1	BAT-01	Administration Fee	33.10	33.10
1	Ag-GRA21	Ag 30g FA-GRAV finish	22.25	22.25
1	Pb-VOL70	Pb by Titration	40.85	40.85

SUBTOTAL (CAD) \$ 96.20

R100938885 GST \$ 4.81

TOTAL PAYABLE (CAD) \$ 101.01

To: **HARDY HIBBING**
ATTN: HARDY HIBBING
P.O. BOX 547
WATSON LAKE YT Y0A 1C0

Payment may be made by: Cheque or Bank Transfer

Beneficiary Name: ALS Canada Ltd.
Bank: Royal Bank of Canada
SWIFT: ROYCCAT2
Address: Vancouver, BC, CAN
Account: 003-00010-1001098
Please send payment info to accounting.canusa@alsglobal.com

Please Remit Payments To :
ALS Canada Ltd.
2103 Dollarton Hwy
North Vancouver BC V7H 0A7

Vancouver Petrographics Ltd.

8080 Glover Road
Langley BC
V1M 3S3
604-888-1323

Invoice

Date	Invoice #
2/16/2017	170133

Invoice To
Tim Liverton P.O. Box 393 Watson Lake, Yukon Y0A 1C0

PAID
02/16/2017

Ship To
Tim Liverton

P.O. No.	Terms	Due Date	Ship Date	Ship Via	Project
	Net 30	3/18/2017	2/16/2017	Mail	

Description	Qty	Rate	Amount
Polished Thin Sections	3	50.00	150.00
Shipping		25.00	25.00
GST On Sales		5.00%	8.75
Total			CAD 183.75
Payments/Credits			CAD -183.75
Balance Due			CAD 0.00

E-mail
vanpetro@vanpetro.com

GST/HST No. 105484687