

ARCHER, CATHRO & ASSOCIATES (1981) LIMITED
1016 - 510 West Hastings Street
Vancouver, B.C. V6B1L8

Telephone: 604-688-2568

Fax: 604-688-2578

ASSESSMENT REPORT

describing

SOIL GEOCHEMICAL SAMPLING AND PROSPECTING

Fieldwork performed July 26 to 31, 2016

at the

LOIS PROPERTY

Lois 1-96 YE66701-YE66796

NTS 105N/07

Latitude 63°17'N; Longitude 132°56'W

in the

Mayo Mining District
Yukon Territory

prepared by

Archer, Cathro & Associates (1981) Limited

for

STRATEGIC METALS LTD.

by

K. Willms, B.Sc.

September 2016

CONTENTS

INTRODUCTION	1
PROPERTY LOCATION, CLAIM DATA AND ACCESS	1
HISTORY AND PREVIOUS WORK	1
GEOMORPHOLOGY AND CLIMATE	2
GEOLOGY	2
MINERALIZATION	5
SOIL GEOCHEMISTRY	5
DISCUSSION AND CONCLUSIONS	6
REFERENCES	8

APPENDICES

I	STATEMENT OF QUALIFICATIONS
II	STATEMENT OF EXPENDITURES
III	CERTIFICATES OF ANALYSIS
IV	ROCK SAMPLE DESCRIPTIONS

TABLES

I	Lithological Units	3
II	Soil Geochemical Thresholds	6

FIGURES

<u>No.</u>	<u>Description</u>	<u>Follows Page</u>
1	Property Location	1
2	Claim Locations	1
3	Tectonic Setting	2
4	Geology	2
5	Rock Sample Locations	5
6	Soil Sample Locations	5
7	Gold Soil and Silt Geochemistry	5
8	Copper Soil and Silt Geochemistry	5
9	Bismuth Soil and Silt Geochemistry	5
10	Arsenic Soil and Silt Geochemistry	5
11	Antimony Soil and Silt Geochemistry	5

INTRODUCTION

The Lois property is located in east-central Yukon within the Mayo Mining District. The property covers the headwaters of creeks yielding regionally anomalous gold, copper, arsenic, bismuth and antimony values. The property is wholly owned by Strategic Metals Ltd.

This report reviews and interprets soil geochemical sampling and prospecting conducted between July 26 and July 31, 2016 by Archer, Cathro and Associates (1981) Limited on behalf of Strategic Metals. The author interpreted all results from current and previous work completed on the property, and his Statement of Qualifications is in Appendix I. The Statement of Expenditures is contained in Appendix II.

PROPERTY LOCATION, CLAIM DATA AND ACCESS

The Lois property is located in east-central Yukon at latitude 63°17' north and longitude 132°56' west on NTS map sheet 105N/07 (Figure 1). It comprises 96 contiguous quartz claims that cover an area of approximately 1950 hectares (19.5 km²). The claims are registered with the Mayo Mining Recorder in the name of Archer Cathro, which holds them in trust for Strategic Metals. Specifics concerning claim registration are given below, while the locations of individual claims are illustrated on Figure 2.

<u>Claim Name</u>	<u>Grant Number</u>	<u>Expiry Date*</u>
Lois 1-96	YE66701-YE66796	March 31, 2017

* Expiry dates do not include 2016 work which has not yet been filed for assessment.

In 2016, the access to the property involved a float plane from Mayo to Fairweather Lake, and an A-Star helicopter from Fairweather Lake to a fly camp located on the property. The town of Faro is located approximately 120 km south-southwest of the property, while the village of Mayo lies 150 km to the northeast. Both Faro and Mayo are road accessible by two-wheel drive vehicles in all seasons via the Robert Campbell Highway and Silver Trail Highway, respectively.

The Lois property is located entirely within the traditional territory of the Nacho Nyak Dun First Nation and much of the property also lies within the traditional territory of the Ross River Dena Council (RRDC). The property is subject to Class 1 notification requirements for work conducted within the RRDC traditional territories.

HISTORY AND PREVIOUS WORK

In 1990, the Geological Survey of Canada (GSC) completed a reconnaissance-scale stream sediment and water sampling survey on NTS map sheet 105N (Day *et. al.*, 2009). A sample collected from a creek draining the northern part of the property yielded 90th percentile arsenic (43 ppm) and 95th percentile bismuth (0.6 ppm) values. A creek draining the southern part of the property returned 95th percentile arsenic (65 ppm) and 99th percentile bismuth (1.7 ppm) values.

STRATEGIC METALS LTD.

FIGURE 1
ARCHER, CATHRO & ASSOCIATES (1981) LIMITED

PROPERTY LOCATION

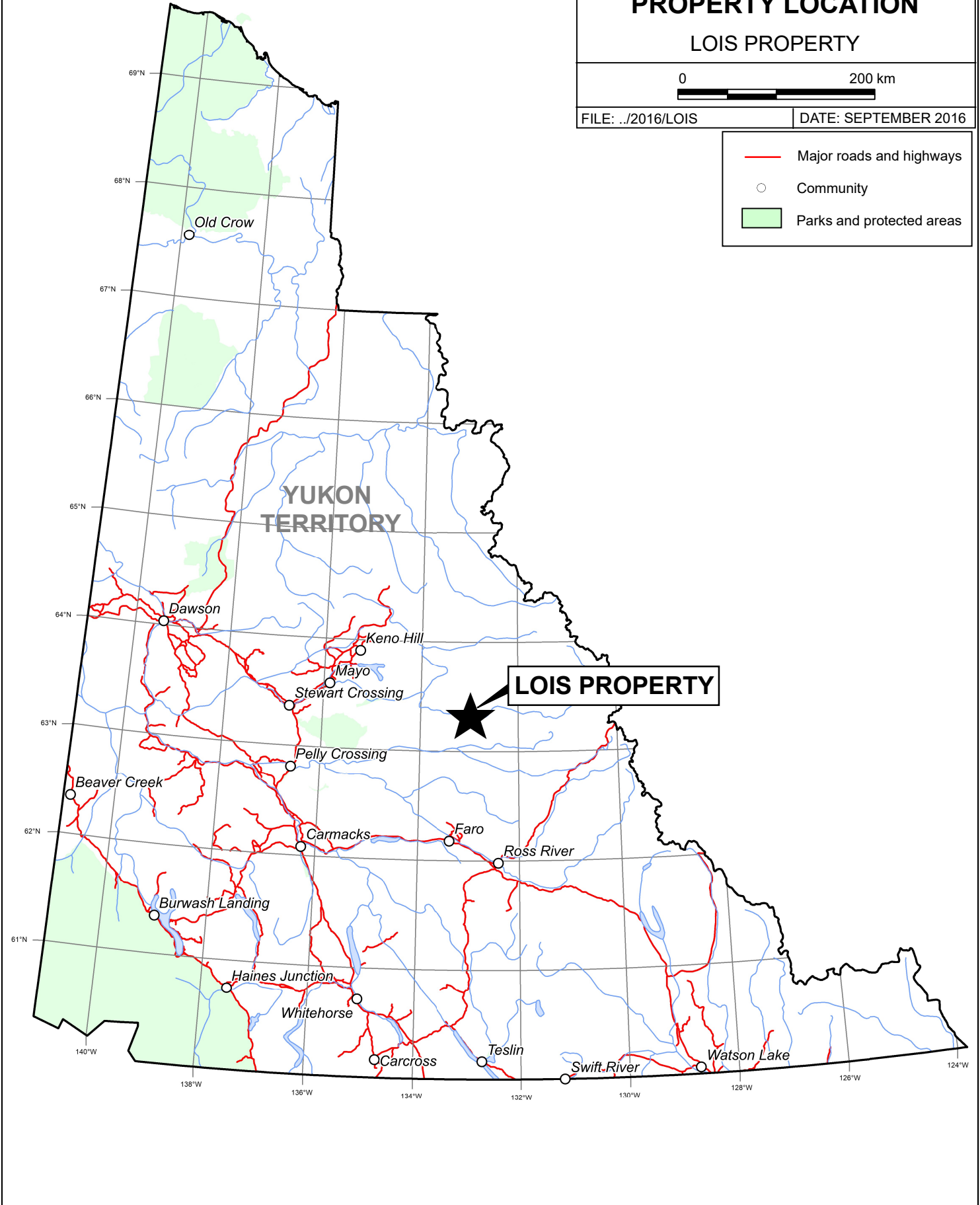
LOIS PROPERTY

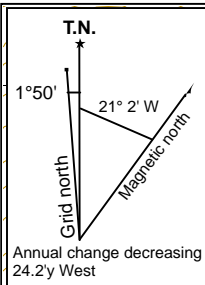
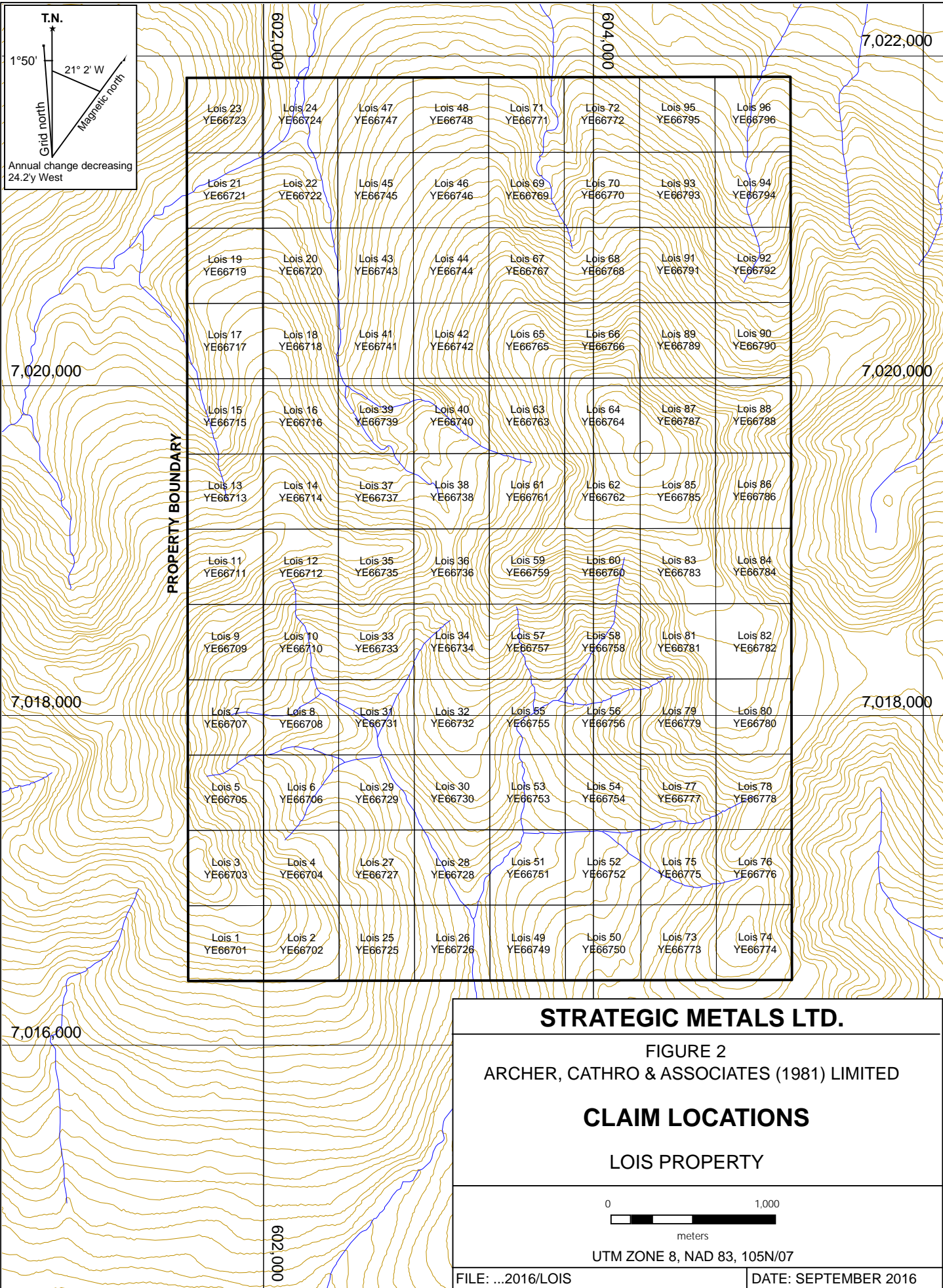


FILE: ../2016/LOIS

DATE: SEPTEMBER 2016

- Major roads and highways
- Community
- Parks and protected areas





PROPERTY BOUNDARY

STRATEGIC METALS LTD.

FIGURE 2
 ARCHER, CATHRO & ASSOCIATES (1981) LIMITED

CLAIM LOCATIONS

LOIS PROPERTY

0 1,000
 meters

UTM ZONE 8, NAD 83, 105N/07

FILE: ...2016/LOIS DATE: SEPTEMBER 2016

In 2011, Strategic Metals staked the property and subsequently optioned it to New Dimension Resources Ltd. A total of 179 silt and soil samples were collected and analyzed, identifying weakly to strongly anomalous concomitant gold, copper, arsenic, bismuth and antimony values (Eaton, 2011).

In 2013, New Dimension dropped its option on the Lois property.

GEOMORPHOLOGY AND CLIMATE

The Lois property is situated in the Russell Range, a subset of the Selwyn Mountains. It is drained by creeks flowing into the Hess River, which ultimately discharges into the Pacific Ocean via the Stewart and Yukon rivers.

The property covers the north and south faces of a mountain located 25 km northwest of Fairweather Lake and six kilometres west of an unnamed, north to south elongated network of lakes. Elevations on the property range from about 1040 to 1940 m above sea level (asl). Outcrop exposure is locally abundant but is generally restricted to ridge tops, deeply incised creek cuts and steep slopes. Most of the property lies below treeline, approximately 1500 m asl. Slopes above that elevation are characterized by talus, outcrop and alpine vegetation primarily comprising low grass and staghorn moss. Valley floors are vegetated with fir and spruce with an understory of low shrubs and moss.

Much of the overburden in the region is associated with the McConnell glaciation, the most recent Cordilleran ice sheet, which is believed to have covered south and central Yukon between 26,500 and 10,000 years ago (Yukon Geological Survey, 2010). The ice sheet generally migrated in a northwesterly direction.

The climate at the Lois property is typical of northern continental regions with long, cold winters, truncated fall and spring seasons and short, mild summers. The property is mostly snow free from late May to late September.

GEOLOGY

In 1995 and 2003, the GSC and Yukon Geological Survey (YGS) published geological maps of the Lansing Range map sheet (NTS 105N) at 1:125,000 and 1:250,000 scales, respectively (Roots *et.al.*, 1995 and Roots, 2003). In 2003, Gordey and Makepeace incorporated this data as part of a Yukon-wide geological compilation. The following geological descriptions are based on the published data.

The Lois property is located within the Selwyn Basin (Figure 3), a predominantly off-shelf meta-sedimentary and meta-volcanic sequence that formed on the western margin of the North American craton from Upper Proterozoic to Lower Paleozoic times.

The geology of the Lansing Range map sheet includes seven sedimentary units (Figure 4). The basal sequence of Hyland Group, Gull Lake Formation and Road River Group represents clastic fill and deep water chemical precipitate of Upper Proterozoic and Lower Paleozoic age. The

STRATEGIC METALS LTD.

FIGURE 3

ARCHER, CATHRO & ASSOCIATES (1981) LIMITED

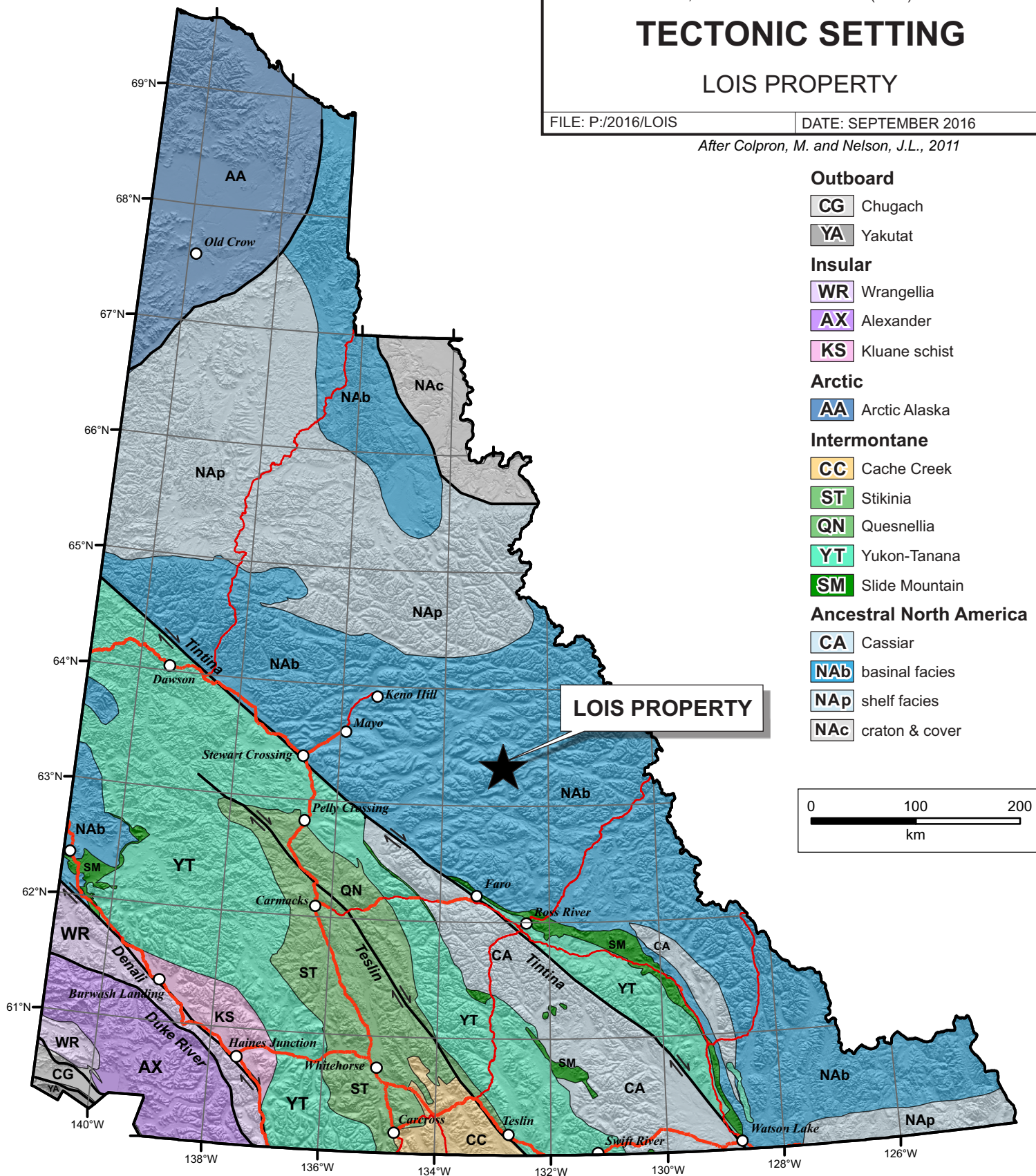
TECTONIC SETTING

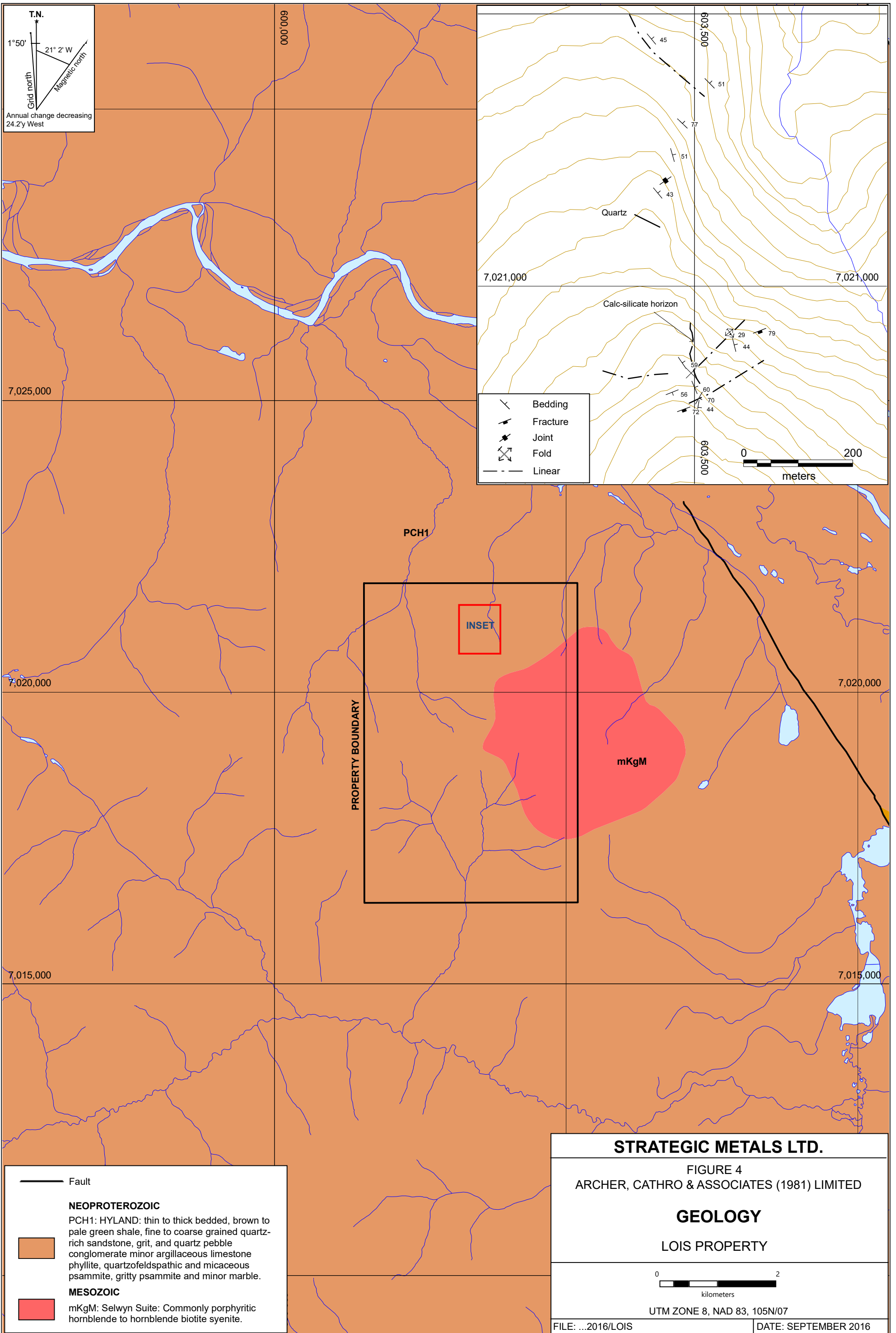
LOIS PROPERTY

FILE: P:/2016/LOIS

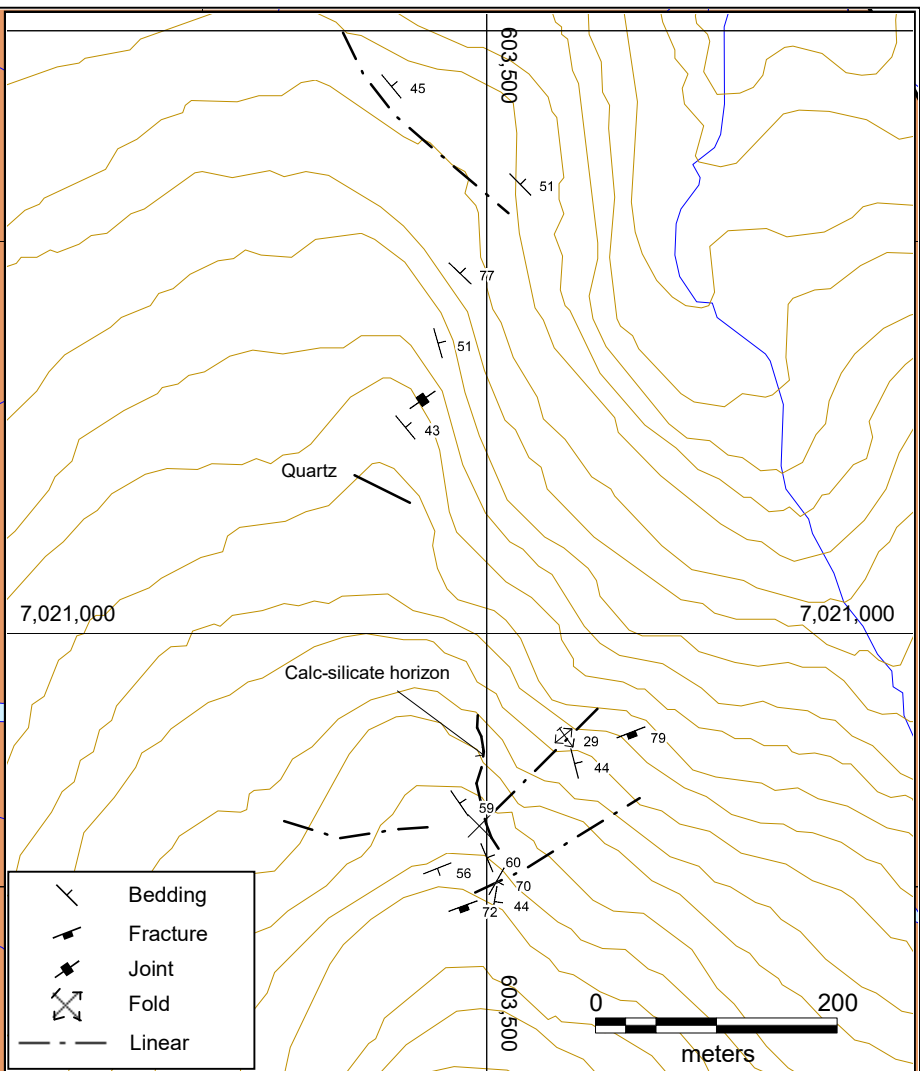
DATE: SEPTEMBER 2016

After Colpron, M. and Nelson, J.L., 2011





T.N.
 1°50'
 21° 2' W
 Grid north
 Magnetic north
 Annual change decreasing
 24.2'y West



7,025,000

PCH1

INSET

7,020,000

PROPERTY BOUNDARY

mKgM

7,020,000

7,015,000

7,015,000

— Fault

NEOPROTEROZOIC
 PCH1: HYLAND: thin to thick bedded, brown to pale green shale, fine to coarse grained quartz-rich sandstone, grit, and quartz pebble conglomerate minor argillaceous limestone phyllite, quartzofeldspathic and micaceous psammite, gritty psammite and minor marble.

MESOZOIC
 mKgM: Selwyn Suite: Commonly porphyritic hornblende to hornblende biotite syenite.

STRATEGIC METALS LTD.

FIGURE 4
 ARCHER, CATHRO & ASSOCIATES (1981) LIMITED

GEOLOGY

LOIS PROPERTY

0 2
 kilometers

UTM ZONE 8, NAD 83, 105N/07

FILE: ...2016/LOIS DATE: SEPTEMBER 2016

Mid-Paleozoic Earn Group conformably and locally unconformably overlies the basal sequence and dominantly consists of black shale and marine conglomerate (Roots, 2003). The younger strata have more limited extent and comprise Mississippian to Triassic sedimentary successions (Keno Hill Quartzite, Mount Christie Group and Jones Lake Formation). Numerous Mid-Cretaceous Selwyn Suite igneous bodies cut the sedimentary package throughout the region. A large area at the centre of the map sheet is covered by Quaternary unconsolidated glacial, glaciofluvial and glaciolacustrine sediments. The units are described in Table I.

Table I – Lithological Units (after Gordey and Makepeace, 2003)

Unit Name	Map Name	Age	Description
Q	Quaternary	Quaternary	Unconsolidated glacial, glaciofluvial and glaciolacustrine deposits; fluviatile silt, sand, and gravel, and local volcanic ash, in part with cover of soil and organic deposits.
mKgS	Selwyn Suite	Mid-Cretaceous	Mainly hornblende and hornblende/biotite syenite, commonly porphyritic (potassium feldspar phenocrysts), uneven textured, mostly medium grained, locally fine or coarse grained; minor diorite; hornblende syenite.
TrJ	Jones Lake Formation	Triassic	Brown to buff weathering, calcareous fine grained sandstone, argillite and shale; extensive ripple cross-lamination and bioturbation; massive, light grey weathering, fine crystalline, dark grey limestone; minor orange weathering platy limestone.
CPMC	Mount Christie Formation	Carboniferous to Permian	Burrowed, interbedded greenish grey cherty shale and green shale; thin to medium bedded, light grey-green to black chert; black siliceous slate and siltstone; minor quartzite, limestone and dolostone; locally abundant, large grey barite nodules.
MK	Keno Hill Quartzite	Mississippian	Massive to thick bedded quartzarenite; thin to medium bedded quartzarenite interstratified with black shale or carbonaceous phyllite; local scour surfaces and shale intraclasts; locally foliated and lineated.
MT2	Tay Formation	Mississippian	Grey and buff weathering, generally thick bedded to massive, dark grey to black fetid limestone; fine crystalline to cryptocrystalline; commonly bioclastic.
DME	Earn Group	Devonian and Mississippian	Thin bedded, laminated slate with thin to thickly interbedded fine to medium grained chert-arenite and wacke; thick members of chert pebble conglomerate; black siliceous siltstone; nodular and bedded barite; rare limestone.

ODR1	Road River Group	Ordovician to Lower Devonian	Black, gun-blue, or silvery white weathering black graptolitic shale and black chert; resistant grey weathering, thin to medium bedded, light grey to black, greenish grey or turquoise chert; minor argillaceous limestone.
ICG1	Gull Lake Formation	Lower Cambrian	Shale, siltstone and mudstone, locally bioturbated, with minor quartz sandstone; rare green-grey chert; local basal limestone and limestone conglomerate; phyllite to quartz-muscovite-biotite schist (+/-garnet +/-sillimanite +/-staurolite +/-andalusite).
PCH (undivided)	Hyland Group	Upper Proterozoic to Lower Cambrian	Consists upwards of coarse turbiditic clastics (1), limestone (2) and fine clastics typified by maroon and green shale (3).
PCH1			Thin to thick bedded, brown to pale green shale, fine to coarse grained quartz-rich sandstone, grit, and quartz-pebble conglomerate; minor argillaceous limestone; phyllite, quartzofeldspathic and micaceous psammite, gritty psammite and minor marble.
PCH2			Grey weathering, dark grey to grey white, thin to thick bedded, very fine crystalline limestone, locally sandy; calc-silicate and marble.
PCH3			Distinctive, recessive, maroon weathering, interbedded maroon and apple-green slate; "Oldhamia" trace fossils; rare grey chert; locally basal member and interbeds of quartz siltstone,

Bedding and structure on the Lansing Range map sheet dominantly trend to the northwest. Significant thrust, strike-slip and extensional faults are present throughout the map sheet. The Lois property lies four kilometres southwest of a steeply-dipping, regional-scale fault (informally named the Fairweather Fault for the purposes of this report). All of the major faults pre-date Mid-Cretaceous plutonism, as evidenced by cross-cutting relationships and several plugs that are emplaced along, but not offset, by the Fairweather Fault. Bedding is variable throughout the map sheet, but generally trends northwesterly, and dips moderately to the southwest.

The property is underlain by variably hornfelsed Hyland Group siliciclastic rocks (PCH1), which are cut by a 3000 by 3000 m Selwyn Suite plug in the eastern part of the property (Figure 4).

Geological mapping performed in the northern part of the property identified a 15 m thick calc-silicate horizon within the north-trending metasedimentary sequence. Approximately 500 m north of the calc-silicate horizon, a north-northwesterly trending recessive linear was traced for 180 m before being obscured by talus.

MINERALIZATION

In 2016, Strategic Metals collected a total of 21 rock samples from the property. Prospecting identified a 180 m long, 15 m thick calc-silicate horizon, a subcrop of massive pyrrhotite skarn and mineralized skarn float. The massive pyrrhotite and mineralized skarn float are located along the western flank of the calc-silicate horizon. Mineralization within the skarn includes pyrrhotite and chalcopyrite, while the massive pyrrhotite specimen contains minor pyrite and chalcopyrite with surface malachite and azurite.

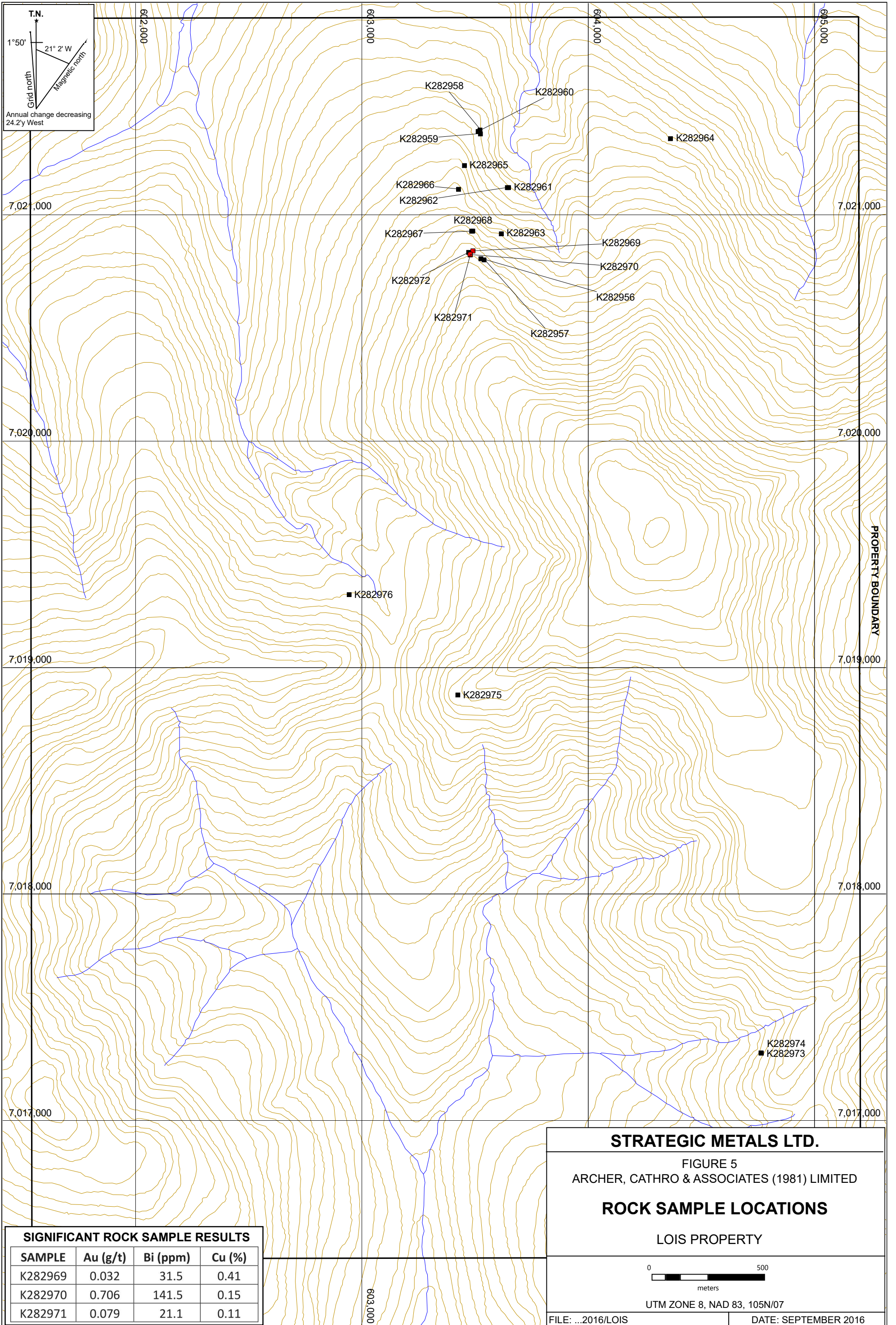
Rock sampling yielded three anomalous specimens of skarn and massive pyrrhotite, the locations of which are illustrated on Figure 5. Skarn samples returned elevated gold (up to 0.706 ppb), copper (up to 1540 ppm) and bismuth (up to 141.5 ppm). The massive pyrrhotite sample yielded 5.03 ppm silver, 4060 ppm copper and 31.5 ppm bismuth.

Rock geochemical sample sites were marked with orange flagging tape labelled with the sample number. The location of each sample was recorded using a handheld GPS unit. Rock sample preparation and multi-element analyses were carried out at the ALS Minerals laboratory in North Vancouver, B.C. Each sample was dried, fine crushed to better than 70% passing 2 mm and then a 250 g split was pulverized to better than 85% passing 75 microns. The fine fraction was analyzed for 52 elements using an aqua regia digestion followed by inductively coupled plasma combined with mass spectroscopy and atomic emission spectroscopy (ME-MS41). An additional 30 g charge was further analyzed for gold by fire assay followed by inductively coupled plasma-atomic emissions spectroscopy (Au-ICP21). Rock Sample Certificates of Analysis for the 2016 samples are provided in Appendix III, while rock sample descriptions are included in Appendix IV.

SOIL GEOCHEMISTRY

In 2016, Strategic Metals completed a four day soil geochemistry program collecting 224 contour soil samples. The soil program expanded geochemical coverage of this largely unexplored property. Figure 6 shows 2016 soil sample locations, along with previous sample sites. Thematic results for gold, copper, bismuth, arsenic and antimony values from samples collected in 2011 and 2016 are illustrated on Figures 7 to 11.

Soil samples were collected at 50 m sample spacing along contour lines set at elevations of 1480, 1610 and 1815 m asl. Hand-held augers were used to collect samples, while locations were recorded using hand-held GPS units. Sample sites are marked by aluminum tags inscribed with the sample numbers and affixed to 0.5 m wooden lath. Upon collection, samples were placed into individually pre-numbered Kraft paper bags. All samples were sent to ALS Minerals in North Vancouver, B.C., where they were dried, screened to -180 microns, and then analyzed for 52 elements using aqua regia digestion followed by inductively coupled plasma combined with mass spectroscopy and atomic emission spectroscopy (ME-MS41). An additional 30 g charge was further analysed for gold via fire assay, with inductively coupled plasma-atomic emission spectroscopy finish (Au-ICP21). Certificates of Analysis appear in Appendix III.



SIGNIFICANT ROCK SAMPLE RESULTS			
SAMPLE	Au (g/t)	Bi (ppm)	Cu (%)
K282969	0.032	31.5	0.41
K282970	0.706	141.5	0.15
K282971	0.079	21.1	0.11

STRATEGIC METALS LTD.

FIGURE 5
 ARCHER, CATHRO & ASSOCIATES (1981) LIMITED

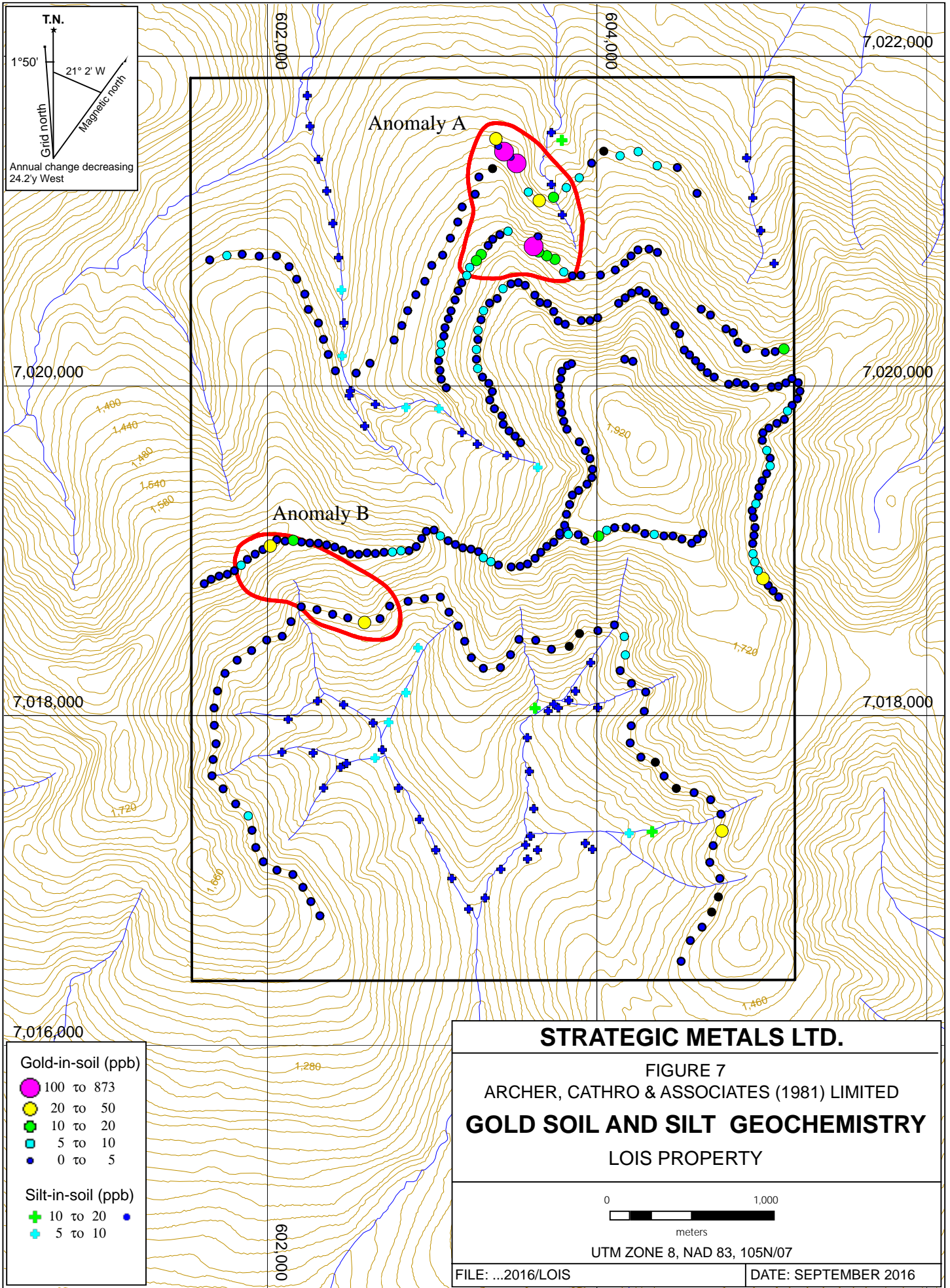
ROCK SAMPLE LOCATIONS

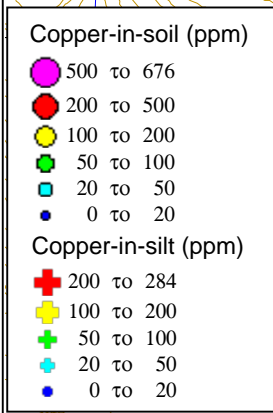
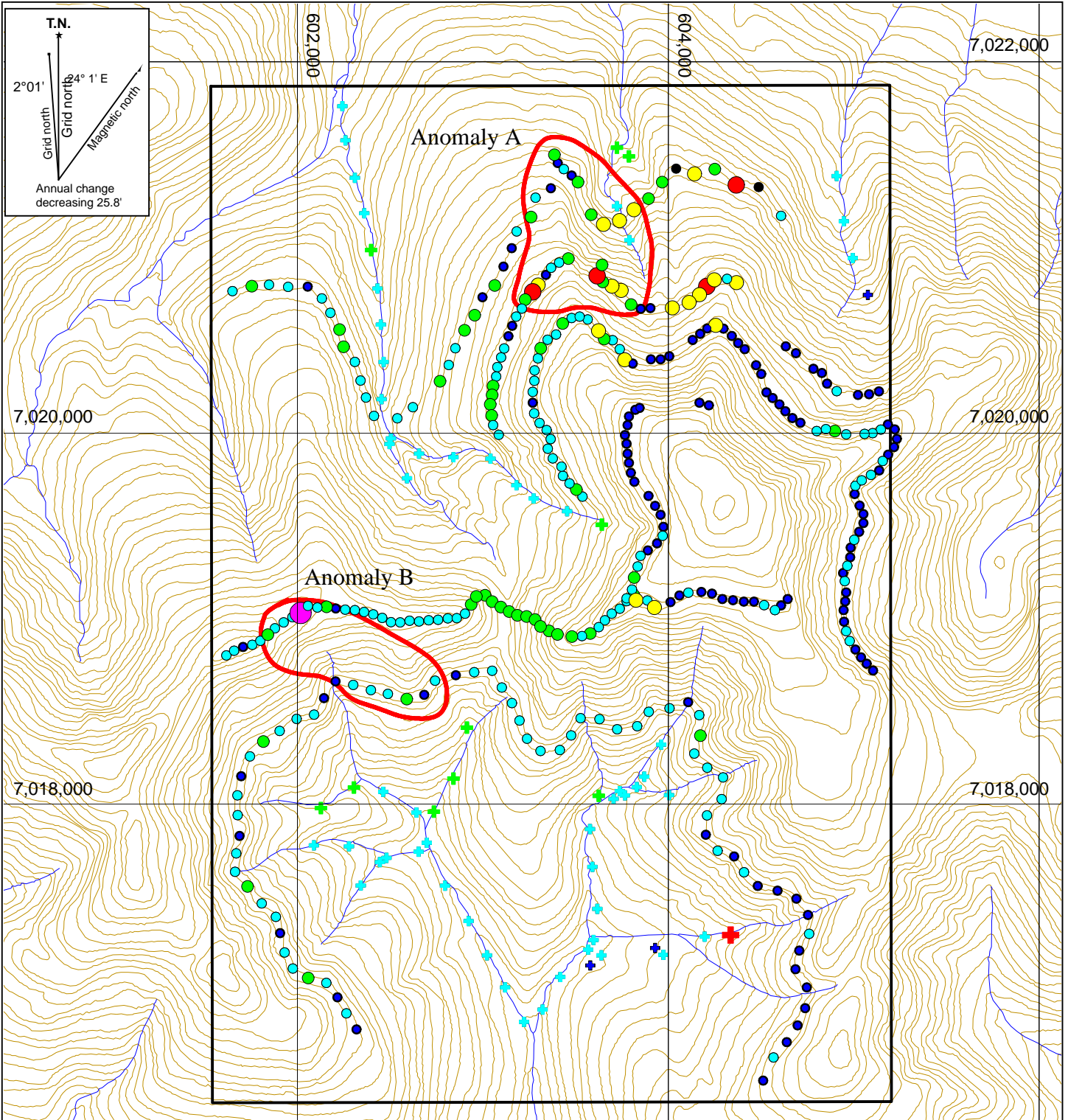
LOIS PROPERTY

0 500
 meters

UTM ZONE 8, NAD 83, 105N/07

FILE: ...2016/LOIS DATE: SEPTEMBER 2016





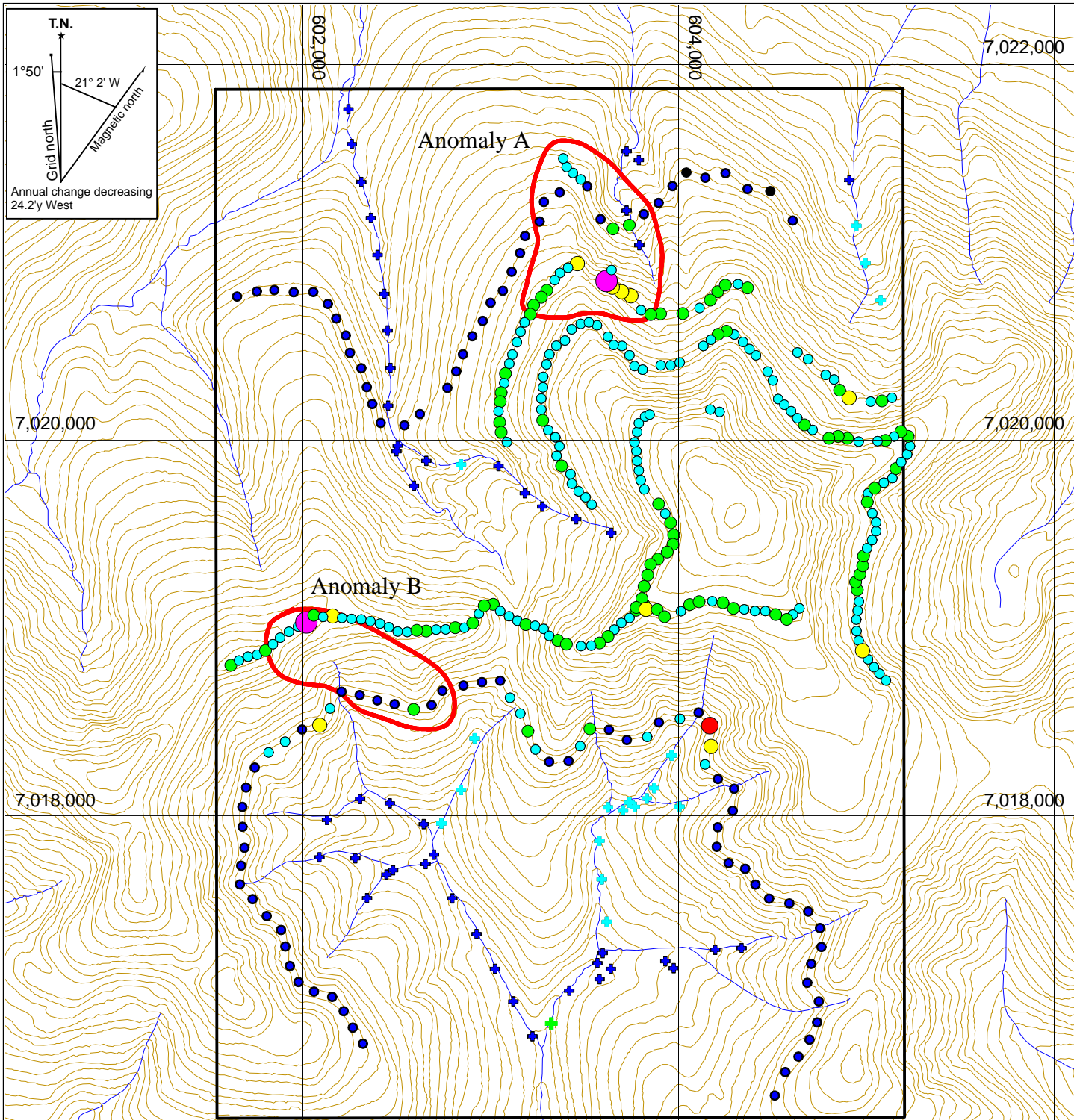
STRATEGIC METALS LTD.

FIGURE 8
 ARCHER, CATHRO & ASSOCIATES (1981) LIMITED
COPPER SOIL AND SILT GEOCHEMISTRY
 LOIS PROPERTY

0 1,000
 meters

UTM ZONE 8, NAD 83, 105N/07

FILE: ...2016/LOIS	DATE: SEPTEMBER 2016
--------------------	----------------------



T.N.
 1°50'
 21° 2' W
 Grid north
 Magnetic north
 Annual change decreasing
 24.2y West

- Bismuth-in-soil (ppm)**
- 20 to 87
 - 10 to 20
 - 5 to 10
 - 2 to 5
 - 1 to 2
 - 0 to 1
- Bismuth-in-silt (ppm)**
- 2 to 2.41
 - 0 to 2

STRATEGIC METALS LTD.

FIGURE 9
 ARCHER, CATHRO & ASSOCIATES (1981) LIMITED

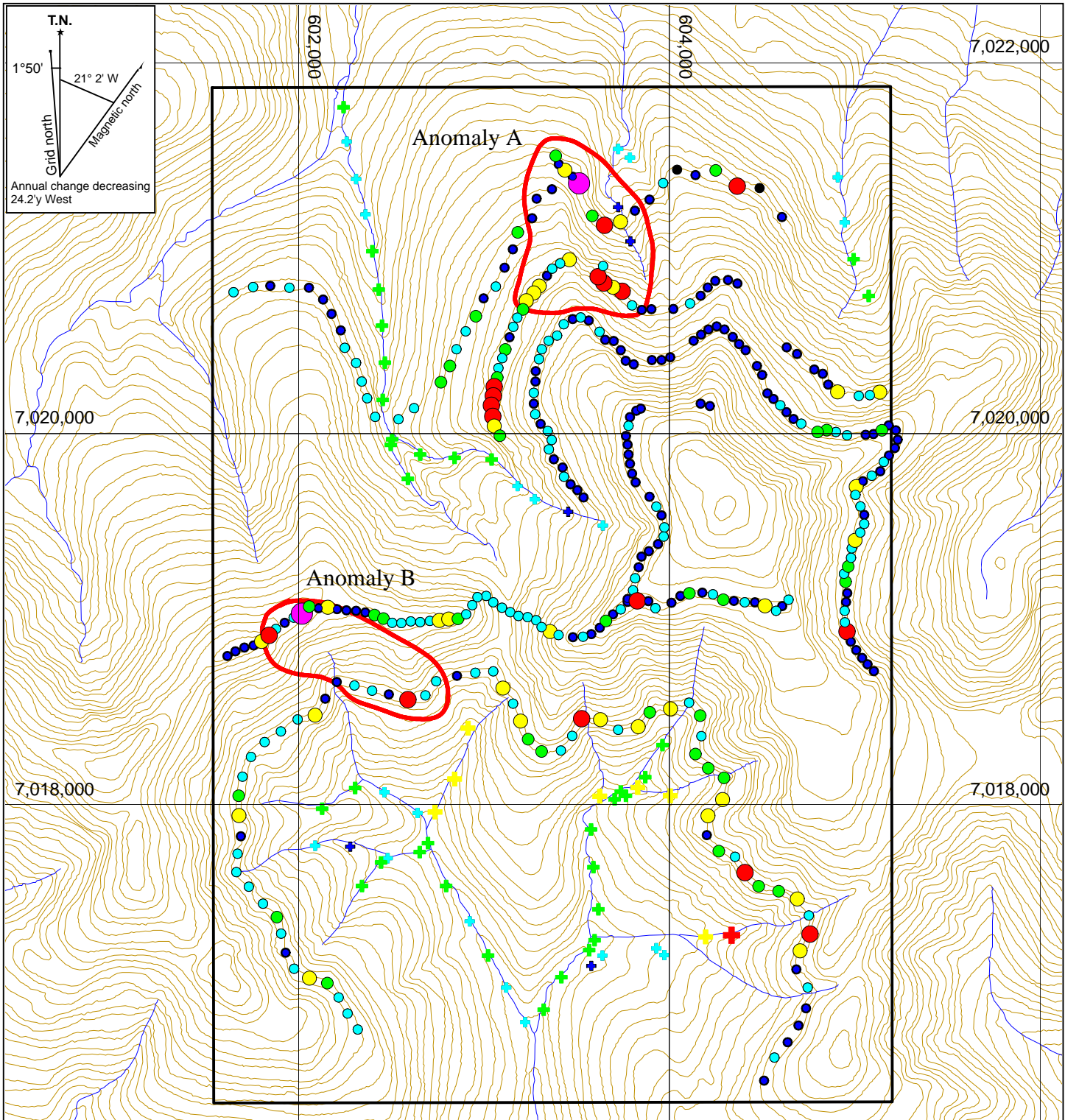
**BISMUTH SOIL AND
 SILT GEOCHEMISTRY**

LOIS PROPERTY

0 1,000
 meters

UTM ZONE 8, NAD 83, 105N/07

FILE: ...2016/LOIS DATE: SEPTEMBER 2016



T.N.
 1°50'
 21° 2' W
 Grid north
 Magnetic north
 Annual change decreasing
 24.2y West

7,020,000

7,018,000

602,000

604,000

7,022,000

7,020,000

7,018,000

602,000

- Arsenic-in-soil (ppm)**
- 500 to 653
 - 200 to 500
 - 100 to 200
 - 50 to 100
 - 20 to 50
 - 0 to 20
- Arsenic-in-silt (ppm)**
- 200 to 500
 - 100 to 200
 - 50 to 100
 - 20 to 50
 - 0 to 20

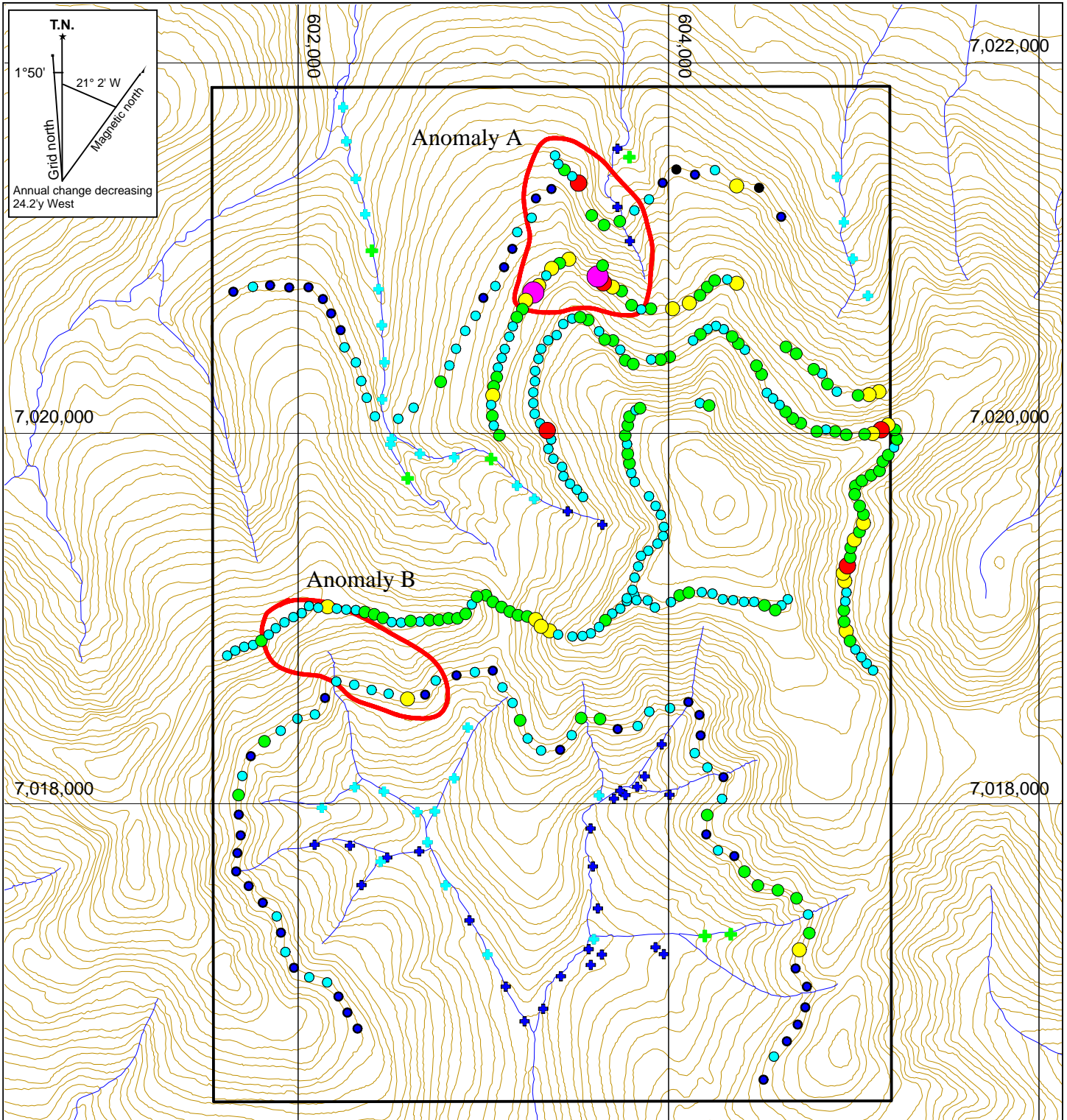
STRATEGIC METALS LTD.

FIGURE 10
 ARCHER, CATHRO & ASSOCIATES (1981) LIMITED
**ARSENIC SOIL AND
 SILT GEOCHEMISTRY**
 LOIS PROPERTY

0 1,000
 meters

UTM ZONE 8, NAD 83, 105N/07

FILE: ...2016/LOIS DATE: SEPTEMBER 2016



- Antimony-in-soil (ppm)**
- 20 to 169
 - 10 to 20
 - 5 to 10
 - 2 to 5
 - 1 to 2
 - 0 to 1
- Antimony-in-silt (ppm)**
- 2 to 5
 - 0 to 1
 - 1 to 2

STRATEGIC METALS LTD.

FIGURE 11
 ARCHER, CATHRO & ASSOCIATES (1981) LIMITED
ANTIMONY SOIL AND SILT GEOCHEMISTRY
 LOIS PROPERTY

0 1,000
 meters

UTM ZONE 8, NAD 83, 105N/07

FILE: ...2016/LOIS DATE: SEPTEMBER 2016

Table II lists anomalous thresholds and peak values used to describe the soil geochemistry results in the following paragraphs.

Table II – Soil Geochemical Thresholds

Element	Weak	Moderate	Strong	2011 peaks	2016 peaks
Gold (ppb)	≥ 10 < 20	≥ 20 < 50	≥ 100 < 875	304	873
Copper (ppm)	≥ 20 < 100	≥ 100 < 200	≥ 200 < 680	284	676
Bismuth (ppm)	≥ 2 < 5	≥ 5 < 10	≥ 10 < 90	17.4	87
Arsenic (ppm)	≥ 20 < 100	≥ 100 < 200	≥ 200 < 655	605	653
Antimony (ppm)	≥ 2 < 5	≥ 5 < 10	≥ 10 < 170	7.07	169

Soil sampling in 2011 was conducted throughout the central and northern parts of the property. Contour sampling in 2016 infilled between samples collected in 2011 and expanded coverage in the central part of the property. Two anomalies comprised of moderate to strong gold-copper ±bismuth±arsenic±antimony values were identified, as described below.

Anomaly A covers a 1000 by 800 m north-northwest trending area along the north side of the mountain. This anomalous area is underlain by Hyland Group sedimentary rock, which includes the calc-silicate horizon and skarns in the lower half of the exposed section. The anomaly can be divided into two distinct clusters. The upper cluster coincides with a recessive linear, while the lower cluster encompasses the calc-silicate horizon, massive pyrrhotite subcrop and mineralized skarn float. These two clusters yielded values for gold (up to 873 ppb), copper (up to 281 ppm), bismuth (up to 82 ppm), arsenic (up to 605 ppm) and antimony (up to 169 ppm).

Anomaly B is a 1000 by 350 m area located along an east-northeast trending ridge line and the adjacent south-facing slope. This area hosts maximum values of 676 ppm copper, 87 ppm bismuth, 653 ppm arsenic, 46 ppb gold and 7 ppm antimony.

DISCUSSION AND CONCLUSIONS

The Lois property is located in a region of Yukon that is relatively unexplored historically, but where significant new discoveries have been made. The property lies 10 km southwest of Goldstrike Resources Ltd.'s Plateau property, where promising drill results have been reported from native gold-bearing quartz veins and breccias. The Plateau property shares a similar geological setting with the Lois property. Both properties are underlain by Hyland Group siliciclastic rocks within close proximity to regional-scale faults.

Work completed by Strategic Metals during the 2016 exploration program better defined and expanded areas with known geochemically anomalous values at the Lois property. Peak results obtained in 2016 are noticeably higher than those found from previous work, for all elements of interest.

Additional exploration is needed on the Lois property to better identify the source of elevated soil geochemical results, as well as to further delineate anomalous areas on the property. Follow up work should include: 1) closely spaced soil sampling in and around known geochemical

anomalies; 2) detailed geological mapping, prospecting and hand trenching to further define the probable source of the elevated soil values; and 3) claim staking north of the property to provide better protection along strike of Anomaly A.

Respectfully submitted,

ARCHER, CATHRO & ASSOCIATES (1981) LIMITED

A handwritten signature in blue ink, appearing to read 'K. Willms', is written over a light yellow rectangular background.

K. Willms, B.Sc

REFERENCES

- Colpron, M. and Nelson, J. L.
 2011 A digital atlas of terranes for the Northern Cordillera; Yukon Geological Survey and BC Geology Survey, BCGS GeoFile 2011-11
http://www.geology.gov.yk.ca/pdf/CanCord_terranes_2011.pdf
- Day, S.J.A., McCurdy, M.W., Friske, P.W.B., McNeil, R.J., Hornbrook, E.H.W., Lynch, J.J., Durham, C.C., Gross, H. and Galletta, A.C.
 2009 Regional stream sediment and water geochemical data, Lansing Range area, east central Yukon (NTS 105N); Geological Survey of Canada, Open File 6272.
 Available at: http://gdr.nrcan.gc.ca/geochem/metadata_svy_e.php?key=210223
- Eaton, S
 2011 Assessment report of stream sediment and soil geochemical sampling at the Lois property; report prepared for Strategic Metals Ltd.
- Gordey, S.P. and Makepeace, A.J.
 2003 Yukon Digital Geology, version 2.0, S.P. Gordey and A.J. Makepeace (comp); Geological Survey of Canada, Open File 1749 and Yukon Geological Survey, Open File 2003-9 (D).
- Roots, C.F.
 2003 Bedrock geology of Lansing Range map area (NTS 105N), central Yukon, 1:250000 scale; Yukon Geological Survey Geoscience Map 2003-1 or Geological Survey of Canada Open File 1616.
- Roots, C.F., Abbott, J.G., Cecile, M.P. and Gordey, S.P.
 1995 Bedrock geology of Lansing Range map area (105N) east half, Hess Mountains, Yukon; Indian and Northern Affairs Canada Open File 1995-7 or Geological Survey of Canada Open File 3171.
- Yukon Geological Survey
 2010 Geoprocess File Summary Report for Mayo Map Area N.T.S. 105M; Available at:
http://ygsftp.gov.yk.ca/publications/openfile/2002/of2002_8d_geoprocess_file/documents/map_specific/105m.pdf

APPENDIX I
STATEMENT OF QUALIFICATIONS

STATEMENT OF QUALIFICATIONS

I, Kelson Willms, geologist, with business addresses in Whitehorse, Yukon Territory and Vancouver, British Columbia and residential address in Vancouver, British Columbia, hereby certify that:

1. I graduated from the University of British Columbia in 2016 with a B.Sc in Earth and Environmental Sciences
2. From 2015 to present, I have been actively engaged in mineral exploration in the Yukon Territory and British Columbia.
3. I have interpreted all data resulting from this work

A handwritten signature in blue ink, appearing to read 'K. Willms', with a stylized flourish at the end.

K. Willms, B.Sc.

APPENDIX II
STATEMENT OF EXPENDITURES

Statement of Expenditures
Lois 1-96 Mineral Claims
November 14, 2016

Labour

D. Eaton (geologist) 11 hours April to November at \$120/hr	\$ 1,386.00
H. Burrell (geologist) 37 hours April to November at \$106/hr	4,118.10
A. Mitchell (geologist) 9 hours April to November at \$82/hr	774.90
J. Morton (geologist) 64 hours April to November at \$82/hr	5,510.40
J. Kitchen (field assistant) 64 hours April to November at \$51/hr	3,427.20
L. Martin-Berry (field assistant) 64 hours April to November at \$49/hr	3,292.80
D. Arnold-Wallinger (expedite) 3 hours April to November at \$85/hr	267.75
L. Corbett (expedite) 15 hours April to November at \$81/hr	1,275.75
L. Smith (office) 14 hours April to November at \$69/hr	1,014.30
S. Newman (office) 15 hours April to November at \$66/hr	1,039.50
K. Willms (office) 33 hours April to November at \$57/hr	<u>1,975.05</u>
	24,081.75

Expenses (including management)

Field room and board – 24 mandays @ \$180/manday	4,881.60
Horizon Helicopters – 4.9 hours AS350 at \$1,525/hr plus fuel	8,443.93
Black Sheep Aviation	7,602.08
ALS Chemex	<u>5,101.17</u>
	26,028.78

Total \$50,110.53

245 samples at \$50,110.53= \$204.53/sample

APPENDIX III
CERTIFICATES OF ANALYSIS



ALS Canada Ltd.
 2103 Dollarton Hwy
 North Vancouver BC V7H 0A7
 Phone: +1 (604) 984 0221 Fax: +1 (604) 984 0218
 www.alsglobal.com

To: STRATEGIC METALS LTD.
 C/O ARCHER, CATHRO & ASSOCIATES (1981)
 LIMITED
 1016-510 W HASTINGS ST
 VANCOUVER BC V6B 1L8

Page: 1
 Total # Pages: 2 (A - D)
 Plus Appendix Pages
 Finalized Date: 31-AUG-2016
 Account: MTT

CERTIFICATE VA16126363

Project: Lois

This report is for 21 Rock samples submitted to our lab in Kamloops, BC, Canada on 1-AUG-2016.

The following have access to data associated with this certificate:

HEATHER BURRELL	JOAN MARIACHER
-----------------	----------------

SAMPLE PREPARATION	
ALS CODE	DESCRIPTION
WEI-21	Received Sample Weight
LOG-21	Sample logging - ClientBarCode
OA-HSUL10	Handling of High Sulphide Samples
CRU-31	Fine crushing - 70% <2mm
SPL-21	Split sample - riffle splitter
PUL-31	Pulverize split to 85% <75 um

ANALYTICAL PROCEDURES		
ALS CODE	DESCRIPTION	INSTRUMENT
Au-ICP21	Au 30g FA ICP-AES Finish	ICP-AES
ME-MS41	Ultra Trace Aqua Regia ICP-MS	

To: STRATEGIC METALS LTD.
 ATTN: JOAN MARIACHER
 C/O ARCHER, CATHRO & ASSOCIATES (1981) LIMITED
 1016-510 W HASTINGS ST
 VANCOUVER BC V6B 1L8

This is the Final Report and supersedes any preliminary report with this certificate number. Results apply to samples as submitted. All pages of this report have been checked and approved for release.

***** See Appendix Page for comments regarding this certificate *****

Signature: 
 Colin Ramshaw, Vancouver Laboratory Manager



ALS Canada Ltd.
 2103 Dollarton Hwy
 North Vancouver BC V7H 0A7
 Phone: +1 (604) 984 0221 Fax: +1 (604) 984 0218
 www.alsglobal.com

To: STRATEGIC METALS LTD.
 C/O ARCHER, CATHRO & ASSOCIATES (1981)
 LIMITED
 1016-510 W HASTINGS ST
 VANCOUVER BC V6B 1L8

Page: 2 - A
 Total # Pages: 2 (A - D)
 Plus Appendix Pages
 Finalized Date: 31-AUG-2016
 Account: MTT

Project: Lois

CERTIFICATE OF ANALYSIS VA16126363

Sample Description	Method Analyte Units LOR	WEI-21	Au-ICP21	ME-MS41	ME-MS41	ME-MS41	ME-MS41	ME-MS41	ME-MS41	ME-MS41	ME-MS41	ME-MS41	ME-MS41	ME-MS41	ME-MS41	
		Recvd Wt. kg	Au ppm	Ag ppm	Al %	As ppm	Au ppm	B ppm	Ba ppm	Be ppm	Bi ppm	Ca %	Cd ppm	Ce ppm	Co ppm	Cr ppm
		0.02	0.001	0.01	0.01	0.1	0.2	10	10	0.05	0.01	0.01	0.01	0.02	0.1	1
K282956		1.68	<0.001	0.11	5.30	29.4	<0.2	10	50	2.11	0.46	3.15	0.10	77.9	16.4	48
K282957		1.26	0.002	0.13	3.57	32.3	<0.2	<10	100	1.61	0.90	1.26	0.03	35.2	23.9	68
K282958		1.80	0.001	0.12	2.95	1.1	<0.2	<10	60	1.56	0.55	3.60	0.11	67.8	22.1	25
K282959		2.20	<0.001	0.03	0.30	0.3	<0.2	<10	20	0.12	0.28	0.02	0.01	4.18	1.9	15
K282960		1.64	<0.001	0.11	2.29	4.0	<0.2	<10	160	1.48	0.93	0.14	0.03	61.4	12.2	39
K282961		0.54	0.006	0.82	0.80	710	<0.2	<10	30	0.32	6.75	0.01	0.20	8.50	35.0	11
K282962		1.54	0.019	0.06	2.72	69.6	<0.2	<10	100	1.40	20.9	0.31	0.04	61.1	12.7	55
K282963		1.80	<0.001	0.01	0.02	2.6	<0.2	<10	<10	<0.05	0.04	0.01	0.01	0.34	0.3	15
K282964		1.86	<0.001	0.03	1.27	5.9	<0.2	<10	10	0.05	0.19	0.61	0.06	1.67	26.9	81
K282965		1.48	<0.001	0.02	0.02	1.1	<0.2	<10	<10	<0.05	0.15	0.05	<0.01	0.37	0.5	15
K282966		1.58	<0.001	0.01	0.08	6.5	<0.2	<10	10	<0.05	0.03	0.01	0.01	9.83	0.2	14
K282967		1.34	0.062	0.26	2.01	19.2	<0.2	<10	10	0.45	43.0	0.31	0.01	28.7	7.9	35
K282968		1.38	0.002	0.02	1.98	4040	<0.2	<10	20	1.23	0.64	2.80	0.02	41.2	252	27
K282969		2.32	0.032	5.03	0.05	22.7	<0.2	<10	10	0.06	31.5	0.02	0.87	0.66	179.5	<1
K282970		1.82	0.706	0.94	1.80	7.4	0.6	<10	10	1.11	141.5	3.17	0.29	89.0	65.7	29
K282971		2.18	0.079	0.63	3.44	5.4	<0.2	<10	10	3.06	21.1	1.93	0.10	60.5	51.6	49
K282972		1.86	0.005	0.04	0.30	3.3	<0.2	<10	10	0.29	0.66	0.53	0.04	12.00	3.3	12
K282973		1.86	0.003	0.03	0.05	8.5	<0.2	<10	20	0.05	0.12	0.02	0.01	10.30	1.0	27
K282974		2.06	<0.001	0.01	0.09	1.8	<0.2	<10	10	0.08	0.08	0.01	0.02	9.00	1.0	18
K282975		2.06	0.003	0.15	0.18	7.4	<0.2	<10	10	0.15	0.22	0.01	0.01	8.10	0.8	17
K282976		0.90	0.025	1.19	0.42	162.5	<0.2	20	30	0.18	1.39	<0.01	0.01	24.0	1.3	10



ALS Canada Ltd.
 2103 Dollarton Hwy
 North Vancouver BC V7H 0A7
 Phone: +1 (604) 984 0221 Fax: +1 (604) 984 0218
 www.alsglobal.com

To: STRATEGIC METALS LTD.
 C/O ARCHER, CATHRO & ASSOCIATES (1981)
 LIMITED
 1016-510 W HASTINGS ST
 VANCOUVER BC V6B 1L8

Page: 2 - B
 Total # Pages: 2 (A - D)
 Plus Appendix Pages
 Finalized Date: 31-AUG-2016
 Account: MTT

Project: Lois

CERTIFICATE OF ANALYSIS VA16126363

Sample Description	Method Analyte Units LOR	ME-MS41	ME-MS41	ME-MS41	ME-MS41	ME-MS41	ME-MS41	ME-MS41	ME-MS41	ME-MS41	ME-MS41	ME-MS41	ME-MS41	ME-MS41	ME-MS41	
		Cs ppm	Cu ppm	Fe %	Ga ppm	Ge ppm	Hf ppm	Hg ppm	In ppm	K %	La ppm	Li ppm	Mg %	Mn ppm	Mo ppm	Na %
		0.05	0.2	0.01	0.05	0.05	0.02	0.01	0.005	0.01	0.2	0.1	0.01	5	0.05	0.01
K282956		4.11	78.8	2.53	16.05	0.13	0.16	<0.01	0.020	0.63	39.5	54.9	0.84	298	1.22	0.26
K282957		6.06	218	4.92	13.30	0.14	0.08	<0.01	0.016	1.08	18.2	63.1	1.68	343	1.01	0.20
K282958		2.40	76.3	2.95	9.39	0.12	0.11	0.01	0.015	0.14	38.1	19.4	0.51	273	0.73	0.30
K282959		0.55	10.7	0.79	1.05	<0.05	<0.02	<0.01	0.006	0.11	2.1	5.2	0.10	109	1.11	<0.01
K282960		3.68	36.6	3.11	7.24	0.09	0.03	0.01	0.023	1.02	31.2	32.9	0.84	324	1.05	0.03
K282961		1.38	839	23.6	3.22	0.10	0.03	0.01	0.314	0.36	4.1	4.1	0.05	174	0.39	<0.01
K282962		5.71	56.6	4.32	10.75	0.13	0.04	0.01	0.062	1.30	31.5	48.3	1.01	406	0.72	0.04
K282963		0.05	1.9	0.34	0.15	<0.05	<0.02	<0.01	<0.005	0.01	0.2	0.5	0.01	36	1.23	<0.01
K282964		0.33	26.8	2.41	4.46	0.06	0.02	0.01	0.014	0.03	0.5	8.7	1.56	219	0.92	0.03
K282965		0.07	4.8	0.36	0.13	<0.05	<0.02	<0.01	<0.005	0.01	0.2	0.5	0.01	40	1.26	<0.01
K282966		0.28	0.9	0.63	0.81	<0.05	<0.02	<0.01	<0.005	0.05	4.8	0.5	0.01	37	1.41	<0.01
K282967		0.51	334	10.80	8.44	0.12	0.07	0.01	0.162	0.10	14.1	48.3	0.63	546	0.49	0.05
K282968		0.70	3.5	1.74	6.58	0.10	0.07	<0.01	0.018	0.14	21.9	56.4	0.81	280	1.56	0.13
K282969		0.05	4060	>50	0.33	0.22	<0.02	<0.01	0.614	0.01	0.4	0.7	0.01	<5	0.61	<0.01
K282970		1.00	1540	20.1	7.12	0.33	0.10	0.01	0.286	0.07	48.1	33.9	1.21	725	0.26	0.01
K282971		2.17	1075	17.60	9.43	0.33	0.17	0.01	0.192	0.08	30.6	55.6	0.90	692	1.05	0.08
K282972		0.51	33.3	0.75	1.00	<0.05	<0.02	<0.01	0.017	0.06	6.4	5.0	0.12	140	0.71	<0.01
K282973		0.12	6.0	0.59	0.20	<0.05	<0.02	0.01	<0.005	0.03	5.1	0.4	<0.01	37	2.49	<0.01
K282974		0.14	12.7	0.48	0.30	<0.05	<0.02	<0.01	0.005	0.03	4.2	0.6	<0.01	35	1.64	<0.01
K282975		0.50	35.4	2.18	1.15	<0.05	<0.02	0.02	0.005	0.06	3.5	0.6	0.01	32	2.84	<0.01
K282976		1.33	38.0	2.45	1.07	<0.05	0.03	<0.01	0.034	0.27	12.1	2.0	0.05	41	1.11	<0.01



ALS Canada Ltd.
 2103 Dollarton Hwy
 North Vancouver BC V7H 0A7
 Phone: +1 (604) 984 0221 Fax: +1 (604) 984 0218
 www.alsglobal.com

To: STRATEGIC METALS LTD.
 C/O ARCHER, CATHRO & ASSOCIATES (1981)
 LIMITED
 1016-510 W HASTINGS ST
 VANCOUVER BC V6B 1L8

Page: 2 - C
 Total # Pages: 2 (A - D)
 Plus Appendix Pages
 Finalized Date: 31-AUG-2016
 Account: MTT

Project: Lois

CERTIFICATE OF ANALYSIS VA16126363

Sample Description	Method Analyte Units LOR	ME-MS41	ME-MS41	ME-MS41	ME-MS41	ME-MS41	ME-MS41	ME-MS41	ME-MS41	ME-MS41	ME-MS41	ME-MS41	ME-MS41	ME-MS41	ME-MS41	
		Nb ppm	Ni ppm	P ppm	Pb ppm	Rb ppm	Re ppm	S %	Sb ppm	Sc ppm	Se ppm	Sn ppm	Sr ppm	Ta ppm	Te ppm	Th ppm
K282956		0.82	45.3	360	14.1	57.5	0.002	0.45	0.32	11.6	0.8	2.8	413	0.03	0.02	18.2
K282957		0.98	48.7	480	6.1	88.7	0.001	1.98	0.26	13.6	1.3	1.3	96.9	0.01	0.08	11.2
K282958		1.95	37.5	520	11.4	7.9	0.001	1.29	0.40	3.2	0.7	1.5	243	0.03	0.06	14.4
K282959		0.37	4.1	50	7.9	7.6	<0.001	0.01	0.07	0.8	0.3	<0.2	3.0	<0.01	0.01	1.5
K282960		0.37	30.2	200	26.7	69.1	<0.001	0.01	0.30	5.2	0.4	1.1	14.1	<0.01	0.04	11.4
K282961		0.22	10.3	800	27.6	24.6	0.001	0.21	4.43	2.6	2.3	3.0	1.5	<0.01	0.17	3.8
K282962		0.69	30.4	290	6.8	91.3	<0.001	0.12	0.28	12.3	0.7	2.2	32.8	0.01	0.15	13.0
K282963		0.06	1.4	<10	0.9	0.5	<0.001	<0.01	0.18	0.1	<0.2	<0.2	1.4	<0.01	<0.01	<0.2
K282964		0.05	175.0	1170	2.0	2.2	0.001	0.20	1.33	8.4	0.8	<0.2	11.7	<0.01	0.02	<0.2
K282965		0.05	2.0	200	2.5	0.4	<0.001	0.01	0.06	0.1	<0.2	<0.2	3.1	<0.01	0.01	<0.2
K282966		0.06	1.4	90	10.6	2.2	<0.001	<0.01	9.67	0.2	<0.2	<0.2	1.9	<0.01	0.01	0.4
K282967		1.25	5.8	200	1.6	6.0	<0.001	0.15	0.38	4.4	1.1	3.7	46.5	0.02	0.32	15.2
K282968		0.45	29.9	440	3.6	8.5	<0.001	0.16	2.78	3.4	0.8	2.0	90.4	0.02	0.20	8.7
K282969		<0.05	135.5	<10	113.0	0.5	0.005	>10.0	4.84	0.3	9.4	2.3	0.6	<0.01	0.35	<0.2
K282970		0.27	55.6	490	24.4	4.1	<0.001	8.94	1.50	6.7	3.1	4.3	54.2	<0.01	2.09	10.6
K282971		0.26	55.9	250	7.3	4.5	0.003	8.49	2.80	11.7	2.6	12.0	36.0	<0.01	0.26	16.5
K282972		0.25	6.8	540	3.3	3.2	<0.001	0.05	0.42	1.5	0.3	0.6	12.9	<0.01	0.01	1.6
K282973		0.10	3.6	110	2.6	1.5	<0.001	0.01	2.14	0.3	0.2	<0.2	1.8	<0.01	0.01	1.0
K282974		0.08	3.8	50	1.4	1.8	<0.001	0.01	0.72	0.4	<0.2	<0.2	0.8	<0.01	0.01	1.2
K282975		0.06	1.8	130	2.9	5.2	0.001	0.03	2.55	0.5	0.6	<0.2	1.9	<0.01	0.09	2.9
K282976		<0.05	6.7	90	28.0	20.4	<0.001	1.20	13.70	0.7	0.5	0.7	2.9	<0.01	<0.01	5.4



ALS Canada Ltd.
 2103 Dollarton Hwy
 North Vancouver BC V7H 0A7
 Phone: +1 (604) 984 0221 Fax: +1 (604) 984 0218
 www.alsglobal.com

To: STRATEGIC METALS LTD.
 C/O ARCHER, CATHRO & ASSOCIATES (1981)
 LIMITED
 1016-510 W HASTINGS ST
 VANCOUVER BC V6B 1L8

Page: 2 - D
 Total # Pages: 2 (A - D)
 Plus Appendix Pages
 Finalized Date: 31-AUG-2016
 Account: MTT

Project: Lois

CERTIFICATE OF ANALYSIS VA16126363

Sample Description	Method Analyte Units LOR	ME-MS41 Ti %	ME-MS41 TI ppm	ME-MS41 U ppm	ME-MS41 V ppm	ME-MS41 W ppm	ME-MS41 Y ppm	ME-MS41 Zn ppm	ME-MS41 Zr ppm
		0.005	0.02	0.05	1	0.05	0.05	2	0.5
K282956		0.285	0.25	1.90	76	0.50	17.65	40	4.9
K282957		0.298	0.49	0.92	97	0.21	10.75	32	2.3
K282958		0.185	0.05	1.08	29	0.56	13.40	37	2.9
K282959		0.047	0.05	0.22	5	0.07	0.87	10	<0.5
K282960		0.136	0.45	0.86	35	0.30	6.77	62	1.0
K282961		0.010	0.17	0.80	6	0.23	3.92	75	1.3
K282962		0.242	0.57	0.85	70	0.49	8.53	66	1.2
K282963		<0.005	<0.02	<0.05	<1	<0.05	0.08	<2	<0.5
K282964		0.093	0.04	<0.05	116	0.07	8.16	27	0.5
K282965		<0.005	<0.02	<0.05	1	<0.05	1.06	2	<0.5
K282966		<0.005	0.02	<0.05	2	<0.05	0.40	4	<0.5
K282967		0.102	0.04	0.88	32	0.73	6.57	25	1.7
K282968		0.082	0.03	0.64	36	0.27	6.49	13	2.0
K282969		<0.005	0.02	0.12	4	0.05	0.81	187	<0.5
K282970		0.019	0.03	1.69	57	0.67	9.10	63	3.5
K282971		0.105	0.13	1.63	72	0.88	10.40	37	4.0
K282972		0.020	0.03	0.22	7	0.18	6.99	10	<0.5
K282973		<0.005	0.02	0.09	1	0.13	1.24	4	<0.5
K282974		<0.005	0.02	0.21	3	0.06	0.68	6	<0.5
K282975		<0.005	0.08	0.34	3	0.05	1.15	4	0.5
K282976		<0.005	0.14	0.47	4	0.10	1.84	17	1.7



ALS Canada Ltd.
 2103 Dollarton Hwy
 North Vancouver BC V7H 0A7
 Phone: +1 (604) 984 0221 Fax: +1 (604) 984 0218
 www.alsglobal.com

To: STRATEGIC METALS LTD.
 C/O ARCHER, CATHRO & ASSOCIATES (1981)
 LIMITED
 1016-510 W HASTINGS ST
 VANCOUVER BC V6B 1L8

Page: 1
 Total # Pages: 7 (A - C)
 Plus Appendix Pages
 Finalized Date: 4-SEP-2016
 Account: MTT

CERTIFICATE VA16126365

Project: Lois

This report is for 224 Soil samples submitted to our lab in Whitehorse, YT, Canada on 3-AUG-2016.

The following have access to data associated with this certificate:

HEATHER BURRELL	JOAN MARIACHER
-----------------	----------------

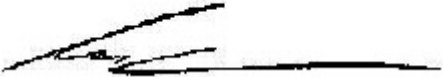
SAMPLE PREPARATION	
ALS CODE	DESCRIPTION
WEI-21	Received Sample Weight
LOG-22	Sample login - Rcd w/o BarCode
SCR-41	Screen to -180um and save both

ANALYTICAL PROCEDURES		
ALS CODE	DESCRIPTION	INSTRUMENT
Au-ICP21	Au 30g FA ICP-AES Finish	ICP-AES
ME-ICP41	35 Element Aqua Regia ICP-AES	ICP-AES

To: STRATEGIC METALS LTD.
 ATTN: JOAN MARIACHER
 C/O ARCHER, CATHRO & ASSOCIATES (1981) LIMITED
 1016-510 W HASTINGS ST
 VANCOUVER BC V6B 1L8

This is the Final Report and supersedes any preliminary report with this certificate number. Results apply to samples as submitted. All pages of this report have been checked and approved for release.

***** See Appendix Page for comments regarding this certificate *****

Signature: 
 Colin Ramshaw, Vancouver Laboratory Manager



ALS Canada Ltd.
 2103 Dollarton Hwy
 North Vancouver BC V7H 0A7
 Phone: +1 (604) 984 0221 Fax: +1 (604) 984 0218
 www.alsglobal.com

To: STRATEGIC METALS LTD.
 C/O ARCHER, CATHRO & ASSOCIATES (1981)
 LIMITED
 1016-510 W HASTINGS ST
 VANCOUVER BC V6B 1L8

Page: 2 - A
 Total # Pages: 7 (A - C)
 Plus Appendix Pages
 Finalized Date: 4-SEP-2016
 Account: MTT

Project: Lois

CERTIFICATE OF ANALYSIS VA16126365

Sample Description	Method	WEI-21	Au-ICP21	ME-ICP41	ME-ICP41	ME-ICP41	ME-ICP41	ME-ICP41	ME-ICP41	ME-ICP41	ME-ICP41	ME-ICP41	ME-ICP41	ME-ICP41	ME-ICP41	ME-ICP41
	Analyte	Recvd Wt.	Au	Ag	Al	As	B	Ba	Be	Bi	Ca	Cd	Co	Cr	Cu	Fe
Units		kg	ppm	ppm	%	ppm	ppm	ppm	ppm	ppm	%	ppm	ppm	ppm	ppm	%
LOR		0.02	0.001	0.2	0.01	2	10	10	0.5	2	0.01	0.5	1	1	1	0.01
ZZ112501		0.58	0.011	0.5	3.68	185	<10	180	2.0	<2	1.39	<0.5	9	11	10	3.08
ZZ112502		0.62	0.003	0.3	3.72	31	<10	150	2.2	2	1.66	<0.5	8	9	7	2.61
ZZ112503		0.38	0.002	<0.2	3.40	28	<10	220	1.7	<2	1.07	<0.5	6	10	8	2.45
ZZ112504		0.42	0.001	0.3	3.01	135	<10	260	1.7	5	0.82	<0.5	9	12	30	3.18
ZZ112505		0.54	<0.001	<0.2	2.57	12	<10	260	1.4	4	1.18	<0.5	9	10	13	2.82
ZZ112506		0.38	0.002	0.2	1.75	9	<10	190	0.6	<2	0.28	<0.5	5	11	7	2.47
ZZ112507		0.54	<0.001	<0.2	2.25	8	<10	320	1.0	<2	0.57	<0.5	9	15	12	2.98
ZZ112508		0.54	<0.001	<0.2	3.65	7	<10	250	1.4	<2	1.36	<0.5	7	11	4	2.76
ZZ112509		0.52	0.003	<0.2	3.43	8	<10	280	1.2	<2	0.93	<0.5	8	12	6	2.88
ZZ112510		0.36	0.001	0.2	3.76	11	<10	180	1.0	2	0.66	<0.5	34	74	117	5.69
ZZ112511		0.34	<0.001	<0.2	0.94	2	<10	80	<0.5	<2	0.13	<0.5	4	19	30	1.49
ZZ112512		0.40	0.001	<0.2	3.95	11	<10	240	1.0	4	0.58	<0.5	27	87	162	4.94
ZZ112513		0.50	0.002	0.2	4.97	9	<10	140	1.2	2	1.13	<0.5	36	95	202	5.67
ZZ112514		0.44	0.002	0.2	3.94	13	<10	240	1.1	4	0.61	<0.5	27	85	142	5.75
ZZ112515		0.54	0.002	<0.2	3.84	21	<10	280	1.4	<2	0.55	<0.5	23	79	106	5.63
ZZ112516		0.50	0.003	0.3	5.34	13	<10	330	2.3	3	1.29	<0.5	30	61	160	7.92
ZZ112517		0.58	<0.001	<0.2	3.65	2	<10	320	1.1	2	1.66	<0.5	8	10	3	3.05
ZZ112518		0.58	<0.001	<0.2	1.18	5	10	110	0.5	2	20.3	0.5	4	8	18	1.19
ZZ112519		0.62	0.005	<0.2	4.07	22	<10	170	1.5	<2	0.41	<0.5	28	82	94	6.19
ZZ112520		0.58	0.011	0.4	3.29	452	<10	170	1.9	5	0.74	<0.5	52	47	181	6.70
ZZ112521		0.52	0.011	0.4	3.93	158	<10	110	2.1	6	0.84	<0.5	33	46	145	6.22
ZZ112522		0.56	0.010	0.5	2.72	225	<10	200	1.4	5	0.68	0.5	24	32	78	5.65
ZZ112523		0.70	0.873	1.5	2.27	309	<10	40	1.9	82	0.56	<0.5	40	28	281	24.1
ZZ112524		0.34	0.003	<0.2	2.10	33	<10	80	0.9	<2	2.87	<0.5	27	26	58	3.05
ZZ112525		0.50	0.007	0.2	2.50	103	<10	120	0.9	5	0.17	<0.5	11	43	80	6.07
ZZ112526		0.38	0.004	0.2	1.01	43	<10	120	<0.5	<2	0.06	<0.5	6	20	24	2.38
ZZ112527		0.38	0.002	0.2	1.36	39	<10	160	0.6	<2	0.20	<0.5	7	20	25	2.65
ZZ112528		0.26	0.002	0.2	0.36	3	<10	80	<0.5	<2	0.12	<0.5	1	6	8	0.52
ZZ112529		0.50	0.011	0.2	3.00	148	<10	330	1.6	3	0.31	<0.5	36	42	147	5.90
ZZ112530		0.56	0.010	0.6	1.82	156	<10	170	1.1	4	0.22	<0.5	26	30	226	5.85
ZZ112531		0.68	0.008	<0.2	2.45	134	<10	230	1.1	3	0.19	<0.5	22	36	78	4.10
ZZ112532		0.52	0.006	0.2	2.34	91	<10	270	1.0	2	0.18	<0.5	14	34	46	3.51
ZZ112533		0.48	0.003	<0.2	2.05	45	<10	230	0.8	<2	0.14	<0.5	11	32	31	3.32
ZZ112534		0.48	<0.001	<0.2	1.23	32	<10	90	<0.5	<2	0.09	<0.5	5	21	19	1.96
ZZ112535		0.38	<0.001	<0.2	0.62	8	<10	60	<0.5	<2	0.08	<0.5	2	7	15	0.91
ZZ112536		0.48	0.002	0.2	2.25	52	<10	260	0.8	<2	0.29	<0.5	11	33	32	3.37
ZZ112537		0.38	0.001	<0.2	1.46	24	<10	180	0.5	<2	0.17	<0.5	8	20	20	2.04
ZZ112538		0.46	0.003	<0.2	1.79	42	<10	170	0.6	2	0.17	<0.5	6	30	28	2.88
ZZ112539		0.58	0.004	<0.2	2.41	55	<10	250	1.0	<2	0.23	<0.5	13	36	37	3.49
ZZ112540		0.40	0.006	<0.2	2.60	243	<10	230	1.1	2	0.15	<0.5	14	37	60	3.64



ALS Canada Ltd.
 2103 Dollarton Hwy
 North Vancouver BC V7H 0A7
 Phone: +1 (604) 984 0221 Fax: +1 (604) 984 0218
 www.alsglobal.com

To: STRATEGIC METALS LTD.
 C/O ARCHER, CATHRO & ASSOCIATES (1981)
 LIMITED
 1016-510 W HASTINGS ST
 VANCOUVER BC V6B 1L8

Page: 2 - B
 Total # Pages: 7 (A - C)
 Plus Appendix Pages
 Finalized Date: 4-SEP-2016
 Account: MTT

Project: Lois

CERTIFICATE OF ANALYSIS VA16126365

Sample Description	Method Analyte Units LOR	ME-ICP41	ME-ICP41	ME-ICP41	ME-ICP41	ME-ICP41	ME-ICP41	ME-ICP41	ME-ICP41	ME-ICP41	ME-ICP41	ME-ICP41	ME-ICP41	ME-ICP41	ME-ICP41	
		Ga	Hg	K	La	Mg	Mn	Mo	Na	Ni	P	Pb	S	Sb	Sc	Sr
		ppm	ppm	%	ppm	%	ppm	ppm	%	ppm	ppm	ppm	%	ppm	ppm	ppm
		10	1	0.01	10	0.01	5	1	0.01	1	10	2	0.01	2	1	1
ZZ112501		10	<1	0.28	30	0.66	798	1	0.05	6	750	87	0.05	8	4	105
ZZ112502		10	<1	0.29	40	0.65	480	1	0.06	5	710	85	0.04	5	4	142
ZZ112503		10	<1	0.23	20	0.52	352	<1	0.06	5	680	19	0.06	3	3	94
ZZ112504		10	1	0.31	20	0.82	518	2	0.04	11	700	24	0.06	<2	5	98
ZZ112505		10	<1	0.37	40	0.78	522	<1	0.04	5	790	14	0.03	2	6	124
ZZ112506		10	<1	0.20	20	0.39	215	<1	0.03	6	570	15	0.06	<2	3	31
ZZ112507		10	<1	0.32	30	0.73	492	1	0.03	11	820	15	0.05	3	4	51
ZZ112508		10	<1	0.42	30	0.65	460	1	0.06	6	660	11	0.03	4	5	96
ZZ112509		10	<1	0.36	20	0.62	509	1	0.05	8	700	17	0.04	2	4	79
ZZ112510		10	<1	0.66	10	1.27	653	2	0.04	54	560	11	0.08	5	12	36
ZZ112511		<10	<1	0.11	<10	0.20	121	<1	0.04	9	600	2	0.09	<2	1	12
ZZ112512		10	<1	0.66	10	1.23	383	1	0.09	56	760	7	0.09	2	13	33
ZZ112513		20	1	0.83	10	1.49	407	1	0.08	71	630	7	0.09	2	16	47
ZZ112514		10	1	0.82	10	1.55	450	2	0.05	83	530	13	0.12	3	14	42
ZZ112515		10	<1	0.69	10	1.56	530	2	0.05	99	560	13	0.11	5	12	42
ZZ112516		20	<1	0.68	30	1.82	749	3	0.11	72	560	22	0.19	8	15	116
ZZ112517		10	1	0.58	40	0.81	549	<1	0.07	4	740	18	0.02	2	6	180
ZZ112518		<10	<1	0.09	20	0.19	3820	<1	0.07	11	2270	20	0.06	<2	2	436
ZZ112519		10	<1	0.51	20	1.35	875	2	0.04	57	710	30	0.15	2	12	82
ZZ112520		10	<1	0.20	30	0.83	1760	2	0.03	84	690	38	0.06	3	7	125
ZZ112521		10	<1	0.23	20	1.03	1190	1	0.05	62	740	61	0.10	7	7	211
ZZ112522		10	<1	0.20	20	0.66	1055	1	0.03	46	670	129	0.04	14	8	125
ZZ112523		10	1	0.10	40	0.33	3160	12	0.02	63	850	38	0.08	169	7	75
ZZ112524		10	<1	0.15	10	0.49	722	<1	0.07	46	820	19	0.18	2	3	387
ZZ112525		10	<1	0.32	10	0.61	587	1	0.03	19	1050	20	0.24	5	4	46
ZZ112526		10	1	0.06	10	0.15	140	2	0.02	18	480	14	0.06	2	1	22
ZZ112527		10	<1	0.11	10	0.26	321	1	0.02	17	960	20	0.12	5	1	21
ZZ112528		<10	<1	0.03	<10	0.02	17	<1	0.03	3	750	2	0.13	<2	<1	14
ZZ112529		10	<1	0.16	20	0.92	1150	3	0.03	67	890	31	0.07	7	7	54
ZZ112530		10	<1	0.12	30	0.53	711	2	0.02	62	750	39	0.05	36	7	30
ZZ112531		10	<1	0.13	20	0.66	677	2	0.03	43	790	48	0.05	5	4	25
ZZ112532		10	<1	0.12	20	0.57	509	1	0.02	31	730	25	0.05	3	3	27
ZZ112533		10	<1	0.10	10	0.46	444	1	0.02	23	620	17	0.05	4	3	21
ZZ112534		10	<1	0.08	10	0.25	276	<1	0.02	12	650	11	0.06	<2	1	13
ZZ112535		<10	<1	0.03	<10	0.10	78	1	0.02	11	490	7	0.06	<2	<1	10
ZZ112536		10	<1	0.09	20	0.49	470	2	0.01	26	920	19	0.07	<2	3	34
ZZ112537		10	<1	0.06	10	0.30	425	1	0.02	15	650	10	0.06	<2	1	22
ZZ112538		10	<1	0.12	10	0.38	270	1	0.02	19	780	14	0.09	<2	2	23
ZZ112539		10	<1	0.15	20	0.59	525	1	0.01	30	580	17	0.05	3	4	30
ZZ112540		10	<1	0.10	10	0.57	487	2	0.01	34	710	26	0.06	3	3	32



ALS Canada Ltd.
 2103 Dollarton Hwy
 North Vancouver BC V7H 0A7
 Phone: +1 (604) 984 0221 Fax: +1 (604) 984 0218
 www.alsglobal.com

To: STRATEGIC METALS LTD.
 C/O ARCHER, CATHRO & ASSOCIATES (1981)
 LIMITED
 1016-510 W HASTINGS ST
 VANCOUVER BC V6B 1L8

Page: 2 - C
 Total # Pages: 7 (A - C)
 Plus Appendix Pages
 Finalized Date: 4-SEP-2016
 Account: MTT

Project: Lois

CERTIFICATE OF ANALYSIS VA16126365

Sample Description	Method	ME-ICP41	ME-ICP41	ME-ICP41	ME-ICP41	ME-ICP41	ME-ICP41
	Analyte	Th	Ti	Ti	U	V	W
	Units	ppm	%	ppm	ppm	ppm	ppm
LOR		20	0.01	10	10	1	10
Zn		2					
ZZ112501	<20	0.09	<10	10	55	<10	90
ZZ112502	<20	0.09	<10	<10	50	<10	78
ZZ112503	<20	0.11	<10	<10	51	<10	47
ZZ112504	<20	0.10	<10	<10	60	<10	63
ZZ112505	20	0.13	<10	<10	54	<10	54
ZZ112506	<20	0.14	<10	<10	63	<10	43
ZZ112507	<20	0.15	<10	<10	60	<10	73
ZZ112508	<20	0.12	<10	<10	52	<10	61
ZZ112509	<20	0.13	<10	<10	57	<10	66
ZZ112510	<20	0.27	<10	<10	159	<10	97
ZZ112511	<20	0.08	<10	<10	53	<10	27
ZZ112512	<20	0.33	<10	<10	191	<10	73
ZZ112513	<20	0.35	<10	<10	202	<10	82
ZZ112514	<20	0.38	<10	<10	169	<10	98
ZZ112515	<20	0.33	<10	<10	136	<10	107
ZZ112516	<20	0.33	<10	<10	142	<10	130
ZZ112517	20	0.18	<10	<10	51	<10	65
ZZ112518	<20	0.05	<10	<10	20	<10	36
ZZ112519	<20	0.26	<10	<10	130	<10	143
ZZ112520	<20	0.09	<10	<10	68	<10	121
ZZ112521	<20	0.11	<10	<10	65	<10	166
ZZ112522	<20	0.05	<10	<10	48	<10	195
ZZ112523	<20	0.02	<10	<10	37	<10	109
ZZ112524	<20	0.08	<10	<10	35	<10	107
ZZ112525	<20	0.10	<10	<10	71	<10	66
ZZ112526	<20	0.06	<10	<10	76	<10	47
ZZ112527	<20	0.05	<10	<10	56	<10	58
ZZ112528	<20	0.02	<10	<10	11	<10	12
ZZ112529	<20	0.09	<10	<10	73	<10	135
ZZ112530	<20	0.04	<10	<10	52	<10	91
ZZ112531	<20	0.07	<10	<10	69	<10	115
ZZ112532	<20	0.07	<10	<10	60	<10	99
ZZ112533	<20	0.06	<10	<10	64	<10	77
ZZ112534	<20	0.05	<10	<10	45	<10	45
ZZ112535	<20	0.03	<10	<10	23	<10	21
ZZ112536	<20	0.06	<10	<10	66	<10	75
ZZ112537	<20	0.04	<10	<10	45	<10	42
ZZ112538	<20	0.07	<10	<10	61	<10	53
ZZ112539	<20	0.08	<10	<10	63	<10	82
ZZ112540	<20	0.05	<10	<10	62	<10	88



ALS Canada Ltd.
 2103 Dollarton Hwy
 North Vancouver BC V7H 0A7
 Phone: +1 (604) 984 0221 Fax: +1 (604) 984 0218
 www.alsglobal.com

To: STRATEGIC METALS LTD.
 C/O ARCHER, CATHRO & ASSOCIATES (1981)
 LIMITED
 1016-510 W HASTINGS ST
 VANCOUVER BC V6B 1L8

Page: 3 - A
 Total # Pages: 7 (A - C)
 Plus Appendix Pages
 Finalized Date: 4-SEP-2016
 Account: MTT

Project: Lois

CERTIFICATE OF ANALYSIS VA16126365

Sample Description	Method Analyte Units LOR	WEI-21 Recvd Wt. kg	Au-ICP21 Au ppm	ME-ICP41 Ag ppm	ME-ICP41 Al %	ME-ICP41 As ppm	ME-ICP41 B ppm	ME-ICP41 Ba ppm	ME-ICP41 Be ppm	ME-ICP41 Bi ppm	ME-ICP41 Ca %	ME-ICP41 Cd ppm	ME-ICP41 Co ppm	ME-ICP41 Cr ppm	ME-ICP41 Cu ppm	ME-ICP41 Fe %
		0.02	0.001	0.2	0.01	2	10	10	0.5	2	0.01	0.5	1	1	1	0.01
ZZ112541		0.50	0.007	0.2	2.23	411	<10	270	1.0	4	0.32	<0.5	17	34	66	3.33
ZZ112542		0.50	0.003	<0.2	3.07	211	<10	260	1.5	<2	0.24	<0.5	23	38	60	3.71
ZZ112543		0.50	0.003	0.2	1.92	442	<10	140	0.8	2	0.18	<0.5	12	31	53	3.48
ZZ112544		0.52	0.002	0.2	2.07	101	<10	240	0.8	2	0.38	<0.5	12	35	49	3.32
ZZ112545		0.54	0.002	<0.2	1.51	87	<10	160	0.5	<2	0.16	<0.5	8	30	39	3.06
ZZ112546		0.40	0.002	0.2	3.27	15	<10	410	1.1	<2	0.85	0.5	18	36	49	3.67
ZZ112547		0.50	<0.001	<0.2	3.68	10	<10	380	0.9	<2	0.99	<0.5	20	50	55	4.07
ZZ112548		0.54	0.001	<0.2	3.27	16	<10	330	0.9	<2	0.67	<0.5	17	52	41	3.62
ZZ112549		0.42	0.003	<0.2	2.31	21	<10	240	0.8	<2	0.37	<0.5	14	37	34	3.22
ZZ112550		0.68	0.002	<0.2	2.98	15	<10	370	1.0	<2	0.48	<0.5	18	36	41	3.75
ZZ112551		0.48	<0.001	<0.2	1.74	19	<10	260	0.6	2	0.33	<0.5	9	28	26	2.74
ZZ112552		0.44	0.001	0.2	2.21	21	<10	300	0.9	<2	0.56	<0.5	18	32	35	3.00
ZZ112553		0.40	0.001	<0.2	2.73	21	<10	240	0.8	<2	0.53	<0.5	11	23	36	2.25
ZZ112554		0.52	0.002	0.2	2.20	25	<10	320	0.8	<2	0.47	0.7	14	34	35	3.12
ZZ112555		0.44	0.001	<0.2	2.11	12	<10	290	0.6	<2	0.25	<0.5	11	35	33	2.82
ZZ112556		0.48	0.006	<0.2	2.22	21	<10	330	0.8	2	0.38	<0.5	11	33	37	2.94
ZZ112557		0.28	<0.001	<0.2	0.64	9	<10	370	<0.5	<2	0.71	<0.5	4	15	12	1.52
ZZ112558		0.42	0.006	<0.2	2.10	23	<10	270	0.9	<2	0.22	<0.5	14	33	42	3.11
ZZ112559		0.46	0.003	0.2	2.24	19	<10	320	1.0	<2	0.42	<0.5	17	35	44	3.32
ZZ112560		0.54	0.006	0.2	1.98	18	<10	310	0.8	<2	0.48	<0.5	14	35	46	3.22
ZZ112561		0.50	0.002	<0.2	2.04	21	<10	130	0.7	<2	0.09	<0.5	12	32	24	3.69
ZZ112562		0.44	0.008	<0.2	2.50	25	<10	300	1.3	<2	0.32	<0.5	19	34	55	3.61
ZZ112563		0.58	0.004	<0.2	2.25	24	<10	250	1.1	<2	0.19	0.6	14	33	42	3.38
ZZ112564		0.60	0.003	<0.2	1.74	22	<10	210	0.7	<2	0.19	<0.5	14	30	35	3.11
ZZ112565		0.48	0.008	0.2	2.34	29	<10	300	1.1	<2	0.23	<0.5	21	36	51	3.80
ZZ112566		0.52	0.001	<0.2	1.52	18	<10	90	0.5	<2	0.09	<0.5	5	29	22	3.53
ZZ112567		0.52	0.003	<0.2	1.81	16	<10	190	0.6	2	0.16	<0.5	11	26	26	2.95
ZZ112568		0.70	0.003	<0.2	1.77	19	<10	120	0.6	<2	0.14	<0.5	10	25	27	2.81
ZZ112569		0.88	0.001	<0.2	2.50	15	<10	160	0.8	<2	0.10	<0.5	12	36	17	2.50
ZZ112570		0.62	0.002	<0.2	1.67	16	<10	90	0.5	<2	0.08	<0.5	10	27	24	2.70
ZZ112571		0.76	0.004	<0.2	1.39	131	<10	110	0.6	3	0.09	<0.5	23	21	42	3.24
ZZ112572		0.68	0.008	<0.2	2.60	216	<10	130	1.1	<2	0.23	<0.5	14	36	91	5.37
ZZ112573		0.80	0.001	<0.2	1.37	22	<10	80	<0.5	<2	0.04	<0.5	8	23	26	2.79
ZZ112574		0.68	0.001	<0.2	1.43	14	<10	80	<0.5	<2	0.05	<0.5	6	24	23	2.28
ZZ112575		0.68	0.001	<0.2	1.80	25	<10	80	0.6	<2	0.05	<0.5	8	28	27	2.95
ZZ112576		0.60	0.043	0.8	1.48	653	<10	50	1.0	87	0.17	<0.5	3	27	676	23.6
ZZ112577		0.68	0.003	<0.2	1.96	54	<10	90	0.7	4	0.07	<0.5	8	25	37	3.43
ZZ112578		0.44	0.001	0.2	1.29	19	<10	50	<0.5	<2	0.06	<0.5	4	14	21	1.74
ZZ112579		0.72	0.011	<0.2	1.31	190	<10	120	1.1	5	0.16	<0.5	15	22	76	4.16
ZZ112580		0.46	<0.001	<0.2	0.69	9	<10	50	<0.5	<2	0.02	<0.5	2	11	12	1.29



ALS Canada Ltd.
 2103 Dollarton Hwy
 North Vancouver BC V7H 0A7
 Phone: +1 (604) 984 0221 Fax: +1 (604) 984 0218
 www.alsglobal.com

To: STRATEGIC METALS LTD.
 C/O ARCHER, CATHRO & ASSOCIATES (1981)
 LIMITED
 1016-510 W HASTINGS ST
 VANCOUVER BC V6B 1L8

Page: 3 - B
 Total # Pages: 7 (A - C)
 Plus Appendix Pages
 Finalized Date: 4-SEP-2016
 Account: MTT

Project: Lois

CERTIFICATE OF ANALYSIS VA16126365

Sample Description	Method Analyte Units LOR	ME-ICP41	ME-ICP41	ME-ICP41	ME-ICP41	ME-ICP41	ME-ICP41	ME-ICP41	ME-ICP41	ME-ICP41	ME-ICP41	ME-ICP41	ME-ICP41	ME-ICP41	ME-ICP41	
		Ga	Hg	K	La	Mg	Mn	Mo	Na	Ni	P	Pb	S	Sb	Sc	Sr
		ppm	ppm	%	ppm	%	ppm	ppm	%	ppm	ppm	ppm	%	ppm	ppm	ppm
		10	1	0.01	10	0.01	5	1	0.01	1	10	2	0.01	2	1	1
ZZ112541		10	<1	0.12	10	0.59	633	1	0.01	29	660	24	0.06	5	3	40
ZZ112542		10	<1	0.18	20	0.62	759	1	0.01	38	700	27	0.04	<2	4	50
ZZ112543		10	<1	0.14	10	0.47	297	2	0.01	31	520	23	0.06	3	3	34
ZZ112544		10	<1	0.23	10	0.56	504	1	0.01	25	710	14	0.08	<2	3	61
ZZ112545		10	<1	0.18	10	0.36	275	1	0.01	18	400	14	0.04	2	3	37
ZZ112546		10	<1	0.29	20	0.84	696	2	0.05	37	940	13	0.09	<2	6	75
ZZ112547		10	1	0.48	20	1.17	577	1	0.05	33	610	10	0.04	<2	9	136
ZZ112548		10	<1	0.27	10	0.85	522	1	0.03	31	640	11	0.07	<2	6	69
ZZ112549		10	<1	0.22	10	0.61	498	1	0.02	25	660	10	0.07	<2	4	35
ZZ112550		10	<1	0.26	20	0.82	841	1	0.03	31	810	17	0.06	<2	6	57
ZZ112551		10	<1	0.19	10	0.38	328	1	0.01	19	740	11	0.09	<2	2	32
ZZ112552		10	<1	0.19	10	0.52	658	1	0.02	27	730	13	0.09	<2	3	54
ZZ112553		10	<1	0.32	10	0.53	337	<1	0.03	22	730	21	0.06	<2	4	109
ZZ112554		10	<1	0.19	10	0.63	827	1	0.02	26	570	38	0.07	11	4	45
ZZ112555		10	<1	0.19	10	0.55	403	1	0.02	24	830	11	0.09	<2	3	27
ZZ112556		10	<1	0.18	10	0.54	380	1	0.02	26	730	12	0.07	<2	3	38
ZZ112557		<10	<1	0.08	10	0.15	246	1	0.01	10	850	6	0.15	<2	1	64
ZZ112558		10	<1	0.20	10	0.52	548	1	0.01	32	700	16	0.05	<2	4	31
ZZ112559		10	<1	0.14	10	0.55	695	1	0.02	31	940	17	0.10	<2	3	52
ZZ112560		10	<1	0.19	10	0.63	547	1	0.02	32	690	13	0.05	<2	5	57
ZZ112561		10	<1	0.08	10	0.39	837	2	0.01	18	520	17	0.05	<2	2	15
ZZ112562		10	<1	0.15	20	0.51	898	1	0.01	32	1050	19	0.10	<2	3	44
ZZ112563		10	<1	0.13	20	0.43	760	2	0.01	26	980	16	0.07	<2	3	24
ZZ112564		10	<1	0.12	20	0.53	463	1	0.01	32	530	12	0.03	<2	4	25
ZZ112565		10	<1	0.15	20	0.54	889	2	0.01	41	960	25	0.07	<2	4	29
ZZ112566		10	<1	0.09	10	0.29	251	2	0.01	19	770	19	0.08	<2	1	11
ZZ112567		<10	<1	0.10	20	0.43	308	1	0.01	26	870	14	0.05	<2	2	52
ZZ112568		<10	<1	0.09	20	0.47	230	1	0.01	26	730	10	0.04	<2	2	23
ZZ112569		10	<1	0.18	20	0.66	227	1	0.01	30	700	13	0.03	<2	3	41
ZZ112570		10	<1	0.17	20	0.52	281	1	0.01	24	530	16	0.03	<2	2	13
ZZ112571		<10	<1	0.08	30	0.30	846	1	0.01	32	810	37	0.04	2	2	14
ZZ112572		10	<1	0.69	60	1.11	278	2	0.02	29	790	50	0.33	<2	5	91
ZZ112573		10	<1	0.16	20	0.26	306	2	0.01	19	450	14	0.03	<2	1	9
ZZ112574		10	<1	0.16	10	0.32	152	1	0.01	17	700	11	0.05	<2	1	10
ZZ112575		10	1	0.10	20	0.48	236	1	0.01	23	530	14	0.05	<2	2	15
ZZ112576		10	<1	0.06	10	0.08	314	1	0.06	13	510	13	0.29	<2	3	29
ZZ112577		10	<1	0.06	10	0.41	488	1	0.01	20	710	20	0.07	<2	1	14
ZZ112578		<10	<1	0.04	10	0.20	209	1	0.02	12	740	10	0.08	<2	<1	9
ZZ112579		<10	<1	0.09	30	0.34	434	1	0.02	34	360	16	0.06	7	4	27
ZZ112580		<10	<1	0.05	10	0.08	55	1	0.01	6	440	7	0.06	<2	<1	6



ALS Canada Ltd.
 2103 Dollarton Hwy
 North Vancouver BC V7H 0A7
 Phone: +1 (604) 984 0221 Fax: +1 (604) 984 0218
 www.alsglobal.com

To: STRATEGIC METALS LTD.
 C/O ARCHER, CATHRO & ASSOCIATES (1981)
 LIMITED
 1016-510 W HASTINGS ST
 VANCOUVER BC V6B 1L8

Page: 3 - C
 Total # Pages: 7 (A - C)
 Plus Appendix Pages
 Finalized Date: 4-SEP-2016
 Account: MTT

Project: Lois

CERTIFICATE OF ANALYSIS VA16126365

Sample Description	Method Analyte Units LOR	ME-ICP41	ME-ICP41	ME-ICP41	ME-ICP41	ME-ICP41	ME-ICP41	
		Th	Ti	Ti	U	V	W	Zn
		ppm	%	ppm	ppm	ppm	ppm	ppm
		20	0.01	10	10	1	10	2
ZZ112541		<20	0.06	<10	<10	56	<10	82
ZZ112542		<20	0.07	<10	<10	63	<10	98
ZZ112543		<20	0.08	<10	<10	58	<10	87
ZZ112544		<20	0.10	<10	<10	65	<10	76
ZZ112545		<20	0.10	<10	<10	73	<10	66
ZZ112546		<20	0.15	<10	<10	85	<10	105
ZZ112547		<20	0.21	<10	<10	109	<10	75
ZZ112548		<20	0.13	<10	<10	92	<10	77
ZZ112549		<20	0.10	<10	<10	72	<10	73
ZZ112550		<20	0.15	<10	<10	80	<10	96
ZZ112551		<20	0.08	<10	<10	62	<10	65
ZZ112552		<20	0.09	<10	<10	61	<10	75
ZZ112553		<20	0.10	<10	<10	51	<10	65
ZZ112554		<20	0.10	<10	<10	68	<10	92
ZZ112555		<20	0.11	<10	<10	74	<10	67
ZZ112556		<20	0.10	<10	<10	64	<10	76
ZZ112557		<20	0.05	<10	<10	39	<10	31
ZZ112558		<20	0.10	<10	<10	56	<10	93
ZZ112559		<20	0.08	<10	<10	61	<10	85
ZZ112560		<20	0.12	<10	<10	58	<10	93
ZZ112561		<20	0.07	<10	<10	69	<10	80
ZZ112562		<20	0.07	<10	<10	59	<10	93
ZZ112563		<20	0.07	<10	<10	60	<10	85
ZZ112564		<20	0.08	<10	<10	51	<10	95
ZZ112565		<20	0.07	<10	<10	61	<10	120
ZZ112566		<20	0.04	<10	<10	57	<10	72
ZZ112567		<20	0.05	<10	<10	43	<10	75
ZZ112568		<20	0.04	<10	<10	46	<10	82
ZZ112569		<20	0.03	<10	<10	54	<10	56
ZZ112570		<20	0.04	<10	<10	44	<10	67
ZZ112571		<20	0.02	<10	<10	41	<10	94
ZZ112572		30	0.05	<10	<10	44	<10	127
ZZ112573		<20	0.05	<10	<10	62	<10	67
ZZ112574		<20	0.03	<10	<10	48	<10	46
ZZ112575		<20	0.04	<10	<10	51	<10	61
ZZ112576		<20	0.17	<10	<10	39	<10	27
ZZ112577		<20	0.03	<10	<10	40	<10	56
ZZ112578		<20	0.02	<10	<10	28	<10	36
ZZ112579		<20	0.02	<10	<10	34	<10	60
ZZ112580		<20	0.03	<10	<10	41	<10	27



ALS Canada Ltd.
 2103 Dollarton Hwy
 North Vancouver BC V7H 0A7
 Phone: +1 (604) 984 0221 Fax: +1 (604) 984 0218
 www.alsglobal.com

To: STRATEGIC METALS LTD.
 C/O ARCHER, CATHRO & ASSOCIATES (1981)
 LIMITED
 1016-510 W HASTINGS ST
 VANCOUVER BC V6B 1L8

Page: 4 - A
 Total # Pages: 7 (A - C)
 Plus Appendix Pages
 Finalized Date: 4-SEP-2016
 Account: MTT

Project: Lois

CERTIFICATE OF ANALYSIS VA16126365

Sample Description	Method	WEI-21	Au-ICP21	ME-ICP41	ME-ICP41	ME-ICP41	ME-ICP41	ME-ICP41	ME-ICP41	ME-ICP41	ME-ICP41	ME-ICP41	ME-ICP41	ME-ICP41	ME-ICP41	ME-ICP41
	Analyte	Recvd Wt.	Au	Ag	Al	As	B	Ba	Be	Bi	Ca	Cd	Co	Cr	Cu	Fe
	Units	kg	ppm	ppm	%	ppm	ppm	ppm	ppm	ppm	%	ppm	ppm	ppm	ppm	%
	LOR	0.02	0.001	0.2	0.01	2	10	10	0.5	2	0.01	0.5	1	1	1	0.01
ZZ112581		0.52	<0.001	<0.2	1.52	7	<10	50	0.7	<2	0.02	<0.5	10	21	39	4.03
ZZ112582		0.52	0.002	<0.2	1.33	15	<10	60	0.5	<2	0.04	<0.5	5	24	20	2.87
ZZ112583		0.46	0.001	<0.2	0.90	17	<10	50	0.5	<2	0.04	<0.5	6	14	20	2.22
ZZ112584		0.64	0.002	<0.2	1.32	50	<10	70	0.6	<2	0.03	<0.5	6	22	24	3.25
ZZ112585		0.74	0.001	<0.2	1.58	89	<10	80	1.4	<2	0.02	<0.5	10	23	44	4.51
ZZ112586		0.58	0.004	<0.2	2.36	21	<10	120	1.8	<2	0.02	<0.5	41	36	36	4.59
ZZ112587		0.80	0.002	<0.2	1.99	22	<10	120	1.4	<2	0.01	<0.5	7	34	41	4.41
ZZ112588		0.54	0.002	<0.2	2.06	33	<10	90	1.3	2	0.02	<0.5	11	34	43	4.55
ZZ112589		0.64	0.002	<0.2	1.36	29	<10	60	0.8	2	0.02	<0.5	5	22	27	3.38
ZZ112590		0.70	0.004	<0.2	2.02	28	<10	80	1.4	<2	0.02	<0.5	8	28	34	3.69
ZZ112591		0.60	0.005	<0.2	1.75	103	<10	100	1.1	<2	0.03	<0.5	11	28	36	3.53
ZZ112592		0.48	0.008	<0.2	1.65	194	<10	100	0.8	3	0.06	<0.5	9	41	32	3.46
ZZ112593		0.70	0.004	0.4	1.66	50	<10	90	0.8	<2	0.04	<0.5	8	26	26	3.17
ZZ112594		0.56	0.002	<0.2	1.69	34	<10	70	1.4	2	0.05	<0.5	25	32	39	3.32
ZZ112595		0.60	0.003	<0.2	2.06	25	<10	90	1.3	<2	0.01	<0.5	12	30	64	5.64
ZZ112596		0.58	0.004	<0.2	1.91	28	<10	70	1.1	2	0.02	<0.5	8	28	67	5.39
ZZ112597		0.66	0.003	<0.2	2.17	27	<10	100	1.5	2	0.02	<0.5	14	30	64	5.02
ZZ112598		0.74	0.007	<0.2	2.12	43	<10	90	1.5	<2	0.02	<0.5	21	33	72	5.04
ZZ112599		0.78	0.003	<0.2	1.86	31	<10	90	1.1	<2	0.03	<0.5	18	40	63	4.81
ZZ112600		0.60	0.002	<0.2	1.60	25	<10	70	1.0	<2	0.03	<0.5	16	37	53	4.25
ZZ112601		0.76	0.003	<0.2	3.66	15	<10	150	2.1	<2	1.92	<0.5	8	11	5	2.57
ZZ112602		0.64	0.001	<0.2	2.55	6	<10	220	1.2	<2	0.68	<0.5	8	13	11	2.52
ZZ112603		0.50	0.002	<0.2	1.02	10	<10	70	<0.5	<2	0.09	<0.5	3	12	10	1.81
ZZ112604		0.40	0.045	<0.2	1.42	12	<10	140	0.6	<2	0.29	<0.5	3	10	6	1.69
ZZ112605		0.68	0.006	<0.2	2.86	17	<10	220	1.6	6	1.03	<0.5	8	11	29	2.52
ZZ112606		0.54	0.006	0.5	2.07	398	<10	180	1.5	<2	0.73	<0.5	7	10	20	2.40
ZZ112607		0.58	0.006	<0.2	2.21	26	<10	230	1.0	<2	0.28	<0.5	7	13	10	2.39
ZZ112608		0.64	0.003	<0.2	2.30	30	<10	230	1.2	<2	0.44	<0.5	8	15	12	2.41
ZZ112609		0.64	0.002	<0.2	2.29	15	<10	210	1.3	<2	0.41	<0.5	6	16	11	2.44
ZZ112610		0.58	0.001	<0.2	1.80	15	<10	190	1.1	<2	0.34	<0.5	6	15	10	2.25
ZZ112611		0.60	0.002	0.2	1.99	98	<10	210	1.2	3	0.36	<0.5	7	11	21	2.25
ZZ112612		0.60	0.002	<0.2	1.68	49	<10	110	0.7	2	0.14	<0.5	6	17	15	2.75
ZZ112613		0.64	0.005	0.4	2.19	59	<10	250	1.2	4	0.37	0.5	8	18	22	2.79
ZZ112614		0.52	0.002	<0.2	1.82	22	<10	180	1.1	3	0.32	<0.5	7	14	14	2.36
ZZ112615		0.66	0.002	<0.2	2.19	21	<10	270	1.2	2	0.59	<0.5	7	11	15	2.31
ZZ112616		0.68	0.004	0.5	2.04	106	<10	220	1.7	<2	0.61	1.1	9	12	22	2.69
ZZ112617		0.58	0.002	0.2	2.15	36	<10	200	1.8	<2	0.66	<0.5	8	12	16	2.66
ZZ112618		0.48	0.005	0.2	1.41	36	<10	130	0.8	<2	0.33	<0.5	4	10	14	1.78
ZZ112619		0.62	0.002	0.2	1.56	9	<10	140	0.7	<2	0.30	<0.5	4	10	12	1.84
ZZ112620		0.70	0.007	<0.2	2.77	28	<10	210	1.9	<2	0.84	<0.5	7	9	10	2.21



ALS Canada Ltd.
 2103 Dollarton Hwy
 North Vancouver BC V7H 0A7
 Phone: +1 (604) 984 0221 Fax: +1 (604) 984 0218
 www.alsglobal.com

To: STRATEGIC METALS LTD.
 C/O ARCHER, CATHRO & ASSOCIATES (1981)
 LIMITED
 1016-510 W HASTINGS ST
 VANCOUVER BC V6B 1L8

Page: 4 - B
 Total # Pages: 7 (A - C)
 Plus Appendix Pages
 Finalized Date: 4-SEP-2016
 Account: MTT

Project: Lois

CERTIFICATE OF ANALYSIS VA16126365

Sample Description	Method Analyte Units LOR	ME-ICP41	ME-ICP41	ME-ICP41	ME-ICP41	ME-ICP41	ME-ICP41	ME-ICP41	ME-ICP41	ME-ICP41	ME-ICP41	ME-ICP41	ME-ICP41	ME-ICP41	ME-ICP41	
		Ga	Hg	K	La	Mg	Mn	Mo	Na	Ni	P	Pb	S	Sb	Sc	Sr
		ppm	ppm	%	ppm	%	ppm	ppm	%	ppm	ppm	ppm	%	ppm	ppm	ppm
		10	1	0.01	10	0.01	5	1	0.01	1	10	2	0.01	2	1	1
ZZ112581		<10	<1	0.07	30	0.33	281	1	0.01	17	770	22	0.05	<2	1	6
ZZ112582		10	<1	0.08	20	0.27	147	1	0.01	14	620	13	0.07	<2	1	8
ZZ112583		<10	<1	0.07	10	0.15	146	1	0.02	12	540	11	0.08	2	1	8
ZZ112584		10	<1	0.16	20	0.29	165	1	0.01	19	340	22	0.06	2	2	12
ZZ112585		<10	<1	0.20	40	0.33	236	1	0.01	29	490	20	0.03	3	2	5
ZZ112586		10	<1	0.63	30	0.63	742	1	0.02	30	490	18	0.05	<2	3	8
ZZ112587		10	<1	0.43	40	0.56	180	2	0.02	16	420	22	0.04	<2	3	6
ZZ112588		10	<1	0.39	40	0.47	220	1	0.02	28	440	20	0.06	3	3	10
ZZ112589		10	<1	0.22	20	0.32	185	1	0.01	17	430	15	0.07	<2	2	9
ZZ112590		10	<1	0.27	30	0.43	191	1	0.01	22	440	17	0.06	2	3	9
ZZ112591		10	<1	0.21	30	0.46	254	2	0.01	29	480	14	0.09	3	2	15
ZZ112592		10	<1	0.16	20	0.53	254	2	0.01	28	570	16	0.09	2	2	14
ZZ112593		10	<1	0.16	20	0.36	214	2	0.01	24	370	17	0.05	2	2	9
ZZ112594		10	<1	0.21	40	0.56	729	1	0.01	35	470	21	0.05	3	3	7
ZZ112595		10	<1	0.42	30	0.59	293	1	0.02	29	620	26	0.11	<2	3	11
ZZ112596		10	<1	0.35	20	0.52	261	1	0.02	21	680	22	0.11	2	3	12
ZZ112597		10	<1	0.39	30	0.49	335	1	0.02	30	680	21	0.11	2	3	12
ZZ112598		10	<1	0.39	30	0.52	515	2	0.02	33	720	24	0.11	3	4	11
ZZ112599		10	<1	0.48	30	0.49	385	1	0.02	26	510	23	0.09	3	7	12
ZZ112600		10	<1	0.44	20	0.43	350	1	0.02	24	460	19	0.08	3	7	10
ZZ112601		10	<1	0.38	30	0.72	513	<1	0.04	5	740	12	0.03	<2	5	166
ZZ112602		10	<1	0.29	20	0.61	534	1	0.04	8	730	10	0.06	<2	3	59
ZZ112603		10	<1	0.07	10	0.12	120	2	0.01	10	360	11	0.05	<2	1	11
ZZ112604		10	<1	0.07	10	0.18	118	1	0.03	4	980	11	0.13	<2	1	87
ZZ112605		10	<1	0.35	30	0.70	432	<1	0.04	6	650	13	0.04	3	5	87
ZZ112606		10	<1	0.19	20	0.48	401	1	0.03	7	780	34	0.07	8	3	90
ZZ112607		10	<1	0.15	10	0.41	674	1	0.03	8	590	13	0.07	2	2	36
ZZ112608		10	<1	0.18	20	0.53	495	1	0.03	9	710	15	0.06	3	3	48
ZZ112609		10	<1	0.16	20	0.41	494	1	0.02	10	750	14	0.06	<2	1	40
ZZ112610		10	<1	0.13	10	0.36	379	1	0.03	11	650	11	0.06	<2	2	30
ZZ112611		10	<1	0.18	20	0.55	346	<1	0.03	8	620	20	0.05	6	3	44
ZZ112612		10	1	0.14	10	0.39	275	2	<0.01	10	460	15	0.04	5	3	19
ZZ112613		10	1	0.22	20	0.60	492	2	0.01	15	700	44	0.04	11	4	41
ZZ112614		10	1	0.23	20	0.60	328	1	0.01	10	850	13	0.05	2	4	31
ZZ112615		10	1	0.30	30	0.62	412	1	0.02	7	630	11	0.03	4	5	66
ZZ112616		10	1	0.19	30	0.64	463	1	0.02	8	710	114	0.02	9	6	97
ZZ112617		10	1	0.19	20	0.60	436	1	0.01	9	720	33	0.03	4	5	76
ZZ112618		10	1	0.12	20	0.25	209	2	0.01	5	480	16	0.05	5	2	38
ZZ112619		10	1	0.14	10	0.30	193	1	0.01	6	400	10	0.04	2	3	41
ZZ112620		10	<1	0.28	30	0.57	412	<1	0.01	5	630	17	0.02	3	5	96



ALS Canada Ltd.
 2103 Dollarton Hwy
 North Vancouver BC V7H 0A7
 Phone: +1 (604) 984 0221 Fax: +1 (604) 984 0218
 www.alsglobal.com

To: STRATEGIC METALS LTD.
 C/O ARCHER, CATHRO & ASSOCIATES (1981)
 LIMITED
 1016-510 W HASTINGS ST
 VANCOUVER BC V6B 1L8

Page: 4 - C
 Total # Pages: 7 (A - C)
 Plus Appendix Pages
 Finalized Date: 4-SEP-2016
 Account: MTT

Project: Lois

CERTIFICATE OF ANALYSIS VA16126365

Sample Description	Method Analyte Units LOR	ME-ICP41	ME-ICP41	ME-ICP41	ME-ICP41	ME-ICP41	ME-ICP41	ME-ICP41
		Th	Ti	Ti	U	V	W	Zn
		ppm	%	ppm	ppm	ppm	ppm	ppm
		20	0.01	10	10	1	10	2
ZZ112581		<20	0.02	<10	<10	29	<10	65
ZZ112582		<20	0.04	<10	<10	45	<10	47
ZZ112583		<20	0.03	<10	<10	32	<10	39
ZZ112584		<20	0.06	<10	<10	45	<10	63
ZZ112585		<20	0.04	<10	<10	30	<10	98
ZZ112586		<20	0.09	<10	<10	47	<10	101
ZZ112587		20	0.08	<10	<10	37	<10	63
ZZ112588		<20	0.08	<10	<10	40	<10	83
ZZ112589		<20	0.05	<10	<10	35	<10	54
ZZ112590		<20	0.06	<10	<10	37	<10	61
ZZ112591		<20	0.07	<10	<10	42	<10	66
ZZ112592		<20	0.08	<10	<10	55	<10	61
ZZ112593		<20	0.07	<10	<10	44	<10	62
ZZ112594		<20	0.04	<10	<10	45	<10	107
ZZ112595		<20	0.06	<10	<10	38	<10	92
ZZ112596		<20	0.05	<10	<10	36	<10	71
ZZ112597		<20	0.05	<10	<10	42	<10	87
ZZ112598		<20	0.06	<10	<10	43	<10	87
ZZ112599		<20	0.07	<10	<10	51	<10	78
ZZ112600		<20	0.06	<10	<10	47	<10	72
ZZ112601		<20	0.14	<10	<10	50	<10	50
ZZ112602		<20	0.13	<10	<10	55	<10	59
ZZ112603		<20	0.08	<10	<10	66	<10	43
ZZ112604		<20	0.07	<10	<10	42	<10	21
ZZ112605		<20	0.11	<10	<10	50	<10	46
ZZ112606		<20	0.05	<10	<10	38	<10	49
ZZ112607		<20	0.06	<10	<10	47	<10	55
ZZ112608		<20	0.06	<10	<10	49	<10	56
ZZ112609		<20	0.05	<10	<10	51	<10	60
ZZ112610		<20	0.06	<10	<10	49	<10	48
ZZ112611		<20	0.07	<10	<10	42	<10	50
ZZ112612		<20	0.09	<10	<10	60	10	51
ZZ112613		<20	0.09	<10	<10	56	<10	83
ZZ112614		<20	0.11	<10	<10	46	<10	56
ZZ112615		<20	0.10	<10	<10	46	10	46
ZZ112616		<20	0.08	<10	<10	45	<10	110
ZZ112617		<20	0.06	<10	<10	42	<10	63
ZZ112618		<20	0.06	<10	<10	49	<10	40
ZZ112619		<20	0.09	<10	<10	50	<10	33
ZZ112620		<20	0.06	<10	<10	37	<10	45



ALS Canada Ltd.
 2103 Dollarton Hwy
 North Vancouver BC V7H 0A7
 Phone: +1 (604) 984 0221 Fax: +1 (604) 984 0218
 www.alsglobal.com

To: STRATEGIC METALS LTD.
 C/O ARCHER, CATHRO & ASSOCIATES (1981)
 LIMITED
 1016-510 W HASTINGS ST
 VANCOUVER BC V6B 1L8

Page: 5 - A
 Total # Pages: 7 (A - C)
 Plus Appendix Pages
 Finalized Date: 4-SEP-2016
 Account: MTT

Project: Lois

CERTIFICATE OF ANALYSIS VA16126365

Sample Description	Method	WEI-21	Au-ICP21	ME-ICP41	ME-ICP41	ME-ICP41	ME-ICP41	ME-ICP41	ME-ICP41	ME-ICP41	ME-ICP41	ME-ICP41	ME-ICP41	ME-ICP41	ME-ICP41	ME-ICP41
	Analyte	Recvd Wt.	Au	Ag	Al	As	B	Ba	Be	Bi	Ca	Cd	Co	Cr	Cu	Fe
Units		kg	ppm	ppm	%	ppm	ppm	ppm	ppm	ppm	%	ppm	ppm	ppm	ppm	%
LOR		0.02	0.001	0.2	0.01	2	10	10	0.5	2	0.01	0.5	1	1	1	0.01
ZZ112621		0.72	0.003	<0.2	2.86	32	<10	200	2.2	2	0.99	<0.5	8	12	19	2.80
ZZ112622		0.62	0.002	0.3	3.72	102	<10	280	1.9	<2	1.07	<0.5	8	12	36	2.52
ZZ112623		0.72	0.001	0.2	2.93	18	<10	260	1.6	2	1.05	<0.5	8	13	25	2.47
ZZ112624		0.58	0.001	0.2	2.44	21	<10	220	1.4	<2	0.62	<0.5	8	16	31	2.53
ZZ112625		0.56	0.001	0.2	2.02	12	<10	210	1.1	<2	0.50	<0.5	6	12	11	2.15
ZZ112626		0.58	0.006	0.3	2.14	33	<10	240	0.9	4	0.47	<0.5	9	18	31	2.56
ZZ112627		0.44	0.001	0.3	1.81	18	<10	170	0.6	<2	0.27	<0.5	6	17	11	2.51
ZZ112628		0.48	0.004	0.4	1.98	14	<10	180	0.8	<2	0.22	<0.5	6	18	17	2.87
ZZ112629		0.56	<0.001	0.2	1.11	11	<10	80	<0.5	<2	0.11	<0.5	3	14	8	1.99
ZZ112630		0.72	0.001	<0.2	3.00	11	<10	330	1.6	2	0.70	<0.5	9	13	16	2.79
ZZ112631		0.64	0.002	0.2	2.51	17	<10	280	1.4	2	0.46	<0.5	8	16	14	3.00
ZZ112632		0.84	0.002	0.4	2.80	89	<10	100	3.3	<2	0.98	<0.5	13	10	21	3.78
ZZ112633		0.74	<0.001	0.2	2.60	8	<10	130	1.7	2	1.08	<0.5	9	9	24	2.43
ZZ112634		0.60	<0.001	<0.2	2.45	13	<10	130	1.8	<2	0.86	<0.5	11	9	32	3.03
ZZ112635		0.46	<0.001	0.4	2.85	21	<10	240	1.5	<2	1.31	<0.5	7	9	25	2.37
ZZ112636		0.78	<0.001	0.7	3.31	34	<10	200	1.9	3	1.59	<0.5	10	10	51	3.13
ZZ112637		0.60	<0.001	0.2	3.05	77	<10	190	1.9	3	1.41	<0.5	10	10	30	3.04
ZZ112638		0.66	0.004	0.2	2.88	66	<10	230	1.5	2	1.18	<0.5	10	12	20	3.01
ZZ112639		0.48	<0.001	0.2	1.01	31	<10	80	0.6	<2	0.33	<0.5	3	5	11	1.16
ZZ112640		0.72	<0.001	0.2	3.24	13	<10	250	1.6	3	0.93	<0.5	9	12	16	2.98
ZZ112641		0.68	<0.001	<0.2	2.92	8	<10	330	1.2	<2	0.87	<0.5	10	14	8	3.26
ZZ112642		0.72	<0.001	<0.2	2.41	29	<10	200	1.2	<2	0.69	<0.5	8	10	10	2.40
ZZ112643		0.48	<0.001	0.2	2.13	7	<10	220	0.9	<2	0.55	<0.5	8	9	8	2.28
ZZ112644		0.56	<0.001	<0.2	1.90	5	<10	220	0.8	<2	0.53	<0.5	6	9	11	2.11
ZZ112645		0.66	<0.001	<0.2	3.01	11	<10	390	1.1	<2	0.83	<0.5	8	15	12	2.70
ZZ112646		0.60	<0.001	<0.2	2.90	5	<10	300	1.0	<2	1.09	<0.5	9	11	6	2.95
ZZ112647		0.62	<0.001	<0.2	3.29	6	<10	340	1.3	<2	1.08	<0.5	10	13	6	3.02
ZZ112648		0.60	<0.001	<0.2	3.34	7	<10	370	1.1	<2	1.25	<0.5	10	14	13	2.87
ZZ112649		0.66	<0.001	0.2	3.71	5	<10	260	1.6	<2	1.81	<0.5	8	10	7	2.49
ZZ112650		0.44	<0.001	<0.2	3.76	4	<10	340	1.0	<2	0.93	0.5	9	15	12	2.59
ZZ112651		0.62	0.004	<0.2	4.77	8	<10	400	2.0	3	0.70	<0.5	23	54	158	6.02
ZZ112652		0.50	<0.001	<0.2	3.33	4	<10	220	1.3	2	1.53	<0.5	9	11	6	2.77
ZZ112653		0.58	<0.001	<0.2	3.49	5	<10	300	1.3	<2	1.50	<0.5	9	11	8	2.87
ZZ112654		0.68	<0.001	0.2	2.95	5	<10	350	1.1	<2	1.18	<0.5	9	10	8	2.74
ZZ112655		0.60	<0.001	0.2	2.96	14	<10	270	1.1	<2	1.12	<0.5	8	9	4	2.50
ZZ112656		0.76	<0.001	<0.2	3.12	3	<10	270	1.0	<2	1.46	<0.5	8	8	3	2.56
ZZ112657		0.58	<0.001	<0.2	2.74	4	<10	270	0.9	<2	1.11	<0.5	7	8	4	2.26
ZZ112658		0.76	0.001	<0.2	2.52	11	<10	260	0.8	<2	1.49	<0.5	12	19	17	2.88
ZZ112659		0.66	0.002	0.2	3.87	10	<10	250	1.1	<2	0.61	<0.5	32	78	170	6.48
ZZ112660		0.54	<0.001	0.2	2.11	16	<10	150	0.7	<2	0.19	<0.5	11	33	27	3.14



ALS Canada Ltd.
 2103 Dollarton Hwy
 North Vancouver BC V7H 0A7
 Phone: +1 (604) 984 0221 Fax: +1 (604) 984 0218
 www.alsglobal.com

To: STRATEGIC METALS LTD.
 C/O ARCHER, CATHRO & ASSOCIATES (1981)
 LIMITED
 1016-510 W HASTINGS ST
 VANCOUVER BC V6B 1L8

Page: 5 - B
 Total # Pages: 7 (A - C)
 Plus Appendix Pages
 Finalized Date: 4-SEP-2016
 Account: MTT

Project: Lois

CERTIFICATE OF ANALYSIS VA16126365

Sample Description	Method	ME-ICP41	ME-ICP41	ME-ICP41	ME-ICP41	ME-ICP41	ME-ICP41	ME-ICP41	ME-ICP41	ME-ICP41	ME-ICP41	ME-ICP41	ME-ICP41	ME-ICP41	ME-ICP41	
	Analyte	Ga	Hg	K	La	Mg	Mn	Mo	Na	Ni	P	Pb	S	Sb	Sc	Sr
Units		ppm	ppm	%	ppm	%	ppm	ppm	%	ppm	ppm	ppm	%	ppm	ppm	ppm
LOR		10	1	0.01	10	0.01	5	1	0.01	1	10	2	0.01	2	1	1
ZZ112621		10	1	0.32	20	0.73	515	<1	0.02	6	660	20	0.02	2	7	91
ZZ112622		10	1	0.32	20	0.68	428	<1	0.02	8	570	14	0.03	4	5	93
ZZ112623		10	1	0.33	30	0.57	484	1	0.03	8	680	14	0.03	2	5	117
ZZ112624		10	1	0.20	30	0.53	382	1	0.02	14	630	14	0.03	2	4	71
ZZ112625		10	1	0.13	20	0.46	349	1	0.02	8	680	12	0.04	2	3	54
ZZ112626		10	1	0.23	30	0.56	479	1	0.01	18	1040	14	0.03	3	3	43
ZZ112627		10	1	0.14	10	0.40	255	1	0.01	12	390	21	0.03	2	2	38
ZZ112628		10	1	0.14	20	0.47	252	1	0.02	14	330	16	0.04	<2	3	31
ZZ112629		10	1	0.08	10	0.20	136	2	<0.01	9	200	12	0.02	2	2	16
ZZ112630		10	1	0.28	30	0.74	526	<1	0.03	9	590	25	0.02	3	5	68
ZZ112631		10	1	0.19	20	0.49	513	1	0.02	11	740	22	0.09	7	2	53
ZZ112632		10	1	0.21	50	0.57	1140	<1	0.01	6	710	51	0.02	10	10	88
ZZ112633		10	<1	0.22	40	0.73	586	<1	0.01	4	610	23	0.02	5	6	87
ZZ112634		10	<1	0.13	50	0.77	801	1	0.01	5	790	25	0.04	4	6	60
ZZ112635		10	<1	0.25	40	0.66	496	<1	0.04	5	690	36	0.05	2	4	118
ZZ112636		10	<1	0.37	50	0.90	647	<1	0.02	5	670	40	0.02	3	7	180
ZZ112637		10	1	0.41	50	0.91	597	<1	0.01	4	730	20	0.02	<2	7	121
ZZ112638		10	<1	0.45	40	0.90	560	<1	0.02	5	740	13	0.02	3	7	127
ZZ112639		<10	1	0.09	10	0.23	159	<1	0.03	2	570	5	0.04	3	1	38
ZZ112640		10	1	0.34	30	0.80	556	1	0.02	6	650	17	0.03	3	5	109
ZZ112641		10	1	0.43	40	0.93	541	<1	0.03	7	770	11	0.02	2	7	85
ZZ112642		10	1	0.19	30	0.65	395	1	0.03	6	600	13	0.02	<2	4	107
ZZ112643		10	<1	0.26	20	0.62	376	<1	0.04	4	660	8	0.03	<2	4	70
ZZ112644		10	1	0.19	30	0.53	357	1	0.03	5	590	17	0.04	<2	3	68
ZZ112645		10	1	0.31	30	0.53	472	1	0.03	12	780	19	0.05	3	3	101
ZZ112646		10	1	0.40	40	0.76	501	<1	0.03	6	680	20	0.02	2	5	98
ZZ112647		10	1	0.41	40	0.79	534	<1	0.04	8	790	10	0.03	<2	5	94
ZZ112648		10	<1	0.29	30	0.71	482	1	0.04	13	570	15	0.02	2	5	85
ZZ112649		10	1	0.50	40	0.66	413	<1	0.03	7	680	9	0.02	3	4	116
ZZ112650		10	<1	0.41	10	0.60	334	1	0.03	8	530	9	0.05	<2	3	68
ZZ112651		10	1	0.89	10	1.57	560	2	0.03	43	600	10	0.16	<2	13	87
ZZ112652		10	1	0.38	40	0.76	456	<1	0.04	5	620	10	0.04	<2	5	103
ZZ112653		10	1	0.43	40	0.75	485	<1	0.05	7	560	13	0.02	2	5	106
ZZ112654		10	1	0.35	30	0.71	499	<1	0.03	7	550	13	0.02	<2	5	87
ZZ112655		10	1	0.37	40	0.66	465	<1	0.03	5	640	47	0.04	2	4	109
ZZ112656		10	<1	0.51	40	0.70	476	<1	0.04	4	600	16	0.01	3	5	154
ZZ112657		10	<1	0.40	30	0.57	392	<1	0.04	4	660	14	0.05	<2	3	132
ZZ112658		10	1	0.24	30	0.67	567	1	0.02	15	700	13	0.02	4	5	80
ZZ112659		10	1	0.99	10	1.50	492	1	0.05	55	600	13	0.31	2	16	55
ZZ112660		10	1	0.19	10	0.50	500	1	<0.01	21	370	16	0.04	<2	3	28



ALS Canada Ltd.
 2103 Dollarton Hwy
 North Vancouver BC V7H 0A7
 Phone: +1 (604) 984 0221 Fax: +1 (604) 984 0218
 www.alsglobal.com

To: STRATEGIC METALS LTD.
 C/O ARCHER, CATHRO & ASSOCIATES (1981)
 LIMITED
 1016-510 W HASTINGS ST
 VANCOUVER BC V6B 1L8

Page: 5 - C
 Total # Pages: 7 (A - C)
 Plus Appendix Pages
 Finalized Date: 4-SEP-2016
 Account: MTT

Project: Lois

CERTIFICATE OF ANALYSIS VA16126365

Sample Description	Method Analyte Units LOR	ME-ICP41	ME-ICP41	ME-ICP41	ME-ICP41	ME-ICP41	ME-ICP41	
		Th	Ti	Ti	U	V	W	Zn
		ppm	%	ppm	ppm	ppm	ppm	ppm
		20	0.01	10	10	1	10	2
ZZ112621		<20	0.09	<10	<10	50	<10	53
ZZ112622		<20	0.06	<10	<10	48	<10	52
ZZ112623		<20	0.10	<10	<10	52	<10	50
ZZ112624		<20	0.08	<10	<10	50	<10	57
ZZ112625		<20	0.06	<10	<10	43	<10	53
ZZ112626		<20	0.11	<10	<10	53	<10	78
ZZ112627		<20	0.10	<10	<10	58	<10	57
ZZ112628		<20	0.11	<10	<10	61	<10	55
ZZ112629		<20	0.10	<10	<10	64	<10	36
ZZ112630		<20	0.13	<10	<10	53	<10	76
ZZ112631		<20	0.07	<10	<10	58	<10	67
ZZ112632		20	0.02	<10	<10	49	<10	74
ZZ112633		20	0.04	<10	<10	43	<10	45
ZZ112634		<20	0.04	<10	<10	44	<10	51
ZZ112635		<20	0.08	<10	<10	47	<10	55
ZZ112636		20	0.13	<10	<10	55	<10	58
ZZ112637		20	0.12	<10	<10	55	<10	52
ZZ112638		20	0.14	<10	<10	56	<10	55
ZZ112639		<20	0.05	<10	<10	25	<10	21
ZZ112640		<20	0.09	<10	<10	60	<10	56
ZZ112641		20	0.20	<10	<10	68	<10	66
ZZ112642		<20	0.08	<10	<10	45	<10	46
ZZ112643		<20	0.13	<10	<10	49	<10	52
ZZ112644		<20	0.10	<10	<10	44	<10	42
ZZ112645		<20	0.12	<10	<10	54	<10	67
ZZ112646		20	0.17	<10	<10	54	<10	67
ZZ112647		20	0.17	<10	<10	57	<10	76
ZZ112648		<20	0.12	<10	<10	55	<10	67
ZZ112649		<20	0.16	<10	<10	47	<10	54
ZZ112650		<20	0.14	<10	<10	56	<10	54
ZZ112651		<20	0.29	<10	<10	126	<10	88
ZZ112652		<20	0.15	<10	<10	53	<10	61
ZZ112653		<20	0.16	<10	<10	53	<10	62
ZZ112654		<20	0.15	<10	<10	50	<10	72
ZZ112655		<20	0.12	<10	<10	46	<10	62
ZZ112656		20	0.15	<10	<10	44	<10	53
ZZ112657		<20	0.13	<10	<10	42	<10	53
ZZ112658		<20	0.09	<10	<10	52	<10	78
ZZ112659		<20	0.36	<10	<10	168	<10	87
ZZ112660		<20	0.10	<10	<10	68	<10	68



ALS Canada Ltd.
 2103 Dollarton Hwy
 North Vancouver BC V7H 0A7
 Phone: +1 (604) 984 0221 Fax: +1 (604) 984 0218
 www.alsglobal.com

To: STRATEGIC METALS LTD.
 C/O ARCHER, CATHRO & ASSOCIATES (1981)
 LIMITED
 1016-510 W HASTINGS ST
 VANCOUVER BC V6B 1L8

Page: 6 - A
 Total # Pages: 7 (A - C)
 Plus Appendix Pages
 Finalized Date: 4-SEP-2016
 Account: MTT

Project: Lois

CERTIFICATE OF ANALYSIS VA16126365

Sample Description	Method	WEI-21	Au-ICP21	ME-ICP41	ME-ICP41	ME-ICP41	ME-ICP41	ME-ICP41	ME-ICP41	ME-ICP41	ME-ICP41	ME-ICP41	ME-ICP41	ME-ICP41	ME-ICP41	ME-ICP41
	Analyte	Recvd Wt.	Au	Ag	Al	As	B	Ba	Be	Bi	Ca	Cd	Co	Cr	Cu	Fe
Units		kg	ppm	ppm	%	ppm	ppm	ppm	ppm	ppm	%	ppm	ppm	ppm	ppm	%
LOR		0.02	0.001	0.2	0.01	2	10	10	0.5	2	0.01	0.5	1	1	1	0.01
ZZ112661		0.44	<0.001	0.3	1.62	17	<10	80	0.5	<2	0.09	<0.5	6	27	32	3.86
ZZ112662		0.60	0.002	<0.2	3.00	16	<10	140	1.2	<2	0.30	<0.5	23	45	66	4.58
ZZ112663		0.42	0.002	0.2	3.88	49	<10	170	1.4	<2	0.26	<0.5	14	73	119	6.39
ZZ112664		0.44	<0.001	<0.2	1.28	11	<10	100	0.5	<2	0.13	<0.5	5	19	30	1.89
ZZ112665		0.64	0.003	0.2	1.96	37	<10	280	1.0	<2	0.20	<0.5	22	32	48	3.52
ZZ112666		0.66	0.002	<0.2	1.79	10	<10	290	0.6	<2	0.46	<0.5	9	15	12	2.62
ZZ112667		0.58	0.002	<0.2	2.19	9	<10	340	0.7	<2	0.37	<0.5	9	16	11	2.89
ZZ112668		0.60	0.001	0.2	2.49	9	<10	400	0.9	<2	0.53	<0.5	9	17	16	2.80
ZZ112669		0.66	0.002	<0.2	2.03	9	<10	310	0.7	<2	0.36	<0.5	9	16	14	2.41
ZZ112670		0.58	<0.001	<0.2	2.36	7	<10	400	0.9	<2	0.41	<0.5	8	17	12	2.71
ZZ112671		0.70	<0.001	<0.2	2.25	9	<10	360	0.7	<2	0.41	<0.5	8	15	11	2.48
ZZ112672		0.82	0.003	0.4	2.05	26	<10	310	1.0	<2	0.60	<0.5	10	13	16	3.00
ZZ112673		0.74	0.001	<0.2	2.24	7	<10	360	0.7	<2	0.49	<0.5	8	19	14	2.40
ZZ112674		0.74	<0.001	0.2	2.70	10	<10	360	0.9	<2	0.50	<0.5	9	17	14	2.84
ZZ112675		0.68	<0.001	<0.2	2.41	7	<10	440	0.9	<2	0.82	<0.5	8	14	10	2.49
ZZ112676		0.14	0.001	<0.2	0.24	5	<10	20	<0.5	<2	0.03	<0.5	1	4	8	0.47
ZZ112677		0.12	0.471	0.3	1.50	198	<10	60	0.9	<2	0.27	<0.5	3	13	34	1.61
ZZ112678		0.14	0.001	0.3	0.71	5	<10	40	<0.5	<2	0.05	<0.5	1	7	12	0.64
ZZ112679		0.14	0.023	0.2	2.07	90	<10	120	1.4	<2	0.74	<0.5	19	27	58	3.04
ZZ112681		0.68	<0.001	0.2	2.19	9	<10	300	0.8	<2	0.40	<0.5	8	13	12	2.49
ZZ112682		0.62	<0.001	<0.2	2.40	7	<10	280	0.8	<2	0.77	<0.5	8	11	8	2.37
ZZ112683		0.64	0.003	<0.2	1.59	42	<10	230	0.6	<2	0.22	<0.5	7	17	16	2.29
ZZ112684		0.60	<0.001	<0.2	1.93	17	<10	310	0.8	<2	0.30	<0.5	9	17	17	2.50
ZZ112685		0.46	0.001	<0.2	2.40	31	<10	330	0.9	4	0.32	<0.5	11	22	23	2.96
ZZ112686		0.56	0.002	<0.2	2.41	140	<10	360	1.2	4	0.22	<0.5	10	22	28	3.07
ZZ112687		0.68	0.001	<0.2	4.04	21	<10	110	2.2	2	0.80	<0.5	23	66	75	4.42
ZZ112688		0.58	<0.001	<0.2	3.30	7	<10	290	1.0	2	0.62	<0.5	9	20	26	2.50
ZZ112689		0.56	0.001	<0.2	2.08	24	<10	220	0.6	<2	0.20	<0.5	10	34	34	3.35
ZZ112690		0.58	0.001	<0.2	1.69	16	<10	220	0.5	<2	0.36	<0.5	5	25	29	2.30
ZZ112691		0.90	0.002	<0.2	2.21	29	<10	100	1.5	2	0.06	<0.5	18	47	65	5.05
ZZ112692		0.76	0.002	<0.2	1.72	25	<10	90	1.1	<2	0.02	<0.5	18	41	67	4.72
ZZ112693		0.72	0.003	<0.2	2.06	23	<10	90	1.6	<2	0.09	<0.5	22	45	62	5.03
ZZ112694		0.76	0.005	<0.2	2.15	44	<10	70	1.2	<2	0.03	<0.5	17	36	57	4.55
ZZ112695		0.68	0.008	<0.2	2.48	101	<10	100	1.7	2	0.04	<0.5	19	41	54	4.49
ZZ112696		0.64	0.001	<0.2	3.13	43	<10	90	2.6	2	0.08	<0.5	23	44	61	5.50
ZZ112697		0.38	<0.001	<0.2	3.13	13	<10	410	1.2	2	0.74	<0.5	10	18	14	3.28
ZZ112698		0.74	<0.001	<0.2	1.91	27	<10	270	0.7	<2	0.52	<0.5	7	11	13	2.28
ZZ112699		0.50	<0.001	<0.2	2.67	18	<10	340	1.2	3	0.41	<0.5	10	17	17	2.99
ZZ112700		0.58	<0.001	<0.2	2.39	33	<10	360	1.0	2	0.60	<0.5	9	14	19	2.68
ZZ112701		0.70	<0.001	<0.2	2.66	20	<10	330	1.1	4	0.81	<0.5	10	15	20	2.81



ALS Canada Ltd.
 2103 Dollarton Hwy
 North Vancouver BC V7H 0A7
 Phone: +1 (604) 984 0221 Fax: +1 (604) 984 0218
 www.alsglobal.com

To: STRATEGIC METALS LTD.
 C/O ARCHER, CATHRO & ASSOCIATES (1981)
 LIMITED
 1016-510 W HASTINGS ST
 VANCOUVER BC V6B 1L8

Page: 6 - B
 Total # Pages: 7 (A - C)
 Plus Appendix Pages
 Finalized Date: 4-SEP-2016
 Account: MTT

Project: Loix

CERTIFICATE OF ANALYSIS VA16126365

Sample Description	Method Analyte Units LOR	ME-ICP41	ME-ICP41	ME-ICP41	ME-ICP41	ME-ICP41	ME-ICP41	ME-ICP41	ME-ICP41	ME-ICP41	ME-ICP41	ME-ICP41	ME-ICP41	ME-ICP41	ME-ICP41	
		Ga	Hg	K	La	Mg	Mn	Mo	Na	Ni	P	Pb	S	Sb	Sc	Sr
		ppm	ppm	%	ppm	%	ppm	ppm	%	ppm	ppm	ppm	%	ppm	ppm	ppm
		10	1	0.01	10	0.01	5	1	0.01	1	10	2	0.01	2	1	1
ZZ112661		10	1	0.11	10	0.27	226	2	<0.01	17	350	25	0.03	3	3	22
ZZ112662		10	1	0.44	10	0.74	690	1	0.03	44	780	20	0.26	3	7	92
ZZ112663		10	1	0.59	20	1.26	516	1	0.05	36	590	18	0.41	<2	12	74
ZZ112664		<10	1	0.08	10	0.25	207	1	0.01	13	730	10	0.08	2	1	17
ZZ112665		10	1	0.12	10	0.58	1090	2	0.01	33	670	35	0.05	2	3	139
ZZ112666		<10	1	0.22	20	0.57	475	1	0.02	15	850	9	0.03	<2	4	29
ZZ112667		10	1	0.22	30	0.64	571	1	0.02	16	790	10	0.05	<2	4	28
ZZ112668		10	1	0.22	30	0.59	485	1	0.03	15	840	11	0.07	3	3	43
ZZ112669		<10	1	0.18	20	0.52	445	1	0.02	18	770	7	0.03	2	3	33
ZZ112670		10	1	0.24	30	0.58	423	1	0.02	16	670	11	0.06	<2	3	58
ZZ112671		10	1	0.21	20	0.53	393	1	0.02	15	680	9	0.03	2	3	40
ZZ112672		10	1	0.24	40	0.59	590	1	0.02	12	860	57	0.02	4	6	45
ZZ112673		<10	1	0.24	30	0.60	291	1	0.02	17	1000	11	0.02	2	4	43
ZZ112674		10	1	0.22	30	0.58	483	1	0.03	17	910	11	0.06	<2	3	45
ZZ112675		10	1	0.34	30	0.60	428	1	0.02	13	860	9	0.02	2	4	136
ZZ112676		<10	1	0.03	<10	0.03	46	<1	0.01	2	270	3	0.02	<2	<1	7
ZZ112677		<10	1	0.05	20	0.18	85	1	0.01	11	1040	17	0.13	3	1	21
ZZ112678		<10	1	0.04	<10	0.08	38	<1	0.02	4	480	3	0.04	<2	<1	10
ZZ112679		10	1	0.11	20	0.49	746	1	0.01	30	940	17	0.08	<2	2	49
ZZ112681		10	1	0.20	20	0.57	533	1	0.02	10	800	23	0.07	<2	3	40
ZZ112682		10	1	0.30	30	0.63	387	1	0.02	9	600	13	0.03	3	3	60
ZZ112683		10	<1	0.14	20	0.48	319	1	0.01	16	610	18	0.04	<2	2	21
ZZ112684		10	1	0.22	20	0.61	370	1	0.01	18	740	12	0.02	<2	4	23
ZZ112685		10	<1	0.17	20	0.56	593	2	0.02	22	990	18	0.07	3	3	33
ZZ112686		10	<1	0.17	20	0.59	657	2	0.01	19	780	17	0.07	2	3	28
ZZ112687		10	<1	0.52	20	1.32	843	<1	0.02	62	410	12	0.02	<2	9	37
ZZ112688		10	<1	0.25	20	0.65	329	<1	0.03	14	730	10	0.03	<2	4	84
ZZ112689		10	<1	0.18	10	0.56	447	1	0.01	23	460	19	0.04	<2	3	30
ZZ112690		10	<1	0.10	10	0.24	285	1	0.02	16	760	15	0.09	<2	1	25
ZZ112691		10	<1	0.53	30	0.62	454	1	0.01	30	540	26	0.07	2	7	13
ZZ112692		10	<1	0.56	20	0.54	416	1	0.01	22	540	22	0.09	3	7	9
ZZ112693		10	<1	0.57	30	0.61	624	1	0.01	30	500	25	0.03	5	8	12
ZZ112694		10	<1	0.27	20	0.45	472	1	<0.01	29	690	26	0.05	7	4	15
ZZ112695		10	<1	0.36	20	0.48	371	1	0.01	30	550	20	0.10	5	6	27
ZZ112696		10	<1	0.35	20	0.60	384	1	0.01	32	560	18	0.06	<2	6	46
ZZ112697		10	<1	0.29	40	0.73	650	1	0.04	14	910	11	0.07	<2	4	82
ZZ112698		10	<1	0.25	30	0.58	390	<1	0.02	8	630	8	0.02	<2	3	41
ZZ112699		10	<1	0.21	30	0.64	490	1	0.02	14	950	11	0.06	<2	4	47
ZZ112700		10	<1	0.30	30	0.67	534	1	0.02	11	790	13	0.04	<2	4	72
ZZ112701		10	<1	0.36	30	0.71	483	1	0.03	12	910	12	0.03	<2	4	70



ALS Canada Ltd.
 2103 Dollarton Hwy
 North Vancouver BC V7H 0A7
 Phone: +1 (604) 984 0221 Fax: +1 (604) 984 0218
 www.alsglobal.com

To: STRATEGIC METALS LTD.
 C/O ARCHER, CATHRO & ASSOCIATES (1981)
 LIMITED
 1016-510 W HASTINGS ST
 VANCOUVER BC V6B 1L8

Page: 6 - C
 Total # Pages: 7 (A - C)
 Plus Appendix Pages
 Finalized Date: 4-SEP-2016
 Account: MTT

Project: Lois

CERTIFICATE OF ANALYSIS VA16126365

Sample Description	Method Analyte Units LOR	ME-ICP41	ME-ICP41	ME-ICP41	ME-ICP41	ME-ICP41	ME-ICP41	
		Th	Ti	Ti	U	V	W	Zn
		ppm	%	ppm	ppm	ppm	ppm	ppm
		20	0.01	10	10	1	10	2
ZZ112661		<20	0.10	<10	<10	83	<10	59
ZZ112662		<20	0.14	<10	<10	70	<10	112
ZZ112663		<20	0.25	<10	<10	105	<10	101
ZZ112664		<20	0.05	<10	<10	37	<10	42
ZZ112665		<20	0.07	<10	<10	52	<10	102
ZZ112666		<20	0.12	<10	<10	48	<10	82
ZZ112667		<20	0.14	<10	<10	55	<10	82
ZZ112668		<20	0.12	<10	<10	54	<10	80
ZZ112669		<20	0.12	<10	<10	47	<10	78
ZZ112670		<20	0.11	<10	<10	53	<10	69
ZZ112671		<20	0.11	<10	<10	49	<10	68
ZZ112672		<20	0.10	<10	<10	46	<10	83
ZZ112673		<20	0.13	<10	<10	53	<10	77
ZZ112674		<20	0.11	<10	<10	57	<10	78
ZZ112675		<20	0.12	<10	<10	46	<10	67
ZZ112676		<20	0.01	<10	<10	13	<10	8
ZZ112677		<20	0.02	<10	<10	22	<10	25
ZZ112678		<20	0.02	<10	<10	13	<10	11
ZZ112679		<20	0.05	<10	<10	44	<10	94
ZZ112681		<20	0.11	<10	<10	51	<10	68
ZZ112682		<20	0.12	<10	<10	48	<10	61
ZZ112683		<20	0.08	<10	<10	48	<10	70
ZZ112684		<20	0.12	<10	<10	51	<10	72
ZZ112685		<20	0.08	<10	<10	62	<10	82
ZZ112686		<20	0.08	<10	<10	62	<10	81
ZZ112687		<20	0.11	<10	<10	80	<10	79
ZZ112688		<20	0.07	<10	<10	47	<10	50
ZZ112689		<20	0.09	<10	<10	63	<10	79
ZZ112690		<20	0.03	<10	<10	52	<10	46
ZZ112691		<20	0.07	<10	<10	55	<10	90
ZZ112692		<20	0.08	<10	<10	51	<10	77
ZZ112693		<20	0.07	<10	<10	56	<10	92
ZZ112694		<20	0.05	<10	<10	47	<10	82
ZZ112695		<20	0.04	<10	<10	49	<10	75
ZZ112696		<20	0.03	<10	<10	52	<10	106
ZZ112697		<20	0.14	<10	<10	65	<10	73
ZZ112698		<20	0.13	<10	<10	46	<10	53
ZZ112699		<20	0.12	<10	<10	59	<10	72
ZZ112700		<20	0.14	<10	<10	54	<10	70
ZZ112701		<20	0.15	<10	<10	58	<10	70



ALS Canada Ltd.
 2103 Dollarton Hwy
 North Vancouver BC V7H 0A7
 Phone: +1 (604) 984 0221 Fax: +1 (604) 984 0218
 www.alsglobal.com

To: STRATEGIC METALS LTD.
 C/O ARCHER, CATHRO & ASSOCIATES (1981)
 LIMITED
 1016-510 W HASTINGS ST
 VANCOUVER BC V6B 1L8

Page: 7 - A
 Total # Pages: 7 (A - C)
 Plus Appendix Pages
 Finalized Date: 4-SEP-2016
 Account: MTT

Project: Lois

CERTIFICATE OF ANALYSIS VA16126365

Sample Description	Method Analyte Units LOR	WEI-21 Recvd Wt. kg	Au-ICP21 Au ppm	ME-ICP41 Ag ppm	ME-ICP41 Al %	ME-ICP41 As ppm	ME-ICP41 B ppm	ME-ICP41 Ba ppm	ME-ICP41 Be ppm	ME-ICP41 Bi ppm	ME-ICP41 Ca %	ME-ICP41 Cd ppm	ME-ICP41 Co ppm	ME-ICP41 Cr ppm	ME-ICP41 Cu ppm	ME-ICP41 Fe %
		0.02	0.001	0.2	0.01	2	10	10	0.5	2	0.01	0.5	1	1	1	0.01
ZZ112702		0.66	<0.001	<0.2	2.80	3	<10	200	1.1	3	1.23	<0.5	9	12	6	2.99
ZZ112703		0.74	<0.001	<0.2	2.63	9	<10	230	1.1	2	1.00	<0.5	8	14	9	2.81
ZZ112704		0.72	<0.001	<0.2	3.99	12	<10	300	1.2	3	1.14	<0.5	14	31	31	3.34
ZZ112705		0.58	<0.001	<0.2	4.23	16	<10	420	1.5	2	1.03	<0.5	19	44	42	3.72
ZZ112706		0.70	0.002	<0.2	5.26	42	<10	360	1.9	4	1.40	<0.5	27	78	85	4.95
ZZ112707		0.70	0.004	<0.2	4.40	42	<10	430	0.9	3	1.44	<0.5	19	54	38	3.50
ZZ112708		0.60	0.001	<0.2	2.96	12	<10	190	1.1	2	0.68	<0.5	19	40	37	3.32
ZZ112709		0.56	0.008	<0.2	3.84	337	<10	260	0.7	5	0.63	<0.5	29	57	161	3.98
ZZ112710		0.44	0.001	<0.2	1.83	15	<10	160	<0.5	2	0.28	<0.5	7	24	27	1.99
ZZ112711		0.60	0.002	<0.2	4.15	20	<10	250	1.1	2	0.89	<0.5	27	66	103	4.61
ZZ112712		0.64	0.016	<0.2	2.29	9	<10	430	0.7	<2	0.48	<0.5	8	16	13	2.35
ZZ112713		0.64	0.006	<0.2	2.26	14	<10	380	0.8	2	0.52	<0.5	9	18	15	2.71
ZZ112714		0.62	0.001	<0.2	2.49	93	<10	400	0.9	4	0.52	<0.5	9	15	25	2.47
ZZ112715		0.38	<0.001	<0.2	1.90	10	<10	280	0.6	<2	0.22	<0.5	7	15	15	2.07
ZZ112716		0.46	<0.001	<0.2	2.56	29	<10	480	1.0	2	0.54	<0.5	7	13	12	2.06
ZZ112717		0.54	0.001	<0.2	2.49	70	<10	380	1.1	3	0.55	<0.5	7	15	17	2.31
ZZ112718		0.66	0.006	<0.2	1.74	18	<10	260	0.7	<2	0.40	<0.5	7	13	11	2.28
ZZ112719		0.64	0.002	<0.2	1.65	27	<10	180	0.8	<2	0.19	<0.5	7	16	17	2.25
ZZ112720		0.74	0.001	<0.2	1.63	9	<10	140	0.9	<2	0.18	<0.5	6	17	13	2.01
ZZ112751		0.56	<0.001	<0.2	1.59	51	10	80	0.9	<2	0.07	<0.5	22	17	44	4.66
ZZ112752		0.50	0.002	0.2	3.22	15	10	100	1.4	2	3.21	0.9	9	22	40	2.61
ZZ112753		0.78	0.002	<0.2	3.59	18	<10	70	2.6	2	0.32	<0.5	28	49	65	6.19
ZZ112754		0.70	0.003	<0.2	2.62	27	<10	120	1.7	<2	0.09	<0.5	13	43	44	5.18
ZZ112755		0.48	0.001	0.3	2.82	15	<10	80	1.4	<2	0.04	<0.5	14	31	61	4.97



ALS Canada Ltd.
 2103 Dollarton Hwy
 North Vancouver BC V7H 0A7
 Phone: +1 (604) 984 0221 Fax: +1 (604) 984 0218
 www.alsglobal.com

To: STRATEGIC METALS LTD.
 C/O ARCHER, CATHRO & ASSOCIATES (1981)
 LIMITED
 1016-510 W HASTINGS ST
 VANCOUVER BC V6B 1L8

Page: 7 - B
 Total # Pages: 7 (A - C)
 Plus Appendix Pages
 Finalized Date: 4-SEP-2016
 Account: MTT

Project: Lois

CERTIFICATE OF ANALYSIS VA16126365

Sample Description	Method Analyte Units LOR	ME-ICP41	ME-ICP41	ME-ICP41	ME-ICP41	ME-ICP41	ME-ICP41	ME-ICP41	ME-ICP41	ME-ICP41	ME-ICP41	ME-ICP41	ME-ICP41	ME-ICP41	ME-ICP41	
		Ga ppm	Hg ppm	K %	La ppm	Mg %	Mn ppm	Mo ppm	Na %	Ni ppm	P ppm	Pb ppm	S %	Sb ppm	Sc ppm	Sr ppm
		10	1	0.01	10	0.01	5	1	0.01	1	10	2	0.01	2	1	1
ZZ112702		10	<1	0.60	40	0.82	443	<1	0.04	5	870	9	0.01	<2	6	100
ZZ112703		10	<1	0.52	40	0.75	441	<1	0.03	9	840	10	0.02	<2	5	80
ZZ112704		10	<1	0.43	30	0.84	583	<1	0.05	22	740	11	0.03	<2	6	120
ZZ112705		10	<1	0.51	10	1.05	635	1	0.05	29	830	11	0.07	<2	7	140
ZZ112706		10	<1	0.54	10	1.53	656	<1	0.10	45	730	12	0.04	<2	12	185
ZZ112707		10	<1	0.48	10	1.43	566	<1	0.10	23	980	9	0.03	<2	8	431
ZZ112708		10	<1	0.25	10	0.90	758	<1	0.02	35	580	19	0.05	<2	5	90
ZZ112709		10	<1	0.27	10	0.92	487	1	0.06	53	720	10	0.10	<2	5	84
ZZ112710		10	<1	0.08	10	0.33	398	1	0.02	13	750	6	0.10	<2	1	37
ZZ112711		10	<1	0.46	20	1.40	614	1	0.05	54	960	11	0.03	<2	11	104
ZZ112712		10	<1	0.27	30	0.55	367	<1	0.03	14	760	8	0.02	<2	3	41
ZZ112713		10	<1	0.34	30	0.62	405	1	0.03	14	980	8	0.02	2	4	57
ZZ112714		10	<1	0.24	30	0.57	485	1	0.03	13	680	10	0.03	3	3	56
ZZ112715		10	<1	0.10	20	0.38	455	1	0.02	12	830	8	0.09	<2	1	23
ZZ112716		10	<1	0.25	20	0.44	637	1	0.03	10	780	11	0.08	<2	2	56
ZZ112717		10	1	0.24	20	0.48	440	1	0.03	11	820	10	0.07	<2	2	54
ZZ112718		10	<1	0.29	20	0.61	339	1	0.02	10	850	7	0.01	<2	4	27
ZZ112719		10	<1	0.11	20	0.43	360	1	0.01	14	800	10	0.08	<2	1	17
ZZ112720		<10	<1	0.06	10	0.35	263	1	<0.01	17	730	9	0.03	<2	1	13
ZZ112751		10	1	0.13	20	0.31	871	3	0.01	35	870	21	0.06	4	2	11
ZZ112752		10	1	0.10	20	0.42	728	<1	0.04	23	750	13	0.09	<2	3	693
ZZ112753		10	<1	0.69	20	0.96	557	1	0.02	35	360	11	0.02	<2	7	53
ZZ112754		10	<1	0.37	20	0.50	291	1	0.01	26	400	11	0.04	<2	6	15
ZZ112755		10	<1	0.21	10	0.44	536	1	0.01	32	940	19	0.12	<2	3	10



ALS Canada Ltd.
 2103 Dollarton Hwy
 North Vancouver BC V7H 0A7
 Phone: +1 (604) 984 0221 Fax: +1 (604) 984 0218
 www.alsglobal.com

To: STRATEGIC METALS LTD.
 C/O ARCHER, CATHRO & ASSOCIATES (1981)
 LIMITED
 1016-510 W HASTINGS ST
 VANCOUVER BC V6B 1L8

Page: 7 - C
 Total # Pages: 7 (A - C)
 Plus Appendix Pages
 Finalized Date: 4-SEP-2016
 Account: MTT

Project: Lois

CERTIFICATE OF ANALYSIS VA16126365

Sample Description	Method Analyte Units LOR	ME-ICP41	ME-ICP41	ME-ICP41	ME-ICP41	ME-ICP41	ME-ICP41	ME-ICP41
		Th	Ti	Ti	U	V	W	Zn
		ppm	%	ppm	ppm	ppm	ppm	ppm
		20	0.01	10	10	1	10	2
ZZ112702		20	0.20	<10	<10	56	<10	58
ZZ112703		20	0.19	<10	<10	54	<10	62
ZZ112704		<20	0.15	<10	<10	80	<10	68
ZZ112705		<20	0.21	<10	<10	90	<10	80
ZZ112706		<20	0.33	<10	<10	131	<10	93
ZZ112707		<20	0.21	<10	<10	97	<10	68
ZZ112708		<20	0.12	<10	<10	61	<10	85
ZZ112709		<20	0.22	<10	<10	93	<10	75
ZZ112710		<20	0.07	<10	<10	55	<10	37
ZZ112711		<20	0.25	<10	<10	150	<10	84
ZZ112712		<20	0.13	<10	<10	47	<10	61
ZZ112713		<20	0.14	<10	<10	53	<10	67
ZZ112714		<20	0.11	<10	<10	52	<10	62
ZZ112715		<20	0.05	<10	<10	42	<10	51
ZZ112716		<20	0.07	<10	<10	43	<10	54
ZZ112717		<20	0.07	<10	<10	50	<10	58
ZZ112718		<20	0.14	<10	<10	48	<10	58
ZZ112719		<20	0.06	<10	<10	48	<10	73
ZZ112720		<20	0.05	<10	<10	39	<10	72
ZZ112751		<20	0.01	<10	<10	23	<10	82
ZZ112752		<20	0.05	<10	<10	23	<10	54
ZZ112753		<20	0.08	<10	<10	53	<10	98
ZZ112754		<20	0.08	<10	<10	56	<10	78
ZZ112755		<20	0.04	<10	<10	48	<10	93



ALS Canada Ltd.
2103 Dollarton Hwy
North Vancouver BC V7H 0A7
Phone: +1 (604) 984 0221 Fax: +1 (604) 984 0218
www.alsglobal.com

To: STRATEGIC METALS LTD.
C/O ARCHER, CATHRO & ASSOCIATES (1981)
LIMITED
1016-510 W HASTINGS ST
VANCOUVER BC V6B 1L8

Page: Appendix 1
Total # Appendix Pages: 1
Finalized Date: 4-SEP-2016
Account: MTT

Project: Lois

CERTIFICATE OF ANALYSIS VA16126365

CERTIFICATE COMMENTS									
Applies to Method:	<p style="text-align: center;">LABORATORY ADDRESSES</p> <p>Processed at ALS Vancouver located at 2103 Dollarton Hwy, North Vancouver, BC, Canada.</p> <table><tr><td>Au-ICP21</td><td>LOG-22</td><td>ME-ICP41</td><td>SCR-41</td></tr><tr><td>WEI-21</td><td></td><td></td><td></td></tr></table>	Au-ICP21	LOG-22	ME-ICP41	SCR-41	WEI-21			
Au-ICP21	LOG-22	ME-ICP41	SCR-41						
WEI-21									

APPENDIX IV
ROCK SAMPLE DESCRIPTIONS

Rock Sample Descriptions

Property: Lois

Sample Number: K282956 UTM: 603526 mE Nad83, Zone 8
Elevation: 1531 m UTM: 7020806 mN

Comments: Specimen sample of epidode-sericite-chlorite altered, banded, pale green to grey, 'cherty' quartz, with clots and narrow seams of fine to medium grained pyrrhotite, rare pyrite. Collected from a prominent ~8m wide linear.

Sample Number: K282957 UTM: 603540 mE Nad83, Zone 8
Elevation: 1527 m UTM: 7020801 mN

Comments: Outcrop sample of fluorescent yellow-green to rusty weathering, dark grey, non-magnetic micaceous siltstone with abundant narrow wisps of fine grained py.

Sample Number: K282958 UTM: 603522 mE Nad83, Zone 8
Elevation: 1309 m UTM: 7021374 mN

Comments: Subcrop sample of medium brown to rusty weathering, medium grey-green, banded, very fine grained skarn(?) with rare wisps and abundant disseminated very fine grained pyrrhotite throughout, and very very rare grains of very fine grained chalcopyrite. Magnetic. Collected from an approximately 2m by 2m area.

Sample Number: K282959 UTM: 603524 mE Nad83, Zone 8
Elevation: 1304 m UTM: 7021357 mN

Comments: Outcrop sample of orange-brown weathering, sugary quartz, collected from a ~10cm wide vein.

Sample Number: K282960 UTM: 603514 mE Nad83, Zone 8
Elevation: 1301 m UTM: 7021368 mN

Comments: Subcrop sample of rock with the same lithology as sample K282959. (Same vein?)

Sample Number: K282961 UTM: 603648 mE Nad83, Zone 8
Elevation: 1286 m UTM: 7021120 mN

Comments: Specimen sample of punky chocolate-brown oxide. Collected in a talus slope. No rep and no rep on site.

Rock Sample Descriptions

Property: Lois

Sample Number: K282962 UTM: 603643 mE Nad83, Zone 8
Elevation: 1289 m UTM: 7021120 mN

Comments: Specimen sample of punky, brown-weathering quartz, with sparase clots of live limonite. Collected in a talus field. No rep.

Sample Number: K282963 UTM: 603616 mE Nad83, Zone 8
Elevation: 1420 m UTM: 7020916 mN

Comments: Outcrop sample of orange weathering bull quartz, with sparse pocks of limonite, collected from a ~40cm wide vein with an orientation of 069/79SE.

Sample Number: K282964 UTM: 604363 mE Nad83, Zone 8
Elevation: 1251 m UTM: 7021336 mN

Comments: Outcrop sample of rock with the same lithology as sample K282963, collected from a ~10cm wide vein.

Sample Number: K282965 UTM: 603453 mE Nad83, Zone 8
Elevation: 1367 m UTM: 7021217 mN

Comments: Outcrop sample of rock with the same lithology as sample K282963, collected from a ~70cm wide vein (orientation is obscure). No rep.

Sample Number: K282966 UTM: 603427 mE Nad83, Zone 8
Elevation: 1418 m UTM: 7021112 mN

Comments: Outcrop sample of rock with the same lithology as sample K282963. Collected from a ridge top quartz boulder field approximately 9m by 3m in size. No rep.

Sample Number: K282967 UTM: 603485 mE Nad83, Zone 8
Elevation: 1482 m UTM: 7020927 mN

Comments: Subcrop sample of limonitic and black (manganese?) stained, slightly magnetic, punky oxide, with clots of medium grained pyrrhotite. Collected below a ~50ft cliff and above a ~100ft cliff.

Rock Sample Descriptions

Property: Lois

Sample Number: K282968 UTM: 603490 mE Nad83, Zone 8
Elevation: 1511 m UTM: 7020928 mN

Comments: Outcrop sample of pale grey-green and black, banded hornfels/marble(?) with very very rare disseminated pyrite. Non-magnetic. Collected from a ~2m wide horizon.

Sample Number: K282969 UTM: 603491 mE Nad83, Zone 8
Elevation: 1508 m UTM: 7020840 mN

Comments: MULE SHOWING: Subcrop sample of deep maroon-brown weathering (goethite-encrusted), massive pyrrhotite-pyrite with lesser chalcopyrite and sparse encrusting azurite/malachite. Removed from a 30 x 30 x 30 cm boulder.

Sample Number: K282970 UTM: 603479 mE Nad83, Zone 8
Elevation: 1511 m UTM: 7020823 mN

Comments: MULE SHOWING: Outcrop sample of dark green to white, calc-silicate skarn with fine grained disseminated pyrrhotite and lesser chalcopyrite throughout. Removed from a ~15m wide horizon, with an approximate orientation of 069/56SE

Sample Number: K282971 UTM: 603478 mE Nad83, Zone 8
Elevation: 1509 m UTM: 7020826 mN

Comments: MULE SHOWING: Outcrop sample of rock with the same lithology as sample K282970.

Sample Number: K282972 UTM: 603472 mE Nad83, Zone 8
Elevation: 1521 m UTM: 7020834 mN

Comments: Outcrop sample of orange to brown to black weathering, smokey quartz.

Sample Number: K282973 UTM: 604763 mE Nad83, Zone 8
Elevation: 1475 m UTM: 7017298 mN

Comments: Specimen sample of rock with the same lithology as sample K282963, with rare, disseminated, very fine grained pyrrhotite and pyrite.

Rock Sample DescriptionsProperty: Lois

Sample Number: K282974 UTM: 604765 mE Nad83, Zone 8
Elevation: 1479 m UTM: 7017297 mN

Comments: Specimen sample of rock with the same lithology as sample K282973. No rep.

Sample Number: K282975 UTM: 603424 mE Nad83, Zone 8
Elevation: 1716 m UTM: 7018879 mN

Comments: Specimen sample of strongly blue-green and rusty tarnished, orange-weathering, sugary quartz.

Sample Number: K282976 UTM: 602944 mE Nad83, Zone 8
Elevation: 1470 m UTM: 7019322 mN

Comments: Specimen sample of pale grey banded chert(?) with disseminated medium to coarse grained euhedral pyrite throughout.
