

ARCHER, CATHRO & ASSOCIATES (1981) LIMITED
1016 - 510 West Hastings Street
Vancouver, B.C. V6B1L8

Telephone: 604-688-2568

Fax: 604-688-2578

ASSESSMENT REPORT

describing

PROSPECTING AND GEOCHEMICAL SAMPLING

Field work
performed on August 24, 2016

at the

POV PROPERTY

POV 1-16 YF25685-YF25700

NTS 105E/06
Latitude 61°21'N; Longitude 135°42'W

located in the

Whitehorse Mining District
Yukon Territory

prepared by

Archer, Cathro & Associates (1981) Limited

for

STRATEGIC METALS LTD.

by

K. Willms, B.Sc.

November 2016

CONTENTS

INTRODUCTION	1
PROPERTY LOCATION, CLAIM DATA AND ACCESS	1
HISTORY AND PREVIOUS WORK	1
GEOMORPHOLOGY AND CLIMATE	2
REGIONAL GEOLOGY	2
PROPERTY GEOLOGY	3
SOIL GEOCHEMISTRY	4
DISCUSSION AND CONCLUSIONS	5
REFERENCES	6

APPENDICES

I	STATEMENT OF QUALIFICATIONS
II	STATEMENT OF EXPENDITURES
III	ROCK SAMPLE DESCRIPTIONS
IV	CERTIFICATES OF ANALYSIS

FIGURES

<u>No.</u>	<u>Description</u>	<u>Follows Page</u>
1	Property Location	1
2	Claim Locations	1
3	Tectonic Setting	2
4	Geology	2
5	Sample Locations	4
6	Gold Geochemistry	4
7	Copper Geochemistry	4

TABLES

I	Lithological Units	3
II	Soil Geochemical Thresholds	4

INTRODUCTION

The POV property covers a historical occurrence of native gold, located in the Lake Laberge area of south-central Yukon. The property is wholly owned by Strategic Metals Ltd.

This report describes prospecting and geochemical sampling performed on August 24, 2016 by Archer, Cathro & Associates (1981) Limited on behalf of Strategic Metals. The author interpreted results from current and previous work programs completed on the property. His Statement of Qualifications is in Appendix I and a Statement of Expenditures appears in Appendix II.

PROPERTY LOCATION, CLAIM DATA AND ACCESS

The POV property consists of 16 contiguous mineral claims, which are located on NTS map sheet 105E/06 at latitude 61°21' north and longitude 135°42' west (Figure 1). The property covers an area of approximately 336 ha (3.36 km²). The claims are registered with the Whitehorse Mining Recorder in the name of Archer Cathro, which holds them in trust for Strategic Metals. Specifics concerning claim registration are given below, while the locations of individual claims are shown on Figure 2.

<u>Claim Name</u>	<u>Grant Number</u>	<u>Expiry Date*</u>
POV 1-16	YF25685-YF25700	July 22, 2017

* Expiry dates do not include 2016 work which has not yet been filed for assessment credit.

In 2016, access to the property was provided by a Bell 206B Jet Ranger operated by Capital Helicopters Inc. from its base at the Whitehorse airport. The property is situated approximately 67 km north-northeast of Whitehorse, the largest city in Yukon and closest supply centre.

The POV property lies within the traditional territories of the Kwanlin Dun and Ta'an Kwäch'än First Nations, which have both concluded land claim agreements with Canada and Yukon.

HISTORY AND PREVIOUS WORK

In 1975, Dome and Cominco Syndicate staked the Gem claims in the area around the current POV property. Geological mapping and soil sampling were conducted, but no report of exploration work was filed. Claims were allowed to lapse without further work.

In 1979, the area was restaked as the Lab claims by Barry Watson. The claims were then optioned to Hillside Energy Corporation, which performed geological mapping in 1980. No record of the work is available.

In 1987, the area was again restaked as the Joan claims by R. DalBianco. No published records of work on the claims has been found, and the claims were allowed to expire.

STRATEGIC METALS LTD.

FIGURE 1
ARCHER, CATHRO & ASSOCIATES (1981) LIMITED

PROPERTY LOCATION

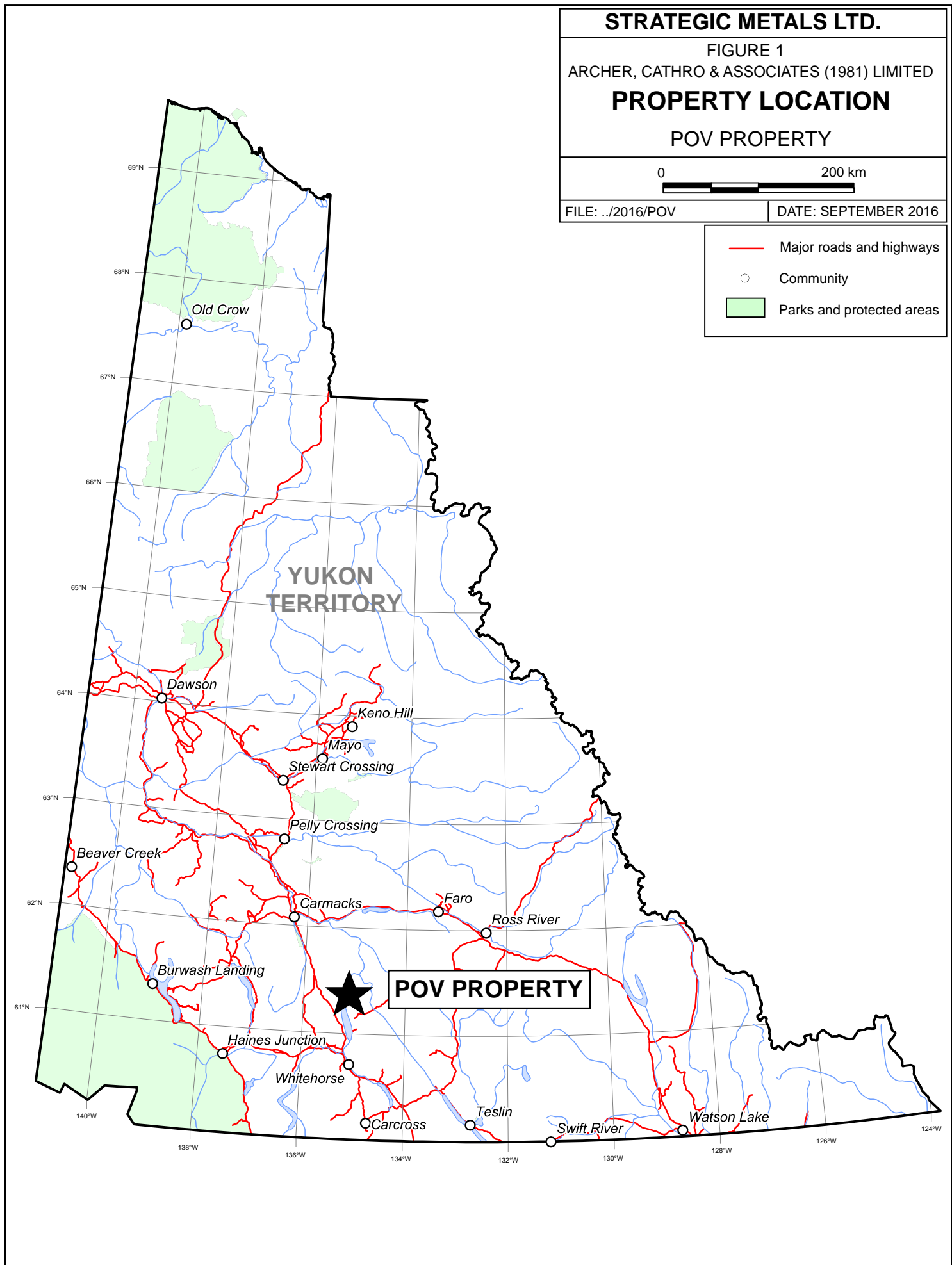
POV PROPERTY

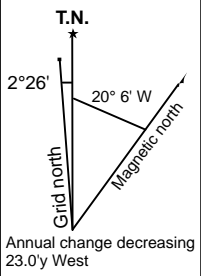
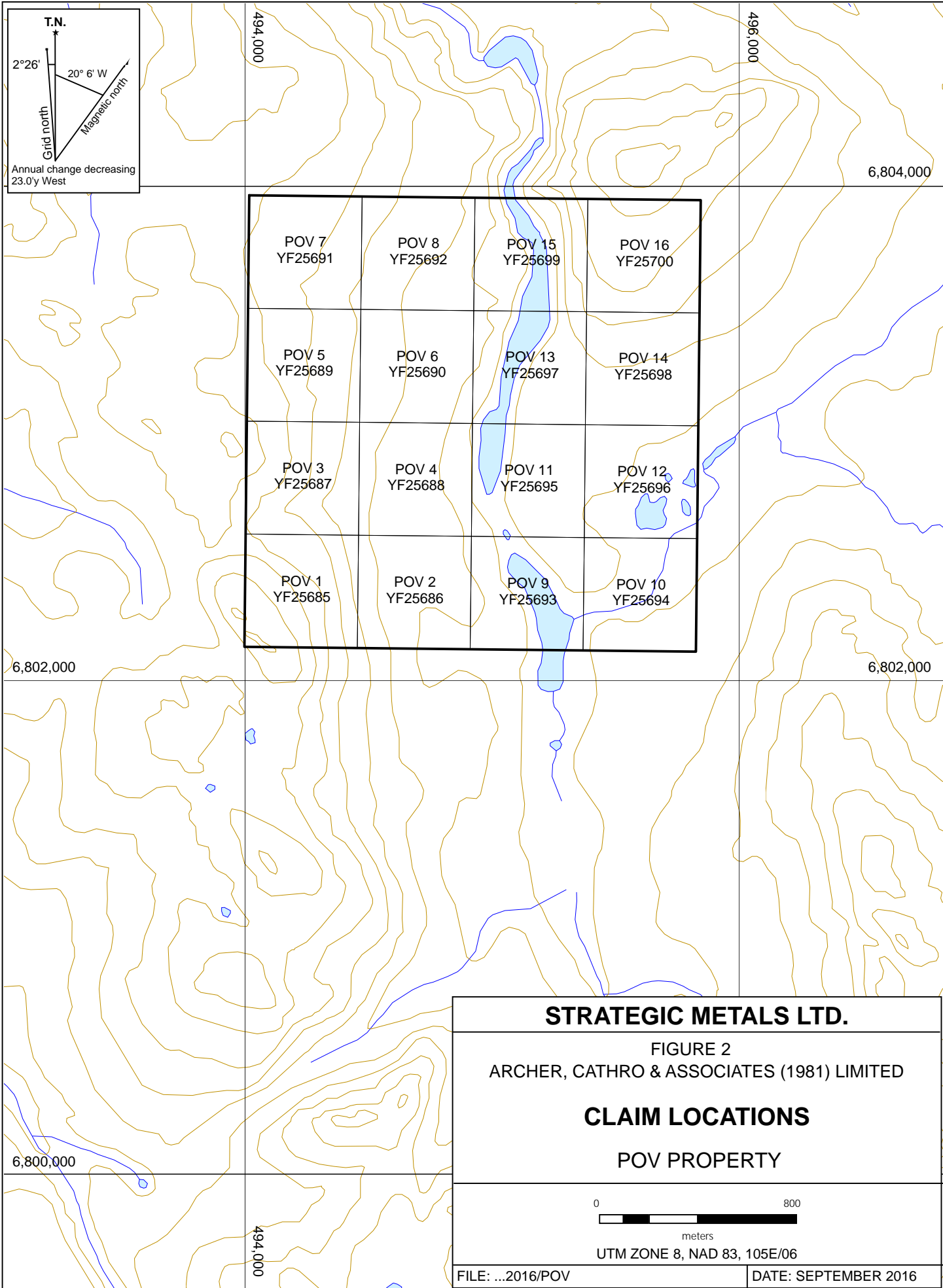


FILE: ../2016/POV

DATE: SEPTEMBER 2016

- Major roads and highways
- Community
- Parks and protected areas





STRATEGIC METALS LTD.

FIGURE 2
 ARCHER, CATHRO & ASSOCIATES (1981) LIMITED

CLAIM LOCATIONS

POV PROPERTY

0 800
 meters

UTM ZONE 8, NAD 83, 105E/06

FILE: ...2016/POV DATE: SEPTEMBER 2016

In 2016, Strategic Metals staked the current POV claims and conducted one day of prospecting and soil sampling later in the year.

GEOMORPHOLOGY AND CLIMATE

The POV property is situated within the Hancock Hills of south-central Yukon, approximately two kilometres southeast of Povoas Mountain. Creeks on the property drain into the Yukon River at the mouth of Lake Laberge, located about seven kilometres to the west.

A long, narrow unnamed lake and creek valley underlie the east-central part of the property, with a broad gentle east-facing hillside to the west and a low-lying knoll to the east. Elevations range from approximately 950 to 1,150 m above sea level. Outcrops are rare, and are mostly restricted to steep banks at the edge of the lake and the top of the knoll. The entire property lies below treeline. Poplar and spruce trees with an understory of buckbrush, moss and grasses make up most of the vegetation; however, wetland vegetation is prevalent along the edge of the lake. The region was glaciated during the Late Pleistocene, with ice sheets in the area migrating north to northwest (Duk-Rodkin, 1999).

Climate is typical of northern continental regions with long, cold winters, truncated fall and spring seasons and short, mild summers. The property is mostly snow free from early May to late October.

REGIONAL GEOLOGY

The POV property is located within the Stikinia Terrane (STT) as shown on Figure 3. The STT comprises a variety of Paleozoic to Mesozoic metavolcanic, metasedimentary and metaplutonic rocks formed in arc environments (Israel et al., 2016). It represents an accretionary island arc that developed along the ancient Pacific margin of North America.

The Yukon Geological Survey (YGS) maintains a website illustrating regional geology based on mapping done by the Geological Survey of Canada and YGS, recent thesis work and a comprehensive compilation done by Gordey and Makepeace in 2003. This interactive map is periodically updated when new information becomes available (YGS, 2016). The main lithological units are described below in Table I, while regional geology is shown on Figure 4.

STRATEGIC METALS LTD.

FIGURE 3

ARCHER, CATHRO & ASSOCIATES (1981) LIMITED

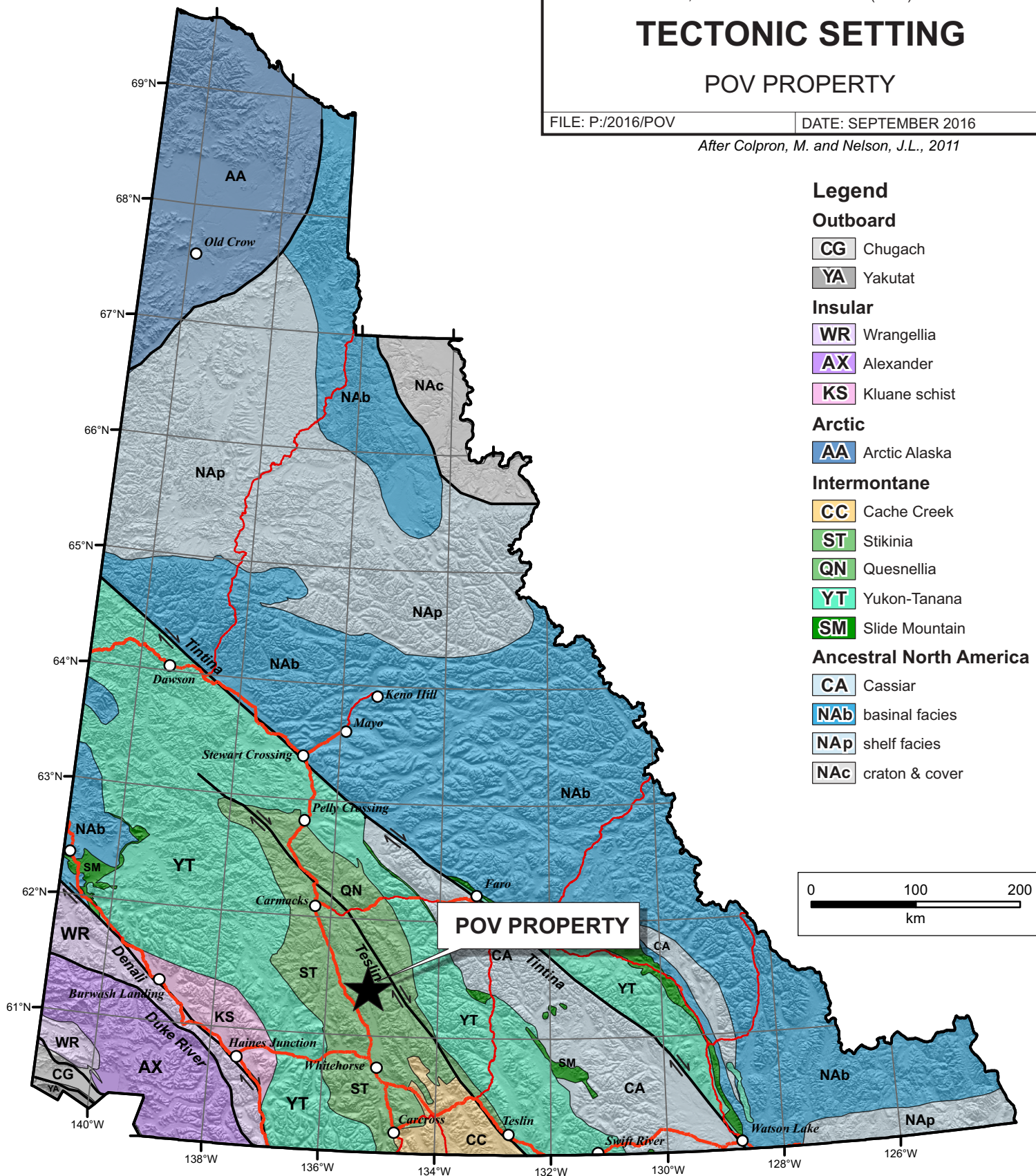
TECTONIC SETTING

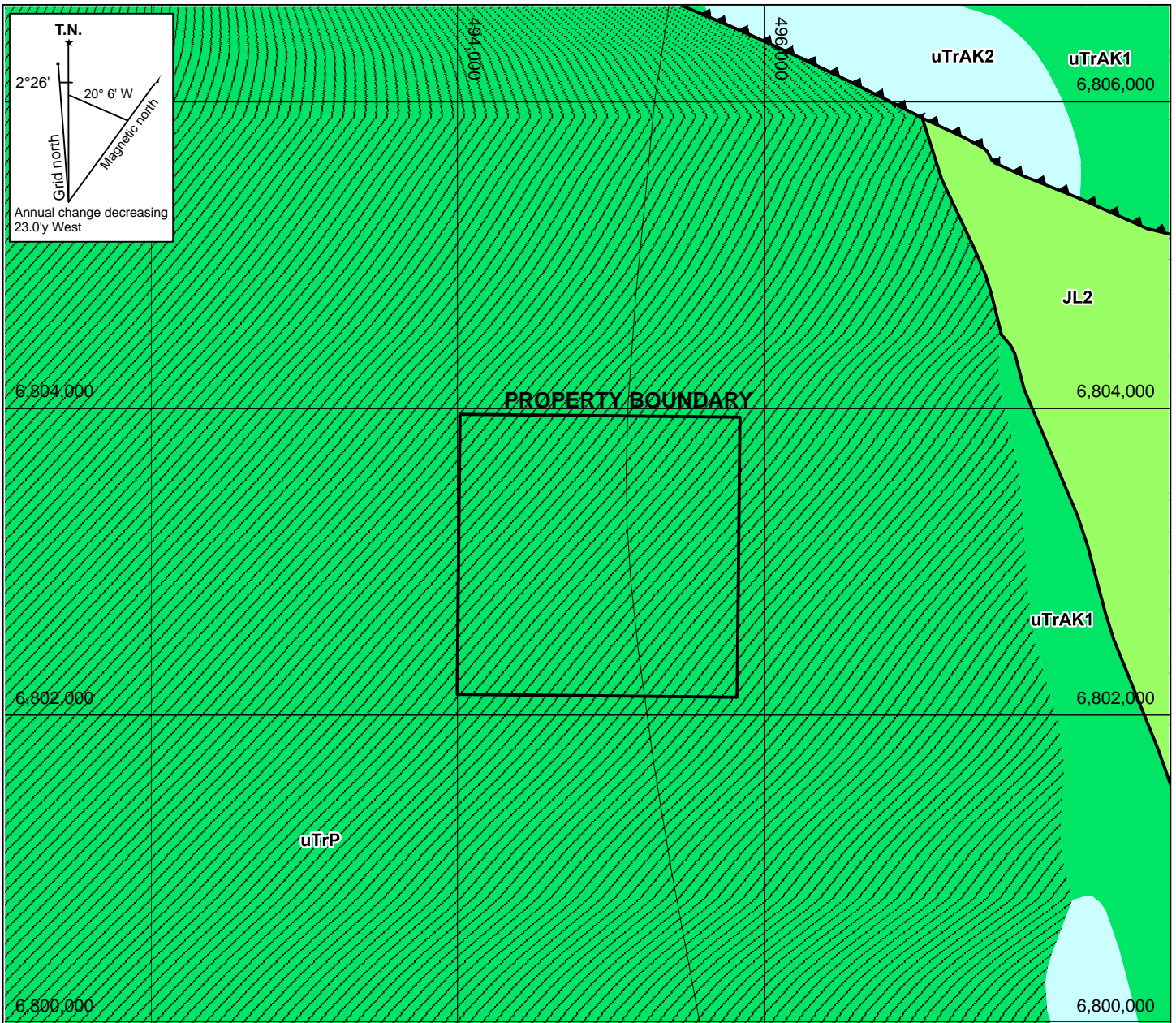
POV PROPERTY


FILE: P:/2016/POV


DATE: SEPTEMBER 2016


After Colpron, M. and Nelson, J.L., 2011






- MESOZOIC**
- 

JL2: LABERGE GROUP: Poorly sorted, medium-bedded to massive arkosic sandstone and minor shale with interbeds of heterolithic pebble and boulder conglomerate; recessive, dark brown to greenish, silty shale (Tanglefoot Formation)
 - 

uTrAK1: AKSALA: brown shale, black and minor red siltstone, greenish, calcareous greywacke and interbedded bioclastic, argillaceous limestone igneous or limestone-clast pebble and cobble conglomerate; lahar debris flows; rare feldspar-augite porphyry flows (Casca member)
 - 

uTrAK2: AKSALA: massive to thick bedded limestone; minor thin-bedded argillaceous to sooty limestone; coarsely crystalline, massive dolostone; minor laminated chert; massive to poorly bedded, limestone conglomerate debris flows and fanglomerate (Hancock member)
 - 

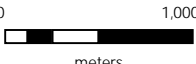
uTrP: POVOAS: augite or feldspar phyric, locally pillowed andesitic basalt flows, breccia, tuff, sandstone and argillite local dacitic breccia and tuff with minor limestone greenschist, chlorite schist, chlorite-augite-feldspar gneiss, amphibolite (Povoas Formation)

STRATEGIC METALS LTD.

FIGURE 4
ARCHER, CATHRO & ASSOCIATES (1981) LIMITED

BEDROCK GEOLOGY

POV PROPERTY



0 1,000
meters

UTM ZONE 8, NAD 83, 105E/06

FILE: ...2016/POV	DATE: SEPTEMBER 2016
-------------------	----------------------

Table I – Lithological Units (after Gordey and Makepeace, 2003)

Unit Name	Age	Map Name	Description
Aksala	Middle Triassic	uTrAK1	Brown shale, black and minor red siltstone, greenish, calcareous greywacke and interbedded bioclastic, argillaceous limestone-clast pebble and cobble conglomerate; lahar debris flows; rare feldspar-augite porphyry flows (Casca member of the Aksala Formation)
		uTrAK2	Massive to thick-bedded limestone; minor thin-bedded argillaceous to sooty limestone; coarsely crystalline, massive dolostone; minor laminated chert; massive to poorly bedded, limestone conglomerate debris flows and fanglomerate (Hancock member of the Aksala Formation)
Povoas Formation	Upper Triassic	UTrP	Augite or feldspar phyric, locally pillowed andesitic basalt flows, breccia, tuff, sandstone and argillite; local dacitic breccia and tuff with minor limestone; greenschist, chlorite schist, chlorite-augite-feldspar gneiss, amphibolite (Lewes River Group)
Laberge Group	Lower to Mid Jurassic	JL2	Poorly sorted, medium-bedded to massive arkosic sandstone and minor shale with interbeds and thick members of resistant heterolithic pebble and boulder conglomerate; recessive, dark brown weathering, thin-bedded, dark brown to greenish, silty shale (Tanglefoot Formation)

Regional-scale mapping shows the POV property is underlain entirely by Upper Triassic Povoas Formation basalt flows and metasediments. A regional-scale north-south trending fold structure, the Povoas Anticline, crosses through the center of the property.

To the north, the Casca Fault, a major northwesterly trending thrust fault, juxtaposes the Povoas Formation and adjacent members of the Middle Triassic Aksala Formation. The Aksala Formation is made up of Hancock Member limestone and dolostone underlain by older Casca Member shale, siltstone and greywacke. Along the southern side of the thrust fault, Jurassic Tanglefoot Formation sandstone and shale overlies the Aksala Formation metasediments.

PROPERTY GEOLOGY

No detailed geological mapping has been done on the property. Based on published data discussed in the previous section, all exposures are assigned to the Povoas Formation.

MINERALIZATION

In 2016, five rock samples were collected from exposures along the banks of the lake. The best results are from an outcrop of biotite-rhyolite tuff, which yielded peak values of 1.69 ppm silver, 190 ppm copper and 71 ppm zinc. All gold results were low. Sample locations are plotted on Figure 5. Rock Sample Descriptions and Certificates of Analysis for the 2016 samples appear in Appendix III and Appendix IV, respectively.

All rock sample sites were marked with orange flagging tape labelled with the sample number and recorded using a handheld GPS unit. Rock samples were sent to ALS Minerals in North Vancouver, B.C., where they were crushed to 70% passing 2 mm before a 250 g split was pulverized to 85% passing 70 microns. Splits of the pulverized fractions were then dissolved in a four acid solution and analyzed for 48 elements using inductively coupled plasma-mass spectroscopy and inductively coupled plasma-atomic emission spectroscopy techniques (ME-MS61). An additional 30 g charge was further analysed for gold by fire assay with inductively coupled plasma-atomic emissions spectroscopy finish (Au-GRA21).

SOIL GEOCHEMISTRY

In 2016, Strategic Metals conducted a one day soil geochemical survey, collecting 105 grid soil samples at an average depth of 45 cm. Figure 5 shows soil sample locations, while thematic results for gold and copper from 2016 samples are illustrated on Figures 6 and 7, respectively.

Soil samples were collected at 50 m spacing along grid lines approximately 100 m apart. Hand-held augers were used to collect samples, while locations were recorded using hand-held GPS units. Sample sites are marked by aluminum tags inscribed with the sample numbers and affixed to 0.5 m wooden lath. Upon collection, samples were placed into individually pre-numbered Kraft paper bags. All samples were sent to ALS Minerals in North Vancouver, B.C., where they were dried, screened to -180 microns, and then analysed for 35 elements using the inductively coupled plasma-atomic emission spectroscopy technique (ME-ICP41). An additional 30 g charge was further analysed for gold by fire assay with inductively coupled plasma-atomic emissions spectroscopy finish (Au-ICP21). Certificates of Analysis appear in Appendix IV.

Anomalous thresholds and peak values for the metals of interest are listed in Table II.

Table II – Soil Geochemical Thresholds

Element	Weak	Moderate	Strong	2016 Peak results
Gold (ppb)	$\geq 10 < 20$	$\geq 20 < 50$	-	26
Copper (ppm)	$\geq 10 < 50$	$\geq 50 < 100$	-	84

Soil sampling was conducted across the western part of the property. The geochemical response was limited to weakly anomalous values up to 26 ppb gold and 84 ppm copper. The highest gold values occur along the northern, western and southern edges of the property. These results are isolated and show no association with other elements of interest.

6,804,000

495,000

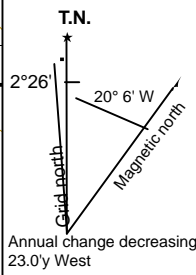
6,803,000

6,803,000

6,802,000

- ZZ114363 ● ZZ115436 ● ZZ114364 ● ZZ115437
- ZZ114362 ● ZZ115435 ● ZZ114365 ● ZZ115438
- ZZ114361 ● ZZ115434 ● ZZ114366 ● ZZ115439
- ZZ115433 ● ZZ114367 ● ZZ115440
- ZZ114360 ● ZZ115432 ● ZZ114368 ● ZZ115441
- ZZ114359 ● ZZ115431 ● ZZ114369 ● ZZ115442
- ZZ114358 ● ZZ115430 ● ZZ114370 ● ZZ115443
- ZZ114371 ● ZZ115444
- ZZ114357 ● ZZ115429 ● ZZ114372 ● ZZ115445
- ZZ114356 ● ZZ115428 ● ZZ114373 ● ZZ115446
- ZZ114355 ● ZZ115427 ● ZZ114374
- ZZ114354 ● ZZ115426 ● ZZ114375 ● ZZ115447
- ZZ114353 ● ZZ115425 ● ZZ114376 ● ZZ115448
- ZZ114352 ● ZZ115424 ● ZZ114377 ● ZZ115449
- ZZ115423 ● ZZ114378 ● ZZ115450
- ZZ114379 ● ZZ115451
- ZZ114351 ● ZZ114380 ● ZZ115452
- ZZ115422 ● ZZ114381 ● ZZ115453
- ZZ114350 ● ZZ115421 ● ZZ114382 ● ZZ115454
- ZZ114349 ● ZZ115420 ● ZZ114383 ● ZZ115455
- ZZ114348 ● ZZ115419 ● ZZ115456
- ZZ114347 ● ZZ115418 ● ZZ115457
- ZZ114346 ● ZZ115417 ● ZZ115458
- ZZ114345 ● ZZ115416 ● ZZ115459
- ZZ114344
- ZZ114343 ● ZZ115460
- ZZ114342 ● ZZ115415 ● ZZ115461
- ZZ114341 ● ZZ115414 ● ZZ115462
- ZZ115413
- ZZ114340 ● ZZ115412 ● ZZ115411
- ZZ115410
- ZZ114339 ● ZZ115411
- ZZ114338
- ZZ114337 ● ZZ115409
- ZZ114336 ● ZZ115408
- ZZ114335 ● ZZ115407

K291442
 K291443 ■ K291444
 K291440 ■ K291441



PROPERTY BOUNDARY

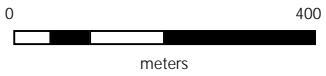
STRATEGIC METALS LTD.

FIGURE 5
ARCHER, CATHRO & ASSOCIATES (1981) LIMITED

SAMPLE LOCATIONS

POV PROPERTY

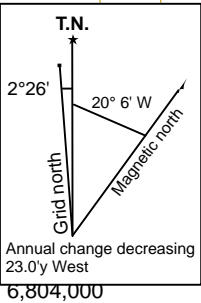
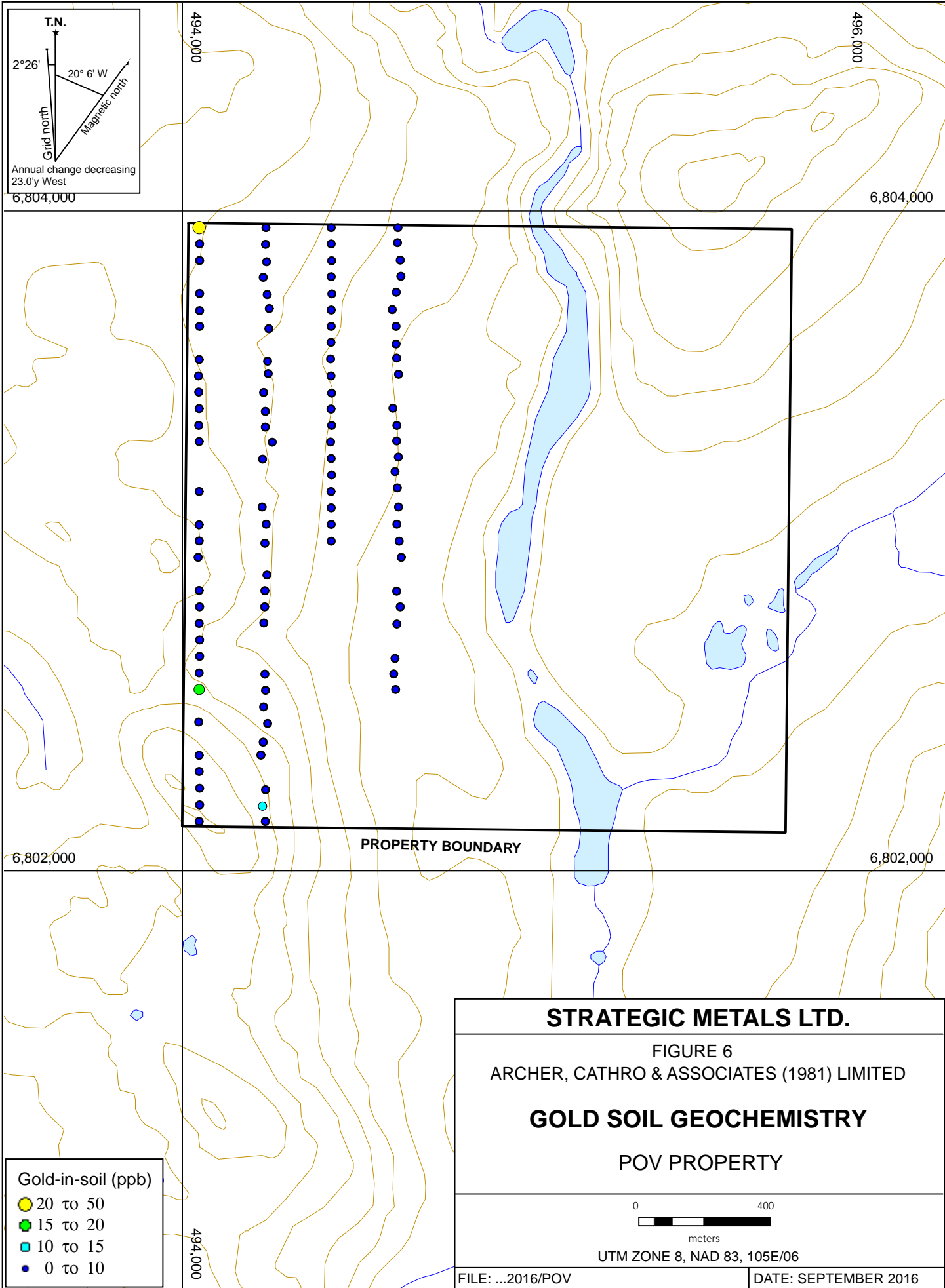
- Rock Sample
- Soil Sample



UTM ZONE 8, NAD 83, 105E/06

FILE: ...2016/POV

DATE: SEPTEMBER 2016



STRATEGIC METALS LTD.

FIGURE 6
 ARCHER, CATHRO & ASSOCIATES (1981) LIMITED

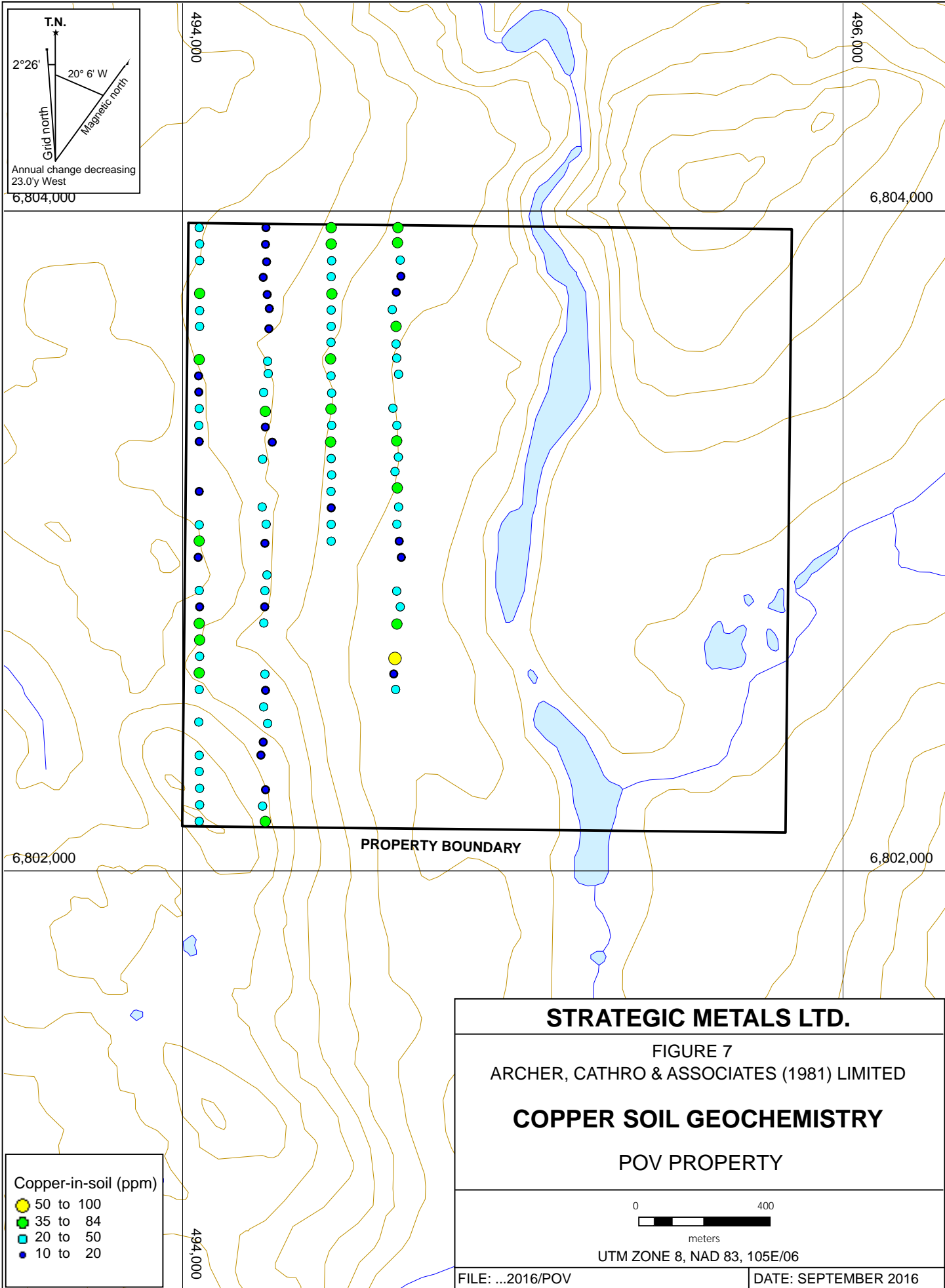
GOLD SOIL GEOCHEMISTRY

POV PROPERTY

0 400
 meters

UTM ZONE 8, NAD 83, 105E/06

FILE: ...2016/POV DATE: SEPTEMBER 2016



DISCUSSION AND CONCLUSIONS

Work completed by Strategic Metals during the 2016 exploration program initiated geochemical coverage on the POV property. Soil sampling identified sporadic weakly elevated gold and copper values, while prospecting failed to relocate the historical native gold occurrence and returned near background results.

Additional exploration should be done on a low priority basis. Follow up work should be limited to closely spaced soil sampling east of the lake in order to expand geochemical coverage across the property. Detailed mapping and prospecting should be deferred until attractive soil anomalies are identified.

Respectfully submitted,

ARCHER, CATHRO & ASSOCIATES (1981) LIMITED

K. Willms, B.Sc.

REFERENCES

- Colpron, M. and Nelson, J. L.
2011 A digital atlas of terranes for the Northern Cordillera; Yukon Geological Survey and BC Geology Survey, BCGS GeoFile 2011-11
http://www.geology.gov.yk.ca/pdf/CanCord_terranes_2011.pdf
- Israel, S., Colpron, M., Roots, C., and Fraser, T.
2016 Overview of Yukon Geology.
http://www.geology.gov.yk.ca/pdf/bedrock_full_overview.pdf, accessed: October 2016
- Duk-Rodkin, A.
1999 Glacial limits map of Yukon Territory; Geological Survey of Canada Geoscience Map 1999-2.
- Gordey, S.P. and Makepeace, A.J. (compilers)
2003 Yukon digital geology, version 2.0, Geological Survey of Canada, Open File 1749 and Yukon Geological Survey, Open File 2003-9 (D).
- Yukon Geological Survey
2016 Yukon Digital Bedrock Geology.
http://www.geology.gov.yk.ca/update_yukon_bedrock_geology_map.html, accessed: October 2016

APPENDIX I
STATEMENT OF QUALIFICATIONS

STATEMENT OF QUALIFICATIONS

I, Kelson Willms, geologist, with business addresses in Whitehorse, Yukon Territory and Vancouver, British Columbia and residential address in Vancouver, British Columbia, hereby certify that:

1. I graduated from the University of British Columbia in 2016 with a B.Sc in Earth and Environmental Sciences.
2. From 2015 to present, I have been actively engaged in mineral exploration in the Yukon Territory and British Columbia.
3. I have interpreted all data resulting from work described in this report.

K.Willms, B.Sc.

APPENDIX II
STATEMENT OF EXPENDITURES

pStatement of Expenditures
Pov 1-16 Mineral Claims
November 16, 2016

Labour

H. Burrell (geologist) 2 hours August to November at \$106/hr	\$ 222.60
J. Morton (geologist) 8 hours August to November at \$82/hr	688.80
K. Willms (field assistant) 23.5 hours August to November at \$57/hr	1,406.48
M. Kulla (field assistant) 8 hours August to November at \$51/hr	428.40
Q. Willms (field assistant) 8 August to November at \$45/hr	378.00
L. Corbett (expedite) 4 hours August to November at \$81/hr	340.20
L. Smith (office) 4 hour August to November at \$69/hr	289.80
S. Newman (office) 4 hours August to November at \$66/hr	<u>277.20</u>
	4,031.48

Expenses (including management)

Field room and board – 3 mandays @ \$180/manday	610.20
Capital Helicopters – 0.3 hours Bell 206B at \$1,075/hr plus fuel	364.43
Trans North Helicopters – 0.7 B3 at \$1,935/hr plus fuel	1,708.96
ALS Chemex	<u>2,219.59</u>
	4,903.18

Total \$8,934.66

110 samples at \$8,934.66= \$81.22/sample

APPENDIX III
ROCK SAMPLE DESCRIPTIONS

Rock Sample Descriptions

Property: POV

Sample Number: K291440 UTM: 495069 mE Nad83, Zone 8

Elevation: 950 m UTM: 6803793 mN

Comments: Outcrop sample of tan to brown to orange weathering, medium grey, porphyritic rhyolite dyke with phenocrysts of feldspar (to clay) and sparse biotite, as well as disseminated fine grained limonite throughout.

Sample Number: K291441 UTM: 495068 mE Nad83, Zone 8

Elevation: 953 m UTM: 6803785 mN

Comments: Outcrop sample of orange-brown weathering, pale grey, sugary welded rhyolite tuff, with sparse disseminated fine grained limonite throughout.

Sample Number: K291442 UTM: 495112 mE Nad83, Zone 8

Elevation: 928 m UTM: 6803910 mN

Comments: Subcrop sample of a 1cm wide buff weathering quartz veinlet through tan to brown weathering, medium grey basalt, which hosts disseminated f.g. pyrrhotite.

Sample Number: K291443 UTM: 495110 mE Nad83, Zone 8

Elevation: 927 m UTM: 6803920 mN

Comments: Outcrop sample of yellow-green (scorodite?) stained salt+pepper biotite rhyolite tuff, with f.g. arsenopyrite, pyrite and limonite disseminated throughout. (Non-magnetic)

Sample Number: K291444 UTM: 495140 mE Nad83, Zone 8

Elevation: 932 m UTM: 6803889 mN

Comments: Outcrop sample of rock with the same lithology as sample K291443, but very very earthy/crumby. No rep.

APPENDIX IV
CERTIFICATES OF ANALYSIS



ALS Canada Ltd.
 2103 Dollarton Hwy
 North Vancouver BC V7H 0A7
 Phone: +1 (604) 984 0221 Fax: +1 (604) 984 0218
 www.alsglobal.com

To: STRATEGIC METALS LTD.
 C/O ARCHER, CATHRO & ASSOCIATES (1981)
 LIMITED
 1016-510 W HASTINGS ST
 VANCOUVER BC V6B 1L8

Page: 1
 Total # Pages: 4 (A - C)
 Plus Appendix Pages
 Finalized Date: 22-SEP-2016
 Account: MTT

CERTIFICATE WH16144496

Project: POV

This report is for 105 Soil samples submitted to our lab in Whitehorse, YT, Canada on 29-AUG-2016.

The following have access to data associated with this certificate:

HEATHER BURRELL	JOAN MARIACHER
-----------------	----------------

SAMPLE PREPARATION	
ALS CODE	DESCRIPTION
WEI-21	Received Sample Weight
LOG-22	Sample login - Rcd w/o BarCode
SCR-41	Screen to -180um and save both

ANALYTICAL PROCEDURES		
ALS CODE	DESCRIPTION	INSTRUMENT
Au-ICP21	Au 30g FA ICP-AES Finish	ICP-AES
ME-ICP41	35 Element Aqua Regia ICP-AES	ICP-AES

To: STRATEGIC METALS LTD.
 ATTN: JOAN MARIACHER
 C/O ARCHER, CATHRO & ASSOCIATES (1981) LIMITED
 1016-510 W HASTINGS ST
 VANCOUVER BC V6B 1L8

This is the Final Report and supersedes any preliminary report with this certificate number. Results apply to samples as submitted. All pages of this report have been checked and approved for release.

***** See Appendix Page for comments regarding this certificate *****

Signature: 
 Colin Ramshaw, Vancouver Laboratory Manager



ALS Canada Ltd.
 2103 Dollarton Hwy
 North Vancouver BC V7H 0A7
 Phone: +1 (604) 984 0221 Fax: +1 (604) 984 0218
 www.alsglobal.com

To: STRATEGIC METALS LTD.
 C/O ARCHER, CATHRO & ASSOCIATES (1981)
 LIMITED
 1016-510 W HASTINGS ST
 VANCOUVER BC V6B 1L8

Page: 2 - A
 Total # Pages: 4 (A - C)
 Plus Appendix Pages
 Finalized Date: 22-SEP-2016
 Account: MTT

Project: POV

CERTIFICATE OF ANALYSIS WH16144496

Sample Description	Method Analyte Units LOR	WEI-21	Au-ICP21	ME-ICP41	ME-ICP41	ME-ICP41	ME-ICP41	ME-ICP41	ME-ICP41	ME-ICP41	ME-ICP41	ME-ICP41	ME-ICP41	ME-ICP41	ME-ICP41	ME-ICP41
		Recvd Wt. kg	Au ppm	Ag ppm	Al %	As ppm	B ppm	Ba ppm	Be ppm	Bi ppm	Ca %	Cd ppm	Co ppm	Cr ppm	Cu ppm	Fe %
		0.02	0.001	0.2	0.01	2	10	10	0.5	2	0.01	0.5	1	1	1	0.01
ZZ114335		0.36	0.002	<0.2	1.87	9	<10	260	<0.5	<2	0.33	<0.5	9	41	27	2.50
ZZ114336		0.30	<0.001	0.2	1.72	8	<10	240	<0.5	<2	0.38	<0.5	8	34	28	2.33
ZZ114337		0.26	<0.001	<0.2	1.23	6	<10	290	<0.5	<2	0.45	<0.5	6	23	29	1.68
ZZ114338		0.28	<0.001	<0.2	2.15	9	<10	220	<0.5	<2	0.42	<0.5	9	38	24	2.91
ZZ114339		0.32	<0.001	0.2	1.47	5	<10	240	<0.5	<2	0.67	<0.5	6	26	30	1.93
ZZ114340		0.38	0.001	<0.2	1.45	7	<10	220	<0.5	<2	0.56	<0.5	9	35	22	2.12
ZZ114341		0.34	0.015	<0.2	1.45	8	<10	190	<0.5	<2	0.47	<0.5	9	40	33	2.26
ZZ114342		0.28	0.004	<0.2	1.33	8	<10	220	<0.5	2	1.27	<0.5	9	36	44	2.23
ZZ114343		0.26	0.001	<0.2	1.31	8	<10	150	<0.5	<2	0.66	<0.5	8	35	20	2.11
ZZ114344		0.28	0.002	0.2	1.52	10	<10	200	<0.5	2	0.86	<0.5	11	45	35	2.54
ZZ114345		0.28	0.003	<0.2	1.20	11	<10	180	<0.5	<2	1.30	<0.5	11	41	46	2.39
ZZ114346		0.32	0.001	<0.2	1.25	6	<10	160	<0.5	<2	0.35	<0.5	8	31	17	1.82
ZZ114347		0.32	0.001	<0.2	1.54	10	<10	180	<0.5	<2	0.49	<0.5	8	36	20	2.34
ZZ114348		0.34	<0.001	<0.2	1.39	6	<10	210	<0.5	<2	0.39	<0.5	6	32	11	1.93
ZZ114349		0.38	0.002	<0.2	1.60	10	<10	370	<0.5	<2	1.14	<0.5	10	41	36	2.43
ZZ114350		0.24	0.002	<0.2	1.49	9	<10	340	<0.5	<2	1.01	<0.5	8	34	29	2.03
ZZ114351		0.38	<0.001	<0.2	1.60	8	<10	170	<0.5	<2	0.46	<0.5	8	34	17	2.36
ZZ114352		0.36	<0.001	<0.2	1.19	6	<10	150	<0.5	<2	0.62	<0.5	8	33	15	1.95
ZZ114353		0.34	0.002	<0.2	1.37	8	<10	280	<0.5	<2	1.26	<0.5	10	42	27	2.24
ZZ114354		0.36	0.001	<0.2	1.49	8	<10	230	<0.5	<2	0.96	<0.5	9	38	25	2.17
ZZ114355		0.34	0.001	<0.2	1.36	8	<10	140	<0.5	<2	0.44	<0.5	7	27	15	2.13
ZZ114356		0.34	<0.001	<0.2	1.44	5	<10	180	<0.5	<2	0.57	<0.5	7	29	16	1.91
ZZ114357		0.30	0.002	<0.2	1.39	6	<10	200	<0.5	<2	0.77	<0.5	9	30	47	1.88
ZZ114358		0.32	<0.001	<0.2	1.50	8	<10	250	<0.5	<2	0.58	<0.5	8	34	21	2.50
ZZ114359		0.20	0.001	<0.2	1.40	5	<10	250	0.6	<2	1.49	<0.5	7	33	34	1.77
ZZ114360		0.32	0.005	0.2	1.46	5	<10	260	0.5	<2	1.44	<0.5	8	36	49	2.06
ZZ114361		0.40	<0.001	<0.2	1.77	11	<10	220	<0.5	<2	0.47	<0.5	10	36	20	2.82
ZZ114362		0.34	0.002	<0.2	1.05	8	<10	130	<0.5	<2	0.59	<0.5	9	32	21	2.17
ZZ114363		0.32	0.026	<0.2	1.26	8	<10	220	<0.5	<2	1.10	<0.5	10	34	25	2.29
ZZ114364		0.28	0.002	<0.2	1.68	10	<10	380	0.6	<2	1.32	<0.5	10	35	42	2.61
ZZ114365		0.34	0.002	<0.2	1.44	8	<10	230	<0.5	<2	0.69	<0.5	9	36	37	2.34
ZZ114366		0.26	0.003	<0.2	1.08	9	<10	170	<0.5	<2	1.01	<0.5	8	31	21	2.37
ZZ114367		0.28	0.003	<0.2	1.18	9	<10	200	<0.5	<2	1.30	<0.5	9	33	33	2.38
ZZ114368		0.36	0.002	<0.2	1.35	10	<10	320	0.5	<2	1.92	<0.5	10	36	52	2.50
ZZ114369		0.34	0.001	<0.2	1.60	9	<10	320	0.5	<2	0.81	<0.5	11	34	33	2.39
ZZ114370		0.34	<0.001	<0.2	1.44	6	<10	230	<0.5	<2	0.75	<0.5	10	30	26	2.18
ZZ114371		0.38	0.001	<0.2	1.67	10	<10	240	<0.5	<2	0.53	<0.5	9	35	27	2.47
ZZ114372		0.30	0.003	<0.2	1.31	7	<10	250	0.5	<2	1.45	0.8	10	35	75	2.06
ZZ114373		0.26	0.001	<0.2	1.02	10	<10	150	<0.5	<2	1.26	<0.5	9	29	27	2.21
ZZ114374		0.38	0.001	<0.2	1.27	8	<10	190	<0.5	<2	0.86	<0.5	8	33	26	2.20



ALS Canada Ltd.
 2103 Dollarton Hwy
 North Vancouver BC V7H 0A7
 Phone: +1 (604) 984 0221 Fax: +1 (604) 984 0218
 www.alsglobal.com

To: STRATEGIC METALS LTD.
 C/O ARCHER, CATHRO & ASSOCIATES (1981)
 LIMITED
 1016-510 W HASTINGS ST
 VANCOUVER BC V6B 1L8

Page: 2 - B
 Total # Pages: 4 (A - C)
 Plus Appendix Pages
 Finalized Date: 22-SEP-2016
 Account: MTT

Project: POV

CERTIFICATE OF ANALYSIS WH16144496

Sample Description	Method Analyte Units LOR	ME-ICP41	ME-ICP41	ME-ICP41	ME-ICP41	ME-ICP41	ME-ICP41	ME-ICP41	ME-ICP41	ME-ICP41	ME-ICP41	ME-ICP41	ME-ICP41	ME-ICP41	ME-ICP41	
		Ga	Hg	K	La	Mg	Mn	Mo	Na	Ni	P	Pb	S	Sb	Sc	Sr
		ppm	ppm	%	ppm	%	ppm	ppm	%	ppm	ppm	ppm	%	ppm	ppm	ppm
		10	1	0.01	10	0.01	5	1	0.01	1	10	2	0.01	2	1	1
ZZ114335		10	<1	0.04	10	0.62	309	1	0.02	27	240	17	0.02	<2	4	25
ZZ114336		10	<1	0.07	10	0.48	257	1	0.01	26	260	9	0.02	<2	4	30
ZZ114337		<10	<1	0.04	10	0.29	431	1	0.02	17	420	11	0.03	<2	2	29
ZZ114338		10	<1	0.05	10	0.61	271	1	0.02	25	200	7	0.02	<2	5	31
ZZ114339		<10	<1	0.05	10	0.39	282	1	0.02	17	570	10	0.04	<2	3	43
ZZ114340		<10	<1	0.06	10	0.69	401	1	0.02	26	540	28	0.02	<2	4	31
ZZ114341		<10	<1	0.05	10	0.69	281	1	0.02	28	350	24	0.02	<2	5	29
ZZ114342		<10	<1	0.05	10	0.58	293	1	0.02	26	840	25	0.08	<2	5	66
ZZ114343		<10	1	0.10	10	0.55	325	1	0.02	26	360	11	0.03	<2	3	37
ZZ114344		<10	<1	0.08	10	0.80	408	2	0.03	43	490	13	0.04	<2	7	48
ZZ114345		<10	<1	0.09	10	0.74	440	1	0.02	45	730	12	0.06	<2	6	60
ZZ114346		<10	<1	0.08	10	0.55	350	1	0.01	24	220	6	0.02	<2	3	23
ZZ114347		<10	<1	0.10	10	0.62	244	1	0.01	25	240	9	0.03	<2	4	30
ZZ114348		10	<1	0.05	10	0.62	219	1	0.01	21	300	6	0.02	<2	3	23
ZZ114349		<10	<1	0.06	10	0.78	587	<1	0.02	31	430	12	0.04	<2	6	49
ZZ114350		<10	<1	0.05	10	0.55	258	<1	0.02	24	1070	7	0.06	<2	3	57
ZZ114351		10	<1	0.06	10	0.67	256	1	0.01	25	200	7	0.02	<2	4	30
ZZ114352		<10	<1	0.05	10	0.63	337	1	0.02	24	440	5	0.03	<2	4	36
ZZ114353		<10	<1	0.07	10	0.74	359	1	0.02	34	600	9	0.06	<2	4	70
ZZ114354		<10	<1	0.06	10	0.67	466	1	0.02	29	330	8	0.02	<2	4	42
ZZ114355		<10	1	0.05	10	0.45	197	1	0.02	19	210	6	0.01	2	3	29
ZZ114356		10	<1	0.05	10	0.47	312	1	0.02	17	250	9	0.01	<2	4	31
ZZ114357		10	<1	0.05	10	0.48	481	1	0.02	26	360	6	0.01	<2	5	41
ZZ114358		<10	<1	0.06	10	0.63	252	1	0.03	26	350	4	0.01	<2	6	44
ZZ114359		<10	1	0.06	10	0.47	430	1	0.02	25	1420	5	0.09	2	4	78
ZZ114360		<10	<1	0.07	20	0.61	260	1	0.03	36	830	5	0.06	<2	5	74
ZZ114361		10	<1	0.12	10	0.58	362	1	0.02	24	290	5	0.01	<2	4	31
ZZ114362		<10	<1	0.07	10	0.60	609	1	0.03	23	810	3	0.01	<2	4	38
ZZ114363		<10	<1	0.05	10	0.56	412	1	0.02	26	900	4	0.05	<2	4	60
ZZ114364		<10	<1	0.05	10	0.66	514	1	0.03	27	410	9	0.02	<2	7	80
ZZ114365		<10	<1	0.08	10	0.65	327	1	0.02	31	320	6	0.01	<2	7	45
ZZ114366		<10	<1	0.08	10	0.61	308	1	0.02	24	910	6	0.04	<2	4	56
ZZ114367		<10	<1	0.07	10	0.63	214	<1	0.03	29	810	8	0.04	<2	6	73
ZZ114368		<10	<1	0.07	10	0.61	644	1	0.02	37	790	8	0.06	<2	5	112
ZZ114369		10	<1	0.06	10	0.52	559	1	0.02	26	440	8	0.01	<2	5	52
ZZ114370		10	<1	0.05	10	0.43	661	1	0.02	18	300	8	0.01	<2	4	47
ZZ114371		10	<1	0.06	10	0.60	277	1	0.02	26	270	8	0.01	<2	5	39
ZZ114372		<10	<1	0.06	10	0.67	458	1	0.02	51	800	8	0.04	<2	6	82
ZZ114373		<10	<1	0.05	10	0.54	231	1	0.03	20	620	6	0.05	<2	4	67
ZZ114374		<10	<1	0.06	10	0.59	398	1	0.03	25	500	6	0.02	<2	4	50



ALS Canada Ltd.
 2103 Dollarton Hwy
 North Vancouver BC V7H 0A7
 Phone: +1 (604) 984 0221 Fax: +1 (604) 984 0218
 www.alsglobal.com

To: STRATEGIC METALS LTD.
 C/O ARCHER, CATHRO & ASSOCIATES (1981)
 LIMITED
 1016-510 W HASTINGS ST
 VANCOUVER BC V6B 1L8

Page: 2 - C
 Total # Pages: 4 (A - C)
 Plus Appendix Pages
 Finalized Date: 22-SEP-2016
 Account: MTT

Project: POV

CERTIFICATE OF ANALYSIS	WH16144496
-------------------------	------------

Sample Description	Method	ME-ICP41	ME-ICP41	ME-ICP41	ME-ICP41	ME-ICP41	ME-ICP41	
	Analyte	Th	Ti	Ti	U	V	W	
	Units	ppm	%	ppm	ppm	ppm	ppm	
LOR		20	0.01	10	10	1	10	
ZZ114335		<20	0.05	<10	<10	69	<10	47
ZZ114336		<20	0.07	<10	<10	56	<10	49
ZZ114337		<20	0.04	<10	<10	45	<10	38
ZZ114338		<20	0.04	<10	<10	75	<10	54
ZZ114339		<20	0.04	<10	<10	54	<10	51
ZZ114340		<20	0.05	<10	<10	57	<10	47
ZZ114341		<20	0.05	<10	<10	60	<10	53
ZZ114342		<20	0.04	<10	<10	53	<10	59
ZZ114343		<20	0.06	<10	<10	55	<10	54
ZZ114344		<20	0.04	<10	<10	62	<10	63
ZZ114345		<20	0.05	<10	<10	54	<10	58
ZZ114346		<20	0.06	<10	<10	47	<10	44
ZZ114347		<20	0.06	<10	<10	60	<10	42
ZZ114348		<20	0.06	<10	<10	58	<10	39
ZZ114349		<20	0.05	<10	<10	64	<10	45
ZZ114350		<20	0.05	<10	<10	49	<10	40
ZZ114351		<20	0.06	<10	<10	59	<10	44
ZZ114352		<20	0.06	<10	<10	50	<10	44
ZZ114353		<20	0.06	<10	10	56	<10	56
ZZ114354		<20	0.05	<10	<10	58	<10	48
ZZ114355		<20	0.03	<10	<10	58	<10	44
ZZ114356		<20	0.06	<10	<10	53	<10	48
ZZ114357		<20	0.05	<10	<10	53	<10	41
ZZ114358		<20	0.05	<10	<10	59	<10	46
ZZ114359		<20	0.04	<10	<10	42	<10	53
ZZ114360		<20	0.05	<10	10	51	<10	50
ZZ114361		<20	0.08	<10	<10	69	<10	87
ZZ114362		<20	0.07	<10	<10	53	<10	54
ZZ114363		<20	0.06	<10	<10	55	<10	50
ZZ114364		<20	0.05	<10	<10	72	<10	48
ZZ114365		<20	0.07	<10	<10	54	<10	62
ZZ114366		<20	0.05	<10	<10	52	<10	57
ZZ114367		<20	0.05	<10	<10	55	<10	66
ZZ114368		<20	0.04	<10	<10	57	<10	51
ZZ114369		<20	0.06	<10	<10	59	<10	54
ZZ114370		<20	0.06	<10	<10	59	<10	56
ZZ114371		<20	0.04	<10	<10	66	<10	49
ZZ114372		<20	0.04	<10	<10	56	<10	69
ZZ114373		<20	0.04	<10	<10	49	<10	51
ZZ114374		<20	0.05	<10	<10	54	<10	44



ALS Canada Ltd.
 2103 Dollarton Hwy
 North Vancouver BC V7H 0A7
 Phone: +1 (604) 984 0221 Fax: +1 (604) 984 0218
 www.alsglobal.com

To: STRATEGIC METALS LTD.
 C/O ARCHER, CATHRO & ASSOCIATES (1981)
 LIMITED
 1016-510 W HASTINGS ST
 VANCOUVER BC V6B 1L8

Page: 3 - A
 Total # Pages: 4 (A - C)
 Plus Appendix Pages
 Finalized Date: 22-SEP-2016
 Account: MTT

Project: POV

CERTIFICATE OF ANALYSIS WH16144496

Sample Description	Method Analyte Units LOR	WEI-21 Recvd Wt. kg	Au-ICP21 Au ppm	ME-ICP41 Ag ppm	ME-ICP41 Al %	ME-ICP41 As ppm	ME-ICP41 B ppm	ME-ICP41 Ba ppm	ME-ICP41 Be ppm	ME-ICP41 Bi ppm	ME-ICP41 Ca %	ME-ICP41 Cd ppm	ME-ICP41 Co ppm	ME-ICP41 Cr ppm	ME-ICP41 Cu ppm	ME-ICP41 Fe %
		0.02	0.001	0.2	0.01	2	10	10	0.5	2	0.01	0.5	1	1	1	0.01
ZZ114375		0.32	0.002	<0.2	1.47	9	<10	240	<0.5	<2	1.38	<0.5	11	38	39	2.50
ZZ114376		0.26	0.001	<0.2	1.43	8	<10	250	<0.5	<2	1.17	<0.5	9	36	33	2.20
ZZ114377		0.36	0.003	<0.2	1.84	12	<10	210	0.5	<2	0.58	<0.5	14	43	42	3.35
ZZ114378		0.30	0.002	<0.2	1.44	11	<10	200	<0.5	<2	0.90	<0.5	10	35	31	2.87
ZZ114379		0.34	0.001	<0.2	1.17	9	<10	170	<0.5	<2	0.89	<0.5	8	33	23	2.22
ZZ114380		0.28	0.003	<0.2	1.23	10	<10	180	<0.5	<2	0.94	<0.5	8	34	30	2.26
ZZ114381		0.42	0.002	<0.2	1.49	8	<10	210	<0.5	<2	0.68	<0.5	9	33	19	2.23
ZZ114382		0.42	0.001	<0.2	1.41	9	<10	140	<0.5	<2	0.38	<0.5	7	33	23	2.27
ZZ114383		0.38	0.001	<0.2	1.69	7	<10	230	0.5	<2	0.66	<0.5	9	35	20	2.34
ZZ115407		0.20	0.009	0.3	1.24	6	<10	340	<0.5	<2	0.94	<0.5	7	34	52	1.95
ZZ115408		0.24	0.014	0.2	1.22	6	<10	260	<0.5	<2	1.01	<0.5	5	29	33	1.69
ZZ115409		0.22	0.002	<0.2	1.80	10	<10	160	<0.5	<2	0.40	<0.5	7	38	17	2.54
ZZ115410		0.30	0.005	<0.2	1.25	7	<10	210	<0.5	<2	0.98	<0.5	7	33	15	1.89
ZZ115411		0.46	0.001	<0.2	1.42	8	<10	230	<0.5	<2	0.89	<0.5	7	35	12	2.16
ZZ115412		0.18	0.002	<0.2	0.74	2	<10	120	<0.5	<2	0.65	<0.5	2	9	28	0.39
ZZ115413		0.28	0.001	<0.2	1.53	6	<10	230	<0.5	<2	0.60	<0.5	8	35	22	2.09
ZZ115414		0.36	0.001	<0.2	1.04	5	<10	140	<0.5	<2	0.65	<0.5	5	28	10	1.52
ZZ115415		0.28	0.003	<0.2	1.66	9	<10	240	<0.5	<2	0.52	<0.5	9	47	32	2.63
ZZ115416		0.28	0.005	<0.2	1.65	11	<10	140	<0.5	<2	0.55	<0.5	10	47	30	2.95
ZZ115417		0.24	0.005	<0.2	1.33	6	<10	150	<0.5	<2	0.59	<0.5	7	30	19	1.98
ZZ115418		0.24	0.002	<0.2	1.75	8	<10	240	<0.5	<2	0.58	<0.5	9	41	22	2.43
ZZ115419		0.24	0.003	<0.2	1.42	8	<10	200	<0.5	<2	0.85	<0.5	11	48	34	2.38
ZZ115420		0.28	0.001	<0.2	1.57	8	<10	160	<0.5	<2	0.55	<0.5	8	35	18	2.27
ZZ115421		0.24	0.008	<0.2	1.48	9	<10	280	<0.5	<2	0.94	<0.5	10	39	27	2.43
ZZ115422		0.26	0.002	<0.2	1.60	9	<10	200	<0.5	<2	0.63	<0.5	10	46	26	2.72
ZZ115423		0.20	0.003	<0.2	1.68	7	<10	250	0.5	<2	1.00	1.4	15	36	34	2.66
ZZ115424		0.24	0.001	<0.2	1.67	6	<10	200	<0.5	<2	0.55	<0.5	8	36	17	2.26
ZZ115425		0.22	0.001	<0.2	1.34	9	<10	240	<0.5	<2	1.16	<0.5	9	33	18	2.12
ZZ115426		0.16	0.002	<0.2	1.69	9	<10	250	0.5	<2	1.27	<0.5	12	41	35	2.77
ZZ115427		0.20	0.002	<0.2	1.36	7	<10	260	<0.5	<2	1.03	<0.5	9	36	31	2.21
ZZ115428		0.22	0.001	<0.2	1.40	7	<10	230	<0.5	<2	1.08	<0.5	8	32	27	2.09
ZZ115429		0.22	0.001	<0.2	1.90	9	<10	240	<0.5	<2	0.52	<0.5	11	42	25	2.98
ZZ115430		0.14	<0.001	<0.2	1.21	7	<10	150	<0.5	<2	0.78	<0.5	7	30	17	1.93
ZZ115431		0.18	<0.001	<0.2	1.55	7	<10	180	<0.5	<2	0.45	<0.5	7	30	17	2.27
ZZ115432		0.26	<0.001	<0.2	1.80	10	<10	200	<0.5	<2	0.39	<0.5	9	37	19	2.43
ZZ115433		0.18	<0.001	<0.2	1.84	8	<10	200	<0.5	<2	0.31	<0.5	9	37	18	2.57
ZZ115434		0.18	<0.001	<0.2	1.42	6	<10	250	<0.5	<2	0.74	<0.5	6	26	19	2.00
ZZ115435		0.28	<0.001	<0.2	1.00	6	<10	160	<0.5	<2	0.52	<0.5	5	24	16	1.54
ZZ115436		0.22	<0.001	<0.2	1.78	9	<10	140	<0.5	<2	0.41	<0.5	8	42	18	2.36
ZZ115437		0.34	0.003	<0.2	1.56	10	<10	300	0.6	<2	1.10	<0.5	11	38	53	2.48



ALS Canada Ltd.
 2103 Dollarton Hwy
 North Vancouver BC V7H 0A7
 Phone: +1 (604) 984 0221 Fax: +1 (604) 984 0218
 www.alsglobal.com

To: STRATEGIC METALS LTD.
 C/O ARCHER, CATHRO & ASSOCIATES (1981)
 LIMITED
 1016-510 W HASTINGS ST
 VANCOUVER BC V6B 1L8

Page: 3 - B
 Total # Pages: 4 (A - C)
 Plus Appendix Pages
 Finalized Date: 22-SEP-2016
 Account: MTT

Project: POV

CERTIFICATE OF ANALYSIS WH16144496

Sample Description	Method Analyte Units LOR	ME-ICP41	ME-ICP41	ME-ICP41	ME-ICP41	ME-ICP41	ME-ICP41	ME-ICP41	ME-ICP41	ME-ICP41	ME-ICP41	ME-ICP41	ME-ICP41	ME-ICP41	ME-ICP41	
		Ga	Hg	K	La	Mg	Mn	Mo	Na	Ni	P	Pb	S	Sb	Sc	Sr
		ppm	ppm	%	ppm	%	ppm	ppm	%	ppm	ppm	ppm	%	ppm	ppm	ppm
		10	1	0.01	10	0.01	5	1	0.01	1	10	2	0.01	2	1	1
ZZ114375		<10	1	0.06	10	0.66	455	2	0.02	32	410	10	0.03	<2	6	81
ZZ114376		<10	<1	0.06	10	0.60	380	1	0.02	27	540	6	0.03	<2	5	68
ZZ114377		10	<1	0.09	10	0.80	577	2	0.03	36	430	9	0.01	<2	7	44
ZZ114378		10	<1	0.06	10	0.60	379	1	0.02	28	310	7	0.02	<2	7	52
ZZ114379		<10	<1	0.06	10	0.59	419	1	0.02	24	460	9	0.02	<2	4	47
ZZ114380		<10	<1	0.06	10	0.61	339	1	0.03	26	560	9	0.02	<2	5	52
ZZ114381		10	<1	0.08	10	0.64	348	<1	0.02	25	360	7	0.01	<2	5	39
ZZ114382		<10	<1	0.06	10	0.55	202	2	0.02	26	150	6	<0.01	<2	4	26
ZZ114383		10	<1	0.07	10	0.56	337	1	0.02	23	240	7	<0.01	<2	5	39
ZZ115407		<10	<1	0.06	10	0.54	345	1	0.03	23	620	29	0.04	<2	5	45
ZZ115408		<10	1	0.05	10	0.46	254	1	0.02	20	810	10	0.05	<2	3	54
ZZ115409		10	<1	0.07	10	0.59	220	1	0.02	21	250	35	0.02	<2	3	25
ZZ115410		10	<1	0.05	10	0.62	203	1	0.02	19	340	11	0.02	<2	4	52
ZZ115411		10	<1	0.08	10	0.70	263	<1	0.02	22	480	7	0.02	<2	4	44
ZZ115412		<10	<1	0.03	10	0.13	31	<1	0.03	6	1290	3	0.12	<2	1	33
ZZ115413		10	<1	0.05	10	0.50	331	1	0.02	23	380	13	0.01	<2	3	36
ZZ115414		10	<1	0.04	10	0.46	168	1	0.01	15	270	8	0.01	<2	3	38
ZZ115415		10	<1	0.07	10	0.79	320	1	0.02	45	480	8	0.01	<2	6	35
ZZ115416		10	<1	0.16	10	0.74	357	1	0.03	39	210	7	0.01	2	8	31
ZZ115417		10	<1	0.08	10	0.47	268	1	0.02	20	200	10	0.01	<2	3	34
ZZ115418		10	<1	0.09	10	0.66	434	<1	0.02	29	230	8	0.01	2	6	36
ZZ115419		<10	1	0.06	10	0.84	423	1	0.03	28	520	38	0.02	<2	7	45
ZZ115420		10	1	0.06	10	0.57	236	1	0.02	24	290	6	<0.01	<2	4	33
ZZ115421		<10	<1	0.08	10	0.69	420	1	0.02	28	610	8	0.02	<2	5	53
ZZ115422		10	<1	0.07	10	0.81	372	1	0.03	34	320	10	0.01	<2	7	39
ZZ115423		<10	1	0.07	20	0.57	785	1	0.03	30	930	71	0.04	<2	5	57
ZZ115424		10	<1	0.08	10	0.57	280	1	0.02	21	290	8	0.01	<2	4	37
ZZ115425		10	<1	0.06	10	0.54	299	1	0.02	20	870	8	0.03	<2	4	66
ZZ115426		10	<1	0.07	10	0.93	500	1	0.02	31	450	10	0.04	<2	5	70
ZZ115427		10	<1	0.07	10	0.66	307	1	0.02	29	500	7	0.04	<2	5	54
ZZ115428		<10	<1	0.08	10	0.60	420	1	0.03	23	490	5	0.03	<2	5	71
ZZ115429		10	<1	0.13	10	0.73	396	1	0.02	34	290	7	0.01	<2	5	37
ZZ115430		10	1	0.05	10	0.57	299	1	0.02	19	410	5	0.02	<2	3	50
ZZ115431		10	<1	0.07	10	0.46	257	1	0.02	19	300	5	0.01	<2	3	33
ZZ115432		10	<1	0.07	10	0.69	268	1	0.02	26	350	6	<0.01	<2	4	28
ZZ115433		10	<1	0.06	10	0.64	396	1	0.02	20	240	4	<0.01	<2	4	23
ZZ115434		10	<1	0.05	10	0.36	263	1	0.02	17	210	6	0.01	<2	3	45
ZZ115435		<10	<1	0.04	10	0.39	238	1	0.03	20	500	4	0.02	<2	3	33
ZZ115436		10	<1	0.07	10	0.62	196	2	0.02	32	190	6	0.01	<2	4	28
ZZ115437		10	<1	0.09	20	0.62	696	1	0.02	36	540	9	0.02	<2	6	63



ALS Canada Ltd.
 2103 Dollarton Hwy
 North Vancouver BC V7H 0A7
 Phone: +1 (604) 984 0221 Fax: +1 (604) 984 0218
 www.alsglobal.com

To: STRATEGIC METALS LTD.
 C/O ARCHER, CATHRO & ASSOCIATES (1981)
 LIMITED
 1016-510 W HASTINGS ST
 VANCOUVER BC V6B 1L8

Page: 3 - C
 Total # Pages: 4 (A - C)
 Plus Appendix Pages
 Finalized Date: 22-SEP-2016
 Account: MTT

Project: POV

CERTIFICATE OF ANALYSIS WH16144496

Sample Description	Method Analyte Units LOR	ME-ICP41	ME-ICP41	ME-ICP41	ME-ICP41	ME-ICP41	ME-ICP41	ME-ICP41
		Th	Ti	Ti	U	V	W	Zn
		ppm	%	ppm	ppm	ppm	ppm	ppm
		20	0.01	10	10	1	10	2
ZZ114375		<20	0.04	<10	<10	60	<10	52
ZZ114376		<20	0.05	<10	<10	54	<10	48
ZZ114377		<20	0.05	<10	<10	87	<10	74
ZZ114378		<20	0.03	<10	<10	66	<10	58
ZZ114379		<20	0.04	<10	<10	57	<10	51
ZZ114380		<20	0.05	<10	<10	56	<10	49
ZZ114381		<20	0.08	<10	<10	51	<10	55
ZZ114382		<20	0.04	<10	<10	59	<10	45
ZZ114383		<20	0.07	<10	<10	59	<10	54
ZZ115407		<20	0.04	<10	<10	47	<10	51
ZZ115408		<20	0.04	<10	<10	44	<10	46
ZZ115409		<20	0.04	<10	<10	71	<10	55
ZZ115410		<20	0.05	<10	<10	52	<10	41
ZZ115411		<20	0.07	<10	<10	52	<10	52
ZZ115412		<20	0.02	<10	<10	12	<10	19
ZZ115413		<20	0.06	<10	<10	55	<10	41
ZZ115414		<20	0.07	<10	<10	51	<10	29
ZZ115415		<20	0.06	<10	<10	64	<10	56
ZZ115416		<20	0.08	<10	<10	67	<10	51
ZZ115417		<20	0.07	<10	<10	50	<10	42
ZZ115418		<20	0.09	<10	<10	56	<10	51
ZZ115419		<20	0.05	<10	<10	65	<10	57
ZZ115420		<20	0.07	<10	<10	59	<10	48
ZZ115421		<20	0.07	<10	<10	57	<10	55
ZZ115422		<20	0.07	<10	<10	69	<10	51
ZZ115423		<20	0.06	<10	<10	57	<10	81
ZZ115424		<20	0.08	<10	<10	58	<10	61
ZZ115425		<20	0.07	<10	<10	50	<10	55
ZZ115426		<20	0.07	<10	<10	69	<10	63
ZZ115427		<20	0.07	<10	<10	58	<10	48
ZZ115428		<20	0.07	<10	<10	48	<10	49
ZZ115429		<20	0.09	<10	<10	69	<10	60
ZZ115430		<20	0.06	<10	<10	52	<10	43
ZZ115431		<20	0.07	<10	<10	63	<10	48
ZZ115432		<20	0.07	<10	<10	63	<10	47
ZZ115433		<20	0.09	<10	<10	78	<10	57
ZZ115434		<20	0.05	<10	<10	54	<10	49
ZZ115435		<20	0.05	<10	<10	39	<10	29
ZZ115436		<20	0.05	<10	<10	64	<10	39
ZZ115437		<20	0.06	<10	<10	58	<10	67



ALS Canada Ltd.
 2103 Dollarton Hwy
 North Vancouver BC V7H 0A7
 Phone: +1 (604) 984 0221 Fax: +1 (604) 984 0218
 www.alsglobal.com

To: STRATEGIC METALS LTD.
 C/O ARCHER, CATHRO & ASSOCIATES (1981)
 LIMITED
 1016-510 W HASTINGS ST
 VANCOUVER BC V6B 1L8

Page: 4 - A
 Total # Pages: 4 (A - C)
 Plus Appendix Pages
 Finalized Date: 22-SEP-2016
 Account: MTT

Project: POV

CERTIFICATE OF ANALYSIS WH16144496

Sample Description	Method Analyte Units LOR	WEI-21 Recvd Wt. kg	Au-ICP21 Au ppm	ME-ICP41 Ag ppm	ME-ICP41 Al %	ME-ICP41 As ppm	ME-ICP41 B ppm	ME-ICP41 Ba ppm	ME-ICP41 Be ppm	ME-ICP41 Bi ppm	ME-ICP41 Ca %	ME-ICP41 Cd ppm	ME-ICP41 Co ppm	ME-ICP41 Cr ppm	ME-ICP41 Cu ppm	ME-ICP41 Fe %
		0.02	0.001	0.2	0.01	2	10	10	0.5	2	0.01	0.5	1	1	1	0.01
ZZ115438		0.24	0.001	<0.2	1.44	10	<10	260	<0.5	<2	1.19	<0.5	10	38	39	2.46
ZZ115439		0.28	<0.001	<0.2	1.19	8	<10	190	<0.5	<2	0.83	<0.5	8	27	28	2.00
ZZ115440		0.24	<0.001	<0.2	1.65	8	<10	230	<0.5	<2	0.42	<0.5	8	35	17	2.46
ZZ115441		0.20	<0.001	<0.2	1.43	10	<10	190	<0.5	<2	0.66	<0.5	8	33	19	2.52
ZZ115442		0.24	0.001	<0.2	1.29	9	<10	200	<0.5	<2	1.36	<0.5	10	34	32	2.39
ZZ115443		0.24	0.003	<0.2	1.20	7	<10	220	0.5	<2	1.79	<0.5	9	32	46	2.23
ZZ115444		0.32	0.001	<0.2	1.17	9	<10	190	<0.5	<2	0.88	<0.5	7	31	28	2.25
ZZ115445		0.26	0.002	<0.2	1.32	9	<10	200	<0.5	<2	1.04	<0.5	9	34	28	2.28
ZZ115446		0.18	0.001	<0.2	1.18	7	<10	200	<0.5	<2	1.54	<0.5	8	34	34	2.13
ZZ115447		0.28	0.002	<0.2	1.16	14	<10	200	<0.5	<2	1.33	0.5	10	30	31	2.46
ZZ115448		0.26	0.003	<0.2	1.39	9	<10	280	<0.5	<2	1.28	<0.5	10	37	33	2.52
ZZ115449		0.22	0.007	0.3	1.04	8	<10	140	<0.5	<2	1.20	<0.5	8	29	37	2.09
ZZ115450		0.22	0.003	0.2	1.38	7	<10	230	<0.5	<2	0.83	<0.5	8	31	31	2.15
ZZ115451		0.32	<0.001	0.2	1.37	7	<10	240	<0.5	<2	1.44	<0.5	8	33	34	2.15
ZZ115452		0.26	0.002	0.2	1.24	7	<10	190	<0.5	<2	1.46	0.5	9	32	61	1.98
ZZ115453		0.22	0.001	0.2	1.29	7	<10	220	<0.5	<2	1.03	<0.5	8	31	34	2.13
ZZ115454		0.24	0.001	0.2	1.31	8	<10	220	<0.5	<2	0.75	<0.5	8	32	28	2.29
ZZ115455		0.24	<0.001	<0.2	1.35	7	<10	180	<0.5	<2	0.42	<0.5	7	30	16	2.27
ZZ115456		0.22	<0.001	<0.2	1.61	7	<10	160	<0.5	<2	0.45	<0.5	9	33	13	2.30
ZZ115457		0.24	<0.001	<0.2	1.24	6	<10	210	<0.5	<2	1.31	<0.5	8	26	24	1.86
ZZ115458		0.26	<0.001	<0.2	1.52	8	<10	210	<0.5	<2	0.41	<0.5	7	32	20	2.24
ZZ115459		0.24	0.001	0.2	1.21	7	<10	200	<0.5	<2	1.51	<0.5	8	27	57	1.82
ZZ115460		0.36	0.002	0.2	1.53	8	<10	240	0.5	<2	1.20	0.5	11	38	84	2.53
ZZ115461		0.38	0.001	<0.2	1.28	7	<10	200	<0.5	<2	0.78	<0.5	6	26	19	2.01
ZZ115462		0.34	0.001	0.3	1.36	5	<10	260	<0.5	<2	1.17	<0.5	8	29	22	1.97



ALS Canada Ltd.
 2103 Dollarton Hwy
 North Vancouver BC V7H 0A7
 Phone: +1 (604) 984 0221 Fax: +1 (604) 984 0218
 www.alsglobal.com

To: STRATEGIC METALS LTD.
 C/O ARCHER, CATHRO & ASSOCIATES (1981)
 LIMITED
 1016-510 W HASTINGS ST
 VANCOUVER BC V6B 1L8

Page: 4 - B
 Total # Pages: 4 (A - C)
 Plus Appendix Pages
 Finalized Date: 22-SEP-2016
 Account: MTT

Project: POV

CERTIFICATE OF ANALYSIS WH16144496

Sample Description	Method Analyte Units LOR	ME-ICP41	ME-ICP41	ME-ICP41	ME-ICP41	ME-ICP41	ME-ICP41	ME-ICP41	ME-ICP41	ME-ICP41	ME-ICP41	ME-ICP41	ME-ICP41	ME-ICP41	ME-ICP41	
		Ga ppm	Hg ppm	K %	La ppm	Mg %	Mn ppm	Mo ppm	Na %	Ni ppm	P ppm	Pb ppm	S %	Sb ppm	Sc ppm	Sr ppm
		10	1	0.01	10	0.01	5	1	0.01	1	10	2	0.01	2	1	1
ZZ115438		<10	1	0.09	10	0.66	464	1	0.03	31	590	6	0.03	<2	6	73
ZZ115439		<10	1	0.06	10	0.46	416	1	0.02	18	490	5	0.02	<2	4	51
ZZ115440		10	1	0.08	10	0.55	282	2	0.02	22	210	7	0.01	<2	4	29
ZZ115441		10	<1	0.09	10	0.50	286	1	0.02	20	180	6	0.01	2	5	45
ZZ115442		<10	<1	0.08	10	0.60	606	1	0.02	26	590	8	0.04	<2	6	78
ZZ115443		<10	1	0.07	10	0.55	440	1	0.02	33	790	6	0.06	<2	6	95
ZZ115444		<10	<1	0.06	10	0.56	298	1	0.02	24	660	6	0.04	<2	5	53
ZZ115445		<10	<1	0.09	10	0.66	320	1	0.02	27	560	6	0.03	<2	5	64
ZZ115446		<10	<1	0.07	10	0.61	361	1	0.02	26	770	7	0.06	<2	5	82
ZZ115447		<10	<1	0.07	10	0.54	448	2	0.03	23	730	5	0.06	<2	4	74
ZZ115448		<10	1	0.07	10	0.64	438	1	0.02	30	610	8	0.04	<2	5	68
ZZ115449		<10	<1	0.07	10	0.54	313	2	0.01	22	700	9	0.04	<2	4	63
ZZ115450		<10	<1	0.08	10	0.55	371	1	0.01	23	380	8	0.01	<2	5	45
ZZ115451		<10	<1	0.07	10	0.55	381	1	0.01	23	450	9	0.02	<2	5	79
ZZ115452		<10	<1	0.07	10	0.56	513	1	0.01	34	630	7	0.04	<2	5	71
ZZ115453		<10	<1	0.07	10	0.59	437	1	0.01	28	480	7	0.01	<2	5	56
ZZ115454		<10	<1	0.07	10	0.54	325	1	0.01	21	490	8	<0.01	<2	5	47
ZZ115455		<10	<1	0.09	10	0.47	286	1	0.01	18	220	6	<0.01	<2	4	29
ZZ115456		10	<1	0.08	10	0.54	316	1	0.01	19	140	7	<0.01	<2	4	33
ZZ115457		<10	<1	0.06	10	0.47	498	1	0.01	18	530	6	0.03	<2	3	66
ZZ115458		<10	<1	0.05	10	0.55	202	1	0.01	22	210	5	<0.01	<2	4	30
ZZ115459		<10	<1	0.07	10	0.51	406	1	0.01	33	380	7	0.04	<2	4	76
ZZ115460		<10	<1	0.09	20	0.72	391	1	0.01	43	570	9	0.04	2	9	63
ZZ115461		<10	<1	0.06	10	0.49	252	1	0.02	19	290	6	0.01	<2	5	45
ZZ115462		10	<1	0.06	10	0.46	499	1	0.01	18	600	8	0.02	<2	4	62

***** See Appendix Page for comments regarding this certificate *****



ALS Canada Ltd.
 2103 Dollarton Hwy
 North Vancouver BC V7H 0A7
 Phone: +1 (604) 984 0221 Fax: +1 (604) 984 0218
 www.alsglobal.com

To: STRATEGIC METALS LTD.
 C/O ARCHER, CATHRO & ASSOCIATES (1981)
 LIMITED
 1016-510 W HASTINGS ST
 VANCOUVER BC V6B 1L8

Page: 4 - C
 Total # Pages: 4 (A - C)
 Plus Appendix Pages
 Finalized Date: 22-SEP-2016
 Account: MTT

Project: POV

CERTIFICATE OF ANALYSIS WH16144496

Sample Description	Method Analyte Units LOR	ME-ICP41	ME-ICP41	ME-ICP41	ME-ICP41	ME-ICP41	ME-ICP41	ME-ICP41
		Th	Ti	Ti	U	V	W	Zn
		ppm	%	ppm	ppm	ppm	ppm	ppm
		20	0.01	10	10	1	10	2
ZZ115438		<20	0.06	<10	<10	57	<10	55
ZZ115439		<20	0.05	<10	<10	49	<10	46
ZZ115440		<20	0.06	<10	<10	66	<10	53
ZZ115441		<20	0.05	<10	<10	61	<10	60
ZZ115442		<20	0.04	<10	<10	59	<10	63
ZZ115443		<20	0.04	<10	<10	55	<10	54
ZZ115444		<20	0.05	<10	<10	54	<10	54
ZZ115445		<20	0.06	<10	<10	54	<10	48
ZZ115446		<20	0.04	<10	<10	51	<10	57
ZZ115447		<20	0.05	<10	<10	53	<10	48
ZZ115448		<20	0.05	<10	<10	59	<10	55
ZZ115449		<20	0.04	<10	<10	50	<10	59
ZZ115450		<20	0.07	<10	<10	47	<10	55
ZZ115451		<20	0.05	<10	<10	52	<10	47
ZZ115452		<20	0.05	<10	<10	49	<10	62
ZZ115453		<20	0.05	<10	<10	49	<10	47
ZZ115454		<20	0.05	<10	<10	54	<10	54
ZZ115455		<20	0.07	<10	<10	56	<10	50
ZZ115456		<20	0.09	<10	<10	58	<10	49
ZZ115457		<20	0.06	<10	<10	46	<10	40
ZZ115458		<20	0.05	<10	<10	58	<10	39
ZZ115459		<20	0.06	<10	<10	44	<10	39
ZZ115460		<20	0.06	<10	<10	61	<10	58
ZZ115461		<20	0.05	<10	<10	48	<10	41
ZZ115462		<20	0.07	<10	<10	47	<10	51



ALS Canada Ltd.
2103 Dollarton Hwy
North Vancouver BC V7H 0A7
Phone: +1 (604) 984 0221 Fax: +1 (604) 984 0218
www.alsglobal.com

To: STRATEGIC METALS LTD.
C/O ARCHER, CATHRO & ASSOCIATES (1981)
LIMITED
1016-510 W HASTINGS ST
VANCOUVER BC V6B 1L8

Page: Appendix 1
Total # Appendix Pages: 1
Finalized Date: 22-SEP-2016
Account: MTT

Project: POV

CERTIFICATE OF ANALYSIS WH16144496

CERTIFICATE COMMENTS									
Applies to Method:	<p style="text-align: center;">LABORATORY ADDRESSES</p> <p>Processed at ALS Vancouver located at 2103 Dollarton Hwy, North Vancouver, BC, Canada.</p> <table><tr><td>Au-ICP21</td><td>LOG-22</td><td>ME-ICP41</td><td>SCR-41</td></tr><tr><td>WEI-21</td><td></td><td></td><td></td></tr></table>	Au-ICP21	LOG-22	ME-ICP41	SCR-41	WEI-21			
Au-ICP21	LOG-22	ME-ICP41	SCR-41						
WEI-21									



ALS Canada Ltd.
 2103 Dollarton Hwy
 North Vancouver BC V7H 0A7
 Phone: +1 (604) 984 0221 Fax: +1 (604) 984 0218
 www.alsglobal.com

To: STRATEGIC METALS LTD.
 C/O ARCHER, CATHRO & ASSOCIATES (1981)
 LIMITED
 1016-510 W HASTINGS ST
 VANCOUVER BC V6B 1L8

Page: 1
 Total # Pages: 2 (A - D)
 Plus Appendix Pages
 Finalized Date: 21-SEP-2016
 Account: MTT

CERTIFICATE WH16144498

Project: POV

This report is for 5 Rock samples submitted to our lab in Whitehorse, YT, Canada on 29-AUG-2016.

The following have access to data associated with this certificate:

HEATHER BURRELL	JOAN MARIACHER
-----------------	----------------

SAMPLE PREPARATION	
ALS CODE	DESCRIPTION
WEI-21	Received Sample Weight
LOG-21	Sample logging - ClientBarCode
CRU-QC	Crushing QC Test
CRU-31	Fine crushing - 70% <2mm
SPL-21	Split sample - riffle splitter
PUL-31	Pulverize split to 85% <75 um

ANALYTICAL PROCEDURES		
ALS CODE	DESCRIPTION	INSTRUMENT
Au-GRA21	Au 30g FA-GRAV finish	WST-SIM
ME-MS61	48 element four acid ICP-MS	

To: STRATEGIC METALS LTD.
 ATTN: JOAN MARIACHER
 C/O ARCHER, CATHRO & ASSOCIATES (1981) LIMITED
 1016-510 W HASTINGS ST
 VANCOUVER BC V6B 1L8

This is the Final Report and supersedes any preliminary report with this certificate number. Results apply to samples as submitted. All pages of this report have been checked and approved for release.

***** See Appendix Page for comments regarding this certificate *****

Signature: 
 Colin Ramshaw, Vancouver Laboratory Manager



ALS Canada Ltd.
 2103 Dollarton Hwy
 North Vancouver BC V7H 0A7
 Phone: +1 (604) 984 0221 Fax: +1 (604) 984 0218
 www.alsglobal.com

To: STRATEGIC METALS LTD.
 C/O ARCHER, CATHRO & ASSOCIATES (1981)
 LIMITED
 1016-510 W HASTINGS ST
 VANCOUVER BC V6B 1L8

Page: 2 - A
 Total # Pages: 2 (A - D)
 Plus Appendix Pages
 Finalized Date: 21-SEP-2016
 Account: MTT

Project: POV

CERTIFICATE OF ANALYSIS WH16144498

Sample Description	Method Analyte Units LOR	WEI-21 Recvd Wt. kg	Au- GRA21 Au ppm	ME-MS61 Ag ppm	ME-MS61 Al %	ME-MS61 As ppm	ME-MS61 Ba ppm	ME-MS61 Be ppm	ME-MS61 Bi ppm	ME-MS61 Ca %	ME-MS61 Cd ppm	ME-MS61 Ce ppm	ME-MS61 Co ppm	ME-MS61 Cr ppm	ME-MS61 Cs ppm	ME-MS61 Cu ppm
		0.02	0.05	0.01	0.01	0.2	10	0.05	0.01	0.01	0.02	0.01	0.1	1	0.05	0.2
K291440		1.36	<0.05	0.10	7.60	1.6	2320	1.64	2.04	0.89	0.07	38.9	0.6	10	1.99	18.6
K291441		1.32	<0.05	0.06	6.65	0.8	300	1.93	0.11	0.12	0.07	12.15	0.5	1	3.58	6.0
K291442		1.24	<0.05	0.28	8.46	2.6	370	0.47	1.21	5.15	0.35	9.78	21.8	105	2.99	126.5
K291443		1.52	<0.05	1.69	7.75	4.2	1520	0.94	17.35	1.78	0.12	36.2	5.2	17	2.49	68.9
K291444		0.96	<0.05	1.32	7.77	3.9	1350	1.13	9.72	1.66	0.17	33.4	2.5	17	3.33	190.0

***** See Appendix Page for comments regarding this certificate *****



ALS Canada Ltd.
 2103 Dollarton Hwy
 North Vancouver BC V7H 0A7
 Phone: +1 (604) 984 0221 Fax: +1 (604) 984 0218
 www.alsglobal.com

To: STRATEGIC METALS LTD.
 C/O ARCHER, CATHRO & ASSOCIATES (1981)
 LIMITED
 1016-510 W HASTINGS ST
 VANCOUVER BC V6B 1L8

Page: 2 - B
 Total # Pages: 2 (A - D)
 Plus Appendix Pages
 Finalized Date: 21-SEP-2016
 Account: MTT

Project: POV

CERTIFICATE OF ANALYSIS WH16144498

Sample Description	Method Analyte Units LOR	ME-MS61	ME-MS61	ME-MS61	ME-MS61	ME-MS61	ME-MS61	ME-MS61	ME-MS61	ME-MS61	ME-MS61	ME-MS61	ME-MS61	ME-MS61	ME-MS61	
		Fe %	Ga ppm	Ge ppm	Hf ppm	In ppm	K %	La ppm	Li ppm	Mg %	Mn ppm	Mo ppm	Na %	Nb ppm	Ni ppm	P ppm
		0.01	0.05	0.05	0.1	0.005	0.01	0.5	0.2	0.01	5	0.05	0.01	0.1	0.2	10
K291440		1.12	16.35	0.12	2.0	0.012	1.62	21.7	3.4	0.12	34	2.27	3.28	7.6	1.7	290
K291441		0.53	14.00	0.09	2.3	0.016	3.05	5.1	21.6	0.16	131	0.69	0.30	14.2	<0.2	90
K291442		4.92	16.95	0.11	1.2	0.109	1.05	4.1	6.4	2.28	751	0.61	2.27	3.2	37.7	260
K291443		2.38	15.65	0.12	2.2	0.062	1.62	20.7	11.1	0.99	498	1.23	2.82	6.3	9.0	580
K291444		2.51	16.60	0.11	2.0	0.143	0.92	19.4	12.6	0.94	455	2.61	2.99	6.5	8.1	570

***** See Appendix Page for comments regarding this certificate *****



ALS Canada Ltd.
 2103 Dollarton Hwy
 North Vancouver BC V7H 0A7
 Phone: +1 (604) 984 0221 Fax: +1 (604) 984 0218
 www.alsglobal.com

To: STRATEGIC METALS LTD.
 C/O ARCHER, CATHRO & ASSOCIATES (1981)
 LIMITED
 1016-510 W HASTINGS ST
 VANCOUVER BC V6B 1L8

Page: 2 - C
 Total # Pages: 2 (A - D)
 Plus Appendix Pages
 Finalized Date: 21-SEP-2016
 Account: MTT

Project: POV

CERTIFICATE OF ANALYSIS	WH16144498
-------------------------	------------

Sample Description	Method	MS61	MS61	MS61	MS61	MS61	MS61	MS61	MS61	MS61	MS61	MS61	MS61	MS61	MS61	
	Analyte	Pb	Rb	Re	S	Sb	Sc	Se	Sn	Sr	Ta	Te	Th	Ti	Tl	U
	Units	ppm	ppm	ppm	%	ppm	ppm	ppm	ppm	ppm	ppm	ppm	ppm	%	ppm	ppm
	LOR	0.5	0.1	0.002	0.01	0.05	0.1	1	0.2	0.2	0.05	0.05	0.01	0.005	0.02	0.1
K291440		20.8	48.8	<0.002	0.24	0.49	5.0	1	0.8	334	0.69	0.25	15.40	0.166	0.65	5.0
K291441		38.2	146.5	<0.002	<0.01	0.46	2.2	<1	1.3	37.6	1.71	<0.05	9.91	0.030	1.68	4.0
K291442		9.3	25.6	<0.002	0.44	1.33	32.2	1	0.6	311	0.38	0.12	4.94	0.300	0.68	2.2
K291443		37.8	62.0	<0.002	0.66	0.65	6.8	1	0.8	458	0.50	1.02	8.74	0.231	0.79	2.8
K291444		21.8	30.4	<0.002	0.12	0.92	7.4	1	1.0	477	0.51	1.85	7.77	0.237	0.43	3.2

***** See Appendix Page for comments regarding this certificate *****



ALS Canada Ltd.
 2103 Dollarton Hwy
 North Vancouver BC V7H 0A7
 Phone: +1 (604) 984 0221 Fax: +1 (604) 984 0218
 www.alsglobal.com

To: STRATEGIC METALS LTD.
 C/O ARCHER, CATHRO & ASSOCIATES (1981)
 LIMITED
 1016-510 W HASTINGS ST
 VANCOUVER BC V6B 1L8

Page: 2 - D
 Total # Pages: 2 (A - D)
 Plus Appendix Pages
 Finalized Date: 21-SEP-2016
 Account: MTT

Project: POV

CERTIFICATE OF ANALYSIS WH16144498

Sample Description	Method Analyte Units LOR	ME-MS61 V ppm 1	ME-MS61 W ppm 0.1	ME-MS61 Y ppm 0.1	ME-MS61 Zn ppm 2	ME-MS61 Zr ppm 0.5
K291440		39	2.5	5.3	17	56.3
K291441		1	1.1	13.6	38	40.6
K291442		218	1.2	14.1	60	26.4
K291443		51	2.2	10.4	61	70.4
K291444		57	4.3	10.2	71	66.4



ALS Canada Ltd.
 2103 Dollarton Hwy
 North Vancouver BC V7H 0A7
 Phone: +1 (604) 984 0221 Fax: +1 (604) 984 0218
 www.alsglobal.com

To: STRATEGIC METALS LTD.
 C/O ARCHER, CATHRO & ASSOCIATES (1981)
 LIMITED
 1016-510 W HASTINGS ST
 VANCOUVER BC V6B 1L8

Page: Appendix 1
 Total # Appendix Pages: 1
 Finalized Date: 21-SEP-2016
 Account: MTT

Project: POV

CERTIFICATE OF ANALYSIS WH16144498

	CERTIFICATE COMMENTS								
Applies to Method:	<p style="text-align: center;">ANALYTICAL COMMENTS</p> <p>REE's may not be totally soluble in this method. ME-MS61</p>								
Applies to Method:	<p style="text-align: center;">LABORATORY ADDRESSES</p> <p>Processed at ALS Vancouver located at 2103 Dollarton Hwy, North Vancouver, BC, Canada.</p> <table style="width: 100%; border: none;"> <tr> <td style="width: 33%;">Au-GRA21</td> <td style="width: 33%;">CRU-31</td> <td style="width: 33%;">CRU-QC</td> <td style="width: 15%;">LOG-21</td> </tr> <tr> <td>ME-MS61</td> <td>PUL-31</td> <td>SPL-21</td> <td>WEI-21</td> </tr> </table>	Au-GRA21	CRU-31	CRU-QC	LOG-21	ME-MS61	PUL-31	SPL-21	WEI-21
Au-GRA21	CRU-31	CRU-QC	LOG-21						
ME-MS61	PUL-31	SPL-21	WEI-21						