

Higher Ground Exploration Services

**2015 Assessment Report on Trenching and
Prospecting on the Tr'ondëk River Gold Project
Diamond Tooth Resources Inc.**

Dawson City Area; NTS 105C 05

Location: Latitude of 60° 3' 36" N, and Longitude 139° 14' 24" W

Mining District: Dawson

Yukon Territory

By Nicolai Goepfel on behalf of

Diamond Tooth Resources

March 28, 2016

INTRODUCTION	3
LOCATION AND ACCESS.....	4
<i>EARLY WORK</i>	<i>4</i>
<i>ACADEMIC AND GOVERNMENT WORK</i>	<i>5</i>
EXPENDITURES FOR 2015	8
CONCLUSION.....	9
RECOMMENDATIONS.....	10
STATEMENT OF QUALIFICATIONS	11
REFERENCES.....	11
APPENDIX	13

Introduction

In 1896 gold was discovered on Rabbit Creek, by Skookum Jim and George Carmack. This set in motion the greatest gold rush in Canadian history; over 100,000 people are estimated to have attempted to reach the Klondike region between 1896 and 1899. This chance discovery by Skookum Jim and Tagish Charlie would result in the production of over 13 million recorded ounces of gold from the Klondike area in the years to follow. In addition, many notable mineral discoveries were made across the Yukon during this time; many recently and currently explored or developed projects owe their original discovery to this era in Yukon's history.

Many veteran hard rock and placer miners from the California gold rush were among those who answered the call to the Yukon. These miners and prospectors who experienced the California rush would have been familiarized with Mother Lode District orogenic gold mineralization. As these early prospectors diligently tested up the creeks they examined the hillsides for potential lode sources. Several notable placer camps and lode gold occurrences through BC discovered in the later 1800s including Bralorne-Pioneer, Erickson lode mining camps and the Cariboo-Bakerville and Atlin placer mining camps display this strong relationship with ophiolite packages and associated orogenic mineralization. As the early pioneers drove farther north similar correlation was noted and pursued on Fortymile and subsequent Dawson area.

The Tr'ondëk River Gold Project (TRGP) composes of 520 contiguous quartz mineral claims located immediately east of Dawson City (Figure 1). This property is in good standing which is held by Diamond Tooth Resources owner Charlie Brown. During the time of discovery in the Yukon much of the Tr'ondëk River Gold Project, western portion of the claim block was held in a hydraulic concession by Joseph Boyle; Figure 2 displays how the concession was fringed by mineral grants in 1911.

The TRGP claim block overlies accreted Slide Mountain terrane; consisting of an ophiolite oceanic sequence of ultramafic, mafic, volcanic and sedimentary rocks at varying degrees of metamorphism which were intruded by later plutons. Strong indication of Mother Lode orogenic mineralization has been observed on TRGP. Several notable zones of mineralization have been identified and include the low lying basal thrust contact of a serpentinite unit. Listwanite alteration was observed in outcrop for 3 m and localized float for over 1.5km along Shovel Creek. Alternate occurrences include a large gossan identified on a Yukon Geological Survey heli-supported property visit in 2015, and a malachite stained and sulfide bearing quartz vein hosted in gabbro with widths of greater than one meter and traceable for approximately 750ft. Highest sample values from TRGP conducted in recent work by Diamond Tooth Resources include 782 ppb Au, 1200 ppm As, 0.5 ppm Ag, over 1% Cu, and 8.2 ppm Sb; Figure 6 to 10 shows an overview of the property and several highlighted areas. The 2016 season will focus exploration on zones which offer the highest potential for sizable targets including zones of primary migration for mineralizing fluids; contact areas, ridged lithologies prone to dilation, and regional aeromagnetic anomalies.

The purpose of this report is summarise and file exploration on the Tr'ondëk River Gold Project for assessment. Work consisted of prospecting and trenching for a total of \$66,975.00.

Location and Access

The Tr'ondek River Gold Project is located in the Dawson Mining District, Yukon. The TRGP is located on map sheet 116B 03 and centered on latitude of 60° 3' 36" N and longitude 139° 14' 24" W, immediately east of Dawson City. The property is very accessible with good infrastructure and entry by the Klondike Highway, on site three phase power, and close proximity to the Dawson City Airport (Figure 1). In addition, the project area is dissected with old exploration trails and roads that provide access to all corners of the claim block ensuring cost effective exploration. The northern margin of the claim block is bordered with Tr'ondëk Hwëch'in category A and B settlement lands. Figure 5 details all the Diamond Tooth Resources claim names and grant numbers within the Tr'ondek River Gold Project.

Previous Work History

Early Work

The earliest evidence of exploration on the property is observed in the numerous prospecting pits and turn of the century cabins at sites across the claim block; old workings likely date back to the late 1800s into the early 1900s. Many pits clearly indicate the prospecting for lode Au sources. Such pits have been observed below the Dome Look Out, along the left limit of Thomas Gulch, and Bradley Creek on the northeast part of the claim block.

The earliest recorded mineral occurrences are Boyle (Minfile,116B009) and Fibre (Minfile,116B011). Boyle was Staked as the Golden Lion claim, in May 1901 by W. Forster who put in numerous shallow shafts and trenches in 1901-05. Fibre (Minfile,116B011) staked as Asbestos and Platinum claims in September 1900, Ophir claim in November 1900 by G.B. Erwin and was restaked as Crow and Platinum claims in December 1900. The west side was extensively staked in 1900-1902 as the Dawson City Group explored with trenching and prospecting and later surveyed as claims in 1908. Records from this time are scarce; however, research conducted by Charlie Brown and local artist and historian Jim Robb uncovered two articles in reference to the surrounding historic patented claims. The two articles refer to the area west of Thomas Gulch and the north end of the hydraulic concession respectively near Thomas Gulch and Fire Tower respectively (Figure 3 & 4). Under the headline "Good Showing of Quartz Ledges" reads, "Thirty prospect holes have been put down on different leads to locate the walls of ledges... There are six leads running parallel with a general trend of northwest and southeast" and continues to say, "A dyke of bird's eye porphyry of feet in width ... surface assay go \$2.92. The center lead gives an assay of \$85.40 in gold"; The article continues to mention "A body of talc 75 feet in width has been located between two slate walls, which assay \$2 to \$7.48 gold from surface croppings" and "30 tonnes" are ready for the mill.

Gold prices at 1902 averaged around \$18.92 per ounce; \$85.40 would be equivalent to 4.5 ounces per ton (140 g/t) and \$3.10 is equivalent to \$0.16 ounces per ton (5.10 g/t). Another article under the header "Quartz Miners Are Becoming Active" and reads, "An incline of 106 feet in length will be extended for another fifty feet or more on the Matilda Claim" and concludes with "Millions of tons of low grade gold-bearing quartz and porphyry are now in sight on the Dawson City group". Fascinatingly, prospecting efforts in 2015 uncovered an area scoured with early 1900 test pits which coincide with the fore mentioned report near Thomas Gulch. These articles allude to the origin of some of the observed workings and

indicate that several potential lode sources were explored outside of Dawson and yielded up to 4.5 ounces per ton gold. Alternate test pits and shafts have evidently been placed to test underlying placers near drainages and on the benches. In the surrounding area early hard rock exploration ranged from basic prospects to underground workings and production attempts. Some examples include the Lone Star, Violet, Pioneer, Roach, Robin Egg, Parnell, and others.

Academic and Government Work

Academically the property has been incorporated in several academic studies as a geological reference on a regional scale. Two regional government geological maps cover the KGRP including a 1927 GSC compilation map and R. L. Dibicki 1984 and is the extent of geological mapping on the property. A recent 2014 aeromagnetic survey was carried out on behalf of the GSC in the Dawson area and included the TRGP claims (Figures 9). The aeromagnetic survey clearly displays the distribution of serpentinite bodies and larger fault structures previously inferred from previous government bedrock mapping.

Recent Work

This section summarises and highlights the work carried out by the claim owner over the last several years of exploration. The first claim staked was by Charlie Brown during a minus-30-day in November 2004, the property has in the last 12 years accumulated to 520 quartz claims. Figures 6 to 10 show the geology, regional geophysics, as well as exploration highlights in the different areas. Assay results as well as other relevant data from the various years of exploration are also attached in the Appendix.

A 2012 exploration program focused on areas south of the Klondike river including around the historic Golden Age claim where a two ounces per ton sample was presumed to be taken from a short adit (Mortensen, 1984). In 2012 a total of 17 trenches were dug; 62 soil samples taken on either side of Foster Gulch on 100m sample intervals; and 72 rocks samples from trenches were collected with 17 sent for assay. Two soil samples returned over 100 ppb Au (159 and 179 ppb), three samples with over 10 ppb Au; other soils samples produced strong Ag (0.85ppm), As (192.1 ppm), Cu (534 ppm), Co (48 ppm), Sb (4.2ppm), Pb and Zn. The sample with the highest Au in soil corresponds to high As, Sb, Cr, Ni (745 ppm), and Co. The most notable rock sample was taken from below the soil lines in Foster Gulch, assays yielded 35.6 ppb Au, 0.5 ppm Ag, 681 ppm Cu, and 74 ppm Co. Work carried out was partially supported by the government Yukon Mineral Incentive Program (YMIP). Based off of findings and positive results around Foster Gulch further work was carried out on this area in 2013.

Diamond Tooth Resources was able to secure additional YMIP funding in 2013, which assisted in follow up work on the Foster Gulch soil anomalies and to further prospect and explore the property. The 2013 work program consisted of prospecting, soil sampling, and trenching resulting in 53 days of prospecting and sampling, excavation of eight test pits and trenches, and submittal of 59 soil samples and 84 rock samples. Follow up trenching on the north side of Foster Gulch resulted in the unearthing of the Kormendy showing. 2015 site visit by the author noted the 60 m long trench exposes a mineralized fold hinge within quartz-chlorite-schist consisting of pyrite, chalcopyrite, galena, limonite with quartz and bladed calcite. Mineralizing fluids likely intrusive in origin migrated along foliation were the hinge provided the embayment and site for mineralization. Strongest values from the Kormendy showing include; 272 ppb

Au, 0.4 ppm Ag, 5118 ppm Cu, 259 ppm As, 2.0 ppm Sb, and 2339 ppm Zn. During the 2013 season, 59 soil samples were taken to infill previous sampling on the northeast end of Foster Gulch. Several outstanding results from 2013 soil samples include; 35.8 ppb Au, 1.87 ppm Ag, 231.4 ppm As, 264.8 ppm Cu, 41.52 ppm Mo, 2.42 ppm Sb, and 774.8 ppm Zn. Seven pits were dug on the northeast side of Foster Gulch; pits are in proximity to previously elevated soils and near the basal contact between overlying serpentinite and quartz-muscovite-schist. Several samples from hydrothermally altered serpentinite encountered in the excavations (Foster Child Showing) include; 782 ppb Au, 0.36 ppm Ag, 12400 ppm As, 237 ppm Cu, 154 ppm Co, 1.9 ppm Hg, and 6.27 ppm Sb. Furthermore, regional prospecting on the TRGP in 2013 resulted in the finding of the “Breccia Zone”; revealing a greater than 100m zone where float samples consisting of sulphide bearing quartz vein breccia yielded up to 139 ppb Au, 0.14 ppm Ag, 346 ppm As, 8.2 ppm Sb, and 531 ppm Zn.

Bedrock Geology

The Tr'ondek River Gold Project is underlain by bedrock comprising of medium-grade metamorphic rocks of the Upper Permian Klondike Schist, middle to late Paleozoic carbonaceous schist of the Finlayson Nasina assemblage, and low-grade metamorphosed greenstone and ultramafic rocks of the Slide Mountain terrane. Lithological units are juxtaposed by regional-scale thrust faults (Mortensen, 2007). These units were emplaced in the Jurassic as a series of kilometre-scale stacked thrust slices that are locally separated by additional ultramafic slices and later unconformably overlain by locally derived sedimentary and volcanic rocks in the Late Cretaceous (Mortensen, 1996). Regional extension and normal faulting continued from Late Cretaceous to early Eocene with initiation of strike-slip movement of proximal Tintina fault, along which rocks of the Klondike District were displaced by approximately 450 km from the rest of the Yukon-Tanana terrane (Gabrielse et al., 2006). A distinctive set of post-metamorphic compressional structures related to thrusting, ductile recumbent folds and associated spaced cleavage is preserved in all thrust slices and is well developed near bounding faults (Mortensen, 2007). This complexly folded and faulted succession of metamorphosed continental margin sediments and ophiolitic rocks are intruded by later Mississippian and Permian plutons.

2015 Exploration Program

Exploration activity for 2015 consisted of approximately two weeks of prospecting by the author and Gay Berg and follow up trenching by the claim owner Charlie Brown. Trench dimensions and locations are displayed in Figure 13. Prospecting in 2015 investigated regionally mapped contacts and faults as well as magnetic anomalies displayed in the regional geophysics. Figure 11 displays tracks from prospecting, Figure 12 indicates prospecting waypoints, and Figure 13 details the waypoint coordinates. Investigating the three-way contact between gabbro and serpentinite and quartz muscovite schist on the western margin of the claim block resulted in discovering a series of old shafts and trenches along the right fork of Thomas Gulch that corresponds to the 1902 newspaper article under the headlined “Good Showing of Quartz Ledges”. Further up slope east of the Dome Lookout revealed two areas of localized quartz boulders with three possible in-situ exposures with evidence of old workings. Majority of quartz bared a “bull” appearance but local samples contained sericite and minor limonite. Samples from this region on Thomas Gulch yielded; 0.19 ppm Ag, 14.8 ppm As, 660 ppm Ba, 50.8 ppm Cu, 3.68 ppm Mo, and 57.5 ppm

Zn. An intensively talc and listwanite altered fault which corresponds with a regional geophysics anomaly was located on the historic Matilda Patented claim where a 106ft incline was drove in the early 1900s.

Several alternate zones of mineralization identified on the property include the low lying basal thrust contact of a serpentinite unit where listwanite alteration was observed in outcrop and localized float for over 1.5 km and wider than 3 m in one outcrop near Shovel Creek on the northeast end of the property. Listwanite alteration consists of fuchsite and magnesite occurring with comb and banded chalcedonic quartz; other samples in the 1.5 km stretch displayed clay alteration and minor brecciation with quartz and bladed calcite. Two rock samples were taken from the zone and returned 5.47 ppm Sb, 52.6 ppm As and 1.27 ppm Mo. In the adjacent area a large gossan greater than 100m across with signs of old workings was discovered during a heli-supported property visit by Yukon Geological Survey (YGS) geologist Derek Torgerson and prospected shortly after. Another discovery in 2015 included the "Smoke Stack" quartz vein hosted in gabbro with minor malachite staining and sulfide with widths of greater than one meter and traceable for approximately 750ft, located in the central part of the claim. The gabbro host contains pyrite and is locally stained with malachite: an ideal chemical trigger for gold deposition in any nearby veins. Rock samples from the "Smoke Stack" and gabbro host returned up to 74 ppb Au, 0.45 ppm Ag, over 1% Cu, 51.5 ppm Li, 0.92 ppm Sb and 7.48 ppm Mo. Accessible sites were trenched: 13 representative samples were sent for initial assay and a second batch of 10 samples were submitted on behalf of the YGS. Despite low Au results, several new sizable targets were identified and has outlined the greater potential across the property.

Expenditures for 2015

Personnel			
Task	Day Rate	Number of Days	Total
Geologist	\$450	17	7650
Prospector	\$350	42	\$14,700.00
Excavator operator	*see gear and transport*	27	*see gear and transport*
		Subtotal	\$22,350.00
Gear and Transportation			
Task	Rate	Number of Days	Total
Truck	\$50.00 per day	2 Trucks X 36 days	\$ 3,600.00
Quad	\$40.00 per day per quad	2 quads X 37 days	\$ 2,960.00
Excavator (for trenching)	\$97.50 per hr X 183 hrs	22	\$ 17,842.50
Excavator (for reclaiming trenches)	\$97.50 per hr X 52 hrs	5	\$ 5,070.00
Excavator (Total mob/demob)	\$97.50 per hr X 55 hrs	5.5	\$ 5,362.50
Quad trailer	\$16.00 per day	46	\$ 736.00
Chainsaw	\$10.00 per day	46	\$ 460.00
Daily expenses	\$100.00 per day per person	86	\$ 8,600.00
2' gas pump	\$10.00 per day	46	\$ 460.00
Generator (3000 Watt)	\$16.00 per day	46	\$ 736.00
Helicopter	\$1400.00 per hour (wet) X 1.4hrs	1	\$ 1,960.00
		Subtotal	\$ 47,787.00
Total Costs			
Personnel	\$	22,350.00	
Gear and Transportation	\$	47,787.00	
Total	\$	70,137.00	

The total expenditures for the 2015 exploration program is \$70,137.00.

Conclusion

The Diamond Tooth Resources Tr'ondek River Gold Project is situated in the Yukon's northwestern extent of the Tintina Gold Belt, a zone of gold mineralization between the Tintina and Denali faults. The project claim block overlays some of the richest placer ground in Canada: the source of which must be attributed to the surrounding geology. Lode sources have been explored in the Dawson area for over one hundred years, yet no significant ore shoots have been found and mined. Through the Western Cordilleran in British Columbia gold-quartz vein deposits and their derived placers are often spatially associated with listwanites and carbonate±sericite±pyrite altered ophiolitic mafic and ultramafic rocks of the Slide Mountain and Cache Creek terranes; some examples include the Bralorne-Pioneer, Erickson and Rossland lode mining camps, and the Atlin, Cariboo-Barkerville, Dease Lake and Manson Creek placer camps (Ash, 2001). Such lodes have historically accounted for as much as 50% of British Columbia's gold (Schroeter et al., 2000). Examples of significant gold producers elsewhere in the Western Cordilleran include the Sierra Nevada metamorphic belt of California and Mother Lode district. In the Mother Lode district, "It is estimated that 80% of the production of the district has been derived from those portions of the veins where serpentinite either formed one wall or was at least 100 ft from the ore" (Moore, 1999).

Listwanite associated veins occur as mesothermal veins mineralizing from metamorphic fluids during orogeny and as distal intrusion related hydrothermal veins. Depending on origin of mineralization fluids, whether they are closer associated to serpentinitizing or intrusion related fluids would greatly vary the encountered geochemistries and precipitated minerals (Hart, 2005). Veins are often encountered in subductile-brittle shears, in embayment zones or intersection points with other structures for greater dilation. Ore zones are typically best where Cu- or Fe-rich, or graphitic reduced horizons are intersected by faults. Listwanite lode Au deposits are structurally hosted epigenetic deposits, occupying zones of weakness such as contacts, transition zones and in faults and shears. Contacts and structures act as fluid conduits to serpentinitizing and mineralizing fluids. Mafic and ultramafic host rocks will generally show signs of steatization with greater intensity towards contacts or structures. Serpentinite bodies expand and contract with hydration and dehydration during serpentinitization; in turn offering a favourable site for dilation and emplacement of epigenetic veins. Distal alteration typically consists of talc, magnesite, and carbonate with addition of quartz, mariposite, and Au/Ag sulphides towards the center of a structure and with increasing alteration. Magnesite, talc, fuchsite or mariposite envelope or are cross-cut by veins and ore shoots; lower grade mineralization can occur as wallrock alteration in the form of pervasive silicification or as veinlets within the wallrock. Serpentinite bodies expand and contract with hydration and dehydration during serpentinitization; in turn offering a favourable site for dilation and emplacement of epigenetic veins. Geochemically, base metals, barium, potassium, arsenic, antimony and lithium; have shown to be significant pathfinders at various lode mining camps in BC (Ash, 1989). Linear areomagnetic lows can be used to delineate faults as carbonatization destroys magnetite through hydrothermal alteration.

Suitable geological structures and lithologies exist on the Diamond Tooth Resources claim block to support and host mesothermal lode gold mineralization on the property. The potential has been recorded in field observations and in geochemical results.

Recommendations

Future Exploration can be carried out cheaply and effectively by utilizing the well established infrastructure and trail network. Exploration consisting of bedrock mapping, prospecting, ground geophysics, soil sampling (hand and mechanical), and mechanical trenching could be carried out cumulatively in several phases. The initial phase of bedrock mapping would outline the distribution of lithological units across the property; this can be done modestly using existing outcrop waypoints combined with an air photo interpretation to highlight linears and exposures. Any remaining unknown areas would be field checked and prospected. Recent 2014 total magnetic field and first vertical aeromagnetic survey flown on behalf of the GSC delineates several serpentinite bodies and potential faults and will aid in inferring geology in covered areas. Simultaneously with bedrock mapping areas identified in previous exploration should be covered with a backpack magnetometer survey. Magnetometer would serve well in identifying magnetic lows produced by destruction of magnetite during hydrothermal alteration and magnetic highs in areas underlain by serpentinite, gabbro, and graphitic schist. Initial areas that should be covered in the magnetometer survey include increasing resolution on anomalies identified in the regional aeromagnetic map, the area of quartz boulders and old workings along the west side of Thomas Gulch, the "Smoke Stack" vein, the "kormendy" showing and nearby contact, Shovel creek listwanites showings and Bradely Gossan. Alternate areas for magnetometer surveys include several extensively talc altered fault and contact encountered in previous trenching, as well as any favourable contacts or structures identified in bedrock mapping.

Following mapping and geophysical surveys, two modes of soil sampling should be carried out in grid format perpendicular to any geophysical anomalies. Mode A would consist of hand augered soils at 50 or 100m sample spacing and 100 or 200m line spacings to a maximum depth to obtain "C" horizon decomposed bedrock material for assay. These surveys would be effective in steeper less accessible areas. Mode B would utilize a 6 inch auger drill mounted on a Kubota KX-121 mini excavator. The unit has a soft sediment and rock bit and can reach up to a maximum reach of 18 ft. Mode B should be applied in 50m sample spacings and 100m line spacing in accessible areas where colluvium or overburden is thick. A geologist should be on site to note bedrock changes across an anomaly as rock chips are brought up with the auger, to assist in connecting rod, and for sampling. Sample density could be increased as signs of alteration are met. Rock samples should also be taken in areas of alteration providing a less invasive way to test the underlying bedrock. A final trenching phase should be carried out following the return of assays. Large bulk samples of vein material can be carefully weighted, crushed and ball milled than run over a Wilfley table to mitigate "nugget effect" and to further assess a showing while assays are waited on.

The future exploration program if carried out would quickly and cost effectively advance the project. The well accessible claim block cuts out need for a costly helicopter budget allowing for more money to be spent on exploration. Geophysics carried out near existing trenches would add more value to the previous exploration. If positive results are found the outlined exploration program would generate drill-ready targets.

Statement of Qualifications

I Nicolai Goeppel am a local Yukon prospector/geologist and owner to Higher Ground Exploration Services. I'm born and raised in the Yukon with placer roots in the Freegold Mountain area near Carmacks. Earliest involvement in geology includes two field seasons with the Yukon Geological Survey and three years as senior project manager at All-In Explorations. More recently includes managing multiple placer and hard rock projects for Midnight Mining Services and alternate exploration companies. In the last seven field season I've encountered and worked in skarn, porphyry, epithermal and intrusive related vein systems, vms, magmatic Cu-Ni mineralization, and Carlin as well other types of mineralization for various commodities. In terms of orogenic lode Au/Ag mineralization, I worked on number of project in the Cache Creek terrane in southern Yukon and northern BC. This includes work in Newfoundland, where I recently completed a BSc in Earth Sciences at Memorial University in January 2014

References

- Ash, C. H., and R. L. Arksey. "British Columbia Geological Survey Geological Fieldwork 1989." (1989).
- Ash, Christopher Henry, Robert William MacDonald, and P. R. Reynolds. *Relationship Between Ophiolites and Gold-Quartz Veins in the North American Cordillera*. British Columbia, Ministry of Energy and Mines, 2001.
- Ash, C.H., 2001: Relationship between ophiolites and gold quartz veins in the North American Cordillera: *British Columbia Ministry of Energy and Mines, Bulletin 108, 140 p.*
- Ash, C.H., 2006: Setting of the gold-quartz vein lode source for placers within the Klondike goldfields, west-central Yukon, Canada; *Society of Economic Geologists (SEG), Keystone Conference*
- Debicki, R.L., 1985: Bedrock geology and mineralization of the Klondike area (west), 115/9, 10, 11, 14, 15, 16 and 116B/2&3: *Yukon, Indian and Northern Affairs Canada, Exploration and Geological Services Division, Open File Map with marginal notes (1:50,000 scale)*.
- Gabrielse, H., Murphy, D.C. and Mortensen, J.K., 2006. Cretaceous and Cenozoic dextral orogen-parallel displacements, magmatism, and paleogeography, north-central Canadian Cordillera. *In: Paleogeography of the North American Cordillera: Evidence For and Against Large-Scale Displacements*, J.W. Haggart, R.J. Enkin and J.W.H Monger (eds.), Geological Association of Canada, Special Paper 46, p. 255-276.
- Green, L.H., 1972: Geology of Nash Creek, Larsen Creek and Dawson map areas, Yukon Territory: Geological Survey of Canada, Memoir 364, 157 p.

Hart, C. J. R., and R. J. Goldfarb. "Distinguishing intrusion-related from orogenic gold systems." *New Zealand Minerals Conference Proceedings*. 2005.

Lowey, G.W. 1998: White channel gravels, Klondike goldfields Yukon, Canada; Exploration and Geological Services Division, Yukon, Indian and Northern Affairs Canada, Open File 1998-2, 1:100,000 scale map and notes.

MacKenzie, Doug, Dave Crow, and Jim K. Mortensen. "Thrust slices and associated deformation in the Klondike goldfield, Yukon." *Yukon Exploration and Geology* (2007): 199-213.

Moore, Eldridge M., Doris Sloan, and Dorothy L. Stout, eds. *Classic Cordilleran concepts: a view from California*. Vol. 338. Geological Society of America, 1999.

Mortensen, J.K., 1984: Assessment Report on Klean 1-12 Claims: *Yukon Energy, Mines and Resources*, Assessment Report No 091560.

Mortensen, J.K., 1990: Geology and U-Pb geochronology of the Klondike District, west-central Yukon Territory: *Canadian Journal of Earth Sciences*, v. 27, p. 903-914.

Mortensen, J.K., 1996: Geological compilation maps of the Northern Stewart River map area Klondike and Sixtymile districts (115N/15,16; 115O/13,14 and parts of 115O/15,16): *Indian and Northern Affairs Canada*, Yukon Region, Open File 1996-1(G), Report, 43 p., 1:50,000 scale maps (6).

Appendix

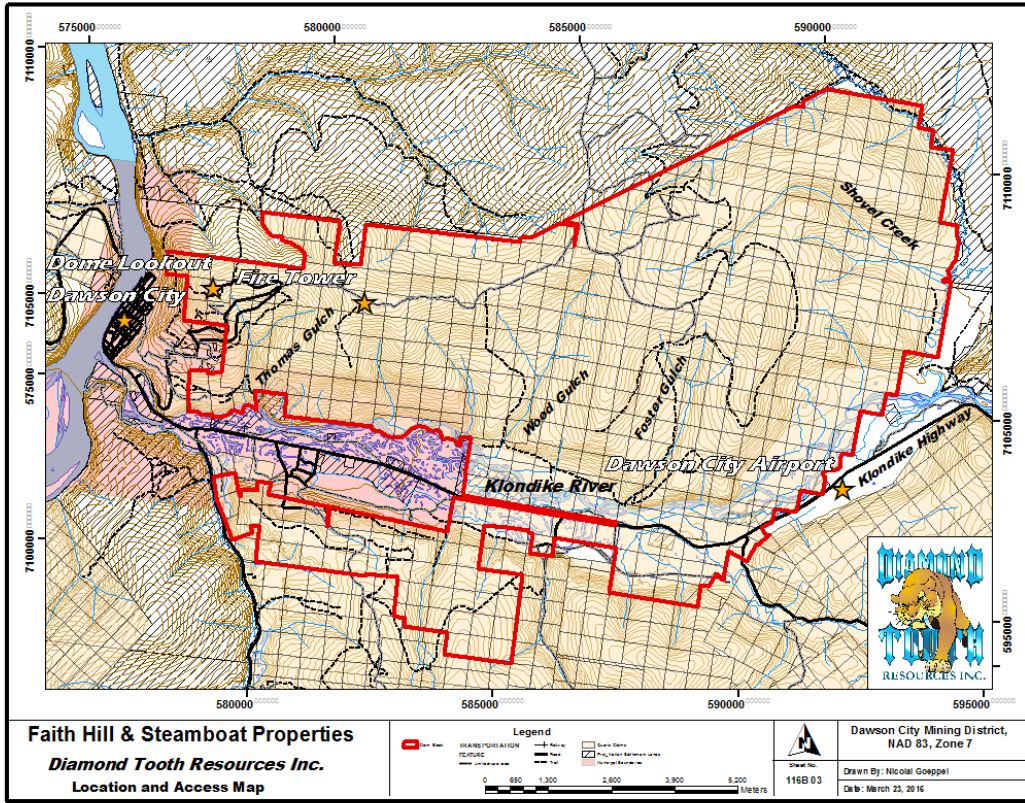


Figure 1. Location and access (solid black lines are paved or chip seal roads, grey lines are dirt roads and dashed lines are atv tracks.

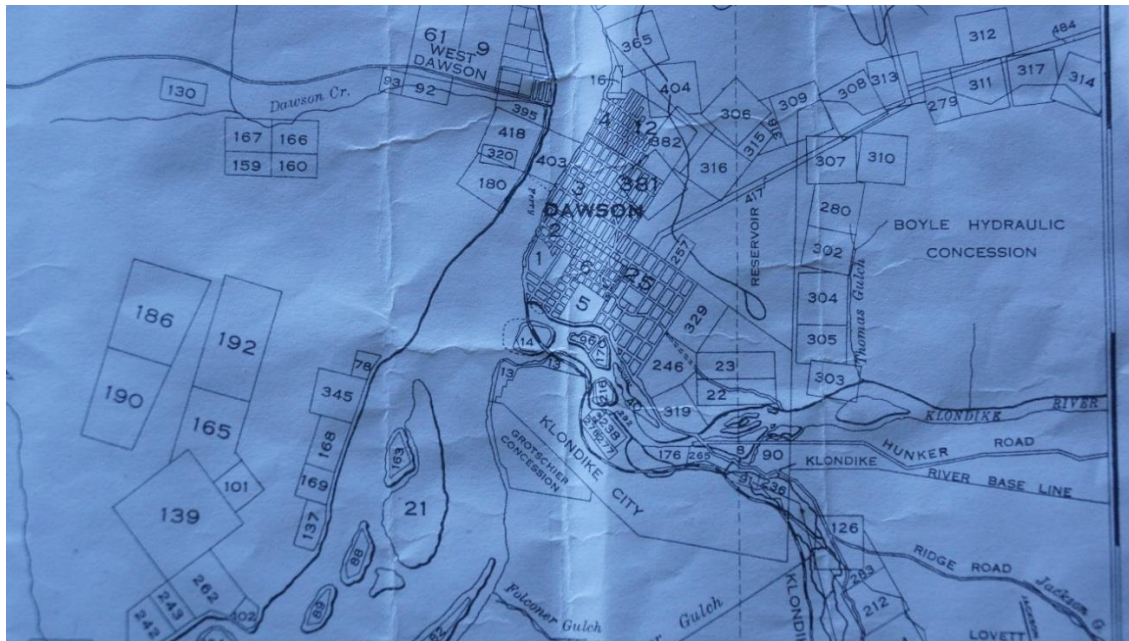


Figure 2. 1911 map of quartz mining activity around Dawson City and showing Boyle Hydraulic Concession.

QUARTZ MINERS BECOMING ACTIVE

Work Commenced on Dawson City Property North of Town—Tests to Be Made.

The increasing interest being taken in quartz properties about Dawson is resulting in preliminary development work that may prove some of the rock to be very rich. Wilson Foster, president of the Dawson City Quartz Mining Company Limited, states that work has been resumed on this company's properties, located just north of and adjoining the northern city limits.

"An incline 106 feet in length," Mr. Foster states, "will be extended for another fifty feet or more in depth on the Matilda claim. A similar incline shaft is now being driven on the Agnes claim, which the company purchased last year from Miss Richardson.

"I intend to have at least two mill tests made from the property before leaving for the fair. I will take 100,000 shares of the treasury working stock of the company to St. Louis with me to sell, if possible, and raise capital enough to install an immense stamp mill on the Klondike at the mouth of Thomas gulch. Millions of tons of low grade gold-bearing quartz and porphyry are now in sight on the Dawson City group."

1902

Time and again the big fellow brought down his hoofs upon his prostrate foe, and as many times did the latter try to rise, but his shoulder had been broken and he was helpless. For a minute or two he struggled, and then lay perfectly still. The conqueror gave the carcass one last contemptuous kick and then crashed off into the woods."

JOE BARRETT'S SWELL ROADSTERS

Arrives From Whitehorse With Palo Alto Thoroughbreds—Make a Grand Appearance.

Joe Barrett and his niece, Miss Barrett, arrived yesterday from Whitehorse with his span of standard bred horses and handsome two-seated sleigh. Upon alighting Mr. Barrett was greeted by a number of friends. The first thing the old sourdough had to say was the old familiar statement, known only to the friends of Joe: "Hello! Hello!"

Putting up at "Hutch's" livery on Third avenue, he said: "Give them three quarts of hay and two pounds of oats, and if they don't go in half-past two, I give you to her."

This fine pair of driving horses imported by Mr. Barrett, are standard bred colts from the Leland Stanford stables of Palo Alto, California.

Joe has not quit growing sideways, and the only kick he has coming is that the White Pass, with its fast stages, has not brought in his trunk of tailor-made clothes and pling hat, and Joe, as usual, will appear in corduroy suit of knee breeches, which he wore on leaving Dawson two months ago. Hence his handsome form will not be seen on the streets until after the arrival of the trunk.

The sleigh is one of the most up-to-date rigs that was ever brought into this city. The seats are adjustable and so arranged that those who sit in the rear are closed in, as if in an open hack. The rig is the best turned out by the Studebaker Bros. of South Bend, Ind.

LOCAL MENTION.

Mrs. Mamie O'Day and Mrs. Budreau arrived from Seattle yesterday and are registered at the Klondike. Nick Gough, an old timer, has been laid up in the hospital for several days

far on the river. Casper Blinn is at the head of a company which is developing a mine on Washington creek. "If these coal mines put out enough coal, and it is found to be of good quality the wood question will be a thing of the past."

Mr. Manchester says he expected to see the town depopulated when he arrived, for between here and Forty-Mile he passed thirteen horse teams and twenty-two dog teams, a number of which, however, were going to the Twelve-Mile stampede.

GOOD SHOWING OF QUARTZ LEDGES

Wilson Foster Reports Finding the Wall and Rich Vein Matter on Dome Back of Dawson.

Wilson Foster, the manager of the Dawson City Quartz Mining Company Limited, has just visited the hill back of town where the work of the company is being done. Mr. Foster says: "Thirty prospect holes have been put down on the different ledges. On one ledge the walls of the ledges, from top to bottom a hole twelve feet deep has been put down and that further work would be unnecessary. There are six leads running parallel with a general direction of northwest and southeast.

"A dyke of bird's eye porphyry of feet in width is in between two leads. Its surface assays go \$932. The center lead gives an assay of \$85.40 in gold, with traces of silver and copper. Assays of the other leads go \$14, \$4 and \$3.

"A body of tale 75 feet in width has been located between two slate walls, which assays from \$2 to \$3.10 gold from surface croppings.

"Work will be continued as soon as the weather gets warmer. "About thirty tons of pay rock is on the dump, ready to be taken to the mill."

DUCHESS BRINGS \$900.

Ted Aikman Buys Mayor Macaulay's Handsome Driving Mare. James Allen Aikman, more familiarly known as Tod, yesterday purchased the handsome driving mare, Duchess from Mayor Macaulay for the sum of \$900. When such "crack" as Tod, Joe Barrett, Frank Pilschler and Dick Lowe can be seen making clouds of

COFFEE AND TOBACCO

The Disease as Clearly Real Old Article fr

"Speaking of delirium a well-known physician takes to assume that the alcohol is the only tudecs this condition. complaint commonly the use of too much the same condition physically may be produced by whisky, too much of any of the stimulants will produce too much smoking and long may produce delirium of its earlier form condition is not aggravated by an excessive use of and things of that sort some are there and it complaint.

"Coffee and tobacco cases of incipient delirium than all the whisky is manifestation of the condition following the coffee and tobacco is the expert and the science of it. I have seen developed. But who was a peculiar condition from a sudden quiet plants of various kind drinks heavily, and suddenly, is likely to men. The nerves sudden change. It produces that condition of jimjams. This, of cases of alcoholism.

"Suppose we take in the habit of drinking of coffee, or us quantity of tobacco. dealy. They do not saying goes. The Now, in my experience a good many cases has produced exactly logical condition. Cams, tobacco produced as the use of whiskey same complaint. C a difference. But it degree.

"During the past had occasion to try this kind. Men and to me at different statement that the;

Figure 3 & 4. Old newspaper articles.

Figure 5. List of claim names, grant numbers, and other details. See attached files.

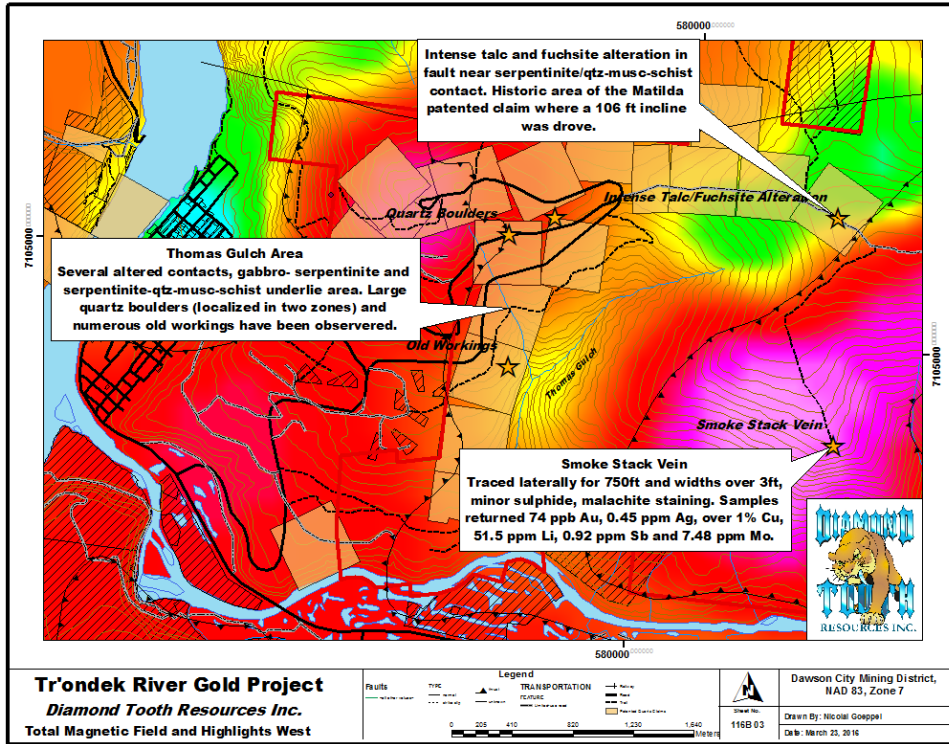


Figure 6. Total magnetic field, faults, and described highlights, west side.

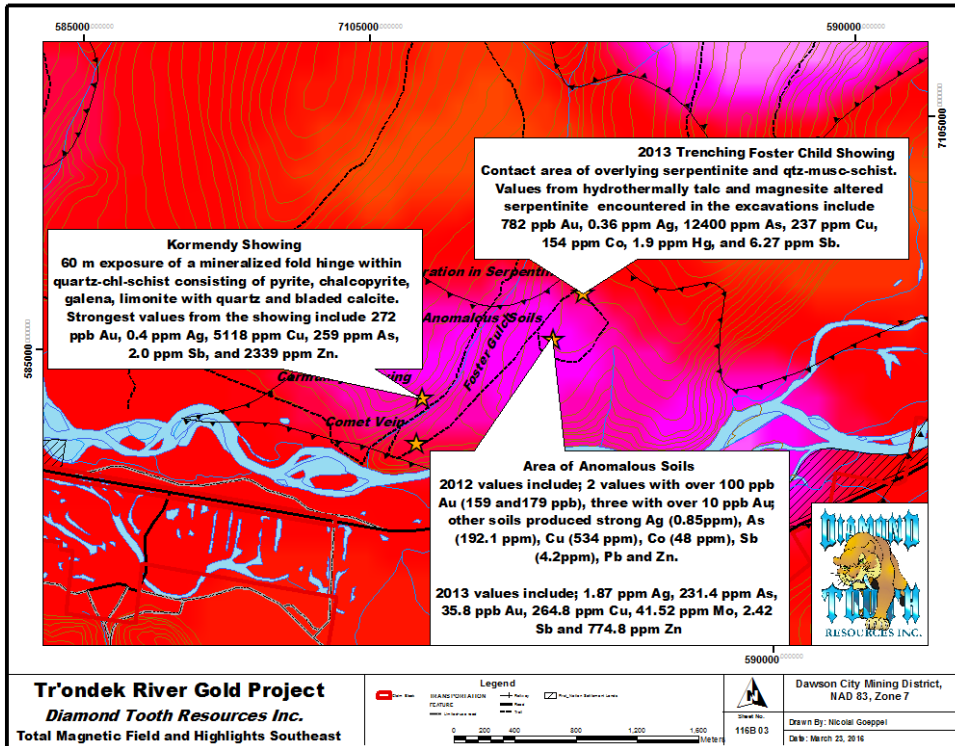


Figure 7. Total magnetic field, faults, and described highlights, southeast side.

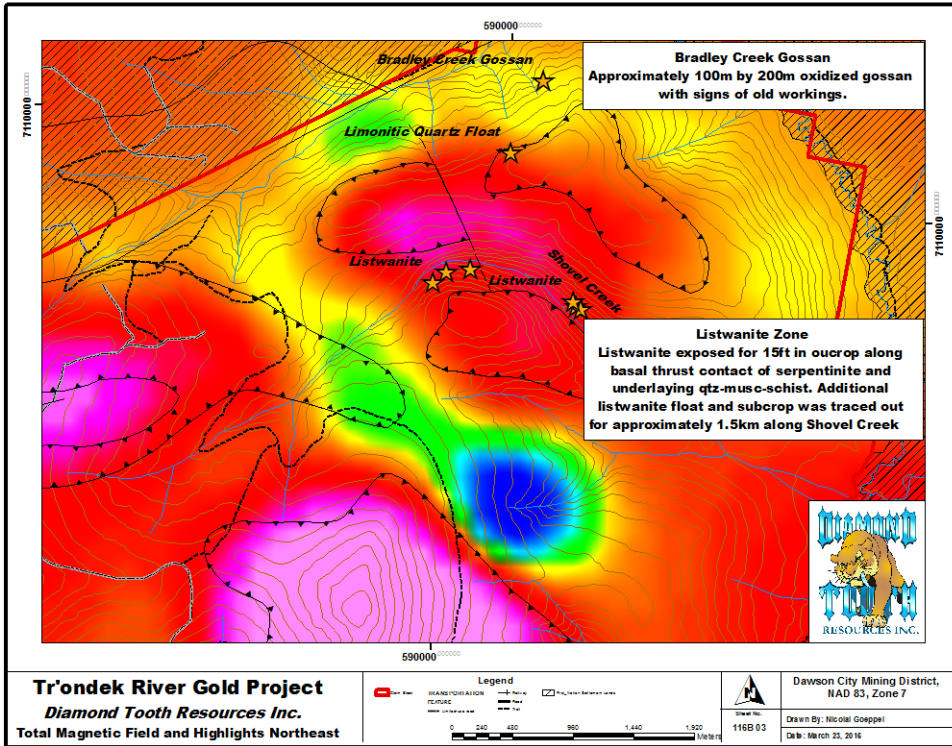


Figure 8. Total magnetic field, faults, and described highlights, northeast side.

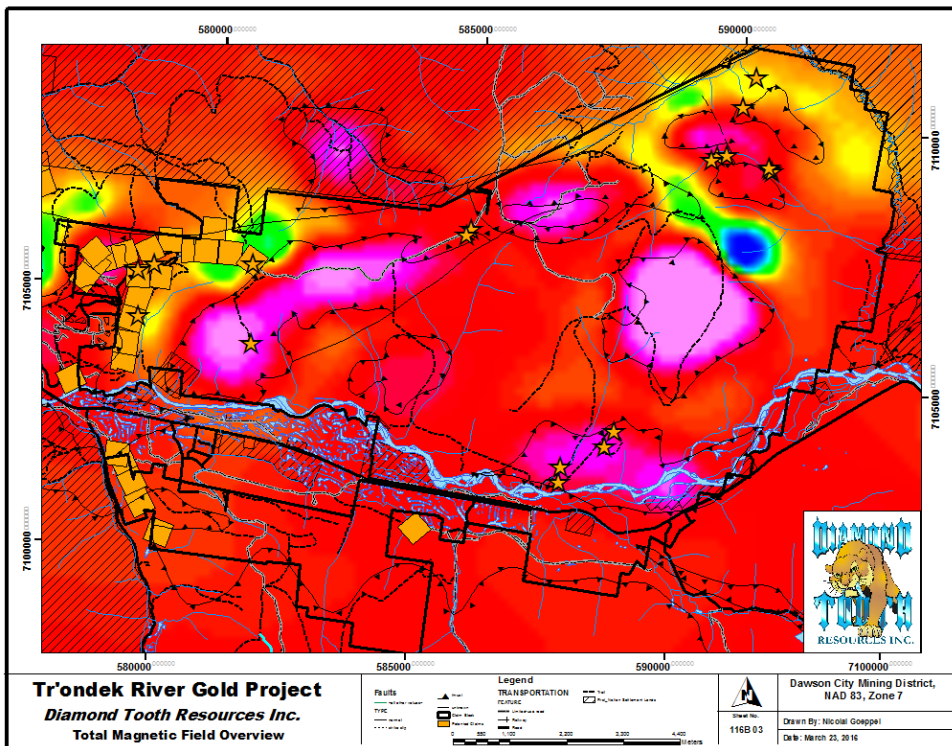


Figure 9. Overview with regional aeromagnetics

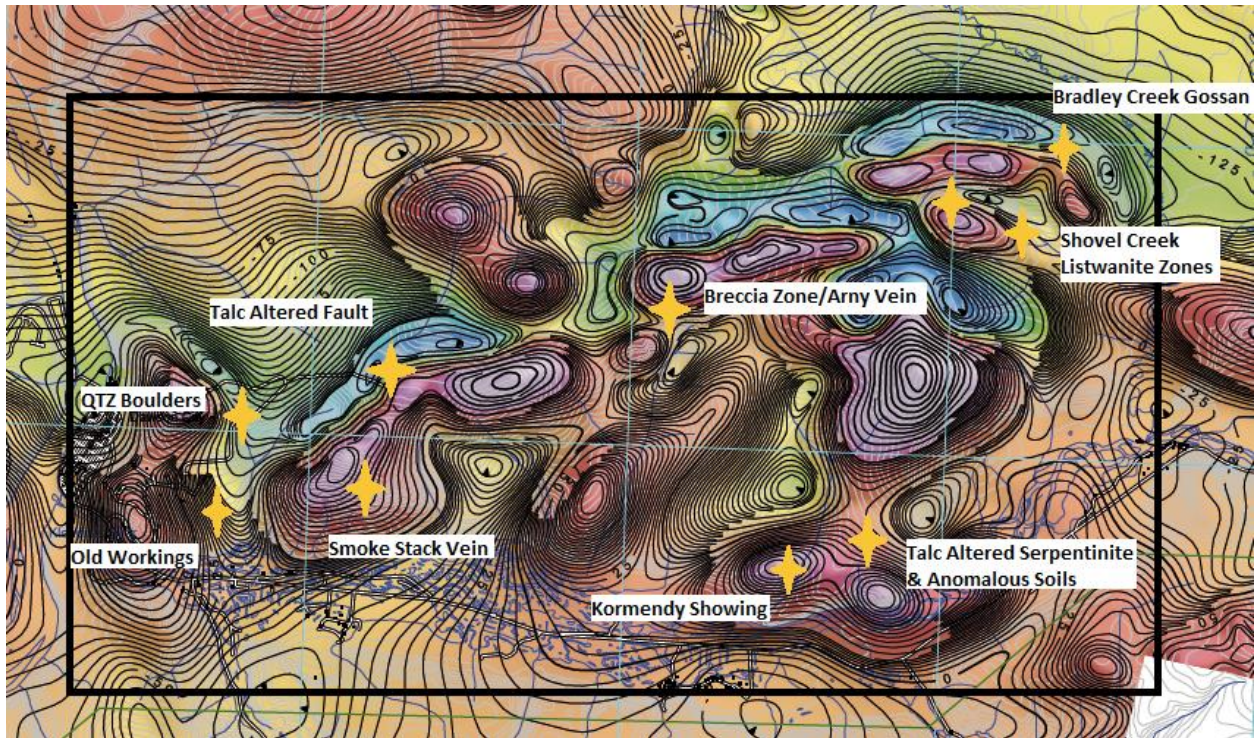


Figure 9. Highlights overlain on recent 2014 Residual Total Magnetic Field aeromagnetic survey.

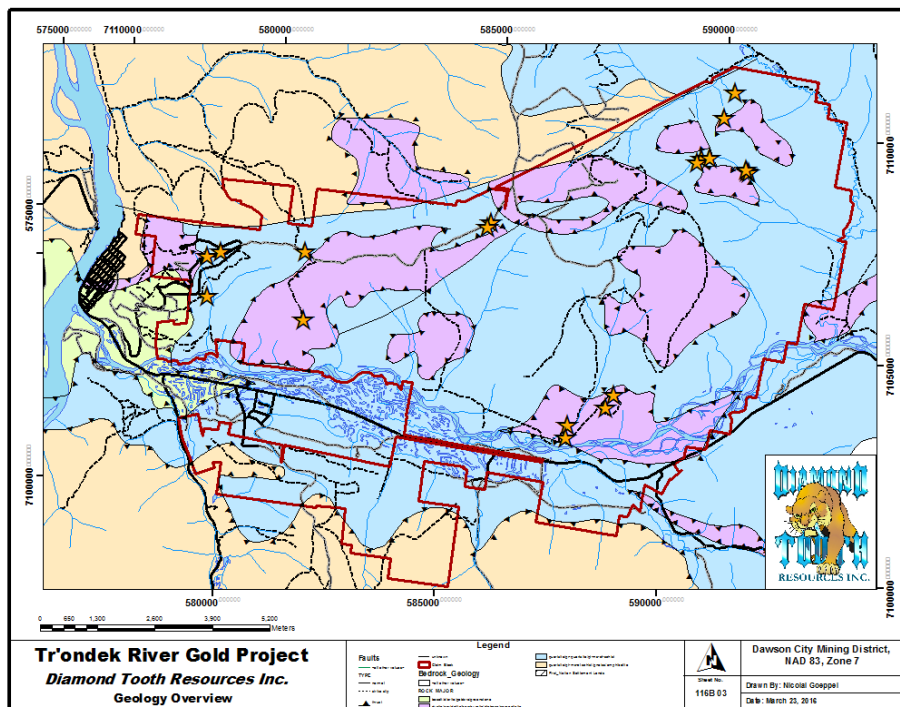


Figure 10. Overview of Geology (beige: quartzite/qt-ms-cl schist/gneiss/amphibolite; blue: quartzite/gr-quartzite/qt-ms-cl-schist; green: basalt/diorite/gabbro/greenstone; purple: dunite/peridotite/harzburgite/diabase/serpentinite).

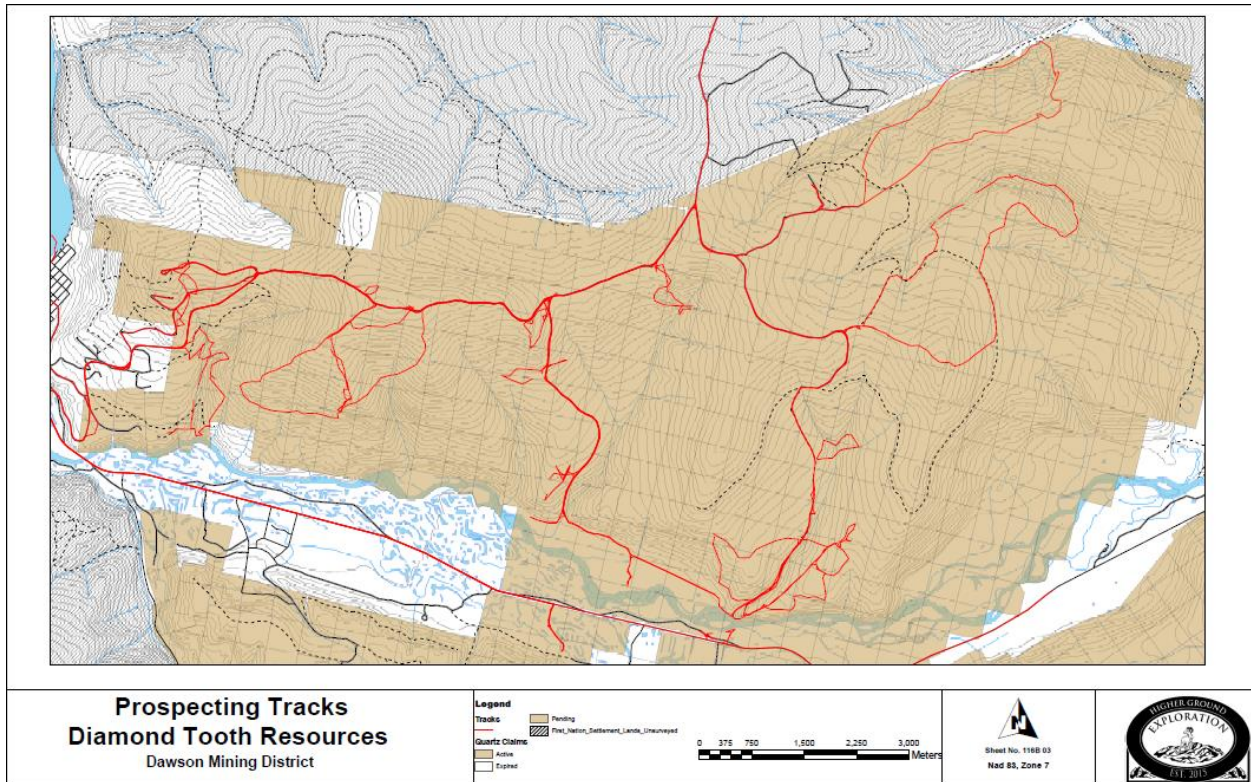


Figure 11. Prospecting traverses (red).

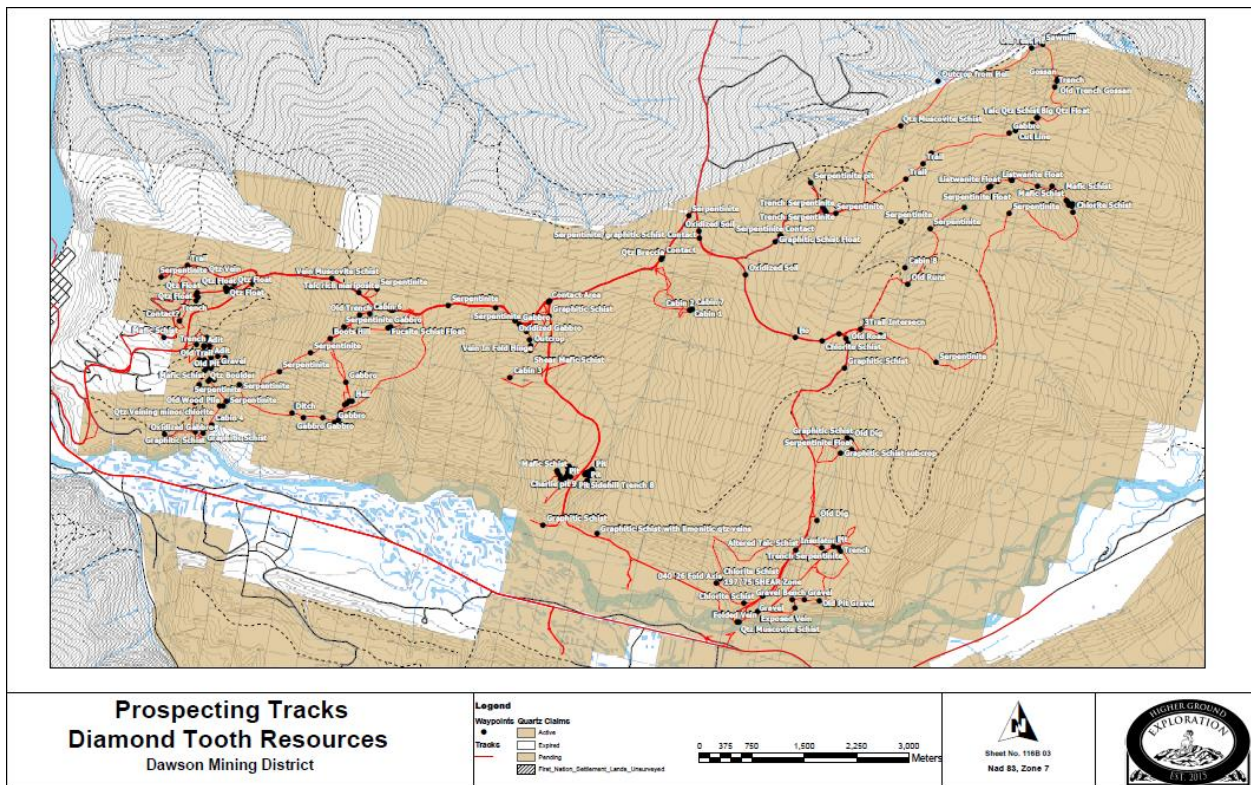


Figure 12. Prospecting waypoints

Datum: NAD 83

NTS: 116B 03

Waypoint ID	Zone	Easting	Northing
020/70 FOLIATION	7W	587530	7102676
040-26 Fold Axis	7W	586847	7102736
197/75 SHEAR Zone	7W	586889	7102813
3m wide limonitic quartz vein	7W	579038	7104806
3Trail Intersecn	7W	588191	7106681
Actinolite Schist	7W	581579	7105686
Adit	7W	579151	7104537
Adit	7W	579024	7104668
Altered Float	7W	579095	7104707
Altered Gabbro	7W	579073	7104253
Altered Serpentinite	7W	588489	7106647
Altered Talc Schist	7W	587872	7103413
Big Qtz Float	7W	590104	7110119
Big Qtz Subcrop	7W	581180	7104257
Boots Hill	7W	580773	7105130
Bottom of Smoke Stack Vein	7W	581126	7104081
Brown Muscovite Schist	7W	587598	7102501
Cabin 1	7W	585749	7106491
Cabin 2	7W	585738	7106491
Cabin 3	7W	583401	7105056
Cabin 4	7W	579342	7103593
Cabin 5	7W	579102	7104423
Cabin 6	7W	581264	7105573
Cabin 7	7W	585777	7106502
Cabin 8	7W	588650	7107663
Carbonated Mafic	7W	581136	7104101
Charlie pit 1	7W	584514	7103834
Charlie pit 10	7W	584469	7103891
Charlie pit 11	7W	584488	7103929
Charlie pit 12	7W	584474	7103969
Charlie pit 13	7W	584462	7103975
Charlie pit 2	7W	584452	7103813
Charlie pit 3	7W	584434	7103731
Charlie pit 4	7W	584378	7103780
Charlie pit 5	7W	584360	7103820
Charlie pit 6	7W	584329	7103849
Charlie pit 7	7W	584311	7103885

Charlie pit 9	7W	584469	7103850
Chlorite Muscovite Schist	7W	579125	7104586
Chlorite Muscovite Schist	7W	584364	7112974
Chlorite Schist	7W	584778	7103910
Chlorite Schist	7W	586882	7102814
Chlorite Schist	7W	579179	7104386
Chlorite Schist	7W	590854	7108893
Chlorite Schist	7W	587284	7102528
Chlorite Schist	7W	579061	7104456
Chlorite Schist	7W	588009	7106513
Chlorite Schist	7W	587678	7106408
Contact	7W	585219	7107156
Contact	7W	586826	7107772
Contact Area	7W	583734	7106226
Contact Schist and Gabbro	7W	579528	7105691
Contact?	7W	578610	7104970
Crenulated	7W	584802	7103984
Cut Line	7W	589833	7109873
Ditch	7W	580435	7103982
End of Trail	7W	587907	7108402
Exposed Vein	7W	587498	7102442
Folded Vein	7W	587265	7102253
Fucsite Schist Float	7W	581554	7105423
Gabbro	7W	580609	7103951
Gabbro	7W	580879	7103995
Gabbro	7W	581592	7105445
Gabbro	7W	589752	7109821
Gabbro	7W	581058	7103970
Gabbro	7W	583385	7105832
Gabbro	7W	581108	7104559
Gabbro Serpentinite Contact	7W	581371	7105681
Gabbro with pyrite and malachite	7W	581207	7104293
Gossan	7W	590289	7110721
Graphitic Schist	7W	588294	7105115
Graphitic Schist	7W	587899	7106557
Graphitic Schist	7W	584258	7103088
Graphitic Schist	7W	579130	7103463
Graphitic Schist	7W	588066	7106091
Graphitic Schist	7W	583751	7106235
Graphitic Schist	7W	583784	7106028
Graphitic Schist	7W	579244	7103469
Graphitic Schist	7W	584312	7103884
Graphitic Schist Float	7W	586760	7107667

Graphitic Schist subcrop	7W	588244	7104882
Graphitic Schist with limonitic qtz veins	7W	585040	7103107
Gravel	7W	588122	7102735
Gravel	7W	587478	7102390
Gravel	7W	579242	7104571
Gravel Bench	7W	587957	7102701
Heli	7W	581249	7104299
Ho	7W	587297	7106389
Insulator	7W	588225	7103513
Listwanite Alteration	7W	590752	7109021
Listwanite Breccia	7W	590823	7108968
Listwanite Float	7W	589634	7109028
Listwanite Float	7W	590783	7108990
Listwanite Float	7W	589727	7109121
Listwanite Float with Clay Alteration	7W	589898	7109175
Listwanite outcrop Bottom	7W	590825	7108979
Listwanite outcrop Top	7W	590828	7108996
Listwanite Subcrop	7W	589914	7109167
Listwanite+DYKE	7W	575018	7104021
Mafic chlorite Schist	7W	589913	7109176
Mafic Schist	7W	579061	7104136
Mafic Schist	7W	578432	7104700
Mafic Schist	7W	579176	7104207
Mafic Schist	7W	584491	7103922
Mafic Schist	7W	579097	7104463
Mafic Schist	7W	590728	7109038
Mafic Schist	7W	590652	7109120
Old Dig	7W	588087	7103883
Old Dig	7W	588351	7105097
Old Pit	7W	579102	7104335
Old Pit Gravel	7W	588013	7102597
Old Pit Gravel	7W	588335	7102756
Old Road	7W	588050	7106445
Old Runs	7W	588733	7107440
Old Test Pit	7W	589839	7111070
Old Trail	7W	578990	7104483
Old Trench	7W	579171	7105554
Old Trench	7W	581123	7105537
Old Trench	7W	578909	7104691
Old Trench Gossan	7W	590279	7110671
Old Wood pile	7W	579404	7103883
Old Wood Pile	7W	579452	7103897

Outcrop	7W	583608	7105557
Outcrop Across Creek	7W	590287	7109160
Outcrop from Heli	7W	588614	7110371
Oxidized Gabbro	7W	583318	7105876
Oxidized Gabbro	7W	578707	7103335
Oxidized Muscovite Schist	7W	588287	7103435
Oxidized Soil	7W	585660	7107617
Oxidized Soil	7W	586429	7107135
Pit	7W	588392	7103561
Pit	7W	584710	7103909
Pit	7W	584718	7103919
Pit	7W	584744	7103940
Pit	7W	584741	7103926
Pit	7W	584769	7103900
Pit	7W	584775	7103899
Pit	7W	584756	7103830
Pit	7W	584804	7103976
Pit	7W	584443	7103810
Pit	7W	554980	7116727
Qtz Boulder	7W	579120	7104381
Qtz Breccia	7W	585204	7107127
Qtz Chlorite Schist	7W	589319	7108667
Qtz Chlorite Schist	7W	579349	7104577
Qtz Float	7W	578677	7105328
Qtz Float	7W	581108	7104000
Qtz Float	7W	578811	7105356
Qtz Float	7W	578788	7105297
Qtz Float	7W	578787	7105414
Qtz Float	7W	579187	7105510
Qtz Float	7W	579175	7105551
Qtz Float	7W	579280	7105635
Qtz Muscovite Chlorite Schist	7W	584802	7103982
Qtz Muscovite Chlorite Schist	7W	579314	7104501
Qtz Muscovite Schist	7W	587244	7102236
Qtz Muscovite Schist	7W	588208	7109628
Qtz Muscovite Schist	7W	584712	7103915
Qtz Muscovite Schist	7W	590490	7109200
Qtz Muscovite Schist	7W	579257	7105553
Qtz Muscovite Schist	7W	579048	7104773
Qtz Muscovite Schist	7W	590774	7108974
Qtz Muscovite Schist Contact	7W	584446	7103964
Qtz Subcrop	7W	579184	7105536
Qtz Vein	7W	578838	7105753

Qtz Veining minor chlorite	7W	579045	7103863
Sawmill	7W	589980	7111163
Serpentinite	7W	578537	7105084
Serpentinite	7W	585476	7107803
Serpentinite	7W	579481	7103971
Serpentinite	7W	579256	7104233
Serpentinite	7W	587530	7108237
Serpentinite	7W	589338	7106410
Serpentinite	7W	589965	7108702
Serpentinite	7W	583013	7106006
Serpentinite	7W	588471	7108292
Serpentinite	7W	588712	7109332
Serpentinite	7W	582339	7105911
Serpentinite	7W	581155	7105308
Serpentinite	7W	580932	7105329
Serpentinite	7W	580534	7104875
Serpentinite	7W	579622	7104239
Serpentinite	7W	588898	7108267
Serpentinite	7W	578235	7105536
Serpentinite	7W	586808	7107766
Serpentinite	7W	581294	7105947
Serpentinite	7W	580148	7104521
Serpentinite Float	7W	588382	7104972
Serpentinite Float	7W	589607	7109004
Serpentinite pit	7W	587100	7108597
Serpentinite/graphitic Schist Contact	7W	585687	7107522
Shear Mafic Schist	7W	583616	7105493
Sidehill Trench A	7W	584769	7103946
Sidehill Trench A	7W	584709	7103907
Sidehill Trench B	7W	584761	7103819
Sidehill Trench B2	7W	584804	7103967
Silicified chlorite schist	7W	579199	7104248
Silicified Mafic	7W	579067	7104484
Smoke Stack Vein outcrop	7W	581153	7104242
Talc Fucsite schist Gabbro	7W	581554	7105685
Talc Qtz Schist	7W	590096	7110108
Talc rich mariposite	7W	581055	7105843
Top Smoke Stack Vein	7W	581117	7104110
Trail	7W	578572	7105773
Trail	7W	588426	7108899
Trail	7W	588625	7109159
Trench	7W	579022	7104687
Trench	7W	578568	7105056

Trench	7W	588501	7103519
Trench	7W	590267	7110595
Trench Chlorite Schist	7W	587391	7108230
Trench Quartz Vein	7W	578772	7105375
Trench Serpentinite	7W	588458	7103563
Trench Serpentinite	7W	587338	7108281
Trench Serpentinite	7W	587363	7108254
Vein In Fold Hinge	7W	583573	7105649
Vein Mafic schist	7W	583862	7105710
Vein Muscovite Schist	7W	580636	7105969
Vein Serpentinite Float	7W	590052	7110018
Vein with epidote and Talc	7W	583508	7105749

Figure 13. Waypints and coordinates from 2015 prospecting.

Trench ID	Utm Zone	Easting	Northin g	Claim Number	Trench Dimensions (Ft)	Digging Time (hrs)	Backfilling time (Hrs)	Cubic Yards Moved
01-015	7	583738	7106238	YF46761	51x 12 x 5 deep	4.5	3	113
02-015	7	583688	7106123	YF46761	13 x 7 x 5 deep	0.75	0.5	16
03-015	7	583556	7105977	YF46761	15 x 9 x 4 deep	0.75	0.5	13
04-015	7			YF46758	14 x 9 x 5 deep	1	1	23
05-015	7	583628	7105828	YF46758	13 x 9 x 5 deep	1	1	21
06-015	7	583371	7105825	YF46757	14 x 9 x 5 deep	1	1	23
07-015	7	583266	7105885	YF46756	13 x 9 x 5 deep	1	1	21
08-015	7	583025	7105718	YF46757	12 x 10 x 5 deep	1	1	22
09-015	7	582381	7105923	YF46752	5 x 5 x 3 deep			3
010-015	7	582133	7105832	YF46752	9 x 9 x 4 deep	0.5	0.5	12
011-015	7	582003	7105718	YF46752	10 x 9 x 4 deep	0.5	0.5	13
012-015	7	581903	7105678	YF46752	12 x 7 x 6 deep	0.75	0.5	18
013-015	7	581502	7105670	YF46750	12 x 8 x 5 deep	0.75	0.5	17
014-015	7	581430	7105646	YF46750	12 x 7 x 4 deep	0.5	open	12
015-015A	7	581063	7105850	YF46749	21 x 15 x 11 deep	7	open	73
015-015B	7			YF46749	15 x 15 x 5 deep	4	open	41
015-015C	7			YF46749	10 x 12 x 3 deep	0.5	open	13
016-015	7	580751	7105044	YF46769	12 x 7 x 4 deep	0.5	0.5	12
017-015	7	580865	7104903	YF46770	15 x 8 x 4 deep	0.75	0.5	18
018-015	7	580958	7104821	YF46770	15 x 10 x 5 deep	1	1	27
019-015	7	581066	7104729	YF46770	15 x 11 x 5 deep	1.25	1	30
020-015A	7	581121	7104451	YF46770	10 x 10 x 4	0.75	open	15

020-015B	7	581137	7104289	YF46770	15 x 9 x 5 deep	1	1	25
021-015	7	581137	7104289	YF46770	13 x 9 x 5 deep	1	1	21
022-015	7	581192	7104287	YF46770	51 x 8 x 3 deep	2	open	45
023-015	7	581201	7104296	YF46770	27 x 10 x 5 deep	2	2	50
024-015A	7	581191	7104314	YF46770	18 x 11 x 4 deep	1.75	open	29
024-015B	7			YF46770	20 x 20 x 11 deep	8	open	162
024-015C	7			YF46770	20 x 20 x 5 deep	4	open	74
025-015	7	581176	7104299	YF46770	12 x 12 x 5 deep	1	open	26
026-015	7	581169	7104316	YF46769	6 x 4 x 3 deep		open	3
027-015	7	581163	7104306	YF46770	18 x 11 x 5 deep	1.25	open	36
028-015	7	581150	7104315	YF46770	15 x 11 x 5 deep	1	1	30
029-015	7	581059	7104267	YF46770	30 x 11 x 5 deep	2.25	1.5	61
030-015	7	581035	7104275	YF46807	36 x 11 x 5 deep	4	2	73
031-015	7	581018	7104272	YF46768	28 x 11 x 5 deep	2.5	1.5	57
032-015	7	581003	7104278	YF46768	36 x 11 x 5 deep	4	2	73
033-015	7	580969	7104282	YF46807	28 x 11 x 5 deep	3	2	57
034-015	7	580947	7104287	YF46807	42 x 11 x 5 deep	4	2	85
035-015	7	580925	7104293	YF46807	33 x 11 x 5 deep	3	2	67
036-015	7	580898	7104299	YF46807	31 x 11 x 5 deep	2.5	2	63
037-015	7	580864	7104314	YF46805	38 x 11 x 5 deep	3.75	2	77
038-015	7	580935	7104309	YF46805	38 x 10 x 5 deep	3	2	70
039-015	7	580896	7104328	YF46805	33 x 10 x 5 deep	3	1.5	61
040-015	7	580873	7104347	YF46805	32 x 10 x 5 deep	3	1.5	59
041-015	7	580863	7104355	YF46805	22 x 12 x 4.5 deep	2	1.5	44
042-015	7	580840	7104341	YF46805	43 x 11 x 6 deep	4	2.5	105
043-015	7	580811	7104356	YF46805	32 x 11 x 5 deep	3	1.5	65
044-015	7	580790	7104375	YF46805	22 x 10 x 4 deep	1.5	1	32
045-015	7	580769	7104369	YF46805	20 x 10 x 5 deep	1.75	1	37
WGT01 A	7	584455	7103462	YF46789	33 x 12 x 10 deep	7	open	146
WGT01 B	7			YF46789	15 x 12 x 6 deep	1.75	open	40
WGT02	7	584465	7103985	YF46789	15 x 10 x 6 deep	1.5	open	33
WGT03	7	584759	7103829	YF46789	12 x 18 x 4 deep	1.5	open	32
WGT04	7	584767	7103893	YF46789	12 x 7 x 5 deep	0.75	open	15
WGT05	7	584776	7103909	YF46789	12 x 7 x 5 deep	0.75	open	15
WGT06	7	584810	7103980	YF46789	38 x 15 x 5 deep	4.5	open	105
WGT07	7	584789	7103969	YF46789	12 x 9 x 4 deep	0.75	open	16
WGT08	7	584738	7103940	YF46789	12 x 6 x 4 deep	1.5	open	11
WGT09	7	584726	7103930	YF46789	12 x 6 x 3 deep	0.5	open	8

WGT10	7	584751	7104629	YF46789	12 x 12 x 7 deep	1.5	open	37
FGT01	7	588341	7103510	YE79713	18 x 12 x 7 deep	2.25	open	56
FGT02	7	588350	7103518	YE79713	16 x 12 x 10 deep	3	open	71
FGT03	7	588377	7103523	YE79713	20 x 10 x 9 deep	3	open	66
FGT04	7	588374	7103553	YE79713	15 x 15 x 5 deep	2	open	41
FGT05	7	588317	7103550	YE79713	21 x 11 x 6 deep	2.25	open	51
FGT06	7	588314	7103535	YE79713	20 x 11 x 6 deep	2	open	48
FGT07	7	588302	7103546	YE79713	15 x 7 x 8 deep	1.75	open	31
PIT15-01	7	586960	7102422	YE79743	10 x 10 x 4.5 deep	0.75	open	16
PIT15-02	7	586960	7102516	YE79743	10 x 10 x 6 deep	1	0.5	22
PIT15-03	7	585542	7102899	YE79747	10 x 10 x 4	0.75	0.5	14
PIT15-04	7	585261	7103029	YE79752	5 x 5 x 3 deep	0.25	0.25	3
PIT15-05	7	584656	7103141	YE79754	9 x 5 x 4 deep	0.25	0.25	7
PIT15-06	7	584560	7103188	YE79754	9 x 6 x 4 deep	0.25	0.25	8
PIT15-07	7	584495	7103258	YE79754	4 x 4 x 4 deep	0.25	0.25	2
PIT15-08	7	584507	7103446	YF46790	4 x 4 x 4 deep	0.25	0.25	2
PIT15-09	7	584553	7103685	YF46790	4 x 4 x 4 deep	0.25	0.25	2
PIT15-10	7	584720	7104003	YF46789	5 x 5 x 5 deep	0.25	0.25	5
PIT15-11	7	582003	7104626	YF46789	8 x 8 x 6 deep	0.5	0.5	14
NT15-01	7	584599	7101631	YC35569	45 x 12 x 10 deep	8	open	200
NT15-02	7	584585	7101631	YC35569	40 x 12 x 11 deep	9	open	234
NT15-03	7	584623	7101635	YC35569	40 x 12 x 6 deep	4	open	106
LH15-01	7	580526	7100295	YC65184	70 x 12 x 8 deep	10	open	248
LH15-02	7	580526	700295	YC65184	75 x 12 x 8 deep	10	open	266
					Total Hours Trenching:	187		
					Total Hours Backfilling:	51.75		
					Total Cubic Yards Moved:	4114		

Figure 14. Trench dimensions and locations.