

**Assessment Report**  
**(Reconnaissance and Target Definition for future machine access.)**  
**Renewal Filed Dawson City : 3rd July, 2013**

**Un-named tributary of Carmack's Fork, east of Flannerty Pup.**  
**Map # 115O14**

**Record of work done on the following claims:**

**IN96 – YD93439**  
**IN51 – YD129024**  
**IN53 – YD129026**  
**IN54 - YD129027**  
**IN55 - YD129028**  
**IN56 - YD129029**

**UTM to access, by road to claim IN124 - 590534/ 7088362**  
**(Carmacks Fork Road at Upper Bonanza Creek Road)**  
**Zone7 Nad83**

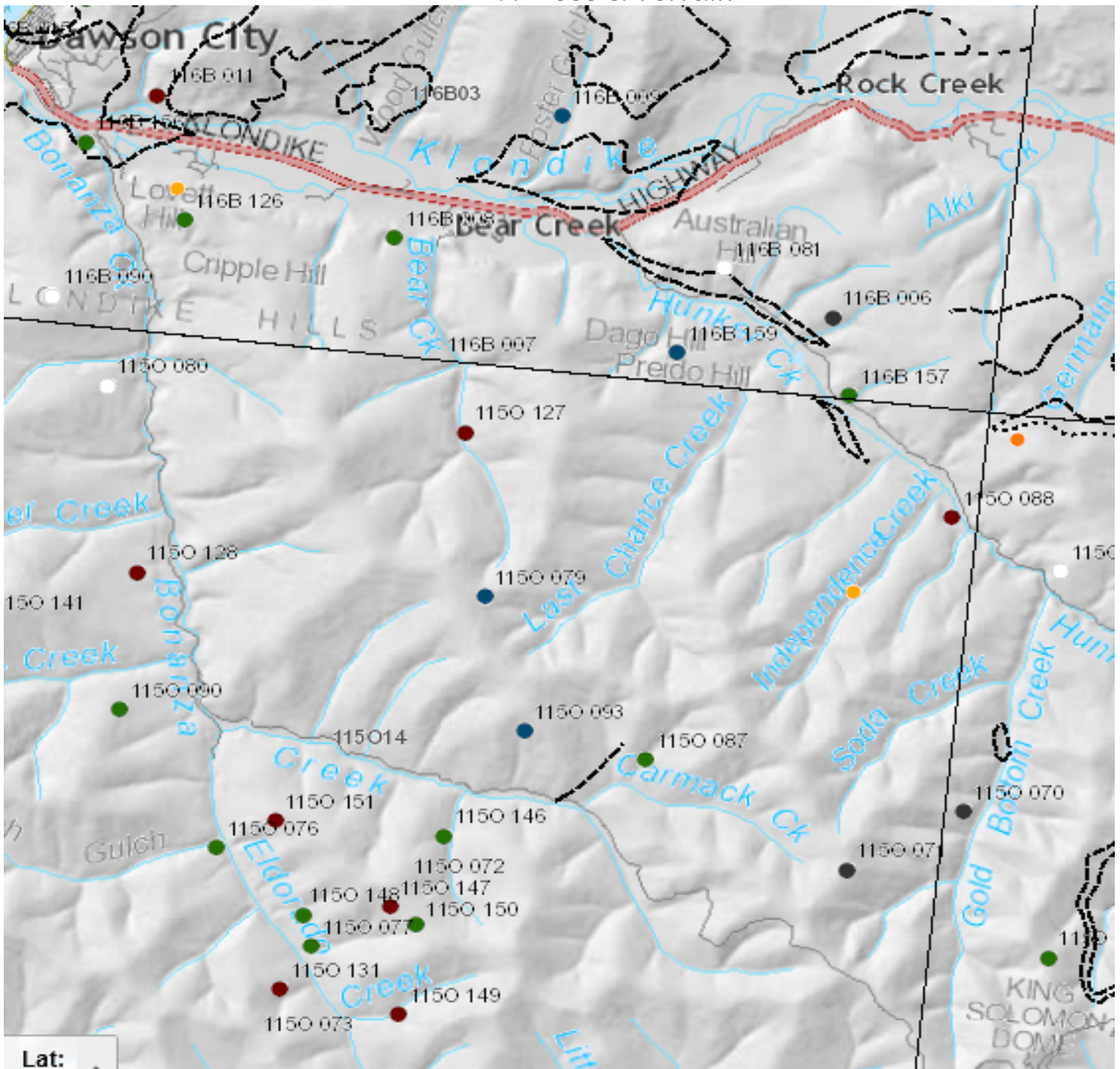
**Claims Owners: Sylvain Montreuil, Mike Church, Erini Petroutsas**

**Author:**  
**Erini Petroutsas**

<u>Table of Contents</u>	<u>Pages</u>
Location, Access & Terrain	3-5
Previous Exploration History	6-22
2013 Prospecting & Description of Work	23
Residual & Vertical Derivative Anomaly Target	23
Bedrock Description at Prospect Target Min-file 115 087	25
Assay Sample Descriptions from Occurrence 087	26
Sample Results & Interpretations	27
Conclusion & Recommendations	28
Qualifications	28
Expenses June 28 <sup>th</sup> – 30 <sup>th</sup> , 2013	29
Full Assay Certificates	30-31

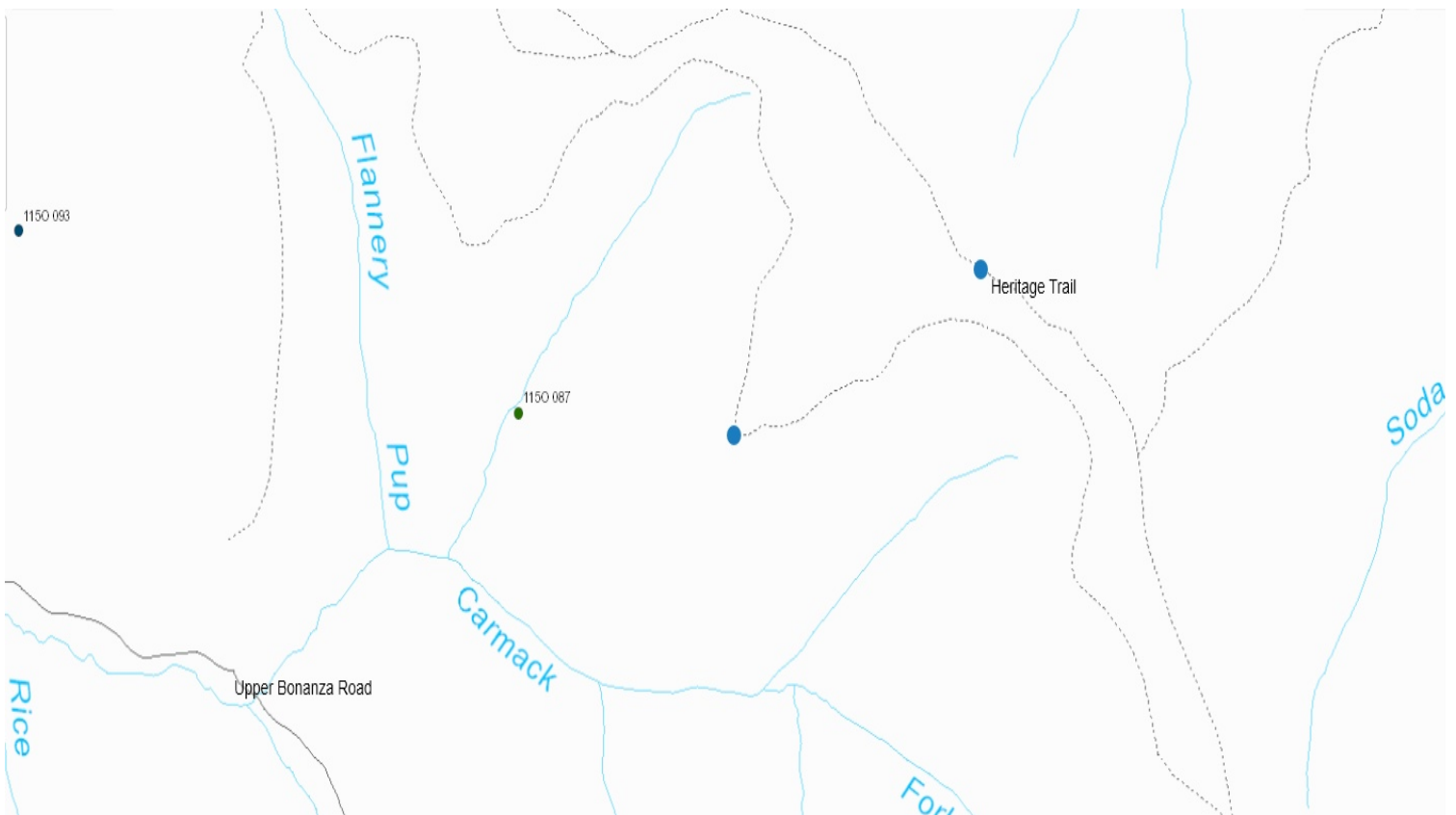


## Access & Terrain



Access obtained by following 22kms of maintained road from Dawson City, along Bonanza & Upper Bonanza Creek Roads to Carmacks Fork. From Carmacks Fork, the mining road continues to Flannerty Pup. There is no existing trail to Minfile occurrence 087, though remnants of a cat-trail can be seen.

The access from the Heritage trail has a fairly well maintained off-shoot road that can be followed roughly half the distance to minfile-087. However the terrain of mostly mossy forest and wet areas make it an un-usable access for excavator travel. Also the heritage status of "Ridge Road" trail, forbids equipment larger than a quad. Equipment access recommended from Carmacks Road.



## **Previous Exploration History**

Min-file 115 087 and it's location on the map correspond to a "drilled prospect".

During 1984 United Keno Hill Mines drilled 7 holes, a total of 481.6 meters – YA80927 (Bon claim).

Barramundi Gold Ltd, Whitehorse. Submitted an assessment report Aug/97 describing their silt/soil program.

In Jul/99 the company optioned the claims to KSL exploration of Australia.

KSL completed a comprehensive soil program over their entire Klondike holdings over 2 years. 2002-03, including a description of previous exploration history for the "Klondike Region" we are examining surrounding Carmacks Fork:

### **Highlights of previous exploration reports conclusions:**

- The presence of only 1 detailed soil grid in the northwest sector of the Goldfield which has contourable anomalies (Grunenberg, 1989); this anomaly is adjacent to KSL's major anomalies ,
- The Arbor data noted above also has a reported IP geophysical anomaly of interest: a deep zone of low resistivity (perhaps sub-horizontal carbonaceous/graphite horizon) which is open-ended in the head water of the Bear Creek drainage system,
- Drilling along and close to Lower Bonanza Creek has tested without success a number of types of targets (e.g. IP, inferred epithermal system at Trail/Cripple Gulch, (Blanch Flower, 1992; Tomlinson & Gonzalez, 1990)
- Also, drilling in the Hunker Creek lower Last Chance Creek district east of the KSP claims has lacked success where one group of drill-holes tested a (?) Carmacks cycle (Paleocene) volcanic system (Cranswick et al, 1995).
- No drilling has occurred along the central, highland ridges of the northern parts of the Goldfield, i.e. where KSP has defined drill targets.
- The gold anomalies in the Lone Star district include those from 3m auger drilling of Kennecott over an area with substantial historic trenching, road trails and values up to 500 ppb (0.5ppm); i.e. a magnitude higher than elsewhere, the same order of soil anomalies occur around the equally culturally disturbed Mitchell-Sheba district (King Solomons/Hunker Dome) (BAMdata).

1

---

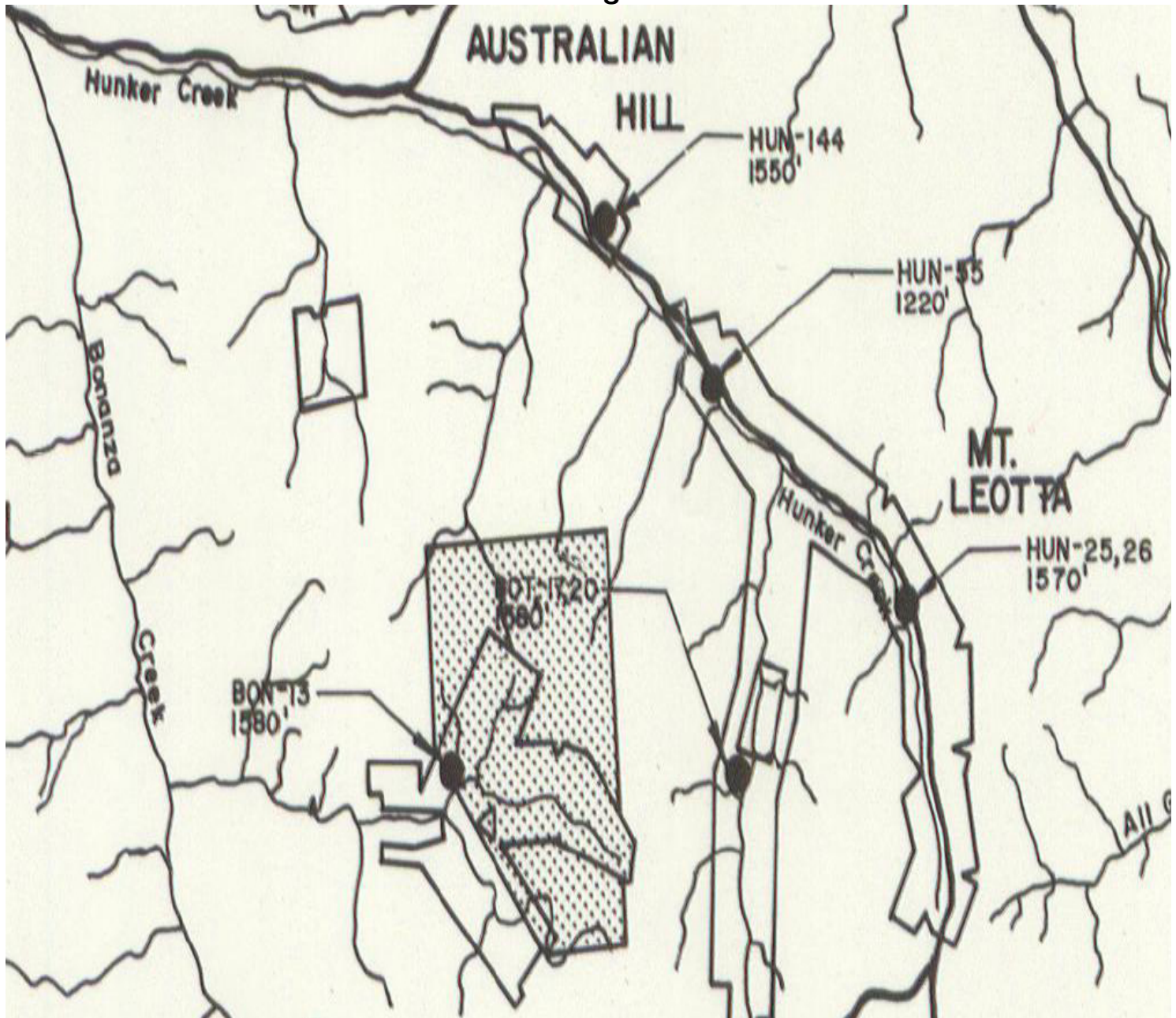
<sup>1</sup> Page 5: KSL 2002 Report. R.G. Adarnson and C.M. Thomas. EMR Min-file Online. Their references, as in brackets of text.

### 1984 Drilling on Upper Bonanza (Carmacks Fork) – BON 13

“A staggered fence of seven drill holes, **BON-2 to BON-8** inclusive, tested an area on Upper Bonanza Creek.

Most of the analyses returned background values except for the lower-most section of **BON-3** and the lower two-thirds of adjacent **BON-4**.

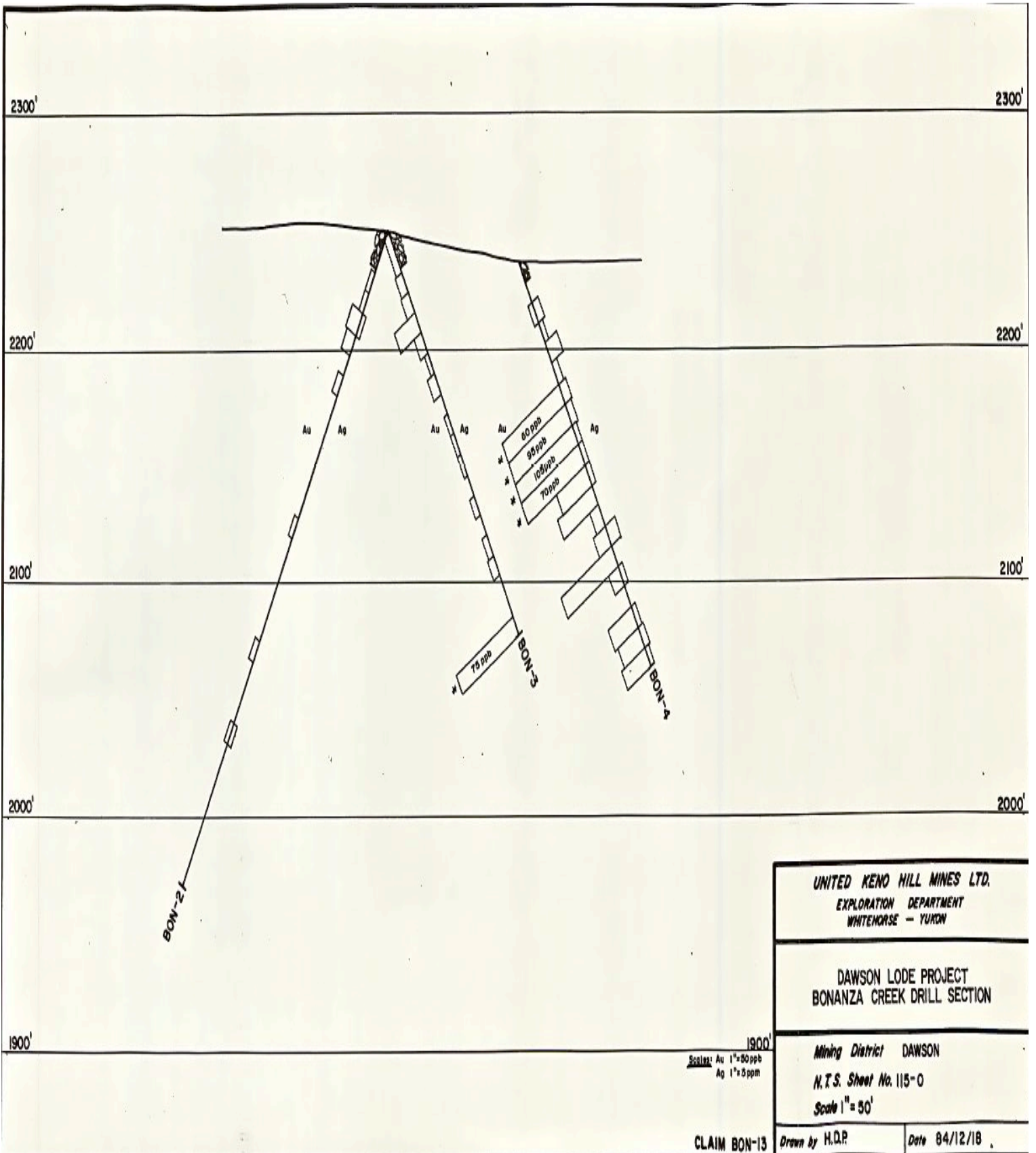
Background in the area appears to be in the 1-5 ppb Au range but the anomalous sections averaged **50 ppb Au**. The anomalous zone appears to be approximately **100-150'** thick and dipping steeply to the southeast.” No other information is available concerning this zone.



2

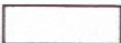

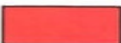
<sup>2</sup> United Keno Hill Mines, Report on the 1984 Exploration Program in the Klondike Goldfields. Report by D.R. Prince. Pages:13, 28, 53, 77.

\*Site of drilling shown as Flannery Pup, not "NoName Pup" as is filed as Minfile #087.



United Keno Hill Mines, Report on the 1984 Exploration Program in the Klondike Goldfields. Report by D.R. Prince. Drill Log results from "Flannerty Pup holes 3, 4 & 21 - Claim Bon13".



GEOCHEMICAL LEGEND	
	≤8 ppm
	>8 - <19 ppm
	≥19 ppm

093711

Dwg 18

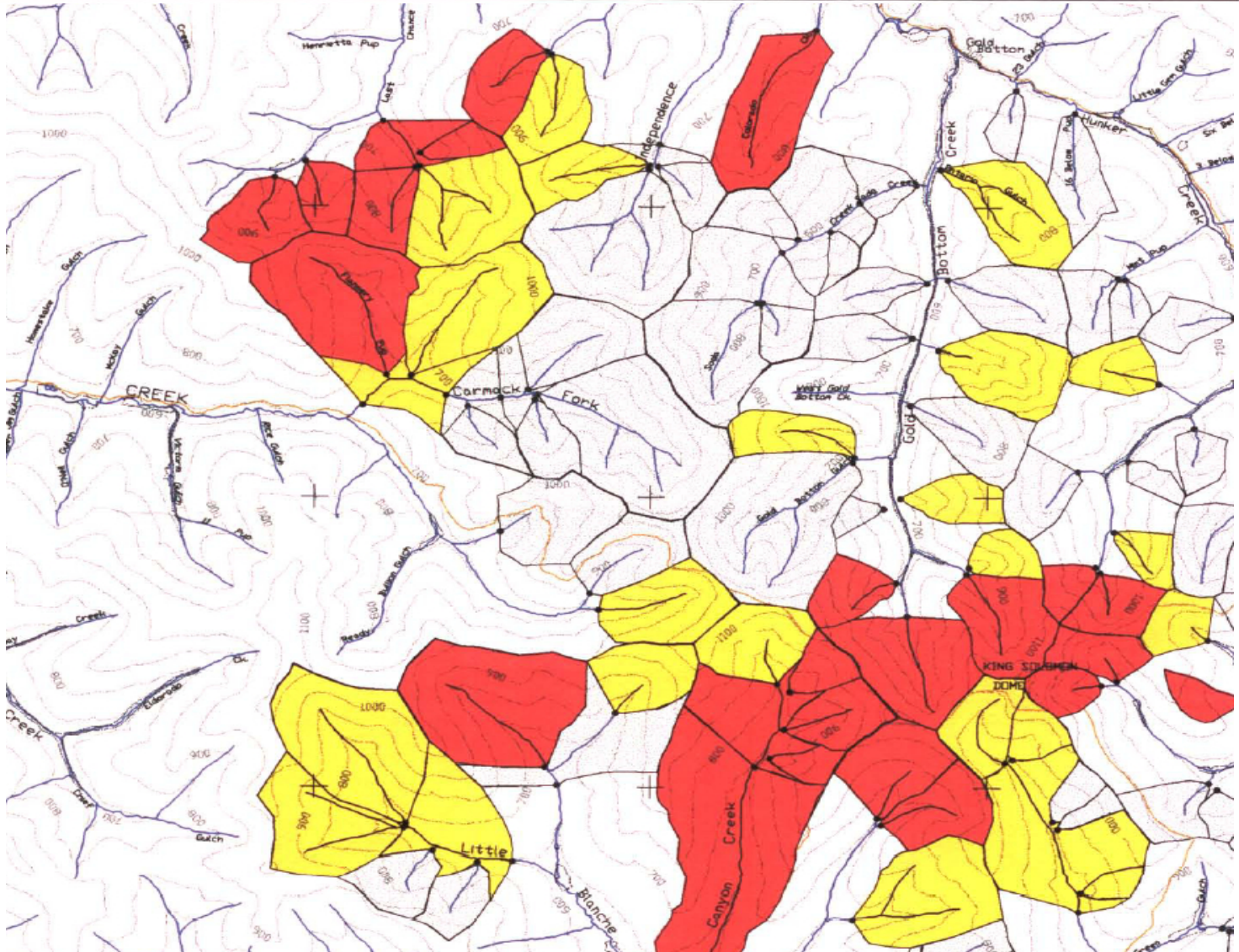


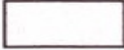


**BARRAMUNDI**  
GOLD • LTD

HUNKER DOME PROJECT – YUKON TERRITORY

STREAM SEDIMENT SAMPLING  
AREAS OF INFLUENCE  
As GEOCHEMISTRY (ppm)

AUTHOR : ROB STEVENS	NTS: 1150/10,14,15	FILE: hdm\dwg\SSBASE
DRAWN : P.M., H.H.	DATE: March 1997	FIGURE No. 6



GEOCHEMICAL LEGEND	
	≤ 1449 ppm
	> 1449 – < 1700 ppm
	≥ 1700 ppm

Dwg 19  
093711

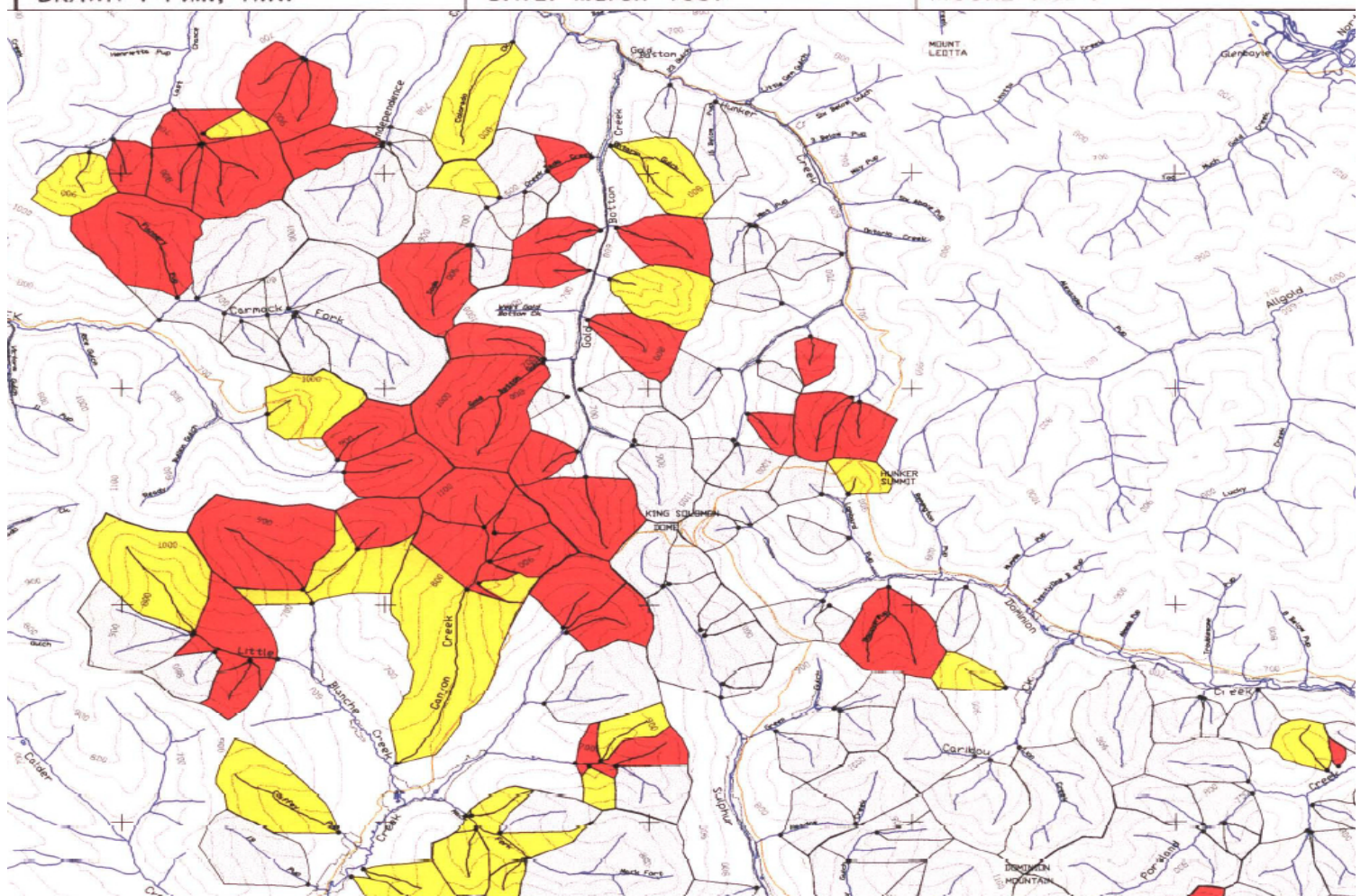


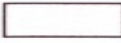


**BARRAMUNDI**  
GOLD • LTD

HUNKER DOME PROJECT – YUKON TERRITORY

STREAM SEDIMENT SAMPLING  
AREAS OF INFLUENCE  
Ba GEOCHEMISTRY (ppm)

AUTHOR : ROB STEVENS	NTS: 1150/10,14,15	FILE: hdm\dwg\SSBASE
DRAWN : P.M., H.H.	DATE: March 1997	FIGURE No. 7



GEOCHEMICAL LEGEND	
	≤ 17 ppm
	> 17 - < 24 ppm
	≥ 24 ppm

DWG 20

093711

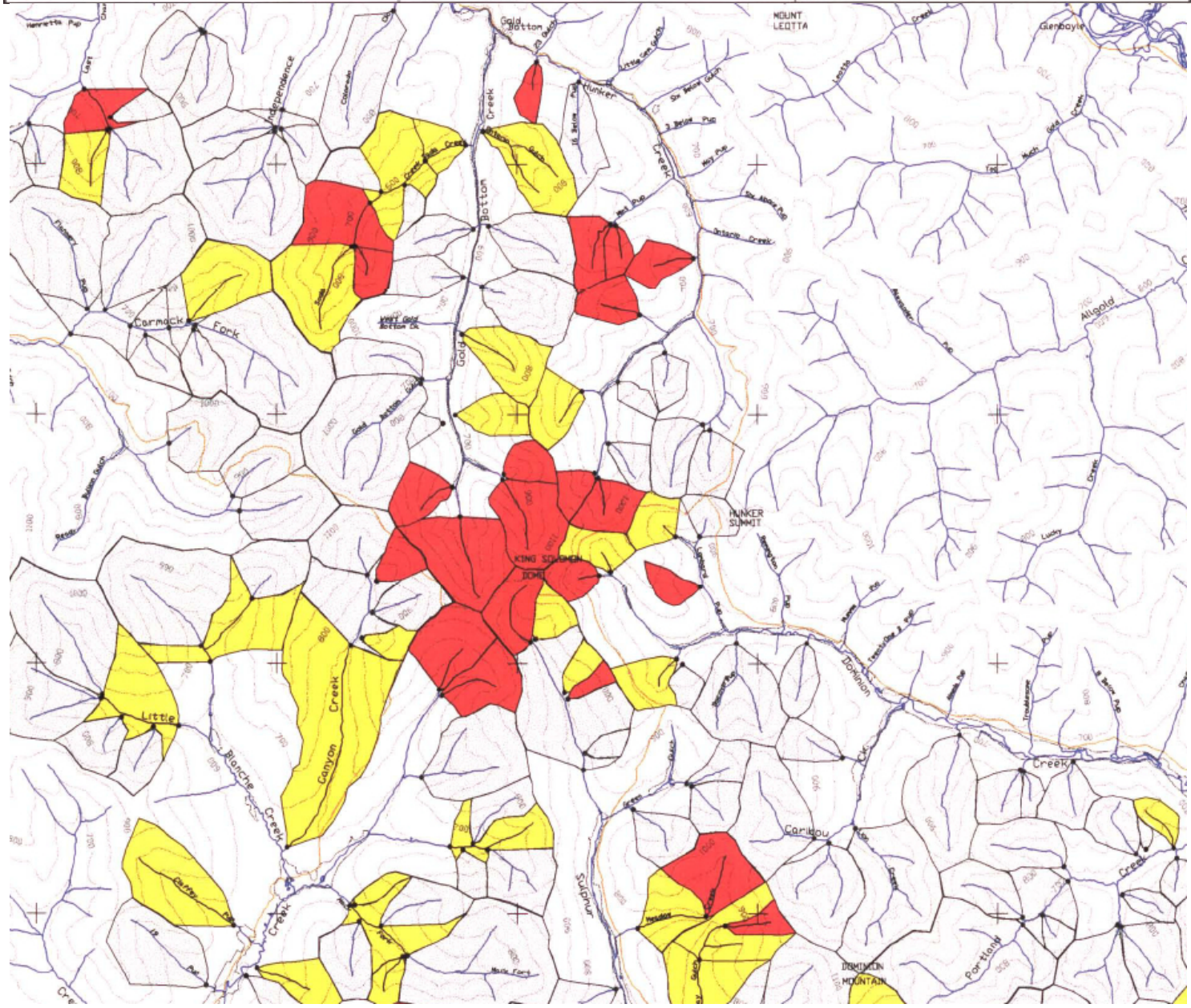


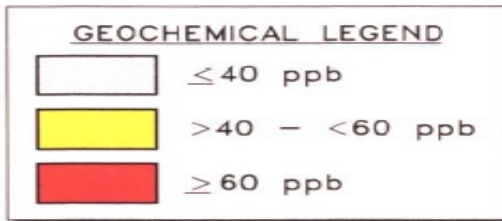
**BARRAMUNDI**  
GOLD LTD

HUNKER DOME PROJECT – YUKON TERRITORY

STREAM SEDIMENT SAMPLING  
AREAS OF INFLUENCE  
**Cu GEOCHEMISTRY (ppm)**

AUTHOR : ROB STEVENS	NTS: 1150/10,14,15	FILE: hdm\dwg\SSBASE
DRAWN : P.M., H.H.	DATE: March 1997	FIGURE No. 8





Dwg 22  
093711



**BARRAMUNDI**  
GOLD • LTD

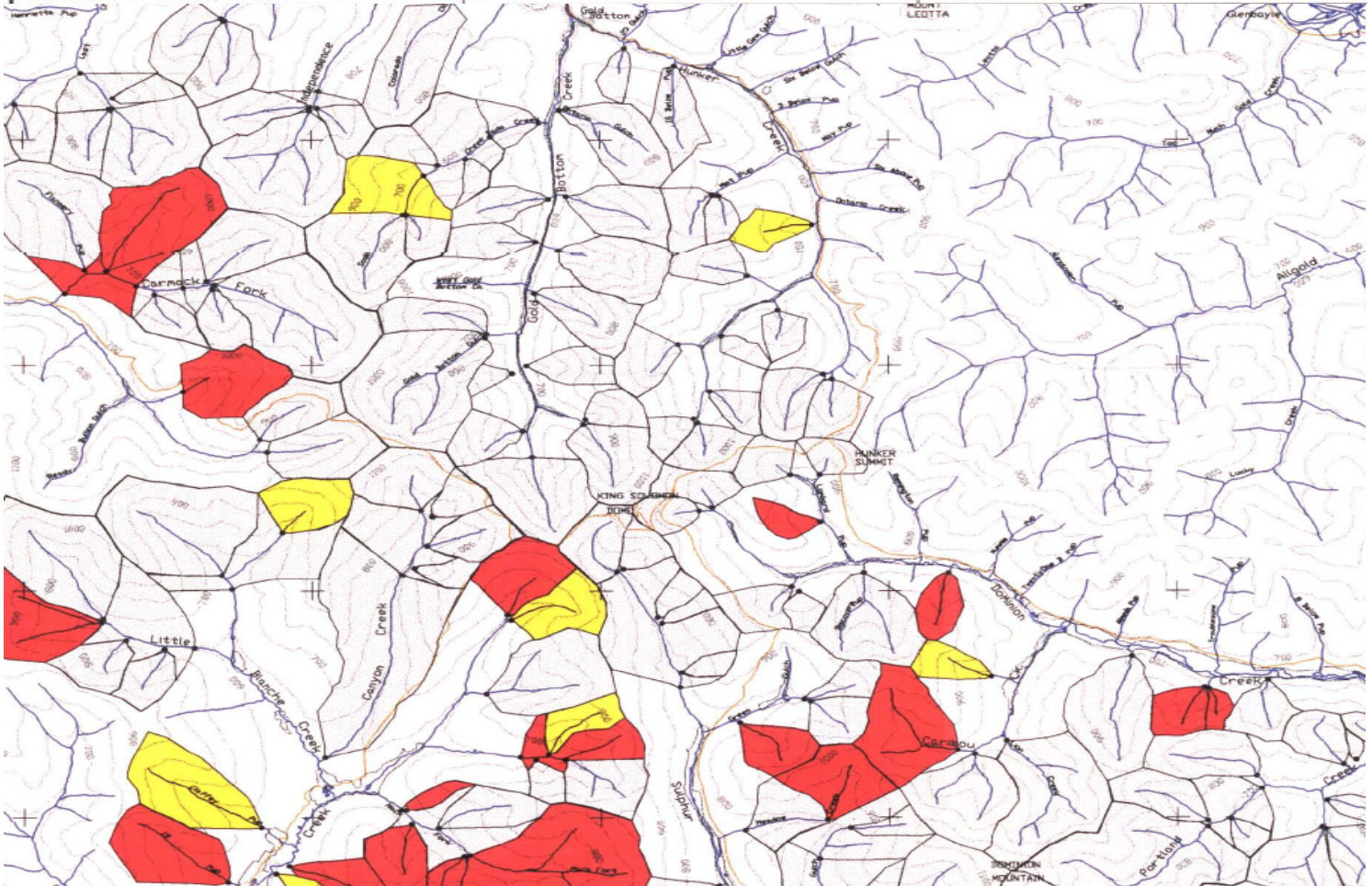
HUNKER DOME PROJECT – YUKON TERRITORY

STREAM SEDIMENT SAMPLING  
AREAS OF INFLUENCE  
Hg GEOCHEMISTRY (ppb)

AUTHOR : ROB STEVENS  
DRAWN : P.M., H.H.

NTS: 1150/10,14,15  
DATE: March 1997

FILE: hdm\dwg\SSBASE  
FIGURE No. 10



3

## **Summary of Barramundi Gold Ltd. 1997 Geochemical Results.**

The lack of correlation between gold and other individual elements suggests that it does not have any significant associated pathfinder elements. Its weak correlation with iron however, may support a gold-pyrite relationship in host rocks. In contrast the base metal elements (particularly iron, copper and zinc and, to a lesser extent, lead and barium) are strongly correlated. These correlations are consistent with element associations found in many VMS deposits. and thus may have important implications for VMS deposits in the Klondike.

A broad zone in the center of the Klondike is anomalous in many or all of the elements. This region extends northeastward from upper Quartz Creek, across King Solomon Dome to upper Hunker Creek and from upper Quartz Creek northward, along the western edge of Gold Bottom Creek). Of particular significance are the two drainage areas in upper Quartz Creek (Solomon South area) that are anomalous in all elements (except for mercury which is intermediate in one of the drainages). This broad area in the center of the Klondike is also at the headwaters of the gold-rich creeks Gold Bottom, Hunker, Dominion, Sulphur and Quartz.

### **Conclusion of 1997 Barramundi Silt sampling.**

A stream sediment program comprising 210 samples collected from across the Klondike was completed from June to September 1996. Each sample was located up-stream of obvious placer workings, and consisted of silt collected over a 50m stretch of river. Samples were analyzed for gold by fire assay, for an additional 32 elements by ICP, for mercury by wet vapour, and for Ba and Sn by XRF. The very fine sediment fraction (C53 pm) was used for the analysis in order to obtain the best contrast in gold values.

The results show that gold values of 15 ppb and greater constitute an anomalous population and values from 10-14 ppb an intermediate population. The distribution of anomalous and intermediate gold shows a distinct grouping into three principle regions and several other secondary regions. Each region comprises several overlapping or adjoining drainages.

The three principle regions are "The Forks" between upper Quartz Creek and Upper Sulphur Creek, "Solomon South" between upper Hunker Creek and Lombard Pup, and "Friday Gulch" to the east of upper Sulphur Creek between Green Gulch and Friday Gulch. These regions are also commonly anomalous in several other elements including arsenic, barium, copper, iron, lead, and zinc. Correlation coefficients and plots indicate a weak association between gold and iron that may support a relationship between gold and pyrite in host rocks.

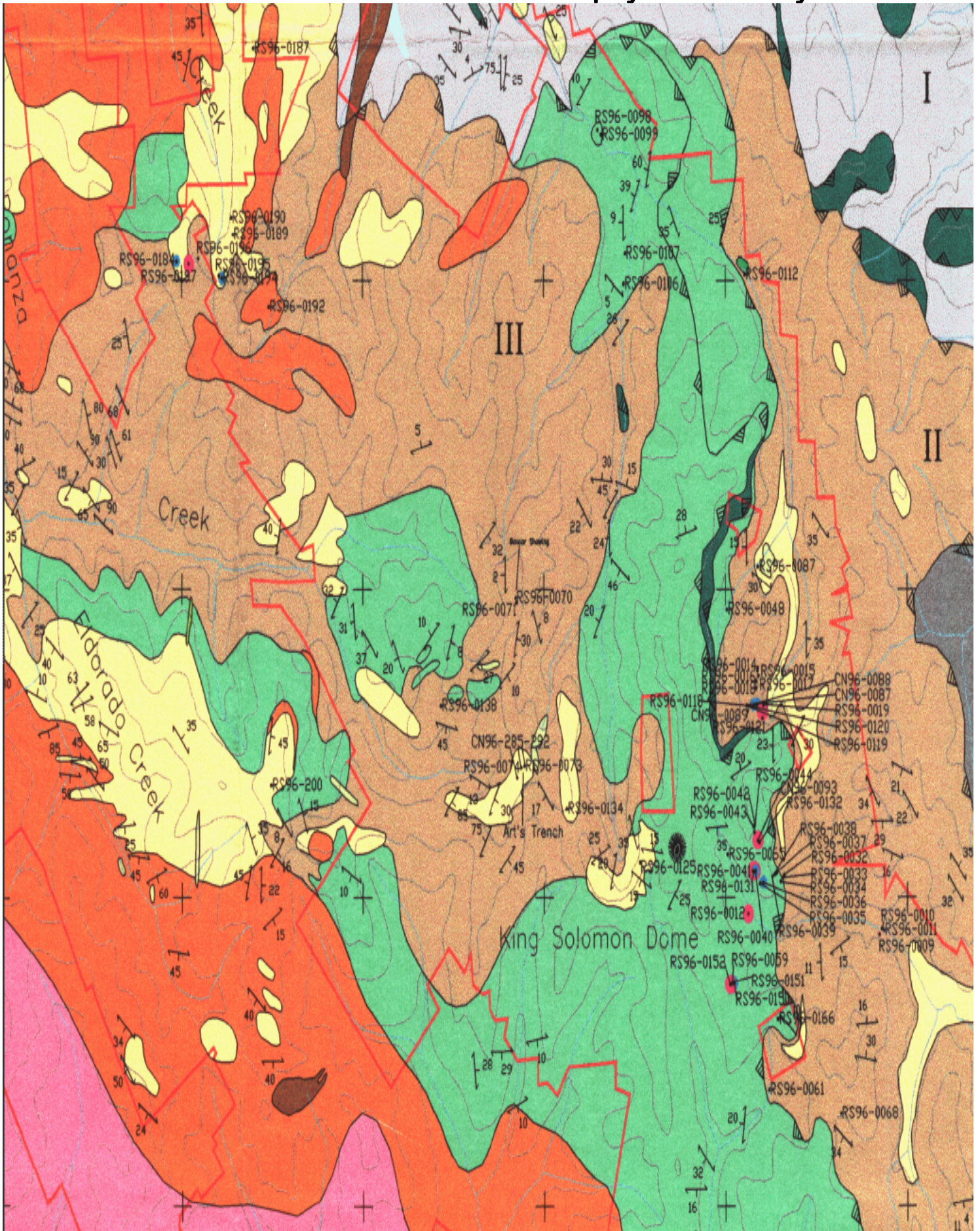
In addition, the base metals show a strong degree of correlation, particularly P b-Zn-Ba and Cu-Pb-Zn-Fe. This may have important implications for the presence of VMS-type massive sulphide deposits in the Klondike area.

4

---

<sup>4</sup> Pages 21 & 22: (130-131 of PDF document, EMR Yukon Library Website). Report 4. Regional Mapping & Geochemical Sampling. Barramundi 1997, Robert Stevens, Ph.D.

# Klondike Source Ltd. 2002 Geophysical Survey



# LITHOSTRATIGRAPHIC LEGEND

## POST-ACCRETION UNITS

### Supracrustal Rocks

#### Late Cretaceous (Carmacks Group)

IKva andesite flows and breccias

### Undeformed Intrusive Rocks

#### Eocene

eTqfp quartz-feldspar porphyry stocks and dykes

#### Late Cretaceous

IKqfp massive quartz feldspar porphyry

IKgdr massive hornblende-biotite granodiorite

#### Early Cretaceous

eKgd massive hornblende-biotite granodiorite

## PRE-ACCRETION UNITS

### Slide Mountain Terrane

#### Middle or Upper Paleozoic

IPv massive and brittily-sheared greenstone and diabase; locally weakly foliated

IPu serpentinite, serpentinized harzbergite, carbonatized ultramafic rocks; talc-carbonate schist

### Klondike Schist Assemblage (Yukon-Tanana Terrane)

#### Middle to Late Permian

Psqm rusty-weathering quartz-muscovite schist (felsic schist)

Psa quartz and/or feldspar augen-bearing quartz-muscovite ( $\pm$ chlorite) schist (augen schist)

Psq tan weathering muscovite and/or chloritic quartzite and quartz-muscovite-chlorite schist (intermediate schist)

Psc medium to dark green chlorite-quartz-muscovite schist (mafic schist)

Pc crystalline marble

### Nasina Assemblage (Yukon-Tanana Terrane)

#### Late(?) Devonian to Early Mississippian

DMsq non-graphitic Nasina Assemblage undifferentiated (pale green, tan and medium weathering, micaceous quartzite and quartz-muscovite ( $\pm$ chlorite) schist); includes minor DMqsc

DMsqc graphitic Nasina Assemblage undifferentiated (mainly pale to dark gray weathering, fine grained quartzite, quartz-muscovite ( $\pm$ chlorite) schist; locally garnetiferous)

DMs medium to coarse grained mica schist, commonly garnetiferous, amphibolite, minor quartzite

### Metaplutonic Rocks (Yukon-Tanana Terrane)

#### Middle Permian

Pmqg moderately to strongly foliated biotite quartz monzonite gneiss (Sulphur Creek orthogneiss)

#### Late Devonian to Early Mississippian

DMgg moderately to strongly foliated K-feldspar augen-bearing quartz monzonite to granitic gneiss (Mt. Burnham orthogneiss)

Undefined

## Appendix 1: Report-3 Barramundi 97. Robert Stevens, Ph.D.

### Conclusion from Report-3, Barramundi 1997

“Regional mapping, prospecting and sampling throughout the Klondike has provided Barramundi with a solid understanding of the regional geological characteristics of the area and has provided data that will help guide Barramundi in its search for gold deposits. Among some of the key features that have been identified are: regionally high barium values, particularly in felsic and augen schist; high mercury in felsic and augen schist and a local strong correlation between mercury and silver; semi-massive and banded pyrite in siliceous schist; narrow bands of probable syngenetic massive sulphides in felsic and augen schist; a probable siliceous exhalative with 3.7g/t Au and >1% Mn; gold in pyritic felsic schist (up to 445 ppb); and gold in meso-thermal quartz veins and altered host schist (see JAE mapping report for more details on the potential of mesothermal quartz veins, Sheba ect.).

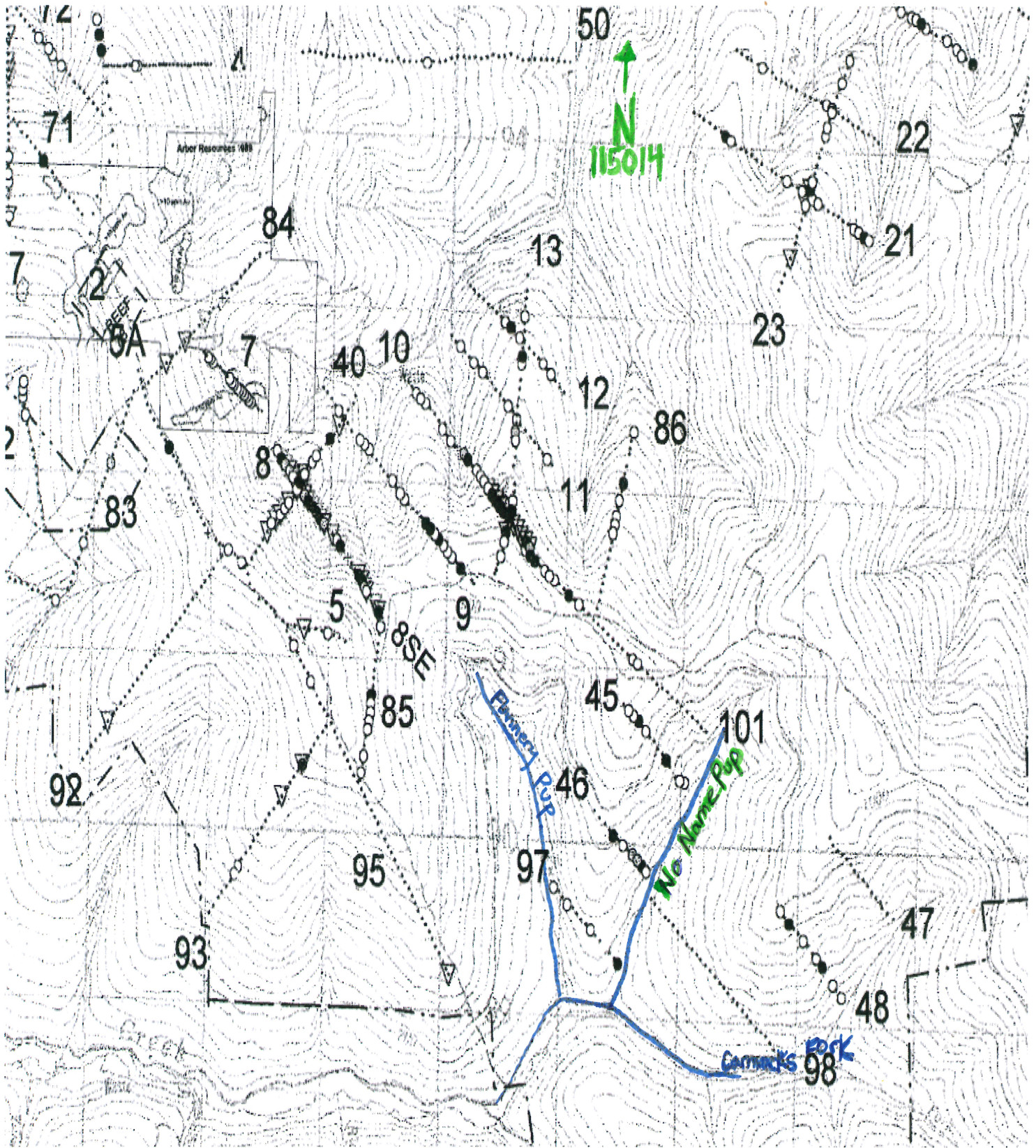
These features suggest that several different deposit types are possible, particularly epithermal and volcanic-hosted gold deposits and gold-bearing mesothermal quartz veins. As the potential of these deposit types has not yet been effectively evaluated, there remains considerable opportunity for the discovery of several different deposit types. Combined with the distribution of the rich placer gold streams it is obvious that multiple bedrock gold sources from a variety of deposit types exist in the Klondike and remain to be discovered with continued diligent work.”

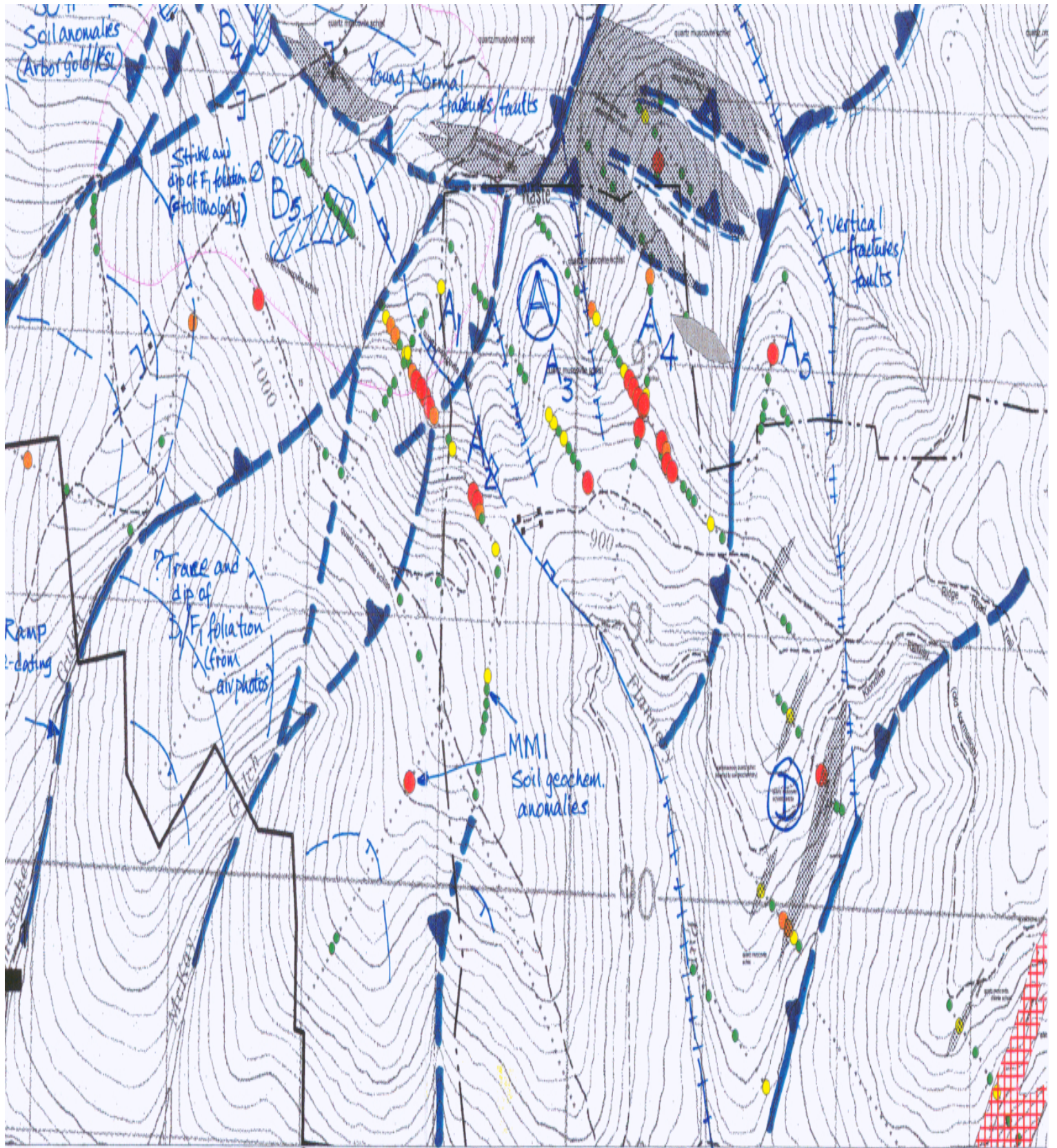
5

<sup>5</sup> Pages 26: Report 3 (Pages 101 & 105 of Pdf; Emr Yukon). Regional Mapping & Geochemical Sampling. Barramundi 1997, Robert Stevens, Ph.D.

Sample	Location	Au ppb	Description
RS96-200 (5 samples)	Near Lone Star Property.	5-35	Two samples are weakly anomalous in gold. A dark purple-red siliceous <u>iron formation(?)</u> with a botryoidal goethite crust (10 ppb Au), and a white sintery or foamy textured banded <u>quartzite</u> with pyrite and calcite (35 ppb Au)
Hunker (4 samples)	Near the mouth of Hunker Creek	15-40	Disseminated to semi-massive pyrite, locally banded, in glassy to smoky quartzite.
Claim 22 (7 samples)	Bonanza Creek at Bolder Creek	<5- 3760	Siliceous, black to rusty, fine grained, pyritic and graphitic quartzite. Laminated quartzite with 3760 ppb Au contains >1% Mn.
Sample	Location	Au ppb	Description
RS96-156 (5 samples)	Sulphur Creek gravels just downstream of 2 below pup	25-110	brown-grey-silvery to rusty and yellow stained muscovite± chlorite <u>quartz-augen schist</u> . Blue to grey quartz augens. Fine to medium pyrite (1-3%), disseminated and in fabric parallel layers. Larger pyrites cut the foliation.
RS96-172 (4 samples)	Scree beside Gold-run road just south of Dominion Mountain	35-64	Yellow-orange, gossaned pyrite-bearing <u>muscovite+quartz schist</u> . May have been abundant pyrite now weathered to goethite.
RS96-184 (2 samples)	Trench just off Heritage trail above Bear Creek.	35-40	Brown-red-yellow, gossaned pyrite-bearing <u>muscovite-quartz schist</u> . 1-3% pyrite.
RS96-197 (5 samples)	Trench above Bear Creek several hundred metres down slope from the Heritage trail.	5-445	Brown-red-yellow quartz-muscovite schist and quartz±felspar <u>augen schist</u> . Minor chlorite. 1-3% pyrite. Includes a breccia of unknown origin that ran 175 ppb Au, and a quartz±felspar augen schist that ran 445 ppb Au.

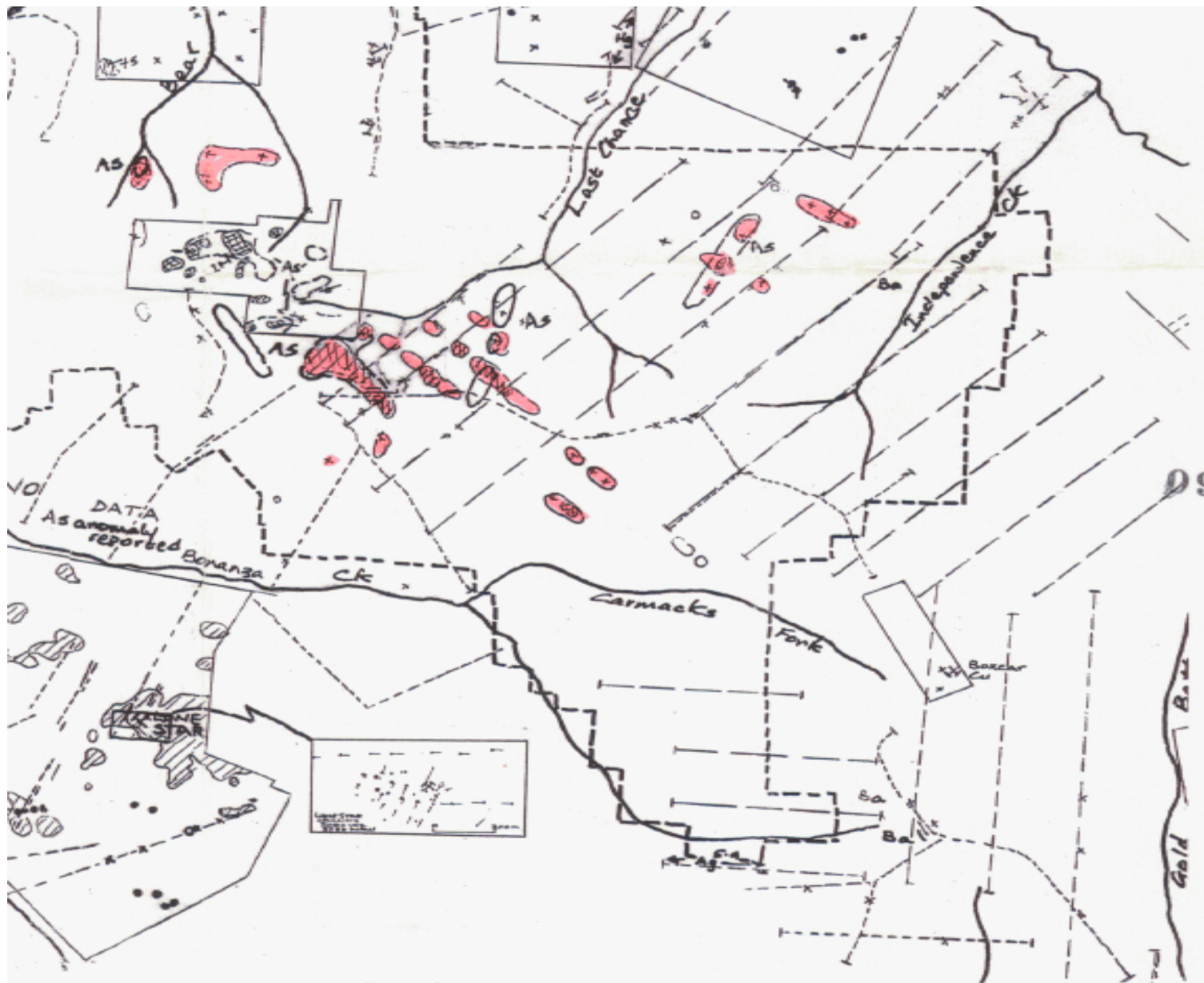
Summary map of soil assay results, for KSL from work done 2002-03, shown with assays of 10-120ppb Au highlighted in black.





Ⓐ PROSPECTS/DRILL TARGETS  
 A1-5 ZONES/DOMAINS

ENCLOSURE 2  
 STRUCTURAL & PHOTOGEOLOGICAL DATA



**LEGEND**

**Previous Explorers Data**

**Soil Sampling**

- Reconnaissance (-80 mesh) sample grid lines, typically 1000m by 50m
- Boundary of detailed grids (100m by 25m)
- Trenches
- Isolated soil (+80 mesh) gold values +10 ppb
- More than one contiguous gold value at +10 ppb
- Contoured gold values at +10 ppb
- Anomalous silver and value in ppm
- Anomalous (+100 ppm) arsenic
- Anomalous (+1000 ppm) barium
- Copper mineralisation ("boxcar") only

**Drilling**

- Drillhole, vertical
- Drillhole, inclined with direction indicated
- Mercury anomaly
- Antimony anomaly

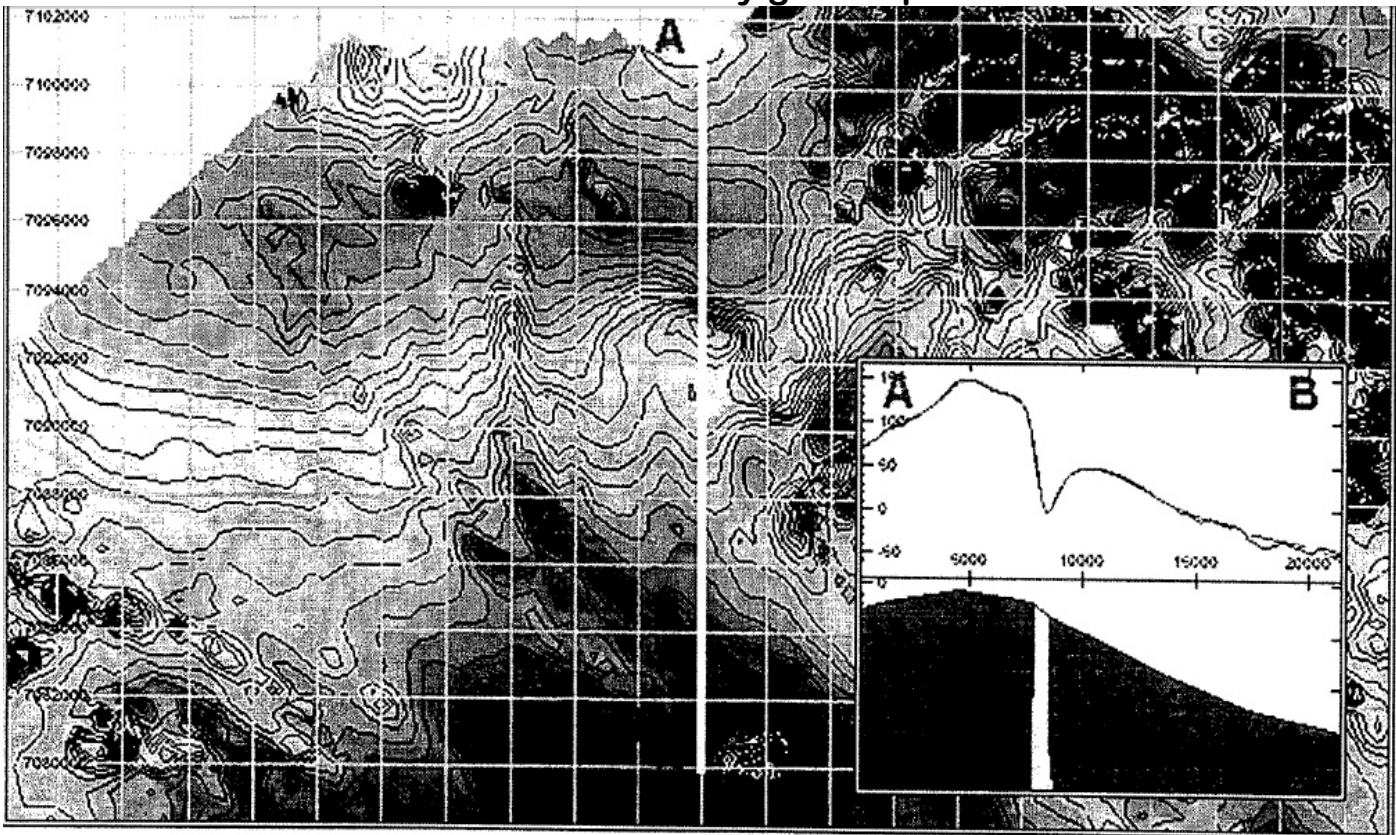
**KSL Data**

- Major gold (MMI & +80 mesh)
- Lesser spotty gold anomalies
- Arsenic anomalies
- Boundary of KSL Claim Block

**“As shown, the magnetic low modeled in Figure 5, is surrounded by a cluster of gold and arsenic soil geochemical anomalies. The magnetic low is located at a topographic high point from where much of the alluvial gold was probably eroded.**

**Modelling of the magnetic data shows that several hundred metres of schists exist in this area above a granitic basement. Un-eroded horizontal shear gold lodes could occur in the schist’s.**

**The magnetic data is indicating fault systems that could be related to these shears. Many gold deposits are located adjacent to major transfer fault zones such as the one interpreted next to the magnetic low. It is concluded that the magnetic low, wether caused by a non-magnetic intrusion or magnetite destruction caused by alteration, could be an indicator or an intrusive system that resulted in nearby gold deposition.”**



**THE MAGNETIC LOW MODELS AS A NON-MAGNETIC BODY WITHIN A MAGNETIC BATHOLITH. THE TOP OF THE NON-MAGNETIC BODY IS OF THE ORDER OF 300 METRES BELOW THE SURFACE.**

**FIGURE 5**

“Appendix I is a report on the interpretation of this geophysical data set. The most important feature of the interpretation is the N to NNE-striking lineament in the vicinity of Last Chance Creek separating two major magnetic basement domains:

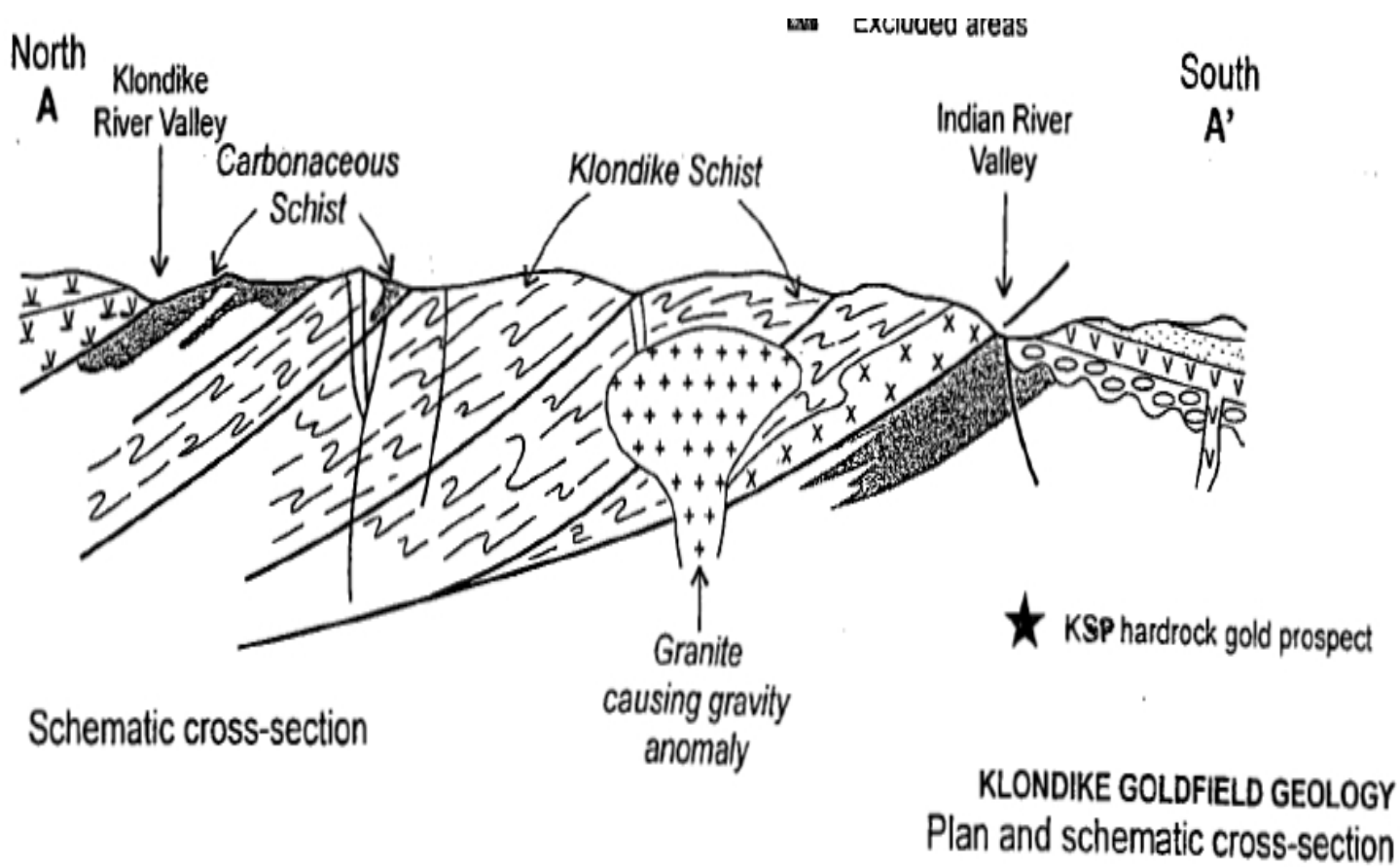
An E-W structured domain to the west inferred to be a magnetic granitic batholith which probably extends to west of Upper Bonanza Creek.

A strongly NE-SW striking domain to the southeast, which is reflected in the parallel strike of Hester, Independent and Gold Bottom Creeks.

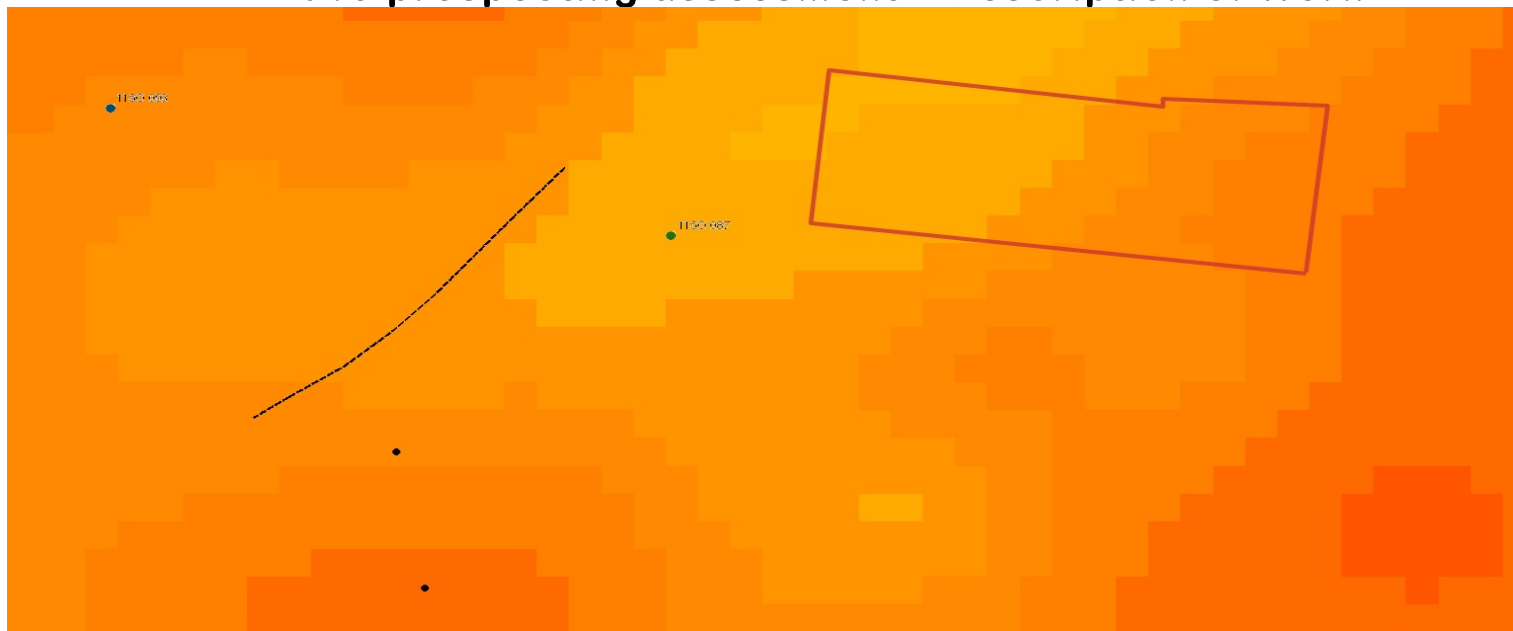
The significance of this inferred NNE-striking structure is: . The location of adjacent magnetic lows, indicative of magnetite destruction, with related clusters of soil geochemical anomalies.

Analagous sub-parallel, more prominently NE-striking, lineaments/major faults in the Pogo district (e.g. Shaw River Fault) and inferred fracturing in the Fort Knox Goldfield district, north of Fairbanks.

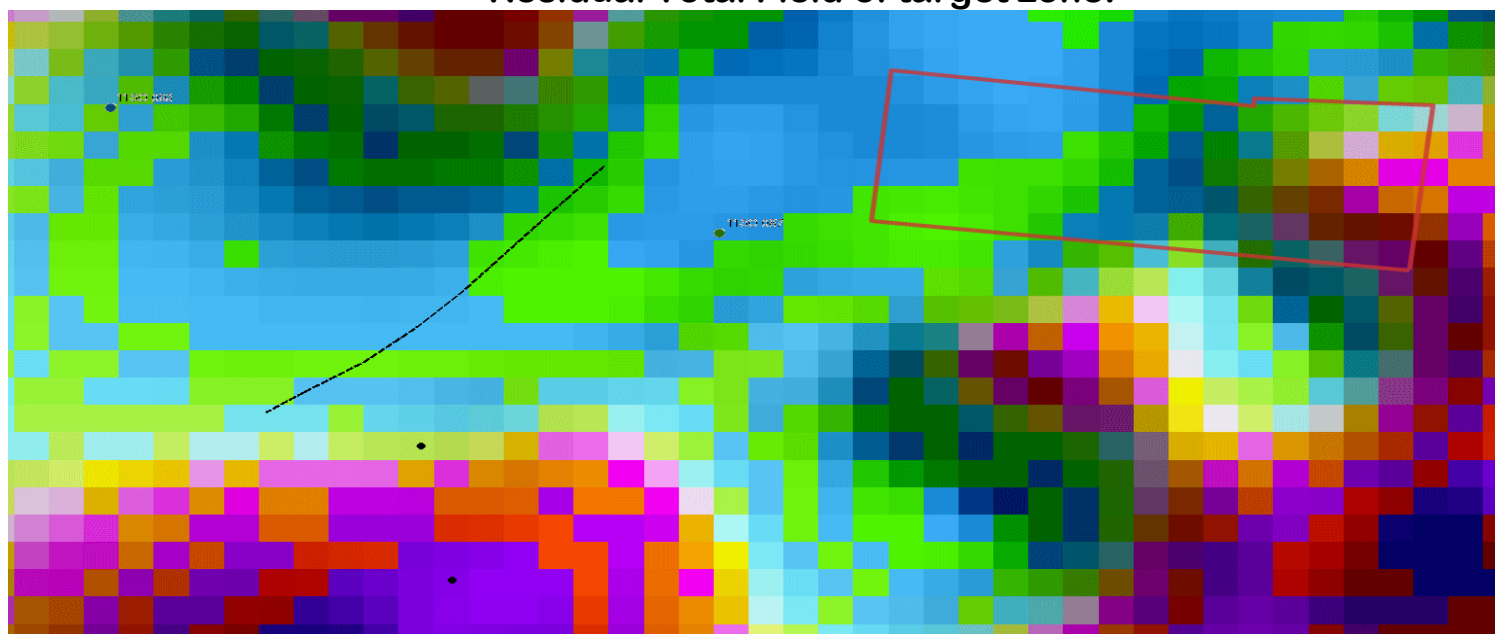
The likelihood of a major plutonic-related mineralising system being located along a major deep structural boundary, particularly a structure at right angles to the Klondike’s regional strike, i.e. the dominant “Tintina” NW-strike.”



## 2013 prospecting assessment – Description of Work



Residual Total Field of target zone.



1<sup>st</sup> Vertical Derivative of target zone.

Access obtained to claim IN96 by quad, left on side road of heritage trail. Investigation of old access road off heritage trail led to the trail then being walk-able along the east nose leading down to “no-name” creek. Prospecting was done along line of mag change contact, to view for outcrops. Chip samples collected along traverse, of floats and outcrops general geological analysis.

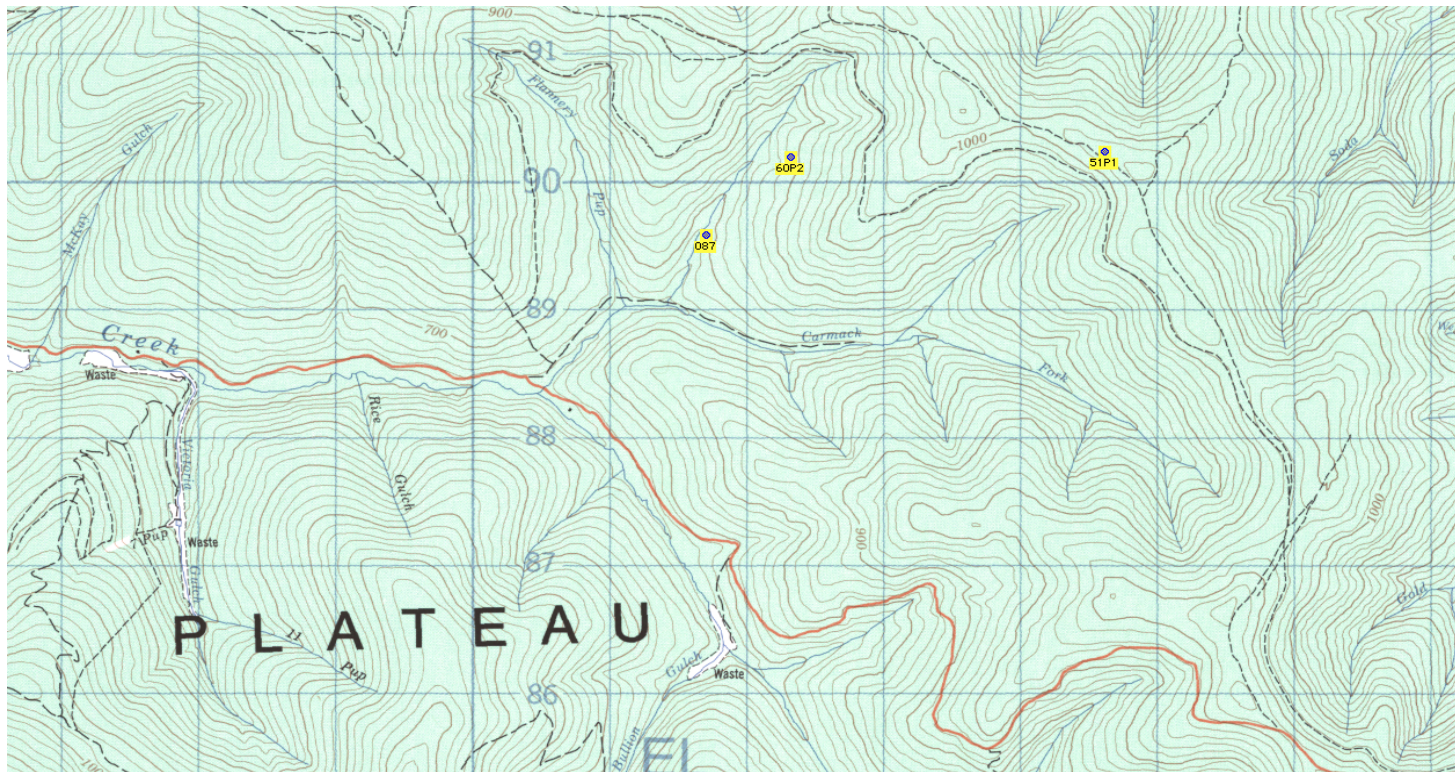
Two samples selected for assay, from the UTM location garnered from Minfile co-ordinates for 087. Likely mistaken for Flannery Pup, where Bon drilling is actually shown by United Keno.

Rocks removed from the bedrock immediately beneath moss overburden.



**Quartzite, quartz & quartz “phyllite”.**

**Similar to what was seen in outcroppings through the rough center-line of traverse: from heritage trail to Min-file 087 “occurrence”.**



**Quartz outcroppings at location 115O-087, (Min-file occurrence recorded location, at NoName Pup, east of Flannery Pup).  
2 samples selected for assay from this spot.**

**Carm1 – Sericite schist coated quartz lenses and veins, sulphide oxidations.**



**Carm2 – Hydrothermally altered sericite/chlorite schist coated quartz/feldspar lenses and veins. Orange oxidation, small sulfides visible.**



**CARM1 – 591700/7089596**

**CARM2 – 591691/7089599**

**Both samples taken from location 087, on page 25 map.**

**Assay Results & Interpretation**

Bureau Veritas Commodities (Final Report)																									
Client:	Petroutsas, Erini																								
Job Number:	WHI15000018																								
Number of Samples:	2																								
Project:	Petra Dominion																								
Shipment ID:																									
P.O. Number:																									
Method	VGHT	Q250	AQ250	Q250	Q250	Q250	Q250	Q250	AQ250	Q250	Q250	Q250	Q250	AQ250	Q250	Q250	Q250	Q250	Q250	AQ250	Q250	Q250	AQ250		
Analyte	Wgt	Mo	Cu	Pb	Zn	Ag	Ni	Co	Mn	Fe	As	U	Au	Th	Sr	Cd	Sb	Bi	V	Ca	P	La	Cr	Mg	
Unit	KG	PPM	PPM	PPM	PPM	PPB	PPM	PPM	PPM	%	PPM	PPM	PPB	PPM	PPM	PPM	PPM	PPM	PPM	%	%	PPM	PPM	%	
MDL	0	0	0.01	0.01	0.1	2	0.1	0.1	1	0.01	0.1	0.1	0.2	0.1	0.5	0	0.02	0	2	0.01	0.001	0.5	0.5	0.01	
Sample	Type																								
CARM1	Rock	0.51	0.97	10.35	18.12	32.0	101	8.0	4.4	369	1.76	7.5	0.6	3.4	8.6	30.1	0.09	0.11	0.16	16	0.55	0.041	24.5	15.9	0.47
CARM2	Rock	0.50	0.91	10.44	17.77	32.5	94	8.0	3.9	356	1.73	7.3	0.6	2.6	8.3	28.0	0.07	0.10	0.16	16	0.52	0.041	24.6	15.8	0.47
AQ250	AQ250	Q250	Q250	AQ250	Q250	Q250	Q250	Q250	Q250	Q250	Q250	Q250	Q250	Q250	Q250	Q250	Q250	Q250	Q250	Q250	Q250	Q250	Q250	Q250	
Ba	Ti	B	Al	Na	K	W	Sc	Tl	S	Hg	Se	Te	Ga												
PPM	%	PPM	%	%	%	PPM	PPM	PPM	%	PPB	PPM	PPM	PPM												
0.5	0.001	20	0	0.001	0.01	0.1	0.1	0.02	0	5	0.1	0	0.1												
478.9	0.003	<20	0.71	0.062	0.15	<0.1	3.9	0.04	0.02	8	<0.1	<0.02	2.2												
476.5	0.003	<20	0.70	0.054	0.15	<0.1	3.8	0.05	<0.02	13	<0.1	<0.02	2.1												

**Trace amount of gold from assayed surface rock. High Barium, Copper, Cobalt and Chromium indicated, confirm the hydrothermal alteration of the “chlorite/sericite” schist. Galena, Silver & Copper amounts from the 2 samples indicate enough potential to continue exploration.**

## Conclusions & Recommendations

It is recommended to access area with a small excavator (<3 ton), from the “Flannerty Pup” road off Upper Bonanza Creek.

Minfile co-ordinates place occurrence 087 on NoName Pup, which is an area of red colored moss and scant vegetation, overlying the immediate (hard) bedrock horizon, consisting of sericite/chlorite coated quartz veins and orange oxidizing lenses.

As this type of rock has been identified as a prospective gold bearing rock in our other Klondike investigations, this will be a target zone for the hoe to access for further rock testing.

United Keno Hill records show the actual Min-file occurrence location to be at the junction of Carmacks Fork and Flannerty Pup.

This area requires prospecting to locate any drill hole remnants and to identify better the geology. As well as excavation work, to connect any bedrock relation to the rich placer ground below it on Carmacks Fork, (stripped to bedrock already by placer operations).

## Statement of Qualifications

**Erini Petroutsas:**

Has been employed 10 consecutive summers in the Dawson area as a gold prospector in the field and geo-tech for drill programs.

Relevant experience has included being assistant to:  
Joanna Hodge PhD Geology; Erin O’Brian Masters Geology; Ken Galambos Geologist; Chris Ashe Masters Ultramafic Geology; Keven Brewer MBA & Geologist, Boris Molak PhD Geology.

References can be requested from any of the above professionals.

**Application for Renewal Certificate Expenses:**

**Work Completed June 2013**  
**Quartz Claims - IN Grouping #HDO3380**

**June 28- In51, 53 & 54~ General Prospect of nose running through claims.  
Outcrop mapping and rock type identification, pictures and samples.**

**June 29- In 55-56~ Residual Total Field/Vertical Derivative Anomalies.  
NorthEast-SouthWest Diagonal Prospecting to identify the geology of contact  
between light orange & yellow - green strip between blue magnetic drops.**

**June 30- In96~ Minfile Occurrence 1150087.  
Location prospecting and sampling of area identified as “Carmacks  
Occurrence”. To determine if further test pitting and assay analysis required.  
(2 samples selected for assay, from prospected samples).**

~

**3 days prospecting cost Erini Petroutsas~ \$275/day**

**\$825**

**3 days truck & quad cost~ \$90/day**

**\$270**

**Report Writing and Office Cost~**

**\$120**

**\$1,215**





**QUALITY CONTROL REPORT**

WHI15000018.1

Method	WGHT	AQ250	AQ250	AQ250	AQ250	AQ250	AQ250	AQ250	AQ250	AQ250	AQ250	AQ250	AQ250	AQ250	AQ250	AQ250	AQ250	AQ250	AQ250	AQ250	AQ250
Analyte	Wgt	Mo	Cu	Pb	Zn	Ag	Ni	Co	Mn	Fe	As	U	Au	Th	Sr	Cd	Sb	Bi	V	Ca	
Unit	kg	ppm	ppm	ppm	ppm	ppb	ppm	ppm	ppm	%	ppm	ppm	ppb	ppm	ppm	ppm	ppm	ppm	ppm	%	
MDL	0.01	0.01	0.01	0.01	0.1	2	0.1	0.1	1	0.01	0.1	0.1	0.2	0.1	0.5	0.01	0.02	0.02	2	0.01	
Pulp Duplicates																					
CARM2	Rock	0.50	0.91	10.44	17.77	32.5	94	8.0	3.9	356	1.73	7.3	0.6	2.6	8.3	28.0	0.07	0.10	0.16	16	0.52
REP CARM2	QC		0.95	10.58	17.82	33.5	106	7.8	4.3	347	1.74	7.7	0.6	2.8	8.3	28.2	0.11	0.11	0.14	15	0.50
Reference Materials																					
STD DS10	Standard	13.60	152.43	154.43	376.7	1930	73.2	11.9	882	2.74	44.8	2.6	70.1	7.2	66.4	2.57	7.16	12.28	36	1.06	
STD OREAS45EA	Standard	1.44	662.28	14.83	29.1	236	377.5	48.8	401	22.03	9.5	1.9	50.7	10.5	3.7	0.02	0.24	0.25	295	0.03	
STD DS10 Expected		14.69	154.61	150.55	370	2020	74.6	12.9	875	2.7188	43.7	2.59	91.9	7.5	67.1	2.49	8.23	11.65	43	1.0625	
STD OREAS45EA Expected		1.39	709	14.3	28.9	260	381	52	400	23.51	9.1	1.73	53	10.7	3.5	0.02	0.2	0.26	303	0.036	
BLK	Blank	<0.01	0.01	<0.01	<0.1	<2	<0.1	<0.1	<1	<0.01	<0.1	<0.1	<0.2	<0.1	<0.5	<0.01	<0.02	<0.02	<2	<0.01	
Prep Wash																					
ROCK-WHI	Prep Blank	0.37	4.57	1.89	43.5	10	1.0	3.6	526	1.80	0.5	0.3	0.6	2.0	20.9	0.08	<0.02	<0.02	17	0.46	



**QUALITY CONTROL REPORT**

WHI15000018.1

Method	AQ250	AQ250	AQ250	AQ250	AQ250	AQ250	AQ250	AQ250	AQ250	AQ250	AQ250	AQ250	AQ250	AQ250	AQ250	AQ250	AQ250	AQ250	AQ250	AQ250
Analyte	P	La	Cr	Mg	Ba	Ti	B	Al	Na	K	W	Sc	Tl	S	Hg	Se	Te	Ga		
Unit	%	ppm	ppm	%	ppm	%	ppm	%	%	%	ppm	ppm	ppm	%	ppb	ppm	ppm	ppm		
MDL	0.001	0.5	0.5	0.01	0.5	0.001	20	0.01	0.001	0.01	0.1	0.1	0.02	0.02	5	0.1	0.02	0.1		
Pulp Duplicates																				
CARM2	Rock	0.041	24.6	15.8	0.47	476.5	0.003	<20	0.70	0.054	0.15	<0.1	3.8	0.05	<0.02	13	<0.1	<0.02	2.1	
REP CARM2	QC	0.041	24.6	15.7	0.48	494.8	0.003	<20	0.71	0.055	0.14	<0.1	3.9	0.04	<0.02	<5	<0.1	<0.02	2.1	
Reference Materials																				
STD DS10	Standard	0.079	16.1	52.6	0.75	403.9	0.074	<20	1.00	0.065	0.33	3.0	2.9	5.15	0.27	315	2.3	4.96	4.5	
STD OREAS45EA	Standard	0.029	6.5	765.5	0.10	138.8	0.089	<20	3.15	0.017	0.04	<0.1	76.0	0.05	0.03	13	0.9	0.10	12.5	
STD DS10 Expected		0.073	17.5	54.6	0.775	359	0.0817		1.0259	0.067	0.338	3.32	2.8	5.1	0.29	300	2.3	5.01	4.3	
STD OREAS45EA Expected		0.029	6.57	849	0.095	148	0.0875		3.13	0.02	0.053		78	0.072	0.036	10	0.63	0.07	11.7	
BLK	Blank	<0.001	<0.5	<0.5	<0.01	<0.5	<0.001	<20	<0.01	<0.001	<0.01	<0.1	<0.1	<0.02	<0.02	<5	<0.1	<0.02	<0.1	
Prep Wash																				
ROCK-WHI	Prep Blank	0.037	5.2	2.9	0.47	47.4	0.061	<20	0.87	0.072	0.08	0.1	2.2	<0.02	0.03	14	<0.1	0.03	3.6	