

Prospecting Report on the Dominion Project,

Dawson Mining District

Yukon Territory, Canada

GATA 1– 19 (YC36286-YC36304)

GATA 21 (YC36305)

GATA 23 – 42 (YC36306-YC36325)

GATA 43 (YC36336)

GOTTA 1 – 4 (YC36539-YC36542)

GRE 1 – 31 (YC27331-YC27362)

SHE 1 – 2 (YC44606-YC44607)

SHE 11 – 12 (YC44616-YC44617)

SHEBA 1-6 (YC36511- YC36516)

SHEBA 7-11 (YC36543- YC36547)

SHEBA 13 (YC44365)

TIE 1 – 12 (YC44318- 44329)

TIE 13 – 42 (YC44655-YC44684)

NTS MAP-SHEETS 1150/15

63° 43' N 138° 40' W

602000mE / 7080000mN NAD83, Zone 7N

DAWSON MINING DISTRICT

Work completed: Aug. 13 - Sep. 28, 2014

Submitted by: Peter Tallman P. Geo.

On behalf of

Klondike Gold Corp.



715 - 675 West Hastings Street,

Vancouver, BC Canada V6B 1N2

Tel · 604.559.4440 Fax · 604.559.4443

Webpage · www.klondikegoldcorp.com

Table of Contents

1.0	Executive Summary.....	2
2.0	Introduction	3
3.0	Property Description and Location	3
4.0	Accessibility, Climate, Local Resources, Infrastructure and Physiography	7
5.0	History	8
6.0	Geological Setting and Mineralization	11
6.1	Yukon-Tanana Terrane.....	11
6.2	Geology	11
6.3	Structural Geology	12
6.4	Quartz Vein System of the Klondike and Mineralization	12
6.5	Quaternary Geology.....	12
6.6	Property Geology	13
7.0	Deposit Types.....	15
8.0	Adjacent Properties.....	15
9.0	2014 Exploration	15
10.0	Sample Preparation, Quality Assurance and Quality Control, Analysis, and Security	20
11.0	Interpretation and Conclusions.....	20
12.0	Recommendations	21
13.0	Statement of Qualifications	22
14.0	References.....	23

List of Figures

1. Location Map
2. Claims Map
3. Regional Geology Map
4. Prospecting Samples Location Map
5. Prospecting Samples Results Map

List of Appendices

- I Statement of Expenditures
 - I.I Dominion Property
 - I.II Dominion North
 - I.III Dominion West
- II Detailed Claims List
 - II.I Dominion Property
 - II.II Dominion North
 - II.III Dominion West
- III Rock Metadata
- IV Rock Analytical Certificates

1.0 Executive Summary

During the 2014 exploration season Klondike Gold Corp. (the “Company”) conducted prospecting and rock sampling on the Dominion Property in the central Klondike area, Yukon. The work, part of a larger survey also covering the Lone Star and Gold Run properties, investigated areas of interpreted faulting with the objective of documenting related extensional gold-enriched quartz veins and distinguishing them from unmineralized quartz and carbonate veins.

The Company during 2014 completed an interpretation of Geological Survey of Canada (“GSC”) airborne magnetics (published 2002), particularly relying on first vertical derivative data, and discerned a dextral shear fault which transects the area of the Klondike goldfields from Eldorado Creek to Dominion Creek. The fault has horsetail fault splays underlying the vicinity of Eldorado Creek and a pattern of pinnate extensions between Eldorado Creek and Hunker Dome. The fault continues from Hunker Dome to Dominion Creek but with no pinnate fractures evident. In total the fault is 50 kilometers long and associated horsetail and pinnate extensional faults add considerable breadth of reach to the system. These faults, when overlain on many of the productive placer creeks within the Klondike goldfields, correlate with the divide between placer leases with production (downstream) and placer claims undergoing exploration (upstream), as shown on the YGS placer claims website.

Eighty-nine prospecting samples of all types of quartz veins were collected for assay in 2014 from throughout the 26 square kilometer Dominion Property and submitted for analysis.

Prospecting samples at the Hunker Dome prospect collected from an array of quartz veins exposed in old trenches over a 700 meter length yield gold assays of between 1 g/t and 37.1 g/t Au and silver between 8 g/t and 930 g/t Ag. Three prospecting samples collected in 2013 across a 3 meter wide quartz vein exposed in a c.1910 prospecting shaft had gold assays of 81.3 g/t, 12.7 g/t and 7.3 g/t Au. The prospect has never been drill tested.

Prospecting samples from the Dominion Adit 150 meters vertically beneath Hunker Dome assayed gold between 0.2 g/t and 0.6 g/t Au with silver between 10 g/t and 167 g/t Ag and are interpreted to represent vertical continuation of Hunker Dome veining.

Two prospecting samples from the Golden Rod prospect assayed gold between 2.1 g/t and 3.0 g/t Au with silver between 7 g/t and 13 g/t silver. Golden Rod exhibits the same type of veining as exposed at Hunker Dome and obtained from the Dominion adit, and is located 1,500 meters south of Hunker Dome.

A previously unrecognized shear fault array identified in Klondike Gold and Geological Survey of Canada (“GSC”) aeromagnetic surveys is comprised of a main dextral shear fault with associated secondary pinnate and horsetail extensional faults interpreted to transect the Klondike goldfields. On the Dominion Property a pinnate-type extensional “D4” fault passes in proximity to historic gold prospects and is interpreted to be the primary local control on Dominion property area D4 gold-bearing quartz veins.

2.0 Introduction

The Company during 2014 completed an interpretation of Geological Survey of Canada (“GSC”) airborne magnetics (published 2002), particularly relying on first vertical derivative data, and discerned a dextral shear fault which transects the area of the Klondike goldfields from Eldorado Creek to Dominion Creek. The fault has horsetail fault splays underlying the vicinity of Eldorado Creek and a pattern of pinnate extensions between Eldorado Creek and Hunker Dome. The fault continues from Hunker Dome to Dominion Creek but with no pinnate fractures evident. In total the fault is 50 kilometers long and associated horsetail and pinnate extensional faults add considerable breadth of reach to the system. These faults, when overlain on many of the productive placer creeks within the Klondike goldfields, correlate with the divide between placer leases with production (downstream) and placer claims undergoing exploration (upstream), as shown on the YGS placer claims website.

Prospecting and rock sampling during 2014 on the Company’s Dominion property, as part of a larger survey also covering the Lone Star and Gold Run properties, investigated areas of interpreted faulting with the objective of documenting related extensional gold-enriched quartz veins and distinguishing them from unmineralized quartz and carbonate veins.

Results indicate the gold-bearing quartz veins within the Klondike goldfields are associated with extensional faulting which transects the Klondike area. There is one genesis of gold-veining consistent throughout the region with similar chemistry, textural characteristics and cross-cutting structural position relative to host rock foliation. The quartz veining produced by extensional faulting (interpreted from GSC magnetics data) can have extraordinarily high gold grades >1000 g/t Au (at Lone Star property) and is considered by the author to be the likely source of “Klondike gold” in placers. There is every geologic reason to presume the region remains prospective for gold-bearing quartz veins.

The age of the gold bearing quartz veining is consistent with MacKenzie et al. (2006) who ascribed a “post-D4” stage to them and an Early-Middle Jurassic age of formation.

This report describes 2014 assessment work for the Dominion Property, which consists of three separate claim blocks ascribed: Dominion, Dominion North and Dominion West. The property consists of 135 claims that extends from upper Sulphur Creek northward to the headwaters of Hunker Creek covering a 26 square kilometer area. Exploration consisted of 23 man days of rock sampling and prospecting with a crew of 6 workers. Field work was conducted by I. Mitchell, geologist, W. Keats, prospector, a geologist assistant and Peter Tallman, President and CEO of Klondike Gold Corp. Academic field work on the property was undertaken by M. Grimshaw and G. McLeod from the University Of Leeds, UK in relation to a PhD dissertation that Klondike Gold is supporting. All contractors and employees were based in Dawson and used a 4WD truck for daily transport.

3.0 Property Description and Location

The Dominion property, located near the central portion of the Klondike goldfields, consists of a main block of claims that straddles upper Sulphur Creek and Green Gulch and extends northward across Dominion Creek (west of Lombard pup) into the headwaters of Hunker Creek, plus two small adjacent

but non-contiguous claim groups named Dominion North and Dominion West (see table 1). The claims lie on NTS map sheet 1150/15 within the Dawson mining district. Property and claim locations are shown in Figure 1 and Figure 2, and claims list is tabled below (see Appendix II for detailed claims list).

Table 1: Dominion Property Claim Summary

Dominion Claim Summary		NTS 1150/15
Claim Names	Owner	Grant Numbers
GRE 1 - 31	Klondike Gold Corp.	YC27331 - YC27362
GATA 1 - 19	Klondike Star Mineral Corp.	YC36286 - YC36304
GATA 21	Klondike Star Mineral Corp.	YC36305
GATA 23 - 42	Klondike Star Mineral Corp.	YC36306 - YC36325
GATA 43	Klondike Star Mineral Corp.	YC36336
GOTTA 1 - 4	Klondike Star Mineral Corp.	YC36539 - YC36542
SHE 11 - 12	Klondike Star Mineral Corp.	YC44616 - YC44617
TIE 1 - 12	Klondike Star Mineral Corp.	YC44318 - 44329
TIE 13 - 42	Klondike Star Mineral Corp.	YC44655 - YC44684

Dominion North Claim Summary		NTS 1150/15
Claim Names	Owner	Grant Numbers
Sheba 7 – 11	Klondike Star Mineral Corp.	YC36543 - YC36547
Sheba 13	Klondike Star Mineral Corp.	YC44365

Dominion West Claim Summary		NTS 1150/15
Claim Names	Owner	Grant Numbers
Sheba 1 – 6	Klondike Star Mineral Corp.	YC36511- YC36516
She 1 - 2	Klondike Star Mineral Corp.	YC44606 - YC44607

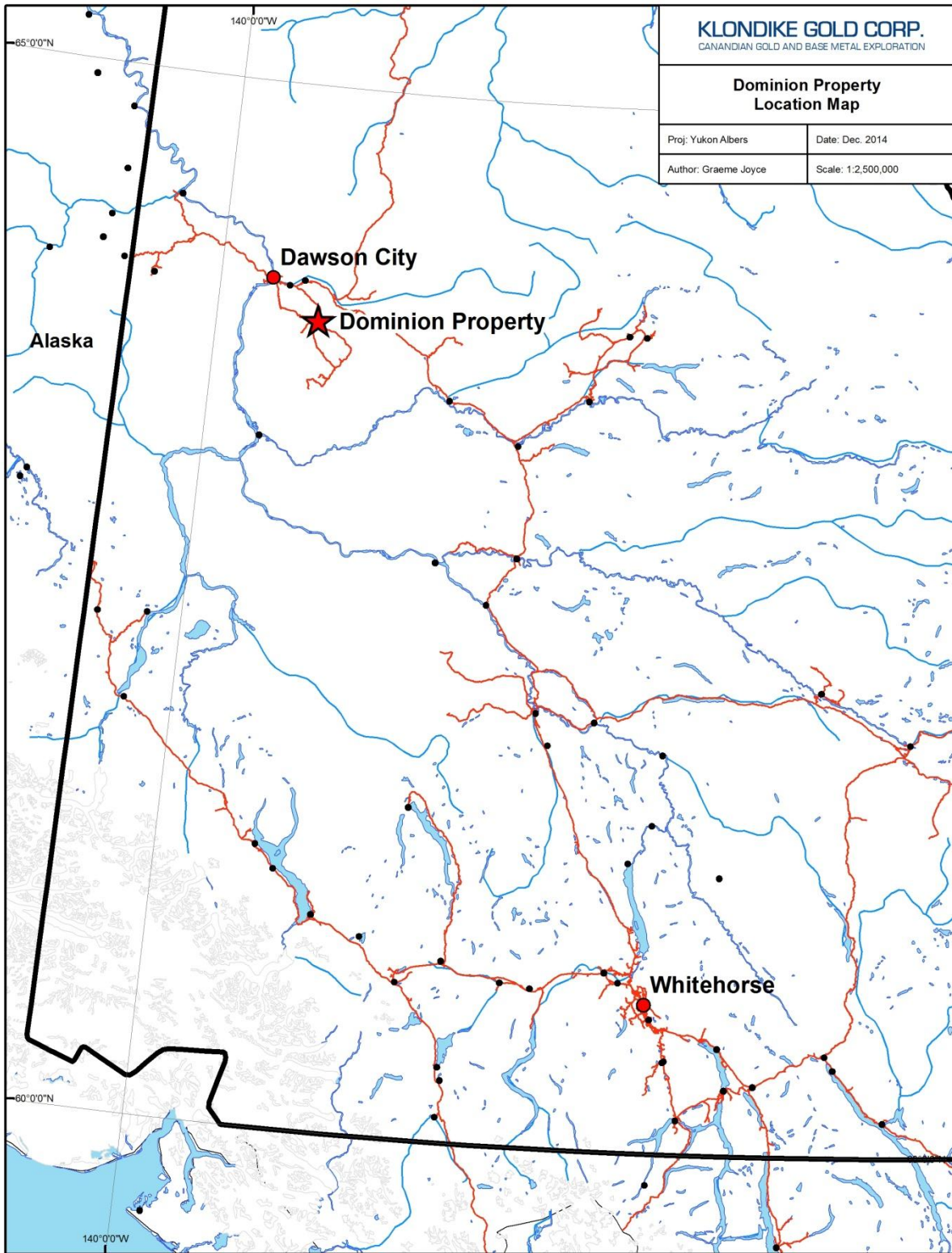


Figure 1: Location Map

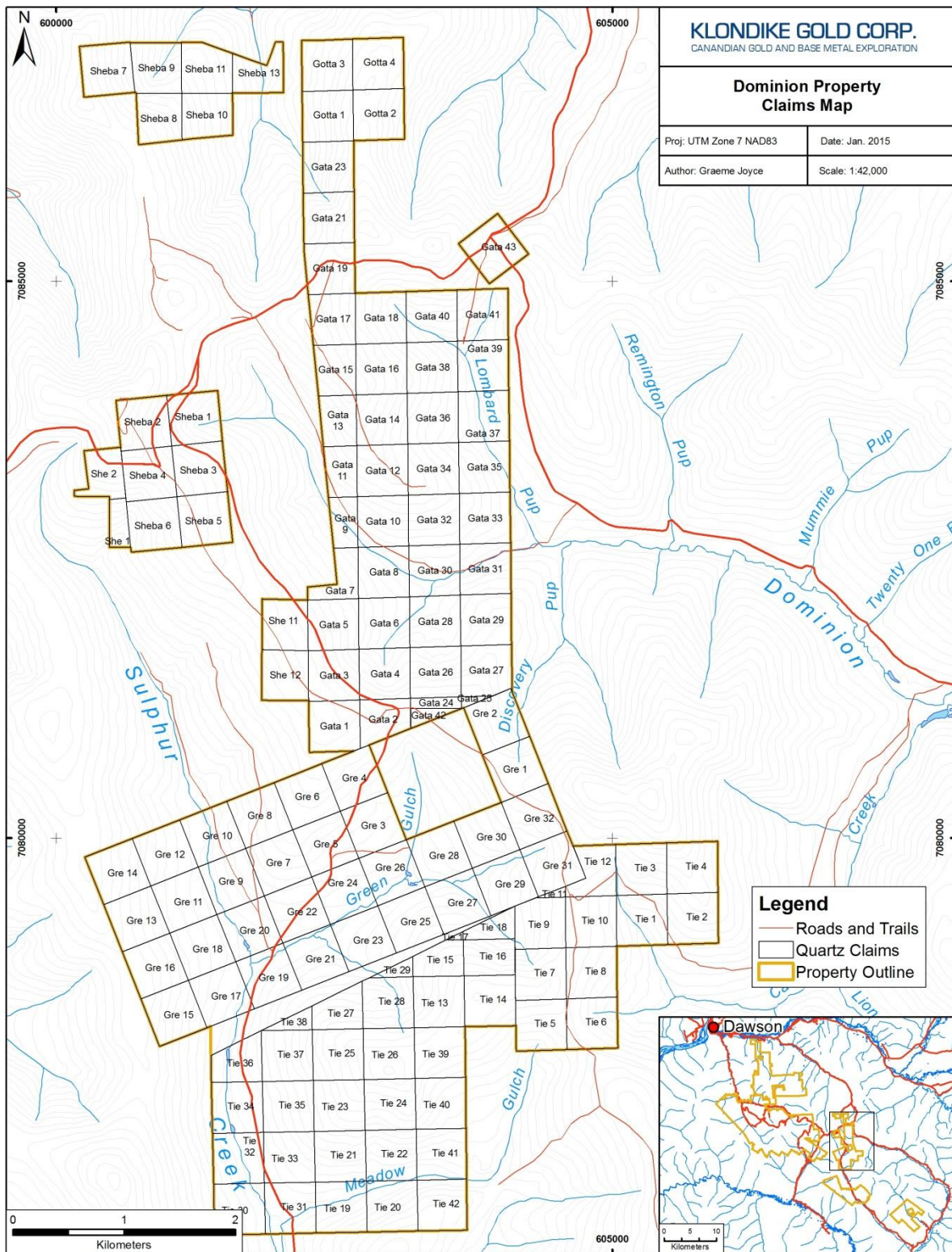


Figure 2: Claims Map

4.0 Accessibility, Climate, Local Resources, Infrastructure and Physiography

The Dominion Property lies near the geographic center of the Klondike placer goldfields located near Dawson City (“Dawson”), Yukon Territory. Gold in the gravels and bedrock here has been the target of prospectors and placer gold miners since 1896.

Dawson is connected to the territorial capital of Whitehorse via a 480 km sealed, government maintained two-lane highway (the “Klondike Highway”). Electricity in Dawson is supplied by the Yukon Energy Corporation’s territorial power grid (connected in 2004) with back-up diesel power. A 5000’ x 100’ gravel surface lighted Yukon Government airfield at 1214’ (370 m) elevation is located on the outskirts of Dawson. Scheduled daily air service is maintained by Air North using twin-engine turboprop aircraft from Whitehorse, and seasonally by Boeing 737 jet (with special gravel landing kit installed) from Fairbanks, Alaska for cruise ship tourists. Charter fixed wing aircraft of various capabilities are available locally or in Whitehorse. In addition, there are two year-round helicopter bases (Trans North Helicopters and Fireweed Helicopters) in Dawson. Other helicopter companies establish seasonal bases as needed. Regular truck freight, parcel and mail, and fuel services supply Dawson via the highway. Dawson offers normal town facilities such as hotels, restaurants, grocery, clothing, building supplies and hardware stores, engineering supplies and two bulk fuel depots.

The Dominion Property lies within the traditional territory of the Tr’ondëk Hwëch’in First Nation. The Tr’ondëk Hwëch’in are based in Dawson with roughly 1,100 members who are descended from the Han-speaking people. Tr’ondëk Hwëch’in began negotiating their individual land claim in 1991. The Tr’ondëk Hwëch’in Final Agreement was signed on July 16, 1998, and came into effect on September 15, 1998.

The Dominion property has a number of access points. The Hunker Creek-Bonanza Creek road is a major government maintained loop which provides access from the Klondike Highway to the centre of the Klondike, and this road cuts across the northern part of the Dominion property. The Dominion Creek–Sulphur Creek road is another inter-connected government maintained loop road that transects the southern portion of the property. The main roads are 2-wheel drive dirt and gravel roads and have significant traffic through the summer. They are not plowed in the winter, but are cleared and graded from April until October. Dirt trails, some requiring 4-wheel drive or ATV, branch from the main roads and provide a network which allows relatively easy access by vehicles and equipment to most areas on the claim block.

The Dominion property is within Central Yukon Basin climatic zone, characterized by a sub-arctic climate, with normally low annual precipitation (approximately 400 mm total precipitation). The exploration season typically extends from May through October by which time nightly temperatures are below freezing and there may be a few centimeters of snow on the ground. Winter temperatures may drop to at least -40 °C for up to six weeks in January and February.

The Klondike region consists of rugged topography of rounded hills and V-section valleys since this region was not recently glaciated. The hills have therefore a more subdued profile than the eastern Yukon, with cliffs being only prominent along the Yukon River valley. Weathering of the region has had a

lengthy history, resulting in few natural fresh rock exposures. The Dominion project is situated in the Yukon Plateau ecoregion, part of the Boreal Cordillera ecozone (Smith et al, 2004).

Dawson City is on the Yukon River at 1050' (320 m) elevation and the highest point near to the claims, King Solomon Dome, is at 4032' (1229 m). The highest points on the claims are about 1100 m on the GATA claims. The region surrounding the claims has been historically denuded of large timber by cutting to either supply mines and fuel boilers or by forest fires, and is now covered by regrowth of spruce, poplar, birch and alder. Only the very highest ridges are covered by dwarf willow and birch ("buckbrush").

5.0 History

- 1896: Start of placer exploration and mining, along with quartz exploration. Sulphur Creek and Dominion Creek drainages which underlie much of the Dominion claim group have been major placer gold producers, with mining continuing to the present.
- 1900: Staking of claims in the Hunker Summit area (Yukon Minfile 1150 067 Hunker Summit). Current GATA claims of the Dominion group.
- 1904: Staking of 40 claims in the Hunker Summit area to form the Dome Lode property. 4 veins traced on surface with 4 shafts and numerous trenches.
- 1904: Extensive staking in the Lloyd area between Green Gulch and upper Dominion and Caribou Creek (Yukon Minfile 1150 066 Lloyd). Current GRE and TIE claims cover part of this occurrence, as well as the DOC claims of a competitor.
- 1905- 1909: Lloyd area explored with numerous shallow shafts, pits, trenches and adits.
- 1909: Development of the Dome Lode (aka Hunker Summit, current GATA claims). A 60' shaft and numerous trenches and pits follow veins along the ridge crest, then a 2600' tunnel was driven eastward from the lower western slope 900' vertically below.
- 1911: Cairnes describes many of the lode gold prospects in the Klondike, including the Lloyd occurrence and nearby claims along the divide between Green Gulch and Caribou Gulch.
- 1914: Maclean reports on the Lloyd group, Green Gulch group and Dome Lode showings on the current Dominion property (Lode Mining in Yukon). The Dome Lode tunnel was examined, and no veins of merit were found, though gold was identified at the upper workings. The Lloyd workings consisted of at least three shallow shafts (20' to 30' deep) and one 70' adit from the Caribou Creek side, all workings inaccessible.
- 1940-1942: Dome Lode tunnel extended 37 m.
- 1966 and 1972: Hunker Summit area was bulldozed by Orekon Ltd.
- 1967: Airborne magnetics survey of area published by Geological Survey of Canada.
- 1980: Cominco conducted exploration around King Solomon Dome on 138 KSD claims (assessment report #090769). Work consisted of 6 grids, labeled A- F, including two cut grids totaling 11.7 line-km (D and F) which had IP surveys in addition to soil and rock geochemistry including >600 C horizon soil samples and >600 rock chip samples from the soil holes. Strong arsenic anomalies were returned from 3 grids, and a Ag-Cu-Pb-Zn-Mn anomaly on grid E. Au

results were spotty, and soil and rock anomalies did not generally coincide. Grids F and G lie on the current GATA claims.

- 1984: Bedrock geology map, 1:50,000 published (Debicki, Open File 1984-3).
- 1984: Archer Cathro associates conducted geological mapping and geochemistry (37 soils) on the Lloyd claims which lay between Green Gulch and Dominion Creek and covered the Lloyd minifile occurrence (assessment report #091562). The Lloyd occurrence is mapped in the footwall rocks below a major thrust fault.
- 1984: Archer Cathro associates conducted geological mapping and geochemistry on the Klook claims, which lay between Lombard pup and upper Dominion Creek (Cominco grid F area and current GATA claims) (assessment report #091561). The Hunker Summit occurrence is mapped in the hangingwall rocks above a major thrust fault.
- 1984: United Keno Hill Mines staked quartz claims over many of the main placer creeks in the Klondike, including upper Sulphur Creek. They flew 3 airborne surveys and conducted minor VLF-EM ground surveys. They drilled 95 rotary percussion holes in 14 areas, including 8 holes in a fence across upper Sulphur Creek on the current GRE claims. This drill fence tested an *“obvious reddish gossan zone stretching parallel to the creek”*, and returned substantial intervals of anomalous gold (assessment report #091634). A 70' (21 m) interval commencing 40' below surface in hole SUL 25 averages 325 ppb Au, including 670 and 1100 ppb Au, which upon fire assay returned 0.045 and 0.020 oz/t Au respectively. Adjacent hole SUL 24 returned 90' averaging 120 ppb Au starting 20' below surface. Note that the assessment report includes detailed assay sheets for all of the 95 holes except the 8 holes drilled at upper Sulphur Creek.
- 1986: United Keno Hill Mines conducted grid soil geochemistry, grid VLF-EM geophysics and trenching at upper Sulphur Creek near Green Gulch to follow up on the successful 1984 percussion drilling in this area (assessment report #091946) (minifile 1150 140 Brady). 269 soils were collected from a grid on roughly 100 m x 50 m spacing over a 1500 m length. 4 significant gold anomalies were identified which were tested by three trenches and 3 excavator pits totaling 726 m length, from which 137 rock samples were collected at 5 m intervals. A pyrite-limonite mineralized chlorite-sericite-talc schist was mapped parallel to Sulphur Creek that was interpreted to be an alteration zone. The best trench anomalies were from this altered zone, with a best result of 312 ppb Au over 5 m. VLF anomalies running north-south appear to correlate with the geological trend. Rock chips from the 1984 drilling were logged during 1986 and reported here. It is noted in the chip logging that the *“talc”* alteration decreases with depth, and is supposedly derived from alteration of chlorite. Note that most of the 1986 soil samples were collected in the creek valley and lower slopes where loess, muck and overburden depth would be significant, and sample quality impaired. Note also that trenches 1 and 3, pits 2 and 3 and the 5 western most drill pads are visible in 2006 satellite imagery available on Google Earth.
- 1987-1988: United Keno Hill Mines collected 4,443 soils on 10 grids at 25 m x 100 m spacing, all grids located on ridge tops. All 10 grids were at least somewhat anomalous in gold. They subsequently dug 18 bulldozer trenches on the Hunker Summit grid, with 243 channel samples collected (assessment report #092600). The trenches identified a series of en echelon quartz veins with trace pyrite and galena, and occasional free gold. Trench maps at 1:200 scale with

assay data are presented. The Hunker Summit workings are mapped at 1:5,000 scale. *“The veins appear to be quite persistent over long distances, but are very inconsistent over short distances due to cross faulting and pinching out.”*

- 1988: United Keno Hill Mines dug 63 trenches totaling 7065 linear meters on 4 grids: Mackay, Dominion, Hunker Dome (19 trenches) and King Solomon Dome (assessment report #092743). This report includes base maps at a scale of 1:12,500 that cover the eastern Klondike in two sheets. These maps include details of placer gold distribution, old workings and drilling and trenching performed by UKHM. Trenches are mapped at 1: 1,000 on a separate page but trenches have only sporadic chip sampling (405 channel samples total). Hunker Dome mineralization is described as north-south trending en-echelon veins that extend 2 km by 400 m.
- 1996: Barramundi Gold Ltd staked and optioned much of the Klondike area, over 3000 claims. Their property covered a large part of the current Dominion group. As part of their exploration program, Barramundi collected 210 regional stream silt samples, covering most of the current Dominion group. Anomalous gold values were found at the headwaters of Sulphur Creek, Green Gulch, Lombard pup and Hunker Creek, however 15 ppb Au was considered to be anomalous, and no attention was paid to actual placer mining. The JAE soil grid extended onto the current GATA claims. Several anomalous rock samples were also collected in the area, specifically at the Lloyd and Hunker Summit areas, however the results were plotted on a 1:250,000 base map which makes specific locations very difficult to determine (assessment report #093711, which includes 4 separate reports).
- 1996: Bedrock geology maps, 1:50,000 published, including 1150/15 (Mortensen, OF 1996-1).
- 1999: Barramundi commissioned a fixed wing airborne magnetics and VLF-EM survey over a 16 x 24 km area that covers the current Dominion group (assessment report #094021). Flight lines spaced 100 m apart, tie lines spaced 5000 m apart, and minimum 90 m elevation above ground surface. Resulting maps shown without geographical features for orientation.
- 1999: Barramundi optioned all of their Klondike region claims to KSL Exploration (Yukon) Ltd, a private Australian company. Airphoto and Landsat interpretation with minor rock and soil sampling (assessment report #094119). Claims that were held by Barramundi under option from JAE Resources and United Keno Hill Mines in the current Dominion project area were excluded from the deal, hence KSL only explored peripheral to the project.
- 2002: Airborne magnetics and radiometrics geophysical survey, 1:50,000 scale published (Shives et. al., GSC Open File 3992).
- 2003: GRE claims staked by Klondike Gold Corp.
- 2004: Prospecting and soil sampling on the GRE claims. Some moderate soil anomalies identified and 8.32 g/t gold float was sampled by Jerry Bryde near the Brady occurrence at the confluence of Green Gulch and Sulphur Creek (assessment report #094689). A sample from the Lloyd occurrence returned 2.4 g/t Au from a sample of rusty quartz vein with euhedral quartz and coarse-grained pyrite.
- 2005: GATA and GOTTA claims staked by Klondike Star Mineral Corp.
- 2006: SHE and TIE claims staked by Klondike Star Mineral Corp. Excavation of 6 new trenches and mapping and sampling of numerous old UKHM trenches in the Hunker summit area, GATA

claims. MMI and conventional soil sampling on the GATA, GRE and TIE claims (assessment report #094783).

- 2007: Klondike Star sponsored detailed structural and geological mapping by Dr. J. Mortensen, Dr. D. Craw and Dr. D. Mackenzie in the area. Unpublished.
- 2012: Excavator pit Sampling conducted by Klondike Gold/ Klondike Star
- 2013: Prospecting and rock sampling.
- 2014: Klondike Gold acquires Klondike Star Mineral Corp by way of share exchange.

6.0 Geological Setting and Mineralization

6.1 Yukon-Tanana Terrane

The Klondike region is underlain by Permian age Klondike Schist, correlative with units of the Yukon-Tanana terrane (“YTT”) which extends from Alaska to the southern Yukon and British Columbia. The YTT is a diverse lithotectonic terrane of largely continental affinity consisting primarily of quartzitic, pelitic and calcic metasedimentary rocks, and local mafic and felsic meta-igneous rocks. These protoliths are intruded to a large extent by Mesozoic and Cenozoic granitic rocks. The YTT is bound on the north by the Tintina-Kaltag fault system, and on the south by the Tanana-Denali-Farewell fault system. These fault systems form zones of major right lateral strike-slip movement. Units of YTT are polydeformed and, over a regional scale, show a range of metamorphic grade from lower green schist to amphibolite facies (Mortensen et al., 1992; Roots et al., 2003). Structural styles are consistent with deformation during east to northeastward directed accretion and crustal shortening.

Igneous rocks are widespread throughout the YTT, but are most abundant in the eastern portion of the province. Age dates of plutonic rocks in the YTT generally cluster into three distinctive groups: 1) 215-188 Ma (Late Triassic–Early Jurassic), 2) 110-85 Ma (mid- to Late Cretaceous), and 3) 70-50 Ma (Latest Cretaceous-Eocene). Within the 110-85 Ma group, most age dates cluster within a sub-group ranging in age from 95-90 Ma, and typically referred to as the “Tombstone” suite (Mortinson et al, 2000).

6.2 Geology

The northwestern Klondike area is underlain by three recognisable thrust fault bounded assemblages (Rushton et al., 1993) that constitute the Permian Klondike Schist with an absolute age about 260 Ma. These are: Assemblage III of carbonaceous quartz-muscovite phyllite, schist and marble that crops out southwest of the Indian River and also to the northeast of Hunker Creek. Structurally above is Assemblage II of micaceous and chloritic quartzite, feldspathic quartzite, marble and calcareous schists which is intruded by the Mt. Burnham orthogneiss, found in the east of the Klondike. Assemblage I consists of three units: quartz augen schist; the Sulphur Creek orthogneiss; and intercalated chloritic schist, metagabbro, amphibolite, quartzite and felsic schist.

A major thrust fault is mapped at the northern part of the claim group, near the mouth of Bear Creek. Much of the Bear Creek area is underlain by quartz augen schist of the Jim Creek Pluton, which is overlain along the ridgetops by Klondike Schist undifferentiated. Several zones of felsic schist similar to

that found at the Lone Star zone to the south are present within the claim group, notably near the mouth of Bear Creek (Mackenzie et al, 2007).

6.3 Structural Geology

Four phases of deformation (D_1 - D_4) have been ascribed to the Klondike Schist and attributed to progressive fabric development. The last “D4” phase is represented as angular folds, shears, and gouge zones ascribed to N to NE compressional deformation of tentatively Early Jurassic age, with an absolute age about 190 to 175 Ma. Academic literature is uncertain if gold-bearing quartz veining is produced by this age of veining.

Subsequent to the “D4” event, Klondike Gold has identified an extensional brittle fault event of tentatively Late Jurassic age inferred to have an absolute age of about 160 Ma. The main fault trends NNW-SSE, has a dextral sense of offset, and extends some 50 km through the Klondike goldfields. At the NNW end the fault terminates in a horsetail splay pattern underlying Eldorado Creek south of Bonanza Creek. Extensional pinnate fracture faults are concentrated between Eldorado Creek and Hunker Dome, and these show rotation due to progressive offset along the main fault of 1500 to 2000 meters implying a long-lived event. (Assuming 2 cm per year for creep on the pinnate extensions, then the main fault was active for 100,000 years).

6.4 Quartz Vein System of the Klondike and Mineralization

Two types of quartz veins are common in the Klondike, and are distinguishable by not being an exploration target, or being an exploration target respectively:

- a) foliaform veins that are typically concordant with transposed bedding (S_2) and which may be meters thick, but which are usually lenticular. These are almost always barren of gold and,
- b) discordant veins that carry sulphide mineralization (pyrite, with minor galena, chalcocopyrite and tetrahedrite) and visible gold which is both commonly contained in selvages of pyrite (or after weathering, pseudomorphs of goethite/limonite) and as free gold grains in the white quartz. The discordant veins are rarely up to 2-3 meters thick and can persist for hundreds of meters strike length. Some spectacular gold grades are reported from this vein type (Rushton et al., 1993; Klondike Gold NR 14-Jan-2015 results from Lone Star). These discordant veins would post-date D_4 .

Base metal and gold primary or secondary enrichment in the Klondike Schist has been postulated and if present may have been emplaced during several events. There is some evidence for VMS type mineralization at the Bronson occurrence west of Bonanza Creek (Minfile 1150 113), and a horizon of sulphide mineralized schist investigated during the 2008 season in the Quartz Creek area. Pyrite that predates and postdates the D_3 deformation has been commonly observed. The association of sulphide, sulphosalt and free gold with discordant (“post- D_4 ”) quartz vein formation is well demonstrated throughout the Klondike area.

6.5 Quaternary Geology

The Dominion property lies in unglaciated terrain, near the western margin of the Cordilleran ice sheet limits. It is in the zone of widespread discontinuous permafrost, with permafrost generally present on north and east facing slopes.

The upland soils in the area, dominated by colluvium have been described by Bond & Sanborn (2006): “... a thin veneer (<25 cm) of loess is preserved on moderate upland slopes. On slopes with a south-facing aspect the loess forms a distinct unit at the top of the B horizon. A minor component of coarser locally derived colluvium appears to have been incorporated in the loess by slope processes in many places. On north-facing slopes, permafrost is commonly present (or has been present), which enhances the colluviation of the surficial deposits. On these slopes, the loess has been incorporated in the underlying colluvium by cryoturbation.”

The dominant soil types on ridge crests and south facing slopes are dystric brunisols. The dominant soils on north facing slopes are turbic cryosols.

6.6 Property Geology

The Dominion group of claims straddles a north-south trending thrust fault within the late Permian Klondike Schist (Mortensen, 1996). Chlorite rich schist and phyllite is dominant in the hangingwall of the thrust, and muscovite-rich quartzite with muscovite schist forms the footwall. Slivers of ultramafic rocks occur in the thrust fault planes, thought to be part of the late Paleozoic Slide Mountain terrane. Minor lenses of black graphitic schist are found within the Klondike Schist. Small plugs and dykes of Eocene quartz-feldspar porphyry are locally present, including a 75 m wide quartz-eye rhyolite dyke with a north-south trend that was exposed in the southernmost trench at Hunker Summit, trench HD88-1.

The Lloyd occurrence quartz vein strikes northwesterly, with a steep northeast dip. This vein is of white quartz with minor pyrite and galena and contains visible gold. Quartz veins at Hunker Summit trend north-south, and are reported to be in an *en echelon* pattern. This pattern may extend off the property to the northwest, where the north-south trending Sheba-Mitchell vein occurs.

Gold at the Brady occurrence near the confluence of Green Gulch and upper Sulphur Creek is found in an altered, rusty weathering pyritic chlorite schist that trends north-south.

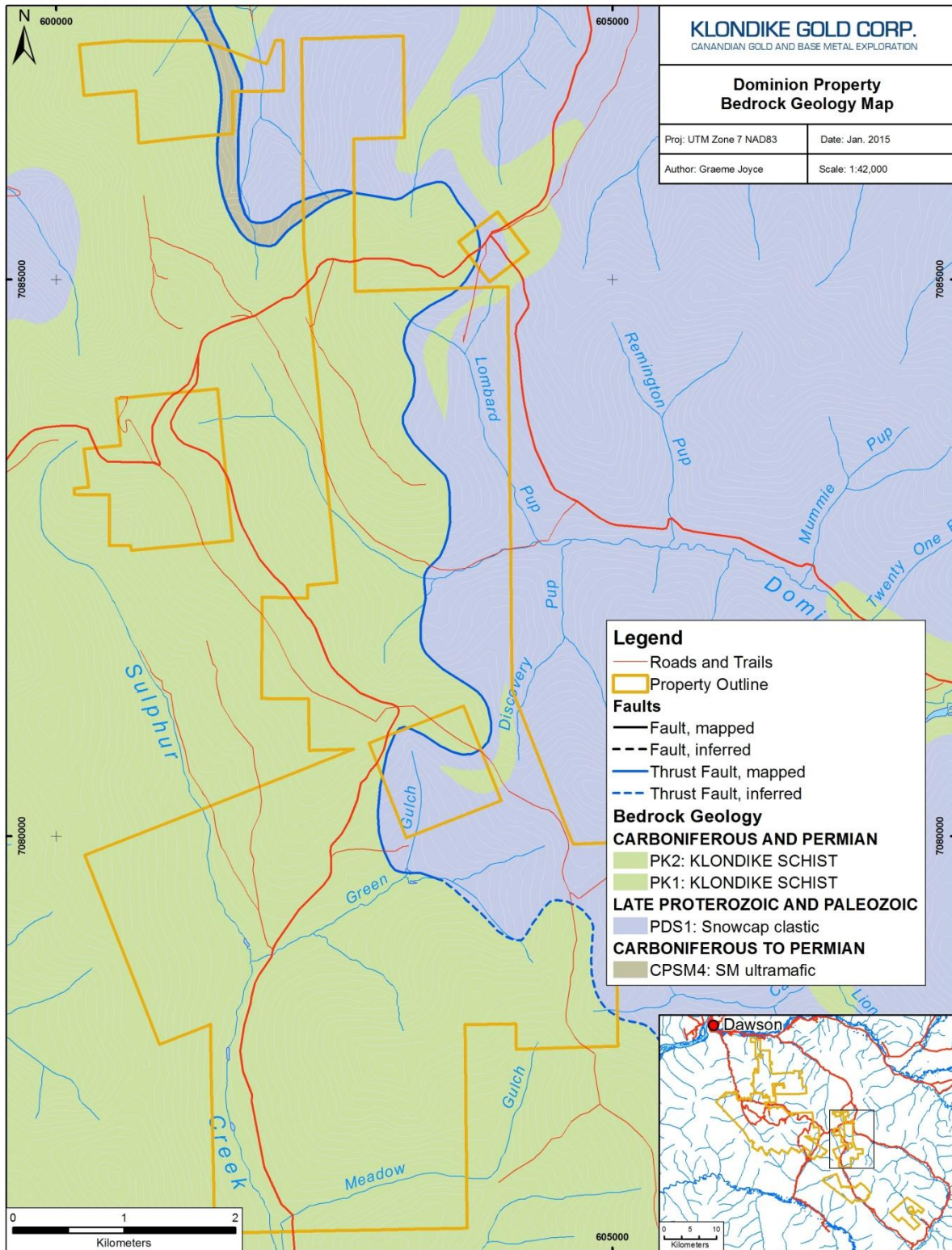


Figure 3: Regional Geology

7.0 Deposit Types

The complex structural history of the various assemblages in the Klondike allow the possibility of several sources for gold mineralization. A detailed discussion is given in Liverton (2008).

The significant models for mineralization relevant to this report are orogenic vein mineralization associated with D₄ deformation at the Hunker Summit and Lloyd occurrences, and possibly VMS at the Brady occurrence at Sulphur Creek. The nature of this zone is unclear due to intense weathering and/or alteration in trench exposures and lack of structural information available from rotary percussion drilling.

The Hunker Summit occurrence may be of the small, high-grade irregular type, as described by McFaul, 1988: "The veins appear to be quite persistent over long distances, but are very inconsistent over short distances due to cross faulting and pinching out." However, the largest gold nugget found in the Yukon (126.6 troy ounces) was found not far downstream from this area in Dominion Creek.

The Lloyd occurrence as described covers part of a long, narrow, persistent quartz vein that is more or less tabular over at least 1km, intermittently exposed in float, trenches and pits, and likely extends on strike to connect with the Green Gulch group (on the DOC claims of a competitor) for another kilometer.

8.0 Adjacent Properties

The Dominion property is surrounded on all sides by claims held by competitors. These claims have numerous anomalies and minor mineral occurrences. All properties in the area are at an early stage of exploration except for active placer gold mining in several creeks.

The Dominion property adjoins the JAE and DOM properties in the King Solomon Dome to Hunker Dome area that are currently owned by Kestrel Gold Inc. The favorable lithologies and structures at SHEBA-MITCHELL and JAE are thought to trend onto the Dominion group of claims, possibly by stepping southeasterly in an *en echelon* pattern.

The property also surrounds the DOC claims, which contain the Green Gulch mineral occurrences including the Yellow Jacket open cut, Thurber adit and Tiger shaft. These showings have (currently inaccessible) underground workings developed on quartz veins. The mineralization is thought to trend onto the Dominion group in both directions, specifically to the Lloyd occurrence to the southeast.

9.0 2014 Exploration

Exploration of the Dominion property was completed between August 13 and September 28, 2014, with daily access to the property via company truck and based from accommodations in Dawson. No company exploration camp is located on the property.

Prospecting was guided by interpreted magnetics and investigated areas of faulting with the objective of documenting gold-enriched quartz veins and distinguishing them from unmineralized quartz and

carbonate veins. Eighty-nine prospecting samples of all types of quartz veins were collected for assay from throughout the Dominion property and submitted for analysis.

Prospecting efforts focussed on a corridor through the Dominion property interpreted by geophysics to be proximal to a northerly trending secondary pinnate-type extensional fault in the vicinity of the east-southeast main shear fault. The corridor of interest includes the historic prospects at Hunker Dome, Dominion Adit, Golden Rod, and the Mitchell Vein.

Fourteen prospecting samples had a gold assay result of greater than 1 g/t Au to a high of 37.1 g/t Au. Thirty-eight of the eighty-nine prospecting samples had a gold assay result of 0.1 g/t Au or higher; sixteen of these had anomalous silver greater than 100 ppm Ag and twenty had anomalous lead greater than 0.5% Pb. Note that prospecting samples are selective, non-representative rock grab samples. Systematic additional test results may vary significantly.

The extensional quartz veins of economic interest sampled at the Dominion Property are ascribed to D4 veining; all have similar observed textural features, structural characteristics, and geochemistry, and are interpreted to be generated by an extensional fault system documented by Company and GSC airborne magnetics.

The Hunker Dome, Dominion Adit, and Golden Rod prospect areas within the Dominion Property were selectively examined during 2014.

Hunker Dome Area:

Hunker Dome area was originally staked in 1900. In 1904, a series of four prospecting shafts were sunk to depths of 4.3 to 24 meters, plus many trenches were excavated. This area has attracted exploration attention periodically since the 1900's but has never been drill tested. Old trenches and workings remain open and were re-examined and resampled by prospectors in 2014.

Twenty-six prospecting samples collected from quartz veining in trenches and outcrops within a 700 meter length near the Hunker Dome summit all had anomalous gold assays between 0.1 g/t and 37.1 g/t Au, anomalous lead between 0.1% and 4.3% Pb, and eighteen of these contained at least an ounce of silver assaying between 32 g/t to 930 g/t Ag.

One of the 1904 Hunker Dome prospecting shafts exposes a 3 meter wide section of extensional quartz vein. In 2013 the Company collected three prospecting grab samples across the vein (NE, middle, SW respectively) which had gold assays of 81.3 g/t, 12.7 g/t and 7.3 g/t Au. The Hunker Dome prospect exhibits extensional veins that cross-cut foliation at a high angle, have variable dips, and range between 10 cm to 3 meters in width. Vein frequency and density appears to increase toward the west towards the interpreted fault.

Dominion Adit ("Adit"):

In 1909-1910, an exploration adit collared 550 meters to the southwest and 150 meters vertically below the Hunker Dome shafts near Dominion Creek was driven 2600 feet (792 meters) into the hill targeting the depth extension of Hunker Dome quartz veins. In 2014, Company's prospectors located the remains

of the adit portal and sampled quartz vein material from the adit rock dump. The adit portal is located in brush on the downslope side of an placer mine road at UTM 602611mE, 7082890mN.

Five of six prospecting samples of quartz vein material collected assayed gold between 0.2 g/t and 0.6 g/t Au with silver between 10 g/t and 167 g/t Ag, and lead between 0.4% and 1.6% Pb. The sixth sample assayed 0.5 g/t Au. The quartz veins from the Adit are part of the same extensional vein network located 150 meters vertically above at the Hunker Dome prospect.

Golden Rod:

The Golden Rod gold showing was discovered and staked in 1900 and worked by trenching and pitting through 1909. Two prospecting samples (ID # 1961856, 1961857) of quartz vein local float from bulldozed old trenches assayed 2.1 g/t and 3.0 g/t Au, with 0.2% to 0.4% lead, and 7 g/t and 13 g/t silver.

Golden Rod exhibits the same type of veining as exposed at Hunker Dome and obtained from the Dominion adit, and is located 1500 meters south of Hunker Dome.

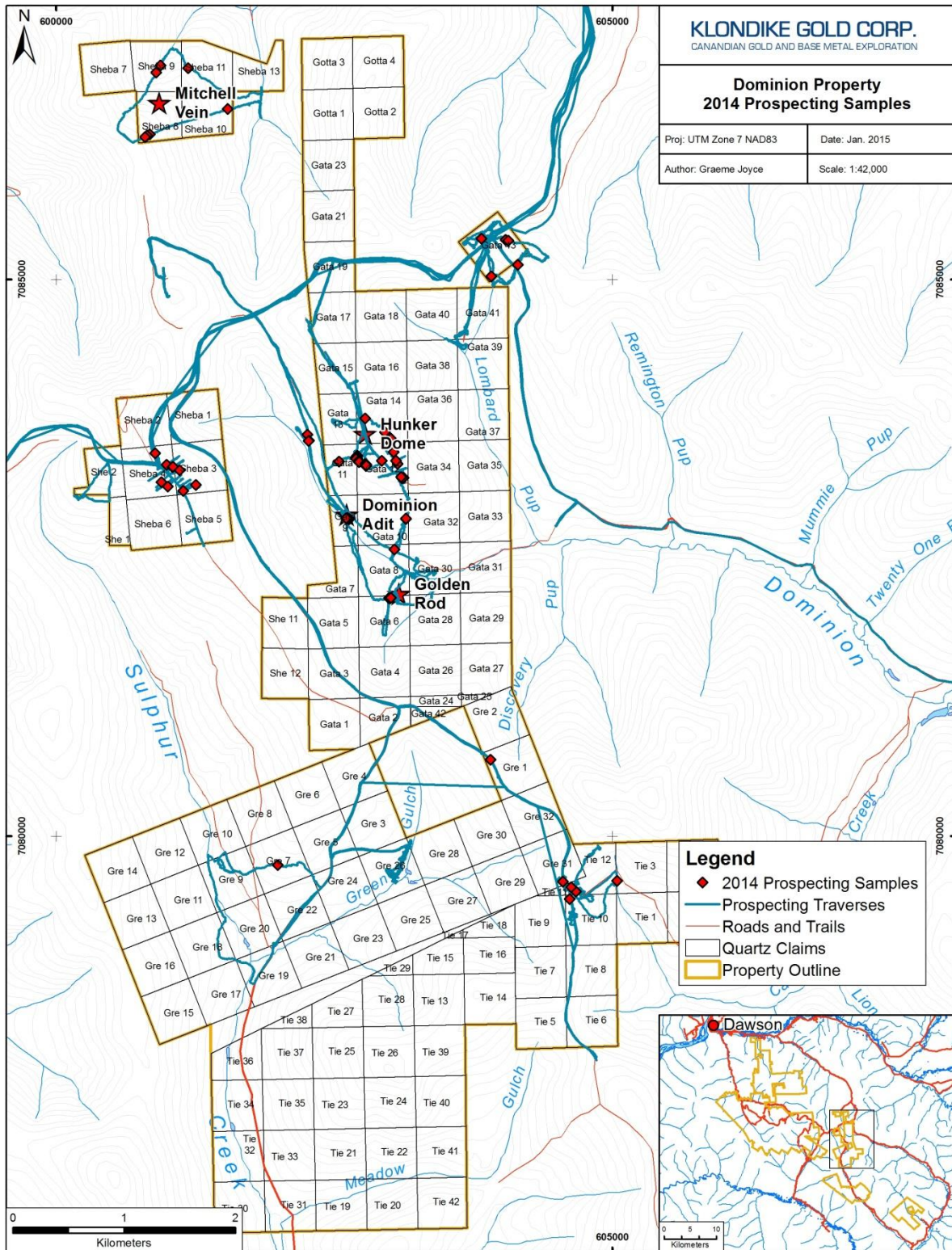


Figure 4: Prospecting Samples Location Map

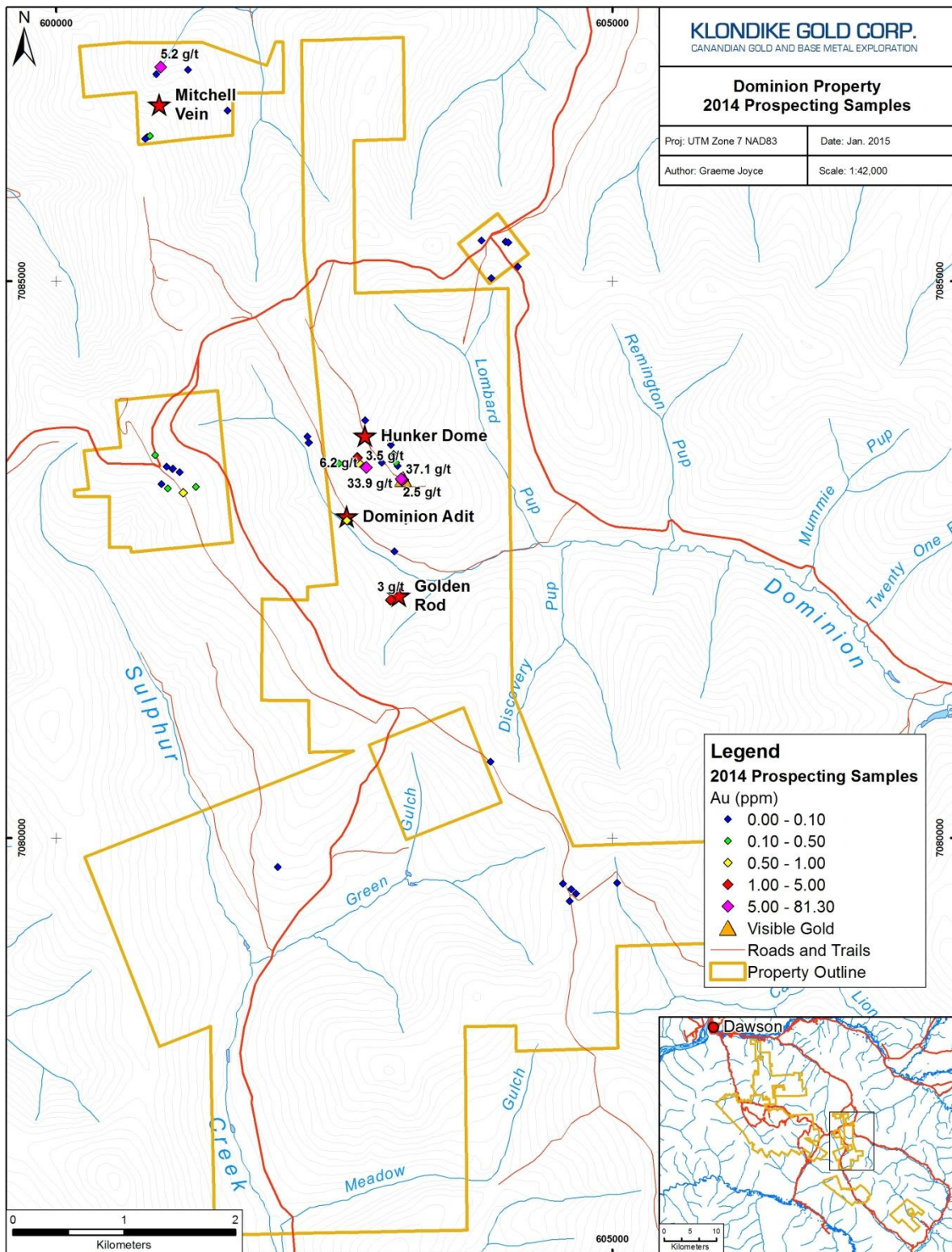


Figure 5: Prospecting Samples Results Map

10.0 Sample Preparation, Quality Assurance and Quality Control, Analysis, and Security

Prospecting samples are selective in nature, non-representative rock grab samples of bedrock or boulders collected to test for the presence or absence of gold and other 'economic' minerals. Systematic additional test results may vary significantly. Samples are usually 0.5 kg to 2.0 kg in weight. The Company's samples are spatially located to within 5 meters using a hand-held Global Positioning System ("GPS") in NAD83 datum, assigned a unique assay tag, described, photographed using a GPS-enabled camera, then placed in a plastic bag and sealed. Groups of sealed sample bags are aggregated in large fiber bags then security sealed for shipment. For samples collected in 2014, the fiber bags were retained in locked storage in the Company's Dawson office until after the end of the field season before being delivered by Company personnel directly to the lab. Samples were submitted to Bureau Veritas Mineral Laboratories ("BV Labs") (formerly Acme Labs) preparation facility in Whitehorse, YT with chemical analysis of sample pulps completed in Vancouver, British Columbia. Bureau Veritas Labs is an accredited ISO 9001:2008 full-service commercial laboratory.

At BV Labs each 1 kg rock sample is crushed to 80% passing 2 mm size. A 250 g subsample is pulverized to >85% passing -75 microns size (Code PRP70-250). A 30 g (1 assay ton) subsample is assayed for gold by fire assay ("FA") fusion with an atomic absorption ("AA") finish (Code FA430). All over-limit results in excess of 10 ppm (10 g/t) for both silver and gold are re-assayed. The re-assay uses a 30 g subsample and is assayed by FA with a gravimetric finish (Code FA530-Au/Ag). Samples were also analyzed for multi-element chemistry by ICP-MS analysis (AQ200+U code). Samples over-limit in lead are rerun by a high-detection limit ICP-ES procedure (Code MA370).

No Company standards, blanks, or duplicates or blank samples were inserted into the sample stream in 2014, as it was not considered to be necessary for a small program of early stage work. BV Labs inserted and completed analyses on 41 duplicates, 51 blanks, 32 Au-only standards, 33 Ag-Au standards, 6 Pb standards, and 28 ICPMS standards as part of QA/QC process on Klondike Gold's 2014 submitted samples (including those from Gold Run property). All results were within expected bounds and within error limits of detection.

11.0 Interpretation and Conclusions

The Dominion property covers a 26 square kilometer area in the vicinity of Hunker Dome located at the headwater of Dominion Creek in the central portion of the Klondike goldfields.

Interpretation of GSC magnetics, particularly first vertical derivative data, suggests a main WNW-ESE dextral fault runs the 50 km length of the Klondike goldfields and transects the southern portion of the Dominion property. A NNW trending pinnate extensional fracture fault extends northerly from this feature and passes near the Golden Rod, Dominion Adit, and Hunker Dome prospects. This extensional fault system is assumed to be the source of extensional quartz veining containing gold found in outcrop and float on the property. These veins have similar physical and chemical characteristics throughout the Klondike area.

12.0 Recommendations

Diamond drilling should be considered to test the gold-bearing quartz vein array outcropping in trenches and shafts near Hunker Dome. This work has been recommended in previous years. Klondike Gold has permitting in place currently to complete a drill program near Hunker Dome. Drilling could test beneath the 81.3 g/t Au grab sample result from a 3 meter wide quartz vein (below Trench KS06-03 at the historic shaft) at the 25 and 75 m level and then two bracketing holes 100 m along strike to the northwest and southeast at the 50 meter level. A total of less than 1,000 meters of drilling is sufficient; the objective would be to test for secondary controls to emplacement of extensional gold-bearing quartz veins. One theoretical consideration is to not target quartz veins below the thrust fault where the wall rock is relatively non-reactive siliciclastics and hypothesized to be a less prospective host rock than the hanging wall chlorite schists.

The Dominion property has potential for gold-bearing extensional quartz veining and brecciation in proximity to the main WNW-ESE dextral fault, also the NNW-SSE trending pinnate extensional fault, and in areas where these two structures intersect. The intersection of the main (first-) and pinnate (second-) order faults should be targeted for gold mineralization. Pervasive silicification and other types of alteration around quartz veining would be a positive exploration indicator.

An airborne magnetic survey with much better resolution versus the GSC survey (500 meter line spacing; 120 meter sensor height) is recommended, or a ground walking magnetics survey is recommended. Contingent upon positive results of this survey, further prospecting, trenching, and drilling should be contemplated.

There is a quantity of historic exploration data documented in Yukon government assessment report archives not in the Company's current digital database for the Dominion property and this information should be compiled. In particular, over 5000 soil samples have been previously collected on or adjacent to the claims and analyzed for gold and other elements, including six grids by Cominco in 1980, ten grids by United Keno Hill in 1987 and smaller numbers by other explorers. In the Hunker summit area (for example) the same ground was grid sampled by both Cominco and UKHM, and covered to a lesser extent by Archer Cathro and later Klondike Star.

13.0 Statement of Qualifications

I, Peter Tallman, of Vancouver, British Columbia hereby certify that:

- I am a graduate of the University of Western Ontario with a Bachelor of Science (Geology) degree (1984).
- I am a practicing Professional Geoscientist (#02366) with the Professional Engineers and Geoscientists of Newfoundland and Labrador (PEGNL) since May 1991.
- I have practiced my profession as a geologist in Canada, throughout the America's as well as Australia and Africa continuously since graduation.
- I have held the position of executive officer and/or director of various publically listed Canadian corporations since 1995.
- I currently hold the position of President and Chief Executive Officer with Klondike Gold Corp., a company listed publically on the TSXV Exchange.
- I own shares and have been granted options to purchase shares in Klondike Gold Corp.
- I directed work on the Dominion Property during the period Aug. 13 to Sep. 28, 2014 and am the designated Qualified Person as defined by National Instrument 43-101 policy.

Vancouver, British Columbia

A handwritten signature in black ink, appearing to read 'Peter Tallman', with a period at the end.

Peter Tallman, P.Geol.

14.0 References

Adamson R.G. and Thomas C.M., 2000. Assessment Report #094119. KSL Exploration (Yukon) Ltd.

Bond, J.D. and Sanborn, P.T., 2006. Morphology and geochemistry of soils formed on colluviated weathered bedrock: Case studies of unglaciated upland slopes in west-central Yukon. YGS OF 2006-19.

Cairnes, D.D., 1911. Quartz Mining in the Klondike District.

Colpron, M. 2001. Geochemical characterization of Carboniferous volcanic successions from Yukon-Tanana terrane, Glenlyon map area (105L), central Yukon. *In: Yukon Exploration and Geology 2000*, D.S. Emond and L.H. Weston (eds.), Exploration and Geological Services Division, Yukon, Indian and Northern Affairs Canada, p. 111-136.

Ledwidge, A. and P., 2007. Assessment Report #094783. 2006 Geological Mapping, Trenching, Rock and Soil Geochemical Sampling on the Dominion Property. Klondike Star Mineral Corp.

Liverton, T. 2008. Geological mapping, trenching, rock sampling and grid preparation on the JAE property. Assessment report #094882. Klondike Star Mineral Corp.

Liverton, T. and Mann, W. 2011. Quartz vein gold mineralization in the Klondike Schist: The Mitchell-Sheba system, central Klondike district, Yukon. *In: Yukon Exploration and Geology*, K.E. MacFarlane, L.H. Weston and C. Relf (eds.), Yukon Geological Survey, p. 149-160.

MacKenzie, D.J., Craw, D., Mortensen, J.K. and Liverton, T., 2007. Structure of schist in the vicinity of the Klondike goldfield. *In: Yukon Exploration and Geology 2006*, D.S. Edmond, L.L. Lewis and L.H. Weston (eds.), Yukon Geological Survey, p. 197-212.

Maclean, T.A., 1914. Lode Mining in Yukon. Mines Branch Publication 222, pps. 76-82, 112-113.

Mann, W. and Liverton, T., 2008. Assessment Report #095112. Geological Mapping, Rock And Soil Geochemistry On The Klondike Properties, Klondike Star Mineral Corp.

McFaull, A.J., 1988. Assessment Report #092600. Geological and Geochemical Exploration of the Mackay, Dominion, King Solomon Dome, Hunker Dome, Lombard, Lloyd, Lloyd II, Lloyd III, Green Gulch and Dominion Mountain Grids - Hunker Summit Area. United Keno Hill Mines Ltd.

McFaull, A.J., 1989. Assessment Report #092743. Geological Mapping and Trenching of 1987 Soil Geochemical Anomalies on the Mackay, Dominion, King Solomon Dome, Hunker Dome Grids. United Keno Hill Mines Ltd.

Medford, G.A., 1981. Assessment Report #090769. 1980 Geochemical Assessment Report on the KSD Claim Group. Cominco Ltd.

Mortensen, J.K., 1984. Assessment Report #091561. Geological and Geochemical Assessment Report on Klook 1-48 claims. Archer Cathro Associates for Dawson Eldorado Gold Explorations Ltd.

Mortensen, J.K., 1984. Assessment Report #091562. Geological and Geochemical Assessment Report on Kloyd 1-16 claims. Archer Cathro.

Mortensen, J.K., Nesbitt, B.E. and Rushton, R. 1992. Preliminary observations on the geology and geochemistry of quartz veins in the Klondike district, west-central Yukon. *In*: Bremner, T.J. (ed.): Yukon Geology, Vol. 3. Exploration and Geological Services Division, Indian and Northern Affairs Canada, p. 260-270.

Mortensen, J.K. 1996. Geological compilation maps of the Northern Stewart River map area, Klondike and Sixtymile districts. Indian and Northern Affairs Canada Yukon Region, Open File 1996-1 (G).

Piercey, S.J., Hunt, J.A. and Murphy, D.C. 1999. Litho-geochemistry of meta-volcanic rocks from Yukon-Tanana terrane, Finlayson Lake region, Yukon: preliminary results. *In*: Roots, C.F. and Emond, D.S. (eds.): Yukon Exploration and Geology 1998. Exploration and Geological Services Division, Yukon, Indian and Northern Affairs Canada, p. 125-138.

Prince, D., 1984. Assessment Report #091634. Report on the 1984 Exploration Program in the Klondike Gold Fields. United Keno Hill Mines Ltd.

Rushton, R.W., Nesbitt, B.E. and Mortensen, J.K. 1993. A fluid inclusion and stable isotope study of Au quartz veins in the Klondike district, Yukon Territory, Canada: A section through a mesothermal vein system. *Economic Geology*, **88**: 647-678.

Sears, W.A., 1999. Assessment Report #094021. Detailed Airborne Magnetics and VLF-EM over the Klondike District. Barramundi Gold Ltd.

Shives, R.B.K., et al., 2001. Multisensor Airborne Geophysical Survey, Stewart River area (1150/14, 15). Geological Survey of Canada, Ottawa, Ontario; Exploration and Geological Services Division, Yukon Region, Indian and Northern Affairs Canada; GSC Open File 3992 and EGSD Open File 2001-8. Ten 1:50 000 scale maps.

Smith, C.A.S., Meikle, J.C. and Roots, C.F. (editors), 2004. Ecoregions of the Yukon Territory: Biophysical properties of Yukon landscapes.

Stevens, R., 1997. Assessment Report #093711. 4 Parts: JAE Mapping Report- 1996; JAE Soil Survey; Regional Mapping and Geochemical Sampling in the Klondike; Stream Sediment Survey Report. Barramundi Gold Ltd.

Yukon MINFILE - Occurrences 1150 066, 067, 086, and 140. Yukon Geological Survey, Energy, Mines and Resources, Yukon Government.

APPENDIX I

STATEMENT OF EXPENDITURES

APPENDIX I.I

DOMINION PROPERTY

Appendix I - Statement of Expenditures
 Dominion Property

Dominion Statement of Expenditures

Prospecting and mapping on the Dominion Property

Note: The PhD and PhD Candidate are associated with the University of Leeds and were doing scientific investigations in relation to a PhD thesis that Klondike Gold is supporting.

Name	Work Type	Days	Rate	Total	
Prospector	Prospecting	6	475	\$ 2,850.00	Aug. 13-17, Sep. 18-28, 2014
Geologist	Mapping and Prospecting	3	475	\$ 1,425.00	Aug. 13-15, 2014
Geologist	Prospecting	3	475	\$ 1,425.00	Sep. 19-28, 2014
Geo Asst	Prospecting	4	250	\$ 1,000.00	Aug. 13-15, 2014
PhD	Mapping	1	400	\$ 400.00	Aug. 13, 2014
PhD Candidate	Mapping	1	400	\$ 400.00	Aug. 13, 2014

Food/Lodging/Supplies YMEP Rate Per Diem

Prospector	YMEP rate per diem	6	100	\$ 600.00
Geologist	YMEP rate per diem	3	100	\$ 300.00
Geologist	YMEP rate per diem	3	100	\$ 300.00
Geo Asst	YMEP rate per diem	4	100	\$ 400.00
PhD	YMEP rate per diem	1	100	\$ 100.00
PhD Candidate	YMEP rate per diem	1	100	\$ 100.00

Samples

		Number	Cost Per	
Rock	Fire Assay	73	32.05	\$ 2,339.65

Transportation

Truck		7	100	\$ 700.00
Fuel		7	50	\$ 350.00

Sub Total

\$ 12,689.65

GIS Estimate at 5%

\$ 634.48

Reporting Estimate at 10%

\$ 1,268.97

Total

\$ 14,593.10

APPENDIX I.II

DOMINION NORTH

Appendix I - Statement of Expenditures
Dominion North

Dominion Statement of Expenditures

Prospecting and mapping on the Dominion North Property (Sheba 7-11, 13)

Name	Work Type	Days	Rate	Total	
Prospector	Prospecting	1	475 \$	475.00	Aug. 17, 2014
Geologist	Prospecting	1	475 \$	475.00	Aug. 17, 2014
 Food/Lodging/Supplies YMEP Rate Per Diem					
W. Keats	Prospector			100 \$	100.00
P. Tallman	Geologist			100 \$	100.00
 Samples					
Rock	Fire Assay	Number	Cost Per		
		7	32.05 \$	224.35	
 Transportation					
Truck		1	100 \$	100.00	
Fuel		1	50 \$	50.00	
 Sub Total				\$ 1,524.35	
GIS (Graeme Joyce) Estimate at 5%				\$ 76.22	
Reporting Estimate at 10%				\$ 152.44	
 Total				 \$ 1,753.00	

APPENDIX I.III

DOMINION WEST

Appendix I - Statement of Expenditures
Dominon West

Dominion Statement of Expenditures

Prospecting and mapping on the Dominion West Property (She 1-2. Sheba 1-6)

Name	Work Type	Days	Rate	Total	
Geologist	Mapping and Prospecting	2	475 \$	950.00	Aug. 14-15, 2014
Prospector	Prospecting	1	475 \$	475.00	Sep. 23, 2014
 Food/Lodging/Supplies YMEP Rate Per Diem					
Geologist	YMEP rate per diem	2	100 \$	200.00	
Prospector	YMEP rate per diem	1	100 \$	100.00	
 Samples					
Rock	Fire Assay	Number	Cost Per		
		9	32.05 \$	288.45	
 Transportation					
Truck		3	100 \$	300.00	
Fuel		3	50 \$	150.00	
 Sub Total				\$ 2,463.45	
GIS Estimate at 5%				\$ 123.17	
Reporting Estimate at 10%				\$ 246.35	
 Total				 \$ 2,832.97	

APPENDIX II

DETAILED CLAIMS LIST

APPENDIX II.I

DOMINION PROPERTY

Appendix II.1 - Dominion Property Claims list

District	GrantNumber	ClaimName	ClaimNbr	Claim Owner	OperationRecordingDate	StakingDate	ClaimExpiryDate	Status	NTS MapNumber	Ops Number	Claim Years	NewExpiryDate
Dawson	YC44672	Tie	30	Klondike Star Mineral Corporation - 100%	19-07-06	16-07-06	19-10-15	Active	115015	163946	1	19-10-16
Dawson	YC44673	Tie	31	Klondike Star Mineral Corporation - 100%	19-07-06	16-07-06	19-10-15	Active	115015	163947	1	19-10-16
Dawson	YC44674	Tie	32	Klondike Star Mineral Corporation - 100%	19-07-06	16-07-06	19-10-15	Active	115015	163948	1	19-10-16
Dawson	YC44675	Tie	33	Klondike Star Mineral Corporation - 100%	19-07-06	16-07-06	19-10-15	Active	115015	163949	1	19-10-16
Dawson	YC44676	Tie	34	Klondike Star Mineral Corporation - 100%	19-07-06	16-07-06	19-10-15	Active	115015	163950	1	19-10-16
Dawson	YC44677	Tie	35	Klondike Star Mineral Corporation - 100%	19-07-06	16-07-06	19-10-15	Active	115015	163951	1	19-10-16
Dawson	YC44678	Tie	36	Klondike Star Mineral Corporation - 100%	19-07-06	16-07-06	19-10-15	Active	115015	163952	1	19-10-16
Dawson	YC44679	Tie	37	Klondike Star Mineral Corporation - 100%	19-07-06	16-07-06	19-10-15	Active	115015	163953	1	19-10-16
Dawson	YC44680	Tie	38	Klondike Star Mineral Corporation - 100%	19-07-06	16-07-06	19-10-15	Active	115015	163954	1	19-10-16
Dawson	YC44681	Tie	39	Klondike Star Mineral Corporation - 100%	19-07-06	18-07-06	19-10-15	Active	115015	163955	1	19-10-16
Dawson	YC44682	Tie	40	Klondike Star Mineral Corporation - 100%	19-07-06	18-07-06	19-10-15	Active	115015	163956	1	19-10-16
Dawson	YC44683	Tie	41	Klondike Star Mineral Corporation - 100%	19-07-06	18-07-06	19-10-15	Active	115015	163957	1	19-10-16
Dawson	YC44684	Tie	42	Klondike Star Mineral Corporation - 100%	19-07-06	18-07-06	19-10-15	Active	115015	163958	1	19-10-16

APPENDIX II.II

DOMINION NORTH

Appendix II.II - Dominion North Claims list

District	GrantNumber	ClaimName	ClaimNbr	Claim Owner	OperationRecordingDate	StakingDate	ClaimExpiryDate	Status	NTS MapNumber	Ops Number	Claim Years	NewExpiryDate
Dawson	YC36543	Sheba	7	Klondike Star Mineral Corporation - 100%	20-10-05	14-10-05	20-10-17	Active	115O15	157223	2	20-10-19
Dawson	YC36544	Sheba	8	Klondike Star Mineral Corporation - 100%	20-10-05	14-10-05	20-10-17	Active	115O15	157224	2	20-10-19
Dawson	YC36545	Sheba	9	Klondike Star Mineral Corporation - 100%	20-10-05	14-10-05	20-10-17	Active	115O15	157225	2	20-10-19
Dawson	YC36546	Sheba	10	Klondike Star Mineral Corporation - 100%	20-10-05	14-10-05	20-10-17	Active	115O15	157226	2	20-10-19
Dawson	YC36547	Sheba	11	Klondike Star Mineral Corporation - 100%	20-10-05	14-10-05	20-10-17	Active	115O15	157227	2	20-10-19
Dawson	YC44365	Sheba	13	Klondike Star Mineral Corporation - 100%	09-06-06	04-06-06	20-10-17	Active	115O15	162519	2	20-10-19

APPENDIX II.III

DOMINION WEST

Appendix II.III - Dominion West Claims list

District	GrantNumber	ClaimName	ClaimNbr	Claim Owner	OperationRecordingDate	StakingDate	ClaimExpiryDate	Status	NTS MapNumber	Ops Number	Claim Years	NewExpiryDate
Dawson	YC36511	Sheba	1	Klondike Star Mineral Corporation - 100%	28-09-05	27-09-05	20-10-16	Active	115O15	156599	2	20-10-18
Dawson	YC36512	Sheba	2	Klondike Star Mineral Corporation - 100%	28-09-05	27-09-05	20-10-16	Active	115O15	156600	2	20-10-18
Dawson	YC36513	Sheba	3	Klondike Star Mineral Corporation - 100%	28-09-05	27-09-05	20-10-16	Active	115O15	156601	2	20-10-18
Dawson	YC36514	Sheba	4	Klondike Star Mineral Corporation - 100%	28-09-05	27-09-05	20-10-16	Active	115O15	156602	2	20-10-18
Dawson	YC36515	Sheba	5	Klondike Star Mineral Corporation - 100%	28-09-05	27-09-05	20-10-16	Active	115O15	156603	2	20-10-18
Dawson	YC36516	Sheba	6	Klondike Star Mineral Corporation - 100%	28-09-05	27-09-05	20-10-16	Active	115O15	156604	2	20-10-18
Dawson	YC44606	She	1	Klondike Star Mineral Corporation - 100%	22-06-06	20-06-06	20-10-17	Active	115O15	163389	2	20-10-19
Dawson	YC44607	She	2	Klondike Star Mineral Corporation - 100%	22-06-06	20-06-06	20-10-17	Active	115O15	163390	2	20-10-19

APPENDIX III

ROCK SAMPLE METADATA

Appendix III - Rock Sample Metadata

Sample ID	Property	Easting	Northing	Altitude (m)	Sample Description	Sample Type	Date (dd/mm/yr)	Sampler	Visible Gold	Rock Type
1961639	Dominion	603141	7082848	892 m	QTZ FL 60CM TR PB PY CPY?	FL GRAB	13-08-14	WK		Qtz
1961640	Dominion	603142	7082853	892 m	QTZ FL70CM FE CARB TR PY	FL GRAB	13-08-14	WK		Qtz
1961641	Dominion	603040	7082576	821 m	QTZ FL 30CM IN OLD TRENCH TR PY	FL GRAB	13-08-14	WK		Qtz
1961642	Dominion	602996	7082140	844 m	GOLDEN ROD TRENCH QTZ FL IN TRENCH 2%PY	FL GRAB	13-08-14	WK		Qtz
1961643	Dominion	602543	7083363	931 m	QTZ FL 60CM TR PY	FL GRAB	13-08-14	WK		Qtz
1961644	Dominion	602704	7083417	984 m	QTZ VEIN PY PB MALACHITE		13-08-14	WK		Qtz
1961645	Dominion	602703	7083415	982 m	QTZ VEIN WITH PB PY		13-08-14	WK		Qtz
1961646	Dominion	602702	7083410	982 m	QTZ VEIN WITH PB PY		13-08-14	WK		Qtz
1961647	Dominion	602700	7083397	977 m	QTZ VEIN TR PY		13-08-14	WK		Qtz
1961648	Dominion	602694	7083395	975 m	QTZ VEIN TR PY		13-08-14	WK		Qtz
1961649	Dominion	602691	7083398	974 m	QTZ VEIN TR PY		13-08-14	WK		Qtz
1961650	Dominion	602693	7083389	973 m	QTZ VEIN PB PY		13-08-14	WK		Qtz
1961658	Dominion	603067	7083342	975 m	Qtz in soil pit, along high grade vein trend. Lots of quartz in pit, proximal veins	FL GRAB	13-08-14	IM		Qtz
1961659	Dominion	603054	7083370	974 m	QV local float in old tr (Tr A gps start and end recorded in geopoints). Tr gal, tr cpy/mal, weathered py boxwork to 2 %, hem to 0.5%. Same vein as high grade, Qtz boulders in area to 50cm.	FL GRAB	13-08-14	IM		Qtz
1961660	Dominion	603031	7083451	973 m	QV local float in old tr (Tr B gps start and end recorded in geopoints). Tr gal, weathered py boxwork, tr hem, trench grown in but sample from within 10 m.	FL GRAB	13-08-14	IM		Qtz
1961661	Dominion	603009	7083531	977 m	Qtz float from soil pit, no other samples available, tr rem py, along high grade trend.	FL GRAB	13-08-14	IM		Qtz
1961662	Dominion	603006	7083572	978 m	QV float cobble in tree well, tr to 1 % rem rusty py, cubic vugs to 1 cm.	FL GRAB	13-08-14	IM		Qtz
1961663	Dominion	602955	7083626	988 m	QV float in soil, several fist size cobbles in 3m area some with 1% rem py, minor box work (weathered).	FL GRAB	13-08-14	IM		Qtz
1961664	Dominion	602777	7083752	1031 m	Qtz float from soil pit, mix of a few types of qtz, some foliaform but with rusted py and fe carb on margins. Minor wall rock with sample with up to 25 % py.	FL GRAB	13-08-14	IM		Qtz
1961665	Dominion	602927	7083370	986 m	Large qtz blocks (1-2m) on road, generally barren and bull w/ tr gal. Host rock at 140/65, in tr labelled tr 1	FL GRAB	13-08-14	IM		Qtz
1961666	Dominion	600990	7083337	1133 m	QV in OC, coarse white qtz, wall rock is chloritised with mod fe carb and locally 2 % py in margin , likely S3 vn and not a great target. See TR 1 to TR 14 in geo points for trench sketches.	OC Grab	14-08-14	IM		Qtz
1961667	Dominion	601046	7083316	1135 m	Possible discordant (S4) vn in local float, 1 % remnant and fresh py (From ripper trench labelled TR3 in GPS). See TR 1 to TR 14 in geo points for trench sketches.	SC Grab	14-08-14	IM		Qtz
1961668	Dominion	601047	7083318	1135 m	QV in OC, semi foliaform but different that previously seen in area, in wk shear with tr fresh py, 3 % cubic remnant py, fe carb, sugary and friable fg qtz.	OC Grab	14-08-14	IM		Qtz
1961669	Dominion	601109	7083287	1132 m	QV, irregular or pod in mod shear, rem py to 5% (0.5% fresh, qtz crystal growth. See TR 1 to TR 14 in geo points for trench sketches.	OC Grab	14-08-14	IM		Qtz
1961670	Dominion	600945	7083181	1123 m	QV/ pod in SC with limonite cubes to 4 %, mod Fe carb, wall rock septa, str chl and wk ser. Mercy sample for TR 5.	SC Grab	14-08-14	IM		Qtz
1961671	Dominion	601002	7083140	1130 m	Irreg QV in TR8, wk to mod shearing, looks like poor sample of s3 related qtz but it was a target of previous work with extra push to expose it. See TR 1 to TR 14 in geo points for trench sketches.	OC Grab	14-08-14	IM		Qtz
1961672	Dominion	601253	7083154	1119 m	QV in OC in only recent excavator trench in area (labelled tr 12 in gps). QV is 5-10 cm wide @ 330/70 rhr along fract perpendicular to s2 surface. Str fe carb on wall rock margin and vugs. Tr to locally 3 % hem, rem py in fecarb matrix along margin gone to lim/hem. rem py to 3% in vn, tr gal. Adjacent recent samples (K Star) are 388823&24, and one illegible grab from vein. See TR 1 to TR 14 in geo points for trench sketches. Good idea to cross ref with K Star trench mapping (liverton likely did a detail map of this.	OC Grab	15-08-14	IM		Qtz
1961673	Dominion	601142	7083101	1140 m	QV in OC, 5-10cm, Tr fresh py, 5% rem py cubes, up to 20% rem py and fecarb on margin with calcite on vn margin. Host is silvery grey QMS. See TR 1 to TR 14 in geo points for trench sketches.	OC Grab	15-08-14	IM		Qtz
1961674	Dominion	600889	7083438	1138 m	QV float in freshly dug drainage ditch, tr fresh py and 5% remnant py, strong rem py and fecarb on margin, only 5-10 cm thick but likely a good target, D4, similar to 1961672/3. See Geopoints RDA, RDB, RDC, and RDD (ie Road Ditch point A) and map for ditch.	FL GRAB	15-08-14	IM		Qtz
1961852	Dominion	602991	7082139	840 m	GOLDEN ROD V DOMINION QTZ VEIN TR PY FECARB		21-09-14	WK		Qtz
1961853	Dominion	602995	7082139	839 m	GOLDEN R QTZ VEIN 30CM TR PY		21-09-14	WK		Qtz
1961854	Dominion	602998	7082141	842 m	QTZ VEIN 30CM TR PY FE CARB		21-09-14	WK		Qtz
1961855	Dominion	603000	7082140	843 m	QTZ VEIN 30CM 1%PY		21-09-14	WK		Qtz
1961856	Dominion	603005	7082138	841 m	QTZ VEIN 20CM TR PY PB		21-09-14	WK		Qtz
1961857	Dominion	603008	7082141	841 m	QTZ VEIN 20CM TR PY PB		21-09-14	WK		Qtz
1961858	Dominion	602634	7082849	834 m	QTZ WITH PY 1-2% WAIST PILE	ORE Grab	21-09-14	WK		Qtz
1961859	Dominion	602627	7082846	833 m	QTZ 15CM 2% PY FE CARB W PILE	ORE Grab	21-09-14	WK		Qtz
1961860	Dominion	602627	7082853	835 m	QTZ 15CM 2% PY FE CARB W PILE	ORE Grab	21-09-14	WK		Qtz
1961861	Dominion	602622	7082851	835 m	QTZ IN W PILE WITH PY PB	ORE Grab	21-09-14	WK		Qtz

Appendix III - Rock Sample Metadata

Sample ID	Property	Easting	Northing	Altitude (m)	Sample Description	Sample Type	Date (dd/mm/yr)	Sampler	Visible Gold	Rock Type
1961862	Dominion	602616	7082858	836 m	QTZ IN WAIST PILE WITH PY PB	ORE Grab	21-09-14	WK		Qtz
1961863	Dominion	602612	7082851	837 m	QTZ IN W PILE PY PB CPY MALACHITE	ORE Grab	21-09-14	WK		Qtz
1961864	Dominion	602612	7082855	833 m	QTZ IN W PILE WITH PY PB	ORE Grab	21-09-14	WK		Qtz
1961865	Dominion	602721	7083373	971 m	QTZ VEIN RUNNING 340 1M WITH TR PY DIP 30		22-09-14	WK		Qtz
1961866	Dominion	602722	7083364	971 m	QTZ VEIN 1M WIDE DIP 30 TR PY		22-09-14	WK		Qtz
1961867	Dominion	602720	7083367	972 m	QTZ VEIN 1M WIDE DIP 30 TR PY PB		22-09-14	WK		Qtz
1961868	Dominion	602722	7083366	972 m	QTZ VEIN 1M WIDE TR PY PB		22-09-14	WK		Qtz
1961869	Dominion	602720	7083360	971 m	QTZ VEIN TR PY PB		22-09-14	WK		Qtz
1961870	Dominion	602723	7083362	971 m	QTZ VEIN TR PY PB		22-09-14	WK		Qtz
1961871	Dominion	602783	7083338	971 m	QTZ VEIN STR 340 DIP 50 TR PY PB		22-09-14	WK		Qtz
1961872	Dominion	602781	7083338	970 m	QTZ VEIN TR PY PB		22-09-14	WK		Qtz
1961873	Dominion	602775	7083342	970 m	QTZ VEIN 1M WIDE TR PY PB CPY MALACHITE		22-09-14	WK		Qtz
1961874	Dominion	602780	7083338	969 m	QTZ VEIN 1M TR PY PB CPY MALACHITE		22-09-14	WK		Qtz
1961875	Dominion	602780	7083335	971 m	QTZ VEIN 1M TR PY PB CPY AZORITE MALACHITE		22-09-14	WK		Qtz
1961876	Dominion	602787	7083335	971 m	QTZ VEIN 1M TR PY CPY PB MALACHITE		22-09-14	WK		Qtz
1961877	Dominion	602784	7083334	971 m	QTZ VEIN 1M TR PY CPY PB MALACHITE		22-09-14	WK		Qtz
1961878	Dominion	602788	7083334	971 m	QTZ VEIN 1M TR PY PB		22-09-14	WK		Qtz
1961879	Dominion	602785	7083329	971 m	QTZ VEIN TRPY PB		22-09-14	WK		Qtz
1961880	Dominion	602784	7083324	970 m	QTZ VEIN 3%PYPB 1M WIDE		22-09-14	WK		Qtz
1961881	Dominion	602786	7083327	970 m	QTZ VEIN 1M 3% PY PB		22-09-14	WK		Qtz
1961882	Dominion	603106	7083216	964 m	QTZ SWIT 3% PB TR PY		22-09-14	WK		Qtz
1961883	Dominion	603121	7083219	962 m	QTZ VEIN STR 300 DIP15 TR PY CPY PB MALACHITE		22-09-14	WK		Qtz
1961884	Dominion	603116	7083220	963 m	QTZ VEIN 50 CM TR PY PB CPY MALACHITE AZORITE		22-09-14	WK		Qtz
1961885	Dominion	603101	7083227	961 m	QTZ VEIN IN OLD SHAFT TR PY PB	ORE Grab	22-09-14	WK		Qtz
1961901	Dominion	603823	7085366	1000 m	QTZ FL 1M TR PY	FL GRAB	14-08-14	WK		Qtz
1961902	Dominion	604039	7085356	1005 m	QTZ FL TR PY	FL GRAB	14-08-14	WK		Qtz
1961903	Dominion	604062	7085348	1009 m	QTZ FL 40CM WITH PB PY	FL GRAB	14-08-14	WK		Qtz
1961904	Dominion	604149	7085130	988 m			14-08-14	WK		Qtz
1961905	Dominion	603912	7085027	927 m	QTZ FL 1MX1M TR PY	FL GRAB	14-08-14	WK		Qtz
1961906	Dominion	601991	7079742	865 m	QTZ FL 20CM TR PY	FL GRAB	15-08-14	WK		Qtz
1961907	Dominion	603905	7080685	1003 m			15-08-14	WK		Qtz
1961908	Dominion	604615	7079436	983 m	QTZ FL 30CM 1% PY	FL GRAB	15-08-14	WK		Qtz
1961909	Dominion	605040	7079598	939 m	QTZ FL 40CM TR PY	FL GRAB	15-08-14	WK		Qtz
1961910	Dominion	604672	7079503	983 m	QTZ SUBCROP TR PY HEMATITE	SC Grab	15-08-14	WK		Qtz
1961911	Dominion	604673	7079503	984 m	QTZ FL 50CM TR PY	FL GRAB	15-08-14	WK		Qtz
1961912	Dominion	604628	7079541	985 m	QTZ IN PIT TR PY		15-08-14	WK		Qtz
1961913	Dominion	604553	7079593	985 m	QTZ IN TRENCH TR PY		15-08-14	WK		Qtz
1961914	Dominion	600900	7086858	862 m	QTZ FL TR PY 20CM	FL GRAB	17-08-14	WK		Qtz
1961915	Dominion	600937	7086922	852 m	QTZ FL 30CM TR PY VUGGY	FL GRAB	17-08-14	WK		Qtz
1961916	Dominion	601182	7086898	891 m	QTZ FROM OLD PIT TR PY		17-08-14	WK		Qtz
1961917	Dominion	601539	7086534	831 m	QTZ FL 1ML 1/2MW TR PY PB	FL GRAB	17-08-14	WK		Qtz
1961918	Dominion	600841	7086305	1045 m	QTZ FL 30CM TR PY	FL GRAB	17-08-14	WK		Qtz
1961919	Dominion	600816	7086293	1050 m	QTZ FL 20CM PY CPY MALACHITE	FL GRAB	17-08-14	WK		Qtz
1961920	Dominion	600799	7086280	1055 m	QTZ FL50CM 1%PY	FL GRAB	17-08-14	WK		Qtz
1961945	Dominion	602258	7083605	926 m	QV RUSTY FL 20CM ANG		18-09-14	PT		Qtz
1961946	Dominion	602270	7083554	908 m	QV 2M		18-09-14	PT		Qtz
1961947	Dominion	602267	7083549	908 m	QV 2M		18-09-14	PT		Qtz
1961948	Dominion	602604	7082854	833 m	QV 2CM CLOTS PY		18-09-14	PT		Qtz
1961949	Dominion	602607	7082854	834 m	QV DUMP CGD PY CUBIC C		18-09-14	PT		Qtz
1961950	Dominion	602605	7082856	833 m	QV FGD PY FRACTURE DUM		18-09-14	PT		Qtz

APPENDIX IV

ROCK SAMPLE ANALYTICAL CERTIFICATES

CERTIFICATE OF ANALYSIS

WHI14000238.1

CLIENT JOB INFORMATION

Project: LS
Shipment ID: LS002
P.O. Number
Number of Samples: 95

SAMPLE DISPOSAL

RTRN-PLP Return
DISP-RJT Dispose of Reject After 90 days

Acme does not accept responsibility for samples left at the laboratory after 90 days without prior written instructions for sample storage or return.

Invoice To: Klondike Gold Corp.
715 - 675 West Hastings St.
Vancouver BC V6B 1N2
CANADA

CC: Melinda Coghill

SAMPLE PREPARATION AND ANALYTICAL PROCEDURES

Procedure Code	Number of Samples	Code Description	Test Wgt (g)	Report Status	Lab
PRP70-250	95	Crush, split and pulverize 250 g rock to 200 mesh			WHI
FA430	95	Lead Collection Fire - Assay Fusion - AAS Finish	30	Completed	VAN
AQ201	95	1:1:1 Aqua Regia digestion ICP-MS analysis	15	Completed	VAN
FA530	18	Lead collection fire assay 30G fusion - Grav finish	30	Completed	VAN
MA370	12	4-acid Digestion ICP-ES Finish	0.5	Completed	VAN

ADDITIONAL COMMENTS



CERTIFICATE OF ANALYSIS

WHI14000238.1

Method Analyte	Unit	WGHT	FA430	AQ201	AQ201	AQ201	AQ201	AQ201	AQ201	AQ201	AQ201	AQ201	AQ201	AQ201	AQ201	AQ201	AQ201	AQ201	AQ201	AQ201	AQ201
			Au	Mo	Cu	Pb	Zn	Ag	Ni	Co	Mn	Fe	As	U	Au	Th	Sr	Cd	Sb	Bi	V
MDL	kg	ppm	ppm	ppm	ppm	ppm	ppm	ppm	ppm	ppm	ppm	ppm	ppm	ppm	ppm	ppm	ppm	ppm	ppm	ppm	ppm
	0.01	0.005	0.1	0.1	0.1	1	0.1	0.1	0.1	0.1	1	0.01	0.5	0.1	0.5	0.1	1	0.1	0.1	0.1	0.1
1961639	Rock	0.72	<0.005	0.2	2.5	7.6	13	<0.1	0.8	0.2	67	0.38	6.9	<0.1	4.5	<0.1	2	<0.1	0.2	<0.1	<2
1961640	Rock	0.91	0.014	0.1	3.0	18.7	19	<0.1	0.9	0.3	82	0.56	8.3	<0.1	15.9	<0.1	3	0.2	0.2	<0.1	<2
1961641	Rock	0.96	0.007	0.2	5.1	1.7	6	<0.1	1.3	1.3	130	0.60	36.5	<0.1	14.6	0.1	1	<0.1	<0.1	<0.1	<2
1961642	Rock	0.76	0.233	0.5	7.1	87.5	8	1.0	2.5	3.0	85	2.39	949.0	0.4	243.0	<0.1	2	0.7	5.0	0.2	3
1961643	Rock	0.75	0.133	0.2	1.3	19.4	2	0.2	0.7	0.4	42	0.52	66.3	<0.1	123.8	0.1	1	<0.1	0.2	0.2	<2
1961644	Rock	0.63	1.613	1.7	293.5	>10000	207	>100	0.6	0.2	41	2.16	947.5	0.7	1509.6	<0.1	2	3.8	125.3	0.2	<2
1961645	Rock	1.07	1.238	0.3	2136.9	>10000	110	>100	0.5	0.1	27	0.75	855.7	1.2	1898.0	<0.1	3	9.2	1346.9	0.3	<2
1961646	Rock	0.68	1.214	0.5	173.4	3520.8	133	72.1	0.7	0.2	35	1.24	517.8	0.2	925.3	<0.1	3	2.5	77.1	<0.1	<2
1961647	Rock	0.50	0.050	0.8	59.3	223.9	158	13.9	1.3	1.2	104	1.20	293.1	0.2	66.7	0.2	5	3.1	15.2	<0.1	2
1961648	Rock	1.14	0.563	4.1	123.0	4507.2	279	>100	1.0	1.0	196	1.68	903.2	0.9	632.1	<0.1	11	5.1	37.9	0.9	3
1961649	Rock	1.19	0.081	0.2	5.9	95.4	65	1.9	0.9	0.7	111	0.50	74.7	<0.1	111.3	<0.1	<1	0.7	2.8	0.2	<2
1961650	Rock	0.86	0.619	0.6	58.5	7025.4	92	>100	0.9	0.3	80	1.14	886.9	1.5	703.9	<0.1	2	1.0	46.2	0.4	<2
1961901	Rock	0.81	0.008	0.9	3.2	29.8	9	0.8	1.2	0.2	61	0.75	13.5	0.2	3.2	0.1	3	0.1	3.0	<0.1	<2
1961902	Rock	1.32	0.007	0.3	1.6	40.5	2	0.7	0.7	0.3	41	0.49	6.3	<0.1	3.5	0.9	3	<0.1	0.5	<0.1	<2
1961903	Rock	0.72	<0.005	0.1	15.7	4465.3	1	12.6	0.6	0.3	60	0.35	<0.5	0.1	24.0	0.4	1	1.0	0.5	50.3	<2
1961904	Rock	0.91	<0.005	0.5	3.4	28.4	3	0.1	0.8	0.6	264	0.35	1.7	0.2	1.4	0.2	1	<0.1	0.3	<0.1	<2
1961905	Rock	1.17	<0.005	0.6	3.8	19.3	5	0.3	1.0	0.3	102	0.66	1.1	0.3	<0.5	2.0	<1	<0.1	0.3	0.3	<2
1961906	Rock	0.70	<0.005	0.1	1.0	4.5	<1	<0.1	0.7	0.4	63	0.37	2.7	<0.1	<0.5	<0.1	<1	<0.1	0.1	<0.1	<2
1961907	Rock	0.83	<0.005	0.2	3.3	4.5	2	0.1	0.6	0.2	44	0.54	1.5	0.1	0.6	0.8	<1	<0.1	0.2	0.1	<2
1961908	Rock	0.88	<0.005	0.4	1.3	4.8	<1	<0.1	0.7	0.2	38	0.58	1.3	0.3	0.6	0.2	3	<0.1	0.1	<0.1	<2
1961909	Rock	0.83	0.006	0.2	3.0	4.8	3	<0.1	0.9	0.6	54	0.50	1.3	<0.1	5.8	0.3	<1	<0.1	0.3	<0.1	<2
1961910	Rock	0.65	<0.005	0.3	0.7	2.2	<1	<0.1	0.8	0.2	38	0.43	0.8	0.1	1.2	<0.1	1	<0.1	<0.1	<0.1	<2
1961911	Rock	0.71	<0.005	1.8	1.7	6.9	1	<0.1	0.8	0.4	51	0.59	2.2	0.6	<0.5	0.3	<1	<0.1	0.1	<0.1	<2
1961912	Rock	1.03	<0.005	1.1	1.2	8.8	<1	<0.1	0.9	0.3	64	0.71	4.6	1.1	1.5	0.6	3	<0.1	0.2	<0.1	<2
1961913	Rock	0.76	<0.005	0.5	10.2	37.0	14	0.1	1.5	0.5	64	0.95	5.8	1.1	5.2	0.9	<1	<0.1	0.2	<0.1	<2
1961914	Rock	0.76	<0.005	0.2	2.6	3.3	3	<0.1	0.9	0.4	75	0.52	1.2	<0.1	<0.5	<0.1	1	<0.1	0.1	<0.1	2
1961915	Rock	0.72	5.186	0.5	5.0	301.0	4	5.8	1.1	0.4	41	0.51	112.7	<0.1	5529.2	<0.1	3	<0.1	3.0	0.4	5
1961916	Rock	0.55	0.010	0.1	1.4	8.8	14	<0.1	1.0	0.5	66	0.53	1.3	<0.1	11.3	<0.1	<1	<0.1	<0.1	<0.1	<2
1961917	Rock	0.45	0.086	1.1	309.6	>10000	99	28.8	1.1	0.3	47	0.75	2.9	0.3	37.7	<0.1	24	1.0	16.9	1.6	2
1961918	Rock	0.81	0.423	2.2	95.4	325.2	34	2.3	2.6	2.5	52	0.95	27.9	0.4	344.5	0.7	<1	0.2	1.1	<0.1	<2

CERTIFICATE OF ANALYSIS

WHI14000238.1

Method	AQ201	AQ201	AQ201	AQ201	AQ201	AQ201	AQ201	AQ201	AQ201	AQ201	AQ201	AQ201	AQ201	AQ201	AQ201	AQ201	AQ201	AQ201	AQ201	AQ201	FA530
Analyte	Ca	P	La	Cr	Mg	Ba	Ti	B	Al	Na	K	W	Hg	Sc	Tl	S	Ga	Se	Te	Ag	
Unit	%	%	ppm	ppm	%	ppm	%	ppm	%	%	%	ppm	ppm	ppm	ppm	%	ppm	ppm	ppm	gm/t	
MDL	0.01	0.001	1	1	0.01	1	0.001	1	0.01	0.001	0.01	0.1	0.01	0.1	0.05	1	0.5	0.2	0.2	50	
1961639	Rock	0.09	<0.001	<1	2	0.03	11	<0.001	<1	0.01	0.003	<0.01	<0.1	<0.01	<0.1	<0.05	<1	<0.5	<0.2		
1961640	Rock	0.17	<0.001	<1	3	0.04	10	<0.001	<1	0.01	0.002	<0.01	<0.1	<0.01	<0.1	<0.05	<1	<0.5	<0.2		
1961641	Rock	0.01	0.001	<1	3	0.08	20	<0.001	<1	0.12	0.001	0.02	<0.1	<0.01	0.2	<0.05	<1	<0.5	<0.2		
1961642	Rock	0.03	0.005	<1	2	0.03	80	<0.001	<1	0.07	0.002	0.02	<0.1	<0.01	0.7	<0.1	0.60	<1	<0.5	<0.2	
1961643	Rock	<0.01	0.001	<1	2	<0.01	23	<0.001	<1	0.04	0.002	0.03	<0.1	<0.01	<0.1	<0.05	<1	<0.5	<0.2		
1961644	Rock	<0.01	0.002	<1	2	<0.01	17	<0.001	<1	0.02	0.002	0.01	<0.1	0.31	0.1	0.2	0.21	<1	2.4	4.0	162
1961645	Rock	<0.01	0.001	<1	2	<0.01	11	<0.001	<1	0.01	0.002	0.02	0.7	0.10	<0.1	0.3	0.21	<1	2.4	3.8	930
1961646	Rock	<0.01	0.001	<1	2	<0.01	23	<0.001	<1	0.02	0.002	0.02	0.8	0.09	<0.1	<0.1	0.13	<1	<0.5	0.6	
1961647	Rock	0.03	0.008	<1	3	0.15	28	<0.001	<1	0.19	0.002	0.05	0.2	<0.01	0.4	<0.1	<0.05	<1	<0.5	0.2	
1961648	Rock	0.01	0.005	<1	3	0.02	44	<0.001	<1	0.07	0.003	0.02	0.2	0.16	0.3	0.2	0.09	<1	2.6	0.4	104
1961649	Rock	<0.01	<0.001	<1	3	<0.01	9	<0.001	<1	0.02	<0.001	<0.01	<0.1	<0.01	<0.1	<0.05	<1	<0.5	<0.2		
1961650	Rock	<0.01	0.002	<1	3	<0.01	10	<0.001	<1	0.02	0.001	0.01	0.1	0.02	<0.1	0.1	0.09	<1	1.4	1.6	117
1961901	Rock	<0.01	0.002	3	4	0.01	99	<0.001	<1	0.03	0.002	0.01	<0.1	<0.01	0.1	<0.05	<1	<0.5	<0.2		
1961902	Rock	<0.01	<0.001	3	2	<0.01	476	<0.001	<1	0.03	<0.001	0.03	<0.1	<0.01	<0.1	<0.05	<1	<0.5	<0.2		
1961903	Rock	<0.01	0.002	2	2	<0.01	139	<0.001	<1	0.01	<0.001	<0.01	<0.1	0.01	<0.1	<0.1	0.10	<1	5.8	1.7	
1961904	Rock	<0.01	<0.001	<1	2	<0.01	94	<0.001	<1	0.01	<0.001	<0.01	<0.1	<0.01	<0.1	<0.05	<1	<0.5	<0.2		
1961905	Rock	<0.01	<0.001	2	3	<0.01	53	<0.001	<1	0.06	0.005	0.03	<0.1	<0.01	<0.1	<0.05	<1	<0.5	<0.2		
1961906	Rock	<0.01	0.002	<1	2	<0.01	17	<0.001	<1	0.01	<0.001	<0.01	<0.1	<0.01	<0.1	<0.05	<1	<0.5	<0.2		
1961907	Rock	<0.01	0.001	1	3	<0.01	175	<0.001	<1	0.05	0.002	0.04	<0.1	0.02	0.1	<0.05	<1	<0.5	<0.2		
1961908	Rock	<0.01	<0.001	<1	2	<0.01	503	<0.001	<1	0.01	<0.001	<0.01	<0.1	<0.01	<0.1	<0.15	<1	<0.5	<0.2		
1961909	Rock	0.02	0.007	1	3	0.01	34	<0.001	<1	0.07	0.002	0.03	<0.1	<0.01	<0.1	<0.05	<1	<0.5	<0.2		
1961910	Rock	<0.01	<0.001	<1	2	<0.01	150	<0.001	<1	<0.01	0.001	<0.01	<0.1	<0.01	<0.1	<0.05	<1	<0.5	<0.2		
1961911	Rock	<0.01	0.001	<1	2	<0.01	45	<0.001	<1	0.03	0.001	0.02	<0.1	<0.01	0.1	<0.05	<1	<0.5	<0.2		
1961912	Rock	<0.01	0.002	2	3	<0.01	27	<0.001	1	0.04	0.001	0.03	<0.1	<0.01	<0.1	<0.05	<1	<0.5	<0.2		
1961913	Rock	<0.01	0.005	2	3	<0.01	14	<0.001	3	0.05	0.001	0.02	<0.1	<0.01	0.1	<0.05	<1	<0.5	<0.2		
1961914	Rock	0.04	<0.001	<1	3	0.03	8	0.003	<1	0.03	0.002	<0.01	<0.1	<0.01	0.2	<0.05	<1	<0.5	<0.2		
1961915	Rock	<0.01	0.003	<1	3	0.01	55	0.002	<1	0.03	0.001	0.01	<0.1	<0.01	0.1	<0.05	<1	1.1	<0.2		
1961916	Rock	<0.01	0.003	<1	3	0.05	9	<0.001	<1	0.08	0.001	0.02	<0.1	<0.01	<0.1	<0.05	<1	<0.5	<0.2		
1961917	Rock	0.01	0.002	<1	3	0.03	48	<0.001	<1	0.08	0.001	0.01	0.2	0.11	0.3	0.3	0.53	<1	4.8	4.5	
1961918	Rock	<0.01	0.003	2	2	0.03	60	<0.001	<1	0.09	0.002	0.05	<0.1	0.01	0.2	<0.1	0.08	<1	0.6	<0.2	



www.acmelab.com

Bureau Veritas Commodities Canada Ltd.

9050 Shaughnessy St Vancouver BC V6P 6E5 CANADA

PHONE (604) 253-3158

Client: Klondike Gold Corp.
715 - 675 West Hastings St.
Vancouver BC V6B 1N2 CANADA

Project: LS
Report Date: October 31, 2014

Page: 2 of 5

Part: 3 of 3

CERTIFICATE OF ANALYSIS

WHI14000238.1

Method	Analyte	FA530	MA370
		Au	Pb
Unit		gm/t	%
MDL		0.9	0.02
1961639	Rock		
1961640	Rock		
1961641	Rock		
1961642	Rock		
1961643	Rock		
1961644	Rock	1.8	2.11
1961645	Rock	0.9	2.01
1961646	Rock		
1961647	Rock		
1961648	Rock	<0.9	
1961649	Rock		
1961650	Rock	<0.9	
1961901	Rock		
1961902	Rock		
1961903	Rock		
1961904	Rock		
1961905	Rock		
1961906	Rock		
1961907	Rock		
1961908	Rock		
1961909	Rock		
1961910	Rock		
1961911	Rock		
1961912	Rock		
1961913	Rock		
1961914	Rock		
1961915	Rock		
1961916	Rock		
1961917	Rock		2.96
1961918	Rock		

CERTIFICATE OF ANALYSIS

WHI14000238.1

Method	Analyte	WGHT	FA430	AQ201	AQ201	AQ201	AQ201	AQ201	AQ201	AQ201	AQ201	AQ201	AQ201	AQ201	AQ201	AQ201	AQ201	AQ201	AQ201	AQ201	AQ201
		Wgt	Au	Mo	Cu	Pb	Zn	Ag	Ni	Co	Mn	Fe	As	U	Au	Th	Sr	Cd	Sb	Bi	V
Unit	MDL	kg	ppm	ppm	ppm	ppm	ppm	ppm	ppm	ppm	ppm	%	ppm	ppb	ppm	ppm	ppm	ppm	ppm	ppm	ppm
		0.01	0.005	0.1	0.1	0.1	1	0.1	0.1	0.1	1	0.01	0.5	0.1	0.5	0.1	1	0.1	0.1	0.1	0.1
1961919	Rock	0.56	0.040	2.2	588.1	382.4	24	4.8	0.8	0.2	46	0.65	14.3	0.4	40.1	<0.1	<1	0.2	0.5	<0.1	<2
1961920	Rock	0.81	0.074	0.2	7.0	26.3	3	0.2	0.7	0.7	47	0.65	156.3	0.1	105.6	0.2	2	<0.1	0.2	<0.1	<2
1961658	Rock	0.45	0.007	0.4	9.2	136.8	48	0.4	2.5	1.9	236	0.76	110.3	0.2	8.2	0.6	3	0.3	0.7	0.2	4
1961659	Rock	0.74	0.237	2.2	338.2	>10000	382	60.3	1.3	0.4	108	2.66	425.9	1.1	261.7	0.1	5	7.1	102.3	3.9	<2
1961660	Rock	0.75	0.365	0.8	83.3	5252.8	123	58.9	0.8	0.2	62	1.00	361.1	0.4	509.8	<0.1	1	2.7	101.1	0.4	<2
1961661	Rock	0.97	0.014	0.3	14.0	98.0	19	0.5	7.4	5.5	302	1.24	61.2	0.2	10.5	0.5	9	0.2	0.8	<0.1	20
1961662	Rock	0.60	<0.005	1.1	2.1	42.6	4	0.3	2.0	1.1	222	0.62	8.1	0.1	2.6	0.2	<1	<0.1	0.8	0.2	<2
1961663	Rock	0.95	0.251	0.3	6.3	61.8	13	0.4	0.9	0.9	99	0.80	80.0	<0.1	255.1	0.1	2	0.1	0.3	0.2	<2
1961664	Rock	0.85	<0.005	0.5	11.0	7.4	28	<0.1	9.7	7.7	810	1.85	8.6	0.5	2.0	2.6	4	<0.1	0.2	<0.1	12
1961665	Rock	0.80	0.035	0.2	2.0	268.3	24	1.0	0.6	0.1	42	0.53	79.5	<0.1	29.7	<0.1	<1	0.3	0.9	0.3	<2
1961666	Rock	0.70	0.019	0.4	10.4	5.9	23	0.3	1.9	3.7	1251	1.66	3.3	0.2	20.8	0.2	10	<0.1	0.1	<0.1	8
1961667	Rock	0.74	0.080	0.1	3.8	77.4	8	0.7	1.0	1.3	337	1.18	3.4	<0.1	66.1	<0.1	2	<0.1	0.1	1.1	2
1961668	Rock	1.07	0.085	0.1	34.3	7.3	61	0.6	4.9	13.2	2780	5.39	<0.5	0.4	71.7	1.4	37	0.3	<0.1	0.5	46
1961669	Rock	0.74	0.047	0.4	12.9	10.2	8	0.3	1.1	2.1	504	1.26	1.3	0.2	43.2	0.9	5	0.1	0.2	0.2	3
1961670	Rock	0.69	0.073	0.4	10.1	3.7	38	0.5	2.4	3.9	843	1.91	0.6	0.4	65.1	0.3	20	0.1	<0.1	<0.1	7
1961671	Rock	1.16	0.192	0.3	9.4	4.6	19	0.3	1.1	2.4	1973	1.37	0.9	0.2	65.7	0.5	43	<0.1	<0.1	<0.1	4
1961672	Rock	0.68	0.259	3.2	3.3	909.4	30	4.1	0.8	0.6	205	1.19	3.2	0.1	283.0	<0.1	3	0.5	0.1	5.1	2
1961673	Rock	0.72	0.603	0.1	4.2	9.1	7	1.6	1.0	1.0	411	0.98	1.5	<0.1	342.5	<0.1	3	<0.1	0.1	0.3	2
1961674	Rock	0.68	0.125	0.2	4.0	8.9	12	1.4	1.5	1.2	402	1.01	1.1	<0.1	131.1	0.2	2	0.1	<0.1	0.6	<2
1961945	Rock	0.85	<0.005	0.5	1.4	65.8	5	0.4	0.9	0.1	60	0.53	47.9	<0.1	4.1	<0.1	<1	<0.1	<0.1	0.7	<2
1961946	Rock	0.99	0.063	0.4	1.6	3.7	5	<0.1	1.4	1.9	105	0.60	23.7	<0.1	60.7	<0.1	<1	<0.1	<0.1	<0.1	<2
1961947	Rock	1.59	0.018	0.7	1.5	3.0	12	<0.1	1.4	1.4	132	0.73	32.0	0.2	18.6	0.2	1	0.2	0.2	<0.1	3
1961948	Rock	0.52	0.452	1.8	10.7	81.4	5	1.0	2.4	10.7	85	3.59	180.1	0.3	339.3	0.3	21	<0.1	0.4	0.9	<2
1961949	Rock	1.01	0.030	0.3	2.8	62.4	3	0.6	1.6	6.1	93	2.39	188.3	0.2	30.9	0.1	34	<0.1	<0.1	0.8	<2
1961950	Rock	0.88	0.016	0.5	4.5	10.9	5	0.1	1.2	2.9	170	1.32	56.5	0.2	13.4	0.3	35	<0.1	0.1	0.1	<2
1961851	Rock	0.56	0.031	0.1	109.8	1.3	2	<0.1	0.9	0.8	195	0.44	1.1	<0.1	11.3	<0.1	35	<0.1	<0.1	<0.1	<2
1961852	Rock	0.69	0.009	0.3	22.6	16.5	6	0.4	0.8	0.5	84	0.50	9.7	<0.1	8.2	0.1	2	<0.1	2.3	0.6	<2
1961853	Rock	0.76	<0.005	0.4	36.9	4.7	9	0.2	1.4	1.3	246	0.59	11.9	0.1	2.0	0.1	<1	<0.1	2.8	<0.1	2
1961854	Rock	0.89	0.022	0.4	8.5	495.1	44	1.9	1.0	0.4	72	0.69	171.9	0.1	25.3	<0.1	2	0.5	17.5	1.7	<2
1961855	Rock	0.64	0.092	0.5	8.2	182.3	32	2.5	2.0	2.1	76	1.40	146.4	0.2	67.1	<0.1	2	0.2	3.9	0.6	<2

CERTIFICATE OF ANALYSIS

WHI14000238.1

Method	AQ201	AQ201	AQ201	AQ201	AQ201	AQ201	AQ201	AQ201	AQ201	AQ201	AQ201	AQ201	AQ201	AQ201	AQ201	AQ201	AQ201	AQ201	AQ201	AQ201	FA530
Analyte	Ca	P	La	Cr	Mg	Ba	Ti	B	Al	Na	K	W	Hg	Sc	Tl	S	Ga	Se	Te	Ag	
Unit	%	%	ppm	ppm	%	ppm	%	ppm	%	%	%	ppm	ppm	ppm	ppm	%	ppm	ppm	ppm	ppm	
MDL	0.01	0.001	1	1	0.01	1	0.001	1	0.01	0.001	0.01	0.1	0.01	0.1	0.05	1	0.5	0.2	0.2	50	
1961919	Rock	<0.01	<0.001	<1	3	<0.01	5	<0.001	<1	0.02	0.001	<0.01	<0.1	<0.01	0.2	<0.1	<0.05	<1	<0.5	<0.2	
1961920	Rock	0.01	<0.001	1	3	0.02	10	0.003	<1	0.04	0.002	0.02	<0.1	<0.01	0.2	<0.1	0.12	<1	<0.5	<0.2	
1961658	Rock	0.03	0.015	3	4	0.08	44	0.004	<1	0.21	0.013	0.04	<0.1	<0.01	0.6	<0.1	<0.05	<1	<0.5	<0.2	
1961659	Rock	<0.01	0.010	<1	2	<0.01	20	<0.001	2	0.05	0.002	0.01	0.3	1.77	0.2	0.3	0.16	<1	2.8	2.9	
1961660	Rock	<0.01	<0.001	<1	3	<0.01	7	<0.001	2	<0.01	0.001	<0.01	<0.1	0.42	<0.1	<0.1	0.08	<1	<0.5	0.7	
1961661	Rock	0.12	0.021	2	22	0.31	36	0.011	1	0.46	0.034	0.04	<0.1	0.02	2.1	<0.1	<0.05	2	<0.5	<0.2	
1961662	Rock	<0.01	0.002	<1	4	0.03	15	<0.001	<1	0.07	0.002	0.01	<0.1	<0.01	0.6	<0.1	<0.05	<1	<0.5	<0.2	
1961663	Rock	0.01	0.007	<1	3	<0.01	18	<0.001	<1	0.05	0.009	0.02	<0.1	<0.01	0.1	<0.1	<0.05	<1	<0.5	<0.2	
1961664	Rock	0.08	0.042	8	20	0.21	62	0.003	<1	0.46	0.048	0.08	<0.1	<0.01	2.7	<0.1	<0.05	2	<0.5	<0.2	
1961665	Rock	<0.01	<0.001	<1	3	<0.01	12	<0.001	<1	<0.01	0.001	<0.01	<0.1	0.02	<0.1	<0.1	<0.05	<1	<0.5	<0.2	
1961666	Rock	1.45	0.013	<1	2	0.32	89	<0.001	1	0.43	0.004	0.04	<0.1	<0.01	2.0	<0.1	<0.05	1	<0.5	<0.2	
1961667	Rock	0.02	0.001	2	2	0.01	44	<0.001	<1	0.03	0.002	0.02	<0.1	<0.01	0.6	<0.1	<0.05	<1	<0.5	0.2	
1961668	Rock	3.25	0.073	2	15	1.18	72	0.003	1	1.74	0.025	0.06	<0.1	<0.01	7.2	<0.1	0.32	5	1.7	0.2	
1961669	Rock	0.08	0.030	3	2	0.02	59	<0.001	2	0.14	0.013	0.08	<0.1	<0.01	1.5	<0.1	0.11	<1	<0.5	<0.2	
1961670	Rock	2.31	0.064	1	2	0.18	43	<0.001	1	0.38	0.012	0.08	<0.1	<0.01	2.7	<0.1	<0.05	1	<0.5	0.3	
1961671	Rock	2.88	0.021	3	2	0.19	40	<0.001	<1	0.30	0.008	0.04	<0.1	<0.01	2.8	<0.1	<0.05	<1	<0.5	<0.2	
1961672	Rock	0.07	0.005	<1	2	<0.01	21	<0.001	<1	0.03	0.002	0.02	<0.1	0.05	0.4	<0.1	<0.05	<1	1.3	1.0	
1961673	Rock	0.06	0.011	<1	3	0.01	29	<0.001	1	0.06	0.004	0.02	<0.1	<0.01	0.8	<0.1	<0.05	<1	<0.5	1.2	
1961674	Rock	0.04	0.005	<1	3	0.03	22	<0.001	<1	0.07	0.004	0.02	<0.1	<0.01	1.3	<0.1	0.09	<1	<0.5	0.6	
1961945	Rock	<0.01	<0.001	<1	3	<0.01	9	<0.001	<1	0.01	0.001	<0.01	<0.1	<0.01	<0.1	<0.1	<0.05	<1	<0.5	<0.2	
1961946	Rock	0.01	0.002	<1	2	0.04	17	<0.001	1	0.06	0.001	0.02	<0.1	<0.01	0.2	<0.1	<0.05	<1	<0.5	<0.2	
1961947	Rock	0.01	0.001	1	3	0.07	23	<0.001	<1	0.12	0.001	0.04	<0.1	<0.01	0.4	<0.1	<0.05	<1	<0.5	<0.2	
1961948	Rock	0.28	0.074	<1	2	0.06	18	<0.001	<1	0.09	0.002	0.02	<0.1	0.02	0.2	<0.1	3.32	<1	1.6	0.3	
1961949	Rock	0.38	0.115	<1	2	0.06	13	<0.001	<1	0.04	0.002	0.01	<0.1	<0.01	0.1	<0.1	2.20	<1	1.3	<0.2	
1961950	Rock	0.48	0.042	<1	2	0.15	16	<0.001	<1	0.14	0.002	0.02	<0.1	0.01	0.4	<0.1	0.79	<1	0.5	<0.2	
1961851	Rock	1.59	0.001	<1	2	0.02	35	<0.001	<1	0.04	0.001	<0.01	<0.1	<0.01	0.2	<0.1	<0.05	<1	<0.5	<0.2	
1961852	Rock	0.03	0.009	<1	2	0.03	17	<0.001	<1	0.05	0.001	0.02	<0.1	0.01	0.2	<0.1	<0.05	<1	<0.5	<0.2	
1961853	Rock	0.02	0.003	<1	2	0.05	38	<0.001	<1	0.07	0.001	0.02	<0.1	<0.01	0.4	<0.1	<0.05	<1	<0.5	<0.2	
1961854	Rock	<0.01	0.002	<1	3	0.01	12	<0.001	<1	0.03	0.001	0.01	<0.1	0.01	0.3	<0.1	<0.05	<1	<0.5	0.3	
1961855	Rock	0.01	0.007	<1	3	0.02	23	<0.001	<1	0.04	0.001	<0.01	<0.1	0.01	0.3	<0.1	0.13	<1	<0.5	0.5	



www.acmelab.com

Bureau Veritas Commodities Canada Ltd.

9050 Shaughnessy St Vancouver BC V6P 6E5 CANADA

PHONE (604) 253-3158

Client: Klondike Gold Corp.
715 - 675 West Hastings St.
Vancouver BC V6B 1N2 CANADA

Project: LS
Report Date: October 31, 2014

Page: 3 of 5

Part: 3 of 3

CERTIFICATE OF ANALYSIS

WHI14000238.1

Method	Analyte	FA530	MA370
		Au	Pb
Unit		gm/t	%
MDL		0.9	0.02
1961919	Rock		
1961920	Rock		
1961658	Rock		
1961659	Rock		2.50
1961660	Rock		
1961661	Rock		
1961662	Rock		
1961663	Rock		
1961664	Rock		
1961665	Rock		
1961666	Rock		
1961667	Rock		
1961668	Rock		
1961669	Rock		
1961670	Rock		
1961671	Rock		
1961672	Rock		
1961673	Rock		
1961674	Rock		
1961945	Rock		
1961946	Rock		
1961947	Rock		
1961948	Rock		
1961949	Rock		
1961950	Rock		
1961851	Rock		
1961852	Rock		
1961853	Rock		
1961854	Rock		
1961855	Rock		

CERTIFICATE OF ANALYSIS

WHI14000238.1

Method	WGHT	FA430	AQ201	AQ201	AQ201	AQ201	AQ201	AQ201	AQ201	AQ201	AQ201	AQ201	AQ201	AQ201	AQ201	AQ201	AQ201	AQ201	AQ201	AQ201	AQ201
Analyte	Wgt	Au	Mo	Cu	Pb	Zn	Ag	Ni	Co	Mn	Fe	As	U	Au	Th	Sr	Cd	Sb	Bi	V	
Unit	kg	ppm	ppm	ppm	ppm	ppm	ppm	ppm	ppm	ppm	%	ppm	ppm	ppb	ppm	ppm	ppm	ppm	ppm	ppm	
MDL	0.01	0.005	0.1	0.1	0.1	1	0.1	0.1	0.1	1	0.01	0.5	0.1	0.5	0.1	1	0.1	0.1	0.1	0.1	
1961856	Rock	0.75	2.139	0.2	2.9	2084.9	6	7.0	1.1	0.5	62	0.50	7.5	0.1	1020.3	<0.1	1	<0.1	1.8	1.5	<2
1961857	Rock	0.73	3.047	0.2	2.9	4390.1	2	13.2	0.5	0.1	33	0.41	6.8	0.2	1190.9	<0.1	<1	0.1	2.8	2.6	<2
1961858	Rock	0.53	0.029	0.4	3.8	154.2	22	1.2	0.9	2.0	104	1.28	82.1	<0.1	26.3	0.3	12	0.2	0.2	1.8	<2
1961859	Rock	0.79	0.030	0.2	3.1	23.4	22	0.2	0.9	1.2	60	0.61	30.3	<0.1	99.8	<0.1	3	0.2	<0.1	<0.1	<2
1961860	Rock	0.78	0.159	0.2	2.0	287.0	35	0.5	1.5	2.5	95	0.97	53.1	<0.1	62.4	<0.1	10	0.5	0.2	0.5	<2
1961861	Rock	0.54	0.316	0.4	184.3	9237.0	42	>100	0.7	0.2	43	0.83	93.2	0.5	254.6	0.2	5	1.2	109.8	0.1	<2
1961862	Rock	0.63	0.293	1.0	12.9	3752.4	45	9.8	0.8	0.3	60	0.71	83.8	0.2	463.8	<0.1	3	0.7	4.6	0.2	<2
1961863	Rock	0.61	0.569	1.2	281.3	>10000	97	>100	0.7	0.3	54	1.31	139.8	1.1	857.9	<0.1	7	1.9	39.9	<0.1	<2
1961864	Rock	0.71	0.371	0.5	259.9	>10000	39	>100	0.7	<0.1	39	0.97	117.5	0.6	531.8	<0.1	6	0.8	89.0	0.2	<2
1961865	Rock	0.54	0.089	0.4	37.4	380.5	52	3.2	0.9	0.1	55	0.74	138.5	<0.1	22.8	<0.1	1	1.8	5.4	0.1	<2
1961866	Rock	0.84	0.165	0.5	95.3	1977.8	47	10.8	1.0	0.2	46	0.82	206.3	0.1	156.9	<0.1	2	2.0	10.1	0.1	<2
1961867	Rock	0.69	0.033	0.3	26.1	379.5	46	2.3	0.7	0.1	39	0.54	417.5	<0.1	37.9	<0.1	15	2.1	1.6	<0.1	<2
1961868	Rock	0.50	0.903	0.4	34.5	1386.3	57	5.0	0.9	0.1	59	0.84	305.7	<0.1	471.1	<0.1	2	1.2	4.3	0.2	<2
1961869	Rock	0.71	0.207	0.6	94.5	2849.3	30	>100	0.7	0.1	42	0.70	260.5	0.3	362.6	<0.1	2	0.9	67.1	0.1	<2
1961870	Rock	0.59	0.018	0.3	6.5	245.1	11	1.2	1.0	0.3	54	0.66	97.0	<0.1	15.3	<0.1	4	0.3	1.6	<0.1	<2
1961871	Rock	0.46	0.006	0.2	46.6	1213.6	13	3.9	0.6	<0.1	37	0.37	33.5	<0.1	<0.5	<0.1	<1	0.2	3.6	0.7	<2
1961872	Rock	0.75	0.028	0.3	91.0	2377.6	51	10.2	0.7	0.1	43	0.51	161.2	0.1	13.7	<0.1	<1	1.1	12.5	<0.1	<2
1961873	Rock	0.63	0.063	0.3	317.2	1989.8	437	20.1	0.8	0.2	52	0.85	199.9	0.1	61.2	<0.1	<1	7.8	21.7	0.4	<2
1961874	Rock	0.80	0.082	0.4	2163.0	5330.5	1009	>100	0.8	0.3	37	0.54	443.8	0.5	72.9	<0.1	2	26.8	490.5	0.1	<2
1961875	Rock	0.72	0.107	0.3	1558.3	6221.1	552	>100	0.9	0.2	48	0.67	378.9	0.3	171.8	<0.1	2	16.2	501.4	<0.1	<2
1961876	Rock	0.61	0.442	0.3	3479.1	6900.3	4179	>100	0.7	0.4	46	0.73	673.5	0.7	357.9	<0.1	3	86.4	1255.6	0.1	<2
1961877	Rock	0.57	0.221	0.4	1808.7	7295.7	323	>100	0.8	0.4	54	0.79	603.6	0.6	254.5	<0.1	3	13.9	626.7	<0.1	<2
1961878	Rock	0.63	1.534	3.2	400.9	>10000	295	>100	1.0	0.2	49	1.90	690.5	0.7	1869.9	<0.1	4	4.9	199.9	<0.1	<2
1961879	Rock	0.67	2.327	3.0	701.0	>10000	259	>100	0.7	0.2	40	3.10	1395.2	0.9	3932.7	<0.1	8	7.9	556.6	0.2	<2
1961880	Rock	0.70	3.466	0.2	504.5	>10000	87	>100	0.6	0.1	35	0.94	200.6	0.4	3931.4	<0.1	2	3.5	441.2	0.1	<2
1961881	Rock	0.58	6.250	0.2	722.1	>10000	187	>100	0.9	0.2	44	0.96	190.7	0.4	6557.5	<0.1	4	5.9	485.0	<0.1	<2
1961882	Rock	0.69	>10	5.7	96.6	>10000	1394	41.7	3.4	1.1	34	2.20	142.8	0.9	54406.2	<0.1	54	25.9	22.6	0.3	<2
1961883	Rock	0.56	2.117	1.9	1070.0	>10000	122	32.4	1.6	0.3	54	0.78	92.7	0.3	2362.6	<0.1	3	6.2	427.0	0.2	<2
1961884	Rock	0.81	2.545	0.7	3171.2	5287.9	322	14.2	1.9	0.7	54	0.70	55.0	1.1	2929.8	<0.1	3	5.9	224.3	<0.1	<2
1961885	Rock	0.70	>10	0.8	250.6	3876.1	45	8.3	1.2	0.3	39	0.56	38.0	<0.1	47112.1	0.2	2	1.5	11.1	0.1	<2

CERTIFICATE OF ANALYSIS

WHI14000238.1

Method	AQ201	AQ201	AQ201	AQ201	AQ201	AQ201	AQ201	AQ201	AQ201	AQ201	AQ201	AQ201	AQ201	AQ201	AQ201	AQ201	AQ201	AQ201	AQ201	AQ201	FA530
Analyte	Ca	P	La	Cr	Mg	Ba	Ti	B	Al	Na	K	W	Hg	Sc	Tl	S	Ga	Se	Te	Ag	
Unit	%	%	ppm	ppm	%	ppm	%	ppm	%	%	%	ppm	ppm	ppm	ppm	%	ppm	ppm	ppm	gm/t	
MDL	0.01	0.001	1	1	0.01	1	0.001	1	0.01	0.001	0.01	0.1	0.01	0.1	0.05	1	0.5	0.2	0.2	50	
1961856	Rock	0.01	0.004	<1	3	0.02	11	<0.001	<1	0.04	<0.001	<0.01	<0.1	<0.01	0.1	<0.1	<0.05	<1	0.5	0.7	
1961857	Rock	<0.01	<0.001	<1	2	<0.01	7	<0.001	<1	<0.01	<0.001	<0.01	<0.1	<0.01	<0.1	<0.1	<0.05	<1	<0.5	0.8	
1961858	Rock	0.23	0.011	<1	2	0.03	11	<0.001	<1	0.07	0.002	0.01	<0.1	<0.01	0.1	<0.1	0.96	<1	0.7	<0.2	
1961859	Rock	0.05	0.002	<1	2	0.02	12	<0.001	<1	0.03	0.001	0.02	<0.1	<0.01	<0.1	<0.1	0.27	<1	<0.5	<0.2	
1961860	Rock	0.20	0.002	<1	3	0.05	23	<0.001	1	0.07	0.002	0.03	<0.1	<0.01	0.3	<0.1	0.59	<1	<0.5	<0.2	
1961861	Rock	0.03	0.005	<1	2	<0.01	13	<0.001	<1	0.03	0.005	0.02	<0.1	0.22	0.2	0.2	0.15	<1	1.4	1.3	122
1961862	Rock	<0.01	0.002	<1	3	<0.01	51	<0.001	<1	0.03	0.002	0.02	2.5	0.07	0.1	<0.1	0.07	<1	0.9	0.6	
1961863	Rock	<0.01	0.001	<1	3	<0.01	22	<0.001	<1	0.04	0.003	0.01	<0.1	0.06	<0.1	0.2	0.10	<1	2.0	2.0	117
1961864	Rock	<0.01	<0.001	<1	2	<0.01	10	<0.001	1	0.02	0.002	0.01	<0.1	0.27	<0.1	<0.1	0.19	<1	2.0	1.8	167
1961865	Rock	<0.01	<0.001	<1	4	<0.01	10	<0.001	2	0.10	0.002	0.01	0.4	<0.01	<0.1	<0.1	<0.05	<1	<0.5	<0.2	
1961866	Rock	0.01	0.001	<1	4	<0.01	10	<0.001	<1	0.17	0.002	0.01	<0.1	<0.01	0.1	<0.1	<0.05	<1	<0.5	<0.2	
1961867	Rock	<0.01	<0.001	<1	2	<0.01	15	<0.001	1	0.08	0.003	0.01	<0.1	0.01	<0.1	<0.1	<0.05	<1	<0.5	0.4	
1961868	Rock	<0.01	<0.001	<1	4	<0.01	13	<0.001	1	0.03	0.002	0.02	<0.1	0.03	0.2	<0.1	<0.05	<1	<0.5	0.5	
1961869	Rock	<0.01	<0.001	<1	3	<0.01	11	<0.001	<1	0.01	0.001	<0.01	<0.1	0.06	<0.1	<0.1	0.11	<1	<0.5	0.4	158
1961870	Rock	<0.01	<0.001	<1	4	<0.01	10	<0.001	<1	0.11	0.002	0.01	<0.1	<0.01	<0.1	<0.1	<0.05	<1	<0.5	<0.2	
1961871	Rock	<0.01	<0.001	<1	2	<0.01	2	<0.001	<1	0.02	<0.001	<0.01	2.0	<0.01	<0.1	<0.1	<0.05	<1	<0.5	0.2	
1961872	Rock	<0.01	<0.001	<1	2	<0.01	4	<0.001	<1	<0.01	0.001	<0.01	1.2	0.02	<0.1	<0.1	0.07	<1	<0.5	0.5	
1961873	Rock	<0.01	<0.001	<1	3	<0.01	3	<0.001	<1	<0.01	<0.001	<0.01	0.3	0.05	<0.1	<0.1	0.29	<1	<0.5	0.3	
1961874	Rock	0.01	0.001	<1	3	<0.01	6	<0.001	<1	0.14	<0.001	<0.01	0.1	0.24	<0.1	<0.1	0.14	<1	<0.5	1.3	411
1961875	Rock	<0.01	<0.001	<1	3	<0.01	5	<0.001	<1	0.03	0.001	<0.01	0.5	0.15	<0.1	<0.1	0.16	<1	0.6	1.4	254
1961876	Rock	<0.01	0.003	<1	3	<0.01	9	<0.001	<1	0.05	0.001	<0.01	0.5	0.62	0.1	<0.1	0.45	<1	1.6	1.9	547
1961877	Rock	<0.01	0.002	<1	3	<0.01	9	<0.001	<1	0.03	0.001	<0.01	0.7	0.18	0.1	<0.1	0.14	<1	<0.5	1.3	393
1961878	Rock	<0.01	0.002	<1	3	<0.01	21	<0.001	<1	0.05	0.002	<0.01	<0.1	0.06	0.1	<0.1	0.19	<1	1.5	1.7	176
1961879	Rock	<0.01	0.001	<1	2	<0.01	18	<0.001	<1	0.01	0.002	0.01	<0.1	0.28	0.2	<0.1	0.54	<1	6.2	5.7	407
1961880	Rock	0.01	<0.001	<1	2	<0.01	5	<0.001	<1	0.11	0.001	<0.01	<0.1	0.55	0.2	<0.1	0.52	<1	0.8	0.8	217
1961881	Rock	<0.01	<0.001	<1	3	<0.01	5	<0.001	1	<0.01	0.001	<0.01	<0.1	0.86	<0.1	<0.1	0.72	<1	2.7	1.5	192
1961882	Rock	<0.01	0.002	<1	2	0.01	21	<0.001	<1	0.05	0.002	0.02	0.3	0.33	0.5	<0.1	0.96	<1	2.6	9.5	<50
1961883	Rock	0.01	<0.001	<1	4	<0.01	5	<0.001	<1	0.19	0.001	<0.01	<0.1	0.62	0.1	<0.1	0.29	<1	<0.5	1.6	
1961884	Rock	<0.01	0.002	<1	3	<0.01	77	<0.001	<1	0.13	0.001	0.01	0.1	0.30	0.6	<0.1	0.18	<1	<0.5	0.6	
1961885	Rock	<0.01	0.002	<1	3	<0.01	15	<0.001	1	0.06	0.001	0.02	0.1	1.31	0.1	<0.1	0.08	<1	<0.5	0.8	<50



www.acmelab.com

Bureau Veritas Commodities Canada Ltd.

9050 Shaughnessy St Vancouver BC V6P 6E5 CANADA

PHONE (604) 253-3158

Client: Klondike Gold Corp.
715 - 675 West Hastings St.
Vancouver BC V6B 1N2 CANADA

Project: LS
Report Date: October 31, 2014

Page: 4 of 5

Part: 3 of 3

CERTIFICATE OF ANALYSIS

WHI14000238.1

Method	Analyte	FA530	MA370
		Au	Pb
Unit		gm/t	%
MDL		0.9	0.02
1961856	Rock		
1961857	Rock		
1961858	Rock		
1961859	Rock		
1961860	Rock		
1961861	Rock	<0.9	
1961862	Rock		
1961863	Rock	<0.9	1.29
1961864	Rock	<0.9	1.61
1961865	Rock		
1961866	Rock		
1961867	Rock		
1961868	Rock		
1961869	Rock	<0.9	
1961870	Rock		
1961871	Rock		
1961872	Rock		
1961873	Rock		
1961874	Rock	<0.9	
1961875	Rock	<0.9	
1961876	Rock	<0.9	
1961877	Rock	<0.9	
1961878	Rock	2.2	1.18
1961879	Rock	2.9	4.31
1961880	Rock	3.5	1.07
1961881	Rock	5.7	1.77
1961882	Rock	37.1	3.89
1961883	Rock		1.05
1961884	Rock		
1961885	Rock	33.9	



www.acmelab.com

Bureau Veritas Commodities Canada Ltd.

9050 Shaughnessy St Vancouver BC V6P 6E5 CANADA

PHONE (604) 253-3158

Client: **Klondike Gold Corp.**
715 - 675 West Hastings St.
Vancouver BC V6B 1N2 CANADA

Project: LS
Report Date: October 31, 2014

Page: 5 of 5

Part: 1 of 3

CERTIFICATE OF ANALYSIS

WHI14000238.1

Method	WGHT	FA430	AQ201	AQ201	AQ201	AQ201	AQ201	AQ201	AQ201	AQ201	AQ201	AQ201	AQ201	AQ201	AQ201	AQ201	AQ201	AQ201	AQ201	AQ201
Analyte	Wgt	Au	Mo	Cu	Pb	Zn	Ag	Ni	Co	Mn	Fe	As	U	Au	Th	Sr	Cd	Sb	Bi	V
Unit	kg	ppm	ppm	ppm	ppm	ppm	ppm	ppm	ppm	ppm	%	ppm	ppm	ppb	ppm	ppm	ppm	ppm	ppm	ppm
MDL	0.01	0.005	0.1	0.1	0.1	1	0.1	0.1	0.1	1	0.01	0.5	0.1	0.5	0.1	1	0.1	0.1	0.1	2
██████	██████	██████	██████	██████	██████	██████	██████	██████	██████	██████	██████	██████	██████	██████	██████	██████	██████	██████	██████	██████
██████	██████	██████	██████	██████	██████	██████	██████	██████	██████	██████	██████	██████	██████	██████	██████	██████	██████	██████	██████	██████
██████	██████	██████	██████	██████	██████	██████	██████	██████	██████	██████	██████	██████	██████	██████	██████	██████	██████	██████	██████	██████
██████	██████	██████	██████	██████	██████	██████	██████	██████	██████	██████	██████	██████	██████	██████	██████	██████	██████	██████	██████	██████
██████	██████	██████	██████	██████	██████	██████	██████	██████	██████	██████	██████	██████	██████	██████	██████	██████	██████	██████	██████	██████

This report supersedes all previous preliminary and final reports with this file number dated prior to the date on this certificate. Signature indicates final approval; preliminary reports are unsigned and should be used for reference only.



www.acmelab.com

Bureau Veritas Commodities Canada Ltd.

9050 Shaughnessy St Vancouver BC V6P 6E5 CANADA

PHONE (604) 253-3158

Client: **Klondike Gold Corp.**
 715 - 675 West Hastings St.
 Vancouver BC V6B 1N2 CANADA

Project: LS
 Report Date: October 31, 2014

Page: 5 of 5

Part: 2 of 3

CERTIFICATE OF ANALYSIS

WHI14000238.1

Method	AQ201	AQ201	AQ201	AQ201	AQ201	AQ201	AQ201	AQ201	AQ201	AQ201	AQ201	AQ201	AQ201	AQ201	AQ201	AQ201	AQ201	AQ201	AQ201	FA530
Analyte	Ca	P	La	Cr	Mg	Ba	Ti	B	Al	Na	K	W	Hg	Sc	Tl	S	Ga	Se	Te	Ag
Unit	%	%	ppm	ppm	%	ppm	%	ppm	%	%	%	ppm	ppm	ppm	ppm	%	ppm	ppm	ppm	gm/t
MDL	0.01	0.001	1	1	0.01	1	0.001	1	0.01	0.001	0.01	0.1	0.01	0.1	0.1	0.05	1	0.5	0.2	50
██████	██████	██████	██████	██████	██████	██████	██████	██████	██████	██████	██████	██████	██████	██████	██████	██████	██████	██████	██████	██████
██████	██████	██████	██████	██████	██████	██████	██████	██████	██████	██████	██████	██████	██████	██████	██████	██████	██████	██████	██████	██████
██████	██████	██████	██████	██████	██████	██████	██████	██████	██████	██████	██████	██████	██████	██████	██████	██████	██████	██████	██████	██████
██████	██████	██████	██████	██████	██████	██████	██████	██████	██████	██████	██████	██████	██████	██████	██████	██████	██████	██████	██████	██████
██████	██████	██████	██████	██████	██████	██████	██████	██████	██████	██████	██████	██████	██████	██████	██████	██████	██████	██████	██████	██████

This report supersedes all previous preliminary and final reports with this file number dated prior to the date on this certificate. Signature indicates final approval; preliminary reports are unsigned and should be used for reference only.



www.acmelab.com

Bureau Veritas Commodities Canada Ltd.

9050 Shaughnessy St Vancouver BC V6P 6E5 CANADA

PHONE (604) 253-3158

Client: **Klondike Gold Corp.**
715 - 675 West Hastings St.
Vancouver BC V6B 1N2 CANADA

Project: LS
Report Date: October 31, 2014

Page: 5 of 5

Part: 3 of 3

CERTIFICATE OF ANALYSIS

WHI14000238.1

Method	FA530	MA370	
		Au	Pb
Analyte		gm/t	%
Unit			
MDL		0.9	0.02
██████	██████		
██████	██████		
██████	██████		
██████	██████		
██████	██████		

QUALITY CONTROL REPORT

WHI14000238.1

Method	WGHT	FA430	AQ201	AQ201	AQ201	AQ201	AQ201	AQ201	AQ201	AQ201	AQ201	AQ201	AQ201	AQ201	AQ201	AQ201	AQ201	AQ201	AQ201	AQ201	AQ201
Analyte	Wgt	Au	Mo	Cu	Pb	Zn	Ag	Ni	Co	Mn	Fe	As	U	Au	Th	Sr	Cd	Sb	Bi	V	
Unit	kg	ppm	ppm	ppm	ppm	ppm	ppm	ppm	ppm	ppm	%	ppm	ppm	ppb	ppm	ppm	ppm	ppm	ppm	ppm	
MDL	0.01	0.005	0.1	0.1	0.1	1	0.1	0.1	0.1	1	0.01	0.5	0.1	0.5	0.1	1	0.1	0.1	0.1	2	
Pulp Duplicates																					
1961645	Rock	1.07	1.238	0.3	2136.9	>10000	110	>100	0.5	0.1	27	0.75	855.7	1.2	1898.0	<0.1	3	9.2	1346.9	0.3	<2
REP 1961645	QC			0.3	2144.3	>10000	110	>100	0.5	0.1	27	0.77	862.3	1.2	948.8	<0.1	3	9.0	1310.0	0.3	<2
1961650	Rock	0.86	0.619	0.6	58.5	7025.4	92	>100	0.9	0.3	80	1.14	886.9	1.5	703.9	<0.1	2	1.0	46.2	0.4	<2
REP 1961650	QC																				
1961917	Rock	0.45	0.086	1.1	309.6	>10000	99	28.8	1.1	0.3	47	0.75	2.9	0.3	37.7	<0.1	24	1.0	16.9	1.6	2
REP 1961917	QC																				
1961666	Rock	0.70	0.019	0.4	10.4	5.9	23	0.3	1.9	3.7	1251	1.66	3.3	0.2	20.8	0.2	10	<0.1	0.1	<0.1	8
REP 1961666	QC		0.018																		
1961667	Rock	0.74	0.080	0.1	3.8	77.4	8	0.7	1.0	1.3	337	1.18	3.4	<0.1	66.1	<0.1	2	<0.1	0.1	1.1	2
REP 1961667	QC			0.1	3.9	82.3	9	0.8	1.1	1.4	342	1.21	2.5	<0.1	83.1	0.2	2	<0.1	0.1	1.1	2
1961863	Rock	0.61	0.569	1.2	281.3	>10000	97	>100	0.7	0.3	54	1.31	139.8	1.1	857.9	<0.1	7	1.9	39.9	<0.1	<2
REP 1961863	QC		0.608																		
1961872	Rock	0.75	0.028	0.3	91.0	2377.6	51	10.2	0.7	0.1	43	0.51	161.2	0.1	13.7	<0.1	<1	1.1	12.5	<0.1	<2
REP 1961872	QC			0.3	90.4	2384.2	49	10.2	0.6	0.2	41	0.50	162.8	<0.1	25.8	<0.1	<1	0.9	12.0	<0.1	<2
1961883	Rock	0.56	2.117	1.9	1070.0	>10000	122	32.4	1.6	0.3	54	0.78	92.7	0.3	2362.6	<0.1	3	6.2	427.0	0.2	<2
REP 1961883	QC																				
Core Reject Duplicates																					
1961916	Rock	0.55	0.010	0.1	1.4	8.8	14	<0.1	1.0	0.5	66	0.53	1.3	<0.1	11.3	<0.1	<1	<0.1	<0.1	<0.1	<2
DUP 1961916	QC		0.014	<0.1	1.3	8.2	14	<0.1	1.1	0.4	54	0.42	0.8	<0.1	10.9	<0.1	<1	<0.1	<0.1	<0.1	<2
1961861	Rock	0.54	0.316	0.4	184.3	9237.0	42	>100	0.7	0.2	43	0.83	93.2	0.5	254.6	0.2	5	1.2	109.8	0.1	<2
DUP 1961861	QC		0.342	0.5	219.9	>10000	49	>100	0.6	0.3	43	0.87	104.5	0.6	160.2	0.2	6	1.3	111.3	0.2	<2
Reference Materials																					
STD AGPROOF	Standard																				
STD AGPROOF	Standard																				
STD AGPROOF	Standard																				
STD AGPROOF	Standard																				
STD CDN-ME-14	Standard																				
STD CDN-ME-9	Standard																				

QUALITY CONTROL REPORT

WHI14000238.1

Method	AQ201	AQ201	AQ201	AQ201	AQ201	AQ201	AQ201	AQ201	AQ201	AQ201	AQ201	AQ201	AQ201	AQ201	AQ201	AQ201	AQ201	AQ201	AQ201	AQ201	FA530
Analyte	Ca	P	La	Cr	Mg	Ba	Ti	B	Al	Na	K	W	Hg	Sc	Tl	S	Ga	Se	Te	Ag	
Unit	%	%	ppm	ppm	%	ppm	%	ppm	%	%	%	ppm	ppm	ppm	ppm	%	ppm	ppm	ppm	ppm	gm/t
MDL	0.01	0.001	1	1	0.01	1	0.001	1	0.01	0.001	0.01	0.1	0.01	0.1	0.05	1	0.5	0.2	50		
Pulp Duplicates																					
1961645	Rock	<0.01	0.001	<1	2	<0.01	11	<0.001	<1	0.01	0.002	0.02	0.7	0.10	<0.1	0.3	0.21	<1	2.4	3.8	930
REP 1961645	QC	<0.01	0.001	<1	2	<0.01	12	<0.001	1	0.01	0.002	0.02	0.6	0.10	<0.1	0.2	0.21	<1	2.4	3.9	
1961650	Rock	<0.01	0.002	<1	3	<0.01	10	<0.001	<1	0.02	0.001	0.01	0.1	0.02	<0.1	0.1	0.09	<1	1.4	1.6	117
REP 1961650	QC																				113
1961917	Rock	0.01	0.002	<1	3	0.03	48	<0.001	<1	0.08	0.001	0.01	0.2	0.11	0.3	0.3	0.53	<1	4.8	4.5	
REP 1961917	QC																				
1961666	Rock	1.45	0.013	<1	2	0.32	89	<0.001	1	0.43	0.004	0.04	<0.1	<0.01	2.0	<0.1	<0.05	1	<0.5	<0.2	
REP 1961666	QC																				
1961667	Rock	0.02	0.001	2	2	0.01	44	<0.001	<1	0.03	0.002	0.02	<0.1	<0.01	0.6	<0.1	<0.05	<1	<0.5	0.2	
REP 1961667	QC	0.02	0.001	2	3	0.01	44	<0.001	<1	0.04	0.002	0.02	<0.1	<0.01	0.6	<0.1	<0.05	<1	<0.5	0.4	
1961863	Rock	<0.01	0.001	<1	3	<0.01	22	<0.001	<1	0.04	0.003	0.01	<0.1	0.06	<0.1	0.2	0.10	<1	2.0	2.0	117
REP 1961863	QC																				116
1961872	Rock	<0.01	<0.001	<1	2	<0.01	4	<0.001	<1	<0.01	0.001	<0.01	1.2	0.02	<0.1	<0.1	0.07	<1	<0.5	0.5	
REP 1961872	QC	<0.01	<0.001	<1	3	<0.01	4	<0.001	<1	<0.01	0.001	<0.01	1.2	0.01	0.1	<0.1	0.07	<1	<0.5	0.5	
1961883	Rock	0.01	<0.001	<1	4	<0.01	5	<0.001	<1	0.19	0.001	<0.01	<0.1	0.62	0.1	<0.1	0.29	<1	<0.5	1.6	
REP 1961883	QC																				
Core Reject Duplicates																					
1961916	Rock	<0.01	0.003	<1	3	0.05	9	<0.001	<1	0.08	0.001	0.02	<0.1	<0.01	<0.1	<0.1	<0.05	<1	<0.5	<0.2	
DUP 1961916	QC	<0.01	0.004	<1	3	0.05	9	<0.001	<1	0.08	0.001	0.02	<0.1	<0.01	0.1	<0.1	<0.05	<1	<0.5	<0.2	
1961861	Rock	0.03	0.005	<1	2	<0.01	13	<0.001	<1	0.03	0.005	0.02	<0.1	0.22	0.2	0.2	0.15	<1	1.4	1.3	122
DUP 1961861	QC	0.04	0.006	<1	2	<0.01	15	<0.001	<1	0.04	0.005	0.02	<0.1	0.26	0.2	0.2	0.18	<1	1.4	1.6	143
Reference Materials																					
STD AGPROOF	Standard																				96
STD AGPROOF	Standard																				98
STD AGPROOF	Standard																				94
STD AGPROOF	Standard																				95
STD CDN-ME-14	Standard																				
STD CDN-ME-9	Standard																				

QUALITY CONTROL REPORT

WHI14000238.1

Method Analyte Unit MDL		FA530	MA370
		Au gm/t	Pb %
	Pulp Duplicates		
	1961645 Rock	0.9	2.01
	REP 1961645 QC		
	1961650 Rock	<0.9	
	REP 1961650 QC	<0.9	
	1961917 Rock		2.96
	REP 1961917 QC		3.00
	1961666 Rock		
	REP 1961666 QC		
	1961667 Rock		
	REP 1961667 QC		
	1961863 Rock	<0.9	1.29
	REP 1961863 QC	<0.9	
	1961872 Rock		
	REP 1961872 QC		
	1961883 Rock		1.05
	REP 1961883 QC		1.05
	Core Reject Duplicates		
	1961916 Rock		
	DUP 1961916 QC		
	1961861 Rock	<0.9	
	DUP 1961861 QC	<0.9	1.09
	Reference Materials		
	STD AGPROOF Standard	<0.9	
	STD AGPROOF Standard	<0.9	
	STD AGPROOF Standard	<0.9	
	STD AGPROOF Standard	<0.9	
	STD CDN-ME-14 Standard		0.49
	STD CDN-ME-9 Standard		<0.02

QUALITY CONTROL REPORT

WHI14000238.1

		WGHT	FA430	AQ201	AQ201	AQ201	AQ201	AQ201	AQ201	AQ201	AQ201	AQ201	AQ201	AQ201	AQ201	AQ201	AQ201	AQ201	AQ201	AQ201	AQ201
		Wgt	Au	Mo	Cu	Pb	Zn	Ag	Ni	Co	Mn	Fe	As	U	Au	Th	Sr	Cd	Sb	Bi	V
		kg	ppm	ppm	ppm	ppm	ppm	ppm	ppm	ppm	ppm	%	ppm	ppm	ppb	ppm	ppm	ppm	ppm	ppm	ppm
		0.01	0.005	0.1	0.1	0.1	1	0.1	0.1	0.1	1	0.01	0.5	0.1	0.5	0.1	1	0.1	0.1	0.1	2
STD CDN-ME-14	Standard																				
STD CDN-ME-9	Standard																				
STD CDN-ME-14	Standard																				
STD CDN-ME-9	Standard																				
STD DS10	Standard			15.1	154.7	153.0	373	1.9	75.5	12.9	876	2.76	47.1	2.6	81.2	7.3	66	2.7	9.6	11.5	44
STD DS10	Standard			14.3	154.0	153.3	369	1.9	74.2	12.8	885	2.70	45.0	2.6	90.9	7.1	65	2.3	9.7	11.9	43
STD DS10	Standard			14.7	156.8	156.7	376	2.0	76.2	13.7	896	2.79	44.3	2.5	121.4	7.4	66	2.6	9.5	12.7	43
STD OXC109	Standard			1.3	33.4	10.5	39	<0.1	69.5	18.2	393	2.72	0.6	0.6	193.2	1.3	125	<0.1	<0.1	<0.1	46
STD OXC109	Standard			1.5	34.1	10.7	42	<0.1	71.0	18.7	398	2.79	<0.5	0.6	205.9	1.3	130	<0.1	<0.1	<0.1	45
STD OXC109	Standard			1.5	33.9	8.2	39	0.7	71.3	18.7	409	2.83	1.8	0.6	187.9	1.4	135	<0.1	<0.1	<0.1	47
STD OXD108	Standard		0.395																		
STD OXD108	Standard		0.414																		
STD OXI121	Standard		1.832																		
STD OXI121	Standard		1.823																		
STD OXN117	Standard		7.747																		
STD OXN117	Standard		7.581																		
STD SP49	Standard																				
STD SP49	Standard																				
STD SP49	Standard																				
STD SP49	Standard																				
STD SP49	Standard																				
STD SQ70	Standard																				
STD SQ70	Standard																				
STD SQ70	Standard																				
STD SQ70	Standard																				
STD OXD108 Expected			0.414																		
STD OXN117 Expected			7.679																		
STD OXI121 Expected			1.834																		
STD DS10 Expected				14.69	154.61	150.55	370	2.02	74.6	12.9	875	2.7188	43.7	2.59	91.9	7.5	67.1	2.49	8.23	11.65	43



www.acmelab.com

Bureau Veritas Commodities Canada Ltd.
 9050 Shaughnessy St Vancouver BC V6P 6E5 CANADA
 PHONE (604) 253-3158

Client: **Klondike Gold Corp.**
 715 - 675 West Hastings St.
 Vancouver BC V6B 1N2 CANADA

Project: LS
 Report Date: October 31, 2014

Page: 2 of 3

Part: 2 of 3

QUALITY CONTROL REPORT

WHI14000238.1

		AQ201	AQ201	AQ201	AQ201	AQ201	AQ201	AQ201	AQ201	AQ201	AQ201	AQ201	AQ201	AQ201	AQ201	AQ201	AQ201	AQ201	AQ201	AQ201	FA530
		Ca	P	La	Cr	Mg	Ba	Ti	B	Al	Na	K	W	Hg	Sc	Tl	S	Ga	Se	Te	Ag
		%	%	ppm	ppm	%	ppm	%	ppm	%	%	%	ppm	ppm	ppm	ppm	%	ppm	ppm	ppm	gm/t
		0.01	0.001	1	1	0.01	1	0.001	1	0.01	0.001	0.01	0.1	0.01	0.1	0.05	1	0.5	0.2	50	
STD CDN-ME-14	Standard																				
STD CDN-ME-9	Standard																				
STD CDN-ME-14	Standard																				
STD CDN-ME-9	Standard																				
STD DS10	Standard	1.06	0.074	18	55	0.77	367	0.079	5	1.06	0.068	0.34	3.4	0.36	2.9	5.3	0.28	5	2.2	5.4	
STD DS10	Standard	1.07	0.073	18	55	0.77	363	0.080	7	1.06	0.068	0.33	3.1	0.30	3.0	5.3	0.28	5	2.2	4.9	
STD DS10	Standard	1.09	0.076	17	59	0.79	351	0.082	7	1.06	0.068	0.34	3.3	0.32	2.9	5.0	0.29	5	1.6	4.1	
STD OXC109	Standard	0.63	0.099	12	55	1.37	52	0.339	2	1.46	0.649	0.40	0.2	<0.01	0.8	<0.1	<0.05	5	<0.5	<0.2	
STD OXC109	Standard	0.63	0.105	12	55	1.39	55	0.348	<1	1.49	0.666	0.41	0.2	<0.01	0.8	<0.1	<0.05	5	<0.5	<0.2	
STD OXC109	Standard	0.67	0.101	12	57	1.43	52	0.365	1	1.50	0.679	0.41	0.2	<0.01	0.9	<0.1	<0.05	5	<0.5	<0.2	
STD OXD108	Standard																				
STD OXD108	Standard																				
STD OXI121	Standard																				
STD OXI121	Standard																				
STD OXN117	Standard																				
STD OXN117	Standard																				
STD SP49	Standard																				60
STD SP49	Standard																				61
STD SP49	Standard																				61
STD SP49	Standard																				60
STD SP49	Standard																				59
STD SQ70	Standard																				155
STD SQ70	Standard																				163
STD SQ70	Standard																				156
STD SQ70	Standard																				163
STD OXD108 Expected																					
STD OXN117 Expected																					
STD OXI121 Expected																					
STD DS10 Expected		1.0625	0.073	17.5	54.6	0.775	359	0.0817		1.0259	0.067	0.338	3.32	0.3	2.8	5.1	0.29	4.3	2.3	5.01	

This report supersedes all previous preliminary and final reports with this file number dated prior to the date on this certificate. Signature indicates final approval; preliminary reports are unsigned and should be used for reference only.

Bureau Veritas Commodities Canada Ltd.

9050 Shaughnessy St Vancouver BC V6P 6E5 CANADA

PHONE (604) 253-3158

Client: **Klondike Gold Corp.**
715 - 675 West Hastings St.
Vancouver BC V6B 1N2 CANADA

Project: LS
Report Date: October 31, 2014

Page: 2 of 3

Part: 3 of 3

QUALITY CONTROL REPORT

WHI14000238.1

		FA530	MA370
		Au	Pb
		gm/t	%
		0.9	0.02
STD CDN-ME-14	Standard		0.51
STD CDN-ME-9	Standard		<0.02
STD CDN-ME-14	Standard		0.49
STD CDN-ME-9	Standard		<0.02
STD DS10	Standard		
STD DS10	Standard		
STD DS10	Standard		
STD OXC109	Standard		
STD OXC109	Standard		
STD OXC109	Standard		
STD OXD108	Standard		
STD OXD108	Standard		
STD OXI121	Standard		
STD OXI121	Standard		
STD OXN117	Standard		
STD OXN117	Standard		
STD SP49	Standard	18.5	
STD SP49	Standard	18.5	
STD SP49	Standard	18.3	
STD SP49	Standard	18.5	
STD SP49	Standard	18.3	
STD SQ70	Standard	39.9	
STD SQ70	Standard	40.0	
STD SQ70	Standard	39.9	
STD SQ70	Standard	40.3	
STD OXD108 Expected			
STD OXN117 Expected			
STD OXI121 Expected			
STD DS10 Expected			

QUALITY CONTROL REPORT

WHI14000238.1

	WGHT	FA430	AQ201	AQ201	AQ201	AQ201	AQ201	AQ201	AQ201	AQ201	AQ201	AQ201	AQ201	AQ201	AQ201	AQ201	AQ201	AQ201	AQ201	AQ201
	Wgt	Au	Mo	Cu	Pb	Zn	Ag	Ni	Co	Mn	Fe	As	U	Au	Th	Sr	Cd	Sb	Bi	V
	kg	ppm	ppm	ppm	ppm	ppm	ppm	ppm	ppm	ppm	%	ppm	ppm	ppb	ppm	ppm	ppm	ppm	ppm	ppm
	0.01	0.005	0.1	0.1	0.1	1	0.1	0.1	0.1	1	0.01	0.5	0.1	0.5	0.1	1	0.1	0.1	0.1	2
STD OXC109 Expected														201						
STD SQ70 Expected																				
STD CDN-ME-14 Expected																				
STD AGPROOF Expected																				
STD SP49 Expected																				
BLK	Blank	<0.005																		
BLK	Blank	<0.005																		
BLK	Blank	<0.005																		
BLK	Blank	<0.005																		
BLK	Blank																			
BLK	Blank		<0.1	<0.1	0.2	<1	<0.1	<0.1	<0.1	<1	<0.01	<0.5	<0.1	<0.5	<0.1	<1	<0.1	<0.1	<0.1	<2
BLK	Blank		<0.1	<0.1	<0.1	<1	<0.1	<0.1	<0.1	<1	<0.01	<0.5	<0.1	<0.5	<0.1	<1	<0.1	<0.1	<0.1	<2
BLK	Blank																			
BLK	Blank																			
BLK	Blank																			
BLK	Blank																			
BLK	Blank		<0.1	0.1	<0.1	<1	<0.1	<0.1	<0.1	<1	<0.01	<0.5	<0.1	<0.5	<0.1	<1	<0.1	<0.1	<0.1	<2
BLK	Blank																			
BLK	Blank																			
BLK	Blank																			
Prep Wash																				
G1-WHI	Prep Blank	<0.005	0.4	3.2	2.2	35	<0.1	0.8	3.5	448	1.66	18.7	0.4	1.3	2.0	22	<0.1	0.6	<0.1	21
G1-WHI	Prep Blank	<0.005	0.5	3.8	1.7	32	<0.1	0.9	3.6	435	1.66	1.4	0.3	1.1	1.8	21	<0.1	<0.1	<0.1	20

QUALITY CONTROL REPORT

WHI14000238.1

		AQ201	AQ201	AQ201	AQ201	AQ201	AQ201	AQ201	AQ201	AQ201	AQ201	AQ201	AQ201	AQ201	AQ201	AQ201	AQ201	AQ201	AQ201	AQ201	FA530	
		Ca	P	La	Cr	Mg	Ba	Ti	B	Al	Na	K	W	Hg	Sc	Tl	S	Ga	Se	Te	Ag	
		%	%	ppm	ppm	%	ppm	%	ppm	%	%	%	ppm	ppm	ppm	ppm	%	ppm	ppm	ppm	gm/t	
		0.01	0.001	1	1	0.01	1	0.001	1	0.01	0.001	0.01	0.1	0.01	0.1	0.05	1	0.5	0.2	50		
STD OXC109 Expected																						
STD SQ70 Expected																						159.5
STD CDN-ME-14 Expected																						94
STD AGPROOF Expected																						60.2
STD SP49 Expected																						
BLK	Blank																					
BLK	Blank																					
BLK	Blank																					
BLK	Blank																					
BLK	Blank																					<50
BLK	Blank	<0.01	<0.001	<1	<1	<0.01	<1	<0.001	<1	<0.01	<0.001	<0.01	<0.1	<0.01	<0.1	<0.1	<0.05	<1	<0.5	<0.2		
BLK	Blank	<0.01	<0.001	<1	<1	<0.01	<1	<0.001	<1	<0.01	<0.001	<0.01	<0.1	<0.01	<0.1	<0.1	<0.05	<1	<0.5	<0.2		
BLK	Blank																					<50
BLK	Blank																					<50
BLK	Blank																					
BLK	Blank																					
BLK	Blank	<0.01	<0.001	<1	<1	<0.01	<1	<0.001	<1	<0.01	<0.001	<0.01	<0.1	<0.01	<0.1	<0.1	<0.05	<1	<0.5	<0.2		
BLK	Blank																					<50
BLK	Blank																					<50
Prep Wash																						
G1-WHI	Prep Blank	0.56	0.039	6	2	0.42	57	0.065	1	0.97	0.104	0.10	0.1	<0.01	2.6	<0.1	<0.05	4	<0.5	<0.2		
G1-WHI	Prep Blank	0.45	0.041	5	2	0.42	53	0.061	<1	0.86	0.093	0.09	0.5	<0.01	2.3	<0.1	<0.05	4	<0.5	<0.2		

QUALITY CONTROL REPORT

WHI14000238.1

		FA530	MA370
		Au	Pb
		gm/t	%
		0.9	0.02
STD OXC109 Expected			
STD SQ70 Expected		39.62	
STD CDN-ME-14 Expected			0.495
STD AGPROOF Expected		0	
STD SP49 Expected		18.34	
BLK	Blank		
BLK	Blank		
BLK	Blank		
BLK	Blank		
BLK	Blank	<0.9	
BLK	Blank		
BLK	Blank		
BLK	Blank	<0.9	
BLK	Blank	<0.9	
BLK	Blank		<0.02
BLK	Blank		<0.02
BLK	Blank		
BLK	Blank	<0.9	
BLK	Blank		<0.02
BLK	Blank	<0.9	
Prep Wash			
G1-WHI	Prep Blank		
G1-WHI	Prep Blank		