

Assessment Report
On Geological Mapping, Rock and Soil Geochemical Sampling
On the
BLACK COFFEE PROPERTY

All-Terrane Mineral Exploration Services

Rancheria area, south-eastern Yukon
YE22201 – YE22222 (BLACK COFFEE 1-22), YE22231 – YE22232 (BLACK COFFEE 23-24)

NTS Sheet 105B01

Watson Lake Mining District

Project Duration: August 28 – 31, 2015

Effective date: September 30, 2015

By: Carl M. Schulze, BSc, PGeo
All-Terrane Mineral Exploration Services
35 Dawson Rd
Whitehorse, Yukon Y1A 5T6
Tel: 867-633-4807
Fax: 867-633-4883
allterrane@northwestel.net

January 15, 2016

1. Summary

In August, 2015, a short preliminary exploration program was conducted on the BLACK COFFEE 1-24 claims located in the Cassiar Silver Belt in southeastern Yukon Territory, Canada. The 504-hectare property was staked in June, 2015 by Carl Schulze of Whitehorse, Yukon. The property is located directly north of the Alaska Highway about 9 km east of Rancheria, Yukon, 97 air-km west of Watson Lake and about 265 air-km ESE of Whitehorse, Yukon. The 2015 work, based at the Rancheria Lodge, was essentially a due-diligence-style program focusing on at least six previously known lead-zinc-silver prospects.

The Black Coffee property is located along the eastern margin of the district-scale mid-Cretaceous granitic Cassiar Batholith, extending NNW along the boundary between Cassiar Platform passive continental margin carbonate sediments to the east, and Yukon-Tanana Terrane Paleozoic to Mesozoic metasediments and metaigneous rocks to the west. The area targeted in 2015 specifically covers the eastern margin of the batholith and adjacent Lower Cambrian Rosella Formation limestone to dolostone intercalated with lesser amounts of Lower Cambrian Boya Formation fine clastic sediments.

Six mineralized showings, all located within the Rosella Formation carbonates, were discovered by 1986 and described in a 1986 assessment report: the SD, Highway, WP, RS, Mike's Show and Top Show prospects. Most of these were visited in 2015 and found to consist of small occurrences of locally high grade lode-style silver bearing galena-sphalerite mineralization associated with strong near-black manganese staining. Research of historical documents following the field program also revealed a 1953 assessment report describing two other small high-grade silver-lead-zinc showings: the No. 1 Vein within the Cassiar Batholith and the carbonate-hosted McLean Showing.

The 2015 program also resulted in discovery of two "new" prospects: the Webster Prospect, directly east of the RS Zone, and the Burke Prospect, northeast of the Top Show. The Webster prospect, returning values to 765 g/t silver, is associated with a separate alteration signature to that of the known showings, representing a new exploration target setting. Short notes in the 1953 report suggest the Mclean Showing may have a similar alteration and fabric signature to the Webster Zone, and that these may be contiguous.

The Burke Prospect, consisting of a large trench extending along a shear zone separating dolomitic carbonates from limonitic phyllites, contains a small rhodochrosite occurrence returning 1.560 g/t gold and 198 g/t silver, the first known gold-bearing rhodochrosite occurrence in the Cassiar Silver Belt. Several other rhodochrosite occurrences within the property remain unsampled.

The preferred orientation for mineral emplacement is an ENE – WSW trending lineation manifested largely as shear zones, one of which hosts both the Webster and RS prospects. This has been interpreted as the latest of three major structural settings in the property area.

Mineralization is dominantly "intrusion-related", centered on the Cassiar Batholith. However, a lack of significant hydrothermal veining, dykes, apophyses and quartz veining suggests that hydrothermal fluid movement was limited in the area visited in 2015; little evidence for this was noted within the

carbonates, although this may be partially due to the ductile nature of the host rocks. An alternate setting is that of Mississippi Valley-type (MVT) lead-zinc mineralization within the Rosella Formation carbonates, which may have contributed some base metal content. The high silver content, not typical of MVT mineralization, is likely intrusion-related, suggesting the deposit setting here represents a hybrid between intrusion-related and MVT-style settings.

The proposed 2016 exploration program is recommended to have two foci: 1. further detailed exploration of the property between, and inclusive of, the RS - Webster Zone and the Burke Zone, and; 2. Reconnaissance-style exploration across the balance of the property. The former should consist of grid soil sampling, detailed geological mapping and rock sampling, focusing on Webster Zone-style mineralization, particularly towards the McLean Showing area. The remainder of the property should also undergo grid soil sampling on a more reconnaissance-style basis, at wider line and station spacings.

This phase is recommended to require a three-person crew consisting of a project geologist and two field assistants for a 14-day field program including weather days and travel time, based at Rancheria Lodge. The program should take place in late June to early July, to allow time for a follow-up program later in 2016. Proposed expenditures, including pre-program preparation, digitization of maps and report writing stand at **CDN\$45,350**; with a 10% contingency this figure stands at **CDN\$49,885**.

Table of Contents

	<u>Page</u>
1. Summary	2
2. Introduction	6
2.1 Introductory Statement	6
2.2 Terms, Definitions and Units	6
2.3 Terms of Reference	7
3. Reliance on Other Experts	8
4. Property Description and Location	8
5. Accessibility, Climate, Local Resources, Infrastructure and Physiography	9
6. History	12
7. Geological Setting and Mineralization	12
7.1 Regional Geological Setting	12
7.2 Property Geology	13
7.3 Mineralization	15
7.3.1 Mineralization Discovered in 1948	15
7.3.2 Mineralization Identified in 1986 and 2015	17
8. Deposit Setting	19
9. Work Program	20
9.1 2015 Rock Sample Results	20
9.2 2015 Soil Sample Results	22
10. Sample Preparation, Analysis and Security	22
10.1 Sampling Methodology	22
10.2 Sample Analysis and Security	23
11. Data Verification	24
11.1 Field Data Verification	24
11.2. Analytical Data Verification	25
11.2.1: Rock Samples	25
11.2.2 Soil Samples	26
12. Mineral Processing and Metallurgical Testing	26
13. Mineral Resource Estimates	26
14. Adjacent Properties	26
15. Other Relevant Data	26
16. Discussion and Conclusions	27
16.1 Discussion	27
16.2 Conclusions	28
17. Recommendations	30
17.1 Recommendations	30
17.2 Recommended Budget	31
18. References	32

Tables

	<u>Page</u>
Table 1: Claim Status, Black Coffee Property, January, 2016	9

List of Figures

Figure 1: Project Location	10
Figure 2: Mineral Tenure	11
Figure 3: Dolostone, Webster Zone near RS zone	14
Figure 4: Brecciated dolostone at Breccia Pit	15
Figure 5: Sedimentary breccia, WP Zone	16
Figure 6: Webster Zone galena stringer mineralization	17
Figure 7: Rhodochrosite, Burke Zone	18
Figure 8: Steel galena, Breccia Pit	19

Appendices

Appendix 1: Statement of Qualifications	33
Appendix 2: Statement of Expenditures	34
Appendix 3: Sample Descriptions	35
Appendix 4: Original Results	38

Maps

Map 1: Geology Map	In Pocket
Map 2: Sample Locations	In Pocket
Map 3: Sample Results	In Pocket

2. Introduction

2.1 Introductory Statement

From August 28 – 31, 2015, a short preliminary exploration program, focusing mainly on due diligence re-sampling of historic workings, was conducted on the Black Coffee Property, located 9 km east of Rancheria, Yukon, 97 air-km west of Watson Lake and about 265 air-km ESE of Whitehorse, Yukon. In June, 2015, the Black Coffee 1-24 claims were staked to cover the former Sterling (Zulu Lady) prospect (Minfile # 105B 002). The 2015 program consisted of preliminary geological mapping and due-diligence style rock sampling, as well as limited reconnaissance-style soil sampling.

Carl Schulze, geological consultant with All-Terrane Mineral Exploration Services, a Whitehorse-based contract exploration company, supervised all work done on the program. Mr. Schulze was present on the property throughout the program.

2.2 Terms, Definitions and Units

All costs contained in this report are reported in Canadian dollars. Distances are reported in metres (m) and kilometres (km). “GPS” refers to Global Positioning System with co-ordinates reported in UTM grid, Zone 8, NAD 83 projection. A “Minfile Occurrence” refers to documented mineral occurrences on file with the Yukon MINFILE Mineral Inventory, Ministry of Energy, Mines and Resources, Government of Yukon.

“ICP-MS” stands for “Inductively coupled plasma mass spectrometry”. The term “ppm” refers to parts per million, which is equivalent to grams per metric tonne (g/t); ppb refers to parts per billion per metric tonne. “Ma” refers to million years. The symbol “%” refers to weight percent unless otherwise stated. QAQC refers to quality assurance/ quality control.

“Au” is the symbol for the chemical element gold and Ag is the symbol for silver. The following symbols pertain to elements analyzed during ICP-MS analysis, and include elements described in subsequent sections.

Elemental abbreviations used in this report are:

Au: Gold	Mg: Magnesium
Ag: Silver	Mn: Manganese
Al: Aluminum	Mo: Molybdenum
As: Arsenic	Na: Sodium
B: Boron	Ni: Nickel
Ba: Barium	P: Phosphorous
Be: Beryllium	Pb: Lead
Bi: Bismuth	S: Sulphur
Ca: Calcium	Sb: Antimony
Cd: Cadmium	Sn: Tin
Ce: Cerium	Sr: Strontium
Co: Cobalt	Ta: Tantalum
Cr: Chrome	Te: Tellurium
Cu: Copper	Th: Thorium
Fe: Iron	Ti: Titanium
Ga: Gallium	Tl: Thallium
Hg: Mercury	U: Uranium
In: Indium	V: Vanadium
K: Potassium	W: Tungsten
La: Lanthanum	Y: Yttrium
Li: Lithium	Zn: Zinc
Rb: Rubidium	Zr: Zirconium
Se: Selenium	

Minerals found on the property include galena (lead sulphide), sphalerite (zinc sulphide), chalcopyrite (copper-iron sulphide), rhodochrosite (magnesium carbonate), dolomite (calcium-magnesium carbonate), pyrite and pyrrhotite (iron sulphides).

2.3 Terms of Reference

This report will focus on the results of all aspects of the 2015 program.

The author has produced this report to satisfy filing requirements with the 2014 Yukon Mineral Exploration Program (YMEP), Ministry of Energy, Mines and Resources, Government of Yukon.

At this point the claims are privately held by Mr. Carl Schulze, PGeo, of All-Terrane Mineral Exploration Services. Mr. Schulze designed, managed and supervised the 2014 program, and was on site throughout. "Official" services as a Qualified Person are not required; however this report will incorporate the same standards of disclosure required of a public company.

3. Reliance on Other Experts

The majority of pre-existing information was derived from two assessment reports: Assessment Report #062276 titled "Report on the Zulu Lady Property, Watson lake Mining District", for Chase Resource Corporation by F. Marshall Smith; and Assessment Report #091862 titled "Assessment Report on the Zulu Lady Property, Watson lake Mining District", for Chase Resource Corporation by Stephen F. Coombs, Peter G. Dasler and F. Marshall Smith. Further information was provided in a 1953 report, Assessment Report #092052 titled "Summary of Report of 1948 season", for the Yukon Ranges Prospecting Syndicate by D.R. Derry. Historic data and some geological information are also provided by the Yukon Minfile, Energy Mines and Resources, Government of Yukon.

4. Property Description and Location

The Black Coffee claim block consists of 24 full-sized Yukon quartz mining claims covering 504 hectares (1,764 acres) (Figures 1 and 2). The property is located directly north of the Alaska Highway about 9 km east of Rancheria, Yukon, 97 air-km west of Watson Lake and about 265 air-km ESE of Whitehorse, Yukon. The property is centered at UTM co-ordinates 420500E, 6661950N, Zone 9 (the RS showing), within NTS map sheet 105B01 in southeastern Yukon Territory, Canada.

The property is located within the traditional territory of the Liard First Nation (LFN), a member of the Kaska Dena Council. Activities in 2015, consisting of due-diligence style rock sampling and geological mapping of known prospects, as well as limited soil sampling, are "Class 1" activities, not requiring a permit. However, at the time of staking a "Class 1 Notification" stating proposed activities is required to be submitted 25 days prior to the onset of the program. The LFN is consulted on the proposed program, and the Watson Lake Mining Recorder of the Ministry of Energy, Mines and Resources may extend the review period by another 25 days or deny the program. This notification was submitted by Mr. Schulze, and was followed in 25 days by authorization to proceed.

Mechanized exploration, particularly trenching and drilling beyond established threshold levels, will require a minimum of a Class 2 operating permit, and may require a Class 3 permit.

No environmental liabilities are known on the property, and the only significant past disturbance consists of historic trenching in the Ni showing area. The property is located on Crown Land with no encumbrances other than the aforementioned Class 1 notification and the right-of-way directly adjacent to the Alaska Highway.

Table 1 lists the claim status of the Black Coffee claim block.

Table 1: Claim Status, Black Coffee Property, January, 2016

Grant No's	Claim Name	Recording Date	Expiry Date
YE22201 - YE22222	BLACK COFFEE 1-22	23/06/2015	23/06/2021
YE22231 - YE22232	BLACK COFFEE 23-24	23/06/2015	23/06/2021

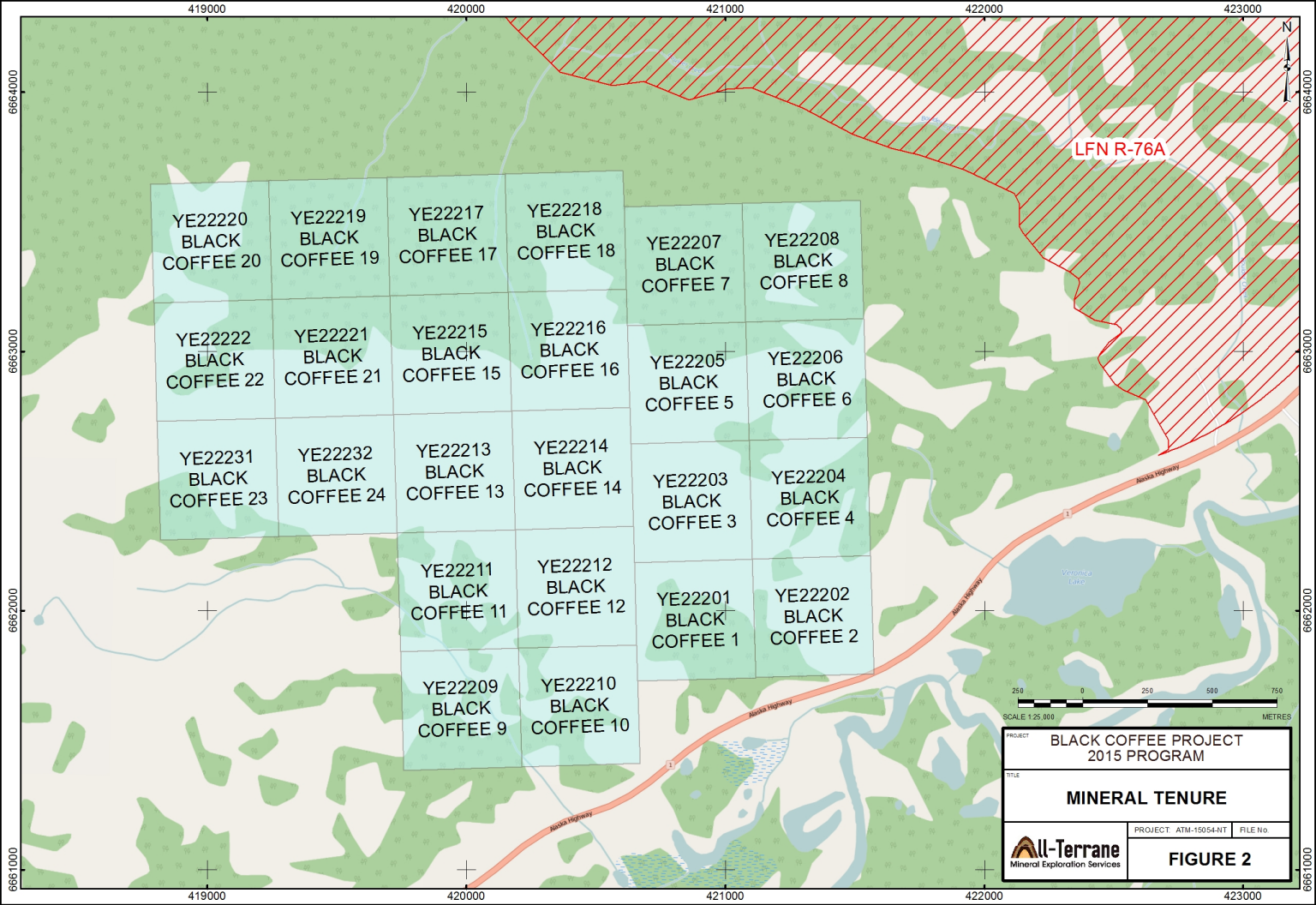
5. Accessibility, Climate, Local Resources, Infrastructure and Physiography

The Black Coffee property may be accessed on foot from the Alaska Highway located directly to the south. A network of historic CAT trails extends across the property, from the Highway Zone area to the Top Show (Map 1). Maps contained within the 1986 assessment reports indicate the trail extended directly from the highway; however, the highway has undergone reconstruction since 1986 and the original access point has been obliterated.

The property area has a dry sub-arctic continental climate, with some intermittent moderation in winter caused by south winds originating from the Gulf of Alaska. Weather records for Rancheria are limited; however, at Watson Lake, average July highs stand at 21.5°C and average lows stand at 9.0°C, and average January high temperatures stand at -17.5°C, with lows averaging -27.5°C. Precipitation at Watson Lake is moderate, averaging 416.4 mm annually, with 262.0 mm falling as rain and 196.1 mm falling as snow. Temperatures at Rancheria are slightly more moderate, with somewhat higher precipitation resulting from the montane setting.

At the Rancheria Lodge, located 9 km to the west along the Alaska Highway, year-round fuel services, lodging and meals are available. Watson Lake (2013 population, 1,474) is a full service town with good accommodations, groceries, hardware, fuel and vehicle services, a continually staffed airport and an available work force. Highway 37 (the Stewart-Cassiar Highway) extends south from the Alaska Highway 22 km west of Watson Lake to Kitwanga along the Yellowhead Highway. Whitehorse (2013 pop. 28,028) is a full service city with an available workforce, including exploration and diamond drilling services and an international airport.

The Black Coffee property covers moderate to locally steep, rugged terrain ranging in elevation from about 2,900 feet (880 m) to a maximum of 4,661 feet (1,420m). The property is large enough to contain small mine, mill and tailings facilities, although the fairly rugged terrain may limit potential for these, particularly the tailings ponds, to be built. Vegetative cover ranges from semi-mature lowland coniferous forest to near-alpine tundra at high elevations, with abundant buckbrush and sparse trees. Outcrop and rubblecrop exposure is fair to limited at lower elevations but very good, and locally almost continuous, above the 1,100-metre level. The area has undergone glaciation, although till is of significant thickness only at lower elevations.



YE22220 BLACK COFFEE 20	YE22219 BLACK COFFEE 19	YE22217 BLACK COFFEE 17	YE22218 BLACK COFFEE 18	YE22207 BLACK COFFEE 7	YE22208 BLACK COFFEE 8
YE22222 BLACK COFFEE 22	YE22221 BLACK COFFEE 21	YE22215 BLACK COFFEE 15	YE22216 BLACK COFFEE 16	YE22205 BLACK COFFEE 5	YE22206 BLACK COFFEE 6
YE22231 BLACK COFFEE 23	YE22232 BLACK COFFEE 24	YE22213 BLACK COFFEE 13	YE22214 BLACK COFFEE 14	YE22203 BLACK COFFEE 3	YE22204 BLACK COFFEE 4
		YE22211 BLACK COFFEE 11	YE22212 BLACK COFFEE 12	YE22201 BLACK COFFEE 1	YE22202 BLACK COFFEE 2
		YE22209 BLACK COFFEE 9	YE22210 BLACK COFFEE 10		

LFN R-76A



PROJECT		BLACK COFFEE PROJECT 2015 PROGRAM	
TITLE		MINERAL TENURE	
PROJECT: ATM-15054-NIT		FILE No.	
All-Terrane Mineral Exploration Services		FIGURE 2	

6. History

The general vicinity of the Rancheria area was first prospected in the 1870s when placer gold was found in the Liard River and its tributaries, including Cabin, Rainbow, Scurvy and Sayyee Creeks (Coombes et al, 1986). Exploration essentially ceased until the commencement of bush plane access in the 1930s and intensified following completion of the Alaska Highway in the 1940s.

The present property was first staked in 1947 as the STERLING 1-18, 21-22 and 25-28 claim block by the Western Ranges Prospecting Syndicate (Western Ranges), which conducted geological mapping and hand trenching in 1947 and 1948. By the end of the 1947 field season, Western Ranges had identified at least four showings: the No 1 Vein, hosted within the granodioritic Cassiar Batholith, the No. 2 (Derry) Vein (re-named as the WP Zone); the No 3 (Lake) Vein (re-named as the Highway Zone) and the McLean Showing to the north, as well as several other galena occurrences in the central property area (Derry, 1953). Western Ranges was incorporated into Yukon Ranges Exploration in 1949 (Yukon Minfile, updated 1998).

The property area was re-staked as the JRS claims in August, 1951, then as the BIMBO claims in October, 1961, and as the LEE claims in October 1963. In December, 1967, P. Bochon restaked the areas as the SILVER claims, then as the HC claims by J.E. Kelpin, and again as the RF claims in June, 1973 by T. Flint. During this time, workings consisted of a 50-foot open cut, a few bulldozer trenches and several hand pits. The property was again re-staked as the OLIE claims in October, 1975 by J. Melynychuk, who conducted hand trenching. In May, 1985 the area to the east was staked as the DAVID claims (Yukon Minfile, updated 1998).

From October 1985 to July 1986 the property was re-staked as the ZULU LADY 1-32 claims by G. Medford and R. Stack who performed trenching, sampling and mapping in 1987 before transferring the claims to the Chase Resource Corporation in 1986 (Yukon Minfile, updated 1998). During this time, six significant showings were identified; from south to north these are the Highway, SD, WP, RS, Mike's Show and the Top Show prospects. The 1986 assessment report also describes the location of the Breccia Pit between the WP and RS showings.

The property was re-staked as the S 1-6 claims in October, 1997 by J. Suffesick, and again in October, 2009 as the SILVERJACK 1-6 claims by M. Stack (Website, Yukon Mining Recorder).

7. Geological Setting and Mineralization

7.1 Regional Geological Setting

The Black Coffee property is located within the western margins of the Cassiar Platform, a pericratonic terrane which includes displaced strata of the North American miogeosyncline (Mortenson et al, 2005). The Cassiar Platform consists of Upper Proterozoic to Upper Triassic passive continental sediments deposited in quiet shallow water environments (Gordey and Makepeace, 2001). The main constituents

of the Cassiar Platform in the property area belong to the Atan group, consisting mainly Lower Cambrian Rosella Formation carbonates and Lower Cambrian Boya Group fine clastic sediments. To the north, the Cassiar Platform consists of Upper Proterozoic Ingenika Group variably calcareous coarse to fine clastic sediments with lesser carbonate units.

The Cassiar Platform lies in northwest-southeast trending contact with highly deformed, variably metamorphosed Paleozoic to Mesozoic Yukon Tanana Terrane metasedimentary and metaigneous rocks. The contact is marked mainly by the northwest-trending mid-Cretaceous Cassiar Batholith, an intrusive body roughly 350 km long and from 5 to 40 km wide along the western edge of Ancestral North America (Mortenson et al, 2005). K-Ar biotite age dating to 2005 provided ages ranging from 103 +/- 10 Ma to 89 +/- 4 Ma from "cataclastic granite". The western margin of the Cassiar Batholith in this area is marked by the northwest-southeast trending Cassiar Fault. Smaller assemblages of Devonian to Upper Triassic Slide Mountain Terrane marginal basin volcanic and sedimentary rocks occur near the western margin of the Cassiar Platform.

The regional stratigraphy and structural setting trends northwest – southeast, marked by the trend of major faults and lithological units. Poole et al (1960) stated that the Cassiar Batholith marks the trend of a regional anticlinal structure flanked on both sides by northwest-trending synclines. Poole suggests the eastern synclinal area represents isoclinal folding; however, Smith, Coombes et al suggest the repetitive nature of certain units combined with the lack of others suggest imbricate thrust faulting may have occurred.

7.2 Property Geology

The Black Coffee property covers the eastern margin of the Cassiar Batholith where it lies in contact with Rosella Formation limestone and dolostone and lesser Boya Formation fine to medium grained clastic rocks. Here, the Cassiar Batholith consists of coarse grained, fairly equigranular biotite granite. Coombes et al described the batholith as consisting of "approximately 40% alkali feldspars, 30% quartz, 20% plagioclase, 10% biotite and muscovite and less than 1% zircon and magnetite" (Coombes, Smith et al, 1986).

Mapping in 1948 and 1986, completed to a good level of sophistication, indicate that, in southern property areas, the Cassiar Platform lies in direct contact with Rosella Formation carbonates. Further north, near the WP showing, a thin wedge of Boya Formation phyllite and siltstone extends NNW between the intrusion and the carbonate units. The 1948 mapping shows a distinct unit of slate and shale forming the contact with the batholith and bounded to the east by the phyllite unit, also shown by the 1986 mapping. The 1948 work indicates the Rosella Formation carbonates form a large north-south trending unit consisting of a dolostone unit to the west directly bounded to the east by a limestone unit, in turn bounded by schist in far eastern areas. The 1986 mapping did not extend sufficiently eastward to confirm this.

Preliminary mapping in 2015 roughly confirmed early mapping in the central property area (Map 1, Geology). The southern area is underlain by the Cassiar Batholith in direct contact with the carbonates. A narrow unit of Boya Formation phyllite and siltstone terminates roughly 100 metres southeast of the WP Zone, becoming considerably wider northwest of this zone. The eastern limit of the “shale and schist” unit identified in 1948 was mapped as Boya Formation medium to fine grained quartzite.

The majority of Cassiar Platform rocks consist of Lower Cambrian Rosella Formation limestone, grading to dolostone to the north. In southern areas, white to light grey limestone is medium to coarsely crystalline, likely due to contact metamorphism, and shows weak banding, likely after bedding. Farther north, limestone is more finely crystalline and light grey in colour, weathering light brown. The unit grades progressively to dolostone to the north, although is locally intercalated with limestone. The dolostone is very finely crystalline to almost aphanitic, white to cream coloured, and locally resembles silicified carbonate, although actual significant silicification was not noted. The dolostone typically shows light brown weathering, which is locally chocolate-brown particularly at the Webster prospect and at other mineralized areas.



Figure 3: Dolostone, Webster Zone near RS zone

Coombes has identified three major structural fabrics in the Black Coffee property area. The earliest consists of bedding and slaty cleavage, followed by a second northwest-trending lineation that includes folding and crenulation cleavage. The third and youngest lineation consists of east-west to ENE – WSW trending folding, small fault zones and locally pervasive jointing. Coombes stated this is the favoured orientation for emplacement of silver-bearing galena in the Rancheria area.

Year-2015 mapping indicates that the dominant bedding and foliation orientation is NNW – SSE, with variable steep dips suggesting tight folding. Although several small shear zones trend similarly, the dominant shearing orientation is ENE – WSW, again dipping steeply, mainly northwards but with some south-dipping lineaments as well. This is most pronounced in the RS – Webster zone area (Map 1), and supports the conclusions by Coombes, Smith et al.

A broad area of brecciation first identified in 1948 by Derry extends NNE from the Derry Vein (WP Showing) to the RS – Webster showing area. Here, heterolithic angular dolostone fragments ranging from cobble to sand-sized include strongly hematitic and locally mineralized clasts with an absence of a uniform matrix, suggesting brecciation postdated the majority of mineralizing events. One small occurrence, the “Breccia Pit”, now nearly fully excavated, occurs within this zone.



Figure 4: Brecciated dolostone at Breccia Pit

7.3 Mineralization

7.3.1 Mineralization Discovered in 1948

The 1948 report by Derry describes four significant occurrences: the granite-hosted No. 1 Vein, within the Cassiar Batholith; the No 2 (Derry) vein, coincident with the WP Zone; the No. 3 Vain, now called the Highway Showing; and the McLean Showing.

The No. 1 Vein was not visited in 2015 or described by Coombes, Smith et al. Derry states the zone consists of fracture-filling quartz with minor calcite, chlorite and mica, with native silver, ruby silver and galena in a fracture zone striking at 140° and dipping at 85° to the southwest (Derry, 1953). Derry noted this was the first showing of native silver near the Alaska Highway. Sampling returned values from grab sampling to 103 oz./ton (3,526 g/tonne), and include 11.7 opt Ag over 10.5 inches (400 g/t Ag across 0.26 m), and 5 oz./ton Ag over 23 inches (171 g/t Ag across 0.58 m) (Derry, 1954).

The No. 2 Vein (Derry Vein) is located along the eastern margin of the Cassiar Batholith and is hosted by brecciated limestone to dolostone. Derry reported an irregular zone from 1.8 to 2.5 metres in width consisting of pyrite, galena and sphalerite, and including narrow stringers of “fairly pure” galena. Derry reported that the silver: lead ratio is about 3 oz./ton (103 g/t) Ag to 1% Pb. Sampling of the WP Zone by Marshall Smith in 1986 returned low to background silver values. This zone was visited in 2015, and found to consist of brecciated weakly scoroditic phyllite mixed with limestone hosting narrow quartz-carbonate stringers and fine grained pyrite. A rock cut directly to the east revealed weakly limonitic limestone with minor galena stringers. This is the only location of brecciated sediments having this fabric visited by this author to date. 2015 results are discussed in Section 9: Exploration.



Figure 5: Sedimentary breccia, WP Zone

The No. 3 Vein (Highway Zone) consists of galena stringers and small pods in grey limestone within 10 metres of the batholith contact. A grab sample returned 42.0 oz./ton (1,438 g/t) Pb and 62.27% Pb (Derry, 1953). In 1986, the Highway Zone was extensively sampled by Coombes, Smith et al, returning values from 0.22 to 8.90 oz./ton (7.5 to 304.7 g/t) Ag. This zone was not visited in 2015.

The McLean Showing, also not visited in 2015 or described by Coombes, consists of “seams of galena 2 to 3 inches wide” within “rusty and brecciated” dolomite. A grab sample of galena returned 4.28 oz./ton (146.5 g/t) Ag and 12.79% Pb. Derry reported that Mr. McLean felt the showing may be larger than the No. 2 showing (Derry, 1954).

The 1948 mapping also revealed several areas of galena veining within the dolostone, as well as coarse crystalline quartz veining within schists, east of the 2015 project area.

7.3.2 Mineralization Identified in 1986 and 2015

The 1986 program identified six major prospects; from south to north these are the Highway, SD, WP, RS, Mike's Show and the Top Show prospects. The Highway and WP Zones are described in the previous section.

The SD showing consists of galena veining within grey limestone, and marked by strong manganese staining, typical of most of the mineralized occurrences identified to date. Grab sampling by Smith in 1986 returned values of 4.55 and 9.25 oz./ton (117.8 and 316.7 g/t) respectively. Although the 1986 report describes a sizeable zone, the 2015 work suggests this may be of more limited extent.

The RS showing, described in the 1986 report, consists of strongly fractured to brecciated dolostone along a NNW trending, steeply west-dipping shear zone. No assay values were reported in the 1986 report. In 2015, prospecting from 50 to 100 metres ENE revealed fracture filling and replacement-style galena in sheared, strongly fractured dolostone, weathering a distinct chocolate brown colour. Galena veinlets occur across a width of up to 15 metres. The Webster Zone is located within the larger brecciated zone extending to the McLean Showing area. A rhodochrosite occurrence was identified in 2015 directly north of the RS showing.



Figure 6: Webster Zone galena stringer mineralization

The Mike's Show represents the largest area of mineralization delineated in the 1986 program, and may be coincident with an area of "coarse galena in float" identified in 1948. Mineralization here consists both of fracture-filling galena stringers associated with strong black manganese staining, and as carbonate veins, with galena occurring as tabular accretions along vein surfaces. Although the showing area is quite large, mineralization occurs as small discontinuous zones within this. Sampling in 1986 returned values from 3.53 to 39.48 oz./ton (120.9 to 1351.7 g/t) Ag. Grab sampling at the D-18 location, in the western part of the Mike's Show, returned values from 0.30 to 6.09 oz./ton (10.3 to 208.5 g/t) Ag. Rhodochrosite was identified in a trench in the southwestern Mike's Show area.

The Top Show prospect is located near the top of the large hill within the claim block. Here, sampling of galena veining returned values from 0.23 to 13.50 oz/ton (7.9 to 462.2 g/t). The 2015 program failed to identify galena mineralization but did re-establish the location of an east-west trending shear zone of strongly limonitic brecciated dolostone.

The 2015 program also re-established the presence of a large north-south trench roughly along a similarly oriented shear zone within intercalated phyllites and dolostone. The phyllites include individual beds with strong limonitic alteration after sulphides within an envelope of moderately but pervasively limonitic clastic sediments and carbonates. This occurrence, now called the “Burke Prospect”, was not mentioned in the 1986 report. Of interest is another narrow rhodochrosite zone near the south end of the excavations.



Figure 7: Rhodochrosite, Burke Zone

The Breccia Pit was excavated prior to 1986, with only a few residual cobbles of massive galena-sphalerite-chalcopryrite mineralization remaining in excavated material. These cobbles suggest mineralization occurred as a small, high grade replacement-style pod associated with late calcite within strongly brecciated dolostone.



Figure 8: Steel galena, Breccia Pit

8. Deposit Settings

The deposit setting is somewhat enigmatic. Smith, Coombes et al (1986) suggest that the setting is that of “intrusion-related mineralization”, where ions of silver, lead, zinc and other metallic elements become concentrated in residual “hydrothermal” fluids during final solidification of a magmatic melt. These metal-bearing fluids are then ejected along open space or permeable zones outbound from the intrusion, where metal ions combine with sulphur ions in the fluid and are deposited as silver bearing sulphide minerals, mainly galena and sphalerite, with lesser chalcopyrite and “barren” iron sulphides. Here, the intrusion is the felsic Cassiar Batholith which has been emplaced into Rosella Formation shallow water carbonates having high background concentrations of lead, zinc, silver and related pathfinder elements. The fluids may also incorporate metal ions from country rock through remobilization of connate waters moving through the carbonate strata.

In this model several specific local deposit settings may result, essentially any that involve hydrothermal fluid movement. These include all vein or “lode” style settings, including quartz +/- carbonate veining or carbonate veining alone, where vein, stringer or stockwork-style mineralization is emplaced along areas of open-space or permeable zones, such as fault or fractured shear zones. A second setting is that of metasomatic or “skarn” or replacement-style mineralization, where metal-bearing hydrothermal fluids, typically silica-enriched, react with calcareous or carbonate host rock forming metal-bearing “calc-silicate” mineralization. Skarn settings tend to be small and somewhat irregular, although high grade deposits can be economically viable. Replacement-style mineralization is formed in a similar manner, but tends to occur as larger, more laterally continuous zones, due to its typical stratiform or stratabound nature. “Fort Knox”-style intrusive-hosted sheeted vein deposits, with several economically viable or

producing examples within the Tintina Gold belt, also are classed as “intrusive-related mineralization” but are more applicable to gold deposits.

Although the Black Coffee property is located within the Cassiar silver belt, where several deposits, including the Silver Hart Deposit held by CMC Metals Ltd, and the Silvertip Mine, held by JDS Silver, are spatially related to the Cassiar Batholith, mineralization may have also partially resulted from other deposit mechanisms. The Black Coffee property area lacks abundant dyke emplacement and hydrothermal alteration typical of most intrusion-related systems. The hypothesis by Smith, Coombes et al that high background metal values exist within host Rosella Formation carbonates suggests mineralization may have characteristics of “Mississippi Valley-Type (MVT) settings. Here, ions of lead, zinc, and iron within shallow water sediments in passive continental margin environments are mobilized due to compaction within low-temperature fluids into areas of high porosity amenable to formation of fracture-filling mineralization. Mineralized zones are virtually always associated with dolomitization of host limestones, and other alteration signatures include minor silicification, jasperoid and calcite development, with barite and fluorite occurring as ore or gangue minerals (Guilbert and Park, 1986). MVT deposits are considered as having a doubtful igneous connection, and typically lack significant precious-metal concentrations.

At this time, the Cassiar silver belt has characteristics of both Intrusion-related and MVT deposits. Mineralization at the Black Coffee property may represent a hybrid of the two, with development of earlier MVT-style settings followed by reactivation due to intrusive activity.

9. Exploration

The four-day 2015 program was conducted by the following three personnel:

Carl Schulze, BSc, PGeo:	Project Geologist
Rick Zuran, BSc:	Field Geologist
Howard Coyne:	Field technician

A total of 38 rock and 5 soil samples were collected, results are shown in Appendix 4.

9.1 2015 Rock Sample Results

Sampling of the SD showing returned low silver values, with the best result being 3.0 g/t Ag with 0.138% Pb, 0.861% Zn and anomalous Cd, Sb, Ga and As values from a 0.75-metre chip sample of trench wall material (Appendix 3). It is possible that higher grade material may have been removed, or that the trench sampled in 2015 may have been a different one from that described in previous literature.

Sampling of the fine phyllite-limestone breccia at the WP Zone returned anomalous gold values of 108 and 109 ppb Au, with strongly anomalous values of 0.777% and 0.760% As respectively. Lead values

were at background values; however, zinc values stood at 20.8 and 825 ppm respectively. This metal signature is unique among those obtained during the 2015 program. Continuous chip sampling of altered limestone with minor galena stringers along a rock-cut directly to the east returned low silver values with moderately elevated As values and near-background Pb and Zn values.

A 0.45-metre chip sample at the pre-delineated RS zone returned a value of 4.3 g/t Ag, 0.259% Pb and 0.255% Zn, with 0.283% As and anomalous Cd and Sb values. A sample taken about 25 metres north returned 53.1 g/t Ag, 471 ppm Pb and 826 ppm Zn, with elevated Cd and Sb values. Grab and composite grab sampling at the newly identified Webster Zone returned high silver values from 6.1 to 765 g/t, with three values exceeding 350 g/t. Lead values ranged from 0.483% to 3.55%, and zinc values ranged from 0.127% to 0.550%. High silver and base metal values are associated with weakly to moderately anomalous Cd, Cu, Sb and Ga values, and only weakly elevated As values. Stringer-style lead-zinc mineralization extends a further 50 metres to the east, returning values from 0.12 to 0.469% Zn, 0.0496 to 0.259% Pb with anomalous Cd values; however silver values were low, ranging from 0.7 to 4.3 g/t. Assay results show strong magnesium enrichment, due to the dolomitization of host limestone. A sample taken roughly 75 metres west of the "original" RS showing returned 10.6 g/t Ag, 0.140% Pb and 0.138% Zn with elevated As and Sb values, indicating potential for other mineralized pods along the ENE-WSW trending shear zone west of the RS showing. Manganese values are strongly anomalous; however the Webster Zone lacks the near-black manganese staining visible at other prospects. The chocolate brown colour likely results partially from manganese enrichment.

At the Mike Zone, a 1.0-metre chip sample returned a value of 39.8 g/t Ag with 1.75% Pb, 1.04% Zn, with anomalous Cd, Cu, As and Sb values. Sampling elsewhere returned lower values, although a composite grab sample of carbonate veining with platy galena returned a value of 27.3 g/t Ag with 1.80% Pb, 2.65% Zn, 185 ppm Cd and elevated As and Sb values. Gold values were also weakly elevated, ranging from 9 to 32 ppb.

Sampling of the east-west trending shear zone at the Top Show returned low to weakly elevated metal values. The highest value was returned from a 2.0-metre chip sample returning 13.9 g/t Ag, 438 ppb Pb, 114 ppb Zn and elevated Sb and As values.

At the Burke Zone, sampling of a 5-cm thick limonitic bed returned 9.0 g/t Ag, 0.579% Pb, 1.27% Zn, 1.40% As, 136 ppm Sb, 40 ppb Au and strongly anomalous values of La, Cd and Cu. The rhodochrosite occurrence returned the only high gold value known to date within the Cassiar silver belt. A grab sample of this returned 1.560 g/t Au with 198 g/t Ag, 169 ppm Pb, 311 ppm Zn, 2.0 ppm Cd, 98 ppm Sb and 446 ppm As. Re-analysis of this returned a value of 1.530 g/t Au and >100 g/t Ag. The high and strongly repeatable gold value, combine with high gold pathfinder values but lower base metal values, represents a distinct geochemical signature for this property.

Sampling of residual excavated material at the Breccia Pit returned silver values from 485 to 1,360 g/t Ag, with Pb values from 4.96% to 6.13% Pb, 6.16% to 14.60% Zn, 1.42% to 2.75% As, 201 to 446 ppm Sb, 161 to 375 ppm Cd, 434 to 648 ppm Cu and 154 to 190 ppb Au. Unfortunately no notable mineralization remains in place at the site.

With the exception of the Breccia Pit, the majority of high silver values are associated with high magnesium values, indicating a dolomitic host rock, likely resulting from dolomitization of limestone. Compared to crustal abundance, almost all rock samples showed weakly anomalous values of molybdenum (Mo), and all returned high Sb values.

9.2 2015 Soil Sample Results

Of the five soil samples obtained in 2015, only one returned an elevated silver value of 1.1 g/t Ag with 10 ppb Au, 501 ppm As, 63.1 ppm Pb, and 16 ppm Sb. This sample was taken about 200 metres west, and along strike, of the shear zone hosting the RS prospect, possibly along its western extension into the Cassiar Batholith (Zuran, pers comm). Two other samples nearby returned background metal values. Two other samples to the south, also along the intrusion boundary, returned low silver values but anomalous values of Pb, Zn, As and Sb (Appendix 4, Map 2). Although the samples are downslope of the Breccia Pit and the Webster Zone, they were taken from heavily vegetated areas with strong soil development at least 125 metres downslope of the former and 330 metres downslope of the latter, therefore potentially representing other, more local sources.

10.0 Sample Preparation, Analysis and Security

10.1: Sampling Methodology

All geochemical sampling was subject to rigorous parameters, including detailed descriptions of each sample. Rock samples were obtained using an Estwing rock hammer, and located in the field using a non-differential Global Positioning System (GPS) instrument. Samples were placed in plastic bags designed specifically for rock sampling. A tag with the unique sample number, supplied by AGAT Laboratories, was placed in the bag; the sample number was written on both sides of the bag using "Magic Markers". The sample numbers were also written on a soft metal "Butter Tag"; the tags were attached to the sample locations in the field. All samples, including soil and silt samples, are accompanied by a photograph of the sample site.

Rock samples were recorded as to location (UTM - NAD 83), sample type (grab, composite grab, chip, etc.), exposure type (outcrop, rubblecrop, float, etc.), formation, lithology, modifier (for textural or structural descriptions), colour, degrees of carbonate presence and silicification, other alteration if applicable, economic mineralization including estimated amounts, date, sampler and comments (Appendix 3a). Minimum sample weight was 0.5 kg, although samples tend to be larger than this. Care was taken during rock sampling to obtain as representative a sample as possible, including a comprehensive description of sample types. Chip samples are most representative of true grades, followed by composite grabs, then by single piece grab samples.

Soil samples were taken by a “Geotool”, with a small pick end on one side to aid in depth penetration. Soil samples were recorded as to location (UTM –NAD 83), horizon, depth, slope angle, colour, presence of permafrost, vegetation type, surficial geology, fragment lithology (if known), percent organics, date, sampler and comments (Appendix 3b). If a particular parameter could not be determined, particularly for fragment lithology, no record was made. Samples were preferably taken of C-horizon material, although sampling of A or B horizon soil was done where C-horizon material was unavailable. This was preferable to omitting the sample. The minimum original sample weight was 0.25 kg. Sample numbers supplied by AGAT Laboratories were scratched onto a small metal “butter tag” and tied on to the station location. Samples were placed in kraft bags, with a tag supplied by AGAT showing the unique sample number placed in the bag, and the sample number written in “Magic Marker” on both sides of the bag. The bags were then dried as much as possible before shipping.

Variability in results of soil sampling may be caused by depth of overburden, slope angle, vegetative cover, if any, and outcrop exposure, with lower values expected in flat areas with thick overburden. Gold and silver ions are less mobile also, suggesting that high precious metal values represent a local source.

Field data was entered into Microsoft Excel spreadsheet format, and later matched with analytical results. This process was continually re-checked to ensure the correct results are associated with the particular descriptions.

The routine and repetitive methodology of soil sampling should eliminate any chance of bias; metal values should accurately represent actual amounts per site. Soil anomalies may be transported, depending on slope and groundwater conditions; detailed records of slope, vegetation, soil conditions are made to determine probability of transportation. Despite rigorous sampling parameters, it is still possible for a nugget to enter the sample and provide an isolated high value; this is called the “Coarse Gold Effect”, possibly applicable to silver where native silver is known.

10.2 Sample Analysis and Security

All rock samples were placed in thick plastic industry standard sample bags, sealed with thick plastic serrated “Zap Straps” and sent in a similarly sealed rice bag to a preparatory laboratory of AGAT Laboratories at Whitehorse, Yukon, an analytical laboratory with ISO 9001:2000 certification and ISO/IEC 17025 certification. Sealed rice bags were personally handed by Carl Schulze directly to the Whitehorse AGAT facility. All rock samples were crushed to ensure that 75% of the material passed through a 2mm (10-mesh) screen using a Jones riffler splitter or rotary split. The resulting material was then pulverized so that 85% of the material could pass through a 75-micron size (200-mesh) screen; then a 30-gram sample of this underwent fire assay analysis with atomic absorption finish. This technique provides gold analysis ranging from 0.001 to 10.0 g/t gold.

Soil samples were dried at 60° C, and then underwent crushing in order that 75% of the material passed through a 2mm (10-mesh) screen using a Jones riffler splitter or rotary split. The resulting material was

then pulverized so that 85% of the material could pass through a 75-micron size (200-mesh) screen; the fine fraction then underwent gold analysis by 30-gram fire assay with ICP – AES finish, providing a detection limit of 0.001 g/t Au. A Rocklabs Boyd Crusher with RSD combo and TM-2 Pulverisers are routinely utilized during preparation of all samples, including core samples (AGAT website, 2012).

All samples were also analyzed by 45-element ICP to test for abundances of Ag, Al, As, B, Ba, Be, Bi, Ca, Cd, Ce, Co, Cr, Cu, Fe, Ga, Hg, In, K, La, Li, Mg, Mn, Mo, Na, Ni, P, Pb, Rb, S, Sb, Sc, Se, Sn, Sr, Ta, Te, Th, Ti, Tl, U, V, W, Y, Zn and Zr. Values for Ag exceeding 100.0 g/t from ICP analysis were re-analyzed by gravimetric analysis. Values for Zn, Pb and As exceeding 10,000 ppm (1.0%) were analyzed by over limit (OL) analysis.

AGAT Labs provides comprehensive in-house quality-control, using numerous blanks to test for any potential contamination, confirming that no detectable contamination has occurred. AGAT also conducts repeated in-house standard sampling for all 45 elements involved in ICP analysis and gold to determine accuracy of analysis.

11.0 Data Verification

11.1. Field Data Verification

The 2015 program was designed as a due-diligence exercise to verify the results of 1986 sampling, focusing on the SD, WP, R.S., Mike's Show and Top Show prospects. The Breccia Pit was also re-sampled, although no results from this were reported in the 1986 report.

Results from 2015 sampling at the SD zone failed to repeat high silver and base metal results from the 1986 work, but did confirm the presence of some mineralization. No significant metal values were reported from 1986 work on the WP zone; therefore the 2015 work repeated the low values returned. No sample values from the RS Zone were listed in the 1986 report, although 2015 sampling of the actual zone and areas directly to the north did return elevated metal values, to a maximum of 53.1 g/t Ag and 11.00% Zn, confirming the presence of mineralization.

At the Top Show, the sites of the 1986 samples returning values to 13.50 opt (462 g/t) Ag could not be located. However, a 2.0-metre chip sample at the "Top Shear" returned a value of 13.9 g/t Ag, 438 ppm Pb and 114 ppm Zn, sufficient to confirm the presence of silver at the prospect. A written request for re-analysis of the pulps from Sample RE5671781, taken from the rhodochrosite showing in the large trench northeast of the Top Show was honoured. Here, an original value of 1.560 g/t Au is supported by a replicate value of 1.530 g/t gold.

2015 sample results at the Mike's Show showed the closest correlation to 1986 values. A 1.0-metre chip sample taken in 2015 returned a value of 39.8 g/t Ag, 1.75% Pb and 1.04% Zn. Grab sampling in 1986 returned values ranging from 3.53 to 39.48 opt (120.8 – 1351.7 g/t) Ag. Chip samples tend to return considerably lower values than grab samples when targeting the same occurrence; although the earlier

grab samples still returned proportionally higher values, the 2015 chip sample confirmed the presence of silver and base metals at this prospect.

Sampling of residual material from the Breccia Pit returned values ranging from 485 to 1,360 g/t (14.2 to 39.7 opt) Ag. Historic sampling mentioned in the 1986 report returned values to 120 opt Ag.

11.2. Analytical Data Verification

11.2.1: Rock Samples

Due to the brief nature of this program, no quality control samples, such as “Standards” and blank samples, were inserted into the stream. However, AGAT conducts in-house quality control, both through re-analysis of select samples and insertion of standards in the sample stream.

Three samples underwent automatic replicate analysis; these are Samples RE5671710, RE5671769 and RE5671782 respectively. In all cases, the majority of individual elements analyzed in the ICP-OES package returned repeat values within 5% of the original value. Re-analysis of silver in Sample RE5671769 returned a value of 13.4 g/t Ag, compared with an original value of 11.1 g/t, a variance of 18.8% (Appendix 4). This is a potentially significant variation, although no re-analysis was provided for samples having very high original silver values.

Re-analysis of arsenic in Sample RE5671782 returned a value of 87 ppm, compared with 109 ppm in the original, a variance of 22.4%. Elsewhere, re-analysis showed strong repeatability, including higher-grade values in Sample RE5671710 where an original value of 7770 ppm As returned a replicate value of 7510 ppm As.

Re-analysis of lead values showed strong repeatability at highly anomalous values. In Sample RE5671769, an original value of 4830 ppm Pb returned a value upon re-analysis of 4840 ppm; Sample RE5671782, having an original value of 3770 ppm returned a replicate analysis value of 3740 ppm. Re-analysis of zinc also showed good repeatability, with variability ranging from 1.0 to 3.9%.

The elements that show the lowest levels of reproducibility are antimony (Sb) and phosphorous (P). Variability rates for antimony range from 6.3% to 16.3%, with the greatest variability returned from the sample with the highest original value of 45 ppm, returning a repeat value of 53 ppm. Antimony is an important pathfinder element for silver and gold. Variability rates for phosphorous range from 16.2% to 23.8%; this is significant, although phosphorous is a less important element for this setting of mineralization.

Re-analysis of gold returned variability rates from 5.7 to 28.6%, although the high rates were returned from samples having near-background original values. The best repeatability was returned from Sample RE5671710, where the original value of 108 ppb Au returned a value of 102 ppb.

Re-analysis of in-house standards returned values ranging from 97% to 101% of the known values, with the majority returning values of 99 or 100% of known values, indicating a high level of accuracy of analysis.

11.2.2 Soil Samples

Only one sample, RE5671725, underwent in-house re-analysis. The only element undergoing ICP-OES analysis that returned variability greater than 10% was molybdenum (Mo), with a variability of 20.1%. This is not an important pathfinder element in this mineralogical setting. Gold showed a variability of 40%, with an original: replicate ratio of 10:14. The values are low enough that this level of variability is not unusual and not necessarily significant.

12. Mineral Processing and Metallurgical Testing

There has been no mineral processing or metallurgical testing on the property to date.

13. Mineral Resource Estimates

No mineral resource estimates have been done on mineralized prospects within this property

14. Adjacent Properties

There are no adjacent properties to the BLACK COFFEE property, either presently (January, 2016) or in the recent past.

15. Other Relevant Data

To the best of this author's knowledge there is no other information or explanation necessary to make this report understandable and not misleading.

16. Discussion and Conclusion

16.1 Discussion

Results from the 2015 program confirmed the presence of lead-zinc-silver sulphide mineralization, typically associated with strong manganese staining, at the SD, RS and Mike's Show prospects, and at the Breccia Pit. However, the SD and RS prospects are small, with limited potential to host mineralized zones of significant size. Mineralization at the "Mike's Show" prospect is somewhat more widespread; sampling during the 2015 program returned metal values that are high enough to support the validity of earlier grades. The Breccia Pit was also re-sampled, resulting in base metal and silver values comparable to those from earlier workers; however, no mineralization was found in place and the prospect is essentially mined out. The Highway Zone was not visited during this program.

Two significant findings were made in 2015. The first is the discovery of the "Webster Prospect", located directly east of the RS Prospect. The Webster Prospect consists of fracture filling galena within sheared dolomitized limestone, resulting in a chocolate brown alteration. There is a notable absence of black manganese staining despite anomalous manganese values, a distinct feature from the known prospects suggesting a distinct alteration assemblage. Dolomitization of limestone is an important exploration tool in this area. The chocolate brown alteration, possibly a result of manganese combined with dolomitization, rather than black manganese staining, represents a "new" exploration target for the area. Silver values decrease to the northeast, suggesting a possible separate structural feature influencing silver deposition at the highest grade areas. Both the RS and Webster prospects are located in a common ENE trending shear zone, which likely extends into the Cassiar Batholith. One rock sample taken along the shear zone about 75 metres west of the RS Showing returned a value of 10.6 g/t Ag with 0.14% Pb, 0.138% Zn and 5.1 g/t Cd, suggesting other mineralized showings may occur along this shear zone. This shear zone represents the most important structural feature identified to date, confirming the preference of mineralization to occupy the ENE-trending lineation.

The second is the identification of a significant gold value of 1.560 g/t with 198 g/t silver, within a small rhodochrosite occurrence at the Burke Prospect, consisting of a large north-south trench not mentioned in the 1986 report. The strong repeatability of results suggests gold is evenly distributed throughout the showing, rather than occurring as coarse gold. Although a gold-rhodochrosite association is not unknown in some deposit models, this is the first such occurrence known to this author in the Cassiar Silver Belt. Several other rhodochrosite occurrences were located during this program, but were not sampled; no historical rhodochrosite sampling is described within the property area. The presence of gold is also indicated by the weakly auriferous arsenical breccia along the margin of the batholith at the WP Showing.

Mapping and prospecting in 1948 identified another prospect, the McLean Showing, not mentioned in the 1986 report or located in 2015. A 1953 report on the 1048 work stated that seams of galena 2-3 inches wide were located in a rusty brecciated dolomite, from which a sample returned 4.28 opt (146.5 g/t) silver and 12.79% lead. The discoverer, McLean, stated the zone may be larger than the No. 2 (WP) zone. Although the location cannot be accurately determined from the attached sketch map, it appears

to be about 80 – 100 metres ENE of the Webster Zone. The “rusty” weathering may represent chocolate-brown alteration as opposed to the near-black manganese staining, suggesting this occurrence has similar geochemical and alteration characteristics as the Webster Prospect, and may represent an extension of it.

The 1948 mapping also identified the “No 1 Vein” within the Cassiar Batholith. Although the vein is narrow, it represents the potential for other intrusion-related mineralized occurrences, and the recognition of this as a possible deposit setting. The presence of native silver suggests a reducing environment within the intrusive setting.

Other observations include the high background values of antimony and molybdenum. Antimony is a typical pathfinder element for gold and silver and does show enrichment in certain environments here. However, the ubiquitously anomalous values suggest a high background concentration within the carbonates, possibly indicating pre-intrusion mineralization. The high molybdenum values are more enigmatic, as molybdenum is not typical of non-porphyritic intrusion-related mineralization. One further observation is the weak trend of increasing gold content from south to north.

Mineralization to date is indicative of an intrusion-related system, supported by the proximity of deposits and zones to the Cassiar Batholith. This is further supported by the 2015 discovery of auriferous rhodochrosite. However, the lack of obvious hydrothermal alteration and quartz veining, at least in the areas visited in 2015, suggests the host carbonates may have contained subeconomic amounts of Mississippi Valley-type (MVT) lead-zinc mineralization which was subsequently remobilized and mixed with silver-copper-gold bearing hydrothermal fluids of the Cassiar Batholith.

16.2 Conclusions

The following conclusions can be made from results of the 2015 program, combined with earlier results:

Numerous lead-zinc-silver prospects found in or prior to 1986 tend to be small, high grade showings, marked by strong manganese staining. The largest of these is the “Mike’s Show”.

The Webster Zone, located along the eastern extension of a shear zone hosting the RS Zone, represents a distinct and previously unrecognized setting, marked by fracture-filling lead-zinc-silver mineralization in dolomitized limestone having “chocolate-brown” weathering but lacking strong manganese staining.

The Webster Zone may be contiguous with a showing discovered in 1948 called the “McLean Showing” to the ENE. Short notes in the 1953 report summarizing the 1948 work suggest this may have a similar alteration and fabric signature to the Webster Zone.

The Burke Prospect, not mentioned in the 1986 report, includes a small rhodochrosite occurrence, sampling of which returned significant gold and silver values. Although an association of gold with rhodochrosite is not unknown, this represents the first known such occurrence in the Cassiar Silver Belt. Other unsampled rhodochrosite occurrences exist within property boundaries.

Another high grade silver showing, the “No 1 Vein” discovered in 1948, occurs along a shear zone within the Cassiar Batholith. This was not known during the 2015 program, and indicates that an intrusion-hosted structurally controlled lead-zinc-silver setting may be viable.

The preferred orientation for mineral emplacement is the ENE – WSW trending lineation manifested largely as shear zones. This, interpreted as the latest of three major structural settings in the property area, hosts the Webster and RS prospects.

Mineralization is dominantly “intrusion-related”, centered on the Cassiar Batholith. However, a lack of significant hydrothermal veining, dykes, apophyses and quartz veining suggests that hydrothermal fluid movement was limited; little evidence for this was noted within the carbonates. The Rosella Formation carbonate country rock may have contributed some base metal content from earlier MVT-style settings, which was then incorporated into metal-bearing fluids from the intrusion.

Gold values, though low, tend to increase slightly from south to north. The rhodochrosite occurrences may be increasingly more abundant to the north also, although this may be a function of outcrop exposure. Still, there may be increased potential for gold occurrences farther to the north.

17. Recommendations

17.1 Recommendations

To date, the majority of exploration has taken place in the Rosella Formation carbonates directly east of the Cassiar Batholith, and has not focused on areas further east and north, or within the Cassiar Batholith itself. No exploration outside of this area was reported in the 1986 report, although physical evidence, in the form of old CAT roads and some trenches, exists, particularly to the west.

The proposed 2016 exploration program is recommended to have two foci: 1. further detailed exploration of the property between, and inclusive of, the RS - Webster Zone and the Burke Zone, and; 2. Reconnaissance-style exploration across the balance of the property. At the former, grid soil geochemical sampling, with a line spacing of 100 metres and a 50-metre station spacing, is recommended to cover the entire area between these prospects. This area should also undergo detailed geological mapping and rock sampling, where applicable, focusing on identification of dolomitized zones and rhodochrosite occurrences. The McLean Showing should be located, with particular attention focused on the area between this and the Webster Prospect.

The remaining property area, including areas south of the detailed grid, should undergo reconnaissance soil sampling at a line spacing of 200 metres, with a 100-metre sample spacing. In eastern and northwestern areas the soil lines should extend to the northern boundaries, whereas in central areas these should not extend beyond the upper ridgeline where topography may inhibit effective surveying. The north-central areas beyond the ridgeline should be covered by two contour soil lines instead. All areas should also undergo geological mapping, prospecting and rock sampling.

The ultimate objective of this program is to determine viable drill targets for subsequent exploration programs. This phase is recommended to require a three-person crew consisting of a project geologist and two field assistants for a program of ten days in the field, as well as two weather days, and two days of travel time. The program is recommended to take place in late June to early July, to minimize effects of winter frost and to allow time for a follow-up program later in 2016. Proposed expenditures, including pre-program preparation, digitization of maps and report writing stand at **CDN\$45,350**; with a 10% contingency this figure stands at **CDN\$49,885**.

17.2 Recommended Budget

Personnel, Geologist: 15 person-days @ \$600/day:	\$10,200
Personnel, Field Assistants: 28 person-days @ \$300/days:	\$ 8,400
Rock sampling: 80 samples @ \$35/sample:	\$ 2,800
Soil sampling: 365 soils @ \$32/soil:	\$11,680
Sample "standards":	\$ 200
Accommodations, 42 person/days @ \$160/day:	\$ 6,240
Mileage: 855 km @ \$0.62/km:	\$ 530
Field office supplies:	\$ 250
Field supplies:	\$ 400
Field-total:	\$40,700

Digitization: 25 hours @ \$60/hr:	\$ 1,500
Report writing: 5 days @ \$600/day:	\$ 3,000
Report/ digitization expenses:	\$ 150
Sub-total:	\$45,350
<u>10% Contingency:</u>	<u>\$ 4,535</u>
Proposed Total:	\$49,885

18. References

Coombes, S.F., Dasler, P.G., and Smith, F.M, 1986: "Assessment Report on the Zulu Lady property, Watson Lake Mining District, Rancheria Area, Yukon Territory", Assessment Report #091862, filed with the Watson Lake Mining Recorder, Ministry of Energy, Mines and Resources, Government of Yukon.

Derry, D.R., 1953: "Summary of Report of 1948 Season" (on the Sterling Property), Originally filed in 1948 with the Department of Mines and Technical Surveys, Ottawa, Ontario. Re-filed by W.H. Poole in 1986 to the Mineral Resource Division, Indian and Northern Affairs Canada, Whitehorse, Yukon and available on the website of the Yukon Geology Survey.

Gordey, S.P., Makepeace, A.J. 2001: Bedrock Geology, Yukon Territory, Geological Survey of Canada, Open File 3754; and Exploration and Geology services Division, Yukon Indian and Northern Affairs Canada, Open File 2001-1.

Mortensen, J.K., Sluggett, C., Liverton, T., and Roots, C., 2005: "Uranium-lead ID-TIMS and LA-ICP-MS ages for the Cassiar and Seagull batholiths, Wolf Lake map area, southern Yukon", In: Yukon Exploration and Geology, 2005, Yukon Geology Survey, Ministry of Energy, Mines and Resources, Government of Yukon.

Smith, F.W., 1986: "Report on the Zulu Lady Property, Watson Lake Mining District", Assessment Report #062276, filed with the Watson Lake Mining Recorder, Ministry of Energy, Mines and Resources, Government of Yukon.

Wheeler, J.O., McFeely, P. 1991: Tectonic Assemblage Map of the Canadian Cordillera and Adjacent Parts of the United States of America, Geological Survey of Canada. Map 1712A.

Yukon Geological Survey, 2013: Yukon "Minfile", Yukon Geology Program, Dept. of Energy Mines and Resources, Government of Yukon.

Websites:

Agat Laboratories: <http://www.agatlabs.com/>

Yukon Energy, Mines and Resources Library Catalogue: <http://virtua.gov.yk.ca:8080/?theme=emr>

Yukon Geology Survey: <http://www.geology.gov.yk.ca/>

Yukon Mining Recorder: <http://www.yukonminingrecorder.ca/>

Appendix1. Certificate of Author

I, Carl M. Schulze, PGeo, hereby certify that:

a) I am a self-employed Consulting Geologist and sole proprietor of:

All-Terrane Mineral Exploration Services
35 Dawson Rd
Whitehorse, Yukon Y1A 5T6

b) This certificate applies to the assessment report entitled: "Assessment Report on Geological Mapping, Rock and Soil Geochemical Sampling on the Black Coffee Property, All-Terrane Mineral Exploration Services" dated Jan 15, 2016 (the "Assessment Report").

c) I am a graduate of Lakehead University, Bachelor of Science Degree in Geology, 1984. I am a member in good standing of the Association of Professional Engineers and Geoscientists of British Columbia (APEGBC), Lic No. 25393. I have worked as a geologist for a total of 30 years since my graduation from Lakehead University.

d) My most recent personal inspections of the property occurred from Aug 28-31st, 2015, for an elapsed period of 4 actual field days.

e) I am responsible for all Sections of the Technical Report.

f) I am the holder of the Black Coffee Project and am therefore the owner.

g) I have read the Instrument and the Assessment Report. This is an Assessment Report, and is not meant to be filed with any Securities Commission, rather with the Whitehorse Mining Recorder, Ministry of Energy, Mines and Resources, Government of Yukon.

h) At the effective date of the assessment report, to the best of my knowledge, information and belief, the Report contains all scientific and technical information that is required to be disclosed to make the report not misleading.

Dated this 15th Day of January, 2016

"Carl Schulze"

Carl Schulze, BSc, Peg
Address: 35 Dawson Rd
Whitehorse, Yukon Y1A 5T6
Telephone: 867-633-4807
Fax: 867-633-4883
E-mail: allterrane@northwestel.net

Appendix 2: Statement of Expenditures

Expenditure type	No. of units	Cost/ unit	Total amount
Wages: C. Schulze	4	\$ 500.00	\$ 2,000.00
Wages: R. Zuran	4	\$ 500.00	\$ 2,000.00
Wages: H. Coyne	4	\$ 225.00	\$ 900.00
Rocks (average amt)	38	\$ 40.76	\$ 1,589.64
Soils	5	\$ 28.50	\$ 142.50
Mileage	732	\$ 0.62	\$ 453.84
Accommodations			\$ 540.00
Meals, Groceries			\$ 490.70
Field Supplies			\$ 173.71
Digitization:			\$ 1,912.50
Report Writing	2.5	\$ 500.00	\$ 1,250.00
		Total:	\$ 11,452.89

Appendix 3: Sample Descriptions

Appendix 3a: Rock Sample Descriptions

Appendix 3b: Soil Sample Descriptions

All-Terrane Mineral Exploration Services

2015 Program, Black Coffee Project

Sample No.	Easting (Nad 83)	Northing (Nad 83)	Zone	Target	Sample Type	Width (m)	Sample Description	Formation	Lithology	Modifier	Colour
RE5671710	420416	6661672	9	WP Zone	float	15x15x15	mottled bl gy colour; arsenic blemish??	Rosella	LST	fig suc	wh bl (rs) gy
RE5671711	420689	6661445	9	SD Zone	float	20X15X15	cog xln, tr sx, pyritohedrons	Rosella	LST-MBL	frac	n/a
RE5671712	420441	6661673	9	WP Zone	chip	35	relic thin bedding, compact-mottled, dis sx	Rosella	LST-MBL	fig	(bl) gy
RE5671713	420489	6661760	9	Breccia Pit	float-composite	n/a	cog xln gal in clasts and matrix	Rosella	BXA	LST-MBL	dk gy
RE5671714	420412	6661900	9	RS Zone	float	n/a	5-10cm size clasts, dk gy fig matrix, v fig dis py	Rosella	BXA	LST-MBL	gy
RE5671715	420376	6661922	9	RS Zone	chip	100	across sheared SLT, fig dis py on frac	?	SLT	calc she	n/a
RE5671716	420501	6661962	9	Webster Zone	float	n/a	irregular patches of gal	Rosella	LST	recrys bxa	dirty
RE5671717	420494	6661959	9	Webster Zone	grab	n/a	dirty LST with 3-7% fig clusters of gal-py	Rosella	LST	n/a	moderate bg bf
RE5671718	420494	6661949	9	Webster Zone	chip	10	10 cm wide, wh cal vn + gal-py-cpy-mal in sel - 240/75	Rosella	LST	vn	wh
RE5671719	420388	6662640	9	Gore Zone	chip	200	see CS notes - dol LST polymictic sheared lim BXA	Rosella	BXA	lim	rs
RE5671720	420388	6662642	9	Gore Zone	chip	200	distinct chocolate-bg-bf-bn she polymictic BXA, chalcidonic-like sil	Rosella	BXA	lim-sil	chocolate-bg-bf-bn
RE5671721	420388	6662644	9	Gore Zone	chip	140	see CS notes - dol LST polymictic sheared lim BXA	Rosella	BXA	lim	rs
RE5671722	420411	6662180	9	Mike's Show	chip	100	fig DOL with dk WS	?	DOL	she frac bxa	dk
RE5671723	420419	6662173	9	Mike's Show	grab-composite	n/a	distinct yw vn BXA - no sx noted	?	BXA	cal dol	yw
RE5671724	420446	6661957	9	RS Zone	grab	n/a	intensely frac controlled mineralization - sph	Rosella	LST	dol frac	rs gy
RE5671760	420419	6661672	9	WP Zone	Grab		Trench push	Rosella	MBL	frac-brecc	blue-green
RE5671761	420687	6661446	9	SD Zone	chip	0.75	Ocrop	Rosella	MBL	Fract	Maroon-brn
RE5671762	420686	6661448	9	SD Zone	CGr		Trench push	Rosella	MBL	Fract	Maroon-brn
RE5671763	420448	6661674	9	WP Zone	Chip	2	Ocrop	Rosella	Phy/LST	Gouge	Tan-blue
RE5671764	420447	6661675	9	WP Zone	chip	2	Ocrop	Rosella	Phy/LST	Silicified	Tan-blue
RE5671765	420491	6661765	9	Breccia Pit	SCGr		Pit push	Rosella	MBL	Brecc	Gry-blue
RE5671766	420490	6661766	9	Breccia Pit	SCGr		Pit push	Rosella	MBL	Brecc	Gry-blue
RE5671767	420496	6661957	9	Webster Zone	CGr		Rcrop	Rosella	LST	Brecc	blue-buff
RE5671768	420498	6661958	9	Webster Zone	Grab		Ocrop	Rosella	LST	Brecc	blue-buff
RE5671769	420522	6661975	9	Webster Zone	CGr		Rcrop	Rosella	LST	shear	buff
RE5671770	420503	6661965	9	Webster Zone	CGr		Rcrop	Rosella	LST	Brecc	blue-buff
RE5671771	420504	6661987	9	Suzuki Shear	Chip	0.7	Ocrop	Rosella	LST	Fract	white
RE5671772	420356	6662331	9	Road Show	SCGr		Rcrop	Rosella	LST	Brecc	wh-buff
RE5671773	420418	6662178	9	Mike's Show	CGr		Ocrop	Rosella	DOL	Tabular	tan
RE5671774	420422	6662185	9	Mike's Show	chip	0.8	Ocrop	Rosella	DOL	Brecc	dk brn
RE5671775	420451	6661933	9	Webster Zone	chip	0.45	Ocrop	Rosella	DOL	Gouge	red-brn
RE5671776	420526	6662011	9	Webster Zone	Grab		Ocrop	Rosella	DOL	Fractured	buff
RE5671777	420533	6662007	9	Webster Zone	chip	0.6	Rcrop	Rosella	DOL	Fractured	buff-beige
RE5671778	420548	6662019	9	Webster Zone	CGr		Rcrop	Rosella	DOL	Fractured	beige-grey
RE5671779	420511	6662781	9	Top Show E	chip	0.6	Ocrop (Trench)	Rosella	Phy/LST	shear	orange-tan
RE5671780	420520	6662763	9	Top Show E	Grab		Ocrop	Rosella	Phy?	Bedded	Dk brown
RE5671781	420530	6662727	9	Top Show E	CGr		Ocrop, Rcrop	Rosella	LST	C Grained	pink-red
RE5671782	420490	6661968	9	Webster Zone	CGr		Ocrop	Rosella	LST	Fractured	buff

All-Terrane Mineral Exploration Services

2015 Program, Black Coffee Project

Sample No.	Carb. Pres	Silicification	Alteration 1	Alt 2	Other alt	Mineral 1	Amt (%)	Min 2	Amt (%)	Other Min	Amt (%)	Date	Sampler	Comments
RE5671710	n/a	strong	n/a	n/a	n/a	n/a	n/a	n/a	n/a	n/a	n/a	28-Aug	RZ	WP SHOWING; GPS PT 023; in trench
RE5671711	n/a	n/a	n/a	n/a	n/a	gal	tr	tet (?)	tr	py	tr	29-Aug	RZ	GPS PT 035
RE5671712	n/a	n/a	n/a	n/a	n/a	gal	tr	py	tr	tet (?)	tr	29-Aug	RZ	GPS PT 037, tr fig dk acicular crystals
RE5671713	n/a	n/a	lim	n/a	n/a	gal	25	py	7	sid	5	29-Aug	RZ	BRECCIA PIT SITE - blasted, GPS PT 039; ORE GRADE LEAD ; photos IMG0074-077
RE5671714	n/a	n/a	n/a	n/a	n/a	py	3	n/a	n/a	n/a	n/a	29-Aug	RZ	GPS PT 045
RE5671715	n/a	n/a	lim-jar	n/a	n/a	py	2	n/a	n/a	n/a	n/a	29-Aug	RZ	GPS PT 046; shear width is 3m wide @ 240/75 20/m
RE5671716	n/a	n/a	n/a	n/a	n/a	gal	5	py	tr	n/a	n/a	29-Aug	RZ	GPS PT 047
RE5671717	n/a	n/a	n/a	n/a	n/a	gal	5	py	5	n/a	n/a	29-Aug	RZ	GPS PT 049
RE5671718	n/a	n/a	n/a	n/a	n/a	gal	15	cpy	tr	mal	tr	30-Aug	RZ	WEBSTER SHEAR (approx 15m wide) GPS PT 051
RE5671719	n/a	n/a	lim	n/a	n/a	lim	20	n/a	n/a	n/a	n/a	30-Aug	RZ	TOP SHEAR - FW sample
RE5671720	n/a	mod	lim	dol	n/a	lim	30	cha	5	gra	5	30-Aug	RZ	TOP SHEAR - GPS PT 057; 250/80
RE5671721	n/a	n/a	lim	n/a	n/a	lim	20	n/a	n/a	n/a	n/a	30-Aug	RZ	TOP SHEAR - HW sample
RE5671722	n/a	n/a	lim	n/a	n/a	gal	1	lim	15	n/a	n/a	30-Aug	RZ	GPS PT 059
RE5671723	n/a	n/a	jar			n/a	n/a	n/a	n/a	n/a	n/a	30-Aug	RZ	GPS PT 060; photo IMG0090
RE5671724	n/a	n/a	lim-jar	n/a	n/a	sph (?)	tr	n/a	n/a	n/a	n/a	30-Aug	RZ	GPS PT 061
RE5671760	C2	S2			L2	As	tr	Py	<1	Scor	mod	28-Aug	CS	Fairly abundant similar float
RE5671761	C3		Mang 3			gal	<1	Cpy	tr	Py	tr	29-Aug	CS	trench
RE5671762	C3		Mang 3			gal	<1	Py	tr			29-Aug	CS	Push form showing
RE5671763	C2	S1	A1	Csil1	L2	Py	tr					29-Aug	CS	Banded limestone
RE5671764	C2	S1	A1	Csil2	L1	Py	tr					29-Aug	CS	Mixed sil limestone and phyllite?
RE5671765	C3				L3	py	25	Gal	12	Sph	>1	29-Aug	CS	Steel galena
RE5671766	C3				L1	Gal	20	Py	tr			29-Aug	CS	Sulphide replacement of clasts
RE5671767	C3				L1	Gal	6	py	tr			29-Aug	CS	Webster Shear: Matrix-supported fine galena
RE5671768	C2	S1			L1	Gal	5	py	2			29-Aug	CS	F gr galena in matrix
RE5671769	C2	S1				Gal	4	py	2			29-Aug	CS	Dissem and replacement-style sulphides
RE5671770	C2	S1				Gal	15	py	<1			29-Aug	CS	Fracture controlled pyrite
RE5671771	C2	S1				Gal	3	Py	<1			30-Aug	CS	Probably poddy rather than uniform
RE5671772					L1	Gal	3	Py	1			30-Aug	CS	Galena and pyrite as disseminated sulphides
RE5671773	C2				L1	gal	4					30-Aug	CS	Joint-controlled galena "Platt"
RE5671774	C1-2			Mang 3		gal	<1	py	tr			30-Aug	CS	Minor fracture-controlled Py, Galena
RE5671775	C1-2			Mang 3	L3							30-Aug	CS	Shear at 155-80
RE5671776	C1	S1				gal	1					31-Aug	CS	Fracture controlled galena
RE5671777	C1	S1-2				gal	1	py	tr			31-Aug	CS	Rubblecrop float; nearby shear at 40 - 90
RE5671778	C1	S1				gal	<1					31-Aug	CS	Fracture-controlled galena
RE5671779		S1-2			L2-3	Py	2					31-Aug	CS	Mixed phyllite with dolostone
RE5671780					L3							31-Aug	CS	Thin limonitic band; limonite after sulphides
RE5671781												31-Aug	CS	May be rhodochrosite-enriched; includes calcite veining
RE5671782	C1	S1				Gal	1	Py	<1			31-Aug	CS	Dolomitized limestone; fracture-filling galena

Soil Sample Descriptions: 2015 Program
Black Coffee Project

SAMPLE NO	UTM Easting	UTM Northing	STATION	HORIZON	DEPTH	SLOPE	COLOUR	PERMAFROST	% COARSE	VEGETATION	SURFICIAL	FRAG LITHOLOGY	PERCENT	DATE	SAMPLER	COMMENTS
	NAD 83	NAD 83	(gps pt)		(cm)	ANGLE (%)		(Y/N)	FRAGMENTS		GEOLOGY		ORGANICS			
SE5671725	420270	6661804	66	B	35	5	lt tn bn rs	N	30	willow		Biotite Granite	0	31/08/15	RJZ	in trail bank, photo IMG0091
SE5671726	420288	6661866	68	B	35	20	lt bn gy	N	30	trees & willow		Biotite Granite	0	31/08/15	RJZ	n/a
SE5671727	420283	6661839	69	B	35	30	lt bn gy	N	20	trees & willow	Lst-Granite	n/a	10	31/08/15	RJZ	LST-GRN-SHEAR intersection; covered
SE5671728	420527	6661620	77	B	40	25	bn gy	N	30	trees & willow		Granite	10	31/08/15	RJZ	10m N of trail
SE5671729	420518	6661582	72	B	30	10	bn	N	30	trees & willow	Lst-Granite	Granite	10	31/08/15	RJZ	near LST-GRN contact; thick veg cover

Appendix 4 : Original Results



CLIENT NAME: ALL TERRANE MINERAL EXPLORATION SER
35 DAWSON ROAD
WHITEHORSE, YT Y1A5T6
(867) 633-4807

ATTENTION TO: CARL SCHULZE, JIM COYNE

PROJECT:

AGAT WORK ORDER: 15Y014458

SOLID ANALYSIS REVIEWED BY: Kevin Motomura, Data Review Supervisor

DATE REPORTED: Sep 21, 2015

PAGES (INCLUDING COVER): 16

Should you require any information regarding this analysis please contact your client services representative at (905) 501-9998

*NOTES

All samples are stored at no charge for 90 days. Please contact the lab if you require additional sample storage time.



Certificate of Analysis

AGAT WORK ORDER: 15Y014458

PROJECT:

5623 McADAM ROAD
MISSISSAUGA, ONTARIO
CANADA L4Z 1N9
TEL (905)501-9998
FAX (905)501-0589
<http://www.agatlabs.com>

CLIENT NAME: ALL TERRANE MINERAL EXPLORATION SER

ATTENTION TO: CARL SCHULZE, JIM COYNE

(201-073) Aqua Regia Digest - Metals Package, ICP-OES finish

DATE SAMPLED: Sep 02, 2015	DATE RECEIVED: Sep 02, 2015					DATE REPORTED: Sep 21, 2015					SAMPLE TYPE: Rock				
Analyte:	Ag	Al	As	B	Ba	Be	Bi	Ca	Cd	Ce	Co	Cr	Cu	Fe	
Unit:	ppm	%	ppm	ppm	ppm	ppm	ppm	%	ppm	ppm	ppm	ppm	ppm	%	
RDL:	0.2	0.01	1	5	1	0.5	1	0.01	0.5	1	0.5	0.5	0.5	0.01	
RE5671710 (6925958)	0.4	0.07	7770	<5	7	<0.5	<1	0.09	0.6	8	3.5	55.1	3.8	1.37	
RE5671711 (6925959)	0.4	0.09	78	<5	13	<0.5	<1	>25	4.4	2	1.2	2.7	4.0	0.34	
RE5671712 (6925960)	0.2	0.67	104	<5	22	2.7	1	13.6	1.5	36	8.2	23.4	2.7	0.98	
RE5671713 (6925961)	>100	0.03	>10000	<5	2	<0.5	<1	13.7	161	7	6.0	9.1	434	9.18	
RE5671714 (6925962)	4.1	0.71	254	<5	11	<0.5	<1	16.8	3.1	14	18.2	69.5	15.9	2.89	
RE5671715 (6925963)	10.6	0.40	241	<5	24	0.7	<1	8.69	5.1	51	17.7	23.5	39.9	3.91	
RE5671716 (6925964)	6.1	0.05	37	<5	5	<0.5	<1	21.2	4.7	2	1.8	2.0	23.4	2.31	
RE5671717 (6925965)	>100	0.55	65	<5	4	0.6	<1	18.2	24.1	9	5.0	16.7	123	2.71	
RE5671718 (6925966)	22.8	0.04	40	<5	2	<0.5	<1	21.0	6.5	<1	1.3	<0.5	168	1.22	
RE5671719 (6925967)	13.9	0.10	206	<5	4	<0.5	<1	16.1	0.5	21	3.9	3.6	4.9	1.99	
RE5671720 (6925968)	1.4	0.11	303	<5	4	<0.5	<1	8.41	0.8	20	9.0	8.9	13.6	1.99	
RE5671721 (6925969)	1.3	0.08	271	<5	2	<0.5	<1	13.8	0.8	17	6.4	4.7	4.4	2.11	
RE5671722 (6925970)	39.8	0.01	242	<5	1	<0.5	<1	18.7	62.6	<1	3.2	<0.5	116	1.34	
RE5671723 (6925971)	2.7	0.03	288	<5	3	<0.5	<1	21.1	34.5	1	2.3	<0.5	26.1	0.93	
RE5671724 (6925972)	53.1	0.20	1840	<5	2	<0.5	<1	15.1	613	12	4.5	4.1	110	3.05	
RE5671760 (6925973)	1.4	0.09	7600	<5	6	<0.5	<1	0.61	9.5	8	4.5	29.6	5.3	1.40	
RE5671761 (6925974)	3.0	0.11	195	14	<1	<0.5	8	15.3	28.4	14	4.7	7.4	10.2	16.5	
RE5671762 (6925975)	1.9	0.10	175	<5	3	<0.5	<1	20.1	7.2	7	2.1	1.8	1.4	3.96	
RE5671763 (6925976)	1.2	0.59	1320	<5	17	1.1	<1	6.82	0.7	32	7.1	30.7	5.4	1.54	
RE5671764 (6925977)	0.6	0.89	201	<5	36	2.5	<1	13.7	1.1	48	8.4	23.9	4.0	1.72	
RE5671765 (6925978)	>100	0.03	>10000	9	<1	<0.5	<1	4.73	227	4	4.1	3.7	488	13.9	
RE5671766 (6925979)	>100	0.02	>10000	7	<1	<0.5	<1	12.8	375	5	5.3	2.8	648	10.8	
RE5671767 (6925980)	>100	0.30	166	<5	3	0.5	<1	18.9	21.0	7	2.4	9.5	104	2.47	
RE5671768 (6925981)	>100	0.22	108	<5	4	<0.5	<1	21.8	13.3	3	2.0	7.9	94.0	2.11	
RE5671769 (6925982)	11.1	0.11	108	<5	4	<0.5	<1	19.0	12.0	3	2.7	1.7	22.0	2.44	
RE5671770 (6925983)	38.3	0.06	367	<5	4	<0.5	<1	20.2	15.7	2	2.1	0.9	156	2.46	
RE5671771 (6925984)	1.9	0.03	34	<5	3	<0.5	<1	20.0	10.0	3	2.2	<0.5	3.0	1.94	
RE5671772 (6925985)	>100	0.17	524	<5	<1	<0.5	<1	>25	44.7	24	5.1	17.6	33.5	1.54	
RE5671773 (6925986)	27.3	0.01	297	<5	3	<0.5	<1	18.4	185	<1	3.6	<0.5	78.5	1.25	
RE5671774 (6925987)	5.1	0.02	357	<5	1	<0.5	<1	20.5	8.6	1	1.4	<0.5	8.3	1.30	
RE5671775 (6925988)	4.3	1.45	2830	<5	2	<0.5	<1	16.4	9.6	10	6.4	17.0	10.8	2.86	
RE5671776 (6925989)	3.4	0.01	47	<5	1	<0.5	<1	19.7	30.9	<1	1.2	<0.5	4.8	0.98	

Certified By:



Certificate of Analysis

AGAT WORK ORDER: 15Y014458

PROJECT:

5623 McADAM ROAD
 MISSISSAUGA, ONTARIO
 CANADA L4Z 1N9
 TEL (905)501-9998
 FAX (905)501-0589
<http://www.agatlabs.com>

CLIENT NAME: ALL TERRANE MINERAL EXPLORATION SER

ATTENTION TO: CARL SCHULZE, JIM COYNE

(201-073) Aqua Regia Digest - Metals Package, ICP-OES finish

DATE SAMPLED: Sep 02, 2015	DATE RECEIVED: Sep 02, 2015		DATE REPORTED: Sep 21, 2015		SAMPLE TYPE: Rock									
Analyte:	Ag	Al	As	B	Ba	Be	Bi	Ca	Cd	Ce	Co	Cr	Cu	Fe
Unit:	ppm	%	ppm	ppm	ppm	ppm	ppm	%	ppm	ppm	ppm	ppm	ppm	%
RDL:	0.2	0.01	1	5	1	0.5	1	0.01	0.5	1	0.5	0.5	0.5	0.01
RE5671777 (6925990)	0.7	0.02	35	<5	1	<0.5	<1	20.6	8.5	1	1.6	<0.5	<0.5	1.06
RE5671778 (6925991)	1.4	0.02	25	<5	1	<0.5	<1	20.7	13.6	4	1.7	<0.5	1.0	1.69
RE5671779 (6925992)	1.8	0.19	1000	<5	9	<0.5	<1	4.83	28.6	16	6.3	4.5	8.9	1.84
RE5671780 (6925993)	9.0	0.79	>10000	12	3	2.0	<1	0.68	125	230	27.0	25.7	253	33.2
RE5671781 (6925994)	>100	0.07	446	<5	4	<0.5	<1	24.6	2.0	3	2.1	<0.5	37.5	1.11
RE5671782 (6925995)	5.1	0.02	109	<5	3	<0.5	<1	19.4	33.1	4	2.2	<0.5	8.9	1.58

Certified By:



Certificate of Analysis

AGAT WORK ORDER: 15Y014458

PROJECT:

5623 McADAM ROAD
MISSISSAUGA, ONTARIO
CANADA L4Z 1N9
TEL (905)501-9998
FAX (905)501-0589
<http://www.agatlabs.com>

CLIENT NAME: ALL TERRANE MINERAL EXPLORATION SER

ATTENTION TO: CARL SCHULZE, JIM COYNE

(201-073) Aqua Regia Digest - Metals Package, ICP-OES finish

DATE SAMPLED: Sep 02, 2015	DATE RECEIVED: Sep 02, 2015						DATE REPORTED: Sep 21, 2015					SAMPLE TYPE: Rock			
Analyte:	Ga	Hg	In	K	La	Li	Mg	Mn	Mo	Na	Ni	P	Pb	Rb	
Unit:	ppm	ppm	ppm	%	ppm	ppm	%	ppm	ppm	%	ppm	ppm	ppm	ppm	
RDL:	5	1	1	0.01	1	1	0.01	1	0.5	0.01	0.5	10	0.5	10	
RE5671710 (6925958)	<5	<1	<1	0.04	4	<1	0.01	77	2.6	<0.01	6.9	299	4.7	<10	
RE5671711 (6925959)	6	<1	<1	<0.01	3	4	0.46	2740	31.2	<0.01	1.3	123	232	<10	
RE5671712 (6925960)	6	2	<1	0.02	19	28	0.65	625	26.5	<0.01	14.4	321	33.1	<10	
RE5671713 (6925961)	33	<1	<1	<0.01	4	1	2.80	20900	18.1	<0.01	29.1	345	>10000	<10	
RE5671714 (6925962)	7	<1	<1	0.05	7	25	5.50	2060	24.9	<0.01	83.3	493	471	<10	
RE5671715 (6925963)	6	3	<1	0.08	20	13	1.47	2180	20.6	<0.01	22.8	2340	1400	<10	
RE5671716 (6925964)	11	<1	<1	<0.01	3	2	10.2	7290	25.9	<0.01	3.2	148	5860	<10	
RE5671717 (6925965)	19	2	<1	<0.01	6	29	9.14	11000	18.1	<0.01	9.6	224	>10000	<10	
RE5671718 (6925966)	6	<1	<1	<0.01	2	2	10.0	3990	21.3	<0.01	2.0	118	>10000	<10	
RE5671719 (6925967)	<5	<1	<1	0.04	9	3	9.29	778	20.9	<0.01	6.5	590	438	<10	
RE5671720 (6925968)	<5	<1	<1	0.04	6	2	4.57	424	13.8	<0.01	13.4	1210	368	<10	
RE5671721 (6925969)	<5	<1	<1	0.04	7	2	7.77	537	18.5	<0.01	8.9	579	71.1	<10	
RE5671722 (6925970)	8	<1	<1	<0.01	3	1	11.1	5180	21.1	<0.01	2.5	89	>10000	<10	
RE5671723 (6925971)	<5	<1	<1	<0.01	3	1	10.2	2010	16.7	<0.01	<0.5	52	1220	<10	
RE5671724 (6925972)	24	<1	<1	0.02	5	8	6.42	15700	11.8	<0.01	8.7	599	449	<10	
RE5671760 (6925973)	<5	<1	<1	0.05	4	<1	0.23	292	9.8	<0.01	8.0	233	76.9	<10	
RE5671761 (6925974)	146	<1	<1	<0.01	5	4	1.74	102000	16.3	<0.01	10.6	220	1380	<10	
RE5671762 (6925975)	34	<1	<1	<0.01	5	5	7.89	23200	20.2	<0.01	3.2	58	1730	<10	
RE5671763 (6925976)	<5	3	<1	0.05	17	14	0.57	571	30.1	<0.01	13.0	315	39.9	<10	
RE5671764 (6925977)	6	<1	<1	0.06	26	34	0.66	690	23.0	<0.01	15.4	318	24.9	<10	
RE5671765 (6925978)	26	<1	<1	<0.01	3	1	0.67	14400	13.6	<0.01	15.8	499	>10000	<10	
RE5671766 (6925979)	25	<1	<1	<0.01	4	<1	0.89	12900	15.6	<0.01	29.4	360	>10000	<10	
RE5671767 (6925980)	15	5	<1	<0.01	5	15	9.24	9230	17.6	<0.01	5.0	92	>10000	<10	
RE5671768 (6925981)	12	<1	<1	<0.01	4	10	7.40	8230	21.5	<0.01	4.9	42	>10000	<10	
RE5671769 (6925982)	16	<1	<1	<0.01	3	5	9.77	9510	23.8	<0.01	3.5	145	4830	<10	
RE5671770 (6925983)	14	<1	<1	<0.01	3	3	9.28	8510	18.2	<0.01	3.1	20	>10000	<10	
RE5671771 (6925984)	<5	<1	<1	<0.01	3	2	10.8	2760	18.5	<0.01	0.6	353	2040	<10	
RE5671772 (6925985)	13	<1	<1	<0.01	12	7	4.39	8190	23.5	<0.01	30.4	631	8280	<10	
RE5671773 (6925986)	<5	2	<1	<0.01	3	1	11.0	2830	24.7	<0.01	1.1	294	>10000	<10	
RE5671774 (6925987)	6	<1	<1	<0.01	3	1	10.9	4710	22.0	<0.01	2.1	239	2040	<10	
RE5671775 (6925988)	14	<1	<1	0.01	7	72	10.1	6420	16.5	<0.01	14.3	442	2590	<10	
RE5671776 (6925989)	<5	<1	<1	<0.01	2	<1	11.3	1210	24.3	<0.01	0.7	73	1060	<10	

Certified By:



Certificate of Analysis

AGAT WORK ORDER: 15Y014458

PROJECT:

5623 McADAM ROAD
 MISSISSAUGA, ONTARIO
 CANADA L4Z 1N9
 TEL (905)501-9998
 FAX (905)501-0589
<http://www.agatlabs.com>

CLIENT NAME: ALL TERRANE MINERAL EXPLORATION SER

ATTENTION TO: CARL SCHULZE, JIM COYNE

(201-073) Aqua Regia Digest - Metals Package, ICP-OES finish

DATE SAMPLED: Sep 02, 2015	DATE RECEIVED: Sep 02, 2015						DATE REPORTED: Sep 21, 2015					SAMPLE TYPE: Rock			
Analyte:	Ga	Hg	In	K	La	Li	Mg	Mn	Mo	Na	Ni	P	Pb	Rb	
Unit:	ppm	ppm	ppm	%	ppm	ppm	%	ppm	ppm	%	ppm	ppm	ppm	ppm	
Sample ID (AGAT ID)	RDL:														
RE5671777 (6925990)	<5	8	<1	<0.01	3	1	11.5	1050	23.0	<0.01	1.2	61	496	<10	
RE5671778 (6925991)	<5	<1	<1	<0.01	4	1	10.7	1020	28.2	<0.01	1.8	127	568	<10	
RE5671779 (6925992)	<5	4	<1	0.13	8	1	2.63	568	6.6	<0.01	10.1	257	1930	<10	
RE5671780 (6925993)	11	<1	<1	0.07	161	1	0.15	754	14.8	<0.01	86.7	1410	5790	<10	
RE5671781 (6925994)	<5	<1	<1	<0.01	3	2	7.08	1220	24.1	<0.01	2.8	<10	169	<10	
RE5671782 (6925995)	5	<1	<1	<0.01	4	2	10.8	2890	20.1	<0.01	3.1	361	3770	<10	

Certified By:



Certificate of Analysis

AGAT WORK ORDER: 15Y014458

PROJECT:

5623 McADAM ROAD
MISSISSAUGA, ONTARIO
CANADA L4Z 1N9
TEL (905)501-9998
FAX (905)501-0589
<http://www.agatlabs.com>

CLIENT NAME: ALL TERRANE MINERAL EXPLORATION SER

ATTENTION TO: CARL SCHULZE, JIM COYNE

(201-073) Aqua Regia Digest - Metals Package, ICP-OES finish

DATE SAMPLED: Sep 02, 2015	DATE RECEIVED: Sep 02, 2015					DATE REPORTED: Sep 21, 2015					SAMPLE TYPE: Rock				
Analyte:	S	Sb	Sc	Se	Sn	Sr	Ta	Te	Th	Ti	Tl	U	V	W	
Unit:	%	ppm	ppm	ppm	ppm	ppm	ppm	ppm	ppm	%	ppm	ppm	ppm	ppm	
RDL:	0.005	1	0.5	10	5	0.5	10	10	5	0.01	5	5	0.5	1	
RE5671710 (6925958)	0.373	45	0.6	<10	<5	1.0	<10	<10	<5	<0.01	<5	<5	1.8	<1	
RE5671711 (6925959)	0.538	32	1.1	<10	<5	1450	<10	<10	<5	<0.01	<5	19	5.9	<1	
RE5671712 (6925960)	0.333	26	5.1	<10	<5	503	<10	14	<5	<0.01	<5	9	15.2	<1	
RE5671713 (6925961)	>10	282	<0.5	<10	397	165	<10	18	<5	<0.01	<5	7	11.5	2	
RE5671714 (6925962)	1.03	26	7.1	<10	<5	194	<10	<10	<5	<0.01	<5	8	46.1	<1	
RE5671715 (6925963)	1.21	33	6.8	<10	<5	58.2	<10	<10	<5	<0.01	<5	<5	21.0	<1	
RE5671716 (6925964)	0.424	28	0.8	<10	<5	186	<10	13	<5	<0.01	<5	12	15.9	<1	
RE5671717 (6925965)	0.784	70	1.9	<10	13	156	<10	10	<5	<0.01	11	8	24.9	<1	
RE5671718 (6925966)	0.476	76	<0.5	<10	<5	158	<10	<10	<5	<0.01	<5	11	14.1	<1	
RE5671719 (6925967)	0.218	55	2.7	<10	<5	64.5	<10	16	<5	<0.01	11	8	17.1	<1	
RE5671720 (6925968)	0.204	91	2.9	<10	<5	47.9	<10	<10	<5	<0.01	<5	5	13.4	<1	
RE5671721 (6925969)	0.256	71	2.3	<10	<5	62.6	<10	<10	<5	<0.01	<5	7	16.6	<1	
RE5671722 (6925970)	0.402	53	<0.5	11	<5	128	<10	12	<5	<0.01	<5	8	14.4	<1	
RE5671723 (6925971)	0.289	30	0.6	<10	<5	151	<10	<10	<5	<0.01	<5	11	13.9	<1	
RE5671724 (6925972)	1.15	85	3.1	<10	48	137	10	<10	<5	<0.01	<5	<5	19.3	2	
RE5671760 (6925973)	0.450	48	0.7	<10	<5	7.2	<10	<10	<5	<0.01	5	<5	3.8	<1	
RE5671761 (6925974)	0.549	45	<0.5	46	<5	282	18	21	<5	<0.01	8	7	9.8	<1	
RE5671762 (6925975)	0.415	19	0.8	<10	<5	280	<10	18	<5	<0.01	<5	10	11.5	<1	
RE5671763 (6925976)	0.142	25	3.2	<10	<5	202	<10	<10	<5	<0.01	18	<5	10.1	<1	
RE5671764 (6925977)	0.279	22	5.5	<10	<5	577	<10	<10	<5	<0.01	<5	7	15.7	<1	
RE5671765 (6925978)	>10	446	<0.5	<10	543	86.5	<10	<10	<5	<0.01	<5	<5	7.2	4	
RE5671766 (6925979)	>10	201	<0.5	54	513	141	<10	27	<5	<0.01	<5	7	7.6	2	
RE5671767 (6925980)	0.692	67	1.2	12	5	155	<10	<10	<5	<0.01	<5	9	20.2	<1	
RE5671768 (6925981)	0.590	60	0.9	31	6	203	<10	11	<5	<0.01	<5	11	16.7	<1	
RE5671769 (6925982)	0.421	28	0.7	13	<5	131	<10	<10	<5	<0.01	6	10	15.2	<1	
RE5671770 (6925983)	0.825	45	<0.5	<10	<5	192	<10	16	<5	<0.01	<5	10	13.8	<1	
RE5671771 (6925984)	0.396	26	0.9	<10	<5	95.3	<10	18	<5	<0.01	<5	10	16.0	<1	
RE5671772 (6925985)	0.784	62	4.2	<10	<5	108	<10	15	<5	<0.01	5	14	35.8	<1	
RE5671773 (6925986)	0.421	46	<0.5	<10	<5	101	<10	19	<5	<0.01	10	9	14.7	<1	
RE5671774 (6925987)	0.294	18	0.6	<10	<5	177	<10	<10	<5	<0.01	12	12	16.3	<1	
RE5671775 (6925988)	0.322	25	3.6	<10	<5	139	<10	<10	<5	<0.01	<5	6	26.7	<1	
RE5671776 (6925989)	0.308	32	0.7	<10	<5	85.3	<10	<10	<5	<0.01	<5	11	15.2	<1	

Certified By:



Certificate of Analysis

AGAT WORK ORDER: 15Y014458

PROJECT:

5623 McADAM ROAD
 MISSISSAUGA, ONTARIO
 CANADA L4Z 1N9
 TEL (905)501-9998
 FAX (905)501-0589
<http://www.agatlabs.com>

CLIENT NAME: ALL TERRANE MINERAL EXPLORATION SER

ATTENTION TO: CARL SCHULZE, JIM COYNE

(201-073) Aqua Regia Digest - Metals Package, ICP-OES finish

DATE SAMPLED: Sep 02, 2015	DATE RECEIVED: Sep 02, 2015					DATE REPORTED: Sep 21, 2015					SAMPLE TYPE: Rock				
Analyte:	S	Sb	Sc	Se	Sn	Sr	Ta	Te	Th	Ti	Tl	U	V	W	
Unit:	%	ppm	ppm	ppm	ppm	ppm	ppm	ppm	ppm	%	ppm	ppm	ppm	ppm	
RDL:	0.005	1	0.5	10	5	0.5	10	10	5	0.01	5	5	0.5	1	
Sample ID (AGAT ID)															
RE5671777 (6925990)	0.326	29	0.6	<10	<5	97.3	<10	<10	<5	<0.01	<5	9	15.3	<1	
RE5671778 (6925991)	0.301	23	0.7	<10	<5	100	11	15	<5	<0.01	<5	11	14.9	<1	
RE5671779 (6925992)	0.133	49	4.1	<10	<5	36.7	<10	<10	<5	<0.01	<5	<5	12.0	<1	
RE5671780 (6925993)	0.179	136	14.9	45	<5	79.9	13	<10	50	<0.01	16	<5	36.8	<1	
RE5671781 (6925994)	0.338	98	0.9	<10	<5	63.2	<10	<10	<5	<0.01	<5	13	13.7	<1	
RE5671782 (6925995)	0.365	33	0.6	15	<5	137	<10	10	<5	<0.01	<5	8	15.7	<1	

Certified By:



Certificate of Analysis

AGAT WORK ORDER: 15Y014458

PROJECT:

5623 McADAM ROAD
MISSISSAUGA, ONTARIO
CANADA L4Z 1N9
TEL (905)501-9998
FAX (905)501-0589
<http://www.agatlabs.com>

CLIENT NAME: ALL TERRANE MINERAL EXPLORATION SER

ATTENTION TO: CARL SCHULZE, JIM COYNE

(201-073) Aqua Regia Digest - Metals Package, ICP-OES finish

DATE SAMPLED: Sep 02, 2015	DATE RECEIVED: Sep 02, 2015			DATE REPORTED: Sep 21, 2015			SAMPLE TYPE: Rock	
Analyte:	Y	Zn	Zr	Ag-Grav	Pb-OL	Zn-OL	As-OL	
Unit:	ppm	ppm	ppm	g/t	%	%	%	
RDL:	1	0.5	5	10	0.01	0.01	0.01	
Sample ID (AGAT ID)								
RE5671710 (6925958)	2	20.8	<5					
RE5671711 (6925959)	2	1250	<5					
RE5671712 (6925960)	10	163	<5					
RE5671713 (6925961)	5	>10000	<5	867	6.13	6.16	1.74	
RE5671714 (6925962)	10	826	<5					
RE5671715 (6925963)	28	1380	<5					
RE5671716 (6925964)	4	1060	<5					
RE5671717 (6925965)	7	5500	<5	765	2.37			
RE5671718 (6925966)	3	1270	<5		1.28			
RE5671719 (6925967)	17	114	<5					
RE5671720 (6925968)	38	55.3	5					
RE5671721 (6925969)	15	27.2	<5					
RE5671722 (6925970)	2	>10000	<5		1.75	1.04		
RE5671723 (6925971)	4	4240	<5					
RE5671724 (6925972)	14	>10000	<5			11.0		
RE5671760 (6925973)	2	825	<5					
RE5671761 (6925974)	2	8610	<5					
RE5671762 (6925975)	2	2060	<5					
RE5671763 (6925976)	8	123	<5					
RE5671764 (6925977)	16	99.4	<5					
RE5671765 (6925978)	2	>10000	<5	1360	5.76	10.0	1.42	
RE5671766 (6925979)	3	>10000	<5	485	4.96	14.6	2.75	
RE5671767 (6925980)	6	4720	<5	519	2.31			
RE5671768 (6925981)	4	3570	<5	391	1.55			
RE5671769 (6925982)	5	3010	<5					
RE5671770 (6925983)	4	4620	<5		3.55			
RE5671771 (6925984)	4	1710	<5					
RE5671772 (6925985)	25	9730	<5	188				
RE5671773 (6925986)	2	>10000	<5		1.80	2.61		
RE5671774 (6925987)	2	1260	<5					
RE5671775 (6925988)	5	2550	<5					
RE5671776 (6925989)	2	4690	<5					

Certified By:



Certificate of Analysis

AGAT WORK ORDER: 15Y014458

PROJECT:

5623 McADAM ROAD
 MISSISSAUGA, ONTARIO
 CANADA L4Z 1N9
 TEL (905)501-9998
 FAX (905)501-0589
<http://www.agatlabs.com>

CLIENT NAME: ALL TERRANE MINERAL EXPLORATION SER

ATTENTION TO: CARL SCHULZE, JIM COYNE

(201-073) Aqua Regia Digest - Metals Package, ICP-OES finish

DATE SAMPLED: Sep 02, 2015	DATE RECEIVED: Sep 02, 2015			DATE REPORTED: Sep 21, 2015			SAMPLE TYPE: Rock	
Analyte:	Y	Zn	Zr	Ag-Grav	Pb-OL	Zn-OL	As-OL	
Unit:	ppm	ppm	ppm	g/t	%	%	%	
Sample ID (AGAT ID)	RDL:							
RE5671777 (6925990)	3	1260	<5					
RE5671778 (6925991)	6	1800	<5					
RE5671779 (6925992)	5	5530	12					
RE5671780 (6925993)	32	>10000	8			1.27	1.40	
RE5671781 (6925994)	8	311	<5	198				
RE5671782 (6925995)	4	4090	<5					

Comments: RDL - Reported Detection Limit

Certified By:



Certificate of Analysis

AGAT WORK ORDER: 15Y014458

PROJECT:

5623 McADAM ROAD
 MISSISSAUGA, ONTARIO
 CANADA L4Z 1N9
 TEL (905)501-9998
 FAX (905)501-0589
<http://www.agatlabs.com>

CLIENT NAME: ALL TERRANE MINERAL EXPLORATION SER

ATTENTION TO: CARL SCHULZE, JIM COYNE

(202-052) Fire Assay - Trace Au, ICP-OES finish (ppb)

DATE SAMPLED: Sep 02, 2015	DATE RECEIVED: Sep 02, 2015	DATE REPORTED: Sep 21, 2015	SAMPLE TYPE: Rock
Analyte:	Sample Login	Au	
Unit:	Weight		
RDL:	kg	ppb	
Sample ID (AGAT ID)	0.01	1	
RE5671710 (6925958)	1.36	108	
RE5671711 (6925959)	1.44	1	
RE5671712 (6925960)	1.84	1	
RE5671713 (6925961)	2.16	154	
RE5671714 (6925962)	1.49	6	
RE5671715 (6925963)	2.26	3	
RE5671716 (6925964)	1.32	3	
RE5671717 (6925965)	1.37	15	
RE5671718 (6925966)	1.24	2	
RE5671719 (6925967)	2.30	2	
RE5671720 (6925968)	3.43	8	
RE5671721 (6925969)	2.26	4	
RE5671722 (6925970)	2.06	30	
RE5671723 (6925971)	1.36	15	
RE5671724 (6925972)	2.22	29	
RE5671760 (6925973)	1.13	109	
RE5671761 (6925974)	0.99	5	
RE5671762 (6925975)	1.04	3	
RE5671763 (6925976)	4.20	19	
RE5671764 (6925977)	2.15	4	
RE5671765 (6925978)	1.28	190	
RE5671766 (6925979)	1.16	166	
RE5671767 (6925980)	1.26	10	
RE5671768 (6925981)	1.02	7	
RE5671769 (6925982)	0.78	4	
RE5671770 (6925983)	1.01	6	
RE5671771 (6925984)	1.62	6	
RE5671772 (6925985)	0.99	13	
RE5671773 (6925986)	1.08	32	
RE5671774 (6925987)	1.09	9	
RE5671775 (6925988)	0.63	15	

Certified By:



Certificate of Analysis

AGAT WORK ORDER: 15Y014458

PROJECT:

5623 McADAM ROAD
 MISSISSAUGA, ONTARIO
 CANADA L4Z 1N9
 TEL (905)501-9998
 FAX (905)501-0589
<http://www.agatlabs.com>

CLIENT NAME: ALL TERRANE MINERAL EXPLORATION SER

ATTENTION TO: CARL SCHULZE, JIM COYNE

(202-052) Fire Assay - Trace Au, ICP-OES finish (ppb)

DATE SAMPLED: Sep 02, 2015	DATE RECEIVED: Sep 02, 2015	DATE REPORTED: Sep 21, 2015	SAMPLE TYPE: Rock
Analyte:	Sample Login	Au	
Unit:	Weight		
kg		ppb	
RDL:	0.01	1	
Sample ID (AGAT ID)			
RE5671776 (6925989)	1.49	<1	
RE5671777 (6925990)	1.34	3	
RE5671778 (6925991)	1.11	<1	
RE5671779 (6925992)	2.16	7	
RE5671780 (6925993)	0.89	40	
RE5671781 (6925994)	1.12	1560	
RE5671782 (6925995)	1.46	12	

Comments: RDL - Reported Detection Limit

Certified By:



CLIENT NAME: ALL TERRANE MINERAL EXPLORATION SER

ATTENTION TO: CARL SCHULZE, JIM COYNE

(201-073) Aqua Regia Digest - Metals Package, ICP-OES finish

Parameter	REPLICATE #1				REPLICATE #2				REPLICATE #3							
	Sample ID	Original	Replicate	RPD	Sample ID	Original	Replicate	RPD	Sample ID	Original	Replicate	RPD				
Ag	6925958	0.4	0.4	0.0%	6925982	11.1	13.4	18.8%	6925995	5.1	4.9	4.0%				
Al	6925958	0.07	0.07	0.0%	6925982	0.114	0.129	12.3%	6925995	0.02	0.02	0.0%				
As	6925958	7770	7510	3.4%	6925982	108	110	1.8%	6925995	109	87	22.4%				
B	6925958	< 5	< 5	0.0%	6925982	< 5	< 5	0.0%	6925995	< 5	< 5	0.0%				
Ba	6925958	7	8	13.3%	6925982	4	5	22.2%	6925995	3	3	0.0%				
Be	6925958	< 0.5	< 0.5	0.0%	6925982	< 0.5	< 0.5	0.0%	6925995	< 0.5	< 0.5	0.0%				
Bi	6925958	< 1	< 1	0.0%	6925982	< 1	< 1	0.0%	6925995	< 1	< 1	0.0%				
Ca	6925958	0.09	0.09	0.0%	6925982	19.0	19.7	3.6%	6925995	19.4	19.7	1.5%				
Cd	6925958	0.6	0.7	15.4%	6925982	12.0	11.8	1.7%	6925995	33.1	34.1	3.0%				
Ce	6925958	8	8	0.0%	6925982	3	3	0.0%	6925995	4	4	0.0%				
Co	6925958	3.5	3.1	12.1%	6925982	2.7	1.8		6925995	2.24	2.04	9.3%				
Cr	6925958	55.1	54.9	0.4%	6925982	1.7	< 0.5		6925995	< 0.5	< 0.5	0.0%				
Cu	6925958	3.81	3.31	14.0%	6925982	22.0	22.8	3.6%	6925995	8.9	9.8	9.6%				
Fe	6925958	1.37	1.34	2.2%	6925982	2.44	2.42	0.8%	6925995	1.58	1.66	4.9%				
Ga	6925958	< 5	< 5	0.0%	6925982	16	16	0.0%	6925995	5	5	0.0%				
Hg	6925958	< 1	1		6925982	< 1	< 1	0.0%	6925995	< 1	< 1	0.0%				
In	6925958	< 1	< 1	0.0%	6925982	< 1	< 1	0.0%	6925995	< 1	< 1	0.0%				
K	6925958	0.04	0.04	0.0%	6925982	< 0.01	< 0.01	0.0%	6925995	< 0.01	< 0.01	0.0%				
La	6925958	4	4	0.0%	6925982	3	3	0.0%	6925995	4	4	0.0%				
Li	6925958	< 1	< 1	0.0%	6925982	5	6	18.2%	6925995	2	2	0.0%				
Mg	6925958	0.01	0.01	0.0%	6925982	9.77	9.65	1.2%	6925995	10.8	11.4	5.4%				
Mn	6925958	77	76	1.3%	6925982	9510	9370	1.5%	6925995	2890	2980	3.1%				
Mo	6925958	2.6	4.3		6925982	23.8	17.4		6925995	20.1	18.7	7.2%				
Na	6925958	< 0.01	< 0.01	0.0%	6925982	< 0.01	< 0.01	0.0%	6925995	< 0.01	< 0.01	0.0%				
Ni	6925958	6.9	6.9	0.0%	6925982	3.46	2.72	23.9%	6925995	3.14	3.54	12.0%				
P	6925958	299	251	17.5%	6925982	145	113	24.8%	6925995	361	307	16.2%				
Pb	6925958	4.7	3.7	23.8%	6925982	4830	4840	0.2%	6925995	3770	3740	0.8%				
Rb	6925958	< 10	< 10	0.0%	6925982	< 10	< 10	0.0%	6925995	< 10	< 10	0.0%				
S	6925958	0.373	0.373	0.0%	6925982	0.421	0.436	3.5%	6925995	0.365	0.365	0.0%				
Sb	6925958	45	53	16.3%	6925982	28	25	11.3%	6925995	33	31	6.3%				
Sc	6925958	0.60	0.54	10.5%	6925982	0.7	0.7	0.0%	6925995	0.60	0.53	12.4%				



CLIENT NAME: ALL TERRANE MINERAL EXPLORATION SER

ATTENTION TO: CARL SCHULZE, JIM COYNE

Se	6925958	< 10	16		6925982	13	< 10		6925995	15	33					
Sn	6925958	< 5	< 5	0.0%	6925982	< 5	< 5	0.0%	6925995	< 5	< 5	0.0%				
Sr	6925958	1.0	3.7		6925982	131	136	3.7%	6925995	137	141	2.9%				
Ta	6925958	< 10	< 10	0.0%	6925982	< 10	< 10	0.0%	6925995	< 10	< 10	0.0%				
Te	6925958	< 10	< 10	0.0%	6925982	< 10	< 10	0.0%	6925995	10	10	0.0%				
Th	6925958	< 5	< 5	0.0%	6925982	< 5	< 5	0.0%	6925995	< 5	< 5	0.0%				
Ti	6925958	< 0.01	< 0.01	0.0%	6925982	< 0.01	< 0.01	0.0%	6925995	< 0.01	< 0.01	0.0%				
Tl	6925958	< 5	< 5	0.0%	6925982	6	< 5		6925995	< 5	< 5	0.0%				
U	6925958	< 5	< 5	0.0%	6925982	10	10	0.0%	6925995	8	11					
V	6925958	1.79	1.74	2.8%	6925982	15.2	15.2	0.0%	6925995	15.7	15.4	1.9%				
W	6925958	< 1	< 1	0.0%	6925982	< 1	< 1	0.0%	6925995	< 1	< 1	0.0%				
Y	6925958	2	2	0.0%	6925982	5	5	0.0%	6925995	4	4	0.0%				
Zn	6925958	20.8	20.6	1.0%	6925982	3010	3130	3.9%	6925995	4090	4180	2.2%				
Zr	6925958	< 5	< 5	0.0%	6925982	< 5	< 5	0.0%	6925995	< 5	< 5	0.0%				

(202-052) Fire Assay - Trace Au, ICP-OES finish (ppb)

Parameter	REPLICATE #1				REPLICATE #2				REPLICATE #3							
	Sample ID	Original	Replicate	RPD	Sample ID	Original	Replicate	RPD	Sample ID	Original	Replicate	RPD				
Au	6925958	108	102	5.7%	6925982	4	3	28.6%	6925995	12	10	18.2%				



CLIENT NAME: ALL TERRANE MINERAL EXPLORATION SER

ATTENTION TO: CARL SCHULZE, JIM COYNE

(201-073) Aqua Regia Digest - Metals Package, ICP-OES finish

Parameter	CRM #1 (ref.CDN-ME-1304)				CRM #2 (ref.CDN-ME-1304)				CRM #3 (ref.CDN-ME-1304)							
	Expect	Actual	Recovery	Limits	Expect	Actual	Recovery	Limits	Expect	Actual	Recovery	Limits				
Ag	34.0	33.9	100%	90% - 110%	34.0	34.1	100%	90% - 110%	34.0	33.1	97%	90% - 110%				
Cu	2680	2668	100%	90% - 110%	2680	2656	99%	90% - 110%	2680	2604	97%	90% - 110%				
Pb	2580	2587	100%	90% - 110%	2580	2641	102%	90% - 110%	2580	2585	100%	90% - 110%				
Zn	2200	2193	100%	90% - 110%	2200	2183	99%	90% - 110%	2200	2213	101%	90% - 110%				



Method Summary

CLIENT NAME: ALL TERRANE MINERAL EXPLORATION SER

AGAT WORK ORDER: 15Y014458

PROJECT:

ATTENTION TO: CARL SCHULZE, JIM COYNE

SAMPLING SITE:

SAMPLED BY:

PARAMETER	AGAT S.O.P	LITERATURE REFERENCE	ANALYTICAL TECHNIQUE
Solid Analysis			
Ag	MIN-200-12020		ICP/OES
Al	MIN-200-12020		ICP/OES
As	MIN-200-12020		ICP/OES
B	MIN-200-12020		ICP/OES
Ba	MIN-200-12020		ICP/OES
Be	MIN-200-12020		ICP/OES
Bi	MIN-200-12020		ICP/OES
Ca	MIN-200-12020		ICP/OES
Cd	MIN-200-12020		ICP/OES
Ce	MIN-200-12020		ICP/OES
Co	MIN-200-12020		ICP/OES
Cr	MIN-200-12020		ICP/OES
Cu	MIN-200-12020		ICP/OES
Fe	MIN-200-12020		ICP/OES
Ga	MIN-200-12020		ICP/OES
Hg	MIN-200-12020		ICP/OES
In	MIN-200-12020		ICP/OES
K	MIN-200-12020		ICP/OES
La	MIN-200-12020		ICP/OES
Li	MIN-200-12020		ICP/OES
Mg	MIN-200-12020		ICP/OES
Mn	MIN-200-12020		ICP/OES
Mo	MIN-200-12020		ICP/OES
Na	MIN-200-12020		ICP/OES
Ni	MIN-200-12020		ICP/OES
P	MIN-200-12020		ICP/OES
Pb	MIN-200-12020		ICP/OES
Rb	MIN-200-12020		ICP/OES
S	MIN-200-12020		ICP/OES
Sb	MIN-200-12020		ICP/OES
Sc	MIN-200-12020		ICP/OES
Se	MIN-200-12020		ICP/OES
Sn	MIN-200-12020		ICP/OES
Sr	MIN-200-12020		ICP/OES
Ta	MIN-200-12020		ICP/OES
Te	MIN-200-12020		ICP/OES
Th	MIN-200-12020		ICP/OES
Ti	MIN-200-12020		ICP/OES
Tl	MIN-200-12020		ICP/OES
U	MIN-200-12020		ICP/OES
V	MIN-200-12020		ICP/OES
W	MIN-200-12020		ICP/OES
Y	MIN-200-12020		ICP/OES
Zn	MIN-200-12020		ICP/OES
Zr	MIN-200-12020		ICP/OES
Pb-OL	MIN-200-12035/12018		ICP/OES
Ag-Grav			GRAVIMETRIC
Zn-OL	MIN-200-12035/12018		ICP/OES
As-OL	MIN-200-12002/12020		ICP/OES



Method Summary

CLIENT NAME: ALL TERRANE MINERAL EXPLORATION SER

AGAT WORK ORDER: 15Y014458

PROJECT:

ATTENTION TO: CARL SCHULZE, JIM COYNE

SAMPLING SITE:

SAMPLED BY:

PARAMETER	AGAT S.O.P	LITERATURE REFERENCE	ANALYTICAL TECHNIQUE
Sample Login Weight			BALANCE
Au	MIN-200-12006	BUGBEE, E: A Textbook of Fire Assaying	ICP-OES



CLIENT NAME: ALL TERRANE MINERAL EXPLORATION SER
35 DAWSON ROAD
WHITEHORSE, YT Y1A5T6
(867) 633-4807

ATTENTION TO: CARL SCHULZE, JIM COYNE

PROJECT:

AGAT WORK ORDER: 15Y014475

SOLID ANALYSIS REVIEWED BY: Kevin Motomura, Data Review Supervisor

DATE REPORTED: Sep 25, 2015

PAGES (INCLUDING COVER): 8

Should you require any information regarding this analysis please contact your client services representative at (905) 501-9998

*NOTES

All samples are stored at no charge for 90 days. Please contact the lab if you require additional sample storage time.



Certificate of Analysis

AGAT WORK ORDER: 15Y014475

PROJECT:

5623 McADAM ROAD
MISSISSAUGA, ONTARIO
CANADA L4Z 1N9
TEL (905)501-9998
FAX (905)501-0589
<http://www.agatlabs.com>

CLIENT NAME: ALL TERRANE MINERAL EXPLORATION SER

ATTENTION TO: CARL SCHULZE, JIM COYNE

(201-073) Aqua Regia Digest - Metals Package, ICP-OES finish

DATE SAMPLED: Sep 02, 2015		DATE RECEIVED: Sep 02, 2015					DATE REPORTED: Sep 25, 2015					SAMPLE TYPE: Soil				
Analyte:	Ag	Al	As	B	Ba	Be	Bi	Ca	Cd	Ce	Co	Cr	Cu	Fe		
Unit:	ppm	%	ppm	ppm	ppm	ppm	ppm	%	ppm	ppm	ppm	ppm	ppm	%		
RDL:	0.2	0.01	1	5	1	0.5	1	0.01	0.5	1	0.5	0.5	0.5	0.01		
Sample ID (AGAT ID)																
SE5671725 (6926032)	1.1	1.18	501	<5	157	2.6	3	0.45	<0.5	69	11.6	9.6	55.9	2.83		
SE5671726 (6926033)	<0.2	1.06	11	<5	47	1.0	<1	0.19	0.6	46	7.3	18.9	6.8	2.20		
SE5671727 (6926034)	0.2	1.36	26	<5	103	1.4	<1	2.11	1.0	53	16.9	23.1	25.5	3.05		
SE5671728 (6926035)	0.6	1.50	275	6	67	1.7	3	0.95	<0.5	46	10.2	21.8	38.1	2.71		
SE5671729 (6926036)	0.4	1.73	227	<5	107	3.4	1	0.50	<0.5	60	10.2	21.9	23.7	3.00		
Analyte:	Ga	Hg	In	K	La	Li	Mg	Mn	Mo	Na	Ni	P	Pb	Rb		
Unit:	ppm	ppm	ppm	%	ppm	ppm	%	ppm	ppm	%	ppm	ppm	ppm	ppm		
RDL:	5	1	1	0.01	1	1	0.01	1	0.5	0.01	0.5	10	0.5	10		
Sample ID (AGAT ID)																
SE5671725 (6926032)	<5	2	<1	0.14	38	33	0.34	373	12.1	<0.01	27.9	690	63.1	21		
SE5671726 (6926033)	<5	<1	5	0.18	23	34	0.42	199	7.6	<0.01	11.3	248	11.9	92		
SE5671727 (6926034)	6	<1	<1	0.17	25	33	0.71	632	8.0	<0.01	30.6	920	42.6	27		
SE5671728 (6926035)	<5	<1	<1	0.07	24	39	0.61	590	8.1	0.01	32.2	417	81.5	27		
SE5671729 (6926036)	6	6	<1	0.08	29	48	0.61	885	7.2	<0.01	17.3	230	74.6	54		
Analyte:	S	Sb	Sc	Se	Sn	Sr	Ta	Te	Th	Ti	Tl	U	V	W		
Unit:	%	ppm	ppm	ppm	ppm	ppm	ppm	ppm	ppm	%	ppm	ppm	ppm	ppm		
RDL:	0.005	1	0.5	10	5	0.5	10	10	5	0.01	5	5	0.5	1		
Sample ID (AGAT ID)																
SE5671725 (6926032)	0.059	16	6.9	14	6	44.5	<10	<10	16	<0.01	<5	12	17.8	<1		
SE5671726 (6926033)	0.013	4	2.0	20	<5	22.0	<10	<10	<5	0.06	6	<5	39.5	<1		
SE5671727 (6926034)	0.050	17	4.4	<10	<5	51.6	<10	<10	<5	0.06	<5	<5	38.9	<1		
SE5671728 (6926035)	0.042	21	4.8	32	<5	89.7	<10	<10	<5	0.03	<5	<5	33.3	128		
SE5671729 (6926036)	0.029	10	4.4	18	<5	52.4	<10	<10	<5	0.05	<5	<5	41.6	3		
Analyte:	Y	Zn	Zr													
Unit:	ppm	ppm	ppm													
RDL:	1	0.5	5													
Sample ID (AGAT ID)																
SE5671725 (6926032)	26	50.2	<5													
SE5671726 (6926033)	3	68.0	<5													
SE5671727 (6926034)	13	322	<5													
SE5671728 (6926035)	19	230	<5													
SE5671729 (6926036)	14	193	<5													

Certified By:



AGAT Laboratories

Certificate of Analysis

AGAT WORK ORDER: 15Y014475

PROJECT:

5623 McADAM ROAD
MISSISSAUGA, ONTARIO
CANADA L4Z 1N9
TEL (905)501-9998
FAX (905)501-0589
<http://www.agatlabs.com>

CLIENT NAME: ALL TERRANE MINERAL EXPLORATION SER

ATTENTION TO: CARL SCHULZE, JIM COYNE

(201-073) Aqua Regia Digest - Metals Package, ICP-OES finish

DATE SAMPLED: Sep 02, 2015

DATE RECEIVED: Sep 02, 2015

DATE REPORTED: Sep 25, 2015

SAMPLE TYPE: Soil

Comments: RDL - Reported Detection Limit

Certified By:



Certificate of Analysis

AGAT WORK ORDER: 15Y014475

PROJECT:

5623 McADAM ROAD
 MISSISSAUGA, ONTARIO
 CANADA L4Z 1N9
 TEL (905)501-9998
 FAX (905)501-0589
<http://www.agatlabs.com>

CLIENT NAME: ALL TERRANE MINERAL EXPLORATION SER

ATTENTION TO: CARL SCHULZE, JIM COYNE

(202-052) Fire Assay - Trace Au, ICP-OES finish (ppb)

DATE SAMPLED: Sep 02, 2015	DATE RECEIVED: Sep 02, 2015	DATE REPORTED: Sep 25, 2015	SAMPLE TYPE: Soil
Analyte:	Sample Login	Au	
Unit:	Weight		
kg		ppb	
RDL:	0.01	1	
Sample ID (AGAT ID)			
SE5671725 (6926032)	0.75	10	
SE5671726 (6926033)	0.60	<1	
SE5671727 (6926034)	0.55	<1	
SE5671728 (6926035)	0.71	1	
SE5671729 (6926036)	0.46	<1	

Comments: RDL - Reported Detection Limit

Certified By:



CLIENT NAME: ALL TERRANE MINERAL EXPLORATION SER

ATTENTION TO: CARL SCHULZE, JIM COYNE

(201-073) Aqua Regia Digest - Metals Package, ICP-OES finish

Parameter	REPLICATE #1				RPD													
	Sample ID	Original	Replicate	RPD														
Ag	6926032	1.1	1.1	0.0%														
Al	6926032	1.18	1.21	2.5%														
As	6926032	501	468	6.8%														
B	6926032	< 5	< 5	0.0%														
Ba	6926032	157	162	3.1%														
Be	6926032	2.6	2.6	0.0%														
Bi	6926032	3	< 1															
Ca	6926032	0.447	0.466	4.2%														
Cd	6926032	< 0.5	< 0.5	0.0%														
Ce	6926032	69	70	1.4%														
Co	6926032	11.6	10.9	6.2%														
Cr	6926032	9.64	9.97	3.4%														
Cu	6926032	55.9	56.5	1.1%														
Fe	6926032	2.83	2.89	2.1%														
Ga	6926032	< 5	< 5	0.0%														
Hg	6926032	2	< 1															
In	6926032	< 1	2															
K	6926032	0.14	0.14	0.0%														
La	6926032	38	38	0.0%														
Li	6926032	33	34	3.0%														
Mg	6926032	0.344	0.353	2.6%														
Mn	6926032	373	383	2.6%														
Mo	6926032	12.1	14.8	20.1%														
Na	6926032	< 0.01	< 0.01	0.0%														
Ni	6926032	27.9	27.1	2.9%														
P	6926032	690	757	9.3%														
Pb	6926032	63.1	59.3	6.2%														
Rb	6926032	21	21	0.0%														
S	6926032	0.059	0.059	0.0%														
Sb	6926032	16	9															
Sc	6926032	6.89	6.85	0.6%														



AGAT Laboratories

Quality Assurance - Certified Reference materials

AGAT WORK ORDER: 15Y014475

PROJECT:

5623 McADAM ROAD
 MISSISSAUGA, ONTARIO
 CANADA L4Z 1N9
 TEL (905)501-9998
 FAX (905)501-0589
<http://www.agatlabs.com>

CLIENT NAME: ALL TERRANE MINERAL EXPLORATION SER

ATTENTION TO: CARL SCHULZE, JIM COYNE

(201-073) Aqua Regia Digest - Metals Package, ICP-OES finish

Parameter	CRM #1 (ref.CDN-ME-1304)														
	Expect	Actual	Recovery	Limits											
Ag	34.0	33.8	99%	90% - 110%											
Cu	2680	2749	103%	90% - 110%											
Pb	2580	2639	102%	90% - 110%											
Zn	2200	2268	103%	90% - 110%											

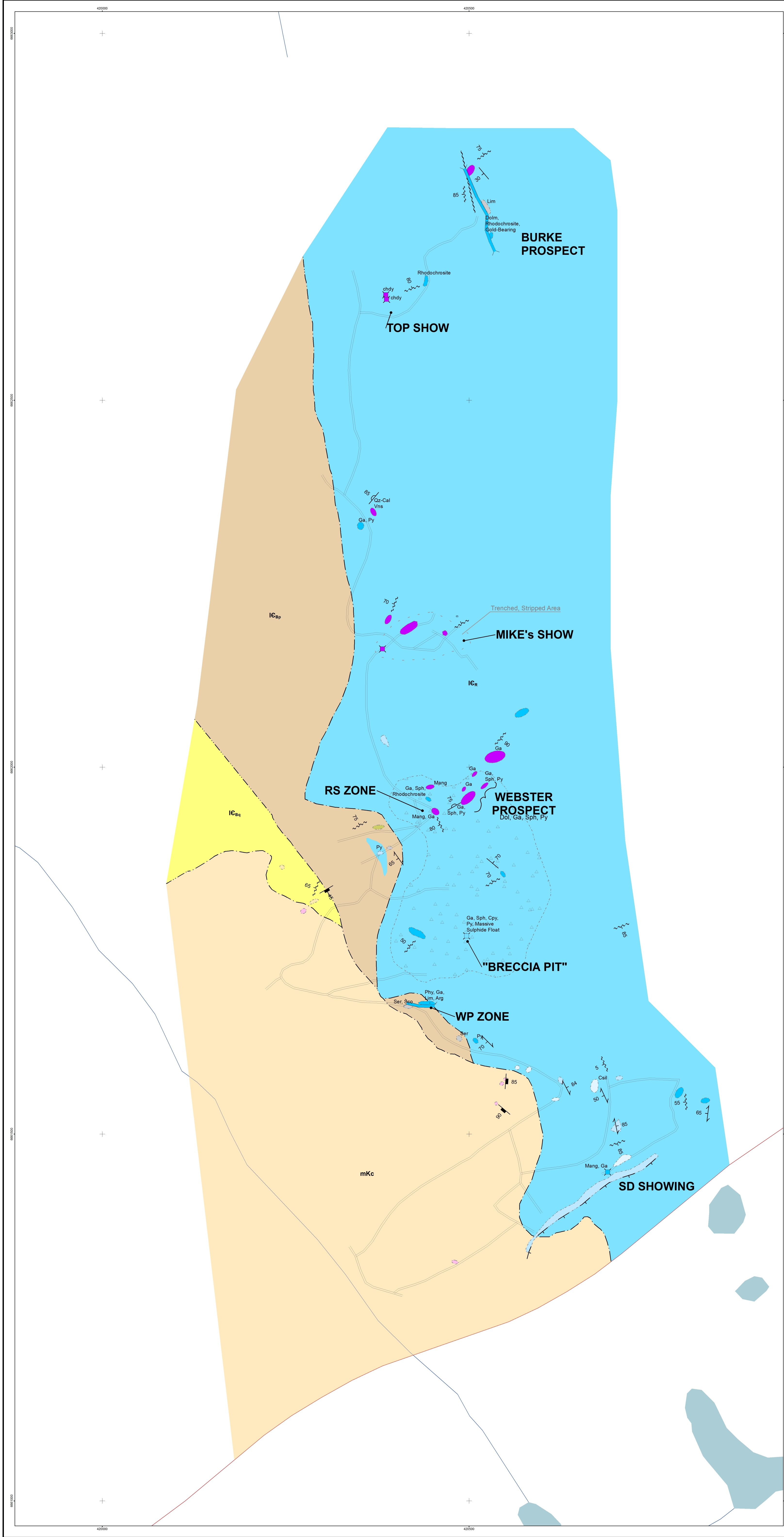


Method Summary

CLIENT NAME: ALL TERRANE MINERAL EXPLORATION SER
 PROJECT:
 SAMPLING SITE:

AGAT WORK ORDER: 15Y014475
 ATTENTION TO: CARL SCHULZE, JIM COYNE
 SAMPLED BY:

PARAMETER	AGAT S.O.P	LITERATURE REFERENCE	ANALYTICAL TECHNIQUE
Solid Analysis			
Ag	MIN-200-12020		ICP/OES
Al	MIN-200-12020		ICP/OES
As	MIN-200-12020		ICP/OES
B	MIN-200-12020		ICP/OES
Ba	MIN-200-12020		ICP/OES
Be	MIN-200-12020		ICP/OES
Bi	MIN-200-12020		ICP/OES
Ca	MIN-200-12020		ICP/OES
Cd	MIN-200-12020		ICP/OES
Ce	MIN-200-12020		ICP/OES
Co	MIN-200-12020		ICP/OES
Cr	MIN-200-12020		ICP/OES
Cu	MIN-200-12020		ICP/OES
Fe	MIN-200-12020		ICP/OES
Ga	MIN-200-12020		ICP/OES
Hg	MIN-200-12020		ICP/OES
In	MIN-200-12020		ICP/OES
K	MIN-200-12020		ICP/OES
La	MIN-200-12020		ICP/OES
Li	MIN-200-12020		ICP/OES
Mg	MIN-200-12020		ICP/OES
Mn	MIN-200-12020		ICP/OES
Mo	MIN-200-12020		ICP/OES
Na	MIN-200-12020		ICP/OES
Ni	MIN-200-12020		ICP/OES
P	MIN-200-12020		ICP/OES
Pb	MIN-200-12020		ICP/OES
Rb	MIN-200-12020		ICP/OES
S	MIN-200-12020		ICP/OES
Sb	MIN-200-12020		ICP/OES
Sc	MIN-200-12020		ICP/OES
Se	MIN-200-12020		ICP/OES
Sn	MIN-200-12020		ICP/OES
Sr	MIN-200-12020		ICP/OES
Ta	MIN-200-12020		ICP/OES
Te	MIN-200-12020		ICP/OES
Th	MIN-200-12020		ICP/OES
Ti	MIN-200-12020		ICP/OES
Tl	MIN-200-12020		ICP/OES
U	MIN-200-12020		ICP/OES
V	MIN-200-12020		ICP/OES
W	MIN-200-12020		ICP/OES
Y	MIN-200-12020		ICP/OES
Zn	MIN-200-12020		ICP/OES
Zr	MIN-200-12020		ICP/OES
Sample Login Weight			BALANCE
Au	MIN-200-12006	BUGBEE, E: A Textbook of Fire Assaying	ICP-OES



LEGEND

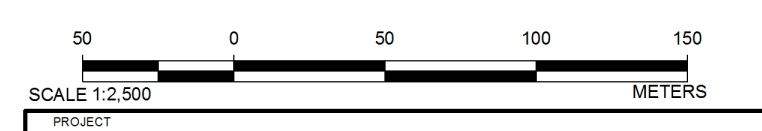
- Mid - Cretaceous: Cassiar Suite
- mKc Cassiar Batholith: coarse grained, fairly equigranular biotite granite
- Lower Cambrian
- Rosella Formation: Thick-bedded limestone - marble, locally dolomitic or dolomitized, commonly fractured - brecciated
- IC_R Boya Formation: Med - fine grained quartzite
- IC_{BP} Boya Formation: Light grey to medium brown phyllite, quartz arenite, siltstone

SYMBOLS

- Strike and Dip of Bedding
- Strike and Dip of Foliation
- Strike and Dip of Joint
- Strike and Dip of Shear
- Strike and Dip of Vein
- Fault
- Normal Fault
- Outcrop Boundary
- Biotite Granite
- Dolomite
- Limestone
- Limestone - Marble
- Limonite
- Marble
- Phyllite
- Quartzite
- Rubble Crop / Talus Boundary
- Geological Contact
- Defined
- Inferred
- Trenches, Pits
- Limestone
- Undefined
- Dolomite
- Limestone
- Bulldozer Trails
- Highway
- Watercourse
- Waterbody

REFERENCE

BASE DATA OBTAINED FROM CANVEC©
 DEPARTMENT OF NATURAL RESOURCES CANADA
 ALL RIGHTS RESERVED.
 DATUM: NAD 1983 CSRS UTM ZONE 9N
 CREATED BY: AURORA GEOSCIENCES

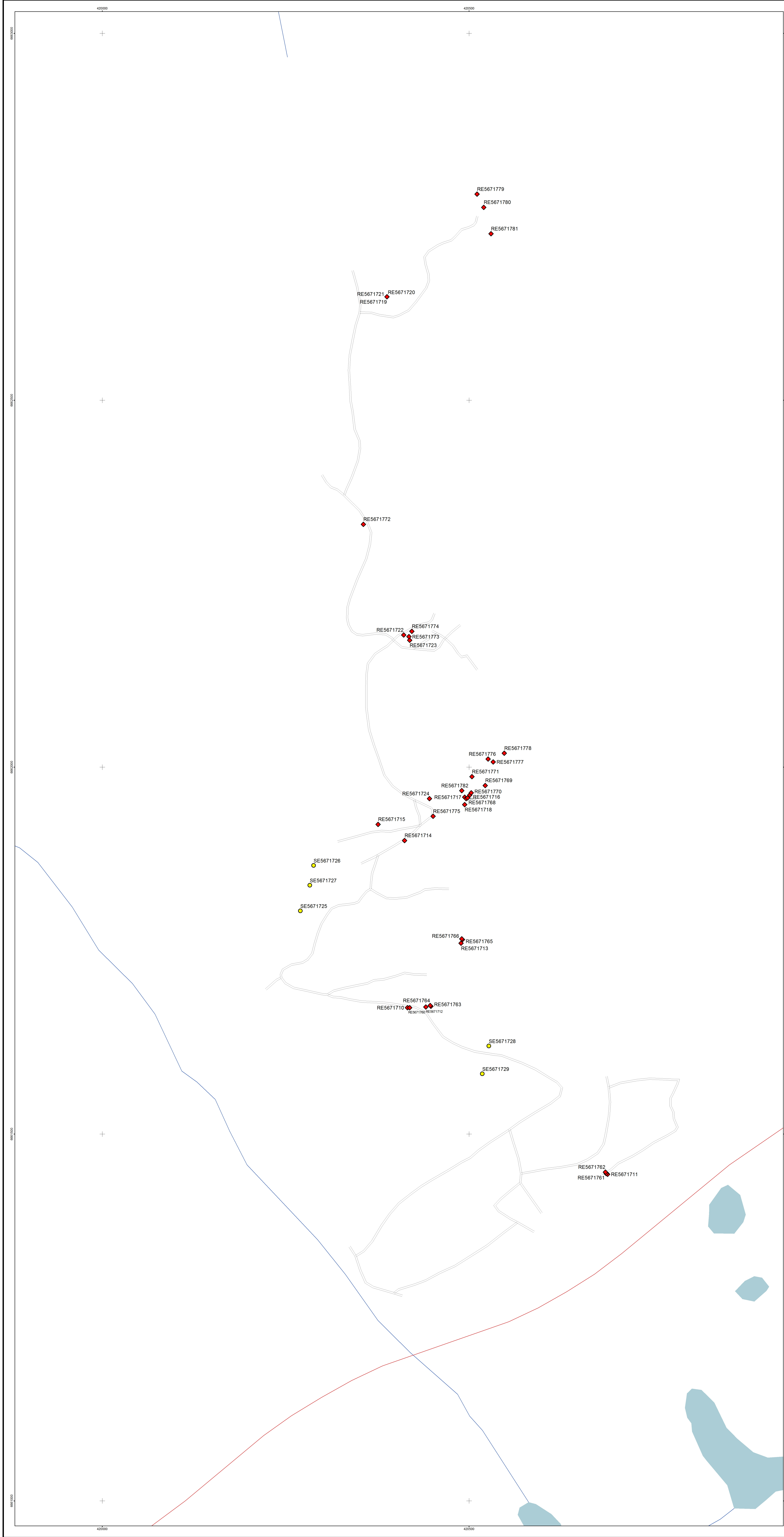


PROJECT
 BLACK COFFEE PROJECT - 2015 PROGRAM

TITLE
 GEOLOGY MAP

	PROJECT	ATM-10064NT	FILE NO.	
	DESIGN	RM	10/11/2015	SCALE AS SHOWN
	GIS	RM	10/11/2015	REV. 1
	CHECK	RM	10/11/2015	
	REVIEW	RM	10/11/2015	

MAP 1

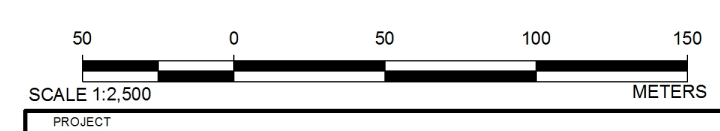
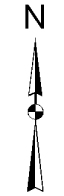


LEGEND

- ◆ Rock Samples
- Soil Samples
- Bulldozer Trails
- Highway
- ~ Watercourse
- Waterbody

REFERENCE

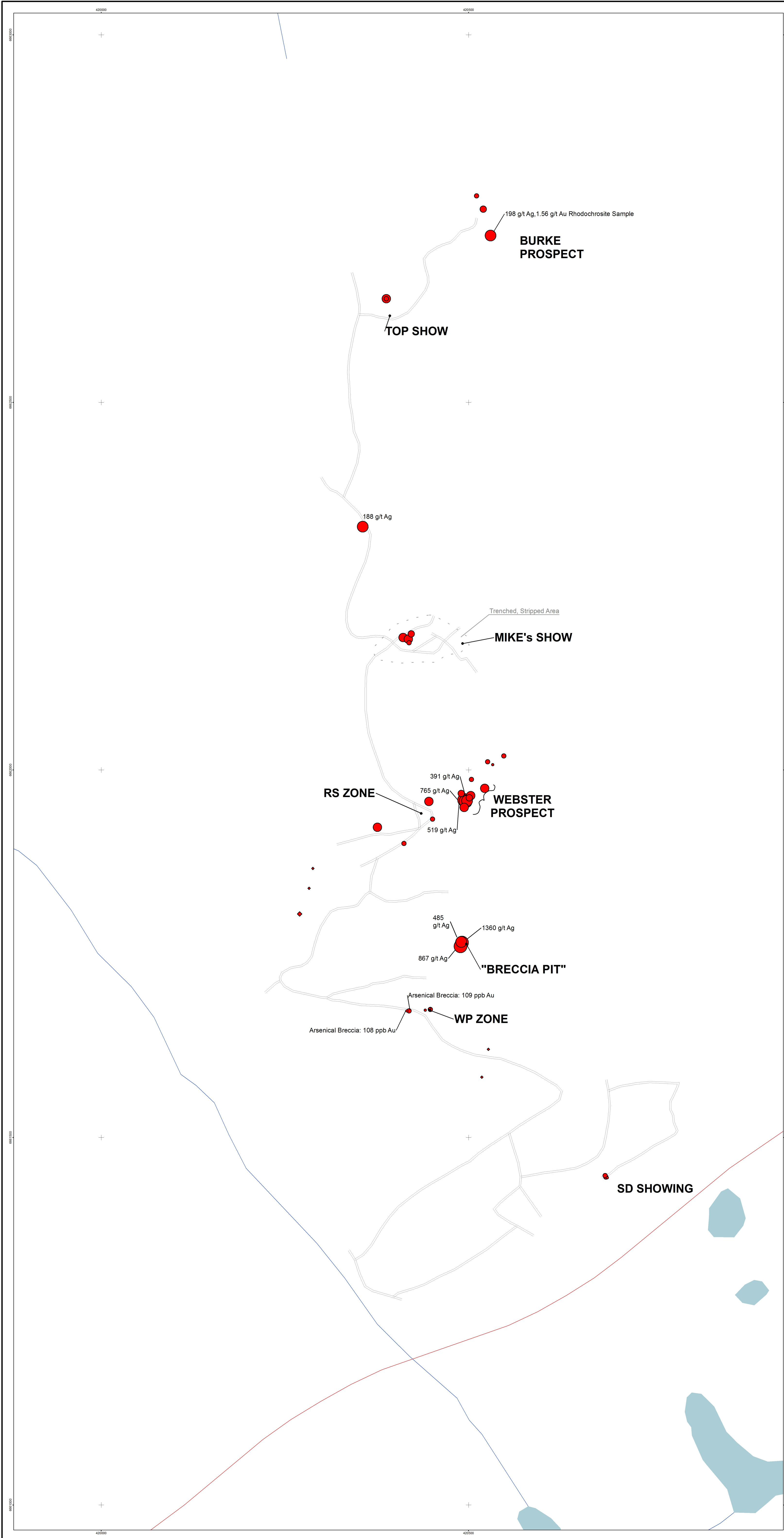
BASE DATA OBTAINED FROM CANVEC©
 DEPARTMENT OF NATURAL RESOURCES CANADA
 ALL RIGHTS RESERVED.
 DATUM: NAD 1983 CSRS UTM ZONE 9N
 CREATED BY: AURORA GEOSCIENCES



PROJECT: BLACK COFFEE PROJECT - 2015 PROGRAM

TITLE: SAMPLING PROGRAM

	PROJECT	ATM-10064NT	FILE NO.	
	DESIGN	RM	09/11/2015	SCALE(S) SHOWN
	CHECK	RM	09/11/2015	REV. 1
	REVIEW	RM	09/11/2015	FIGURE

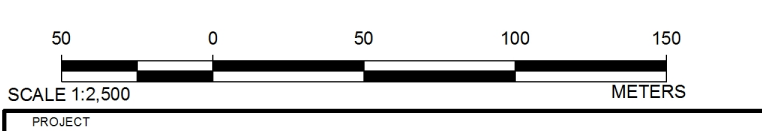


LEGEND

- Rock Samples**
Ag (g/t)
- <1 g/t Ag
 - 1.0 - 5.0 g/t Ag
 - 5.0 - 10.0 g/t Ag
 - 10.0 - 100.0 g/t Ag
 - 100.0 - 500.0 g/t Ag
 - >500 g/t Ag
- Soil Samples**
Ag (g/t)
- <1 g/t Ag
 - ◆ >1 g/t Ag
- Bulldozer Trails
 - Highway
 - Watercourse
 - Waterbody

REFERENCE

BASE DATA OBTAINED FROM CANVEC©
DEPARTMENT OF NATURAL RESOURCES CANADA
ALL RIGHTS RESERVED.
DATUM: NAD 1983 CSRS UTM ZONE 9N
CREATED BY: AURORA GEOSCIENCES



PROJECT			
BLACK COFFEE PROJECT - 2015 PROGRAM			
TITLE			
SAMPLING PROGRAM			
	PROJECT	ATM-10064NT	FILE NO.
	DESIGN	RM	10/11/2015
	Q.S.	RM	10/11/2015
	CHECK	RM	10/11/2015
REVIEW	RM	10/11/2015	MAP 3