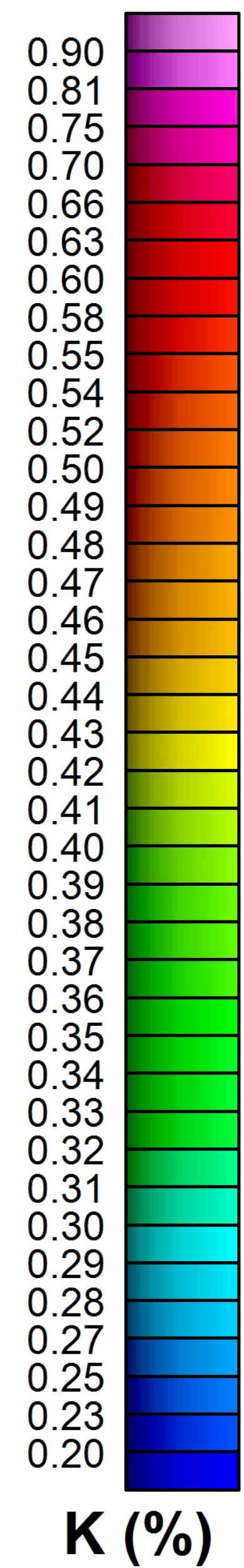


100 m Buffer Boundary
Original Survey Block Boundary



LEGEND

Map Projection:

Projection: Universal Transverse Mercator
Central Meridian: 219 Zone 7N
Datum: WGS 84



Survey Date(s):
Survey Base:
Helicopter Type:
Registration:
Survey Technology:

July 5, 2015
Minto Airstrip, Yukon
Eurocopter AS350
C-GOHK
Magnetic and Radiometric survey.

SURVEY PARAMETERS:

Helicopter:
Magnetometer:
Radiometric:
Actual Mean Terrain Clearance:

35.0 meters
35.0 meters
35.0 meters
35.4 meters

Idaho Creek Survey Block

Survey Line Spacing:
Survey Line Direction:
Tie Line Spacing:
Tie Line Direction:

100 meters
066°/246°
1000 meters
156°/336°

AIRBORNE SYSTEMS:

Scintrex CS-3 Magnetometer Sensor

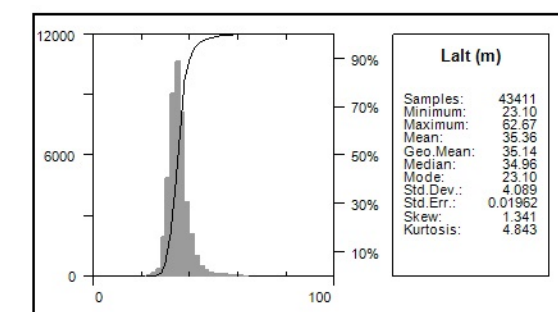
Configuration:
Sample Rate:
Sensitivity:

Stinger with 3 axis compensation
10 Hz
0.01 nT

Gamma Ray Spectrometer

Pico Envirotec GRS-10 Gamma Spectrometer
16.8 litres of NaI(Tl) synthetic "downward looking" crystals
4.2 litres of NaI(Tl) synthetic "upward looking" crystals
Sample Rate:

1 Hz



ATAC Resources Ltd.

Radiometric Map

Idaho Creek Survey Block
Potassium - Equivalent Concentration in Percentage
Created By: Precision GeoSurveys Inc.
July 23, 2015

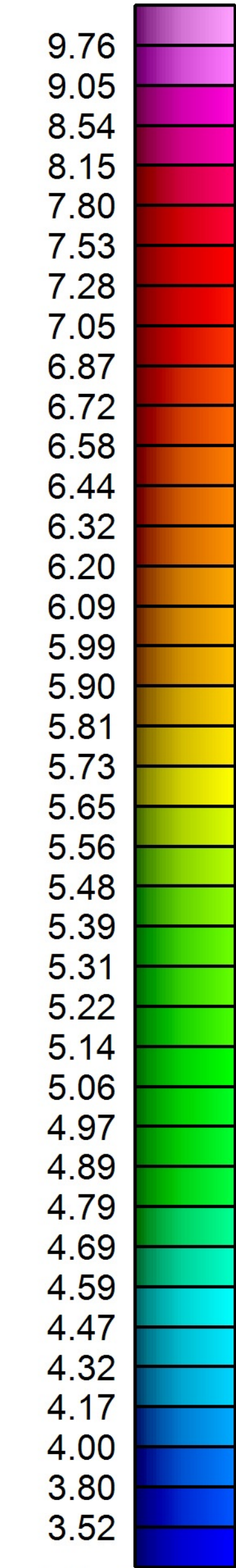
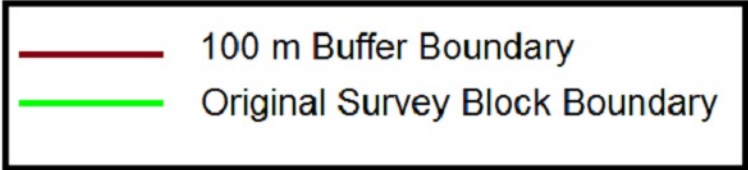
Precision
GeoSurveys

IC_%K

LEGEND

Map Projection:

Projection: Universal Transverse Mercator
Central Meridian: 219 Zone 7N
Datum: WGS 84



eTh (ppm)



Survey Date(s): July 5, 2015
Survey Base: Minto Airstrip, Yukon
Helicopter Type: Eurocopter AS350
Registration: C-GOHK
Survey Technology: Magnetic and Radiometric survey.

SURVEY PARAMETERS:

Helicopter: 35.0 meters
Magnetometer: 35.0 meters
Radiometric: 35.0 meters
Actual Mean Terrain Clearance: 35.4 meters

Idaho Creek Survey Block

Survey Line Spacing: 100 meters
Survey Line Direction: 066°/246°
Tie Line Spacing: 1000 meters
Tie Line Direction: 156°/336°

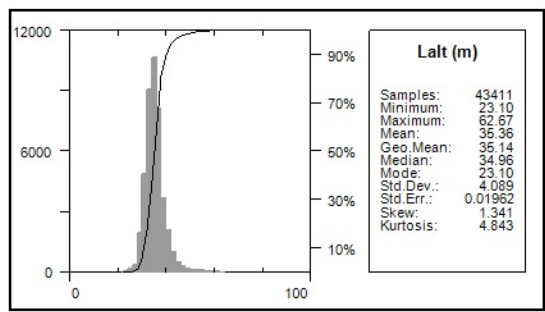
AIRBORNE SYSTEMS:

Scintrex CS-3 Magnetometer Sensor

Configuration: Stinger with 3 axis compensation
Sample Rate: 10 Hz
Sensitivity: 0.01 nT

Gamma Ray Spectrometer

Pico Envirotec GRS-10 Gamma Spectrometer
16.8 litres of NaI(Tl) synthetic "downward looking" crystals
4.2 litres of NaI(Tl) synthetic "upward looking" crystals
Sample Rate: 1 Hz



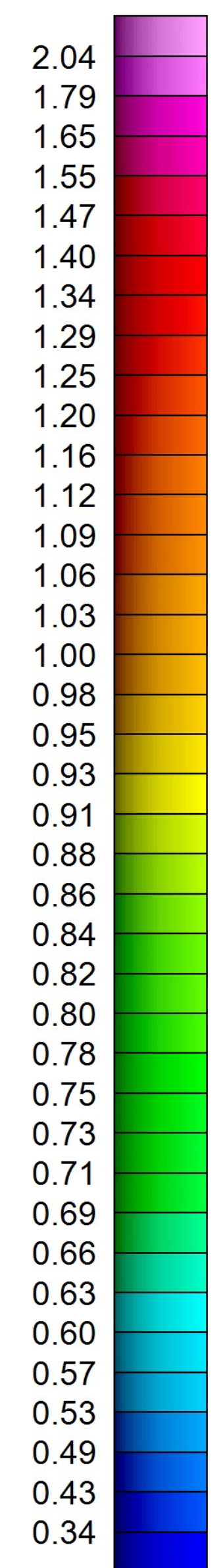
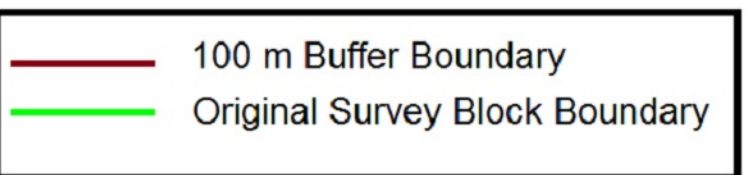
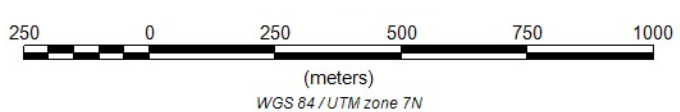
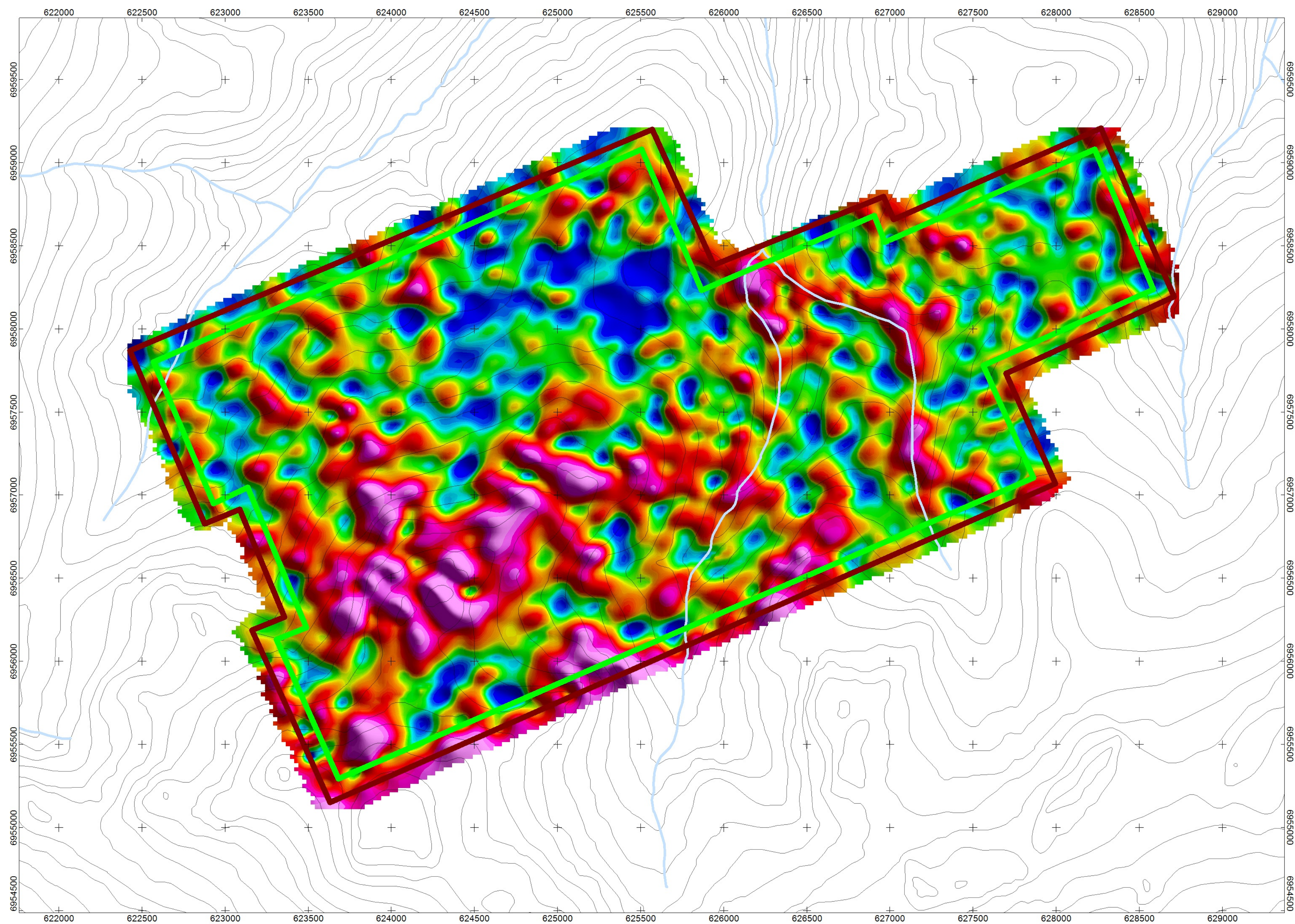
ATAC Resources Ltd.

Radiometric Map

Idaho Creek Survey Block
Thorium - Equivalent Concentration
Created By: Precision GeoSurveys Inc.
July 23, 2015

Precision
GeoSurveys

IC_eTh



eU (ppm)

LEGEND

Map Projection:

Projection: Universal Transverse Mercator
Central Meridian: 219 Zone 7N
Datum: WGS 84



Survey Date(s):
Survey Base:
Helicopter Type:
Registration:
Survey Technology:

July 5, 2015
Minto Airstrip, Yukon
Eurocopter AS350
C-GOHK
Magnetic and Radiometric survey.

SURVEY PARAMETERS:

Helicopter:
Magnetometer:
Radiometric:
Actual Mean Terrain Clearance:

35.0 meters
35.0 meters
35.0 meters
35.4 meters

Idaho Creek Survey Block

Survey Line Spacing:
Survey Line Direction:
Tie Line Spacing:
Tie Line Direction:

100 meters
066°/246°
1000 meters
156°/336°

AIRBORNE SYSTEMS:

Scintrex CS-3 Magnetometer Sensor

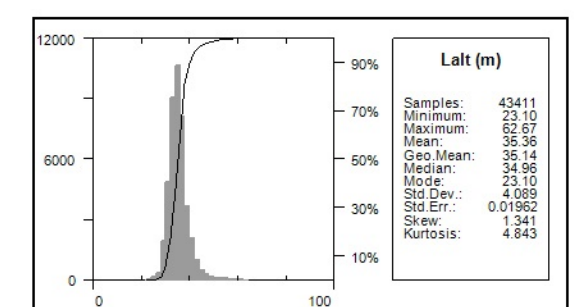
Configuration:
Sample Rate:
Sensitivity:

Stinger with 3 axis compensation
10 Hz
0.01 nT

Gamma Ray Spectrometer

Pico Envirotec GRS-10 Gamma Spectrometer
16.8 litres of NaI(Tl) synthetic "downward looking" crystals
4.2 litres of NaI(Tl) synthetic "upward looking" crystals
Sample Rate:

1 Hz



ATAC Resources Ltd.

Radiometric Map

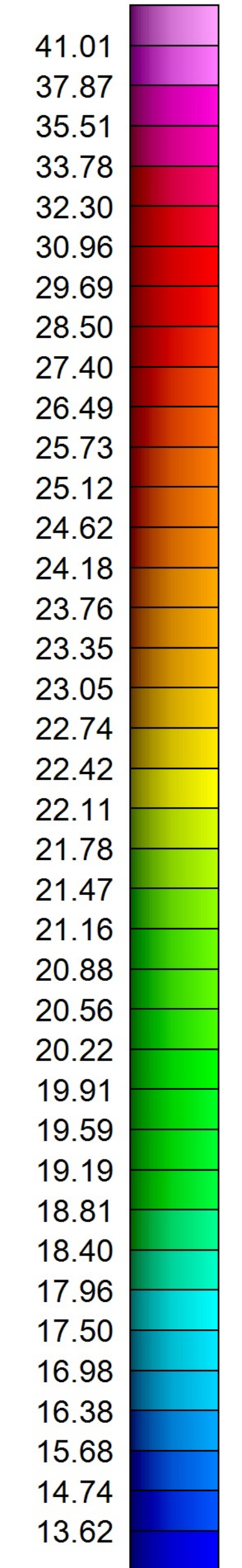
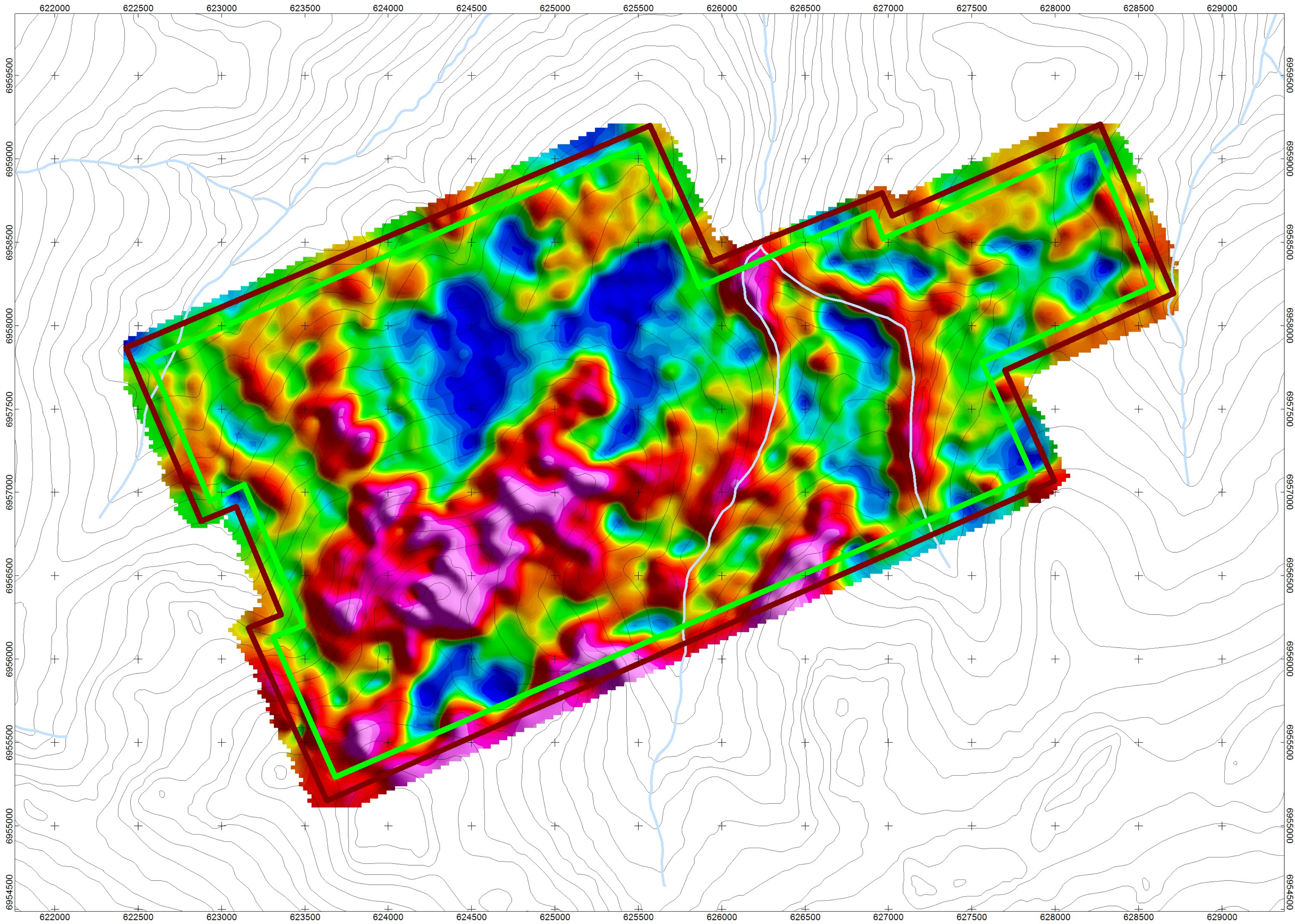
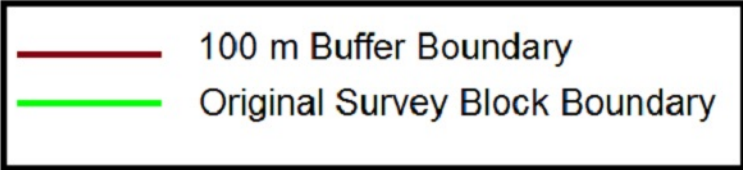
Idaho Creek Survey Block
Uranium - Equivalent Concentration
Created By: Precision GeoSurveys Inc.
July 23, 2015



LEGEND

Map Projection:

Projection: Universal Transverse Mercator
Central Meridian: 219 Zone 7N
Datum: WGS 84



TCcor (µR)



Survey Date(s):
Survey Base:
Helicopter Type:
Registration:
Survey Technology:

July 5, 2015
Minto Airstrip, Yukon
Eurocopter AS350
C-GOHK
Magnetic and Radiometric survey.

SURVEY PARAMETERS:

Helicopter:
Magnetometer:
Radiometric:
Actual Mean Terrain Clearance:

35.0 meters
35.0 meters
35.0 meters
35.4 meters

Idaho Creek Survey Block

Survey Line Spacing:
Survey Line Direction:
Tie Line Spacing:
Tie Line Direction:

100 meters
066°/246°
1000 meters
156°/336°

AIRBORNE SYSTEMS:

Scintrex CS-3 Magnetometer Sensor

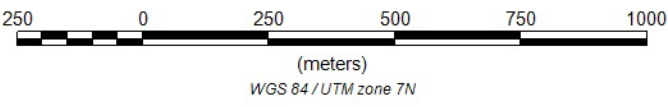
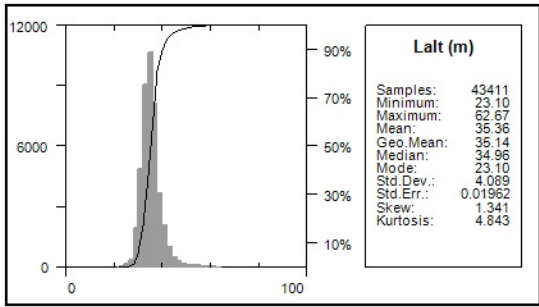
Configuration:
Sample Rate:
Sensitivity:

Stinger with 3 axis compensation
10 Hz
0.01 nT

Gamma Ray Spectrometer

Pico Envirotec GRS-10 Gamma Spectrometer
16.8 litres of NaI(Tl) synthetic "downward looking" crystals
4.2 litres of NaI(Tl) synthetic "upward looking" crystals

Sample Rate: 1 Hz



ATAC Resources Ltd.

Radiometric Map

Idaho Creek Survey Block
Total Count - Equivalent Dose Rate
Created By: Precision GeoSurveys Inc.
July 23, 2015

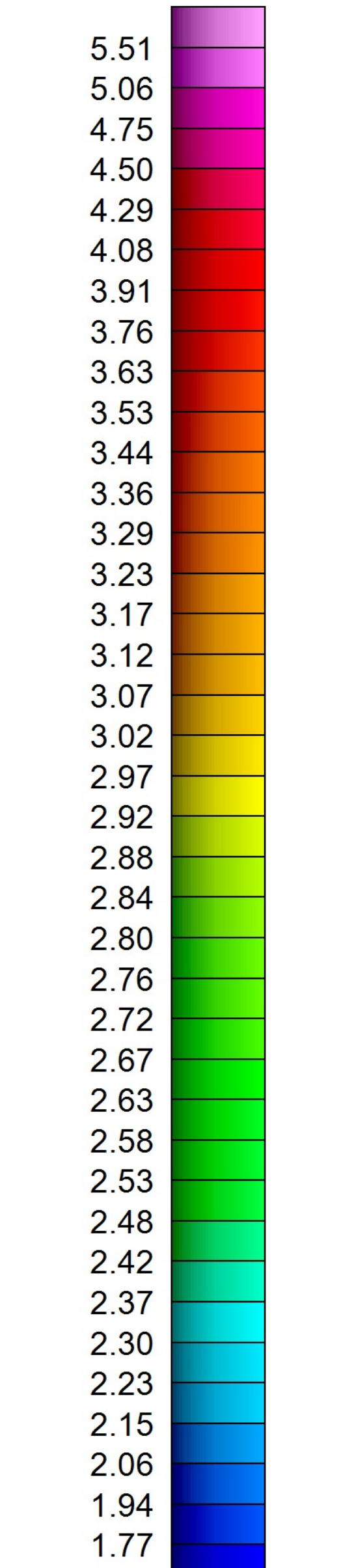
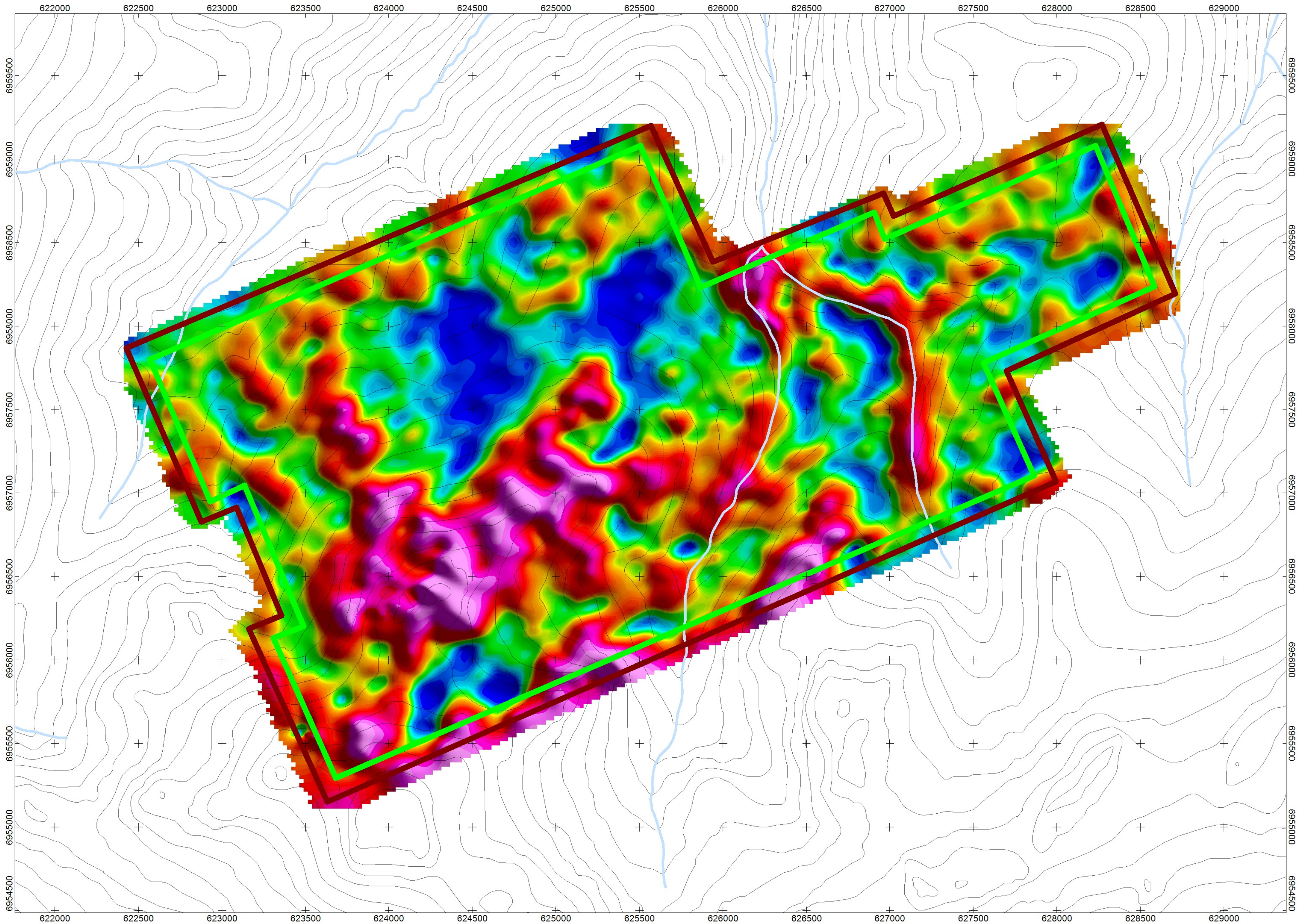
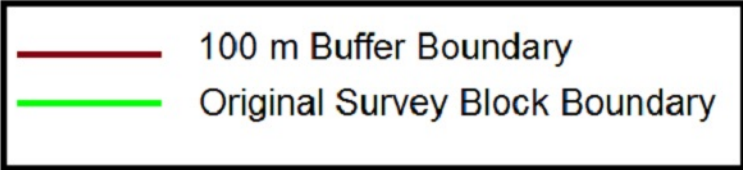
Precision
GeoSurveys

IC_TCcor

LEGEND

Map Projection:

Projection: Universal Transverse Mercator
Central Meridian: 219 Zone 7N
Datum: WGS 84



TCexp (µR/Hr)



Survey Date(s):
Survey Base:
Helicopter Type:
Registration:
Survey Technology:

July 5, 2015
Minto Airstrip, Yukon
Eurocopter AS350
C-GOHK
Magnetic and Radiometric survey.

SURVEY PARAMETERS:

Helicopter:
Magnetometer:
Radiometric:
Actual Mean Terrain Clearance:

35.0 meters
35.0 meters
35.0 meters
35.4 meters

Idaho Creek Survey Block

Survey Line Spacing:
Survey Line Direction:
Tie Line Spacing:
Tie Line Direction:

100 meters
066°/246°
1000 meters
156°/336°

AIRBORNE SYSTEMS:

Scintrex CS-3 Magnetometer Sensor

Configuration:
Sample Rate:
Sensitivity:

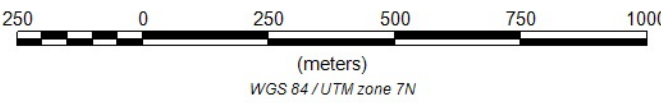
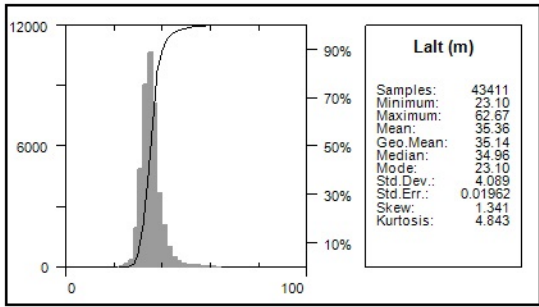
Stinger with 3 axis compensation
10 Hz
0.01 nT

Gamma Ray Spectrometer

Pico Envirotec GRS-10 Gamma Spectrometer
16.8 litres of NaI(Tl) synthetic "downward looking" crystals
4.2 litres of NaI(Tl) synthetic "upward looking" crystals

Sample Rate:

1 Hz



ATAC Resources Ltd.

Radiometric Map

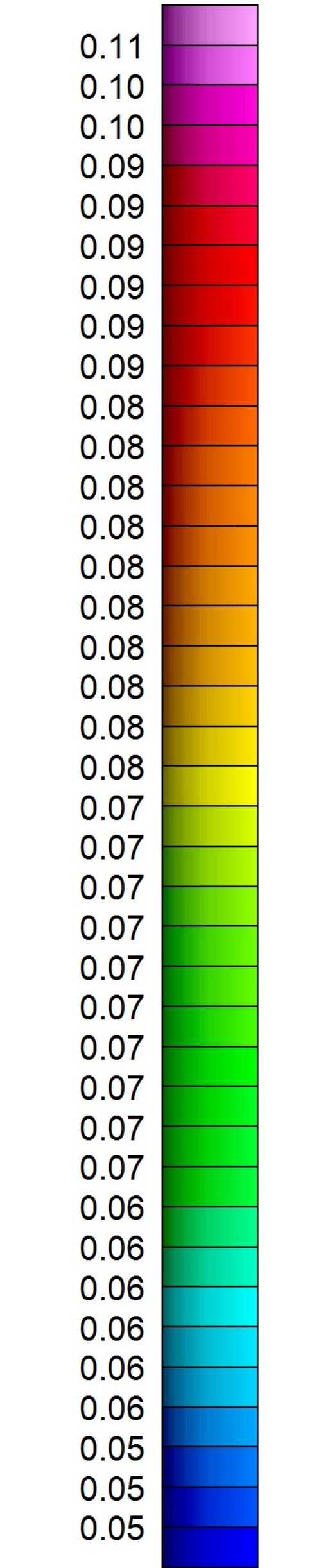
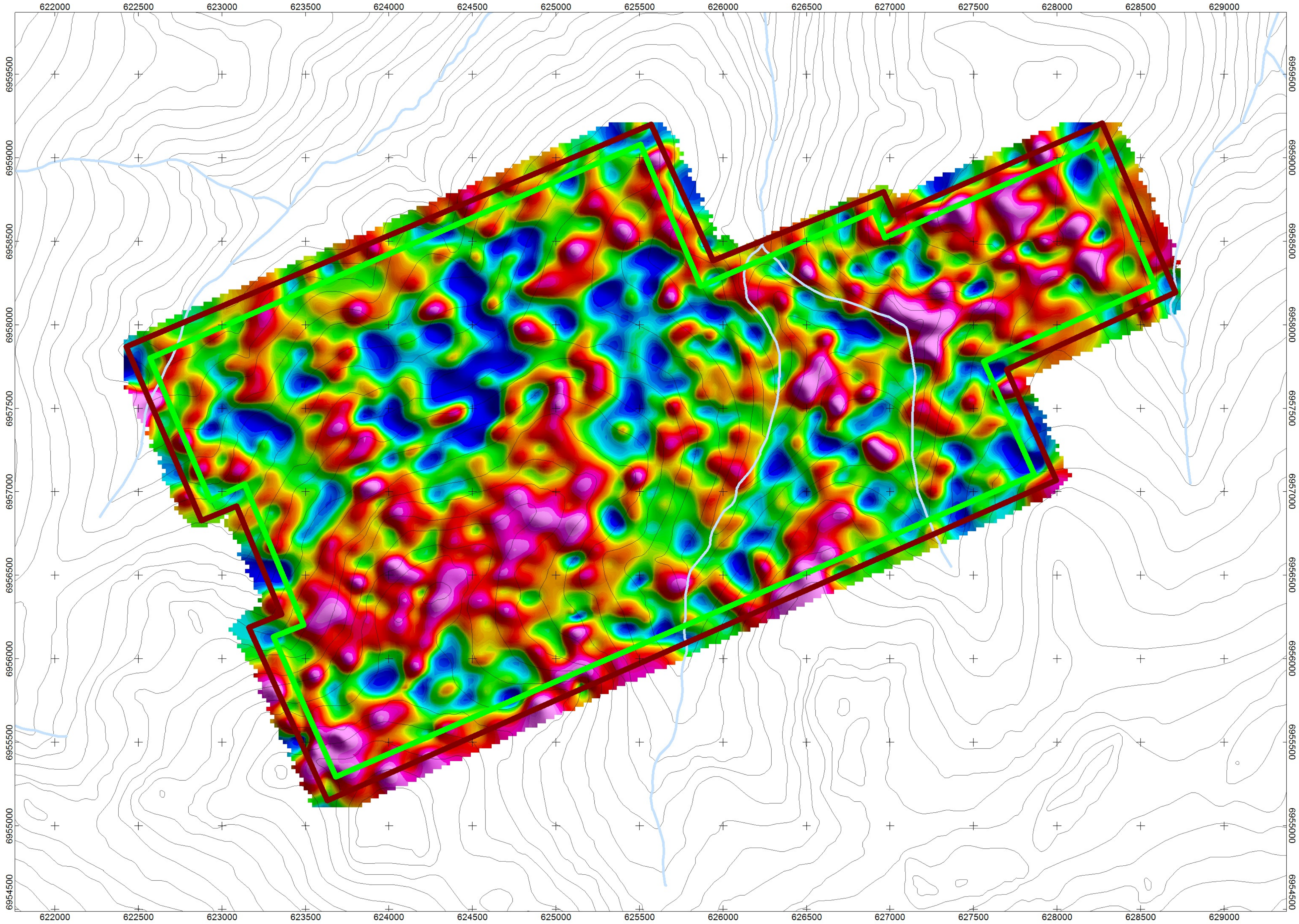
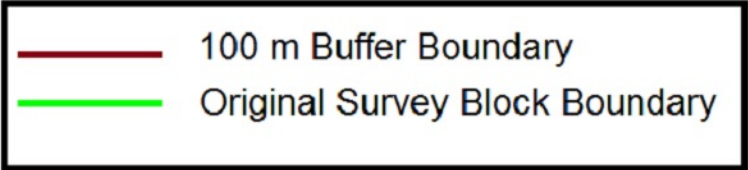
Idaho Creek Survey Block
Total Count - Exposure Rate
Created By: Precision GeoSurveys Inc.
July 23, 2015



LEGEND

Map Projection:

Projection: Universal Transverse Mercator
Central Meridian: 219 Zone 7N
Datum: WGS 84



%K/eTh ratio

Survey Date(s):

Survey Base:

Helicopter Type:

Registration:

Survey Technology:

SURVEY PARAMETERS:

Helicopter:

Magnetometer:

Radiometric:

Actual Mean Terrain Clearance:

Idaho Creek Survey Block

Survey Line Spacing:

Survey Line Direction:

Tie Line Spacing:

Tie Line Direction:

AIRBORNE SYSTEMS:

Scintrex CS-3 Magnetometer Sensor

Configuration:

Sample Rate:

Sensitivity:

Gamma Ray Spectrometer

Pico Envirotec GRS-10 Gamma Spectrometer

16.8 litres of NaI(Tl) synthetic "downward looking" crystals

4.2 litres of NaI(Tl) synthetic "upward looking" crystals

Sample Rate:

July 5, 2015

Minto Airstrip, Yukon

Eurocopter AS350

C-GOHK

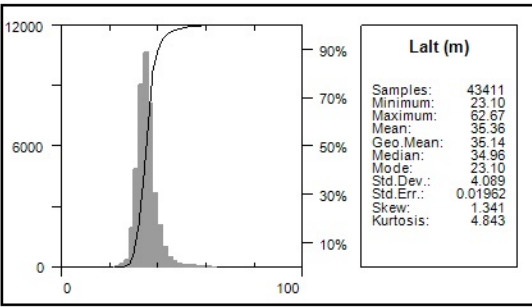
Magnetic and Radiometric survey.

35.0 meters

35.0 meters

35.0 meters

35.4 meters



100 meters

066°/246°

1000 meters

156°/336°

Stinger with 3 axis compensation

10 Hz

0.01 nT

1 Hz

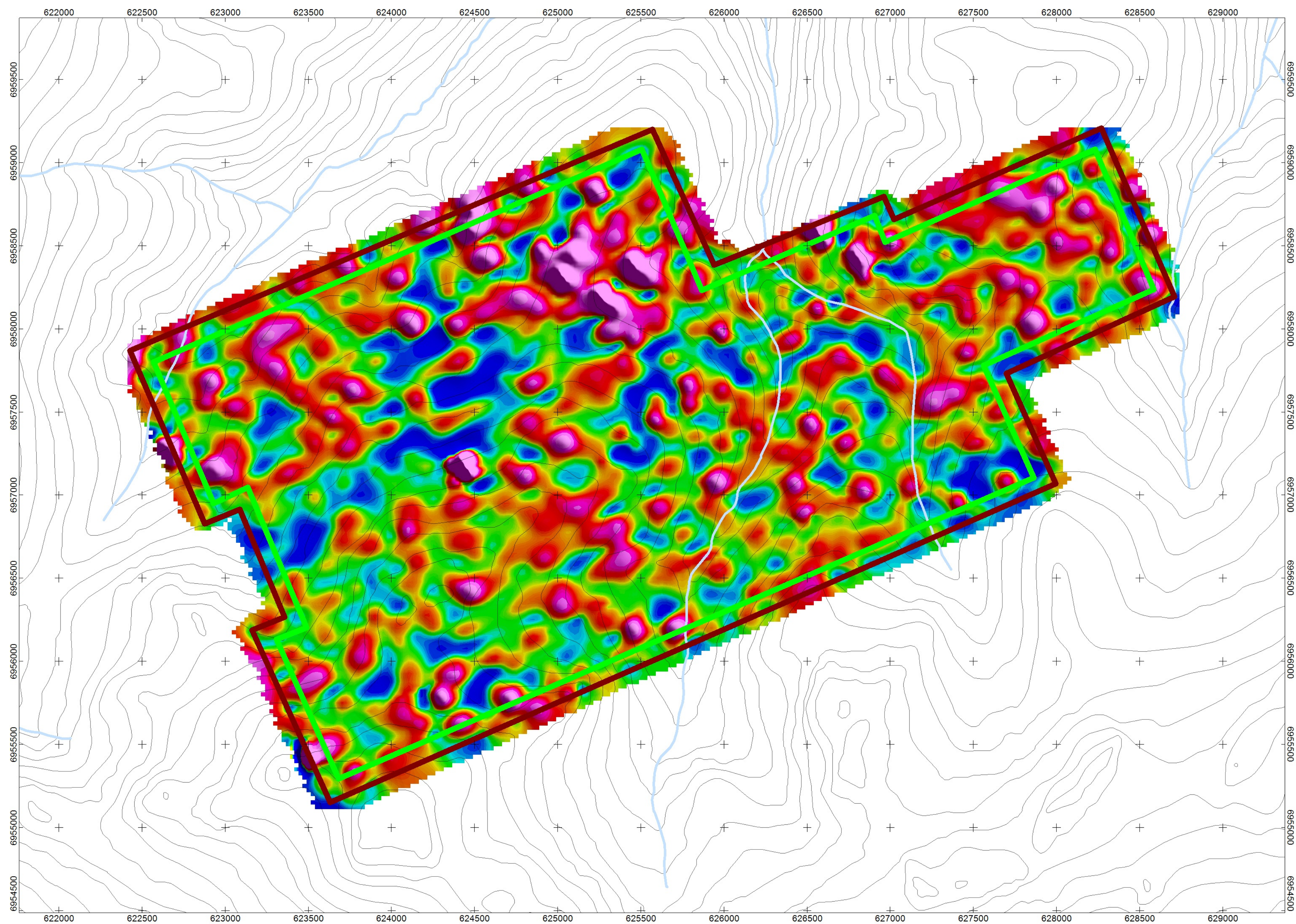
ATAC Resources Ltd.

Radiometric Map

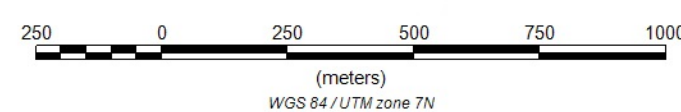
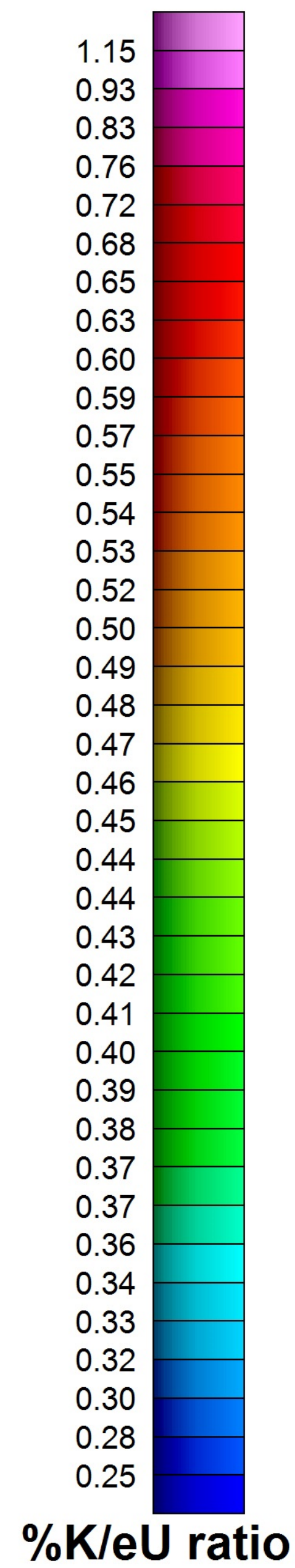
Idaho Creek Survey Block
Potassium over Thorium Ratio
Created By: Precision GeoSurveys Inc.
July 23, 2015

Precision
GeoSurveys

IC_%K/eTh



100 m Buffer Boundary
Original Survey Block Boundary



LEGEND

Map Projection:

Projection: Universal Transverse Mercator
Central Meridian: 219 Zone 7N
Datum: WGS 84



Survey Date(s):
Survey Base:
Helicopter Type:
Registration:
Survey Technology:

July 5, 2015
Minto Airstrip, Yukon
Eurocopter AS350
C-GOHK
Magnetic and Radiometric survey.

SURVEY PARAMETERS:

Helicopter:
Magnetometer:
Radiometric:
Actual Mean Terrain Clearance:

35.0 meters
35.0 meters
35.0 meters
35.4 meters

Idaho Creek Survey Block

Survey Line Spacing:
Survey Line Direction:
Tie Line Spacing:
Tie Line Direction:

100 meters
066°/246°
1000 meters
156°/336°

AIRBORNE SYSTEMS:

Scintrex CS-3 Magnetometer Sensor

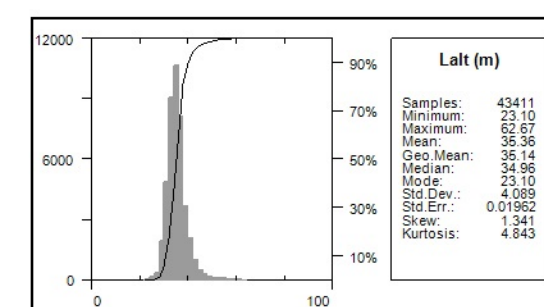
Configuration:
Sample Rate:
Sensitivity:

Stinger with 3 axis compensation
10 Hz
0.01 nT

Gamma Ray Spectrometer

Pico Envirotec GRS-10 Gamma Spectrometer
16.8 litres of NaI(Tl) synthetic "downward looking" crystals
4.2 litres of NaI(Tl) synthetic "upward looking" crystals

Sample Rate: 1 Hz



ATAC Resources Ltd.

Radiometric Map

Idaho Creek Survey Block
Potassium over Uranium Ratio
Created By: Precision GeoSurveys Inc.
July 23, 2015

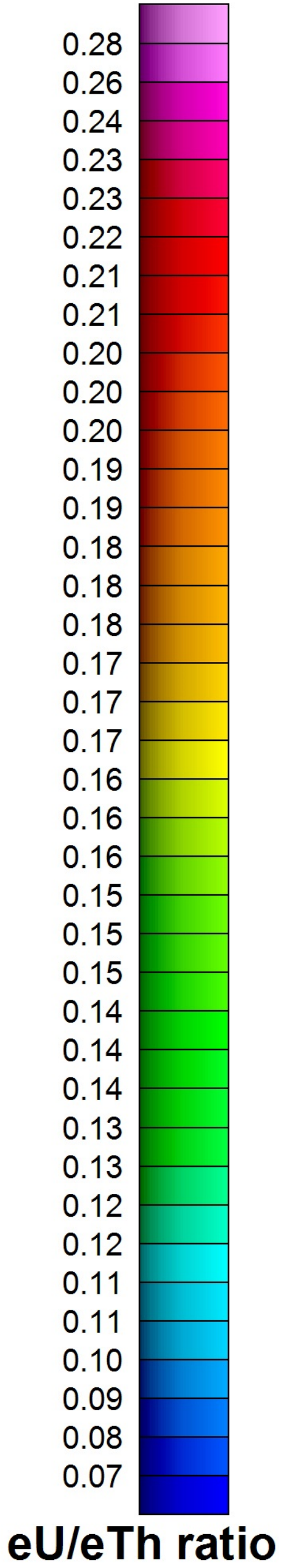
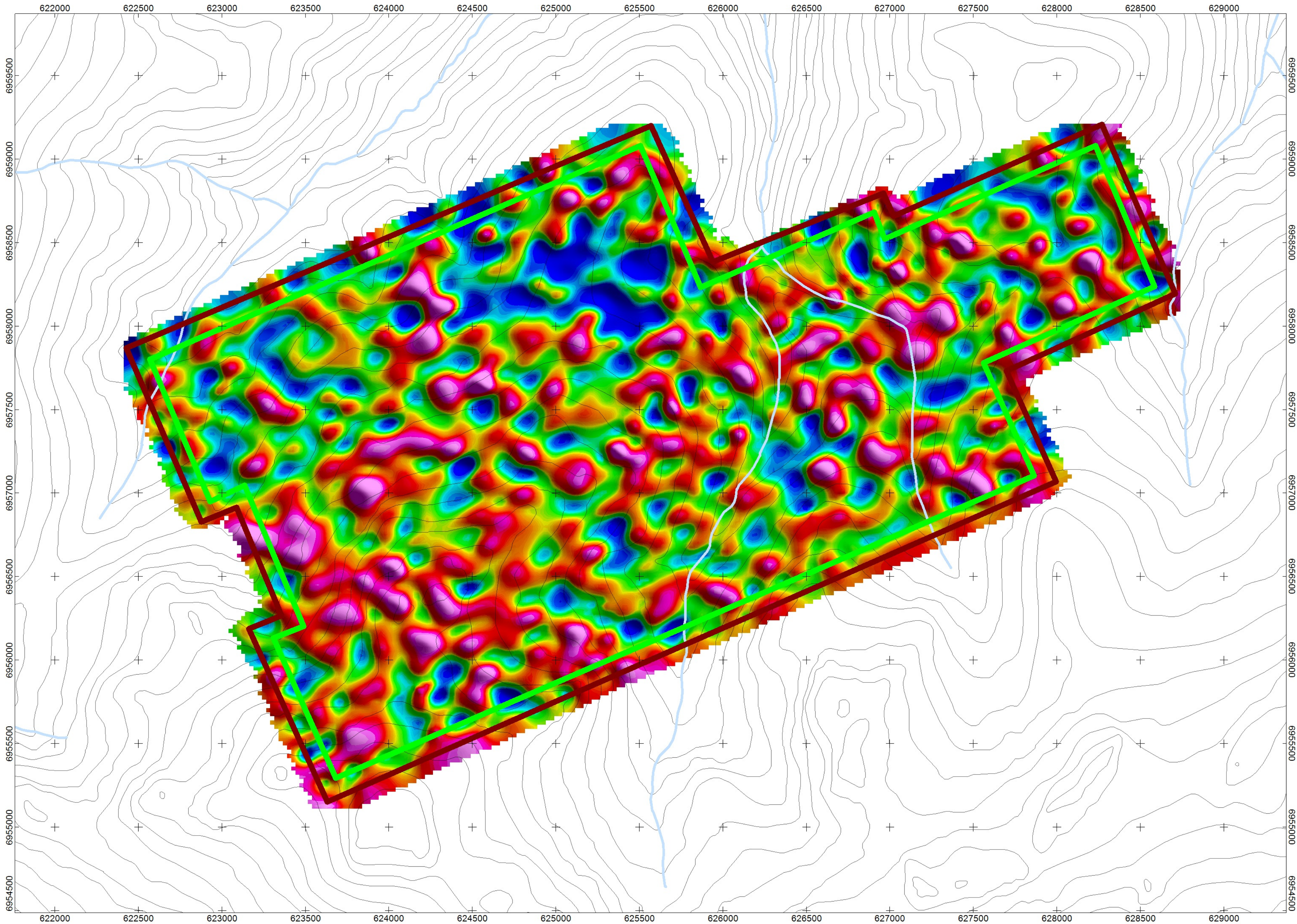
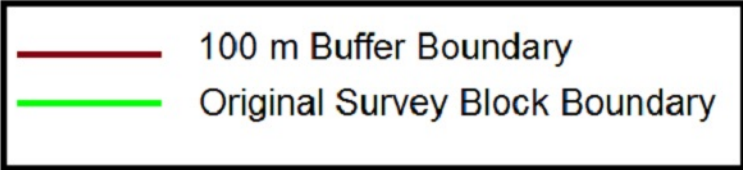
Precision
GeoSurveys

IC_%K/eU

LEGEND

Map Projection:

Projection: Universal Transverse Mercator
Central Meridian: 219 Zone 7N
Datum: WGS 84



Survey Date(s): July 5, 2015
Survey Base: Minto Airstrip, Yukon
Helicopter Type: Eurocopter AS350
Registration: C-GOHK
Survey Technology: Magnetic and Radiometric survey.

SURVEY PARAMETERS:

Helicopter: 35.0 meters
Magnetometer: 35.0 meters
Radiometric: 35.0 meters
Actual Mean Terrain Clearance: 35.4 meters

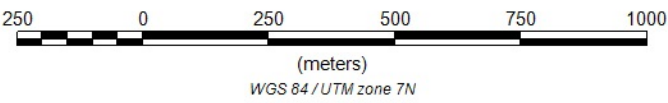
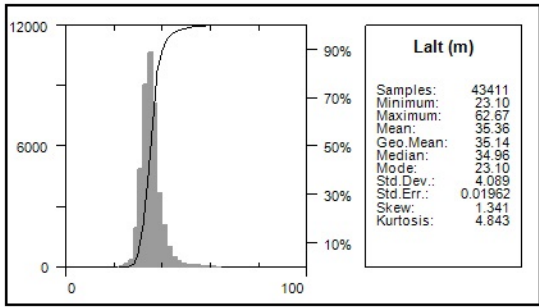
Idaho Creek Survey Block

Survey Line Spacing: 100 meters
Survey Line Direction: 066°/246°
Tie Line Spacing: 1000 meters
Tie Line Direction: 156°/336°

AIRBORNE SYSTEMS:

Scintrex CS-3 Magnetometer Sensor
Configuration: Stinger with 3 axis compensation
Sample Rate: 10 Hz
Sensitivity: 0.01 nT

Gamma Ray Spectrometer
Pico Envirotec GRS-10 Gamma Spectrometer
16.8 litres of NaI(Tl) synthetic "downward looking" crystals
4.2 litres of NaI(Tl) synthetic "upward looking" crystals
Sample Rate: 1 Hz



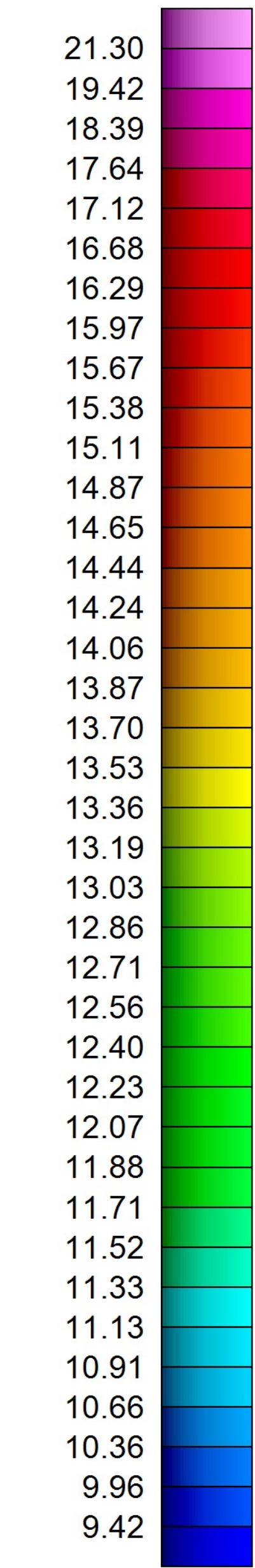
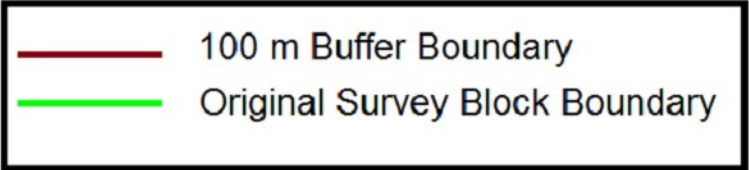
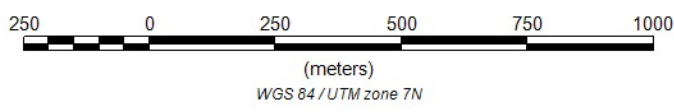
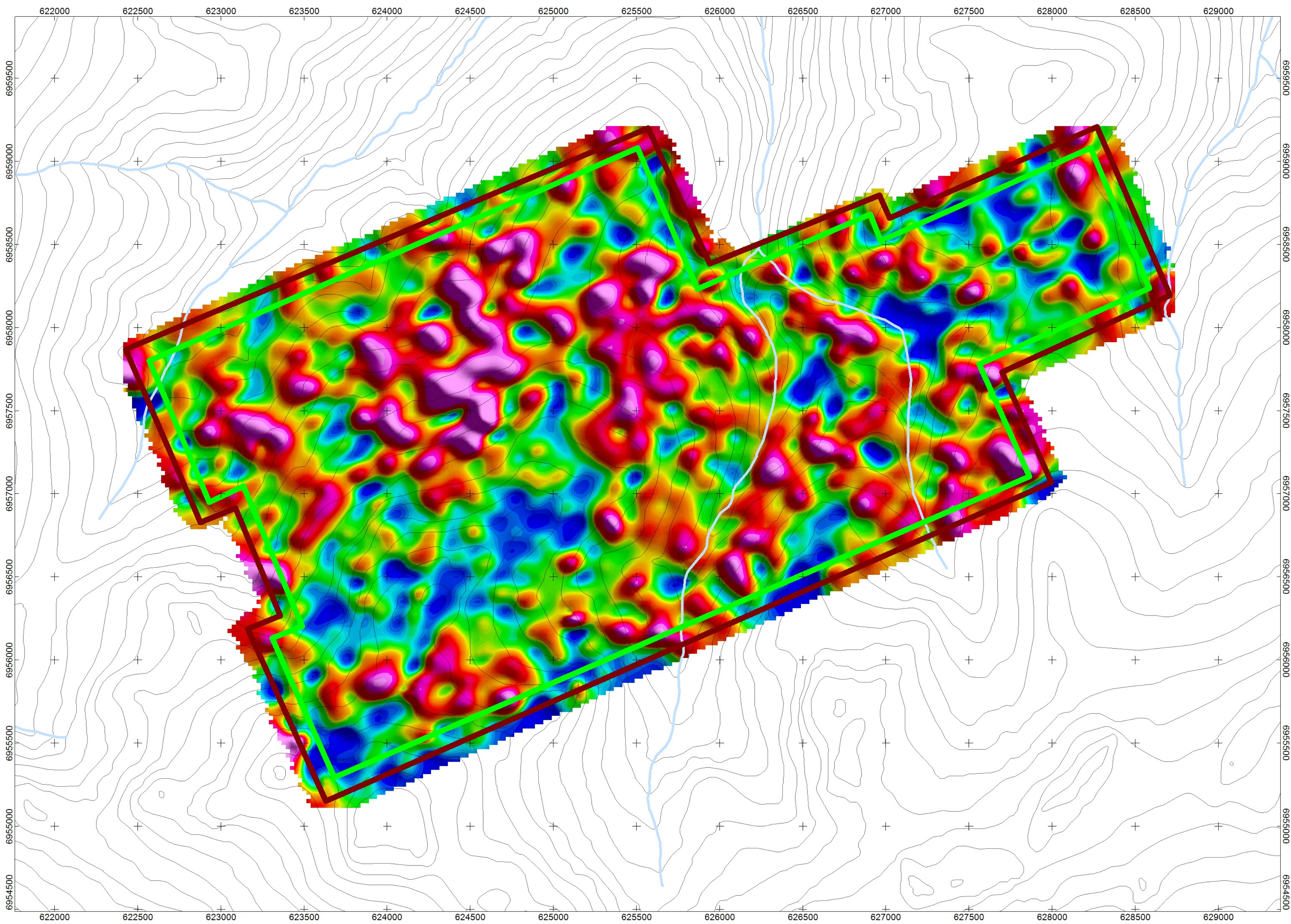
ATAC Resources Ltd.

Radiometric Map

Idaho Creek Survey Block
Uranium over Thorium Ratio
Created By: Precision GeoSurveys Inc.
July 23, 2015

Precision
GeoSurveys

IC_eU/eTh



eTh/%K ratio

LEGEND

Map Projection:

Projection: Universal Transverse Mercator
Central Meridian: 219 Zone 7N
Datum: WGS 84



Survey Date(s):
Survey Base:
Helicopter Type:
Registration:
Survey Technology:

July 5, 2015
Minto Airstrip, Yukon
Eurocopter AS350
C-GOHK
Magnetic and Radiometric survey.

SURVEY PARAMETERS:

Helicopter:
Magnetometer:
Radiometric:
Actual Mean Terrain Clearance:

35.0 meters
35.0 meters
35.0 meters
35.4 meters

Idaho Creek Survey Block

Survey Line Spacing:
Survey Line Direction:
Tie Line Spacing:
Tie Line Direction:

100 meters
066°/246°
1000 meters
156°/336°

AIRBORNE SYSTEMS:

Scintrex CS-3 Magnetometer Sensor

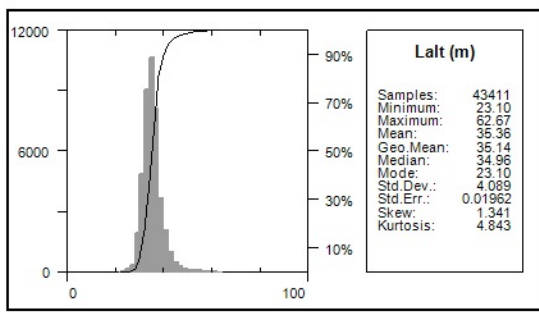
Configuration:
Sample Rate:
Sensitivity:

Stinger with 3 axis compensation
10 Hz
0.01 nT

Gamma Ray Spectrometer

Pico Envirotec GRS-10 Gamma Spectrometer
16.8 litres of NaI(Tl) synthetic "downward looking" crystals
4.2 litres of NaI(Tl) synthetic "upward looking" crystals
Sample Rate:

1 Hz



ATAC Resources Ltd.

Radiometric Map

Idaho Creek Survey Block
Thorium over Potassium Ratio
Created By: Precision GeoSurveys Inc.
July 23, 2015

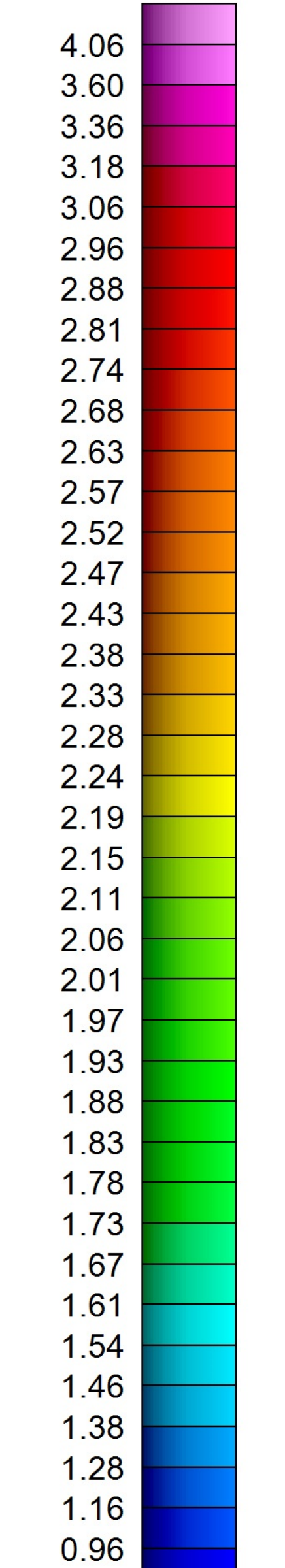
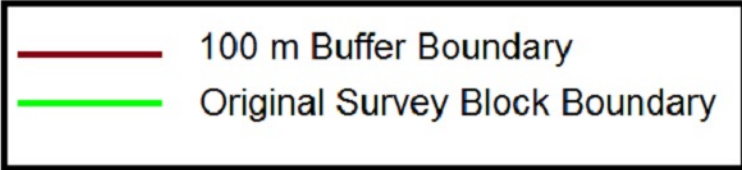
Precision
GeoSurveys

IC_eTh/%K

LEGEND

Map Projection:

Projection: Universal Transverse Mercator
Central Meridian: 219 Zone 7N
Datum: WGS 84



eU/%K ratio



Survey Date(s):
Survey Base:
Helicopter Type:
Registration:
Survey Technology:

July 5, 2015
Minto Airstrip, Yukon
Eurocopter AS350
C-GOHK
Magnetic and Radiometric survey.

SURVEY PARAMETERS:

Helicopter:
Magnetometer:
Radiometric:
Actual Mean Terrain Clearance:

35.0 meters
35.0 meters
35.0 meters
35.4 meters

Idaho Creek Survey Block

Survey Line Spacing:
Survey Line Direction:
Tie Line Spacing:
Tie Line Direction:

100 meters
066°/246°
1000 meters
156°/336°

AIRBORNE SYSTEMS:

Scintrex CS-3 Magnetometer Sensor

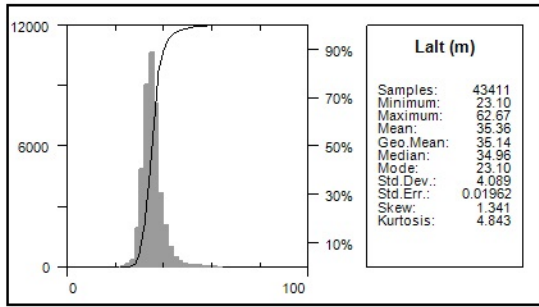
Configuration:
Sample Rate:
Sensitivity:

Stinger with 3 axis compensation
10 Hz
0.01 nT

Gamma Ray Spectrometer

Pico Envirotec GRS-10 Gamma Spectrometer
16.8 litres of NaI(Tl) synthetic "downward looking" crystals
4.2 litres of NaI(Tl) synthetic "upward looking" crystals
Sample Rate:

1 Hz



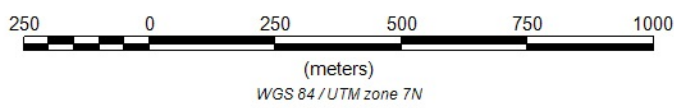
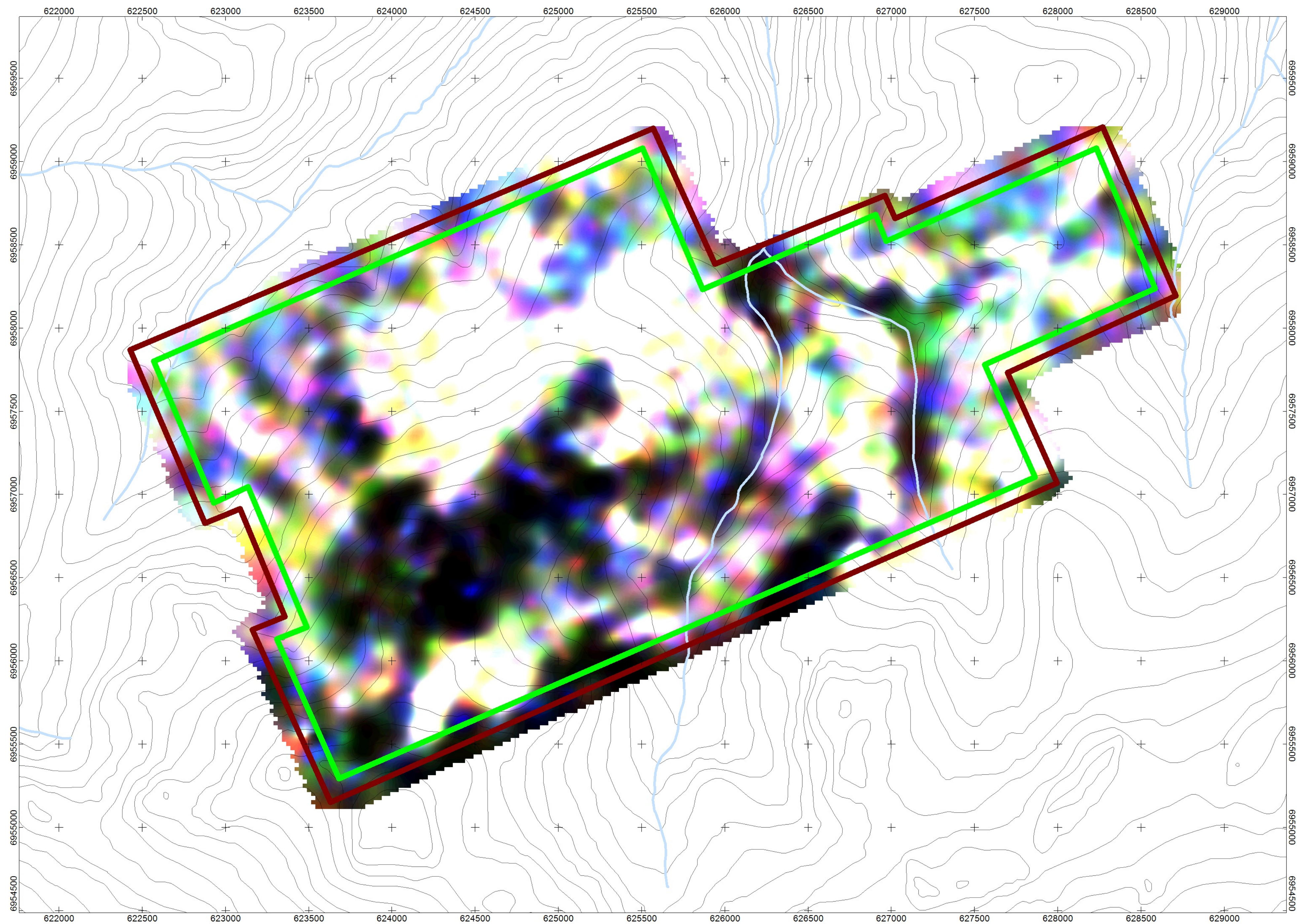
ATAC Resources Ltd.

Radiometric Map

Idaho Creek Survey Block
Uranium over Potassium Ratio
Created By: Precision GeoSurveys Inc.
July 23, 2015

Precision
GeoSurveys

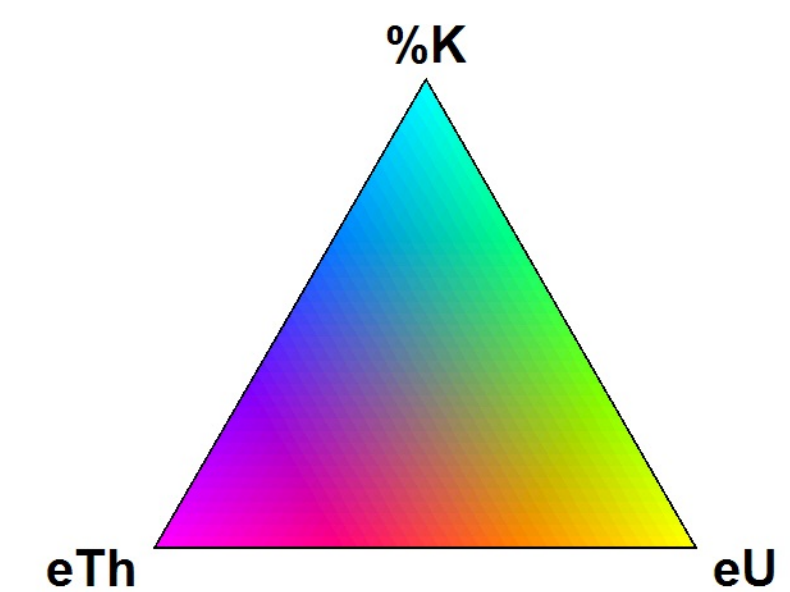
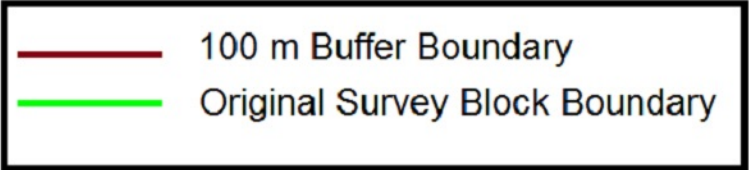
IC_eU/%K



LEGEND

Map Projection:

Projection: Universal Transverse Mercator
Central Meridian: 219 Zone 7N
Datum: WGS 84



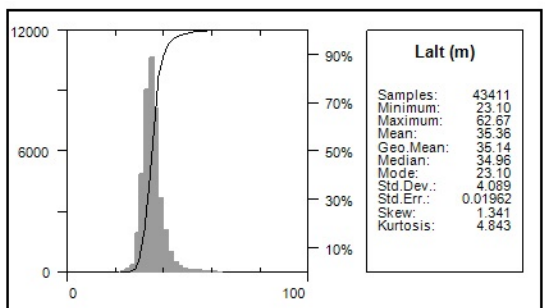
Survey Date(s):
Survey Base:
Helicopter Type:
Registration:
Survey Technology:

July 5, 2015
Minto Airstrip, Yukon
Eurocopter AS350
C-GOHK
Magnetic and Radiometric survey.

SURVEY PARAMETERS:

Helicopter:
Magnetometer:
Radiometric:
Actual Mean Terrain Clearance:

35.0 meters
35.0 meters
35.0 meters
35.4 meters



Idaho Creek Survey Block

Survey Line Spacing:
Survey Line Direction:
Tie Line Spacing:
Tie Line Direction:

100 meters
066°/246°
1000 meters
156°/336°

AIRBORNE SYSTEMS:

Scintrex CS-3 Magnetometer Sensor

Configuration:
Sample Rate:
Sensitivity:

Stinger with 3 axis compensation
10 Hz
0.01 nT

Gamma Ray Spectrometer

Pico Envirotec GRS-10 Gamma Spectrometer
16.8 litres of NaI(Tl) synthetic "downward looking" crystals
4.2 litres of NaI(Tl) synthetic "upward looking" crystals
Sample Rate:

1 Hz

ATAC Resources Ltd.

Radiometric Map

Idaho Creek Survey Block
Ternary Map
Created By: Precision GeoSurveys Inc.
July 23, 2015

Precision
GeoSurveys