

LEGEND

Map Projection:

Projection: Universal Transverse Mercator
Central Meridian: 219 Zone 7N
Datum: WGS 84



Survey Date(s):

Survey Base:

Helicopter Type:

Registration:

Survey Technology:

July 5, 2015

Minto Airstrip, Yukon

Eurocopter AS350

C-GOHK

Magnetic and Radiometric survey.

SURVEY PARAMETERS:

Helicopter:

Magnetometer:

Radiometric:

Actual Mean Terrain Clearance:

35.0 meters

35.0 meters

35.0 meters

35.4 meters

Idaho Creek Survey Block

Survey Line Spacing:

Survey Line Direction:

Tie Line Spacing:

Tie Line Direction:

100 meters

066°/246°

1000 meters

156°/336°

AIRBORNE SYSTEMS:

Scintrex CS-3 Magnetometer Sensor

Configuration:

Sample Rate:

Sensitivity:

Stinger with 3 axis compensation

10 Hz

0.01 nT

Gamma Ray Spectrometer

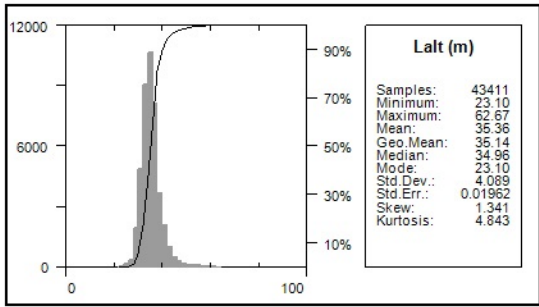
Pico Envirotec GRS-10 Gamma Spectrometer

16.8 litres of NaI(Tl) synthetic "downward looking" crystals

4.2 litres of NaI(Tl) synthetic "upward looking" crystals

Sample Rate:

1 Hz



ATAC Resources Ltd.

Overview Map

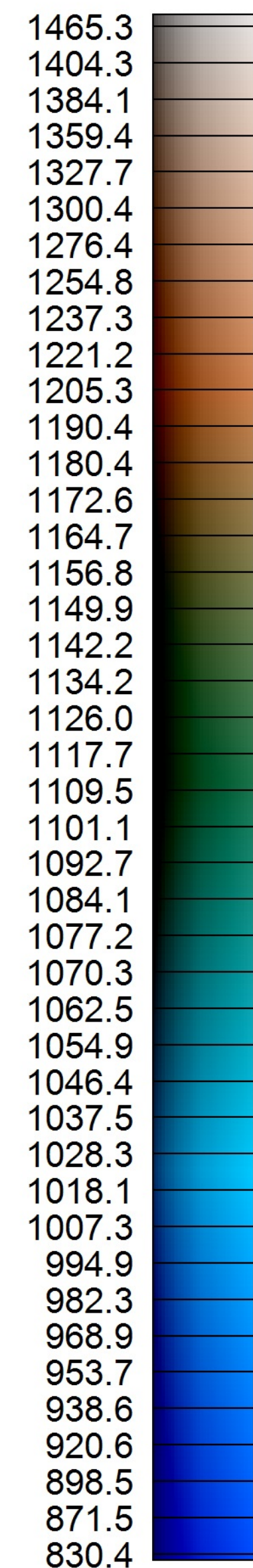
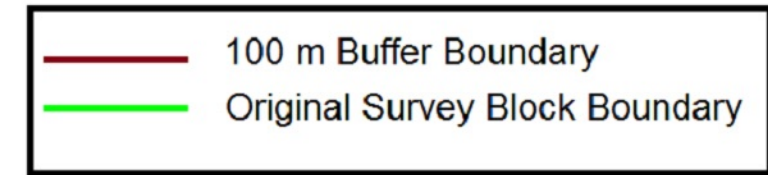
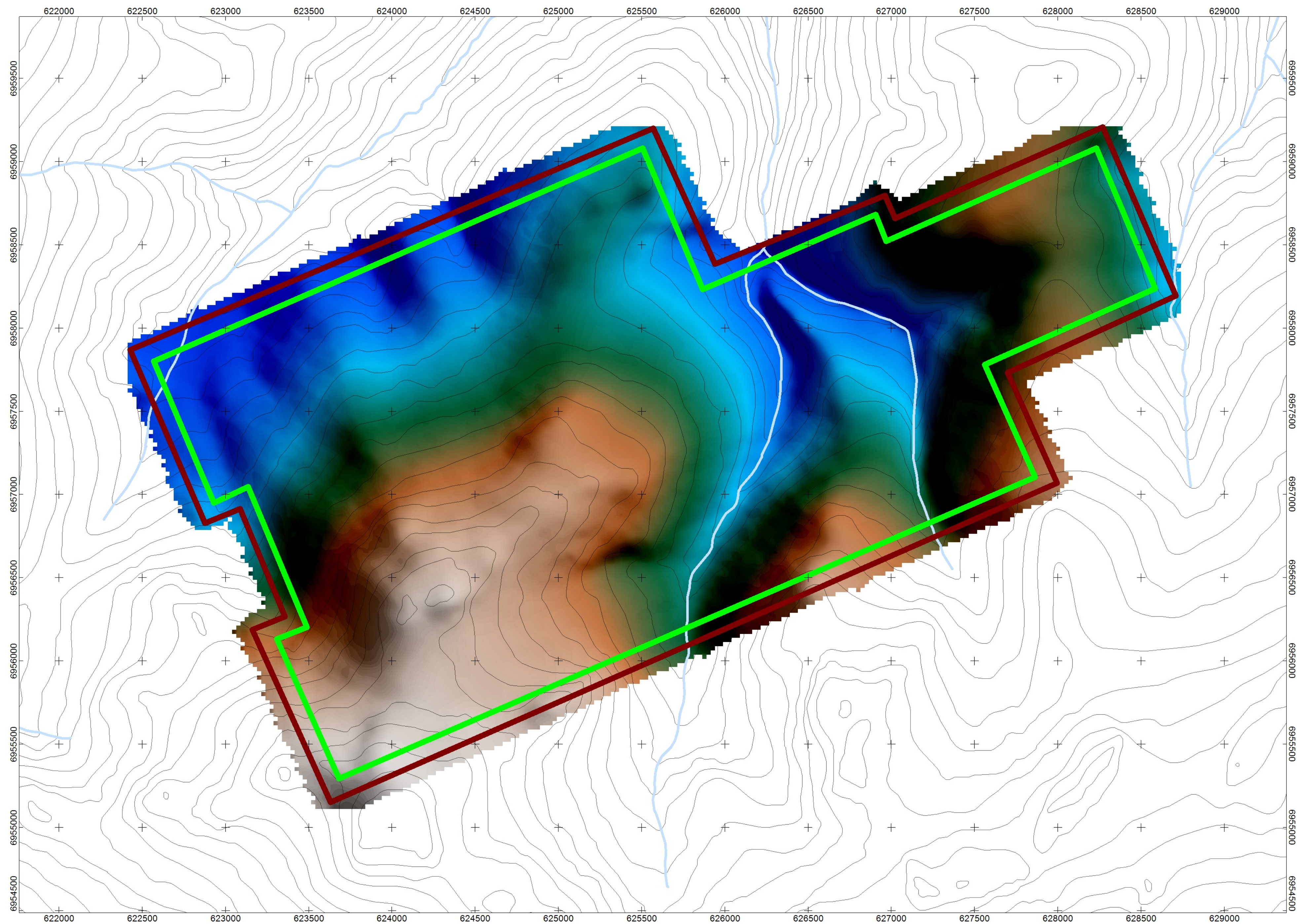
Idaho Creek Survey Block

Actual Flight Lines

Created By: Precision GeoSurveys Inc.

July 23, 2015

Precision
GeoSurveys



DTM (m)

LEGEND

Map Projection:

Projection: Universal Transverse Mercator
Central Meridian: 219 Zone 7N
Datum: WGS 84



Survey Date(s):
Survey Base:
Helicopter Type:
Registration:
Survey Technology:

July 5, 2015
Minto Airstrip, Yukon
Eurocopter AS350
C-GOHK
Magnetic and Radiometric survey.

SURVEY PARAMETERS:

Helicopter:
Magnetometer:
Radiometric:
Actual Mean Terrain Clearance:

35.0 meters
35.0 meters
35.0 meters
35.4 meters

Idaho Creek Survey Block

Survey Line Spacing:
Survey Line Direction:
Tie Line Spacing:
Tie Line Direction:

100 meters
066°/246°
1000 meters
156°/336°

AIRBORNE SYSTEMS:

Scintrex CS-3 Magnetometer Sensor

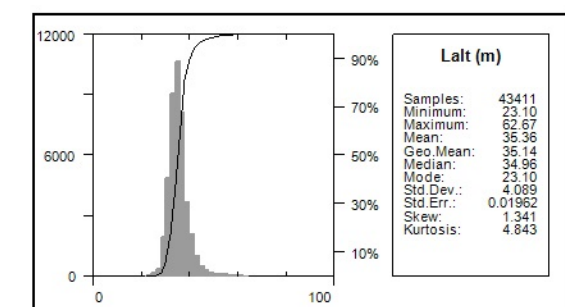
Configuration:
Sample Rate:
Sensitivity:

Stinger with 3 axis compensation
10 Hz
0.01 nT

Gamma Ray Spectrometer

Pico Envirotec GRS-10 Gamma Spectrometer
16.8 litres of NaI(Tl) synthetic "downward looking" crystals
4.2 litres of NaI(Tl) synthetic "upward looking" crystals
Sample Rate:

1 Hz



ATAC Resources Ltd.

Overview Map

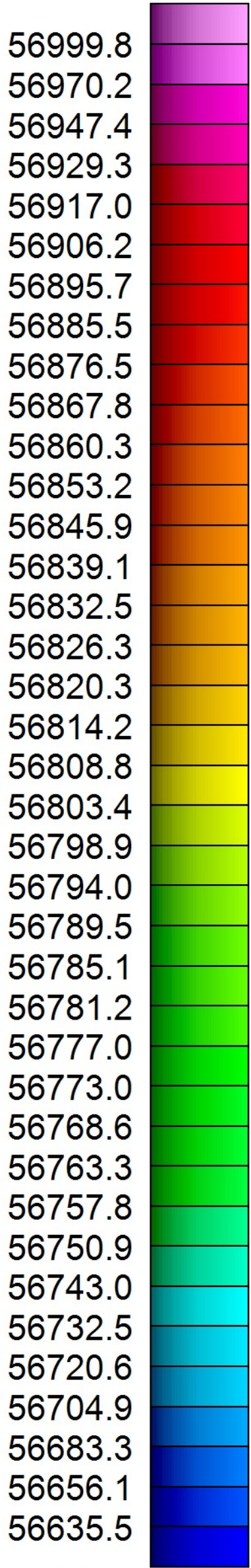
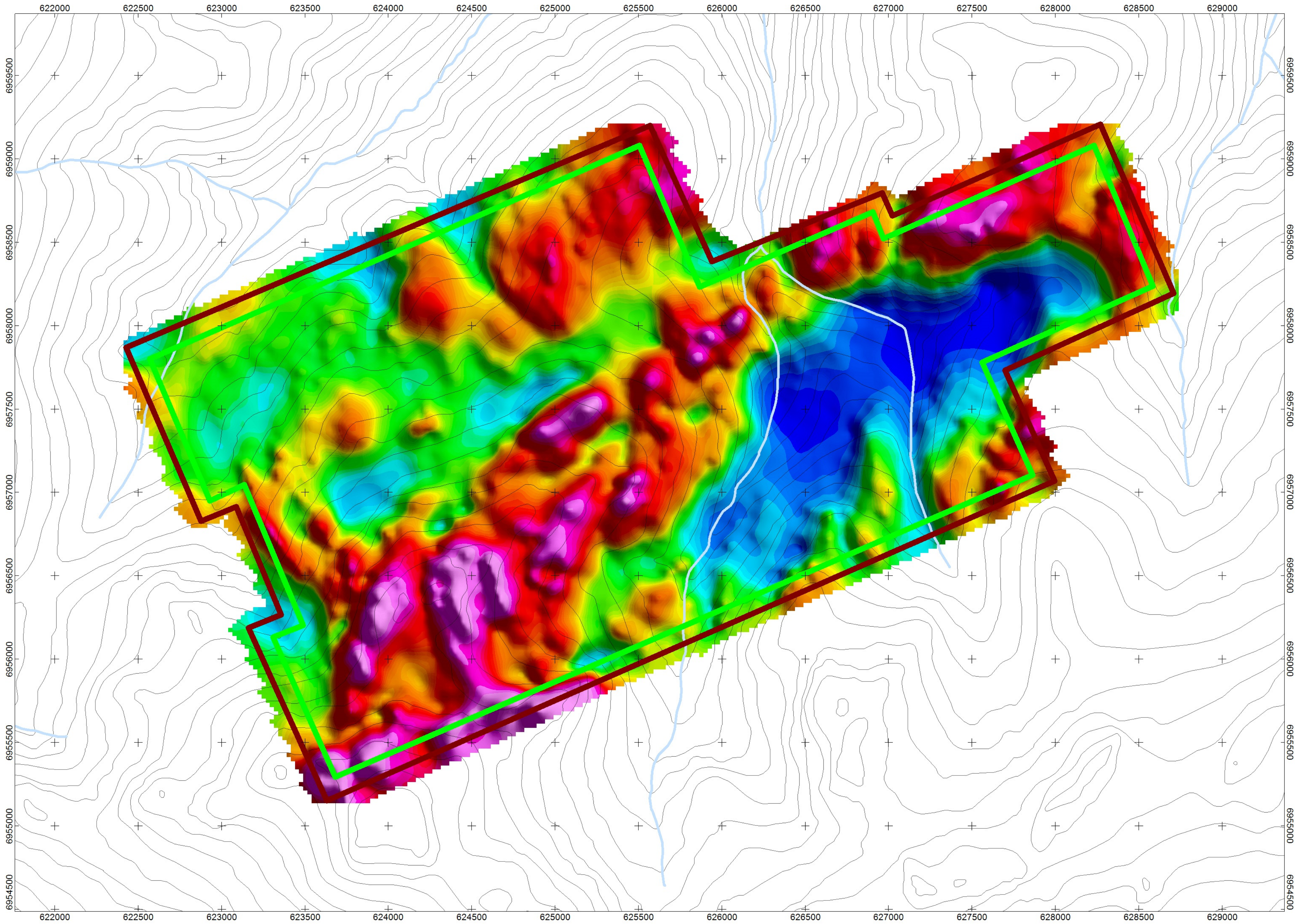
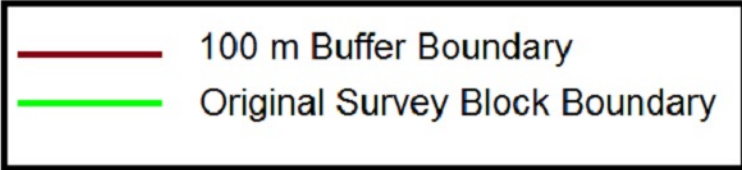
Idaho Creek Survey Block
Digital Terrain Model
Created By: Precision GeoSurveys Inc.
July 23, 2015

Precision
GeoSurveys

LEGEND

Map Projection:

Projection: Universal Transverse Mercator
Central Meridian: 219 Zone 7N
Datum: WGS 84



TMI (nT)



Survey Date(s):
Survey Base:
Helicopter Type:
Registration:
Survey Technology:

July 5, 2015
Minto Airstrip, Yukon
Eurocopter AS350
C-GOHK
Magnetic and Radiometric survey.

SURVEY PARAMETERS:

Helicopter:
Magnetometer:
Radiometric:
Actual Mean Terrain Clearance:

35.0 meters
35.0 meters
35.0 meters
35.4 meters

Idaho Creek Survey Block

Survey Line Spacing:
Survey Line Direction:
Tie Line Spacing:
Tie Line Direction:

100 meters
066°/246°
1000 meters
156°/336°

AIRBORNE SYSTEMS:

Scintrex CS-3 Magnetometer Sensor

Configuration:
Sample Rate:
Sensitivity:

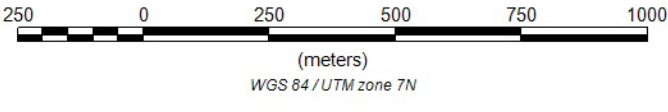
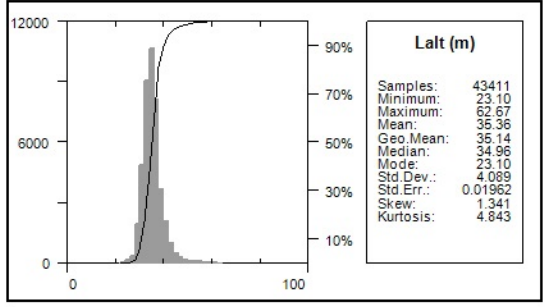
Stinger with 3 axis compensation
10 Hz
0.01 nT

Gamma Ray Spectrometer

Pico Envirotec GRS-10 Gamma Spectrometer
16.8 litres of NaI(Tl) synthetic "downward looking" crystals
4.2 litres of NaI(Tl) synthetic "upward looking" crystals

Sample Rate:

1 Hz



ATAC Resources Ltd.

Magnetic Map

Idaho Creek Survey Block
Total Magnetic Intensity
Created By: Precision GeoSurveys Inc.
July 23, 2015

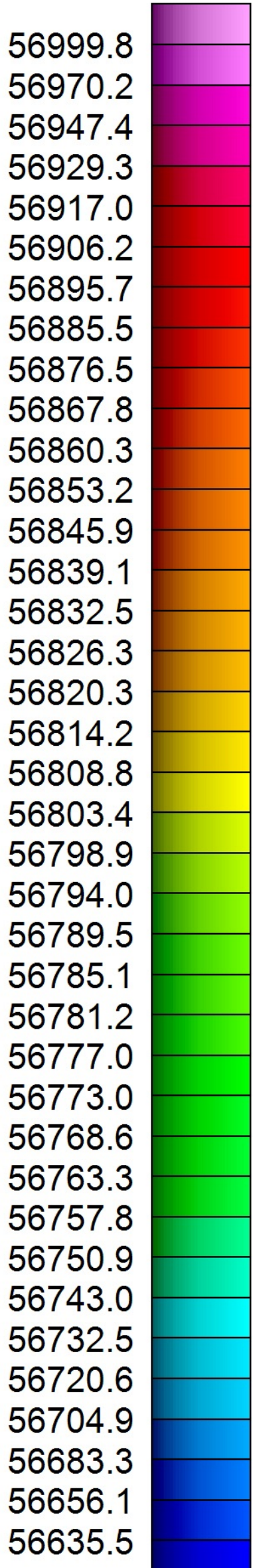
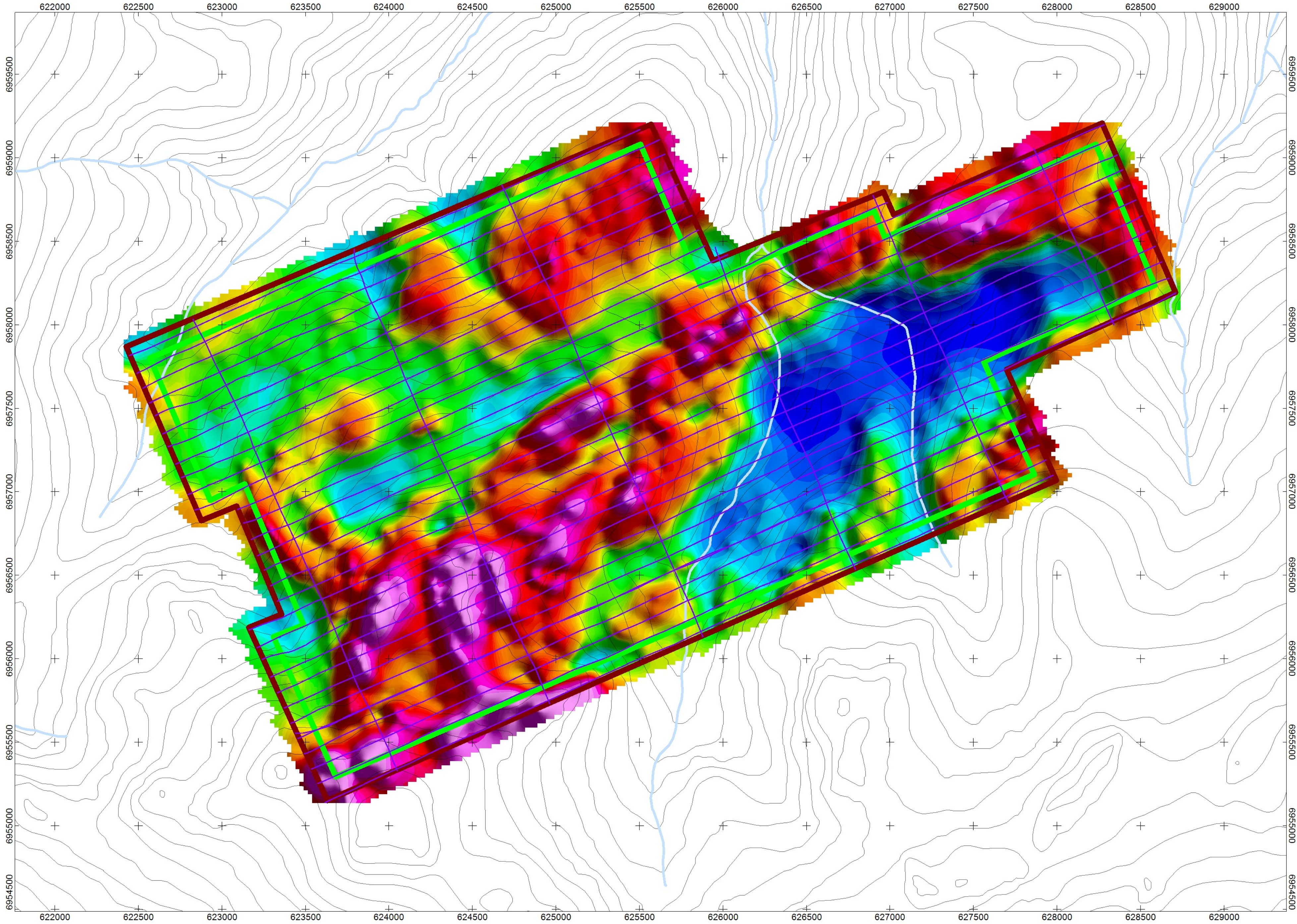
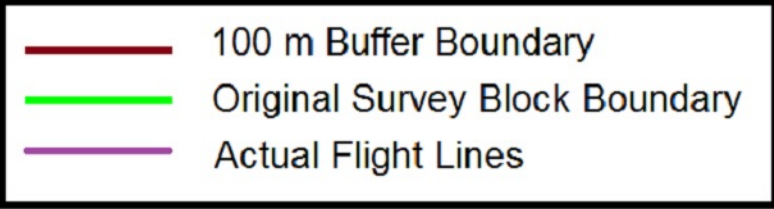
Precision
GeoSurveys

IC_TMI

LEGEND

Map Projection:

Projection: Universal Transverse Mercator
Central Meridian: 219 Zone 7N
Datum: WGS 84



TMI (nT)



Survey Date(s):
Survey Base:
Helicopter Type:
Registration:
Survey Technology:

July 5, 2015
Minto Airstrip, Yukon
Eurocopter AS350
C-GOHK
Magnetic and Radiometric survey.

SURVEY PARAMETERS:

Helicopter:
Magnetometer:
Radiometric:
Actual Mean Terrain Clearance:

35.0 meters
35.0 meters
35.0 meters
35.4 meters

Idaho Creek Survey Block

Survey Line Spacing:
Survey Line Direction:
Tie Line Spacing:
Tie Line Direction:

100 meters
066°/246°
1000 meters
156°/336°

AIRBORNE SYSTEMS:

Scintrex CS-3 Magnetometer Sensor

Configuration:
Sample Rate:
Sensitivity:

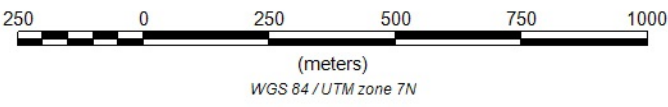
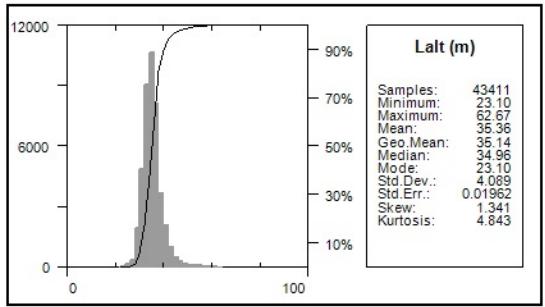
Stinger with 3 axis compensation
10 Hz
0.01 nT

Gamma Ray Spectrometer

Pico Envirotec GRS-10 Gamma Spectrometer
16.8 litres of NaI(Tl) synthetic "downward looking" crystals
4.2 litres of NaI(Tl) synthetic "upward looking" crystals

Sample Rate:

1 Hz



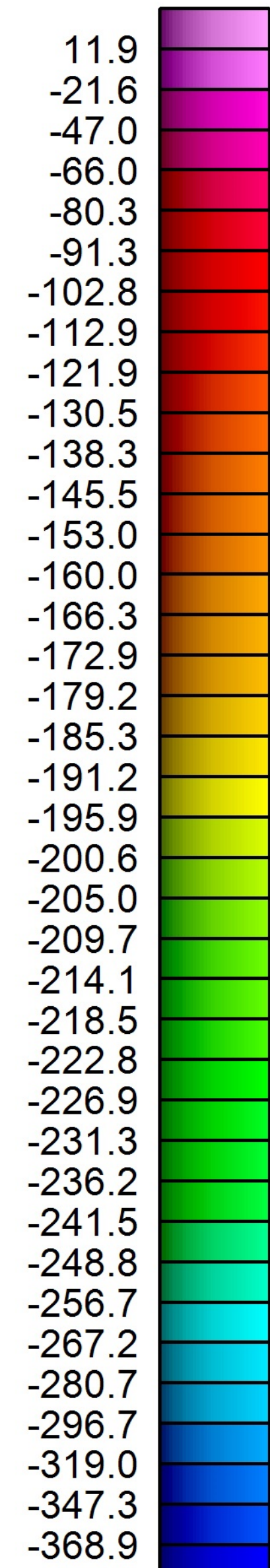
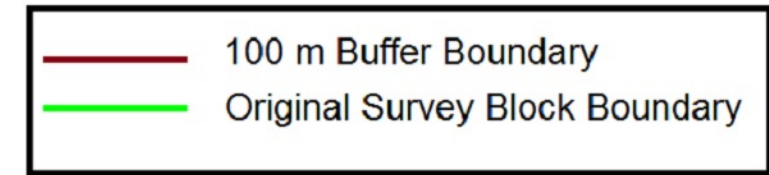
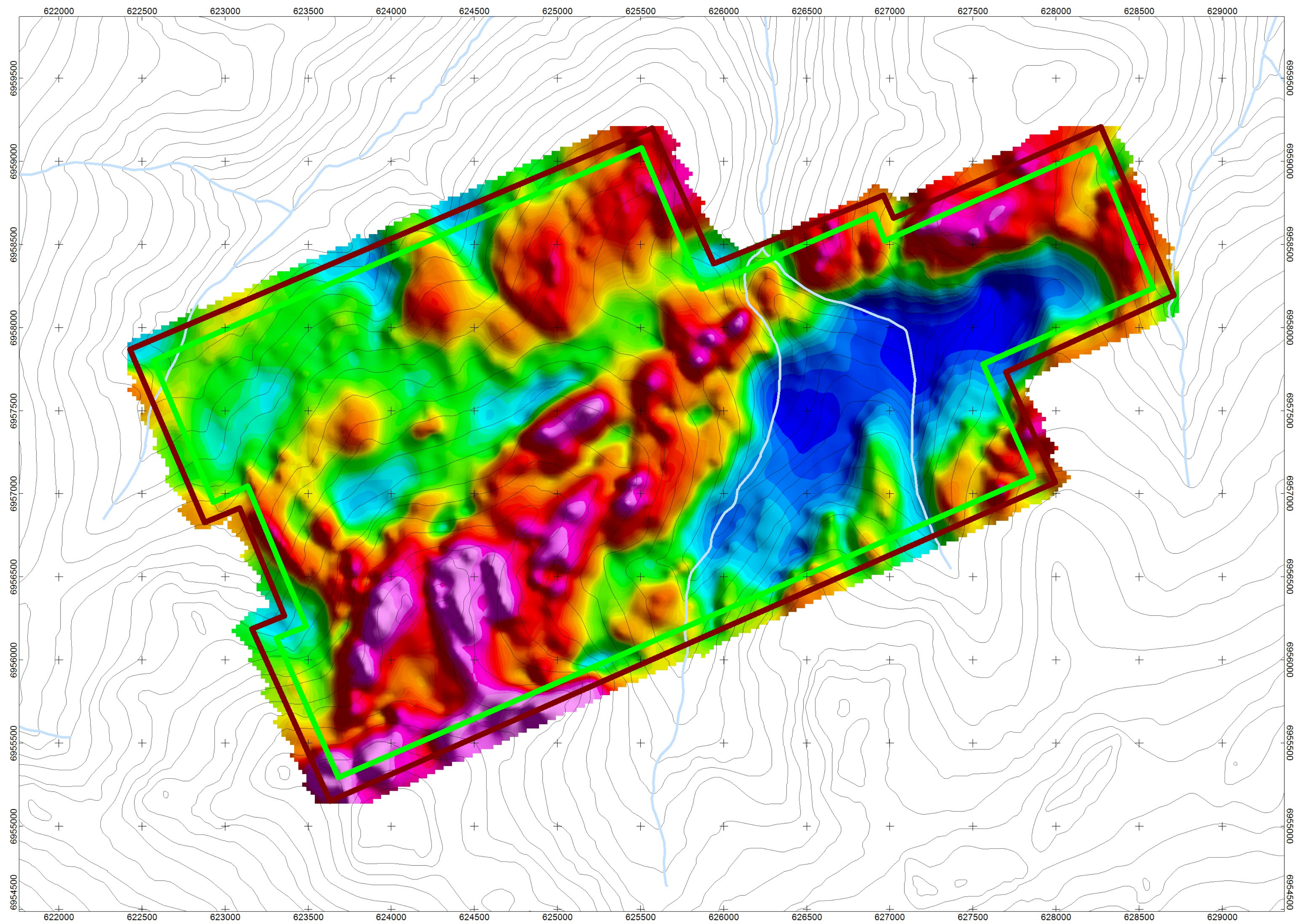
ATAC Resources Ltd.

Magnetic Map

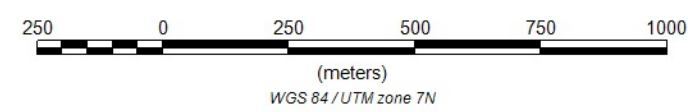
Idaho Creek Survey Block
Total Magnetic Intensity with Flight Lines
Created By: Precision GeoSurveys Inc.
July 23, 2015

Precision
GeoSurveys

IC_TMI_WFL



RMI (nT)



LEGEND

Map Projection:

Projection: Universal Transverse Mercator
Central Meridian: 219 Zone 7N
Datum: WGS 84



Survey Date(s):
Survey Base:
Helicopter Type:
Registration:
Survey Technology:

July 5, 2015
Minto Airstrip, Yukon
Eurocopter AS350
C-GOHK
Magnetic and Radiometric survey.

SURVEY PARAMETERS:

Helicopter:
Magnetometer:
Radiometric:
Actual Mean Terrain Clearance:

35.0 meters
35.0 meters
35.0 meters
35.4 meters

Idaho Creek Survey Block

Survey Line Spacing:
Survey Line Direction:
Tie Line Spacing:
Tie Line Direction:

100 meters
066°/246°
1000 meters
156°/336°

AIRBORNE SYSTEMS:

Scintrex CS-3 Magnetometer Sensor

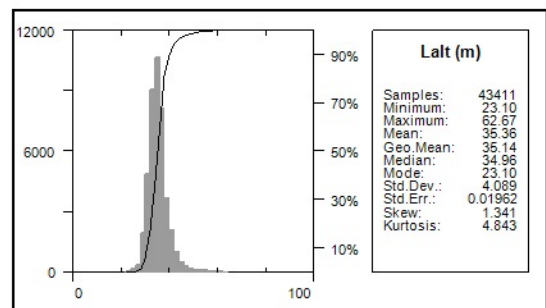
Configuration:
Sample Rate:
Sensitivity:

Stinger with 3 axis compensation
10 Hz
0.01 nT

Gamma Ray Spectrometer

Pico Envirotec GRS-10 Gamma Spectrometer
16.8 litres of NaI(Tl) synthetic "downward looking" crystals
4.2 litres of NaI(Tl) synthetic "upward looking" crystals

Sample Rate: 1 Hz



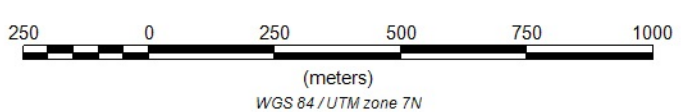
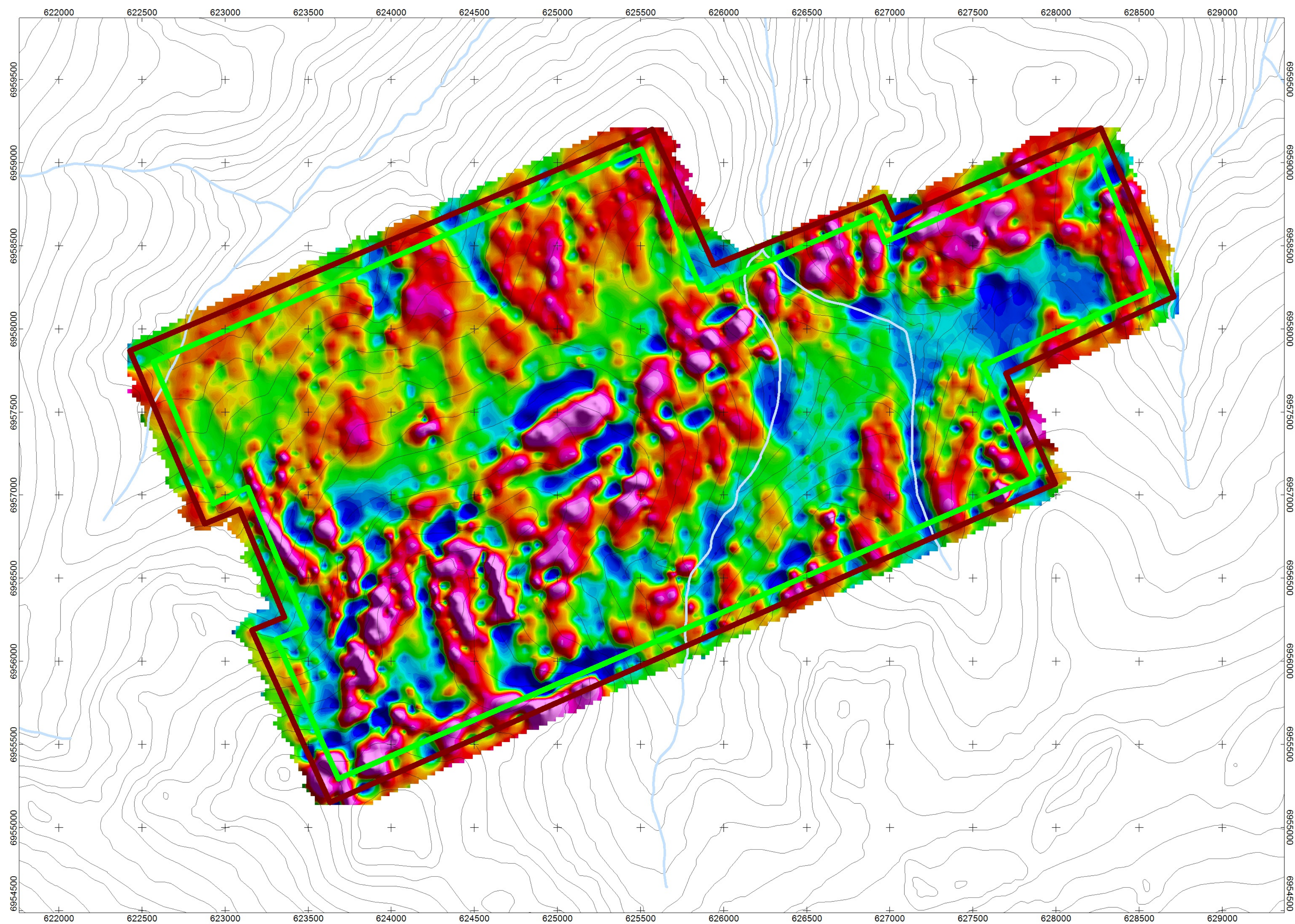
ATAC Resources Ltd.

Magnetic Map

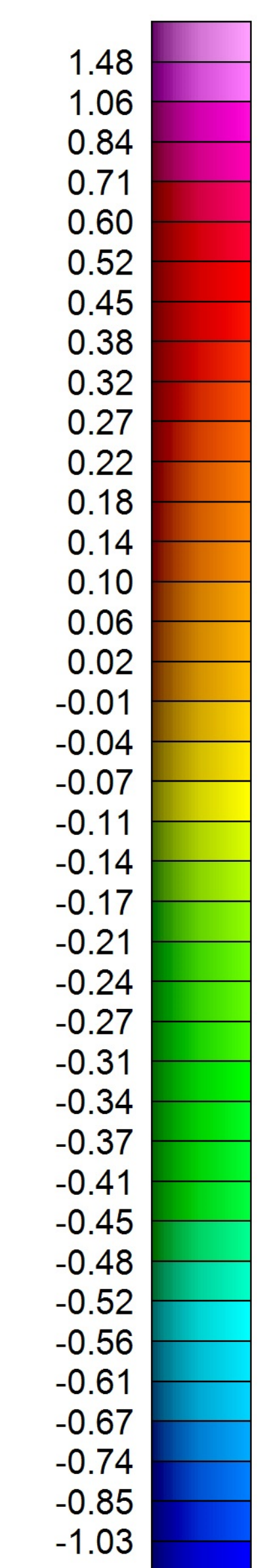
Idaho Creek Survey Block
Residual Magnetic Intensity
Created By: Precision GeoSurveys Inc.
July 23, 2015

Precision
GeoSurveys

IC_RMI



100 m Buffer Boundary
Original Survey Block Boundary



CVG (nT/m)

LEGEND

Map Projection:

Projection: Universal Transverse Mercator
Central Meridian: 219 Zone 7N
Datum: WGS 84



Survey Date(s):
Survey Base:
Helicopter Type:
Registration:
Survey Technology:

July 5, 2015
Minto Airstrip, Yukon
Eurocopter AS350
C-GOHK
Magnetic and Radiometric survey.

SURVEY PARAMETERS:

Helicopter:
Magnetometer:
Radiometric:
Actual Mean Terrain Clearance:

35.0 meters
35.0 meters
35.0 meters
35.4 meters

Idaho Creek Survey Block

Survey Line Spacing:
Survey Line Direction:
Tie Line Spacing:
Tie Line Direction:

100 meters
066°/246°
1000 meters
156°/336°

AIRBORNE SYSTEMS:

Scintrex CS-3 Magnetometer Sensor

Configuration:
Sample Rate:
Sensitivity:

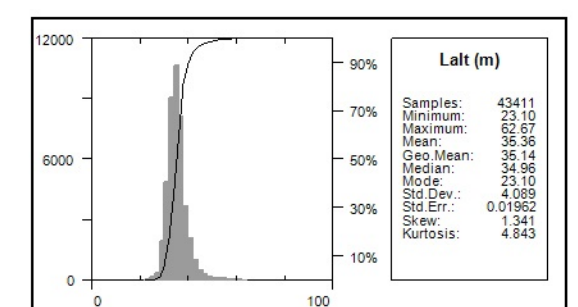
Stinger with 3 axis compensation
10 Hz
0.01 nT

Gamma Ray Spectrometer

Pico Envirotec GRS-10 Gamma Spectrometer
16.8 litres of NaI(Tl) synthetic "downward looking" crystals
4.2 litres of NaI(Tl) synthetic "upward looking" crystals

Sample Rate:

1 Hz



ATAC Resources Ltd.

Magnetic Map

Idaho Creek Survey Block
Calculated Vertical Gradient
Created By: Precision GeoSurveys Inc.
July 23, 2015

