

**2014 GEOLOGICAL AND GEOCHEMICAL EXPLORATION
ON THE
SHADOW LAKE PROPERTY**

WHITEHORSE MINING DISTRICT, YUKON

Grant Numbers: WL 1-45 (YF46097-YF46141)

Geographic Coordinates
60°33' N to 60°35' N
134°46' W to 134°49' W

NTS Sheet 105D10

Owner: H. Lole (Client ID 4001170)
18, 10509 - 81 Avenue
Edmonton, Alberta T6E 1X7

Operator: Graymont Western Canada Inc.
260, 4311 - 12 Street NE
Calgary, Alberta T2E 4P9

Consultant: Dahrouge Geological Consulting Ltd.
18, 10509 - 81 Avenue
Edmonton, Alberta T6E 1X7

Authors: H. Lole, B.Sc., FGS
K. Krueger, B.Sc., Geo.I.T.

Field Work: September 7-8th and October 16-18th, 2014

Date Submitted: May 4, 2015

TABLE OF CONTENTS

	<u>Page</u>
1. Introduction	1
1.1 Geographic Setting	1
1.1.1 Location and Access	1
1.1.2 Topography, Vegetation, Wildlife and Climate	1
1.2 Property	2
1.3 History and Previous Investigations	3
1.4 Purpose of Work	4
1.5 Summary of Work	4
2. Regional Geology	5
2.1 Stratigraphy	5
2.1.1 Laberge Group	5
2.1.2 Lewes River Group	6
2.2 Structure	6
3. Property Geology	6
3.1 Stratigraphy and Lithology	6
3.1.1 Aksala Formation – Casca Member	7
3.1.2 Aksala Formation – Hancock Member	8
3.2 Structure	8
4. Results of 2014 Exploration	8
5. Discussion and Conclusions	9
6. Statement of Qualifications	10
7. References	12

LIST OF TABLES

	<u>Page</u>
Table 1.1 List of Shadow Lake Claims.....	2
Table 2.1 Stratigraphy of the Shadow Lake Property Area	7

LIST OF APPENDICES

Appendix 1	Itemized Cost Statement.....	A1
Appendix 2	Analytical Laboratory Information and Techniques.....	A3
Appendix 3	Assay Results – Central Analytical Laboratory of Graymont Western U.S. Inc.....	A4
Appendix 4	2014 Sample Descriptions and Assay Results from the Shadow Lake Property.....	A6

LIST OF FIGURES

Fig. 3.1	Property Location	F1
Fig. 3.2	Access Map	F2
Fig. 4.1	Claim Map	F3
Fig. 4.2	Geology & Sample Locations.....	F4
Fig. 4.3	Regional Geology Map	F5

1. INTRODUCTION

The Shadow Lake quartz claims were staked by Henry Lole in late June 2014; Dahrouge Geological Consulting (Dahrouge) completed two surface sampling programs from September 7th to 8th and October 16th to 18th, 2014. Exploration consisted of collecting 36 limestone samples, representing approximately 99.75 m of stratigraphy. The majority of the 2014 work on the claims focused on identifying access routes, mapping geological contacts and identifying high-calcium limestone outcrops on the Shadow Lake Property. This report describes the 2014 exploration and provides an interpretation of the results. Appendix 1 is an itemized cost breakdown of the 2014 work completed on the Shadow Lake Property. The operator for the 2014 exploration was Graymont Western Canada Inc.

The Shadow Lake Property is comprised of 45 contiguous quartz claims; the Property has been grouped as per Grouping Certificate HW07571.

Structural measurements were obtained at stations throughout the Property. A magnetic declination of 24° 2' E was used. Attitudes of bedding and other planar features are given as A°/B° NW, where A° is the azimuth of the strike (right-hand rule) and B° is the amount of dip in the direction indicated. Where bedding has been obscured by structure, stratigraphic thicknesses were calculated using orientations from adjacent units. Where more than one bedding orientation was measured, the mean orientation was used.

1.1 GEOGRAPHIC SETTING

1.1.1 Location and Access

The Shadow Lake Property can be accessed by travelling approximately 18 km southeast of Whitehorse, Yukon along the Alaska Highway (Hwy 1), then spurring off south onto the Klondike Highway (Hwy 2) for approximately 2 km (Fig.'s 3.1 and 3.2). A network of well-maintained ATV trail bisects the northern portion of the Property, and can be used to further access the claims. Extensive hiking is also required, as much of the southern half of the Property has no pre-existing ATV trails.

1.1.2 Topography, Vegetation, Wildlife and Climate

Topography in the Shadow Lake Property area is characterized by northwest trending broad U-shaped glacial valleys and ridges of significant relief. Elevations on the Property range from 730 m in the north, nearest the Alaska Highway, up to approximately 1,300 m on the highest peak in the SE corner of the Property (Fig. 4.1).

Tree cover in the Whitehorse area is moderate to dense. The most common trees are evergreen (spruce, pine and fir), with common birch, poplar, willow, cottonwood and aspen. There is no evidence of recent industry clear-cutting and logging in the area. There is, however, a public municipal firewood area overlapping the northern portion of the Property.

The abundance of wetlands and small ponds in the Shadow Lake area make it an ideal habitat for variety of ungulates, birds and small mammals. The Yukon Government has identified a woodland caribou winter range in the Shadow Lake Property area. To the authors' knowledge, there are no restrictions on the area due to the presence of these animals. During exploration, Dahrouge endeavored to minimize the disturbance to local flora and fauna.

The area is part of the Boreal Cordillera Eco-zone with generally dry and cool conditions. Climate is alpine to sub-arctic with average summer temperatures of 20° to 25°C and winter temperatures of -15° to -25°C, with extremes of 32°C and -55°C. Rainfall averages about 15 cm per year and maximum snowfall occurs from November to February with an average total of 128 cm. Snow often falls as early as September and as late as April.

1.2 PROPERTY

The Shadow Lake claims are being held in trust for Graymont Western Canada Inc. by Henry Lole of Dahrouge Geological Consulting Ltd., based out of Edmonton, AB. The claims were staked from June 22nd to 24th, 2014 by a four person crew based out of Whitehorse. The Canyon Mountain Property consists of 45 quartz claims (WL 1-45) with a combined area of 940.5 ha.

TABLE 1 .1 LIST OF SHADOW LAKE CLAIMS

Grant Number	Claim Name	Original Size (ha)	Record Date	New Good To Date	Required Spending
YF46097	WL 1	20.9	14-Jul-14	14-Jan-2020	\$450.00
YF46098	WL 2	20.9	14-Jul-14	14-Jan-2020	\$450.00
YF46099	WL 3	20.9	14-Jul-14	14-Jan-2020	\$450.00
YF46100	WL 4	20.9	14-Jul-14	14-Jan-2020	\$450.00
YF46101	WL 5	20.9	14-Jul-14	14-Jan-2020	\$450.00
YF46102	WL 6	20.9	14-Jul-14	14-Jan-2020	\$450.00
YF46103	WL 7	20.9	14-Jul-14	14-Jan-2020	\$450.00
YF46104	WL 8	20.9	14-Jul-14	14-Jan-2020	\$450.00
YF46105	WL 9	20.9	14-Jul-14	14-Jan-2020	\$450.00
YF46106	WL 10	20.9	14-Jul-14	14-Jan-2020	\$450.00
YF46107	WL 11	20.9	14-Jul-14	14-Jan-2020	\$450.00

YF46108	WL 12	20.9	14-Jul-14	14-Jan-2020	\$450.00
YF46109	WL 13	20.9	14-Jul-14	14-Jan-2020	\$450.00
YF46110	WL 14	20.9	14-Jul-14	14-Jan-2020	\$450.00
YF46111	WL 15	20.9	14-Jul-14	14-Jan-2020	\$450.00
YF46112	WL 16	20.9	14-Jul-14	14-Jan-2020	\$450.00
YF46113	WL 17	20.9	14-Jul-14	14-Jan-2020	\$450.00
YF46114	WL 18	20.9	14-Jul-14	14-Jan-2020	\$450.00
YF46115	WL 19	20.9	14-Jul-14	14-Jan-2020	\$450.00
YF46116	WL 20	20.9	14-Jul-14	14-Jan-2020	\$450.00
YF46117	WL 21	20.9	14-Jul-14	14-Jan-2020	\$450.00
YF46118	WL 22	20.9	14-Jul-14	14-Jan-2020	\$450.00
YF46119	WL 23	20.9	14-Jul-14	14-Jan-2020	\$450.00
YF46120	WL 24	20.9	14-Jul-14	14-Jan-2020	\$450.00
YF46121	WL 25	20.9	14-Jul-14	14-Jan-2020	\$450.00
YF46122	WL 26	20.9	14-Jul-14	14-Jan-2020	\$450.00
YF46123	WL 27	20.9	14-Jul-14	14-Jan-2020	\$450.00
YF46124	WL 28	20.9	14-Jul-14	14-Jan-2020	\$450.00
YF46125	WL 29	20.9	14-Jul-14	14-Jan-2020	\$450.00
YF46126	WL 30	20.9	14-Jul-14	14-Jan-2020	\$450.00
YF46127	WL 31	20.9	14-Jul-14	14-Jan-2020	\$450.00
YF46128	WL 32	20.9	14-Jul-14	14-Jan-2020	\$450.00
YF46129	WL 33	20.9	14-Jul-14	14-Jan-2020	\$450.00
YF46130	WL 34	20.9	14-Jul-14	14-Jan-2020	\$450.00
YF46131	WL 35	20.9	14-Jul-14	14-Jan-2020	\$450.00
YF46132	WL 36	20.9	14-Jul-14	14-Jan-2020	\$450.00
YF46133	WL 37	20.9	14-Jul-14	14-Jan-2020	\$450.00
YF46134	WL 38	20.9	14-Jul-14	14-Jan-2020	\$450.00
YF46135	WL 39	20.9	14-Jul-14	14-Jan-2020	\$450.00
YF46136	WL 40	20.9	14-Jul-14	14-Jan-2020	\$450.00
YF46137	WL 41	20.9	14-Jul-14	14-Jan-2020	\$450.00
YF46138	WL 42	20.9	14-Jul-14	14-Jan-2020	\$450.00
YF46139	WL 43	20.9	14-Jul-14	14-Jan-2020	\$450.00
YF46140	WL 44	20.9	14-Jul-14	14-Jan-2020	\$450.00
YF46141	WL 45	20.9	14-Jul-14	14-Jan-2020	\$450.00
Total Area:		940.5	Representation Work Cost:		\$20,250.00
					Certification Cost: \$900.00
					Total: \$21,150.00

1.3 HISTORY AND PREVIOUS INVESTIGATIONS

The Shadow Lake claims were staked in 2014 by Henry Lole and a team from Dahrouge Geological Consulting Ltd. Historic exploration in the area surrounding the Shadow Lake Property has dominantly been focused on copper mineralization of the Whitehorse Copper Belt,

a 30 km northwest trending zone of skarn deposits, which is located west of the Property. To the knowledge of the authors, there has been no previous exploration for high-calcium limestone in the Shadow Lake Property area.

The YT Property is located approximately 4 km northwest along Alaska Highway of the Shadow Lake Property and has been historically explored for copper minerals such as bornite and chalcopyrite. The YT claims were first staked in 1967 by Lewes River Mines Ltd., then optioned to Arcturus Ventures Inc. in 2006, who currently holds them. Exploration completed between 1967 and 1970 by Lewes River Mines Ltd. consisted of an induced polarization surveys, geochemical sampling and line cutting. In 2006, Arcturus Ventures Inc. completed an extensive magnetic survey in order to confirm the Triassic Aksala Formation limestone - Coast Intrusive contact.

The JIM (85337-8, 85355-8), SUE (75653-6) and ACE (85476) claims held by Lobo del Norte Ltd. are located at the southeast end of the Whitehorse Copper Belt, and is approximately 4.5 km west of the Shadow Lake Property. Historic exploration on the JIM claims in 1998 included trenching, outcrop, float and soil sampling.

1.4 PURPOSE OF WORK

The work described herein was undertaken to accurately identify the location and extent of limestone units throughout the Shadow Lake Property, and consisted of mapping and sampling.

1.5 SUMMARY OF WORK

In September 2014, Dahrouge conducted a 2-day geologic mapping and sampling program on the Shadow Lake Property. An additional 3-day sampling program was completed in mid-October 2014.

A total of 36 limestone samples were obtained within the Shadow Lake Property, representing approximately 100 m of stratigraphy (Fig. 4.2). Samples were collected by chipping outcrops perpendicular to defined or assumed bedding. Bedding was commonly difficult to identify due to the nondescript and cryptocrystalline nature of the limestone. Where bedding was uncertain or had been obscured by structure, stratigraphic thicknesses were calculated using the best estimated orientation from adjacent units. Where more than one bedding orientation was measured, the mean orientation was used.

Geological observations were recorded, including lithologic information, measurements of structural elements, and other pertinent details (Appendix 4). A solution of 10% HCl was used

to assess carbonate quality in the field. Samples were shipped to a lab in Salt Lake City, Utah for preparation and analyses by standard ICP techniques, and LOI. Analytical procedures are described in Appendix 2 and assay sheets are provided in Appendix 3.

Personnel were based in a hotel in Whitehorse, Yukon, and access to and from the Property was by rented four-wheel-drive vehicle. Access throughout the Property was by ATV's and extensive hiking.

2. REGIONAL GEOLOGY

2.1 STRATIGRAPHY

The Shadow Lake Property is located within the Whitehorse Trough, part of the Stikine Terrane. The Whitehorse Trough is a 500 km long, northwest-trending intermontane basin located in south-central Yukon, which originated as a forearc basin, but progressively developed into a piggy-back basin near the end of the Pliensbachian during orogenic events (Colpron, 2014). The basin straddles the Yukon-British Columbia border, with its northernmost margin in the Carmacks area, approximately 200 km north of the Shadow Lake Property. The area of the Trough covers approximately 2.44 million hectares. The basin contains up to 3 km thick Jurassic Laberge Group sedimentary rocks, underlain by Triassic Lewes River Group sediments. Overlying the sedimentary sequences are Cretaceous and Neogene volcanics (Fig. 4.3).

2.1.1 Laberge Group

The Jurassic Laberge Group has been informally subdivided into the Richthofen, Nordenskiöld and Tanglefoot formations. The Richthofen Formation is characterized by thin- to medium-bedded turbidite beds, massive sandstone intervals, and fossiliferous conglomerates. It ranges from 500-10,000 m in thickness, and is restricted to the southern half of the basin, so is not present in the Whitehorse area. The Nordenskiöld Formation consists of dark grey, massive dacites with quartz, plagioclase, biotite and hornblende phenocrysts in a cryptocrystalline groundmass. The Tanglefoot Formation consists of coal-bearing, fluvial to marginal marine interbedded sandstones and mudstones, conglomerates, and rare bioclastic limestones. The limestones locally contain abundant ammonites, pelecypods, and carbonaceous material. It is at least 600 m thick and is restricted to the northern half of the Whitehorse Trough, and has not been seen in outcrop near the Shadow Lake Property to date. The Richthofen, Nordenskiöld and Tanglefoot formations unconformably overlie the Triassic

Lewes River Group and are unconformably overlain by the Jurassic-Cretaceous Tantalus Formation (Colpron, 2011).

2.1.2 Lewes River Group

The Lewes River Group was determined to range in age from Carnian to Norian, based on dating of spiriferids, pelecypods, ammonites and cerioid corals. It generally consists of limestone, argillite, greywacke and sandstone. Lees (1934) recognized the presence of 3 units: a lower limestone sequence, middle sequence of greywacke and argillite with interbedded limestone intervals, and an upper limestone unit. The Lewes River Group is informally subdivided into the Povoas and Aksala formations. The Povoas Formation is a volcanic unit that consists of basalts and andesites, with minor carbonate rocks. It is overlain by the Carnian-Norian Aksala Formation, which has been subdivided into 2 main members: Casca and Hancock. Sequences of sandstones, conglomerates and mudstones comprise the Casca Member, which overlies the reefal carbonates of the Hancock Member (Colpron, 2011). Large areas of the sedimentary sequence were subsequently intruded by granitic rocks during the Cretaceous.

2.2 STRUCTURE

The structural geology of the area is dominated by two major sub-parallel, north-northwest trending faults that divide and define the boundaries between the Cache Creek Terrane (to the east) and the Whitehorse Trough and between the Whitehorse Trough and the Yukon-Tanana Terrane (to the west). The Nahlin Fault more or less marks the western extent of the Cache Creek Terrane and eastern extent of the Whitehorse Trough. It is a steeply dipping to vertical fault, or series of faults and has seen intermittent activity from the Late Triassic to Tertiary time. The Llewellyn fault marks the boundary between the regionally metamorphosed Yukon-Tanana Terrane and the Whitehorse Trough. It is also steeply dipping and appears to have been active from Late Triassic to Tertiary time (Shaw, 1989).

3. PROPERTY GEOLOGY

3.1 STRATIGRAPHY & LITHOLOGY

As only initial prospecting work has been performed on the Shadow Lake Property, a detailed description of the property geology is not yet possible. In the Whitehorse area, carbonate lithologies are known to occur within Triassic sequences. The Triassic limestones

encountered within the Shadow Lake Property are from the Hancock and Casca members of the Carnian-Norian Aksala Formation (Fig. 4.2). The massive, resistant limestone exposures in the Whitehorse area are likely part of the Hancock Member. The following is a brief summary of the units encountered on the Shadow Lake Property.

TABLE 2.1 STRATIGRAPHY OF THE SHADOW LAKE PROPERTY AREA*

Period	Stage	Stratigraphic Unit		Lithological Description	Approx. Thickness (m)	
		Group	Formation/ Member			
Jurassic	Bathenian		Tantalus Fm.	Quartzite, chert and pebble conglomerate, minor sandstone, shale and minor coal	200-300	
	Bajocian	Laberge Gp.	Tanglefoot Fm.	Interbedded sandstones and mudstones, conglomerates, rare limestones	Up to 600 m	
	Aalenian					
	Toarcian		Nordenskiold Fm.	Volcanics including dacites	unknown	
	Pliensbachian		Richtofen Fm.	Massive sandstones, conglomerates	500-900 m	
	Sinemurian					
	Hettangian					
Triassic	Norian	Lewes River Gp.	Aksala Fm.	Casca Mbr.	Sandstones, conglomerates and mudstones, limestone	unknown
				Hancock Mbr.	Massive to thick-bedded limestone	Up to 600
	Carnian		Povoas Fm.		Volcanics including basalts and andesites, minor carbonates	

*Adapted from Clapham et al., 2002.

3.1.1 Aksala Formation – Casca Member

Exposures of the Casca Member were mapped and sampled within the Shadow Lake Property. The member outcrops consist of light-grey weathered, medium-grey to dark-grey fresh, micritic to fine-grained lime mudstones and argillaceous lime mudstones. Outcrops are typically massive and somewhat resistant with minor calcite veining. The 2014 exploration programs revealed significant amounts of silica contamination in the Casca Member.

3.1.2 Aksala Formation – Hancock Member

The cliff-forming Hancock Member has been mapped within the western claims of the Shadow Lake Property. The member outcrops consist of very light-grey to medium-grey weathered, light-grey to medium-grey fresh, cryptocrystalline to micritic lime mudstones. Both massive and resistant, the Hancock Member limestones have minor carbonaceous stringers and oxide alteration along fractures.

3.2 STRUCTURE

Given the early stage of exploration on the Property, the structure is currently largely unknown.

4. RESULTS OF 2014 EXPLORATION

The 2014 exploration programs were conducted in order to further assess the limestone quality of the Aksala Formation limestones and provide more constraint on geologic contacts with other units in the area.

The groundwork involved mapping and sampling at several locations along the western portion of the Shadow Lake Property. In total, 36 limestone outcrops were examined and sampled at ten locations (Fig. 4.2).

During the programs, geological observations were recorded, including lithologic information, measurements of structural elements, and other pertinent details (Appendix 4). A solution of 10% HCl was used to assess carbonate quality in the field. In some instances, interval thicknesses were determined by measuring outcrops perpendicular to bedding, where it could be identified. In many cases the interval thickness can only be considered approximate (at best) due to the lack of reliable bedding surfaces.

All samples from the 2014 programs were shipped to a lab in Salt Lake City, Utah for preparation and analyses by standard ICP techniques, and LOI (Appendices 2 and 3). Overall, this initial exploration of the southern portion of the Shadow Lake Property returned favourable results. The best Hancock Member interval examined in 2014 was Section 2014-04, which averaged 98.36% CaCO₃, 0.90% MgCO₃ and 0.57% SiO₂ over an estimated 12 m. Another notable Hancock section averaged 98.19% CaCO₃, 1.05% MgCO₃ and 0.38% SiO₂ over approximately 7.5 m (Section 2014-05).

The best section of Casca Member limestone averaged 86.97% CaCO₃, 1.65% MgCO₃ and 7.64% SiO₂ over approximately 15 m (Section 2014-01). The poorest quality limestones,

including slightly dolomitic and highly silicified limestones, were located along the western edge of the Property (Fig. 4.2).

5. DISCUSSION AND CONCLUSIONS

Within the Shadow Lake Property, limestones of the Norian-Carnian Casca and Hancock members of the Aksala Formation were mapped and tested by measuring and sampling stratigraphic sections. A total of 36 samples were collected, from the members in the western half of the Property. Samples collected from the Hancock Member were fairly consistent in quality, generally averaging in excess of 97% CaCO₃. The best section of Hancock Member (Section 2014-04) averaged over 98% CaCO₃ across an estimated 12 m. Unfortunately, limited time prevented a conclusive analysis of the quality of the Aksala members.

The next phase of exploration on the Shadow Lake Property should consist of additional mapping and sampling, focusing on the southern and eastern portions of the Property. Identifying and mapping the contact between the Hancock and Casca members should also be a priority. Southwestern claims WL 1-6 should be allowed to lapse if, during the next exploration program, higher quality limestones are not discovered.

6. STATEMENT OF QUALIFICATIONS

I, Henry Lole, residing at 11023 96 Street, Edmonton, Alberta, do hereby certify that:

- I am a geologist of Dahrouge Geological Consulting Ltd., Suite 18, 10509 - 81 Ave., Edmonton, Alberta, T6E 1X7.
- I am a 2011 graduate of Cardiff University, Cardiff, Wales, with a B.Sc. (Hons) in Exploration and Resource Geology.
- I have practiced my profession as a geologist continuously since 2011.
- I am a registered Fellow of The Geological Society, member 1019264.
- I co-managed the 2014 work described in this report.
- I am co-author of the report entitled "2014 Geological and Geochemical Exploration on the Shadow Lake Property" and accept responsibility for the veracity of technical data and results.
- I hereby consent to the copying or reproduction of this Assessment Report following the confidentiality period.

Dated this 4th day of May, 2015.

Henry Lole, B.Sc., FGS

FGS 1019264

I, Kelly Krueger, residing at 1820 Rutherford Rd., Edmonton, Alberta, do hereby certify that:

- I am a geologist of Dahrouge Geological Consulting Ltd., Suite 18, 10509 - 81 Ave., Edmonton, Alberta, T6E 1X7.
- I am a 2012 graduate of the University of Alberta, Edmonton, Alberta with a B.Sc. in Geology.
- I have practiced my profession as a geologist continuously since 2012.
- I am a registered Geologist in Training with the Association of Professional Engineers and Geoscientists of Alberta, member M96506.
- I co-managed the 2014 work described in this report.
- I am co-author of the report entitled "2014 Geological and Geochemical Exploration on the Shadow Lake Property" and accept responsibility for the veracity of technical data and results.
- I hereby consent to the copying or reproduction of this Assessment Report following the confidentiality period.

Dated this 4th day of May, 2015.

Kelly Krueger, B.Sc., Geo.I.T.

APEGA M96506

7. REFERENCES

- Bond, J.D., Morison, S. and McKenna, K. Surficial Geology of MacRae (1:50,000 scale). Yukon Geological Survey, Geoscience Map 2005-6.
- Clapham, M.E., Smith, P.L. and Tipper, H.W., 2002. Lower to Middle Jurassic stratigraphy, ammonoid fauna and sedimentary history of the Laberge Group in the Fish Lake syncline, northern Whitehorse Trough, Yukon, Canada. In: Yukon Exploration and Geology 2001, D.S. Emond, L.H. Weston and L.L. Lewis (eds.), Exploration and Geological Services Division, Yukon Region, Indian and Northern Affairs Canada, p. 73-85.
- Colpron, M., 2011 (compiler). Geological compilation of Whitehorse trough – Whitehorse (105D), Lake Laberge (105E), and parts of Carmacks (115I), Glenlyon (105L), Aishihik Lake (115H), Quite Lake (105F), and Teslin (105C). Yukon Geological Survey, Geological map 2011-1, 1:250,000, 3 maps, legend & appendices.
- Colpron, M., 2014. Birth of the Northern Cordilleran orogeny, as recorded by Jurassic sedimentation and exhumation in Yukon. Presentation at 2014 Geological Society of America Annual Meeting. Vancouver, Canada, 19-22 October 2014.
- Deklerk, R., 2002. Yukon Minfile, 2002. A Database of Mineral Occurrences. Exploration and Geological Services Division, Yukon Region, Indian and Northern Affairs Canada.
- Doherty, R.A., 1999. Report on the 1997 RC Drill Program on the Mac 1-4 and Jeannie 1-12 claims. Assessment Report 093946 prepared for 145976 Yukon Inc.
- Gordey, S.P. and Makepeace, A.J., 1999. Yukon bedrock geology in Yukon digital geology, Geological Survey of Canada, Open File D3826.
- Hart, C.J.R., 1997. A transect across northern Stikinia: Geology of the northern Whitehorse map area, southern Yukon Territory (105D/13-16). Exploration and Geological Sciences Division, Yukon, Indian and Northern Affairs Canada, Bulletin 8, p. 112.
- Lees, E.J., 1934. Geology of the Laberge area, Yukon. Transactions of the Royal Canadian Institute, vol. 20, part 1, pp. 1-48.

ITEMIZED COST STATEMENT FOR THE 2014 EXPLORATION - SHADOW LAKE

a) Personnel

P. Kluczny, geologist

<u>2.0</u>	days	Project planning & preparations, supervision, reporting	
2.0	days	@ \$ 725.00	\$ 1,450.00

H. Lole, geologist

<u>4.7</u>	days	Field work and travel Sept 7-8, Oct 16-18	
2.6	days	Office work, reporting	
<u>7.3</u>	days	@ \$ 570.00	\$ 4,161.00

K. Krueger, geologist

<u>1.7</u>	days	Field work and travel Sept 7-8	
10.3	days	Project planning & preparations, reporting	
<u>12.0</u>	days	@ \$ 465.00	\$ 5,580.00

M. Osinowski, geologist

<u>4.7</u>	days	Field work and travel Sept 7-8, Oct 16-18	
4.7	days	@ \$ 465.00	\$ 2,185.50

B. Hagen, assistant

<u>1.7</u>	days	Field work and travel Sept 7-8	
1.7	days	@ \$ 410.00	\$ 697.00

J. Amundsen, geologist

<u>1.3</u>	days	Data entry, reporting	
1.3	days	@ \$ 490.00	<u>\$ 637.00</u>

\$ 14,710.50

b) Food and Accommodation

8	man-days @ \$ 108.90	Accommodations	\$ 871.18	
12	man-days @ \$ 51.63	Meals	\$ 619.52	
			<u> </u>	\$ 1,490.70

c) Transportation

Vehicles:	SUV Rental (Whitehorse)	\$ 554.29	
	ATV Rental (Whitehorse)	\$ 1,597.85	
	Mileage	\$ 11.96	
	Fuel	\$ 127.50	
		<u> </u>	\$ 2,291.61

d) Instrument Rental

	Laptop	\$ 30.57	
	Radios	\$ 24.20	
	Satellite Phone	\$ 49.34	
	GPS Rental	\$ 32.93	
		<u> </u>	\$ 137.04

e) Analyses

		Central Lab of Graymont Western U.S. Inc.	
		(36 rock samples)	
36	samples @ \$ 4.50	Preparation fee	\$ 162.00
36	samples @ \$ 25.00	Sample analysis	\$ 900.00
			<u> </u>
			\$ 1,062.00

f) Other

	Software Rental	\$ 332.06	
	Disposable Supplies	\$ 228.43	
	Courier & Supplies	\$ 25.98	
	Plots & Prints	\$ 63.98	
	Telephone charges	\$ 1.87	
	Overhead & Supply	\$ 356.34	
		<u> </u>	\$ 1,008.67

Total\$ 20,700.52

Edmonton, Alberta
May 4, 2015

Kelly Krueger, B.Sc., Geo. I.T.

APPENDIX 2: ANALYTICAL LABORATORY INFORMATION AND TECHNIQUES

Name and Address of the Lab:

Graymont Western US Inc., Central Laboratory.
670 East 3900 South, Suite 200
Salt Lake City, Utah, 84107

Statement of Qualifications:

Jared Leikam obtained a B.S. in Chemistry from the University of Utah in the class of 2003. Jared started working for Graymont in February of 2004 and has been working with the ICP Spectrometer for two and a half years, under the direct supervision of Carl Paystrup (Lab Supervisor).

Vonda Stuart obtained a B.S. in Chemistry from Weber State University in 2004. Vonda started with Graymont in August of 2007 and started working in the ICP Lab the following September.

Sample Preparation, Procedures, Reagents, Equipment, etc.:

For the ICP sample preparation, 0.5 grams of the sample is mixed with 3 g of lithium carbonate. The sample and the lithium carbonate are then fused together in a muffle furnace at 850°C. Following the fusion process, the samples are dissolved in 1:1 HCl; a total of 40 mL 1:1 HCl is used in the dissolving process. The samples are then diluted to 200 mL and spiked with 10 ppm Co. Cobalt is used as an internal standard. At this point the samples are ready for analysis on the Perkin Elmer, Optima 7300V.

Mesh Size Fraction, Split and Weight of Sample:

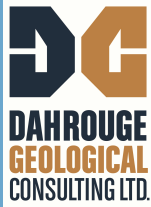
Upon receiving the samples, the prep room technician riffles and then splits the stone down to a manageable size (roughly 200 g). The stone is then dried in an oven at 120°C. Once the samples have been dried they get pulverized to a -200 mesh size. A split of this pulverized material is then sent for testing in the main part of the lab.

Quality Control Procedures:

The ICP spectrometer is calibrated with two certified reference materials prior to analyzing a batch of samples. A batch typically contains 96 samples. Every 12th sample in a batch is a certified limestone reference sample. In addition to the 8 reference samples imbedded in the batch, there are 2 limestone reference samples analyzed at the beginning and at the end of the batch to ensure the accuracy of our Na and P numbers. Every element being analyzed in a sample is backed up by data from the certified reference materials. We also use an internal standard (10 ppm Co) to further ensure the quality and accuracy of the analysis.

**APPENDIX 3: ASSAY RESULTS – CENTRAL ANALYTICAL LABORATORY OF
GRAYMONT WESTERN U.S. INC**

Lab ID	Plant	Lab Owner	Sample Type	Remarks	% CaCO3	% MgCO3	% Fe2O3	% Al2O3	ppm SrO	ppm MnO	% SiO2	ppm BaO	ppm K2O	ppm Na2O	ppm P2O5	ppm TiO2	% Total	% Sulfur	% LOI(1000)
2014114689	202	202	Limestone	Dahrouge_-_Yukon_Territory_120501	72.16	3.26	1.546	2.27	1180	372	14.22	376	5812	10128	1832	2788	95.7	0.013	32.0
2014114690	202	202	Limestone	Dahrouge_-_Yukon_Territory_120502	89.61	0.96	0.276	0.599	1152	176	8.02	61	1954	1499	806	249	100.1	0.011	39.5
2014114691	202	202	Limestone	Dahrouge_-_Yukon_Territory_120503	93.76	1.11	0.335	0.611	1302	186	3.61	59	1619	716	510	221	99.9	0.016	42.0
2014114692	202	202	Limestone	Dahrouge_-_Yukon_Territory_120504	94.42	1.07	0.283	0.398	1190	167	2.95	32	894	479	565	118	99.5	0.012	42.5
2014114693	202	202	Limestone	Dahrouge_-_Yukon_Territory_120505	90.08	1.44	0.458	0.885	1028	224	6.2	68	2063	1755	538	367	99.7	0.014	40.2
2014114694	202	202	Limestone	Dahrouge_-_Yukon_Territory_120506	9.53	12.80	4.792	7.82	700	864	38.19	874	20658	24476	3917	6338	78.9	0.021	4.6
2014114695	202	202	Limestone	Dahrouge_-_Yukon_Territory_120507	66.84	2.34	1.198	1.398	1463	626	17.24	243	7949	6580	1206	1108	90.9	0.019	32.0
2014114696	202	202	Limestone	Dahrouge_-_Yukon_Territory_120508	71.12	2.13	0.921	1.425	1355	257	17.65	257	8168	4610	1110	1082	94.9	0.014	31.6
2014114697	202	202	Limestone	Dahrouge_-_Yukon_Territory_120509	51.56	0.54	0.241	0.847	289	242	23.84	1212	14197	19926	460	119	80.7	0.009	26.0
2014114698	202	202	Limestone	Dahrouge_-_Yukon_Territory_120510	96.34	1.28	0.178	0.431	311	157	1.44	33	1111	267	358	113	99.9	0.014	43.2
2014114699	202	202	Limestone	Dahrouge_-_Yukon_Territory_120511	95.65	1.28	0.266	0.488	463	184	1.96	45	1271	165	751	156	99.9	0.007	42.8
2014068586	202	202	Limestone	Dahrouge_-_Yukon_Territory_123001	96.99	1.05	0.09	0.12	764	40	1.51	23	266	30	388	67	99.9	0.01	42.7
2014068587	202	202	Limestone	Dahrouge_-_Yukon_Territory_123002	97.45	1.17	0.09	0.08	1004	30	0.73	12	144	44	360	52	99.7	0.01	43.2
2014068588	202	202	Limestone	Dahrouge_-_Yukon_Territory_123003	97.06	1.13	0.27	0.17	1224	77	1.22	21	339	52	445	55	100.1	0.01	43.1
2014068589	202	202	Limestone	Dahrouge_-_Yukon_Territory_123004	95.90	1.05	0.15	0.16	1370	45	2.17	22	368	49	538	68	99.7	0.00	42.6
2014068590	202	202	Limestone	Dahrouge_-_Yukon_Territory_123005	97.38	1.05	0.10	0.10	997	32	0.90	10	187	24	356	35	99.7	0.01	43.1
2014068591	202	202	Limestone	Dahrouge_-_Yukon_Territory_123006	97.41	1.07	0.11	0.10	915	42	1.11	13	198	39	344	31	100.0	0.01	43.1
2014068592	202	202	Limestone	Dahrouge_-_Yukon_Territory_123007	97.04	1.23	0.11	0.11	859	41	0.79	14	237	27	540	41	99.5	0.01	43.3
2014068593	202	202	Limestone	Dahrouge_-_Yukon_Territory_123008	95.75	2.34	0.12	0.19	1306	40	1.18	21	349	77	479	64	99.8	0.02	43.4
2014068595	202	202	Limestone	Dahrouge_-_Yukon_Territory_123009	97.02	1.13	0.14	0.34	609	64	1.10	29	557	599	337	127	100.0	0.01	43.4
2014068596	202	202	Limestone	Dahrouge_-_Yukon_Territory_123010	89.26	1.26	0.11	0.28	657	56	8.90	24	423	617	371	107	100.0	0.01	38.9
2014068597	202	202	Limestone	Dahrouge_-_Yukon_Territory_123011	92.18	1.07	0.14	0.35	990	73	5.65	28	662	156	441	103	99.6	0.00	40.3
2014068598	202	202	Limestone	Dahrouge_-_Yukon_Territory_123012	91.79	1.11	0.29	0.81	968	102	5.43	67	1917	733	357	270	99.9	0.01	40.8
2014068599	202	202	Limestone	Dahrouge_-_Yukon_Territory_123013	94.47	1.15	0.19	0.43	978	79	3.38	29	540	648	597	144	99.9	0.01	42.0
2014068600	202	202	Limestone	Dahrouge_-_Yukon_Territory_123014	91.90	0.88	0.15	0.24	1527	76	5.35	31	489	55	330	80	98.8	0.01	40.9
2014068601	202	202	Limestone	Dahrouge_-_Yukon_Territory_123015	97.97	0.86	0.10	0.09	248	91	0.61	9	194	37	285	26	99.7	0.01	42.7
2014068602	202	202	Limestone	Dahrouge_-_Yukon_Territory_123016	98.02	0.84	0.09	0.11	234	85	0.68	9	289	32	296	34	99.8	0.00	42.9
2014068603	202	202	Limestone	Dahrouge_-_Yukon_Territory_123017	97.49	1.05	0.10	0.20	314	71	0.98	29	402	221	457	61	100.0	0.01	42.8
2014068604	202	202	Limestone	Dahrouge_-_Yukon_Territory_123018	98.49	0.82	0.09	0.06	234	51	0.35	7	76	55	250	20	99.9	0.00	42.7
2014068605	202	202	Limestone	Dahrouge_-_Yukon_Territory_123019	98.79	0.88	0.08	0.09	291	61	0.62	9	126	675	340	20	100.6	0.00	42.6
2014068606	202	202	Limestone	Dahrouge_-_Yukon_Territory_123020	98.66	0.86	0.07	0.08	265	49	0.33	13	144	50	184	29	100.1	0.00	43.8
2014068607	202	202	Limestone	Dahrouge_-_Yukon_Territory_123021	98.13	1.03	0.08	0.11	334	78	0.45	18	235	30	465	38	99.9	0.00	43.2
2014068608	202	202	Limestone	Dahrouge_-_Yukon_Territory_123022	98.09	1.07	0.06	0.11	273	37	0.39	13	215	41	297	27	99.8	0.01	43.8
2014068609	202	202	Limestone	Dahrouge_-_Yukon_Territory_123023	98.49	1.03	0.10	0.07	246	58	0.23	10	104	40	425	36	100.0	0.01	43.8
2014068611	202	202	Limestone	Dahrouge_-_Yukon_Territory_123024	98.56	1.07	0.09	0.09	231	55	0.26	7	164	30	469	15	100.2	0.00	43.7
2014068612	202	202	Limestone	Dahrouge_-_Yukon_Territory_123025	97.56	1.38	0.11	0.16	398	87	0.63	11	140	43	406	42	99.9	0.01	43.5



APPENDIX 4: SAMPLE DESCRIPTIONS AND ASSAY RESULTS FROM THE SHADOW LAKE PROPERTY



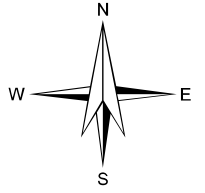
Notes: Stratigraphic thicknesses are based on measured attitudes of bedding listed below, with appropriate interpolations. Attitudes are strike and dip (right-hand rule). Sections are listed in numerical order of samples, which does not necessarily represent stratigraphic order. Most samples consist of chips at 30 cm intervals. UTM coordinates are NAD83, Zone 8N. Section locations are shown in Figure 4.2.
 Stratigraphy Abbreviations: Tc - Triassic Aksala Formation (Casca Member); Th - Triassic Aksala Formation (Hancock Member)

Sample	Strat Unit	Strat Tkns (m)	Description	CaCO ₃ (%)	MgCO ₃ (%)	SiO ₂ (%)	Al ₂ O ₃ (%)	Fe ₂ O ₃ (%)	SrO (ppm)	MnO (ppm)	P ₂ O ₅ (ppm)
120506	Tc		Shale/Mudstone , olive grey weathered, medium grey fresh, very fine-grained to fine-grained, hard, fissile, alteration: silica, no HCl reaction, structure(s): calcite veinlet moderate	9.53	12.80	38.19	7.820	4.792	700	864	3917
120507	Tc		Argillaceous Lime Mudstone , medium grey weathered and fresh, micritic, strong HCl reaction, structure(s): calcite veinlet weak	66.84	2.34	17.24	1.398	1.198	1463	626	1206
120508	Tc		Calcareous Mudstone , medium grey weathered, medium grey to dark grey fresh, cryptocrystalline, massive, strong HCl reaction	71.12	2.13	17.65	1.425	0.921	1355	257	1110
123001	Th	3	Lime Mudstone , medium grey weathered and fresh, micritic, massive, resistant, alteration: oxide, localized, 60-80% intensity, moderate HCl reaction, structure(s): calcite vein moderate; bedding (possible) SW	96.99	1.05	1.51	0.120	0.090	764	40	388
123002	Th	4	Lime Mudstone , medium grey weathered and fresh, micritic, massive, resistant, alteration: oxide, localized, 60-80% intensity, moderate HCl reaction, structure(s): calcite vein moderate; bedding (definite) 184/48 W	97.45	1.17	0.73	0.080	0.090	1004	30	360
123003	Th	3	Lime Mudstone , medium grey weathered and fresh, micritic, massive, slightly resistant, alteration: oxide, localized, 60-80% intensity, moderate HCl reaction, structure(s): calcite vein moderate; bedding (undulatory) moderate, 146/48 SW	97.06	1.13	1.22	0.170	0.270	1224	77	445
123004	Th	3	Lime Mudstone , medium grey weathered, light grey to medium grey fresh, micritic, moderately-bedded to massively-bedded, resistant, alteration: oxide, weak intensity, moderate HCl reaction, structure(s): calcite vein moderate	95.90	1.05	2.17	0.160	0.150	1370	45	538
123005	Th	3.5	Lime Mudstone , medium grey weathered, medium grey to dark grey fresh, micritic, thinly-bedded to moderately-bedded, resistant, alteration: oxide, weak intensity, moderate HCl reaction	97.38	1.05	0.90	0.100	0.100	997	32	356
123006	Th	5.5	Lime Mudstone , medium grey weathered, medium grey to dark grey fresh, micritic, thinly-bedded to moderately-bedded, resistant, alteration: oxide, weak intensity, moderate HCl reaction	97.41	1.07	1.11	0.100	0.110	915	42	344
123007	Th	4	Lime Mudstone , medium grey weathered, medium grey to dark grey fresh, micritic, thinly-bedded to moderately-bedded, resistant, alteration: oxide, weak intensity, moderate HCl reaction	97.04	1.23	0.79	0.110	0.110	859	41	540
123008	Th	4	Lime Mudstone , medium grey weathered, dark grey to black fresh, cryptocrystalline to micritic, thinly-bedded to moderately-bedded, alteration: oxide, fracture-related, weak intensity, moderate HCl reaction, structure(s): calcite veinlet weak	95.75	2.34	1.18	0.190	0.120	1306	40	479
123009	Th	5	Lime Mudstone , medium grey to dark grey weathered, medium grey fresh, micritic, thinly-bedded to moderately-bedded, resistant, alteration: oxide, fracture-related, weak intensity, strong HCl reaction, structure(s): calcite veinlet weak	97.02	1.13	1.10	0.340	0.140	609	64	337

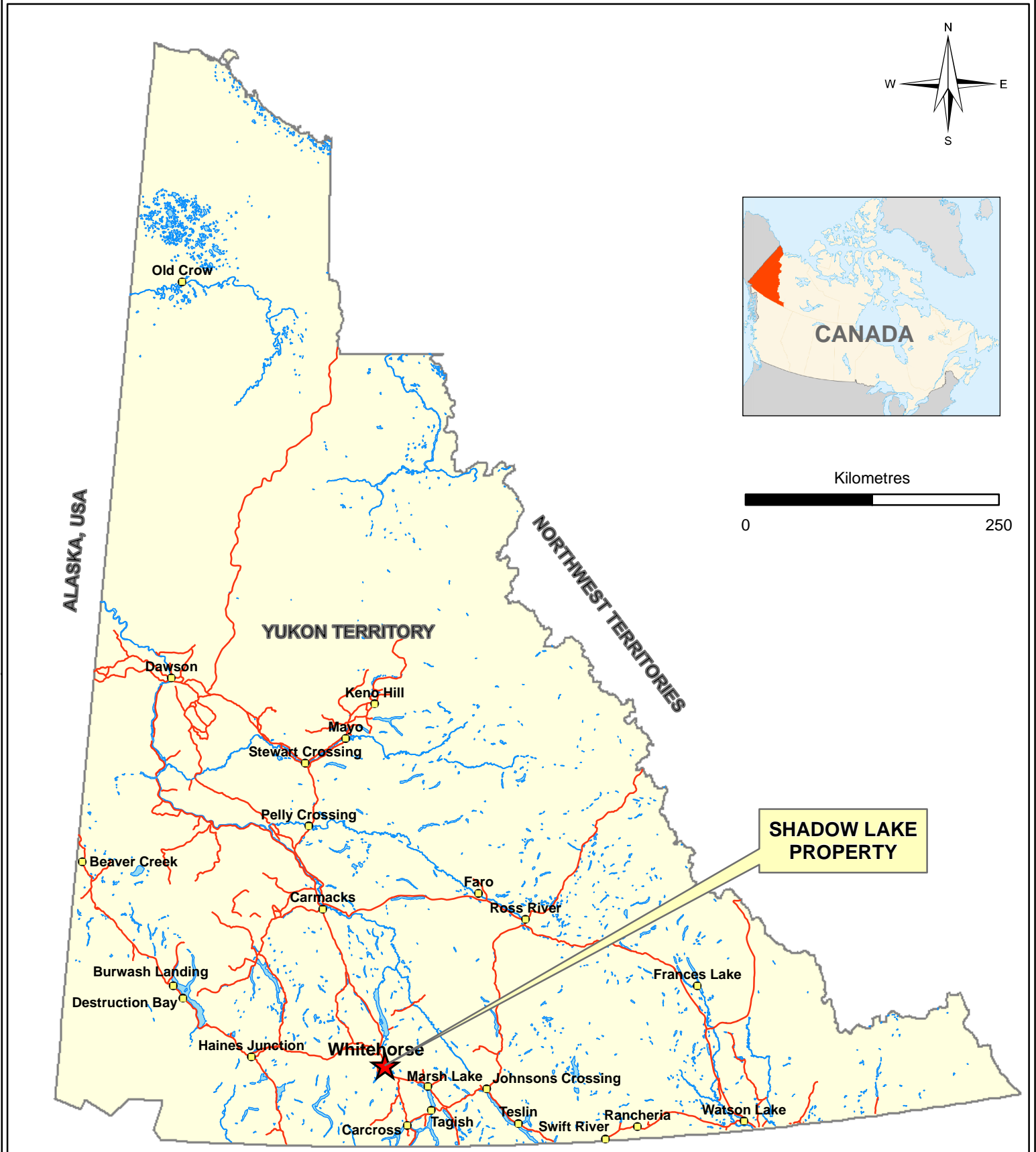
A6

Sample	Strat Unit	Strat Tkns (m)	Description	CaCO ₃ (%)	MgCO ₃ (%)	SiO ₂ (%)	Al ₂ O ₃ (%)	Fe ₂ O ₃ (%)	SrO (ppm)	MnO (ppm)	P ₂ O ₅ (ppm)
123010	Th	3	Lime Mudstone to Argillaceous Lime Mudstone , medium grey to dark grey weathered, medium grey fresh, micritic, thinly-bedded to moderately-bedded, resistant, alteration: oxide, fracture-related, weak intensity, moderate HCl reaction, structure(s): calcite veinlet weak	89.26	1.26	8.90	0.280	0.110	657	56	371
123011	Th	3	Lime Mudstone to Argillaceous Lime Mudstone , light grey to medium grey weathered, medium grey fresh, micritic, alteration: oxide, weak intensity, moderate HCl reaction, structure(s): calcite vein moderate; bedding (definite)	92.18	1.07	5.65	0.350	0.140	990	73	441
123012	Th	3	Lime Mudstone to Argillaceous Lime Mudstone , medium grey weathered, medium grey to dark grey fresh, micritic, alteration: oxide, fracture-related, weak intensity, moderate HCl reaction, structure(s): bedding (definite) strong, 328/34 NE	91.79	1.11	5.43	0.810	0.290	968	102	357
123013	Th	3	Lime Mudstone to Argillaceous Lime Mudstone , light grey to medium grey weathered, medium grey fresh, micritic, alteration: oxide, weak intensity, moderate HCl reaction, structure(s): calcite vein moderate; bedding (definite)	94.47	1.15	3.38	0.430	0.190	978	79	597
123014	Th	2	Lime Mudstone to Argillaceous Lime Mudstone , light grey to medium grey weathered, medium grey fresh, micritic, moderately-bedded, alteration: oxide, fracture-related, weak intensity, moderate HCl reaction, structure(s): calcite veinlet moderate; calcite vein moderate	91.90	0.88	5.35	0.240	0.150	1527	76	330
123024	Th	2	Lime Mudstone , light grey weathered, very-dark grey fresh, cryptocrystalline to micritic, moderately-bedded to thickly-bedded, resistant, sucrosic, strong HCl reaction, structure(s): calcite vein strong	98.56	1.07	0.26	0.090	0.090	231	55	469
123025	Th	3	Lime Mudstone , light grey to medium grey weathered, medium grey fresh, cryptocrystalline to micritic, thickly-bedded to massively-bedded, resistant, strong HCl reaction, structure(s): calcite vein moderate	97.56	1.38	0.63	0.160	0.110	398	87	406
Section 2014-01 (UTM 510105E, 6714524N)											
120501	Tc	3.5	Calcareous Mudstone , light grey weathered, medium grey fresh, micritic, thinly-bedded, resistant, strong HCl reaction, structure(s): calcite veinlet, local-scale, weak; bedding (undulatory) 164/82 SW	72.16	3.26	14.22	2.270	1.546	1180	372	1832
120502	Tc	3.5	Argillaceous Lime Mudstone , light grey weathered, medium grey to dark grey fresh, micritic, thinly-bedded, resistant, strong HCl reaction, structure(s): calcite veinlet, local-scale, weak; bedding (undulatory) 164/82 SW	89.61	0.96	8.02	0.599	0.276	1152	176	806
120503	Tc	2.75	Lime Mudstone , light grey weathered, medium grey fresh, micritic, thinly-bedded, resistant, strong HCl reaction, structure(s): calcite veinlet, local-scale, weak; bedding (undulatory) 164/82 SW	93.76	1.11	3.61	0.611	0.335	1302	186	510
120504	Tc	1.75	Lime Mudstone , light grey weathered, medium grey to dark grey fresh, micritic, thinly-bedded, resistant, strong HCl reaction, structure(s): calcite veinlet, local-scale, weak; bedding (undulatory) 164/82 SW	94.42	1.07	2.95	0.398	0.283	1190	167	565
120505	Tc	3.5	Argillaceous Lime Mudstone , light grey weathered, medium grey fresh, cryptocrystalline, massive, resistant, strong HCl reaction, structure(s): calcite veinlet, local-scale, weak	90.08	1.44	6.20	0.885	0.458	1028	224	538
Section 2014-02 (UTM 510451E, 6714542N)											
120509	Tc	1.5	Calcareous Mudstone , light grey to medium grey weathered and fresh, micritic, laminated to thinly-bedded, sucrosic, fissile, strong HCl reaction, structure(s): calcite veinlet, local-scale, moderate; bedding (approximate) 259/40 NW	51.56	0.54	23.84	0.847	0.241	289	242	460

Sample	Strat Unit	Strat Tkns (m)	Description	CaCO ₃ (%)	MgCO ₃ (%)	SiO ₂ (%)	Al ₂ O ₃ (%)	Fe ₂ O ₃ (%)	SrO (ppm)	MnO (ppm)	P ₂ O ₅ (ppm)
120510	Th	2.75	Lime Mudstone , light grey to medium grey weathered and fresh, micritic, laminated to thinly-bedded, sucrosic, fissile, strong HCl reaction, structure(s): calcite veinlet, local-scale, moderate; bedding (approximate) 259/40 NW	96.34	1.28	1.44	0.431	0.178	311	157	358
120511	Th	1	Lime Mudstone , light grey to medium grey weathered and fresh, micritic, laminated to thinly-bedded, sucrosic, fissile, strong HCl reaction, structure(s): calcite veinlet, local-scale, moderate; bedding (approximate) 259/40 NW	95.65	1.28	1.96	0.488	0.266	463	184	751
Section 2014-03 (UTM 510504E, 6716115N)											
123015	Th	3	Lime Mudstone , light grey weathered and fresh, cryptocrystalline to micritic, thickly-bedded, alteration: oxide, fracture-related, weak intensity, strong HCl reaction, structure(s): calcite veinlet weak	97.97	0.86	0.61	0.090	0.100	248	91	285
123016	Th	3	Lime Mudstone , light grey weathered, light grey to medium grey fresh, micritic, thinly-bedded to moderately-bedded, moderate HCl reaction, structure(s): calcite vein moderate	98.02	0.84	0.68	0.110	0.090	234	85	296
Section 2014-04 (UTM 510497E, 6716030N)											
123017	Th	3	Lime Mudstone , light grey weathered, light brown to medium grey fresh, micritic, resistant, moderate HCl reaction, structure(s): calcite vein strong; bedding (definite) strong	97.49	1.05	0.98	0.200	0.100	314	71	457
123018	Th	3	Lime Mudstone , very-light grey weathered and fresh, cryptocrystalline, thickly-bedded, resistant, moderate HCl reaction, structure(s): calcite vein strong; bedding (definite) 8/30 E	98.49	0.82	0.35	0.060	0.090	234	51	250
123019	Th	3	Lime Mudstone , very-light grey weathered and fresh, cryptocrystalline, thickly-bedded, resistant, moderate HCl reaction, structure(s): calcite vein strong; bedding (definite) 8/30 E	98.79	0.88	0.62	0.090	0.080	291	61	340
123020	Th	3	Lime Mudstone , very-light grey weathered and fresh, cryptocrystalline, thickly-bedded, resistant, strong HCl reaction, structure(s): calcite vein strong; bedding (definite) 8/30 E	98.66	0.86	0.33	0.080	0.070	265	49	184
Section 2014-05 (UTM 510572E, 6716018N)											
123021	Th	3	Lime Mudstone , very-light grey weathered and fresh, cryptocrystalline, thickly-bedded, resistant, weak HCl reaction, structure(s): calcite vein strong; bedding (undulatory) 0/30 E	98.13	1.03	0.45	0.110	0.080	334	78	465
123022	Th	3	Lime Mudstone , very-light grey weathered and fresh, cryptocrystalline, thickly-bedded, resistant, moderate HCl reaction, structure(s): calcite vein strong; bedding (undulatory) 0/30 E	98.09	1.07	0.39	0.110	0.060	273	37	297
123023	Th	1.5	Lime Mudstone , very-light grey weathered and fresh, cryptocrystalline, thickly-bedded, resistant, moderate HCl reaction, structure(s): calcite vein strong; bedding (undulatory) 0/30 E	98.49	1.03	0.23	0.070	0.100	246	58	425



Kilometres



ALASKA, USA






NORTHWEST TERRITORIES

YUKON TERRITORY

BRITISH COLUMBIA

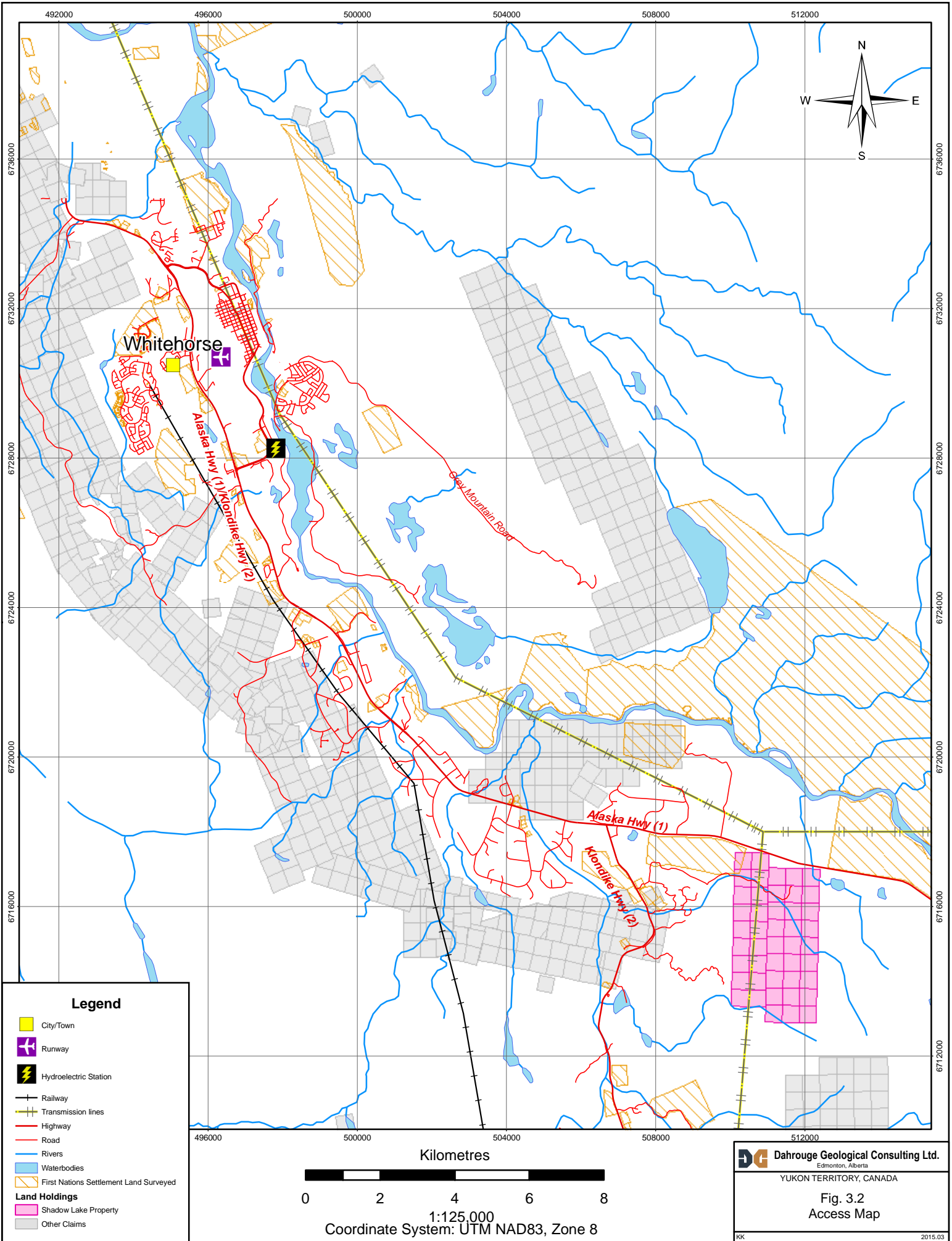
SHADOW LAKE PROPERTY

Legend

-  Cities/Towns
-  Highway
-  Rivers
-  Lakes
-  Territorial Boundary

1:5,000,000
Coordinate System: UTM NAD83, Zone 8

DG Dahrouge Geological Consulting Ltd.
Edmonton, Alberta
YUKON TERRITORY, CANADA
Fig. 3.1
Property Location
KK 2015.02



Legend

- City/Town
- Runway
- Hydroelectric Station
- Railway
- Transmission lines
- Highway
- Road
- Rivers
- Waterbodies
- First Nations Settlement Land Surveyed
- Land Holdings**
- Shadow Lake Property
- Other Claims

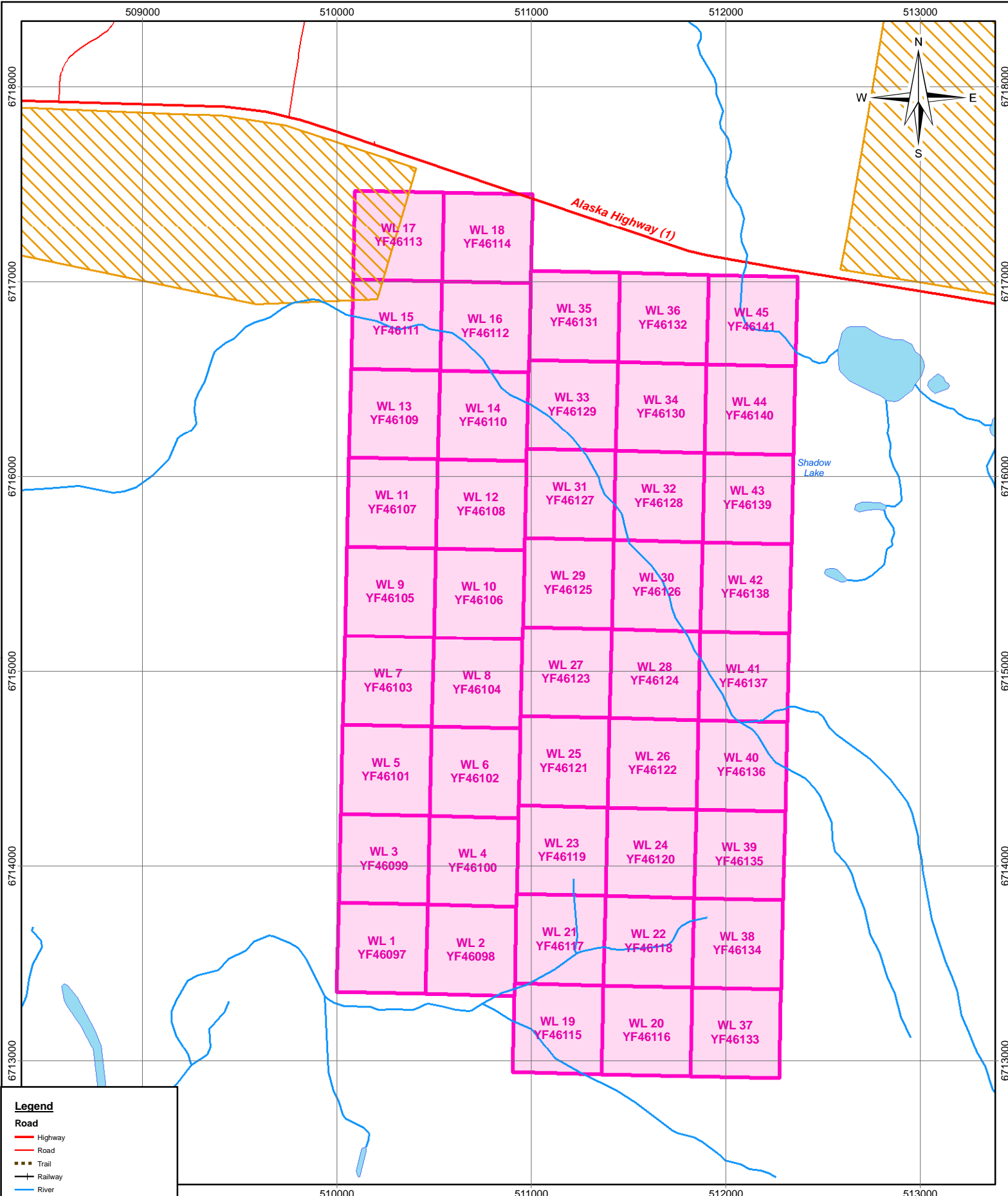
Kilometres



0 2 4 6 8
 1:125,000
 Coordinate System: UTM NAD83, Zone 8

DG Dahrouge Geological Consulting Ltd.
 Edmonton, Alberta
 YUKON TERRITORY, CANADA

Fig. 3.2
 Access Map



Legend

Road

- Highway
- Road
- Trail
- Railway

Water

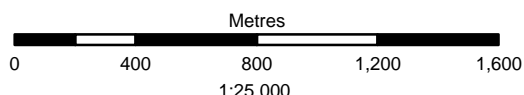
- River
- Lake
- Wetlands

Other

- Areas Withdrawn from Staking
- First Nations Settlement Land Surveyed

Land Holdings

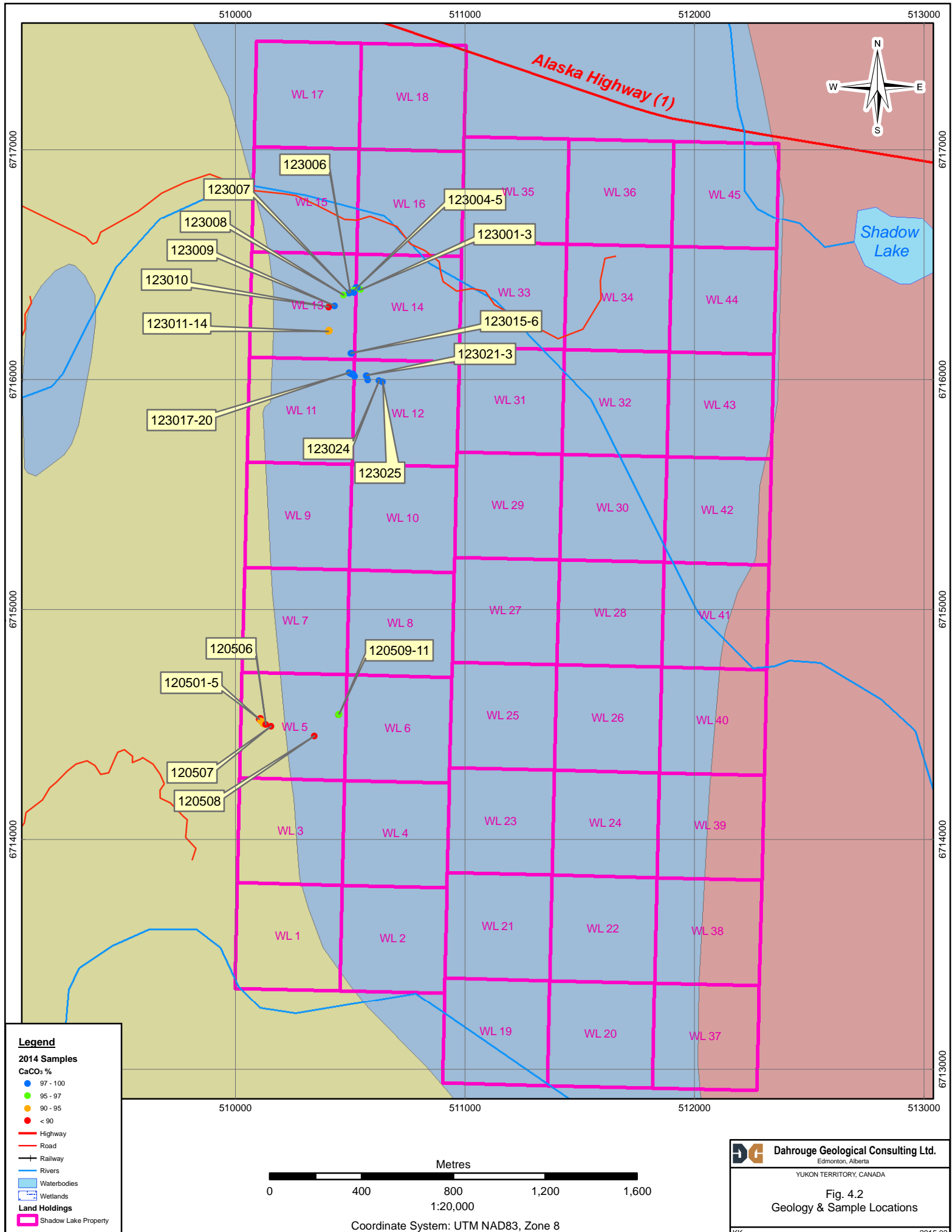
- Other Quartz Claims
- Graymont
- Shadow Lake Property



Dahrouge Geological Consulting Ltd.
Edmonton, Alberta
YUKON TERRITORY, CANADA

Fig. 4.1
Claim Map

JA 2014.11



Legend

2014 Samples

CaCO₃ %

- 97 - 100
- 95 - 97
- 90 - 95
- < 90

— Highway

— Road

— Railway

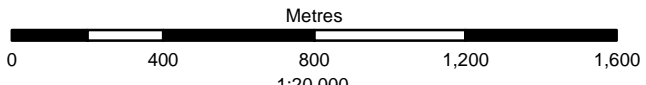
— Rivers

Waterbodies

Wetlands

Land Holdings

Shadow Lake Property

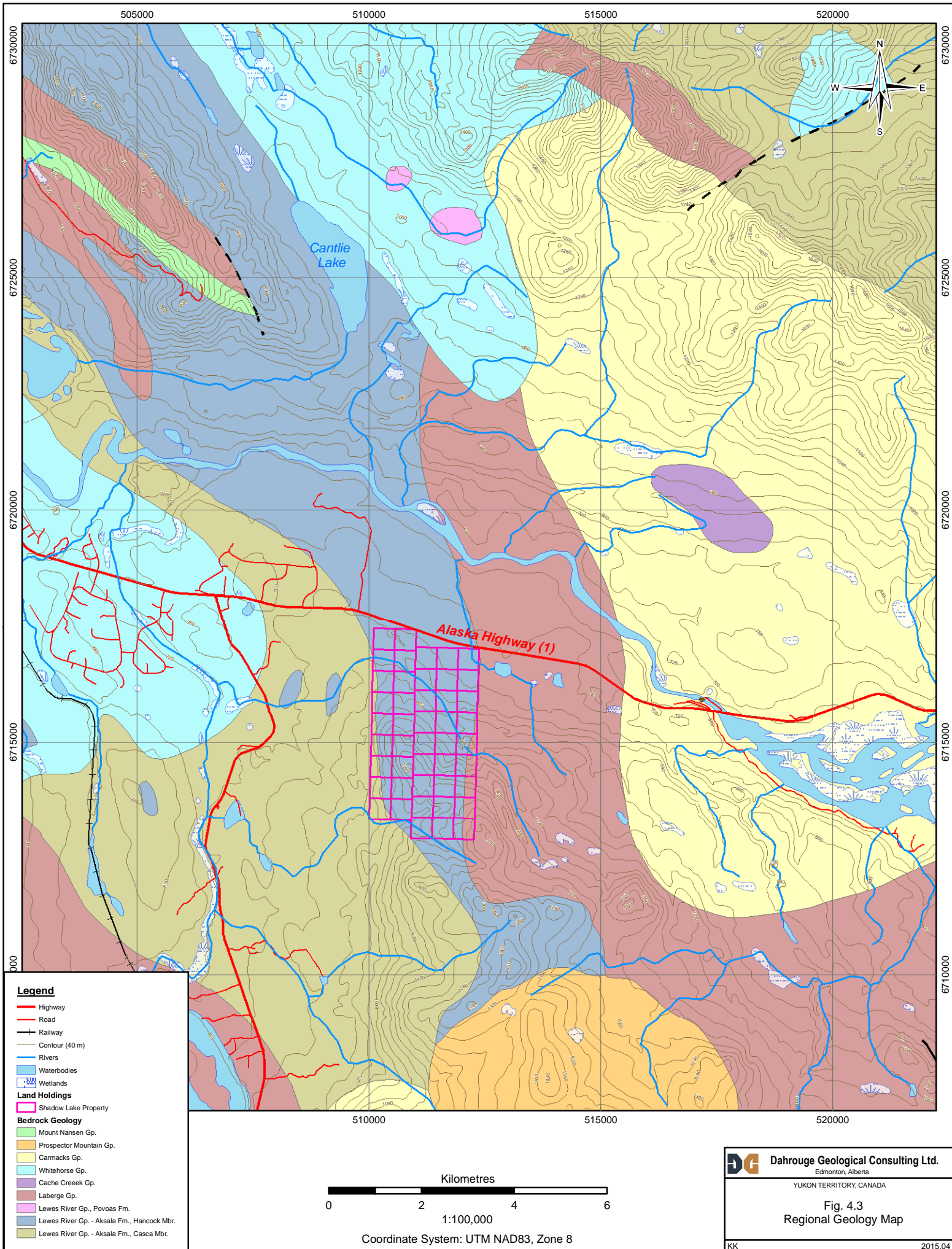


Coordinate System: UTM NAD83, Zone 8

DG Dahrouge Geological Consulting Ltd.
 Edmonton, Alberta
 YUKON TERRITORY, CANADA

Fig. 4.2
 Geology & Sample Locations

KK 2015.03



DC Dahrouge Geological Consulting Ltd.
 Edmonton, Alberta
 YUKON TERRITORY, CANADA

Fig. 4.3
 Regional Geology Map

KK 2015.04