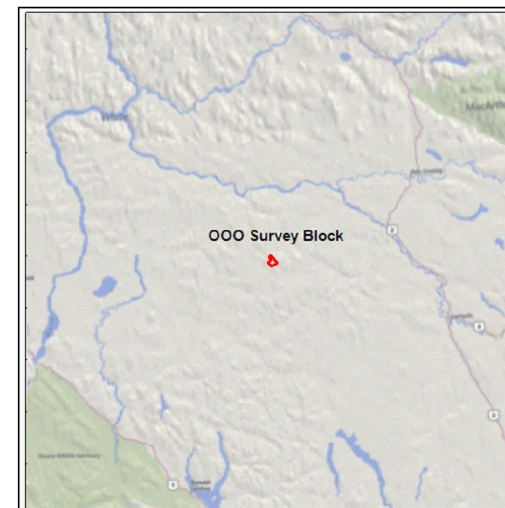


rawK (cps)

LEGEND

Map Projection:

Projection: Universal Transverse Mercator
Central Meridian: 219 Zone 7N
Datum: WGS 84



Radiometric data were collected with variable snow cover. Therefore, radiometric data were not corrected and should be used with discretion.

Survey Dates: March 30, 2015 and March 31, 2015
Survey Base: Minto Airstrip, Yukon
Helicopter Type: Eurocopter AS350
Registration: C-GOJK
Survey Technology: Magnetic and Radiometric survey.

SURVEY PARAMETERS:

Helicopter: 35.0 meters
Magnetometer: 35.0 meters
Radiometric: 35.0 meters
Actual Mean Terrain Clearance: 34.6 meters

OOO Survey Block

Survey Line Spacing: 100 meters
Survey Line Direction: 056°/236°
Tie Line Spacing: 900 meters
Tie Line Direction: 146°/326°

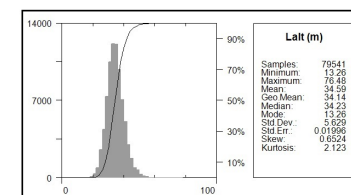
AIRBORNE SYSTEMS:

Scintrex CS-3 Magnetometer Sensor

Configuration: Stinger with 3 axis compensation
Sample Rate: 10 Hz
Sensitivity: 0.01 nT

Gamma Ray Spectrometer

Pico Envirotec GRS-10 Gamma Spectrometer
8.4 litres of NaI(Tl) synthetic "downward looking" crystals
Sample Rate: 1 Hz



Alt (m)	
Samples:	76541
Minimum:	13.26
Maximum:	76.48
Mean:	34.59
Geo Mean:	34.14
Median:	34.23
Mode:	13.26
Std Dev:	5.929
Std Err:	0.01969
Skew:	0.6524
Kurtosis:	2.123

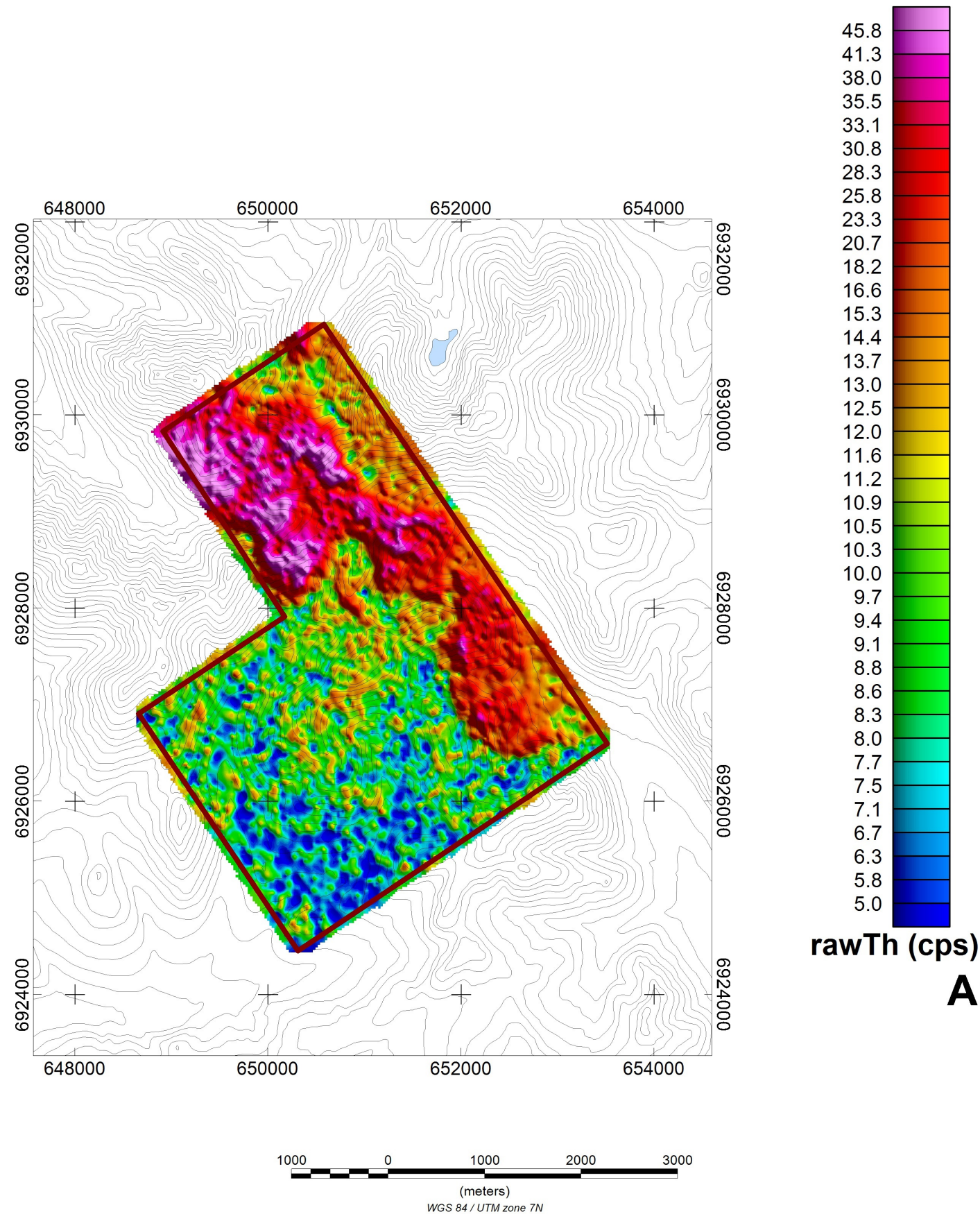
Archer, Cathro & Associates (1981) Limited

Radiometric Map

OOO Survey Block
Raw Potassium - Counts/Second
Created By: Precision GeoSurveys Inc.
April 2, 2015

Precision
GeoSurveys

rawK



LEGEND

Map Projection:

Projection: Universal Transverse Mercator
Central Meridian: 219 Zone 7N
Datum: WGS 84



Radiometric data were collected with variable snow cover. Therefore, radiometric data were not corrected and should be used with discretion.

Survey Dates: March 30, 2015 and March 31, 2015
Survey Base: Minto Airstrip, Yukon
Helicopter Type: Eurocopter AS350
Registration: C-GOHK
Survey Technology: Magnetic and Radiometric survey.

SURVEY PARAMETERS:

Helicopter: 35.0 meters
Magnetometer: 35.0 meters
Radiometric: 35.0 meters
Actual Mean Terrain Clearance: 34.6 meters

OOO Survey Block

Survey Line Spacing: 100 meters
Survey Line Direction: 056°/236°
Tie Line Spacing: 900 meters
Tie Line Direction: 146°/326°

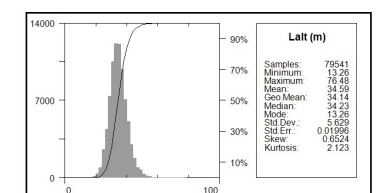
AIRBORNE SYSTEMS:

Scintrex CS-3 Magnetometer Sensor

Configuration: Stinger with 3 axis compensation
Sample Rate: 10 Hz
Sensitivity: 0.01 nT

Gamma Ray Spectrometer

Pico Envirotec GRS-10 Gamma Spectrometer
8.4 litres of NaI(Tl) synthetic "downward looking" crystals
Sample Rate: 1 Hz



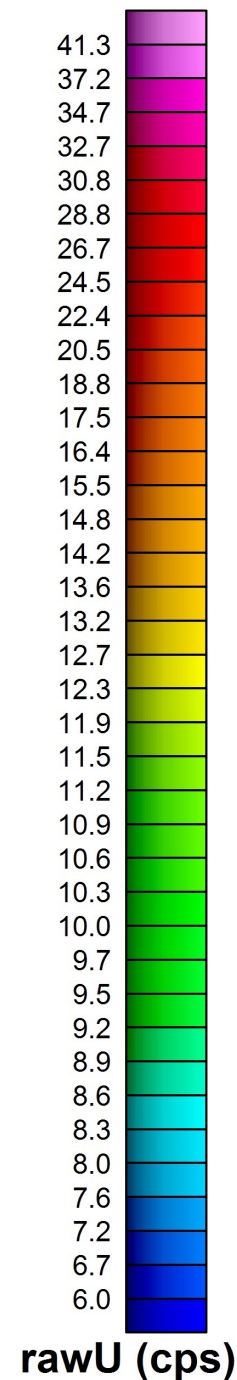
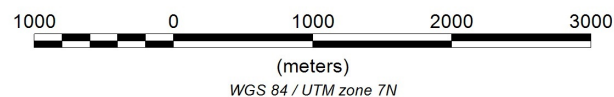
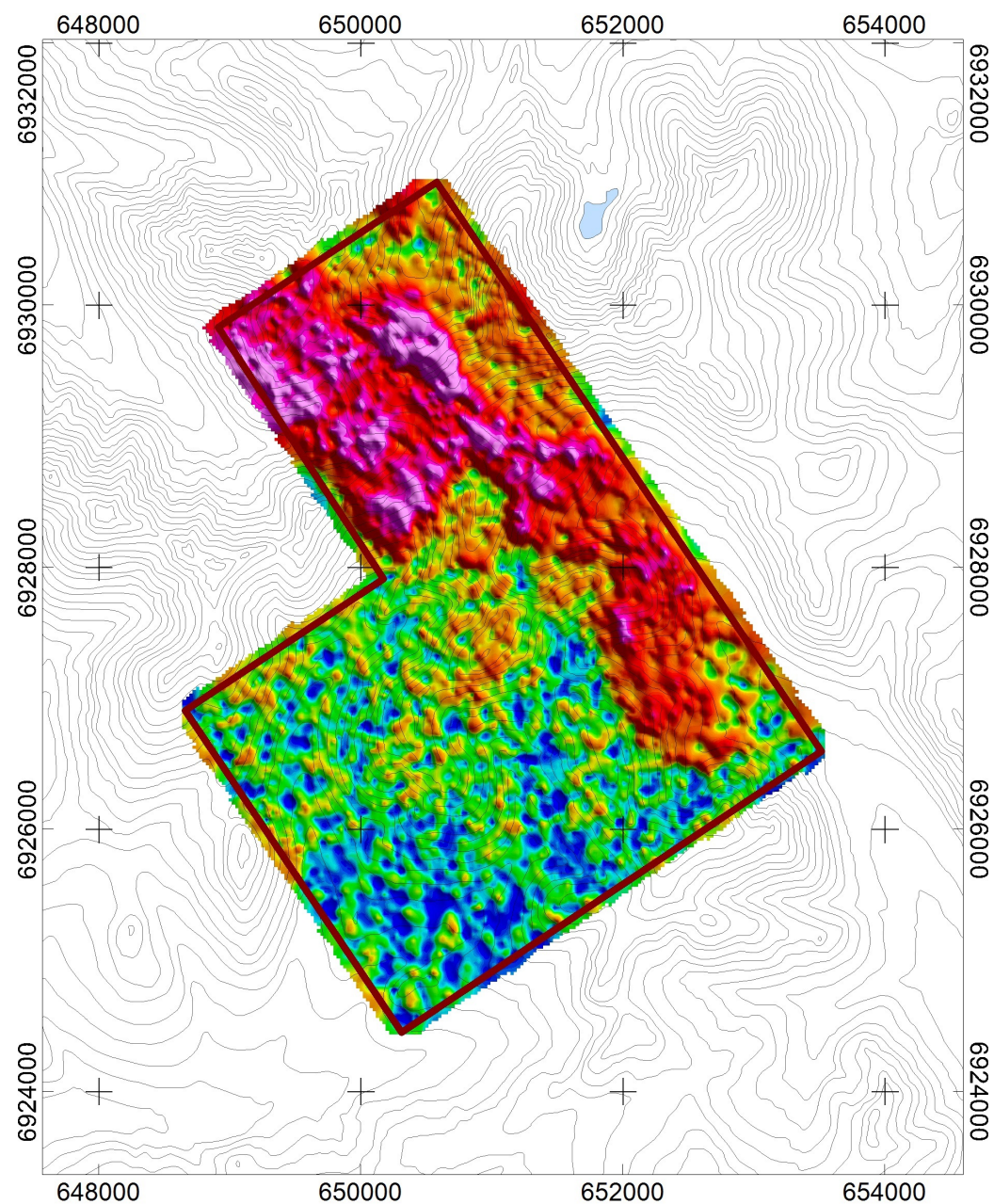
Archer, Cathro & Associates (1981) Limited

Radiometric Map

OOO Survey Block
Raw Thorium - Counts/Second
Created By: Precision GeoSurveys Inc.
April 2, 2015

Precision
GeoSurveys

rawTh

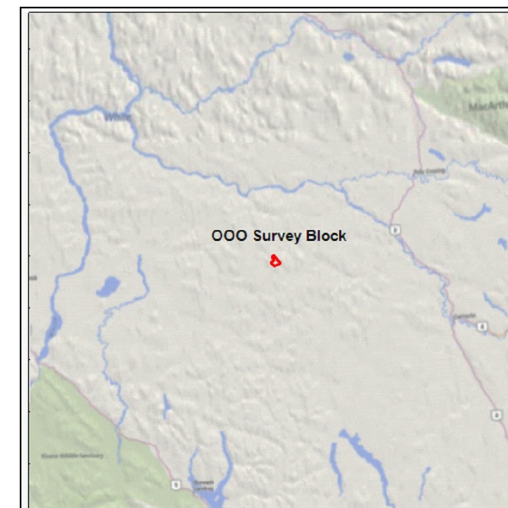


rawU (cps)

LEGEND

Map Projection:

Projection: Universal Transverse Mercator
Central Meridian: 219 Zone 7N
Datum: WGS 84



Radiometric data were collected with variable snow cover. Therefore, radiometric data were not corrected and should be used with discretion.

Survey Dates: March 30, 2015 and March 31, 2015
Survey Base: Minto Airstrip, Yukon
Helicopter Type: Eurocopter AS350
Registration: C-GOJK
Survey Technology: Magnetic and Radiometric survey.

SURVEY PARAMETERS:

Helicopter: 35.0 meters
Magnetometer: 35.0 meters
Radiometric: 35.0 meters
Actual Mean Terrain Clearance: 34.6 meters

OOO Survey Block

Survey Line Spacing: 100 meters
Survey Line Direction: 056°/236°
Tie Line Spacing: 900 meters
Tie Line Direction: 146°/326°

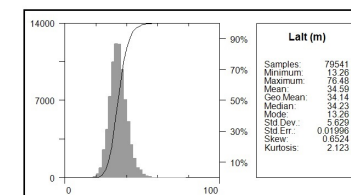
AIRBORNE SYSTEMS:

Scintrex CS-3 Magnetometer Sensor

Configuration: Stinger with 3 axis compensation
Sample Rate: 10 Hz
Sensitivity: 0.01 nT

Gamma Ray Spectrometer

Pico Envirotec GRS-10 Gamma Spectrometer
8.4 litres of NaI(Tl) synthetic "downward looking" crystals
Sample Rate: 1 Hz



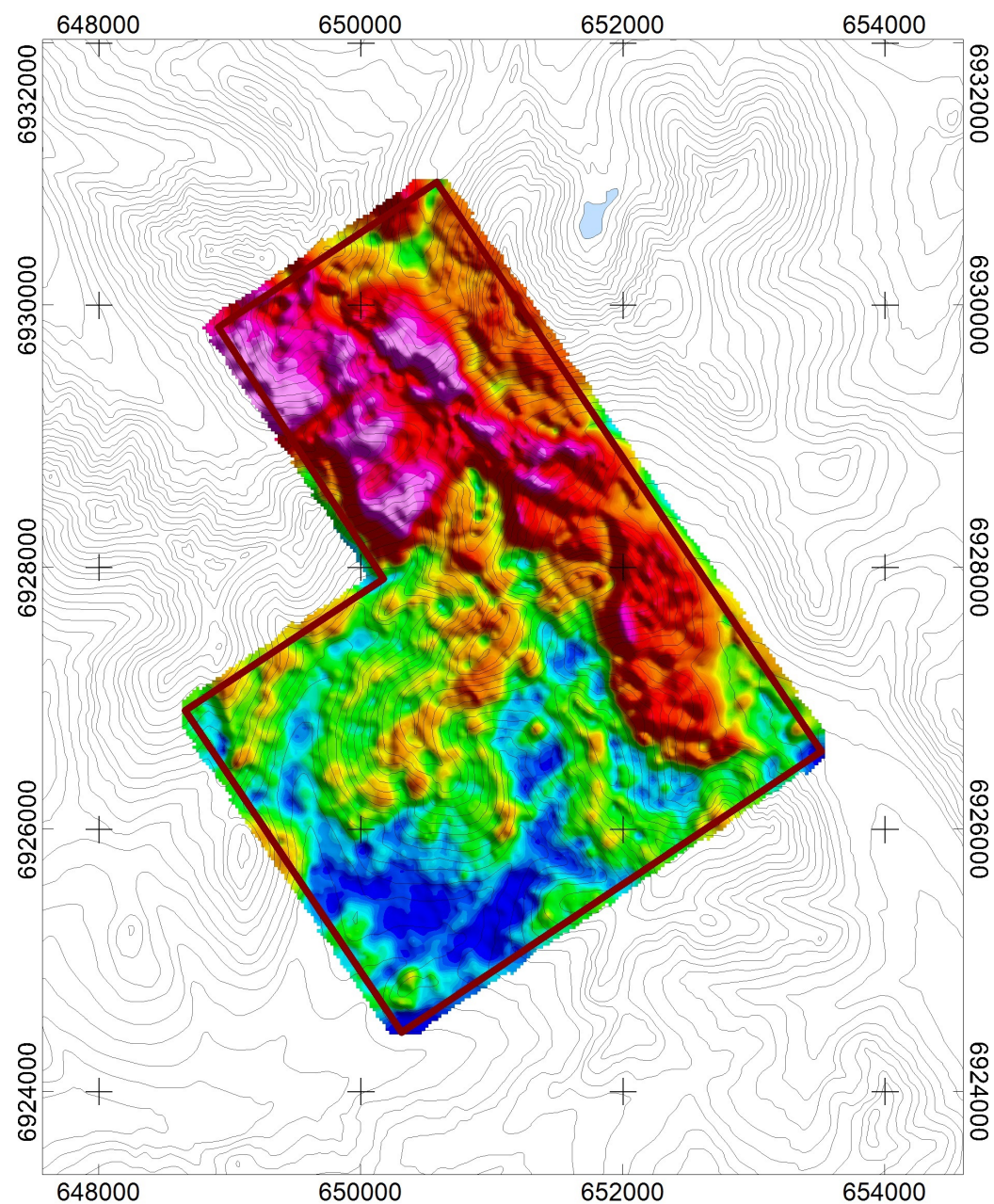
Archer, Cathro & Associates (1981) Limited

Radiometric Map

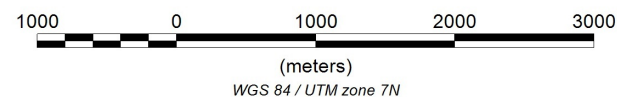
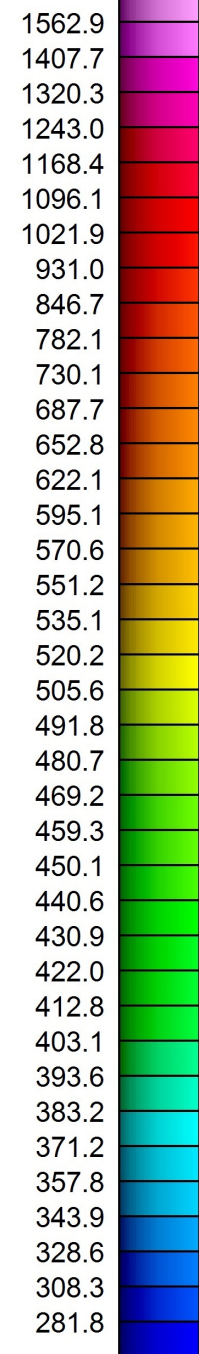
OOO Survey Block
Raw Uranium - Counts/Second
Created By: Precision GeoSurveys Inc.
April 2, 2015

Precision
GeoSurveys

rawU



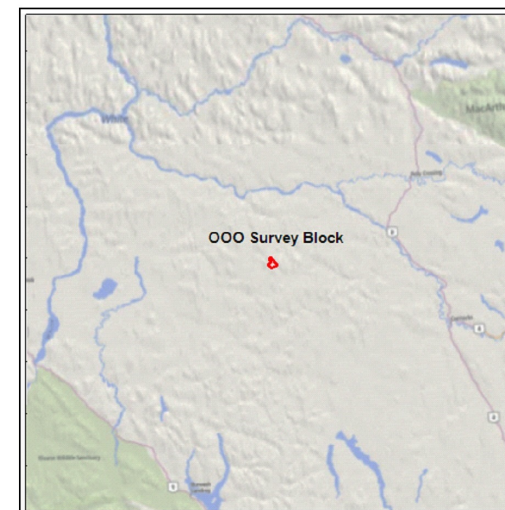
rawTC (cps)



LEGEND

Map Projection:

Projection: Universal Transverse Mercator
Central Meridian: 219 Zone 7N
Datum: WGS 84



Radiometric data were collected with variable snow cover. Therefore, radiometric data were not corrected and should be used with discretion.

Survey Dates: March 30, 2015 and March 31, 2015
Survey Base: Minto Airstrip, Yukon
Helicopter Type: Eurocopter AS350
Registration: C-GOHK
Survey Technology: Magnetic and Radiometric survey.

SURVEY PARAMETERS:

Helicopter: 35.0 meters
Magnetometer: 35.0 meters
Radiometric: 35.0 meters
Actual Mean Terrain Clearance: 34.6 meters

OOO Survey Block

Survey Line Spacing: 100 meters
Survey Line Direction: 056°/236°
Tie Line Spacing: 900 meters
Tie Line Direction: 146°/326°

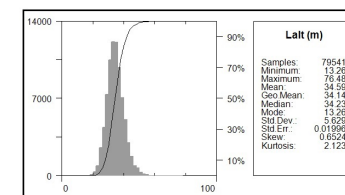
AIRBORNE SYSTEMS:

Scintrex CS-3 Magnetometer Sensor

Configuration: Stinger with 3 axis compensation
Sample Rate: 10 Hz
Sensitivity: 0.01 nT

Gamma Ray Spectrometer

Pico Envirotec GRS-10 Gamma Spectrometer
8.4 litres of NaI(Tl) synthetic "downward looking" crystals
Sample Rate: 1 Hz



Archer, Cathro & Associates (1981) Limited

Radiometric Map

OOO Survey Block
Raw Total Count - Counts/Second
Created By: Precision GeoSurveys Inc.
April 2, 2015

Precision
GeoSurveys

rawTC