

LEGEND

Map Projection:

Projection: Universal Transverse Mercator
Central Meridian: 219 Zone 7N
Datum: WGS 84



Survey Dates: March 30, 2015 and March 31, 2015
Survey Base: Minto Airstrip, Yukon
Helicopter Type: Eurocopter AS350
Registration: C-GOHK
Survey Technology: Magnetic and Radiometric survey.

SURVEY PARAMETERS:

Helicopter: 35.0 meters
Magnetometer: 35.0 meters
Radiometric: 35.0 meters
Actual Mean Terrain Clearance: 34.6 meters

OOO Survey Block

Survey Line Spacing: 100 meters
Survey Line Direction: 056°/236°
Tie Line Spacing: 900 meters
Tie Line Direction: 146°/326°

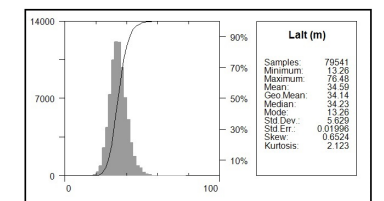
AIRBORNE SYSTEMS:

Scintrex CS-3 Magnetometer Sensor

Configuration: Stinger with 3 axis compensation
Sample Rate: 10 Hz
Sensitivity: 0.01 nT

Gamma Ray Spectrometer

Pico Envirotec GRS-10 Gamma Spectrometer
8.4 litres of NaI(Tl) synthetic "downward looking" crystals
Sample Rate: 1 Hz



Archer, Cathro & Associates (1981) Limited

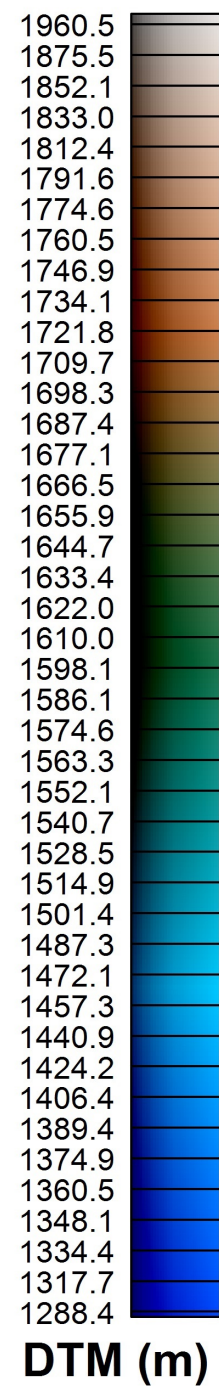
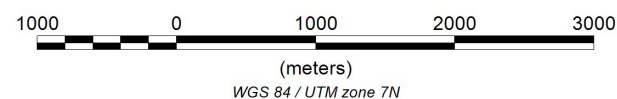
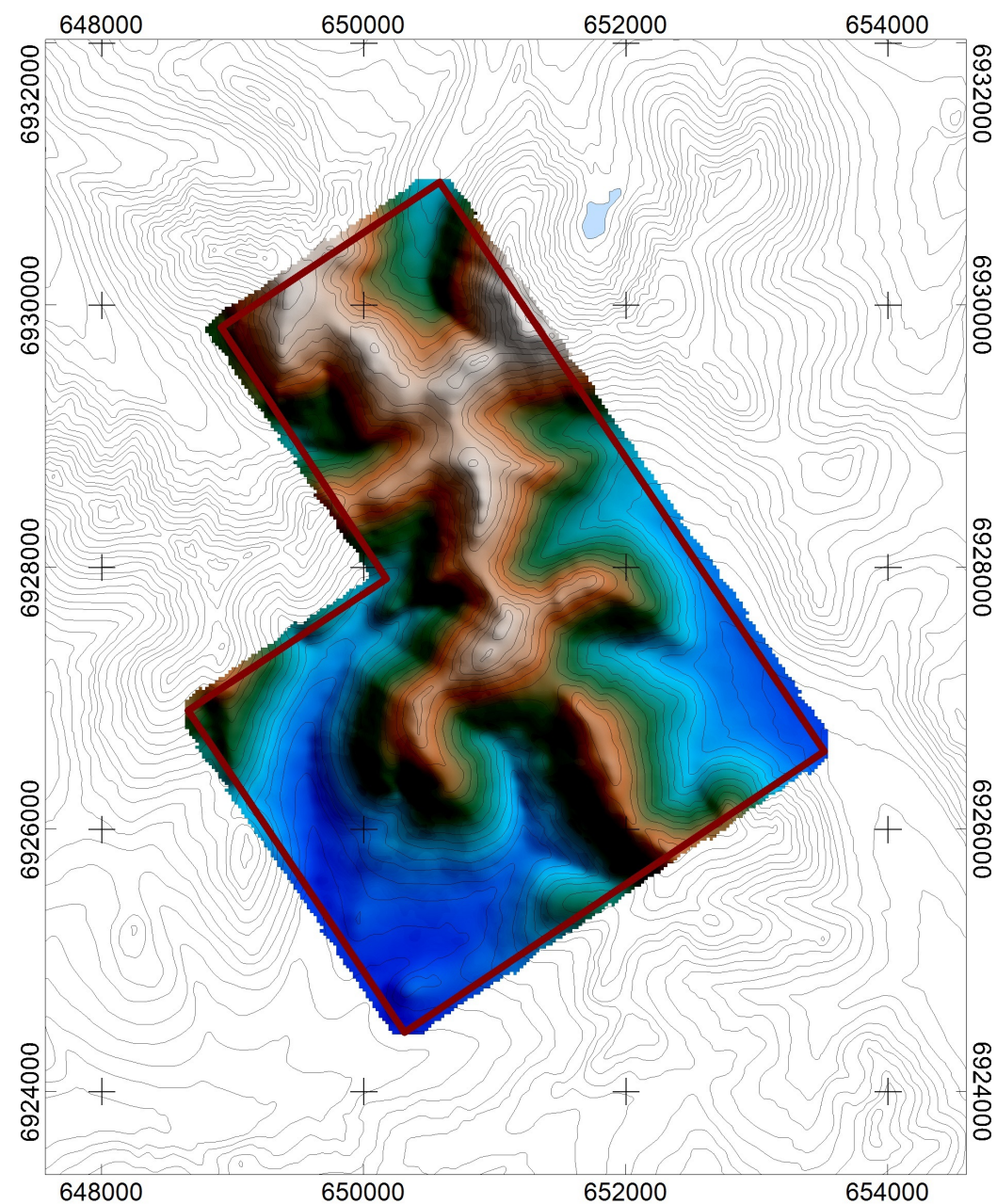
Overview Map

OOO Survey Block
Actual Flight Lines

Created By: Precision GeoSurveys Inc.

April 2, 2015

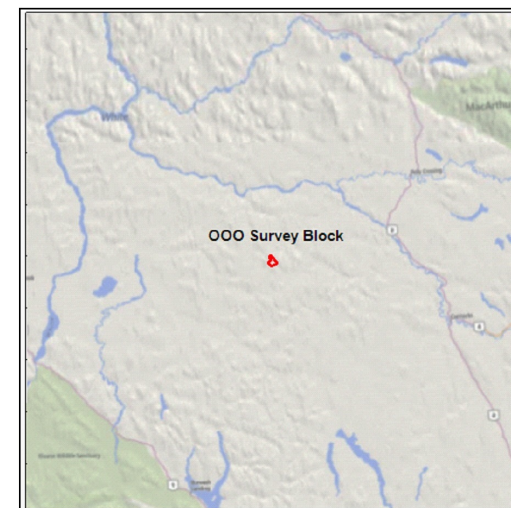
Precision
GeoSurveys



LEGEND

Map Projection:

Projection: Universal Transverse Mercator
Central Meridian: 219 Zone 7N
Datum: WGS 84



Survey Dates: March 30, 2015 and March 31, 2015
Survey Base: Minto Airstrip, Yukon
Helicopter Type: Eurocopter AS350
Registration: C-GOHK
Survey Technology: Magnetic and Radiometric survey.

SURVEY PARAMETERS:

Helicopter: 35.0 meters
Magnetometer: 35.0 meters
Radiometric: 35.0 meters
Actual Mean Terrain Clearance: 34.6 meters

OOO Survey Block

Survey Line Spacing: 100 meters
Survey Line Direction: 056°/236°
Tie Line Spacing: 900 meters
Tie Line Direction: 146°/326°

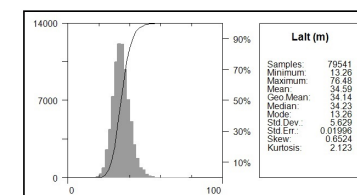
AIRBORNE SYSTEMS:

Scintrex CS-3 Magnetometer Sensor

Configuration: Stinger with 3 axis compensation
Sample Rate: 10 Hz
Sensitivity: 0.01 nT

Gamma Ray Spectrometer

Pico Envirotec GRS-10 Gamma Spectrometer
8.4 litres of NaI(Tl) synthetic "downward looking" crystals
Sample Rate: 1 HZ



Alt (m)	
Samples:	76541
Minimum:	13.26
Maximum:	76.48
Mean:	34.59
Geo Mean:	34.14
Median:	34.23
Mode:	13.26
Std Dev:	5.929
Std Err:	0.01959
Skew:	0.6524
Kurtosis:	2.123

Archer, Cathro & Associates (1981) Limited

Overview Map

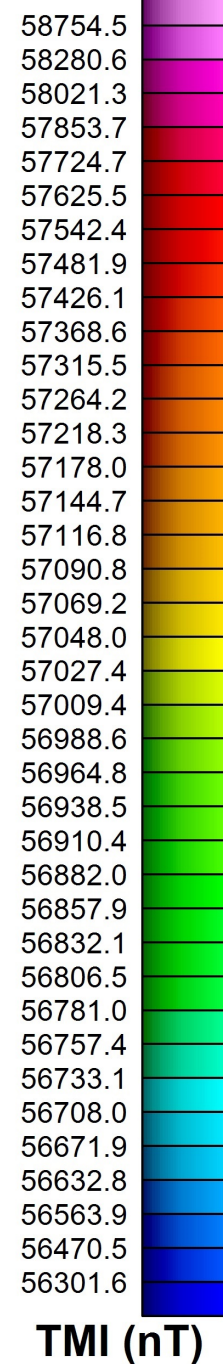
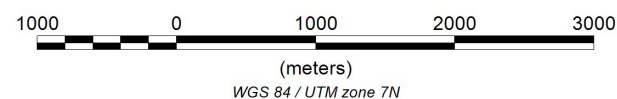
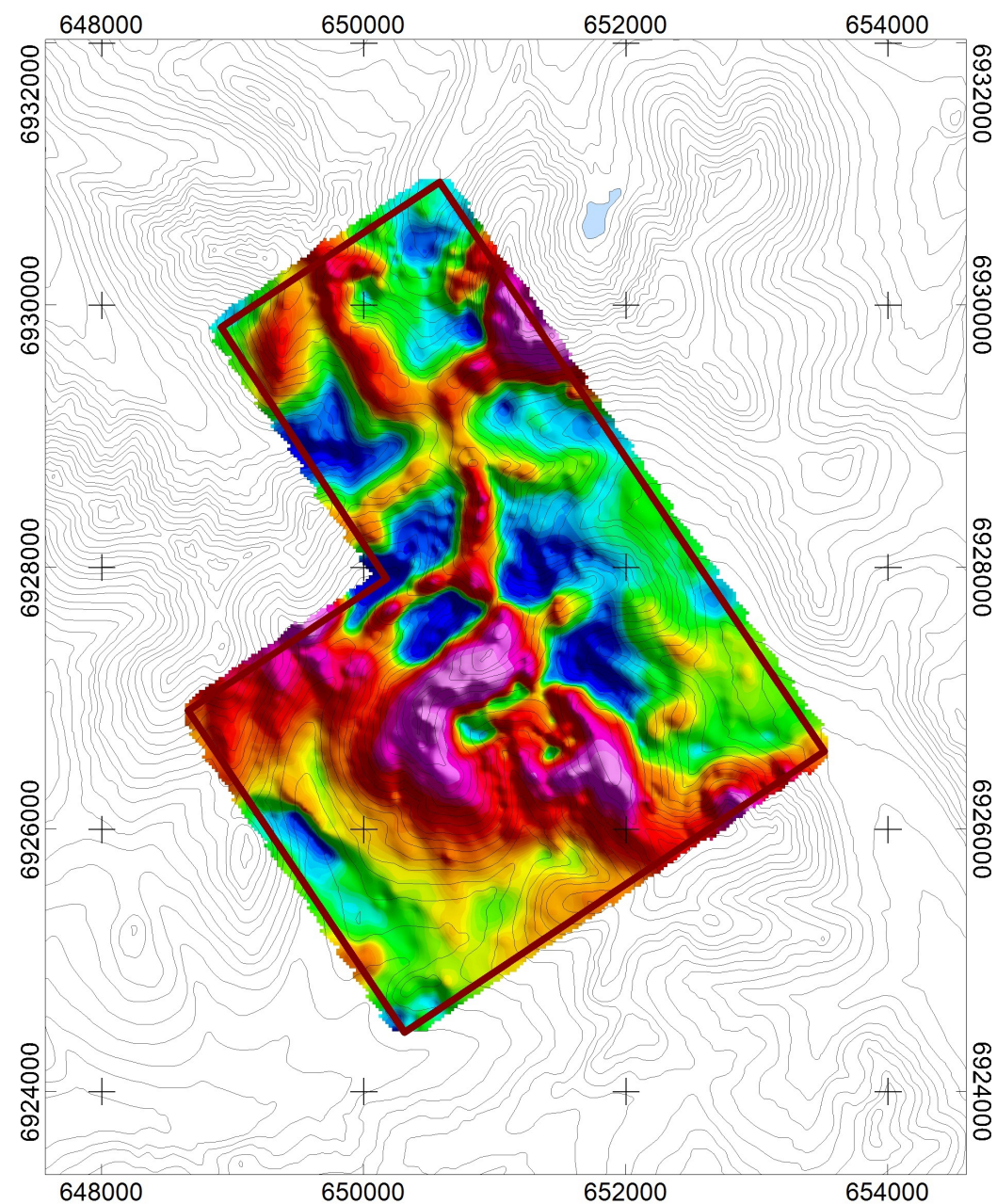
OOO Survey Block
Digital Terrain Model

Created By: Precision GeoSurveys Inc.

April 2, 2015

Precision
GeoSurveys

DTM

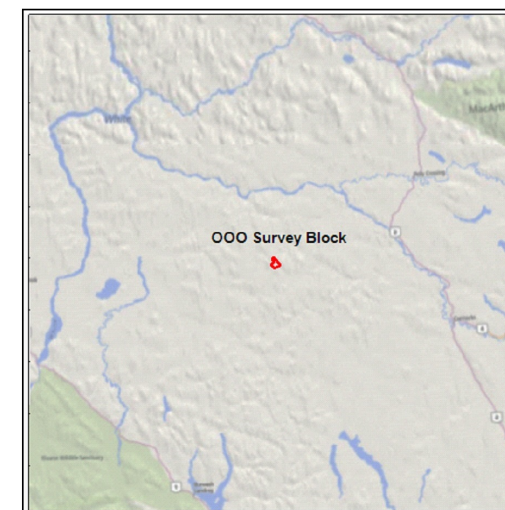


TMI (nT)

LEGEND

Map Projection:

Projection: Universal Transverse Mercator
Central Meridian: 219 Zone 7N
Datum: WGS 84



Survey Dates: March 30, 2015 and March 31, 2015
Survey Base: Minto Airstrip, Yukon
Helicopter Type: Eurocopter AS350
Registration: C-GOHK
Survey Technology: Magnetic and Radiometric survey.

SURVEY PARAMETERS:

Helicopter: 35.0 meters
Magnetometer: 35.0 meters
Radiometric: 35.0 meters
Actual Mean Terrain Clearance: 34.6 meters

OOO Survey Block

Survey Line Spacing: 100 meters
Survey Line Direction: 056°/236°
Tie Line Spacing: 900 meters
Tie Line Direction: 146°/326°

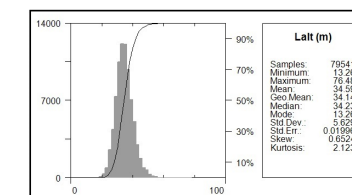
AIRBORNE SYSTEMS:

Scintrex CS-3 Magnetometer Sensor

Configuration: Stinger with 3 axis compensation
Sample Rate: 10 Hz
Sensitivity: 0.01 nT

Gamma Ray Spectrometer

Pico Envirotec GRS-10 Gamma Spectrometer
8.4 litres of NaI(Tl) synthetic "downward looking" crystals
Sample Rate: 1 Hz



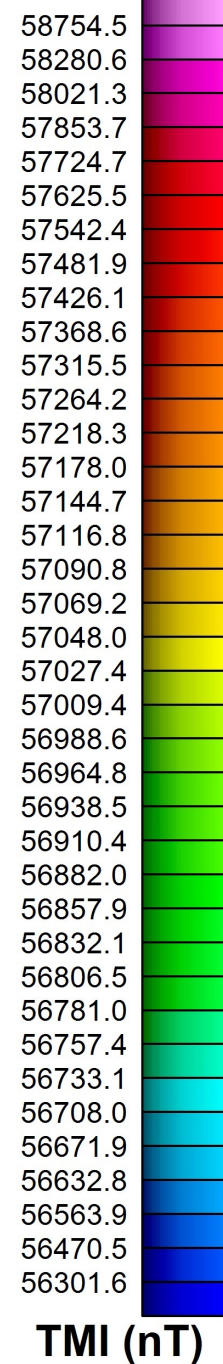
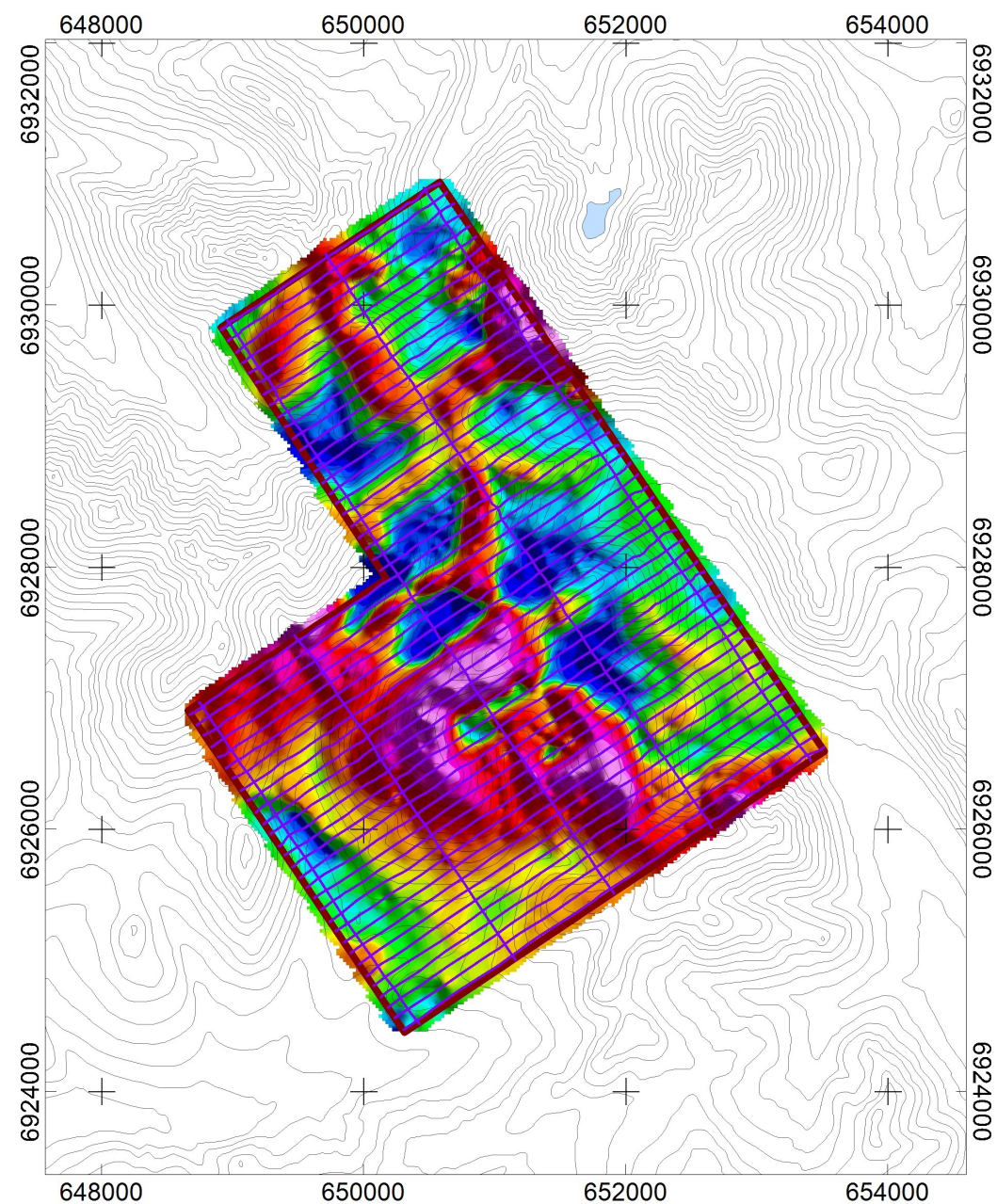
Archer, Cathro & Associates (1981) Limited

Magnetic Map

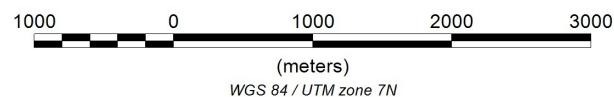
OOO Survey Block
Total Magnetic Intensity
Created By: Precision GeoSurveys Inc.
April 10, 2015

Precision
GeoSurveys

TMI



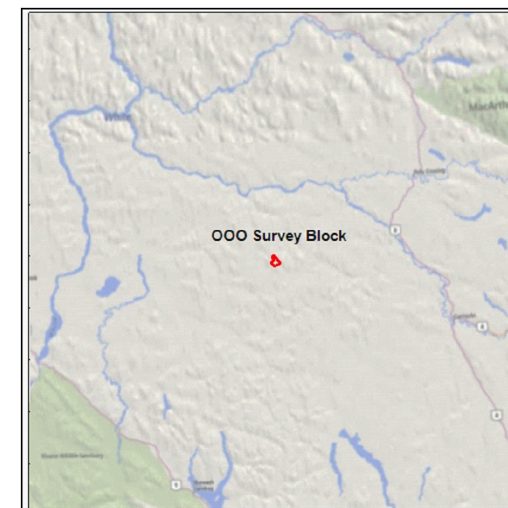
TMI (nT)



LEGEND

Map Projection:

Projection: Universal Transverse Mercator
Central Meridian: 219 Zone 7N
Datum: WGS 84



Survey Dates: March 30, 2015 and March 31, 2015
Survey Base: Minto Airstrip, Yukon
Helicopter Type: Eurocopter AS350
Registration: C-GOHK
Survey Technology: Magnetic and Radiometric survey.

SURVEY PARAMETERS:

Helicopter: 35.0 meters
Magnetometer: 35.0 meters
Radiometric: 35.0 meters
Actual Mean Terrain Clearance: 34.6 meters

OOO Survey Block

Survey Line Spacing: 100 meters
Survey Line Direction: 056°/236°
Tie Line Spacing: 900 meters
Tie Line Direction: 146°/326°

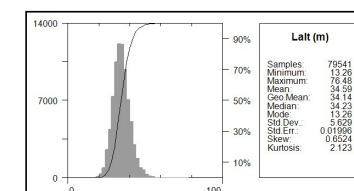
AIRBORNE SYSTEMS:

Scintrex CS-3 Magnetometer Sensor

Configuration: Stinger with 3 axis compensation
Sample Rate: 10 Hz
Sensitivity: 0.01 nT

Gamma Ray Spectrometer

Pico Envirotec GRS-10 Gamma Spectrometer
8.4 litres of NaI(Tl) synthetic "downward looking" crystals
Sample Rate: 1 Hz



Alt (m)	
Samples:	76541
Minimum:	13.26
Maximum:	76.48
Mean:	34.59
Geo Mean:	34.14
Median:	34.23
Mode:	13.26
Std Dev:	5.929
Std Err:	0.01959
Skew:	0.6524
Kurtosis:	2.123

Archer, Cathro & Associates (1981) Limited

Magnetic Map

OOO Survey Block

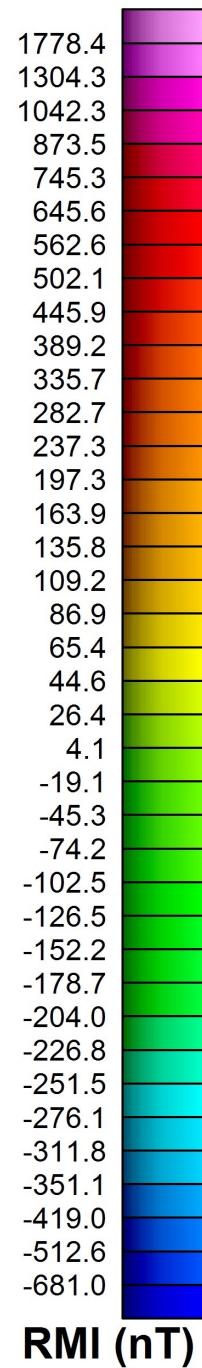
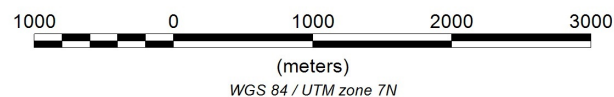
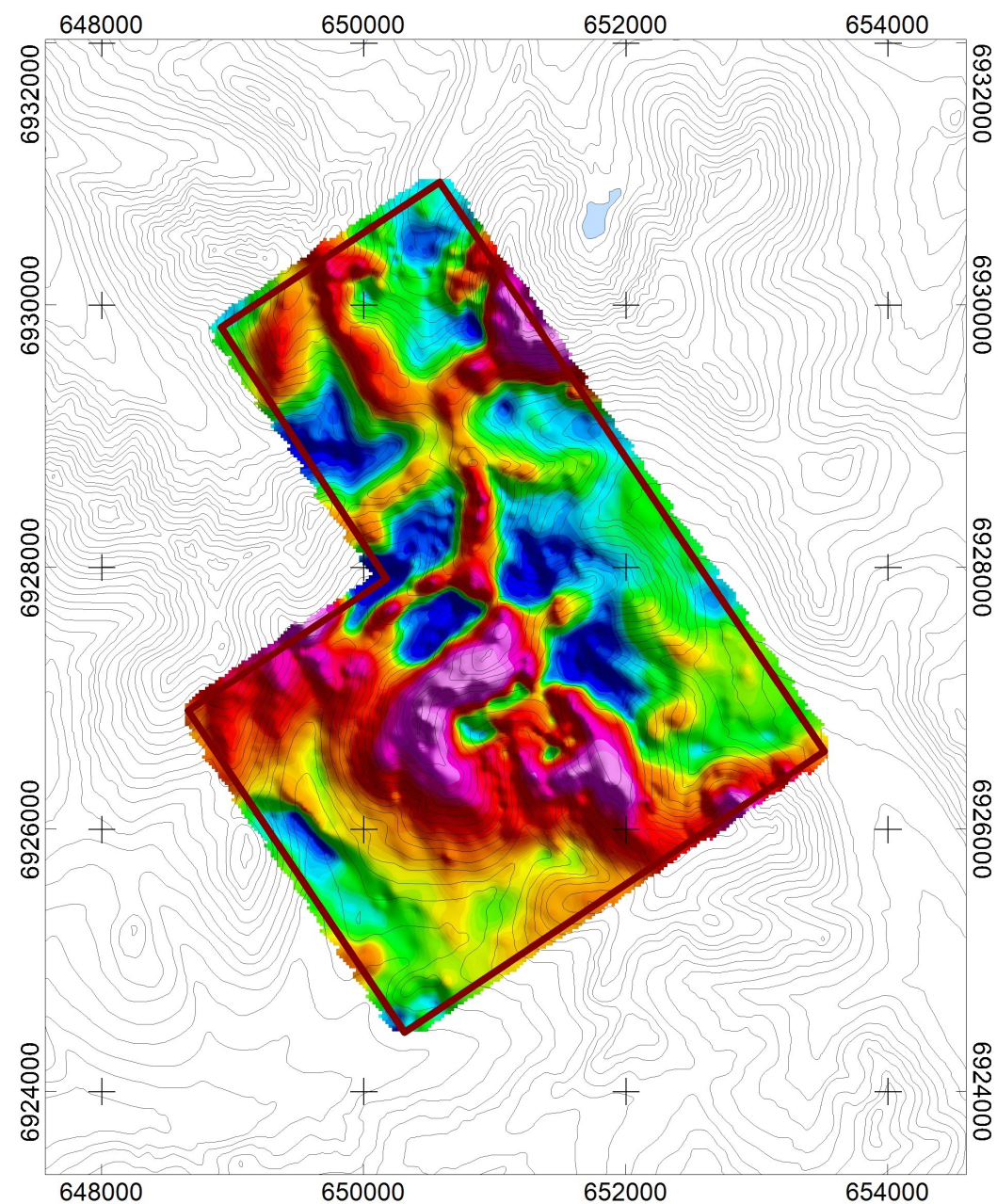
Total Magnetic Intensity with Flight Lines

Created By: Precision GeoSurveys Inc.

April 10, 2015

Precision
GeoSurveys

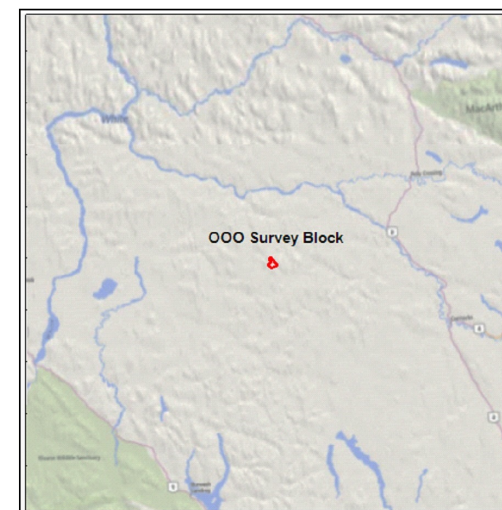
TMI_wFL



LEGEND

Map Projection:

Projection: Universal Transverse Mercator
Central Meridian: 219 Zone 7N
Datum: WGS 84



Survey Dates: March 30, 2015 and March 31, 2015
Survey Base: Minto Airstrip, Yukon
Helicopter Type: Eurocopter AS350
Registration: C-GOHK
Survey Technology: Magnetic and Radiometric survey.

SURVEY PARAMETERS:

Helicopter: 35.0 meters
Magnetometer: 35.0 meters
Radiometric: 35.0 meters
Actual Mean Terrain Clearance: 34.6 meters

OOO Survey Block

Survey Line Spacing: 100 meters
Survey Line Direction: 056°/236°
Tie Line Spacing: 900 meters
Tie Line Direction: 146°/326°

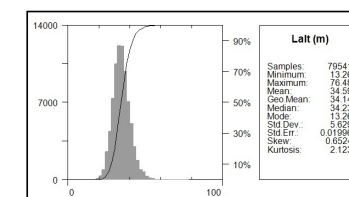
AIRBORNE SYSTEMS:

Scintrex CS-3 Magnetometer Sensor

Configuration: Stinger with 3 axis compensation
Sample Rate: 10 Hz
Sensitivity: 0.01 nT

Gamma Ray Spectrometer

Pico Envirotec GRS-10 Gamma Spectrometer
8.4 litres of NaI(Tl) synthetic "downward looking" crystals
Sample Rate: 1 Hz



Archer, Cathro & Associates (1981) Limited

Magnetic Map

OOO Survey Block

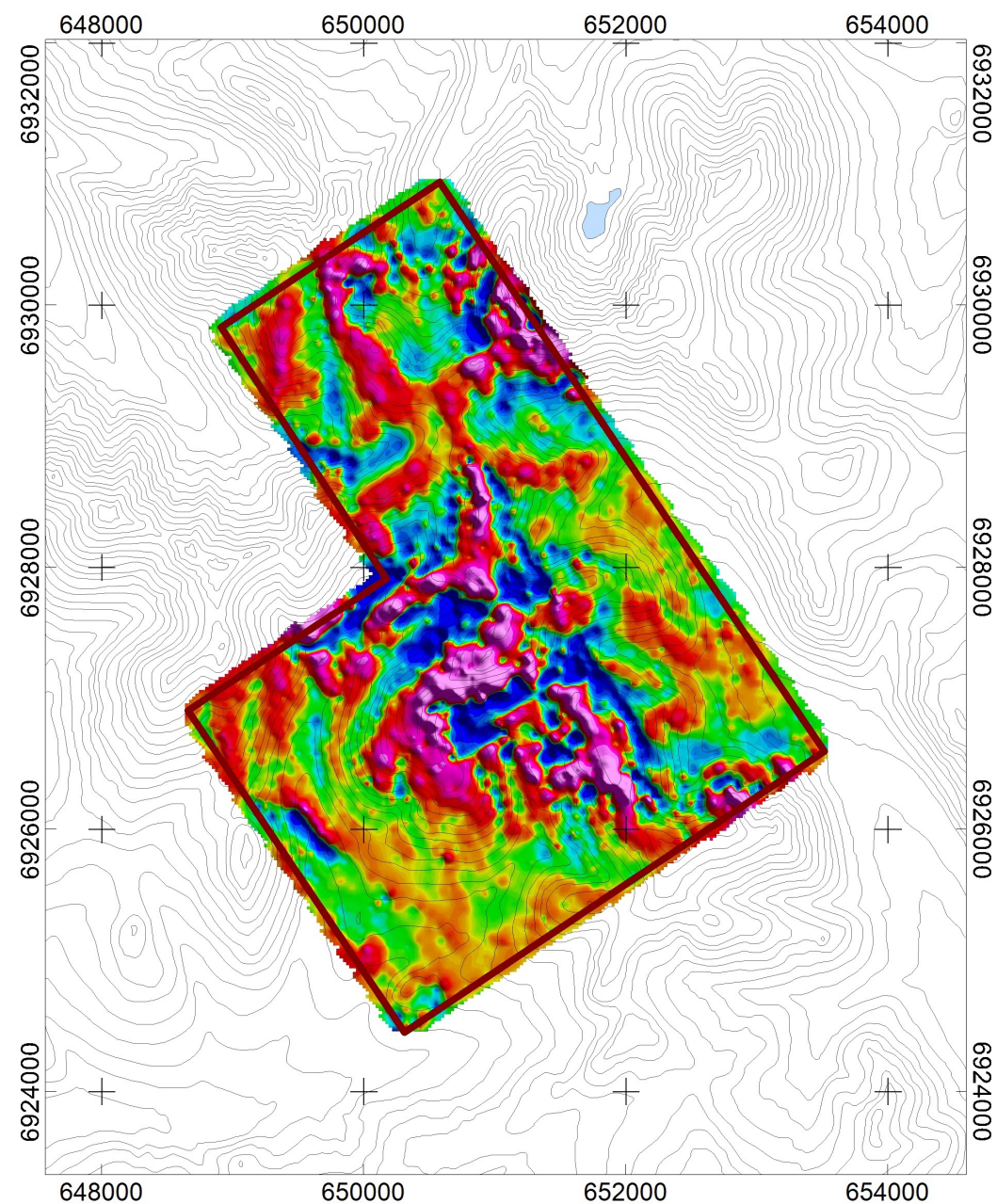
Residual Magnetic Intensity

Created By: Precision GeoSurveys Inc.

April 10, 2015

Precision
GeoSurveys

RMI



CVG (nT/m)

LEGEND

Map Projection:

Projection: Universal Transverse Mercator
Central Meridian: 219 Zone 7N
Datum: WGS 84



Survey Dates: March 30, 2015 and March 31, 2015
Survey Base: Minto Airstrip, Yukon
Helicopter Type: Eurocopter AS350
Registration: C-GOHK
Survey Technology: Magnetic and Radiometric survey.

SURVEY PARAMETERS:

Helicopter: 35.0 meters
Magnetometer: 35.0 meters
Radiometric: 35.0 meters
Actual Mean Terrain Clearance: 34.6 meters

OOO Survey Block

Survey Line Spacing: 100 meters
Survey Line Direction: 056°/236°
Tie Line Spacing: 900 meters
Tie Line Direction: 146°/326°

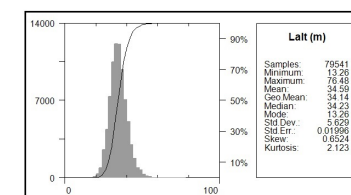
AIRBORNE SYSTEMS:

Scintrex CS-3 Magnetometer Sensor

Configuration: Stinger with 3 axis compensation
Sample Rate: 10 Hz
Sensitivity: 0.01 nT

Gamma Ray Spectrometer

Pico Envirotec GRS-10 Gamma Spectrometer
8.4 litres of NaI(Tl) synthetic "downward looking" crystals
Sample Rate: 1 Hz



Archer, Cathro & Associates (1981) Limited

Magnetic Map

OOO Survey Block

Calculated Vertical Gradient

Created By: Precision GeoSurveys Inc.

April 10, 2015

Precision
GeoSurveys

CVG