

ASSESSMENT REPORT

2013 GEOCHEMICAL PROGRAM

on the

Josephine Property

Dawson Mining District, Yukon Territory

for

Goldspike Exploration Inc.

Claims filed for: 'JO' 1-100 (YD93501 – YD93600) and 'JO' 101-109 (YD14061 – YD14069)

NTS Mapsheets: 115P14, 115P15

UTM Coordinates: E400000, N7087000 (NAD83, Zone8)

Owner: Goldspike Exploration Inc.

Author: D. Ferraro, HBSc.

Dates worked performed: August 17th and September 5th, 2013

TABLE OF CONTENTS

1.0 Summary	1
2.0 Introduction	2
3.0 Property Location and Access	2
4.0 Topography, Vegetation, and Climate	3
5.0 Property Description	4
6.0 Property History	8
7.0 Geology	
7.1 Regional Geology	9
7.2 Property Geology	9
8.0 2011 Work Program	
8.1 Sampling Method and Approach	12
8.2 Sample Preparation, Analysis, and QA/QC	12
8.3 Results	12
9.0 Conclusions and Recommendations	17
References	18
Statement of Expenditures	19
Certificates of Qualifications	20

Figures, Photos, and Tables

Figure 1: General Location of the Josephine Property	2
Figure 2: Claim Location Map	7
Figure 3: Regional Bedrock Geology	11
Figure 4: Sample Location Map	14
Figure 5: Sample Geochemistry Map – Gold and Arsenic	15
Figure 6: Silt Sample Geochemistry 2011-2013 – Gold, Arsenic, Tungsten	16
Photo 1: Example of physiography on the Property	3
Photo 2: Rock sample 1201915	13
Table 1: List of claims	4

Appendices

Appendix I: Rock and Silt Sample Descriptions	21
Appendix II: Rock Sample Assay Certificates	23
Appendix III: Silt Sample Assay Certificates	29

1.0 SUMMARY

A 2 day geochemical sampling program was conducted on the Josephine Property August 17th and September 5th, 2013. The property is owned 100% by Goldspike Exploration Inc. and consists of 109 contiguous quartz claims located in the Dawson Mining District.

The Josephine Property is situated in the Clear Creek area, approximately 122 km ESE of Dawson City. It can be reached by truck via Clear Creek road which begins at the Klondike Highway approximately 100 km west of Dawson. The majority of the property is best accessed by helicopter.

Geologically, the property is located in the Tintina gold belt. The region is underlain by Hyland Group metasedimentary rocks which have been intruded by a wide range of Cretaceous aged dykes, sills and stocks known as the Tombstone Plutonic Suite. Gold mineralization in the area is generally related to these intrusions. The property itself is proximal to the Josephine Stock and Josephine gold-tungsten occurrence, and is dominated by chlorite and mica schists, quartzite, and slate.

A total of 3 rock samples and 12 silt samples were taken over the course of the program. Silt sampling was intended to fill in gaps left by a systematic sampling program on Josephine Creek conducted during 2012. Josephine Creek and its tributaries returned highly anomalous gold values with associated arsenic and tungsten. Prospecting yielded a 4.3 g/t Au rock sample of altered intrusive float, with an overlimit of arsenic and anomalous Pb, Co, Bi, Sb, Te.

The geological setting of the property is favourable to intrusive-related gold mineralization. Silt sample results are very encouraging to potential placer operations and locating a possible source of the gold on the property. Follow-up prospecting is recommended in the area of the high gold rock float sample, as well as trenching and ground geophysics in areas outlined during the 2011 and 2012 programs.

2.0 INTRODUCTION

This assessment report has been prepared at the request of Mr. Bruce Durham, president of Goldspike Exploration Inc. of Toronto, Ontario. The report describes the 2013 geochemical and prospecting program on the Josephine Property. Field work was performed by Druid Exploration Inc. of Dawson City, Yukon. The report text and maps were written by D. Ferraro, of Ferraro Consulting Ltd. of Woodstock, ON.

3.0 PROPERTY LOCATION AND ACCESS

The Josephine Property is situated in the Clear Creek area, approximately 122 km ESE of Dawson City (Figure 1). It can be reached by truck via Clear Creek road which begins at the Klondike Highway approximately 100 km west of Dawson. Although the road gets progressively rougher, it is possible to reach the property about 50 km in. An ATV trail runs along Josephine Creek for further ground access.



Figure 1: General location of the Josephine Property (modified from NRCAN, 2006).

4.0 TOPOGRAPHY, VEGETATION, AND CLIMATE

The Josephine Property is situated in a fairly high relief area of the Clear Creek – McQuesten River region. It straddles Josephine Creek (Photo 1) which has a number of small tributaries. The south is defined by the ‘West Ridge’ range and is incised by Big Creek. Elevations range from 3200 ft to 5500 ft.

Vegetation consists of evergreen and deciduous forest which dominates the slopes. The mountain tops are generally bare due to high elevations with buck brush covering. The treeline ranges from 4100 ft to 4500 ft. Outcrop exposure is fair on the mountain tops, but very limited at lower elevations.

The Yukon has a subarctic continental climate with a mean summer temperature of 10 degrees celcius and a mean winter temperature of -23 degrees celcius. Temperature extremes of 35 degrees and -55 degrees celcius are common in the summer and winter, respectively.



Photo 1: Josephine Creek on a typical rainy day (facing north).

5.0 PROPERTY DESCRIPTION

The present property consists of 109 contiguous quartz claims in the Dawon Mining District. The 109 'JO' claims can be found on NTS mapsheets 115P14 and 115P15 (see Figure 2). The claims are owned 100% by Goldspike Exploration Inc. of Toronto, Ontario.

A complete list of the mining claims that make up the Josephine Property is as follows:

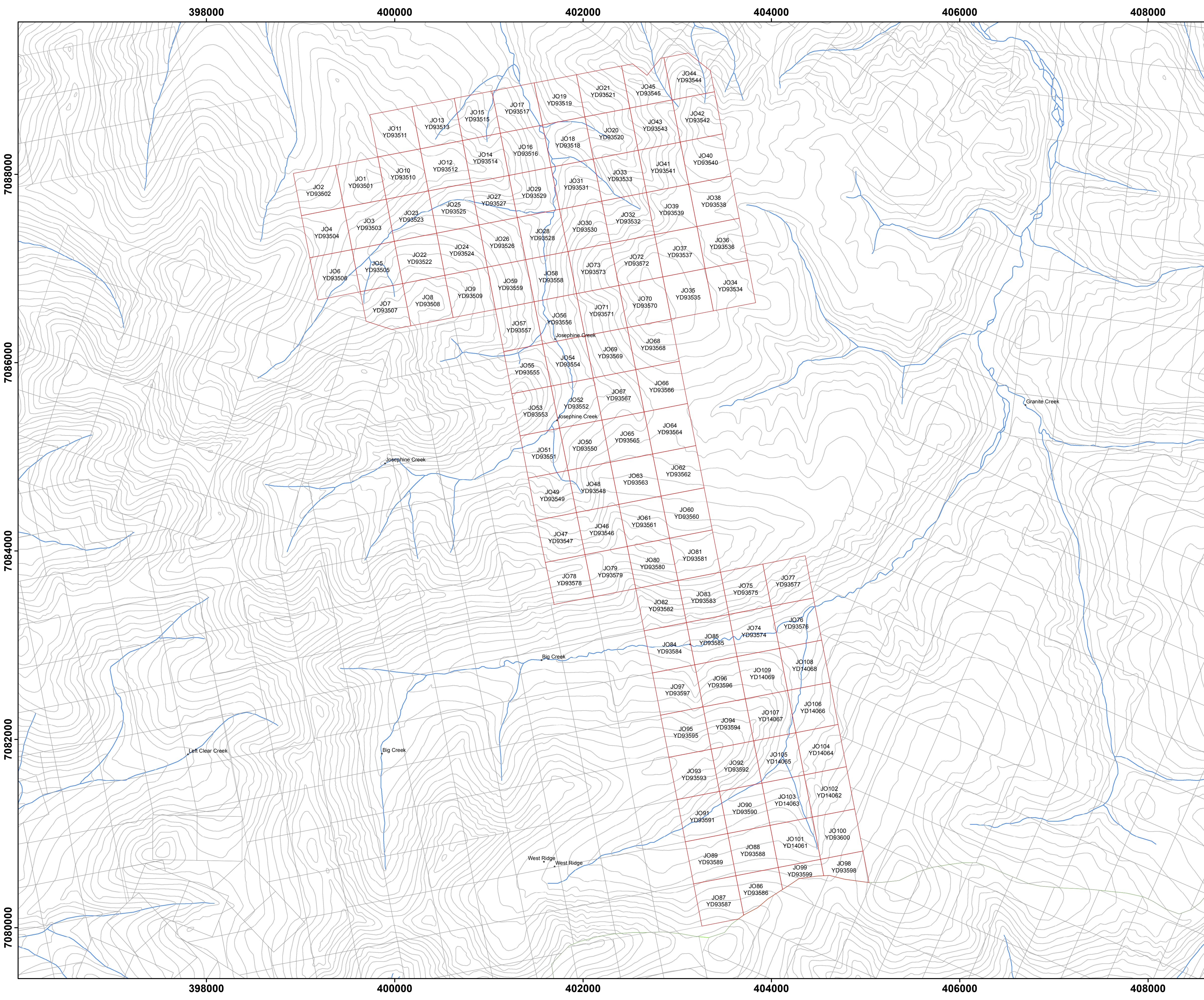
Table 1: Claims comprising the Josephine Property.

Claim Name	Claim Number	Grant Number	Claim Owner	Status	Claim Expiry Date
JO	1	YD93501	Goldspike Exploration Inc. (100%)	Active	21/09/2018
JO	2	YD93502	Goldspike Exploration Inc. (100%)	Active	21/09/2018
JO	3	YD93503	Goldspike Exploration Inc. (100%)	Active	21/09/2018
JO	4	YD93504	Goldspike Exploration Inc. (100%)	Active	21/09/2018
JO	5	YD93505	Goldspike Exploration Inc. (100%)	Active	21/09/2018
JO	6	YD93506	Goldspike Exploration Inc. (100%)	Active	21/09/2018
JO	7	YD93507	Goldspike Exploration Inc. (100%)	Active	21/09/2018
JO	8	YD93508	Goldspike Exploration Inc. (100%)	Active	21/09/2018
JO	9	YD93509	Goldspike Exploration Inc. (100%)	Active	21/09/2018
JO	10	YD93510	Goldspike Exploration Inc. (100%)	Active	21/09/2018
JO	11	YD93511	Goldspike Exploration Inc. (100%)	Active	21/09/2017
JO	12	YD93512	Goldspike Exploration Inc. (100%)	Active	21/09/2017
JO	13	YD93513	Goldspike Exploration Inc. (100%)	Active	21/09/2017
JO	14	YD93514	Goldspike Exploration Inc. (100%)	Active	21/09/2017
JO	15	YD93515	Goldspike Exploration Inc. (100%)	Active	21/09/2017
JO	16	YD93516	Goldspike Exploration Inc. (100%)	Active	21/09/2017
JO	17	YD93517	Goldspike Exploration Inc. (100%)	Active	21/09/2017
JO	18	YD93518	Goldspike Exploration Inc. (100%)	Active	21/09/2017
JO	19	YD93519	Goldspike Exploration Inc. (100%)	Active	21/09/2017
JO	20	YD93520	Goldspike Exploration Inc. (100%)	Active	21/09/2017
JO	21	YD93521	Goldspike Exploration Inc. (100%)	Active	21/09/2017
JO	22	YD93522	Goldspike Exploration Inc. (100%)	Active	21/09/2017
JO	23	YD93523	Goldspike Exploration Inc. (100%)	Active	21/09/2017
JO	24	YD93524	Goldspike Exploration Inc. (100%)	Active	21/09/2017
JO	25	YD93525	Goldspike Exploration Inc. (100%)	Active	21/09/2017
JO	26	YD93526	Goldspike Exploration Inc. (100%)	Active	21/09/2017
JO	27	YD93527	Goldspike Exploration Inc. (100%)	Active	21/09/2017
JO	28	YD93528	Goldspike Exploration Inc. (100%)	Active	21/09/2017
JO	29	YD93529	Goldspike Exploration Inc. (100%)	Active	21/09/2017

JO	30	YD93530	Goldspike Exploration Inc. (100%)	Active	21/09/2017
JO	31	YD93531	Goldspike Exploration Inc. (100%)	Active	21/09/2017
JO	32	YD93532	Goldspike Exploration Inc. (100%)	Active	21/09/2017
JO	33	YD93533	Goldspike Exploration Inc. (100%)	Active	21/09/2017
JO	34	YD93534	Goldspike Exploration Inc. (100%)	Active	21/09/2017
JO	35	YD93535	Goldspike Exploration Inc. (100%)	Active	21/09/2017
JO	36	YD93536	Goldspike Exploration Inc. (100%)	Active	21/09/2017
JO	37	YD93537	Goldspike Exploration Inc. (100%)	Active	21/09/2017
JO	38	YD93538	Goldspike Exploration Inc. (100%)	Active	21/09/2017
JO	39	YD93539	Goldspike Exploration Inc. (100%)	Active	21/09/2017
JO	40	YD93540	Goldspike Exploration Inc. (100%)	Active	21/09/2018
JO	41	YD93541	Goldspike Exploration Inc. (100%)	Active	21/09/2018
JO	42	YD93542	Goldspike Exploration Inc. (100%)	Active	21/09/2018
JO	43	YD93543	Goldspike Exploration Inc. (100%)	Active	21/09/2018
JO	44	YD93544	Goldspike Exploration Inc. (100%)	Active	21/09/2018
JO	45	YD93545	Goldspike Exploration Inc. (100%)	Active	21/09/2018
JO	46	YD93546	Goldspike Exploration Inc. (100%)	Active	21/09/2018
JO	47	YD93547	Goldspike Exploration Inc. (100%)	Active	21/09/2018
JO	48	YD93548	Goldspike Exploration Inc. (100%)	Active	21/09/2018
JO	49	YD93549	Goldspike Exploration Inc. (100%)	Active	21/09/2018
JO	50	YD93550	Goldspike Exploration Inc. (100%)	Active	21/09/2018
JO	51	YD93551	Goldspike Exploration Inc. (100%)	Active	21/09/2018
JO	52	YD93552	Goldspike Exploration Inc. (100%)	Active	21/09/2018
JO	53	YD93553	Goldspike Exploration Inc. (100%)	Active	21/09/2018
JO	54	YD93554	Goldspike Exploration Inc. (100%)	Active	21/09/2018
JO	55	YD93555	Goldspike Exploration Inc. (100%)	Active	21/09/2018
JO	56	YD93556	Goldspike Exploration Inc. (100%)	Active	21/09/2018
JO	57	YD93557	Goldspike Exploration Inc. (100%)	Active	21/09/2018
JO	58	YD93558	Goldspike Exploration Inc. (100%)	Active	21/09/2018
JO	59	YD93559	Goldspike Exploration Inc. (100%)	Active	21/09/2018
JO	60	YD93560	Goldspike Exploration Inc. (100%)	Active	21/09/2018
JO	61	YD93561	Goldspike Exploration Inc. (100%)	Active	21/09/2018
JO	62	YD93562	Goldspike Exploration Inc. (100%)	Active	21/09/2018
JO	63	YD93563	Goldspike Exploration Inc. (100%)	Active	21/09/2018
JO	64	YD93564	Goldspike Exploration Inc. (100%)	Active	21/09/2018
JO	65	YD93565	Goldspike Exploration Inc. (100%)	Active	21/09/2018
JO	66	YD93566	Goldspike Exploration Inc. (100%)	Active	21/09/2018
JO	67	YD93567	Goldspike Exploration Inc. (100%)	Active	21/09/2018
JO	68	YD93568	Goldspike Exploration Inc. (100%)	Active	21/09/2018
JO	69	YD93569	Goldspike Exploration Inc. (100%)	Active	21/09/2018
JO	70	YD93570	Goldspike Exploration Inc. (100%)	Active	21/09/2018

JO	71	YD93571	Goldspike Exploration Inc. (100%)	Active	21/09/2018
JO	72	YD93572	Goldspike Exploration Inc. (100%)	Active	21/09/2018
JO	73	YD93573	Goldspike Exploration Inc. (100%)	Active	21/09/2018
JO	74	YD93574	Goldspike Exploration Inc. (100%)	Active	21/09/2018
JO	75	YD93575	Goldspike Exploration Inc. (100%)	Active	21/09/2018
JO	76	YD93576	Goldspike Exploration Inc. (100%)	Active	21/09/2018
JO	77	YD93577	Goldspike Exploration Inc. (100%)	Active	21/09/2018
JO	78	YD93578	Goldspike Exploration Inc. (100%)	Active	21/09/2018
JO	79	YD93579	Goldspike Exploration Inc. (100%)	Active	21/09/2018
JO	80	YD93580	Goldspike Exploration Inc. (100%)	Active	21/09/2018
JO	81	YD93581	Goldspike Exploration Inc. (100%)	Active	21/09/2018
JO	82	YD93582	Goldspike Exploration Inc. (100%)	Active	21/09/2018
JO	83	YD93583	Goldspike Exploration Inc. (100%)	Active	21/09/2018
JO	84	YD93584	Goldspike Exploration Inc. (100%)	Active	21/09/2018
JO	85	YD93585	Goldspike Exploration Inc. (100%)	Active	21/09/2018
JO	86	YD93586	Goldspike Exploration Inc. (100%)	Active	21/09/2017
JO	87	YD93587	Goldspike Exploration Inc. (100%)	Active	21/09/2017
JO	88	YD93588	Goldspike Exploration Inc. (100%)	Active	21/09/2017
JO	89	YD93589	Goldspike Exploration Inc. (100%)	Active	21/09/2017
JO	90	YD93590	Goldspike Exploration Inc. (100%)	Active	21/09/2017
JO	91	YD93591	Goldspike Exploration Inc. (100%)	Active	21/09/2017
JO	92	YD93592	Goldspike Exploration Inc. (100%)	Active	21/09/2017
JO	93	YD93593	Goldspike Exploration Inc. (100%)	Active	21/09/2017
JO	94	YD93594	Goldspike Exploration Inc. (100%)	Active	21/09/2017
JO	95	YD93595	Goldspike Exploration Inc. (100%)	Active	21/09/2017
JO	96	YD93596	Goldspike Exploration Inc. (100%)	Active	21/09/2017
JO	97	YD93597	Goldspike Exploration Inc. (100%)	Active	21/09/2017
JO	98	YD93598	Goldspike Exploration Inc. (100%)	Active	21/09/2017
JO	99	YD93599	Goldspike Exploration Inc. (100%)	Active	21/09/2017
JO	100	YD93600	Goldspike Exploration Inc. (100%)	Active	21/09/2017
JO	101	YD14061	Goldspike Exploration Inc. (100%)	Active	21/09/2017
JO	102	YD14062	Goldspike Exploration Inc. (100%)	Active	21/09/2017
JO	103	YD14063	Goldspike Exploration Inc. (100%)	Active	21/09/2017
JO	104	YD14064	Goldspike Exploration Inc. (100%)	Active	21/09/2017
JO	105	YD14065	Goldspike Exploration Inc. (100%)	Active	21/09/2017
JO	106	YD14066	Goldspike Exploration Inc. (100%)	Active	21/09/2017
JO	107	YD14067	Goldspike Exploration Inc. (100%)	Active	21/09/2017
JO	108	YD14068	Goldspike Exploration Inc. (100%)	Active	21/09/2017
JO	109	YD14069	Goldspike Exploration Inc. (100%)	Active	21/09/2017

Figure 2: Claim Location Map



Josephine Property

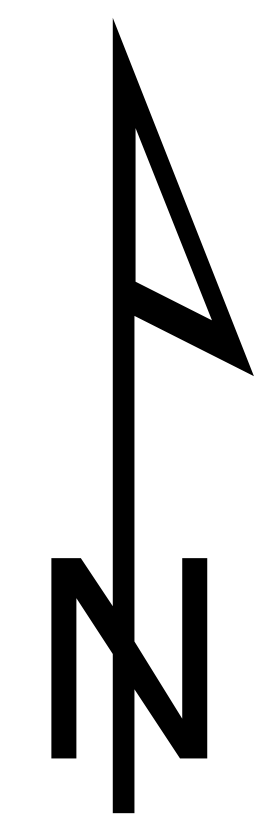
Fig. 2: Claim Location Map

Goldspike Exploration Inc.

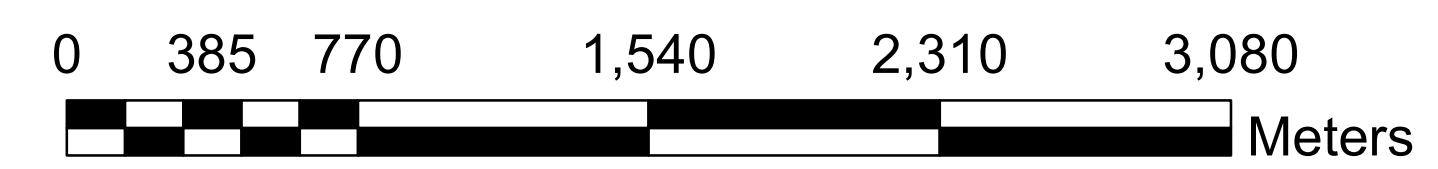
Clear Creek area,
Dawson Mining District

Legend

- Josephine Property claims
- Yukon quartz claims
- Mining district boundary



1:20,000



Date: March, 2012
 Mapsheets: 115P14, 115P15
 Datum: UTM NAD83 Zone 8

6.0 PROPERTY HISTORY

The Josephine and Clear Creek areas have had a long history of placer gold production and hard rock exploration. Quartz claims in the area were recorded as early as 1902 at Josephine Creek and Lewis Gulch. The Lewis Gulch gold-pyrite showing is located southwest of the Josephine Property and was drilled in 1989 by Secret Pass Minerals. They intersected a 0.5 metre wide pyrite-sericite-quartz-clay gouge zone that assayed 18.7 g/t Au (Minfile 115P023).

The Josephine gold-tungsten occurrence is reportedly located 4 miles above the mouth of Josephine Creek. During 1902-03, M. Spisak drove three shallow adits, the longest being 20.7m. Further claims were added from 1912-1914. The area was fairly inactive until 1962 when the claims were restaked by T. Gergich then again in 1980 by Canada Tungsten. Government collected grab samples from the showing have yielded values of 5.14 g/t Au from an arsenopyrite bearing quartz vein and values of 7.63 g/t Au and 0.61% WO, from scheelite bearing quartz veinlets (Minfile 115P11).

During the late 1960's and early 1970's Canada Tungsten explored the Josephine, Rhosgobel, Pukelman stocks for tungsten potential. At the Rhosgobel and Pukelman occurrences, gold is associated with arsenopyrite bearing quartz veins in both the intrusive and hornfelsed country rocks. Drilling in 1988 by Goldrite Mining Corp. at the Pukelman intersected 1.1 metres of 8.57 g/t Au.

Currently, Golden Predator Corp. holds 300 quartz claims west of the Josephine Property covering the Josephine, Eiger, Pukelman, and Rhosgobel stocks. During 2010 reverse circulation drilling at the 'Contact Zone' of the Pukelman Stock intercepted significant gold mineralization. RC Hole CC10-22 intercepted 137.50 g/t Au over 1.52 m from a depth of 3.05 m and RC Hole CC10-20 intercepted 0.719 g/t Au over 30.48 m from a depth of 38.1 m (Golden Predator, 2011).

The most recent and comprehensive work on the current Josephine Property was done by Newmont Exploration Ltd. In 1997, Newmont obtained strongly anomalous gold values in silt along Josephine Creek (275, 175, 85, 80 and 80 ppb), as well as most of its tributaries (130, 115, 60 and 50 ppb Au). Arsenic values in silt were also highly anomalous (up to 410 ppm). Newmont also outlined a large Au-As soil anomaly 1 km northeast of the Josephine occurrence, with values up to 80 ppb Au, 2350 ppm As and 32 ppm Sb. It measures about 2 km long and 1 km wide. The east half of Newmont's anomaly is located on the present JO claims, and the west half extends onto Golden Predator's property. The southwest part of Newmont's anomaly would most likely have extended further west along the ridge, at least as far as the 32 ppb gold-arsenic silt anomaly, except that this area was not sampled because it was outside Newmont's claims. Samples of silicified and brecciated metasediments in the anomalous area returned values of 0.1 to 0.2 g/t Au, but rock sampling was limited by poor outcrop (Stammers, 1997, Bremner, 2010).

7.0 GEOLOGY

7.1 Regional Geology

The Josephine Property is located in the Tintina gold belt of the central Yukon. The regional geology was mapped by Murphy and Heon in 1993 as underlain by a large unit of Hyland Group rocks comprising quartzo-feldspathic psammite (metamorphosed sandstone), micaceous psammite and muscovite-chlorite phyllite (see Figure 3). Other lithologies include gritty or pebbly psammite, meta-pebble conglomerate, marble and calc-silicate rocks. Younger, unmetamorphosed stratigraphy outcrop to the north and include a Lower Paleozoic carbonate unit (Rabbitkettle Formation), Road River Group shale and siltstone and Earn Group fine chert pebble conglomerate, shale and sandstone (Murphy and Heon, 1994).

The entire package of sedimentary and metasedimentary rocks have been intruded by a wide range of Cretaceous (92 Ma) aged dykes, sills and stocks known as the Tombstone Plutonic Suite (Stephens et al., 2000). Composition of these intrusive rocks varies from quartz syenite and syenite at the large Syenite Range Stock to granitic and quartz monzonite bodies which include the Josephine, Eiger, Rhosgobel and Pukelman stocks. In a study of the Bear Paw Breccia Zone, Stephens and Weekes (2001) found that significant intrusive-related gold mineralization can be found outwards of 1.5 km away from Tombstone Plutonic Suite stocks.

Stephens and Weekes (2001) defined four main styles of gold mineralization recognized in the Clear Creek area:

1. East- to east-southeast-striking, sheeted, auriferous quartz sulphide veins occurring mostly within larger Tombstone Plutonic Suite stocks (ex. Pukelman, Rhosgobel stocks);
2. Silicified fault zones in both south to southeast and east to east-southeast orientations (ex. Contact zone of the Pukelman Stock);
3. Intrusive breccias with stockwork, auriferous quartz-sulphide veins (ex. Bear Paw breccia, Saddle Stock);
4. Calc-silicate rocks with replacement/skarn-style mineralization (ex. Bear Paw breccia).

7.2 Property Geology

The Josephine Property's dominant geological feature is the Josephine Creek Fault, a north-south fault that offsets stratigraphic contacts in the area. According to Murphy (1997), the Josephine Creek Fault is one of a number of younger north-south structures in the area. It juxtaposes Upper Proterozoic Hyland Group metasediments on the west side against Cambrian to Mississippian sediments on the east side. Hyland Group rocks have attracted considerable attention recently as the host for recent Carlin-style gold discoveries in Yukon, including ATAC's Osiris and Northern Tiger's 3 Aces prospects. Murphy reported numerous undated north-trending faults and topographic lineament swarms in the McQuesten area, and that the densest

concentration of these structures occurs along and in a NNW-striking zone straddling the Josephine Creek Fault.

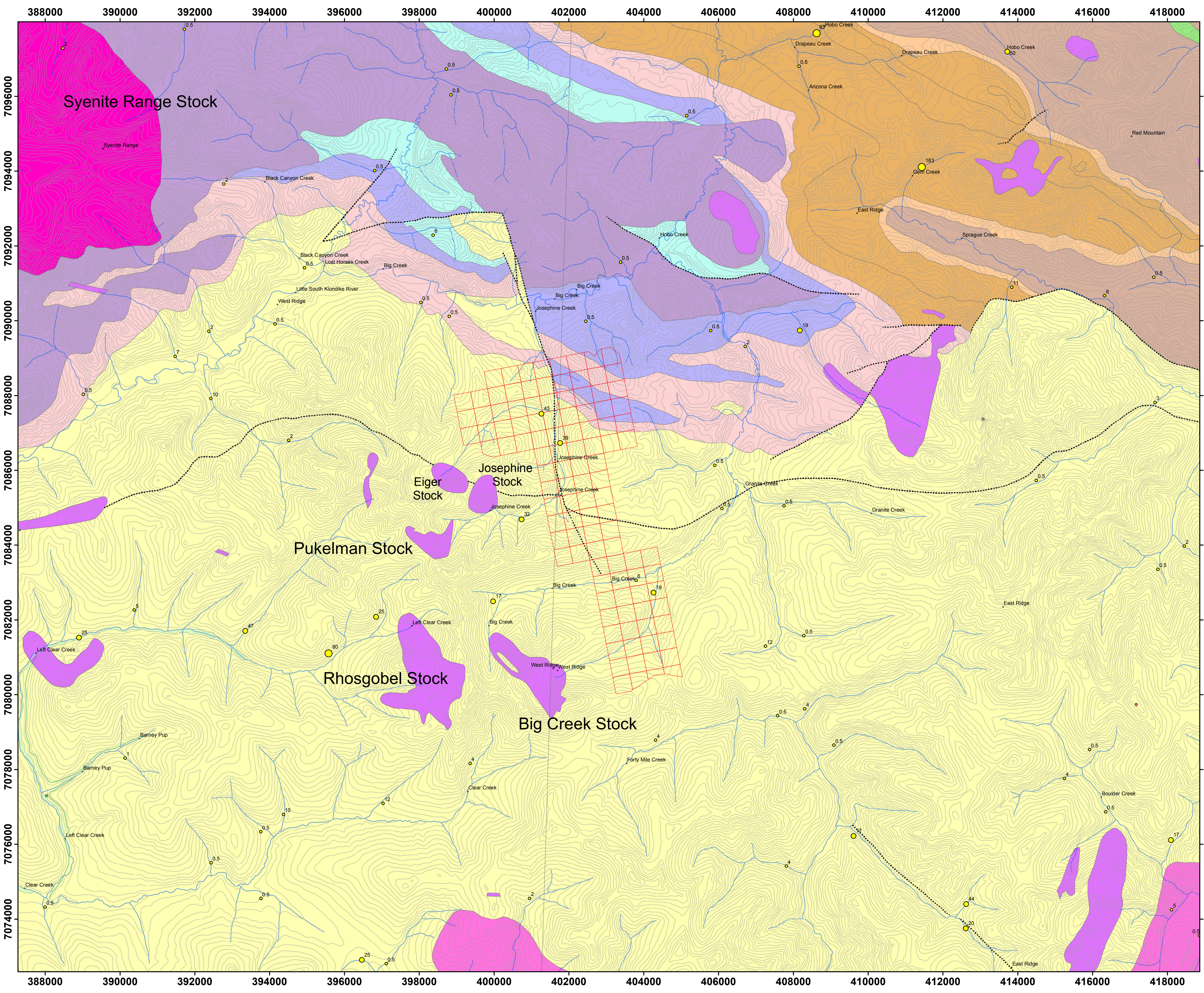
It has been suggested that at least several of the smaller stocks outcropping in this area are the surface expression of a larger intrusion at depth. Radiometric data indicate that the Josephine stock and three nearby intrusions to the west may be part of a single intrusive body. Such a buried intrusion could have focused late stage gold-bearing solutions into structures that cut the overlying sediments, yielding structurally controlled arrays of gold-bearing veins as described at Dublin Gulch. This model is supported by the high density of structures reported to occur in a corridor either side of Josephine Creek, and widespread gold-arsenic soil and talus fines anomalies reported by companies that were previously active in the area, including Newmont and Kennecott.

The southern part of the block is close to the Big Creek Stock, a 2.7 x 1 km Cretaceous intrusion. The JO claims in this southern area are close to the BIG showing (Minfile 115P061), discovered by Don Murphy and Danielle Heon of the Yukon Geological Survey in 1993. Mineralized samples collected by Murphy and Heon assayed 377 ppb gold and 478 ppm manganese (vein), 435 ppb gold, 72 ppm bismuth, 88 ppm arsenic, 15.3 ppm silver, 242 ppm lead and 303 ppm tungsten (vein, disseminated); and 20 ppb gold and 789 ppm arsenic (breccia) (Murphy and Heon, 1994).

The JO claims cover two 98th percentile regional gold silt anomalies (43 and 39 ppb Au) in Josephine Creek. Both gold anomalies are coincident with 99th percentile As anomalies, and the 43 ppb Au anomaly also coincides with a 90th percentile Sb anomaly. Local silt sampling by Newmont in 1997 returned substantially higher values than this from Josephine Creek and its tributaries (see Property History). The JO claim block also covers the inferred source of a 95th percentile regional gold silt anomaly (19 ppb) and a 98th percentile tungsten anomaly in an east-flowing creek that drains the south part of the property. As mentioned, tungsten correlates strongly with Cretaceous intrusions and gold in this area (Modified from Bremner, 2010).

The 2011-2013 work programs involved reconnaissance level prospecting and mapping. The northeastern area of the property is dominated by well-foliated chlorite and mica schists and quartzite. One outcrop of quartz-pebble conglomerate was observed. Quartz vein stockwork was also common in this area as 1-10 cm quartz vein 'swarms' in varying orientations. Gossanous metasediments are observed with iron staining and oxidized, limonitic pyrite. Rocks generally strike EW and dip shallowly to the north. The northwestern area is comprised of chlorite and mica schists, slate, and isolated outcrops of porphyry, likely dikes related to the Josephine Stock. Quartz vein boulders up to 1 meter in diameter were also found. To the south of Big Creek the bedrock is generally well foliated metasedimentary mica schists with abundant quartz veining. The strike of this unit tends to be NW here, dipping shallowly to the northeast. Mineralization is very limited across the property. Arsenopyrite was observed in the metasediments and porphyry in the northwest, and minor pyrite in the metasediments south of Big Creek.

Figure 3: Bedrock Geology Map



Josephine Property

Fig. 3: Bedrock Geology

Goldspike Exploration Inc.

Clear Creek area, Dawson Mining District

Legend

Bedrock Geology

Rock Type

- chert/siltstone/phyllite/limestone/conglo
- granite/quartz monzonite
- granite/quartz monzonite/granodiorite
- limestone
- mudstone/shale/siltstone/phyllite/schist
- phyllite/shale/sandstone/grit/conglomerate/limestone
- shale/chert
- shale/chert/siltstone
- shale/claystone/siltstone/sandstone/conglo/coal
- shale/quartzite
- siltstone/argillite/volcanic
- siltstone/sandstone/conglo
- slate
- syenite/quartz syenite/granite/monzogranite/clinopyroxenite

Regional stream geochemistry

Au (ppb)

- 0.0 - 15.0
- 15.1 - 74.0
- 74.1 - 215.0
- 215.1 - 482.0
- 482.1 - 1170.0

1:50,000

0 950 1,900 3,800 5,700 7,600 Meters

N

Date: March, 2012
 Mapsheets: 115P14, 115P15
 Datum: UTM NAD83 Zone 8

8.0 2011 WORK PROGRAM

8.1 Sampling Method and Approach

A 2 day geochemical sampling program was conducted on the Josephine Property on August 17th and September 5th, 2013. Working out of a camp, a crew of two geologists collected 3 rock samples and 12 silt samples (see Figure 4 for sample locations).

Silt samples were taken in major creeks and tributaries. A low energy zone of the stream was located and a collapsible shovel, pan, or hand was used to collect a sample. Sample locations were marked with a GPS unit and flagged with the sample number. Sample conditions, environment and attributes were recorded in a field notebook. Silt sample descriptions can be found in Appendix I.

Rock samples were taken based on mineralogy, structure and lithology. Samples were placed inside labeled plastic poly bags with the corresponding sample tag. Sample descriptions were recorded in a field notebook and the location recorded by GPS unit. Sample locations were marked with flagging tape labeled with the sample number. Rock sample descriptions can be found in Appendix I.

8.2 Sample Preparation, Analysis, and QA/QC

The soil and silt samples were dried at 60° C and sieved to -80 mesh (<177 microns). A 15.0 gram sub-sample was digested in hot (95° C) aqua regia (HCl-HNO₃-H₂O); following this, the samples were analysed by inductively-coupled plasma mass spectrometry (ICP-MS) techniques (Acme's Group 1DX2). Multi-elemental analysis of 36 elements was made.

The rock samples were crushed, split to 250 g, pulverized, and a split was sieved to -200 mesh. The same analytical procedure (Acme's Group 1DX2) was used.

Quality control samples from the lab include control blanks, duplicates and standards. Sample blanks (BLK), pulp duplicates and standards (STD DS8) were run with the batch analysis; no problems were noted with analytical accuracy or precision.

8.3 Results

The 2013 program on the Josephine Property had two objectives: prospecting and general geological reconnaissance; and a silt sampling program to fill in the sampling gaps left on Josephine Creek during 2011 and 2012. See Figure 5 for a gold and arsenic geochemistry map.

Rock Sampling

Previous rock sampling on the Josephine Property has yielded values of up to 1 g/t Au with abundant arsenic and minor base metals. Sample 1201915 is float taken from the west side of

Josephine Creek. It is an altered intrusive rock with abundant arsenopyrite mineralization and minor scorodite (see Photo 2). The sample assayed high gold, overlimit arsenic, and numerous anomalous base metals (4390 ppb Au, <10000 ppm As, 182 ppm Pb, 159 ppm Co, 434 ppm Sb, 69 ppm Bi, 3.7 ppm Te). Rock sample results can be found in Appendix II.

Silt sampling

Josephine Creek and its main tributary to the west were heavily sampled in 2012 due to high gold values seen in 2011 (up to 985 ppb Au). The 2013 program was intended to fill in sampling gaps along the creek to give a full geochemical profile for the purposes of targeting a potential bedrock source (see Figure 6 for 2011-2013 silt samples). The 12 samples assayed between 44 ppb Au and 730 ppb Au. Arsenic values are surprising consistent with each other despite the property's history of arsenic values being roughly concordant with gold values. All 12 samples assayed between 350 and 500 ppm As. Tungsten is also anomalous with values up to 44.3 ppm W. Silt sample results can be found in Appendix III.



Photo 2: Sample 1201915 assayed 4390 ppb Au, <10000 ppm As, 182 ppm Pb, 159 ppm Co, 434 ppm Sb, 69 ppm Bi, and 3.7 ppm Te.

Figure 4: Sample Location Map

Josephine Property

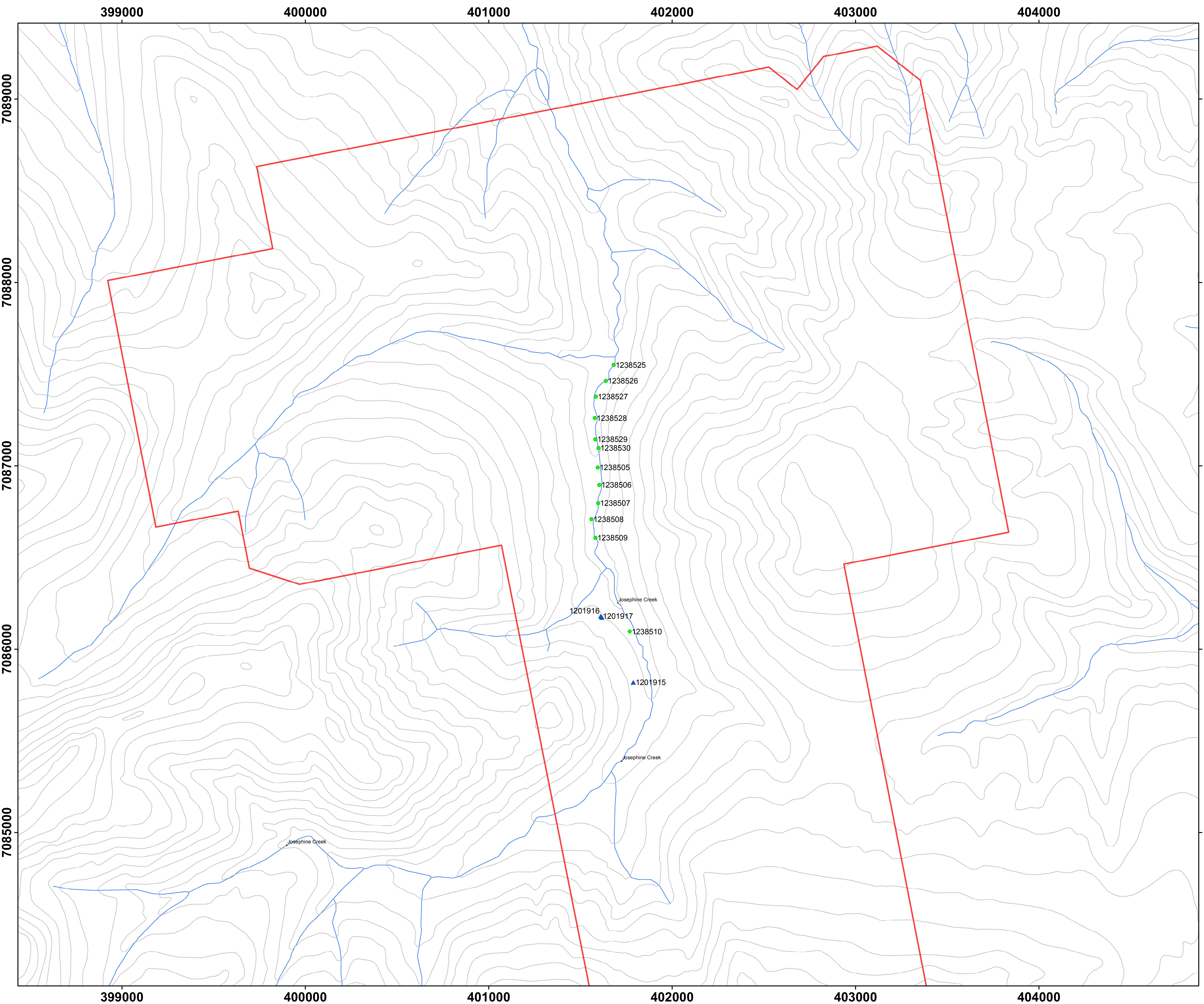
Fig. 4: Sample Location Map

Goldspike Exploration Inc.

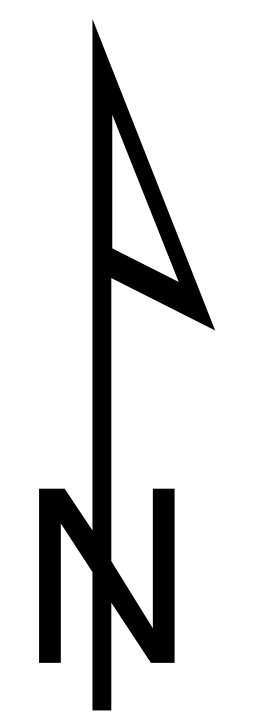
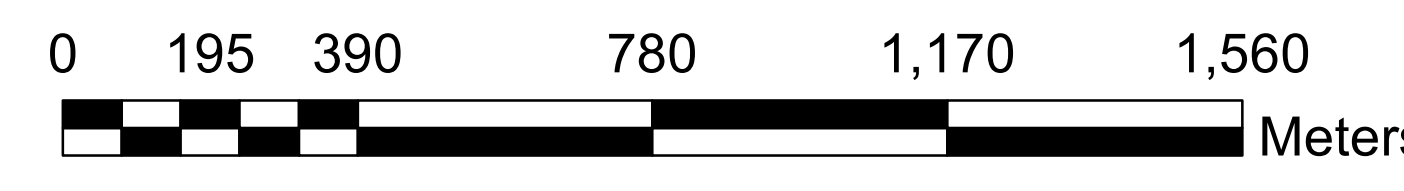
Clear Creek area,
Dawson Mining District

Legend

- ▲ Rock samples
- Silt samples
- Josephine Property



1:10,000



Date: November, 2013
Mapsheets: 115P14, 115P15
Datum: UTM NAD83 Zone 8

Figure 5: Sample Geochemistry Map

Josephine Property

Fig. 5: Sample Geochemistry
- Gold and Arsenic

Goldspike Exploration Inc.

Clear Creek area,
Dawson Mining District

Legend

Silt samples

Au (ppb)

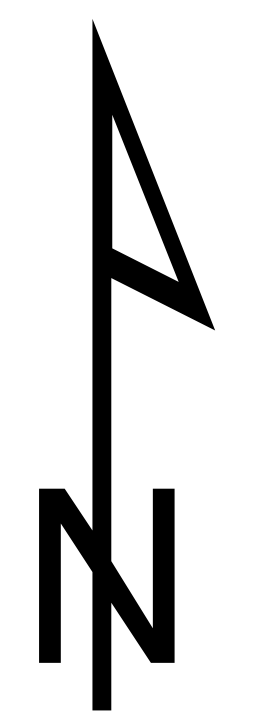
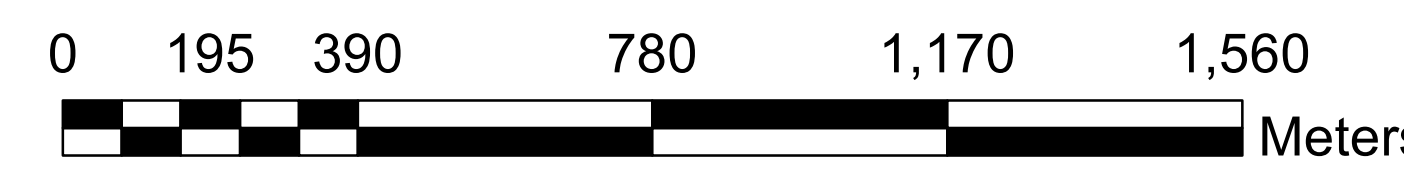
- 44.4 - 50.0
- 50.1 - 100.0
- 100.1 - 250.0
- 250.1 - 500.0
- 500.1 - 730.2

▲ Rock samples

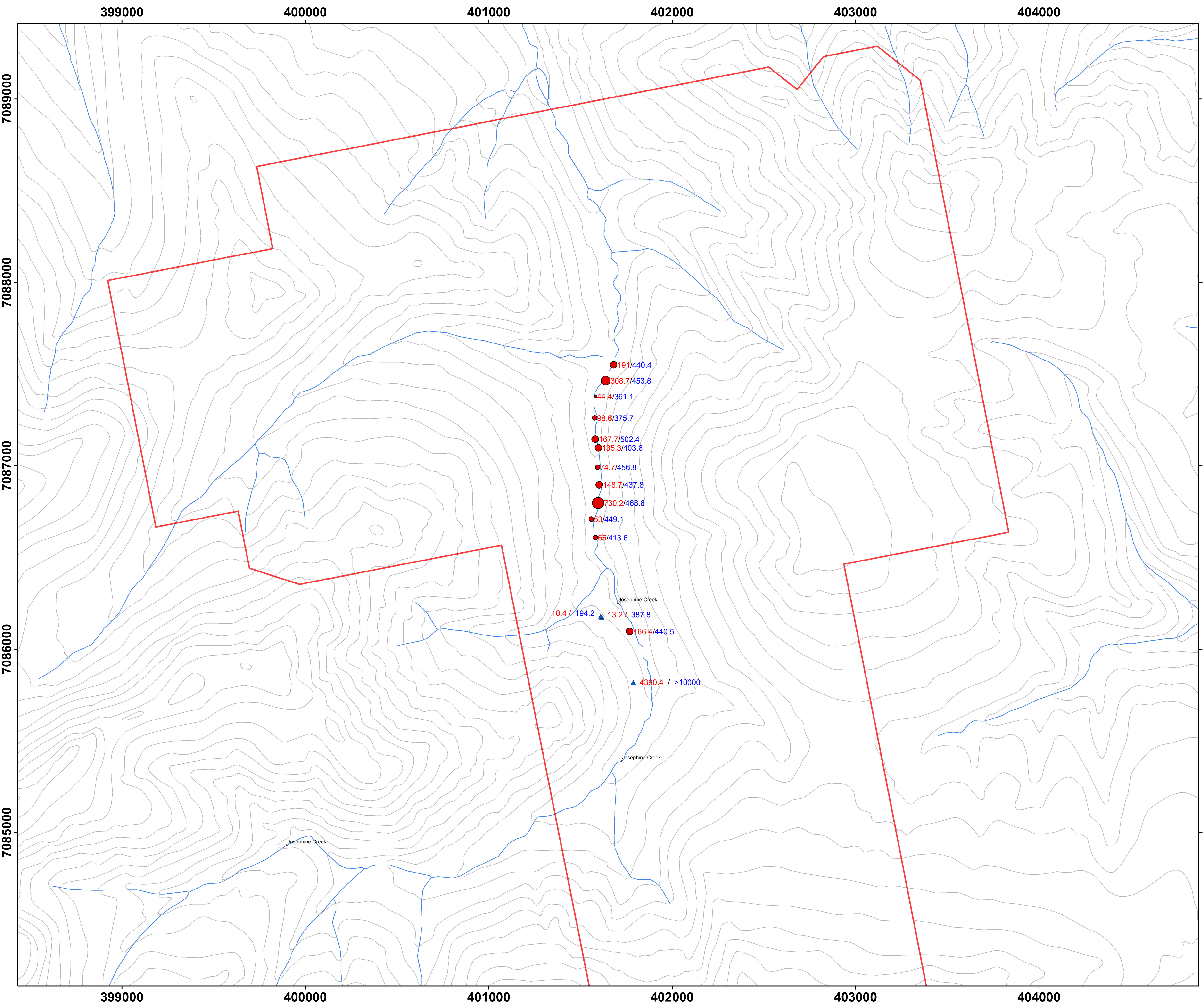
— Josephine Property

Labelling: ppb Au (red) / ppm As (blue)

1:10,000



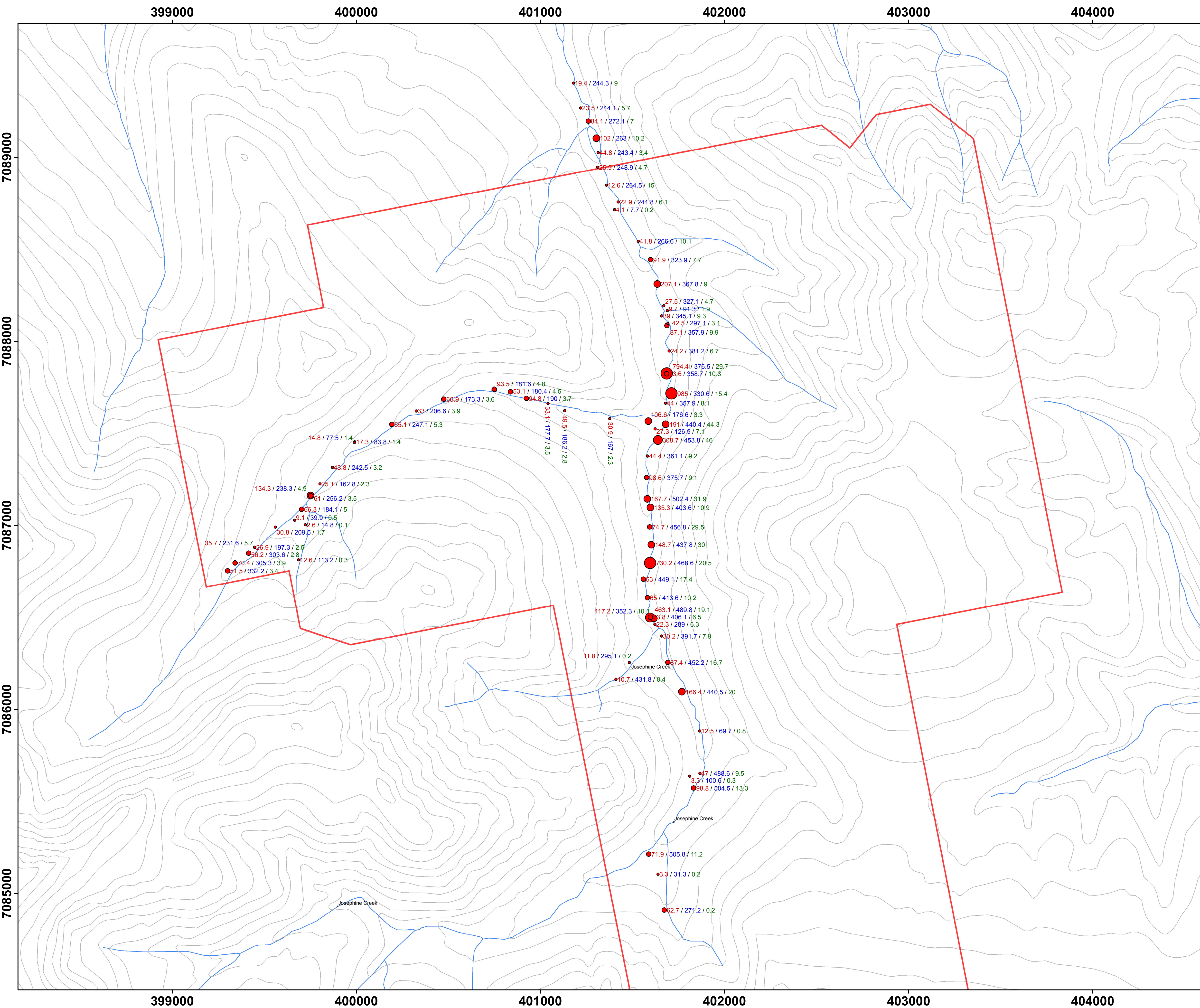
Date: November, 2013
Mapsheets: 115P14, 115P15
Datum: UTM NAD83 Zone 8



- 191/440.4
- 308.7/453.8
- 44.4/361.1
- 98.6/375.7
- 167.7/502.4
- 135.3/403.6
- 74.7/456.8
- 148.7/437.8
- 730.2/468.6
- 53/449.1
- 65/413.6

- ▲ 10.4 / 194.2
- ▲ 13.2 / 387.8
- ▲ 4390.4 / >10000

Figure 6: Silt Sample Results 2011-2013 (Au-As-W)



Josephine Property

Fig. 6: Silt Sample Results
2011-2013 (Au-As-W)

Goldspike Exploration Inc.

Clear Creek area,
Dawson Mining District

Legend

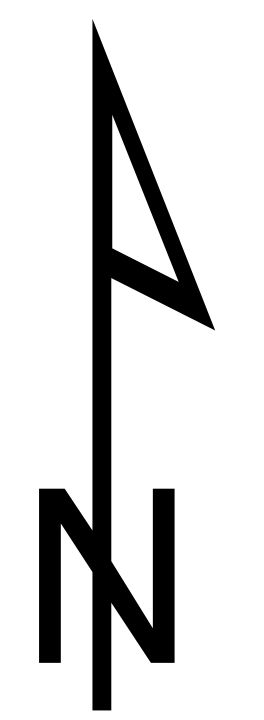
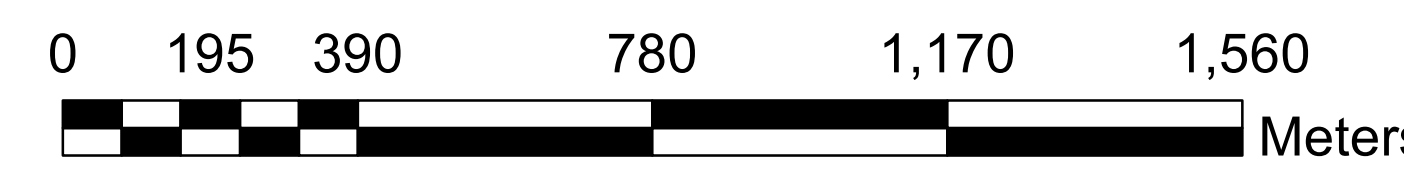
Silt samples 2011-2013

- Au (ppb)**
- 1.5 - 50.0
 - 50.1 - 100.0
 - 100.1 - 250.0
 - 250.1 - 500.0
 - 500.1 - 985.0

— Josephine Property

Labelling: ppb Au (red) /
ppm As (blue) / ppm W (green)

1:10,000



Date: November, 2013
 Mapsheets: 115P14, 115P15
 Datum: UTM NAD83 Zone 8

9.0 CONCLUSIONS AND RECOMMENDATIONS

The Josephine Property is located in a geological setting favourable to intrusion-related gold deposits. The adjacent Josephine Stock, regional placer history, and GSC-collected silt anomalies on the property make it a desirable exploration target.

Although the 2013 program was limited in scope, it showed new prospective areas. Rock sample 1201915 of altered intrusive float assayed 4.3 g/t Au with >10000 ppm As. This sample may indicate that high gold-in-silt values in Josephine Creek can be attributed to the mid-Cretaceous intrusions west and south of Josephine Creek. However, it is suspect that tungsten is not present in high-gold rock samples recovered from the property while appearing in most silt samples.

Figure 6 displays silt sampling on Josephine Creek and its tributaries between 2011 and 2013. Although gold values are relatively high across the property, concentration tends to be highest between the south end of the creek and the confluence of the main tributary flowing from the west. This may be due to a potential adjacent bedrock source or drainage from the nearby Josephine, Eiger, and Puckleman mid-Cretaceous stocks. It may also be attributed to old placer workings in the area which have brought finer gold to the surface.

Further prospecting is recommended to follow-up upon the area of the 4.3 g/t rock sample float. There are additional results from the 2011 and 2012 programs which require follow-up in the form of Candig trenching and potentially ground geophysics in the south and west sides of the property.

REFERENCES

Bremner, T. (2010): Josephine JO 1-109 Claims 115P14-15, Dawson Mining District, for Goldspike Exploration Inc.

Golden Predator Corp., Clear Creek Projects (2011): <http://www.goldenpredator.com/Clear-Creek.html> (visited 01/02/2012)

Murphy, D. and Heon, D. (1994): Geology and Mineral Occurrences of Sprague Creek Map Area (115P/15), Western Selwyn Basin. In: Yukon Exploration and Geology 1993. Exploration and Geological Services Division, Yukon, Indian and Northern Affairs Canada, p. 29-46.

Murphy, D. (1996): Geology of the McQuesten River Region, Northern McQuesten and Mayo Map Areas, Yukon Territory (115P/14, 15, 16; 105M/13, 14. Exploration and Geological Services Division, Yukon, Indian and Northern Affairs Canada, Bulletin 6, 122 p.

Natural Resources Canada, Atlas, (12/05/2006):
http://atlas.nrcan.gc.ca/auth/english/maps/reference/provincesterritories/yukon_territory/referencemap_image_view (visited 01/02/2012)

Stammers, M. (1997): Geological and Geochemical Assessment Report on the JO 1-70 Claims, for Newmont Exploration Ltd. Denver, CO.

Stephens, J.R., Oliver, N.H.S., Baker, T. and Hart, C.J.R., (2000): Structural evolution and controls on gold mineralization at Clear Creek, Yukon. *In*: Yukon Exploration and Geology 1999, D.S. Emond and L.H. Weston (eds.), Exploration and Geological Services Division, Yukon, Indian and Northern Affairs Canada, p. 151-163.

Stephens, J.R. and Weekes, S., (2001): Intrusive-breccia-hosted gold mineralization associated with ca. 92 Ma Tombstone Plutonic Suite magmatism: An example from the Bear Paw breccia zone, Clear Creek, Tintina gold belt, Yukon. *In*: Yukon Exploration and Geology 2000, D.S. Emond and L.H. Weston (eds.), Exploration and Geological Services Division, Yukon, Indian and Northern Affairs Canada, p. 347-353.

Yukon Minfile 115P011 (2004): Josephine, Yukon Geological Survey.

Yukon Minfile 115P023 (2004): Lewis, Yukon Geological Survey.

Yukon Minfile 115P061 (2004): Big, Yukon Geological Survey.

STATEMENT OF EXPENDITURES


Costs associated with the Josephine Property
Worked August 17th and September 5th, 2013

Geologist wages (2 men)	\$450/day	\$1,800.00
ATV rental	100/day	\$200.00
truck rental	\$150/day	\$300.00
Fuel		\$200.00
rock sample assay	\$35x3 samples	\$105.00
silt sample assay	\$30x12 samples	\$360.00
assessment report		\$1,800.00
food	\$40/man/day	\$160.00
accomodation	\$130/rm/night	\$520.00
consumables (bags, flagging, etc)		\$200.00
TOTAL		\$5,645.00

CERTIFICATE OF QUALIFICATIONS

I, Daniel Ferraro, of 835 Berkshire Dr., Woodstock, Ontario, Canada, certify that:

1. I am a graduate of Lakehead University, 2008, and hold an H. B.Sc. Geology degree.
2. I am an independent geological consultant.
3. I am a member of the Ontario Prospectors Association (2010).
4. I have been employed as a geological assistant for the Ontario Geological Survey and the Geological Survey of Canada during the summers of, respectively, 2006 and 2007.
5. I have been working in the mineral exploration industry since 2008 consulting for Pacific North West Capital Corporation, East West Resources Corporation, Rainy Mountain Royalty Corporation, Black Panther Mining Corporation, White Tiger Mining Corporation, Trillium North Minerals Ltd., Nebu Resources Inc., Goldstrike Resources Ltd., and Goldspike Exploration Inc.
6. This report was prepared by myself.
7. I have no personal knowledge from the date of this certificate of any material fact or change not reflected in this report.



Daniel Ferraro, H.B.Sc.

Date: Feb. 1 2014

Appendix I: Rock and Silt Sample Descriptions

Rock Sample Descriptions

UTM NAD83 Zone 8

Abbreviations: qtz - quartz, py - pyrite, cpy - chalcopyrite, po - pyrrhotite, aspy - arsenopyrite, chl - chlorite, fg - fine grained, mg - medium grained, metased - metasedimentary, min - mineralization, OC - outcrop

Sample ID	Easting	Northing	Elevation (m)	Date Taken	Source	Description
1201915	401788	7085818	n/a	17-Aug-13	float	Altered intrusive from west side of rd near JO creek. Fine grained felsic intrusive with abundant (50%) aspy min with green scorodite. Minor qtz veining. Some biotite. Weathered surface well oxidized.
1201916	401616	7086172	n/a	17-Aug-13	float	Silicified intrusive float from creek. Fine grained disseminated aspy, minor dissem py.
1201917	401610	7086180	n/a	17-Aug-13	float	Felsic intrusive float. Porphyritic with mg qtz-feldspar

Silt Sample Descriptions

UTM NAD83 Zone 8

Sample ID	Easting	Northing	Elevation (m)	Date Taken	Medium	Sample Environment
1238505	401594	7086991	1021	5-Sep-13	JO Creek	low energy pool on bank
1238506	401603	7086895	1025	5-Sep-13	JO Creek	low energy pool on bank
1238507	401597	7086796	1031	5-Sep-13	JO Creek	low energy pool on bank
1238508	401560	7086708	1039	5-Sep-13	JO Creek	low energy pool on bank
1238509	401582	7086607	1047	5-Sep-13	JO Creek	low energy pool on bank
1238510	401769	7086096	1066	5-Sep-13	JO Creek	difficult to locate silt, high energy, collected from various banks over 15m
1238525	401681	7087550	992	5-Sep-13	JO Creek	slow flow pool, fine silt
1238526	401639	7087464	995	5-Sep-13	JO Creek	point bar, silt gravel mix
1238527	401584	7087377	998	5-Sep-13	JO Creek	low energy pool, sand/silt mix
1238528	401578	7087260	1003	5-Sep-13	JO Creek	low energy pool, sand/silt mix
1238529	401581	7087144	1007	5-Sep-13	JO Creek	medium energy flow, point bar, silt/gravel
1238530	401598	7087097	1007	5-Sep-13	JO Creek	low energy, seasonal flow pool, silty sand

Appendix II: Rock Sample Assay Certificates



www.acmelab.com

Acme Analytical Laboratories (Vancouver) Ltd.
9050 Shaughnessy St Vancouver BC V6P 6E5 CANADA
PHONE (604) 253-3158

Client: Goldspike Exploration Inc.
56th Floor - 100 King Street West
Toronto ON M5X 1C9 CANADA

Submitted By: Bruce Durham
Receiving Lab: Canada-Whitehorse
Received: September 09, 2013
Report Date: October 03, 2013
Page: 1 of 2

CERTIFICATE OF ANALYSIS

WHI13000396.1

CLIENT JOB INFORMATION

Project: JO
Shipment ID: JoRx1_2013
P.O. Number
Number of Samples: 3

SAMPLE DISPOSAL

DISP-PLP Dispose of Pulp After 90 days
DISP-RJT Dispose of Reject After 90 days

Acme does not accept responsibility for samples left at the laboratory after 90 days without prior written instructions for sample storage or return.

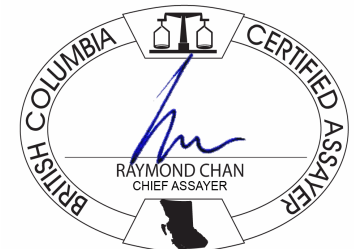
Invoice To: Goldspike Exploration Inc.
56th Floor - 100 King Street West
Toronto ON M5X 1C9
CANADA

CC: Daniel Ferraro

SAMPLE PREPARATION AND ANALYTICAL PROCEDURES

Procedure Code	Number of Samples	Code Description	Test Wgt (g)	Report Status	Lab
R200-250	3	Crush, split and pulverize 250 g rock to 200 mesh			WHI
3B	3	Fire assay fusion Au by ICP-ES	30	Completed	VAN
1DX	3	1:1:1 Aqua Regia digestion ICP-MS analysis	0.5	Completed	VAN

ADDITIONAL COMMENTS



This report supersedes all previous preliminary and final reports with this file number dated prior to the date on this certificate. Signature indicates final approval; preliminary reports are unsigned and should be used for reference only. All results are considered the confidential property of the client. Acme assumes the liabilities for actual cost of analysis only. Results apply to samples as submitted. *** asterisk indicates that an analytical result could not be provided due to unusually high levels of interference from other elements.



www.acmelab.com

Acme Analytical Laboratories (Vancouver) Ltd.
 9050 Shaughnessy St Vancouver BC V6P 6E5 CANADA
 PHONE (604) 253-3158

Client: Goldspike Exploration Inc.
 56th Floor - 100 King Street West
 Toronto ON M5X 1C9 CANADA

Project: JO
 Report Date: October 03, 2013

Page: 2 of 2

Part: 1 of 2

CERTIFICATE OF ANALYSIS

WHI13000396.1

Method	WGHT	3B	1DX	1DX	1DX	1DX	1DX	1DX	1DX	1DX	1DX	1DX	1DX	1DX	1DX	1DX	1DX	1DX	1DX	1DX	
Analyte	Wgt	Au	Mo	Cu	Pb	Zn	Ag	Ni	Co	Mn	Fe	As	Au	Th	Sr	Cd	Sb	Bi	V	Ca	
Unit	kg	ppb	ppm	ppm	ppm	ppm	ppm	ppm	ppm	ppm	%	ppm	ppb	ppm	ppm	ppm	ppm	ppm	ppm	%	
MDL	0.01	2	0.1	0.1	0.1	1	0.1	0.1	0.1	1	0.01	0.5	0.5	0.1	1	0.1	0.1	0.1	2	0.01	
1201915	Rock	2.46	4019	0.3	34.1	182.6	45	4.4	17.7	159.5	53	6.76	>10000	4390	6.7	16	0.9	434.6	69.2	3	0.01
1201916	Rock	0.50	10	1.2	44.2	3.1	29	0.2	64.9	18.8	133	1.80	194.2	10.4	10.7	16	0.3	0.8	3.3	<2	0.10
1201917	Rock	0.81	17	2.9	85.6	5.8	55	0.2	45.1	19.6	963	4.38	387.8	13.2	19.0	35	0.8	2.6	8.4	39	0.38



www.acmelab.com

Acme Analytical Laboratories (Vancouver) Ltd.
 9050 Shaughnessy St Vancouver BC V6P 6E5 CANADA
 PHONE (604) 253-3158

Client: Goldspike Exploration Inc.
 56th Floor - 100 King Street West
 Toronto ON M5X 1C9 CANADA

Project: JO
 Report Date: October 03, 2013

Page: 2 of 2

Part: 2 of 2

CERTIFICATE OF ANALYSIS

WHI13000396.1

Method	1DX	1DX	1DX	1DX	1DX	1DX	1DX	1DX	1DX	1DX	1DX	1DX	1DX	1DX	1DX	1DX	1DX	1DX	
Analyte	P	La	Cr	Mg	Ba	Ti	B	Al	Na	K	W	Hg	Tl	S	Sc	Se	Ga	Te	
Unit	%	ppm	ppm	%	ppm	%	ppm	%	%	%	ppm	ppm	ppm	%	ppm	ppm	ppm	ppm	
MDL	0.001	1	1	0.01	1	0.001	20	0.01	0.001	0.01	0.1	0.01	0.1	0.05	0.1	0.5	1	0.2	
1201915	Rock	0.015	13	11	0.04	46	<0.001	<20	0.28	0.027	0.01	<0.1	0.02	<0.1	2.11	1.2	6.8	<1	3.7
1201916	Rock	0.032	23	2	0.05	503	0.001	<20	0.43	0.028	0.22	<0.1	<0.01	0.2	0.56	0.6	<0.5	1	<0.2
1201917	Rock	0.143	40	20	1.06	337	0.006	<20	1.56	0.028	0.20	0.1	<0.01	0.1	0.96	4.2	1.1	6	<0.2

QUALITY CONTROL REPORT

WHI13000396.1

Method	WGHT	3B	1DX	1DX	1DX	1DX	1DX	1DX	1DX	1DX	1DX	1DX	1DX	1DX	1DX	1DX	1DX	1DX	1DX	1DX		
Analyte	Wgt	Au	Mo	Cu	Pb	Zn	Ag	Ni	Co	Mn	Fe	As	Au	Th	Sr	Cd	Sb	Bi	V	Ca		
Unit	kg	ppb	ppm	ppm	ppm	ppm	ppm	ppm	ppm	ppm	%	ppm	ppb	ppm	ppm	ppm	ppm	ppm	ppm	%		
MDL	0.01	2	0.1	0.1	0.1	1	0.1	0.1	0.1	1	0.01	0.5	0.5	0.1	1	0.1	0.1	0.1	2	0.01		
Pulp Duplicates																						
1201917	Rock	0.81	17	2.9	85.6	5.8	55	0.2	45.1	19.6	963	4.38	387.8	13.2	19.0	35	0.8	2.6	8.4	39	0.38	
REP 1201917	QC			2.5	82.3	5.9	57	0.2	45.5	19.4	969	4.35	388.2	10.7	18.4	35	0.7	2.8	8.9	38	0.39	
Reference Materials																						
STD DS9	Standard			11.7	110.7	129.0	307	1.6	42.2	7.7	585	2.37	27.2	112.2	6.1	67	2.4	4.0	6.8	40	0.72	
STD OREAS45EA	Standard			1.6	701.8	15.3	31	0.3	394.8	52.9	399	23.90	9.5	54.7	10.2	4	<0.1	0.2	0.3	306	0.04	
STD OXC109	Standard			208																		
STD OXI96	Standard			1797																		
STD OXC109 Expected				201																		
STD OXI96 Expected				1802																		
STD DS9 Expected				12.84	108	126	317	1.83	40.3	7.6	575	2.33	25.5	118	6.38	69.6	2.4	4.94	6.32	40	0.7201	
STD OREAS45EA Expected				1.39	709	14.3	28.9	0.26	381	52	400	23.51	9.1	53	10.7	3.5	0.02	0.2	0.26	303	0.036	
BLK	Blank			6																		
BLK	Blank			7																		
BLK	Blank			<0.1	<0.1	<0.1	<1	<0.1	<0.1	<0.1	<1	<0.01	<0.5	<0.5	<0.1	<1	<0.1	<0.1	<0.1	<2	<0.01	
Prep Wash																						
G1-WHI	Prep Blank			6	<0.1	6.4	3.5	43	<0.1	11.7	4.2	516	1.86	0.9	<0.5	5.1	46	<0.1	0.3	<0.1	34	0.46

QUALITY CONTROL REPORT

WHI13000396.1

Method	1DX	1DX	1DX	1DX	1DX	1DX	1DX	1DX	1DX	1DX	1DX	1DX	1DX	1DX	1DX	1DX	1DX	1DX	
Analyte	P	La	Cr	Mg	Ba	Ti	B	Al	Na	K	W	Hg	Tl	S	Sc	Se	Ga	Te	
Unit	%	ppm	ppm	%	ppm	%	ppm	%	%	%	ppm	ppm	ppm	%	ppm	ppm	ppm	ppm	
MDL	0.001	1	1	0.01	1	0.001	20	0.01	0.001	0.01	0.1	0.01	0.1	0.05	0.1	0.5	1	0.2	
Pulp Duplicates																			
1201917	Rock	0.143	40	20	1.06	337	0.006	<20	1.56	0.028	0.20	0.1	<0.01	0.1	0.96	4.2	1.1	6	<0.2
REP 1201917	QC	0.151	40	20	1.05	320	0.005	<20	1.52	0.026	0.19	0.1	<0.01	0.1	0.96	4.0	1.0	6	<0.2
Reference Materials																			
STD DS9	Standard	0.090	11	121	0.63	302	0.103	<20	0.95	0.084	0.41	2.7	0.22	5.4	0.17	2.2	5.4	4	5.0
STD OREAS45EA	Standard	0.029	7	885	0.09	145	0.090	<20	3.22	0.026	0.06	<0.1	<0.01	<0.1	<0.05	74.5	0.6	13	<0.2
STD OXC109	Standard																		
STD OXI96	Standard																		
STD OXC109 Expected																			
STD OXI96 Expected																			
STD DS9 Expected		0.0819	13.3	121	0.6165	330	0.1108		0.9577	0.0853	0.395	2.89	0.2	5.3	0.1615	2.5	5.2	4.59	5.02
STD OREAS45EA Expected		0.029	6.57	849	0.095	148	0.0875		3.13	0.02	0.053			0.072	0.036	78	0.6	11.7	0.07
BLK	Blank																		
BLK	Blank																		
BLK	Blank	<0.001	<1	<1	<0.01	<1	<0.001	<20	<0.01	<0.001	<0.01	<0.1	<0.01	<0.1	<0.05	<0.1	<0.5	<1	<0.2
Prep Wash																			
G1-WHI	Prep Blank	0.073	11	10	0.53	151	0.111	<20	0.85	0.067	0.47	<0.1	<0.01	0.3	<0.05	2.0	<0.5	4	<0.2

Appendix III: Silt Sample Assay Certificates



www.acmelab.com

Acme Analytical Laboratories (Vancouver) Ltd.
9050 Shaughnessy St Vancouver BC V6P 6E5 CANADA
PHONE (604) 253-3158

Client: Goldspike Exploration Inc.
56th Floor - 100 King Street West
Toronto ON M5X 1C9 CANADA

Submitted By: Bruce Durham
Receiving Lab: Canada-Whitehorse
Received: September 09, 2013
Report Date: October 03, 2013
Page: 1 of 2

CERTIFICATE OF ANALYSIS

WHI13000399.1

CLIENT JOB INFORMATION

Project: JO
Shipment ID: JO_Silts_2013
P.O. Number
Number of Samples: 12

SAMPLE DISPOSAL

DISP-PLP Dispose of Pulp After 90 days
DISP-RJT-SOIL Immediate Disposal of Soil Reject

Acme does not accept responsibility for samples left at the laboratory after 90 days without prior written instructions for sample storage or return.

Invoice To: Goldspike Exploration Inc.
56th Floor - 100 King Street West
Toronto ON M5X 1C9
CANADA

CC: Daniel Ferraro

SAMPLE PREPARATION AND ANALYTICAL PROCEDURES

Table with 6 columns: Procedure Code, Number of Samples, Code Description, Test Wgt (g), Report Status, Lab. Rows include procedures like 'Dry at 60C', 'SS80', and '1DX2'.

ADDITIONAL COMMENTS



This report supersedes all previous preliminary and final reports with this file number dated prior to the date on this certificate. Signature indicates final approval; preliminary reports are unsigned and should be used for reference only. All results are considered the confidential property of the client. Acme assumes the liabilities for actual cost of analysis only. Results apply to samples as submitted. *** asterisk indicates that an analytical result could not be provided due to unusually high levels of interference from other elements.

CERTIFICATE OF ANALYSIS

WHI13000399.1

	Method	1DX15																				
		Analyte	Mo	Cu	Pb	Zn	Ag	Ni	Co	Mn	Fe	As	Au	Th	Sr	Cd	Sb	Bi	V	Ca	P	La
	Unit	ppm	ppm	ppm	ppm	ppm	ppm	ppm	ppm	%	ppm	ppb	ppm	ppm	ppm	ppm	ppm	ppm	ppm	%	%	ppm
	MDL	0.1	0.1	0.1	1	0.1	0.1	0.1	1	0.01	0.5	0.5	0.1	1	0.1	0.1	0.1	0.1	2	0.01	0.001	1
1238505	Silt	1.3	35.0	10.8	77	0.5	48.3	22.4	663	3.21	456.8	74.7	9.6	17	0.3	2.0	1.6	28	0.15	0.045	23	
1238506	Silt	1.1	33.0	9.6	73	0.2	44.4	21.0	643	3.06	437.8	148.7	8.7	15	0.3	1.8	1.6	26	0.15	0.045	21	
1238507	Silt	1.4	36.6	11.6	86	0.3	57.4	23.9	719	3.40	468.6	730.2	9.8	17	0.5	1.9	1.4	29	0.17	0.047	24	
1238508	Silt	1.3	36.4	11.0	83	0.2	52.7	22.8	682	3.33	449.1	53.0	9.7	17	0.4	2.0	1.8	30	0.16	0.046	24	
1238509	Silt	1.2	35.0	10.9	86	0.3	59.0	24.3	761	3.22	413.6	65.0	8.0	19	0.5	1.8	1.5	33	0.19	0.047	22	
1238510	Silt	1.3	35.8	12.9	96	0.3	72.1	25.7	758	3.23	440.5	166.4	7.2	21	0.7	1.7	1.2	35	0.22	0.053	23	
1238525	Silt	1.1	32.3	10.6	72	0.3	44.1	21.7	645	2.86	440.4	191.0	8.4	19	0.3	1.8	1.8	29	0.19	0.050	22	
1238526	Silt	1.1	31.3	10.3	72	0.3	39.6	18.7	534	3.03	453.8	308.7	9.1	19	0.3	2.0	2.1	29	0.18	0.051	23	
1238527	Silt	1.1	32.8	10.7	82	0.2	52.2	21.0	658	2.97	361.1	44.4	8.2	18	0.4	1.7	1.2	30	0.18	0.047	23	
1238528	Silt	1.2	33.4	10.3	81	0.2	49.8	20.6	606	2.95	375.7	98.6	7.3	21	0.4	1.6	1.1	33	0.22	0.053	23	
1238529	Silt	1.2	34.7	12.1	83	0.2	49.4	20.4	601	3.25	502.4	167.7	9.6	18	0.4	2.1	2.4	30	0.17	0.049	26	
1238530	Silt	1.2	34.4	9.9	82	0.2	53.6	22.1	669	3.14	403.6	135.3	8.1	18	0.4	1.8	1.3	31	0.17	0.046	22	

CERTIFICATE OF ANALYSIS

WHI13000399.1

Method	Analyte	1DX15	1DX15	1DX15	1DX15	1DX15	1DX15	1DX15	1DX15	1DX15	1DX15	1DX15	1DX15	1DX15	1DX15	1DX15	1DX15
		Cr	Mg	Ba	Ti	B	Al	Na	K	W	Hg	Sc	Tl	S	Ga	Se	Te
Unit		ppm	%	ppm	%	ppm	%	%	ppm	ppm	ppm	ppm	%	ppm	ppm	ppm	
MDL		1	0.01	1	0.001	1	0.01	0.001	0.01	0.1	0.01	0.1	0.05	1	0.5	0.2	
1238505	Silt	25	0.44	93	0.040	<1	1.05	0.008	0.14	29.5	<0.01	2.2	0.2	<0.05	4	<0.5	<0.2
1238506	Silt	23	0.41	89	0.037	<1	0.97	0.007	0.13	30.0	0.01	2.0	0.2	<0.05	3	<0.5	<0.2
1238507	Silt	27	0.46	109	0.043	<1	1.13	0.008	0.15	20.5	<0.01	2.4	0.2	<0.05	4	0.5	<0.2
1238508	Silt	26	0.45	105	0.044	<1	1.10	0.008	0.15	17.4	<0.01	2.4	0.3	<0.05	4	<0.5	<0.2
1238509	Silt	28	0.47	114	0.047	<1	1.18	0.009	0.15	10.2	0.02	2.6	0.2	<0.05	4	<0.5	<0.2
1238510	Silt	30	0.51	129	0.046	<1	1.28	0.009	0.15	20.0	0.02	2.7	0.3	0.06	4	<0.5	<0.2
1238525	Silt	23	0.42	89	0.039	<1	1.03	0.008	0.13	44.3	<0.01	2.2	0.2	<0.05	3	0.6	<0.2
1238526	Silt	23	0.41	81	0.037	<1	1.01	0.007	0.12	46.0	0.01	2.1	0.2	<0.05	3	<0.5	0.2
1238527	Silt	25	0.44	107	0.043	<1	1.12	0.009	0.14	9.2	0.01	2.5	0.2	<0.05	3	<0.5	<0.2
1238528	Silt	26	0.47	110	0.043	<1	1.17	0.008	0.14	9.1	0.01	2.6	0.2	<0.05	4	<0.5	<0.2
1238529	Silt	24	0.42	100	0.039	<1	1.04	0.009	0.13	31.9	<0.01	2.3	0.2	<0.05	3	<0.5	<0.2
1238530	Silt	26	0.46	110	0.043	<1	1.11	0.009	0.15	10.9	0.02	2.5	0.2	<0.05	4	<0.5	<0.2



www.acmelab.com

Acme Analytical Laboratories (Vancouver) Ltd.
 9050 Shaughnessy St Vancouver BC V6P 6E5 CANADA
 PHONE (604) 253-3158

Client: Goldspike Exploration Inc.
 56th Floor - 100 King Street West
 Toronto ON M5X 1C9 CANADA

Project: JO
Report Date: October 03, 2013

Page: 1 of 1

Part: 1 of 2

QUALITY CONTROL REPORT

WHI13000399.1

Method	Analyte	1DX15	1DX15	1DX15	1DX15	1DX15	1DX15	1DX15	1DX15	1DX15	1DX15	1DX15	1DX15	1DX15	1DX15	1DX15	1DX15	1DX15	1DX15	1DX15	1DX15
		Mo	Cu	Pb	Zn	Ag	Ni	Co	Mn	Fe	As	Au	Th	Sr	Cd	Sb	Bi	V	Ca	P	La
Unit		ppm	ppm	ppm	ppm	ppm	ppm	ppm	ppm	%	ppm	ppb	ppm	ppm	ppm	ppm	ppm	ppm	%	%	ppm
MDL		0.1	0.1	0.1	1	0.1	0.1	0.1	1	0.01	0.5	0.5	0.1	1	0.1	0.1	0.1	2	0.01	0.001	1
Pulp Duplicates																					
1238509	Silt	1.2	35.0	10.9	86	0.3	59.0	24.3	761	3.22	413.6	65.0	8.0	19	0.5	1.8	1.5	33	0.19	0.047	22
REP 1238509	QC	1.3	35.3	10.9	85	0.2	57.0	24.1	750	3.17	414.5	75.4	8.0	19	0.3	1.7	1.3	33	0.19	0.049	22
Reference Materials																					
STD DS9	Standard	14.8	120.1	122.0	321	1.8	44.1	8.3	603	2.48	27.8	116.8	6.1	65	2.3	5.3	5.9	47	0.74	0.080	14
STD DS9 Expected		12.84	108	126	317	1.83	40.3	7.6	575	2.33	25.5	118	6.38	69.6	2.4	4.94	6.32	40	0.7201	0.0819	13.3
BLK	Blank	<0.1	<0.1	<0.1	<1	<0.1	<0.1	<0.1	<1	<0.01	<0.5	<0.5	<0.1	<1	<0.1	<0.1	<0.1	<2	<0.01	<0.001	<1

QUALITY CONTROL REPORT

WHI13000399.1

Method	Analyte	1DX15	1DX15	1DX15	1DX15	1DX15	1DX15	1DX15	1DX15	1DX15	1DX15	1DX15	1DX15	1DX15	1DX15	1DX15	1DX15
		Cr	Mg	Ba	Ti	B	Al	Na	K	W	Hg	Sc	Tl	S	Ga	Se	Te
Unit		ppm	%	ppm	%	ppm	%	%	%	ppm	ppm	ppm	ppm	%	ppm	ppm	ppm
MDL		1	0.01	1	0.001	1	0.01	0.001	0.01	0.1	0.01	0.1	0.1	0.05	1	0.5	0.2
Pulp Duplicates																	
1238509	Silt	28	0.47	114	0.047	<1	1.18	0.009	0.15	10.2	0.02	2.6	0.2	<0.05	4	<0.5	<0.2
REP 1238509	QC	27	0.47	112	0.046	<1	1.18	0.008	0.15	11.5	0.01	2.5	0.3	<0.05	4	<0.5	<0.2
Reference Materials																	
STD DS9	Standard	134	0.67	309	0.112	3	0.99	0.083	0.38	3.4	0.19	2.4	5.2	0.19	5	5.8	5.6
STD DS9 Expected		121	0.6165	295	0.1108		0.9577	0.0853	0.395	2.89	0.2	2.5	5.3	0.1615	4.59	5.2	5.02
BLK	Blank	<1	<0.01	<1	<0.001	<1	<0.01	<0.001	<0.01	<0.1	<0.01	<0.1	<0.1	<0.05	<1	<0.5	<0.2