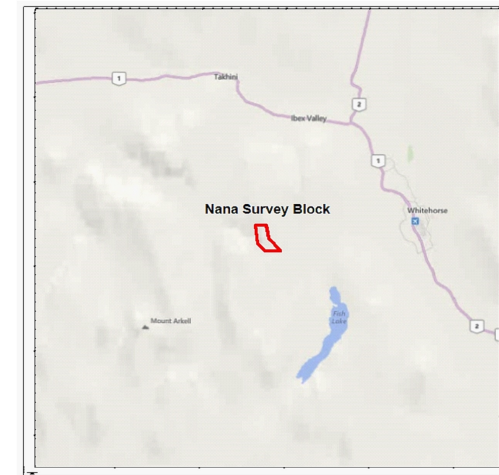


LEGEND

Map Projection:

Projection: Universal Transverse Mercator  
Central Meridian: 225 Zone 8N  
Datum: WGS 84



Survey Date: July 23, 2014  
Survey Base: Whitehorse, YT  
Helicopter Type: Eurocopter AS350  
Registration: C-GOHK  
Survey Technology: Magnetic and Radiometric survey.

SURVEY PARAMETERS:

Helicopter: 40.0 meters  
Magnetometer: 40.0 meters  
Radiometric: 40.0 meters  
Actual Mean Terrain Clearance: 38.7 meters

Nana Survey Block

Survey Line Spacing: 100 meters  
Survey Line Direction: 090°-270°  
Tie Line Spacing: 1000 meters  
Tie Line Direction: 000°-180°

AIRBORNE SYSTEMS:

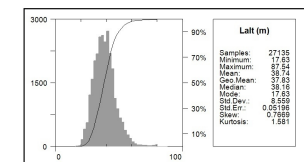
Scintrex CS-3 Magnetometer Sensor

Configuration: Stinger with 3 axis compensation  
Sample Rate: 10 Hz  
Sensitivity: 0.01 nT

Gamma Ray Spectrometer

Pico Envirotec GRS-10 Gamma Spectrometer  
12.6 litres of NaI(Tl) synthetic "downward looking" crystals  
and 4.2 litres of NaI (Tl) synthetic "upward looking" crystals

Sample Rate: 1 Hz

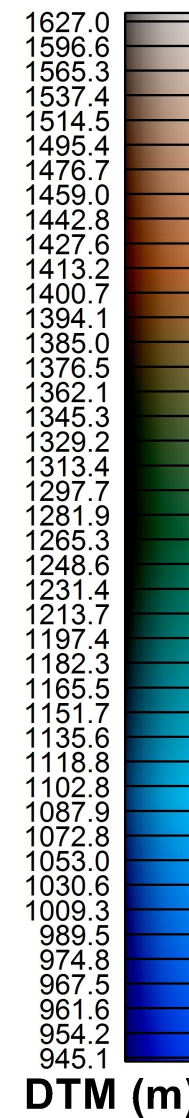
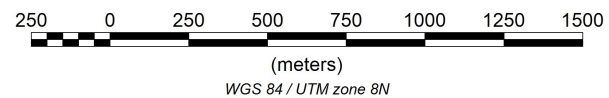
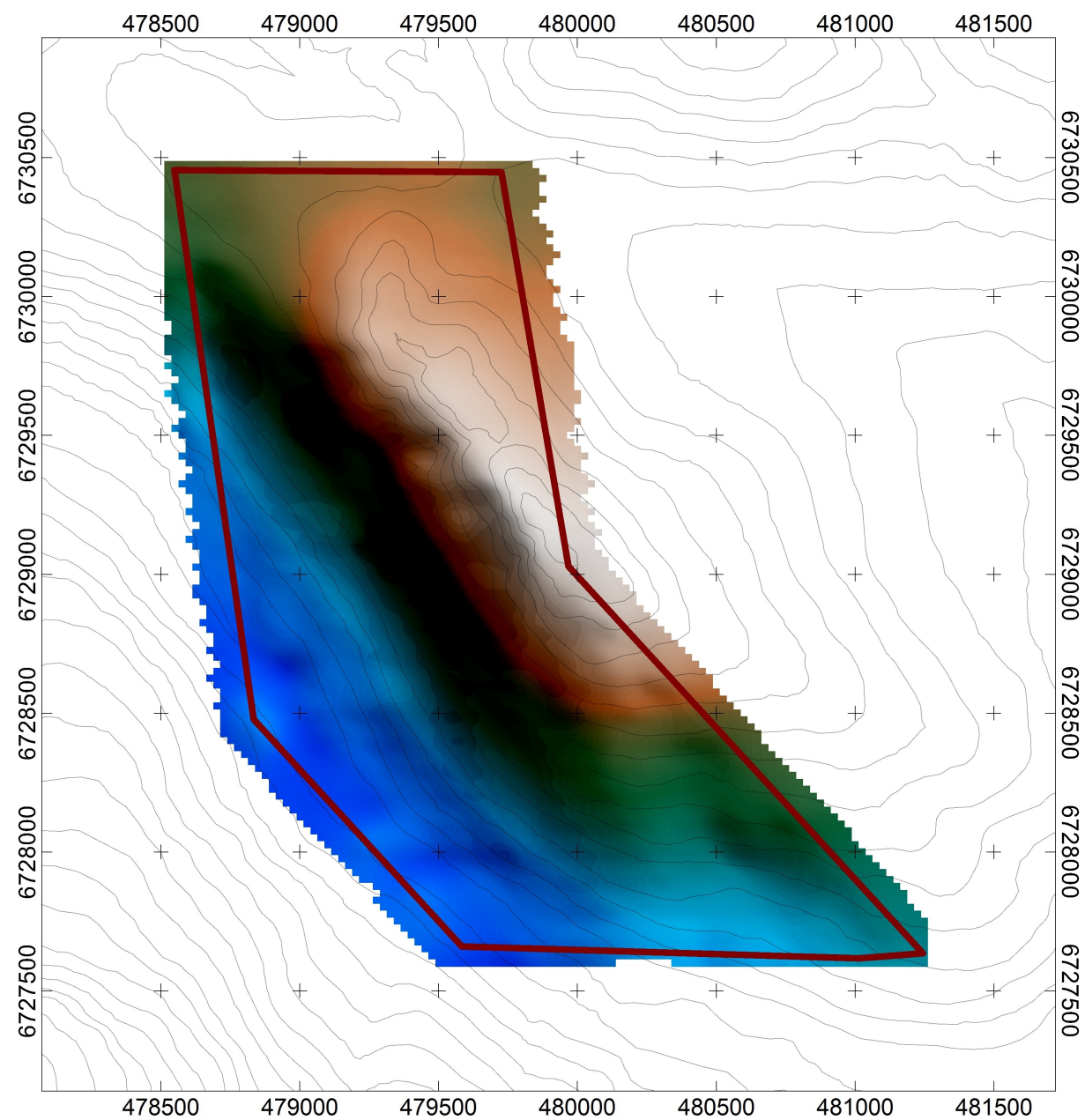


# H. Coyne and Sons

## Overview Map

Nana Survey Block  
Actual Flight Lines  
Created By: Precision GeoSurveys Inc.  
September 18, 2014

Precision  
GeoSurveys



DTM (m)

#### LEGEND

##### Map Projection:

Projection: Universal Transverse Mercator  
Central Meridian: 225 Zone 8N  
Datum: WGS 84



Survey Date: July 23, 2014  
Survey Base: Whitehorse, YT  
Helicopter Type: Eurocopter AS350  
Registration: C-GOJK  
Survey Technology: Magnetic and Radiometric survey.

##### SURVEY PARAMETERS:

Helicopter: 40.0 meters  
Magnetometer: 40.0 meters  
Radiometric: 40.0 meters  
Actual Mean Terrain Clearance: 38.7 meters

##### Nana Survey Block

Survey Line Spacing: 100 meters  
Survey Line Direction: 090°-270°  
Tie Line Spacing: 1000 meters  
Tie Line Direction: 000°-180°

##### AIRBORNE SYSTEMS:

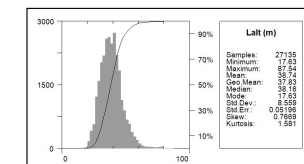
Scintrex CS-3 Magnetometer Sensor

Configuration: Stinger with 3 axis compensation  
Sample Rate: 10 Hz  
Sensitivity: 0.01 nT

Gamma Ray Spectrometer

Pico Envirotec GRS-10 Gamma Spectrometer  
12.6 litres of NaI(Tl) synthetic "downward looking" crystals  
and 4.2 litres of NaI (Tl) synthetic "upward looking" crystals

Sample Rate: 1 Hz



# H. Coyne and Sons

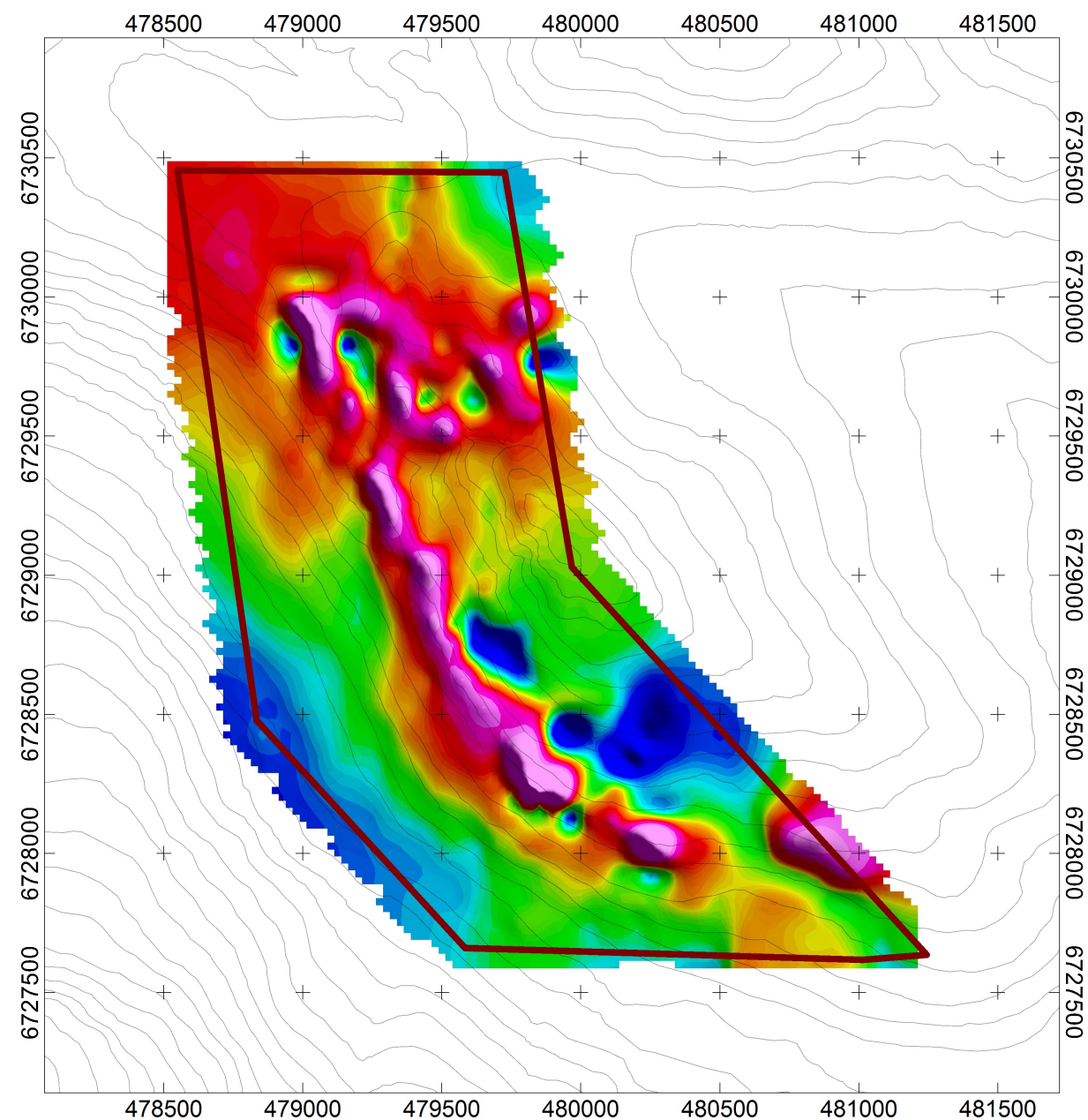
## Overview Map

Nana Survey Block  
Digital Terrain Model  
Created By: Precision GeoSurveys Inc.  
September 18, 2014

Precision  
GeoSurveys

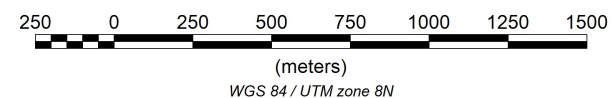
DTM





57324.90  
57241.22  
57185.78  
57140.62  
57116.11  
57098.68  
57086.05  
57074.12  
57060.07  
57045.35  
57030.79  
57018.47  
57007.34  
56996.61  
56987.52  
56978.80  
56971.16  
56962.20  
56953.16  
56943.96  
56933.93  
56923.23  
56913.34  
56902.68  
56893.40  
56882.12  
56871.14  
56860.78  
56849.53  
56836.22  
56824.12  
56810.32  
56791.13  
56768.04  
56748.05  
56723.09  
56698.46  
56669.56

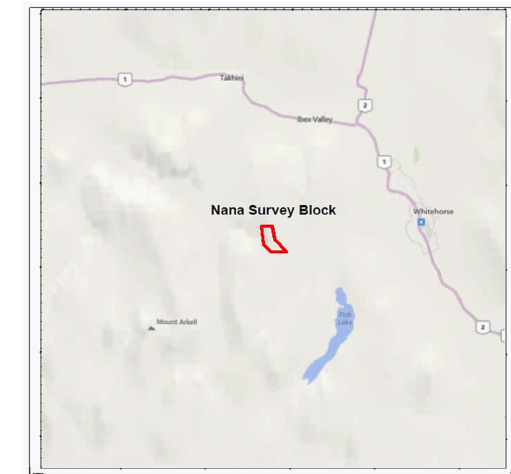
TMI (nT)



#### LEGEND

##### Map Projection:

Projection: Universal Transverse Mercator  
Central Meridian: 225 Zone 8N  
Datum: WGS 84



Survey Date: August 12, 2014  
Survey Base: Whitehorse, YT  
Helicopter Type: Eurocopter AS350  
Registration: C-GOHK  
Survey Technology: Magnetic and Radiometric survey.

##### SURVEY PARAMETERS:

Helicopter: 40.0 meters  
Magnetometer: 40.0 meters  
Radiometric: 40.0 meters  
Actual Mean Terrain Clearance: 38.7 meters

##### Nana Survey Block

Survey Line Spacing: 100 meters  
Survey Line Direction: 090°-270°  
Tie Line Spacing: 1000 meters  
Tie Line Direction: 000°-180°

##### AIRBORNE SYSTEMS:

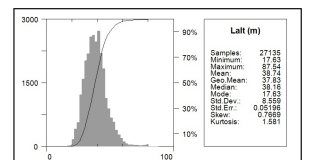
Scintrex CS-3 Magnetometer Sensor

Configuration: Stinger with 3 axis compensation  
Sample Rate: 10 Hz  
Sensitivity: 0.01 nT

Gamma Ray Spectrometer

Pico Envirotec GRS-10 Gamma Spectrometer  
12.6 litres of NaI(Tl) synthetic "downward looking" crystals  
and 4.2 litres of NaI (Tl) synthetic "upward looking" crystals

Sample Rate: 1 Hz



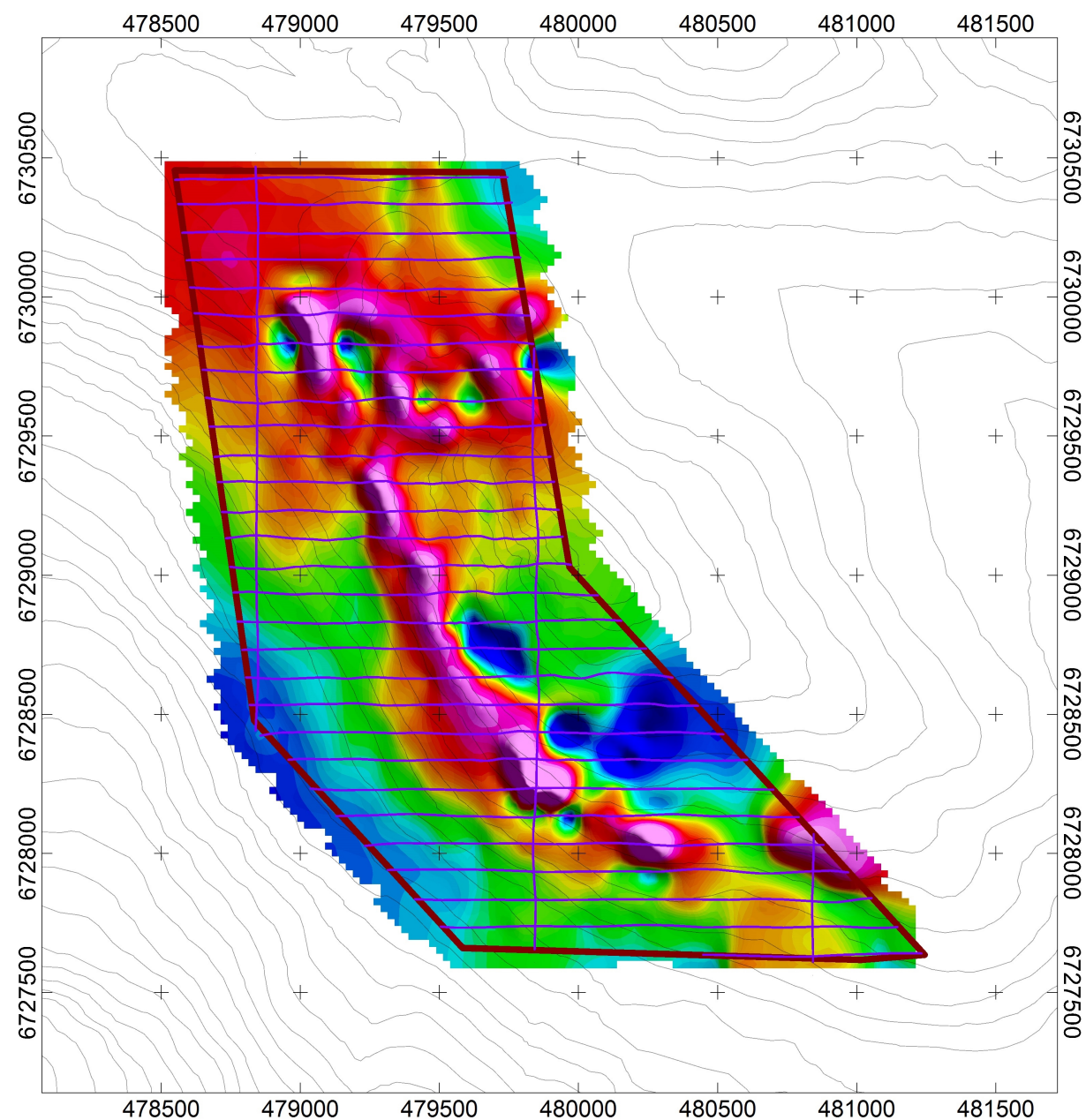
## H. Coyne and Sons

### Magnetic Map

Nana Survey Block  
Total Magnetic Intensity  
Created By: Precision GeoSurveys Inc.  
October 08, 2014

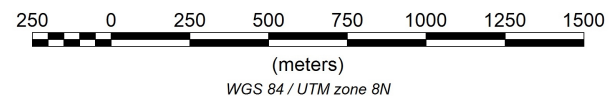
Precision  
GeoSurveys





57324.90  
57241.22  
57185.78  
57140.62  
57116.11  
57098.68  
57086.05  
57074.12  
57060.07  
57045.35  
57030.79  
57018.47  
57007.34  
56996.61  
56987.52  
56978.80  
56971.16  
56962.20  
56953.16  
56943.96  
56933.93  
56923.23  
56913.34  
56902.68  
56893.40  
56882.12  
56871.14  
56860.78  
56849.53  
56836.22  
56824.12  
56810.32  
56791.13  
56768.04  
56748.05  
56723.09  
56698.46  
56669.56

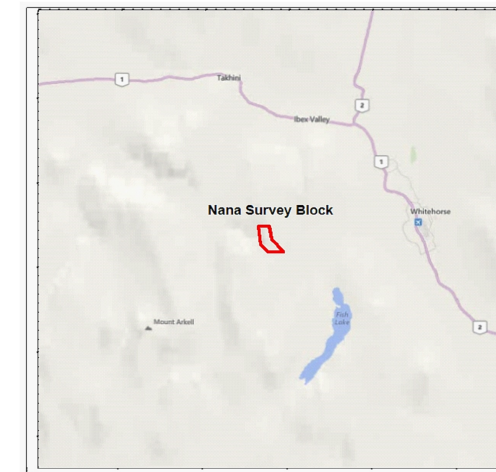
TMI (nT)



LEGEND

Map Projection:

Projection: Universal Transverse Mercator  
Central Meridian: 225 Zone 8N  
Datum: WGS 84



Survey Date: August 12, 2014  
Survey Base: Whitehorse, YT  
Helicopter Type: Eurocopter AS350  
Registration: C-GOHK  
Survey Technology: Magnetic and Radiometric survey.

SURVEY PARAMETERS:

Helicopter: 40.0 meters  
Magnetometer: 40.0 meters  
Radiometric: 40.0 meters  
Actual Mean Terrain Clearance: 38.7 meters

Nana Survey Block

Survey Line Spacing: 100 meters  
Survey Line Direction: 090°-270°  
Tie Line Spacing: 1000 meters  
Tie Line Direction: 000°-180°

AIRBORNE SYSTEMS:

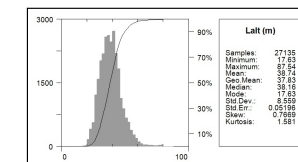
Scintrex CS-3 Magnetometer Sensor

Configuration: Stinger with 3 axis compensation  
Sample Rate: 10 Hz  
Sensitivity: 0.01 nT

Gamma Ray Spectrometer

Pico Envirotec GRS-10 Gamma Spectrometer  
12.6 litres of NaI(Tl) synthetic "downward looking" crystals  
and 4.2 litres of NaI (Tl) synthetic "upward looking" crystals

Sample Rate: 1 Hz



**H. Coyne and Sons**

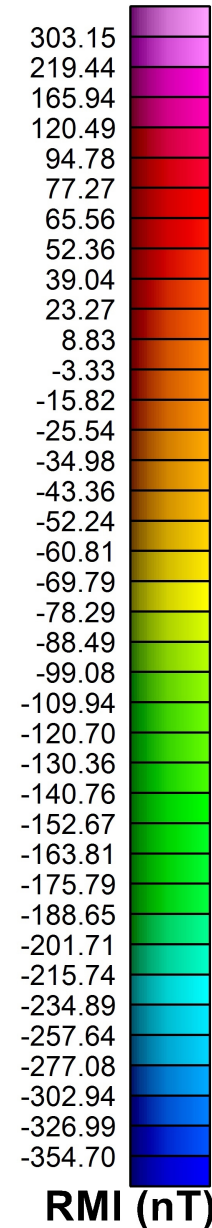
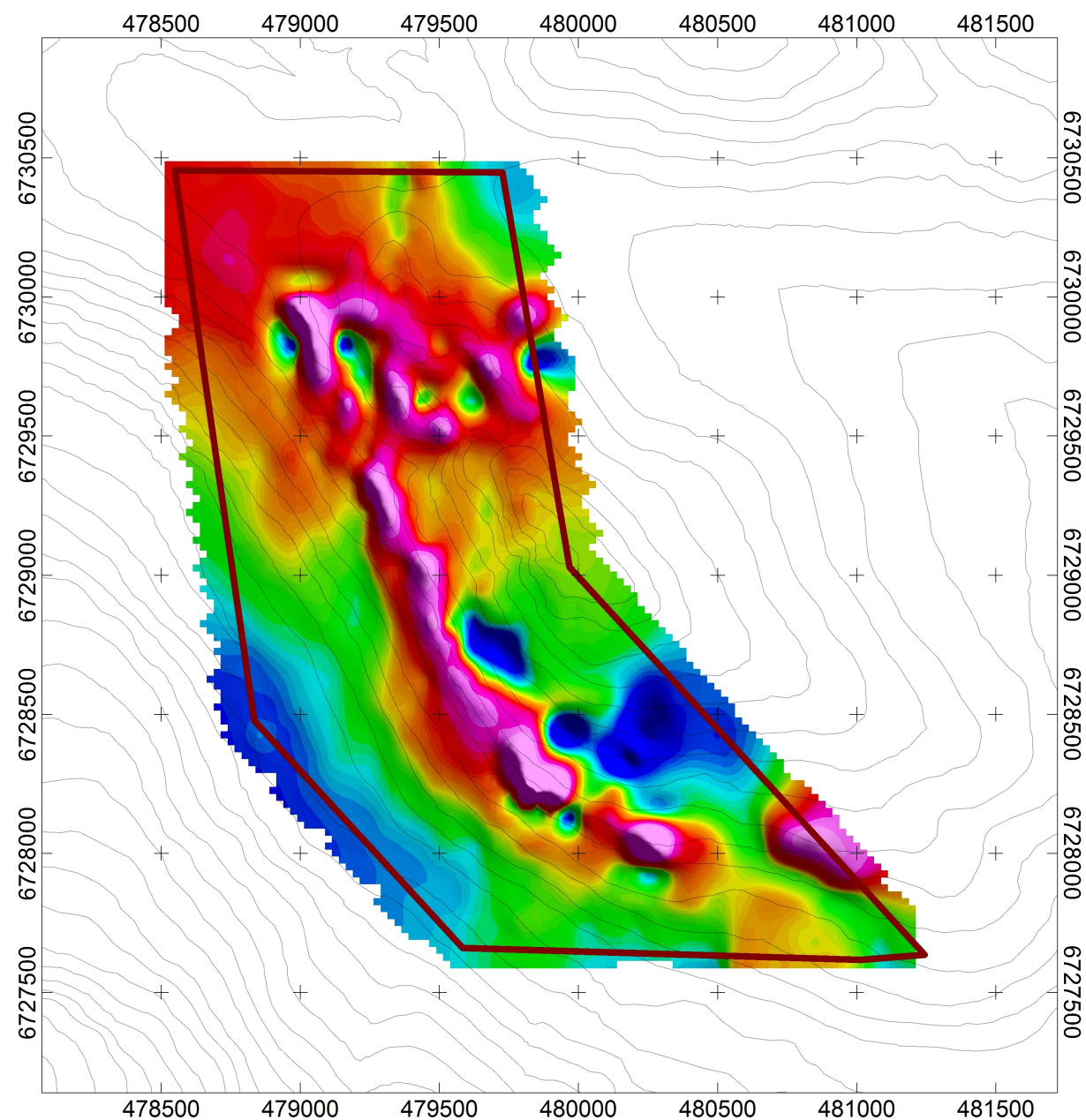
**Magnetic Map**

Nana Survey Block  
Total Magnetic Intensity with Flight Lines  
Created By: Precision GeoSurveys Inc.  
October 08, 2014

**Precision**  
GeoSurveys

TMI\_wFL

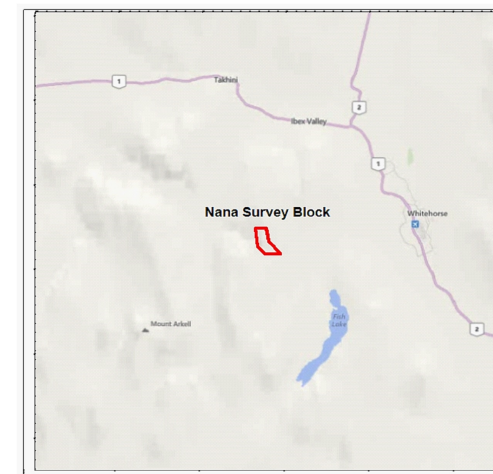




LEGEND

Map Projection:

Projection: Universal Transverse Mercator  
Central Meridian: 225 Zone 8N  
Datum: WGS 84



Survey Date: August 12, 2014  
Survey Base: Whitehorse, YT  
Helicopter Type: Eurocopter AS350  
Registration: C-GOHK  
Survey Technology: Magnetic and Radiometric survey.

SURVEY PARAMETERS:

Helicopter: 40.0 meters  
Magnetometer: 40.0 meters  
Radiometric: 40.0 meters  
Actual Mean Terrain Clearance: 38.7 meters

Nana Survey Block

Survey Line Spacing: 100 meters  
Survey Line Direction: 090°-270°  
Tie Line Spacing: 1000 meters  
Tie Line Direction: 000°-180°

AIRBORNE SYSTEMS:

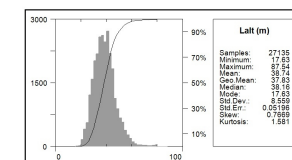
Scintrex CS-3 Magnetometer Sensor

Configuration: Stinger with 3 axis compensation  
Sample Rate: 10 Hz  
Sensitivity: 0.01 nT

Gamma Ray Spectrometer

Pico Envirotec GRS-10 Gamma Spectrometer  
12.6 litres of NaI(Tl) synthetic "downward looking" crystals  
and 4.2 litres of NaI (Tl) synthetic "upward looking" crystals

Sample Rate: 1 Hz

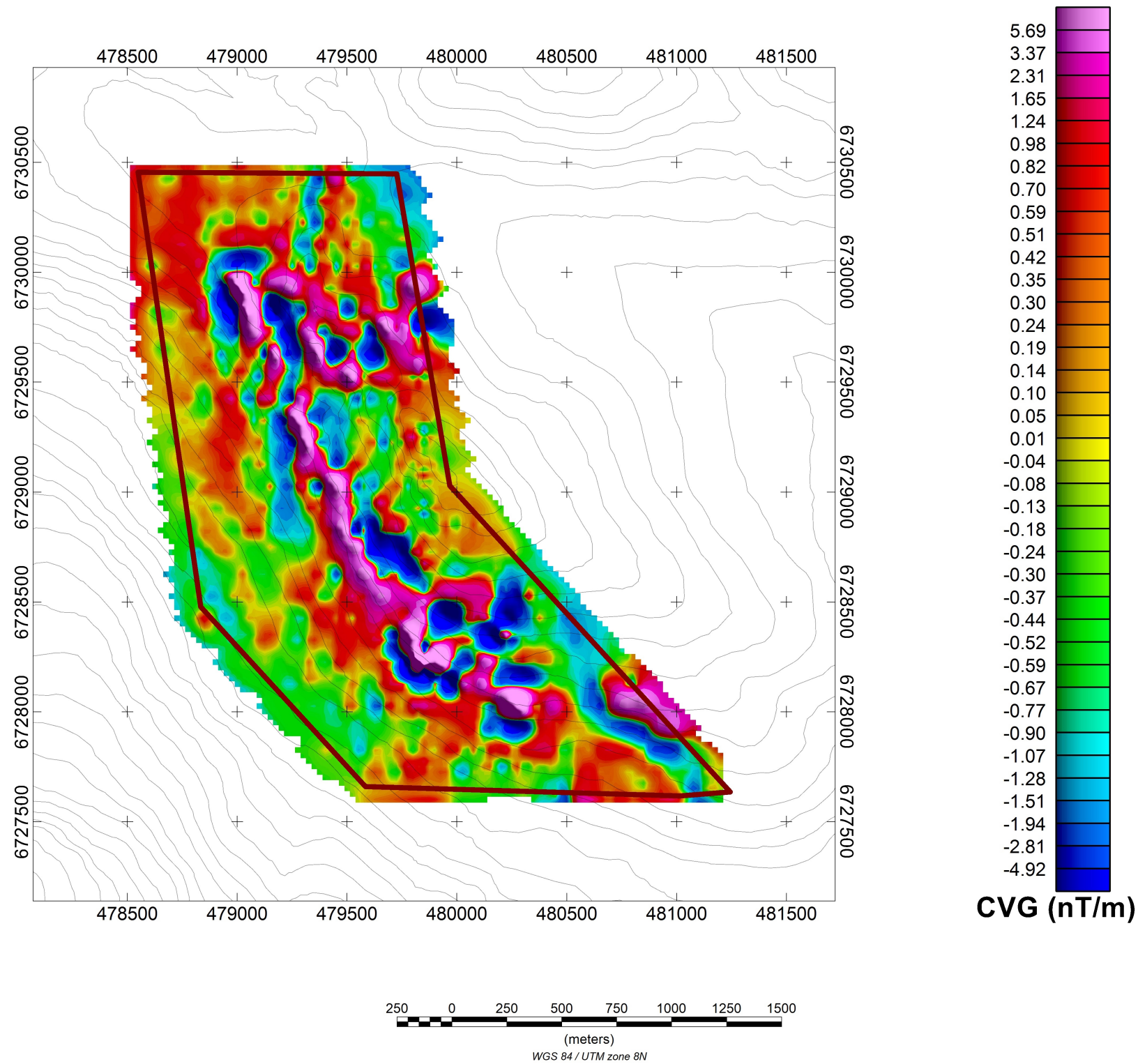


# H. Coyne and Sons

## Magnetic Map

Nana Survey Block  
Residual Magnetic Intensity  
Created By: Precision GeoSurveys Inc.  
October 08, 2014

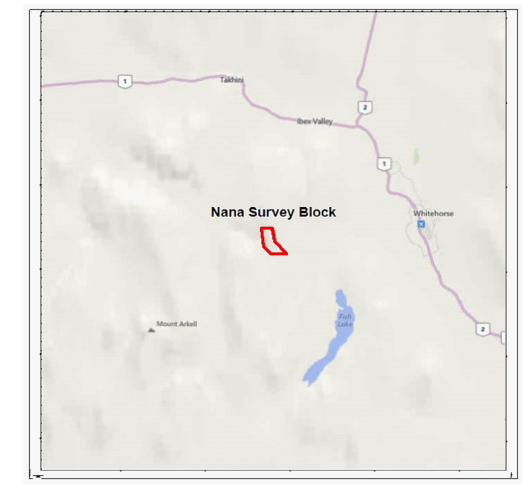
Precision  
GeoSurveys



**LEGEND**

**Map Projection:**

Projection: Universal Transverse Mercator  
Central Meridian: 225 Zone 8N  
Datum: WGS 84



Survey Date: August 12, 2014  
Survey Base: Whitehorse, YT  
Helicopter Type: Eurocopter AS350  
Registration: C-GOHK  
Survey Technology: Magnetic and Radiometric survey.

**SURVEY PARAMETERS:**

Helicopter: 40.0 meters  
Magnetometer: 40.0 meters  
Radiometric: 40.0 meters  
Actual Mean Terrain Clearance: 38.7 meters

**Nana Survey Block**

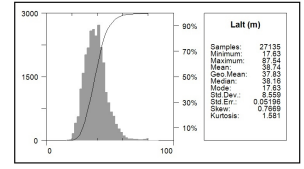
Survey Line Spacing: 100 meters  
Survey Line Direction: 090°-270°  
Tie Line Spacing: 1000 meters  
Tie Line Direction: 000°-180°

**AIRBORNE SYSTEMS:**

Scintrex CS-3 Magnetometer Sensor  
Configuration: Stinger with 3 axis compensation  
Sample Rate: 10 Hz  
Sensitivity: 0.01 nT

Gamma Ray Spectrometer  
Pico Envirotec GRS-10 Gamma Spectrometer  
12.6 litres of NaI(Tl) synthetic "downward looking" crystals  
and 4.2 litres of NaI (Tl) synthetic "upward looking" crystals

Sample Rate: 1 Hz



**H. Coyne and Sons**

**Magnetic Map**

Nana Survey Block  
Calculated Vertical Gradient  
Created By: Precision GeoSurveys Inc.  
October 08, 2014

