

ARCHER, CATHRO & ASSOCIATES (1981) LIMITED
1016 -510 West Hastings Street
Vancouver, B.C. V6B 1L8

Telephone: 604-688-2568

Fax: 604-688-2578

ASSESSMENT REPORT

describing

GEOLOGICAL MAPPING AND LITHOGEOCHEMICAL SAMPLING

Field work performed between June 9 and 12, 2013

at the

LIMESTONE PROPERTY

LS 1-20 YC82804-YC82823

located at

Latitude 61°33' N; Longitude 135°49' W
NTS 105/E12

in the

Whitehorse Mining District
Yukon Territory

prepared by

Archer, Cathro & Associates (1981) Limited

for

STRATEGIC METALS LTD.

by

J. Tarswell, B.Sc., GIT

May 2014

CONTENTS

INTRODUCTION	1
PROPERTY LOCATION, CLAIM DATA AND ACCESS	1
HISTORY AND PREVIOUS WORK	1
GEOMORPHOLOGY	2
REGIONAL GEOLOGY	2
PROPERTY GEOLOGY	3
LITHOGECHEMISTRY	4
DISCUSSION AND CONCLUSIONS	6
REFERENCES	7

APPENDICES

I	STATEMENT OF QUALIFICATIONS
II	STATEMENT OF EXPENDITURES
III	CROSS SECTIONS
IV	CERTIFICATES OF ANALYSIS
V	ROCK SAMPLE DESCRIPTIONS

FIGURES

<u>No.</u>	<u>Description</u>	<u>Follows Page</u>
1	Property Location	1
2	Claim Locations	1
3	Historical Workings	2
4	Tectonic Setting	2
5	Geology	3

TABLES

<u>No.</u>	<u>Description</u>	<u>Page</u>
I	1997 RC Drill Hole Data	2
II	Lithological Units	3
III	Outcrop "A" Chip Sample Results	5
IV	Additional Chip Sample Results	5

INTRODUCTION

The Limestone property (the Property) covers a limestone prospect, which lies alongside the Klondike Highway in southern Yukon. The claims were staked based on potential to host an industrial grade limestone quarry. The property is owned 100% by Strategic Metals Ltd.

This report describes a four day exploration program that was conducted from June 9 to 12, 2013 by Archer, Cathro & Associates (1981) Limited on behalf of Strategic Metals. Work consisted of geological mapping and lithochemical sampling that was conducted to determine the purity of limestone exposed on a ridge of the property. The author compiled and interpreted the 2013 data, and his Statement of Qualifications appears in Appendix I. A Statement of Expenditures is presented in Appendix II.

PROPERTY LOCATION, CLAIM DATA AND ACCESS

The Property is located in southern Yukon, approximately 10 km north of Braeburn Lodge and immediately east of the Klondike Highway. It is centred at latitude 61°33' north and longitude 135°49' west on NTS map sheet 105E/12 (Figure 1).

The Property comprises 20 contiguous mineral claims covering approximately 405 ha (4 km²). All claims are registered in the name of Archer Cathro, which holds them in trust for Strategic Metals. Claim data are listed below, while the locations of individual claims are shown on Figure 2.

<u>Claim Name</u>	<u>Grant Number</u>	<u>Expiry Date*</u>
LS 1-20	YC82804-YC82823	April 17, 2019

* Expiry date includes 2013 work that has been filed, but not yet accepted for assessment credit.

In 2013, access to the Property was by truck from Whitehorse via the Klondike Highway, which is usable in all seasons by two wheel drive vehicles. The Whitehorse-Faro power transmission line runs adjacent to the highway and through the Property. A short (100 m) unmaintained access road connects the highway to the power line. In 1997, a tote trail was constructed using a bulldozer, from the access road to the highest ridge on the property. The field crew walked the tote trail during the 2013 program.

The Property lies within the traditional territories of the Kwanlin Dun, Ta'an Kwach'an and Little Salmon/Carmacks first nations, which have all completed land claims agreements with Canada and Yukon.

HISTORY AND PREVIOUS WORK

The area of the LS claims was first staked by 14844 Yukon Inc. in 1995 as the Mac and Jeannie claims. This claim block was expanded in 1996, and the entire property was then optioned to 145976 Yukon Inc.

STRATEGIC METALS LTD.

FIGURE 1
ARCHER, CATHRO & ASSOCIATES (1981) LIMITED

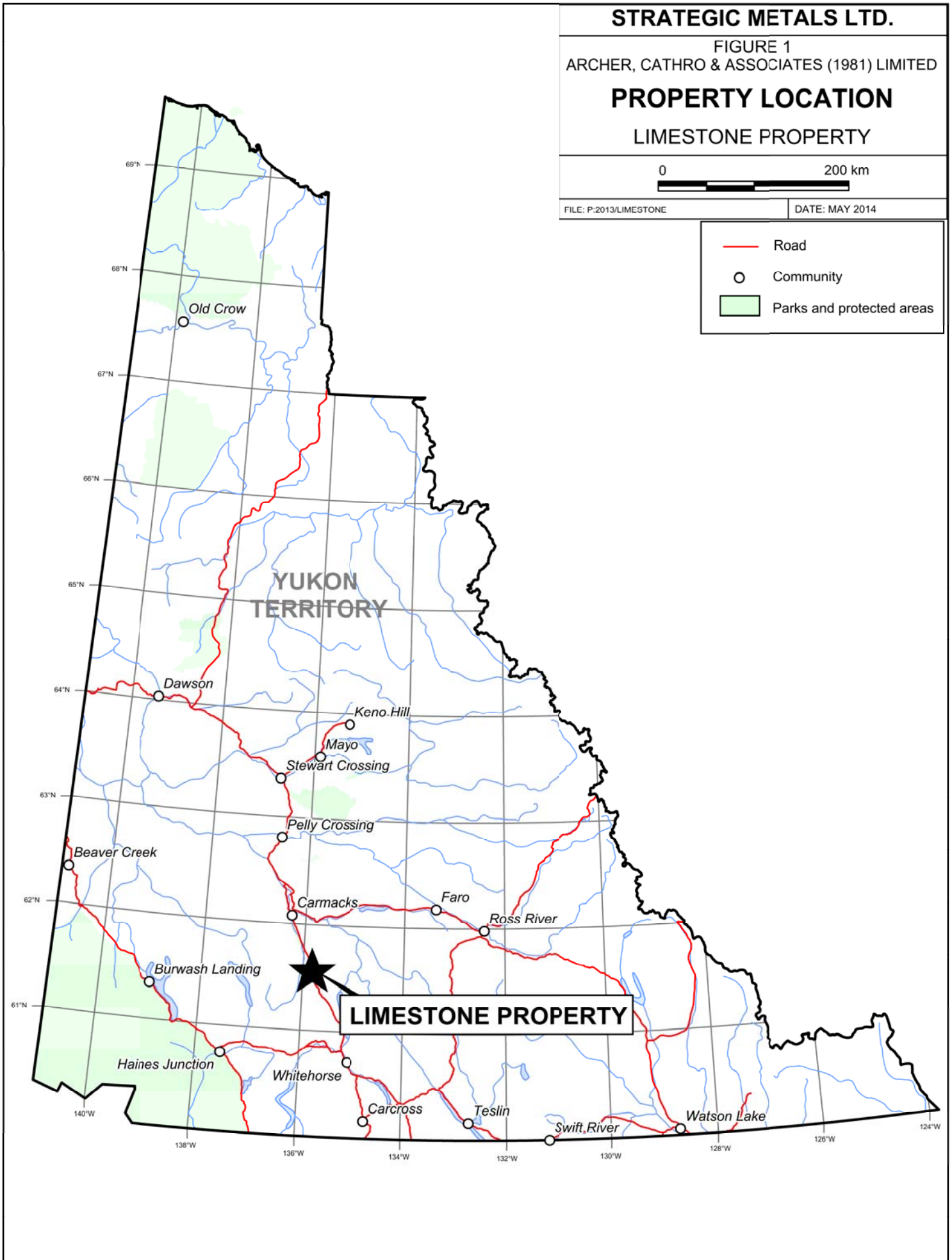
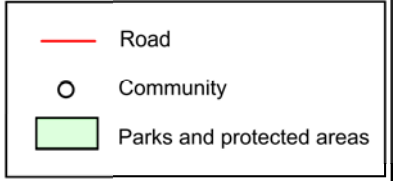
PROPERTY LOCATION

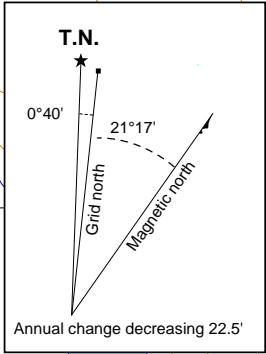
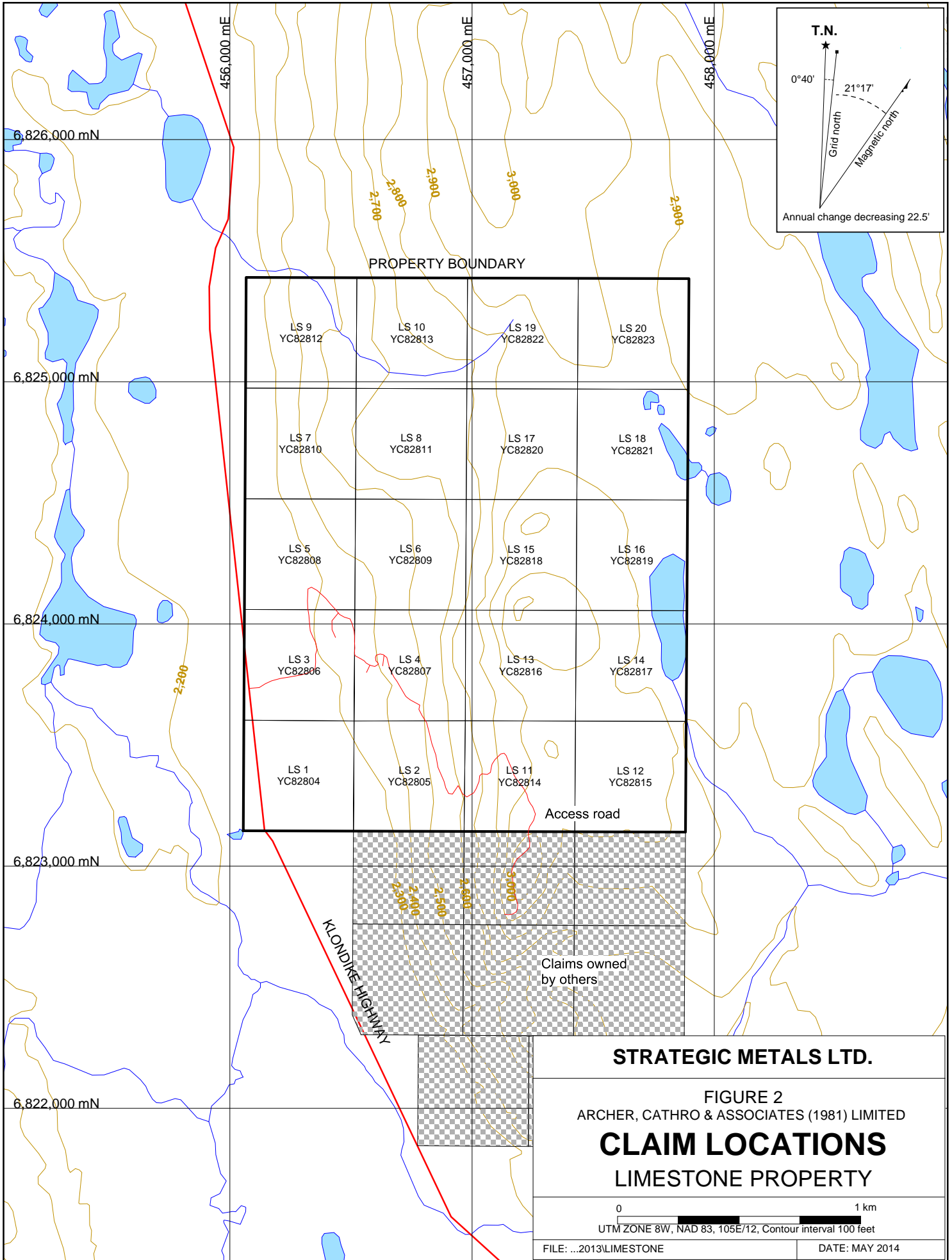
LIMESTONE PROPERTY



FILE: P:2013/LIMESTONE

DATE: MAY 2014





PROPERTY BOUNDARY

LS 9 YC82812	LS 10 YC82813	LS 19 YC82822	LS 20 YC82823
LS 7 YC82810	LS 8 YC82811	LS 17 YC82820	LS 18 YC82821
LS 5 YC82808	LS 6 YC82809	LS 15 YC82818	LS 16 YC82819
LS 3 YC82806	LS 4 YC82807	LS 13 YC82816	LS 14 YC82817
LS 1 YC82804	LS 2 YC82805	LS 11 YC82814	LS 12 YC82815

Access road

Claims owned by others

KLONDIKE HIGHWAY

STRATEGIC METALS LTD.

FIGURE 2
ARCHER, CATHRO & ASSOCIATES (1981) LIMITED

CLAIM LOCATIONS
LIMESTONE PROPERTY

0 1 km
UTM ZONE 8W, NAD 83, 105E/12, Contour interval 100 feet

In 1997, 145976 Yukon Inc. completed blast trenching, sampling and seven reverse circulation (RC) drill holes totalling 193.55 m. Six of the seven drill holes were logged and sampled. One hundred and nine samples of drill cuttings, each 1.52 m in length, were analyzed for a suite of whole rock oxides and loss on ignition (Doherty, 1999). Figure 3 illustrates locations of the RC drill holes and the tote trail. Table I lists weighted average analyses for iron oxide and calcium carbonate (CaCO₃) for each drill hole. Hole RC97-3 contained the most CaCO₃ and included an industrial grade interval that assayed greater than 95% CaCO₃.

Table I – 1997 RC Drill Hole Data (Doherty, 1999)

Hole	Length (m)	FeO ₃ %	CaCO ₃ %
RC97-1	21.34	1.78	67.60
RC97-2	30.48	3.66	61.12
RC97-3	36.58	0.25	93.22
including	10.67	0.13	95.23
RC97-4	19.81	4.18	53.23
RC97-5	30.48	1.11	78.74
RC97-6	30.48	1.13	70.26
RC97-7	24.38	NA*	NA*

* RC97-7 was not logged or sampled due to the ‘sooty’ nature of the limestone.

GEOMORPHOLOGY

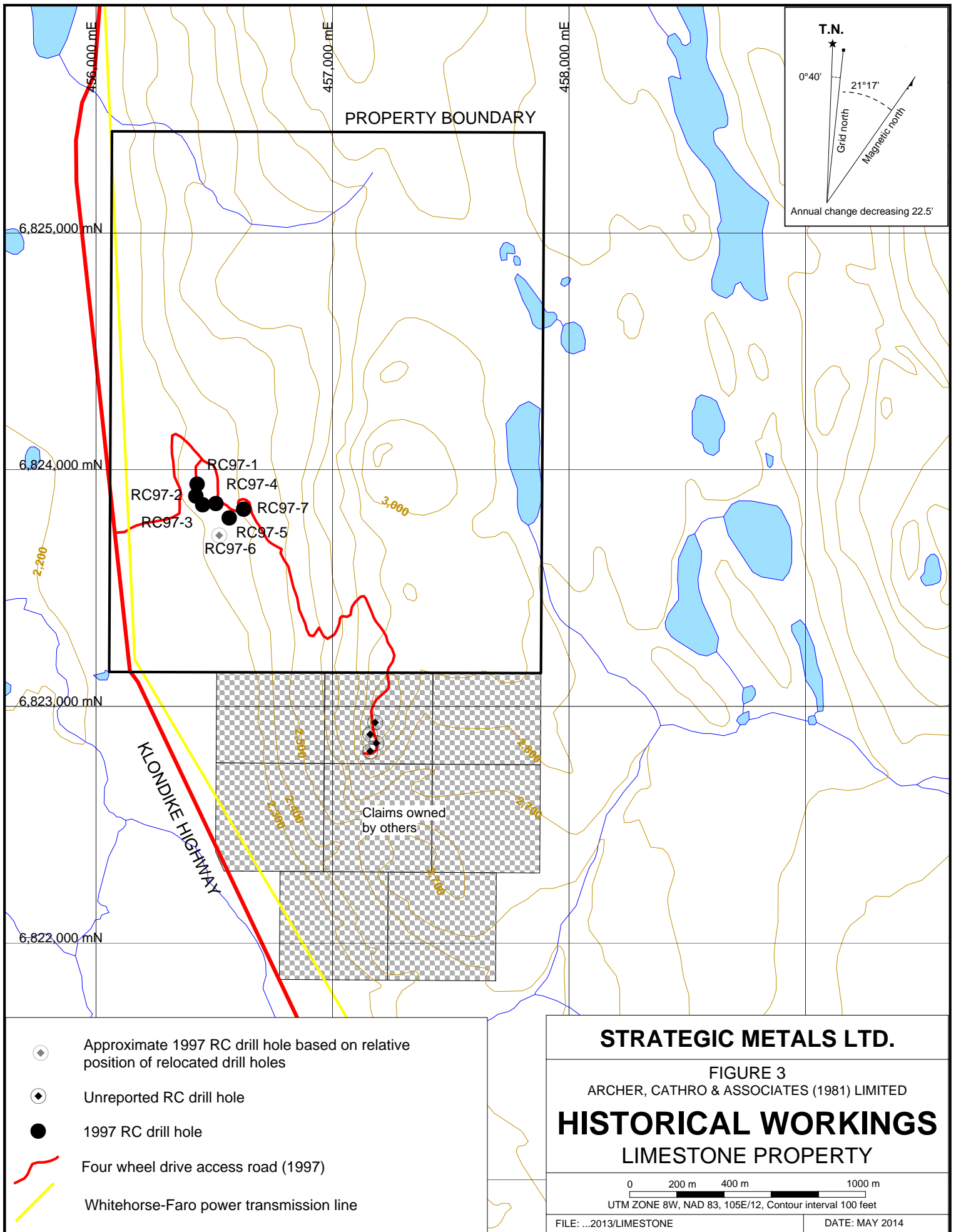
The Property is located within the Lewes Plateau physiographic region. Moderate relief and elevations ranging from 670 to 1000 m characterize the area. Only 10% of the Property has exposed bedrock, but talus and felsenmeener are common on hillsides. A thick mantle of glacial till and outwash cover valley floors.

Vegetation consists of white spruce, lodgepole pine and aspen forests with sparse willows in creeks. A few small creeks drain the Property, all of which belong to the Yukon River watershed.

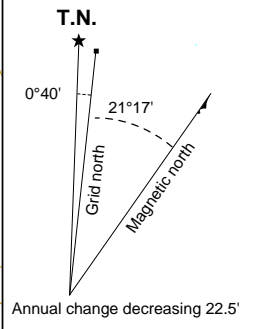
The climate in the area of the Property is typical of northern continental regions with long, cold winters, truncated fall and spring seasons and short, mild summers. Although summers are relatively mild, arctic cold fronts often cover the area and snowfall can occur in any month. The Property is mostly snow free from early April to late October.

REGIONAL GEOLOGY

The Property lies within Whitehorse Trough, part of Stikine Terrane (Figure 4). Whitehorse Trough is a northwest-trending, fore-arc basin comprised of Mesozoic volcanic and sedimentary rocks. Whitehorse Trough constitutes the northern end of the Intermontane Belt and is bounded by the Omineca Crystalline Belt to the east and the Coast Plutonic Complex to the west Canadian Cordillera.



PROPERTY BOUNDARY



RC97-1
 RC97-2
 RC97-3
 RC97-4
 RC97-5
 RC97-6
 RC97-7

3,000

2,200

2,500

2,800

2,300

2,400

2,700

Claims owned by others

KLONDIKE HIGHWAY

- ◊ Approximate 1997 RC drill hole based on relative position of relocated drill holes
- ◈ Unreported RC drill hole
- 1997 RC drill hole
- Four wheel drive access road (1997)
- Whitehorse-Faro power transmission line

STRATEGIC METALS LTD.

FIGURE 3
 ARCHER, CATHRO & ASSOCIATES (1981) LIMITED

HISTORICAL WORKINGS
 LIMESTONE PROPERTY

0 200 m 400 m 1000 m

UTM ZONE 8W, NAD 83, 105E/12, Contour interval 100 feet

STRATEGIC METALS LTD.

FIGURE 4

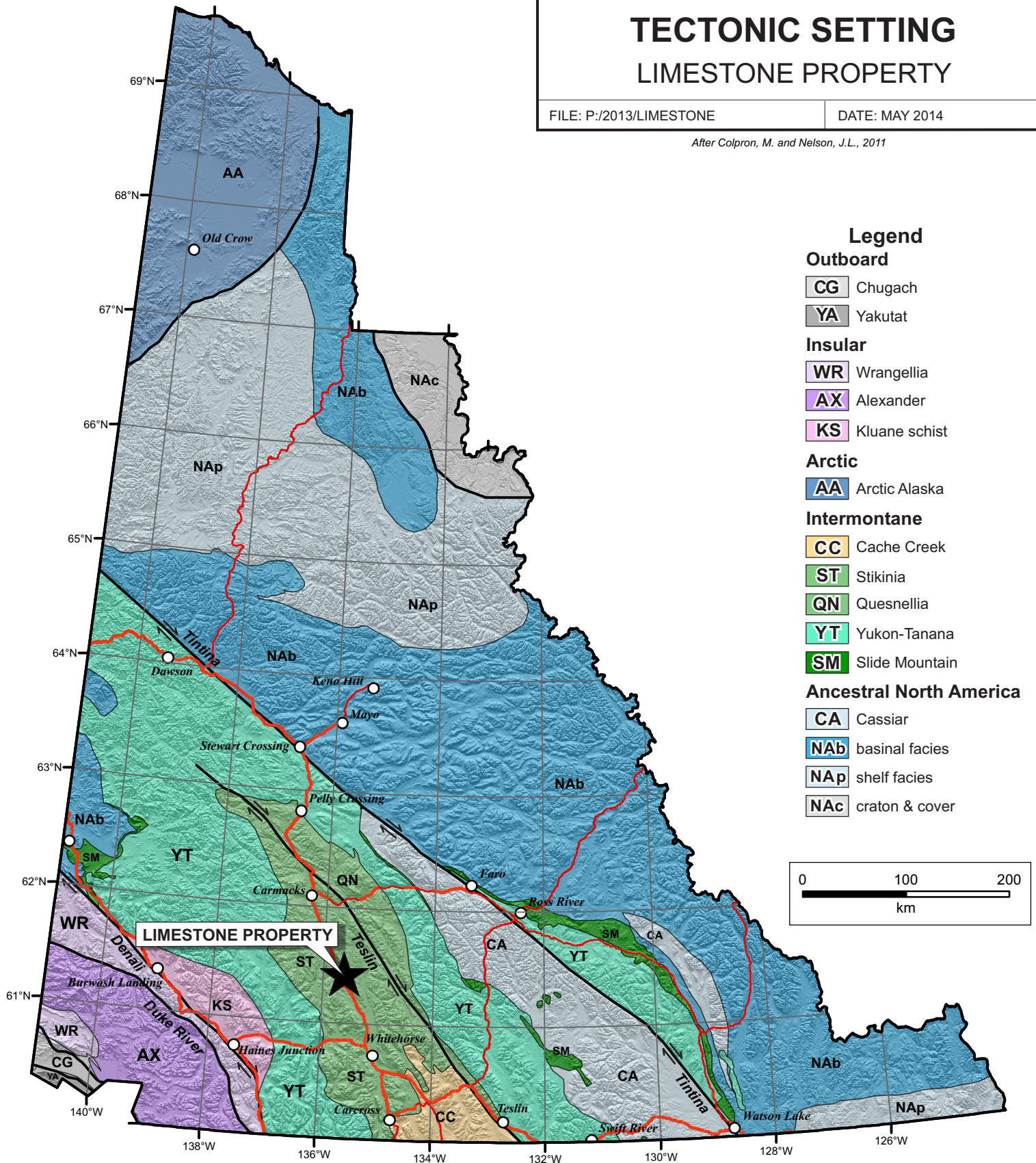
ARCHER, CATHRO & ASSOCIATES (1981) LIMITED

TECTONIC SETTING LIMESTONE PROPERTY

FILE: P:/2013/LIMESTONE

DATE: MAY 2014

After Colpron, M. and Nelson, J.L., 2011



During Late Triassic, an island arc assemblage consisting of a 7,000 m thick succession of Lewes River Group aphyric to augite-phyric basaltic andesite flows, breccias and tuff, conglomerate, wacke, limestone and shale was deposited within Whitehorse Trough (Long, 2005).

The geology in the vicinity of the Property consists of the Aksala Formation of the Lewes River Group, which has two main members (Casca and Hancock). These units are described in Table II.

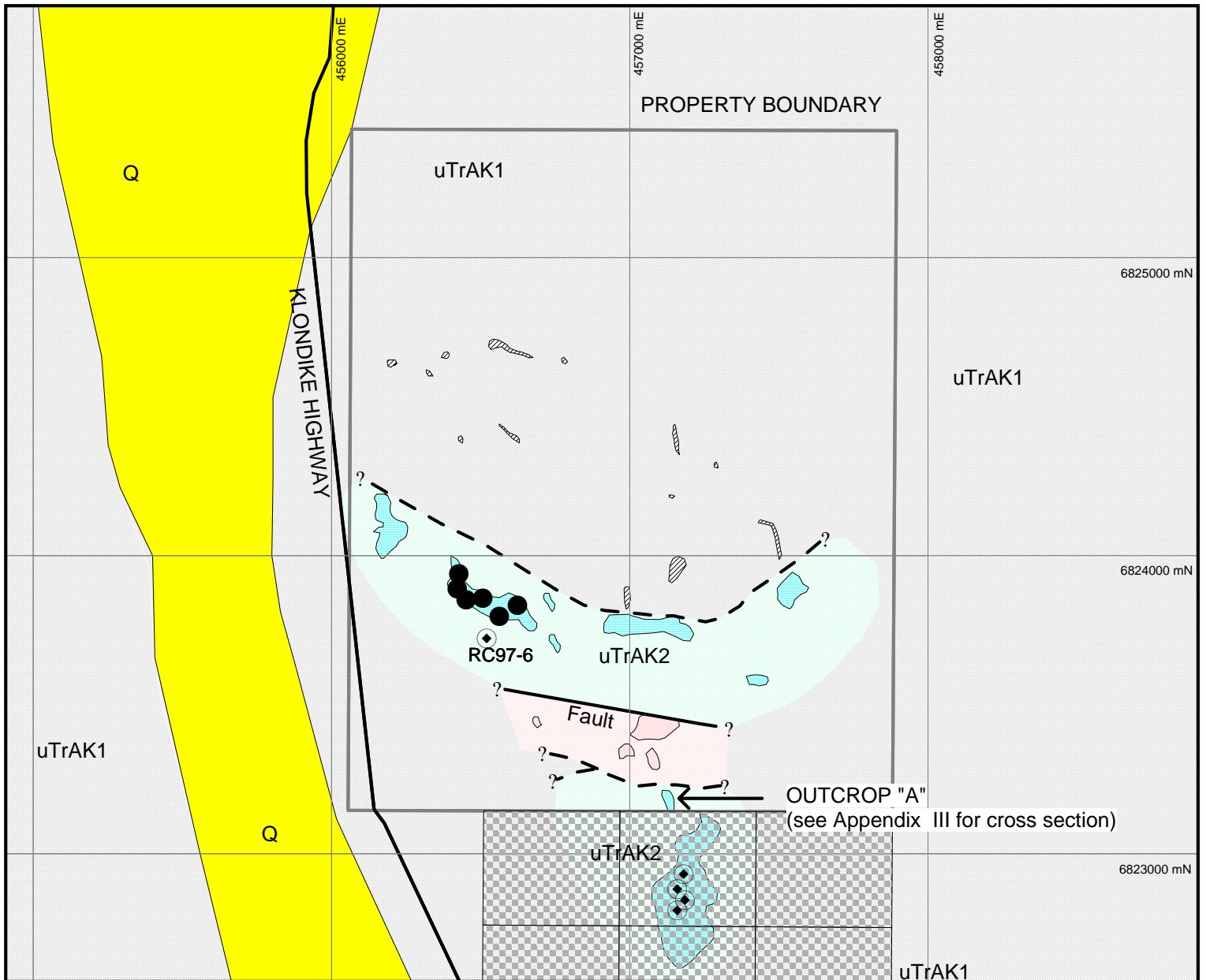
Table II – Lithological Units (after Gordey and Makepeace, 1999).

Unit Name	Age	Map Name	Description
Overburden	Quaternary	Q	Unconsolidated glacial, glaciofluvial and glaciolacustrine deposits; fluvial silt, sand, and gravel, and local volcanic ash, in part with cover of soil and organic deposits.
Lewes River Group-Aksala Formation	Upper Triassic, Carnian to Norian	Casca Member (uTrAK1)	Brown shale, black and minor red siltstone, greenish calcareous greywacke and inter-bedded bioclastic, argillaceous limestone, igneous or limestone clast pebble conglomerate, lahaaric debris flows.
		Hancock Member (uTrAK2)	Massive to thickly bedded limestone; minor thin bedded argillaceous and sooty limestone; coarse crystalline, massive dolostone; minor laminated chert; massive to poorly bedded, limestone conglomerate debris flow.

PROPERTY GEOLOGY

In 2013, Strategic Metals performed 1:2500 scale mapping in the southwestern part of the Property. Figure 5 illustrates regional geology with outcrop locations. Mapping identified a number of limestone exposures along the west side of a northerly-trending ridge. The Hancock Member comprises thick limestone reefs and minor argillaceous limestone lenses, which form 5 to 30 m high, locally cliffy outcrops. The Hancock Member is surrounded by the dominantly clastic Casca Member, representing quiescent depositional episodes (Yarnell et al., 1998). A Norian age for the Hancock Member is constrained by conodonts and macrofossils (Hart, 1997).

A series of outcrops of Casca Member occur north of the Hancock Member limestone bluffs. The main Casca Member lithology mapped is arkose.



QUATERNARY OVERBURDEN

Q Unconsolidated glacial, glaciofluvial and glaciolacustrine deposits; fluvial silt, sand, and gravel, and local volcanic ash, in part with cover of soil and organic deposits

UNKNOWN

? Feldspar porphyry; felsic intrusion with associated aplite dykes.

**UPPER TRIASSIC, CARNIAN TO NORIAN
LEWES RIVER GROUP
ASKALA FORMATION**

uTrAK1 **CASCA MEMBER**
Brown shale, black and red minor siltstone, greenish calcareous greywacke and interbedded bioclastic, argillaceous limestone, igneous or limestone clast pebble conglomerate, laharic debris flows

uTrAK2 **HANCOCK MEMBER**
Massive to thickly bedded limestone; minor to thin bedded argillaceous and sooty limestone; coarse crystalline, massive dolostone, minor laminated chert; massive to poorly bedded, limestone conglomerate debris flow

◆ Unreported RC drill hole ● 1997 RC drill hole

Claims owned by others

*After Gordey and Makepeace (1999)

STRATEGIC METALS LTD.

FIGURE 5
ARCHER, CATHRO & ASSOCIATES (1981) LIMITED

GEOLOGY
LIMESTONE PROPERTY

0 200 m 400 m 1000 m
UTM ZONE 8W, NAD 83, 105E/12

In the southern part of the map area, an east-trending fault (sense of motion unknown) bisects the limestone. Proximal to this fault, a 200 m thick easterly elongated feldspar porphyry dyke intrudes the limestone.

LITHOGECHEMISTRY

In 2013, a total of 28 continuous chip samples were taken from section lines across six different limestone outcrops. Chip samples ranged from 1.33 to 11.00 m in length. The section lines were orientated perpendicular to the long-axis of each limestone exposure. Hard chain and compass surveys were used to establish section lines and determine the size and orientation of each outcrop. The location of all samples was recorded using a hand-held GPS unit. Cross-sections showing individual section lines are provided in Appendix III while Certificates of Analysis are given in Appendix IV.

Sample preparation was carried out by ALS Minerals in Whitehorse, where the samples were dried, fine crushed to better than 70% passing -2mm before a 250 g split was pulverized to better than 85% passing 75 micron. The fine fractions were then sent to ALS Minerals in North Vancouver, where they were analyzed for 48 elements using a four acid digestion and inductively coupled plasma with atomic emission spectrometry (ME-MS61). Additionally, whole rock composition was determined using a 13 element whole rock fusion package with sample decomposition in lithium borate fusion and analysis by x-ray fluorescence spectroscopy (ME-XRF26) and loss-on-ignition (LOI) at 1000 °C (OA-GRA05). Certificates of Analysis are given in Appendix IV.

The CaCO₃ content of the samples was calculated from the XRF analysis by adding the CaO and LOI values. This calculation assumes that all CaO in the sample was CaCO₃ before the 1000 °C lithium borate fusion process calcinated the limestone to lime, with the evolution of CO₂ accounting for the entire LOI value.

Ten rock samples were collected from Outcrop “A” (Figure 5). Rock Sample Descriptions are located in Appendix V. These samples returned an average grade of 95.2% CaCO₃, with all samples grading over 94.4% CaCO₃. ME-MS61 results indicate that the samples contain only trace amounts of elements that are considered impurities for the production of chemical lime. For most industrial uses, the levels of impurities are more important than the quality of the lime because various calcium compounds can form. This can reduce the reactivity of the lime by blocking the pores that form during the calcination process. Impurities can also exclude lime from being used in certain processes because of unwanted interactions between the impurities and other elements in the process. ME-XRF26 results indicate that the 10 samples from Outcrop “A” have low (averaging 0.65%) magnesium carbonate content, which is important because magnesium carbonate contents at higher levels will yield dolomitic lime, which is less versatile than chemical lime.

Table III shows the CaCO₃ content of each sample from Outcrop “A” as determined by XRF analysis, which is directly proportional to the CaCO₃ content of the original sample. The table also shows the magnesium carbonate levels for each of these samples.

Table III – Outcrop “A” Chip Sample Results

Sample Number	CaO (%)	LOI (%)	CaCO₃ (%)	MgO (%)
M400901	53.2	42.92	96.12	0.62
M400902	52.6	42.79	95.39	0.53
M400903	52.9	42.54	95.44	0.55
M400904	52.4	42.33	94.73	0.53
M400905	53.0	42.38	95.38	0.50
M400906	52.1	42.29	94.39	0.77
M400907	52.3	42.18	94.48	0.71
M400908	52.6	42.55	95.15	0.95
M400909	53.5	42.62	96.12	0.43
M400910	52.2	43.00	95.20	0.97

Another 18 rock samples were collected from the limestone unit, north of the fault and feldspar porphyry dyke. All of those samples returned discouraging results, largely due to high (>2.00%) magnesium oxide (MgO) content and variable CaCO₃ levels. Table IV shows the CaCO₃ and MgO contents of each of the additional samples.

Table IV – Additional Chip Sample Results

Sample Number	CaO (%)	LOI (%)	CaCO₃ (%)	MgO (%)
M400911	50.5	42.84	93.34	2.02
M400912	50.1	40.82	90.92	0.83
M400913	41.2	37.84	79.04	4.02
M400914	46.4	41.89	88.29	4.38
M400915	46.4	41.83	88.23	4.03
M400916	50.0	42.48	92.48	2.40
M400917	47.0	42.39	89.39	4.59
M400918	47.5	41.73	89.23	3.25
M400919	48.3	42.85	91.15	4.11
M400920	46.5	42.43	88.93	5.06
M400921	52.0	43.55	95.55	1.80
M400922	54.8	43.16	97.96	0.77
M400923	51.1	42.49	93.59	1.62
M400924	51.0	43.03	94.03	1.54
M400928	49.4	42.96	92.36	3.29
M400929	53.6	42.77	96.37	0.66
M400930	50.5	42.82	93.32	2.82
M400931	49.2	42.92	92.12	3.63

These unfavourable results are consistent with RC drill results from the reef, on the valley floor to the west.

DISCUSSION AND CONCLUSIONS

Test pitting, bulk sampling, and reverse circulation drilling of limestone reefs on the Property by previous operators produced mixed results for industrial grade limestone, which has very specific chemical parameters requiring a purity of greater than 95% CaCO₃.

Preliminary geological mapping performed in 2008 and 2009 demonstrated that limestone bodies are more widespread than previously documented. In 2013, geological mapping and lithogeochemical sampling of these bodies determined that the chemical parameters required for industrial lime were met in specific areas, particularly within Outcrop "A". Geological mapping suggests this higher grade, southerly limestone reef extends towards the valley bottom to the west, and wraps with topography to the east and west. The northern reef appears to be unsuitable for lime production.

The next phase of exploration should include the use of a track-mounted RC drill or a diamond drill to provide a three-dimensional configuration of the size and composition of the Outcrop "A". Pending favourable results from those tests, heritage studies, wildlife surveys and water quality baseline testing should be conducted. An effort should also be made to consolidate the claims covering the prospective limestone horizon currently owned by other operators.

Respectfully submitted,

ARCHER, CATHRO & ASSOCIATES (1981) LIMITED

A handwritten signature in blue ink, consisting of a stylized, cursive script that starts with a large loop and extends upwards and to the right.

J. Tarswell, B.Sc., GIT

REFERENCES

- Colpron, M. and Nelson, J. L.
 2011 A digital atlas of terranes for the Northern Cordillera; Yukon Geological Survey and British Columbia Geology Survey, BCGS GeoFile 2011-11
http://www.geology.gov.yk.ca/pdf/CanCord_terranes_2011.pdf
- Doherty, R.A.
 1999 Report on the 1997 RC Drill Program on the Mac 1-4 and Jeannie 1-12 claims. Assessment Report 093946 prepared for 145976 Yukon Inc.
- Gordey, S.P. and Makepeace, A.J. (comp.).
 1999 Yukon bedrock geology in Yukon digital geology, Geological Survey of Canada Open File D3826 and Exploration and Geological Services Division, Yukon, Indian and Northern Affairs Canada, Open File 1999-1(D).
- Hart, C.J.R.
 1997 A transect across northern Stikinia: Geology of the northern Whitehorse map area, southern Yukon Territory (105D/13-16). Exploration and Geological Sciences Division, Yukon, Indian and Northern Affairs Canada, Bulletin 8, p. 112.
- Long, D.G.F.
 2005 Sedimentology and hydrocarbon potential of fluvial strata in the Tantalus and Aksala formations, northern Whitehorse Trough, Yukon. In: Yukon Exploration and Geology 2004, D.S. Emond, L.L. Lewis Yukon Geological Survey p. 167-176.
- Yarnell, J.M, Stanley, G. and C.J.R. Hart.
 1998 New paleontological investigations of Upper Triassic shallow-water reef carbonates (Lewes River Group) in the Whitehorse area, Yukon. In: Yukon Exploration and Geology 1998 p. 179-184.

APPENDIX I
STATEMENT OF QUALIFICATIONS

STATEMENT OF QUALIFICATIONS

I, Jared Tarswell, geologist, with business addresses in Whitehorse, Yukon Territory and Vancouver, British Columbia and residential address in Vancouver, British Columbia, hereby certify that:

1. I graduated from the University of British Columbia in 2009 with a B.Sc. majoring in Earth and Environmental Sciences.
2. From 2010 to present, I have been actively engaged as a geologist in mineral exploration in Yukon Territory
3. I am a Geoscientist in Training (GIT) with the Association of Professional Engineers and Geoscientists of British Columbia.
4. I have personally reviewed and interpreted all data resulting from this work.



Jared Tarswell, B.Sc., GIT

APPENDIX II
STATEMENT OF EXPENDITURES

Statement of Expenditures
LS 1-20 Mineral Claims
October 7, 2013

Labour

H. Burrell – geologist – 4 days June at \$765/day	\$ 3,225.60
X. Montague – geologist – 5 days June at \$578/day	3,034.50
J. Ritchie – field assistant – 4 days June at \$440/day	1,848.00
S. Wedge – field assistant – 5 days June at \$408/day	2,142.00
K. Gray – field assistant – 5 days June at \$357/day	<u>1,874.25</u>
	12,124.35

Expenses (incl. management)

Field room and board – 23 mandays at \$130/day	3,139.50
ALS Chemex	<u>1,612.13</u>
	4,751.63

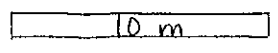
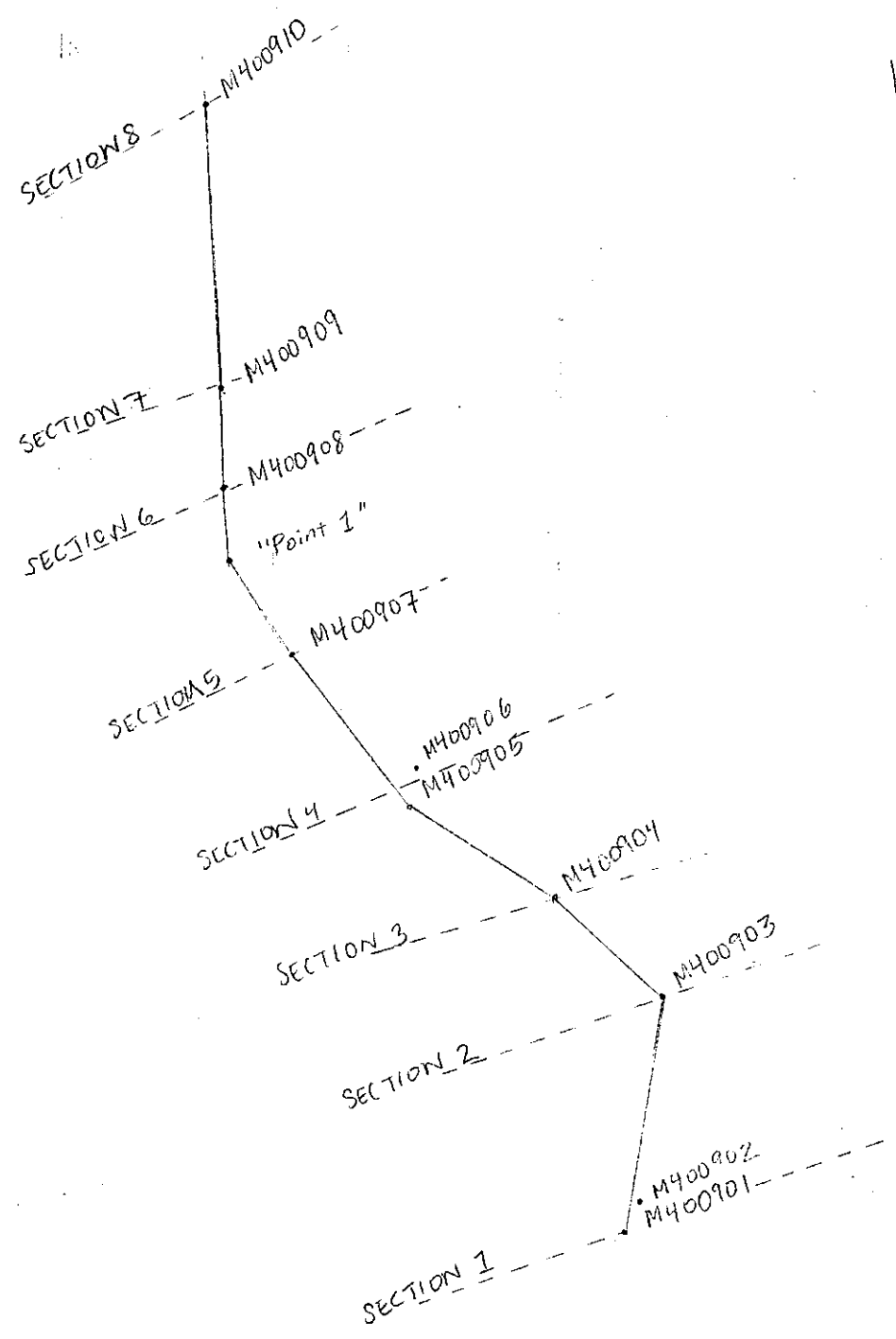
Total \$16,875.98

Total 28 rock samples = \$602.71/sample

APPENDIX III
CROSS SECTIONS

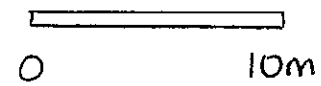
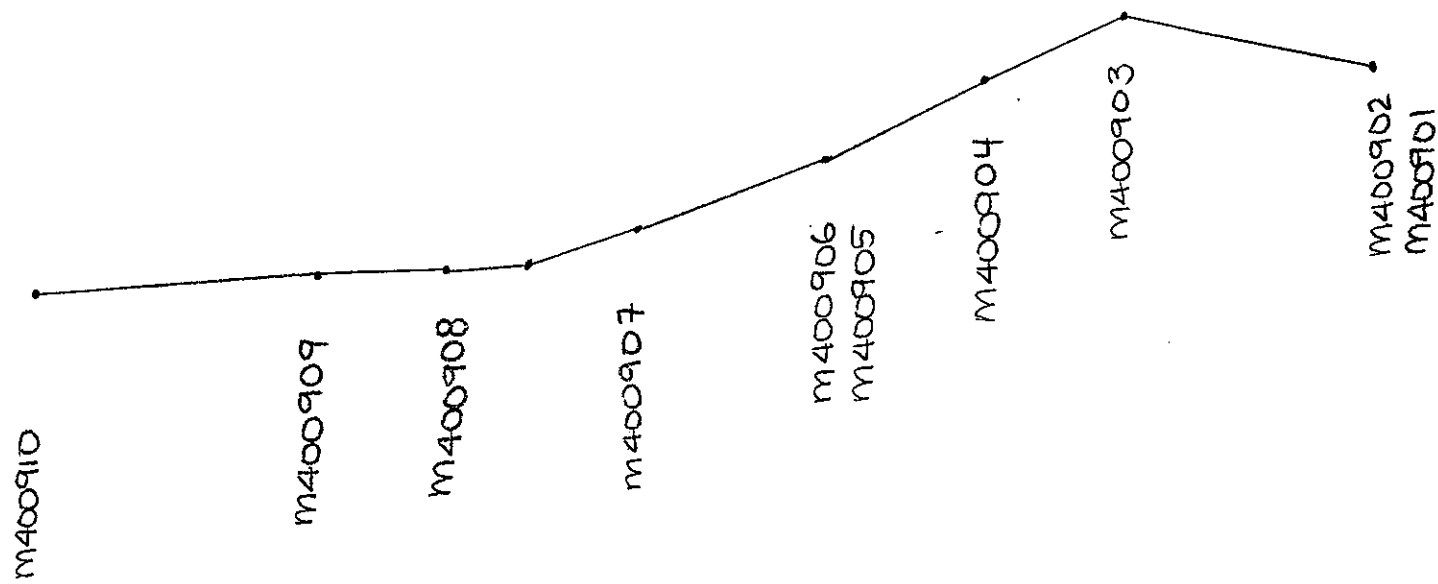


PLAN VIEW

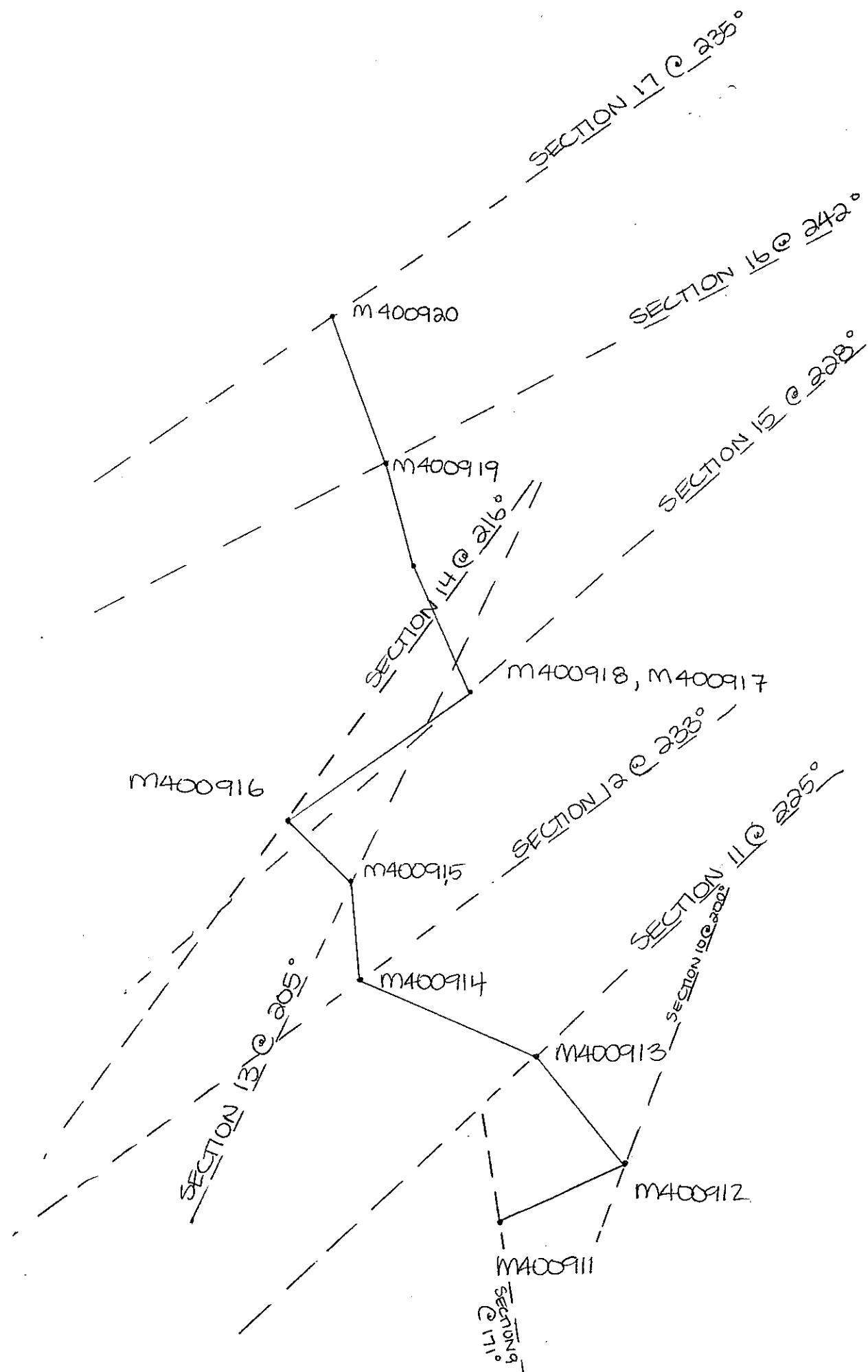


STRATEGIC METALS LTD.	
ARCHER, CATIRO & ASSOCIATES (1981) LIMITED	
SAMPLE LOCATIONS & CROSS SECTION LOCATIONS	
LIMESTONE	
1:300	105G
JUNE 2013	

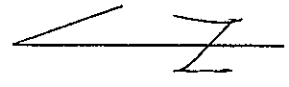
XM



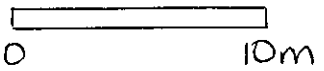
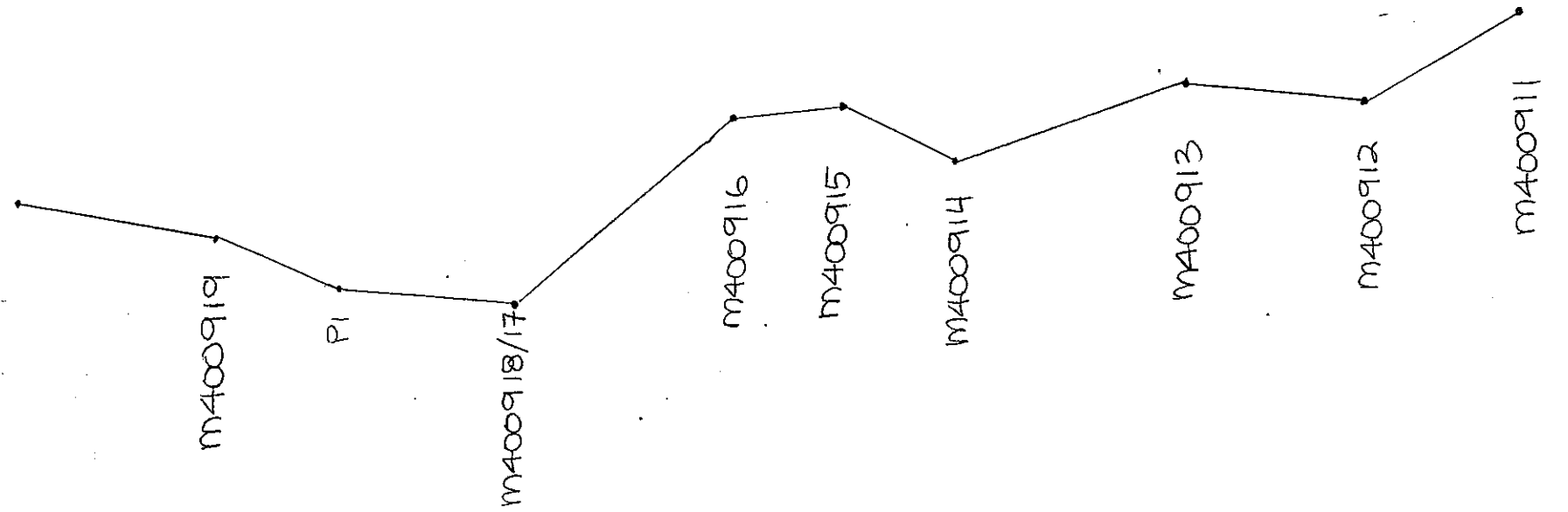
STRATEGIC METALS LTD.	
ARCHER, CATHRO & ASSOCIATES (1981) LIMITED	
CROSS SECTION OF SAMPLES FOR OUTCROP 1.	
1:300 SCALE	JUNE 10/13



STRATEGIC METALS LTD.
ARCHER, CATHRO & ASSOCIATES (Pty) LIMITED
SAMPLE AND CROSS SECTION LOCATIONS OUTCROP 2 LIMESTONE
1:300 SCALE JUNE 2013



OUTCROP 2

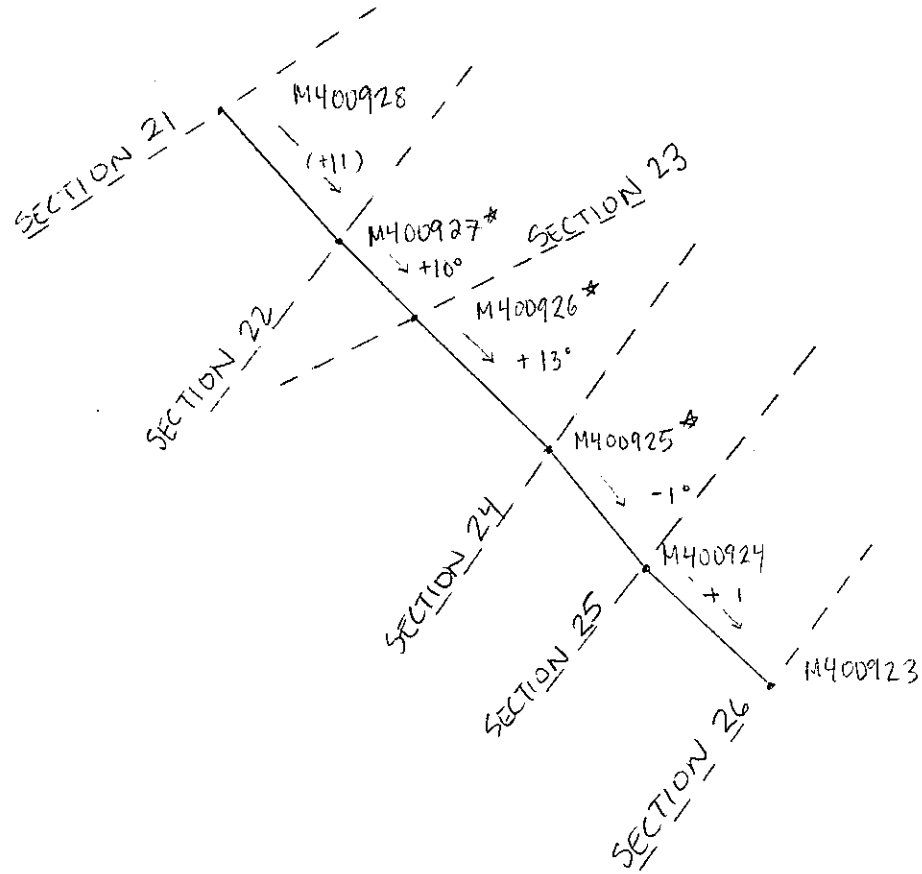


SECTION 18.

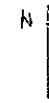
STRATEGIC METALS LTD
ARCHER, CATHRO & ASSOCIATES (1981) LIMITED
CROSS SECTION OF SAMPLES FOR OUTCROP 2 LIMESTONE
1:300 SCALE JUNE 2013



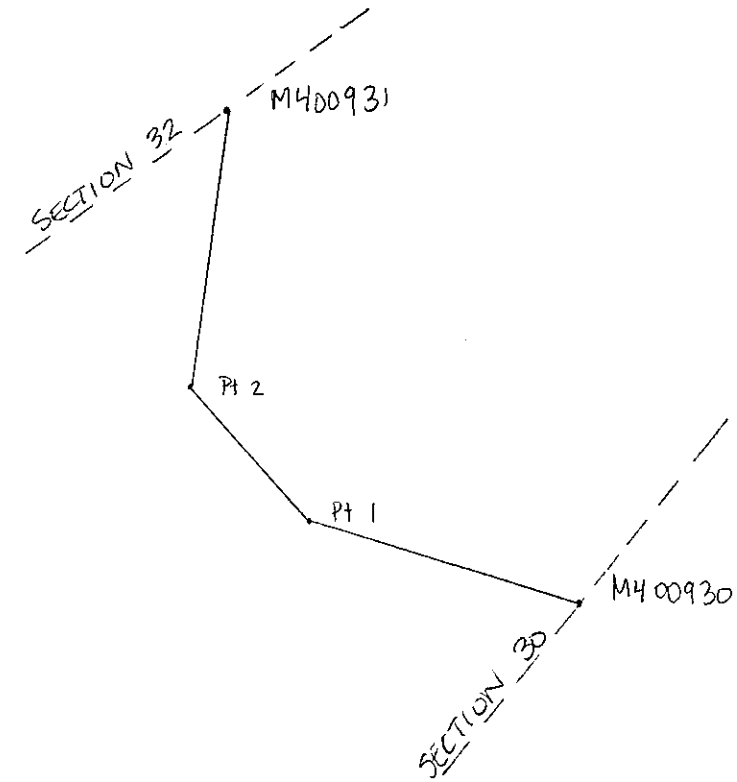
PLAN VIEW
 OUTCROP 4 - need to account
 for dip/slope



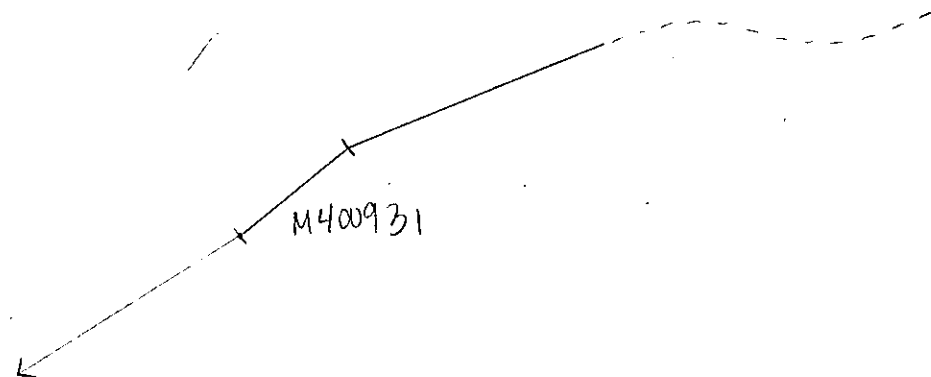
* not sampled



PLAN VIEW
 OUTCROP 6 - need to
 account for dip slope



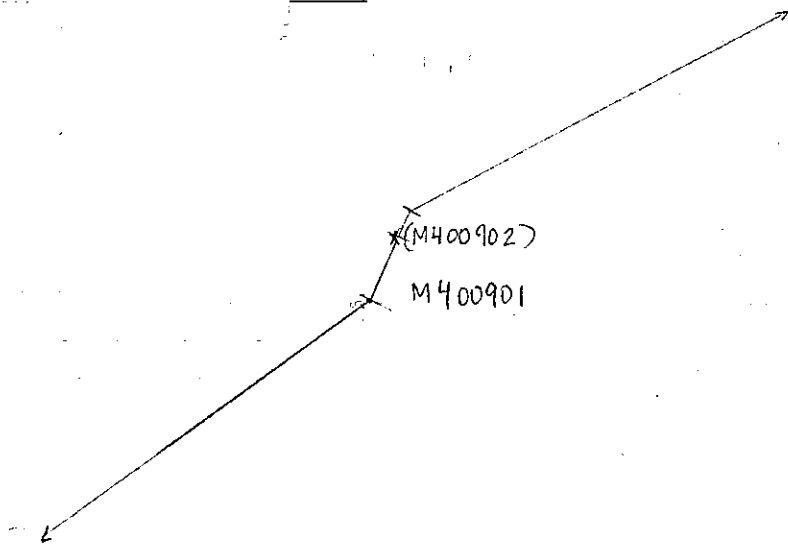
SECTION 32 - OUTCROP 6
054°



STRATEGIC METALS LTD.
 OUTCROP 4 and 6
 PLAN VIEW of SECTIONS
 LIMESTONE

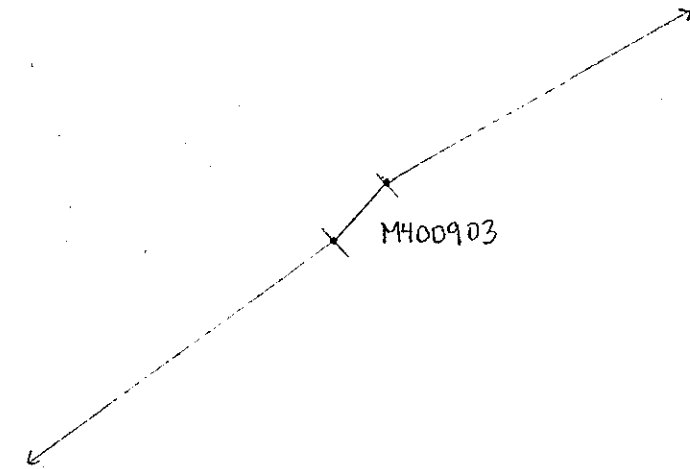
SECTION 1

070°



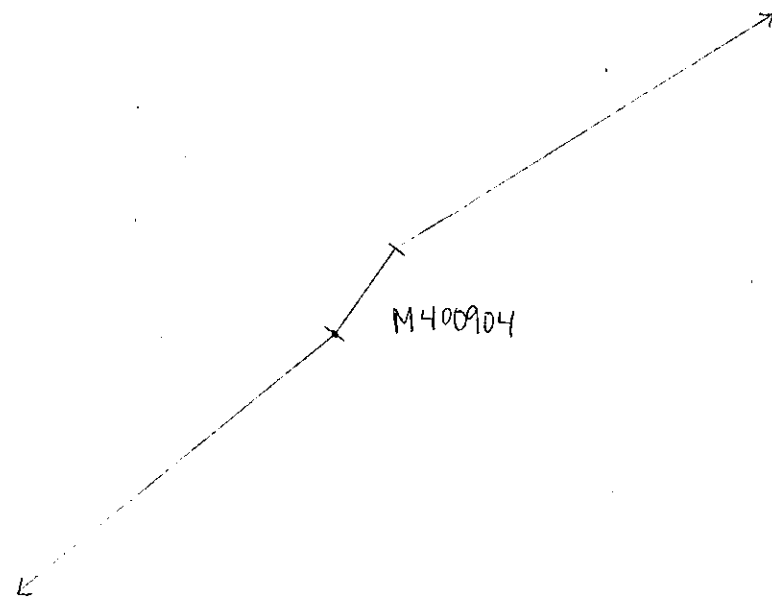
SECTION 2

071°



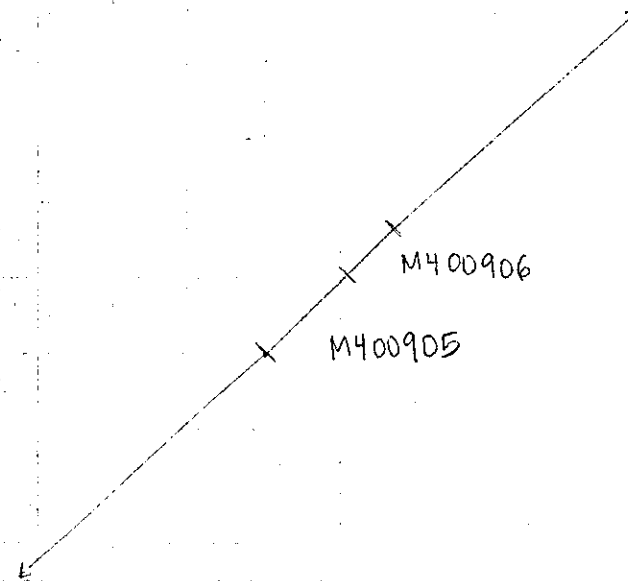
SECTION 3

073°

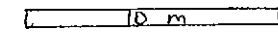


SECTION 4

066°



STRATEGIC METALS LTD.
 ARCHER, CATHMO, & ASSOCIATES (1981) LIMITED
 CROSS
 SECTIONS 1-4
 OUTCROP 1
 LIMESTONE



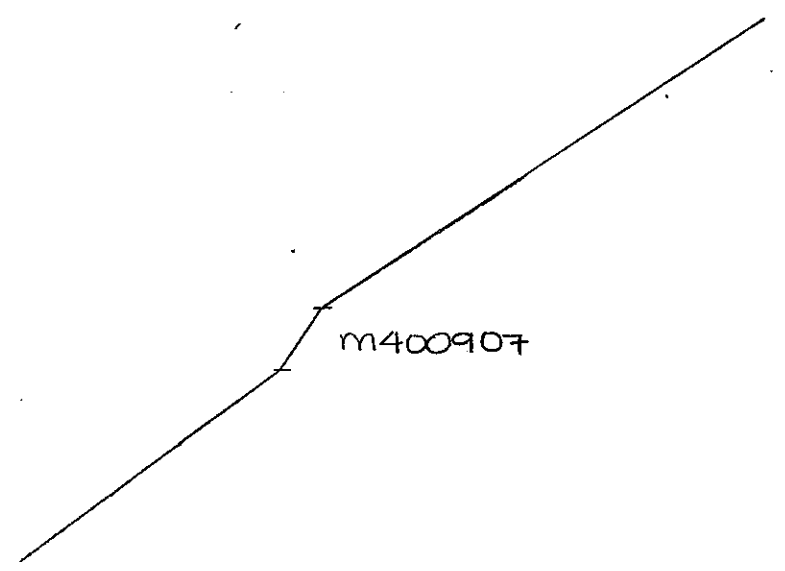
1:300

JUNE 2013

Xm

STRATEGIC METALS LTD.	
LIMESTONE OUTCROP 1	
CROSS SECTIONS	
1:300	JUNE 10/13

063°

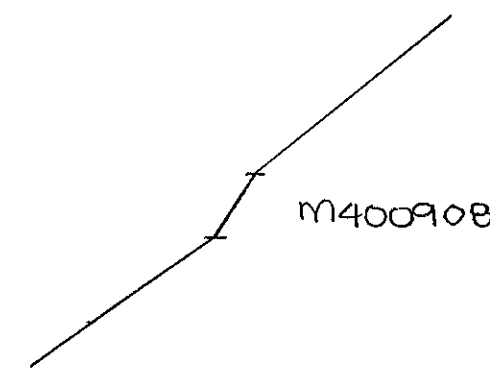


M400907

SECTION 5

AZM 063°
1:300

065°

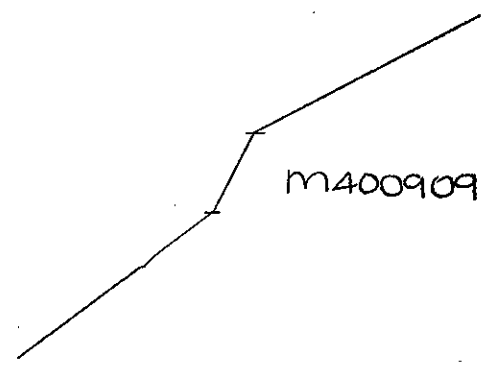


M400908

SECTION 6

AZM 065°
1:300

072°

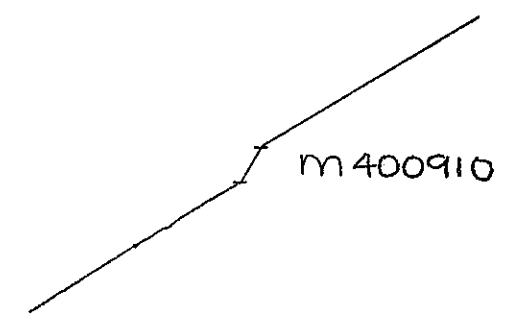


M400909

SECTION 7

AZM 072°
1:300

060°

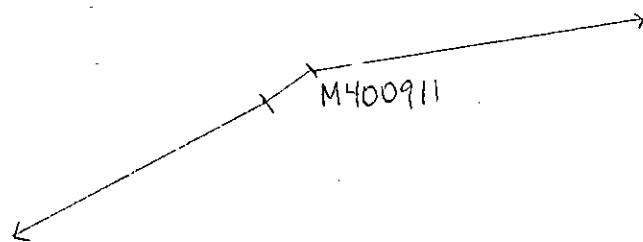


M400910

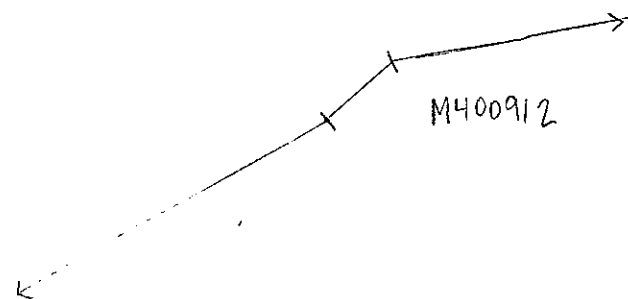
SECTION 8

AZM 060°
1:300

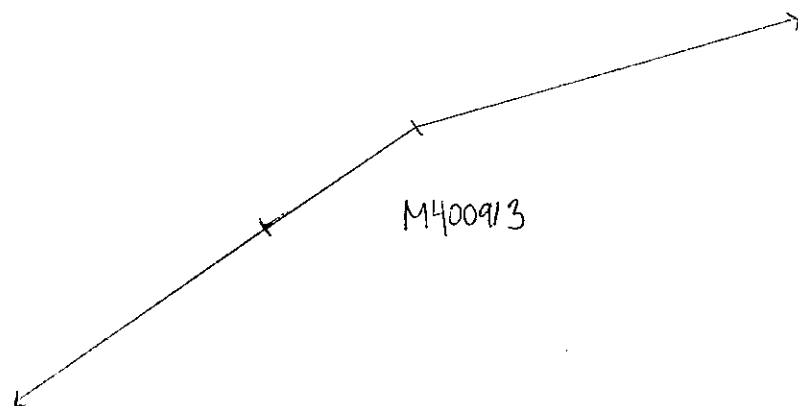
SECTION 9
351 ↘



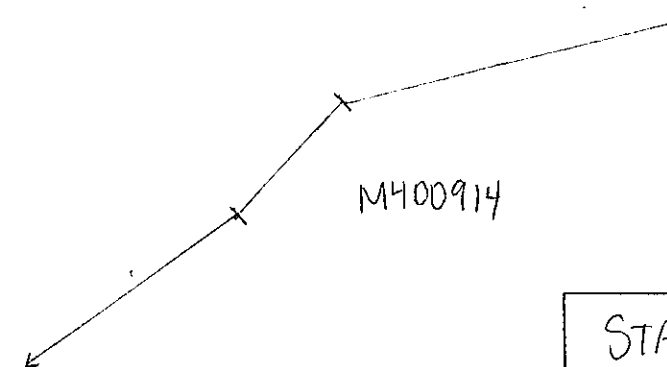
SECTION 10
020 ↘



SECTION 11
045 ↘

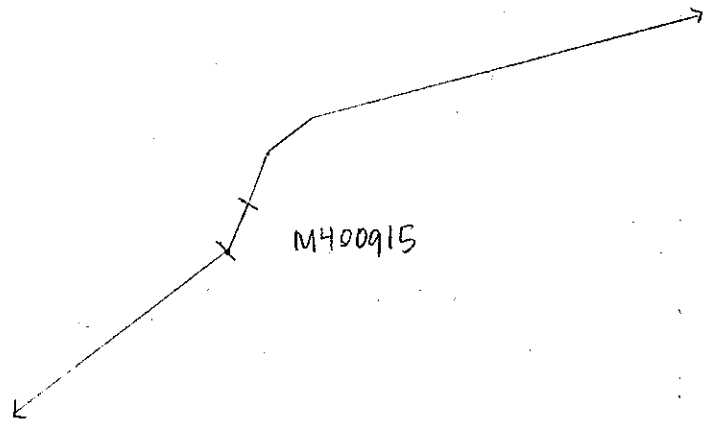


SECTION 12
047 ↘

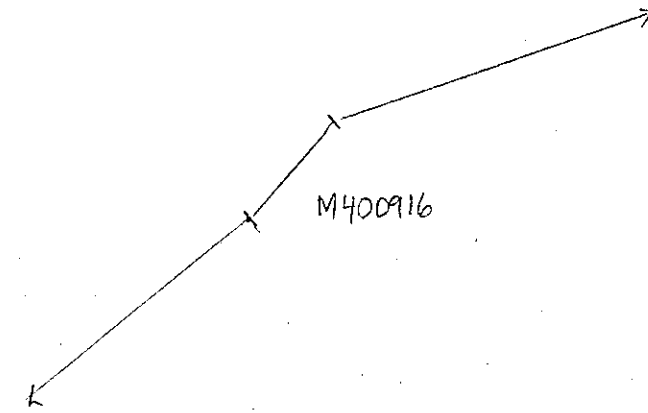


STRATEGIC METALS LTD	
OUTCROP 2	
CROSS SECTIONS 9-12	
LIMESTONE	
11/2000	Xm 11/2000

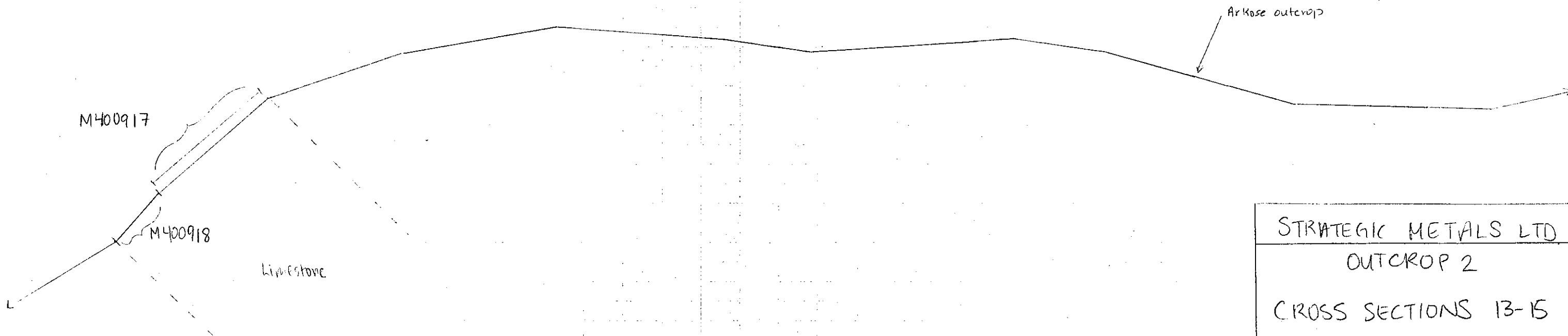
SECTION 13
025



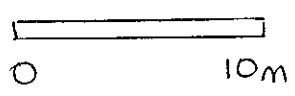
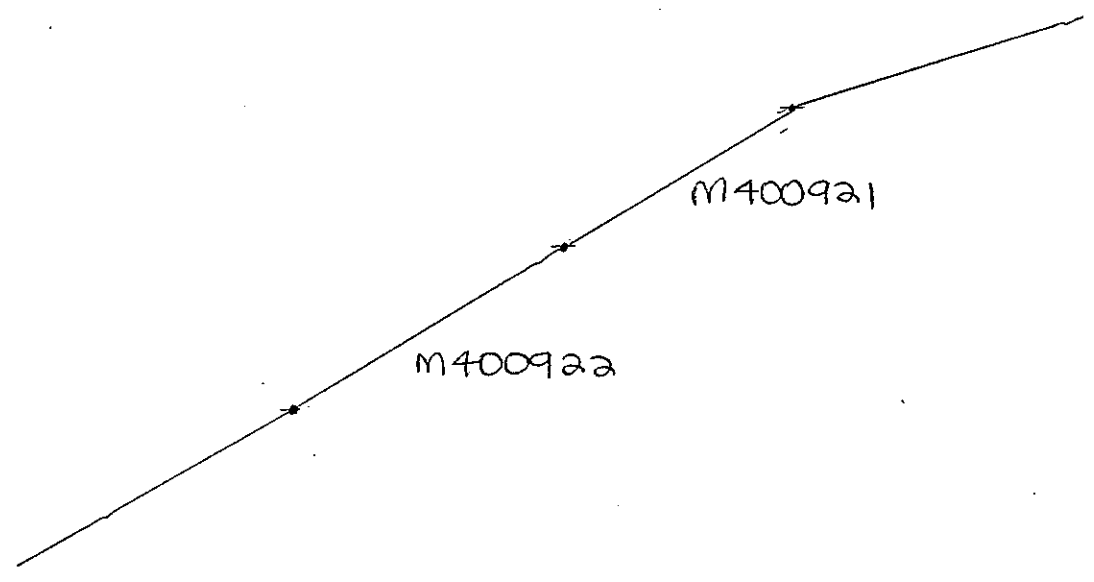
SECTION 14
036



SECTION 15
048

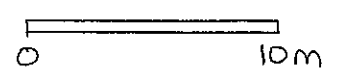
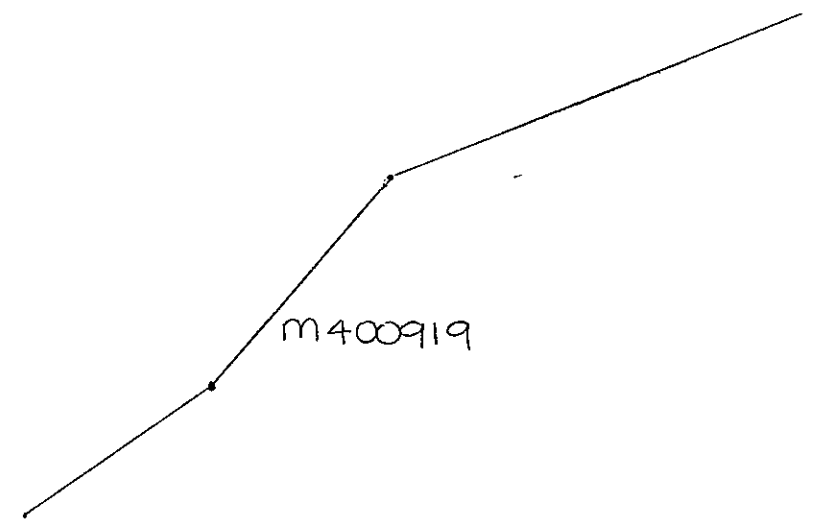


STRATEGIC METALS LTD	
OUTCROP 2	
CROSS SECTIONS 13-15	
LIMESTONE	
	XM
112m	June 2012



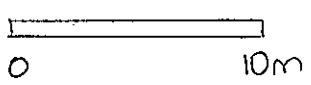
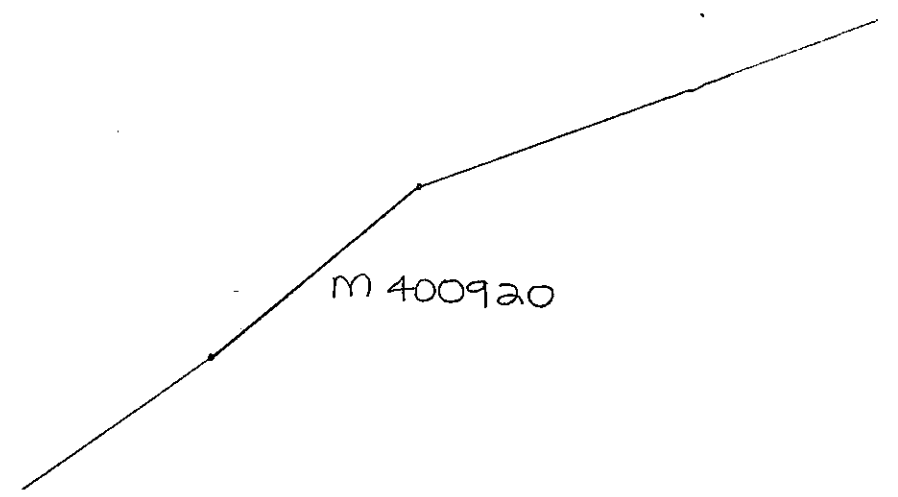
SECTION 19

1:300 SCALE
037



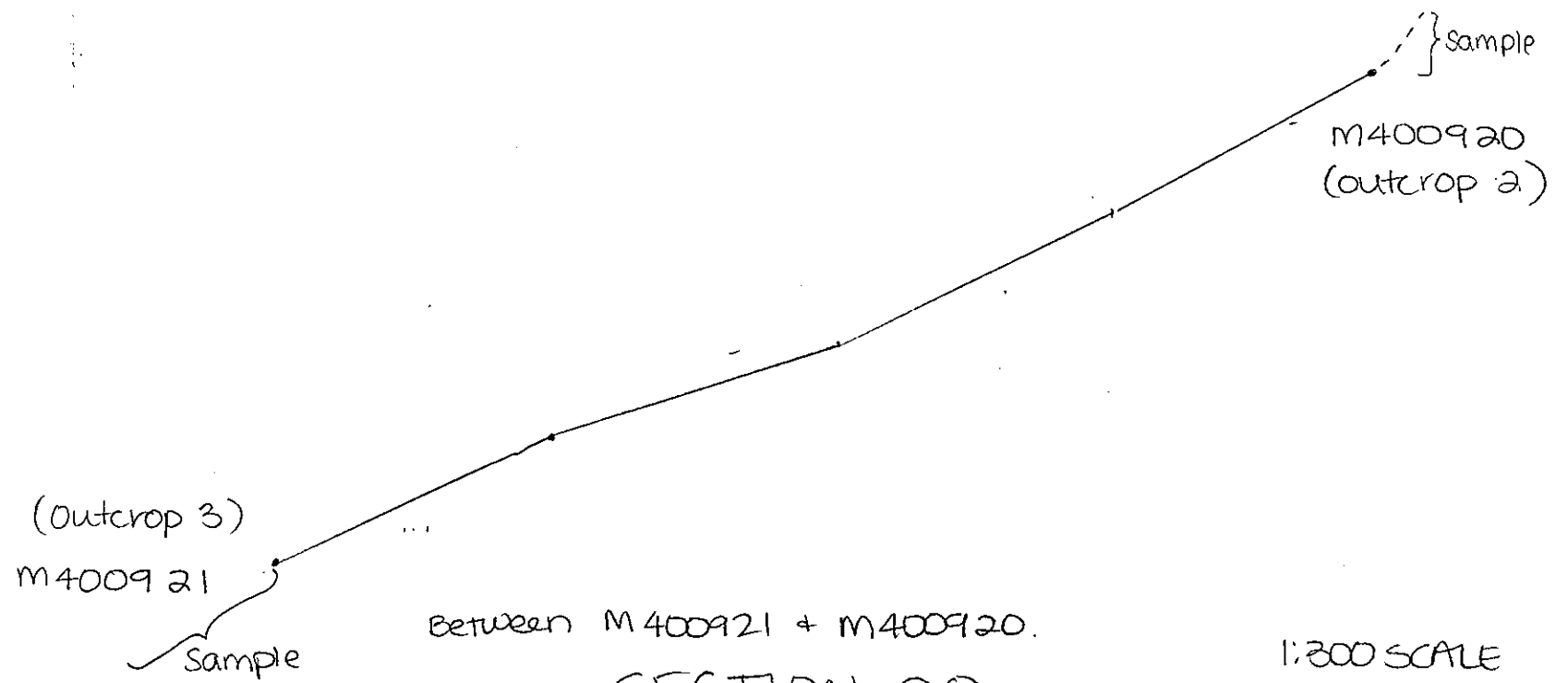
SECTION 16

1:300 SCALE
062



SECTION 17

1:300 SCALE
055

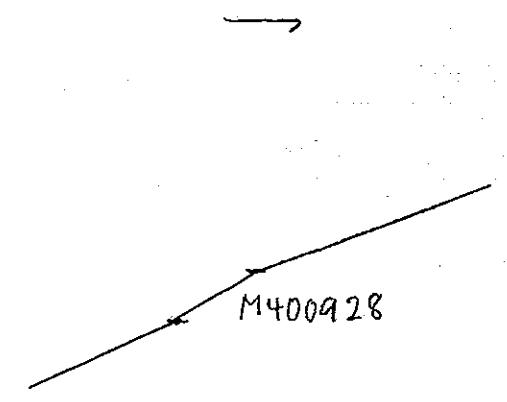


SECTION 20

1:300 SCALE
082

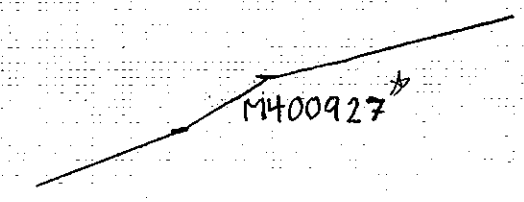
STRATEGIC METALS LTD.
OUTCROP 4
CROSS SECTIONS
1:300
JUNE 10/13

* not sampled



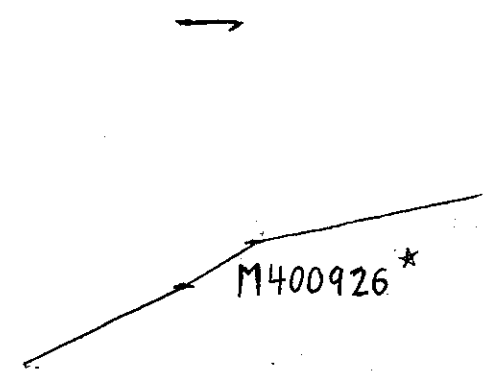
SECTION 21

AZM 046°



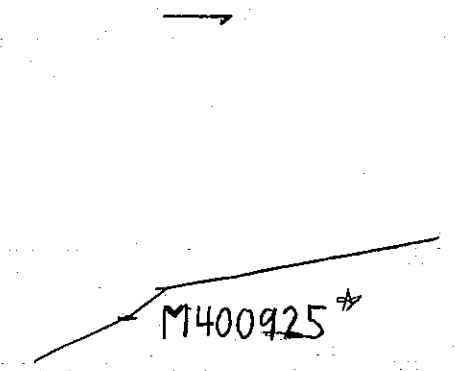
SECTION 22

AZM 037°



SECTION 23

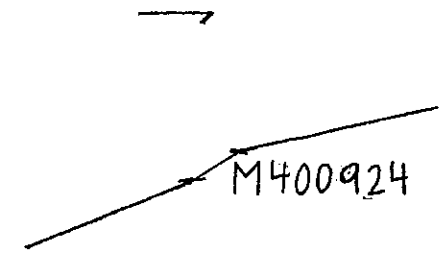
AZM 064°



SECTION 24

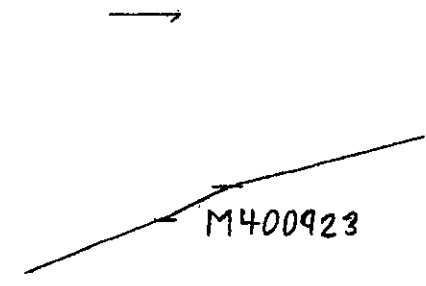
AZM 034°

STRATEGIC METALS LTD.	
OUTCROP 4	
CROSS SECTIONS	
I:300	JUNE 10/13



SECTION 25

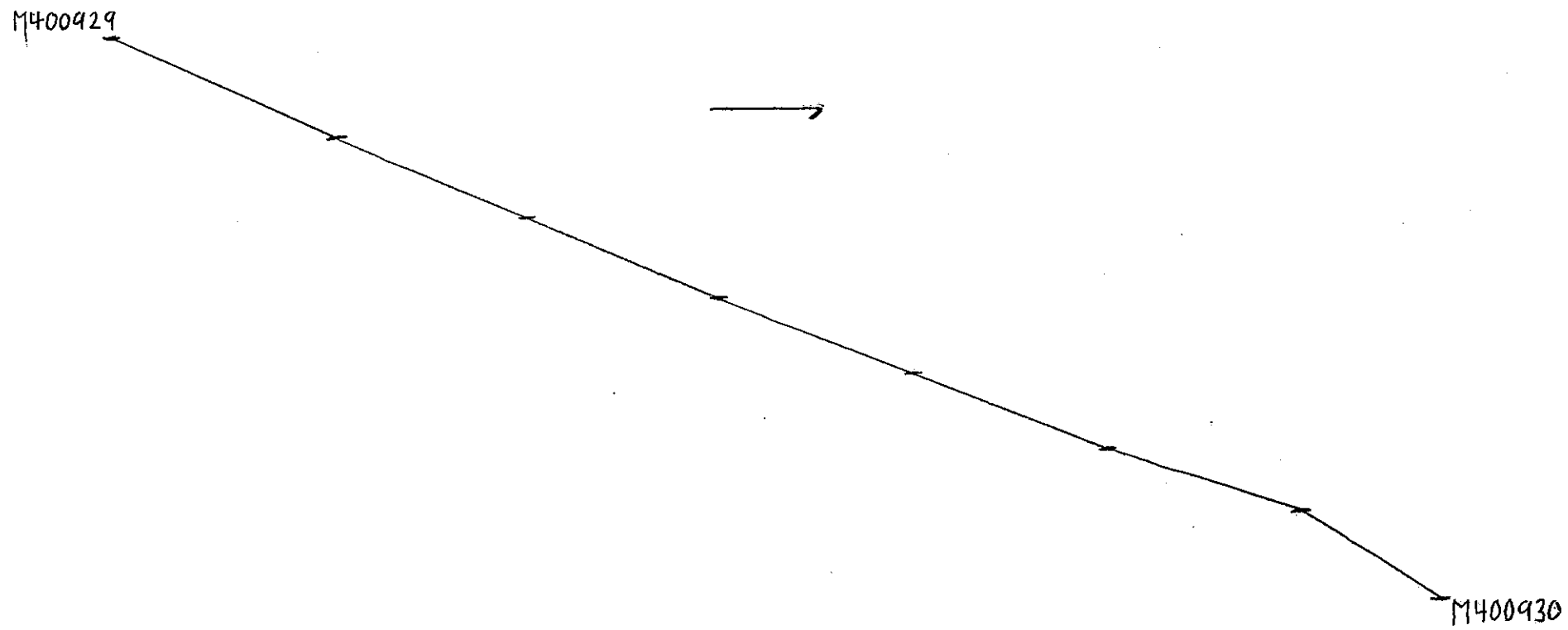
AZM038°



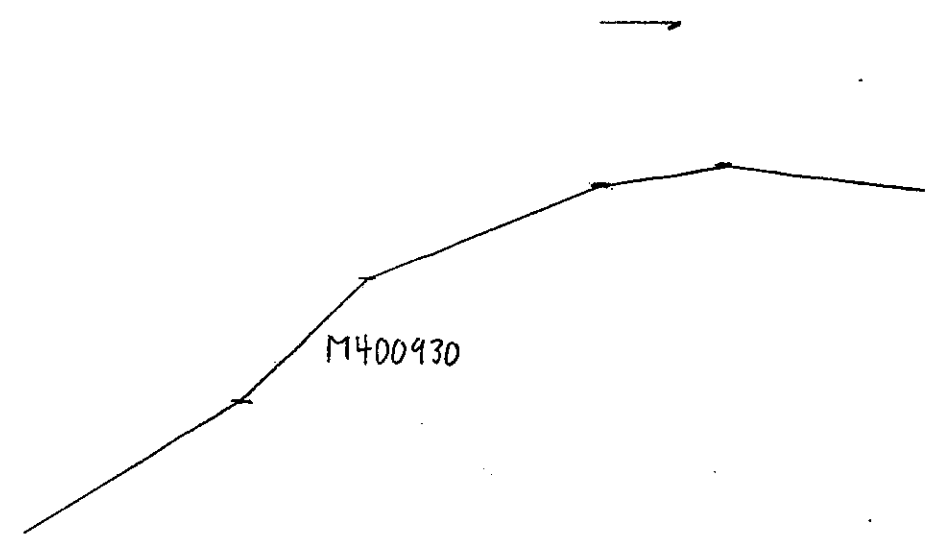
SECTION 26

AZM 035

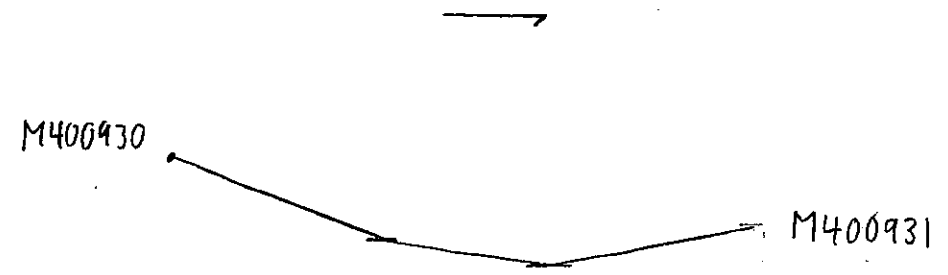
STRATEGIC METALS LTD.	
LIMESTONE	
OUTCROP 6	
SURVEY AND SECTION	
1:300	JUNE 10/13



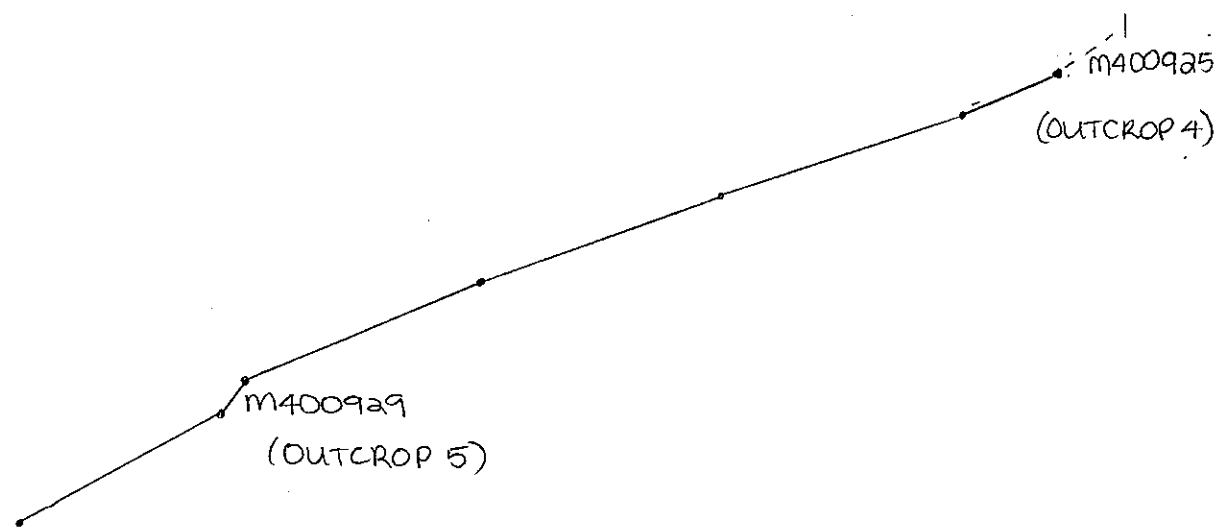
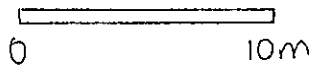
SECTION 29 AZM 274°



SECTION 30 AZM 038°

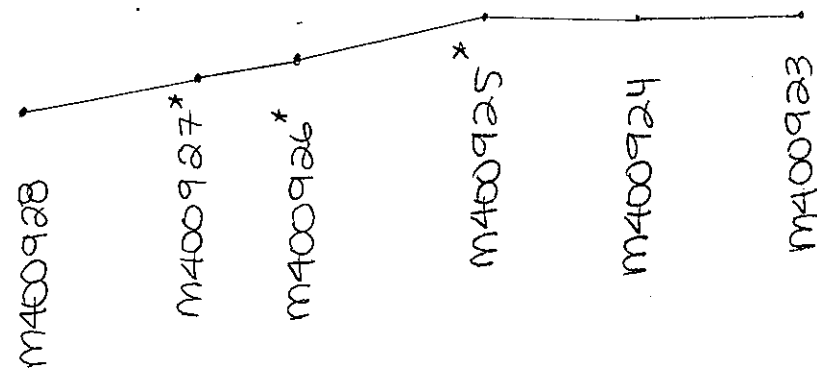
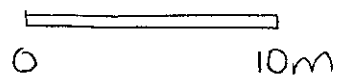


SECTION 31 AZM 145°



BETWEEN M400929 AND M400925
SECTION 28

038



SECTION 27
* not sampled

STRATEGIC METALS LTD
ARCHER, CATHERO & ASSOCIATES (1951) LIMITED
CROSS SECTION AND SAMPLE NUMBERS
1:300 SCALE JUNE 2013

APPENDIX IV
CERTIFICATES OF ANALYSIS



ALS Canada Ltd.
 2103 Dollarton Hwy
 North Vancouver BC V7H 0A7
 Phone: 604 984 0221 Fax: 604 984 0218 www.alsglobal.com

To: STRATEGIC METALS LTD.
 C/O ARCHER, CATHRO & ASSOCIATES (1981) LIMITED
 1016-510 W HASTINGS ST
 VANCOUVER BC V6B 1L8

Page: 1
 Finalized Date: 21-JUN-2013
 Account: MTT

CERTIFICATE WH13104917

Project: Limestone
 P.O. No.:
 This report is for 28 Rock samples submitted to our lab in Whitehorse, YT, Canada on 13-JUN-2013.
 The following have access to data associated with this certificate:

HEATHER BURRELL	SARAH DRECHSLER	JOAN MARIACHER
-----------------	-----------------	----------------

SAMPLE PREPARATION	
ALS CODE	DESCRIPTION
WEI-21	Received Sample Weight
LOG-22	Sample login - Rcd w/o BarCode
CRU-31	Fine crushing - 70% <2mm
CRU-QC	Crushing QC Test
PUL-QC	Pulverizing QC Test
SPL-21	Split sample - riffle splitter
PUL-31	Pulverize split to 85% <75 um

ANALYTICAL PROCEDURES		
ALS CODE	DESCRIPTION	
ME-MS61	48 element four acid ICP-MS	
ME-XRF26	Whole Rock By Fusion/XRF	XRF
OA-GRA05x	LOI for XRF	WST-SEQ

To: STRATEGIC METALS LTD.
 ATTN: JOAN MARIACHER
 C/O ARCHER, CATHRO & ASSOCIATES (1981) LIMITED
 1016-510 W HASTINGS ST
 VANCOUVER BC V6B 1L8

This is the Final Report and supersedes any preliminary report with this certificate number. Results apply to samples as submitted. All pages of this report have been checked and approved for release.

***** See Appendix Page for comments regarding this certificate *****

Signature:
 Colin Ramshaw, Vancouver Laboratory Manager



ALS Canada Ltd.
 2103 Dollarton Hwy
 North Vancouver BC V7H 0A7
 Phone: 604 984 0221 Fax: 604 984 0218 www.alsglobal.com

To: STRATEGIC METALS LTD.
 C/O ARCHER, CATHRO & ASSOCIATES (1981)
 LIMITED
 1016-510 W HASTINGS ST
 VANCOUVER BC V6B 1L8

Page: 2 - A
 Total # Pages: 2 (A - E)
 Plus Appendix Pages
 Finalized Date: 21-JUN-2013
 Account: MTT

Project: Limestone

CERTIFICATE OF ANALYSIS WH13104917

Sample Description	Method	WEI-21	ME-MS61	ME-MS61	ME-MS61	ME-MS61	ME-MS61	ME-MS61	ME-MS61	ME-MS61	ME-MS61	ME-MS61	ME-MS61	ME-MS61	ME-MS61	ME-MS61
	Analyte	Recvd Wt.	Ag	Al	As	Ba	Be	Bi	Ca	Cd	Ce	Co	Cr	Cs	Cu	Fe
	Units	kg	ppm	%	ppm	ppm	ppm	ppm	%	ppm	ppm	ppm	ppm	ppm	ppm	%
	LOR															
M400901		0.45	0.02	0.30	12	80	0.06	<0.01	37.6	0.19	1.26	1.0	8	0.10	18.6	0.21
M400902		0.81	0.04	0.33	19	50	0.07	<0.01	35.2	0.25	1.58	1.5	6	0.18	17.9	0.23
M400903		3.15	0.02	0.37	10	20	0.08	<0.01	37.0	0.20	1.34	0.8	8	0.11	4.6	0.24
M400904		2.31	0.07	0.44	6	20	0.09	<0.01	37.4	0.40	1.73	1.0	9	0.14	4.7	0.35
M400905		3.10	0.01	0.39	29	20	0.12	<0.01	37.8	0.23	1.40	1.0	6	0.14	4.8	0.26
M400906		0.89	0.03	0.46	14	30	0.09	<0.01	36.7	0.12	1.57	1.1	4	0.13	4.8	0.41
M400907		3.83	0.02	0.49	17	20	0.10	0.02	37.2	0.38	1.55	1.3	8	0.14	6.7	0.30
M400908		2.05	0.02	0.36	12	20	0.09	0.02	37.2	0.26	1.30	1.6	7	0.09	5.1	0.29
M400909		5.62	0.06	0.36	13	30	0.10	0.02	38.4	0.27	1.17	1.0	7	0.11	4.4	0.29
M400910		0.86	0.02	0.30	8	30	<0.05	0.02	37.1	0.31	1.03	1.0	6	0.09	5.1	0.25
M400911		2.14	0.01	0.21	14	30	0.24	0.03	35.9	0.47	0.94	1.0	9	0.06	3.7	0.18
M400912		1.90	0.01	0.31	14	20	0.34	0.02	34.8	0.20	2.14	1.2	6	<0.05	4.8	0.20
M400913		1.43	0.01	0.62	15	30	0.44	0.08	29.2	0.39	3.21	2.0	10	0.06	3.6	0.45
M400914		6.52	0.01	0.32	28	30	0.24	0.03	32.6	0.17	2.03	1.2	8	0.07	3.4	0.35
M400915		2.54	0.01	0.47	21	30	0.25	0.03	33.4	0.16	2.21	0.9	5	0.09	4.3	0.26
M400916		5.68	0.01	0.40	18	80	0.21	0.03	37.6	0.16	1.93	0.8	4	0.06	2.9	0.23
M400917		9.12	0.01	0.33	<5	70	0.24	0.02	32.9	0.14	1.74	0.9	6	0.09	3.0	0.23
M400918		4.59	0.02	0.66	5	190	0.33	0.03	32.9	0.14	2.43	1.9	6	0.11	3.3	0.27
M400919		1.68	0.03	0.39	<5	30	0.26	0.03	32.3	0.17	1.72	0.8	5	0.12	2.7	0.19
M400920		8.22	0.02	0.27	<5	100	0.28	0.03	31.5	0.13	1.72	0.8	3	<0.05	2.8	0.20
M400921		0.41	0.01	0.16	<5	490	0.15	0.02	35.2	0.16	0.99	0.7	3	0.08	2.3	0.14
M400922		1.09	<0.01	0.09	<5	20	0.10	0.01	38.0	0.14	0.54	0.5	3	0.05	1.4	0.07
M400923		1.60	0.01	0.37	10	60	0.26	0.01	35.4	0.20	1.56	0.7	6	0.22	2.7	0.19
M400924		0.71	0.01	0.28	13	30	0.17	0.01	32.6	0.16	1.39	0.7	4	0.15	2.5	0.16
M400928		4.18	0.01	0.18	<5	70	0.20	0.01	34.4	0.16	0.86	0.6	4	0.09	2.2	0.12
M400929		3.22	0.01	0.16	<5	30	0.15	0.01	36.5	0.22	0.89	0.5	2	0.09	2.3	0.08
M400930		7.78	0.01	0.34	7	20	0.19	0.01	35.8	0.15	1.14	0.6	5	0.16	2.3	0.11
M400931		5.94	0.02	0.34	9	20	0.23	0.01	33.8	0.12	1.41	0.6	3	0.16	2.1	0.14



ALS Canada Ltd.
 2103 Dollarton Hwy
 North Vancouver BC V7H 0A7
 Phone: 604 984 0221 Fax: 604 984 0218 www.alsglobal.com

To: STRATEGIC METALS LTD.
 C/O ARCHER, CATHRO & ASSOCIATES (1981)
 LIMITED
 1016-510 W HASTINGS ST
 VANCOUVER BC V6B 1L8

Page: 2 - B
 Total # Pages: 2 (A - E)
 Plus Appendix Pages
 Finalized Date: 21-JUN-2013
 Account: MTT

Project: Limestone

CERTIFICATE OF ANALYSIS WH13104917

Sample Description	Method Analyte Units LOR	ME-MS61	ME-MS61	ME-MS61	ME-MS61	ME-MS61	ME-MS61	ME-MS61	ME-MS61	ME-MS61	ME-MS61	ME-MS61	ME-MS61	ME-MS61	ME-MS61	
		Ga	Ge	Hf	In	K	La	Li	Mg	Mn	Mo	Na	Nb	Ni	P	Pb
		ppm	ppm	ppm	ppm	%	ppm	ppm	%	ppm	ppm	%	ppm	ppm	ppm	ppm
M400901		0.61	<0.05	0.1	<0.005	0.13	0.6	1.6	0.36	136	0.43	0.02	0.2	1.6	140	0.6
M400902		0.67	0.06	0.1	<0.005	0.14	0.8	1.5	0.30	138	0.61	0.01	0.2	2.1	150	1.1
M400903		0.69	0.05	0.1	<0.005	0.14	0.7	1.6	0.33	124	0.37	0.02	0.2	1.4	130	0.6
M400904		0.70	0.07	0.1	<0.005	0.17	0.8	1.9	0.32	168	2.21	0.01	0.2	3.2	230	1.7
M400905		0.75	0.06	0.1	<0.005	0.15	0.7	2.0	0.30	147	0.38	0.01	0.2	2.0	120	<0.5
M400906		0.78	0.06	0.1	<0.005	0.14	0.7	2.9	0.45	114	2.22	0.01	0.2	2.1	160	0.6
M400907		1.00	0.06	<0.1	<0.005	0.18	0.7	2.7	0.42	139	0.67	0.01	0.3	2.1	200	0.5
M400908		0.74	0.06	<0.1	<0.005	0.14	0.6	1.4	0.55	154	1.76	0.01	0.2	2.8	150	0.6
M400909		0.65	0.05	<0.1	<0.005	0.15	0.6	1.1	0.27	144	1.22	0.01	0.2	2.1	200	18.7
M400910		0.55	0.05	<0.1	<0.005	0.13	0.5	1.1	0.58	138	0.78	0.01	0.2	2.4	170	<0.5
M400911		0.39	0.05	<0.1	<0.005	0.04	0.6	1.5	1.18	78	3.41	0.01	0.1	4.4	240	2.0
M400912		0.78	0.06	<0.1	<0.005	0.01	1.3	2.2	0.47	109	2.13	0.01	0.3	4.2	500	2.1
M400913		1.39	0.08	<0.1	<0.005	0.03	2.3	5.4	2.44	190	5.51	0.02	0.4	10.2	380	2.8
M400914		0.76	0.06	<0.1	<0.005	0.04	1.2	2.5	2.64	131	2.70	0.01	0.2	8.5	280	2.0
M400915		1.01	0.06	<0.1	<0.005	0.04	1.4	3.3	2.51	80	2.32	0.01	0.3	3.4	410	2.1
M400916		0.86	0.07	<0.1	<0.005	0.04	1.2	2.7	1.49	90	1.29	0.01	0.2	2.8	310	1.5
M400917		0.80	0.05	<0.1	<0.005	0.06	1.2	2.1	2.80	107	1.41	0.01	0.2	3.1	280	1.5
M400918		1.53	0.07	<0.1	<0.005	0.07	1.5	4.3	1.90	102	1.79	0.01	0.3	3.8	320	1.6
M400919		0.87	0.08	<0.1	<0.005	0.08	1.2	2.1	2.40	97	1.28	0.01	0.2	1.6	240	1.3
M400920		0.62	0.06	<0.1	<0.005	0.02	1.3	2.1	3.00	119	1.42	0.01	0.2	1.8	290	1.3
M400921		0.43	0.06	<0.1	<0.005	0.04	0.7	1.1	1.02	71	0.64	0.02	0.1	1.1	200	0.9
M400922		0.25	0.08	<0.1	<0.005	0.03	<0.5	0.7	0.45	48	0.31	0.01	0.1	0.5	130	<0.5
M400923		0.89	0.08	<0.1	<0.005	0.12	1.1	1.3	0.93	128	0.82	0.01	0.2	1.6	200	0.6
M400924		0.65	0.07	<0.1	<0.005	0.08	0.9	1.2	0.83	102	0.54	0.02	0.2	1.2	210	0.6
M400928		0.49	0.07	<0.1	<0.005	0.06	0.6	1.0	1.94	75	0.52	0.02	0.1	1.3	140	<0.5
M400929		0.39	0.08	<0.1	<0.005	0.06	0.7	0.6	0.39	45	1.63	0.01	0.1	0.7	200	<0.5
M400930		0.76	0.07	<0.1	<0.005	0.11	0.8	1.3	1.68	58	3.91	0.01	0.1	1.1	180	0.7
M400931		0.79	0.07	<0.1	<0.005	0.13	0.9	1.5	2.15	60	1.38	0.02	0.2	1.0	180	0.6



ALS Canada Ltd.
 2103 Dollarton Hwy
 North Vancouver BC V7H 0A7
 Phone: 604 984 0221 Fax: 604 984 0218 www.alsglobal.com

To: STRATEGIC METALS LTD.
 C/O ARCHER, CATHRO & ASSOCIATES (1981)
 LIMITED
 1016-510 W HASTINGS ST
 VANCOUVER BC V6B 1L8

Page: 2 - C
 Total # Pages: 2 (A - E)
 Plus Appendix Pages
 Finalized Date: 21-JUN-2013
 Account: MTT

Project: Limestone

CERTIFICATE OF ANALYSIS WH13104917

Sample Description	Method Analyte Units LOR	ME-MS61	ME-MS61	ME-MS61	ME-MS61	ME-MS61	ME-MS61	ME-MS61	ME-MS61	ME-MS61	ME-MS61	ME-MS61	ME-MS61	ME-MS61	ME-MS61	
		Rb ppm	Re ppm	S %	Sb ppm	Sc ppm	Se ppm	Sn ppm	Sr ppm	Ta ppm	Te ppm	Th ppm	Ti %	Tl ppm	U ppm	V ppm
		0.1	0.002	0.01	0.05	0.1	1	0.2	0.2	0.05	0.05	0.2	0.005	0.02	0.1	1
M400901		2.6	<0.002	0.03	0.33	0.8	1	<0.2	912	<0.05	<0.05	<0.2	0.015	0.08	5.0	10
M400902		3.2	<0.002	0.03	0.32	0.8	1	<0.2	790	<0.05	<0.05	0.2	0.017	0.08	4.6	10
M400903		2.5	0.002	0.02	0.24	1.0	<1	<0.2	967	<0.05	<0.05	<0.2	0.018	0.06	3.7	11
M400904		2.8	0.004	0.03	0.35	1.7	<1	<0.2	827	<0.05	<0.05	<0.2	0.025	0.12	6.1	15
M400905		2.3	<0.002	0.01	0.44	1.4	<1	<0.2	801	<0.05	<0.05	<0.2	0.019	0.05	3.9	14
M400906		2.4	0.003	0.02	0.51	1.2	1	<0.2	1360	<0.05	<0.05	<0.2	0.024	0.10	3.0	13
M400907		2.8	0.002	0.02	0.34	1.4	<1	<0.2	1050	<0.05	<0.05	<0.2	0.026	0.05	2.9	14
M400908		2.3	0.002	0.02	0.45	1.3	1	<0.2	1220	<0.05	<0.05	<0.2	0.021	0.15	4.2	13
M400909		2.1	0.003	0.02	0.85	1.0	<1	<0.2	863	<0.05	<0.05	<0.2	0.019	0.06	4.1	11
M400910		1.9	<0.002	0.02	0.18	0.9	1	<0.2	899	<0.05	<0.05	<0.2	0.017	0.05	3.9	10
M400911		0.8	<0.002	0.01	0.55	0.6	1	<0.2	696	<0.05	<0.05	<0.2	0.006	0.04	3.7	7
M400912		0.4	<0.002	0.02	0.74	0.7	<1	<0.2	1140	<0.05	<0.05	0.3	0.014	0.05	3.4	12
M400913		0.8	0.003	<0.01	1.29	1.1	1	<0.2	884	<0.05	<0.05	0.3	0.020	0.08	4.5	32
M400914		0.8	0.002	0.01	0.57	0.9	1	<0.2	642	<0.05	0.06	0.2	0.013	0.03	2.0	19
M400915		0.9	<0.002	<0.01	0.50	0.8	1	<0.2	817	<0.05	<0.05	0.2	0.019	0.02	1.2	13
M400916		0.8	<0.002	0.01	0.43	0.6	<1	<0.2	698	<0.05	<0.05	0.2	0.016	0.03	1.0	11
M400917		1.3	<0.002	0.02	0.29	0.6	1	<0.2	620	<0.05	<0.05	<0.2	0.012	0.03	0.8	14
M400918		1.6	<0.002	0.02	0.53	0.9	<1	<0.2	879	<0.05	<0.05	0.2	0.022	0.04	1.3	17
M400919		1.6	<0.002	0.02	0.28	0.6	1	<0.2	634	<0.05	<0.05	<0.2	0.014	0.03	0.8	11
M400920		0.5	<0.002	0.02	0.35	0.5	<1	<0.2	730	<0.05	<0.05	<0.2	0.010	0.03	1.3	11
M400921		1.1	<0.002	0.03	0.29	0.3	<1	<0.2	533	<0.05	<0.05	<0.2	0.006	0.02	2.1	10
M400922		0.7	<0.002	0.01	0.18	0.2	1	<0.2	431	<0.05	<0.05	<0.2	<0.005	0.02	0.7	3
M400923		2.5	0.002	0.02	0.40	0.4	<1	<0.2	478	<0.05	<0.05	<0.2	0.011	0.08	0.7	6
M400924		1.8	<0.002	0.01	0.44	0.4	<1	<0.2	442	<0.05	<0.05	<0.2	0.010	0.05	0.5	5
M400928		1.4	0.003	0.02	0.17	0.3	1	<0.2	542	<0.05	<0.05	<0.2	0.006	0.06	2.4	13
M400929		1.3	<0.002	0.01	0.49	0.2	1	<0.2	549	<0.05	<0.05	<0.2	0.006	0.08	0.8	6
M400930		2.3	0.002	0.02	0.39	0.4	<1	<0.2	534	<0.05	<0.05	<0.2	0.007	0.08	1.5	17
M400931		2.8	<0.002	0.02	0.34	0.5	1	<0.2	531	<0.05	<0.05	<0.2	0.011	0.07	1.3	17



ALS Canada Ltd.
 2103 Dollarton Hwy
 North Vancouver BC V7H 0A7
 Phone: 604 984 0221 Fax: 604 984 0218 www.alsglobal.com

To: STRATEGIC METALS LTD.
 C/O ARCHER, CATHRO & ASSOCIATES (1981)
 LIMITED
 1016-510 W HASTINGS ST
 VANCOUVER BC V6B 1L8

Page: 2 - D
 Total # Pages: 2 (A - E)
 Plus Appendix Pages
 Finalized Date: 21-JUN-2013
 Account: MTT

Project: Limestone

CERTIFICATE OF ANALYSIS WH13104917

Sample Description	Method Analyte Units LOR	ME-MS61	ME-MS61	ME-MS61	ME-MS61	ME-XRF26	ME-XRF26	ME-XRF26	ME-XRF26	ME-XRF26	ME-XRF26	ME-XRF26	ME-XRF26	ME-XRF26	ME-XRF26	ME-XRF26
		W ppm	Y ppm	Zn ppm	Zr ppm	Al2O3 %	BaO %	CaO %	Cr2O3 %	Fe2O3 %	K2O %	MgO %	MnO %	Na2O %	P2O5 %	SiO2 %
		0.1	0.1	2	0.5	0.01	0.01	0.01	0.01	0.01	0.01	0.01	0.01	0.01	0.01	0.05
M400901		0.1	1.1	6	2.0	0.54	<0.01	53.2	<0.01	0.30	0.12	0.62	0.04	<0.01	0.03	1.81
M400902		0.1	1.1	8	2.3	0.68	<0.01	52.6	<0.01	0.35	0.15	0.53	0.04	<0.01	0.04	2.27
M400903		0.1	1.2	4	2.4	0.69	<0.01	52.9	0.01	0.36	0.15	0.55	0.04	<0.01	0.03	2.34
M400904		0.1	2.0	6	2.7	0.79	<0.01	52.4	0.01	0.49	0.17	0.53	0.05	<0.01	0.05	2.47
M400905		0.1	1.7	5	2.5	0.71	<0.01	53.0	<0.01	0.34	0.14	0.50	0.04	<0.01	0.03	2.49
M400906		0.2	1.5	3	3.8	0.85	<0.01	52.1	<0.01	0.59	0.13	0.77	0.04	<0.01	0.03	2.80
M400907		0.2	1.6	7	3.4	0.89	<0.01	52.3	<0.01	0.41	0.18	0.71	0.04	<0.01	0.04	2.94
M400908		0.1	1.4	5	2.6	0.66	<0.01	52.6	<0.01	0.41	0.14	0.95	0.04	<0.01	0.03	2.27
M400909		0.1	1.4	8	2.3	0.65	<0.01	53.5	<0.01	0.39	0.14	0.43	0.04	<0.01	0.04	2.12
M400910		<0.1	1.2	8	1.9	0.62	<0.01	52.2	<0.01	0.36	0.13	0.97	0.04	<0.01	0.04	2.09
M400911		0.3	1.0	7	3.4	0.42	<0.01	50.5	<0.01	0.26	0.02	2.02	0.03	<0.01	0.05	3.10
M400912		0.6	2.9	5	5.1	0.66	<0.01	50.1	0.01	0.28	<0.01	0.83	0.04	<0.01	0.11	6.97
M400913		0.5	3.2	23	7.8	1.16	<0.01	41.2	0.01	0.65	0.02	4.02	0.05	<0.01	0.08	14.65
M400914		0.4	2.1	8	4.0	0.61	<0.01	46.4	0.01	0.51	0.02	4.38	0.04	<0.01	0.06	5.62
M400915		0.5	2.2	7	4.4	0.87	<0.01	46.4	0.01	0.37	0.02	4.03	0.03	<0.01	0.09	5.36
M400916		0.4	2.1	6	3.9	0.71	<0.01	50.0	0.01	0.32	0.02	2.40	0.04	<0.01	0.06	3.49
M400917		0.3	2.5	8	3.3	0.60	<0.01	47.0	<0.01	0.33	0.04	4.59	0.04	<0.01	0.06	4.46
M400918		0.4	2.1	12	4.5	1.24	0.01	47.5	<0.01	0.38	0.06	3.25	0.04	<0.01	0.07	5.40
M400919		0.3	2.0	6	3.7	0.77	<0.01	48.3	<0.01	0.30	0.08	4.11	0.04	<0.01	0.07	3.46
M400920		0.2	2.5	6	3.3	0.51	<0.01	46.5	<0.01	0.28	<0.01	5.06	0.04	<0.01	0.07	4.53
M400921		0.1	1.4	6	2.3	0.31	0.05	52.0	<0.01	0.21	0.03	1.80	0.04	<0.01	0.05	2.07
M400922		0.1	0.9	3	1.2	0.18	<0.01	54.8	<0.01	0.11	<0.01	0.77	0.03	<0.01	0.03	1.20
M400923		0.1	1.7	6	2.8	0.68	<0.01	51.1	<0.01	0.27	0.11	1.62	0.04	<0.01	0.05	3.08
M400924		0.2	1.6	6	2.5	0.62	<0.01	51.0	<0.01	0.26	0.09	1.54	0.04	<0.01	0.06	2.44
M400928		0.1	1.2	5	1.5	0.33	<0.01	49.4	<0.01	0.16	0.04	3.29	0.03	<0.01	0.03	3.14
M400929		0.1	1.5	5	1.7	0.30	<0.01	53.6	0.01	0.13	0.04	0.66	0.03	<0.01	0.05	2.09
M400930		0.4	1.5	4	2.5	0.61	<0.01	50.5	0.01	0.15	0.10	2.82	0.03	<0.01	0.04	2.49
M400931		0.3	1.6	6	2.4	0.65	<0.01	49.2	<0.01	0.20	0.13	3.63	0.03	<0.01	0.04	2.74



ALS Canada Ltd.
 2103 Dollarton Hwy
 North Vancouver BC V7H 0A7
 Phone: 604 984 0221 Fax: 604 984 0218 www.alsglobal.com

To: STRATEGIC METALS LTD.
 C/O ARCHER, CATHRO & ASSOCIATES (1981)
 LIMITED
 1016-510 W HASTINGS ST
 VANCOUVER BC V6B 1L8

Page: 2 - E
 Total # Pages: 2 (A - E)
 Plus Appendix Pages
 Finalized Date: 21-JUN-2013
 Account: MTT

Project: Limestone

CERTIFICATE OF ANALYSIS WH13104917

Sample Description	Method Analyte Units LOR	ME-XRF26	ME-XRF26	ME-XRF26	OA-GRA05x
		SrO %	TiO2 %	Total %	LOI 1000 %
		0.01	0.01	0.01	0.01
M400901		0.10	0.04	99.90	42.92
M400902		0.09	0.03	99.76	42.79
M400903		0.10	0.04	99.92	42.54
M400904		0.09	0.05	99.62	42.33
M400905		0.08	0.04	99.89	42.38
M400906		0.14	0.05	99.94	42.29
M400907		0.11	0.05	100.00	42.18
M400908		0.13	0.04	99.98	42.55
M400909		0.09	0.04	100.20	42.62
M400910		0.09	0.05	99.74	43.00
M400911		0.08	0.02	99.48	42.84
M400912		0.12	0.03	100.10	40.82
M400913		0.09	0.04	99.92	37.84
M400914		0.07	0.03	99.78	41.89
M400915		0.08	0.04	99.26	41.83
M400916		0.07	0.03	99.77	42.48
M400917		0.06	0.03	99.75	42.39
M400918		0.09	0.04	99.95	41.73
M400919		0.07	0.03	100.25	42.85
M400920		0.08	0.02	99.64	42.43
M400921		0.06	0.02	100.35	43.55
M400922		0.05	0.02	100.45	43.16
M400923		0.05	0.02	99.60	42.49
M400924		0.05	0.03	99.29	43.03
M400928		0.06	0.01	99.57	42.96
M400929		0.06	0.02	99.89	42.77
M400930		0.05	0.02	99.78	42.82
M400931		0.06	0.03	99.77	42.92

***** See Appendix Page for comments regarding this certificate *****



ALS Canada Ltd.
2103 Dollarton Hwy
North Vancouver BC V7H 0A7
Phone: 604 984 0221 Fax: 604 984 0218 www.alsglobal.com

To: STRATEGIC METALS LTD.
C/O ARCHER, CATHRO & ASSOCIATES (1981)
LIMITED
1016-510 W HASTINGS ST
VANCOUVER BC V6B 1L8

Page: Appendix 1
Total # Appendix Pages: 1
Finalized Date: 21-JUN-2013
Account: MTT

Project: Limestone

CERTIFICATE OF ANALYSIS WH13104917

CERTIFICATE COMMENTS	
-----------------------------	--

Applies to Method:	
--------------------	--

--

APPENDIX V
ROCK SAMPLE DESCRIPTIONS

Rock Sample Descriptions

Property: Limestone

Sample Number: M400901 UTM: 457132 mE Nad83, Zone 8
Elevation: m UTM: 6823134 mN
Comments: Length: 1.33

Sample Number: M400902 UTM: 457136 mE Nad83, Zone 8
Elevation: m UTM: 6823152 mN
Comments: Length: 2.73

Sample Number: M400903 UTM: 457133 mE Nad83, Zone 8
Elevation: m UTM: 6823156 mN
Comments: Length: 2

Sample Number: M400904 UTM: 457126 mE Nad83, Zone 8
Elevation: m UTM: 6823161 mN
Comments: Length: 3

Sample Number: M400905 UTM: 457126 mE Nad83, Zone 8
Elevation: m UTM: 6823161 mN
Comments: Length: 3.5

Sample Number: M400906 UTM: 457130 mE Nad83, Zone 8
Elevation: m UTM: 6823162 mN
Comments: Length: 3

Sample Number: M400907 UTM: 457124 mE Nad83, Zone 8
Elevation: m UTM: 6823170 mN
Comments: Length: 3

Rock Sample Descriptions

Property: Limestone

Sample Number: M400908 UTM: 457122 mE Nad83, Zone 8
Elevation: m UTM: 6823179 mN
Comments: Length: 3.5

Sample Number: M400909 UTM: 457119 mE Nad83, Zone 8
Elevation: m UTM: 6823188 mN
Comments: Length: 3

Sample Number: M400910 UTM: 457115 mE Nad83, Zone 8
Elevation: m UTM: 6823200 mN
Comments: Length: 2.5

Sample Number: M400911 UTM: 457201 mE Nad83, Zone 8
Elevation: 900 m UTM: 6823753 mN
Comments:

Sample Number: M400912 UTM: 457190 mE Nad83, Zone 8
Elevation: 899 m UTM: 6823752 mN
Comments:

Sample Number: M400913 UTM: 457184 mE Nad83, Zone 8
Elevation: 897 m UTM: 6823752 mN
Comments:

Sample Number: M400914 UTM: 457176 mE Nad83, Zone 8
Elevation: 898 m UTM: 6823760 mN
Comments:

Rock Sample Descriptions

Property: Limestone

Sample Number: M400915 UTM: 457174 mE Nad83, Zone 8
Elevation: 903 m UTM: 6823764 mN
Comments:

Sample Number: M400916 UTM: 457173 mE Nad83, Zone 8
Elevation: 901 m UTM: 6823761 mN
Comments:

Sample Number: M400917 UTM: 457168 mE Nad83, Zone 8
Elevation: 898 m UTM: 6823772 mN
Comments:

Sample Number: M400918 UTM: 457162 mE Nad83, Zone 8
Elevation: 889 m UTM: 6823759 mN
Comments:

Sample Number: M400919 UTM: 457154 mE Nad83, Zone 8
Elevation: 903 m UTM: 6823774 mN
Comments:

Sample Number: M400920 UTM: 457157 mE Nad83, Zone 8
Elevation: 902 m UTM: 6823769 mN
Comments:

Sample Number: M400921 UTM: 457106 mE Nad83, Zone 8
Elevation: 867 m UTM: 6823780 mN
Comments:

Rock Sample Descriptions

Property: Limestone

Sample Number: M400922 UTM: 457096 mE Nad83, Zone 8
Elevation: 866 m UTM: 6823772 mN
Comments:

Sample Number: M400923 UTM: 457020 mE Nad83, Zone 8
Elevation: 851 m UTM: 6823755 mN
Comments:

Sample Number: M400924 UTM: 457015 mE Nad83, Zone 8
Elevation: 843 m UTM: 6823761 mN
Comments:

Sample Number: M400925 UTM: 457014 mE Nad83, Zone 8
Elevation: 841 m UTM: 6823766 mN
Comments:

Sample Number: M400926 UTM: 457010 mE Nad83, Zone 8
Elevation: 840 m UTM: 6823770 mN
Comments:

Sample Number: M400927 UTM: 457006 mE Nad83, Zone 8
Elevation: 838 m UTM: 6823772 mN
Comments:

Sample Number: M400928 UTM: 457003 mE Nad83, Zone 8
Elevation: 838 m UTM: 6823780 mN
Comments:

Rock Sample Descriptions

Property: Limestone

Sample Number: M400929 UTM: 457000 mE Nad83, Zone 8
Elevation: 830 m UTM: 6823739 mN
Comments:

Sample Number: M400930 UTM: 456934 mE Nad83, Zone 8
Elevation: 807 m UTM: 6823734 mN
Comments:

Sample Number: M400931 UTM: 456924 mE Nad83, Zone 8
Elevation: 810 m UTM: 6823755 mN
Comments:
