

# **Assessment Report Describing Surface geological and geochemical work**

## **On the Hess Property, Anthill Resources Yukon Ltd.**

YD116812 – YD117017 (HES 1- HES 206)

Stewart River Area

Centered at 603500E, 7030500N, NAD83-ZN8  
NTS Sheets: 105N/07

Mayo Mining District



Anthill Resources Yukon Ltd  
Suite 1010, 1055 West Hastings Street Vancouver, BC, Canada  
Tel: (604) 569-0608 Fax: (604) 569-3892

-By-

Hua Jin, P. Geo

May, 2014

---

## Table of Contents

List of Figures .....	II
List of Tables .....	II
Appendices.....	III
1.0 Executive Summary .....	1
2.0 Introduction.....	2
3.0 Reliance on Other Experts .....	2
4.0 Property Description and Location .....	3
5.0 Accessibility, Climate, Infrastructure and Physiography .....	6
6.0 History and Adjacent Properties .....	7
7.0 Geologic Setting and Mineralization .....	8
7.1 Regional Geology .....	8
7.2 Property Geology .....	9
8.0 Deposit Types .....	12
8.1 Intrusion-Related Gold System.....	12
8.2 SEDEX Type Base Metal Deposit.....	12
9.0 Work Program.....	13
10.0 Interpretation and Conclusions .....	14
10.1 Interpretation.....	15
10.1.1 Target 1:.....	15
10.1.2 Target 2:.....	15
10.1.3 Targets 3-6: .....	22
10.1.4 Shadow Fault Zone .....	24
10.2 Conclusion .....	24
11.0 Recommendations.....	25
12.0 References.....	26

## **List of Figures**

Figure 1. Hess Property Location Map .....	4
Figure 2. Hess Property Claim Map .....	5
Figure 3. Hess Property Regional Geology .....	9
Figure 4. Hess Property Geology.....	11
Figure 5. Gold and Arsenic Anomaly in 2013 Surface Samples .....	16
Figure 6. Lead and Zinc Anomaly in 2013 Surface Samples .....	17
Figure 7. Copper and Silver Anomaly in 2013 Surface Samples .....	18

## **List of Tables**

Table 1. Hess Claim Status .....	3
Table 2. Heli Pad and Camp Specification .....	6
Table 3. Selective Assay Results of Rock Samples from Target 2 Area.....	22

## Appendices

Appendix A	Sample Descriptions
Appendix B	Assay Certificates
Appendix C	Expenditure of the program
Appendix D	Statement of Qualification

## 1.0 Executive Summary

An extensive property wide surface geochemistry exploration program including rock, silt and soil sampling was conducted at the Hess property by All-Terrane mineral exploration services in 2012 and limited regional geochemistry survey was carried out by CME Consultants Inc. in 2011. Based on two field seasons of geochemistry surveys, six promising target areas characterised by anomalous precious metal and base metal contents in the surface samples were delineated at the Hess Property as prospective grounds for follow up exploration work.

In 2013, Jean Pautler P. Geo and Don Collidge were commissioned by Anthill to conduct a geological prospecting; in particular, following up on the previously identified soil, silt and rock sample anomalies in the six target areas to assess the exploration potential of the property. A total of 77 surface geochemistry samples including 3 silts, 19 soil samples and 55 rock samples were collected from the geological prospecting carried out from August 10<sup>th</sup> to 20<sup>th</sup> in 2013.

Encouraging results up to 0.62 g/t gold, 1% of lead, 1.1% of zinc in rock grab samples of limonitic gritstone and phyllite with weak sericite alteration from target 2 and up to 0.35% of lead and 0.36% of zinc in metasediments containing banded quartz-carbonate veins filled with sphalerite, galena and pyrite from target 1 was discovered in 2013 exploration program. Moreover, a rock grab sample containing 5% malachite, 1% chalcopyrite in quartz-calcite vein stockwork in grey phyllic shale returned 0.1% of copper from Target 4. Enriched copper in soil ranging from 66.1 ppm to 82.5 ppm and zinc in soil ranging from 109 ppm to 144 ppm were identified at the Target 5.

Several rock grab samples taken from Target 2 returned anomalous lead, zinc, silver, arsenic and lesser amount of gold and copper and the area is presumably the most promising exploration target relative to other five target areas based on current work. A new target – northwest trending shadow fault zone to the northeast of the property was proposed by Pautler due to its extensive gossaneous exposure, silicification, quartz veining and oxidation.

Further work including detailed contour soil sampling at Target 1 area and grid soil sampling consisted of 400 samples at Rhyolite trend and Black Bear Ridge at Target 2 area are recommended by Jean Pautler to cover the most prospective grounds to delineate the extent of the anomaly zone as the next phase of exploration work at the Hess Property.

## **2.0 Introduction**

The property is situated in the eastern central of the Yukon Territory and approximately 150km to the east of town-Mayo in Yukon. The Hess property consists of 206 contiguous claims in the Mayo Mining district covering approximately 4,305 hectares on NTS map sheet 105N/07. The property was staked by Anthill Resources Ltd., in 2010 to cover the ground prospective for mineralization related to a felsic intrusion in the northern property area. Previous work by Anthill Resources Ltd. includes minor rock and silt geochemical sampling by CME Consultants Inc. in 2011 and an intensive property wide program of reconnaissance soil geochemical sampling, with limited silt and rock sampling in 2012 (Schulze, 2013).

Six targets were delineated based on surface geochemistry survey carried out at the Hess property in 2011 and 2012. Two most important are: Target 1, the intrusive stock and proximal country rock; and Target 2, a linear coincident lead – silver – arsenic +/- gold anomaly extending southeast from the stock. A third target area, Target 3, is located in the southwestern area; the other three including Target 4 to 6 lie northeast of the main trend. Targets 4 to 6 are characterized by strong lead in soil anomalies with scattered anomalies in zinc, silver, copper and antimony.

In 2013, Jean Pautler, PGeo was contracted by Anthill to conduct the geological prospecting to follow up the six targets defined by soil, silt, and rock sample anomalies from previous work to assess the exploration potential of the property and make recommendations on future work program on the Hess property.

## **3.0 Reliance on Other Experts**

This report was prepared primarily relying on the memo accompanied with sample coordinates and descriptions, field mapping notes and field photos of the Hess Property sent by Jean Pautler. The author of the report did not visit the property and no personal communication was carried out between the author of the report and Jean Pautler. The author has been requested by Anthill to write this report to satisfy the assessment filing requirements with the Yukon Mining Recorder, Ministry of Energy, Mines and Resources, Government of Yukon.

## 4.0 Property Description and Location

The center of the Hess property is located at the Easting 603450 and Northing 7030232 in NAD83 UTM Zone 8 and on NTS Map sheet 105N07. The Hess property consists of 206 contiguous Yukon quartz mining claims (Table 1) and the location of claims is shown in Figure 1. The closest towns near the property are Mayo which is at 150km to the east of the property and Keno City that is 130km to northeast of the property. Hess River is located immediately south of the claim boundary and the area is accessible by helicopter.

South-western part of the property lies predominantly below tree line and relatively high elevation with decent outcrop exposure occurs in the north east and northwest of the property. Two main tributaries from the Hess property are Porcupine Creek and Lance Creek, both of which flow towards the main Hess River immediately south of the claim boundary. The elevation of low areas at the bottom of the Lance creek and porcupine creek is approximately at 640m and the elevation on the ridge tops in the northeast of the property ranging from 1760m to 1980m. Areas with elevation below 1450m are mostly covered by a thick tangle of dwarf balsam, particularly a thick bush is present in the lance creek drainage.

The recent exploration work carried out Anthill is conducted under the category of Class 1 exploration permit. No environmental liabilities or historical disturbance are known for the property. The property is located within the traditional territory of the Nacho Nyak Dun (NND) First Nation. Since the establishment of the relationship with NND by Anthill, continuous efforts has been made by Anthill to maintain a good relationship with the NND by notifying exploration activities and engaging the NND personnel in exploration work at their main Einarson Property camp.

*Table 1. Hess Claim Status*

<b>Grant No.</b>	<b>Claim Names</b>	<b>No. Of claims</b>	<b>Expiry Date</b>
<b>YD116812 - YD117017</b>	<b>HES 1- HES 206</b>	<b>206</b>	<b>29/10/2017</b>

Figure 1. Hess Property Location Map

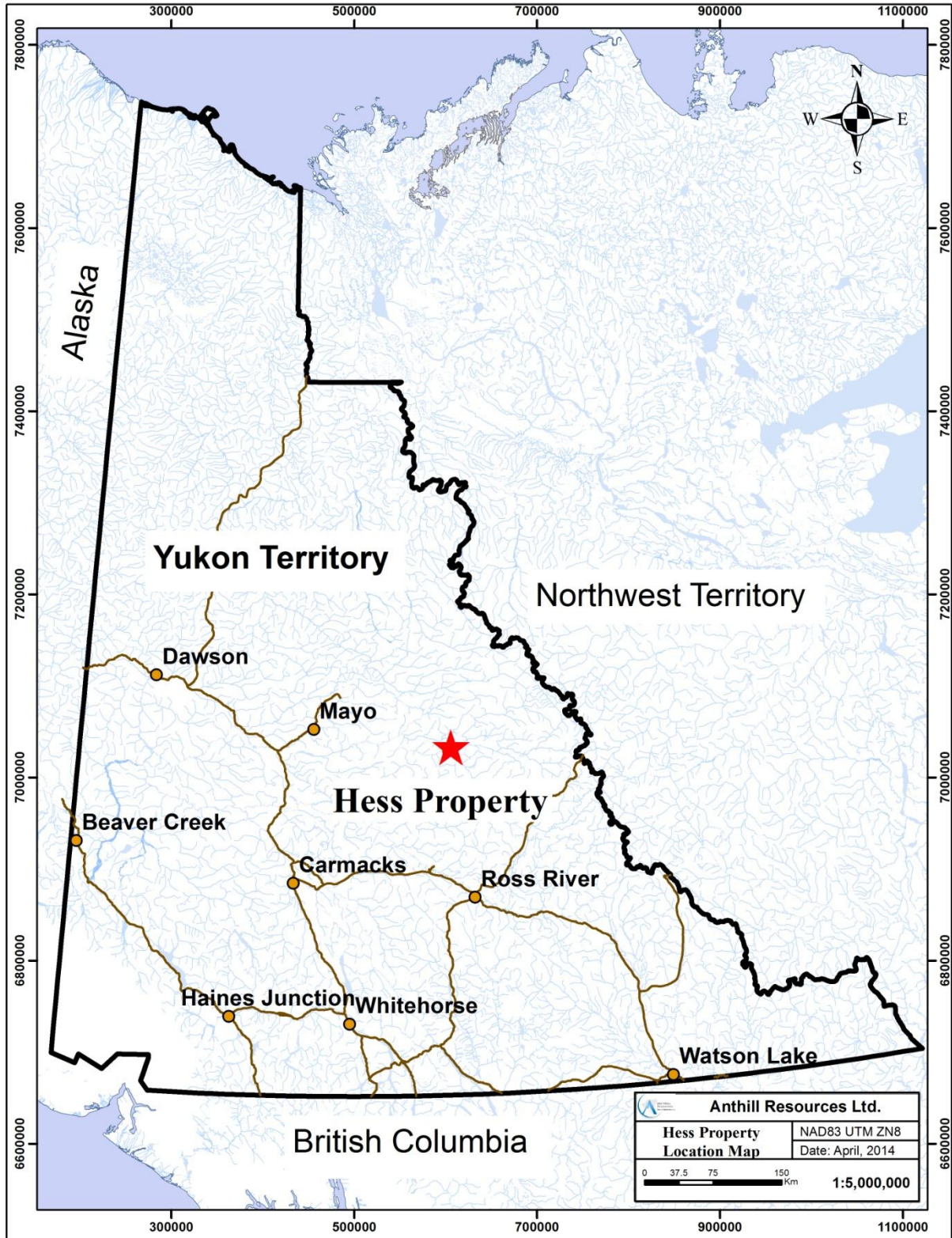
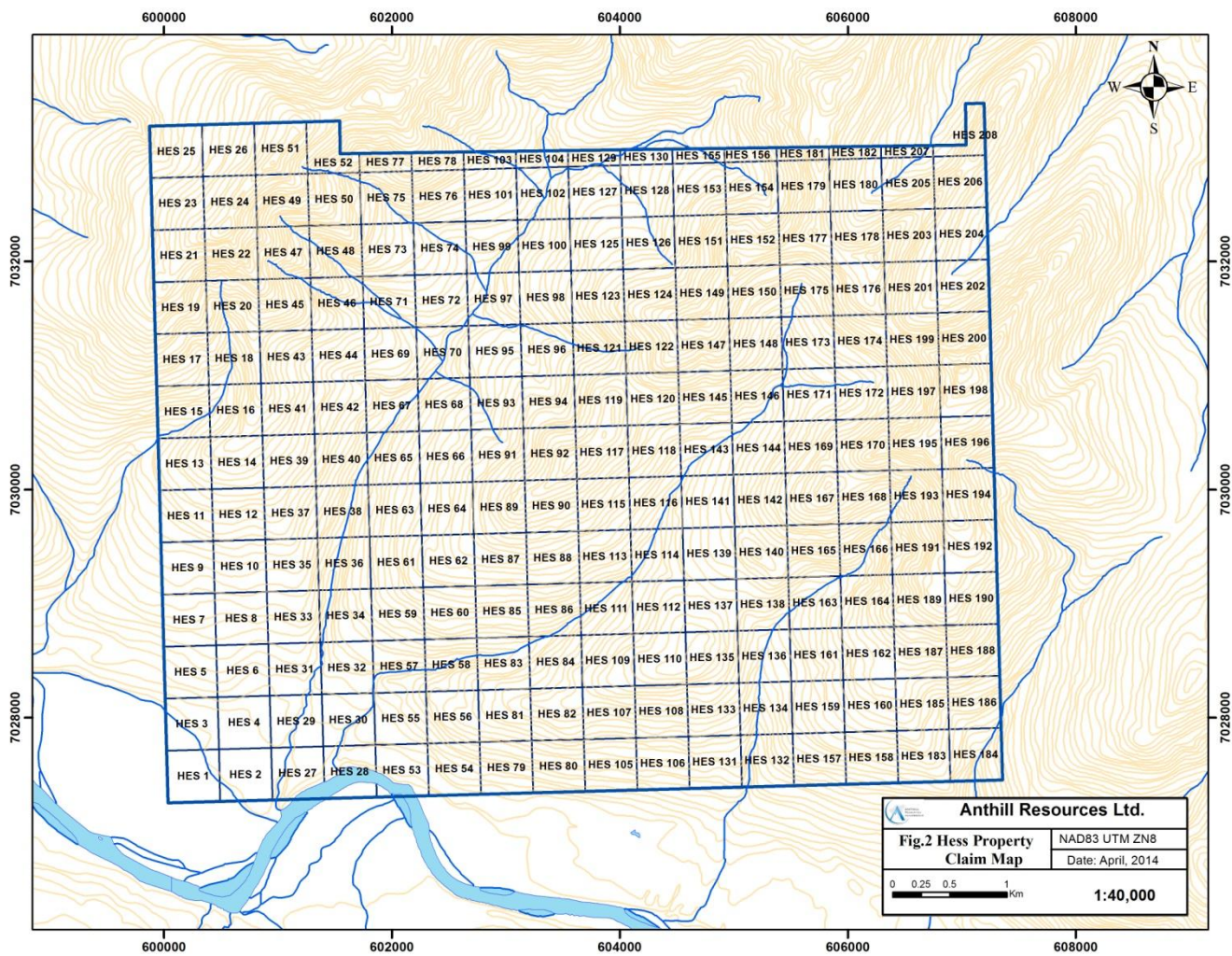


Figure 2. Hess Property Claim Map



## 5.0 Accessibility, Climate, Infrastructure and Physiography

The nearest towns are Mayo and Keno city which are located 150km and 130km from the property, respectively. The property is accessible by helicopter and observed helipads during the 2013 program are documented in Table 2 (Pautler, 2013).

*Table 2. Heli Pad and Camp Specification*

Name	Location	UTM Nad 83, zone 8		Elev. (ft)	Comments
		Easting	Northing		
Heli-A	Target 2	605173	7029456	4370	helipad - bear observed in area
Heli-B	Target 2	604746	7028627	3940	flat helipad
Heli-C	Target 3	602286	7028365	2625	toe in on side hill
Heli-D	Target 2-3	602410	7029194	3905	potential pad
Heli-E	Target 1	600733	7032694	5944	flat site on ridge
Camp	2013 camp	605859	7030800	4625	2013 camp helipad
Camp1	N of Target 1	601502	7034001	5905	potential Target 1 camp with pond
Plata	Plata	647498	7045312	2668	Plata airstrip

The following description of climate and physiography of Hess property is primarily referenced from the 2012 Hess work assessment report by Schulze (2013).

*The area has a subarctic climate, combined with some northern alpine effects. Average July daily high temperatures range from 15° to 20° C, although cooler temperatures are common. Although no records are available for the Hess property area, average January high temperatures are likely in the -20°C range, with temperatures below -40° not uncommon. Precipitation is moderate, with fairly frequent afternoon showers and some electrical storms. Annual average precipitation stands at 500 – 625 mm (20 – 25 inches). The field season at lower elevations ranges from about June 1st to Sept 20th, although it will be shorter at higher elevation.*

*The topography is mountainous, with abundant rugged terrain interspaced with deep stream valleys. Elevations range from about 1,780m (5,850 feet) to about 640m (2,100 feet) along the Hess River. Areas below 1,450m are covered by sub-arctic fir mixed with spruce and minor poplar stands along south-facing slopes. White and black spruce dominates in the Hess River valley and the lower extents of several streams within the property.*

*The Hess Property is large enough contain any amount of mining, milling, tailings facilities and other infrastructure related to mining, although rugged terrain would likely confine development to the Hess River valley and some of the larger stream valleys. There is fairly abundant water throughout the property, particularly from the Hess River, although smaller streams will freeze completely during the winter. There is no available power in or close to the property.*

---

*Mayo (pop. 480, including surrounding area) is a village with basic services, consisting of groceries, propane, and accommodations, as well as local expediting services, and a limited available work force. The community is roughly 420 road-kilometres from Whitehorse, Yukon, a full-service community of about 27,000, with excellent available accommodations, groceries, hardware, camp supplies bulk fuel and expediting services, and an available skilled workforce. The communities are connected by all-weather paved roads.*

## **6.0 History and Adjacent Properties**

There are two previously documented mineral occurrences adjacent to the Hess property, namely, Pebble showing located 2.5 km to the north of northern boundary of the project and Cartier showing located 2.4 km south outside of the property area.

The Pebble mineral occurrence characterized by galena bearing polymetallic quartz vein was located in a small stream by Atlas Exploration Ltd (a joint venture of Atlas Exploration Ltd., Quebec Cartier Mg C and Phillip Bros (Can) L) near the Hess Property area in 1967, however, the source of the polymetallic quartz vein was not found. The same company also found minor chalcopyrite associated with pyrrhotite in narrow quartz filled shear zones cutting proterozoic quartzite in 1967. Copper assays ranging from 0.01 – 0.11% and lesser amount of lead, zinc and silver from nine grab samples taken from the area immediately south of the Hess River, was documented as Cartier showing in Yukon Minfile.

In 1997 and 1998, Viceroy International Exploration Ltd. conducted regional soil and silt sampling and reconnaissance-style mapping across much of the eastern Selwyn Basin in the Plata area; however, the present Hess property was not selected as a target for detailed exploration (Schulze, 2013).

Recent work at the Hess Property by Anthill includes limited geochemical sampling by CME Consultants Inc. in 2011 and property wide reconnaissance soil sampling along with some rock and silt sampling geochemistry survey by All-Terrane Mineral Exploration Services in 2012 (Schulze, 2013).

The Lance property of Archer-Cathro and Associates Limited (1981) adjoins the Hess property to the north. The Lance property is underlain by Neo-proterozoic to early Cambrian Hyland sedimentary rocks intruded by mid-Cretaceous Tombstone plutonic suite and recent surface exploration work has returned very promising results including 8.32 g/t, 2.5 g/t and 1.4 g/t of gold in soil. The best rock samples contain up to 1.35 g/t and 1.61 g/t gold, but the source of the gold has yet to be determined in spite of detailed geological prospecting of the gold in soil anomaly areas (NewDimension Resource Website).

Goldstrike resources Ltd's Plateau North project is situated roughly 18km directly to the east of the Hess Property and the project includes a 12km long, 1.5km wide GoldRush zone delineated by an array of anomalous gold in soil anomalies as high as 26.82 g/t of gold. Moreover, detailed

---

sampling over 350 metres in the same area returned 21 soil samples and 11 rock samples over 1 gram per tonne of gold and as high as 9 g/t in rock sample.

Goldstrike's Plateau South Project consisted of three recently discovered auriferous zones including Goldstack, Goldbank and VG zones is situated immediately south of the Plateau North project. Significant drill hole assay results include 2.28 g/t over 53 metres including 10.91 g/t over 10m, 16.2 g/t over 6m and 25.87 g/t over 3m from the Goldstack zone and 7.6 g/t gold over 9 metres from the VG zone. The gold mineralization is hosted in felsic metavolcanic rocks and hydrothermal breccias containing variable amounts of arsenopyrite and specks of visible gold. Drill results also indicated that the high grade gold mineralization shoot plunges in a southeasterly direction, parallel to the regional fold axes in middle Cambrian clastic metasediments and metavolcanics proximal to the Cretaceous Tombstone intrusion (Goldstrike website).

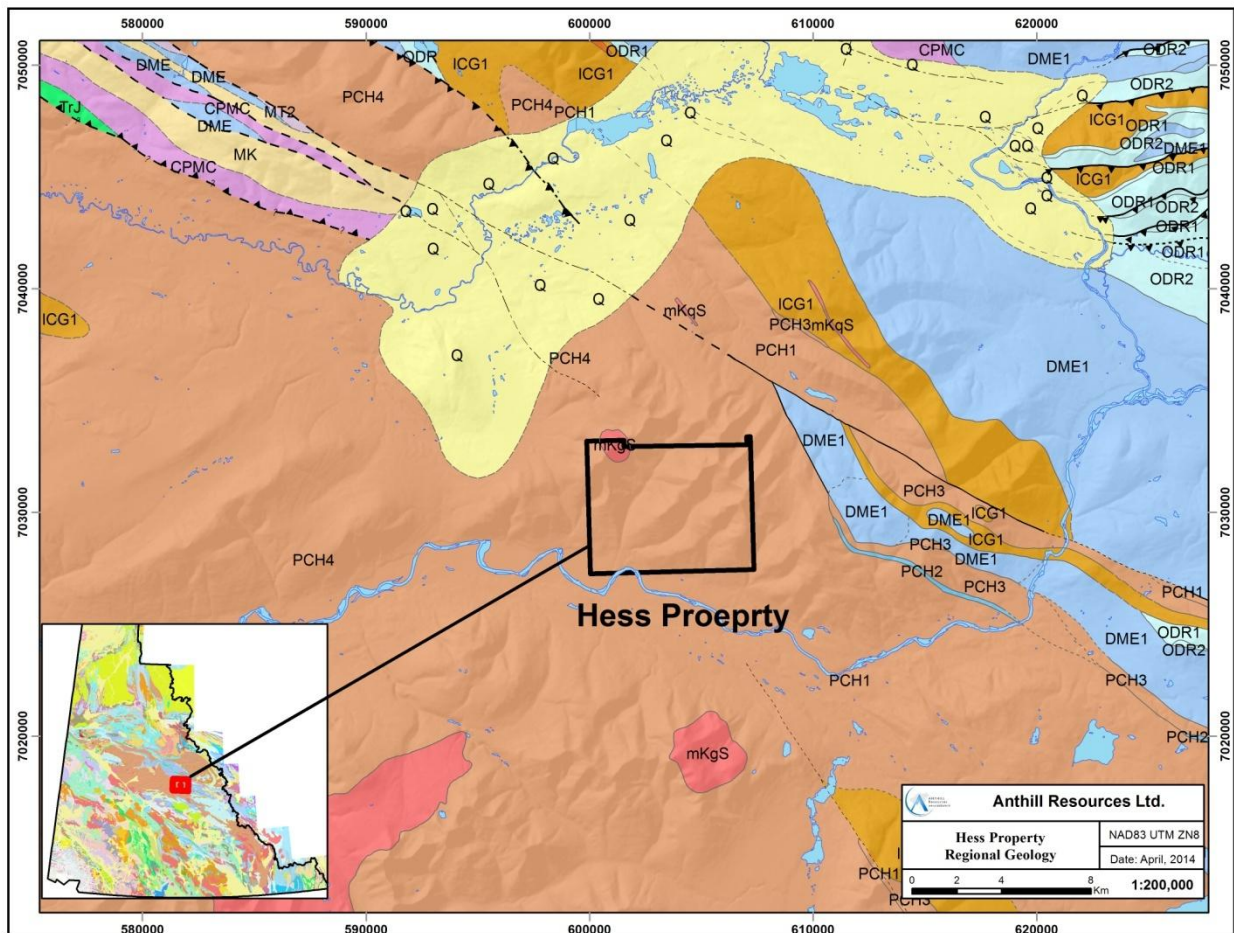
## **7.0 Geologic Setting and Mineralization**

### **7.1 Regional Geology**

The geological framework of Yukon can be broadly divided into two components divided by northwest trending Tintina Fault. Northeast of the Tintina Fault is composed of mainly sedimentary rocks originated from Ancient North American Craton margin. Southwest of the Tintina Fault are mostly young (190-120Ma) igneous and metamorphic rocks of accreted terranes from unknown sources. The western edge of the Ancient North American continental craton which was submerged into the ancient Pacific Ocean provided a stable continental platform for deposition of sedimentary rocks of mostly limestone and sandstone over a billion years. In the regions of deep water, shale, sandstone and chert were accumulated from the late Precambrian to Devonian which formed the Selwyn basin. Coarse sandstone, shale and carbonate rocks of the Neoproterozoic to Lower Cambrian Hyland Group comprise the oldest unit in Selwyn basin (Fig. 3). The Hyland group is further divided into three main formation, namely, coarse-grained siliciclastic rocks of Yusezyu formation, thin discontinuous Algae formation and maroon and green shale Narchilla Formations from oldest to youngest. Overlying the Hyland group is the Ordovician to Early Devonian Road River group consisting of chert, shale and siltstone, which is underlain by the Devono-Mississippian Earn group of chert-pebble conglomerate, greywacke and shale (Gordey and Anderson, 1993).

Extensive thrust faulting along the entire northern and eastern margin of the Selwyn Basin began during the Late Jurassic and extended through the Early Cretaceous. The regional fold and thrust belt strikes west-northwest and dips to the southwest. Major regional thrust faults include, from youngest to oldest, Dawson, Tombstone, and Robert Service from north to south within the Selwyn Basin. At least two major episodes of rifting have occurred; the first during deposition of the Late Precambrian Hyland Group sediments and the second during deposition of the Devono-Mississippian Earn Group sediments.

Figure 3. Hess Property Regional Geology



## 7.2 Property Geology

The Hess property is located within a large package of Hyland Group rocks, forming the basal group of the Selwyn Basin, which consists of a thick sequence of shelf and off-shelf sediments with lesser mafic volcanic units deposited along the southern margin of the Ancient North American Platform (Fig. 3). The area is well-known for lead-zinc silver sedimentary-exhalative (SEDEX) deposits, which have been discovered in Cambrian (Faro or Anvil), Silurian (Howards Pass), and Devonian (Macmillan Pass) shales. Although known primarily for SEDEX deposits, the geographic extent of the Selwyn Basin also contains several other deposit types. Exploration activities have outlined tungsten skarn (Mactung), stratiform barite (Tea), intrusion-related gold systems (Dublin Gulch, Brewery Creek), silver-lead vein (Keno Hill), stratiform nickel (Nick) and volcanogenic massive sulphide (Marg) occurrences and deposits.

---

Following descriptions of the property geology is heavily referenced from Pautler's 2013 exploration work summary memo sent to Anthill Resources. The field notes of outcrop occurrences of the Hess property based on Jean's field note is digitized and presented in figure 4.

*Extensive outcrop is present in the areas above treelines while it is limited to ridges, cliff and creek bottom exposure below the tree line. Detailed property scale mapping is not conducted on the Hess Property.*

*The primary lithology comprising the Hess property is interbedded pale grey-green fine to coarse grits with lesser amount of siltstone, phyllite and shale of Yusezyu formation of the Hyland Group. Younger unit of the Hyland group of Nachilla Formation has not been observed in the property and it might not occur or represent minor volume in the area. Metaconglomerate was observed in two locations; one in the northwest property peripheral to the Lance intrusive stock and the other in the east central property area within the inferred Shadow Fault zone. Only one occurrence of fine maroon grit was observed on the central part of the property (Fig. 4)*

*A prominent northwest trending 100-150m wide band of grey quartzite with lesser (or more recessive) graphitic shale (PYb) extends through the central property area. A 150m wide band of limestone of the Algae Lake Formation (PAL) lies approximately 250-300m further northeast and fault slices of limestone and dolostone occur within a large fault zone (informally named Shadow fault) further to the northeast.*

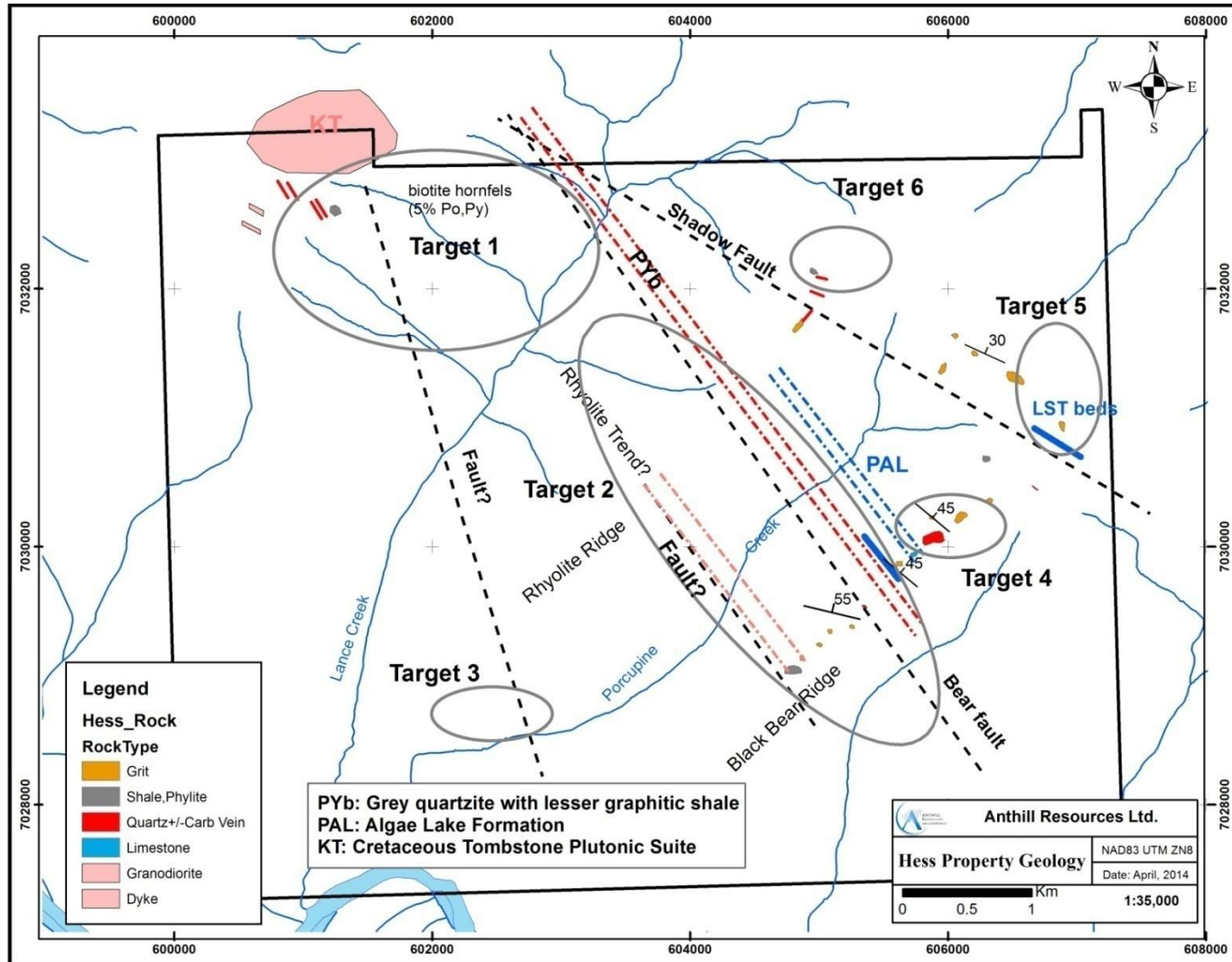
*A small stock, which is part of the Mid Cretaceous Tombstone plutonic suite was observed in the northwestern property area and extends further north outside of the Hess Claim boundary. The intrusion consists of fresh, medium grained hornblende-biotite granodiorite. Northwest trending aphanitic rhyolite dykes (Kd) associated with the Tombstone plutonic suite were observed transecting the central property area, just south of the quartzite horizon (PYb).*

*A prominent, 150-200m wide, northwest trending (roughly striking 305-310° and dipping 70-75° NE) fault zone (Shadow fault) was postulated extending from a gossanous creek gully on the southern Lance claim to a series of rusty gullies between Target 4 and Target 5. From northeast to southwest the fault disrupts the northwest trending, shallow northeast dipping foliation (generally 30°), then totally transposes it.*

*Another northwest trending (320°) fault is postulated almost 2 km to the southwest of the Shadow fault and named Bear fault. Slickensides were noted in boulders above a sharp notch in Rhyolite Ridge and the fault projects through a small notch on Black Bear Ridge to the southeast. The rhyolite dykes may also occupy northwest trending fault zones (Rhyolite trend). The rhyolite occurs within another sharp notch along Black Bear Ridge and quartz-rhyolite breccia veins occur along Rhyolite Ridge.*

*A more northerly trending fault is postulated in the eastern property area. Quartz-carbonate veins and breccias with galena and sphalerite, which returned 432 ppm Ag and 380 ppb Au, are evident just south of the Lance stock. The trend of the breccias extends through an arsenic in soil anomaly (2790 ppm As), a 195 ppb Au in soil anomaly and Target 3, from which galena bearing quartz veins returned a maximum of 18.1 ppm Ag.*

Figure 4. Hess Property Geology.



---

## 8.0 Deposit Types

### 8.1 Intrusion-Related Gold System

Mid Cretaceous intrusions in Selwyn basin sediments are spatially and temporarily associated with numerous gold deposits and occurrences that comprise the Tintina Gold Province extending from Alaska to Yukon. The reduced Intrusion related Gold system was proposed by Thompson and Newberry (2000) to emphasize the importance of the reduced oxidation state of the associated granitoids and exsolved fluids of mid-Cretaceous Intrusion. The reduced IRGS model was recently classified as a separate gold deposit type to describe the common characteristics observed on gold systems such as Fort Knox, Dublin Gulch, Clear Creek, and Scheelite Dome gold deposits situated in central Alaska and Yukon where they are part of the Tintina Gold Province.

Reduced Intrusion-Related Gold Systems (IRGS) are spatially associated with metaluminous, subalkalic intrusion of intermediate to felsic compositions emplaced into ancient continental margins behind accretionary or collisional orogens and subduction-related magmatic arcs (Lang and Baker, 2001). Preferred host rocks are reduced basinal miogeoclinal sedimentary or metasediments and the style of gold mineralization manifests as skarns, replacements, disseminations, stockwork and veins in intrusion and country rocks. Metal zoning developed proximal to the pluton may be characterized as Au-Bi-Te while tungsten mineralization will have arsenic or antimony signature and distal mineralization associated with Ag, Pb and Zn. Thermal gradient surrounding the plutons is relatively steep and develops outward for a few kilometers, or just beyond the thermal aureole of a central mineralizing pluton. Sheeted veins are one of the most distinctive features for IRGS and usually consist of single stage, low sulphide (<5%) parallel/subparallel quartz veins. Timing of the IRGS is generally coeval with the related pluton and the plutons are characterized as felsic, ilmenite series and contain little magnetite showing low magnetic response (Hart and Goldfarb, 2006, Hart et al., 2004).

### 8.2 SEDEX Type Base Metal Deposit

The Selwyn Basin is underlain by Neoproterozoic to Paleozoic reduced basinal facies sediments extending from Alaska through the Yukon along the continental margin of ancient North America craton in an arcade manner. The exploration potential for SEDEX type deposit in the Selwyn Basin is considered high due to several deposits discovered in the regions including Cambrian Faro or Anvil, Early Silurian Howards Pass and Late Devonian MacMillan Pass shale hosted lead zinc deposits. SEDEX deposit historically has been an important resource for Zn and Pb and accounted for more than 50% and 60% of the world's reserves of these elements (Tikkanen, 1986).

SEDEX deposits are generally hosted by reduced basinal marine, fine-grained sedimentary rocks consisted of carbonaceous chert and shale. Ore bodies are typically tabular in shape deposited on

---

the seafloor proximal or distal to the sub-seafloor vents where the hydrothermal fluids vented out into the reduced sedimentary rocks in continental rift. Alteration minerals include quartz, muscovite, chlorite, ankerite, siderite, tourmaline and sulphide minerals are typically pyrite, pyrrhotite, galena, sphalerite, chalcopyrite, tetrahedrite and/or some arsenopyrite.

The ideal basinal architecture conducive for SEDEX formation is a continental rift basin with at least 2 to 5 km of coarse-grained permeable clastics and related volcanics or volcanoclastics that form the rift phase overlain by an impermeable cap or seal of basinal shales or carbonates (Goodfellow et al., 1993; Large, 1986; Lydon, 1983). The source for Zn and Pb is the syn-rift phase volcanic and clastic rocks (Lydon et al., 2000). The ultimate traps for the metals are reduced sub-basins with an unlimited supply of H<sub>2</sub>S in the ambient water column. Although an association with magmatism is not indicated for all deposits, mafic volcanic rocks and sills are spatially and temporally associated with many SEDEX deposits (e.g. Selwyn Basin and Belt-Purcell basin) and bimodal volcanic rocks host most BHT deposits (e.g. Broken Hill, Parr and Plimer, 1993(Parr, 1993).

A few criteria have been documented for evaluation of SEDEX type base metal deposit potential at the district or target scale. These area 1) reactivation of extensional faults evidenced by thickness of the sedimentary facies, fault breccias, unconformities, major fault offset and fault intersections, 2) magmatic centers, 3) distal hydrothermal sediments including barite, apatite, pyrite and Mn-Fe-Ca-Mg carbonates, 4) hydrothermal alteration minerals such as muscovite, chlorite, ankerite, siderite and tourmaline alteration with disseminated ore forming sulphides in the veins, 5) anomalous geochemical signatures of As, Sb, Cd, Mn, P, Ba, Hg and Tl elements in shale.

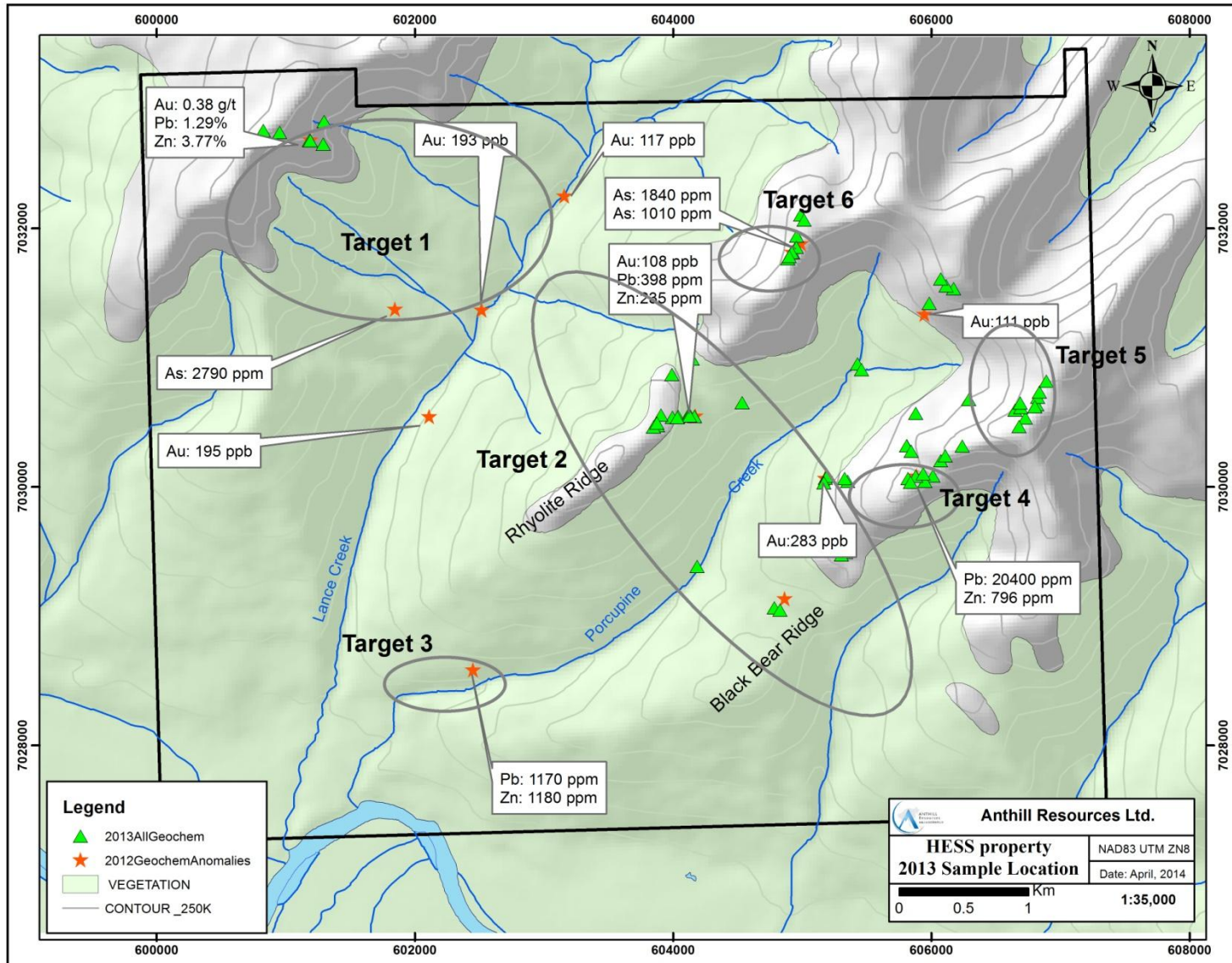
## **9.0 Work Program**

The program consisted of follow-up of soil anomalies and anomalous rock samples obtained in 2011 and 2012 and geological prospecting for property evaluation. Nineteen man days were spent on the property by Jean Pautler and prospector Don Coolidge during the period of August 10<sup>th</sup> and 20<sup>th</sup> in 2013. A two man fly camp was set up for the work program in the Hess property with helicopter support provided by Fireweed Helicopters Ltd. based out of Mayo, Yukon Territory, 150km west of the property.

During the follow up work of the 2011-12 surface geochemistry anomalies, locating the previous samples in the field presented quite challenges due to few identifiable marks like flagging near sample sites. Nonetheless, a total of 77 samples were collected by carefully examining the numerous anomalies identified from the target areas at Hess property in 2013. The location of the surface samples from 2013 along with the 2012 geochemistry anomalies is shown on Figure 5. All of previously identified targets were investigated except for target 3 due to clag conditions on the demobilization day when necessary helicopter access would be available to visit the target.

Helipads observed during the 2013 program was recorded and summarized in the table 2 in the section 5. A suitable helipad was not observed along Lance Creek.

Figure 5. Hess Property Sample Location Map



---

## 10.0 Interpretation and Conclusions

### 10.1 Interpretation

#### 10.1.1 Target 1:

Cretaceous aged granodiorite outcrops to the northwest of the property and extends to the Lance claim with granodiorite dykes up to 10-20m occurs proximal to the main intrusive rock. Hornfelsed sediments and quartzite containing 5-7cm quartz carbonate brecciated veins/veinlets occur peripheral to intrusion. Up to 5% of pyrrhotite, less than 1% of chalcopyrite and minor pyrite were observed in the fractures, vuggy veins and biotite hornfels. A grab sample of bedded quartz carbonate veins containing sphalerite, galena and pyrite near the main intrusion (Sample No: 116344) returned 59 ppb Au, 75.6 ppm Ag, 6.75 ppm Sb, 3500 ppm Pb and 3560 ppm Zn (Fig.5 to Fig.7). Another sample of quartz carbonate veins hosted in metasediments containing minor galena returned 762 ppm Zn and 135 ppm Pb (Fig.6 to Fig.8). It is possible that Target 3 may represent a similar style of mineralization along the same north-northwest trending structure.

Some bleaching, silicification, sericite alteration and oxidization were identified in the sediments near the main intrusion or granodiorite dyke.

An examination of the 2012 rock anomaly containing 432 ppm Ag and 380 ppb Au indicated the possible association with 1-2m wide quartz carbonate vein and breccia zone trending 340°/60° NE. The 2790 ppm As in soil anomaly situated further south was not accessible due to limited helicopter support and should be followed up in later program as a promising target. It is possible the anomaly may be related to the interpreted N-S trending fault transecting the quartzite horizon extending from Target 1 to Target 3 (Figure 4).

#### 10.1.2 Target 2:

The highest gold returned from 2013 sampling was identified from target 2 from a sericite altered rhyolite float containing minor pyrite (Photo 1-3). Anomalous concentration of lead, zinc and arsenic values were returned from a silicified breccias vein cutting the rhyolite and graphitic shale. Several additional samples taken from target 2 area returned anomalous lead, zinc, silver and arsenic (Fig.6 to Fig.8).

Figure 6. Gold and Arsenic Anomaly in 2013 Surface Samples

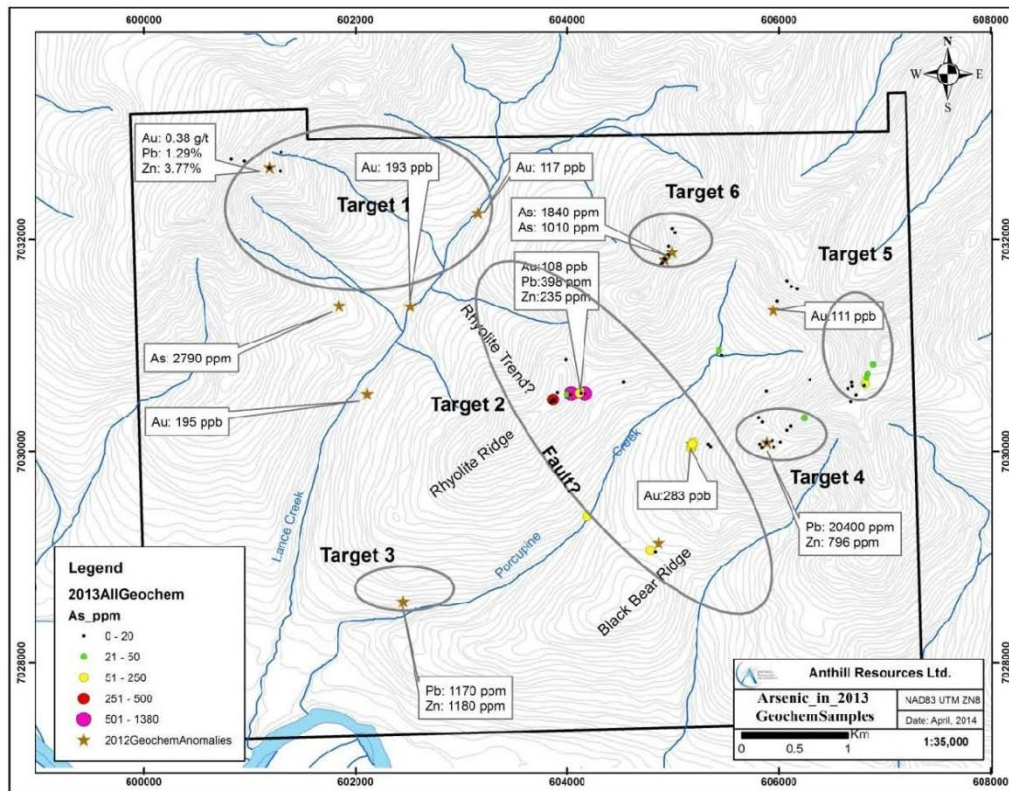
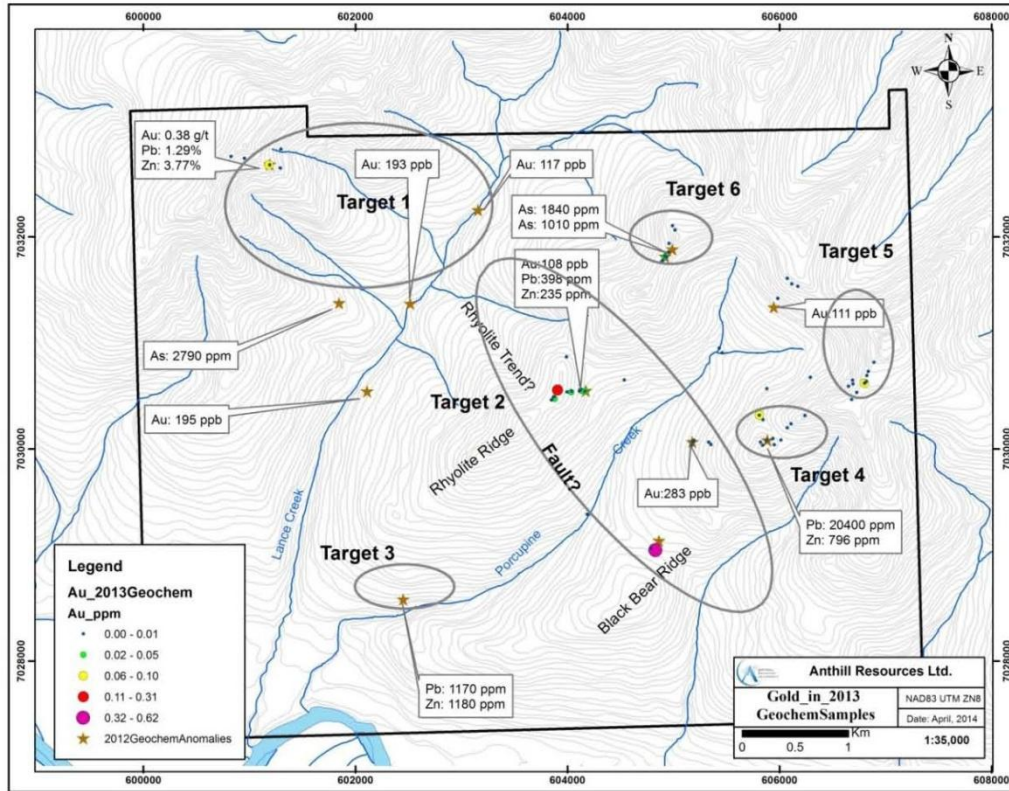


Figure 7. Lead and Zinc Anomaly in 2013 Surface Samples

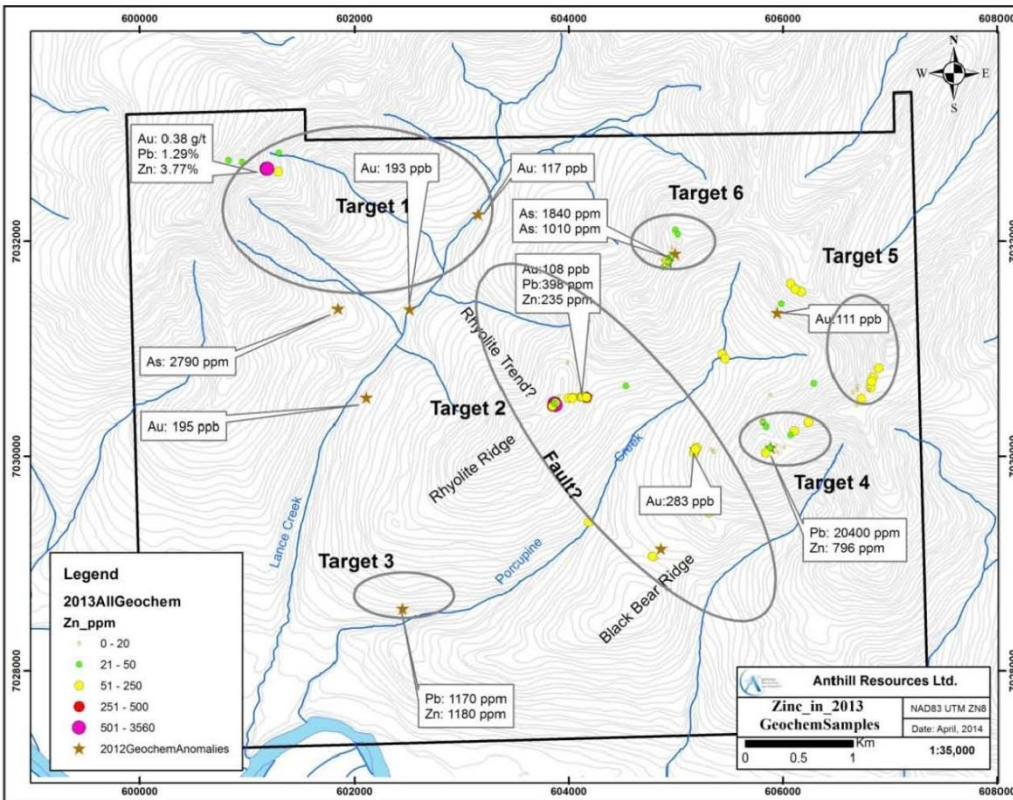
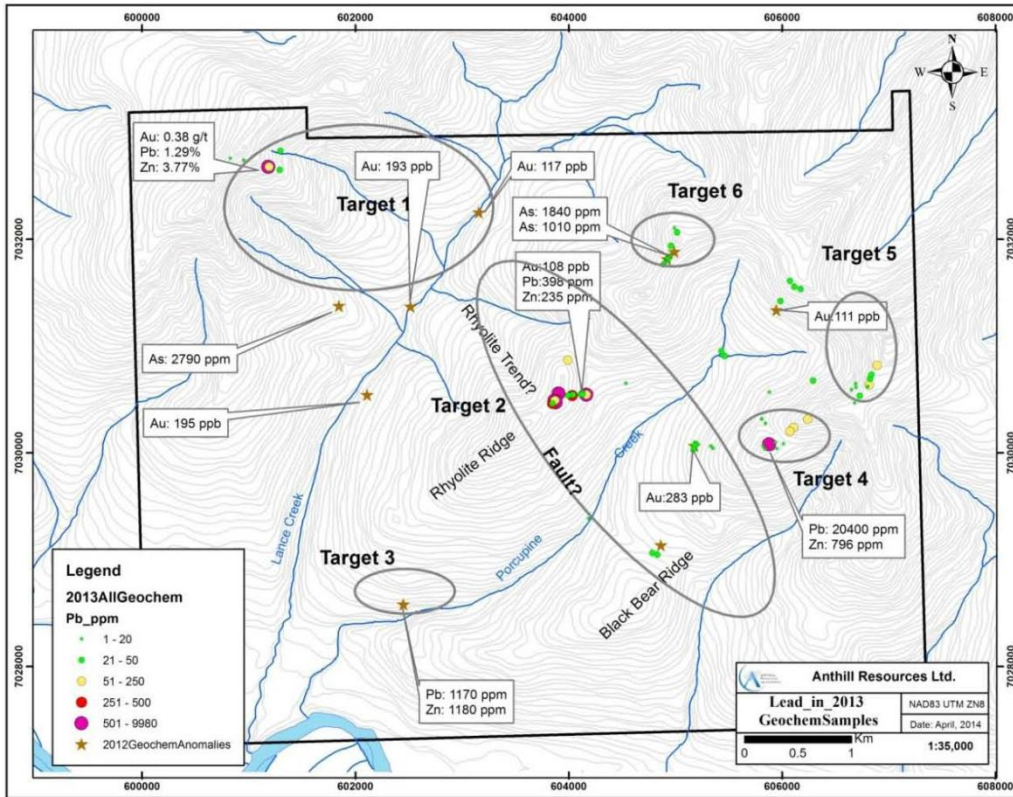
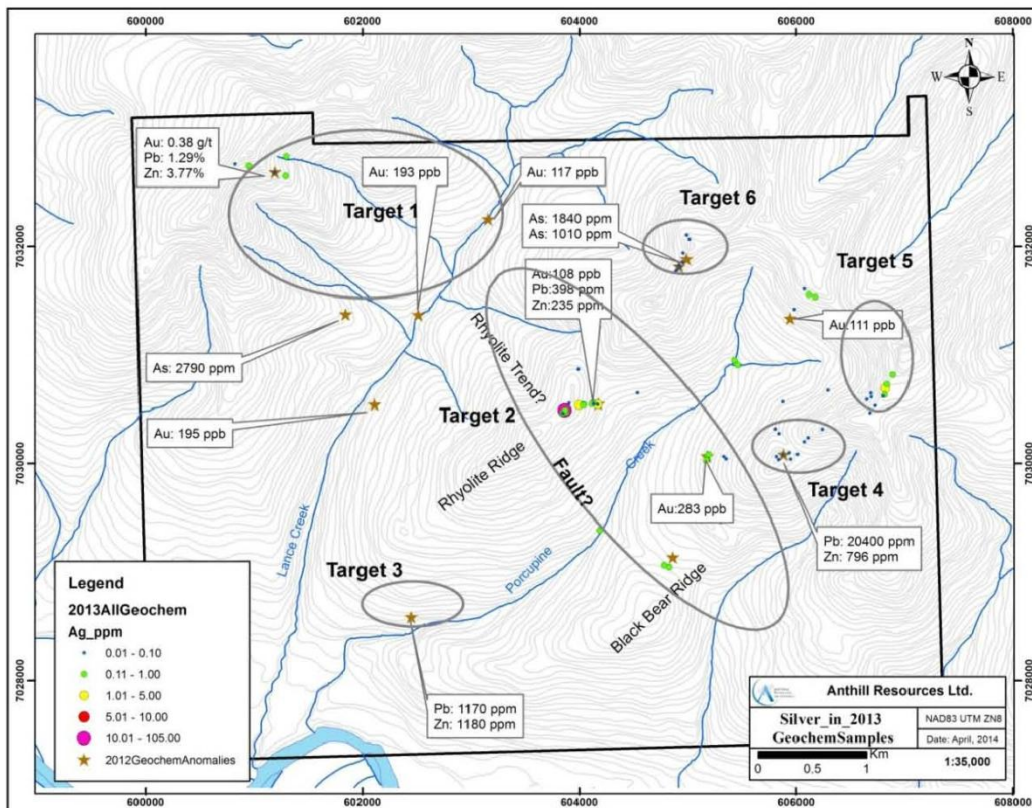
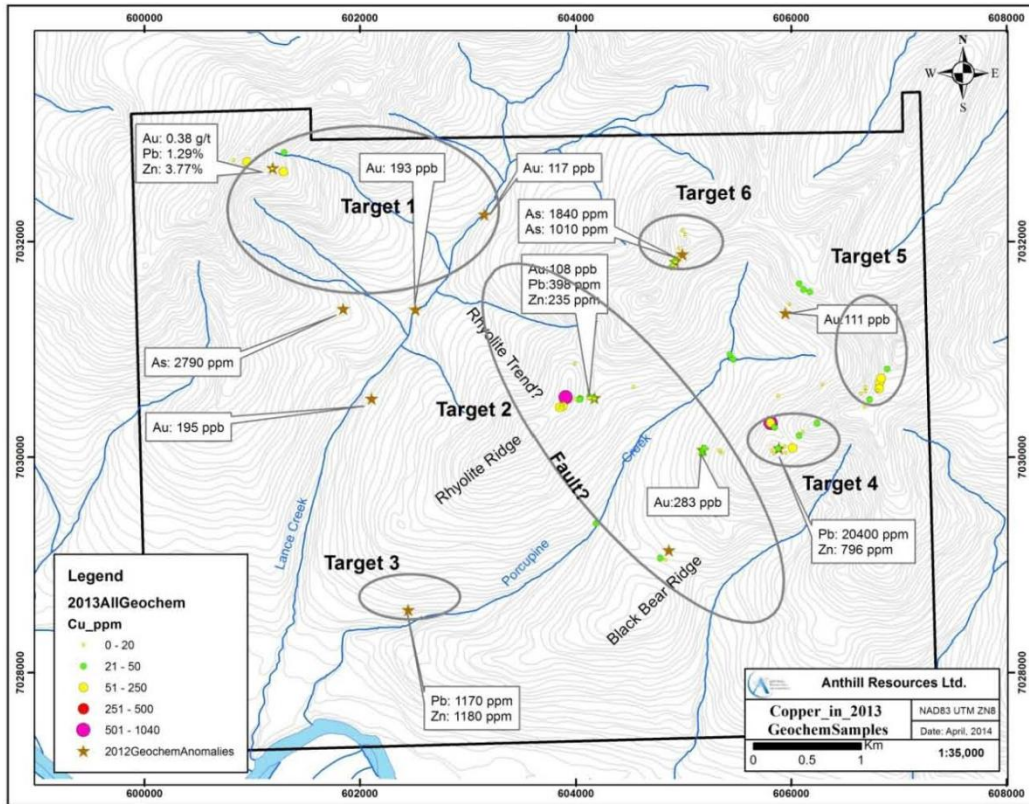


Figure 8. Copper and Silver Anomaly in 2013 Surface Samples



**Photo 1-3 Sample: 1298634**



---

A soil sample collected from the vicinity returned anomalous values of 152 ppm As and 109 ppm Zn (sample S1298633). A 2012 soil from this locality returned 94 ppm As, but 200 ppm As with 23 ppb Au was obtained 100m upslope to the northeast. A silicified breccia vein zone cutting the rhyolite and graphitic shale, 1.7 km to the northwest along the Rhyolite trend, returned 11.7 ppm Ag, with anomalous lead-zinc, across 3.5m (samples 116338-9) and occurs near a 477 ppm As anomaly from 2012.

Within this area, follow up of a 108 ppb Au soil anomaly from 2012 led to the discovery of a highly oxidized polymetallic vein, which contains 308 ppb Au, 169 ppm Ag, 324 ppm As, 6.42 ppm Sb, 9980 ppm Pb, 1.1% Zn and 944 ppm Cu (sample 116336, Photo 4), 100m north of the breccia vein. A soil sample from the site contained 516 ppb Au, 105 ppm Ag, 295 ppm As, 12.1 ppm Sb, 3550 ppm Pb, 2440 ppm Zn and 184 ppm Cu (sample S116310, Photo 5) (Fig.6 to Fig.8).

Other samples in this area also returned anomalous results of lead, zinc and arsenic confirming the promising lead-zinc-silver target characterized as silicified quartzite and grit with limonite pyrite clay fracture containing polymetallic veins. Selective results of surface samples taken from Target 2 area is shown in the following Table 3.

---

**Photo 4 Sample: 116336**



**Photo 5 Sample: S116310**



*Table 3. Selective Assay Results of Rock Samples from Target 2 Area*

Sample	Location	Easting Nad83	Northing Nad83 Z8	TYPE	Au-ppm	Ag-ppm	As-ppm	Sb-ppm	Pb-ppm	Zn-ppm	Cu-ppm
116333	Target 2	604536	7030651	grab	0.007	0.05	340	0.62	3.8	42.7	5.2
116334	Target 2	604128	7030549	grab	0.016	0.04	390	0.43	24.8	50.8	10.1
116335	Target 2	604034	7030535	grab	0.039	9.28	221	1.16	422	71	22.4
116336	Target 2	603906	7030556	grab	0.308	169	324	6.42	9980	1.10%	944
116338	Target 2	603881	7030474	1.5m chip	0.018	16.5	99.9	0.48	633	658	90.3
116339	Target 2	603849	7030462	2m chip	0.002	8.16	23.2	0.18	414	405	60

### 10.1.3 Targets 3-6:

Relatively narrow quartz  $\pm$ carbonate veins, quartz filled tension fractures and quartz lenses containing variable amounts of galena, sphalerite, chalcopyrite, malachite and some stibnite are possible cause for the lead,  $\pm$  zinc,  $\pm$  silver,  $\pm$  copper,  $\pm$  antimony soil anomalies previously identified in the Target 4 to 6 areas. However, the extent of mineralized area and the range of grade for enriched base metal elements have yet to be determined. Additional surface work in the area may further enhance the understanding of the base metal exploration targets in the area.

Minor galena occurs within foliation-parallel quartz lenses and occasional quartz filled tension fractures, both generally less than 10 cm wide but occasionally up to 50 cm wide, in the northeastern property area (Targets 4 to 6). A foliaform quartz-galena vein in Target 4 returned 0.47% Pb near a 2012 rock sample that returned 18.5 ppm Ag with 2% Pb, 796 ppm Zn and 10 ppm Sb.

Similar mineralization is suspected in the Target 3 area based on the similar geochemical response (lead, zinc, silver, antimony) but was not investigated. A previous rock sample collected from Target 3 returned 18.1 ppm Ag with 1170 ppm Pb and 1180 ppm Zn from a quartz vein reportedly hosted by quartz-muscovite schist (Fig.5 to Fig.7).

Copper sulphides including malachite and chalcopyrite was observed in quartz  $\pm$ carbonate veins hosted by shaly phyllite, grit, and dolomite in the Target 4 area. Anomalous concentration of copper up to 220 ppm Cu with 675 ppm Zn was also reported by CME consultants from the Target 5 area in 2011. High antimony results were obtained from sample 116325 (183 Sb and 1040 ppm, Photo 6) and sample 116326 (8.05 ppm Sb Photo 7). The anomalies may be related to the northwest trending structure through a sharp saddle area or locally present copper antimony sulphide - tetrahedrite.

---

Follow up of a 111 ppb Au in soil anomaly between Targets 5 and 6 did not uncover significant mineralization (samples S116307-09, 116350), although minor quartz veins with trace galena, sphalerite and pyrite were noted.

**Photo 6 Sample: 116325**



**Photo 7 Sample: 116326**



---

#### 10.1.4 Shadow Fault Zone

A northeast trending fault (informally named Shadow Fault) was postulated to the northeast of the property (Fig. 4). The fault zone is described as an extensive gossanous surface exposure with limonite, silicification, quartz veining and locally observed sericite alteration.

Arsenic in soil anomalies up to 1010 ppm and 1840 ppm were discovered along the shadow fault zone in the target 6 area. In spite of extensive surface sampling (samples: 116320 to 116324 and 1372676-1272678), the possible source of the soil anomaly could not be identified. The highest arsenic value of 117 ppm was obtained from a rock sample of chloritic phyllitic mudstone containing minor foliaform quartz veinlets and pyrite.

Although no significant values were returned from rock samples (1372680-84,116306, 1298636) within the fault zone near the Target 5 area, soils across the zone returned anomalous lead, zinc, copper and antimony, ±silver with maximum values of 83.3 ppm Pb, 144 ppm Zn, 94.5 ppm Cu, 18.7 ppm Sb and 1.69 ppm Ag (samples S116300-04).

#### 10.2 Conclusion

The six targets identified from 2012 surface geochemistry program primarily consisted of soils and minor silt and rock still remain to be viable targets for precious and base metals. In particular, target 1 and target 2 appear to be most promising targets and the lead-zinc-silver soil anomalies were confirmed in galena, sphalerite and locally copper bearing mineralization in quartzite, phyllite and hornfels containing polymetallic quartz +/- carbonate veins. A new target – shadow fault zone is postulated due to its extensive gossaneous exposure, silicification, quartz veining, oxidation and local sericite alternation.

Target 4, 5 and 6 appear to be less attractive exploration targets despite the copper, zinc and lead sulphides presence in the area. The size and grade potential of the base metal and precious metal deposits from the Target 4- 6 is considered to be limited based on current work.

---

## 11.0 Recommendations

Target 1 and 2 were originally selected due to the anomalous precious and base metal concentrations in the stream and soil samples in 2011 and 2012. Geological prospecting conducted in 2013 further confirmed the exploration potential by discovering polymetallic (lead, zinc, silver +/- copper) quartz carbonate veins in sediments and rhyolite with moderate to strong silification, oxidation and some sericite alteration. Work program consisted of soil grid sampling in the most prospective target 1 and target 2 with the effort to delineate the extent of anomalous areas of gold, silver, lead, zinc and copper is strongly recommended as the next phase of program.

Northwest trending faults including shadow fault and bear fault have been postulated in the Hess Property by Jean Paultler. The structural zones are perceived to be important corridors for hydrothermal fluids and the mineralization seemingly concentrates in the areas where the faults transecting the competent rock units of quartzite and rhyolite. Additional work composed of geological prospecting and surface sampling is also recommended to follow along the strike of the fault zones where numerous surface geochemistry anomalies are located.

Approximately 400 soils from grid sampling and 5-10 days of geological prospecting probably provide sufficient information to fully assess the extent of the mineralization system to make a decision on exploration drilling.

---

## 12.0 References

- Goodfellow, W.D., Lydon, J.W., and Turner, R.W., 1993. Geology and genesis of stratiform sediment-hosted (SEDEX) Zn-Pb-Ag sulphide deposits, in Kirkham, R.V., Sinclair, W.D., Thorpe, R.I., and Duke, J.M., eds., Mineral Deposit Modeling, Geological Association of Canada, Special Paper 40, p. 201-251.
- Gordey, S.P. and Anderson, R.G., 1993. Evolution of Northern Cordilleran Miogeosyncline, Nahanni Map Area (105I), Yukon and Northwest Territories. Geological Survey of Canada, Memoir 428.
- Hart, C.J.R., Mair, J.L., Goldfarb, R.J. and Groves, D.I. 2004. Source and Redox Controls of Intrusion-Related Metallogeny, Tombstone-Tungsten Belt, Yukon, Canada. Fifth Hutton Symposium Volume, Transactions of the Royal Society of Edinburgh: Earth Sciences 95: 339-356.
- Hart, C.J.R. and Goldfarb, R.J. 2006. Distinguishing intrusion-related from orogenic gold system. 2005 New Zealand Minerals Conference Proceedings, Auckland, New Zealand, p. 125-133
- Lang, J.R. and Baker, T. 2001. Intrusion-related gold systems: the present level of understanding. *Mineralium Deposita* 36: 477-489.
- Large, D.E., 1986, The paleotectonic setting of Rammelsberg and Meggen, Germany - A basin analysis study, in Turner, R. J.W., and Einaudi, M.T., eds., *The Genesis of Stratiform Sediment-hosted Lead and Zinc Deposits: Conference proceedings*, 20, Stanford University Publications, Geological Sciences, p. 109-112.
- Lydon, J.W., 1983, Chemical parameters controlling the origin and deposition of sediment-hosted stratiform lead-zinc deposits, in Sangster, D.F., ed., *Short Course in Sediment-hosted Stratiform Lead-zinc Deposits*, Mineralogical Association of Canada, Short Course Handbook v. 8, p. 175-250.
- Lydon, J.W., Walker, R., and Anderson, E.H., 2000, Lithogeochemistry of the Aldridge Formation and the chemical effects of burial diagenesis, in *The geological environment of the Sullivan Deposit, British Columbia*, in Lydon, J.W., Höy, T., Slack, J.F., and Knapp, M. E., eds., Geological Association of Canada, Mineral Deposits Division, Special Publication 1, p. 137-179.
- Pautler, J., 2013, Memorandum on Hess Property 2013 Exploration Summary and Recommendations

---

Parr, J.M., and Plimer, I.R., 1993, Models for Broken Hill-type lead-zinc-silver deposits, in Kirkham, R.V., Sinclair, W.D., Thorpe, R.I., and Duke, J.M., eds., Mineral deposit modeling: Geological Association of Canada, Special Paper 40, p. 253-288.

Schulze, C.M., 2013, Assessment Report on 2012 Soil, Silt and Rock geochemical sampling program on the Hess Project, Anthill Resources Yukon Ltd., Yukon Energy, Mines and Resources Assessment Report

Thompson, J.F.H. & Newberry, R.J., 2000. Gold deposits related to reduced granitic intrusions. Reviews in Economic Geology, v. 13, p. 377-400.

Tikkanen, G.D., 1986, World resources and supply of lead and zinc, in Bush, W.R., ed., Economics of Internationally Traded Minerals: Society of Mining Engineers, Inc., p. 242-250.

---

## **Appendix A. Sample Location and Description**

---

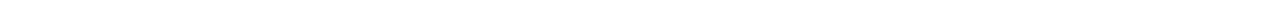
Jean Pautler					Hess Property, Anthill Resources Inc.		Anomalous results in red						
					Rock Sample Descriptions - August 2013		Select anomalous Mn in ppm, Ca in %						
SAMPLE No.	LOCATION	NAD 83 EASTING	ZONE 8 NORTHING	TYPE	DESCRIPTION	Au ppm	Ag ppm	As ppm	Sb ppm	Pb ppm	Zn ppm	Cu ppm	
116306	Target 5 area	606802	7030620	rough 2.5m chip	NW trending 2.5m wide white weathering quartz vein with orange-red limonite inside, hosted by silicified grits (possibly silicified limy grit, since some limy grits in area); wallrock sample 1298636	0.006	0.02	2	0.12	1.8	8.2	4.5	
116315	Target 2 central	604167	7030545	grab	phyllitic shale rock chips from S116316 soil hole with rusty quartz veining with clay-limonite fracture fillings and vugs, fine pyrite	0.024	0.05	893	0.84	91.9	50.4	8.6	
116318	Target 6 area	604990	7032104	grab	weak to moderately silicified, chlorite altered grit with fine quartz veinlets, some sheeted, up to 4 mm, <1% oxidized cubic pyrite with quartz and in wallrock, trend 260/steep, strong foliation (possible structure) at 305/85NE	<0.001	0.03	7.7	0.47	7.7	32.8	13.6	
116319	Target 6 area	605015	7032065	grab	grey to greenish (chloritic) phyllite and grit with rusty weathering irregular quartz veins to 10-20 cm, minor apple green ??	<0.001	0.03	9.9	0.25	22.5	27.9	5.3	
116320	Target 6 area	604952	7031855	grab	50 cm boulder from cliff along edge of sharp saddle/gully with 40 cm quartz vein and adjacent silicified grit with few mm sized quartz stringers cubic pyrite, some oxidized, minor fine arsenopyrite?, realgar?? In area of >1000 ppm As soil anomaly	0.003	0.07	11.4	0.31	9.5	37.6	13.2	
116321	Target 6 area	604921	7031817	rough 0.6m chip	rusty, fine grained, chloritic phyllitic mudstone with fine oxidized cubic pyrite, minor quartz veinlets with pyrite along foliation (300/70NE) near galena bearing sample 1372677	0.006	0.05	177	1.2	10.5	63.4	38.5	
116322	Target 6 area	604889	7031765	grab	grit with 1-2 mm wide sheeted veins along foliation over 20m area with minor <1% cubic pyrite and possible trace bornite	0.001	0.08	4.8	0.14	23.2	39.4	31.7	
116323	Target 6 area	604957	7031939	grab	quartz veining up to 10cm in grit/phyllite with strong limonite, oxidized cubic pyrite, patchy clay alteration and Mn	0.002	0.07	3	0.33	24.5	14.4	5.5	
116324	Target 6 area	604928	7031811	grab	composite grab over 20m area of 3-15 cm quartz veining with strong limonite patches and fracture fillings	0.004	0.03	65.6	0.21	20.4	23.4	3.9	
116325	Target 4 area	605811	7030318	grab	5% malachite, 1% chalcopryite, tetrahedrite? in quartz, minor calcite, vein stockwork and grey phyllitic shale host adjacent to dolostone, as larger boulders in saddle area 3.63% Ca	0.056	0.25	24.6	183	5.9	25.6	1040	
116326	Target 4 area	605809	7030318	grab	trace malachite, fine pyrite in quartz stockworked grit (in grit not quartz); as larger boulders in saddle area	0.005	0.29	3.2	8.05	15.2	7.9	61.4	
116327	Target 4 area	605845	7030275	grab	grab of assorted rusty white quartz talus with cubic pyrite, limonite, clay altered zones (remnant wallrock - grit unit)	0.002	0.05	1.7	0.38	19	31.5	20.3	
116328	Target 4 area	606013	7030085	grab	white quartz with limonite fracture fillings, trace cubic pyrite, minor Mn and weak clay, 5-30 cm wide, along foliation	<0.001	0.14	1	0.14	8.3	5.1	94.4	
116329	Target 4 area	605952	7030041	grab	white quartz veins up to 50 cm wide (most 5-10 cm) with limonite - clay fracture fillings, vugs, cubic pyrite; trend 310	0.002	0.03	1.2	0.14	1.7	4.9	1.7	
116330	Target 4 area	605879	7030081	grab	trace galena in rusty quartz talus with some limonite-clay fracture fillings and vugs	<0.001	0.16	3.4	0.79	4730	44.7	20.8	
116331	between Target 4 & 5	606074	7030201	grab	rusty quartz veins parallel to foliation with limonite fracture fillings and vugs, trend 267/45N, hosted by finer phyllitic clastics than the coarse grits below	0.007	0.14	15.5	1.18	55.9	41.8	22.5	
116332	between Target 4 & 6	606108	7030239	grab	composite grab of rusty, 5-10 cm wide quartz veins parallel to foliation with limonite fracture fillings and vugs, some clay	0.002	0.09	17.7	0.89	115	63.3	12.6	

Jean Pautler					Hess Property, Anthill Resources Inc.		Anomalous results in red						
					Rock Sample Descriptions - August 2013		Select anomalous Mn in ppm, Ca in %						
SAMPLE No.	LOCATION	NAD 83 EASTING	ZONE 8 NORTHING	TYPE	DESCRIPTION	Au ppm	Ag ppm	As ppm	Sb ppm	Pb ppm	Zn ppm	Cu ppm	
116333	Target 2 area	604536	7030651	grab	quartz stockwork in quartzite with quartz-sericite altered limonite fracture fillings with pyrite (some cubic), as local boulders	0.007	0.05	340	0.62	3.8	42.7	5.2	
116334	Target 2 area	604128	7030549	grab	quartz with rusty, limonitic and Mn fracture fillings cutting shaley phyllite and fine grit from S116313-4 area	0.016	0.04	390	0.43	24.8	50.8	10.1	
116335	Target 2 area	604034	7030535	grab	intensely silicified, quartz stringered pale green metaclastic unit with limonite-clay fracture fillings and vugs, cubic pyrite and boxwork, above S116312 and 108 ppb Au in soil anomaly	0.039	9.28	221	1.16	422	71	22.4	
116336	Target 2 area	603906	7030556	grab	fine rock bits of limonitic and Mn grunge over 5 by 7m area at S116310; in area of shaley phyllite to fine grit	0.308	169	324	6.42	9980	1.10%	944	
116337	Target 2 area	603868	7030490	grab	silicified rhyolite dyke with weak sericite alteration, limonite on fractures, from general area of 477 ppm As in soil anomaly	0.003	1.82	16.1	0.34	60.3	36	3.8	
116338	Target 2 area	603881	7030474	1.5m chip	west side of strong to intensely silicified vein-breccia zone with intensely limonitic fractures, some Mn; graphitic phyllite and rhyolite fragments, resilicified quartz stockwork	0.018	16.5	99.9	0.48	633	658	90.3	
116339	Target 2 area	603849	7030462	2m chip	east side of strong to intensely silicified vein-breccia zone, more quartz rich with druses and crystalline vugs, intensely limonitic fractures; sericite altered and intensely silicified rhyolite fragments	0.002	8.16	23.2	0.18	414	405	60	
116340	Target 2 area	603849	7030462	grab	orthogonal quartz veins with dark, sooty material as fracture fillings and dustings in rusty quartz veins cutting sericite altered phyllite host	<0.001	0.86	25.8	0.1	31.6	120	16.5	
116341	Target 2 area	603875	7030494	grab	quartz-sericite altered rhyolite with quartz stringers up to 5 mm across with minor pyrite, as subrop; from 477 ppm As soil anomaly area	0.005	0.93	28.7	0.39	67.5	87.8	7.5	
116342	Target 2 area	604149	7030988	grab	rusty, silicified? quartzite with crosscutting quartz veinlets, appears as linear silicified unit	0.003	0.22	4.4	0.17	4.5	8.4	5.6	
116343	Target 2 area	603991	7030868	grab	20 by 30 cm block of white quartz breccia with vuggy crystalline quartz and <1 cm to 2 cm grey phyllite fragments, some rhyolite float in area, just west (above) sharp saddle	0.002	1.54	6.1	0.11	66.5	7.1	1.9	
116344	Target 1 area	601185	7032679	grab	quartz-carbonate vein zone, with individual veins 5-7 cm wide, includes banded veins with sphalerite, galena and pyrite, some drusy and vuggy veins within zone; from 432 ppm Ag rock anomaly area; trend 340/60NE	0.059	75.6	32.7	6.75	3500	3560	16.4 2.76Ca	
116345	Target 1 area	601290	7032650	grab	dark, rusty hornfelsed shale with pyrite along foliation as discontinuous bands, minor folding	0.005	1	20.6	0.72	23.6	87.8	93.5	
116346	Target 1 area	601297	7032826	grab	bleached, silicified, pyritized, sericite (QSP) altered sediments from rusty zone about 55m wide; quartz-feldspar-tourmaline and fresh biotite granodiorite dykes in area	0.002	0.35	9.7	0.32	23.5	36.6	20.3	
116347	Target 1 area	601190	7032677	grab	quartz-carbonate breccia vein with metasedimentary fragments, minor galena within banded quartz vein part of breccia	0.009	1.19	13.6	2.73	135	762	2.4	
116348	Target 1 area	600953	7032741	grab	dark rusty biotite hornfels with 5% po, <1% chalcopryite, minor pyrite	0.002	0.58	3	0.09	16.3	40.7	64.2	
116349	Target 1 area	600827	7032758	grab	rusty quartz vein, minor carbonate, with sericite altered patches surrounded by cubic pyrite, some druses, vugs, trend 285/70NE, near medium grained alaskite dyke (to west)	0.003	0.12	19.6	0.27	5.6	23.3	18	
116350	near Target 6 area	605984	7031420	grab	white quartz vein with weak carbonate along fractures, trace galena, sphalerite and cubic pyrite, above 111 ppb Au soil anomaly	0.001	0.1	1.4	0.12	45.5	24.6	3.8	
1298631	Target 2 area	605347	7029540	grab	silicified quartzite with quartz stockwork and rusty, drusy veins	0.02	1.1	15.7	2.9	1.1	15.7	2.9	
1298634	Target 2 area	604830	7029046	grab	sericite altered rhyolite with minor cubic pyrite, limonite and Mn fracture fillings, about 10 pieces of local float in area	0.62	27.9	14.8	2.8	27.9	14.8	2.8	
1298636	Target 5 area	606802	7030620	rough 4m chip	stockwork in silicified grit adjacent to (west side) of 116306 vein	0.07	4.7	11.4	2.6	4.7	11.4	2.6	

Jean Pautler					Hess Property, Anthill Resources Inc.							Anomalous results in red						
					Soil Sample Descriptions - August 2013							Select anomalous Mn & Cd in ppm						
SAMPLE No.	LOCATION	NAD 83 EASTING	ZONE 8 NORTHING	TYPE	DESCRIPTION	Au ppm	Ag ppm	As ppm	Sb ppm	Pb ppm	Zn ppm	Cu ppm						
S116300	Target 5 area	606729	7030533	Soil	medium brown C horizon talus fines, flat, along ridge, 25 cm depth, in area of quartz-sericite altered grits (originally limy? -some limy grits in area) at end of main area of silicification	<0.005	0.1	18.9	1.65	30.1	97.6	40.3						
S116301	Target 5 area	606817	7030636	Soil	medium brown C horizon talus fines, flat, in minor gully along ridge, 20 cm depth, in area of grey limestone and orange dolostone 1910 ppm Mn, 4.6% Ca	<0.005	0.27	81.7	18.7	53.1	138	66.1						
S116302	Target 5 area	606824	7030693	Soil	brown-black C horizon talus fines, flat, in minor gully along ridge, 15 cm depth, in area of black shale, grey limestone, orange dolostone, and grits 2.36% Ca	<0.005	1.69	30.6	3.7	36	91.3	94.5						
S116303	Target 5 area	606837	7030732	Soil	medium brown-bit black C horizon talus fines, flat, in minor gully along ridge, 25 cm depth, in area of black shale, grey limestone and orange dolostone; just above 50 cm wide quartz stockwork zone	<0.005	0.54	31.7	3.01	33.2	109	82.5						
S116304	Target 5 area	606892	7030817	Soil	light brown C horizon talus fines, flat, along ridge, 30 cm depth, above weakly rusty grits	<0.005	0.13	25.3	3.27	83.3	144	47.9						
S116305	Target 5 area	606518	7031319	Soil	medium brown C horizon talus fines, flat, in light gully-saddle area along ridge, 25 cm depth, in area of grit and minor grey shale	<0.005	0.07	19.7	1.76	37.4	88.8	38.1						
S116307	between Targets 5 & 6	606174	7031533	Soil	medium brown C horizon talus fines, moderate slope, 40 cm depth, in area of grits, above 111 ppb Au soil anomaly in area of overgrown boulder talus slope	<0.005	0.16	16.5	1.51	31.3	94.3	30.2						
S116308	between Targets 5 & 6	606116	7031555	Soil	medium brown C horizon talus fines, moderate slope, 40 cm depth, below outcrop of brownish-green grits, above 111 ppb Au soil anomaly in area of overgrown boulder talus slope	<0.005	0.12	9.7	1	41	88.4	31.3						
S116309	between Targets 5 & 6	606073	7031609	Soil	medium brown C horizon talus fines, moderate - steep slope, 40 cm depth, in area of fine-coarse grits, above 111 ppb Au soil anomaly in area of overgrown boulder talus slope	<0.005	0.1	12.7	1.38	45	88.7	29.4						
S116310	Target 2 central	603868	7030490	Soil	medium brown C horizon talus fines, flat slope along ridge, 15 cm depth, in area of 1-2 cm broken subcrop bits of rusty and Mn stained material, above 108 ppb Au soil anomaly 7.54% Fe, 13.5Cd	0.374 0.516	105	295	12.1	3550	2440	184 2960Mn						
S116311	Target 2 central	603995	7030538	Soil	medium brown C horizon talus fines, moderate - gentle slope, 30 cm depth, in area of mostly phylitic shale, above 108 ppb Au soil anomaly in area of paleotalus slope	<0.005	1.11	49.4	1.26	44	96.9	19.3						
S116312	Target 2 central	604041	7030545	Soil	medium brown C horizon talus fines, moderate slope, 50 cm depth, above 108 ppb Au soil anomaly in area of paleotalus slope	0.007 0.009	0.54	663	1.37	44.7	104	27						
S116313	Target 2 central	604113	7030549	Soil	rich medium orange-brown C horizon talus fines, moderate slope, 30 cm depth, above 108 ppb Au soil anomaly in area of paleotalus slope	<0.005	0.22	200	0.97	26.5	106	19.2						
S116314	Target 2 central	604127	7030560	Soil	medium orange-brown C horizon talus fines, steep slope, 40 cm depth, above 108 ppb Au soil anomaly in area of paleotalus slope	0.03 0.008	0.39	217	0.96	27.8	91.5	25.7						
S116316	Target 2 central	604167	7030545	Soil	medium orange-brown C horizon talus fines, steep slope, 35 cm depth, from vicinity of 108 ppb Au soil anomaly on paleotalus slope; no flag, soil hole or disturbance	0.065 0.104	2.34	1380	1.77	535	288	28						
S116317	Target 5 area	606241	7030315	Soil	medium brown C horizon talus fines, flat slope along ridge in 15m gully within bit rusty pale green phylitic mudstone, 15 cm depth 6.17% Fe	<0.005	0.1	26	4.05	69.6	126	45.5						
S1298632	Target 2 area	605337	7029494	Soil	rusty orange-brown C horizon, 35 cm depth, moderate slope near deep saddle below quartzite unit, green & black shales in area	<0.005	0.65	25.3	1.28	20.8	89	20.6						
S1298633	Target 2 area	604785	7029064	Soil	medium brown, bit dark, C horizon, 20 cm depth, flat, in 294 degree trending gully, greenish-grey phylitic shales 2260 ppm Mn	<0.005	0.76	152	0.47	28.4	109	44.4						
S1298635	Target 2 area	605305	7029473	Soil	medium brown C horizon, 30 cm depth, bit dark, shale chips, flat slope in gully, beside few cm deep Al In 2012 soil	<0.005	0.6	23.2	0.88	10.6	112	23.1						

Don Coolidge					Hess Property, Anthill Resources Inc.							Anomalous results in red						
					Sample Descriptions - August 2013													
SAMPLE No.	LOCATION	NAD 83 EASTING	ZONE 8 NORTHING	TYPE	DESCRIPTION	Au ppm	Ag ppm	As ppm	Sb ppm	Pb ppm	Zn ppm	Cu ppm						
1372676	Target 6 area	604956	7031852	Grab	Small quartz vein with orange rust and small dark, oxidized cubes of pyrite and weak mm scale spots of argillic altered clay. From NW 330 degree trending gulch in the ridge.	0.001	0.02	6.3	0.22	3.2	19.8	6						
1372677	Target 6 area	604921	7031814	composite	Quartz lense or boudin trending 060 degrees perpendicular to strong foliation. White quartz with strong red oxide, 2% coarse cubic pyrite, trace very fine grained galena. From the SW side of NW trending recessive zone.	0.016	0.04	56	0.27	12.3	17.7	11.5						
1372678	Target 6 area	604901	7031781	grab	White quartz zone 2 x 1m lense like that runs parallel to fabric and has an orange oxide on fractures. Trace vfg silver looking sulphide. From the northeast side of notch on ridge.	<0.001	0.02	3	0.15	2.6	15.4	8.8						
1372679	Target 4-5 area	605879	7030568	composite	Flat lying white quartz vein overlying steeply dipping light grey phillitic schist. White, brittle quartz with orange oxide on internal fractures. Trace silver coloured vfg sulphide? Taken over a 15cm width and along a 4m exposed strike.	0.001	0.04	1.6	0.17	11.2	9.6	4.9						
1372680	Target 4-5 area	606292	7030676	grab	Quartz blowout in chlorite schist. Minor orange oxide and weak chlorite alteration. Exhibits 0.5 to 1 cm wormy looking quartz veinlets. Brittle white quartz, chips over 1.5 m width, trace pyrite. 15m strike and faces NW.	<0.001	0.06	3.9	0.36	38.6	28.9	18.1						
1372681	Target 4-5 area	606681	7030466	grab	Brittle white quartz with minor orange-brown oxide on fractures. Trace of vfg pyrite? Chlorite along vein contact. From 0.5m wide quartz talus zone that trends 316 degrees on N side of ridge. Sample over 2m strike.	0.006	0.02	0.8	0.09	12.8	12.3	3.8						
1372682	Target 4-5 area	606650	7030592	composite	White, brittle, flatly dipping and sheeted quartz veinlets host in a dark grey siliceous schist. Minor orange oxide, with a trace of vfg pyrite. From NW facing bluff between NW trending chutes.	<0.001	0.03	1	0.13	6.1	11.6	4.5						
1372683	Target 4-5 area	606694	7030614	grab	Grey-brown-buff weathered. Massive looking, siliceous sericite altered unit, with a trace of vfg vuggy sulphide. Brittle, white quartz stringers. At the contact with a fissile grey schist. From a steep NW trending chute.	0.009	0.02	2.3	0.17	1.1	2.2	3.8						
1372684	Target 4-5 area	606690	7030648	0.2m chip	Siliceous 0.3m wide shear zone with 1% medium grained, oxidized cubic pyrite. Weak green-yellow oxide and in a sericite altered halo. Shear attitude: 342/66.	0.001	0.01	1.5	0.11	2.3	3.6	3.6						
1372691	NE target 2 area	605354	7030043	composite	Small white quartz vein and stringers that run parallel to fabric in a light grey foliated meta-sed. Weak orange oxide on vein fractures, and weak quartz stockwork over 1.5 x 3 m area.	0.001	0.02	13.1	0.14	14.1	16.5	7.2						
1372692	NE target 2 area	605330	7030064	composite	3 x 4 m zone of white, brittle quartz in a grey-brown phyllite. Strong quartz flooding with a trace of pyrite. Taken over a 4x5 m area. Outcrop trends 330 degrees.	0.007	0.02	90.7	0.19	5.1	17.8	13.9						
1372693	Target 4 area	605821	7030064	grab	Wispy quartz stringers in brown, gritty phillite. From a 20 x 30 cm zone that faces SW.	<0.001	0.02	34.5	0.29	4.9	7.2	6.1						
1372694	Target 4 area	605841	7030036	composite	From a 1x2m zone of wispy to wormy looking white quartz veinlets in grey brown phyllite. Weak orange oxide in quartz veinlets. No visible sulphides.	<0.001	0.03	2.3	0.16	6.2	110	11.7						
1372695	Target 4 area	605937	7030099	float	Blocky 20 cm white, brittle quartz boulder with moderate orange oxide on fractures. Contains 0.5% oxidized cubic pyrite and a trace of vfg galena? From the west side of a recessive fault zone that trends 320 degrees.	0.004	0.09	7.6	0.21	11.4	12.3	5.9						
S1372685	Target 2	605180	7030066	soil	Dark brown-grey "C" horizon. 40 cm depth, small dark phylitic chips. From a 35 degree west facing slope with mature timber and light undergrowth.	<0.005	0.23	69.4	1.47	24.8	69.4	30.4						
S1372686	Target 2	605194	7030083	soil	Dark brown-grey "C" horizon. 40 cm depth, small dark phylitic chips. From a 35 degree west facing slope with mature timber and light undergrowth.	<0.005	0.13	141	0.96	29.5	87.7	26.3						
S1372687	Target 2	605169	7030031	soil	Dark brown-grey "C" horizon. 40 cm depth, small dark phylitic chips. From a 35 degree west facing slope with mature timber and light undergrowth. 1.09%Ca	<0.005	0.15	77.5	0.82	20.3	80	31.7						
L1372388	Target 2	604186	7029384	silt	Light grey sand to silt with brown mica flakes. 2m wide creek with moderate flow and 20 cm depth. Boulders and cobbles of metaseds and schists.	<0.005	0.2	59.5	1.07	19.3	170	36.8						
L1372689	Target 2	605430	7030951	silt	From a 1.5m wide tributary/fork, 10cm depth, gentle flow and coarse, platy granular sand to grit. Creek flow is from the NE.	<0.005	0.28	31.3	1.32	21.9	94.5	43.9						
L1372690	Target 2	605459	7030906	silt	From a 1.5-2m wide fork that flows from the east. Low energy flow and volume of water-10 cm depth with sparse fines. Mostly brown phyllite and some quartz cobbles in stream bed.	<0.005	0.15	18.6	1.3	23.4	88.2	29.9						

## **Appendix B. Assay certificates**





CLIENT NAME: ANTHILL RESOURCES (YUKON)  
1010-1055 WEST HASTINGS STREET  
Vancouver, BC V6E2E9  
(604) 569-3892

ATTENTION TO: Yinghua Chen

PROJECT NO:

AGAT WORK ORDER: 13Y750146

SOLID ANALYSIS REVIEWED BY: Yufei Chen, Analyst

DATE REPORTED: Sep 04, 2013

PAGES (INCLUDING COVER): 14

Should you require any information regarding this analysis please contact your client services representative at (905) 501-9998

\*NOTES

All samples are stored at no charge for 90 days. Please contact the lab if you require additional sample storage time.



## Certificate of Analysis

AGAT WORK ORDER: 13Y750146

PROJECT NO:

5623 McADAM ROAD  
MISSISSAUGA, ONTARIO  
CANADA L4Z 1N9  
TEL (905)501-9998  
FAX (905)501-0589  
<http://www.agatlabs.com>

CLIENT NAME: ANTHILL RESOURCES (YUKON)

ATTENTION TO: Yinghua Chen

### AR--FA Metals Package, ICP/ICP-MS finish (201074, 202552) (Anthill)-Core

DATE SAMPLED: Aug 22, 2013

DATE RECEIVED: Aug 20, 2013

DATE REPORTED: Sep 04, 2013

SAMPLE TYPE: Rock

Sample ID (AGAT ID)	Analyte: Unit: RDL:	Au g/t 0.001	Au ppm 0.005	As ppm 0.1	Sb ppm 0.05	Hg ppm 0.005	Tl ppm 0.001	Ag ppm 0.01	Pb ppm 0.1	Zn ppm 0.5	Cu ppm 0.1	Bi ppm 0.01	W ppm 0.05	Mo ppm 0.05	Al % 0.01
1372676 (4674625)		0.001	<0.005	6.3	0.22	0.011	0.017	0.02	3.2	19.8	6.0	0.02	<0.05	2.21	0.15
1372677 (4674626)		0.016	<0.005	56.0	0.27	0.017	0.017	0.04	12.3	17.7	11.5	0.04	<0.05	1.58	0.23
1372678 (4674627)		<0.001	<0.005	3.0	0.15	0.008	0.012	0.02	2.6	15.4	8.8	0.01	<0.05	1.44	0.22
1372679 (4674628)		0.001	<0.005	1.6	0.17	0.005	0.007	0.04	11.2	9.6	4.9	0.10	<0.05	1.20	0.05
1372680 (4674629)		<0.001	<0.005	3.9	0.36	0.007	0.024	0.06	38.6	28.9	18.1	0.14	<0.05	1.25	0.71
1372681 (4674630)		0.006	<0.005	0.8	0.09	0.008	0.005	0.02	12.8	12.3	3.8	0.01	<0.05	1.20	0.06
1372682 (4674631)		<0.001	<0.005	1.0	0.13	0.010	0.011	0.03	6.1	11.6	4.5	0.05	<0.05	1.21	0.15
1372683 (4674632)		0.009	<0.005	2.3	0.17	0.005	0.031	0.02	1.1	2.2	3.8	0.01	<0.05	0.85	0.22
1372684 (4674633)		0.001	<0.005	1.5	0.11	0.010	0.021	0.01	2.3	3.6	3.6	0.02	<0.05	1.12	0.15
1372691 (4674634)		0.001	<0.005	13.1	0.14	<0.005	0.012	0.02	14.1	16.5	7.2	0.05	<0.05	1.09	0.14
1372692 (4674635)		0.007	<0.005	90.7	0.19	0.005	0.017	0.02	5.1	17.8	13.9	0.03	<0.05	1.19	0.15
1372693 (4674636)		<0.001	<0.005	34.5	0.29	0.009	0.047	0.02	4.9	7.2	6.1	0.03	<0.05	1.11	0.23
1372694 (4674637)		<0.001	<0.005	2.3	0.16	0.012	0.042	0.03	6.2	110	11.7	0.03	<0.05	1.82	0.24
1372695 (4674638)		0.004	<0.005	7.6	0.21	0.009	0.011	0.09	11.4	12.3	5.9	0.16	<0.05	1.04	0.20
116306 (4674639)		0.006	<0.005	2.0	0.12	0.008	0.009	0.02	1.8	8.2	4.5	<0.01	<0.05	1.19	0.08
116315 (4674640)		0.024	0.008	893	0.84	0.011	0.020	0.05	91.9	50.4	8.6	0.10	2.00	1.10	0.20
116318 (4674641)		<0.001	<0.005	7.7	0.47	0.005	0.035	0.03	7.7	32.8	13.6	0.05	0.07	0.87	0.72
116319 (4674642)		<0.001	<0.005	9.9	0.25	0.012	0.016	0.03	22.5	27.9	5.3	0.05	<0.05	1.55	0.19
116320 (4674643)		0.003	<0.005	11.4	0.31	0.012	0.038	0.07	9.5	37.6	13.2	0.04	<0.05	1.21	0.42
116321 (4674644)		0.006	<0.005	177	1.20	0.012	0.075	0.05	10.5	63.4	38.5	0.40	<0.05	0.75	1.42
116322 (4674645)		0.001	<0.005	4.8	0.14	0.011	0.019	0.08	23.2	39.4	31.7	0.28	<0.05	1.23	0.60
116323 (4674646)		0.002	<0.005	3.0	0.33	0.009	0.019	0.07	24.5	14.4	5.5	0.21	<0.05	1.31	0.34
116324 (4674647)		0.004	<0.005	65.6	0.21	0.008	0.028	0.03	20.4	23.4	3.9	0.06	<0.05	1.29	0.27
116325 (4674648)		0.056	0.039	24.6	183	0.097	0.030	0.25	5.9	25.6	1040	0.06	0.11	1.04	0.23
116326 (4674649)		0.005	<0.005	3.2	8.05	0.018	0.008	0.29	15.2	7.9	61.4	0.25	0.06	1.20	0.11
116327 (4674650)		0.002	<0.005	1.7	0.38	0.017	0.013	0.05	19.0	31.5	20.3	0.15	<0.05	2.03	0.28
116328 (4674651)		<0.001	<0.005	1.0	0.14	0.006	0.011	0.14	8.3	5.1	94.4	0.01	<0.05	5.24	0.10
116329 (4674652)		0.002	<0.005	1.2	0.14	<0.005	0.005	0.03	1.7	4.9	1.7	<0.01	<0.05	1.47	0.08
116330 (4674653)		<0.001	<0.005	3.4	0.79	0.005	0.013	0.16	4730	44.7	20.8	0.03	<0.05	4.97	0.24
116331 (4674654)		0.007	<0.005	15.5	1.18	0.009	0.044	0.14	55.9	41.8	22.5	0.14	<0.05	1.22	0.52
116332 (4674655)		0.002	<0.005	17.7	0.89	0.010	0.014	0.09	115	63.3	12.6	0.10	<0.05	4.67	0.27
116333 (4674656)		0.007	<0.005	340	0.62	<0.005	0.023	0.05	3.8	42.7	5.2	0.10	0.06	1.19	0.09

Certified By:



## Certificate of Analysis

AGAT WORK ORDER: 13Y750146

PROJECT NO:

5623 McADAM ROAD  
MISSISSAUGA, ONTARIO  
CANADA L4Z 1N9  
TEL (905)501-9998  
FAX (905)501-0589  
<http://www.agatlabs.com>

CLIENT NAME: ANTHILL RESOURCES (YUKON)

ATTENTION TO: Yinghua Chen

### AR--FA Metals Package, ICP/ICP-MS finish (201074, 202552) (Anthill)-Core

DATE SAMPLED: Aug 22, 2013

DATE RECEIVED: Aug 20, 2013

DATE REPORTED: Sep 04, 2013

SAMPLE TYPE: Rock

Sample ID (AGAT ID)	Analyte: Unit: RDL:	Au g/t 0.001	Au ppm 0.005	As ppm 0.1	Sb ppm 0.05	Hg ppm 0.005	Tl ppm 0.001	Ag ppm 0.01	Pb ppm 0.1	Zn ppm 0.5	Cu ppm 0.1	Bi ppm 0.01	W ppm 0.05	Mo ppm 0.05	Al % 0.01
116334 (4674657)		0.016	<0.005	390	0.43	0.042	0.021	0.04	24.8	50.8	10.1	0.18	71.8	4.08	0.23
116335 (4674658)		0.039	0.029	221	1.16	0.013	0.118	9.28	422	71.0	22.4	0.59	2.44	5.64	0.12
116336 (4674659)		0.308	0.236	324	6.42	0.233	0.083	169	9980	>10000	944	0.10	2.12	1.39	0.13
116337 (4674660)		0.003	<0.005	16.1	0.34	0.007	0.141	1.82	60.3	36.0	3.8	0.61	0.37	0.98	0.30
116338 (4674661)		0.018	<0.005	99.9	0.48	0.017	0.244	16.5	633	658	90.3	0.02	0.34	4.66	0.24
116339 (4674662)		0.002	<0.005	23.2	0.18	0.009	0.253	8.16	414	405	60.0	<0.01	0.12	1.02	0.20
116340 (4674663)		<0.001	<0.005	25.8	0.10	<0.005	0.018	0.86	31.6	120	16.5	0.27	0.08	4.17	0.31
116341 (4674664)		0.005	<0.005	28.7	0.39	<0.005	0.212	0.93	67.5	87.8	7.5	0.53	0.12	0.76	0.35
116342 (4674665)		0.003	<0.005	4.4	0.17	<0.005	0.011	0.22	4.5	8.4	5.6	0.01	0.07	6.29	0.04
116343 (4674666)		0.002	<0.005	6.1	0.11	<0.005	0.055	1.54	66.5	7.1	1.9	0.06	0.07	0.93	0.09
116344 (4674667)		0.059	0.045	32.7	6.75	0.082	0.096	75.6	3500	3560	16.4	0.13	0.26	5.05	0.19
116345 (4674668)		0.005	<0.005	20.6	0.72	0.013	0.252	1.00	23.6	87.8	93.5	0.46	0.44	7.57	1.69
116346 (4674669)		0.002	<0.005	9.7	0.32	0.005	0.168	0.35	23.5	36.6	20.3	0.32	0.07	2.56	0.84
116347 (4674670)		0.009	<0.005	13.6	2.73	0.007	0.037	1.19	135	762	2.4	0.01	0.16	0.30	0.05
116348 (4674671)		0.002	<0.005	3.0	0.09	0.007	0.289	0.58	16.3	40.7	64.2	0.41	0.69	4.68	1.74
116349 (4674672)		0.003	<0.005	19.6	0.27	<0.005	0.056	0.12	5.6	23.3	18.0	0.06	0.09	1.00	0.19
116350 (4674673)		0.001	<0.005	1.4	0.12	0.008	0.021	0.10	45.5	24.6	3.8	0.15	<0.05	5.07	0.13
1298631 (4674674)		<0.001	<0.005	3.2	0.09	<0.005	0.007	0.02	1.1	15.7	2.9	<0.01	<0.05	1.24	0.03
1298634 (4674675)		<0.001	<0.005	15.2	0.05	<0.005	0.101	0.62	27.9	14.8	2.8	1.80	0.24	0.36	0.26
1298636 (4674676)		0.012	<0.005	2.8	0.14	0.007	0.012	0.07	4.7	11.4	2.6	0.03	<0.05	4.33	0.08

Certified By:



## Certificate of Analysis

AGAT WORK ORDER: 13Y750146

PROJECT NO:

5623 McADAM ROAD  
MISSISSAUGA, ONTARIO  
CANADA L4Z 1N9  
TEL (905)501-9998  
FAX (905)501-0589  
<http://www.agatlabs.com>

CLIENT NAME: ANTHILL RESOURCES (YUKON)

ATTENTION TO: Yinghua Chen

### AR--FA Metals Package, ICP/ICP-MS finish (201074, 202552) (Anthill)-Core

DATE SAMPLED: Aug 22, 2013

DATE RECEIVED: Aug 20, 2013

DATE REPORTED: Sep 04, 2013

SAMPLE TYPE: Rock

Analyte:	B	Ba	Be	Ca	Cd	Ce	Co	Cr	Cs	Fe	Ga	Ge	Hf	In
Unit:	ppm	ppm	ppm	%	ppm	ppm	ppm	ppm	ppm	%	ppm	ppm	ppm	ppm
RDL:	5	1	0.05	0.01	0.01	0.01	0.1	0.5	0.05	0.01	0.05	0.05	0.02	0.005
1372676 (4674625)	<5	26	<0.05	0.02	0.02	7.35	4.9	23.3	0.14	0.84	0.40	0.15	0.16	<0.005
1372677 (4674626)	<5	36	0.05	0.14	0.05	19.2	2.6	21.4	0.14	1.04	0.79	0.14	0.22	<0.005
1372678 (4674627)	<5	24	0.06	0.02	0.02	7.12	1.4	16.9	0.15	0.87	0.62	0.14	0.16	<0.005
1372679 (4674628)	<5	21	<0.05	0.05	0.02	1.66	2.0	14.6	0.05	0.63	0.19	0.14	0.06	<0.005
1372680 (4674629)	<5	54	0.12	1.09	0.06	28.2	5.0	18.3	0.18	1.62	1.43	0.15	0.07	0.007
1372681 (4674630)	<5	26	<0.05	0.40	0.05	1.65	1.1	13.4	<0.05	1.03	0.19	0.13	0.04	<0.005
1372682 (4674631)	<5	22	0.05	0.02	0.02	4.25	1.4	15.3	0.11	0.76	0.35	0.13	0.09	<0.005
1372683 (4674632)	<5	492	0.08	<0.01	<0.01	19.6	0.4	12.4	0.27	0.45	0.67	0.13	0.20	<0.005
1372684 (4674633)	<5	516	0.05	<0.01	<0.01	9.92	0.6	14.1	0.17	0.47	0.48	0.14	0.10	<0.005
1372691 (4674634)	<5	41	<0.05	0.06	0.05	11.5	1.7	13.0	0.12	0.79	0.40	0.15	0.13	<0.005
1372692 (4674635)	<5	43	<0.05	0.03	0.05	12.5	1.9	14.5	0.16	0.80	0.46	0.14	0.06	<0.005
1372693 (4674636)	<5	58	0.08	0.01	0.03	30.2	2.5	13.8	0.25	0.98	0.74	0.15	0.20	0.005
1372694 (4674637)	<5	46	0.15	0.02	0.15	11.1	4.0	16.5	0.17	1.26	0.55	0.14	0.11	0.006
1372695 (4674638)	<5	31	<0.05	0.53	0.05	18.7	4.2	10.9	0.08	1.66	0.38	0.14	0.14	0.012
116306 (4674639)	<5	122	<0.05	<0.01	0.01	2.42	0.6	14.5	0.08	0.59	0.31	0.13	0.10	<0.005
116315 (4674640)	<5	38	0.08	0.03	0.49	9.14	4.6	12.8	0.12	1.21	0.56	0.13	0.03	0.012
116318 (4674641)	<5	65	0.09	0.01	0.01	36.0	2.9	17.0	0.40	1.70	2.53	0.16	0.17	0.007
116319 (4674642)	<5	27	0.05	0.86	0.05	6.75	3.0	17.3	0.14	1.80	0.55	0.14	0.14	0.007
116320 (4674643)	<5	52	0.07	0.01	0.02	17.8	6.0	14.6	0.29	1.38	1.30	0.16	0.20	0.007
116321 (4674644)	<5	80	0.31	0.01	0.01	82.9	5.0	18.2	1.09	3.18	4.41	0.24	0.27	0.014
116322 (4674645)	<5	22	0.08	0.07	0.01	7.71	6.0	15.8	0.17	1.89	1.76	0.14	0.15	0.008
116323 (4674646)	<5	37	0.11	0.12	0.04	13.6	2.5	15.3	0.15	1.26	0.80	0.13	0.11	0.005
116324 (4674647)	<5	45	0.13	0.02	0.18	9.72	2.3	15.5	0.22	1.26	0.67	0.13	0.13	0.006
116325 (4674648)	<5	130	0.13	3.63	0.64	34.8	3.4	12.4	0.17	1.59	0.77	0.13	0.10	0.027
116326 (4674649)	<5	33	<0.05	0.78	0.15	15.1	0.9	14.3	0.09	0.49	0.31	0.13	0.17	<0.005
116327 (4674650)	<5	20	0.12	0.08	0.02	8.23	4.2	110	0.07	1.16	0.64	0.14	0.06	0.006
116328 (4674651)	<5	16	<0.05	0.01	0.01	5.81	0.7	69.5	0.08	0.39	0.20	0.13	0.11	<0.005
116329 (4674652)	<5	21	<0.05	0.03	0.02	2.58	0.8	84.3	<0.05	0.65	0.15	0.13	0.04	<0.005
116330 (4674653)	<5	37	<0.05	0.14	0.39	11.9	2.0	64.4	0.06	1.04	0.36	0.14	0.12	<0.005
116331 (4674654)	<5	70	0.16	0.05	0.06	44.3	4.7	68.4	0.27	1.68	1.06	0.17	0.18	0.011
116332 (4674655)	<5	22	0.11	0.01	0.05	12.8	8.9	53.0	0.07	2.02	0.52	0.14	0.11	0.010
116333 (4674656)	<5	38	0.06	<0.01	0.15	10.1	1.9	62.6	0.16	0.68	0.32	0.13	0.03	<0.005

Certified By:



## Certificate of Analysis

AGAT WORK ORDER: 13Y750146

PROJECT NO:

5623 McADAM ROAD  
MISSISSAUGA, ONTARIO  
CANADA L4Z 1N9  
TEL (905)501-9998  
FAX (905)501-0589  
<http://www.agatlabs.com>

CLIENT NAME: ANTHILL RESOURCES (YUKON)

ATTENTION TO: Yinghua Chen

### AR--FA Metals Package, ICP/ICP-MS finish (201074, 202552) (Anthill)-Core

DATE SAMPLED: Aug 22, 2013

DATE RECEIVED: Aug 20, 2013

DATE REPORTED: Sep 04, 2013

SAMPLE TYPE: Rock

Sample ID (AGAT ID)	Analyte: Unit: RDL:	B ppm 5	Ba ppm 1	Be ppm 0.05	Ca % 0.01	Cd ppm 0.01	Ce ppm 0.01	Co ppm 0.1	Cr ppm 0.5	Cs ppm 0.05	Fe % 0.01	Ga ppm 0.05	Ge ppm 0.05	Hf ppm 0.02	In ppm 0.005
116334 (4674657)		<5	122	0.13	0.13	0.24	26.0	9.0	51.9	0.18	1.99	0.82	0.15	0.26	0.012
116335 (4674658)		<5	102	0.05	0.01	0.09	11.6	0.9	59.7	0.36	1.01	0.50	0.13	0.03	<0.005
116336 (4674659)		<5	74	0.20	0.04	44.3	5.00	2.8	12.8	0.24	28.6	1.10	0.39	0.06	0.056
116337 (4674660)		<5	122	0.24	<0.01	0.18	11.3	0.2	17.8	0.44	0.49	0.88	0.13	0.28	0.005
116338 (4674661)		<5	49	0.29	0.01	1.37	4.33	0.9	36.7	0.59	2.09	0.41	0.06	0.16	0.008
116339 (4674662)		<5	32	0.16	<0.01	5.09	2.14	1.9	55.9	0.43	0.80	0.32	0.13	0.05	<0.005
116340 (4674663)		<5	42	0.15	0.01	0.10	7.28	9.5	53.5	0.12	1.59	0.89	0.14	0.02	0.014
116341 (4674664)		<5	64	0.32	<0.01	0.25	9.95	0.7	26.9	0.49	0.66	0.84	0.14	0.19	0.006
116342 (4674665)		<5	21	<0.05	<0.01	0.04	3.35	0.5	84.4	0.07	0.57	0.22	0.11	0.02	<0.005
116343 (4674666)		<5	25	0.05	<0.01	0.02	12.8	0.3	75.0	0.19	0.29	0.38	0.14	0.04	<0.005
116344 (4674667)		<5	87	0.11	2.76	30.4	11.3	4.4	37.7	0.56	2.66	0.64	0.09	0.21	0.010
116345 (4674668)		<5	105	0.46	0.55	0.57	17.1	15.7	67.0	2.71	3.84	5.54	0.16	0.61	0.025
116346 (4674669)		<5	135	0.27	0.02	0.08	38.4	5.9	28.4	1.86	2.14	2.96	0.17	0.12	0.009
116347 (4674670)		<5	26	0.37	22.3	6.48	8.81	2.8	2.3	0.19	1.65	0.20	<0.05	0.13	<0.005
116348 (4674671)		<5	152	1.09	0.50	0.15	26.5	7.4	63.7	3.83	3.25	7.77	0.16	0.05	0.030
116349 (4674672)		<5	42	0.09	0.28	0.09	12.5	2.8	54.0	0.55	0.71	0.62	0.12	0.03	<0.005
116350 (4674673)		<5	36	0.09	0.09	0.06	10.4	5.4	59.7	0.22	0.96	0.35	0.13	0.10	0.006
1298631 (4674674)		<5	17	<0.05	0.01	0.03	1.54	0.8	67.2	0.08	0.47	0.12	0.12	0.02	<0.005
1298634 (4674675)		<5	33	0.36	0.06	0.04	8.54	0.8	20.2	0.66	0.42	0.95	0.12	0.60	0.009
1298636 (4674676)		<5	126	<0.05	<0.01	0.01	4.85	0.7	51.0	0.11	0.42	0.29	0.11	0.20	<0.005

Certified By:



## Certificate of Analysis

AGAT WORK ORDER: 13Y750146

PROJECT NO:

5623 McADAM ROAD  
MISSISSAUGA, ONTARIO  
CANADA L4Z 1N9  
TEL (905)501-9998  
FAX (905)501-0589  
<http://www.agatlabs.com>

CLIENT NAME: ANTHILL RESOURCES (YUKON)

ATTENTION TO: Yinghua Chen

### AR--FA Metals Package, ICP/ICP-MS finish (201074, 202552) (Anthill)-Core

DATE SAMPLED: Aug 22, 2013

DATE RECEIVED: Aug 20, 2013

DATE REPORTED: Sep 04, 2013

SAMPLE TYPE: Rock

Analyte:	K	La	Li	Mg	Mn	Na	Nb	Ni	P	Rb	Re	S	Sc	Se
Unit:	%	ppm	ppm	%	ppm	%	ppm	ppm	ppm	ppm	ppm	%	ppm	ppm
RDL:	0.01	0.1	0.1	0.01	1	0.01	0.05	0.2	10	0.1	0.001	0.005	0.1	0.2
1372676 (4674625)	0.05	3.6	2.3	0.02	110	0.01	0.20	13.2	54	2.5	<0.001	0.007	0.4	<0.2
1372677 (4674626)	0.04	8.4	4.4	0.06	432	0.04	0.14	5.8	162	2.5	<0.001	0.070	1.0	<0.2
1372678 (4674627)	0.03	3.6	3.7	0.06	114	<0.01	0.18	4.0	61	2.1	<0.001	<0.005	0.6	<0.2
1372679 (4674628)	0.02	0.8	0.5	<0.01	219	0.01	0.13	4.5	212	0.9	<0.001	<0.005	0.4	<0.2
1372680 (4674629)	0.08	14.1	8.7	0.23	633	0.02	<0.05	12.1	180	3.9	<0.001	0.042	1.6	<0.2
1372681 (4674630)	0.01	0.7	0.5	0.03	669	0.02	0.13	2.7	53	0.8	<0.001	0.009	0.8	<0.2
1372682 (4674631)	0.04	2.0	2.0	0.02	120	<0.01	0.12	3.5	30	2.0	<0.001	<0.005	0.4	<0.2
1372683 (4674632)	0.10	9.9	0.5	<0.01	23	0.01	0.06	1.4	30	5.2	<0.001	0.024	0.4	<0.2
1372684 (4674633)	0.07	4.7	0.4	<0.01	30	0.01	0.12	2.0	17	3.5	<0.001	0.061	0.3	<0.2
1372691 (4674634)	0.04	5.2	0.7	<0.01	266	0.03	0.11	3.9	101	2.1	<0.001	<0.005	0.6	<0.2
1372692 (4674635)	0.05	6.4	0.6	<0.01	223	0.03	0.13	4.0	114	2.8	<0.001	0.014	0.6	<0.2
1372693 (4674636)	0.14	15.1	1.0	0.02	449	<0.01	0.07	3.8	91	7.6	<0.001	<0.005	0.8	<0.2
1372694 (4674637)	0.07	5.5	1.6	0.03	446	<0.01	0.15	9.5	142	4.1	<0.001	0.008	0.8	<0.2
1372695 (4674638)	0.03	9.4	0.7	0.04	780	0.08	0.07	6.9	59	1.5	<0.001	0.042	3.4	<0.2
116306 (4674639)	0.03	1.2	0.3	<0.01	41	<0.01	0.26	1.7	31	1.5	<0.001	<0.005	0.3	<0.2
116315 (4674640)	0.04	5.0	1.1	0.01	584	0.02	0.15	11.5	127	2.8	<0.001	<0.005	1.5	<0.2
116318 (4674641)	0.10	18.0	17.8	0.23	238	0.03	0.07	8.4	88	5.9	<0.001	0.020	1.4	<0.2
116319 (4674642)	0.05	3.2	3.3	0.07	603	0.02	0.19	7.5	83	2.6	<0.001	0.023	1.4	<0.2
116320 (4674643)	0.13	8.5	7.2	0.08	149	0.01	0.12	14.0	48	6.0	<0.001	0.030	1.0	<0.2
116321 (4674644)	0.25	45.3	31.6	0.50	117	0.02	0.06	17.6	214	12.4	<0.001	0.034	2.0	0.3
116322 (4674645)	0.06	3.7	20.3	0.24	454	0.02	0.15	12.1	407	3.1	<0.001	0.009	1.2	<0.2
116323 (4674646)	0.05	6.7	4.4	0.08	622	<0.01	0.09	4.6	35	2.9	<0.001	0.009	1.3	<0.2
116324 (4674647)	0.08	4.9	2.5	0.05	241	0.01	0.16	4.9	91	4.6	<0.001	0.006	1.0	<0.2
116325 (4674648)	0.13	21.0	1.3	1.43	468	0.03	0.08	7.3	97	5.8	<0.001	0.095	3.4	0.3
116326 (4674649)	0.03	11.8	0.5	0.39	196	0.03	0.22	2.9	76	1.4	<0.001	0.008	0.7	<0.2
116327 (4674650)	0.04	4.2	6.1	0.09	470	0.02	0.09	11.3	476	2.0	<0.001	0.027	1.3	<0.2
116328 (4674651)	0.04	3.0	0.4	0.01	91	0.01	0.15	2.1	24	2.1	<0.001	0.012	0.3	<0.2
116329 (4674652)	0.01	1.2	0.2	<0.01	209	<0.01	0.10	2.6	135	0.8	<0.001	<0.005	0.4	<0.2
116330 (4674653)	0.01	6.0	0.6	0.03	477	0.01	0.06	4.2	158	0.7	<0.001	0.042	1.2	<0.2
116331 (4674654)	0.15	21.6	1.7	0.05	125	0.03	<0.05	8.9	147	6.9	<0.001	0.013	1.7	<0.2
116332 (4674655)	0.04	6.7	0.7	0.02	79	0.04	0.07	14.0	129	2.1	<0.001	0.047	2.3	0.2
116333 (4674656)	0.04	4.8	0.4	<0.01	47	0.01	0.08	5.7	93	2.2	<0.001	0.010	0.4	<0.2

Certified By:



## Certificate of Analysis

AGAT WORK ORDER: 13Y750146

PROJECT NO:

5623 McADAM ROAD  
MISSISSAUGA, ONTARIO  
CANADA L4Z 1N9  
TEL (905)501-9998  
FAX (905)501-0589  
<http://www.agatlabs.com>

CLIENT NAME: ANTHILL RESOURCES (YUKON)

ATTENTION TO: Yinghua Chen

### AR--FA Metals Package, ICP/ICP-MS finish (201074, 202552) (Anthill)-Core

DATE SAMPLED: Aug 22, 2013

DATE RECEIVED: Aug 20, 2013

DATE REPORTED: Sep 04, 2013

SAMPLE TYPE: Rock

Sample ID (AGAT ID)	Analyte: Unit: RDL:	K %	La ppm	Li ppm	Mg %	Mn ppm	Na %	Nb ppm	Ni ppm	P ppm	Rb ppm	Re ppm	S %	Sc ppm	Se ppm
116334 (4674657)		0.05	12.8	3.0	0.05	1550	0.02	0.06	15.8	193	3.1	<0.001	0.007	2.2	<0.2
116335 (4674658)		0.07	5.8	0.6	<0.01	47	<0.01	0.05	3.0	60	6.3	<0.001	0.052	0.4	0.5
116336 (4674659)		0.04	2.4	0.6	<0.01	11400	<0.01	0.10	4.7	36	3.3	<0.001	0.499	2.2	2.9
116337 (4674660)		0.22	5.6	0.6	<0.01	31	<0.01	0.16	0.8	71	13.8	<0.001	0.021	0.3	0.3
116338 (4674661)		0.12	2.2	0.4	<0.01	353	<0.01	0.20	8.9	324	11.4	<0.001	0.036	0.9	0.7
116339 (4674662)		0.12	0.9	0.3	<0.01	935	<0.01	0.10	7.9	113	10.8	<0.001	0.021	0.3	0.3
116340 (4674663)		0.04	3.5	4.6	0.09	194	<0.01	0.06	39.3	459	2.1	<0.001	0.008	1.4	<0.2
116341 (4674664)		0.25	4.8	0.7	<0.01	29	<0.01	0.19	3.5	135	17.1	<0.001	0.012	0.4	0.4
116342 (4674665)		<0.01	1.7	0.3	<0.01	34	<0.01	0.13	2.6	56	0.7	<0.001	<0.005	0.2	<0.2
116343 (4674666)		0.06	6.5	0.4	<0.01	30	<0.01	0.12	1.9	39	4.6	<0.001	0.007	0.2	<0.2
116344 (4674667)		0.10	5.6	1.6	0.27	854	<0.01	0.21	8.5	267	7.0	0.002	0.671	1.8	3.0
116345 (4674668)		0.39	8.6	30.2	1.22	509	0.02	1.99	36.0	1840	27.6	0.012	2.22	4.8	3.9
116346 (4674669)		0.35	19.2	17.3	0.50	131	0.01	0.24	8.9	184	26.3	0.002	0.600	2.4	0.2
116347 (4674670)		0.03	4.6	0.2	7.88	987	<0.01	0.12	2.9	55	2.1	<0.001	0.349	0.9	1.2
116348 (4674671)		0.44	13.2	21.5	0.54	689	0.10	2.15	14.1	237	47.5	<0.001	0.788	9.3	0.9
116349 (4674672)		0.07	6.0	1.6	0.14	210	<0.01	0.20	6.6	196	5.9	<0.001	0.023	1.1	<0.2
116350 (4674673)		0.05	5.3	1.3	0.02	456	0.01	0.15	7.2	176	2.6	<0.001	0.017	1.2	<0.2
1298631 (4674674)		<0.01	0.7	<0.1	<0.01	68	<0.01	0.14	4.6	51	0.7	<0.001	<0.005	0.3	<0.2
1298634 (4674675)		0.16	4.3	1.2	0.01	105	0.04	3.37	1.2	108	17.6	<0.001	0.022	0.4	<0.2
1298636 (4674676)		0.03	2.3	0.3	<0.01	27	<0.01	0.53	2.2	44	1.9	<0.001	<0.005	0.3	<0.2

Certified By:



## Certificate of Analysis

AGAT WORK ORDER: 13Y750146

PROJECT NO:

5623 McADAM ROAD  
MISSISSAUGA, ONTARIO  
CANADA L4Z 1N9  
TEL (905)501-9998  
FAX (905)501-0589  
<http://www.agatlabs.com>

CLIENT NAME: ANTHILL RESOURCES (YUKON)

ATTENTION TO: Yinghua Chen

### AR--FA Metals Package, ICP/ICP-MS finish (201074, 202552) (Anthill)-Core

DATE SAMPLED: Aug 22, 2013

DATE RECEIVED: Aug 20, 2013

DATE REPORTED: Sep 04, 2013

SAMPLE TYPE: Rock

Sample ID (AGAT ID)	Analyte:	Sn	Sr	Ta	Te	Th	Ti	U	V	Y	Zr	Sample Login Weight	Zn-OL
	Unit: RDL:	ppm	ppm	ppm	ppm	ppm	%	ppm	ppm	ppm	ppm	kg	%
1372676 (4674625)		<0.2	2.0	<0.01	0.02	3.1	<0.005	0.34	1.2	1.01	4.2	1.36	
1372677 (4674626)		<0.2	7.0	<0.01	<0.01	7.5	<0.005	0.15	2.6	1.98	6.3	1.27	
1372678 (4674627)		<0.2	2.8	<0.01	<0.01	4.3	<0.005	0.21	1.8	0.61	5.1	1.15	
1372679 (4674628)		<0.2	6.7	<0.01	<0.01	2.2	<0.005	0.17	0.9	1.14	2.0	1.14	
1372680 (4674629)		<0.2	42.5	<0.01	<0.01	13.4	<0.005	0.55	3.8	3.19	2.5	1.11	
1372681 (4674630)		<0.2	9.6	<0.01	<0.01	3.1	<0.005	0.09	1.1	2.21	1.4	0.88	
1372682 (4674631)		<0.2	3.2	<0.01	<0.01	4.9	<0.005	0.25	1.2	0.59	3.6	1.40	
1372683 (4674632)		<0.2	3.6	<0.01	<0.01	5.9	<0.005	0.14	2.3	0.92	5.6	1.13	
1372684 (4674633)		<0.2	2.3	<0.01	<0.01	4.0	<0.005	0.08	1.4	0.36	3.4	1.61	
1372691 (4674634)		<0.2	6.0	<0.01	<0.01	4.6	<0.005	0.33	1.5	1.22	4.7	1.22	
1372692 (4674635)		<0.2	6.2	<0.01	<0.01	7.3	<0.005	0.16	1.7	0.84	2.3	1.56	
1372693 (4674636)		<0.2	3.4	<0.01	<0.01	12.4	<0.005	0.38	2.0	2.43	6.6	0.96	
1372694 (4674637)		<0.2	3.0	<0.01	<0.01	5.5	<0.005	0.63	1.7	2.00	3.7	1.17	
1372695 (4674638)		<0.2	16.0	<0.01	0.01	7.5	<0.005	0.18	1.7	3.98	4.5	1.28	
116306 (4674639)		<0.2	1.5	<0.01	<0.01	2.2	<0.005	0.07	1.1	0.24	2.9	1.28	
116315 (4674640)		<0.2	3.1	<0.01	<0.01	3.2	<0.005	0.18	2.1	1.56	1.4	0.45	
116318 (4674641)		<0.2	3.8	<0.01	<0.01	14.6	<0.005	0.41	7.1	2.03	6.4	2.04	
116319 (4674642)		<0.2	21.7	<0.01	<0.01	3.3	<0.005	0.18	2.5	2.94	2.5	1.40	
116320 (4674643)		<0.2	3.6	<0.01	0.03	6.0	<0.005	0.33	3.5	1.02	5.8	0.91	
116321 (4674644)		0.2	9.2	<0.01	0.05	23.9	<0.005	0.87	10.6	3.62	9.8	1.29	
116322 (4674645)		0.6	11.3	<0.01	0.02	4.4	<0.005	0.33	5.1	1.50	4.9	1.02	
116323 (4674646)		<0.2	4.9	<0.01	0.02	5.1	<0.005	0.53	2.2	2.16	3.9	0.93	
116324 (4674647)		<0.2	4.6	<0.01	0.01	4.8	<0.005	0.23	2.3	1.48	4.9	1.04	
116325 (4674648)		0.3	255	<0.01	0.02	9.6	<0.005	0.18	6.5	5.99	3.1	1.19	
116326 (4674649)		<0.2	48.7	<0.01	0.02	4.6	<0.005	0.13	1.6	1.59	3.5	0.90	
116327 (4674650)		<0.2	18.5	<0.01	0.03	3.8	<0.005	0.50	2.3	2.07	2.1	1.34	
116328 (4674651)		<0.2	1.6	<0.01	<0.01	2.6	<0.005	0.10	<0.5	0.44	2.9	0.85	
116329 (4674652)		<0.2	3.6	<0.01	<0.01	1.7	<0.005	0.10	0.5	0.87	1.3	1.07	
116330 (4674653)		<0.2	17.6	<0.01	<0.01	5.2	<0.005	0.20	1.0	2.24	4.8	0.74	
116331 (4674654)		<0.2	15.1	<0.01	0.01	17.5	<0.005	1.00	3.0	2.30	7.9	0.94	
116332 (4674655)		<0.2	15.7	<0.01	0.02	6.7	<0.005	0.49	2.2	2.55	4.9	0.50	

Certified By:



## Certificate of Analysis

AGAT WORK ORDER: 13Y750146

PROJECT NO:

5623 McADAM ROAD  
MISSISSAUGA, ONTARIO  
CANADA L4Z 1N9  
TEL (905)501-9998  
FAX (905)501-0589  
<http://www.agatlabs.com>

CLIENT NAME: ANTHILL RESOURCES (YUKON)

ATTENTION TO: Yinghua Chen

### AR--FA Metals Package, ICP/ICP-MS finish (201074, 202552) (Anthill)-Core

DATE SAMPLED: Aug 22, 2013

DATE RECEIVED: Aug 20, 2013

DATE REPORTED: Sep 04, 2013

SAMPLE TYPE: Rock

Analyte:	Sn	Sr	Ta	Te	Th	Ti	U	V	Y	Zr	Sample Login Weight	Zn-OL
Unit:	ppm	ppm	ppm	ppm	ppm	%	ppm	ppm	ppm	ppm	kg	%
RDL:	0.2	0.2	0.01	0.01	0.1	0.005	0.05	0.5	0.05	0.5	0.01	0.01
Sample ID (AGAT ID)												
116333 (4674656)	<0.2	17.6	<0.01	<0.01	4.4	<0.005	0.74	3.1	1.08	1.4	1.49	
116334 (4674657)	<0.2	11.4	<0.01	0.01	9.7	<0.005	0.75	3.6	3.47	2.6	1.60	
116335 (4674658)	0.4	3.2	<0.01	0.03	3.0	<0.005	0.63	2.6	0.83	1.4	1.82	
116336 (4674659)	5.3	17.7	<0.01	0.01	5.6	<0.005	1.21	18.4	9.26	3.5	0.62	1.10
116337 (4674660)	0.2	10.2	<0.01	<0.01	5.3	<0.005	0.61	1.2	1.41	4.9	1.29	
116338 (4674661)	0.7	7.8	<0.01	<0.01	3.7	<0.005	4.22	6.4	2.97	3.4	3.04	
116339 (4674662)	0.3	11.5	<0.01	0.02	1.4	<0.005	1.79	2.9	1.71	1.2	3.29	
116340 (4674663)	<0.2	3.8	<0.01	0.03	5.5	<0.005	0.63	4.0	1.34	1.0	1.04	
116341 (4674664)	0.3	10.1	<0.01	<0.01	6.7	<0.005	1.25	2.1	1.88	3.4	0.74	
116342 (4674665)	<0.2	4.3	<0.01	<0.01	1.6	<0.005	0.06	1.5	0.23	0.8	1.53	
116343 (4674666)	0.6	1.8	<0.01	<0.01	2.3	<0.005	0.09	2.0	0.37	1.3	0.79	
116344 (4674667)	<0.2	42.6	<0.01	0.08	4.7	<0.005	0.72	7.4	5.68	2.9	2.24	
116345 (4674668)	0.4	17.8	<0.01	0.10	14.1	0.142	3.72	84.0	13.1	18.5	1.74	
116346 (4674669)	<0.2	4.1	<0.01	0.05	15.9	0.009	0.90	13.8	3.20	2.4	1.80	
116347 (4674670)	<0.2	658	<0.01	0.02	2.5	<0.005	0.33	8.5	7.48	1.2	2.28	
116348 (4674671)	1.2	61.9	<0.01	0.08	14.2	0.135	0.67	59.6	4.06	0.9	0.94	
116349 (4674672)	<0.2	7.6	<0.01	0.02	4.7	<0.005	0.22	2.4	2.75	0.6	1.54	
116350 (4674673)	<0.2	11.0	<0.01	0.01	4.1	<0.005	0.82	1.3	2.85	3.0	2.12	
1298631 (4674674)	<0.2	0.8	<0.01	<0.01	1.3	<0.005	0.09	2.5	0.74	0.6	2.18	
1298634 (4674675)	0.5	5.1	0.01	0.02	5.7	<0.005	3.69	<0.5	4.08	7.9	1.25	
1298636 (4674676)	<0.2	2.3	<0.01	<0.01	3.8	<0.005	0.16	0.8	0.41	4.1	1.13	

Comments: RDL - Reported Detection Limit

Certified By:



CLIENT NAME: ANTHILL RESOURCES (YUKON)

ATTENTION TO: Yinghua Chen

## AR--FA Metals Package, ICP/ICP-MS finish (201074, 202552) (Anthill)-Core

Parameter	REPLICATE #1				REPLICATE #2				REPLICATE #3				REPLICATE #4			
	Sample ID	Original	Replicate	RPD	Sample ID	Original	Replicate	RPD	Sample ID	Original	Replicate	RPD	Sample ID	Original	Replicate	RPD
Au	4674625	0.001	< 0.001		4674637	< 0.001	< 0.001	0.0%	4674650	0.002	0.002	0.0%	4674662	0.002	0.022	
As	4674625	6.3	6.4	1.6%	4674644	177	186	5.0%	4674663	25.8	26.5	2.7%	4674675	15.2	16.3	7.0%
Sb	4674625	0.220	0.212	3.7%	4674644	1.20	1.28	6.5%	4674663	0.10	0.10	0.0%	4674675	0.055	0.056	1.8%
Hg	4674625	0.011	0.014	24.0%	4674644	0.012	0.011	8.7%	4674663	< 0.005	< 0.005	0.0%	4674675	< 0.005	< 0.005	0.0%
Tl	4674625	0.0171	0.0162	5.4%	4674644	0.0753	0.0793	5.2%	4674663	0.018	0.018	0.0%	4674675	0.101	0.100	1.0%
Ag	4674625	0.02	0.02	0.0%	4674644	0.05	0.05	0.0%	4674663	0.86	0.72	17.7%	4674675	0.624	0.694	10.6%
Pb	4674625	3.24	3.36	3.6%	4674644	10.5	10.8	2.8%	4674663	31.6	31.7	0.3%	4674675	27.9	29.1	4.2%
Zn	4674625	19.8	18.9	4.7%	4674644	63.4	64.5	1.7%	4674663	120	121	0.8%	4674675	14.8	15.2	2.7%
Cu	4674625	6.0	6.1	1.7%	4674644	38.5	37.2	3.4%	4674663	16.5	16.5	0.0%	4674675	2.8	2.9	3.5%
Bi	4674625	0.02	0.02	0.0%	4674644	0.40	0.41	2.5%	4674663	0.27	0.28	3.6%	4674675	1.80	1.88	4.3%
W	4674625	< 0.05	< 0.05	0.0%	4674644	< 0.05	< 0.05	0.0%	4674663	0.075	0.065	14.3%	4674675	0.24	0.21	13.3%
Mo	4674625	2.21	1.89	15.6%	4674644	0.751	0.777	3.4%	4674663	4.17	4.28	2.6%	4674675	0.356	0.335	6.1%
Al	4674625	0.147	0.143	2.8%	4674644	1.42	1.41	0.7%	4674663	0.31	0.31	0.0%	4674675	0.26	0.26	0.0%
B	4674625	< 5	< 5	0.0%	4674644	< 5	< 5	0.0%	4674663	< 5	< 5	0.0%	4674675	< 5	< 5	0.0%
Ba	4674625	26	27	3.8%	4674644	80	82	2.5%	4674663	42	41	2.4%	4674675	33	33	0.0%
Be	4674625	< 0.05	< 0.05	0.0%	4674644	0.31	0.35	12.1%	4674663	0.147	0.156	5.9%	4674675	0.360	0.378	4.9%
Ca	4674625	0.02	0.02	0.0%	4674644	0.01	0.01	0.0%	4674663	0.01	0.01	0.0%	4674675	0.06	0.06	0.0%
Cd	4674625	0.02	0.02	0.0%	4674644	0.01	0.01	0.0%	4674663	0.097	0.089	8.6%	4674675	0.04	0.04	0.0%
Ce	4674625	7.35	7.29	0.8%	4674644	82.9	87.8	5.7%	4674663	7.28	7.20	1.1%	4674675	8.54	8.64	1.2%
Co	4674625	4.93	5.01	1.6%	4674644	5.01	5.20	3.7%	4674663	9.49	9.56	0.7%	4674675	0.81	0.86	6.0%
Cr	4674625	23.3	22.5	3.5%	4674644	18.2	17.7	2.8%	4674663	53.5	53.3	0.4%	4674675	20.2	19.5	3.5%
Cs	4674625	0.14	0.14	0.0%	4674644	1.09	1.20	9.6%	4674663	0.12	0.12	0.0%	4674675	0.661	0.681	3.0%
Fe	4674625	0.84	0.84	0.0%	4674644	3.18	3.15	0.9%	4674663	1.59	1.60	0.6%	4674675	0.423	0.431	1.9%
Ga	4674625	0.40	0.40	0.0%	4674644	4.41	4.65	5.3%	4674663	0.893	0.911	2.0%	4674675	0.950	0.931	2.0%
Ge	4674625	0.15	0.15	0.0%	4674644	0.24	0.22	8.7%	4674663	0.136	0.127	6.8%	4674675	0.116	0.110	5.3%
Hf	4674625	0.161	0.155	3.8%	4674644	0.27	0.27	0.0%	4674663	0.02	0.02	0.0%	4674675	0.60	0.69	14.0%
In	4674625	< 0.005	< 0.005	0.0%	4674644	0.0140	0.0149	6.2%	4674663	0.014	0.014	0.0%	4674675	0.009	0.009	0.0%
K	4674625	0.05	0.05	0.0%	4674644	0.245	0.244	0.4%	4674663	0.04	0.04	0.0%	4674675	0.156	0.155	0.6%
La	4674625	3.6	3.6	0.0%	4674644	45.3	47.3	4.3%	4674663	3.5	3.5	0.0%	4674675	4.3	4.4	2.3%
Li	4674625	2.28	2.23	2.2%	4674644	31.6	35.6	11.9%	4674663	4.63	4.77	3.0%	4674675	1.2	1.2	0.0%
Mg	4674625	0.02	0.02	0.0%	4674644	0.497	0.491	1.2%	4674663	0.09	0.09	0.0%	4674675	0.01	0.01	0.0%



CLIENT NAME: ANTHILL RESOURCES (YUKON)

ATTENTION TO: Yinghua Chen

Mn	4674625	110	112	1.8%	4674644	117	115	1.7%	4674663	194	192	1.0%	4674675	105	107	1.9%	
Na	4674625	0.01	< 0.01		4674644	0.02	0.02	0.0%	4674663	< 0.01	< 0.01	0.0%	4674675	0.04	0.04	0.0%	
Nb	4674625	0.20	0.18	10.5%	4674644	0.060	0.067	11.0%	4674663	0.06	0.06	0.0%	4674675	3.37	3.63	7.4%	
Ni	4674625	13.2	13.6	3.0%	4674644	17.6	17.4	1.1%	4674663	39.3	38.7	1.5%	4674675	1.2	1.3	8.0%	
P	4674625	54	56	3.6%	4674644	214	245	13.5%	4674663	459	470	2.4%	4674675	108	117	8.0%	
Rb	4674625	2.5	2.4	4.1%	4674644	12.4	12.9	4.0%	4674663	2.1	2.1	0.0%	4674675	17.6	17.4	1.1%	
Re	4674625	< 0.001	< 0.001	0.0%	4674644	< 0.001	< 0.001	0.0%	4674663	< 0.001	< 0.001	0.0%	4674675	< 0.001	< 0.001	0.0%	
S	4674625	0.0071	0.0078	9.4%	4674644	0.034	0.034	0.0%	4674663	0.008	0.008	0.0%	4674675	0.022	0.023	4.4%	
Sc	4674625	0.42	0.45	6.9%	4674644	2.02	2.17	7.2%	4674663	1.43	1.50	4.8%	4674675	0.4	0.4	0.0%	
Se	4674625	< 0.2	< 0.2	0.0%	4674644	0.3	0.3	0.0%	4674663	< 0.2	< 0.2	0.0%	4674675	< 0.2	< 0.2	0.0%	
Sn	4674625	< 0.2	< 0.2	0.0%	4674644	0.2	0.2	0.0%	4674663	< 0.2	< 0.2	0.0%	4674675	0.45	0.44	2.2%	
Sr	4674625	2.0	1.9	5.1%	4674644	9.22	9.82	6.3%	4674663	3.8	3.8	0.0%	4674675	5.1	5.2	1.9%	
Ta	4674625	< 0.01	< 0.01	0.0%	4674644	< 0.01	< 0.01	0.0%	4674663	< 0.01	< 0.01	0.0%	4674675	0.01	0.01	0.0%	
Te	4674625	0.02	0.01		4674644	0.049	0.055	11.5%	4674663	0.03	0.03	0.0%	4674675	0.02	0.02	0.0%	
Th	4674625	3.1	3.7	17.6%	4674644	23.9	25.1	4.9%	4674663	5.5	5.8	5.3%	4674675	5.7	6.8	17.6%	
Ti	4674625	< 0.005	< 0.005	0.0%	4674644	< 0.005	< 0.005	0.0%	4674663	< 0.005	< 0.005	0.0%	4674675	< 0.005	< 0.005	0.0%	
U	4674625	0.34	0.33	3.0%	4674644	0.87	0.90	3.4%	4674663	0.630	0.622	1.3%	4674675	3.69	3.67	0.5%	
V	4674625	1.2	1.2	0.0%	4674644	10.6	10.1	4.8%	4674663	3.99	3.82	4.4%	4674675	< 0.5	< 0.5	0.0%	
Y	4674625	1.01	0.98	3.0%	4674644	3.62	3.76	3.8%	4674663	1.34	1.33	0.7%	4674675	4.08	4.15	1.7%	
Zr	4674625	4.2	4.3	2.4%	4674644	9.83	10.4	5.6%	4674663	1.0	1.0	0.0%	4674675	7.94	9.48	17.7%	
		REPLICATE #5															
Parameter	Sample ID	Original	Replicate	RPD													
Au	4674675	< 0.001	< 0.001	0.0%													



CLIENT NAME: ANTHILL RESOURCES (YUKON)

ATTENTION TO: Yinghua Chen

**AR--FA Metals Package, ICP/ICP-MS finish (201074, 202552) (Anthill)-Core**

Parameter	CRM #1 (1P5F)				CRM #2 (CFRM-100)				CRM #3 (CFRM-100)				CRM #4 (GS7E)			
	Expect	Actual	Recovery	Limits	Expect	Actual	Recovery	Limits	Expect	Actual	Recovery	Limits	Expect	Actual	Recovery	Limits
Au	1.40	1.27	90%	90% - 110%									7.4	7.4	100%	90% - 110%
Cu					3494	3746	107%	90% - 110%	3494	3772	108%	90% - 110%				
Co					180	167	93%	90% - 110%	180	167	93%	90% - 110%				
Ni					2985	2696	90%	90% - 110%	2985	2689	90%	90% - 110%				
Parameter	CRM #5 (CFRM-100)				CRM #6 (CM14)				CRM #7 (CFRM-100)							
	Expect	Actual	Recovery	Limits	Expect	Actual	Recovery	Limits	Expect	Actual	Recovery	Limits				
Au					0.792	0.742	94%	90% - 110%								
Cu	3494	3695	106%	90% - 110%					3494	3498	100%	90% - 110%				
Co	180	174	97%	90% - 110%												
Ni	2985	2699	90%	90% - 110%					2985	2699	90%	90% - 110%				



## Method Summary

CLIENT NAME: ANTHILL RESOURCES (YUKON)

AGAT WORK ORDER: 13Y750146

PROJECT NO:

ATTENTION TO: Yinghua Chen

PARAMETER	AGAT S.O.P	LITERATURE REFERENCE	ANALYTICAL TECHNIQUE
Solid Analysis			
Au	MIN-200-12017		ICP-MS
Au	MIN-200-12006		ICP/OES
As	MIN-200-12017		ICP-MS
Sb	MIN-200-12017		ICP-MS
Hg	MIN-200-12017		ICP-MS
Tl	MIN-200-12017		ICP-MS
Ag	MIN-200-12017		ICP-MS
Pb	MIN-200-12017		ICP-MS
Zn	MIN-200-12017		ICP-MS
Cu	MIN-200-12017		ICP-MS
Bi	MIN-200-12017		ICP-MS
W	MIN-200-12017		ICP-MS
Mo	MIN-200-12017		ICP-MS
Al	MIN-200-12017		ICP/OES
B	MIN-200-12017		ICP/OES
Ba	MIN-200-12017		ICP-MS
Be	MIN-200-12017		ICP-MS
Ca	MIN-200-12017		ICP/OES
Cd	MIN-200-12017		ICP-MS
Ce	MIN-200-12017		ICP-MS
Co	MIN-200-12017		ICP-MS
Cr	MIN-200-12017		ICP/OES
Cs	MIN-200-12017		ICP-MS
Fe	MIN-200-12017		ICP/OES
Ga	MIN-200-12017		ICP-MS
Ge	MIN-200-12017		ICP-MS
Hf	MIN-200-12017		ICP-MS
In	MIN-200-12017		ICP-MS
K	MIN-200-12017		ICP/OES
La	MIN-200-12017		ICP-MS
Li	MIN-200-12017		ICP-MS
Mg	MIN-200-12017		ICP/OES
Mn	MIN-200-12017		ICP/OES
Na	MIN-200-12017		ICP/OES
Nb	MIN-200-12017		ICP-MS
Ni	MIN-200-12017		ICP-MS
P	MIN-200-12017		ICP/OES
Rb	MIN-200-12017		ICP-MS
Re	MIN-200-12017		ICP-MS
S	MIN-200-12017		ICP/OES
Sc	MIN-200-12017		ICP-MS
Se	MIN-200-12017		ICP-MS
Sn	MIN-200-12017		ICP-MS
Sr	MIN-200-12017		ICP-MS
Ta	MIN-200-12017		ICP-MS
Te	MIN-200-12017		ICP-MS
Th	MIN-200-12017		ICP-MS
Ti	MIN-200-12017		ICP/OES
U	MIN-200-12017		ICP-MS

## Method Summary

CLIENT NAME: ANTHILL RESOURCES (YUKON)

AGAT WORK ORDER: 13Y750146

PROJECT NO:

ATTENTION TO: Yinghua Chen

PARAMETER	AGAT S.O.P	LITERATURE REFERENCE	ANALYTICAL TECHNIQUE
V	MIN-200-12017		ICP/OES
Y	MIN-200-12017		ICP-MS
Zr	MIN-200-12017		ICP-MS
Sample Login Weight	MIN-12009		BALANCE
Zn-OL	MIN-200-12032		AA



CLIENT NAME: ANTHILL RESOURCES (YUKON)  
1010-1055 WEST HASTINGS STREET  
Vancouver, BC V6E2E9  
(604) 569-3892

ATTENTION TO: Yinghua Chen

PROJECT NO:

AGAT WORK ORDER: 13Y750157

SOLID ANALYSIS REVIEWED BY: Yufei Chen, Analyst

DATE REPORTED: Sep 04, 2013

PAGES (INCLUDING COVER): 10

Should you require any information regarding this analysis please contact your client services representative at (905) 501-9998

\*NOTES

All samples are stored at no charge for 90 days. Please contact the lab if you require additional sample storage time.



## Certificate of Analysis

AGAT WORK ORDER: 13Y750157

PROJECT NO:

5623 McADAM ROAD  
MISSISSAUGA, ONTARIO  
CANADA L4Z 1N9  
TEL (905)501-9998  
FAX (905)501-0589  
<http://www.agatlabs.com>

CLIENT NAME: ANTHILL RESOURCES (YUKON)

ATTENTION TO: Yinghua Chen

### AR- Metals Package, ICP/ICP-MS finish (201074) (Anthill)-Soil

DATE SAMPLED: Aug 22, 2013

DATE RECEIVED: Aug 20, 2013

DATE REPORTED: Sep 04, 2013

SAMPLE TYPE: Soil

Sample ID (AGAT ID)	Analyte: Unit: RDL:	Au g/t 0.001	Au ppm 0.005	As ppm 0.1	Sb ppm 0.05	Hg ppm 0.005	Tl ppm 0.001	Ag ppm 0.01	Pb ppm 0.1	Zn ppm 0.5	Cu ppm 0.1	Bi ppm 0.01	W ppm 0.05	Mo ppm 0.05	Al % 0.01
S116300 (4674749)		<0.005		18.9	1.65	0.045	0.138	0.10	30.1	97.6	40.3	0.34	0.24	1.83	1.42
S116301 (4674750)		<0.005		81.7	18.7	0.065	0.067	0.27	53.1	138	66.1	0.35	0.26	5.38	0.35
S116302 (4674751)		<0.005		30.6	3.70	0.353	0.091	1.69	36.0	91.3	94.5	0.28	0.05	9.41	0.31
S116303 (4674752)		<0.005		31.7	3.01	0.081	0.051	0.54	33.2	109	82.5	0.35	<0.05	6.06	0.49
S116304 (4674753)		<0.005		25.3	3.27	0.022	0.045	0.13	83.3	144	47.9	0.34	<0.05	0.61	1.29
S116305 (4674754)		<0.005		19.7	1.76	0.028	0.088	0.07	37.4	88.8	38.1	0.37	0.08	0.91	1.63
S116307 (4674755)		<0.005		16.5	1.51	0.051	0.068	0.16	31.3	94.3	30.2	0.25	0.11	0.95	0.90
S116308 (4674756)		<0.005		9.7	1.00	0.037	0.079	0.12	41.0	88.4	31.3	0.29	0.13	1.01	1.03
S116309 (4674757)		<0.005		12.7	1.38	0.033	0.068	0.10	45.0	88.7	29.4	0.24	0.11	1.21	1.38
S116310 (4674758)		0.516	0.374	295	12.1	0.549	0.128	105	3550	2440	184	0.38	2.05	0.56	0.43
S116311 (4674759)		<0.005		49.4	1.26	0.059	0.165	1.11	44.0	96.9	19.3	0.27	0.45	2.39	1.87
S116312 (4674760)		0.009	0.007	663	1.37	0.032	0.133	0.54	44.7	104	27.0	0.34	0.72	2.03	1.34
S116313 (4674761)		<0.005		200	0.97	0.026	0.107	0.22	26.5	106	19.2	0.32	1.47	1.57	1.27
S116314 (4674762)		0.008	0.030	217	0.96	0.034	0.081	0.39	27.8	91.5	25.7	0.32	1.41	1.45	1.35
S116316 (4674763)		0.104	0.065	1380	1.77	0.042	0.110	2.34	535	288	28.0	0.47	2.66	1.09	1.62
S116317 (4674764)		<0.005		26.0	4.05	0.047	0.119	0.10	69.6	126	45.5	0.29	0.08	2.48	1.26
S1372685 (4674765)		<0.005		69.4	1.47	0.049	0.080	0.23	24.8	69.4	30.4	0.21	0.33	1.00	0.68
S1372686 (4674766)		<0.005		141	0.96	0.041	0.100	0.13	29.5	87.7	26.3	0.31	0.37	0.97	1.21
S1372687 (4674767)		<0.005		77.5	0.82	0.061	0.090	0.15	20.3	80.0	31.7	0.25	0.15	1.07	1.15
L1372688 (4674768)		<0.005		59.5	1.07	0.056	0.057	0.20	19.3	170	36.8	0.17	0.19	1.30	0.98
L1372689 (4674769)		<0.005		31.3	1.32	0.060	0.054	0.28	21.9	94.5	43.9	0.25	0.11	0.75	1.34
L1372690 (4674770)		<0.005		18.6	1.30	0.035	0.058	0.15	23.4	88.2	29.9	0.25	0.10	0.66	1.07
1298632 (4674771)		<0.005		25.3	1.28	0.056	0.161	0.65	20.8	89.0	20.6	0.36	0.28	2.11	1.74
1298633 (4674772)		<0.005		152	0.47	0.084	0.136	0.76	28.4	109	44.4	0.67	0.14	3.18	1.98
1298635 (4674773)		<0.005		23.2	0.88	0.024	0.121	0.60	10.6	112	23.1	0.22	0.12	2.19	0.77

Certified By:



## Certificate of Analysis

AGAT WORK ORDER: 13Y750157

PROJECT NO:

5623 McADAM ROAD  
MISSISSAUGA, ONTARIO  
CANADA L4Z 1N9  
TEL (905)501-9998  
FAX (905)501-0589  
<http://www.agatlabs.com>

CLIENT NAME: ANTHILL RESOURCES (YUKON)

ATTENTION TO: Yinghua Chen

### AR- Metals Package, ICP/ICP-MS finish (201074) (Anthill)-Soil

DATE SAMPLED: Aug 22, 2013

DATE RECEIVED: Aug 20, 2013

DATE REPORTED: Sep 04, 2013

SAMPLE TYPE: Soil

Sample ID (AGAT ID)	Analyte: Unit: RDL:	B ppm 5	Ba ppm 1	Be ppm 0.05	Ca % 0.01	Cd ppm 0.01	Ce ppm 0.01	Co ppm 0.1	Cr ppm 0.5	Cs ppm 0.05	Fe % 0.01	Ga ppm 0.05	Ge ppm 0.05	Hf ppm 0.02	In ppm 0.005
S116300 (4674749)		<5	97	0.40	0.07	0.20	41.0	15.4	22.7	2.24	3.92	4.49	0.17	<0.02	0.029
S116301 (4674750)		<5	95	0.48	4.60	1.20	54.9	32.6	3.0	0.72	5.18	1.01	0.18	0.21	0.040
S116302 (4674751)		<5	67	0.55	2.36	3.16	40.6	15.9	3.3	1.57	3.76	0.83	0.18	0.23	0.034
S116303 (4674752)		<5	70	0.48	0.31	1.13	55.9	22.0	3.9	0.93	3.76	1.25	0.20	0.09	0.036
S116304 (4674753)		<5	249	0.57	0.06	0.46	87.1	20.5	9.4	0.98	3.85	3.28	0.22	0.23	0.030
S116305 (4674754)		<5	67	0.46	0.04	0.10	99.2	21.3	17.6	1.85	3.55	4.84	0.21	0.03	0.019
S116307 (4674755)		<5	130	0.37	0.20	0.31	74.9	17.9	11.4	1.76	3.35	2.65	0.21	0.02	0.024
S116308 (4674756)		<5	111	0.39	0.12	0.20	71.0	20.8	12.6	2.17	3.44	3.54	0.23	<0.02	0.024
S116309 (4674757)		<5	104	0.41	0.17	0.23	68.9	17.6	12.5	1.69	3.52	3.37	0.22	<0.02	0.022
S116310 (4674758)		<5	45	0.23	0.05	13.5	66.0	6.5	3.4	1.20	7.54	1.96	0.25	0.02	0.063
S116311 (4674759)		<5	121	0.54	0.07	0.23	36.2	9.2	25.0	1.71	3.45	5.34	0.19	<0.02	0.028
S116312 (4674760)		<5	96	0.30	0.06	0.28	60.9	10.1	19.9	2.24	3.70	5.43	0.20	0.02	0.023
S116313 (4674761)		<5	67	0.19	0.04	0.39	70.6	8.6	15.7	1.44	4.18	6.71	0.23	0.03	0.019
S116314 (4674762)		<5	71	0.32	0.06	0.20	75.1	11.4	16.6	1.60	3.91	5.10	0.21	<0.02	0.020
S116316 (4674763)		<5	94	0.48	0.04	0.97	70.3	13.4	20.2	1.70	4.20	4.87	0.21	0.03	0.028
S116317 (4674764)		<5	70	0.57	0.06	0.18	92.0	26.7	8.0	1.78	6.17	2.84	0.22	0.20	0.024
S1372685 (4674765)		<5	165	0.36	0.90	0.38	46.2	12.5	8.9	1.84	2.74	1.82	0.16	0.16	0.027
S1372686 (4674766)		<5	275	0.47	0.73	0.32	39.2	15.5	15.7	5.08	2.83	3.43	0.16	0.08	0.027
S1372687 (4674767)		<5	160	0.49	1.09	0.28	35.0	13.2	12.5	2.59	2.64	2.95	0.16	0.10	0.026
L1372688 (4674768)		<5	285	0.33	0.46	1.22	46.9	13.4	13.6	0.84	2.70	2.95	0.18	0.03	0.016
L1372689 (4674769)		<5	179	0.45	0.43	0.53	59.0	12.2	16.2	1.71	2.85	3.44	0.20	0.06	0.017
L1372690 (4674770)		<5	272	0.45	0.28	0.26	64.0	13.1	11.2	1.20	2.67	2.98	0.17	0.06	0.019
1298632 (4674771)		<5	135	0.33	0.05	0.37	45.5	9.4	27.3	3.60	4.41	6.71	0.19	0.03	0.030
1298633 (4674772)		<5	317	0.57	0.16	0.66	34.9	26.8	26.3	4.16	4.78	5.84	0.19	0.03	0.025
1298635 (4674773)		<5	174	0.19	0.02	1.17	32.6	9.0	11.3	1.59	2.35	3.50	0.20	0.06	0.017

Certified By:



## Certificate of Analysis

AGAT WORK ORDER: 13Y750157

PROJECT NO:

5623 McADAM ROAD  
MISSISSAUGA, ONTARIO  
CANADA L4Z 1N9  
TEL (905)501-9998  
FAX (905)501-0589  
<http://www.agatlabs.com>

CLIENT NAME: ANTHILL RESOURCES (YUKON)

ATTENTION TO: Yinghua Chen

### AR- Metals Package, ICP/ICP-MS finish (201074) (Anthill)-Soil

DATE SAMPLED: Aug 22, 2013

DATE RECEIVED: Aug 20, 2013

DATE REPORTED: Sep 04, 2013

SAMPLE TYPE: Soil

Sample ID (AGAT ID)	Analyte: Unit: RDL:	K %	La ppm	Li ppm	Mg %	Mn ppm	Na %	Nb ppm	Ni ppm	P ppm	Rb ppm	Re ppm	S %	Sc ppm	Se ppm
S116300 (4674749)		0.08	21.4	24.6	0.37	712	<0.01	0.96	25.0	728	10.8	<0.001	0.032	2.6	0.7
S116301 (4674750)		0.06	31.0	1.7	1.38	1910	<0.01	0.16	37.9	1060	4.2	<0.001	0.138	7.9	1.6
S116302 (4674751)		0.06	21.0	2.7	0.99	656	0.01	0.21	39.7	736	4.0	0.003	0.092	5.1	4.4
S116303 (4674752)		0.06	28.9	9.1	0.17	803	<0.01	0.16	35.7	538	5.5	<0.001	0.038	5.2	1.8
S116304 (4674753)		0.05	43.2	14.9	0.30	477	<0.01	0.18	26.2	556	5.2	<0.001	0.020	3.3	0.5
S116305 (4674754)		0.06	49.9	38.6	0.47	660	<0.01	0.38	25.8	820	10.4	<0.001	0.040	1.6	0.4
S116307 (4674755)		0.07	38.1	10.3	0.20	1180	<0.01	0.37	21.8	706	9.0	<0.001	0.031	2.4	0.5
S116308 (4674756)		0.08	35.3	15.7	0.23	1030	<0.01	0.26	22.3	857	11.1	<0.001	0.033	1.8	0.4
S116309 (4674757)		0.07	33.6	16.4	0.32	1050	<0.01	0.32	19.6	617	8.1	<0.001	0.031	1.9	0.4
S116310 (4674758)		0.05	35.3	5.0	0.09	2960	<0.01	<0.05	12.8	299	6.8	<0.001	0.164	1.8	2.0
S116311 (4674759)		0.08	19.1	31.9	0.35	341	<0.01	1.87	18.3	377	16.8	<0.001	0.016	2.8	0.6
S116312 (4674760)		0.08	31.4	22.2	0.35	313	<0.01	1.49	22.7	351	17.1	<0.001	0.017	2.4	0.5
S116313 (4674761)		0.05	36.4	17.8	0.22	362	<0.01	1.35	16.5	471	13.1	<0.001	0.010	1.9	0.3
S116314 (4674762)		0.05	39.3	27.4	0.32	395	<0.01	1.01	22.0	451	9.3	<0.001	0.017	1.8	0.4
S116316 (4674763)		0.06	35.3	35.9	0.39	691	<0.01	0.59	25.2	340	12.0	<0.001	0.010	2.3	0.5
S116317 (4674764)		0.12	47.3	12.7	0.15	573	<0.01	0.52	35.6	739	12.1	<0.001	0.078	2.7	0.7
S1372685 (4674765)		0.03	19.1	6.3	0.15	1750	<0.01	0.47	21.7	828	6.2	<0.001	0.084	3.3	0.7
S1372686 (4674766)		0.06	20.4	16.3	0.28	1100	<0.01	0.89	19.6	1220	13.0	<0.001	0.081	3.1	0.6
S1372687 (4674767)		0.04	17.7	12.1	0.21	1100	<0.01	0.77	17.6	1160	7.7	<0.001	0.119	2.5	0.8
L1372688 (4674768)		0.06	24.6	22.4	0.40	650	<0.01	0.63	32.7	839	6.8	<0.001	0.033	2.4	0.9
L1372689 (4674769)		0.08	32.1	32.6	0.44	383	<0.01	0.51	25.2	843	8.5	<0.001	0.066	2.7	1.7
L1372690 (4674770)		0.09	33.5	27.7	0.34	429	<0.01	0.45	21.3	619	10.9	<0.001	0.043	2.3	0.7
1298632 (4674771)		0.07	23.2	32.4	0.31	303	<0.01	2.12	19.1	643	15.0	<0.001	0.020	2.9	0.9
1298633 (4674772)		0.10	17.4	41.0	0.58	2260	<0.01	0.39	30.7	1380	16.1	<0.001	0.075	2.9	0.9
1298635 (4674773)		0.04	16.7	1.3	0.03	112	<0.01	0.46	25.7	1740	6.8	<0.001	0.027	0.6	1.2

Certified By:



## Certificate of Analysis

AGAT WORK ORDER: 13Y750157

PROJECT NO:

5623 McADAM ROAD  
MISSISSAUGA, ONTARIO  
CANADA L4Z 1N9  
TEL (905)501-9998  
FAX (905)501-0589  
<http://www.agatlabs.com>

CLIENT NAME: ANTHILL RESOURCES (YUKON)

ATTENTION TO: Yinghua Chen

### AR- Metals Package, ICP/ICP-MS finish (201074) (Anthill)-Soil

DATE SAMPLED: Aug 22, 2013

DATE RECEIVED: Aug 20, 2013

DATE REPORTED: Sep 04, 2013

SAMPLE TYPE: Soil

Analyte:	Sn	Sr	Ta	Te	Th	Ti	U	V	Y	Zr	Sample Login Weight
Unit:	ppm	ppm	ppm	ppm	ppm	%	ppm	ppm	ppm	ppm	kg
RDL:	0.2	0.2	0.01	0.01	0.1	0.005	0.05	0.5	0.05	0.5	0.01
Sample ID (AGAT ID)											
S116300 (4674749)	0.5	12.5	<0.01	0.06	4.2	0.024	1.34	45.6	4.64	<0.5	0.67
S116301 (4674750)	<0.2	194	<0.01	0.10	21.6	<0.005	1.28	10.3	22.5	18.0	0.45
S116302 (4674751)	0.2	91.3	<0.01	0.07	16.3	0.006	2.04	13.1	15.2	18.7	0.43
S116303 (4674752)	<0.2	19.9	<0.01	0.11	11.7	<0.005	1.22	10.2	15.7	4.0	0.44
S116304 (4674753)	0.3	24.8	<0.01	0.05	32.8	0.006	1.68	14.8	7.44	15.5	0.57
S116305 (4674754)	0.3	11.4	<0.01	0.04	10.8	0.008	1.25	23.3	5.71	1.6	0.53
S116307 (4674755)	0.3	19.8	<0.01	0.04	8.9	0.012	1.55	24.1	11.7	0.7	0.49
S116308 (4674756)	0.3	18.3	<0.01	0.03	6.6	0.009	1.45	26.1	7.37	0.6	0.56
S116309 (4674757)	0.3	20.3	<0.01	0.03	9.2	0.007	1.32	25.9	6.10	0.6	0.64
S116310 (4674758)	4.9	16.8	<0.01	0.03	24.5	<0.005	0.90	10.3	6.72	2.0	0.47
S116311 (4674759)	0.6	11.8	<0.01	0.04	10.6	0.025	0.87	56.1	3.68	1.0	0.31
S116312 (4674760)	0.5	13.8	<0.01	0.05	14.2	0.024	0.98	45.7	3.85	1.0	0.30
S116313 (4674761)	0.6	7.9	<0.01	0.05	17.5	0.017	0.72	45.7	3.31	2.6	0.39
S116314 (4674762)	0.4	8.9	<0.01	0.05	14.2	0.016	0.89	34.4	4.06	0.6	0.54
S116316 (4674763)	0.4	7.1	<0.01	0.05	15.5	0.007	0.99	33.2	5.16	<0.5	0.36
S116317 (4674764)	0.3	52.1	<0.01	0.03	23.1	0.009	7.24	17.8	8.86	2.9	0.43
S1372685 (4674765)	<0.2	54.5	<0.01	0.04	5.5	0.009	3.76	17.1	18.3	2.0	0.34
S1372686 (4674766)	0.4	68.7	<0.01	0.04	3.9	0.016	4.08	31.7	18.6	1.4	0.40
S1372687 (4674767)	0.3	73.3	<0.01	0.04	3.0	0.012	7.24	24.7	19.1	1.8	0.29
L1372688 (4674768)	0.2	49.4	<0.01	0.03	10.8	0.016	1.08	27.3	8.01	1.2	0.96
L1372689 (4674769)	0.3	52.8	<0.01	0.03	8.5	0.010	2.80	19.5	14.9	1.0	1.06
L1372690 (4674770)	0.3	44.6	<0.01	0.03	9.7	0.009	1.63	15.9	8.70	1.2	1.25
1298632 (4674771)	0.7	11.8	<0.01	0.05	12.2	0.026	0.74	64.6	3.40	1.1	0.41
1298633 (4674772)	0.4	22.8	<0.01	0.05	10.2	0.009	1.73	37.9	5.31	0.7	0.48
1298635 (4674773)	0.6	6.5	0.01	0.05	1.5	0.009	0.63	36.9	7.15	1.0	0.47

Comments: RDL - Reported Detection Limit

Certified By:



CLIENT NAME: ANTHILL RESOURCES (YUKON)

ATTENTION TO: Yinghua Chen

AR- Metals Package, ICP/ICP-MS finish (201074) (Anthill)-Soil

Parameter	REPLICATE #1				RPD													
	Sample ID	Original	Replicate	RPD														
Au	4674765	< 0.005	< 0.005	0.0%														
As	4674765	69.4	67.6	2.6%														
Sb	4674765	1.47	1.44	2.1%														
Hg	4674765	0.0487	0.0463	5.1%														
Tl	4674765	0.080	0.073	9.2%														
Ag	4674765	0.23	0.23	0.0%														
Pb	4674765	24.8	21.8	12.9%														
Zn	4674765	69.4	65.8	5.3%														
Cu	4674765	30.4	28.6	6.1%														
Bi	4674765	0.206	0.184	11.3%														
W	4674765	0.33	0.28	16.4%														
Mo	4674765	1.00	0.98	2.0%														
Al	4674765	0.680	0.652	4.2%														
B	4674765	< 5	< 5	0.0%														
Ba	4674765	165	149	10.2%														
Be	4674765	0.36	0.35	2.8%														
Ca	4674765	0.904	0.875	3.3%														
Cd	4674765	0.376	0.373	0.8%														
Ce	4674765	46.2	42.1	9.3%														
Co	4674765	12.5	11.7	6.6%														
Cr	4674765	8.9	8.7	2.3%														
Cs	4674765	1.84	1.71	7.3%														
Fe	4674765	2.74	2.57	6.4%														
Ga	4674765	1.82	1.75	3.9%														
Ge	4674765	0.159	0.166	4.3%														
Hf	4674765	0.16	0.15	6.5%														
In	4674765	0.027	0.027	0.0%														
K	4674765	0.03	0.03	0.0%														
La	4674765	19.1	17.6	8.2%														
Li	4674765	6.3	6.2	1.6%														
Mg	4674765	0.15	0.15	0.0%														



CLIENT NAME: ANTHILL RESOURCES (YUKON)

ATTENTION TO: Yinghua Chen

Mn	4674765	1750	1700	2.9%														
Na	4674765	< 0.01	< 0.01	0.0%														
Nb	4674765	0.465	0.392	17.0%														
Ni	4674765	21.7	20.8	4.2%														
P	4674765	828	821	0.8%														
Rb	4674765	6.2	6.3	1.6%														
Re	4674765	< 0.001	< 0.001	0.0%														
S	4674765	0.0839	0.0804	4.3%														
Sc	4674765	3.3	3.2	3.1%														
Se	4674765	0.7	0.7	0.0%														
Sn	4674765	< 0.2	< 0.2	0.0%														
Sr	4674765	54.5	53.6	1.7%														
Ta	4674765	< 0.01	< 0.01	0.0%														
Te	4674765	0.038	0.031	20.3%														
Th	4674765	5.5	4.9	11.5%														
Ti	4674765	0.009	0.009	0.0%														
U	4674765	3.76	3.46	8.3%														
V	4674765	17.1	17.0	0.6%														
Y	4674765	18.3	18.2	0.5%														
Zr	4674765	2.0	1.7	16.2%														



CLIENT NAME: ANTHILL RESOURCES (YUKON)

ATTENTION TO: Yinghua Chen

AR- Metals Package, ICP/ICP-MS finish (201074) (Anthill)-Soil

Parameter	CRM #1 (1P5F)				CRM #2 (CFRM-100)											
	Expect	Actual	Recovery	Limits	Expect	Actual	Recovery	Limits								
Au	1.40	1.39	99%	90% - 110%												
Cu					3494	3623	104%	90% - 110%								
Co					180	198	110%	90% - 110%								
Ni					2985	2689	90%	90% - 110%								

## Method Summary

CLIENT NAME: ANTHILL RESOURCES (YUKON)

AGAT WORK ORDER: 13Y750157

PROJECT NO:

ATTENTION TO: Yinghua Chen

PARAMETER	AGAT S.O.P	LITERATURE REFERENCE	ANALYTICAL TECHNIQUE
Solid Analysis			
Au	MIN-200-12017		ICP-MS
As	MIN-200-12017		ICP-MS
Sb	MIN-200-12017		ICP-MS
Hg	MIN-200-12017		ICP-MS
Tl	MIN-200-12017		ICP-MS
Ag	MIN-200-12017		ICP-MS
Pb	MIN-200-12017		ICP-MS
Zn	MIN-200-12017		ICP-MS
Cu	MIN-200-12017		ICP-MS
Bi	MIN-200-12017		ICP-MS
W	MIN-200-12017		ICP-MS
Mo	MIN-200-12017		ICP-MS
Al	MIN-200-12017		ICP/OES
B	MIN-200-12017		ICP/OES
Ba	MIN-200-12017		ICP-MS
Be	MIN-200-12017		ICP-MS
Ca	MIN-200-12017		ICP/OES
Cd	MIN-200-12017		ICP-MS
Ce	MIN-200-12017		ICP-MS
Co	MIN-200-12017		ICP-MS
Cr	MIN-200-12017		ICP/OES
Cs	MIN-200-12017		ICP-MS
Fe	MIN-200-12017		ICP/OES
Ga	MIN-200-12017		ICP-MS
Ge	MIN-200-12017		ICP-MS
Hf	MIN-200-12017		ICP-MS
In	MIN-200-12017		ICP-MS
K	MIN-200-12017		ICP/OES
La	MIN-200-12017		ICP-MS
Li	MIN-200-12017		ICP-MS
Mg	MIN-200-12017		ICP/OES
Mn	MIN-200-12017		ICP/OES
Na	MIN-200-12017		ICP/OES
Nb	MIN-200-12017		ICP-MS
Ni	MIN-200-12017		ICP-MS
P	MIN-200-12017		ICP/OES
Rb	MIN-200-12017		ICP-MS
Re	MIN-200-12017		ICP-MS
S	MIN-200-12017		ICP/OES
Sc	MIN-200-12017		ICP-MS
Se	MIN-200-12017		ICP-MS
Sn	MIN-200-12017		ICP-MS
Sr	MIN-200-12017		ICP-MS
Ta	MIN-200-12017		ICP-MS
Te	MIN-200-12017		ICP-MS
Th	MIN-200-12017		ICP-MS
Ti	MIN-200-12017		ICP/OES
U	MIN-200-12017		ICP-MS
V	MIN-200-12017		ICP/OES

## Method Summary

CLIENT NAME: ANTHILL RESOURCES (YUKON)

AGAT WORK ORDER: 13Y750157

PROJECT NO:

ATTENTION TO: Yinghua Chen

PARAMETER	AGAT S.O.P	LITERATURE REFERENCE	ANALYTICAL TECHNIQUE
Y	MIN-200-12017		ICP-MS
Zr	MIN-200-12017		ICP-MS
Sample Login Weight	MIN-12009		BALANCE
Au	MIN-200-12006		ICP/OES

### Appendix C. Expenditure of the program

Contractor	Work	Units		% of total	Item/Cost	Total Cost	Comment
JP Exploration	Prospecting/Sampling	1		100.00%	\$11,460.94	\$11,460.94	JP Exploration - Contract Geologist/Camp Supplies
North Track Exploration	Prospecting/Sampling	1		100.00%	\$9,408.94	\$9,408.94	North Track Exploration - Contract Geologist/Camp Supplies
Alcan Air	Transportation	1		100.00%	\$3,600.50	\$3,600.50	Single Otter - Mayo-Plata Airstrip-Mayo
Fireweed Helicopter	Transportation	1		100.00%	\$6,688.82	\$6,688.82	LongRanger 206 - Carmacks-Project Area-Carmacks
Horizon Helicopter	Transportation	1		100.00%	\$7,569.40	\$7,569.40	Astar - Einarson Camp-Project Area-Einarson Camp
AGAT Labs	Geochemistry	77	samples	100.00%	\$45.77	\$3,524.29	Au assay plus 51 element trace element geochem/sampling supplies
JP Exploration/Anthill Resources	Report Writing	5	days	100.00%	\$800.00	\$4,000.00	JP Exploration/Anthill Resources Ltd.
						\$46,252.89	Total Expenditure 2013 Work
						\$222.37	Expenditure per Claim

## **Appendix D Statement of Qualification**

## Certificate of Author

I, Hua Jin, M.Sc., P.Ge., do hereby certify that:

1. I am a consulting geologist and sole proprietor of TGR consulting Inc. with an office at 118 Sapper St, New Westminster, British Columbia.
2. This certificate applies to the assessment report entitled: "Assessment report describing surface geological and geochemical work on the Hess Property, Anthill Resources Yukon Ltd." Dated May 9<sup>th</sup>, 2014.
3. I graduated with an Honours Bachelor of Science degree in Geology from Peking University, Beijing, China, in 2003 and with a Masters of Science degree in Geology from the Western University (formerly The University of Western Ontario), London, Ontario in 2005.
4. I am registered as a Professional Geologist with the Association of Professional Engineers and Geoscientists of British Columbia (APEGBC) since 2012 with the license number 37813.
5. I have practiced my profession continuously since 2005 in mining and mineral exploration industry for over eight years primarily in US and Canada.
6. I have not personally visited the property, but all surface work conducted in 2013 was performed or indirectly supervised by a qualified person Jean Pautler P.Ge.
7. I am responsible for all sections of the assessment report.
8. I have read the checklist of the work assessment report and this report meets requirements of the filling the assessment report with the Yukon Mining Recorder, Ministry of Energy, Mines and Resources, Government of Yukon.
9. I am not aware of any material fact of material change with respect to the subject matter of this report which is not reflected in the assessment report the omission to disclose which makes this report misleading

Dated this 9<sup>th</sup> of May 2014



---

Hua Jin, M.Sc, P.Ge