

**AN ASSESSMENT REPORT
OF THE
ROGUE RIVER CLAIM BLOCK,
MAYO MINING DISTRICT,
YUKON TERRITORY, CANADA
FOR
CANTEX MINE DEVELOPMENT CORP.
CENTRAL POINT (NAD83 ZONE 08V):
642466 E, 7066686 N
NTS: 105N09**

Prepared by
Chad Ulansky P. Geo.

Assisted by
Shadi Morton P. Geo.

Date: August 2013

TABLE OF CONTENTS

| | | |
|-------|-------------------------------------------------------------------|----|
| 1. | SUMMARY | 3 |
| 2. | INTRODUCTION AND TERMS OF REFERENCE | 3 |
| 2.1 | INTRODUCTION | 3 |
| 2.2 | UNITS AND CURRENCY | 3 |
| 3. | PROPERTY DESCRIPTION AND LOCATION | 4 |
| 3.1 | LOCATION | 4 |
| 3.2 | PROPERTY DESCRIPTION | 4 |
| 4. | ACCESS, CLIMATE, LOCAL RESOURCES, INFRASTRUCTURE AND PHYSIOGRAPHY | 7 |
| 4.1 | ACCESS | 7 |
| 4.2 | CLIMATE | 7 |
| 4.3 | LOCAL RESOURCES AND INFRASTRUCTURE | 8 |
| 4.4 | PHYSIOGRAPHY | 8 |
| 5. | HISTORY | 8 |
| 6. | GEOLOGICAL SETTING | 8 |
| 6.1 | REGIONAL GEOLOGY | 8 |
| 6.2 | PROPERTY GEOLOGY | 11 |
| 7. | MINERALIZATION | 14 |
| 8. | EXPLORATION | 14 |
| 9. | SAMPLING METHOD AND APPROACH | 14 |
| 9.1 | HEAVY MINERAL SAMPLING | 14 |
| 9.2 | ROCK SAMPLING | 15 |
| 10. | SAMPLE PREPARATION, ANALYSIS AND SECURITY | 16 |
| 10.1a | HEAVY MINERAL SAMPLE PROCESSING | 16 |
| 10.1b | PROCESSING ROCK SAMPLES | 16 |
| 10.2 | QAQC | 17 |
| 10.3 | SECURITY | 17 |
| 11. | RESULTS | 17 |
| 12. | CONCLUSIONS AND RECOMMENDATIONS | 18 |
| 13. | EXPLORATION EXPENDITURES | 18 |
| | REFERENCES | 19 |
| | APPENDICES | |
| | APPENDIX 1: TABLE OF CLAIMS | |
| | APPENDIX 2: SAMPLE LOCATIONS | |
| | APPENDIX 3: ASSAY RESULTS | |

1. SUMMARY

During the summers and autumns of 2012 and 2013, Cantex Mine Development Corporation ("**Cantex**") carried out an extensive early stage exploration program on its various claim blocks in the Yukon Territory, Canada. In 2012 this work focussed on heavy mineral sampling. In 2013 the program included an extensive soil-sampling program, limited heavy mineral sampling, and a prospecting and rock sampling program.

2. INTRODUCTION AND TERMS OF REFERENCE

2.1 INTRODUCTION

Cantex is a publically traded company based in Kelowna, BC trading on TSX Venture Exchange as CD.V.

The data supporting the statements made in this report have been verified for accuracy and completeness by the author. No meaningful errors or omissions were noted. The sources for the data are given in the "Reference" section of this report.

2.2 UNITS AND CURRENCY

Throughout this report, measurements are in metric units, unless the historic context dictates that the use of Imperial units is appropriate. Tonnages are shown as tonnes ("t"), equivalent to 1,000 kg, linear measurements are metres ("m"), or kilometres ("km") and precious metal values are as grams per tonne ("g Au/t") or troy ounces per ton ("oz Au/T" or "opt"). Grams are converted to ounces based on $31.104 \text{ g} = 1 \text{ troy ounce}$ and $34.29 \text{ g/t} = 1 \text{ oz/T}$.

3. PROPERTY DESCRIPTION AND LOCATION

3.1 LOCATION

The Rogue River property is located approximately 190 km east of the Town of Mayo. The location of the property relative to the town of Mayo and the Company's Rackla camp is shown in Figure 1. Also portrayed on the map are Cantex's other claim blocks in the central Yukon region.

3.2 PROPERTY DESCRIPTION

The Rogue River Property is comprised of 80 contiguous Quartz Claims with which this report is concerned. These Claims are RR 1 - RR 80 with Grant Numbers YF43959 to YF44038.

Figure 2 shows the individual claims plotted on topography. Details of the individual claims are presented in Appendix 1.

These Claims are currently in various stakers' names and the application for transfer is still pending. Once the transfer has completed, these claims will be owned 100% by Cantex. The approximate centre of the property has an easting of 642466 and northing of 7066686 (UTM zone 8, NAD 83).

Figure 1. Property Location Map of Rogue River Claim Block

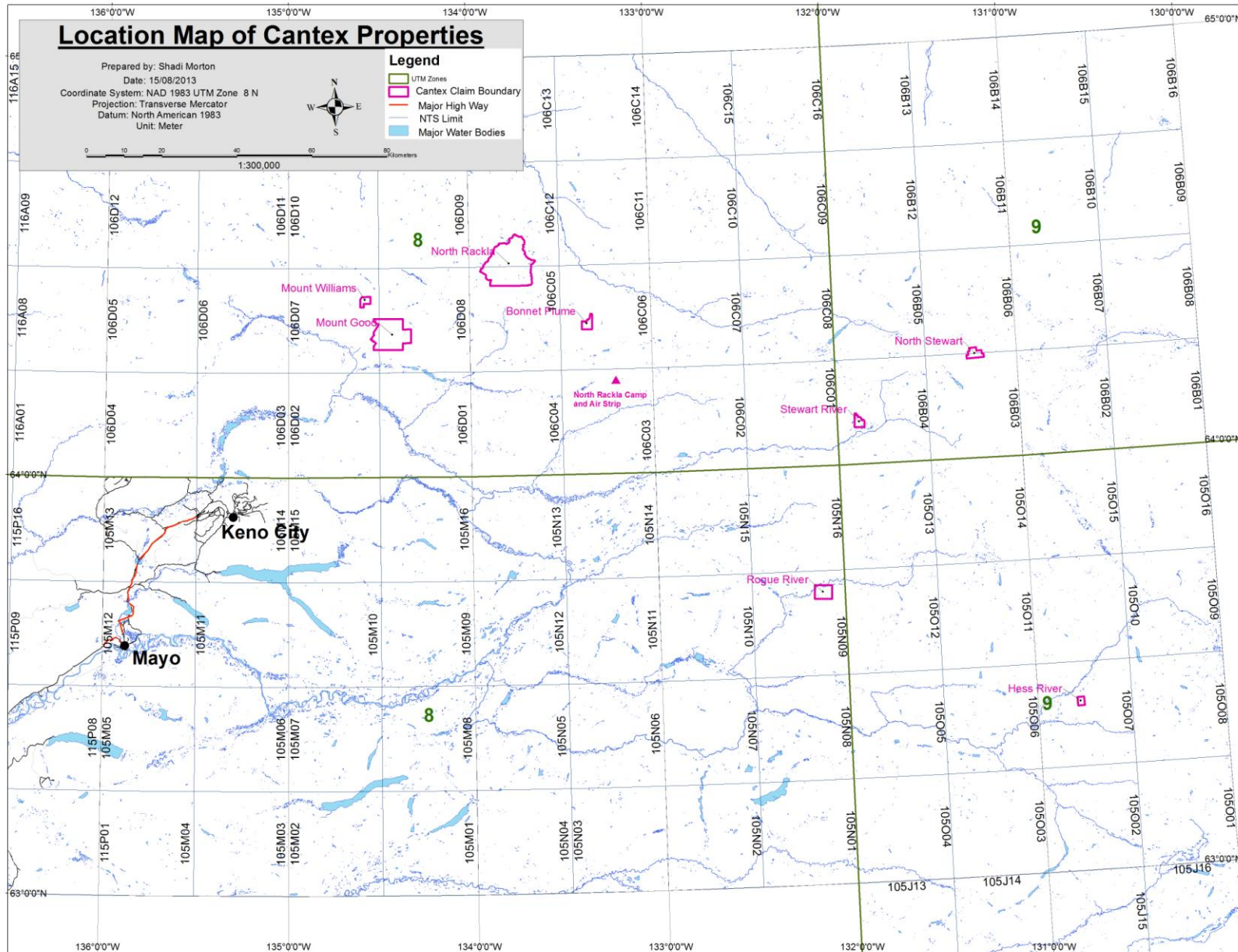
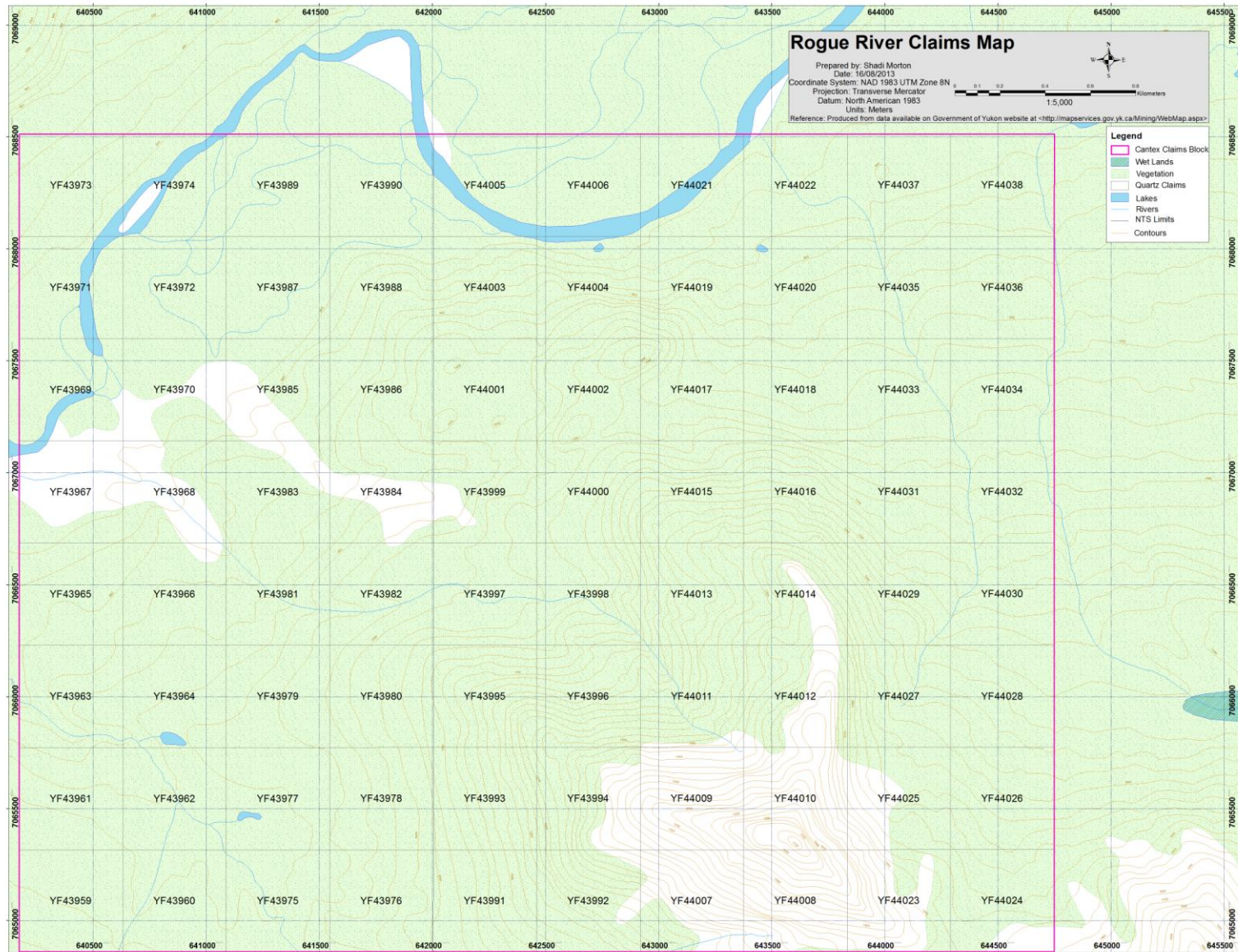


Figure 2. 2013 Rogue River Claims Map



4. ACCESS, CLIMATE, LOCAL RESOURCES, INFRASTRUCTURE AND PHYSIOGRAPHY

4.1 ACCESS

The Rogue River claim group is best accessed by helicopter. The 2012 and 2013 field programs were based from the Rackla airstrip where Cantex maintains a camp. The camp is located at 64° 13.4' N 133° 12.2' W. The Rogue River claim group is 80 kilometers southeast from the Rackla camp.

4.2 CLIMATE

The following information was sourced from weatherspark.com.

The data in this report is generated by the weather station at the Mayo Airport (Mayo, Yukon Territory, Canada) which is the nearest major centre with historic meteorological records. The climatic data presented is based on the historical records from 1977 to 2012.

Mayo has a continental climate with short dry cool summers. The area within 40 km of this station is covered by forests (79%), tundra (18%), and lakes and rivers (4%). Mayo experiences dramatic temperature swings through the course of a year, with average temperatures varying from -29°C to 22°C. However, temperatures can fall below -46°C or climb to above 27°C on rare occasions. The warm season lasts from mid May to mid September with an average daily high temperature above 14°C. Typically the hottest portion of the year is mid July when daytime highs average 22°C and night time lows fall to 10°C.

The cold season lasts from mid November to late February with an average daily high temperature below -11°C. The coldest part of the year is early January when average lows fall to -29°C and daily highs only reach -20°C.

The median cloud cover ranges from 77% (partly cloudy) to 95% (overcast). The sky is cloudiest in late October and clearest in mid March. The clearer part of the year begins around January 23. The cloudier part of the year begins around May 12.

The probability of precipitation is highest in mid November, occurring on 69% of days. Precipitation is least likely in mid April, occurring on 36% of days.

During the warm season there is a 52% chance that precipitation will be observed at some point during a given day. When precipitation does occur it is most often in the form of light rain (66%), thunderstorms (17%), or moderate rain (12%).

During the cold season there is typically a 61% chance of precipitation. When precipitation does occur it is most often in the form of light snow (83%) and moderate snow (15%).

4.3 LOCAL RESOURCES AND INFRASTRUCTURE

The claims are located in a mountainous region which is remote from permanent infrastructure. Elsa and Keno are the closest towns to the project area. With no aviation companies based from either Elsa or Keno, Mayo was used as the location for supplies to be mobilized to camp and samples from camp.

Mayo is a small town and as such has limited availability of goods and services (beyond fixed wing air support) needed to support an exploration program. The bulk of the project's needs were sourced in Whitehorse.

4.4 PHYSIOGRAPHY

As noted in Figure 2, majority of the property lies above the tree line in the mountains of the Yukon Territory. The claim block is drained by a small tributary that is a portion of the watershed of the Rogue River which is located within the Interior Hydrologic Region.

5. HISTORY

The company is not aware of any significant previous work completed within the claims area. The claims were staked in August of 2012.

6. GEOLOGICAL SETTING

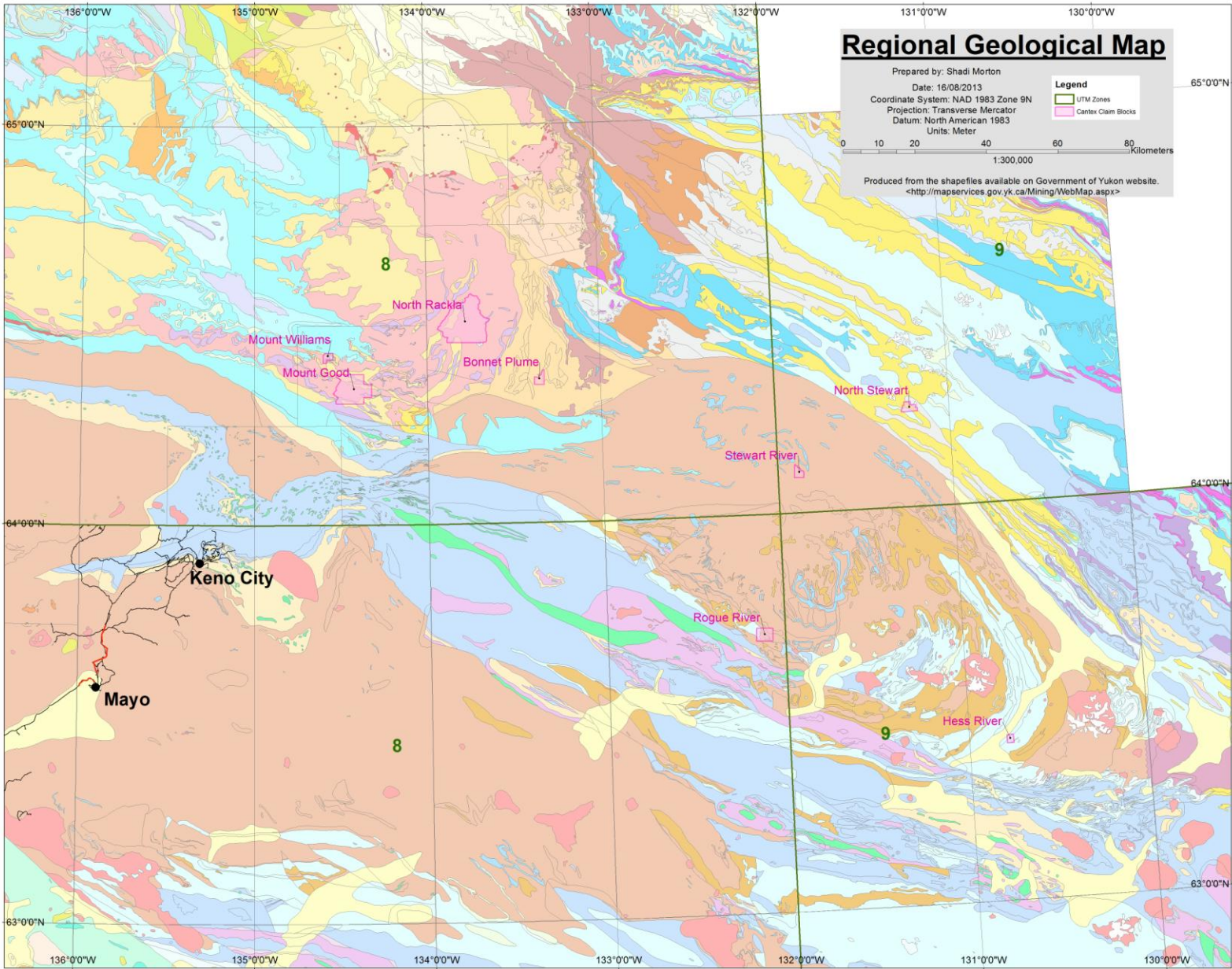
6.1 REGIONAL GEOLOGY

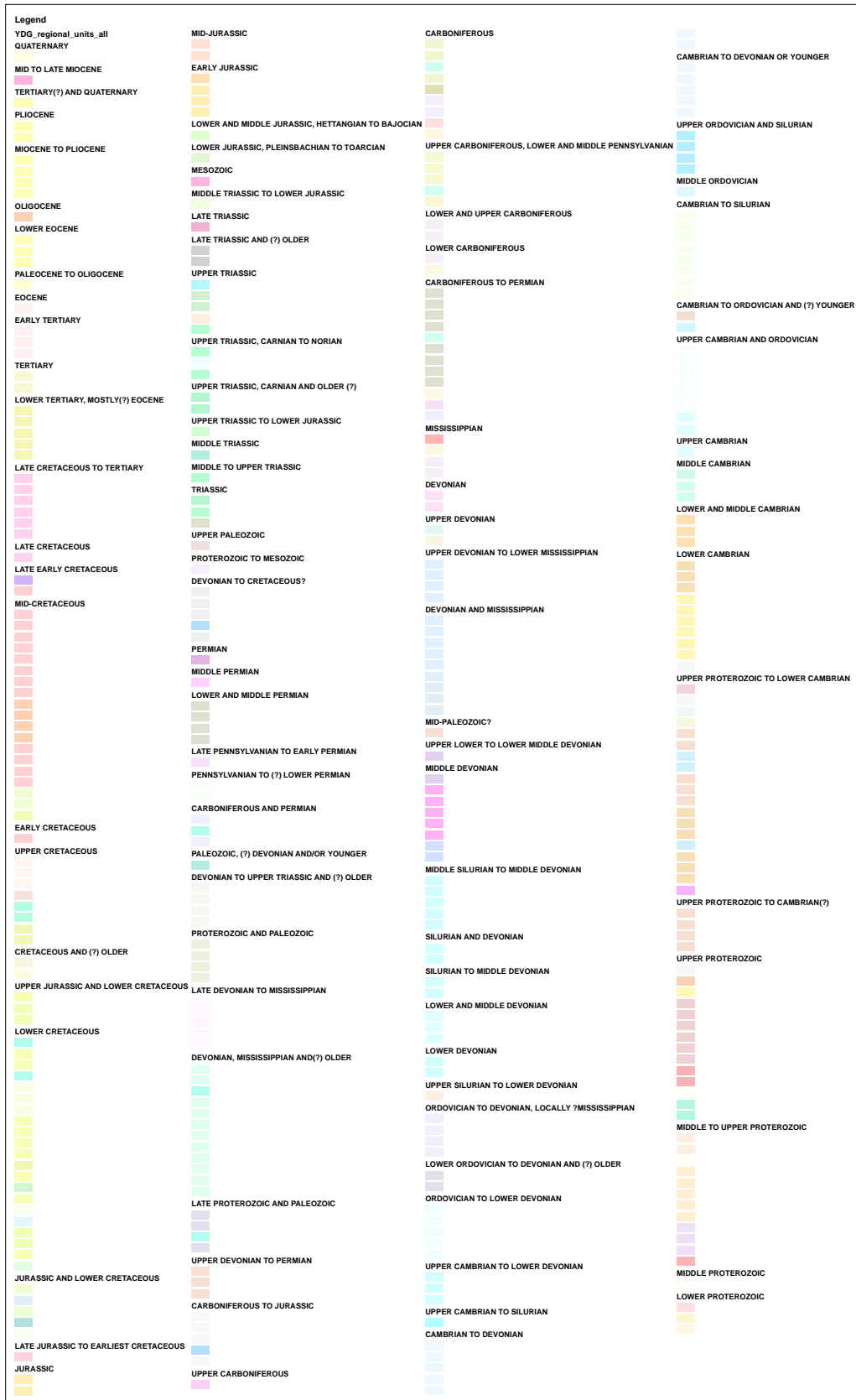
The Rogue River Property is located within the 105N map sheet and the following is retrieved from a geoprocessed file by government of Yukon.

This region is part of the foreland belt. The bedrock geology is mainly that of the Mackenzie platform of ancient North America. Three pre-550 million year old rock packages dominate the area: 1) the Backbone Ranges that are underlain by sandstone, conglomerate, shale, slate, quartzite, limestone and dolomite of the Sekwi Formation, Backbone Ranges and Atan Group; 2) the Wernecke Mountains and Rackla Range are underlain by Wernecke Super-group (Gillespie, Quartet and Fairchild Lakes Groups) quartzite, conglomerate, sandstone, siltstone, limestone and dolomite, and Pinguicula Group sedimentary rocks; 3) the Nadaleen Range is largely underlain by Hyland Group siltstone, conglomerate, sandstone, quartzite and limestone.

A regional geologic map is presented in Figure 3. The geologic legend for the map is presented on the following page.

Figure 3. Regional Geological Map of the Rogue River Property





6.2 PROPERTY GEOLOGY

Detailed geological mapping of the project area has not yet been undertaken by Cantex staff. Unfortunately, a search of publications has not yielded any focused mapping on the area.

In general the property covers the lower proterozoic clastic, sedimentary rocks, comprised of mudstone, shale, siltstone, sandstone, conglomerate (Blusson 1974) and are thought to be part of the Wernecke super-group.

The exploration area occurs within the Omineca morphogeological belt of east-central Yukon. The claims are underlain by a sequence of variably metamorphosed sedimentary rocks deposited on the ancient North American craton margin between 300Ma and 1,000Ma BP.

The sediments were deposited in the Selwyn Basin. Black shales and cherts were deposited in deeper waters while the rarer carbonate rocks were deposited in a shallower environment. (Hart, nd; Monger, 1989; Wheeler and McFeely, 1991; Wheeler et al, 1991).

As this region was beyond the extent of the northward extending glaciation there is typically extensive soil development. Geochemical anomalies detected in such an environment are likely to be of local provenance.

Figure 4. Rogue River Property Geology

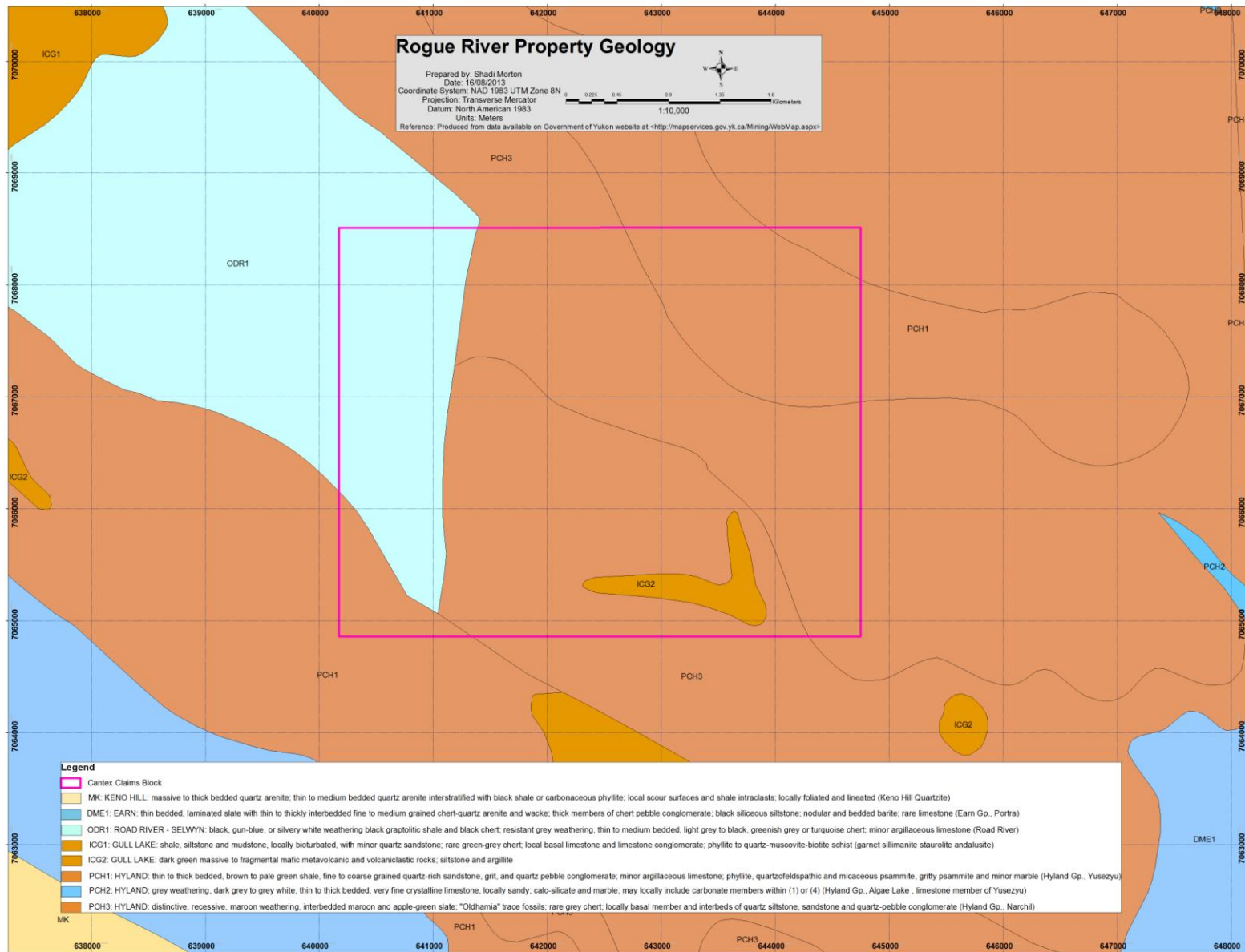
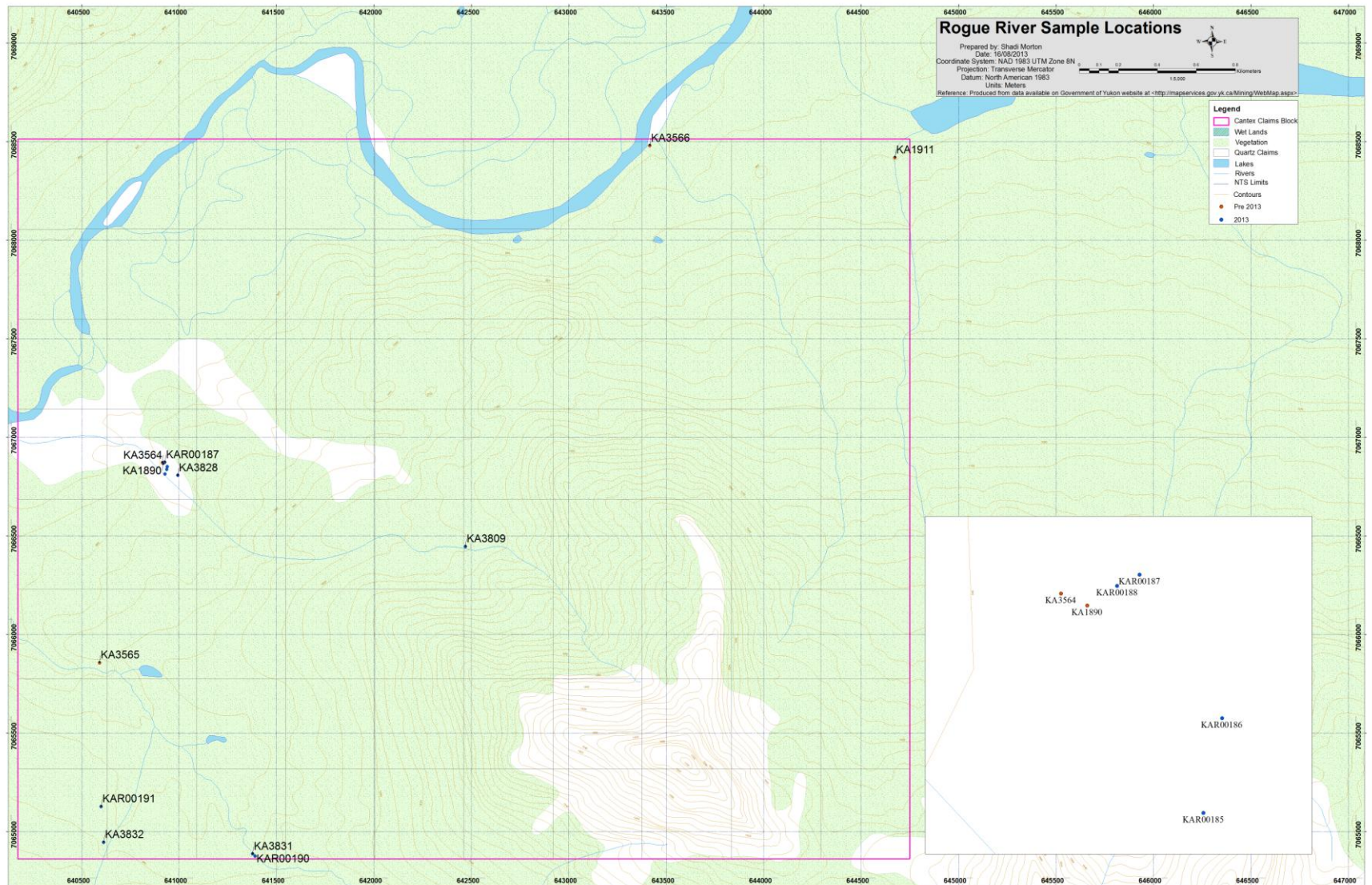


Figure 5. 2013 Rogue River Work Program



7. MINERALIZATION

The majority of the reported mineral deposits in the area consist of Mississippi Valley type and associated vein lead-zinc-silver deposit. Any conclusion on the possible minerals on the property are pending the current exploration results.

8. EXPLORATION

The property was first staked by the company in August of 2012, and little is known of any prior exploration activity within the claim block. In late 2012, a detailed heavy mineral sampling program was undertaken which included 5 samples on the claim block. In 2013, the property was once again visited by geologists Charles Fipke and Chad Ulansky. A day was spent prospecting and two heavy mineral samples and 6 rock samples were collected. Locations of these samples are presented in Figure 5 and are also contained within Appendix 2.

9. SAMPLING METHOD AND APPROACH

9.1 HEAVY MINERAL SAMPLING

Cantex has developed expertise in heavy mineral sampling techniques targeting gold mineralization. The successful application of these techniques has been demonstrated in exploration programs in both Nevada, USA and the Republic of Yemen.

Successful sampling requires a systematic approach which accounts for local variations in geology, geomorphology, climate and target properties. Using the proprietary techniques developed by CF Mineral Research, minerals considered pathfinders for gold mineralization are concentrated to for subsequent analysis.

Evaluation of the results allows the company to focus its time and assets on exploring areas of potential economic significance.

Sampling procedures utilized for the heavy mineral sampling program were as follows:

- Sample locations were chosen prior to the field program by senior technical staff. These were then digitized and plotted on topographic maps at a suitable scale for field operations. The sample sites were located based on the following factors:
 - Historical data available in the public domain
 - The drainage network
 - Claim locations

- During field operations technicians were transported to the field by helicopter. After completing a sample the technician would be moved to the next proposed location by helicopter.
- The technician chose the specific sample site once the local conditions were evaluated at the digitized location. The technicians selected a site where heavy minerals would naturally be concentrated.
- Once the specific site was selected a 10 kilogram sample of sediments sieved to -20 mesh was collected. The site was then plotted on the field map and the coordinates saved in a handheld GPS. Field maps and GPS coordinates were collected at the end of each day.
- At the end of each day the collected samples were transported to the base of operations by helicopter and then stored in a secure location. At the end of the program the samples were shipped in sealed megabags to Kelowna, BC for processing.

9.2 ROCK SAMPLING

A prospecting program was undertaken on the license. This location of the areas to be prospected was driven by several factors including past sample results, local geology, and any mineralization seen by technicians previously on the property. Should potential mineralization be encountered while prospecting it was sampled. The following procedures were used for the prospecting / rock sampling program:

- Field access by the geologists was by helicopter. Once in the area of interest the geologists completed traverses of the selected area.
- When a sample was found that was of interest the geologist followed the following protocol:
 - A photo of the sample was taken
 - Coordinates of the sample were recorded in a GPS
 - A description of the sample was recorded
 - A grab sample was collected of approximately 1 to 2 kg for analysis.
- At the end of each day this information was collected and compiled.
- At the end of each day the collected samples were transported to the camp by helicopter and then stored in a secure location. Periodically the samples were flown from camp to Mayo where they were stored in a secure sea-can before being trucked in security sealed mega-bags to CF Minerals Research Ltd in Kelowna, BC for processing.
- Six rock samples have been collected as a part of this program

10. SAMPLE PREPARATION, ANALYSIS AND SECURITY

10.1a HEAVY MINERAL SAMPLE PROCESSING

The till samples are washed and wet sieved in a multi-stage jig to obtain -20 +35, -35 +60 and -60 mesh fraction samples, followed by drying and re-sieving of the same size fractions.

Various density and magnetic separation techniques are used to prepare the heavy mineral concentrates. The minerals of interest include: arsenopyrite and its weathering products scorodite and goethite; stibnite and its weathering product stibiconite; realgar, galkhaite, cinnabar and pyrite.

Once the samples are reduced to the size, density and magnetic fraction required for analysis the procedure is as follows:

- A heavy liquid separation was carried out using the desired fraction. The heavy liquids used are tetrabromoethane (TBE, SG = 2.9 g/cm³), followed by methylene iodide (MI, SG = 3.09 to 3.20 g/cm³). The final product of the heavy liquid separation is the desired fraction split into light (SG < 2.9 g/cm³), intermediate (2.9 g/cm³ < SG < 3.2 g/cm³), and heavy portions (SG > 3.2 g/cm³).
- Magnetic Separation (3 to 4 stages at various magnetic intensities) using a Franz separator to yield fractions with the desired magnetic properties.
- -20+32 HP (Heavy Paramagnetic) and -60 HN (Heavy Nonmagnetic) fractions were prepared for assay.
- The -20+32 HP fraction was digested using a sodium peroxide fusion with a ICPMS finish. The concentrations of 57 elements were determined.
- The -60 HN fraction was assayed using INAA for 34 elements.

10.1b PROCESSING ROCK SAMPLES

The processing of the rock samples is much less involved than the heavy mineral samples. Upon receipt by the CF Mineral Research laboratory the samples are first weighed. Thereafter a small portion of the sample is selected as a reference sample and the remainder of the sample is crushed to 90% passing a 10 mesh sieve. The sample is then homogenized before an approximately 500 gram split of the crushed material was then pulverized to 95% passing through an 80 mesh sieve. A portion of the pulverized material is then vialled and weighed in grams to three decimal places to be sent for assay.

The analysis is to be conducted at Activation Laboratories Ltd. where the Code 1D Enhanced analysis will be performed using INAA. At the time of writing Cantex is still awaiting results.

10.2 QAQC

During field operations approximately one in every hundred samples was a blank. An empty bag was submitted with the samples to be filled with barren quartz. The barren quartz is to be run as a normal sample to test for any contamination in the preparation and analytical processes.

10.3 SECURITY

Chain of custody procedures were implemented as an integral part of the program. As the samples were collected in the field they were placed in a rice bag. Every 10 to 20 samples the rice bags were sealed with a cable tie and then flown to a staging point and then on back to the camp at the Rackla airstrip. During the period Cantex was operating we were the only people to be using the airstrip.

Alkan Air was used to service the camp, and on their backhauls they would ferry out samples. When the samples arrived in Mayo they were stored in a secure sea container awaiting onward transport. The samples were either driven to Kelowna by Cantex staff or were driven to Whitehorse where the samples were placed in one ton mega bags closed with a numbered tamper proof security seal prior to being shipped with the commercial carrier Manitoulin Transport.

11. RESULTS

11.1 HEAVY MINERAL SAMPLE RESULTS

Sample results for the 5 heavy mineral samples collected in 2012 are presented in Appendix 3. Significantly, in terms of gold the -60HN fractions of samples KA3564 and KA3565 are highly anomalous with 10,700ppb and 11,000ppb respectively, and samples KA1911 and KA3566 are moderately anomalous with 461ppb and 1,740ppb respectively. In the -20 +32 HP fraction samples KA1911, KA3564 and KA3565 were moderately anomalous in antimony - which is a pathfinder element for Carlin style mineralization.

12. CONCLUSIONS AND RECOMMENDATIONS

The results of the heavy mineral samples show that the claim block has the potential to host gold mineralization.

It is recommended that once the rock samples collected during prospecting have been assayed the results from the claim block be assessed to best determine what the next phase of exploration entails. Possible next steps include a detailed prospecting program, a soil sampling program, a geophysical survey or detailed mapping.

13. EXPLORATION EXPENDITURES

The work undertaken on the claim group was a part of a much larger exploration program. As such the work on the claims benefited significantly from economies of scale. Mobilization, camp set-up, equipment, shipping, logistical support and planning were far cheaper than if the work program had occurred in isolation.

The costs associated with the collection of heavy mineral samples in 2012 were \$662.61 per sample. This includes all helicopter, fixed wing, fuel, wages, supplies, mobilization, shipping and other field related costs. Processing and analysis of a heavy mineral sample costs \$365.64.

In 2013 the claims were visited on one day for a prospecting program. Helicopter costs are for access from the Rackla camp. \$1700 is allocated for wages, field costs, travel, etc. Processing costs for the samples collected in 2013 are not included as results are not yet available.

In total \$9,230.25 was spent on the claim group.

Table 1. Claim Group Share of Field Program Costs

| Yukon Field Program Costs | | | |
|-------------------------------------------------|------------------|----------|-------------------------|
| Category | Unit Cost | # | Claim Group Cost |
| 2012 Sample collection costs (per sample) | 662.61 | 5.00 | 3,308.05 |
| 2012 Heavy mineral processing cost (per sample) | 365.64 | 5.00 | 1,828.20 |
| 2013 Helicopter costs (incl fuel per hour) | 1,260.00 | 1.90 | 2,394.00 |
| 2013 Field costs | 1,700.00 | 1.00 | 1,700.00 |
| Total | | | \$9,230.25 |

REFERENCES

Blusson, S. L. Five geological maps of northern Selwyn Basin (Operation Stewart), Yukon Territory and District of Mackenzie, N.W.T. Geological Survey of Canada, Open File 205. 1974.

Hart, C. (nd) The Geological Framework of the Yukon Territory. Yukon Department of Energy, Mines and Resources website. www.geology.gov.yk.ca/publications/summaries/quaternary.html

Monger, J.W.H. (1989) Overview of Cordilleran Geology; Chapter 2: *In*: B.D. Ricketts, (ed.). Western Canadian Sedimentary Basin; Canadian Society of Petroleum Geologists, 9-32.

Roots, C. F. Geology of the Mayo Map Area, Yukon Territory (105 M)

Wheeler, J.O. and McFeely, P. (1991) Tectonic Assemblage Map of the Canadian Cordillera. Geological Survey of Canada Map 1712A, 1:2 000 000 scale with legend.

Wheeler, J.O., Brookfield, A.J., Gabrielse, H., Monger, J.W.H., Tipper, H.W. and Woodsworth, G.J. (1991) Terrane Map of the Canadian Cordillera. Geological Survey of Canada Map 1713, 1:2 000 000 scale with legend.

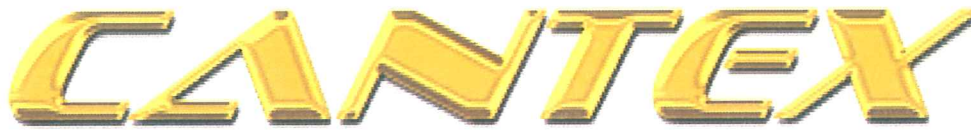
Also see:

<http://ygsftp.gov.yk.ca/publications/openfile/2002/of2002_8d_geoprocess_file/documents/map_specific/106c.pdf>

< http://www.emr.gov.yk.ca/oilandgas/pdf/yukon_overview.pdf>

< <http://weatherspark.com/history/28297/2013/Mayo-Yukon-Territory-Canada>>

<<http://mapservices.gov.yk.ca/Mining/WebMap.aspx>>



Mine Development Corporation

203-1634 Harvey Ave
Kelowna, B.C.
Canada V1Y 6G2
Tel 250.860.8582
Fax 250.860.1362

August 30, 2013

RE: Statement of Qualifications

I, Chad Stanley Ulansky, geologist with business address in Kelowna, British Columbia and residential address in West Kelowna, British Columbia, do hereby certify that:

1. I graduated from the University of Cape Town, South Africa in 1998 with a B.Sc. (Honours) in Geology.
2. I am a member of the Association of Professional Engineers and Geoscientists of British Columbia (registration number 37150).
3. I am a member of the Association of Professional Geoscientists of Ontario (registration number 1800).
4. I have been actively involved in mineral exploration since 1991.
5. I have personally participated in and supervised the work reported herein.

Signed,

Chad Stanley Ulansky
B.Sc., P.Geo.

APPENDIX 1: TABLE OF CLAIMS

Table 1. Claim Details for Rogue River Claims Block

| District | Grant Number | Reg. Type | Claim Name | Claim No. | Staking Date | Claim Expiry Date | NTS Map Number |
|----------|--------------|-----------|------------|-----------|--------------|-------------------|----------------|
| Mayo | YF43959 | Quartz | RR | 1 | 02/08/2012 | 31/08/2013 | 105N09 |
| Mayo | YF43960 | Quartz | RR | 2 | 02/08/2012 | 31/08/2013 | 105N09 |
| Mayo | YF43961 | Quartz | RR | 3 | 02/08/2012 | 31/08/2013 | 105N09 |
| Mayo | YF43962 | Quartz | RR | 4 | 02/08/2012 | 31/08/2013 | 105N09 |
| Mayo | YF43963 | Quartz | RR | 5 | 02/08/2012 | 31/08/2013 | 105N09 |
| Mayo | YF43964 | Quartz | RR | 6 | 02/08/2012 | 31/08/2013 | 105N09 |
| Mayo | YF43965 | Quartz | RR | 7 | 02/08/2012 | 31/08/2013 | 105N09 |
| Mayo | YF43966 | Quartz | RR | 8 | 02/08/2012 | 31/08/2013 | 105N09 |
| Mayo | YF43967 | Quartz | RR | 9 | 02/08/2012 | 31/08/2013 | 105N09 |
| Mayo | YF43968 | Quartz | RR | 10 | 02/08/2012 | 31/08/2013 | 105N09 |
| Mayo | YF43969 | Quartz | RR | 11 | 02/08/2012 | 31/08/2013 | 105N09 |
| Mayo | YF43970 | Quartz | RR | 12 | 02/08/2012 | 31/08/2013 | 105N09 |
| Mayo | YF43971 | Quartz | RR | 13 | 02/08/2012 | 31/08/2013 | 105N09 |
| Mayo | YF43972 | Quartz | RR | 14 | 02/08/2012 | 31/08/2013 | 105N09 |
| Mayo | YF43973 | Quartz | RR | 15 | 02/08/2012 | 31/08/2013 | 105N09 |
| Mayo | YF43974 | Quartz | RR | 16 | 02/08/2012 | 31/08/2013 | 105N09 |
| Mayo | YF43975 | Quartz | RR | 17 | 02/08/2012 | 31/08/2013 | 105N09 |
| Mayo | YF43976 | Quartz | RR | 18 | 02/08/2012 | 31/08/2013 | 105N09 |
| Mayo | YF43977 | Quartz | RR | 19 | 02/08/2012 | 31/08/2013 | 105N09 |
| Mayo | YF43978 | Quartz | RR | 20 | 02/08/2012 | 31/08/2013 | 105N09 |
| Mayo | YF43979 | Quartz | RR | 21 | 02/08/2012 | 31/08/2013 | 105N09 |
| Mayo | YF43980 | Quartz | RR | 22 | 02/08/2012 | 31/08/2013 | 105N09 |
| Mayo | YF43981 | Quartz | RR | 23 | 02/08/2012 | 31/08/2013 | 105N09 |
| Mayo | YF43982 | Quartz | RR | 24 | 02/08/2012 | 31/08/2013 | 105N09 |
| Mayo | YF43983 | Quartz | RR | 25 | 02/08/2012 | 31/08/2013 | 105N09 |
| Mayo | YF43984 | Quartz | RR | 26 | 02/08/2012 | 31/08/2013 | 105N09 |
| Mayo | YF43985 | Quartz | RR | 27 | 02/08/2012 | 31/08/2013 | 105N09 |
| Mayo | YF43986 | Quartz | RR | 28 | 02/08/2012 | 31/08/2013 | 105N09 |
| Mayo | YF43987 | Quartz | RR | 29 | 02/08/2012 | 31/08/2013 | 105N09 |
| Mayo | YF43988 | Quartz | RR | 30 | 02/08/2012 | 31/08/2013 | 105N09 |
| Mayo | YF43989 | Quartz | RR | 31 | 02/08/2012 | 31/08/2013 | 105N09 |
| Mayo | YF43990 | Quartz | RR | 32 | 02/08/2012 | 31/08/2013 | 105N09 |
| Mayo | YF43991 | Quartz | RR | 33 | 02/08/2012 | 31/08/2013 | 105N09 |
| Mayo | YF43992 | Quartz | RR | 34 | 02/08/2012 | 31/08/2013 | 105N09 |
| Mayo | YF43993 | Quartz | RR | 35 | 02/08/2012 | 31/08/2013 | 105N09 |
| Mayo | YF43994 | Quartz | RR | 36 | 02/08/2012 | 31/08/2013 | 105N09 |
| Mayo | YF43995 | Quartz | RR | 37 | 02/08/2012 | 31/08/2013 | 105N09 |
| Mayo | YF43996 | Quartz | RR | 38 | 02/08/2012 | 31/08/2013 | 105N09 |
| Mayo | YF43997 | Quartz | RR | 39 | 02/08/2012 | 31/08/2013 | 105N09 |

| District | Grant Number | Reg. Type | Claim Name | Claim No. | Staking Date | Claim Expiry Date | NTS Map Number |
|----------|--------------|-----------|------------|-----------|--------------|-------------------|----------------|
| Mayo | YF43998 | Quartz | RR | 40 | 02/08/2012 | 31/08/2013 | 105N09 |
| Mayo | YF43999 | Quartz | RR | 41 | 02/08/2012 | 31/08/2013 | 105N09 |
| Mayo | YF44000 | Quartz | RR | 42 | 02/08/2012 | 31/08/2013 | 105N09 |
| Mayo | YF44001 | Quartz | RR | 43 | 02/08/2012 | 31/08/2013 | 105N09 |
| Mayo | YF44002 | Quartz | RR | 44 | 02/08/2012 | 31/08/2013 | 105N09 |
| Mayo | YF44003 | Quartz | RR | 45 | 02/08/2012 | 31/08/2013 | 105N09 |
| Mayo | YF44004 | Quartz | RR | 46 | 02/08/2012 | 31/08/2013 | 105N09 |
| Mayo | YF44005 | Quartz | RR | 47 | 02/08/2012 | 31/08/2013 | 105N09 |
| Mayo | YF44006 | Quartz | RR | 48 | 02/08/2012 | 31/08/2013 | 105N09 |
| Mayo | YF44007 | Quartz | RR | 49 | 02/08/2012 | 31/08/2013 | 105N09 |
| Mayo | YF44008 | Quartz | RR | 50 | 02/08/2012 | 31/08/2013 | 105N09 |
| Mayo | YF44009 | Quartz | RR | 51 | 02/08/2012 | 31/08/2013 | 105N09 |
| Mayo | YF44010 | Quartz | RR | 52 | 02/08/2012 | 31/08/2013 | 105N09 |
| Mayo | YF44011 | Quartz | RR | 53 | 02/08/2012 | 31/08/2013 | 105N09 |
| Mayo | YF44012 | Quartz | RR | 54 | 02/08/2012 | 31/08/2013 | 105N09 |
| Mayo | YF44013 | Quartz | RR | 55 | 02/08/2012 | 31/08/2013 | 105N09 |
| Mayo | YF44014 | Quartz | RR | 56 | 02/08/2012 | 31/08/2013 | 105N09 |
| Mayo | YF44015 | Quartz | RR | 57 | 02/08/2012 | 31/08/2013 | 105N09 |
| Mayo | YF44016 | Quartz | RR | 58 | 02/08/2012 | 31/08/2013 | 105N09 |
| Mayo | YF44017 | Quartz | RR | 59 | 02/08/2012 | 31/08/2013 | 105N09 |
| Mayo | YF44018 | Quartz | RR | 60 | 02/08/2012 | 31/08/2013 | 105N09 |
| Mayo | YF44019 | Quartz | RR | 61 | 02/08/2012 | 31/08/2013 | 105N09 |
| Mayo | YF44020 | Quartz | RR | 62 | 02/08/2012 | 31/08/2013 | 105N09 |
| Mayo | YF44021 | Quartz | RR | 63 | 02/08/2012 | 31/08/2013 | 105N09 |
| Mayo | YF44022 | Quartz | RR | 64 | 02/08/2012 | 31/08/2013 | 105N09 |
| Mayo | YF44023 | Quartz | RR | 65 | 02/08/2012 | 31/08/2013 | 105N09 |
| Mayo | YF44024 | Quartz | RR | 66 | 02/08/2012 | 31/08/2013 | 105N09 |
| Mayo | YF44025 | Quartz | RR | 67 | 02/08/2012 | 31/08/2013 | 105N09 |
| Mayo | YF44026 | Quartz | RR | 68 | 02/08/2012 | 31/08/2013 | 105N09 |
| Mayo | YF44027 | Quartz | RR | 69 | 02/08/2012 | 31/08/2013 | 105N09 |
| Mayo | YF44028 | Quartz | RR | 70 | 02/08/2012 | 31/08/2013 | 105N09 |
| Mayo | YF44029 | Quartz | RR | 71 | 02/08/2012 | 31/08/2013 | 105N09 |
| Mayo | YF44030 | Quartz | RR | 72 | 02/08/2012 | 31/08/2013 | 105N09 |
| Mayo | YF44031 | Quartz | RR | 73 | 02/08/2012 | 31/08/2013 | 105N09 |
| Mayo | YF44032 | Quartz | RR | 74 | 02/08/2012 | 31/08/2013 | 105N09 |
| Mayo | YF44033 | Quartz | RR | 75 | 02/08/2012 | 31/08/2013 | 105N09 |
| Mayo | YF44034 | Quartz | RR | 76 | 02/08/2012 | 31/08/2013 | 105N09 |
| Mayo | YF44035 | Quartz | RR | 77 | 02/08/2012 | 31/08/2013 | 105N09 |
| Mayo | YF44036 | Quartz | RR | 78 | 02/08/2012 | 31/08/2013 | 105N09 |
| Mayo | YF44037 | Quartz | RR | 79 | 02/08/2012 | 31/08/2013 | 105N09 |
| Mayo | YF44038 | Quartz | RR | 80 | 02/08/2012 | 31/08/2013 | 105N09 |

APPENDIX 2: SAMPLE LOCATIONS

Locations of the samples in Rogue River Claims Block

| Sample ID | Type | Latitude | Longitude | Datum | Year |
|-----------|---------------|----------|------------|-------|------|
| KA1890 | Heavy Mineral | 63.70125 | -132.14865 | NAD83 | 2012 |
| KA1911 | Heavy Mineral | 63.714 | -132.071 | NAD83 | 2012 |
| KA3564 | Heavy Mineral | 63.70127 | -132.14873 | NAD83 | 2012 |
| KA3565 | Heavy Mineral | 63.69231 | -132.15618 | NAD83 | 2012 |
| KA3566 | Heavy Mineral | 63.71469 | -132.09671 | NAD83 | 2012 |
| KA3831 | Heavy Mineral | 63.68329 | -132.14117 | NAD83 | 2013 |
| KA3832 | Heavy Mineral | 63.68413 | -132.15656 | NAD83 | 2013 |
| KAR00185 | Rock | 63.70096 | -132.14832 | NAD83 | 2013 |
| KAR00186 | Rock | 63.70109 | -132.14825 | NAD83 | 2013 |
| KAR00187 | Rock | 63.70129 | -132.14848 | NAD83 | 2013 |
| KAR00188 | Rock | 63.70128 | -132.14855 | NAD83 | 2013 |
| KAR00190 | Rock | 63.68319 | -132.14092 | NAD83 | 2013 |
| KAR00191 | Rock | 63.68577 | -132.15665 | NAD83 | 2013 |

APPENDIX 3: ASSAY RESULTS

| Sample Name | Analysis and Fraction | Au (ppb) | Ag (ppm) | As (ppm) | Ba (ppm) | Br (ppm) | Ca (%) | Co (ppm) | Cr (ppm) | Cs (ppm) | Fe (%) |
|-------------|-----------------------|----------|----------|----------|----------|----------|--------|----------|----------|----------|--------|
| KA1890 | INAA -20+32 HP | -5 | -5 | 509 | -200 | 344 | -3 | 142 | 73.1 | -2 | 43.4 |
| KA1911 | INAA -20+32 HP | -16 | -5 | 340 | 1870 | 2060 | -7 | 253 | 86.9 | -2 | 57.1 |
| KA3564 | INAA -20+32 HP | -5 | -5 | 119 | 1340 | 164 | -1 | 86.3 | 114 | -2 | 20.2 |
| KA3565 | INAA -20+32 HP | -5 | -5 | 126 | 2720 | 136 | -1 | 97.8 | 188 | -2 | 20.2 |
| KA3566 | INAA -20+32 HP | -5 | -5 | 93 | 2530 | 308 | -1 | 107 | 255 | -2 | 25.4 |

| Sample Name | Analysis and Fraction | Hf (ppm) | Hg (ppm) | Ir (ppm) | Mo (ppm) | Na (%) | Ni (ppm) | Rb (ppm) | Sb (ppm) | Sc (ppm) | Se (ppm) |
|-------------|-----------------------|----------|----------|----------|----------|--------|----------|----------|----------|----------|----------|
| KA1890 | INAA -20+32 HP | 2.55 | -5 | -50 | -20 | 0.102 | -200 | -50 | 40.4 | 14.6 | -20 |
| KA1911 | INAA -20+32 HP | -1 | -5 | -50 | -20 | -0.05 | -200 | -50 | 39.9 | 19.3 | -20 |
| KA3564 | INAA -20+32 HP | 10.7 | -5 | -50 | -20 | 0.331 | -200 | -50 | 8.24 | 29.6 | -20 |
| KA3565 | INAA -20+32 HP | 5.33 | -5 | -50 | -20 | 0.291 | -200 | -50 | 7.47 | 28.4 | -20 |
| KA3566 | INAA -20+32 HP | 7.55 | -5 | -50 | -20 | 0.395 | -200 | -50 | 6.2 | 39.8 | -20 |

| Sample Name | Analysis and Fraction | Sr (%) | Ta (ppm) | Th (ppm) | U (ppm) | W (ppm) | Zn (ppm) | La (ppm) | Ce (ppm) | Nd (ppm) | Sm (ppm) |
|-------------|-----------------------|--------|----------|----------|---------|---------|----------|----------|----------|----------|----------|
| KA1890 | INAA -20+32 HP | -0.2 | -1 | 13.1 | 12.4 | -4 | 555 | 79.1 | 129 | 68.9 | 12.1 |
| KA1911 | INAA -20+32 HP | -0.2 | -1 | 31.4 | 85 | -4 | -200 | 173 | 331 | -10 | 23.8 |
| KA3564 | INAA -20+32 HP | -0.2 | -1 | 12.5 | -0.5 | -4 | -200 | 86.1 | 170 | 48.3 | 11.9 |
| KA3565 | INAA -20+32 HP | -0.2 | -1 | 18.5 | -0.5 | -4 | -200 | 89.7 | 123 | 95.5 | 13.6 |
| KA3566 | INAA -20+32 HP | -0.2 | -1 | 22.6 | -0.5 | -4 | 1090 | 138 | 280 | 93.8 | 18.7 |

| Sample Name | Analysis and Fraction | Eu (ppm) | Tb (ppm) | Yb (ppm) | Lu (ppm) | Cert # |
|-------------|-----------------------|----------|----------|----------|----------|-----------------|
| KA1890 | INAA -20+32 HP | 2.55 | -2 | 4.17 | 0.612 | #PW12MA45002535 |
| KA1911 | INAA -20+32 HP | -0.2 | -2 | 9.02 | 1.45 | #PW12MA45002535 |
| KA3564 | INAA -20+32 HP | 2.15 | -2 | 2.89 | 0.248 | #PW12MA45002535 |
| KA3565 | INAA -20+32 HP | 2.1 | -2 | 3.46 | -0.05 | #PW12MA45002535 |
| KA3566 | INAA -20+32 HP | 3.94 | -2 | 5.6 | 0.386 | #PW12MA45002535 |

| Sample Name | Analysis and Fraction | Au (ppb) | Ag (ppm) | As (ppm) | Ba (ppm) | Br (ppm) | Ca (%) | Co (ppm) | Cr (ppm) | Cs (ppm) | Fe (%) |
|-------------|-----------------------|----------|----------|----------|----------|----------|--------|----------|----------|----------|--------|
| KA1890 | INAA -60 HN | -10 | -5 | 17 | 1280 | 63.8 | -3 | 17.9 | -10 | 5.1 | 3.44 |
| KA1911 | INAA -60 HN | 461 | -5 | -15 | -200 | -14 | -8 | 40.8 | 30 | -2 | 2.51 |
| KA3564 | INAA -60 HN | 10700 | -5 | 6490 | 49200 | 282 | -1 | 329 | -10 | -2 | 27.7 |
| KA3565 | INAA -60 HN | 11000 | -5 | 7000 | 48500 | 104 | -1 | 373 | -10 | -2 | 30.6 |
| KA3566 | INAA -60 HN | 1740 | -5 | 60 | 39400 | -5 | -1 | -5 | 288 | -2 | -0.02 |

| Sample Name | Analysis and Fraction | Hf (ppm) | Hg (ppm) | Ir (ppm) | Mo (ppm) | Na (%) | Ni (ppm) | Rb (ppm) | Sb (ppm) | Sc (ppm) | Se (ppm) |
|-------------|-----------------------|----------|----------|----------|----------|--------|----------|----------|----------|----------|----------|
| KA1890 | INAA -60 HN | 21.3 | -5 | -50 | -20 | 0.238 | -200 | -50 | 1.87 | 7.99 | -20 |
| KA1911 | INAA -60 HN | 46.8 | -5 | -50 | -42 | 0.55 | -200 | -50 | 34.6 | 14.4 | -20 |
| KA3564 | INAA -60 HN | 279 | -5 | -50 | -20 | 0.131 | -200 | -50 | 31.1 | 16 | -20 |
| KA3565 | INAA -60 HN | 104 | -5 | -50 | -20 | -0.05 | -200 | -50 | 52.4 | 8.09 | -20 |
| KA3566 | INAA -60 HN | 620 | 305 | -50 | -20 | -0.05 | -200 | -50 | 12.3 | 51.6 | -20 |

| Sample Name | Analysis and Fraction | Sr (%) | Ta (ppm) | Th (ppm) | U (ppm) | W (ppm) | Zn (ppm) | La (ppm) | Ce (ppm) | Nd (ppm) | Sm (ppm) |
|-------------|-----------------------|--------|----------|----------|---------|---------|----------|----------|----------|----------|----------|
| KA1890 | INAA -60 HN | -0.2 | -1 | 37.1 | 8.67 | 39.1 | -200 | 613 | 1080 | 428 | 61.5 |
| KA1911 | INAA -60 HN | -0.2 | 48 | 505 | -10.8 | -29 | -200 | 10000 | 10000 | 7080 | 1000 |
| KA3564 | INAA -60 HN | -0.2 | -1 | 56.8 | 41.2 | 282 | 1230 | 360 | 693 | 334 | 51.9 |
| KA3565 | INAA -60 HN | -0.2 | -1 | 22.5 | 28.2 | 333 | 1950 | 124 | 239 | 183 | 14.8 |
| KA3566 | INAA -60 HN | -0.2 | -1 | 602 | 260 | -4 | -200 | 6800 | 10000 | 7150 | 871 |

| Sample Name | Analysis and Fraction | Eu (ppm) | Tb (ppm) | Yb (ppm) | Lu (ppm) | Cert # | Comments |
|-------------|-----------------------|----------|----------|----------|----------|-----------------|-------------------|
| KA1890 | INAA -60 HN | 8.59 | -2 | 5.19 | 0.663 | #PW12MA45002535 | |
| KA1911 | INAA -60 HN | 184 | 40.8 | 18.5 | 2.8 | #PW12MA45002535 | La>10000;Ce>10000 |
| KA3564 | INAA -60 HN | 8.48 | -2 | 14.7 | 1.13 | #PW12MA45002535 | |
| KA3565 | INAA -60 HN | 1.86 | -2 | 5.92 | 0.466 | #PW12MA45002535 | |
| KA3566 | INAA -60 HN | 161 | 51.6 | 74.2 | 3.14 | #PW12MA45002535 | Ce>10000 |

| Sample Name | Analysis and Fraction | Cu (ppm) | Ni (ppm) | Cr (ppm) | Co (ppm) | Se (ppm) | Zn (ppm) | Pb (ppm) | Cd (ppm) | As (ppm) |
|-------------|-----------------------|----------|----------|----------|----------|----------|----------|----------|----------|----------|
| KA1890 | UT7 -2+32 HP | 191 | 130 | 180 | 94.9 | 2.1 | 430 | 48.8 | -2 | 89 |
| KA1911 | UT7 -2+32 HP | 57 | 100 | 190 | 61.2 | 2 | 460 | -0.8 | -2 | 82 |
| KA3564 | UT7 -2+32 HP | 282 | 140 | 180 | 83.7 | 3 | 400 | 26.9 | -2 | 92 |
| KA3565 | UT7 -2+32 HP | 780 | 120 | 130 | 89.3 | 2.3 | 390 | 168 | -2 | 96 |
| KA3566 | UT7 -2+32 HP | 196 | 130 | 170 | 81.6 | 1 | 800 | 39.8 | -2 | 62 |

| Sample Name | Analysis and Fraction | Sn (ppm) | Sb (ppm) | Mo (ppm) | B (ppm) | Li (ppm) | Be (ppm) | V (ppm) | Mn (ppm) | Ga (ppm) |
|-------------|-----------------------|----------|----------|----------|---------|----------|----------|---------|----------|----------|
| KA1890 | UT7 -2+32 HP | 2.8 | 4 | 5 | 20 | 46 | -3 | 215 | 6670 | 13.8 |
| KA1911 | UT7 -2+32 HP | 5 | 6 | 5 | 110 | 38 | 3 | 344 | 3920 | 19 |
| KA3564 | UT7 -2+32 HP | 2.3 | 7 | 3 | 40 | 44 | 3 | 279 | 6500 | 17.9 |
| KA3565 | UT7 -2+32 HP | 1.3 | 6 | 4 | 30 | 47 | -3 | 243 | 6300 | 16.8 |
| KA3566 | UT7 -2+32 HP | 2.4 | 5 | 3 | 60 | 60 | 4 | 311 | 7170 | 19.9 |

| Sample Name | Analysis and Fraction | Ge (ppm) | Rb (ppm) | Sr (ppm) | Y (ppm) | Nb (ppm) | In (ppm) | Te (ppm) | Cs (ppm) | Ba (ppm) |
|-------------|-----------------------|----------|----------|----------|---------|----------|----------|----------|----------|----------|
| KA1890 | UT7 -2+32 HP | 7.5 | 22.8 | 266 | 33.9 | 75.1 | 0.2 | -6 | 1.3 | 1440 |
| KA1911 | UT7 -2+32 HP | 11.2 | 26.1 | 266 | 47 | 70 | -0.2 | -6 | 2 | 856 |
| KA3564 | UT7 -2+32 HP | 6.9 | 31.3 | 291 | 37.9 | 84.3 | 0.2 | -6 | 2.1 | 1410 |
| KA3565 | UT7 -2+32 HP | 6.7 | 28.8 | 285 | 37.3 | 79.4 | 0.2 | -6 | 1.7 | 2820 |
| KA3566 | UT7 -2+32 HP | 10.4 | 28.3 | 342 | 44.2 | 99.8 | 0.2 | -6 | 1.6 | 1800 |

| Sample Name | Analysis and Fraction | La (ppm) | Ce (ppm) | Pr (ppm) | Nd (ppm) | Sm (ppm) | Eu (ppm) | Gd (ppm) | Tb (ppm) | Dy (ppm) |
|-------------|-----------------------|----------|----------|----------|----------|----------|----------|----------|----------|----------|
| KA1890 | UT7 -2+32 HP | 67.6 | 146 | 18.1 | 73 | 12.2 | 3.4 | 11 | 1.4 | 7.4 |
| KA1911 | UT7 -2+32 HP | 281 | 569 | 51.3 | 180 | 25.9 | 4.5 | 16.9 | 1.8 | 10.4 |
| KA3564 | UT7 -2+32 HP | 71.5 | 146 | 22.4 | 80.4 | 14.7 | 4.1 | 11.7 | 1.6 | 6.8 |
| KA3565 | UT7 -2+32 HP | 56.9 | 124 | 18.8 | 69.3 | 13.2 | 3.5 | 10.8 | 1.5 | 6.7 |
| KA3566 | UT7 -2+32 HP | 150 | 277 | 30.9 | 106 | 16.8 | 4.4 | 13.8 | 2 | 9.1 |

| Sample Name | Analysis and Fraction | Ho (ppm) | Er (ppm) | Tm (ppm) | Yb (ppm) | Hf (ppm) | Ta (ppm) | W (ppm) | Tl (ppm) | Bi (ppm) |
|-------------|-----------------------|----------|----------|----------|----------|----------|----------|---------|----------|----------|
| KA1890 | UT7 -2+32 HP | 1.3 | 3.3 | 0.4 | 2.2 | -10 | 4.9 | 3.1 | 0.2 | -2 |
| KA1911 | UT7 -2+32 HP | 1.7 | 4.5 | 0.6 | 3.3 | -10 | 4.4 | 7.8 | 0.2 | -2 |
| KA3564 | UT7 -2+32 HP | 1.6 | 3.7 | 0.5 | 2.2 | -10 | 5.8 | -0.7 | 0.5 | 3 |
| KA3565 | UT7 -2+32 HP | 1.6 | 3.8 | 0.5 | 2.3 | -10 | 5.4 | -0.7 | 0.7 | -2 |
| KA3566 | UT7 -2+32 HP | 1.8 | 4.5 | 0.6 | 3 | -10 | 6.6 | 1.1 | 0.2 | -2 |

| Sample Name | Analysis and Fraction | Th (ppm) | U (ppm) | Al (%) | Ca (%) | Fe (%) | K (%) | Mg (%) | P (%) | S (%) |
|-------------|-----------------------|----------|---------|--------|--------|--------|-------|--------|-------|-------|
| KA1890 | UT7 -2+32 HP | 8.8 | 3.2 | 4.11 | 5.06 | 26.1 | 0.6 | 3.8 | 0.365 | 1.14 |
| KA1911 | UT7 -2+32 HP | 65.8 | 3.7 | 4.68 | 5.33 | 24 | 0.7 | 3.26 | 0.364 | 0.09 |
| KA3564 | UT7 -2+32 HP | 8.6 | 3.4 | 4.36 | 5.15 | 21.8 | 0.7 | 3.84 | 0.354 | 0.61 |
| KA3565 | UT7 -2+32 HP | 9 | 3.5 | 4.14 | 4.96 | 23 | 0.6 | 3.7 | 0.301 | 1.13 |
| KA3566 | UT7 -2+32 HP | 22.4 | 4.1 | 4.33 | 5.57 | 22.3 | 0.7 | 3.48 | 0.349 | 0.09 |

| Sample Name | Analysis and Fraction | Si (%) | Ti (%) | CERT # |
|-------------|-----------------------|--------|--------|----------------|
| KA1890 | UT7 -2+32 HP | 11.1 | 1.84 | 5102-UT7 |
| KA1911 | UT7 -2+32 HP | 14 | 2.19 | 5102-UT7 |
| KA3564 | UT7 -2+32 HP | 11.6 | 1.79 | PW12MA45002535 |
| KA3565 | UT7 -2+32 HP | 11.4 | 1.69 | PW12MA45002535 |
| KA3566 | UT7 -2+32 HP | 13.4 | 2.2 | PW12MA45002535 |