

ASSESSMENT REPORT ON THE
2012 AND 2013 GEOCHEMICAL SURVEYS OF THE AU CLAIMS

DAWSON MINING DISTRICT – NTS 1150/ 13 AND 14

Latitude 63° 52' 30" N, Longitude 139° 25 ' W

UTM NAD 83 ZONE 7: 578500E, 7085000N

AU CLAIMS 1- 186

GRANT NUMBERS YF41171 - YF41356

SURVEYS CONDUCTED SEPTEMBER 21 TO 23 2012, AND SEPTEMBER 29 TO OCTOBER 2 2013

REPORT BY DANIÈLE HÉON, P. GEO.

WHITEHORSE, NOVEMBER 22ND 2013

TABLE OF CONTENTS

SUMMARY	1
LOCATION AND ACCESS	1
CLAIM DATA	2
REGIONAL DATA	2
Regional Geology	2
Regional Geochemistry	5
Regional Geophysics	5
MINERALIZATION	6
PREVIOUS WORK	6
2012- 2013 SOIL SURVEYS	7
Description of work	7
Methodology	7
Results	7
CONCLUSIONS AND RECOMMENDATIONS	12
STATEMENT OF QUALIFICATIONS	13
REFERENCES	14

LIST OF FIGURES

Figure 1 General Location Map- AU claims- Quartz and Placer	1
Figure 2 A- Regional Geology- Minfile	3
Figure 3 Regional Geology- Property Scale	4
Figure 4- RGS DATA for Au ppb	5
Figure 5- Regional First Derivative Mag	6
Figure 6 Gold values by AU ICP-21 vs MEMS-41L	9
Figure 7 – Soil Sample Location Maps	10

LIST OF APPENDICES

Appendix A- Claim Map	15
Appendix B- Claim Data	16
Appendix C- Soil Sample Location Data	17
Appendix D- Soil Geochemistry	18
Appendix E- Statements of Expenditures	19
Appendix F- Assay Certificates	20

SUMMARY

The AU claims consist of 186 quartz claims registered in the Dawson Mining District; they are located on NTS map sheet 1150/13 and 14. The 2012 phase of fieldwork was conducted between September 21 and 23 2012, and consisted of a soil sampling grid covering the first phase of staking (claims AU 1 to 130). A total of 281 soil samples were analyzed for gold and multi-element ICP. The second phase of fieldwork was conducted between September 29 and October 2 2013, expanding the soil grid over claims staked in a second phase of staking (claims AU 131 to 186), a total of 231 soil samples were collected and assayed.

The property is located in the heart of the Klondike district, and is drained to the east by Bonanza and Eldorado creeks, which have produced placer gold from the early days of the Klondike to the present. Recent regional mapping shows the property to overlie the Permian Sulphur Creek Orthogneiss, and its northeastern contact with the Permian Klondike Schist.

This report is based on information supplied by Coureur des Bois Ltée Ltd, the contracting company which staked the claims and conducted the soil survey. The author has not been involved in the fieldwork described herein, but is simply documenting and interpreting the results, based on the information supplied.

LOCATION AND ACCESS

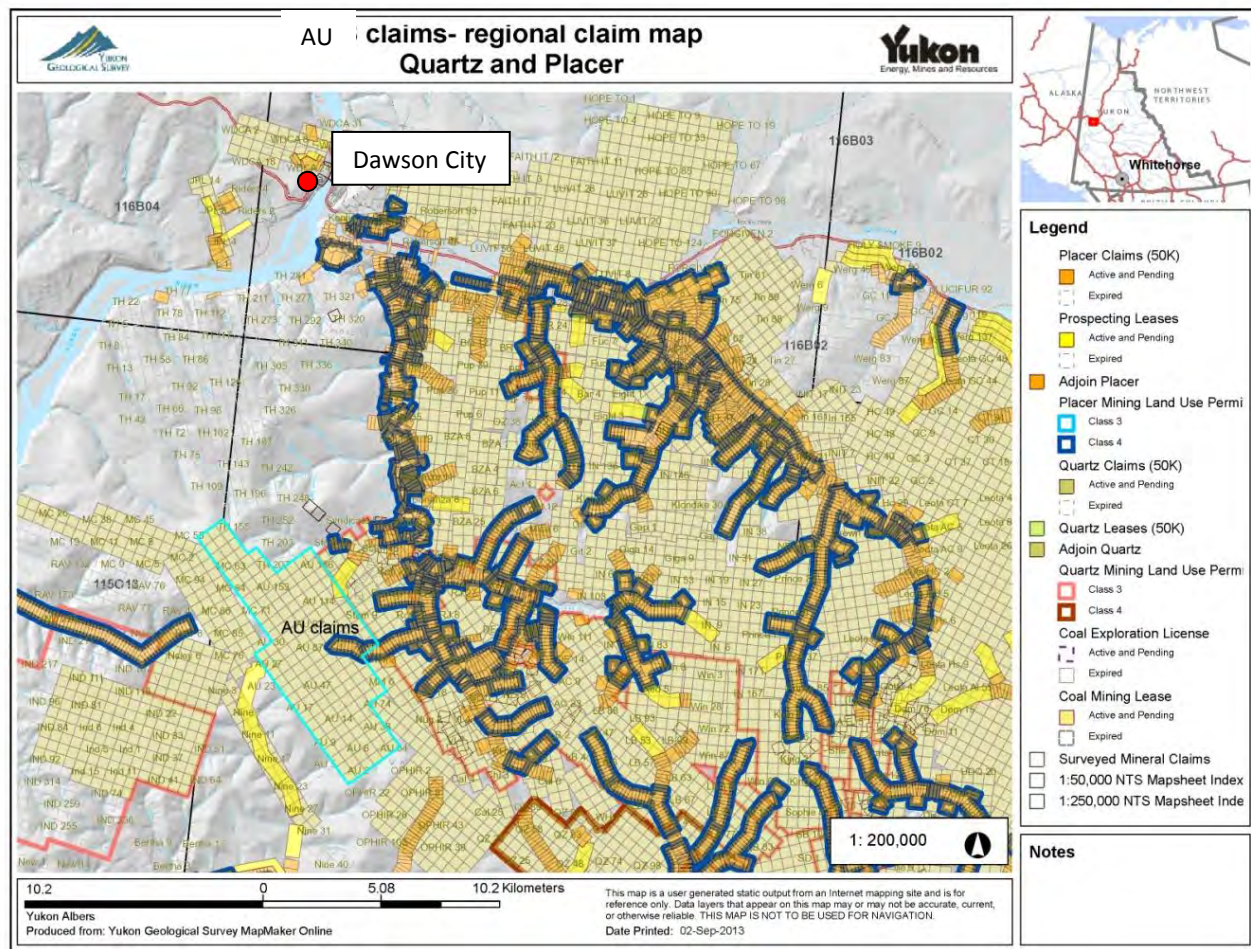


FIGURE 1 GENERAL LOCATION MAP- AU CLAIMS- QUARTZ AND PLACER

The AU property is located in the heart of the Klondike district, approximately 20 km south of Dawson City, on NTS map sheet 1150/13 and 14 (Figure 1). The claims are located to the west of Bonanza and Eldorado creeks, two historical gold placer producing creeks. In 2012, the property was accessed from helicopter chartered from Dawson City. In 2013, the property was accessed by 4x4 truck. The center of the property lies approximately at Latitude 63° 52' 30" N, Longitude 139° 25' W, or UTM NAD 83 Zone 7: 578500E, 7085000N.

CLAIM DATA

The AU property consists of 186 contiguous mineral claims registered in the Dawson Mining District. The claims are still currently held in the names of the stakers, all employees of Coureur des Bois Ltée Ltd, the contracting company that staked the claims and executed the soil survey. The claim map is in Appendix A-1. Appendix A-2 shows the actual location of the claim posts and demonstrates that the Mining Recorder's claim map show the claim posts offset 200m northeast of their actual location. The detailed claim data is found in Appendix B. The summary claim data is as follows:

TABLE 1 CLAIM DATA

<i>Claim name</i>	<i>Grant number</i>	<i>New expiry date pending acceptance of filing</i>
AU 1 to 130	YF41171 - 300	December 20 2015
AU 131 to 186	YF41301 - 356	October 16 2017

Placer claims overlap the AU quartz claims on the eastern part of the property.

REGIONAL DATA

REGIONAL GEOLOGY

Since this area of central Yukon has not been glaciated, the weathering profile and oxidation level is deeper than in glaciated areas. Metal response in soils may be muted due to prolonged weathering and resulting dilution. Interpretation of soil geochemical results must take this into consideration.

The bedrock geology in the property area is part of the Yukon-Tanana terrane (YTT), a belt of metamorphosed sedimentary, volcanic and plutonic rocks which document a complex magmatic and structural history. Rocks of YTT are interpreted to have started off as a Paleozoic (Devono-Mississippian) magmatic arc built on the margin of the Laurentian craton as a response to subduction of the oceanic lithosphere under the craton. Subsequent rifting created the Slide Mountain Ocean between YTT and Laurentia and lasted until mid Permian time. In late Permian time, the polarity of the subduction reversed, and the Slide Mountain Ocean began to subduct under YTT, creating a new (Permian) continental arc package. The metavolcanic and metasedimentary rocks of the Klondike Schist and the late Permian Sulphur Creek plutonic suite are part of this Permian arc. In latest Permian time, arc polarity reversed and YTT collided with and overrode the Laurentian margin. Continued convergence led to several other episodes of subduction and their complex magmatic response.

The digital regional geology map published by the Yukon Geological Survey (Figure 2a) shows the claims to be underlain by the Late Permian Sulphur Creek Orthogneiss (unit PqS), described as gneiss/ granite/ granodiorite/ quartz monzonite. The claims overlap the contact with the (earlier) Permian rocks of the Klondike Schist (unit CPK1), described as quartzite/ quartz-muscovite schist/gneiss/amphibolite.

This mapping, originally published in 1996, has now been updated by regional mapping and metallogenic studies conducted by UBC's Mineral Deposit Research Unit (MDRU) and summarized in their Yukon Gold Project report (Figure 2b). There is no

change in the distribution or ages of these two units, but the Jim Creek pluton, located west of the claims and formerly thought to be part of the Jurassic Long Lake Suite, is now known to be Permian and is now correlated with the Sulphur Creek Plutonic suite. This intrusion hosts the IND occurrence (Minfile 1150 095, Gleeson).

No new geological information was collected during Coureur des Bois' programs, the regional geology maps are therefore the most detailed ones available at this time. The information is displayed at the property scale in Figure 3.

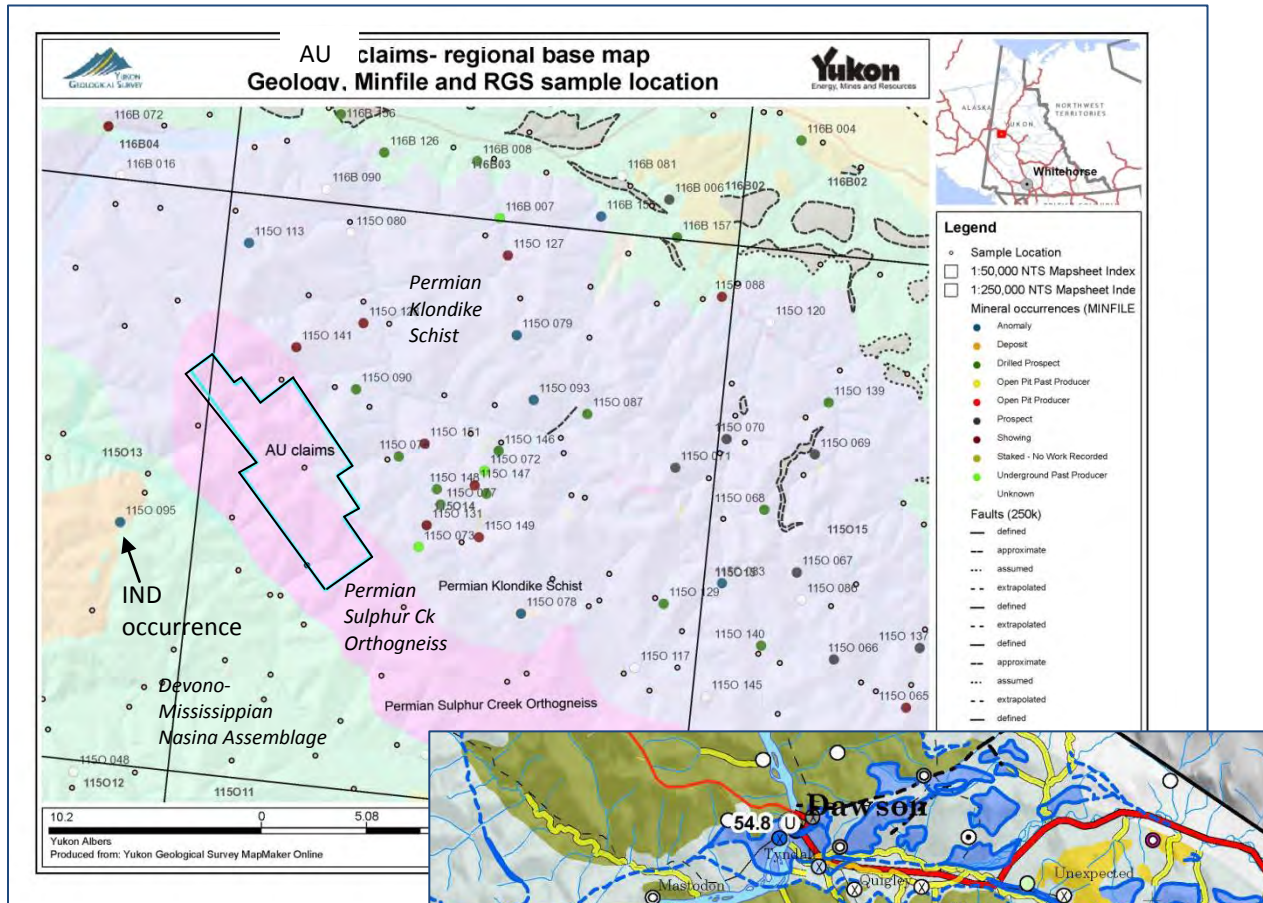
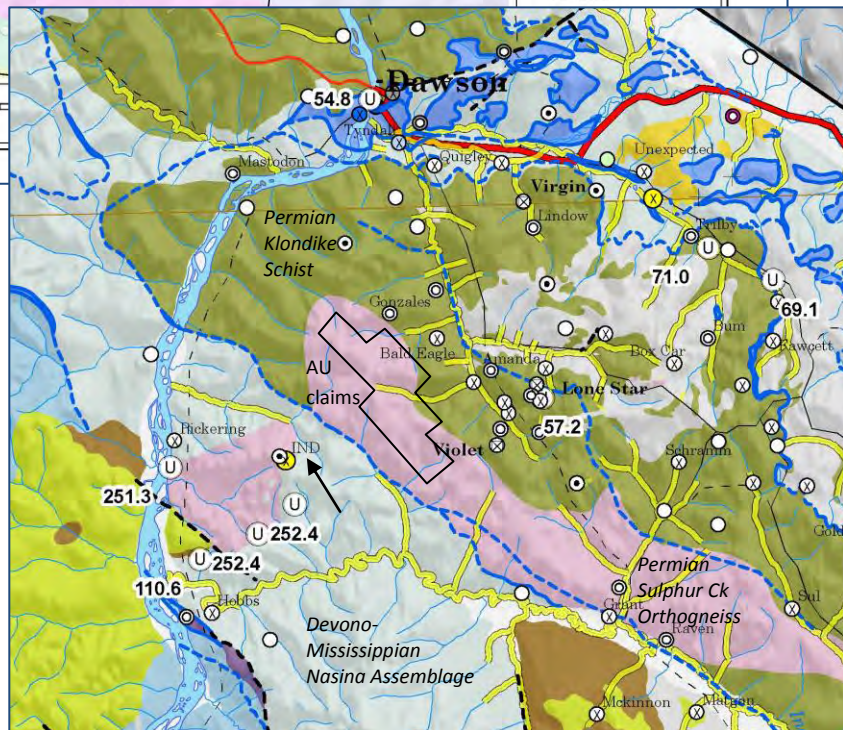


FIGURE 2 A- REGIONAL GEOLOGY- MINFILE
YGS MAPMAKER



2B- Regional Geology- MDRU Yukon Gold Project

REGIONAL GEOCHEMISTRY

About ten RGS sample sites are located on creeks draining the AU claims, while only two are located on the claim block itself (Figure 4). The metal response in these samples is flat for all the elements analyzed. The plot below shows that Au response in silt is muted for most of the Klondike district. Only King Solomon site dome area shows as highly anomalous. The location of RGS samples sites on the property maps throughout this report is marked as a pink triangle.

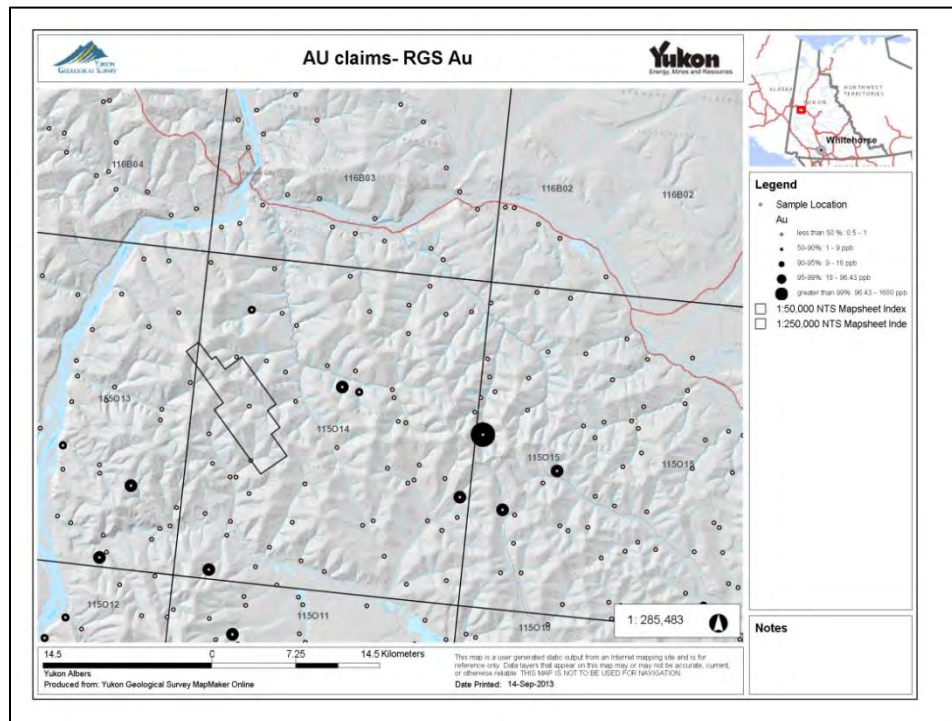


FIGURE 4- RGS DATA FOR AU PPB

REGIONAL GEOPHYSICS

Regional magnetic data is available from the YGS website. Figure 5 below shows the first derivative magnetic survey, with the outline of the AU claim block shown in black.

Magnetic signature for the claim area is overall flat and subdued, apart from an isolated weak mag high in the middle of the claim block. The low magnetic response seems to be the signature of the Sulphur Creek Orthogneiss while The Klondike Schist, to the north and east of the claim block, shows a distinct high mag signature.

The southwestern boundary of the claim block lines up with a linear discontinuity in magnetic signature, which, according to the regional geology maps, corresponds to the contact with the Devono-Mississippian Nasina assemblage.

The neighbouring intrusion hosting the IND occurrence, also appears to have a subdued magnetic response.

The isolated higher mag at the center of the claim block has yet to be explained.

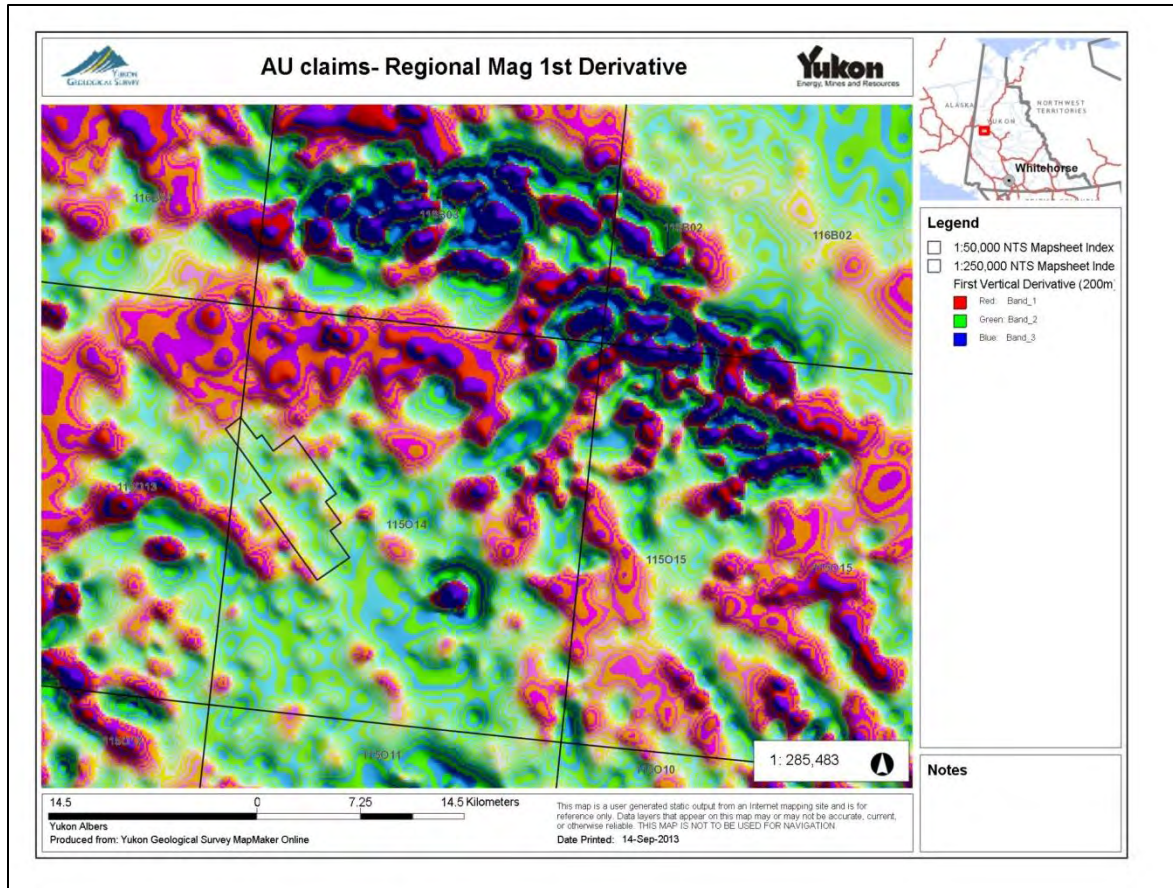


FIGURE 5- REGIONAL FIRST DERIVATIVE MAG

MINERALIZATION

Most of the claim block is underlain by the Permian Sulphur Creek Plutonic Suite. Mineralization in the area is mostly associated with rocks of the Klondike Schist, as is evident from the distribution of Minfile occurrences as seen on Figure 2. The Minfile occurrences that appear to be hosted by the Sulphur Creek Orthogneiss are in fact hosted in pendants of Klondike Schist within the orthogneiss.

The neighbouring IND occurrence (Minfile 1150 095, Gleeson) is located 7 km west of the claims block. It is hosted in the Jim Creek pluton, formerly thought to be part of the Jurassic Long Lake Suite. However recent age dating showed the host intrusion to be Permian and that body is now correlated with the Sulphur Creek Plutonic suite (Figure 2). Formerly known as a tungsten skarn, recent work by Aldrin Resources outlined a sheeted sill complex cut by bluish quartz veins. Trench samples yielded up to 12g/t Au (Allan et al, 2012).

Since the AU claims are underlain by the same host rocks as those that host the IND, this same type of mineralization could potentially be found on the AU claims.

PREVIOUS WORK

No previous work has been documented on the property.

2012- 2013 SOIL SURVEYS

Claims AU 1 to 130 were staked in September 2012, and soil sampling proceeded between September 21th and 22nd 2012, with the crew of samplers demobilizing on September 23rd. A second block of adjoining claims (AU 131 to 186) was staked to the north in October 2012, and soil sampling of these claims took place in September 29th to October 2nd 2013. This report documents these two soil programs.

DESCRIPTION OF WORK

Soil sampling was conducted by Coureur des Bois Ltée Ltd. A total of 281 soil samples were collected on claims AU 1 to 130 in 2012 and a total of 231 soil samples were collected on claims AU 131 to 186 in 2013, for a grand total of 512 samples assayed (a few samples were too small to analyze). The sample location map is seen below in Figure 7 a and b, and the sample location data is found in Appendix C.

METHODOLOGY

Soil samples were taken along NW-SE-trending lines, parallel to the claim lines. Grid lines were spaced 450m apart, roughly in the middle of the claims, with samples taken along the lines at every 150m. A few lines on the northeast side of the claim block were done at 225m spacing.

Sample site locations were pre-determined and stored in the sampler's GPS unit. The samplers navigated to the planned waypoints using their GPS, and sampled the B or C horizon at the sample site using a mattock or soil auger. The soil sample was put in a Kraft bag which in 2012 was labeled with the waypoint number. Sample tag books were used for the 2013 survey, where sample tags were inserted in the bags which were then labeled with the sample number. Notes were taken in a notebook or tag book, describing the different features (depth, colour, etc) of each sample.

Samples were bagged, brought to Whitehorse and shipped directly to ALS Minerals sample prep facility in Whitehorse.

Samples were prepped according to prep code 41, where the samples were dried at <60°C/140F, sieved to -180 micron (80 mesh) and both fractions retained. The samples from the 2012 survey were then assayed using the ME-MS41L multi-element package (which included Au) using an aqua regia digestion. Since this technique uses only 1g of pulp and is not the most optimal for Au, a total of 48 pulps were later selected to re-assay using Au-TL43 method (Au by ICP, aqua regia digestion, 25g sample weight) in order to test if a larger sample size would give more reliable gold assay results than the ME-MS41L. Both sets of results are displayed in the Au in soil maps (Appendix D) and a comparison of assay results is found below in Table 2 .

Samples from the 2013 survey were analyzed by Au-ICP21 (a fire assay with conventional ICP finish, 30g sample weight) and the same ME-MS41L multi-element ICP technique used in the first phase.

The results for Au using AU-ICP21 and the 48 samples of the 2012 survey that were reanalyzed using AU-TL43 are displayed together in Appendix D-2, the results for Au using ME-MS41L are displayed in appendix D-3, and all the combined assays for Au are displayed together in Appendix D-4.

RESULTS

As mentioned earlier, the non-glaciated nature of the terrain may cause a subdued metal response in soils due to their prolonged weathering and oxidation. The material sampled may have been leached from its original metal content. Significant metal values would therefore be lower than in glaciated areas.

Soil geochemical maps for Au, As, Cu, Mo, Pb, U and Zn as well as a compilation geochemical map are in Appendix D. Complete assay results are listed in the assay certificates compiled in Appendix F. Values below detection limit in the digital data were converted to half of that detection limit.

The geochemical maps display the range of values for selected elements. The ranges of values were chosen in order to best represent the distribution of ranges of values for each element. The highest values in each data set are portrayed in red. This does not always mean that this highest range is significant; it simply means that it is the highest in the data set.

From this initial soil survey, the following observations can be made:

- The soil sampling grid provides an initial 'first pass' investigation of the claim block. Line spacing is wide, at 450m between lines.
- The soil grid covers an area mapped as the Sulphur Creek Plutonic suite, but about 14 claims, apparently underlain by the Permian Klondike Schist, remain untested. The Klondike Schist is a prospective unit for VMS mineralization and also hosts orogenic gold veins in the Klondike district.
- Metal response in this survey is generally low, but with a few anomalous features.
- **Au**: the highest value obtained is 78 ppb (sample Q011671). This result is anomalous for this unglaciated terrane. A weak Au anomaly (10 to 20 ppb Au) spanning 900m and still open to the NE, is located northwest of the 78 ppb Au sample. The northwest area of the claim block is therefore worthy of follow up.
- This same area hosts a few coincident **Zn-Pb (-Cu)** anomalies, with two samples returning high values in **Pb** (160 and 408 ppm). These anomalies should be ground-truthed.
- The combination of Au and Pb-Zn anomalies in this area could point to the potential for vein-hosted or intrusion-related mineralization such as found at the IND occurrence (Minfile 1150 095).
- The highest **As** value, 96.5 ppm, is located at the southeastern end of the claim block.
- A series of coincident **Zn-weak Cu** anomalies occur in the east-central portion of the claim block, perhaps reflecting the Klondike Schist as the underlying bedrock in that area and therefore potential for VMS mineralization?
- Sample AU 313, grading 15 ppm **Mo** is also anomalous in Cu-Mn-Pb-Zn values. This could point to a base metal occurrence.

With respect to the various analytical techniques used for Au:

- All the 2013 samples were analyzed for gold using both a fire assay (Au-1CP21) and a low detection ICP package using a 1g sample size (ME-MS41L). Only one sample had a significantly lower assay by AU-ICP21 than by ME-MS41L (Q011683 returned 10.5 ppb Au when analyzed by ME-MS-41L but only 3 ppb when analyzed by AU-ICP21). Of the 11 samples grading higher than 8 ppb by AU-ICP-21 (8 to 78 ppb), only one returned comparable values when analyzed by ME-MS41L, all the other ones were much lower. Whether this is due to the irregular distribution of gold in the samples, or to the imprecision associated with the detection limit in the AU-ICP method (1 ppb vs 0.2 ppb for ME_MS41L), is not clear. Samples grading 78 and 25 ppb are far above the lower detection limit by AU-ICP21 yet only returned values of 1.8 and 2.6 ppb respectively by ME-MS41L..
- The low values obtained make comparisons difficult, as small variations in numbers yield great percentage differences. A greater range of gold values would enable a more reliable evaluation of assay techniques. Gold values using both assay methods are displayed below in Figure 6.

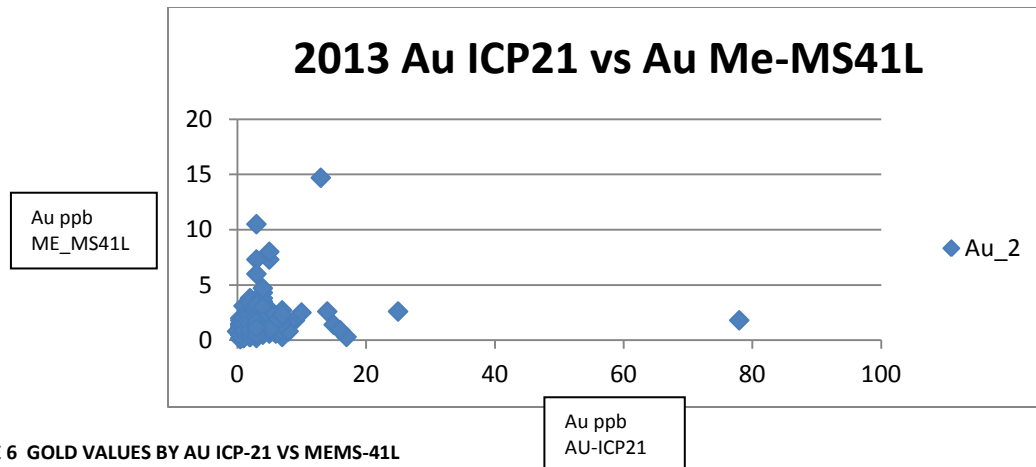


FIGURE 6 GOLD VALUES BY AU ICP-21 VS MEMS-41L

- From the 2012 samples analyzed by ME-MS41L: the re-analyses of 48 pulps samples using the Au-TL43 ICP method with aqua regia digestion (25g pulp) has had mixed results: 9 re-analyses were significantly lower (in red), 18 were higher (in green), and 21 did not change significantly. The 9 samples grading > 10 ppb by ME-MS41L (range 11.4-31.5 ppb) all returned much lower values when analyzed by AU-TL43 (between 1 and 5 ppb). The results are tabulated here:

TABLE 2 - COMPARISON OF 2012 AND 2013 ASSAY RESULTS FOR AU

sample no	Au ppb ME-MS41L	Au ppb TL43	difference ppb	sample no	Au ppb ME-MS41L	Au ppb TL43	difference ppb
AU 011	0.4	2	1.6	AU 28	11.4	3	-8.4
AU 111	1	8	7	AU 313	1.1	2	0.9
AU 112	17	3	-14	AU 314	1.1	2	0.9
AU 113	1.5	3	1.5	AU 319	0.6	2	1.4
AU 121	4	3	-1	AU 320	3.1	5	1.9
AU 124	2.3	3	0.7	AU 322	2.1	2	-0.1
AU 131	20.8	3	-17.8	AU 324	1.2	3	1.8
AU 137	17.9	3	-14.9	AU 348	0.6	2	1.4
AU 144	1	2	1	AU 349	1	15	14
AU 181	3.1	3	-0.1	AU 351	0.3	5	4.7
AU 195	0.1	1	0.9	AU 354	1.5	9	7.5
AU 206	14.1	1	-13.1	AU 355	1.3	5	3.7
AU 212	1.4	1	-0.4	AU 356	1	4	3
AU 226	2	3	1	AU 357	0.9	4	3.1
AU 228	16.1	4	-12.1	AU 358	1.9	5	3.1
AU 232	3.1	5	1.9	AU 359	3	2	-1
AU 238	3.4	2	-1.4	AU 38	1.6	6	4.4
AU 241	0.7	1	0.3	AU 39	0.1	2	1.9
AU 243	31.5	3	-28.5	AU 45	1	2	1
AU 247	1	2	1	AU 58	13.3	5	-8.3
AU 26	3.7	5	1.3	AU 59	3.9	4	0.1
AU 271	0.8	1	0.2	AU 77	2.1	8	5.9
AU 272	0.7	1	0.3	AU 86	14.4	2	-12.4
AU 276	1.8	3	1.2	AU 92	4	5	1

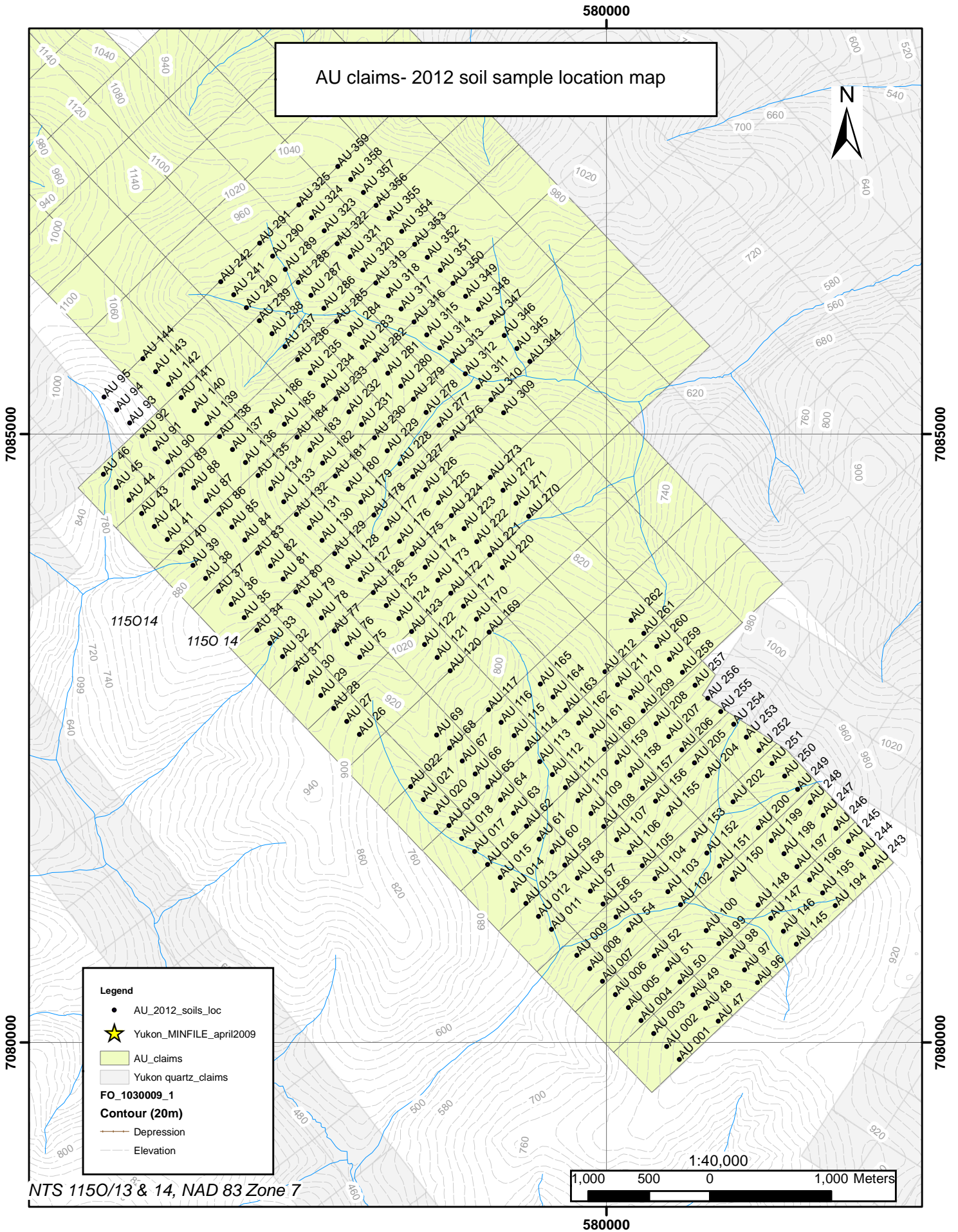


Figure 7a- 2012 Soil Sample Location Map

575000

AU claims - 2013 soil sample location map



★ 1150 141

7090000

7090000

7085000

7085000

115013

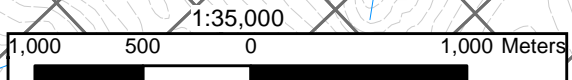
1150 14

115014

Legend

- 2013_soils
- ▭ AU_claims
- ▲ REG_STREAM_2003_PT_250K_SVW
- ★ Yukon_MINFILE_april2009

NTS 1150/13 & 14, NAD 83 Zone 7



575000

Figure 7b - 2013 Soil Sample Location Map

CONCLUSIONS AND RECOMMENDATIONS

The 2012 and 2013 soil grids covered an area mapped as the Sulphur Creek Orthogneiss, leaving out a small area potentially underlain by the Klondike Schist. The Klondike Schist hosts most of the mineral occurrences in the area. No prospecting took place during this work program

Metal response was generally low.

The northwest end of the property hosts a spotty high Au anomaly (78 ppb Au) as well as a weaker Au anomaly spanning at least 900m, as well as spotty Zn-Pb anomalies, one of which is defined by two samples grading 408 and 160 ppm Pb. These results could indicate the presence of intrusion-related and/or vein mineralization.

Weak Zn-Cu and moderate to strong Pb values may point to undocumented distribution of the Klondike Schist, and hence the potential for VMS mineralization. The small magnetic high feature in the east-central part of the property could be due to the stronger magnetic signature of the Klondike Schist.

A coincident Cu-Mn-Mo-Pb-Zn anomaly in the central part of the property could point to a base metal (vein) occurrence.

A single point high As value occurs at the southeastern end of the soil grid.

In light of these results, the following work is proposed:

- Air photo interpretation, looking for evidence for structures as controls to orogenic gold mineralization.
- Completing of soil coverage of area possibly underlain by the Klondike Schist.
- Infill sampling of soil grid near anomalies outlined above, 100m-spaced lines are proposed with sampling at every 25m.
- Groundtruthing of anomalies outlined above.
- Geological mapping and prospecting of the property, with focus on the contacts, potential outcrops of Klondike Schist, characterization of Sulphur Creek body, magnetic high area, high As and Au value in soil, and coincident multi-element soil anomaly at the northwest end of the claim block.

-The small sample size used in the ME-MS41L ICP method is not recommended for the determination of gold content. A fire assay method is favoured as it analyzes the whole of the sample and not just a leached portion.

Additional work would be dependent on the results of this proposed phase of work.

Signed, in Whitehorse, November 22, 2013

Danièle Héon, P. Geo.

STATEMENT OF QUALIFICATIONS

I, Danièle Héon, of:

12 Marigold Place
Whitehorse, Yukon
Y1A 6A2

do hereby declare that;

- I am an independent contracting geologist.
- I graduated with a Bachelor of Science degree from McGill University in Montréal in 1984.
- I have worked as a geologist since graduation from University and in the Yukon since 1990.
- I am a member in good standing of the Ordre des Géologues du Québec (OGQ), no. 1510, and of the Association of Professional Engineers and Geoscientists of BC (APEGBC), no. 38518.
- I have not visited the property.
- I am the author of this report in which I compile and present the work and the results of the soil survey conducted by Coureur des Bois Exploration Ltée Ltd., based on the data provided by Coureur des Bois Exploration Ltée Ltd.
- I have not been involved in the fieldwork described herein, so therefore my responsibility is limited to the interpretation and presentation of the data provided.
- This report is intended to satisfy assessment requirements only.

Danièle Héon, P. Geo.

REFERENCES

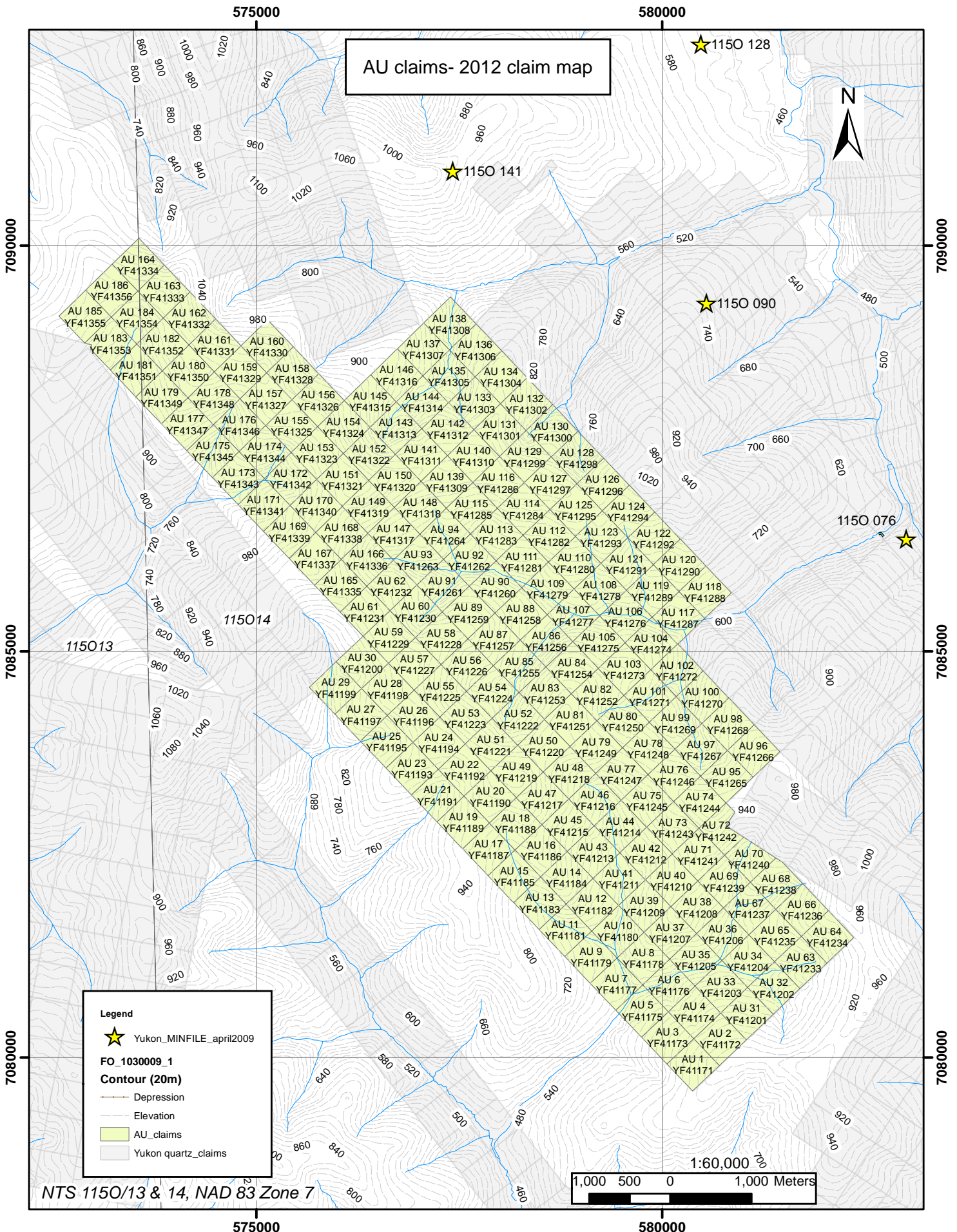
Allan, M.M., Hart. C.J.R., and Mortensen, J.K. (eds), 2012, Yukon Gold Project Final technical Report, Mineral Deposit Research Unit, University of British Columbia.

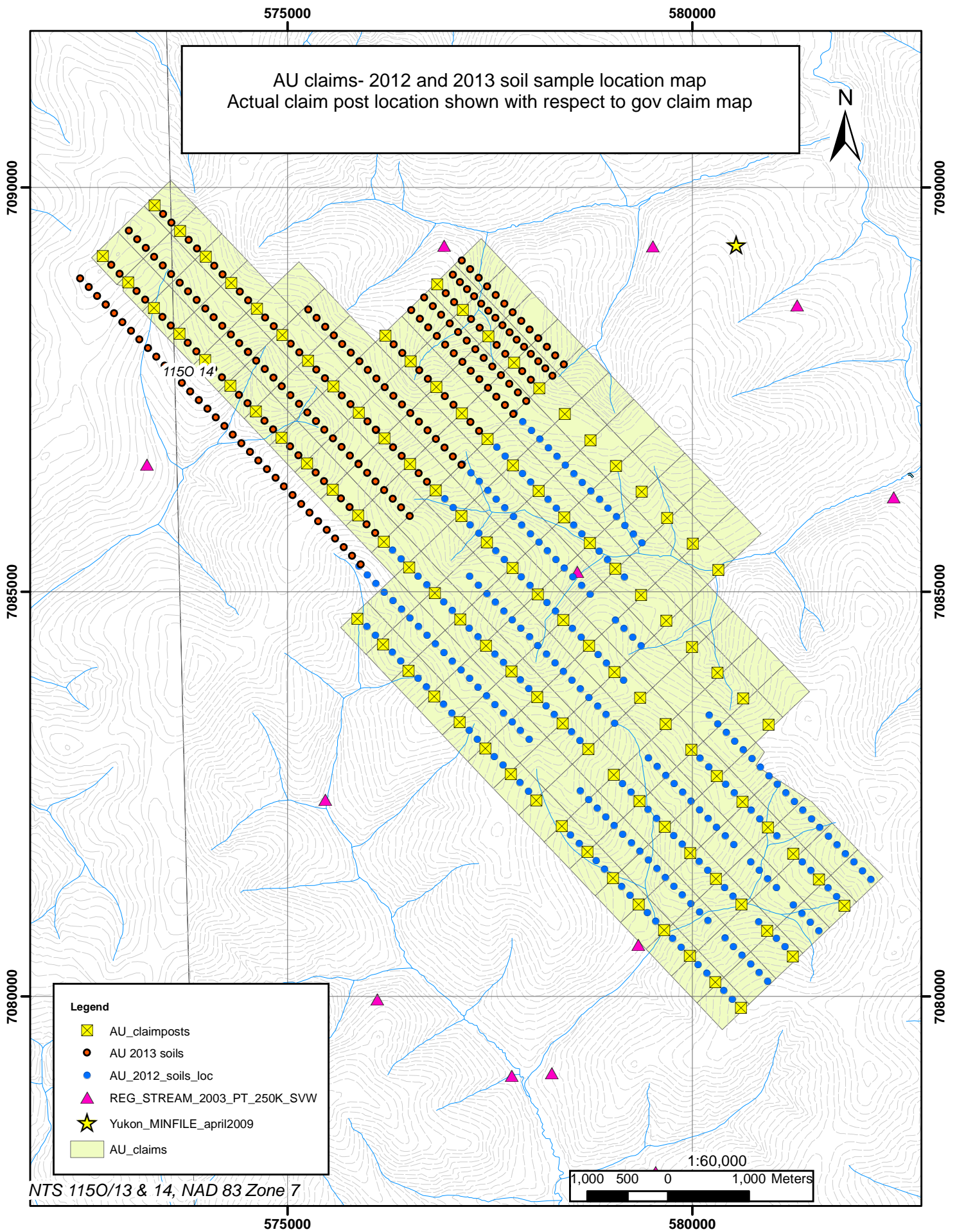
Allan, M.M., Hart. C.J.R., and Mortensen, J.K. (eds), 2012, Geological Map of the Dawson Range- White Gold Area, Yukon and East-Central Alaska, 1: 400,000, Mineral Deposit Research Unit, University of British Columbia.

Digital data as provided by the Yukon Geological Survey and government agencies, in particular:

- Deklerk, R. (compiler), 2003. Yukon MINFILE 2003 – A database of mineral occurrences. Yukon Geological Survey. And Yukon MINFILE, 2012. Yukon MINFILE – A database of mineral occurrences. Yukon Geological Survey, http://www.geology.gov.yk.ca/databases_gis.html
- Gordey, S.P., Makepeace, A.J., (compilers), , **2003-9(D), Open File (Geological - Bedrock); Yukon Digital Geology (version 2)** Yukon Geological Survey.
- Mineral Claims (Yukon Mining Recorder) <http://www.yukonminingrecorder.ca/>
- Geomatics Yukon for regional shape file data: <http://geomaticsyukon.ca/data/datasets>
- Yukon Geological Survey, 2011. YGS Mapmaker online <http://maps.gov.yk.ca/imf.jsp?site=YGS>

APPENDIX A- CLAIM MAP





NTS 1150/13 & 14, NAD 83 Zone 7

APPENDIX B- CLAIM DATA

District	Grant Number	RegType	Claim Name	Claim Nbr	Claim Owner	Status	NTS Map	Claim Expiry Date	New Expiry Date
Dawson	YF41171	Quartz	AU	1	Martin Paquette - 100%	Pending	115O14	9/21/2013	12/20/2015
Dawson	YF41172	Quartz	AU	2	Martin Paquette - 100%	Pending	115O14	9/21/2013	12/20/2015
Dawson	YF41173	Quartz	AU	3	Martin Paquette - 100%	Pending	115O14	9/21/2013	12/20/2015
Dawson	YF41174	Quartz	AU	4	Martin Paquette - 100%	Pending	115O14	9/21/2013	12/20/2015
Dawson	YF41175	Quartz	AU	5	Martin Paquette - 100%	Pending	115O14	9/21/2013	12/20/2015
Dawson	YF41176	Quartz	AU	6	Martin Paquette - 100%	Pending	115O14	9/21/2013	12/20/2015
Dawson	YF41177	Quartz	AU	7	Martin Paquette - 100%	Pending	115O14	9/21/2013	12/20/2015
Dawson	YF41178	Quartz	AU	8	Martin Paquette - 100%	Pending	115O14	9/21/2013	12/20/2015
Dawson	YF41179	Quartz	AU	9	Martin Paquette - 100%	Pending	115O14	9/21/2013	12/20/2015
Dawson	YF41180	Quartz	AU	10	Martin Paquette - 100%	Pending	115O14	9/21/2013	12/20/2015
Dawson	YF41181	Quartz	AU	11	Martin Paquette - 100%	Pending	115O14	9/21/2013	12/20/2015
Dawson	YF41182	Quartz	AU	12	Martin Paquette - 100%	Pending	115O14	9/21/2013	12/20/2015
Dawson	YF41183	Quartz	AU	13	Martin Paquette - 100%	Pending	115O14	9/21/2013	12/20/2015
Dawson	YF41184	Quartz	AU	14	Martin Paquette - 100%	Pending	115O14	9/21/2013	12/20/2015
Dawson	YF41185	Quartz	AU	15	Martin Paquette - 100%	Pending	115O14	9/21/2013	12/20/2015
Dawson	YF41186	Quartz	AU	16	Martin Paquette - 100%	Pending	115O14	9/21/2013	12/20/2015
Dawson	YF41187	Quartz	AU	17	Normand Jacob - 100%	Pending	115O14	9/21/2013	12/20/2015
Dawson	YF41188	Quartz	AU	18	Normand Jacob - 100%	Pending	115O14	9/21/2013	12/20/2015
Dawson	YF41189	Quartz	AU	19	Normand Jacob - 100%	Pending	115O14	9/21/2013	12/20/2015
Dawson	YF41190	Quartz	AU	20	Normand Jacob - 100%	Pending	115O14	9/21/2013	12/20/2015
Dawson	YF41191	Quartz	AU	21	Normand Jacob - 100%	Pending	115O14	9/21/2013	12/20/2015
Dawson	YF41192	Quartz	AU	22	Normand Jacob - 100%	Pending	115O14	9/21/2013	12/20/2015
Dawson	YF41193	Quartz	AU	23	Normand Jacob - 100%	Pending	115O14	9/21/2013	12/20/2015
Dawson	YF41194	Quartz	AU	24	Normand Jacob - 100%	Pending	115O14	9/21/2013	12/20/2015
Dawson	YF41195	Quartz	AU	25	Normand Jacob - 100%	Pending	115O14	9/21/2013	12/20/2015
Dawson	YF41196	Quartz	AU	26	Normand Jacob - 100%	Pending	115O14	9/21/2013	12/20/2015
Dawson	YF41197	Quartz	AU	27	Normand Jacob - 100%	Pending	115O14	9/21/2013	12/20/2015
Dawson	YF41198	Quartz	AU	28	Normand Jacob - 100%	Pending	115O14	9/21/2013	12/20/2015
Dawson	YF41199	Quartz	AU	29	Normand Jacob - 100%	Pending	115O14	9/21/2013	12/20/2015
Dawson	YF41200	Quartz	AU	30	Normand Jacob - 100%	Pending	115O14	9/21/2013	12/20/2015
Dawson	YF41201	Quartz	AU	31	Cody Wilkinson - 100%	Pending	115O14	9/21/2013	12/20/2015
Dawson	YF41202	Quartz	AU	32	Cody Wilkinson - 100%	Pending	115O14	9/21/2013	12/20/2015

District	Grant Number	RegType	Claim Name	Claim Nbr	Claim Owner	Status	NTS Map	Claim Expiry Date	New Expiry Date
Dawson	YF41203	Quartz	AU	33	Cody Wilkinson - 100%	Pending	115O14	9/21/2013	12/20/2015
Dawson	YF41204	Quartz	AU	34	Cody Wilkinson - 100%	Pending	115O14	9/21/2013	12/20/2015
Dawson	YF41205	Quartz	AU	35	Cody Wilkinson - 100%	Pending	115O14	9/21/2013	12/20/2015
Dawson	YF41206	Quartz	AU	36	Cody Wilkinson - 100%	Pending	115O14	9/21/2013	12/20/2015
Dawson	YF41207	Quartz	AU	37	Cody Wilkinson - 100%	Pending	115O14	9/21/2013	12/20/2015
Dawson	YF41208	Quartz	AU	38	Cody Wilkinson - 100%	Pending	115O14	9/21/2013	12/20/2015
Dawson	YF41209	Quartz	AU	39	Cody Wilkinson - 100%	Pending	115O14	9/21/2013	12/20/2015
Dawson	YF41210	Quartz	AU	40	Cody Wilkinson - 100%	Pending	115O14	9/21/2013	12/20/2015
Dawson	YF41211	Quartz	AU	41	Cody Wilkinson - 100%	Pending	115O14	9/21/2013	12/20/2015
Dawson	YF41212	Quartz	AU	42	Cody Wilkinson - 100%	Pending	115O14	9/21/2013	12/20/2015
Dawson	YF41213	Quartz	AU	43	Cody Wilkinson - 100%	Pending	115O14	9/21/2013	12/20/2015
Dawson	YF41214	Quartz	AU	44	Cody Wilkinson - 100%	Pending	115O14	9/21/2013	12/20/2015
Dawson	YF41215	Quartz	AU	45	Cody Wilkinson - 100%	Pending	115O14	9/21/2013	12/20/2015
Dawson	YF41216	Quartz	AU	46	Cody Wilkinson - 100%	Pending	115O14	9/21/2013	12/20/2015
Dawson	YF41217	Quartz	AU	47	Patricia Brunel - 100%	Pending	115O14	9/21/2013	12/20/2015
Dawson	YF41218	Quartz	AU	48	Patricia Brunel - 100%	Pending	115O14	9/21/2013	12/20/2015
Dawson	YF41219	Quartz	AU	49	Patricia Brunel - 100%	Pending	115O14	9/21/2013	12/20/2015
Dawson	YF41220	Quartz	AU	50	Patricia Brunel - 100%	Pending	115O14	9/21/2013	12/20/2015
Dawson	YF41221	Quartz	AU	51	Patricia Brunel - 100%	Pending	115O14	9/21/2013	12/20/2015
Dawson	YF41222	Quartz	AU	52	Patricia Brunel - 100%	Pending	115O14	9/21/2013	12/20/2015
Dawson	YF41223	Quartz	AU	53	Patricia Brunel - 100%	Pending	115O14	9/21/2013	12/20/2015
Dawson	YF41224	Quartz	AU	54	Patricia Brunel - 100%	Pending	115O14	9/21/2013	12/20/2015
Dawson	YF41225	Quartz	AU	55	Patricia Brunel - 100%	Pending	115O14	9/21/2013	12/20/2015
Dawson	YF41226	Quartz	AU	56	Patricia Brunel - 100%	Pending	115O14	9/21/2013	12/20/2015
Dawson	YF41227	Quartz	AU	57	Patricia Brunel - 100%	Pending	115O14	9/21/2013	12/20/2015
Dawson	YF41228	Quartz	AU	58	Patricia Brunel - 100%	Pending	115O14	9/21/2013	12/20/2015
Dawson	YF41229	Quartz	AU	59	Patricia Brunel - 100%	Pending	115O14	9/21/2013	12/20/2015
Dawson	YF41230	Quartz	AU	60	Patricia Brunel - 100%	Pending	115O14	9/21/2013	12/20/2015
Dawson	YF41231	Quartz	AU	61	Patricia Brunel - 100%	Pending	115O14	9/21/2013	12/20/2015
Dawson	YF41232	Quartz	AU	62	Patricia Brunel - 100%	Pending	115O14	9/21/2013	12/20/2015
Dawson	YF41233	Quartz	AU	63	Yann LeRoy - 100%	Pending	115O14	9/21/2013	12/20/2015
Dawson	YF41234	Quartz	AU	64	Yann LeRoy - 100%	Pending	115O14	9/21/2013	12/20/2015

District	Grant Number	RegType	Claim Name	Claim Nbr	Claim Owner	Status	NTS Map	Claim Expiry Date	New Expiry Date
Dawson	YF41235	Quartz	AU	65	Yann LeRoy - 100%	Pending	115O14	9/21/2013	12/20/2015
Dawson	YF41236	Quartz	AU	66	Yann LeRoy - 100%	Pending	115O14	9/21/2013	12/20/2015
Dawson	YF41237	Quartz	AU	67	Yann LeRoy - 100%	Pending	115O14	9/21/2013	12/20/2015
Dawson	YF41238	Quartz	AU	68	Yann LeRoy - 100%	Pending	115O14	9/21/2013	12/20/2015
Dawson	YF41239	Quartz	AU	69	Yann LeRoy - 100%	Pending	115O14	9/21/2013	12/20/2015
Dawson	YF41240	Quartz	AU	70	Yann LeRoy - 100%	Pending	115O14	9/21/2013	12/20/2015
Dawson	YF41241	Quartz	AU	71	Yann LeRoy - 100%	Pending	115O14	9/21/2013	12/20/2015
Dawson	YF41242	Quartz	AU	72	Yann LeRoy - 100%	Pending	115O14	9/21/2013	12/20/2015
Dawson	YF41243	Quartz	AU	73	Yann LeRoy - 100%	Pending	115O14	9/21/2013	12/20/2015
Dawson	YF41244	Quartz	AU	74	Yann LeRoy - 100%	Pending	115O14	9/21/2013	12/20/2015
Dawson	YF41245	Quartz	AU	75	Yann LeRoy - 100%	Pending	115O14	9/21/2013	12/20/2015
Dawson	YF41246	Quartz	AU	76	Yann LeRoy - 100%	Pending	115O14	9/21/2013	12/20/2015
Dawson	YF41247	Quartz	AU	77	Yann LeRoy - 100%	Pending	115O14	9/21/2013	12/20/2015
Dawson	YF41248	Quartz	AU	78	Yann LeRoy - 100%	Pending	115O14	9/21/2013	12/20/2015
Dawson	YF41249	Quartz	AU	79	Conor O'Donovan - 100%	Pending	115O14	9/21/2013	12/20/2015
Dawson	YF41250	Quartz	AU	80	Conor O'Donovan - 100%	Pending	115O14	9/21/2013	12/20/2015
Dawson	YF41251	Quartz	AU	81	Conor O'Donovan - 100%	Pending	115O14	9/21/2013	12/20/2015
Dawson	YF41252	Quartz	AU	82	Conor O'Donovan - 100%	Pending	115O14	9/21/2013	12/20/2015
Dawson	YF41253	Quartz	AU	83	Conor O'Donovan - 100%	Pending	115O14	9/21/2013	12/20/2015
Dawson	YF41254	Quartz	AU	84	Conor O'Donovan - 100%	Pending	115O14	9/21/2013	12/20/2015
Dawson	YF41255	Quartz	AU	85	Conor O'Donovan - 100%	Pending	115O14	9/21/2013	12/20/2015
Dawson	YF41256	Quartz	AU	86	Conor O'Donovan - 100%	Pending	115O14	9/21/2013	12/20/2015
Dawson	YF41257	Quartz	AU	87	Conor O'Donovan - 100%	Pending	115O14	9/21/2013	12/20/2015
Dawson	YF41258	Quartz	AU	88	Conor O'Donovan - 100%	Pending	115O14	9/21/2013	12/20/2015
Dawson	YF41259	Quartz	AU	89	Conor O'Donovan - 100%	Pending	115O14	9/21/2013	12/20/2015
Dawson	YF41260	Quartz	AU	90	Conor O'Donovan - 100%	Pending	115O14	9/21/2013	12/20/2015
Dawson	YF41261	Quartz	AU	91	Conor O'Donovan - 100%	Pending	115O14	9/21/2013	12/20/2015
Dawson	YF41262	Quartz	AU	92	Conor O'Donovan - 100%	Pending	115O14	9/21/2013	12/20/2015
Dawson	YF41263	Quartz	AU	93	Conor O'Donovan - 100%	Pending	115O14	9/21/2013	12/20/2015
Dawson	YF41264	Quartz	AU	94	Conor O'Donovan - 100%	Pending	115O14	9/21/2013	12/20/2015
Dawson	YF41265	Quartz	AU	95	Tyler Quock - 100%	Pending	115O14	9/21/2013	12/20/2015
Dawson	YF41266	Quartz	AU	96	Tyler Quock - 100%	Pending	115O14	9/21/2013	12/20/2015

District	Grant Number	RegType	Claim Name	Claim Nbr	Claim Owner	Status	NTS Map	Claim Expiry Date	New Expiry Date
Dawson	YF41267	Quartz	AU	97	Tyler Quock - 100%	Pending	115O14	9/21/2013	12/20/2015
Dawson	YF41268	Quartz	AU	98	Tyler Quock - 100%	Pending	115O14	9/21/2013	12/20/2015
Dawson	YF41269	Quartz	AU	99	Tyler Quock - 100%	Pending	115O14	9/21/2013	12/20/2015
Dawson	YF41270	Quartz	AU	100	Tyler Quock - 100%	Pending	115O14	9/21/2013	12/20/2015
Dawson	YF41271	Quartz	AU	101	Tyler Quock - 100%	Pending	115O14	9/21/2013	12/20/2015
Dawson	YF41272	Quartz	AU	102	Tyler Quock - 100%	Pending	115O14	9/21/2013	12/20/2015
Dawson	YF41273	Quartz	AU	103	Tyler Quock - 100%	Pending	115O14	9/21/2013	12/20/2015
Dawson	YF41274	Quartz	AU	104	Tyler Quock - 100%	Pending	115O14	9/21/2013	12/20/2015
Dawson	YF41275	Quartz	AU	105	Tyler Quock - 100%	Pending	115O14	9/21/2013	12/20/2015
Dawson	YF41276	Quartz	AU	106	Tyler Quock - 100%	Pending	115O14	9/21/2013	12/20/2015
Dawson	YF41277	Quartz	AU	107	Tyler Quock - 100%	Pending	115O14	9/21/2013	12/20/2015
Dawson	YF41278	Quartz	AU	108	Tyler Quock - 100%	Pending	115O14	9/21/2013	12/20/2015
Dawson	YF41279	Quartz	AU	109	Tyler Quock - 100%	Pending	115O14	9/21/2013	12/20/2015
Dawson	YF41280	Quartz	AU	110	Tyler Quock - 100%	Pending	115O14	9/21/2013	12/20/2015
Dawson	YF41281	Quartz	AU	111	Tyler Quock - 100%	Pending	115O14	9/21/2013	12/20/2015
Dawson	YF41282	Quartz	AU	112	Tyler Quock - 100%	Pending	115O14	9/21/2013	12/20/2015
Dawson	YF41283	Quartz	AU	113	Tyler Quock - 100%	Pending	115O14	9/21/2013	12/20/2015
Dawson	YF41284	Quartz	AU	114	Tyler Quock - 100%	Pending	115O14	9/21/2013	12/20/2015
Dawson	YF41285	Quartz	AU	115	Tyler Quock - 100%	Pending	115O14	9/21/2013	12/20/2015
Dawson	YF41286	Quartz	AU	116	Tyler Quock - 100%	Pending	115O14	9/21/2013	12/20/2015
Dawson	YF41287	Quartz	AU	117	Martin Gauvreau - 100%	Pending	115O14	9/20/2013	12/20/2015
Dawson	YF41288	Quartz	AU	118	Martin Gauvreau - 100%	Pending	115O14	9/20/2013	12/20/2015
Dawson	YF41289	Quartz	AU	119	Martin Gauvreau - 100%	Pending	115O14	9/20/2013	12/20/2015
Dawson	YF41290	Quartz	AU	120	Martin Gauvreau - 100%	Pending	115O14	9/20/2013	12/20/2015
Dawson	YF41291	Quartz	AU	121	Martin Gauvreau - 100%	Pending	115O14	9/20/2013	12/20/2015
Dawson	YF41292	Quartz	AU	122	Martin Gauvreau - 100%	Pending	115O14	9/20/2013	12/20/2015
Dawson	YF41293	Quartz	AU	123	Martin Gauvreau - 100%	Pending	115O14	9/20/2013	12/20/2015
Dawson	YF41294	Quartz	AU	124	Martin Gauvreau - 100%	Pending	115O14	9/20/2013	12/20/2015
Dawson	YF41295	Quartz	AU	125	Martin Gauvreau - 100%	Pending	115O14	9/20/2013	12/20/2015
Dawson	YF41296	Quartz	AU	126	Martin Gauvreau - 100%	Pending	115O14	9/20/2013	12/20/2015
Dawson	YF41297	Quartz	AU	127	Martin Gauvreau - 100%	Pending	115O14	9/20/2013	12/20/2015
Dawson	YF41298	Quartz	AU	128	Martin Gauvreau - 100%	Pending	115O14	9/20/2013	12/20/2015

District	Grant Number	RegType	Claim Name	Claim Nbr	Claim Owner	Status	NTS Map	Claim Expiry Date	New Expiry Date
Dawson	YF41299	Quartz	AU	129	Martin Gauvreau - 100%	Pending	115O14	9/20/2013	12/20/2015
Dawson	YF41300	Quartz	AU	130	Martin Gauvreau - 100%	Pending	115O14	9/20/2013	12/20/2015
Dawson	YF41301	Quartz	AU	131	Cody Wilkinson - 100%	Pending	115O14	10/16/2013	10/16/2017
Dawson	YF41302	Quartz	AU	132	Cody Wilkinson - 100%	Pending	115O14	10/16/2013	10/16/2017
Dawson	YF41303	Quartz	AU	133	Cody Wilkinson - 100%	Pending	115O14	10/16/2013	10/16/2017
Dawson	YF41304	Quartz	AU	134	Cody Wilkinson - 100%	Pending	115O14	10/16/2013	10/16/2017
Dawson	YF41305	Quartz	AU	135	Cody Wilkinson - 100%	Pending	115O14	10/16/2013	10/16/2017
Dawson	YF41306	Quartz	AU	136	Cody Wilkinson - 100%	Pending	115O14	10/16/2013	10/16/2017
Dawson	YF41307	Quartz	AU	137	Cody Wilkinson - 100%	Pending	115O14	10/16/2013	10/16/2017
Dawson	YF41308	Quartz	AU	138	Cody Wilkinson - 100%	Pending	115O14	10/16/2013	10/16/2017
Dawson	YF41309	Quartz	AU	139	Normand Jacob - 100%	Pending	115O14	10/16/2013	10/16/2017
Dawson	YF41310	Quartz	AU	140	Normand Jacob - 100%	Pending	115O14	10/16/2013	10/16/2017
Dawson	YF41311	Quartz	AU	141	Normand Jacob - 100%	Pending	115O14	10/16/2013	10/16/2017
Dawson	YF41312	Quartz	AU	142	Normand Jacob - 100%	Pending	115O14	10/16/2013	10/16/2017
Dawson	YF41313	Quartz	AU	143	Normand Jacob - 100%	Pending	115O14	10/16/2013	10/16/2017
Dawson	YF41314	Quartz	AU	144	Normand Jacob - 100%	Pending	115O14	10/16/2013	10/16/2017
Dawson	YF41315	Quartz	AU	145	Normand Jacob - 100%	Pending	115O14	10/16/2013	10/16/2017
Dawson	YF41316	Quartz	AU	146	Normand Jacob - 100%	Pending	115O14	10/16/2013	10/16/2017
Dawson	YF41317	Quartz	AU	147	Gabriel Rondeau - 100%	Pending	115O14	10/16/2013	10/16/2017
Dawson	YF41318	Quartz	AU	148	Gabriel Rondeau - 100%	Pending	115O14	10/16/2013	10/16/2017
Dawson	YF41319	Quartz	AU	149	Gabriel Rondeau - 100%	Pending	115O14	10/16/2013	10/16/2017
Dawson	YF41320	Quartz	AU	150	Gabriel Rondeau - 100%	Pending	115O14	10/16/2013	10/16/2017
Dawson	YF41321	Quartz	AU	151	Gabriel Rondeau - 100%	Pending	115O14	10/16/2013	10/16/2017
Dawson	YF41322	Quartz	AU	152	Gabriel Rondeau - 100%	Pending	115O14	10/16/2013	10/16/2017
Dawson	YF41323	Quartz	AU	153	Gabriel Rondeau - 100%	Pending	115O14	10/16/2013	10/16/2017
Dawson	YF41324	Quartz	AU	154	Gabriel Rondeau - 100%	Pending	115O14	10/16/2013	10/16/2017
Dawson	YF41325	Quartz	AU	155	Gabriel Rondeau - 100%	Pending	115O14	10/16/2013	10/16/2017
Dawson	YF41326	Quartz	AU	156	Gabriel Rondeau - 100%	Pending	115O14	10/16/2013	10/16/2017
Dawson	YF41327	Quartz	AU	157	Gabriel Rondeau - 100%	Pending	115O14	10/16/2013	10/16/2017
Dawson	YF41328	Quartz	AU	158	Gabriel Rondeau - 100%	Pending	115O14	10/16/2013	10/16/2017
Dawson	YF41329	Quartz	AU	159	Gabriel Rondeau - 100%	Pending	115O14	10/16/2013	10/16/2017
Dawson	YF41330	Quartz	AU	160	Gabriel Rondeau - 100%	Pending	115O14	10/16/2013	10/16/2017

District	Grant Number	RegType	Claim Name	Claim Nbr	Claim Owner	Status	NTS Map	Claim Expiry Date	New Expiry Date
Dawson	YF41331	Quartz	AU	161	Gabriel Rondeau - 100%	Pending	115O14	10/16/2013	10/16/2017
Dawson	YF41332	Quartz	AU	162	Gabriel Rondeau - 100%	Pending	115O14	10/16/2013	10/16/2017
Dawson	YF41333	Quartz	AU	163	Gabriel Rondeau - 100%	Pending	115O14	10/16/2013	10/16/2017
Dawson	YF41334	Quartz	AU	164	Gabriel Rondeau - 100%	Pending	115O14	10/16/2013	10/16/2017
Dawson	YF41335	Quartz	AU	165	Martin Paquette - 100%	Pending	115O14	10/16/2013	10/16/2017
Dawson	YF41336	Quartz	AU	166	Martin Paquette - 100%	Pending	115O14	10/16/2013	10/16/2017
Dawson	YF41337	Quartz	AU	167	Martin Paquette - 100%	Pending	115O14	10/16/2013	10/16/2017
Dawson	YF41338	Quartz	AU	168	Martin Paquette - 100%	Pending	115O14	10/16/2013	10/16/2017
Dawson	YF41339	Quartz	AU	169	Martin Paquette - 100%	Pending	115O14	10/16/2013	10/16/2017
Dawson	YF41340	Quartz	AU	170	Martin Paquette - 100%	Pending	115O14	10/16/2013	10/16/2017
Dawson	YF41341	Quartz	AU	171	Martin Paquette - 100%	Pending	115O14	10/16/2013	10/16/2017
Dawson	YF41342	Quartz	AU	172	Martin Paquette - 100%	Pending	115O14	10/16/2013	10/16/2017
Dawson	YF41343	Quartz	AU	173	Martin Paquette - 100%	Pending	115O14	10/16/2013	10/16/2017
Dawson	YF41344	Quartz	AU	174	Martin Paquette - 100%	Pending	115O14	10/16/2013	10/16/2017
Dawson	YF41345	Quartz	AU	175	Martin Paquette - 100%	Pending	115O14	10/16/2013	10/16/2017
Dawson	YF41346	Quartz	AU	176	Martin Paquette - 100%	Pending	115O14	10/16/2013	10/16/2017
Dawson	YF41347	Quartz	AU	177	Martin Paquette - 100%	Pending	115O14	10/16/2013	10/16/2017
Dawson	YF41348	Quartz	AU	178	Martin Paquette - 100%	Pending	115O14	10/16/2013	10/16/2017
Dawson	YF41349	Quartz	AU	179	Martin Paquette - 100%	Pending	115O14	10/16/2013	10/16/2017
Dawson	YF41350	Quartz	AU	180	Martin Paquette - 100%	Pending	115O14	10/16/2013	10/16/2017
Dawson	YF41351	Quartz	AU	181	Martin Paquette - 100%	Pending	115O14	10/16/2013	10/16/2017
Dawson	YF41352	Quartz	AU	182	Martin Paquette - 100%	Pending	115O14	10/16/2013	10/16/2017
Dawson	YF41353	Quartz	AU	183	Martin Paquette - 100%	Pending	115O14	10/16/2013	10/16/2017
Dawson	YF41354	Quartz	AU	184	Martin Paquette - 100%	Pending	115O14	10/16/2013	10/16/2017
Dawson	YF41355	Quartz	AU	185	Martin Paquette - 100%	Pending	115O14	10/16/2013	10/16/2017
Dawson	YF41356	Quartz	AU	186	Martin Paquette - 100%	Pending	115O14	10/16/2013	10/16/2017

APPENDIX C- SOIL SAMPLE LOCATION DATA

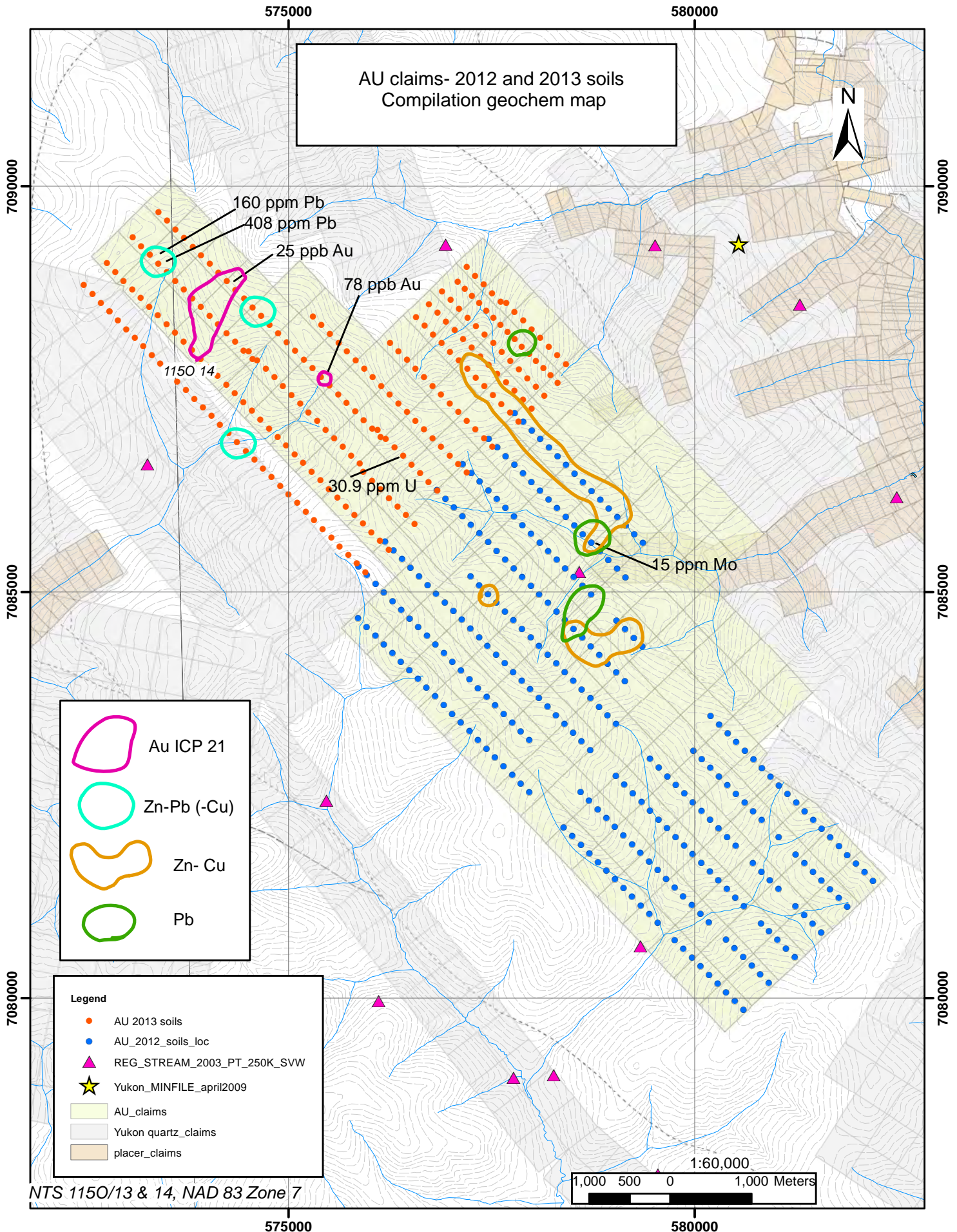
Year	SAMPLE	UTM_E	UTM_N	Year	SAMPLE	UTM_E	UTM_N	Year	SAMPLE	UTM_E	UTM_N
2012	AU 001	580602	7079857	2012	AU 128	577874	7083908	2012	AU 179	577984	7084438
2012	AU 002	580497	7079964	2012	AU 129	577768	7084015	2012	AU 180	577879	7084545
2012	AU 003	580391	7080071	2012	AU 130	577664	7084123	2012	AU 181	577773	7084651
2012	AU 004	580286	7080178	2012	AU 131	577558	7084229	2012	AU 182	577668	7084758
2012	AU 005	580181	7080284	2012	AU 132	577453	7084336	2012	AU 183	577563	7084866
2012	AU 006	580075	7080391	2012	AU 133	577348	7084442	2012	AU 184	577458	7084972
2012	AU 007	579970	7080499	2012	AU 134	577242	7084549	2012	AU 185	577352	7085079
2012	AU 008	579865	7080605	2012	AU 135	577137	7084657	2012	AU 186	577247	7085186
2012	AU 009	579759	7080712	2012	AU 136	577032	7084764	2012	AU 194	581884	7081121
2012	AU 011	579549	7080926	2012	AU 137	576927	7084870	2012	AU 195	581779	7081227
2012	AU 012	579444	7081033	2012	AU 138	576821	7084977	2012	AU 196	581674	7081334
2012	AU 013	579338	7081139	2012	AU 139	576716	7085084	2012	AU 197	581568	7081442
2012	AU 014	579233	7081247	2012	AU 140	576611	7085191	2012	AU 198	581463	7081548
2012	AU 015	579128	7081353	2012	AU 141	576505	7085298	2012	AU 199	581358	7081655
2012	AU 016	579023	7081460	2012	AU 142	576400	7085405	2012	AU 200	581252	7081762
2012	AU 017	578917	7081567	2012	AU 143	576295	7085511	2012	AU 202	581042	7081975
2012	AU 018	578812	7081674	2012	AU 144	576190	7085618	2012	AU 204	580831	7082189
2012	AU 019	578707	7081781	2012	AU 145	581563	7080805	2012	AU 205	580726	7082296
2012	AU 020	578601	7081887	2012	AU 146	581458	7080911	2012	AU 206	580621	7082402
2012	AU 021	578496	7081994	2012	AU 147	581353	7081018	2012	AU 207	580515	7082510
2012	AU 022	578391	7082101	2012	AU 148	581248	7081126	2012	AU 208	580410	7082617
2012	AU 100	580822	7080916	2012	AU 150	581037	7081339	2012	AU 209	580305	7082723
2012	AU 102	580611	7081130	2012	AU 151	580932	7081446	2012	AU 210	580200	7082830
2012	AU 103	580506	7081237	2012	AU 152	580827	7081553	2012	AU 211	580094	7082937
2012	AU 104	580401	7081343	2012	AU 153	580721	7081659	2012	AU 212	579989	7083044
2012	AU 105	580296	7081450	2012	AU 155	580511	7081873	2012	AU 220	579147	7083899
2012	AU 106	580190	7081558	2012	AU 156	580405	7081980	2012	AU 221	579042	7084005
2012	AU 107	580085	7081664	2012	AU 157	580300	7082087	2012	AU 222	578936	7084113
2012	AU 108	579979	7081771	2012	AU 158	580195	7082194	2012	AU 223	578831	7084220
2012	AU 109	579874	7081878	2012	AU 159	580089	7082301	2012	AU 224	578726	7084326
2012	AU 110	579769	7081985	2012	AU 160	579984	7082407	2012	AU 225	578621	7084433
2012	AU 111	579664	7082092	2012	AU 161	579879	7082515	2012	AU 226	578515	7084541
2012	AU 112	579558	7082198	2012	AU 162	579774	7082622	2012	AU 227	578410	7084647
2012	AU 113	579453	7082306	2012	AU 163	579668	7082728	2012	AU 228	578304	7084754
2012	AU 114	579348	7082412	2012	AU 164	579563	7082835	2012	AU 229	578200	7084860
2012	AU 115	579242	7082519	2012	AU 165	579458	7082942	2012	AU 230	578094	7084967
2012	AU 116	579137	7082627	2012	AU 169	579037	7083369	2012	AU 231	577989	7085075
2012	AU 117	579032	7082733	2012	AU 170	578932	7083476	2012	AU 232	577883	7085181
2012	AU 120	578716	7083053	2012	AU 171	578826	7083583	2012	AU 233	577778	7085288
2012	AU 121	578611	7083161	2012	AU 172	578721	7083690	2012	AU 234	577673	7085395
2012	AU 122	578506	7083267	2012	AU 173	578616	7083796	2012	AU 235	577567	7085501
2012	AU 123	578400	7083374	2012	AU 174	578510	7083904	2012	AU 236	577463	7085609
2012	AU 124	578295	7083481	2012	AU 175	578405	7084011	2012	AU 237	577357	7085716
2012	AU 125	578190	7083588	2012	AU 176	578300	7084117	2012	AU 238	577252	7085822
2012	AU 126	578085	7083695	2012	AU 177	578195	7084224	2012	AU 239	577147	7085929
2012	AU 127	577979	7083802	2012	AU 178	578089	7084332	2012	AU 240	577041	7086037

Year	SAMPLE	UTM_E	UTM_N	Year	SAMPLE	UTM_E	UTM_N	Year	SAMPLE	UTM_E	UTM_N
2012	AU 241	576936	7086143	2012	AU 30	577549	7082956	2012	AU 43	576180	7084345
2012	AU 242	576831	7086250	2012	AU 309	579156	7085172	2012	AU 44	576075	7084453
2012	AU 243	582205	7081436	2012	AU 31	577444	7083063	2012	AU 45	575970	7084559
2012	AU 244	582100	7081543	2012	AU 310	579051	7085279	2012	AU 46	575864	7084666
2012	AU 245	581994	7081650	2012	AU 311	578946	7085385	2012	AU 47	580922	7080173
2012	AU 246	581889	7081756	2012	AU 312	578841	7085492	2012	AU 48	580817	7080279
2012	AU 247	581784	7081864	2012	AU 313	578735	7085600	2012	AU 49	580712	7080387
2012	AU 248	581678	7081971	2012	AU 314	578630	7085706	2012	AU 50	580606	7080494
2012	AU 249	581573	7082077	2012	AU 315	578525	7085813	2012	AU 51	580501	7080600
2012	AU 250	581468	7082185	2012	AU 316	578419	7085919	2012	AU 52	580396	7080707
2012	AU 251	581362	7082291	2012	AU 317	578314	7086027	2012	AU 54	580185	7080921
2012	AU 252	581257	7082398	2012	AU 318	578209	7086134	2012	AU 55	580080	7081027
2012	AU 253	581152	7082505	2012	AU 319	578104	7086240	2012	AU 56	579975	7081134
2012	AU 254	581047	7082612	2012	AU 32	577338	7083170	2012	AU 57	579869	7081242
2012	AU 255	580941	7082718	2012	AU 320	577998	7086347	2012	AU 58	579764	7081348
2012	AU 256	580836	7082825	2012	AU 321	577893	7086454	2012	AU 59	579659	7081455
2012	AU 257	580731	7082933	2012	AU 322	577788	7086561	2012	AU 60	579554	7081563
2012	AU 258	580626	7083039	2012	AU 323	577682	7086668	2012	AU 61	579448	7081669
2012	AU 259	580520	7083146	2012	AU 324	577577	7086775	2012	AU 62	579343	7081776
2012	AU 26	577970	7082528	2012	AU 325	577472	7086881	2012	AU 63	579238	7081882
2012	AU 260	580415	7083253	2012	AU 33	577233	7083277	2012	AU 64	579132	7081990
2012	AU 261	580310	7083360	2012	AU 34	577127	7083384	2012	AU 65	579027	7082097
2012	AU 262	580204	7083466	2012	AU 344	579372	7085594	2012	AU 66	578922	7082203
2012	AU 27	577865	7082636	2012	AU 345	579266	7085701	2012	AU 67	578817	7082310
2012	AU 270	579362	7084321	2012	AU 346	579161	7085808	2012	AU 68	578711	7082418
2012	AU 271	579257	7084429	2012	AU 347	579056	7085915	2012	AU 69	578606	7082524
2012	AU 272	579152	7084535	2012	AU 348	578951	7086022	2012	AU 75	577974	7083165
2012	AU 273	579046	7084642	2012	AU 349	578845	7086129	2012	AU 76	577869	7083272
2012	AU 276	578731	7084963	2012	AU 35	577022	7083490	2012	AU 77	577764	7083379
2012	AU 277	578625	7085070	2012	AU 350	578740	7086236	2012	AU 78	577659	7083486
2012	AU 278	578520	7085176	2012	AU 351	578635	7086343	2012	AU 79	577553	7083593
2012	AU 279	578414	7085284	2012	AU 352	578530	7086449	2012	AU 80	577448	7083699
2012	AU 28	577759	7082743	2012	AU 353	578424	7086556	2012	AU 81	577343	7083806
2012	AU 280	578310	7085390	2012	AU 354	578319	7086663	2012	AU 82	577238	7083914
2012	AU 281	578204	7085497	2012	AU 355	578214	7086770	2012	AU 83	577132	7084020
2012	AU 282	578099	7085604	2012	AU 356	578108	7086877	2012	AU 84	577027	7084127
2012	AU 283	577994	7085710	2012	AU 357	578003	7086984	2012	AU 85	576922	7084234
2012	AU 284	577888	7085818	2012	AU 358	577898	7087090	2012	AU 86	576816	7084340
2012	AU 285	577783	7085925	2012	AU 359	577793	7087197	2012	AU 87	576711	7084448
2012	AU 286	577678	7086031	2012	AU 36	576917	7083597	2012	AU 88	576606	7084555
2012	AU 287	577572	7086138	2012	AU 37	576812	7083704	2012	AU 89	576501	7084661
2012	AU 288	577467	7086245	2012	AU 38	576706	7083811	2012	AU 90	576396	7084768
2012	AU 289	577362	7086352	2012	AU 39	576601	7083918	2012	AU 91	576290	7084875
2012	AU 29	577654	7082849	2012	AU 40	576496	7084025	2012	AU 92	576185	7084981
2012	AU 290	577256	7086459	2012	AU 41	576390	7084131	2012	AU 93	576080	7085088
2012	AU 291	577151	7086566	2012	AU 42	576285	7084238	2012	AU 94	575974	7085196

Year	SAMPLE	UTM_E	UTM_N	Year	SAMPLE	UTM_E	UTM_N	Year	SAMPLE	UTM_E	UTM_N
2012	AU 95	575869	7085303	2013	Q011477	577216	7088103	2013	Q011563	577221	7088740
2012	AU 96	581243	7080489	2013	Q011478	577321	7087997	2013	Q011564	577133	7088828
2012	AU 97	581138	7080595	2013	Q011479	577426	7087889	2013	Q011565	577045	7088917
2012	AU 98	581032	7080703	2013	Q011480	577532	7087782	2013	Q011566	576529	7088480
2012	AU 99	580927	7080810	2013	Q011481	577637	7087676	2013	Q011567	576635	7088372
2013	Q011401	574510	7087964	2013	Q011482	577742	7087569	2013	Q011568	576740	7088266
2013	Q011402	574615	7087857	2013	Q011483	577847	7087462	2013	Q011569	576845	7088159
2013	Q011403	574721	7087751	2013	Q011501	578113	7087513	2013	Q011570	576950	7088052
2013	Q011404	574826	7087644	2013	Q011502	578008	7087620	2013	Q011571	577056	7087946
2013	Q011405	574931	7087537	2013	Q011503	577903	7087727	2013	Q011572	577161	7087839
2013	Q011406	575037	7087429	2013	Q011504	577797	7087833	2013	Q011573	577266	7087731
2013	Q011407	575142	7087323	2013	Q011505	577692	7087940	2013	Q011574	577372	7087625
2013	Q011408	575247	7087216	2013	Q011506	577587	7088048	2013	Q011575	577477	7087518
2013	Q011409	575352	7087109	2013	Q011507	577482	7088155	2013	Q011576	577582	7087411
2013	Q011410	575457	7087003	2013	Q011508	577376	7088261	2013	Q011577	577687	7087305
2013	Q011411	575563	7086896	2013	Q011509	577271	7088368	2013	Q011578	577793	7087197
2013	Q011412	575668	7086789	2013	Q011510	577166	7088474	2013	Q011579	572439	7088872
2013	Q011413	575773	7086682	2013	Q011511	577060	7088581	2013	Q011581	572544	7088764
2013	Q011414	575878	7086583	2013	Q011512	576955	7088689	2013	Q011582	572648	7088656
2013	Q011451	576094	7086998	2013	Q011513	576850	7088796	2013	Q011584	572752	7088549
2013	Q011452	576199	7086891	2013	Q011514	576209	7088163	2013	Q011585	572857	7088441
2013	Q011453	576305	7086783	2013	Q011515	576314	7088057	2013	Q011586	572961	7088333
2013	Q011454	576410	7086677	2013	Q011516	576419	7087950	2013	Q011587	573065	7088226
2013	Q011455	576515	7086570	2013	Q011517	576524	7087843	2013	Q011588	573170	7088118
2013	Q011456	576620	7086463	2013	Q011518	576630	7087737	2013	Q011589	573274	7088011
2013	Q011457	576726	7086357	2013	Q011519	576735	7087629	2013	Q011590	573379	7087903
2013	Q011458	576831	7086250	2013	Q011520	576840	7087522	2013	Q011591	573483	7087795
2013	Q011459	578416	7087811	2013	Q011521	576946	7087416	2013	Q011592	573589	7087688
2013	Q011460	578311	7087919	2013	Q011522	577051	7087309	2013	Q011593	573694	7087581
2013	Q011461	578205	7088025	2013	Q011523	577156	7087202	2013	Q011594	573799	7087475
2013	Q011462	578100	7088132	2013	Q011524	577261	7087096	2013	Q011595	573904	7087368
2013	Q011463	577995	7088239	2013	Q011525	577367	7086988	2013	Q011596	574010	7087261
2013	Q011464	577890	7088345	2013	Q011526	577472	7086881	2013	Q011597	574115	7087154
2013	Q011465	577784	7088453	2013	Q011551	578274	7087670	2013	Q011598	574220	7087047
2013	Q011466	577679	7088560	2013	Q011552	578186	7087760	2013	Q011599	574325	7086940
2013	Q011467	577574	7088666	2013	Q011553	578098	7087849	2013	Q011602	575273	7085978
2013	Q011468	577468	7088773	2013	Q011554	578010	7087938	2013	Q011603	575378	7085871
2013	Q011469	577363	7088879	2013	Q011555	577923	7088027	2013	Q011604	575484	7085765
2013	Q011470	577258	7088987	2013	Q011556	577835	7088116	2013	Q011605	575589	7085658
2013	Q011471	577153	7089094	2013	Q011557	577747	7088206	2013	Q011606	575694	7085551
2013	Q011472	576689	7088638	2013	Q011558	577659	7088295	2013	Q011607	575799	7085444
2013	Q011473	576795	7088531	2013	Q011559	577572	7088383	2013	Q011608	575905	7085337
2013	Q011474	576900	7088423	2013	Q011560	577484	7088472	2013	Q011651	573357	7089777
2013	Q011475	577005	7088317	2013	Q011561	577396	7088561	2013	Q011652	573462	7089669
2013	Q011476	577111	7088210	2013	Q011562	577308	7088651	2013	Q011653	573567	7089563

Year	SAMPLE	UTM_E	UTM_N	Year	SAMPLE	UTM_E	UTM_N	Year	SAMPLE	UTM_E	UTM_N
2013	Q011654	573673	7089456	2013	Q011758	572718	7089147	2013	Q011828	575347	7086473
2013	Q011655	573778	7089349	2013	Q011759	572822	7089039	2013	Q011829	575242	7086579
2013	Q011656	573883	7089242	2013	Q011760	572927	7088931	2013	Q011830	575137	7086686
2013	Q011657	573988	7089134	2013	Q011761	573031	7088824	2013	Q011831	575032	7086794
2013	Q011658	574094	7089028	2013	Q011762	573136	7088717	2013	Q011832	574926	7086901
2013	Q011659	574199	7088921	2013	Q011763	573242	7088610	2013	Q011833	574821	7087007
2013	Q011660	574304	7088814	2013	Q011764	573347	7088503	2013	Q011834	574716	7087114
2013	Q011661	574410	7088708	2013	Q011765	573453	7088396	2013	Q011835	574431	7086833
2013	Q011662	574515	7088601	2013	Q011766	573558	7088289	2013	Q011836	574536	7086726
2013	Q011663	574620	7088494	2013	Q011767	573663	7088183	2013	Q011837	574641	7086620
2013	Q011664	574725	7088387	2013	Q011768	573768	7088076	2013	Q011838	574747	7086513
2013	Q011665	574831	7088281	2013	Q011769	573874	7087969	2013	Q011839	574852	7086406
2013	Q011666	574936	7088173	2013	Q011770	573979	7087862	2013	Q011840	574957	7086299
2013	Q011667	575041	7088066	2013	Q011771	574084	7087756	2013	Q011841	575062	7086193
2013	Q011668	575147	7087959	2013	Q011772	574189	7087649	2013	Q011842	575168	7086085
2013	Q011669	575252	7087853	2013	Q011773	574295	7087541				
2013	Q011670	575357	7087746	2013	Q011774	574400	7087434				
2013	Q011671	575462	7087639	2013	Q011775	574505	7087328				
2013	Q011672	575568	7087533	2013	Q011776	574610	7087221				
2013	Q011673	575673	7087425	2013	Q011801	575663	7086153				
2013	Q011674	575778	7087318	2013	Q011802	575769	7086046				
2013	Q011675	575883	7087211	2013	Q011803	575874	7085939				
2013	Q011676	575988	7087105	2013	Q011804	575979	7085831				
2013	Q011677	576093	7087001	2013	Q011805	576084	7085725				
2013	Q011678	573040	7089463	2013	Q011806	576190	7085618				
2013	Q011679	573144	7089357	2013	Q011807	575256	7088489				
2013	Q011680	573248	7089249	2013	Q011808	575362	7088383				
2013	Q011681	573353	7089141	2013	Q011809	575467	7088276				
2013	Q011682	573457	7089033	2013	Q011810	575572	7088168				
2013	Q011683	573562	7088926	2013	Q011811	575678	7088061				
2013	Q011684	573667	7088819	2013	Q011812	575783	7087955				
2013	Q011685	573773	7088713	2013	Q011813	575888	7087848				
2013	Q011686	573878	7088606	2013	Q011814	575993	7087741				
2013	Q011687	573984	7088499	2013	Q011815	576099	7087635				
2013	Q011688	574089	7088391	2013	Q011816	576204	7087528				
2013	Q011689	574194	7088284	2013	Q011817	576309	7087420				
2013	Q011690	574300	7088178	2013	Q011818	576414	7087313				
2013	Q011691	574405	7088071	2013	Q011819	576520	7087207				
2013	Q011692	574516	7087961	2013	Q011820	576625	7087100				
2013	Q011751	575879	7086575	2013	Q011821	576730	7086993				
2013	Q011752	575984	7086468	2013	Q011822	576835	7086886				
2013	Q011753	576089	7086361	2013	Q011823	576941	7086779				
2013	Q011754	576194	7086255	2013	Q011824	577046	7086672				
2013	Q011755	576300	7086148	2013	Q011825	577151	7086566				
2013	Q011756	576405	7086040	2013	Q011826	575558	7086259				
2013	Q011757	576510	7085933	2013	Q011827	575453	7086366				

APPENDIX D- SOIL GEOCHEMISTRY



575000

580000

AU claims- Au ppb in soils
Au ICP 21 for 2013 samples
Au TL43 for 2012 samples



7090000

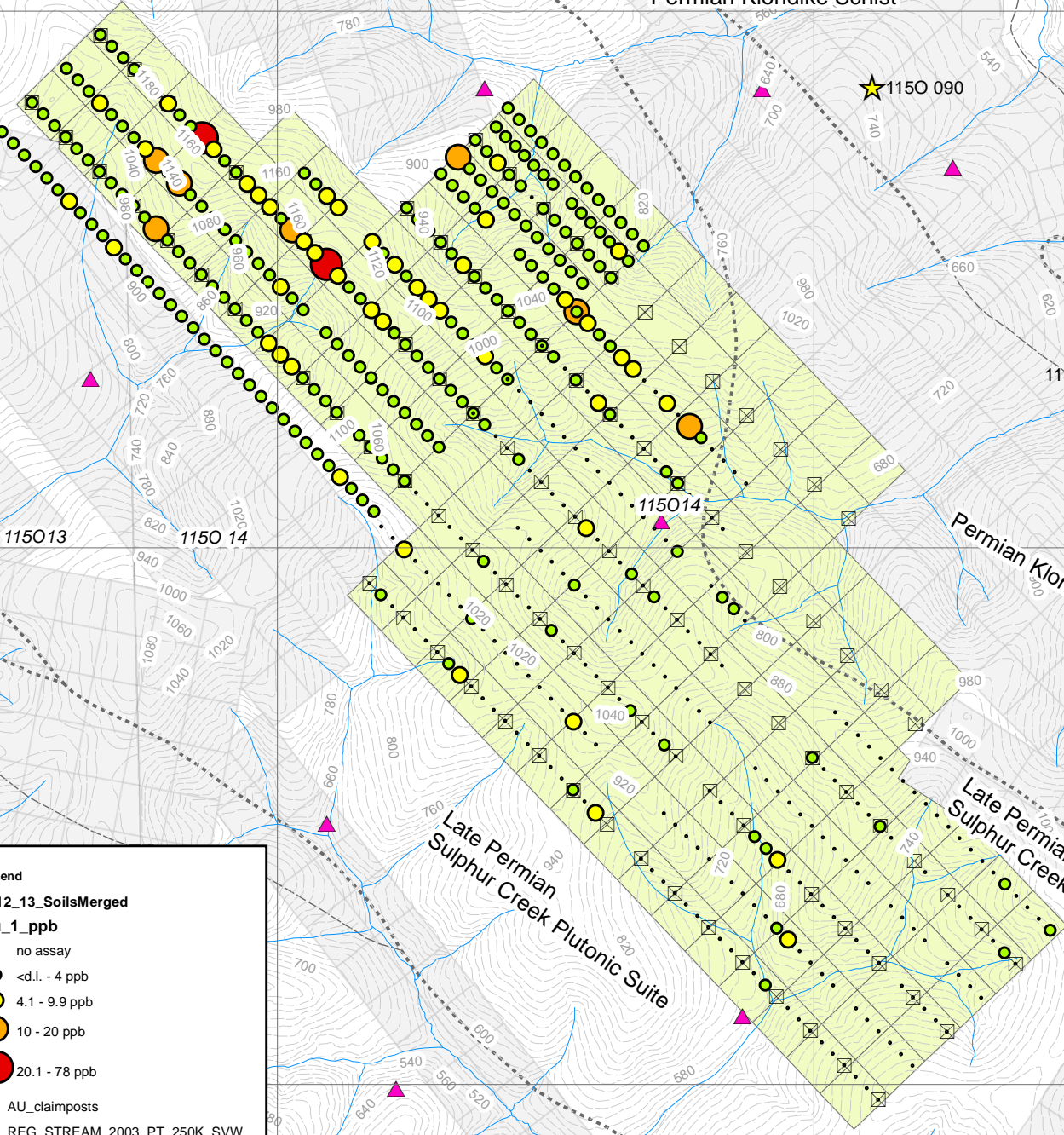
7090000

Late Permian Sulphur Creek Plutonic Suite

Permian Klondike Schist

7085000

7085000



Legend

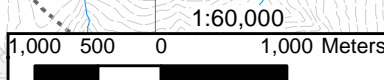
2012_13_SoilsMerged

Au_1_ppb

- no assay
- <d.l. - 4 ppb
- 4.1 - 9.9 ppb
- 10 - 20 ppb
- 20.1 - 78 ppb

- ⊠ AU_claimposts
- ▲ REG_STREAM_2003_PT_250K_SVV
- AU_claims
- Yukon quartz_claims

NTS 1150/13 & 14, NAD 83 Zone 7



7080000

7080000

575000

580000

575000

580000

AU claims- Au ppb in soils
Au ME-MS 41L for all samples



7090000

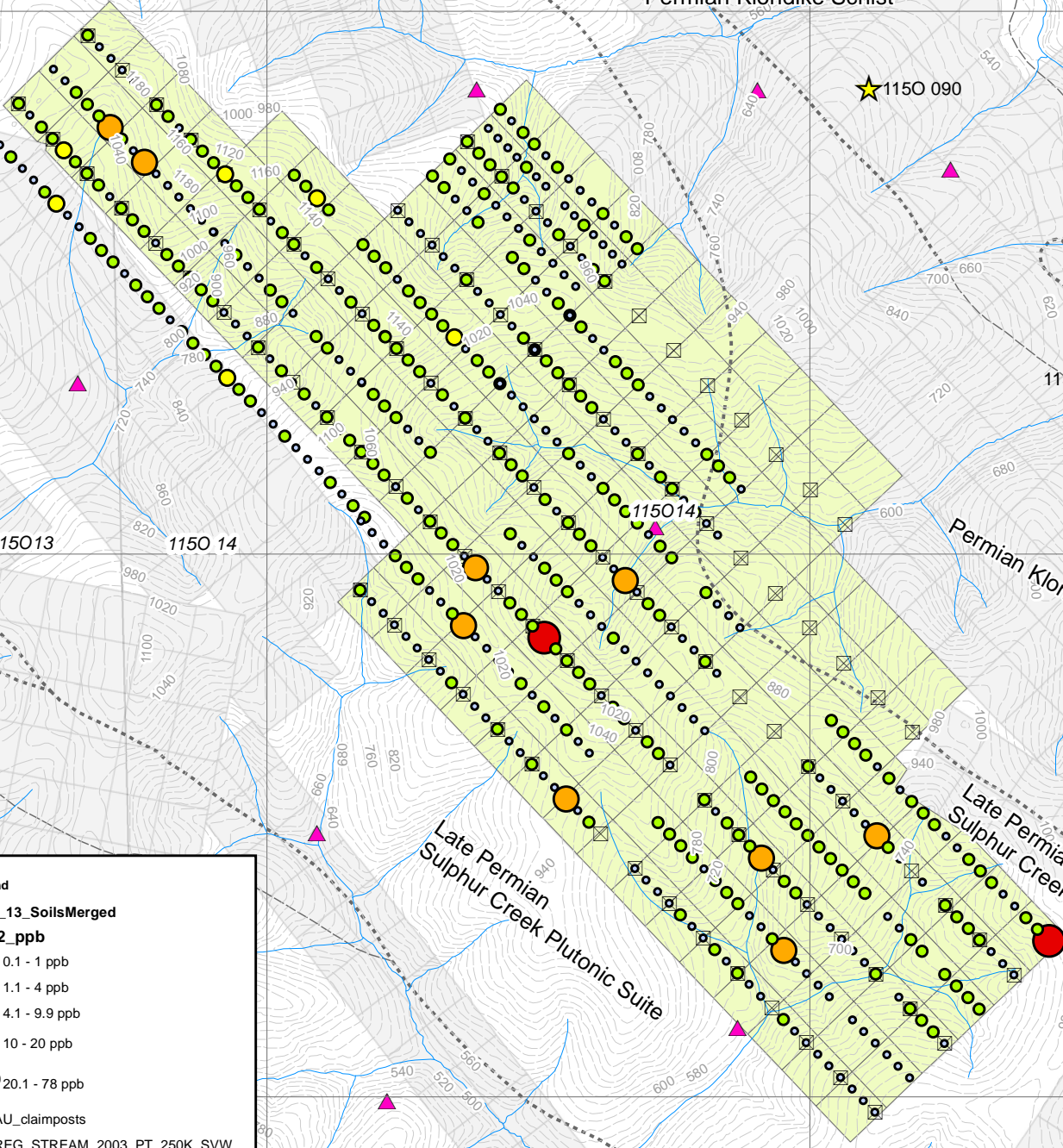
7090000

Late Permian Sulphur Creek Plutonic Suite

Permian Klondike Schist

7085000

7085000



7080000

7080000

Legend

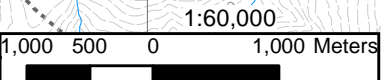
2012_13_SoilsMerged

Au_2_ppb

- 0.1 - 1 ppb
- 1.1 - 4 ppb
- 4.1 - 9.9 ppb
- 10 - 20 ppb
- 20.1 - 78 ppb

- ⊠ AU_claimposts
- ▲ REG_STREAM_2003_PT_250K_SVV
- AU_claims
- Yukon quartz_claims

NTS 1150/13 & 14, NAD 83 Zone 7



575000

580000

575000

580000

AU claims- Au ppb in soils
all assay methodologies combined

★ 1150 128



Late Permian
Sulphur Creek Plutonic Suite

★ 1150 141

Permian Klondike Schist

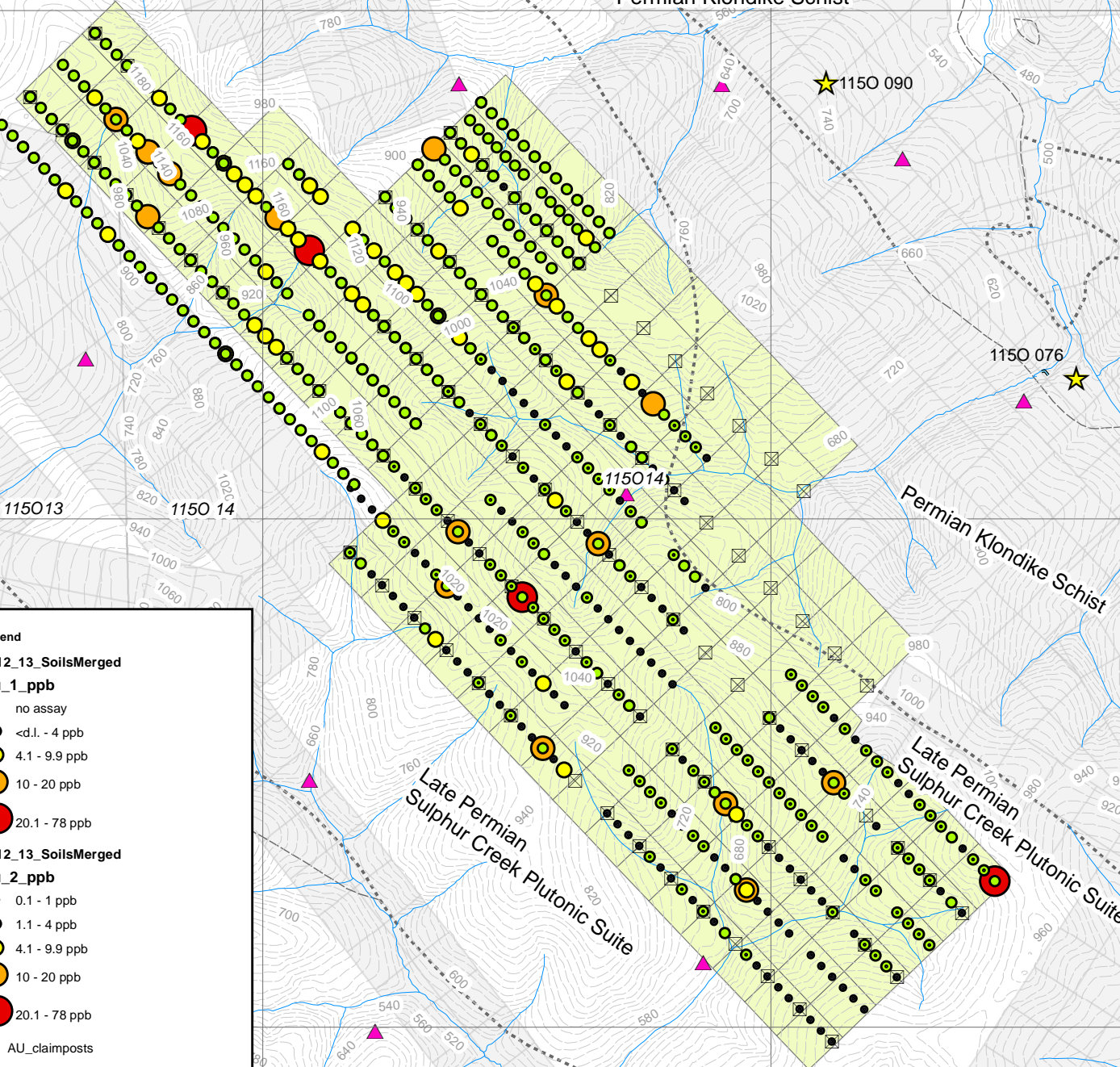
★ 1150 090

7090000

7090000

7085000

7085000



Legend

2012_13_SoilsMerged

Au_1_ppb

- no assay
- <d.l. - 4 ppb
- 4.1 - 9.9 ppb
- 10 - 20 ppb
- 20.1 - 78 ppb

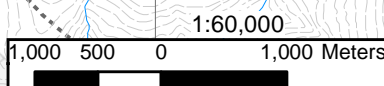
2012_13_SoilsMerged

Au_2_ppb

- 0.1 - 1 ppb
- 1.1 - 4 ppb
- 4.1 - 9.9 ppb
- 10 - 20 ppb
- 20.1 - 78 ppb

- ⊠ AU_claimposts
- ▲ REG_STREAM_2003_PT_250K_SVV
- AU_claims
- Yukon quartz_claims

NTS 1150/13 & 14, NAD 83 Zone 7



7080000

7080000

Late Permian
Sulphur Creek Plutonic Suite

Permian Klondike Schist

Late Permian
Sulphur Creek Plutonic Suite

575000

580000

575000

580000

AU claims- As ppm in soils



Late Permian Sulphur Creek Plutonic Suite

Permian Klondike Schist

7090000

7090000

★ 1150 141

★ 1150 090

★ 1150 076

7085000

7085000

115013

1150 14

115014

Permian Klondike Schist

Late Permian Sulphur Creek Plutonic Suite

7080000

7080000

Legend

2012_13_SoilsMerged

As

- 0.8 - 6.89 ppm
- 6.9- 15.7 ppm
- 17.15 - 24.1 ppm
- 96.5 ppm

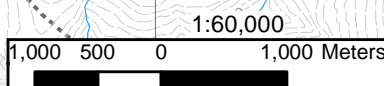
⊠ AU_claimposts

▲ REG_STREAM_2003_PT_250K_SVW

■ AU_claims

■ Yukon quartz_claims

NTS 1150/13 & 14, NAD 83 Zone 7



575000

580000

575000

580000

AU claims- Cu ppm in soils



Late Permian Sulphur Creek Plutonic Suite

Permian Klondike Schist

7090000

7090000

★ 1150 141

★ 1150 090

★ 1150 076

7085000

7085000

115013

1150 14

Permian Klondike Schist

7080000

7080000

Legend

2012_13_SoilsMerged

Cu

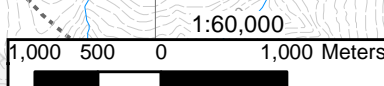
- 4.250000 - 15.350000
- 15.350001 - 24.400000
- 24.400001 - 44.000000
- 44.000001 - 84.800000

- ⊠ AU_claimposts
- ▲ REG_STREAM_2003_PT_250K_SVV
- AU_claims
- Yukon quartz_claims

Late Permian Sulphur Creek Plutonic Suite

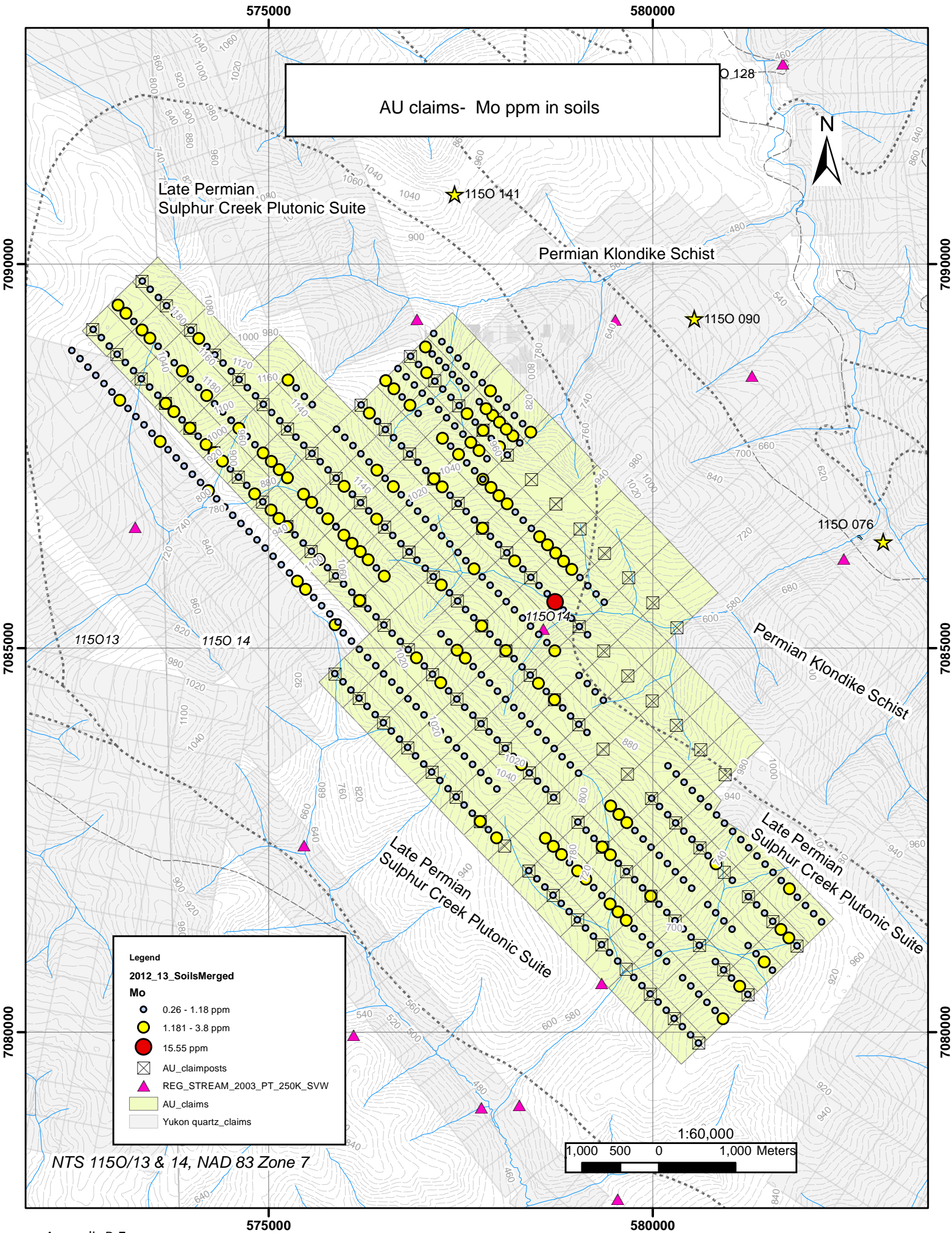
Late Permian Sulphur Creek Plutonic Suite

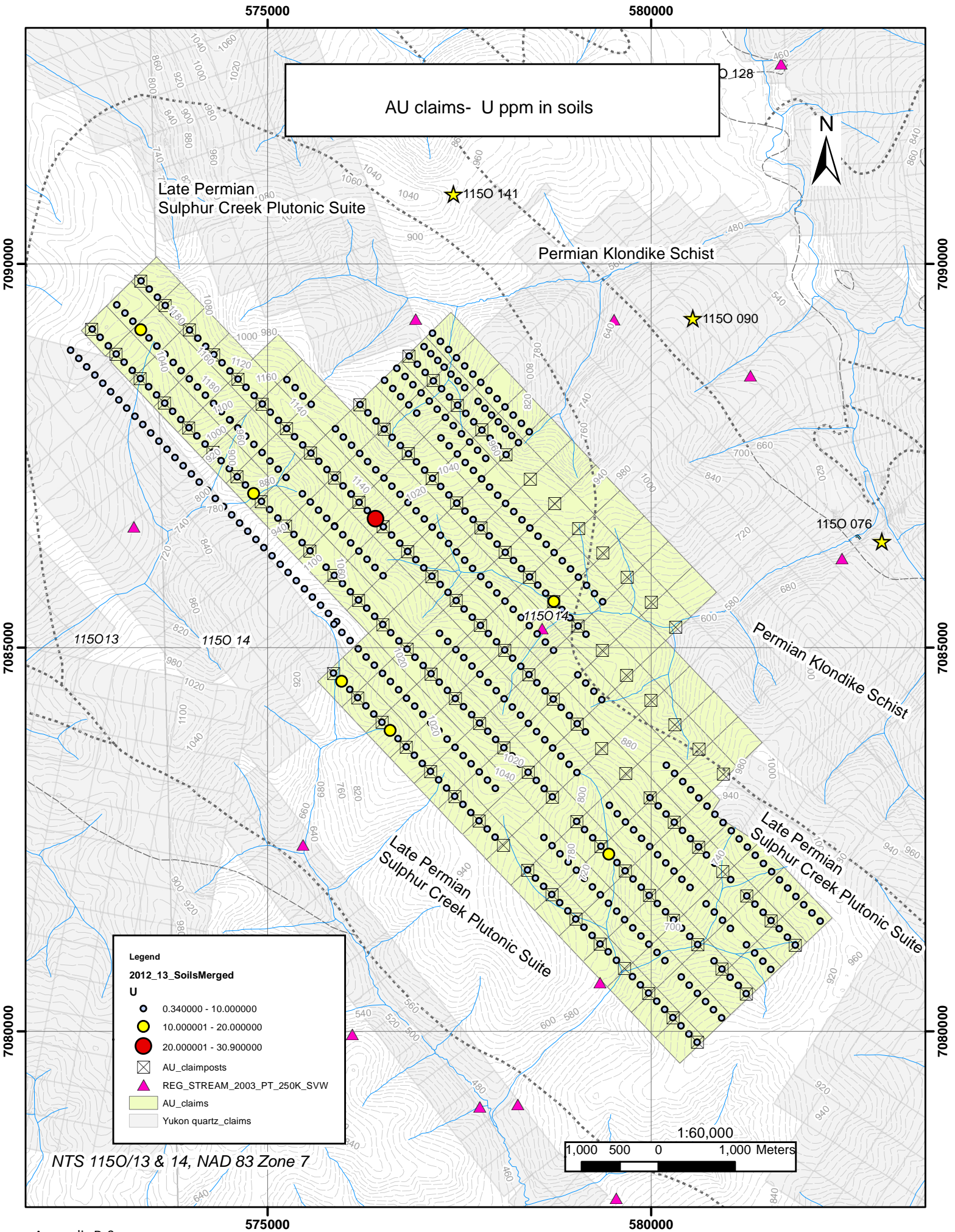
NTS 1150/13 & 14, NAD 83 Zone 7

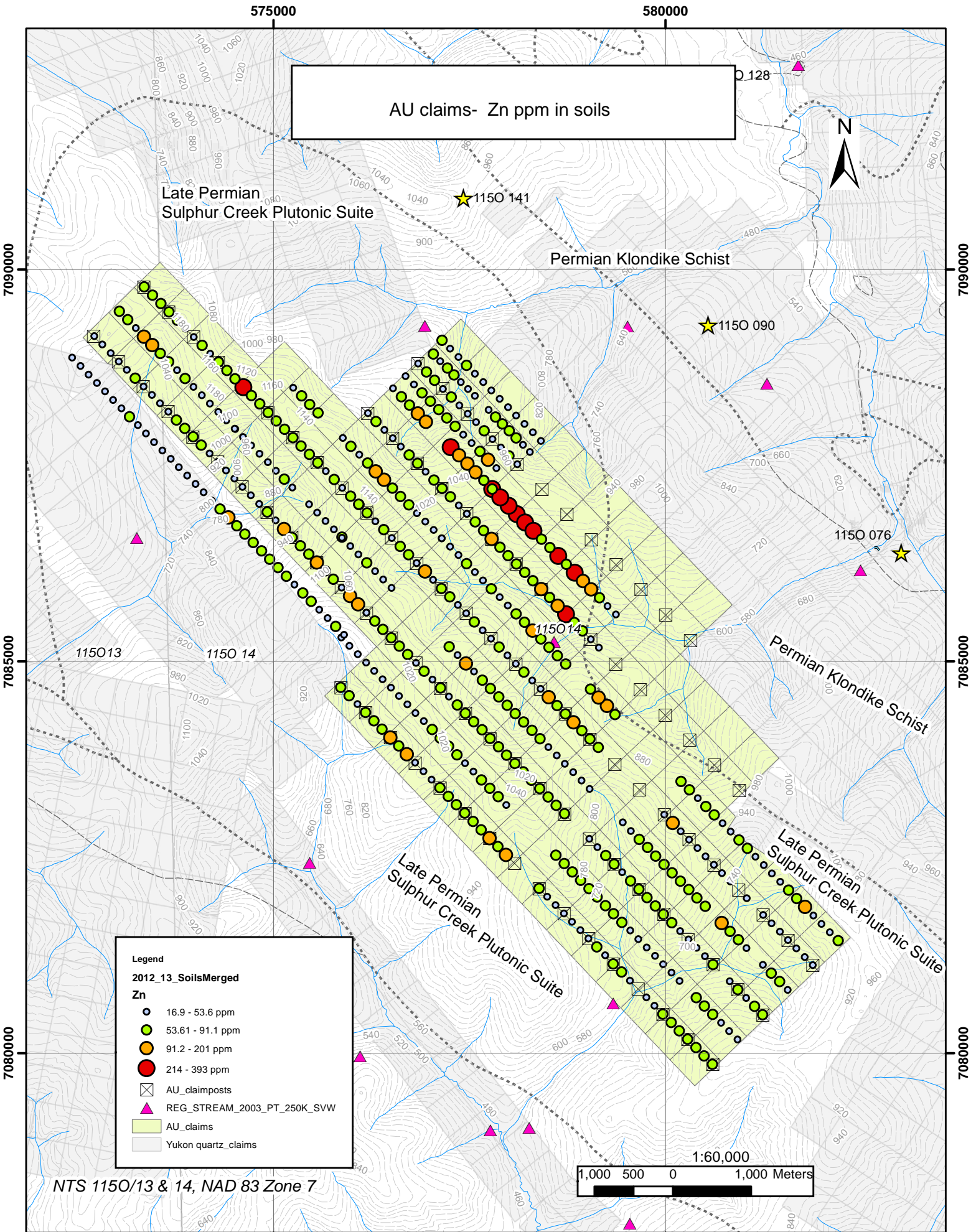


575000

580000







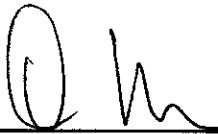
APPENDIX E- STATEMENTS OF EXPENDITURES

AU claims- 2012-2013 Expenditures	
wages and food	\$14,000.00
Helicopter	\$4,878.00
trucks	\$900.00
fuel and travel	\$1,000.00
data management, compilation, interpretation, report, printing	\$1,000.00
Total ALS assays	\$10,193.39
TOTAL	\$31,971.39
No of claims	186
\$ spent/ claim	\$171.89
enough to renew all claims for	1.5 year
renewal fee	\$1,395.00
Grouping fee	\$93.00

281 soil samples, 48 soil pulps re-assays

Prepared based on information supplied by contractor

Signed in Whitehorse,
Wednesday September 04, 2013



Danièle Héon, P.Ge

AU claims 131 to 186 -Oct-2013	
Sept 29-30, Oct 1-2 2013	
wages	\$5,800.00
truck	\$700.00
fuel, room and board, supplies	\$2,500.00
data management, compilation, interpretation, report	\$1,600.00
printing	\$50.00
Total ALS assays	\$11,917.00
TOTAL	\$22,567.00
No of claims	56
\$ spent/ claim	\$402.98
enough to renew all claims for _years	4.00
renewal fee (\$5/renewal year)	\$1,120.00

6 samplers

236 soil samples

Prepared based on information supplied by contractor

Signed in Whitehorse,
Wednesday October 08, 2013

Danièle Héon, P.Geo

APPENDIX F- ASSAY CERTIFICATES

See Data Folder for Secured Assay Certificates