

Geochemical Assessment Report for Quartz Claims KOHO 1-120

Claim Number	Claim Owner	Grant Number
KOHO 1-20	All-In Exploration Solutions Inc.	YD88073 - YD88092
KOHO 21-40	Gerald Asp	YD87737 - YD87756
KOHO 41-60	All-In Exploration Solutions Inc.	YD87757 - YD87776
KOHO 61-80	Riley Gibson	YD87777 - YD87796
KOHO 81-100	Edward Long	YD88315 - YD88334
KOHO 101-120	All-In Exploration Solutions Inc.	YD88335 - YD88354

Location: 60°38' N, 133°98' W

NTS Map Sheets 105D08, 105C05

Whitehorse Mining District

Yukon Territory

For Work Performed:

August 16-17, 2012

Edward Long, Riley Gibson, Nicolai Goepfel & Casey Cardinal

Table of Contents

Introduction	2
Location & Access.....	2
History	2
Geology	3
2012 Exploration Program	3
Expenditures	4
Interpretation & Conclusion.....	5
References.....	6
Summary of Qualifications	7
Appendix A: Figures, Data & Certificates	8

Introduction

The KOHO quartz claims, staked in November 2011 by All-In Exploration Solutions Inc., are located 70km south of the City of Whitehorse. The property is largely underlain by Mesozoic ultramafics and limestones of the Cache Creek group and by mid-cretaceous volcanic rocks of the Mount Nansen Group. Several different types of mineralization may be present in target areas based on rock type and geological setting, including chromite deposits, skarn/replacement, ultramafic associated Ni-Cu deposits, volcanogenic massive sulfide deposits, structurally controlled epithermal deposits and listwaenite-altered gold-hosting quartz/quartz-carbonate veins. The objective of the work conducted in 2012 was to provide a preliminary geochemical survey of the property, particularly on the higher ridges in the northwest and southeast corners of the claim block. Also, some soils and rocks were collected along a pre-existing trench on the western margin of the property.

Location & Access

The KOHO claims are located approximately 75km south of the City of Whitehorse and 2km north of Jake's Corner in the Yukon Territory. The claims are centered on latitude 60°38' N and longitude 133°98' W in NTS map sheets 105C05 and 105D08. Access to the KOHO property is obtained by following a 4x4 trail for 2km off of the Alaska Highway.

Claim Number	Claim Owner	Operator	Grant Number
KOHO 1-20	All-In Exploration Solutions Inc.	All-In Exploration Solutions Inc.	YD88073 - YD88092
KOHO 21-40	Gerald Asp	All-In Exploration Solutions Inc.	YD87737 - YD87756
KOHO 41-60	All-In Exploration Solutions Inc.	All-In Exploration Solutions Inc.	YD87757 - YD87776
KOHO 61-80	Riley Gibson	All-In Exploration Solutions Inc.	YD87777 - YD87796
KOHO 81-100	Edward Long	All-In Exploration Solutions Inc.	YD88315 - YD88334
KOHO 101-120	All-In Exploration Solutions Inc.	All-In Exploration Solutions Inc.	YD88335 - YD88354

History

Very little work has been done within the staked area; however, several RGS gold anomalies have been recorded on the KOHO claims. To the south, blast trenching was conducted in 1989 to investigate quartz-carbonate veins with anomalous gold and silver values. To the northwest, soil sampling geochemistry around occurrence 105D 178 outlined a northwest-trending Au-Cu-Ni anomaly which coincided with a previous outlined geophysical structure. However, later sampling failed to achieve the

same anomalous values and the claims lapsed. Listwaenite is noted at the nearby Marsh Lake showing 105D 069 and at TOG 105C 028. The TOG occurrence is hosted in Cache Creek ultramafics with peak gold values of 1422.2 g/t and chromite up to 49.4%. In March of 1994, a DIGHAM V airborne EM and magnetics geophysical survey was flown over the Jake's Corner area, including target locations.

Geology

The KOHO claims are situated within an underexplored area with excellent potential for various types of mineralization. Bedrock consists of Permian to Triassic Cache Creek Terrane volcanic rocks, serpentinite and sedimentary rocks, mainly dolomite with minor chert. The main focus of work done on the claims is targeting gold mineralization in structurally-controlled mesothermal quartz carbonate veins and listwaenite motherlode-style gold deposits. The Cache Creek ultramafics have been identified in hosting epithermal / listwaenite type gold mineralization in the Atlin district and the source for surrounding placer operations.

2012 Exploration Program

Geochemical Analytical Procedure/Sampling Technique

Soil samples were collected from the B or C soil horizon using a 5 ft. Dutch auger. Each sample was put into a kraft soil sample bag, each sample weighing approximately 1.5 lbs. At each station, the soil sampler took notes and recorded the geographic coordinates of the location where the sample was collected. Each soil station was marked with fluorescent orange flagging.

All samples were sent to Inspectorate Exploration & Mining Services Ltd. in Whitehorse for sample preparation, then sent down to Vancouver to be analyzed. The analytical procedure was done by drying the soil samples and sieving them to -80 mesh. The samples were tested using 30 Element, Aqua Regia, ICP, and Au fire assay. The rocks were tested using 30 element, 4 acid, and Trace level assay.

Results

During field work in 2012 (August 16th & 17th), a total of 69 soils were collected on the KOHO property. Most of the samples were collected on the ridges in the northwest and southeast corners of the claim block at 100m intervals. Some were collected along a contour below one of the ridges as well, at 200m

intervals. Of the 69 soil samples, 21 were collected along a pre-existing trench on the western margin of the property. Soil samples produced some weakly anomalous gold values, mainly in the samples that were collected along the trench. These soils had a peak value of 48 ppb Au, while soils collected on the ridges produced a maximum of 14 ppb Au. Soils collected along the trench also gave higher nickel and copper values, peaking at 300 ppm Cu and 256 ppm Ni. In addition, a number of the anomalous nickel values were from soils collected from the ridge and contour in the southeast corner of the property. All 7 rock samples were collected along the trench, and also yielded fairly significant results with peak nickel and gold values of 419 ppm Ni and 27 ppb Au. Spatial distribution of assay values for gold and nickel for the ridge and contour soils are shown in Figures 3 and 4 (trench samples excluded). All soil and rock sample locations collected at the KOHO property in 2012 are shown in Figure 2.

Expenditures

Soil Sampling Trips

Travel

	Cost/day	Days	Total
Truck	\$50	3	\$150.00
ATV	\$40	4	\$160.00
Trailor	\$16	2	\$32.00
			\$342.00

Labour

Wage/day	Man days	Total
\$350	9	\$3,150

Field expenses/day	Man days	Total
\$100	9	\$900

TOTAL = \$4050.00

Sample Assay

Type	# of samples	Total
Soil	69	\$1,894.31
Rock	7	\$236.82
		\$2,131.13

Mapping, data management & report writing

Labour

Wage/hr	Hours	Total
\$50	10	\$500

TOTAL EXPENDITURES

Soil Sampling	
Travel	\$342
Labour	\$4,050
Sample Assay	\$2,131.13
Mapping, data mgt. & report writing	
Labour	\$500
TOTAL	\$7,023.13

Interpretation & Conclusion

The 2012 work program on the KOHO claims was focused on providing an introductory look into the potential of the property through a simple soils program. Given the results of the geochemical survey, further exploration may be warranted in the southeast corner of the property where conducting a soils grid over the area may help define a more localized target. Targeted prospecting and a more in-depth soils program on the property may be beneficial, especially around the trench area, but not likely practical given that the anomalies produced by the trench samples are somewhat weak.

References

SHERMAN, M., Oct/2001. Assessment Report #094232 by S. Casselman.

Summary of Qualifications


Edward Long and Riley Gibson, co-owners of All-In Exploration Solutions Inc., own the quartz claims KOHO 1-120.

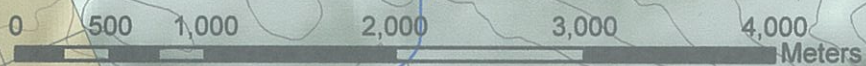
Edward Long completed a Diploma in Geological Technology at the Northern Alberta Institute of Technology (NAIT) in 2009. He then spent two years employed by the Mineral Assessment Branch of the Yukon Geological Survey. He also has several years of exploration experience, within both Yukon and Alberta.

Riley Gibson completed his Bachelor's degree in Physical Geography at the University of Lethbridge in the spring of 2011. He has spent two seasons as a field assistant working with Jeff Bond and the YGS. He has also been employed in various aspects of the exploration industry in Yukon and British Columbia since 2004.

Appendix A: Figures, Data & Certificates

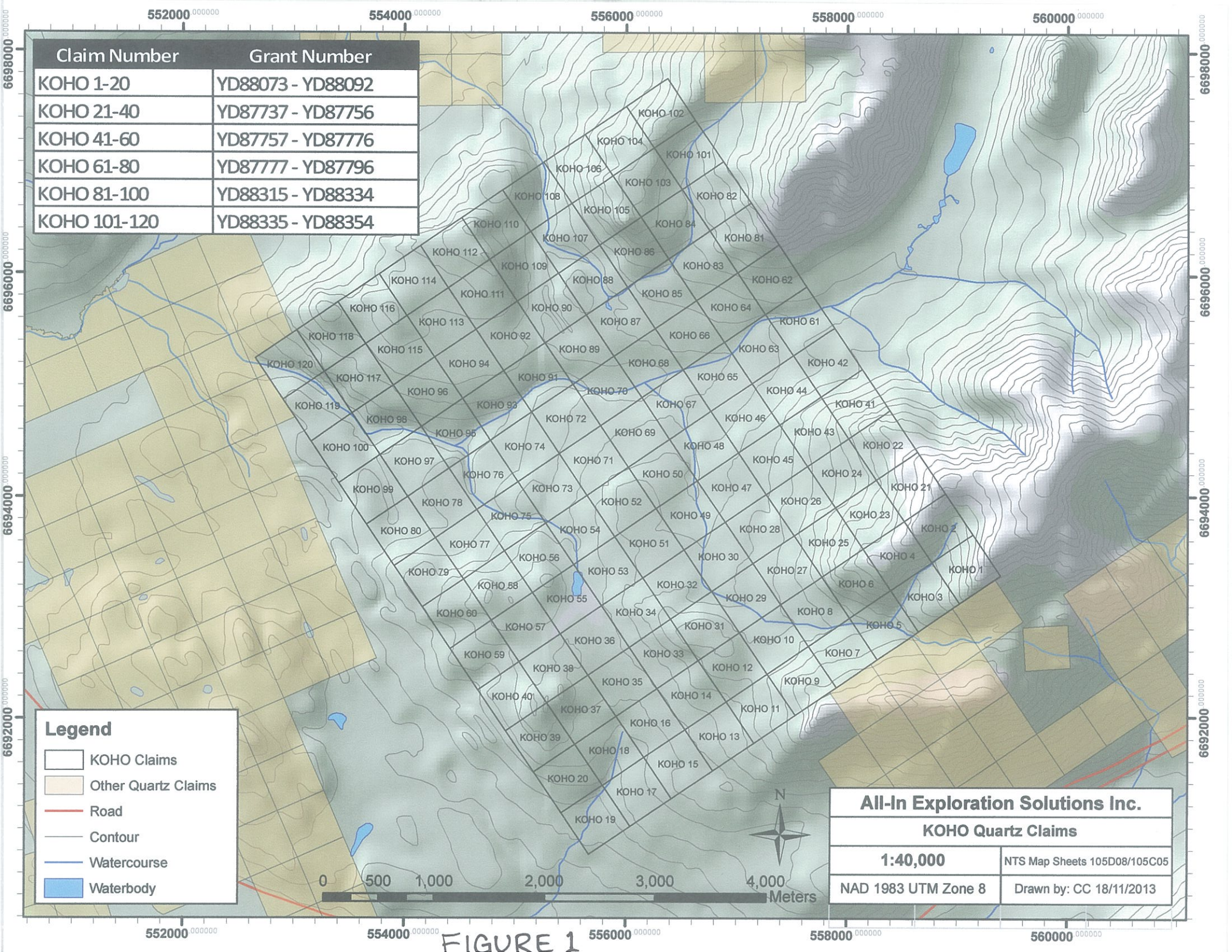
Claim Number	Grant Number
KOHO 1-20	YD88073 - YD88092
KOHO 21-40	YD87737 - YD87756
KOHO 41-60	YD87757 - YD87776
KOHO 61-80	YD87777 - YD87796
KOHO 81-100	YD88315 - YD88334
KOHO 101-120	YD88335 - YD88354

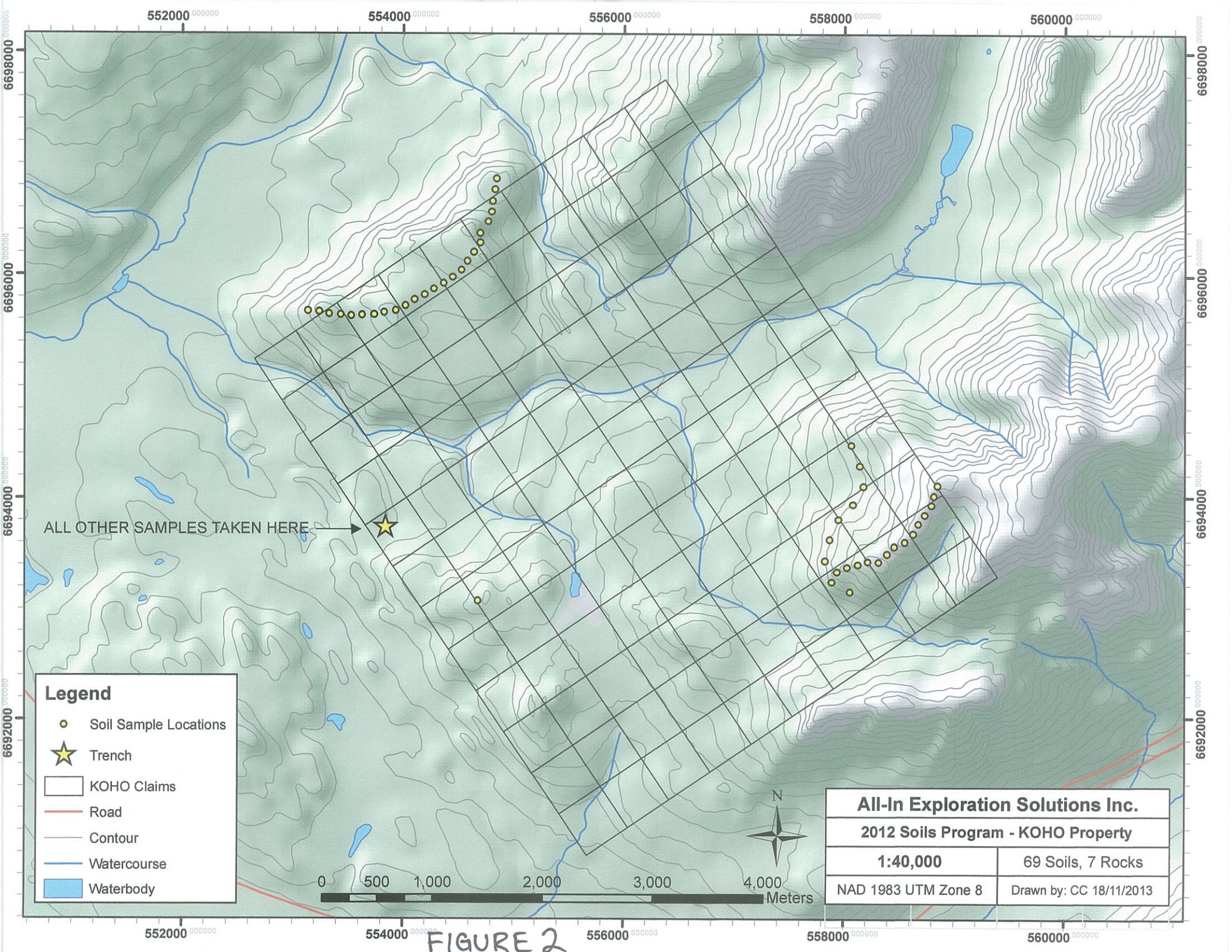
Legend	
	KOHO Claims
	Other Quartz Claims
	Road
	Contour
	Watercourse
	Waterbody



All-In Exploration Solutions Inc.	
KOHO Quartz Claims	
1:40,000	NTS Map Sheets 105D08/105C05
NAD 1983 UTM Zone 8	Drawn by: CC 18/11/2013

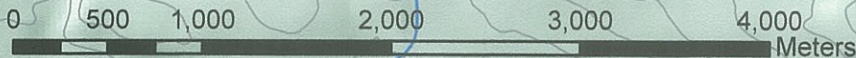
FIGURE 1





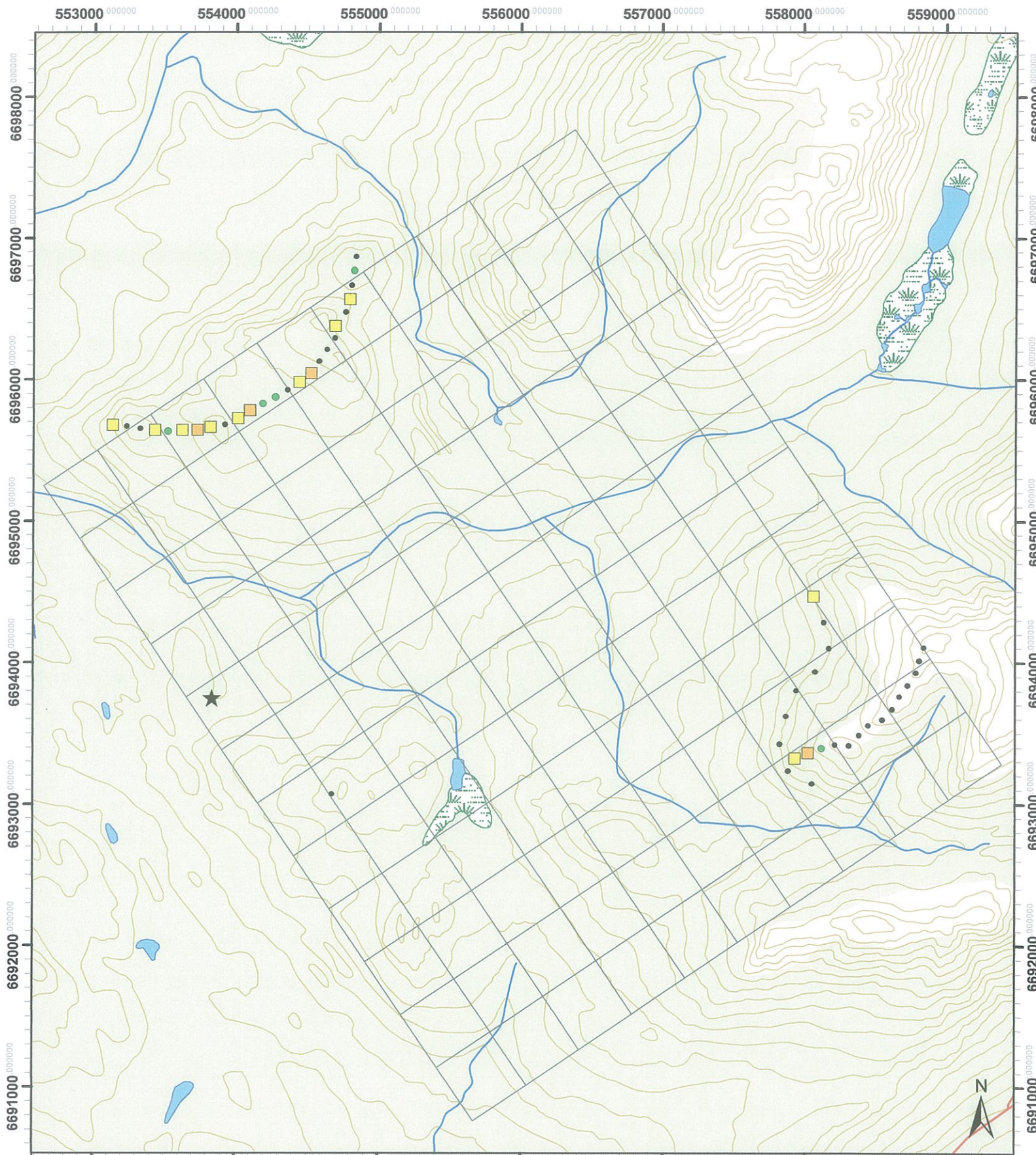
ALL OTHER SAMPLES TAKEN HERE →

- Legend**
- Soil Sample Locations
 - ★ Trench
 - KOHO Claims
 - Road
 - Contour
 - Watercourse
 - Waterbody



All-In Exploration Solutions Inc.	
2012 Soils Program - KOHO Property	
1:40,000	69 Soils, 7 Rocks
NAD 1983 UTM Zone 8	Drawn by: CC 18/11/2013

FIGURE 2



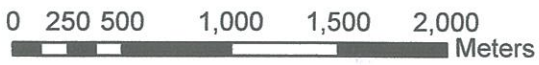
Legend

Au (ppb)

- 5.1 - 10 (10)
- <5 (30)
- 5 (5)
- 10.1 - 14 (4)
- ★ Trench

KOHO Property Soil Geochemistry - Au

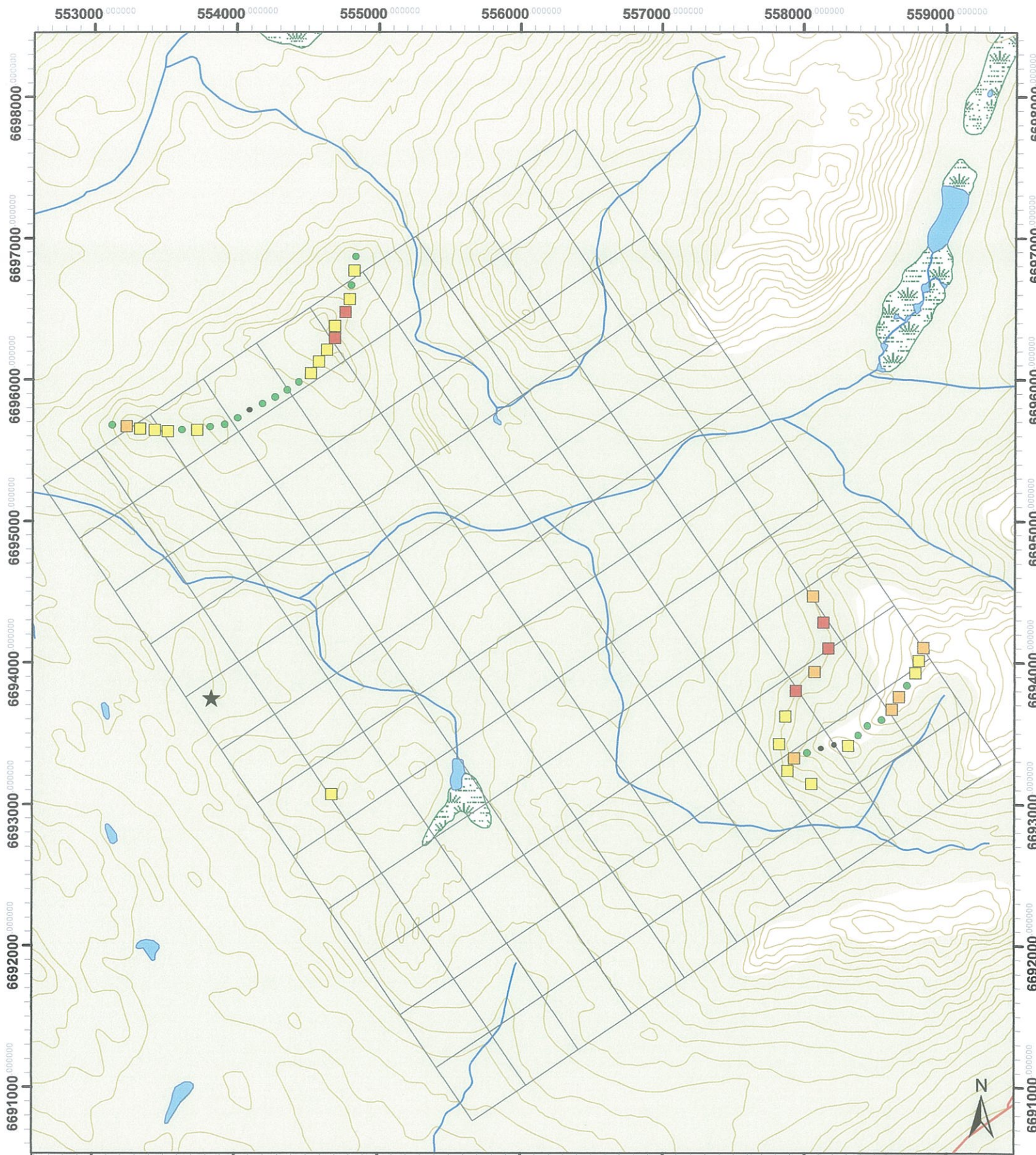
All-In Exploration Solutions Inc.



1:35,000

NAD 1983 UTM Zone 8N

FIGURE 3



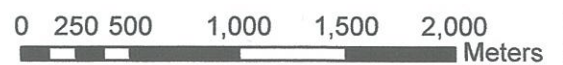
Legend

Ni (ppm)

- 16 - 40 (3)
- 40.1 - 70 (16)
- 70.1 - 100 (18)
- 100.1 - 125 (7)
- 125.1 - 155 (5)
- ★ Trench

KOHO Property Soil Geochemistry - Ni

All-In Exploration Solutions Inc.



1:35,000

NAD 1983 UTM Zone 8N

FIGURE 4

KOHO Property – 2012 Soil Sample Locations

NAD 1983 UTM Zone 8

Sample	Easting	Northing
8241	557932	6693323
8242	558052	6693142
8243	557883	6693232
8244	557825	6693424
8245	557868	6693619
8246	557944	6693798
8247	558077	6693933
8248	558173	6694099
8249	558137	6694283
8250	558063	6694467
8808	558843	6694104
8809	558812	6694012
8810	558788	6693927
8811	558727	6693837
8812	558671	6693758
8813	558622	6693670
8814	558549	6693595
8815	558453	6693554
8816	558387	6693486
8817	558312	6693412
10001	554842	6696866
10002	554828	6696768
10003	554809	6696663
10004	554798	6696566
10005	554768	6696475
10006	554692	6696376
10007	554693	6696289
10008	554637	6696207
10009	554580	6696124
10010	554524	6696042
10011	554442	6695978
10012	554360	6695924
10013	554275	6695874
10014	554189	6695824
10015	554098	6695780
10016	554015	6695725
10017	553927	6695679
10018	553822	6695662

10019	553730	6695642
10020	553624	6695641
10021	553524	6695633
10022	553431	6695643
10023	553326	6695650
10024	553233	6695669
10025	553133	6695678
8238A	558214	6693416
8239A	558121	6693389
8240A	558022	6693362
12/KOHO/001	553836	6693748
12/KOHO/002	553836	6693748
12/KOHO/003	553836	6693748
12/KOHO/004	553836	6693748
12/KOHO/005	553836	6693748
12/KOHO/006	553836	6693748
12/KOHO/007	553836	6693748
12/KOHO/008	553836	6693748
12/KOHO/009	553836	6693748
12/KOHO/010	553836	6693748
12/KOHO/011	553836	6693748
12/KOHO/012	553836	6693748
12/KOHO/013	553836	6693748
12/KOHO/014	553836	6693748
12/KOHO/015	553836	6693748
12/KOHO/016	553836	6693748
12/KOHO/017	553836	6693748
12/KOHO/018	553836	6693748
12/KOHO/019	553836	6693748
12/KOHO/020	553836	6693748
12/KOHO/021	554677	6693066

KOHO Property – 2012 Rock Sample Locations

NAD 1983 UTM Zone 8

Sample	Easting	Northing
12KOHOR001A	553836	6693748
12KOHOR002A	553836	6693748
12KOHOR003A	553836	6693748
12KOHOR004A	553836	6693748
12KOHOR005A	553836	6693748
12KOHOR006A	553836	6693748
12KOHOR007A	553836	6693748



INSPECTORATE

A Bureau Veritas Group Company

Certificate of Analysis

12-360-08153-01

Inspectorate Exploration & Mining Services Ltd.

#200 - 11620 Horseshoe Way

Richmond, BC V7A 4V5 Canada

Phone: 604-272-7818

Distribution List

Attention: Ed Long
113A Platinum Road
Whitehorse, Yukon Y1A 5M3
Phone: 867-393-3006
EMail: allinexploration@gmail.com

Submitted By: **All-In Exploration Solutions, Inc.**
113A Platinum Road
Whitehorse, Yukon Y1A 5M3

Date Received: 10/29/2012

Date Completed: 11/08/2012

Invoice:

Attention: **Ed Long**

Project: **KOHO**
Description: **KOHO**

Location	Samples	Type	Preparation Description
Whitehorse, YT	21	Soil	

Location	Quantity	Method	Description
Vancouver, BC	21	Au-1AT-AAGenX	Au, 1AT Fire Assay, AAS
Vancouver, BC	21	30-AR-TR	30 Element, Aqua Regia, ICP, Trace Level
Vancouver, BC	21	Hg-AR-TR-CVAA	Hg, AQR, CVAA, Trace Levels

The results of this assay were based solely upon the content of the sample submitted. Any decision to invest should be made only after the potential investment value of the claim or deposit has been determined based on the results of assays of multiple samples of geologic materials collected by the prospective investor or by a qualified person selected by him and based on an evaluation of all engineering data which is available concerning any proposed project. For our complete terms and conditions please see our website at www.inspectorate.com.

For and on behalf of **Inspectorate Exploration and Mining Services Ltd**

By 
Sofia Devota – Operations Manager



INSPECTORATE

A Bureau Veritas Group Company

#200 - 11620 Horseshoe Way

Richmond, BC V7A 4V5 Canada

Certificate of Analysis

12-360-08153-01

All-In Exploration Solutions, Inc.

113A Platinum Road

Whitehorse, Yukon Y1A 5M3

Sample Description	Sample Type	Au Au-1AT-AA GenX ppb	Ag 30-AR-TR ppm	Al 30-AR-TR %	As 30-AR-TR ppm	Ba 30-AR-TR ppm	Bi 30-AR-TR ppm	Ca 30-AR-TR %	Cd 30-AR-TR ppm	Co 30-AR-TR ppm	Cr 30-AR-TR ppm	Cu 30-AR-TR ppm	Fe 30-AR-TR %	K 30-AR-TR %	La 30-AR-TR ppm
12/KOHO/001	Soil	9	<0.1	0.38	10	450	<2	0.97	<0.5	20	8	171	4.02	0.11	4
12/KOHO/002	Soil	9	<0.1	0.71	16	1857	<2	4.06	<0.5	26	15	176	5.11	0.14	6
12/KOHO/003	Soil	<5	<0.1	0.43	10	754	<2	1.41	<0.5	19	8	125	4.71	0.13	5
12/KOHO/004	Soil	8	<0.1	0.63	13	1077	<2	0.89	<0.5	19	11	117	4.98	0.11	16
12/KOHO/005	Soil	5	<0.1	0.53	8	185	<2	0.83	<0.5	15	8	85	4.17	0.14	17
12/KOHO/006	Soil	8	<0.1	0.74	11	601	<2	1.09	<0.5	13	13	107	4.47	0.16	17
12/KOHO/007	Soil	<5	<0.1	0.87	8	1145	<2	1.61	<0.5	22	22	128	4.67	0.14	13
12/KOHO/008	Soil	11	0.2	0.66	<5	738	<2	9.09	<0.5	7	20	166	1.78	0.06	11
12/KOHO/009	Soil	14	<0.1	0.47	8	216	<2	2.52	<0.5	14	12	201	4.14	0.13	7
12/KOHO/010	Soil	19	0.2	0.63	11	254	<2	0.79	<0.5	18	22	122	3.14	0.09	10
12/KOHO/011	Soil	8	0.3	1.72	<5	224	<2	3.80	<0.5	18	20	300	3.34	0.05	15
12/KOHO/012	Soil	11	0.7	3.21	14	227	<2	2.61	<0.5	38	197	286	6.69	0.07	19
12/KOHO/013	Soil	8	0.2	1.81	12	385	<2	1.82	<0.5	31	113	189	6.08	0.10	11
12/KOHO/014	Soil	10	<0.1	0.64	13	366	<2	1.13	<0.5	16	22	138	3.83	0.10	12
12/KOHO/015	Soil	11	<0.1	0.79	18	328	<2	1.30	<0.5	15	21	129	4.15	0.08	19
12/KOHO/016	Soil	5	<0.1	0.75	20	496	<2	3.53	0.6	13	26	169	3.91	0.09	26
12/KOHO/017	Soil	48	0.3	1.92	19	172	<2	1.26	<0.5	29	35	103	5.31	0.07	13
12/KOHO/018	Soil	18	0.2	1.92	20	1353	<2	0.60	<0.5	21	42	143	5.11	0.08	17
12/KOHO/019	Soil	13	<0.1	0.37	29	111	<2	0.62	<0.5	12	9	184	4.50	0.08	23
12/KOHO/020	Soil	13	<0.1	0.44	33	224	<2	0.50	<0.5	13	15	172	4.71	0.09	17
12/KOHO/021	Soil	<5	<0.1	2.83	5	208	<2	1.01	<0.5	23	105	63	3.89	0.15	15



INSPECTORATE

A Bureau Veritas Group Company

#200 - 11620 Horseshoe Way
Richmond, BC V7A 4V5 Canada

Certificate of Analysis

12-360-08153-01

All-In Exploration Solutions, Inc.

113A Platinum Road

Whitehorse, Yukon Y1A 5M3

Sample Description	Sample Type	Mg	Mn	Mo	Na	Ni	P	Pb	Sb	Sc	Sr	Ti	Tl	V	W
		30-AR-TR %	30-AR-TR ppm	30-AR-TR ppm	30-AR-TR %	30-AR-TR ppm	30-AR-TR ppm	30-AR-TR ppm	30-AR-TR ppm	30-AR-TR ppm	30-AR-TR ppm	30-AR-TR ppm	30-AR-TR %	30-AR-TR ppm	30-AR-TR ppm
12/KOHO/001	Soil	0.25	548	3	<0.01	76	556	16	3	7	36	<0.01	<10	16	<10
12/KOHO/002	Soil	0.50	858	4	0.01	78	609	9	5	14	104	<0.01	<10	51	<10
12/KOHO/003	Soil	0.37	551	4	0.01	89	675	10	<2	10	50	<0.01	<10	21	<10
12/KOHO/004	Soil	0.40	614	5	0.01	94	567	9	7	12	39	<0.01	<10	24	<10
12/KOHO/005	Soil	0.34	415	6	0.01	65	531	8	3	12	33	<0.01	<10	20	<10
12/KOHO/006	Soil	0.43	423	4	0.01	55	517	10	<2	14	51	<0.01	<10	29	<10
12/KOHO/007	Soil	0.72	789	4	0.02	66	692	3	5	15	84	<0.01	<10	57	<10
12/KOHO/008	Soil	3.81	1658	5	0.03	59	1171	6	<2	17	271	<0.01	<10	24	<10
12/KOHO/009	Soil	0.94	516	6	0.02	50	802	8	5	14	75	<0.01	<10	25	<10
12/KOHO/010	Soil	0.34	497	11	0.01	60	793	6	9	10	45	0.01	<10	30	<10
12/KOHO/011	Soil	1.26	575	3	0.01	61	798	<2	<2	18	232	<0.01	<10	88	<10
12/KOHO/012	Soil	2.45	934	7	0.01	256	951	<2	5	45	160	<0.01	<10	167	<10
12/KOHO/013	Soil	1.20	524	7	0.01	209	939	<2	4	27	103	<0.01	<10	127	<10
12/KOHO/014	Soil	0.41	614	10	0.01	98	1270	9	5	12	53	<0.01	<10	47	<10
12/KOHO/015	Soil	0.47	1201	11	0.01	72	1168	8	4	13	64	<0.01	<10	54	<10
12/KOHO/016	Soil	0.58	3313	9	0.01	108	2335	14	9	14	143	<0.01	<10	50	<10
12/KOHO/017	Soil	1.15	991	8	0.01	57	1342	2	3	17	73	<0.01	<10	122	<10
12/KOHO/018	Soil	1.28	1556	10	0.02	58	844	7	4	9	36	<0.01	<10	73	<10
12/KOHO/019	Soil	0.16	340	22	0.01	46	848	10	6	10	34	<0.01	<10	21	<10
12/KOHO/020	Soil	0.14	269	27	0.01	45	590	11	8	18	33	<0.01	<10	46	<10
12/KOHO/021	Soil	1.39	843	<1	0.02	93	899	<2	<2	11	39	0.14	<10	80	<10



INSPECTORATE

A Bureau Veritas Group Company

#200 - 11620 Horseshoe Way
Richmond, BC V7A 4V5 Canada

Certificate of Analysis

12-360-08153-01

All-In Exploration Solutions, Inc.
113A Platinum Road
Whitehorse, Yukon Y1A 5M3

Sample Description	Sample Type	Zn 30-AR-TR ppm	Zr 30-AR-TR ppm	Hg Hg-AR-TR-CVAA ppm
12/KOHO/001	Soil	144	<2	0.10
12/KOHO/002	Soil	158	2	0.12
12/KOHO/003	Soil	171	2	0.08
12/KOHO/004	Soil	196	3	0.08
12/KOHO/005	Soil	150	2	0.08
12/KOHO/006	Soil	134	2	0.10
12/KOHO/007	Soil	120	<2	0.10
12/KOHO/008	Soil	96	2	0.69
12/KOHO/009	Soil	119	<2	0.21
12/KOHO/010	Soil	151	2	0.17
12/KOHO/011	Soil	88	<2	0.24
12/KOHO/012	Soil	139	<2	0.25
12/KOHO/013	Soil	147	2	0.13
12/KOHO/014	Soil	180	<2	0.09
12/KOHO/015	Soil	173	<2	0.14
12/KOHO/016	Soil	165	<2	0.13
12/KOHO/017	Soil	136	<2	0.12
12/KOHO/018	Soil	168	3	0.15
12/KOHO/019	Soil	292	4	0.13
12/KOHO/020	Soil	228	4	0.13
12/KOHO/021	Soil	51	7	0.03



INSPECTORATE

A Bureau Veritas Group Company

#200 - 11620 Horseshoe Way

Richmond, BC V7A 4V5 Canada

Certificate of Analysis

12-360-08153-01

All-In Exploration Solutions, Inc.

113A Platinum Road

Whitehorse, Yukon Y1A 5M3

Sample Description	Sample Type	Au	Ag	Al	As	Ba	Bi	Ca	Cd	Co	Cr	Cu	Fe	K	La
		Au-1AT-AAGenX ppb	30-AR-TR ppm	30-AR-TR %	30-AR-TR ppm	30-AR-TR ppm	30-AR-TR ppm	30-AR-TR ppm	30-AR-TR %	30-AR-TR ppm	30-AR-TR ppm	30-AR-TR ppm	30-AR-TR ppm	30-AR-TR %	30-AR-TR %
12/KOHO/001	Soil	5	0.1	0.01	5	10	2	0.01	0.5	1	1	1	0.01	0.01	2
12/KOHO/001 Dup			<0.1	0.38	10	450	<2	0.97	<0.5	20	8	171	4.02	0.11	4
QCV1210-02287-0002-BLK			<0.1	0.38	9	461	<2	0.96	<0.5	20	9	164	4.00	0.12	4
STD-OREAS-903 expected			<0.1	<0.01	<5	<10	<2	<0.01	<0.5	<1	<1	<1	<0.01	<0.01	<2
STD-OREAS-903 result			0.3	0.54	48			0.63	0.2	131	26	6710	3.94	0.33	
12/KOHO/019	Soil		0.5	0.53	48			0.63	0.9	132	27	6901	3.70	0.33	
12/KOHO/019 Dup			<0.1	0.37	29	111	<2	0.62	<0.5	12	9	184	4.50	0.08	23
QCV1210-02287-0005-BLK			<0.1	0.37	25	111	<2	0.60	<0.5	12	10	177	4.42	0.09	23
STD-OREAS 902-AR expected			<0.1	<0.01	<5	<10	<2	<0.01	<0.5	<1	<1	<1	<0.01	<0.01	<2
STD-OREAS 902-AR result			0.3	0.54	569			4.19			24	3080	3.04		
12/KOHO/001	Soil		0.2	0.52	573			4.24			24	3045	2.88		
12/KOHO/001 Dup			9												
QCV1210-02288-0002-BLK			6												
QCV1210-02288-0003-BLK			<5												
STD-Oxi96 expected			<5												
STD-Oxi96 result			1802												
			1713												



INSPECTORATE

A Bureau Veritas Group Company

#200 - 11620 Horseshoe Way

Richmond, BC V7A 4V5 Canada

Certificate of Analysis

12-360-08153-01

All-In Exploration Solutions, Inc.

113A Platinum Road

Whitehorse, Yukon Y1A 5M3

Sample Description	Sample Type	Mg	Mn	Mo	Na	Ni	P	Pb	Sb	Sc	Sr	Ti	Tl	V	W
		30-AR-TR %	30-AR-TR ppm	30-AR-TR ppm	30-AR-TR %	30-AR-TR ppm	30-AR-TR ppm	30-AR-TR ppm	30-AR-TR ppm	30-AR-TR ppm	30-AR-TR ppm	30-AR-TR ppm	30-AR-TR %	30-AR-TR ppm	30-AR-TR ppm
12/KOHO/001	Soil	0.25	548	3	<0.01	76	556	16	3	7	36	<0.01	<10	16	<10
12/KOHO/001 Dup		0.25	545	3	<0.01	75	548	16	2	8	37	<0.01	<10	16	<10
QCV1210-02287-0002-BLK		<0.01	<5	<1	<0.01	<1	<10	<2	<2	<1	<1	<0.01	<10	<1	<10
STD-OREAS-903 expected		0.23	710	4		49				3	18			13	
STD-OREAS-903 result		0.22	713	4		49				3	16			12	
12/KOHO/019	Soil	0.16	340	22	0.01	46	848	10	6	10	34	<0.01	<10	21	<10
12/KOHO/019 Dup		0.16	331	22	0.01	46	849	8	5	10	34	<0.01	<10	21	<10
QCV1210-02287-0005-BLK		<0.01	<5	<1	<0.01	<1	<10	<2	<2	<1	<1	<0.01	<10	<1	<10
STD-OREAS 902-AR expected		2.24	460	13						3				9	
STD-OREAS 902-AR result		2.18	442	12						2				7	
STD-Oxi96 expected															
STD-Oxi96 result															



INSPECTORATE

A Bureau Veritas Group Company

#200 - 11620 Horseshoe Way
Richmond, BC V7A 4V5 Canada

Certificate of Analysis

12-360-08153-01

All-In Exploration Solutions, Inc.
113A Platinum Road
Whitehorse, Yukon Y1A 5M3

Sample Description	Sample Type	Zn	Zr	Hg
		30-AR-TR ppm	30-AR-TR ppm	Hg-AR-TR-CVAA ppm
12/KOHO/001	Soil	144	<2	0.10
12/KOHO/001 Dup		141	<2	0.09
QCV1210-02287-0002-BLK		<2	<2	<0.01
STD-OREAS-903 expected		21		
STD-OREAS-903 result		23		
12/KOHO/019	Soil	292	4	0.13
12/KOHO/019 Dup		289	4	0.14
QCV1210-02287-0005-BLK		<2	<2	<0.01
STD-OREAS 902-AR expected				
STD-OREAS 902-AR result				
STD-Oxi96 expected				
STD-Oxi96 result				



INSPECTORATE

A Bureau Veritas Group Company

Certificate of Analysis

12-360-06824-01

Inspectorate Exploration & Mining Services Ltd.

#200 - 11620 Horseshoe Way

Richmond, BC V7A 4V5 Canada

Phone: 604-272-7818

Distribution List

Attention: Ed Long
113A Platinum Road
Whitehorse, Yukon Y1A 5M3
EMail: allinexploration@gmail.com

Submitted By: **All-In Exploration Solutions, Inc.**
113A Platinum Road
Whitehorse, Yukon Y1A 5M3

Date Received: 09/21/2012
Date Completed: 10/03/2012
Invoice:

Attention: **Ed Long**

Description: **General**

Location	Samples	Type	Preparation Description
Whitehorse, YT	143	Soil	

Location	Quantity	Method	Description
Vancouver, BC	143	Au-1AT-AAGenX	Au, 1AT Fire Assay, AAS
Vancouver, BC	143	30-AR-TR	30 Element, Aqua Regia, ICP, Trace Level
Vancouver, BC	143	Hg-AR-TR-CVAA	Hg, AQR, CVAA, Trace Levels

The results of this assay were based solely upon the content of the sample submitted. Any decision to invest should be made only after the potential investment value of the claim or deposit has been determined based on the results of assays of multiple samples of geologic materials collected by the prospective investor or by a qualified person selected by him and based on an evaluation of all engineering data which is available concerning any proposed project. For our complete terms and conditions please see our website at www.inspectorate.com.

For and on behalf of **Inspectorate Exploration and Mining Services Ltd**

By 
Sofia Devota – Operations Manager



INSPECTORATE

A Bureau Veritas Group Company

#200 - 11620 Horseshoe Way

Richmond, BC V7A 4V5 Canada

Certificate of Analysis

12-360-06824-01

All-In Exploration Solutions, Inc.

113A Platinum Road

Whitehorse, Yukon Y1A 5M3

Sample Description	Sample Type	Au	Ag	Al	As	Ba	Bi	Ca	Cd	Co	Cr	Cu	Fe	K	La
		Au-IAT-AAGenX ppb	30-AR-TR ppm	30-AR-TR %	30-AR-TR ppm	30-AR-TR ppm	30-AR-TR ppm	30-AR-TR ppm	30-AR-TR %	30-AR-TR ppm	30-AR-TR ppm	30-AR-TR ppm	30-AR-TR ppm	30-AR-TR %	30-AR-TR %
8751	Soil	7	<0.1	1.76	8	183	<2	0.35	1.3	17	104	33	3.12	0.09	6
8752	Soil	<5	<0.1	1.51	13	132	<2	0.24	1.0	15	109	28	2.65	0.06	8
8753	Soil	<5	<0.1	1.51	13	145	<2	0.35	2.0	22	144	38	3.01	0.15	11
8754	Soil	6	<0.1	1.26	9	124	<2	0.28	1.0	28	214	32	3.16	0.05	8
8755	Soil	7	<0.1	1.49	8	168	<2	0.46	1.1	35	238	51	3.53	0.11	10
8756	Soil	<5	<0.1	1.29	9	160	<2	0.28	0.7	17	155	29	2.72	0.04	7
8757	Soil	<5	<0.1	1.60	10	120	<2	0.19	0.8	26	166	25	3.04	0.03	6
8758	Soil	<5	<0.1	0.92	9	87	<2	0.20	0.7	25	189	28	2.69	0.03	7
8759	Soil	<5	<0.1	1.04	6	108	<2	0.18	0.6	17	113	20	2.39	0.04	6
8760	Soil	<5	<0.1	2.42	8	181	<2	0.32	<0.5	12	67	31	3.04	0.07	9
8761	Soil	<5	<0.1	2.46	10	261	<2	0.40	<0.5	18	124	38	3.44	0.09	9
8762	Soil	6	<0.1	1.71	11	170	<2	0.37	0.7	16	162	34	2.78	0.06	7
8763	Soil	6	<0.1	2.37	10	205	<2	0.41	0.7	14	77	39	3.20	0.09	10
8764	Soil	8	<0.1	1.00	9	100	<2	0.44	0.6	7	69	28	2.06	0.14	12
8765	Soil	<5	<0.1	1.94	12	175	<2	0.45	0.6	19	157	71	3.31	0.22	9
8766	Soil	28	0.1	2.08	26	198	<2	0.37	1.1	21	117	107	3.36	0.33	9
8767	Soil	13	<0.1	1.87	25	179	<2	0.51	0.7	12	97	66	3.08	0.31	9
8768	Soil	<5	<0.1	1.52	13	134	<2	0.35	<0.5	10	77	41	2.45	0.17	7
8769	Soil	10	<0.1	1.72	12	179	<2	0.48	0.6	13	83	59	2.76	0.27	10
8770	Soil	8	<0.1	2.15	14	157	<2	0.34	<0.5	12	76	50	2.94	0.18	9
8771	Soil	9	<0.1	1.99	17	135	<2	0.32	<0.5	12	82	44	3.02	0.22	8
8772	Soil	7	<0.1	2.16	15	171	<2	0.38	<0.5	14	85	51	3.12	0.21	7
8773	Soil	14	<0.1	1.88	13	154	<2	0.35	0.8	14	61	49	3.23	0.07	10
8774	Soil	16	<0.1	1.55	14	130	<2	0.52	0.8	12	59	65	2.97	0.14	13
10001	Soil	<5	<0.1	1.65	8	234	<2	0.49	<0.5	8	68	24	2.27	0.05	8
10002	Soil	5	<0.1	1.42	<5	163	<2	0.52	<0.5	14	130	13	2.43	0.05	5
10003	Soil	<5	<0.1	1.85	7	152	<2	0.80	0.7	12	107	20	2.69	0.05	5
10004	Soil	9	<0.1	1.82	9	74	<2	0.47	<0.5	12	106	32	2.63	0.04	6
10005	Soil	<5	<0.1	1.84	8	111	<2	0.86	0.5	16	185	68	2.75	0.03	6
10006	Soil	6	<0.1	2.09	9	182	<2	0.79	0.7	17	124	35	3.10	0.05	8
10007	Soil	<5	<0.1	2.38	8	78	<2	0.58	<0.5	18	154	34	3.00	0.03	6
10008	Soil	<5	<0.1	1.70	6	98	<2	0.64	<0.5	11	108	23	2.29	0.02	4
10009	Soil	<5	<0.1	1.76	6	140	<2	0.76	<0.5	14	120	26	2.54	0.04	6
10010	Soil	14	<0.1	1.72	7	97	<2	0.72	<0.5	12	123	24	2.36	0.04	5
10011	Soil	9	<0.1	1.64	6	158	<2	0.79	<0.5	8	79	24	2.09	0.05	7
10012	Soil	<5	<0.1	1.65	8	180	<2	0.67	<0.5	10	79	21	2.28	0.05	7
10013	Soil	5	<0.1	1.60	6	140	<2	0.62	<0.5	9	71	17	2.13	0.06	7
10014	Soil	5	<0.1	1.79	6	188	<2	0.66	<0.5	10	80	18	2.46	0.05	7
10015	Soil	12	<0.1	1.80	7	154	<2	0.66	<0.5	7	67	18	1.74	0.04	7
10016	Soil	6	<0.1	2.15	6	218	<2	0.75	0.7	14	94	35	3.00	0.04	8



INSPECTORATE

A Bureau Veritas Group Company

#200 - 11620 Horseshoe Way

Richmond, BC V7A 4V5 Canada

Certificate of Analysis

12-360-06824-01

All-In Exploration Solutions, Inc.

113A Platinum Road

Whitehorse, Yukon Y1A 5M3

Sample Description	Sample Type	Au Au-IAT-AAGenX ppb	Ag 30-AR-TR ppm	Al 30-AR-TR %	As 30-AR-TR ppm	Ba 30-AR-TR ppm	Bi 30-AR-TR ppm	Ca 30-AR-TR %	Cd 30-AR-TR ppm	Co 30-AR-TR ppm	Cr 30-AR-TR ppm	Cu 30-AR-TR ppm	Fe 30-AR-TR %	K 30-AR-TR %	La 30-AR-TR ppm
10017	Soil	<5	<0.1	2.55	7	243	<2	0.57	0.8	12	81	34	3.25	0.04	6
10018	Soil	6	<0.1	1.89	7	207	<2	0.83	0.8	16	101	40	3.34	0.09	7
10019	Soil	13	<0.1	1.85	8	143	<2	0.68	0.6	13	106	36	2.88	0.06	7
10020	Soil	6	<0.1	2.55	7	146	<2	0.60	<0.5	14	108	28	3.14	0.05	6
10021	Soil	5	<0.1	2.42	11	181	<2	0.82	0.5	14	109	42	2.98	0.06	9
10022	Soil	7	<0.1	2.72	10	109	<2	0.75	0.7	15	110	47	3.55	0.04	6
10023	Soil	<5	<0.1	2.56	8	146	<2	0.89	0.7	17	138	44	3.63	0.05	8
10024	Soil	<5	<0.1	3.02	9	346	<2	0.94	0.7	22	165	49	3.81	0.13	9
10025	Soil	6	<0.1	1.85	9	337	<2	0.99	0.9	16	95	19	3.02	0.12	6
8805	Soil	6	<0.1	1.93	15	125	<2	0.29	0.5	8	52	26	2.67	0.06	9
8806	Soil	8	<0.1	1.47	11	208	<2	0.42	0.8	11	63	37	2.55	0.05	12
8807	Soil	16	<0.1	1.89	7	99	<2	0.22	0.7	6	40	59	2.56	0.06	9
8237	Soil	16	0.4	2.03	110	400	<2	0.64	1.8	17	40	76	4.15	0.21	12
8238	Soil	<5	<0.1	2.97	13	82	<2	0.98	0.9	24	171	59	3.96	0.04	6
8239	Soil	<5	<0.1	3.81	13	88	<2	0.93	1.0	28	144	77	4.60	0.07	6
8240	Soil	<5	<0.1	2.65	8	137	<2	0.61	1.1	18	83	37	3.93	0.05	6
8241	Soil	8	<0.1	3.05	10	158	<2	0.87	0.9	31	178	71	4.46	0.11	8
8242	Soil	<5	<0.1	2.58	7	236	<2	0.91	1.1	31	150	68	3.87	0.20	8
8243	Soil	<5	<0.1	2.35	7	202	<2	0.88	1.2	24	114	61	3.53	0.11	8
8244	Soil	<5	<0.1	2.06	8	81	<2	0.73	0.9	21	108	46	3.23	0.08	6
8245	Soil	<5	<0.1	2.08	10	125	<2	0.78	0.7	18	129	48	3.19	0.07	7
8246	Soil	<5	<0.1	2.23	10	92	<2	0.95	0.9	26	218	45	3.61	0.05	5
8247	Soil	<5	<0.1	2.51	8	94	<2	0.74	1.0	25	173	50	4.01	0.06	6
8248	Soil	<5	<0.1	1.82	9	68	<2	1.13	0.7	18	191	30	2.63	0.04	4
8249	Soil	<5	<0.1	3.24	8	145	<2	1.20	1.0	27	238	61	4.21	0.07	8
8250	Soil	9	<0.1	2.76	14	120	<2	1.26	0.8	24	194	68	3.55	0.08	6
8800	Soil	<5	<0.1	2.76	15	195	<2	0.36	0.6	12	68	41	3.38	0.19	7
8801	Soil	<5	<0.1	2.15	10	82	<2	0.57	0.7	19	58	81	3.19	0.28	4
8802	Soil	6	<0.1	2.83	13	180	<2	0.39	0.5	15	72	66	3.51	0.29	8
8803	Soil	6	<0.1	2.73	9	178	<2	0.33	0.8	18	78	62	3.85	0.28	6
8804	Soil	5	<0.1	3.48	12	179	<2	0.50	0.6	17	78	111	3.91	0.40	10
8808	Soil	<5	<0.1	2.78	7	100	<2	0.92	0.9	27	193	61	3.76	0.08	6
8809	Soil	<5	<0.1	2.62	6	241	<2	1.01	0.9	21	139	44	3.60	0.08	6
8810	Soil	<5	<0.1	2.99	8	142	<2	0.69	1.0	19	147	52	3.61	0.05	8
8811	Soil	<5	<0.1	2.32	5	209	<2	0.97	0.8	19	113	43	3.17	0.05	5
8812	Soil	<5	<0.1	2.56	<5	97	<2	0.65	0.9	23	180	47	3.49	0.04	6
8813	Soil	<5	<0.1	2.73	7	78	<2	0.99	0.8	24	178	44	3.60	0.04	4
8814	Soil	<5	<0.1	2.89	8	138	<2	1.08	0.8	21	117	39	4.03	0.04	6
8815	Soil	<5	<0.1	2.97	6	145	<2	0.77	0.6	17	129	51	3.67	0.05	9
8816	Soil	<5	<0.1	2.55	8	158	<2	0.80	0.8	17	110	35	3.67	0.04	6



INSPECTORATE

A Bureau Veritas Group Company

#200 - 11620 Horseshoe Way

Richmond, BC V7A 4V5 Canada

Certificate of Analysis

12-360-06824-01

All-In Exploration Solutions, Inc.

113A Platinum Road

Whitehorse, Yukon Y1A 5M3

Sample Description	Sample Type	Au Au-IAT-AAGenX ppb	Ag 30-AR-TR ppm	Al 30-AR-TR %	As 30-AR-TR ppm	Ba 30-AR-TR ppm	Bi 30-AR-TR ppm	Ca 30-AR-TR %	Cd 30-AR-TR ppm	Co 30-AR-TR ppm	Cr 30-AR-TR ppm	Cu 30-AR-TR ppm	Fe 30-AR-TR %	K 30-AR-TR %	La 30-AR-TR ppm
8817	Soil	<5	<0.1	3.17	7	103	<2	1.32	<0.5	22	130	44	3.97	0.05	6
8236	Soil	6	<0.1	2.08	10	187	<2	0.42	<0.5	10	60	33	2.50	0.06	13
8237A	Soil	8	<0.1	2.25	9	83	<2	0.17	<0.5	7	44	35	2.77	0.04	10
8238A	Soil	<5	<0.1	1.24	9	91	<2	0.22	<0.5	4	32	12	2.31	0.03	6
8239A	Soil	5	<0.1	1.36	10	75	<2	0.29	0.5	7	54	28	3.40	0.03	6
8240A	Soil	12	<0.1	2.02	10	100	<2	0.26	<0.5	9	61	33	2.53	0.04	10
8201	Soil	5	<0.1	2.39	10	607	<2	0.57	1.6	18	33	61	4.89	0.05	15
8202	Soil	9	<0.1	1.95	14	637	<2	0.82	1.2	16	41	86	4.25	0.07	15
8203	Soil	6	<0.1	2.65	20	799	<2	0.65	1.7	21	35	93	5.69	0.09	13
8204	Soil	<5	<0.1	2.45	15	517	<2	0.67	1.2	16	34	61	4.64	0.08	8
8205	Soil	<5	<0.1	2.46	23	218	<2	0.28	1.0	11	38	54	3.79	0.06	11
8206	Soil	<5	<0.1	0.91	<5	242	<2	0.49	<0.5	<1	7	30	1.06	0.03	8
8207	Soil	<5	<0.1	2.42	10	528	<2	0.42	1.1	11	30	51	3.82	0.04	9
8208	Soil	<5	<0.1	2.18	16	357	<2	0.45	0.8	12	40	59	3.62	0.04	8
8209	Soil	<5	<0.1	2.66	15	260	<2	0.40	0.7	15	55	41	3.74	0.08	11
8210	Soil	<5	<0.1	2.09	15	285	<2	0.52	0.6	12	45	38	3.13	0.06	9
8211	Soil	<5	<0.1	2.38	15	275	<2	0.39	<0.5	13	45	30	3.31	0.05	9
8212	Soil	<5	<0.1	1.48	12	132	<2	0.29	0.6	5	34	23	2.63	0.05	9
8213	Soil	<5	<0.1	2.65	11	430	<2	0.69	0.7	18	48	58	3.75	0.07	9
8214	Soil	<5	<0.1	2.13	10	282	<2	0.43	0.5	12	45	44	3.05	0.06	9
8215	Soil	6	<0.1	2.77	16	323	<2	0.40	0.8	19	52	56	3.73	0.06	8
8216	Soil	<5	<0.1	2.27	7	269	<2	0.29	0.8	9	36	39	3.31	0.04	10
8217	Soil	<5	<0.1	1.89	10	173	<2	0.28	<0.5	8	35	52	2.50	0.05	11
8218	Soil	<5	<0.1	2.20	7	299	<2	0.35	0.6	13	40	76	3.09	0.06	10
8219	Soil	<5	<0.1	1.59	11	154	<2	0.26	<0.5	6	35	35	2.00	0.04	10
8220	Soil	<5	<0.1	1.66	14	171	<2	0.16	1.1	7	37	41	3.65	0.03	8
8221	Soil	<5	<0.1	1.72	10	91	<2	0.24	<0.5	11	42	51	2.48	0.06	11
8222	Soil	7	<0.1	1.12	7	208	<2	0.45	<0.5	6	42	35	1.93	0.04	13
8223	Soil	<5	<0.1	2.03	14	272	<2	0.50	0.7	11	42	51	2.95	0.05	12
8224	Soil	8	<0.1	1.57	16	232	<2	0.36	0.5	11	64	57	2.59	0.05	15
8225	Soil	<5	<0.1	1.94	8	322	<2	0.34	0.6	10	51	41	2.95	0.05	9
8226	Soil	7	<0.1	1.53	8	286	<2	0.29	<0.5	7	46	27	2.29	0.04	7
8227	Soil	<5	<0.1	1.53	7	218	<2	0.25	0.9	8	36	28	2.50	0.04	7
8228	Soil	8	<0.1	1.63	11	192	<2	0.42	<0.5	9	50	39	2.47	0.03	13
8229	Soil	<5	0.1	1.66	8	243	<2	0.52	<0.5	13	24	60	2.18	0.03	11
8230	Soil	<5	<0.1	1.19	<5	108	<2	0.92	<0.5	6	9	69	1.20	0.04	13
8231	Soil	<5	0.2	2.07	6	301	<2	0.32	1.6	3	36	35	1.96	0.05	9
8232	Soil	<5	<0.1	2.08	13	177	<2	0.28	1.8	8	40	42	2.73	0.06	9
8233	Soil	<5	<0.1	1.52	9	191	<2	0.32	1.5	6	34	30	2.11	0.05	9
8234	Soil	6	0.1	1.90	6	157	<2	0.21	1.7	8	38	46	2.48	0.04	6



INSPECTORATE

A Bureau Veritas Group Company

#200 - 11620 Horseshoe Way

Richmond, BC V7A 4V5 Canada

Certificate of Analysis

12-360-06824-01

All-In Exploration Solutions, Inc.

113A Platinum Road

Whitehorse, Yukon Y1A 5M3

Sample Description	Sample Type	Au	Ag	Al	As	Ba	Bi	Ca	Cd	Co	Cr	Cu	Fe	K	La
		Au-IAT-AAGenX ppb	30-AR-TR ppm	30-AR-TR %	30-AR-TR ppm	30-AR-TR ppm	30-AR-TR ppm	30-AR-TR %	30-AR-TR ppm	30-AR-TR ppm	30-AR-TR ppm	30-AR-TR ppm	30-AR-TR ppm	30-AR-TR %	30-AR-TR %
8235	Soil	10	<0.1	1.86	10	172	<2	0.27	1.7	8	54	45	2.39	0.04	7
8778	Soil	<5	<0.1	1.13	<5	133	<2	0.25	2.1	30	195	32	2.95	0.07	5
8779	Soil	<5	<0.1	1.39	<5	173	<2	0.40	2.4	24	163	43	2.81	0.08	7
8780	Soil	<5	<0.1	1.37	6	142	<2	0.26	1.8	18	129	32	2.58	0.04	5
8781	Soil	<5	0.1	1.71	6	179	<2	0.52	2.1	20	124	44	2.86	0.07	5
8782	Soil	<5	0.5	1.99	26	67	<2	1.40	5.4	17	53	112	2.90	0.06	7
8783	Soil	10	<0.1	1.24	<5	119	<2	1.06	1.8	18	111	34	2.22	0.07	6
8784	Soil	<5	<0.1	2.14	<5	229	<2	0.29	2.3	18	82	46	3.06	0.22	6
8785	Soil	<5	<0.1	2.00	10	249	<2	0.43	2.3	15	90	56	3.08	0.18	6
8786	Soil	6	<0.1	1.75	8	188	<2	0.32	1.8	13	82	39	2.74	0.10	5
8787	Soil	<5	<0.1	1.94	13	133	<2	0.27	2.0	12	72	44	2.80	0.14	4
8788	Soil	5	0.1	1.68	9	141	<2	0.39	2.0	12	75	45	2.59	0.21	5
8789	Soil	<5	0.1	1.73	10	155	<2	0.50	2.1	12	85	59	2.68	0.19	6
8790	Soil	6	<0.1	1.38	11	132	<2	0.46	1.9	10	70	44	2.36	0.23	7
8791	Soil	<5	0.3	1.20	<5	124	<2	0.28	1.9	9	43	25	2.13	0.21	7
8792	Soil	<5	<0.1	1.13	<5	143	<2	0.26	1.6	7	39	18	2.08	0.16	6
8793	Soil	<5	0.2	1.13	6	122	<2	0.20	1.6	8	38	24	1.91	0.11	5
8794	Soil	<5	0.2	0.83	5	205	<2	0.26	1.7	8	25	20	1.67	0.13	4
8795	Soil	<5	0.2	1.35	8	125	<2	0.19	1.8	6	39	23	2.34	0.08	5
8796	Soil	<5	<0.1	1.50	6	83	<2	0.14	1.9	7	47	21	2.51	0.12	4
8797	Soil	<5	<0.1	1.04	<5	158	<2	0.12	1.4	7	33	17	1.81	0.06	4
8798	Soil	<5	0.1	1.41	7	172	<2	0.20	1.8	8	37	22	2.33	0.12	4
8799	Soil	<5	0.1	1.71	6	180	<2	0.36	1.9	11	43	32	2.59	0.17	5



INSPECTORATE

A Bureau Veritas Group Company

#200 - 11620 Horseshoe Way

Richmond, BC V7A 4V5 Canada

Certificate of Analysis

12-360-06824-01

All-In Exploration Solutions, Inc.

113A Platinum Road

Whitehorse, Yukon Y1A 5M3

Sample Description	Sample Type	Mg	Mn	Mo	Na	Ni	P	Pb	Sb	Sc	Sr	Ti	Tl	V	W
		30-AR-TR %	30-AR-TR ppm	30-AR-TR ppm	30-AR-TR %	30-AR-TR ppm	30-AR-TR ppm	30-AR-TR ppm	30-AR-TR ppm	30-AR-TR ppm	30-AR-TR ppm	30-AR-TR ppm	30-AR-TR %	30-AR-TR ppm	30-AR-TR ppm
8751	Soil	1.64	585	3	0.02	101	385	<2	2	3	27	0.13	<10	75	<10
8752	Soil	1.56	463	3	0.02	117	256	2	3	3	19	0.06	<10	54	<10
8753	Soil	1.93	643	<1	0.02	211	618	<2	3	4	23	0.06	<10	53	<10
8754	Soil	3.65	473	<1	0.03	398	181	<2	3	5	19	0.07	<10	50	<10
8755	Soil	4.97	626	<1	0.04	614	630	<2	2	6	26	0.07	<10	51	<10
8756	Soil	2.55	360	<1	0.02	261	258	<2	<2	4	16	0.06	<10	51	<10
8757	Soil	3.58	378	<1	0.02	356	130	<2	6	3	13	0.06	<10	50	<10
8758	Soil	3.65	447	<1	0.02	379	187	<2	5	3	12	0.06	<10	39	<10
8759	Soil	1.97	418	<1	0.02	197	200	<2	2	3	12	0.05	<10	38	<10
8760	Soil	1.03	446	<1	0.02	65	473	<2	<2	4	16	0.09	<10	66	<10
8761	Soil	1.76	515	<1	0.02	117	387	<2	<2	4	26	0.10	<10	72	<10
8762	Soil	1.67	515	<1	0.02	126	260	<2	3	5	21	0.09	<10	66	<10
8763	Soil	1.22	507	<1	0.02	67	380	<2	<2	5	22	0.11	<10	72	<10
8764	Soil	0.84	315	<1	0.03	42	832	5	<2	3	22	0.11	<10	53	<10
8765	Soil	1.73	490	<1	0.03	128	551	<2	2	6	25	0.17	<10	92	<10
8766	Soil	1.19	494	2	0.02	49	632	<2	<2	5	23	0.20	<10	107	<10
8767	Soil	1.08	367	<1	0.03	36	704	<2	<2	6	29	0.17	<10	94	<10
8768	Soil	0.81	336	<1	0.03	30	474	<2	<2	3	23	0.14	<10	81	<10
8769	Soil	1.03	435	<1	0.03	37	690	<2	<2	5	37	0.16	<10	88	<10
8770	Soil	1.01	447	<1	0.02	40	431	<2	<2	4	22	0.13	<10	80	<10
8771	Soil	0.98	390	<1	0.03	37	409	<2	2	3	24	0.14	<10	89	<10
8772	Soil	1.11	473	<1	0.03	51	449	<2	4	3	31	0.13	<10	82	<10
8773	Soil	1.06	531	<1	0.02	59	557	<2	<2	4	19	0.06	<10	65	<10
8774	Soil	1.03	469	<1	0.03	31	905	<2	<2	6	36	0.11	<10	76	<10
10001	Soil	0.74	347	<1	0.02	57	269	<2	2	4	25	0.08	<10	56	<10
10002	Soil	0.80	434	<1	0.02	80	315	<2	<2	4	21	0.11	<10	57	<10
10003	Soil	0.95	335	<1	0.02	68	294	<2	<2	5	21	0.14	<10	79	<10
10004	Soil	0.91	249	<1	0.02	71	101	<2	2	4	15	0.13	<10	78	<10
10005	Soil	1.81	430	<1	0.02	132	147	<2	<2	6	18	0.14	<10	81	<10
10006	Soil	1.21	603	<1	0.02	92	316	<2	3	8	22	0.13	<10	86	<10
10007	Soil	1.42	332	<1	0.02	151	231	<2	<2	7	12	0.16	<10	94	<10
10008	Soil	1.11	335	<1	0.02	76	125	<2	<2	4	13	0.14	<10	73	<10
10009	Soil	1.08	522	<1	0.02	75	230	<2	<2	7	17	0.16	<10	82	<10
10010	Soil	1.24	413	<1	0.02	89	400	<2	<2	5	16	0.12	<10	72	<10
10011	Soil	0.87	310	<1	0.02	50	247	<2	<2	4	18	0.13	<10	61	<10
10012	Soil	0.72	409	<1	0.02	52	206	<2	<2	4	16	0.15	<10	71	<10
10013	Soil	0.76	331	<1	0.02	41	316	<2	<2	4	16	0.14	<10	69	<10
10014	Soil	0.72	514	<1	0.02	48	275	<2	<2	4	18	0.15	<10	74	<10
10015	Soil	0.74	195	<1	0.02	39	248	<2	<2	4	16	0.12	<10	60	<10
10016	Soil	0.62	797	<1	0.02	58	147	<2	<2	7	19	0.14	<10	83	<10



INSPECTORATE

A Bureau Veritas Group Company

#200 - 11620 Horseshoe Way

Richmond, BC V7A 4V5 Canada

Certificate of Analysis

12-360-06824-01

All-In Exploration Solutions, Inc.

113A Platinum Road

Whitehorse, Yukon Y1A 5M3

Sample Description	Sample Type	Mg	Mn	Mo	Na	Ni	P	Pb	Sb	Sc	Sr	Ti	Tl	V	W
		30-AR-TR %	30-AR-TR ppm	30-AR-TR ppm	30-AR-TR %	30-AR-TR ppm	30-AR-TR ppm	30-AR-TR ppm	30-AR-TR ppm	30-AR-TR ppm	30-AR-TR ppm	30-AR-TR %	30-AR-TR ppm	30-AR-TR ppm	30-AR-TR ppm
10017	Soil	0.75	412	<1	0.02	52	471	<2	3	4	16	0.14	<10	96	<10
10018	Soil	0.77	663	<1	0.02	62	263	<2	<2	8	18	0.14	<10	83	<10
10019	Soil	0.83	523	<1	0.02	75	304	<2	<2	7	16	0.14	<10	80	<10
10020	Soil	0.80	408	<1	0.02	65	227	<2	<2	5	14	0.17	<10	98	<10
10021	Soil	0.95	480	<1	0.02	73	199	<2	<2	10	20	0.17	<10	90	<10
10022	Soil	1.00	303	<1	0.02	77	141	<2	3	6	17	0.21	<10	119	<10
10023	Soil	1.12	436	<1	0.02	81	173	<2	<2	10	21	0.20	<10	111	<10
10024	Soil	0.97	981	<1	0.03	113	759	<2	2	12	25	0.17	<10	99	<10
10025	Soil	0.80	753	<1	0.02	63	1141	<2	<2	6	22	0.17	<10	73	<10
8805	Soil	0.76	384	<1	0.02	41	639	<2	<2	2	17	0.07	<10	61	<10
8806	Soil	1.00	501	<1	0.02	68	678	<2	<2	3	23	0.08	<10	54	<10
8807	Soil	0.52	308	<1	0.02	25	705	<2	<2	1	19	0.06	<10	57	<10
8237	Soil	1.03	1907	<1	0.05	29	891	78	2	6	51	0.14	<10	74	<10
8238	Soil	1.58	553	<1	0.02	100	399	<2	<2	7	13	0.27	<10	129	<10
8239	Soil	1.63	575	<1	0.02	100	208	<2	<2	9	16	0.26	<10	145	<10
8240	Soil	0.97	578	<1	0.02	47	402	<2	<2	5	12	0.23	<10	131	<10
8241	Soil	1.60	906	<1	0.02	108	310	<2	<2	10	16	0.25	<10	141	<10
8242	Soil	1.24	1422	<1	0.02	97	916	<2	<2	11	25	0.16	<10	100	<10
8243	Soil	1.08	1052	<1	0.02	76	588	<2	<2	8	20	0.17	<10	97	<10
8244	Soil	1.12	673	<1	0.02	74	284	<2	3	5	14	0.18	<10	94	<10
8245	Soil	1.31	583	<1	0.02	91	358	<2	<2	7	18	0.18	<10	92	<10
8246	Soil	1.94	704	<1	0.02	131	277	<2	<2	6	17	0.23	<10	113	<10
8247	Soil	1.63	613	<1	0.02	113	406	<2	<2	7	13	0.24	<10	121	<10
8248	Soil	1.80	392	<1	0.02	128	319	<2	<2	5	20	0.20	<10	83	<10
8249	Soil	2.27	757	<1	0.02	155	417	<2	2	11	20	0.21	<10	115	<10
8250	Soil	1.88	795	<1	0.03	124	531	<2	<2	9	26	0.16	<10	99	<10
8800	Soil	1.26	371	<1	0.04	36	394	8	<2	6	31	0.16	<10	95	<10
8801	Soil	0.91	287	<1	0.05	44	515	2	3	3	33	0.18	<10	96	<10
8802	Soil	1.36	473	<1	0.04	32	637	<2	3	5	42	0.18	<10	104	<10
8803	Soil	1.67	546	<1	0.03	40	309	<2	<2	5	27	0.20	<10	106	<10
8804	Soil	1.60	581	<1	0.07	43	368	7	<2	7	61	0.18	<10	119	<10
8808	Soil	1.77	740	<1	0.02	116	570	<2	3	6	20	0.15	<10	106	<10
8809	Soil	1.36	812	<1	0.02	84	498	<2	<2	5	35	0.13	<10	97	<10
8810	Soil	1.28	753	<1	0.02	85	481	<2	4	6	18	0.14	<10	100	<10
8811	Soil	1.18	777	<1	0.03	64	497	<2	<2	4	35	0.13	<10	85	<10
8812	Soil	1.51	822	<1	0.01	107	454	<2	2	5	17	0.15	<10	103	<10
8813	Soil	1.91	654	<1	0.02	114	278	<2	3	6	19	0.21	<10	104	<10
8814	Soil	1.48	715	<1	0.02	65	309	<2	<2	6	22	0.24	<10	124	<10
8815	Soil	1.33	674	<1	0.02	70	522	<2	<2	7	20	0.18	<10	115	<10
8816	Soil	1.12	533	<1	0.02	61	371	<2	<2	5	23	0.21	<10	113	<10



INSPECTORATE

A Bureau Veritas Group Company

#200 - 11620 Horseshoe Way

Richmond, BC V7A 4V5 Canada

Certificate of Analysis

12-360-06824-01

All-In Exploration Solutions, Inc.

113A Platinum Road

Whitehorse, Yukon Y1A 5M3

Sample Description	Sample Type	Mg	Mn	Mo	Na	Ni	P	Pb	Sb	Sc	Sr	Ti	Tl	V	W
		30-AR-TR %	30-AR-TR ppm	30-AR-TR ppm	30-AR-TR %	30-AR-TR ppm	30-AR-TR ppm	30-AR-TR ppm	30-AR-TR ppm	30-AR-TR ppm	30-AR-TR ppm	30-AR-TR ppm	30-AR-TR %	30-AR-TR ppm	30-AR-TR ppm
8817	Soil	1.62	601	<1	0.02	74	264	<2	<2	8	24	0.29	<10	127	<10
8236	Soil	0.91	379	<1	0.02	52	703	<2	<2	4	28	0.10	<10	59	<10
8237A	Soil	0.57	336	<1	0.01	23	322	<2	<2	4	17	0.11	<10	72	<10
8238A	Soil	0.44	285	<1	0.01	16	398	<2	2	2	10	0.09	<10	58	<10
8239A	Soil	0.72	316	<1	0.01	33	441	<2	4	3	9	0.10	<10	74	<10
8240A	Soil	0.80	275	<1	0.02	48	193	<2	<2	4	15	0.10	<10	60	<10
8201	Soil	0.79	1110	<1	0.01	19	952	<2	5	13	42	<0.01	<10	103	<10
8202	Soil	0.75	927	<1	0.02	22	962	3	3	19	38	0.01	<10	85	<10
8203	Soil	0.73	1050	<1	0.01	18	1217	5	<2	16	45	<0.01	<10	108	<10
8204	Soil	0.77	786	<1	0.01	18	445	4	3	9	47	<0.01	<10	101	<10
8205	Soil	0.77	403	<1	0.01	23	1004	<2	3	6	18	0.02	<10	75	<10
8206	Soil	0.25	488	<1	0.03	4	1105	<2	<2	<1	41	<0.01	<10	24	<10
8207	Soil	0.81	418	<1	0.01	17	228	<2	4	6	29	<0.01	<10	79	<10
8208	Soil	0.85	573	<1	0.01	26	388	3	5	6	31	0.02	<10	82	<10
8209	Soil	1.08	611	2	0.02	37	488	<2	<2	5	30	0.07	<10	86	<10
8210	Soil	0.86	620	<1	0.02	26	593	<2	3	4	42	0.08	<10	90	<10
8211	Soil	0.79	444	<1	0.01	30	366	<2	3	4	27	0.10	<10	83	<10
8212	Soil	0.50	283	<1	0.01	15	298	<2	<2	3	24	0.10	<10	95	<10
8213	Soil	1.15	808	<1	0.02	39	575	<2	<2	6	43	0.07	<10	98	<10
8214	Soil	0.93	539	<1	0.01	29	538	<2	<2	4	28	0.06	<10	78	<10
8215	Soil	1.02	775	<1	0.01	42	453	<2	3	6	26	0.05	<10	89	<10
8216	Soil	0.77	403	<1	0.01	22	541	<2	2	4	17	0.04	<10	80	<10
8217	Soil	0.61	448	<1	<0.01	24	904	<2	3	1	12	0.02	<10	53	<10
8218	Soil	1.21	446	<1	0.01	19	929	<2	<2	3	15	0.02	<10	65	<10
8219	Soil	0.57	351	<1	0.01	23	722	<2	<2	3	13	0.04	<10	45	<10
8220	Soil	0.54	270	<1	<0.01	25	289	3	2	3	10	0.04	<10	85	<10
8221	Soil	0.79	334	<1	0.01	46	367	4	2	3	13	0.10	<10	56	<10
8222	Soil	0.64	268	<1	0.02	36	675	<2	<2	3	24	0.08	<10	46	<10
8223	Soil	0.62	650	<1	0.01	22	763	5	3	2	26	0.04	<10	74	<10
8224	Soil	0.79	465	<1	0.02	51	333	4	<2	5	23	0.05	<10	62	<10
8225	Soil	0.70	423	<1	0.01	35	290	<2	3	3	18	0.04	<10	73	<10
8226	Soil	0.68	317	<1	0.01	37	301	<2	3	3	15	0.04	<10	53	<10
8227	Soil	0.61	628	<1	0.01	22	764	<2	<2	2	14	0.04	<10	55	<10
8228	Soil	0.92	416	<1	0.01	37	818	<2	4	4	19	0.06	<10	58	<10
8229	Soil	0.45	1627	<1	0.02	11	1215	5	<2	1	33	0.02	<10	60	<10
8230	Soil	0.24	792	<1	0.02	5	1237	7	<2	<1	55	0.02	<10	33	<10
8231	Soil	0.58	274	<1	0.01	15	1142	7	<2	<1	29	0.01	<10	57	<10
8232	Soil	0.73	349	<1	0.02	27	441	11	<2	4	23	0.06	<10	77	<10
8233	Soil	0.58	412	<1	0.01	25	341	7	<2	3	21	0.06	<10	53	<10
8234	Soil	0.64	349	<1	0.01	28	338	9	<2	3	21	0.06	<10	68	<10



INSPECTORATE

A Bureau Veritas Group Company

#200 - 11620 Horseshoe Way

Richmond, BC V7A 4V5 Canada

Certificate of Analysis

12-360-06824-01

All-In Exploration Solutions, Inc.

113A Platinum Road

Whitehorse, Yukon Y1A 5M3

Sample Description	Sample Type	Mg	Mn	Mo	Na	Ni	P	Pb	Sb	Sc	Sr	Ti	Tl	V	W
		30-AR-TR %	30-AR-TR ppm	30-AR-TR ppm	30-AR-TR %	30-AR-TR ppm	30-AR-TR ppm	30-AR-TR ppm	30-AR-TR ppm	30-AR-TR ppm	30-AR-TR ppm	30-AR-TR ppm	30-AR-TR %	30-AR-TR ppm	30-AR-TR ppm
8235	Soil	0.82	312	<1	0.01	40	367	8	<2	4	21	0.06	<10	64	<10
8778	Soil	4.09	484	<1	0.02	430	285	4	<2	4	15	0.06	<10	44	<10
8779	Soil	3.07	573	<1	0.03	352	554	7	<2	4	27	0.06	<10	50	<10
8780	Soil	1.93	427	<1	0.02	209	229	4	<2	3	17	0.07	<10	53	<10
8781	Soil	1.58	567	<1	0.03	178	449	7	<2	3	34	0.08	<10	64	<10
8782	Soil	0.72	379	1	0.08	103	1563	9	<2	2	284	0.05	<10	41	<10
8783	Soil	1.80	403	<1	0.03	279	625	4	<2	3	40	0.07	<10	48	<10
8784	Soil	1.54	640	7	0.02	77	603	4	<2	4	24	0.18	<10	91	<10
8785	Soil	1.71	494	2	0.03	128	704	4	<2	5	32	0.14	<10	83	<10
8786	Soil	1.40	330	2	0.02	97	349	4	<2	3	23	0.13	<10	74	<10
8787	Soil	1.10	410	2	0.02	58	250	9	<2	3	21	0.13	<10	76	<10
8788	Soil	1.16	430	<1	0.02	65	315	5	<2	3	26	0.12	<10	69	<10
8789	Soil	1.16	405	<1	0.02	74	382	7	<2	4	27	0.12	<10	73	<10
8790	Soil	0.97	405	<1	0.03	62	606	10	<2	3	27	0.09	<10	61	<10
8791	Soil	0.53	696	1	0.01	28	559	7	<2	2	20	0.08	<10	47	<10
8792	Soil	0.58	552	<1	0.01	23	573	6	<2	2	21	0.08	<10	46	<10
8793	Soil	0.55	577	1	0.01	24	485	6	<2	2	15	0.07	<10	42	<10
8794	Soil	0.39	876	<1	0.01	22	797	6	<2	1	22	0.06	<10	33	<10
8795	Soil	0.59	360	1	0.01	31	891	7	<2	2	12	0.06	<10	50	<10
8796	Soil	0.67	184	1	0.01	22	490	9	<2	2	9	0.15	<10	79	<10
8797	Soil	0.46	561	<1	0.01	20	385	8	<2	1	10	0.06	<10	45	<10
8798	Soil	0.59	277	<1	0.01	23	310	8	<2	2	18	0.11	<10	63	<10
8799	Soil	0.73	446	<1	0.02	36	281	9	<2	3	30	0.10	<10	60	<10



INSPECTORATE

A Bureau Veritas Group Company

#200 - 11620 Horseshoe Way

Richmond, BC V7A 4V5 Canada

Certificate of Analysis

12-360-06824-01

All-In Exploration Solutions, Inc.

113A Platinum Road

Whitehorse, Yukon Y1A 5M3

Sample Description	Sample Type	Zn 30-AR-TR ppm	Zr 30-AR-TR ppm	Hg Hg-AR-TR-CVAA ppm
8751	Soil	71	<2	0.19
8752	Soil	55	<2	0.08
8753	Soil	67	<2	0.09
8754	Soil	37	2	0.05
8755	Soil	56	5	0.07
8756	Soil	36	2	0.04
8757	Soil	40	<2	0.05
8758	Soil	32	<2	0.03
8759	Soil	35	<2	0.03
8760	Soil	53	2	0.07
8761	Soil	62	3	0.05
8762	Soil	43	2	0.05
8763	Soil	63	3	0.04
8764	Soil	47	3	0.01
8765	Soil	62	3	0.03
8766	Soil	68	2	0.05
8767	Soil	61	2	0.03
8768	Soil	43	<2	0.08
8769	Soil	50	3	0.04
8770	Soil	54	3	0.04
8771	Soil	48	2	0.05
8772	Soil	53	2	0.11
8773	Soil	58	2	0.08
8774	Soil	62	3	0.04
10001	Soil	40	4	0.03
10002	Soil	42	4	0.03
10003	Soil	31	6	0.03
10004	Soil	43	5	0.02
10005	Soil	32	5	0.03
10006	Soil	50	4	0.04
10007	Soil	36	6	0.04
10008	Soil	25	4	0.02
10009	Soil	34	6	0.03
10010	Soil	30	4	0.02
10011	Soil	36	4	0.02
10012	Soil	38	6	0.07
10013	Soil	35	4	0.03
10014	Soil	42	5	0.03
10015	Soil	25	3	0.03
10016	Soil	51	7	0.03



INSPECTORATE

A Bureau Veritas Group Company

#200 - 11620 Horseshoe Way
Richmond, BC V7A 4V5 Canada

Certificate of Analysis

12-360-06824-01

All-In Exploration Solutions, Inc.
113A Platinum Road
Whitehorse, Yukon Y1A 5M3

Sample Description	Sample Type	Zn	Zr	Hg
		30-AR-TR ppm	30-AR-TR ppm	Hg-AR-TR-CVAA ppm
10017	Soil	73	4	0.04
10018	Soil	52	6	0.04
10019	Soil	40	5	0.03
10020	Soil	53	7	0.03
10021	Soil	47	10	0.04
10022	Soil	44	9	0.04
10023	Soil	44	10	0.04
10024	Soil	74	7	0.04
10025	Soil	89	6	0.03
8805	Soil	47	<2	0.05
8806	Soil	51	2	0.05
8807	Soil	51	<2	0.08
8237	Soil	200	4	0.05
8238	Soil	59	8	0.09
8239	Soil	67	9	0.05
8240	Soil	70	5	0.04
8241	Soil	74	6	0.03
8242	Soil	90	4	0.04
8243	Soil	92	4	0.03
8244	Soil	57	4	0.03
8245	Soil	52	4	0.03
8246	Soil	58	7	0.02
8247	Soil	57	7	0.04
8248	Soil	50	6	0.03
8249	Soil	59	5	0.06
8250	Soil	60	5	0.05
8800	Soil	66	4	0.02
8801	Soil	62	2	0.03
8802	Soil	75	3	0.02
8803	Soil	66	4	0.02
8804	Soil	79	3	0.05
8808	Soil	62	3	0.70
8809	Soil	73	3	0.24
8810	Soil	77	3	0.10
8811	Soil	59	3	0.08
8812	Soil	55	3	0.10
8813	Soil	51	5	0.06
8814	Soil	61	7	0.06
8815	Soil	74	3	0.07
8816	Soil	62	4	0.07



INSPECTORATE

A Bureau Veritas Group Company

#200 - 11620 Horseshoe Way

Richmond, BC V7A 4V5 Canada

Certificate of Analysis

12-360-06824-01

All-In Exploration Solutions, Inc.

113A Platinum Road

Whitehorse, Yukon Y1A 5M3

Sample Description	Sample Type	Zn 30-AR-TR ppm	Zr 30-AR-TR ppm	Hg Hg-AR-TR-CVAA ppm
8817	Soil	54	8	0.06
8236	Soil	42	<2	0.04
8237A	Soil	49	3	0.07
8238A	Soil	42	<2	0.03
8239A	Soil	51	3	0.04
8240A	Soil	39	2	0.05
8201	Soil	69	<2	0.14
8202	Soil	62	2	0.21
8203	Soil	73	2	0.35
8204	Soil	58	3	0.44
8205	Soil	55	<2	0.19
8206	Soil	38	<2	0.31
8207	Soil	54	<2	0.31
8208	Soil	50	<2	0.23
8209	Soil	58	<2	0.12
8210	Soil	53	<2	0.09
8211	Soil	51	3	0.08
8212	Soil	37	<2	0.06
8213	Soil	60	3	0.09
8214	Soil	49	<2	0.06
8215	Soil	59	<2	0.09
8216	Soil	50	<2	0.07
8217	Soil	52	<2	0.06
8218	Soil	76	<2	0.06
8219	Soil	42	<2	0.04
8220	Soil	41	<2	0.06
8221	Soil	51	3	0.05
8222	Soil	38	2	0.04
8223	Soil	74	<2	0.09
8224	Soil	42	<2	0.09
8225	Soil	52	<2	0.08
8226	Soil	42	<2	0.04
8227	Soil	51	<2	0.04
8228	Soil	41	<2	0.04
8229	Soil	47	<2	0.06
8230	Soil	23	<2	0.06
8231	Soil	46	<2	0.01
8232	Soil	39	<2	0.03
8233	Soil	36	<2	0.03
8234	Soil	31	3	0.03



INSPECTORATE

A Bureau Veritas Group Company

#200 - 11620 Horseshoe Way

Richmond, BC V7A 4V5 Canada

Certificate of Analysis

12-360-06824-01

All-In Exploration Solutions, Inc.

113A Platinum Road

Whitehorse, Yukon Y1A 5M3

Sample Description	Sample Type	Zn	Zr	Hg
		30-AR-TR ppm	30-AR-TR ppm	Hg-AR-TR-CVAA ppm
8235	Soil	26	3	0.03
8778	Soil	21	2	0.02
8779	Soil	37	2	0.04
8780	Soil	29	2	0.02
8781	Soil	38	<2	0.04
8782	Soil	220	<2	0.04
8783	Soil	33	<2	0.03
8784	Soil	53	<2	0.03
8785	Soil	59	<2	0.02
8786	Soil	40	<2	0.02
8787	Soil	49	<2	0.03
8788	Soil	45	2	0.03
8789	Soil	44	2	0.03
8790	Soil	46	<2	0.03
8791	Soil	46	<2	0.02
8792	Soil	44	<2	0.02
8793	Soil	54	<2	0.02
8794	Soil	50	<2	0.02
8795	Soil	57	<2	0.02
8796	Soil	34	2	0.02
8797	Soil	37	<2	0.01
8798	Soil	38	2	0.02
8799	Soil	49	3	0.02



INSPECTORATE

A Bureau Veritas Group Company

#200 - 11620 Horseshoe Way

Richmond, BC V7A 4V5 Canada

Certificate of Analysis

12-360-06824-01

All-In Exploration Solutions, Inc.

113A Platinum Road

Whitehorse, Yukon Y1A 5M3

Sample Description	Sample Type	Au Au-IAT-AAGenX ppb	Ag 30-AR-TR ppm	Al 30-AR-TR %	As 30-AR-TR ppm	Ba 30-AR-TR ppm	Bi 30-AR-TR ppm	Ca 30-AR-TR %	Cd 30-AR-TR ppm	Co 30-AR-TR ppm	Cr 30-AR-TR ppm	Cu 30-AR-TR ppm	Fe 30-AR-TR %	K 30-AR-TR %	La 30-AR-TR ppm
8751	Soil		<0.1	1.76	8	183	<2	0.35	1.3	17	104	33	3.12	0.01	0.09
8751 Dup			<0.1	1.78	10	182	<2	0.37	0.9	17	105	34	3.09	0.01	0.09
QCV1209-01677-0002-BLK			<0.1	<0.01	<5	<10	<2	<0.01	<0.5	<1	<1	<1	<0.01	<0.01	<2
STD-Oreas501 expected			0.7	2.20	17			1.40	0.4	13	88	2670	4.10	1.20	29
STD-Oreas501 result			0.4	2.05	26			1.25	1.5	14	82	2751	4.10	1.17	28
8769	Soil		<0.1	1.72	12	179	<2	0.48	0.6	13	83	59	2.76	0.27	10
8769 Dup			<0.1	1.79	11	180	<2	0.49	0.6	14	83	58	2.88	0.28	10
QCV1209-01677-0005-BLK			<0.1	<0.01	<5	<10	<2	<0.01	<0.5	<1	<1	<1	<0.01	<0.01	<2
STD-Oreas501 expected			0.7	2.20	17			1.40	0.4	13	88	2670	4.10	1.20	29
STD-Oreas501 result			0.4	2.07	22			1.28	1.3	14	83	2757	4.10	1.23	28
10013	Soil		<0.1	1.60	6	140	<2	0.62	<0.5	9	71	17	2.13	0.06	7
10013 Dup			<0.1	1.63	6	138	<2	0.64	<0.5	8	70	16	2.23	0.06	8
QCV1209-01677-0008-BLK			<0.1	<0.01	<5	<10	<2	<0.01	<0.5	<1	<1	<1	<0.01	<0.01	<2
STD-OREAS 902-AR expected			0.3	0.54	569			4.19		908	24	3080	3.04	0.27	
STD-OREAS 902-AR result			0.3	0.48	562			4.24		906	22	3109	2.85	0.28	
8239	Soil		<0.1	3.81	13	88	<2	0.93	1.0	28	144	77	4.60	0.07	6
8239 Dup			<0.1	3.69	11	86	<2	0.92	0.7	27	141	74	4.48	0.07	6
QCV1209-01677-0011-BLK			<0.1	<0.01	<5	<10	<2	<0.01	<0.5	<1	<1	<1	<0.01	<0.01	<2
STD-OREAS 902-AR expected			0.3	0.54	569			4.19		908	24	3080	3.04	0.27	
STD-OREAS 902-AR result			0.3	0.52	531			4.35		881	22	2988	2.94	0.29	
8809	Soil		<0.1	2.62	6	241	<2	1.01	0.9	21	139	44	3.60	0.08	6
8809 Dup			<0.1	2.57	<5	231	<2	0.99	1.1	20	131	41	3.60	0.07	6
QCV1209-01677-0014-BLK			<0.1	<0.01	<5	<10	<2	<0.01	<0.5	<1	<1	<1	<0.01	<0.01	<2
STD-Oreas501 expected			0.7	2.20	17			1.40	0.4	13	88	2670	4.10	1.20	29
STD-Oreas501 result			0.3	2.11	22			1.62	1.1	16	86	2633	4.29	0.95	26
8205	Soil		<0.1	2.46	23	218	<2	0.28	1.0	11	38	54	3.79	0.06	11
8205 Dup			<0.1	2.38	21	216	<2	0.28	1.0	11	38	54	3.80	0.05	10
QCV1209-01677-0017-BLK			<0.1	<0.01	<5	<10	<2	<0.01	<0.5	<1	<1	<1	<0.01	<0.01	<2
STD-OREAS-903 expected			0.3	0.54	48			0.63	0.2	131	26	6710	3.94		23
STD-OREAS-903 result			0.4	0.48	47			0.64	2.8	139	26	6605	3.61		18
8223	Soil		<0.1	2.03	14	272	<2	0.50	0.7	11	42	51	2.95	0.05	12
8223 Dup			<0.1	2.02	10	267	<2	0.51	0.8	11	41	50	2.95	0.05	12
QCV1209-01677-0020-BLK			<0.1	<0.01	<5	<10	<2	<0.01	<0.5	<1	<1	<1	<0.01	<0.01	<2
STD-OREAS 902-AR expected			0.3	0.54	569			4.19		908	24	3080	3.04		
STD-OREAS 902-AR result			0.2	0.50	592			4.17		880	22	3188	2.89		
8783	Soil		<0.1	1.24	<5	119	<2	1.06	1.8	18	111	34	2.22	0.07	6
8783 Dup			<0.1	1.20	5	114	<2	1.01	1.6	17	105	32	2.17	0.07	6
QCV1209-01677-0023-BLK			<0.1	<0.01	<5	<10	<2	<0.01	<0.5	<1	<1	1	<0.01	<0.01	<2
STD-CDN-ME-12 expected				52.5								4280			
STD-CDN-ME-12 result				50.2								4666			



INSPECTORATE

A Bureau Veritas Group Company

#200 - 11620 Horseshoe Way
Richmond, BC V7A 4V5 Canada

Certificate of Analysis

12-360-06824-01

All-In Exploration Solutions, Inc.
113A Platinum Road
Whitehorse, Yukon Y1A 5M3

Sample Description	Sample Type	Au	Ag	Al	As	Ba	Bi	Ca	Cd	Co	Cr	Cu	Fe	K	La
		Au-1AT-AAGenX ppb	30-AR-TR ppm	30-AR-TR %	30-AR-TR ppm	30-AR-TR ppm	30-AR-TR ppm	30-AR-TR %	30-AR-TR ppm	30-AR-TR ppm	30-AR-TR ppm	30-AR-TR ppm	30-AR-TR ppm	30-AR-TR %	30-AR-TR %
QCV1209-01677-0025-BLK		5	<0.1	<0.01	<5	<10	<2	<0.01	<0.5	<1	<1	<1	0.01	0.01	2
STD-DS-1 expected			0.5		6930							27	<0.01	<0.01	<2
STD-DS-1 result			0.1		6543							26			
8751	Soil	7													
8751 Dup		<5													
QCV1209-01678-0002-BLK		<5													
10003	Soil	<5													
10003 Dup		16													
STD-OxA89 expected															
STD-OxA89 result															
QCV1209-01678-0005-BLK		5													
8237	Soil	16													
8237 Dup		16													
STD-OxJ95 expected		2337													
STD-OxJ95 result		2298													
QCV1209-01678-0008-BLK		<5													
8815	Soil	<5													
8815 Dup		<5													
STD-Oxi96 expected		1802													
STD-Oxi96 result		1788													
QCV1209-01678-0011-BLK		<5													
8219	Soil	<5													
8219 Dup		<5													
STD-Oxi96 expected		1802													
STD-Oxi96 result		1691													
8787	Soil	<5													
8787 Dup		<5													
STD-OxF100 expected		804													
STD-OxF100 result		765													
QCV1209-01678-0016-BLK		<5													
QCV1209-01678-0017-BLK		<5													
STD-OxJ95 expected		2337													
STD-OxJ95 result		2365													



INSPECTORATE

A Bureau Veritas Group Company

#200 - 11620 Horseshoe Way

Richmond, BC V7A 4V5 Canada

Certificate of Analysis

12-360-06824-01

All-In Exploration Solutions, Inc.

113A Platinum Road

Whitehorse, Yukon Y1A 5M3

Sample Description	Sample Type	Mg 30-AR-TR %	Mn 30-AR-TR ppm	Mo 30-AR-TR ppm	Na 30-AR-TR %	Ni 30-AR-TR ppm	P 30-AR-TR ppm	Pb 30-AR-TR ppm	Sb 30-AR-TR ppm	Sc 30-AR-TR ppm	Sr 30-AR-TR ppm	Ti 30-AR-TR %	Tl 30-AR-TR ppm	V 30-AR-TR ppm	W 30-AR-TR ppm
8751	Soil	1.64	585	3	0.02	101	385	<2	2	3	27	0.13	<10	75	<10
8751 Dup		1.63	582	4	0.03	101	402	<2	2	4	27	0.14	<10	75	<10
QCV1209-01677-0002-BLK		<0.01	<5	<1	<0.01	<1	<10	<2	<2	<1	<1	<0.01	<10	<1	<10
STD-Oreas501 expected		1.30	400	58			900	10		7	63			103	
STD-Oreas501 result		1.19	355	57			920	11		6	63			97	
8769	Soil	1.03	435	<1	0.03	37	690	<2	<2	5	37	0.16	<10	88	<10
8769 Dup		1.04	445	<1	0.03	37	689	<2	<2	5	37	0.17	<10	89	<10
QCV1209-01677-0005-BLK		<0.01	<5	<1	<0.01	<1	<10	<2	<2	<1	<1	<0.01	<10	<1	<10
STD-Oreas501 expected		1.30	400	58			900	10		7	63			103	
STD-Oreas501 result		1.22	375	54			941	13		6	62			99	
10013	Soil	0.76	331	<1	0.02	41	316	<2	<2	4	16	0.14	<10	69	<10
10013 Dup		0.76	330	<1	0.02	40	306	<2	<2	4	16	0.15	<10	70	<10
QCV1209-01677-0008-BLK		<0.01	<5	<1	<0.01	<1	<10	<2	<2	<1	<1	<0.01	<10	<1	<10
STD-OREAS 902-AR expected		2.24	460	13		159	670			3	22		0	9	
STD-OREAS 902-AR result		2.16	456	11		150	667			2	23		<10	9	
8239	Soil	1.63	575	<1	0.02	100	208	<2	<2	9	16	0.26	<10	145	<10
8239 Dup		1.58	560	<1	0.02	98	219	<2	<2	8	15	0.26	<10	142	<10
QCV1209-01677-0011-BLK		<0.01	<5	<1	<0.01	<1	<10	<2	<2	<1	<1	<0.01	<10	<1	<10
STD-OREAS 902-AR expected		2.24	460	13		159	670			3	22		0	9	
STD-OREAS 902-AR result		2.28	459	11		148	676			2	22		<10	9	
8809	Soil	1.36	812	<1	0.02	84	498	<2	<2	5	35	0.13	<10	97	<10
8809 Dup		1.30	804	<1	0.02	82	477	<2	6	5	32	0.12	<10	92	<10
QCV1209-01677-0014-BLK		<0.01	<5	<1	<0.01	<1	<10	<2	<2	<1	<1	<0.01	<10	<1	<10
STD-Oreas501 expected		1.30	400	58			900	10		7	63			103	
STD-Oreas501 result		1.25	398	61			1107	11		6	52			98	
8205	Soil	0.77	403	<1	0.01	23	1004	<2	3	6	18	0.02	<10	75	<10
8205 Dup		0.76	400	<1	0.01	22	993	<2	2	5	17	0.02	<10	74	<10
QCV1209-01677-0017-BLK		<0.01	<5	<1	<0.01	<1	<10	<2	<2	<1	<1	<0.01	<10	<1	<10
STD-OREAS-903 expected		0.23	710	4		49	1030			3	18		0	13	
STD-OREAS-903 result		0.23	671	3		49	914			2	16		<10	13	
8223	Soil	0.62	650	<1	0.01	22	763	5	3	2	26	0.04	<10	74	<10
8223 Dup		0.61	651	<1	0.01	22	739	6	4	2	26	0.04	<10	73	<10
QCV1209-01677-0020-BLK		<0.01	<5	<1	<0.01	<1	<10	<2	<2	<1	<1	<0.01	<10	<1	<10
STD-OREAS 902-AR expected		2.24	460	13		159	670	11		3	22		0	9	
STD-OREAS 902-AR result		2.16	469	11		143	542	16		2	29		<10	10	
8783	Soil	1.80	403	<1	0.03	279	625	4	<2	3	40	0.07	<10	48	<10
8783 Dup		1.72	385	<1	0.03	268	614	4	<2	3	39	0.06	<10	46	<10
QCV1209-01677-0023-BLK		<0.01	<5	<1	<0.01	<1	<10	<2	<2	<1	<1	<0.01	<10	<1	<10
STD-CDN-ME-12 expected		0.78						2220							
STD-CDN-ME-12 result		0.67						2157							



INSPECTORATE

A Bureau Veritas Group Company

#200 - 11620 Horseshoe Way
Richmond, BC V7A 4V5 Canada

Certificate of Analysis

12-360-06824-01

All-In Exploration Solutions, Inc.

113A Platinum Road

Whitehorse, Yukon Y1A 5M3

Sample Description	Sample Type	Mg	Mn	Mo	Na	Ni	P	Pb	Sb	Sc	Sr	Ti	Tl	V	W
		30-AR-TR %	30-AR-TR ppm	30-AR-TR ppm	30-AR-TR %	30-AR-TR ppm	30-AR-TR ppm	30-AR-TR ppm	30-AR-TR ppm	30-AR-TR ppm	30-AR-TR ppm	30-AR-TR ppm	30-AR-TR %	30-AR-TR ppm	30-AR-TR ppm
QCV1209-01677-0025-BLK		<0.01	<5	<1	<0.01	<1	<10	<2	<2	<1	<1	<0.01	<10	<1	<10
STD-DS-1 expected		2.76	437				340	14					20		
STD-DS-1 result		2.49	417				316	11					15		
STD-OxA89 expected															
STD-OxA89 result															
STD-OxJ95 expected															
STD-OxJ95 result															
STD-Oxi96 expected															
STD-Oxi96 result															
STD-Oxi96 expected															
STD-Oxi96 result															
STD-OxF100 expected															
STD-OxF100 result															
STD-OxJ95 expected															
STD-OxJ95 result															



INSPECTORATE

A Bureau Veritas Group Company

#200 - 11620 Horseshoe Way

Richmond, BC V7A 4V5 Canada

Certificate of Analysis

12-360-06824-01

All-In Exploration Solutions, Inc.

113A Platinum Road

Whitehorse, Yukon Y1A 5M3

Sample Description	Sample Type	Zn 30-AR-TR ppm	Zr 30-AR-TR ppm	Hg Hg-AR-TR-CVAA ppm
8751	Soil	71	<2	0.19
8751 Dup		70	<2	0.12
QCV1209-01677-0002-BLK		<2	<2	<0.01
STD-Oreas501 expected			12	
STD-Oreas501 result			9	
8769	Soil	50	3	0.04
8769 Dup		50	3	0.03
QCV1209-01677-0005-BLK		<2	<2	<0.01
STD-Oreas501 expected			12	
STD-Oreas501 result			9	
10013	Soil	35	4	0.03
10013 Dup		34	4	0.03
QCV1209-01677-0008-BLK		<2	<2	<0.01
STD-OREAS 902-AR expected				
STD-OREAS 902-AR result				
8239	Soil	67	9	0.05
8239 Dup		67	9	0.05
QCV1209-01677-0011-BLK		<2	<2	<0.01
STD-OREAS 902-AR expected				
STD-OREAS 902-AR result				
8809	Soil	73	3	0.24
8809 Dup		70	3	0.12
QCV1209-01677-0014-BLK		<2	<2	<0.01
STD-Oreas501 expected		85	12	
STD-Oreas501 result		94	10	
8205	Soil	55	<2	0.19
8205 Dup		55	<2	0.14
QCV1209-01677-0017-BLK		<2	<2	<0.01
STD-OREAS-903 expected		21	18	
STD-OREAS-903 result		21	5	
8223	Soil	74	<2	0.09
8223 Dup		74	<2	0.08
QCV1209-01677-0020-BLK		<2	<2	<0.01
STD-OREAS 902-AR expected				
STD-OREAS 902-AR result				
8783	Soil	33	<2	0.03
8783 Dup		30	<2	<0.01
QCV1209-01677-0023-BLK		<2	<2	<0.01
STD-CDN-ME-12 expected		2750		
STD-CDN-ME-12 result		2675		



INSPECTORATE

A Bureau Veritas Group Company

#200 - 11620 Horseshoe Way
Richmond, BC V7A 4V5 Canada

Certificate of Analysis

12-360-06824-01

All-In Exploration Solutions, Inc.
113A Platinum Road
Whitehorse, Yukon Y1A 5M3

Sample Description	Sample Type	Zn	Zr	Hg
		30-AR-TR ppm	30-AR-TR ppm	Hg-AR-TR-CVAA ppm
QCV1209-01677-0025-BLK		<2	<2	<0.01
STD-DS-1 expected		206		82.00
STD-DS-1 result		197		84.72
STD-OxA89 expected				
STD-OxA89 result				
STD-OxJ95 expected				
STD-OxJ95 result				
STD-Oxi96 expected				
STD-Oxi96 result				
STD-Oxi96 expected				
STD-Oxi96 result				
STD-OxF100 expected				
STD-OxF100 result				
STD-OxJ95 expected				
STD-OxJ95 result				



INSPECTORATE

A Bureau Veritas Group Company

Certificate of Analysis

12-360-08154-01

Inspectorate Exploration & Mining Services Ltd.

#200 - 11620 Horseshoe Way

Richmond, BC V7A 4V5 Canada

Phone: 604-272-7818

Distribution List

Attention: Ed Long
113A Platinum Road
Whitehorse, Yukon Y1A 5M3
Phone: 867-393-3006
EMail: allinexploration@gmail.com

Submitted By: **All-In Exploration Solutions, Inc.**
113A Platinum Road
Whitehorse, Yukon Y1A 5M3

Date Received: 10/29/2012

Date Completed: 11/08/2012

Invoice:

Attention: **Ed Long**

Project: **KOHO**

Description: **KOHO**

Location	Samples	Type	Preparation Description
Whitehorse, YT	7	Rock	SP-RX-2K/Rock/Chips/Drill Core/Cuttings <2Kg

Location	Quantity	Method	Description
Vancouver, BC	7	Au-1AT-AAGenX	Au, 1AT Fire Assay, AAS
Vancouver, BC	7	30-AR-TR	30 Element, Aqua Regia, ICP, Trace Level
Vancouver, BC	7	Hg-AR-TR-CVAA	Hg, AQR, CVAA, Trace Levels

The results of this assay were based solely upon the content of the sample submitted. Any decision to invest should be made only after the potential investment value of the claim or deposit has been determined based on the results of assays of multiple samples of geologic materials collected by the prospective investor or by a qualified person selected by him and based on an evaluation of all engineering data which is available concerning any proposed project. For our complete terms and conditions please see our website at www.inspectorate.com.

For and on behalf of **Inspectorate Exploration and Mining Services Ltd**

By

Sofia Devota – Operations Manager



INSPECTORATE

A Bureau Veritas Group Company

#200 - 11620 Horseshoe Way

Richmond, BC V7A 4V5 Canada

Certificate of Analysis

12-360-08154-01

All-In Exploration Solutions, Inc.

113A Platinum Road

Whitehorse, Yukon Y1A 5M3

Sample Description	Sample Type	Au Au-1AT-AAGenX ppb	Ag 30-AR-TR ppm	Al 30-AR-TR %	As 30-AR-TR ppm	Ba 30-AR-TR ppm	Bi 30-AR-TR ppm	Ca 30-AR-TR %	Cd 30-AR-TR ppm	Co 30-AR-TR ppm	Cr 30-AR-TR ppm	Cu 30-AR-TR ppm	Fe 30-AR-TR %	K 30-AR-TR %	La 30-AR-TR ppm
12KOHOR001A	Rock	<5	<0.1	0.24	<5	80	<2	8.31	<0.5	5	80	51	0.60	0.10	7
12KOHOR002A	Rock	<5	<0.1	0.08	6	75	<2	1.51	<0.5	3	141	17	0.85	0.05	<2
12KOHOR003A	Rock	26	0.2	0.24	37	93	<2	0.89	<0.5	20	98	61	2.87	0.13	<2
12KOHOR004A	Rock	<5	<0.1	0.31	5	204	<2	0.61	<0.5	2	62	12	0.68	0.15	<2
12KOHOR005A	Rock	27	<0.1	0.13	<5	51	<2	0.86	<0.5	1	125	18	0.69	0.07	<2
12KOHOR006A	Rock	18	<0.1	0.44	6	82	<2	0.15	<0.5	3	32	11	0.79	0.20	5
12KOHOR007A	Rock	8	<0.1	0.29	56	13	<2	>10	<0.5	28	352	23	3.83	0.03	<2



INSPECTORATE

A Bureau Veritas Group Company

#200 - 11620 Horseshoe Way

Richmond, BC V7A 4V5 Canada

Certificate of Analysis

12-360-08154-01

All-In Exploration Solutions, Inc.

113A Platinum Road

Whitehorse, Yukon Y1A 5M3

Sample Description	Sample Type	Mg	Mn	Mo	Na	Ni	P	Pb	Sb	Sc	Sr	Ti	Tl	V	W
		30-AR-TR %	30-AR-TR ppm	30-AR-TR ppm	30-AR-TR %	30-AR-TR ppm	30-AR-TR ppm	30-AR-TR ppm	30-AR-TR ppm	30-AR-TR ppm	30-AR-TR ppm	30-AR-TR ppm	30-AR-TR %	30-AR-TR ppm	30-AR-TR ppm
		0.01	5	1	0.01	1	10	2	2	1	1	0.01	10	1	10
12KOHOR001A	Rock	0.45	564	1	<0.01	39	701	5	<2	4	601	<0.01	<10	6	<10
12KOHOR002A	Rock	0.49	357	2	<0.01	13	162	<2	4	3	49	<0.01	<10	4	<10
12KOHOR003A	Rock	0.32	415	9	<0.01	76	351	8	6	4	44	<0.01	<10	11	<10
12KOHOR004A	Rock	0.23	158	1	<0.01	10	14	<2	<2	<1	20	<0.01	<10	4	<10
12KOHOR005A	Rock	0.30	157	<1	<0.01	7	39	<2	<2	<1	24	<0.01	<10	4	<10
12KOHOR006A	Rock	0.05	207	<1	0.04	5	358	<2	2	<1	7	<0.01	<10	3	<10
12KOHOR007A	Rock	5.05	1003	<1	0.02	419	119	10	3	7	415	<0.01	<10	34	<10



INSPECTORATE

A Bureau Veritas Group Company

#200 - 11620 Horseshoe Way

Richmond, BC V7A 4V5 Canada

Certificate of Analysis

12-360-08154-01

All-In Exploration Solutions, Inc.

113A Platinum Road

Whitehorse, Yukon Y1A 5M3

Sample Description	Sample Type	Zn	Zr	Hg
		30-AR-TR ppm	30-AR-TR ppm	Hg-AR-TR-CVAA ppm
		2	2	0.01
12KOHOR001A	Rock	41	<2	0.04
12KOHOR002A	Rock	24	<2	0.03
12KOHOR003A	Rock	121	5	0.15
12KOHOR004A	Rock	16	<2	0.03
12KOHOR005A	Rock	9	<2	0.03
12KOHOR006A	Rock	25	7	0.02
12KOHOR007A	Rock	16	<2	0.06



INSPECTORATE

Certificate of Analysis

12-360-08154-01

All-In Exploration Solutions, Inc.
113A Platinum Road
Whitehorse, Yukon Y1A 5M3

A Bureau Veritas Group Company

#200 - 11620 Horseshoe Way
Richmond, BC V7A 4V5 Canada

Sample Description	Sample Type	Au	Ag	Al	As	Ba	Bi	Ca	Cd	Co	Cr	Cu	Fe	K	La
		Au-1AT-AA GenX ppb	30-AR-TR ppm	30-AR-TR %	30-AR-TR ppm	30-AR-TR ppm	30-AR-TR ppm	30-AR-TR %	30-AR-TR ppm	30-AR-TR ppm	30-AR-TR ppm	30-AR-TR ppm	30-AR-TR ppm	30-AR-TR %	30-AR-TR %
12KOHOR001A	Rock	5	<0.1	0.24	<5	80	<2	8.31	<0.5	5	80	51	0.60	0.10	7
12KOHOR001A Dup			<0.1	0.21	<5	79	<2	7.24	<0.5	4	77	49	0.52	0.09	6
QCV1210-02291-0002-BLK			<0.1	<0.01	<5	<10	<2	<0.01	<0.5	<1	<1	<1	<0.01	<0.01	<2
STD-OREAS 902-AR expected			0.3		569			4.19		908	24	3080	3.04	0.27	
STD-OREAS 902-AR result			0.3		573			4.04		850	21	3191	2.93	0.26	
12KOHOR001A	Rock		<5												
12KOHOR001A Dup			<5												
QCV1210-02292-0002-BLK			<5												
STD-OxF100 expected			804												
STD-OxF100 result			765												



INSPECTORATE

A Bureau Veritas Group Company

#200 - 11620 Horseshoe Way
Richmond, BC V7A 4V5 Canada

Certificate of Analysis

12-360-08154-01

All-In Exploration Solutions, Inc.
113A Platinum Road
Whitehorse, Yukon Y1A 5M3

Sample Description	Sample Type	Mg	Mn	Mo	Na	Ni	P	Pb	Sb	Sc	Sr	Ti	Tl	V	W
		30-AR-TR %	30-AR-TR ppm	30-AR-TR ppm	30-AR-TR %	30-AR-TR ppm	30-AR-TR ppm	30-AR-TR ppm	30-AR-TR ppm	30-AR-TR ppm	30-AR-TR ppm	30-AR-TR ppm	30-AR-TR %	30-AR-TR ppm	30-AR-TR ppm
		0.01	5	1	0.01	1	10	2	2	1	1	0.01	10	1	10
12KOHOR001A	Rock	0.45	564	1	<0.01	39	701	5	<2	4	601	<0.01	<10	6	<10
12KOHOR001A Dup		0.39	557	1	<0.01	33	690	3	<2	4	592	<0.01	<10	5	<10
QCV1210-02291-0002-BLK		<0.01	<5	<1	<0.01	<1		<2	<2	<1	<1	<0.01	<10	<1	<10
STD-OREAS 902-AR expected		2.24	460	13				11		3	22		0		
STD-OREAS 902-AR result		2.12	449	12				16		2	23		<10		
STD-OxF100 expected															
STD-OxF100 result															



INSPECTORATE

Certificate of Analysis

12-360-08154-01

All-In Exploration Solutions, Inc.
113A Platinum Road
Whitehorse, Yukon Y1A 5M3

A Bureau Veritas Group Company

#200 - 11620 Horseshoe Way
Richmond, BC V7A 4V5 Canada

Sample Description	Sample Type	Zn	Zr	Hg
		30-AR-TR ppm	30-AR-TR ppm	Hg-AR-TR-CVAA ppm
		2	2	0.01
12KOHOR001A	Rock	41	<2	0.04
12KOHOR001A Dup		38	<2	0.04
QCV1210-02291-0002-BLK		<2	<2	<0.01
STD-OREAS 902-AR expected				
STD-OREAS 902-AR result				
STD-OxF100 expected				
STD-OxF100 result				