



ALS Canada Ltd.  
2103 Dollarton Hwy  
North Vancouver BC V7H 0A7  
Phone: 604 984 0221 Fax: 604 984 0218 www.alsglobal.com

To: KLUANE DRILLING LTD  
14 MACDONALD ROAD  
WHITEHORSE YT Y1A 4L2

Page: 1  
Finalized Date: 5-AUG-2012  
Account: KLUDRIL

**CERTIFICATE WH12162749**

Project: Whitehorse Copper

P.O. No.:

This report is for 29 Drill Core samples submitted to our lab in Whitehorse, YT, Canada on 12-JUL-2012.

The following have access to data associated with this certificate:

ROBERT STROSHEIN

**SAMPLE PREPARATION**

ALS CODE	DESCRIPTION
WEI-21	Received Sample Weight
LOG-22	Sample login - Rcd w/o BarCode
BAG-01	Bulk Master for Storage
CRU-QC	Crushing QC Test
PUL-QC	Pulverizing QC Test
CRU-31	Fine crushing - 70% <2mm
SPL-21	Split sample - riffle splitter
PUL-32	Pulverize 1000g to 85% < 75 um

**ANALYTICAL PROCEDURES**

ALS CODE	DESCRIPTION	INSTRUMENT
ME-ICP41	35 Element Aqua Regia ICP-AES	ICP-AES
ME-OG46	Ore Grade Elements - AquaRegia	ICP-AES
Cu-OG46	Ore Grade Cu - Aqua Regia	VARIABLE
Cu-AA46	Ore grade Cu - aqua regia/AA	AAS
Au-ICP21	Au 30g FA ICP-AES Finish	ICP-AES

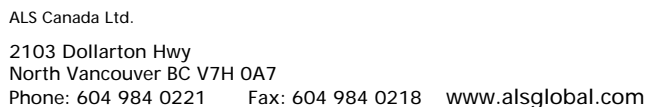
To: KLUANE DRILLING LTD  
ATTN: ROBERT STROSHEIN  
14 MACDONALD ROAD  
WHITEHORSE YT Y1A 4L2

This is the Final Report and supersedes any preliminary report with this certificate number. Results apply to samples as submitted. All pages of this report have been checked and approved for release.

Signature:

  
Colin Ramshaw, Vancouver Laboratory Manager





Page: 2 - B  
Total # Pages: 2 (A - C)  
Finalized Date: 5-AUG-2012  
Account: KLUDRIL

**CERTIFICATE OF ANALYSIS    WH12162749**

Sample Description	Method Analyte Units LOR	ME-ICP41	ME-ICP41	ME-ICP41	ME-ICP41	ME-ICP41	ME-ICP41	ME-ICP41	ME-ICP41	ME-ICP41	ME-ICP41	ME-ICP41	ME-ICP41	ME-ICP41	ME-ICP41	ME-ICP41
		Ga	Hg	K	La	Mg	Mn	Mo	Na	Ni	P	Pb	S	Sb	Sc	Sr
		ppm 10	ppm 1	% 0.01	ppm 10	% 0.01	ppm 5	ppm 1	% 0.01	ppm 1	ppm 10	ppm 2	% 0.01	ppm 2	ppm 1	ppm 1
K931711		10	<1	0.06	10	0.33	572	712	0.01	3	890	5	0.07	<2	2	51
K931712		<10	<1	0.12	10	0.38	336	673	0.04	6	810	12	0.07	<2	1	187
K931713		<10	<1	0.07	10	0.59	195	646	0.08	15	860	3	0.19	<2	1	78
K931714		10	<1	0.16	10	0.22	134	408	0.04	4	960	7	0.07	<2	1	223
K931715		10	<1	0.85	20	5.44	723	6	0.02	21	490	3	0.34	2	4	42
K931716		10	<1	2.89	20	5.80	209	3	0.04	24	20	2	0.41	<2	1	19
K931717		10	<1	1.56	20	4.37	179	3	0.03	20	30	2	0.04	<2	<1	23
K931718		10	<1	0.02	<10	8.57	1360	1	0.01	9	50	<2	0.17	<2	2	12
K931719		10	<1	0.47	10	5.37	648	22	0.03	43	770	10	0.25	<2	2	139
K931720		10	<1	0.82	<10	15.05	1390	1	0.03	8	10	<2	0.35	<2	2	6
K931721		10	<1	0.63	<10	13.95	1400	1	0.02	8	10	<2	0.54	<2	2	4
K931722		10	<1	0.98	<10	8.42	1050	<1	0.02	10	20	<2	0.47	<2	<1	7
K931723		10	<1	0.99	<10	6.97	811	1	0.03	9	110	4	0.55	<2	1	16
K931724		10	<1	0.94	<10	4.73	384	1	0.04	11	130	6	0.43	<2	1	31
K931725		10	<1	0.01	<10	0.63	436	3	0.02	4	510	3	0.56	2	<1	92
K931726		10	<1	0.01	<10	0.88	410	3	0.01	1	1020	6	1.01	25	<1	68
K931727		<10	<1	<0.01	<10	0.61	306	2	<0.01	1	980	3	1.14	26	<1	20
K931728		<10	<1	<0.01	<10	0.65	121	1	<0.01	1	500	2	0.62	5	<1	10
K931729		<10	<1	<0.01	<10	1.31	235	3	0.01	1	1260	3	0.94	4	<1	28
K931730		10	<1	<0.01	<10	1.07	465	1	<0.01	14	510	6	1.65	3	<1	14
K931731		10	<1	0.01	<10	2.83	610	<1	0.01	31	520	4	2.10	<2	1	29
K931732		10	<1	0.02	<10	2.19	595	2	0.04	41	1030	2	1.66	2	2	102
K931733		10	<1	0.02	<10	2.85	832	2	0.04	51	1160	2	1.11	<2	2	100
K931734		10	<1	0.03	<10	2.01	950	4	0.10	45	1080	<2	1.81	4	1	221
K931735		<10	<1	<0.01	<10	0.76	273	1	<0.01	4	610	4	1.68	11	<1	12
K931736		10	<1	0.03	<10	2.53	346	1	0.04	6	390	7	0.75	2	1	83
K931737		20	<1	<0.01	<10	1.10	431	<1	0.01	<1	160	<2	0.70	<2	<1	13
K931738		10	<1	<0.01	<10	1.23	422	<1	<0.01	<1	60	3	1.28	<2	<1	12
K931739																



2103 Dollarton Hwy  
North Vancouver BC V7H 0A7

Phone: 604 984 0221      Fax: 604 984 0218      [www.alsglobal.com](http://www.alsglobal.com)

**TO: KLUANE DRILLING LTD  
14 MACDONALD ROAD  
WHITEHORSE YT Y1A 4L2**

Page: 2 - C  
Total # Pages: 2 (A - C)  
Finalized Date: 5-AUG-2012  
Account: KLUDRIL

Project: Whitehorse Copper

**CERTIFICATE OF ANALYSIS    WH12162749**

[illegible]