

ARCHER, CATHRO & ASSOCIATES (1981) LIMITED
1016 - 510 West Hastings Street
Vancouver, B.C. V6B1L8

Telephone: 604-688-2568

Fax: 604-688-2578

ASSESSMENT REPORT

describing

SOIL SAMPLING AND PROSPECTING

at the

LISA PROPERTY

Lisa 1-36 YD29801- YD29836
37-76 YF31321-YF31366

NTS 105N/02

Latitude 63°08'N; Longitude 132°34'W

Field work performed on July 19, 2012

located in the

Mayo Mining District
Yukon Territory

prepared by

Archer, Cathro & Associates (1981) Limited

for

NEW DIMENSION RESOURCES LTD.

and

STRATEGIC METALS LTD.

by

A. Mitchell, B.Sc. Geology, GIT

December 2012

CONTENTS

INTRODUCTION	1
PROPERTY LOCATION, CLAIM DATA AND ACCESS	1
HISTORY AND PREVIOUS WORK	1
GEOMORPHOLOGY AND CLIMATE	2
GEOLOGY	2
MINERALIZATION	5
SOIL GEOCHEMISTRY	6
EXPLORATION MODEL	7
DISCUSSION AND CONCLUSIONS	9
REFERENCES	10

APPENDICES

I	STATEMENT OF QUALIFICATIONS
II	ROCK SAMPLE DESCRIPTIONS
III	CERTIFICATES OF ANALYSIS
IV	STATEMENT OF EXPENDITURES

TABLES

I	Lithological Units	3
---	--------------------	---

FIGURES

<u>No.</u>	<u>Description</u>	<u>Follows Page</u>
1	Property Location	1
2	Claim Locations	1
3	Tectonic Setting	2
4	Regional Geology	In Pocket
5	Property Geology	5
6	Sample Locations	5
7	Arsenic Geochemistry	5
8	Gold Geochemistry	5
9	Antimony Geochemistry	5
10	Bismuth Geochemistry	5
11	Copper Geochemistry	5
12	Tungsten Geochemistry	5
13	Model for Reduced Intrusion-Related Gold Systems	7

INTRODUCTION

The Lisa property is located within the Tombstone Gold Belt in east-central Yukon (Figure 1). It covers auriferous quartz veins and copper±tungsten±gold skarn showings. The property is owned by Strategic Metals Ltd. and is under option to New Dimension Resources Ltd.

This report describes prospecting and geochemical surveys conducted on July 19, 2012 by Archer, Cathro and Associates (1981) Limited on behalf of New Dimension. The author interpreted all data from this project, and his Statement of Qualifications is in Appendix I.

PROPERTY LOCATION, CLAIM DATA AND ACCESS

The Lisa property is located in east-central Yukon at latitude 63°08' north and longitude 132°34' west on NTS map sheet 105N/02 (Figure 1). It comprises 76 contiguous quartz claims that cover an area of about 1550 hectares (15.5 km²). The claims are registered with the Mayo Mining Recorder in the name of Archer Cathro, which holds them in trust for Strategic Metals. Specifics concerning claim registration are tabulated below, while the locations of individual claims are shown on Figure 2.

<u>Claim Name</u>	<u>Grant Number</u>	<u>Expiry Date*</u>
Lisa 1-36	YD29801- YD29836	March 31, 2016
Lisa 37-76	YF31321-YF31366	March 31, 2016

* Expiry dates include 2012 work which has been filed for assessment credit but not yet accepted.

Access to and from the property was provided by a Bell 206BL4 helicopter owned and operated by Fireweed Helicopters from a temporary base camp at the Rackla airstrip, which is located approximately 124 km to the northwest.

The Lisa property is located 7 km southwest of Fairweather Lake, which can accommodate float planes. The property lies 108 km northeast of Faro, the nearest supply centre. Faro is accessible via the Robert Campbell Highway in all seasons using two-wheel drive vehicles.

HISTORY AND PREVIOUS WORK

In the mid-1950s, Prospectors Airways Ltd. found copper-bearing float on the west side of small pluton (Minfile occurrence 105N 006 – Figure 2). In 1967, Atlas Exploration Ltd. inspected that showing on behalf of the Hess Project (a joint venture with Phillip Brothers (Canada) Ltd. and Quebec Cartier Mining Company), but no claims were staked (Deklerk and Traynor, 2005).

In 1990, the Geological Survey of Canada (GSC) completed a reconnaissance-scale stream sediment and water sampling survey on NTS map sheet 105N (Day *et. al.*, 2009). A sample collected from a creek draining the Lisa property returned 99th percentile arsenic (250 ppm), bismuth (4.5 ppm) and tungsten (12 ppm) values and a 90th percentile antimony (5.5 ppm) value, for that map sheet.

**NEW DIMENSION RESOURCES LTD.
STRATEGIC METALS LTD.**

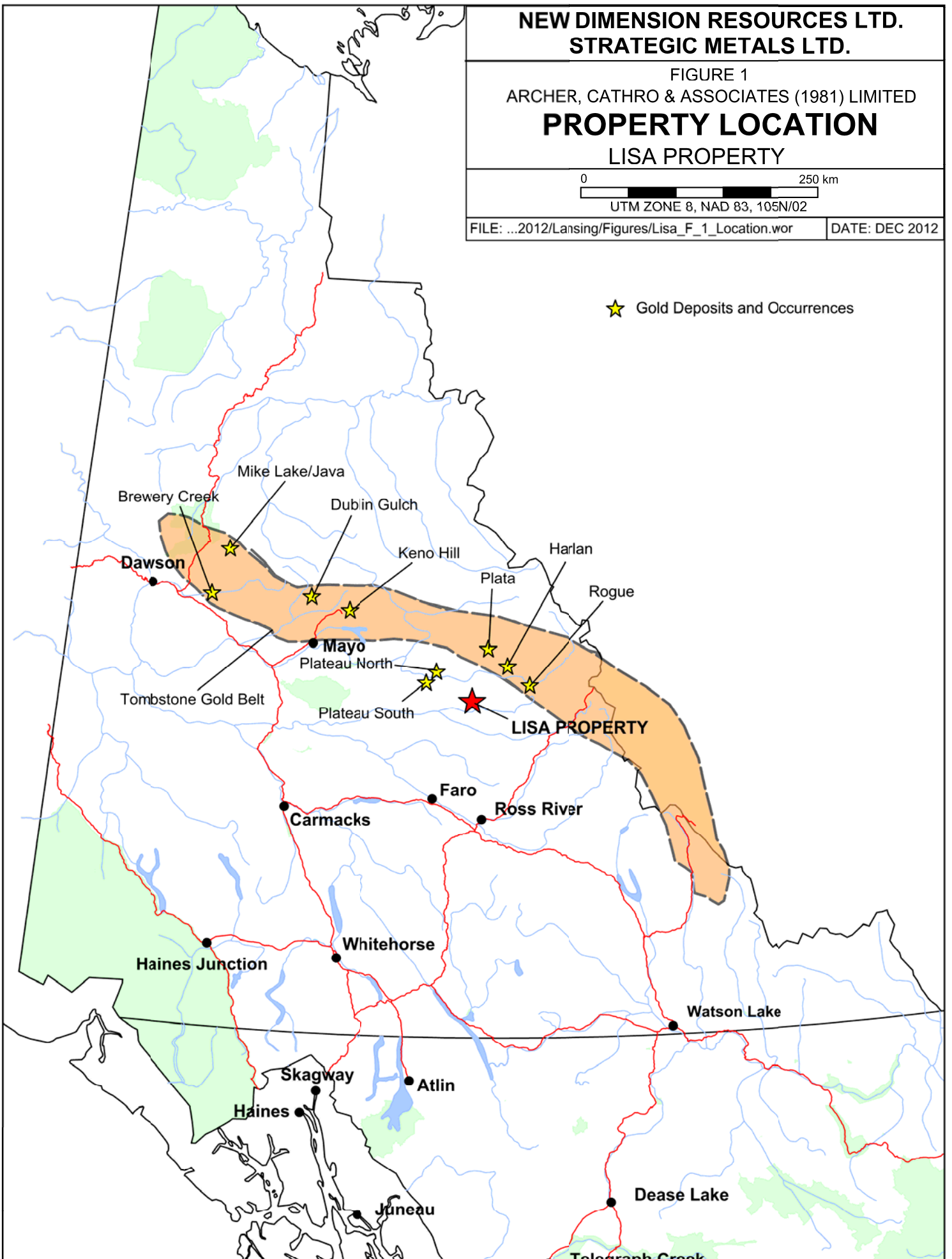
FIGURE 1
ARCHER, CATHRO & ASSOCIATES (1981) LIMITED

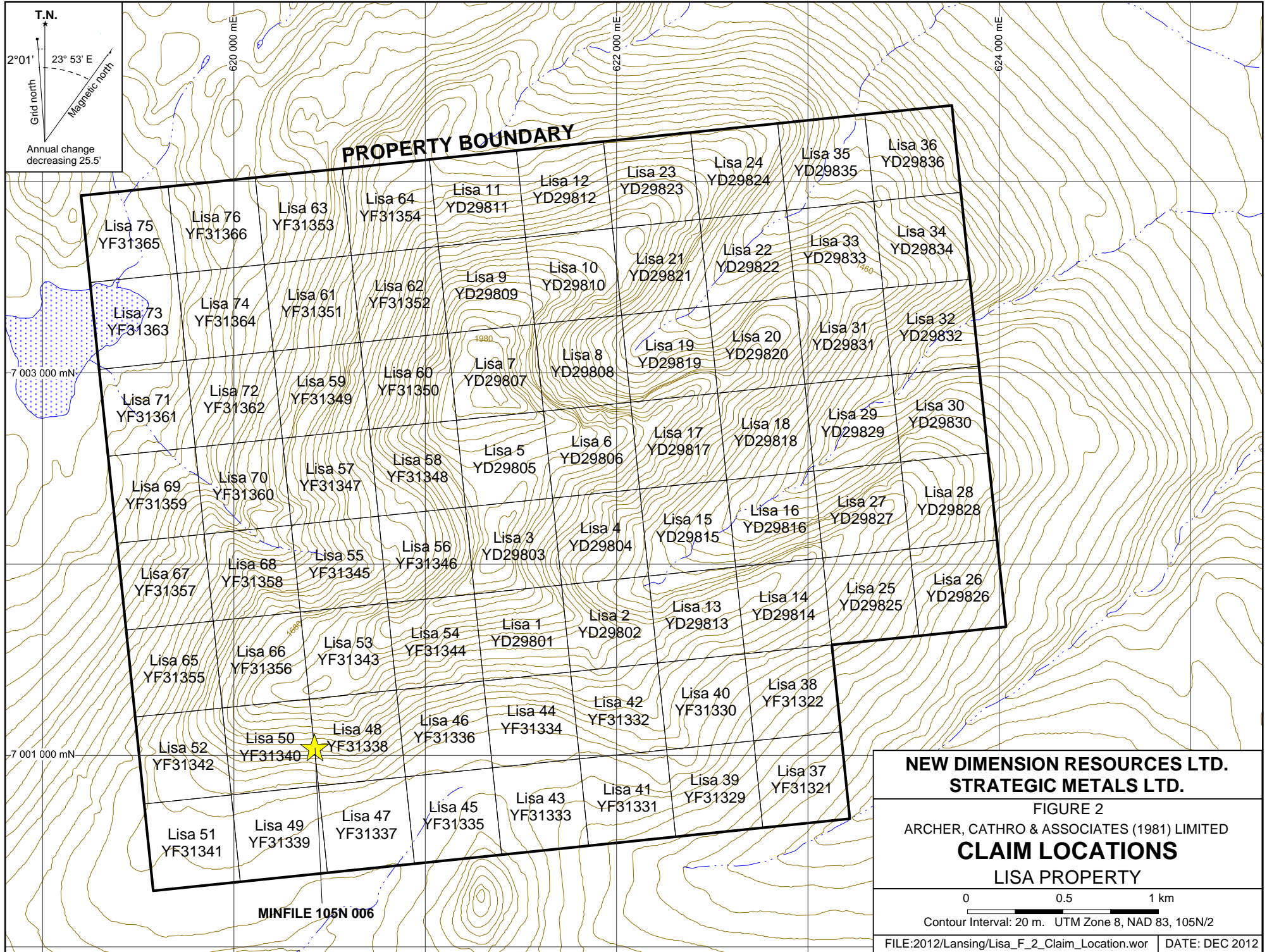
**PROPERTY LOCATION
LISA PROPERTY**

0 250 km
UTM ZONE 8, NAD 83, 105N/02

FILE: ...2012/Lansing/Figures/Lisa_F_1_Location.wor DATE: DEC 2012

★ Gold Deposits and Occurrences





MINFILE 105N 006

**NEW DIMENSION RESOURCES LTD.
STRATEGIC METALS LTD.**

FIGURE 2
ARCHER, CATHRO & ASSOCIATES (1981) LIMITED

CLAIM LOCATIONS
LISA PROPERTY

0 0.5 1 km
Contour Interval: 20 m. UTM Zone 8, NAD 83, 105N/2

FILE:2012/Lansing/Lisa_F_2_Claim_Location.wor DATE: DEC 2012

In 2010, Strategic Metals staked 36 claims to cover the anomalous drainage, which encompassed the eastern half of the pluton and adjacent sedimentary rocks.

In spring 2011, the property was optioned to New Dimension, and later that summer soil sampling outlined a broad zone of weak to very strong arsenic (50 to 2440 ppm) and bismuth (2 to 41.3 ppm) values, weak to moderate gold (10 to 44 ppb) and copper (50 to 161 ppm) values and weak tungsten (2 to 2.78 ppm) values (Mitchell, 2011). Rock samples returned subdued results, with peak values of 343 ppm arsenic, 0.49 ppm bismuth, 0.017 g/t gold, 67.4 ppm copper 1.19 ppm tungsten and 10.2 ppm antimony. In November 2011, an additional 40 claims were added to the west side of the property to cover the historical skarn showing and the remainder of the pluton.

GEOMORPHOLOGY AND CLIMATE

The Lisa property is situated in the Hess Mountains, a subset of the Selwyn Mountains. It is drained by creeks that flow into the North MacMillan River, which ultimately connects to the Pacific Ocean via the MacMillan and Yukon rivers.

The property covers a northerly trending ridge and three parallel spurs that extend to the northeast. The terrain is rugged, with local elevations ranging from about 1140 to 2020 m above sea level (asl). One-third of the property lies below treeline, which is at approximately 1500 m asl. Slopes above that elevation are characterized by talus, cliffy outcrop and alpine vegetation primarily featuring low grasses and staghorn moss. The density and size of vegetation gradually increases on lower slopes. Valley floors are treed with fir and spruce with an understorey of low shrubs and moss.

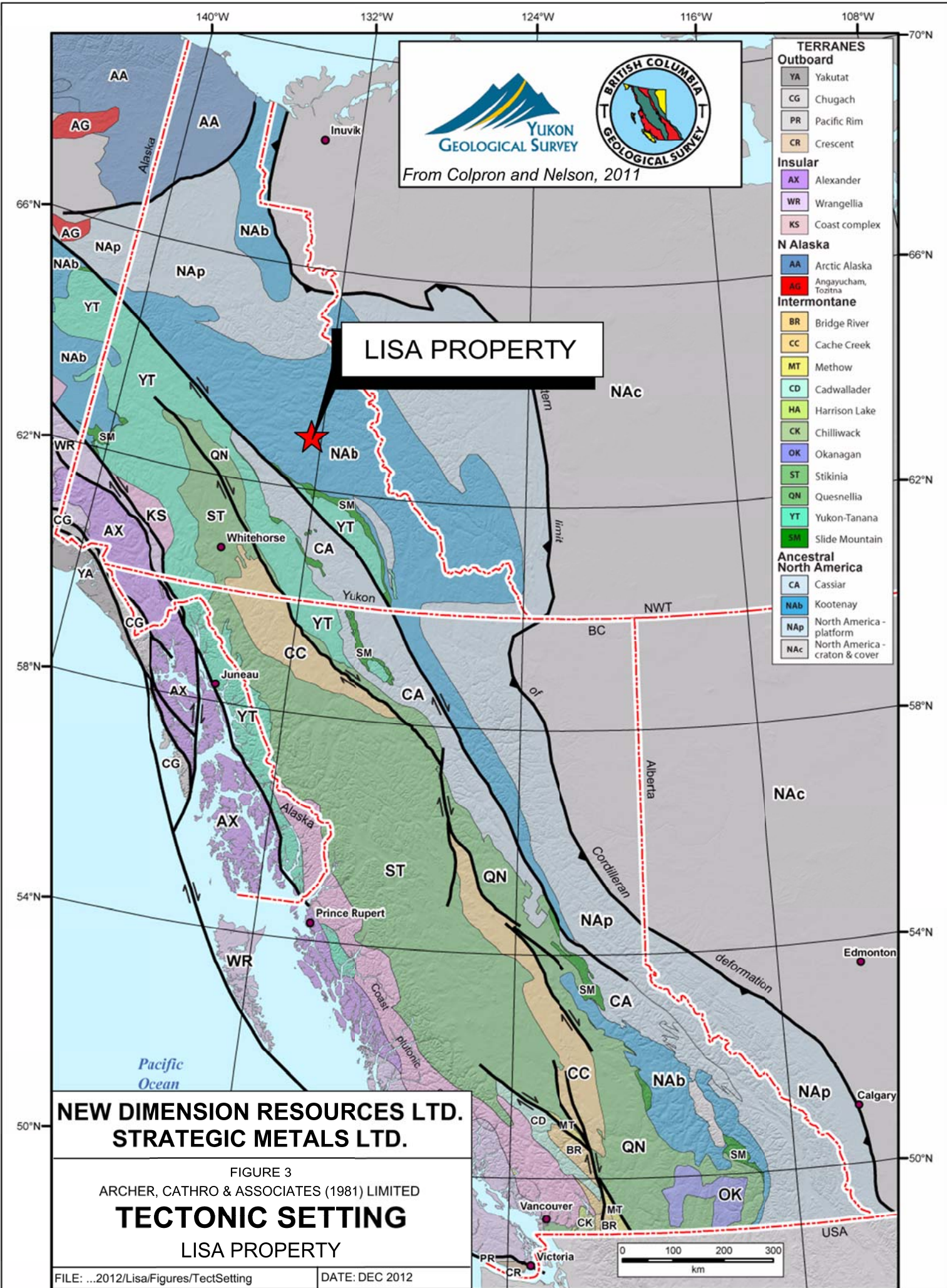
Much of the overburden in the region is associated with the most recent Cordilleran ice sheet, the McConnell glaciation, which is believed to have covered south and central Yukon between 26,500 and 10,000 years ago (Yukon Geological Survey, 2010). In this area, the ice sheet generally moved in a northwesterly direction.

The climate in the Lisa property area is typical of northern continental regions with long, cold winters, truncated fall and spring seasons and short, mild summers. The property is mainly snow free from late May to late September.

GEOLOGY

In 1995 and 2003, the GSC and Yukon Geological Survey (YGS) published geological maps of the Lansing Range map sheet (NTS 105N) at 1:125,000 and 1:250,000 scales, respectively (Roots *et.al.*, 1995 and Roots, 2003). In 2003, Gordey and Makepeace incorporated this data as part of a Yukon-wide geological compilation. The following geological descriptions are based on the published data.

The Lisa property is located within northern Selwyn Basin (Figure 3), a predominantly off-shelf meta-sedimentary and meta-volcanic sequence that formed on the western margin of the North American craton from Upper Proterozoic to Lower Paleozoic times.



The geology of the Lansing Range map sheet includes seven sedimentary units and one intrusive unit (Figure 4). The basal sequence of Hyland Group, Gull Lake Formation and Road River Group represents clastic fill and deep water chemical precipitate of Upper Proterozoic and Lower Paleozoic age. The Mid-Paleozoic Earn Group conformably and locally unconformably overlies the basal sequence and dominantly consists of black shale and marine conglomerate (Roots, 2003). The younger strata have a limited extent and comprise Mississippian to Triassic sedimentary successions (Keno Hill Quartzite, Mount Christie Group and Jones Lake Formation). Numerous Mid-Cretaceous Selwyn Suite igneous bodies cut the sedimentary package throughout the region. A large area at the centre of the map sheet is covered by Quaternary unconsolidated glacial, glaciofluvial and glaciolacustrine deposits. The units are described in Table I.

Table I – Lithological Units (after Gordey and Makepeace, 2003)

Unit Name	Map Name	Age	Description
Q	Quaternary	Quaternary	Unconsolidated glacial, glaciofluvial and glaciolacustrine deposits; fluviatile silt, sand, and gravel, and local volcanic ash, in part with cover of soil and organic deposits.
mKgS	Selwyn Suite	Mid-Cretaceous	Mainly hornblende and hornblende/biotite syenite, commonly porphyritic (potassium feldspar phenocrysts), uneven textured, mostly medium grained, locally fine or coarse grained; minor diorite; hornblende syenite.
TrJ	Jones Lake Formation	Triassic	Brown to buff weathering, calcareous fine grained sandstone, argillite and shale; extensive ripple cross-lamination and bioturbation; massive, light grey weathering, fine crystalline, dark grey limestone; minor orange weathering platy limestone.
CPMC	Mount Christie Formation	Carboniferous to Permian	Burrowed, interbedded greenish grey cherty shale and green shale; thin to medium bedded, light grey-green to black chert; black siliceous slate and siltstone; minor quartzite, limestone and dolostone; locally abundant, large grey barite nodules.
MK	Keno Hill Quartzite	Mississippian	Massive to thick bedded quartzarenite; thin to medium bedded quartzarenite interstratified with black shale or carbonaceous phyllite; local scour surfaces and shale intraclasts; locally foliated and lineated.
MT2	Tay Formation	Mississippian	Grey and buff weathering, generally thick bedded to massive, dark grey to black fetid

			limestone; fine crystalline to cryptocrystalline; commonly bioclastic.
DME	Earn Group	Devonian and Mississippian	Thin bedded, laminated slate with thin to thickly interbedded fine to medium grained chert-arenite and wacke; thick members of chert pebble conglomerate; black siliceous siltstone; nodular and bedded barite; rare limestone.
ODR1	Road River Group	Ordovician to Lower Devonian	Black, gun-blue, or silvery white weathering black graptolitic shale and black chert; resistant grey weathering, thin to medium bedded, light grey to black, greenish grey or turquoise chert; minor argillaceous limestone.
ICG1	Gull Lake Formation	Lower Cambrian	Shale, siltstone and mudstone, locally bioturbated, with minor quartz sandstone; rare green-grey chert; local basal limestone and limestone conglomerate; phyllite to quartz-muscovite-biotite schist (+/-garnet +/-sillimanite +/-staurolite +/-andalusite).
PCH (undivided)	Hyland Group	Upper Proterozoic to Lower Cambrian	Consists upwards of coarse turbiditic clastics (1), limestone (2) and fine clastics typified by maroon and green shale (3).
PCH1			Thin to thick bedded, brown to pale green shale, fine to coarse grained quartz-rich sandstone, grit, and quartz-pebble conglomerate; minor argillaceous limestone; phyllite, quartzofeldspathic and micaceous psammite, gritty psammite and minor marble.
PCH2			Grey weathering, dark grey to grey white, thin to thick bedded, very fine crystalline limestone, locally sandy; calc-silicate and marble.
PCH3			Distinctive, recessive, maroon weathering, interbedded maroon and apple-green slate; "Oldhamia" trace fossils; rare grey chert; locally basal member and interbeds of quartz siltstone, sandstone and quartz-pebble conglomerate.
PCH4			Quartzose clastic rocks as described in (1); mostly(?) equivalent to (1) but may include younger units

Bedding and structure on the Lansing Range map sheet are dominated by a northwesterly trend. Significant thrust, strike-slip and extensional faults are present throughout the map sheet. A

high-angle, northwest-southeast trending regional-scale fault (informally named the Fairweather Fault for the purposes of this report) crosses the central part of the Lisa property (Figure 5). All of the major faults pre-date Mid-Cretaceous plutonism, as evidenced by cross-cutting relationships. Bedding is variable throughout the map sheet, but generally trends northwesterly, and dips moderately to the southwest.

The property covers a section of the Fairweather Fault, which juxtaposes Hyland Group siliciclastic rocks (PCH1) to the west against maroon and green slate (PCH3) and conformably overlying Gull Lake Formation (ICG1) to the east. A 750 by 1300 m Selwyn Suite plug is intruded along, but not offset by the Fairweather Fault.

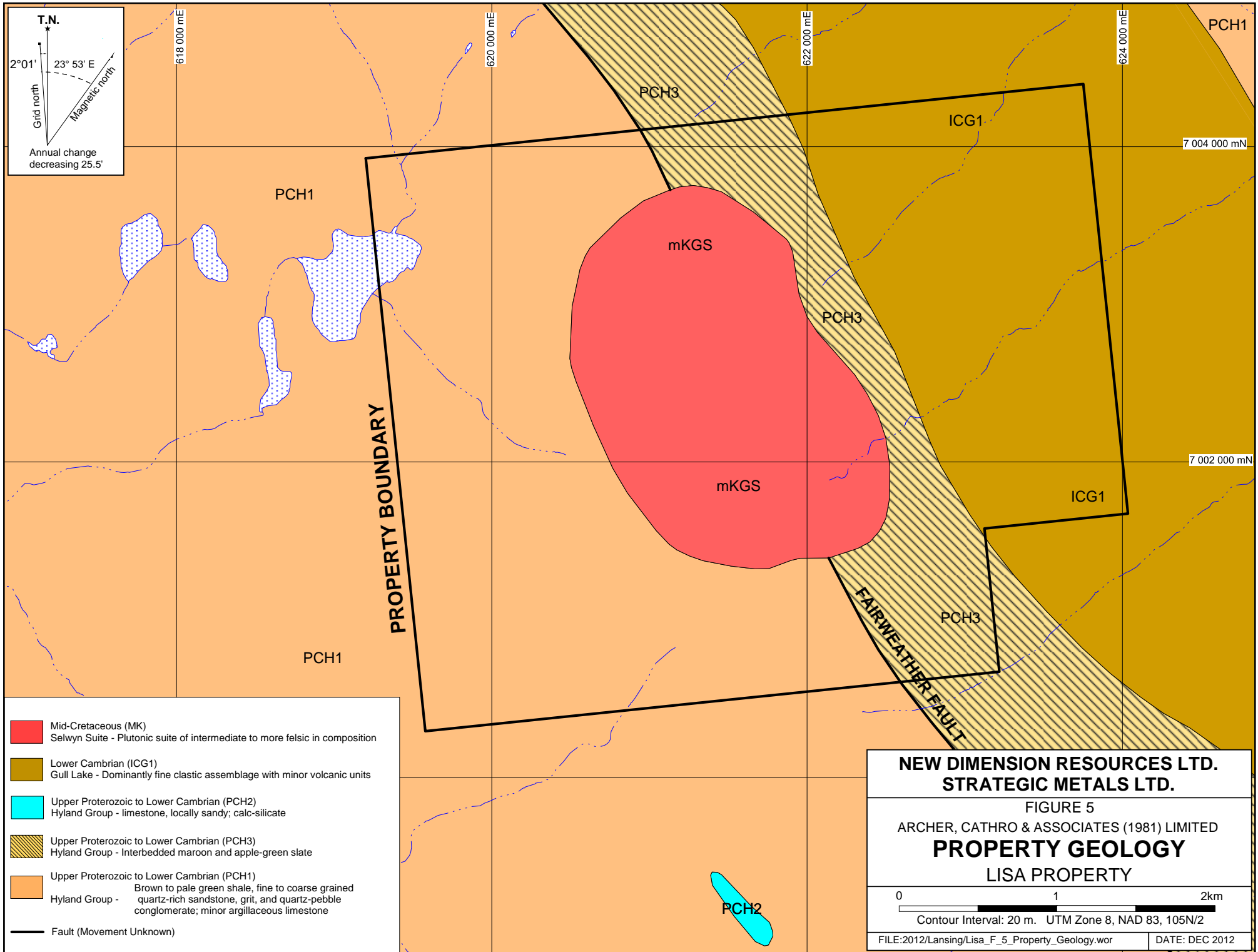
MINERALIZATION

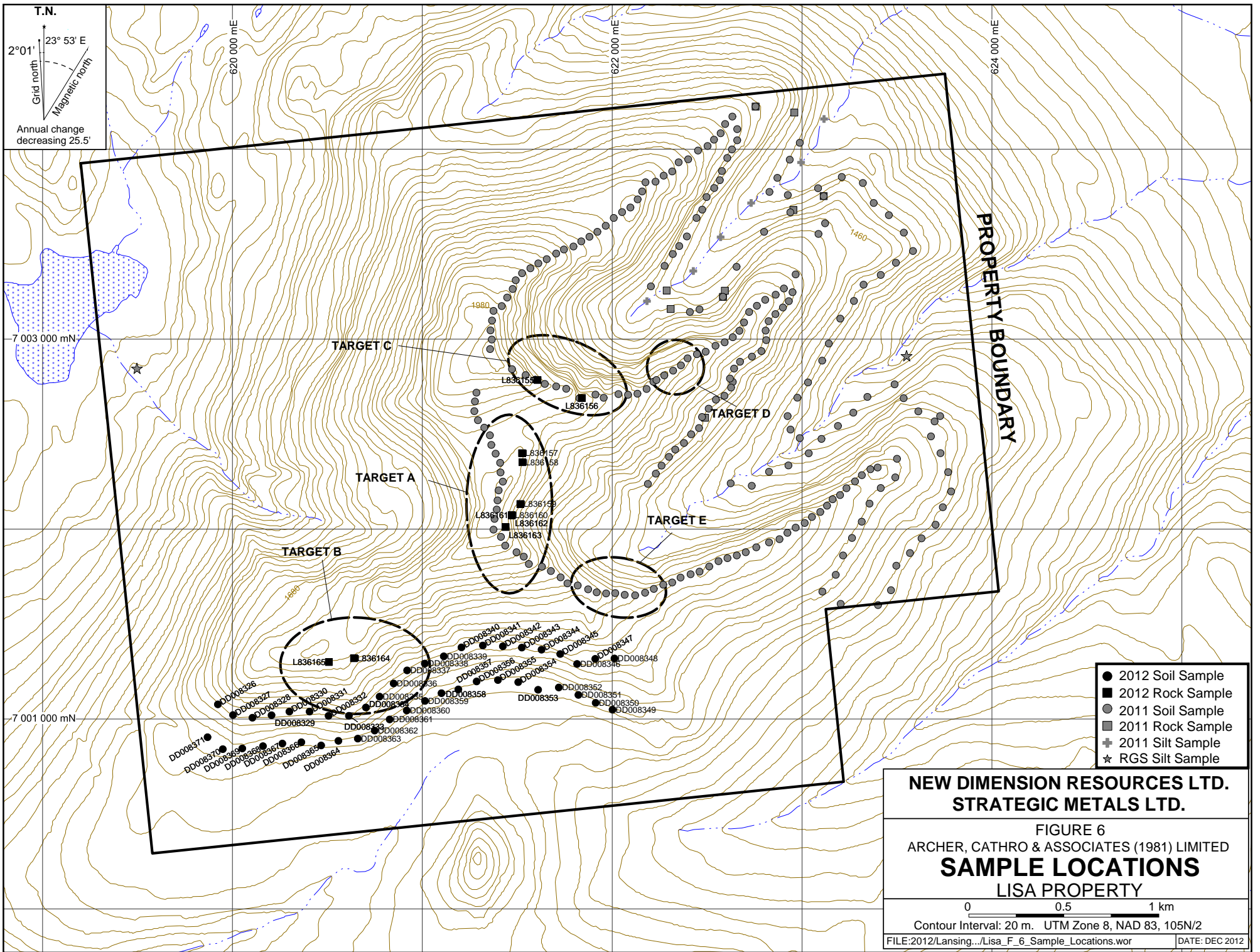
In 1967, Atlas Exploration examined a skarn showing hosted in Hyland Group metasedimentary rocks on the southwest margin of the Selwyn Suite plug that underlies the centre of Lisa property. The skarn horizon is 150 m wide and hosts patchy chalcopyrite and pyrrhotite. Grab samples from the horizon reportedly averaged less than 0.5% copper. The samples were not tested for gold.

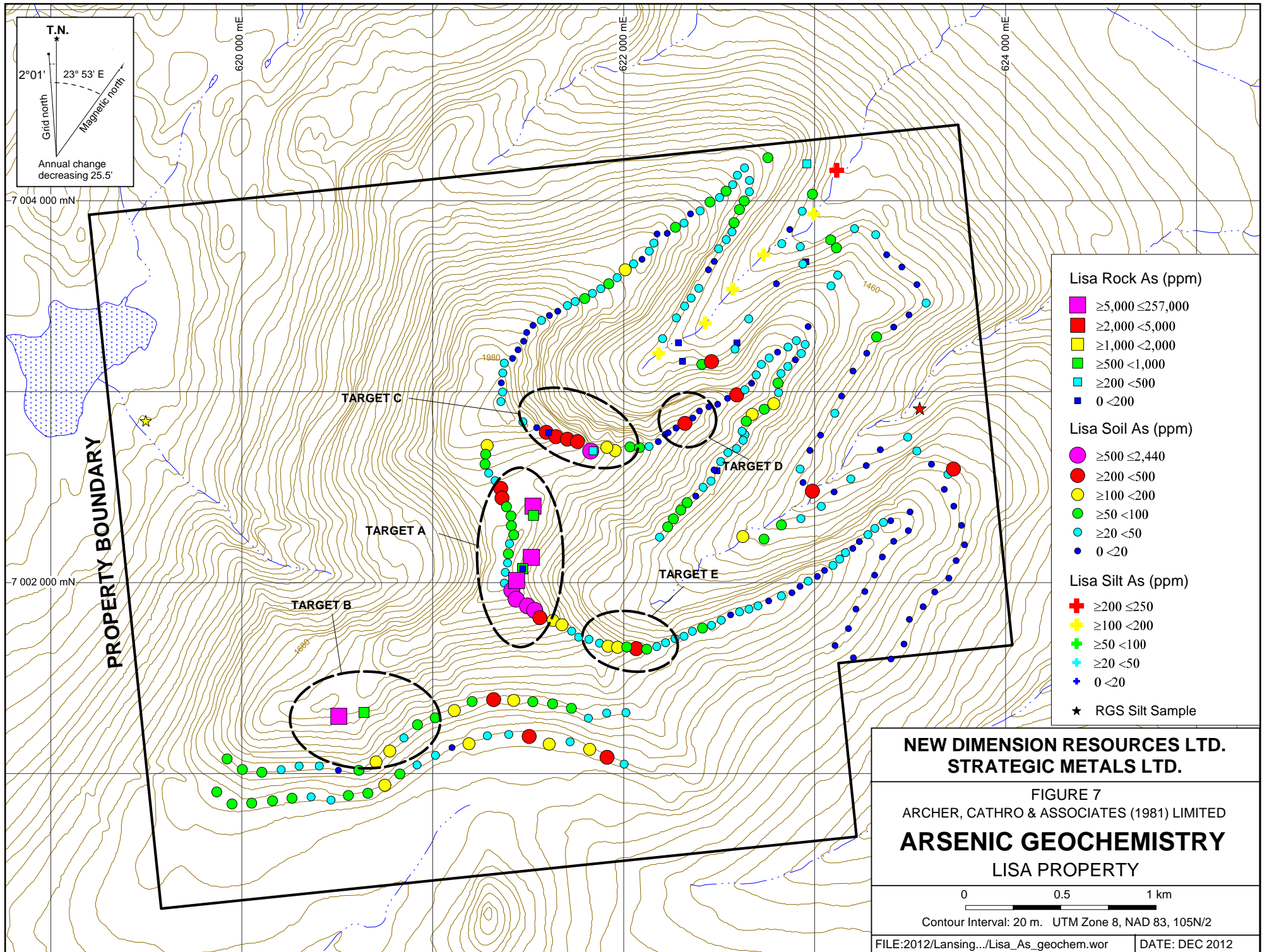
In 2012, a total of 11 rock samples were taken from two arsenic \pm bismuth \pm gold \pm copper \pm tungsten \pm antimony zones (Zone A and B). Zone B is believed to be the historical skarn showing. Sample locations are plotted on Figure 6, while results for arsenic, bismuth, gold, copper, tungsten and antimony are plotted on Figures 7 to 12, respectively. Rock samples collected from 2011 are also present on those figures. Rock Sample Descriptions for the 2012 samples appear in Appendix II, and Certificates of Analysis are given in Appendix III.

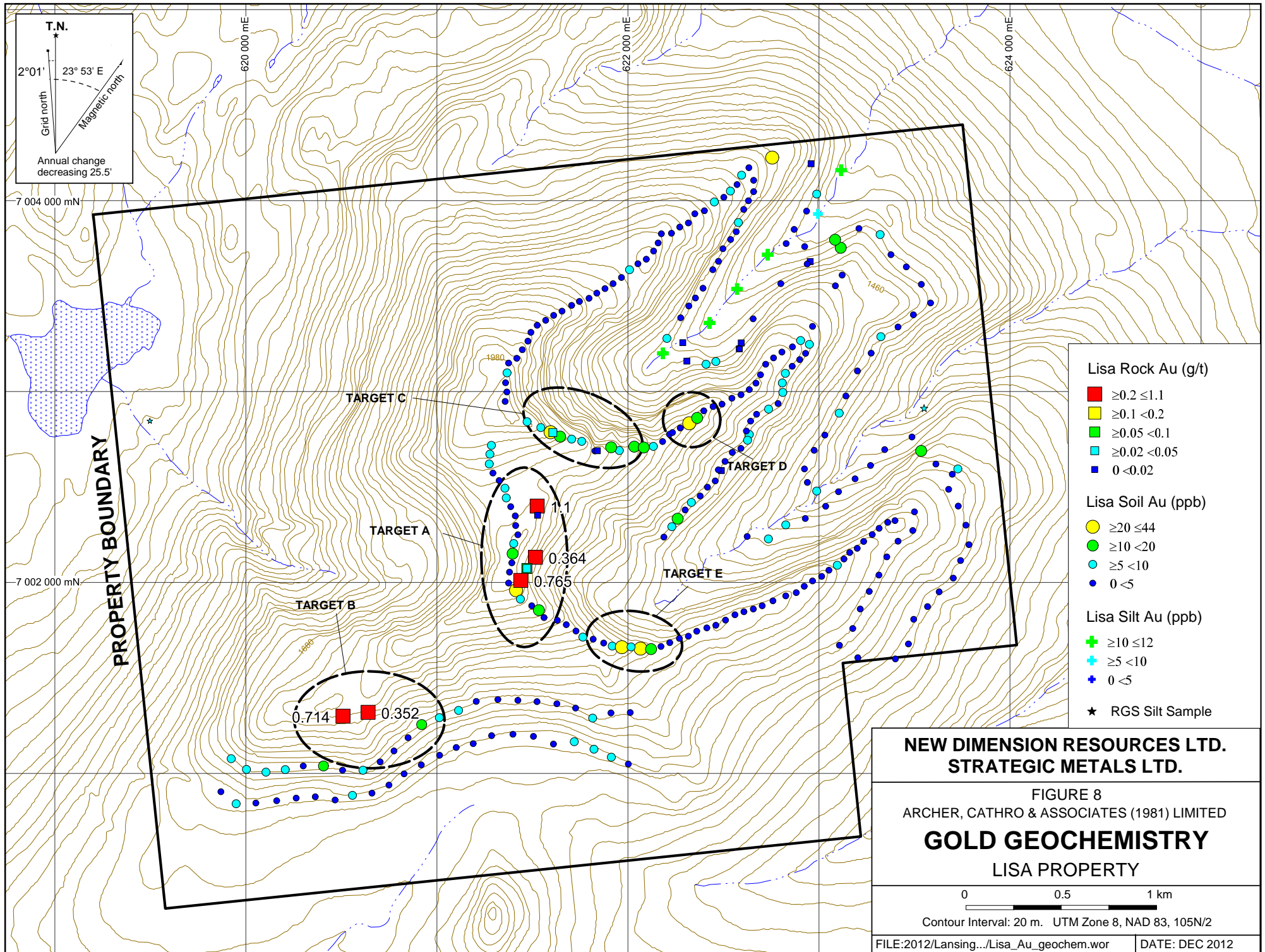
Rock sample sites on this property were marked with orange flagging tape labelled with the sample number. The location of each sample was determined using a handheld GPS unit. The rock samples were sent to ALS Minerals' preparation laboratory in Whitehorse, where they were dried, fine crushed to better than 70% passing 2 mm and a 250 g split was pulverized to better than 85% passing 75 microns. Pulverized splits were then sent to ALS Minerals in North Vancouver where they were analyzed for gold using fire assay followed by inductively coupled plasma-atomic emission spectroscopy analysis (Au-ICP21) and for 51 elements using an aqua regia digestion followed by inductively coupled plasma combined with mass spectroscopy and atomic emission spectroscopy (ME-MS41).

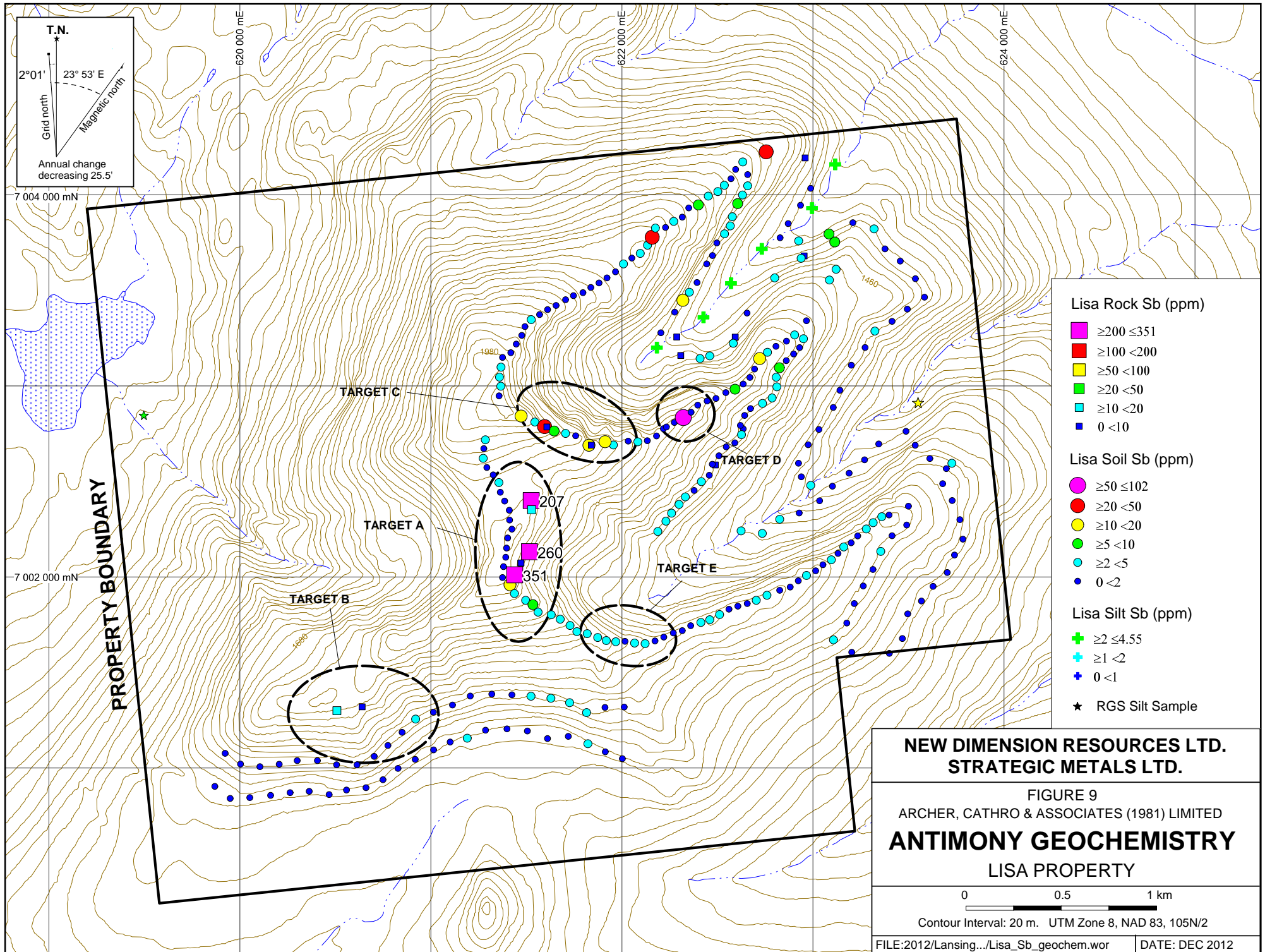
Zone A comprises mixed quartz vein and skarn talus. Three auriferous quartz vein samples and three skarn specimens were collected, one taken from a mostly snow covered bench (sample L836159) and the others from a cirque on the east side of the plug. Quartz veins (less than 5 cm wide) are found as talus within granodiorite and near the contact between the intrusion and metasedimentary rocks. The quartz vein material contains fine grained arsenopyrite along selvages, while abutting granodiorite wall rocks feature minor disseminated arsenopyrite and pervasive green scordite staining. The best quartz vein sample returned 1.1 g/t gold with very strong arsenic (2.64%), antimony (207 ppm) and bismuth (36.8 ppm) values. The best skarn specimen yielded 2,780 ppm copper with elevated values for bismuth (44.8 ppm), tungsten (up to

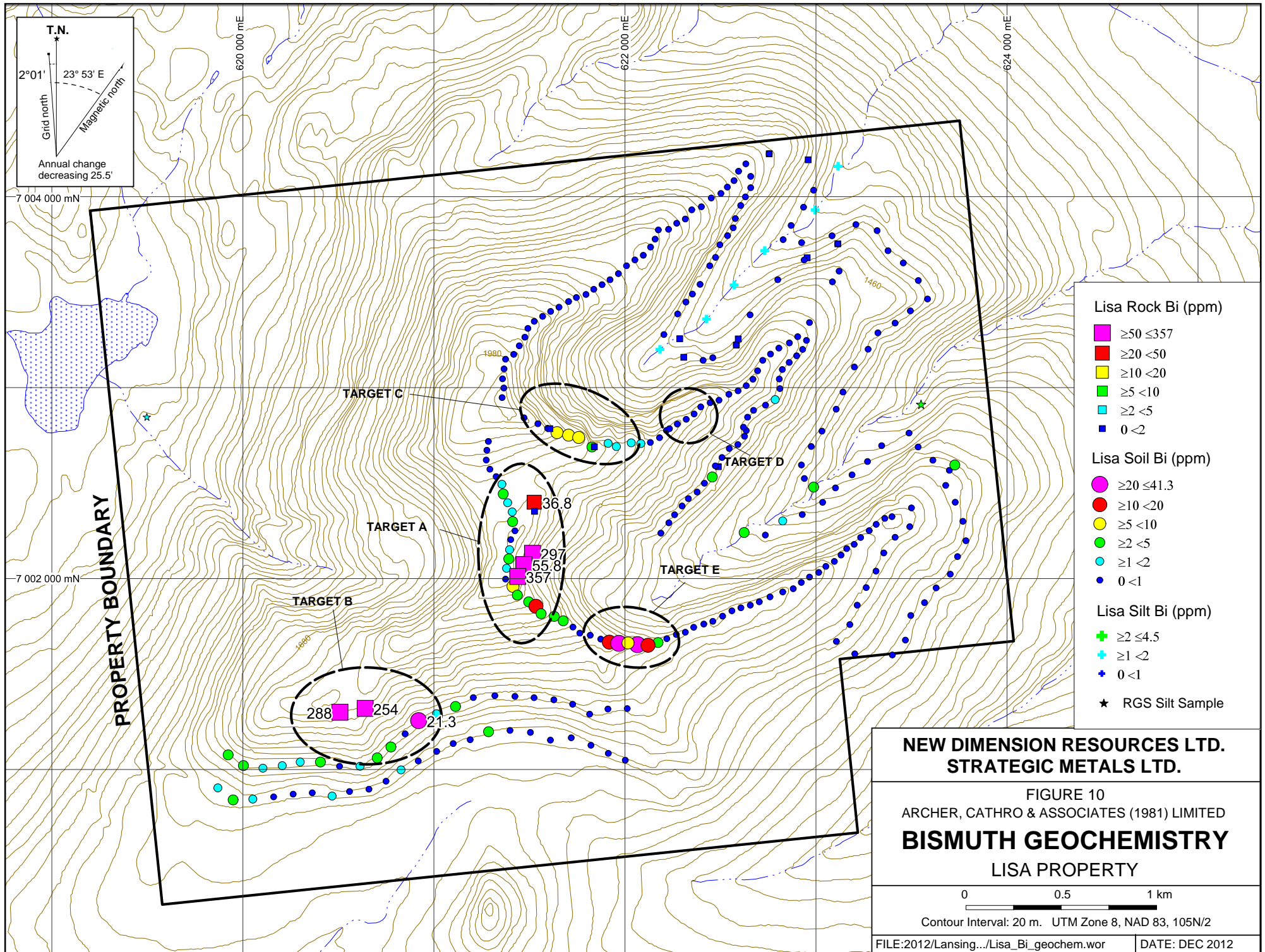








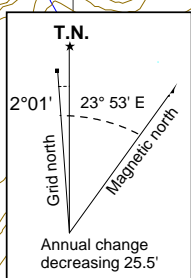
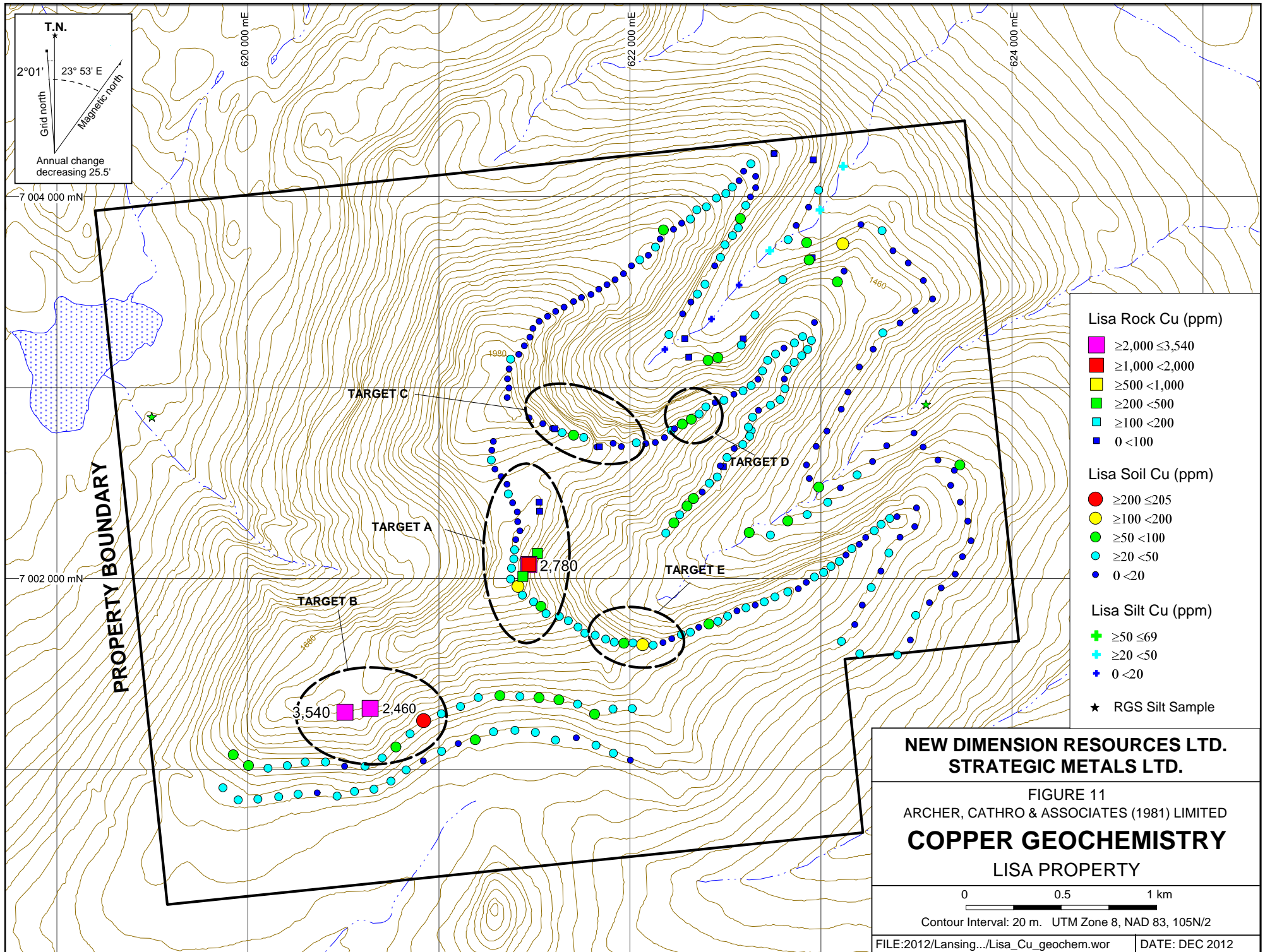




**NEW DIMENSION RESOURCES LTD.
STRATEGIC METALS LTD.**

FIGURE 10
ARCHER, CATHRO & ASSOCIATES (1981) LIMITED
BISMUTH GEOCHEMISTRY
LISA PROPERTY

0 0.5 1 km
Contour Interval: 20 m. UTM Zone 8, NAD 83, 105N/2



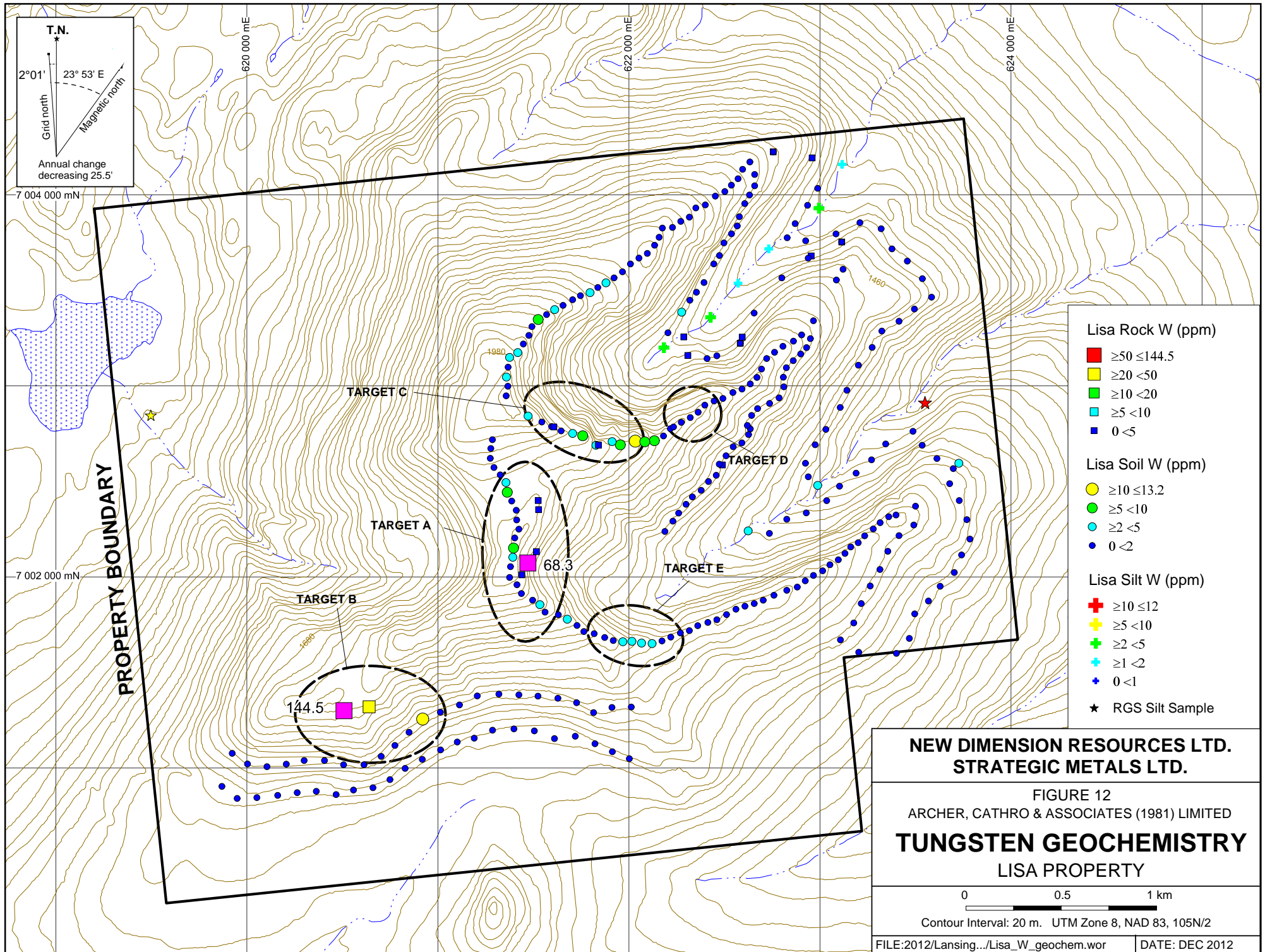
**NEW DIMENSION RESOURCES LTD.
STRATEGIC METALS LTD.**

FIGURE 11
ARCHER, CATHRO & ASSOCIATES (1981) LIMITED
COPPER GEOCHEMISTRY
LISA PROPERTY

0 0.5 1 km

Contour Interval: 20 m. UTM Zone 8, NAD 83, 105N/2

FILE:2012/Lansing.../Lisa_Cu_geochem.wor DATE: DEC 2012



68.3 ppm) and arsenic (573 ppm). The source of quartz veins and dimensions of the skarn horizon were not determined due to time constraints.

Zone B encompasses the historical skarn showing. Two samples were collected 150 m apart on either side of an intrusive dyke. The skarn band is up to 10 m thick and contains prominently rusty weathering diopside with variably abundant blebby pyrrhotite plus disseminated, blebby and banded chalcopyrite, and disseminated to blebby pyrite. The samples returned 0.714 and 0.352 g/t gold with strong bismuth (254 and 288 ppm), copper (2,460 and 3,540 ppm) and arsenic (822 and 5,230 ppm) values and significantly elevated tungsten (45.6 to 144.5 ppm) values.

SOIL GEOCHEMISTRY

In 2012, New Dimension took 46 contour soil samples from the southwestern part of the property, down slope of the historical skarn showing. Sample locations are plotted on Figure 6, while results for arsenic, gold, antimony, bismuth, copper and tungsten are illustrated thematically on Figures 7 to 12, respectively. Results from soil samples collected from 2011 are also present on those figures. Certificates of Analysis are provided in Appendix III.

Soil sample locations were recorded using hand-held GPS units. Sample sites are marked by aluminum tags inscribed with the sample numbers and affixed to 0.5 m wooden lath that were driven into the ground. Soil samples were collected from 30 to 70 cm deep holes dug by handheld auger. Each sample was placed into uniquely pre-numbered Kraft paper bag.

The soil samples were sent to ALS Laboratory in Whitehorse where they were dried, screened to -180 microns, and then to ALS Laboratory in North Vancouver where they were analyzed for gold and 51 elements using Au-ICP21 and ME-MS41.

Soil sampling has outlined five general target areas (Targets A to E) comprising elevated gold values with arsenic±antimony±bismuth±copper±tungsten support. The targets are all located within and on the margins of the intrusive plug.

Targets A, C and E are underlain by granitic rocks, while Targets B and D occur within Upper Proterozoic to Lower Cambrian Hyland Group siliciclastics and interbedded maroon and apple-green slate, respectively.

Target A is situated along the main north-trending ridge and includes a string of very strong arsenic values (up to 2,440 ppm) with weak to moderate bismuth (up to 12.55 ppm), gold (up to 44 ppb), antimony (up to 15.2 ppm) and copper (up to 115 ppm) support. These anomalous soil samples are from the same area as auriferous quartz vein and skarn rock samples that comprise Zone A.

Target B is on a south-southeast facing slope, 700 m southwest of Target A and down slope of Zone B. Soil response in this area is surprisingly weak. The best results came from a sample site that yielded strong bismuth (21.3 ppm) and copper (205 ppm) values. The highest gold value was only 17 ppb.

Target C is located 150 m northeast of Target A along a spur-ridge. It consists of several, strongly elevated arsenic values (up to 1,100 ppm) with scattered antimony (up to 24.3 ppm), gold (up to 22 ppb), bismuth (up to 7.6 ppm), copper (up to 55.5 ppm) and tungsten (up to 6.77 ppm) support.

Target D lies 200 m east of Target C along the same spur-ridge. It features a moderately anomalous gold (22 ppb) point anomaly with very strong antimony (102 ppm) and moderate arsenic (236 ppm) support.

Target E is situated along a southeast-trending spur, 250 m southeast of Target A. It comprises a cluster of moderate to strong values for bismuth (up to 41.3 ppm) that are accompanied by a few elevated arsenic (up to 264 ppm), gold (up to 26 ppb) and copper (up to 119 ppm) values. Limited prospecting was carried out in this area but no mineralization was discovered.

Sporadic, high values for various elements were also obtained from samples taken elsewhere on the property.

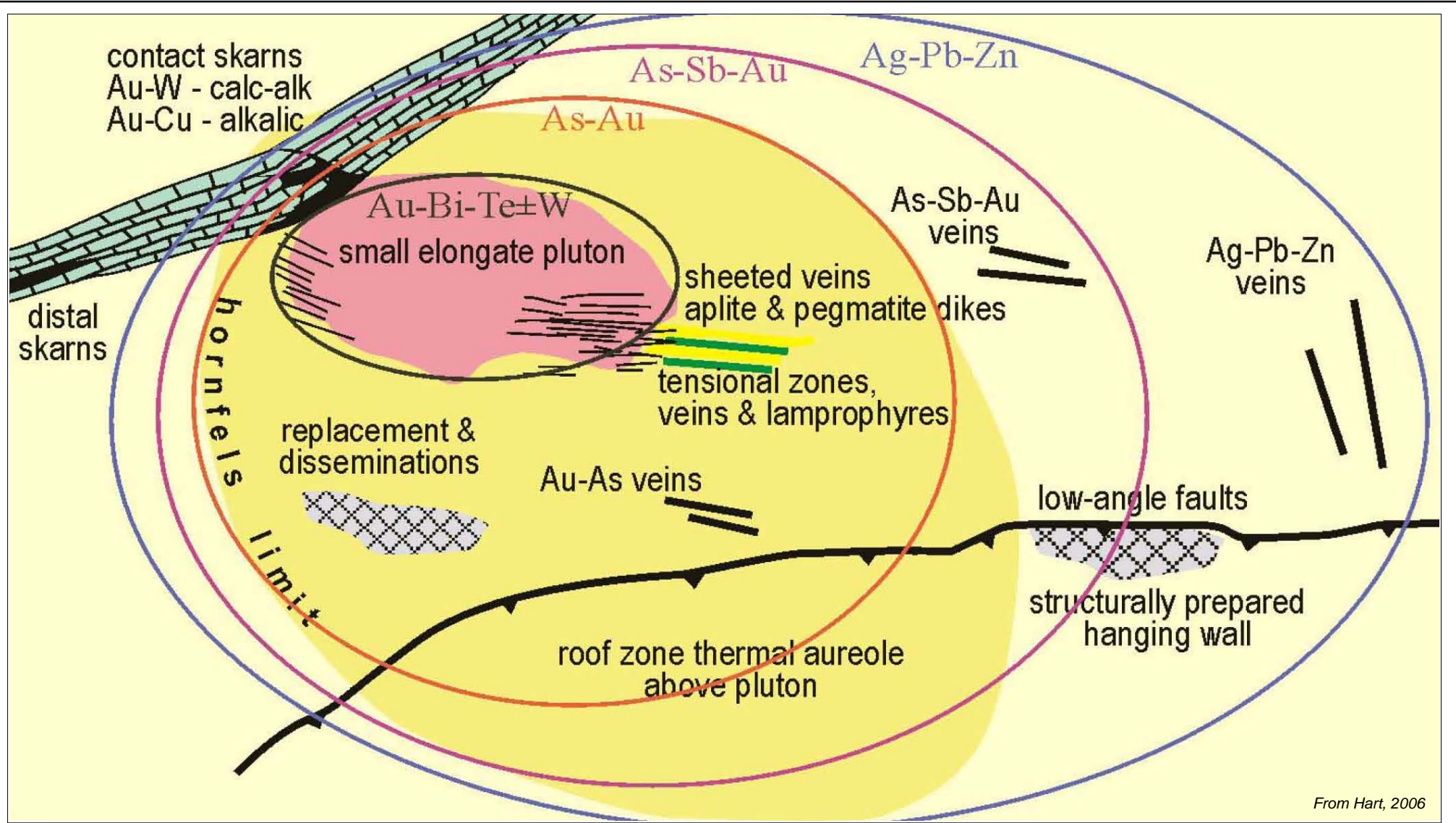
EXPLORATION MODEL

The Lisa property lies along the southern margin of the Tombstone Gold Belt (TGB), a 600 km long belt of gold occurrences that extend across central Yukon and Alaska and which is associated with reduced, low magnetic signature plutons (Hart and Lewis, 2006 and Hart, 2006).

Since the discovery of the intrusion-related Fort Knox gold deposit in Alaska in the early 1990s, gold exploration in Yukon (particularly within the TGB) has increasingly focussed on plutons of Mid-Cretaceous age (Hart and Lewis, 2006). The strong association between gold mineralization and Mid-Cretaceous intrusions within the TGB provided the foundation for a reduced intrusion-related gold systems (RIRGS) model that has gained widespread use and acceptance (Hart and Lewis, 2006).

Nearby examples of RIRGS gold mineralization have recently been discovered at Goldstrike Resources Limited's Plateau North and South properties, located 40 and 45 km northwest of the Lisa property, respectively (Figure 4). The Yellow Giant Trend on Plateau South property hosts high grade gold mineralization. It lies within and on the margins of two Selwyn Suite plugs. Multiple grab samples from each of the VG, Goldbank and Goldstack Zones reportedly contain visible gold and return encouraging assays, including 525.86, 34.25 and 49.21 g/t gold, respectively. The Goldrush Trend, located on Plateau North property, has produced strongly elevated soil and rock results that include up to 26.82 and 8.99 g/t gold, respectively. The gold is structurally controlled but occurs in a variety of settings: an anticlinal fold hinge covered by felsic volcanic tuff (VG Zone); weathered gritty sandstone hosting disseminated arsenopyrite (VG Zone); variably silicified felsic volcanics (Goldbank Zone); and breccias associated with extensive quartz veining (Goldstack Zone) - (Bremner, 2012).

RIRGS gold deposits are the product of local-scale fluids derived from cooling of a proximal granitoid intrusion. Figure 13 illustrates several of the geochemical, lithological, structural and mineralogical features of RIRGS gold deposits. These deposits share several characteristics with



**NEW DIMENSION RESOURCES LTD.
STRATEGIC METALS LTD.**

FIGURE 13
ARCHER, CATHRO & ASSOCIATES (1981) LIMITED

**MODEL FOR REDUCED
INTRUSION-RELATED GOLD SYSTEMS**

LISA PROPERTY

orogenic deposits, which are considered to result from crustal-scale fluids derived through metamorphic dehydration (Hart, 2005). Features that are common to both deposit types include:

- 1) metaluminous, subalkalic intrusions or intermediate to felsic compositions that lie near the boundary between ilmenite and magnetite series;
- 2) carbonic hydrothermal fluids;
- 3) a metal assemblage that variably combines gold with elevated bismuth, tungsten, arsenic, molybdenum, tellurium and/or antimony and low concentrations of base metals; and
- 4) a low sulphide mineral content, with a reduced ore mineral assemblage that typically comprises arsenopyrite, pyrrhotite and pyrite and lacks magnetite and hematite (Hart, 2005).

Other features exist that exclusively differentiate RIRGS deposits (Hart, 2005), including:

- 1) ideal tectonic setting is ancient continental margin behind accretionary or collisional orogens and subduction-related magmatic arcs;
- 2) typically formed late in orogeny;
- 3) preferred host strata include basinal miogeoclinal sedimentary or metasedimentary rocks;
- 4) concentric zoning due to steep thermal gradients surrounding cooling plutons – zones can develop outward from pluton margin for up to a few kilometres and gold mineralization is associated with pluton-proximal mineralization (bismuth, tellurium and tungsten), aureole-hosted mineralization (arsenic or antimony) and distal mineralization (silver, lead and zinc);
- 5) several different styles of mineralization due to rapid cooling of mineralizing fluids – styles include variably intrusion and country-rock hosted skarns, replacements, disseminations, stockworks and veins;
- 6) sheeted arrays of parallel, low-sulphide, single-stage quartz veins found over tens to hundreds of metres and preferentially located in the pluton's cupola are the most distinctive style of gold mineralization;
- 7) plutons should exhibit physical evidence and geochemical support for high volatile contents, fluid exsolution, rapid fractionation, zonation, porphyry textures, presence of aplite and pegmatite dykes, quartz and tourmaline veins, greisen alteration, mariolitic cavities and/or unidirectional-solidification textures;
- 8) felsic, ilmenite-series plutons that lack magnetite, have low magnetic susceptibilities and aeromagnetic response, and have low ferric:ferrous ratios; and
- 9) coeval (± 2 million years) with their associated, causative pluton.

The abundance of RIRGS deposits correlates inversely with the surface exposure of the related intrusion because stocks and batholiths with considerable erosion are generally less prospective (Lefebure and Hart, 2005).

DISCUSSION AND CONCLUSIONS

New Dimension's 2012 work program was designed to follow up elevated gold, antimony, bismuth, copper and tungsten values identified by previous geochemical surveys and to re-locate a historical skarn showing on the property. Prospecting completed in 2012 successfully identified intrusion-related auriferous quartz veins and skarns, which includes the historical skarn. The most anomalous samples are located within and directly adjacent to a granitic plug in the centre of the property.

Several geochemical and geological features on the Lisa property are characteristic of the RIRGS deposit model. These features include: a continental margin setting that underwent orogeny; proximity to a small granitoid intrusions; aplite dykes; and evidence of a large hydrothermal system that is marked by auriferous veins and skarns. This model applies to a number of mines and advanced prospects in the Tombstone Gold Belt of Yukon and Alaska, including Goldstrike's Plateau nearby North and South properties.

Due to the encouraging results obtained from limited prospecting and geochemical sampling and the favourable geological setting, the Lisa property warrants more work. Initial field work should consist of: 1) closely spaced soil sampling (50 m spacing) in the relating gentle northwestern part of the property and in other areas where terrain permits; 2) systematic detailed mapping and prospecting within each geochemical target to identify the presence or absence of lithological, structural and/or mineralogical features that are indicative of RIRGS deposits; 3) a low-level helicopter-borne magnetic, radiometric and electromagnetic geophysical survey to better delineate lithological contacts, alteration and structure on the property; and, if warranted, 4) diamond drilling to test the various targets identified by prospecting and soil geochemical surveys.

Respectfully submitted,

ARCHER, CATHRO & ASSOCIATES (1981) LIMITED



A. Mitchell, B.Sc. Geology, GIT

REFERENCES

- Bremner, J.T.
2012 Goldstrike Resources Limited's corporate presentation. Available at:
<http://www.goldstrikeresources.com/files/pdf/GSR-presentation.pdf>
- Colpron, M. and Nelson, J. L.
2011 A Digital atlas of terranes for the Northern Cordillera; Yukon Geological Survey and BC Geology Survey, BCGS GeoFile 2011-11
(http://www.geology.gov.yk.ca/pdf/CanCord_terranes_2011.pdf).
- Day, S.J.A., McCurdy, M.W., Friske, P.W.B., McNeil, R.J., Hornbrook, E.H.W., Lynch, J.J., Durham, C.C., Gross, H. and Galletta, A.C.
2009 Regional stream sediment and water geochemical data, Lansing Range area, east central Yukon (NTS 105N); Geological Survey of Canada, Open File 6272.
Available at: http://gdr.nrcan.gc.ca/geochem/metadata_svy_e.php?key=210223
- Deklerk, R. and Traynor, S. (compilers)
2005 Yukon MINFILE – a database of mineral occurrences (Minfile Occurrence 105N 006, GOLF). Available at:
<http://servlet.gov.yk.ca/ygsmin/occurrence.do?occurrenceID=105N+006>
- Gordey, S.P. and Makepeace, A.J.
2003 Yukon Digital Geology, version 2.0, S.P. Gordey and A.J. Makepeace (comp); Geological Survey of Canada, Open File 1749 and Yukon Geological Survey, Open File 2003-9 (D).
- Hart, C.J.R.
2005 Classifying, distinguishing and exploring for intrusion-related gold systems; in The Gangue, October 2005, Issue 87; GAC Mineral Deposits Division and CIM Geological Society.

2006 Intrusion-related gold – Tombstone Gold Belt; Yukon Geological Survey Brochure 2006-6. Available at:
http://ygsftp.gov.yk.ca/publications/brochures/ygs/ygs_brochure_2006_6_tombstone_gold_belt.pdf
- Hart, C.J.R. and Lewis, L.L.
2006 Gold mineralization in the upper Hyland River area: A non-magmatic origin; in Yukon Exploration and Geology 2005, D.S. Emon, G.D. Bradshaw, L.L. Lewis and L.H. Weston (eds.), Yukon Geological Survey, p. 109-125.
- Lefebure, D.V. and Hart, C.
2005 Plutonic-related Au quartz veins & veinlets (L02); in Mineral Deposit Profiles; YGS and BSGS. Available at:
http://www.geology.gov.yk.ca/pdf/l02_plutonic_related_au_quartz_veins_and_veinlets.pdf

- Mitchell, A.
2011 Assessment Report describing stream sediment, soil and rock geochemical sampling at the Lisa Property; prepared for New Dimension Resources Ltd. and Strategic Metals Ltd. by Archer, Cathro & Associates (1981) Limited.
- Roots, C.F.
2003 Bedrock geology of Lansing Range map area (NTS 105N), central Yukon, 1:250000 scale; Yukon Geological Survey Geoscience Map 2003-1 or Geological Survey of Canada Open File 1616.
- Roots, C.F., Abbott, J.G., Cecile, M.P. and Gordey, S.P.
1995 Bedrock geology of Lansing Range map area (105N) east half, Hess Mountains, Yukon; Indian and Northern Affairs Canada Open File 1995-7 or Geological Survey of Canada Open File 3171.
- Yukon Geological Survey
2010 Geoprocess File Summary Report for Mayo Map Area N.T.S. 105M; Available at: http://Ygsftp.gov.yk.ca/publications/openfile/2002/of2002_8d_geoprocess_file/documents/map_specific/105M.pdf

APPENDIX I
STATEMENT OF QUALIFICATIONS

STATEMENT OF QUALIFICATIONS

I, Andrew Mitchell, geologist, with business addresses in Whitehorse, Yukon Territory and Vancouver, British Columbia and residential address in Vancouver, British Columbia, hereby certify that:

1. I graduated from the University of British Columbia in 2010 with a B.Sc. in Earth and Environmental Sciences.
2. From 2010 to present, I have been actively engaged in mineral exploration in Yukon Territory.
3. I am a Geoscientist in Training (GIT) with the Association of Professional Engineers and Geoscientists of British Columbia (Member Number 169067)
4. I have interpreted all data resulting from this work.



A. Mitchell, B.Sc. Geology, GIT

APPENDIX II
ROCK SAMPLE DESCRIPTIONS

Rock Sample DescriptionsProject: Lansing Property: Lisa

Sample Number:	Grid East:	E	Grid North:	N	Type:	Dimension:
L836155	UTM:	621607 E	UTM:	7002785 N	Sample Width:	Abundance:
	Elevation:	m				

Comments: rusty weathering, altered granodiorite collected from area with fracture with alteration selvages in main intrusive body. Fractures are narrow (<2mm) but rusty alteration selvages are up to 10 cm. no visible sulphides. Fracture density max 1-2 per meter. Mostly rusty material appears to be sourcing from recessive linear in outcrop trending 172 degrees.

Sample Number:	Grid East:	E	Grid North:	N	Type:	Dimension:
L836156	UTM:	621840 E	UTM:	7002690 N	Sample Width:	Abundance:
	Elevation:	m				

Comments: 75cm wide chip sample of rusty weathered soil and altered granodiorite rock chips taken from 2-3m linear in cliff

Sample Number:	Grid East:	E	Grid North:	N	Type:	Dimension: 2x0.4m
L836157	UTM:	621525 E	UTM:	7002400 N	Sample Width:	Abundance: 15%
	Elevation:	m				

Comments: 4 piece composite, several small pieces (up to 3cm wide) of quartz vein with arsenopyrite > limonite. AsPy occurs as 0.5cm selvages along both sides of quartz vein within intrusive. Exposed in small area below snow patch that may be covering structure.

Sample Number:	Grid East:	E	Grid North:	N	Type:	Dimension:
L836158	UTM:	621527 E	UTM:	7002352 N	Sample Width:	Abundance:
	Elevation:	m				

Comments: 6 cobbles of beige weathering, strongly quartz carbonate alteration. Intrusive. Weakly rusty on fresh face may just be iron carbonate within unaltered intrusive boulder field - large blocks

Sample Number:	Grid East:	E	Grid North:	N	Type:	Dimension:
L836159	UTM:	621516 E	UTM:	7002132 N	Sample Width:	Abundance: only one found
	Elevation:	m				

Comments: Light green (emerald green) weathering, pervasively green quartz veins separated by non-calcarious vuggy clay? Veinlets are swirly and up to 4mm wide. Rock is 5mm wide. Taken from boulder field near intrusive metased contact

Sample Number:	Grid East:	E	Grid North:	N	Type:	Dimension:
L836160	UTM:	621471 E	UTM:	7002073 N	Sample Width:	Abundance: numerous ~15% of talus
	Elevation:	m				

Comments: 3 small cobbles of rusty-green weathering fine grained, heavy green skarn with trace-weak AsPy + Cpy? In talus near intrusive contact with abundant rusty weathering with hornfelsed metaseds. Skarn may be ~1m wide.

Rock Sample DescriptionsProject: Lansing Property: Lisa

Sample Number:	Grid East:	E	Grid North:	N	Type:	Dimension:
L836161	UTM:	621471 E	UTM:	7002073 N	Sample Width:	Abundance:
	Elevation:	m				

Comments: 1 cobble of rusty, porous ferricrete. Only one of its type. Found near skarn horizon

Sample Number:	Grid East:	E	Grid North:	N	Type:	Dimension:
L836162	UTM:	621471 E	UTM:	7002073 N	Sample Width:	Abundance:
	Elevation:	m				

Comments: Rusty purple weathering, very heavy, dark green skarn with moderate pyratite and trace pyrite +/- chalcopyrite?

Sample Number:	Grid East:	E	Grid North:	N	Type:	Dimension:
L836163	UTM:	621439 E	UTM:	7002011 N	Sample Width:	Abundance:
	Elevation:	m				

Comments: one block of quartz vein with moderate AsPy. Pervasively weak green colour. In float with hornfels + intrusive talus. Several similar blocks found nearby.

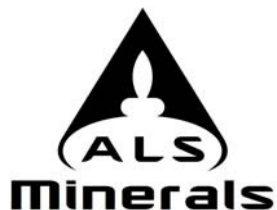
Sample Number:	Grid East:	E	Grid North:	N	Type:	Dimension:
L836164	UTM:	620640 E	UTM:	7001320 N	Sample Width:	Abundance:
	Elevation:	m				

Comments: Several boulders and subcrop of rusty purple brown weathering, fine grained, dark green diopside skarn, with minor to moderate disseminated Pyrite> blebby pyrrhotite and trace to moderately disseminated chalcopyrite. 6 piece composite sample collected within 10x3 m area in talus, along with hornfelsed seds. Largest block approx 50cm wide. samples are variably mineralized. Rep is of high grade material.

Sample Number:	Grid East:	E	Grid North:	N	Type:	Dimension:
L836165	UTM:	620508 E	UTM:	7001300 N	Sample Width:	Abundance:
	Elevation:	m				

Comments: 10 x 5m area of prominently rusty weathered dark green skarn subcrop and talus. Weak to moderate pyrrhotite pyrite chalcopyrite as blebs, disseminations and bands. 6 piece composite sample. Truncated against dyke to west. Locally limonitic and burnt up.

APPENDIX III
CERTIFICATES OF ANALYSIS



ALS Canada Ltd.
 2103 Dollarton Hwy
 North Vancouver BC V7H 0A7
 Phone: 604 984 0221 Fax: 604 984 0218 www.alsglobal.com

To: **ARCHER, CATHRO AND ASSOCIATES (1981) LIMITED**
1016- 510 W HASTINGS ST
VANCOUVER BC V6B 1L8

Page: 1
 Finalized Date: 15- AUG- 2012
 Account: F

CERTIFICATE WH12171264

Project: Lisa
 P.O. No.:
 This report is for 11 Rock samples submitted to our lab in Whitehorse, YT, Canada on 22- JUL- 2012.
 The following have access to data associated with this certificate:
 SARAH EATON JOAN MARIACHER

SAMPLE PREPARATION	
ALS CODE	DESCRIPTION
WEI- 21	Received Sample Weight
LOG- 22	Sample login - Rcd w/o BarCode
CRU- 31	Fine crushing - 70%<2mm
SPL- 21	Split sample - riffle splitter
PUL- 31	Pulverize split to 85%< 75 um
CRU- QC	Crushing QC Test
PUL- QC	Pulverizing QC Test

ANALYTICAL PROCEDURES		
ALS CODE	DESCRIPTION	INSTRUMENT
As- OG46	Ore Grade As - Aqua Regia	VARIABLE
Au- ICP21	Au 30g FA ICP- AES Finish	ICP- AES
ME- MS41	51 anal. aqua regia ICPMS	
ME- OG46	Ore Grade Elements - AquaRegia	ICP- AES

To: **ARCHER, CATHRO AND ASSOCIATES (1981) LIMITED**
ATTN: JOAN MARIACHER
1016- 510 W HASTINGS ST
VANCOUVER BC V6B 1L8

This is the Final Report and supersedes any preliminary report with this certificate number. Results apply to samples as submitted. All pages of this report have been checked and approved for release.

***** See Appendix Page for comments regarding this certificate *****

Signature: 
 Colin Ramshaw, Vancouver Laboratory Manager



ALS Canada Ltd.
 2103 Dollarton Hwy
 North Vancouver BC V7H 0A7
 Phone: 604 984 0221 Fax: 604 984 0218 www.alsglobal.com

To: ARCHER, CATHRO AND ASSOCIATES (1981)
 LIMITED
 1016- 510 W HASTINGS ST
 VANCOUVER BC V6B 1L8

Page: 2 - A
 Total # Pages: 2 (A - D)
 Plus Appendix Pages
 Finalized Date: 15- AUG- 2012
 Account: F

Project: Lisa

CERTIFICATE OF ANALYSIS WH12171264

Sample Description	Method Analyte Units LOR	WEI- 21	Au- ICP21	ME- MS41	ME- MS41	ME- MS41	ME- MS41	ME- MS41	ME- MS41	ME- MS41	ME- MS41	ME- MS41	ME- MS41	ME- MS41	ME- MS41	
		Recvd Wt. kg	Au ppm	Ag ppm	Al %	As ppm	Au ppm	B ppm	Ba ppm	Be ppm	Bi ppm	Ca %	Cd ppm	Ce ppm	Co ppm	Cr ppm
		0.02	0.001	0.01	0.01	0.1	0.2	10	10	0.05	0.01	0.01	0.01	0.02	0.1	1
L836155		0.66	0.020	0.02	0.97	98.8	<0.2	10	110	0.87	0.05	1.99	0.04	76.3	6.3	5
L836156		1.13	0.001	0.03	1.40	351	<0.2	<10	70	0.99	1.63	3.38	0.03	78.2	6.2	4
L836157		0.44	1.100	3.78	0.37	>10000	1.1	<10	180	0.15	36.8	0.31	1.13	11.40	15.5	7
L836158		0.13	0.015	0.10	0.92	795	<0.2	<10	90	0.61	0.25	3.37	0.16	29.3	4.7	8
L836159		0.42	0.364	4.07	0.02	>10000	0.4	<10	10	<0.05	297	0.02	0.68	0.84	5.6	<1
L836160		0.41	0.027	1.09	0.96	573	<0.2	<10	10	0.45	44.8	1.24	0.05	9.58	2.8	9
L836161		0.19	0.076	0.98	0.28	712	<0.2	<10	10	0.07	133.5	0.57	0.01	5.90	0.5	6
L836162		0.24	0.036	0.50	1.39	43.9	<0.2	<10	<10	0.30	55.8	1.03	0.05	13.65	13.7	5
L836163		0.21	0.765	6.56	0.04	>10000	0.8	<10	10	<0.05	357	0.02	0.38	3.33	585	2
L836164		0.82	0.352	0.96	1.66	822	0.3	<10	10	0.90	254	1.06	0.17	13.50	51.4	6
L836165		0.90	0.714	1.64	1.10	5230	0.7	<10	10	0.64	288	0.94	0.13	20.0	76.6	7

***** See Appendix Page for comments regarding this certificate *****



ALS Canada Ltd.
 2103 Dollarton Hwy
 North Vancouver BC V7H 0A7
 Phone: 604 984 0221 Fax: 604 984 0218 www.alsglobal.com

To: ARCHER, CATHRO AND ASSOCIATES (1981)
 LIMITED
 1016- 510 W HASTINGS ST
 VANCOUVER BC V6B 1L8

Page: 2 - B
 Total # Pages: 2 (A - D)
 Plus Appendix Pages
 Finalized Date: 15- AUG- 2012
 Account: F

Project: Lisa

CERTIFICATE OF ANALYSIS WH12171264

Sample Description	Method Analyte Units LOR	ME- MS41	ME- MS41	ME- MS41	ME- MS41	ME- MS41	ME- MS41	ME- MS41	ME- MS41	ME- MS41	ME- MS41	ME- MS41	ME- MS41	ME- MS41	ME- MS41	
		Cs ppm	Cu ppm	Fe %	Ga ppm	Ge ppm	Hf ppm	Hg ppm	In ppm	K %	La ppm	Li ppm	Mg %	Mn ppm	Mo ppm	Na %
L836155		6.80	3.2	2.33	2.79	0.07	0.17	0.02	0.020	0.31	40.4	8.7	0.16	291	0.47	0.02
L836156		6.64	14.5	2.21	3.51	0.07	0.08	0.02	0.018	0.26	39.6	14.0	0.25	330	0.20	0.01
L836157		1.07	12.8	3.16	1.50	0.09	0.07	0.01	0.030	0.09	6.3	4.4	0.12	57	4.59	<0.01
L836158		2.27	2.7	2.51	4.27	0.05	0.09	0.01	0.009	0.14	21.0	15.9	0.28	350	0.37	<0.01
L836159		<0.05	433	19.35	0.24	0.60	<0.02	0.01	0.313	0.01	0.6	0.2	<0.01	21	2.55	0.02
L836160		0.56	2780	5.66	7.04	0.36	0.08	0.06	0.123	0.03	4.1	7.9	0.09	286	0.77	0.01
L836161		0.09	290	14.45	2.38	0.54	0.36	0.01	0.036	0.02	3.2	0.5	0.03	122	0.52	0.01
L836162		0.35	1270	6.96	6.66	0.26	0.12	0.02	0.046	0.01	6.9	8.1	0.06	291	0.25	0.03
L836163		0.06	492	15.50	0.54	1.82	0.02	0.03	0.063	0.01	1.7	0.2	<0.01	17	6.97	0.01
L836164		0.74	2460	15.30	5.75	0.29	0.12	0.05	0.074	0.06	6.0	17.6	0.10	280	0.89	0.04
L836165		0.49	3540	15.15	5.29	0.41	0.16	0.12	0.133	0.02	11.0	7.7	0.10	243	1.15	0.03



ALS Canada Ltd.
 2103 Dollarton Hwy
 North Vancouver BC V7H 0A7
 Phone: 604 984 0221 Fax: 604 984 0218 www.alsglobal.com

To: ARCHER, CATHRO AND ASSOCIATES (1981)
 LIMITED
 1016- 510 W HASTINGS ST
 VANCOUVER BC V6B 1L8

Page: 2 - C
 Total # Pages: 2 (A - D)
 Plus Appendix Pages
 Finalized Date: 15- AUG- 2012
 Account: F

Project: Lisa

CERTIFICATE OF ANALYSIS WH12171264

Sample Description	Method Analyte Units LOR	ME-MS41	ME-MS41	ME-MS41	ME-MS41	ME-MS41	ME-MS41	ME-MS41	ME-MS41	ME-MS41	ME-MS41	ME-MS41	ME-MS41	ME-MS41	ME-MS41	
		Nb ppm	Ni ppm	P ppm	Pb ppm	Rb ppm	Re ppm	S %	Sb ppm	Sc ppm	Se ppm	Sn ppm	Sr ppm	Ta ppm	Te ppm	Th ppm
		0.05	0.2	10	0.2	0.1	0.001	0.01	0.05	0.1	0.2	0.2	0.2	0.01	0.01	0.2
L836155		0.08	3.4	560	16.6	20.9	<0.001	0.05	5.84	5.9	0.3	0.2	31.9	0.01	<0.01	16.5
L836156		0.09	3.3	530	10.4	19.6	<0.001	0.03	4.01	5.0	0.3	0.3	42.8	0.01	0.01	14.4
L836157		0.14	2.1	130	1565	6.6	<0.001	1.15	207	1.0	2.1	0.2	12.1	<0.01	0.29	3.6
L836158		0.30	3.1	240	11.7	12.1	0.001	0.03	12.05	2.4	0.3	0.5	72.7	<0.01	<0.01	5.1
L836159		0.44	0.2	20	264	0.3	<0.001	0.34	260	0.3	6.3	0.2	0.5	<0.01	1.28	0.3
L836160		0.19	2.5	140	3.6	2.0	0.001	1.60	0.65	1.2	2.0	6.1	14.0	<0.01	0.24	2.8
L836161		0.75	0.7	160	6.8	0.5	<0.001	0.53	1.53	0.7	5.7	12.4	10.8	0.01	0.55	2.0
L836162		0.26	8.5	340	7.9	0.4	<0.001	4.23	0.23	0.7	4.4	2.8	32.9	<0.01	0.35	1.7
L836163		0.42	93.4	180	114.5	0.9	0.006	7.18	351	0.2	22.1	0.3	1.0	<0.01	4.98	1.5
L836164		0.79	9.1	240	3.7	6.0	0.001	>10.0	1.52	0.9	13.6	2.3	55.1	0.01	5.33	4.9
L836165		0.65	21.0	400	6.9	1.3	0.001	8.45	11.45	1.0	18.1	2.9	28.0	<0.01	8.75	5.4

***** See Appendix Page for comments regarding this certificate *****



ALS Canada Ltd.
 2103 Dollarton Hwy
 North Vancouver BC V7H 0A7
 Phone: 604 984 0221 Fax: 604 984 0218 www.alsglobal.com

To: ARCHER, CATHRO AND ASSOCIATES (1981)
 LIMITED
 1016- 510 W HASTINGS ST
 VANCOUVER BC V6B 1L8

Page: 2 - D
 Total # Pages: 2 (A - D)
 Plus Appendix Pages
 Finalized Date: 15- AUG- 2012
 Account: F

Project: Lisa

CERTIFICATE OF ANALYSIS WH12171264

Sample Description	Method Analyte Units LOR	ME- MS41	ME- MS41	ME- MS41	ME- MS41	ME- MS41	ME- MS41	ME- MS41	ME- MS41	As- OG46
		Ti %	Ti ppm	U ppm	V ppm	W ppm	Y ppm	Zn ppm	Zr ppm	As %
		0.005	0.02	0.05	1	0.05	0.05	2	0.5	0.01
L836155		0.007	0.15	3.58	10	0.38	17.20	43	4.9	
L836156		0.007	0.11	1.38	17	2.38	18.90	26	1.6	
L836157		0.005	0.08	4.40	7	1.28	2.95	72	2.1	2.64
L836158		0.026	0.08	4.96	18	0.83	12.35	18	2.2	
L836159		<0.005	0.08	1.43	2	0.09	0.32	23	<0.5	25.7
L836160		0.028	0.06	0.49	10	68.3	3.15	15	2.0	
L836161		0.094	<0.02	0.36	23	3.51	2.10	<2	9.7	
L836162		0.028	0.02	0.41	6	11.70	2.92	11	2.3	
L836163		<0.005	0.02	0.69	1	0.17	0.24	38	0.6	19.35
L836164		0.047	0.04	0.86	9	45.6	5.15	31	2.1	
L836165		0.037	0.05	0.66	11	144.5	3.87	25	3.4	



ALS Canada Ltd.
2103 Dollarton Hwy
North Vancouver BC V7H 0A7
Phone: 604 984 0221 Fax: 604 984 0218 www.alsglobal.com

To: ARCHER, CATHRO AND ASSOCIATES (1981)
LIMITED
1016- 510 W HASTINGS ST
VANCOUVER BC V6B 1L8

Page: Appendix 1
Total # Appendix Pages: 1
Finalized Date: 15- AUG- 2012
Account: F

Project: Lisa

CERTIFICATE OF ANALYSIS WH12171264

Method	CERTIFICATE COMMENTS
ME-MS41	Gold determinations by this method are semi-quantitative due to the small sample weight used (0.5g).



ALS Canada Ltd.
 2103 Dollarton Hwy
 North Vancouver BC V7H 0A7
 Phone: 604 984 0221 Fax: 604 984 0218 www.alsglobal.com

To: **ARCHER, CATHRO AND ASSOCIATES (1981) LIMITED**
1016- 510 W HASTINGS ST
VANCOUVER BC V6B 1L8

Page: 1
 Finalized Date: 7- AUG- 2012
 Account: F

CERTIFICATE WH12174361

Project: Lisa
 P.O. No.:
 This report is for 46 Soil samples submitted to our lab in Whitehorse, YT, Canada on 25- JUL- 2012.
 The following have access to data associated with this certificate:
 SARAH EATON JOAN MARIACHER

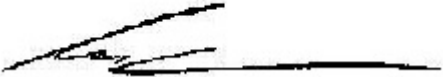
SAMPLE PREPARATION	
ALS CODE	DESCRIPTION
WEI- 21	Received Sample Weight
LOG- 22	Sample login - Rcd w/ o BarCode
SCR- 41	Screen to - 180um and save both

ANALYTICAL PROCEDURES		
ALS CODE	DESCRIPTION	INSTRUMENT
Au- ICP21	Au 30g FA ICP- AES Finish	ICP- AES
ME- MS41	51 anal. aqua regia ICPMS	

To: **ARCHER, CATHRO AND ASSOCIATES (1981) LIMITED**
ATTN: JOAN MARIACHER
1016- 510 W HASTINGS ST
VANCOUVER BC V6B 1L8

This is the Final Report and supersedes any preliminary report with this certificate number. Results apply to samples as submitted. All pages of this report have been checked and approved for release.

***** See Appendix Page for comments regarding this certificate *****

Signature: 
 Colin Ramshaw, Vancouver Laboratory Manager



ALS Canada Ltd.
 2103 Dollarton Hwy
 North Vancouver BC V7H 0A7
 Phone: 604 984 0221 Fax: 604 984 0218 www.alsglobal.com

To: ARCHER, CATHRO AND ASSOCIATES (1981)
 LIMITED
 1016- 510 W HASTINGS ST
 VANCOUVER BC V6B 1L8

Page: 2 - A
 Total # Pages: 3 (A - D)
 Plus Appendix Pages
 Finalized Date: 7- AUG- 2012
 Account: F

Project: Lisa

CERTIFICATE OF ANALYSIS WH12174361

Sample Description	Method	WEI- 21	Au- ICP21	ME- MS41	ME- MS41	ME- MS41	ME- MS41	ME- MS41	ME- MS41	ME- MS41	ME- MS41	ME- MS41	ME- MS41	ME- MS41	ME- MS41	ME- MS41
	Analyte	Recvd Wt.	Au	Ag	Al	As	Au	B	Ba	Be	Bi	Ca	Cd	Ce	Co	Cr
Units		kg	ppm	ppm	%	ppm	ppm	ppm	ppm	ppm	ppm	%	ppm	ppm	ppm	ppm
LOR		0.02	0.001	0.01	0.01	0.1	0.2	10	10	0.05	0.01	0.01	0.01	0.02	0.1	1
DD008326		0.29	0.007	0.14	2.25	65.0	<0.2	<10	330	1.02	2.84	0.49	0.52	37.8	15.9	37
DD008327		0.28	0.007	0.14	1.99	82.4	<0.2	<10	200	0.83	2.90	0.17	0.27	34.9	12.8	34
DD008328		0.30	0.005	0.11	1.71	58.0	<0.2	<10	230	0.67	1.35	0.19	0.62	29.3	9.9	29
DD008329		0.25	0.005	0.26	2.33	29.9	<0.2	<10	290	0.92	1.33	0.74	0.28	36.3	12.5	49
DD008330		0.33	0.003	0.12	2.06	39.5	<0.2	<10	290	0.70	1.36	0.30	0.20	33.8	10.6	35
DD008331		0.22	0.010	0.12	1.07	35.0	<0.2	<10	80	0.20	3.79	0.05	0.17	16.80	3.5	15
DD008332		0.17	0.002	0.06	0.99	14.5	<0.2	<10	80	0.34	0.66	0.08	0.14	15.95	3.7	8
DD008333		0.20	0.009	0.13	1.60	64.1	<0.2	<10	90	0.33	1.23	0.09	0.25	27.7	6.1	31
DD008334		0.18	0.003	0.34	1.89	110.0	<0.2	<10	150	0.44	2.38	0.10	0.50	28.6	9.8	40
DD008335		0.34	0.004	0.08	2.60	116.5	<0.2	<10	230	0.90	2.45	0.19	0.23	45.0	14.9	44
DD008336		0.20	0.003	0.06	1.69	42.9	<0.2	<10	120	0.34	0.55	0.05	0.83	26.9	8.8	37
DD008337		0.21	0.017	0.17	1.97	64.2	<0.2	<10	130	1.13	21.3	0.37	0.31	39.9	10.5	30
DD008338		0.28	0.006	0.09	2.09	52.9	<0.2	<10	130	0.68	1.29	0.11	0.30	30.5	12.3	37
DD008339		0.31	0.006	0.09	1.86	134.5	<0.2	<10	170	0.68	2.24	0.15	0.21	31.7	11.6	35
DD008340		0.17	0.002	0.20	1.61	90.9	<0.2	<10	110	0.41	0.85	0.08	0.41	18.70	7.8	25
DD008341		0.27	0.003	0.09	2.44	281	<0.2	<10	180	0.60	0.49	0.17	0.16	25.1	13.0	42
DD008342		0.24	0.004	0.06	2.63	102.5	<0.2	<10	120	0.53	0.38	0.06	0.50	25.2	8.9	49
DD008343		0.30	0.003	0.10	2.60	79.8	<0.2	<10	140	0.60	0.56	0.10	0.31	26.7	12.2	44
DD008344		0.29	0.004	0.09	2.95	95.3	<0.2	<10	200	0.77	0.70	0.12	0.36	32.1	16.4	56
DD008345		0.25	0.003	0.07	2.55	56.7	<0.2	<10	150	0.58	0.53	0.09	0.42	28.5	12.5	52
DD008346		0.27	0.009	0.21	2.53	47.2	<0.2	<10	300	0.72	0.37	0.16	0.33	38.3	19.1	44
DD008347		0.23	0.003	0.12	1.71	22.8	<0.2	<10	460	0.54	0.30	0.08	0.30	28.7	9.1	29
DD008348		0.41	0.004	0.08	1.90	27.1	<0.2	<10	290	0.57	0.36	0.20	0.36	28.5	8.7	29
DD008349		0.29	<0.001	0.12	0.51	37.7	<0.2	<10	40	0.12	0.11	0.22	0.37	3.41	2.2	4
DD008350		0.22	0.009	0.46	1.59	269	<0.2	<10	140	0.63	0.32	0.43	0.33	20.6	8.1	27
DD008351		0.24	0.005	0.18	2.30	190.0	<0.2	<10	230	0.94	0.55	0.66	0.49	25.4	15.2	30
DD008352		0.20	0.008	0.06	1.33	20.6	<0.2	<10	110	0.39	0.30	0.05	0.27	26.8	5.8	24
DD008353		0.20	0.003	0.12	1.82	111.0	<0.2	<10	200	0.62	0.49	0.21	0.36	22.2	10.4	27
DD008354		0.27	0.002	0.08	1.95	336	<0.2	<10	280	0.65	0.46	0.22	0.32	28.9	10.8	34
DD008355		0.21	0.003	0.07	1.68	38.8	<0.2	<10	130	0.50	0.35	0.07	0.25	26.7	7.0	32
DD008356		0.22	0.003	0.07	1.21	29.2	<0.2	<10	100	0.33	2.10	0.05	0.15	21.9	5.8	21
DD008357		0.33	0.004	0.06	2.22	122.0	<0.2	<10	170	0.74	0.74	0.10	0.27	30.0	11.8	46
DD008358		0.17	0.001	0.10	0.89	11.7	<0.2	<10	50	0.25	0.12	0.08	0.10	10.85	3.1	12
DD008359		0.27	0.003	0.14	1.17	32.4	<0.2	<10	90	0.37	0.37	0.04	0.42	21.1	7.4	23
DD008360		0.29	0.001	0.09	1.11	24.0	<0.2	<10	110	0.32	0.30	0.09	0.21	15.05	5.6	17
DD008361		0.18	0.004	0.09	1.79	56.0	<0.2	<10	170	0.67	1.98	0.23	0.24	36.1	8.3	24
DD008362		0.23	0.003	0.09	2.69	115.0	<0.2	<10	170	0.92	0.71	0.12	0.30	35.8	11.3	44
DD008363		0.19	0.004	0.29	1.27	59.5	<0.2	<10	80	0.27	0.56	0.06	0.16	25.2	5.4	24
DD008364		0.24	0.005	0.14	2.31	80.7	<0.2	<10	190	0.75	0.62	0.10	0.27	31.4	10.1	36
DD008365		0.21	0.004	0.15	2.05	46.8	<0.2	<10	220	0.72	1.63	0.14	0.26	36.7	9.1	28



ALS Canada Ltd.
 2103 Dollarton Hwy
 North Vancouver BC V7H 0A7
 Phone: 604 984 0221 Fax: 604 984 0218 www.alsglobal.com

To: ARCHER, CATHRO AND ASSOCIATES (1981)
 LIMITED
 1016- 510 W HASTINGS ST
 VANCOUVER BC V6B 1L8

Page: 2 - B
 Total # Pages: 3 (A - D)
 Plus Appendix Pages
 Finalized Date: 7- AUG- 2012
 Account: F

Project: Lisa

CERTIFICATE OF ANALYSIS WH12174361

Sample Description	Method Analyte Units LOR	ME-MS41	ME-MS41	ME-MS41	ME-MS41	ME-MS41	ME-MS41	ME-MS41	ME-MS41	ME-MS41	ME-MS41	ME-MS41	ME-MS41	ME-MS41	ME-MS41	
		Cs ppm	Cu ppm	Fe %	Ga ppm	Ge ppm	Hf ppm	Hg ppm	In ppm	K %	La ppm	Li ppm	Mg %	Mn ppm	Mo ppm	Na %
DD008326		4.62	60.1	3.49	6.90	0.09	0.02	0.04	0.048	0.12	17.0	31.8	0.64	596	1.26	0.03
DD008327		3.52	56.4	3.46	6.01	0.09	0.02	0.03	0.039	0.14	16.2	27.5	0.62	428	1.55	0.01
DD008328		3.38	26.2	3.18	6.49	0.07	<0.02	0.04	0.037	0.12	14.2	25.4	0.43	480	1.55	0.02
DD008329		4.28	46.2	3.09	8.17	0.08	0.02	0.05	0.037	0.12	18.3	25.7	0.66	599	1.41	0.03
DD008330		2.56	40.8	3.05	6.25	0.07	0.02	0.03	0.037	0.08	15.4	24.8	0.55	561	1.30	0.02
DD008331		2.34	30.7	1.85	5.80	<0.05	<0.02	0.04	0.019	0.05	8.4	6.3	0.18	277	1.60	0.01
DD008332		1.20	18.1	1.18	3.11	<0.05	<0.02	0.02	0.010	0.05	7.9	7.3	0.15	165	0.68	0.03
DD008333		2.68	29.4	3.62	9.40	0.09	0.03	0.06	0.025	0.15	13.2	15.4	0.38	193	1.87	0.01
DD008334		2.60	25.0	4.33	9.63	0.08	0.03	0.06	0.031	0.13	13.9	20.7	0.55	462	4.00	0.01
DD008335		2.97	73.0	3.76	7.72	0.11	0.02	0.03	0.041	0.16	23.5	32.2	0.80	538	1.55	0.02
DD008336		2.45	31.0	3.90	8.88	0.08	<0.02	0.03	0.032	0.13	12.8	13.9	0.46	385	2.36	0.01
DD008337		5.02	205	4.51	7.59	0.11	0.02	0.04	0.197	0.12	16.9	34.2	0.62	869	1.68	0.02
DD008338		2.52	36.0	3.56	6.84	0.08	<0.02	0.05	0.068	0.15	13.8	27.9	0.54	503	1.55	0.01
DD008339		2.80	40.1	3.24	6.53	0.08	<0.02	0.03	0.050	0.14	15.5	25.3	0.53	472	1.27	0.01
DD008340		1.73	27.9	2.21	5.37	0.06	<0.02	0.04	0.025	0.08	8.8	12.0	0.33	378	0.96	0.02
DD008341		3.34	52.1	3.59	8.47	0.07	0.02	0.03	0.034	0.10	13.3	28.5	0.59	506	1.12	0.01
DD008342		2.09	44.4	3.84	9.42	0.08	0.02	0.06	0.036	0.16	12.2	16.9	0.53	353	1.55	0.01
DD008343		2.49	51.5	3.37	7.71	0.08	0.02	0.06	0.032	0.12	12.7	25.2	0.59	321	1.18	0.01
DD008344		3.54	63.1	3.84	9.52	0.09	0.02	0.04	0.038	0.18	14.9	34.5	0.83	352	1.27	0.01
DD008345		2.63	45.0	4.10	9.22	0.09	0.02	0.05	0.036	0.19	13.5	26.7	0.71	310	1.42	0.01
DD008346		2.80	68.8	3.82	6.89	0.11	0.04	0.05	0.030	0.26	17.6	28.4	0.86	503	1.42	0.02
DD008347		2.01	32.1	3.14	5.75	0.07	<0.02	0.04	0.022	0.14	13.8	17.5	0.48	452	1.61	0.02
DD008348		1.96	22.1	4.02	6.57	0.08	0.03	0.05	0.027	0.13	13.8	21.5	0.46	397	2.56	0.01
DD008349		0.51	7.4	0.75	2.35	<0.05	<0.02	0.03	0.005	0.03	2.0	2.0	0.07	92	0.32	0.03
DD008350		2.12	33.9	2.24	5.29	0.06	<0.02	0.04	0.020	0.11	11.7	22.3	0.44	275	0.73	0.02
DD008351		3.37	47.6	3.02	6.67	0.06	<0.02	0.05	0.032	0.11	13.7	37.6	0.52	526	1.76	0.02
DD008352		2.11	19.8	2.56	6.02	0.05	<0.02	0.04	0.020	0.10	13.4	11.8	0.26	307	1.50	0.01
DD008353		2.30	34.2	2.63	6.34	0.05	<0.02	0.04	0.024	0.09	12.0	21.4	0.42	584	1.25	0.02
DD008354		2.77	35.0	3.11	7.13	0.05	<0.02	0.04	0.027	0.13	15.1	23.5	0.47	761	1.28	0.01
DD008355		2.23	24.0	2.98	7.17	<0.05	<0.02	0.05	0.021	0.09	13.5	20.4	0.42	234	1.59	0.01
DD008356		1.77	21.9	2.28	5.99	<0.05	<0.02	0.04	0.018	0.09	10.6	8.1	0.22	402	1.30	0.01
DD008357		3.06	59.3	3.69	8.79	0.06	<0.02	0.04	0.039	0.13	14.1	30.2	0.63	442	1.24	0.01
DD008358		0.81	11.6	1.20	3.22	<0.05	<0.02	0.05	0.010	0.04	4.7	6.4	0.16	109	0.52	0.02
DD008359		1.65	22.0	2.30	5.41	<0.05	<0.02	0.05	0.021	0.10	10.3	12.7	0.29	391	1.10	0.01
DD008360		1.51	16.7	1.69	4.62	<0.05	<0.02	0.05	0.015	0.06	7.3	7.6	0.18	342	1.29	0.02
DD008361		2.33	33.4	2.44	6.07	0.05	<0.02	0.05	0.023	0.09	18.1	21.0	0.39	328	1.75	0.02
DD008362		2.71	34.3	3.48	8.09	0.06	0.04	0.05	0.038	0.12	18.2	38.7	0.63	263	2.56	0.01
DD008363		2.20	23.6	3.17	8.21	0.05	0.02	0.04	0.019	0.12	12.6	12.2	0.33	211	2.33	0.01
DD008364		2.35	29.6	3.44	7.93	0.05	0.03	0.05	0.031	0.10	15.9	30.6	0.49	253	1.72	0.01
DD008365		2.60	36.9	2.98	6.79	0.06	<0.02	0.07	0.033	0.11	18.7	22.5	0.48	382	2.07	0.01



ALS Canada Ltd.
 2103 Dollarton Hwy
 North Vancouver BC V7H 0A7
 Phone: 604 984 0221 Fax: 604 984 0218 www.alsglobal.com

To: ARCHER, CATHRO AND ASSOCIATES (1981)
 LIMITED
 1016- 510 W HASTINGS ST
 VANCOUVER BC V6B 1L8

Page: 2 - C
 Total # Pages: 3 (A - D)
 Plus Appendix Pages
 Finalized Date: 7- AUG- 2012
 Account: F

Project: Lisa

CERTIFICATE OF ANALYSIS WH12174361

Sample Description	Method Analyte Units LOR	ME-MS41	ME-MS41	ME-MS41	ME-MS41	ME-MS41	ME-MS41	ME-MS41	ME-MS41	ME-MS41	ME-MS41	ME-MS41	ME-MS41	ME-MS41	ME-MS41	
		Nb ppm	Ni ppm	P ppm	Pb ppm	Rb ppm	Re ppm	S %	Sb ppm	Sc ppm	Se ppm	Sn ppm	Sr ppm	Ta ppm	Te ppm	Th ppm
DD008326		1.85	36.0	630	14.1	22.9	0.001	0.05	1.18	5.7	0.7	1.2	53.9	<0.01	0.09	2.9
DD008327		1.45	30.9	510	13.6	18.2	0.001	0.04	1.79	4.7	0.7	1.1	21.0	<0.01	0.08	2.4
DD008328		1.66	24.3	490	11.1	23.1	0.001	0.04	1.02	3.2	0.6	0.8	29.6	<0.01	0.09	1.3
DD008329		2.52	29.1	940	10.2	26.0	<0.001	0.10	0.73	4.2	0.7	0.9	66.6	<0.01	0.06	1.3
DD008330		1.23	28.7	570	10.6	17.3	<0.001	0.05	0.82	4.2	0.6	0.9	36.1	<0.01	0.06	1.9
DD008331		0.83	7.8	390	9.8	13.2	<0.001	0.03	0.55	1.1	0.4	1.0	13.1	<0.01	0.07	<0.2
DD008332		0.69	7.0	410	5.3	7.8	<0.001	0.02	0.33	1.5	0.3	0.3	11.9	0.01	0.02	0.4
DD008333		2.98	16.5	390	11.7	22.2	<0.001	0.04	1.58	4.4	0.5	1.1	13.8	<0.01	0.08	3.7
DD008334		3.05	19.1	400	16.4	34.4	<0.001	0.04	1.28	5.1	0.5	1.2	14.1	<0.01	0.09	2.9
DD008335		1.65	34.1	520	14.3	22.3	0.001	0.04	1.49	5.5	0.7	0.9	20.8	0.01	0.08	1.5
DD008336		1.46	19.1	650	14.2	26.3	0.001	0.06	1.49	2.0	0.7	1.0	10.6	<0.01	0.07	0.2
DD008337		1.54	21.1	630	14.0	22.3	0.001	0.08	2.14	3.6	0.7	12.8	30.7	<0.01	0.19	1.6
DD008338		1.07	24.9	580	12.9	18.6	<0.001	0.06	1.56	2.5	0.7	2.1	14.7	<0.01	0.06	0.3
DD008339		1.26	25.8	490	12.8	21.4	0.001	0.04	1.84	3.3	0.6	2.1	23.6	<0.01	0.07	0.8
DD008340		0.82	15.9	550	19.7	16.0	<0.001	0.05	1.10	1.5	0.5	0.6	12.2	<0.01	0.05	<0.2
DD008341		1.33	29.0	570	12.3	24.4	0.001	0.06	1.37	3.7	0.6	0.9	18.5	<0.01	0.05	0.3
DD008342		1.98	20.3	570	12.1	17.5	<0.001	0.06	1.43	4.3	1.0	0.9	9.1	<0.01	0.06	0.5
DD008343		1.86	31.3	560	10.5	16.6	<0.001	0.05	2.28	5.0	0.9	0.8	14.2	0.01	0.06	0.9
DD008344		1.85	38.8	510	14.8	23.4	<0.001	0.05	3.53	6.9	0.8	1.0	17.7	<0.01	0.06	0.8
DD008345		1.86	28.3	540	12.1	22.3	0.001	0.05	2.21	5.3	0.7	0.9	11.5	<0.01	0.06	0.6
DD008346		1.92	43.6	520	13.0	22.5	0.001	0.04	2.15	7.9	0.7	0.7	19.4	<0.01	0.05	4.4
DD008347		0.63	23.3	690	11.6	17.4	<0.001	0.07	1.63	1.4	0.7	0.5	13.2	<0.01	0.05	0.2
DD008348		1.61	22.3	540	19.4	18.0	0.001	0.03	1.58	3.5	0.8	0.7	18.6	<0.01	0.07	3.4
DD008349		0.32	3.0	380	5.0	3.8	<0.001	0.05	0.37	0.4	0.2	<0.2	15.1	<0.01	0.01	<0.2
DD008350		0.87	18.5	700	10.7	17.6	0.001	0.08	1.79	2.1	0.6	0.5	25.4	<0.01	0.02	0.3
DD008351		1.33	31.0	820	12.2	25.6	<0.001	0.09	2.01	2.8	0.9	0.7	45.1	<0.01	0.04	0.6
DD008352		0.61	14.1	540	9.4	22.1	<0.001	0.04	1.16	0.5	0.2	0.7	8.2	<0.01	0.04	<0.2
DD008353		0.78	20.5	670	10.4	16.7	0.001	0.06	1.35	1.7	0.5	0.7	20.1	<0.01	0.05	0.2
DD008354		0.85	22.0	770	11.1	24.5	<0.001	0.07	1.48	1.8	0.8	0.8	24.1	<0.01	0.04	0.2
DD008355		1.14	18.6	650	12.5	15.9	0.001	0.05	1.42	1.4	0.7	0.8	12.7	<0.01	0.05	0.2
DD008356		0.67	11.9	480	8.6	15.9	<0.001	0.05	1.49	0.7	0.3	0.7	9.3	<0.01	0.04	<0.2
DD008357		1.31	34.7	510	12.6	18.4	0.001	0.06	2.41	3.8	0.6	1.1	17.4	<0.01	0.04	0.5
DD008358		0.43	6.9	530	4.4	5.7	<0.001	0.04	0.46	0.5	0.4	0.3	7.6	<0.01	0.02	<0.2
DD008359		0.74	13.6	470	9.1	18.9	<0.001	0.05	1.14	1.0	0.5	0.7	8.4	<0.01	0.04	<0.2
DD008360		0.38	8.7	580	8.4	11.8	0.001	0.04	0.66	0.3	0.5	0.5	12.1	<0.01	0.03	<0.2
DD008361		1.24	17.7	680	11.2	16.1	<0.001	0.04	0.85	2.6	0.7	0.7	22.7	<0.01	0.05	0.7
DD008362		2.75	26.8	360	14.7	20.2	<0.001	0.02	1.57	6.8	0.9	1.0	14.4	0.01	0.04	5.5
DD008363		2.37	17.0	340	12.4	20.0	0.001	0.02	1.53	3.0	0.6	0.9	12.9	<0.01	0.04	3.1
DD008364		2.43	24.2	370	16.8	18.4	<0.001	0.03	1.65	5.0	0.6	1.0	14.9	0.01	0.05	4.2
DD008365		1.06	21.6	820	14.7	21.6	0.001	0.05	0.98	2.4	0.9	0.9	18.6	<0.01	0.04	0.6



ALS Canada Ltd.
 2103 Dollarton Hwy
 North Vancouver BC V7H 0A7
 Phone: 604 984 0221 Fax: 604 984 0218 www.alsglobal.com

To: ARCHER, CATHRO AND ASSOCIATES (1981)
 LIMITED
 1016- 510 W HASTINGS ST
 VANCOUVER BC V6B 1L8

Page: 2 - D
 Total # Pages: 3 (A - D)
 Plus Appendix Pages
 Finalized Date: 7- AUG- 2012
 Account: F

Project: Lisa

CERTIFICATE OF ANALYSIS WH12174361

Sample Description	Method Analyte Units LOR	ME- MS41	ME- MS41	ME- MS41	ME- MS41	ME- MS41	ME- MS41	ME- MS41	ME- MS41
		Ti %	Ti ppm	U ppm	V ppm	W ppm	Y ppm	Zn ppm	Zr ppm
		0.005	0.02	0.05	1	0.05	0.05	2	0.5
DD008326		0.079	0.19	2.17	64	0.65	8.20	103	0.6
DD008327		0.074	0.18	1.21	61	1.21	5.58	82	<0.5
DD008328		0.074	0.19	0.80	55	0.63	3.92	97	<0.5
DD008329		0.092	0.19	1.61	67	0.54	7.91	83	0.5
DD008330		0.066	0.16	1.32	58	0.58	6.53	74	<0.5
DD008331		0.041	0.12	0.87	51	0.56	2.06	33	<0.5
DD008332		0.035	0.07	1.14	25	0.38	3.82	26	<0.5
DD008333		0.120	0.16	0.67	99	0.79	2.92	56	1.2
DD008334		0.115	0.20	0.73	97	0.76	3.19	78	0.9
DD008335		0.091	0.18	2.47	81	1.30	12.80	99	0.5
DD008336		0.076	0.12	0.75	95	0.36	3.01	83	0.5
DD008337		0.051	0.14	1.49	53	13.10	5.70	104	<0.5
DD008338		0.061	0.16	1.01	67	0.32	4.57	88	<0.5
DD008339		0.070	0.15	0.81	62	0.38	4.89	87	<0.5
DD008340		0.051	0.12	0.60	50	0.23	2.81	68	<0.5
DD008341		0.090	0.15	1.11	85	0.26	8.77	75	<0.5
DD008342		0.103	0.15	0.82	105	0.34	3.45	70	0.8
DD008343		0.097	0.16	0.72	84	0.45	3.89	74	0.7
DD008344		0.109	0.18	0.82	106	0.35	5.27	89	0.5
DD008345		0.106	0.14	0.69	104	0.34	3.98	86	0.5
DD008346		0.116	0.20	1.06	84	0.29	7.25	102	1.2
DD008347		0.036	0.15	0.78	56	0.18	3.56	76	<0.5
DD008348		0.033	0.18	0.78	65	0.29	4.13	85	0.9
DD008349		0.029	0.02	0.33	19	0.05	1.46	22	<0.5
DD008350		0.051	0.09	1.02	46	0.18	9.46	60	<0.5
DD008351		0.058	0.14	1.57	55	0.95	11.35	115	<0.5
DD008352		0.029	0.17	0.65	54	0.22	2.48	54	<0.5
DD008353		0.043	0.15	1.09	57	0.30	5.84	60	<0.5
DD008354		0.047	0.14	1.01	62	0.26	7.63	78	<0.5
DD008355		0.045	0.17	0.69	69	0.30	2.74	58	<0.5
DD008356		0.035	0.12	0.52	49	0.17	2.41	44	<0.5
DD008357		0.085	0.16	0.77	88	0.32	4.13	85	<0.5
DD008358		0.033	0.07	0.34	29	0.12	1.32	25	<0.5
DD008359		0.043	0.11	0.53	51	0.22	2.44	52	<0.5
DD008360		0.023	0.11	0.54	41	0.22	1.84	35	<0.5
DD008361		0.053	0.15	2.50	52	1.00	6.49	58	<0.5
DD008362		0.097	0.21	1.99	83	0.77	4.88	70	1.6
DD008363		0.087	0.14	0.54	74	0.98	2.34	67	0.9
DD008364		0.075	0.19	0.83	73	1.02	4.16	61	0.9
DD008365		0.049	0.20	3.01	61	1.16	8.93	79	<0.5



ALS Canada Ltd.
 2103 Dollarton Hwy
 North Vancouver BC V7H 0A7
 Phone: 604 984 0221 Fax: 604 984 0218 www.alsglobal.com

To: ARCHER, CATHRO AND ASSOCIATES (1981)
 LIMITED
 1016- 510 W HASTINGS ST
 VANCOUVER BC V6B 1L8

Page: 3 - A
 Total # Pages: 3 (A - D)
 Plus Appendix Pages
 Finalized Date: 7- AUG- 2012
 Account: F

Project: Lisa

CERTIFICATE OF ANALYSIS WH12174361

Sample Description	Method Analyte Units LOR	WEI- 21 Recvd Wt. kg	Au- ICP21 Au ppm	ME- MS41 Ag ppm	ME- MS41 Al %	ME- MS41 As ppm	ME- MS41 Au ppm	ME- MS41 B ppm	ME- MS41 Ba ppm	ME- MS41 Be ppm	ME- MS41 Bi ppm	ME- MS41 Ca %	ME- MS41 Cd ppm	ME- MS41 Ce ppm	ME- MS41 Co ppm	ME- MS41 Cr ppm
		0.02	0.001	0.01	0.01	0.1	0.2	10	10	0.05	0.01	0.01	0.01	0.02	0.1	1
DD008366		0.26	0.001	0.08	1.17	37.9	<0.2	<10	140	0.25	0.54	0.11	0.21	24.4	5.2	27
DD008367		0.22	0.003	0.10	1.64	70.7	<0.2	<10	290	0.58	0.61	0.25	0.35	22.8	8.3	25
DD008368		0.16	0.003	0.21	1.45	59.0	<0.2	<10	180	0.48	0.63	0.06	1.20	24.6	7.2	25
DD008369		0.21	0.004	0.06	1.52	86.6	<0.2	<10	180	0.59	1.41	0.18	0.28	38.5	13.3	32
DD008370		0.43	0.006	0.08	2.16	75.4	<0.2	<10	230	0.83	2.12	0.21	0.24	46.9	12.3	36
DD008371		0.29	0.004	0.13	2.29	86.4	<0.2	<10	300	0.83	1.42	0.16	0.25	34.7	11.3	42

***** See Appendix Page for comments regarding this certificate *****



ALS Canada Ltd.
 2103 Dollarton Hwy
 North Vancouver BC V7H 0A7
 Phone: 604 984 0221 Fax: 604 984 0218 www.alsglobal.com

To: ARCHER, CATHRO AND ASSOCIATES (1981)
 LIMITED
 1016- 510 W HASTINGS ST
 VANCOUVER BC V6B 1L8

Page: 3 - B
 Total # Pages: 3 (A - D)
 Plus Appendix Pages
 Finalized Date: 7- AUG- 2012
 Account: F

Project: Lisa

CERTIFICATE OF ANALYSIS WH12174361

Sample Description	Method Analyte Units LOR	ME-MS41	ME-MS41	ME-MS41	ME-MS41	ME-MS41	ME-MS41	ME-MS41	ME-MS41	ME-MS41	ME-MS41	ME-MS41	ME-MS41	ME-MS41	ME-MS41	
		Cs ppm	Cu ppm	Fe %	Ga ppm	Ge ppm	Hf ppm	Hg ppm	In ppm	K %	La ppm	Li ppm	Mg %	Mn ppm	Mo ppm	Na %
		0.05	0.2	0.01	0.05	0.05	0.02	0.01	0.005	0.01	0.2	0.1	0.01	5	0.05	0.01
DD008366		1.79	15.7	2.78	7.27	<0.05	<0.02	0.04	0.021	0.11	12.0	8.8	0.32	238	1.75	0.01
DD008367		2.40	26.6	2.99	7.65	0.05	<0.02	0.04	0.024	0.11	13.3	12.7	0.33	687	2.97	0.01
DD008368		2.22	28.5	2.87	6.91	0.05	<0.02	0.03	0.027	0.13	13.1	9.2	0.27	604	1.82	0.01
DD008369		2.29	29.4	3.28	6.84	0.07	<0.02	0.03	0.032	0.16	19.8	26.1	0.53	623	1.80	0.01
DD008370		2.76	47.1	3.38	6.79	0.07	0.02	0.04	0.051	0.17	23.0	30.4	0.64	429	1.80	0.01
DD008371		3.02	45.2	3.69	8.92	0.06	<0.02	0.04	0.042	0.16	17.0	34.1	0.67	451	2.31	0.01

***** See Appendix Page for comments regarding this certificate *****



ALS Canada Ltd.
 2103 Dollarton Hwy
 North Vancouver BC V7H 0A7
 Phone: 604 984 0221 Fax: 604 984 0218 www.alsglobal.com

To: ARCHER, CATHRO AND ASSOCIATES (1981)
 LIMITED
 1016- 510 W HASTINGS ST
 VANCOUVER BC V6B 1L8

Page: 3 - C
 Total # Pages: 3 (A - D)
 Plus Appendix Pages
 Finalized Date: 7- AUG- 2012
 Account: F

Project: Lisa

CERTIFICATE OF ANALYSIS WH12174361

Sample Description	Method Analyte Units LOR	ME-MS41 Nb ppm	ME-MS41 Ni ppm	ME-MS41 P ppm	ME-MS41 Pb ppm	ME-MS41 Rb ppm	ME-MS41 Re ppm	ME-MS41 S %	ME-MS41 Sb ppm	ME-MS41 Sc ppm	ME-MS41 Se ppm	ME-MS41 Sn ppm	ME-MS41 Sr ppm	ME-MS41 Ta ppm	ME-MS41 Te ppm	ME-MS41 Th ppm
DD008366		1.09	13.9	430	10.9	23.9	<0.001	0.04	0.91	1.6	0.6	0.9	13.3	<0.01	0.04	0.3
DD008367		0.77	17.2	640	15.0	26.1	<0.001	0.06	1.22	1.0	0.6	0.9	21.9	<0.01	0.07	<0.2
DD008368		0.55	14.9	800	13.4	26.3	<0.001	0.07	1.34	0.4	0.4	1.0	12.7	<0.01	0.04	<0.2
DD008369		1.85	24.5	580	14.4	19.7	<0.001	0.03	1.63	4.3	0.8	1.1	20.3	<0.01	0.06	4.0
DD008370		1.74	29.7	660	17.5	22.8	<0.001	0.02	1.61	5.5	1.5	1.9	19.5	<0.01	0.05	4.8
DD008371		1.41	27.5	530	16.2	23.2	<0.001	0.04	1.58	3.8	0.8	1.2	18.4	<0.01	0.07	0.9

***** See Appendix Page for comments regarding this certificate *****



ALS Canada Ltd.
 2103 Dollarton Hwy
 North Vancouver BC V7H 0A7
 Phone: 604 984 0221 Fax: 604 984 0218 www.alsglobal.com

To: **ARCHER, CATHRO AND ASSOCIATES (1981)
 LIMITED
 1016- 510 W HASTINGS ST
 VANCOUVER BC V6B 1L8**

Page: 3 - D
 Total # Pages: 3 (A - D)
 Plus Appendix Pages
 Finalized Date: 7- AUG- 2012
 Account: F

Project: Lisa

CERTIFICATE OF ANALYSIS WH12174361

Sample Description	Method Analyte Units LOR	ME- MS41 Ti %	ME- MS41 Ti ppm	ME- MS41 U ppm	ME- MS41 V ppm	ME- MS41 W ppm	ME- MS41 Y ppm	ME- MS41 Zn ppm	ME- MS41 Zr ppm
		0.005	0.02	0.05	1	0.05	0.05	2	0.5
DD008366		0.071	0.16	0.64	71	0.38	2.39	65	<0.5
DD008367		0.038	0.21	1.04	71	0.40	3.98	71	<0.5
DD008368		0.025	0.19	0.77	64	0.36	3.18	82	<0.5
DD008369		0.086	0.17	0.87	67	0.78	5.01	75	0.5
DD008370		0.082	0.21	1.51	67	1.12	8.13	86	0.6
DD008371		0.072	0.22	1.61	84	0.71	5.00	87	<0.5

***** See Appendix Page for comments regarding this certificate *****



ALS Canada Ltd.
2103 Dollarton Hwy
North Vancouver BC V7H 0A7
Phone: 604 984 0221 Fax: 604 984 0218 www.alsglobal.com

To: ARCHER, CATHRO AND ASSOCIATES (1981)
LIMITED
1016- 510 W HASTINGS ST
VANCOUVER BC V6B 1L8

Page: Appendix 1
Total # Appendix Pages: 1
Finalized Date: 7- AUG- 2012
Account: F

Project: Lisa

CERTIFICATE OF ANALYSIS WH12174361

Method	CERTIFICATE COMMENTS
ME-MS41	Gold determinations by this method are semi-quantitative due to the small sample weight used (0.5g).

APPENDIX IV

STATEMENT OF EXPENDITURES

Statement of Expenditures
Lisa 1-76 Mineral Claims
October 24, 2012

Labour

S. Drechsler (geologist) July 2012 – 1 day @ \$765/day	\$ 856.80
R. Drechsler (field assistant) July 2012 – 1 day @ \$680/day	761.60
T. Epp (field assistant) July 2012 – 1 day @ \$476/day	533.12
S. Wedge (field assistant) July 2012 – 1 day @ \$357/day	399.84
M. Van Loon (field assistant) July 2012 – 1 day @ \$340/day	<u>380.80</u>
	2,932.16

Expense (including management fee)

Field room and board – 5 mandays @ \$180/manday	1,088.64
Fireweed Helicopters – 4.7 hrs L4 @ \$1550/hr	8,261.19
ALS Chemex	2,195.94
Report preparation	<u>3,500.00</u>
	15,045.77

Total	<u>\$17,977.93</u>
-------	--------------------

ARCHER, CATHRO & ASSOCIATES (1981) LIMITED
1016 – 510 West Hastings Street
Vancouver, B.C. V6B 1L8


Telephone: 604-688-2568

Fax: 604-688-2578

AFFIDAVIT

I, Joan Mariacher, of Vancouver, B.C. make oath and say:

That to the best of my knowledge the attached Statement of Expenditures for exploration work on the Lisa 1-76 mineral claims on claim sheet 105N/2 is accurate.


Joan Mariacher

Sworn before me at Vancouver, B.C.

this 25th day of October 2012.


Barrister & Solicitor

IAN J. TALBOT
Barrister & Solicitor
281 East 5th Street
North Vancouver
British Columbia
Canada V7L 1L8

GEOLOGICAL LEGEND TO ACCOMPANY FIGURE 4

QUATERNARY



Q: QUATERNARY

unconsolidated glacial, glaciofluvial and glaciolacustrine deposits; fluvial silt, sand, and gravel, and local volcanic ash, in part with cover of soil and organic deposits

MID-CRETACEOUS



mKS: SELWYN SUITE

plutonic suite of intermediate (g) to more felsic composition (q) and rarely syenitic (y); equivalent felsic dykes (f); complete compositional gradation so that these designations are somewhat arbitrary

q. equigranular to porphyritic (K-feldspar) biotite +/- hornblende +/- muscovite granite, quartz monzonite and granodiorite; porphyritic biotite hornblende granite with large smoky grey quartz phenocrysts and locally K-feldspar phenocrysts (Selwyn Suite)

g. resistant, blocky, fine to coarse grained equigranular to porphyritic (K-feldspar) biotite quartz monzonite and granodiorite and minor quartz diorite; minor leuco-quartz monzonite and syenite (Selwyn Suite)

MIDDLE TO UPPER TRIASSIC



TrJ: JONES LAKE

brown to buff weathering, calcareous fine grained sandstone, argillite and shale; extensive ripple cross-lamination and bioturbation; massive, light grey weathering, fine crystalline, dark grey limestone; minor orange weathering platy limestone (Jones Lake)

CARBONIFEROUS TO PERMIAN



CPMC: MOUNT CHRISTIE

burrowed, interbedded greenish grey cherty shale and green shale; thin to medium bedded, light grey-green to black chert; black siliceous slate and siltstone; minor quartzite, limestone and dolostone; locally abundant, large grey barite nodules (Mount Christie)

MISSISSIPPIAN



MK: KENO HILL

massive to thick bedded quartz arenite; thin to medium bedded quartz arenite interstratified with black shale or carbonaceous phyllite; local scour surfaces and shale intraclasts; locally foliated and lineated (Keno Hill Quartzite)

MISSISSIPPIAN

MT

MT: TAY

mixed, generally fine clastic and carbonate assemblage (1) with locally thick regionally mappable carbonate horizons (2)

2. grey and buff weathering, generally thick bedded to massive, dark grey to black fetid limestone; fine crystalline to cryptocrystalline; commonly bioclastic

DEVONIAN AND MISSISSIPPIAN

DME

DME: EARN

complex assemblage of submarine fan and channel deposits (1), (5) within black siliceous shale and chert (2), (4) and including separated small occurrences of felsic volcanic rocks (3); barite common and many occurrences of stratiform Pb-Zn

1. thin bedded, laminated slate with thin to thickly interbedded fine to medium grained chert-quartz arenite and wacke; thick members of chert pebble conglomerate; black siliceous siltstone; nodular and bedded barite; rare limestone (Earn Gp., Portrait Lake and Prevost)

ORDOVICIAN TO LOWER DEVONIAN

ODR

ODR: ROAD RIVER - SELWYN

black shale and chert (1) overlain by orange siltstone (2) or buff platy limestone (3); locally contains beds as old as Middle Cambrian (4); correlations with basinal strata in Richardson Mountains include: ODR1 with CDR2 (upper part) and ODR2 with CDR4 (Road River Gp.)

1. black, gun-blue, or silvery white weathering black graptolitic shale and black chert; resistant grey weathering, thin to medium bedded, light grey to black, greenish grey or turquoise chert; minor argillaceous limestone (Road River Gp., Duo Lake and Elmer Creek)
2. rusty dark green to orange buff weathering, pyritic, burrowed, thin to thick bedded, argillite and dolomitic siltstone with members or partings of black shale and chert; minor bright orange dolostone (Road River Gp., Steel)

LOWER CAMBRIAN

ICG

ICG: GULL LAKE

dominantly fine clastic assemblage (1) with local volcanic units (2)

1. shale, siltstone and mudstone, locally bioturbated, with minor quartz sandstone; rare green-grey chert; local basal limestone and limestone conglomerate; phyllite to quartz-muscovite-biotite schist (+/-garnet +/-sillimanite +/-staurolite +/-andalusite) (Gull Lake)

2. dark green massive to fragmental mafic meta-volcanic and volcanoclastic rocks; siltstone and argillite

UPPER PROTEROZOIC TO LOWER CAMBRIAN

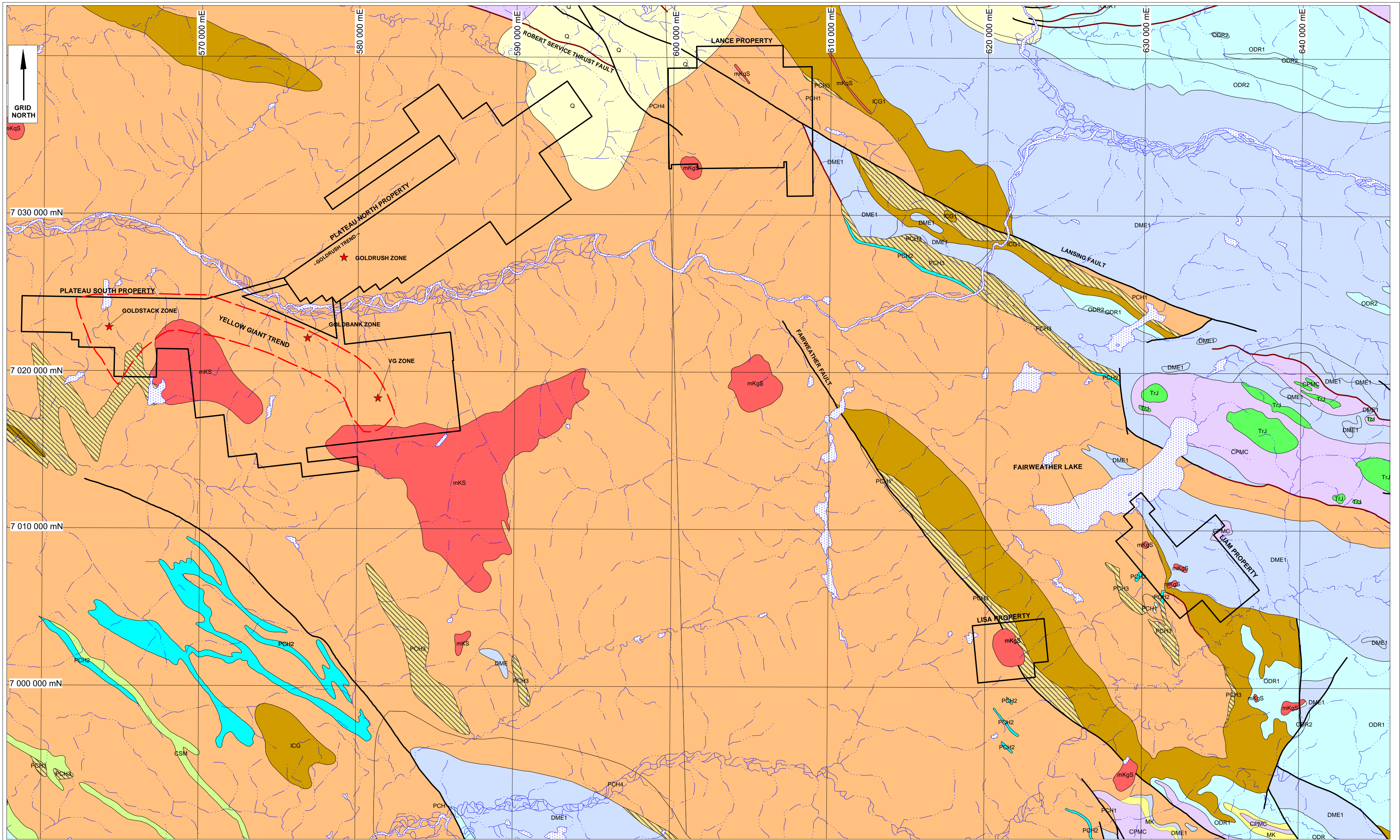
PCH

PCH: HYLAND

consists upwards of coarse turbiditic clastics (1), limestone (2) and fine clastics typified by maroon and green shale (3); may include younger (4) units; includes scattered mafic volcanic rocks (5) (Hyland Gp.)

PCH2

1. thin to thick bedded, brown to pale green shale, fine to coarse grained quartz-rich sandstone, grit, and quartz-pebble conglomerate; minor argillaceous limestone; phyllite, quartzofeldspathic and micaceous psammite, gritty psammite and minor marble (Hyland Gp., Yusezyu)
2. grey weathering, dark grey to grey white, thin to thick bedded, very fine crystalline limestone, locally sandy; calc-silicate and marble; may locally include carbonate members within (1) or (4) (Hyland Gp., Algae Lake , limestone member of Yusezyu)
3. distinctive, recessive, maroon weathering, interbedded maroon and apple-green slate; "Oldhamia" trace fossils; rare grey chert; locally basal member and interbeds of quartz siltstone, sandstone and quartz-pebble conglomerate (Hyland Gp., Narchilla , Senoah , Arrowhead Lake)
4. quartzose clastic rocks as described in (1); mostly(?) equivalent to (1) but may include younger units (Hyland Gp., mostly(?) Yusezyu)



After Gordey and Makepeace, 2003 and Bremner, 2012

- ★ Goldstrike Resources Mineralized Zones Referred to in Text
- Fault (movement unknown)
- Thrust fault (dip unknown)
- See accompanying lithological legend

**NEW DIMENSION RESOURCES LTD.
STRATEGIC METALS LTD.**

FIGURE 4
ARCHER, CATHRO & ASSOCIATES (1981) LIMITED

REGIONAL GEOLOGY

LISA PROPERTY

0 10 20 km

UTM ZONE 8, NAD 83, NTS 105N

FILE: ...2012\Lansing\Figures\Geology.wor DATE: DEC 2012