

**GEOCHEMICAL REPORT ON THE BISMARK CLAIMS, YUKON TERRITORY,
CANADA**

Claim Names and Grant Numbers:

Bismark 1 – 162; YE27031 to YE27192

NTS Map Sheet 115 O 11

Latitude N63.6167, Longitude W-139.2433

UTM Coordinates 587100E, 7055500N, Zone 7, NAD83

Dawson Mining District

Registered owners:

Goldbank Eastern Klondike Properties Inc. (100 %)

Work performed: March 24 - 28, 2012

for

Goldbank Eastern Klondike Properties Inc.

by

Bohumil (Boris) Molak, PhD., P.Ge (BC)

Sylvain Montreuil

& Erini Petroutsas

Date: November 30, 2012

Table of Contents

	page
1. Introduction	4
1.1. Location, Access and Topography	4
1.2. The Claims	4
1.3. Terms of Reference	6
2. Previous Exploration	7
3. Regional Geology	7
4. Local Geology	8
5. 2012 Geochemistry Survey	9
6. Sample Preparation and Analysis	12
6.1. Rock Samples	13
6.2. Soil Samples	16
7. Quality Assurance	21
8. Conclusions and Recommendations	26
9. 2012 Exploration Expenses	27
10. References	27
11. Statement of Qualifications	29

List of Figures

Fig. 1: Location of Bismark Claims	5
Fig. 2: Bismark Claim Block	6
Fig. 3: Bismark Claims, 2012 Geochemistry, Rock and Soil Sample Sites	10
Fig. 4: Bismark Claims, Geological Setting	11
Fig. 5 a,b,c: Histograms for Gold, Silver and Copper	14
Fig. 6 a, b,c: Histograms for Lead, Zinc and Nickel vs Chromium	15
Fig. 7 a,b,c: Histograms for Gold, Silver and Arsenic	18
Fig. 8 a, b, c: Histograms for Copper, Lead and Zinc	19
Fig. 9 a, b, c: Histograms for Mercury, Nickel and Chromium	20
Fig. 10 a, b, c: Original vs Repeat Assays, a- B92-S15R; b – 1FT; c – B11-OC-R	22
Fig. 11: DS8 Standard	23
Fig. 12: Graphs for G1-WHI Prep Blank	23
Fig. 13 a, b, c: Original vs Repeat Assays, a – B8-OCSB; b – B26; c – B109S18	24
Fig. 14: Original vs Repeat Assays, Soil 14	25
Fig. 15: DS8 Standard	25

List of Tables

Table 1: Bismark Claims Information	5
Table 2: Basic Statistics	13
Table 3: Correlation Matrix	13
Table 4: Basic Statistics for Soil Assays	17
Table 3: Correlation Matrix for Soil Assays	17

List of Appendices

Appendix I: Bismark, 2012 Geochemistry Survey, Sample Information	31
Appendix II: Assay Certificates	36

1. INTRODUCTION

The Bismark claims are situated approximately 50 air kilometers south of Dawson City in the Yukon Territory. The claims consist of 162 contiguous, un-surveyed, “Quartz” mining claims covering an area of over 33 square kilometers (3400 ha). The claims are 100 % owned by Goldbank Eastern Klondike Properties Inc.

A geochemistry program was carried out on the Bismark claims from March 24 to March 29, 2012 with an objective to detect precious and base metal anomalies in the outcrops and in the soil overlying various facies of the Nasina Assemblage and other rock units in the area. Two of the writers of this report (SM and EP) with a field assistant carried out the survey. A total of 66 rock and 41 soil samples were collected and their locations were recorded using a GPS unit. The samples were prepared and analysed at the Acme Analytical Laboratories Ltd. (AcmeLabs) in Dawson City and Vancouver.

1.1. Location, Access and Topography

Bismark claims form a contiguous block of 162 claims centered about 50 air kilometers south of Dawson City, Yukon Territory (Figs 1, 2). The claims cover an area of about 34.00 sq. km (3400 ha). Access to the Bismark claims from Dawson City is by the Hunker Creek road via Hunker Summit to Granville and then southbound across the Indian River and through Eureka Creek and along the ridge past Montana Creek to Bismark Creek. Access from there is by helicopter.

Topography on the Bismark claims is of an upland type with altitudes ranging from about 650 meters above sea level in the north to about 100 meters a. s. l. at the western edge of the grid.

1.2. The Claims

Table 1: Bismark claims information.

Grant Number	Claim Name	Claim Owner (100%)	Expiry Date
YE27031-YE27192	Bismark 1 - 162	Goldbank Eastern Klondike Properties Inc.	31/03/2013

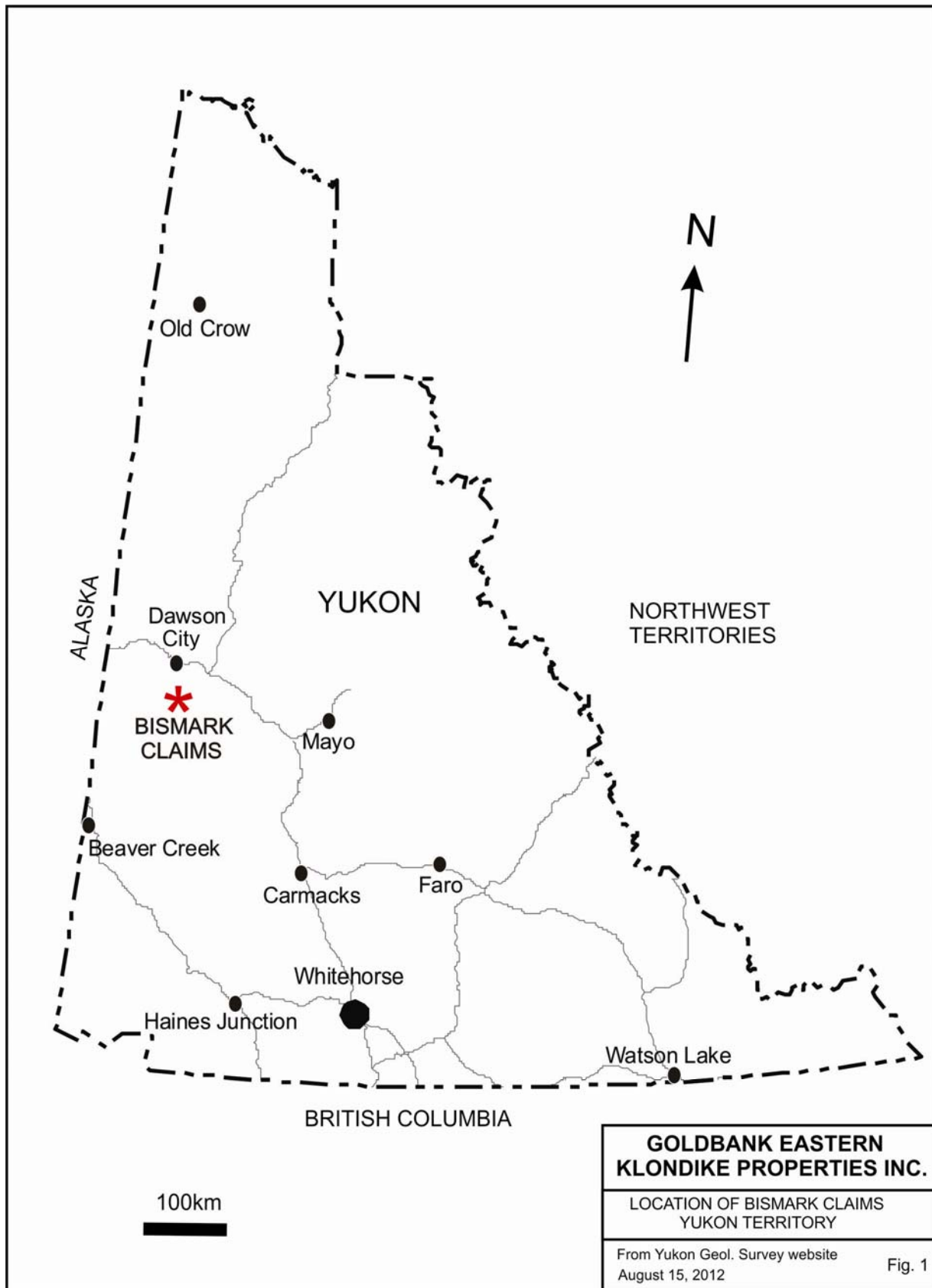


Fig. 1: Location of Bismark Claims.

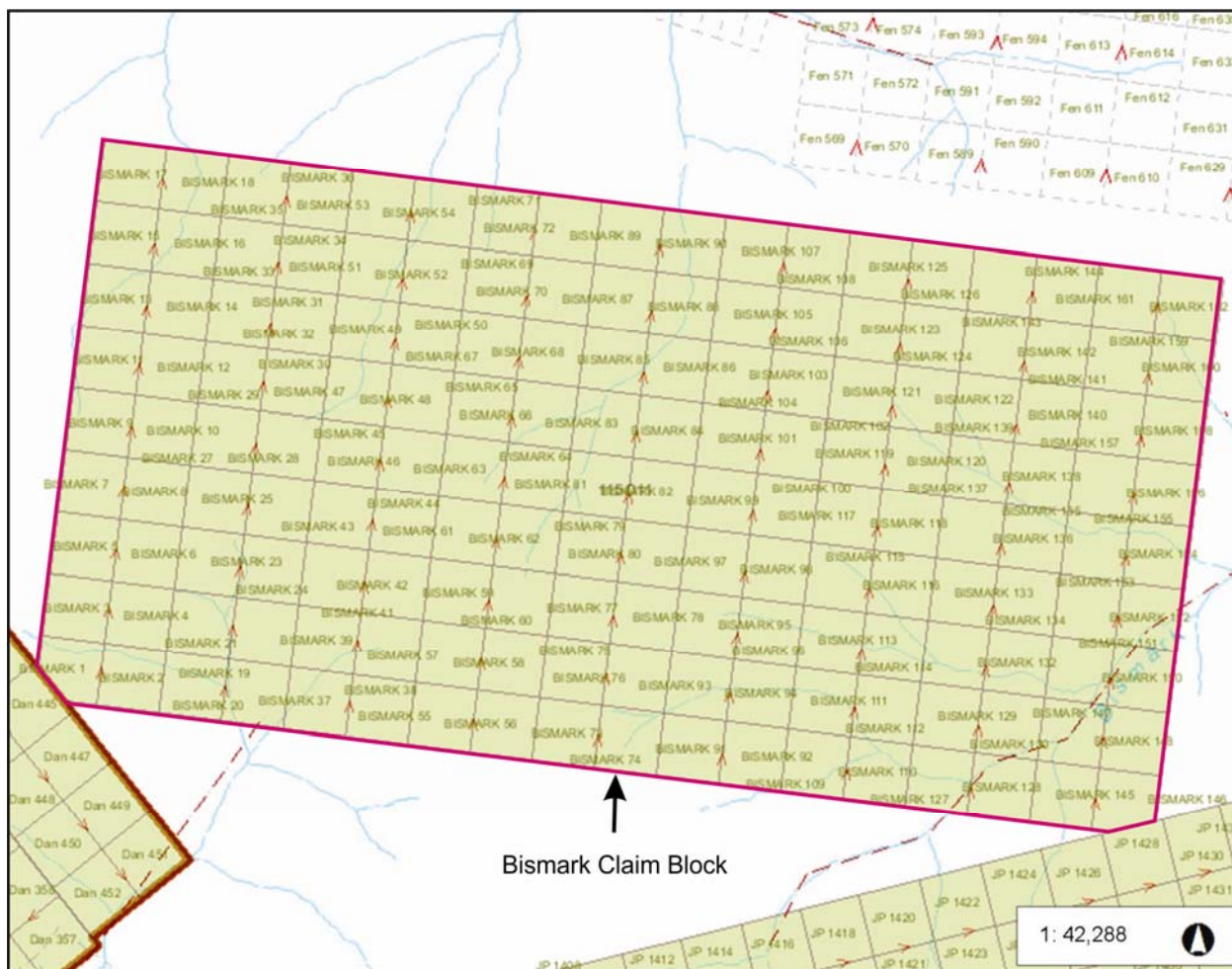


Fig. 2: Bismark Claim Block.

1.2. Terms of Reference

This report summarizes the results of a rock and soil sampling program that was conducted on the Bismark claims from March 24 to March 28, 2012. The objective was to detect precious and/or base metals anomalies in the rocks and in soil overlying various facies of the Nasina and Anvil Assemblages, Pelly Gneiss and Tantalus Suites and Carmacks Group. Historical information that was used in this report includes Minfile electronic applications of the YDEM and claim information relates to the status as of November 30, 2012.

2. PREVIOUS EXPLORATION

The Bismark area has received little attention in the past. It was originally staked as Hoosier Boy cl (4379) (part of the Union Group) in July, 1900. The Dalcouath and Dundinald cl (6542) were staked in the vicinity in Jan/03. In Aug/2001 T. Morgan et al., staked RMB cl 1-8 (YC20955) 4 km to the southwest. The group mapped and sampled the claims later in the summer (MINFILE 115O 052).

In 2003 a geological map of the entire Yukon authored by Gordey and Makepeace was released and in 2005 Gordey and Ryan authored a geological map at scale 1:250,000 for the Stewart River region that has been compiled on the basis of mapping conducted by themselves, Mortensen and others.

Minfile 115 O052 describes an anomaly that occurs within the felsic gneiss unit. The original claims however were probably staked on the gold bearing quartz veins, which are known to occur in the conglomerate unit. Old aeromagnetic maps identified several small 100 gamma magnetic anomalies nearby (Minfile 115 O052).

3. REGIONAL GEOLOGY

The Bismark claim area is located at the northwest end of the Yukon portion of the Yukon-Tanana terrane. According to Ryan and Gordey (2002, 2003) the area is part of the Ancient Pacific Margin.

The area has escaped glaciation, thus much of it is covered by a thick soil veneer (~ 1 m), thick gravel and loess deposits in valley bottoms and by thick cover of forest, moss and lichen. The best bedrock exposure is along the main rivers and large creeks and on ridges of high elevation. In addition the rocks have been twice-transposed and have undergone intense metamorphism. Thus it is likely that the geology will change as more information becomes available (Minfile 115 O52).

4. LOCAL GEOLOGY

According to Gordey and Ryan's map (2005), the area is underlain by undivided metasedimentary rocks (unit DMps) including mica-quartz schist and paragneiss of psammitic, semipelitic and rare pelitic origin. Although transposed, they generally preserve primary compositional layering. The unit commonly contains members of micaceous quartzite and rare conglomerate. The metasedimentary rocks are overlain by amphibolite schist and gneiss (unit DMA) that are probably derived from mafic to intermediate volcanic or volcanoclastic rocks. The amphibolite is probably interstratified with the metasedimentary rocks. The sequence is intruded to the east and west by grey gneiss (unit DMt), a unit described as intermediate to mafic ortho-gneiss derived from intermediate granitoid (tonalite to diorite) sheets and veinlets. The unit is interpreted as subvolcanic intrusions to the volcanic pile(s) represented by the amphibolite unit (unit DMA) with which it is intimately associated, essentially forming a volcanic-plutonic complex. Felsic to intermediate orthogneiss (unit DPg) is composed of pink to orange-weathering granite to granodiorite sheets and veinlets that crosscut the diorite and tonalite sheets, with which they were transposed (Minfile 115 O052).

The area underlying the RBM claims hosts Cretaceous clastic and volcanic rocks that unconformably overlie the rock sequence previously described. The lower part is comprised of clast-supported pebble conglomerate unit uKcv) and possibly minor limestone assigned to the Tantalus Formation (?). This is in turn overlain by voluminous basalt and andesite flows assigned to the lower Carmacks Group. Although the occurrence lies within the felsic gneiss unit, the original claims were probably staked on gold bearing quartz veins which are known to occur in the conglomerate unit. Old aeromagnetic maps identified several small 100 gamma magnetic anomalies nearby (Minfile 115 O052).

At the top of the divide separating the head of Montana Creek and Bismark Creek, Morgan et al., (2003) identified a small ultramafic intrusion (?), which may be a small, shallow dipping, high strain lozenge within the metasedimentary or amphibolite rocks that is not large enough to show up on the Gordey and Ryan's map. Bostock's 1942 geology map notes the presence of

ultramafic rocks in the area and scattered lozenges and boudins of ultramafic rocks are reported by Ryan and Gordey across the region.

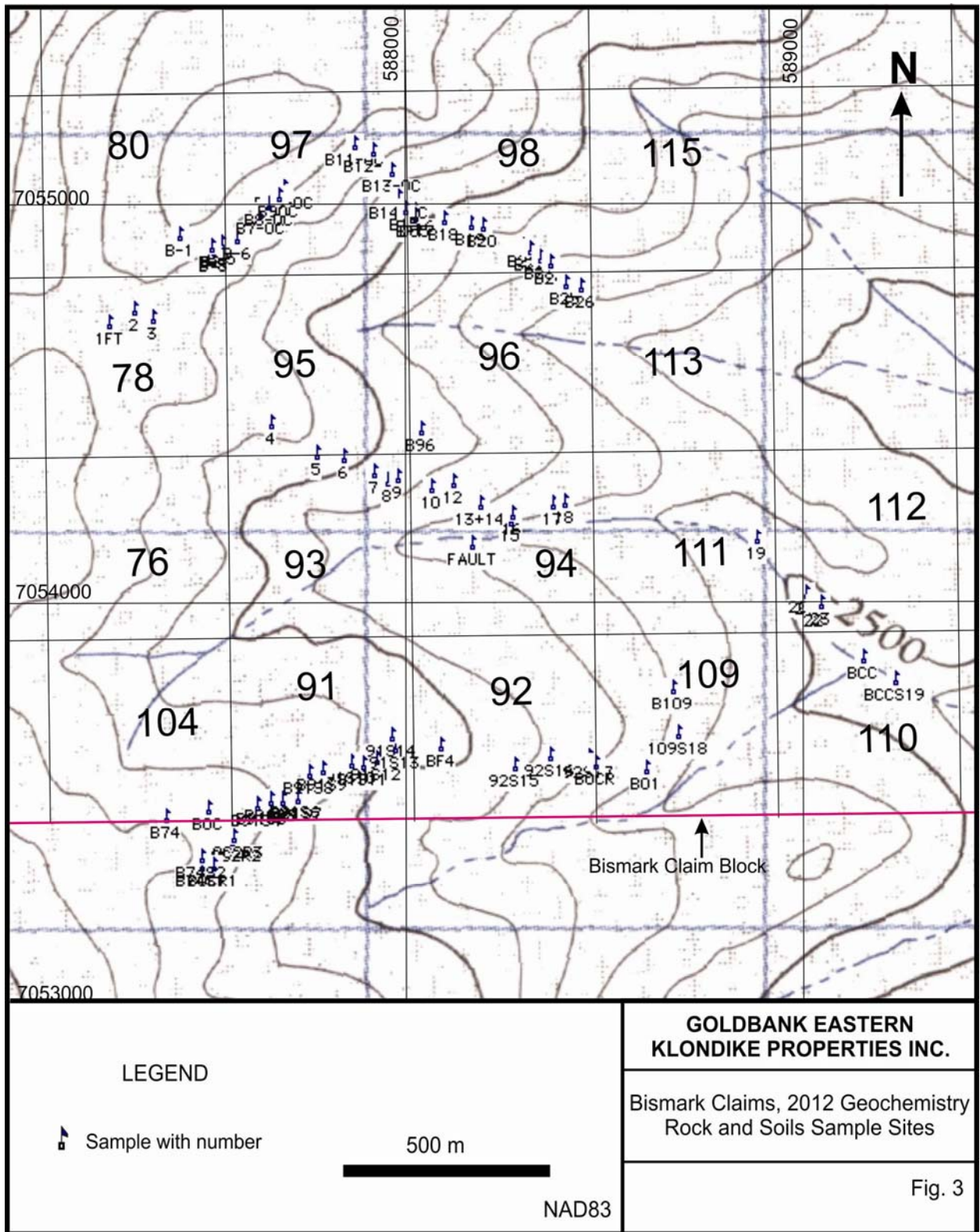
Morgan described the intrusion as being comprised of dark weathering dunite and displaying layered textures of dunite and pyroxenite with some serpentinized zones. The chemical differences in mineralogy have created visually distinct, flat lying linear contrasts in the ridge-top outcrop. Morgan felt that the intrusion might represent a potential Alaska Type ultramafic platinum group elements (PGE) deposit. A regional airborne magnetic survey (Shives, 2001), jointly funded by the Geological Survey of Canada and the Yukon Geology Program identified a magnetic high just east of the intrusion, giving credence to the possibility of a previously unidentified ultramafic intrusion (Minfile 115 O052).

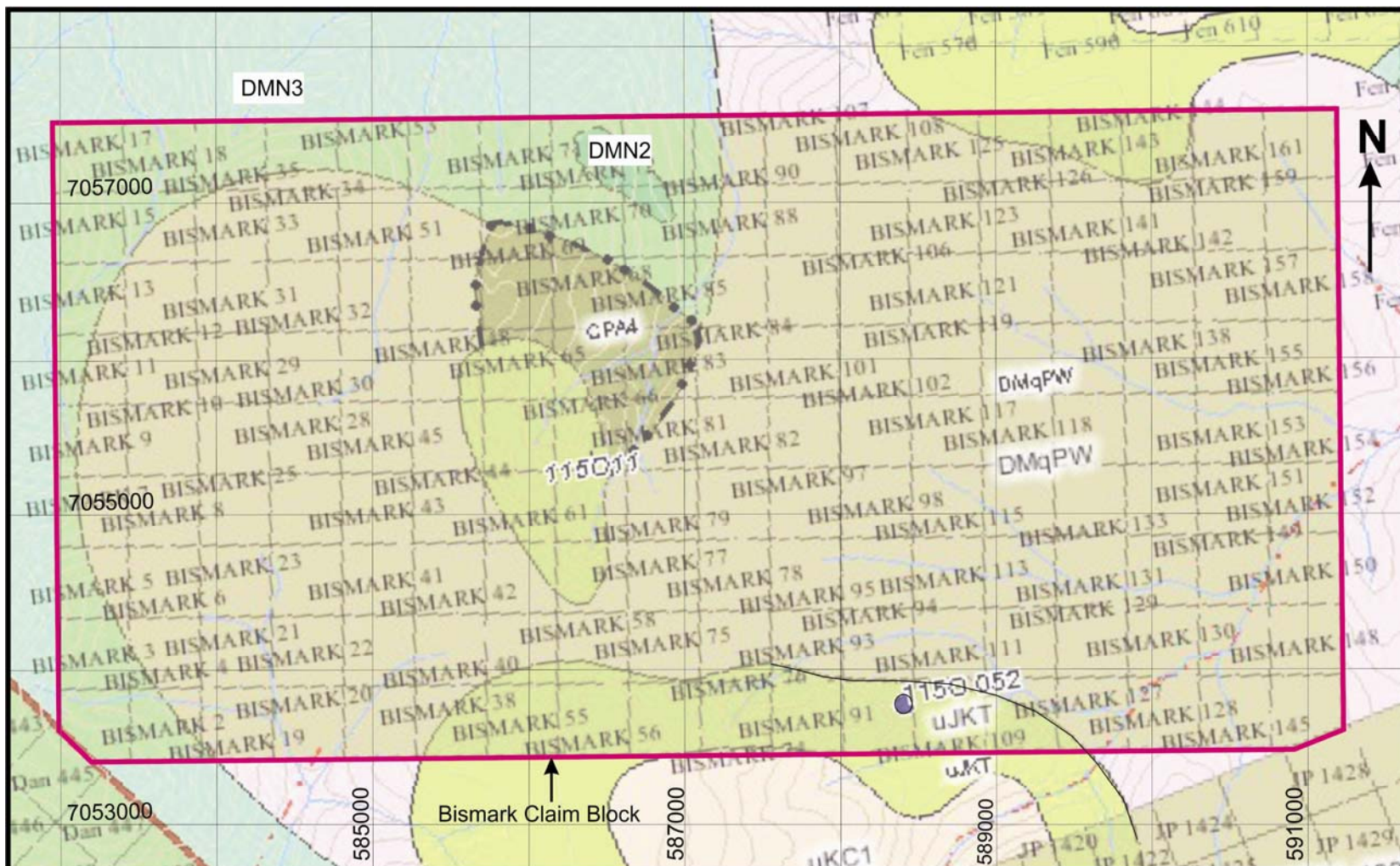
A 2 m chip sample collected from a pyroxinite layer grading up into a dunite layer returned 0.11 g/t platinum and 0.08 g/t palladium. A second sample from the same spot later in the season returned 65 ppb platinum and 105 ppb palladium (Minfile 115 O052).

5. 2012 GEOCHEMISTRY SURVEY

A helicopter supported geochemistry survey was carried out on the Bismark claims from March 24 to March 28, 2012. Spur lines were run on the Bismark 74, 78, 80, 91 to 98 and 109 to 112 claims with an objective to detect precious and/or base metal anomalies in the outcrops and in soil overlying Nasina and Anvil Assemblages, Pelly Gneiss and Tantalus Suites and Carmacks Group. The survey started from the landing area about 100 meters south of Bismark 104 claim. The rock samples were chips collected from the outcrops and the soil samples were collected using a Dutch auger. The rock samples were placed in plastic bags and provided with sample tags. The soil samples were placed in pre-numbered Kraft paper bags, closed and sealed with flagging tape. Each sample site was flagged and a GPS unit was used to record coordinates.

In total, 41 rock and 66 soil samples were collected (Appendix I). The writers personally dispatched the samples to AcmeLabs facility in Dawson City for preparation. The analysis was conducted at AcmeLabs in Vancouver. The rock and soil sample sites are shown in Fig. 3.





GOLDBANK EASTERN KLONDIKE PROPERTIES INC.

Bismark Claims, Geological Setting

NAD83

Copyright@Yukon Geological Survey

Fig. 4

Legend to Geological Setting in Fig. 4

DMN: Nasina Assemblage (Devonian, Mississippian and (?) older)

3 - quartzite, micaceous quartzite, quartz muscovite (+/-chlorite; +/- feldspar augen) schist, and minor metaconglomerate and metagrit as in (1), but may locally include significant Nisling Assemblage; 2 – marble.

DMPW: Pelly Gneiss Suite (Late Devonian to Mississippian)

variably deformed granitic rocks of predominantly felsic composition; q - foliated equigranular medium-grained muscovite quartz monzonite; moderately to strongly foliated K-feldspar augen-bearing quartz monzonitic to granitic gneiss.

CPA: Anvil Assemblage (Carboniferous and Permian)

dominantly oceanic assemblage of ultramafics (4), incl. dunite, peridotite, gabbro, pyroxenite, harzburgite and minor diorite, hornblendite and diabase; serpentinite, orange weathering quartz carbonate rock with minor green chromian muscovite, talc-carbonate schist and carbonatized ultramafic rocks.

uJKT: Tantalus Suite (Upper Jurassic and Lower Cretaceous)

massive to thickly bedded chert pebble conglomerate and gritty quartz-chert-feldspar sandstone; interbedded dark grey shale, argillite, siltstone, arkose and coal; at one locality includes red-weathering dacite to andesite flows at base.

uKC: Carmacks Group (Upper Cretaceous)

a volcanic succession dominated by basic volcanic strata (1), but including felsic volcanic rocks dominantly (?) at the base of the succession (2) and locally, basal clastic strata (3) (70 MA approx).

1. augite olivine basalt and breccia; hornblende feldspar porphyry andesite and dacite flows; vesicular, augite phyric andesite and trachyte; minor sandy tuff, granite boulder conglomerate, agglomerate and associated epiclastic rocks.

6. SAMPLE PREPARATION AND ANALYSIS

AcmeLabs conducts the sample preparation and analyses in accordance with generally accepted analytical laboratory principles and practices. The soil samples are prepared by drying at 60° C and sieving 100g to -80 mesh (code SS80). The rock samples (1 kg) are crushed, split and pulverized to 200 mesh (code R200-1000) and the assays are performed on 30 g pulps using Aqua Regia digestion and Ultratrace ICP-MS analysis (code 1F03) for 37 elements.

6.1. Rock Samples

The rock sample assays for selected elements from the Bismark claims were statistically evaluated and the statistics and correlation results are listed in Tables 2 and 3 below. The histograms for selected elements are shown in Figs. 5 and 6. Both statistics and histograms were prepared using Excel program.

Table 2: Basic statistics

Item	Au	Ag	Cu	Pb	Zn	Ni	Cr	Mg	Fe	Ca	Mn	Ba
Count	41	41	41	41	41	41	41	41	41	41	41	41
Minimum	<0.2	<2	0.39	0.19	1.3	0.7	2.1	<0.01	0.37	<0.01	35	9.2
Maximum	2.8	95	53.09	6.52	63	26.5	95.3	2.18	4.99	1.99	784	1163.9
Mean	0.9	13.1	8.2	1.1	25.2	5.6	13.1	0.7	2.0	0.4	328.4	323.7
Standard Error	0.1	2.7	1.9	0.2	2.3	1.0	2.7	0.1	0.1	0.1	26.4	50.3
Median	0.6	8.0	2.0	0.8	25.4	3.1	5.9	0.5	2.1	0.1	322.0	195.9
St. Deviation	0.8	17.5	11.9	1.1	14.9	6.2	17.6	0.5	0.9	0.6	168.8	322.2
Kurtosis	0.6	13.2	4.6	13.0	-0.4	3.1	12.0	0.1	1.2	0.5	0.2	0.4
Skewness	1.2	3.4	2.2	3.2	0.3	1.9	3.2	0.7	0.3	1.4	0.2	1.1
Range	2.8	94.5	52.7	6.3	61.7	25.8	93.2	2.2	4.6	2.0	749.0	1154.7

Note: for calculations, the values with “<” sign were replaced with rational numbers

Table 3: Correlation matrix

	Au	Ag	Cu	Pb	Zn	Ni	Cr	Mg	Fe	Ca	Mn	Ba
Au	1.000											
Ag	-0.084	1.000										
Cu	-0.077	0.625	1.000									
Pb	0.090	0.059	0.047	1.000								
Zn	0.065	0.131	0.043	0.310	1.000							
Ni	-0.016	0.038	-0.024	0.196	0.180	1.000						
Cr	-0.042	0.104	-0.116	0.115	0.199	0.598	1.000					
Mg	0.019	0.058	0.002	0.034	0.446	0.638	0.547	1.000				
Fe	0.005	0.231	0.245	0.002	0.673	0.315	0.240	0.682	1.000			
Ca	-0.287	0.345	0.414	-0.105	0.236	-0.007	0.131	0.276	0.354	1.000		
Mn	-0.004	0.190	0.203	-0.019	0.678	0.281	0.293	0.568	0.800	0.461	1.000	
Ba	0.206	0.034	0.036	0.241	0.210	0.263	0.181	0.401	0.334	-0.098	0.182	1.000

Note: for calculations, the values with “<” sign were replaced with rational numbers

The rock and soil samples were collected along spur lines shown on map in Fig. 3. Table 2 shows the basic statistics of the rock assays. One half of the rock assays falls below 0.6 ppb gold, eight gold values exceed the mean value plus one standard deviation and only two values are greater than the mean value plus two standard deviations. Silver values are also low except four values that exceed the mean value plus one standard deviation.

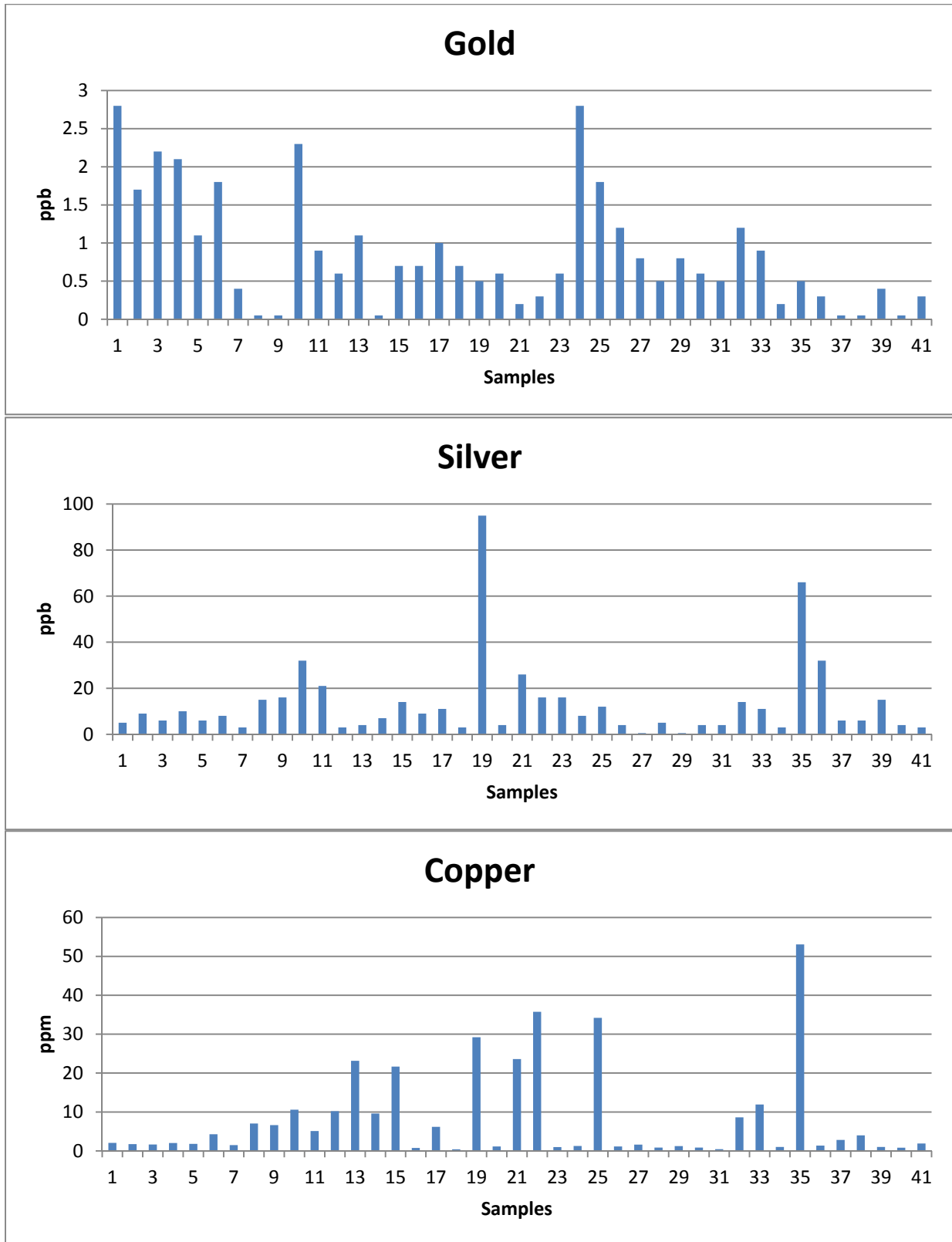


Fig. 5 a, b, c: Histograms for gold (a), silver (b) and copper (c).

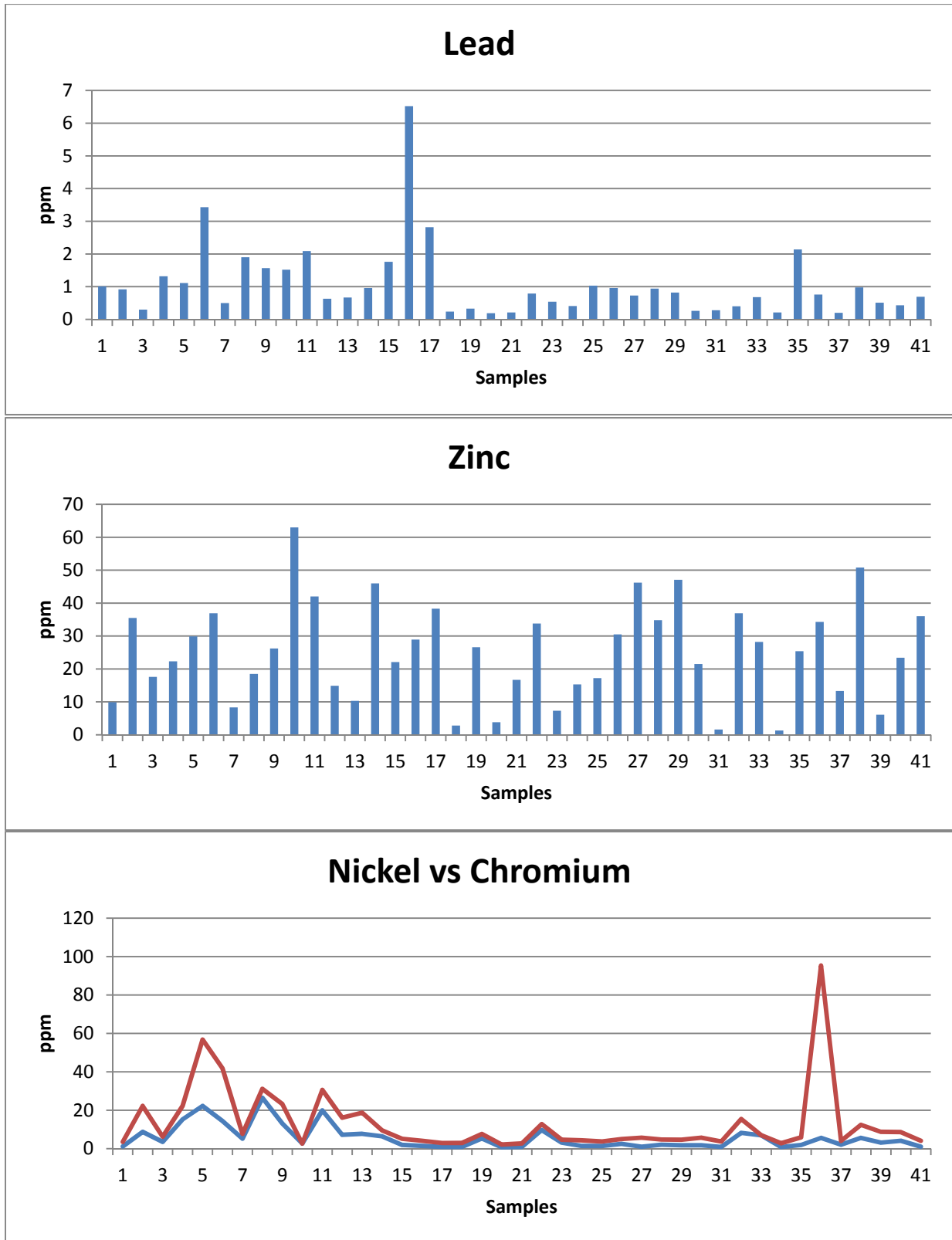


Fig. 6 a, b, c: Histograms for lead (a), zinc (b) and nickel (blue) vs chromium (red), (c).

The correlation matrix in Table 3 shows strong correlation between iron and manganese (co-variance 64 %). This correlation can possibly be attributed to occurrence of carbonate minerals. Medium power correlations exist between silver and copper (co-variance 39 %), between manganese and zinc (co-variance 46 %) and among chromium – nickel - magnesium (co-variance ranging from 36 to 47 %).

6.2. Soil Samples

The 66 soil sample assays for selected elements from the Bismark claims were statistically evaluated and the statistics and correlations are listed in Tables 4 and 5 below. The histograms for selected elements are shown in Figs. 7 to 9. Both, statistics and histograms were prepared using Excel program.

As shown in Table 4, the gold, silver and base metals values are generally low. The highest values exceeding the mean values + one standard deviation are in 6 assays for gold, in 7 assays for silver, also 7 assays for copper values, 10 assays for lead and 5 assays for zinc. None of these values however exceeds the respective mean value plus two standard deviations.

Table 5 shows that no significant correlations exist between gold and other metals. Silver significantly correlates with mercury (co-variance 46 %) and with chromium (co-variance 42 %). Weak correlations exist between nickel on the one hand and silver, copper, lead and zinc on the other. These correlations are conducive to an association of sulphidic mineralization with the mafic rocks. However, the rock geochemistry failed to detect such relationships and/or associations. Arsenic fairly well correlates with antimony (co-variance 40 %) and with iron (co-variance 44 %) and lead significantly correlates with antimony (co-variance 44 %). The strongest correlation was found between chromium and nickel (co-variance 61 %), indicating a fair proportion of the mafic rocks in the sampled area.

Table 4: Basic Statistics for Soil Assays

Item	Au	Ag	As	Cu	Pb	Zn	Sb	Hg	Ni	Cr	Mg	Fe	Ca	Mn	Ba
Count	66	66	66	66	66	66	66	66	66	66	66	66	66	66	66
Minimum	<0.2	4	1.2	5.08	2.42	15.8	0.09	2	4	9.8	0.09	1.02	0.06	74	73.3
Maximum	7.6	1001	22.7	49.09	17.47	109.7	0.61	149	24	79.2	1.33	5.9	0.77	2148	843
Mean	1.71	107.09	5.21	14.38	6.45	44.06	0.27	23.85	13.15	26.39	0.63	2.85	0.23	424.52	332.51
St. Error	0.18	17.54	0.39	1.01	0.31	1.71	0.01	2.62	0.56	1.26	0.03	0.08	0.02	45.73	20.58
Median	1.35	59.5	5	12.1	5.93	42.35	0.25	18.5	11.9	24.75	0.63	2.83	0.21	309.5	303.7
St. Deviation	1.46	142.50	3.19	8.24	2.50	13.89	0.11	21.28	4.55	10.21	0.26	0.66	0.13	371.51	167.17
Kurtosis	4.98	23.66	13.28	5.93	4.54	6.93	0.62	18.47	-0.22	10.52	0.24	6.82	4.88	10.72	1.06
Skewness	2.02	4.22	2.77	2.21	1.41	1.72	0.98	3.68	0.64	2.51	0.37	1.36	1.82	3.04	0.95
Range	7.55	997	21.5	44.01	15.05	93.9	0.52	147	20	69.4	1.24	4.88	0.71	2074	769.7

Note: for calculations, the values with “<” sign were replaced with rational numbers

Table 5: Correlation Matrix for Soil Assays

	Au	Ag	As	Cu	Pb	Zn	Sb	Hg	Ni	Cr	Mg	Fe	Ca	Mn	Ba
Au	1.000														
Ag	-0.119	1.000													
As	0.208	-0.125	1.000												
Cu	-0.096	0.230	-0.041	1.000											
Pb	0.257	0.244	0.346	-0.117	1.000										
Zn	-0.035	0.242	0.219	0.229	0.101	1.000									
Sb	0.317	-0.072	0.629	-0.065	0.666	0.262	1.000								
Hg	0.043	0.679	-0.064	0.270	0.511	-0.015	0.023	1.000							
Ni	0.067	0.345	0.357	0.555	0.366	0.509	0.513	0.254	1.000						
Cr	0.082	0.651	0.223	0.358	0.299	0.449	0.379	0.260	0.780	1.000					
Mg	-0.244	0.199	-0.155	0.384	-0.307	0.436	-0.236	-0.082	0.409	0.374	1.000				
Fe	-0.132	-0.055	0.623	0.271	-0.071	0.392	0.191	-0.112	0.355	0.198	0.460	1.000			
Ca	-0.177	0.245	-0.114	0.399	-0.337	0.239	-0.433	0.241	0.032	-0.020	0.216	0.228	1.000		
Mn	-0.117	0.228	0.185	-0.027	0.028	0.122	-0.185	0.270	-0.090	-0.015	-0.086	0.263	0.469	1.000	
Ba	-0.238	0.256	-0.290	0.379	-0.077	0.001	-0.362	0.389	0.159	0.041	0.249	0.017	0.566	0.352	1.000

Note: for calculations, the values with “<” sign were replaced with rational numbers

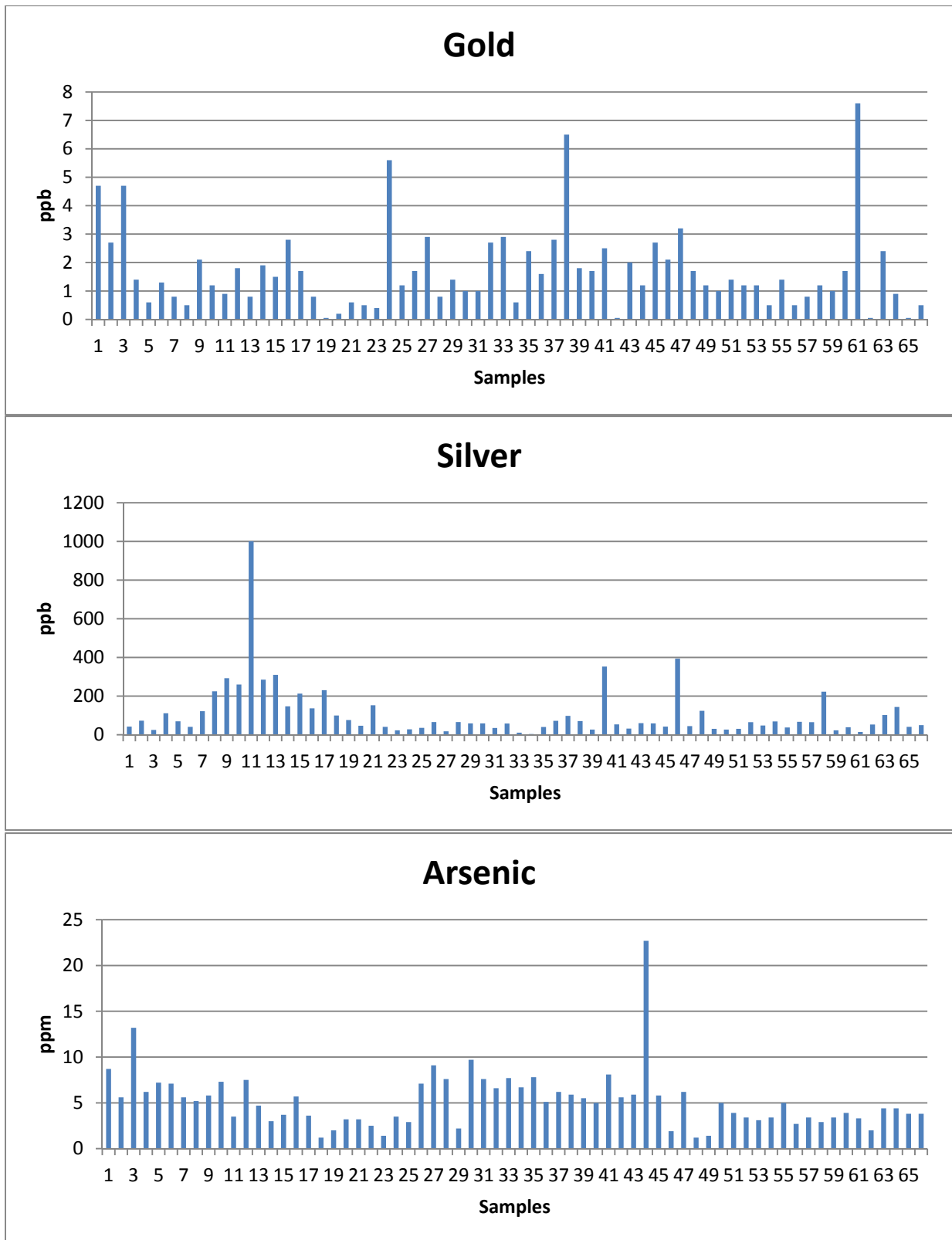


Fig. 7 a,b,c: Histograms for gold, silver and arsenic

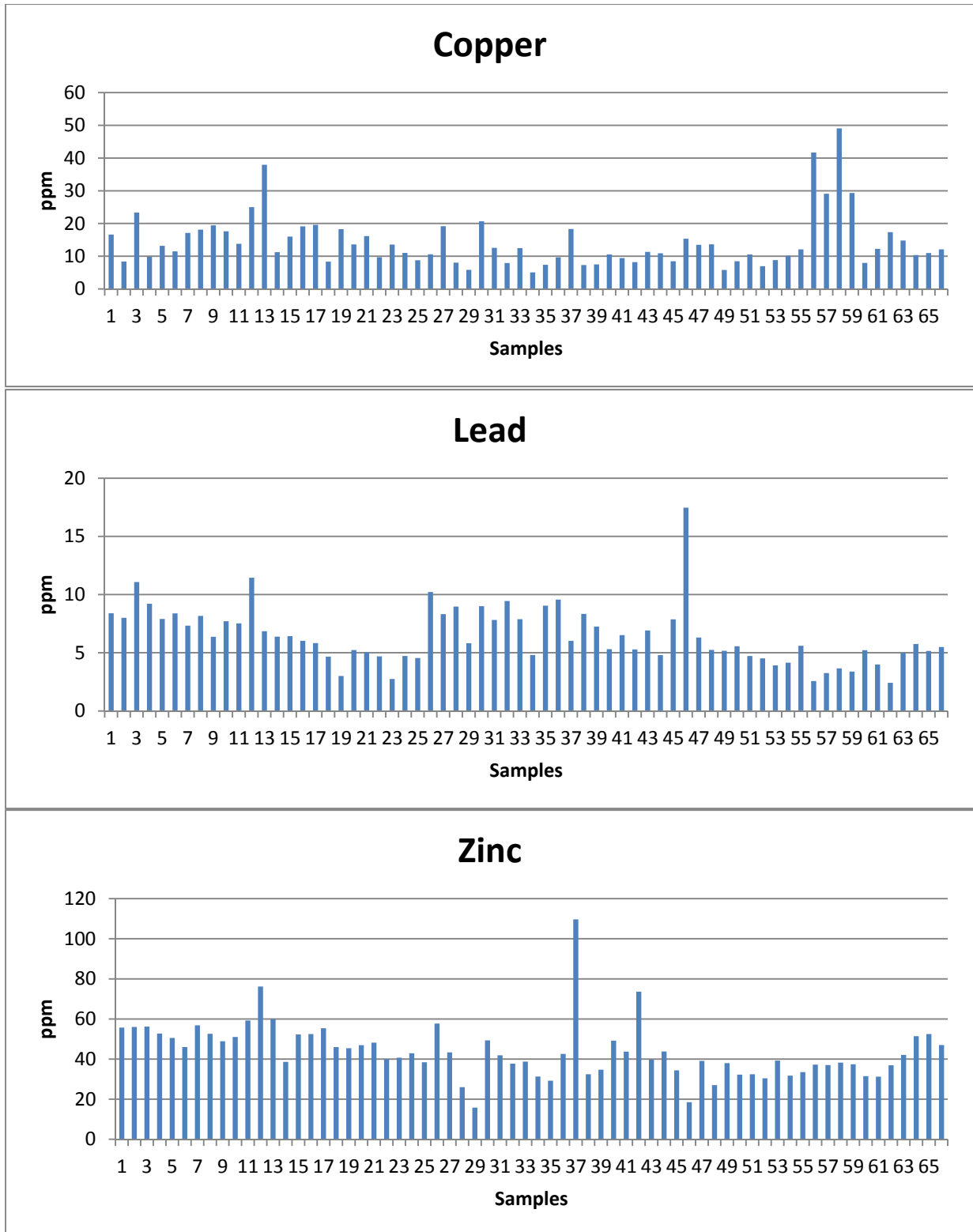


Fig. 8 a,b,c: Histograms for copper (a), lead (b) and zinc (c).

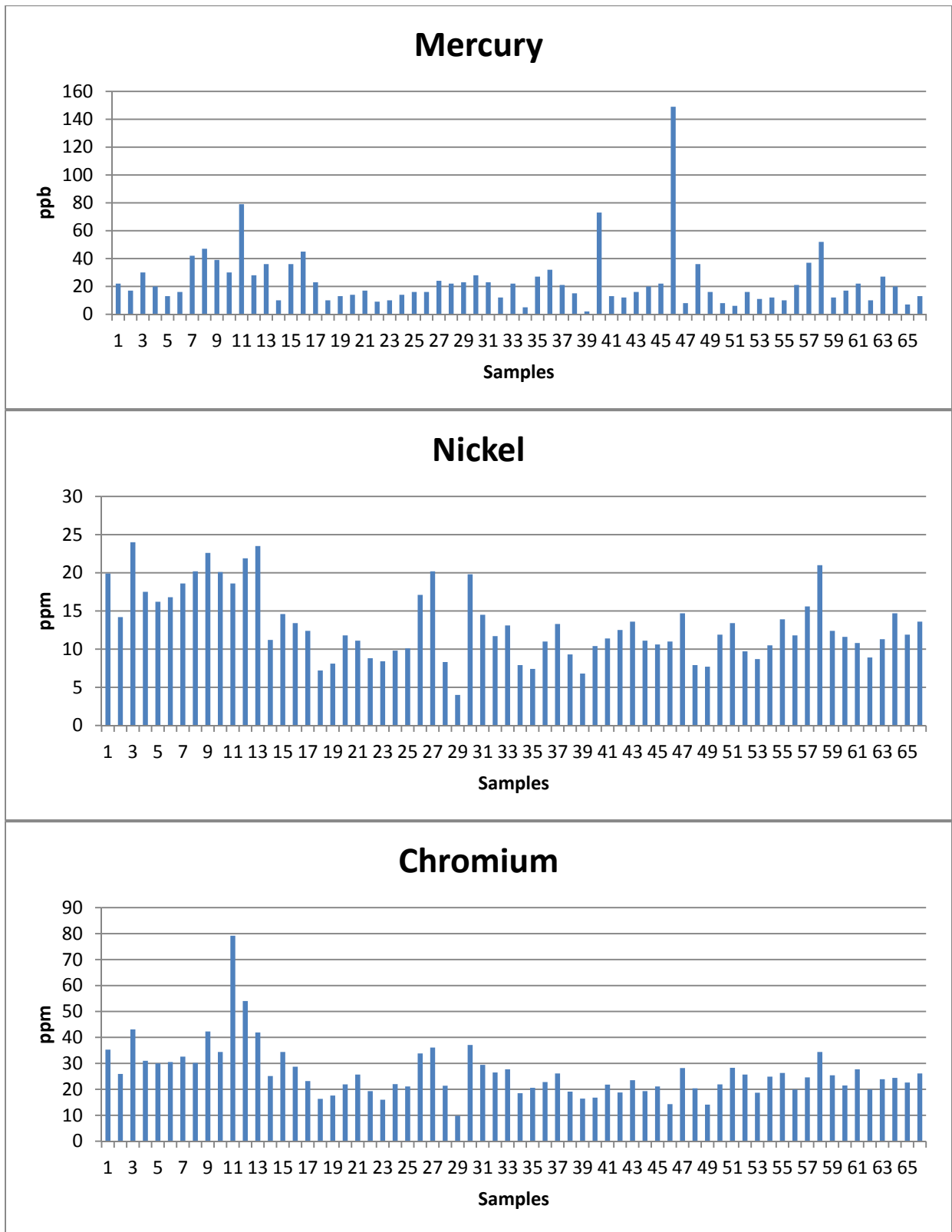


Fig. 9 a,b,c: Histograms for mercury (a), nickel (b) and chromium (c).

7. QUALITY ASSURANCE

The Quality Assurance program for both, the rock and soil assays included repeats, standards and blanks. The rock assays had two repeats, one preparation duplicate, one standard, one blank and one prep blank. The results of Quality Assurance for the rock assays are shown in Figs. 10 to 12 below.

The B92-S15R repeat is within 10 % for all elements but silver, which is twice the original assay (4 vs 8 ppb). The 1FT repeat for all elements but silver is within 10 % of the original, while the silver repeat is half original (4 vs 2 ppb). The B11-OC-R prep duplicate differs within 10 % for all elements but silver, where the duplicate is 66 % lower than the original. DS8 standard has all elements in two measurements within 10 %. The G1-WHI blank has all elements but zinc within 10 % of each other. Zinc is 21 % lower in the second assay. The blank assayed with the rock samples falls below detection limit for all elements except copper, which yielded both values of 0.02 ppm, lead returned < 0.01 vs 0.02 ppm, silver returned 3 vs <2 ppb, chromium was < 0.5 vs 1.5 ppm and tellurium was 0.02 vs < 0.02.

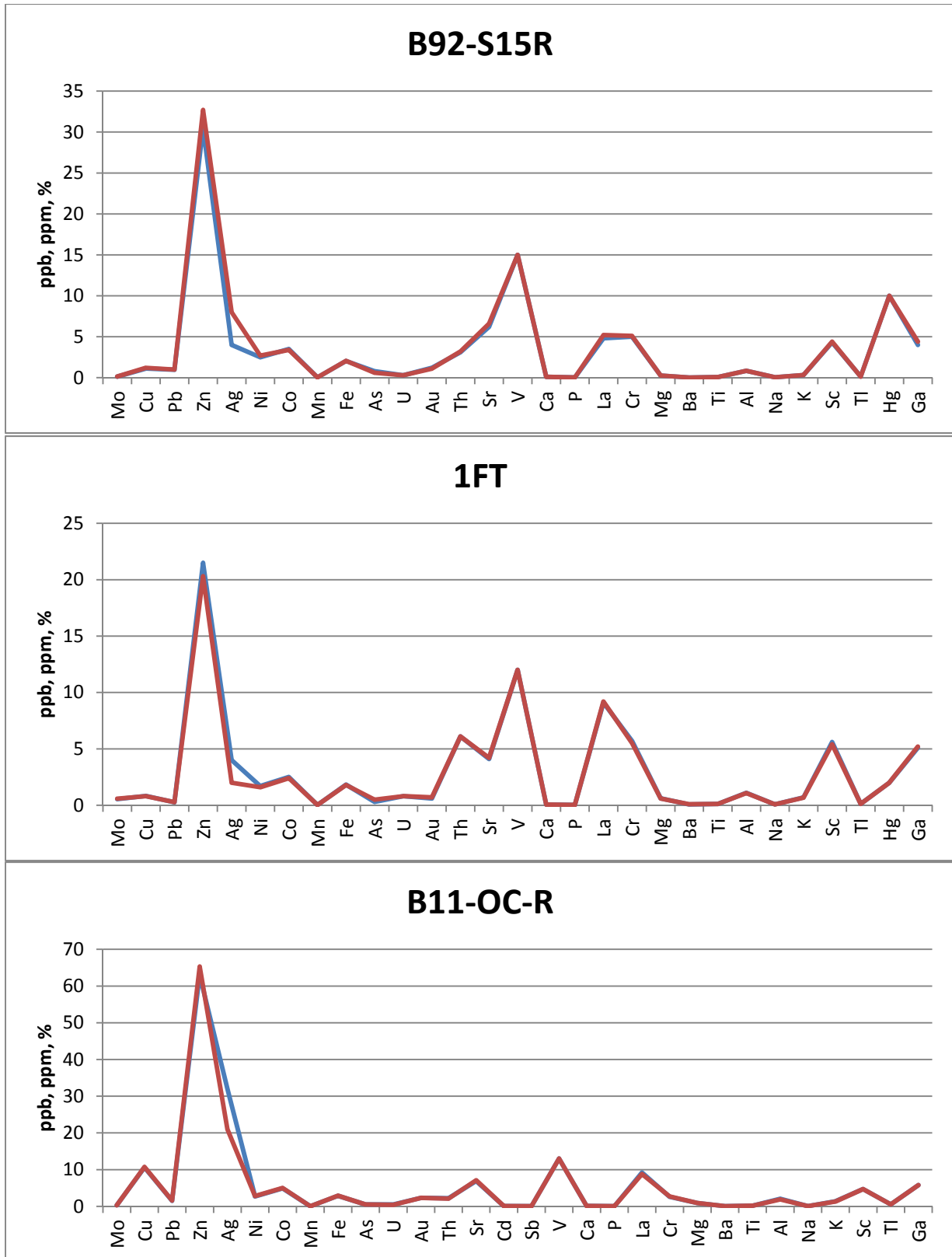


Fig. 10 a,b,c: Original (blue) vs repeat (red) assays: a - B92-S15R; b - 1FT; c - B11-OC-R.

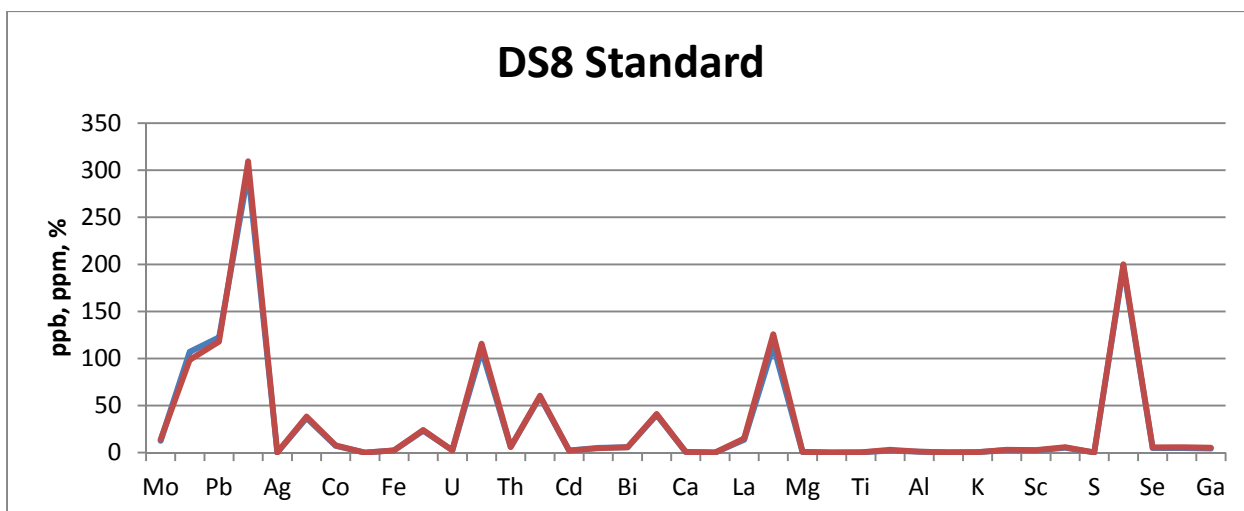


Fig. 11: Graphs for DS8 Standard

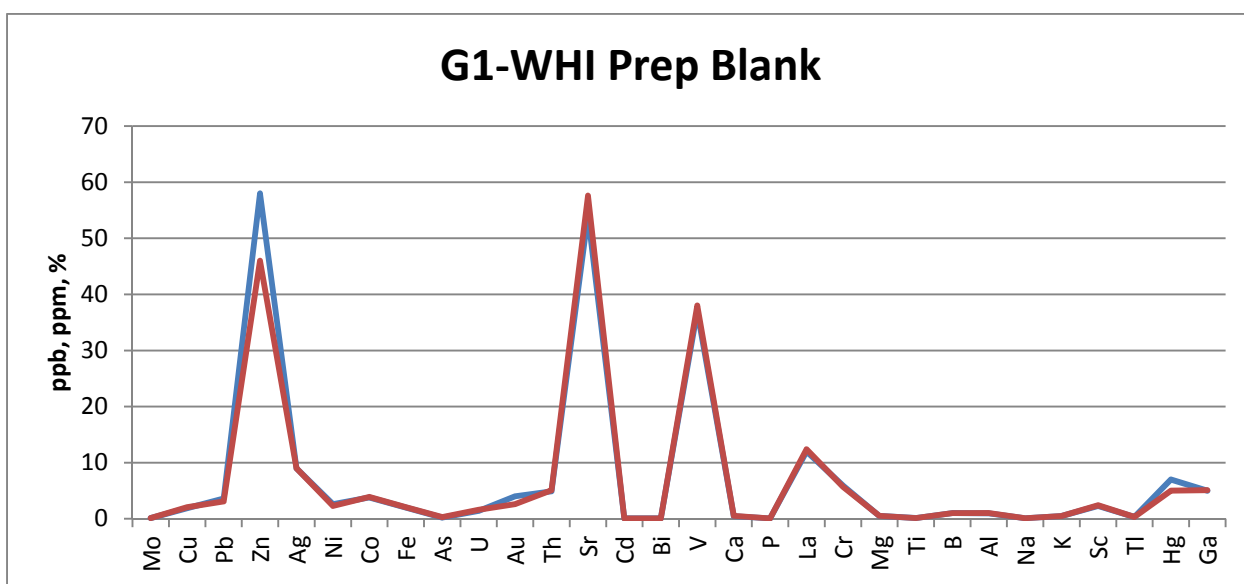


Fig. 12: Graphs for G1-WHI Prep Blank.

The soil sample assays had four repeats, one standard measured twice and one blank also measured twice. The Quality Assurance results are shown in Figs. 13, 14 and 15 below.

The repeat assays for samples B8-OCS-B, B-26, B109S18 and 14 do not differ from their originals by more than $\pm 8\%$ for all elements but gold, which is systematically higher in the repeat relative to their originals and the differences range from 145% to 280%. This appears to be a result of nugget effect. DS8 standard has all elements in both measurements within 20%

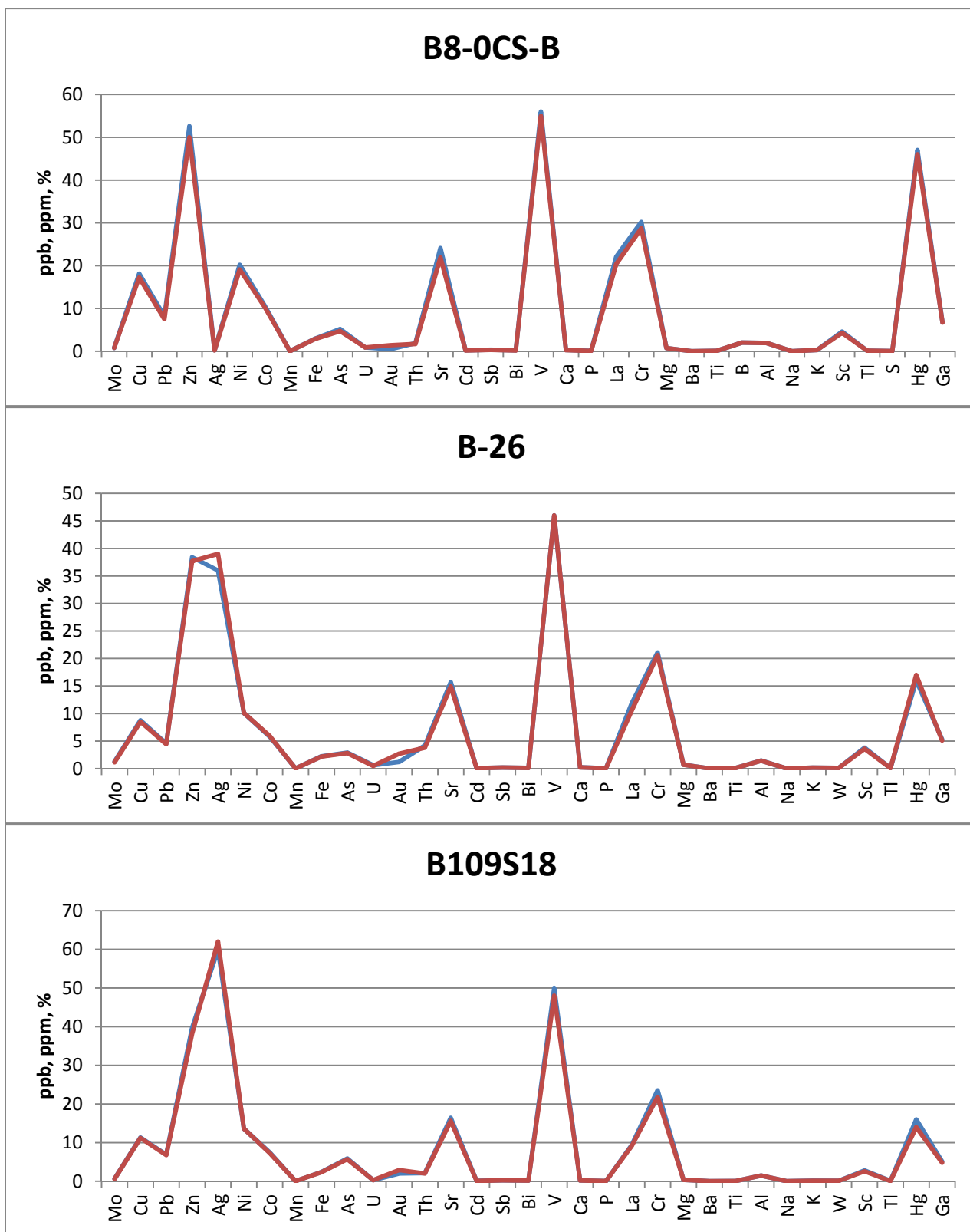


Fig. 13 a,b,c: Original (blue) vs repeat (red) assays: a – B8-OCSB; b – B26; c - B109S18.

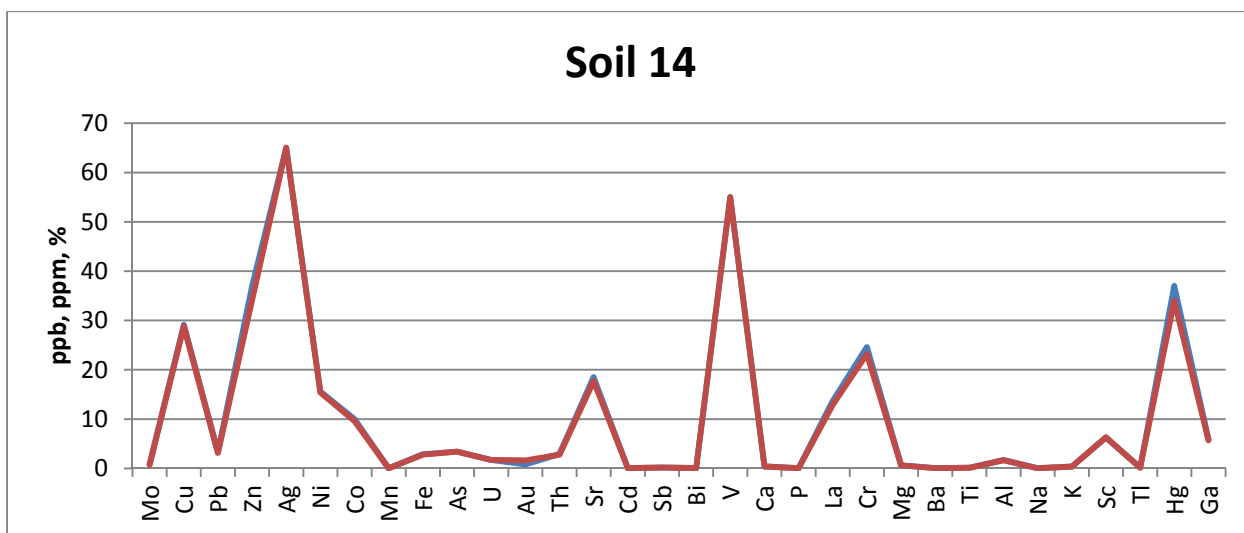


Fig. 14: Original (blue) vs repeat (red) assays for soil sample 14.

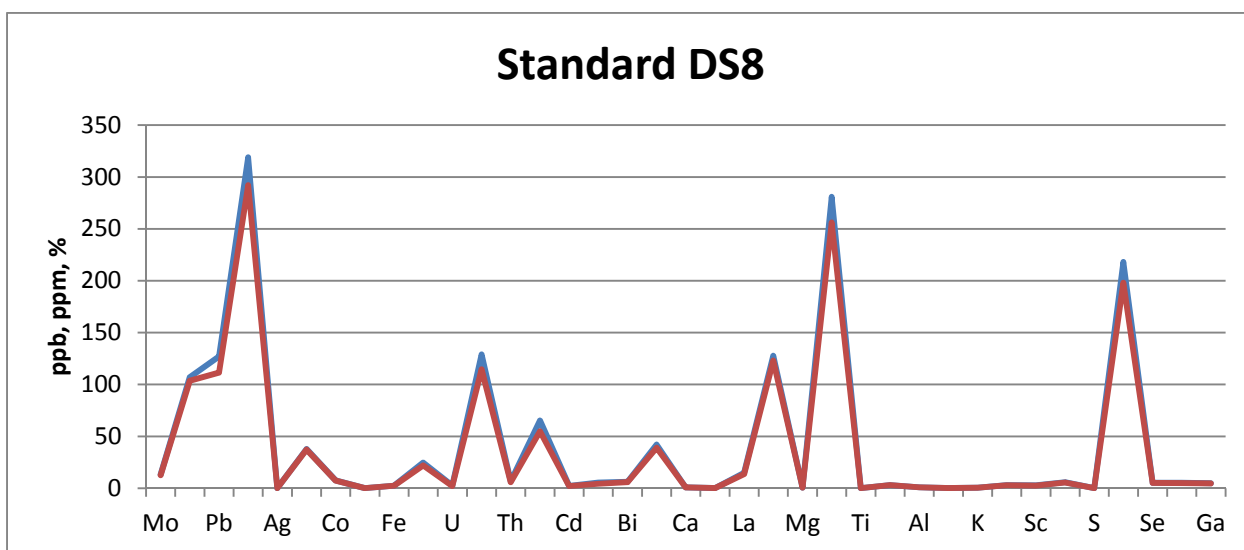


Fig. 15: DS8 Standard

except antimony, where the second value for antimony is by 21 % lower than the first. Gold and silver values in the second assays are up to 11.2 % lower relative to the first values. The blanks assayed with the rock samples fall below detection limit for all elements except copper, (0.02 vs < 0.01 ppm), lead (0.02 vs < 0.01 vs ppm), manganese (2 vs <1 ppm) and chromium (0.7 vs 1 ppm).

In conclusion we can state that the Quality Assurance program applied to the rock and soil samples from the Bismark claims meets industry standards and is sufficient for this project.

8. CONCLUSIONS AND RECOMMENDATIONS

The objectives of the 2012 rocks and soil geochemistry survey on the Bismark claims were to detect precious and/or base metals anomalies on the claim block that is underlain by various facies of the Nasina Assemblage, Pelly Gneiss Suite, Tantalus Suite, Anvil Assemblage and Carmacks Group.

In total, 41 rock and 66 soil samples were collected along spur lines running through the southern-central portion of the Bismark Claim Block, which is floored by the Nasina Assemblage and Tantalus Suite rocks. The rock samples were collected from the outcrops and the soil samples were collected from the “C” soil horizon. The samples were submitted for chemical analysis after collection.

The assays have shown that at least one half of the rock samples contain less than 0.6 ppb gold. In another half, eight samples assayed more than mean plus one standard deviation and two samples assayed more than mean plus two standard deviations. Silver values were also low except four values that exceed the mean plus one standard deviation.

Medium power correlations exist between the pairs silver – copper and manganese - zinc and within the chromium – nickel - magnesium group. A strong correlation was found between iron and manganese, which can possibly be attributed to occurrence of carbonate minerals.

The soil samples returned low to very low gold, silver and/or base metal values. The highest values exceeding means + one standard deviation included 6 assays for gold, 7 assays for silver, 7 assays for copper, 10 assays for lead and 5 assays for zinc. None of these values however exceeds the mean plus two standard deviations for the respective elements.

No significant correlations were found between gold and other metals. Silver fairly well correlates with mercury and with chromium. Nickel was found to weakly correlate with silver, copper, lead and zinc. These correlations are conducive to a sulphidic mineralization associated with mafic rocks. However, the rock geochemistry does not confirm such relationships and/or

associations. Arsenic fairly well correlates with antimony and with iron and lead significantly correlates with antimony. The strongest correlation was found between chromium and nickel, indicating a fair proportion of the mafic rocks in the sampled area.

The Quality Assurance program detected possible nugget effect affecting some of the gold assays on the soil samples. This could indicate gold mineralization of to-date unknown origin may occur on the Bismark claims.

The 2012 geochemistry survey tested the southern-central portion of the Bismark claim block only. It is recommended that the whole claim block be systematically soil sampled over a grid with lines spaced 100 meters and the stations 25 meters apart. Any and all outcrops in the area should be sampled and logged and contingent on the results, a trenching program would be designed to test detected anomalies.

9. 2012 EXPLORATION EXPENSES

Helicopter costs (1.4 hours/day transport to & from property)	5,605.00
Prospecting, 3 days, 3 persons @ \$500/day, (350 + 150 living expenses)	4,500.00
Assays (108 samples, @\$35/each (10 prep + 25assay))	3,750.00
Report writing	1,600.00
Sample Recording & Organization (2 days @\$300/day)	600.00
Transportation of samples to AcmeLabs Whitehorse	150.00
Total:	16,205.00

10. REFERENCES

BOSTOCK, H.S., 1942. Geology Map No. 711, Ogilvie, Yukon Territory. Department of Mines and Resources, scale 1:253 440.

GEOLOGICAL SURVEY OF CANADA, 1967. Aeromagnetic Series, Reindeer Mountain, Yukon Territory, Sheet 1150/11. Department of Mines and Technical Surveys. Geophysics Paper 4308, scale 1:63 360.

GORDEY, S.P. AND RYAN, J.J. 2004. Geology, Stewart River Area (Parts of 115N/1,2,7,8 and 115-O/2-12), Yukon Territory; Geol. Survey of Canada, Map 1772A, scale 1:100 000.

JOHAN, Z. 2002. Alaskan-type Complexes and Their Platinum-Group Element Mineralization. In: The Geology, Geochemistry, Mineralogy and Mineral Beneficiation of Platinum-Group Elements. Edited by L.J. Cabri. Canadian Institute of Mining, Metallurgy and Petroleum, Special Volume 54, p. 669-719.

MORGAN, T., Feb 2003. Assessment Report #094358 by V. Matkovich and T. Morgan.

RYAN, J.J. AND GORDEY, S.P. 2002. Bedrock geology of Yukon-Tanana terrane in southern Stewart River map area, Yukon Territory. Geological Survey of Canada, Current Research 2002-A1, 11 p.

RYAN, J.J. ET AL., 2003. Update on bedrock geological mapping of the Yukon-Tanana terrane, southern Stewart River map area, Yukon Territory. Geological Survey of Canada. Current Research 2003-A9, 7 p.

SHIVES, R.B. K., ET AL., 2001. Multisensor Airborne Geophysical Survey, Stewart River area (115O/14, 15). Geological Survey of Canada, Ottawa, Ontario; Exploration and Geological Services Division, Yukon Region, Indian and Northern Affairs Canada; GSC Open File 3992 and EGSD Open File 2001-8. Ten 1:50 000 scale maps. Gabrielse H., Murphy D.C. and

Minfile: <http://servlet.gov.yk.ca/ygsmin/occurrence.do?occurrenceID=115O+052>

11. STATEMENT OF QUALIFICATIONS

I, Bohumil (Boris) Molak, Ph.D., P.Geo., do hereby certify that:

1. I am a self-employed Geoscientist residing at 204 - 458, E44th Avenue, Vancouver, BC., V5W 1W3, Canada.
2. I am a member of the Association of Professional Engineers and Geoscientists of British Columbia (License No. 28600) in good standing.
3. I graduated from the Comenius University of Czechoslovakia with a Bachelor of Science in Economic Geology in 1970. From the same university I obtained in 1980 the degree Master of Science in Economic Geology and in 1990 the degree Doctor of Philosophy. I have practiced my profession continuously since 1970.
4. My geological exploration and mining practice includes research, prospecting, and exploration for precious, base, ferrous and other metals in Slovakia, Zambia, Cuba, Guinea, Canada, Chile and Argentina.
5. Since 2003 until present I am a self-employed geo-scientist.
6. I did not visit the Bismark claims but I did visit the areas adjacent to Bismark claims in 2011 and 2012.
7. I am co-responsible for all items in this report. The sources of information not based on personal examination are quoted in the References Chapter.
8. As of the date of this Statement I am not aware of any material fact or material change with respect to the subject matter of this report that is not reflected in this report, the omission of which would make the report misleading.

9. I am independent of Goldbank Eastern Klondike Properties Inc.

Dated at Vancouver, BC, Canada, this 30th day of November, 2012.

APPENDIX I

Bismark, 2012 Rock and Soil Survey, Sample Information

Description of Rock Samples

B7-0C	587616	7054996	Shiny forest green mica, altered (quartzite?) *No soil collected.
B7-0C-B	587616	7054996	Dense, heavy, quartzite with the dark green mica alteration, small sulfide flecks visible.
B8-0C-B	587640	7055016	Outcrop; Orange/Brown & Light lime Green powder oxidizing on the “country rock”, Black mica.
B8-0C-R	587640	7055016	Outcrop; Altered calcite/mica schist; Light Brown oxidation.
B9OC-R	587665	7055041	Black mica infused (granite?) Contact rock with schist
B9-Q	587665	7055041	Outcrop; Pink tinged, Clear & White, Quartz/Calcite vein; Contact with the “Black Mica Quartzite”.
B9Shist	587665	7055041	Outcrop; Altered calcite/mica schist; Light Brown oxidation.
B11-0C-R	587854	7055171	Iron stained, altered quartzite schist.
B12-0C-R	587902	7055155	
B130C-R	587948	7055101	Clear & white coloured 5cm wide quartz/quartzite vein. Mica flecks. Contact: black mica-altered quartzite.
B14-0C	587965	7055037	Chlorite/Sericite Schist contact with Quartz vein
B-17-OC	588007	7054989	Outcropping; More dense “black mica” (quartzite?) with “lime green” powder coating outside.
B18-R	588078	7054979	Native bedrock, under tree; Thicker grey “quartzite” vein in the black mica contact rock. Iron staining.
B19-R	588149	7054968	Clear Grey Quartz, Calcite.
B20-R	588177	7054961	Under Tree; Black/Green mica throughout white powdery “intrusive”. Light Brown oxides.
B21	588277	7054913	Native bedrock, under tree; Heavy, more white “quartzite”, small sulfide flecks.
B23-R	588323	7054884	Native rock; White bull quartz, red & light brown oxidation.
B0CR	588458	7053606	Outcropping;
B0CR1	587495	7053353	Outcrop; Orange stained, white quartz veins, running in altered black/grey rock.
B0C2R2	587540	7053419	OC; Clear Grey & White altered quartz veining with a brown oxidation; Forest green staining.
B0C2R3	587546	7053424	Pink stained, Black/Green mica & calcite/quartz veining. Altered intrusive?
B91S5-R	587641	7053517	Dense, heavy, Black, siliceous.
B91R5	587641	7053517	White/Pink, Quartz/calcite, Grey/Green mica, Light Brown oxidation.
B91S7Q	587707	7053525	Under Tree; Native bedrock. Quartz.
B91S12	587908	7053622	Light Brown Oxidation in same Black/Grey mica altered Quartzite country rock.
B92S15	588254	7053605	Altered (Quartzite?); Light green powder oxidation oozing out on exposed areas.
B92R16	588340	7053628	Outcrop; Silver, siliceous mica schist; White calcite powder; Same quartzite type rock.
B92S17	588439	7053626	Grey/Black mica, Light Brown oxidization on (Quartzite?); Clear quartz segments. Sulfides visible.

Geochemical Report on the Bismark Claims, Yukon Territory, Canada

1FT	587239	7054722	Upthrust rock on saddle between ridges; Bismark95; Black/Grey Mica through a siliceous intrusive(?)
5Q-R	587758	7054390	Native rock; Clear & Grey Quartz; Light Brown/Orange oxidation.
5B-R-B	587758	7054390	Bedrock, dense, black. Chlorite, Quartzite(?), Light Brown oxidation.
8-R	587937	7054324	Outcropping; Dense, black/green mica "mix".
12-R	588102	7054320	Clear quartz veining with Black/Burgundy Mica schist and Light Brown oxidation.
13-R	588168	7054263	Same dark green mica schist, throughout altered (Gabbro?). Dark orange and black stainings.
14-R	588168	7054263	Under Tree; Native Bedrock; Moderately heavy, dark Green, Siliceous altered ? Very small sulfide specs.
19-R	588865	7054176	Native bedrock; Orange oxidation, more white powder, (hydrothermal action) on the "quartzite schist"
22-R	589008	7054004	Native bedrock, under tree; Grey/Green mica "quartzite" contact rock. Iron staining.

Description of Soil Samples

B-1	587417	7054940	Under Tree; Dark & light Brown, fine powdery soil.
B2	587495	7054910	Under Tree; Light Brown, fine soil, decomposing rock.
B-3	587501	7054904	Under Tree; Light Brown, Yellowish, fine powdery soil.
B-4	587499	7054912	Under Tree; Brown, Green Tinge, fine powdery soil, decomposing rock
B-5	587523	7054918	Under Tree; Brown/Light Brown, fine powdery soil, fine pebbles.
B-6	587560	7054931	Under Tree; Light Brown, Orange Tinge, fine grained soil.
B8-0CS	587640	7055016	Under Outcrop; Light Brown/Orange, Light Green Oxidation, fie powdery soil
B90C	587665	7055041	Under Outcrop; Brown, fine siliceous soil and decomposing rock. Light lime Green powder
B9Q-S			Under Outcrop Quartz/Calcite veining. Light Brown, Green tinge, Green oxidation products.
B11-0C	587854	7055171	Under Outcrop; Brown, fine soil and organics.
B12-0C	587902	7055155	Under Outcrop; Light Brown/White, Orange, Fine powdery soil.
B13-0C	587948	7055101	Under Outcrop; Light Brown, silica segments, mica, Fine powdery soil.
B15	587984	7055004	Under Tree; Grey, Brown, fine powdery soil, fine pebbles.
B-16	588009	7055001	Under Tree; Grey/White, Brown, fine powdery soil.
B-17	588007	7054989	Under Outcrop; Grey/White, Brown, fine powdery soil.
B18	588078	7054979	Under Tree; Light Brown, fine powdery soil, decomposing rocks with iron stainings.

Geochemical Report on the Bismark Claims, Yukon Territory, Canada

B19	588149	7054968	Under Tree; Light Brown, White fine soil, decomposing rock, quartz calcite floats.
B20	588177	7054961	Brown, Green Tinge, fine powdery soil, decomposing rock- same “country” rock
B21	588277	7054913	Under Tree; Light Brown, Yellow tinge, fine powdery soil and decomposing rock.
B22	588297	7054903	Under Tree; Light Brown/White, Orange Tinge, fine grained soil, decomposing quartz.
B23	588323	7054884	Under Tree; Light Brown/White, fine powdery soil, pebbles, more quartz floats.
B24	588347	7054868	Under Tree; Light Brown/White, Orange, fine grained soil, decomposing quartz & bull quartz floats.
B25	588385	7054817	Under Tree; Light Brown, Green Tinge, fine powdery soil, decomposing rock.
B26	588423	7054810	Under Tree; Light Brown/White/Grey, fine powdery soil, small pebbles, more quartz floats.
B74S1	587466	7053353	Outcrop Area; Burn; Under a Tree- Light Brown, Orange tint, Decomposing rock & clay.
B74S2	587465	7053373	Outcrop Area; Burn; Under a Tree- Light Brown, White/Green tinge, fine powdery.
B91S3	587616	7053509	Under Tree; Light Brown/Grey, fine powdery soil.
B91S4	587607	7053508	Under Tree, Light Brown/Grey; Decomposing rock, fine powdery soil.
B91S5	587641	7053517	Under Tree, Light Brown, Yellow/Green tinge; Decomposing rock, fine powdery soil.
B91S6	587701	7053528	Under Tree, Light Brown/Grey, Orange/Green tinge; Fine powdery soil.
B91S7	587707	7053525	Under Tree, Light Brown, Yellow tinge; Decomposing rock, fine powdery soil.
B91S8	587738	7053587	Under Tree, Light Brown; Decomposing rock, fine powdery soil.
B91S9	587770	7053596	Under Tree, Light Brown, Orange tinge; Decomposing rock, fine powdery soil.
91S10	587841	7053611	Under Tree, Light Brown/Grey; organics, fine powdery soil.
91S11	587873	7053609	Under Tree, Brown soil, fine powdery.
91S12	587908	7053622	Under Tree, Brown organics; Decomposing rock, (altered quartzite?) fine powdery soil.
91S13	587951	7053650	Under Tree, Yellow, Light Brown, Red; Decomposing rock, fine powdery soil.
91S14	587943	7053681	Under Tree, Light Brown/Brown, Grey; Fine powdery soil.
92S15	588254	7053605	Under Outcrop; Brown soil, Red tinge, Light & fine grained.
92S16	588340	7053628	Under Outcrop; Light Brown. Fine powdery soil.
92S17	588439	7053626	Under Tree, Light Brown/White Orange tinge; Fine grained decomposing rock, fine powdery soil.
109S18	588664	7053682	Under Tree, Brown, Red tinged fine powdery soil with organics.
BCCS19	589210	7053818	North Bank of Creek Crossing; Grey silty “muck”, Orange/Brown, fine grained. 1.5 m below ground.
2	587299	7054755	Under Tree; Light Brown, Orange Tinge, fine powdery soil.
3	587670	7053520	Under Tree; Dark Brown, soil with organics.

Geochemical Report on the Bismark Claims, Yukon Territory, Canada

4	587645	7054469	Under Tree; Brown/Orange, White, fine powdery soil, pebbles, decomposing quartz.
5	587758	7054390	Under Tree; Brown/Grey, fine grained soil.
6	587828	7054381	Hillside Drop; Brown soil.
7	587903	7054343	Under Tree; Brown/Light Brown, Orange tinge, fine powdery soil, fine pebbles of decomposing rock.
8	587937	7054324	Under Outcrop; Light Brown/White, Orange, Fine powdery soil.
9	587960	7054332	Under Tree; Light Brown, Orange Tinge, Mica, fine powdery soil.
10	588048	7054308	Under Tree; Light Brown, Orange Tinge, Mica, fine powdery soil.
11	588070	7054315	Under Tree; Grey Brown, Mica, Fine powdery soil, pebbles.
12	588102	7054320	Under Tree; Light Brown, Green Tinge, White decomposing quartz; Fine grained powdery soil.
13+14	588168	7054263	Approximately 6 meters away from each other.
13 S			Under Tree; Light Brown, Mica, fine powdery soil, fine pebbles, decomposing rock.
14 S			Under Tree; Golden Brown, Mica, pebbles, fine powdery soil.
Fault	588148	7054163	Running parallel to creek, towards the northwest.
15	588246	7054221	Under Bank of Creek; Dark & Light Brown, fine powdery soil.
16	588251	7054240	Under Tree; Light Brown, Red tinge, fine powdery soil. Red quartz floats.
17	588351	7054263	Under Tree; Light Brown, Orange, fine grained soil. Decomposing rock, Black Mica Quartzite floats.
18	588380	7054269	Under Tree; Light Brown, Green Tinge, fine powdery soil, decomposing rock.
19	588865	7054176	Under Tree; Brown/ Green, Orange Tinge, fine powdery soil, decomposing rock
20	588969	7054038	Under Tree; Brown/Light Brown, fine powdery soil, fine pebbles.
21	588985	7054035	Under Tree; Light Brown, fine soil, decomposing rock.
22	589008	7054004	Under Tree; Light Brown, fine soil, decomposing rock.
23	589022	7054012	Under Tree; Dark & light Brown, fine grained soil.

APPENDIX II

Assay Certificates



1020 Cordova St. East Vancouver BC V6A 4A3 Canada

Acme Analytical Laboratories (Vancouver) Ltd.

www.acmelab.com

Client: Goldbank Mining Corp.
605 - 889 West Pender St.
Vancouver BC V6C 3B2 Canada

Submitted By: Anthony Beruschi
Receiving Lab: Canada-Whitehorse
Received: April 02, 2012
Report Date: April 24, 2012
Page: 1 of 3

CERTIFICATE OF ANALYSIS

WHI12000025.1

CLIENT JOB INFORMATION

Project: BISMARK
Shipment ID:
P.O. Number
Number of Samples: 42

SAMPLE PREPARATION AND ANALYTICAL PROCEDURES

Table with 6 columns: Method Code, Number of Samples, Code Description, Test Wgt (g), Report Status, Lab. Contains 2 rows of sample preparation data.

SAMPLE DISPOSAL

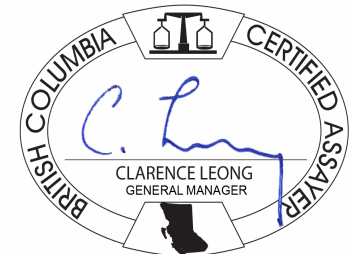
PICKUP-PLP Client to Pickup Pulps
PICKUP-RJT Client to Pickup Rejects

ADDITIONAL COMMENTS

Acme does not accept responsibility for samples left at the laboratory after 90 days without prior written instructions for sample storage or return.

Invoice To: Goldbank Eastern Klondike Properties Inc.
605-889 West Pender St
Vancouver British Columbia V6C 3B2
Canada

CC: Boris Molak



This report supersedes all previous preliminary and final reports with this file number dated prior to the date on this certificate. Signature indicates final approval; preliminary reports are unsigned and should be used for reference only. All results are considered the confidential property of the client. Acme assumes the liabilities for actual cost of analysis only. Results apply to samples as submitted. ** asterisk indicates that an analytical result could not be provided due to unusually high levels of interference from other elements.



Acme Analytical Laboratories (Vancouver) Ltd.
1020 Cordova St. East Vancouver BC V6A 4A3 Canada
Phone (604) 253-3158 Fax (604) 253-1716

www.acmelab.com

Client: **Goldbank Mining Corp.**
605 - 889 West Pender St.
Vancouver BC V6C 3B2 Canada

Project: BISMARCK
Report Date: April 24, 2012

Page: 2 of 3 Part 1

CERTIFICATE OF ANALYSIS

WHI12000025.1

Method	Analyte	WGHT	1F30	1F30	1F30	1F30	1F30	1F30	1F30	1F30	1F30	1F30	1F30	1F30	1F30	1F30	1F30	1F30	1F30	1F30	1F30
Unit	MDL	Wgt	Mo	Cu	Pb	Zn	Ag	Ni	Co	Mn	Fe	As	U	Au	Th	Sr	Cd	Sb	Bi	V	Ca
MDL	MDL	kg	ppm	ppm	ppm	ppm	ppb	ppm	ppm	ppm	%	ppm	ppm	ppb	ppm	ppm	ppm	ppm	ppm	ppm	%
BOC-R	Rock	0.56	0.13	2.05	1.01	9.9	5	1.1	0.5	119	1.09	0.3	0.5	2.8	8.4	3.4	0.03	0.13	<0.02	2	0.02
B7-OC	Rock	0.49	0.10	1.72	0.92	35.5	9	8.7	11.7	344	3.02	0.1	1.2	1.7	4.3	8.1	0.04	0.02	0.05	71	0.34
B7-OCB	Rock	0.42	0.20	1.63	0.30	17.6	6	3.5	5.0	243	1.69	0.4	0.5	2.2	3.3	3.3	0.03	<0.02	0.04	30	0.18
B8-OCR	Rock	0.54	0.10	2.03	1.32	22.3	10	15.2	9.3	269	2.09	0.4	1.1	2.1	10.5	4.8	0.03	<0.02	0.08	30	0.16
B8-OCRB	Rock	0.37	0.09	1.78	1.11	29.9	6	22.2	11.6	362	2.83	<0.1	1.3	1.1	11.4	6.2	<0.01	<0.02	0.06	44	0.14
B9-OCR	Rock	0.27	0.13	4.28	3.43	36.9	8	14.4	8.2	357	2.75	0.1	0.7	1.8	8.2	8.6	0.06	0.03	0.09	38	0.13
B9-Q	Rock	0.78	0.11	1.47	0.50	8.3	3	5.2	3.0	101	0.81	0.3	0.6	0.4	8.7	2.9	<0.01	<0.02	0.02	6	0.05
B9-SCHIST	Rock	0.37	0.15	7.03	1.90	18.5	15	26.5	17.4	303	2.63	0.4	1.4	<0.2	8.9	5.2	0.01	0.06	0.04	29	0.11
B10-OC	Rock	0.49	0.31	6.63	1.57	26.2	16	13.0	6.1	322	1.90	0.4	1.2	<0.2	10.3	5.9	0.05	0.03	0.04	23	0.11
B11-OC-R	Rock	0.31	0.30	10.60	1.52	63.0	32	2.7	4.9	493	2.87	0.5	0.5	2.3	2.2	6.9	0.05	0.04	<0.02	13	0.09
B12-OC-R	Rock	0.45	0.89	5.10	2.09	42.0	21	19.9	5.3	596	1.90	0.6	0.7	0.9	4.7	1.7	<0.01	0.05	0.03	43	0.05
B13-OCR	Rock	2.24	0.42	10.22	0.63	14.9	3	7.2	3.7	263	1.28	0.3	0.6	0.6	6.2	3.1	<0.01	0.04	<0.02	17	0.06
B14-OC-R	Rock	0.48	0.33	23.16	0.67	10.3	4	7.7	8.8	313	2.18	0.5	0.8	1.1	4.9	3.1	<0.01	0.04	0.08	31	0.13
B17-OC-R	Rock	0.92	0.25	9.60	0.96	46.0	7	6.4	10.0	334	2.20	0.2	0.4	<0.2	1.2	78.2	0.11	0.03	0.06	58	1.52
B18-R	Rock	0.60	1.48	21.65	1.76	22.1	14	1.9	5.8	245	1.65	0.3	1.2	0.7	3.6	117.5	0.07	0.06	0.04	23	1.99
B19-R	Rock	0.45	0.16	0.75	6.52	28.9	9	1.4	0.5	66	0.51	0.9	<0.1	0.7	<0.1	2.6	0.12	0.14	<0.02	<2	0.02
B20-R	Rock	0.49	0.34	6.19	2.82	38.3	11	0.9	6.5	511	3.07	1.8	0.5	1.0	2.4	7.3	0.08	0.02	0.11	23	0.16
B21	Rock	L.N.R.	L.N.R.	L.N.R.	L.N.R.	L.N.R.	L.N.R.	L.N.R.	L.N.R.	L.N.R.	L.N.R.	L.N.R.	L.N.R.	L.N.R.	L.N.R.	L.N.R.	L.N.R.	L.N.R.	L.N.R.	L.N.R.	L.N.R.
B23-R	Rock	0.69	0.09	0.39	0.24	2.8	3	0.9	0.2	35	0.37	0.3	<0.1	0.7	<0.1	<0.5	0.01	<0.02	<0.02	<2	<0.01
BOCR1	Rock	1.96	0.51	29.23	0.33	26.6	95	5.3	13.2	304	2.57	<0.1	0.2	0.5	0.7	13.6	0.04	<0.02	0.02	90	1.17
BOC2-R2	Rock	1.29	0.06	1.12	0.19	3.8	4	0.7	0.8	45	0.63	<0.1	0.3	0.6	1.3	14.4	0.03	<0.02	<0.02	2	0.35
BOC2-R3	Rock	1.07	0.25	23.61	0.21	16.7	26	0.9	8.2	409	3.07	4.9	0.4	0.2	1.3	5.9	0.02	0.02	<0.02	14	0.35
B91S5R	Rock	0.71	0.35	35.76	0.79	33.8	16	9.7	15.2	570	3.17	1.2	<0.1	0.3	0.2	8.4	0.06	0.04	<0.02	123	1.42
B91R6	Rock	0.52	0.06	0.96	0.54	7.3	16	3.1	2.9	144	0.96	0.4	0.5	0.6	2.5	2.4	0.02	0.02	<0.02	19	0.13
B91S7-R QZ	Rock	0.30	0.14	1.26	0.41	15.3	8	1.4	2.2	405	2.31	0.7	0.3	2.8	4.0	4.3	<0.01	0.03	0.06	4	0.06
B91-S12R	Rock	0.86	0.21	34.19	1.03	17.2	12	1.3	3.5	250	1.32	0.5	0.4	1.8	5.4	2.3	0.02	0.03	0.09	8	0.04
B92-S15R	Rock	0.57	0.13	1.12	0.96	30.5	4	2.5	3.5	363	2.05	0.8	0.3	1.2	3.1	6.2	<0.01	0.03	<0.02	15	0.10
B92-S16R	Rock	0.26	0.14	1.60	0.73	46.2	<2	1.0	3.2	319	2.07	0.3	0.1	0.8	1.7	3.6	0.03	<0.02	<0.02	16	0.07
B92-S17R	Rock	0.75	0.09	0.84	0.94	34.8	5	2.0	3.9	378	2.17	0.7	0.5	0.5	3.0	5.0	0.03	<0.02	<0.02	16	0.11
B109S18	Rock	0.52	0.12	1.23	0.82	47.1	<2	1.7	4.6	441	2.27	0.3	0.4	0.8	2.6	6.8	0.03	<0.02	<0.02	18	0.16

This report supersedes all previous preliminary and final reports with this file number dated prior to the date on this certificate. Signature indicates final approval; preliminary reports are unsigned and should be used for reference only.



Acme Analytical Laboratories (Vancouver) Ltd.
1020 Cordova St. East Vancouver BC V6A 4A3 Canada
Phone (604) 253-3158 Fax (604) 253-1716

www.acmelab.com

Client: **Goldbank Mining Corp.**
605 - 889 West Pender St.
Vancouver BC V6C 3B2 Canada

Project: BISMARK
Report Date: April 24, 2012

Page: 2 of 3 Part 2

CERTIFICATE OF ANALYSIS

WHI12000025.1

Method	Analyte	Unit	MDL	1F30 P	1F30 La	1F30 Cr	1F30 Mg	1F30 Ba	1F30 Ti	1F30 B	1F30 Al	1F30 Na	1F30 K	1F30 W	1F30 Sc	1F30 TI	1F30 S	1F30 Hg	1F30 Se	1F30 Te	1F30 Ga
				%	ppm	ppm	%	ppm	%	ppm	%	%	%	ppm	ppm	ppm	%	ppb	ppm	ppm	ppm
				0.001	0.5	0.5	0.01	0.5	0.001	1	0.01	0.001	0.01	0.1	0.1	0.02	0.02	5	0.1	0.02	0.1
BOC-R	Rock			0.070	14.2	3.5	0.04	77.2	0.027	<1	0.32	0.046	0.17	<0.1	1.9	0.07	<0.02	9	<0.1	<0.02	2.2
B7-OC	Rock			0.088	13.3	22.2	2.18	790.7	0.119	<1	2.16	0.103	0.93	0.1	8.8	0.13	<0.02	6	0.1	<0.02	8.4
B7-OCB	Rock			0.027	6.3	6.2	0.95	174.9	0.042	<1	0.90	0.042	0.20	0.1	2.4	0.03	<0.02	<5	<0.1	<0.02	3.8
B8-OCR	Rock			0.065	16.2	22.2	1.01	472.2	0.128	<1	1.60	0.056	0.96	<0.1	4.7	0.21	<0.02	<5	<0.1	<0.02	6.6
B8-OCRB	Rock			0.046	20.1	56.8	1.45	765.7	0.185	<1	2.34	0.090	1.48	<0.1	8.6	0.31	<0.02	5	0.1	<0.02	9.2
B9-OCR	Rock			0.025	7.7	41.8	1.36	1164	0.186	<1	2.24	0.099	1.39	<0.1	6.9	0.24	<0.02	<5	<0.1	<0.02	8.4
B9-Q	Rock			0.023	13.5	7.7	0.35	98.5	0.020	<1	0.52	0.012	0.17	<0.1	0.7	0.04	<0.02	<5	<0.1	<0.02	1.7
B9-SCHIST	Rock			0.038	21.1	31.1	1.22	295.0	0.148	<1	2.11	0.063	1.27	<0.1	3.9	0.31	<0.02	<5	<0.1	<0.02	6.2
B10-OC	Rock			0.031	21.6	23.2	0.98	649.8	0.094	<1	1.39	0.043	0.66	<0.1	3.3	0.08	<0.02	<5	0.2	<0.02	5.6
B11-OC-R	Rock			0.038	9.2	2.6	0.92	612.3	0.155	<1	2.06	0.071	1.38	<0.1	4.7	0.55	<0.02	<5	<0.1	0.02	5.8
B12-OC-R	Rock			0.012	13.4	30.6	1.18	218.8	0.098	<1	1.55	0.073	0.85	<0.1	7.7	0.13	<0.02	<5	<0.1	<0.02	6.8
B13-OCR	Rock			0.022	8.4	16.1	0.48	317.8	0.082	<1	0.80	0.041	0.48	<0.1	2.6	0.08	<0.02	<5	<0.1	<0.02	3.4
B14-OC-R	Rock			0.055	10.1	18.7	1.43	377.5	0.107	<1	1.80	0.039	0.86	<0.1	6.5	0.14	<0.02	<5	<0.1	<0.02	4.8
B17-OC-R	Rock			0.097	5.1	9.5	1.17	458.4	0.063	<1	2.45	0.198	0.22	<0.1	6.8	<0.02	<0.02	<5	<0.1	<0.02	5.8
B18-R	Rock			0.099	12.1	5.1	0.50	484.4	0.061	<1	2.75	0.255	0.05	<0.1	5.6	<0.02	<0.02	<5	<0.1	<0.02	7.4
B19-R	Rock			0.002	<0.5	4.1	0.04	30.6	0.002	<1	0.08	0.011	<0.01	0.2	0.2	<0.02	<0.02	<5	<0.1	<0.02	0.4
B20-R	Rock			0.033	4.7	2.9	0.54	867.2	0.118	<1	1.07	0.084	0.59	<0.1	7.6	0.08	<0.02	<5	0.1	<0.02	5.8
B21	Rock			L.N.R.	L.N.R.	L.N.R.	L.N.R.	L.N.R.	L.N.R.	L.N.R.	L.N.R.	L.N.R.	L.N.R.	L.N.R.	L.N.R.	L.N.R.	L.N.R.	L.N.R.	L.N.R.	L.N.R.	L.N.R.
B23-R	Rock			<0.001	<0.5	2.9	<0.01	12.6	<0.001	<1	0.01	0.002	<0.01	0.2	<0.1	<0.02	<0.02	<5	<0.1	<0.02	<0.1
BOCR1	Rock			0.080	4.2	7.6	0.61	31.4	0.210	<1	1.01	0.168	0.13	0.1	7.6	0.02	0.10	9	0.3	0.02	4.5
BOC2-R2	Rock			0.053	5.6	2.1	0.09	26.8	0.039	<1	0.43	0.056	0.05	<0.1	2.8	0.02	<0.02	5	0.1	<0.02	2.0
BOC2-R3	Rock			0.056	4.3	2.7	0.38	281.3	0.130	<1	1.18	0.090	0.66	<0.1	5.8	0.27	<0.02	<5	0.2	<0.02	5.0
B91S5R	Rock			0.083	2.2	12.8	0.98	35.3	0.180	<1	1.53	0.210	0.09	<0.1	10.4	0.02	<0.02	<5	0.2	<0.02	5.5
B91R6	Rock			0.043	4.5	4.6	0.45	23.6	0.029	1	0.65	0.087	0.03	<0.1	6.7	<0.02	<0.02	<5	<0.1	<0.02	2.2
B91S7-R QZ	Rock			0.013	1.7	4.3	0.25	429.5	0.092	<1	0.95	0.077	0.52	0.2	7.3	0.14	<0.02	<5	<0.1	<0.02	5.3
B91-S12R	Rock			0.010	11.7	3.7	0.12	81.1	0.044	<1	0.52	0.051	0.24	<0.1	1.8	0.12	<0.02	<5	0.1	<0.02	2.6
B92-S15R	Rock			0.022	4.8	5.0	0.27	195.9	0.062	<1	0.84	0.054	0.32	<0.1	4.3	0.14	<0.02	10	<0.1	<0.02	4.0
B92-S16R	Rock			0.020	2.9	5.7	0.29	267.1	0.107	<1	0.87	0.088	0.53	0.1	6.2	0.18	<0.02	<5	<0.1	<0.02	5.2
B92-S17R	Rock			0.021	7.7	4.7	0.27	162.4	0.101	<1	0.95	0.057	0.46	<0.1	5.4	0.18	<0.02	<5	<0.1	<0.02	4.8
B109S18	Rock			0.022	7.7	4.6	0.33	178.9	0.128	<1	1.04	0.073	0.60	<0.1	4.3	0.23	<0.02	<5	0.2	<0.02	5.0

This report supersedes all previous preliminary and final reports with this file number dated prior to the date on this certificate. Signature indicates final approval; preliminary reports are unsigned and should be used for reference only.



Acme Analytical Laboratories (Vancouver) Ltd.
 1020 Cordova St. East Vancouver BC V6A 4A3 Canada
 Phone (604) 253-3158 Fax (604) 253-1716

www.acmelab.com

Client: **Goldbank Mining Corp.**
 605 - 889 West Pender St.
 Vancouver BC V6C 3B2 Canada

Project: BISMARK
 Report Date: April 24, 2012

Page: 3 of 3 Part 1

CERTIFICATE OF ANALYSIS

WHI12000025.1

Method	WGHT	1F30	1F30	1F30	1F30	1F30	1F30	1F30	1F30	1F30	1F30	1F30	1F30	1F30	1F30	1F30	1F30	1F30	1F30	1F30	1F30
Analyte	Wgt	Mo	Cu	Pb	Zn	Ag	Ni	Co	Mn	Fe	As	U	Au	Th	Sr	Cd	Sb	Bi	V	Ca	
Unit	kg	ppm	ppm	ppm	ppm	ppb	ppm	ppm	ppm	%	ppm	ppm	ppb	ppm	ppm	ppm	ppm	ppm	ppm	%	
MDL	0.01	0.01	0.01	0.01	0.1	2	0.1	0.1	1	0.01	0.1	0.1	0.2	0.1	0.5	0.01	0.02	0.02	2	0.01	
1FT	Rock	1.63	0.54	0.83	0.26	21.5	4	1.7	2.5	261	1.83	0.3	0.8	0.6	6.1	4.1	<0.01	<0.02	<0.02	12	0.05
5-R-Q	Rock	0.64	0.11	0.42	0.28	1.6	4	0.9	0.4	59	0.45	0.2	<0.1	0.5	<0.1	1.3	<0.01	<0.02	<0.02	<2	0.05
5-R-B	Rock	0.42	0.09	8.63	0.40	36.9	14	8.2	16.1	784	3.09	0.3	0.1	1.2	0.5	12.0	0.06	0.03	<0.02	99	1.57
8 ROCK	Rock	0.43	0.15	11.91	0.68	28.2	11	6.9	13.1	472	3.01	0.4	0.2	0.9	0.9	19.3	0.03	0.05	<0.02	117	1.52
12 ROCK	Rock	1.46	0.11	0.99	0.21	1.3	3	0.8	0.7	70	0.43	0.1	<0.1	0.2	<0.1	<0.5	<0.01	<0.02	<0.02	<2	<0.01
13 ROCK	Rock	1.30	0.39	53.09	2.14	25.4	66	1.9	8.2	383	2.45	0.7	0.6	0.5	1.6	25.1	0.22	0.05	0.06	26	1.02
14 ROCK	Rock	0.48	0.15	1.34	0.76	34.3	32	5.6	10.7	514	2.28	<0.1	0.6	0.3	2.9	6.8	0.12	<0.02	0.02	69	1.30
19 R	Rock	0.56	0.11	2.82	0.20	13.3	6	2.0	6.6	288	2.04	0.6	0.5	<0.2	3.7	9.9	0.02	0.03	<0.02	29	0.57
22 ROCK	Rock	1.06	0.12	3.97	0.98	50.8	6	5.6	19.4	566	4.99	0.6	0.3	<0.2	1.0	9.8	0.03	<0.02	<0.02	160	0.69
B-2	Rock	0.53	0.11	1.01	0.51	6.1	15	3.1	5.2	324	1.85	0.5	0.7	0.4	5.5	4.5	<0.01	<0.02	0.03	38	0.10
B-5	Rock	0.64	0.08	0.80	0.43	23.4	4	4.1	8.9	560	1.90	0.5	0.3	<0.2	1.2	24.6	<0.01	<0.02	0.06	59	1.37
BOC-R-B	Rock	0.54	0.08	1.90	0.69	36.0	3	1.0	3.1	278	2.11	0.6	0.5	0.3	4.0	3.9	0.02	<0.02	<0.02	15	0.10



Acme Analytical Laboratories (Vancouver) Ltd.
 1020 Cordova St. East Vancouver BC V6A 4A3 Canada
 Phone (604) 253-3158 Fax (604) 253-1716

www.acmelab.com

Client: **Goldbank Mining Corp.**
 605 - 889 West Pender St.
 Vancouver BC V6C 3B2 Canada

Project: BISMARK
 Report Date: April 24, 2012

Page: 3 of 3 Part 2

CERTIFICATE OF ANALYSIS

WHI12000025.1

Method	1F30	1F30	1F30	1F30	1F30	1F30	1F30	1F30	1F30	1F30	1F30	1F30	1F30	1F30	1F30	1F30	1F30	1F30	
Analyte	P	La	Cr	Mg	Ba	Ti	B	Al	Na	K	W	Sc	Tl	S	Hg	Se	Te	Ga	
Unit	%	ppm	ppm	%	ppm	%	ppm	%	%	%	ppm	ppm	ppm	%	ppb	ppm	ppm	ppm	
MDL	0.001	0.5	0.5	0.01	0.5	0.001	1	0.01	0.001	0.01	0.1	0.1	0.02	0.02	5	0.1	0.02	0.1	
1FT	Rock	0.017	9.1	5.7	0.62	861.5	0.115	<1	1.10	0.078	0.69	<0.1	5.6	0.12	<0.02	<5	<0.1	<0.02	5.1
5-R-Q	Rock	0.009	<0.5	3.7	0.01	9.2	0.002	<1	0.06	0.002	<0.01	0.1	0.2	<0.02	<0.02	<5	<0.1	<0.02	0.3
5-R-B	Rock	0.096	4.2	15.4	1.29	49.5	0.090	1	1.81	0.237	0.06	<0.1	10.3	<0.02	<0.02	<5	<0.1	<0.02	5.9
8 ROCK	Rock	0.082	4.9	7.0	0.79	494.8	0.209	<1	1.41	0.202	0.07	<0.1	8.9	0.02	<0.02	<5	0.2	<0.02	5.3
12 ROCK	Rock	0.002	<0.5	2.8	0.02	15.0	0.001	<1	0.06	0.002	0.02	0.1	0.2	<0.02	<0.02	<5	<0.1	<0.02	0.3
13 ROCK	Rock	0.096	9.9	5.9	0.41	681.0	0.124	<1	1.02	0.115	0.05	<0.1	7.2	<0.02	<0.02	<5	0.2	<0.02	4.1
14 ROCK	Rock	0.055	6.0	95.3	1.18	56.3	0.118	<1	1.35	0.160	0.10	<0.1	9.8	<0.02	<0.02	<5	<0.1	<0.02	4.5
19 R	Rock	0.051	7.1	4.0	0.50	79.6	0.039	<1	1.02	0.129	0.04	<0.1	5.6	<0.02	<0.02	<5	<0.1	<0.02	3.6
22 ROCK	Rock	0.060	5.1	12.4	1.84	86.2	0.079	<1	2.14	0.149	0.05	<0.1	9.4	<0.02	<0.02	<5	<0.1	<0.02	8.9
B-2	Rock	0.042	16.1	8.7	0.87	1141	0.102	<1	1.27	0.065	0.58	<0.1	6.0	0.08	<0.02	<5	0.1	<0.02	4.2
B-5	Rock	0.101	5.8	8.6	0.96	74.6	0.042	<1	1.66	0.239	0.05	<0.1	8.0	<0.02	<0.02	7	<0.1	<0.02	4.5
BOC-R-B	Rock	0.022	14.0	4.1	0.26	143.9	0.079	<1	0.84	0.054	0.42	<0.1	5.1	0.13	<0.02	<5	<0.1	<0.02	4.2



Acme Analytical Laboratories (Vancouver) Ltd.

1020 Cordova St. East Vancouver BC V6A 4A3 Canada
 Phone (604) 253-3158 Fax (604) 253-1716

www.acmelab.com

Client: Goldbank Mining Corp.
 605 - 889 West Pender St.
 Vancouver BC V6C 3B2 Canada

Project: BISMARK
Report Date: April 24, 2012

Page: 1 of 1 **Part** 1

QUALITY CONTROL REPORT

WHI12000025.1

Method	WGHT	1F30	1F30	1F30	1F30	1F30	1F30	1F30	1F30	1F30	1F30	1F30	1F30	1F30	1F30	1F30	1F30	1F30	1F30	1F30	
Analyte	Wgt	Mo	Cu	Pb	Zn	Ag	Ni	Co	Mn	Fe	As	U	Au	Th	Sr	Cd	Sb	Bi	V	Ca	
Unit	kg	ppm	ppm	ppm	ppm	ppb	ppm	ppm	ppm	%	ppm	ppm	ppb	ppm	ppm	ppm	ppm	ppm	ppm	%	
MDL	0.01	0.01	0.01	0.01	0.1	2	0.1	0.1	1	0.01	0.1	0.1	0.2	0.1	0.5	0.01	0.02	0.02	2	0.01	
Pulp Duplicates																					
B92-S15R	Rock	0.57	0.13	1.12	0.96	30.5	4	2.5	3.5	363	2.05	0.8	0.3	1.2	3.1	6.2	<0.01	0.03	<0.02	15	0.10
REP B92-S15R	QC		0.14	1.20	0.99	32.7	8	2.7	3.4	373	2.06	0.6	0.3	1.1	3.2	6.6	<0.01	0.03	<0.02	15	0.10
1FT	Rock	1.63	0.54	0.83	0.26	21.5	4	1.7	2.5	261	1.83	0.3	0.8	0.6	6.1	4.1	<0.01	<0.02	<0.02	12	0.05
REP 1FT	QC		0.58	0.80	0.28	20.3	2	1.6	2.4	257	1.80	0.5	0.8	0.7	6.1	4.2	<0.01	<0.02	<0.02	12	0.05
Core Reject Duplicates																					
B11-OC-R	Rock	0.31	0.30	10.60	1.52	63.0	32	2.7	4.9	493	2.87	0.5	0.5	2.3	2.2	6.9	0.05	0.04	<0.02	13	0.09
DUP B11-OC-R	QC		0.31	10.74	1.60	65.3	21	2.8	5.0	491	2.91	0.5	0.4	2.3	2.1	7.1	0.05	0.04	<0.02	13	0.10
Reference Materials																					
STD DS8	Standard		12.58	107.1	122.4	297.2	1721	36.8	7.1	590	2.41	23.2	2.5	108.7	6.2	59.2	2.14	5.04	5.54	40	0.64
STD DS8	Standard		13.93	98.55	118.0	309.5	1835	38.2	7.6	628	2.45	24.0	2.4	115.6	5.9	60.4	2.19	4.65	5.67	41	0.70
STD DS8 Expected			13.44	110	123	312	1690	38.1	7.5	615	2.46	26	2.8	107	6.89	67.7	2.38	5.7	6.67	41.1	0.7
BLK	Blank		<0.01	0.02	<0.01	<0.1	3	<0.1	<0.1	<1	<0.01	<0.1	<0.1	<0.2	<0.1	<0.5	<0.01	<0.02	<0.02	<2	<0.01
BLK	Blank		<0.01	0.02	0.02	<0.1	<2	<0.1	<0.1	<1	<0.01	<0.1	<0.1	<0.2	<0.1	<0.5	<0.01	<0.02	<0.02	<2	<0.01
Prep Wash																					
G1-WHI	Prep Blank		0.12	1.89	3.60	58.0	9	2.6	3.8	555	2.02	0.2	1.4	4.0	4.9	54.1	0.07	0.03	0.06	37	0.46
G1-WHI	Prep Blank		0.14	2.08	3.10	46.0	9	2.3	3.9	578	2.07	0.3	1.6	2.6	5.1	57.6	0.04	<0.02	0.04	38	0.53



Acme Analytical Laboratories (Vancouver) Ltd.

1020 Cordova St. East Vancouver BC V6A 4A3 Canada
 Phone (604) 253-3158 Fax (604) 253-1716

www.acmelab.com

Client: Goldbank Mining Corp.
 605 - 889 West Pender St.
 Vancouver BC V6C 3B2 Canada

Project: BISMARK
Report Date: April 24, 2012

Page: 1 of 1 Part 2

QUALITY CONTROL REPORT

WHI12000025.1

Method		1F30	1F30	1F30	1F30	1F30	1F30	1F30	1F30	1F30	1F30	1F30	1F30	1F30	1F30	1F30	1F30	1F30		
Analyte		P	La	Cr	Mg	Ba	Ti	B	Al	Na	K	W	Sc	Ti	S	Hg	Se	Te	Ga	
Unit		%	ppm	ppm	%	ppm	%	ppm	%	%	%	ppm	ppm	ppm	%	ppb	ppm	ppm	ppm	
MDL		0.001	0.5	0.5	0.01	0.5	0.001	1	0.01	0.001	0.01	0.1	0.1	0.02	0.02	5	0.1	0.02	0.1	
Pulp Duplicates																				
B92-S15R	Rock	0.022	4.8	5.0	0.27	195.9	0.062	<1	0.84	0.054	0.32	<0.1	4.3	0.14	<0.02	10	<0.1	<0.02	4.0	
REP B92-S15R	QC	0.023	5.2	5.1	0.27	208.4	0.063	<1	0.84	0.054	0.32	<0.1	4.4	0.13	<0.02	10	<0.1	0.02	4.4	
1FT	Rock	0.017	9.1	5.7	0.62	861.5	0.115	<1	1.10	0.078	0.69	<0.1	5.6	0.12	<0.02	<5	<0.1	<0.02	5.1	
REP 1FT	QC	0.017	9.2	5.5	0.60	841.0	0.111	<1	1.08	0.076	0.67	<0.1	5.4	0.12	<0.02	<5	<0.1	<0.02	5.2	
Core Reject Duplicates																				
B11-OC-R	Rock	0.038	9.2	2.6	0.92	612.3	0.155	<1	2.06	0.071	1.38	<0.1	4.7	0.55	<0.02	<5	<0.1	0.02	5.8	
DUP B11-OC-R	QC	0.040	8.8	2.7	0.93	622.1	0.153	<1	1.90	0.072	1.32	<0.1	4.7	0.54	<0.02	<5	<0.1	<0.02	5.8	
Reference Materials																				
STD DS8	Standard	0.073	13.6	113.5	0.58	259.7	0.101	2	0.89	0.084	0.40	2.8	2.2	5.12	0.16	197	4.8	4.79	4.2	
STD DS8	Standard	0.079	15.0	125.6	0.61	277.3	0.116	3	0.94	0.089	0.42	3.1	2.5	5.80	0.16	200	5.5	5.61	5.1	
STD DS8 Expected		0.08	14.6	115	0.6045	279	0.113	2.6	0.93	0.0883	0.41	3	2.3	5.4	0.1679	192	5.23	5	4.7	
BLK	Blank	<0.001	<0.5	<0.5	<0.01	<0.5	<0.001	<1	<0.01	<0.001	<0.01	<0.1	<0.1	<0.02	<0.02	<5	<0.1	0.02	<0.1	
BLK	Blank	<0.001	<0.5	1.5	<0.01	<0.5	<0.001	<1	<0.01	<0.001	<0.01	<0.1	<0.1	<0.02	<0.02	<5	<0.1	<0.02	<0.1	
Prep Wash																				
G1-WHI	Prep Blank	0.073	12.0	5.9	0.50	168.4	0.118	1	0.96	0.096	0.49	<0.1	2.3	0.34	<0.02	7	<0.1	<0.02	5.0	
G1-WHI	Prep Blank	0.077	12.4	5.7	0.52	161.8	0.123	1	1.00	0.100	0.49	0.1	2.4	0.34	<0.02	5	<0.1	<0.02	5.1	



1020 Cordova St. East Vancouver BC V6A 4A3 Canada

Acme Analytical Laboratories (Vancouver) Ltd.

www.acmelab.com

Client: **Goldbank Mining Corp.**
605 - 889 West Pender St.
Vancouver BC V6C 3B2 Canada

Submitted By: Anthony Beruschi
Receiving Lab: Canada-Whitehorse
Received: April 02, 2012
Report Date: April 24, 2012
Page: 1 of 4

CERTIFICATE OF ANALYSIS

WHI12000024.1

CLIENT JOB INFORMATION

Project: BISMARK
Shipment ID:
P.O. Number
Number of Samples: 67

SAMPLE DISPOSAL

DISP-PLP Dispose of Pulp After 90 days
DISP-RJT Dispose of Reject After 90 days

Acme does not accept responsibility for samples left at the laboratory after 90 days without prior written instructions for sample storage or return.

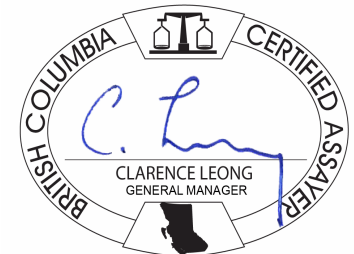
Invoice To: Goldbank Eastern Klondike Properties Inc.
605-889 West Pender St
Vancouver British Columbia V6C 3B2
Canada

CC: Boris Molak

SAMPLE PREPARATION AND ANALYTICAL PROCEDURES

Method Code	Number of Samples	Code Description	Test Wgt (g)	Report Status	Lab
Dry at 60C	66	Dry at 60C			WHI
SS80	66	Dry at 60C sieve 100g to -80 mesh			WHI
RJSV	66	Saving all or part of Soil Reject			VAN
1F03	66	1:1:1 Aqua Regia digestion Ultratrace ICP-MS analysis	30	Completed	VAN

ADDITIONAL COMMENTS



This report supersedes all previous preliminary and final reports with this file number dated prior to the date on this certificate. Signature indicates final approval; preliminary reports are unsigned and should be used for reference only. All results are considered the confidential property of the client. Acme assumes the liabilities for actual cost of analysis only. Results apply to samples as submitted. ** asterisk indicates that an analytical result could not be provided due to unusually high levels of interference from other elements.



Acme Analytical Laboratories (Vancouver) Ltd.
 1020 Cordova St. East Vancouver BC V6A 4A3 Canada
 Phone (604) 253-3158 Fax (604) 253-1716

www.acmelab.com

Client: **Goldbank Mining Corp.**
 605 - 889 West Pender St.
 Vancouver BC V6C 3B2 Canada

Project: BISMARCK
 Report Date: April 24, 2012

Page: 2 of 4 Part 1

CERTIFICATE OF ANALYSIS

WHI12000024.1

Method	Analyte	Unit	MDL	1F30 Mo	1F30 Cu	1F30 Pb	1F30 Zn	1F30 Ag	1F30 Ni	1F30 Co	1F30 Mn	1F30 Fe	1F30 As	1F30 U	1F30 Au	1F30 Th	1F30 Sr	1F30 Cd	1F30 Sb	1F30 Bi	1F30 V	1F30 Ca	1F30 P
				ppm	ppm	ppm	ppm	ppb	ppm	ppm	ppm	%	ppm	ppm	ppb	ppm	ppm	ppm	ppm	ppm	ppm	%	%
				0.01	0.01	0.01	0.1	2	0.1	0.1	1	0.01	0.1	0.1	0.2	0.1	0.5	0.01	0.02	0.02	2	0.01	0.001
B1	Soil			0.93	16.60	8.40	55.7	42	19.9	9.6	396	3.03	8.7	0.4	4.7	2.9	14.8	0.12	0.50	0.18	69	0.17	0.048
B-2	Soil			0.71	8.40	8.00	56.0	73	14.2	9.3	315	3.02	5.6	0.4	2.7	2.8	14.8	0.11	0.33	0.18	66	0.18	0.113
B-3	Soil			1.15	23.36	11.08	56.2	25	24.0	9.5	260	3.43	13.2	0.8	4.7	6.6	17.9	0.05	0.61	0.19	71	0.14	0.039
B-4	Soil			0.80	9.83	9.21	52.7	111	17.5	13.4	838	3.03	6.2	0.4	1.4	2.6	20.2	0.12	0.35	0.18	71	0.23	0.061
B-5	Soil			0.80	13.16	7.91	50.5	70	16.2	10.3	440	2.83	7.2	0.5	0.6	3.9	21.0	0.06	0.38	0.17	63	0.23	0.062
B-6	Soil			0.76	11.49	8.38	46.0	41	16.8	9.2	243	2.76	7.1	0.4	1.3	3.2	14.9	0.07	0.39	0.16	63	0.14	0.034
B8-0CS	Soil			0.86	17.12	7.33	56.8	122	18.6	10.7	323	3.34	5.6	0.8	0.8	5.7	14.0	0.11	0.31	0.18	66	0.13	0.046
B8-0CS-B	Soil			0.78	18.14	8.17	52.6	225	20.2	10.6	419	2.93	5.2	0.9	0.5	1.9	24.1	0.19	0.34	0.19	56	0.29	0.076
B9-0C	Soil			1.13	19.42	6.38	48.9	293	22.6	10.6	381	3.28	5.8	0.9	2.1	6.2	18.4	0.10	0.28	0.33	58	0.24	0.074
B9Q-S	Soil			1.02	17.61	7.71	51.0	260	20.1	9.9	266	3.22	7.3	1.0	1.2	5.6	12.9	0.09	0.36	0.23	61	0.12	0.048
B11-0C	Soil			1.10	13.78	7.53	59.2	1001	18.6	14.0	910	2.44	3.5	0.4	0.9	0.5	34.5	0.46	0.25	0.20	64	0.36	0.081
B12-0C	Soil			1.13	25.01	11.45	76.2	285	21.9	8.9	300	3.15	7.5	0.6	1.8	3.4	13.6	0.13	0.36	0.23	74	0.10	0.036
B13-0C	Soil			1.70	37.96	6.85	59.9	310	23.5	12.2	372	4.40	4.7	0.9	0.8	6.3	25.0	0.15	0.23	0.43	72	0.21	0.055
B-15	Soil			0.88	11.24	6.39	38.6	147	11.2	5.7	202	2.05	3.0	0.7	1.9	3.2	13.5	0.08	0.15	0.18	48	0.15	0.030
B-16	Soil			0.94	16.01	6.43	52.3	213	14.6	7.3	243	2.36	3.7	1.1	1.5	2.9	19.4	0.12	0.19	0.18	54	0.20	0.040
B17-0CS	Soil			1.28	19.14	6.03	52.5	137	13.4	8.2	285	2.71	5.7	0.6	2.8	2.9	16.2	0.11	0.21	0.17	61	0.17	0.039
B-18	Soil			0.76	19.59	5.83	55.4	231	12.4	7.0	279	2.07	3.6	0.5	1.7	1.9	27.0	0.19	0.24	0.15	46	0.39	0.073
B-19	Soil			0.85	8.35	4.67	46.0	100	7.2	8.7	808	2.43	1.2	0.5	0.8	2.1	23.6	0.12	0.14	0.12	39	0.34	0.071
B-20	Soil			1.04	18.29	3.01	45.4	76	8.1	10.4	911	2.81	2.0	0.9	<0.2	4.2	17.5	0.06	0.14	0.13	40	0.27	0.075
B-21	Soil			1.05	13.61	5.23	46.9	47	11.8	8.2	306	2.76	3.2	0.5	0.2	3.2	16.7	0.07	0.21	0.13	49	0.27	0.059
B-22	Soil			1.32	16.14	5.06	48.2	153	11.1	9.1	319	3.23	3.2	0.6	0.6	3.1	18.3	0.05	0.20	0.18	58	0.26	0.056
B-23	Soil			0.88	9.72	4.69	39.9	41	8.8	9.5	438	2.77	2.5	0.6	0.5	3.4	14.3	0.06	0.19	0.13	54	0.20	0.053
B-24	Soil			0.77	13.55	2.74	40.7	23	8.4	9.7	235	2.93	1.4	1.5	0.4	4.0	16.9	0.05	0.14	0.09	52	0.30	0.079
B-25	Soil			1.36	11.00	4.72	42.9	28	9.8	8.4	256	2.63	3.5	0.6	5.6	3.5	18.2	0.06	0.22	0.11	52	0.25	0.044
B-26	Soil			1.28	8.76	4.55	38.4	36	10.1	5.8	195	2.24	2.9	0.6	1.2	4.2	15.7	0.07	0.17	0.11	46	0.22	0.043
B74-S1	Soil			1.30	10.60	10.22	57.7	66	17.1	9.5	297	3.11	7.1	0.4	1.7	3.0	8.8	0.12	0.53	0.19	76	0.09	0.026
B74-S2	Soil			0.70	19.15	8.32	43.3	18	20.2	9.4	221	3.09	9.1	0.4	2.9	3.2	9.8	0.07	0.47	0.14	69	0.09	0.028
B91-S3	Soil			1.14	8.04	8.97	26.0	66	8.3	3.8	127	2.96	7.6	0.3	0.8	1.2	7.2	0.07	0.43	0.19	74	0.06	0.031
B91-S4	Soil			0.65	5.84	5.82	15.8	59	4.0	1.9	74	1.02	2.2	0.2	1.4	0.5	11.2	0.14	0.28	0.15	41	0.12	0.026
B91S5	Soil			1.03	20.69	9.00	49.3	59	19.8	10.0	229	3.00	9.7	0.6	1.0	4.0	11.1	0.05	0.55	0.15	72	0.10	0.021

This report supersedes all previous preliminary and final reports with this file number dated prior to the date on this certificate. Signature indicates final approval; preliminary reports are unsigned and should be used for reference only.



Acme Analytical Laboratories (Vancouver) Ltd.
 1020 Cordova St. East Vancouver BC V6A 4A3 Canada
 Phone (604) 253-3158 Fax (604) 253-1716

www.acmelab.com

Client: **Goldbank Mining Corp.**
 605 - 889 West Pender St.
 Vancouver BC V6C 3B2 Canada

Project: BISMARK
 Report Date: April 24, 2012

Page: 2 of 4 Part 2

CERTIFICATE OF ANALYSIS

WHI1200024.1

Method	Analyte	Unit	MDL	1F30 La	1F30 Cr	1F30 Mg	1F30 Ba	1F30 Ti	1F30 B	1F30 Al	1F30 Na	1F30 K	1F30 W	1F30 Sc	1F30 Ti	1F30 S	1F30 Hg	1F30 Se	1F30 Te	1F30 Ga
				ppm	ppm	%	ppm	%	ppm	%	%	%	ppm	ppm	ppm	%	ppb	ppm	ppm	ppm
				0.5	0.5	0.01	0.5	0.001	1	0.01	0.001	0.01	0.1	0.1	0.02	0.02	5	0.1	0.02	0.1
B1	Soil			7.9	35.3	0.82	309.8	0.105	3	2.37	0.007	0.12	0.1	4.1	0.10	<0.02	22	0.2	0.03	7.0
B-2	Soil			9.7	25.9	0.65	399.5	0.069	2	2.24	0.005	0.12	0.1	3.8	0.10	<0.02	17	<0.1	<0.02	7.6
B-3	Soil			12.2	43.1	0.64	459.5	0.074	2	2.83	0.007	0.10	0.1	4.8	0.11	<0.02	30	0.2	0.03	6.7
B-4	Soil			10.2	31.0	0.57	634.8	0.065	2	2.32	0.006	0.10	0.1	3.5	0.13	<0.02	20	<0.1	0.03	7.0
B-5	Soil			9.2	30.0	0.69	431.0	0.066	2	2.30	0.006	0.10	0.2	4.3	0.10	<0.02	13	<0.1	<0.02	6.7
B-6	Soil			9.5	30.5	0.58	243.2	0.066	1	2.04	0.006	0.07	0.1	3.4	0.09	<0.02	16	<0.1	<0.02	6.2
B8-0CS	Soil			15.3	32.6	1.02	343.5	0.136	2	2.47	0.011	0.44	<0.1	5.8	0.16	<0.02	42	0.2	0.03	8.3
B8-0CS-B	Soil			22.1	30.2	0.75	396.9	0.078	2	1.92	0.007	0.29	<0.1	4.6	0.12	0.02	47	<0.1	0.03	6.8
B9-0C	Soil			17.7	42.3	1.11	363.9	0.135	2	2.34	0.008	0.53	0.1	4.7	0.13	0.03	39	0.1	0.03	8.0
B9Q-S	Soil			18.9	34.4	0.81	219.9	0.118	1	2.06	0.006	0.37	0.1	3.9	0.19	0.02	30	0.1	0.04	7.2
B11-0C	Soil			6.9	79.2	0.80	444.4	0.067	1	1.45	0.008	0.16	<0.1	4.0	0.15	0.05	79	0.1	0.04	6.9
B12-0C	Soil			11.8	54.0	0.95	177.3	0.105	1	2.21	0.006	0.20	0.1	5.0	0.22	0.03	28	0.3	0.08	6.8
B13-0C	Soil			15.1	41.9	1.33	294.8	0.141	1	2.84	0.015	0.41	<0.1	4.8	0.19	0.07	36	0.6	0.14	9.4
B-15	Soil			13.4	25.1	0.67	242.7	0.108	1	1.42	0.007	0.14	<0.1	3.5	0.12	<0.02	10	<0.1	0.02	6.3
B-16	Soil			12.8	34.4	0.86	376.4	0.113	2	1.94	0.007	0.19	0.1	4.5	0.15	0.03	36	0.1	<0.02	7.2
B17-0CS	Soil			10.7	28.7	0.87	287.7	0.122	1	1.85	0.009	0.28	0.1	3.9	0.13	<0.02	45	<0.1	0.04	6.8
B-18	Soil			8.6	23.2	0.54	388.9	0.061	1	1.59	0.010	0.12	0.1	3.0	0.07	<0.02	23	<0.1	<0.02	5.9
B-19	Soil			7.9	16.3	0.79	464.1	0.069	1	1.72	0.008	0.15	<0.1	4.3	0.07	<0.02	10	<0.1	<0.02	7.5
B-20	Soil			13.9	17.6	0.89	578.1	0.084	<1	1.99	0.006	0.36	<0.1	6.8	0.11	<0.02	13	<0.1	0.03	6.9
B-21	Soil			8.5	21.9	0.76	533.9	0.083	1	1.79	0.007	0.23	0.1	4.5	0.07	<0.02	14	<0.1	<0.02	7.1
B-22	Soil			9.9	25.7	1.01	711.0	0.096	1	2.37	0.008	0.27	<0.1	5.9	0.09	<0.02	17	0.1	0.02	8.6
B-23	Soil			9.6	19.3	0.77	338.7	0.094	<1	1.70	0.010	0.18	<0.1	4.8	0.07	<0.02	9	<0.1	<0.02	6.3
B-24	Soil			15.2	16.0	0.92	371.9	0.105	<1	1.89	0.008	0.50	<0.1	6.1	0.10	<0.02	10	<0.1	<0.02	6.3
B-25	Soil			12.4	22.0	0.81	258.7	0.096	<1	1.82	0.010	0.15	0.1	4.9	0.07	<0.02	14	<0.1	<0.02	5.9
B-26	Soil			11.9	21.1	0.71	292.3	0.095	<1	1.45	0.008	0.16	0.1	3.8	0.08	<0.02	16	<0.1	<0.02	5.3
B74-S1	Soil			9.5	33.8	0.40	263.9	0.067	<1	2.30	0.008	0.04	<0.1	3.0	0.14	<0.02	16	<0.1	0.03	7.5
B74-S2	Soil			8.6	36.1	0.50	144.4	0.075	<1	2.19	0.005	0.05	0.1	3.3	0.10	<0.02	24	0.1	0.03	6.1
B91-S3	Soil			7.6	21.4	0.24	73.3	0.070	<1	1.25	0.003	0.05	0.1	2.1	0.08	<0.02	22	0.2	0.03	7.5
B91-S4	Soil			6.1	9.8	0.09	75.6	0.056	<1	0.43	0.005	0.06	<0.1	0.9	0.05	<0.02	23	<0.1	<0.02	4.3
B91S5	Soil			10.3	37.1	0.53	256.1	0.071	<1	2.61	0.005	0.06	0.1	4.2	0.11	<0.02	28	0.2	<0.02	6.2

This report supersedes all previous preliminary and final reports with this file number dated prior to the date on this certificate. Signature indicates final approval; preliminary reports are unsigned and should be used for reference only.



Acme Analytical Laboratories (Vancouver) Ltd.
 1020 Cordova St. East Vancouver BC V6A 4A3 Canada
 Phone (604) 253-3158 Fax (604) 253-1716

www.acmelab.com

Client: **Goldbank Mining Corp.**
 605 - 889 West Pender St.
 Vancouver BC V6C 3B2 Canada

Project: BISMARCK
 Report Date: April 24, 2012

Page: 3 of 4 Part 1

CERTIFICATE OF ANALYSIS

WHI12000024.1

Method	Analyte	Unit	MDL	1F30 Mo	1F30 Cu	1F30 Pb	1F30 Zn	1F30 Ag	1F30 Ni	1F30 Co	1F30 Mn	1F30 Fe	1F30 As	1F30 U	1F30 Au	1F30 Th	1F30 Sr	1F30 Cd	1F30 Sb	1F30 Bi	1F30 V	1F30 Ca	1F30 P
				ppm	ppm	ppm	ppm	ppb	ppm	ppm	ppm	%	ppm	ppm	ppb	ppm	ppm	ppm	ppm	ppm	ppm	%	%
B91S6	Soil			0.93	12.56	7.82	41.9	35	14.5	8.4	248	3.18	7.6	0.5	1.0	3.7	9.4	0.05	0.47	0.13	67	0.11	0.030
B91-S7	Soil			1.04	7.93	9.45	37.7	58	11.7	7.1	327	2.82	6.6	0.4	2.7	2.5	8.9	0.09	0.40	0.16	70	0.10	0.031
B91S8	Soil			0.78	12.48	7.88	38.7	11	13.1	6.7	193	2.99	7.7	0.5	2.9	2.8	9.6	0.06	0.38	0.13	60	0.10	0.023
B91-S9	Soil			0.77	5.08	4.81	31.3	4	7.9	7.9	227	4.21	6.7	0.5	0.6	3.3	7.9	0.07	0.29	0.07	70	0.11	0.043
B91-S10	Soil			0.82	7.40	9.05	29.2	40	7.4	3.9	122	2.66	7.8	0.3	2.4	0.5	9.4	0.11	0.34	0.17	81	0.09	0.041
B91-S11	Soil			1.05	9.68	9.57	42.6	72	11.0	9.4	918	2.53	5.1	0.3	1.6	1.3	13.8	0.12	0.35	0.18	59	0.16	0.035
B91-S12	Soil			0.98	18.31	6.03	109.7	98	13.3	9.6	1131	3.63	6.2	0.4	2.8	2.3	30.7	0.16	0.31	0.17	59	0.65	0.077
B91-S13	Soil			0.86	7.32	8.34	32.4	71	9.3	4.4	157	2.54	5.9	0.3	6.5	1.9	7.2	0.09	0.33	0.18	57	0.07	0.021
B91-S14	Soil			1.02	7.48	7.25	34.7	27	6.8	3.2	199	1.92	5.5	0.2	1.8	1.2	9.1	0.19	0.27	0.19	54	0.09	0.028
B92-S15	Soil			0.90	10.57	5.31	49.2	353	10.4	6.5	433	2.55	5.0	0.4	1.7	2.9	12.5	0.18	0.25	0.11	38	0.17	0.063
B92-S16	Soil			1.13	9.44	6.52	43.7	54	11.4	5.5	283	2.78	8.1	0.3	2.5	1.9	12.9	0.07	0.31	0.17	58	0.20	0.035
B92-S17	Soil			0.65	8.20	5.29	73.6	32	12.5	7.5	482	3.19	5.6	0.4	<0.2	2.6	12.7	0.08	0.26	0.15	47	0.17	0.053
B109S18	Soil			0.66	11.33	6.92	39.7	60	13.6	7.4	480	2.39	5.9	0.3	2.0	2.1	16.4	0.10	0.25	0.16	50	0.22	0.052
BCC-S19	Soil			2.56	10.89	4.80	43.8	59	11.1	27.5	1997	5.90	22.7	0.8	1.2	3.0	27.7	0.14	0.24	0.10	65	0.55	0.102
2	Soil			1.09	8.47	7.87	34.4	42	10.6	6.8	286	3.08	5.8	0.3	2.7	2.2	9.9	0.07	0.31	0.21	64	0.11	0.029
3	Soil			1.14	15.34	17.47	18.5	394	11.0	23.3	1033	1.88	1.9	1.4	2.1	0.1	26.8	0.27	0.20	0.13	20	0.38	0.198
4	Soil			0.88	13.48	6.31	39.1	45	14.7	9.0	338	2.64	6.2	0.4	3.2	3.3	11.8	0.04	0.33	0.13	53	0.12	0.017
5-S	Soil			0.63	13.64	5.24	27.0	124	7.9	17.3	2148	2.38	1.2	0.7	1.7	2.2	16.4	0.08	0.14	0.14	49	0.26	0.041
6	Soil			0.45	5.79	5.17	38.0	31	7.7	7.0	360	1.67	1.4	0.2	1.2	0.9	18.2	0.10	0.18	0.12	35	0.25	0.069
7	Soil			0.57	8.45	5.56	32.2	27	11.9	6.6	278	2.25	5.0	0.2	1.0	2.2	13.6	0.05	0.22	0.10	48	0.18	0.040
8	Soil			0.60	10.55	4.72	32.4	31	13.4	9.6	319	2.44	3.9	0.3	1.4	2.0	9.6	0.04	0.19	0.09	49	0.13	0.021
9	Soil			0.70	6.97	4.52	30.4	65	9.7	14.4	851	2.38	3.4	0.2	1.2	1.8	14.5	0.03	0.16	0.08	45	0.26	0.072
10	Soil			0.88	8.80	3.92	39.2	48	8.7	7.9	287	3.23	3.1	0.4	1.2	2.5	13.3	0.05	0.17	0.08	50	0.24	0.065
11	Soil			0.79	10.14	4.15	31.7	69	10.5	7.3	190	2.39	3.4	0.3	0.5	1.6	12.6	0.04	0.16	0.08	53	0.23	0.039
12	Soil			0.68	12.08	5.60	33.5	38	13.9	9.6	348	2.61	5.0	0.8	1.4	3.2	16.6	0.04	0.21	0.11	48	0.21	0.021
13+14	Soil			L.N.R.	L.N.R.	L.N.R.	L.N.R.	L.N.R.	L.N.R.	L.N.R.	L.N.R.	L.N.R.	L.N.R.	L.N.R.	L.N.R.	L.N.R.	L.N.R.	L.N.R.	L.N.R.	L.N.R.	L.N.R.	L.N.R.	L.N.R.
13	Soil			0.82	41.68	2.57	37.2	67	11.8	11.6	313	2.94	2.7	1.1	0.5	1.9	13.1	0.06	0.09	0.04	65	0.28	0.026
14	Soil			0.80	29.10	3.26	37.0	65	15.6	10.0	280	2.88	3.4	1.7	0.8	2.9	18.5	0.04	0.15	0.07	55	0.37	0.032
15	Soil			1.01	49.09	3.66	38.2	223	21.0	15.5	417	3.22	2.9	2.4	1.2	3.0	42.9	0.16	0.22	0.12	72	0.77	0.059
16	Soil			0.65	29.32	3.39	37.4	23	12.4	10.7	180	2.84	3.4	0.3	1.0	1.8	10.8	0.02	0.16	0.06	66	0.21	0.019



Acme Analytical Laboratories (Vancouver) Ltd.
 1020 Cordova St. East Vancouver BC V6A 4A3 Canada
 Phone (604) 253-3158 Fax (604) 253-1716

www.acmelab.com

Client: **Goldbank Mining Corp.**
 605 - 889 West Pender St.
 Vancouver BC V6C 3B2 Canada

Project: BISMARK
 Report Date: April 24, 2012

Page: 3 of 4 Part 2

CERTIFICATE OF ANALYSIS

WHI1200024.1

Method	Analyte	1F30	1F30	1F30	1F30	1F30	1F30	1F30	1F30	1F30	1F30	1F30	1F30	1F30	1F30	1F30	1F30	
		La	Cr	Mg	Ba	Ti	B	Al	Na	K	W	Sc	Tl	S	Hg	Se	Te	Ga
Unit		ppm	ppm	%	ppm	%	ppm	%	%	%	ppm	ppm	ppm	ppb	ppm	ppm	ppm	
MDL		0.5	0.5	0.01	0.5	0.001	1	0.01	0.001	0.01	0.1	0.1	0.02	0.02	5	0.1	0.02	0.1
B91S6	Soil	10.8	29.4	0.46	159.1	0.053	<1	2.26	0.004	0.06	0.1	4.2	0.10	<0.02	23	0.1	<0.02	7.1
B91-S7	Soil	8.4	26.5	0.37	148.4	0.056	<1	1.68	0.004	0.05	0.1	2.6	0.11	<0.02	12	<0.1	0.03	6.9
B91S8	Soil	8.6	27.7	0.47	118.0	0.068	<1	1.82	0.005	0.05	0.1	3.2	0.09	<0.02	22	0.2	<0.02	6.0
B91-S9	Soil	6.1	18.5	0.87	98.7	0.202	<1	2.38	0.004	0.43	0.2	10.2	0.24	<0.02	5	<0.1	0.03	11.3
B91-S10	Soil	8.2	20.6	0.27	86.4	0.057	<1	1.22	0.004	0.05	0.1	2.0	0.08	<0.02	27	0.2	0.02	7.9
B91-S11	Soil	8.2	22.8	0.30	207.9	0.055	<1	1.58	0.005	0.09	0.1	2.4	0.11	<0.02	32	0.1	0.03	6.5
B91-S12	Soil	10.3	26.1	0.63	244.0	0.111	3	1.87	0.006	0.39	0.1	5.2	0.21	<0.02	21	0.2	0.05	8.0
B91-S13	Soil	8.4	19.1	0.26	111.4	0.051	<1	1.44	0.003	0.06	0.1	2.2	0.10	<0.02	15	0.2	<0.02	6.2
B91-S14	Soil	8.9	16.4	0.18	119.4	0.050	1	1.09	0.004	0.05	<0.1	1.5	0.10	<0.02	<5	<0.1	0.04	6.0
B92-S15	Soil	12.7	16.8	0.38	261.5	0.071	1	1.73	0.006	0.37	0.1	4.2	0.15	0.02	73	0.3	0.04	6.1
B92-S16	Soil	8.6	21.8	0.39	189.2	0.071	<1	1.78	0.005	0.10	0.1	3.2	0.11	<0.02	13	<0.1	<0.02	6.7
B92-S17	Soil	6.2	18.8	0.58	275.8	0.150	1	2.15	0.004	0.49	<0.1	7.0	0.26	<0.02	12	<0.1	<0.02	8.0
B109S18	Soil	9.4	23.5	0.36	215.7	0.058	1	1.49	0.007	0.13	0.1	2.8	0.10	<0.02	16	<0.1	<0.02	5.1
BCC-S19	Soil	13.6	19.3	0.46	360.2	0.048	<1	1.22	0.015	0.08	0.1	4.4	0.07	0.02	20	0.2	<0.02	4.1
2	Soil	8.3	21.1	0.37	276.9	0.074	<1	2.01	0.007	0.06	0.1	3.1	0.10	<0.02	22	0.2	0.03	9.0
3	Soil	32.3	14.3	0.22	843.0	0.010	1	1.58	0.009	0.08	<0.1	1.1	0.11	0.13	149	0.6	<0.02	2.8
4	Soil	8.3	28.2	0.60	265.9	0.065	<1	1.91	0.005	0.07	0.1	3.9	0.08	<0.02	8	0.1	<0.02	5.7
5-S	Soil	21.3	20.4	0.39	556.7	0.083	1	1.58	0.012	0.13	<0.1	4.4	0.10	<0.02	36	0.2	0.03	6.2
6	Soil	5.6	14.1	0.23	361.1	0.037	<1	0.88	0.010	0.15	<0.1	1.8	0.06	<0.02	16	<0.1	<0.02	4.2
7	Soil	7.5	21.9	0.41	380.8	0.060	<1	1.50	0.007	0.12	<0.1	2.6	0.07	<0.02	8	0.1	<0.02	5.0
8	Soil	6.2	28.3	0.60	360.4	0.080	<1	1.72	0.007	0.10	0.1	3.4	0.08	<0.02	6	<0.1	<0.02	5.0
9	Soil	5.4	25.7	0.54	220.7	0.096	<1	1.73	0.009	0.24	<0.1	2.6	0.12	<0.02	16	0.1	<0.02	6.2
10	Soil	7.8	18.7	0.75	427.2	0.174	<1	1.97	0.006	0.58	0.1	6.1	0.19	<0.02	11	0.2	<0.02	8.2
11	Soil	6.7	24.9	0.53	288.7	0.074	<1	1.43	0.012	0.15	<0.1	3.4	0.08	<0.02	12	<0.1	<0.02	5.4
12	Soil	11.7	26.3	0.50	600.9	0.073	<1	1.85	0.012	0.15	<0.1	4.5	0.07	<0.02	10	<0.1	0.04	5.3
13+14	Soil	L.N.R.	L.N.R.	L.N.R.	L.N.R.	L.N.R.	L.N.R.	L.N.R.	L.N.R.	L.N.R.	L.N.R.	L.N.R.	L.N.R.	L.N.R.	L.N.R.	L.N.R.	L.N.R.	L.N.R.
13	Soil	9.6	19.9	0.63	436.2	0.139	<1	1.69	0.010	0.31	<0.1	5.6	0.16	<0.02	21	<0.1	0.03	5.6
14	Soil	13.7	24.6	0.63	671.0	0.129	<1	1.72	0.011	0.36	0.1	6.3	0.15	<0.02	37	<0.1	<0.02	5.9
15	Soil	30.9	34.4	0.74	787.0	0.120	2	2.03	0.015	0.31	0.2	9.1	0.12	0.04	52	0.3	0.02	7.0
16	Soil	3.7	25.4	0.68	212.4	0.121	<1	1.77	0.007	0.26	<0.1	3.4	0.09	<0.02	12	<0.1	<0.02	5.1

This report supersedes all previous preliminary and final reports with this file number dated prior to the date on this certificate. Signature indicates final approval; preliminary reports are unsigned and should be used for reference only.



Acme Analytical Laboratories (Vancouver) Ltd.
 1020 Cordova St. East Vancouver BC V6A 4A3 Canada
 Phone (604) 253-3158 Fax (604) 253-1716

www.acmelab.com

Client: **Goldbank Mining Corp.**
 605 - 889 West Pender St.
 Vancouver BC V6C 3B2 Canada

Project: BISMARK
 Report Date: April 24, 2012

Page: 4 of 4 Part 1

CERTIFICATE OF ANALYSIS

WHI12000024.1

Method	1F30	1F30	1F30	1F30	1F30	1F30	1F30	1F30	1F30	1F30	1F30	1F30	1F30	1F30	1F30	1F30	1F30	1F30	1F30	1F30	
Analyte	Mo	Cu	Pb	Zn	Ag	Ni	Co	Mn	Fe	As	U	Au	Th	Sr	Cd	Sb	Bi	V	Ca	P	
Unit	ppm	ppm	ppm	ppm	ppb	ppm	ppm	ppm	%	ppm	ppm	ppb	ppm	ppm	ppm	ppm	ppm	ppm	%	%	
MDL	0.01	0.01	0.01	0.1	2	0.1	0.1	1	0.01	0.1	0.1	0.2	0.1	0.5	0.01	0.02	0.02	2	0.01	0.001	
17	Soil	0.67	7.97	5.22	31.5	39	11.6	8.3	241	2.40	3.9	0.4	1.7	3.0	17.4	0.03	0.20	0.09	42	0.26	0.030
18	Soil	0.68	12.27	4.00	31.2	15	10.8	7.6	180	2.37	3.3	0.8	7.6	4.0	14.0	0.01	0.21	0.07	40	0.24	0.036
19	Soil	0.44	17.35	2.42	36.9	53	8.9	10.9	319	3.43	2.0	0.5	<0.2	2.6	16.7	0.05	0.15	0.05	49	0.33	0.034
20	Soil	0.68	14.81	4.99	42.1	102	11.3	12.1	406	2.98	4.4	0.7	2.4	3.0	19.5	0.09	0.20	0.10	58	0.37	0.064
21	Soil	0.74	10.35	5.76	51.4	144	14.7	11.1	503	2.81	4.4	0.2	0.9	2.0	24.1	0.12	0.25	0.11	66	0.43	0.027
22	Soil	1.10	10.99	5.16	52.5	41	11.9	15.8	298	3.75	3.8	0.3	<0.2	1.8	21.0	0.06	0.17	0.07	101	0.30	0.027
23	Soil	0.85	12.11	5.49	47.0	50	13.6	13.3	358	3.15	3.8	0.2	0.5	1.5	15.9	0.07	0.21	0.09	79	0.26	0.037



Acme Analytical Laboratories (Vancouver) Ltd.
 1020 Cordova St. East Vancouver BC V6A 4A3 Canada
 Phone (604) 253-3158 Fax (604) 253-1716

www.acmelab.com

Client: Goldbank Mining Corp.
 605 - 889 West Pender St.
 Vancouver BC V6C 3B2 Canada

Project: BISMARK
Report Date: April 24, 2012

Page: 4 of 4 Part 2

CERTIFICATE OF ANALYSIS

WHI1200024.1

Method	Analyte	1F30	1F30	1F30	1F30	1F30	1F30	1F30	1F30	1F30	1F30	1F30	1F30	1F30	1F30	1F30	1F30	
		La	Cr	Mg	Ba	Ti	B	Al	Na	K	W	Sc	Tl	S	Hg	Se	Te	Ga
Unit		ppm	ppm	%	ppm	%	ppm	%	%	ppm	ppm	ppm	%	ppb	ppm	ppm	ppm	
MDL		0.5	0.5	0.01	0.5	0.001	1	0.01	0.001	0.01	0.1	0.1	0.02	5	0.1	0.02	0.1	
17	Soil	8.9	21.5	0.57	297.6	0.074	1	1.82	0.008	0.21	<0.1	4.4	0.06	<0.02	17	0.1	<0.02	5.6
18	Soil	24.0	27.7	0.60	311.8	0.079	<1	1.59	0.008	0.10	0.1	5.2	0.05	<0.02	22	0.1	<0.02	4.6
19	Soil	7.6	19.9	0.85	410.3	0.045	<1	1.93	0.010	0.23	<0.1	7.2	0.06	<0.02	10	<0.1	<0.02	7.3
20	Soil	17.1	23.9	0.63	247.8	0.077	1	1.65	0.011	0.25	<0.1	4.7	0.08	<0.02	27	0.2	0.03	5.7
21	Soil	7.0	24.4	0.76	350.5	0.048	1	1.90	0.010	0.19	<0.1	3.6	0.07	<0.02	20	0.1	0.02	6.4
22	Soil	5.0	22.6	1.33	351.1	0.053	<1	2.53	0.017	0.06	<0.1	5.5	0.04	<0.02	7	<0.1	0.02	8.3
23	Soil	5.6	26.1	1.07	315.5	0.042	<1	2.31	0.016	0.07	<0.1	4.3	0.06	<0.02	13	<0.1	0.02	7.6



Acme Analytical Laboratories (Vancouver) Ltd.
 1020 Cordova St. East Vancouver BC V6A 4A3 Canada
 Phone (604) 253-3158 Fax (604) 253-1716

www.acmelab.com

Client: **Goldbank Mining Corp.**
 605 - 889 West Pender St.
 Vancouver BC V6C 3B2 Canada

Project: BISMARCK
 Report Date: April 24, 2012

Page: 1 of 1 Part 1

QUALITY CONTROL REPORT

WHI12000024.1

Method	1F30	1F30	1F30	1F30	1F30	1F30	1F30	1F30	1F30	1F30	1F30	1F30	1F30	1F30	1F30	1F30	1F30	1F30	1F30	1F30	1F30
Analyte	Mo	Cu	Pb	Zn	Ag	Ni	Co	Mn	Fe	As	U	Au	Th	Sr	Cd	Sb	Bi	V	Ca	P	
Unit	ppm	ppm	ppm	ppm	ppb	ppm	ppm	ppm	%	ppm	ppm	ppb	ppm	ppm	ppm	ppm	ppm	ppm	%	%	
MDL	0.01	0.01	0.01	0.1	2	0.1	0.1	1	0.01	0.1	0.1	0.2	0.1	0.5	0.01	0.02	0.02	2	0.01	0.001	
Pulp Duplicates																					
B8-0CS-B	Soil	0.78	18.14	8.17	52.6	225	20.2	10.6	419	2.93	5.2	0.9	0.5	1.9	24.1	0.19	0.34	0.19	56	0.29	0.076
REP B8-0CS-B	QC	0.79	17.24	7.51	50.0	212	19.1	10.3	395	2.87	4.7	0.9	1.4	1.7	21.9	0.18	0.32	0.18	55	0.26	0.069
B-26	Soil	1.28	8.76	4.55	38.4	36	10.1	5.8	195	2.24	2.9	0.6	1.2	4.2	15.7	0.07	0.17	0.11	46	0.22	0.043
REP B-26	QC	1.17	8.51	4.43	37.7	39	10.1	5.9	189	2.19	2.8	0.5	2.7	3.8	14.9	0.06	0.17	0.11	46	0.21	0.044
B109S18	Soil	0.66	11.33	6.92	39.7	60	13.6	7.4	480	2.39	5.9	0.3	2.0	2.1	16.4	0.10	0.25	0.16	50	0.22	0.052
REP B109S18	QC	0.61	11.19	6.79	38.2	62	13.6	7.3	469	2.34	5.7	0.3	2.9	2.0	15.6	0.09	0.25	0.16	48	0.20	0.052
14	Soil	0.80	29.10	3.26	37.0	65	15.6	10.0	280	2.88	3.4	1.7	0.8	2.9	18.5	0.04	0.15	0.07	55	0.37	0.032
REP 14	QC	0.74	28.82	3.13	34.2	65	15.4	9.6	276	2.80	3.4	1.7	1.6	2.8	17.7	0.06	0.15	0.06	55	0.38	0.032
Reference Materials																					
STD DS8	Standard	13.20	107.0	127.1	318.9	1932	37.7	7.5	620	2.48	24.7	2.6	128.9	6.6	65.2	2.25	5.52	6.19	42	0.73	0.082
STD DS8	Standard	12.65	103.7	111.4	292.0	1749	37.3	7.4	605	2.39	22.0	2.2	114.5	5.9	54.8	2.10	4.33	5.88	39	0.70	0.074
STD DS8 Expected		13.44	110	123	312	1690	38.1	7.5	615	2.46	26	2.8	107	6.89	67.7	2.38	5.7	6.67	41.1	0.7	0.08
BLK	Blank	<0.01	0.02	0.02	<0.1	3	<0.1	<0.1	2	<0.01	<0.1	<0.1	<0.2	<0.1	<0.5	<0.01	<0.02	<0.02	<2	<0.01	<0.001
BLK	Blank	<0.01	<0.01	<0.01	<0.1	2	<0.1	<0.1	<1	<0.01	<0.1	<0.1	<0.2	<0.1	<0.5	<0.01	<0.02	<0.02	<2	<0.01	<0.001



Acme Analytical Laboratories (Vancouver) Ltd.

1020 Cordova St. East Vancouver BC V6A 4A3 Canada
 Phone (604) 253-3158 Fax (604) 253-1716

www.acmelab.com

Client: Goldbank Mining Corp.
 605 - 889 West Pender St.
 Vancouver BC V6C 3B2 Canada

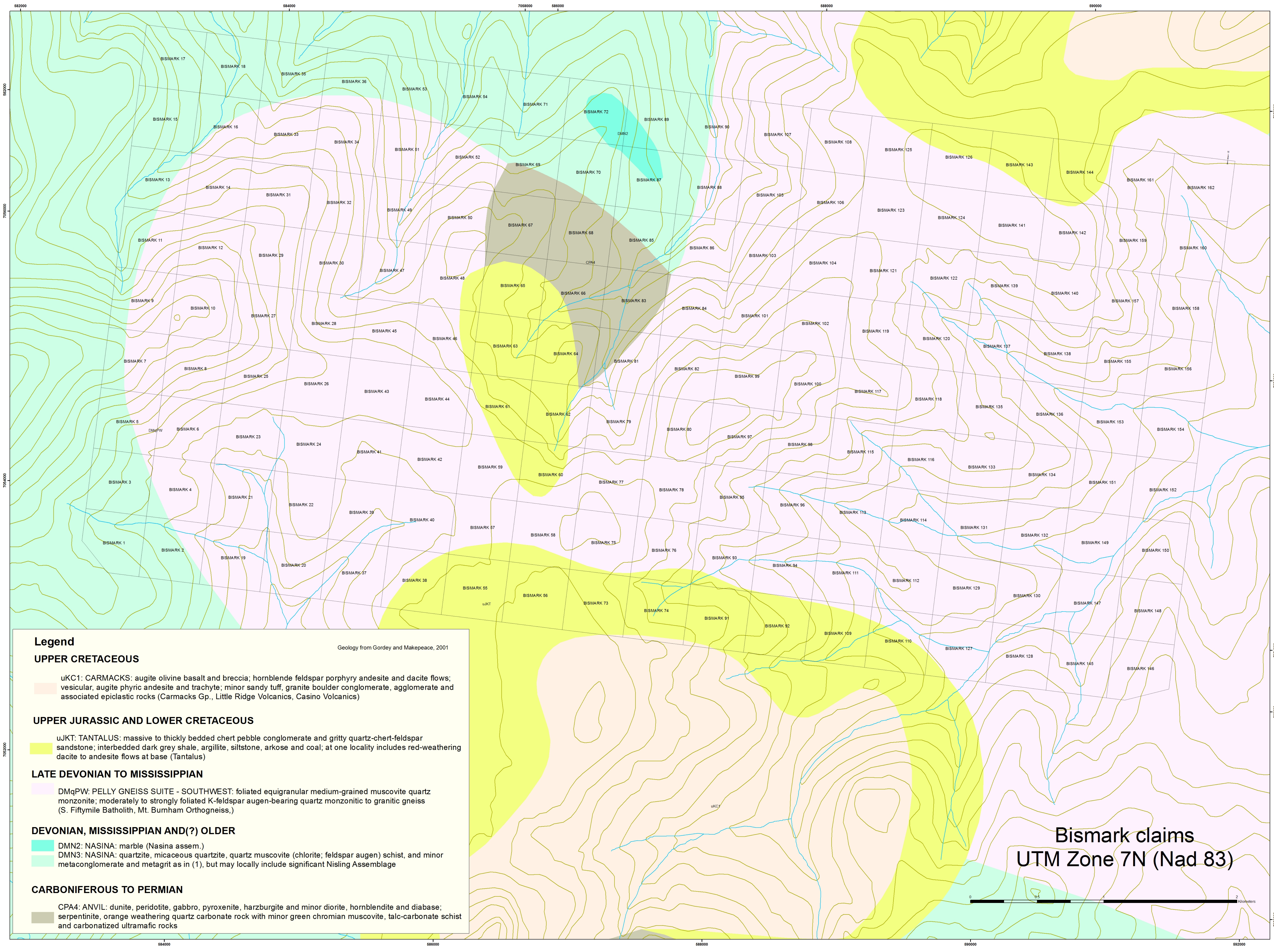
Project: BISMARK
Report Date: April 24, 2012

Page: 1 of 1 Part 2

QUALITY CONTROL REPORT

WHI1200024.1

Method	1F30	1F30	1F30	1F30	1F30	1F30	1F30	1F30	1F30	1F30	1F30	1F30	1F30	1F30	1F30	1F30	1F30	
Analyte	La	Cr	Mg	Ba	Ti	B	Al	Na	K	W	Sc	Tl	S	Hg	Se	Te	Ga	
Unit	ppm	ppm	%	ppm	%	ppm	%	%	%	ppm	ppm	ppm	%	ppb	ppm	ppm	ppm	
MDL	0.5	0.5	0.01	0.5	0.001	1	0.01	0.001	0.01	0.1	0.1	0.02	0.02	5	0.1	0.02	0.1	
Pulp Duplicates																		
B8-0CS-B	Soil	22.1	30.2	0.75	396.9	0.078	2	1.92	0.007	0.29	<0.1	4.6	0.12	0.02	47	<0.1	0.03	6.8
REP B8-0CS-B	QC	20.4	28.7	0.74	376.1	0.072	2	1.93	0.007	0.29	0.1	4.3	0.11	0.02	46	0.1	<0.02	6.7
B-26	Soil	11.9	21.1	0.71	292.3	0.095	<1	1.45	0.008	0.16	0.1	3.8	0.08	<0.02	16	<0.1	<0.02	5.3
REP B-26	QC	10.6	20.6	0.70	283.4	0.090	<1	1.42	0.007	0.16	0.1	3.6	0.08	<0.02	17	<0.1	<0.02	5.1
B109S18	Soil	9.4	23.5	0.36	215.7	0.058	1	1.49	0.007	0.13	0.1	2.8	0.10	<0.02	16	<0.1	<0.02	5.1
REP B109S18	QC	9.2	21.8	0.35	203.4	0.050	<1	1.47	0.006	0.12	0.1	2.6	0.09	<0.02	14	<0.1	<0.02	4.8
14	Soil	13.7	24.6	0.63	671.0	0.129	<1	1.72	0.011	0.36	0.1	6.3	0.15	<0.02	37	<0.1	<0.02	5.9
REP 14	QC	12.9	23.2	0.61	658.9	0.127	1	1.66	0.010	0.36	<0.1	6.3	0.15	<0.02	34	0.2	<0.02	5.7
Reference Materials																		
STD DS8	Standard	15.0	127.7	0.62	280.8	0.117	3	0.97	0.097	0.42	3.1	2.8	5.90	0.17	218	5.2	5.20	4.8
STD DS8	Standard	13.7	123.0	0.60	256.1	0.106	3	0.92	0.092	0.41	2.9	2.5	5.53	0.15	198	5.0	4.88	4.6
STD DS8 Expected		14.6	115	0.6045	279	0.113	2.6	0.93	0.0883	0.41	3	2.3	5.4	0.1679	192	5.23	5	4.7
BLK	Blank	<0.5	0.7	<0.01	<0.5	<0.001	<1	<0.01	<0.001	<0.01	<0.1	<0.1	<0.02	<0.02	<5	<0.1	<0.02	<0.1
BLK	Blank	<0.5	1.0	<0.01	<0.5	<0.001	<1	<0.01	<0.001	<0.01	<0.1	<0.1	<0.02	<0.02	<5	<0.1	<0.02	<0.1



Bismark claims
UTM Zone 7N (Nad 83)

Legend

Geology from Gordey and Makepeace, 2001

UPPER CRETACEOUS

uKC1: CARMACKS: augite olivine basalt and breccia; hornblende feldspar porphyry andesite and dacite flows; vesicular, augite phyric andesite and trachyte; minor sandy tuff, granite boulder conglomerate, agglomerate and associated epiclastic rocks (Carmacks Gp., Little Ridge Volcanics, Casino Volcanics)

UPPER JURASSIC AND LOWER CRETACEOUS

uJKT: TANTALUS: massive to thickly bedded chert pebble conglomerate and gritty quartz-chert-feldspar sandstone; interbedded dark grey shale, argillite, siltstone, arkose and coal; at one locality includes red-weathering dacite to andesite flows at base (Tantalus)

LATE DEVONIAN TO MISSISSIPPIAN

DMqPW: PELLY GNEISS SUITE - SOUTHWEST: foliated equigranular medium-grained muscovite quartz monzonite; moderately to strongly foliated K-feldspar augen-bearing quartz monzonitic to granitic gneiss (S. Fiftymile Batholith, Mt. Burnham Orthogneiss.)

DEVONIAN, MISSISSIPPIAN AND(?) OLDER

DMN2: NASINA: marble (Nasina assem.)
DMN3: NASINA: quartzite, micaceous quartzite, quartz muscovite (chlorite; feldspar augen) schist, and minor metaconglomerate and metagrit as in (1), but may locally include significant Nisling Assemblage

CARBONIFEROUS TO PERMIAN

CPA4: ANVIL: dunite, peridotite, gabbro, pyroxenite, harzburgite and minor diorite, hornblende and diabase; serpentinite, orange weathering quartz carbonate rock with minor green chromian muscovite, talc-carbonate schist and carbonatized ultramafic rocks

