



ALS Canada Ltd.  
2103 Dollarton Hwy  
North Vancouver BC V7H 0A7  
Phone: 604 984 0221 Fax: 604 984 0218 www.alsglobal.com

To: **DRIVEN CAPITAL CORP**  
**440-789 W. PENDER ST**  
**VANCOUVER BC V6C 1H2**

Page: 1  
Finalized Date: 4-SEP-2012  
Account: DRICAP

**CERTIFICATE WH12192022**

Project: White River

P.O. No.:

This report is for 35 Rock samples submitted to our lab in Whitehorse, YT, Canada on 16-AUG-2012.

The following have access to data associated with this certificate:

PETER KURISOO

TOMA SOJONKY

JAY TIMMERMAN

**SAMPLE PREPARATION**

ALS CODE	DESCRIPTION
WEI-21	Received Sample Weight
LOG-22	Sample login - Rcd w/o BarCode
CRU-QC	Crushing QC Test
PUL-QC	Pulverizing QC Test
CRU-31	Fine crushing - 70% <2mm
SPL-21	Split sample - riffle splitter
PUL-31	Pulverize split to 85% <75 um

**ANALYTICAL PROCEDURES**

ALS CODE	DESCRIPTION	INSTRUMENT
ME-ICP61	33 element four acid ICP-AES	ICP-AES
ME-OG62	Ore Grade Elements - Four Acid	ICP-AES
Cu-OG62	Ore Grade Cu - Four Acid	VARIABLE
Au-AA23	Au 30g FA-AA finish	AAS
Au-GRA21	Au 30g FA-GRAV finish	WST-SIM

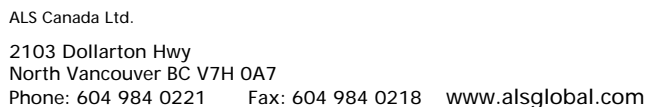
To: **DRIVEN CAPITAL CORP**  
**ATTN: TOMA SOJONKY**  
**440-789 W. PENDER ST**  
**VANCOUVER BC V6C 1H2**

This is the Final Report and supersedes any preliminary report with this certificate number. Results apply to samples as submitted. All pages of this report have been checked and approved for release.

Signature:

  
Colin Ramshaw, Vancouver Laboratory Manager

Sample Description	Method Analyte Units LOR	WEI-21	Au-AA23	Au-GRA21	ME-ICP61	ME-ICP61	ME-ICP61	ME-ICP61	ME-ICP61	ME-ICP61	ME-ICP61	ME-ICP61	ME-ICP61	ME-ICP61	ME-ICP61	ME-ICP61
		Recvd Wt.	Au	Au	Ag	Al	As	Ba	Be	Bi	Ca	Cd	Co	Cr	Cu	Fe
		kg	ppm	ppm	ppm	%	ppm	ppm	ppm	ppm	%	ppm	ppm	ppm	ppm	%
		0.02	0.005	0.05	0.5	0.01	5	10	0.5	2	0.01	0.5	1	1	1	0.01
WRDH-7 19.75 - 20.20	1.52	0.184		8.8	8.57	1135	530	<0.5	<2	3.95	0.5	189	458	>10000	7.64	
WRDH-7 23.90 - 24.58	2.23	<0.005		<0.5	7.51	17	1020	<0.5	<2	7.49	<0.5	36	215	66	4.10	
WRDH-7 30.48 - 31.08	1.91	0.008		<0.5	6.16	36	390	<0.5	<2	7.78	<0.5	35	246	177	4.70	
WRDH-7 45.00 - 45.40	1.69	0.006		<0.5	7.34	30	720	<0.5	<2	10.20	<0.5	31	326	58	5.19	
WRDH-7 48.06 - 48.92	2.96	<0.005		<0.5	7.23	27	330	<0.5	<2	8.40	<0.5	33	375	48	5.42	
WRDH-7 53.30 - 54.36	3.58	<0.005		<0.5	7.68	59	600	<0.5	<2	7.50	<0.5	38	357	64	6.11	
WRDH-7 61.95 - 62.80	3.62	<0.005		<0.5	7.20	52	670	<0.5	<2	5.52	<0.5	30	144	68	4.21	
WRDH-7 62.80 - 62.80A	0.79	<0.005		<0.5	2.82	7	550	0.6	<2	3.06	<0.5	3	13	4	1.49	
WRDH-7 62.80 - 63.73	2.94	0.027		<0.5	4.87	743	270	<0.5	37	7.05	<0.5	36	582	88	4.43	
WRDH-7 63.73 - 64.75	2.94	1.340		<0.5	5.12	519	80	<0.5	59	4.56	<0.5	51	426	62	5.70	
WRDH-7 66.75 - 67.88	3.32	0.088		<0.5	3.17	190	20	<0.5	<2	7.56	<0.5	78	668	355	6.53	
WRDH-7 67.88 - 68.12	0.82	0.966		<0.5	6.10	>10000	220	<0.5	8	1.75	<0.5	2030	216	1110	14.35	
WRDH-7 68.12 - 68.88	3.08	0.024		<0.5	7.41	585	290	0.5	<2	3.99	<0.5	54	199	348	8.31	
WRDH-7 68.88 - 69.72	2.84	0.213		3.2	6.01	3120	290	0.5	<2	6.20	3.6	228	195	518	10.00	
WRDH-7 71.76 - 72.79	2.98	0.117		<0.5	7.04	757	260	0.6	60	3.66	<0.5	61	201	225	10.40	
WRDH-7 72.79 - 73.78	3.94	0.149		<0.5	6.98	56	300	<0.5	<2	5.69	<0.5	33	233	165	9.42	
WRDH-7 78.42 - 79.26	3.60	1.760		<0.5	4.63	>10000	150	<0.5	10	3.14	<0.5	2230	346	2060	15.20	
WRDH-7 79.26 - 80.23	2.94	2.78		0.7	4.92	>10000	230	<0.5	21	1.98	0.6	1650	526	1400	15.15	
WRDH-7 80.23 - 81.25	3.27	0.075		<0.5	2.01	484	10	<0.5	<2	4.37	<0.5	107	1025	397	6.80	
WRDH-7 84.75 - 86.07	5.14	0.011		<0.5	3.55	125	10	<0.5	<2	6.02	<0.5	80	805	40	6.43	
WRDH-7 87.00 - 88.07	3.11	0.029		<0.5	0.86	576	<10	<0.5	<2	6.47	<0.5	100	1715	241	5.77	
WRDH-7 89.30 - 89.88	1.97	0.034		<0.5	0.57	914	<10	<0.5	<2	2.85	<0.5	48	1395	11	4.55	
WRDH-7 92.45 - 93.65	3.53	<0.005		<0.5	2.93	51	<10	<0.5	<2	3.01	<0.5	86	1165	22	6.83	
WRDH-7 106.23 - 107.48	2.16	<0.005		<0.5	0.92	34	<10	<0.5	<2	10.40	<0.5	75	1185	17	4.55	
WRDH-7 107.48 - 108.31	1.52	<0.005		<0.5	0.78	91	<10	<0.5	3	8.48	<0.5	84	1270	16	4.93	
WRDH-7 115.52 - 119.00	1.68	<0.005		<0.5	1.83	90	<10	<0.5	<2	4.23	<0.5	90	1435	18	5.53	
WRDH-7 147.93 - 149.77	2.82	<0.005		0.7	7.72	157	430	1.2	5	5.25	<0.5	30	179	230	6.52	
WRDH-7 149.77 - 149.77A	0.92	<0.005		<0.5	2.76	10	530	0.6	<2	2.64	<0.5	4	14	4	1.46	
WRDH-7 149.77 - 151.46	2.41	0.025		0.6	4.34	165	140	0.7	5	3.66	<0.5	21	102	545	4.36	
WRDH-7 151.46 -152.50	1.92	1.390		6.8	3.64	3150	60	0.7	66	5.90	2.3	427	20	2500	20.0	
WRDH-7 152.40 - 154.10	1.98	0.033		0.6	6.24	144	360	0.9	3	2.22	<0.5	14	46	224	3.93	
WRDH-7 158.70 - 160.07	2.53	0.010		<0.5	6.11	22	560	1.0	2	3.48	<0.5	29	168	92	6.30	
WRDH-7 160.07 - 161.48	2.13	<0.005		<0.5	5.98	91	640	1.6	6	7.49	<0.5	21	112	67	6.90	
WRR-13	0.75	>10.0	45.4	1.3	0.06	>10000	20	<0.5	1070	0.02	<0.5	66	15	1325	20.7	
WRR-136	1.24	>10.0	85.8	3.0	0.99	>10000	280	<0.5	1675	0.42	<0.5	44	62	842	11.35	



Page: 2 - B  
Total # Pages: 2 (A - C)  
Finalized Date: 4-SEP-2012  
Account: DRICAP

**CERTIFICATE OF ANALYSIS    WH12192022**

Sample Description	Method Analyte Units LOR	ME-ICP61	ME-ICP61	ME-ICP61	ME-ICP61	ME-ICP61	ME-ICP61	ME-ICP61	ME-ICP61	ME-ICP61	ME-ICP61	ME-ICP61	ME-ICP61	ME-ICP61	ME-ICP61	
		Ga	K	La	Mg	Mn	Mo	Na	Ni	P	Pb	S	Sb	Sc	Sr	Th
		ppm	%	ppm	%	ppm	ppm	%	ppm	ppm	ppm	%	ppm	ppm	ppm	ppm
		10	0.01	10	0.01	5	1	0.01	1	10	2	0.01	5	1	1	20
WRDH-7 19.75 - 20.20		20	2.10	<10	5.39	617	1	0.52	248	90	5	0.05	23	31	63	<20
WRDH-7 23.90 - 24.58		10	1.37	<10	4.81	621	<1	0.84	141	40	<2	<0.01	7	15	283	<20
WRDH-7 30.48 - 31.08		20	0.96	20	4.31	635	<1	0.98	64	30	<2	<0.01	19	22	121	<20
WRDH-7 45.00 - 45.40		20	0.77	<10	4.46	867	<1	1.22	96	180	<2	0.01	5	31	123	<20
WRDH-7 48.06 - 48.92		10	0.59	<10	4.76	945	<1	1.06	98	40	4	<0.01	8	40	169	<20
WRDH-7 53.30 - 54.36		10	1.25	<10	4.62	894	<1	1.02	123	110	<2	<0.01	7	30	144	<20
WRDH-7 61.95 - 62.80		20	1.90	<10	5.17	588	<1	1.24	185	300	<2	0.01	10	12	201	<20
WRDH-7 62.80 - 62.80A		10	1.23	10	0.64	385	<1	0.90	7	300	8	0.02	<5	2	166	<20
WRDH-7 62.80 - 63.73		10	1.41	20	10.70	550	<1	0.42	625	270	<2	0.01	54	20	172	<20
WRDH-7 63.73 - 64.75		20	0.44	<10	13.00	509	<1	0.24	774	360	<2	<0.01	31	19	44	<20
WRDH-7 66.75 - 67.88		10	0.10	<10	10.60	715	3	0.01	1030	200	4	0.35	56	14	20	<20
WRDH-7 67.88 - 68.12		20	1.34	10	5.68	925	6	0.47	294	410	<2	3.08	85	30	85	<20
WRDH-7 68.12 - 68.88		20	1.68	10	4.37	1225	2	1.89	64	580	<2	0.47	14	34	187	<20
WRDH-7 68.88 - 69.72		20	1.80	10	2.94	987	2	0.60	79	640	6	0.98	66	32	103	<20
WRDH-7 71.76 - 72.79		20	1.98	10	4.89	594	1	1.68	56	560	<2	0.92	14	32	170	<20
WRDH-7 72.79 - 73.78		20	1.87	10	4.96	733	<1	1.37	78	460	2	1.32	29	39	175	<20
WRDH-7 78.42 - 79.26		20	1.38	10	6.00	626	6	0.64	849	260	<2	9.89	70	34	69	<20
WRDH-7 79.26 - 80.23		10	1.15	10	8.22	871	10	0.13	1065	300	9	5.94	74	21	24	<20
WRDH-7 80.23 - 81.25		10	0.06	<10	16.45	546	1	0.03	1195	130	2	1.04	60	13	20	<20
WRDH-7 84.75 - 86.07		10	0.02	<10	15.05	852	1	0.02	1175	230	2	0.17	33	20	9	<20
WRDH-7 87.00 - 88.07		<10	0.01	<10	16.15	672	<1	0.01	2000	70	2	1.09	78	10	10	<20
WRDH-7 89.30 - 89.88		<10	0.01	<10	20.5	723	1	0.01	1885	10	6	0.07	51	8	3	<20
WRDH-7 92.45 - 93.65		10	0.01	<10	17.60	923	1	0.02	1280	180	7	0.02	35	16	2	<20
WRDH-7 106.23 - 107.48		<10	0.01	<10	13.75	784	<1	0.02	1565	80	3	0.05	7	9	63	<20
WRDH-7 107.48 - 108.31		<10	0.01	<10	15.05	730	1	0.02	1545	80	3	0.03	13	8	30	<20
WRDH-7 115.52 - 119.00		10	0.01	<10	18.55	743	1	0.03	1810	130	2	0.06	46	14	4	<20
WRDH-7 147.93 - 149.77		20	1.01	10	3.74	744	1	1.40	99	680	7	0.10	33	32	84	<20
WRDH-7 149.77 - 149.77A		10	1.13	10	0.59	345	1	0.86	11	260	7	0.02	<5	2	156	<20
WRDH-7 149.77 - 151.46		10	0.47	20	2.14	437	1	0.94	56	470	3	0.29	9	16	42	<20
WRDH-7 151.46 -152.50		10	0.12	10	1.21	321	3	0.60	88	640	27	>10.0	22	11	48	<20
WRDH-7 152.40 - 154.10		20	0.73	20	1.82	296	2	2.77	28	800	4	0.15	11	20	114	<20
WRDH-7 158.70 - 160.07		20	1.09	<10	2.73	625	1	1.85	87	480	4	0.16	19	25	101	<20
WRDH-7 160.07 - 161.48		20	1.13	10	2.29	1250	1	1.40	54	640	3	1.46	22	29	109	<20
WRR-13		<10	0.05	<10	<0.01	<5	8	0.01	<1	980	6	0.66	707	5	3	<20
WRR-136		10	0.20	10	0.23	63	8	0.11	5	980	11	0.22	222	11	30	<20



ALS Canada Ltd.  
 2103 Dollarton Hwy  
 North Vancouver BC V7H 0A7  
 Phone: 604 984 0221 Fax: 604 984 0218 www.alsglobal.com

To: DRIVEN CAPITAL CORP  
 440-789 W. PENDER ST  
 VANCOUVER BC V6C 1H2

Page: 2 - C  
 Total # Pages: 2 (A - C)  
 Finalized Date: 4-SEP-2012  
 Account: DRICAP

Project: White River

**CERTIFICATE OF ANALYSIS WH12192022**

Sample Description	Method Analyte Units LOR	ME-ICP61 Ti %	ME-ICP61 Ti ppm	ME-ICP61 U ppm	ME-ICP61 V ppm	ME-ICP61 W ppm	ME-ICP61 Zn ppm	Cu-OG62 Cu %
		0.01	10	10	1	10	2	0.001
WRDH-7 19.75 - 20.20		0.25	<10	<10	186	<10	70	1.055
WRDH-7 23.90 - 24.58		0.15	<10	<10	82	<10	27	
WRDH-7 30.48 - 31.08		0.14	<10	<10	94	<10	36	
WRDH-7 45.00 - 45.40		0.32	<10	<10	166	<10	41	
WRDH-7 48.06 - 48.92		0.28	<10	<10	193	<10	40	
WRDH-7 53.30 - 54.36		0.82	<10	<10	236	<10	38	
WRDH-7 61.95 - 62.80		0.26	<10	<10	103	<10	34	
WRDH-7 62.80 - 62.80A		0.06	<10	<10	18	<10	16	
WRDH-7 62.80 - 63.73		0.36	<10	<10	137	<10	25	
WRDH-7 63.73 - 64.75		0.40	<10	<10	138	<10	34	
WRDH-7 66.75 - 67.88		0.23	<10	<10	86	10	54	
WRDH-7 67.88 - 68.12		0.72	<10	<10	244	<10	51	
WRDH-7 68.12 - 68.88		0.89	<10	<10	281	<10	50	
WRDH-7 68.88 - 69.72		0.62	<10	<10	227	<10	950	
WRDH-7 71.76 - 72.79		0.78	<10	<10	269	<10	46	
WRDH-7 72.79 - 73.78		0.73	<10	<10	252	<10	41	
WRDH-7 78.42 - 79.26		0.53	<10	<10	185	<10	46	
WRDH-7 79.26 - 80.23		0.46	<10	<10	161	<10	91	
WRDH-7 80.23 - 81.25		0.21	<10	<10	84	<10	33	
WRDH-7 84.75 - 86.07		0.43	<10	<10	152	<10	54	
WRDH-7 87.00 - 88.07		0.03	<10	<10	57	<10	56	
WRDH-7 89.30 - 89.88		0.02	<10	<10	32	<10	55	
WRDH-7 92.45 - 93.65		0.38	<10	<10	123	<10	59	
WRDH-7 106.23 - 107.48		0.04	<10	<10	49	<10	45	
WRDH-7 107.48 - 108.31		0.02	<10	<10	47	<10	69	
WRDH-7 115.52 - 119.00		0.18	<10	<10	80	<10	55	
WRDH-7 147.93 - 149.77		0.69	<10	<10	245	<10	59	
WRDH-7 149.77 - 149.77A		0.06	<10	<10	18	<10	15	
WRDH-7 149.77 - 151.46		0.34	<10	<10	143	<10	31	
WRDH-7 151.46 - 152.50		0.29	<10	<10	97	<10	68	
WRDH-7 152.40 - 154.10		0.54	<10	<10	178	<10	24	
WRDH-7 158.70 - 160.07		0.62	<10	<10	203	<10	25	
WRDH-7 160.07 - 161.48		0.79	<10	<10	250	10	23	
WRR-13		0.57	10	<10	11	<10	<2	
WRR-136		0.33	<10	<10	39	<10	4	