

ASSESSMENT REPORT
PROSPECTING & SOIL GEOCHEMICAL INVESTIGATIONS
AT THE EIKLAND MOUNTAIN PROPERTY

NTS: 115/K7
Whitehorse Mining District, Yukon Territory
62° 15' N, 140° 52' W

Claim Name	Record Number	Expiry Date
MONI 1	1YE31842	12-Apr-13
MONI 2	2YE31843	12-Apr-13
MONI 3	3YE31844	12-Apr-13
MONI 4	4YE31845	12-Apr-13
MONI 5	5YE31846	11-Jun-13
MONI 6	6YE31847	11-Jun-13
MONI 7	7YE31848	11-Jun-13
MONI 8	8YE31849	11-Jun-13
MONI 9	9YE31850	11-Jun-13
MONI 10	10YE31851	11-Jun-13

Date: January 9, 2013

PREPARED FOR
PANARC RESOURCES LTD.

PREPARED BY



ASSESSMENT REPORT
PROSPECTING & SOIL GEOCHEMICAL INVESTIGATIONS
AT THE EIKLAND MOUNTAIN PROPERTY

Effective Date: January 9, 2013

Prepared for:
Panarc Resources Ltd.
34A Laberge Road
WHITEHORSE, YK
Y1A 5Y9

Prepared by:
Aurora Geosciences Ltd.
Main Office: 3506 McDonald Drive, Yellowknife, NT, X1A 2H1
Phone: (867) 902.2729 Fax: (867) 920-2739
www.aurorageosciences.com

Author
Robin J. Wyllie, B.Sc.(Hon.), P.Geol.

1 SUMMARY

The Eikland Mountain Property is located 15 km south of Beaver Creek and consists of 10 claims staked under the Yukon Quartz Mining Act. The property hosts Platinum Group Element (PGE) mineralization and covers an area in which Yukon Geological Survey geologists discovered PGE-bearing chromitite (rock) veins in an ultramafic (harzburgite) complex during 2011 field work.

The property was staked in March and June of 2012 and is owned by Panarc Resources Ltd. Prior to this, there is no record of exploration activity. This report describes the results of a work program consisting of prospecting, staking and contour soil geochemical surveys conducted during June, 2012.

The Eikland Mountain Property is underlain by the Permo-Triassic Eikland Mountain ophiolite suite, consisting of harzburgite, dunite and lesser lherzolite and intruded by decimetre-scale dykes and veinlets of plagiogranite and chromitite (rock). The gently southeast-dipping sequence is located in the hanging wall of an ENE-trending thrust fault. The ophiolite sequence is thought to be imbricated, however the rock units appear coherent and mélange-free. Although a complete ophiolite section from mantle to sea-floor sediments has not been documented, it has been inferred to be a Supra Subduction Zone (SSZ) ophiolite.

This relict ocean floor assemblage is considered to be part of the Slide Mountain Terrane (SMT) which consists of regionally extensive remnants of oceanic lithosphere. This material formed as the ensialic arc of the Yukon-Tanana Terrane (YTT) drifted away from the Laurentian continental margin (LM) during subduction rollback in the Late Paleozoic. Geochronological and geochemical evidence, along with positioning between the YTT and the LM, indicate that it is correlative with the SMT and not part of the 'Windy-McKinley' Terrane (WMT) as previously hypothesized.

To date, mineralization on the property is located in decimetre-scale intrusive chromitite (rock) veinlets and as disseminated concentrations of chromite (mineral) confined to specific layers (cumulates) within the harzburgite host rock. Mineralization consists of chromite, together with chlorite and pyroxene, in the chromitite veinlets. Mineralization in cumulate layers of the harzburgite proper consists of disseminated chromite.

The chromitite veins are enriched in PGE's, with samples by the Yukon Geological Survey geologists returning assays of up to 2.6 ppm total PGE (1,593 ppb Pt+Pd). Panarc rock sampling from the 2012 field program returned values of up to 724 ppb (Pt+Pd). Harzburgitic host rock, with 3 to 20% disseminated chromite, returned assays of up to 266 ppb (Pt+Pd). Soil geochemical samples returned values of up to 15 ppb Pt and 25 ppb Pd, respectively. The 2012 field program collected 20 rock grab samples and 51 soil geochemical samples.

Soil geochemical and prospecting contour surveys were conducted on the property in order to sample potential PGE mineralization *in situ* and over locations where overburden thicknesses are minimal. A total of 51 contour soil samples and 20 grab samples were collected. Samples were analyzed using Fire Assay – Emission Spectroscopy (FA-ES) for Au, Pt and Pd; and Inductively Coupled Plasma – Emission Spectroscopy (ICP-ES) for 32 elements.

The data were analyzed statistically and anomalous values identified in the 98th percentile. The rock geochemistry results identify one anomaly in Pt & Pd from a chromitite vein. The soil survey identified one soil Pt anomaly and two soil Pd anomalies with peak values of 11 ppb and 25 ppb, respectively. The anomalous areas are located in the Eikland Mountain harzburgite and are associated with the Eikland Mountain showing.

The results of the work conducted to date, in tandem with research by the Yukon Geological Survey, indicate that there is potential for PGE mineralized horizons within the Eikland Mountain harzburgite suite and analogs. A work program consisting of detailed mapping, soil geochemical and ground magnetic total field surveys is recommended. The best exposure of the mineralization occurs at high elevation where techniques could be developed for effective evaluation of the favourable stratigraphy at lower elevations where it is obscured by overburden.

TABLE OF CONTENTS

1	SUMMARY	1
2	INTRODUCTION	1
3	LOCATION AND ACCESS	1
4	PROPERTY DESCRIPTION	1
5	PHYSIOGRAPHY & CLIMATE	4
6	EXPLORATION HISTORY	4
7	REGIONAL GEOLOGY	4
8	PROPERTY GEOLOGY	7
8.1	ROCK UNITS.....	7
8.2	STRUCTURE.....	9
9	MINERALIZATION	9
10	2012 WORK PROGRAM	10
10.1	SUMMARY	10
10.1.1	<i>Personnel & Equipment</i>	10
10.1.2	<i>Specifications</i>	10
10.1.3	<i>Sample Analyses</i>	11
10.1.4	<i>Data</i>	12
10.2	GEOCHEMICAL SURVEYS	12
10.2.1	<i>Procedures</i>	12
10.2.2	<i>Univariate Analysis</i>	13
10.2.3	<i>Principle Components Analysis (PCA)</i>	19
10.2.4	<i>Statistical Analysis Results</i>	20
11	CONCLUSIONS	20
12	RECOMMENDATIONS	21
13	REFERENCES	22

LIST OF FIGURES

FIGURE 4.1. PROPERTY LOCATION MAP.....	2
FIGURE 4.2. PROPERTY QUARTZ CLAIMS MAP	3
FIGURE 7.1. REGIONAL GEOLOGY.....	6
FIGURE 8.1. PROPERTY GEOLOGY.....	8
FIGURE 5. - PT ASSAYS – ROCKS	MAP POCKET
FIGURE 6. - PD ASSAYS – ROCKS.....	MAP POCKET
FIGURE 7. - PT ASSAYS – SOILS.....	MAP POCKET
FIGURE 8. - PD ASSAYS – SOILS	MAP POCKET

LIST OF APPENDICES

APPENDIX I..... STATEMENT OF QUALIFICATIONS
APPENDIX II..... SURVEY LOG
APPENDIX III..... STATEMENT OF EXPENDITURES
APPENDIX IV..... GEOLOGICAL MAPPING AND PROSPECTING OBSERVATIONS
APPENDIX V..... GEOCHEMICAL SURVEY SAMPLE NOTES
APPENDIX VI..... ROCK SAMPLE ANALYSIS
APPENDIX VII..... GEOCHEMICAL SURVEY (SOIL) ANALYSIS
APPENDIX VIII..... ASSAY CERTIFICATES
APPENDIX IX..... GEOCHEMICAL SURVEY UNIVARIATE ANALYSIS
APPENDIX X..... SPEARMAN CORRELATION MATRIX (ROCK GEOCHEMISTRY)
APPENDIX XI..... SPEARMAN CORRELATION MATRIX (SOIL GEOCHEMISTRY)

2 INTRODUCTION

This report describes prospecting, geological and geochemical surveys conducted on the Eikland Mountain Property held by Panarc Resources Ltd. in the Whitehorse Mining District, Yukon. This work was conducted to investigate PGE's in chromitite veins and harzburgite cumulate layers on the property.

3 LOCATION AND ACCESS

The Eikland Mountain Property is located 15 km south of Beaver Creek on NTS 115K/7, in the Whitehorse Mining District and is centred at approximately 62°15' N, 140°52' W (Figure 4.1). The property is readily accessible by helicopter.

4 PROPERTY DESCRIPTION

The Eikland Mountain Property consists of 10 un-surveyed Quartz Claims staked under the Yukon Quartz Mining Act and recorded in the Whitehorse Mining District (Figure 4.2). Claim information is summarized in Table 4.1.

Table 4.1. Claim Summary

Claim Name	Record Number	Expiry Date
MONI 1	1YE31842	12-Apr-13
MONI 2	2YE31843	12-Apr-13
MONI 3	3YE31844	12-Apr-13
MONI 4	4YE31845	12-Apr-13
MONI 5	5YE31846	11-Jun-13
MONI 6	6YE31847	11-Jun-13
MONI 7	7YE31848	11-Jun-13
MONI 8	8YE31849	11-Jun-13
MONI 9	9YE31850	11-Jun-13
MONI 10	10YE31851	11-Jun-13

The claims are owned 100% by Panarc Resources Ltd. The claims can be maintained in good standing indefinitely by performing \$100 per claim per year of assessment work, or paying the same amount in lieu of assessment work, and paying associated filing fees of \$5 per claim. The claims are located on Crown Land and surface rights are retained by the Crown.

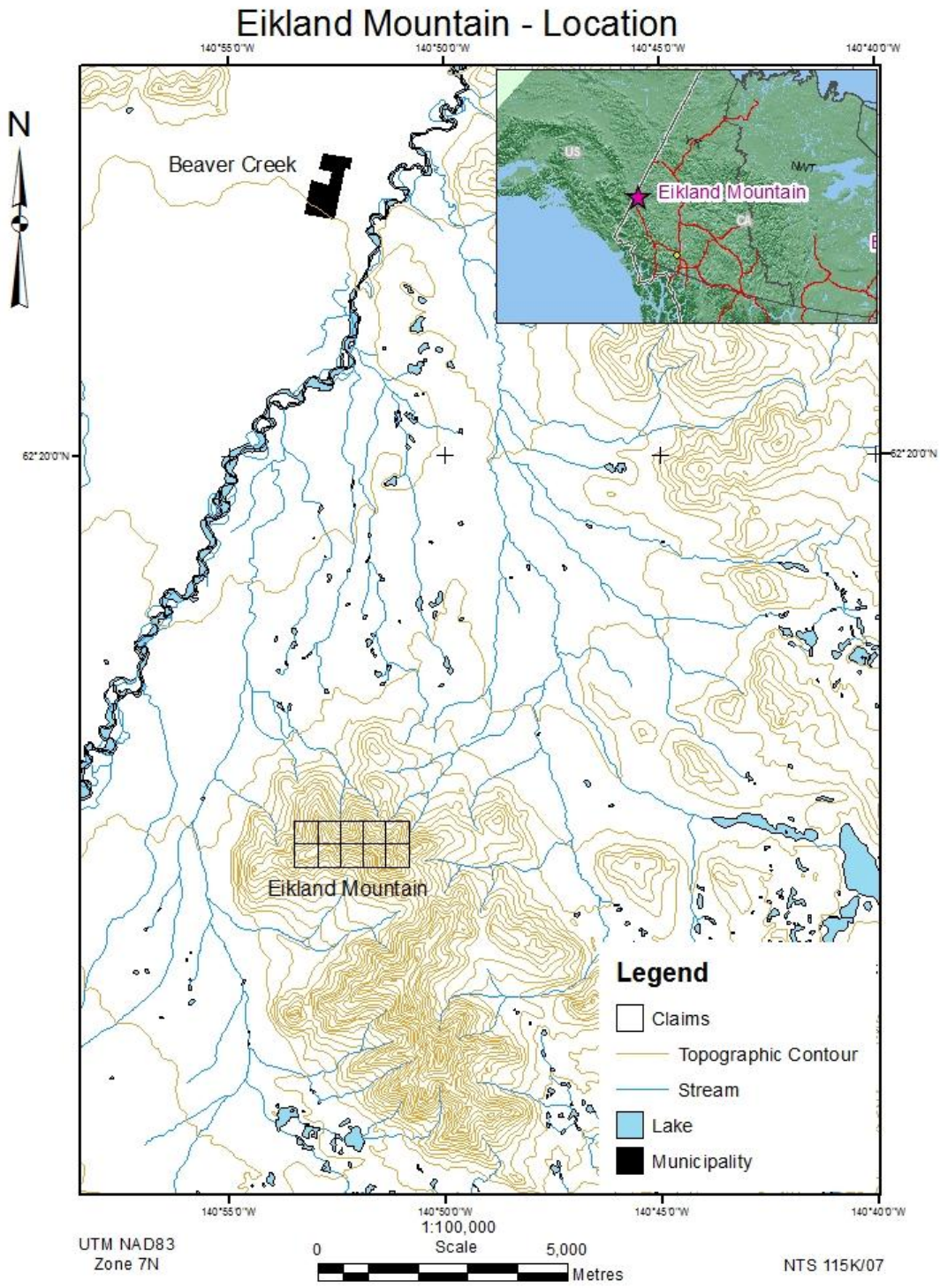


Figure 4.1. Property location map

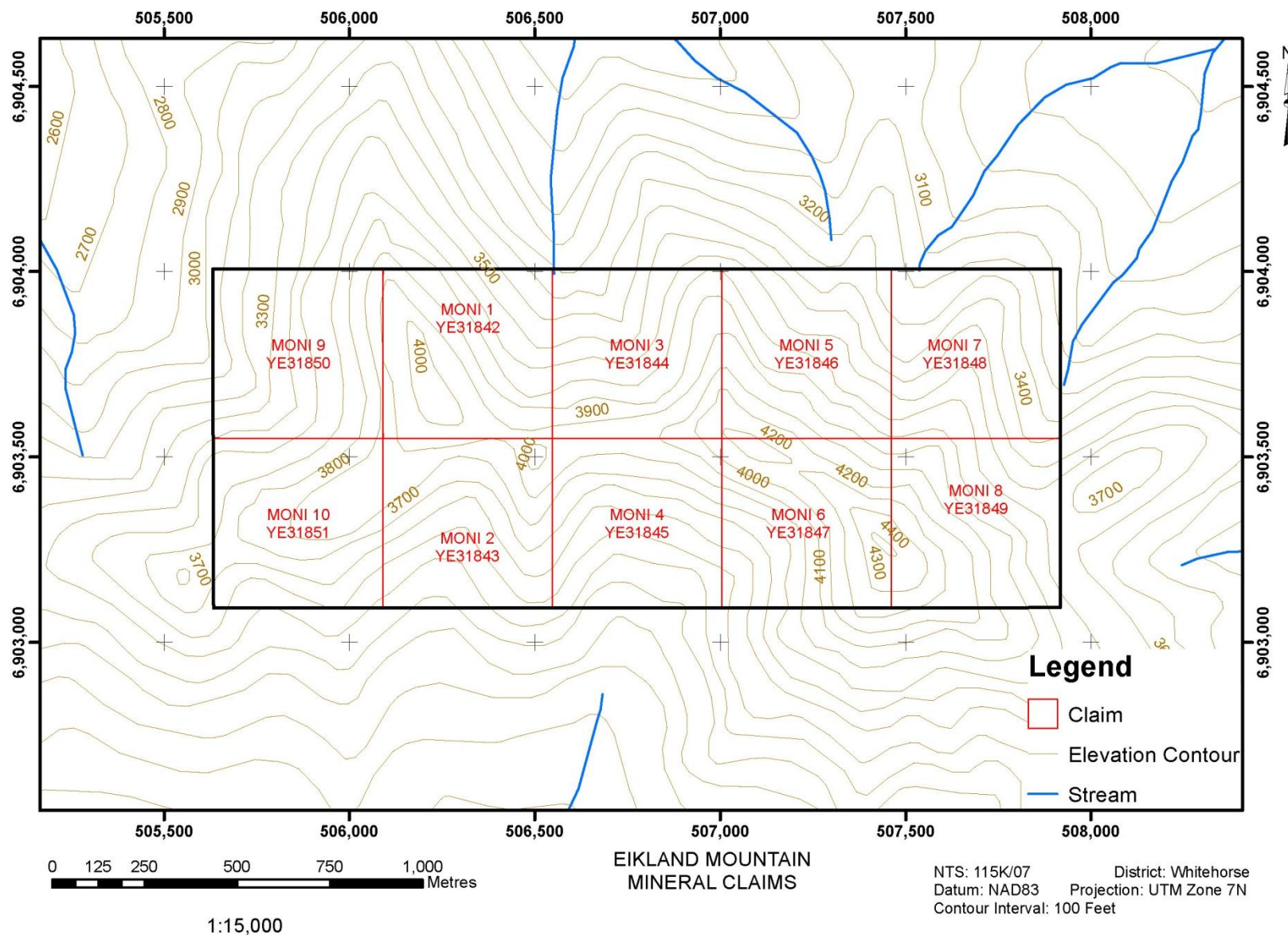


Figure 4.2. Property Quartz claims map

5 PHYSIOGRAPHY & CLIMATE

The Eikland Mountain Property is located in the Cordilleran Physiographic Region (Scudder, 1997). Topography in the area consists of alluvial plains and mountains with elevations ranging from 800 to 1500 m. The terrain is part of the Boreal Cordillera Ecozone and hosts typical sub-Arctic taiga forest with alpine barrens above the tree line.

Outcrop in the area is better exposed at higher elevations on steeper slopes. Water is predominantly confined to the bottom of river and stream valleys. Natural vegetation consists of taiga affinity trees and alpine barrens above the tree line.

The climate in the property area consists of long, cold winters, short wet summers and short spring and fall seasons. At Beaver Creek, the closest nearby community, temperatures range from -32°C to 20°C, and precipitation averages 296 mm of rain and 123 cm of snow annually.

6 EXPLORATION HISTORY

The Eikland Mountain occurrence was discovered by Yukon Geological Survey geologists during the 2011 summer field season (Escayola *et al.*, 2012). Investigations of chromitite vein systems intruding a harzburgite host produced anomalous assays of up to 2.6 ppm total PGE (1,593 ppb Pt+Pd).

7 REGIONAL GEOLOGY

The regional geology in the property area is summarized by Murphy *et al.* (2007) and by Gordey & Makepeace (1999). The property lies in the Slide Mountain Terrane (SMT) of the Cordillera, a para-autochthonous sequence of oceanic affinity rocks lying between the ancestral Laurentian continental margin (LM) and the detached Yukon-Tanana Terrane (YTT) mature island-arc complex (Figure 7.1). The following formations are mapped in the property area:

Formation (Age)	Description
Overburden (Quaternary - Holocene)	Talus, organic and alluvial soil, boulder till at lower elevations.
White River Fm. [PTWR] (Permo-Triassic)	Muscovite quartz schist, quartz & feldspar augen schist (metavolcanic). Carbonaceous metapelite schist, grey psammitic schist & quartzite. Extensive Triassic (?) gabbro.
PTHEd (Permo-Triassic)	Massive, medium- to dark-green, fine-grained to locally feldspar porphyritic basalt or diabase. Inferred to be sheeted dyke complex; overlies gabbro.

PTHEg (Permo-Triassic)	Gabbro, coarse-grained, locally foliated and lineated (Eikland Mountain); overlies harzburgite and dunite.
PTHEu (Permo-Triassic)	Harzburgite, dunite and lesser lherzolite, variably serpentized and locally intruded by decimetre-scale bodies of plagiogranite and chromitite (rock).

The structural geological history of the area is summarized by Murphy *et al.* (2007) and Canil and Johnston (2003) who describe the following deformational and associated igneous events:

Age	Description
Late Cretaceous	Intrusion of plutons into boundary faults and juxtaposed terranes along with syn-orogenic clastic sedimentation.
Late Jurassic	Obduction of SMT ophiolitic and eclogitic rocks via thrusting on to LM and by back thrusting on to YTT.
Early Jurassic	Juxtaposition of SMT and LM by northeast-directed thrust faulting as YTT collided with western North America during subduction and closure of SMT ocean basin.
Early Triassic	Earliest onset of terrane imbrication due to convergence of YTT with LM and start of SMT ocean basin closure.
Mississippian to Permian	Creation of ocean basin marginal to ancestral western North American (Laurentian) continental margin (LM). Generation of ultramafic melts, mafic intrusions and basaltic lavas with correlative deposition of deep water sediments as back-arc spreading and subduction rollback moved YTT outboard of LM.

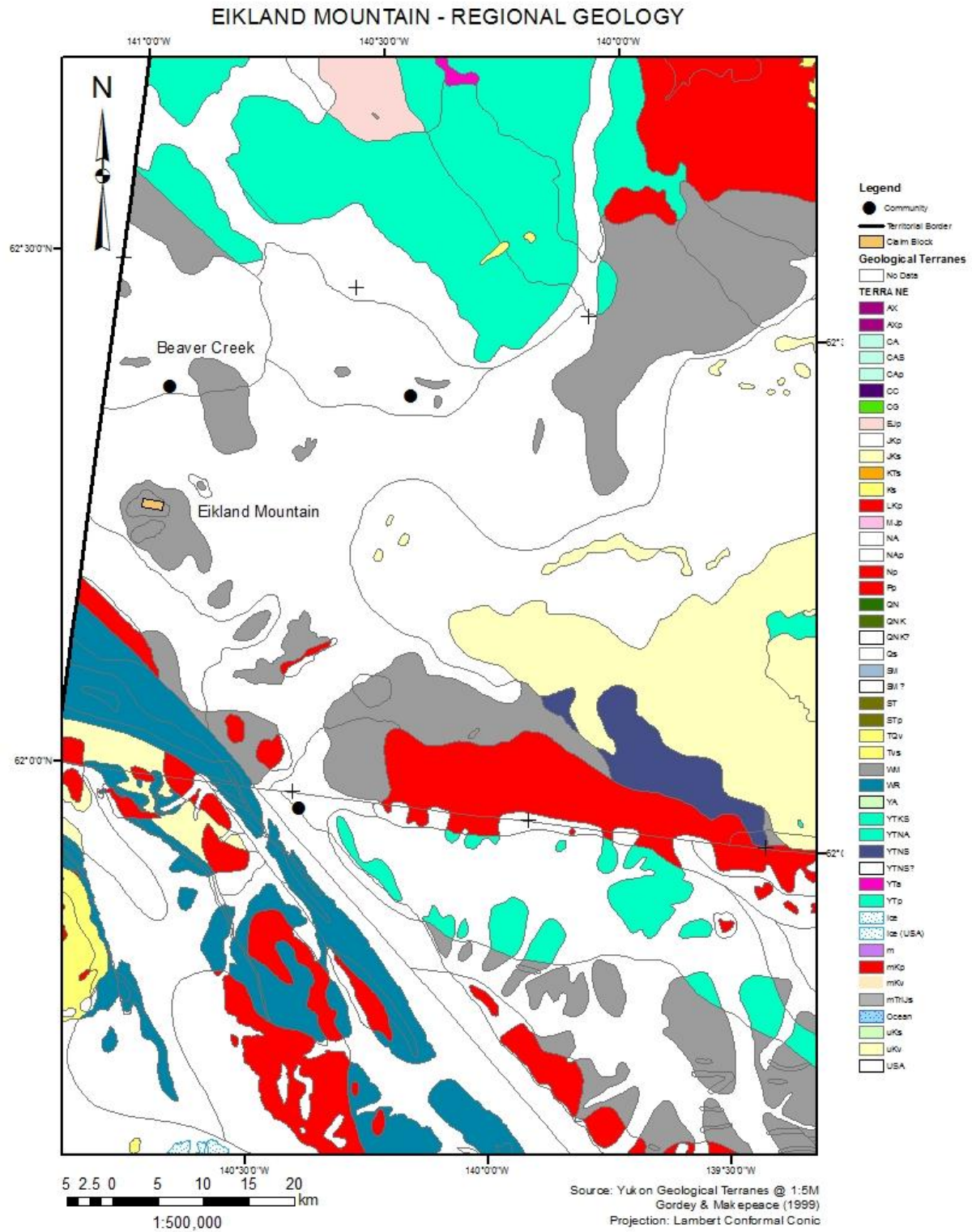


Figure 7.1. Regional Geology

8 PROPERTY GEOLOGY

The geology on the Eikland Mountain Property has been mapped by Escaloya and others (Escaloya *et al.*, 2012). This section is a compilation and synthesis of mapping results to date with results shown in Figure 8.1.

The ophiolite formed during the Late Paleozoic as part of the SMT oceanic crust lying between the western margin of North America (Laurentian Margin - LM) and an outboard mature island arc complex (YTT). The ophiolite affinity lithologies formed as subduction rollback moved the island arc away from the LM. Plate convergence during the Early Mesozoic reversed the polarity of the subduction zone and pushed the YTT mature island arc up against the LM through the Middle to Late Mesozoic.

As a result of this orogenic event, the oceanic crust of the SMT was thrust up on the LM and back-thrust on to the YTT. Stitching plutons and coeval sedimentation indicate that the convergence had ceased by the Late Cretaceous. The current geometry of the Eikland Mountain ophiolite suggests a klippe structure, with the harzburgite and associated lithologies lying in the hanging wall.

8.1 Rock Units

The following rock units are mapped on the property:

Unit (Age)	Description
Overburden (Quaternary - Holocene)	Talus, organic, aeolian and alluvial soil horizons.
(Late) Gabbro	Unfoliated fine- to medium-grained hornblende diorite and gabbro [67 Ma].
Gabbro	Coarse-grained gabbro, locally foliated and lineated, overlying ultramafic units of the ophiolite sequence.
Harzburgite	Variably serpentized harzburgite with dunite and lesser lherzolite. Intruded by veins of plagiogranite and chromitite (rock). Localized cumulate zones in harzburgite host up to 20% disseminated chromite (mineral).

The harzburgite consists of dark-brown to brown weathering bedrock, sometimes with intruding veins and veinlets of plagiogranite and chromitite. The unit is variably serpentized, and also contains sericitic and chloritic alteration zones. Local cumulate layers in harzburgite host up to 20% disseminated chromite. Dunite and lesser lherzolite also occur in the ultramafic sequence.

Stratigraphically above the ultramafic sequence is a coarse-grained gabbro that locally displays foliation and lineation structural fabrics. This gabbro is exposed in the southeastern portion of the property.

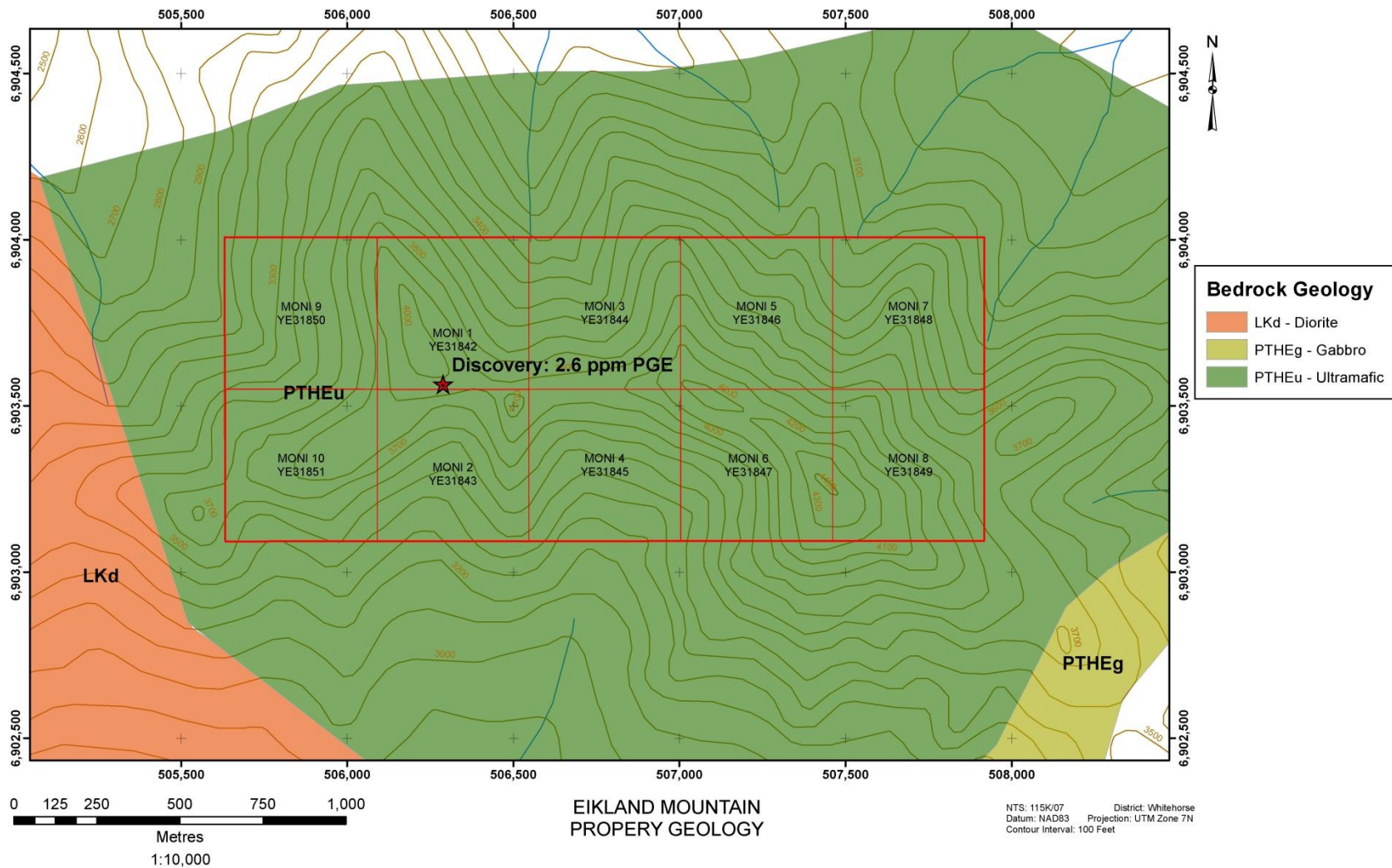


Figure 8.1. Property Geology

Unfoliated fine- to medium-grained hornblende diorite and gabbro has limited exposure in the southwestern corner of the property and represents Late Cretaceous stitching plutons emplaced at the end of orogenesis and obduction of the ophiolitic sequence.

The property is overlain by talus, organic & alluvial soil horizons, and boulder till. Thicknesses of the overburden are variable and difficult to determine due to local conditions of terrain and slope.

8.2 Structure

At present there are no detailed structural fabric measurements available in order to determine a local kinematic history. Regionally, the Eikland Mountain rock assemblage is part of the Slide Mountain Terrane (SMT). Locally, it forms the hanging wall of an ENE-trending thrust fault, with White River Formation in the footwall. The structure is inferred to represent a klippe of oceanic affinity rock types sandwiched between the LM continental edge and YTT mature arc.

9 MINERALIZATION

The Eikland Mountain harzburgite is host to two discrete styles of PGE enrichment. The first is associated with veins and veinlets of chromitite that intrude the harzburgite body proper. The second is found in association with igneous cumulate layers of the harzburgite where disseminated chromite mineralization may constitute up to 20% of the rock mass.

The most common deposit model associated with the first type of mineralization is classic Uralian- or Alaskan-type. It may also be referred to as Cordilleran- or Alpine-type. The host rocks in these types of deposits represent oceanic crust that has been obducted by thrust tectonics, and may or may not be spatially associated with a mélangé sequence. Typically, the obduction affects portions of oceanic crust formed behind a mature island arc during subduction rollback. A modern tectonic analogue would be the Sea of Japan.

The mineralization in the second metalotect type, where it is hosted in cumulate layers of the harzburgite host, may be more analogous to 'reef-type' Cr and PGE mineralization found in the Bushveld Igneous Complex (BIC) in the Republic of South Africa (RSA). In particular the Merensky, Plat and UG2 reefs are important sources of PGE's which occur in cumulate, chromium-enriched layers within this extensive intrusive complex. PGE grades in the BIC are typically reported in the 10 ppm range.

In the particular case of Eikland Mountain, the oceanic crust represented by the layered harzburgite was thrust over the LM and also back-thrust over the YTT during subduction rollback in the Mesozoic Era. The SMT would be analogous to the Sea of Japan (back-arc basin), YTT to the main islands of Japan proper (mature arc) and LM to modern eastern Eurasia (continental margin).

Chromitite vein samples by Yukon Geological Survey personnel returned assays up to 2.6 ppm total PGE's (1.6 ppm Pt+Pd).

10 2012 WORK PROGRAM

This section describes the prospecting, geological and geochemical investigations conducted on the Eikland Mountain Property in June, 2012.

10.1 SUMMARY

The property was staked by Panarc Resources Ltd. in March and June of 2012 for a total of 10 Quartz Mining claims. A program of prospecting, bedrock mapping and geochemical soil sampling was undertaken. Twenty (20) grab samples were obtained from chromitite veins and zones of cumulate, disseminated chromite mineralization within the harzburgite host rock. Fifty-one (51) contour soil samples were obtained at high elevation on the property, where bedrock geology benefits from better exposure.

Chromitite veins sampled during the prospecting component of the program returned PGE assays of up to 724 ppb (Pt+Pd). Harzburgite cumulate zones with from 3 to 20% disseminated chromite returned assays of up to 268 ppb (Pt+Pd). Contour soil geochemical samples returned assays of up to 11 ppb Pt and 25 ppb Pd.

10.1.1 Personnel & Equipment

The work program was conducted by the following personnel:

<u>Crew chief:</u>	Tomasz Kalkowski
<u>Field assistant:</u>	Neil McKinnon
<u>Staker:</u>	Mike Power

The crew were equipped with the following instruments and equipment:

<u>Instruments:</u>	3 - Garmin DGPS receivers
<u>Equipment:</u>	1 - 3 man camp (sleeper / kitchen tents) 1 - 2 KW generator 1 - Satellite phone 3 - VHF radios
<u>Vehicles:</u>	1 - 1 Ton truck

The survey log in Appendix II includes the names and addresses of all persons employed and a detailed description of daily operations. A statement of costs is compiled in Appendix III.

10.1.2 Specifications

Prospecting and geological mapping were conducted according to the following specifications:

<u>Mapping datum:</u>	NAD83 Zone 7N UTM (metric)
-----------------------	----------------------------

<u>Station location:</u>	WAAS corrected (where available) GPS positioning with each reading averaged at least 20 times.
<u>Station records:</u>	<i>Geological:</i> Lithology, structure, samples & descriptions <i>Prospecting:</i> Sample descriptions, general rock type
<u>Sample marking:</u>	All samples were marked with blue and orange flagging. The sample number was written on a portion of the flagging covered from weather and sunlight, wrapped around a representative of the sampled material.

Geochemical surveys were conducted according to the following specifications:

<u>Mapping datum:</u>	NAD83 Zone 7N
<u>Station location:</u>	WAAS corrected (where available) GPS positioning with each reading averaged at least 20 times.
<u>Sampling:</u>	For each sample, the sample material was noted by the sampler. Where the horizon was present and accessible, samples were taken from the B-horizon (below organic layer).
<u>Sample marking:</u>	All samples were marked with flagging and white Tyvek tags on which the line and station were written. Sample names were abbreviations of the line and station where the sample was collected.

Panarc sampling in the 2012 field season returned assay values from chromitite veins up to 724 ppb (Pt+Pd). The cumulate, chromite-rich (mineral) layers in the harzburgite returned assays up to 266 ppb Pt+Pd.

10.1.3 Sample Analyses

Rock samples were prepped by drying, crushing, and riffle splitting a 250 g split then pulverizing it to pass a No. 200 ASTM mesh (75 µm) screen. The samples were analyzed by 32 element Inductively Coupled Plasma – Emission Spectroscopy (ICP-ES). Fire Assay with an ICP-ES finish (FA-ES) was the method chosen for Au, Pt & Pd.

For the multi-element ICP-ES, sample splits of 0.5 g were leached in hot (95°C) Aqua Regia, analyzed via ICP, and emission spectra recorded to give the assay result. For Au, Pt and Pd, lead

collection fire assay fusion for total sample decomposition, digestion of the Ag doré bead and an ICP-ES analysis or 'finish' were the methods used.

Soil geochemical samples were prepped as follows. Soils were dried at 60°C then a 100 g split was sieved to pass through a No. 80 ASTM mesh (180 µm) screen. The analytical methods chosen were identical to those used for the rock samples.

10.1.4 Data

Geological mapping and prospecting station notes are compiled in Appendix IV. Appendix V contains the geochemical samplers' notes on the composition of each sample and the sample sites. A compilation of rock sample and soil geochemical results are contained in Appendices VI and VII: Assay certificates are in Appendix VIII. The results of the prospecting, mapping and geochemical surveys are discussed in Sections 9 and 10.

10.2 GEOCHEMICAL SURVEYS

This section describes the results of geochemical surveys performed on the property to date. As of the completion of the work program described in this report, a total of 51 soil samples and 20 rock samples had been collected on the property for geochemical analysis.

Follow-up rock sampling in the area of the Yukon Geological Survey discovery returned elevated Pt and Pd assays, confirming the presence of anomalous enrichment in the Eikland Mountain harzburgite. Elevated Pt and Pd were also recorded from contour soil samples acquired down slope of the discovery outcrop.

Additional anomalous enrichments in Pt and Pd were recorded in assays from rock and soil samples taken to the east of the discovery outcrop. This area of the property also exhibits elevated Pt and Pd concentrations in the contour soil sampling and requires follow-up.

10.2.1 Procedures

Mineralization identified to date on the Eikland Mountain Property consists of chromitite veins and disseminated chromite mineralization in cumulate layers, both hosting anomalous assays of Pt and Pd. In addition, sericitization and chloritization may be found with the vein style of mineralization, indicated by the presence of white mica and chlorite.

Geochemical data processing consisted of the following procedures, described in Grunsky (2007), and applied to the elements described above:

1. Analyses below the detection limit and censored values above the upper limit of detection were assigned values using statistical imputation based upon the EM Method (Dempster *et al.*, 1977).
2. Data were normalized to log₁₀ base to simplify the plotting and manipulation of univariate statistics.
3. Univariate statistics consisting of the mean, median, standard deviation and first (lower) quartile (Q1) through highest (upper) quartile (Q3), along with 95th and

98th percentile, Skewness (Pearson) and Kurtosis (Pearson) of the entire data set were calculated.

4. The data were plotted in Box plots to provide a visual evaluation of element data and associated univariate statistics.
5. The data were plotted in Q-Q plots and described. The Q-Q plots were used to identify sample populations and outliers.
6. Histograms and cumulative histograms of the investigated elements were plotted to determine the sample population distribution.
7. PCA correlation matrices (Pearson $n-1$) were prepared in order to analyze elemental trends and associations.

10.2.2 Univariate Analysis

Statistical analyses were performed using the XLSTAT® plugin package for Microsoft Excel®. Standard deviations were normalized by $n-1$, and Pearson's equations were used to calculate the skewness and kurtosis of the distributions. Normal distributions will show a skewness and kurtosis of 0. Percentile ranks are calculated for the 25th, median, 75th, 95th and 98th percentile.

Appendix IX contains Log (base 10) normalized Box, Q-Q, Histogram and Cumulative Probability plots of univariate statistical analyses of the investigated elements, described by element and grouped as either rock or soil samples. The tables below summarize these results.

For rock geochemistry, a number of elements analyzed by ICP-ES were excluded from detailed statistical analyses because they were either at or below detection limit or contained only one or two points of assay data. The elements excluded consist of: As, Au, B, Bi, Ga, Mo, Pb, S, Sc, Th and W.

For soil geochemistry, a number of the ICP-ES elements analyzed were excluded because of detection limit or low sample population issues. These elements consist of: Au, Ag, B, Bi, Cd, Mo, Sb, Sc, Th and W.

Graphically, the excluded elements can be discriminated based upon their Box plots which contain only outlier points with no Quartile boxes. When plotted as histograms they are always heavily skewed to the left due to the values assigned based upon calculated detection limit data.

The natural distributions of most elements which are not left censored will show either a positive or negative skew relative to the mean. The \log_{10} values of such elements more closely approximate normal distributions, making it a common practice to examine the logarithmic data when calculating statistical parameters.

In log space, a normal distribution will be symmetric about a mean value with 66% of all analyses falling within one standard deviation of the mean. Normal distributions will show

symmetric box plots and cumulative probability plots. Outliers in box plots lying above the 95th percentile produce the 'whiskers' in box plots.

Table 10.1. Geochemical Survey rock data – Univariate Statistics

Analyte	Units	Missing Values	Minimum	Maximum	Mean	Standard Deviation	Detection Limit	Skewness (Pearson)	Kurtosis (Pearson)
Au	ppb	0	1.000	6.000	1.550	1.395	2	2.523	4.842
Pt	ppb	0	1.500	362.000	42.900	90.114	3	2.628	6.156
Pd	ppb	0	1.000	362.000	39.250	84.896	2	3.064	8.792
Mo	ppm	0	0.500	0.500	0.500	0.000	1		
Cu	ppm	0	3.000	431.000	84.700	105.145	1	2.002	3.919
Pb	ppm	0	1.500	1.500	1.500	0.000	3		
Zn	ppm	0	0.500	20.000	11.650	5.858	1	-0.543	-0.607
Ag	ppm	0	0.150	0.150	0.150	0.000	0.3		
Ni	ppm	0	601.000	2451.000	1969.050	414.407	1	-2.004	4.139
Co	ppm	0	36.000	119.000	98.150	25.328	1	-1.405	0.560
Mn	ppm	0	402.000	1027.000	775.250	171.190	2	-0.663	-0.330
Fe	%	0	2.480	6.290	5.062	1.040	0.01	-1.205	0.485
As	ppm	0	1.000	1.000	1.000	0.000	2		
Au	ppm	0	1.000	2.000	1.050	0.224	2	4.129	15.053
Th	ppm	0	1.000	1.000	1.000	0.000	2		
Sr	ppm	0	0.500	162.000	9.800	35.842	1	4.123	15.016
Cd	ppm	0	0.250	1.000	0.665	0.240	0.5	-0.810	-0.654
Sb	ppm	0	1.500	1.500	1.500	0.000	3		
Bi	ppm	0	1.500	1.500	1.500	0.000	3		
V	ppm	0	1.000	11.000	4.800	2.668	1	0.817	0.030
Ca	%	0	0.020	2.300	0.201	0.504	0.01	3.890	13.706
P	%	0	0.001	0.004	0.002	0.001	0.001	-0.132	-1.060
La	ppm	0	0.500	2.000	1.825	0.438	1	-2.165	3.084
Cr	ppm	0	32.000	395.000	122.150	99.597	1	1.462	1.225
Mg	%	0	8.670	23.920	20.343	4.181	0.01	-1.806	1.915
Ba	ppm	0	0.500	25.000	4.525	5.175	1	3.270	10.645
Ti	%	0	0.005	0.020	0.006	0.003	0.01	3.577	11.628
B	ppm	0	10.000	10.000	10.000	0.000	20		
Al	%	0	0.030	4.980	0.662	1.079	0.01	3.401	11.264
Na	%	0	0.005	0.560	0.037	0.123	0.01	4.112	14.962
K	%	0	0.005	0.030	0.007	0.006	0.01	3.895	13.678
W	ppm	0	1.000	1.000	1.000	0.000	2		
S	%	0	0.025	0.090	0.028	0.015	0.05	4.129	15.053
Sc	ppm	0	2.500	5.000	2.750	0.769	5	2.667	5.111
Ga	ppm	0	2.500	5.000	2.750	0.769	5	2.667	5.111

Table 10.2. Geochemical Survey rock data – Univariate Statistics (continued)

Analyte	Freq. of Minimum	Freq. of Maximum	1st Quartile	Median	3rd Quartile	95th Percentile	98th Percentile
Au	16	1	1.000	1.000	1.000	5.05	5.62
Pt	2	1	4.000	7.500	12.500	189.1	292.84
Pd	4	1	3.750	7.500	19.500	165.35	283.34
Mo	20	20	0.500	0.500	0.500	0.5	0.5
Cu	1	1	18.750	41.000	112.250	242.9	355.76
Pb	20	20	1.500	1.500	1.500	1.5	1.5
Zn	2	2	7.750	13.000	15.000	20	20
Ag	20	20	0.150	0.150	0.150	0.15	0.15
Ni	1	1	1923.000	2057.000	2178.000	2363.6	2416.04
Co	1	2	97.500	108.000	114.250	119	119
Mn	1	1	702.000	804.500	898.250	986.15	1010.66
Fe	1	1	4.880	5.350	5.800	6.081	6.2064
As	20	20	1.000	1.000	1.000	1	1
Au	19	1	1.000	1.000	1.000	1.05	1.62
Th	20	20	1.000	1.000	1.000	1	1
Sr	2	1	1.000	2.000	2.000	12.85	102.34
Cd	4	1	0.575	0.800	0.800	0.905	0.962
Sb	20	20	1.500	1.500	1.500	1.5	1.5
Bi	20	20	1.500	1.500	1.500	1.5	1.5
V	1	1	3.000	4.000	6.000	10.05	10.62
Ca	2	1	0.040	0.055	0.103	0.552	1.6008
P	3	1	0.001	0.002	0.003	0.00305	0.00362
La	1	17	2.000	2.000	2.000	2	2
Cr	1	1	58.250	76.500	175.000	322.8	366.12
Mg	1	1	20.830	22.010	22.263	23.4925	23.749
Ba	1	1	2.000	3.500	5.000	7.9	18.16
Ti	18	1	0.005	0.005	0.005	0.0105	0.0162
B	20	20	10.000	10.000	10.000	10	10
Al	1	1	0.138	0.325	0.823	1.313	3.5132
Na	10	1	0.005	0.008	0.010	0.0565	0.3586
K	18	1	0.005	0.005	0.005	0.011	0.0224
W	20	20	1.000	1.000	1.000	1	1
S	19	1	0.025	0.025	0.025	0.02825	0.0653
Sc	18	2	2.500	2.500	2.500	5	5
Ga	18	2	2.500	2.500	2.500	5	5

Table 10.3. Geochemical Survey soil data – Univariate Statistics

Analyte	Units	Missing Values	Minimum	Maximum	Mean	Standard Deviation	Detection Limit	Skewness (Pearson)	Kurtosis (Pearson)
Au	ppb	0	1.000	26.000	3.961	4.228	2	3.056	12.693
Pt	ppb	0	1.500	15.000	3.618	2.780	3	1.895	4.395
Pd	ppb	0	1.000	25.000	5.627	4.450	2	1.849	5.385
Mo	ppm	0	0.500	1.000	0.510	0.070	1	6.930	46.020
Cu	ppm	0	4.000	91.000	32.471	16.954	1	1.615	2.672
Pb	ppm	0	1.500	49.000	8.392	6.508	3	4.881	28.069
Zn	ppm	0	11.000	60.000	40.882	8.344	1	-0.812	2.281
Ag	ppm	0	0.150	0.150	0.150	0.000	0.3		
Ni	ppm	0	10.000	578.000	248.314	128.387	1	0.415	-0.309
Co	ppm	0	3.000	37.000	23.020	8.230	1	-0.421	-0.449
Mn	ppm	0	91.000	729.000	489.784	136.822	2	-0.713	0.768
Fe	%	0	1.150	4.000	2.876	0.567	0.01	-0.720	1.047
As	ppm	0	1.000	10.000	4.627	2.049	2	0.414	-0.024
Au	ppm	0	1.000	4.000	1.255	0.659	2	2.657	6.328
Th	ppm	0	1.000	1.000	1.000	0.000	2		
Sr	ppm	0	9.000	44.000	26.588	7.032	1	0.080	0.317
Cd	ppm	0	0.250	0.250	0.250	0.000	0.5		
Sb	ppm	0	1.500	4.000	1.549	0.350	3	6.930	46.020
Bi	ppm	0	1.500	3.000	1.529	0.210	3	6.930	46.020
V	ppm	0	27.000	95.000	54.843	11.538	1	0.417	2.121
Ca	%	0	0.090	0.930	0.371	0.160	0.01	1.162	1.720
P	%	0	0.007	0.080	0.039	0.015	0.001	0.582	0.065
La	ppm	0	1.000	8.000	5.510	1.488	1	-0.626	0.643
Cr	ppm	0	8.000	107.000	48.686	20.609	1	0.513	0.195
Mg	%	0	0.150	3.730	1.612	0.841	0.01	0.594	-0.180
Ba	ppm	0	23.000	166.000	106.196	28.059	1	-0.560	1.193
Ti	%	0	0.037	0.109	0.065	0.013	0.01	0.654	1.214
B	ppm	0	10.000	10.000	10.000	0.000	20		
Al	%	0	0.430	2.480	1.513	0.390	0.01	-0.531	1.414
Na	%	0	0.020	0.040	0.031	0.006	0.01	0.010	-0.005
K	%	0	0.020	0.060	0.043	0.011	0.01	-0.057	-0.811
W	ppm	0	1.000	1.000	1.000	0.000	2		
S	%	0	0.025	0.170	0.039	0.029	0.05	2.458	6.533
Sc	ppm	0	2.500	5.000	2.598	0.490	5	4.748	20.541
Ga	ppm	0	2.500	10.000	3.961	1.921	5	0.957	0.035

Table 10.4. Geochemical survey soil data – Univariate statistics (continued)

Analyte	Freq. of Minimum	Freq. of Maximum	1st Quartile	Median	3rd Quartile	95th Percentile	98th Percentile
Au	20	1	1.000	3.000	5.500	10	12
Pt	23	1	1.500	3.000	4.500	8	11
Pd	9	1	2.500	5.000	8.000	13	15
Mo	50	1	0.500	0.500	0.500	0.5	0.5
Cu	1	1	23.500	27.000	34.000	65	83
Pb	2	1	6.000	7.000	9.000	14.5	15
Zn	1	1	36.500	41.000	46.500	52	56
Ag	51	51	0.150	0.150	0.150	0.15	0.15
Ni	1	1	156.000	233.000	339.500	452	491
Co	1	1	18.000	23.000	31.000	34	36
Mn	1	1	433.000	502.000	584.500	706.5	726
Fe	1	1	2.595	2.920	3.195	3.635	3.89
As	4	1	3.000	4.000	6.000	8	9
Au	43	1	1.000	1.000	1.000	3	3
Th	51	51	1.000	1.000	1.000	1	1
Sr	1	1	23.000	26.000	31.000	37.5	42
Cd	51	51	0.250	0.250	0.250	0.25	0.25
Sb	50	1	1.500	1.500	1.500	1.5	1.5
Bi	50	1	1.500	1.500	1.500	1.5	1.5
V	1	1	49.500	55.000	61.000	72	77
Ca	1	1	0.280	0.320	0.450	0.635	0.75
P	1	1	0.029	0.036	0.047	0.0685	0.069
La	1	4	5.000	6.000	6.000	8	8
Cr	1	1	36.000	44.000	62.000	80	96
Mg	1	1	0.925	1.580	1.970	3.195	3.44
Ba	1	1	92.500	106.000	123.000	150.5	157
Ti	1	1	0.058	0.062	0.073	0.089	0.093
B	51	51	10.000	10.000	10.000	10	10
Al	1	1	1.355	1.580	1.695	2.065	2.3
Na	6	11	0.030	0.030	0.030	0.04	0.04
K	2	8	0.035	0.040	0.050	0.06	0.06
W	51	51	1.000	1.000	1.000	1	1
S	38	1	0.025	0.025	0.038	0.095	0.11
Sc	49	2	2.500	2.500	2.500	2.5	5
Ga	30	1	2.500	2.500	5.500	7	7

The table below summarizes observations on the logarithmic population distributions.

Table 10.5. Geochemical rock survey Element Response Distributions

Analyte	Distribution	Element	Distribution
Ag	Left censored	Mg	Positive skew
Al	Positive skew	Mn	Positive skew
As	Left censored	Mo	Left censored
Au	Left censored	Na	Left censored, negative skew
B	Left censored	Ni	Positive skew
Ba	Log normal	P	Left censored, discretized
Bi	Left censored	Pb	Left censored
Ca	Negative skew	Pd	Left censored, discretized
Cd	Left censored, positive skew	Pt	Two populations, negative skew
Co	Positive skew	S	Left censored
Cr	Two populations, negative skew	Sb	Left censored
Cu	Log normal	Sc	Left censored
Fe	Positive skew	Sr	Left censored
Ga	Left censored	Ti	Left censored
K	Left censored	V	Log normal
La	Positive skew	Zn	Positive skew

Table 10.6. Geochemical soil survey Element Response Distributions

Analyte	Distribution	Element	Distribution
Ag	Left censored	Mg	Log normal
Al	Positive skew	Mn	Positive skew
As	Log normal, discretized	Mo	Left censored
Au	Left censored, negative skew	Na	Left censored
B	Left censored	Ni	Positive skew
Ba	Positive skew	P	Positive skew
Bi	Left censored	Pb	Log normal
Ca	Positive skew	Pd	Left censored, positive skew
Cd	Left censored	Pt	Left censored, negative skew
Co	Positive skew	S	Left censored
Cr	Positive skew	Sb	Left censored
Cu	Negative skew	Sc	Left censored
Fe	Positive skew	Sr	Log normal
Ga	Left censored, negative skew	Ti	Log normal
K	Positive skew, discretized	V	Log normal
La	Positive skew	Zn	Positive skew

The responses of the elements analyzed vary depending upon abundance in the sample and the detection limits of the analytical method. Elements showing no significant response above detection limit were excluded from more advanced, multivariate statistical analyses.

10.2.3 Principle Components Analysis (PCA)

Principle Components Analysis (PCA) is a multivariate statistical technique used to analyze large, variable data sets. The application of PCA to geochemistry is meant to reduce the number of variables by grouping them into a smaller number of related linear combinations. These linear combinations (principle components) are often found to reflect underlying physical features and processes, such as bedrock lithology, alteration and ore genesis.

Each sample response in a multivariate data set can be expressed as a combination of the principle components. The broad pattern of these principle components over the survey area together with the factor components may yield insight into the significance of the particular principle component. Geochemical data sets taken from areas where economic mineralization is present are frequently found to be spatially associated, in some degree, to the mineralizing system. The application of PCA to mineral exploration is covered in more detail by Grunsky (2007).

PCA makes the assumption that variables follow nearly normal distributions. Highly skewed or left censored components produce noisy and erratic results. Typically those analyte sets where the means are at least 5 times the detection limit and are not left censored make the best candidates for PCA. Analyte results are then logarithmically transformed (base 10) prior to statistical analysis.

For the rock samples Factors 1 and 2 comprise 64.6% of the geochemical response of the survey. The elements chosen based upon mean = 5 x detection limit were: Pt, Pd, Cu, Zn, Ni, Co, Mn, Fe, Sr, Cr, Mg and Al.

For the soil samples, Factors 1 and 2 comprise 55.4% of the geochemical response of the survey. The elements chosen based upon mean = 5 x detection limit were: Cu, Zn, Ni, Co, Mn, Fe, Sr, V, La, Cr, Ba and Al.

Appendix X lists the correlation matrix (Pearson [n-1]) for the rock geochemistry results. There are strong correlations evident between the precious metals association (Au, Pt, Pd), the base metals association (Ni, Co, Mn, Fe, Mg and La) and the Large Ion Lithophile Element (LILE) association (Ca, Na, Sr, Ba and Al). A less strong correlation between Cr and the precious metals may be indicative of the chromite present in the chromitite veins and cumulate chromite layering of the harzburgite host.

Appendix XI lists the correlation matrix (Pearson [n-1]) for the soil geochemistry results. The metal associations indicated in the rock geochemistry correlation matrix are similar to those noted in the soils data set, with the noted exception that the precious metals association has no strong correlation. This could in part be explained by cation mobility in soil horizons and is also dependent upon the source of the overburden material (*in situ* vs. transported).

10.2.4 Statistical Analysis Results

PCA of the rock geochemical assays indicates that there is a strong correlation for Ni, Co, Mn, Fe, Mg and La in Factor 1. The correlation for Factor 2 is between the precious metals (Au, Pt, Pd) and Cr. Factor 1 for the rock geochemistry is most likely explained by the harzburgite association as a host for base metal concentration and mineralization. The correlation between the precious metals and Cr reflects their occurrence in chromitite veins and cumulate chromite layers of the harzburgite where Cr-spinels are noted in all of the sample descriptions.

PCA results for the soil geochemical assays show the highest correlations occurring in Factor 1. Strong correlations are indicated for Cu, Zn, Ni, Co, Mn, Fe, Sr, P, La, Mg, Ba, Al and K. Once again, as in the rock geochemistry, there is a strong base metals association tied to the lithology of the host. Factor 2 for soils shows strong correlation between Ca, P and S which would tend to be more mobile in soil materials.

11 CONCLUSIONS

The results of prospecting, geological mapping and geochemical surveys conducted to date on the Eikland Mountain Property support the following conclusions:

- a. PGE enrichment is associated with discrete chromitite veins and also cumulate layers of the harzburgitic host rock that contain disseminated chromite mineralization.
- b. Better bedrock exposure at higher elevations will assist in determining the best exploration approach for delineating PGE mineralization at lower elevations where it is obscured by overburden.
- c. There are similarities with classic Uralian- and Alaska-type layered ultramafic sequences, however the Eikland Mountain showing represents a potentially new and untested exploration metallogenic for rocks of the Slide Mountain Terrane (SMT). PGE grades are of the same order of magnitude as the BIC in South Africa.

12 RECOMMENDATIONS

The following recommendations, based on the conclusions of this report, are made for additional work on this property:

- a. Detailed geological mapping at higher elevations to determine spatial and structural relationships between chromitite veins and cumulate layers of disseminated chromite mineralization within the harzburgite host rock.
- b. Total field magnetic geophysical survey to assist in delineating prospective zones and veins within the Eikland Mountain harzburgite.
- c. Detailed soil geochemical survey to determine the extent of mineralization effects within the soil column.

Respectfully submitted,
AURORA GEOSCIENCES LTD.



Robin J. Wylie, B.Sc. (Hon.), P.Geol.
Project Manager - Geology

13 REFERENCES

Escayola, M., Murphy, D.C., Garuti, G., Zaccarini, F., Proenza, J.A., Aiglsperger, T. and van Staal, C., 2012: First finding of Pt-Pd-rich chromitite and platinum-group element mineralization in southwest Yukon mantle peridotite complexes. Yukon Geological Survey, Open File 2012-12, 18 pp.

Canil, D. and Johnston, S.T., 2003: Harzburgite Peak: A large mantle tectonite massif in ophiolite from southwest Yukon. In: Yukon Exploration and Geology 2002, D.S. Edmond and L.L. Lewis (eds.), Exploration and Geological Services Division, Yukon Region, Indian and Northern Affairs Canada, p. 77-84.

Colpron, M., Nelson, J.L. and Murphy, D.C., 2006: A tectonostratigraphic framework for the pericratonic terranes of the northern Canadian Cordillera. In: Paleozoic evolution and metallogeny of pericratonic terranes at the ancient Pacific margin of North America, Canadian and Alaskan Cordillera. M. Colpron, J.L. Nelson and R.I. Thompson (Eds.), Geological Association of Canada Special Paper 45, p. 1-23.

Creaser, R.A., Goodwin-Bell, J.A.S. and Erdmer, P., 1999: Geochemical and Nd isotopic constraints for the origin of eclogite protoliths, northern Cordillera: Implications for the Paleozoic tectonic evolution of the Yukon-Tanana terrane. Canadian Journal of Earth Sciences, vol. 36, p. 1697-1709.

Gordey, S.P. and Makepeace, A.J. (comp.) 1999: Yukon bedrock geology *in* Yukon digital geology, S.P. Gordey and A.J. Makepeace (comp.); Geological Survey of Canada Open File D3826 and Exploration and Geological Services Division, Yukon, Indian and Northern Affairs Canada, Open File 1999-1(D)

Grunsky, E.C., 2007: The Interpretation of Regional Geochemical Survey Data. In Proceedings of Exploration '07; 5th Decennial International Conference on Mineral Exploration. P. 139 – 182.

Murphy, D.C., van Staal, C. and Mortensen, J.K., 2007: Preliminary bedrock geology of part of Stevenson Ridge area, Yukon (1:125,000 scale). Yukon Geological Survey, Open File 2007-09, Map.

Scudder, G.G.E., 1997: Environment of the Yukon. In H.V. Danks and J.A. Downe (Eds.), Insects of the Yukon, Biological Survey of Canada (Terrestrial Arthropods), Ottawa, pp. 13-57.

Taylor, H.P., Jr., 1967: The zoned ultramafic complexes of southeastern Alaska. In P.J. Wyllie (Ed.), Ultramafics and related rocks. New York, John Wiley & Sons, p. 96-118.

APPENDIX I

STATEMENT OF QUALIFICATIONS

I, Robin James Wyllie, B.Sc. (Hon.), P.Geol., with business and residence addresses in Yellowknife, Northwest Territories, do hereby certify that:

1. I am a professional geologist registered by the Northwest Territories & Nunavut Association of Professional Engineers and Geoscientists (registration number 1638) and a member of the Association of Professional Engineers, Geologists and Geophysicists of Alberta (registration number 60998).
2. I am a graduate of the Centre of Geographic Sciences (formerly Nova Scotia Land Survey Institute) with a Diploma in Remote Sensing & Airphoto Interpretation obtained in 1983.
3. I am a graduate of the University of Waterloo with a B.Sc. (Hon.) degree in Co-op Applied Earth Sciences obtained in 1989.
4. I have been actively involved in mineral exploration in the Arctic since 1988.
5. I have no interest, direct or indirect, nor do I hope to receive any interest, direct or indirect, in Panarc Resources Ltd. or any of its properties.

Dated this 9th day of January, 2013 in Yellowknife, Northwest Territories.



Robin J. Wyllie, B.Sc.(Hon.), P.Geol.
Project Manager - Geology

APPENDIX II

SURVEY LOG



AURORA GEOSCIENCES

PRL-12529-YT

Weather Day	PERSONNEL : 9 Person-Days BAD WEATHER : 0 Person-Weather Days DAYS ON THE JOB : 4 days							
weather day *1/2 weather day*	Men-Weather Days	Mike Power, Staker, Project Manager	Neil McKinnon, Geo Tech	Tomasz Kalkowski, Jr Geo, Crew Chief	Personnel 4	Personnel 5	Personnel 6	Personnel 7
Current Job	0	1	4	4	0	0	0	0
June 2012 Totals	0	1	4	4	0	0	0	0
0	0	0	0	0	0	0	0	0
* 2012-06-01	*							
* 2012-06-02	*							
* 2012-06-03	*							
* 2012-06-04	*							
* 2012-06-05	*							
* 2012-06-06	*							
* 2012-06-07	*							
* 2012-06-08	*							
* 2012-06-09	*							
* 2012-06-10	*	Stake	Mobe in	Mobe in				
* 2012-06-11	*		Soils	Prospecting/staking				
* 2012-06-12	*		Soils	Prospecting/staking				
* 2012-06-13	*		Prospecting/Mobe out	Soils/Mobe out				
* 2012-06-14	*							
* 2012-06-15	*							
* 2012-06-16	*							
* 2012-06-17	*							
* 2012-06-18	*							
* 2012-06-19	*							
* 2012-06-20	*							
* 2012-06-21	*							
* 2012-06-22	*							
* 2012-06-23	*							
* 2012-06-24	*							
* 2012-06-25	*							
* 2012-06-26	*							
* 2012-06-27	*							
* 2012-06-28	*							
* 2012-06-29	*							
* 2012-06-30	*							

APPENDIX III

STATEMENT OF EXPENDITURES

PROGRAM COSTS		
<i>Field operations</i>		
T. Kalkowski: 4 days	\$2,000.00	
N. McKinnon: 4 days	\$1,600.00	
M. Power: 1 day	\$500.00	
Camp & related gear	\$400.00	
Staker vehicle rental	\$150.00	
Geology crew vehicle rental	\$600.00	
Geological equipment rental	\$200.00	
<i>Total - Field operations</i>	\$5,450.00	\$5,450.00
<i>Service & support</i>		
Helicopter: June 2012	\$2,044.77	
Fixed wing charter: June 2012	\$2,044.80	
Government fees	\$45.50	
Government fees	\$67.50	
Gas/propane	\$170.13	
Gas/propane	\$51.51	
Accommodation & Meals	\$34.14	
<i>Total - Service & support</i>	\$4,458.35	\$4,458.35
<i>Assays & reports</i>		
Assays	\$1,979.18	
Report	<u>\$3,500.00</u>	
<i>Total - Report & assays</i>	\$5,479.18	<u>\$5,479.18</u>
<i>Total expenditures</i>		\$15,387.53

APPENDIX IV

GEOLOGICAL MAPPING AND PROSPECTING OBERVATIONS

Declination used: 21° 6' East

Eikland Mtn. - Geological data

All planar data entered using the right hand rule

No.	Location (NAD83 Zone xx)			Recording info		Unit	Foliation						Veins						Lineation						Sulphides				Altn	Description
	UTME	UTMN	Z	Mapper	Date		S0		S1		S3		V1		V2		V3		L1		L2		L3		Py %	Gn %	Sph %	Other %		
							S	D	S	D	S	D	S	D	S	D	S	D	T	P	T	P	T	P						
EM01	505818	6903333	1167	TK	11-Jun-12	Harzburgite							30	70					335	78								Serpentinized	Harzburgite, brown-black weathered, brown fresh. white-green plagioclase/chlorite (50/50) veins present, 1-2 cm thick, 2 veins present in outcrop. black with some brown veining 0.1 to 1 cm thick, following main fracture (L1) pattern (chromite? or altering harzburgite in fractures). plagioclase veins cross-cut the fracturing. 2-3 1-10mm veins of dark veins per metre. Rock heavily fractured striking 155 (L1).	
EM02	505814	6903303	1171	TK	11-Jun-12	Harzburgite													355	40								Serpentinized	Harzburgite, brown to black weathered, brown fresh. no plagioclase veins observed. thin, 1-5mm thick dark veins following fractures in rock, black serpentinized edges (chromite? or altering harzburgite). Heavily fractured. ~20 1-2mm dark veins per metre.	
EM03	505900	6903321	1186	TK	11-Jun-12	Harzburgite													300	88								Serpentinized	Harzburgite. Plagioclase veins, heavily seritized and chloritized, slightly boudanaged, thickness varies from 3mm to 5 cm, granular texture, not fracture controlled. Dark black (chromite or altering harzburgite) veins, fracture controlled, very fine grained crystalline 0.5 to 2 cm thick. Thinner <1mm dark veinlets cutting into harzburgite surrounding veins ~2cm around vein. Some veins not following structure. 5-10 thin ~1mm veins per metre.	
EM04	506160	6903520	1198	TK	11-Jun-12	Harzburgite													0									Serpentinized	Outcrop 10m high and 25m wide on knife edge. Harzburgite, dark brown to brown weathered, brown-grey fresh. criss-crossed with many very thick plagioclase/chlorite veins with coarse chlorite (5mm) crystals within heavily seritized plagioclase, no preferred orientation of veins, most 3-7cm thick, some 3-5mm thick, not fracture controlled, serpentinized at edges. Dark (chromite or altering harzburgite) veins following fractures, very fine grained matte black. outcrop less fractured than previous stations. 1 large dark vein/metre.	
EM05	506172	6903523	1208	TK	11-Jun-12	Harzburgite							280	45					310	75								Serpentinized	Outcrop on side of knife-edge. Harzburgite, dark brown to brown weathered, brown fresh. very fractured with dark (chromite or altered harzburgite) veining within, 1-2mm thick and very serpentinized on edges, following fractures. 15cm thick coarse (5mm crystals of chlorite) plagioclase/chlorite vein cutting through, very seritized. 10-20 veinlets 1-5mm size per metre.	
EM06	506224	6903579	1246	TK	11-Jun-12	Harzburgite							270	75														Serpentinized	Knife-edge. Harzburgite, dark brown weathered, brown fresh. large black vein (chromite or altered harzburgite), well serpentinized, not following fracture pattern, matte black, very fine. some smaller fracture controlled dark veins present, 2-3 per metre. nearby plagioclase vein roughly following strike of the large dark vein sampled.	
EM07	506237	6903575	1239	TK	11-Jun-12	Harzburgite							290	35														Serpentinized	Knife-edge. Harzburgite, dark brown weathered, brown fresh. white coarse (5mm crystals) plagioclase/chlorite vein present, turning into more finely (<2mm) crystalline grey veining, 10cm thick travelling at least 10m. rock fairly fractured, almost brecciated at vein, with strike of 020 but few dark veins within. <1% possible disseminated sulphides.	
EM08	506284	6903566	1225	TK	11-Jun-12	Harzburgite							265	50					305	82	270	70						Serpentinized	Harzburgite, dark brown weathered, brown fresh. Fractured at two angles (not uncommon), some small dark (chromite or altered harzburgite) veining, up to 2cm thick, well serpentinized, very fine grained matte black, fracture controlled. large 8cm thick chloritized plagioclase vein not fracture controlled, coarse grained (5mm) present. 10 dark veins / metre.	
EM09	506311	6903544	1206	TK	11-Jun-12	Harzburgite							290															Serpentinized	Dark grey-black vein, most likely resembling chromite of all veins sampled so far, in more massive harzburgite, very brittle, granular, non-fracture controlled, 2-3cm thick. some nearby plagioclase/chlorite veins, serpentinized, 2-3cm thick. No other such veins observed. Regular serpentinized thin dark veins 2-3 / metre. Surrounding harzburgite has small 2-3mm euhedral grains of possibly chlorite within.	
EM10	506298	6903555	1217	TK	11-Jun-12	Harzburgite													345		265							Serpentinized	Harzburgite, brown to dark brown weathered, brown fresh. fractures infilled with dark serpentinized veining, thin 0.2 - 0.8 cm thick, 30 veins per metre. Nearby plagioclase/chlorite veins, 2-3cm thick, sparse, not fracture controlled.	
EM11	506709	6903492	1203	TK	12-Jun-12	Harzburgite							280	40					230	45								Serpentinized	Harzburgite, brown-red weathered, brown-grey fresh. dark veining (chromite or altering harzburgite), 8mm thick, serpentinized with some possible plagioclase and chlorite in the middle, 2-3 veins per metre. brown harzburgite consists of 2-5mm angular crystals of semi-metallic luster mineral, possibly chromite, 1% of total rock. many fractures in rock.	
EM12	506835	6903528	1244	TK	12-Jun-12	Harzburgite																						Serpentinized	Harzburgite, brown weathered and fresh, forming pillows. loose boulders found near outcrop on knife-edge consisting of granular veins of possibly chromite, angular semi-metallic luster crystals 5-8mm thick. Some serpentinized dark edges of rock. disseminated chromite? within, 2%. 3 veins observed within 5cm of each other, appearing linear and not planar	
EM13	506925	6903557	1276	TK	12-Jun-12	Harzburgite							20	65														Serpentinized	Harzburgite, with pillow texture, on knife-edge. fracturing appears due to pillows. black granular veins, brittle, found within, 6-9mm thick, pinch out in places or split apart within the harzburgite. disseminated, semi-metallic angular dark grains in harzburgite, 5% of rock. 10-15 such veins per metre, orientated at 020-65.	
EM14	506986	6903538	1289	TK	12-Jun-12	Harzburgite							60	50														Serpentinized	5x2m outcrop on peak, harzburgite, brown fresh and weathered. disseminated semi-metallic angular crystals, dark black, 1-6mm wide, within the harzburgite, 1-3% of rock, concentrated up to 20% in some areas, possibly chromite, brittle and semi-angular. was observed all along the knife-edge. harzburgite very pillow fractured. 1cm thick plagioclase/chlorite vein, coarse grained (3mm) present in outcrop, striking 060-20.	
EM15	507462	6903212	1319	TK	12-Jun-12	Harzburgite																						Serpentinized	Outcrop near summit, representing similar lithology as observed down E knife-edge. little to no plagioclase veining observed, thin dark veining mostly in line with fractures, likely due to serpentinization. harzburgite to dunite, black to brown weathered, brown-grey fresh. coarsely disseminated (2-5mm) dark clasts within, possibly serpentinized olivine, 10% of rock. some smaller semi-metallic disseminated crystals, possibly chromite, 1% of rock.	
EM16	507076	6903498	1282	TK	12-Jun-12	Harzburgite																						Serpentinized	harzburgite, and dunite on knife-edge. dark brown weathered, brown to grey fresh. disseminated small 1-2mm grains of semi-metallic dark mineral, possibly chromite, 1% of rock. no visible veining of any kind. pillow textured.	
EM17	507013	6903522	1281	TK	12-Jun-12	Harzburgite													220	45								Serpentinized	pillow textured harzburgite on knife-edge, black to brown weathered, brown fresh. serpentinized black veins, 3 per metre, fracture controlled, 1-2mm thick, with smaller web-like veinlets in 1-2cm proximity to dark veins. small disseminated dark black crystals within the veins, 1mm wide, semi-metallic.	
EM18	506300	6903540	1215	TK	12-Jun-12	Harzburgite																						Serpentinized	Disseminated chromite within harzburgite near showing, up to 30% of rock in some areas.	
EM19 (NM)	507004	6903755		NM	12-Jun-12	Harzburgite							240						240		150							Serpentinized	mid-slope rock exposure, 100m from ridge, blue-green sugary fresh, tan brown mottled with black weathered harzburgite, fine grained 0.5-1mm, blocky cleavage. chromite hosted in vein and wall rock, 1-3%, 0.5 to 3mm, subhedral, black with sub-metallic luster. veining 2-8mm, dark green to black striking 240, spaced 0.5m apart (4 total), concordant with primary stress fracture, veins look to be altering to serpentinite. outcrop 2x5m, dominant joining 240, with 150 secondary.	
EM20 (NM)	507105	6903668		NM	12-Jun-12	Harzburgite																						Serpentinized	fine grained harzburgite, chromite rich disseminated and within veins. chromite is 0.25 to 1mm subhedral and less than 3% of rock disseminated, and black, <1mm with serpentine alteration in veins.	

APPENDIX V

SAMPLE NOTES

Eikland Mountain
Soil Sample Log
Datum / Registration: NAD83 Zone 8N

Line	Station	Sample	UTME	UTMN	Depth (cm)	Color	Material	Aspect	Notes
		MON01	505700.0	6903293.0	30-40	Light Brown	C	NW mod	
		MON02	505753.0	6903357.0	20-30	Dark Brown	B/C	NW steep	
		MON03	505847.0	6903396.0	20-30	Brown	B/C	NW steep	
		MON04	505930.0	6903450.0	30-40	Dark Brown	B/C	NW steep	
		MON05	506005.0	6903499.0	30-40	Light Brown	B/C	NW steep	
		MON06	506026.0	6903587.0	20-30	Dark Brown	B/C	W steep	
		MON07	506013.0	6903676.0	30-40	Light Brown	C	W steep	
		MON08	506000.0	6903765.0	30-40	Dark Brown	B/C	W steep	
		MON09	506010.0	6903867.0	30-40	Dark Brown	B/C	W steep	
		MON10	506014.0	6903964.0	20-30	Light Brown	B/C	W steep	
		MON11	506037.0	6904051.0	30-40	Light Brown	C	NW steep	
		MON12	506103.0	6903998.0	40-50	Light Brown	C	NE steep	
		MON13	506175.0	6903928.0	40-50	Dark Brown	C	NE steep	
		MON14	506226.0	6903851.0	30-40	Light Brown	B/C	NE steep	
		MON15	506269.0	6903763.0	30-40	Light Brown	B/C	NE steep	
		MON16	506313.0	6903669.0	40-50	Light Brown	C	NE steep	
		MON17	506394.0	6903608.0	40-50	Dark Brown	B/C	N steep	
		MON18	506543.0	6903632.0	30-40	Light Brown	C	N steep	
		MON19	506695.0	6903627.0	40-50	Light Brown	C	N steep	
		MON20	506825.0	6903697.0	20-30	Light Brown	B/C	NW steep	
		MON21	506917.0	6903796.0	40-50	Light Brown	C	NW steep	
		MON22	506987.0	6903760.0	30-40	Light Brown	B/C	NE steep	
		MON23	507102.0	6903665.0	30-40	Light Brown	B/C		
		MON24	507234.0	6903595.0	30-40	Light Brown	B/C		
		MON25	507354.0	6903512.0	20-30	Dark Brown	B/C		
		MON26	507500.0	6903504.0	30-40	Light Brown	B/C		
		MON27	507554.0	6903387.0	30-40	Light Brown	B/C		
		MON28	507651.0	6903309.0	30-40	Light Brown	C		
		MON29	507739.0	6903218.0	30-40	Light Brown	C		
		MON30	507776.0	6903084.0	30-40	Light Brown	B/C		
		MON31	507792.0	6902942.0	30-40	Light Brown	C		
		MON32	507654.0	6902925.0					
		MON33	507542.0	6902942.0					
		MON34	507404.0	6902906.0	30-40	Light Brown	B/C		
		MON35	507282.0	6902921.0	30-40	Light Brown	B/C		
		MON36	507180.0	6902984.0	30-40	Light Brown	C		
		MON37	507152.0	6903127.0	30-40	Light Brown	B/C		
		MON38	507131.0	6903269.0	30-40	Light Brown	C		
		MON39	507009.0	6903296.0	30-40	Light Brown	C		
		MON40	506879.0	6903358.0					
		MON41	506760.0	6903387.0	30-40	Light Brown	C		
		MON42	506638.0	6903412.0	30-40	Light Brown	C		
		MON43	506524.0	6903364.0	40-50	Light Brown	C		
		MON44	506431.0	6903329.0	40-50	Light Brown	C		
		MON45	505801.0	6903284.0	30-40	Light Brown	B	SW monderate	
		MON46	505912.0	6903282.0	30-40	Brown	B	S steep	
		MON47	506003.0	6903317.0	20-30	Light Brown	B	SSE steep	
		MON48	506099.0	6903351.0	20-30	Brown	B	SE steep	
		MON49	506164.0	6903428.0	30-40	Light Brown	B	SW steep	
		MON50	506264.0	6903453.0	30-40	Brown	B	SW steep	
		MON51	506357.0	6903403.0	30-40	Brown	B	SSW steep	

APPENDIX VI

ROCK SAMPLE ANALYSIS

APPENDIX VII

GEOCHEMICAL SURVEY ANALYSES

Sample	Method Analyte Unit MDL	3B Au	3B Pt	3B Pd	1D Mo	1D Cu	1D Pb	1D Zn	1D Ag	1D Ni	1D Co	1D Mn	1D Fe	1D As	1D Au	1D Th	1D Sr	1D Cd	1D Sb	1D Bi	1D V	1D Ca	1D P	1D La	1D Cr	1D Mg	1D Ba	1D Ti	1D B	1D Al	1D Na	1D K	1D W	1D S	1D Sc	1D Ga
		PPB	PPB	PPB	PPM	PPM	PPM	PPM	PPM	PPM	PPM	PPM	PPM	%	PPM	PPM	PPM	PPM	PPM	PPM	PPM	PPM	%	%	PPM	PPM	%	PPM	%	PPM	%	%	PPM	%	PPM	PPM
M01	Soil	3	1.5	1	0.5	30	10	60	0.15	98	18	455	4	10	1	1	26	0.25	1.5	1.5	95	0.29	0.028	6	43	0.86	166	0.09	10	2.48	0.02	0.05	1	0.025	2.5	10
M02	Soil	1	3	1	0.5	28	8	37	0.15	219	18	472	2.63	5	2	1	27	0.25	1.5	1.5	57	0.32	0.041	6	42	0.91	152	0.062	10	1.63	0.03	0.04	1	0.025	2.5	7
M03	Soil	1	4	5	0.5	29	9	43	0.15	292	23	533	2.85	4	1	1	36	0.25	1.5	1.5	59	0.52	0.052	6	62	1.72	129	0.071	10	1.63	0.04	0.05	1	0.05	2.5	2.5
M04	Soil	1	11	1	0.5	29	49	33	0.15	219	14	428	1.95	5	4	1	44	0.25	1.5	1.5	40	0.75	0.069	5	36	1.28	116	0.04	10	1.07	0.03	0.04	1	0.11	2.5	2.5
M05	Soil	1	4	2	0.5	21	6	41	0.15	135	15	426	2.28	3	3	1	31	0.25	1.5	1.5	55	0.45	0.041	4	40	0.88	96	0.071	10	1.25	0.04	0.05	1	0.025	2.5	5
M06	Soil	1	3	8	0.5	35	8	40	0.15	239	31	593	2.99	5	1	1	31	0.25	1.5	1.5	54	0.43	0.046	6	43	1.86	113	0.073	10	1.58	0.04	0.05	1	0.05	2.5	2.5
M07	Soil	4	1.5	3	0.5	31	10	40	0.15	294	21	487	3.08	7	1	1	38	0.25	1.5	1.5	58	0.56	0.053	8	72	1.69	149	0.074	10	2.04	0.04	0.06	1	0.06	2.5	5
M08	Soil	1	4	6	0.5	24	5	35	0.15	173	20	451	2.43	5	1	1	25	0.25	1.5	1.5	48	0.34	0.032	4	52	1.13	100	0.067	10	1.31	0.03	0.06	1	0.025	2.5	6
M09	Soil	2	4	1	0.5	22	7	38	0.15	187	21	494	2.59	4	1	1	32	0.25	1.5	1.5	49	0.45	0.047	5	52	1.33	101	0.062	10	1.42	0.03	0.06	1	0.025	2.5	2.5
M10	Soil	1	1.5	6	0.5	27	13	47	0.15	351	29	521	3.65	8	1	1	27	0.25	1.5	1.5	75	0.29	0.029	6	75	1.46	157	0.088	10	2.3	0.03	0.05	1	0.025	2.5	7
M11	Soil	1	4	4	0.5	25	8	33	0.15	63	9	269	2.47	4	2	1	28	0.25	1.5	1.5	61	0.37	0.034	5	27	0.59	127	0.053	10	1.19	0.03	0.03	1	0.025	2.5	7
M12	Soil	1	1.5	2	0.5	4	1.5	11	0.15	10	3	91	1.15	1	1	1	9	0.25	1.5	1.5	27	0.09	0.007	1	8	0.15	23	0.049	10	0.43	0.03	0.02	1	0.025	2.5	2.5
M13	Soil	1	3	3	0.5	19	5	34	0.15	182	19	370	2.67	3	1	1	23	0.25	1.5	1.5	53	0.28	0.03	4	52	1.32	96	0.062	10	1.22	0.03	0.04	1	0.025	2.5	2.5
M14	Soil	3	1.5	5	0.5	20	7	49	0.15	108	16	480	2.71	4	1	1	21	0.25	1.5	1.5	59	0.28	0.033	3	37	0.77	85	0.062	10	0.97	0.03	0.06	1	0.025	2.5	7
M15	Soil	6	4	3	0.5	23	7	35	0.15	333	25	438	2.87	4	1	1	26	0.25	1.5	1.5	62	0.34	0.031	5	107	2.84	81	0.076	10	1.4	0.03	0.05	1	0.025	2.5	7
M16	Soil	6	5	8	0.5	66	8	48	0.15	491	31	608	3.29	6	1	1	34	0.25	1.5	1.5	52	0.6	0.063	7	42	2.75	128	0.062	10	1.7	0.04	0.06	1	0.07	2.5	2.5
M17	Soil	2	1.5	10	0.5	61	8	38	0.15	440	19	420	2.11	5	3	1	42	0.25	1.5	1.5	31	0.93	0.08	6	27	2.06	106	0.037	10	1.05	0.03	0.04	1	0.17	2.5	2.5
M18	Soil	8	5	6	0.5	91	7	42	0.15	578	37	683	3.61	5	1	1	29	0.25	1.5	1.5	52	0.4	0.042	7	62	3.44	122	0.071	10	1.73	0.03	0.04	1	0.025	2.5	2.5
M19	Soil	1	8	6	0.5	18	3	24	0.15	120	10	315	1.77	1	3	1	18	0.25	1.5	1.5	36	0.28	0.026	3	12	0.61	49	0.054	10	0.59	0.03	0.03	1	0.025	2.5	2.5
M20	Soil	1	8	25	0.5	47	7	36	0.15	454	24	715	2.6	3	2	1	32	0.25	1.5	1.5	38	0.65	0.068	6	39	2.42	126	0.046	10	1.4	0.03	0.04	1	0.1	2.5	2.5
M21	Soil	3	1.5	1	0.5	54	6	47	0.15	436	34	594	3.62	5	1	1	30	0.25	1.5	1.5	60	0.4	0.049	6	48	2.83	124	0.064	10	1.69	0.03	0.04	1	0.06	2.5	2.5
M22	Soil	1	1.5	5	0.5	64	9	44	0.15	267	31	550	2.79	4	1	1	34	0.25	1.5	1.5	52	0.56	0.047	5	36	1.92	98	0.061	10	1.24	0.03	0.04	1	0.08	2.5	5
M23	Soil	6	5	10	0.5	48	10	49	0.15	441	31	590	3.28	9	1	1	36	0.25	1.5	1.5	58	0.55	0.069	8	51	2.47	126	0.069	10	1.75	0.04	0.06	1	0.08	2.5	2.5
M24	Soil	1	1.5	4	0.5	21	5	53	0.15	107	17	443	2.54	3	2	1	23	0.25	1.5	1.5	48	0.24	0.034	4	23	0.69	94	0.055	10	1.35	0.03	0.03	1	0.025	2.5	2.5
M25	Soil	12	4	8	0.5	53	8	56	0.15	346	36	569	2.95	8	1	1	32	0.25	1.5	1.5	50	0.55	0.065	6	44	2.8	99	0.054	10	1.39	0.04	0.05	1	0.09	2.5	6
M26	Soil	3	1.5	8	0.5	35	10	48	0.15	233	28	729	3.03	7	1	1	37	0.25	1.5	1.5	60	0.62	0.06	7	82	1.71	134	0.058	10	1.63	0.04	0.05	1	0.08	2.5	5
M27	Soil	3	1.5	5	1	25	8	44	0.15	213	22	441	3.52	7	1	1	21	0.25	1.5	1.5	69	0.23	0.026	5	96	1.37	101	0.067	10	1.68	0.02	0.05	1	0.025	2.5	2.5
M28	Soil	1	1.5	1	0.5	10	6	23	0.15	25	4	140	1.43	2	1	1	11	0.25	1.5	1.5	36	0.13	0.014	2	17	0.26	31	0.053	10	0.48	0.02	0.02	1	0.025	2.5	2.5
M29	Soil	4	1.5	2	0.5	18	5	34	0.15	77	12	265	2.42	6	1	1	18	0.25	1.5	1.5	53	0.22	0.024	4	31	0.57	89	0.061	10	1.31	0.03	0.03	1	0.025	2.5	5
M30	Soil	1	8	3	0.5	27	7	46	0.15	258	18	505	2.73	4	1	1	34	0.25	1.5	1.5	55	0.48	0.052	7	57	1.18	148	0.059	10	1.63	0.03	0.04	1	0.05	2.5	6
M31	Soil	1	1.5	3	0.5	26	9	42	0.15	126	14	359	2.8	5	1	1	23	0.25	1.5	1.5	57	0.24	0.033	6	45	0.68	114	0.062	10	1.62	0.03	0.03	1	0.025	2.5	2.5
M32	Soil	1	5	1	0.5	26	7	41	0.15	222	27	503	2.78	6	1	1	21	0.25	1.5	1.5	44	0.28	0.039	5	67	1.39	82	0.05	10	1.38	0.03	0.05	1	0.025	2.5	2.5
M33	Soil	1	4	1	0.5	24	15	41	0.15	151	23	502	3.15	4	1	1	24	0.25	1.5	1.5	61	0.3	0.036	5	64	1.21	91	0.072	10	1.75	0.03	0.04	1	0.025	2.5	5
M34	Soil	4	3	4	0.5	23	5	43	0.15	228	32	726	3.08	5	1	1	29	0.25	1.5	1.5	58	0.41	0.045	5	78	1.92	88	0.066	10	1.6	0.03	0.05	1	0.025	2.5	2.5
M35	Soil	3	1.5	3	0.5	24	8	46	0.15	236	28	525	3.51	1	1	1	23	0.25	1.5	1.5	66	0.26	0.026	6	75	1.74	94	0.076	10	1.88	0.02	0.06	1	0.025	2.5	2.5
M36	Soil	5	1.5	9	0.5	25	4	51	0.15	249	28	597	2.97	3	1	1	23	0.25	1.5	1.5	50	0.33	0.036	5	74	2.02	112	0.055	10	1.42	0.03	0.04	1	0.025	2.5	2.5
M37	Soil	9	1.5	8	0.5	25	6	44	0.15	258	22	460	3.17	3	1	1	23	0.25	1.5	1.5	64	0.3	0.034	5	70	1.72	116	0.073	10	1.65	0.03	0.04	1	0.025	2.5	2.5
M38	Soil	4	1.5	6	0.5	18	12	34	0.15	83	11	244	2.45	4	1	1	16	0.25	1.5	1.5	50	0.17	0.024	4	32	0.55	70	0.058	10	1.37	0.02	0.03	1	0.025	2.5	6
M39	Soil	6	1.5	5	0.5	28	4	41	0.15	273	29	548	2.92	7	1	1	28	0.25	1.5	1.5	54	0.39	0.043	6	37	1.86	95	0.075	10	1.48	0.04	0.04	1	0.025	2.5	2.5
M40	Soil	5	7	7	0.5	33	6	41	0.15	217	31	541	3.14	4	1	1	27	0.25	1.5	1.5	58	0.36	0.03	6	40	1.45	113	0.082	10	1.72	0.03	0.06	1	0.025	2.5	2.5
M41	Soil	6	1.5	8	0.5	33	14	37	0.15	450	32	505	3.29	4	1	1	24	0.25	1.5	1.5	48	0.31	0.029	6	39	3.11	91	0.073	10	1.53	0.03					

APPENDIX VIII

ASSAY CERTIFICATES



1020 Cordova St. East Vancouver BC V6A 4A3 Canada

Acme Analytical Laboratories (Vancouver) Ltd.

www.acmelab.com

Client: **Aurora Geosciences Ltd. (Whitehorse)**

34A Laberge Road.
Whitehorse YT Y1A 5Y9 Canada

Submitted By: Mike Power
Receiving Lab: Canada-Whitehorse
Received: June 14, 2012
Report Date: June 27, 2012
Page: 1 of 3

CERTIFICATE OF ANALYSIS

WHI12000093.1

CLIENT JOB INFORMATION

Project: None Given
Shipment ID:
P.O. Number
Number of Samples: 51

SAMPLE DISPOSAL

PICKUP-PLP Client to Pickup Pulps
PICKUP-RJT Client to Pickup Rejects

SAMPLE PREPARATION AND ANALYTICAL PROCEDURES

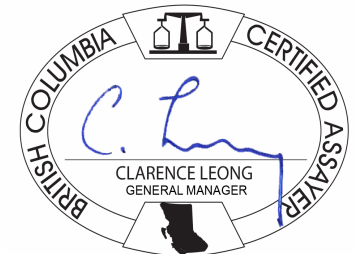
Method Code	Number of Samples	Code Description	Test Wgt (g)	Report Status	Lab
Dry at 60C	51	Dry at 60C			WHI
SS80	51	Dry at 60C sieve 100g to -80 mesh			WHI
GEO4	51	FA fusion Au Pt Pd; 1:1:1 AR digestion ICP-ES analysis	30	Completed	VAN
RJSV	51	Saving all or part of Soil Reject			WHI

ADDITIONAL COMMENTS

Acme does not accept responsibility for samples left at the laboratory after 90 days without prior written instructions for sample storage or return.

Invoice To: Aurora Geosciences Ltd. (Whitehorse)
34A Laberge Road.
Whitehorse YT Y1A 5Y9
Canada

CC:



This report supersedes all previous preliminary and final reports with this file number dated prior to the date on this certificate. Signature indicates final approval; preliminary reports are unsigned and should be used for reference only. All results are considered the confidential property of the client. Acme assumes the liabilities for actual cost of analysis only. Results apply to samples as submitted. ** asterisk indicates that an analytical result could not be provided due to unusually high levels of interference from other elements.



Acme Analytical Laboratories (Vancouver) Ltd.
 1020 Cordova St. East Vancouver BC V6A 4A3 Canada
 Phone (604) 253-3158 Fax (604) 253-1716

www.acmelab.com

Client: **Aurora Geosciences Ltd. (Whitehorse)**
 34A Laberge Road.
 Whitehorse YT Y1A 5Y9 Canada

Project: None Given
 Report Date: June 27, 2012

Page: 2 of 3

Part: 1 of 2

CERTIFICATE OF ANALYSIS

WHI12000093.1

Method	Analyte	3B	3B	3B	1D	1D	1D	1D	1D	1D	1D	1D	1D	1D	1D	1D	1D	1D	1D	1D	
		Au	Pt	Pd	Mo	Cu	Pb	Zn	Ag	Ni	Co	Mn	Fe	As	Au	Th	Sr	Cd	Sb	Bi	V
Unit		ppb	ppb	ppb	ppm	ppm	ppm	ppm	ppm	ppm	ppm	%	ppm	ppm	ppm	ppm	ppm	ppm	ppm	ppm	
MDL		2	3	2	1	1	3	1	0.3	1	1	2	0.01	2	2	2	1	0.5	3	3	1
M01	Soil	3	<3	<2	<1	30	10	60	<0.3	98	18	455	4.00	10	<2	<2	26	<0.5	<3	<3	95
M02	Soil	<2	3	<2	<1	28	8	37	<0.3	219	18	472	2.63	5	2	<2	27	<0.5	<3	<3	57
M03	Soil	<2	4	5	<1	29	9	43	<0.3	292	23	533	2.85	4	<2	<2	36	<0.5	<3	<3	59
M04	Soil	<2	11	<2	<1	29	49	33	<0.3	219	14	428	1.95	5	4	<2	44	<0.5	<3	<3	40
M05	Soil	<2	4	2	<1	21	6	41	<0.3	135	15	426	2.28	3	3	<2	31	<0.5	<3	<3	55
M06	Soil	<2	3	8	<1	35	8	40	<0.3	239	31	593	2.99	5	<2	<2	31	<0.5	<3	<3	54
M07	Soil	4	<3	3	<1	31	10	40	<0.3	294	21	487	3.08	7	<2	<2	38	<0.5	<3	<3	58
M08	Soil	<2	4	6	<1	24	5	35	<0.3	173	20	451	2.43	5	<2	<2	25	<0.5	<3	<3	48
M09	Soil	2	4	<2	<1	22	7	38	<0.3	187	21	494	2.59	4	<2	<2	32	<0.5	<3	<3	49
M10	Soil	<2	<3	6	<1	27	13	47	<0.3	351	29	521	3.65	8	<2	<2	27	<0.5	<3	<3	75
M11	Soil	<2	4	4	<1	25	8	33	<0.3	63	9	269	2.47	4	2	<2	28	<0.5	<3	<3	61
M12	Soil	<2	<3	2	<1	4	<3	11	<0.3	10	3	91	1.15	<2	<2	<2	9	<0.5	<3	<3	27
M13	Soil	<2	3	3	<1	19	5	34	<0.3	182	19	370	2.67	3	<2	<2	23	<0.5	<3	<3	53
M14	Soil	3	<3	5	<1	20	7	49	<0.3	108	16	480	2.71	4	<2	<2	21	<0.5	<3	<3	59
M15	Soil	6	4	3	<1	23	7	35	<0.3	333	25	438	2.87	4	<2	<2	26	<0.5	<3	<3	62
M16	Soil	6	5	8	<1	66	8	48	<0.3	491	31	608	3.29	6	<2	<2	34	<0.5	<3	<3	52
M17	Soil	2	<3	10	<1	61	8	38	<0.3	440	19	420	2.11	5	3	<2	42	<0.5	<3	<3	31
M18	Soil	8	5	6	<1	91	7	42	<0.3	578	37	683	3.61	5	<2	<2	29	<0.5	<3	3	52
M19	Soil	<2	8	6	<1	18	3	24	<0.3	120	10	315	1.77	<2	3	<2	18	<0.5	<3	<3	36
M20	Soil	<2	8	25	<1	47	7	36	<0.3	454	24	715	2.60	3	2	<2	32	<0.5	<3	<3	38
M21	Soil	3	<3	<2	<1	54	6	47	<0.3	436	34	594	3.62	5	<2	<2	30	<0.5	<3	<3	60
M22	Soil	<2	<3	5	<1	64	9	44	<0.3	267	31	550	2.79	4	<2	<2	34	<0.5	<3	<3	52
M23	Soil	6	5	10	<1	48	10	49	<0.3	441	31	590	3.28	9	<2	<2	36	<0.5	<3	<3	58
M24	Soil	<2	<3	4	<1	21	5	53	<0.3	107	17	443	2.54	3	2	<2	23	<0.5	<3	<3	48
M25	Soil	12	4	8	<1	53	8	56	<0.3	346	36	569	2.95	8	<2	<2	32	<0.5	<3	<3	50
M26	Soil	3	<3	8	<1	35	10	48	<0.3	233	28	729	3.03	7	<2	<2	37	<0.5	<3	<3	60
M27	Soil	3	<3	5	1	25	8	44	<0.3	213	22	441	3.52	7	<2	<2	21	<0.5	<3	<3	69
M28	Soil	<2	<3	<2	<1	10	6	23	<0.3	25	4	140	1.43	2	<2	<2	11	<0.5	<3	<3	36
M29	Soil	4	<3	2	<1	18	5	34	<0.3	77	12	265	2.42	6	<2	<2	18	<0.5	<3	<3	53
M30	Soil	<2	8	3	<1	27	7	46	<0.3	258	18	505	2.73	4	<2	<2	34	<0.5	<3	<3	55

This report supersedes all previous preliminary and final reports with this file number dated prior to the date on this certificate. Signature indicates final approval; preliminary reports are unsigned and should be used for reference only.



1020 Cordova St. East Vancouver BC V6A 4A3 Canada
Phone (604) 253-3158 Fax (604) 253-1716

Acme Analytical Laboratories (Vancouver) Ltd.

www.acmelab.com

Client: **Aurora Geosciences Ltd. (Whitehorse)**
34A Laberge Road.
Whitehorse YT Y1A 5Y9 Canada

Project: None Given
Report Date: June 27, 2012

Page: 2 of 3

Part: 2 of 2

CERTIFICATE OF ANALYSIS

WHI1200093.1

Method	1D	1D	1D	1D	1D	1D	1D	1D	1D	1D	1D	1D	1D	1D	1D	
Analyte	Ca	P	La	Cr	Mg	Ba	Ti	B	Al	Na	K	W	S	Sc	Ga	
Unit	%	%	ppm	ppm	%	ppm	%	ppm	%	%	ppm	%	ppm	ppm	ppm	
MDL	0.01	0.001	1	1	0.01	1	0.001	20	0.01	0.01	0.01	2	0.05	5	5	
M01	Soil	0.29	0.028	6	43	0.86	166	0.090	<20	2.48	0.02	0.05	<2	<0.05	<5	10
M02	Soil	0.32	0.041	6	42	0.91	152	0.062	<20	1.63	0.03	0.04	<2	<0.05	<5	7
M03	Soil	0.52	0.052	6	62	1.72	129	0.071	<20	1.63	0.04	0.05	<2	0.05	<5	<5
M04	Soil	0.75	0.069	5	36	1.28	116	0.040	<20	1.07	0.03	0.04	<2	0.11	<5	<5
M05	Soil	0.45	0.041	4	40	0.88	96	0.071	<20	1.25	0.04	0.05	<2	<0.05	<5	5
M06	Soil	0.43	0.046	6	43	1.86	113	0.073	<20	1.58	0.04	0.05	<2	0.05	<5	<5
M07	Soil	0.56	0.053	8	72	1.69	149	0.074	<20	2.04	0.04	0.06	<2	0.06	<5	5
M08	Soil	0.34	0.032	4	52	1.13	100	0.067	<20	1.31	0.03	0.06	<2	<0.05	<5	6
M09	Soil	0.45	0.047	5	52	1.33	101	0.062	<20	1.42	0.03	0.06	<2	<0.05	<5	<5
M10	Soil	0.29	0.029	6	75	1.46	157	0.088	<20	2.30	0.03	0.05	<2	<0.05	<5	7
M11	Soil	0.37	0.034	5	27	0.59	127	0.053	<20	1.19	0.03	0.03	<2	<0.05	<5	7
M12	Soil	0.09	0.007	1	8	0.15	23	0.049	<20	0.43	0.03	0.02	<2	<0.05	<5	<5
M13	Soil	0.28	0.030	4	52	1.32	96	0.062	<20	1.22	0.03	0.04	<2	<0.05	<5	<5
M14	Soil	0.28	0.033	3	37	0.77	85	0.062	<20	0.97	0.03	0.06	<2	<0.05	<5	7
M15	Soil	0.34	0.031	5	107	2.84	81	0.076	<20	1.40	0.03	0.05	<2	<0.05	<5	7
M16	Soil	0.60	0.063	7	42	2.75	128	0.062	<20	1.70	0.04	0.06	<2	0.07	<5	<5
M17	Soil	0.93	0.080	6	27	2.06	106	0.037	<20	1.05	0.03	0.04	<2	0.17	<5	<5
M18	Soil	0.40	0.042	7	62	3.44	122	0.071	<20	1.73	0.03	0.04	<2	<0.05	<5	<5
M19	Soil	0.28	0.026	3	12	0.61	49	0.054	<20	0.59	0.03	0.03	<2	<0.05	<5	<5
M20	Soil	0.65	0.068	6	39	2.42	126	0.046	<20	1.40	0.03	0.04	<2	0.10	<5	<5
M21	Soil	0.40	0.049	6	48	2.83	124	0.064	<20	1.69	0.03	0.04	<2	0.06	<5	<5
M22	Soil	0.56	0.047	5	36	1.92	98	0.061	<20	1.24	0.03	0.04	<2	0.08	<5	5
M23	Soil	0.55	0.069	8	51	2.47	126	0.069	<20	1.75	0.04	0.06	<2	0.08	<5	<5
M24	Soil	0.24	0.034	4	23	0.69	94	0.055	<20	1.35	0.03	0.03	<2	<0.05	<5	<5
M25	Soil	0.55	0.065	6	44	2.80	99	0.054	<20	1.39	0.04	0.05	<2	0.09	<5	6
M26	Soil	0.62	0.060	7	82	1.71	134	0.058	<20	1.63	0.04	0.05	<2	0.08	<5	5
M27	Soil	0.23	0.026	5	96	1.37	101	0.067	<20	1.68	0.02	0.05	<2	<0.05	<5	<5
M28	Soil	0.13	0.014	2	17	0.26	31	0.053	<20	0.48	0.02	0.02	<2	<0.05	<5	<5
M29	Soil	0.22	0.024	4	31	0.57	89	0.061	<20	1.31	0.03	0.03	<2	<0.05	<5	5
M30	Soil	0.48	0.052	7	57	1.18	148	0.059	<20	1.63	0.03	0.04	<2	0.05	<5	6



Acme Analytical Laboratories (Vancouver) Ltd.
 1020 Cordova St. East Vancouver BC V6A 4A3 Canada
 Phone (604) 253-3158 Fax (604) 253-1716

www.acmelab.com

Client: **Aurora Geosciences Ltd. (Whitehorse)**
 34A Laberge Road.
 Whitehorse YT Y1A 5Y9 Canada

Project: None Given
 Report Date: June 27, 2012

Page: 3 of 3

Part: 1 of 2

CERTIFICATE OF ANALYSIS

WHI12000093.1

Method	Analyte	3B	3B	3B	1D	1D	1D	1D	1D	1D	1D	1D	1D	1D	1D	1D	1D	1D	1D	1D	
		Au	Pt	Pd	Mo	Cu	Pb	Zn	Ag	Ni	Co	Mn	Fe	As	Au	Th	Sr	Cd	Sb	Bi	V
	Unit	ppb	ppb	ppb	ppm	ppm	ppm	ppm	ppm	ppm	ppm	ppm	%	ppm	ppm	ppm	ppm	ppm	ppm	ppm	ppm
	MDL	2	3	2	1	1	3	1	0.3	1	1	2	0.01	2	2	2	1	0.5	3	3	1
M31	Soil	<2	<3	3	<1	26	9	42	<0.3	126	14	359	2.80	5	<2	<2	23	<0.5	<3	<3	57
M32	Soil	<2	5	<2	<1	26	7	41	<0.3	222	27	503	2.78	6	<2	<2	21	<0.5	<3	<3	44
M33	Soil	<2	4	<2	<1	24	15	41	<0.3	151	23	502	3.15	4	<2	<2	24	<0.5	<3	<3	61
M34	Soil	4	3	4	<1	23	5	43	<0.3	228	32	726	3.08	5	<2	<2	29	<0.5	4	<3	58
M35	Soil	3	<3	3	<1	24	8	46	<0.3	236	28	525	3.51	<2	<2	<2	23	<0.5	<3	<3	66
M36	Soil	5	<3	9	<1	25	4	51	<0.3	249	28	597	2.97	3	<2	<2	23	<0.5	<3	<3	50
M37	Soil	9	<3	8	<1	25	6	44	<0.3	258	22	460	3.17	3	<2	<2	23	<0.5	<3	<3	64
M38	Soil	4	<3	6	<1	18	12	34	<0.3	83	11	244	2.45	4	<2	<2	16	<0.5	<3	<3	50
M39	Soil	6	<3	5	<1	28	4	41	<0.3	273	29	548	2.92	7	<2	<2	28	<0.5	<3	<3	54
M40	Soil	5	7	7	<1	33	6	41	<0.3	217	31	541	3.14	4	<2	<2	27	<0.5	<3	<3	58
M41	Soil	6	<3	8	<1	33	14	37	<0.3	450	32	505	3.29	4	<2	<2	24	<0.5	<3	<3	48
M42	Soil	6	<3	10	<1	83	7	47	<0.3	350	33	574	3.47	6	<2	<2	25	<0.5	<3	<3	61
M43	Soil	<2	4	<2	<1	29	7	37	<0.3	161	20	499	2.74	3	<2	<2	25	<0.5	<3	<3	54
M44	Soil	5	6	2	<1	18	15	32	<0.3	139	17	329	2.51	4	<2	<2	18	<0.5	<3	<3	44
M45	Soil	11	4	7	<1	31	<3	44	<0.3	263	22	413	3.13	3	<2	<2	26	<0.5	<3	<3	66
M46	Soil	26	15	13	<1	25	12	36	<0.3	201	26	589	3.04	3	<2	<2	21	<0.5	<3	<3	61
M47	Soil	9	<3	7	<1	27	7	50	<0.3	355	31	698	3.41	<2	<2	<2	23	<0.5	<3	<3	62
M48	Soil	4	7	3	<1	32	5	42	<0.3	220	22	586	3.22	8	<2	<2	25	<0.5	<3	<3	63
M49	Soil	7	<3	8	<1	41	10	49	<0.3	450	34	631	3.89	5	<2	<2	30	<0.5	<3	<3	77
M50	Soil	4	5	13	<1	48	7	42	<0.3	361	32	583	3.16	3	<2	<2	28	<0.5	<3	<3	47
M51	Soil	3	3	15	<1	32	6	37	<0.3	282	24	492	2.85	7	<2	<2	19	<0.5	<3	<3	50



Acme Analytical Laboratories (Vancouver) Ltd.
 1020 Cordova St. East Vancouver BC V6A 4A3 Canada
 Phone (604) 253-3158 Fax (604) 253-1716

www.acmelab.com

Client: **Aurora Geosciences Ltd. (Whitehorse)**
 34A Laberge Road.
 Whitehorse YT Y1A 5Y9 Canada

Project: None Given
 Report Date: June 27, 2012

Page: 3 of 3

Part: 2 of 2

CERTIFICATE OF ANALYSIS

WHI1200093.1

Method	1D	1D	1D	1D	1D	1D	1D	1D	1D	1D	1D	1D	1D	1D	1D	
Analyte	Ca	P	La	Cr	Mg	Ba	Ti	B	Al	Na	K	W	S	Sc	Ga	
Unit	%	%	ppm	ppm	%	ppm	%	ppm	%	%	ppm	%	ppm	ppm	ppm	
MDL	0.01	0.001	1	1	0.01	1	0.001	20	0.01	0.01	0.01	2	0.05	5	5	
M31	Soil	0.24	0.033	6	45	0.68	114	0.062	<20	1.62	0.03	0.03	<2	<0.05	<5	<5
M32	Soil	0.28	0.039	5	67	1.39	82	0.050	<20	1.38	0.03	0.05	<2	<0.05	<5	<5
M33	Soil	0.30	0.036	5	64	1.21	91	0.072	<20	1.75	0.03	0.04	<2	<0.05	<5	5
M34	Soil	0.41	0.045	5	78	1.92	88	0.066	<20	1.60	0.03	0.05	<2	<0.05	<5	<5
M35	Soil	0.26	0.026	6	75	1.74	94	0.076	<20	1.88	0.02	0.06	<2	<0.05	<5	<5
M36	Soil	0.33	0.036	5	74	2.02	112	0.055	<20	1.42	0.03	0.04	<2	<0.05	<5	<5
M37	Soil	0.30	0.034	5	70	1.72	116	0.073	<20	1.65	0.03	0.04	<2	<0.05	<5	<5
M38	Soil	0.17	0.024	4	32	0.55	70	0.058	<20	1.37	0.02	0.03	<2	<0.05	<5	6
M39	Soil	0.39	0.043	6	37	1.86	95	0.075	<20	1.48	0.04	0.04	<2	<0.05	<5	<5
M40	Soil	0.36	0.030	6	40	1.45	113	0.082	<20	1.72	0.03	0.06	<2	<0.05	<5	<5
M41	Soil	0.31	0.029	6	39	3.11	91	0.073	<20	1.53	0.03	0.04	<2	<0.05	<5	<5
M42	Soil	0.30	0.041	8	39	1.58	108	0.073	<20	1.85	0.03	0.05	<2	<0.05	<5	5
M43	Soil	0.28	0.039	5	29	0.90	121	0.060	<20	1.57	0.03	0.04	<2	<0.05	<5	<5
M44	Soil	0.21	0.023	4	23	0.94	81	0.049	<20	1.36	0.03	0.03	<2	<0.05	<5	6
M45	Soil	0.31	0.019	7	53	1.71	120	0.093	<20	1.97	0.03	0.03	<2	<0.05	5	5
M46	Soil	0.24	0.019	7	52	1.62	116	0.078	<20	1.93	0.03	0.03	<2	<0.05	<5	<5
M47	Soil	0.29	0.040	6	65	3.28	118	0.060	<20	1.68	0.02	0.03	<2	<0.05	<5	<5
M48	Soil	0.29	0.022	7	60	1.19	138	0.077	<20	2.09	0.03	0.04	<2	<0.05	<5	<5
M49	Soil	0.47	0.040	8	61	3.73	87	0.109	<20	1.65	0.04	0.05	<2	<0.05	5	<5
M50	Soil	0.37	0.050	7	35	2.17	94	0.058	<20	1.60	0.04	0.05	<2	<0.05	<5	6
M51	Soil	0.21	0.028	6	30	1.59	101	0.061	<20	1.50	0.03	0.03	<2	<0.05	<5	6



Acme Analytical Laboratories (Vancouver) Ltd.

1020 Cordova St. East Vancouver BC V6A 4A3 Canada
 Phone (604) 253-3158 Fax (604) 253-1716

www.acmelab.com

Client: **Aurora Geosciences Ltd. (Whitehorse)**
 34A Laberge Road.
 Whitehorse YT Y1A 5Y9 Canada

Project: None Given
 Report Date: June 27, 2012

Page: 1 of 1

Part: 1 of 2

QUALITY CONTROL REPORT

WHI12000093.1

Method	Analyte	Unit	MDL	3B	3B	3B	1D	1D	1D	1D	1D	1D	1D	1D	1D	1D	1D	1D	1D	1D	1D		
				Au	Pt	Pd	Mo	Cu	Pb	Zn	Ag	Ni	Co	Mn	Fe	As	Au	Th	Sr	Cd	Sb	Bi	V
				ppb	ppb	ppb	ppm	ppm	ppm	ppm	ppm	ppm	ppm	ppm	%	ppm	ppm	ppm	ppm	ppm	ppm	ppm	ppm
				2	3	2	1	1	3	1	0.3	1	1	2	0.01	2	2	2	1	0.5	3	3	1
Pulp Duplicates																							
M29	Soil			4	<3	2	<1	18	5	34	<0.3	77	12	265	2.42	6	<2	<2	18	<0.5	<3	<3	53
REP M29	QC						1	18	<3	35	<0.3	79	11	268	2.45	5	<2	<2	18	<0.5	4	<3	55
M30	Soil			<2	8	3	<1	27	7	46	<0.3	258	18	505	2.73	4	<2	<2	34	<0.5	<3	<3	55
REP M30	QC			<2	<3	11																	
M47	Soil			9	<3	7	<1	27	7	50	<0.3	355	31	698	3.41	<2	<2	<2	23	<0.5	<3	<3	62
REP M47	QC			16	5	13																	
M51	Soil			3	3	15	<1	32	6	37	<0.3	282	24	492	2.85	7	<2	<2	19	<0.5	<3	<3	50
REP M51	QC			7	9	18																	
Reference Materials																							
STD DS9	Standard						13	113	128	350	1.8	39	7	626	2.48	26	3	6	76	2.3	4	5	40
STD DS9	Standard						11	100	128	321	1.5	41	7	577	2.36	23	<2	4	68	2.0	7	8	40
STD OREAS45CA	Standard						<1	597	29	62	<0.3	288	100	976	17.07	3	3	8	17	<0.5	<3	3	246
STD OREAS45CA	Standard						<1	502	16	57	0.4	244	89	959	15.30	3	<2	7	15	<0.5	5	<3	211
STD PD1	Standard			545	468	562																	
STD PD1	Standard			545	464	567																	
STD PD1	Standard			529	455	554																	
STD PD1	Standard			542	455	580																	
STD OREAS45CA Expected							1	494	20	60	0.275	240	92	943	15.69	3.8	0.043	7	15	0.1	0.13	0.19	215
STD DS9 Expected							12.84	108	126	317	1.83	40.3	7.6	575	2.33	25.5	0.118	6.38	69.6	2.4	4.94	6.32	40
STD PD1 Expected				542	456	563																	
BLK	Blank						<1	<1	<3	<1	<0.3	<1	<1	<2	<0.01	<2	<2	<2	<1	<0.5	<3	<3	<1
BLK	Blank						<1	<1	<3	<1	<0.3	<1	<1	<2	<0.01	<2	<2	<2	<1	<0.5	<3	<3	<1
BLK	Blank			<2	<3	3																	
BLK	Blank			<2	<3	4																	
BLK	Blank			4	<3	6																	
BLK	Blank			2	<3	<2																	



Acme Analytical Laboratories (Vancouver) Ltd.

1020 Cordova St. East Vancouver BC V6A 4A3 Canada
 Phone (604) 253-3158 Fax (604) 253-1716

www.acmelab.com

Client: **Aurora Geosciences Ltd. (Whitehorse)**
 34A Laberge Road.
 Whitehorse YT Y1A 5Y9 Canada

Project: None Given
 Report Date: June 27, 2012

Page: 1 of 1

Part: 2 of 2

QUALITY CONTROL REPORT

WHI1200093.1

Method	1D	1D	1D	1D	1D	1D	1D	1D	1D	1D	1D	1D	1D	1D	1D	
Analyte	Ca	P	La	Cr	Mg	Ba	Ti	B	Al	Na	K	W	S	Sc	Ga	
Unit	%	%	ppm	ppm	%	ppm	%	ppm	%	%	%	ppm	%	ppm	ppm	
MDL	0.01	0.001	1	1	0.01	1	0.001	20	0.01	0.01	0.01	2	0.05	5	5	
Pulp Duplicates																
M29	Soil	0.22	0.024	4	31	0.57	89	0.061	<20	1.31	0.03	0.03	<2	<0.05	<5	5
REP M29	QC	0.22	0.024	4	32	0.58	91	0.061	<20	1.33	0.03	0.03	<2	<0.05	<5	<5
M30	Soil	0.48	0.052	7	57	1.18	148	0.059	<20	1.63	0.03	0.04	<2	0.05	<5	6
REP M30	QC															
M47	Soil	0.29	0.040	6	65	3.28	118	0.060	<20	1.68	0.02	0.03	<2	<0.05	<5	<5
REP M47	QC															
M51	Soil	0.21	0.028	6	30	1.59	101	0.061	<20	1.50	0.03	0.03	<2	<0.05	<5	6
REP M51	QC															
Reference Materials																
STD DS9	Standard	0.76	0.083	12	116	0.65	344	0.117	<20	1.02	0.09	0.42	3	0.17	<5	<5
STD DS9	Standard	0.71	0.084	11	115	0.62	324	0.105	<20	0.94	0.08	0.39	3	0.16	<5	7
STD OREAS45CA	Standard	0.45	0.042	18	857	0.16	189	0.142	<20	3.87	0.02	0.08	<2	<0.05	56	22
STD OREAS45CA	Standard	0.44	0.040	15	733	0.13	165	0.126	<20	3.47	0.01	0.07	<2	<0.05	46	19
STD PD1	Standard															
STD PD1	Standard															
STD PD1	Standard															
STD PD1	Standard															
STD OREAS45CA Expected		0.4265	0.0385	15.9	709	0.1358	164	0.128		3.592	0.0075	0.0717		0.021		
STD DS9 Expected		0.7201	0.0819	13.3	121	0.6165	330	0.1108		0.9577	0.0853	0.395	2.89	0.1615	2.5	4.59
STD PD1 Expected																
BLK	Blank	0.05	<0.001	<1	<1	<0.01	<1	<0.001	<20	<0.01	<0.01	<0.01	<2	<0.05	<5	<5
BLK	Blank	<0.01	<0.001	<1	<1	<0.01	<1	<0.001	<20	<0.01	<0.01	<0.01	<2	<0.05	<5	<5
BLK	Blank															
BLK	Blank															
BLK	Blank															
BLK	Blank															



1020 Cordova St. East Vancouver BC V6A 4A3 Canada

Acme Analytical Laboratories (Vancouver) Ltd.

www.acmelab.com

Client: Aurora Geosciences Ltd. (Whitehorse)
34A Laberge Road.
Whitehorse YT Y1A 5Y9 Canada

Submitted By: Mike Power
Receiving Lab: Canada-Whitehorse
Received: June 14, 2012
Report Date: June 25, 2012
Page: 1 of 2

CERTIFICATE OF ANALYSIS

WHI12000092.1

CLIENT JOB INFORMATION

Project: None Given
Shipment ID:
P.O. Number
Number of Samples: 20

SAMPLE PREPARATION AND ANALYTICAL PROCEDURES

Table with 6 columns: Method Code, Number of Samples, Code Description, Test Wgt (g), Report Status, Lab. Contains data for R200-250 and GEO4 methods.

SAMPLE DISPOSAL

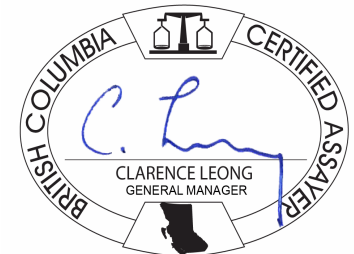
PICKUP-PLP Client to Pickup Pulps
PICKUP-RJT Client to Pickup Rejects

ADDITIONAL COMMENTS

Acme does not accept responsibility for samples left at the laboratory after 90 days without prior written instructions for sample storage or return.

Invoice To: Aurora Geosciences Ltd. (Whitehorse)
34A Laberge Road.
Whitehorse YT Y1A 5Y9
Canada

CC:



This report supersedes all previous preliminary and final reports with this file number dated prior to the date on this certificate. Signature indicates final approval; preliminary reports are unsigned and should be used for reference only. All results are considered the confidential property of the client. Acme assumes the liabilities for actual cost of analysis only. Results apply to samples as submitted. ** asterisk indicates that an analytical result could not be provided due to unusually high levels of interference from other elements.



Acme Analytical Laboratories (Vancouver) Ltd.
 1020 Cordova St. East Vancouver BC V6A 4A3 Canada
 Phone (604) 253-3158 Fax (604) 253-1716

www.acmelab.com

Client: **Aurora Geosciences Ltd. (Whitehorse)**
 34A Laberge Road.
 Whitehorse YT Y1A 5Y9 Canada

Project: None Given
 Report Date: June 25, 2012

Page: 2 of 2

Part: 1 of 2

CERTIFICATE OF ANALYSIS

WHI1200092.1

Method	WGHT	3B	3B	3B	1D	1D	1D	1D	1D	1D	1D	1D	1D	1D	1D	1D	1D	1D	1D	1D	
Analyte	Wgt	Au	Pt	Pd	Mo	Cu	Pb	Zn	Ag	Ni	Co	Mn	Fe	As	Au	Th	Sr	Cd	Sb	Bi	
Unit	kg	ppb	ppb	ppb	ppm	ppm	ppm	ppm	ppm	ppm	ppm	ppm	%	ppm	ppm	ppm	ppm	ppm	ppm	ppm	
MDL	0.01	2	3	2	1	1	3	1	0.3	1	1	2	0.01	2	2	2	1	0.5	3	3	
K948401	Rock	0.32	<2	8	<2	<1	3	<3	20	<0.3	2272	104	754	4.91	<2	<2	<2	1	0.7	<3	<3
K948402	Rock	0.26	<2	14	13	<1	47	<3	13	<0.3	2054	106	710	5.19	<2	<2	<2	1	0.8	<3	<3
K948403	Rock	0.22	<2	4	<2	<1	49	<3	20	<0.3	1937	114	896	5.96	<2	<2	<2	5	0.8	<3	<3
K948404	Rock	0.19	2	4	4	<1	134	<3	15	<0.3	1927	106	794	5.27	<2	<2	<2	2	0.8	<3	<3
K948405	Rock	0.35	2	<3	4	<1	431	<3	13	<0.3	2451	116	678	5.71	<2	<2	<2	1	0.9	<3	<3
K948406	Rock	0.75	<2	7	5	<1	105	<3	18	<0.3	2060	113	853	5.46	<2	<2	<2	1	1.0	<3	<3
K948407	Rock	0.61	<2	4	7	<1	96	<3	12	<0.3	601	49	486	3.26	<2	<2	<2	162	0.8	<3	<3
K948408	Rock	0.32	<2	9	13	<1	21	<3	15	<0.3	2039	110	875	5.39	<2	<2	<2	3	0.9	<3	<3
K948409	Rock	0.31	5	362	362	<1	192	<3	3	<0.3	1475	53	492	3.18	<2	<2	<2	4	<0.5	<3	<3
K948410	Rock	0.47	<2	6	13	<1	233	<3	10	<0.3	2226	113	713	5.36	<2	<2	<2	2	0.7	<3	<3
K948411	Rock	0.35	<2	3	15	<1	9	<3	6	<0.3	1911	90	815	4.93	<2	<2	<2	2	0.8	<3	<3
K948412	Rock	0.48	<2	12	33	<1	21	<3	<1	<0.3	1885	70	655	4.11	<2	<2	<2	<1	<0.5	<3	<3
K948413	Rock	0.23	<2	<3	<2	<1	9	<3	<1	<0.3	1362	36	402	2.48	<2	<2	<2	2	<0.5	<3	<3
K948414	Rock	0.16	<2	180	88	<1	27	<3	12	<0.3	2140	119	1027	6.29	<2	<2	<2	2	0.8	<3	<3
K948415	Rock	0.27	<2	7	3	<1	6	<3	15	<0.3	2162	100	728	4.79	<2	<2	<2	1	0.5	<3	<3
K948416	Rock	0.35	<2	8	4	<1	31	<3	8	<0.3	2359	115	940	5.78	<2	2	<2	1	0.8	<3	<3
K948417	Rock	0.19	6	153	155	<1	152	<3	13	<0.3	2036	113	948	5.89	<2	<2	<2	2	0.8	<3	<3
K948418	Rock	0.26	<2	58	54	<1	12	<3	7	<0.3	2080	101	850	5.34	<2	<2	<2	2	0.6	<3	<3
K948451	Rock	0.93	<2	6	<2	<1	81	<3	17	<0.3	2277	119	905	5.86	<2	<2	<2	<1	0.6	<3	<3
K948452	Rock	0.78	<2	10	8	<1	35	<3	15	<0.3	2127	116	984	6.07	<2	<2	<2	1	<0.5	<3	<3



Acme Analytical Laboratories (Vancouver) Ltd.
 1020 Cordova St. East Vancouver BC V6A 4A3 Canada
 Phone (604) 253-3158 Fax (604) 253-1716

www.acmelab.com

Client: **Aurora Geosciences Ltd. (Whitehorse)**
 34A Laberge Road.
 Whitehorse YT Y1A 5Y9 Canada

Project: None Given
 Report Date: June 25, 2012

Page: 2 of 2

Part: 2 of 2

CERTIFICATE OF ANALYSIS

WHI1200092.1

Method	1D	1D	1D	1D	1D	1D	1D	1D	1D	1D	1D	1D	1D	1D	1D	1D	
Analyte	V	Ca	P	La	Cr	Mg	Ba	Ti	B	Al	Na	K	W	S	Sc	Ga	
Unit	ppm	%	%	ppm	ppm	%	ppm	%	ppm	%	%	%	ppm	%	ppm	ppm	
MDL	1	0.01	0.001	1	1	0.01	1	0.01	20	0.01	0.01	0.01	2	0.05	5	5	
K948401	Rock	10	0.05	0.002	2	319	20.71	7	<0.01	<20	0.14	<0.01	<0.01	<2	<0.05	5	<5
K948402	Rock	3	0.02	0.003	2	36	22.30	2	<0.01	<20	0.79	<0.01	<0.01	<2	<0.05	<5	<5
K948403	Rock	8	0.19	0.003	2	196	22.25	2	<0.01	<20	0.83	0.03	<0.01	<2	<0.05	<5	<5
K948404	Rock	4	0.08	0.001	2	48	22.03	3	<0.01	<20	0.91	<0.01	<0.01	<2	<0.05	<5	<5
K948405	Rock	5	0.04	0.003	2	78	22.10	2	<0.01	<20	0.72	<0.01	<0.01	<2	0.09	<5	<5
K948406	Rock	4	0.05	0.003	2	70	22.95	2	<0.01	<20	1.12	<0.01	<0.01	<2	<0.05	<5	<5
K948407	Rock	6	2.30	0.004	1	71	8.67	25	0.01	<20	4.98	0.56	0.03	<2	<0.05	<5	5
K948408	Rock	4	0.11	0.002	2	85	22.21	7	<0.01	<20	0.82	<0.01	<0.01	<2	<0.05	<5	5
K948409	Rock	11	0.46	0.003	1	395	12.31	3	0.02	<20	0.32	0.02	0.01	<2	<0.05	<5	<5
K948410	Rock	6	0.03	0.002	2	50	21.49	5	<0.01	<20	0.98	0.01	<0.01	<2	<0.05	<5	<5
K948411	Rock	3	0.10	0.001	2	59	20.87	6	<0.01	<20	0.33	0.01	<0.01	<2	<0.05	<5	<5
K948412	Rock	2	0.02	<0.001	2	123	18.53	4	<0.01	<20	0.13	<0.01	<0.01	<2	<0.05	<5	<5
K948413	Rock	3	0.04	0.002	<1	199	12.43	5	<0.01	<20	0.38	0.01	<0.01	<2	<0.05	<5	<5
K948414	Rock	2	0.07	0.003	2	56	23.18	4	<0.01	<20	0.04	0.01	<0.01	<2	<0.05	<5	<5
K948415	Rock	7	0.05	<0.001	2	231	21.89	1	<0.01	<20	0.08	<0.01	<0.01	<2	<0.05	<5	<5
K948416	Rock	1	0.07	0.002	2	32	23.47	4	<0.01	<20	0.03	0.01	<0.01	<2	<0.05	<5	<5
K948417	Rock	4	0.06	0.003	2	75	22.10	3	<0.01	<20	0.24	0.01	<0.01	<2	<0.05	<5	<5
K948418	Rock	2	0.18	0.001	2	66	21.99	<1	<0.01	<20	0.06	<0.01	<0.01	<2	<0.05	<5	<5
K948451	Rock	6	0.05	<0.001	2	168	23.92	1	<0.01	<20	0.19	<0.01	<0.01	<2	<0.05	5	<5
K948452	Rock	5	0.04	0.002	2	86	21.45	4	<0.01	<20	0.14	0.01	<0.01	<2	<0.05	<5	<5



Acme Analytical Laboratories (Vancouver) Ltd.
 1020 Cordova St. East Vancouver BC V6A 4A3 Canada
 Phone (604) 253-3158 Fax (604) 253-1716

www.acmelab.com

Client: **Aurora Geosciences Ltd. (Whitehorse)**
 34A Laberge Road.
 Whitehorse YT Y1A 5Y9 Canada

Project: None Given
 Report Date: June 25, 2012

Page: 1 of 1

Part: 1 of 2

QUALITY CONTROL REPORT

WHI12000092.1

Method	WGHT	3B	3B	3B	1D	1D	1D	1D	1D	1D	1D	1D	1D	1D	1D	1D	1D	1D	1D	1D	
Analyte	Wgt	Au	Pt	Pd	Mo	Cu	Pb	Zn	Ag	Ni	Co	Mn	Fe	As	Au	Th	Sr	Cd	Sb	Bi	
Unit	kg	ppb	ppb	ppb	ppm	ppm	ppm	ppm	ppm	ppm	ppm	ppm	%	ppm	ppm	ppm	ppm	ppm	ppm	ppm	
MDL	0.01	2	3	2	1	1	3	1	0.3	1	1	2	0.01	2	2	2	1	0.5	3	3	
Pulp Duplicates																					
K948416	Rock	0.35	<2	8	4	<1	31	<3	8	<0.3	2359	115	940	5.78	<2	2	<2	1	0.8	<3	<3
REP K948416	QC		<2	10	3																
K948452	Rock	0.78	<2	10	8	<1	35	<3	15	<0.3	2127	116	984	6.07	<2	<2	<2	1	<0.5	<3	<3
REP K948452	QC					<1	35	<3	15	<0.3	2216	120	1023	6.33	<2	<2	<2	1	0.6	<3	<3
Reference Materials																					
STD DS9	Standard				13	103	120	326	1.6	38	5	562	2.32	25	<2	5	69	2.5	5	7	
STD OREAS45CA	Standard				1	494	22	61	<0.3	240	88	904	15.73	<2	<2	4	15	<0.5	<3	<3	
STD PD1	Standard		585	448	502																
STD PD1	Standard		539	488	579																
STD DS9 Expected					12.84	108	126	317	1.83	40.3	7.6	575	2.33	25.5	0.118	6.38	69.6	2.4	4.94	6.32	
STD OREAS45CA Expected					1	494	20	60	0.275	240	92	943	15.69	3.8	0.043	7	15	0.1	0.13	0.19	
STD PD1 Expected			542	456	563																
BLK	Blank		<2	<3	<2																
BLK	Blank		<2	<3	<2																
BLK	Blank				<1	<1	<3	<1	<0.3	<1	<1	<2	<0.01	<2	<2	<2	<1	<0.5	<3	<3	
BLK	Blank		<2	<3	2																
Prep Wash																					
G1-WHI	Prep Blank		<2	<3	<2	<1	4	<3	46	<0.3	2	1	551	1.96	<2	<2	4	63	<0.5	<3	<3
G1-WHI	Prep Blank		<2	<3	<2	<1	2	<3	45	<0.3	2	2	537	1.89	<2	<2	4	60	<0.5	<3	<3



Acme Analytical Laboratories (Vancouver) Ltd.
 1020 Cordova St. East Vancouver BC V6A 4A3 Canada
 Phone (604) 253-3158 Fax (604) 253-1716

www.acmelab.com

Client: **Aurora Geosciences Ltd. (Whitehorse)**
 34A Laberge Road.
 Whitehorse YT Y1A 5Y9 Canada

Project: None Given
 Report Date: June 25, 2012

Page: 1 of 1

Part: 2 of 2

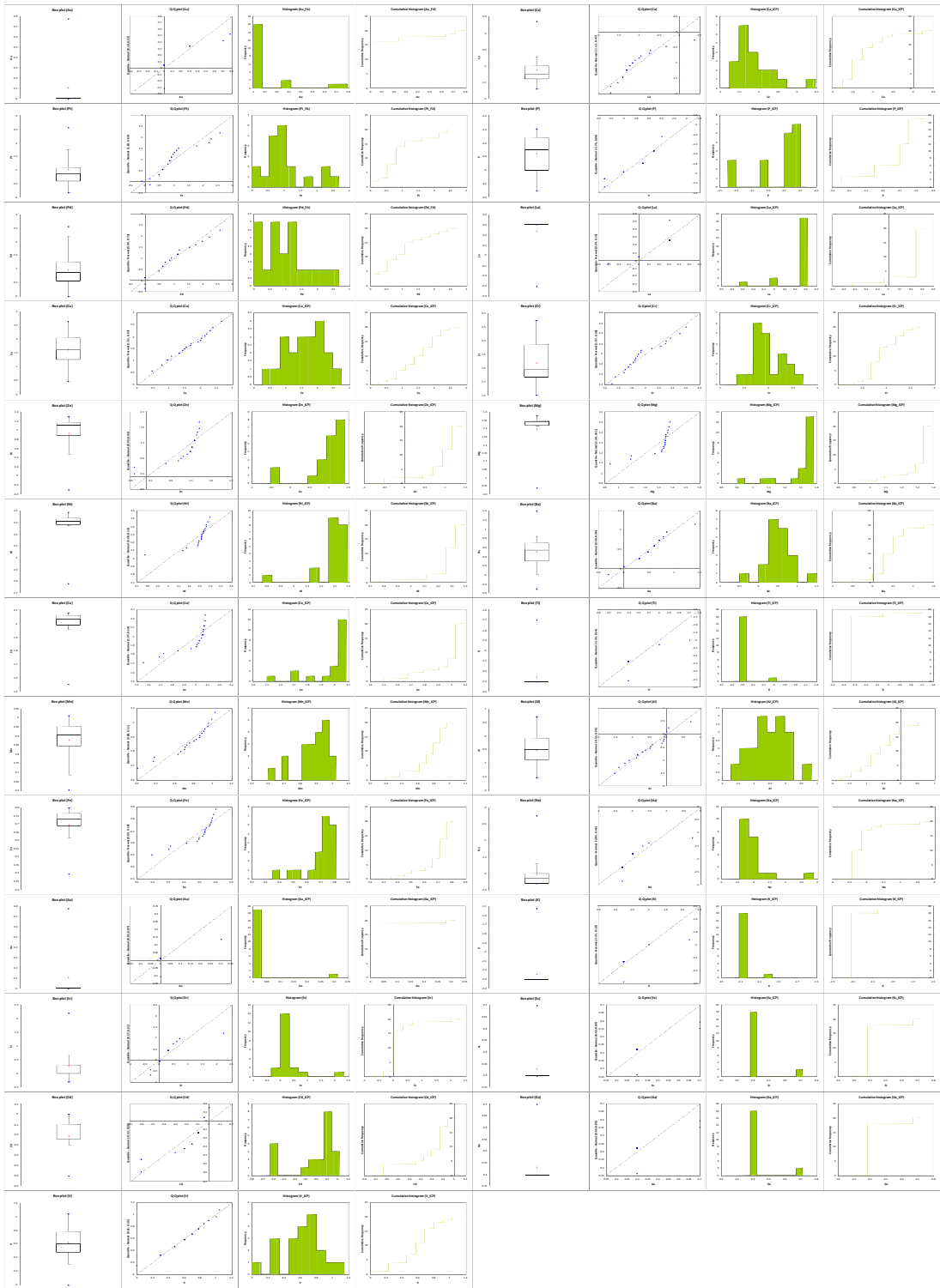
QUALITY CONTROL REPORT

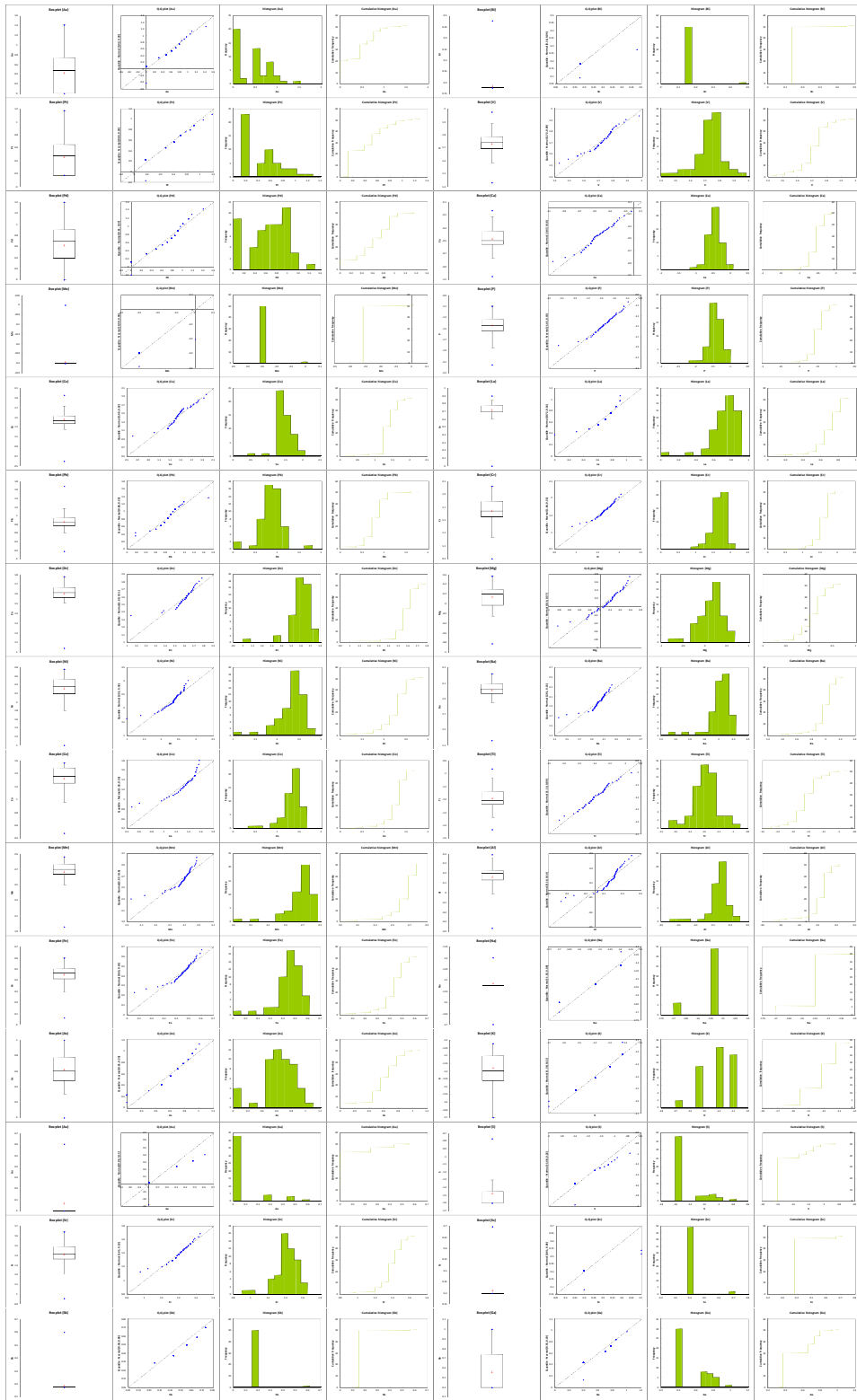
WHI1200092.1

Method		1D	1D	1D	1D	1D	1D	1D	1D	1D	1D	1D	1D	1D	1D	1D
Analyte		V	Ca	P	La	Cr	Mg	Ba	Ti	B	Al	Na	K	W	S	Sc
Unit		ppm	%	%	ppm	ppm	%	ppm	%	ppm	%	%	%	ppm	%	ppm
MDL		1	0.01	0.001	1	1	0.01	1	0.01	20	0.01	0.01	0.01	2	0.05	5
Pulp Duplicates																
K948416	Rock	1	0.07	0.002	2	32	23.47	4	<0.01	<20	0.03	0.01	<0.01	<2	<0.05	<5
REP K948416	QC															
K948452	Rock	5	0.04	0.002	2	86	21.45	4	<0.01	<20	0.14	0.01	<0.01	<2	<0.05	<5
REP K948452	QC	5	0.05	0.002	2	87	21.94	5	<0.01	<20	0.14	0.01	<0.01	<2	<0.05	5
Reference Materials																
STD DS9	Standard	40	0.71	0.083	12	122	0.60	321	0.11	<20	0.93	0.09	0.39	3	0.17	<5
STD OREAS45CA	Standard	207	0.43	0.039	17	742	0.10	163	0.14	<20	3.58	0.01	0.07	<2	<0.05	46
STD PD1	Standard															
STD PD1	Standard															
STD DS9 Expected		40	0.7201	0.0819	13.3	121	0.6165	330	0.1108		0.9577	0.0853	0.395	2.89	0.1615	2.5
STD OREAS45CA Expected		215	0.4265	0.0385	15.9	709	0.1358	164	0.128		3.592	0.0075	0.0717		0.021	
STD PD1 Expected																
BLK	Blank															
BLK	Blank															
BLK	Blank	<1	<0.01	<0.001	<1	<1	<0.01	<1	<0.01	<20	<0.01	<0.01	<0.01	<2	<0.05	<5
BLK	Blank															
Prep Wash																
G1-WHI	Prep Blank	37	0.50	0.079	12	6	0.51	153	0.12	<20	0.87	0.10	0.47	<2	<0.05	<5
G1-WHI	Prep Blank	37	0.47	0.077	10	6	0.50	156	0.12	<20	0.88	0.10	0.47	<2	<0.05	<5

APPENDIX IX

UNIVARIATE STATISTICAL PLOTS





APPENDIX X

PEARSON CORRELATION MATRIX (ROCK GEOCHEMISTRY)

Correlation matrix (Pearson (n-1)):

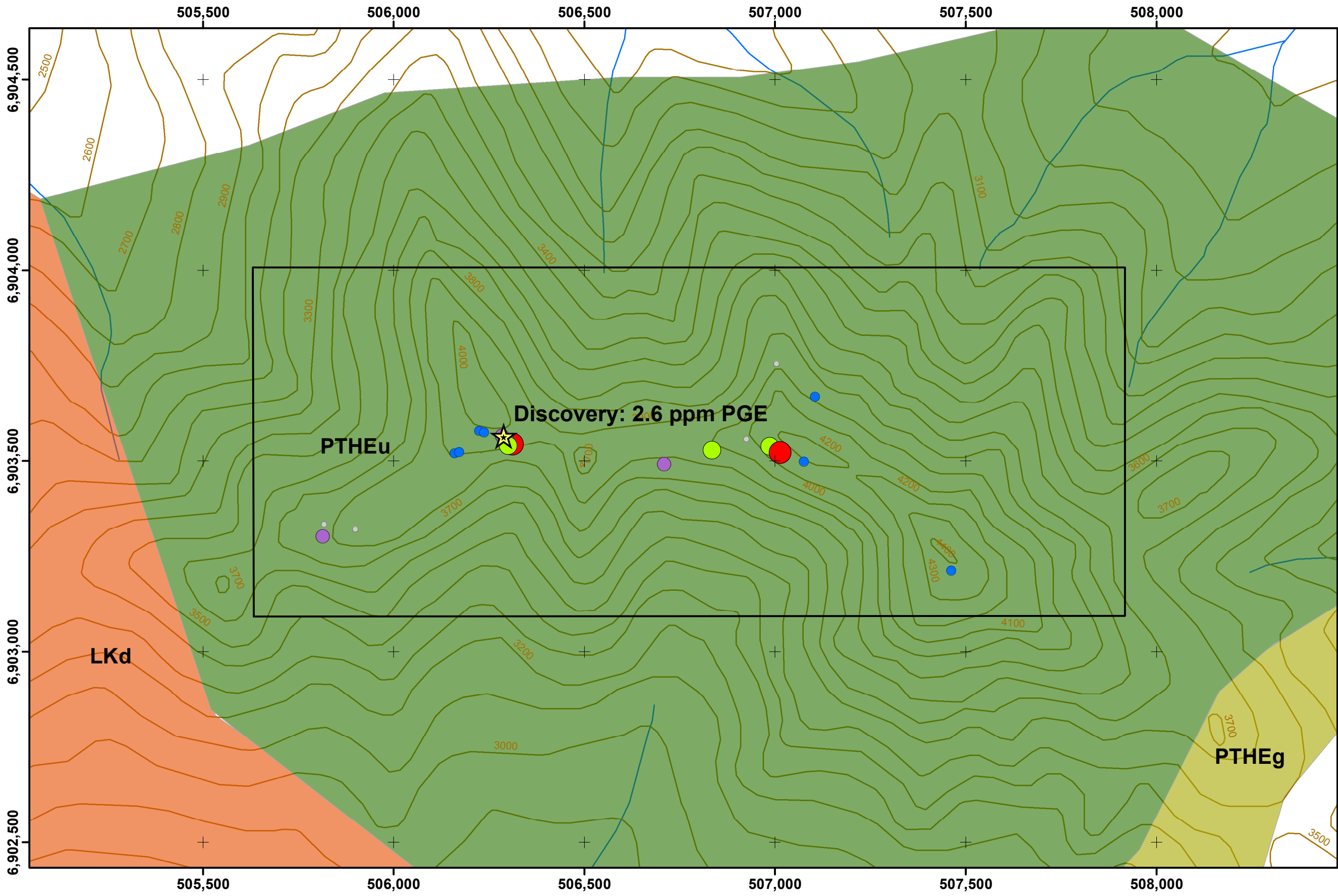
Variables	Au_FA	Pt_FA	Pd_FA	Cu_ICP	Zn_ICP	Ni_ICP	Co_ICP	Mn_ICP	Fe_ICP	Sr_ICP	Cd_ICP	V_ICP	Ca_ICP	P_ICP	La_ICP	Cr_ICP	Mg_ICP	Ba_ICP	Al_ICP	Na_ICP
Au_FA	1	0.732	0.800	0.417	-0.149	-0.109	-0.120	-0.077	-0.092	-0.083	-0.097	0.286	0.004	0.296	-0.179	0.279	-0.180	-0.130	-0.111	-0.080
Pt_FA	0.732	1	0.971	0.177	-0.303	-0.175	-0.225	-0.086	-0.173	-0.088	-0.268	0.314	0.048	0.315	-0.291	0.441	-0.273	-0.126	-0.182	-0.083
Pd_FA	0.800	0.971	1	0.226	-0.367	-0.224	-0.309	-0.193	-0.269	-0.075	-0.327	0.369	0.069	0.270	-0.330	0.486	-0.343	-0.113	-0.153	-0.070
Cu_ICP	0.417	0.177	0.226	1	0.041	0.123	0.124	-0.210	0.087	0.026	0.228	0.231	0.045	0.361	-0.006	-0.068	-0.026	-0.057	0.168	0.026
Zn_ICP	-0.149	-0.303	-0.367	0.041	1	0.350	0.677	0.516	0.616	0.014	0.565	0.347	-0.033	0.188	0.514	-0.036	0.502	-0.039	0.121	0.014
Ni_ICP	-0.109	-0.175	-0.224	0.123	0.350	1	0.839	0.664	0.776	-0.786	0.233	-0.150	-0.823	-0.366	0.805	-0.164	0.914	-0.755	-0.741	-0.788
Co_ICP	-0.120	-0.225	-0.309	0.124	0.677	0.839	1	0.868	0.976	-0.462	0.547	-0.142	-0.513	-0.091	0.891	-0.404	0.937	-0.486	-0.378	-0.463
Mn_ICP	-0.077	-0.086	-0.193	-0.210	0.516	0.664	0.868	1	0.927	-0.400	0.397	-0.301	-0.435	-0.141	0.796	-0.415	0.838	-0.397	-0.417	-0.398
Fe_ICP	-0.092	-0.173	-0.269	0.087	0.616	0.776	0.976	0.927	1	-0.411	0.517	-0.223	-0.459	-0.052	0.874	-0.465	0.905	-0.447	-0.360	-0.410
Sr_ICP	-0.083	-0.088	-0.075	0.026	0.014	-0.786	-0.462	-0.400	-0.411	1	0.134	0.118	0.985	0.446	-0.452	-0.111	-0.664	0.932	0.945	1.000
Cd_ICP	-0.097	-0.268	-0.327	0.228	0.565	0.233	0.547	0.397	0.517	0.134	1	-0.180	0.082	0.363	0.452	-0.516	0.439	0.124	0.293	0.126
V_ICP	0.286	0.314	0.369	0.231	0.347	-0.150	-0.142	-0.301	-0.223	0.118	-0.180	1	0.202	0.195	-0.212	0.805	-0.293	0.105	0.131	0.126
Ca_ICP	0.004	0.048	0.069	0.045	-0.033	-0.823	-0.513	-0.435	-0.459	0.985	0.082	0.202	1	0.466	-0.506	-0.008	-0.718	0.905	0.920	0.985
P_ICP	0.296	0.315	0.270	0.361	0.188	-0.366	-0.091	-0.141	-0.052	0.446	0.363	0.195	0.466	1	-0.316	-0.046	-0.331	0.417	0.521	0.453
La_ICP	-0.179	-0.291	-0.330	-0.006	0.514	0.805	0.891	0.796	0.874	-0.452	0.452	-0.212	-0.506	-0.316	1	-0.407	0.908	-0.457	-0.396	-0.456
Cr_ICP	0.279	0.441	0.486	-0.068	-0.036	-0.164	-0.404	-0.415	-0.465	-0.111	-0.516	0.805	-0.008	-0.046	-0.407	1	-0.384	-0.094	-0.198	-0.103
Mg_ICP	-0.180	-0.273	-0.343	-0.026	0.502	0.914	0.937	0.838	0.905	-0.664	0.439	-0.293	-0.718	-0.331	0.908	-0.384	1	-0.674	-0.590	-0.667
Ba_ICP	-0.130	-0.126	-0.113	-0.057	-0.039	-0.755	-0.486	-0.397	-0.447	0.932	0.124	0.105	0.905	0.417	-0.457	-0.094	-0.674	1	0.878	0.929
Al_ICP	-0.111	-0.182	-0.153	0.168	0.121	-0.741	-0.378	-0.417	-0.360	0.945	0.293	0.131	0.920	0.521	-0.396	-0.198	-0.590	0.878	1	0.942
Na_ICP	-0.080	-0.083	-0.070	0.026	0.014	-0.788	-0.463	-0.398	-0.410	1.000	0.126	0.126	0.985	0.453	-0.456	-0.103	-0.667	0.929	0.942	1

APPENDIX XI

PEARSON CORRELATION MATRIX (SOIL GEOCHEMISTRY)

Correlation matrix (Pearson (n-1)):

Variables	Au_FA	Pt_FA	Pd_FA	Cu_ICP	Pb_ICP	Zn_ICP	Ni_ICP	Co_ICP	Mn_ICP	Fe_ICP	As_ICP	Sr_ICP	V_ICP	Ca_ICP	P_ICP	La_ICP	Cr_ICP	Mg_ICP	Ba_ICP	Ti_ICP	Al_ICP	Na_ICP	K_ICP	S_ICP	Ga_ICP
Au_FA	1	0.373	0.335	0.183	-0.032	0.197	0.271	0.377	0.283	0.335	0.012	-0.067	0.228	-0.073	-0.112	0.375	0.181	0.402	0.079	0.336	0.318	0.067	-0.071	-0.081	-0.089
Pt_FA	0.373	1	0.221	0.012	0.363	-0.220	0.041	-0.019	0.138	-0.156	-0.112	0.171	-0.194	0.177	0.110	0.145	-0.093	-0.017	0.119	-0.121	0.010	0.112	-0.051	0.131	-0.136
Pd_FA	0.335	0.221	1	0.388	-0.122	0.117	0.502	0.373	0.439	0.165	0.002	0.145	-0.136	0.279	0.304	0.374	-0.037	0.421	0.114	-0.031	0.096	0.210	0.035	0.308	-0.107
Cu_ICP	0.183	0.012	0.388	1	0.017	0.400	0.769	0.652	0.550	0.447	0.317	0.506	0.044	0.514	0.559	0.619	0.028	0.616	0.342	0.060	0.294	0.285	0.280	0.443	-0.063
Pb_ICP	-0.032	0.363	-0.122	0.017	1	-0.034	0.044	-0.052	0.007	-0.054	0.146	0.390	-0.040	0.348	0.306	0.086	-0.007	0.019	0.154	-0.176	0.023	-0.016	0.035	0.355	0.019
Zn_ICP	0.197	-0.220	0.117	0.400	-0.034	1	0.398	0.619	0.655	0.772	0.463	0.413	0.651	0.258	0.368	0.586	0.433	0.438	0.596	0.383	0.667	0.148	0.496	0.098	0.179
Ni_ICP	0.271	0.041	0.502	0.769	0.044	0.398	1	0.787	0.694	0.559	0.244	0.545	0.085	0.547	0.585	0.702	0.323	0.906	0.373	0.197	0.379	0.353	0.359	0.414	-0.224
Co_ICP	0.377	-0.019	0.373	0.652	-0.052	0.619	0.787	1	0.861	0.767	0.304	0.408	0.331	0.312	0.398	0.693	0.469	0.837	0.351	0.392	0.557	0.346	0.509	0.121	-0.162
Mn_ICP	0.283	0.138	0.439	0.550	0.007	0.655	0.694	0.861	1	0.688	0.271	0.541	0.333	0.448	0.532	0.701	0.499	0.717	0.528	0.275	0.567	0.342	0.511	0.207	-0.175
Fe_ICP	0.335	-0.156	0.165	0.447	-0.054	0.772	0.559	0.767	0.688	1	0.451	0.247	0.799	0.045	0.112	0.735	0.587	0.604	0.591	0.678	0.869	0.063	0.477	-0.156	0.098
As_ICP	0.012	-0.112	0.002	0.317	0.146	0.463	0.244	0.304	0.271	0.451	1	0.361	0.426	0.256	0.302	0.477	0.234	0.133	0.513	0.252	0.518	0.269	0.395	0.217	0.332
Sr_ICP	-0.067	0.171	0.145	0.506	0.390	0.413	0.545	0.408	0.541	0.247	0.361	1	0.100	0.930	0.876	0.598	0.238	0.440	0.601	0.001	0.291	0.535	0.517	0.711	-0.031
V_ICP	0.228	-0.194	-0.136	0.044	-0.040	0.651	0.085	0.331	0.333	0.799	0.426	0.100	1	-0.145	-0.160	0.472	0.543	0.182	0.570	0.790	0.788	-0.085	0.355	-0.339	0.369
Ca_ICP	-0.073	0.177	0.279	0.514	0.348	0.258	0.547	0.312	0.448	0.045	0.256	0.930	-0.145	1	0.917	0.443	0.095	0.438	0.391	-0.199	0.043	0.497	0.405	0.874	-0.118
P_ICP	-0.112	0.110	0.304	0.559	0.306	0.368	0.585	0.398	0.532	0.112	0.302	0.876	-0.160	0.917	1	0.472	0.087	0.462	0.407	-0.306	0.074	0.518	0.435	0.811	-0.119
La_ICP	0.375	0.145	0.374	0.619	0.086	0.586	0.702	0.693	0.701	0.735	0.477	0.598	0.472	0.443	0.472	1	0.397	0.614	0.703	0.456	0.765	0.385	0.407	0.238	0.000
Cr_ICP	0.181	-0.093	-0.037	0.028	-0.007	0.433	0.323	0.469	0.499	0.587	0.234	0.238	0.543	0.095	0.087	0.397	1	0.428	0.358	0.415	0.538	-0.004	0.477	-0.102	-0.005
Mg_ICP	0.402	-0.017	0.421	0.616	0.019	0.438	0.906	0.837	0.717	0.604	0.133	0.440	0.182	0.438	0.462	0.614	0.428	1	0.230	0.290	0.336	0.311	0.326	0.274	-0.243
Ba_ICP	0.079	0.119	0.114	0.342	0.154	0.596	0.373	0.351	0.528	0.591	0.513	0.601	0.570	0.391	0.407	0.703	0.358	0.230	1	0.292	0.774	0.172	0.354	0.215	0.253
Ti_ICP	0.336	-0.121	-0.031	0.060	-0.176	0.383	0.197	0.392	0.275	0.678	0.252	0.001	0.790	-0.199	-0.306	0.456	0.415	0.290	0.292	1	0.657	0.113	0.333	-0.438	0.134
Al_ICP	0.318	0.010	0.096	0.294	0.023	0.667	0.379	0.557	0.567	0.869	0.518	0.291	0.788	0.043	0.074	0.765	0.538	0.336	0.774	0.657	1	0.051	0.402	-0.132	0.208
Na_ICP	0.067	0.112	0.210	0.285	-0.016	0.148	0.353	0.346	0.342	0.063	0.269	0.535	-0.085	0.497	0.518	0.385	-0.004	0.311	0.172	0.113	0.051	1	0.365	0.277	-0.069
K_ICP	-0.071	-0.051	0.035	0.280	0.035	0.496	0.359	0.509	0.511	0.477	0.395	0.517	0.355	0.405	0.435	0.407	0.477	0.326	0.354	0.333	0.402	0.365	1	0.140	0.095
S_ICP	-0.081	0.131	0.308	0.443	0.355	0.098	0.414	0.121	0.207	-0.156	0.217	0.711	-0.339	0.874	0.811	0.238	-0.102	0.274	0.215	-0.438	-0.132	0.277	0.140	1	-0.135
Ga_ICP	-0.089	-0.136	-0.107	-0.063	0.019	0.179	-0.224	-0.162	-0.175	0.098	0.332	-0.031	0.369	-0.118	-0.119	0.000	-0.005	-0.243	0.253	0.134	0.208	-0.069	0.095	-0.135	1

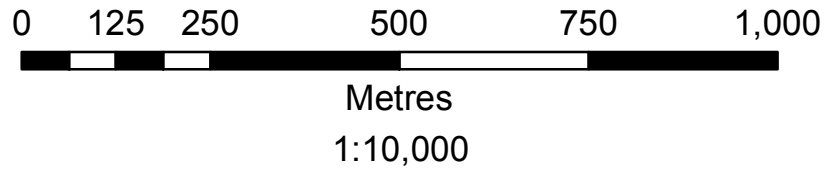


Legend

Pd (ppb)

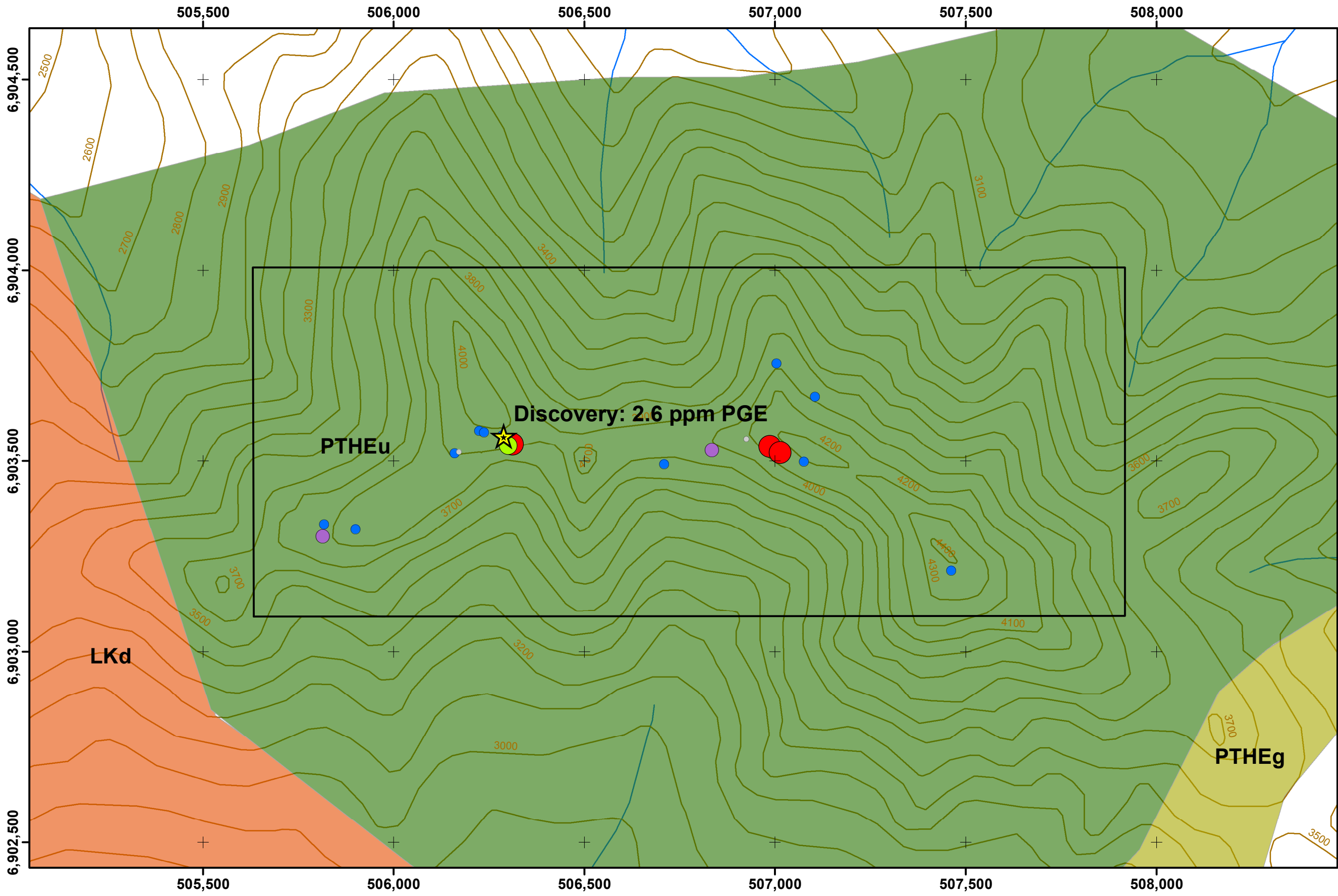
- 1.0 - 2.0
- 2.0 - 10.0
- 10.0 - 20.0
- 20.0 - 100.0
- 100.0 - 362.0

LKd - Diorite
 PTHEg - Gabbro
 PTHEu - Ultramafic



EIKLAND MOUNTAIN
Pd - ROCKS

NTS: 115K/07 District: Whitehorse
Datum: NAD83 Projection: UTM Zone 7N
Contour Interval: 100 Feet

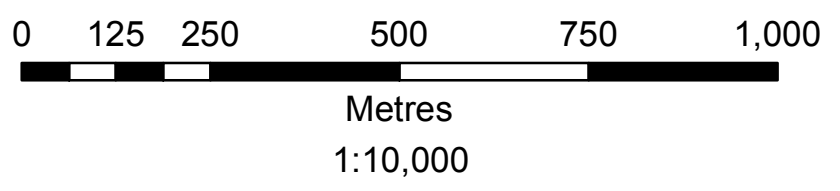


Legend

Pt (ppb)

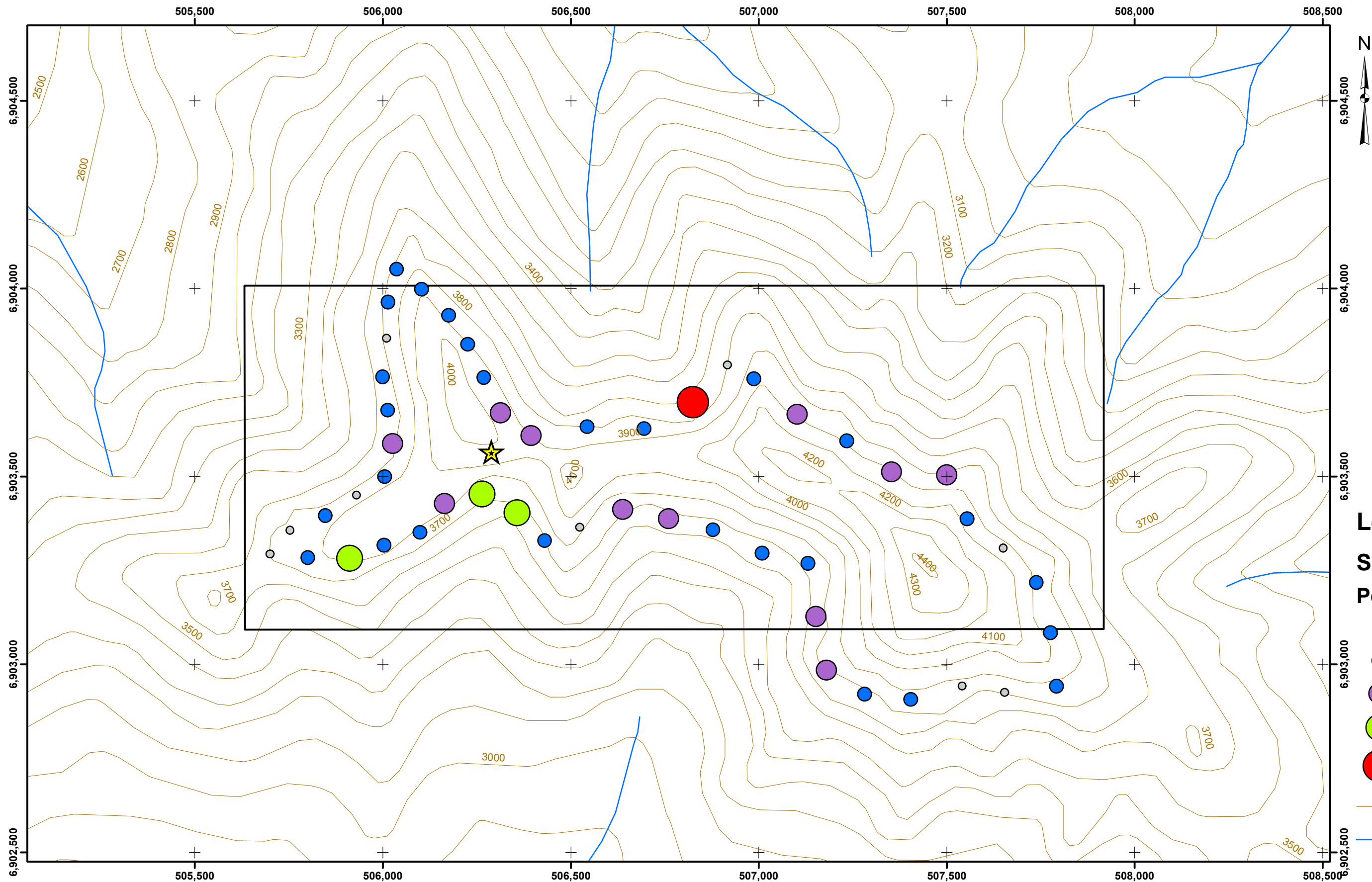
- 1.5 - 2.0
- 2.0 - 10.0
- 10.0 - 20.0
- 20.0 - 100.0
- 100.0 - 362.0

LKd - Diorite
 PTHEg - Gabbro
 PTHEu - Ultramafic



**EIKLAND MOUNTAIN
Pt - ROCKS**

NTS: 115K/07 District: Whitehorse
 Datum: NAD83 Projection: UTM Zone 7N
 Contour Interval: 100 Feet

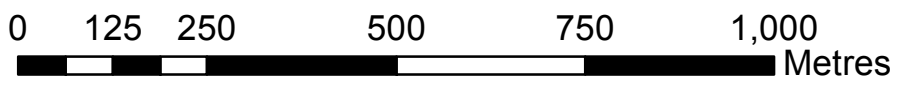


Legend

Soil Sample Pd (ppb)

- 1.0
- 1.0 - 7.0
- 7.0 - 12.0
- 12.0 - 19.0
- 19.0 - 25.0

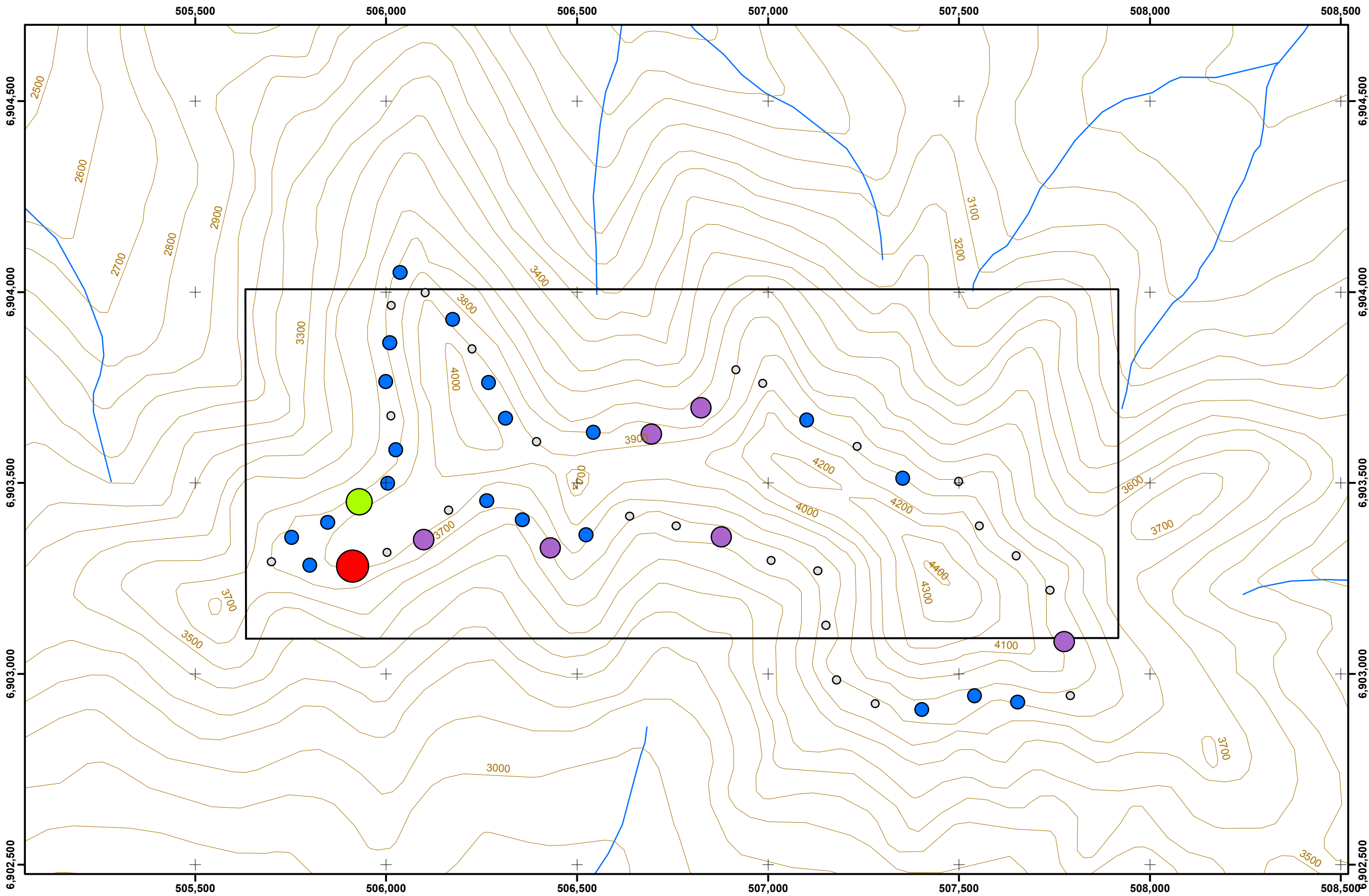
- Topographic Contour
- Stream



1:10,000

**EIKLAND MOUNTAIN
Pd - SOILS**

NTS: 115K/07 District: Whitehorse
 Datum: NAD83 Projection: UTM Zone 7N
 Contour Interval: 100 Feet

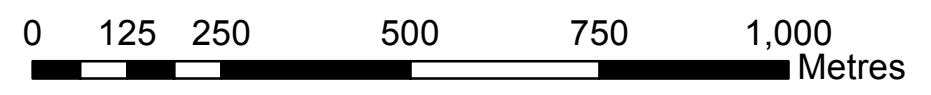


Legend

**Soil Sample
Pt (ppb)**

- 1.5 - 1.6
- 1.6 - 5.0
- 5.0 - 10.0
- 10.0 - 12.0
- 12.0 - 15.0

- Topographic Contour
- Stream



1:10,000

**EIKLAND MOUNTAIN
Pt - SOILS**

NTS: 115K/07 District: Whitehorse
 Datum: NAD83 Projection: UTM Zone 7N
 Contour Interval: 100 Feet