

# **2011 Soil Sampling Program Results on the WSW PROPERTY**

(WSW 1 to 204)

NTS: 1150/13

**Latitude:** 63° 94' N  
**Easting:** 557800

**Longitude:** 139° 82' W  
**Northing:** 7090600

**Dawson Mining District, Yukon**

Work performed in August and October, 2011

Owner

&

Operator

**Goldplex Resources Inc.**

902 – 555 Burrard Street

Vancouver, B.C., V7X 1M8

by

**Chris H. Ash, P.Geol.**

**CASH** Geological Consulting

October 2012

## Table of Contents

	Page
Table of Contents .....	2
List of Figures .....	3
List of Photos.....	3
List of Tables.....	3
Introduction .....	4
Location and Access.....	6
Legal Description .....	8
Physiography .....	11
2011 Work.....	11
Soil Sampling .....	11
WSW 2011 Exploration Program Results.....	14
WSW Property Geology.....	16
Mineralization .....	18
Summary & Recommendations.....	18
WSW River Claim Block.....	18
Geophysical – Ground Magnetic Surveys.....	18
WSW Ridge Claim Block .....	19
WSW Potential New Staking .....	19
References .....	21
APPENDIX I List of WSW Quartz Claims .....	22
APPENDIX II Statement of Expenditures .....	27
APPENDIX III Statement of Qualifications .....	28
APPENDIX IV WSW Property 2011 Soil Assay Data.....	29

## List of Figures

<b>Figure 1.</b> Location of the WSW property within east central Yukon Territory .....	6
<b>Figure 2.</b> Location of the WSW property relative to Dawson City .....	7
<b>Figure 3</b> WSW property claim block distribution map .....	7
<b>Figure 3a</b> WSW Ridge property claim number map .....	7
<b>Figure 3b</b> WSW River property claim number map .....	7
<b>Figure 4a.</b> WSW River claim block soil sample assay data .....	12
<b>Figure 4b-1.</b> WSW River claim block detailed soil grid sample location map .....	13
<b>Figure 4b-2.</b> WSW River claim block detailed soil grid gold anomaly map .....	13
<b>Figure 4c.</b> WSW River Property soil sample gold anomaly map .....	15
<b>Figure 5.</b> Geology of the WSW property area (after Gordey and Ryan, 2005).....	17
<b>Figure 6.</b> WSW Ridge claim block areas remaining to be explored .....	20

## List of Photos

<b>Photo 1.</b> View to the west overlooking the WSW property area .....	7
--	---

## List of Tables

<b>Table 1.</b> List of WSW Quartz Claims (Appendix I) .....	8
<b>Table 2.</b> WSW 2011 Exploration Expenditures (Appendix II).....	27
<b>Table 3.</b> WSW 2011 Soil Sample Assay Data (Appendix IV) .....	29

## Introduction

This report presents the results of the 2011 field exploration program conducted on the WSW property in west-central Yukon Territory (Figure 1). The property is located on the west side of the Yukon River, to the immediate west of the historic Klondike Goldfields, 23 kilometres WSW from Dawson City (Figure 2).

The WSW property comprise two adjoining blocks of overlapping claims that for descriptive purposes have been unofficially designated as the WSW River and the WSW Ridge claim blocks (Figure 3). Both these claim blocks were staked above previously documented belts of ultramafic rocks with the anticipated potential for spatially associated areas of the often previously unrecognized and commonly associated mafic igneous rocks (e.g. diabase and gabbro), which are the most prospective host rocks for gold-quartz veins, may also be locally present.

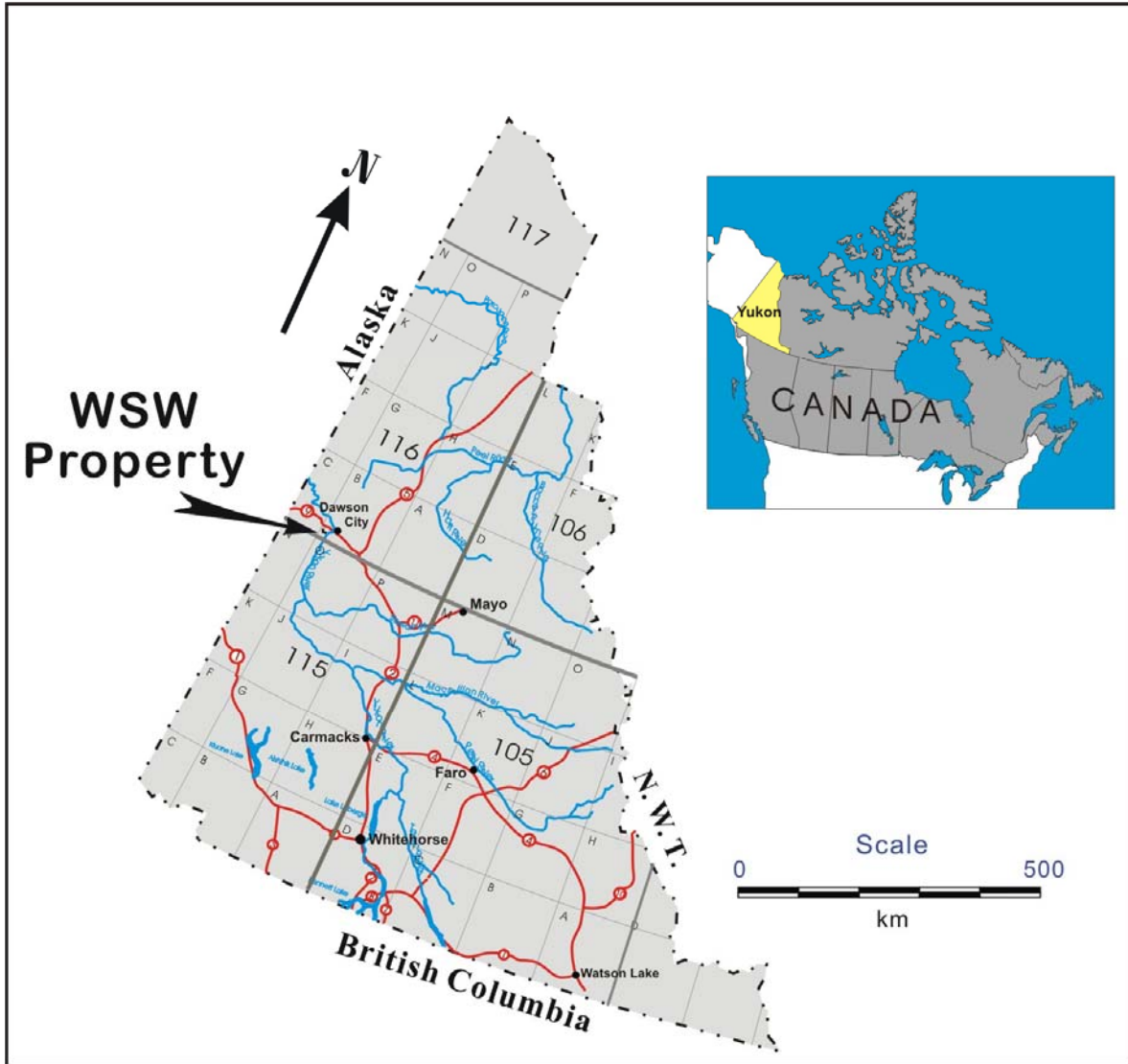
WSW claims 1 to 180 were initially staked in April of 2011 and comprised two separate blocks of claims. Following positive results from a ridge and spur soil sampling program conducted in August and September of 2011, a detailed soil grid was sampled to test the extent and orientation of the potential gold mineralized zone in late September of the same year. Based on positive results an additional 24 WSW claims were staked in early October to both extend the area of coverage and also join the two claim blocks for Grouping.

During the program a total of 251 ridge and spur soil samples were collected and covered the bulk of the ridges and spurs available for sampling. From the WSW Ridge claim block, 127 soil samples were collected. The most northern and southern portions of this claim block were not evaluated by this method and remains to be explored. On the WSW River claim block 123 ridge and spur soil samples were collected. A detailed soil grid was established and 60 samples collected to test three contiguous gold anomalous samples occurring roughly midway along the most easterly regional soil line sampled. This was the only line in the River claim block for which assay data was available prior to the end of the field program.

On the WSW River claim block the ridge and spur sampling program was successful in identifying a number of different gold anomalies. Several of these are defined by individual samples but 4 anomalous areas are defined by contiguous to semi-contiguous clusters with 2 to 3 and sometimes more anomalous samples ( $>5\text{ppb Au}$ ). Combined all these anomalies appear to be part of a broader NW-trending zone with discrete intervals of anomalous gold. The continuity of such zones or the bedrock source responsible for generating the gold anomalies that define them are currently unknown and remain to be established. Assay results from the detailed soil grid are exceptional, with 40 of the 60 samples collected being anomalous in gold. This gold anomalous zone remains open to the west and the potential for its continuity and connectivity with other anomalies occurring in the ridge and spur samples to the west is encouraging.

Results for the WSW Ridge claim block were much less positive with only two anomalous gold samples present. Each of these are individual and isolated samples, however the location of both occurring at the edge of the area tested, combined with incomplete coverage of the block by the more regional ridge and spur soil sampling suggest untested potential. Evaluation of this potential is considered a much lower priority for advancing the property compared to the WSW River claim block.

A total of \$30,750 was expended on the WSW property during the 2011 field exploration program. A proposed 2012 Phase I exploration program includes both detailed regional infill soil sampling and a ground magnetic geophysical survey. Results of this work would be evaluated to orient a targeted trenching, rock sampling and geological mapping program to constrain the source of the currently established gold in soil anomalies. Ultimately these results would be evaluated to plan a potential drill program. A total of \$60,000.00 is suggested as the necessary funding to complete the 2012 exploration field program.



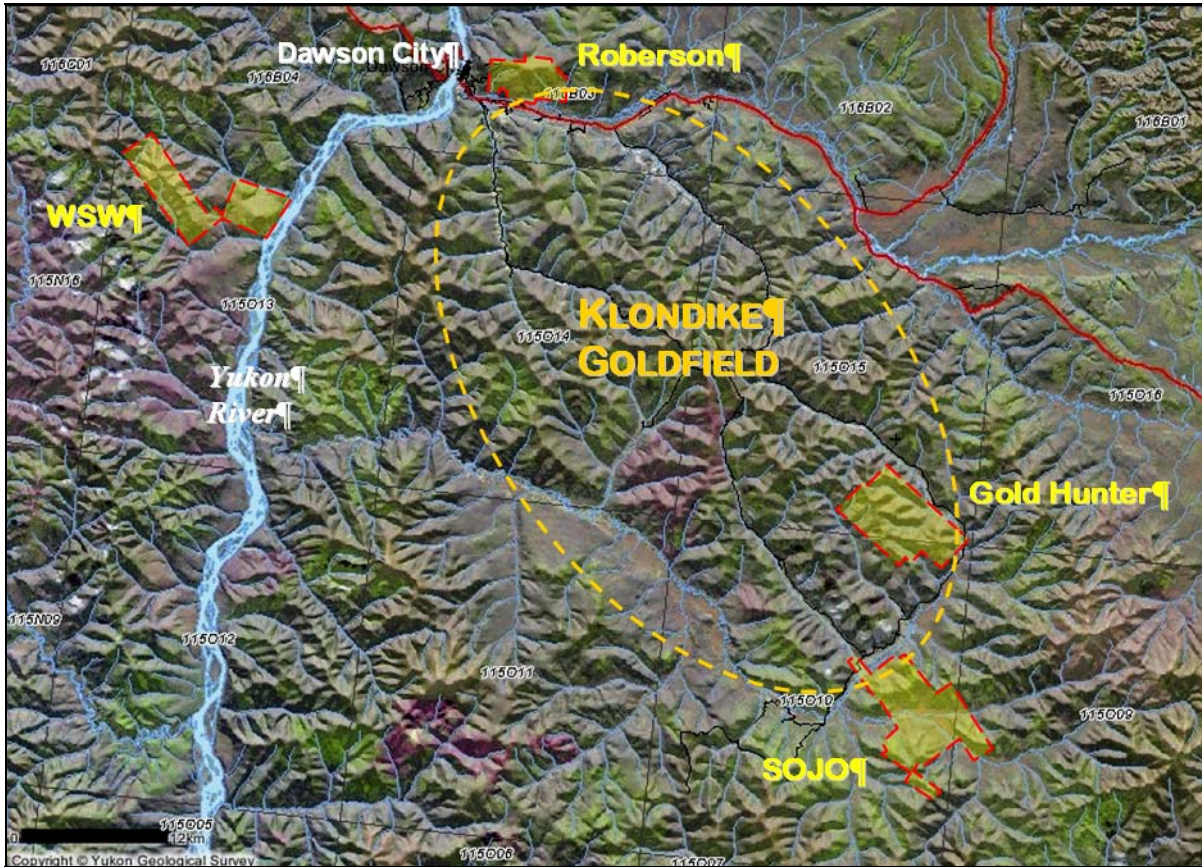
**Figure 1.** Location of the WSW property within the west-central portion of the Yukon Territory.

## Location and Access

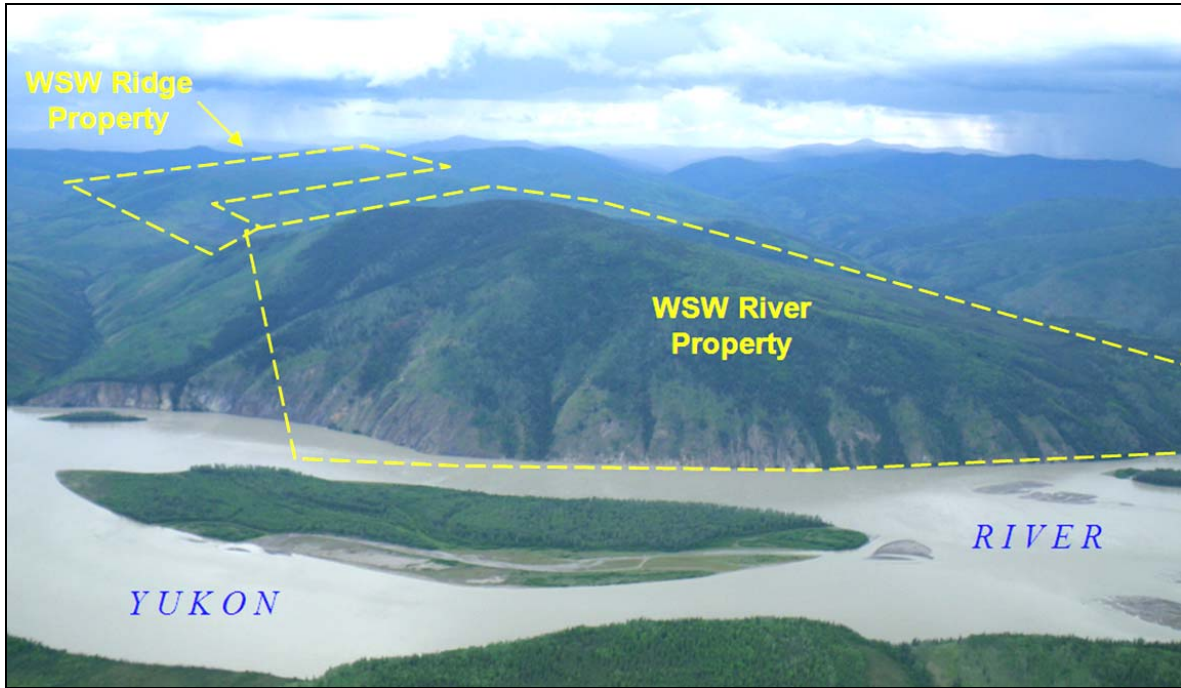
The WSW property is located at its center ( $63^{\circ} 94'N$  Latitude,  $139^{\circ} 82'W$  Longitude; UTM 7557800E, 7090600N NAD83 Zone 7), 23 kms west south west (WSW) from Dawson City on the western banks of the Yukon River. It is situated on NTS map sheet 115O\13, midway between Bell Creek to the north and Gerner Creek to the south.

The property is quickly and efficiently accessed using helicopter transport from Dawson City, which was the means of access used to conduct the Goldplex 2011 exploration field program.

Should heavy equipment be required for advanced exploration the use of a barge to transport equipment, fuel, etc. south along the Yukon River from Dawson would be considered. Two trails, one along the north bank of Bell Creek is roughly 22 kms south from Dawson City and a second trail along Garner Creek which accesses in part the WSW Ridge portion of the property is roughly 26 kms south from Dawson City.



**Figure 2.** Location of the WSW Property relative to Dawson City, the Klondike Goldfields and the remainder of Klondike area Goldplex Mineral Properties.



**Photo 1.** View to the west overlooking the Yukon River showing the approximate location of the WSW property area.

## Legal Description

The WSW Claim group consists of 204 unsurveyed contiguous claims (Figure 3, 3a & 3b) Appendix I - Table 1) which have all been 'Grouped'. These claims are located at their center 23 kms west south west (WSW) from Dawson City and cover an area of approximately 42.5 square kms within the Dawson Mining District.

The WSW Property is owned and operated by Goldplex Resources Inc. which is located at 902 – 555 Burrard Street, Vancouver, B.C., V7X 1M8.

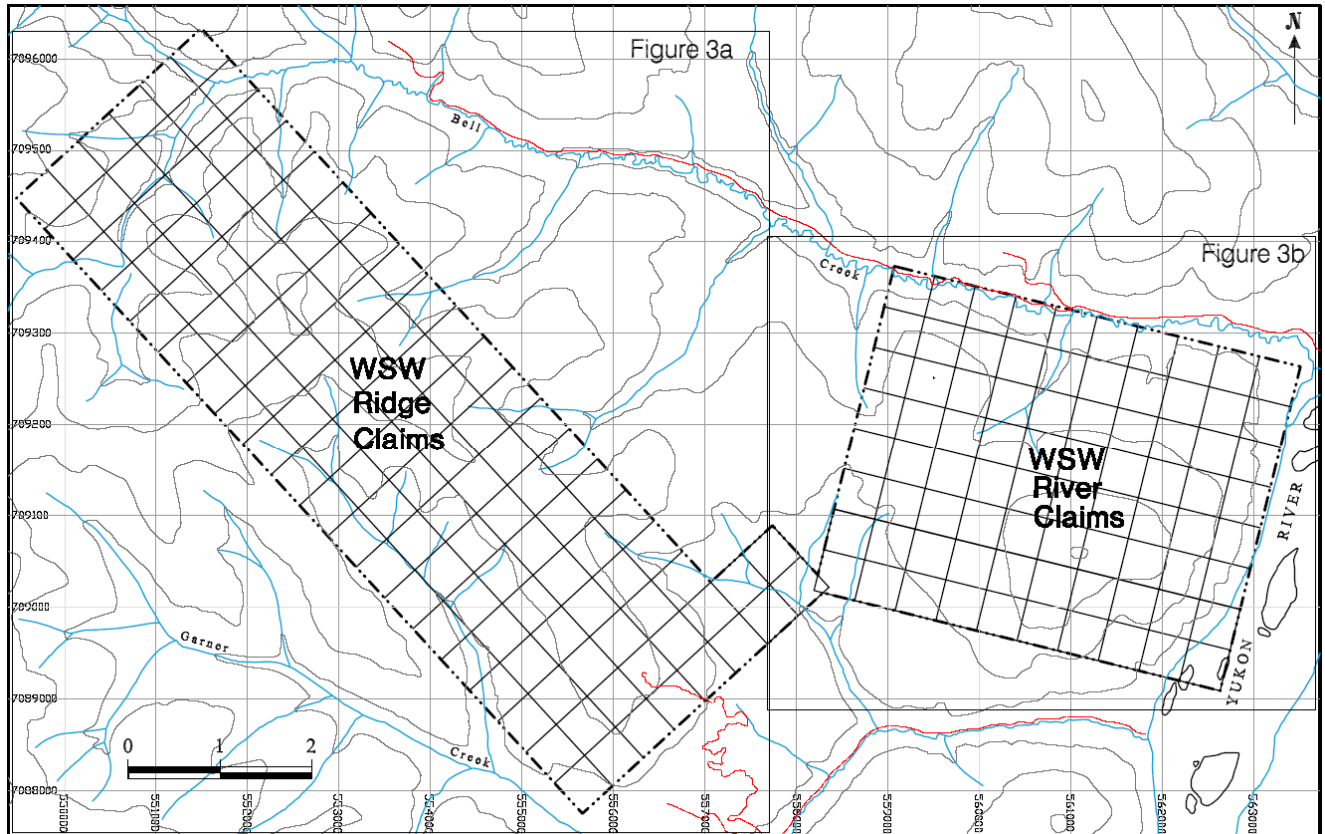


Figure 3. Distribution of the WSW Ridge and WSW River claim blocks illustrating location of more detailed Figures 3a and 3b used to show details (Grant & Claim Number) for the individual claim blocks.

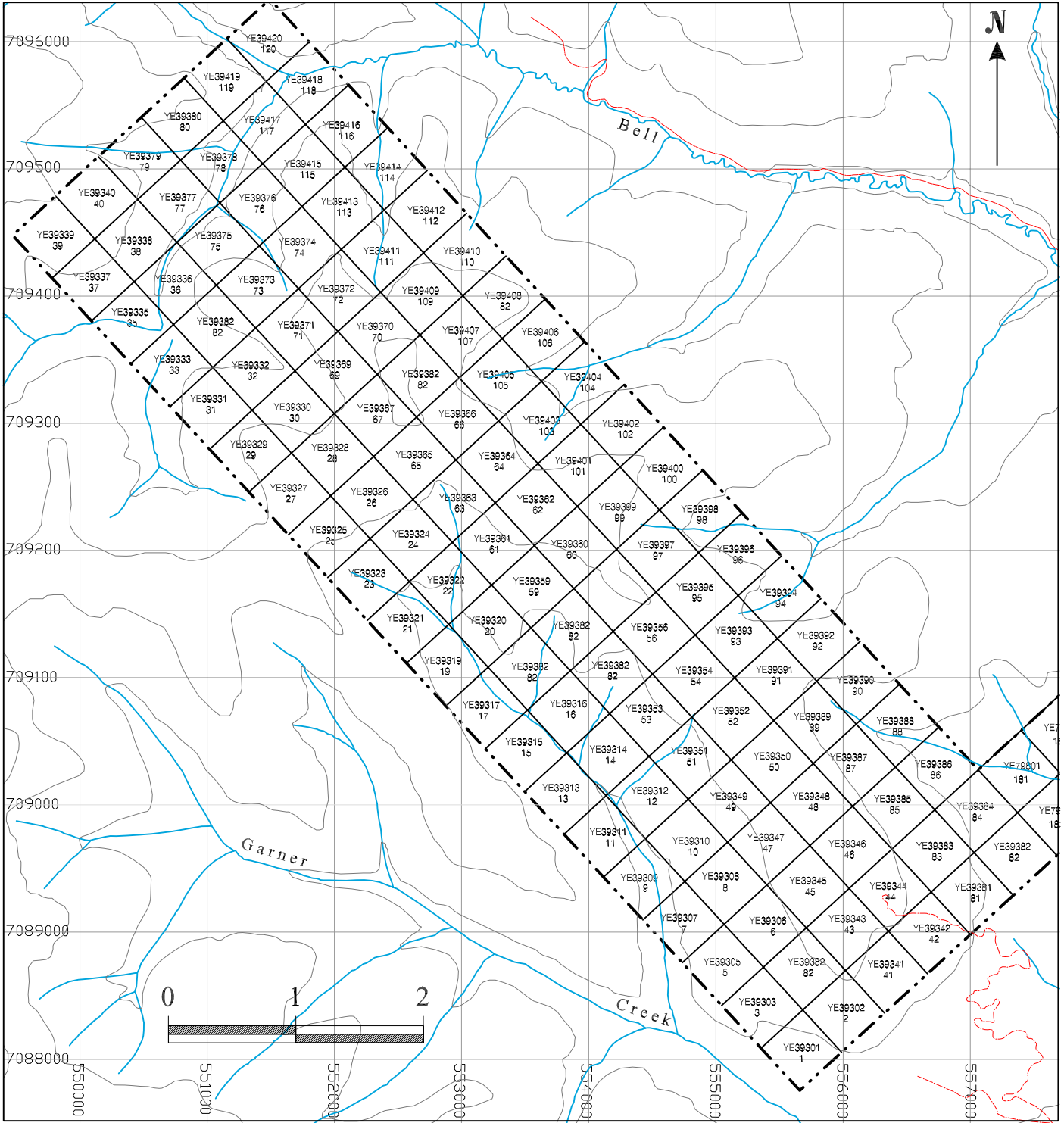


Figure 3a. Distribution of the WSW Ridge claim block showing claim details (Grant & Claim Number).

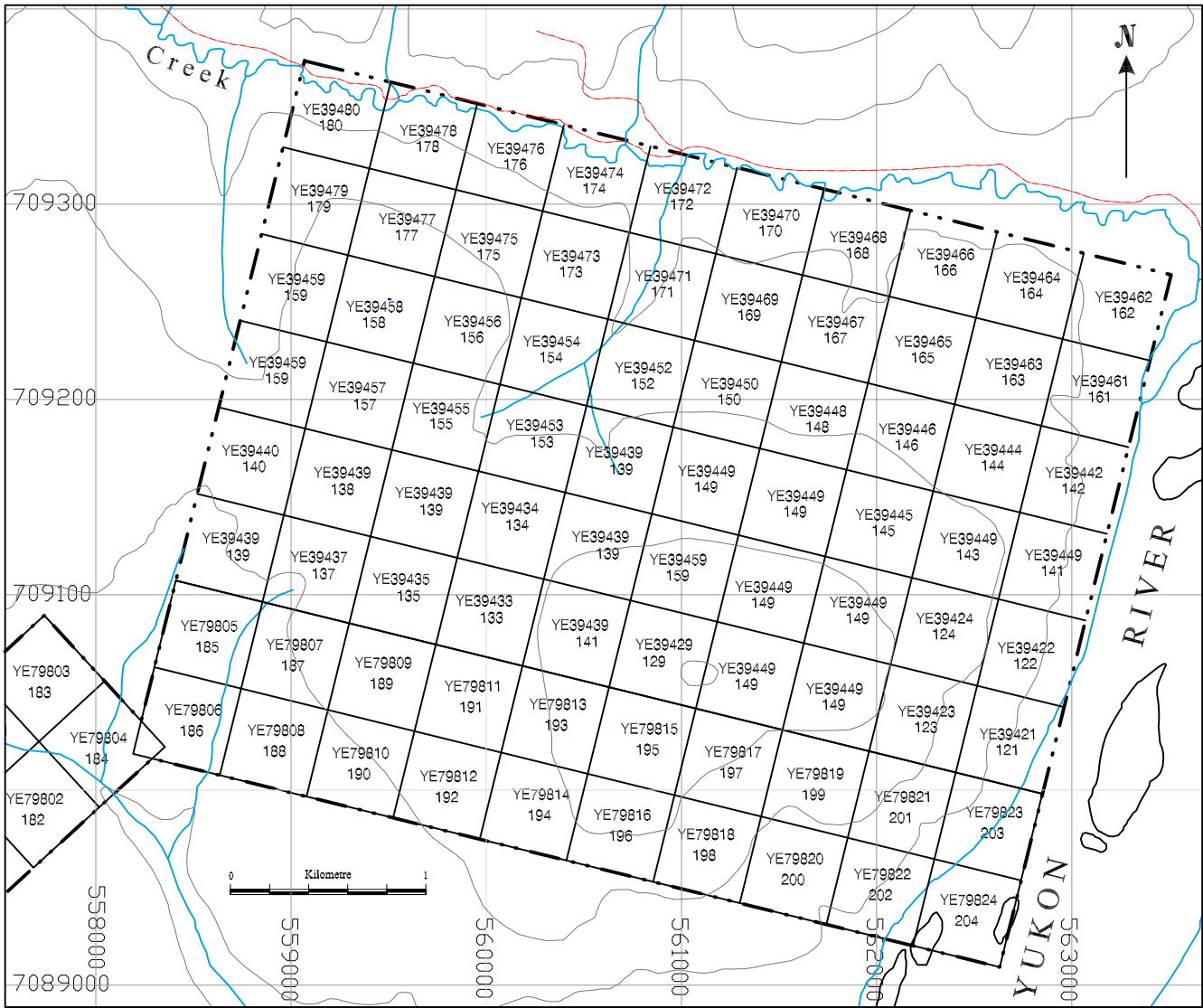


Figure 3b. Distribution of the WSW River claim block showing claim details (Grant & Claim Number).

## Physiography

The WSW property overlies two areas of prominent high ground west of the Yukon River (Photo 1). The River portion of the property comprises a square shaped block of claims centered on a prominent hill at just over 3000 feet elevation. The Ridge portion of the property forms a NW trending rectangular shaped block of claims that overlie a similarly oriented ridge or spur that at its highest is in excess of 3700 feet elevation.

The area is unglaciated and as a result bedrock exposures are in large part restricted to exposures of prominent knolls of bedrock mostly at the higher elevations of the Ridge claim block. A cat trail occurs along the spine of the WSW Ridge claim blocks and aided in accessing property and also provided a semi-continuous line of bedrock to constrain property geology and identify potential appropriate styles of hydrothermal alteration. The property is elsewhere extensively vegetated with north-facing slopes typified by a mix of scraggy black spruce, willows and alder, while white birch, poplar and spruce dominate the south facing slopes. Relatively steep bedrock exposures along the Yukon River provides a near continuous exposure of bedrock that should provide insight into the setting and controls for the gold mineralization identified in the high ground above this exposed cliff face.

## 2011 Work

Work on the WSW property during the 2011 field exploration program focused predominantly on soil sampling with prospecting and geological mapping completed over portions of the property.

In late August and early September an initial Phase I ridge and spur soil sampling program was completed with 250 soil samples collected by a 2 to 3 person sampling crew over a 4 day period using daily helicopter set outs from Dawson City. Based on positive results identified in the portion of the analytical data received prior to the end of the field program (roughly half of those samples submitted), a detailed soil grid was sampled and an addition 60 samples collected by a two person crew, over a one day period in early October.

The author of the report conducted two separate days of prospecting on the WSW Ridge claim block. Two separate attempts in late August to reach the WSW River claim block to conduct prospecting and geological mapping in conjunction with soil sampling were curtailed by persistent river fog which hampered access to the this Yukon River side mineral property. This aspect of weather related inability to access the property added some additional costs and delays for crews waiting on standby to complete soil sampling which had to be completed on a subsequent field day.

## Soil Sampling

Soil samples were collected by local individuals each with significant experience and familiar with soil sampling protocols in the Klondike region. All samples were recovered using a soil auger and the material collected was placed into paper/kraft, soil sample bags and labeled at the site of collection, with each site being flagged and located using a hand held GPS (+/- 3m).

For the WSW River claim block a total of 123 ridge and spur soil samples were collected. This claim block was covered by 3 broadly spaced soil lines starting from a south central point of high ground (Figure 4a), with each line sampled at 100 meter spacing's.



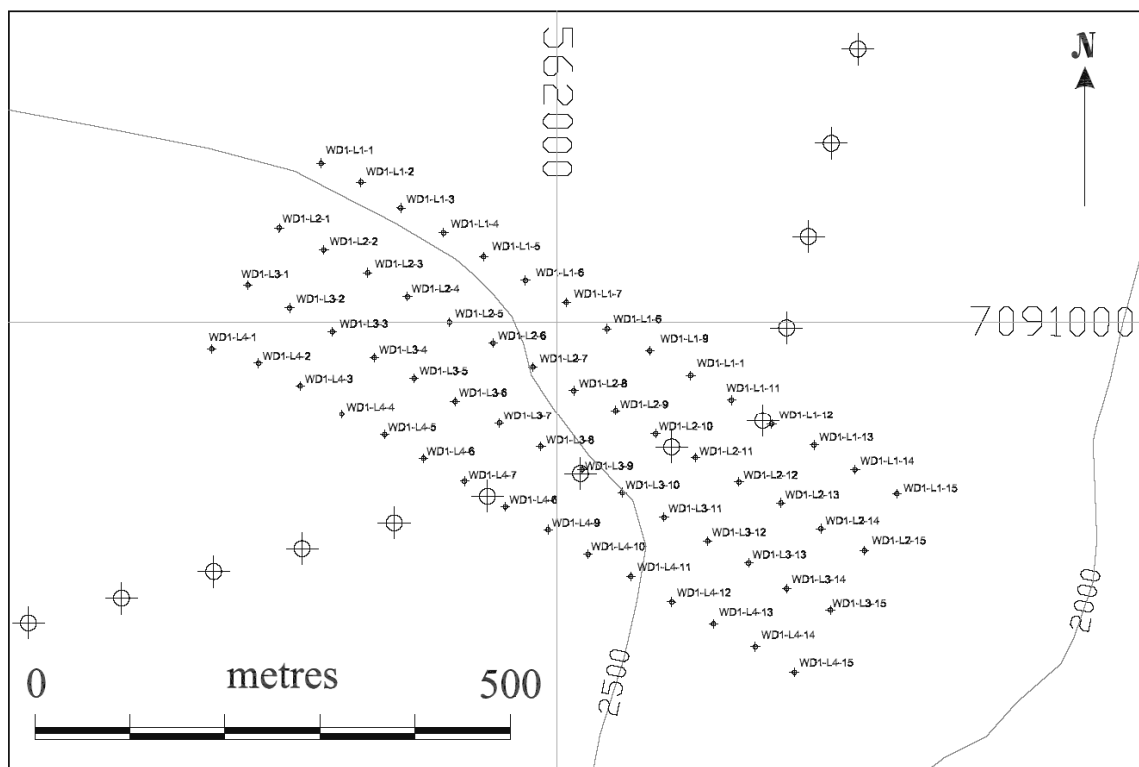


Figure 4b-1. WSW River detailed soil grid soil sample location map.

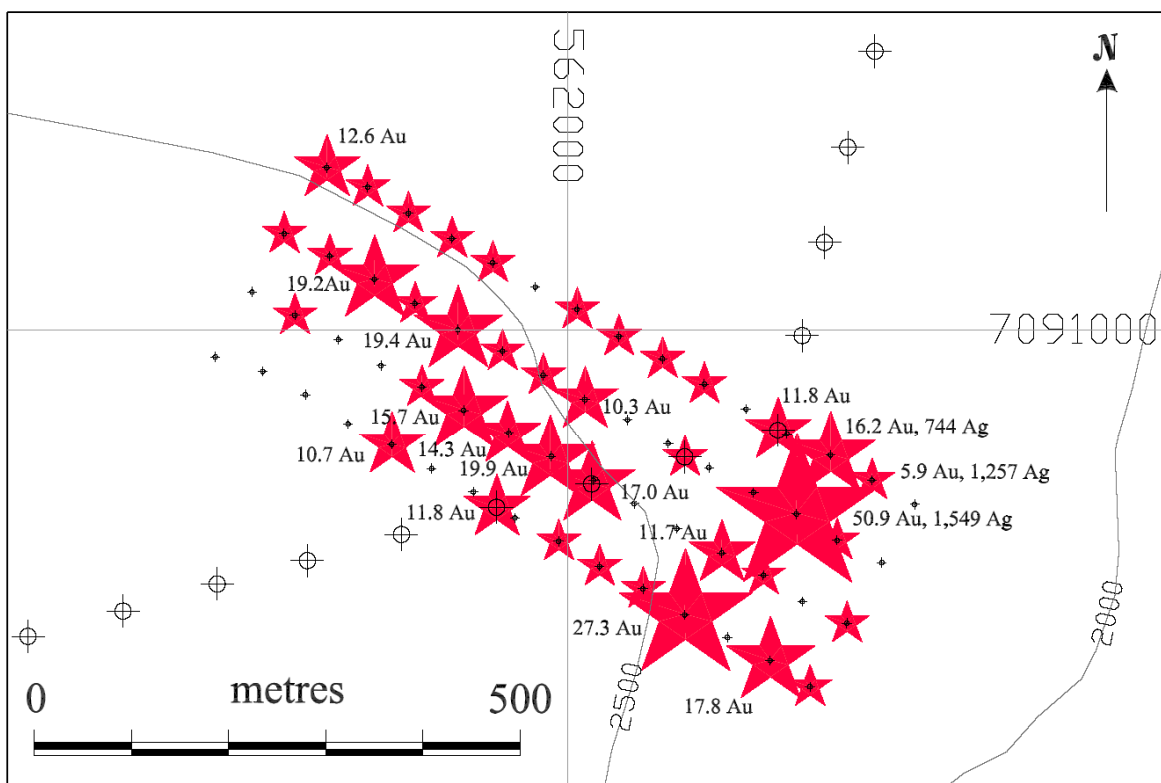


Figure 4b-2. WSW River detailed soil grid highlighting samples with gold values greater than 5ppb. For gold abundances greater than 10ppb individual values are indicated.

For the WSW Ridge claim block a total of 127 ridge and spur soil samples were collected. Sample collection was covered by a central soil sample line running along the NW-trending, main central ridge with a number of shorter ridge lines extending from it along ridges to the NE and SW (Figure 4c).

The 310 soil samples collected were all sorted, dried and packaged at a secure facility being rented by Goldplex at Callison Subdivision\Industrial Park near Dawson City. All samples were delivered to the local Dawson City, ACME Labs sample preparation facility (also in Callison) by the author of the report.

Elemental analysis of all soil samples was completed at the ACME Analytical Laboratories Ltd., Vancouver, BC using the 'Ultratrace Aqua Regia Digestion' analytical package. This process measures elemental abundances using ICP-MS (Induced Coupled Plasma-Mass Spectrometry) following an Aqua Regia digestion of the powdered sample. For the soil samples submitted in this program, a larger 15g sample size was requested for analysis to help provide a more representative analysis of elements subject to the nugget effect, which is an attribute of gold in the mineralizing system under investigation.

A list of the analytical results for the individual soil samples is provided in table format with the UTM NAD83 location coordinates included (Table 2 - Appendix IV)

### ***WSW 2011 Exploration Results***

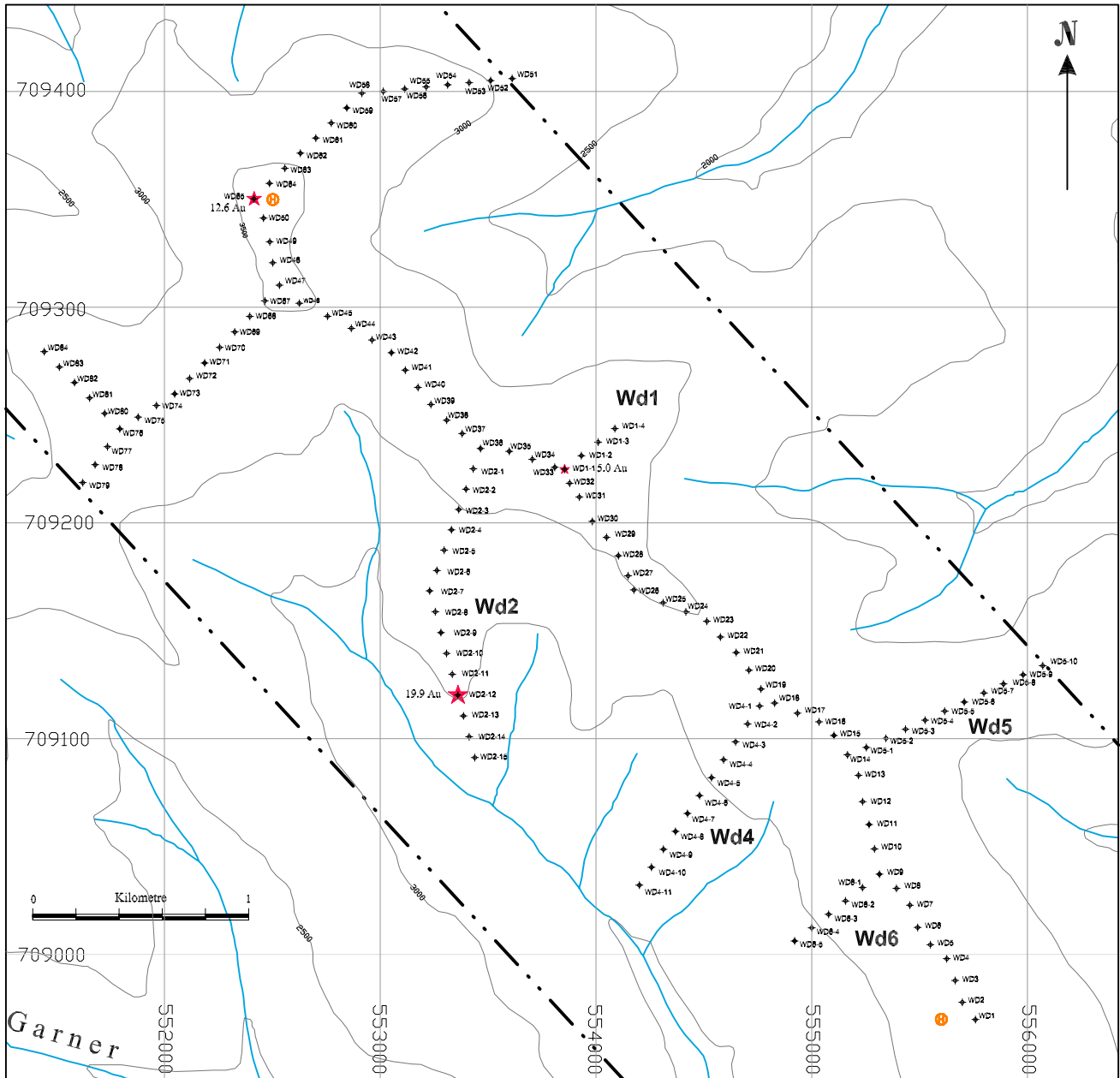
Soil sample assay results from the ridge and spur sampling program returned gold anomalies on both the Ridge and River claim blocks. Results for the on the WSW River claim block were by far the most positive. Twenty-two of the initial 123 ridge and spur samples collected from the River claim block are anomalous (>5ppb Au) in gold. These samples define at least three and possibly four clusters of gold anomalous soil samples as well several isolated gold anomalies defined by individual samples (Figure 4a).

The most westerly soil line on the WSW property returned three contiguous gold anomalous samples in the range of 6 to 17 ppb Au (WV line, Figure 4a). To test the potential continuity \ lateral extent and orientation of a potential gold anomalous zone, a detailed soil grid (WD1; Figure 4b) with 4 separate 700m lines (15 samples per line @ 50m spacing) was established and a total of 60 samples collected.

Assay results from the detailed soil grid are in relative terms exceptional, with 40 of the 60 samples collected being anomalous (>5ppb Au) in gold. Due to the abundance and density of gold anomalous (>5ppb) samples, two separate maps are used for this detailed grid (Figures 4b-1 and 4b-2) to provide clarity in highlighting both the sample numbers (Figures 4b-1) and the gold anomalous results (Figures 4b-2). This gold anomalous zone remains open to the west and the potential for its continuity in that direction, as well as possible connectivity with other anomalies occurring in the ridge and spur sample lines to the west, is encouraging.

Assay data for the two more westerly lines on the River claim block were not returned until December of 2011 and as such, no subsequent, detailed following up on either of these sample lines (i.e., WA, WB and WC; Figure 4a) was possible during the 2011 field program.

For the WSW Ridge claim block (Figure 4c), only two of the 127 samples collected returned anomalous (> 5ppb Au) gold values, with a third sample just at the threshold abundance of 5.00 ppb Au. Both of the anomalous soil samples (WD65 at 12.6 ppb Au and WD2-6 at 19.9 ppb Au) are from isolated, site-specific sample sites occurring at the periphery of the area sampled.



**Figure 4c.** WSW Ridge soil sample location map highlighting samples with gold values greater than 5ppb. For gold abundances greater than 10ppb individual values are indicated. For Gold value symbol Legend see Figure 4a.

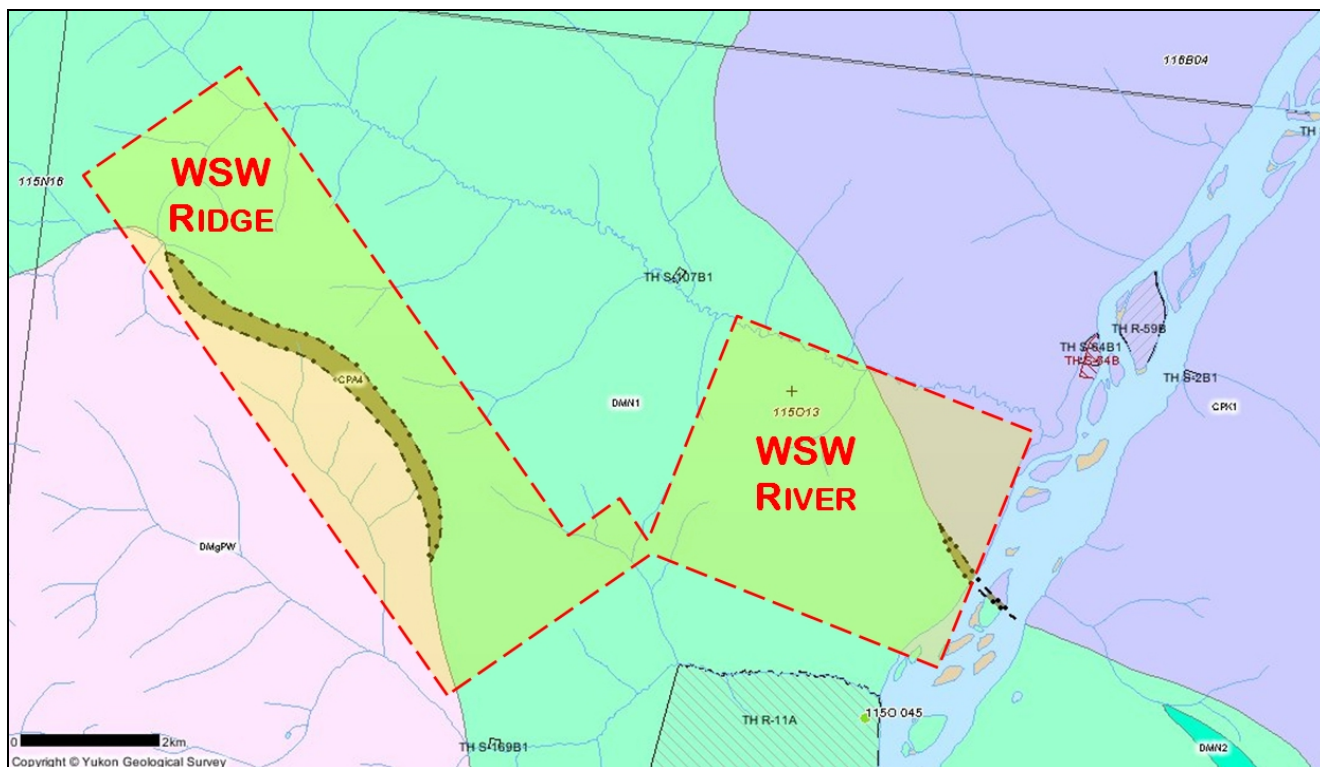
## **WSW Property Geology**

The WSW property was staked on the basis of the area geology, primarily on the documented presence of ultramafic rocks (Figure 5). Such rocks form the core of both the WSW Ridge and River claim blocks. No preliminary evaluation of the area was undertaken prior to staking. It was hoped, however that the mafic igneous rocks (i.e. gabbro & diabase) often found in association with such ultramafic rocks and also the most prospective rocks for hosting gold-bearing quartz veins, would also be locally present.

Elsewhere on the Klondike the author of this report has found that such mafic igneous rocks are in fact commonly found in association with the ultramafic rocks (e.g. Crown Jewel, Leota, Hassenfuss and Roberson claims) but have gone unrecognized by previous mappers.

The WSW Ridge property was the only claim block prospected during the 2011 field program. The cat trail along NE-trending ridge and core of the property provided semi-continuous exposures of subcrop with lesser outcrop. In spite of this relatively high level of exposure, at least by Klondike standards, no exposures of gabbro or areas affected by the appropriate styles of hydrothermal alteration were identified in the area of the Ridge claim block examined.

Attempts to access the River claim block were curtailed by persistent, low-lying valley fog. As such no additional comments beyond that portrayed in Figure 5 are possible at this time.



#### CARBONIFEROUS AND PERMIAN

- CPA** **CPA: ANVIL**  
dominantly oceanic assemblage of mafic volcanics (1), ultramafics (4), chert and pelite (2), limestone (3) and gabbroic rocks (5)
- CPA3**
1. variably altered and foliated, locally augite-phyric basalt (local pillows), diorite and gabbro, chloritic greenstone, amphibolitic greenstone and amphibolite; minor metachert, siliceous argillite or siltstone, greywacke, tuff, and siliceous limestone
  2. varicoloured metachert with partings or interbeds of phyllite and tuffaceous argillite; interbedded jasper red and apple green chert and cherty tuff; chert breccia; shale, minor greenstone, agglomerate, limestone, quartzite(?) and greywacke
  3. light grey to buff weathering, massive fine crystalline, light to dark grey limestone and minor dolomite; light grey, massive, crinoidal limestone; limestone and polymictic conglomerate; sandy limestone, cherty limestone; marble, phyllite, meta-siltstone
  4. dunite, peridotite, gabbro, pyroxenite, harzburgite and minor diorite, hornblende and diabase; serpentinite, orange weathering quartz carbonate rock with minor green chromian muscovite, talc-carbonate schist and carbonatized ultramafic rocks
  5. dominantly diorite, quartz diorite, and gabbro with lesser pyroxenite or other ultramafic rocks; variably altered and foliated; local dioritic orthogneiss
  6. eclogite

#### CARBONIFEROUS AND PERMIAN

- CPK** **CPK: KLONDIKE SCHIST**  
poorly understood assemblage of metamorphosed pelitic/volcanic rocks (1) and minor marble (2), including phyllite of uncertain association (3)
- CPK2**
1. tan to rusty and black weathering muscovitic and/or chloritic quartzite and quartz-muscovite-chlorite schist; quartz and/or feldspar augen-bearing quartz-muscovite (+/-chlorite) schist; includes augen gneiss and amphibolite (**Klondike Schist**)
  2. resistant, white weathering, white sugary marble with a ductile flow fabric; crystalline marble (**Klondike Schist**)
  3. silvery grey muscovite chlorite quartz phyllite

#### LATE DEVONIAN TO MISSISSIPPIAN

- DMPW** **DMPW: PELLY GNEISS SUITE - SOUTHWEST**  
variably deformed granitic rocks of predominantly felsic (q) to intermediate composition (g) southwest of Tintina Fault
- q. foliated equigranular medium-grained muscovite quartz monzonite; moderately to strongly foliated K-feldspar augen-bearing quartz monzonitic to granitic gneiss (**S. Fiftymile Batholith, Mt. Burnham Orthogneiss,**)
- g. foliated medium grained, homogeneous biotite granite gneiss to biotite or hornblende granodiorite gneiss; massive to strongly foliated dioritic to granodioritic gneiss; includes interfoliated amphibolite, quartz-mica schist and phyllite (**Selwyn Gneiss, Pelly Gneiss, N. Fiftymile Batholith, Moose Creek Orthogneiss**)

**Figure 5.** Geology of the WSW property area; clipped directly from the digital-based, spatial data Yukon Government MapMaker website (geology after Gordey and Makepeace, 2004).

## **Mineralization**

No significant mineralization was identified during the course of the 2011 exploration field program. Detailed examinations to see through this heavily overburdened area, will help identify the sources and styles of mineralization producing the identified gold soil anomalies which at present is unknown and remains to be established.

## **Summary & Recommendations**

The 2011 exploration program was successful in achieving broad, first-pass coverage over most of the WSW property. The northern and southern portion of the WSW Ridge claim block however, were not covered by the 2011 ridge and spur soil sampling and remains to be explored by this method of broader regional coverage.

### ***WSW River Claim Block***

Assay results for the WSW River claim block identified several individual areas with anomalous gold in soils. Three to possibly four of these anomalies are defined by localized clusters of several contiguous or near-contiguous samples. These individual gold anomalies may well represent discrete zones of mineralization within a larger northwest-trending, gold mineralized system.

Each of the anomalous areas identified should be evaluated in more detail through the implementation of more densely spaced soil sample grids above the anomalies in an effort to establish orientation and continuity of potential gold zones.

The application of more detailed sampling was effectively applied to the gold soil anomaly defined by the three contiguous anomalous samples on the most easterly soil sample line. This was the only line for which data was available on the River claim block before the end of the field program (Figure 4) in order to determine both the extent and orientation of the underlying gold zones.

### **Geophysical – Ground Magnetic Surveys**

A ground magnetic geophysical survey is recommended for targeted application over the gold anomalous area of the WSW River block. This survey in conjunction with the soil sample elemental abundance data could be used to help establish buried rock unit contacts or hydrothermal alteration zones to more efficiently target detailed soil sampling. The identification of magnetic linears in association gold anomalies could also be utilized to more efficiently target trenching for exposing and identifying sources of the anomalous gold where identified in soils.

This geophysical data set, in conjunction with the overlying soil sample data and rare intermittent geological control points (test pits\trenches\float\rare outcrops) will provide a more informed perspective that should significantly enhance the accuracy in locating and more

efficiently exploring the property through a process of detailed soil sampling, trenching and ultimately drilling moving forward.

The areas of detailed soil sampling should be combined with detailed geological mapping and prospecting to identify potential bedrock, potentially using shallow test pits to identify underlying geology in prospective areas with poor exposure.

### ***WSW Ridge Claim Block***

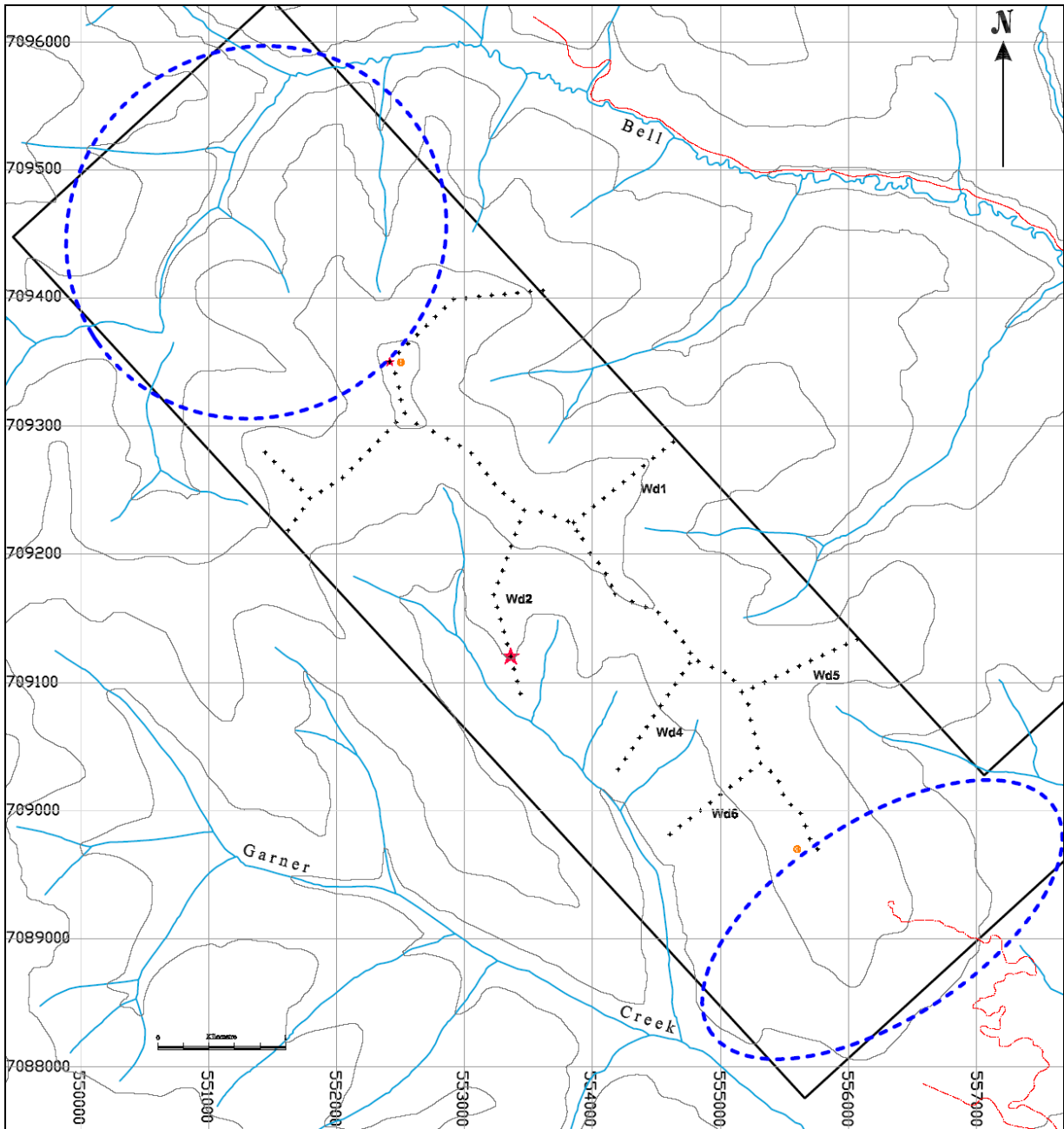
On the WSW River block the ridge and spur sampling program was successful in identifying only two gold anomalous samples from the total 127 samples collected from this claim block.

The site specific nature of the two individual gold in soil anomalies would make these of lesser priority for follow up in comparison to the relatively highly anomalous nature of the WSW River claim block. The 100 meter spacing of these anomalous samples combined with their occurrence at the periphery of the area sampled suggesting the possibility that these samples may be at the edge of a gold zone or system that occurs beyond the area of the Ridge block that has currently been evaluated by soil sampling.

A small detailed soil grid totaling 10 to 15 samples for each the anomalies is recommended to test for possible extensions of these anomalies. For efficiency, the timing of the sampling of these detailed grids should be planned in conjunction with ridge and spur sampling to complete full coverage of the northern and southern portions of the WSW Ridge claim block (Figure 6).

### ***WSW Potential New Staking***

The northern portion of the WSW Ridge claim block remains to be explored by ridge and spur soil sampling is on trend with the NW-trending broad zone of gold anomalous clusters of soil samples defined in the WSW River claim block to the east. The potential extension of the WSW River gold anomalous zone into the northern portion of the WSW Ridge claim block remains to be tested. Should the potential for continuity of this gold anomalous zone be supported by ridge and spur soil sampling results for this untested northern area of the Ridge block, consideration should be given to filling in the intervening, open\unstaked ground between the two claim blocks.



**Figure 6.** WSW Ridge claim block areas remaining to be explored (area outlined by dashed blue line) by regional ridge and spur soil sampling.

## References

- Ash, C.H., 2001: Relationship between ophiolites and gold quartz veins in the North American Cordillera: *British Columbia Ministry of Energy and Mines*, Bulletin 108, 140 p.  
URL <http://www.em.gov.bc.ca/Mining/Geolsurv/Publications/Bulletins/Bull108/toc.htm>
- Ash, C.H., 2006: Setting of the gold-quartz vein lode source for placers within the Klondike goldfields, west-central Yukon, Canada; *Society of Economic Geologists* 2006 Keystone Conference May 14-16, Wealth Creation in the Minerals Industry, Poster (on CD) and extended abstract, p. 109-114.
- Ash, C.H., Macdonald, R.W.J. and Arksey R.L., 1992: Towards a deposit model for ophiolite-related mesothermal gold in British Columbia; in *Geological Fieldwork 1991*, Grant, B. and Newell, J.M., Editors, *B.C. Ministry of Energy, Mines and Petroleum Resources*, Paper 1992-1, p. 253-260.
- Bostock, H.S., 1942, Oligvie map sheet: Geological Survey of Canada, Map 711A.
- Gordey, S.P. and Ryan, J.J., 2005: Geology, Stewart River Area (115N, 115O and part of 115J) Yukon Territory; *Geological Survey of Canada*, Open File 4970, scale 1:250,000.
- Mortensen, J.K., 1990, Geology and U-Pb geochronology of the Klondike District, west-central Yukon Territory: *Canadian Journal of Earth Sciences*, v. 27, p. 903-914.
- Mortensen, J.K., 1996, Geological compilation maps of the Northern Stewart River map area Klondike and Sixtymile districts (115N/15,16; 115O/13,14 and parts of 115O/15,16): *Indian and Northern Affairs Canada*, Yukon Region, Open File 1996-1(G), Report, 43 p., 1:50,000 scale maps (6).

**TABLE 1**  
**WSW Quartz Claims - Dawson Mining District**

<b>Claim Name</b>	<b>Grant Number</b>	<b>Claim Number</b>	<b>Claim Owner</b>	<b>Operation Recording Date</b>	<b>Staking Date</b>	<b>Claim Expiry Date</b>	<b>Status</b>	<b>NTS Map Number</b>
WSW	YE39301	1	Martin Paquette - 100%	09/05/2011	14/04/2011	01/11/2013	Active	115O13
WSW	YE39302	2	Martin Paquette - 100%	09/05/2011	14/04/2011	01/11/2013	Active	115O13
WSW	YE39303	3	Martin Paquette - 100%	09/05/2011	14/04/2011	01/11/2013	Active	115O13
WSW	YE39304	4	Martin Paquette - 100%	09/05/2011	14/04/2011	01/11/2013	Active	115O13
WSW	YE39305	5	Martin Paquette - 100%	09/05/2011	14/04/2011	01/11/2013	Active	115O13
WSW	YE39306	6	Martin Paquette - 100%	09/05/2011	14/04/2011	01/11/2013	Active	115O13
WSW	YE39307	7	Martin Paquette - 100%	09/05/2011	14/04/2011	01/11/2013	Active	115O13
WSW	YE39308	8	Martin Paquette - 100%	09/05/2011	14/04/2011	01/11/2013	Active	115O13
WSW	YE39309	9	Martin Paquette - 100%	09/05/2011	14/04/2011	01/11/2013	Active	115O13
WSW	YE39310	10	Martin Paquette - 100%	09/05/2011	14/04/2011	01/11/2013	Active	115O13
WSW	YE39311	11	Martin Paquette - 100%	09/05/2011	14/04/2011	01/11/2013	Active	115O13
WSW	YE39312	12	Martin Paquette - 100%	09/05/2011	14/04/2011	01/11/2013	Active	115O13
WSW	YE39313	13	Martin Paquette - 100%	09/05/2011	14/04/2011	01/11/2013	Active	115O13
WSW	YE39314	14	Martin Paquette - 100%	09/05/2011	14/04/2011	01/11/2013	Active	115O13
WSW	YE39315	15	Martin Paquette - 100%	09/05/2011	14/04/2011	01/11/2013	Active	115O13
WSW	YE39316	16	Martin Paquette - 100%	09/05/2011	14/04/2011	01/11/2013	Active	115O13
WSW	YE39317	17	Martin Paquette - 100%	09/05/2011	14/04/2011	01/11/2013	Active	115O13
WSW	YE39318	18	Martin Paquette - 100%	09/05/2011	14/04/2011	01/11/2013	Active	115O13
WSW	YE39319	19	Martin Paquette - 100%	09/05/2011	14/04/2011	01/11/2013	Active	115O13
WSW	YE39320	20	Martin Paquette - 100%	09/05/2011	14/04/2011	01/11/2013	Active	115O13
WSW	YE39321	21	KIM PASCHE - 100%	09/05/2011	14/04/2011	01/11/2013	Active	115O13
WSW	YE39322	22	KIM PASCHE - 100%	09/05/2011	14/04/2011	01/11/2013	Active	115O13
WSW	YE39323	23	KIM PASCHE - 100%	09/05/2011	14/04/2011	01/11/2013	Active	115O13
WSW	YE39324	24	KIM PASCHE - 100%	09/05/2011	14/04/2011	01/11/2013	Active	115O13
WSW	YE39325	25	KIM PASCHE - 100%	09/05/2011	14/04/2011	01/11/2013	Active	115O13
WSW	YE39326	26	KIM PASCHE - 100%	09/05/2011	14/04/2011	01/11/2013	Active	115O13
WSW	YE39327	27	KIM PASCHE - 100%	09/05/2011	14/04/2011	01/11/2013	Active	115O13
WSW	YE39328	28	KIM PASCHE - 100%	09/05/2011	14/04/2011	01/11/2013	Active	115O13
WSW	YE39329	29	KIM PASCHE - 100%	09/05/2011	14/04/2011	01/11/2013	Active	115O13
WSW	YE39330	30	KIM PASCHE - 100%	09/05/2011	14/04/2011	01/11/2013	Active	115O13
WSW	YE39331	31	KIM PASCHE - 100%	09/05/2011	14/04/2011	01/11/2013	Active	115O13
WSW	YE39332	32	KIM PASCHE - 100%	09/05/2011	14/04/2011	01/11/2013	Active	115O13
WSW	YE39333	33	KIM PASCHE - 100%	09/05/2011	14/04/2011	01/11/2013	Active	115O13
WSW	YE39334	34	KIM PASCHE - 100%	09/05/2011	14/04/2011	01/11/2013	Active	115O13
WSW	YE39335	35	KIM PASCHE - 100%	09/05/2011	14/04/2011	01/11/2013	Active	115O13
WSW	YE39336	36	KIM PASCHE - 100%	09/05/2011	14/04/2011	01/11/2013	Active	115O13
WSW	YE39337	37	KIM PASCHE - 100%	09/05/2011	14/04/2011	01/11/2013	Active	115O13
WSW	YE39338	38	KIM PASCHE - 100%	09/05/2011	14/04/2011	01/11/2013	Active	115O13
WSW	YE39339	39	KIM PASCHE - 100%	09/05/2011	14/04/2011	01/11/2013	Active	115O13
WSW	YE39340	40	KIM PASCHE - 100%	09/05/2011	14/04/2011	01/11/2013	Active	115O13
WSW	YE39341	41	Mark Hockley - 100%	09/05/2011	14/04/2011	01/11/2013	Active	115O13
WSW	YE39342	42	Mark Hockley - 100%	09/05/2011	14/04/2011	01/11/2013	Active	115O13
WSW	YE39343	43	Mark Hockley - 100%	09/05/2011	14/04/2011	01/11/2013	Active	115O13
WSW	YE39344	44	Mark Hockley - 100%	09/05/2011	14/04/2011	01/11/2013	Active	115O13
WSW	YE39345	45	Mark Hockley - 100%	09/05/2011	14/04/2011	01/11/2013	Active	115O13
WSW	YE39346	46	Mark Hockley - 100%	09/05/2011	14/04/2011	01/11/2013	Active	115O13
WSW	YE39347	47	Mark Hockley - 100%	09/05/2011	14/04/2011	01/11/2013	Active	115O13
WSW	YE39348	48	Mark Hockley - 100%	09/05/2011	14/04/2011	01/11/2013	Active	115O13
WSW	YE39349	49	Mark Hockley - 100%	09/05/2011	14/04/2011	01/11/2013	Active	115O13
WSW	YE39350	50	Mark Hockley - 100%	09/05/2011	14/04/2011	01/11/2013	Active	115O13
WSW	YE39351	51	Mark Hockley - 100%	09/05/2011	14/04/2011	01/11/2013	Active	115O13

**TABLE 1**  
**WSW Quartz Claims - Dawson Mining District**

<b>Claim Name</b>	<b>Grant Number</b>	<b>Claim Number</b>	<b>Claim Owner</b>	<b>Operation Recording Date</b>	<b>Staking Date</b>	<b>Claim Expiry Date</b>	<b>Status</b>	<b>NTS Map Number</b>
WSW	YE39352	52	Mark Hockley - 100%	09/05/2011	14/04/2011	01/11/2013	Active	115O13
WSW	YE39353	53	Mark Hockley - 100%	09/05/2011	14/04/2011	01/11/2013	Active	115O13
WSW	YE39354	54	Mark Hockley - 100%	09/05/2011	14/04/2011	01/11/2013	Active	115O13
WSW	YE39355	55	Mark Hockley - 100%	09/05/2011	14/04/2011	01/11/2013	Active	115O13
WSW	YE39356	56	Mark Hockley - 100%	09/05/2011	14/04/2011	01/11/2013	Active	115O13
WSW	YE39357	57	Mark Hockley - 100%	09/05/2011	14/04/2011	01/11/2013	Active	115O13
WSW	YE39358	58	Mark Hockley - 100%	09/05/2011	14/04/2011	01/11/2013	Active	115O13
WSW	YE39359	59	Mark Hockley - 100%	09/05/2011	14/04/2011	01/11/2013	Active	115O13
WSW	YE39360	60	Mark Hockley - 100%	09/05/2011	14/04/2011	01/11/2013	Active	115O13
WSW	YE39361	61	Benjamin Fromme - 100%	09/05/2011	14/04/2011	01/11/2013	Active	115O13
WSW	YE39362	62	Benjamin Fromme - 100%	09/05/2011	14/04/2011	01/11/2013	Active	115O13
WSW	YE39363	63	Benjamin Fromme - 100%	09/05/2011	14/04/2011	01/11/2013	Active	115O13
WSW	YE39364	64	Benjamin Fromme - 100%	09/05/2011	14/04/2011	01/11/2013	Active	115O13
WSW	YE39365	65	Benjamin Fromme - 100%	09/05/2011	14/04/2011	01/11/2013	Active	115O13
WSW	YE39366	66	Benjamin Fromme - 100%	09/05/2011	14/04/2011	01/11/2013	Active	115O13
WSW	YE39367	67	Benjamin Fromme - 100%	09/05/2011	14/04/2011	01/11/2013	Active	115O13
WSW	YE39368	68	Benjamin Fromme - 100%	09/05/2011	14/04/2011	01/11/2013	Active	115O13
WSW	YE39369	69	Benjamin Fromme - 100%	09/05/2011	14/04/2011	01/11/2013	Active	115O13
WSW	YE39370	70	Benjamin Fromme - 100%	09/05/2011	14/04/2011	01/11/2013	Active	115O13
WSW	YE39371	71	Benjamin Fromme - 100%	09/05/2011	14/04/2011	01/11/2013	Active	115O13
WSW	YE39372	72	Benjamin Fromme - 100%	09/05/2011	14/04/2011	01/11/2013	Active	115O13
WSW	YE39373	73	Benjamin Fromme - 100%	09/05/2011	14/04/2011	01/11/2013	Active	115O13
WSW	YE39374	74	Benjamin Fromme - 100%	09/05/2011	14/04/2011	01/11/2013	Active	115O13
WSW	YE39375	75	Benjamin Fromme - 100%	09/05/2011	14/04/2011	01/11/2013	Active	115O13
WSW	YE39376	76	Benjamin Fromme - 100%	09/05/2011	14/04/2011	01/11/2013	Active	115O13
WSW	YE39377	77	Benjamin Fromme - 100%	09/05/2011	14/04/2011	01/11/2013	Active	115O13
WSW	YE39378	78	Benjamin Fromme - 100%	09/05/2011	14/04/2011	01/11/2013	Active	115O13
WSW	YE39379	79	Benjamin Fromme - 100%	09/05/2011	14/04/2011	01/11/2013	Active	115O13
WSW	YE39380	80	Benjamin Fromme - 100%	09/05/2011	14/04/2011	01/11/2013	Active	115O13
WSW	YE39381	81	Tyler Quock - 100%	09/05/2011	14/04/2011	01/11/2013	Active	115O13
WSW	YE39382	82	Tyler Quock - 100%	09/05/2011	14/04/2011	01/11/2013	Active	115O13
WSW	YE39383	83	Tyler Quock - 100%	09/05/2011	14/04/2011	01/11/2013	Active	115O13
WSW	YE39384	84	Tyler Quock - 100%	09/05/2011	14/04/2011	01/11/2013	Active	115O13
WSW	YE39385	85	Tyler Quock - 100%	09/05/2011	14/04/2011	01/11/2013	Active	115O13
WSW	YE39386	86	Tyler Quock - 100%	09/05/2011	14/04/2011	01/11/2013	Active	115O13
WSW	YE39387	87	Tyler Quock - 100%	09/05/2011	14/04/2011	01/11/2013	Active	115O13
WSW	YE39388	88	Tyler Quock - 100%	09/05/2011	14/04/2011	01/11/2013	Active	115O13
WSW	YE39389	89	Tyler Quock - 100%	09/05/2011	14/04/2011	01/11/2013	Active	115O13
WSW	YE39390	90	Tyler Quock - 100%	09/05/2011	14/04/2011	01/11/2013	Active	115O13
WSW	YE39391	91	Robert Clarke - 100%	09/05/2011	14/04/2011	01/11/2013	Active	115O13
WSW	YE39392	92	Robert Clarke - 100%	09/05/2011	14/04/2011	01/11/2013	Active	115O13
WSW	YE39393	93	Robert Clarke - 100%	09/05/2011	14/04/2011	01/11/2013	Active	115O13
WSW	YE39394	94	Robert Clarke - 100%	09/05/2011	14/04/2011	01/11/2013	Active	115O13
WSW	YE39395	95	Robert Clarke - 100%	09/05/2011	14/04/2011	01/11/2013	Active	115O13
WSW	YE39396	96	Robert Clarke - 100%	09/05/2011	14/04/2011	01/11/2013	Active	115O13
WSW	YE39397	97	Robert Clarke - 100%	09/05/2011	14/04/2011	01/11/2013	Active	115O13
WSW	YE39398	98	Robert Clarke - 100%	09/05/2011	14/04/2011	01/11/2013	Active	115O13
WSW	YE39399	99	Robert Clarke - 100%	09/05/2011	14/04/2011	01/11/2013	Active	115O13
WSW	YE39400	100	Robert Clarke - 100%	09/05/2011	14/04/2011	01/11/2013	Active	115O13
WSW	YE39401	101	Claude Audet - 100%	09/05/2011	14/04/2011	01/11/2013	Active	115O13
WSW	YE39402	102	Claude Audet - 100%	09/05/2011	14/04/2011	01/11/2013	Active	115O13

**TABLE 1**  
**WSW Quartz Claims - Dawson Mining District**

<b>Claim Name</b>	<b>Grant Number</b>	<b>Claim Number</b>	<b>Claim Owner</b>	<b>Operation Recording Date</b>	<b>Staking Date</b>	<b>Claim Expiry Date</b>	<b>Status</b>	<b>NTS Map Number</b>
WSW	YE39403	103	Claude Audet - 100%	09/05/2011	14/04/2011	01/11/2013	Active	115O13
WSW	YE39404	104	Claude Audet - 100%	09/05/2011	14/04/2011	01/11/2013	Active	115O13
WSW	YE39405	105	Claude Audet - 100%	09/05/2011	14/04/2011	01/11/2013	Active	115O13
WSW	YE39406	106	Claude Audet - 100%	09/05/2011	14/04/2011	01/11/2013	Active	115O13
WSW	YE39407	107	Claude Audet - 100%	09/05/2011	14/04/2011	01/11/2013	Active	115O13
WSW	YE39408	108	Claude Audet - 100%	09/05/2011	14/04/2011	01/11/2013	Active	115O13
WSW	YE39409	109	Claude Audet - 100%	09/05/2011	14/04/2011	01/11/2013	Active	115O13
WSW	YE39410	110	Claude Audet - 100%	09/05/2011	14/04/2011	01/11/2013	Active	115O13
WSW	YE39411	111	Kyle MacDougall - 100%	09/05/2011	14/04/2011	01/11/2013	Active	115O13
WSW	YE39412	112	Kyle MacDougall - 100%	09/05/2011	14/04/2011	01/11/2013	Active	115O13
WSW	YE39413	113	Kyle MacDougall - 100%	09/05/2011	14/04/2011	01/11/2013	Active	115O13
WSW	YE39414	114	Kyle MacDougall - 100%	09/05/2011	14/04/2011	01/11/2013	Active	115O13
WSW	YE39415	115	Kyle MacDougall - 100%	09/05/2011	14/04/2011	01/11/2013	Active	115O13
WSW	YE39416	116	Kyle MacDougall - 100%	09/05/2011	14/04/2011	01/11/2013	Active	115O13
WSW	YE39417	117	Kyle MacDougall - 100%	09/05/2011	14/04/2011	01/11/2013	Active	115O13
WSW	YE39418	118	Kyle MacDougall - 100%	09/05/2011	14/04/2011	01/11/2013	Active	115O13
WSW	YE39419	119	Kyle MacDougall - 100%	09/05/2011	14/04/2011	01/11/2013	Active	115O13
WSW	YE39420	120	Kyle MacDougall - 100%	09/05/2011	14/04/2011	01/11/2013	Active	115O13
WSW	YE39421	121	Martin Paquette - 100%	09/05/2011	15/04/2011	01/11/2013	Active	115O13
WSW	YE39422	122	Martin Paquette - 100%	09/05/2011	15/04/2011	01/11/2013	Active	115O13
WSW	YE39423	123	Martin Paquette - 100%	09/05/2011	15/04/2011	01/11/2013	Active	115O13
WSW	YE39424	124	Martin Paquette - 100%	09/05/2011	15/04/2011	01/11/2013	Active	115O13
WSW	YE39425	125	Martin Paquette - 100%	09/05/2011	15/04/2011	01/11/2013	Active	115O13
WSW	YE39426	126	Martin Paquette - 100%	09/05/2011	15/04/2011	01/11/2013	Active	115O13
WSW	YE39427	127	Martin Paquette - 100%	09/05/2011	15/04/2011	01/11/2013	Active	115O13
WSW	YE39428	128	Martin Paquette - 100%	09/05/2011	15/04/2011	01/11/2013	Active	115O13
WSW	YE39429	129	Martin Paquette - 100%	09/05/2011	15/04/2011	01/11/2013	Active	115O13
WSW	YE39430	130	Martin Paquette - 100%	09/05/2011	15/04/2011	01/11/2013	Active	115O13
WSW	YE39431	131	Martin Paquette - 100%	09/05/2011	15/04/2011	01/11/2013	Active	115O13
WSW	YE39432	132	Martin Paquette - 100%	09/05/2011	15/04/2011	01/11/2013	Active	115O13
WSW	YE39433	133	Martin Paquette - 100%	09/05/2011	15/04/2011	01/11/2013	Active	115O13
WSW	YE39434	134	Martin Paquette - 100%	09/05/2011	15/04/2011	01/11/2013	Active	115O13
WSW	YE39435	135	Martin Paquette - 100%	09/05/2011	15/04/2011	01/11/2013	Active	115O13
WSW	YE39436	136	Martin Paquette - 100%	09/05/2011	15/04/2011	01/11/2013	Active	115O13
WSW	YE39437	137	Martin Paquette - 100%	09/05/2011	15/04/2011	01/11/2013	Active	115O13
WSW	YE39438	138	Martin Paquette - 100%	09/05/2011	15/04/2011	01/11/2013	Active	115O13
WSW	YE39439	139	Martin Paquette - 100%	09/05/2011	15/04/2011	01/11/2013	Active	115O13
WSW	YE39440	140	Martin Paquette - 100%	09/05/2011	15/04/2011	01/11/2013	Active	115O13
WSW	YE39441	141	Robert Clarke - 100%	09/05/2011	15/04/2011	01/11/2013	Active	115O13
WSW	YE39442	142	Robert Clarke - 100%	09/05/2011	15/04/2011	01/11/2013	Active	115O13
WSW	YE39443	143	Robert Clarke - 100%	09/05/2011	15/04/2011	01/11/2013	Active	115O13
WSW	YE39444	144	Robert Clarke - 100%	09/05/2011	15/04/2011	01/11/2013	Active	115O13
WSW	YE39445	145	Robert Clarke - 100%	09/05/2011	15/04/2011	01/11/2013	Active	115O13
WSW	YE39446	146	Robert Clarke - 100%	09/05/2011	15/04/2011	01/11/2013	Active	115O13
WSW	YE39447	147	Robert Clarke - 100%	09/05/2011	15/04/2011	01/11/2013	Active	115O13
WSW	YE39448	148	Robert Clarke - 100%	09/05/2011	15/04/2011	01/11/2013	Active	115O13
WSW	YE39449	149	Robert Clarke - 100%	09/05/2011	15/04/2011	01/11/2013	Active	115O13
WSW	YE39450	150	Robert Clarke - 100%	09/05/2011	15/04/2011	01/11/2013	Active	115O13
WSW	YE39451	151	Robert Clarke - 100%	09/05/2011	15/04/2011	01/11/2013	Active	115O13
WSW	YE39452	152	Robert Clarke - 100%	09/05/2011	15/04/2011	01/11/2013	Active	115O13
WSW	YE39453	153	Robert Clarke - 100%	09/05/2011	15/04/2011	01/11/2013	Active	115O13

**TABLE 1**  
**WSW Quartz Claims - Dawson Mining District**

<b>Claim Name</b>	<b>Grant Number</b>	<b>Claim Number</b>	<b>Claim Owner</b>	<b>Operation Recording Date</b>	<b>Staking Date</b>	<b>Claim Expiry Date</b>	<b>Status</b>	<b>NTS Map Number</b>
WSW	YE39454	154	Robert Clarke - 100%	09/05/2011	15/04/2011	01/11/2013	Active	115O13
WSW	YE39455	155	Robert Clarke - 100%	09/05/2011	15/04/2011	01/11/2013	Active	115O13
WSW	YE39456	156	Robert Clarke - 100%	09/05/2011	15/04/2011	01/11/2013	Active	115O13
WSW	YE39457	157	Robert Clarke - 100%	09/05/2011	15/04/2011	01/11/2013	Active	115O13
WSW	YE39458	158	Robert Clarke - 100%	09/05/2011	15/04/2011	01/11/2013	Active	115O13
WSW	YE39459	159	Robert Clarke - 100%	09/05/2011	15/04/2011	01/11/2013	Active	115O13
WSW	YE39460	160	Robert Clarke - 100%	09/05/2011	15/04/2011	01/11/2013	Active	115O13
WSW	YE39461	161	Mark Hockley - 100%	09/05/2011	15/04/2011	01/11/2013	Active	115O13
WSW	YE39462	162	Mark Hockley - 100%	09/05/2011	15/04/2011	01/11/2013	Active	115O13
WSW	YE39463	163	Mark Hockley - 100%	09/05/2011	15/04/2011	01/11/2013	Active	115O13
WSW	YE39464	164	Mark Hockley - 100%	09/05/2011	15/04/2011	01/11/2013	Active	115O13
WSW	YE39465	165	Mark Hockley - 100%	09/05/2011	15/04/2011	01/11/2013	Active	115O13
WSW	YE39466	166	Mark Hockley - 100%	09/05/2011	15/04/2011	01/11/2013	Active	115O13
WSW	YE39467	167	Mark Hockley - 100%	09/05/2011	15/04/2011	01/11/2013	Active	115O13
WSW	YE39468	168	Mark Hockley - 100%	09/05/2011	15/04/2011	01/11/2013	Active	115O13
WSW	YE39469	169	Mark Hockley - 100%	09/05/2011	15/04/2011	01/11/2013	Active	115O13
WSW	YE39470	170	Mark Hockley - 100%	09/05/2011	15/04/2011	01/11/2013	Active	115O13
WSW	YE39471	171	Mark Hockley - 100%	09/05/2011	15/04/2011	01/11/2013	Active	115O13
WSW	YE39472	172	Mark Hockley - 100%	09/05/2011	15/04/2011	01/11/2013	Active	115O13
WSW	YE39473	173	Mark Hockley - 100%	09/05/2011	15/04/2011	01/11/2013	Active	115O13
WSW	YE39474	174	Mark Hockley - 100%	09/05/2011	15/04/2011	01/11/2013	Active	115O13
WSW	YE39475	175	Mark Hockley - 100%	09/05/2011	15/04/2011	01/11/2013	Active	115O13
WSW	YE39476	176	Mark Hockley - 100%	09/05/2011	15/04/2011	01/11/2013	Active	115O13
WSW	YE39477	177	Mark Hockley - 100%	09/05/2011	15/04/2011	01/11/2013	Active	115O13
WSW	YE39478	178	Mark Hockley - 100%	09/05/2011	15/04/2011	01/11/2013	Active	115O13
WSW	YE39479	179	Mark Hockley - 100%	09/05/2011	15/04/2011	01/11/2013	Active	115O13
WSW	YE39480	180	Mark Hockley - 100%	09/05/2011	15/04/2011	01/11/2013	Active	115O13
WSW	YE79801	181	Sherrin Lim - 100%	13/10/2011	06/10/2011	13/10/2012	Active	115O13
WSW	YE79802	182	Sherrin Lim - 100%	13/10/2011	06/10/2011	13/10/2012	Active	115O13
WSW	YE79803	183	Sherrin Lim - 100%	13/10/2011	06/10/2011	13/10/2012	Active	115O13
WSW	YE79804	184	Sherrin Lim - 100%	13/10/2011	06/10/2011	13/10/2012	Active	115O13
WSW	YE79805	185	Sherrin Lim - 100%	13/10/2011	06/10/2011	13/10/2012	Active	115O13
WSW	YE79806	186	Sherrin Lim - 100%	13/10/2011	06/10/2011	13/10/2012	Active	115O13
WSW	YE79807	187	Sherrin Lim - 100%	13/10/2011	06/10/2011	13/10/2012	Active	115O13
WSW	YE79808	188	Sherrin Lim - 100%	13/10/2011	06/10/2011	13/10/2012	Active	115O13
WSW	YE79809	189	Sherrin Lim - 100%	13/10/2011	06/10/2011	13/10/2012	Active	115O13
WSW	YE79810	190	Sherrin Lim - 100%	13/10/2011	06/10/2011	13/10/2012	Active	115O13
WSW	YE79811	191	Sherrin Lim - 100%	13/10/2011	06/10/2011	13/10/2012	Active	115O13
WSW	YE79812	192	Sherrin Lim - 100%	13/10/2011	06/10/2011	13/10/2012	Active	115O13
WSW	YE79813	193	Sherrin Lim - 100%	13/10/2011	06/10/2011	13/10/2012	Active	115O13
WSW	YE79814	194	Sherrin Lim - 100%	13/10/2011	06/10/2011	13/10/2012	Active	115O13
WSW	YE79815	195	Sherrin Lim - 100%	13/10/2011	06/10/2011	13/10/2012	Active	115O13
WSW	YE79816	196	Sherrin Lim - 100%	13/10/2011	06/10/2011	13/10/2012	Active	115O13
WSW	YE79817	197	Sherrin Lim - 100%	13/10/2011	06/10/2011	13/10/2012	Active	115O13
WSW	YE79818	198	Sherrin Lim - 100%	13/10/2011	06/10/2011	13/10/2012	Active	115O13
WSW	YE79819	199	Sherrin Lim - 100%	13/10/2011	06/10/2011	13/10/2012	Active	115O13
WSW	YE79820	200	Sherrin Lim - 100%	13/10/2011	06/10/2011	13/10/2012	Active	115O13
WSW	YE79821	201	Sherrin Lim - 100%	13/10/2011	06/10/2011	13/10/2012	Active	115O13
WSW	YE79822	202	Sherrin Lim - 100%	13/10/2011	06/10/2011	13/10/2012	Active	115O13
WSW	YE79823	203	Sherrin Lim - 100%	13/10/2011	06/10/2011	13/10/2012	Active	115O13
WSW	YE79824	204	Sherrin Lim - 100%	13/10/2011	06/10/2011	13/10/2012	Active	115O13

## APPENDIX II

### Statement of Expenditures

The 2011 WSW exploration program was completed at a cost of approximately **\$30,750** (Table 2). This work included a total of 17 person days involving 6 individuals.

**TABLE 2**  
**2011 Exploration Expenditures by Goldplex Resources Inc.**  
**on the WSW Quartz Mineral Property - Dawson Mining District**

Expense	Activity Breakdown by Item	#	Item	\$ Rate	Item Total Cost
<b>Labor</b>					
<b>Geologist</b>	Project management direction & oversight; prospecting, mapping, rock assay sampling, soil sampling map generation, project data management and reporting	5	days @	\$700 /day	\$3,500.00
<b>Accommodations</b>	Newtec Minerals Expiditing - Dawson base camp (C. Ash)	5	days @	\$60 /day	\$300.00
	Meals per day	5	days @	\$50 /day	\$250.00
	Secure assay sample drying and storage space. Equipment storage and equipment drying and shower facilities for field crew.	5	days @	\$30 /day	\$150.00
<b>Travel</b>	Helicopter Trans North, Dawson Includes Fuel	5	days @	\$1,500 /day	\$7,500.00
	SUV	5	days @	\$95 /day	\$475.00
	Fuel - Gasoline				\$100.00
<b>Assays</b>	Soils	313	samples @	\$26 /sample	\$8,216.25
<b>Soil Sampling</b>	Includes all related expenses (e.g. meals, rain days, field equipment, etc.) for daily sampling crews that consisted of 2 to 3 soil samplers with daily set outs from Dawson.	313	samples @	\$20 /sample	\$6,260.00
<b>Drafting and Final Report</b>	Produce required assessment report with related maps, figures and tables, etc.				\$4,000.00
<b>Total</b>					<b>\$30,751.25</b>

## APPENDIX III

### Statement of Qualifications

I Chris H. Ash, do hereby certify that:

- (1) I am an independent Consulting Geologist and Professional Geoscientists residing at 405-1350 Stanley Ave., Victoria, BC (Telephone: 250 598-9084).
- (2) I graduated from Memorial University of Newfoundland, St. John's, in 1985 with a Bachelors Degree in Science (B.Sc.) Honours, in Geology, and subsequently in 1990 received a Master of Science Degree (M.Sc.) Geology from the same University.
- (3) From 2004 to 2010 I have been actively engaged in exploration as an independent consulting geologist involved in prospecting and mapping and providing guidance to a number of exploration companies throughout the Klondike region.
- (4) As a Project Geologist, I conducted geological mapping and mineral deposits research for the British Columbia Geological Survey throughout the province of British Columbia for 13 years from 1989 to 2002.
- (5) I am a registered Professional Geoscientist (P.Geo.) in the Province of British Columbia (Registration No. 20015) with the Association of Professional Engineers and Geoscientists of BC ("APEGBC") and I am entitled to use the Seal, which has been affixed to this report.
- (6) In late August to early October of 2011 I designed and supervised the field exploration component of the WSW property exploration for Goldplex Resources Inc.

---

Chris H. Ash, M.Sc., P.Geo.  
CASH Geological Consulting

TABLE 2  
WSW Property 2011 Soil Assay Data

Sample	Location		Mo	Cu	Pb	Zn	Ag	Ni	Co	Mn	Fe	As	U
	UTM NAD83 Zone 7		PPM	PPM	PPM	PPM	PPB	PPM	PPM	PPM	%	PPM	PPM
	Easting	Northing	0.01	0.01	0.01	0.1	2	0.1	0.1	1	0.01	0.1	0.1
<b>WSW Ridge Samples</b>													
WD1	555759	7089698	1.15	65.48	12.72	119.8	73	45.5	13.9	716	4.05	2.7	1.7
WD2	555698	7089778	1.91	47.51	14.45	64.0	124	35.7	11.5	502	3.14	5.5	1.0
WD3	555665	7089879	4.15	53.98	13.07	60.2	90	17.7	7.9	416	3.15	4.1	2.4
WD4	555626	7089980	6.18	50.95	21.62	47.6	62	16.5	4.7	210	2.02	3.3	5.2
WD5	555550	7090045	0.99	102.63	14.18	85.0	28	50.0	32.6	1701	2.89	1.7	1.3
WD6	555491	7090125	0.97	38.58	9.35	68.4	78	30.3	8.4	317	3.09	3.6	0.8
WD7	555455	7090228	0.54	32.93	11.22	150.6	25	81.1	25.3	856	7.05	4.3	0.3
WD8	555393	7090306	1.56	20.13	11.03	87.6	64	26.0	9.7	266	3.70	5.8	0.8
WD9	555314	7090372	3.34	101.26	10.72	100.6	93	27.6	8.8	547	3.27	4.1	2.4
WD10	555291	7090489	0.99	60.94	6.41	69.1	55	23.3	9.9	224	3.02	3.1	0.7
WD11	555266	7090602	0.84	52.84	11.67	64.1	54	26.7	13.5	618	2.63	4.4	1.0
WD12	555236	7090708	1.16	37.52	13.56	58.4	54	30.7	11.2	366	3.00	9.0	0.7
WD13	555217	7090830	0.63	28.19	9.81	74.4	83	34.5	12.8	609	3.03	4.3	0.5
WD14	555166	7090925	0.33	63.43	6.68	77.9	26	95.5	15.3	550	3.47	2.1	1.0
WD15	555103	7091015	0.23	28.15	10.31	76.1	10	29.6	14.5	401	3.76	1.6	0.7
WD16	555034	7091078	0.94	38.89	37.98	43.6	272	46.9	12.9	1154	2.43	3.3	2.9
WD17	554934	7091118	0.97	46.81	3.93	63.8	115	19.7	7.0	121	2.81	1.2	1.1
WD18	554828	7091165	3.47	51.36	17.93	59.7	308	30.8	8.0	200	3.11	7.9	1.0
WD19	554765	7091230	1.12	49.91	6.00	83.7	131	22.9	7.7	253	3.31	2.5	1.3
WD20	554709	7091317	0.67	32.42	11.12	110.4	110	36.0	6.9	668	4.04	3.6	0.9
WD21	554650	7091399	0.38	16.66	12.08	81.8	29	23.0	11.7	424	3.59	3.5	0.6
WD22	554577	7091470	0.68	11.42	11.73	56.6	142	15.3	8.3	436	2.61	4.0	0.3
WD23	554514	7091544	0.36	19.18	13.82	72.9	27	33.2	14.2	489	3.81	3.0	1.2
WD24	554417	7091588	0.70	13.05	9.30	49.2	93	19.0	9.3	351	2.84	5.2	0.3
WD25	554311	7091630	0.45	44.63	8.69	80.0	11	32.3	13.9	62	3.23	1.3	1.6
WD27	554149	7091755	1.41	56.17	7.18	55.9	23	22.8	10.4	316	1.98	2.8	1.1
WD28	554104	7091848	1.16	58.00	15.22	87.6	27	37.8	16.0	389	3.87	1.0	1.6
WD29	554049	7091933	1.69	25.85	15.01	66.4	654	22.5	12.7	472	3.35	7.5	0.4
WD30	553983	7092007	0.87	76.84	8.44	76.1	38	76.2	12.9	706	2.70	6.3	0.4
WD31	553923	7092120	1.62	21.48	26.67	59.0	55	26.2	5.3	296	2.49	5.8	0.3
WD32	553878	7092184	0.26	20.67	2.87	95.9	56	36.3	11.2	248	3.70	1.6	0.5
WD33	553809	7092258	1.18	37.00	16.11	102.7	144	36.8	13.6	400	3.82	2.3	0.9
WD34	553705	7092295	0.53	20.51	12.48	63.7	23	41.7	14.6	509	3.49	3.4	0.7
WD35	553598	7092332	0.43	64.77	3.73	41.8	15	11.1	10.9	172	2.59	2.9	0.2
WD36	553465	7092345	0.37	134.66	3.47	58.9	66	14.8	13.8	274	3.59	2.9	0.3
WD37	553380	7092414	0.54	31.00	15.46	79.5	55	43.0	18.3	468	4.02	4.4	0.9
WD38	553308	7092476	0.38	32.03	6.20	73.9	23	49.5	14.6	345	3.20	1.8	0.4
WD39	553235	7092549	0.96	45.94	13.73	78.9	40	33.9	12.7	363	3.67	4.3	1.2
WD40	553175	7092628	0.26	140.79	3.40	51.3	113	12.0	12.6	179	2.99	2.3	0.4
WD41	553116	7092708	0.68	36.72	11.84	74.3	90	32.9	13.5	490	3.64	6.0	1.2
WD42	553052	7092789	1.27	37.52	13.15	77.0	78	33.3	13.1	453	3.77	4.1	1.0
WD43	552962	7092848	1.70	38.70	8.74	106.2	250	32.6	9.8	383	3.25	4.7	0.8
WD44	552866	7092902	7.05	104.52	11.68	364.8	639	62.6	5.3	211	4.26	2.9	2.9
WD45	552756	7092958	2.16	58.26	11.17	140.4	338	27.1	9.6	407	3.78	2.6	1.3
WD46	552625	7093018	5.40	105.04	14.39	136.0	594	23.2	6.4	681	4.17	1.5	2.9

TABLE 2  
WSW Property 2011 Soil Assay Data

Sample	Location		Mo	Cu	Pb	Zn	Ag	Ni	Co	Mn	Fe	As	U
	UTM NAD83 Zone 7 Easting	UTM NAD83 Zone 7 Northing	PPM 0.01	PPM 0.01	PPM 0.01	PPM 0.1	PPB 2	PPM 0.1	PPM 0.1	PPM 1	% 0.01	PPM 0.1	PPM 0.1
WD47	552533	7093102	2.55	36.72	11.62	128.0	671	27.7	10.2	274	3.12	6.6	1.3
WD48	552502	7093206	0.71	62.30	7.24	71.5	58	28.1	12.2	653	3.48	1.7	0.6
WD49	552488	7093303	1.06	103.75	18.36	104.1	37	49.9	17.6	578	4.42	1.9	1.1
WD50	552459	7093413	1.83	90.92	16.04	69.2	47	34.9	15.8	502	3.10	1.8	1.6
WD51	553611	7094060	1.23	33.34	12.91	74.9	153	33.0	11.3	268	3.14	13.8	0.6
WD52	553515	7094047	1.58	43.12	9.40	73.2	283	13.8	5.6	192	2.99	3.6	1.3
WD53	553413	7094037	1.73	83.97	9.41	130.8	313	28.8	6.4	176	3.57	1.8	2.0
WD54	553315	7094027	0.73	49.56	10.56	79.1	60	52.5	18.6	563	3.56	4.8	1.2
WD55	553214	7094016	2.47	45.85	15.06	100.3	56	34.1	9.2	518	2.77	2.6	0.9
WD56	553113	7094007	1.25	53.02	14.65	69.5	62	29.7	10.3	337	3.67	4.4	1.2
WD57	553016	7094002	0.89	40.37	13.12	75.4	28	32.4	13.3	362	3.60	4.3	1.1
WD58	552915	7093992	1.47	49.00	16.50	65.8	227	24.6	9.1	312	3.37	4.4	1.5
WD59	552843	7093923	0.71	28.63	10.95	76.4	94	30.7	13.9	414	3.29	3.9	0.9
WD60	552770	7093852	1.99	53.09	18.86	55.0	134	21.5	7.5	364	2.70	5.3	2.0
WD61	552700	7093784	2.40	40.37	20.47	44.9	98	18.2	6.5	266	2.36	7.0	1.8
WD62	552629	7093713	0.85	23.36	9.75	109.2	258	57.8	7.6	7195	1.71	8.2	0.9
WD63	552556	7093643	1.17	48.31	11.01	62.6	97	16.2	7.0	349	3.91	8.6	0.6
WD64	552486	7093572	2.43	51.06	12.19	43.0	91	12.8	4.9	283	2.66	2.4	2.3
WD65	552415	7093502	3.06	84.66	18.62	96.8	92	32.0	15.2	659	3.99	2.7	1.7
WD66	552533	7093102	1.91	68.84	14.37	81.6	78	39.4	18.3	470	3.64	7.0	1.6
WD67	552462	7093030	0.94	80.71	20.43	128.8	68	51.2	16.1	633	3.60	4.6	1.0
WD68	552393	7092958	0.95	42.74	14.59	79.5	55	40.0	14.5	540	3.50	5.2	1.4
WD69	552322	7092888	0.71	28.27	18.04	59.1	29	23.0	10.1	360	2.96	4.0	1.7
WD70	552255	7092815	0.97	40.29	13.01	62.7	56	32.7	9.3	338	2.98	8.4	0.8
WD71	552185	7092743	0.89	44.52	12.43	61.6	64	31.2	8.0	311	2.83	4.0	1.5
WD72	552116	7092672	0.55	21.99	14.88	52.9	66	307.8	23.2	418	2.70	8.9	1.2
WD73	552047	7092598	0.74	21.13	12.27	56.0	91	590.1	41.9	564	3.21	8.4	0.6
WD74	551959	7092547	0.60	7.52	13.32	60.6	44	325.0	40.0	766	3.14	3.2	0.3
WD75	551876	7092491	0.45	50.11	11.96	80.2	13	107.2	30.6	936	3.05	3.2	0.4
WD76	551793	7092436	0.29	12.02	5.89	27.7	26	727.9	46.0	672	3.23	3.1	0.3
WD77	551736	7092348	1.03	20.53	9.81	62.7	198	28.5	9.5	484	2.96	9.1	0.4
WD78	551679	7092268	0.96	10.45	8.08	55.7	124	8.9	8.1	266	3.60	3.1	0.4
WD79	551621	7092187	0.79	7.52	9.26	186.7	22	2.9	5.2	456	2.69	24.2	0.5
WD80	551720	7092506	0.61	62.02	8.93	56.5	72	487.3	38.6	512	3.73	3.8	0.6
WD81	551650	7092575	0.16	10.07	3.01	18.8	5	214.0	11.1	162	1.34	1.5	0.3
WD82	551581	7092649	0.73	20.87	9.30	59.5	100	110.9	12.9	383	2.55	8.2	0.6
WD83	551514	7092720	0.69	11.65	17.18	51.4	57	616.7	70.2	1161	3.73	4.2	0.5
WD84	551441	7092794	0.47	12.79	10.81	47.2	36	239.3	21.0	416	2.46	5.0	0.4
WD1-1	553855	7092249	0.87	16.21	10.68	49.7	55	21.3	8.4	228	3.00	7.2	0.6
WD1-2	593933	7092311	0.85	29.26	10.78	69.5	44	41.0	12.5	260	3.20	7.1	0.7
WD1-3	554010	7092374	0.76	68.21	13.62	85.6	66	52.2	16.6	577	3.90	1.4	0.7
WD1-4	554087	7092437	0.63	49.30	8.27	63.9	26	145.8	15.2	298	2.97	4.0	0.9
WD2-1	553431	7092251	0.71	26.71	13.51	67.3	40	28.7	13.7	348	3.35	4.7	1.1
WD2-2	553397	7092157	0.71	23.00	10.01	57.8	28	31.0	10.5	273	2.96	5.0	0.9
WD2-3	553364	7092063	0.83	70.83	8.91	80.2	65	74.1	10.9	424	2.95	3.2	0.8
WD2-4	553330	7091968	0.80	21.72	11.06	60.5	30	24.9	10.2	224	3.51	5.0	1.0

TABLE 2  
WSW Property 2011 Soil Assay Data

Sample	Location		Mo	Cu	Pb	Zn	Ag	Ni	Co	Mn	Fe	As	U
	UTM NAD83 Zone 7		PPM	PPM	PPM	PPM	PPB	PPM	PPM	PPM	%	PPM	PPM
	Easting	Northing	0.01	0.01	0.01	0.1	2	0.1	0.1	1	0.01	0.1	0.1
WD2-5	553297	7091874	1.27	69.70	10.57	106.5	24	108.5	14.9	561	4.20	2.6	0.6
WD2-6	553263	7091780	0.66	6.90	10.68	117.3	56	6.5	5.0	416	3.85	21.0	0.5
WD2-7	553229	7091685	0.42	19.14	9.70	70.4	27	21.8	13.7	522	3.88	1.9	1.2
WD2-8	553255	7091588	0.41	16.55	12.29	75.5	17	150.9	18.1	516	4.38	2.9	0.6
WD2-9	553282	7091491	0.55	19.94	6.43	45.7	14	17.3	12.4	450	3.67	4.9	0.6
WD2-10	553308	7091395	0.35	20.39	5.92	75.2	9	18.8	15.6	611	4.62	1.7	0.8
WD2-11	553334	7091299	0.35	9.75	8.43	48.5	9	10.0	8.1	334	2.83	3.7	0.6
WD2-12	553360	7091202	0.56	14.01	6.51	43.5	12	16.5	10.0	251	2.70	3.6	0.6
WD2-13	553386	7091105	0.55	46.82	10.30	75.9	9	29.1	14.0	339	4.11	3.0	2.4
WD2-14	553412	7091009	0.63	30.62	10.21	71.2	18	26.1	10.6	278	3.39	18.9	1.9
WD2-15	553438	7090913	0.88	23.47	10.16	60.8	80	25.6	9.8	291	2.41	8.8	0.6
WD4-1	554759	7091151	1.29	22.78	12.33	110.1	454	48.4	19.8	1106	3.85	5.1	0.5
WD4-2	554703	7091068	1.14	48.13	10.87	80.7	155	50.6	16.7	689	3.32	3.2	0.7
WD4-3	554647	7090985	1.21	57.52	8.09	66.4	53	182.7	20.5	403	3.39	1.1	1.7
WD4-4	554591	7090902	1.45	42.95	7.57	54.5	73	163.7	16.0	343	2.52	4.6	0.9
WD4-5	554536	7090819	0.51	30.36	11.55	48.5	116	325.2	24.2	318	2.44	5.3	1.5
WD4-6	554480	7090736	1.46	28.86	15.29	79.7	125	75.3	12.2	942	2.91	14.5	1.6
WD4-7	554424	7090653	0.91	30.12	11.23	87.8	115	42.8	7.2	613	2.45	4.5	1.1
WD4-8	554368	7090570	1.43	33.46	9.82	62.0	58	48.4	10.9	375	3.05	9.9	0.8
WD4-9	554312	7090487	0.53	15.85	11.56	67.8	19	14.3	14.7	561	3.62	10.0	1.0
WD4-10	554257	7090404	0.41	3.49	6.54	53.5	5	5.0	8.8	413	2.79	2.4	0.7
WD5-1	555253	7090959	0.55	16.02	13.49	53.6	24	20.8	9.2	246	2.85	4.3	0.8
WD5-2	555344	7091001	0.77	29.62	11.67	74.8	49	28.6	10.9	364	3.72	3.6	1.0
WD5-3	555435	7091043	0.33	22.56	14.38	83.3	78	32.0	12.5	456	3.88	2.0	0.9
WD5-4	555525	7091086	8.01	37.50	10.23	46.6	942	12.3	2.1	218	2.26	3.3	2.2
WD5-5	555616	7091128	3.37	55.74	11.28	142.3	660	39.2	9.3	211	3.50	9.8	1.1
WD5-6	555707	7091170	0.55	45.17	12.37	78.1	33	20.1	7.3	288	2.80	1.0	1.6
WD5-7	555798	7091212	0.36	98.76	5.06	39.7	48	25.6	13.0	738	2.57	1.6	0.6
WD5-8	555889	7091254	1.33	32.28	11.66	64.6	254	36.8	11.2	241	3.45	6.2	0.9
WD5-9	555980	7091296	1.76	73.62	9.59	77.2	122	47.3	12.0	304	3.02	6.5	1.8
WD5-10	556070	7091338	1.06	45.87	8.97	91.8	27	31.7	16.2	493	4.13	1.3	1.4
WD6-1	555235	7090310	1.21	18.31	12.05	143.4	335	19.2	12.0	1585	3.55	6.5	1.1
WD6-2	555157	7090248	0.95	28.15	17.49	91.5	42	39.4	8.7	304	3.15	1.6	1.8
WD6-3	555078	7090186	1.43	41.35	7.14	120.9	92	34.2	4.9	220	2.10	1.7	1.3
WD6-4	555000	7090123	1.19	23.18	8.67	73.8	272	38.1	10.0	251	2.45	5.7	0.9
WD6-5	554921	7090062	0.96	52.83	13.92	129.1	94	74.1	13.8	393	3.61	1.3	2.2

#### Ridge & Spur - WSW River Samples

WA-1	560979	7090624	1.84	53.59	8.35	41.9	82	15.1	3.8	74	2.06	45.4	1.0
WA-2	560890	7090671	2.25	41.46	10.21	43.7	55	20.1	8.1	262	2.73	37.9	1.0
WA-3	560804	7090720	1.73	48.20	11.26	45.6	40	25.5	6.9	325	2.64	34.5	0.9
WA-4	560716	7090770	2.05	47.69	10.47	59.8	113	26.0	8.2	242	2.82	28.7	1.0
WA-5	560631	7090820	1.63	34.62	9.31	56.0	162	24.3	8.2	223	2.81	24.4	0.9
WA-6	560543	7090871	1.63	50.95	9.64	74.5	83	62.7	9.2	268	3.15	19.4	1.4
WA-7	560456	7090921	1.01	28.39	7.25	54.2	141	63.1	8.1	197	2.35	16.0	0.6
WA-8	560369	7090969	0.95	25.74	7.51	49.7	139	46.6	8.3	241	2.26	13.0	0.8
WA-9	560281	7091021	0.94	23.30	6.81	51.7	109	31.8	7.1	178	2.25	12.7	0.5

TABLE 2  
WSW Property 2011 Soil Assay Data

Sample	Location		Mo	Cu	Pb	Zn	Ag	Ni	Co	Mn	Fe	As	U
	UTM NAD83 Zone 7 Easting	UTM NAD83 Zone 7 Northing	PPM 0.01	PPM 0.01	PPM 0.01	PPM 0.1	PPB 2	PPM 0.1	PPM 0.1	PPM 1	% 0.01	PPM 0.1	PPM 0.1
WA-10	560193	7091068	0.94	28.49	7.02	56.5	118	39.6	6.5	172	2.17	17.2	0.7
WA-11	560107	7091119	0.89	26.68	7.71	49.6	97	26.4	8.0	265	2.15	9.6	0.7
WA-12	560021	7091172	1.01	33.63	10.14	60.4	125	29.2	10.4	411	2.47	11.8	0.9
WA-13	559929	7091221	1.09	31.61	9.77	63.4	114	31.9	10.4	380	2.60	11.1	0.6
WA-14	559843	7091267	1.08	34.39	10.35	73.5	160	30.8	11.1	446	2.69	10.2	0.7
WA-15	559754	7091318	0.96	33.53	10.14	68.8	141	28.8	11.0	412	2.67	8.8	0.8
WA-16	559668	7091366	0.73	26.17	9.04	54.5	84	23.5	8.5	274	2.34	7.8	0.9
WA-17	559582	7091418	0.75	33.20	9.81	56.7	119	28.2	9.9	358	2.62	10.3	0.6
WA-18	559495	7091467	0.86	36.05	10.69	61.4	150	29.8	11.7	428	2.76	9.5	0.7
WA-19	559409	7091516	0.87	37.89	10.85	70.9	146	31.4	11.7	481	2.79	9.8	0.5
WA-20	559320	7091566	0.87	37.09	11.14	68.2	135	31.1	12.0	452	2.93	9.9	0.7
WA-21	559230	7091612	0.57	31.56	11.09	60.7	128	24.8	10.8	361	2.70	8.0	0.9
WA-22	559139	7091639	0.64	34.25	10.96	59.7	129	27.3	11.7	438	2.82	9.8	1.2
WA-23	559040	7091664	0.78	32.64	11.90	58.8	116	26.1	11.9	422	2.84	10.4	1.1
WA-24	558945	7091690	1.12	38.39	12.57	74.1	153	33.0	13.6	559	3.06	12.2	0.7
WA-25	558847	7091714	1.39	38.88	13.03	88.2	179	34.6	12.5	541	2.91	10.7	0.7
WA-26	558753	7091742	0.99	31.88	9.25	64.8	107	27.4	9.9	394	2.59	9.5	0.6
WA-27	558654	7091765	1.55	43.41	15.07	81.3	195	36.1	12.6	537	3.36	15.8	0.9
WA-28	558554	7091791	1.06	38.28	13.48	75.5	148	31.5	12.8	576	3.04	12.3	1.0
WB1	561055	7090669	1.69	54.49	11.09	52.6	45	29.4	11.6	225	2.90	32.5	1.1
WB2	561061	7090775	0.99	34.96	8.39	54.7	58	27.9	11.3	283	2.72	11.5	0.8
WB3	561061	7090876	1.04	31.58	9.21	60.0	73	28.4	9.0	283	2.50	9.5	0.9
WB4	561057	7090974	0.95	28.19	8.66	59.6	179	22.5	7.9	291	2.46	8.5	1.0
WB5	561063	7091074	1.11	19.31	9.62	50.7	160	18.2	11.3	498	2.23	8.0	0.6
WB6	561055	7091171	0.86	28.87	8.61	70.7	140	23.8	8.4	208	2.30	7.1	1.0
WB7	561059	7091277	0.55	19.35	9.35	54.1	143	16.5	5.7	109	1.98	7.5	0.8
WB8	561060	7091375	0.49	20.03	8.95	55.3	146	15.8	5.8	101	2.10	10.0	0.8
WB9	561063	7091474	0.83	25.24	8.76	46.6	205	19.1	5.8	102	2.19	10.1	1.1
WB10	561066	7091576	0.73	15.07	7.53	50.5	127	15.3	5.4	92	2.04	8.9	0.6
WB11	561063	7091675	1.12	15.46	16.00	54.5	189	14.4	6.7	155	2.09	20.6	1.0
WB12	561058	7091769	0.88	13.06	10.75	49.3	124	13.8	5.1	99	1.91	13.1	0.7
WB13	561067	7091870	0.97	11.70	11.89	44.4	186	12.1	5.1	108	1.68	9.8	0.8
WB14	561063	7091976	0.79	8.85	10.61	45.2	162	12.0	4.8	94	1.70	8.7	0.6
WB15	561065	7092073	0.75	14.79	10.51	53.4	118	16.1	5.8	96	1.98	8.8	0.8
WB16	561062	7092176	0.64	12.64	9.11	48.5	93	13.3	4.8	84	1.96	8.9	0.7
WB17	561063	7092276	0.81	15.22	12.37	53.3	143	13.8	5.9	134	1.98	8.7	1.1
WB18	561064	7092377	0.73	12.00	9.27	49.9	65	12.7	5.7	136	2.02	8.7	0.9
WB19	561060	7092476	0.94	14.41	18.91	61.9	43	13.9	7.7	192	2.19	8.7	1.2
WB19-2	561060	7092476	0.93	11.45	24.79	52.6	47	11.8	5.9	168	1.76	6.1	1.3
WB20	561062	7092576	0.81	13.84	11.41	55.2	87	13.2	7.4	202	2.05	7.7	1.1
WB21	561063	7092678	0.39	9.73	24.24	55.3	19	4.3	2.3	129	1.11	2.2	1.9
WB22	561062	7092777	1.96	17.82	15.70	86.0	52	11.7	7.5	484	2.67	5.0	2.1
WB23	561060	7092878	3.31	18.78	43.74	55.8	46	8.3	3.4	84	2.15	9.3	2.1
WB24	561058	7092978	1.51	16.05	89.17	123.1	106	6.6	4.5	126	1.78	4.7	2.8
WB25	561061	7093075	1.04	10.87	38.46	72.0	111	8.6	4.4	167	1.80	3.5	2.8
WC1	559269	7091705	0.80	29.89	12.24	63.1	137	25.3	11.4	417	2.69	10.9	1.0

TABLE 2  
WSW Property 2011 Soil Assay Data

Sample	Location		Mo	Cu	Pb	Zn	Ag	Ni	Co	Mn	Fe	As	U
	UTM NAD83 Zone 7 Easting	UTM NAD83 Zone 7 Northing	PPM 0.01	PPM 0.01	PPM 0.01	PPM 0.1	PPB 2	PPM 0.1	PPM 0.1	PPM 1	% 0.01	PPM 0.1	PPM 0.1
WC2	559306	7091798	0.26	12.93	8.02	12.6	49	10.3	2.8	51	1.13	5.0	0.7
WC3	559346	7091892	0.88	32.17	10.30	60.7	80	34.3	8.6	173	2.47	8.2	0.9
WC4	559386	7091984	1.02	44.23	9.34	61.4	152	31.5	14.2	493	2.82	10.9	0.6
WC5	559425	7092076	0.61	42.97	7.23	37.5	110	17.8	11.2	363	2.18	7.6	0.8
WC6	559462	7092168	0.80	84.88	8.07	78.7	383	104.5	22.3	824	3.32	37.4	1.3
WC7	559499	7092261	1.34	45.75	8.56	67.2	172	34.4	10.6	257	2.72	50.6	0.7
WC8	559536	7092354	2.45	73.86	8.22	103.1	363	47.4	8.9	125	3.54	30.8	1.3
WC9	559574	7092445	0.17	198.19	1.41	100.8	244	123.6	47.2	1678	7.27	14.0	0.4
WC10	559509	7092522	2.00	34.67	9.58	65.9	556	21.8	6.5	163	3.21	76.9	0.9
WC11	559444	7092598	2.43	40.93	10.97	54.3	508	27.4	6.7	118	2.76	69.7	1.0
WC12	559381	7092675	1.07	27.17	8.54	64.7	186	27.6	8.4	127	2.64	22.7	0.5
WC13	559317	7092751	5.12	92.17	18.84	108.7	1612	38.2	5.9	96	3.55	53.6	3.2
WC14	559251	7092829	4.18	78.15	15.55	129.6	1053	39.9	7.1	106	3.66	14.7	2.2
WC15	559185	7092903	1.88	67.42	7.88	113.0	207	88.5	19.6	678	4.50	14.0	0.6
WC16	559121	7092983	1.20	60.51	7.49	73.4	76	69.2	12.9	320	3.40	21.3	1.0
WC17	559057	7093058	1.87	48.58	7.96	69.0	188	54.6	10.5	283	2.94	22.6	1.5
WC18	558993	7093134	1.37	42.17	7.66	63.2	89	27.4	7.7	182	2.56	19.9	1.9
WC19	558926	7093208	0.79	55.81	5.91	85.3	193	45.8	8.8	352	2.92	12.4	1.7
WC20	559669	7092477	2.43	63.80	12.87	99.0	259	48.0	15.0	749	3.82	76.8	2.4
WC21	559765	7092504	1.10	34.30	8.92	56.4	155	35.1	7.7	220	2.67	56.4	1.1
WC22	559863	7092533	1.38	49.71	11.24	63.6	244	40.7	10.2	356	2.91	35.7	0.8
WC23	559957	7092562	1.03	43.81	9.50	57.0	106	32.6	9.0	346	2.72	19.6	1.4
WC24	560054	7092591	1.01	53.71	7.38	62.1	146	47.5	14.6	547	3.49	18.5	1.3
WC25	560149	7092620	1.02	21.11	11.99	41.9	212	19.0	6.7	192	2.00	37.3	1.6
WC26	560247	7092646	1.18	29.99	11.35	49.5	240	26.9	8.7	380	2.38	27.8	1.8
WC27	560342	7092674	0.78	20.95	7.94	44.7	116	18.5	6.6	225	2.05	17.2	1.0
WC28	560439	7092700	0.97	17.23	8.02	44.2	129	17.4	7.0	235	2.02	11.1	1.1
WC29	560505	7092772	0.86	18.79	7.72	44.0	98	16.4	6.5	204	2.02	10.6	1.1
WC30	560573	7092849	0.96	14.34	9.10	44.8	90	15.4	7.4	237	2.05	10.5	0.8
WC31	560641	7092923	0.65	12.04	14.07	44.7	43	10.3	5.4	130	1.69	5.4	0.8
WC32	560708	7092997	0.75	11.22	20.43	62.2	18	4.2	2.4	121	1.35	2.9	2.7
WC33	560836	7093146	3.35	5.59	36.48	88.2	83	9.1	4.0	409	2.03	2.1	2.6
WC34	560772	7093076	1.24	5.94	24.70	32.5	55	6.2	2.5	82	1.50	4.7	1.0
WV1	561059	7090576	1.14	24.96	8.91	50.2	221	24.4	9.1	249	2.55	11.6	0.7
WV2	561149	7090601	1.06	36.58	11.43	52.1	170	34.8	10.8	268	2.69	18.3	1.1
WV3	561249	7090629	1.80	34.21	14.68	68.1	67	34.4	12.5	766	2.84	9.8	0.7
WV4	561346	7090658	1.20	16.61	8.95	48.8	296	17.4	7.1	194	2.51	8.5	0.5
WV5	561444	7090683	1.16	24.38	10.59	55.7	574	21.1	6.3	137	3.24	10.3	0.6
WV6	561542	7090709	0.86	25.03	8.90	51.4	52	25.5	8.8	254	2.66	9.6	0.6
WV7	561639	7090737	1.05	27.76	10.36	55.5	44	24.5	8.8	243	2.91	10.0	1.0
WV8	561732	7090761	0.85	16.60	8.57	43.2	88	16.2	5.7	133	2.21	22.4	0.6
WV9	561829	7090788	1.06	18.31	10.60	41.9	134	16.1	5.9	176	2.24	13.3	0.9
WV10	561927	7090816	1.24	31.33	20.48	55.4	117	35.7	9.6	371	3.02	12.7	0.8
WV11	562025	7090840	2.81	46.96	20.92	122.6	310	48.6	10.6	414	2.98	49.9	1.3
WV12	562121	7090868	1.91	25.58	12.31	60.9	261	34.6	7.3	369	2.89	32.7	0.6
WV13	562217	7090896	2.20	14.91	30.88	55.4	292	27.6	5.2	186	2.28	41.3	1.0

TABLE 2  
WSW Property 2011 Soil Assay Data

Sample	Location		Mo	Cu	Pb	Zn	Ag	Ni	Co	Mn	Fe	As	U
	UTM NAD83 Zone 7		PPM	PPM	PPM	PPM	PPB	PPM	PPM	PPM	%	PPM	PPM
	Easting	Northing	0.01	0.01	0.01	0.1	2	0.1	0.1	1	0.01	0.1	0.1
WV14	562242	7090994	0.74	8.00	21.93	29.0	58	15.4	2.1	168	0.95	11.1	2.3
WV15	562265	7091090	1.81	18.07	27.45	53.6	110	25.6	6.0	208	2.22	16.2	1.4
WV16	562289	7091188	1.05	16.25	16.72	47.0	209	19.4	6.7	366	1.80	12.9	2.0
WV17	562317	7091287	1.01	13.66	17.70	51.7	173	16.4	5.0	185	1.86	12.0	2.3
WV18	562342	7091380	0.70	8.61	17.22	53.4	76	9.3	3.6	123	1.79	8.7	2.2
WV19	562367	7091479	0.69	6.45	19.18	59.1	51	6.6	2.5	138	1.54	8.2	3.2
WV20	562389	7091576	0.63	5.06	16.91	48.0	43	6.2	2.5	106	1.49	5.3	2.1
WV21	562410	7091673	1.19	16.38	35.92	57.9	183	14.6	3.9	162	1.90	8.6	4.9
WV22	562436	7091769	0.90	12.71	27.04	54.4	99	12.5	4.5	136	2.06	7.1	3.6
WV23	562461	7091864	1.16	17.21	22.19	56.7	105	19.1	6.1	168	2.22	7.5	3.5
WV24	562486	7091963	0.96	19.52	20.46	60.5	111	16.4	5.5	145	2.20	6.9	2.3
WV25	562508	7092059	1.06	17.91	22.79	57.3	131	14.6	5.2	146	2.14	6.6	2.4
WV26	562530	7092158	2.22	23.01	29.08	59.8	120	27.7	6.1	179	2.29	7.1	1.9
WV27	562554	7092255	1.12	18.93	16.58	50.2	73	22.0	7.2	251	2.35	8.1	1.7
WV28	562579	7092351	0.99	21.80	14.28	52.9	97	24.3	8.4	324	2.50	9.2	0.8
WV29	562675	7092391	0.94	17.89	13.68	43.0	80	21.5	7.7	244	2.17	8.4	1.0
WV30	562769	7092426	1.24	28.69	14.04	56.0	79	33.3	10.8	446	2.69	10.0	0.5
WV31	562862	7092461	1.31	24.70	19.74	47.8	32	34.5	9.5	252	2.68	10.4	0.9
WV32	562952	7092500	1.29	18.85	19.02	46.0	58	26.2	9.5	322	2.61	9.7	0.9
WV33	563050	7092540	1.02	15.21	13.16	39.3	41	19.3	7.5	161	2.38	8.2	0.5
WV34	563138	7092577	0.84	21.61	7.85	45.2	95	25.2	8.2	327	2.21	8.2	0.4
WV35	563232	7092616	1.15	25.11	11.39	46.5	117	28.1	8.9	469	2.32	9.3	1.3

#### Detailed Soil Grid 1 - WSW River

WD1L1-1	561752	7091167	1.56	43.94	7.85	95.3	540	85.4	12.2	410	2.89	47.0	1.2
WD1L1-2	561794	7091147	1.05	24.97	7.08	60.7	358	30.4	7.9	246	2.33	21.9	1.0
WD1L1-3	561836	7091120	1.57	39.83	8.89	86.3	307	51.6	10.3	346	2.95	21.7	1.2
WD1L1-4	561881	7091094	1.19	36.78	9.14	77.1	303	38.7	9.0	336	2.66	20.5	1.5
WD1L1-5	561923	7091069	1.05	31.92	8.55	59.8	256	27.2	8.1	266	2.57	21.2	1.4
WD1L1-6	561967	7091044	0.82	27.39	7.68	49.8	177	25.7	8.2	281	2.32	17.3	1.4
WD1L1-7	562010	7091021	0.90	24.67	9.34	55.5	252	26.7	7.1	270	2.24	28.3	1.5
WD1L1-8	562053	7090993	1.12	17.83	6.16	54.5	241	22.6	5.6	234	1.86	24.8	0.6
WD1L1-9	562098	7090970	1.13	18.45	12.31	49.0	143	23.4	6.0	227	1.86	36.7	1.2
WD1L1-1	562141	7090944	1.24	20.11	14.56	47.4	188	19.5	5.2	209	1.87	32.8	1.8
WD1L1-1	562184	7090918	1.39	14.69	14.29	44.6	380	18.4	6.1	388	2.19	34.1	0.7
WD1L1-1	562229	7090895	1.80	14.89	15.72	52.4	318	27.7	4.3	193	1.64	29.0	0.9
WD1L1-1	562271	7090870	4.77	15.40	43.79	58.9	744	14.3	3.7	164	2.14	96.3	3.2
WD1L1-1	562314	7090844	1.54	17.96	14.52	19.6	1257	9.8	1.6	44	0.83	21.5	1.7
WD1L1-1	562358	7090819	1.19	11.35	18.17	35.9	435	13.5	5.5	329	1.80	21.8	0.8
WD1L2-1	561708	7091099	1.00	29.42	7.23	62.6	243	48.8	10.0	315	2.47	26.4	1.1
WD1L2-2	561755	7091076	2.27	44.75	7.08	166.2	548	97.4	15.6	2743	2.43	33.9	1.6
WD1L2-3	561801	7091052	1.11	33.91	6.93	88.0	424	43.8	10.4	385	2.49	33.6	0.9
WD1L2-4	561843	7091027	1.76	33.27	6.85	125.8	600	53.4	8.7	601	2.32	25.2	1.3
WD1L2-5	561887	7091000	0.87	35.31	7.03	52.4	308	27.8	8.1	344	2.36	29.1	1.6
WD1L2-6	561933	7090978	0.86	31.66	7.37	54.6	249	33.9	8.0	277	2.30	22.4	1.4
WD1L2-7	561975	7090953	0.72	30.97	7.70	54.4	347	28.2	8.1	365	2.30	17.1	1.4

TABLE 2  
WSW Property 2011 Soil Assay Data

Sample	Location		Mo	Cu	Pb	Zn	Ag	Ni	Co	Mn	Fe	As	U
	UTM NAD83 Zone 7 Easting	UTM NAD83 Zone 7 Northing	PPM 0.01	PPM 0.01	PPM 0.01	PPM 0.1	PPB 2	PPM 0.1	PPM 0.1	PPM 1	% 0.01	PPM 0.1	PPM 0.1
WD1L2-8	562018	7090928	1.59	47.50	7.00	98.9	281	50.3	9.9	710	2.50	34.6	1.4
WD1L2-9	562062	7090907	1.00	27.27	6.23	55.7	218	29.3	7.3	254	2.16	17.8	1.2
WD1L2-1	562104	7090882	1.28	31.60	6.31	57.6	217	27.9	7.6	233	2.25	21.7	1.2
WD1L2-1	562146	7090857	1.35	28.88	6.18	65.2	297	33.7	6.7	386	2.34	33.4	0.7
WD1L2-1	562192	7090831	1.07	24.07	6.33	54.7	281	25.2	6.5	363	1.95	20.1	0.6
WD1L2-1	562236	7090809	0.72	9.35	13.50	23.1	1549	11.3	3.2	76	1.10	51.8	0.6
WD1L2-1	562278	7090782	0.96	33.35	13.24	50.4	359	44.0	8.9	289	2.46	40.6	0.8
WD1L2-1	562324	7090759	1.35	10.10	17.08	35.9	216	14.6	5.3	263	1.89	35.8	1.0
WD1L3-1	561680	7091038	0.94	25.46	6.91	62.5	133	70.0	10.2	265	2.63	21.8	0.7
WD1L3-2	561719	7091015	0.71	30.09	5.87	50.6	115	156.2	12.7	229	2.56	31.9	0.6
WD1L3-3	561764	7090990	0.82	28.10	8.76	51.3	102	25.8	7.8	247	2.41	19.5	1.2
WD1L3-4	561808	7090963	0.79	30.94	7.75	58.8	173	27.6	9.4	452	2.46	17.2	1.2
WD1L3-5	561850	7090941	0.78	17.49	6.20	45.7	149	35.0	7.7	292	2.25	19.3	0.5
WD1L3-6	561893	7090917	0.99	25.62	6.88	54.4	322	35.9	8.8	290	2.43	30.1	0.7
WD1L3-7	561938	7090892	1.30	30.27	7.94	64.5	192	29.7	8.1	213	2.51	32.1	1.0
WD1L3-8	561982	7090866	2.82	56.62	9.75	95.0	416	45.7	11.9	594	2.77	63.5	1.1
WD1L3-9	562027	7090841	1.13	32.80	6.66	66.9	157	29.0	7.5	248	2.43	29.8	0.9
WD1L3-1	562069	7090820	1.18	38.24	6.10	63.3	126	41.2	7.6	289	2.24	31.6	1.1
WD1L3-1	562113	7090794	2.00	24.05	6.46	50.6	295	35.7	10.0	998	2.35	46.6	0.4
WD1L3-1	562159	7090769	1.41	55.88	6.18	60.6	544	40.6	7.2	680	2.44	42.3	1.7
WD1L3-1	562202	7090746	2.05	49.55	11.63	94.3	273	80.6	11.7	876	2.72	148.3	1.0
WD1L3-1	562242	7090719	1.23	14.83	14.57	58.7	370	21.9	8.4	600	2.38	30.2	0.8
WD1L3-1	562288	7090696	1.48	20.61	15.93	48.1	298	23.8	8.0	378	2.24	31.7	0.8
WD1L4-1	561637	7090972	1.01	32.43	11.33	57.3	446	19.2	6.8	168	2.41	16.4	1.3
WD1L4-2	561686	7090957	0.92	42.04	7.80	72.5	187	28.0	9.7	340	3.30	14.5	1.0
WD1L4-3	561730	7090933	0.89	30.96	10.39	58.3	202	26.7	9.2	304	2.54	21.3	1.4
WD1L4-4	561774	7090903	1.05	19.67	9.45	50.0	76	16.5	6.7	201	2.26	12.6	0.8
WD1L4-5	561819	7090881	0.90	29.54	8.11	55.7	308	168.0	12.9	268	2.78	52.1	0.9
WD1L4-6	561860	7090856	2.58	31.82	9.56	63.2	300	33.3	15.1	630	2.93	43.7	0.6
WD1L4-7	561903	7090832	0.85	32.14	8.30	51.3	60	35.7	10.0	267	2.71	10.7	0.9
WD1L4-8	561946	7090805	0.85	29.35	8.44	51.9	147	21.7	8.5	242	2.57	10.9	1.0
WD1L4-9	561991	7090781	0.88	32.37	8.04	55.4	147	27.7	9.0	301	2.88	11.0	1.0
WD1L4-1	562033	7090755	1.21	45.56	8.45	96.9	244	40.9	11.1	322	2.93	46.8	1.4
WD1L4-1	562078	7090732	1.27	45.54	7.73	93.2	203	65.8	15.1	278	3.45	45.4	0.9
WD1L4-1	562121	7090705	1.19	53.30	7.96	93.7	215	76.4	21.4	657	4.47	36.0	1.1
WD1L4-1	562165	7090682	2.02	37.67	8.85	102.6	344	51.7	9.2	727	2.32	31.5	0.8
WD1L4-1	562209	7090658	1.51	56.94	9.35	84.1	427	51.8	12.8	780	2.78	23.1	0.7
WD1L4-1	562250	7090631	2.95	62.46	10.38	97.2	356	77.9	20.0	2177	3.54	92.0	1.0

TABLE 2  
WSW Property 2011 Soil Assay Data

Sample	Location		Au	Th	Sr	Cd	Sb	Bi	V	Ca	P	La	Cr	Mg	Ba
	UTM NAD83 Zone 7		PPB	PPM	PPM	PPM	PPM	PPM	PPM	%	%	PPM	PPM	%	PPM
	Easting	Northing	0.2	0.1	0.5	0.01	0.02	0.02	2	0.01	0.001	0.5	0.5	0.01	0.5
<b>WSW Ridge Samples</b>															
WD1	555759	7089698	2.2	7.1	35.5	0.12	0.20	0.22	79	0.38	0.180	50.9	54.7	0.97	321.8
WD2	555698	7089778	1.2	2.8	23.0	0.11	0.36	0.23	64	0.08	0.055	14.1	39.9	0.50	175.3
WD3	555665	7089879	1.0	6.4	19.4	0.05	0.28	0.22	66	0.06	0.041	48.8	31.1	0.70	254.5
WD4	555626	7089980	3.3	7.5	21.3	0.15	0.32	0.42	64	0.08	0.032	35.7	25.5	0.33	142.6
WD5	555550	7090045	<0.2	5.7	10.0	0.04	0.15	0.20	57	0.10	0.028	30.8	41.7	1.27	239.1
WD6	555491	7090125	0.7	3.3	15.5	0.04	0.18	0.15	56	0.12	0.050	17.0	36.2	0.91	301.5
WD7	555455	7090228	0.2	1.8	60.3	0.06	0.23	0.10	119	1.06	0.355	16.5	95.3	1.74	912.3
WD8	555393	7090306	<0.2	4.0	63.2	0.11	0.30	0.24	77	0.37	0.250	35.9	35.2	0.55	296.2
WD9	555314	7090372	1.5	4.2	19.1	0.13	0.24	0.27	115	0.08	0.037	23.0	43.8	1.00	211.0
WD10	555291	7090489	<0.2	2.2	13.7	0.03	0.11	0.27	42	0.05	0.022	8.6	29.1	0.88	277.7
WD11	555266	7090602	1.9	5.5	17.2	0.04	0.28	0.18	51	0.12	0.017	24.4	32.8	0.93	206.2
WD12	555236	7090708	2.5	4.0	27.8	0.06	0.54	0.20	68	0.28	0.017	15.6	48.4	0.68	291.7
WD13	555217	7090830	0.5	4.4	9.2	0.06	0.23	0.20	57	0.09	0.022	9.8	50.3	1.04	196.1
WD14	555166	7090925	0.6	7.4	25.9	0.04	0.08	0.16	78	0.26	0.027	43.6	148.7	2.10	388.7
WD15	555103	7091015	1.5	15.2	6.6	0.01	0.09	0.36	42	0.08	0.024	54.6	38.5	0.87	178.4
WD16	555034	7091078	2.5	10.6	38.7	0.25	0.27	0.22	47	0.18	0.019	78.0	35.3	0.47	423.9
WD17	554934	7091118	1.1	4.8	15.1	0.05	0.10	0.19	55	0.06	0.027	21.2	31.1	0.75	194.7
WD18	554828	7091165	1.6	3.4	18.3	0.37	0.51	0.36	87	0.09	0.043	12.0	49.4	0.41	354.0
WD19	554765	7091230	0.6	7.0	27.7	0.10	0.16	0.13	66	0.11	0.034	20.8	47.1	1.00	376.3
WD20	554709	7091317	1.9	7.4	68.2	0.04	0.19	0.21	70	0.39	0.169	59.3	97.6	1.59	671.1
WD21	554650	7091399	<0.2	8.6	9.2	0.03	0.19	0.19	51	0.09	0.021	13.8	37.7	0.81	131.9
WD22	554577	7091470	1.5	1.6	17.8	0.11	0.26	0.20	52	0.17	0.041	7.0	29.3	0.45	161.6
WD23	554514	7091544	2.1	14.0	15.1	0.02	0.21	0.27	47	0.09	0.012	19.2	38.8	0.80	223.5
WD24	554417	7091588	1.0	4.4	12.5	0.05	0.30	0.15	51	0.12	0.022	9.8	31.8	0.57	148.8
WD25	554311	7091630	1.8	14.8	5.4	0.02	0.09	0.41	29	0.06	0.021	35.1	28.2	0.76	105.0
WD27	554149	7091755	0.8	4.2	13.2	0.03	0.21	0.16	31	0.09	0.015	16.3	18.0	0.53	113.1
WD28	554104	7091848	1.2	10.7	18.9	0.06	0.08	0.29	51	0.11	0.032	45.9	38.0	1.05	203.1
WD29	554049	7091933	1.8	3.5	11.1	0.11	0.40	0.19	69	0.11	0.054	10.3	40.8	0.67	256.0
WD30	553983	7092007	3.3	3.5	14.1	0.04	0.35	0.14	58	0.15	0.021	9.2	58.7	1.03	475.5
WD31	553923	7092120	1.5	0.7	10.8	0.20	0.37	0.21	65	0.11	0.091	9.7	42.9	0.41	324.0
WD32	553878	7092184	0.3	4.4	9.8	0.04	0.05	0.05	94	0.19	0.032	9.4	29.0	1.98	912.5
WD33	553809	7092258	1.1	9.8	18.9	0.15	0.17	0.26	72	0.12	0.027	23.3	51.4	0.95	320.7
WD34	553705	7092295	0.7	6.9	12.0	0.05	0.19	0.14	54	0.11	0.031	17.0	43.0	1.20	172.3
WD35	553598	7092332	<0.2	1.8	5.1	0.04	0.19	0.06	66	0.11	0.019	5.3	16.0	0.68	229.1
WD36	553465	7092345	0.8	2.2	5.8	0.04	0.16	0.06	99	0.13	0.035	10.2	19.7	0.95	258.9
WD37	553380	7092414	1.0	10.6	16.0	0.14	0.20	0.25	62	0.16	0.030	16.6	53.9	0.92	417.2
WD38	553308	7092476	0.3	4.1	11.9	0.09	0.14	0.12	72	0.14	0.023	12.2	88.9	1.62	353.1
WD39	553235	7092549	1.3	10.4	12.4	0.05	0.28	0.26	51	0.06	0.020	31.0	41.8	0.90	178.4
WD40	553175	7092628	1.5	2.1	7.7	0.04	0.21	0.08	78	0.19	0.044	7.9	15.8	0.77	351.3
WD41	553116	7092708	1.6	9.4	21.6	0.11	0.47	0.23	68	0.19	0.018	31.1	51.5	0.95	316.0
WD42	553052	7092789	<0.2	8.9	13.9	0.06	0.27	0.25	53	0.08	0.021	21.8	39.9	0.92	173.9
WD43	552962	7092848	1.9	4.0	32.5	0.24	0.30	0.18	66	0.10	0.048	15.6	53.3	0.92	459.8
WD44	552866	7092902	1.4	5.9	28.0	3.06	0.43	0.21	119	0.10	0.058	21.4	45.6	0.38	256.6
WD45	552756	7092958	<0.2	8.6	35.1	0.37	0.18	0.18	72	0.10	0.060	24.0	43.1	1.14	490.2
WD46	552625	7093018	3.0	9.0	47.1	0.37	0.18	0.38	58	0.09	0.063	38.9	39.0	1.25	343.1

TABLE 2  
WSW Property 2011 Soil Assay Data

Sample	Location		Au	Th	Sr	Cd	Sb	Bi	V	Ca	P	La	Cr	Mg	Ba
	UTM NAD83 Zone 7		PPB	PPM	PPM	PPM	PPM	PPM	PPM	%	%	PPM	PPM	%	PPM
	Easting	Northing	0.2	0.1	0.5	0.01	0.02	0.02	2	0.01	0.001	0.5	0.5	0.01	0.5
WD47	552533	7093102	1.2	3.3	19.5	0.85	0.47	0.22	171	0.09	0.031	14.1	48.7	0.57	246.0
WD48	552502	7093206	0.9	4.3	16.3	0.05	0.10	0.13	92	0.19	0.020	14.6	47.0	1.23	477.5
WD49	552488	7093303	2.9	5.7	9.8	0.14	0.13	0.18	48	0.06	0.027	22.4	39.1	1.07	234.2
WD50	552459	7093413	3.3	9.0	10.2	0.11	0.14	0.35	36	0.05	0.028	30.1	27.8	0.55	197.6
WD51	553611	7094060	3.4	3.9	11.7	0.23	0.84	0.20	71	0.10	0.022	12.4	41.8	0.65	220.4
WD52	553515	7094047	4.2	5.6	15.8	0.17	0.26	0.17	55	0.10	0.039	18.5	34.5	0.76	300.0
WD53	553413	7094037	4.5	2.5	28.2	0.53	0.29	0.23	82	0.13	0.059	10.8	48.4	0.91	473.8
WD54	553315	7094027	2.8	5.0	16.2	0.08	0.34	0.18	67	0.22	0.060	25.5	71.6	1.10	298.9
WD55	553214	7094016	2.5	2.5	10.3	0.38	0.18	0.25	86	0.08	0.045	12.9	39.4	0.54	308.6
WD56	553113	7094007	1.9	5.0	16.4	0.11	0.28	0.25	75	0.12	0.032	19.8	41.9	0.84	322.8
WD57	553016	7094002	3.7	7.5	9.2	0.08	0.33	0.25	49	0.09	0.027	25.9	38.9	0.80	191.6
WD58	552915	7093992	3.7	4.1	16.3	0.06	0.26	0.22	47	0.36	0.042	17.6	29.9	0.69	461.7
WD59	552843	7093923	2.7	5.8	19.9	0.08	0.19	0.22	48	0.65	0.052	18.8	34.3	0.86	374.6
WD60	552770	7093852	3.8	2.7	19.1	0.18	0.31	0.25	52	0.23	0.060	18.7	30.7	0.55	429.6
WD61	552700	7093784	3.0	0.2	13.7	0.19	0.47	0.23	49	0.10	0.079	14.0	31.2	0.36	149.5
WD62	552629	7093713	2.6	0.7	86.3	1.22	0.32	0.12	41	####	0.119	16.2	18.5	0.29	306.0
WD63	552556	7093643	2.1	3.0	11.1	0.14	0.45	0.18	70	0.08	0.035	8.3	33.8	0.74	189.9
WD64	552486	7093572	1.3	3.2	11.3	0.08	0.15	0.17	61	0.08	0.050	13.9	23.1	0.55	208.7
WD65	552415	7093502	2.9	5.4	16.3	0.19	0.13	0.26	68	0.06	0.046	17.2	40.4	1.07	380.2
WD66	552533	7093102	12.6	4.3	10.1	0.09	0.32	0.28	56	0.10	0.042	12.4	38.2	0.84	170.7
WD67	552462	7093030	<0.2	7.3	12.5	0.13	0.13	0.22	83	0.09	0.029	10.2	57.4	1.86	382.0
WD68	552393	7092958	2.6	9.1	15.9	0.06	0.19	0.22	60	0.16	0.029	21.0	51.5	1.07	188.4
WD69	552322	7092888	0.7	5.2	25.8	0.06	0.17	0.20	42	0.23	0.045	34.6	32.2	0.64	157.9
WD70	552255	7092815	1.6	4.9	12.7	0.09	0.39	0.18	66	0.13	0.019	12.2	41.6	0.73	202.2
WD71	552185	7092743	0.7	4.5	12.8	0.05	0.15	0.20	48	0.12	0.025	18.0	37.7	0.79	244.7
WD72	552116	7092672	0.9	3.0	18.5	0.17	0.31	0.14	44	0.20	0.036	12.9	155.0	1.97	205.0
WD73	552047	7092598	2.4	2.3	19.5	0.20	0.39	0.13	41	0.30	0.043	9.0	301.4	4.52	193.9
WD74	551959	7092547	0.8	1.3	12.6	0.21	0.22	0.11	50	0.14	0.039	5.7	231.7	3.01	166.2
WD75	551876	7092491	1.0	3.1	8.4	0.07	0.11	0.11	83	0.17	0.040	10.2	168.8	2.26	285.7
WD76	551793	7092436	1.6	1.0	6.2	0.10	0.14	0.04	35	0.19	0.021	2.2	391.5	6.51	72.2
WD77	551736	7092348	0.7	3.2	9.4	0.11	0.40	0.17	62	0.10	0.024	8.7	44.5	0.74	153.3
WD78	551679	7092268	0.7	3.0	8.1	0.08	0.25	0.12	91	0.15	0.023	8.8	19.2	0.71	93.1
WD79	551621	7092187	0.4	3.1	7.8	0.17	0.33	0.05	16	0.17	0.062	16.8	6.1	0.17	159.8
WD80	551720	7092506	0.9	2.4	6.5	0.10	0.19	0.12	71	0.07	0.021	8.6	327.3	3.69	220.0
WD81	551650	7092575	0.6	1.5	7.6	0.01	0.10	0.02	27	0.14	0.021	4.6	370.4	1.66	96.9
WD82	551581	7092649	2.1	4.0	24.1	0.16	0.53	0.12	50	0.37	0.071	13.1	48.8	0.96	230.8
WD83	551514	7092720	1.0	1.9	14.2	0.15	0.30	0.11	46	0.17	0.031	7.1	302.1	3.98	164.4
WD84	551441	7092794	3.3	2.5	15.5	0.13	0.23	0.11	45	0.19	0.026	9.2	101.0	1.70	196.6
WD1-1	553855	7092249	5.0	3.7	10.6	0.19	0.44	0.21	61	0.11	0.029	9.8	32.9	0.47	155.7
WD1-2	593933	7092311	1.4	6.5	14.2	0.10	0.34	0.20	71	0.18	0.023	14.8	55.4	1.03	172.8
WD1-3	554010	7092374	1.4	5.7	18.7	0.10	0.11	0.16	101	0.09	0.015	21.2	59.7	1.49	862.9
WD1-4	554087	7092437	1.3	5.9	11.7	0.05	0.20	0.12	59	0.11	0.011	15.2	157.7	1.61	567.0
WD2-1	553431	7092251	1.9	11.0	14.9	0.07	0.28	0.20	52	0.16	0.023	27.3	40.5	0.69	135.0
WD2-2	553397	7092157	1.1	7.0	15.8	0.06	0.25	0.15	56	0.18	0.021	21.5	47.3	0.81	192.7
WD2-3	553364	7092063	2.1	3.2	13.0	0.06	0.11	0.11	86	0.12	0.026	9.1	77.5	1.99	1940.0
WD2-4	553330	7091968	3.4	9.4	8.5	0.08	0.28	0.22	58	0.08	0.017	18.7	37.6	0.76	123.4

TABLE 2  
WSW Property 2011 Soil Assay Data

Sample	Location		Au	Th	Sr	Cd	Sb	Bi	V	Ca	P	La	Cr	Mg	Ba
	UTM NAD83 Zone 7		PPB	PPM	PPM	PPM	PPM	PPM	PPM	%	%	PPM	PPM	%	PPM
	Easting	Northing	0.2	0.1	0.5	0.01	0.02	0.02	2	0.01	0.001	0.5	0.5	0.01	0.5
WD2-5	553297	7091874	0.3	7.7	9.9	0.10	0.12	0.17	111	0.16	0.043	21.2	103.6	1.65	328.8
WD2-6	553263	7091780	0.3	4.3	7.8	0.09	0.13	0.03	10	0.14	0.055	14.0	6.2	0.44	342.1
WD2-7	553229	7091685	0.2	12.7	48.7	0.05	0.21	0.09	73	0.82	0.025	36.5	68.7	1.13	128.2
WD2-8	553255	7091588	<0.2	12.3	6.5	0.19	0.16	0.08	91	0.12	0.028	19.0	345.6	2.25	114.0
WD2-9	553282	7091491	0.8	6.1	15.0	0.03	0.30	0.07	82	0.21	0.031	9.6	50.6	1.07	161.3
WD2-10	553308	7091395	<0.2	8.8	29.9	0.02	0.23	0.04	87	0.42	0.077	17.3	39.0	1.49	312.4
WD2-11	553334	7091299	<0.2	5.6	12.3	0.02	0.39	0.04	48	0.16	0.033	10.6	21.1	0.77	257.9
WD2-12	553360	7091202	19.2	4.6	20.9	0.03	0.34	0.07	69	0.33	0.038	11.8	37.9	0.91	158.9
WD2-13	553386	7091105	0.5	21.0	13.6	0.02	0.16	0.15	58	0.14	0.028	47.4	52.5	0.93	215.4
WD2-14	553412	7091009	2.1	19.5	19.9	0.05	0.56	0.14	58	0.21	0.020	39.1	52.0	0.65	236.2
WD2-15	553438	7090913	1.2	5.2	35.0	0.11	0.63	0.16	52	0.57	0.052	16.7	30.5	0.56	302.4
WD4-1	554759	7091151	0.8	3.8	14.1	0.23	0.24	0.18	97	0.14	0.060	11.0	77.6	1.03	377.6
WD4-2	554703	7091068	0.5	6.6	18.3	0.13	0.21	0.14	83	0.27	0.033	16.7	86.7	1.17	495.1
WD4-3	554647	7090985	0.6	9.4	12.7	0.03	0.07	0.16	67	0.31	0.040	27.2	149.1	1.92	544.3
WD4-4	554591	7090902	1.2	4.2	16.1	0.07	0.17	0.11	57	0.38	0.015	13.2	140.8	1.58	359.8
WD4-5	554536	7090819	3.4	4.0	25.0	0.17	0.48	0.16	40	0.52	0.032	10.4	232.3	1.53	295.1
WD4-6	554480	7090736	1.5	4.7	47.6	0.19	0.69	0.18	36	0.80	0.055	15.1	66.7	0.68	494.0
WD4-7	554424	7090653	0.5	4.0	15.7	0.20	0.76	0.08	13	0.31	0.032	17.1	39.7	0.46	258.0
WD4-8	554368	7090570	1.8	5.5	13.1	0.06	0.80	0.13	61	0.21	0.016	25.2	56.0	0.82	184.1
WD4-9	554312	7090487	0.4	9.8	60.7	0.04	1.22	0.08	74	1.04	0.047	21.7	38.5	1.05	92.7
WD4-10	554257	7090404	<0.2	6.0	51.6	0.04	8.68	0.02	31	0.69	0.025	15.0	8.1	0.55	135.4
WD5-1	555253	7090959	1.0	7.4	14.0	0.05	0.22	0.17	47	0.13	0.018	18.7	33.4	0.56	131.0
WD5-2	555344	7091001	0.8	10.6	11.3	0.05	0.20	0.17	63	0.10	0.017	32.1	43.6	0.87	186.5
WD5-3	555435	7091043	0.8	12.6	35.0	0.03	0.11	0.30	65	0.22	0.033	48.4	62.4	1.01	375.5
WD5-4	555525	7091086	0.9	3.0	27.2	0.43	0.35	0.19	250	0.10	0.049	17.3	110.3	1.38	222.0
WD5-5	555616	7091128	1.3	4.2	12.9	0.36	0.58	0.21	87	0.08	0.068	12.0	45.3	0.57	1257.0
WD5-6	555707	7091170	1.6	13.1	8.5	0.04	0.14	0.25	30	0.09	0.012	47.8	26.7	0.55	56.8
WD5-7	555798	7091212	0.5	4.1	22.6	0.11	0.11	0.05	64	0.70	0.065	19.1	29.0	0.80	253.7
WD5-8	555889	7091254	1.8	6.7	16.5	0.08	0.34	0.19	71	0.18	0.018	18.7	55.6	0.68	201.3
WD5-9	555980	7091296	2.8	5.1	26.8	0.16	0.47	0.15	84	0.31	0.022	17.4	80.2	0.87	436.5
WD5-10	556070	7091338	1.5	10.1	15.9	0.08	0.13	0.32	52	0.11	0.024	26.5	41.9	1.03	199.8
WD6-1	555235	7090310	<0.2	9.0	86.6	0.53	0.33	0.17	60	0.86	0.392	38.6	25.1	0.91	789.2
WD6-2	555157	7090248	<0.2	14.6	72.9	0.04	0.09	0.16	40	0.53	0.248	70.2	42.7	0.75	246.6
WD6-3	555078	7090186	<0.2	3.6	21.9	0.29	0.10	0.12	93	0.14	0.053	12.3	72.7	0.72	285.9
WD6-4	555000	7090123	1.1	4.1	17.9	0.19	0.33	0.15	67	0.17	0.026	11.7	49.4	0.54	430.4
WD6-5	554921	7090062	2.0	13.4	15.5	0.39	0.13	0.25	80	0.23	0.059	36.2	69.6	0.99	449.0
<b>Ridge &amp; Spur - WSW River</b>															
WA-1	560979	7090624	4.5	1.5	11.6	0.14	3.82	0.24	29	0.02	0.056	28.3	13.9	0.11	142.8
WA-2	560890	7090671	3.5	4.2	15.3	0.08	3.70	0.20	49	0.10	0.029	19.5	28.5	0.33	250.4
WA-3	560804	7090720	2.1	3.5	12.4	0.09	2.18	0.21	43	0.08	0.044	20.1	32.5	0.26	235.2
WA-4	560716	7090770	3.0	4.5	16.6	0.19	2.31	0.20	46	0.11	0.034	18.3	29.7	0.31	238.3
WA-5	560631	7090820	4.0	4.3	17.5	0.16	1.40	0.18	55	0.14	0.031	14.2	34.6	0.41	252.1
WA-6	560543	7090871	17.5	5.1	21.0	0.12	1.46	0.18	62	0.16	0.032	18.6	93.4	0.78	414.0
WA-7	560456	7090921	1.1	3.2	13.5	0.13	1.14	0.13	49	0.12	0.025	12.4	93.6	0.62	194.2
WA-8	560369	7090969	5.3	3.6	18.7	0.08	1.23	0.12	48	0.19	0.021	13.8	77.4	0.57	353.2
WA-9	560281	7091021	2.9	3.7	18.4	0.11	1.23	0.12	43	0.20	0.038	14.4	50.3	0.47	263.4

TABLE 2  
WSW Property 2011 Soil Assay Data

Sample	Location		Au	Th	Sr	Cd	Sb	Bi	V	Ca	P	La	Cr	Mg	Ba
	UTM NAD83 Zone 7		PPB	PPM	PPM	PPM	PPM	PPM	PPM	%	%	PPM	PPM	%	PPM
	Easting	Northing	0.2	0.1	0.5	0.01	0.02	0.02	2	0.01	0.001	0.5	0.5	0.01	0.5
WA-10	560193	7091068	100.1	3.4	21.1	0.16	1.22	0.11	44	0.25	0.050	14.2	61.6	0.53	402.6
WA-11	560107	7091119	7.1	4.0	27.8	0.14	0.79	0.13	42	0.37	0.066	15.2	32.4	0.43	330.1
WA-12	560021	7091172	20.1	4.7	46.1	0.18	0.95	0.16	46	1.07	0.066	16.8	32.7	0.55	368.0
WA-13	559929	7091221	3.1	4.2	40.7	0.22	0.79	0.15	50	1.04	0.066	15.1	35.1	0.58	356.3
WA-14	559843	7091267	3.1	4.3	45.9	0.26	0.85	0.17	56	1.31	0.064	15.3	33.8	0.63	428.9
WA-15	559754	7091318	6.3	4.4	43.1	0.23	0.82	0.17	55	0.89	0.067	15.5	33.0	0.63	444.7
WA-16	559668	7091366	1.6	3.7	34.4	0.11	0.61	0.14	52	0.48	0.051	13.7	30.8	0.47	331.3
WA-17	559582	7091418	2.3	4.4	38.8	0.17	0.75	0.16	55	0.75	0.060	15.7	33.3	0.54	366.0
WA-18	559495	7091467	3.3	4.3	40.9	0.17	0.76	0.17	57	0.62	0.060	15.4	33.9	0.52	418.0
WA-19	559409	7091516	3.0	4.4	41.6	0.24	0.86	0.17	57	0.66	0.062	16.1	35.8	0.56	396.9
WA-20	559320	7091566	2.0	4.8	41.2	0.18	0.83	0.17	61	0.70	0.058	16.8	37.9	0.56	434.8
WA-21	559230	7091612	5.3	4.0	39.5	0.17	0.63	0.16	53	0.60	0.052	14.7	34.0	0.47	368.2
WA-22	559139	7091639	1.9	4.3	44.3	0.17	0.73	0.17	57	0.62	0.048	16.3	35.4	0.50	430.1
WA-23	559040	7091664	2.3	4.5	38.1	0.13	0.77	0.17	59	0.55	0.047	16.8	36.2	0.48	442.8
WA-24	558945	7091690	4.3	5.1	44.6	0.26	0.95	0.20	61	0.65	0.062	17.5	39.2	0.54	521.6
WA-25	558847	7091714	3.5	4.8	39.0	0.37	0.96	0.18	57	0.54	0.079	16.5	38.1	0.54	402.9
WA-26	558753	7091742	2.2	4.5	34.1	0.22	0.75	0.15	51	0.48	0.073	15.2	34.7	0.48	310.7
WA-27	558654	7091765	2.3	6.2	45.5	0.28	1.12	0.24	56	0.50	0.075	18.2	40.3	0.48	474.5
WA-28	558554	7091791	2.6	5.1	40.0	0.23	0.87	0.21	54	0.57	0.065	18.1	35.2	0.45	456.3
WB1	561055	7090669	3.6	4.8	18.2	0.07	2.67	0.18	59	0.12	0.026	18.7	38.3	0.41	316.2
WB2	561061	7090775	1.8	4.6	15.7	0.12	1.19	0.16	55	0.16	0.028	18.1	41.6	0.57	246.0
WB3	561061	7090876	2.7	4.2	18.8	0.07	0.94	0.16	50	0.23	0.036	16.6	36.6	0.53	254.4
WB4	561057	7090974	1.3	5.1	20.1	0.10	1.11	0.18	42	0.27	0.046	18.6	32.2	0.45	254.7
WB5	561063	7091074	2.0	2.4	20.3	0.09	0.88	0.17	44	0.32	0.047	13.7	31.2	0.43	219.6
WB6	561055	7091171	2.7	4.2	23.8	0.23	0.75	0.16	38	0.30	0.059	16.1	30.3	0.44	315.7
WB7	561059	7091277	1.8	1.6	18.2	0.18	0.58	0.18	40	0.23	0.066	14.8	26.4	0.37	194.5
WB8	561060	7091375	6.1	2.4	17.6	0.17	0.71	0.16	44	0.21	0.049	14.5	25.7	0.36	196.1
WB9	561063	7091474	4.9	0.6	19.7	0.23	0.73	0.16	37	0.26	0.058	11.3	22.1	0.23	272.4
WB10	561066	7091576	3.4	1.4	13.4	0.14	0.58	0.14	40	0.21	0.046	11.5	21.9	0.28	170.6
WB11	561063	7091675	11.1	4.1	13.1	0.15	0.97	0.21	35	0.19	0.045	18.0	21.3	0.26	186.0
WB12	561058	7091769	1.4	2.9	14.7	0.09	0.56	0.15	38	0.23	0.039	12.9	21.5	0.28	194.0
WB13	561067	7091870	2.4	2.5	14.9	0.11	0.45	0.16	33	0.22	0.036	13.9	20.3	0.26	230.5
WB14	561063	7091976	1.8	1.7	16.6	0.12	0.40	0.15	32	0.23	0.047	12.9	19.1	0.24	196.0
WB15	561065	7092073	3.5	3.5	17.4	0.12	0.54	0.14	37	0.26	0.050	15.5	23.2	0.31	245.1
WB16	561062	7092176	17.7	1.7	15.5	0.11	0.46	0.13	39	0.24	0.051	12.4	21.4	0.29	168.8
WB17	561063	7092276	2.6	3.1	17.2	0.11	0.43	0.15	36	0.26	0.050	15.0	22.2	0.29	249.3
WB18	561064	7092377	2.1	3.2	14.0	0.10	0.44	0.13	38	0.23	0.051	14.1	20.0	0.28	177.3
WB19	561060	7092476	2.7	9.4	16.5	0.10	0.56	0.14	35	0.24	0.049	23.7	25.5	0.42	259.1
WB19-2	561060	7092476	1.9	18.8	15.4	0.10	0.42	0.15	23	0.20	0.041	45.2	18.7	0.40	241.4
WB20	561062	7092576	3.1	5.5	16.5	0.07	0.50	0.15	38	0.25	0.043	17.0	25.8	0.36	267.5
WB21	561063	7092678	2.0	19.5	10.8	0.09	0.21	0.26	8	0.13	0.027	53.5	6.2	0.53	210.5
WB22	561062	7092777	0.8	13.3	19.4	0.36	0.45	0.13	36	0.15	0.025	61.0	18.7	0.23	1606.0
WB23	561060	7092878	1.2	16.9	5.1	0.15	0.55	0.38	15	0.04	0.022	32.2	11.5	0.11	208.2
WB24	561058	7092978	0.4	16.9	11.9	0.25	0.30	0.41	13	0.11	0.038	62.6	10.3	0.52	426.4
WB25	561061	7093075	6.0	10.7	14.9	0.21	0.23	0.23	20	0.15	0.044	48.4	14.5	0.63	288.2
WC1	559269	7091705	2.5	3.9	33.3	0.14	0.57	0.20	54	0.56	0.058	14.6	32.8	0.40	424.7

TABLE 2  
WSW Property 2011 Soil Assay Data

Sample	Location		Au	Th	Sr	Cd	Sb	Bi	V	Ca	P	La	Cr	Mg	Ba
	UTM NAD83 Zone 7		PPB	PPM	PPM	PPM	PPM	PPM	PPM	%	%	PPM	PPM	%	PPM
	Easting	Northing	0.2	0.1	0.5	0.01	0.02	0.02	2	0.01	0.001	0.5	0.5	0.01	0.5
WC2	559306	7091798	9.2	3.1	9.5	0.03	0.25	0.12	26	0.14	0.008	11.9	16.7	0.08	120.4
WC3	559346	7091892	1.3	3.3	24.9	0.12	0.58	0.16	47	0.36	0.040	14.9	39.3	0.34	307.8
WC4	559386	7091984	2.4	3.9	26.0	0.18	0.81	0.17	50	0.48	0.043	13.4	31.5	0.37	402.3
WC5	559425	7092076	2.8	4.9	12.7	0.05	0.75	0.14	34	0.14	0.017	17.0	22.2	0.22	298.9
WC6	559462	7092168	16.5	6.0	12.4	0.14	2.60	0.21	35	0.12	0.026	19.9	75.4	0.24	410.1
WC7	559499	7092261	5.1	4.0	21.8	0.16	2.35	0.14	54	0.30	0.046	13.4	36.1	0.56	318.3
WC8	559536	7092354	4.8	5.5	17.9	0.30	2.64	0.17	47	0.14	0.052	21.6	41.4	0.60	311.1
WC9	559574	7092445	3.9	0.6	20.0	0.30	0.21	<0.02	110	0.59	0.109	8.6	204.2	2.36	359.5
WC10	559509	7092522	1.5	3.7	11.7	0.18	1.67	0.19	43	0.07	0.121	17.8	24.2	0.40	177.5
WC11	559444	7092598	1.8	2.8	15.8	0.22	2.18	0.24	48	0.11	0.076	14.8	28.0	0.27	219.0
WC12	559381	7092675	1.4	2.3	15.1	0.23	1.07	0.15	50	0.14	0.032	10.4	29.3	0.33	245.5
WC13	559317	7092751	7.8	6.5	29.5	0.27	3.71	0.33	40	0.15	0.085	26.0	28.9	0.39	334.8
WC14	559251	7092829	6.7	5.0	38.0	0.29	1.04	0.26	39	0.14	0.056	13.0	26.0	0.37	366.1
WC15	559185	7092903	1.8	2.9	13.9	0.28	1.13	0.12	108	0.22	0.062	14.6	110.6	1.84	326.9
WC16	559121	7092983	2.7	3.7	21.3	0.10	1.20	0.12	67	0.36	0.053	14.7	81.2	1.02	319.9
WC17	559057	7093058	2.1	4.5	23.3	0.13	2.81	0.14	55	0.33	0.059	15.5	71.3	0.90	264.6
WC18	558993	7093134	3.9	3.8	22.1	0.09	2.77	0.14	47	0.25	0.037	13.6	33.9	0.53	293.4
WC19	558926	7093208	10.1	4.8	12.8	0.40	2.81	0.15	36	0.11	0.019	14.7	29.4	0.32	260.9
WC20	559669	7092477	4.7	4.5	24.3	0.47	4.75	0.41	76	0.31	0.091	16.7	57.0	0.89	352.9
WC21	559765	7092504	5.8	5.2	18.9	0.09	3.01	0.22	38	0.26	0.046	15.7	43.1	0.47	276.4
WC22	559863	7092533	3.5	4.4	24.7	0.15	2.42	0.33	53	0.66	0.043	15.3	49.8	0.53	346.5
WC23	559957	7092562	4.1	4.8	26.5	0.08	1.74	0.19	49	0.43	0.037	15.5	37.8	0.45	338.4
WC24	560054	7092591	4.3	4.4	24.6	0.09	1.69	0.14	72	0.40	0.054	16.0	58.1	1.13	293.0
WC25	560149	7092620	6.4	6.0	22.3	0.05	1.69	0.15	34	0.27	0.040	15.5	25.4	0.40	225.1
WC26	560247	7092646	5.9	5.1	34.1	0.12	1.81	0.18	42	0.48	0.044	16.6	30.4	0.45	302.8
WC27	560342	7092674	4.5	3.8	27.3	0.09	1.01	0.13	38	0.38	0.047	12.6	23.5	0.39	250.0
WC28	560439	7092700	2.7	3.3	26.3	0.10	0.70	0.13	41	0.36	0.053	12.4	23.5	0.37	249.9
WC29	560505	7092772	2.7	3.9	23.1	0.07	0.64	0.14	40	0.32	0.052	13.9	25.0	0.37	259.7
WC30	560573	7092849	3.4	3.3	21.3	0.09	0.52	0.14	41	0.29	0.048	12.3	25.8	0.44	231.4
WC31	560641	7092923	1.9	6.5	17.8	0.07	0.39	0.18	29	0.22	0.031	16.8	17.8	0.63	193.2
WC32	560708	7092997	1.3	22.5	15.1	0.10	0.31	0.23	7	0.17	0.027	49.1	5.3	0.71	172.4
WC33	560836	7093146	<0.2	24.4	7.0	0.11	0.23	0.34	10	0.05	0.024	60.8	22.4	1.48	173.1
WC34	560772	7093076	1.2	2.8	5.7	0.10	0.24	0.27	25	0.05	0.036	25.8	11.9	0.12	193.9
WV1	561059	7090576	2.3	4.6	10.6	0.07	0.75	0.15	55	0.09	0.016	11.3	30.6	0.44	265.9
WV2	561149	7090601	4.3	5.6	11.9	0.12	1.02	0.17	57	0.11	0.018	13.2	38.0	0.46	284.2
WV3	561249	7090629	3.3	3.9	10.5	0.20	0.70	0.18	48	0.10	0.056	11.1	30.7	0.44	207.7
WV4	561346	7090658	1.5	4.5	8.7	0.08	0.54	0.16	48	0.08	0.024	14.5	24.5	0.35	153.2
WV5	561444	7090683	2.2	4.4	8.8	0.07	0.68	0.19	54	0.08	0.026	13.7	27.5	0.35	179.1
WV6	561542	7090709	2.6	3.7	18.2	0.07	0.59	0.14	57	0.19	0.016	13.6	31.5	0.51	314.6
WV7	561639	7090737	3.7	5.0	17.9	0.05	0.72	0.16	60	0.18	0.015	17.2	33.2	0.46	298.4
WV8	561732	7090761	6.0	4.1	12.6	0.11	1.19	0.15	40	0.15	0.024	13.5	23.0	0.34	148.2
WV9	561829	7090788	3.5	3.9	21.5	0.07	0.60	0.15	48	0.30	0.028	13.5	26.5	0.39	259.9
WV10	561927	7090816	11.8	4.1	19.1	0.09	1.07	0.14	52	0.34	0.030	13.6	42.9	0.56	303.5
WV11	562025	7090840	17.0	4.4	19.9	0.35	7.09	0.16	43	0.19	0.029	14.0	35.9	0.34	309.6
WV12	562121	7090868	6.8	3.5	13.2	0.16	3.28	0.15	52	0.19	0.030	11.8	37.6	0.39	176.5
WV13	562217	7090896	11.8	6.2	10.3	0.15	3.93	0.22	30	0.12	0.034	20.4	26.4	0.25	148.4

TABLE 2  
WSW Property 2011 Soil Assay Data

Sample	Location		Au	Th	Sr	Cd	Sb	Bi	V	Ca	P	La	Cr	Mg	Ba
	UTM NAD83 Zone 7		PPB	PPM	PPM	PPM	PPM	PPM	PPM	%	%	PPM	PPM	%	PPM
	Easting	Northing	0.2	0.1	0.5	0.01	0.02	0.02	2	0.01	0.001	0.5	0.5	0.01	0.5
WV14	562242	7090994	3.6	20.0	8.3	0.07	0.80	0.19	10	0.10	0.013	51.6	9.1	0.08	159.1
WV15	562265	7091090	6.3	5.8	18.5	0.08	1.61	0.15	41	0.30	0.021	17.7	34.6	0.37	246.1
WV16	562289	7091188	6.5	7.2	17.1	0.15	1.26	0.15	32	0.27	0.025	21.8	22.3	0.30	254.5
WV17	562317	7091287	4.9	7.4	15.7	0.10	0.80	0.15	29	0.25	0.031	23.8	20.3	0.33	271.5
WV18	562342	7091380	3.9	9.8	12.9	0.05	0.46	0.19	24	0.16	0.018	29.1	14.5	0.43	159.8
WV19	562367	7091479	4.5	15.1	9.5	0.06	0.39	0.18	17	0.14	0.018	52.6	10.9	0.26	110.8
WV20	562389	7091576	1.8	10.5	7.5	0.05	0.28	0.16	18	0.11	0.014	38.1	9.8	0.30	100.2
WV21	562410	7091673	2.8	15.1	13.7	0.16	0.38	0.29	21	0.21	0.026	70.0	23.4	0.42	220.7
WV22	562436	7091769	2.4	9.8	14.8	0.09	0.40	0.20	30	0.22	0.029	36.0	20.6	0.45	213.2
WV23	562461	7091864	2.7	8.5	19.1	0.10	0.48	0.16	34	0.30	0.041	28.3	28.7	0.49	241.4
WV24	562486	7091963	3.3	7.0	19.2	0.08	0.44	0.16	40	0.30	0.033	21.1	27.5	0.51	268.4
WV25	562508	7092059	4.4	6.1	21.4	0.09	0.44	0.23	38	0.33	0.037	21.4	26.1	0.44	347.5
WV26	562530	7092158	2.9	6.7	22.6	0.06	0.56	0.16	39	0.35	0.035	21.6	43.1	0.48	356.1
WV27	562554	7092255	4.4	4.9	24.7	0.08	0.54	0.13	44	0.37	0.044	16.6	30.1	0.42	261.0
WV28	562579	7092351	3.7	4.4	25.4	0.10	0.60	0.14	48	0.40	0.042	14.1	31.3	0.43	274.3
WV29	562675	7092391	2.7	4.1	23.5	0.04	0.54	0.11	42	0.38	0.054	13.7	29.1	0.39	226.6
WV30	562769	7092426	4.3	4.6	23.8	0.10	0.75	0.13	55	0.40	0.037	13.4	39.4	0.49	264.2
WV31	562862	7092461	4.3	5.3	16.3	0.07	0.76	0.15	55	0.22	0.017	15.3	41.5	0.42	280.0
WV32	562952	7092500	2.5	4.2	22.9	0.05	0.58	0.16	61	0.36	0.021	14.1	38.8	0.46	383.1
WV33	563050	7092540	1.9	3.1	16.6	0.08	0.43	0.13	56	0.27	0.021	9.9	31.5	0.41	219.0
WV34	563138	7092577	2.4	2.7	38.9	0.13	0.51	0.10	51	1.64	0.033	10.1	26.2	0.58	191.3
WV35	563232	7092616	3.0	3.4	29.7	0.11	0.73	0.16	50	0.72	0.034	14.0	30.4	0.49	294.8

#### Detailed Soil Grid 1 - WSW

WD1L1-1	561752	7091167	12.6	5.2	25.3	0.35	5.88	0.18	41	0.32	0.070	17.4	59.9	0.50	416.6
WD1L1-2	561794	7091147	5.7	4.5	18.8	0.24	2.00	0.14	41	0.25	0.041	15.7	34.5	0.36	306.8
WD1L1-3	561836	7091120	7.3	5.2	25.5	0.23	2.82	0.17	40	0.36	0.064	18.1	36.0	0.42	373.1
WD1L1-4	561881	7091094	6.4	4.4	27.6	0.20	3.63	0.18	47	0.42	0.045	17.1	31.9	0.40	420.5
WD1L1-5	561923	7091069	7.8	4.4	26.2	0.16	1.93	0.17	49	0.38	0.042	15.4	31.8	0.40	428.8
WD1L1-6	561967	7091044	4.6	4.0	28.1	0.16	1.51	0.15	47	0.35	0.038	15.1	29.7	0.37	331.6
WD1L1-7	562010	7091021	8.2	5.5	25.3	0.18	3.09	0.16	39	0.32	0.039	16.5	28.8	0.37	298.1
WD1L1-8	562053	7090993	7.7	3.0	17.2	0.20	2.53	0.19	35	0.22	0.023	11.6	20.6	0.26	228.7
WD1L1-9	562098	7090970	9.0	6.1	16.3	0.18	2.93	0.21	31	0.16	0.024	17.7	23.5	0.27	206.9
WD1L1-1	562141	7090944	9.4	9.6	17.3	0.10	3.25	0.23	28	0.17	0.016	23.9	20.3	0.24	232.0
WD1L1-1	562184	7090918	6.1	5.7	11.9	0.16	2.32	0.25	40	0.12	0.017	16.2	22.5	0.30	170.9
WD1L1-1	562229	7090895	7.5	5.7	13.0	0.20	2.37	0.20	30	0.12	0.027	21.2	31.7	0.32	207.9
WD1L1-1	562271	7090870	16.2	16.1	21.7	0.13	9.20	0.33	11	0.06	0.027	35.7	10.5	0.12	133.7
WD1L1-1	562314	7090844	5.9	2.5	16.0	0.22	1.71	0.20	17	0.19	0.022	12.7	8.7	0.09	155.9
WD1L1-1	562358	7090819	2.3	5.8	11.8	0.08	1.65	0.17	32	0.14	0.017	17.0	17.1	0.26	162.1
WD1L2-1	561708	7091099	8.2	4.4	21.8	0.14	2.13	0.15	42	0.32	0.042	17.4	49.4	0.40	309.7
WD1L2-2	561755	7091076	9.5	4.4	30.2	2.23	2.53	0.16	37	0.27	0.046	16.6	33.6	0.35	645.3
WD1L2-3	561801	7091052	19.2	3.6	18.5	0.40	2.22	0.14	41	0.27	0.040	13.8	35.6	0.37	269.6
WD1L2-4	561843	7091027	7.3	4.2	21.8	0.75	2.88	0.16	35	0.29	0.042	16.8	27.0	0.32	319.4
WD1L2-5	561887	7091000	19.4	4.2	22.3	0.18	2.16	0.14	43	0.32	0.034	15.6	27.8	0.35	273.8
WD1L2-6	561933	7090978	9.6	4.1	24.0	0.13	1.78	0.15	42	0.29	0.039	16.5	34.2	0.38	300.5
WD1L2-7	561975	7090953	9.7	3.3	27.1	0.22	1.82	0.34	42	0.42	0.045	16.8	29.6	0.40	362.0

TABLE 2  
WSW Property 2011 Soil Assay Data

Sample	Location		Au	Th	Sr	Cd	Sb	Bi	V	Ca	P	La	Cr	Mg	Ba
	UTM NAD83 Zone 7		PPB	PPM	PPM	PPM	PPM	PPM	PPM	%	%	PPM	PPM	%	PPM
	Easting	Northing	0.2	0.1	0.5	0.01	0.02	0.02	2	0.01	0.001	0.5	0.5	0.01	0.5
WD1L2-8	562018	7090928	10.3	4.6	18.5	0.46	3.57	0.18	34	0.21	0.034	16.3	26.2	0.30	252.1
WD1L2-9	562062	7090907	6.4	3.9	18.0	0.14	1.79	0.15	41	0.20	0.027	14.8	32.7	0.39	293.2
WD1L2-1	562104	7090882	5.9	4.0	15.2	0.10	2.82	0.15	42	0.15	0.015	15.9	31.1	0.33	266.1
WD1L2-1	562146	7090857	2.5	3.1	12.4	0.22	3.89	0.15	43	0.13	0.025	11.9	28.4	0.33	203.4
WD1L2-1	562192	7090831	4.3	3.4	10.7	0.19	2.18	0.15	39	0.11	0.016	13.1	24.7	0.30	175.7
WD1L2-1	562236	7090809	50.9	3.4	15.4	0.10	3.40	0.20	30	0.18	0.024	14.3	16.4	0.19	246.2
WD1L2-1	562278	7090782	8.8	6.7	25.2	0.09	2.44	0.18	38	0.40	0.037	20.8	35.7	0.54	293.9
WD1L2-1	562324	7090759	4.1	9.9	16.3	0.06	2.06	0.21	30	0.25	0.015	24.3	17.3	0.25	280.0
WD1L3-1	561680	7091038	2.9	3.8	18.0	0.18	1.70	0.14	44	0.29	0.051	15.6	86.0	0.41	270.0
WD1L3-2	561719	7091015	6.9	3.7	15.7	0.14	6.39	0.12	40	0.18	0.031	13.6	110.5	0.57	203.4
WD1L3-3	561764	7090990	2.2	4.7	19.9	0.10	1.42	0.16	43	0.40	0.038	16.8	29.6	0.39	318.2
WD1L3-4	561808	7090963	2.9	4.0	24.2	0.21	1.36	0.13	46	0.40	0.048	16.0	29.8	0.43	299.7
WD1L3-5	561850	7090941	6.6	3.1	15.5	0.09	2.28	0.12	45	0.22	0.018	11.0	38.8	0.39	210.5
WD1L3-6	561893	7090917	15.7	3.1	17.7	0.17	3.19	0.12	42	0.26	0.033	13.0	33.8	0.38	242.4
WD1L3-7	561938	7090892	14.3	4.0	19.8	0.16	3.06	0.14	43	0.19	0.029	15.7	27.6	0.33	313.3
WD1L3-8	561982	7090866	19.9	4.9	20.5	0.32	6.36	0.19	39	0.21	0.032	17.3	28.0	0.31	333.6
WD1L3-9	562027	7090841	7.2	3.9	18.1	0.22	3.42	0.13	45	0.19	0.022	15.7	30.6	0.38	272.0
WD1L3-1	562069	7090820	5.4	4.0	17.8	0.16	3.33	0.13	40	0.20	0.029	15.6	37.7	0.38	260.5
WD1L3-1	562113	7090794	1.8	2.6	10.9	0.22	6.63	0.16	36	0.12	0.056	11.1	24.0	0.23	184.2
WD1L3-1	562159	7090769	11.7	3.6	20.4	0.14	4.79	0.16	44	0.21	0.033	15.1	34.3	0.36	219.6
WD1L3-1	562202	7090746	6.9	5.3	25.5	0.57	14.44	0.21	33	0.33	0.032	16.5	36.5	0.20	379.1
WD1L3-1	562242	7090719	3.2	4.7	16.5	0.22	2.44	0.28	41	0.24	0.023	13.8	26.2	0.31	315.1
WD1L3-1	562288	7090696	5.1	5.6	15.9	0.10	2.64	0.24	37	0.20	0.016	15.7	24.5	0.33	286.6
WD1L4-1	561637	7090972	4.1	3.4	21.0	0.24	0.91	0.25	41	0.18	0.038	16.9	26.8	0.35	305.6
WD1L4-2	561686	7090957	2.7	5.8	33.2	0.13	1.26	0.18	45	0.41	0.099	28.4	29.3	0.49	270.5
WD1L4-3	561730	7090933	3.6	5.2	30.5	0.10	1.18	0.21	43	0.37	0.044	19.0	29.0	0.46	417.7
WD1L4-4	561774	7090903	2.1	4.7	19.9	0.09	0.85	0.19	40	0.21	0.027	15.6	25.0	0.35	243.7
WD1L4-5	561819	7090881	10.7	4.6	18.7	0.15	13.34	0.17	39	0.18	0.022	15.1	82.1	0.45	232.3
WD1L4-6	561860	7090856	4.3	3.7	11.4	0.24	4.47	0.24	43	0.11	0.075	13.3	30.3	0.32	161.7
WD1L4-7	561903	7090832	3.0	4.3	21.5	0.08	1.23	0.18	48	0.27	0.029	15.7	47.4	0.58	287.1
WD1L4-8	561946	7090805	2.8	4.2	23.9	0.11	0.99	0.18	47	0.34	0.025	14.7	30.4	0.47	322.3
WD1L4-9	561991	7090781	5.6	4.7	19.5	0.09	1.28	0.17	44	0.24	0.024	15.3	33.0	0.52	313.8
WD1L4-1	562033	7090755	5.1	4.7	26.0	0.47	3.55	0.18	42	0.33	0.043	16.9	36.0	0.51	314.8
WD1L4-1	562078	7090732	6.6	4.2	20.6	0.33	3.08	0.16	52	0.28	0.043	18.9	65.5	0.63	322.5
WD1L4-1	562121	7090705	27.3	3.8	27.6	0.30	3.37	0.15	68	0.57	0.068	17.7	80.2	0.91	376.7
WD1L4-1	562165	7090682	2.1	3.2	27.5	0.60	5.37	0.22	31	0.33	0.065	17.5	42.8	0.36	315.7
WD1L4-1	562209	7090658	17.8	3.1	38.3	0.27	2.80	0.20	45	0.85	0.050	14.5	49.0	0.61	355.1
WD1L4-1	562250	7090631	5.6	3.2	22.9	0.47	9.34	0.23	30	0.34	0.045	14.7	27.5	0.21	359.5

TABLE 2  
WSW Property 2011 Soil Assay Data

Sample	Location		Ti	B	Al	Na	K	W	Sc	Tl	S	Hg	Se	Te	Ga
	UTM NAD83 Zone 7		%	PPM	%	%	%	PPM	PPM	PPM	%	PPB	PPM	PPM	PPM
	Easting	Northing	0.001	1	0.01	0.001	0.01	0.1	0.1	0.02	0.02	5	0.1	0.02	0.1
<b>WSW Ridge Samples</b>															
WD1	555759	7089698	0.172	<1	2.34	0.003	0.37	<0.1	4.2	0.22	<0.02	28	0.4	0.06	9.0
WD2	555698	7089778	0.085	<1	1.67	0.004	0.18	<0.1	2.3	0.14	0.06	24	0.5	0.06	5.4
WD3	555665	7089879	0.109	<1	1.76	0.003	0.27	<0.1	3.6	0.19	0.15	21	0.9	0.08	5.4
WD4	555626	7089980	0.060	<1	1.04	0.003	0.11	<0.1	2.5	0.10	0.03	28	0.6	0.13	4.8
WD5	555550	7090045	0.192	<1	2.11	0.002	0.66	<0.1	2.9	0.36	<0.02	10	0.4	0.09	7.9
WD6	555491	7090125	0.161	<1	2.12	0.007	0.68	<0.1	3.2	0.26	<0.02	19	0.2	<0.02	7.2
WD7	555455	7090228	0.269	<1	4.54	0.007	1.46	0.1	7.3	0.47	<0.02	22	0.2	<0.02	17.1
WD8	555393	7090306	0.134	<1	2.17	0.005	0.42	0.1	2.8	0.13	<0.02	20	0.2	<0.02	7.8
WD9	555314	7090372	0.199	<1	2.14	0.002	0.44	<0.1	5.2	0.25	<0.02	19	0.6	0.09	6.5
WD10	555291	7090489	0.174	<1	1.83	0.005	0.69	<0.1	3.7	0.37	0.06	25	0.5	0.08	5.5
WD11	555266	7090602	0.144	<1	2.07	0.006	0.28	<0.1	4.4	0.18	<0.02	20	0.4	0.02	5.7
WD12	555236	7090708	0.103	<1	1.86	0.016	0.08	0.1	5.7	0.07	<0.02	53	0.4	0.05	5.2
WD13	555217	7090830	0.181	<1	2.33	0.005	0.40	<0.1	3.4	0.20	<0.02	20	<0.1	0.03	6.9
WD14	555166	7090925	0.248	<1	3.30	0.014	1.02	0.1	8.3	0.41	<0.02	13	0.5	<0.02	10.3
WD15	555103	7091015	0.245	<1	2.32	0.002	0.99	<0.1	4.6	0.51	<0.02	6	0.2	<0.02	7.1
WD16	555034	7091078	0.078	<1	2.30	0.009	0.20	<0.1	6.1	0.15	<0.02	65	0.9	<0.02	5.9
WD17	554934	7091118	0.135	<1	1.40	0.012	0.67	<0.1	2.9	0.34	0.14	7	1.4	0.03	4.1
WD18	554828	7091165	0.039	<1	1.95	0.005	0.08	<0.1	3.0	0.10	0.07	28	6.7	0.12	7.0
WD19	554765	7091230	0.226	<1	2.07	0.016	0.64	<0.1	3.5	0.37	0.15	8	1.2	0.08	6.2
WD20	554709	7091317	0.197	<1	3.16	0.013	0.39	0.1	4.1	0.22	0.15	12	0.8	0.03	10.5
WD21	554650	7091399	0.252	<1	2.49	0.004	0.50	<0.1	3.5	0.35	<0.02	7	0.2	<0.02	8.1
WD22	554577	7091470	0.142	<1	1.61	0.008	0.13	<0.1	2.4	0.12	<0.02	30	0.2	<0.02	8.0
WD23	554514	7091544	0.242	<1	2.70	0.002	0.81	<0.1	3.9	0.51	<0.02	12	0.3	<0.02	7.5
WD24	554417	7091588	0.147	<1	1.94	0.005	0.28	0.1	3.1	0.22	<0.02	26	0.3	<0.02	7.1
WD25	554311	7091630	0.179	<1	1.92	0.003	0.66	<0.1	2.0	0.51	<0.02	<5	0.4	0.02	5.3
WD27	554149	7091755	0.069	<1	1.26	0.003	0.11	<0.1	2.7	0.12	<0.02	13	0.2	0.04	3.4
WD28	554104	7091848	0.192	<1	2.29	0.004	0.86	<0.1	3.4	0.38	0.04	13	0.9	0.04	7.0
WD29	554049	7091933	0.053	<1	2.26	0.005	0.08	0.1	2.6	0.09	<0.02	23	0.4	<0.02	7.1
WD30	553983	7092007	0.136	<1	1.98	0.005	0.14	0.1	3.6	0.11	<0.02	20	0.3	<0.02	7.4
WD31	553923	7092120	0.049	<1	1.42	0.006	0.07	<0.1	1.6	0.06	<0.02	13	0.3	<0.02	7.1
WD32	553878	7092184	0.232	<1	3.22	0.013	1.00	<0.1	6.6	0.16	<0.02	9	0.2	<0.02	10.9
WD33	553809	7092258	0.211	<1	2.89	0.005	0.66	<0.1	4.2	0.43	<0.02	12	0.7	0.04	8.4
WD34	553705	7092295	0.242	<1	2.89	0.006	0.66	<0.1	3.2	0.41	<0.02	14	0.2	<0.02	7.5
WD35	553598	7092332	0.214	<1	1.89	0.009	0.17	<0.1	2.0	0.08	<0.02	<5	0.3	0.02	5.7
WD36	553465	7092345	0.290	<1	2.32	0.006	0.65	<0.1	3.0	0.15	<0.02	10	0.2	0.03	6.9
WD37	553380	7092414	0.296	<1	3.68	0.012	0.68	0.2	4.6	0.46	<0.02	18	0.5	<0.02	10.5
WD38	553308	7092476	0.248	<1	3.09	0.009	0.59	0.1	5.4	0.29	<0.02	8	0.2	0.06	8.4
WD39	553235	7092549	0.205	<1	2.72	0.004	0.77	<0.1	3.2	0.44	<0.02	6	0.6	0.06	6.4
WD40	553175	7092628	0.226	<1	2.09	0.010	0.48	<0.1	2.8	0.12	<0.02	5	0.2	0.06	5.9
WD41	553116	7092708	0.186	<1	3.13	0.014	0.36	0.1	6.5	0.29	<0.02	30	0.5	0.06	8.4
WD42	553052	7092789	0.197	<1	2.92	0.007	0.61	<0.1	3.3	0.38	0.03	15	0.5	0.03	7.0
WD43	552962	7092848	0.132	<1	2.30	0.021	0.22	<0.1	4.3	0.26	0.18	9	1.2	0.08	6.8
WD44	552866	7092902	0.005	<1	1.40	0.016	0.11	<0.1	3.2	0.49	0.23	41	6.2	0.10	4.8
WD45	552756	7092958	0.197	<1	2.64	0.008	0.59	<0.1	3.8	0.40	0.14	15	1.3	0.08	8.4
WD46	552625	7093018	0.206	<1	2.59	0.010	0.87	<0.1	3.9	0.54	0.23	16	2.8	0.31	7.5

TABLE 2  
WSW Property 2011 Soil Assay Data

Sample	Location		Ti	B	Al	Na	K	W	Sc	Tl	S	Hg	Se	Te	Ga
	UTM NAD83 Zone 7		%	PPM	%	%	%	PPM	PPM	PPM	%	PPB	PPM	PPM	PPM
	Easting	Northing	0.001	1	0.01	0.001	0.01	0.1	0.1	0.02	0.02	5	0.1	0.02	0.1
WD47	552533	7093102	0.077	<1	1.97	0.006	0.08	0.1	2.9	0.11	0.08	18	1.0	0.07	6.8
WD48	552502	7093206	0.156	<1	2.86	0.006	0.39	<0.1	7.2	0.17	<0.02	<5	0.5	0.08	10.1
WD49	552488	7093303	0.207	<1	2.67	0.009	1.03	<0.1	5.0	0.60	0.05	13	0.5	0.07	7.8
WD50	552459	7093413	0.102	<1	1.66	0.003	0.40	<0.1	3.5	0.40	<0.02	24	0.7	0.07	5.1
WD51	553611	7094060	0.068	<1	2.11	0.005	0.08	0.1	3.7	0.12	<0.02	33	0.5	0.04	5.9
WD52	553515	7094047	0.109	<1	1.73	0.007	0.48	<0.1	2.6	0.40	0.13	13	1.5	0.14	4.6
WD53	553413	7094037	0.141	<1	2.10	0.011	0.75	<0.1	4.4	0.54	0.23	5	1.4	0.10	5.9
WD54	553315	7094027	0.133	1	2.55	0.004	0.32	<0.1	5.9	0.25	<0.02	20	0.8	0.11	7.1
WD55	553214	7094016	0.139	1	1.71	0.004	0.32	<0.1	3.1	0.14	<0.02	12	0.5	0.07	9.2
WD56	553113	7094007	0.180	1	2.52	0.006	0.45	<0.1	4.4	0.29	0.05	17	0.7	0.14	8.7
WD57	553016	7094002	0.210	<1	2.26	0.005	0.57	<0.1	3.2	0.42	<0.02	17	0.4	0.10	7.0
WD58	552915	7093992	0.106	2	1.90	0.006	0.27	0.1	3.0	0.22	0.07	23	0.7	0.05	5.2
WD59	552843	7093923	0.192	<1	2.07	0.009	0.38	0.1	3.5	0.32	<0.02	11	0.4	0.06	6.6
WD60	552770	7093852	0.072	<1	1.49	0.007	0.21	<0.1	3.0	0.18	0.09	24	0.9	0.08	4.3
WD61	552700	7093784	0.021	1	1.56	0.006	0.08	<0.1	0.8	0.13	0.05	26	0.6	0.09	4.9
WD62	552629	7093713	0.018	<1	1.13	0.007	0.03	0.2	2.2	0.08	<0.02	56	0.6	0.07	2.8
WD63	552556	7093643	0.087	<1	2.51	0.006	0.34	0.2	2.7	0.22	0.09	20	0.6	0.13	7.0
WD64	552486	7093572	0.083	<1	1.33	0.004	0.38	<0.1	2.3	0.25	0.07	14	0.8	0.08	4.0
WD65	552415	7093502	0.201	<1	2.33	0.010	1.00	<0.1	3.2	0.55	0.13	13	0.7	0.11	6.7
WD66	552533	7093102	0.135	<1	2.41	0.010	0.46	<0.1	3.5	0.35	<0.02	44	0.2	0.06	7.0
WD67	552462	7093030	0.125	<1	3.62	0.004	0.47	<0.1	7.1	0.25	<0.02	14	0.4	0.07	11.6
WD68	552393	7092958	0.187	<1	2.77	0.008	0.63	<0.1	3.9	0.38	0.02	13	0.4	0.03	8.0
WD69	552322	7092888	0.103	<1	2.16	0.007	0.40	<0.1	2.9	0.31	<0.02	35	0.5	0.04	6.8
WD70	552255	7092815	0.102	<1	2.30	0.009	0.12	0.1	3.3	0.10	<0.02	24	0.3	0.09	6.2
WD71	552185	7092743	0.126	<1	1.97	0.008	0.50	<0.1	3.0	0.30	0.02	10	0.6	0.07	6.5
WD72	552116	7092672	0.055	1	1.33	0.023	0.05	0.1	4.4	0.06	<0.02	32	0.3	0.08	3.5
WD73	552047	7092598	0.052	<1	1.53	0.023	0.06	<0.1	5.0	0.10	0.03	26	0.6	0.02	4.0
WD74	551959	7092547	0.044	2	1.70	0.008	0.03	0.1	3.0	0.12	<0.02	19	<0.1	0.03	4.6
WD75	551876	7092491	0.159	<1	2.41	0.003	0.24	0.1	5.7	0.20	<0.02	9	0.2	0.08	9.9
WD76	551793	7092436	0.044	2	1.78	0.009	0.02	<0.1	8.7	0.10	<0.02	70	0.1	0.02	2.0
WD77	551736	7092348	0.067	1	2.26	0.006	0.07	0.1	3.1	0.09	<0.02	22	0.2	0.04	6.3
WD78	551679	7092268	0.122	<1	2.27	0.014	0.08	0.1	3.8	0.10	<0.02	22	0.1	0.04	9.7
WD79	551621	7092187	0.023	<1	0.83	0.007	0.13	<0.1	1.8	0.08	<0.02	24	0.1	0.03	4.4
WD80	551720	7092506	0.072	3	2.06	0.005	0.06	<0.1	4.3	0.14	0.02	7	0.2	0.07	6.5
WD81	551650	7092575	0.038	<1	1.19	0.002	0.01	<0.1	2.4	0.03	<0.02	6	<0.1	<0.02	3.1
WD82	551581	7092649	0.065	2	1.28	0.025	0.06	0.2	3.5	0.07	<0.02	27	0.2	0.02	3.7
WD83	551514	7092720	0.047	2	1.61	0.014	0.05	0.1	5.0	0.07	0.03	24	0.2	0.03	4.1
WD84	551441	7092794	0.053	2	1.28	0.015	0.04	0.1	3.2	0.06	<0.02	18	0.1	0.02	3.7
WD1-1	553855	7092249	0.109	2	2.14	0.004	0.16	0.1	2.9	0.12	<0.02	34	0.3	<0.02	6.8
WD1-2	593933	7092311	0.174	1	2.52	0.004	0.28	<0.1	4.1	0.20	<0.02	16	0.3	<0.02	6.7
WD1-3	554010	7092374	0.294	1	3.87	0.002	0.72	0.1	8.3	0.30	<0.02	9	0.3	0.03	10.7
WD1-4	554087	7092437	0.158	1	2.23	0.004	0.18	<0.1	5.5	0.18	<0.02	13	0.2	0.02	7.2
WD2-1	553431	7092251	0.170	2	2.32	0.004	0.37	0.1	4.1	0.29	<0.02	21	0.3	<0.02	7.2
WD2-2	553397	7092157	0.176	<1	2.18	0.008	0.27	0.1	4.2	0.24	<0.02	12	0.2	0.03	6.5
WD2-3	553364	7092063	0.188	<1	3.00	0.009	0.49	0.1	8.3	0.15	<0.02	7	0.2	0.06	10.4
WD2-4	553330	7091968	0.204	1	2.32	0.003	0.33	0.1	3.4	0.29	<0.02	9	0.2	<0.02	7.3

TABLE 2  
WSW Property 2011 Soil Assay Data

Sample	Location		Ti	B	Al	Na	K	W	Sc	Tl	S	Hg	Se	Te	Ga
	UTM NAD83 Zone 7		% PPM	PPM	%	%	%	PPM	PPM	PPM	%	PPB	PPM	PPM	PPM
	Easting	Northing	0.001	1	0.01	0.001	0.01	0.1	0.1	0.02	0.02	5	0.1	0.02	0.1
WD2-5	553297	7091874	0.164	<1	2.58	0.002	0.47	<0.1	6.6	0.24	<0.02	6	0.4	0.10	9.2
WD2-6	553263	7091780	0.052	<1	2.06	0.005	0.44	<0.1	2.1	0.10	<0.02	92	0.1	<0.02	8.7
WD2-7	553229	7091685	0.234	<1	3.06	0.008	0.10	<0.1	6.8	0.06	<0.02	22	0.3	<0.02	10.1
WD2-8	553255	7091588	0.374	2	3.18	0.003	0.22	<0.1	5.9	0.12	<0.02	17	0.2	<0.02	12.3
WD2-9	553282	7091491	0.112	<1	2.51	0.005	0.12	<0.1	5.7	0.05	<0.02	32	0.2	0.02	8.4
WD2-10	553308	7091395	0.291	<1	3.08	0.005	0.33	<0.1	5.3	0.14	<0.02	38	0.2	<0.02	10.7
WD2-11	553334	7091299	0.088	<1	1.90	0.003	0.27	<0.1	4.2	0.11	<0.02	80	0.1	<0.02	6.2
WD2-12	553360	7091202	0.103	1	1.87	0.011	0.05	<0.1	4.6	0.04	<0.02	13	<0.1	0.02	6.1
WD2-13	553386	7091105	0.230	<1	2.63	0.003	0.78	<0.1	5.8	0.41	<0.02	14	0.3	0.03	9.0
WD2-14	553412	7091009	0.144	<1	1.79	0.006	0.33	<0.1	8.0	0.21	<0.02	61	0.3	0.02	7.5
WD2-15	553438	7090913	0.076	1	1.42	0.020	0.07	0.2	3.7	0.06	<0.02	26	0.5	<0.02	4.3
WD4-1	554759	7091151	0.195	<1	2.81	0.005	0.16	0.1	4.6	0.15	0.02	19	0.3	0.03	9.8
WD4-2	554703	7091068	0.136	<1	2.52	0.007	0.20	<0.1	5.7	0.14	<0.02	10	0.2	0.04	9.0
WD4-3	554647	7090985	0.178	<1	2.26	0.006	0.53	<0.1	7.0	0.28	<0.02	5	0.3	<0.02	8.1
WD4-4	554591	7090902	0.115	<1	1.61	0.008	0.13	<0.1	4.6	0.08	<0.02	11	0.4	<0.02	5.8
WD4-5	554536	7090819	0.038	2	1.39	0.011	0.10	0.1	5.1	0.07	0.05	48	0.9	<0.02	3.5
WD4-6	554480	7090736	0.042	<1	1.94	0.020	0.10	0.1	4.2	0.06	0.02	41	0.4	0.04	6.4
WD4-7	554424	7090653	0.004	<1	1.57	0.005	0.12	<0.1	3.4	0.04	<0.02	28	0.4	<0.02	5.3
WD4-8	554368	7090570	0.026	<1	2.08	0.004	0.06	<0.1	5.8	0.06	<0.02	23	0.3	0.03	6.5
WD4-9	554312	7090487	0.165	<1	2.87	0.006	0.09	<0.1	8.1	0.05	<0.02	22	0.3	<0.02	9.1
WD4-10	554257	7090404	0.149	<1	2.71	0.002	0.11	<0.1	2.8	0.06	<0.02	13	<0.1	<0.02	7.4
WD5-1	555253	7090959	0.149	<1	1.94	0.003	0.28	<0.1	3.2	0.22	<0.02	12	0.1	<0.02	6.7
WD5-2	555344	7091001	0.232	<1	2.49	0.002	0.65	0.1	4.8	0.45	<0.02	10	0.3	0.04	8.8
WD5-3	555435	7091043	0.262	<1	3.46	0.010	0.99	<0.1	7.4	0.61	<0.02	9	<0.1	<0.02	12.0
WD5-4	555525	7091086	0.087	<1	2.12	0.003	0.13	0.3	3.5	0.33	0.14	26	3.9	0.14	8.2
WD5-5	555616	7091128	0.044	1	2.38	0.005	0.12	0.1	3.2	0.18	0.13	18	1.9	0.10	6.3
WD5-6	555707	7091170	0.085	<1	1.69	0.002	0.25	<0.1	1.9	0.40	<0.02	12	0.2	0.08	6.3
WD5-7	555798	7091212	0.075	<1	1.34	0.011	0.05	0.1	7.8	0.10	<0.02	7	<0.1	0.10	6.3
WD5-8	555889	7091254	0.134	<1	2.72	0.009	0.10	<0.1	4.5	0.21	<0.02	30	0.3	0.04	9.2
WD5-9	555980	7091296	0.103	<1	2.36	0.015	0.07	0.1	6.6	0.13	0.03	41	0.5	0.06	6.5
WD5-10	556070	7091338	0.289	<1	2.68	0.006	1.03	0.1	4.7	0.68	0.03	10	0.2	0.04	8.8
WD6-1	555235	7090310	0.124	1	2.14	0.010	0.19	0.1	2.5	0.13	<0.02	18	0.3	0.05	9.2
WD6-2	555157	7090248	0.124	<1	1.74	0.004	0.54	<0.1	1.9	0.28	0.06	<5	0.2	0.07	7.3
WD6-3	555078	7090186	0.122	<1	1.39	0.001	0.29	<0.1	3.5	0.23	0.03	<5	0.8	0.09	4.9
WD6-4	555000	7090123	0.085	1	1.51	0.006	0.08	<0.1	3.2	0.07	<0.02	15	0.3	0.03	5.0
WD6-5	554921	7090062	0.211	<1	2.44	0.005	0.79	<0.1	6.1	0.46	<0.02	36	0.4	0.07	8.7
<b>Ridge &amp; Spur - WSW River</b>															
WA-1	560979	7090624	0.009	<1	0.70	0.004	0.05	<0.1	0.9	0.08	<0.02	23	0.6	0.12	2.8
WA-2	560890	7090671	0.049	<1	1.39	0.009	0.04	0.1	4.1	0.09	<0.02	41	1.0	0.09	4.5
WA-3	560804	7090720	0.024	<1	1.29	0.006	0.05	0.1	2.1	0.09	<0.02	23	0.6	0.05	4.3
WA-4	560716	7090770	0.045	<1	1.43	0.009	0.05	0.1	2.8	0.10	<0.02	26	0.9	0.15	4.0
WA-5	560631	7090820	0.056	<1	1.75	0.010	0.05	0.2	3.2	0.09	<0.02	36	0.5	0.04	5.3
WA-6	560543	7090871	0.071	<1	1.95	0.010	0.05	0.1	4.5	0.11	<0.02	30	0.9	0.05	5.9
WA-7	560456	7090921	0.052	<1	1.49	0.008	0.04	<0.1	2.5	0.09	<0.02	20	0.3	0.05	4.3
WA-8	560369	7090969	0.058	<1	1.49	0.010	0.04	0.1	3.1	0.08	<0.02	18	0.5	0.05	4.2
WA-9	560281	7091021	0.056	<1	1.33	0.010	0.04	0.2	2.4	0.06	<0.02	27	0.4	0.06	3.6

TABLE 2  
WSW Property 2011 Soil Assay Data

Sample	Location		Ti	B	Al	Na	K	W	Sc	Tl	S	Hg	Se	Te	Ga
	UTM NAD83 Zone 7		%	PPM	%	%	%	PPM	PPM	PPM	%	PPB	PPM	PPM	PPM
	Easting	Northing	0.001	1	0.01	0.001	0.01	0.1	0.1	0.02	0.02	5	0.1	0.02	0.1
WA-10	560193	7091068	0.059	<1	1.29	0.012	0.04	0.2	2.8	0.06	<0.02	30	0.4	<0.02	3.7
WA-11	560107	7091119	0.061	1	1.22	0.018	0.05	0.2	3.3	0.06	<0.02	29	0.4	0.02	3.6
WA-12	560021	7091172	0.070	1	1.36	0.027	0.06	0.2	3.8	0.06	<0.02	38	0.4	<0.02	4.2
WA-13	559929	7091221	0.079	1	1.46	0.026	0.07	0.2	4.0	0.07	<0.02	33	0.3	0.05	4.4
WA-14	559843	7091267	0.094	1	1.56	0.027	0.07	0.2	4.4	0.06	<0.02	34	0.3	0.05	4.5
WA-15	559754	7091318	0.093	1	1.60	0.026	0.07	0.1	4.6	0.07	<0.02	40	0.3	0.04	4.8
WA-16	559668	7091366	0.076	<1	1.62	0.022	0.06	0.2	3.9	0.06	<0.02	22	0.3	<0.02	4.4
WA-17	559582	7091418	0.082	2	1.62	0.025	0.07	0.2	4.6	0.07	<0.02	38	0.2	0.06	4.8
WA-18	559495	7091467	0.093	<1	1.70	0.026	0.06	0.2	4.7	0.06	<0.02	39	0.3	<0.02	4.9
WA-19	559409	7091516	0.096	<1	1.69	0.026	0.08	0.1	5.0	0.08	<0.02	39	0.3	0.05	5.0
WA-20	559320	7091566	0.102	1	1.86	0.026	0.07	0.1	5.4	0.07	<0.02	32	0.3	<0.02	5.5
WA-21	559230	7091612	0.080	<1	1.85	0.022	0.06	<0.1	4.8	0.06	<0.02	30	0.3	0.03	5.1
WA-22	559139	7091639	0.077	1	1.89	0.021	0.06	<0.1	5.2	0.06	<0.02	41	0.3	<0.02	5.6
WA-23	559040	7091664	0.075	<1	1.97	0.018	0.06	<0.1	5.4	0.06	<0.02	46	0.4	<0.02	5.7
WA-24	558945	7091690	0.089	<1	1.95	0.023	0.08	0.1	5.6	0.09	<0.02	52	0.3	0.03	5.6
WA-25	558847	7091714	0.080	1	1.75	0.022	0.10	0.1	5.5	0.09	<0.02	55	0.4	0.05	5.1
WA-26	558753	7091742	0.070	<1	1.45	0.023	0.08	0.1	4.4	0.08	<0.02	44	0.2	<0.02	4.6
WA-27	558654	7091765	0.055	<1	1.83	0.017	0.09	0.1	5.8	0.10	<0.02	57	0.4	0.05	5.8
WA-28	558554	7091791	0.060	<1	1.85	0.017	0.08	<0.1	5.2	0.08	<0.02	42	0.4	0.07	5.6
WB1	561055	7090669	0.051	<1	1.93	0.011	0.06	0.1	4.5	0.12	<0.02	40	0.6	0.07	5.4
WB2	561061	7090775	0.043	<1	1.70	0.009	0.05	0.1	3.7	0.09	<0.02	27	0.3	0.06	5.0
WB3	561061	7090876	0.060	<1	1.63	0.012	0.05	0.2	4.1	0.08	<0.02	52	0.4	0.03	4.5
WB4	561057	7090974	0.051	<1	1.61	0.012	0.05	0.1	3.6	0.07	<0.02	54	0.6	<0.02	4.5
WB5	561063	7091074	0.044	<1	1.51	0.010	0.04	0.2	2.8	0.09	0.02	49	0.3	0.02	4.8
WB6	561055	7091171	0.051	<1	1.45	0.013	0.04	0.2	3.6	0.06	<0.02	53	0.4	0.03	4.3
WB7	561059	7091277	0.041	<1	1.39	0.011	0.04	0.3	2.3	0.08	0.02	56	0.5	0.03	4.8
WB8	561060	7091375	0.041	<1	1.42	0.010	0.04	0.2	2.4	0.08	<0.02	55	0.3	0.05	4.2
WB9	561063	7091474	0.022	3	1.20	0.010	0.03	0.2	1.9	0.06	<0.02	73	0.8	0.08	3.5
WB10	561066	7091576	0.030	1	1.30	0.009	0.03	0.2	2.1	0.07	<0.02	48	0.6	0.05	4.0
WB11	561063	7091675	0.029	1	1.17	0.008	0.04	0.2	2.0	0.08	<0.02	45	0.4	<0.02	3.5
WB12	561058	7091769	0.030	2	1.22	0.008	0.04	0.2	2.0	0.07	<0.02	34	0.3	<0.02	3.9
WB13	561067	7091870	0.026	1	1.09	0.008	0.04	0.2	1.9	0.08	<0.02	43	0.4	0.05	4.0
WB14	561063	7091976	0.026	2	1.17	0.011	0.04	0.2	1.7	0.07	<0.02	50	0.5	0.03	3.8
WB15	561065	7092073	0.037	2	1.26	0.010	0.04	0.3	2.4	0.07	<0.02	45	0.3	0.03	3.8
WB16	561062	7092176	0.033	2	1.24	0.010	0.04	0.2	2.0	0.06	<0.02	36	0.4	<0.02	3.9
WB17	561063	7092276	0.033	1	1.18	0.010	0.05	0.3	2.2	0.06	<0.02	48	0.4	0.04	3.7
WB18	561064	7092377	0.036	2	1.11	0.009	0.04	0.2	2.0	0.05	<0.02	28	0.3	<0.02	3.5
WB19	561060	7092476	0.051	1	1.18	0.010	0.08	0.2	2.3	0.09	<0.02	35	0.4	0.03	3.5
WB19-2	561060	7092476	0.039	1	0.97	0.008	0.11	0.1	1.9	0.10	<0.02	16	0.3	<0.02	2.8
WB20	561062	7092576	0.043	1	1.32	0.011	0.05	0.1	2.7	0.07	<0.02	33	0.4	0.03	4.1
WB21	561063	7092678	0.029	<1	0.81	<0.001	0.18	<0.1	1.3	0.16	<0.02	10	<0.1	<0.02	2.6
WB22	561062	7092777	0.024	<1	1.34	0.011	0.06	<0.1	5.2	0.06	<0.02	131	0.2	<0.02	3.6
WB23	561060	7092878	0.016	1	0.76	0.004	0.06	0.2	0.9	0.05	<0.02	27	0.3	<0.02	1.9
WB24	561058	7092978	0.033	<1	1.09	0.006	0.19	<0.1	1.5	0.17	<0.02	63	0.4	<0.02	3.4
WB25	561061	7093075	0.044	<1	1.20	0.007	0.14	0.1	1.8	0.14	0.03	35	0.4	<0.02	4.4
WC1	559269	7091705	0.050	1	1.74	0.018	0.05	<0.1	4.5	0.04	<0.02	42	0.6	<0.02	5.3

TABLE 2  
WSW Property 2011 Soil Assay Data

Sample	Location		Ti	B	Al	Na	K	W	Sc	Tl	S	Hg	Se	Te	Ga
	UTM NAD83 Zone 7		%	PPM	%	%	%	PPM	PPM	PPM	%	PPB	PPM	PPM	PPM
	Easting	Northing	0.001	1	0.01	0.001	0.01	0.1	0.1	0.02	0.02	5	0.1	0.02	0.1
WC2	559306	7091798	0.017	<1	1.35	<0.001	0.03	<0.1	1.9	0.04	<0.02	8	<0.1	0.04	4.4
WC3	559346	7091892	0.050	<1	1.59	0.021	0.08	<0.1	3.6	0.06	<0.02	34	0.2	0.02	4.9
WC4	559386	7091984	0.058	2	1.65	0.019	0.07	0.2	4.5	0.07	<0.02	36	0.3	<0.02	4.6
WC5	559425	7092076	0.042	<1	0.95	0.010	0.05	<0.1	3.0	0.04	<0.02	31	0.4	0.03	2.9
WC6	559462	7092168	0.013	1	0.92	0.006	0.08	<0.1	3.4	0.09	<0.02	47	0.8	0.13	2.5
WC7	559499	7092261	0.049	<1	1.46	0.015	0.06	0.1	4.2	0.05	<0.02	62	0.6	0.09	4.4
WC8	559536	7092354	0.022	<1	1.55	0.007	0.05	<0.1	4.6	0.08	<0.02	112	1.7	0.09	4.2
WC9	559574	7092445	0.034	<1	3.61	0.010	0.14	<0.1	15.4	0.06	<0.02	34	<0.1	0.02	14.2
WC10	559509	7092522	0.021	<1	1.61	0.006	0.07	<0.1	2.4	0.10	<0.02	16	1.0	0.15	5.1
WC11	559444	7092598	0.028	<1	1.53	0.008	0.06	0.2	2.2	0.09	0.03	48	1.0	0.11	5.2
WC12	559381	7092675	0.030	<1	1.74	0.008	0.04	0.1	2.2	0.07	<0.02	20	0.5	0.05	4.7
WC13	559317	7092751	0.018	<1	1.32	0.008	0.09	<0.1	3.3	0.10	0.11	133	2.8	0.17	3.7
WC14	559251	7092829	0.020	<1	1.42	0.013	0.16	<0.1	3.4	0.10	0.30	95	3.5	0.18	3.6
WC15	559185	7092903	0.103	<1	2.94	0.008	0.26	<0.1	9.1	0.17	<0.02	12	0.6	0.03	8.7
WC16	559121	7092983	0.072	1	2.17	0.013	0.05	0.1	6.9	0.05	<0.02	62	0.6	0.05	5.9
WC17	559057	7093058	0.057	<1	1.75	0.006	0.04	0.1	3.8	0.09	<0.02	56	0.8	0.05	4.8
WC18	558993	7093134	0.047	<1	1.48	0.008	0.04	0.1	3.2	0.06	<0.02	64	0.4	0.06	3.9
WC19	558926	7093208	0.029	<1	1.18	0.006	0.05	0.1	3.2	0.04	<0.02	79	0.4	0.06	3.1
WC20	559669	7092477	0.036	<1	2.10	0.005	0.07	<0.1	5.8	0.12	0.03	111	0.7	0.12	5.8
WC21	559765	7092504	0.025	<1	1.35	0.006	0.05	<0.1	2.7	0.05	<0.02	37	0.4	0.08	3.4
WC22	559863	7092533	0.053	<1	1.79	0.010	0.05	0.2	4.5	0.07	<0.02	90	0.4	0.07	4.6
WC23	559957	7092562	0.058	<1	1.76	0.013	0.05	0.1	4.6	0.07	<0.02	71	0.2	0.07	4.2
WC24	560054	7092591	0.087	<1	2.23	0.007	0.15	0.1	6.4	0.11	<0.02	40	0.3	0.03	6.1
WC25	560149	7092620	0.046	<1	1.11	0.009	0.06	0.1	2.5	0.07	0.04	40	0.4	<0.02	2.9
WC26	560247	7092646	0.050	<1	1.44	0.012	0.05	0.2	3.2	0.07	<0.02	44	0.5	0.06	4.0
WC27	560342	7092674	0.047	<1	1.26	0.012	0.05	0.2	2.5	0.05	<0.02	26	0.3	0.04	3.2
WC28	560439	7092700	0.045	<1	1.20	0.013	0.04	0.3	2.4	0.05	<0.02	23	0.4	0.04	3.4
WC29	560505	7092772	0.045	<1	1.24	0.011	0.04	0.2	2.5	0.05	<0.02	19	0.4	0.02	3.3
WC30	560573	7092849	0.042	<1	1.32	0.010	0.05	0.1	2.1	0.07	<0.02	21	0.2	0.04	3.7
WC31	560641	7092923	0.050	<1	1.30	0.005	0.06	0.1	1.5	0.11	<0.02	7	0.1	0.02	3.4
WC32	560708	7092997	0.033	<1	0.99	0.003	0.23	<0.1	1.2	0.23	<0.02	15	<0.1	0.03	2.7
WC33	560836	7093146	0.061	<1	1.33	0.007	0.35	0.1	1.2	0.34	0.02	20	0.3	<0.02	6.5
WC34	560772	7093076	0.012	<1	0.83	<0.001	0.06	0.1	1.0	0.06	<0.02	15	0.1	<0.02	3.0
WV1	561059	7090576	0.054	<1	1.92	0.007	0.05	0.1	2.8	0.09	<0.02	24	0.3	0.04	4.8
WV2	561149	7090601	0.054	1	2.23	0.006	0.05	0.1	3.7	0.11	<0.02	28	0.4	0.05	5.0
WV3	561249	7090629	0.035	<1	1.75	0.006	0.06	0.1	2.6	0.09	<0.02	17	0.5	0.05	4.4
WV4	561346	7090658	0.039	1	1.93	0.004	0.04	0.2	2.2	0.10	<0.02	35	0.3	0.04	5.0
WV5	561444	7090683	0.018	<1	2.10	0.003	0.03	0.1	2.1	0.10	<0.02	45	0.4	0.05	5.0
WV6	561542	7090709	0.053	<1	1.88	0.009	0.04	0.1	4.0	0.09	<0.02	38	0.3	<0.02	4.6
WV7	561639	7090737	0.064	<1	2.00	0.010	0.04	0.1	5.1	0.08	<0.02	43	0.4	0.04	4.9
WV8	561732	7090761	0.044	1	1.37	0.008	0.03	0.2	2.0	0.08	<0.02	41	0.4	0.05	4.0
WV9	561829	7090788	0.046	2	1.55	0.012	0.03	0.2	3.0	0.08	<0.02	41	0.4	0.05	4.8
WV10	561927	7090816	0.051	1	1.78	0.010	0.06	0.1	4.2	0.07	<0.02	44	0.4	0.04	5.0
WV11	562025	7090840	0.021	<1	1.24	0.006	0.06	0.1	4.3	0.11	0.02	108	1.4	0.11	3.5
WV12	562121	7090868	0.019	1	1.75	0.006	0.05	0.2	2.4	0.12	<0.02	30	0.4	0.05	4.8
WV13	562217	7090896	0.013	<1	1.10	0.005	0.07	0.2	1.4	0.12	0.03	56	0.4	0.04	3.0

TABLE 2  
WSW Property 2011 Soil Assay Data

Sample	Location		Ti	B	Al	Na	K	W	Sc	Tl	S	Hg	Se	Te	Ga
	UTM NAD83 Zone 7		%	PPM	%	%	%	PPM	PPM	PPM	%	PPB	PPM	PPM	PPM
	Easting	Northing	0.001	1	0.01	0.001	0.01	0.1	0.1	0.02	0.02	5	0.1	0.02	0.1
WV14	562242	7090994	0.007	<1	0.53	0.005	0.15	<0.1	1.3	0.10	<0.02	25	0.1	<0.02	1.3
WV15	562265	7091090	0.034	<1	1.42	0.010	0.05	0.2	2.6	0.08	<0.02	43	0.4	0.04	4.2
WV16	562289	7091188	0.027	<1	1.19	0.009	0.06	0.1	2.1	0.08	<0.02	56	0.3	0.02	3.5
WV17	562317	7091287	0.026	<1	1.18	0.008	0.10	0.2	1.9	0.13	<0.02	53	0.2	0.03	3.8
WV18	562342	7091380	0.039	<1	1.27	0.005	0.13	0.1	1.6	0.15	<0.02	40	0.2	0.03	4.1
WV19	562367	7091479	0.025	<1	0.91	0.005	0.14	0.1	1.5	0.19	<0.02	40	0.1	<0.02	3.4
WV20	562389	7091576	0.030	<1	0.93	0.004	0.17	<0.1	1.2	0.17	<0.02	19	<0.1	<0.02	4.2
WV21	562410	7091673	0.024	<1	1.52	0.006	0.18	<0.1	2.1	0.20	<0.02	69	0.2	<0.02	5.3
WV22	562436	7091769	0.044	<1	1.40	0.006	0.15	<0.1	2.1	0.16	<0.02	67	0.3	0.02	4.9
WV23	562461	7091864	0.045	1	1.34	0.009	0.11	0.2	2.4	0.12	<0.02	57	0.3	0.02	4.5
WV24	562486	7091963	0.055	<1	1.48	0.011	0.08	0.2	2.7	0.11	<0.02	46	0.2	0.02	4.7
WV25	562508	7092059	0.048	1	1.36	0.012	0.07	0.2	2.3	0.09	<0.02	51	0.4	0.03	4.3
WV26	562530	7092158	0.047	1	1.51	0.012	0.07	0.2	2.9	0.09	<0.02	47	0.5	<0.02	4.4
WV27	562554	7092255	0.052	1	1.44	0.014	0.05	0.2	2.9	0.07	<0.02	36	0.5	0.02	4.1
WV28	562579	7092351	0.056	<1	1.48	0.016	0.05	0.2	3.1	0.07	<0.02	35	0.4	0.03	4.2
WV29	562675	7092391	0.051	1	1.18	0.015	0.04	0.2	3.2	0.06	<0.02	36	0.5	0.02	3.5
WV30	562769	7092426	0.067	<1	1.62	0.019	0.07	0.2	4.3	0.09	<0.02	49	0.3	0.03	4.7
WV31	562862	7092461	0.053	1	1.77	0.009	0.06	0.2	4.4	0.08	<0.02	28	0.4	0.04	4.6
WV32	562952	7092500	0.048	1	1.94	0.012	0.05	0.2	3.4	0.10	<0.02	37	0.3	0.02	5.3
WV33	563050	7092540	0.045	1	1.63	0.010	0.04	0.2	2.2	0.09	<0.02	15	0.3	0.03	4.8
WV34	563138	7092577	0.058	2	1.10	0.028	0.05	0.2	2.6	0.05	<0.02	29	0.3	0.02	3.4
WV35	563232	7092616	0.047	2	1.30	0.018	0.05	0.2	3.1	0.05	<0.02	47	0.4	0.02	4.0

#### Detailed Soil Grid 1 - WSW

WD1L1-1	561752	7091167	0.033	<1	1.18	0.009	0.06	0.1	4.0	0.08	<0.02	51	0.8	0.05	3.7
WD1L1-2	561794	7091147	0.034	<1	1.26	0.006	0.04	0.1	2.6	0.07	<0.02	38	0.4	0.03	3.8
WD1L1-3	561836	7091120	0.034	<1	1.27	0.007	0.07	<0.1	3.1	0.09	<0.02	52	0.9	0.05	3.7
WD1L1-4	561881	7091094	0.037	1	1.42	0.010	0.06	0.1	3.7	0.09	<0.02	67	0.6	0.03	4.0
WD1L1-5	561923	7091069	0.047	<1	1.53	0.009	0.05	0.1	3.6	0.08	<0.02	58	0.4	0.04	4.2
WD1L1-6	561967	7091044	0.049	<1	1.41	0.010	0.04	0.1	3.4	0.07	<0.02	40	0.3	0.04	4.1
WD1L1-7	562010	7091021	0.042	<1	1.18	0.010	0.05	0.1	3.1	0.08	<0.02	45	0.4	0.03	3.5
WD1L1-8	562053	7090993	0.030	1	1.03	0.006	0.03	0.1	2.0	0.07	<0.02	34	0.3	0.05	3.0
WD1L1-9	562098	7090970	0.031	2	0.97	0.006	0.05	0.1	2.3	0.07	<0.02	40	0.4	<0.02	2.7
WD1L1-1	562141	7090944	0.029	1	0.97	0.006	0.05	<0.1	2.7	0.07	<0.02	49	0.4	0.03	2.5
WD1L1-1	562184	7090918	0.027	1	1.34	0.005	0.05	0.1	1.9	0.10	<0.02	43	0.2	0.03	3.8
WD1L1-1	562229	7090895	0.022	1	0.95	0.004	0.06	0.1	1.5	0.08	<0.02	21	0.2	0.02	3.4
WD1L1-1	562271	7090870	0.008	<1	0.58	0.004	0.11	<0.1	1.0	0.12	0.09	75	0.6	0.04	1.6
WD1L1-1	562314	7090844	0.010	1	0.65	0.006	0.06	0.1	1.0	0.13	0.02	45	0.2	<0.02	2.9
WD1L1-1	562358	7090819	0.023	<1	0.96	0.004	0.08	0.1	1.5	0.07	<0.02	20	0.2	0.02	3.1
WD1L2-1	561708	7091099	0.036	<1	1.45	0.007	0.04	0.1	3.4	0.07	<0.02	55	0.4	0.03	4.1
WD1L2-2	561755	7091076	0.035	1	1.23	0.007	0.04	0.1	3.4	0.09	<0.02	127	0.5	0.03	3.5
WD1L2-3	561801	7091052	0.025	<1	1.29	0.006	0.04	<0.1	3.6	0.07	<0.02	80	0.4	0.05	3.7
WD1L2-4	561843	7091027	0.029	1	1.14	0.006	0.05	0.1	3.1	0.08	<0.02	85	0.6	0.05	3.1
WD1L2-5	561887	7091000	0.050	1	1.35	0.009	0.04	<0.1	4.2	0.06	<0.02	74	0.5	0.04	3.8
WD1L2-6	561933	7090978	0.048	1	1.44	0.009	0.04	0.1	3.9	0.06	<0.02	46	0.4	0.04	4.0
WD1L2-7	561975	7090953	0.041	<1	1.47	0.010	0.04	0.1	3.9	0.05	<0.02	59	0.5	<0.02	4.0

TABLE 2  
WSW Property 2011 Soil Assay Data

Sample	Location		Ti	B	Al	Na	K	W	Sc	Tl	S	Hg	Se	Te	Ga
	UTM NAD83 Zone 7		%	PPM	%	%	%	PPM	PPM	PPM	%	PPB	PPM	PPM	PPM
	Easting	Northing	0.001	1	0.01	0.001	0.01	0.1	0.1	0.02	0.02	5	0.1	0.02	0.1
WD1L2-8	562018	7090928	0.035	<1	1.03	0.008	0.05	<0.1	3.4	0.08	<0.02	56	0.6	0.06	2.9
WD1L2-9	562062	7090907	0.035	1	1.27	0.007	0.04	<0.1	3.5	0.07	<0.02	55	0.4	0.04	3.6
WD1L2-1	562104	7090882	0.024	<1	1.37	0.005	0.04	<0.1	3.5	0.09	<0.02	32	0.4	0.04	3.7
WD1L2-1	562146	7090857	0.020	<1	1.22	0.004	0.05	0.1	2.3	0.09	<0.02	22	0.3	0.03	3.7
WD1L2-1	562192	7090831	0.022	<1	1.06	0.004	0.04	<0.1	2.0	0.09	<0.02	9	0.2	0.04	3.4
WD1L2-1	562236	7090809	0.016	1	1.01	0.004	0.06	0.1	1.5	0.13	<0.02	324	0.3	0.03	4.1
WD1L2-1	562278	7090782	0.029	1	1.22	0.012	0.07	0.1	3.8	0.08	<0.02	96	0.4	<0.02	3.4
WD1L2-1	562324	7090759	0.019	<1	1.09	0.005	0.08	<0.1	1.7	0.09	<0.02	6	0.3	<0.02	3.2
WD1L3-1	561680	7091038	0.033	1	1.38	0.006	0.04	<0.1	3.0	0.06	<0.02	27	0.3	0.05	4.2
WD1L3-2	561719	7091015	0.028	1	1.28	0.005	0.04	0.1	3.6	0.07	<0.02	31	0.3	0.03	3.4
WD1L3-3	561764	7090990	0.048	<1	1.54	0.009	0.04	<0.1	3.7	0.06	<0.02	45	0.2	0.03	4.3
WD1L3-4	561808	7090963	0.052	<1	1.42	0.011	0.04	0.1	4.2	0.06	<0.02	45	0.3	0.03	4.0
WD1L3-5	561850	7090941	0.035	<1	1.50	0.007	0.03	<0.1	2.9	0.08	<0.02	16	0.3	<0.02	4.2
WD1L3-6	561893	7090917	0.020	<1	1.35	0.006	0.05	0.1	3.6	0.08	<0.02	46	0.6	0.04	3.6
WD1L3-7	561938	7090892	0.034	<1	1.43	0.008	0.05	<0.1	3.5	0.07	<0.02	71	1.0	0.04	3.7
WD1L3-8	561982	7090866	0.028	<1	1.17	0.007	0.07	<0.1	4.1	0.10	<0.02	74	1.5	0.10	3.3
WD1L3-9	562027	7090841	0.032	<1	1.32	0.007	0.05	0.1	3.7	0.07	<0.02	40	0.6	0.03	3.9
WD1L3-1	562069	7090820	0.025	<1	1.11	0.006	0.04	0.1	3.2	0.07	<0.02	58	0.4	0.04	3.3
WD1L3-1	562113	7090794	0.015	<1	1.02	0.003	0.07	0.1	2.0	0.08	<0.02	15	0.3	0.07	3.3
WD1L3-1	562159	7090769	0.023	<1	1.25	0.006	0.06	<0.1	4.1	0.08	<0.02	88	0.5	0.07	3.6
WD1L3-1	562202	7090746	0.005	<1	0.97	0.006	0.09	<0.1	3.2	0.10	0.03	38	1.1	0.08	2.7
WD1L3-1	562242	7090719	0.034	1	1.23	0.009	0.10	0.2	2.6	0.08	<0.02	29	0.4	0.05	3.7
WD1L3-1	562288	7090696	0.024	1	1.17	0.007	0.08	0.2	2.3	0.06	<0.02	36	0.4	0.05	3.3
WD1L4-1	561637	7090972	0.034	<1	1.52	0.009	0.04	0.2	2.9	0.06	<0.02	70	0.6	0.03	4.8
WD1L4-2	561686	7090957	0.056	<1	1.57	0.008	0.14	<0.1	4.4	0.07	<0.02	43	0.4	0.06	4.9
WD1L4-3	561730	7090933	0.053	<1	1.54	0.013	0.04	0.2	3.9	0.06	<0.02	71	0.6	0.04	4.5
WD1L4-4	561774	7090903	0.047	<1	1.40	0.008	0.03	0.1	2.7	0.06	<0.02	29	0.4	<0.02	4.2
WD1L4-5	561819	7090881	0.043	<1	1.37	0.009	0.03	0.1	3.9	0.07	<0.02	53	0.5	0.04	4.0
WD1L4-6	561860	7090856	0.028	<1	1.44	0.006	0.06	0.1	2.7	0.05	<0.02	32	0.8	0.06	4.4
WD1L4-7	561903	7090832	0.057	<1	1.64	0.009	0.04	0.1	4.1	0.06	<0.02	36	0.5	<0.02	4.7
WD1L4-8	561946	7090805	0.051	<1	1.58	0.009	0.04	0.1	3.6	0.05	<0.02	43	0.3	<0.02	4.5
WD1L4-9	561991	7090781	0.040	<1	1.57	0.009	0.04	0.1	4.0	0.05	<0.02	46	0.5	0.05	4.2
WD1L4-1	562033	7090755	0.033	<1	1.28	0.014	0.05	0.2	4.6	0.05	<0.02	89	0.7	0.04	3.8
WD1L4-1	562078	7090732	0.015	<1	1.47	0.008	0.05	0.1	4.1	0.09	<0.02	30	0.8	0.04	4.6
WD1L4-1	562121	7090705	0.017	<1	1.82	0.012	0.07	0.1	6.4	0.06	<0.02	34	0.9	0.04	5.8
WD1L4-1	562165	7090682	0.014	<1	0.93	0.007	0.09	0.2	2.4	0.07	0.03	54	1.0	0.09	2.7
WD1L4-1	562209	7090658	0.030	<1	1.35	0.015	0.06	0.1	4.1	0.05	<0.02	78	0.7	0.06	3.9
WD1L4-1	562250	7090631	0.007	1	0.89	0.006	0.13	0.1	4.1	0.09	<0.02	42	1.9	0.08	2.4