

Memorandum Report of 2012 Surface Work

On the

Bishop-Montana Property

Farm 1 to 6	YD17716 to YD17721
IN 1 to 10	YD29081 to YD29090
IN 11 to 12	YD 06597 to YD 06598
IN 13 to 23	YC95373 to YC95383
IN 24 to 227	YD101504 to YD101707
M 1 to 11	YD132351 to YD132361
M 12	YD132362
M 13	YD132363
M 14 to 36	YD132364 to YD132386
M 37 to 41	YD105947 to YD105951
MT 1 to 74	YD19614 to YD19687
MT 75 to 80	YD129075 to YD129080
MT 81 to 86	YD132431 to YD132436
MT 87 to 182	YD19700 to YD19795
MT 183 to 196	YD19839 to YD19852
MT 197 to 236	YD19799 to YD19838
VMS 1 to 8	YC27160 to YC27167
VMS 9 to 16	YC27194 to YC27201

**Dawson Mining District, Yukon
NTS Sheets 115O10 & 115O11
63°37' N. Lat., 139°02' W. Long.**

Operated by and Recorded to



**By
Mark Fekete, P.Geo.
and
Drew MacPhail, B.Sc., G.I.T
October 30, 2012**

Table of Contents

<i>Table of Contents</i>	<i>ii</i>
<i>List of Figures</i>	<i>ii</i>
<i>Certificate of Qualifications</i>	<i>iii</i>
<i>Certificate of Qualifications</i>	<i>iv</i>

Introduction and Terms of Reference.....	1
Location, Property Information and Access.....	1
Previous Work.....	1
Geological Context and Deposit Model	5
2012 Exploration	11
Results	11
Recommendations	11
References	12

Appendix A - Statement of Work Expenditures
Appendix B - Sample Locations and Descriptions
Appendix C - Assay Certificates

List of Figures

Figure 1 - General Location Map	2
Figure 2 - Claim Map Bishop.....	3
Figure 3 - Claim Map Montana	4
Figure 4 - Yukon Tectonic Map.....	6
Figure 5 - Regional Geology Map.....	7
Figure 6 - Property Geology Map Bishop	9
Figure 7 - Property Geology Map Montana	10
Figure 8 - Sample Locations North	13
Figure 9 - Sample Locations Centre.....	14
Figure 10 - Sample Locations South	15
Figure 11 - Anomalous Gold Area	16

List of Tables

Table 1 - List of Claims.....	1
Table 2 - Previous Assessment Work Files.....	5
Table 3 - MINFILE Showings.....	5
Table 4 - Estimated Costs.....	12

Certificate of Qualifications

I, Mark Fekete, having my place of residence at 178 Dennison Boulevard in Val d'Or in the Province of Quebec do hereby certify that:

1. I obtained a Bachelor of Science Degree in Geology from the University of British Columbia in 1986, I have been engaged as a Geologist continuously since 1986 and I am a Member in good standing of the Order of Geologists of Quebec (OGQ #553) and the Association of Professional Engineers and Geoscientists of British Columbia (APEGBC #31440), and I am a "qualified person" as defined in Section 1.2 in and for the purposes of National Instrument 43-101;
2. I have visited the Bishop-Montana property on numerous occasions including most recently in August 2012;
3. I co-wrote and I am, as the senior author and qualified person, responsible for the contents of this technical report entitled "Memorandum Report of 2012 Surface Work on the Bishop-Montana Property, Dawson Mining District, Yukon, NTS Sheet 115O10 and 115O11, 63°37'N. Lat., 139°02'W. Long.," based on my professional experience, a review of relevant reports and maps made available to me from government and corporate sources and my participation in the work programs described in the report;
4. I am not aware of any material fact or material change with respect to the subject matter of the report that is not disclosed in the report which, by its omission, makes the report misleading;
5. I am an Officer and Director, and I beneficially hold a number of shares in Taku Gold Corp.;
6. I hold no direct interest in the Bishop-Montana property as a result of my prior involvement with the property; and
7. I have read, and this report has not been prepared for the purposes, nor in full compliance with, National Instrument 43-101 and according to Form 43-101F1.

Respectfully submitted this 30th day of October, 2012,

(s) "**Mark Fekete**"

Mark Fekete, P.Geo.

Certificate of Qualifications

I, Drew MacPhail, having my place of residence at 610 Church St. in Port Williams in the Province of Nova Scotia do hereby certify that:

1. I obtained a Bachelor of Science Degree in Geology from Acadia University in May 2012, I have been engaged as a Geologist in Training (“GIT”) continuously since May 2012 and I am not a “qualified person” as defined in Section 1.2 in and for the purposes of National Instrument 43-101;
2. I have visited the Bishop-Montana property on numerous occasions including most recently in June 2012;
3. I co-wrote this technical report entitled “Memorandum Report of 2012 Surface Work on the Bishop-Montana Property, Dawson Mining District, Yukon, NTS Sheet 115O10 and 115O11, 63°37’N. Lat., 139°02’W. Long.,” under the supervision of Mark Fekete, P.Geo.;
4. I am not aware of any material fact or material change with respect to the subject matter of the report that is not disclosed in the report which, by its omission, makes the report misleading;
5. I do not beneficially hold a number of shares in Taku Gold Corp.;
6. I hold no direct interest in the Bishop-Montana property as a result of any prior involvement with the property; and
7. I have read, and this report has not been prepared for the purposes, nor in full compliance with, National Instrument 43-101 and according to Form 43-101F1.

Respectfully submitted this 30th day of October, 2012,

(s) “*Drew MacPhail*”

Drew MacPhail, GIT.

Introduction and Terms of Reference

Breakaway Exploration Management Inc. (“Breakaway”) was engaged by Taku Gold Corp. (“Taku”) to manage and report on a sampling program done on the Bishop-Montana property (“Bishop-Montana” or the “Property”) in Yukon in 2012. The goal of the program was to test bedrock close or at surface for gold mineralization on the property. Since the Bishop-Montana property has little to no exposed bedrock samples were typically collected from hand dug pits or road cuts. This memorandum report was prepared to complete statutory assessment work filings required under the Yukon Quartz Mining Act. It is not intended to and does not fully comply with National Instrument 43-101.

Location, Property Information and Access

The Bishop-Montana property is located approximately 50km south of Dawson City in the Klondike region of the Yukon (Figure 1). The Property covers approximately 10,300 hectares of the Dawson Mining Division and is held 100% by Taku Gold Corp. The approximate centre of the Property is described by 63°37’ North Latitude and 139°02’ West Longitude on N.T.S. Sheets 115O10 and 115O11. In total, the Property includes 526 un-surveyed mineral titles (Figure 2 and 3) more fully described in Table 1 below.

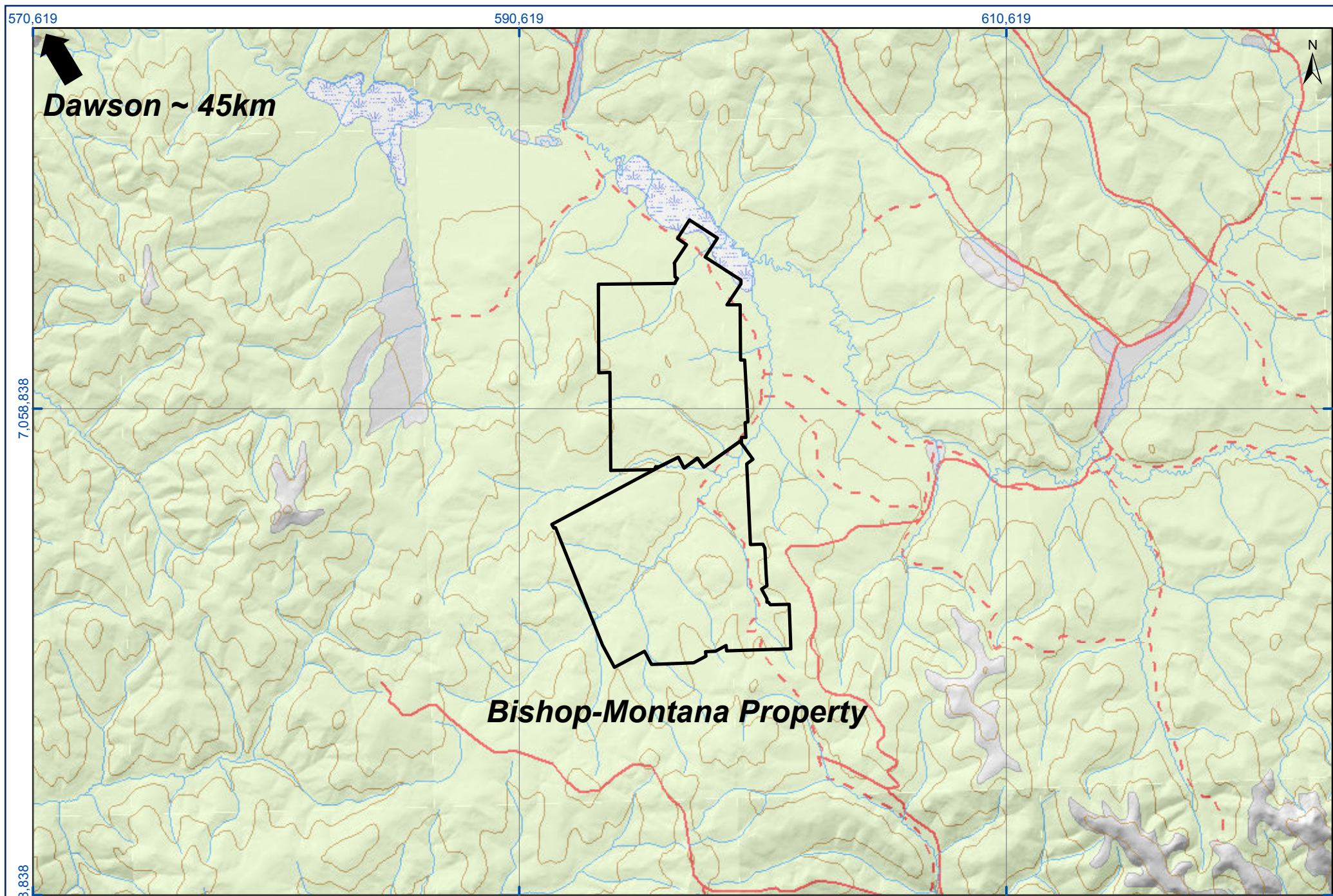
Table 1 - List of Claims

Claim Name	Tag No.	Expiry Date	#
Farm 1 to 6	YD17716 to YD17721	22-July-12	6
IN 1 to 10	YD29081 to YD29090	1-Mar-15	10
IN 11 to 12	YD 06597 to YD 06598	1-Mar-15	2
IN 13 to 23	YC95373 to YC95383	1-Mar-15	11
IN 24 to 227	YD101504 to YD101707	16-Mar-16	204
M 1 to 11	YD132351 to YD132361	1-Mar-16	11
M 12	YD132362	1-Mar-16	1
M 13	YD132363	1-Mar-16	1
M 14 to 36	YD132364 to YD132386	1-Mar-16	23
M 37 to 41	YD105947 to YD105951	1-Mar-16	5
MT 1 to 74	YD19614 to YD19687	1-Mar-16	74
MT 75 to 80	YD129075 to YD129080	1-Mar-16	6
MT 81 to 86	YD132431 to YD132436	1-Mar-16	6
MT 87 to 182	YD19700 to YD19795	1-Mar-16	96
MT 183 to 196	YD19839 to YD19852	1-Mar-16	14
MT 197 to 236	YD19799 to YD19838	1-Mar-16	40
VMS 1 to 8	YC27160 to YC27167	2-Jul-12	8
VMS 9 to 16	YC27194 to YC27201	15-Jul-12	8
	Total		526

The Bishop-Montana claims can be accessed by a network of summer roads from Dawson City. There are a series of seasonal mining roads and ATV trails that lead directly onto the Property from the Indian River and Black Hills roads. The road that provides the most direct access leaves the Black Hills road near the summit of Eureka Dome and leads into Steele Fork and then to several placer operations on Montana Creek. This road is very rough and steep in places and it is built mostly on clay that becomes very slippery and dangerous when wet. It should only be used in dry weather.

Previous Work

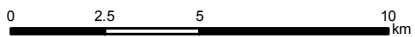
Despite an ongoing history of placer mining in the area, there has been limited hard rock (quartz) exploration on the Bishop block to the north and no documented exploration on the Montana block to the south. Table 2 below lists all known assessment reports that describe work done adjacent to and within the boundaries of the present Property. In 2010, Taku completed an airborne geophysical survey over the Montana block (Poon, 2010), a five-hole drill program on the Bishop block (Fekete and Dubois, 2011) and a 4,828-sample soil geochemical survey over the entire Property (Fekete and Dubois, 2012).



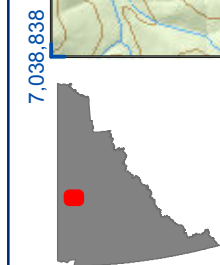
Bishop-Montana Property

BISHOP-MONTANA PROPERTY
Figure 1. GENERAL LOCATION

Universal Transverse Mercator Zone 7
World Geodetic System 1984
Scale 1:200 000



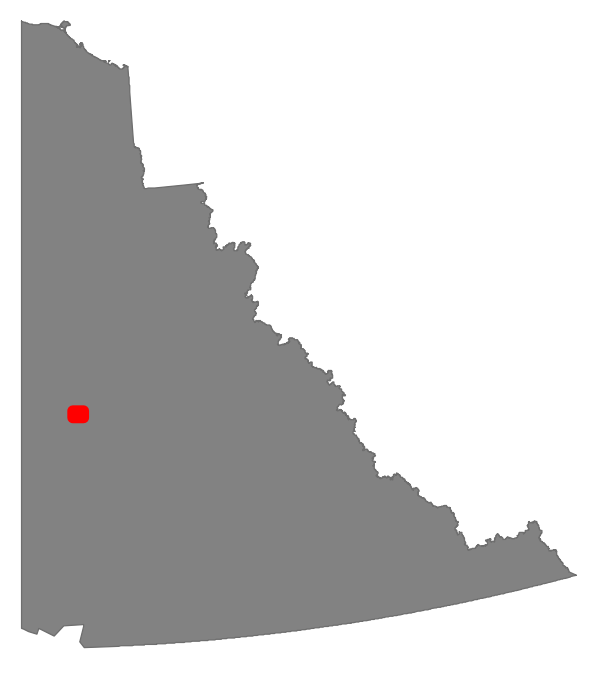
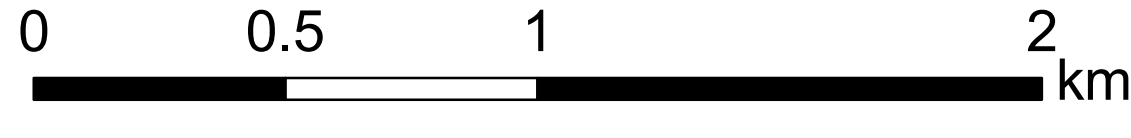
Bishop-Montana Property
Figure 1. General Location
Taku Gold Corp.
NTS Sheet: 1150
Date: November 8, 2011



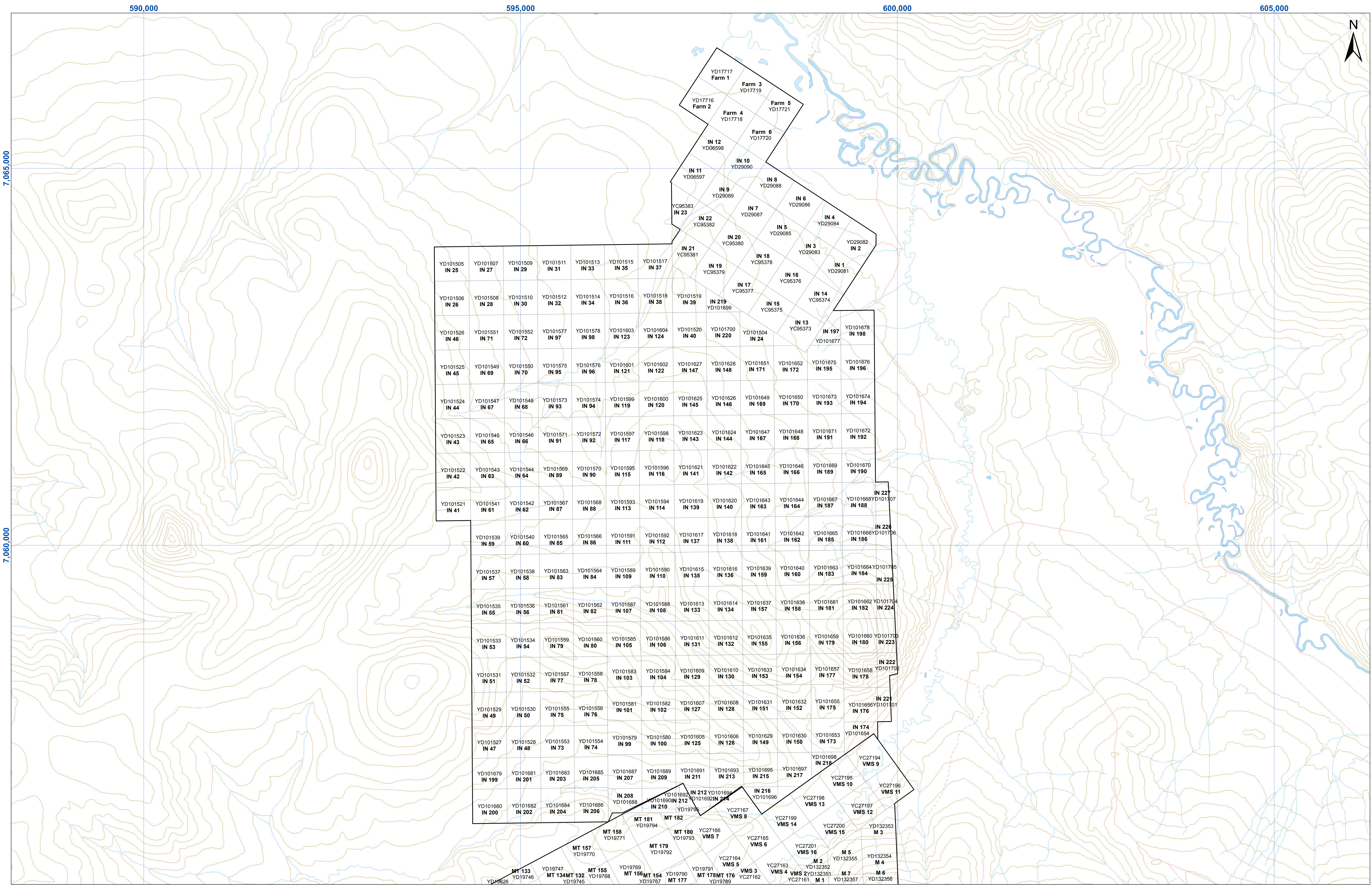


BISHOP-MONTANA PROPERTY
Figure 3. CLAIM MAP MONTANA BLOCK

Universal Transverse Mercator Zone 7
 World Geodetic System 1984
 Scale 1:15 000

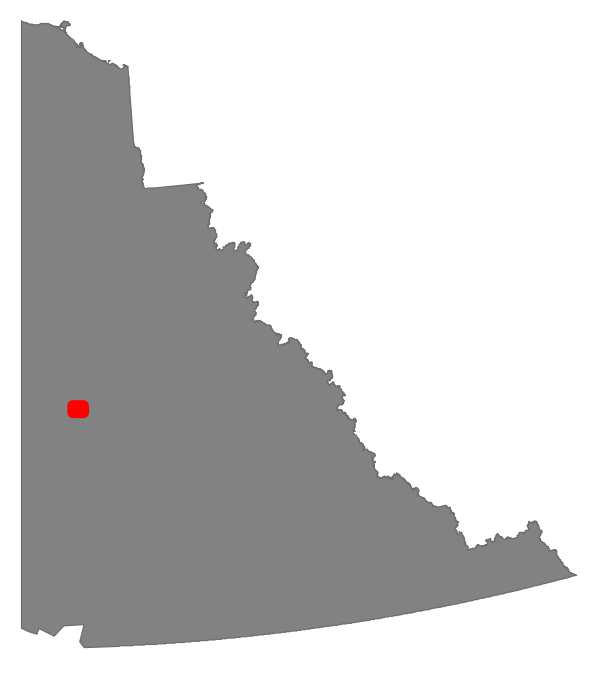


Bishop-Montana Property
 Figure 3. Claim Map Montana Block
 Taku Gold Corp.
 NTS Sheet: 115O/10 & 11
 Date: November 4, 2011



BISHOP-MONTANA PROPERTY
Figure 2. CLAIM MAP BISHOP BLOCK

Universal Transverse Mercator Zone 7
 World Geodetic System 1984
 Scale 1:15 000
 0 0.5 1 2 km



Bishop-Montana Property
 Figure 2. Claim Map Bishop Block
 Taku Gold Corp.
 NTS Sheet: 115O/10 & 11
 Date: November 4, 2011

Table 2 - Previous Assessment Work Files

Company	Year	AFR No.	Author	Work	Link
Eldorado Nuclear Ltd	1983	091406	R.D. Cruickshank	Mapping, soil sampling	091406.pdf
Yukon Inc.	2002	094397	T. Morgan & V. Matkovich	Geophysics, geochem	094397.pdf
Yukon Inc	2003	094422	T. Morgan & V. Matkovich	Drilling, trenching	094422.pdf

There are only two mineral showings documented within and immediately adjacent to the area of the Property listed in Table 3 below:

Table 3 - MINFILE Showings

MINFILE No.	MINEFILE Name	Link
115O 164	Matgan	115O 164
115O 056	FotherGill	115O 056

Geological Context and Deposit Model

The Property lies within the Yukon-Tanana Terrane (Figure 4) which generally consists of several successions of layered sedimentary and volcanic rocks ranging from Late Proterozoic to Late Permian age that overlay the older Nisling Terrane. These complexly deformed layered rocks have been episodically intruded by various plutonic rocks in the Permian, Jurassic, Cretaceous and Tertiary periods. The intrusive events have been accompanied by volcanic activity especially in the Upper Jurassic to Lower Cretaceous. The Yukon-Tanana has been subjected to numerous prolonged deformational events including subduction and accretion that has led to significant structural thickening. Imbricated allochthonous terranes such as Slide Mountain Terrane are evidenced by altered ultramafic fragments.

The Property lies within the Klondike gold district of the Stewart River Area. The district has been interpreted to be underlain by the Klondike assemblage (Mortensen, 1996) which is comprised of strongly deformed and altered mafic to felsic metavolcanic rocks and as well as deformed subvolcanic and plutonic equivalents, together with interlayered non-carbonaceous metasediments. This assemblage has been emplaced as a stack of three distinct thrust plates over rocks of the Late Devonian Early Mississippian Nasina assemblage.

The most recent regional mapping and compilation work (Figure 5) in the Stewart River Area (Ryan and Gordey, 2005) indicates that the majority of the Bishop-Montana Property is underlain by Devonian to Mississippian quartz–mica schist (DMps) further described as metasedimentary rocks dominated by metapsammite, semipelite and metapelite. Quartz-garnet-biotite-muscovite schist possibly derived from siliceous siltstone is common as well as micaceous quartzite. Conglomerate is found rarely in this area. The second most dominant lithology is Devonian to Mississippian amphibolite (DMA) found northwest of Montana Creek. This unit consists of amphibolite schist, gneiss and metabasite. To the south east, the Property is underlain by Devonian to Mississippian Orthogneiss (DMogt). The grey orthogneiss is mainly tonalitic (intermediate to mafic in composition) commonly banded to layered, veined. Small bodies of marble have been noted within the area of the claim block (DMc). The Devonian to Mississippian rocks are overlain in places by much younger Lower Cretaceous Tantalus Formation (IKTcg) clast supported pebble to cobble conglomerate with clasts of vein quartz and foliated quartzite, and by Upper Cretaceous Carmacks Group volcanic (uKCv) rocks. Two Eocene rhyodacite stocks have been mapped just west of the Bishop claims.

The Property lies within underexplored Klondike-White Gold district of the loosely defined Tintina Gold Belt. This metallurgical province has past production of 29.9 million ounces and 39.3 million ounces, for total gold resources of 69.2 million ounces. Notable gold deposits are Donlin Creek, Ft. Knox, Pogo and Brewery Creek. The Klondike-White Gold district lies within the larger Dawson Range area where a number of known gold and porphyry copper deposits show a wide range of styles, geological settings and geochemical associations. Taku's exploration effort at Bishop-Montana is not adhering to any firm deposit model but is instead based on practical survey methods that generate drill targets and have led to discoveries by other groups working in the area.

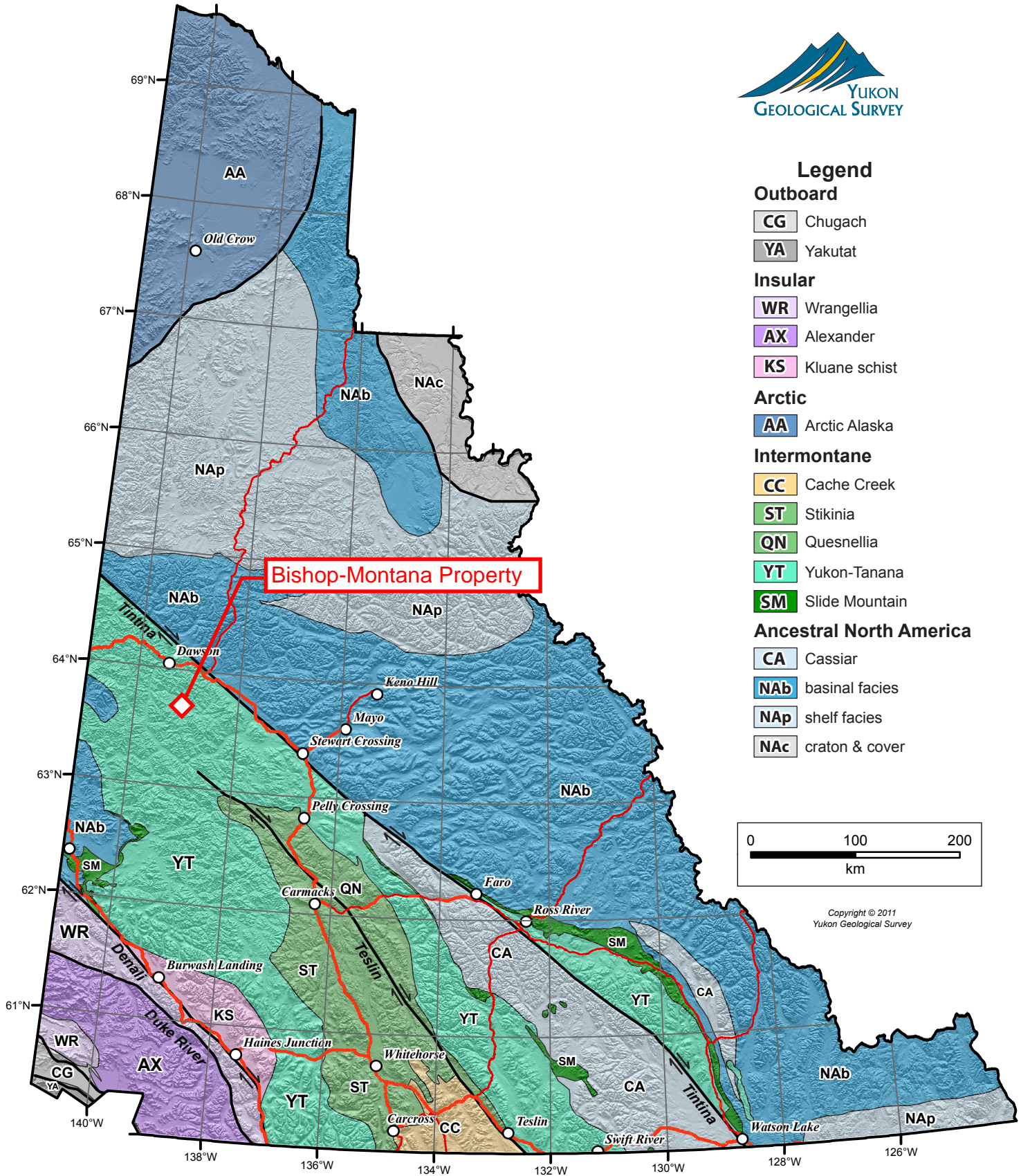
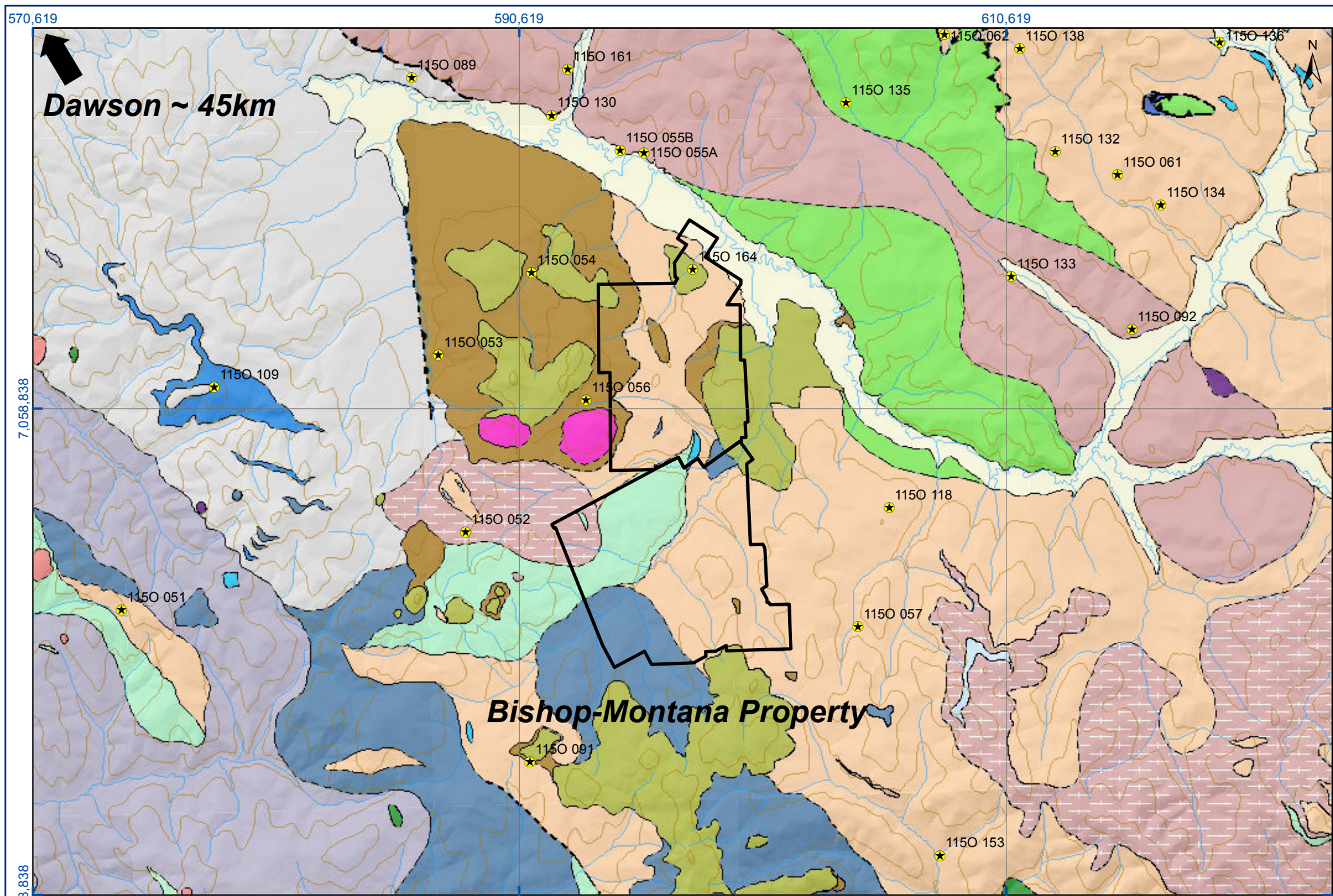


Figure 4 - Yukon Tectonic Map



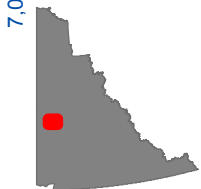
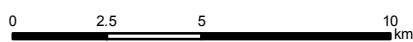
Dawson ~ 45km

Bishop-Montana Property

★ Mineral Occurrence



**BISHOP-MONTANA PROPERTY
Figure 4. REGIONAL GEOLOGY**

Universal Transverse Mercator Zone 7
World Geodetic System 1984
Scale 1:200 000




Bishop-Montana Property
Figure 4. Regional Geology
Taku Gold Corp.
NTS Sheet: 1150
Date: November 8, 2011

QUATERNARY

-  Qs
Fluvial silt, sand and gravel
-  Qb
Basalt

TERTIARY

-  Ts
Conglomerate, sandstone, shale

DEVONIAN TO MISSISSIPPIAN?


-  DME
Earn group

TERTIARY EOCENE

-  Er
Porphyry

CRETACEOUS

UPPER CRETACEOUS

-  uKcV
Carmacks Group

MID?-CRETACEOUS

-  Kg/Kgd
Granite/Granodiorite

LOWER CRETACEOUS

-  IKToG
Tantalus(?) Formation


JURASSIC

EARLY JURASSIC

-  EJgd
Granodiorite

TRIASSIC

LATE TRIASSIC

-  LTrum
Pyroxene Mountain Body

PALEOZOIC AND/OR MESOZOIC

-  PMd
Gabbro




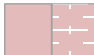
CARBONIFEROUS

-  CD
Dawson-Clinton Creek Assemblage

MID(?) - TO LATE PALEOZOIC

-  mPum/mPums
Ultramafic-Gabbro

PERMIAN

-  Pv
Foliated volcanic
-  PKs
Klondike Schist
-  Pg
Jim Creek Pluton
-  Pogg, Pogq/Poga
Pogt
Orthogneiss (Younger, 264-259 Ma)

DEVONIAN TO MISSISSIPPIAN

-  DMNq/DMNI
Nasina Assemblage
-  DMogg/DMoga
DMogt
Orthogneiss (Older, 363-343 Ma)
-  DMogta
Undivided DMogt (Orthogneiss (older))
and DMA (Amphibolite)
-  DMA
Amphibolite
-  DMm
Mafic schist
-  DMc
Marble
-  DMps
Quartz-Mica schist
-  DMcg
Metaconglomerate
-  DMq
Quartzite

SYMBOLS





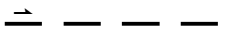

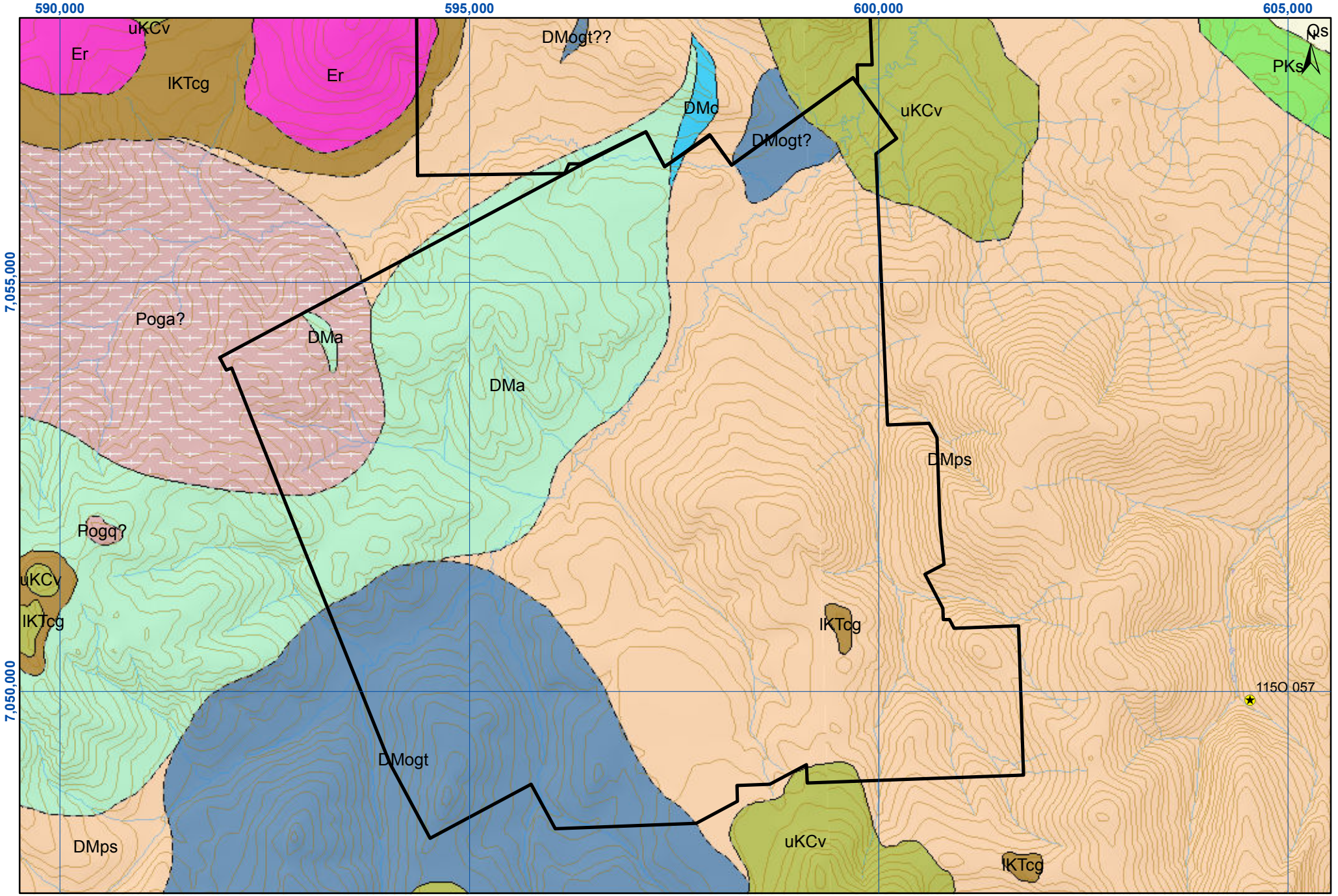
-  ————— Geological contact
(defined, approximate, assumed)
-  - - - - - Fault, sense of movement uncertain
(defined, approximate, assumed)
-  - - - - - Fault, transcurrent, dextral
(approximate)
-  - - - - - Fault, thrust (teeth on upper plate)
(defined, approximate, assumed)
-  - - - - - Fault, normal (teeth on upper plate)
(defined, approximate, assumed)
-  - - - - - Fault, low-angle normal
(teeth on upper plate)
(approximate, assumed)

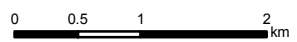
Figure 3 continued. Legend for Regional Geology



★ Mineral Occurrence

BISHOP-MONTANA PROPERTY
Figure 6. PROPERTY GEOLOGY MONTANA BLOCK

Universal Transverse Mercator Zone 7
 World Geodetic System 1984
 Scale 1:60 000



Bishop-Montana Property
 Figure 5. Property Geology Montana Block
 Taku Gold Corp.
 NTS Sheet: 1150/10 & 11
 Date: November 8, 2011

590,000

595,000

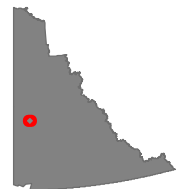
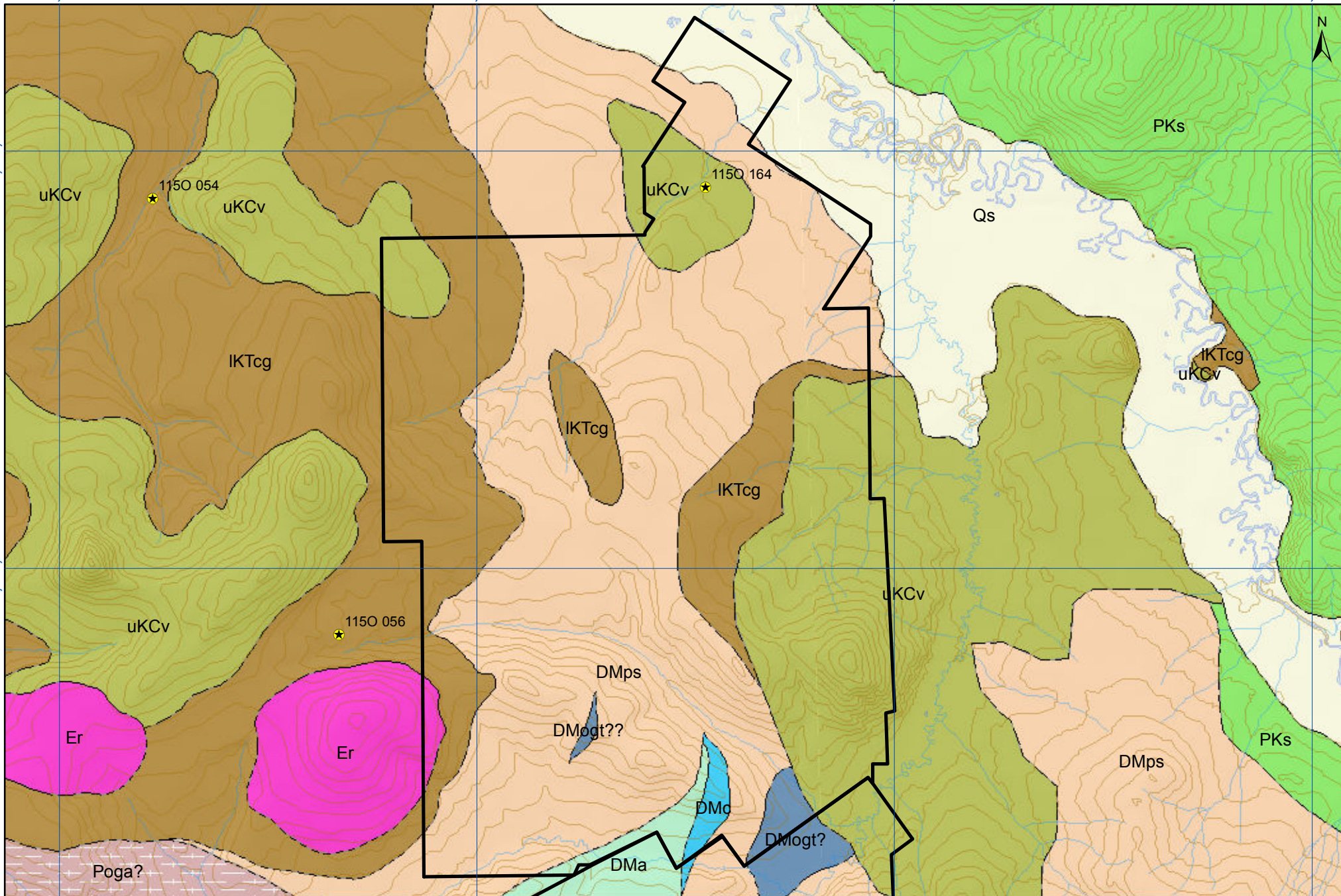
600,000

605,000



7,065,000

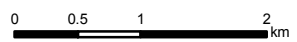
7,060,000



★ Mineral Occurrence

BISHOP-MONTANA PROPERTY
Figure 5. PROPERTY GEOLOGY BISHOP BLOCK

Universal Transverse Mercator Zone 7
 World Geodetic System 1984
 Scale 1:60 000



Bishop-Montana Property
 Figure 5. Property Geology Bishop Block
 Taku Gold Corp.
 NTS Sheet: 1150/10 & 11
 Date: November 8, 2011

2012 Exploration

A prospecting and sampling survey was completed on the Property on June 10, 2012 by a five-man crew on foot with a helicopter set-out from Taku's Dominion camp located 20km northeast of Bishop-Montana. A total of 26 rock samples from hand dug pits were collected over gold and arsenic soil geochemical anomalies detected on the Property by the 2011 soil geochemical survey (Fekete and Dubois, 2012). Sample material varied from float to weathered bedrock with depths varying from 60 to 160cm. The analytical work was done from June 12 to June 26, 2012. Geologist in Training Drew MacPhail (the "Junior Author") compiled the field data into digital maps and wrote this Report up to October 30th, 2012 under the supervision of Professional Geologist Mark Fekete (the "Senior Author"). A detailed Statement of Work is included herein as Appendix A. The work program was planned under the supervision of the Senior Author and managed on a day-to-day basis by the Junior Author.

Sample locations were tagged in the field and recorded with HP iPAQ 200 series field computers running GeoInfoMobile and Tierra Mapper software paired with Holux GPS receivers in map datum UTM WGS84 Zone 7N. Sample locations (Figure 8, 9 and 10) and descriptions are included as Appendix B. Rock samples were placed in heavy-duty plastic bags with the appropriate sample numbers marked in indelible ink. Samples were then sealed in rice bags and shipped to Acme Analytical Laboratories Ltd. ("Acme") in Vancouver, B.C. for analysis. Samples were crushed, split and pulverized to minus 200 mesh and analyzed for gold by 30 gram Aqua Regia digestion, ICP-ES finish (Appendix C). Acme is accredited under ISO 9001.

It is the Authors' opinion that the sampling procedures, security measures, sample preparations and analytical methods applied to the soil samples were diligently followed and are adequate to meet industry standards commonly accepted for this level of exploration. The Authors have relied upon the adequacy and accuracy of the analytical results provided by Acme. Independent verification of those results has not been undertaken. The Junior Author reconciled the field data with the analytical results and found no irregularities.

Results

Lithologies of the rock samples varied from schist to quartzite with one sample of conglomerate. The rock samples returned gold values ranging from below the detection limit (i.e. <5 parts per billion gold) to a maximum of 2.2 grams per tonne gold (gpt Au). The 2.2gpt Au sample was taken from the southeast corner of the Bishop-Montana property, where soil sampling in 2011 revealed a scattered arsenic anomaly (Figure 11). No other rock samples returned significant gold values.

Interpretation and Conclusions

The 2.2gpt Au result is significant and merits further investigation by more advanced methods. Moreover, the area where this sample was collected was targeted for prospecting and sampling based on an arsenic-in-soil anomaly in the absence of any elevated gold-in-soil values. Clearly arsenic is a useful pathfinder for gold mineralization on the Property. More detailed prospecting and sampling is warranted on the many arsenic-in-soil and gold-in-soil anomalies found on the Property in 2011 that to date have not been prospected.

Recommendations

It is recommended that exploration work continue on Bishop-Montana with two days of mechanical trenching at the site where the 2.2gpt Au rock sample was found. A geologist and two line-cutters will be required to work with the Can-Dig excavator operator. A helicopter will be required to sling the Can-Dig into the trenching site. In order to make efficient use of the helicopter, it is suggested that a four-man prospecting crew go into the Property at the same time in order to investigate a number of other arsenic-in-soil and gold-in-soil anomalies.

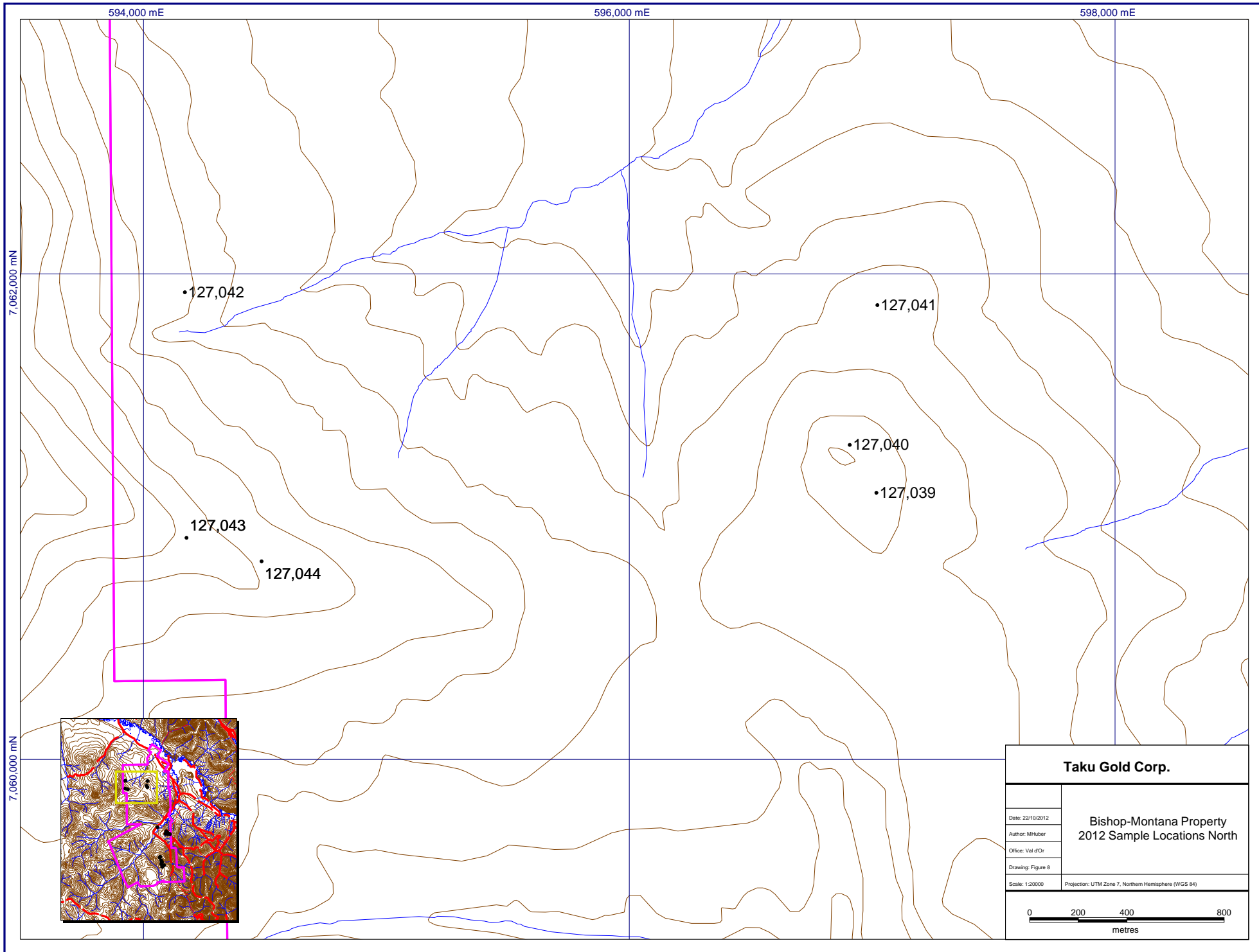
The estimated cost of the work is \$25,000 as detailed in Table 4 below. Note that all camp, food, lodging, supplies, transportation, rentals and other incidental expenses are included in the estimated cost.

Table 4 - Estimated Costs

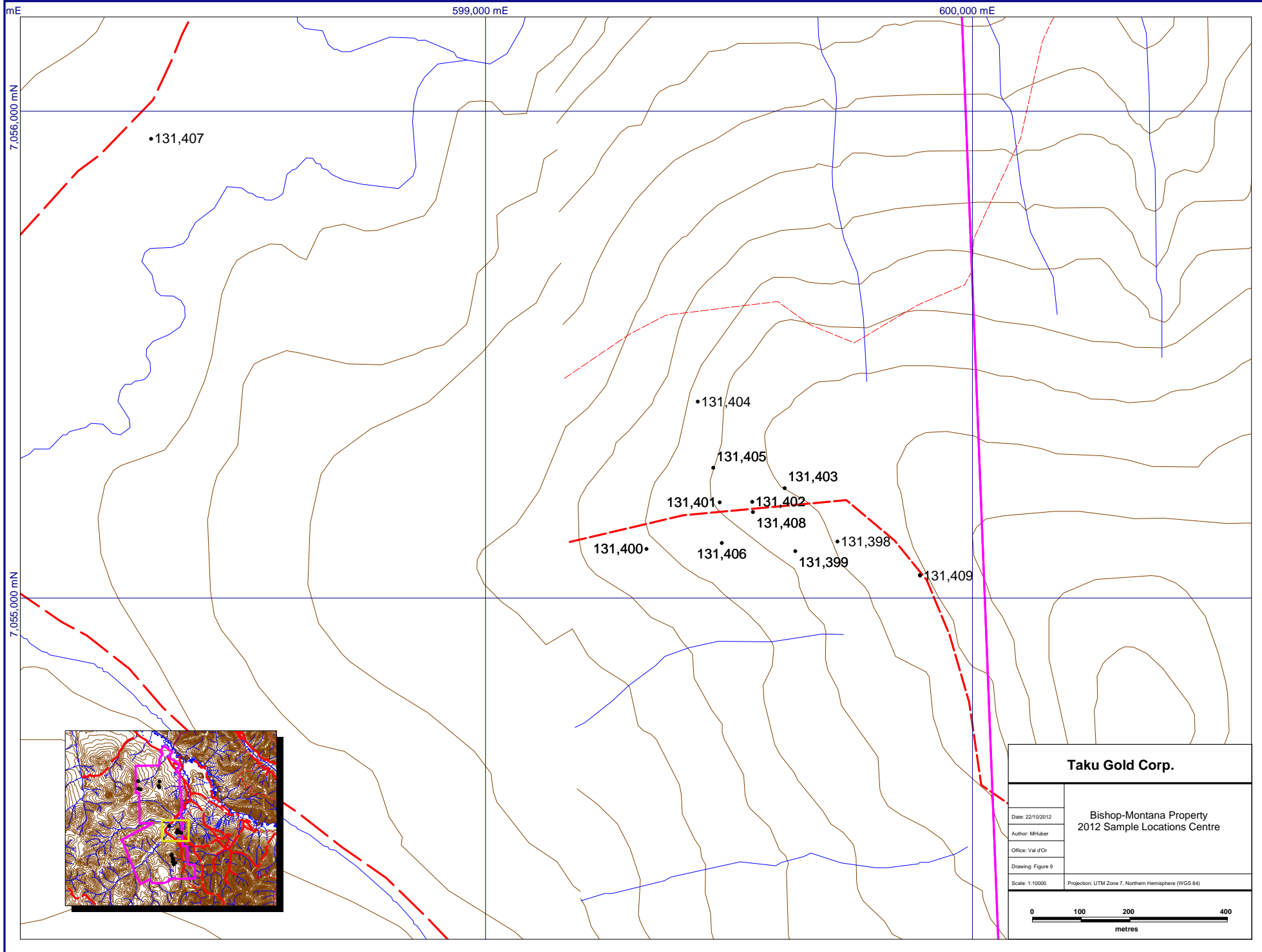
Excavator	2	days @	\$1,000	per day	\$2,000	
Geologist	2	days @	\$700	per day	\$1,400	
Line-cutters (2)	2	days @	\$1,400	per day	\$2,800	
Prospectors (4)	2	days @	\$2,800	per day	\$5,600	
Helicopter w/ fuel	4	hours @	\$2,000	per hour	\$8,000	
Truck w/ fuel	2	days @	\$200	per day	\$400	
Rock Samples	25	samples @	\$25	per sample	\$625	
Report	1	report @	\$1,000	per report	\$1,000	
					Subtotal	\$21,825
					~15% Contingency	\$3,175
					Total	\$25,000

References

- Fekete, M. and Dubois, B. (2011): 2010 drilling on the Bishop Property, Dawson Mining District, Yukon NTS Sheet 115O10 & 11, 63°41'N. Lat., 139°00'W. Long. (unpub.)
- Fekete, M. and Dubois, B. (2012): 2011 surface work on the Bishop-Montana Property Dawson Mining District, Yukon, NTS Sheets 115O10 & 115O11, 63°37' N. Lat., 139°02' W., Long.(unpub.)
- Gordey, S.P. and Ryan, J.J. (2005): Geology, Stewart River Area (115 N, 115-O and part of 115 J), Yukon Territory; Geological Survey of Canada, Open File 4970, scale 1:250 000.
- Mortensen, J.K. (1996): Geological compilation maps of the northern Stewart River map area, Klondike and Sixtymile Districts (115N/15, 16; 115O/13, 14; and parts of 115O/15, 16). Exploration and Geological Services Division, Yukon region, Indian and Northern Affairs Canada, Open File 1996-1 (G).
- Poon, J. (2010): Airborne geophysical report, Montana Property (unpub.)



Taku Gold Corp.	
<small>Date: 22/10/2012</small>	Bishop-Montana Property 2012 Sample Locations North
<small>Author: MHuber</small>	
<small>Office: Val d'Or</small>	
<small>Drawing: Figure 8</small>	
<small>Scale: 1:20000</small>	<small>Projection: UTM Zone 7, Northern Hemisphere (WGS 84)</small>



Taku Gold Corp.	
Date: 22/10/2012	Bishop-Montana Property 2012 Sample Locations Centre
Author: MHuber	
Office: Val d'Or	
Drawing: Figure 9	
Scale: 1:10000	Projection: UTM Zone 7, Northern Hemisphere (WGS 84)

598,000 mE

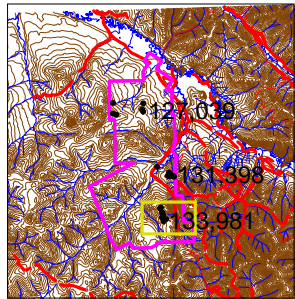
600,000 mE

602,000 mE

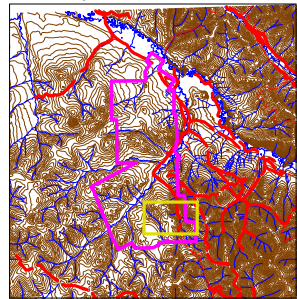
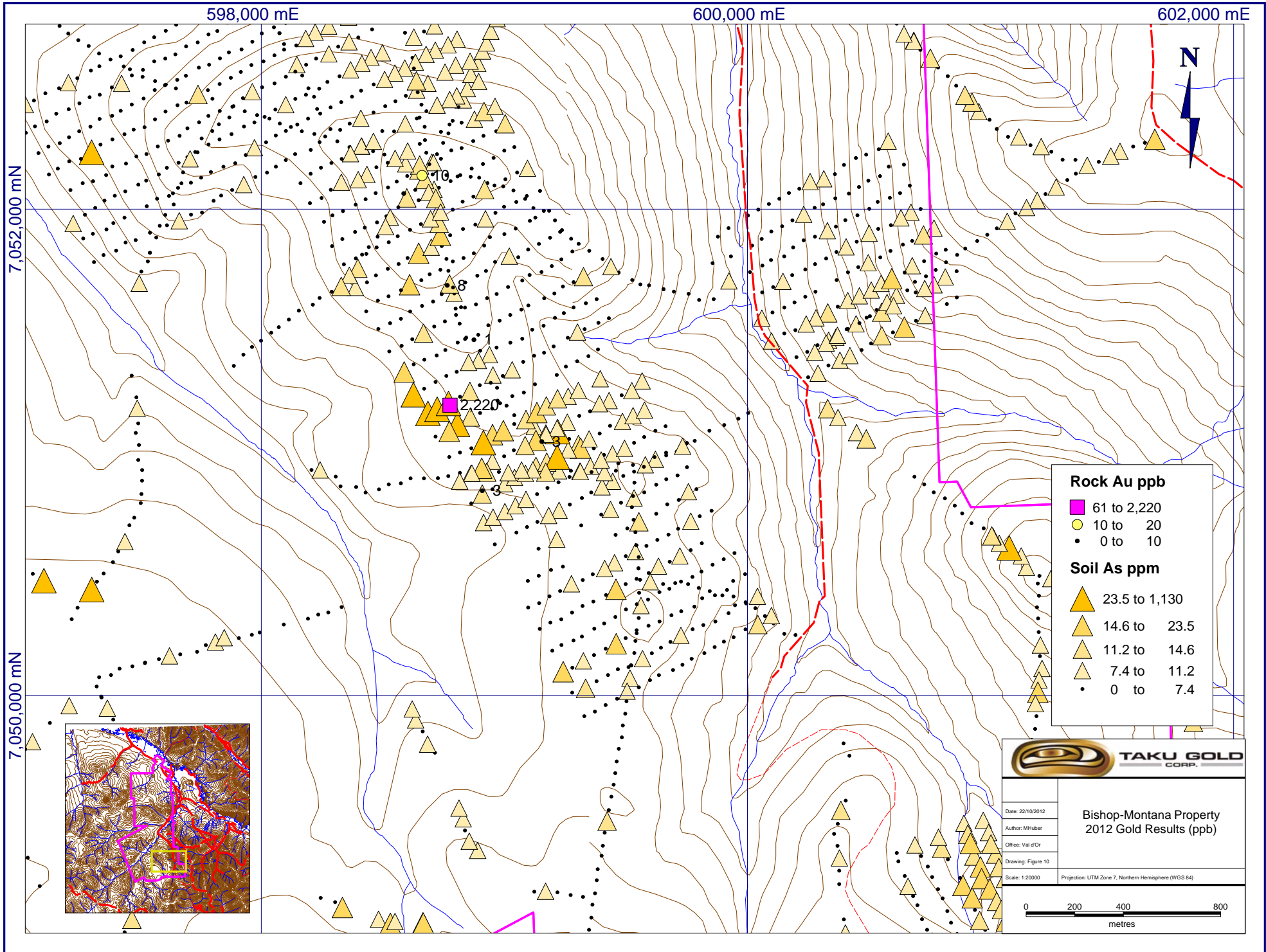
7,052,000 mN

7,050,000 mN

•134,816
 133,983•
 •134,815
 •133,982
 •134,814
 •134,813
 •133,981



Taku Gold Corp.	
Bishop-Montana Property 2012 Sample Locations South	
Date: 22/10/2012	
Author: MHuber	
Office: Val d'Or	
Drawing: Figure 10	
Scale: 1:20000	Projection: UTM Zone 7, Northern Hemisphere (WGS 84)



Appendix A - Statement of Work Expenditures

I, Darrell Kraemer

of Dawson City, Yukon

Phone (867) 993-2511

make oath and say that:

Office Date Stamp

1. I am the owner, or agent of the owner, of the mineral claim(s) to which reference is made herein.
2. I have done, or caused to be done, work, on the following mineral claim(s): (Here list claims on which work was actually done by number and name)

SEE ATTACHED SCHEDULE

situated at Bishop and Montana Creeks Claim sheet No. 1150/10&11
in the Dawson Mining District, to the value of at least 5110.90 dollars,
since the 10th day of June 2012,
to represent the following mineral claims under the authority of Grouping Certificate No. HD03249.
(Here list claims to be renewed in numerical order, by grant number and claim name, showing renewal period requested).

SEE ATTACHED SCHEDULE

Please renew all VMS'Entlo u"q"he"35th of July,"4013"

Please renew all IN claims to the 1st of March, 2016".....

Please renew all Farm claims to the 22nd of July, 2013

3. The following is a detailed statement of such work: (Set out full particulars of the work done indicating dates work commenced and ended in the twelve months in which such work is required to be done as shown by Section 56).

The work included a prospecting survey of particular anomalies. 26 rock samples were collected. Work began June 10th and continued until June 25th, 2012.

Sworn before me at _____ this _____ day of _____ 20 _____ .

Notary Public Owner or Authorized Agent

Claim List for Cert of Work 2012 BishopMon

Type	Claim Information				Work Done	Renewal		
	Grant No.	Claim Name	Claim No.	Expiry Date	Prospecting	Years	Annual Fee	Total
YC27160	Quartz	VMS	1	15/07/2012		1	\$ 15.00	\$ 15.00
YC27161	Quartz	VMS	2	15/07/2012		1	\$ 15.00	\$ 15.00
YC27162	Quartz	VMS	3	15/07/2012		1	\$ 15.00	\$ 15.00
YC27163	Quartz	VMS	4	15/07/2012	\$ 340.73	1	\$ 15.00	\$ 15.00
YC27164	Quartz	VMS	5	15/07/2012		1	\$ 15.00	\$ 15.00
YC27165	Quartz	VMS	6	15/07/2012		1	\$ 15.00	\$ 15.00
YC27166	Quartz	VMS	7	15/07/2012		1	\$ 15.00	\$ 15.00
YC27167	Quartz	VMS	8	15/07/2012		1	\$ 15.00	\$ 15.00
YC27194	Quartz	VMS	9	15/07/2012		1	\$ 15.00	\$ 15.00
YC27195	Quartz	VMS	10	15/07/2012		1	\$ 15.00	\$ 15.00
YC27196	Quartz	VMS	11	15/07/2012		1	\$ 15.00	\$ 15.00
YC27197	Quartz	VMS	12	15/07/2012		1	\$ 15.00	\$ 15.00
YC27198	Quartz	VMS	13	15/07/2012		1	\$ 15.00	\$ 15.00
YC27199	Quartz	VMS	14	15/07/2012		1	\$ 15.00	\$ 15.00
YC27200	Quartz	VMS	15	15/07/2012		1	\$ 15.00	\$ 15.00
YC27201	Quartz	VMS	16	15/07/2012		1	\$ 15.00	\$ 15.00
YD17717	Quartz	Farm	1	22/07/2012		1	\$ 15.00	\$ 15.00
YD17716	Quartz	Farm	2	22/07/2012		1	\$ 15.00	\$ 15.00
YD17719	Quartz	Farm	3	22/07/2012		1	\$ 15.00	\$ 15.00
YD17718	Quartz	Farm	4	22/07/2012		1	\$ 15.00	\$ 15.00
YD17721	Quartz	Farm	5	22/07/2012		1	\$ 15.00	\$ 15.00
YD17720	Quartz	Farm	6	22/07/2012		1	\$ 15.00	\$ 15.00
YD29081	Quartz	IN	1	01/03/2015		1	\$ 5.00	\$ 5.00
YD29082	Quartz	IN	2	01/03/2015		1	\$ 5.00	\$ 5.00
YD29083	Quartz	IN	3	01/03/2015		1	\$ 5.00	\$ 5.00
YD29084	Quartz	IN	4	01/03/2015		1	\$ 5.00	\$ 5.00
YD29085	Quartz	IN	5	01/03/2015		1	\$ 5.00	\$ 5.00
YD29086	Quartz	IN	6	01/03/2015		1	\$ 5.00	\$ 5.00
YD29087	Quartz	IN	7	01/03/2015		1	\$ 5.00	\$ 5.00
YD29088	Quartz	IN	8	01/03/2015		1	\$ 5.00	\$ 5.00
YD29089	Quartz	IN	9	01/03/2015		1	\$ 5.00	\$ 5.00
YD29090	Quartz	IN	10	01/03/2015		1	\$ 5.00	\$ 5.00
YD06597	Quartz	IN	11	01/03/2015		1	\$ 5.00	\$ 5.00
YD06598	Quartz	IN	12	01/03/2015		1	\$ 5.00	\$ 5.00
YC95373	Quartz	IN	13	01/03/2015		1	\$ 5.00	\$ 5.00
YC95374	Quartz	IN	14	01/03/2015		1	\$ 5.00	\$ 5.00
YC95375	Quartz	IN	15	01/03/2015		1	\$ 5.00	\$ 5.00
YC95376	Quartz	IN	16	01/03/2015		1	\$ 5.00	\$ 5.00
YC95377	Quartz	IN	17	01/03/2015		1	\$ 5.00	\$ 5.00
YC95378	Quartz	IN	18	01/03/2015		1	\$ 5.00	\$ 5.00
YC95379	Quartz	IN	19	01/03/2015		1	\$ 5.00	\$ 5.00
YC95380	Quartz	IN	20	01/03/2015		1	\$ 5.00	\$ 5.00
YC95381	Quartz	IN	21	01/03/2015		1	\$ 5.00	\$ 5.00
YC95382	Quartz	IN	22	01/03/2015		1	\$ 5.00	\$ 5.00
YC95383	Quartz	IN	23	01/03/2015		1	\$ 5.00	\$ 5.00
YD132351	Quartz	M	1	01/03/2016		0		\$ -
YD132352	Quartz	M	2	01/03/2016		0		\$ -
YD132353	Quartz	M	3	01/03/2016		0		\$ -
YD132354	Quartz	M	4	01/03/2016		0		\$ -
YD132355	Quartz	M	5	01/03/2016		0		\$ -
YD132356	Quartz	M	6	01/03/2016	\$ 340.73	0		\$ -
YD132357	Quartz	M	7	01/03/2016	\$ 340.73	0		\$ -
YD132358	Quartz	M	8	01/03/2016	\$ 340.73	0		\$ -
YD132359	Quartz	M	9	01/03/2016	\$ 340.73	0		\$ -
YD132360	Quartz	M	10	01/03/2016		0		\$ -
YD132361	Quartz	M	11	01/03/2016		0		\$ -
YD132362	Quartz	M	12	01/03/2016		0		\$ -
YD132363	Quartz	M	13	01/03/2016		0		\$ -
YD132364	Quartz	M	14	01/03/2016		0		\$ -
YD132365	Quartz	M	15	01/03/2016		0		\$ -

Claim List for Cert of Work 2012 BishopMon

Type	Claim Information				Work Done	Renewal		
	Grant No.	Claim Name	Claim No.	Expiry Date	Prospecting	Years	Annual Fee	Total
YD132366	Quartz	M	16	01/03/2016		0	\$	-
YD132367	Quartz	M	17	01/03/2016		0	\$	-
YD132368	Quartz	M	18	01/03/2016		0	\$	-
YD132369	Quartz	M	19	01/03/2016		0	\$	-
YD132370	Quartz	M	20	01/03/2016		0	\$	-
YD132371	Quartz	M	21	01/03/2016		0	\$	-
YD132372	Quartz	M	22	01/03/2016		0	\$	-
YD132373	Quartz	M	23	01/03/2016		0	\$	-
YD132374	Quartz	M	24	01/03/2016		0	\$	-
YD132375	Quartz	M	25	01/03/2016		0	\$	-
YD132376	Quartz	M	26	01/03/2016		0	\$	-
YD132377	Quartz	M	27	01/03/2016		0	\$	-
YD132378	Quartz	M	28	01/03/2016		0	\$	-
YD132379	Quartz	M	29	01/03/2016		0	\$	-
YD132380	Quartz	M	30	01/03/2016		0	\$	-
YD132381	Quartz	M	31	01/03/2016		0	\$	-
YD132382	Quartz	M	32	01/03/2016		0	\$	-
YD132383	Quartz	M	33	01/03/2016		0	\$	-
YD132384	Quartz	M	34	01/03/2016		0	\$	-
YD132385	Quartz	M	35	01/03/2016		0	\$	-
YD132386	Quartz	M	36	01/03/2016		0	\$	-
YD105947	Quartz	M	37	01/03/2016		0	\$	-
YD105948	Quartz	M	38	01/03/2016		0	\$	-
YD105949	Quartz	M	39	01/03/2016		0	\$	-
YD105950	Quartz	M	40	01/03/2016		0	\$	-
YD105951	Quartz	M	41	01/03/2016		0	\$	-
YD19614	Quartz	MT	1	01/03/2016		0	\$	-
YD19615	Quartz	MT	2	01/03/2016		0	\$	-
YD19616	Quartz	MT	3	01/03/2016		0	\$	-
YD19617	Quartz	MT	4	01/03/2016		0	\$	-
YD19618	Quartz	MT	5	01/03/2016		0	\$	-
YD19619	Quartz	MT	6	01/03/2016		0	\$	-
YD19620	Quartz	MT	7	01/03/2016		0	\$	-
YD19621	Quartz	MT	8	01/03/2016		0	\$	-
YD19622	Quartz	MT	9	01/03/2016		0	\$	-
YD19623	Quartz	MT	10	01/03/2016		0	\$	-
YD19624	Quartz	MT	11	01/03/2016		0	\$	-
YD19625	Quartz	MT	12	01/03/2016		0	\$	-
YD19626	Quartz	MT	13	01/03/2016		0	\$	-
YD19627	Quartz	MT	14	01/03/2016		0	\$	-
YD19628	Quartz	MT	15	01/03/2016		0	\$	-
YD19629	Quartz	MT	16	01/03/2016		0	\$	-
YD19630	Quartz	MT	17	01/03/2016		0	\$	-
YD19631	Quartz	MT	18	01/03/2016		0	\$	-
YD19632	Quartz	MT	19	01/03/2016		0	\$	-
YD19633	Quartz	MT	20	01/03/2016		0	\$	-
YD19634	Quartz	MT	21	01/03/2016		0	\$	-
YD19635	Quartz	MT	22	01/03/2016		0	\$	-
YD19636	Quartz	MT	23	01/03/2016		0	\$	-
YD19637	Quartz	MT	24	01/03/2016		0	\$	-
YD19638	Quartz	MT	25	01/03/2016		0	\$	-
YD19639	Quartz	MT	26	01/03/2016		0	\$	-
YD19640	Quartz	MT	27	01/03/2016		0	\$	-
YD19641	Quartz	MT	28	01/03/2016		0	\$	-
YD19642	Quartz	MT	29	01/03/2016		0	\$	-
YD19643	Quartz	MT	30	01/03/2016		0	\$	-
YD19644	Quartz	MT	31	01/03/2016		0	\$	-
YD19645	Quartz	MT	32	01/03/2016		0	\$	-
YD19646	Quartz	MT	33	01/03/2016		0	\$	-
YD19647	Quartz	MT	34	01/03/2016		0	\$	-

Claim List for Cert of Work 2012 BishopMon

Type	Claim Information				Work Done	Renewal		
	Grant No.	Claim Name	Claim No.	Expiry Date	Prospecting	Years	Annual Fee	Total
YD19648	Quartz	MT	35	01/03/2016		0	\$	-
YD19649	Quartz	MT	36	01/03/2016		0	\$	-
YD19650	Quartz	MT	37	01/03/2016		0	\$	-
YD19651	Quartz	MT	38	01/03/2016		0	\$	-
YD19652	Quartz	MT	39	01/03/2016		0	\$	-
YD19653	Quartz	MT	40	01/03/2016		0	\$	-
YD19654	Quartz	MT	41	01/03/2016		0	\$	-
YD19655	Quartz	MT	42	01/03/2016		0	\$	-
YD19656	Quartz	MT	43	01/03/2016		0	\$	-
YD19657	Quartz	MT	44	01/03/2016		0	\$	-
YD19658	Quartz	MT	45	01/03/2016		0	\$	-
YD19659	Quartz	MT	46	01/03/2016		0	\$	-
YD19660	Quartz	MT	47	01/03/2016		0	\$	-
YD19661	Quartz	MT	48	01/03/2016		0	\$	-
YD19662	Quartz	MT	49	01/03/2016		0	\$	-
YD19663	Quartz	MT	50	01/03/2016		0	\$	-
YD19664	Quartz	MT	51	01/03/2016		0	\$	-
YD19665	Quartz	MT	52	01/03/2016		0	\$	-
YD19666	Quartz	MT	53	01/03/2016		0	\$	-
YD19667	Quartz	MT	54	01/03/2016		0	\$	-
YD19668	Quartz	MT	55	01/03/2016		0	\$	-
YD19669	Quartz	MT	56	01/03/2016		0	\$	-
YD19670	Quartz	MT	57	01/03/2016		0	\$	-
YD19671	Quartz	MT	58	01/03/2016		0	\$	-
YD19672	Quartz	MT	59	01/03/2016		0	\$	-
YD19673	Quartz	MT	60	01/03/2016		0	\$	-
YD19674	Quartz	MT	61	01/03/2016		0	\$	-
YD19675	Quartz	MT	62	01/03/2016		0	\$	-
YD19676	Quartz	MT	63	01/03/2016		0	\$	-
YD19677	Quartz	MT	64	01/03/2016		0	\$	-
YD19678	Quartz	MT	65	01/03/2016		0	\$	-
YD19679	Quartz	MT	66	01/03/2016		0	\$	-
YD19680	Quartz	MT	67	01/03/2016		0	\$	-
YD19681	Quartz	MT	68	01/03/2016		0	\$	-
YD19682	Quartz	MT	69	01/03/2016		0	\$	-
YD19683	Quartz	MT	70	01/03/2016		0	\$	-
YD19684	Quartz	MT	71	01/03/2016		0	\$	-
YD19685	Quartz	MT	72	01/03/2016		0	\$	-
YD19686	Quartz	MT	73	01/03/2016		0	\$	-
YD19687	Quartz	MT	74	01/03/2016		0	\$	-
YD129075	Quartz	MT	75	01/03/2016		0	\$	-
YD129076	Quartz	MT	76	01/03/2016		0	\$	-
YD129077	Quartz	MT	77	01/03/2016		0	\$	-
YD129078	Quartz	MT	78	01/03/2016		0	\$	-
YD129079	Quartz	MT	79	01/03/2016		0	\$	-
YD129080	Quartz	MT	80	01/03/2016		0	\$	-
YD132431	Quartz	MT	81	01/03/2016		0	\$	-
YD132432	Quartz	MT	82	01/03/2016		0	\$	-
YD132433	Quartz	MT	83	01/03/2016		0	\$	-
YD132434	Quartz	MT	84	01/03/2016		0	\$	-
YD132435	Quartz	MT	85	01/03/2016		0	\$	-
YD132436	Quartz	MT	86	01/03/2016		0	\$	-
YD19700	Quartz	MT	87	01/03/2016		0	\$	-
YD19701	Quartz	MT	88	01/03/2016		0	\$	-
YD19702	Quartz	MT	89	01/03/2016		0	\$	-
YD19703	Quartz	MT	90	01/03/2016		0	\$	-
YD19704	Quartz	MT	91	01/03/2016		0	\$	-
YD19705	Quartz	MT	92	01/03/2016		0	\$	-
YD19706	Quartz	MT	93	01/03/2016		0	\$	-
YD19707	Quartz	MT	94	01/03/2016		0	\$	-

Claim List for Cert of Work 2012 BishopMon

Type	Claim Information				Work Done	Renewal		
	Grant No.	Claim Name	Claim No.	Expiry Date	Prospecting	Years	Annual Fee	Total
YD19708	Quartz	MT	95	01/03/2016		0	\$	-
YD19709	Quartz	MT	96	01/03/2016		0	\$	-
YD19710	Quartz	MT	97	01/03/2016		0	\$	-
YD19711	Quartz	MT	98	01/03/2016		0	\$	-
YD19712	Quartz	MT	99	01/03/2016		0	\$	-
YD19713	Quartz	MT	100	01/03/2016		0	\$	-
YD19714	Quartz	MT	101	01/03/2016		0	\$	-
YD19715	Quartz	MT	102	01/03/2016		0	\$	-
YD19716	Quartz	MT	103	01/03/2016		0	\$	-
YD19717	Quartz	MT	104	01/03/2016		0	\$	-
YD19718	Quartz	MT	105	01/03/2016		0	\$	-
YD19719	Quartz	MT	106	01/03/2016		0	\$	-
YD19720	Quartz	MT	107	01/03/2016		0	\$	-
YD19721	Quartz	MT	108	01/03/2016		0	\$	-
YD19722	Quartz	MT	109	01/03/2016		0	\$	-
YD19723	Quartz	MT	110	01/03/2016		0	\$	-
YD19724	Quartz	MT	111	01/03/2016		0	\$	-
YD19725	Quartz	MT	112	01/03/2016		0	\$	-
YD19726	Quartz	MT	113	01/03/2016		0	\$	-
YD19727	Quartz	MT	114	01/03/2016		0	\$	-
YD19728	Quartz	MT	115	01/03/2016		0	\$	-
YD19729	Quartz	MT	116	01/03/2016		0	\$	-
YD19730	Quartz	MT	117	01/03/2016		0	\$	-
YD19731	Quartz	MT	118	01/03/2016		0	\$	-
YD19732	Quartz	MT	119	01/03/2016		0	\$	-
YD19733	Quartz	MT	120	01/03/2016		0	\$	-
YD19734	Quartz	MT	121	01/03/2016		0	\$	-
YD19735	Quartz	MT	122	01/03/2016		0	\$	-
YD19736	Quartz	MT	123	01/03/2016		0	\$	-
YD19737	Quartz	MT	124	01/03/2016		0	\$	-
YD19738	Quartz	MT	125	01/03/2016		0	\$	-
YD19739	Quartz	MT	126	01/03/2016		0	\$	-
YD19740	Quartz	MT	127	01/03/2016		0	\$	-
YD19741	Quartz	MT	128	01/03/2016		0	\$	-
YD19742	Quartz	MT	129	01/03/2016		0	\$	-
YD19743	Quartz	MT	130	01/03/2016		0	\$	-
YD19744	Quartz	MT	131	01/03/2016		0	\$	-
YD19745	Quartz	MT	132	01/03/2016		0	\$	-
YD19746	Quartz	MT	133	01/03/2016		0	\$	-
YD19747	Quartz	MT	134	01/03/2016		0	\$	-
YD19748	Quartz	MT	135	01/03/2016		0	\$	-
YD19749	Quartz	MT	136	01/03/2016	\$ 340.73	0	\$	-
YD19750	Quartz	MT	137	01/03/2016		0	\$	-
YD19751	Quartz	MT	138	01/03/2016	\$ 340.73	0	\$	-
YD19752	Quartz	MT	139	01/03/2016		0	\$	-
YD19753	Quartz	MT	140	01/03/2016		0	\$	-
YD19754	Quartz	MT	141	01/03/2016		0	\$	-
YD19755	Quartz	MT	142	01/03/2016		0	\$	-
YD19756	Quartz	MT	143	01/03/2016		0	\$	-
YD19757	Quartz	MT	144	01/03/2016		0	\$	-
YD19758	Quartz	MT	145	01/03/2016		0	\$	-
YD19759	Quartz	MT	146	01/03/2016		0	\$	-
YD19760	Quartz	MT	147	01/03/2016		0	\$	-
YD19761	Quartz	MT	148	01/03/2016		0	\$	-
YD19762	Quartz	MT	149	01/03/2016		0	\$	-
YD19763	Quartz	MT	150	01/03/2016		0	\$	-
YD19764	Quartz	MT	151	01/03/2016		0	\$	-
YD19765	Quartz	MT	152	01/03/2016		0	\$	-
YD19766	Quartz	MT	153	01/03/2016		0	\$	-
YD19767	Quartz	MT	154	01/03/2016		0	\$	-

Claim List for Cert of Work 2012 BishopMon

Type	Claim Information				Work Done	Renewal		
	Grant No.	Claim Name	Claim No.	Expiry Date	Prospecting	Years	Annual Fee	Total
YD19768	Quartz	MT	155	01/03/2016		0	\$	-
YD19769	Quartz	MT	156	01/03/2016		0	\$	-
YD19770	Quartz	MT	157	01/03/2016		0	\$	-
YD19771	Quartz	MT	158	01/03/2016		0	\$	-
YD19772	Quartz	MT	159	01/03/2016		0	\$	-
YD19773	Quartz	MT	160	01/03/2016		0	\$	-
YD19774	Quartz	MT	161	01/03/2016	\$ 340.73	0	\$	-
YD19775	Quartz	MT	162	01/03/2016		0	\$	-
YD19776	Quartz	MT	163	01/03/2016		0	\$	-
YD19777	Quartz	MT	164	01/03/2016		0	\$	-
YD19778	Quartz	MT	165	01/03/2016		0	\$	-
YD19779	Quartz	MT	166	01/03/2016		0	\$	-
YD19780	Quartz	MT	167	01/03/2016		0	\$	-
YD19781	Quartz	MT	168	01/03/2016		0	\$	-
YD19782	Quartz	MT	169	01/03/2016		0	\$	-
YD19783	Quartz	MT	170	01/03/2016		0	\$	-
YD19784	Quartz	MT	171	01/03/2016		0	\$	-
YD19785	Quartz	MT	172	01/03/2016		0	\$	-
YD19786	Quartz	MT	173	01/03/2016		0	\$	-
YD19787	Quartz	MT	174	01/03/2016		0	\$	-
YD19788	Quartz	MT	175	01/03/2016		0	\$	-
YD19789	Quartz	MT	176	01/03/2016		0	\$	-
YD19790	Quartz	MT	177	01/03/2016		0	\$	-
YD19791	Quartz	MT	178	01/03/2016		0	\$	-
YD19792	Quartz	MT	179	01/03/2016		0	\$	-
YD19793	Quartz	MT	180	01/03/2016		0	\$	-
YD19794	Quartz	MT	181	01/03/2016		0	\$	-
YD19795	Quartz	MT	182	01/03/2016		0	\$	-
YD19839	Quartz	MT	183	01/03/2016		0	\$	-
YD19840	Quartz	MT	184	01/03/2016		0	\$	-
YD19841	Quartz	MT	185	01/03/2016		0	\$	-
YD19842	Quartz	MT	186	01/03/2016		0	\$	-
YD19843	Quartz	MT	187	01/03/2016		0	\$	-
YD19844	Quartz	MT	188	01/03/2016		0	\$	-
YD19845	Quartz	MT	189	01/03/2016		0	\$	-
YD19846	Quartz	MT	190	01/03/2016		0	\$	-
YD19847	Quartz	MT	191	01/03/2016		0	\$	-
YD19848	Quartz	MT	192	01/03/2016		0	\$	-
YD19849	Quartz	MT	193	01/03/2016		0	\$	-
YD19850	Quartz	MT	194	01/03/2016		0	\$	-
YD19851	Quartz	MT	195	01/03/2016		0	\$	-
YD19852	Quartz	MT	196	01/03/2016		0	\$	-
YD19799	Quartz	MT	197	01/03/2016		0	\$	-
YD19800	Quartz	MT	198	01/03/2016		0	\$	-
YD19801	Quartz	MT	199	01/03/2016		0	\$	-
YD19802	Quartz	MT	200	01/03/2016		0	\$	-
YD19803	Quartz	MT	201	01/03/2016		0	\$	-
YD19804	Quartz	MT	202	01/03/2016		0	\$	-
YD19805	Quartz	MT	203	01/03/2016	\$ 340.73	0	\$	-
YD19806	Quartz	MT	204	01/03/2016	\$ 340.73	0	\$	-
YD19807	Quartz	MT	205	01/03/2016		0	\$	-
YD19808	Quartz	MT	206	01/03/2016		0	\$	-
YD19809	Quartz	MT	207	01/03/2016		0	\$	-
YD19810	Quartz	MT	208	01/03/2016		0	\$	-
YD19811	Quartz	MT	209	01/03/2016		0	\$	-
YD19812	Quartz	MT	210	01/03/2016		0	\$	-
YD19813	Quartz	MT	211	01/03/2016		0	\$	-
YD19814	Quartz	MT	212	01/03/2016		0	\$	-
YD19815	Quartz	MT	213	01/03/2016		0	\$	-
YD19816	Quartz	MT	214	01/03/2016		0	\$	-

Claim List for Cert of Work 2012 BishopMon

Type	Claim Information				Work Done	Renewal		
	Grant No.	Claim Name	Claim No.	Expiry Date	Prospecting	Years	Annual Fee	Total
YD19817	Quartz	MT	215	01/03/2016		0	\$	-
YD19818	Quartz	MT	216	01/03/2016		0	\$	-
YD19819	Quartz	MT	217	01/03/2016		0	\$	-
YD19820	Quartz	MT	218	01/03/2016		0	\$	-
YD19821	Quartz	MT	219	01/03/2016		0	\$	-
YD19822	Quartz	MT	220	01/03/2016		0	\$	-
YD19823	Quartz	MT	221	01/03/2016		0	\$	-
YD19824	Quartz	MT	222	01/03/2016		0	\$	-
YD19825	Quartz	MT	223	01/03/2016		0	\$	-
YD19826	Quartz	MT	224	01/03/2016		0	\$	-
YD19827	Quartz	MT	225	01/03/2016		0	\$	-
YD19828	Quartz	MT	226	01/03/2016		0	\$	-
YD19829	Quartz	MT	227	01/03/2016		0	\$	-
YD19830	Quartz	MT	228	01/03/2016		0	\$	-
YD19831	Quartz	MT	229	01/03/2016		0	\$	-
YD19832	Quartz	MT	230	01/03/2016		0	\$	-
YD19833	Quartz	MT	231	01/03/2016		0	\$	-
YD19834	Quartz	MT	232	01/03/2016		0	\$	-
YD19835	Quartz	MT	233	01/03/2016		0	\$	-
YD19836	Quartz	MT	234	01/03/2016		0	\$	-
YD19837	Quartz	MT	235	01/03/2016		0	\$	-
YD19838	Quartz	MT	236	01/03/2016		0	\$	-
YD101504	Quartz	IN	24	16/03/2016		0	\$	-
YD101505	Quartz	IN	25	16/03/2016		0	\$	-
YD101506	Quartz	IN	26	16/03/2016		0	\$	-
YD101507	Quartz	IN	27	16/03/2016		0	\$	-
YD101508	Quartz	IN	28	16/03/2016		0	\$	-
YD101509	Quartz	IN	29	16/03/2016		0	\$	-
YD101510	Quartz	IN	30	16/03/2016		0	\$	-
YD101511	Quartz	IN	31	16/03/2016		0	\$	-
YD101512	Quartz	IN	32	16/03/2016		0	\$	-
YD101513	Quartz	IN	33	16/03/2016		0	\$	-
YD101514	Quartz	IN	34	16/03/2016		0	\$	-
YD101515	Quartz	IN	35	16/03/2016		0	\$	-
YD101516	Quartz	IN	36	16/03/2016		0	\$	-
YD101517	Quartz	IN	37	16/03/2016		0	\$	-
YD101518	Quartz	IN	38	16/03/2016		0	\$	-
YD101519	Quartz	IN	39	16/03/2016		0	\$	-
YD101520	Quartz	IN	40	16/03/2016		0	\$	-
YD101521	Quartz	IN	41	16/03/2016		0	\$	-
YD101522	Quartz	IN	42	16/03/2016	\$ 340.73	0	\$	-
YD101523	Quartz	IN	43	16/03/2016		0	\$	-
YD101524	Quartz	IN	44	16/03/2016	\$ 340.73	0	\$	-
YD101525	Quartz	IN	45	16/03/2016		0	\$	-
YD101526	Quartz	IN	46	16/03/2016		0	\$	-
YD101527	Quartz	IN	47	16/03/2016		0	\$	-
YD101528	Quartz	IN	48	16/03/2016		0	\$	-
YD101529	Quartz	IN	49	16/03/2016		0	\$	-
YD101530	Quartz	IN	50	16/03/2016		0	\$	-
YD101531	Quartz	IN	51	16/03/2016		0	\$	-
YD101532	Quartz	IN	52	16/03/2016		0	\$	-
YD101533	Quartz	IN	53	16/03/2016		0	\$	-
YD101534	Quartz	IN	54	16/03/2016		0	\$	-
YD101535	Quartz	IN	55	16/03/2016		0	\$	-
YD101536	Quartz	IN	56	16/03/2016		0	\$	-
YD101537	Quartz	IN	57	16/03/2016		0	\$	-
YD101538	Quartz	IN	58	16/03/2016		0	\$	-
YD101539	Quartz	IN	59	16/03/2016		0	\$	-
YD101540	Quartz	IN	60	16/03/2016		0	\$	-
YD101541	Quartz	IN	61	16/03/2016		0	\$	-

Claim List for Cert of Work 2012 BishopMon

Claim Information					Work Done	Renewal		
Type	Grant No.	Claim Name	Claim No.	Expiry Date	Prospecting	Years	Annual Fee	Total
YD101542	Quartz	IN	62	16/03/2016		0	\$	-
YD101543	Quartz	IN	63	16/03/2016		0	\$	-
YD101544	Quartz	IN	64	16/03/2016		0	\$	-
YD101545	Quartz	IN	65	16/03/2016		0	\$	-
YD101546	Quartz	IN	66	16/03/2016		0	\$	-
YD101547	Quartz	IN	67	16/03/2016		0	\$	-
YD101548	Quartz	IN	68	16/03/2016		0	\$	-
YD101549	Quartz	IN	69	16/03/2016		0	\$	-
YD101550	Quartz	IN	70	16/03/2016		0	\$	-
YD101551	Quartz	IN	71	16/03/2016		0	\$	-
YD101552	Quartz	IN	72	16/03/2016		0	\$	-
YD101553	Quartz	IN	73	16/03/2016		0	\$	-
YD101554	Quartz	IN	74	16/03/2016		0	\$	-
YD101555	Quartz	IN	75	16/03/2016		0	\$	-
YD101556	Quartz	IN	76	16/03/2016		0	\$	-
YD101557	Quartz	IN	77	16/03/2016		0	\$	-
YD101558	Quartz	IN	78	16/03/2016		0	\$	-
YD101559	Quartz	IN	79	16/03/2016		0	\$	-
YD101560	Quartz	IN	80	16/03/2016		0	\$	-
YD101561	Quartz	IN	81	16/03/2016		0	\$	-
YD101562	Quartz	IN	82	16/03/2016		0	\$	-
YD101563	Quartz	IN	83	16/03/2016		0	\$	-
YD101564	Quartz	IN	84	16/03/2016		0	\$	-
YD101565	Quartz	IN	85	16/03/2016		0	\$	-
YD101566	Quartz	IN	86	16/03/2016		0	\$	-
YD101567	Quartz	IN	87	16/03/2016		0	\$	-
YD101568	Quartz	IN	88	16/03/2016		0	\$	-
YD101569	Quartz	IN	89	16/03/2016		0	\$	-
YD101570	Quartz	IN	90	16/03/2016		0	\$	-
YD101571	Quartz	IN	91	16/03/2016		0	\$	-
YD101572	Quartz	IN	92	16/03/2016		0	\$	-
YD101573	Quartz	IN	93	16/03/2016		0	\$	-
YD101574	Quartz	IN	94	16/03/2016		0	\$	-
YD101575	Quartz	IN	95	16/03/2016		0	\$	-
YD101576	Quartz	IN	96	16/03/2016		0	\$	-
YD101577	Quartz	IN	97	16/03/2016		0	\$	-
YD101578	Quartz	IN	98	16/03/2016		0	\$	-
YD101579	Quartz	IN	99	16/03/2016		0	\$	-
YD101580	Quartz	IN	100	16/03/2016		0	\$	-
YD101581	Quartz	IN	101	16/03/2016		0	\$	-
YD101582	Quartz	IN	102	16/03/2016		0	\$	-
YD101583	Quartz	IN	103	16/03/2016		0	\$	-
YD101584	Quartz	IN	104	16/03/2016		0	\$	-
YD101585	Quartz	IN	105	16/03/2016		0	\$	-
YD101586	Quartz	IN	106	16/03/2016		0	\$	-
YD101587	Quartz	IN	107	16/03/2016		0	\$	-
YD101588	Quartz	IN	108	16/03/2016		0	\$	-
YD101589	Quartz	IN	109	16/03/2016		0	\$	-
YD101590	Quartz	IN	110	16/03/2016		0	\$	-
YD101591	Quartz	IN	111	16/03/2016		0	\$	-
YD101592	Quartz	IN	112	16/03/2016		0	\$	-
YD101593	Quartz	IN	113	16/03/2016		0	\$	-
YD101594	Quartz	IN	114	16/03/2016		0	\$	-
YD101595	Quartz	IN	115	16/03/2016		0	\$	-
YD101596	Quartz	IN	116	16/03/2016	\$ 340.73	0	\$	-
YD101597	Quartz	IN	117	16/03/2016		0	\$	-
YD101598	Quartz	IN	118	16/03/2016	\$ 340.73	0	\$	-
YD101599	Quartz	IN	119	16/03/2016		0	\$	-
YD101600	Quartz	IN	120	16/03/2016	\$ 340.73	0	\$	-
YD101601	Quartz	IN	121	16/03/2016		0	\$	-

Claim List for Cert of Work 2012 BishopMon

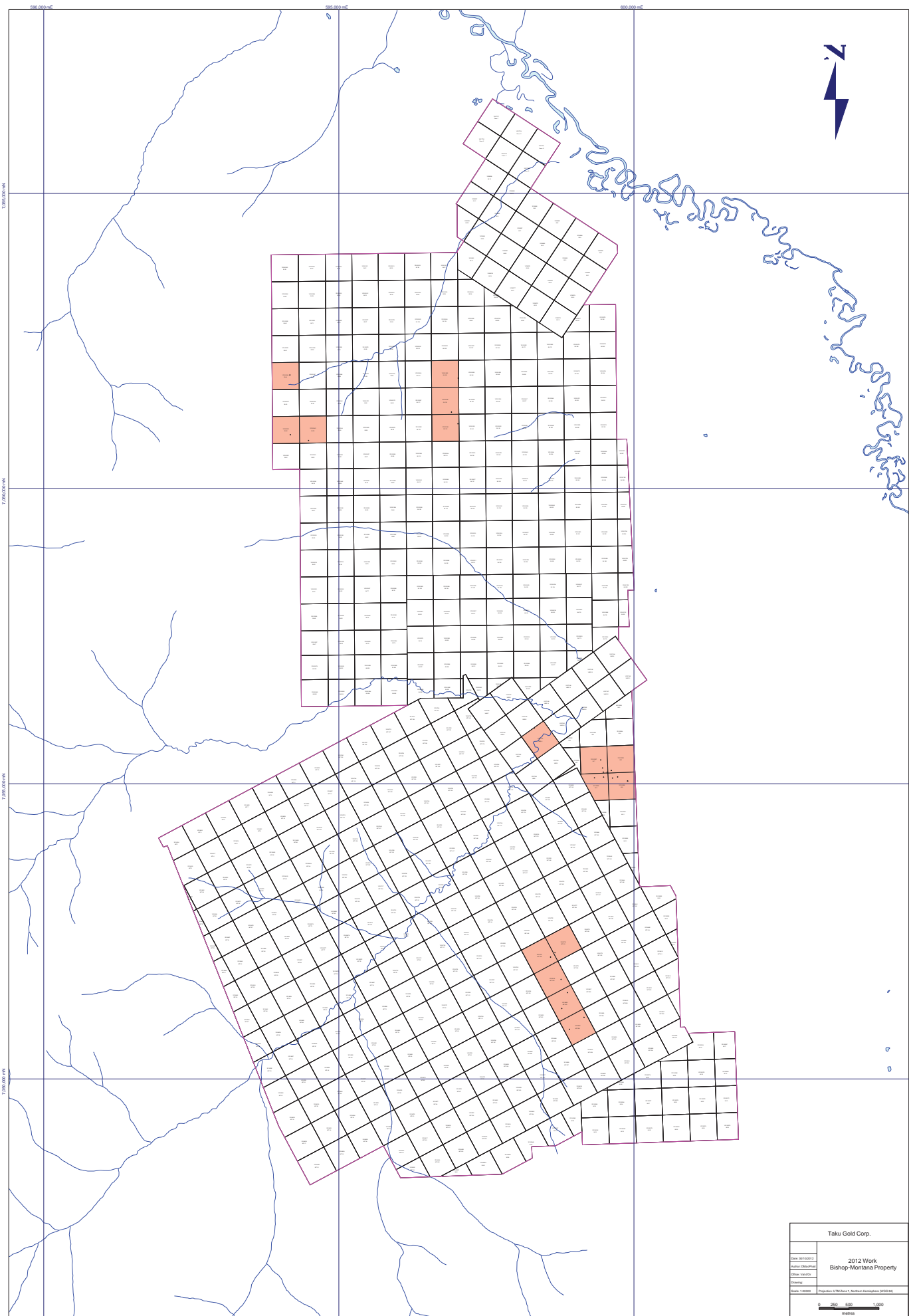
Type	Claim Information				Work Done	Renewal		
	Grant No.	Claim Name	Claim No.	Expiry Date	Prospecting	Years	Annual Fee	Total
YD101602	Quartz	IN	122	16/03/2016		0	\$	-
YD101603	Quartz	IN	123	16/03/2016		0	\$	-
YD101604	Quartz	IN	124	16/03/2016		0	\$	-
YD101605	Quartz	IN	125	16/03/2016		0	\$	-
YD101606	Quartz	IN	126	16/03/2016		0	\$	-
YD101607	Quartz	IN	127	16/03/2016		0	\$	-
YD101608	Quartz	IN	128	16/03/2016		0	\$	-
YD101609	Quartz	IN	129	16/03/2016		0	\$	-
YD101610	Quartz	IN	130	16/03/2016		0	\$	-
YD101611	Quartz	IN	131	16/03/2016		0	\$	-
YD101612	Quartz	IN	132	16/03/2016		0	\$	-
YD101613	Quartz	IN	133	16/03/2016		0	\$	-
YD101614	Quartz	IN	134	16/03/2016		0	\$	-
YD101615	Quartz	IN	135	16/03/2016		0	\$	-
YD101616	Quartz	IN	136	16/03/2016		0	\$	-
YD101617	Quartz	IN	137	16/03/2016		0	\$	-
YD101618	Quartz	IN	138	16/03/2016		0	\$	-
YD101619	Quartz	IN	139	16/03/2016		0	\$	-
YD101620	Quartz	IN	140	16/03/2016		0	\$	-
YD101621	Quartz	IN	141	16/03/2016		0	\$	-
YD101622	Quartz	IN	142	16/03/2016		0	\$	-
YD101623	Quartz	IN	143	16/03/2016		0	\$	-
YD101624	Quartz	IN	144	16/03/2016		0	\$	-
YD101625	Quartz	IN	145	16/03/2016		0	\$	-
YD101626	Quartz	IN	146	16/03/2016		0	\$	-
YD101627	Quartz	IN	147	16/03/2016		0	\$	-
YD101628	Quartz	IN	148	16/03/2016		0	\$	-
YD101629	Quartz	IN	149	16/03/2016		0	\$	-
YD101630	Quartz	IN	150	16/03/2016		0	\$	-
YD101631	Quartz	IN	151	16/03/2016		0	\$	-
YD101632	Quartz	IN	152	16/03/2016		0	\$	-
YD101633	Quartz	IN	153	16/03/2016		0	\$	-
YD101634	Quartz	IN	154	16/03/2016		0	\$	-
YD101635	Quartz	IN	155	16/03/2016		0	\$	-
YD101636	Quartz	IN	156	16/03/2016		0	\$	-
YD101637	Quartz	IN	157	16/03/2016		0	\$	-
YD101638	Quartz	IN	158	16/03/2016		0	\$	-
YD101639	Quartz	IN	159	16/03/2016		0	\$	-
YD101640	Quartz	IN	160	16/03/2016		0	\$	-
YD101641	Quartz	IN	161	16/03/2016		0	\$	-
YD101642	Quartz	IN	162	16/03/2016		0	\$	-
YD101643	Quartz	IN	163	16/03/2016		0	\$	-
YD101644	Quartz	IN	164	16/03/2016		0	\$	-
YD101645	Quartz	IN	165	16/03/2016		0	\$	-
YD101646	Quartz	IN	166	16/03/2016		0	\$	-
YD101647	Quartz	IN	167	16/03/2016		0	\$	-
YD101648	Quartz	IN	168	16/03/2016		0	\$	-
YD101649	Quartz	IN	169	16/03/2016		0	\$	-
YD101650	Quartz	IN	170	16/03/2016		0	\$	-
YD101651	Quartz	IN	171	16/03/2016		0	\$	-
YD101652	Quartz	IN	172	16/03/2016		0	\$	-
YD101653	Quartz	IN	173	16/03/2016		0	\$	-
YD101654	Quartz	IN	174	16/03/2016		0	\$	-
YD101655	Quartz	IN	175	16/03/2016		0	\$	-
YD101656	Quartz	IN	176	16/03/2016		0	\$	-
YD101657	Quartz	IN	177	16/03/2016		0	\$	-
YD101658	Quartz	IN	178	16/03/2016		0	\$	-
YD101659	Quartz	IN	179	16/03/2016		0	\$	-
YD101660	Quartz	IN	180	16/03/2016		0	\$	-
YD101661	Quartz	IN	181	16/03/2016		0	\$	-

Claim List for Cert of Work 2012 BishopMon

Claim Information					Work Done	Renewal			
Type	Grant No.	Claim Name	Claim No.	Expiry Date	Prospecting	Years	Annual Fee	Total	
YD101662	Quartz	IN	182	16/03/2016		0	\$	-	
YD101663	Quartz	IN	183	16/03/2016		0	\$	-	
YD101664	Quartz	IN	184	16/03/2016		0	\$	-	
YD101665	Quartz	IN	185	16/03/2016		0	\$	-	
YD101666	Quartz	IN	186	16/03/2016		0	\$	-	
YD101667	Quartz	IN	187	16/03/2016		0	\$	-	
YD101668	Quartz	IN	188	16/03/2016		0	\$	-	
YD101669	Quartz	IN	189	16/03/2016		0	\$	-	
YD101670	Quartz	IN	190	16/03/2016		0	\$	-	
YD101671	Quartz	IN	191	16/03/2016		0	\$	-	
YD101672	Quartz	IN	192	16/03/2016		0	\$	-	
YD101673	Quartz	IN	193	16/03/2016		0	\$	-	
YD101674	Quartz	IN	194	16/03/2016		0	\$	-	
YD101675	Quartz	IN	195	16/03/2016		0	\$	-	
YD101676	Quartz	IN	196	16/03/2016		0	\$	-	
YD101677	Quartz	IN	197	16/03/2016		0	\$	-	
YD101678	Quartz	IN	198	16/03/2016		0	\$	-	
YD101679	Quartz	IN	199	16/03/2016		0	\$	-	
YD101680	Quartz	IN	200	16/03/2016		0	\$	-	
YD101681	Quartz	IN	201	16/03/2016		0	\$	-	
YD101682	Quartz	IN	202	16/03/2016		0	\$	-	
YD101683	Quartz	IN	203	16/03/2016		0	\$	-	
YD101684	Quartz	IN	204	16/03/2016		0	\$	-	
YD101685	Quartz	IN	205	16/03/2016		0	\$	-	
YD101686	Quartz	IN	206	16/03/2016		0	\$	-	
YD101687	Quartz	IN	207	16/03/2016		0	\$	-	
YD101688	Quartz	IN	208	16/03/2016		0	\$	-	
YD101689	Quartz	IN	209	16/03/2016		0	\$	-	
YD101690	Quartz	IN	210	16/03/2016		0	\$	-	
YD101691	Quartz	IN	211	16/03/2016		0	\$	-	
YD101692	Quartz	IN	212	16/03/2016		0	\$	-	
YD101693	Quartz	IN	213	16/03/2016		0	\$	-	
YD101694	Quartz	IN	214	16/03/2016		0	\$	-	
YD101695	Quartz	IN	215	16/03/2016		0	\$	-	
YD101696	Quartz	IN	216	16/03/2016		0	\$	-	
YD101697	Quartz	IN	217	16/03/2016		0	\$	-	
YD101698	Quartz	IN	218	16/03/2016		0	\$	-	
YD101699	Quartz	IN	219	16/03/2016		0	\$	-	
YD101700	Quartz	IN	220	16/03/2016		0	\$	-	
YD101701	Quartz	IN	221	16/03/2016		0	\$	-	
YD101702	Quartz	IN	222	16/03/2016		0	\$	-	
YD101703	Quartz	IN	223	16/03/2016		0	\$	-	
YD101704	Quartz	IN	224	16/03/2016		0	\$	-	
YD101705	Quartz	IN	225	16/03/2016		0	\$	-	
YD101706	Quartz	IN	226	16/03/2016		0	\$	-	
YD101707	Quartz	IN	227	16/03/2016		0	\$	-	
Column Total					\$	5,110.90	45	\$	445.00
Check Column total less Expenses					\$	-			
Number of Claims Where work was done						15			
Expenses (from Project Management Sheet)					\$	5,110.90			
Work Required for requested renewal					\$	4,500.00			
Surplus (Deficit)					\$	610.90			
Years to renew 45 claims x 1 years						45			

Bishop-Montana - Costs2012 - Prospecting

Item	Date	Supplier	Invoice	Cost	Totals
5550 Prospect & Exam - Wages & Contract					
	06-30-2012	BXM	854	\$ 1,950.00	
	08-31-2012	BXM	884	\$ 450.00	
					\$ 2,400.00
5552 Prospect & Exam - Supplies					
	06-30-2012	BXM	854	\$ 39.00	
					\$ 39.00
5553 Prospect & Exam - Transport					
	06-10-2012	Heli Dynamics	11807	\$ 1,052.00	
	06-10-2012	Heli Dynamics	11808	\$ 841.60	
	06-30-2012	BXM	854	\$ 150.00	
					\$ 2,043.60
5554 Prospect & Exam - Rentals					
	06-30-2012	BXM	854	\$ 125.00	
					\$ 125.00
5556 Prospect & Exam - Assays					
	06-25-2012	Acmelabs	VANI132772	\$ 503.30	
					\$ 503.30
Generated On: 27/10/2012					\$ 5,110.90



Taku Gold Corp.	
Date: 06/10/2012	2012 Work
Author: Steve Pugh	Bishop-Montana Property
Editor: Sam Pugh	
Scale: 1:50000	Projection: UTM Zone 17 North

Appendix B - Sample Locations and Descriptions

Appendix B - Sample Locations and Descriptions

Sample	Type	Date	Sampler	Easting	Northing	EastNorthDatum	SampleType	Lithology	LithModifier	LithModifier2	Colour
133981	Rock	10/06/2012	JamesSullivan	598909	7050841	UTMZ7N_WGS84	ProspectPitGrab	Schist	Biotitic	QuartzVein	Black
133982	Rock	10/06/2012	JamesSullivan	598875	7051462	UTMZ7N_WGS84	SubCropGrab	Schist	Siliceous	Muscovite	Grey
133983	Rock	10/06/2012	JamesSullivan	598586	7052064	UTMZ7N_WGS84	ProspectPitGrab	Schist	Siliceous	Micaceous	Grey
134813	Rock	10/06/2012	HugoGirard	599154	7051044	UTMZ7N_WGS84	ProspectPitGrab	SchistMuscovite	Siliceous		Grey
134814	Rock	10/06/2012	HugoGirard	598776	7051193	UTMZ7N_WGS84	FloatGrab	Schist	Siliceous	Biotitic	Grey
134815	Rock	10/06/2012	HugoGirard	598765	7051687	UTMZ7N_WGS84	FloatGrab	SchistMuscovite	Siliceous		Grey
134816	Rock	10/06/2012	HugoGirard	598661	7052138	UTMZ7N_WGS84	SubCropGrab	Quartzite			White
131398	Rock	10/06/2012	JoshJudson	599723	7055116	UTMZ7N_WGS84	ProspectPitGrab	SchistMuscovite	Biotitic		Black
131399	Rock	10/06/2012	JoshJudson	599636	7055096	UTMZ7N_WGS84	ProspectPitGrab	SchistMuscovite	Biotitic	Siliceous	Black
131400	Rock	10/06/2012	JoshJudson	599330	7055101	UTMZ7N_WGS84	ProspectPitGrab	SchistMuscovite	Biotitic	Brecciated	Black
131401	Rock	10/06/2012	JoshJudson	599481	7055196	UTMZ7N_WGS84	ProspectPitGrab	SchistMuscovite	Biotitic	Brecciated	Orange
131402	Rock	10/06/2012	JoshJudson	599548	7055197	UTMZ7N_WGS84	ProspectPitGrab	SchistMuscovite	Biotitic		BrownLight
131403	Rock	10/06/2012	JoshJudson	599614	7055226	UTMZ7N_WGS84	ProspectPitGrab	SchistChlorite	Siliceous		Green
131404	Rock	10/06/2012	JoshJudson	599436	7055403	UTMZ7N_WGS84	ProspectPitGrab	SchistChlorite	Biotitic	Banded	Black
131405	Rock	10/06/2012	JoshJudson	599468	7055268	UTMZ7N_WGS84	ProspectPitGrab	SchistChlorite	Siliceous		Grey
131406	Rock	10/06/2012	JoshJudson	599485	7055113	UTMZ7N_WGS84	ProspectPitGrab	SchistChlorite	Siliceous		Grey
131407	Rock	10/06/2012	JoshJudson	598313	7055943	UTMZ7N_WGS84	MineTailings				White
131408	Rock	10/06/2012	JoshJudson	599549	7055177	UTMZ7N_WGS84	TrenchChip	SchistChlorite	Siliceous		Orange
131409	Rock	11/06/2012	JoshJudson	599892	7055046	UTMZ7N_WGS84	TrenchChip	VeinQuartz	Banded		Orange
131410	Rock	11/06/2012	JoshJudson	599892	7055047	UTMZ7N_WGS84	TrenchChip	VeinQuartz	Quartz		Orange
127039	Rock	10/06/2012	DarrellKraemer	597017	7061098	UTMZ7N_WGS84	FloatGrab	Quartzite			Tan
127040	Rock	10/06/2012	DarrellKraemer	596908	7061296	UTMZ7N_WGS84	OutcropGrab	Quartzite			Tan
127041	Rock	10/06/2012	DarrellKraemer	597021	7061872	UTMZ7N_WGS84	FloatGrab	Quartzite			Tan
127042	Rock	10/06/2012	DarrellKraemer	594170	7061924	UTMZ7N_WGS84	FloatGrab	Quartzite			Tan
127043	Rock	10/06/2012	DarrellKraemer	594177	7060913	UTMZ7N_WGS84	FloatGrab	Quartzite			Tan
127044	Rock	10/06/2012	DarrellKraemer	594486	7060816	UTMZ7N_WGS84	ProspectPitGrab	Conglomerate			Tan

Appendix C - Assay Certificates



1020 Cordova St. East Vancouver BC V6A 4A3 Canada

Acme Analytical Laboratories (Vancouver) Ltd.

www.acmelab.com

Client: Taku Gold Corp
680 3rd Ave, Suite 203
Val D'Or QC J9P 1S5 Canada

Submitted By: Mark Fekete
Receiving Lab: Canada-Whitehorse
Received: June 18, 2012
Report Date: June 25, 2012
Page: 1 of 2

CERTIFICATE OF ANALYSIS

WHI12000107.1

CLIENT JOB INFORMATION

Project: Montana
Shipment ID: 20120614083528
P.O. Number
Number of Samples: 26

SAMPLE PREPARATION AND ANALYTICAL PROCEDURES

Table with 6 columns: Method Code, Number of Samples, Code Description, Test Wgt (g), Report Status, Lab. Contains two rows of sample preparation data.

SAMPLE DISPOSAL

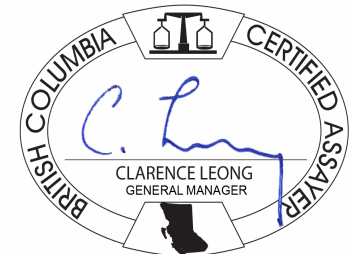
DISP-PLP Dispose of Pulp After 90 days
DISP-RJT Dispose of Reject After 90 days

ADDITIONAL COMMENTS

Acme does not accept responsibility for samples left at the laboratory after 90 days without prior written instructions for sample storage or return.

Invoice To: Taku Gold Corp
680 3rd Ave, Suite 203
Val D'Or QC J9P 1S5
Canada

CC: Marty Huber



This report supersedes all previous preliminary and final reports with this file number dated prior to the date on this certificate. Signature indicates final approval; preliminary reports are unsigned and should be used for reference only. All results are considered the confidential property of the client. Acme assumes the liabilities for actual cost of analysis only. Results apply to samples as submitted. ** asterisk indicates that an analytical result could not be provided due to unusually high levels of interference from other elements.



Acme Analytical Laboratories (Vancouver) Ltd.
 1020 Cordova St. East Vancouver BC V6A 4A3 Canada
 Phone (604) 253-3158 Fax (604) 253-1716

www.acmelab.com

Client: **Taku Gold Corp**
 680 3rd Ave, Suite 203
 Val D'Or QC J9P 1S5 Canada

Project: Montana
 Report Date: June 25, 2012

Page: 2 of 2

Part: 1 of 1

CERTIFICATE OF ANALYSIS

WHI12000107.1

Method	WGHT	3B
Analyte	Wgt	Au
Unit	kg	ppb
MDL	0.01	2
127039	Rock	0.85 2
127040	Rock	1.11 8
127041	Rock	0.82 4
127042	Rock	1.05 6
127043	Rock	0.58 <2
127044	Rock	1.32 6
131398	Rock	2.24 <2
131399	Rock	2.23 4
131400	Rock	1.37 5
131401	Rock	1.92 5
131402	Rock	1.65 3
131403	Rock	2.00 2
131404	Rock	2.26 5
131405	Rock	2.20 4
131406	Rock	2.06 9
131407	Rock	2.23 <2
131408	Rock	3.08 4
131409	Rock	2.69 <2
131410	Rock	2.24 <2
133981	Rock	1.54 3
133982	Rock	1.60 <2
133983	Rock	1.43 <2
134813	Rock	1.14 3
134814	Rock	1.35 2220
134815	Rock	1.32 8
134816	Rock	1.28 10

